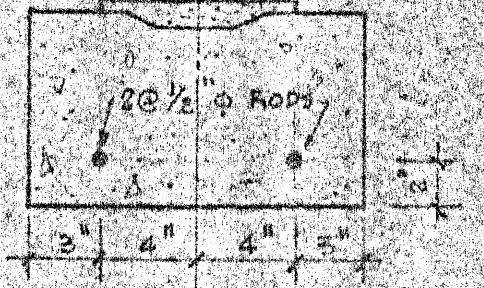
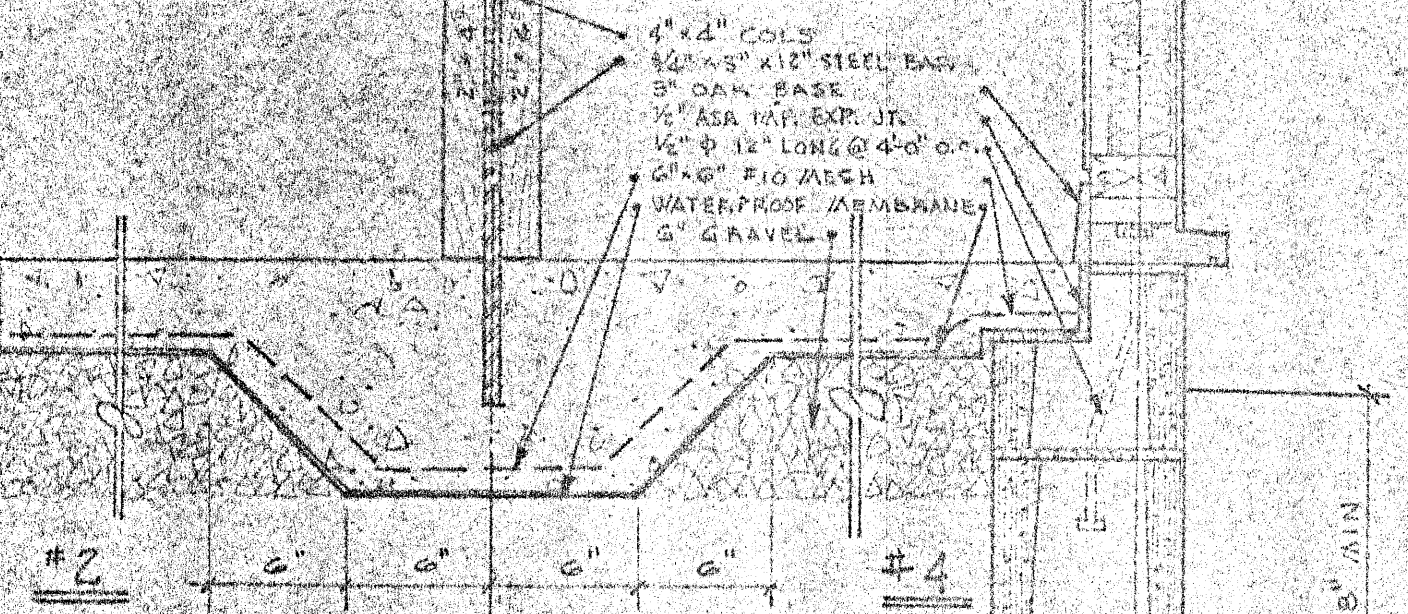


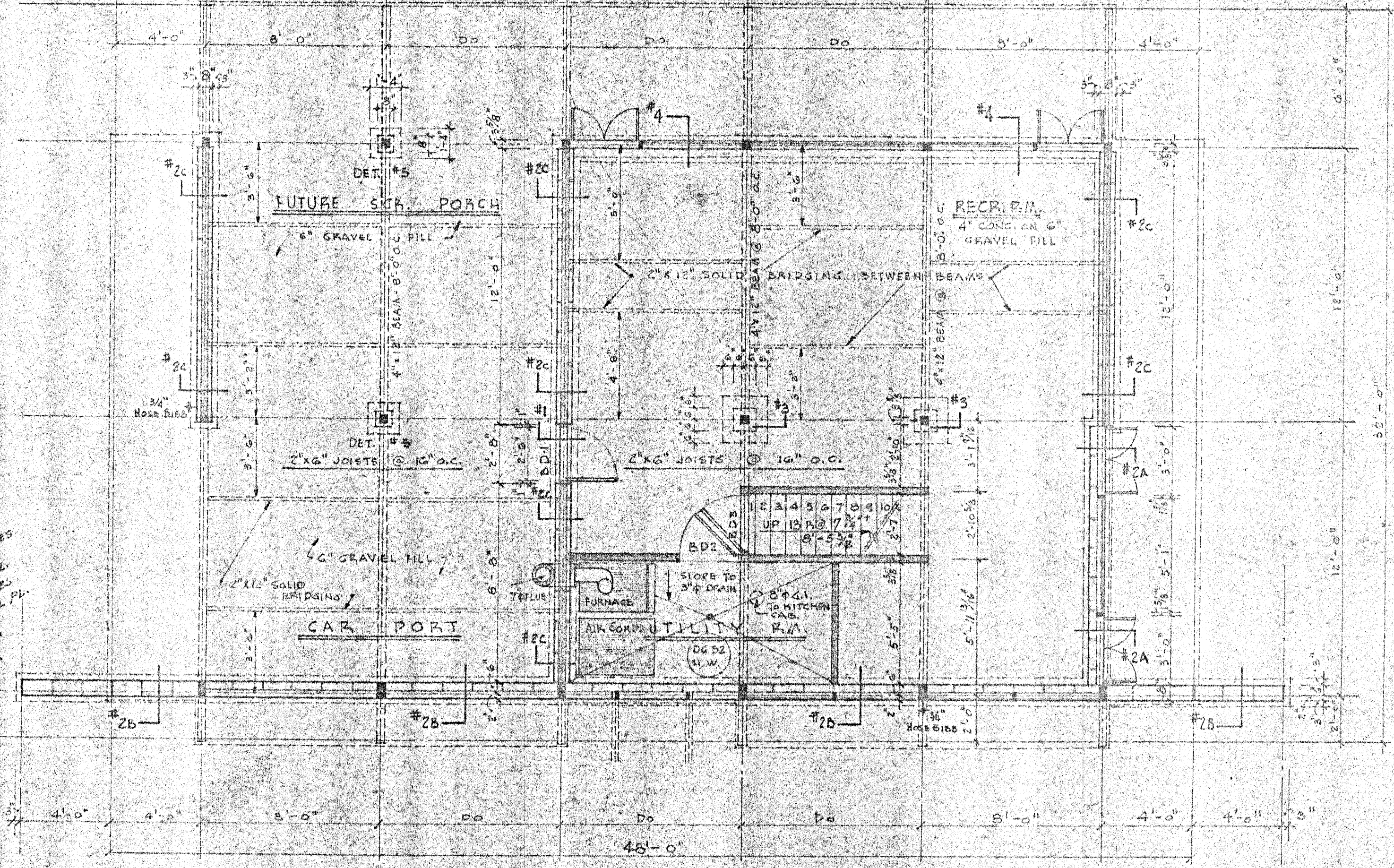
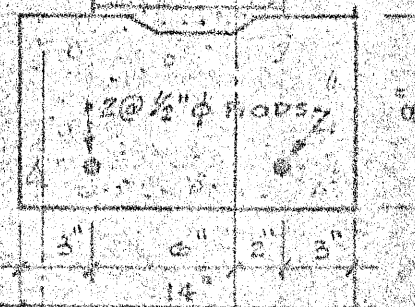
DETAIL #1



MODULES



DETAIL #3



RESIDENCE FOR KIMI & GEORGE MATSUMOTO
 BASEMENT & FOUNDATION PLAN
 DATE: 11-15-52 JOB NO. 5204
 GEORGE MATSUMOTO, AIA, RALEIGH, N.C., ARCHITECT

SHEET 2 OF 11 SHEETS