



# A

Abrasive Cords (P)..... M/A 74  
 Academic Eclecticism ..... N/D 39  
 Adhesive Removal  
 -from brick (RN) ..... M/A 18  
 -from floors (RN) ..... M/A 32  
 -from floors (RN) ..... J/A 14  
 Air Vents, Repairing..... S/O 53  
 American Foursquare—exterior colors... M/J 37  
 Ants, Carpenter ..... M/A 35  
 Apple Trees, Antique..... N/D 16  
 Archambault, Connie  
 -on old-house living ..... N/D 44  
 Archway Ellipse, Swinging (RN)..... N/D 22  
 Arndt, Jacob  
 -on working with native stone..... J/A 30  
 Art Deco Lighting Fixtures (P)..... N/D 54  
 Art, Hanging—Victorian-style..... J/F 41  
 Art Nouveau Lighting Fixtures (P)..... N/D 54  
 Arts & Crafts Furniture, Refinishing ... N/D 31  
 Attics—frost problems (RN) ..... M/A 16

# B

Balloon-Frame Construction (RN)..... J/A 20  
 Barndash..... J/A 37  
 Bathrooms  
 -(L) ..... J/F 8  
 -toilet repair (RN) ..... S/O 22  
 Bathtub, Cabinet (L) ..... J/F 10  
 Bats ..... J/A 42  
 -(L) ..... S/O 12  
 -(L) ..... N/D 12  
 Bay Windows—restoration ..... N/D 34  
 Beaux Arts Houses..... N/D 39  
 Bees, Carpenter (L) ..... M/J 8  
 Beetles, Wood-Boring ..... M/A 36  
 Birdbaths ..... J/F 18  
 Birdhouses (P)..... J/A 64  
 Boilers, Maintaining..... S/O 50  
 Bond-Beam Construction ..... M/A 44  
 BOOKS REVIEWED  
 The American Country House (Aslet) ..... J/A 56  
 The American Country House (Moss) ..... J/A 56  
 America's Favorite Homes..... S/O 64  
 The Architect & the American Country House 1890-1940..... J/A 56  
 The Details of Modern Architecture. M/A 68  
 Discovering & Restoring Antique Furniture ..... S/O 64  
 For Every House a Garden ..... M/A 68  
 Recipes for Surfaces..... M/A 68  
 Brass, Polishing (RN)..... J/A 16  
 Bricks  
 -removing adhesive (RN) ..... M/A 18  
 -screwing into (RN)..... N/D 14  
 Briggs, Paul  
 -on mortars & finishes ..... J/A 35  
 Briscoe, Frank  
 -on wood-destroying insects ..... M/A 34  
 Brushes, Paint  
 -cleaner (P) ..... M/J 58  
 -maintenance..... M/J 54  
 -source (P)..... M/J 58  
 Bucher, Ward  
 -on water-damage from flooding... M/A 40  
 Bungalows—exterior colors..... M/J 37

# C

Cabinet Bathtub (L)..... J/F 10  
 Cape Cod Houses—history..... J/F 45  
 Carpenter Ants ..... M/A 35  
 Carpenter Bees (L)..... M/J 8  
 Carpentry, Finish ..... N/D 34  
 Caulk, Preserving (RN) ..... J/A 14  
 Caustic Paint Strippers..... J/F 38  
 Ceiling, Metal—repairs (RN)..... N/D 14  
 Chimneys, Docked  
 -(L) ..... S/O 6  
 -(RN) ..... M/J 14  
 Chisel Sharpener (P)..... N/D 56  
 Chisels (P) ..... N/D 56  
 Cisterns (RN) ..... J/F 20  
 Clapboards, Quarter-Sawn (P)..... M/A 72  
 Closet, Craftsman—design (RN)..... S/O 18  
 Colonial Revival Style ..... M/A 49  
 Columns—for gardens ..... J/F 18  
 Construction, New (L)..... J/F 10  
 Copper Patina, Simulating (RN) ..... J/F 20  
 Cotton, J. Randall  
 -on books..... J/A 56  
 Craftsman Farms (L) ..... J/A 6  
 Craftsman Finish, Re-Creating ..... N/D 31  
 Craftsman Lighting Fixtures (P)..... N/D 54

# D

Dadoes, Making ..... N/D 48  
 Davis, A.J.—Lyndhurst (L)..... M/A 10  
 Del Sordo, Stephen  
 -on moving houses ..... J/F 26  
 Dentil Moulding, Exterior (P)..... M/A 72  
 Drills, Masonry  
 -cleaning holes (RN) ..... M/J 18  
 -cleaning holes (RN) ..... S/O 22  
 -drilling plaster (RN) ..... N/D 14  
 -history & sources ..... M/A 66  
 Dropcloth (P)..... S/O 68  
 Dutch Colonial Revival  
 -history of ..... M/A 49  
 -exterior colors ..... M/J 37  
 Dutchman Repairs ..... N/D 35  
 Dyes, Aniline  
 -for refinishing furniture ..... N/D 31  
 -sources ..... N/D 33

# E

Earthquake Damage, Repairing ..... M/A 44  
 EDITORIALS  
 A Moving Story..... J/F 4  
 Primer & Paint ..... M/J 4  
 Stone-House Stories..... J/A 4  
 What's New For '92?..... N/D 4  
 Why Restore Old Houses?..... S/O 4  
 "Yeah, But What Kind Of Car Does He Drive?" ..... M/A 6  
 Electric Logs—source (RN)..... M/J 12  
 Ellipse, Archway—swinging (RN) ..... N/D 22  
 English Revival Styles ..... S/O 46  
 Entryways, Colonial (P)..... M/A 72  
 Epoxy—for window repairs ..... S/O 33  
 Erickson, Janet Doub  
 -on Cape Cod houses ..... J/F 45  
 Evans, Al  
 -on bond-beam construction ..... M/A 44  
 Extension Cord—uncoiling (RN)..... M/A 32

# F

Fabric  
 -Colonial textiles (P)..... M/A 74  
 -Craftsman leather (P) ..... M/A 74  
 -wallpaper netting..... S/O 43  
 Fainting Room (L)..... J/F 12  
 Finishes, Masonry ..... J/A 35  
 Finishes, Wood  
 -Craftsman, re-creating ..... N/D 31  
 -sources ..... N/D 38  
 -staining out repairs ..... N/D 37  
 Fisher, Ken  
 -on repointing stonework ..... J/A 38  
 Flood Damage, Repairing ..... M/A 40  
 -(L) ..... M/J 6  
 Flooring, Tile—Greek-key, source (RN) . N/D 24  
 Flooring, Wood  
 -removing plywood (RN) ..... S/O 22  
 -silencing squeaks (RN) ..... M/J 16  
 -source (L)..... J/F 8  
 Folk Victorian—identifying (RN)..... J/F 20  
 Fountains—for gardens..... J/F 18  
 Frames, Picture—Victorian ..... J/F 43  
 Frames, Window—fixing ..... S/O 33  
 Freeman, John Crosby  
 -on exterior paint colors ..... M/J 37  
 French Revival Houses ..... M/J 41  
 -(L) ..... J/A 12  
 Friezes, Wallpaper (P)..... S/O 66  
 Frost—in attics (RN) ..... M/A 16

# HOMESAVER™ CHIMNEY LINERS

FOR RESTORING GREAT OLD CHIMNEYS ON GREAT OLD HOMES

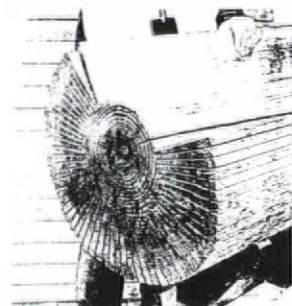
Lifetime warranty. UL-Listed. Call or write for a FREE brochure and the name of an installer/dealer in your area. 1-800-437-6685, ext. 500; 9:00 A.M. to 5:00 P.M. Central Time, Monday through Friday.

HomeSaver Chimney Liners, P.O. Box 664, Fairfield, IA 52556



## The Ward Quartersawn Clapboard

Authentically Produced  
Early American Clapboards



Over 100 years of continuous operation by the Ward family. Quartersawing produces a vertical grain which eliminates warping and accepts paint and stain easily for extended life and beauty. Spruce and pine. Widths from 4-1/2" to 6-1/2". Pre-staining available.

### Ward Clapboard Mill

P.O. Box 1030  
Waitsfield, VT 05673

Moretown, Vermont  
(802) 496-3581

Patten, Maine  
(207) 528-2933



**SCL Sterling**

### 5F5 Non-Flammable Paint Remover

- #1 in New England for 35 years!
- Strips wood, metal, glass & masonry
- Preferred over national brands
- Safe, quick & effective
- Ask for it by name
- Dealer inquiries invited

Also available:

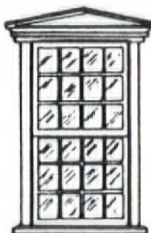


### THE POLYURETHANE ALTERNATIVE

- Fast Drying
- Economical
- Seals Wood
- Dries Clear
- Needs No Waxing
- Gloss or Satin Finish

**NEW!!**

For a free refinishing brochure, write:  
SCL Corp., Box J, Dept. OHJ, Malden, Ma. 02148



## DOORS & WINDOWS

Specialists in 18th & 19th century architectural millwork including Colonial style mortise & tenon small pane window sash, plank window frames, interior & exterior doors, entryways, French doors, mantelpieces, wainscoting, raised panel walls, fanlight windows, & more. Custom orders are welcome. Illustrated brochure, \$3.00.

## ARCHITECTURAL COMPONENTS, INC.

DEPT OH, 26 NORTH LEVERETT RD, MONTAGUE, MA 01351 (413) 367-9441

AUTHENTIC  
VICTORIAN

## SCREEN-STORM DOORS

Touchstone Woodworks

Dept. OHJ PO Box 112  
Ravenna, OH 44266  
(216) 297-1313

Send two dollars to view our elegant collection

Why put a new  
fan in an old house?

Send \$2.00 for  
brochure.

EMERSON,  
CIRCA 1900

## THE FAN MAN

DEPT. OHJ 4614 TRAVIS DALLAS, TEXAS 75205 214-559-4440

Fuming Wood Furniture	
-health hazards	N/D 32
-sources for supplies	N/D 33
-techniques	N/D 31
Furniture	
-Arts & Crafts, refinishing	N/D 31
-book on repairs	S/O 64
-Craftsman closet (RN)	S/O 18
-garden (P)	J/A 64
-upholstery repair kits (P)	M/A 74

<b>G</b>	
Gable Vents	
-(P)	M/A 72
-(RN)	M/A 16
Gambrel Roof-formula for dimensions (RN)	M/J 16
Gardens	
-antique iris	M/J 20
-heirloom seeds (P)	J/A 64
-houses (P)	J/A 64
-ornament	J/F 16
-ornament (P)	J/F 66
-restoration	M/A 22
-(L)	J/A 12
-wirework furniture (P)	J/A 64
Garlows	S/O 49
Gas Radiant Heaters (P)	J/A 66
Georgian Revival Style	M/A 49
Gibbs, Jay	
-on old-house living	M/A 59

Glass	
-repair (P)	J/F 64
-tools	S/O 60
Gloves, Work-children's (RN)	J/F 14
Gothic Revival, Identifying (RN)	N/D 22
Gozdan, Walt	
-on latex paint	M/J 30
Graining, Wood-recipe (RN)	J/F 15

<b>H</b>	
Hall, Bruce E.	
-on old-house living	S/O 55
Hardware, Window (P)	S/O 68
Health Hazards	
-chemical paint strippers	J/F 36
-foot protection (L)	J/F 8
-fuming wood furniture	N/D 32
-hand protection (RN)	J/F 14
Heaters, Gas Radiant (P)	J/A 66
Hickman, Janet C.	
-on paint strippers	J/F 36
Holohan, Dan	
-on steam-heating systems	S/O 50
Hubbard, Elbert-& Larkin Soap (L)	J/F 8
Hurricanes	
-(L)	M/J 6
-protecting houses	M/A 43
-repairing water damage	M/A 40

<b>I</b>	
Impatiens (L)	M/J 6
Insects, Wood-Destroying	M/A 34
-(L)	M/J 8
Insulating Wainscot (RN)	N/D 14
Iris, Antique	M/J 20

<b>J</b>	
Jardinières (P)	J/F 66
Jefferson, Thomas	M/J 22

Johnston, Carol	
-on rug restoration	M/J
Joinery Tool Kit (P)	N/D 56

<b>K</b>	
Kunst, Scott G.	
-on antique apple trees	N/D 16
-on antique iris	M/J 20
-on books & groups for old-house gardeners	S/O 26
-on not remuddling your yard	M/A 22

<b>L</b>	
Lamp Globes (P)	J/F 64
Landscape Architecture	J/F 22
Leather, Craftsman (P)	M/A 74
LeBold, Diane	
-on repointing stonework	J/A 38
Leeke, John	
-on building a roof railing	N/D 26
-on rehabilitating sash windows	S/O 30
-on sand paint	M/J 32
Levels-history & sources	J/F 52
Lighting Fixtures, Post-Victorian (P)	N/D 54

<b>M</b>	
Mail-Order Houses	
-Aladdin (L)	M/A 14
-identifying (L)	S/O 8
-identifying (RN)	J/F 14
-models (L)	M/A 8
Mansard Houses-identifying (RN)	M/J 12
Masonry Tools	
-drills	M/A 66
-suppliers	J/A 34, 41
Massey, James C., & Shirley Maxwell	
-on Beaux Arts houses	N/D 39
-on Colonial & Georgian Revival houses	M/A 49
-on decorative tile	M/A 54
-on English Revival houses	S/O 46
-on French Revival houses	M/J 37
-on Spanish & Mediterranean houses	J/A 45

McNamara, Martin H.	
-on historic wallpaper	S/O 36
Mediterranean Style-history of	J/A 45
Metal Repair (P)	J/F 64
Methylene Chloride Paint Strippers	J/F 36
Mildewcide (P)	M/J 60
Mission Lighting Fixtures (P)	N/D 54
Moody, Dwight D.	
-on bats	J/A 42
Mortar	
-for repointing	J/A 39
-historic	J/A 35
Mouldings, Dentil-exterior (P)	M/A 72
Mouldings, Picture	J/F 41
Mouldings, Wood-repairs	N/D 34
Moving Houses	
-(L)	M/A 8, 12
-(L)	M/J 6
-(L)	J/A 10
-business of	J/F 31
-case histories	J/F 34
-checklist	J/F 35
-techniques	J/F 26
Muntin Repairs	S/O 35

<b>N</b>	
Netting For Wallpaper	S/O 41
Newsletters, Preservationist (L)	J/F 12

<b>O</b>	
Obelisks-for gardens	J/F 18
Odors, Animal-combatting (RN)	S/O 24
OLD-HOUSE LIVING	
The House On 239 Warren Street	S/O 55
Lilacs, Lace, & Old Houses	J/F 49
-(L)	M/A 12
More Time Capsules	M/J 48
A Real Old-House Journal	J/A 50
Urban Plight	M/A 59
Victorian With A Vengeance	N/D 44

OLD-HOUSE MECHANIC	
Brush Care	M/J 54
Doing Dadoes	N/D 48
Glass Tools	S/O 60
Levels	J/F 62
Masonry Drills	M/A 66
Whitewash	J/A 54
Olmsted, Frederick Law	J/F 22
-& Calvert Vaux	N/D 18

Ornament	
-garden	J/F 16
-garden (P)	J/F 66
-pressed metal (P)	J/A 66
OUTSIDE THE OLD HOUSE	
Antique Apple Trees	N/D 16
Antique Iris	M/J 20
Books & Groups For Old-House Gardeners	S/O 26
How Not To Remuddle Your Yard	M/A 22
Using Garden Ornament	J/F 16

<b>P</b>	
Paint	
-brushes	M/J 56
-Colonial colors (P)	M/J 60
-for exterior wood	M/J 26
-for exterior wood (L)	J/A 6
-latex	M/J 30
-red (P)	M/J 60
-sand	M/J 32
-selecting exterior colors	M/J 37
-selecting exterior colors (RN)	S/O 22

KEY TO ABBREVIATIONS

- (G) = Glossary Item
  - (L) = Letter
  - (P) = Product
  - (RN) = Short Item (Restorer's Notebook, Ask OHJ, etc.)
- 
- J/F = January/February 1991
  - M/A = March/April 1991
  - M/J = May/June 1991
  - J/A = July/August 1991
  - S/O = September/October 1991
  - N/D = November/December 1991

-waterproofing sealer (P) . . . . . M/J 60  
 -whitewash . . . . . J/A 54  
 Paintings, Hanging-Victorian-style . . . . . J/F 41  
 Palliser, George (L) . . . . . J/A 8  
 Parging . . . . . J/A 37  
 Patina, Copper-simulating (RN) . . . . . J/F 20  
**Pest Control**  
 -bats . . . . . J/A 42  
 -combating odors (RN) . . . . . S/O 24  
 -insects . . . . . M/A 34  
 Peters, Frazer Forman (L) . . . . . N/D 6  
 Photographs, Preserving (RN) . . . . . J/A 14  
 Picture Mouldings . . . . . J/F 41  
 Pipes-for steam heating . . . . . S/O 50  
 Planters-for gardens . . . . . J/F 16  
 -(P) . . . . . J/F 66  
**Plaster**  
 -patching tool (RN) . . . . . M/A 30  
 -walls, drilling (RN) . . . . . M/J 16  
 -walls, drilling (RN) . . . . . N/D 14  
 Pocket Doors, Trackless (RN) . . . . . J/A 18  
 Polychrome Houses (L) . . . . . M/J 8  
**Porches**  
 -building a roof railing . . . . . N/D 26  
 -on Italianate house (L) . . . . . J/F 6  
 -uncovering original structure (RN) . . . . . M/A 30  
 Portable Houses (RN) . . . . . S/O 18  
 Prairie-School Houses-windows (RN) . . . . . M/A 16  
 Primers-for painting exterior wood . . . . . M/J 28  
 Putlogs-for scaffolding (RN) . . . . . J/F 21  
 Putty, Window-removing . . . . . S/O 32

## R

Radiators-repairs . . . . . S/O 50  
 Railing, Porch-Roof-building . . . . . N/D 26  
**Ready-Cut Houses**  
 -Aladdin (L) . . . . . M/A 14  
 -identifying (L) . . . . . S/O 8  
 -identifying (RN) . . . . . J/F 14  
 -models (L) . . . . . M/A 8  
 Refinishing Arts & Crafts Furniture . . . . . N/D 31  
**REMUDDLING**  
 -(L) . . . . . S/O 6  
 Appendage-itis in CO & FL . . . . . M/A 96  
 Bungled Bungalows in IL . . . . . J/A 80  
 Halfway House in PA . . . . . M/J 80  
 Hill Street Blues in CA . . . . . J/F 80  
 Split Decision in NY . . . . . N/D 80  
 Tortured Tudor Revival in TX . . . . . S/O 88  
 Repointing Stonework . . . . . J/A 38  
 Researching Old Houses . . . . . S/O 55  
 Roof, Porch-building a railing . . . . . N/D 26  
 Rug, Oriental-restoration . . . . . M/J 46  
 -(L) . . . . . S/O 10

## S

Salvage-Work Tools (P) . . . . . J/F 66  
 Sand Paint . . . . . M/J 32  
 Sander, Power (P) . . . . . M/J 58  
 Santaguida, Steve  
 -on bond-beam construction . . . . . M/A 44  
 Sash Windows-rehabilitating . . . . . S/O 30  
 Sashware (P) . . . . . S/O 68  
**Saws**  
 -cutting sash grooves (RN) . . . . . S/O 22  
 -for making dadoes . . . . . N/D 48  
 -homemade gauge (RN) . . . . . M/J 16  
 Scaffolding-with putlogs (RN) . . . . . J/F 21  
 Scarf Joints . . . . . N/D 37  
 Second Empire Style-identifying (RN) . . . . . M/J 12  
 Seeds, Heirloom (P) . . . . . J/A 64  
 Shellac, Removing (RN) . . . . . N/D 14  
 Skylight Construction (L) . . . . . J/F 6

Sockets, Electrical-protecting (RN) . . . . . M/A 32  
 Soffit, Beaded-vinyl (P) . . . . . J/A 66  
**Spanish Colonial Revival Style**  
 -(L) . . . . . S/O 8  
 -history of . . . . . J/A 45  
 -models (L) . . . . . M/A 8  
 Statuary-for gardens . . . . . J/F 18  
**Steam-Heating Systems**  
 -(L) . . . . . N/D 8, 10  
 -history and maintenance . . . . . S/O 50  
 -suppliers . . . . . S/O 54  
 Stick Style, Identifying (RN) . . . . . N/D 22  
 Stickley, Gustav . . . . . J/A 22  
 -on Craftsman furniture . . . . . N/D 31  
 Stone-cutting & dressing . . . . . J/A 30  
**Stone Houses**  
 -editorial . . . . . J/A 4  
 -history of . . . . . J/A 26  
 -of Frazer Forman Peters (L) . . . . . N/D 6  
**Strippers, Chemical**  
 -options . . . . . J/F 36  
 -shellac & alcohol (RN) . . . . . M/A 30  
 -suppliers . . . . . J/F 39  
**Stripping Paint**  
 -from window sash . . . . . S/O 32  
 -scrapers (P) . . . . . M/J 58  
 -with abrasive cords (P) . . . . . M/A 74  
 -with chemicals . . . . . J/F 36  
 -with oven cleaner (RN) . . . . . M/J 16  
 -with spoons (RN) . . . . . J/A 14  
**Stucco**  
 -identifying (RN) . . . . . M/J 12  
 -techniques . . . . . J/A 37  
 Sundials-for gardens . . . . . J/F 18  
 Szopo, Bruce  
 -on refinishing furniture . . . . . N/D 31

## T

Telephones, Period (P) . . . . . J/F 64  
 Termites . . . . . M/A 34  
 Textiles, Colonial (P) . . . . . M/A 74  
**Tiles**  
 -decorative, history of . . . . . M/A 54  
 -decorative, source . . . . . M/A 58  
 -Greek-key, source (RN) . . . . . N/D 24  
 -post-Victorian (P) . . . . . J/A 66  
 -shower stall, replacing (L) . . . . . J/F 6  
 Toilet Repair (RN) . . . . . S/O 22  
 Tools, Glass . . . . . S/O 60  
**Tools, Woodworking**  
 -(P) . . . . . N/D 56  
 -for dadoes . . . . . N/D 48  
 Tower Restoration (L) . . . . . M/A 8  
 Trees, Apple-antique . . . . . N/D 16  
 Tudor Revival Style . . . . . S/O 46  
 -identifying (L) . . . . . S/O 8  
 -identifying (RN) . . . . . J/A 18  
 Tulpehocken Station (L) . . . . . N/D 6

## U

**Unmuddling**  
 -(L) . . . . . J/F 8  
 -(L) . . . . . J/A 6  
 Upholstery Repair Kit (P) . . . . . M/A 74  
 Urns-for gardens . . . . . J/F 16  
 -(P) . . . . . J/F 66

## V

Varnish, Removing (RN) . . . . . N/D 14  
 Vaux, Calvert . . . . . N/D 18  
 Vents, Air-repairing . . . . . S/O 53

Vents, Gable  
 -(P) . . . . . M/A 72  
 -(RN) . . . . . M/A 16  
**VERNACULAR HOUSES**  
 Amana Four-Family Houses of Iowa . . . . . S/O  
 -(L) . . . . . N/D 12  
 Block-&-Stack Houses of Wisconsin . . . . . J/A  
 Patterned Brick Houses of New Jersey . . . . . M/J  
 Rain-Porch Houses of Alabama . . . . . N/D  
 St. Louis Four-Flat . . . . . J/F  
 Still Houses of Western Tennessee . . . . . M/A  
 Victorian, Folk-identifying (RN) . . . . . J/F 20

## W

Wainscot, Insulating (RN) . . . . . N/D 14  
 Walkie-Talkies (RN) . . . . . J/F 14  
 Wallboard, Patching (RN) . . . . . M/J 18  
**Wallpaper**  
 -Art Nouveau (P) . . . . . S/O 66  
 -Craftsman friezes (P) . . . . . S/O 66  
 -hanging with netting . . . . . S/O 41  
 -identifying . . . . . S/O 36  
 -identifying (L) . . . . . M/A 10  
 -identifying (RN) . . . . . S/O 20  
 -removal & archiving . . . . . S/O 40  
 -reproduction source (L) . . . . . N/D 6  
 -reproduction sources . . . . . S/O 39  
 -restoring . . . . . S/O 37  
 -stripper (P) . . . . . S/O 68  
 -tools (P) . . . . . S/O 68  
 -Victorian (P) . . . . . S/O 66  
 Water Damage-repairs . . . . . M/A 40  
 Waterman, Pamela J.  
 -on old-house living . . . . . J/A 50  
 Whitehead, Linda  
 -on netting for wallpaper . . . . . S/O 41  
 -on old-house living . . . . . J/F 49  
 Whitewash-recipes & suppliers . . . . . J/A 54  
**WHO THEY WERE**  
 Thomas Jefferson . . . . . M/J 22  
 Frederick Law Olmsted . . . . . J/F 22  
 Gustav Stickley . . . . . J/A 22  
 Calvert Vaux . . . . . N/D 18  
**Windows**  
 -bay, restoration case history . . . . . N/D 34  
 -curing drafty sash (RN) . . . . . M/A 30  
 -cutting sash grooves (RN) . . . . . S/O 22  
 -hardware (P) . . . . . S/O 68  
 -painting sash (RN) . . . . . J/A 14  
 -Prairie School (RN) . . . . . M/A 16  
 -rehabilitating sash . . . . . S/O 30  
 -security panel (RN) . . . . . M/A 30  
 -skylight construction (L) . . . . . J/F 6  
 Wiring, Electrical-running (RN) . . . . . J/A 14  
 Wood, Exterior-painting . . . . . M/J 26  
 -(L) . . . . . J/A 6  
 Wood Furniture, Fuming . . . . . N/D 31  
 Wood Graining-recipe (RN) . . . . . J/F 15  
 Woodwork, Interior-cleaning (RN) . . . . . S/O 24  
 Woodwork-Repair Techniques . . . . . N/D 34  
**Woodworking Tools**  
 -(P) . . . . . N/D 56  
 -for dadoes . . . . . N/D 48

