

THE PROFESSIONAL'S RESOURCE FOR PUBLIC & RESIDENTIAL ARCHITECTURE

JUNE 2021

TRADITIONAL BUILDING

TRADITIONAL BUILDING | JUNE 2021 | Vol. 34/No. 3

THE NEW CLASSIC HOUSE

+ Reviving Historic Structures, Sourcing Antique Flooring, Materials for Coastal Buildings



CHADSWORTH INCORPORATED

WWW.COLUMNS.COM



Photograph: Sculpture by Frederick Hart, 1991 Arthur Ross Award recipient.

Congratulations 2021 Arthur Ross Award Winners

Skurman Architects
Architecture

Hyde Park Mouldings
Artisanship & Craftsmanship

Charles Miers & Rizzoli
Publishing

Bob Christian Decorative Art
Fine Arts

John F.W. Rogers
Patronage

Hollander Design Landscape Architects
Landscape

Michael Lykoudis, FAIA
Board of Directors Honor

T +1 800 486 2118

SALES@COLUMNS.COM

LIGHTING SOLUTIONS for ARCHITECTS • DESIGNERS • CONTRACTORS

Photo by Scott Denney



Custom Lighting Restoration - Jackson County Courthouse

St. Louis Antique Lighting Co.

801 North Skinker Blvd. St. Louis, Mo. 63120 Phone: (314)-863-1414 Email: slalco@slalco.com



ZepSA Industries

ARCHITECTURAL WOODWORK

MONUMENTAL STAIRS

ARCHITECTURAL METALS

ZEPSA.COM

NEW YORK | CHARLOTTE | FLORIDA | CALIFORNIA

The Vision:
Replicate historic authenticity with custom windows & doors.



Kolbe's Ultra Series windows provide modern energy efficiency and impact performance in this renovated 1868 New England hotel and residence, while capturing beachfront views of the Atlantic.

Ocean House | Watch Hill, RI

Kolbe Windows & Doors provided all of the options and custom solutions needed to create the 530 windows and 123 doors required for this historic renovation. In addition to superior quality, custom craftsmanship and design excellence, we offer specialty shapes and sizes, exotic wood species, divided lite patterns, custom colors and finishes – plus performance options for coastal climates.

KOLBE
WINDOWS & DOORS

75
YEARS
Est. 1946

See more at kolbewindows.com/oceanhouse | 800.955.8177

GOODWIN
— COMPANY —

Fine Antique Wood Flooring Since 1976

Your Partner in Perfection...

Private Residence



heartpine.com

1-800-336-3118

Goodwin Antique River-Recovered® Heart Pine

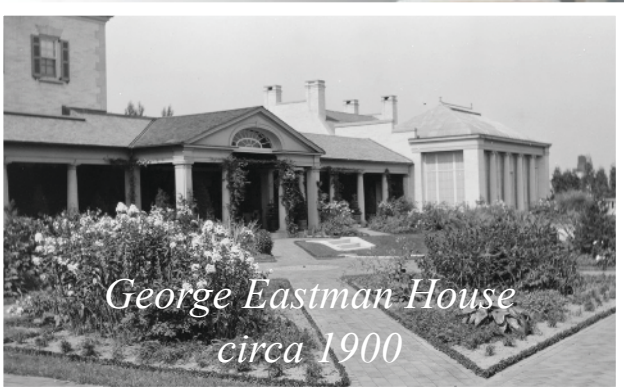
Signature Collection — Midnight

When "close" just isn't good enough

When preserving any historic property, details matter.

When compromise is simply not an option, consider HeartWood Fine Windows & Doors.

*George Eastman Museum
Renovation 2020*



HEARTWOOD

FINE WINDOWS AND DOORS™

a Luxury brand of Rochester Colonial Mfg Corp

Knock Knock, It's Noise Interrupting Your Life.

Being an architect is more than just improving spaces for others. Your space should be well thought out, perfect for working, and an example for others. Indow inserts aren't just a great solution for your clients, they can work for you.

Indow window inserts block up to 70% of outside noise. When placed over single-pane windows, that's a 18.9 dBA reduction with our Acoustic Grade inserts and a 10-12 dBA reduction with our Standard Grade inserts. We like to say that it will hush outside noise to a whisper, because you may still hear it, but it won't be the annoying, interrupting noise it once was.

Virtual AIA Accredited Presentation: Sign Up Now

Join us for virtual AIA accredited presentations, providing attendees with 1 LU/HSW credit, while learning about valuable solutions to window concerns.

- Course: Window Retrofits for Occupant Comfort and Energy Efficiency
- Course: The Impact of Noise in Buildings

Schedule your presentation: go.indowwindows.com/aia



indowwindows.com

| 503.822.3805



Keep the sash.
Improve the glass.

Pilkington **Spacia**™

Thermal performance of conventional double glazing packed in a single pane profile. Bring historic profiles to modern performance with Pilkington **Spacia**™.

1.800.221.0444
buildingproducts.pna@nsg.com
www.pilkington.com/na





Timeless and enduring custom doors, gates and shutters
for historical restoration and architectural accuracy
on new and existing residences and institutions.



CAMBEKTM
DESIGNER DOORS[®]

800.241.0525 • cambek.com

Durability, True Quality, And Simply Beautiful

Experience the Difference!



**See Parrett for Your Hurricane
Impact or Laminated Glass
Security Needs!**

**Hamptons Residence
Quogue, NY**

Since 1982, Parrett has offered a high quality product that is produced using the highest grade materials along with meticulous craftsmanship. Whether we manufacture using our standard parts and profiles, or if we build to your specification, you can count on Parrett quality and durability.



Parrett
Windows & Doors
Quality Crafted Windows & Doors

Parrett Manufacturing, Inc.

Phone: 800-541-9527

Fax: 1-877-238-2452

www.parrettwindows.com

info@parrettwindows.com

CONTENTS

JUNE 2021



40

40 Riverside Renewal

Historical Concepts designs a gracious Greek Revival home for a historic Lowcountry estate.



48

48 Reinventing History

A Chicago Beaux Arts beauty is restored in the Windy City.



54

54 Bridging Old and New

Restored to its former glory, a rustic cabin links a modern English country-style home to the American past.

60 Grand Hotel

An original McKim, Mead & White bank building transforms into a luxury hotel.



60

INDUSTRY NEWS

14 TBCS Virtual Conference presents Meg Kindelin On-Demand

New Alabama Federal Courthouse Unveiled

Richard Driehaus 1942 - 2021

INTERVIEW

16 Philadelphia Story

Interior design Barbara Eberlein incorporates her passion for contemporary design and historical integrity into her projects.

THE TRADES

22 Salvaging the Past

Incorporating original antique flooring into a house project.

HISTORIC MATERIALS

26 Casting Casements

What you need to know when restoring metal windows.

TECHNIQUES

30 Saving Saarinen's Birdcage

Preservation of the Milwaukee County War Memorial 1955-57.

PRODUCTS IN-DEPTH

34 Resilience on the Coast

Durable solutions for building traditional designs on the water.



ON THE COVER

Classic library designed by Historical Concepts.
More on p. 40.

Photo by Eric Piasecki

BUYING GUIDES

Windows, Doors, Shutters & Hardware	64
Porches, Decks & Porch Parts	68
Wood Flooring	68
Mantels & Fireplaces	70
Ornamental Metalwork	71
Historical Products Showcase	72
Period Garages & Garage Doors	72
Ornamental Ceilings & Fans	73
Interior Lighting	74
The Period Kitchen, Baths, & Tile	76
Roofing & Roof Specialties	77
Timber Framing & Barns	78
Interior Woodwork	79

FREE INFORMATION GUIDE62

LOG HOME RESOURCE GUIDE63

Traditional Building® (ISSN #0898-0824) (USPS #000-049) is published bi-monthly with issues in February, April, June, August, October and December by the Home Group of Active Interest Media HoldCo, Inc., 5710 Flatiron Pkwy, Suite A, Boulder, CO 80301. The known office of publication is located at 5710 Flatiron Pkwy, Suite A, Boulder, CO 80301. Periodicals postage paid at Boulder, CO, and at additional mailing offices. **POSTMASTER:** Send address changes to Traditional Building, P.O. Box 3000 Denville, NJ 07835-9965. **COPYRIGHT:** 2021 by Active Interest Media HoldCo, Inc., Boulder, Colorado. This publication may not be reproduced, either in whole or part, in any form without written permission from the publisher. **PRIVACY STATEMENT:** Active Interest Media HoldCo, Inc. is committed to protecting your privacy. For a full copy of our privacy statement, go to aimmedia.com/privacy-policy.

J.P. Weaver Co.
SINCE 1914



WALL ART BY:
MARIA TRIMBELL

THE DINING ROOM OF THIS 1921 SAN DIEGO ITALIANATE CLASSIC FEATURES A CUSTOM DESIGNED STRAPWORK CEILING BY JPWEAVER DESIGNERS. THIS GRAND 24 X 20 ROOM HAS A GENTLY BARRELED 11 FOOT CEILING HEIGHT. CONTACT DESIGN@JPWEAVER FOR ASSISTANCE WITH YOUR PROJECT.

FINE INTERIOR ARCHITECTURAL MOULDINGS

DESIGNED AND HANDCRAFTED IN THE UNITED STATES SINCE 1914

JP WEAVER COMPANY • SINCE 1914 • 941 AIR WAY • GLENDALE, CA 91201 TB-5/21
TEL (818) 500-1740 • FAX (818) 500-1798 • INFO@JPWEAVER.COM • WWW.JPWEAVER.COM



9TH ANNUAL ACANTHUS AWARDS

CALL FOR ENTRIES

INTENT TO ENTER DEADLINE: JUNE 25, 2021

The Acanthus Awards, established by the Institute of Classical Architecture & Art (ICAA) Chicago-Midwest Chapter, celebrate the most spectacular achievements in classical design and study from the last decade.

Projects submitted for consideration may be from anywhere in the world. The Acanthus Awards are open to all design professionals, students and artisans practicing within the Chicago-Midwest region.

THANK YOU TO OUR GENEROUS EVENT SPONSORS:

Decorator's Supply/Casci Plaster
Bulley & Andrews
Craig & Company
Dacor
Craig Bergmann Landscape Design

Gibbons, Fortman & Associates
HBRA Architects
Hollander Design Landscape Architects
Kane Brothers
Power Construction

Pella Crafted Luxury
Wilmette Hardware
Calia Stone Boutique
Rich & Judie Green
Wintrust Bank



INSTITUTE OF CLASSICAL
ARCHITECTURE & ART
CHICAGO-MIDWEST

SUBMIT YOUR PROJECT TODAY!

FOR DETAILED INFORMATION, PLEASE VISIT OUR WEBSITE:

WWW.CLASSICISTCHICAGO.ORG



TRADITIONAL BUILDING

EDITOR **Nancy Berry**
 MANAGING EDITOR **Emily O'Brien**
 CONTRIBUTING EDITORS **Gordon Bock**
Nancy A. Ruhling
Judy Hayward

CREATIVE DIRECTOR **Edie Mann**
 ART DIRECTOR, PHOTO & DESIGN **Mark Sorenson**

DIRECTOR OF PRODUCTION **Phil Graham**
 ADVERTISING COORDINATOR **Kim Hoff**
 PREPRESS SPECIALIST **Idania Mentana**

ASSOCIATE PUBLISHER **Jennifer Baldwin**
 INFORMATION SERVICES MANAGER **Dorian Henao**

FOUNDER, EDITOR EMERITUS **Clem Labine**

ADVISORY BOARD

Cal Bowie	Robert A.M. Stern Architects	Steven Semes	University of Notre Dame
Graham S. Wyatt	Payne Bouchier Builders	Erik Evens	Evens Architects
Stephen Payne	Jill H. Gotthelf	Duncan G. Stroik	Duncan G. Stroik Architect
		WSA ModernRuins	



VP DIGITAL DEVELOPMENT	Brian Van Heuverswyn
ADVERTISING SALES DIRECTOR	Heather Glynn Gniazdowski
EDITORIAL DIRECTOR	Patricia Poore
DIRECTOR OF PRODUCTION	Phil Graham
DIRECTOR OF DIGITAL MARKETING	LJ Lindhurst
MARKETING MANAGER	Griffin Suber
MARKETING COORDINATOR	Josh Cohn
CATAPULT CREATIVE LABS	Amanda Phillips
CIRCULATION DIRECTOR	Paige Nordmeyer
AR COLLECTIONS REPRESENTATIVE	Tracie Christensen
HUMAN RESOURCES	Scott Roeder
HUMAN RESOURCES	Kirsten Koele

TRADITIONAL BUILDING CONFERENCE SERIES

EDUCATION DIRECTOR	Judy L. Hayward
EVENTS OPERATIONS MANAGER	Carolyn Walsh



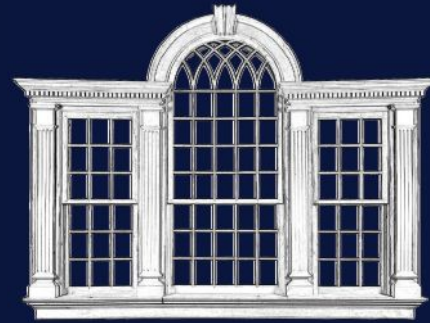
ACTIVE INTEREST MEDIA

PRESIDENT HOME GROUP	Peter H. Miller
PRESIDENT MARINE GROUP	Gary DeSanctis
CTO	Nelson Saenz
SENIOR VP OF OPERATIONS	Patricia B. Fox
VP PEOPLE & PLACES	JoAnn Thomas
VP, DIGITAL PRODUCTS & PLATFORMS	Katie Herrell
VP ACCOUNTING	Bart Hawley
CHAIRMAN	Andrew W. Clurman
CHAIRMAN EMERITUS	Efrem Zimbalist III

Subscriptions & Subscriber Service: 800-548-0193;
 Traditional Building, P.O. Box 3000, Denville, NJ 07834-9965

Subscription rate to professionals in architecture, interior design, construction and landscape design in the U.S. and possessions: \$48/yr. (6 issues). Not available outside the U.S. postal system.

LIST RENTAL: THE INFORMATION REFINERY 201-529-2600



COOPER HISTORICAL WINDOWS

A Division of The Cooper Group

Specializing in wood window & door restoration & replication

Exceptionally energy efficient windows combined with historic accuracy

Restoration glass made in house



www.thecoopergroupct.com • brian@thecoopergroupct.com



TRADITIONAL BUILDING CONFERENCE

View our *TBCS Virtual Conference On-Demand* to see Meg Kindelin's presentation.

Working History and its Application to Design, Materials, and Interventions: Springfield Ranch, Tallgrass Prairies National Park

Meg Kindelin is the president and owner of JKL Architects, a firm in Chicago, Illinois. She has over 20 years of experience in all phases of architecture and design and is a specialist in historic preservation architecture. Current projects include preservation services for the \$70M rehabilitation of the Shipper and Block Department Store as OSF Healthcare Headquarters, master planning for the reuse of the University of Illinois Libraries, the restoration of the 1931 Battledock House, and preservation research and architecture for numerous railroad bridges and transit stations in Chicago.

Meg outlines her strategy in the webinar for guiding contracted restoration work and will share how understanding the cultural life of the ranch navigated the stakeholder team for decision-making regarding repairs and rehabilitation of the main house on this important National Register site, with a period of significance dating to 1881.

LEARNING OBJECTIVES:

- Introducing the concept of "Working History" of the Tallgrass Prairies site, participants will explore how to compile and work with this kind of historical documentation, and how it guides the design and construction team on the decision-making of restoration projects.
- Define how a Period of Significance is derived, and how to apply this knowledge to the identification, treatment, and interpretation of extant historic materials.
- Make informed decisions on the replication, repair, or retrofit of fixtures and materials based on ethnographic research.
- Prioritize the application of the Working History and the Period of Significance to make decisions on the sympathetic retrofit of the structure for the Americans with Disabilities Act, Architectural Barriers Act, thermal upgrades, and other energy-saving measures.

Visit TraditionalBuildingShow.com to experience our On-Demand series and earn AIA HSW Learning Units.



Courtesy of Fentress Architects

Design Unveiled for New Federal Courthouse in Huntsville

Fentress Architects and the U.S. General Services Administration recently unveiled design renderings for the new federal courthouse in Huntsville, Alabama, in partnership with the U.S. District Court for the Northern District of Alabama.

Soon to be a prominent feature in Huntsville's historic downtown, the three-story courthouse with a walkout basement will include five courtrooms and six judges' chambers, as well as workspace for the U.S. Marshals Service, the U.S. Attorney's Office, and the U.S. Probation and Pretrial Services.

The new courthouse's design is neoclassical in style, with a large pedimented entry portico flanked by gently arcing symmetrical wings. The design incorporates modern security, sustainability, and technological features necessary for a 21st-century federal courthouse, while integrating classical organizational, proportional, and design elements. In addition, the design features a large formal public lawn with symmetrical plantings that will help both to create a sense of space and to focus the eye towards nearby panoramic views.

"GSA is excited to give the people of Huntsville a glimpse into what their future downtown will look like through this courthouse design," says Kevin Kerns, Regional Commissioner for GSA's Public Buildings Service Southeast Sunbelt Region. "GSA strives to provide a state-of-the-art facility that meets the long-term workspace and security needs of our partners in the Northern District of Alabama."

With an authorized budget of nearly \$86 million, construction of the 123,000 square-foot courthouse is anticipated to begin in early 2022 and will take approximately 30 months to complete. The 5-acre property sits at the intersection of Lowe Avenue and Gallatin Street. Steve White of Fentress Architects in Washington, D.C., is the project's lead designer, and Lee Sims of Studio Scarab Architecture Interiors Planning in Montgomery, Alabama, serves as the courthouse designer. Payne Design Group Architects of Montgomery is providing bridging architectural services. To learn more, please visit: fentressarchitects.com



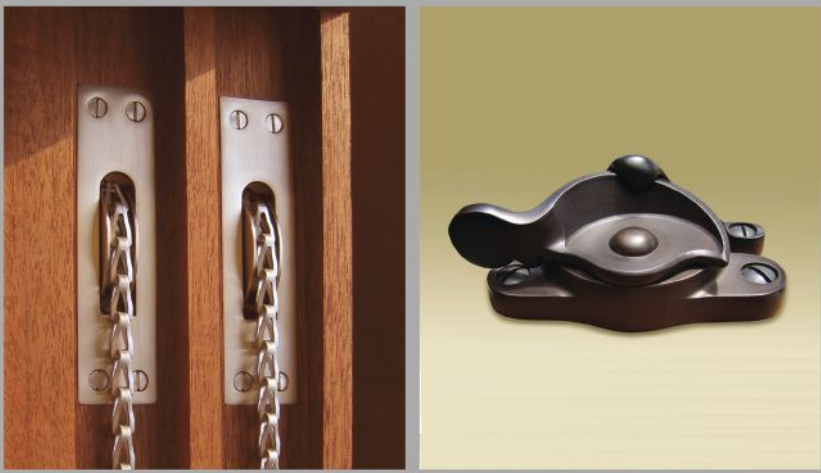
Courtesy Driehaus Foundation

Richard Driehaus 1942 - 2021

A devoted philanthropist, Richard Driehaus established his eponymous foundation in 1983. He saw philanthropy as a form of inquiry, and a way of learning about the world. Reflecting on nearly two decades, he wrote, "I have devoted my professional life to the field of financial management and have been blessed with remarkable success. I recognize, however, that the measure of one's personal holdings is of less importance than the impact of our collective aspirations made real. I have further come to understand that maximizing the impact of donated dollars can be considerably more challenging than earning those dollars in the first place."

"Richard was a dear friend, my professional mentor, and a lifelong philanthropist," says executive director of the Driehaus Foundation Anne Lazar. "He spent decades making an impact in Chicago and his legacy will live on through his foundation. He was a true gentleman of grace and humility, and it is the Foundation's honor and privilege to continue Richard's legacy of support."

Philanthropy enriched Richard's life immeasurably, and he would often paraphrase Winston Churchill's quote: "We make a living by what we get, we make a life by what we give."



www.phelpscompany.com



Fine custom indoor/
outdoor, traditional
and contemporary
architectural metal
craftsmanship and
antique/historic
restoration.

Specializing in
furniture, railings,
sculpture, lighting,
fireplace accessories,
artifact mounts and
hardware.

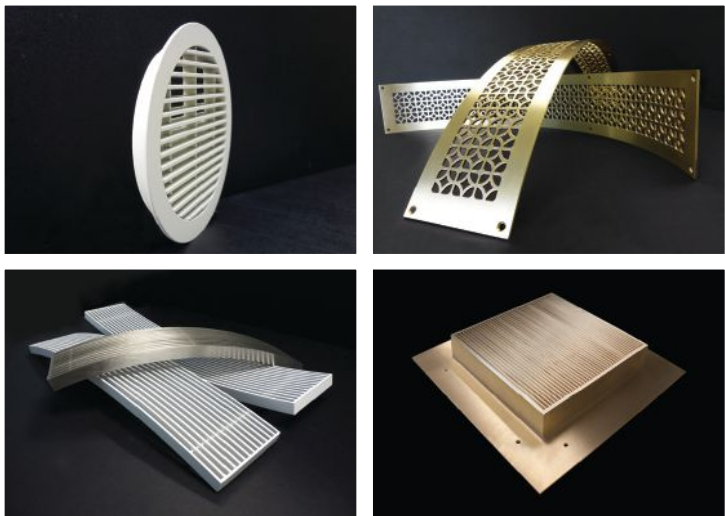
**JAMES DEMARTIS
METAL STUDIO**

631-329-2966
jamesdemartis.com



ADVANCED ARCHITECTURAL GRILLEWORKS
Innovative Architectural Grille Designs

Enhancing Views Inside and Out



Unlimited Custom Design Possibilities

The Only Patented J-Bead Product Available

aagrilles.com • sales@aagrilles.com • 516-488-0628





LEFT The living room at “Ardrossan,” the 1912 Horace Trumbauer masterpiece, in white English oak panelling with ornamental wood carvings, decorative plaster ceiling and the original pair of marble mantels, all now restored. Textiles were custom woven to resemble the original covers. The family portraits are by Sir John Lavery and Thomas Sully.

BELOW Exceptionally beautiful original hardware still graces the commanding interior doors.



Tom Crane photos

Philadelphia Story

Interior design Barbara Eberlein incorporates her passion for contemporary design and historical integrity into her projects.



BARBARA EBERLEIN

Neema Kashi photo

Philadelphia-based interior designer

Barbara Eberlein loves connections—in art, history, design, and people. For the past three decades, Eberlein has curated a career infusing these overlaps into design. She’s traveled the world gathering inspiration to create memorable interiors in spaces contemporary and historical, and she’s been at the forefront of historical preservation and restoration. As a designer, Eberlein’s projects incorporate her passion for the juxtaposition of arts, craftsmanship, contemporary design, and historical integrity. This preternatural ability to intuit the

connections of history and design has cemented Eberlein’s presence in the world of interior design.

As a board member of both the Institute of Classical Architecture & Art and the Preservation Alliance for Greater Philadelphia, Eberlein fuses both sides of her personality—the academic and the practical, the creator and the protector, the contemporary and the historical. She is the host of ICAA Visits: Ardrossan, a virtual guided tour of the historic Main Line mansion made into the a silver screen icon in *The Philadelphia Story*. Eberlein is a big promoter of ICAA’s “In

Your Neighborhood,” the short video series where ICAA members take us on a personal walking tour to introduce expressive examples of the design and architecture of their hometown. She is also part of a task force developing a curriculum on the history of interior design and its interaction with architecture.

1 You grew up in Cleveland. Have you always wanted to work in interiors?

I was a fashion groupie. I designed and made all my clothes which, just like interior design, is all about 2D/3D

GRAND LIGHT
Lighting & Design Since 1929

Lighting Restoration

Custom Lighting

On-Site Services

Surveys

Schedule Grand Light's "Preserving America" Webinar
This Virtual Experience Includes:

Pre-Project Planning	In-Factory & On-Site Capabilities
Engineering	Notable Projects & Awards
Custom Lighting Solutions	Q&A With VP Ryan Stockman

Reserve your company's spot now at grandlight.com/webinar
1-800-922-1469 www.Grandlight.com info@grandlight.com

— FINEST QUALITY REPRODUCTION —

**DOOR LOCKS,
LIGHTING &
BUILDERS' HARDWARE**

◆

Since 1932, Ball and Ball has been manufacturing the finest quality antique reproduction door hardware including iron strap hinges, brass butt hinges, rim locks, mortise locks and door knockers. Furniture hardware, builders' hardware, lighting fixtures and fireplace accessories are also available.

Call for our catalog

Exton, Pennsylvania • 1.800.257.3711 • ballandball.com

We Build Today's Best Backyard Buildings
Crafting fine Post and Beam Buildings since 1974.

Country Carpenters
NEW ENGLAND STYLE
POST & BEAM BUILDINGS
since 1974

Three generations of unmatched excellence.

Country Barns • Carriage Houses • Garages • Pool/Garden Sheds • Cabins • Hobby Barns
860.228.2276 countrycarpenters.com 326 Gilead St, Hebron, CT

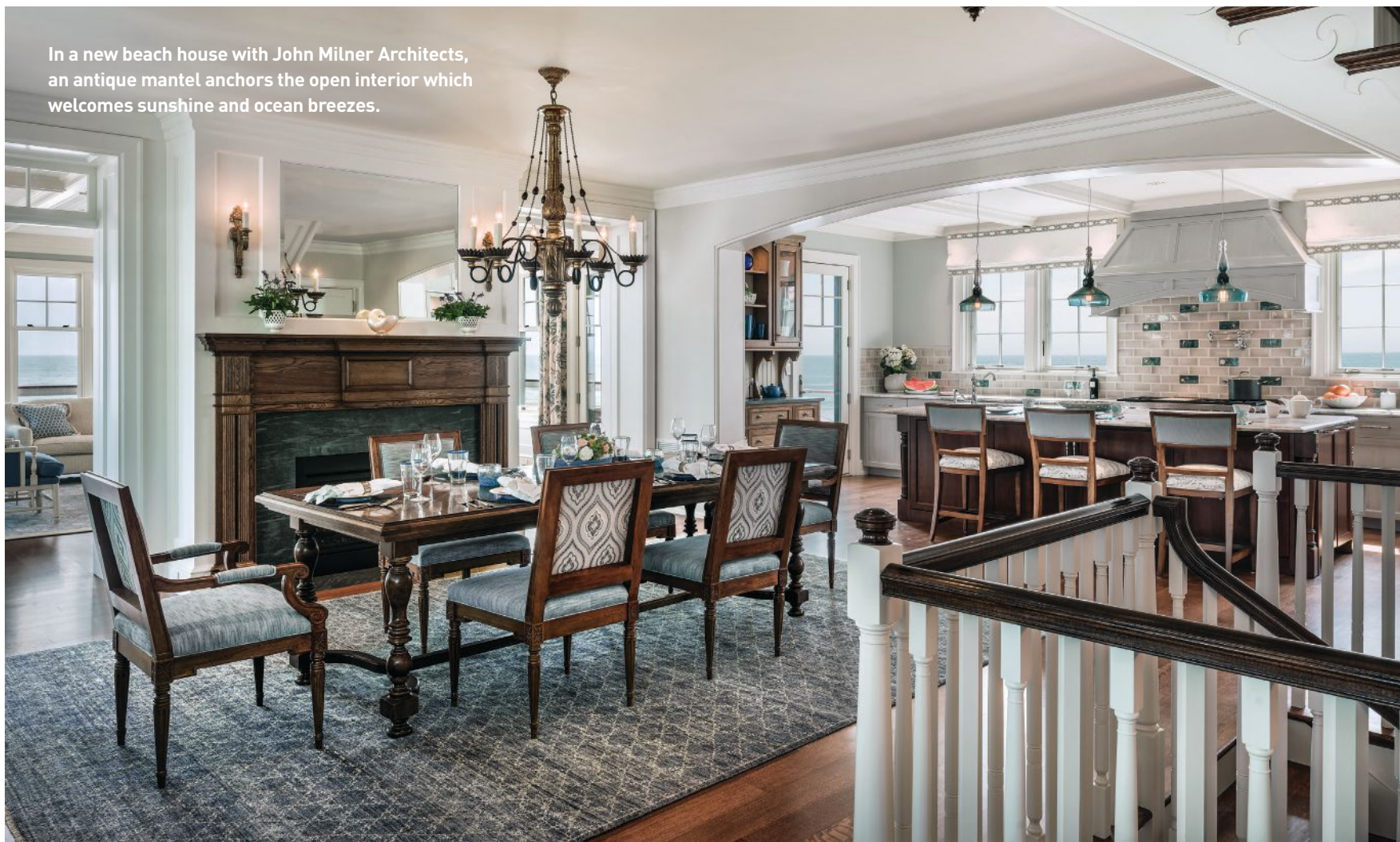
Shipped Nationwide!

Models on Display!

Get 5% Off all Even Pitch or Saltbox Pool Houses with Deposit Paid before Jul 1st. Up to a \$730 Value!

USE PROMO CODE
PHSP485

In a new beach house with John Milner Architects, an antique mantel anchors the open interior which welcomes sunshine and ocean breezes.



Tom Crane photo



Richard Powers photo

LEFT An 1856 Philadelphia townhouse is brought into the 21st century as it opens into a new kitchen and balcony, both cantilevered off the original structure. In this north-facing room, light is amplified by luminous walnut flooring, a scagliola table and silver leaf ceiling.

construction, knowledge of materials, and understanding how things are created. It was also a great background for understanding aesthetics—analyzing what looks good and why. I was completely obsessed with color, pattern, texture, movement, proportion, rhythm, and details. So effectively, this had everything to do with my later fascination enthusiasm for interior design.

2 Before embarking on interior architecture and design, you studied ancient history and religion at the University of Chicago and did archaeological field work. Tell us about that.

“[As an undergrad] I did a program in archaeology with a professor at Yale who had discovered the first sunken ship dating from the 5th C. BCE in Greece. We were invited to map the

Gaby's Shoppe

Manufacturer of Fine Wrought Iron



Our extensive collection ranges from fine hand-finished wrought iron to richly grained stainless steel. Because we manufacture our products right here in the U.S., we are able to offer custom items such as curved bay windows or brackets sized specifically for your application.



View the complete Gaby's Shoppe catalog online: www.gabys.com
1311 Dragon St. • Dallas, Texas 75207 • 1-800-299-4229

ARTISTRY. CRAFTSMANSHIP. SUSTAINABILITY.



Since 1989, CraftWright has practiced the age-old tradition of timber framing. Using one of the oldest construction techniques in mortise and tenon joinery, our company has produced hundreds of quality dwellings. Whether it is a home, addition, barn, covered bridge, church, museum, or trellis, all of our projects are customized with you in mind.



410.876.0999
craftwrighttimberframes.com
info@craftwrighttimberframes.com



BUILT RIGHT. BUILT FOR YOU. BUILT TO LAST.



historic doors

FINE CRAFTSMANSHIP IN WOODWORKING

610-756-6187 ~ HISTORICDOORS.COM



LEFT The dining room at “Woodcrest,” a Trumbauer work of 1900, preserves the exuberant plasterwork, limestone mantel and overmantel, and carved quarter-sawn oak panelling.

future of a house is ensured if it makes a significant statement about its value and relevance both now and for successive generations.

4 Tell us about your contemporary work.

I’m intrigued by how light, color, texture, and balance all work together to create a certain mood. I find working with contemporary materials so interesting because of the endless variations of unexpected and novel juxtapositions. I asked myself, for example, what I can do with a material that didn’t even exist 200 years ago. It’s vital to keep an open mind and expand the aesthetic opportunities rather than follow a narrow set of prescriptive rules. With a free creative, thought process, I take elements that have very contemporary lines and infuse them with sumptuous materials which enrich contemporary interiors.

5 What is it like working on a historical property?

Like archaeology, you must approach restoration with reverence. Always balancing a building’s past and its future, I focus on capturing its spirit as well as its key architectural details. Once the “fabric” of the building is sound, I reinforce its aesthetic impact with materials, furnishings and collections that add enriching layers to the composition. Even though you’re working in a robust building, you must have a light touch, a gentle hand. As with conservation of art and antiques, we preserve its authenticity and make our new interventions reversible so that if, in the future, new information is revealed, the restoration can be adapted to reflect this. Be knowledgeable about what’s there, respectful of the process, and interactive with the client.

6 How do you feel about new classical work?

It’s wonderful to create new classical work that celebrates historical precedents while incorporating an individual point of view and unique sensibility. Quite honestly, I do the same thing in my contemporary work, just using a different palette. Ultimately, the creative process follows the same path through exploration, discovery, and expression. I still do archaeology—archaeology of buildings. And buildings, just like people, should enjoy a long and happy life with caring and connection.

excavation for the Greek Archaeological Service. I thought, This is fantastic! Analyzing the clues to determine what you were looking at, how an object was made and used, and understanding its significance in its culture. Interior design, especially historic restoration, follows a similar thought process of exploration, imagination and interpreta-

tion. It encourages you to dig deep, look closer, challenge your own assumptions and imagine all the options.

3 Following your post-graduate work, you moved to Philadelphia and dove into the world of interior design. You embrace new design and historic preservation equally. How do you do it?

Professionally, I love being involved at both ends of the spectrum. I want the “brain balance” of being an artist and a scientist; I want to do new classical work and restoration. My goal is to preserve the very best elements of every space and then adapt and amplify the rest, so the structure continues as a viable and vital environment. The

Tom Crane photo



DESIGNED + MADE IN BROOKLYN

ARCHITECTURAL GRILLE

ARCHGRILLE.COM



888-486-2363

www.Riverbend-TF.com

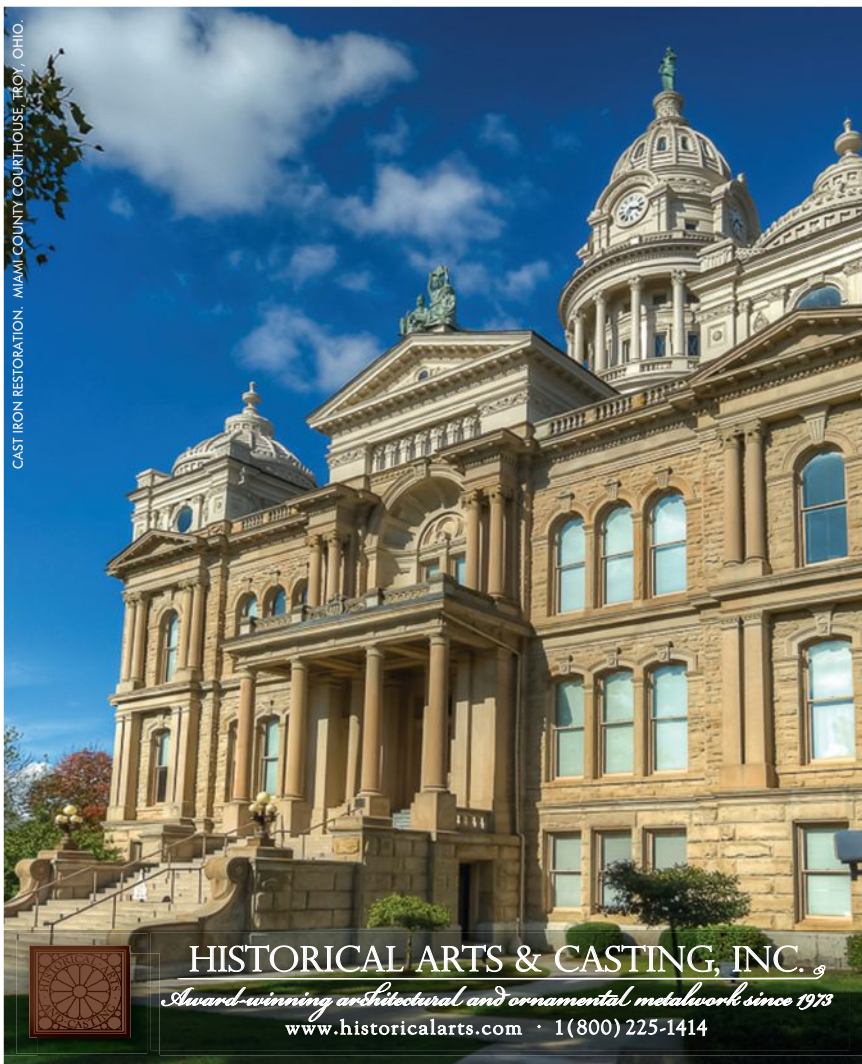


Riverbend
TIMBER FRAMING

Exceeding Expectations

For over 40 years, Riverbend Timber Framing has worked with builders and architects to create unique timber framing solutions. We also provide our integrated Structural Insulated Panels (SIPs) for a complete energy-efficient building solution.

Plan Evaluation · Value Engineering · Timber Frame Modeling
Structural Drawings · On-site Technical Assistance · Install Available



CAST IRON RESTORATION · MIAMI COUNTY COURTHOUSE, TROY, OHIO.

HISTORICAL ARTS & CASTING, INC.

Award-winning architectural and ornamental metalwork since 1973
www.historicalarts.com · 1(800) 225-1414

TRADITIONAL BY DESIGN

Period reproduction lighting and hardware



HH HouseofAntiqueHardware.com | 888-223-2545



Salvaging the Past

Incorporating original antique flooring into a house project.

No matter the project—historic restoration or a “new old” house—you cannot replicate the color, patina, and character of original antique flooring. Boards that have existed well over 100 years offer warmth, width, and history. Using them has the additional benefit of saving valuable building materials from the dump. If these qualities are important, using antique flooring is well worth the chal-

lenges of purchasing and installing it. “The first thing you notice is the rich patina, which took nature hundreds of years to create,” says Tom Campbell of Old Wood Workshop, which specializes in supplying 18th- and early 19th-century flooring. “...also subtle variations of color, the texture and contour of the surface due to foot wear or saw marks, the taper of the board from end to end, even defects such as leather or tin patches—all

of these nuances create a unique and beautiful floor.”

Campbell sells flooring in batches, just as it was salvaged from historic homes or barns, to re-create a truly authentic look. Like most suppliers in his business, he still occasionally salvages a floor himself but relies on demolition contractors or pickers throughout the eastern seaboard to help source his materials. Campbell is always on the

lookout for extremely rare, very wide boards—up to 24 inches—and focuses on buying materials that are circa mid-1800s and earlier. His flooring batches are cleaned and de-nailed. Occasionally, he will strip paint or do some repair work on a batch but he usually leaves milling to the contractor.

Original antique flooring requires a lengthy process to make it install-ready. Floors must be salvaged, handled, and

Nat Rea photos

LEFT Old Wood Workshop supplied at least five batches of antique flooring for this 1670 farmhouse in Rhode Island being lovingly restored by the homeowners.

RIGHT Short but very wide (16"+) antique white pine planks were used to start the floor layout. Some of the best boards in a batch can be the shorter ones and should be used in prominent locations during the installation process.

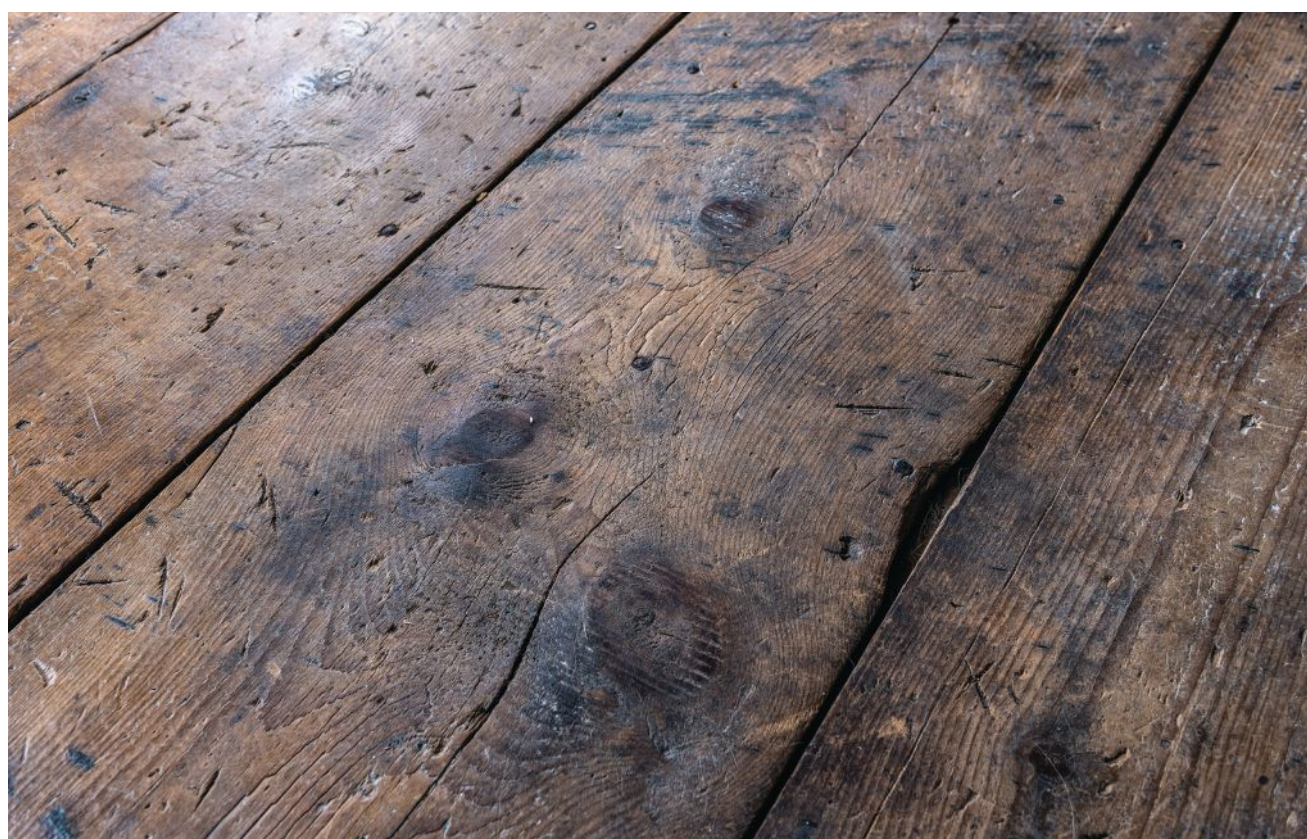
BOTTOM Characteristics of original surface antique floors include raised knots, which are harder than the surrounding wood and do not wear as quickly over centuries of being walked on.

stored with care to prevent damage, then measured and inventoried, cleaned and de-nailed, and stickered to sit over time or kiln dried to remove moisture. Only then can the material be milled to specifications. Installation can be a challenge since board dimensions (including thickness) and variation in color are not uniform. It requires a careful eye and experience. Campbell does not do installation work, but he offers advice and can recommend professionals in New England.

Bob Friedman of Chestnut Woodworking and Antique Flooring Co. has been supplying and installing antique floors since the 1980s. His customers are attracted to the beauty of a vintage floor. Unfortunately, antique barns and homes are a limited resource, rapidly disappearing from our landscape. "New wood doesn't come close to the old-growth material, but it's getting harder to source antique lumber," says Friedman. "I travel from Tennessee to Canada to find it. These days I have to go farther and pay more for it."

Every floor is a custom job for Friedman. He works closely with his clients to meet their needs. Once the boards are milled to a job's specs and installed, finishes can include wax, oil, light stains, and additional hand planing or brushing surfaces. Friedman might have to combine several flooring batches of the same species to create a single order of large dimensions, since antique homes did not have 5,000-square-foot areas. "There are minor variations of color but customers really like the look of it," he says. "That's part of the beauty of antique flooring."

Chestnut Specialists in Plymouth, Connecticut, also supplies reclaimed building materials. "Our main activity is repurposing reclaimed boards for flooring," says owner David Wasley. Most of his flooring is remilled from antique lumber to a smooth and uniform width, but he can also supply flooring that





This copper fish was created by Old Wood Workshop owner Thomas Campbell to replicate a decorative antique patch. After seeing many such “Dutchmen” made of tin, copper and leather in antique floors over the years, he thought this design appropriate, considering the house’s proximity to the water.

These antique flooring suppliers have all been in business for over 25 years. Each is dedicated to providing top-quality material and outstanding customer service.

OLD WOOD WORKSHOP, LLC
 Pomfret, CT 860-655-5259
 oldwoodworkshop.com

CHESTNUT WOODWORKING & ANTIQUE FLOORING CO.
 West Cornwall, CT 860-672-4300
 chestnutwoodworking.com

CHESTNUT SPECIALISTS, INC.
 Plymouth, CT 860-283-4209
 chestnutspec.com

OLDE NEW ENGLAND SALVAGE
 Bozrah, CT 860-885-9589
 oldnewenglandsalvage.com

LEFT In the farmhouse's office, Campbell used an early 1700s antique white pine floor with widths up to 22 inches. Each board was numbered and laid next to its sister board to make the floor look as though it had been there forever. They retained the original painted ends and the unpainted center area. The boards fit the room so perfectly barely 5 percent of the flooring was wasted.

preserves an original worn surface and edges. "Besides its natural beauty, we are reclaiming and recycling, so antique wood is a green building product," he says.

According to Wasley, it takes about a dozen steps from salvage to installation. "It's very time consuming and labor intensive." He points out potential installation issues: "Although we mill to uniform widths, we are using a limited resource. Compared to conventional boards, dimensions might not be what contractors are used to because we try to cut down on waste."

Wasley advises making sure the installation crew knows exactly what the customer wants. "You don't want the finishing guys to sand it smooth and level if the customer wants the original rough surface. If you are using a finish on a floor, you need to test it on side pieces to see what it looks like. A lot of original surfaces are conducive to leaving as is."

"The antique building materials business has drastically changed from dismantling colonial and other era buildings for reconstruction or restoration to simply utilizing the 'heart and soul' components in remodeling or new construction projects," says Glenn Pianka of Olde New England Salvage. Pianka has been salvaging and selling antique materials since 1982. "The best wide-board flooring usually comes from the attic of colonial-era homes due to their limited abuse. Then the second floor, for the same reasons, although this is where you may find that the boards have been painted." A recent salvage project he undertook in New Hampshire produced 950 square feet of 13 to 16-inch wide hard pine, mostly in the 14 to 16-foot length. "Most of those boards never had a nail put through them yet they remained 'flat as a board.'" This find is rare these days, he says.

"The choice to use authentic-surface period flooring versus re-sawn stock is a combined analysis of the client, architect/designer, and a competent contractor to bring a vision to reality," says Pianka. "I personally have not ever heard of anyone who chose antique flooring say that they wished they had selected another option."



DOORS • WINDOWS • CUPOLAS • TACK ROOMS
DRIVEWAY GATES • STAIRCASES
SCREENED PORCHES • HISTORICAL RESTORATION

VINTAGE
MILLWORK + RESTORATION

Contact us today to start your custom work.

34 S Vintage Road, Paradise, PA 17562 • 717.687.0292 • vintage-mr.com

BY SUSAN D. TURNER



At historic Floyd Bennett Field, several individual steel windows and hardware sets were restored and/or replicated.

Casting Casements

What you need to know when restoring metal windows.

Windows are the eyes to the world for buildings, and in historic buildings, they are considered character-defining. As with approaching any element of an historic building, one must assess the approaches of replace versus restore. This decision must consider all factors, such as capital cost, differential durability, maintenance costs, operating costs, ease of maintenance and repair, ease of operation, retention of historic materials, reversibility of interventions considered, historic appearance, carbon footprint, avoided impact, and landfill diversion. (All these factors are discussed at length in the Lincoln Hall Window Study available on the www.parks.ca.gov website, along with comparison data, albeit for wood

windows.) The ultimate decision will be made based on the weighting of all the criteria. If the only factor considered is capital cost, depending on level of deterioration, and quality of replacement, restoration may not be competitive. But for all other factors, restoration will provide an equal or better scoring of all criteria.

HISTORY OF METAL WINDOWS

English blacksmiths produced wrought iron windows as early as the 13th century. Due to the early limitations of glass production, quarries (small panes of squares or diamonds) made from horn, alabaster, thin marble, or glass were mounted in lead cames. Toward the mid-17th century, cast iron was developed, and window frames, mul-

lions and muntins could emulate the more elaborate profiles of carved wood windows. The invention of the Bessemer converter in 1856 made rolled steel available, which was used starting in the 1890s in the United States for industrial windows. The new rolled T-shapes provided thin profiles for large openings and made direct application of glass to the frames possible. While steel windows started out following the operation of wood windows, such as casement and double hung windows, manufacturers eventually started taking advantage of the strong thin profiles to develop projecting windows, center pivot, and hopper types.

Several different metal compositions are used: cast iron (an iron alloyed with 2% to 4% carbon along with trace amounts of silicon, manganese and other elements)

which is cast into molds, wrought iron (iron with 1 to 2% of added slag) which is drawn out, heated, and worked in several cycles, rolled steel (98% iron 1% Manganese, with other minerals) which is rolled out into shapes and bronze (a mixture of copper with 12% tin). To determine the composition without testing, start with a magnet, which will attract to high iron content cast and wrought metal, but not to bronze. To differentiate between cast and wrought iron, note that cast iron has seams (perhaps not easily detected) with intricate detail and hollow shapes, while wrought iron is solid, has smaller members, frequently has tool marks, and may have tiny inconsistencies between elements. It further should be noted that wrought iron is stronger and more malleable than

Femenella & Associates Inc. photos

cast iron, but cast iron is harder and more able to resist deformation under pressure (carry weight), despite its brittleness. By visual observation, any ferrous metals will show reddish oxidation of the iron content (rust) over time. Bronze is identifiable by its greenish oxidation, which likely extends to material below the frame. (For more information on bronze, see the *Traditional Building* June 2019 issue.)

APPROACHING THE PROJECT

Assuming the decision is made to restore the existing windows, it is important to perform a survey. A larger project warrants hiring a professional to document the windows by numbering them on elevations of the building, and then charting the type, size, and condition of the glass, presence or absence, and types of hardware, and frame condition in a spreadsheet. Documenting the frame includes checking the putty and sealant, operability, condition of the paint finish, presence of corrosion, loss of section, warping or bowing, and anchorage. The drawings and spreadsheet should explain exactly how many and what kind of windows will be restored, the level of preparation required, how much of the glass or hardware needs replacement etc. The window numbering needs to be transferred onto the windows with a permanent marker on waterproof tape, or similar. Since openings vary in dimension, and can be out of square, if sashes or frames are removed, they must be returned to the same openings.

An aspect of window restoration that should not be overlooked is the potential for hazardous materials. Older windows are likely to have lead-based paint, and/or putty that could contain asbestos. The substrates should be tested to determine what abatement will be necessary, prior to bidding, or any work on the windows. (For more information on dealing with hazardous materials, refer to *Traditional Building's* April 2020 issue.)

Once survey documents are complete, they can be circulated to several qualified contractors with sufficient experience and reputation in the type of window project at hand (material, size, style, and operation). An historic building is not an appropriate vehicle to chance inexperienced contractors. Referrals from trusted colleagues can locate suitable candidates, but if that is not possible, the Window Preservation Alliance (windowpreservationalliance.org) has a list of contractors that can be sorted by state, as a starting point. While WPA does not endorse any company, their list provides a selection that can be contacted to solicit references. By checking these references,



The Hangar doors were glazed with wire glass that was considered safety glass at the time. When originally manufactured, hexagonal shaped chicken wire was embedded into the molten glass. All extant glass was restored.

a short list of qualified contractors can be assembled. With a select list of three or four contractors equally vetted and issued survey documents, the pricing will be competitive, and qualified.

TYPES OF DETERIORATION

With all types of metal windows, corrosion is the typical cause of warped, jammed or failing frames. The oxidation of bronze results in solubilized copper being deposited on the adjacent substrate below the building and is not typically a problem. Oxidation of ferrous metals, by contrast, expands six times the original volume of the substrate and this phenomenon results in several subsequent problems. Loss of paint film is the initial tell-tale sign of initial corrosion. A raised finish and pitting are considered heavy corrosion. Sometimes heavy corrosion of a frame mounted securely to an immovable substrate will cause bowing and warping of the frame or sash. The worst case is corrosion progressing to the point where there is delamination, section loss, or portions of the frame are missing.

Where there is only paint loss, the window can be restored in situ. Microabrasive cleaning can be used safely to remove paint if the adjacent surfaces are protected. Other, more aggressive options are power tool grinding and chemical stripper, if done by a professional. Chemicals have a host of concerns, such as the type of chemical, cleaning of substrate after application, voids in which the chemical can hide, and adjacent materials, which can be negatively impacted. Once cleaned down to bare metal, immediately prime the substrate, as oxidation can form in hours.

Where the finish is raised and the surface is pitted, it is still possible to repair the frames in-situ, but heavily corroded sashes may be easier to remove to a shop for cleaning and repair. Once the metal is completely bare, patch any of the members with a metal putty immediately, followed by priming the surfaces, to prevent rust that can occur within hours.

Where advanced corrosion exists, it may be necessary to remove the windows from the opening to repair missing elements. Since steel windows are strong, they

could have been installed in the opening as the building was being erected. This could make removal difficult since the frame could be engaged in the masonry. Where parts of steel window frames are missing, new sections of the same metal can be brazed into the original profile, or welding can be used, followed by grinding to return the profile back to its original configuration.

Warped or bowed frames can be straightened out either in-situ, or more easily, in the shop, using clamps, vises, a ratchet-type tension device, and heat. Typically, due to metal 'memory', the straightening may require over correcting the bow or warp, so that it when it cools and relaxes, it ends up straight.

For a lasting finish, an industrial coating system should be used. The paint selection must align to the anticipated methodology of in situ or shop restoration. There are some that work well applied in the field, and some that must be shop-applied but can be touched up in the field. Apply the coating to the mil thickness recommended by the paint supplier. To ensure



The Olin Library was designed by the firm of McKim, Mead & White, built in 1925–27. The steel windows (shown above) were in much needed repair, allowing free ingress of water and air; the brass hardware was tarnished black. You can see how the restoration of the windows brought the library back to life below.



each layer is consistently applied, specify a tinted primer to start, such as orange that contrasts to the cleaned base metal. The next coat is the tie coat, which should be a contrasting color to the previous coat and to the topcoat, such as pure white. Then the final finish coat is applied in the historically researched color. (If white is the final color, the tie coat can be tinted blue.) With this tinting method, each coat can be inspected when dry, and if there is any visibility of the previous color, the mil thickness was not achieved and can be corrected before proceeding to the next coat.

One of the main reasons that replacement is promoted is the perception that these non-thermally broken metal windows cannot be retrofitted for improved energy efficiency. This is incorrect. There are several small interventions that can be implemented to dramatically decrease air infiltration, which is of greater concern than thermal conductivity for the building's energy consumption.

The first step is to ensure that the window is sealed. Individual panes of glass should be puttied to seal the joint for air and water. The next step is to ensure that the frame is sealed to the building envelope at the air barrier or vapor barrier of the assembly. Lastly, weatherstrip any operable portions of frame. While compressible foam or other commercial weatherstripping is typically too thick to be accommodated in metal frames, silicon sealant can be used instead. Open the sash, and place bond breaker tape on the operable side. Place a continuous fine bead of silicon to the non-operable side, and almost close the sash so that the silicon is somewhat, but not fully, compressed against the bond breaker tape. Once cured, open the window and remove the tape. Closing the window will compress the bead of sealant to provide an airtight seal.

Another way to improve U-value and reduce air infiltration is to apply a storm. There are many styles now that can be installed interior or exterior, either operating or fixed, which would not significantly impact the historic appearance. An economical option is a seasonal interior friction fit 'storm' that can be removed for operating the sash in clement weather, and to easily clean the interstitial space. These are all 'reversible' approaches to thermal upgrades. A more intrusive approach is double-glazing the existing frame. It should be noted that typically, the metal frame will be too thin to take the thickness of a traditional hermetically sealed double glazed (HSDG) unit. A vacuum insulated glass (VIG) can be used within the existing frame, although they come with a small seal that looks like a metal button. To use a HSDG unit will require the mullions and muntins to be welded with same-metal extensions to support the glass thickness

and provide a ledge for putty. Intervening with the frame depth in this manner is not reversible. Depending on the scale of the window, the impact can be negligible relative the additional thermal improvement. A mock-up to assess the visual impact should be performed.

There are a lot of small repairs that can be done as well. Hardware can be removed and cleaned of old paint residue and reinstalled, to provide tight closure and prevent drafts. Missing hardware can be sourced and replaced where missing. Where windows are double hung and inoperable, replace the rope or chain. Before replacement, check the pulley over which the rope or chain moves. If it is curved in section, it was designed for ropes; a profile with flat sides and bottom is intended for chain. Incorrectly replacing a rope with a chain will gouge the pulley; vice versa and the rope could slip. Either error would prevent smooth operation.

If the window has been upgraded to higher performance glass, the weight of the sash will have changed. The counterweight needs to be increased to balance the window frame, making the opening and closing easy.

In summary, restoring metal windows is not a simple task. Hiring qualified professionals for both the project planning and the restoration work will ensure that the windows will endure well into the future.

Bibliography

Building Conservation Website
www.buildingconservation.com

Eleni Makri. "Wrought Iron and Steel Windows." Cathedral Communications Limited. 2012.

Richard Baister, Metal Windows, The Building Conservation Directory 2019

Peter Clement, Metal Windows The Building Conservation Directory, 1997

National Parks Preservation Briefs
13 *The Repair and Thermal Upgrading of Historic Steel Windows* by Sharon C. Park, AIA

27 *The Maintenance and Repair of Architectural Cast Iron* by John G. Waite, AIA, *Historical Overview* by Margot Gayle

www.parks.ca.gov and search for *Lincoln Hall Window Study*

SUSAN D. TURNER, FAIA is a Canadian architect specializing in historic preservation of national registered buildings. She is the senior technical architect at Johnson Lasky Kindelin, an architectural firm specializing in the repair and preservation of historic buildings. She can be reached at susan_rktect@hotmail.com

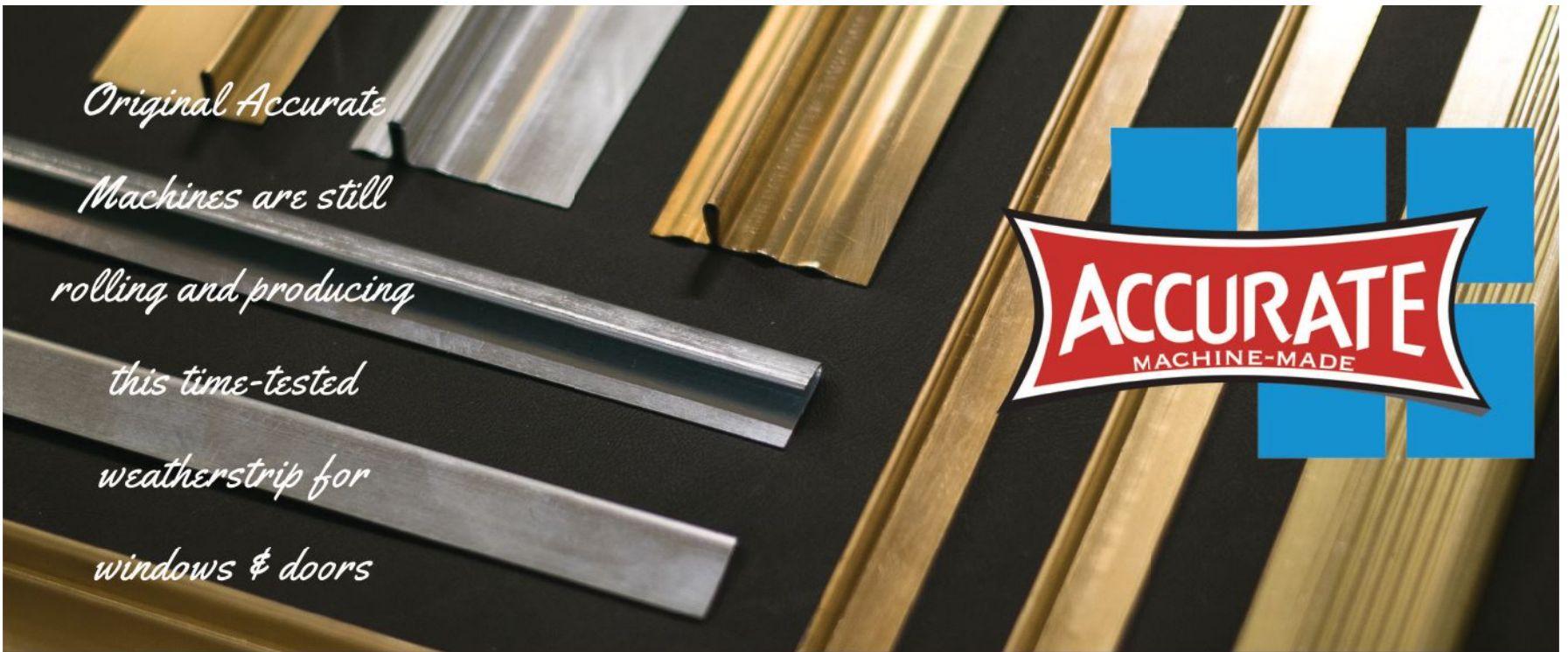


Complimentary design service
 No cost job-specific client samples
 No charge blanket-wrapped job site delivery

Handcrafted in New Hampshire
 Available direct, nationwide
 Industry leading on-time delivery

800-999-4994 • www.crown-point.com

Long recognized for the finest quality materials and craftsmanship, we have once again raised the bar.
 Walnut interiors. Walnut drawers. Our new standard.



*Original Accurate
 Machines are still
 rolling and producing
 this time-tested
 weatherstrip for
 windows & doors*



FIND OUT MORE & PURCHASE AT ACCURATEMACHINEMADE.COM

ACCURATE METAL WEATHER STRIP

Saving Saarinen's Birdcage

Preservation of the Milwaukee County War Memorial 1955-57.

The restored birdcage at the Milwaukee County Veteran's Memorial.

A grateful nation will pause on Memorial Day 2021 to honor all veterans. In Milwaukee, everyone is welcome every day to reflect and show their gratitude at a landmark memorial overlooking Lake Michigan.

THE CHALLENGE TO PRESERVE MID-20TH CENTURY MODERNISM

The preservation of mid-20th century modern structures is a growing part of historic preservation in the third decade of the 21st century. Because mid-century

modern design was by its very definition an intentional deviation from traditional building, preservation professionals find themselves developing new methods for preservation, restoration, and rehabilitation that often borrow from the wisdom of traditional building practices for application to new materials and technology so that eternal problems like condensation and rust can be solved.

The Milwaukee County War Memorial was designed by Eero Saarinen (1910-1961) and built between 1955-1957. It has

become a beloved symbol of veterans' service and sacrifice to the United States. In addition, it has come to be regarded as an early example of destination architecture in Milwaukee and has continued as such despite the 2001 opening of the Milwaukee Art Museum, designed by Santiago Calatrava (b. 1951). Both buildings, situated near one another, have a view of Lake Michigan.

SAARINEN'S DESIGN INTENT

Saarinen took advantage of the breath-

taking view of the lake from a nearby bluff. He installed the birdcage—so named because the stairwell is designed within a steel frame resembling a cage—in a courtyard above a reflecting pool with an eternal flame.

Julie Bastin, P.E. and architect at Milwaukee County Architecture, Engineering and Environmental Services, supervised the birdcage project within a larger rehabilitation of the entire memorial. Russell Drewry, senior associate vice president with HGA, was the project

Leave a Lasting Impression.

Historically accurate metalwork
& modern custom designs.
Exclusive to the trade.

Lighting • Hardware
Gates & Railings • Restoration • Custom



HMW
Heritage Metalworks
610.518.3999 | hmwpa.com



Court Room
"Your Honor"
series

EXIT
Vintage Hardware & Lighting
2000 West Sims, Port Townsend, WA 98368
360-379-9030 • www.vintagehardware.com

EXIT



Neal Vogel photo

KEY RESOURCES

MILWAUKEE COUNTY DAS

Julie Bastin, PE, M. Arch.

ARCHITECT

Russell Drewry, AIA, HGA
hga.com/locations/milwaukee

PRESERVATION CONSULTANT

Donna Weiss
preservellc.com

GLAZING CONTRACTOR

Neal Vogel, Restoric, LLC, Chicago

VACUUM INSULATED GLASS

Pilkington NSG
pilkington.com/en/us/products/product-categories/thermal-insulation/pilkington-spacia

HEATING SYSTEM

Runtal Radiators
runtalnorthamerica.com

VIDEO ABOUT THE BIRDCAGE RESTORATION TB BUYING GUIDE

traditionalbuilding.com/buying-guides/the-bird-cage-renovation-project

LEFT Severe deterioration, failed wired glass, condensation, heat loss, and paint failure were the challenges that needed to be addressed.

manager for the birdcage rehabilitation. The memorial offers veterans and their families “a quiet place to reflect,” says Bastin, who concurs with Drewry that, with this design, Saarinen pushed the structural capabilities of cantilevered piers to a new threshold. The building appears to float but is actually supported, discretely, by the cantilevered piers. The site, given its proximity to the lake and its harsh winters, is moisture laden. That, combined with minimal heat and insulation, took a particular toll on the design

of the birdcage, which is essentially a glass box framed in steel. Furthermore, the roof drains were not well designed initially, says Drewry. Nor did subsequent repairs improve their performance; in fact, they exacerbated the moisture problems. Throughout the memorial and extensively in the birdcage, Saarinen used re-entrant corners, and they contributed to some of the drainage challenges.

PRESERVATION PROBLEMS

The birdcage stair enclosure, featuring

756 glazed openings originally designed with wired glass, suffered from severe condensation that accelerated the decay of the entire steel structure. The challenges were significant: the wired glass was cracked and failing; the severe condensation diminished the performance and aesthetics of the memorial; the steel structure was rusting, and there was significant energy loss that made the stairs cold and unwelcoming for those using them. The steel glazing stops were on the exterior of the structure and the

glazing channel was 7/16 of an inch. The building embodied memorial and patriotic values for the people of Milwaukee and the region, and it had been designed by a leading international architect of the 20th century. Was saving it by replacing it really the only option?

DESIGNING AND IMPLEMENTING THE SOLUTION

Like so many projects, getting to the right solution proved to be a combination of who you know and what you know.

Infrared Proof: Our Storm Windows Save Energy!

Innerglass
 Window Systems, LLC
 The Compression-Fit Advantage

Innerglass Interior Storm Windows keep the building **warm** in the winter and cooler in the summer without sacrificing the charm and beauty of **existing** historic windows.

Noise reduction better than replacement windows.

Compression-fits to ANY window, no matter how crooked!

Innerglass (left)
Existing window (right)

Lyman Estate

Innerglass Window Systems, LLC
 15 Herman Drive • Simsbury, CT
 1-800-743-6207 • www.stormwindows.com

NIKO CONTRACTING CO.

SPECIALISTS IN ROOFING AND ARCHITECTURAL SHEET METAL WITH IN-HOUSE FABRICATION, WE ENSURE THE **HIGHEST** DEGREE OF QUALITY CONTROL AND COST EFFECTIVENESS.

**INSTITUTIONAL • COMMERCIAL
 HIGH-END RESIDENTIAL**

3434 PARKVIEW AVE • PITTSBURGH, PA 15213
 412-687-1517 • INFO@NIKOCONTRACTING.COM
WWW.NIKOCONTRACTING.COM

Quality Craftsmanship Since 1974



Pilkington photo

Visiting the War Memorial Today

warmemorialcenter.org

The War Memorial mission is “Honor the Dead—Serve the Living.” The mission is embodied in the building and in the people who are honored and served by it. The memorial features tours and exhibits and offers adult and children’s educational programs about the legacy of veterans and supports services for veterans. You will find a mobile tour on the website.

Initially, HGA was commissioned to replace the steel curtain wall with aluminum. However, this meant losing one of the primary Saarinen design elements, the birdcage stair. Donna Weiss, founder of Preserve Design Studio, LLC, was the preservation consultant for the project. While HGA was pricing the steel curtain wall replacement and having its engineers assess structural and weight considerations of replacement, Weiss executed a condition assessment, material testing, and cost estimating for a restoration approach. Essential issues to address included the following: determine project scope and pricing; was the reuse of existing glazing pockets possible; the extent of rust; fastener condition; an efficient method for paint and rust removal, and glazing type to increase performance. The restoration budget could not exceed the county’s budget allocation for the aluminum replacement option.

Rust was found to be primarily surface corrosion. All frame components could be saved if the new glazing weighed no more than the original, so as not to stress the cantilevered reinforced concrete structure. The search was on for the right glazing. Weiss invited colleague Neal Vogel, principal of Restoric, LLC, in Chicago, to view the project and he suggested they consider Pilkington Spacia, a vacuum insulated glass that would offer an improved R-Value. The glass would be thin enough to fit the existing glazing pockets, saving the cost to redrill thousands of taps and holes to reset the stop placement. At a quarter of an inch, the glazing did not increase the weight beyond what the original cantilevered design could support, a major concern that arose during the project design by HGA and its engineers.

After testing several methods, Weiss specified vapor blasting to clean the steel in a highly targeted manner and prepare it for a high-performance coating that restored the original gray/brown color that Saarinen chose for the birdcage. A remote space heater had been the sole source of heat originally, but during the rehab process, a perimeter hot water panel radiator, made by Runtal, was installed that maintains enough heat to keep the temperature above the dew point. The increased heat, the insulation now achieved with the vacuum insulated glass, and improved roof drains have combined to solve nearly 100 percent of the condensation problem. The cost to restore the birdcage was \$850,000 within the \$16 million project for work on the entire memorial. The project was completed in under a year and within budget. Russell Drewry says that conversation between Donna Weiss and Neal Vogel was the critical moment that made this a preservation project rather than a replacement project.

To learn about the Milwaukee D-Day veterans who inspired Saarinen, visit traditionalbuilding.com/projects/birdcage

JUDY L. HAYWARD is executive director of *Historic Windsor, Inc.*, and the *Preservation Education Institute*. She serves as education director for the *Traditional Building Conferences Series and Online Education Program*. She blogs and writes this *Techniques* column regularly for *Traditional Building*. She specializes in the development of educational programs for builders, architects, and tradespeople. She can be reached at peihwi@gmail.com or 802.674.6752.



Classics never go out of style

BALANCE. HARMONY. SYMMETRY.



Create a refuge from a crazy, chaotic world and enhance your interior space with ornamental, embossed hardwood moulding.

With more than 500 mouldings in stock, our classically correct mouldings can be specified in exotic hardwoods or poplar. Custom design and millwork upon request.

Visit our website to search, view, and select mouldings or mantels for your home.

Call us for free samples.

DRIWOOD

Driwood.com 888-245-9663

Resilience on the Coast

Durable solutions for building traditional designs on the water.



For traditional projects in coastal environments, the proper windows, shutters, and doors not only define the design but also provide protection from hurricane-force winds, blistering sunlight, and corrosive ocean salt.

Materials must be durable and shutters must be operable to keep the harsh climate at bay while still looking as though they were made the same way they were when the structure was erected decades or even centuries ago.

Today, there are a variety of functional and aesthetically pleasing products that literally are built to stand the test of time.

Here is a selection of companies that specialize in creative coastal solutions.

AERATIS PORCH PRODUCTS **AERATIS.COM**

Using profiles from 19th-century examples, Aeratis Porch Products manufactures historically accurate, operable, high-density PVC shutters that have stainless steel hardware and tongue-and-groove porch flooring.

The shutters, which come with a lifetime guarantee, are available in louver, raised-panel, combo louver and panel, and Bahama styles.

Chris Tidwell, who created the com-

pany's line of shutters, says the products are durable and resilient enough to stand up to coastal weather.

"They are much more stable, longer lasting and hold paint for much longer than wood shutters," he says. "In addition, we can offer them at a fraction of the cost—around \$350 per pair as opposed to \$1,000 for wood counterparts—and our lead time is less than 10 days."

The company, which was founded in 2005 and is based in Tempe, Arizona, has provided products for a number of prominent places, including the Oak Alley Plantation in Vacherie, Louisiana; This Old House Ideas Houses; and

National Register homes around the country.

The company's products, which also include historically accurate PVC tongue-and-groove porch flooring, are guaranteed not to buckle, cup or warp no matter how hot or cold it gets, making them ideal for coastal installations.

"We try to utilize wisdom from early architects and home builders who did not have high-performance materials," Tidwell says. "In early American home building, for example, exterior living spaces had tongue-and-groove flooring, which aided in getting water away from the house and into a collection system.

Top photo courtesy of Kolbe Windows & Doors



LEFT & ABOVE Aeratis Porch Products manufactures historically accurate, operable, high-density PVC shutters and tongue-and-groove porch flooring.

RIGHT & BELOW Kolbe Windows & Doors manufacturers a variety of traditional-style customizable products that are designed for the climate of coastal areas.

The deck boards of more modern times, which have gaps and spaces and allow water to penetrate in large volumes and get under the main structure, cause mold mildew and stimulate fungal decay of wood.”

KOLBE WINDOWS & DOORS
KOLBEWINDOWS.COM

Celebrating its 75th anniversary this year, Kolbe Windows & Doors manufactures a variety of customizable windows and doors that lend themselves to traditional and coastal projects.

The Wisconsin-based company’s Ultra Series, for instance, features extruded aluminum exteriors and wood interiors, with numerous options, including exterior trim details and hurricane-impact resistance for coastal areas.

Its Heritage Series, which features wood interiors and exteriors, is designed to create architecturally intricate and historically accurate details. “With numerous divided lite profiles and patterns, aesthetic and efficient glass, hardware options and finishes, it’s easy to create one-of-a-kind openings to suit every region and climate,” says Nick Pesl, displays and product information manager.

Kolbe windows and doors have been installed in residential and commercial projects from coast to coast. The company provided 530 impact windows and 123 doors for Ocean House, a historic beach hotel in Watch Hill, Rhode Island. WaterColor, Florida, used Kolbe’s Ultra Series windows and doors on its 45,000-square-foot beach club on the Gulf of Mexico, and Turks & Caicos



Sporting Club, a 1,100-acre private residential community on the island’s southernmost chain, features Kolbe impact products.

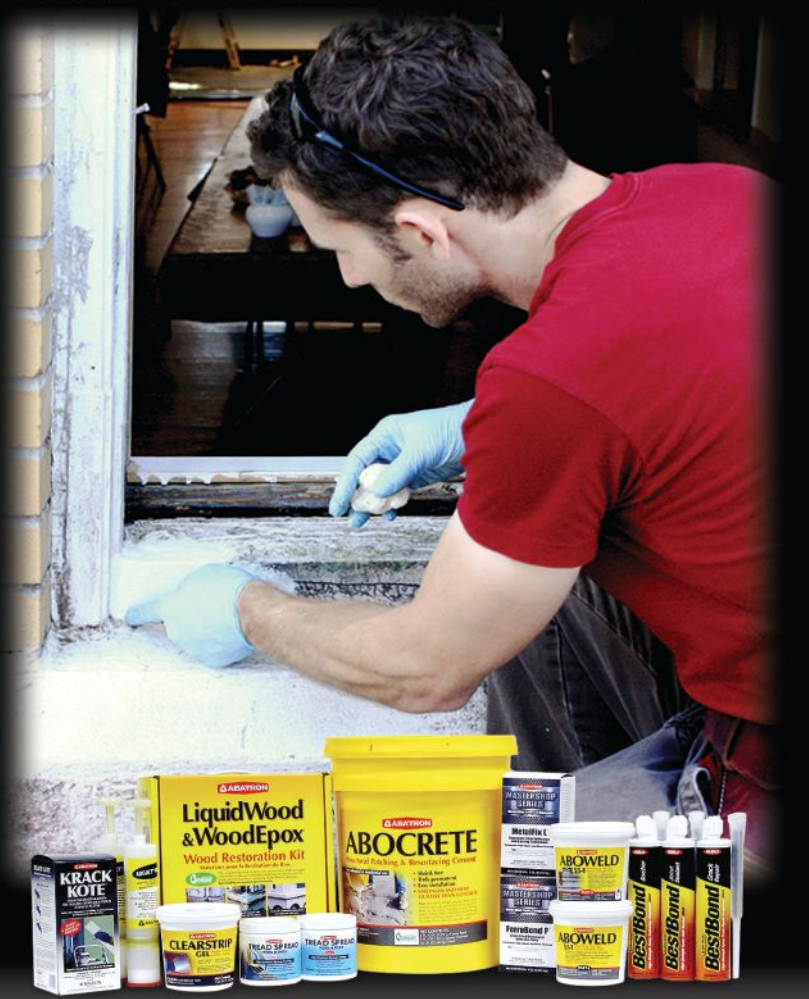
“Our windows and doors are designed to marry traditional design aesthetics with new advances in technology,” Pesl says. “Over the years, strict building codes have been implemented in coastal areas to prevent excessive damage during tropical storms and hurricanes. A wide selection of Kolbe products can be upgraded to meet specific needs, including impact resistance in Zone 4 and high-velocity hurricane zones.”





Restoration & Maintenance Products

Your Toughest Challenges...Accepted!



- Wood
- Concrete
- Metal
- Plaster
- Stone
- Porcelain

Request a Free Catalog or View Online

www.abatron.com

1-800-445-1754 • info@abatron.com



Graham Architectural Products manufactured history replica windows for The Cigar Factory, a 19th-century National Register building in Charleston, South Carolina.



Photos by Graham Architectural Products

GRAHAM ARCHITECTURAL PRODUCTS
GRAHAMWINDOWS.COM

A manufacturer of custom architectural-grade windows, Graham Architectural Products specializes in historic replications as well as new-construction products.

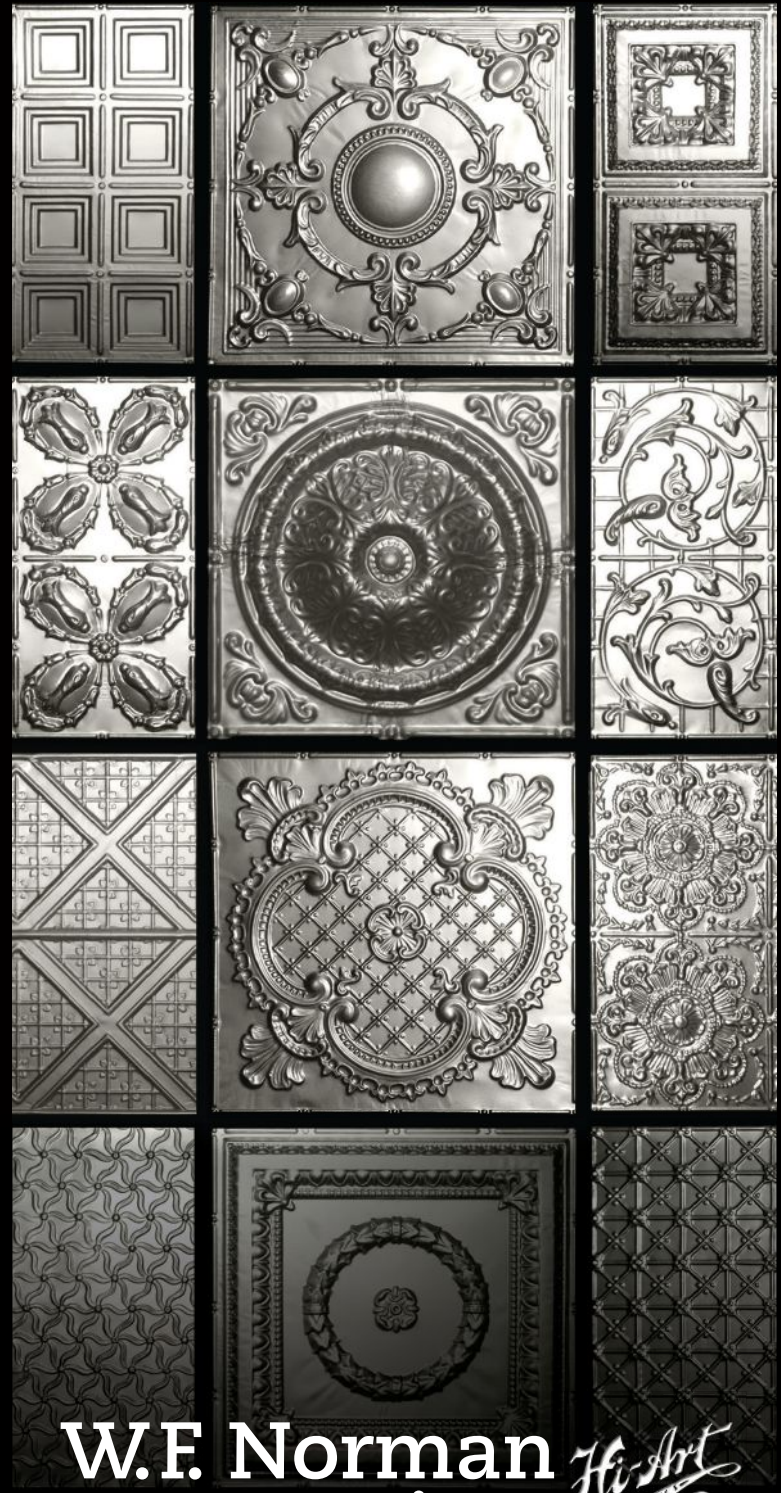
Its operable, thermally broken aluminum windows, which are manufactured in the 50-year-old company's 240,000-square-foot warehouse/factory in York, Pennsylvania, include designs for coastal installations.

"We have hurricane-resistant products," says Jim Eisenbeis, director of marketing. "The construction and available finish of our hurricane-resistant windows, patio, and sliding-glass doors are durable enough to withstand the elements typical in these high-wind areas."

The company has worked on a

number of coastal projects. For The Cigar Factory, an 1881 National Register building in Charleston, South Carolina, that is now home to several businesses, Graham Architectural Products replicated historic windows that meet hurricane-impact requirements. It also manufactured replica windows for the 1928-30 Asbury Park Convention Hall, an exhibition center in the New Jersey city of the same name that is used for ports, concerts, and other special events.

Noting that Graham Architectural Products has manufactured windows for projects in numerous coastal regions that each have their own stringent requirements, Eisenbeis says that the company's "attention to detail to meet the needs of each project and the quality of the product set us apart. Our motto is: Your vision, our experience."



W.F. Norman Corporation *Hi-Art*
STEEL CEILING

The Nation's Most Complete Collection



The W.F. Norman Corporation offers quality, hand-stamped architectural sheet metal with a vast selection of ornate designs. Our 1898 Hi-Art® product line features 140 ceiling patterns and over 1,300 ornaments, including rosettes, brackets, finials and more! We offer custom stamping and architectural sheet metal fabrication. To see our products online visit our website at: wfnorman.com, or send \$3 for our catalog to P.O. Box 323, Nevada, MO 64772.

info@wfnorman.com | (800)641-4038



The Sherry-Netherland | New York, NY

To find out more about our work uncovering and conserving these intricate murals, see our project page by scanning the code with your phone's camera.

CONNECTED THROUGH QUALITY & CRAFT.

www.evergreene.com | 212. 244. 2800



Stewart Brannen supplies luxury windows, doors and millwork that are classic in style and modern in performance.

**STEWART BRANNEN
MILLWORKS
BRANNENMILLWORK.COM**

Catering to the custom luxury market, Stewart Brannen Millworks offers wood products that are classical in style and modern in performance so they stand the test of wet, windy weather.

Although the family-owned and -operated company does do replications of historic windows, doors and millwork, “we frequently end up merging the two worlds: creating products that meet the high-performance demands of today while paying homage to the details of the past,” says Bradford Stewart, vice president of sales and marketing.

The company, whose 43,000-square-foot factory is in Register, Georgia, manufactures the wood components in-house and orders glass and hardware from other sources.

“We select hardware that is proven and reliable,” he says. “Hardware that isn’t going to be outdated or discontinued in five years, in case you were to have an issue. We also build in redundancies so that our products don’t rely on things like a custom gasket that

must be in perfect order for the unit to perform properly.”

Most of Stewart Brannen’s projects are residential, but the company does have windows, doors and millwork installed in a number of award-winning public projects, including the Florida State University president’s mansion; The Masters House at Augusta National Golf Club in Georgia; the Heritage House at Harbour Town Golf Links in South Carolina; Citrus Square in Sarasota, Florida; and the Wallace House at the Augusta Country Club in Georgia.

“A great deal of our projects are in historic cities in coastal environments, which require impact or at least design-pressure ratings but are still subject to approval by an architectural review board, which must approve the aesthetic details of the products, and finally the engineers who calculate the heat loads for efficiency,” Stewart says. “What you end up with after checking all the boxes is a pretty incredible hybrid.”

He adds that Stewart Brannen’s products are anchored in tradition, not trends. “Things become classics for a reason,” he says. “Quality never goes out of style.”

Photos courtesy of Stewart Brannen

**WEBINARS
TRADITIONAL
BUILDING**



Visit us online at
TraditionalBuilding.com to

- learn about our free educational series offering AIA credits
- read our bloggers latest posts
- browse our book reviews and story archives
- and much more



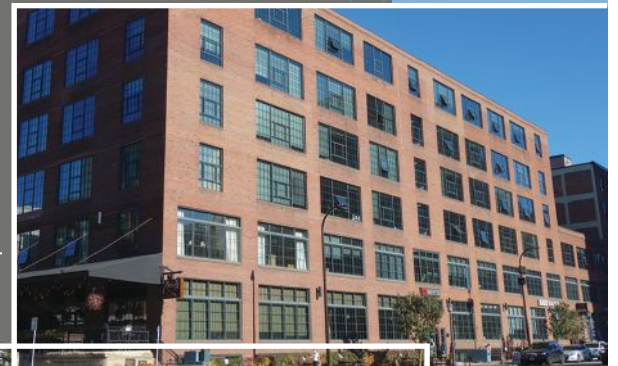
Celebrating *50 Years* of the finest quality stonework, hand crafted by Haddonstone

Call 01604 770711
Visit haddonstone.com

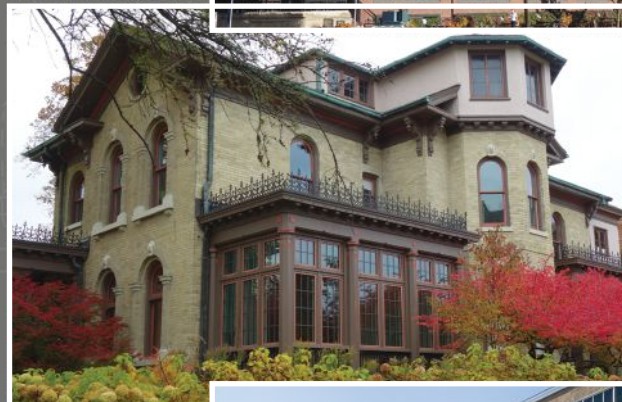


Quiet. Safe. Timeless.

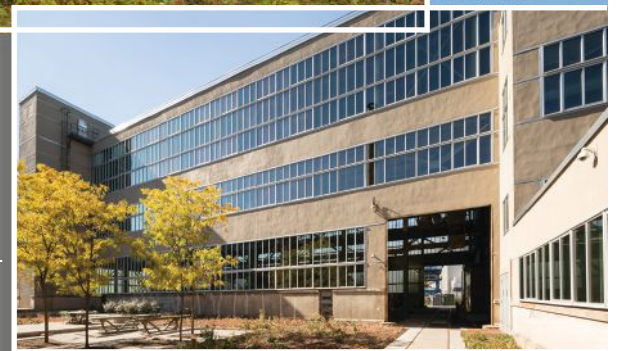
Else Warehouse
Minneapolis, MN



John Michael Kohler Arts Center
Sheboygan, WI



Naval Yard, Building 18
Philadelphia, PA





Riverside Renewal

Historical Concepts designs a gracious Greek Revival home for a historic Lowcountry estate.

BY JENNIFER SPERRY | PHOTOS BY ERIC PIASECKI

Forty miles west of Charleston, set along the banks of the Ashepoo River, this 1,800-acre property dates back to 1697 as a land grant from King Charles II. Here, pond, riverbank, Southern live oak, and loblolly pine mingle with the structural remnants of a plantation past. It's believed that three homes were built onsite—all succumbed to either fire or natural disaster. Times changed, but the land's natural beauty persisted.

"When our clients purchased the parcel, the original

house had been rebuilt over the years and was small and insignificant compared to the scale of the property," explains Terry Pylant, senior principal at Historical Concepts, an award-winning architectural firm based in Atlanta. In its place, they wanted a home that expressed their passions for history, art, land conservation, hunting, and exotic collectibles.

"The clients envisioned a home that would draw from the setting's historic elements, evoking a sense of age but also a feeling of welcome and ease," summarizes Pylant, who, along with project manager Ryan Yurbaca, collaborated with builder Terry Hoff and interior

designer Barbara Westbrook on the intricate project. Construction lasted nearly two years and required the skillful application of both modern techniques and old-world craftsmanship. "From the interior trim carpentry to the floors to the cabinetry, we had some phenomenal artisans working on this project," notes Pylant.

Today, much of the land is within a conservation easement, protecting it from development and preserving sensitive river habitat for waterfowl. With the easement capping the main home's size at 5,000 square feet, Pylant's out-of-the-box response was to separate out sleeping spaces from the living/entertaining areas.



Extending symmetrically off the main home and flanking an ornamental boxwood garden are two detached wings, one containing a gracious master suite and the other two private guest rooms.

“This solution is drawn from the historic forms of working homesteads where kitchens, drying rooms, and carriage structures would have been separate from the main house,” describes Pylant. “It’s a modern house, but we wanted it to tell a story as if it had changed and evolved over time.”

The owners developed a design narrative for their property rooted in the early 1800s, and Pylant contrib-

uted to this story by suggesting stately Greek Revival architecture, a favored style of the Antebellum South. A study in symmetry, the main home, reached via a winding oak allée, features a Greek Doric entry portico and roof parapet with delicate fretwork. The zinc roof and Savannah Grey brick are purposeful nods to regional Charleston flavor.

Scale was a vital consideration, notes the design principal. “The house itself is small relative to what you see around it, but its details are large. The front columns are two feet in diameter and stand almost thirteen feet tall. The front windows are four and a half feet wide and

ABOVE The approach to this home, which is composed of three separate structures, is through a winding allée framed by the limbs of old live oaks. Living spaces are located in the main pavilion; sleeping quarters are privately tucked into two brick pavilions. Walkways constructed of hand-molded brick connect the pavilions.

BELOW The entry hall is flooded with natural light, allowing views to the live oaks and gardens beyond.

OPPOSITE Loblolly pine beams (harvested on site), along with a robust island, express the kitchen's rustic charm.







LEFT Walkways constructed of hand-molded brick connect the pavilions, here extending to form an outdoor seating area.

BELOW Two galleries provide display space for the owners' collections. This is the east gallery, with leaded glass fronts in custom cabinetry used to display the homeowners' collections.



LEFT The scullery, located just off the kitchen, has a floor comprised of handmade bricks laid in a herringbone pattern with white mortar pattern.

almost ten feet tall. Every custom detail had to fit stylistically and proportionally into the setting," he adds.

Inside, the main pavilion's unique layout begins with an 8 by 45 foot picture gallery, which doubles as both an entry vestibule and as wall space for art display. Immediately following is the great hall, which, at 25 by 45 feet in size, is a grand, inviting space for relaxing and formal dining. Dotted with hunting trophies and wildlife artwork, "It's like a domestic version of a natural history museum," points out Pylant.

Reclaimed oak trusses in the hall's vaulted ceiling



Cypress wood recently recovered from the bottom of the original rice ponds has been milled into cabinetry and ceiling panels in the library. The room frames awe-inspiring views through live oaks to the river beyond.

KEY SUPPLIERS

ARCHITECTURE

Historical Concepts
Terry Pylant (senior principal) and
Ryan Yurcaba (project manager), with
Jim Strickland (founding principal), Camden
McClelland, RA, and Paul Haislmaier, RA
historicalconcepts.com

INTERIOR DESIGN Barbara Westbrook
Westbrook Interiors, westbrookinteriors.com

BUILDER

Terry Hoff Construction
terryhoffconstruction.com

LANDSCAPE ARCHITECT

Hooten Land Design, hootenlanddesign.com

DECORATIVE PAINTING

Bob Christian Decorative Art
bobchristiandecorativeart.com

CABINETRY

William C. Pritchard Co., wcpritchard.com

STONE (IN KITCHEN, BATHS)

Walker Zanger, walkerzanger.com

EXTERIOR MOLDINGS, WIDOW'S WALK RAILING, AND FIBERGLASS COLUMNS

Versatex and Stratton Creek Wood Works
versatex.com, strattoncreek.com

FIBERGLASS COLUMNS

DMG Architectural Specialists in partnership
with CBL Architectural Fiberglass
dmgarchitectural.com
cblarchitecturalfiberglass.net

STEEL WINDOWS/DOORS

COMEP comepsteelwindows.com

WOOD WINDOWS Marvin, marvin.com

ZINC ROOF Rheinzink, rheinzink.us

PLASTER ARTISAN

Charleston Plaster Co., charlestonplaster.com

INTERIOR TRIM & BEAM ERECTION

Tree Marsh Woodworks

MISC. ANTIQUE DOOR HARDWARE AND FIXTURES Architectural Accents

architecturalaccents.com

EXTERIOR DOORS

Stewart Brannen Millworks
brannenmillwork.com

EXTERIOR GAS LANTERNS

Carolina Lanterns & Lighting
carolinalanterns.com

EXTERIOR BRICK, INTERIOR BRICK FLOORS

Old Carolina Brick Co., handmadebrick.com

EXTERIOR SHUTTERS

New Horizon Shutters
newhorizonshutters.com

INTERIOR DOORS

Berlin G. Myers Lumber Corp.
berlinmyerslumber.com

BELT & PULLEY CEILING FANS

Woolen Mill Fan Co., architecturalfans.com



add character but also contribute to the home's fictional timeline. According to Pylant, "It's as if at some point in time, the 'existing' plaster ceiling had been removed and the timbers exposed to allow more light into the space."

To the left of the great hall is the kitchen, which tells its own tale of the passage of time. "It's meant to look like a porch that was enclosed around the 1920s, when electricity and indoor plumbing became available," notes the designer. The exposed ceiling beams shift orientation to represent the extension of the "porch" off the main roofline. The beams were crafted from loblolly pine harvested onsite and faux painted by noted decorative artist Bob Christian.

In order to keep the kitchen's look based in the '20s, the design team nixed upper cabinets and opted for a rustic island with open shelving underneath. William C. Pritchard Co. crafted all of the custom cabinetry and

cleverly hid the fridge behind paneling shaped like an ice box. Reclaimed heart pine flooring contributes to the new-old aesthetic.

Another entertaining hub is the storytelling room, a casual, sunlit space off the great hall and of equal width. Here, large steel windows frame views of live oaks and river beyond. "Its design cues stem from the idea that it was originally a veranda," explains Pylant. Beyond the windows stand full fluted columns: "Because this elevation is visible from the river, the owners wanted a formal river façade," he explains.

While much of the main pavilion facilitates gathering, Pylant snuck in a variety of private destinations for the owners, the most intriguing of which are his and hers galleries sited at either end of the long entry vestibule. The wife's West gallery is lined with leaded glass cabinets to display her collections of Japanese art, snow



globes, and various ceramics. Its ceiling, painted by Bob Christian, represents the night sky as it would have appeared on December 28, 1810 (the clients' anniversary date plus the home's invented circa year). Over 200 inset LED lights twinkle like stars.

The husband's East gallery has its own decorative ceiling painted in the style of Audubon, inspired by the couple's collection of 1800s prints from *Birds of America*. The artwork is directionally accurate and includes Charleston in the distance. Another quiet space is the library, which is paneled with sinker cypress, recovered from the bottom of the property's original rice ponds and prized for its rich color.

Inside their master suite, aka the master pavilion, design elements, materials, and furnishings form a Colonial palette, evoking the early 1800s like much of the main home. Meanwhile, the styling of the master

bath suggests it was added later in the 1920s or '30s. The bathroom mass acts as a hyphen connecting the pavilion's bedroom on one side and walk-in closet on the other. This arrangement suggests that the whole is comprised of converted outbuildings.

From corner to corner, the property is awash in intriguing features, including a restored parterre garden dating back to 1703, when the first home was presumably built. This oasis is just one success story of many—over the years, historic rice pond dikes were rebuilt, fields replanted, roads redone, outbuildings revived. A home befitting the property's gravitas was always the missing piece.

"The owners have proven themselves respectful stewards of the land," contends Pylant, "but with this house they've established a lasting legacy through design."

ABOVE In a fictional timeline imagined for the home, this glamorous bath was added in the early 20th century, thus influenced by both the Art Deco movement and the machine age. This narrative allowed us to insert a steel-framed glass wall behind the tub, which opens onto a trellised outdoor shower.

OPPOSITE The house features two bedroom pavilions, one containing the owners' suite and the other a pair of guest rooms. Seen here is the owners' bedroom. A rustic hearth is flanked by vintage chairs for evening reading.

REINVENTING HISTORY





Overlooking the Chicago River, LondonHouse Chicago is the gatekeeper of North Michigan Avenue and East Wacker Drive.

Photo by Tom Rossiter

A Chicago Beaux Arts beauty is restored in the Windy City.

BY NANCY A. RUHLING

PHOTOS BY NICHOLAS JAMES PHOTOGRAPHY
(EXCEPT WHERE OTHERWISE NOTED)

In the Windy City, the Michigan Avenue Bridge is defined by four 1920s architectural icons: Wrigley Building, Tribune Tower, 333 N. Michigan Ave., and the London Guarantee & Accident Building, now part of the LondonHouse Chicago hotel, a new award-winning historic redevelopment.

The cupola-topped hotel, overlooking the Chicago River at North Michigan Avenue and East Wacker Drive, distinguishes itself in the cityscape with a sleek contemporary glass extension that seamlessly blurs the lines between old and new, past and present.

The luxury lifestyle hotel, which was completed in 2016, is a collaboration between the Chicago-based architectural firm Goettsch Partners and Chicago-based developer Oxford Capital Group.

“I’ve always thought it was the prettiest and most beautifully proportioned building in the city,” says developer John Rutledge, founder, president and CEO of Oxford Capital Group and affiliate Oxford Hotels & Resorts, which manages the hotel, as well as trustee board chair of the Chicago Architecture Center. “It really is a Grace Kelly of buildings, which we believe will continue to stand the test of time.”

The structure’s and the city’s history are entwined: It was constructed on the site of Fort Dearborn, which was originally built in 1803 and ultimately destroyed in the Great Chicago Fire of 1871. Through the years, it served as offices for a variety of well-known companies ranging from the radio station WLS-AM to the publisher Crain’s Communications.

By the time Oxford Capital Group decided to turn it into a hotel-anchored mixed-use building with two floors of retail, it was nearly vacant.

Leonard Koroski, FAIA, LEED AP, a principal of Goettsch Partners, says that “it was a unique opportunity for adaptive reuse and expansion. It has 23 different faces, and the floor plates are irregular, which is not good for offices, but it’s ideal for a hotel because there are 56 different room types so it appeals to various types of users.”



CLOCKWISE, FROM LEFT
 As the lobby library illustrates, the contemporary furnishings are opulent, elegant, and striking.

The hotel's front desk features a black marble floor and back wall whose patterns replicate ornamental features in the original building.

The indoor bar on Floor 21 is one of the amenities of the tri-level rooftop.



The 305,000-square-foot, 21-story limestone Beaux-Arts building, designed by Chicago architect Alfred Alschuler to house the London Guarantee & Accident Co., was restored. Original façade details, including the 6-foot-high, 5,000-pound urns that serve as rooftop finials, were repaired or replicated and remounted. Some 1,100 windows were replaced with energy-efficient replicas, and the building's HVAC systems were upgraded.

The 85,000-square-foot new tower, which melds with the 1929 Neo-Gothic terra-cotta Mather Tower next door, replaced a street-level surface parking lot.

Adding the tower, says Rutledge, “was like filling in a missing tooth” in the Wacker Drive street wall.

It was, he adds, an aesthetic as well as a financial de-

cision—the 80 additional guest rooms it contains, along with an expanded rooftop and column-free ballroom, were necessary for the redevelopment because “we needed the incremental revenues generated by those additional rooms and spaces to make the investment pencil.”

From the beginning, Rutledge’s vision was of a contemporary component that would complement the existing architecture while satisfying the rules and regulations of local, state, and national preservation groups, which had indicated they didn’t necessarily want the addition to be a replica or updated version of the building’s architecture.

“We wanted something that paid homage to the

original building,” he says.

Koroski adds, “We sculpted the two buildings together. Each has a base (floors one through four), a shaft (floors five through 21) and an elaborate top.”

Two types of glass define the new tower’s façade and delineate its distinct uses. On floors one through four, which include the lobby, ballroom, retail stores, and other public rooms, the glass is transparent because “we wanted people to see that there’s activity going on inside,” Koroski says.

The upper floors, where the guest rooms are, are clad in glass that has more reflectivity, he says, “to create a sense of privacy while still giving a better view of the Chicago River.”



KEY SUPPLIERS

ARCHITECT Goettsch Partners

DEVELOPER Oxford Capital Group

INTERIOR DESIGNER
Simeone Deary Design Group

OWNER'S REPRESENTATIVE/
PROJECT MANAGER Daccord

STRUCTURAL ENGINEER TGRWA

MEP/FP ENGINEER
WMA Consulting Engineers

EXTERIOR MASONRY RESTORATION
Klein & Hoffman

LIGHTING DESIGNER
AKLD Lighting Design

GENERAL CONTRACTOR
W.E. O'Neil Construction

CURTAIN WALL MANUFACTURER
Schüco

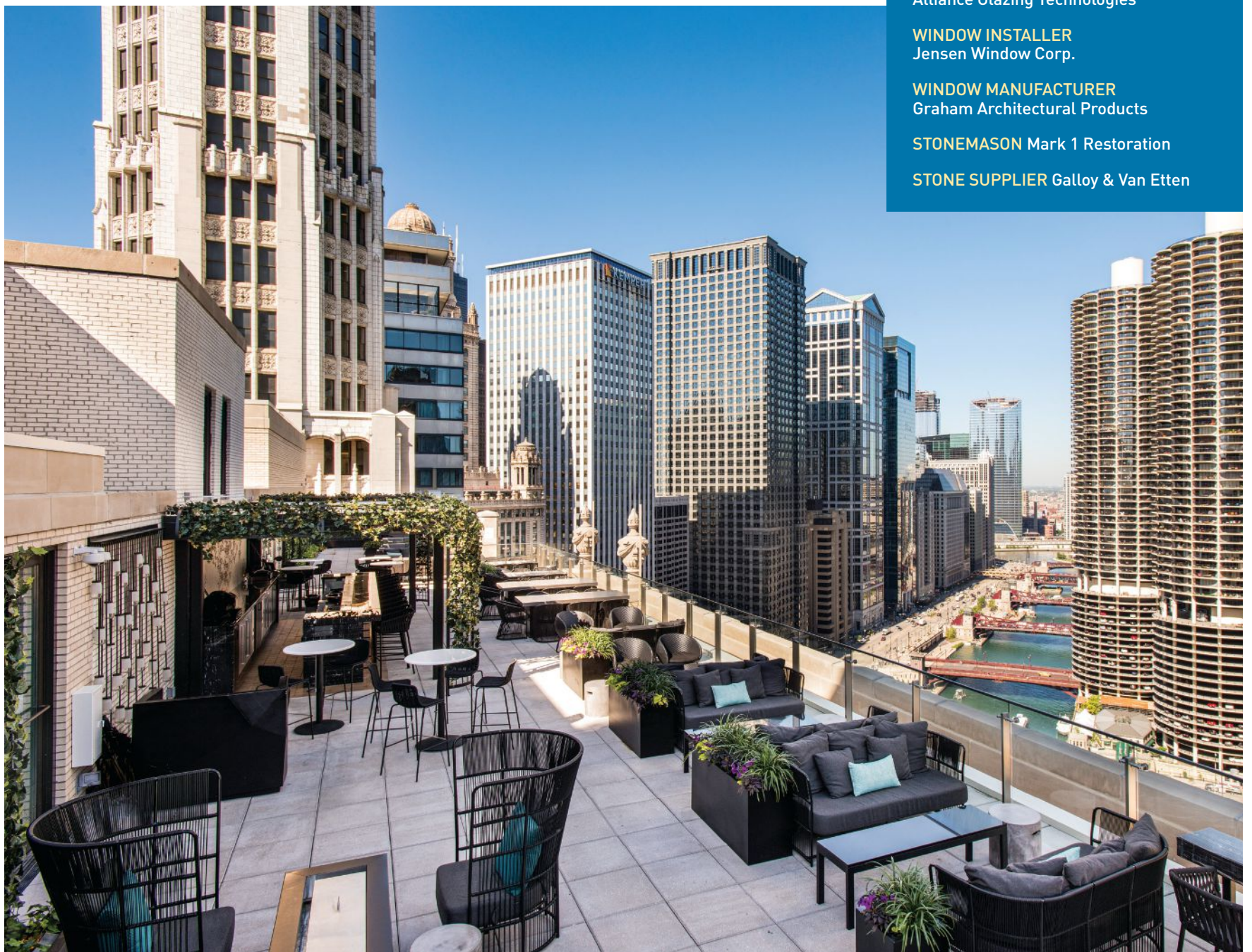
CURTAIN WALL INSTALLER
Alliance Glazing Technologies

WINDOW INSTALLER
Jensen Window Corp.

WINDOW MANUFACTURER
Graham Architectural Products

STONEMASON Mark 1 Restoration

STONE SUPPLIER Galloy & Van Etten



BELOW The hotel's glass tower contains several public rooms, including a lobby bar, which is flooded with natural light and beautiful views.

OPPOSITE, TOP The original cupola serves as a private dining and events space.

OPPOSITE, BOTTOM LondonHouse Chicago has the only tri-level rooftop in the city.



The redevelopment of the hotel, which has 452 guest rooms, allowed the team to design the city's only tri-level rooftop, whose features include a two-level bar and event space, an indoor bar and an outdoor terrace that has lounge seating and a covered bar.

The original building's cupola, which offers 360-degree views of the city and is a city icon in its own right, has been turned into additional rooftop space, as well as a venue for private dining and events.

In keeping with the historic theme, the guest room interiors, designed by Simeone Deary Design Group, were inspired by luxury automobiles of the 1920s. Contemporary furnishings with opulent embellish-

ments and lavish upholstery and Art Deco-inspired geometric patterns are used throughout the hotel to reflect the building's history and make it come alive.

The hotel's name—LondonHouse Chicago—also is a nod to the past. From the 1950s to the 1970s, the building was home to the world-famous London House jazz club, which featured some of the genre's greatest performers, including Dinah Washington, Nancy Wilson, and Bobby Short.

LondonHouse Chicago has won a lot of praise and numerous honors, including the 2021 Award of Excellence, Renovation from the Council on Tall Buildings and Urban Habitat, the 2018 Chicago Landmark Award for Preservation Excellence from the City of

Chicago Commission on Chicago Landmarks, the 2017 Historic Redevelopment of the Year Award from the Chicago Commercial Real Estate Awards, and the 2016 Gold Award, Mixed-Use Architecture—Chicago Design Awards.

"The project was extremely gratifying for our entire team," Rutledge says. "It has been architecturally and financially successful, receiving almost universal accolades."

Koroski adds that the hotel is "a success on so many levels—historic preservation and stewardship, adaptive reuse with existing architecture and design. And it's a real magnet. People stand in line to get onto the rooftop."

Bridging Old and New

Restored to its former glory, a rustic cabin links a modern English country-style home to the American past.

BY JANICE RANDALL ROHLF

PHOTOGRAPHY BY ANICE HOACHLANDER OF HOACHLANDER DAVIS PHOTOGRAPHY





LEFT The last light of the day coordinates seamlessly with the glow of the windows and exterior lights of this charming home, at peace in its surrounding natural setting.

“**T**he tail that wagged the dog.” That’s how BarnesVanze Architects describes a storybook log cabin from the 1800s that was a hair’s breadth away from demolition when firm principal Steve Vanze and his team—Melanie Giordano and Sydney Katz—came to the rescue. “You don’t run into many of these log cabins,” says Vanze. “We knew we had to save it.”

The clients needed little convincing. Neada and Brian Onufrychuk, new to country life in Virginia, were so focused on the five acres of land (“It’s magical,” says Neada), that they hadn’t noticed the squat, chink-walled structure attached to a nondescript 1925 brick house poised for the wrecking ball. As soon as they did, however, they instantly recognized its value. Now her favorite part of the house, the painstakingly restored cabin initially gave her pause, Neada admits. She worried that the rustic cabin might not mesh with the rest of the home, a modern English country house inspired by C.F.A. Vosey, an icon of the English Arts and Crafts movement.

Fortunately, the design and construction challenges fell into the right hands. Along with the homeowners, both history buffs and avid collectors—she of art, he of stamps and antique coins—the classically inclined architects headed up a team consisting of designer Lauren Liess, known for strong sense-of-place interiors, and contractor Michael Carr, whose meticulous craftsmanship included burning and chipping new wood to make it look old. Landscape designer Jennifer Horn introduced a homey “Remnant Garden” outside the cabin along with other landscaping she says is “what we imagine was once on site.” In terms of vision, talent, and integrity, this was a dream collaboration of professionals.

Designed in a meandering fashion, the house is organized around axial views through the house to the woods, with the cabin at one end and a three-bay garage cum upstairs office at the other. Glass hallways set at an angle link





these two volumes to the house's central vaulted great room, where the parents enjoy casual living and eating with their two young children. Other spaces—kitchen, bedrooms, formal dining, covered porch, and library—surround the central space and look into it from the main level or hall and balconies above. Open and airy when you walk into the foyer, the mood shifts to cozy once you step into the dark-wood paneled library, and changes again in the kitchen, a sunlit room with a white oak island, white quartz countertops, and floors of light gray slate.

The house looks smaller from the outside than it actually is. Its sweeping roof and the gently curved stucco rolling out over windows and into wooden door openings recall the white roughcast houses with slate roofs typical of Vosey. "Our aim was to reflect his ideas in a cleaner, more modern way," observes Vanze. "We made the design a little crisper, and added slightly simpler details." While there is a ribbon of horizontal windows à la Vosey on the front shed dormer, there are

also large expanses of glass, especially in the back and in the pedimented portions of the house.

To Naeda's delight, the house, she says, is shaped like a hug that embraces arriving guests. It's a welcoming spirit that carries through once you step inside. "The bends and turns of the house create mystery," she suggests. "It makes you wonder where every little section leads to." Like the property marked by rolling hills, forest, and a stream, the house is an assemblage of wonderful moments just waiting to happen, the culmination of which is the log cabin.

Originally, the idea was entertained to have the cabin serve as a pool house, sited as it is near the pool and sports court. Once the original low roof was raised, however, the resulting cathedral ceiling gave the space more potential and, newly insulated, it has become a much-used family room as well as the place to have dinner guests at a long table that seats 20 in front of the original fireplace brought back into working order. "We pulled in simple, comfortable furnishings," says Lauren

ABOVE LEFT This view taken from the office window above the garage provides a nice perspective of the front façade of the home, the entry flanked by two substantial planters filled with greenery, and a glimpse of the log cabin just beyond the parking court.

ABOVE RIGHT Moving from the cabin back toward the main house, a built-in-framed opening marks the entrance into the main stair hall and entry foyer. This image offers a lovely sampling of the layers of color, texture, and style that have been curated by the design team in collaboration with the owner that lend this home its unique character.

OPPOSITE Upon entry, one moves through the foyer to land in the heart of the home: a double-height great room. Warmth is imbued to this already welcoming room by the natural wood finishes of the beams and trusses. Ample daylight streams through the French doors and large clerestory windows above.



ABOVE A wide aisle between the perimeter counters and island provides enough room for everyone to help with prep or clean-up. The large windows above the prep sink shown here are sure to bring joy and optimism to any chore.

OPPOSITE The existing historic log cabin was lovingly restored making it a comfortable family lounge. During restoration, the cabin received electric service, new doors and windows, and a more open ceiling with wood beam details that tie the cabin aesthetically to the great room of the main house.

Leiss, adding that she chose “primitive, rustic-feeling materials” for the cabin from which she transitioned to the rest of the home.

“I could see that Neada was drawn to romantic, dramatic spaces that had a bit of quiet soul to them,” says Liess, who incorporated many of the pieces she designed for the Onufrychuks into her most recent custom furnishings line, Woodbridge. “This being a new-build, my goal was to try to bring in some patina.” Elements like a soft, tea-stained palette, tone-on-tone patterns, and vintage and vintage-inspired textiles and rugs create an Old Curiosity Shop-type backdrop that stops short of becoming too heavy-handed. “I wanted it to be a little bit dusty, but not too much,” says Neada, implying that she loves antiques but also appreciates the trappings of other, more modern eras. “I’m all about the old, new, and earthy, mixed with some

moody dark moments.”

The wide range of styles she’s drawn to is most apparent in the extensive and eclectic art collection, which she had already begun to amass before Liess encouraged her to keep going. Among the artists displayed in the home are Mary Little, who created the sculpture-like shadow-catching piece above the great room fireplace, and Chelsea Fly, whose atmospheric landscape watercolors flank the doors to the kitchen.

Perhaps the most meaningful piece of art in the home has been part of the property since long before the Onufrychuks moved here. The salvaged original door to the 1800s log cabin now occupies a place of honor on wall space in the main stairway. Much more than an old door, it represents how the preservation of the cabin influenced the architecture and how the past is now linked to the present.



GRAND HOTEL

An original McKim, Mead & White bank building transforms into a luxury hotel.

BY NANCY A. RUHLING



Copyright Andrew Ruggie/Courtesy Perkins Eastman-III

The most architecturally significant additions to historic buildings are those that seamlessly merge the best of their time periods yet allow each element to make a distinct statement.

By design, they don't replicate their architectural past; instead, they use the sophistication and ingenuity of bygone eras as a springboard for creativity and innovation to reflect what went before yet anticipate what is yet to come in a prescient manner.

One of the latest illustrations of this principle is The Fifth Avenue Hotel, which is housed in one of New York City's architectural gems.

A decade in the making, the hotel is the latest chapter in the landmarked building's century-long history.

The original five-story McKim, Mead & White building, 250 Fifth Ave. at 28th Street in Manhattan's chic NoMad neighborhood, was erected in 1907 for the Second National Bank.

In 1913, McKim, Mead & White designed a two-story addition on the north side, and in 1928, the firm also designed a commercial addition on the back of the building.

The fourth—and final—addition is the 230-foot-tall, ground-up building designed by the New York City-based firms Perkins Eastman and PBDW Architects as the premiere project of the hotel development and management company Flâneur Hospitality.

Flâneur Hospitality CEO and Founder Alex Ohebshalom, who is a principal of his family's property-management

company, which oversees a portfolio of more than 2,000 residential apartments and over 1 million square feet of office, industrial and retail space, including 250 Fifth Ave., envisioned the project as a way to honor and build upon the work of McKim, Mead & White.

"They were pioneers and innovators of their time—they traveled extensively through Europe and brought ingenious and audacious design ideas back with them," he says, adding that his family has owned the building since 1978 and that most recently it was used as commercial and office space. "Like them, I take inspiration from both cultures and masterpieces the world over."

Stanford White, the "White" of McKim, Mead & White, whom Ohebshalom calls the "quintessential flâneur, or urban

wanderer," was his main inspiration—not only for the hotel but also for the brand of his hospitality development and management company.

"I did a deep dive into Stanford White and unearthed images and news articles of his townhouse in Gramercy Park and his Box Hill estate in St. James on Long Island," he says. "He had a collection of furniture, objects, and art from his travels that spanned countries, eras, and cultures."

The Fifth Avenue Hotel project, which started in 2012 with a public hearing before the New York City Landmarks Preservation Commission, evolved over time.

PBDW Architects—whose consulting partner Samuel White is Stanford White's great-grandson—was commis-

KEY SUPPLIERS

HOTEL DEVELOPMENT & MANAGEMENT CO.

Flâneur Hospitality

DESIGN ARCHITECTS

Perkins Eastman and PBDW Architects

ARCHITECT OF RECORD

Perkins Eastman

INTERIOR DESIGN

Martin Brudnizki Design Studio

ART VISTO Images

LANDSCAPER Harrison Green

FAÇADE RESTORATION CONSULTANT

Surface Design Group

TERRA COTTA Gladding McBean

RIGHT The Fifth Avenue Hotel, whose interiors were designed by Martin Brudnizki Design Studio, includes a multi-level signature restaurant on Fifth Avenue.

OPPOSITE The Fifth Avenue Hotel, designed by PBDW and Perkins Eastman, features a new tower that complements a Gilded Age building designed by McKim, Mead & White.



Rendering by Flâneur Hospitality

sioned to explore the possibilities for the Gilded Age building, which was to be restored.

“Right from the beginning, the landmarks commission, which has been very supportive of the project, told us that building on top of the existing structure would not be considered by the Landmarks Preservation Commission,” says Matthew Mueller, AIA, partner at PBDW Architects. “And that if we did build on top of the two-story addition, we would not be able to add more than four or five stories over it.”

After extensive research, however, PBDW Architects discovered a 1911 New York Times article describing a proposal for a “tall loft building” on the site, and it was that, along with the fact that their own firm was at the time housed in a similar building near 250 Fifth Ave., that persuaded the commission to entertain proposals for a higher structure.

Ultimately, the architectural team decided to maintain and preserve the façade of the two-story addition and replace the building behind it with the new tower.

“We also excavated another floor below ground,” says Shawn Basler, AIA, co-CEO and executive director of Perkins Eastman,

Perkins Eastman, which came on board later, and PBDW Architects altered the tower’s design as circumstances changed.

The original buff-colored brick and limestone building, which has a terracotta cornice, was meticulously restored and its wood-frame windows were precisely replicated.

“We built a scaffold around it and let the brick dry out for a year,” says Basler. “And we matched the original mortar color.”

Ohebshalom added that the replacement terra cotta, from Gladding McBean, makes the 155 feet of the cornice look “gorgeous.”

The departure of the largest tenant—coincidentally, it was a bank like the building’s first resident—“changed the whole dynamic of the project and how we looked at the building,” Basler says. “It allowed us to create a streetscape and bring back the building’s original two-story banking hall space. It also allowed us to re-think the main entrance so we could add double-height windows with transoms.”

The new brick and metal tower, which steps back from the original building, clearly shows, Mueller says, that “additions can be complementary and

contemporary.”

The thistledown color of the new brick, which, after many samples was intentionally chosen to play off the original tone instead of matching it, ties the two structures together.

“We took the proportion and composition of the windows and drew from them for inspiration to hark back to the materiality so the tower can stand on its own,” Mueller says. “But it doesn’t undermine the original building.”

Or, Basler adds, overwhelm it. “The hotel is a unique property—it blends new and old, and it has attention to detail from the interior to the exterior,” he says. Ohebshalom says The Fifth Avenue Hotel represents “a unique approach to hospitality, one that provides guests the greatest luxury of our time: being present in the moment. The flâneur—someone who takes time to observe and enjoy the pleasures of life—is the inspiration behind our philosophy of mindful travel and personal hospitality.”

In keeping with that theme, The Fifth Avenue Hotel is made for luxury living in a grand style. It has 153 rooms—24 in The Mansion, which is the rebranded name of the original building, and 129 in The Tower.

In addition to a 5,000-square-foot

ballroom with 22-foot ceilings, there’s a 2,500-square-foot private dining space, a signature multi-level restaurant on Fifth Avenue, a two-story library and study, an outdoor terrace and a fitness center with equipment from Technogym, Peloton, and Mirror.

The interiors, designed by Martin Brudnizki Design Studio, “are meant to evoke the home of a worldly explorer, captured through rich colors, textures, furnishings, and art as well as thoughtful accoutrements and one-of-a-kind finishes,” Ohebshalom says.

Mueller notes that the attention to historic detail and sensibility set The Fifth Avenue Hotel apart.

“Frequently owners care more about the addition than the landmark, but in this case, Alex cherished the landmark and restored it to its rightful glory,” he says. “It’s good for New York, good for the property, and for historic preservation.”

The Fifth Avenue Hotel, which may open as soon as the end of the year, “is a career high point for me,” Ohebshalom says. “We intend to own the property for the next 100 years, and creating The Fifth Avenue Hotel allowed us to optimize the asset while respecting its history and honoring New York City architecture.”

FREE INFORMATION GUIDE

Visit traditionalbuilding.com/page/lit for FREE information on traditional buildings and products provided by the companies below.

Historical Products Showcase

Abatron, Inc.....	36
800-445-1754 www.abatron.com	
Advanced Architectural Grilleworks.....	15
516-488-0628 www.aagrilles.com	
EverGreene Architectural Arts, Inc.....	38
212-244-2800 www.evergreene.com	
Haddonstone (USA), Ltd.....	39
719-948-4554 www.haddonstone.com	

Windows, Doors, Shutters & Hardware

Allied Window, Inc.....	66, COV 3
800-445-5411 www.alliedwindow.com	
Arch Angle Window & Door.....	65
330-723-2551 www.archangleohio.com	
Architectural Components, Inc.....	66
413-367-9441 www.architecturalcomponentsinc.com	
Bagala Window Works.....	29
207-887-9231 www.bagalawindowworks.com	
Brass Accents, Inc.....	65
877-332-7277 www.brassaccents.com	
Brownstone Doors.....	65
718-832-1058 www.brownstoneddoors.nyc	
Cooper Historical Windows.....	13
860-599-2481 www.thecoopergroupct.com	
Gaby's Shoppe.....	19
800-299-4229 www.gabys.com	
HeartWood Fine Windows & Doors.....	5, 66
585-340-9085 www.heartwoodwindowsanddoors.com	
Historic Doors.....	19
610-756-6187 www.historicdoors.com	
Hope's Windows, Inc.....	66, COV 4
716-665-5124 www.hopeswindows.com	
Indow.....	6, 67
503-284-2260 www.indowwindows.com	
Innerglass Window Systems.....	32
800-743-6207 www.stormwindows.com	
Jim Illingworth Millwork, LLC.....	67
315-232-3433 www.jimillingworthmillwork.com	
Kolbe Windows & Doors.....	3, 67
800-955-8177 www.kolbewindows.com	
Parrett Windows & Doors.....	9, 67
800-541-9527 www.parrettwindows.com	
Phelps Company.....	15
603-336-6213 www.phelpscompany.com	
Pilkington NA.....	7, 67
800-221-0444; 419-247-3731 www.pilkington.com	
Shuttercraft, Inc.....	67
203-245-2608 www.shuttercraft.com	
St. Cloud Window, Inc.....	39
800-383-9311 www.stcloudwindow.com	
Vintage Millwork and Restoration.....	25
717-687-0292 www.vintagemillworkrestoration.com	

Period Garages & Garage Doors

Cambek Designer Doors.....	8, 72
800-241-0525 www.cambek.com	

Porches, Decks & Porch Parts

Chadsworth Columns.....	COV 2, 68
910-763-7600 www.columns.com	

Wood Flooring

Brandt, Sylvan.....	69
717-626-4520 www.sylvanbrandt.com	
Carlson's Barnwood Co.....	69
309-522-5550 www.carlsonsbarnwood.com	
Chestnut Specialists, Inc.....	69
860-283-4209 www.chestnutspec.com	
Goodwin Company.....	4, 69
800-336-3118 www.heartpine.com	
Waterlox Coatings Corp.....	69
216-641-4877 www.waterlox.com	

Ornamental Ceilings & Fans

JP Weaver Company.....	11, 73
818-500-1740 www.jpweaver.com	
W.F. Norman Corp.....	37
800-641-4038 www.wfnorman.com	
Woolen Mill Fan Co.....	73
717-382-4754 www.architecturalfans.com	

Interior Lighting

Ball & Ball Lighting.....	17
610-363-7330 www.ballandball.com	
Deep Landing Workshop.....	75
877-778-4042 www.deeplandingworkshop.com	
Grand Light.....	17
800-922-1469 www.grandlight.com	
HMW Forge.....	31
610-518-3999 www.hmwforge.com	
House of Antique Hardware.....	21
888-223-2545 www.houseofantiquehardware.com	
James DeMartis Metal Studio.....	15
631-329-2966 www.jamesdemartis.com	
Period Lighting Fixtures, Inc.....	75
800-828-6990; 413-664-7141 www.periodlighting.com	
St. Louis Antique Lighting Co.....	1, 75
314-863-1414 www.slalco.com	
Steven Handelman Studios.....	75
805-962-5119 www.stevenhandelmanstudios.com	
Vintage Hardware & Lighting.....	31
360-379-9030 www.vintagehardware.com	

Ornamental Metalwork

Architectural Grille.....	21
800-387-6267 www.archgrille.com	
Historical Arts & Casting, Inc.....	21
800-225-1414 www.historicalarts.com	
Wiemann Metalcraft.....	71
918-592-1700 www.wmcraft.com	

The Period Kitchen, Baths & Tile

Crown Point Cabinetry.....	29
800-999-4994 www.crown-point.com	
Moore-Merkowitz Tile Company.....	76
607-587-9052 www.mooremerkowitztile.com	
Notting Hill Decorative Hardware.....	76
262-248-8890 www.nottinghill-usa.com	

Log Cabins

Appalachian Log Structures.....	63
866-564-4663 www.applog.com	

Coventry Log Homes.....	63
800-308-7505 www.coventryloghomes.com	
Honest Abe Timber Frame & Log Homes.....	63
800-231-3695 www.honestabe.com	
Perma Chink Systems.....	63
800-548-1231 www.permachink.com	
Schroeder Log Home Supply.....	63
800-359-6614 www.loghelp.com	
Ward Cedar Log Homes.....	63
800-341-1566 www.wardcedarloghomes.com	

Roofing & Roof Specialties

Copper-Inc.com.....	77
888-499-1962 www.copper-inc.com	
NIKO Contracting Co., Inc.....	32
412-687-1517 www.nikocontracting.com	
Preservation Products, Inc.....	77
800-553-0523 www.preservationproducts.com	
Weathercap, Inc.....	77
985-649-4000 www.weathercap.net	

Timber Framing & Barns

Country Carpenters, Inc.....	17
860-228-2276 www.countrycarpenters.com	
Craftwright, Inc.....	19
410-876-0999 www.craftwrighttimberframes.com	
Hochstetler Timbers.....	78
419-368-0008 www.hochstetlertimbers.com	
Pioneer Millworks.....	78
800-951-9663 www.pioneermillworks.com	
Riverbend Timber Framing, Inc.....	21
888-486-2363 www.riverbendtf.com	

Interior Woodwork

Driwood Moulding Company.....	33
888-245-9663 www.driwood.com	
Zepa Industries, Inc.....	2, 79
704-583-9220 www.zepa.com	



OLD HOUSE JOURNAL
ARTS & CRAFTS HOMES
NEW OLD HOUSE
DESIGN CENTER SOURCEBOOK
OLDHOUSEONLINE.COM
TRADITIONAL BUILDING
PERIOD-HOMES.COM
TRADITIONALBUILDING.COM

LOG + TIMBER HOME LIVING
COZY CABINS & COTTAGES
DREAM HOME SHOWCASE
BEST LOG & TIMBER HOMES OF THE YEAR
BEST LOG & TIMBER FLOOR PLANS
LOG & TIMBER HOME PLANNER
OUR HOME FOREVER
CABINLIFE.COM
LOGHOME.COM

ADVERTISING INQUIRIES

ASSOCIATE PUBLISHER
Jennifer Baldwin
jenbaldwin1@msn.com
718-619-7645

LOG HOME RESOURCE GUIDE

LET YOUR NEXT DESIGN BE A LOG HOME



The Oakland model's wide open spaces with full log and timber construction make a warm and inviting atmosphere for living the log home dream.

APPALACHIAN LOG STRUCTURES

www.applog.com
info@applog.com
866-564-4663
Ripely, WV

Appalachian Log Structures manufactures precut and pressure treat log home building material packages. Over 75 standard floor plans and custom designs are available. Cabins, log siding, log railing, and maintenance products are also available. Several log profiles and corner styles.



- Factory Direct
- Pre-cut Log Homes
- Timberframe Homes
- Hybrid Homes

COVENTRY LOG HOMES, INC.

www.coventryloghomes.com
info@coventryloghomes.com
800-308-7505
603-747-8177
Woodsville, NH

Since 1993, Coventry has produced thousands of high-quality homes. As the factory, we control every item that is in your home. No middlemen, no high paid dealers— just a top-quality home at an affordable price.



The Southern Grace is one of more than 100 floor plans by Honest Abe that can be customized to create a forever home of log, timber frame or hybrid construction.

HONEST ABE LOG HOMES

www.honestabe.com
info@honestabe.com
800-231-3695, 931-258-3648
Moss, TN

Founded in 1979, Honest Abe Log Homes custom manufactures energy-efficient log, timber frame and hybrid homes through a nationwide sales network. A variety of log profiles, roof systems and floor plans are available as well as in-house custom plan drafting, interior design consulting and dry-in construction services.



Everything you need to seal, protect and beautify your home.

PERMA-CHINK

www.permachink.com
techservice@permachink.com
800-548-3554

Perma-Chink Systems Products is the building industry's trusted partner for the tightest, greenest, and most impeccably finished wood homes in the world. Hundreds of home manufacturers and builders have turned to Perma-Chink Systems Products for the past four decades because of the easy application and superior performance of its products. Company has firmly rooted itself as the premier provider of cutting-edge premium wood stains and finishes, log home sealants, and maintenance and wood restoration products.



The "Ask Us!" resource of quality log home products for over 30 years.

SCHROEDER LOG HOME SUPPLY, INC.

www.loghelp.com
info@loghelp.com
800-359-6614
Grand Rapids, MN

Since 1986, we've been providing expert maintenance and application information; offering quality products including caulking, chinking, log finishes, tools, wood treatments, and restoration products for log homes. Our color catalog provides helpful information along with our products. We offer same day shipping from Minnesota.



Norfolk log home featuring lots of glass to let in natural light.

WARD CEDAR LOG HOMES

www.wardcedarloghomes.com
info@wardcedarloghomes.com
800-341-1566
207-532-6531
Houlton, ME

Since 1923, Ward Cedar Log Homes has been creating high-quality log homes using Northern White Cedar, the best wood with which to build your log home. Ward is focused on providing a home that fills your own needs.



ALLIED WINDOW, INC.
800-445-5411; Fax: 513-559-1883
www.alliedwindow.com
Cincinnati, OH 45241

Manufacturer & installer of aluminum interior & exterior custom "invisible" storm windows® that disappear in the window opening. Custom colors, shapes, bent glass, various glazing materials for energy efficiency, sound reduction and protection from UV & vandalism. Historic, commercial, residential & industrial applications.

SEE OUR AD ON INSIDE BACK COVER.



ARCH ANGLE WINDOW & DOOR
330-723-2551; Fax: 330-722-4389
www.archangleohio.com
Medina, OH 44256

Custom fabricator of special shape aluminum storm doors, windows, hardware & screens: round top, arch top, cathedral & Gothic designs; tempered & low-e glass.

SEE OUR AD ON PAGE 65.



ARCHITECTURAL COMPONENTS
413-367-9441; Fax: 413-367-9461
www.architecturalcomponentsinc.com
Montague, MA 01351

Manufacturer of reproduction & custom wood windows & doors: true-divided lites with insulated glass; wood-framed storm sash & screens; renovation & restoration projects & new construction; paneled walls & storefronts; catalog \$5.

SEE OUR AD ON PAGE 66.



BAGALA WINDOW WORKS
207-887-9231
www.bagalawindowworks.com
Westbrook, ME 04092

Restorer of wood windows & doors: any shape; antique glass; improved energy efficiency with metal interlocking weatherstrip systems; historically sensitive storm windows; innovators of steam stripping for window restoration.

SEE OUR AD ON PAGE 29.



BRASS ACCENTS, INC.
877-332-7277
www.brassaccents.com
Salem, OH 44460

Creators of hot-forged and cast-brass decorative brass hardware. Interior door hardware, doorknobs, pulls, knockers, hooks, cabinet hardware, electrical cover plates, and bath accessories.

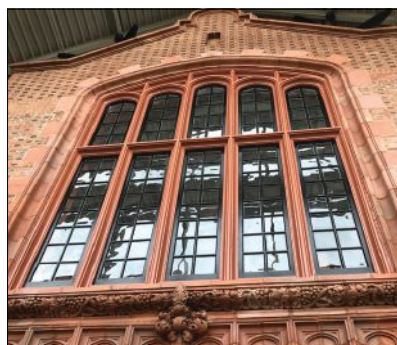
SEE OUR AD ON PAGE 65.



BROWNSTONE DOORS
718-832-1058
www.brownstonedoors.nyc
Brooklyn, NY 11220

Specializing in expertly crafted reproduction of historic doors, entryways and storefronts. Our knowledge of New York City historic door details is unparalleled. We provide custom entry door solutions from conception to installation for historic and designer homes and commercial landmark properties.

SEE OUR AD ON PAGE 65.



COOPER HISTORICAL WINDOWS
860-599-2481
www.thecoopergroupct.com
North Stonington, CT 06359

Manufacturer of historically accurate windows; restorer of period windows, doors, & entranceways. Combining the beauty of handmade glass with the efficiency of Low-E glass, to produce an ideal IG unit, adding high-performance and energy-efficiency to historically accurate windows.

SEE OUR AD ON PAGE 13.



GABY'S SHOPPE
800-299-4229; Fax: 214-748-7701
www.gabys.com
Dallas, TX 75207

Manufacturer of handcrafted decorative iron drapery hardware: for curved & angled bay windows & arches; 30 standard finishes; more than 100 finial options.

SEE OUR AD ON PAGE 19.



HEARTWOOD FINE WINDOWS & DOORS
585-340-9085; Fax: 585-254-1760
www.heartwoodwindowsanddoors.com
Rochester, NY 14606

Manufacturer of custom architectural wood windows & doors: Honduras mahogany & other species; traditional mortise-&-tenon construction; standard & decorative glazing; related window & door hardware; 68-year-old company.

SEE OUR AD ON PAGE 5.



HERITAGE METALWORKS
610-518-3999; Fax: 610-518-7264
www.hmwpa.com
Downingtown, PA 19335

Foundry, blacksmith shop and custom metal fabricator offering historically accurate and custom-designed lighting, architectural hardware, and designer-envisioned metalwork including interior and exterior gates & railings.

SEE OUR AD ON PAGE 31.



HISTORIC DOORS
610-756-6187; Fax: 610-756-6171
www.historicdoors.com
Kempton, PA 19529

Custom fabricator of wood windows & doors: casing; circular & crown moldings; complete entryways; wood storefronts; restoration & period-style construction.

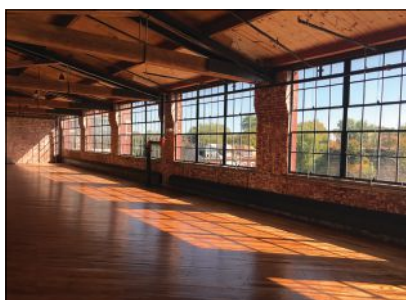
SEE OUR AD ON PAGE 19.



HMW FORGE
610-518-3999; Fax: 610-518-7264
www.hmwforge.com
Downingtown, PA 19335

This signature collection by Heritage Metalworks provides authentic hand-forged and cast brass hardware. 100% made in the USA.

SEE OUR AD ON PAGE 31.



HOPE'S WINDOWS, INC.
716-665-5124; Fax: 716-665-3365
www.hopeswindows.com
Jamestown, NY 14702

Manufacturer of custom-designed windows & doors: handcrafted, hot-rolled, solid-steel & solid-bronze window & door systems.

SEE OUR AD ON BACK COVER.



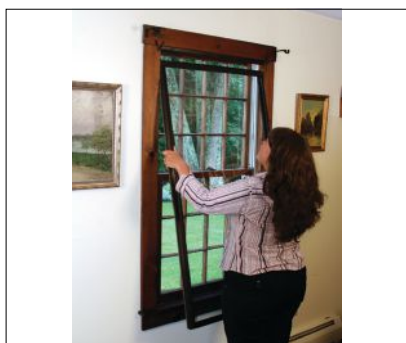
INDOW
503-284-2260; Fax: 503-284-2261
www.indowwindows.com
Portland, OR 97227

Manufacturer of handcrafted acrylic interior storms: edged in Compression Tube that press into place without a track or magnetic system to preserve historic windows while creating comfort, energy efficiency, savings & noise reduction; laser-measured for out-of-square openings; for residential & commercial projects.

SEE OUR AD ON PAGE 6.



Preserving the heritage of our bungalows and small churches. SPECIAL SHAPE STORMS...OUR NICHE AND OUR SPECIALTY.
Arch Angle Window & Door • 800-548-0214 • archangleohio.com



INNERGLASS WINDOW SYSTEMS
800-743-6207; Fax: 860-651-4789
www.stormwindows.com
Simsbury, CT 06070

Manufacturer of custom glass interior storm windows for energy conservation & soundproofing: out performs almost any replacement; automatically conforms to the opening, compensating for out-of-square conditions; no sub-frame needed; all glazing options available; easy do-it-yourself installation.

SEE OUR AD ON PAGE 32.



JIM ILLINGWORTH MILLWORK
315-232-3433
www.jimillingworthmillwork.com
Adams, NY 13605

Manufacturer of custom wood windows, doors & moldings: for homes & historic buildings; matches any existing wood windows, doors, moldings; custom millwork.

SEE OUR AD ON PAGE 67.



Unsurpassed Quality

brassaccents.com

BRASS SOLID BRASS Accents INC.



KOLBE WINDOWS & DOORS
800-955-8177; Fax: 715-845-8270
www.kolbewindows.com
Wausau, WI 54401

Manufacturer of windows & doors: traditional details; extruded aluminum-clad, roll-formed aluminum-clad, wood & vinyl energy-efficient windows & doors; fiberglass doors.

SEE OUR AD ON PAGE 3.



PARRETT WINDOWS & DOORS
800-541-9527; Fax: 877-238-2452
www.parrettwindows.com
Dorchester, WI 54425

Manufacturer of custom, quality wood & aluminum-clad windows & doors: vast array of options, numerous wood species & complete finishing capabilities; historical replications; screen doors, casings & moldings.




SEE OUR AD ON PAGE 9.



Expertly crafted since 2005

CUSTOM & REPRODUCTION DOORS

www.brownstonedoors.nyc
718-832-1058

Finely Crafted Reproduction & Custom Windows, Doors, & Architectural Millwork

413-367-9441
architecturalcomponentsinc.com



Features

Online Education

The Traditional Building Conference's Online Education series for architecture, building, and restoration professionals provides best practices, industry insights, AIA credits and more—for FREE.



Features

The Institute of Classical Architecture & Art's 2018 Stanford White Awards

The winners have been announced for The Institute of Classical Architecture & Art (ICAA)'s 2018 Stanford White Awards.



Features

Merritt, International Interior Solutions Firm, Acquires Renowned Agrell Architectural Carving

Acquisition showcases Merritt's continued company expansion and commitment to excellence.



Book Reviews

Book Review: Robert Venturi's Rome

A book review on Robert Venturi's Rome by Frederick Fisher and Stephen Harby.

Blogs & Opinion Pieces



Patrick Webb
Craftsmen of the Tao



David Brussat
Rebuilding Notre Dame: What's the Rush?



Peter Miller
What I Learned at MESDA in May

Visit us online at TraditionalBuilding.com to

- learn about our free educational series offering AIA credits
- read our bloggers latest posts
- browse our book reviews and story archives
- and much more



PHELPS COMPANY

603-336-6213; Fax: 603-336-6085

www.phelpscompany.com

Hinsdale, NH 03451

Manufacturer of traditional hot-forged solid-brass window hardware: sash pulleys, weights, chains, lifts & locks; stop-bead adjusters, spring bolts, window ventilation locks, push-out casement hardware, storm/screen-door latch sets & more.

SEE OUR AD ON PAGE 15.



PILKINGTON NA

800-221-0444; 419-247-3731

Fax: 419-247-4517

www.pilkington.com

Toledo, OH 43697

Manufacturer of low-e glass: hard coat; double-pane unit; emissivity of 0.15.

SEE OUR AD ON PAGE 7.



Allied Window, Inc
CUSTOM
"Invisible" Storm Windows®
See our ad on Inside Back Cover

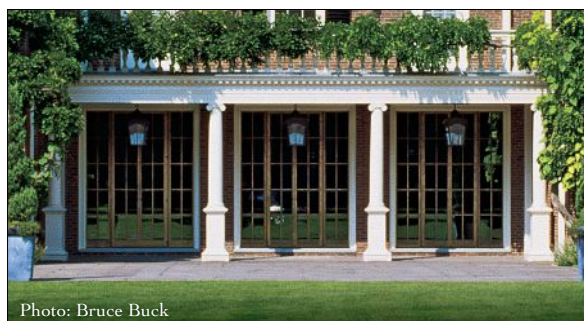


Photo: Bruce Buck

HOPE'S®
Windows, Inc.

THE WORLD'S FINEST
WINDOWS AND DOORS
SINCE 1912

See our full page ad
on back cover



HEARTWOOD
FINE WINDOWS AND DOORS™
See our ad on Page 5

To see larger photos and informational captions, visit traditionalbuilding.com/page/the-magazine
Scroll down and click on the Buying Guides link



SHUTTERCRAFT, INC.
203-245-2608; Fax: 203-245-5969
www.shuttercraft.com
Madison, CT 06443

Manufacturer of authentic mortise-&-tenon wood shutters: cedar & mahogany, exterior movable & fixed louver, board & batten & raised panel; cutouts, capping, arches & more; hinges & holdbacks; interior louvers, Colonial panels & open frame; painting services; made in USA; family-owned company since 1986; ships nationwide.

SEE OUR AD ON PAGE 67.



ST. CLOUD WINDOW, INC.
800-383-9311; Fax: 320-255-1513
www.stcloudwindow.com
Sauk Rapids, MN 56379

Manufacturer of aluminum windows for heavy commercial & architectural replacement: dual windows for acoustical abatement; screens, metal windows & doors.

SEE OUR AD ON PAGE 39.

Custom Millwork
Architectural • Historical • Traditional
We Custom Build/Mill
Wood: Doors • Windows • Moldings

Jim Illingworth Millwork, LLC
Contact Us: 315-232-3433
www.jimillingworthmillwork.com
www.illingworthmillwork.com



VINTAGE HARDWARE & LIGHTING
360-379-9030; Fax: 360-379-9029
www.vintagehardware.com
Port Townsend, WA 98368

Supplier of door hardware, window hardware: window locks & sash lifts; drapery hardware; bathroom accessories; reproduction lighting; weathervanes.

SEE OUR AD ON PAGE 31.



VINTAGE MILLWORK AND RESTORATION
717-687-0292; Fax: 717-687-3510
www.vintagemillworkrestoration.com
Paradise, PA 17562

Offers custom-milled front doors, interior doors, garage doors, barn doors, and custom hardware. Specialties include custom trim work, custom grid doors, true or simulated divide light doors, and engineered doors. Made in the USA in Lancaster, PA.

SEE OUR AD ON PAGE 25.

Real Wood Shutters
Make All the Difference!

Call (203) 245-2608
www.shuttercraft.com

Traditional Shutter Styles
Any Size & Any Color
Authentic Hardware

WESTERN RED CEDAR COLONIAL CRAFTSMANSHIP MADE IN USA SINCE 1986

Parrett
Windows & Doors

Durability, True Quality, and Simply Beautiful - Experience the Difference!
See Our Ad on Page 9
1-800-541-9527 Parrettwindows.com

NSG GROUP

see our full page ad on p. 7

PILKINGTON

KOLBE
WINDOWS & DOORS
We're for the visionaries.[®]

See our full page ad on p. 3

Save money, reduce noise, & get comfortable with Indow inserts.

See Our Ad on Page 6

Indow

PORCHES, DECKS & PORCH PARTS



CHADSWORTH COLUMNS

910-763-7600; Fax: 910-763-3191

www.columns.com

Wilmington, NC 28412

Manufacturer of authentically correct architectural columns: complete line of columns, piers, pilasters & posts for interior & exterior use; variety of sizes, styles & materials, including wood; more than 30 years.

SEE OUR AD ON INSIDE FRONT COVER.

WOOD FLOORING



BRANDT, SYLVAN

717-626-4520; Fax: 717-626-5867

www.sylvanbrandt.com

Lititz, PA 17543

Manufacturer of salvaged wood flooring, ceiling boards & paneling; wide board, random width & weatherboard (barn siding); chestnut, oak, pine, heart pine, cypress, walnut, hemlock, fir & hickory; doors & hardware.

SEE OUR AD ON PAGE 69.



CARLSON'S BARNWOOD CO.

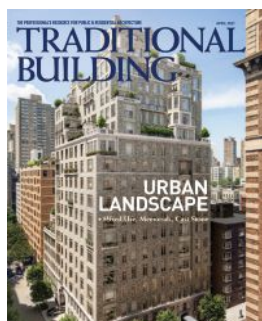
309-522-5550; Fax: 309-522-5123

www.carlsonsbarnwood.com

Cambridge, IL 61238

Supplier of antique barn wood & salvaged materials: planks, beams, dimensional lumber, re-milled flooring & architectural antiques; pine, oak, heart pine & mixed species; salvaged doors, windows & shutters; antique lighting & art glass; hardware.

SEE OUR AD ON PAGE 69.



If you'd like to order a

GIFT
subscription
for a colleague,
just call
800-548-0148



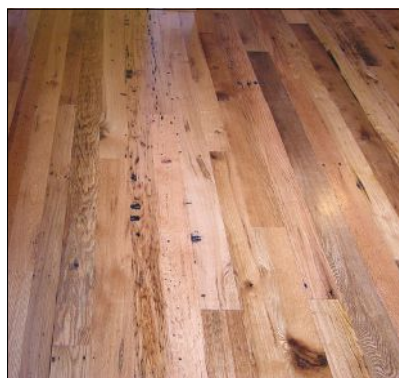
MWT CUSTOM WOOD WORKING

828-322-4061; Fax: 828-322-4364

www.mwtwoodturning.com

Hickory, NC 28603

Supplier of custom wood turnings: roped, twisted, flutes & spiral stairs & stair parts; balusters & columns; newel posts, spiral molding, lamps & tables; Classical & contemporary styles; exterior & interior.



CHESTNUT SPECIALISTS, INC.

860-283-4209; No fax

www.chestnutspec.com

Plymouth, CT 06782

Manufacturer of antique wood for flooring: chestnut, oak, pine & hemlock; hewn barn beams, weathered siding & sheathing planks.

SEE OUR AD ON PAGE 69.



GOODWIN COMPANY

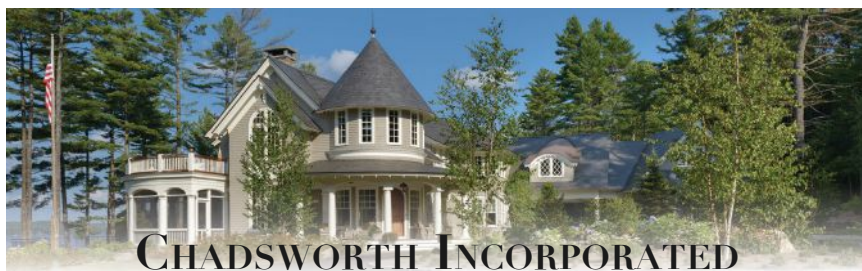
800-336-3118; Fax: 352-466-0608

www.heartpine.com

Micanopy, FL 32667

Supplier of centuries-old, river-recovered, reclaimed harvested wood: for flooring, stair parts, millwork; solid or engineered, finished or unfinished.

SEE OUR AD ON PAGE 4.



CHADSWORTH INCORPORATED

See our Ad on Inside Front Cover



PIONEER MILLWORKS

800-951-9663; Fax: 585-924-9962

www.pioneermillworks.com

Farmington, NY 14425

Supplier of reclaimed & sustainably harvested woods: barn boards; flooring; heart pine, oak, elm, chestnut, hickory, Douglas fir, Australian jarrah & special wood mixes; custom millwork.

SEE OUR AD ON PAGE 78.



WATERLOX COATINGS CORP.

216-641-4877

www.waterlox.com

Cleveland, OH 44105

Manufacturer of handmade tung oil/phenolic resin wood finishes: hand-rubbed/natural oiled look; penetration, protection & beauty for all wood surfaces; easy to apply & maintain; clear oil-based urethanes.

SEE OUR AD ON PAGE 69.

**WHEN CONTACTING COMPANIES
YOU'VE SEEN IN THIS ISSUE,
PLEASE TELL THEM YOU SAW THEM IN
TRADITIONAL BUILDING
MAGAZINE.**

Carlson's Barnwood Company



Major supplier of antique-reclaimed flooring barnwood beams & architectural elements

Cambridge, IL 61238
1-800-734-5824
info@carlsonsbarwood.com
www.carlsonsbarwood.com

Relax in the Beauty of America's Original Antique Floor



Sylvan Brandt
Resawn & Antique Flooring

PRESERVING NATURE'S PAST
756 Rothsville Road • Lititz, PA 17543
717-626-4520 • www.sylvanbrandt.com

Chestnut Specialists Inc. Antique Floors of Distinction



Chestnut, oak & pine flooring and hand-hewn antique posts & beams.
860-283-4209 • www.chestnutspec.com

GO DWIN
COMPANY

Fine Antique Wood Flooring Since 1976
heartpine.com

See Our Full Page Ad on Page 4

To see larger photos and informational captions, visit traditionalbuilding.com/page/the-magazine
Scroll down and click on the **Buying Guides link**

YOU'VE SPENT HOURS PERFECTING IT,
NOW PROTECT IT.

FINISH STRONG

with beautiful and durable wood sealers, stains and finishes from Waterlox.

Locks out water. Locks in beauty. Learn more at www.waterlox.com.

MANTELS & FIREPLACES



DRIWOOD MOULDING COMPANY
888-245-9663; Fax: 843-669-4874
www.driwood.com
Florence, SC 29503

Supplier of molding: Stock & custom moldings for residential & commercial projects; embossed moldings, custom millwork, mantels, entrances, cabinet & panel work, custom doors.

SEE OUR AD ON PAGE 33.



HADDONSTONE (USA), LTD.
719-948-4554; Fax: 719-948-4285
www.haddonstone.com
Pueblo, CO 81001

Manufacturer of classical & contemporary cast limestone: columns, balustrades, benches, planters, vases, fountains, gazebos, interior ornament, mantels, statuary & more; 500+ designs; custom designs.

SEE OUR AD ON PAGE 39.



JP WEAVER COMPANY
818-500-1740; Fax: 818-500-1798
www.jpweaver.com
Glendale, CA 91201

Over 8,000 types of molded ornaments cast from carvings. Products are pliable and will contour and self-bond to any sealed surface such as mirror, plaster, drywall, wood, metal, ceramic. Scaled-design books (1/4 in. = 1 in. scale).

SEE OUR AD ON PAGE 11.



JAMES DEMARTIS METAL STUDIO
631-329-2966
www.jamesdemartis.com
East Hampton, NY 11937

JDMS creates site specific custom indoor/outdoor traditional and contemporary architectural metal and restores historic and antique objects. Specializing in furniture, railings, sculpture, lighting, fireplace accessories, artifact mounts and hardware. Textural and hand applied patina finishes are trademarks of our craftsmanship.

SEE OUR AD ON PAGE 15.



MOORE-MERKOWITZ TILE COMPANY
607-587-9052

www.mooremerkowitztile.com
Alfred Station, NY 14803

Designer & manufacturer of handcrafted ceramic relief & field tile since 1986: original designs & glazes; more than 230 designs in 150 colors; for kitchen backsplashes, bathrooms, fireplace surrounds, murals, pools & more. Residential and commercial.

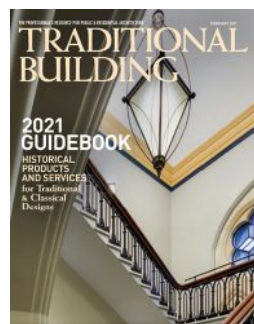
SEE OUR AD ON PAGE 76.



ZEPSA INDUSTRIES, INC.
704-583-9220; Fax: 704-583-9674
www.zepssa.com
Charlotte, NC 28273

Supplier of architectural woodwork: stairs, mantels, paneling, wine cellars, furniture, doors & more.

SEE OUR AD ON PAGE 2.



If you'd like to order a

GIFT
subscription
for a colleague,
just call
800-548-0148

To see larger photos and informational captions, visit traditionalbuilding.com/page/the-magazine

Scroll down and click on the **Buying Guides** link

Period Homes
THE PROFESSIONAL'S RESOURCE FOR RESIDENTIAL ARCHITECTURE.

Traditional Building Conference
July 18-19 in Salem, MA

Period Homes
Buying Guides
Browse Our BUYING GUIDES

Buying Guides The Magazine Projects Profiles Features Product Reports Palladio Awards Subscribe



The Classical Porch

Visit **Period-Homes.com** today for the latest residential projects, profiles, and our exclusive online **Buying Guides**



ARCHITECTURAL GRILLE
800-387-6267; Fax: 718-832-1390
www.archgrille.com
Brooklyn, NY 11215

Manufacturer of custom grilles: perforated & linear bar grilles; radiator covers; aluminum, brass, steel & stainless steel; variety of finishes; stock sizes; water-jet & laser cutting.

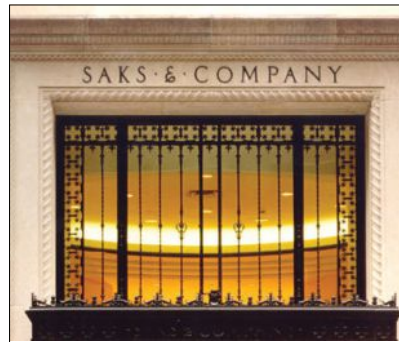
SEE OUR AD ON PAGE 21.



HERITAGE METALWORKS
610-518-3999; Fax: 610-518-7264
www.hmwpa.com
Downingtown, PA 19335

Foundry, blacksmith shop and custom metal fabricator offering historically accurate and custom-designed lighting, architectural hardware, and designer-envisioned metalwork including interior and exterior gates & railings.

SEE OUR AD ON PAGE 31.



HISTORICAL ARTS & CASTING
800-225-1414; Fax: 801-280-2493
www.historicalarts.com
West Jordan, UT 84081

Designer & custom fabricator of ornamental metalwork: doors, windows, hardware, stairs, balustrades, registers, fences, lighting, gutters, columns, weather-vanes, snow guards, cupolas, planters, fireplace tools & more; iron, bronze, aluminum & steel; restoration services.

SEE OUR AD ON PAGE 21.



HOUSE OF ANTIQUE HARDWARE
888-223-2545; Fax: 503-233-1312
www.houseofantiquehardware.com
Portland, OR 97232

Manufacturer & supplier of vintage reproduction door, window, shutter, cabinet & furniture hardware & accessories: Federal, Victorian, Colonial Revival, Craftsman & Deco styles; lighting fixtures, push-button switches & plates; bathroom accessories; registers & grilles.

SEE OUR AD ON PAGE 21.



JAMES DEMARTIS METAL STUDIO
631-329-2966
www.jamesdemartis.com
East Hampton, NY 11937

JDMS creates site specific custom indoor/outdoor traditional and contemporary architectural metal and restores historic and antique objects. Specializing in furniture, railings, sculpture, lighting, fireplace accessories, artifact mounts and hardware. Textural and hand applied patina finishes are trademarks of our craftsmanship.

SEE OUR AD ON PAGE 15.



KENNETH LYNCH & SONS, INC.
203-264-2831; Fax: 203-264-2833
www.klynchandsons.com
Oxford, CT 06478

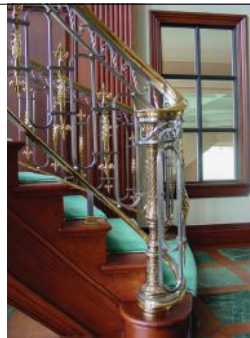
Manufacturer of ornamental metalwork & cast-stone products: planters, urns, benches, fountains, statuary, topiary, sundials & weather-vanes; cast stone, cast & wrought iron, lead & bronze; stock & custom designs.



STEVEN HANDELMAN STUDIOS
805-962-5119; Fax: 805-966-9529
www.stevenhandelmanstudios.com
Santa Barbara, CA 93103

Manufacturer of hand-forged traditional lighting, grilles & fireplace accessories: many types & styles of lighting & grilles; fireplace screens, grates & inserts; historic reproduction & restoration services.

SEE OUR AD ON PAGE 75.



WIEMANN METALCRAFT
918-592-1700; Fax: 918-592-2385
www.wmcraft.com
Tulsa, OK 74107

Designer, fabricator, finisher & installer of fine quality custom ornamental metalwork: railings, fences, gates, custom, hot-rolled steel doors & windows, lighting, grilles, bronze & aluminum entry doors; all cast- & wrought-metal alloys, finishes & architectural styles; since 1940.

SEE OUR AD ON PAGE 71.

COMING IN THE
JULY/AUGUST ISSUE

Palladio Award-winning projects

WIEMANN METALCRAFT

DETAILS MATTER.

Proudly Made in the USA
www.wmcraft.com (918)592-1700 sales@wmcraft.com

HISTORICAL PRODUCTS SHOWCASE



ABATRON, INC.
800-445-1754; Fax: 262-653-2019
www.abatron.com
Kenosha, WI 53144

Manufacturer of products for restoration & repair: wood consolidation & repair, window & door restoration, concrete patching & resurfacing, metal restoration, moldmaking & casting, structural adhesives, protective coatings, strippers & related products.

SEE OUR AD ON PAGE 36.



ADVANCED ARCHITECTURAL GRILLEWORKS

516-488-0628
www.aagrilles.com
New Hyde Park, NY 11040

Custom manufacturer of linear bar & perforated grilles, decorative metal panels, architectural screens, HVAC grilles, radiator grilles, enclosures, registers, grilles for millwork inserts, laser cut metal panels, & the Authentic Patented* Plaster J Bead® frame. Full service metal fabricators: aluminum, brass, bronze, steel, & stainless steel with variety of metallic & applied finishes. *Patent # 9,765,988

SEE OUR AD ON PAGE 15.



EVERGREENE ARCHITECTURAL ARTS
212-244-2800; Fax: 212-244-6204
www.evergreene.com
Brooklyn, NY 11232

Since 1978, EverGreene Architectural Arts has provided award-winning design and fabrication, conservation and restoration services for many of the world's most significant buildings and objects. Expertise includes: murals, decorative painting, gilding, plaster, wood, metal, stone, mosaics, new design, conservation, restoration, ecclesiastical, institutional, public, commercial projects; offices in Brooklyn, Chicago, Washington DC & Los Angeles.

SEE OUR AD ON PAGE 38.



HADDONSTONE (USA), LTD.
719-948-4554; Fax: 719-948-4285
www.haddonstone.com
Pueblo, CO 81001

Manufacturer of classical & contemporary cast limestone: columns, balustrades, benches, planters, pavers, fountains, gazebos, interior ornament, mantels, statuary & more; 500+ designs; custom designs.

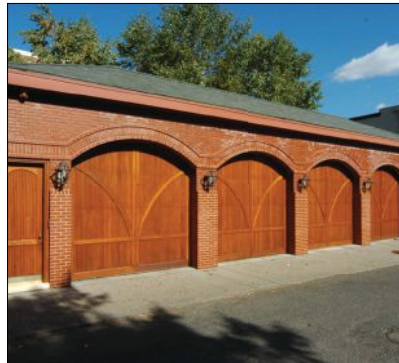
SEE OUR AD ON PAGE 39.

visit TraditionalBuilding.com today for web exclusives like blogs by industry leaders & experts.

PERIOD GARAGES & GARAGE DOORS



SEE OUR AD ON PAGE 8



CAMBEK DESIGNER DOORS
800-241-0525; Fax: 715-426-4999
www.cambek.com
River Falls, WI 54022

Manufacturer of handcrafted garage doors & complementary entrance ways, shutters & garden gates: western red cedar, mahogany & other species; specialty glass, decorative hardware, metals, stone & other innovative materials.

SEE OUR AD ON PAGE 8.



VINTAGE MILLWORK AND RESTORATION

717-687-0292; Fax: 717-687-3510
www.vintagemillworkrestoration.com
Paradise, PA 17562

Offers custom-milled front doors, interior doors, garage doors, barn doors, and custom hardware. Specialties include custom trim work, custom grid doors, true or simulated divide light doors, and engineered doors. Made in the USA in Lancaster, PA.

SEE OUR AD ON PAGE 25.

WHEN CONTACTING COMPANIES YOU'VE SEEN IN THIS ISSUE, PLEASE TELL THEM YOU SAW THEM IN TRADITIONAL BUILDING MAGAZINE.



JUMP IN THE CONVERSATION

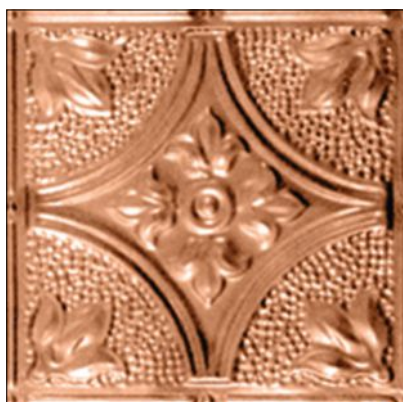
[@PeriodHomes](https://twitter.com/PeriodHomes) [@TradBuilding](https://twitter.com/TradBuilding) [@TradBldgShow](https://twitter.com/TradBldgShow)

Join us on Twitter for news and views about the world of traditional building and design.



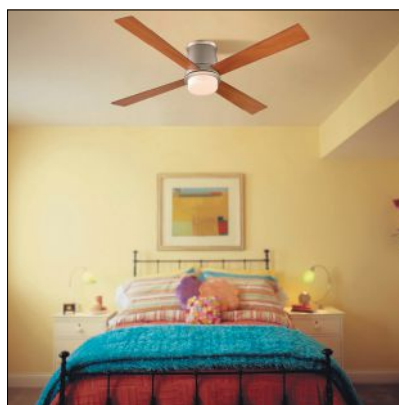
ABOVE VIEW INC.
414-744-7118; Fax: 866-728-5586
www.aboveview.com
Milwaukee, WI 53221

Supplier of ornamental plaster ceiling tile made in US: Each 2x2-ft. tile drops into standard 15/16-in. T-bar grid; tile is non-toxic, non-combustible & biodegradable; more than 70 standard designs; custom capabilities; since 1984.



CHELSEA DECORATIVE METAL
713-721-9200; Fax: 713-776-8661
www.tinman.com
Houston, TX 77074

Manufacturer of pressed-tin ceiling & wall panels: tin-plated steel has shiny silver finish, can be painted with oil-based paint; 3-, 6-, 12- & 24-in. patterns ranging from Art Deco to Victorian; easy-to-install 2x4-ft. sheets.



FANIMATION
888-567-2055; Fax: 317-733-4185
www.fanimation.com
Zionsville, IN 46077

Supplier of belt-driven fans: palm-leaf fans; one-blade fans; ceiling-, wall- & floor-mounted models; Victorian, Turn of the Century & Southwestern/rustic; historical reproductions & custom lighting.



JP WEAVER COMPANY
818-500-1740; Fax: 818-500-1798
www.jpweaver.com
Glendale, CA 91201

Over 8,000 types of molded ornaments cast from carvings. Products are pliable and will contour and self-bond to any sealed surface such as mirror, plaster, drywall, wood, metal, ceramic. Scaled-design books (1/4 in. = 1 in. scale).

SEE OUR AD ON PAGE 11.



METALCEILINGEXPRESS
941-723-2288; Fax: 941-729-1470
www.metalceilingexpress.com
Palmetto, FL 34221

Manufacturer of ceilings: ornamental; decorative painting & faux finishes; architectural, standard & custom sheet metal.



MINKA AIRE FANS & LIGHTING
800-221-7977
www.minkagroup.net
Corona, CA 92882

Creator of award-winning ceiling fan designs from the modern to the traditional. Fans are available in a variety of sizes and hand-painted finishes. Sold exclusively through specialty-lighting showrooms and ceiling-fan retailers.



W.F. NORMAN CORP.
800-641-4038; Fax: 417-667-2708
www.wfnorman.com
Nevada, MO 64772

Manufacturer of sheet-metal ornament: hundreds of stock designs; cornices, moldings, brackets, pressed-metal ceilings, roofing, siding, finials & more; zinc, copper & lead-coated copper; duplication from samples or drawings.

SEE OUR AD ON PAGE 37.



WOOLEN MILL FAN CO.
717-382-4754; Fax: 717-382-4275
www.architecturalfans.com
New Park, PA 17352

Manufacturer of decorative ceiling fans: historic & new designs; belt-&-pulley models & beltless single-motor units; iron, bronze & aluminum castings.

SEE OUR AD ON PAGE 73.

SEE OUR AD ON PAGE 11

JP Weaver Co.
SINCE 1914

FINE INTERIOR ARCHITECTURAL MOULDINGS
DESIGNED AND HANDCRAFTED IN THE UNITED STATES SINCE 1914

To see larger photos and informational captions, visit traditionalbuilding.com/page/the-magazine
Scroll down and click on the Buying Guides link

Woolen Mill Fan Company, LLC

290 Woolen Mill Road
New Park, PA 17352
p: 717-382-4754
architecturalfans@gmail.com
www.architecturalfans.com

Invest in timeless integrity.

INTERIOR LIGHTING



B & P LAMP SUPPLY, INC.
800-822-3450; Fax: 931-473-3014
www.bplampsupply.com
Mc Minnville, TN 37110

Wholesaler of traditional lighting parts for repair, restoration & fabrication of interior light fixtures; more than 7,500 parts ready to ship nationwide; sells to consumer under Antique Lamp Supply brand: since 1952.



BALL & BALL LIGHTING
610-363-7330; Fax: 610-363-7639
www.ballandball.com
Exton, PA 19341

Fabricator of historical lighting: chandeliers, sconces, pendants, lanterns & table lamps; Early American & Turn of the Century styles; antique & salvaged originals, new designs, custom work & reproductions; stair handrails; restoration services.

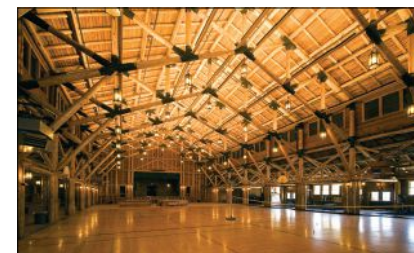
SEE OUR AD ON PAGE 17.



DEEP LANDING WORKSHOP
877-778-4042; Fax: 410-778-4070
www.deeplandingworkshop.com
Chestertown, MD 21620

Manufacturer of custom lighting fixtures: chandeliers, sconces, pendants & lanterns; new designs, historic reproductions & custom work; handcrafted in wood, tin, brass or copper; glass, mica or alabaster shades.

SEE OUR AD ON PAGE 75.



GRAND LIGHT
800-922-1469; Fax: 203-828-6307
www.grandlight.com
Seymour, CT 06483

Restorer of historic lighting fixtures & manufacturer of custom lighting fixtures: metal fabrication, glass fabrication, metal finishing, polishing, painting, welding, abrasive blasting; historical replication & reproduction.

SEE OUR AD ON PAGE 17.



HERITAGE METALWORKS
610-518-3999; Fax: 610-518-7264
www.hmwp.com
Downingtown, PA 19335

Foundry, blacksmith shop and custom metal fabricator offering historically accurate and custom-designed lighting, architectural hardware, and designer-envisioned metalwork including interior and exterior gates & railings.

SEE OUR AD ON PAGE 31.



HISTORICAL ARTS & CASTING
800-225-1414; Fax: 801-280-2493
www.historicalarts.com
West Jordan, UT 84081

Designer & custom fabricator of ornamental metalwork: doors, windows, hardware, stairs, balustrades, registers, fences, lighting, gutters, columns, weather-vanes, snow guards, cupolas, planters, fireplace tools & more; iron, bronze, aluminum & steel; restoration services.

SEE OUR AD ON PAGE 21.



HOUSE OF ANTIQUE HARDWARE
888-223-2545; Fax: 503-233-1312
www.houseofantiquehardware.com
Portland, OR 97232

Manufacturer & supplier of vintage reproduction door, window, shutter, cabinet & furniture hardware & accessories: Federal, Victorian, Colonial Revival, Craftsman & Deco styles; lighting fixtures, push-button switches & plates; bathroom accessories; registers & grilles.

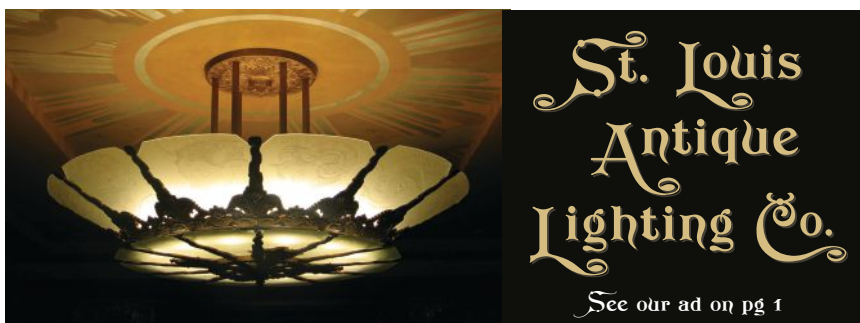
SEE OUR AD ON PAGE 21.



JAMES DEMARTIS METAL STUDIO
631-329-2966
www.jamesdemartis.com
East Hampton, NY 11937

JDMS creates site specific custom indoor/outdoor traditional and contemporary architectural metal and restores historic and antique objects. Specializing in furniture, railings, sculpture, lighting, fireplace accessories, artifact mounts and hardware. Textural and hand applied patina finishes are trademarks of our craftsmanship.

SEE OUR AD ON PAGE 15.



**St. Louis
Antique
Lighting Co.**

See our ad on pg 1



MILLS ARCHITECTURAL LIGHTING
800-268-1526; Fax: 416-463-9882
www.millslighting.com
Toronto, ON M4Y 2L7 Canada

Custom designer & manufacturer of interior & exterior lighting: historical lighting & restoration; for houses of worship; servicing all of North America & parts of South America.



PERIOD LIGHTING FIXTURES
800-828-6990; 413-664-7141
Fax: 413-664-0312
www.periodlighting.com
Clarksburg, MA 01247

For over 40 years we have been producing Handmade 18th- and 19th century chandeliers, sconces, and lanterns. Aged tin, oxidized copper-, natural copper-, and pewter- finishes. Exterior and interior lanterns. Over 200 historically accurate models. Made in the USA. UL listed.

SEE OUR AD ON PAGE 75.

To see larger photos and informational captions, visit traditionalbuilding.com/page/the-magazine
Scroll down and click on the Buying Guides link



SCOFIELD LIGHTING
610-518-3999; Fax: 610-518-7264
www.scfieldlighting.com
Downingtown, PA 19335

This signature 19th century inspired collection by Heritage Metalworks provides over 120 original custom and reproduction designs in the finest handmade interior and exterior lighting. Artisans use traditional tools and proven techniques that show the mark of the human hand.

SEE OUR AD ON PAGE 31.



ST. LOUIS ANTIQUE LIGHTING
314-863-1414; Fax: 314-863-6702
www.slalco.com
Saint Louis, MO 63130

Manufacturer & supplier of architectural lighting; all styles; historical reproductions & custom lighting; restoration services; commercial & ecclesiastical projects.

SEE OUR AD ON PAGE 1.



STEVEN HANDELMAN STUDIOS
805-962-5119; Fax: 805-966-9529
www.stevenhandelmanstudios.com
Santa Barbara, CA 93103

Manufacturer of hand-forged traditional lighting, grilles & fireplace accessories: many types & styles of lighting & grilles; fireplace screens, grates & inserts; historic reproduction & restoration services.

SEE OUR AD ON PAGE 75.



TROY LIGHTING
626-336-4511; Fax: 626-330-4266
www.troy-lighting.com
City of Industry, CA 91744

Manufacturer of lighting fixtures: interior & exterior; many styles; historical reproductions, custom; post-mounted, sconces, pendants, porch lights, chandeliers & more.



VINTAGE HARDWARE & LIGHTING
360-379-9030; Fax: 360-379-9029
www.vintagehardware.com
Port Townsend, WA 98368

Supplier of door hardware, window hardware: window locks & sash lifts; drapery hardware; bathroom accessories; reproduction lighting; weathervanes.

SEE OUR AD ON PAGE 31.



before



after

Expert Restoration

Design, Engineering-
Metal Fabrication
Glass Etching
Casting

**STEVEN
HANDELMAN
STUDIOS**

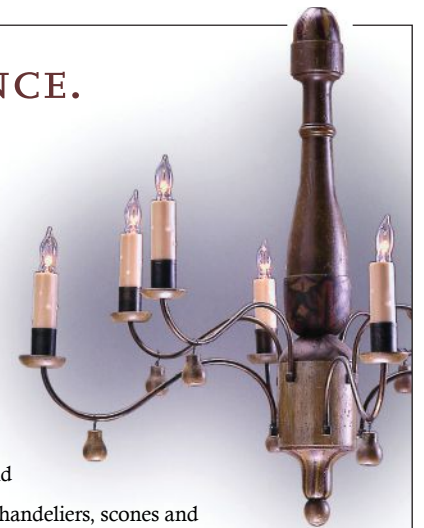
www.stevenhandelmanstudios.com
805-962-5119

BEAUTY. ELEGANCE. SIMPLICITY.

Grace your home with the timeless sophistication of 18th and Early 19th Century lighting. The country's largest collection of Early American designs, reproduced entirely by hand from original fixtures in museums such as *Historic Deerfield* and *Olde Sturbridge Village*. **PERIOD LIGHTING** chandeliers, scones and lanterns will add a quiet beauty to your home and surroundings.

PERIOD LIGHTING FIXTURES INC.

ARTISANS SINCE 1974 PERIODLIGHTING.COM 800 828-6990
167 RIVER ROAD CLARKSBURG, MA 01247



WIEMANN METALCRAFT
918-592-1700; Fax: 918-592-2385
www.wmcraft.com
Tulsa, OK 74107

Designer, fabricator, finisher & installer of fine quality custom ornamental metalwork: railings, fences, gates, custom, hot-rolled steel doors & windows, lighting, grilles, bronze & aluminum entry doors; all cast- & wrought-metal alloys, finishes & architectural styles; since 1940.

SEE OUR AD ON PAGE 71.



**ELEGANCE
IN CUSTOM
LIGHTING**



**DEEP LANDING
WORKSHOP**

115 Deep Landing Rd
Chestertown, MD 21620
877-778-4042
410-778-4042
410-778-4070 fax
www.deeplandingworkshop.com
deeplandingworkshop@gmail.com



THE PERIOD KITCHEN, BATHS & TILES



CROWN POINT CABINETRY
800-999-4994; Fax: 603-370-1218
www.crown-point.com
Claremont, NH 03743

Manufacturer of custom cabinetry in period styles: Shaker, Victorian, Arts & Crafts, Early American & traditional styles.

SEE OUR AD ON PAGE 29.



HOUSE OF ANTIQUE HARDWARE
888-223-2545; Fax: 503-233-1312
www.houseofantiquehardware.com
Portland, OR 97232

Manufacturer & supplier of vintage reproduction door, window, shutter, cabinet & furniture hardware & accessories: Federal, Victorian, Colonial Revival, Craftsman & Deco styles; lighting fixtures, push-button switches & plates; bathroom accessories; registers & grilles.

SEE OUR AD ON PAGE 21.



JP WEAVER COMPANY
818-500-1740; Fax: 818-500-1798
www.jpweaver.com
Glendale, CA 91201

Over 8,000 types of molded ornaments cast from carvings. Products are pliable and will contour and self-bond to any sealed surface such as mirror, plaster, drywall, wood, metal, ceramic. Scaled-design books (1/4 in. = 1 in. scale).

SEE OUR AD ON PAGE 11.

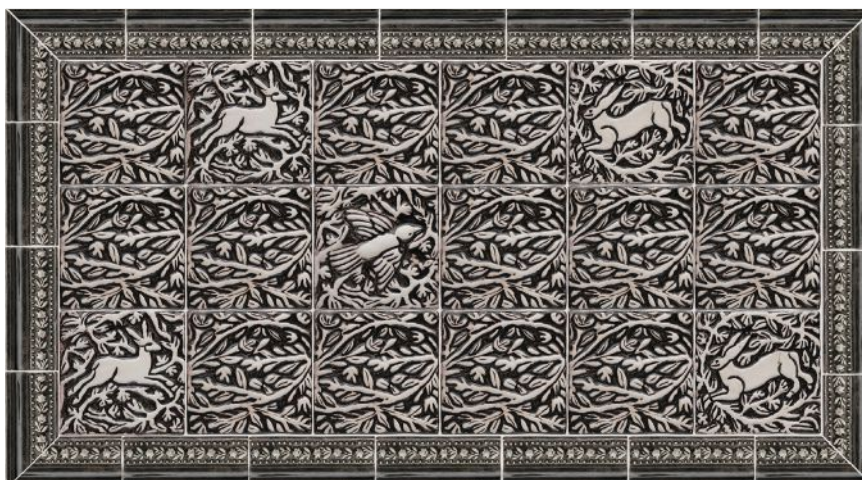


MOORE-MERKOWITZ TILE COMPANY

607-587-9052
www.mooremerkowitztile.com
Alfred Station, NY 14803

Designer & manufacturer of handcrafted ceramic relief & field tile since 1986: original designs & glazes; more than 230 designs in 150 colors; for kitchen backsplashes, bathrooms, fireplace surrounds, murals, pools & more. Residential and commercial.

SEE OUR AD ON PAGE 76.



MOORE MERKOWITZ

Handcrafted American Art Tile for interiors
230 designs in more than 150 colors

607-587-9052 | www.mooremerkowitztile.com



NOTTING HILL DECORATIVE HARDWARE

262-248-8890; Fax: 262-248-7876
www.nottinghill-usa.com
Lake Geneva, WI 53147

Distinctive, high-end artisan hardware for cabinets and furniture. Knobs, pulls, bin pulls, back plates and appliance pulls are hand-finished with exceptional attention to detail. Unique designs span many eras and styles. Made in the USA of 100% lead-free pewter with a variety of finishes.

SEE OUR AD ON PAGE 76.



ZEPSA INDUSTRIES, INC.

704-583-9220; Fax: 704-583-9674
www.zepsa.com
Charlotte, NC 28273

Supplier of architectural woodwork: stairs, mantels, paneling, wine cellars, furniture, doors & more.

SEE OUR AD ON PAGE 2.



Acanthus Appliance Pull with Portobello Road



NOTTING HILL DECORATIVE HARDWARE

262-248-8890
cs@nottinghill-usa.com
www.nottinghill-usa.com
Handcrafted in the USA

Visit us online at
TraditionalBuilding.com to

- learn about our free educational series offering AIA credits
- read our bloggers latest posts
- browse our book reviews and story archives
- and much more

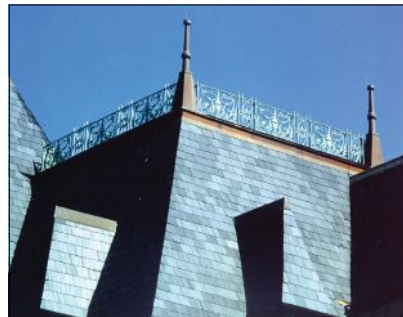




COPPER-INC.COM
888-499-1962; Fax: 888-499-1963
www.copper-inc.com
Galveston, TX 77552

Manufacturer & distributor of copper products: cupolas, finials, weathervanes, roof vents, conductor heads, chimney caps, chimney pots & more; large production facility.

SEE OUR AD ON PAGE 77.



HISTORICAL ARTS & CASTING
800-225-1414; Fax: 801-280-2493
www.historicalarts.com
West Jordan, UT 84081

Designer & custom fabricator of ornamental metalwork: doors, windows, hardware, stairs, balustrades, registers, fences, lighting, gutters, columns, weathervanes, snow guards, cupolas, planters, fireplace tools & more; iron, bronze, aluminum & steel; restoration services.

SEE OUR AD ON PAGE 21.

Weathercap®
Joint Protective System
A permanent elastic seal for any masonry joint, horizontal or vertical.

We are honored to assist in the protection of our Supreme Court Building & National Cemetery

Weathercap®, Inc.
www.weathercap.net
985-649-4000
f: 985-847-1237

Weathercap is the only authorized supplier of our patented Lead Ts.



NIKO CONTRACTING CO., INC.
412-687-1517; Fax: 412-687-7969
www.nikocontracting.com
Pittsburgh, PA 15213

Custom fabricator & contractor of sheet metal & roofing: slate, tile & other roofing; storefronts, cornices, cupolas, domes, steeples, snow guards & leader heads; copper, lead-coated copper, zinc & stainless steel; metal ceilings.

SEE OUR AD ON PAGE 32.



PRESERVATION PRODUCTS
800-553-0523; Fax: 610-891-0834
www.preservationproducts.com
Media, PA 19063

Manufacturer & distributor of Acrymax restoration & preservation systems for historic metal roofs: durable weatherproof membrane can be used as complete roof system or for repair; Acrymax is an energy star partner.

SEE OUR AD ON PAGE 77.

PRESERVATION PRODUCTS, INC.
Protecting America's heritage, one landmark at a time.

800-553-0523
preservationproducts.com

ACRYMAX®
Weatherproof Coating Systems to Protect and Preserve Historic Structures

Partial List of Historic Projects

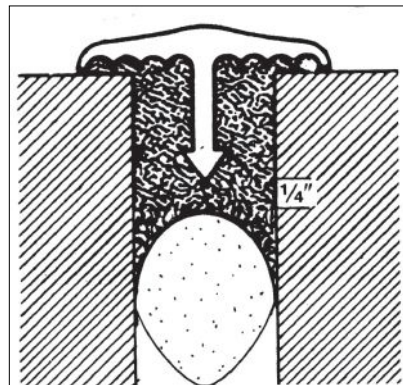
- The White House
- Fort Sumter
- Thomas Point Lighthouse
- Arlington House
- Fort Mackinac
- Musee Culturel Du Mont Carmel
- The Betsy Ross House
- Newton County Historic Jail
- Fort McHenry
- Appomattox Manor



W.F. NORMAN CORP.
800-641-4038; Fax: 417-667-2708
www.wfnorman.com
Nevada, MO 64772

Manufacturer of sheet-metal ornament: hundreds of stock designs; cornices, moldings, brackets, pressed-metal ceilings, roofing, siding, finials & more; zinc, copper & lead-coated copper; duplication from samples or drawings.

SEE OUR AD ON PAGE 37.



WEATHERCAP, INC.
985-649-4000; Fax: 985-847-1237
www.weathercap.net
Slidell, LA 70459

Manufacturer of soft-lead strips: set & bedded in caulking compound/sealant; forms a cap to create a permanent elastic seal for any masonry joint.

SEE OUR AD ON PAGE 77.

COPPER-INC

COPPER CUPOLAS
FINIALS
ROOF DORMERS
CHIMNEY CAPS
& much more
...

1-888-499-1962
sales@copper-inc.com
www.copper-inc.com

TIMBER FRAMING & BARNES



COUNTRY CARPENTERS, INC.
860-228-2276; Fax: 860-228-5106
www.countrycarpenters.com
Hebron, CT 06248

Manufacturer of pre-cut, pre-engineered New England-style post-&-beam carriage houses, garden sheds & country barns: family owned & operated; since 1974; catalog \$5.

SEE OUR AD ON PAGE 17.



CRAFTWRIGHT, INC.
410-876-0999; Fax: Same as phone
www.craftwrighttimberframes.com
Westminster, MD 21157

Supplier of timber-frame structures: home, barn, bridge, steeple & church framing & more.

SEE OUR AD ON PAGE 19.



HOCHSTETLER TIMBERS
419-368-0008; Fax: 419-368-6080
www.hochstetlertimbers.com
Loudonville, OH 44842

Supplier of new timbers in oak up to 40 ft. long: planed & rough sawn; 2x6 & 1x6 tongue-in-groove knotty pine.

SEE OUR AD ON PAGE 78.



MID-ATLANTIC TIMBERFRAMES
717-288-2460

www.midatlantictimberframes.com
Paradise, PA 17562

Timber frame manufacturer; Designer and builder of custom timber frame homes, pavilions, and pergolas, as well as barns, equestrian facilities, and commercial buildings; Heavy timber frame construction; Serving the Mid-Atlantic region and beyond.

Precision-Milled Oak & Douglas Fir **TIMBERS**



**ALL TIMBERS
GRADE-CERTIFIED**

- White Oak up to 40'
- Douglas Fir up to 50'
Dense & Free of Heart Center

CALL FOR FREE TIMBER
PRICE LIST: 419-368-0008

FAX TIMBER LIST FOR FREE
QUOTES: 419-368-6080



552 SR 95, LOUDONVILLE, OH 44842



**NEW ENERGY WORKS
TIMBERFRAMERS**
800-486-0661; 585-924-3860;
Fax: 585-924-9962
www.newenergyworks.com
Farmington, NY 14425

Designer and builder of timberframes, timber trusses, fine woodworking, and high-performance enclosure systems.



PIONEER MILLWORKS
800-951-9663; Fax: 585-924-9962
www.pioneermillworks.com
Farmington, NY 14425

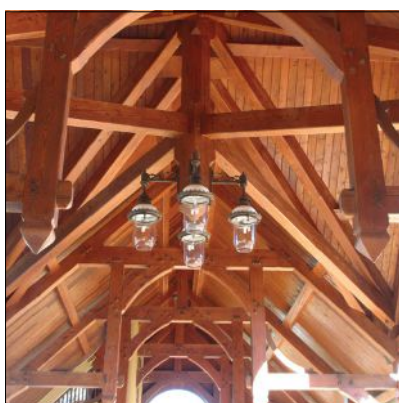
Supplier of reclaimed & sustainably harvested woods: barn boards; flooring; heart pine, oak, elm, chestnut, hickory, Douglas fir, Australian jarrah & special wood mixes; custom millwork.

SEE OUR AD ON PAGE 78.

Designing & building custom timber frames across the nation from NY & OR.

NEW ENERGY WORKS
design • build • timberframing • woodworks

newenergyworks.com
800.486.0661



RIVERBEND TIMBER FRAMING
888-486-2363
www.riverbendtf.com
Blissfield, MI 49228

Manufacturer of traditional handcrafted timber frames: residential & commercial work; northern oak, Douglas Fir, pine & reclaimed timbers; frames are enclosed in structural insulated panels.

SEE OUR AD ON PAGE 21.



TIMBERCRAFT
888-676-9870
www.timbercraft.com
Tecumseh, MI 49286

Builders of timber-frame homes and commercial structures using mortise-and-tenon joinery. Also, architectural design, engineering, and consulting.



CHADSWORTH COLUMNS
910-763-7600; Fax: 910-763-3191
www.columns.com
Wilmington, NC 28412

Manufacturer of authentically correct architectural columns: complete line of columns, piers, pilasters & posts for interior & exterior use; variety of sizes, styles & materials, including wood; more than 30 years.

SEE OUR AD ON INSIDE FRONT COVER.



DRIWOOD MOULDING COMPANY
888-245-9663; Fax: 843-669-4874
www.driwood.com
Florence, SC 29503

Supplier of molding: Stock & custom moldings for residential & commercial projects; embossed moldings, custom millwork, mantels, entrances, cabinet & panel work, custom doors.

SEE OUR AD ON PAGE 33.



GOODWIN COMPANY
800-336-3118; Fax: 352-466-0608
www.heartpine.com
Micanopy, FL 32667

Supplier of centuries-old, river-recovered, reclaimed harvested wood: for flooring, stair parts, millwork; solid or engineered, finished or unfinished.

SEE OUR AD ON PAGE 4.



JIM ILLINGWORTH MILLWORK
315-232-3433
www.jimillingworthmillwork.com
Adams, NY 13605

Manufacturer of custom wood windows, doors & moldings: for homes & historic buildings; matches any existing wood windows, doors, moldings; custom millwork.

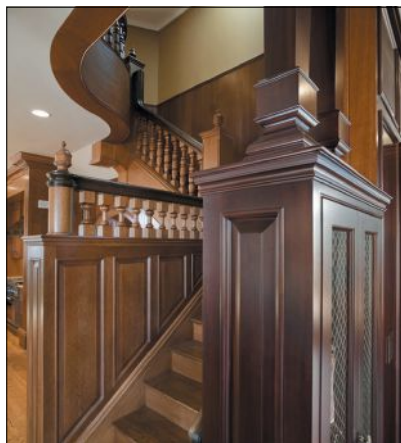
SEE OUR AD ON PAGE 67.



VINTAGE MILLWORK AND RESTORATION
717-687-0292; Fax: 717-687-3510
www.vintagemillworkrestoration.com
Paradise, PA 17562

Offers custom-milled front doors, interior doors, garage doors, barn doors, and custom hardware. Specialties include custom trim work, custom grid doors, true or simulated divide light doors, and engineered doors. Made in the USA in Lancaster, PA.

SEE OUR AD ON PAGE 25.



ZEPSA INDUSTRIES, INC.
704-583-9220; Fax: 704-583-9674
www.zepssa.com
Charlotte, NC 28273

Supplier of architectural woodwork: stairs, mantels, paneling, wine cellars, furniture, doors & more.

SEE OUR AD ON PAGE 2.



SEE OUR AD ON PAGE TWO

Zepssa Industries

ARCHITECTURAL WOODWORK
MONUMENTAL STAIRS
ARCHITECTURAL METALS

ZEPSA.COM | NEW YORK | CHARLOTTE | FLORIDA | CALIFORNIA

To see larger photos and informational captions, visit traditionalbuilding.com/page/the-magazine
Scroll down and click on the **Buying Guides link**

Period Homes
THE PROFESSIONAL'S RESOURCE FOR RESIDENTIAL ARCHITECTURE.

Traditional Building Conference
July 18-19 in Salem, MA

Period Homes
Buying Guides
Browse Our BUYING GUIDES

[Buying Guides](#) [The Magazine](#) [Projects](#) [Profiles](#) [Features](#) [Product Reports](#) [Palladio Awards](#) [Subscribe](#)



Visit **Period-Homes.com** today for the latest residential projects, profiles, and our exclusive online **Buying Guides**



TRADITIONAL BUILDING CONFERENCE

SAVE THESE 2021 DATES

JUNE 7-11, 2021



VIRTUAL CONFERENCE

TRADITIONAL BUILDING MATERIALS & METHODS

**REGISTRATION IS NOW OPEN AT
TRADITIONALBUILDINGSHOW.COM**

**Earn 10+
AIA Learning
Units with
live education
relevant to
you!**

DEC. 1-2, 2021

IN-PERSON CONFERENCE

**Featuring the Palladio Awards Ceremony and Dinner
in Coral Gables, Florida at the Biltmore Hotel.**

This virtual conference is more than a webinar. Through digital seminars and a library of expert learning materials, the same community and resources of our in-person events is on your desktop. Once you register for the Traditional Building Virtual Conference, the materials are yours to keep. Learn about historic preservation, adaptive use, urban infill, classical design, sustainable restoration/maintenance, and traditional craft. On-demand sessions require that architects pass an exam to get AIA CEUs. This exam will be provided during the exit survey.



INSTITUTE OF CLASSICAL
ARCHITECTURE & ART

**AIA
Continuing
Education
Provider**

For latest information, visit traditionalbuildingshow.com

REGISTRATION INQUIRIES:

Carolyn Walsh
cwalsh@aimmedia.com

MARKETING INQUIRIES:

Griffin Suber 202.410.3929
GSuber@aimmedia.com

SPONSORSHIP INQUIRIES:

Peter H. Miller 202.256.0694
pmiller@aimmedia.com

EDUCATION INQUIRIES:

Judy Hayward 802.356.4348
jhayward@aimmedia.com

THANK YOU TO OUR SPONSORS!

ALLIED WINDOW, INC.



Custom Invisible Storm Windows



PILKINGTON



HADDONSTONE



LUDOWICI
Trusted. Timeless. Terra Cotta.



Custom "Invisible" Storm Windows®



Millicent Library - Fairhaven, MA



Cincinnati Union Terminal - Cincinnati, OH



Rawson Flats - Findlay, OH



Delphi Opera House - Delphi, IN



Landmark Lofts - New Braunfels, TX



Moody Mansion - Galveston, TX



The Motherhouse of Baxter Woods - Portland, ME



Allied Window, Inc.

1111 Canal Rd., Cincinnati, OH 45241

www.alliedwindow.com 800-445-5411

- Interior & Exterior Storm Windows
- Custom Colors
- Custom Screens & Special Shapes
- Historic, Residential & Commercial Buildings
- Energy Savings Approx. 50% - Sound Reduction up to 80%



HOPE'S®

For more than a century, Hope's has handcrafted the world's finest steel and bronze windows and doors, and we continue to refine the art that makes them the most sought-after, luxurious, and longest lasting windows and doors available. Hope's exclusive hot-rolled steel and solid bronze profiles replicate the traditional aesthetic of historic buildings while providing modern performance and efficiency. Hope's windows and doors are built to last a lifetime and beyond – sustaining their beauty and performance for generations. HopesWindows.com

HOPE'S WINDOWS, INC. – EST. 1912 – JAMESTOWN, NEW YORK

PRODUCTS SHOWN: Empire Bronze™ Jamestown175™ Series bronze windows and doors

ARCHITECT: Meyer & Meyer, Inc.
PHOTOGRAPHER: Bruce Buck