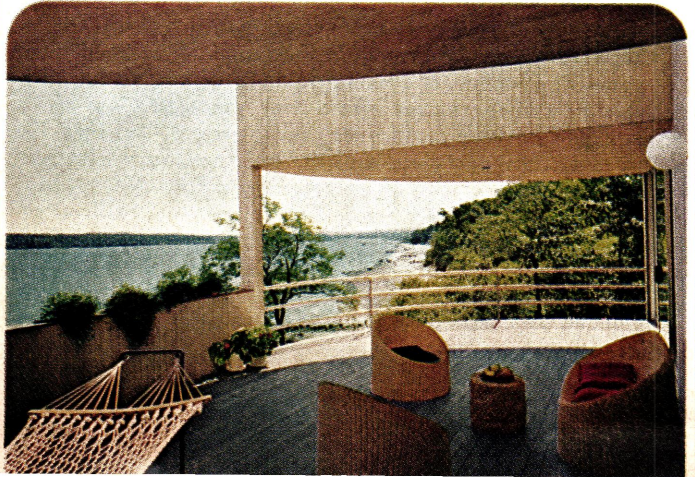
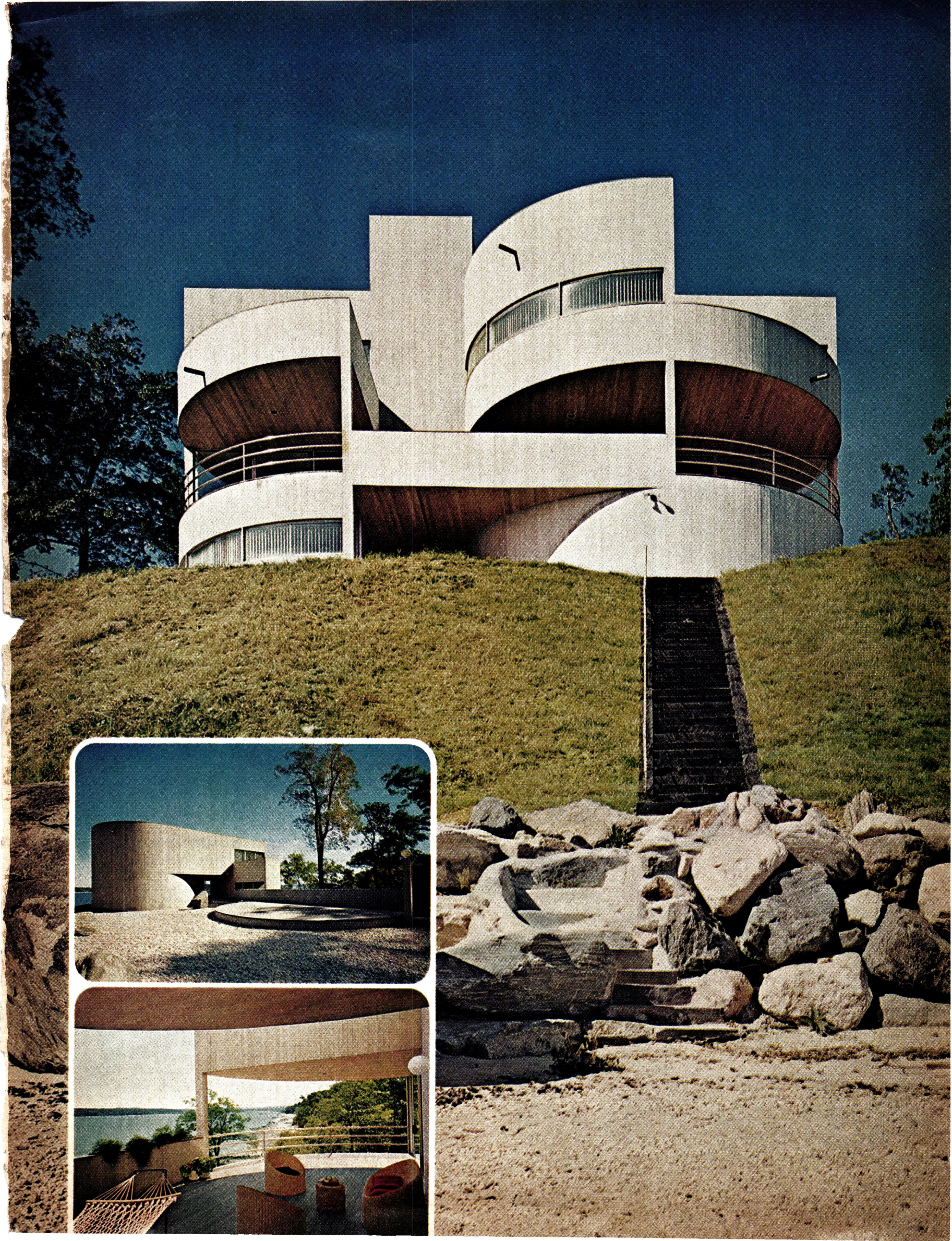


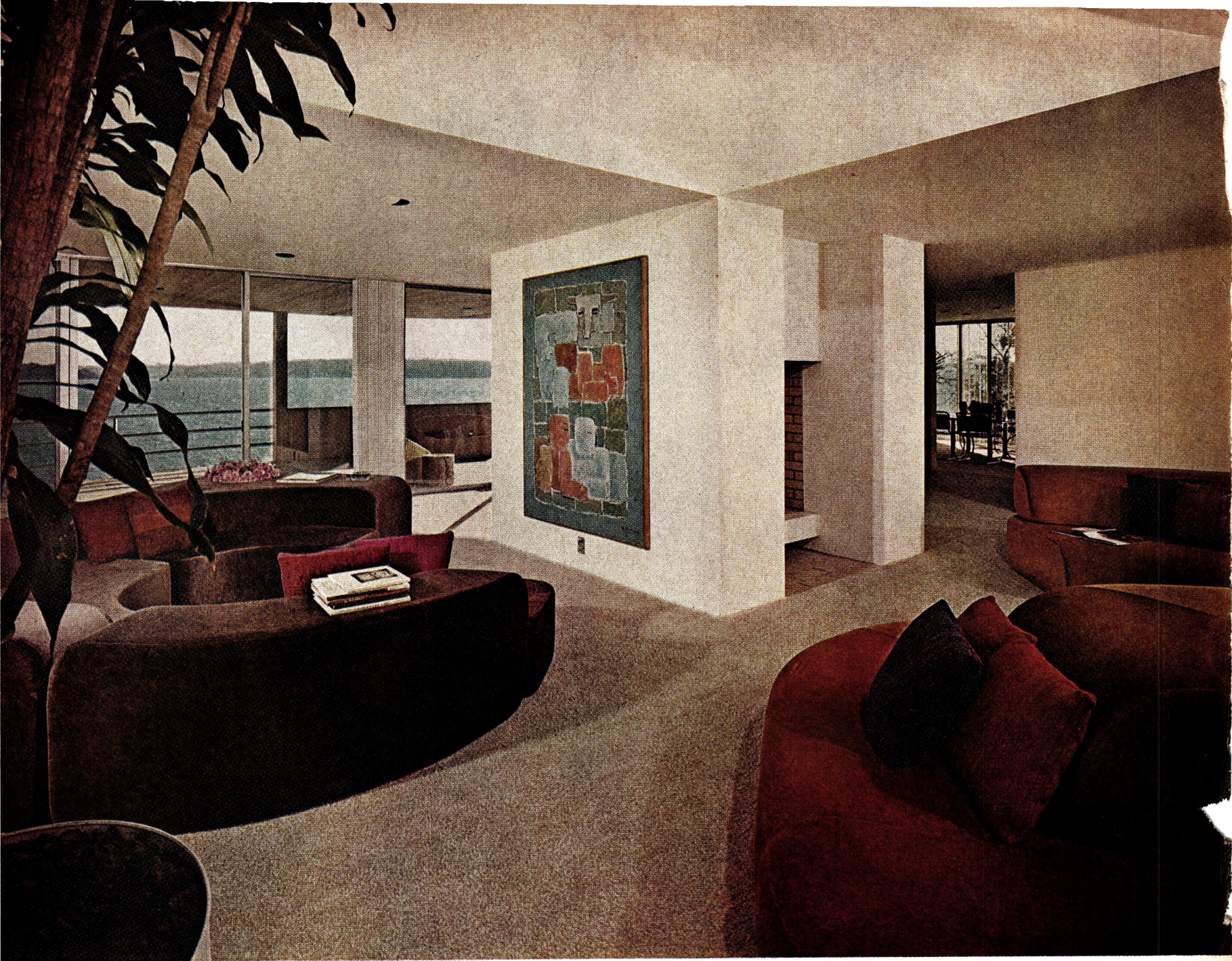
CURVE UPON CURVE

**this seaside aerie opens
life inside to all the beauty of its
spectacular site**

By SUSAN LEWIN □ Open sky, restless sea, rocky bluff—what setting could be more dramatic? And this Sands Point, Long Island, N.Y., house, designed by Myron Goldfinger for a semiretired shipping executive and his wife, is thrust almost to the edge of the bluff "to fully respect the dynamics of the site." The architect describes the house as his first opportunity to employ curves, although it uses two themes common to other of his structures: ordered space and building from a modular-unit concept. Contained, concealed, private, the entrance side (above and top right inset) is closed to all view of its neighboring houses. It only hints of the explosion of space on the water side, with curving facade (right) and the further excitement of open decks (lower right inset) bursting out over Long Island Sound.

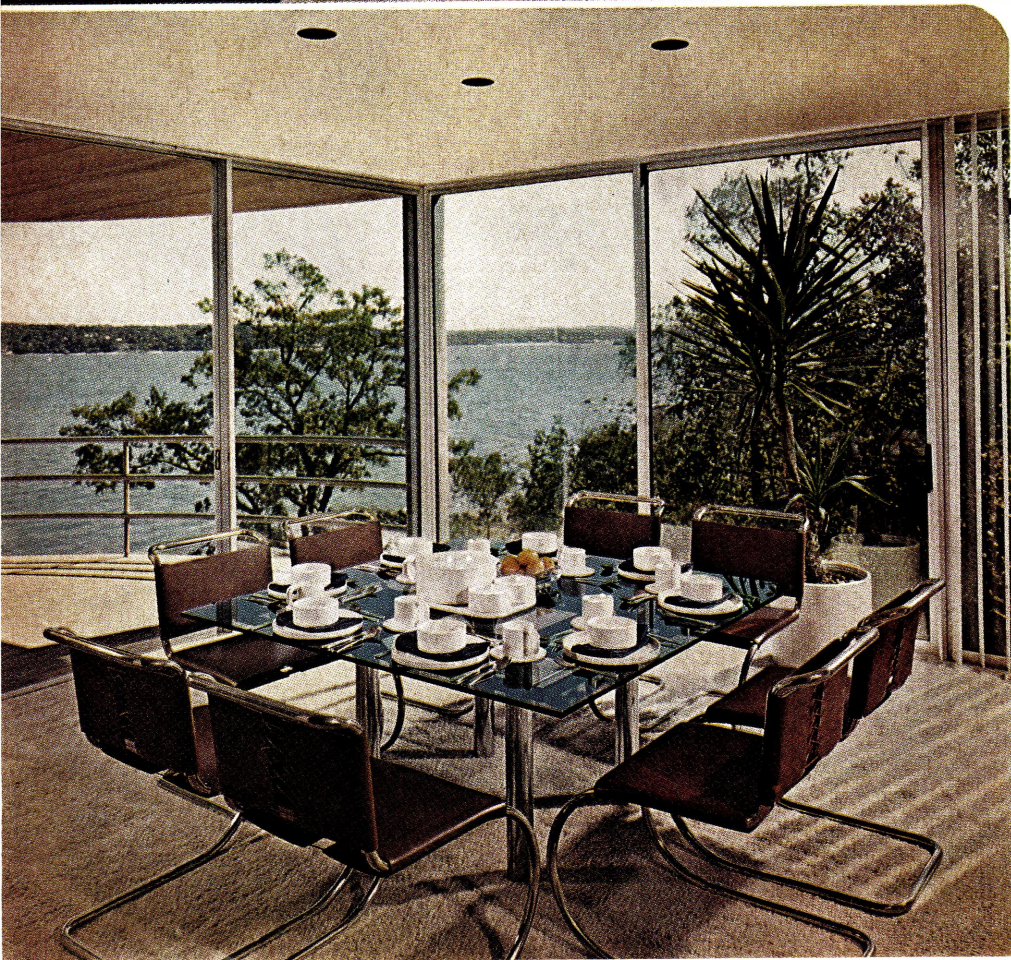
MARIS/SEMEL



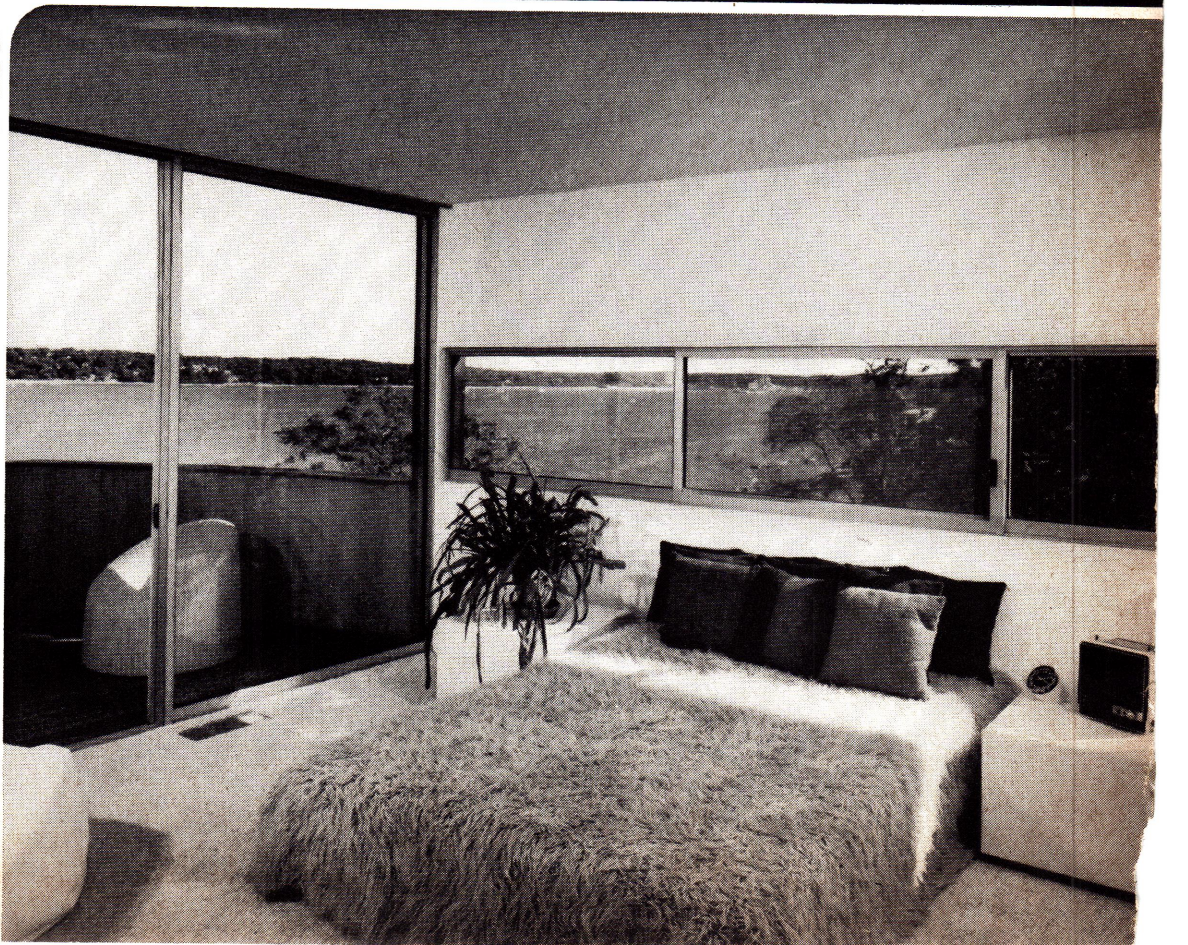
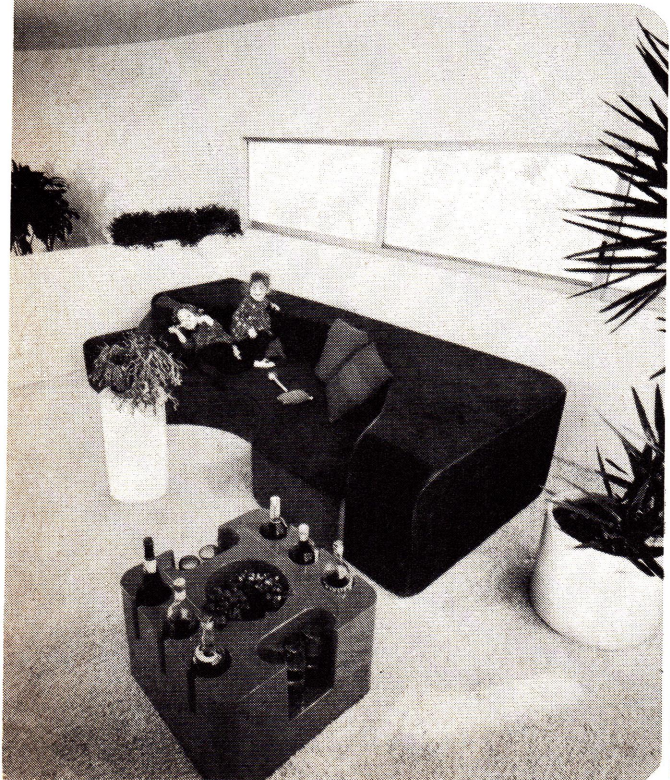
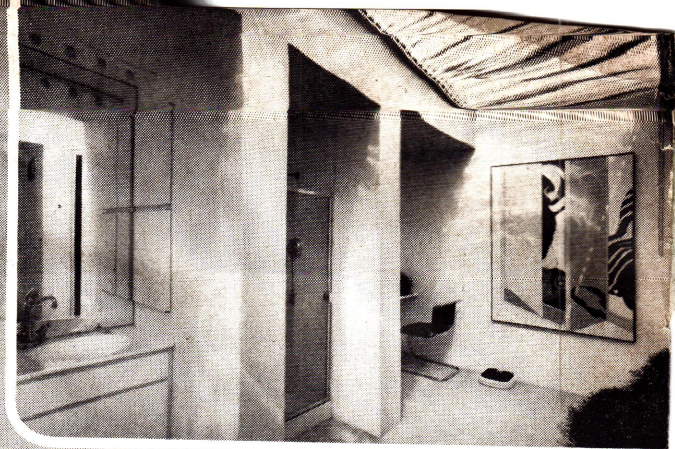


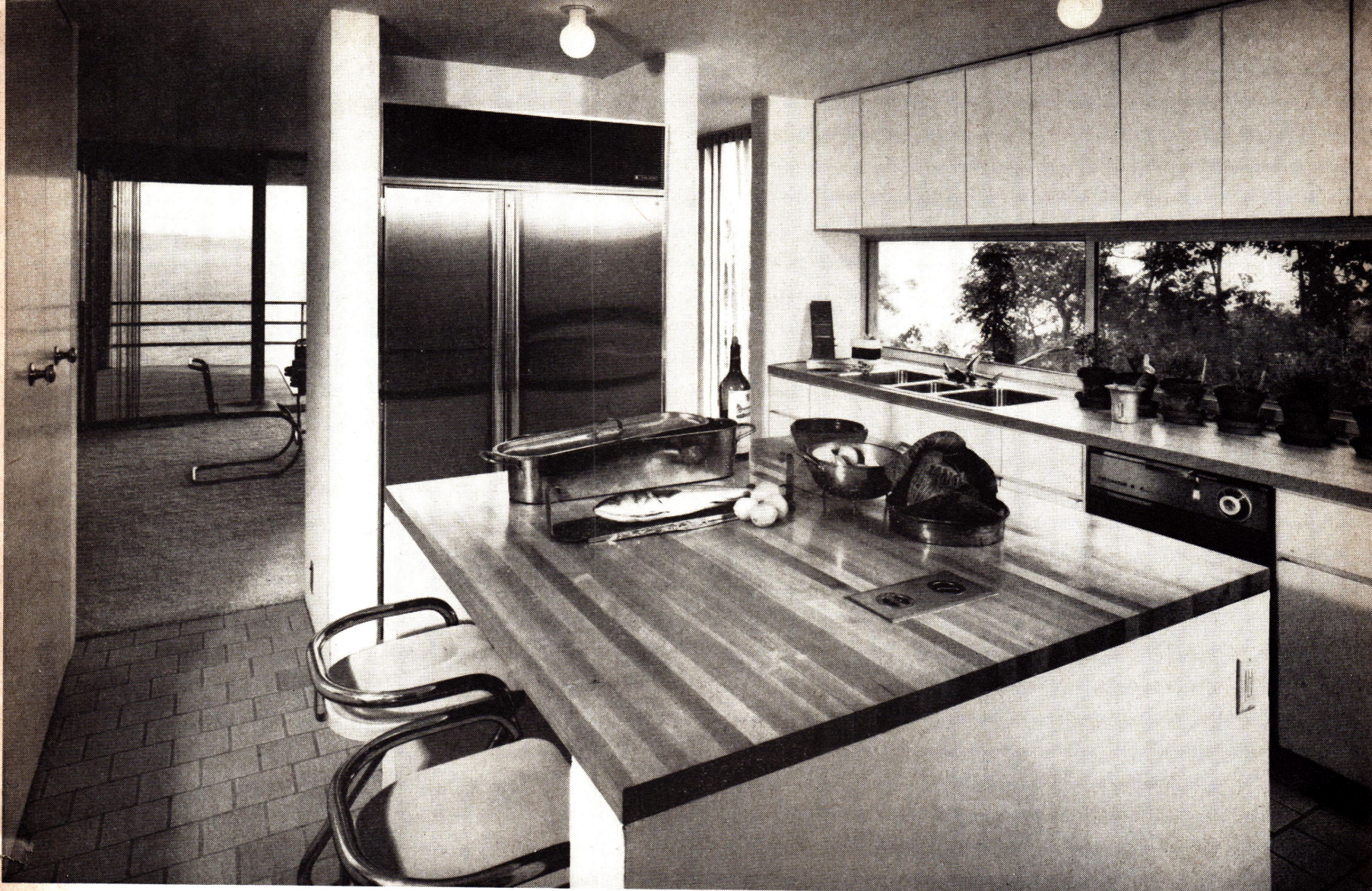
within, too, this design premise forms a strong pattern

The sweeping curves of the exterior are called to mind inside the house by the sensuous, sinuous shapes of the velvet-covered Italian seating system. By contrast, the open double-sided fireplace (right) is a blocky, rectangular form that creates a mini-gallery wall for a painting by George Constant (above and top right). The flow of space in the living room continues around to the dining room (left), furnished with classic leather-and-steel Bauhaus furniture, and up into a big double-story space (top center). Hinting of the beach a few steps below is a textured sandy/off-white carpet that runs throughout the house. And as for the sparkling water, a 180-degree visual sweep from this side of the house offers a spectacular view of the sea and horizon from every major room. But this ever-present sea view isn't the only reason the house gives an impression of being aboard ship. Note, too, Architect Goldfinger's use of stainless steel railings on the deck, railings that were custom-fabricated for this house by a ship-building firm. Inside, vertical blinds draw easily whenever the glare of the sun on the water becomes a little too strong for comfort.









above all, it is a success in satisfying their personal needs

The owners have three great passions that are reflected everywhere in this powerful house: their love of the sea (both were born along Yugoslavia's Dalmation Coast), art (they are such avid collectors that they now own their own private gallery) and their seven grandchildren (Djerba, three, and Thira, four, are pictured in the study at below left).

As they put it, "We wanted this house to be a paradise for our grandchildren, and it is. They come here to play, fish and swim and the great thing is that there is nothing for them to break." Most of the second floor (see plans) is devoted to a master suite that can be closed off from the rest of the house. Again, the geometry of the house is reflected in the furnishings—this time in the spectacular leather-covered Italian bed in the master bedroom (above left). The skylight in the luxurious master bath (inset, above center) is covered with shiny silver vertical blinds that turn the natural light into interesting light-and-shadow patterns on the walls. The far end of the study opens into a two-story well above the living room and its curving real-life seascape. Both guest bedrooms on the upper level have decks, with a Greek Flokati rug transformed into a handsome spread in the guestroom at near left. The spacious, easy-care kitchen (above) is conveniently placed off the dining room and has long slit windows to give view to the water below and to the land side.

PLAN, NATALIE F. SIEGEL; FOR DETAILS, SEE PRODUCT INFORMATION

