

AMERICAN INSTITUTE
OF
ARCHITECTS
NOV 1 1957
LIBRARY

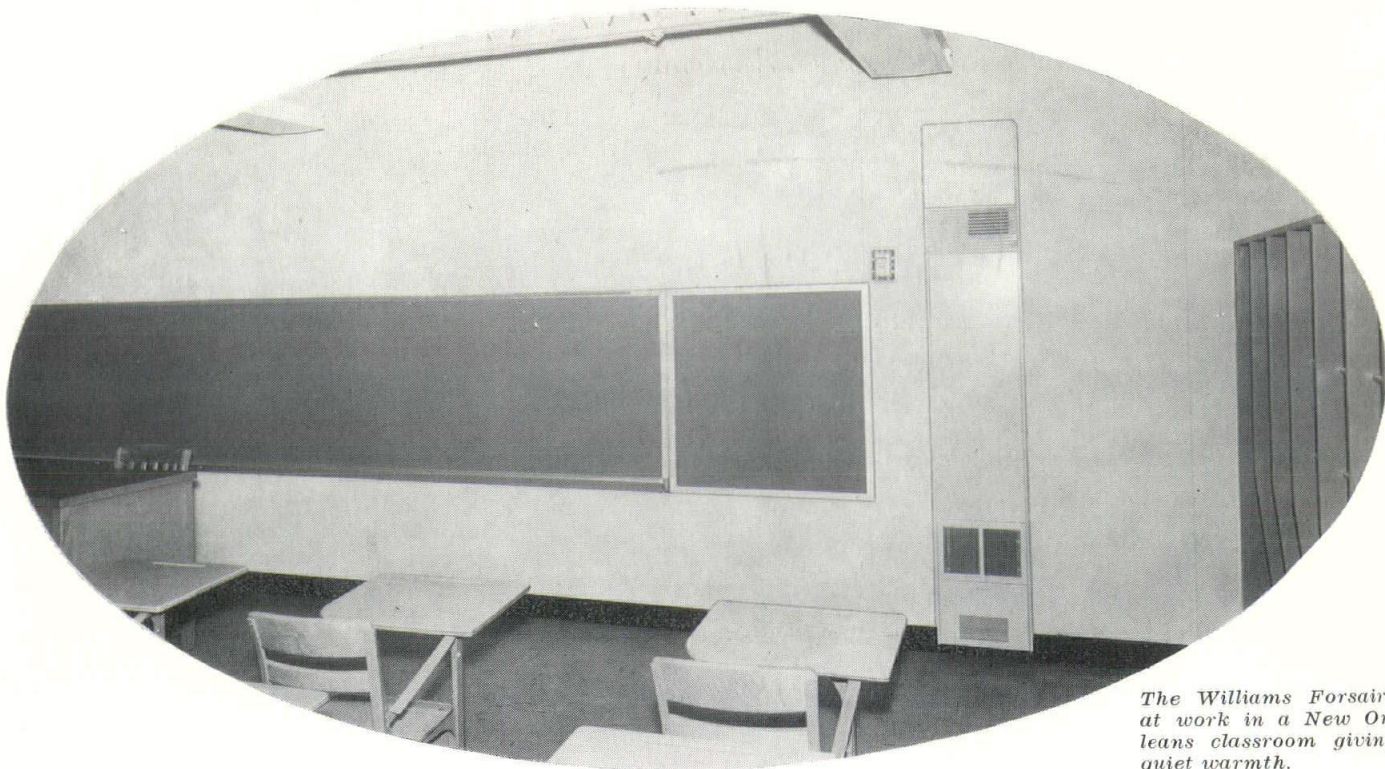
architect

builder

OCTOBER, 1957

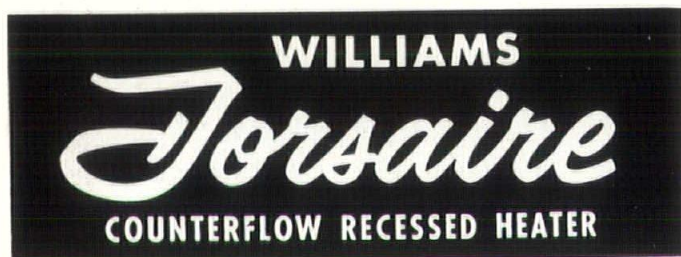


Conference Program	11
Home Week	19
New Prefab	16



The Williams Forsaire at work in a New Orleans classroom giving quiet warmth.

As Low as \$225 per Classroom



COMPACT—VERSATILE
Designed for Quietness and Heating Efficiency



Approved under rigid 1957 Requirements by American Gas Association Testing Laboratories for zero clearance.

The Williams Forsaire was designed in collaboration with architects and school officials to meet the specific need of classroom heating at moderate cost. Several years of use in all sections of the country has proven its efficiency and economy.

The Forsaire is compact, only 14½" by 7" in cross-section. Recessing into the wall, it does not steal valuable desk or blackboard space and blends well with the architecture. Counter-flow, it delivers warmth at the student level and each room is individually controlled.

Best of all, Forsaire is quiet—much, much quieter than ceiling-hung, gas-fired unit heaters. Teachers and students can concentrate on the lesson without distraction. Of course, Forsaire carries a ten year warranty.

*

Approximate cost including thermostatic controls and Metalbestos vent. Furring, gas piping and external electrical wiring and switches extra.

SOUTHERN // *Heater Company Inc.*

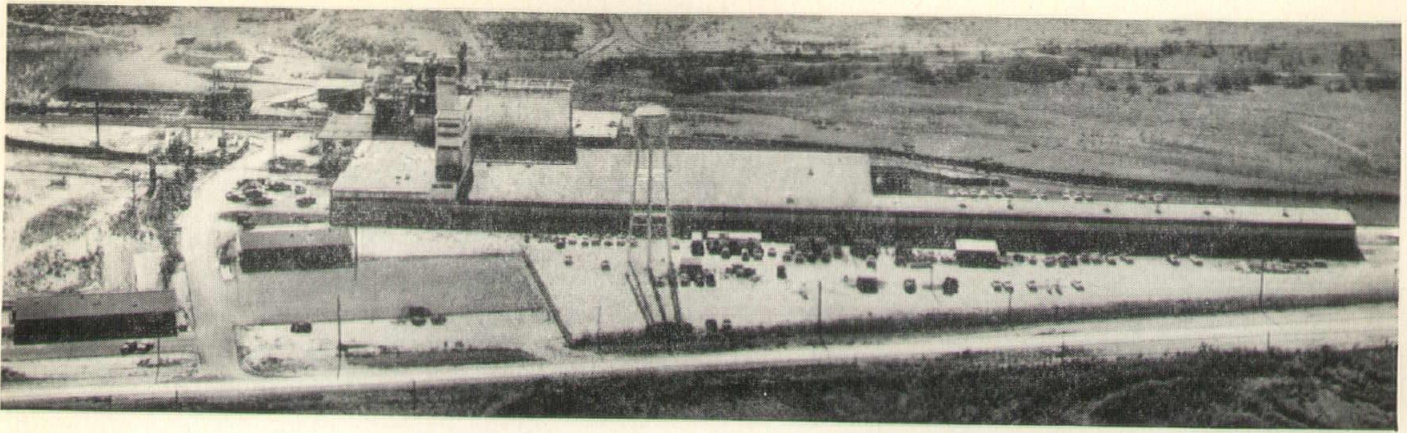
844 BARONNE St.

• Telephone MAgnolia 5525 •

NEW ORLEANS, LA.

Free Parking in Our Lot Across the Street, 841 Baronne St.

MEMPHIS OFFICE: 470 Decatur Street, Telephone BRoadway 6-2732, Memphis



New... serving the Great Southwest

FLINTKOTE

maker of quality building products for over half a century

ANNOUNCES

that it is now producing a complete line of

FLINT^{*}ROCK

GYPSUM PRODUCTS *in its brand new, completely modern plant at Sweetwater, Texas.*

FLINTKOTE GYPSUM PRODUCTS SALES OFFICE: ENNIS, TEXAS
THE FLINTKOTE COMPANY, Building Materials Division, 30 Rockefeller Plaza, New York 20, N. Y.

*A trademark of the Flintkote Company

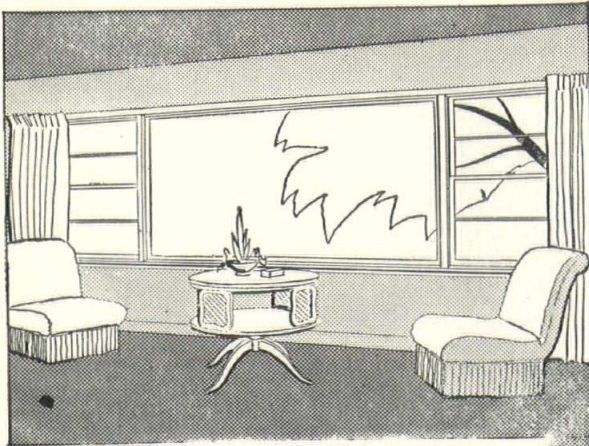


Architects know quality

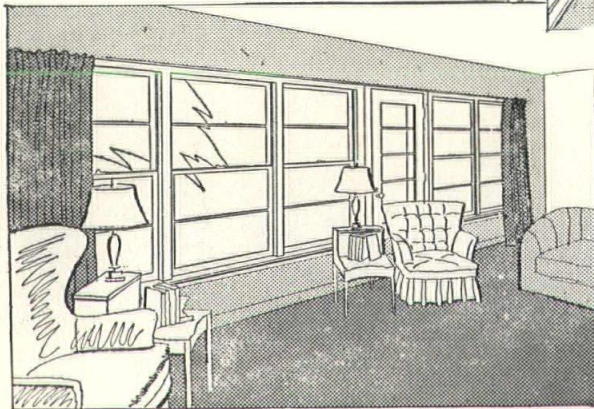
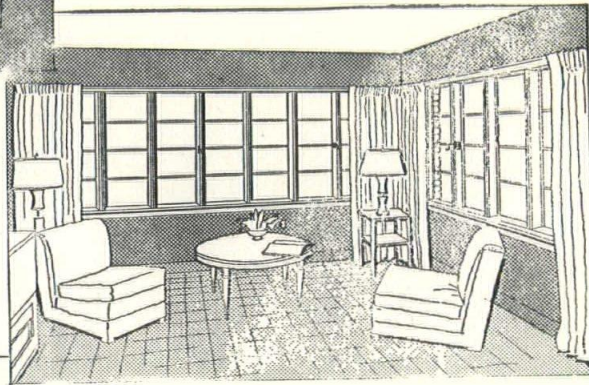
counts most in

WINDOWS

For your next job, examine the fine Curtis Craftsmanship that spells quality in window construction.



A typical arrangement above of a Curtis Silentite picture window, with two Silentite double hung units for ventilation requirements.



For trouble-free casements, the Curtis Silentite wood casements provide watertight construction in a choice of several styles.

Patented "floating" weather-strips provide extra weather protection in Curtis windows. Shuts out dust and dirt, and lowers heating costs in winter.

Architects—
Write Today to your nearest
Curtis Distributor listed below
for your latest Architectural
Detail Kit.



Contact Your Curtis Distributor Below for Specifications
and Information on Curtis Products.

NEW ORLEANS
Bernard Lumber Company, Inc.
7833 Edinburgh St.
Telephone AUdubon 0814

BATON ROUGE
Ronald A. Coco, Inc.
3717 Florida St.
Telephone Dlckens 2-5242

EDITORIAL

ADVISORY BOARD

O. J. Baker, A. I. A.

Secretary

Louisiana Architects Association
Baton Rouge, Louisiana

Arren Broussard

Executive Manager Associated
General Contractors of America
Baton Rouge

Ray E. Putfark

Executive Director, Construction
Industry Association of
New Orleans

STAFF

Editor-Publisher

Lloyd Lewis

Art Director

Howard Edwards

Business Manager

Ruth Campbell

The Gulf States Architect and Builder is published monthly at 1391 Highland Road, Baton Rouge, Louisiana. Its circulation is available to members of the architectural and engineering professions; to contractors; sub-contractors; and individuals allied with the construction industry. Circulation figures, advertising rates and related information are published in Standard Rate and Data Service or may be obtained by a request to the publication. All correspondence relative to Editorial and Advertising information should be addressed to the publication, Post Office Box 301, Baton Rouge, Louisiana. Editorial Offices—3435 North Blvd., Baton Rouge—Telephone Dickens 3-7013.

The Gulf States Architect and Builder is an official means of communication between the Louisiana Architects Association and its membership.

architect

builder

OCTOBER, 1957

VOL. 2, NO. 4

architects meet	9
conference program	11
national home week	19
agc to meet	18

DEPARTMENTS

new products	28
blueprint services	29
product application	27
building news	21

COVER PHOTO

Mississippi School for Cerebral Palsy
Photo by Frank Lotz Miller

'GOOFED' DEPT.

One of the many items inclined to make editors loose their hair is to check out a new issue and get real shocked upon finding mechanical errors, and other needling bits of raw journalism miscarriage. Prize examples of which we speak are the subject of what we hope to be corrections, and our apologies to most understanding subjects.

CONTRACTORS MIXED:

In our feature of the new Baton Rouge Chamber of Commerce Building in the September issue, we very incorrectly listed the fine contracting firm of Barksdale & LeBlanc as general contractors on the project.

Credit for the splendid construction of this fine new building should be given the Baton Rouge contracting firm of **Buquet & LeBlanc**.

SOUTHERN HEATER COMPANY:

If Edward Makofsky, newly appointed representative of the Southern Heater Company, Inc., could read the news announcement related to his appointment which appeared in our September issue he's better at jigsaw puzzles than we are. What we



wanted to tell in our mixed-up announcement article was the details of his appointment to the sales force of Southern Heater as announced by Emmett Smith, president of the New Orleans firm.

Southern Heater Company, Inc., is a distributor for Ruud Water Heaters in five and one-half states, and Mr. Makofsky joins his new company following 10 years with one of the largest plumbing and heating houses in the area.

We trust that his many friends will now recognize his new move and we extend our best wishes for his success.—ED.

USE OUR
CLASSIFIED

Columns—Page 29

Letters

● Heartiest congratulations on your first issue of Gulf States Architect & Builder. You have done a grand job in a short time and we all wish you the best of luck and success in the future.

In your article describing the **Baton Rouge Chamber of Commerce** building you listed Barksdale & LeBlanc of Baton Rouge as the general contractors whereas the actual contractor was **Buquet and LeBlanc, Inc.**

I am sure all parties concerned would appreciate your correcting this in your next issue.

Wm. Bailey Smith, A.I.A.

Bodman & Murrell & Smith
Architects

Baton Rouge, Louisiana

(See 'Goofed' Dept. on this page.—ED.)

● Thanks for adding our name to your list to receive the Gulf States Architect and Builder. We believe that you are doing the Gulf States area a big service especially for the construction industry by the publication of this magazine.

We will look forward to receiving your future issues.

Bert M. Ellis

Nashville

MEETINGS and EVENTS

● **October 6-9—Eighth Annual Gulf States Regional Conference, A.I.A.,** Birmingham, Alabama.

● **October 13-20—Arkansas Home Builders Association,** Parade of Homes, Little Rock, Arkansas.

● **October 25-26—Louisiana State Council, Associated General Contractors of America,** Roosevelt Hotel, New Orleans.

● **October 30 - Nov. 1—Texas Region, American Institute of Architects Regional Conference,** Dallas.

● **October 31 - Nov. 2 — Central States District, American Institute of Architects,** Regional Conference, Hotel Skirvin, Oklahoma City Oklahoma.

● **January 26-30—Associated Equipment Distributors,** 39th annual meeting, Conrad Hilton Hotel, Chicago.

Please address all communication to the Editor, P. O. Box 301, Baton Rouge, Louisiana.

Comment From Page 30—This Issue

Our Editorial Advisors Comment on topics of present day concern—Page 30.

“ . . . It would seem to me that if the client, especially school boards had an up-to-date cost figure in preparing budgets, everyone would benefit by it.



The . . . department is contemplating a research project that will be of benefit to all phases of the industry. . . ”

O. J. Baker, A.I.A.

“ . . . The folks who journey to Birmingham for the . . . meeting, indicate by their mere presence a deep interest in the problems of the profession . . . it is gratifying to see the increasing participation on the part of architects and engineers in industry matters . . . ”



—Ray E. Putfark

“ . . . Bid prices can be affected by so many variables; projected wage increases, projected price advances, site peculiarities, etc. Budgets are fine and are necessary, particularly with public bodies, but are accurate only to the extent of the accuracy and ability of the person preparing them . . . ”

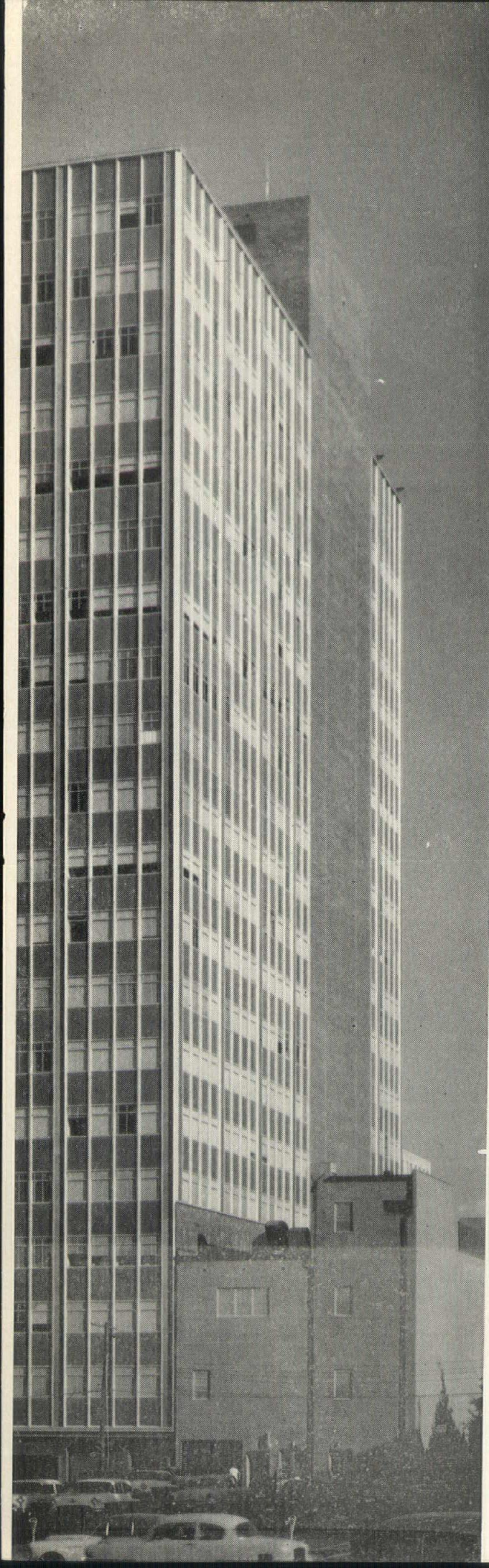


—Arren Broussard

(ED NOTE — We appreciate these communications from our readers and always welcome suggestions and comments.)

For those who desire to send editorial material to the editors for publication, we suggest that a note be enclosed stating requested dispositions of papers and photographs.

ARCHITECT and BUILDER



Publisher's Letter

The theme of the 8th Annual Conference of the Gulf States Region, A.I.A. is a timely one . . . 'the Architect and his role in the expansion and industrial development of the South.' It denotes the desire to better understand not only the opportunities that exist for us today, but also the awareness of the problems that are being faced and those that will have to be solved tomorrow.

One such problem is the creation of a proper attitude in those responsible for growth investment in the South. Much has already been done, however it is our observation that in other areas the true picture of the vast opportunities that exist in the South, both socially and economically, are not too clearly defined, and in many instances are not correctly stated by those responsible for the molding of public opinion.

We have every reason to be proud of our industrial progress, and our ability to utilize our available vast resources, through technical knowledge and skill, however let us not lose sight of the constant need to keep telling the true story of this progress. The Annual Conference of the A.I.A. is an excellent means for this purpose.

Most cordially,

Henry D. Lewis

Thanks to you -

Southern Heater Co. is celebrating its

25th ANNIVERSARY

Thanks to you -

we've had 25 happy, prosperous years as

RUUD
WATER HEATER DISTRIBUTORS

in Louisiana, Mississippi, Arkansas,
Alabama, Tennessee and N.W. Florida

All of us at Southern Heater Company say "Thanks to you" for your part in helping us grow. You've helped us build the largest group of water heater specialists in the South—a friendly organization geared to give you service at all times. Your faith in Ruud and Southern Heater enables us to serve you with offices in two cities, modern showrooms, complete shops, warehouse and control depot in New Orleans, and sales representatives throughout the territory. Thanks—we pledge to you continued service, quality and satisfaction!

SOUTHERN

Heater Company Inc.

844 BARONNE ST.

• Telephone MAgnolia 5525 •

NEW ORLEANS, LA.

Free Parking in Our Lot Across the Street, 841 Baronne St.

WAREHOUSE and CONTROLS DEPOT: 522 Montegut St., Telephone BYwater 8323, New Orleans
MEMPHIS OFFICE: 470 Decatur Street, Telephone BRoadway 6-2732, Memphis



Emmett A. Smith
President



Lawrence Babst
Secty.-Treasurer



Henry N. Stall
Vice-President



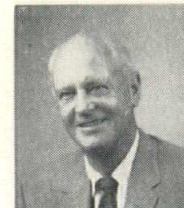
A. J. Saucier
Vice-President
Memphis



Alvin J. Songne
City Sales Mgr.



Albert E. Sabrio
Credit Manager



Walter Forshag
Salesman



Buddy Gullette
Salesman



Fritz Hansen
Salesman



J. Stephen Lanier
Salesman



Ed Makofsky
Salesman



Herman M. Toups
Office Mgr.
Memphis



Herbert Berrigan
Salesman



Jack Wild
Floor Sales



G. Woody Jackson
Whse. Supt.

*Remind your clients
to see
the new RUUD WATER HEATERS
Buy Once—Buy Wisely—Buy RUUD
Write for Complete Catalog*



Two top speakers scheduled to appear at the 8th Annual Conference, A.I.A., in Birmingham, October 6-9, are from left: Keen Johnson, vice president, Reynolds Metals Company, and a former governor of Kentucky; and Angus Wynne, president, Great Southwest Corporation, of Ft. Worth-Dallas, Texas.

Architects Meet in Alabama Eighth Annual Conference Set

With a theme which appraises the role of the architect and other professional planners in the dynamic changes taking place in the South, the Gulf States Conference, A.I.A. set for October 6-9 in Birmingham promises to attract the largest attendance ever experienced by the event, according to conference officials.

A considerable portion of the scheduled program includes a roster of nationally prominent speakers closely identified with community growth and planning. This, coupled with an array of social highlights is scheduled to provide delegates with four days of informative and entertaining relaxation, according to Nelson Smith, conference general chairman.

Registration October 6

Registration will begin Sunday, October 6 at the Dinkler-Tutwiler Hotel, headquarters for the conference. Cocktails and a Buffet Dinner at the Mountain Brook Country Club are also scheduled for opening day.

Product Exhibit

A product exhibit showing latest in materials, services and methods by participating manufacturers will be displayed in the Terrace Ball Room of the Hotel.

Ralph Delahaye Paine, Jr., publisher of *Fortune* and *Forum* will deliver the keynote address at a luncheon on Monday. Paine will discuss "The New Century", and opportunities and responsibilities of architects and planners in guiding the growth of our communities.

Keen Johnson, vice president for public affairs, Reynolds Metals Products, and a former governor of Kentucky will address the conference Monday evening.

Other prominent speakers include, Angus Wynne, president, Great Southwest Corporation, Ft. Worth-Dallas, Texas; Max Wehrly, executive director, Urban Land Institute, Washington, D. C.; Philip Will, Jr., F. A. I. A., Chicago; E. Todd Wheeler, F. A. I. A., Chicago; James J. Souder, A. I. A., New York; Morris Ketchum, Jr., F. A. I. A., New York, and Morgan Yost, Chicago.

Panel discussions also are scheduled and include "Community Planning" with William Bailey Smith, president, Louisiana Architects Association, as chairman. Moderator of the panel on community planning will be Arch Winter, Mobile, Alabama. Panelists include, John Osman, vice-president, Ford Foundation Fund for Adult Education, White Plains, New York; Oscar Stonorov, A. I. A., A. I. P., Philadelphia; Karl Van Leuven, Jr., Associate, Victor Gruen Associates, Detroit; and Richard W. Poston, Director, department of community development, Southern Illinois University, Carbondale, Illinois.

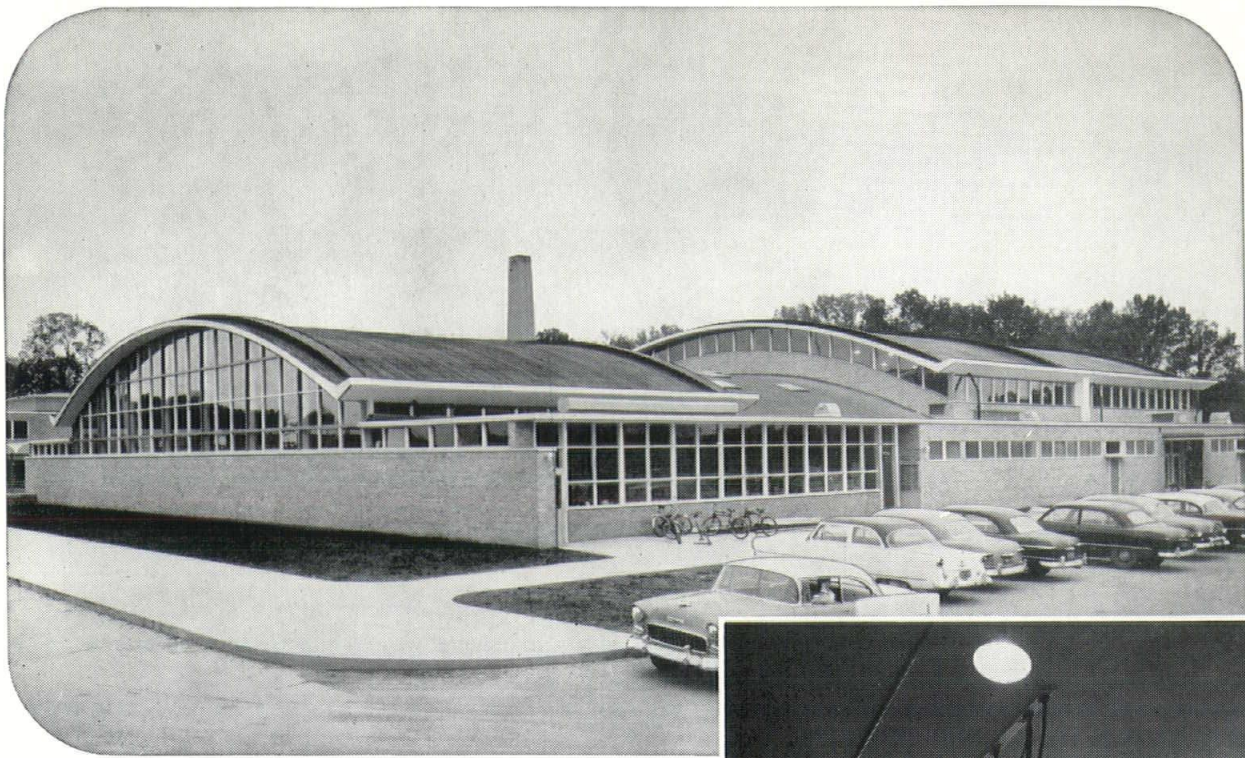
William I. Rosamond, president, Mississippi Chapter, A. I. A. will head a panel on "Community Buildings" with E. Todd Wheeler, as moderator.

Gordon Wittenberg, Little Rock, Arkansas, architect and president of the Arkansas chapter is chairman of a panel discussion Monday afternoon on "Plant Location". Panelists include W. Cooper Green, vice president Alabama Power Company, Max Wehrly, executive director, Urban Land Institute, Washington, D. C., Fred J. Bashaw, lecturer, and producer of real estate films, West Palm Beach, Florida; James F. Steiner,

(Continued on Page 26)



A huge product exhibit showing the latest in building materials will be displayed for visiting architects at the convention hotel throughout the Conference.



Design of Edsel Ford High School features distinctive, economical Concrete Shell Roofs

The first concrete shell roofs constructed in Michigan were used in the Edsel Ford High School in Dearborn. Four shell units were built: two over the boys' gym, one over the girls' gym, and a fourth over an intermediate building housing the swimming pool and locker rooms. All four roofs have spans of 100 ft. and identical arches of 121-ft. radius and a rise of 13 ft.

Concrete shell roof construction was selected because (1) it provided unobstructed interiors, (2) it was adaptable to the architectural design and (3) it was economical to build.

Concrete shell roof construction is gaining rapidly in popularity with architects and engineers for buildings requiring large unobstructed floor areas. Roofs with spans up to 300 ft. and more can be built without interior columns. They are ideal for auditoriums, exhibit halls, hangars, train sheds, repair shops and warehouses.

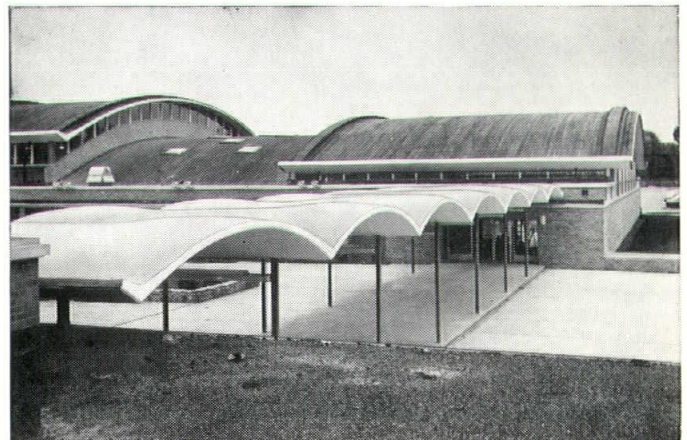
Concrete shell roofs are economical to build, need little or no maintenance, have long life and low insurance rates. They are true *low-annual-cost* construction. Write for free illustrated literature. Distributed only in the United States and Canada.

PORTLAND CEMENT ASSOCIATION 611 Gravier Street, New Orleans 12, Louisiana

A national organization to improve and extend the uses of portland cement and concrete . . . through scientific research and engineering field work



Large photo shows completed structure. Girls' gym is in foreground, boys' gym in rear. Depressed roof between gyms covers swimming pool and locker rooms. Small photo above shows clean, unobstructed interior in boys' gym. Photo below shows how shell roof design was repeated in roof over walk connecting gymnasium wing with auditorium. Architect, Eberle M. Smith Associates, Inc.; engineer, Alfred Zweig; contractor, O. W. Burke Construction Co. All are from Detroit.



ACTIVITIES OF THE GULF STATES REGION A.I.A.

John Hayes Pritchard, Tunica, Mississippi—Director

Wm. Bailey Smith, Baton Rouge, Louisiana—Secretary-Treasurer



Among the participants on the program of the Conference program at Birmingham, October 6-9, are, from left: W. Cooper Green, vice-president, Alabama Power Company; Samuel B. Zisman, planning consultant, Ft. Worth, Texas; and Max S. Wehrly, executive director, Urban Land Institute, Washington, D. C.

Conference Committee Sets Stage With Well Planned Program

For those who attend the 8th Annual Conference of the Gulf States Region, American Institute of Architects, the host planning committee has arranged for a full, interesting and entertaining program.

Headed by Nelson Smith, architect of Birmingham, the conference committee has worked for months in preparation of a program placing emphasis on the architect and his role in the expansion and industrial development of the South.

Assisting Smith on the general conference committee has been Paul M. Speake, Budget & Finance; William N. Chambers, Civic Awards; Evan M. Terry, Honor Awards; Edwin M. Paul, Hotel and Meals; Mrs. J. Marion Thrasher, Ladies' Events; Charles J. Snook, Products Exhibits; Lawrence Whitten, Program; Wilmot C. Douglas, Public Relations; William E. Morris, Publications; Edwin T. McCowan, Records.

Registration at the conference is in charge of Allen L. Bartlett, and Charles Kelley heading student activities committee. Brooke B. Burnham heads the Tours Committee.

In addition to regular conference activity and social functions, a number of state groups will hold meet-

ings during the 4-day event. The Alabama Chapter will hold its quarterly business meeting at 3:00 p.m. on Sunday, October 6. The Louisiana



Smith

Architects Association also has scheduled a business meeting in connection with the conference. The date and location of the meeting is to be announced.

For the first time in the Region, an award program for architectural draftsmen will become a part of the conference activity.

Awards will be made to five architectural draftsmen whose work has been judged during the week prior to the conference.

The purpose of the competition, co-sponsored by many of the blueprint companies throughout the five-state area, is to stimulate greater interest and pride in the technique of architectural drafting and due regard to processes used in reproducing drawings.

Monetary awards to be donated by participating blueprint companies are: First Prize \$125.00; Second

Prize, \$75.00; and three Third Prizes at \$50.00 each. Appropriate citations will also be awarded to the winning participants.

Conference Briefs

Sunday, Oct. 6

- 1:30 P.M.—Registration
- 3:00 P.M.—Alabama Chapter meets
- 6:30 P.M.—Cocktails & Buffet, Mountain Brook Country Club

Monday, Oct. 7

- 9:30 A.M.—Opening Session
- 12:30 P.M.—Luncheon
- 2:30 P.M.—Panel Discussion "Plant Location"
- 4:15 P.M.—Motion Picture "Dynamic American City"
- 7:00 P.M.—Dinner - Hotel Dining Room

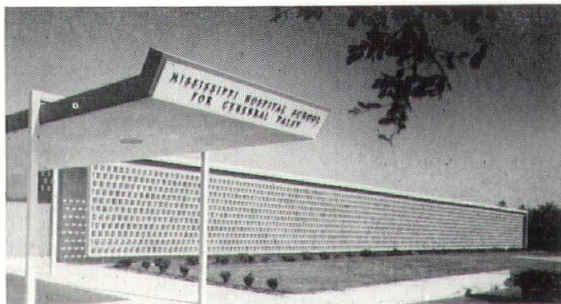
Tuesday, Oct. 8

- 7:30 A.M.—Chapter Breakfasts
- 9:00 A.M.—Panels - "Community Planning"
- 10:45 A.M.—Discussion "A Planned Industrial Community - Angus Wynne"
- 12:30 P.M.—Luncheon at Hotel
- 2:30 P.M.—Panel - "Community Buildings"
- 6:30 P.M.—Deep South Follies - Birmingham Country Club. Cocktails - Dinner Announcements of Awards

Wednesday, Oct. 9

- 9:30 A.M.—Panel Discussion "Industrial Buildings"
- 12:30 P.M.—Luncheon - Hotel

*A modern new
building for the
Handicapped child
expressed in
a manner utilizing
the maximum
means of theraputic
treatment*

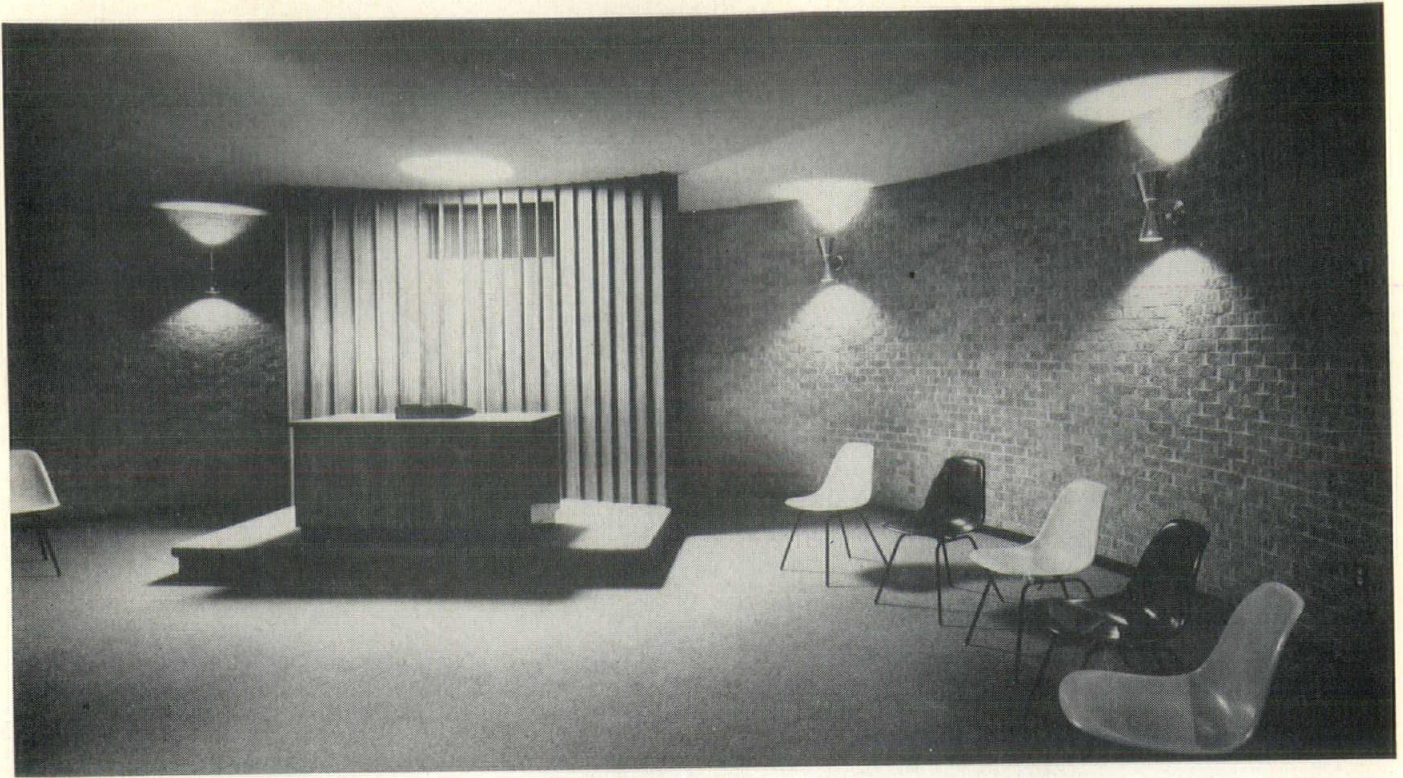


Frank Lotz Miller



Curtain Walls and Rotund Brick Chapel

—Frank Lotz Miller



School For Handicapped Children

Design Is Merger of Institutional With Domestic

Design requirements of The Cerebral Palsy Hospital School for the state of Mississippi, by architects Biggs, Weir, and Chandler, of Jackson, was basically three fold . . . to provide a home, a school, and theraputic facilities in one package for children afflicted with cerebral palsy.

Every effort was made in the solution to link these functions into an integrated whole and pleasant environment without loss of operating efficiency. This involved a merger of institutional and domestic activities which was approached with the thought of surrounding institutional requirements in a domestic atmosphere, or from the child's point of view, to make play out of chores.

All major spaces are visually opened to the out of doors in an effort to extend the child's

circumstantially limited environment as far as possible. A central open court functions as a theraputic space and sheltered play area simultaneously. Its long dimension is equalivent to the width of a four lane highway so that as the child learns to walk and play in the length of the court, he also learns to cross major traffic ways.

A rotund chapel is slightly pegged away from the central building so that the children may literally "go to church" as others do and find in the circular space a positive change of environment.

The building is air-conditioned throughout for maximum comfort level; and though slick and durable surface finishes were required for maintenance purposes, austerity is minimized with bright colors and playful

wall paper and fabrics in "out of reach" places.

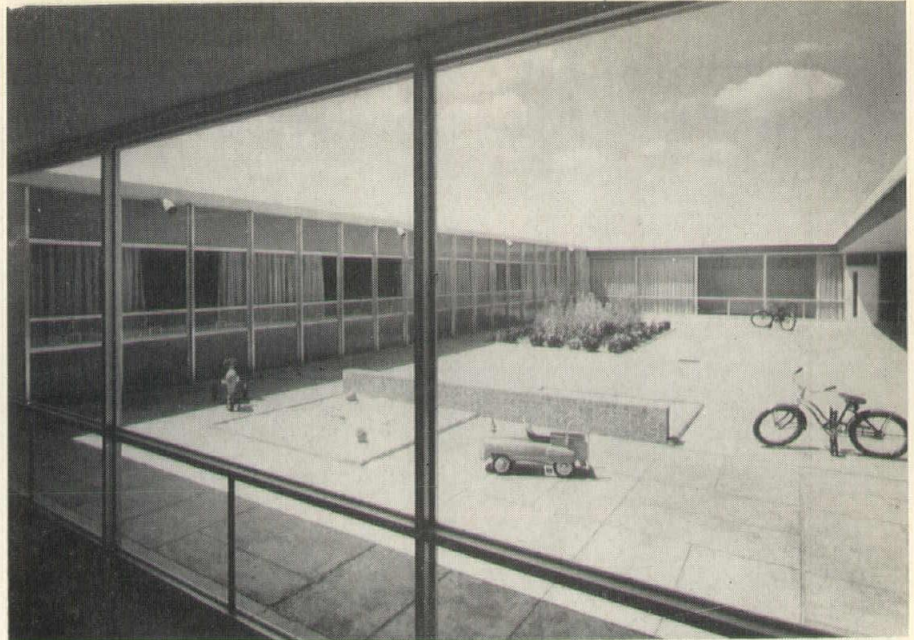
Facilities include, dormitory units for 64 children with individual units accomodating 4 children each complete with toilet facilities; two classrooms; a library; specialized mental and physical therapy rooms; dining room and kitchen; the chapel, recreation area, and an administrative suite.

Total cost of the project, exclusive of furnishings was \$421,581.00 for approximately 25,000 square feet of enclosed space.

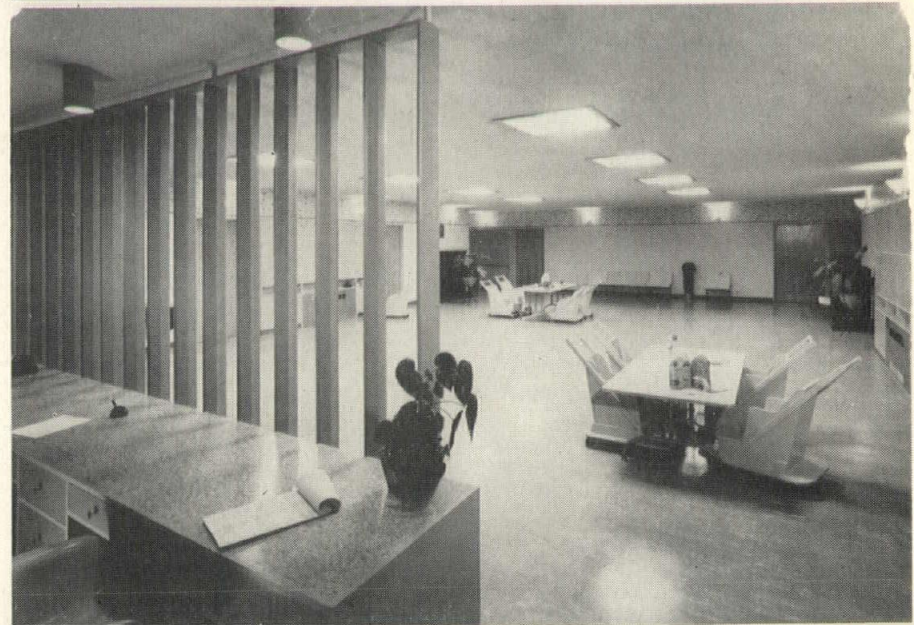
G. E. Bass and Co., General Contractors, of Jackson, Mississippi were general contractors on the project. Matthews Electric Company, and Davis Plumbing Company, both of Jackson, were contractors respectively for electrical and mechanical work. Structural engineering was done by Post & Witty, of

ARCHITECT and BUILDER

Jackson. Mechanical and electrical engineering was executed by the architects.

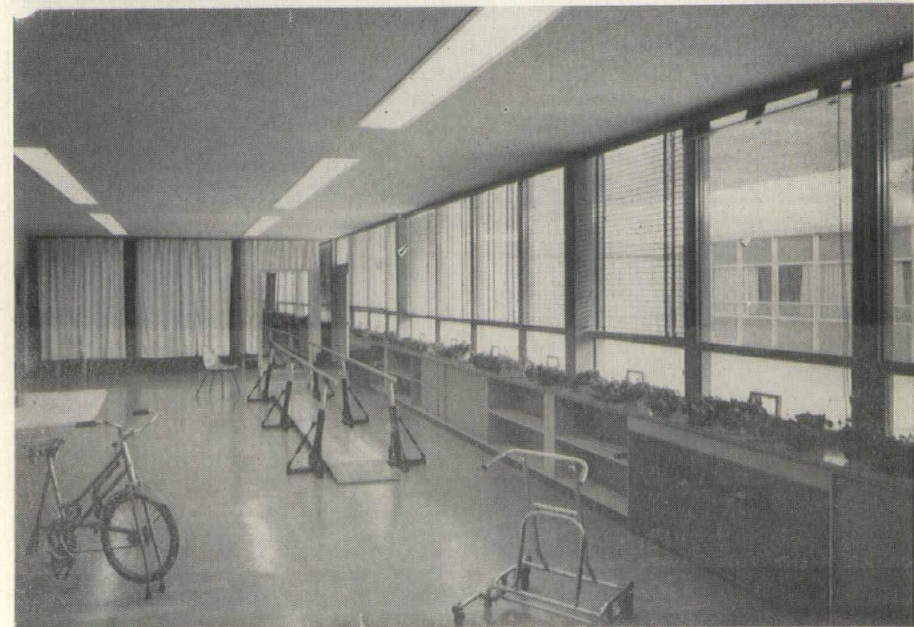


Top photo on this page shows courtyard which doubles as play area and therapeutic space. Also provides maximum use of natural lighting through curtain walls to interior rooms. Photo was taken looking out from the cafeteria.



In the next lower photograph note the lively wall paper, specially designed seating arrangements in the project's day room.

Bottom photo shows interior of physical therapy room with mechanical treatment devices.



Photographs by Frank Lotz Miller.

DEVELOPMENT OF NEW DESIGN IN PRE-FAB CONSTRUCTION ANNOUNCED

This is a report on the development of a new concept of residential and commercial construction developed in the deep South. One of its salient features . . . the use of a central administration and utility core has been the subject of considerable discussion in recent years, especially in school construction.

The Poligon Building described below was developed by Durel Black, a New Orleans business and construction industry executive, who has spent months with his consulting architects in perfecting a design with a seemingly universal application for mass production through pre-fabrication.—Ed.

The Poligon . . . a new concept in building construction is perhaps best described by its name.

Developed in New Orleans by Durel Black, prominent construction industry executive, with the architectural firm of Curtis & Davis as design consultants, the new building type has been announced as a major move in the field of residential and commercial prefabrication.

Its chief features are centered around a "core" system, and its structural requirements adapt it to maximum use of prefabricated members which allow for a versatile use of removable wall units, windows, exterior wall surfaces and a variety of interchangeable components.

According to the consulting architects, the new plan contains many possibilities for its use and application . . . restaurants, tourists courts, neighborhood shopping centers, schools, churches, and single or multi-family housing units.

Developers of the plan state that the economy in construction stems through the use of factory produced prefabricated parts, with the core system pro-

viding centralization of all mechanical and electrical equipment. Structural features include the use of standard Butler steel frames, "Thermo-Con" cellular concrete roofs and walls, bonderized steel windows and doors, and reinforced concrete floor slabs.

The central mechanical and electrical core allow for changes in the floor plan of each unit with a minimum of adjustment.

According to Carl E. Woodward, president of Gulf Buildings, Inc. in New Orleans, and a distributor for Butler Steel products, the new design has outstanding possibilities because of its ability to be mass-produced and its use for all price ranges in construction.

Andrew Higgins, president of Higgins, Inc., manufacturer of Thermo-Con said that because of the ability to utilize a versatile material on both exterior and interior wall surfaces the Poligon offers an outstanding opportunity for the expansion of the pre-fabrication field.

Mr. Black, developer of the new design said that much research has gone into his program. He pointed out that he



Durel Black

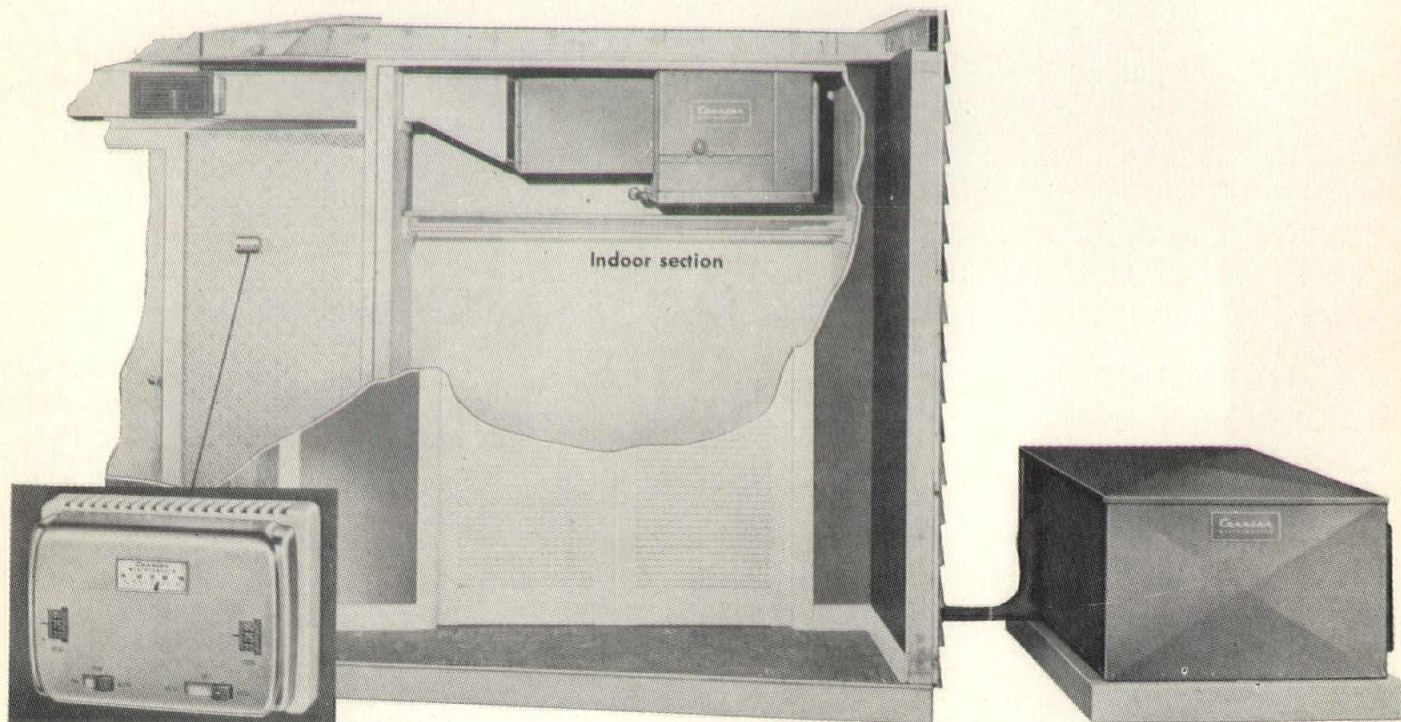
feels the design is so versatile that the local architect has now available a means of utilizing the basic principles of the "core" system with its advantages for individual expression adapted to specific job requirements. Black said that a patent is pending on the Poligon system, and the new company is programming the marketing and distribution throughout the construction industry.

From an architectural point of view, the consulting architects expressed the belief that the plan offers the maximum use of space around the exterior wall surfaces and its pre-fab structural members permit the adjustment of its height and size to fit specific requirements. Insulation qualities are found in a Thermo-Con lightweight concrete (precast) roof. They also point to a feature of flexibility through the use of removable module exterior wall panels allowing for changes and modification at the same time providing durability as a principal feature.

Carrier's

New "Climate-Balanced" concept . . .

lowers first cost, installation cost, operating cost



Two-section construction gives great flexibility in design

Versatile in its design application for Commercial and Residential Specifications

Electrical Characteristics — single phase model for 230 volts and a three-phase model for 208-220 volts for 60-cycle current.

Five Year Protection Plan covers the entire refrigeration system; all other parts are protected for one year. Defective parts are replaced or repaired without charge.

Optional Equipment—additional electric heater units including heater elements and controls. Time delay devices for individual heater elements. Mounting legs to elevate the Outdoor Sections are also available.

The Carrier Heat Pump Weathermaker takes full advantage of its "Climate-Balance" and is most efficient at the greatest number of operating hours, it offers lower operating costs over the entire year.



For Detailed Information
Contact Your Local Carrier Distributor Listed Below

SHREVEPORT, LA.
Air Conditioning Distributors
Telephone 2-4529

LITTLE ROCK, ARK.
A. W. Johnson Co.
FR 4-8223

NEW ORLEANS, LA.
Industries Sales, Inc.
MA 5271

MEMPHIS, TENN.
Stephens Bros.
JA 7-0475

MOBILE, ALA.
Equipment Sales
GR 7-0401

GREENWOOD, MISS.
Air Conditioning Sales
Telephone 2645



Discussing activities of the annual Louisiana state convention, Associated General Contractors of America to be held in New Orleans, October 25-26, are from left: Winfred Spano, estimator, Buquet & LeBlanc, Baton Rouge contractors; Al Buquet, president, Louisiana State Council, AGC; Arren Broussard, secretary of the Council; and Robert M. Stuart, office manager, Buquet & LeBlanc. (A&B Photo).

La. Contractors Set Meeting

The annual state convention of the Associated General Contractors of America will be held October 25-26 at the Roosevelt Hotel in New Orleans.

According to Al Buquet, Baton Rouge, president of the state AGC council, more than 100 Louisiana contractors and their wives are scheduled to attend the two-day event.

Heading a list of prominent speakers on the conference program are F. W. Heldenfels, AGC National vice president, Corpus Christi, Texas; William Dunn, of the AGC national staff, Washington, D. C.

Others to appear on the program are: R. L. Richardson, director, Louisiana Department of Highways; and Wm. Bailey Smith, A.I.A., president, Louisiana Architects Association.

Alabama Launches Industry Drive

A long-range program to assist some 300 Alabama municipalities to attract industry will be launched in the near future.

According to Pleas Looney, director of the Alabama State Planning and Industrial Development Commission, industrial brochures will be completed in the next few weeks and will be used in an organized promotion.

According to Looney, the state board plans to implement a present program conducted by county industrial boards. Looney said the primary importance is given to determine the type of industry best adapted to each community, and local conferences will

be held to determine what problems must be overcome in order to attract labor.

Mobile Housing Project Planned

A low-rent housing project consisting of 90 buildings comprising 407 dwelling units are scheduled to be built in Mobile, Alabama.

Located in the vicinity of Owens School, primary purpose of the project is to provide housing for families displaced by an 18-block urban redevelopment project extending from the west end of Beauregard Street to the north end of Broad Street.

Clearing of buildings for the redevelopment project is now in progress.

A Public Housing Administration Commitment to loan \$3,900,000 has already been issued, however, on original bids, received July 30, G. E. Bass of Jackson, Mississippi, submitted the low bid of \$4,298,033.00. New bids were scheduled to be received in mid-September.

Little Rock Gets New Federal Bldg.

A new \$9,000,000 Federal office building is scheduled to be constructed in Little Rock, Arkansas, according to a recent announcement.

The Government Services Administration recently paid \$650,000 for a vacant lot next to the Little Rock Post Office building. Once the site of Peabody School, the property was bought for \$450,000 in December, 1955, from the Little Rock School Board by the National Equity Life Insurance Company.

Producers' Councils Plan Training Course

Building materials and equipment manufacturers will have the opportunity this fall of enrolling their architectural salesmen in a unique new training course aimed at improving their effectiveness in selling and servicing the architectural profession, according to an announcement by the Producers' Council, Inc.

According to Council President Fred M. Hauserman, the purpose of a series of schools for training is to develop in the salesman an understanding of the problems and desires of the architect and his associates, and by so doing to create a harmonious and profitable working atmosphere.

Hauserman, who heads the E. F. Hauserman Company, Cleveland manufacturer of movable metal partitions, said "this should help establish a high standard for architectural salesmanship that will benefit the entire building industry."

According to the announcement the schools will be conducted on a regional basis at leading universities in conjunction with their departments of architecture. Enrollment at each school will be limited to 60 students, and classes are to be held in four sections, with 15 students assigned to a section. The course will run a full school week, Monday through Friday.

The course outline for the schools was developed by Prof. Raymond A. Fisher, Department of Architecture, Carnegie Institute of Technology, Pittsburgh, and L. L. Prince, American Radiator & Standard Sanitary Corporation, New York. Serving as chairman of the guiding committees are David S. Miller, Kawneer Co., Niles, Michigan, and Frank Uphues, Crane Co., Chicago.

At the conclusion of the course, a copy of the student's record will be forwarded to his employer. His architectural customers also will be notified of his attendance at the Institute.

Further information regarding curriculum and admission requirements may be obtained from: Robert W. Hurst, Executive Assistant, Producer's Council, Inc., 2029 K Street N. W., Washington 6, D. C. Membership in the Producer's Council is not necessary for training course eligibility, the announcement said.

N. O. Builders Stage Home Week

New Orleans home builders staged their annual parade and coronation of National Home Week queen, September 21. These events climaxed a kick-off program to formally observe National Home Week in the Crescent City area.

Sponsored by the Home Builders Association of Greater New Orleans, individual builder members displayed recently completed units in various parts of the city.

Special promotional programs in announcing the event was coordinated with local newspapers through extensive advertising and special editions.

As an interest-booster and means of additional publicity and recognition a Home Week queen was selected from candidates sponsored by individual builder members who exhibited in the show. Coronation of the queen followed a huge downtown parade which terminated at City Hall.

General chairman of the New Orleans event was Morgan Earnest, and Max Ferran, served as co-chairman.

Other committee chairmen and co-chairmen were: Special Events and Civic Affairs—E. B. Norman, Jr., chairman, and Jack Helm, co-chairman; Queen Committee—William C. Osborne, Jr., chairman, and William Jerome, co-chairman. Others include: Max Ferran and Alfred Zeller, chairman and co-chairman of the Builders Participation committee; and Fred C. Loucks, and William Smolkin, co-chairmen of the publicity and advertising committee.

Fred Forstall is president of the New Orleans association.

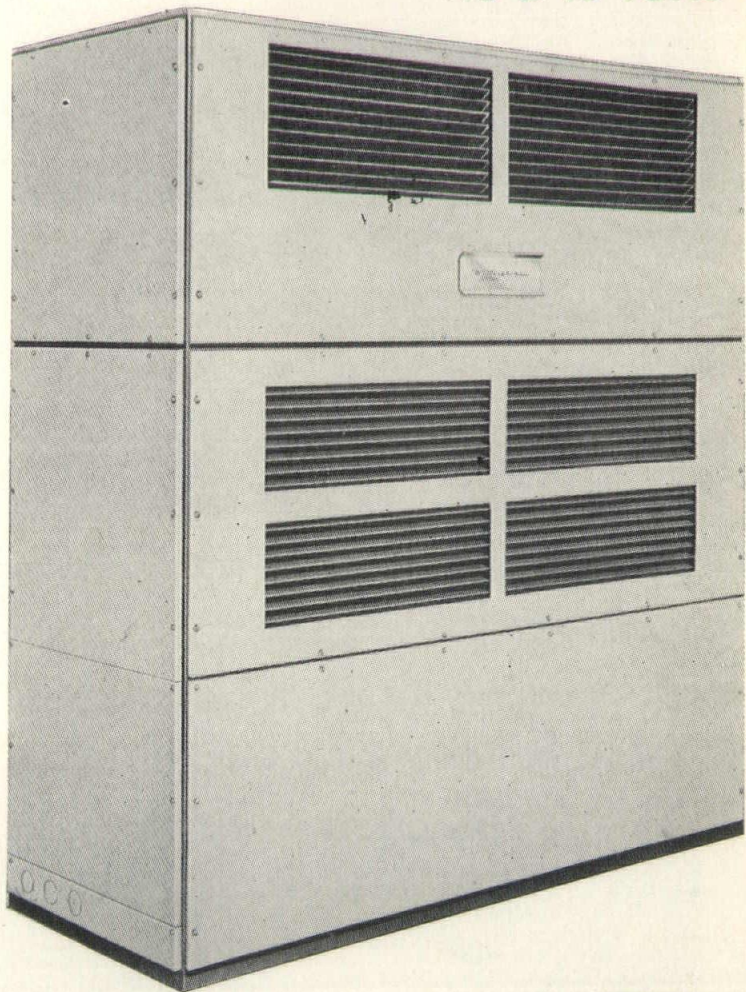
**ARCHITECTS
and
DRAFTSMEN**
See
**Information About
EMPLOYMENT**
PAGE 31
this issue

Mr. Architect:
Mr. Engineer:
Mr. Builder:

We take pleasure in Presenting to You
the NEW

Westinghouse CUSTOM-MASTER

IT LOOKS LIKE THIS!
10 & 15 TONS



**DUAL
COMPRESSORS**

FOR DETAILED SPECIFICATIONS
CALL or WRITE . . . AT ONCE
We KNOW you will LIKE what you SEE!

EQUITABLE EQUIPMENT CO., INC.

Wholesale Distributors
410 CAMP ST.

RA 9744

NEW ORLEANS

Prestressed Concrete Lectures Scheduled

A series of lectures for architects and engineers on prestressed concrete design and construction methods will be held at L.S.U. beginning Oct. 8. Dr. F. J. Germano, head of the civil engineering department at the university has announced.

Eight lectures will comprise the sessions, which will be held in Pleasant Hall. Time for the meetings are 7:30 p.m.

Leading the discussions will be Ashby T. Gibbons of New Orleans, district structural engineer of the Portland Cement Association, and Robert Shoobred, Atlanta, regional structural engineer of the organization.

"Engineers, architects and others interested in prestressed concrete are urged to attend the sessions," Germano said. "We believe they will find information of value and interest."

Subjects to be included in the short course include: introduction to prestressed concrete; materials and prestressing systems; design of a

post-tensioned girder; shear, bond and bearing; prestressed piles, review of specifications; and manufacturing and erection procedures.

Sponsored by the civil engineering department of the LSU College of Engineering and the P.C.A., the talks will be illustrated with visual aids.

Further information may be obtained from Dr. Germano or from Dr. J. W. Brouillette, director of the General Extension Division, L.S.U.

Latt Appointed Sales Manager

John Latt, a former assistant sales manager for the southern division, Thyer Manufacturing Corp., has been named sales service manager for Lumber Fabricators, Inc., Fort Payne, Alabama, according to a recent announcement. LFI is manufacturer of Kingsberry Homes.

A native of Hendersonville, N. C., and a graduate of the school of building construction, Alabama Polytechnic Institute, Latt has recently moved to Fort Payne to assume his new duties.

NAHB Plans For Record Attendance

Plans for a record attendance at the 14th annual convention-exposition, National Association of Home Builders in Chicago, January 19-23 are under way, according to Paul S. Van Auken, convention director for NAHB.

Auken said that a total of 770 exhibit spaces divided between the Conrad Hilton and Sherman hotels and the Chicago Coliseum are available for displays by leading manufacturers of building products, materials and equipment.

According to an association announcement, the preliminary program plans for the January convention call for fewer, but larger, meetings than in previous years. Emphasis will be given to securing nationally recognized speakers and program participants, the announcement said.

Ben C. Wileman, Oklahoma City, and Ernest B. Norman, Jr., of New Orleans are members of the Convention-Exposition Committee comprised of leading association members from throughout the country. The committee is responsible for the program and general plans of the Convention.

Assassination Scene Being Restored

In Louisiana's skyscraper capitol building at Baton Rouge, workmen have been busy restoring the marble and panels marking the capitol corridor scene where gunfire felled the late Huey P. Long.

The marble was removed in 1955 during the administration of former Governor Robert Kennon, who modernized the governor's suite and turned a part of the open corridor into a reception room.

For years, the corridor has been a top tourist attraction in the 34-story capitol the late governor built.

According to building superintendent, Emile J. Bourg, cost of the project is about \$5,000.

Glass Tub Enclosures

for **GLASS** . . .

Fiberglass Panels

Sliding Glass Doors

and a complete line of
BUILDING SPECIALTIES think first of

BINSWANGER & CO.

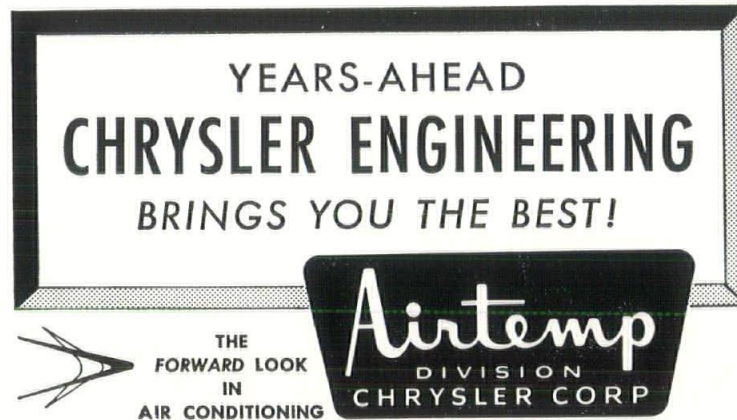
Our representative will be glad to work with you
SHREVEPORT, LA. JACKSON, MISS.

451 W. 61st Street Phone 8-0404 863 S. State Street Phone 2-8313
NEW ORLEANS, LA.
1645 Tchoupitoulas Street Phone CA 7551

NEED DRAFTSMEN?
Architects
See
Details on Page 31
This Issue

- A \$600,000 contract to build a resort motel on Dauphin Island near Mobile, Alabama, has been announced by Hugh North, Mobile real estate firm manager. Roger Hall Construction Co. of Bradenton, Florida, was the successful bidder, the announcement said.
- An appropriation bill carrying \$13,603,000 for military construction in Alabama for the period ending June, 1958, has been signed by President Eisenhower.
- In Little Rock, Arkansas the Federal Government has paid \$650,000 for a vacant lot next to the existing Post Office, for the purpose of constructing a new \$9,000,000 Federal office building.
- Alabama Power Company has won the right to go ahead with plans for the construction of a \$30,000,000 hydro-electric development on the Warrior River. The Federal Power Commission said in Washington that it has issued a 50-year license to the power company for the purpose of building a dam to be known as the Lewis Smith Dam, on the Warrior River at Upper New Hope.
- The FHA has issued its Operations Letter No. 233 which gives interpretations of the Agency's new regulations on charges, fees and discounts. Also included in the new release are specific questions and answers providing FHA Field Offices and the home building industry with detailed instructions on problems encountered since discounts control regulations were issued.
- NAHB has announced its new Housing Almanac, a complete fact-file of the home-building industry. Cost to members of NAHB is \$1.00 per copy.
- According to NAHB's Washington Letter, FHA has issued instructions to its field offices which make it still more difficult in rental housing cases for Mortgagors to withdraw funds from replacement reserves . . . the principal change in FHA policy is a confinement of withdrawals to amounts accumulated for specific items . . . ranges, refrigerators, etc.

Air Conditioning



YEARS-AHEAD
CHRYSLER ENGINEERING
BRINGS YOU THE BEST!

THE
FORWARD LOOK
IN
AIR CONDITIONING

Airtemp
DIVISION
CHRYSLER CORP

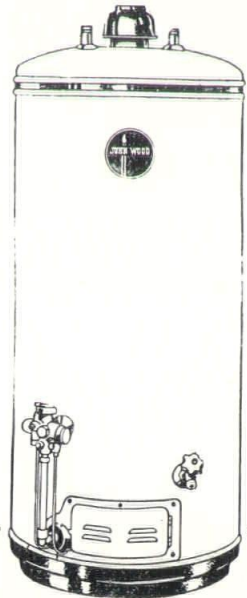
CALL YOUR NEAREST DEALER

OR

FACTORY BRANCH

AIRTEMP DIVISION
CHRYSLER CORPORATION—NEW ORLEANS
1023 BARONNE ST.
NEW ORLEANS, LOUISIANA

*Architects
and Builders*



are giving their
customers more
hot water for
less money than
ever before

JOHN WOOD
PENFIELD
Automatic GAS
WATER HEATERS

give
**LOWEST
COST
PER
GALLON**
Hot Water



Harry Cash Company Inc.

2312 N. 21st ST.
BATON ROUGE
phone ELgin 7-1469

2834 ST. CLAUDE
NEW ORLEANS
phone VA 8828

**PLAN
NOW**



For the Finest in Air-Conditioning

When you're building or remodeling, you should consider the advantages of the All-Electric HEAT PUMP.

The single unit cools in Summer—heats in Winter—changes as the Temperature changes.

Include an Electric Heat Pump in your plans . . . enjoy Springtime comfort the year 'round.

Get free information about the Heat Pump from Gulf States Utilities Company Sales Department.



Gulf States

SERVICE
HELPS YOU LIVE BETTER

Louisiana Realtors Set Meeting

The Louisiana State Board of Realtors will hold its annual convention in Monroe, Louisiana, October 24-26, according to Omer F. Kuebel, New Orleans, president of the group.

Kuebel said that the three-day event will feature a program which will include prominent industry speakers from throughout the United States. Included are, Mrs. Ebby Halliday, prominent Texas realtor, and Arthur Nall, Regional Vice-President, National Association of Real Estate Boards.

Others on the program include, Louis Bisso speaking on "The Effect of Our New Highways on City Planning and Land Use"; Ralph Agate, of FHA, and Joe Finley of the Veterans Administration.

A panel moderated by Gilbert Faulk on "The New Interstate Highways Across the State" will include Allison Kolb; R. C. Bethea; Joel Taylor, and Bisso.

Social highlights of the convention include an evening party at the "Lotus Club"; and a lively shrimp barbecue to be held at the American Legion Club.

E. A. Porter, Jr., Monroe, is general chairman of convention planning and activity.

The state board maintains executive offices at 5131 Government Street, in Baton Rouge. Miss Pat Ellis is executive secretary of the group.

Airtemp Gets Big Contract

The DeSoto Refrigeration Company, Mansfield, Louisiana, has received the contract for air conditioning 24 buildings at Fort Polk, La.

Representing one of the largest air conditioning jobs ever contracted in the state, the installation will consist of 69 Chrysler Airtemp "packaged" air conditioners, plus a number of room air conditioners. Thirty of the "packaged" conditioners will be 8-ton models, 39 will be 5-ton versions.

C. M. Barr, manager of Airtemp's New Orleans division, worked closely with dealer John Sturdivant, owner of DeSoto Refrigeration, in estimating the job and negotiating the contract.

"This is the biggest single installation I know of in this area," said Barr.

He also pointed out that the Fort

Polk air conditioners will be similar to the "packaged" models presently being installed in many New Orleans industrial plants and commercial establishments.

New Alabama Trade Center

A new million dollar International Trade Center for the Port of Mobile, Alabama, is scheduled to be constructed in the near future, according to an announcement by Alabama's state docks director, Knox McRae.

In a modern design, the new proposed structure will rise above the seaport buildings, and visitors will be able to view the port scene from a rooftop restaurant.

Plans call for a building of nine stories with 8,000 square feet on each floor. The structure will provide office facilities for consular officials, steamship agents, foreign freight forwarders, custom house brokers, and space for exhibits by manufacturers, exporters and importers, the announcement said.

Tench Gets New Engineer Post

Col. Charles T. Tench, a former district engineer, Corps of Engineers, New Orleans District, has been appointed as vice president of Palmer & Baker, Inc., engineers, of Mobile, according to Wayne Palmer, president of the firm.

Palmer said that Tench will be in charge of the company's Louisiana and Texas operations.

The new vice president first joined Palmer and Baker upon his retirement from the Corps of Engineers in 1955. He has been an assistant to the president of the consulting engineering firm.

Tench is a graduate of the U. S. Military Academy at West Point, Princeton University, The Engineer School, U. S. Army, and the National War College. He began his Army engineer career in 1929 and served in assignments throughout the U. S. and overseas.

From 1943 to 1945, Col. Tench served as a member of the general staff of Gen. Douglas MacArthur in Australia, New Guinea, Philippines, and Japan. During this time he was awarded the Distinguished Service Medal and the Legion of Merit.

Employees of Corps Receive Awards

Two Arkansas employees of the Corps of Engineers, U. S. Army have been presented with Sustained Superior Performance Awards, according to an announcement.

Colonel Staunton Brown, District Engineer, at Little Rock presented the awards to Norman F. Griffing, building construction superintendent at Blytheville Air Force Base office, and to N. Curtis Hamer, district labor relations officer. The awards included \$200.00 in cash to each recipient.

Griffing has been employed by the Little Rock District almost 20 years, beginning his employment with the Corps in 1938.

Hamer has completed 20 years service with the Corps, virtually all of which has been spent in labor relations work.

Binswanger Sales Exec Resigns

Gordon E. P. Wright, for the past four years general sales manager of



Wright

the Tennessee Division, Binswanger & Co., has resigned to accept a position with the University of Alabama, according to Milton S. Binswanger, Jr., president of the company.

Wright will be director of commerce extension for the University, and a lecturer on business management in the school of commerce and business administration.

A veteran of the glass industry, Wright also plans to carry on research in flat glass and mirror industries and to act as management consultant for a number of business concerns.

Wright came to Memphis, from Raleigh, N. C., and has more than 30 years experience in the glass industry.

DRAFTSMEN

See

HELP WANTED

Page 29

Dauphin Island Motel Built

A contract to construct a new resort motel on Dauphin Island, located at the mouth of Mobile Bay, Alabama, has been awarded to the Roger Hall Construction Co., Bradenton, Florida, according to a recent announcement.

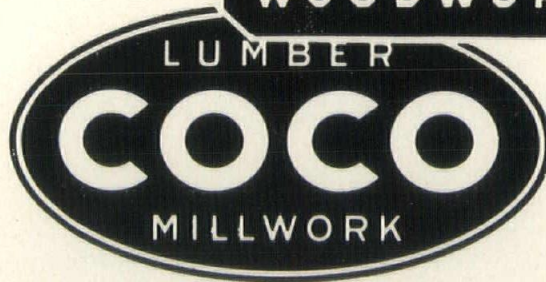
Hugh North, manager of a Mobile

real estate firm, said the cost of the project is estimated at \$600,000.00, with a scheduled additional outlay of \$150,000.00 for swimming pool, pavilion, landscaping and furnishings.

The 100-unit motel is scheduled for completion in five months, the announcement said.

George A. Mellan real estate firm is in charge of development on the island, located approximately 30 miles south of Mobile.

2 good signs



Complete kitchen planning service to help you design and build better kitchens. Our broad knowledge of the incomparable Curtis line will enable you to secure just the right mill work for your next commercial or residential job.



Ronald A. Coco, Inc.

3717 FLORIDA

BATON ROUGE, LA.

DIAL DI 2-5242

Architects Meet

(Continued from Page 9)

manager, construction and civic development department, Chamber of Commerce of U. S., and N. M. Mitchell, consulting engineer, Barnes Textile Associates, Inc., Boston.

Airtemp Announces New Sales Zones

Warren Fitch, formerly regional manager for Airtemp Division, Chrysler Corporation in New Orleans, has been named Zone Manager, Southeast Zone for Airtemp, with headquarters in Atlanta, according to J. F. Knoff, vice-president in charge of sales for the company.

The new appointment is a part of a general reorganization of the sales division of Airtemp, according to Knoff. At the field level five zone operations will replace the company's former ten regional operations.

A Southwest Zone, with headquarters at Dallas will be in charge of zone manager F. G. Hill, the announcement said.

Architects—Builders
Use Our Classified
Columns Page 29

Arcadia Appoints New Salesman

The appointment of C. Carter Ellis as salesman for Arcadia Metal Products in Orange Country, Long Beach and Southeastern Los Angeles County was announced by D. P. Johnson, sales manager for the Fullerton, Calif., firm.

Ellis will cover both the architectural and building fields in his area.

He is a native of Missouri and studied business administration at Washington University in St. Louis, Mo. He has held the position of sales engineer with two California firms, Pacific Coast Electrical and Supply in Los Angeles and R. A. Parker Building Specialties in San Francisco. Prior to these positions he was a field engineer with White-Rodgers Electric Co., in St. Louis.

Ellis, 37, is married and lives in Fullerton.

Arcadia Metal Products manufactures steel and aluminum-framed sliding glass doors and windows for residential and commercial uses. Distributors are located in Canada, Hawaii, Puerto Rico, Cuba, Latin America and throughout the United States.

INDUSTRY
NEWS
12 MONTHS AGO

Horace C. Brown, a former construction official with the East Baton Rouge parish school board, has been named executive director of the contracting licensing board with headquarters in Baton Rouge.

Heading a list of speakers to appear before the 7th Annual Conference of the Gulf States Region, A.I.A., is **Dr. John Ely Burchard**, dean of the School of Humanities and Social Studies, M.I.T.

The annual state convention of local chapters of the **Associated General Contractors of America** is scheduled for October 12-13 in New Orleans, according to **Paul Malone**, secretary of the AGC Council.

Joseph B. Haverstick, president of NAHB was in New Orleans to help kick-off National Home Week.

Theo Maumus, president of **Fletcher Equipment & Supplies, Inc.**, New Orleans equipment firm was presented a quarter century plaque in recognition of his company's service to the construction equipment industry, at a meeting of the **Louisiana Equipment Engineers** in September.

Verdun R. Daste, a New Orleans housing improvement official has been appointed executive vice-president of the **Home Builders Association of Greater New Orleans**, according to an announcement by **Fred J. Forstall**, president of the Association.

Ivan Foley, chairman of New Orleans' OHI committee invited local OHI officials and workers to a meeting October 23 in New Orleans for the purpose of receiving latest information about the program, from OHI national director Jack Doscher.

Plans for the construction of a million-dollar materials center for New Orleans have been announced by **Grimball-van Amerongen**, architects representing a group of local business men.

The Louisiana Realtors Association has scheduled its annual convention for October 18-20, to be held at Lafayette, Louisiana.

The Baton Rouge Chapter of the A.I.A. kicked off its 1956 Honor Awards Competition with a meeting of the Competition Committee September 11. **Carl R. Deen**, of **LeBlanc and Deen, Architects**, is chairman of the committee.

Specify and Use

RICKKRAFT BUILDING PAPERS

and

- ★ Rubber Waterstop
- ★ Fibre and Asphalt Expansion Joints
- ★ Concrete Curing Compound
- ★ Sewer Joint Compound
- ★ Joint Sealers
- ★ Paving Accessories
- ★ Pitt Chem Protective Coatings

CONSTRUCTION MATERIALS, INC.

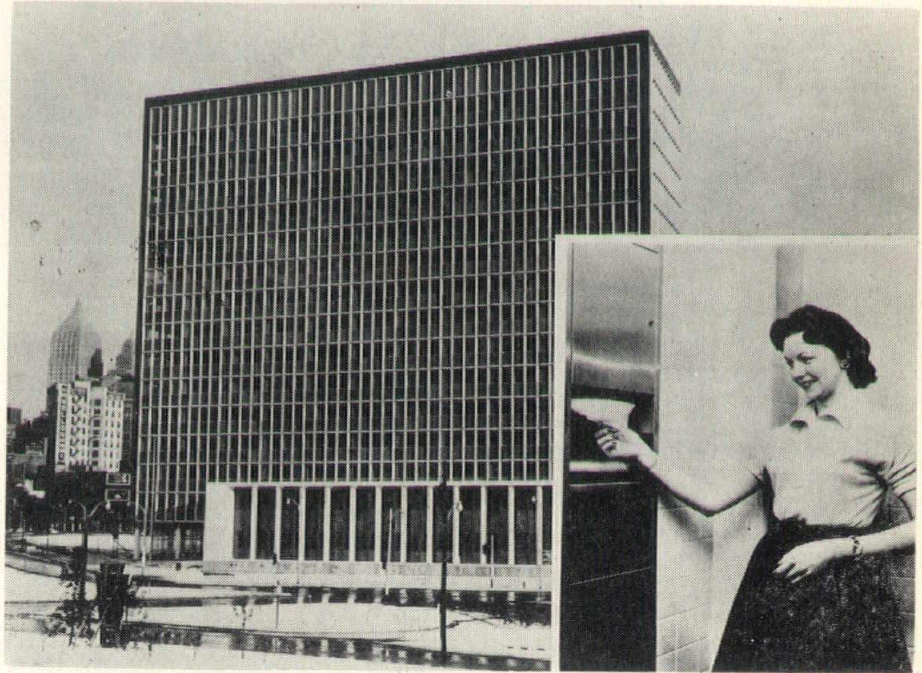
474 NORTH FOSTER DRIVE

P. O. BOX 2427

BATON ROUGE, LOUISIANA

At the new Pennsylvania State Office Building located at Gateway Center in Pittsburgh, recessed paper cabinets are installed in all employee lounges and washrooms.

The Scott Paper Company stainless steel towel units provide installations with a removable towel receptacle provided in each cabinet unit for disposal of used towels.



• Shower Doors

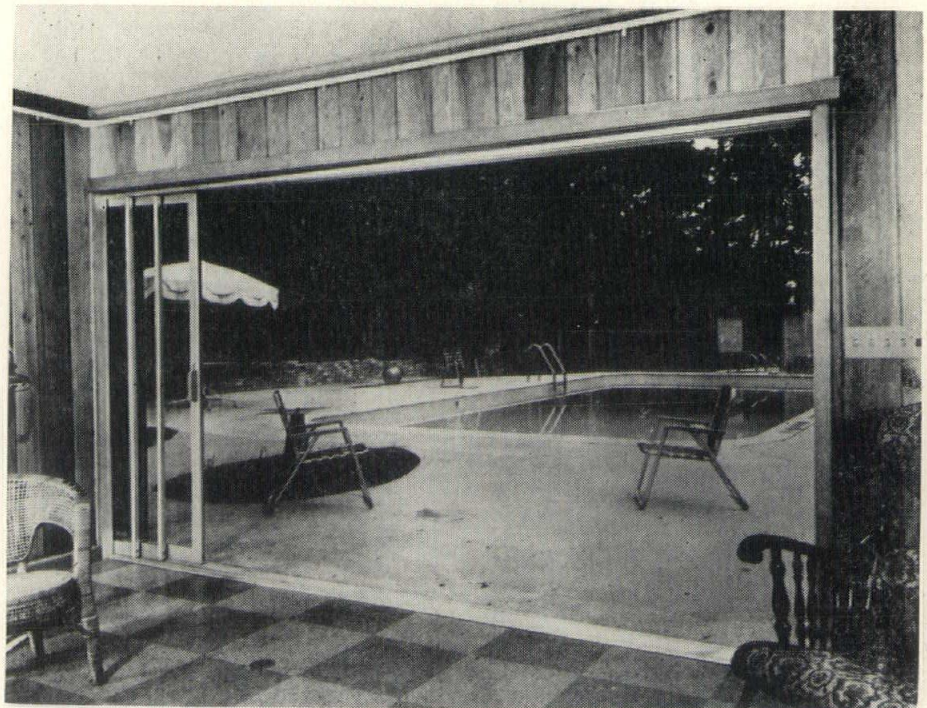
Shower Door Company of America has added a full range of "pocket door" models to its line of Vue-Lume Rolling Glass Patio Doors, according to the manufacturer.

These new Vue-Lume pocket models allow the full width of rolling glass door to be opened as the panels slip easily into a wall recess.

Vue-Lume Rolling Glass Door Pocket Models are available in single and double pocket units of 1, 2, 3, 4 and larger numbers of panels.

Heights are 6'10" and 8' on standard models, with 24 stock widths available. Any width opening can be filled with a combination of standard panel sizes immediately available.

Introduction this year of Vue-Lume Rolling Glass Patio Doors marks the beginning of a long-range program of product diversification by Shower Door Company of America, the announcement said.



a

b

NEW

PRODUCTS

New Lunchtable

Haldeman-Homme Manufacturing Co., St. Paul, Minnesota, has announced a new lunchtable with benches which seats up to 24 school children and then can be folded in its own wall-mounted cabinet.

According to the announcement, the new table unit helps architects solve the seating-for-eating problem in old as well as new school and other type buildings. The cabinet may be mounted on the wall of a gym, multipurpose room or corridor, or recess mounted in the wall for maximum floor area, the announcement said.

Complete information on all features including models and dimensions, specifications, drawings, etc., can be obtained direct from the Haldeman-Homme Mfg. Co., 2580 University Ave., St. Paul, Minn.

Shower Cabinet

Vitreous Steel Products Company, Cleveland, Ohio, has announced a new vitreous porcelain enamel shower cabinet selling at utility prices, according to the company.

Panels for the new units are interchangeable for left or right-hand installations. Brass fittings are heavily chrome plated.

Two interchangeable bases are available, the announcement said. Vitreo Lifetime base is reinforced one-piece die stamped with a non-slip porcelain enamel surface. The Vitreo Vitcrete base is pre-cast stone with a built-in pan.

Alenco Windows

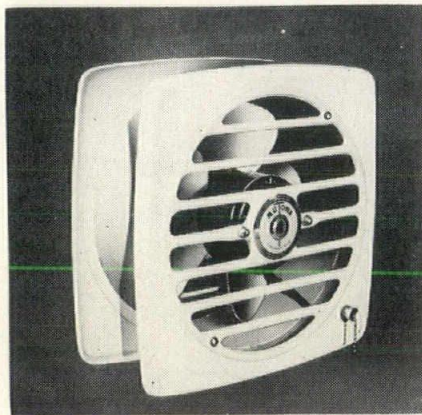
Albritton Engineering Corporation, manufacturer of Alenco aluminum windows, will move to Bryan, Texas, from Houston, effective October 1, according to Ford D. Albritton, Jr., company president.

Albritton said that the company will occupy a plant containing approximately 36,500 square feet of production space in the new location.

New Catalog

A new catalog (Bulletin PH58) is now available from the Dole Valve Company showing Dole's complete line of valves, according to a company announcement.

The new catalog may be obtained without charge from the Dole Valve Company, Morton Grove, Illinois.



NuTone Fan

NuTone, Inc., has announced its room to room ventilating fan Model 814 pull chain operated for installation between 2 rooms.

According to the company, the unit was specially designed to move warm air from one room to another for maximum heating facilities from one heating unit. It is also said to be ideal for use in air conditioned homes where it is desirable to move cool air from one room through to another.

The model 814 is easy to install; is mounted between studding and fits a 9¼" square wall opening. It is adjustable for 25/8" to 5¼" thick walls and operated on 110-120 volt as standard house current.

Housing and grille are finished in baked white enamel and may be painted to match walls. List price is \$21.95.

More information may be obtained by writing direct to the company. Southwestern Sales office, 1303 Dragon Street, Dallas, Texas.

Baseduct

Baseduct—new complete surface raceway electrical distribution system at the baseboard level—is reviewed in a four-page illustrated bulletin available from the manufacturer, National Electric Products Corporation, Pittsburgh, Pa.

The modern combination multi-outlet assembly and surface raceway system is suggested for use in new construction of residential, commercial and institutional structures. It is also recommended as an economical application for rewiring existing homes and buildings.

Described as a 3-inch high, ¾-inch wide "all electric" baseboard, new Baseduct is produced in five-foot lengths with duplex receptacles pre-assembled to the wiring harness at the factory—on 30-inch (Catalog No. BD-630) or 60-inch (Catalog No. BD-660) centers.

The Baseduct bulletin also contains pictures of the two types of available outlet spacing and close-up photographs of the three basic fittings required for simplified installation of the system.

To obtain a copy of the new Baseduct bulletin, write National Electric Products Corporation, Two Gateway Center, Pittsburgh, Pa.

K-Lath

K-LATH Corporation of Alhambra, Calif., announces that wire lath and plaster ceiling construction with such structural strength that the ceiling can not fall, unless the building collapses, is now made possible by electrically welded steel wire paper-backed K-LATH and specially designed, zinc-plated earthquake staples.

K-LATH, when applied according to specifications under wood or steel joists, forms a sheer ceiling. Tests show that wood joists break or wire ties fail before K-LATH pulls away, the announcement said. Details on earthquake safety ceiling are available through K-LATH Corporation, 909 S. Fremont, Alhambra, Calif.

For Additional
Information On These
New Products
Write Direct to
The Manufacturers or
To This Publication

CLASSIFIED SECTION

OPPORTUNITIES

- EMPLOYMENT
- BUSINESS
- MISC.

Advertising rates—Classified section—\$5.00 per column inch. With border - \$1.00 per inch extra. Column inch measured: width of column 2-3/16 and 1 inch deep. **POSITIONS WANTED** advertising rate is 50 cents per line - 4 line minimum, payable in advance. Agency discounts not allowed on classified advertising. Send new ads or inquiries to Classified Advertising Department, Gulf States Architect & Builder, P. O. Box 301, Baton Rouge, Louisiana.

DRAFTSMEN WANTED

WANTED — by Louisiana Architectural Firm. Experienced architectural draftsmen. Good salary, and best working conditions. In reply send full information and snapshot if available. Write: Box 5A, Gulf States Architect and Builder.

Special Rates For Those Seeking Employment. Reach All Major Firms Using Construction Personnel in The Gulf States.

If You Need Draftsmen, and Construction Personnel, Use These Classified Columns To Reach All Areas of the Gulf States.

ADVERTISERS

Airtemp Division Chrysler Corporation—

New Orleans	22
Harry Cash Company, Inc.	23
E. P. Cuthrell Flooring Co.	*
Baton Rouge Blue Print and Supply Co....	29
Bureau for Lathing & Plastering	32
Binswanger & Co., Inc.	20
Carrier Corp.	17
Construction Materials, Inc.	26
Curtis Co.	4
Equitable Equipment Co. Inc.	19
Ronald A. Coco, Inc.	25
Flintkote Co.	3
Georgia Marble Co.	*
Georgia-Pacific Plywood Corp.	*
Gulf States Utilities	24
Louisiana Concrete Products, Inc.	*
Louisiana Power & Light Co.	*
Miss-La. Brick & Tile Assn.	*
Nutone, Inc.	*
W. H. Moynan	*
Portland Cement Association	10
Reilly-Benton Company, Inc.	*
Ridgway's	29
Southern Heater Co., Inc.	2-8
Unit Structures	*
Yarberry's	29
Big River Industries	*

BLUE PRINT SERVICES

● Baton Rouge

BATON ROUGE BLUE PRINT & SUPPLY COMPANY
207 St. Ferdinand St.
Blueprints - Photostats
Superstats - Film Reproductions
Architects & Engineers Supplies
2-2208 4-4394

● Baton Rouge

YARBERRY'S
BLUEPRINTS • PHOTOSTATS • FILM
ARTISTS' SUPPLIES
DIETZGEN
EVERYTHING FOR DRAFTING
SURVEYING & PRINTMAKING
PHONE 2-5631
145 THIRD STREET
BATON ROUGE, LA.

● Shreveport

RIDGWAY'S
Complete Reproduction Service—
Photocopies - Engineer's and
Drafting Supplies
Phone 3-0676
423 Crockett St. Shreveport, La.
Mail Orders Solicited

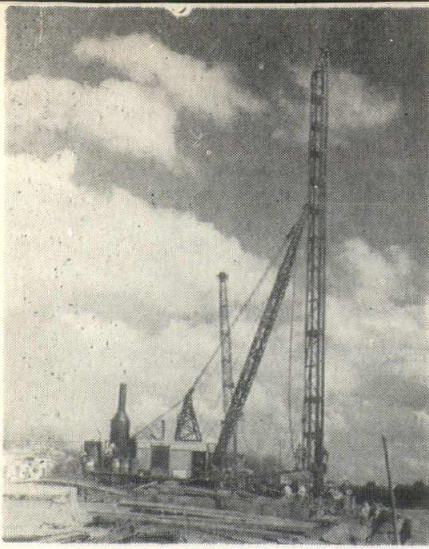
● New Orleans

RIDGWAY'S
Blueprinting — Photocopying
Architect & Engineers Supplies
Phone CANal 3831
307 St. Charles St.,
NEW ORLEANS

● New Orleans

NEW ORLEANS BLUE PRINT & SUPPLY COMPANY, INC.
Blue Prints — Photostats — Photo Murals
K & E Architectural & Engineering
Supplies
Phone RA 4196

Your Firm's Name
Here



"Cost per square foot or cost per cubic foot?" Architects, contractors, builders and engineers as well as clients figure the costs of buildings in various ways and therefore have different results.

It would seem to me that if the client, especially school boards, had an up-to-date cost figure in preparing

budgets, **everyone** would benefit by it.

Square feet figures are not accurate because of the different ceiling heights, especially in churches.

How are garages, carports, paved patios, porches and overhangs figured?

The Department of Agriculture at L. S. U. is contemplating a research project that will be of benefit to all phases of the building industry, including the client.

Complete sets of drawings and specifications and the contract prices of the buildings would be analyzed as to type of structures, major building materials used and other pertinent information that would affect cost.

This data would be available to interested persons upon request.

The department must have the cooperation of the architects in order to carry on a worthwhile research project. Plans, specifications and contract figures must be furnished to the department for short periods of time.

We believe that data of this type would be valuable to architects, especially young architects, and therefore of value to contractors since there would be fewer bids "over the budget" and to clients in making their own plans for new building or additions.

The project would be continuous and the figures revised as costs varied.

O. J. BAKER, A.I.A.

■ We have noticed lately several projects rejected and readvertised after the opening of bids because figures submitted were something in excess of the "budget." Budgets are fine and are necessary, particularly with public bodies, but are accurate only to the extent of the accuracy and ability of the person or persons preparing them. Bid prices can be affected by so many variables; pro-

jected wage increases, projected price advances, site peculiarities; etc.; are only a few which may well be hidden from the "rule of thumb" budget maker. Then too, very often the plans and specifications reaching contractors for bidding have been revised during preparation to the extent that neither the original prospectus nor the budget figure are real.

No two projects are exactly alike though they may appear to be. Improved mechanical or electrical facili-

ties, feeder systems, sewage and drainage systems, sub-surface conditions, and many other items will differ. Even the season of the year can seriously affect prices.

Competition in all elements of the construction industry being as active as it is today, I truly believe it appropriate to note that, by and large, you get just what you are willing to pay for.

ARREN BROUSSARD

■ Since the Gulf States Regional Architectural group will be convening about the same time this October issue goes to press, I felt I might take the opportunity once again to congratulate our professional group during this, their 100th National Anniversary of the American Institute of Architects.

The folks who will journey to Birmingham for the Regional Meeting indicate by their mere presence a

deep interest in the problems of the profession. Although many of you have probably read these words before, they are none the less worthwhile. Theodore Roosevelt once said, "Every man should devote some part of his time to the building up of the industry or profession to which he belongs." By attendance and participation at conferences we are able through the exchange of ideas and information to go home fortified with increased knowledge of the things we do. This holds true no matter what our field. Conversely we

learn that our problems, while of immediate concern to us as individuals, are perhaps no greater than the problems of others as evidenced in these gatherings.

It is very gratifying to see the increasing participation on the part of Architects and Engineers in industry matters. Our professional group is cognizant of the industry's perplexities, and have indicated a willingness to cooperate with all groups in solving related problems.

RAY E. PUTFARK

ARCHITECT and BUILDER

...NEED DRAFTSMEN?

M E M O:

To: Architects, and firm principals

With this issue the Gulf States
ARCHITECT & BUILDER features a CLASSIFIED
'EMPLOYMENT' section making available
advertising space for HELP WANTED, etc.

If you have a need for DRAFTSMEN, or
other staff personnel, send us your
space requirements for insertion in the
next issue. \$5.00 per column inch per
insertion. (About 8 lines per column inch.)

DEADLINE for Copy October 18.

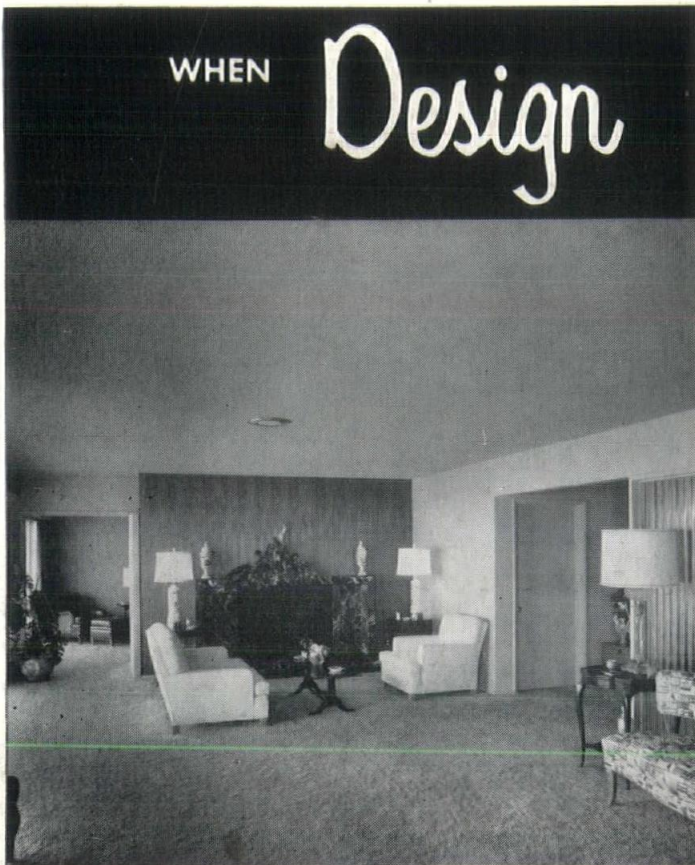
Gulf States Architect & Builder

P. O. Box 301

Baton Rouge, Louisiana

LOUISIANA ARCHITECT & BUILDER
P. O. Box 301
Baton Rouge, Louisiana
Form 3547 Requested

BULK RATE
U. S. Postage
PAID
Permit No. 488
Baton Rouge, La.



WHEN *Design*

IS THE KEYNOTE...

Plaster's endless versatility and adaptability enables the modern home designer to achieve a wider range of effects than is possible with any other building material.

There is no texture that plaster cannot provide, no requirement of ornamentation, design or style that plaster cannot meet more easily and with more enduring beauty than any other substance that has ever been devised.

Genuine Lath and Plaster is fire-resistant and soundproof. It is the hallmark of quality construction in the well built home. Its superiority has remained unchallenged for over a thousand years.

TO BE SURE, SPECIFY GENUINE LATH AND PLASTER

KNOCK ON THE WALL
to be sure its
GENUINE LATH & PLASTER



affiliated with the NATIONAL BUREAU
for LATHING and PLASTERING

BUREAU FOR LATHING AND PLASTERING

1530 Florida St.

Baton Rouge, Louisiana