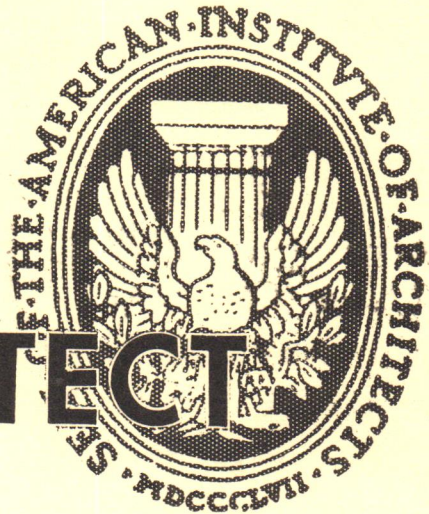


IOWA ARCHITECT



Iowa Chapter, American Institute of Architects



Prof. Leonard Wolf
*Head of the Department of
Architecture and Architectural
Engineering, Iowa State College,
Ames; author of "This I Believe"
in this issue of Iowa Architect.*

Owens-Illinois TOPLITE . . .

Skylights, over the years, have been a headache for Architects. However, the new Toplite, manufactured by Owens-Illinois, we believe removes every bad feature formerly found. They are scientifically designed to transmit just the right amount of light and heat at *every season of the year.*

They are delivered already fabricated so you can be sure they are structurally sound and cannot leak. Because of the two heavy glass faces each reinforced by ribs, it is practically impossible to break the glass units, thus eliminating the necessity of wire shields.

If you would like to know more about Toplite, we will be glad to send you a circular and arrange to have an Owens-Illinois expert call upon you.

PHONE 8-5751



BETTER BUILDING PRODUCTS SINCE 1917

IOWA CONCRETE BLOCK & MATERIAL CO.

CONCRETE BLOCKS • HAYDITE BLOCKS • CONCRETE JOIST • CHANNEL ROOF SLABS
OWENS-ILLINOIS GLASS BLOCKS • LANNON STONE • CHAMPION SAWS & BLADES
SANYMETAL TOILET COMPARTMENTS • STEEL & ALUMINUM WINDOWS • METAL SPECIALTIES
CONCRETE SILOS • CORN CRIBS • STOCK TANKS

820 S. W. Ninth Street

Des Moines 9, Iowa

IOWA ARCHITECT

Volume 1

October, 1954

Number 4

American Institute of Architects

Officers, 1954

President

O. H. Thorson
Waterloo

Vice President

Gerald I. Griffith
Des Moines

Secretary

Stanley C. Ver Ploeg
Des Moines

Treasurer

Clair Weintz
Des Moines

Directors

James Walsh

Spencer

William Parish

Davenport

Eugene O'Neil

Des Moines

Public and Professional Information Committee

Robert E. Savage, Chairman

Des Moines

James Walsh

Spencer

Don McKeown

Ames

William Woodburn

Des Moines

Paul Skiles

Des Moines

* * *

"Iowa Architect" is published bi-monthly for Iowa Chapter, American Institute of Architects, and mailed without charge. Appearance of names and pictures of products or services in editorial or advertising copy does not constitute endorsement of either the A.I.A., or this chapter. Editor: Robert E. Savage, 931 59th Street, Des Moines, Iowa.

* In Memoriam *

Karl Keffer has stopped practising Architecture and is now performing in the Elysian Fields where deadlines are unknown, and where there are no defaults, substitutions, or rejections. Karl had long pretended that he would retire in favor of a leisurely existence in Des Moines, California, and Minnesota; but he had led too active a life for that lessened pace to have fully gratified him.

His start in Architecture, in the early days of the twentieth century, took place at a time when youth was a serious handicap to acceptance by the public. His entire life was a struggle; first to overcome this drawback, later to execute the many commissions which came to him; for he always dominated the firm which he headed, and may be said to have been personally responsible for more school buildings than any other man in the state of Iowa.

He became a solid symbol of the successful architect. He responded to the need for maintaining the Profession by training in his office a number of men who are today practising on their own; and by contributing generous funds to the Department of Architecture at Iowa State College for scholarship.

He cooperated with fellow architects in causes where he could be most effective, such as the Legislative Committee and the Building Code Committee. He was always considerate of his fellow practitioners. His decisions on controversial matters were always considered fair by both clients and contractors.

Karl Keffer was never spectacular. He believed in sound Architecture and forthrightness in business and professional dealings. The Profession of Architecture, which necessarily must contain visionaries, will miss this sturdy middle-of-the-roader.

- By John Brooks

HERE'S HOW THE CANDIDATES FOR GOVERNOR
STAND ON ISSUES THAT WILL INTEREST YOU

* * *

Two committees representing the Iowa Chapter, A.I.A., interviewed Attorney General Leo Hoegh, Republican candidate for governor, and Polk County Attorney Clyde Herring, Democratic candidate for the same office, on Monday, Sept. 13.

The purpose of the interviews was to learn the candidates' views on certain issues that are important to the general public welfare and of interest to Architects.

Hoegh met the Architect's committee in the State House and Herring met the committee in the Polk County Court House. Both candidates received your representatives graciously and gave the impression that the visits were welcome and appreciated.

Each candidate answered identical questions put to him by the committees. Following are the questions and summaries of each candidate's answers:

What is your opinion of a State Building Code?

Hoegh said he feels Iowa should "catch up" with other states in the matter of a Building Code which, he pointed out, would be in line with current trends and would be no expense to the public. He feels it is one of the responsibilities of the State Legislature to "guide" the people in building. He favors a State Building Code, if not the one presented previously, then, at least, a revised version.

Herring said he favors a State Building Code. He agreed that the absence of a Code lets down the bars for poor design and structure. He feels a State Code would eliminate "confusion" and afford protection for the public.

What is your opinion of strengthening the present architect's licensing law to exclude unqualified persons from the practice of architecture, and to protect the safety and welfare of the public?

Herring said he recognized the right of architects, as well as of any other group, to protect their profession by means of strengthening their license law. He said he felt such a move would "rebound to the protection of the general public". He agreed that only registered architects should be allowed to practice above a certain level of building.

Hoegh said he believed the law should be strengthened, but that any change should not upset those now practicing. He pointed out that a poor professional man can hurt the public and that a practice law is essential. He said he felt a strengthened law would prevent a lot of harm to innocent persons.

(In answer to an added question, Hoegh said he felt the several thousand dollars in architect's annual registration fees now held by the state could be used to purchase an architectural reference library and supplies if the law is changed to allow such a move. He felt there would be no objection from the legislature to this use of the funds.)

Do you favor legislation that would provide state aid to communities unable to build needed schools, or, do you favor legislation that would increase limits of bonded indebtedness?

Hoegh said he is a strong believer in state aid to schools and feels additional money should be made available for education from state income and sales tax funds, because many now make no contribution to school support through property taxes. He doubts that state aid could be expanded to cover construction. He feels the State Legislature could not be led to appropriate money for construction. He feels school district re-organization should be encouraged and thinks raising the limits of bonded indebtedness "is absolutely necessary".

Herring charged that Iowa now ranks forty-fifth in the nation in the amount of state aid to schools. He accused the Republican administration of using sales tax funds for highways that should be used for schools and old age assistance.

He said the solution to state aid to schools may be in an over-all state millage which would be returned to the schools on the basis of average daily attendance.

He said he did not favor Federal aid to schools. "I know there is a tendency to look to Washington, but I think we have the potential here in Iowa to solve many of our own problems", Herring said.

Do you feel the State Interim Committee is usurping the powers of the State Board of Education?

Herring said he feels "there is no question that the Interim Committee is taking on the powers of the board of Education". He said the committee's system of audits and pre-audits "creates too many wheels within wheels in state government".

He said the state institutions should be allowed to "begin right now" to expand their physical plants in order to take care of the increased enrollments 10 or 12 years from now.

Herring called members of the State Board of Education "high-type individuals who should have the power to run the state schools".

(Herring then surprised his committee by asking: "What do you think of the appointment of a state architect?" The question had not been asked due to a feeling that the subject should not be brought to public attention until it seems necessary to do so.

(The architects told Herring they were, of course, against such an appointment. "It would begin a trend toward sterility", Ed. Wetherell told Herring. He pointed out that a private architectural firm must be efficient to survive while that would not be the case with a state architects office.

(Herring agreed. "I would not want to see all of our state buildings coming out of the same mold", he said. "We need so much new design and construction in our state buildings", he commented.)

Hoegh, in answering the question on the State Interim Committee, said he feels the committee "should not usurp the powers of the State Board of Education".

He believes the Interim Committee should locate emergencies and needs in state schools, provide guidance, and see that the institutions "get their money's worth". The committee should not control the board, however, he said.

Hoegh also complimented members of the board and said he felt the difficulty could be worked

out through an agreement between the Interim Committee and the State Board of Education.

Members of the architect's committee calling on Hoegh were Charles Silletto, Eugene O'Neil, Ames Emery, Wayne Lyon and Robert Savage.

Interviewing Herring were Ed. Wetherell, Charles Spooner and Bob Hullihan.

Beyond learning the candidates' views on several problems, this particular project had an important result in that it made both candidates for Iowa governor aware of architects as an organized group. Several members of the committees felt that the candidates had not been particularly conscious of architects prior to the meetings.

In addition, the comments of the candidates on the Interim Committee question were included in a news story which was printed by the Des Moines Register and carried by the state news wire services. The candidates' opinions on the state aid problem were incorporated in a second news story which has been mailed to papers out in the state.

* * *

ALVAH GAGE Alvah J. Gage, retired architect died in Des Moines early in September at the age of 81. Mr. Gage worked as an architect for 23 years in New York, N.Y., and in Des Moines. In Des Moines he was employed by Smith and Gutterson, and later, by Proudfoot, Bird and Rawson. Mr. Gage retired 23 years ago.

* * *

Stan Ver Ploeg, Secretary of the Iowa Chapter, was one of three judges who chose outstanding features in new Des Moines homes during the recent observance of National Home Week.

THIS I BELIEVE: The third in a series of articles in which members of the Iowa Chapter, A.I.A. express their convictions about the Profession.

* * *

"Do As I Say, Not As I Do"

By Leonard Wolf

If you will assume for a few minutes that all is well with Architectural education, we may proceed.

An Architect is a professional man. He is not an artist. He is not a business man. He must have some of the qualities of both. The Architect has responsibilities to his client, to the public and to the profession. Since he has certain responsibilities, he must have the authority required to carry them out.

The public is as understanding of the Architect and what he does as the Architect is of the public. What do we as Architects know about the man on the street? Very little I would say. How can we carry out our responsibility to the public if we don't know him? We should get better acquainted with our public.

The purpose of an Architect's Registration Law is to protect the public, not the Architects. Our registration boards have developed a somewhat reasonable procedure for determining technical competence. Further attention must be given by everyone in the Profession in developing ways and means for determining whether a candidate will conduct himself as a professional Architect and not as a business man or artist.

We need more Architects in Iowa. We have Architects in 20 to 25 of Iowa's counties. If we had Architects in 50 of Iowa's 99 counties, the public would be better served. It will take vigorous young men with a mission in life to establish some of these offices. Are you "old Timers" letting them get fat and lazy?

Our present supply of Architects skim off the cream of construction work in the state. It takes whole milk, however, to build sturdy bodies, good teeth and general good health. We as a profession, should have a hand in a larger and larger percent of the building construction in the state for our own professional health.

The client expects an Architect to see to it that his new building is designed and built so that the roof doesn't leak, walls won't have cracks, basement is never damp, and that all mechanical equipment works perfectly - regardless!

If an Architect successfully accomplishes the above and also has done an excellent job of planning and design - then the owner generally will want to take credit for the whole job. He generally will distribute a little credit to the Architect and others connected with the job from time to time. Even if the newspaper doesn't print your name - don't worry - your public relations are A +.

What we as Architects must do is get together more often, let our hair down, and pool our knowledge on how to prevent leaky roofs, cracked walls, damp basements and so forth. If we are professional men we must be willing to teach as well as learn. This is one of our responsibilities to the Profession. If we can get the problems like those above out of our hair, then more attention can be given to planning and design.

In our great desire for more recognition, we must never forget that our professional reputation and our public relations can never be any better than our work as planners and designers. The Architecture that we do can be our best public relations counsel.

* * *

The practice of Karl Keffer Associates will be continued by Waldo Dean and Thomas Atherton who, for many years, have been associated with the Keffer firm as architects.

A COMMENT FROM THE PRESS

ON CREDIT TO ARCHITECTS

Complaints from Chapter members that architectural firms often are not mentioned in news stories and pictures concerning new buildings led your public relations committee to question a representative of the daily press on the subject.

The City Editor of the Des Moines Register was asked: "Is it a policy or practice of the Register to delete names of architects from news stories?"

His answer: "Absolutely not." The editor explained that the Register considers the architect's name to be a part of any news report or picture on new construction.

The architect's name is left in the story if it is there in the first place, he said. But, if the architect's name is not in the story or report received by the paper, the paper will not go out of its way to dig up the name of the architect.

He was talking about stories that come to the Register from its part-time correspondents around the state. They may neglect to ask for the architect's name or the owner releasing the story may neglect to give it.

This information seems to indicate that architects will profit by gently schooling owners that the name of his architect is a part of any information he may release on the new construction.

Another approach would be for the architect to send material to the newspaper concerned (information on the building, pictures, etc.) with the request that the material be held pending an official release of information by the owner. The material then could be used as additional, helpful background.

BROOKS REPORTS ON

GSA ASSIGNMENTS

John Brooks, FAIA, returning from a recent trip to Washington, D.C., had the following information regarding future architectural work to be assigned through the General Services Administration.

About all architectural work under control of GSA will be farmed out to private architectural firms. The work will be assigned to a firm in the area in which the work is to be done, and when it is necessary to assign architects to a job, all firms in the area will be circularized regarding the size and qualifications of their organization.

Concerning recent news items about the combined Council Bluffs Court House and Post Office, Brooks said nothing has been done about selection of an architect as the Act concerning the work was not passed until late July which left no time for Congress to approve specific projects. Nothing will be done now until late January, 1955, when Congress reconvenes and the specific project is approved and the Director of Budget assigns the money.

As soon as the Council Bluffs job becomes a project it will be determined what is a logical area for selection of an architect. The area will not include Omaha or Nebraska. The architectural firms will be circularized when the time comes.

All communications with GSA prior to that time will become dead paper to clutter files. Big jobs will be assigned to large firms and smaller jobs to smaller firms, Brooks said.

* * *

Congratulations to William Lockard (and Mrs. Lockard!), Decorah, on the birth of their son, Abram William, late in August. Proud pop broke the happy news by posting a sign in front of his office and the Decorah newspaper dropped around to take a picture...

ARCH-I-TICKLES

(More selections from an Architect's vocabulary)

Reliable Source - The guy you just met.

Informed Source - The guy who told the guy you just met.

Unimpeachable Source - The guy who started the rumor originally.

A Clarification - To fill in the background with so many details that the foreground goes underground.

We Are Making A Survey - We need more time to think of an answer.

Note And Initial - Let's spread the responsibility for this.

See Me or Let's Discuss - Come down to my office. I'm lonesome.

Let's Get Together on This - I'm assuming you're as confused as I am.

Give Us the Benefit of your Present Thinking - We'll listen to what you have to say as long as it doesn't interfere with what we have already decided to do.

Will Advise You in Due Course - If we figure it out, we'll let you know.

Take Some Dictation - Come on over, honey, and we'll talk? ? ?

To Give Someone the Picture - A long, confused and inaccurate statement to a newcomer.

Point Up the Issue - To expand one page to fifteen.

American Institute of Architects
Central States District Conference

Hotel Lassen, Wichita, Kansas

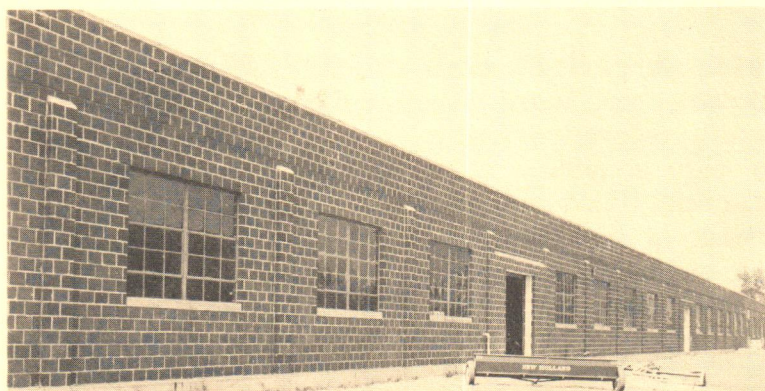
October 21, 22, 23

Theme:

"Of Grass Roots and Architecture"

Registration: 9 a. m., Thursday, October 21

Utility - Economy - Durability

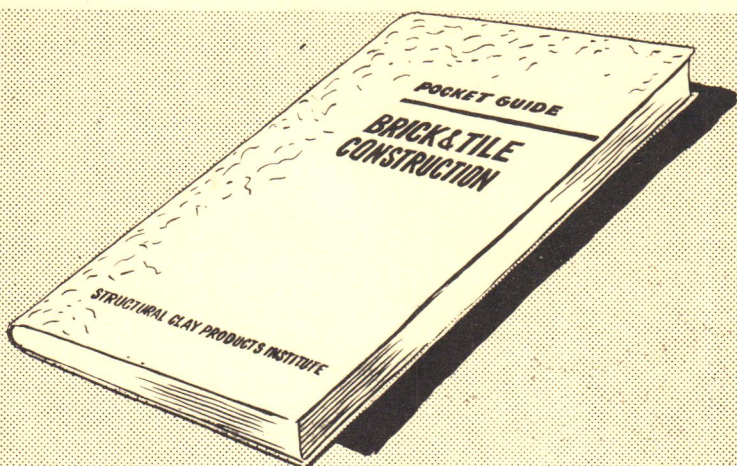


Here is a typical example of building with Adel Clay's No. 20, 8 x 8 x 12 Face Tile. Adel Clay 8 x 8 x 12 is ideally suited for industrial, warehouse and commercial construction. For further details, write or call:

ADEL CLAY PRODUCTS COMPANY

1118 MULBERRY, DES MOINES 9, IOWA

Member Structural Clay Products Institute



A COPY IS YOURS WITHOUT COST

A QUICK and READY REFERENCE IN DIGEST FORM

Every Architect and Engineer will want this handy reference book on clay masonry construction; it is a condensation of all information published to date. A post card or letter will bring you your copy without cost.

Write today

A PARTIAL LIST OF CONTENTS

1. Classification of Products.
2. Modular Coordination.
3. Properties of Products.
4. Mortars for Unit Masonry.
5. Properties of Walls.
6. Design of Walls.
7. Construction and Maintenance.
8. Reinforced Brick Masonry.
9. Floors and Roofs.
10. Modular Estimating Tables.

Structural Clay Products Institute

Region 6

Ames, Iowa

IOWA

ARCHITECT



Iowa Chapter
American Institute of Architects

15 00

Lemke Builders Supply Co.

610 Walnut Building
DES MOINES 9, IOWA

Phone 2-9611

*Specialists in
steel sash,
doors, partitions*

Christmas Greetings



SONOTUBES and SONOVOIDS —Round Forms For Concrete—

With present high costs of carpenter labor and lumber, we are sure Iowa Architects will be very much interested in this new, modern and economical way of designing good looking, reinforced concrete columns and lightweight floors and ducts by using SONOTUBES and SONOVOIDS.

They are made of laminated and impregnated fibre in diameters up to 36 inches. They are easily removed by sawing them with a skil saw when you want a smooth, good looking exposed column or can be left in place if looks are not important.

SONOTUBES and SONOVOIDS save time, save labor, save lumber and save money. Many Contractors say they are cheaper than even square, unsightly wooden forms. They have been used in thousands of jobs — large and small.

We carry many sizes in stock and special sizes can be shipped from the factory on short notice.

If you do not have a complete file on SONOTUBES and SONOVOIDS, drop us a line and we will send you circulars and design data.

PHONE 8-5751



BETTER BUILDING PRODUCTS SINCE 1917

IOWA CONCRETE BLOCK & MATERIAL CO.

CONCRETE BLOCKS • HAYDITE BLOCKS • CONCRETE JOIST • CHANNEL ROOF SLABS
OWENS-ILLINOIS GLASS BLOCKS • LANTERN STONE • CHAMPION SAWS & BLADES
SANYMETAL TOILET COMPARTMENTS • STEEL & ALUMINUM WINDOWS • METAL SPECIALTIES
CONCRETE SILOS • CORN CRIBS • STOCK TANKS

820 S. W. Ninth Street

Des Moines 9, Iowa

25 00

IOWA ARCHITECT

Volume 1

December, 1954

Number 5

American Institute of Architects

Officers, 1954

President

C. H. Thorson
Waterloo

Vice President

Gerald I. Griffith
Des Moines

Secretary

Stanley C. VerPloeg
Des Moines

Treasurer

Clair Weintz
Des Moines

Directors

James Walsh
William Parish
Eugene O'Neil

Spencer
Davenport
Des Moines

Public and Professional Information Committee

Robert E. Savage, Chairman Des Moines
James Walsh Spencer
Don McKeown Ames
William Woodburn Des Moines
Paul Skiles Des Moines

* * *

"Iowa Architect" is published bi-monthly for Iowa Chapter, American Institute of Architects, and mailed without charge. Appearance of names and pictures of products or services in editorial or advertising copy does not constitute endorsement of either the A.I.A., or this chapter. Editor: Robert E. Savage, 931 59th Street, Des Moines, Iowa.

OFFICE AND PERSONAL NEWS ... (of which Iowa Architect could use a lot more than it is getting. Send office and personal items that would be news to the Chapter brothers to Bob Savage, 931 - 59th St., Des Moines.)

Bill Martin of Woodburn & O'Neil in Des Moines has moved to Colorado Springs... Harry Hedges of the same firm has been called into service and is stationed in California.

* * *

John Wetherell has returned from service and is working with his father in the firm of Wetherell & Harrison, Des Moines.

* * *

The 43rd Annual Convention of the Master Builders of Iowa is scheduled for the Hotel Savery in Des Moines Dec. 7 and 8. Architects and Engineers have been asked to avoid making lettings on those dates so that the Master Builders can have full attendance at their meeting. Invitations to attend the Convention have been issued to many members of the Iowa Chapter, A.I.A. Iowa Architect takes this opportunity to wish the Master Builders a highly successful Convention.

* * *

Myron Jensen of Smith-Voorhees-Jensen-Sillette & Associates, Des Moines, has returned to work after recovering from a recent illness.

* * *

Gerald Griffith and Robert Savage spoke on architects and architecture recently at a meeting of the Knights of Columbus in Des Moines.

* * *

A request from the Sioux City Public School system for information on careers in Architecture has been filled in Donald McKeown, Iowa State College, member of the Public Relations Committee. The Committee has been in contact with school men offering the services of architects in Career Day projects.

"In this opinion it was held that the board of supervisors could in the exercise of sound discretion employ architects in order to inform itself of the requirements of the several public offices and housing thereof and in the event that the bond issue failed, could pay for the services of said architects from the general fund.

"The duty of the school board to provide adequate and safe schooling is somewhat applicable to the duty of the board of supervisors to provide its several county officials with offices.

"It would appear that only common sense would require that the school board inform itself as to building construction, types, costs, etc., all of which information could only be obtained through technical assistance of professional architects and would not be in the knowledge of the school board members before submission of a bond issue."

* * *

ARCHITECTURAL FOUNDATION

SEEKS FUNDS FOR RESEARCH

The American Architectural Foundation, Inc., is now in the midst of an intensive, nation-wide campaign to raise funds for research "in methods for meeting human needs in years ahead" through architecture.

The aim of the campaign is to enlist the financial support of every member of the American Institute of Architects.

Each member has been asked to contribute a minimum of \$100 and, wherever possible, "much more than this amount, for it is the architect who will receive the great benefit for this work in the future."

In general, funds raised will support research

in "studying, understanding, interpreting and applying the effects of new technological discoveries and advances, particularly in the fields of light, color, sound and solar energy.

"The problems of decentralization of industry and commerce also will offer a fertile field" for research, according to a Foundation announcement.

Subscriptions to the fund may be sent to The American Architectural Foundation, Inc., 115 East 40th St., New York, New York. The subscription may be sent in the entire amount or may be extended over a three-year period.

(Federal tax laws would permit an architect to give the Foundation up to 20 per cent of his adjusted gross income and pay no tax on that amount.)

The fund campaign is being conducted by architects and only architects are being asked to subscribe at this time.

"It is imperative that architects contribute to their own welfare. Others with funds which may become available for research surely cannot be expected to help us if we will not help ourselves," according to Douglas W. Orr, F.A.I.A. Orr is president of the Foundation.

Funds raised in the campaign will be invested, for the most part, and proceeds from these investments will be used for research.

Each architect contributing \$100 or more will receive a certificate suitable for framing and office display.

* * *

CAREER DAYS Architect George Harner, Iowa City, spoke at a Career Day program at Cornell College in Mount Vernon last month as a result of contacts made by the Chapter Public Relations Committee.

ADAIR - Elmer Halling, Republican, of Orient
ADAMS - James Briles, Republican, of Corning
ALLAMAKEE - Elmer Hoth, Republican, of Postville
APPANOOSE - Kenneth Owen, Democrat, of Seymour
AUDUBON - Harvey Hohanson, Republican, of Exira
BENTON - J. N. Milroy, Republican, of Vinton
BLACK HAWK - Earl Miller and Leslie Santee, both
Republican, both of Cedar Falls
BOONE - Chester Scheerer, Republican, of Boone
BREMER - Clarence Christophel, Republican,
of Waverly
BUENA VISTA - Wendell Pendelton, Republican, of
Storn Lake
BUTLER - Wayne Ballhagen, Republican, New Hartford
CAIHOUN - Melvin Wilson, Republican, of
Rockwell City
CARROLL - John Baumhover, Democrat, of Carroll
CASS - G. T. Kuester, Republican, of Griswold
CEDAR - A. L. Mensing, Republican, of Lowden
CERRO GORDO - W. H. Tate, Republican, Mason City
CHEROKEE - W. E. Whitney, Republican, Aurelia
CHICKASAW - Amos Peterson, Republican, Nashua
CLARKE - A. F. Klein, Republican, New Virginia
CLAY - Merle W. Hagedorn, Democrat, Linn Grove

CLAYTON - J. F. Walter, Republican, McGregor
CLINTON - Charles Coverdale and William Judd,
both Republican, both of Clinton
CRAWFORD - Leonard Holdsworth, Republican, Manilla
DALLAS - Conway Morris, Republican, Dallas Center
DAVIS - Dewey Goode, Republican, Bloomfield
DECATUR - Harold Tabor, Republican, of Lemoni
DELAWARE - Floyd Hatch, Republican, Edgewood
DES MOINES - Claude Oberman, Republican, Yarmouth
DICKINSON - Roy Smith, Republican, Spirit Lake
DUBUQUE - John Duffy and Andrew Frommelt, both
Democrats, both of Dubuque
EMMET - Fred Ehlers, Republican, Estherville
FAYETTE - Grant Lauer, Republican, of Eldorado
FLOYD - Martin Sar, Republican, of Charles City
FRANKLIN - Floyd Edgington, Republican, Sheffield
FREMONT - A. S. Bloedel, Republican, of Tabor
GREENE - Henry Stevens, Republican, Jefferson
GRUNDY - W. L. Mooty, Republican, Grundy Center
GUTHRIE - Frank Thompson, Republican, Guthrie Center
HAMILTON - Robert Naden, Republican, Webster City
HANCOCK - Curtis Riehm, Republican, Garner
HARDIN - Paul Walter, Republican, of Union

MITCHELL - Charles Burtch, Republican, Osage
MONONA - Roy Hadden, Republican, Jordan Township
MONTGOMERY - O. N. Hultman, Republican, Stanton
MUSCATINE - W. C. Hendrix, Republican, Letts
O'BRIEN - Jacob Van Swel, Republican, Paullina
OSCEOLA - W. J. Hohannes, Democrat, Ashton
PAIO ALTO - Edward Norland, Republican, Cylinder
PLYMOUTH - J. H. Lucken, Republican, Akron
POCAHONTAS - Earl Chambers, Democrat, Gilmore City
POLK - William Denman and Howard Reppert, Jr.,
both Democrats, both of Des Moines
POTTAWATTAMIE - T. J. Frey, of Neola, and Jim
Henry of Carson, both Republican
POWESHIEK - George Paul, Republican, Brooklyn
PAGE - Vern Lisle, Republican, Clarinda
RINGGOLD - Earl Hoover, Republican, Mt. Ayr
SAC - J. D. Currie, Republican, Schaller
SCOTT - Riley Dietz, Wolcott, and Don Petruccelli,
Davenport, both Republican
SHELBY - Jay Colburn, Republican, Harlan
SIOUX - Russell Patrick, Republican, Hawarden
STORY - Carl Ringgenbert, Republican, Ames
TAMA - Neil Johns, Republican, of Toledo
TAYLOR - Kirk Nicholson, Republican, Bedford

THE CENTRAL STATES DISTRICT CONFERENCE

A major result of the Central States District Conference, A.I.A., held in Wichita, Kansas, Oct. 21 - 23, was a 10-point "sense of the conference" report adopted by the delegates and reprinted below in full:

1. Service and public welfare should continue to be the prime concern to the architect, as a professional man.

2. The architect should continue to place first his service to his fellow man and his community, then only, consider his remuneration.

3. We, as architects, shall "plow back" public service into our community, for as we do so, will be the measure of our service in our own home community.

4. We, as architects, must be concerned with the discovery and selection of the students for the architectural schools, in order to assure better architects for the future.

5. We, as architects, should endeavor to bring about an increase in the salaries paid to the teachers in our architectural schools.

6. We, as architects, must stress to the students and the younger men of the profession the great value of establishing himself in a small community and growing up with it.

7. We, as architects, must study, keep and project into the profession the rich heritage that is ours.

8. We architects will take steps to promote the practice of signing our projects by the use of a small bronze plaque or other device.

9. We, as architects, should sponsor a system of merit awards to the craftsmen and artisans of the building construction industry and urge labor unions to better train their craftsmen.

10. The architect, at all times, should focus his attention on the retention of the natural beauties afforded by his projects and his community.

Resolutions adopted by the conference:

... That the Equalization Fund (to help defray cost to delegates attending the National Convention) should be abandoned.

... That Chapters of the Central States District be urged to screen their delegates to the National Convention carefully and to select, in so far as possible, as delegates, only members who have attended at least 50 per cent of the regularly scheduled Chapter meetings.

... That the Jury of Fellows be advised that members of this region favor expansion of the College of Fellows to a figure approaching five per cent of the total membership of the Institute, and further, that the College of Fellows be encouraged to undertake a program of activity which will develop the talent and prestige of the Fellows.

... That by-law changes be made to limit the presidency of the Institute to one year, provided an opportunity for re-election is permitted after an interim of two years as provided in the by-laws.

... That a by-law change be made to limit the term of a Regional Director to two (2) years.

Other resolutions provided that the record show a continuation of the renaissance of architectural organization within the district; Walter Rolfe be commended for his participation in the conference; that the Womens Activities

\$2,600,000 per day production line and to eat cafeteria lunch.

A stimulating seminar on practical problems of the building industry.

Liquid refreshments Friday evening.

Another Banquet after which Walter Rolf, who practically carried the Conference on his shoulders, showed some marvelous color slides.

Burdette Higgins voicing a popular tribute to Walter Rolf's tremendous contribution.

Ossie Thorson deliberating with the Regional Council.

A final business session.

St. Louis in 1955.

* * *

CALL HIM WHAT HE IS

One suggestion made at the Central States Conference has been picked out as exceptionally good and worthy of follow-up by delegates.

Quite simply, the suggestion is that when referring to members of the profession, the name be prefixed by the word Architect.

In other words, Architect Jones, Architect Smith, and so on.

A major part of the prestige of the medical profession is the public's education to the effect that it is all but disrespectful to call a medical man by anything other than doctor.

As a member of one of the few true professions, the architect deserves to be called what he is - ARCHITECT. Let's start it.

UNION - Edward Steers, Republican, Creston
VAN BUREN - Roscoe Pollock, Republican, Douds
WAPELLO - Jack McCoy and Wade McReynolds, both
Democrats, both of Ottumwa
WARREN - J. O. Watson, Jr., Republican, Indianola
WASHINGTON - Harry Ramseyer, Republican,
Washington
WAYNE - O. C. Stephenson, Republican, Corydon
WEBSTER - Willard Freed, Democrat, of Gowrie
WINNEBAGO - Henry Nelson, Republican, Forest City
WINNESHIEK - Hillman Sersland, Republican, Decorah
WOODBURY - Jack Miller, Republican, and Emlin
Bergeson, Democrat, both of Sioux City
WORDEN - W. R. Christiansen, Republican, Northwood
WORTH - Clark McNeal, Republican, Belmont

* * *

ARCH - I - TICKLES

(More From an Architect's Vocabulary)

We Are Aware Of It - We had hoped that the fool
who started it would have forgotten it by now

Confidential - Spy bait and besides the stamp
looks important.

With Modifications - Will be shipped to you in kit
form. Put it together (if you can) yourself.
Glue optional.

Interpretation - Your warped opinion pitted
against your adversary's good sense.

Statistician - One who draws a mathematically pre-
cise line from an unwarranted assumption to a
foregone conclusion.

Ferrous and non-ferrous metal fabricating of all types.

Our extensive machine shop facilities enables us to fabricate items of unusual and intricate design.

We solicit work that others hesitate to undertake.

2500
JOHNSON MACHINE WORKS, INC.

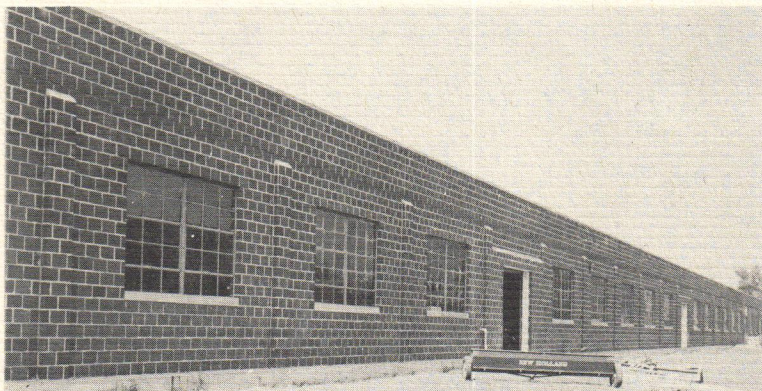
P. O. Box 251

318 No. Eleventh St.

Phones 109 & 291

CHARITON, IOWA

Utility - Economy - Durability



Here is a typical example of building with Adel Clay's No. 20, 8 x 8 x 12 Face Tile. Adel Clay 8 x 8 x 12 is ideally suited for industrial, warehouse and commercial construction. For further details, write or call:

ADEL CLAY PRODUCTS COMPANY

1118 MULBERRY, DES MOINES 9, IOWA

Member Structural Clay Products Institute

2500 - Sande Legger

45⁰⁰ Son Dekegger



J. E. "Jim" Neville
Regional Director
Ames Iowa, Office



Wishing You a
Very Merry Christmas
and a Happy New Year



C. L. "Chuck" Wetzler
Minneapolis, Minnesota
Field Engineer



STRUCTURAL CLAY PRODUCTS INSTITUTE

Region 6

Ames, Iowa

BRANCH OFFICES

401 Wesley Temple Bldg.
Minneapolis 4, Minnesota

1938 South 38th Ave.
Omaha, Nebraska

Phone Webster 7035

These Leading Clay Products Manufacturers Are Members of SCPI



Donald Ness
Field Engineer
Omaha, Nebraska

Members

- A. C. OCHS BRICK & TILE CO.
Springfield, Minnesota
- ADEL CLAY PRODUCTS CO.
Des Moines 9, Iowa
- CARLISLE BRICK & TILE CO.
Carlisle, Iowa
- DES MOINES CLAY CO.
Des Moines 9, Iowa
- ENDICOTT BRICK & TILE
Fairbury, Nebraska
- GOODWIN TILE & BRICK CO.
Des Moines, Iowa
- IOWA CLAY PRODUCTS CO.
Centerville, Iowa
- JOHNSTON CLAY WORKS, INC.
Fort Dodge, Iowa
- KALO BRICK AND TILE CO.
Fort Dodge, Iowa
- MASON CITY BRICK & TILE CO.
Mason City, Iowa
- NEVADA BRICK & TILE CO.
Nevada, Iowa

- OTTUMWA BRICK & TILE CO.
Ottumwa, Iowa
- OSKALOOSA CLAY PRODUCTS CO.
Oskaloosa, Iowa
- REDFIELD BRICK & TILE CO.
Redfield, Iowa
- ROCKFORD BRICK & TILE CO.
Rockford, Iowa
- SHEFFIELD BRICK & TILE CO.
Sheffield, Iowa
- TWIN CITY BRICK CO.
St. Paul 4, Minnesota
- VINCENT CLAY PRODUCTS CO.
Fort Dodge, Iowa
- YANKEE HILL BRICK MFG. CO.
Lincoln, Nebraska

Associate Members

- BLACK HILLS
CLAY PRODUCTS CO.
Belle Fourche, South Dakota
- MIDLAND BRICK & TILE CO.
Chillicothe, Missouri



Allen D. Hauge
Office Engineer
Ames, Iowa