

IOWA

ARCHITECT



Iowa Chapter American Institute of Architects

VOL. III, No. 3

OFFICIAL PUBLICATION

JULY, 1956

Architects Spark New State Group

OFFICERS, 1955

President.....Gerald Griffith
 Vice President.....James Walsh
 Secretary.....Paul Skiles
 Treasurer.....Lyle Howard

PUBLIC AND PROFESSIONAL RELATIONS COMMITTEE

James Lynch, Chairman
 James Walsh
 Don McKeown
 Harold Bullington
 William Wagner
 Allen Salisbury

Aim To Preserve Historic Sites

Two members of the Iowa Chapter, in a matter of a few short weeks, have succeeded in creating a new state-wide group organized for the preservation of Iowa landmarks of historic or architectural interest.

The movement was started by Prof. Leonard Wolf, Iowa State College, and William Wagner, chairman of the Iowa Chapter's committee on historic buildings.

Backed by stories in the Des Moines Register, the idea caught the interest of hundreds of persons throughout the state. Many have written to Wolf and Wagner suggesting buildings to the attention of the organization.

Governor and Mrs. Leo A. Hoegh expressed their interest and support of the movement. The first meeting of the new organization was held Thursday,

(Continued on page 3)

"Iowa Architect" is published bi-monthly for Iowa Chapter, American Institute of Architects, and mailed without charge. Appearance of names and pictures of products or services in editorial or advertising copy does not constitute endorsement of either the A.I.A., or this chapter. Editor: James ch.

LANNON STONE

We believe most of the Architects in Central Iowa already know that our Mr. Stetson is an expert in the use of natural stone.

We carry LANNON Veneer, Flagstone and Landscape stone in stock and can usually furnish just what you need to dress up a job.

As you probably know, LANNON stone has very low absorption so it will last years and years without the staining and deterioration common to most stone.

We also have Tennessee Marble in a variety of sizes and colors.

We are here to furnish service to Architects and Contractors and we hope you will feel free to call upon us whenever you can use it—absolutely no obligation.

PHONE 8-5751



BETTER BUILDING PRODUCTS SINCE 1917

IOWA CONCRETE BLOCK & MATERIAL CO.

CONCRETE BLOCKS • HAYDITE BLOCKS • CONCRETE JOIST • CHANNEL ROOF SLABS
OWENS-ILLINOIS GLASS BLOCKS • LANNON STONE • CHAMPION SAWS & BLADES
SANMETAL TOILET COMPARTMENTS • STEEL & ALUMINUM WINDOWS • METAL SPECIALTIES
CONCRETE SILOS • CORN CRIBS • STOCK TANKS

820 S. W. Ninth Street

Des Moines 9, Iowa

YOUR



CHECK LIST FOR THE *FINEST* IN CLAY MASONRY INTERIORS



ACOUSTILE, with "built-in sound control"; this load bearing unit absorbs sounds, eliminating need for costly acoustical treatment—withstands high compression; crack resistant.



INTERIOR SALT GLAZED TILE . . . Maximum quality at minimum cost. Provides extra beauty, extra durability, and extra insulation, at no extra cost. Colorful, easy-to-clean walls of buffs, tans and browns.



SMOOTH RED FACE TILE . . . Very popular 8 x 5 1/3 x 12 size for interior walls. Colorful, smooth face. The brick for economy and beauty-minded people.



FINE FACE BRICK . . . For color, texture, strength and uniformity you can't match this full line of fine face brick. Wide range of colors and textures add charm to every interior.



Whatever your need in the finest clay products we can serve you. Our engineers are always ready to serve you.

THE MASON CITY BRICK AND TILE COMPANY

MASON CITY, IOWA
554 BUILDERS EXCHANGE BLDG. 433 ENDICOTT BLDG.
MINNEAPOLIS, MINNESOTA ST. PAUL, MINNESOTA
PH. FE 6-6788 PH. CA 4-7221

THE DES MOINES CLAY COMPANY
DES MOINES, IOWA

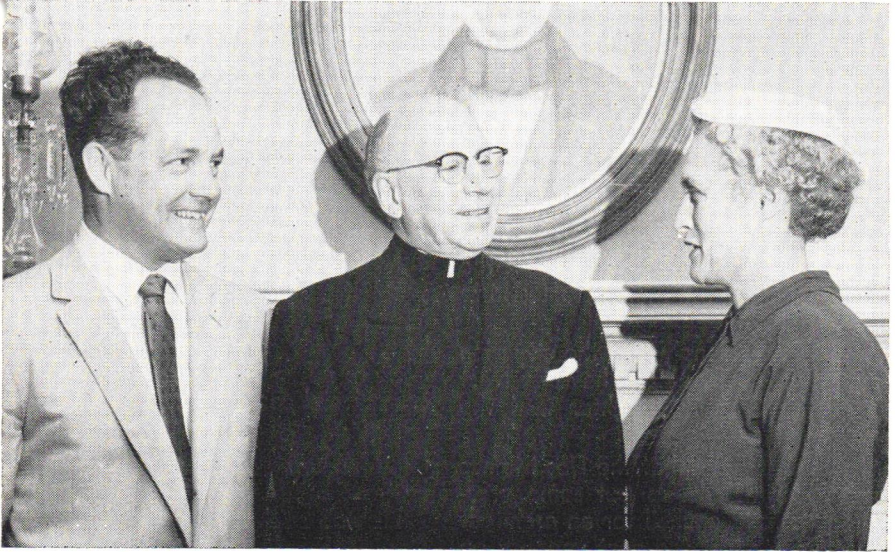
THE OTTUMWA BRICK AND TILE COMPANY
OTTUMWA, IOWA

THE OSKALOOSA CLAY PRODUCTS COMPANY
OSKALOOSA, IOWA

THE REDFIELD BRICK AND TILE COMPANY
REDFIELD, IOWA

THE JOHNSTON CLAY WORKS, INC.
FORT DODGE, IOWA

Wagner Named Secretary-Treasurer



William Wagner, left, member of the Iowa Chapter, A. I. A., has been named secretary-treasurer of the new state group for the preservation of historic buildings. President is Rt. Rev. M. M. Hoffman, center, of Dyersville. Vice-president is Mrs. Otha Wearin of Hastings. Prof. Leonard Wolf was named to the committee to prepare a constitution and by-laws for the new group.

May 31, in the Governor's Mansion in Des Moines. Mrs. Hoegh acted as temporary chairman for a group of 70 persons from throughout Iowa.

The Rt. Rev. M. M. Hoffman of Dyersville was elected president. He is a noted historian and author of the book "Antique Dubuque." Mrs. Otha Wearin of Hastings, wife of a former congressman, was named vice-president, William J. Wagner, Des Moines architect who lives in Dallas Center, was chosen secretary-treasurer.

Mrs. Hoegh

The officers were selected by an executive committee named by Mrs. Hoegh.

Monsignor Hoffman said the officers and committees will serve until the next

Architecturally Designed

New fathers are Ed Munzenmeir, Savage and Ver Ploeg, a son; and Stan Lyles, Woodburn and O'Neill, a son. Congratulations.

meeting, which probably will be in October. He appointed this committee to select a name for the organization:



Wolf

John Adams, secretary of the Greater Des Moines Chamber of Commerce; Simpson Smith, Des Moines, and J. C. Moore, publisher of the Madisonian at Winterset.

Selected to prepare a constitution and by-laws were:

Monsignor Hoffman, Mrs. Wearin, Prof. Leonard Wolf of Iowa State College and George Mills, Des Moines Register reporter.

Among structures already nominated for the attention of the new organization are an 80 year-old eight-sided barn near Delta in Keokuk county, the Caleb Clark stone house in Winterset.

Urge Architect on City Plan Group

Clyde Lighter, a former member of the Des Moines city plan and zoning commission, told architects meeting in Des Moines June 6 they should urge that an architect be appointed to the commission.

Since Lighter's term expired last April, there has been no architect on the 15-member commission.

Lighter spoke at a meeting of the Iowa chapter of the American Institute of Architects.

"I feel very strongly that the city plan commission should always have at least one architect on it," Lighter told the group.

"I would suggest that the Des Moines members of the group put some pressure on the city council for an architect to be appointed at the next vacancy on the commission."

City Councilman Robert E. Conley, who participated in a panel discussion at the meeting, replied to Lighter:

"I've had a lot of pressure for a real estate man to be appointed, too. I haven't anything against Clyde.

"The main thing is your public interest. You don't have to be on the plan and zoning commission to engender some influence on what's to be done."

Conley said the next vacancy on the commission will occur in March of next year.

Prof. John R. Fitzsimmons, head of the landscape architecture department at Iowa State College in Ames, and Walter Voss, administrative assistant to City Manager Leonard Howell, participated on the panel with Lighter and Conley.

A total of 31, including the panel members, attended the meeting which had a "Rock-N-Roll" musical background from a teen-age dance in an adjoining room.

The plan and zoning commission is an advisory body which makes recommendation to the city council on matters concerning the future development and layout of the city.

It tries to foresee problems in such things as public transportation, street layouts and traffic flow, and in the growth of subdivisions and outlying commercial centers.

It also aids in planning the design, location and functions of public buildings.

Lighter said at the meeting at the Des Moines Golf and Country Club that Des Moines architects have been "a little lax" in trying to get an architect on the commission.

He said that as far as he knew he was the first architect appointed to the commission since the early 1930's. He was appointed in 1948.

After the meeting, Lighter said the commission needs an architect "because of his knowledge of planning."

"It's right along his line of work, and it seems to me they should take advantage of the skills and training that an architect has," he said.

Conley said that come planning experts recommend that planning commissions have no more than nine members.

"Even with our 15 it seems that we can't get everybody represented," he said.



THIS AD MAT IS AVAILABLE

Chapter members may obtain a mat of the A.I.A. seal for small-space advertising by writing to James Lynch.

Enclose \$1.00 to cover costs.

Architects Aid Civil Defense

Des Moines members of the Iowa Chapter have turned out in some force to make an unusual contribution to the function of the Des Moines Filter Center, a key point in the aircraft warning system in this area.

The architects are doing the art work on a huge grid used in locating and tracking aircraft from the reports of observers out of the state.

This is the first time that work of this type has been done by a volunteer group anywhere in the country. Reports of the job being done by the Des Moines architects have reached top civil defense authorities in Washington and, apparently, the project is being watched with considerable interest.

It seems possible that the architects' job in Des Moines may become a pilot

Five Names Submitted For Board Appointment

Names of five architects have been submitted to Gov. Leo Hoegh for consideration in filling two vacancies on the Iowa State Board of Architectural Examiners. A poll of registered architects determined the names and the order of Chapter preference, as follows:

1. William L. Parish, Davenport
2. Gerald I. Griffith, Des Moines
3. O. H. Thorson, Waterloo
4. Charles B. Silletto, Des Moines
5. William L. Perkins, Chariton

project that will be copied in other communities throughout the country.

Architects contributing their time and talent at the filter center during evening hours are Jim Lynch, Stan Haynes, Herb Shane, George Peterson, Keith Shirk, Richard Goewey and Bill Taylor.



The fixtures illustrated above, and many others too, employ "DieLux"* diecastings as an integral part of the unit... for STRENGTH, DURABILITY, APPEARANCE.
 1. No. 1015-6715 Recessed. 2. No. A-14 Swivel Unit.
 3. No. 8585 Hospital Light. No. WB-25 Wall Unit.
 Write for your copies of PRESCOLITE literature.

*Prescolite's trade name for precision diecast products.

PRESCOLITE MANUFACTURING CORP.
 Berkeley, California • Neshaminy, Pennsylvania

Specify The Best

Fleelite

DOUBLE WINDOWS

- ✓ No Paint—Ever
- ✓ No Putty—Ever
- ✓ Easy to Wash
- ✓ Numerous Sizes
- ✓ Prompt Service

Buffalo, N.Y. - Coral Gables, Fla.

Des Moines, Iowa

62-3484

THIS I BELIEVE

By Paul Rossiter

Many years ago a respected individual of mature years and superior wisdom called my attention to these words of the Psalmist:

"Let thy work appear unto thy servants, and thy glory unto their children."

"And let the beauty of the Lord our God be upon us; and establish thou the work of our hands upon us; yea, the work of our hands establish thou it."

As time passed, its meaning started to unfold. I saw that David's petition for evidence of God's glory or omnipotence, evidence of His beauty or harmony, the Psalmist's desire to organize his work, and the assurance that this work has a spiritual cause came to light.

All this sounds quite transcendental to the practitioner of the most practical of the arts, but is it? When we answer the question on fees to owner, would we be willing to repeat it to the Chapter? When a commission is of an ordinary nature, can we accept the first study? When the owner demands a design, a material selection, or a color combination below the standards of the architect, can we live with ourselves if we don't try to sell him an improved design?

With the awakened realization that there is Someone much bigger that we reflect should we not say, ". . . Let the beauty of the Lord our God be upon us; and . . . yea, the work of our hands establish thou it."

Summer Meeting

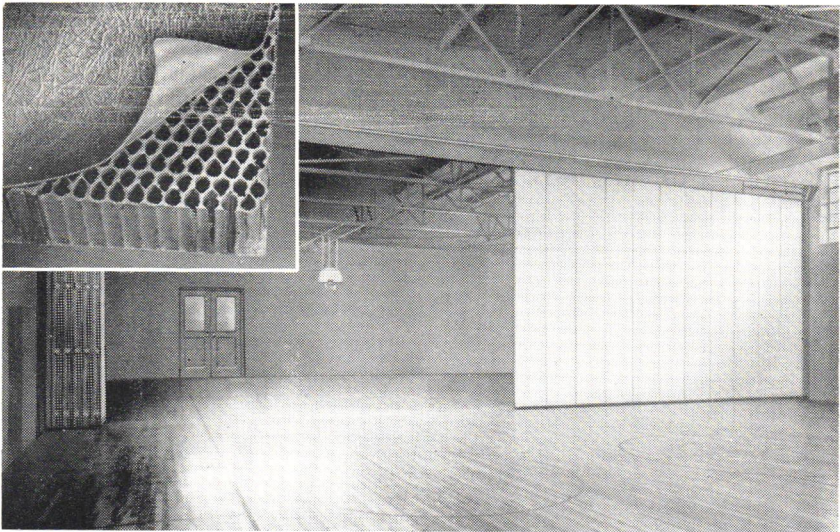
The summer meeting of the Iowa Chapter will be held July 28 at the Hotel Blackhawk in Davenport. Members and their wives are urged to attend. A traditional feature of the Davenport meeting will be the boat trip on the Mississippi. The boat went up the river year before last, down the river last year, and is expected to go "sideways" this year, according to one member. Anyway, plan to attend.

On The Move

Bob DeVoe, formerly of Thorson, Thorson and Madson, Waterloo, has joined Bob Grow in partnership in the latter's office at 403½ Main St., Cedar Falls.

Ray Thurston has joined Wetherell and Harrison, Des Moines, and Ken Steffen now is with Lyle Howard in Ottumwa. Berney Voelker has joined Smith, Voorhees, Jensen, Silletto Associates in Des Moines.

NEW SHIEBER-HAWS FOLDING PARTITION



Offers 9 Advantages

LIGHTER WEIGHT—Honeycomb fiber core, pressure bonded each side to a one-piece aluminum sheathing reduces weight 65% per square foot as compared with other constructions.

STRONGER CONSTRUCTION—Each section is one integral piece, not a built up construction. It is impervious to warping, shrinking and expansion.

IMPROVED OPERATION—Extension is performed by electric power and cable. Rigid sealing to floor is done by industrial type hydraulic power.

BETTER APPEARANCE—Embossed aluminum sheathing resists and conceals mars and defacing due to accidental bumping and vandalism.

TIGHTER SEAL—Interlocking joints made tighter with concealed hinges. Hydraulic compression and rubber base assure tighter floor seal.

GREATER SOUND ABATEMENT—Testing Laboratory reports two decibel greater sound loss than that claimed for other type partitions.

EMERGENCY MANUAL OPERATION—Provisions are included as standard part of design for manual opening and closing in event of local power failure.

LOWER COST INSTALLATION—No floor tracks or guides are needed. Light weight eliminates need of additional overhead support in most cases.

SUPERVISED INSTALLATION—Schieber trained and salaried engineers who know the assembly supervise every installation.

Let us supply you with quotations, complete detail drawings, specifications and any further information you may need.

PIGOTT SUPPLY COMPANY

15 Ingersoll Ave.

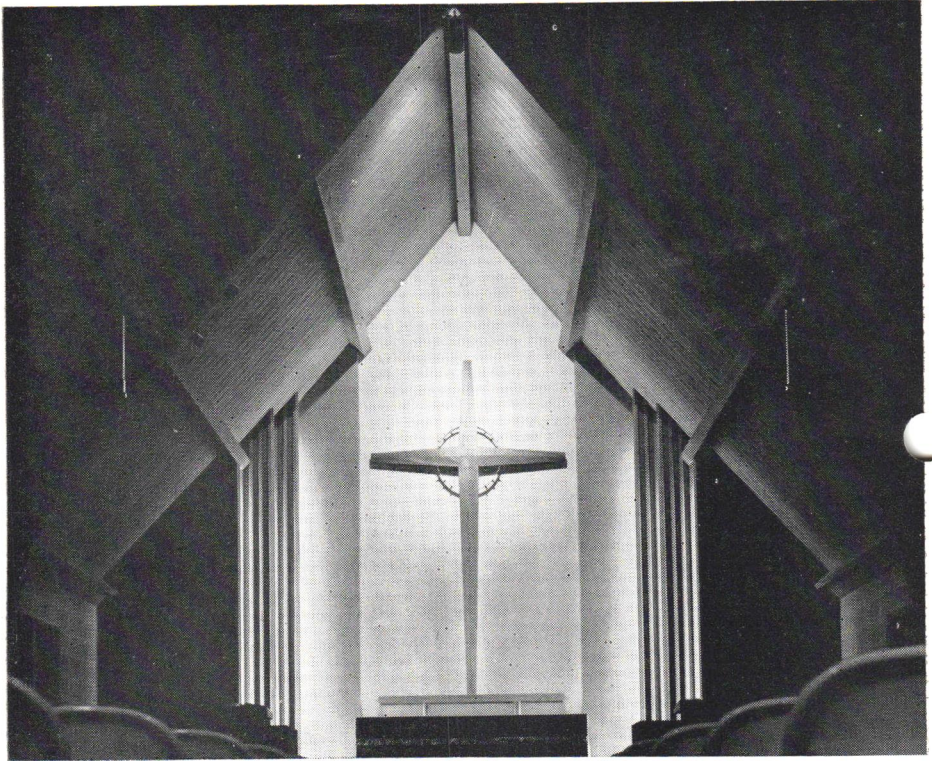
Phone CR 9-8879

Des Moines 12, Iowa

Design

By

Iowa Architects



This is the second in a series of pictures illustrating the work of members of the Iowa Chapter. Architects submit the pictures from their own files. The scene above shows the interior of St. Mark's Lutheran Church in West Des Moines. Savage and Ver Plogg were the architects. William Breiholz was the contractor. Members are invited to continue this series by submitting pictures of their work to James Lynch, editor.

The Service Scoreboard Lights Up

This is a gratifying issue of Iowa Architect. It contains no less than three articles reporting public or civic service by Chapter members: The formaton of the new state group for preservation of historical sites, the volunteer work of members at the Des Moines filter center, and the movement to place an architect on the Des Moines city planning commission. Coming after months of almost fruitless searching for small items to list under our Service Scoreboard, these three reports are outstanding, indeed.

But there is one point that may have some significance: The volunteer work at the filter center and the group for preservation of historical sites are programs resulting from the activity of a **few** individuals. These programs are not actually a result of over-all **Chapter** planning and effort. The two programs are excellent and the individuals involved are to be congratulated for taking the lead. We are sure they would wlcome the support and interest of other Chapter members. Perhaps this is an opportunity to begin the long-sought **Chapter** public service program.

Lemke Builders Supply Co.

610 Walnut Building
DES MOINES 9, IOWA

Phone 2-9611

*Specialists in
steel sash,
doors, partitions*

✓ 30 years of service
to Iowa Schools

✓ chalkboard
specialists

✓ natural slate--
tomorrow's best
chalkboard

✓ Armstrong cork
tackboard

✓ Gotham "Screw-Tite"
(economy) and
"Snap-Tite" (1st
quality) aluminum
trim

✓ Gotham chalkboards

✓ the only complete
chalkboard line in
the industry

W. E. NEAL SLATE COMPANY

1121 Dartmouth Ave., S.E.
Minneapolis 14, Minn.

FE 9-2783

Walsh Flies Sloow

President Jerry Griffith, Prof. Leonard Wolf and Jim Walsh represented the Iowa Chapter at the national convention in Los Angeles. Griffith traveled by train and Walsh started out in his own airplane. Result: Griffith was on the West Coast waiting when Walsh finally flew in.

Thanks, It Was Fine

The Iowa Chapter wishes to express its thanks and appreciation to members of the student chapter, Iowa State College, for an extremely successful and interesting spring meeting. Bob Savage, by the way, was selected as one of the judges of the Viesha parade and decorations.

The best support you can give Iowa Architects is to send in news items, comments, pictures. The magazine will be only as interesting and useful as **you** make it.

Award

John Normile, Des Moines, received an A.I.A. Journalism award at the meeting for his part in editing a story that appeared in Better Homes and Gardens magazine. The award was shared by Curtis Anderson of Better Homes. Award certificates and a check for \$250.00 were presented by President Jerry Griffith.

ADVERTISERS

Iowa Architects calls your attention to two points: 1, the firms advertising in this issue and 2, the other organizations that would be interested in advertising if you will pass the word. Advertising rates in the Iowa Architect, for 12 consecutive issues, are:

Full-page	\$45 per insertion
Half-page	\$25 per insertion
Quarter-page	\$15 per insertion

Rates do not include the cost of cuts, if any. Inquiries or advertising orders should be addressed to Robert Savage, editor, 931 59th St., Des Moines.

CORALITE

New Precast Perlite Concrete Insulating Roof Slabs are now available in sizes 3"x24"x36" or 48".

- Manufactured in Iowa
- Install in any weather
- Deck and insulation in "one package"
- Permanent—no maintenance
- Nailable and sawable

For information phone 9-9775
or write

Midwest Perlite Prod. Inc.

1120 Railroad St.
West Des Moines, Iowa

Our knowledge and experience of over 25 years in the Floor and Wall Covering Field is at your service. Call on us for solution of your problem jobs.

Laytex Underlayments

Asphalt Underlayments

Vinyl Asbestos & Asphalt

Homogeneous Vinyl

Rubber and Cork Tiles

Bolta-Wall Vinyl Wall
Coverings

Rubber Wall Coverings

RALPH N. SMITH, Inc.

Des Moines, Iowa
1339 2nd Ave.

8-6741

Swimming Pool Equipment

- **Vacuum and Pressure Diatomite Filters**
- **Zeolite Softeners**
- **Chemical Feeders**



*For Information
Write or Call*



WATERITE CO.

OMAHA, NEBR.

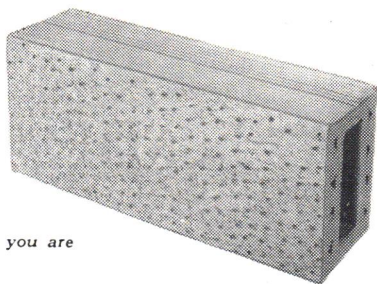
Phone Pleasant 5582

BETTER CLAY PRODUCTS SINCE 1894

Acoustile SOUND ABSORBING

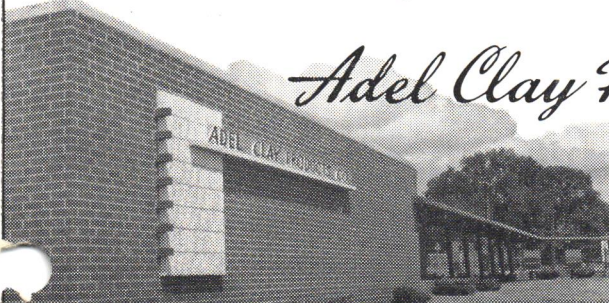
**RED COLOR RANGE—STIPPLE MATT
TEXTURED. A GOOD SURFACE TO PAINT.**

We can supply most of your brick and tile requirements from either of two factories, **THE ADEL CLAY PRODUCTS** at REDFIELD, Iowa, or **THE IOWA CLAY PRODUCTS** at CENTERVILLE, Iowa, or through jobber lines in certain territories.



Free! *Illustrated Brochure of our items in which you are interested will be sent on request.*

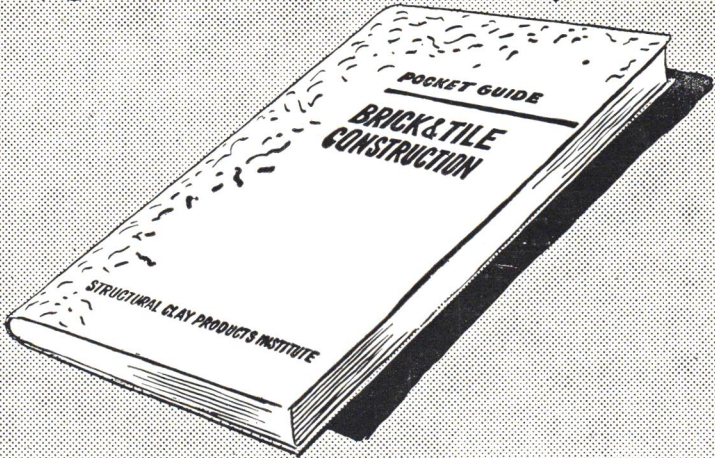
Adel Clay Products Co.



IOWA SALES OFFICES
AND WAREHOUSES
101 ASHWORTH ROAD
WEST DES MOINES, IOWA
TELEPHONE 9-9721

Sold in Carload or Truckload
Quantities. Prices on Request.

JUST OFF THE PRESS



A COPY IS YOURS WITHOUT COST

THE NEW, REVISED QUICK and READY REFERENCE IN DIGEST FORM

Every Architect and Engineer will want this handy reference book on clay masonry construction; it is a condensation of all information published to date. A post card or letter will bring you your copy without cost.

Write today.

A PARTIAL LIST OF CONTENTS

1. Classification of Products.
2. Modular Coordination.
3. Properties of Products.
4. Mortars for Unit Masonry.
5. Properties of Walls.
6. Design of Walls.
7. Construction and Maintenance.
8. Reinforced Brick Masonry.
9. Floors and Roofs.
10. Modular Estimating Tables.

STRUCTURAL CLAY PRODUCTS INSTITUTE

REGION 6

AMES, IOWA