

# IOWA

# ARCHITECT



Iowa Chapter  
American Institute of Architects

VOL. III, No. 5

OFFICIAL PUBLICATION

NOV. - DEC., 1956

## Strong Foundation Underway for A.I.A. Convention

Innovations, entertainment and top-quality information are on the planning boards for the January 24-25-26 meeting of the Iowa Chapter of A.I.A. at the Hotel Savery in Des Moines.

General Chairman Robert Savage said the Convention will open Thursday afternoon, which is an innovation, with a visit to the factory of the Iowa Paint Manufacturing Co., followed by a buffet dinner. A business meeting is planned for Thursday evening.

Mitchell Model Co., a firm which specializes in the preparation of architectural presentations, will conduct a session Friday morning at which architects will see a "how to do it," and "how it can be done" demonstration in the use of models and 35 mm. color slides.

Another feature already on the program is a skit to be presented by the Student Chapter of A.I.A. from Iowa State College.

Highlighting the annual luncheon at noon Friday will be Roger Allen of Grand Rapids, Michigan, who is nationally known as a writer and speaker. His entertaining and philosophic dissertations have been widely read, and he has received much favorable comment when he

was the principal speaker at an A.I.A. banquet about 10 years ago.

The qualities and training that architects expect in newly graduated students, and how the schools should go about providing the necessary training, will be subjects for a panel discussion Friday afternoon in which the professional staff from Iowa State College will take an active part. This panel is an outgrowth of a discussion which took place when the accrediting committee visited Iowa State College.

Saturday sessions will be devoted to business meetings of the Iowa Chapter.

Plans are outlined, but yet incomplete, for the Banquet Friday evening

(Continued on page 6)

## OFFICERS

President.....Gerald Griffith  
Vice President.....James Walsh  
Secretary.....Paul Skiles  
Treasurer.....Lyle Howard

### PUBLIC AND PROFESSIONAL RELATIONS COMMITTEE

James Lynch, Chairman

James Walsh

Don McKeown

Harold Bullington

William Wagner

Allen Salisbury

"Iowa Architect" is published bi-monthly for Iowa Chapter, American Institute of Architects, and mailed without charge. Appearance of names and pictures of products or services in editorial or advertising copy does not constitute endorsement of either the A.I.A., or this chapter. Editor: James Lynch, 2425 Park Ave., Des Moines, Iowa

We wish all

Iowa Chapter Members

a

**VERY**

**MERRY CHRISTMAS**

and a

**HAPPY NEW YEAR**

From everyone at:

**FLEETLITE OF IOWA, INC.**

2001 Maple St., Des Moines

and

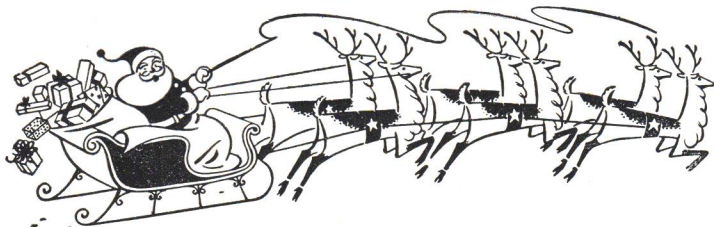
**FLEET OF AMERICA SALES  
CORP.**

E. M. Carlson, District Manager

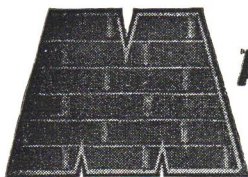
Buffalo, N.Y. - Coral Gables, Fla.

Des Moines, Iowa

Telephone AMherst 2-3484



To You The Merriest Christmas And  
A Happy And Prosperous 1957 is The  
Wish of The Makers of **DENISON**  
CLAY PRODUCTS



**DENISON CITY BRICK AND TILE COMPANY**  
MASON CITY, IOWA

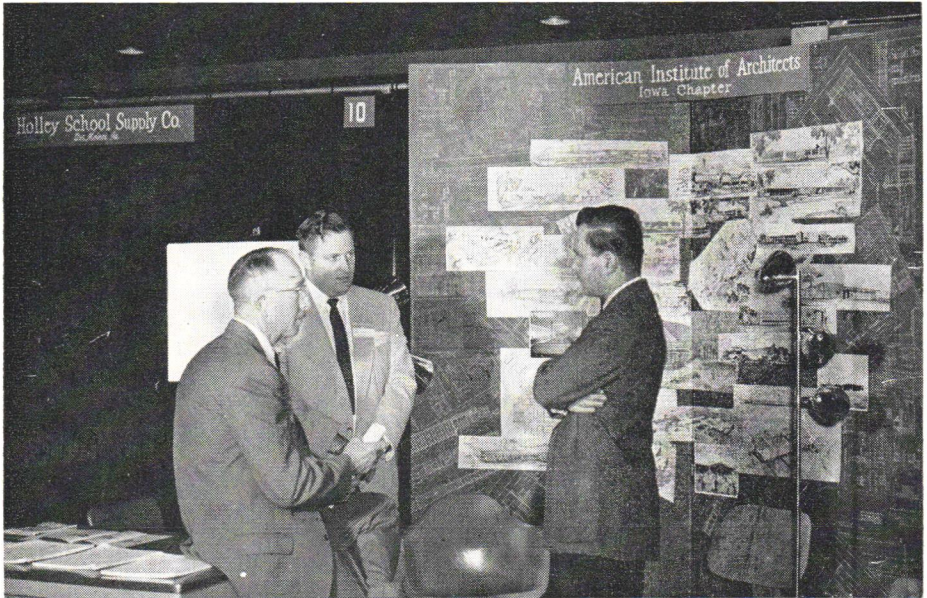
554 Builders Exchange Bldg.  
Minneapolis, Minnesota

433 Endicott Bldg.  
St. Paul, Minnesota

Member Structural Clay Products Institute



## Iowa Chapter Shows School Designs to Boards



James Lynch, center, and Paul Moore, right, discuss the services an architect performs with a visitor from Northern Iowa during the two-day meeting of the Iowa Association of School Boards annual convention in Des Moines November 14 and 15 at Memorial Auditorium.

The display booth background was composed of prints and renderings of school projects which have been designed by members of the Iowa Chapter. In addition to explanation and discussion at the display, the interested visitors were provided with a list of all members of the Iowa Chapter.

The Public Relations Committee, which handled the creation of the booth, extended special appreciation to the Holley School Supply Co., Des Moines, which provided a desk and chair; Weston Lighting Co., Des Moines, which provided lamps, and the Piggott Supply Co., Des Moines, which also supplied chairs.

Members who helped man the booth during the two days included: Harold Bullington, Allen Salisbury, Bob Savage, Bill Wagner, Rich Goewey, Paul Moore, and Jim Lynch.

Architects contributing prints and renderings for the display included: Wetherill & Harrison, Karl Keffer Associates, N. Clifford Prall, Brooks-Borg, Savage & Ver Ploeg; Smith-Voorhees-Jensen, Silletto & Associates, all of Des Moines, and James Walsh, of Spencer.

### Returns To ISC

Carl Vise has returned to Iowa State College as a member of the faculty of the Department of Architecture and Architectural Engineering. His return to ISC is from private practice in St. Louis, Missouri, where he went following a period as a member of the faculty of the University of Minnesota at Minne-

apolis. Before joining the Minnesota faculty, Vise had been a member of the ISC architectural instruction staff.

### NEW FIRM ESTABLISHED

Harold F. Bianco and Robert B. Bergland of Mason City have established their own firm under the name of Bianco and Bergland and have the best wishes of the association in their venture.

## Call For Candidates For Craftsmanship Award

John Brooks, Chairman of the Awards Committee of Iowa Chapter A.I.A., has issued a call for nominations for Craftsmanship Awards which will be made to outstanding building craftsmen of the state at the Iowa Chapter's annual banquet January 25.

In issuing the call, Brooks reminded Architects and Contractors that these awards are a method by which the architect can call attention to the men who do the highest quality of work. He also noted that too few of the nominations received in past years have been made by chapter members.

Nominations may be made by any architect or contractor and should be sent to Paul Skiles, Secretary, Iowa Chapter A.I.A., 506 Shops Building, Des Moines. Nomination letters should in-

clude this information about the nominee:

Name, address, craft in which the nominee works, your reason for making the nomination, the names of several other persons who are familiar with his skill, and the name of the principal contractor which he works.

Brooks, of Brooks-Borg, 815 Hubbell Building, Des Moines, said the nominations must be received no later than December 26 in order to provide sufficient time for judging by the awards committee.

The Craftsmanship awards have been one of the chapter's most successful programs, having won wide acknowledgement among the contractors of the state, and having served to focus attention on quality workmanship.

## Thin Shell Seminar Reaches Architects, Engineers, Contractors

Some 50 central Iowa architects, contractors and engineers completed the six-session course on basic design of thin shell concrete structures at Roosevelt high school, Des Moines, by the Portland Cement Association.

Of the 65 who attended the first session, at which Milo Ketchum of Ketchum & Konkell, Denver, was the speaker, 75 percent attended the remaining five sessions.

Some of those attending found themselves working the kind of mathematics they hadn't seen for years as the instructors presented sample problems. Problems were primarily aimed at teaching those present how to work with available reference data on the thin shell structures.

Characteristics of the thin shell concrete structure were compared with the characteristics of the familiar types of concrete structure with particular emphasis on the types of project for which thin shell has already been found to be satisfactory, and upon the problems which can be solved by thin shell techniques.

- ✓ 30 years of service to Iowa Schools
- ✓ chalkboard specialists
- ✓ natural slate--tomorrow's best chalkboard
- ✓ Armstrong cork tackboard
- ✓ Gotham "Screw-Tite" (economy) and "Snap-Tite" (1st quality) aluminum trim
- ✓ Gotham chalkboards
- ✓ the only complete chalkboard line in the industry

### W. E. NEAL SLATE COMPANY

1121 Dartmouth Ave., S.E.  
Minneapolis 14, Minn. FE 9-276



# THIS I BELIEVE

By Harold W. Himes

Associate Professor of Architecture, Iowa State College

The efforts of the Architect, as they are directed toward the creation of shelter for the many and varied activities of man, create a portion of the physical environment of man. In many cases, the people using or viewing this shelter were non-participants in the decisions concerning it. Thus the Architect and the teacher must assume the obligations, toward men, that all his efforts will be for the betterment of man and enrichment of his physical environment. This also is his challenge.

How well he fulfills this obligation and meets this challenge is a measure of his integrity and his ability. He must know more than just the technical and mechanical requirements and he must have a vision greater than that of his immediate project.

We are involved in a period of rapidly changing technologies. Materials and methods of construction have changed radically. Thus we must have a different expression in our buildings than those of earlier times.

But the basic reference point of all architecture must be man. It must satisfy his need for shelter and, equally important, enhance his daily experience through the sensory perceptions. Architecture must have a meaning and purpose for man that is rich, satisfying and stimulating.

The Architect must be aware of the fact that although the things men do and things men use have changed, that although the tempo of life has indeed become jet-propelled, man himself has not changed in his primary requirements for the complete fulfillment of his life. The Architect, as he meets his challenge and his obligation, must be more concerned with this than with the superficial trappings of an uncertain age.

---

## Accrediting Committee Inspects Iowa State; Dines With A.I.A. Men

Architects from Central Iowa and the A.I.A. Executive Committee heard three nationally known architects describe the intricacies of accrediting architectural education institutions at a dinner meeting in Des Moines in November.

The three architects were Perry Johanson of Seattle, Wash., Robert Cerny of Minneapolis, Minn., and Norman Schlossman of Chicago, who were in Iowa representing the National Architectural Accrediting Board, for the perfunctory examination of the Iowa State College architecture department.

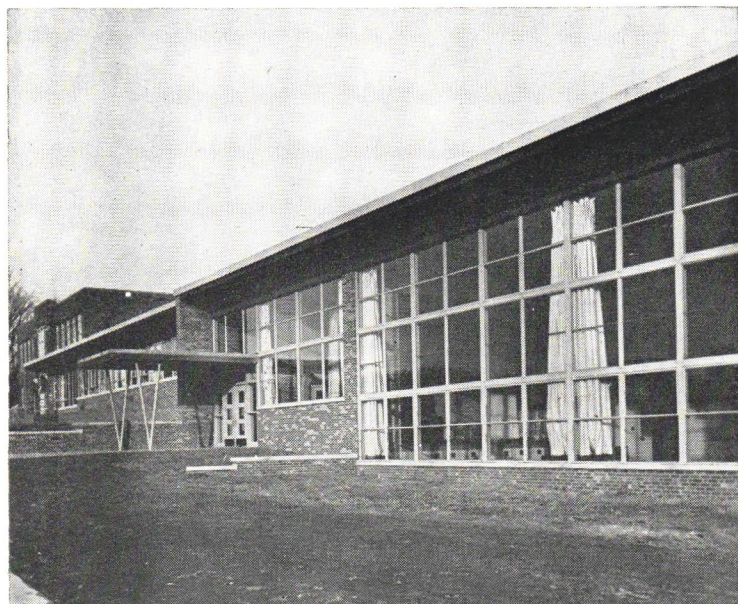
During the informal discussions of the evening, the three accrediting examiners told of the duties and activities of the accrediting committee and described the methods and standards used in judging a school. They also described the general requirements for architectural schools and told how facts about each school are accumulated for judging.

All present joined in a general discussion of architectural education.

The committee members said that announcement of the accreditation of schools is made in reports published from the board's national headquarters.

**DESIGNED**

**BY IOWA ARCHITECTS**



Woodrow Wilson School Addition  
Newton Community School District  
Newton, Iowa

Karl Keffer Associates  
Architects & Engineers  
Des Moines, Iowa

The Weitz Company, Inc.,  
General Contractor  
Completed: March 1956  
Cost: \$204,960.00

Fourth in a continuing series of pictures illustrating work of members of the Iowa Chapter of A.I.A., this shows entrance detail, and the use of broad expanses of windows for interior illumination.

All chapter members are invited to contribute examples of their work to this series. Pictures are from the member's own file. Send your pictures to James Lynch, Editor, the Iowa Architect.

## **Strong Foundation . . .**

(Continued from page 1)  
and the committee expects to have an outstanding architectural delineator as the principal speaker. A reception will

precede the banquet, and after the dinner there will be dancing to the music of Speck Redd's orchestra. Speer will be playing his third consecutive dance program for the Iowa A.I.A.

**HEAR YE!**

**HEAR YE!**

**Let All Men**

**Hear,  
from every corner  
of the state,**

**BEST WISHES**

*for a*

**MERRY CHRISTMAS**

*and a*

**PROSPEROUS  
NEW YEAR**

*Proclaimed by the  
20 Members of the*



**IOWA CONCRETE MASONRY ASSOCIATION**

820 S.W. 9th St.

Des Moines, Iowa



## Walsh Outlines Tentative Plans for Investment Seminar

Tentative plans are being formulated for a week-end seminar at the State University of Iowa for discussion of building design, construction and maintenance costs as they are related to attracting building investments.

James Walsh, Spencer, First Vice-President of the Iowa Chapter, A.I.A. has been working on the project with Dean S. G. Winters of the College of Commerce at S.U.I. and is interested in learning how many Iowa architects would be interested in attending such a seminar. It would be held in April or May of 1957.

Plans for the program are only tentative and Walsh is interested in receiving suggestions for subjects to be included, or other program improvements.

Subjects tentatively listed include: Building Design; Financing; Taxation. Plans call for the presentations to be keyed so as to appeal to architects, contractors, bankers, attorneys, and

mortgage lenders who have interest in building investments.

Some of the questions which are expected to be answered on the subjects are these: "What do the building investors want? What are they looking for? How can it be supplied? How does the cost of operation and maintenance affect the investment in relation to insurance, and to taxes?"

Architects and others who might be interested in attending the seminar, or who have suggestions, should contact James Walsh at Spencer.

## Regents Set Visits

### To Educational Campi

Members of the Executive and Legislative Committees of the Iowa Chapter of A.I.A. have been invited by the State Board of Regents to visit all of the institutions under control of the Board.

Charles Silletto, of Smith-Voohees-Jensen-Silletto & Associates, chairman of the legislative committee reported that his visits to the Braille and Sight Saving School at Vinton, and to the School for the Deaf at Council Bluffs were most revealing in disclosing the exceptional accomplishments at those schools.

He also expressed his belief in the need for supporting the appropriation requests of the Regents for the institutions.

The Board of Regents is in control of the State University of Iowa, Iowa State College, Iowa State Teachers College, the Braille and Sight Saving School, the School for the Deaf and the Iowa Tuberculosis Sanatorium at Oakdale, near Iowa City.

Members who have visited institutions have included Wayne Lyon of the executive committee, Silletto, Burdett-Higgins, Waldo Dean, and Clair Wei all of the legislative committee.

Our knowledge and experience of over 25 years in the Floor and Wall Covering Field is at your service. Call on us for solution of your problem jobs.

Laytex Underlayments

Asphalt Underlayments

Vinyl Asbestos & Asphalt

Homogeneous Vinyl

Rubber and Cork Tiles

Bolta-Wall Vinyl Wall Coverings

Rubber Wall Coverings

**RALPH N. SMITH, Inc.**

Des Moines, Iowa

1339 2nd Ave.

AT 8-6741



# IOWA CHAPTER PRESIDENT DISCUSSES SERVICES OF ARCHITECT IN RADIO INTERVIEW

Gerald Griffith, president of Iowa Chapter A.I.A. explained the methods architects generally use in serving their clients during a 10-minute interview broadcast over Radio Station KSO, Des Moines, October 28.

During the 10-minute interview, which was part of the hour-long "Hour of Progress" sponsored weekly by the Iowa Concrete Block and Material Co., Jerry covered such points as the service of the architect in assisting in choice of proper location, drafting of preliminary floor plans, and assistance in selection of the contractor. He stressed the vital aspects of the continuing interchange of ideas between the client and the architect.

The interview was intended to help inform central Iowa residents of the place of the architect in the construc-

tion field. In emphasizing the key role of architects in building design and construction, Griffith said in part:

"I believe every person today will agree that this is an age of specialists. In order to succeed in this busy world, every person in business . . . must continually learn all the new phases of his business . . . in order to meet his competition. Because this takes so much of his time, he does not have the time nor the experience to plan his buildings, so he calls in an architect as a specialist on the latest and best methods of construction."

(Comments received indicate Jerry did a commendable job in representing the chapter and its members. Complete copies of his talk are available from Iowa Concrete Block and Materials Co.)

## We Are Trying To Hold Down Building Costs

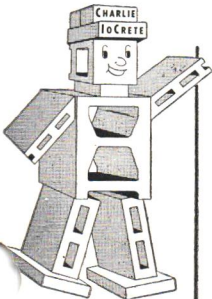
### PERCENTAGE OF PRESENT PRICES OVER PREWAR (1939)

An Appraisal By American Appraisal Co.

Lumber .....	Up 293%	Wages .....	Up 152%
Common Brick .....	Up 144%	Steel .....	Up 119%
Cement .....	Up 67%	Copper .....	Up 283%
Our Concrete Blocks .....	Up .52%		
Our Lightweight Blocks .....	Up .52%		

Not only is our percentage of increase much less than any other building costs, but our blocks today are superior in every way over those made in 1939.

You can keep costs of your buildings down by using more Concrete Masonry and you can help us to keep our prices down by giving us more volume.



## IOWA CONCRETE BLOCK & MATERIAL COMPANY

- Concrete Blocks • Haydite Blocks • Bricks • Chan-
- nel Roof Slabs • Concrete Joist • Owens-Illinois
- Glass Blocks • Lannon Stone • Sanymetal Toilet
- Compartments • Champion Masonry Saws and
- Blades • Chicago Fire Brick • Masonry Materials
- Aluminum and Steel Windows • Arketex Glazed Tile
- Metal Specialties • Concrete Corn Cribs and Silos

820 S.W. 9th St. PH. AT 8-5751 DES MOINES 9, IOWA  
 "Your Problems Keep Us in Business"

## Awards Stress Safety For Master Builders

Six companies were awarded first place plaques for accident prevention at the annual Convention of the Master Builders of Iowa at Des Moines December 5 and 12 other firms were presented certificates of merit.

The awards were made after J. W. Nichols, Des Moines, chairman of the Accident Prevention Committee of the Master Builders of Iowa, reported that the 1956 program had resulted in a 13 per cent reduction in the frequency of lost time work injuries or about one less major accident per week. Results of three years of work against accidents has brought three tangible results, a report prepared by Nichols' committee said; they were savings of workmen's lives, decrease in the cost of workmen's compensation, and increased efficiency because of fewer work days lost due to injuries.

First Place Plaques were presented to: R. M. Coomer Construction Co., Sioux City; Langer & Associates, Des Moines;

## DOUBLED IN BABES

John Hart, structural engineer with Brooks-Borg, had the number of youngsters in his house just doubled when he and Mrs. Hart became the parents of twins December 5. Newcomer Andrew Paul has an older brother, John Alexander, age 2½, and newcomer Kathryn Walsh has an older sister, Marcia Bawn, age 8. The young ones are reported doing fine and carry best wishes from the A.I.A., Iowa Chapter.

## SULLIVAN DESIGN

A cast iron ornament designed by Louis Sullivan graces a wall of the newly decorated Brooks-Borg offices at 815 Hubbell Bldg. The ornament came from the elevators of the Carson-Perry-Scott Building, Chicago, and was resurrected for its present use.

Stolz Construction Co., Inc., New Hampton; C. Glenn Walker Co., Fort Dodge; The Weitz Company, Inc., Des Moines; and Wickes Engineering & Construction Co., Des Moines.

## BETTER CLAY PRODUCTS SINCE 1894

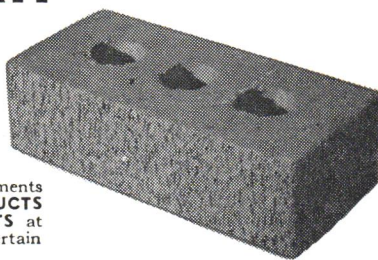
### TEXTURED STIPPLE-MATT

## Standard Face Brick

TEXTURED OR SMOOTH FACE IN RED AND BUFF. STANDARD SIZE OR STANDARD MODULAR ON SPECIAL ORDERS.

We can supply most of your brick and tile requirements from either of two factories, **THE ADEL CLAY PRODUCTS** at **REDFIELD, Iowa**, or **THE IOWA CLAY PRODUCTS** at **CENTERVILLE, Iowa**, or through jobber lines in certain territories.

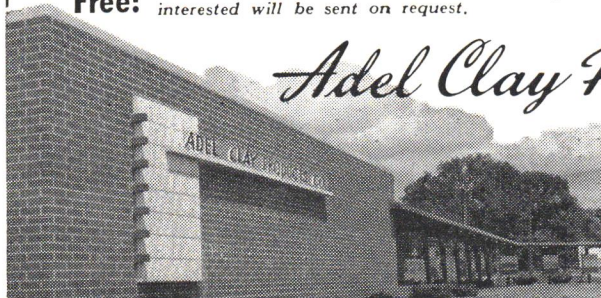
**Free!** *Illustrated Brochure of our items in which you are interested will be sent on request.*



# *Adel Clay Products Co.*

IOWA SALES OFFICES  
AND WAREHOUSES  
101 ASHWORTH ROAD  
WEST DES MOINES, IOWA  
CRestwood 9-9721

Sold in Carload or Truckload  
Quantities. Prices on Request.





# CORALITE

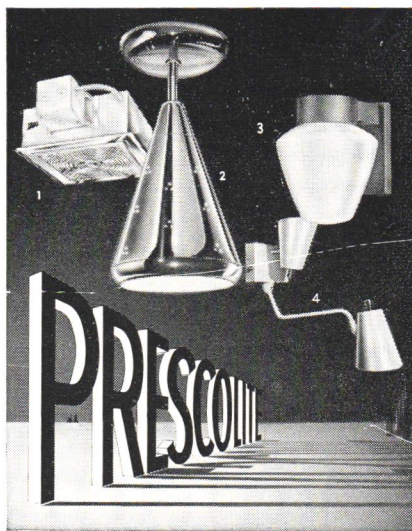
New Precast Perlite Concrete Insulating Roof Slabs are now available in sizes 3"x24"x36" or 48".

- Manufactured in Iowa
- Fewer weather problems
- Deck and insulation in "one package"
- Permanent—no maintenance
- Nailable and sawable

For information  
write or telephone:

## Midwest Perlite Prod. Inc.

1120 Railroad St.  
West Des Moines, Iowa  
CRestwood 9-9775



The fixtures illustrated above, and many others too, employ "DieLux"\* diecastings as an integral part of the unit...for STRENGTH, DURABILITY, APPEARANCE. 1. No. 1015-6715 Recessed. 2. No. A-14 Swivel Unit. 3. No. 8585 Hospital Light. No. WB-25 Wall Unit. Write for your copies of PRESCOLITE literature.

\*Prescolite's trade name for precision diecast products.

**PRESCOLITE MANUFACTURING CORP.**  
Berkeley, California • Neshaminy, Pennsylvania

# Swimming Pool Equipment

- ***Vacuum and Pressure Diatomite Filters***
- ***Zeolite Softeners***
- ***Chemical Feeders***



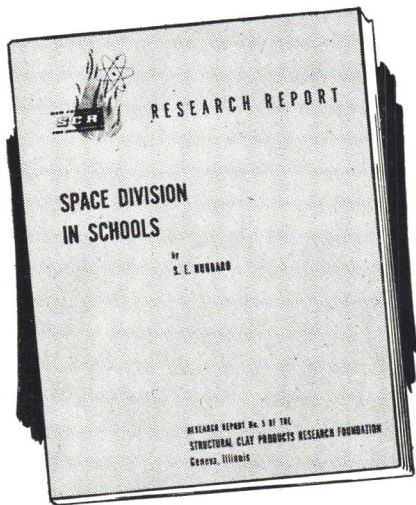
*For Information  
Write or Call*



## WATERITE CO.

OMAHA, NEBR.

Phone Pleasant 5582



**WOULD YOU LIKE TO  
KNOW HOW YOUR  
COLLEAGUES RATE THE  
IMPORTANCE OF THE  
FOLLOWING CRITERIA  
FOR CLASSROOM  
PARTITION WALLS**

Initial Cost

Ease of Relocation

Educational Use of  
Partition Surfaces

High Sound Absorption

Resistance to Soiling

Structural Qualities

Low Sound Transmission

Easy Cleanability

Resistance to Vandalism

Fire Safety

The above Research Structural Clay Products Research Foundation Report No. 5 lists results of such a survey of Architectural Firms conducted throughout the United States. If you will list, in order of preference, your own criteria, we will be very happy to send you the report pictured above for comparison.

## **STRUCTURAL CLAY PRODUCTS INSTITUTE**

Ames, Iowa

401 Wesley Temple Bldg.  
Minneapolis, Minnesota  
Phone FEderal 6-7055

7437 Wright Street  
Omaha, Nebraska  
Phone REgent 8991