

Vol. IV - No. 2

IOWA ARCHITECT

Official Publication of

Iowa Chapter

American Institute of Architects

March-April 1957



Plans Complete for April 17 Meet At Ames;

Photographer Julius Shulman Will Be Speaker

Members of the Iowa Chapter of A.I.A. will hear a noted architectural photographer at the April 17 Spring Meeting of the Chapter on the campus of Iowa State College.

Julius Shulman, architectural photographer whose work has become noted among those who record modern architectural developments, will be the banquet speaker for the evening meeting at the Memorial Union grand hall.

Prof. Leonard Wolf, head of the Division of Architecture at I.S.C., has reported that plans for the day include a 12 Noon luncheon in the Memorial Union Cafeteria, a 2 p.m. Business Meeting for members of the Chapter, and a 5:45 p.m. banquet at which Mr. Shulman will speak.

"One Hundred Years of Residential Construction in Iowa" will be reviewed during a 10:00 p.m. television program over Station WOI-TV (Channel 5). This program, featuring the Division of Architecture, will be produced and directed by students of the Television courses at I.S.C., but will present members of the profession.

In connection with this program, Prof. Wolf is issuing an appeal for 8 x 10 inch, black and white pictures to be used to illustrate the changes in architectural designs in Iowa during the past century. He is particularly interested in obtaining good photographs of old houses, and details of old houses which demonstrate the influence of architects on home design.

The educational committee will meet at 9:30 a.m. in the architecture department to judge the exhibits of work by the seniors. The committee will select the works, which in its judgment, are the best in the fields of architecture and engineering.

(Continued on page 4)

OFFICERS

President.....James Walsh
Vice President.....Wayne Lyon
Secretary.....Paul Skiles
Treasurer.....Lyle Howard

PUBLIC AND PROFESSIONAL RELATIONS COMMITTEE

James Lynch, Chairman

James Walsh

Don McKeown

Harold Bullington

William Wagner

Allen Salisbury

"Iowa Architect" is published bi-monthly for Iowa Chapter, American Institute of Architects, and mailed without charge. Appearance of names and pictures of products or services in editorial or advertising copy does not constitute endorsement of either the A.I.A., or this chapter. Editor: James Lynch, 2425 Park Ave., Des Moines, Iowa

CORALITE

New Precast Perlite Concrete Insulating Roof Slabs are now available in sizes 3"x24"x36" or 48".

- Manufactured in Iowa
- Fewer weather problems
- Deck and insulation in "one package"
- Permanent—no maintenance
- Nailable and sawable

For information
write or telephone:

Midwest Perlite Prod. Inc.

1120 Railroad St.

West Des Moines, Iowa

CRestwood 9-9775

Swimming Pool Equipment

- **Vacuum and Pressure Diatomite Filters**
- **Zeolite Softeners**
- **Chemical Feeders**



*For Information
Write or Call*



WATERITE CO.

OMAHA, NEBR.

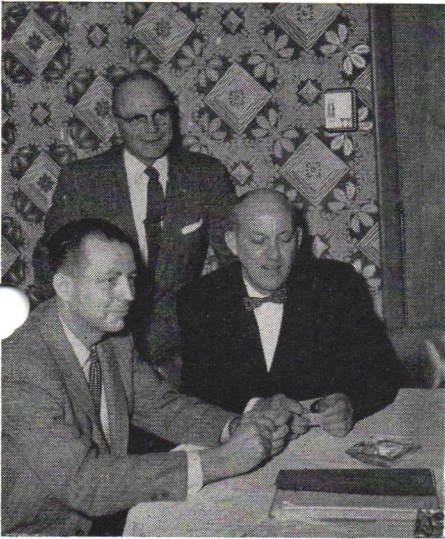
Phone Pleasant 5582

James Walsh Moves Into Presidency;

Jayne Lyon is V-P., O'Neil, Robinson, Siletto Named

Members of the Iowa Chapter A.I.A. advanced James Walsh to the presidency for 1957 and chose Wayne Lyon of Des Moines as Chapter Vice-President in elections that marked the January 25th business session. Paul Skiles of Des Moines and Lyle Howard of Ottumwa were re-elected as secretary and treasurer. All the major offices were filled on the basis of unanimous ballots.

Eugene O'Neil, of Woodburn & O'Neil, Charles Silletto of Smith-Voorhees-Jensen-Silletto & Associates, both of Des Moines, and Douglas Robison of Louis C. Kingscott & Associates, Davenport, were chosen as members of the Board of Directors. Silletto and O'Neil were elected on the first ballot from among six candidates, and Robison was elected on the second ballot. Gerald T. Griffith, Past-President, is a member of the board.



Officers James Walsh, right, president, Wayne Lyon, vice-president, and Lyle Howard, (standing), treasurer, smile with pleasure following elections during the 1957 convention.

In other official actions, the chapter voted approval of the purchase of a 16 mm sound-color film "Architecture U.S.A." for use by the chapter in promoting architecture. The membership also voted to buy a supply of stickers commemorating the 100th anniversary of the founding of the A.I.A. These stickers will be available through the Public Relations Committee headed by James Lynch.

The Summer Meeting of the Iowa Chapter is set for Lake Okoboji from Friday noon, June 28th through Sunday



Board Members for 1957 are (seated, left to right), Doug Robison of Davenport, Gerry Griffith, Des Moines, Charles Silletto, Des Moines, and Eugene O'Neil, Des Moines, standing.

noon June 30th. This annual summer meeting is planned as a family outing and James Walsh reported that an advance payment will be necessary to hold reservations at "Vacation Village," a spacious and comfortable resort which is excellently adapted for family groups. The resort has facilities for children of all ages and some of the girls who are waitresses in the dining room also will act as baby-sitters during the evening.

Committee reports presented at the business meeting January 24 included those of membership, practice, relations with the construction industry, education, fellowship, convention, legislation, historical building, and the centennial committee.

Reporting on the public relations committee, Robert Bonomi outlined the

More Convention . . . (from page 3)

policy program for the Iowa Architect and told the chapter that it was intended to make the magazine serve the chapter. He stressed the need to have the magazine carry as much information as possible about chapter plans and activities. He also stressed the need for information (which may be sent directly to James Lynch, editor), for pictures of outstanding or noteworthy construction designed by Iowa architects, and the need for the membership to recognize the advertisers in the magazine.

"If you have seen an advertisement in the Architect, and a representative of the firm calls on you, let him know that you have seen the advertisement. Then he knows that his message is reaching you; whether you are convinced by his message is a matter for your own decision," Bonomi said. He predicted that such a program would bring increased recognition to the publication and would result in an increase in advertising, thus permitting the chapter to do a better job with the publication as both an internal and external public relations item.

J. Woolson Brooks, chairman of the Centennial Liaison Committee reported on plans for holding a Centennial recognition dinner at the Des Moines Art Center, and the scheduling of a radio program in conjunction with the Iowa Bar Association.

A report on the activities in connection with the Des Moines recognition of the Centennial is carried elsewhere in this issue of the Iowa Architect.

Joins Wetherell & Harrison

John Wetherell has become a member of the staff of Wetherell & Harrison, Des Moines, following completion of studies for an M.S. Degree in Architecture at the University of Illinois. Wetherell is a son of Edwin H. Wetherell, one of the firm heads, and has received a B.S. Degree in Architecture from Iowa State College. He has completed armed forces service with the Navy.

Appreciation Expressed In Chapter Resolutions

Recognizing the activities of firm organization and members on behalf of the entire chapter, resolutions were adopted at the Iowa Chapter Convention in January which expressed appreciation to the following named persons and firms:

Iowa Paint Manufacturing Co. which "cordially received and entertained" the chapter.

Pomona Tile Company, Los Angeles, Cal., which presented an informative and entertaining program and had remembrances for the members and their wives.

"**The Advertisers in the Iowa Architect**," because "they are most helpful in developing and expanding our publication."

The Craftsmanship Committee, the officers of 1956, the Convention Chairman and Committee.

Charles Altfillisch and Karl M. Waggoner for their many years of faithful and excellent service as members of the State Board of Architectural Examiners.

The Iowa Concrete Block and Materials Co. for the series of radio programs which gave recognition to architecture.

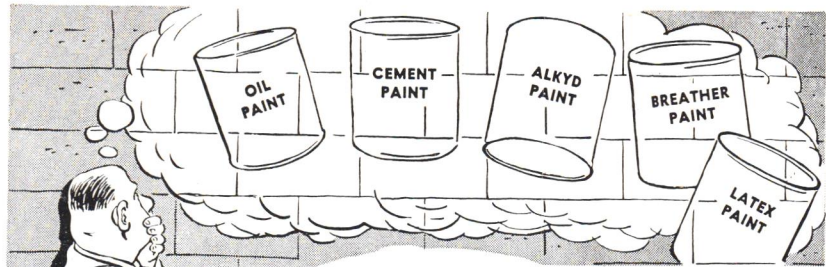
The Master Builders of Iowa for the cordial relationships which have existed between the organizations.

More Spring . . . (from page 1)

Among awards presented during the spring meeting will be the following:

Iowa Chapter Awards for Architectural Engineering and Architecture; Student Chapter A.I.A. Award, Master Builder's Scholarship, Structural Products award, the Charles F. Bowers Memorial award, and the Karl Keffer Award.

DONALD R. SHELDON, formerly of Hutchinson, Minn., and a graduate of the University of Minnesota, 1954, has joined the staff of Smith, Voorhees, Jensen, Silletto & Associates. He formerly was with Despatch Oven Co., who design and build industrial ovens.



WHICH MASONRY COATING ? ? ?

The subject of masonry and masonry coatings is one of the most confusing in the industry today . . .

We have available for Iowa Architects an impartial, authoritative 24-page
"SPECIAL REPORT ON MASONRY COATINGS"*

This report includes 10 separate articles covering such topics as:

How to Prepare Masonry Surfaces.

Emulsion Paints for Concrete.

Where to Use Silicone Coatings.

Oil, Synthetic and Alkyd Paints.

A Check List Comparing Properties of
Masonry Coatings.

Use the accompanying post card to request your free copy
of this special report from our Des Moines office.

You are invited to call upon our staff for impartial and technical advice
upon all paint problems. Our offices are in Des Moines, Waterloo,
Davenport and Omaha.

* Compiled by the Editors of Painting & Decorating Contractor

Iowa

PAINT MANUFACTURING CO., INC.



Des Moines

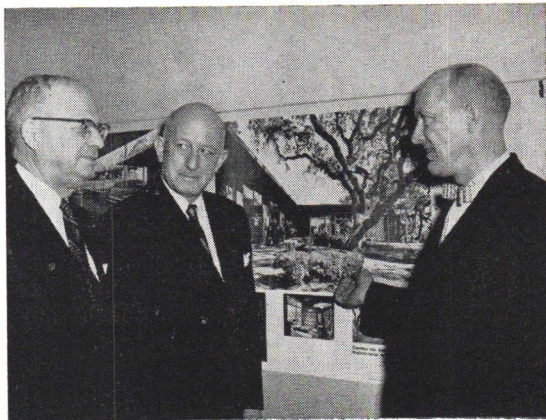
Waterloo

Omaha

Davenport

Iowa Chapter Recognizes Centennial Of American Institute of Architecture

Rex Bateson of Eldora, president of the Iowa Bar Association (left), Dr. Fred Sternagel of West Des Moines (center) president-elect of the Iowa State Medical Society talk about one of the A.I.A. award winning designs with A.I.A. Chapter President James Walsh during the Iowa recognition of the A.I.A. Centennial at the Des Moines Art Center.



Stressing the element of art as a vital factor in the success of a structure, Dr. Wilfred Payne of the University of Omaha, helped the Iowa Chapter of A.I.A. mark the Centennial of A.I.A. by addressing Architects, Engineers and their ladies in a special centennial program held February 23rd at the Des Moines Art Center.

Dr. Fred Sternagel, West Des Moines, president-elect of the Iowa State Medical Society, and Rex Bateson, Eldora, president of the Iowa State Bar Association joined Iowa A.I.A. Chapter President James Walsh at the head table, along with Centennial Chairman J. Woolson Brooks, Burdette Higgins, Dr. Payne, and Ken Lewis, Executive Secretary for the Master Builders of Iowa.

In a talk labelled "100 Years of Conscience and Competence," Dr. Payne declared that a "design must express the intention of the builder, and not be a part of a 'school' to be successful."

Citing successful designs which have become landmarks of architecture during the past century, Dr. Payne pointed out that architects have created new, daring and successful structures. He said that in many of these the architect actually had adopted a style and then adapted it to his own use and had used it to express himself with grace and charm.

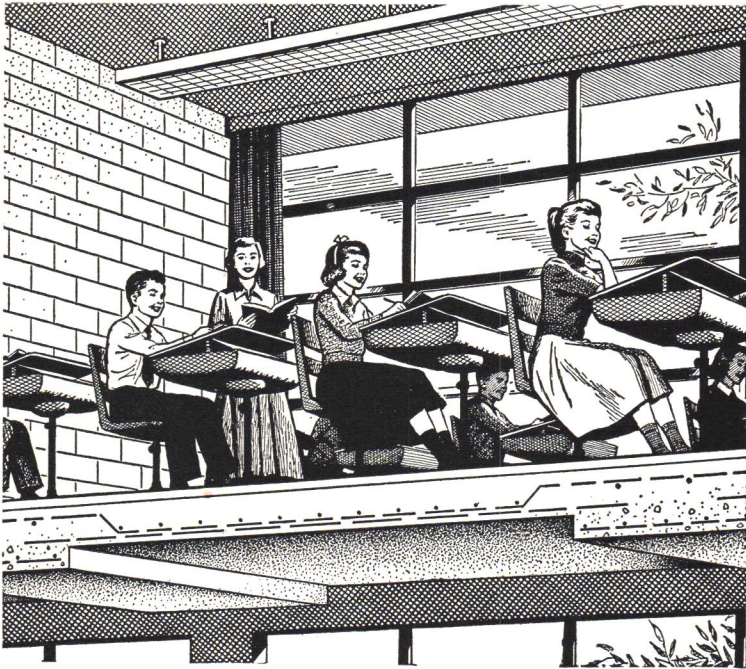
Although Dr. Payne gave heavy emphasis to the place of beauty in design, he also drew attention to buildings which were not successful because they

failed to efficiently serve the purpose for which they had been constructed.

Those attending the dinner gathered in a main corridor at the Art Center and then were served a dinner in a small dining room before returning to the auditorium to hear Dr. Payne's discussion.

Another portion of the A.I.A. Centennial recognition took place in Des Moines, Feb. 23, as J. Woolson Brooks, Rex Bateson, and Hiram Hunn participated in a half-hour radio show over WHO for a discussion of architectural principles and the history of architecture. The show was a part of the continuing series of programs presented by WHO with the bar association furnishing the materials.

Another recognition of the centennial will take place as the Chapter holds its Spring meeting at Ames, April 17 when a TV show over WOI-TV will feature "100 Years of Residential Construction in Iowa."



Guard These Precious Lives. Build Safer Schools with *CONCRETE*

News of a school fire or explosion strikes terror into the heart of every parent. You can give your children and their teachers an extra measure of protection against tragedy by insisting that schools planned for your community be built with concrete frames and floors and concrete masonry walls.

A school built with concrete frames and floors has the strength, rigidity and toughness to withstand such destructive forces as hurricanes, earthquakes, and atomic blasts. These forces can spell disaster in a split second for buildings of less durable construction.

Only the best is good enough when children's lives are at stake. Play safe. Insist on durable, safe concrete construction for the new schools in your community.

PORTLAND CEMENT ASSOCIATION

408 Hubbell Bldg., Des Moines 9, Iowa

A national organization to improve and extend the uses of portland cement and concrete through scientific research and engineering field work

THIS I BELIEVE

HAROLD J. STEWART

Louis C. Kingscott & Associates, Inc., Davenport, Iowa

A few thoughts from one of the older-young men in the Chapter:

Our efforts to build our practice and secure work should be pointed to offering a superior service for a fair fee rather than a mediocre service for a lower fee. In the long run, we will be judged by the quality of our service, not by the cost of it.

Public relations, at any level, will be for naught if the individual Architects are careless with their responsibilities and opportunities. A state or national public relations program can be only as successful as the aggregate actions of the individual architects permit it to be.

If we wish architecture to be looked upon as a Profession, we must accept our code of ethics for what it is: A code to govern our professional conduct and practice and should be followed conscientiously and consistently. It is not something to be forgotten, twisted, warped and changed to suit our own selfish purposes each time we are faced with a situation. Architecture has no place for a double standard.

Architectural service is a complete service and should be equally competent and complete in all its parts, counseling, administration, design, working drawings, specifications and supervision. Our work can be no better than its weakest link.

Involuntary Test

Gerald I. Griffith, Immediate Past President of the Iowa Chapter, is testing the support and stability offered by what is known as a "walking cast." The test is involuntary but was made necessary when Gerry slipped and a leg crumpled under him March 15. The accident occurred on the sidewalk in front of his office after a storm left the streets icy.

Mr. and Mrs. Griffith and their children are featured in the March 24 issue of "This Week" magazine in which Mrs. Griffith details the family system of "hiring" the children.

IN THE SPOTLIGHT

(Top Pictures) Pres. G. I. Griffith addresses the crowd that filled the Hotel Savery dining room for the banquet.

(U.L.) Paint cans get "loaded" in the packaging department of Iowa Paint.

(U.C.) Roger Allen converses with Burdette Higgins.

(U.R.) Student chapter demonstrates confusion.

(L.C.) Presidents and Vice-Presidents of A.I.A. and Iowa Paint.

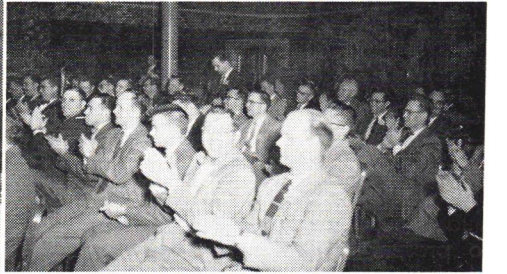
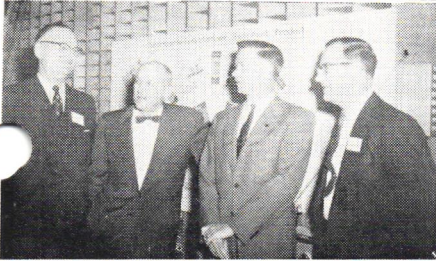
(R.C.) Visitors view a "ball mill" on tour.

(L.L.) Prof. Wilfred Payne addresses crowd.

(L.R.) Applause thanks Mitchell's Models for presentation.

(Bottom Pictures) Iowa Chapter Officers at Banquet head table.

The Convention Spotlight Shone On:



National Observance of Centennial Outlined on theme "A New Century Beckons."

Plans for national observance of the 100th anniversary of the national professional society of architects, were announced by Alexander C. Robinson of Cleveland, Ohio, chairman of the A.I.A.'s Centennial observance Committee. Architects from all parts of the country met in Washington's historic Octagon House and chose a theme for the national program: "A New Century Beckons." President Eisenhower has been invited to address the architects and their guests, as did President Theodore Roosevelt at the 50th anniversary convention of the A.I.A. in 1907.

As this magazine was being sent to press, the Iowa chapter was informed by Edward R. Purvey that President Eisenhower had sent regrets that because of the international situation he would be unable to attend the Centennial celebration in person. Purvey said a representative of the president would participate in the program.

Another major event in the celebration will be an architectural exhibition in the National Gallery of Art to provide a survey of the past hundred years of American architecture, and point toward the future of building design in a new age of technology.

The four-day national Centennial celebration in Washington will be devoted to a forum on the problems of planning the environment of the future. Some twenty prominent speakers, including the President, have been invited to present their views on the forces which will shape environment of the future.

In contrast to the problems of planning man's shelter in the relatively un-complicated world of yesterday, a prospectus of the program states: "Today, the architect must consider, simultaneously, man's physical environment in relation to his new social aspirations and spiritual needs; to a host of new contrivances which afford new com-

At Iowa Meeting



Burdette Higgins is in deep conversation with Prof. Wilfred Payne of Omaha U. (center) while Centennial Chairman J. Woolson Brooks appears to contemplate the program ahead as Iowa architects recognized the Centennial February 23 at the Des Moines Art Center.

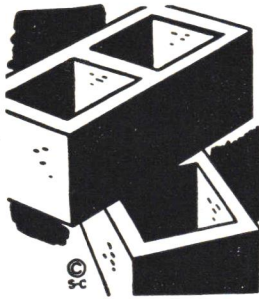
fort and leisure time; to new problems of traffic flow, land use, and urban congestion; even to the problem of shielding him, not from the elements alone, but from the hazards of a world whose skill at making weapons has outstripped its ability to live without them."

"... Our vast new knowledge of the nature of matter," the prospectus states, "must be matched by an equivalent understanding of the nature of man. The architect can and must contribute to a closure of this gap in knowledge. This, then, is the aim of the Centennial Program of the American Institute of Architects.

Joins McCann-Prout

McCann-Prout & Associates, Clinton, announce the addition to their staff of N. D. Calo who comes from Shreveport, La., as a non-registered architectural designer. Calo was born in Smyrna and educated in Greece, and has been in the U.S. since 1922. He will make his home in Clinton.

PICTURE A STOCKPILE



containing
420 MILLION

Common Brick
or

140 MILLION

4 x 5 x 12 Tile
or

70 MILLION

8 x 5 x 12 Tile

*This is a fictional stockpile
in Iowa, BUT*

IOWA ARCHITECTS SPECIFIED

a stockpile just as large when they designed

35 MILLION 8x8x16 Concrete Masonry Units

into Iowa Structures during 1955*

Most of these Quality Concrete Blocks were
provided by the 20 Members of the

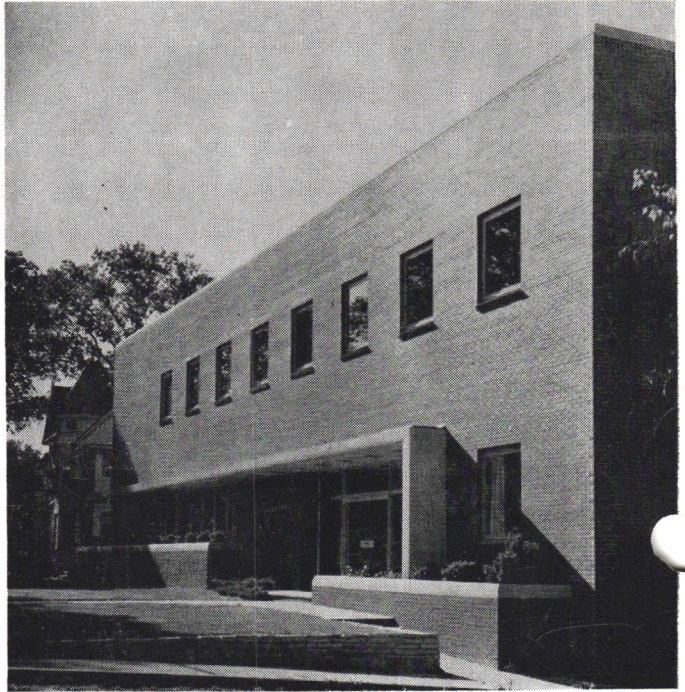
IOWA CONCRETE MASONRY ASSOCIATION

820 S.W. 9th St.

Des Moines, Iowa

*Last year for which figures are available

Designed
by *Iowa Architects*



Architects:
Wetherell & Harrison
Des Moines, Iowa

FARMERS MUTUAL HAIL INSURANCE COMPANY

2323 Grand Avenue

Des Moines

Iowa

Built 1954-55

CONTRACTORS

General.....	Garmer and Stiles Company
Electrical.....	Johnson Electric Co., Inc.
Plumbing & Heating.....	Goff Plumbing and Heating Co.
Air Conditioning.....	Iowa Sheet Metal Contractors, Inc.
Elevator & Dumbwaiter.....	Otis Elevator Company
Kitchen Equipment.....	Bolton & Hay
Gross Area.....	49,830 sq. ft.
Net Area (Less Services Etc.).....	38,607 sq. ft. (77.5%)
Total Cost Including Architect's Fee.....	\$1,010,170.00
Cost Per Square Foot Gross.....	\$20.27

Machines are taking over many of the clerical duties in some offices and that brings changes in design, as illustrated by Farmers Mutual Hail Insurance Company, 2323 Grand Avenue, Des Moines.

Most unusual feature of this building is the use of the "hospital type" elevators which permit the insurance company to easily transport the IBM machines it uses in its departments. The designing architects noted the similarity in size of the IBM machines and the carts used for transporting patients in hospitals.

The outside wall of the structure is of 4-inch face brick, 2 inches of "Foamglas" insulation, four inches of backup tile, plastered.

The structure has a concrete frame, pan joist floors with triple underfloor duct in fill.

For maintenance ease, the designer specified Flour City, reversible sash. Movable partitions are of the Hauserman Type CC; the acoustical ceilings are metal pan.

Another unusual feature of the building is the Ground Floor Cafeteria, which is equipped with a complete restaurant-type kitchen.

WINDOWS—ALUMINUM AND STEEL

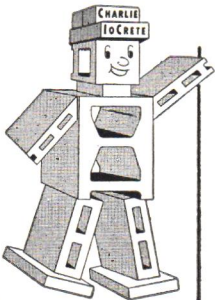
Architects, we believe, are interested not only in specifying good windows at reasonable prices, but they want to be sure that they are properly installed to give long and satisfactory service.

We represent

ALWINTITE • CECO • CLEARVIEW • GENERAL BRONZE • TRUSEAL
VAMPCO • WHIZZER

We personally instruct the contractor exactly how the windows should be installed and check the finished job. The responsibility of the Company that sells the job is often more important than the product itself.

Let us help you with your window problems. We are sure we can help you.



You can keep costs of your buildings down by using more Concrete Masonry and you can help us to keep our prices down by giving us more volume.

IOWA CONCRETE BLOCK & MATERIAL COMPANY

Concrete Blocks • Haydite Blocks • Bricks • Channel Roof Slabs • Concrete Joist • Owens-Illinois Glass Blocks • Lannon Stone • Sanymetal Toilet Compartments • Champion Masonry Saws and Blades • Chicago Fire Brick • Masonry Materials Aluminum and Steel Windows • Arketex Glazed Tile Metal Specialties • Concrete Corn Cribs and Silos

820 S.W. 9th St. PH. AT 8-5751 DES MOINES 9, IOWA
"Your Problems Keep Us in Business"

A.I.A. Awards Special Centennial Medal to Ralph T. Walker; Gold Medal to Skidmore

Ralph T. Walker, New York architect, inventor, community planner, and humanitarian, has been named by the American Institute of Architects to receive a special Centennial Medal which was struck in commemoration of the 100th anniversary of the national professional society.

The unprecedented award, according to A.I.A. President Leon Chatelain, Jr., means that Walker, 67, is considered by the 11,500 society members to have made "the most significant contribution of any living American architect to humanity and the planning of human environment."

At the same time, the A.I.A. announced that its board of directors has voted to award the coveted Gold Medal for 1957 to Louis Skidmore, senior partner of the architectural firm of Skidmore, Owings & Merrill. Mr. Chatelain said the award was made "in recognition of Mr. Skidmore's leadership in the formation and conduct of a firm which has made outstanding contributions to the profession of architecture."

Walker and Skidmore will receive the awards at the annual A.I.A. banquet, to be held May 16 in Washington. The Institute Centennial program will be held May 13-17 in the capital city.

Other Awards announced by A.I.A. were as follows:

The Fine Arts Medal, the Institute's highest award in the non-architectural fine arts, goes to Mark Tobey, of Seattle, Wash., for distinguished achievement in painting.

The Craftsmanship Medal, awarded for achievement in the industrial arts, goes to Charles Eames, of Venice, California, for distinguished design of furniture.

Citations of Honor were awarded to the Foreign Buildings Operation of the U.S. Department of State, for distinguished achievement in directing the

foreign building program, and to Milton Horn, Chicago sculptor, for achievements in the arts.

Honorary A.I.A. Fellowships were awarded to Pier Luigi Nervi, of Rome, Italy, and Christiano das Neves, of Sao Paulo, Brazil.

David C. Baer, Houston, Texas architect, received the Edward C. Kemper Award, made annually for significant contributions to the profession. Baer is chairman of the A.I.A. Committee on Office Practice.

President Chatelain declared that Walker, a Fellow and former president of the American Institute of Architects and a member of the New York architectural firm of Voorhees, Walker, Smith & Smith, was chosen as the recipient of the Centennial Medal "for the unstinting use of his talents and energies in many fields of public service."

"It is our belief," the Institute president said, "that Mr. Walker has made the most significant contribution of any living American architect to humanity and the planning of human environment. It appeared to our board of directors that his unique contributions would be recognized most fittingly through the creation of a special award to be given only once—on the occasion of our Centennial celebration."

Walker, a native of Waterbury, Conn., has been the designer of the New York Telephone Co. headquarters in New York City and Brooklyn; Prudential Life Insurance building in Newark, N.J.; General Foods Offices building, White Plains, N.Y.; Union Carbide and Carbon Corp., New York; A.F.L.-C.I.O. building, Washington, D.C.; Charles Hayden Memorial Library, Cambridge, Mass.; Loyola Seminary, Shrub Oak, N.Y. and the Luxembourg American Cemetery, Hamm, Luxembourg.

Visitors Invited For ISC VEISHEA

Three days of top-quality entertainment again will mark the annual VEISHEA celebration at Iowa State College as students, faculty and administration go "all-out" to demonstrate the achievements of the college to the people of the state.

Student activities are highlights of the program for Thursday afternoon with the Iowa State Players production of the "Caine Mutiny Court Marshal" as the feature of the evening.

The Friday program is marked by Open House throughout the departments on the campus, the afternoon pre-

sentations of the Vodvil program, the play, a baseball game between ISC and Kansas, and the Horse Show which is always a beautiful and pleasing presentation of fine animals.

"Stars Over Veishea" is a highlight of the evening program Friday, along with the play and a dance.

Saturday's program moves along with gaiety and laughter as the Annual Parade gets underway in the morning. Open House again is extended across the campus, there is the Vodvil, more baseball between the same teams, the play, and the continuation of the Horse Show in the afternoon.

The evening program again consists of "Stars Over Veishea" and the annual dance.

Plan Quad-City Organization

Organization of the Quad-City Architects Association was announced in Daveport, Moline, East Moline and Rock Island following a February 5 meeting at which G. D. Robison of Davenport was named temporary chairman of the new group.

The association was formed independently of the American Institute of Architects, although many of its members also are members of the A.I.A.

H. M. Parkhurst was chosen as temporary secretary. Officers and directors were to be selected March 5.

The new organization has professed these objectives: To strengthen the architectural profession and increase its effectiveness in the community, to meet common problems and to achieve common objectives and to render greater public service.

C. V. Richardson reports the organization had some 27 charter members and that the membership would be expanded to include all non-registered people in the various offices. The membership is expected to include registered architects, architectural draftsmen, and technical employees from firms in the quad-city area.

✓ 30 years of service
to Iowa Schools

✓ chalkboard
specialists

✓ natural slate--
tomorrow's best
chalkboard

✓ Armstrong cork
tackboard

✓ Gotham "Screw-Tite"
(economy) and
"Snap-Tite" (1st
quality) aluminum
trim

✓ Gotham chalkboards

✓ the only complete
chalkboard line in
the industry

W. E. NEAL SLATE COMPANY

1121 Dartmouth Ave., S.E.

Minneapolis 14, Minn.

FE 9-2783



Pictured above are nine master craftsmen and representatives of the nine firms which employ them. The group was collected during the 1957 convention of the Iowa Chapter at Des Moines. Two of the eleven men named as Master Craftsmen were unable to attend.

Eleven Honored As Master Craftsmen

Eleven craftsmen employed by Iowa contractors were recognized January 25 as Distinguished Craftsmen with awards presented by President G. I. Griffin as the Iowa Chapter of A.I.A. held its 1957 Annual Convention at the Hotel Savery in Des Moines.

The eleven, representing nine crafts, were selected by an awards committee composed of members of the chapter, and the selection was based upon the individual's ability, character, and his reputation among his employers and fellow workers.

Two of those named were carpenters, two were masons, and one each was from these crafts: plumber, ironworker, cement finisher, crane operator, painter, tile setter, and millwork foreman.

The award winners were:

August H. Beberniss, 41, Davenport, plumber, employed by the Ryan Plumbing and Heating Co., Davenport.

Robert Brainerd, Jr., 35, of Fulton, Ill., the only non-Iowan honored, who has 13 years experience as a cement finisher and is employed by O. Jorgensen & Sons, Clinton.

Anthony Chiamonte, 50, Des Moines, a millwork foreman with 21 years experience, employed by Arthur S. Neumann Bros., Des Moines.

Frank A. Dietl, 67, Ames, a bricklayer for 48 years, now employed by James Thompson & Sons, Ames.

Alvin Fort, 63, Webster City, a bricklayer for 40 years who is employed by Zitterell-Mills Co., Webster City.

Oscar Gates, 37, Des Moines, a painter for 21 years, employed by the Carr Glass & Paint Co., Des Moines.

Charles Hooper, 38, Spencer, a finish carpenter of 16 years experience, employed by the Spencer Construction Co., Spencer.

Dan Johnson, Jr., 37, of Des Moines, a carpenter of 20 years experience, employed by Wm. Knudson & Son, Inc. Des Moines.

Robert L. Keegan, 40, Sioux City, operating engineer for 11 years with W. Klinger, Inc., of Sioux City, as a crane operator.

Carl Kuntz, 44, Davenport, an ironworker employed by the Priestler Construction Co. of Davenport.

Edwin C. Nelson, 56, of Des Moines, a tile-setter of 37 years experience, employed by Des Moines Marble and Mantel Co.

Nine of the men honored attended the banquet as guests of the chapter. Mr. Brainerd was unable to attend, as was Mr. Nelson who had suffered a fractured hip in a fall and still was hospitalized at the time of the award presentation. Mr. Harris Golden of Des Moines Marble and Mantel Co. accepted the award on the behalf of Mr. Nelson.

Adel Clay Names

Johnson Sales Manager

The Adel Clay Products Co. has announced the appointment of Homer Johnson as sales manager for the firm.

Francis L. McCrea, manager of the firm, made the announcement and said that Johnson had been with W. K. Loveland, Inc., of Madison, Wis., distributors of brick and tile products. For the past three years Johnson was an officer of the firm.



Johnson was educated at Morning-side college and Drake university. He, Mrs. Johnson and their two children will make their home in Des Moines.

YOUR



CHECK LIST FOR THE ***FINEST*** IN CLAY MASONRY INTERIORS



ACOUSTILE. with "built-in sound control"; this load bearing unit absorbs sounds, eliminating need for costly acoustical treatment—withstands high compression; crack resistant.



INTERIOR SALT GLAZED TILE . . . Maximum quality at minimum cost. Provides extra beauty, extra durability, and extra insulation, at no extra cost. Colorful, easy-to-clean walls of buffs, tans and browns.



SMOOTH RED FACE TILE . . . Very popular 8 x 5 1/3 x 12 size for interior walls. Colorful, smooth face. The brick for economy and beauty-minded people.



FINE FACE BRICK . . . For color, texture, strength and uniformity you can't match this full line of fine face brick. Wide range of colors and textures add charm to every interior.



Whatever your need in the finest clay products we can serve you. Our engineers are always ready to serve you.

THE MASON CITY BRICK AND TILE COMPANY

MASON CITY, IOWA
554 BUILDERS EXCHANGE BLDG.
MINNEAPOLIS, MINNESOTA
PH. FE 6-6788

433 ENDICOTT BLDG
ST. PAUL, MINNESOTA
PH. CA 4-7221

THE DES MOINES CLAY COMPANY
DES MOINES, IOWA

THE OTTUMWA BRICK AND TILE COMPANY
OTTUMWA, IOWA

THE OSKALOOSA CLAY PRODUCTS COMPANY
OSKALOOSA, IOWA

THE REDFIELD BRICK AND TILE COMPANY
REDFIELD, IOWA

THE JOHNSTON CLAY WORKS, INC.
FORT DODGE, IOWA

Architects Enjoy Reception, Tour



A guest list of nearly 200 was compiled as Iowa Paint Manufacturing Co. was host to the members of the Iowa Chapter of A.I.A. for a plant tour, reception and buffet supper at the company's production facilities at 97 Indiana in Des Moines January 27.

Beginning with a courteous greeting, groups of architects and their ladies were conducted on an organized tour of the manufacturing plant. Beginning with a presentation on the types of pigments used in the choice and blending of colors, the groups were led through the pigment departments and were told how the various pigments differed; brief explanations described the many kinds of coverings in which the various pigments were used.

Pigments are only one part of the paint, the visitors learned, and members of the paint company staff told of the importance of the various agents which are used to carry and hold the pigments. The advantages of each carrier was explained. There was a short presentation on the use of aluminum paint.

Methods of mixing pigments with the carrying agent were explained and

demonstrated, and the visitors were shown the laboratory in which the company maintains controls to make certain that base colors remain constant, and that quality of the product is maintained.

The "packaging" department completed the tour of the manufacturing facilities and then the groups were served refreshments after each member was presented with a plastic 'zipper' envelope in which papers and documents may be carried.

Following an informal cocktail hour, the visitors were guests for an excellent buffet supper served in the area the company usually uses for its shipping department.

Careful planning on the part of the host company, adequate arrangements for the crowd, and a well-selected menu made the evening a memorable event for those who attended.

RALPH SCHILLING has opened a consulting engineering office in the Insurance Exchange Building. He formerly was associated with Frank Pulley, Consulting Engineer, Securities Building, Des Moines.

Our knowledge and experience of over 25 years in the Floor and Wall Covering Field is at your service. Call on us for solution of your problem jobs.

Laytex Underlayments

Asphalt Underlayments

Vinyl Asbestos & Asphalt

Homogeneous Vinyl

Rubber and Cork Tiles

Bolta-Wall Vinyl Wall Coverings

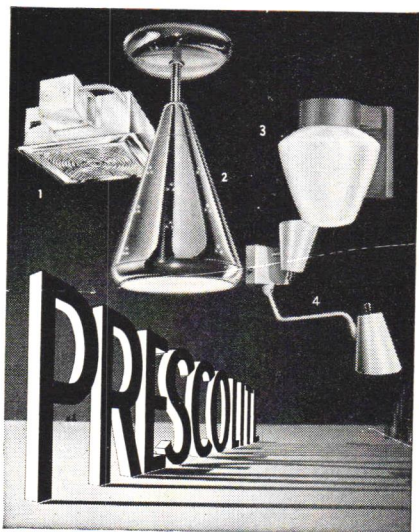
Rubber Wall Coverings

RALPH N. SMITH, Inc.

Des Moines, Iowa

1339 2nd Ave.

AT 8-6741



The fixtures illustrated above, and many others too, employ "DieLux" diecastings as an integral part of the unit...for STRENGTH, DURABILITY, APPEARANCE. 1. No. 1015-6715 Recessed. 2. No. A-14 Swivel Unit. 3. No. WB-25 Wall Unit. 4. No. 8585 Hospital Light. Write for your copies of PRESCOLITE literature.

*Prescolite's trade name for precision diecast products.

PRESCOLITE MANUFACTURING CORP.
Berkeley, California • Neshaminy, Pennsylvania

Adel Clay Products Co.

**IOWA SALES OFFICE
AND WAREHOUSES**

101 ASHWORTH ROAD
WEST DES MOINES, IOWA

Phone CRestwood 9-9721

FACTORIES
REDFIELD and CENTERVILLE, IOWA

JOBBER LINES*

We can supply all your brick and tile requirements from either of our two factories or through jobber lines *in most territories.

PRICE QUOTATIONS ON REQUEST

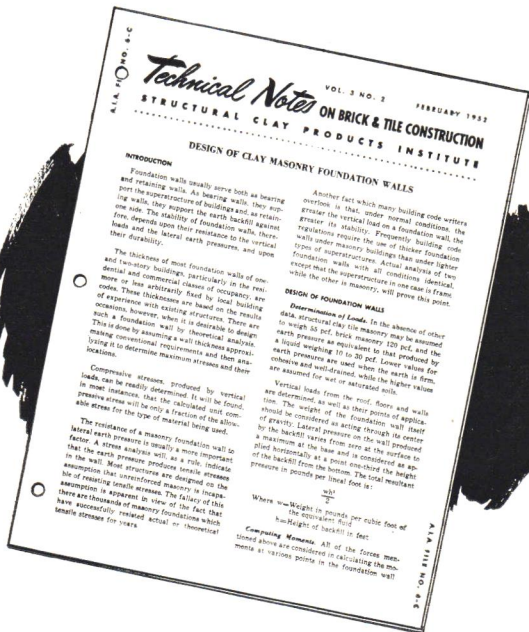
We'll be happy to quote you prices on your specific requirements. Telephone CR 9-9721 West Des Moines, or write our sales office in West Des Moines.



SERVING IOWA AND THE MIDDLE WEST SINCE 1894

Just To Be Technical . . .

Is Your File of the TECHNICAL NOTES ON BRICK & TILE CONSTRUCTION Up-To-Date?



Each month SCPI sends you a TECHNICAL NOTES ON BRICK & TILE CONSTRUCTION giving information on various phases of clay masonry construction. Architects and Engineers alike, have found these to be a valuable aid in their work.

Check your table of contents page and index of all issues to date. If, in checking the table of contents, you find you are missing any of the issues, please let us know and we will be happy to send them to you.

Also, if you are not receiving the TECH NOTES at the present time, notify us and you will be sent the complete file and your name will be placed on our monthly mailing list.

STRUCTURAL CLAY PRODUCTS INSTITUTE

REGION 6

AMES, IOWA