

IOWA ARCHITECT

Official Publication of

Iowa Chapter

American Institute of Architects



“Air Force Academy Story” Will Highlight Spring Meeting At Iowa State College, April 25

Iowa Architects will Also Meet with Architectural
Educators from Throughout the Region

Walter A. Netsch of the firm of Skidmore, Owings and Merrill has been announced as the banquet speaker for the Spring Meeting of the Iowa Chapter of the American Institute of Architects at Iowa State College, Ames, Friday, April 25.

The evening program, at which awards to outstanding students will be made, will be the climax of a day-long series of events which will be of interest to the profession.

President Wayne Lyon of Iowa Chapter has announced this program for chapter members: Executive Committee Meeting at 10:30 a.m. in the Architecture Department library.

Chapter meeting at 1:30 p.m. in the Architecture Department lecture room.

A joint meeting of Iowa Architects and Architectural Educators from throughout the midwest at approximately 4:00 or 4:30 p.m.

Prof. Leonard Wolf, head of the department of Architecture and Architectural Engineering at Iowa State College, has announced that architectural educators from Washington University, Kansas, Kansas State, Colorado, Nebraska, North Dakota, Minnesota, Manitoba, Illinois Tech, and Illinois have been invited to meet at Iowa State Friday

evening April 25 and all day Saturday, April 14.

"At the joint meeting between Iowa architects and architectural educators of this region, it is hoped that we can discuss in some detail the responsibility of the schools, the profession and the registration boards, the formal and the practical education of architects, their registration and their establishment in professional practice," Prof. Wolf said.

"The Air Force Academy" will be the principal subject of Mr. Netsch's presentation and every Iowa architect and student can look forward to hearing a professionally exciting story of a major development, including the choice of designs and construction methods.

(Continued on page 25)

.....
OFFICERS

President.....R. Wayne Lyon
Des Moines
Vice President.....George Horner
Iowa City
Secretary.....Dave Frevert
Des Moines
Treasurer.....Doug Robison
Davenport

**PUBLIC AND PROFESSIONAL
RELATIONS COMMITTEE**

James H. Walsh, Chairman

Harold J. Bullington
Robert W. Grow
Allen B. Salisbury
Robert E. Savage
James A. Lynch
B. J. Slater

"Iowa Architect" is published bi-monthly for Iowa Chapter, American Institute of Architects, and mailed without charge. Appearance of names and pictures of products or services in editorial or advertising copy does not constitute endorsement of either the A.I.A. or this chapter. Editor: Harold J. Bullington, 202 Masonic Temple Bldg., Des Moines, Iowa

.....



**YOUR SIGN
OF PROMPT
SERVICE**

We are anxious to give you the facts about products manufactured by these well known and respected firms:

- BEST
- DURAPANE
- WONDERLY
- NATIONAL ROOFING AGGREGATE
- TECTUM
- TIMBER STRUCTURES
- W. R. MEADOWS
- MARMET
- TOLEDO PORCELAIN
- VIRGINIA METAL
- RUBBER AND PLASTIC COMPOUND
- COOKSON
- SPLENDOR
- FOLDOOR

SWANSON SALES

CR 9-9793

2737 Douglas

Des Moines

DRILLED FOUNDATIONS

● **Caissons**

● **Footings**

● **Piling**

CAISSON CORPORATION

Iowa District

517 5th Ave.

Des Moines

Chapter Honors Six "Distinguished Craftsmen"



Present to receive the awards were: **J. L. Bengard**, Exira; **Sam Kupresin**, Carbon Cliff, Ill., **John Medinger**, Reynold, Ill., and **Sidney A. Miller**, Ames. **Francis Bacon**, Sioux City, and **Lars Rygh**, Des Moines, were unable to attend because of illness.

Six craftsmen employed by Iowa contractors were honored as "Distinguished Craftsmen" by the Iowa Chapter of the American Institute of Architects as the organization held its 1958 Annual Convention at the Hotel Savery in Des Moines.

The six men honored were selected from nominations presented by A.I.A. members and contractors, and the Awards Committee reported that all nominations received this year had been proposed by architects.

R. Wayne Lyon, newly elected president, presented awards to:

Juhl L. Bengard, 29, of Exira, a mason with 13 years experience in his craft who is employed by the R. H. Grabau Construction Co. of Boone.

Sam Kupresin, 28, of 107 5th St., Carbon Cliff, Illinois, an employe of the Allied Construction Services, Inc., Davenport, Ia., who has nine years of experience as a lather.

John Medinger, 32, of Reynold, Illinois, an employe of the Dean Fry Construction Co., Davenport, who has been a finish carpenter for 10 years.

Sidney A. (Sox) Miller, 67, of Ames, an employee of the Conditioned Air Corporation, Des Moines, who has spent 47 years in his trade of plumbing.

Francis Bacon, 45, of 4501 Morningside Ave., Sioux City, Ia., a cement finisher employed by W. A. Klinger, Inc., Sioux City. He has been employed by Klinger for 25 years, and has 18 years in the trade.

Lars L. Rygh, 67, of 2429 Capitol Ave., Des Moines, has been a carpenter for 47 years and is employed by Ringland-Johnson, Inc., of Des Moines.

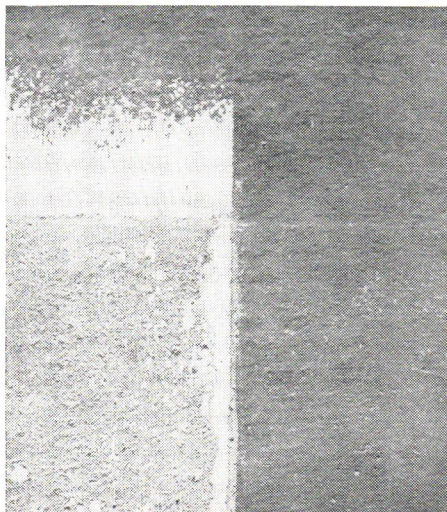
The presentation was the fourth successive year in which the certificates of award were presented by the Iowa Chapter of the A.I.A. as a means of bringing public attention to the combination of skill, loyalty, and pride in well-done work which marks outstanding craftsmen in the construction and allied trades.

NOW REAL SWIMMING POOL PROTECTION

Iowa's **HydroPool**

Available in White, Majestic Blue, Kool Green
and Gulf Blue

- BEAUTIFIES
- PROTECTS
- PREVENTS
CRUMBLING and
DUSTING
- FAST DRYING
- EASILY MAINTAINED
- DURABLE
- RESISTS MOLD
and FUNGUS



This properly prepared concrete panel was coated on the right half with PLIOLITE S-5 enamel formulation (thinned 10%), left half with an oleoresinous enamel. Second coat (full bodied) of each applied after 24 hours; panel dried 72 hours then immersed 48 hours in water. PLIOLITE S-5 was unaffected; ordinary enamel softened badly, lifted, blistered and was partially removed with most damage just above the water level. Immersion tests show PLIOLITE S-5 is better adapted for swimming than are ordinary enamels.

May we send you our informative brochure on
Swimming Pool Paints?

PLIOLITE S-5—TM Goodyear Tire & Rubber Co.



Davenport
Mason City

Des Moines

Omaha
Waterloo



Lyon Heads Iowa A.I.A. Chapter For 1958

R. Wayne Lyon of the firm of Tinsley, Higgins, Lighter and Lyon, Des Moines, was elected president of the Iowa Chapter of the A.I.A. at the 1958 Annual Convention in Des Moines, succeeding James A. Walsh of Spencer.

George Horner of Iowa City was elected Vice-President, succeeding Wayne Lyon, and Douglas Robison, Davenport, was named Treasurer, succeeding Lyle Howard of Ottumwa.

David Frevert of Des Moines was chosen secretary to succeed Paul Skiles, also of Des Moines.

Raymond Berquist, Dubuque, Lyle Howard and Eugene O'Neil were chosen as members of the Executive Committee. O'Neil served on the committee during 1957.

Thorson, Roark Report On Regional Subjects

Two major reports to Iowa architects were presented during the convention, one by O. H. Thorson, Waterloo, district chairman for chapter affairs, and one by Lloyd Roark, Kansas City, Regional Director, A.I.A.

Thorson reminded the architects that the next regional convention will be held in Kansas City the first weekend in October of this year, and that the 1959 meeting will be held in Iowa. Thorson also emphasized that the A.I.A. is composed of the chapters and that the effectiveness of the chapters is the vital key in effectiveness of the A.I.A. He expressed the belief that the purpose of his committee was to "needle" the chapter into action and that its Chapter Affairs representative should be someone who has had recent, close connection with the executive committee. He stressed the need for active committees on the subjects included in the basic organization of the chapter.

He expressed belief the Iowa group would make early and complete plans for the Regional Convention in 1959.

Roark described activities of the Regional Directors and emphasized the

IT's VACATION VILLAGE JUNE 25-27

Acting in accord with the desires expressed by the many members who enjoyed the 1957 summer outing at Lake Okoboji, the Executive Committee of the chapter has selected Vacation Village on Lake Okoboji as location for the 1958 week-end gathering of architects for fun, frolic, and a necessary minimum of business.

need for good committeemen from the Regional to the National level. He suggested that the A.I.A. could take leadership in its relations with the construction industry by accepting representatives of its various branches into some of the several degrees of A.I.A. membership.

- ✓ 30 years of service to Iowa Schools
- ✓ chalkboard specialists
- ✓ natural slate--tomorrow's best chalkboard
- ✓ Armstrong cork tackboard
- ✓ Gotham "Screw-Tite" (economy) and "Snap-Tite" (1st quality) aluminum trim
- ✓ Gotham chalkboards
- ✓ the only complete chalkboard line in the industry

W. E. NEAL SLATE COMPANY

1121 Dartmouth Ave., S.E.

Minneapolis 14, Minn.

FE 9-2783

A Message from

the President

Fellow Architects:

Your President and Secretary attended the annual Central States Regional Council meeting in Kansas City on February 12.

Two resolutions were adopted at this meeting which should be of interest. It was the concensus of the council that (1) The newly established "Architectural Firm Award" of the Institute should be opposed in principal, and (2) the State Department Embassy building program should be cited for its excellence. Proper resolutions were so formulated.

Reports from other chapters indicate business and backlogs somewhat below last year in most offices.

The Spring Chapter meeting will be in Ames on April 25. Plan now to attend, as indications are that we will have an interesting business session, followed by an opportunity to meet and discuss problems with Architectural educators from the entire region, followed by the Annual Student Banquet.

It's been a long hard winter and you will all need a break. If you're a sports fan you can attend the Drake Relays the following Saturday in Des Moines. The weather is always good for the Relays, so it's bound to be good for the Spring Meeting.

See you in Ames April 25.

R. WAYNE LYON, PRESIDENT



IN MEMORIAM

WILLIAM L. PERKINS, ARCHITECT

The Iowa Chapter, American Institute of Architects, expresses its sincere feeling of loss in the passing of William L. Perkins who served the Profession so long and faithfully as Secretary of The Iowa Board of Archtectural Examiners, and gave so generously of his time and efforts in this capacity.

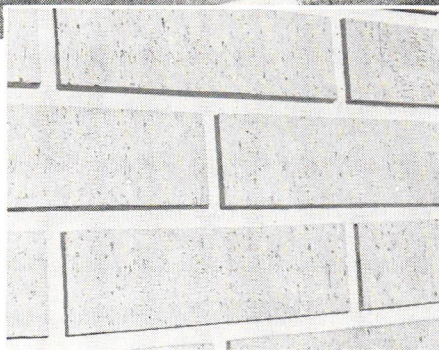
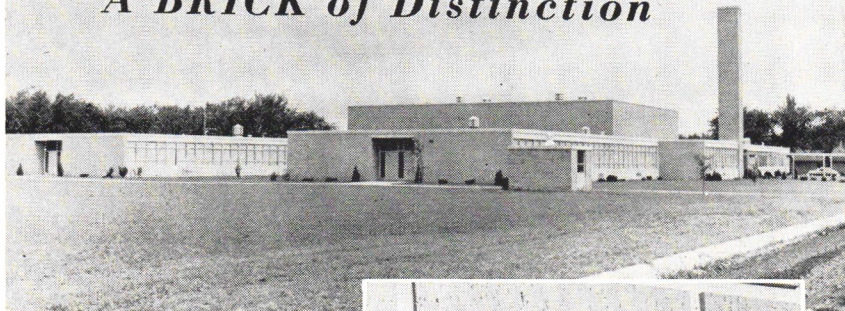
The Chapter extends its deepest sympathy to Mrs. Perkins, who may well be proud of her late Huband's unselfish contribution to the Architectural Profession.

R. WAYNE LYON, PRESIDENT

RISING SUN

BUFF WIRECUT

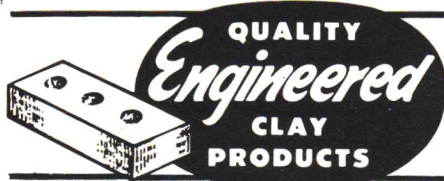
A BRICK of Distinction



Looking for walls of beauty and distinction in that new school building? Then consider the beautiful Rising Sun Buff Wirecut Brick used in this lovely new high school. Rising Sun, a rich, natural buff brick made by Ottumwa Brick and Tile Company, provides walls of surpassing distinctiveness. You'll find in the wide selections of striking colors and textures in the brick and tile, made by these companies, the clay products for your new building.

RISING SUN BRICK (shown above) . . . for those who prefer a wirecut face, this blend of rich, natural buff colors produced by Ottumwa Brick and Tile Company is ideal. The fine vertical scoring and occasional scuff marks, produced by the cutting wire, lend it soft shadows and highlights which combined with its distinctive colors, make a truly beautiful wall.

Write any of these companies for color reproductions of Rising Sun Buff Wirecut Brick or of the many other types of beautiful brick and tile which they produce, including back-up tile, partition tile, face tile and acoustile.



FIVE IOWA COMPANIES TO SERVE YOU
DES MOINES CLAY COMPANY
MASON CITY BRICK AND TILE COMPANY
OTTUMWA BRICK AND TILE COMPANY
OSKALOOSA CLAY PRODUCTS COMPANY
REDFIELD BRICK AND TILE COMPANY



CONVENTION SCENES. (Top, L. to R.) Prof. Leonard Wolf talks about the job-log projects for A.I.A.; Bill Wagner and John Grove, Pittsburgh, confer between sessions; a "substitute" speaker addresses the banquet crowd. (Bottom, L. to R.) A part of the Luncheon crowd; ISC students at Banquet reception.

"IOWA ARCHITECT" WELCOMES NEW DISPLAYS

The Iowa Architect is again proud to call the attention of Chapter Members to a growth in the number of advertisements which are to be found within the covers of this magazine.

New advertisements include those of:

- Caisson Corporation,
- Marquart Concrete Block Company.

In addition to these new advertisers, we also call attention to:

Swanson Sales, for whom the first ad appeared in the January-February issue.

Portland Cement Association, which has previously used the Iowa Architect on an intermittent basis.

Midwest Concrete Industries, which has been using the magazine for several issues, but has increased the size of space from one-fourth page to a full page.

Other advertisers appearing in this issue are:

- | | |
|-------------------------------------|------------------------------------|
| Adel Clay Products Co. | Prescolite |
| Central Engineering & Investment Co | Sheffield Brick & Tile |
| Iowa Concrete Block & Material Co. | Sioux City Mosaic Co. |
| Iowa Concrete Masonry Association | Ralph N. Smith, Inc. |
| Iowa Paint Manufacturing Co. | Structural Clay Products Institute |
| Midwest Placing Co. | Vinyl Plastics, Inc. |
| W. E. Neal Slate Co. | Waterite Co. |



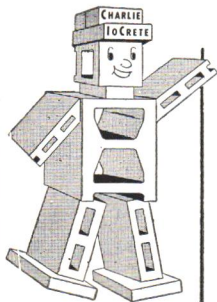
CONVENTION SCENES. (Top, L. to R.) Panel of Fernbach, Butter, Hunn, Grove, Cownie; Crowd intent on panel discussion. (Bottom, L. to R.) Convention head table: identifiable at the right of the rostrum are Gov. and Mrs. Herschel Loveless, Mrs. J. H. Walsh, Mr. and Mrs. R. Wayne Lyon, Mr. and Mrs. Doug Robison. A part of the banquet reception crowd; identifiable are Bob Savage, a visting Englishman, and Past-President Walsh.

SHADOWALL and HALF-HIGH BLOCKS

One objection often advanced by Architects has been that a block wall is too plain. Now for a very small added cost you can dress up your block walls by the addition of bands or small panels of SHADOWALL or HALF HIGH blocks. Both are available in both regular Concrete and Haydite aggregates.

You can make hundreds of different patterns with only three different Shadowall units and their judicious use will surprise every Architect, we are sure.

Cost, more than ever, is important in designing any building, so remember, "If cost is a factor, concrete masonry units will be used every time."



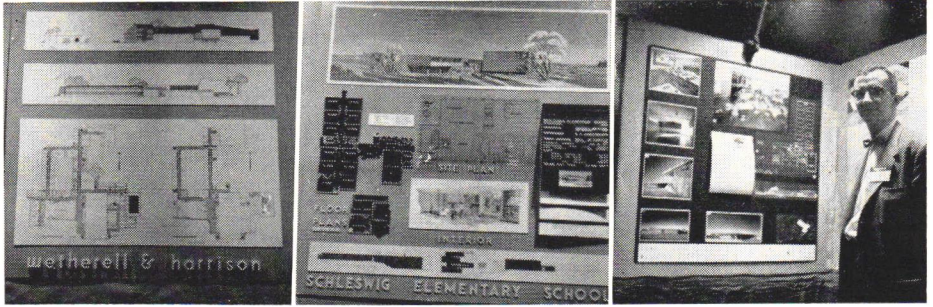
If you do not have complete facts about Shadowall, let us know and we will be glad to send you Architects Complete File, free.

**IOWA
CONCRETE
BLOCK &
MATERIAL
COMPANY**

Concrete Blocks • Haydite Blocks • Bricks • Channel Roof Slabs • Concrete Joist • Owens-Illinois Glass Blocks • Lannon Stone • Sanymetal Toilet Compartments • Champion Masonry Saw\$ and Blades • Chicago Fire Brick • Masonry Materials Aluminum and Steel Windows • Arketex Glazed Tile Metal Specialties • Concrete Corn Cribs and Silos

820 S.W. 9th St. PH. AT 8-5751 DES MOINES 9, IOWA
"Your Problems Keep Us in Business"

EIGHT IOWA FIRMS AT ST. LOUIS MEETING



These photos were made at St. Louis and show displays by Wetherell & Harrison, Savage & Ver Ploeg, and Glenn E. Lundblad of Architects Associated with that firm's display. The photos were made without the use of flash illumination.

Representatives from eight Iowa firms were among the many architects who attended the Regional Convention of the American Association of School Administrators at St. Louis in February.

Of exceptional interest to the architects, and of wide interest to the administrators, was the vast architectural exhibit featuring models, photographs, floor plan and site plans which demonstrated what is being done in school architecture throughout the central states. This exhibit was sponsored jointly by the American Association of School Administrators and the American Institute of Architects.

BROCK ANDREW WALDEN

Forest City, now an employee of Thorson, Thorson and Madsen, Forest City, won notice in the Humboldt Republican with the model and plans he drew as a senior thesis at Iowa State College. Gunvalde Sande, a contractor, had seen the thesis on display at the MBI offices, Des Moines, and made arrangement for its display in Humboldt.

REYNOLDS JURY CHOSEN

The American Institute of Architects has named the following five distinguished architects to serve as the Jury for the 1958 R. S. Reynolds Memorial Award for the best use of aluminum in architecture:

Richard J. Neutra of Los Angeles, California; Arthur Loomis Harmon of New York, New York; J. Roy Carroll of Philadelphia, Pennsylvania; Richard M. Bennett of Chicago, Illinois, and Pier Luigi Nervi of Rome, Italy.

The Reynolds Award—which consists of a \$25,000 honorary payment plus an emblem—is international in character.

Iowa Chapter members with exhibits in the display were: Durant & Berquist, Dubuque; Louis C. Kingscott and Associates of Kalamazoo, Michigan, and Davenport, Savage and Ver Ploeg, West Des Moines, Architects Associated, Des Moines and Wetherell and Harrison, Des Moines.

Architects Associated had five members present for the meeting, and Wetherell and Harrison also were well represented with four firm members in attendance.

Other firms with representatives present were:

Savage and Ver Ploeg, West Des Moines

Clifford N. Prall, Des Moines

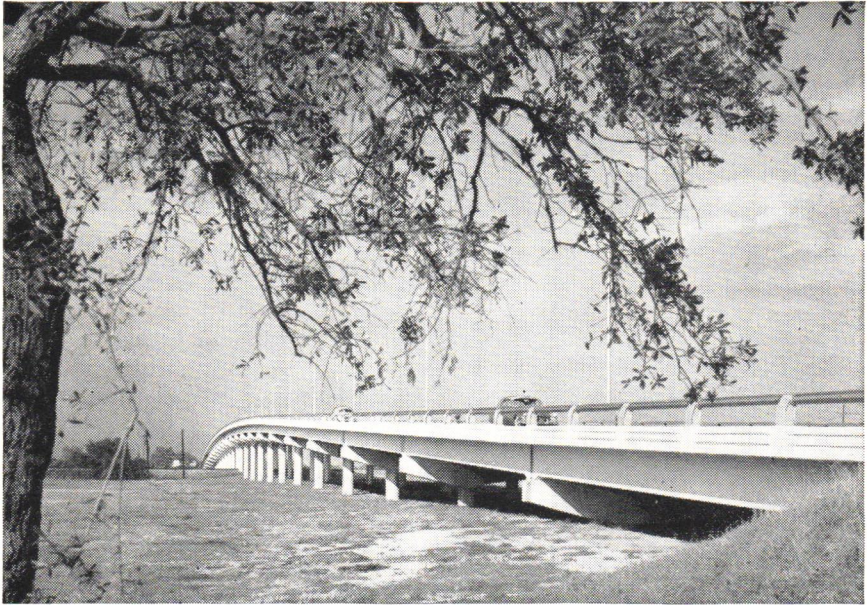
Woodburn and O'Neil, Des Moines

Dougher, Frevert and Ramsey

Louis C. Kingscott and Associates, Davenport

Karl Keffer Associates, Des Moines

The Award will then be presented at the American Institute of Architect's Annual Convention to be held in Cleveland, Ohio, July 7-11.



Build Beautiful Bridges Economically with PRECAST, PRESTRESSED CONCRETE

Sweeping gracefully over a railroad, Wisner Boulevard overpass in New Orleans is a beautiful prestressed, precast concrete structure 2450 ft. long. Its 56-ft. spans are designed for H20-S16 loading. Prestressed concrete girders are of T-shaped cross-section and have 5-ft. upper flanges that are joined by a cast-in-place reinforced concrete slab.

The construction features of this bridge are especially significant today due to the thousands of bridges and overpasses needed on the National System of Interstate and Defense Highways.

Whether the bridges you design or build are long or short, straight, curved or skewed; precast, prestressed concrete construction offers many advantages. It is neat and clean. It is economical. It eliminates formwork on the job site. It speeds erection time. Weight and thickness of members are reduced.

For more information, write for free booklets, *Prestressed Concrete Bridge Calculations and More Bridge For Your Money.*

PORTLAND CEMENT ASSOCIATION
408 Hubbell Bldg., Des Moines 9, Iowa

A national organization to improve and extend the uses of portland cement and concrete through scientific research and engineering field work

IOWA ARCHITECT ANNOUNCES PLANS TO "DOUBLE" SIZE; TENTATIVE DATE: JULY-AUGUST ISSUE

Plans for an increase in the page size of the Iowa Architect have been announced by the Public Relation Committee following proposals made at the Annual Convention.

James A. Lynch, 1957 editor and public relations chairman, recommended the change in size and suggested that the change be made as soon as practicable. The tentative date for the new magazine size is the July-August issue of 1958. The new page size would be 8½ by 11 inches, or just twice the size of the present publication.

"A new page size, similar to that of most magazines now on the market will prove of benefit to the Iowa Architect, and to the chapter," said Robert F. Bonomi, chapter public relations counsel and managing editor of the publication.

"The 'story' of architecture can best be told through the medium of pictures and illustration. An increased page size will give us an opportunity to use pictures which will be of a size large enough to convey a much better impression of scope. We will be able to use pictures which will give the reader a much better chance to 'feel' the subject, and to study the architectural detail," Bonomi explained. "We want this magazine to be a true public relations piece, and to do this we must show architecture at its best. We can't do it with words—but we can do a large part of the job with pictures."

It was explained that the plans call for a moderate increase in the advertising rate and a doubling of the page size. Under the proposal, the advertisers now having contracts would complete the contracts at the present rate, but would receive the larger advertising space for the duration of the contract. New rates would then become effective as new contracts were prepared.

The plan also calls for making one color available to advertisers at a moderate cost, with special colors available to those advertisers who wish them. The first advertisement to use color appears in this issue of the Iowa Architect.

The Public Relations committee also

has suggested that members who would like to have additional copies of the magazine may request them for their offices, and there is a standing offer to supply each office with copies enough to make one available to each staff member.

Details of the proposed change have been mailed to all advertisers and to their agencies. The information is also being provided advertising agencies which have in the past inquired about use of the Iowa Architect as an advertising media.

A change to a "standard" page size may be expected to create some additional advertising for the magazine, because the proposed size will be equal to that of many other publications then will be able to schedule advertisements in the Iowa Architect without a costly operation of re-writing and converting the advertisement to a smaller space, he explained.

The change of size has been encouraged by the recent growth in the number of advertisers in the magazine, and the apparent interest of members in producing a publication which will be on a par with those of other major A.I.A. chapters. The current publication is the largest in number of pages and number of ads which the Iowa chapter has yet produced.

MAIWURM-WIEGMAN, architects, have announced the removal of their offices from the State Bank Building, Fort Dodge, to 612 Third Avenue, South.

WHAT DO YOU MEAN --- OR EQUAL?

(Reprinted from Bulletin of Michigan Society of Architects)

ARCHITECT SPECIFICATION WRITERS many times investigate thoroughly the merit of a product which they intend to specify. They pick out the exact characteristics that will accomplish the purposes they desire, and then name the product, —but, to keep in good graces with competitive materials, they add two little words "Or Equal." With these two words they lose full control of the entire specification, because every contractor down the line, can use his own judgment as to what might be "Equal."

An immediate effort to bring control back to the specification writer would be to use the words "or Architect's written approved equal." This would at least force the contractor or sub-contractor or owner for that matter, who wants to substitute, to contact the Specification writer and prove to him that the substitute material is "Equal" in all its characteristics, to those desired by the Architect.

To illustrate the point, a Specification writer may specify that terrazzo be sealed with "H" companies Terrazzo Seal. He knows that that particular product is deep penetrating, non-discoloring, and durable. The Terrazzo sub-contractor, however, has bought a competitor's Sealer alleged to be a protective coat, but may be only a "surface coating," which may discolor within a short period, and wear off in patches,—and may not be "Equal" at all.

Another good example is Gym Finish Specifications. Many inexperienced people do not realize that there are three classes of "Varnishes,"—decorative, outdoor marine and floor varnish. Floor varnishes vary greatly in their resistance to abrasion, discoloration, tough unbroken surfaces, lack of pock marks, and ease of maintenance. Pentetrating first coat and Finish top coats of Gymnasium Finishes should be furnished by the same supplier—otherwise they may not be compatible materials. The Specification writer should choose the Surface Coats that have the highest abrasion test, the best color reaction, and ease of maintenance. He should specify exactly the product he desires following it by the words "Or Architects written approved Equal." If a sub-contractor or owner wants to substitute, he will have to prove that the substitute product has the necessary qualities.

Every type of floor, wood, composition, and variations of stone and marble are relatively porous, and should be properly treated before the building is

turned over to the owner. If this runs up the cost and the owner objects, the owner should at least be advised what should be done, so he can perform the necessary work with his own labor.

For your own, and your customers protection, don't say "Or Equal," say "Or Architects written approved Equal."

A.I.A. Announces Two New Films

The first two in a series of semi- animated movie shorts on architectural subjects have been completed by The American Institute of Architects as public relations aids for chapters and state societies.

"What's a House?....", the first of these 15-minute cartoon films, traces the evolution of the American house from the "carpenter classic" to the residence of the future. By acquainting the audience with some of the problems of site planning, orientation and building technology the film indirectly points up the essential role of the architect in residential design.

"A School for Johnny" addressed itself to the problem of filling the increasing need for schools without over-training community resources. The film relates some of the primary factors the school architect must consider in designing for today's education and attempts to clarify some misconception about comparative costs and economy in school design.



Copyright, 1958, Wm. J. Wagner

BLAKE HELPED ORGANIZE IOWA ARCHITECTS

A man who fathered formation of architectural groups which preceded the Iowa Chapter of the A.I.A. was the designer of the Guthrie County Courthouse, shown on the adjoining page in a sketch by Wm. Wagner, A.I.A., Des Moines.

The man who pioneered in organization of architects in Iowa was J. S. Blake, who began practicing architecture from his Fourth Street home in 1871. A year later he had an office in the Clapp Building, and in 1879 he was in partnership with C. H. Lee. This partnership flourished until 1883 when the two returned to separate practices.

Mr. Blake was chosen as the first president of the Architectural Association of Des Moines when it was formed in the early spring of 1844 with five architects and four associates (draftsmen) as members. They and several artists also organized a sister group, "The Des Moines Sketch Club."

Efforts of the Des Moines group proved that an association of Des Moines architects was not enough and plans were laid for the formation of a state group. In December of 1884, invitations were sent to "forty Iowa men more or less entitled to the name of architect" to gather in Des Moines on January 7, 1885, for the purpose of creating a state-wide organization.

The first business meeting was called to order on January 7, with J. S. Blake serving as its chairman. From this meeting grew the Architectural Association of Iowa, but it died about three years later as some of its most active supporters left Des Moines. Although reorganization was mentioned several times, nothing was done until after the close of the century and the Iowa Chapter of the A.I.A. was organized in 1903.

The Guthrie County Courthouse is an example of the work performed by Blake & Lee during their partnership, and this brief history of the construction is provided:

Flames were seen in the almost new Guthrie County Courthouse on the night of March 3rd, 1882, at Guthrie Center. Although the flames were already eating at the building, all of the county records were saved. That building, a wooden structure, was destroyed.

Acting with almost lightning speed for a county governmental organization, the county officers collected \$15,000 insurance on the destroyed building and took action to create a more fireproof structure. Bonds to produce an additional \$20,000 were voted and Blake & Lee were hired as architects. Bids on a new structure were opened less than 130 days after the fire. Five bid were received, ranging from \$19,600 up to \$23,000, and all were rejected. Later a contract for the structure was signed with John E. Motz, a Guthrie Center contractor, for \$19,100.

The courthouse was completed and the Guthrie County history for 1884 has this to say:

The courthouse is "an improved renaissance, and one of the most classic specimen of that school. While well lighted and ventilated—and in all its detail of that school. While inside everything is in most excellent taste, well furnished, each room well lighted and vented—and in all details betrays the hand of superior architects, Messrs. Blake & Lee.

The courthouse is beautifully located on a knoll overlooking the town. Of particular interest to architectural viewers is the termination of the four corner towers, a gable for each.

1958-59 COMMITTEES IOWA CHAPTER AMERICAN INSTITUTE OF ARCHITECTS

Conventions

Stanley C. Ver Ploeg, 12th and Grand Ave.,
Des Moines

Education and Registration

Keith Lorenzen, Chm., 1200 Grand Ave., Des
Moines

Harold Bianco, 11½ S. Federal Ave., Mason
City

Amos Emery, 820 Locust St., Des Moines

Dick Jordison, Old Dental Bldg., S.U.I., Iowa
City

John McKlveen, 400 S.W. 42nd St., Des Moines

N. Clifford Prall, 346 Ins. Exch. Bldg., Des
Moines

Fellowships

Gerald I. Griffith, Chm., 3810 Ingersoll, Des
Moines

Charles Altfillisch, 126½ W. Water St., De-
corah

J. Woolson Brooks, 815 Hubbell Bldg., Des
Moines

Memberships

William O. Woodburn, Chm., 201 Jewett Bldg.,
Des Moines

Charles Richardson, 1001 Kahl Bldg., Davenport

Glen E. Lundblad, 518 Badgerow Bldg., Sioux
City

Norman Madson, 535 N. 8th St., Forest City

Harold J. Sewart, 4210 Rodeo Road, Davenport

Richard A. Utterback, 506 Shops Bldg., Des
Moines

Relations with Construction Industry

Grant W. Voorhees, Chm., 206 Davidson Bldg.,
Des Moines

Paul S. Skiles, 506 Shops Bldg., Des Moines

Ira T. Carrithers, Jr., 6 North 1st St., Council
Bluffs

Edward H. Healey, 36th St. and 1st Ave., S.E.,
Cedar Rapids

Robert Ramsey, 302 Garver Bldg., Des Moines

Louis G. Soeneke, 1327 W. High St., Davenport

Practice of Architecture

Thomas J. Atherton, Chm., 2403 50th St., Des
Moines

Elmer H. Borg, 815 Hubbell Bldg., Des Moines

Dane D. Morgan, 218 F & M Bank Bldg., Bur-
lington

Paul A. Rossiter, 455 Main St., Dubuque

George Russell, 1201 Savings & Loan Bldg., Des
Moines

Richard D. McConnell, 419 Hawthorne, Ames

Preservation of Historical Buildings in Iowa

William J. Wagner, Chm., 506 Shops Bldg., Des
Moines

Lawton M. Patten, Iowa State College, Ames

Public Relations

James H. Walsh, Chm., P.O. Box 526, Spencer

Harold J. Bullington, 202 Masonic Temple Bldg.,
Des Moines (Editor, Iowa Architect)

Robert W. Grow, 403½ Main St., Cedar Falls

Allen B. Salisbury, 518 Badgerow Bldg., Sioux
City

Robert E. Savage, 12 & Grand Ave., Des Moines

James Lynch, 1800 Watrous St., Des Moines

Bernard J. Slater, Iowa State College, Ames

State and Federal Legislation

Waldo J. Dean, Chm., 1704 45th St., Des
Moines

Burdette Higgins, 526 Liberty Bldg., Des Moines

Leonard Wolf, Iowa State College, Ames

Charles B. Silletto, 206 Davidson Bldg., Des
Moines

Rhodes M. Cleveland, 424½ East 4th St., Wa-
terloo

A. Hews McCann, 410 Howes Bldg., Clinton

Chapter Affairs

George L. Horner, Chm., 1422 E. College St.,
Iowa City

R. Wayne Lyon, 5830 Windsor Dr., Des Moines

W. David Frevert, 805 10th St., West Des
Moines

Douglas Robison, P. O. Box 202, Davenport

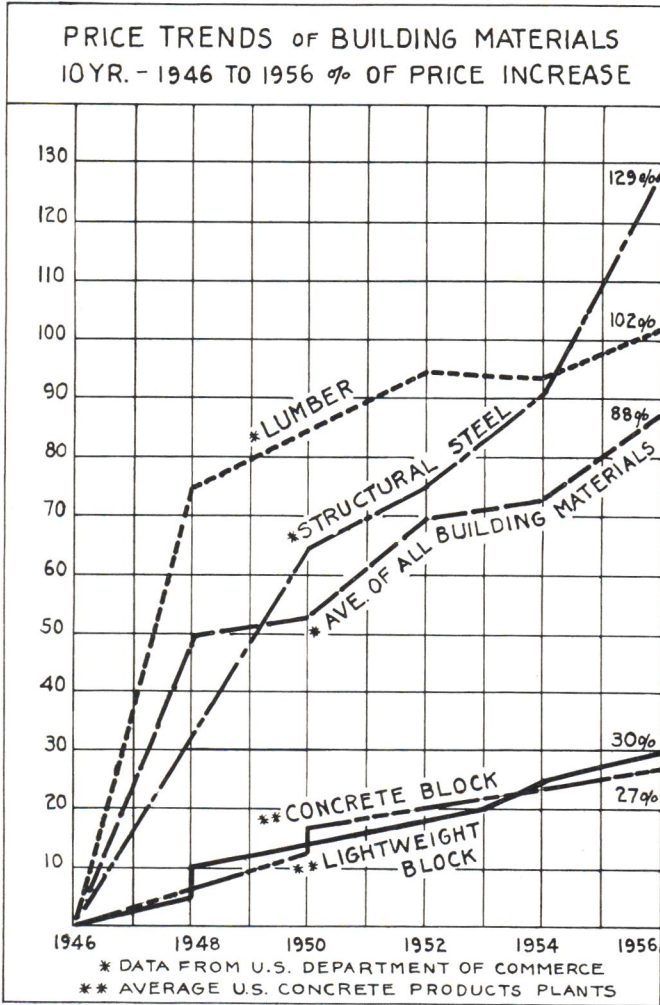
Eugene C. O'Neil, 201 Jewett Bldg., Des Moines

Lyle P. Howard, 208 Kresge Bldg., Ottumwa

Raymond G. Bergquist, 197 Jones St., Dubuque

James H. Walsh, P. O. Box 526, Spencer

CONCRETE MASONRY HAS HELPED TO KEEP BUILDING COSTS DOWN



IOWA CONCRETE MASONRY ASSOCIATION

P.O. Box 156

West Des Moines, Iowa

State Rules on Nursing Homes May Affect Construction Plans

House File 572 as passed by the 57th General Assembly empowers the State Department of Health and the State Fire Marshal to adopt rules and regulations governing the design and construction of nursing and custodial homes. In accordance with this regulatory power, both agencies now require that plans and specifications for new construction, additions to existing buildings and remodeling of existing buildings, be submitted for review and approval. There appears to be some confusion as to how the plans and specifications should be prepared for submission to the agencies involved. In an attempt to clear up this confusion we are offering the following outline for information and guidance of those contemplating the construction of Nursing and Custodial Homes.

Preparation of Plans:

- A. It is recommended that before working drawings are begun, schematic plans be submitted. Single line drawings of each floor showing the room arrangement and the relationship of the various services to each other.
- B. Working drawings
 1. A plot plan showing and dimensioning the boundaries of the property, adjacent streets and alleys, water, sewer and electric lines and orientation of the proposed building on the site.
 2. General layout of each floor to scale, dimensioned and identified.
 - a. Room sizes
 - b. Room finish schedule
 - c. Door schedule
 - d. Location of plumbing fixtures
 - e. Special service areas to scale with equipment shown in some detail. (utility rooms, kitchen, boiler room, treatment room)
 3. Structural drawings showing a complete design with sizes, sections and relative location of the various members, for all foundations, floors and roofs. Schedule of beams, girders and columns. **Design must be certified as being structurally sound in keeping with good practice by an engineer or architect licensed to practice in Iowa.**
 4. Mechanical drawings showing the complete heating, ventilating, plumbing and drainage systems.
 5. Electrical drawings showing all electrical wiring, switches, outlets, fixtures, nurse call systems, fire alarm systems.
 6. Elevations of all facades.
 7. Sections through the building.

Specifications:

The specifications shall fully describe, except where fully indicated and described on the drawings, the materials, workmanship, the kind, site, capacities, finishes and other characteristics of all materials, products, articles and devices.

While to the layman the above list of materials may seem complex and confusing, it is the minimum by which the State Agencies may make an intelligent review.

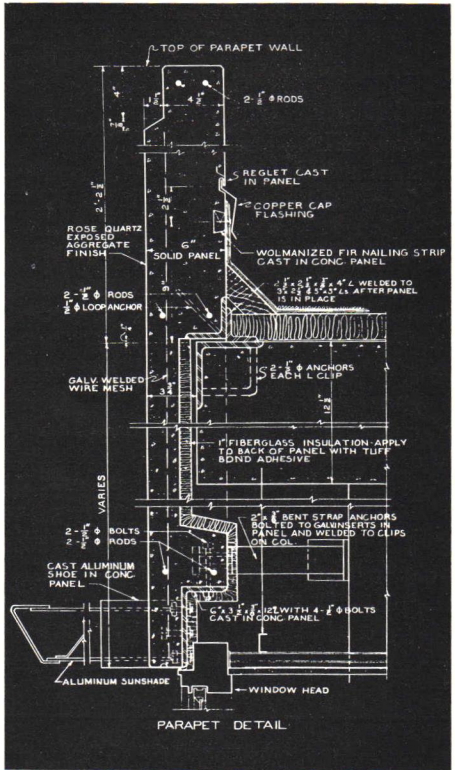
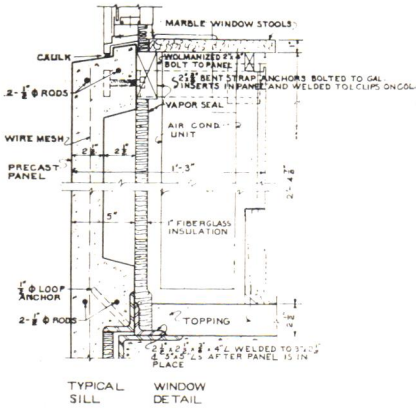
It is strongly recommended that anyone contemplating a new building or a sizable addition to an existing building hire a licensed architect or engineer. Many pitfalls await the unwary in the building business. The average layman is unfamiliar with such things as bonds, special insurance, local building codes and ordinances and many other related items. All too often, an owner thinking that he can save a professional fee, embarks on a building program without such professional guidance. He may soon find himself in a most happy situation that could be very expensive correcting. It is the business of the architect or engineer to know all of the various ramifications of the building industry and can keep the owner out of trouble.

ROLAND (Tip) HARRISON of Des Moines has been elected a director of the Polk County Savings and Loan Association.

Precast Facing Panels

For:
Mercy Hospital + Des Moines

Finish: Exposed Rose Quartz



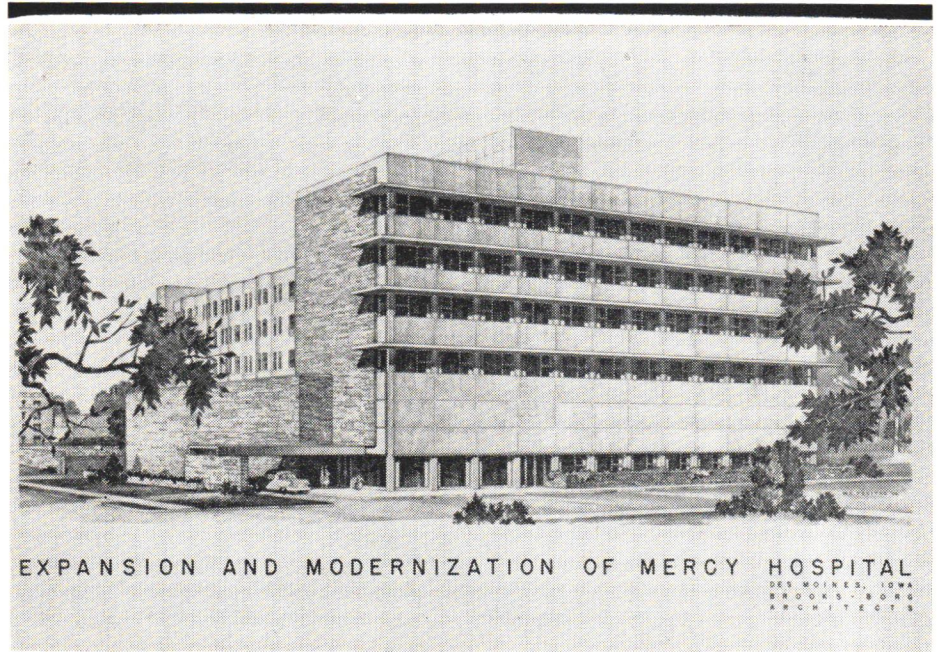
Fabricated by

Midwest Concrete Industries

Telephone AMherst 2-4690

1900 Delaware

Des Moines, Iowa



EXPANSION AND MODERNIZATION OF MERCY HOSPITAL
 DES MOINES, IOWA
 BROOKS - BORG
 ARCHITECTS

ARCHITECTS VOLUNTEER FOR NEW LOOK CITY

by Robert H. Spiegel

(This entire item is reprinted from the Des Moines Evening Tribune of March 25, 1958.)

A TASK FORCE of architects, volunteers all, have joined the battle to give Des Moines a new look.

Some 60 persons from all 14 active architectural firms in the city have formed the Des Moines Architects Council.

The purpose is to provide Richard B. Fernbach, city planning director, with trained and talented manpower for work on projects aimed to improve the appearance and utility of the city of Des Moines.

There are many projects, but until the architects came along, not nearly enough help.

Charles T. Cownie, then chairman of the central business district bureau of the Greater Des Moines Chamber of Commerce, first gave the idea to the architects. Cownie had heard of such volunteer groups in other cities.

"It opened the door for us," said James A. Lynch, chairman of the executive committee of the Architects

Editor's Note

In connection with the planning for Des Moines, a group of Iowans, including A.I.A. members William Wagner and Grant Voorhies accompanied City Planner Richard Fernbach, A.I.A., to Minneapolis to study and urban redevelopment project there. The trip included a day-long tour of the city, and a study of a model of the proposed plans.

!! ARCHITECT'S DREAM !!

SHADOWAL...patterned concrete masonry of unusual architectural design.

Interior beauty — no expensive finishing costs.

BES-STONE SPLIT BLOCK...versatile concrete masonry to enhance the beauty of any structure.

CONCRETE-MARQUALITE-HAYDITE BUILDING BLOCKS
COLORED PATIO BLOCKS

MARQUART CONCRETE BLOCK COMPANY

110 Dunham Place—Waterloo, Iowa

Phone: ADams 3-8421

Complete Line of Masonry Tools and Supplies
Distributors of Sonneborn Products

Council. "We saw in it a chance for genuine civic service."

The architects formed the council to help in city-wide planning under direction of Fernbach.

"We didn't want to limit our efforts to any one part of the city," added Lynch. "In a sense, we hoped to supplement the staff of the city planning director."

That is the way it has worked out.

Already the volunteer architects have spent about 200 hours in helping prepare a land use map of the "central city area," extending from New Des Moines Technical High School to the state capitol building.

In the future, the architects council will distribute ideas and projects among its members.

They will make working drawings ("not just pretty pictures") and help prepare models of proposed projects. A room in Franklin Junior high has been assigned to the council as a meeting place and headquarters.

One thing is certain. The architects will be kept busy. It will be a big challenge.

"This is exciting work," said Fernbach, his eyes gleaming.

(Ed. Note: The article and two pictures filled one-fourth of a page in the Tribune. The pictures showed a bill board-laden area as it appears in Des Moines, and a sketch which should show how the same area might appear if cleared of the advertising boards.)

KEITH LORENZEN has become an active partner in the firm of **RALSTON & RALSTON** in Waterloo and the firm now will operate as **RALSTON & LORENZEN**. Lorenzen is a native of Waterloo and had been employed by Thorson, Thorson and Madsen, Forest City, and by Savage and Ver Ploeg, West Des Moines, before joining the Waterloo firm.

For the Finest In Vinyl Floor Covering

— specify —

VINYLAST® • TERRALAST® ULTRALAST®

VINYL PLASTICS INC
FINEST IN FLOORING

See our catalogue in
Sweet's Architectural File,
Index No. 13j and in
vi

Sweet's Light Construction File
Index No. 7c
Vi



1825 ERIE AVENUE • GLENCOURT 7-5075
SHEBOYGAN • WISCONSIN

CONVENTION RESOLUTIONS

Among resolutions adopted at the 1959 Annual Meeting of the Iowa Chapter, A.I.A., were these:

RESOLVED that the appreciation of the membership be extended to the members of the panel who gave so generously of their time and efforts in public interest and service in presenting their points in discussions. These panel members being John R. Grove, Pittsburg, Pa., Charles T. Cownie, John Butter, Richard Fernbach, and Hiram Hunn.

RESOLVED that the Iowa Chapter A.I.A. on this 25th day of January express thanks to Arthur Ebeling for his many years of service to the Profession as a member of the State Board of Architectural Examiners.

RESOLVED that the membership of the Iowa Chapter, A.I.A., offer its cooperation to the Department of Archi-

itecture, Iowa State College, for the education program and the job-log projects, currently undertaken, and extends its thanks to the Department for its untiring efforts to improve architectural education in Iowa.

WHEREAS the joint committee of the MBI, AIA and IES have created certain documents involving joint approval by these groups,

BE IT RESOLVED that the membership of the Iowa Chapter, A.I.A. express its thanks to the members of this committee for their patient and untiring efforts to these ends, and BE IT FURTHER RESOLVED that this chapter's action be transmitted to the MBI and the IES.

RESOLVED that the membership offer and record thanks to the Committee on Craftsmanship Awards for dedication and diligence in seeking out worthy candidates for the Craftsmanship awards on a statewide basis, keeping in mind the intent and purpose of such recognition and that we offer our encouragement and help in keeping up their good work.

WHEREAS the Iowa Architect has become a true organ of public relations and service to the Architects of Iowa and during the past year has become an outstanding publication,

BE IT RESOLVED that the Iowa Chapter A.I.A., extends its thanks to James Lynch, Chairman of the Public Relations Committee, and his committee members.

BE IT FURTHER RESOLVED that the Iowa Chapter A.I.A. assembled express our appreciation to the Advertisers in the Iowa Architect whose participation, interest and cooperation have been most helpful in developing and expanding our publication and that this resolution be printed in the Iowa Architect.

RESOLVED that the membership offer and record their thanks to the of-

DESCO VITRO GLAZE

(Enamelled Cement)

TERRAZZO

CERAMIC TILE

For Information, Write or Phone:

Sioux City Mosaic Co., Inc.

WEST FIRST AND REBECCA STREETS

5-5653

SIoux CITY 3, IOWA

Established 1920

Member of

National Terrazzo and Mosaic Ass'n.
Desco Vitro Glaze Ass'n. of America
Northwest Terrazzo Ass'n.



Officers of the past year, the Executive Committee and all of the working committees for their work during the past year in our interest and behalf.

RESOLVED that the membership offer and record their thanks to our Convention Chairman, George W. Russell, Ladies Program Chairman, Mrs. Grant Voorhess, and their committees for their untiring effort and contribution in providing the excellent convention we have so much enjoyed.

Left Above: Past President James Walsh, left, confers with Regional Director Lloyd Roark of Kansas City and President Wayne Lyon with an emphasis on civic redevelopment. Above right: These members of the Convention Committee halted for a picture and showed signs of satisfaction as the convention came to a close. Left to right they are Jim Lynch, Bill Wagner, George Russell, Herb Shane, and Keith Lorenzen.

Optimist: Man whose glass is half full.

Pessimist: Man whose glass is half empty.

Swimming Pool Equipment

- **Vacuum and Pressure Diatomite Filters**
- **Zeolite Softeners**
- **Chemical Feeders**



*For Information
Write or Call*



WATERITE CO.

OMAHA, NEBR.

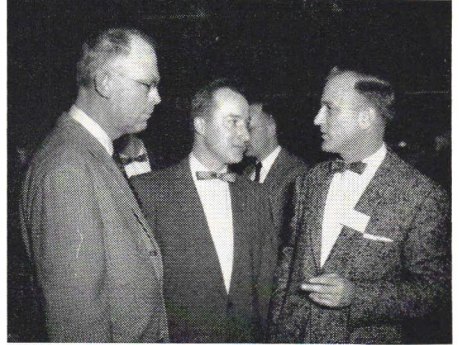
Phone Pleasant 5582

MBI Now Occupies Fine New Offices

The Master Builders of Iowa are extending an invitation to all architects to visit the Association's new headquarters at 912 Walnut Street, Des Moines. Those who are familiar with the organization's old office in the Hubbell Building will find the new location just a short distance west in the new parking building immediately across the street from the Fort Des Moines Hotel.

The new headquarters provides a greatly expanded plan room where the MBI staff, now with room to breathe, can service the plans and specifications on all major Iowa projects. Subcontractors and suppliers are given quieter and more comfortable accommodations for their takeoffs and the amount of traffic in and out of the office since its opening February 1 shows that they are taking full advantage of it.

Architects for the MBI office were Brooks-Borg, Des Moines, who were also



CONVENTION SCENES. An enjoyable portion of informal entertainment coincidental with the 1958 convention was the reception Thursday evening sponsored by Bob Maddox and Allied Construction Services of Davenport and Des Moines. The upper and lower pictures are of the crowd, and in the center, Mr. Maddox, (right) confers with Dane D. Morgan (left) and Lawrence Langohr, both of Burlington.

resident architects for the parking building. Contractor was Arthur H. Neumann & Brothers, Inc., who likewise held the parking building contract.

The 2300 square feet of floor space in the MBI office provides an addition to the plan room, accommodations for the six staff members, a conference room and a small room for the use of out-of-town contractors and architects who may need a desk and telephone during their visit.

Our knowledge and experience of over 25 years in the Floor and Wall Covering Field is at your service. Call on us for solution of your problem jobs.

Laytex Underlayments

Asphalt Underlayments

Vinyl Asbestos & Asphalt

Homogeneous Vinyl

Rubber and Cork Tiles

Bolta-Wall Vinyl Wall Coverings

Rubber Wall Coverings

RALPH N. SMITH, Inc.

Des Moines, Iowa

1339 2nd Ave.

AT 8-6741

Mayor Names Lyon To Des Moines Zoning Commission

R. Wayne Lyon, President of the Iowa Chapter, A.I.A., has been appointed by Mayor Charles Iles as a member of the Des Moines City Zoning Commission to serve a five year term.

Marguerite Darnell, realtor, and Donald L. Beving, attorney, also were appointed at the same time as Lyon.

Architect Lyon is the only member of his profession now on the Des Moines commission, and he is the first since Clyde Lighter completed a term two years ago and was not re-appointed following a political shake-up of the Des Moines city council.

JAMES A. LYNCH, Des Moines, discussed "The Public's Responsibility in Residential Design" in the first of four public sessions for home buyers sponsored by the Home Builders Association of Des Moines.

More Spring Meeting . . .

(Continued from page 1)

The annual banquet will begin at 6:15 p.m.

No formal luncheon program is set for the day, but it is planned to have an informal meeting in the Memorial Union with persons wishing to attend going through the Cafeteria line and then gathering in either the "39" Room or the Pine Room.

In referring to the speaker for the banquet, President Lyon expressed belief that he would need no introduction to the members of the profession.

Prof. Wolf also reported that the Gallery in Memorial Union had been reserved for the Period from April 18 through April 26 for a display of architectural renderings from the past. The display is to be keyed to the Iowa State Centennial and its motto: "With Honor to the Past—With Vision for the Future."

● PROVED IN NUCLEAR TESTS

Floor and Roof Strength for the



ATOMIC AGE

SHEFFIELD REINFORCED CLAY TILE BEAMS

SUPER STRONG ● FIREPROOF

SOUND PROOF ● VERMIN PROOF ● DUST PROOF

LOWEST "USE COST"

Sheffield

Write For Full Information

BRICK and TILE CO.

SHEFFIELD, IOWA

Iowa State Students Visit Chicago; See Modern Structures; Developments

Film supplies were exhausted and the members of the Fourth Year class of Iowa State Colleges Department of Architecture were tired upon their return from a two-day visit to Chicago in March, but all were exceptionally happy to have had the opportunity to make the tour.

Directed by Prof. Karol Kocimski and faculty, the students visited the Chicago Art Institute Friday morning, March 7 and that afternoon visited the offices of the firm of Perkins and Will. They were guests of Reidar Asker and Brock Arms, partners in Perkins and Will, for an interesting discussion of architecture and its future. This was followed by a tour of the Mutual Insurance Building, designed by the firm.

Representatives of Skidmore, Owings and Merrill and of Inland Steel Corporation took the students on a tour of the New Inland Steel Building later Friday afternoon, and that evening the students were guests at a social hour in the Prudential Building where they also had a chance to study the Chicago night skyline.

accompanied by Thomas Killain of the

Saturday's adventures included a tour of an apartment development on Lake Shore Drive as designed by Meis Van der Rohe. They later inspected more of his work at the Illinois Institute of Technology where they lunched before visiting the Coonley house, a design by Frank Lloyd Wright.

On the return to Ames, the group stopped at Aurora, Ill., for a tour of the Ford house designed by Bruce Goff.

Jim Wilkins

FIVE IOWA STATE COLLEGE students attended the Midwest Regional conference of the National Association of Students in Architecture held at the Illinois Institute of Technology, Chicago, April 2, 3 and 4. The conference was highlighted by workshop, lectures and discussions conducted by prominent architects, educators and city planners.

IOWA CHURCH LAUDED

St. Paul's Methodist Church of Cedar Rapids, Iowa, has been listed by "Together," a methodist family magazine, as one of eight "modern" Methodist Churches which were featured in four-color pictures in the February issue of the magazine.

The pictures were used to illustrate an article in which Frank Lloyd Wright was quoted as saying:

"The Gothic style took it so from in crowded medieval cities, but the Gothic eras is past, and with it should go its architecture."

St. Paul's is the first of the eight churches pictured in the article which states that modern, or contemporary church architecture started with Louis Sullivan, who designed the Cedar Rapids church.

FOR SWIVEL LIGHTS

PRESCOLITE

IS


PREFERRED

HERE'S WHY...

EXCLUSIVE "DieLux" DIECAST CONSTRUCTION

Heavy duty swivels holds tension indefinitely

Choice of metal cones; or Fabriglas cones, with embedded maple leaves, ferns, or rattan. (Also available in white.)



9 beautiful finishes to choose from

A-14

WRITE FOR OUR CATALOG

PRESCOLITE MANUFACTURING CORP.
2229 4th St., Berkeley 10, Calif.
Easton Road, Neshaminy, Penna.

ZONATILE®

The All-In-One roof slab
IS THERE FOR GOOD

Wherever a permanent, firesafe insulating deck is called for, ZONATILE provides superior performance—and cuts construction costs substantially.

ZONATILE short-span roof slab installs over subpurlins or standard shapes. It combines structural strength with 100% fire safety, can repay its costs over years of sharply decreased insurance premiums.

ZONATILE saws like wood; is lightweight, and one man can easily handle a slab. With ZONATILE the whole job is done faster, in any weather.

U. Factor of .22

Noise Reduction Coefficient of .60

For Information, Call

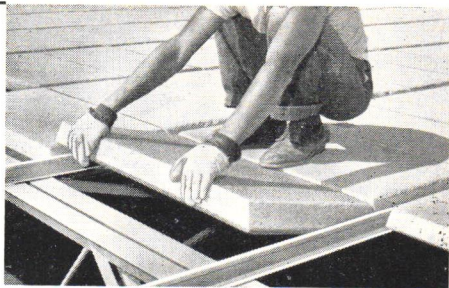
MIDWEST PLACING COMPANY

(Also licensed applicator of poured lightweight concrete roof decks.)

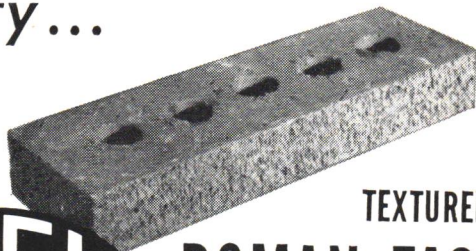
400-51st Street

Des Moines, Iowa

CR 9-7844



Specify ...



TEXTURED STIPPLE-MATT
ROMAN FACE BRICK

Size $1\frac{5}{8}'' \times 3\frac{5}{8}'' \times 11\frac{5}{8}''$.

Red Stipple-Matt in Color
Range 109.

PHONE CRestwood 9-9721

FACTORIES AT REDFIELD AND CENTERVILLE, IOWA



SALES OFFICE AND WAREHOUSES

101 ASHWORTH ROAD • WEST DES MOINES, IOWA



**JUST
OFF
THE
PRESS!**

●

***THE 1958 REVISED
EDITION OF THIS
VALUABLE BRICK &
TILE DETAIL BOOK***

Architects agree "It's The Most Valuable
Clay Products Construction Book." Write
For Your Free Copy Now.

Structural Clay Products Institute

Region 6

Ames, Iowa