

# ia architect

THE OFFICIAL MAGAZINE OF AIA IOWA

## Awards Issue

2021 AIA Iowa and  
AIA Central States  
Region Design Awards

---



# SUPPLY CENTER

**ADDRESS**  
4601 NW Urbandale Dr.  
Suite 112  
Urbandale, IA 50322

**PHONE**  
515.224.4110

**BRICKWORKS**  
SUPPLY CENTER



## DESIGN. SELECT. BUY.

The Brickworks Supply Center in Urbandale has an expansive offering of brick, stone and other masonry supplies.

The new, modern showroom is host to industry leading events, color consultations, product selections and educational seminars.

[glengery.com](http://glengery.com)

## AWARD WINNING DESIGN



THANK YOU AIA IOWA AND AIA CENTRAL STATES REGION

**substance**architecture  
DES MOINES IOWA

# MARKETING OPPORTUNITIES



Communications  
Iowa Architect Magazine  
Newsletter and Website  
Social Media



Promoting your business with us increases your credibility and visibility, improves your image, and builds prestige. It is a strategic way to reach your target audience and grow your business.

Events  
Spring Conference  
Annual Convention  
& More



The American Institute of Architects, Iowa Chapter is a Component of the American Institute of Architects. Since 1904 we have been the voice the architectural profession in Iowa and beyond. Our staff and members are leaders in Iowa communities and at National levels.

Additional Opportunities  
Educational Partnership  
Center for Architecture  
Directory  
Labels  
Career Center



Partnering with us gets you a front seat to engage with architects and designers across the state. Taking an active role in the architecture community will help you build relationships, strengthen your brand, help you meet business goals, and reach your target market.

Membership  
Allied Membership



Over 90% of architects in Iowa are members. Our Chapter has one of the highest membership saturation rates in the world for a Component of the AIA, second to be exact. The architectural and design community looks to us as the resource for the profession. Being affiliated with the Chapter sends a strong message to leaders within the profession.

**Learn More:**  
For questions or more  
information contact:

AIA Iowa  
515-244-7502  
[info@aiaiowa.org](mailto:info@aiaiowa.org)

# Editor's letter



**Andrew Ballard, AIA**  
Editor, *Iowa Architect*

## Welcome!

Our annual convention, co-chaired by Johnny Boyd, AIA, and Nathan Griffith, AIA, returned to an in-person gathering this year at the Iowa Events Center. Attendees picked up where they had left off—mixing and mingling with keynote speakers, workshop presenters, and trade representatives. “New” or not, normal was welcome.

This issue of *Iowa Architect* is dedicated to the American Institute of Architects, Iowa Chapter (AIA Iowa) and AIA Central States Region award recipients. Sam Stagg, AIA, chaired the committee for Iowa’s portion, and a jury of accomplished professionals from around the country selected the winners. Biographies for all eight jurists are featured in this issue. We thank each of them for their contribution.

Our chapter’s Design Award recipients span municipal, academic, corporate, and mixed-use typologies. Design teams mustered a mastery of craft and materiality to deliver an unexpected level of sophistication to what could easily have been a bland “more of the same.” That infusion of care was nowhere more salient than in the solitary Craft Award, which the jury saw as a precedent-setting registration of design and technique.

We congratulate the individuals and teams who elevate our profession from within our Iowa Chapter. We thank the designers, clients, consultants, and contractors who made these special projects possible.

A special thank-you to Justin Burnham, Assoc. AIA, who just wrapped up a crackerjack tenure as editor. In the reassuring words of Lando: “All right, old buddy. You know I know what she means to you. I’ll take good care of her; sh-she won’t get a scratch.”

## iaarchitect

**Editor** Andrew Ballard, AIA

**Associate Editors** Anna Aversing, Assoc. AIA, Brent Hoffman, Assoc. AIA, Khalid Khan, Assoc. AIA, Grant Nordby, AIA

**Editorial Board** Kerry Anderson, AIA; Michael Bechtel, AIA; Justin Burnham, Assoc. AIA; Jason DeVries, AIA; Curtis Ehler, AIA; Danielle Hermann, AIA; Nathan Kalaher, AIA; Cody Knop, AIA; Thomas Leslie, FAIA; Alexander Michl, Assoc. AIA; Jeff Shaffer, AIA; Alyanna Subayno, Assoc. AIA

**American Institute of Architects, Iowa Chapter**

**Executive Director** Jessica Reinert, Hon. AIA Iowa

**President** Steve King, AIA

**First Vice President/President Elect** Nick Lindsley, AIA

**Second Vice President** Lisa Kalaher, AIA

**Secretary** Pete Franks, AIA

**Treasurer** Naura Heiman Godar, AIA

**Past President** Dan Drendel, AIA

### Directors

Jacob Allen, AIA, Matthew Gaul, AIA, Lyndley Kent, AIA; Anna Schwennsen Squire, AIA; Hoang Tran, AIA

**Associate Director** Benjamin Hansen, Assoc. AIA

**Allied Director** Brenda Golwitzer, Allied Member of AIA Iowa

**ISU Representative** Deborah Hauptmann, Assoc. AIA

**AIA’s President** Mercedes Cooper, Student Affiliate  
Member of AIA Iowa

**Central Iowa Architects Section President**  
Matthew Gaul, AIA

**North East Architects Section President**  
Scott Huffman, AIA

**North West Architects Section President**  
Julio Munoz, Assoc. AIA

**South East Architects Section President**  
Monica Bailey, AIA

**South West Architects Section President**  
Brian Nohr, AIA

**Iowa Architect**, the official publication of the American Institute of Architects, Iowa Chapter

Iowa Center for Architecture  
400 Locust Street, Suite 100  
Des Moines, IA 50309  
515-244-7502  
[www.AIAIowa.org](http://www.AIAIowa.org) / [www.IowaArchitecture.org](http://www.IowaArchitecture.org)

### Subscription Rates

\$7.25 per single issue  
\$24.95 per year  
\$67.37 for 3 years (save 10%)

To purchase visit [www.AIAIowa.org/Store](http://www.AIAIowa.org/Store)

**Note to Subscribers:** When changing address, please send address label from recent issue with your new address or call 515-244-7502. Allow six weeks for change to take effect.

**@AIAIowa | @iowaarchitectmagazine**

**@iowaarchitectmagazine; @aiaIowa\_1904**

**@AIAIowa**

**The American Institute of Architects, Iowa Chapter**

### Publisher

Innovative Publishing  
10629 Henning Way, Suite 8  
Louisville, KY 40241  
(844) 423-7272

Innovative Publishing specializes in association communications and messaging. To advertise in future issues of *Iowa Architect*, please contact (844) 423-7272 or [advertise@innovativepublishing.com](mailto:advertise@innovativepublishing.com).



**Corrections:** In the Fall 2021 issue, Associate Director for AIA, Iowa Chapter was Paloma Chapman, Assoc. AIA at time of issue. Credits for the University of Iowa’s Visual Arts Building should have designated Steven Holl Architects as Design Architect and BNIM as Architect of Record. In the table on page 9, “Sefaira” is the correct spelling for the energy efficient design software.



## Top 10 Reasons Why You Should Choose Masonry

- 1 Fire Resistant** / Non-combustible materials.
- 2 Weather Resistant** / Exterior walls that will hold up to heavy storms, UV degradation, blistering heat, and sub-zero temperatures.
- 3 Termite Resistant** / Exterior walls made of masonry means there's no wood to eat.
- 4 Protection from Rotting, Mold & Fungus** / With no exterior wood, there's nothing to rot. Masonry plays a large role in significantly reducing or eliminating the buildup of fungus and mildew between interior and exterior walls.
- 5 Superior Sound Proofing** / Masonry blocks out noise better than traditional building materials, resulting in a quieter environment.
- 6 Virtually Maintenance Free** / When used in its natural form, masonry provides lasting beauty that requires considerably less maintenance than other building materials.
- 7 Lower Utility Bills** / Concrete block, combined with 'thermal mass' insulation systems, stores more energy, meaning it stays warmer in winter and cooler in summer, reducing electric consumption.
- 8 Lower Insurance Premiums** / Because masonry provides a higher level of security, fire and termite protection, and does a better job of weathering the storm, many insurance companies may offer discounts on policies.
- 9 Environmentally-Friendly "Green" Products** / Masonry products are recognized by government programs as a contributor to green building status. Masonry products are also earth-friendly because they do not deplete precious natural and limited resources such as timber.
- 10 Increased Resale Appeal** / Studies show that masonry constructed buildings and homes offer a greater resale value than other forms of construction.

*Working to build a better Iowa – with brick, block and stone.*

**Want to know more about building with masonry?  
Contact the Masonry Institute of Iowa at 515-252-0637  
or visit [www.masonryinstituteofiowa.org](http://www.masonryinstituteofiowa.org).**

Founded in 1975, the Masonry Institute of Iowa is a non-profit association dedicated to promoting the use of brick, stone, and block in construction. We look forward to meeting with you and your team to help you define your goals in designing with masonry. Call us today to learn more!

# contents

IOWA ARCHITECT MAGAZINE WINTER 2022



^ *University of Iowa Psychological and Brain Sciences Building, p. 22*

## Features

- 18 **AIA Iowa Design Awards**  
Recognizes excellence in architecture projects that are designed by members of AIA Iowa and emphasizes its importance in the community.
- 38 **AIA Iowa Craft Awards**  
Recognizes Iowa craftspeople and/or companies that demonstrate particular skill and inventiveness in the execution and incorporation of their craft into our built environment.
- 42 **AIA Central States Region Design Awards**  
Recognizes outstanding architecture projects in the AIA Central States Region (CSR), designed by AIA CSR members.

## Departments

- 08 **Collected**  
Newly Licensed Architects; Emerging Professionals
- 12 **Profile**  
AIA Iowa Young Architect Award:  
Lyndley Kent, AIA



**ON THE COVER**  
MidAmerican Energy Corporate Office and Conference Center Renovation, p. 24

## NEWLY LICENSED ARCHITECTS

### Congratulating AIA Iowa's newly licensed architects

American Institute of Architects, Iowa Chapter (AIA Iowa) was honored to recognize the accomplishments of 12 newly licensed architects at its annual convention this year, Sept. 23-24, 2021. Each of the newly licensed members completed a professional degree or master's program in a National Architectural Accrediting Board program; completed the Architect Registration Examination, an extensive series of six or seven tests; and recorded at least 3,740 hours to complete their Architectural Experience Program requirements for the National Council of Architectural Registration Boards. They have each proven their dedication to the profession through years of service and hard work. AIA Iowa and *Iowa Architect* magazine could not be more excited to welcome them to the distinguished designation of AIA.



■ **DAVID BROCKSHUS, AIA**



■ **MICHAEL DEAN, AIA**



■ **MATTHEW FORS, AIA**



■ **JERICA GRABNER, AIA**

"Becoming a licensed professional in this industry is a true symbol of the dedication these individuals have to their profession. The licensure process is one of the most intense of any professions and meeting this achievement deserves significant recognition. Congratulations!"

— **DAN DRENDEL, AIA,**  
2021 AIA IOWA PRESIDENT



■ **ZACH HANSEN, AIA**



■ **SCOTT HUFFMAN, AIA**



■ **CALLY NIESS, AIA**



■ **DEREK POWERS, AIA**



■ **SALONI SHETH, AIA**



■ **BRIAN WALKER, AIA**



■ **JEREMY ZEHR, AIA**

\*NOT PICTURED, **KELSEY FLEENOR, AIA**



# EMERGING PROFESSIONALS

SOURCE : BRENT WOLLENBURG, AIA

*Emerging Professional Tyler Jessen Wins First Prize in Competition That Features Work of Architecture Students, Architectural Interns, and Architects Licensed 10 Years or Fewer*

Winners were announced for the annual Emerging Professionals Competition at the 2021 AIA Iowa Convention held at the Iowa Events Center in Des Moines from September 23-24. The competition aims to promote the efforts of the rising generation of architects and designers and inspire professionals to continue to mentor and engage the talented emerging professionals in Iowa by showcasing the work of architecture students, architectural interns, and architects licensed 10 years or fewer.

First-place went to emerging professional Tyler Jessen, AIA with his proposed Green Space Performance Venue project in Historic Arnolds Park in Okoboji, Iowa. Jessen proposed park improvements that attract a new public presence to the area through a series of performance and event spaces. The project's central focus, an undulating amphitheater with a wooden canopy and color-changing LED lighting, provides a contextual link to the site's natural and built amenities such as mature trees and adjacent roller coaster.

As a result, the design ties preservation to newfound function as it provides unobstructed sightlines from a performance venue and viewing deck to one of the state's most celebrated lakeside recreational areas.

The Second-place winners, a group of Iowa State University (ISU) students consisting of Zach Letterman, Lexi Ruroden, Zach Rupprecht, and Allison Morgan, addressed the demand for healthcare services in Adel, Iowa with a micro-hospital proposal that promotes staff wellness and patient privacy by offering an indoor fitness center, daylighting strategies, views to natural surroundings, and adaptable spaces

**Below:** Rendering of the winning project 'Green Space Performance Venue' by Tyler Jessen, AIA, proposing park improvements and an undulating amphitheater in Okoboji, Iowa.



**Below:** Experiential view of the second-place winner, 'The Woodview Medical Center', proposed by Iowa State University students Zach Letterman, Lexi Ruroden, Zach Rupprecht, and Allison Morgan.



that will accommodate future needs. The Woodview Medical Center project will provide Adel and the surrounding community access to services such as a clinic, inpatient units, an emergency department, a behavioral wellness center, and imaging services. The design intent will help empower staff to take charge of their health while promoting healthier living to patients.

Emerging Professional Sarah Lembke, AIA, received the third-place prize for her rehabilitation efforts on the formerly vacant 1875 Raphael Building in Davenport's historic Hilltop Campus Village. As part of her role as the Downtown Building Rehabilitation Specialist for Main Street Iowa (a Main

Street America™ coordinating program), Lembke hopes to demonstrate that small moves can make a big impact.

“My hope is that the transformation of this building will successfully honor the past, meet the needs of today, and protect the building for the future,” said Lembke.

The three winning submissions were selected through a People's Choice selection process. A \$300 prize was awarded to the first-place winner and two \$100 prizes were awarded to second and third-place submissions. An exhibition of the work was displayed at the convention and viewed by over 1,000 convention attendees and exhibitors. The competition was sponsored by ISG Inc., and the AIA Iowa Emerging Professionals Committee.

I collected



## AIA AWARD

### Market One

AIA COTE TOP 10 AWARD

**LOCATION:** DES MOINES, IOWA **ARCHITECT:** NEUMANN MONSON **SIZE:** 40,668-SF **COST:** \$10,700,000

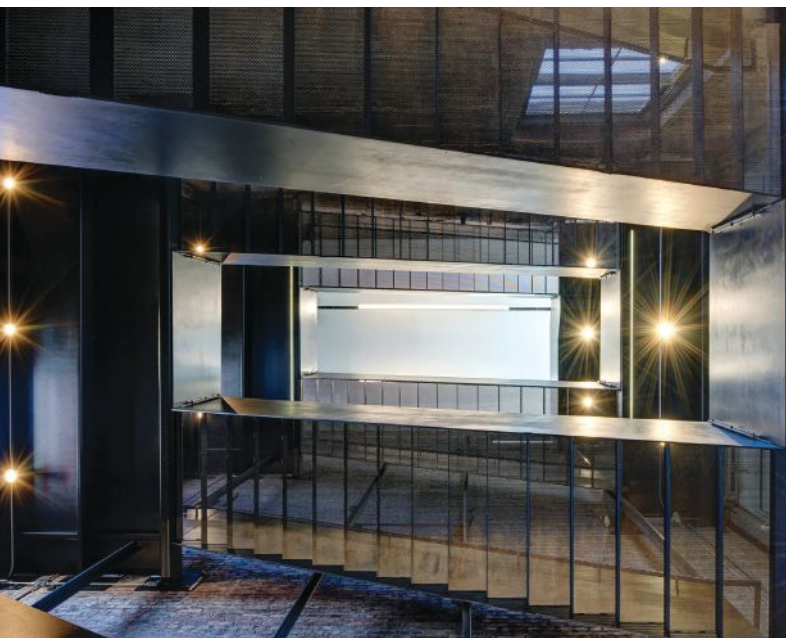
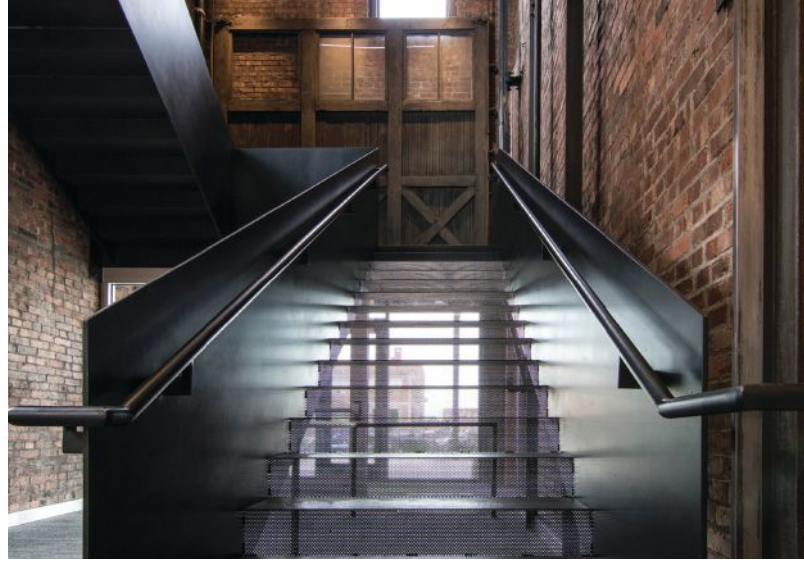
Nothing is more sustainable than breathing new life into an existing resource. Market One tells an important story about the role historic buildings can play in anchoring urban revitalization with sustainable principles. With pragmatic intent and a sensitive touch, Market One harnesses a 1901 manufacturing facility's inherent flexibility to guide open-ended infill strategies. It integrates comprehensive sustainable strategies and rigorous design into a charismatic existing structure, maintaining the building's original character and yielding healthy open work environments faithful to its original, airy

spaces. The project meets the challenge of pursuing energy efficiency while adhering to National Park Service historic preservation guidelines.

This adaptive-reuse project achieves a rich, nuanced dialogue between new and old. In some locations, the two are carefully delineated. In others, modern interventions take a back seat to historic character. Throughout the building, transparency and compatible finishes allow space to flow freely. A service and circulation core along the building's west maximizes tenant space flexibility. The blackened-steel primary stair that occupies the building's old freight

elevator shaft provides dramatic access through the building. A modern, wood-clad conference suite and communal roof deck perch atop the original building, using the old elevator overrun to inform its size and location.

As the first major reinvestment in Des Moines' Market District, Market One has set the standard for subsequent, responsible development. A series of investments since the building's completion have followed Market One's lead in respecting the existing fabric. LEED Platinum status and a 2018 ASHRAE Award have further elevated this project as an influential development model.



## AIA Iowa Young Architect Award

Lyndley Kent, AIA,  
Neumann Monson Architects

WORDS : SAMANTHA BROWN

Lyndley Kent, AIA, first dreamed of being an architect around age 8, when assisting her mom with home improvement projects, following her dad on construction sites, and sharing a fascination of old houses with her grandparents each became enjoyable routines. She's always had a knack for drawing and painting, which helped apply her real-world interests to paper and bring early skills to life. "I really enjoyed going with my grandma to look at historic homes, and then I would draw and model those as best I could at that age," says Kent. She recalls someone telling her she'd make a fine architect one day, and something clicked. From then on, she set her career sights toward architecture.

Each year, Channing Swanson, AIA, principal at Neumann Monson Architects, asks his close friend Rob Whitehead, AIA, associate professor of architecture at Iowa State University, for a list of great minds to consider for opportunities at the firm. In 2012, the year Kent graduated cum laude from Iowa State University's Bachelor of Architecture program, Whitehead gave only one name: Lyndley (Baldwin) Kent. She joined the firm at their Des Moines studio that year and worked on a wide range of project types including commercial office, municipal parking facilities, and religious spaces. "Nearly 10 years later she's become a registered architect and shareholder and she's just getting started," Whitehead writes in a letter recommending Kent for the award.

Projects that Kent worked on over the years developed and fostered a passion for sustainability, design



excellence, service to the profession, and gender equity. The most recent example of Kent's continued work toward sustainability is the Stanley Center for Peace and Security project. The center advocates for global policies that address existential threats to humanity, including nuclear weapons, mass violence, and climate change, through education and diplomacy. As project architect for the new headquarters in Muscatine, Iowa, Kent is leading the owner and project team toward achieving Neumann Monson's first fully Certified Living Building by the International Living Future Institute, the most rigorous measure for sustainable development. "It takes sustainability to a whole different level from what people are used to seeing," Kent explains. "This Living Building Challenge program ... is all the things you'd expect—creating all of your own energy, really harvesting or creating all your own water and managing that, and then there are a lot of community aspects. That's where that net positive comes in, when you're able to be an element within that community to give back or to serve as a resource that wasn't being fulfilled." Part of the certification process was for Neumann

Monson to obtain a JUST label, which recognizes and rates firms based on company performance in equity, inclusion, diversity, and sustainability. Kent led the firm's efforts toward that goal, focusing on parental leave and pay equity among other employee benefits.

When asked about the benefits of her American Institute of Architects, Iowa Chapter membership, Kent notes that the organization's partnership with Iowa Women in Architecture (iaWia) "sold a spot." Early in her career she realized the importance of having someone to look up to who had similar lived experiences. She looked around, and not having seen many women role models in the field, became one herself. In 2014 Kent joined iaWia, volunteering on the organization's Communications and Outreach Committee. Soon after, she served as a student mentor through their College Mentorship program and shared her experience at Career Day Portfolio reviews. "As much as we can bolster representation, or, as much as I can make myself available to show at least how I've done it and offer words or wisdom that I was able to get from Iowa Women in Architecture and some of the other professionals working with AIA Iowa, seeing those other perspectives

is extremely helpful,” Kent says.

“Hopefully in the next 10 or 15 years we’ll see a lot more [representation and] hopefully this isn’t as big of a topic.”

Looking back on Kent’s young career, she fondly recalls one of the first projects she worked on, the celebrated Market One historic preservation and sustainability project that’s won AIA Iowa Excellence in Design and Craft Merit awards in 2016 and 2018, respectively, and most recently earned a place in the 2021 AIA Committee on the Environment (COTE) Top 10. As the project manager, Kent led the team in transforming the warehouse building, originally constructed in 1901, into multi-tenant, open floorplan offices, a retention of the traditional design. Geothermal and solar energy sources allow the project to seek NetZero energy usage, and it is a one-of-a-kind project in the Des Moines area.

The aforementioned are just a few examples of Kent’s experience that led to her selection as 2021’s AIA Iowa Young Architect Award recipient. At AIA Iowa, she’s served on the Convention Planning

“ In the nine years since we met Lyndley, she has never disappointed. Not once. She has, however, grown into the kind of young architect that, as her mentor, I can be exceedingly proud to say, ‘I had a small part in the evolution and development of that powerhouse.’”

– CHANNING SWANSON, AIA, PRINCIPAL,  
NEUMANN MONSON ARCHITECTS

Committee, and currently serves on the EP and Awards committees. Kent is also the current Young Architect Representative for Iowa in the AIA Central States Region.

At the time of this writing, Kent is 39 weeks pregnant, preparing to take leave, and the news of her award is still relatively fresh. “It still feels like there are a lot of people who have done a lot and could also get this award,” she says, but ultimately views this honor as another way to lead by example.

“Having to prioritize what makes sense for me has been a big aspect. There’s always going to be work, and you’re always busy, but at some point, if you want to have a family, you have to just do it. I hope that I can be more of a model, whether or not I’m an active model for them or they just know me now, maybe more because of this. If they see that it’s doable, hopefully I’m approachable enough and involved enough that I may run into those people who need that.”



**NEUMANN MONSON ARCHITECTS**

IOWA CITY | DES MOINES



**CONGRATULATIONS!**

Lyndley Kent  
2021 AIA Iowa Young Architect



Des Moines | Cedar Rapids | Davenport | Dubuque | Sioux Falls

**PIGOTT**

**Ready to elevate  
your space?**

From understanding your aspirations to exceptional implementation, we'll work together to create elevated places that drive success.

Connect with us today at [pigottnet.com](http://pigottnet.com).



**DIRTT**

# Congratulations Design Award Winners!



**TREEHUIS MARION COUNTY, IA**  
**SUBSTANCE**ARCHITECTURE  
 DESIGN MERIT AWARD




**ISU STUDENT INNOVATION CENTER AMES, IA**  
**SUBSTANCE**ARCHITECTURE  
 DESIGN MERIT AWARD



The Building Envelope  
 Built Better



Build Better  
[www.archwall.com](http://www.archwall.com) | [www.seedorff.com](http://www.seedorff.com)

**Marion Fire Station No. 1**  
 Honor Award, Excellence in Design,  
 AIA Iowa

**Lester Buresh Family Community  
 Wellness Center**  
 Honor Award, AIA Central States Region

**OPN**  
 ARCHITECTS

Cedar Rapids | Des Moines | Iowa City | Madison  
[opnarchitects.com](http://opnarchitects.com)



**David A. Block, AIA-Emeritus (1943-2021)**

## Remembering a Sustainability Pioneer

**WORDS:** JANNA ALAMPI, AIA



Several generations of architecture students had the privilege of being taught by David Block, AIA, at Iowa State University, and as many will attest, he had a reputation that preceded him surrounding his required (and often dreaded) technology courses in the architecture curriculum. At the time, most had no idea of the influence that he would have on their careers, and that Block would see his efforts rewarded as many of his students successfully emphasized sustainable design in their practices.

### **Junction of Practice and Teaching**

As a graduate of Iowa State University, Block attended the architecture program

from 1961 to 1967 before being drafted during the Vietnam War. He later returned to Iowa State and earned two master's degrees in architecture and urban planning, before becoming an assistant professor of architecture.

The OPEC Oil Embargo of 1973 occurred during his first year of teaching, and strongly impacted his teaching and practice of architecture. While energy and environmental issues were important for just a few years afterward, Block was persistent in principles of sustainable architecture and implemented a philosophy of "I practice what I teach and I teach what I practice."

What he taught in class became a



reality when his students could see the principles being applied in his own work. He would often take his students to visit homes that he had designed, one being the Hodges Residence (1978-1979), a superinsulated direct gain passive solar home in Ames. It was Iowa's first earth-sheltered passive solar home and the winner of the 1978 National Passive Solar Residential Design Competition.

In his private practice, he designed 34 homes with 22 of them incorporating passive solar principles, in addition to authoring approximately 30 magazine articles on passive solar and house design, and having his work published in several books. He also received the National Science Foundation grant and was one of the limited number of architecture faculty nationally to earn this extremely competitive research grant.

### Master Storyteller

When Block talked about his work, he spoke with his whole being. It was as if part of his essence was infused in each of his projects, and they were physical manifestations of his values of the built environment.

One of his former students, Tom Hagerty, worked for Block and heard many stories about his beginnings as an architect. His favorite story was from one of his earliest jobs when he started his own firm, and the project was a new house with a long-span roof. The ridge beam needed large steel columns to carry the load, but the contractor installed wood columns and convinced the owner that they were strong enough, commenting that steel was a waste of money. David tried to explain the load calculations, but the owner sided with the contractor and noted that the wood columns were already installed. In response, David went to the trunk of his car, got an axe, and proceeded to chop the wood columns out of place. He then smiled to both the contractor and owner and said "the wood columns aren't installed anymore – so let's stick with the steel" and then drove off.

Another house he designed utilized the concept of thermal mass, which was accomplished by using tin cans inside of a black box. Things didn't go as planned



during the project, so he had to purchase hundreds of tin cans himself so that the house could perform as designed. He would also talk about lawsuits he was involved in, giving a taste of what practicing architecture was like in the real world. These were just a few of many occasions that he freely shared his experiences as a practicing architect and was honest about those experiences.

### Sustainability and Contributions

As a long-time member of the American Institute of Architects, Iowa Chapter, Block was recognized in April 2018 for forty years of membership and service. He also received the AIA Iowa Education Award in 2008, a prestigious award in which he was highly recommended with the very best and most consistent accolades from many of his students and colleagues.

Block was before his time, authoring elective courses in the 1980s and 90s in topics that would become a design issue for all

architects in the 21<sup>st</sup> century. His teaching accomplishments included a "Solar Home Design" co-taught course with Dr. Laurent Hodges, professor of physics; in fact, there was so much interest that it had a waiting list. In 1980, he began teaching a course titled "Energy in Large Buildings," and in 1990 this course transitioned into the infamous "Environmental Forces." Years later, "Sustainability and Green Architecture" became one of the most anticipated courses in the department and was always fully booked.

Block was an innovative architect and educator who pioneered energy efficiency and sustainability, as well as an effective learning environment. His character, integrity, and professional ethics were without reproach, upholding the highest moral standards. He cared for generations of students, listened to them, and showed unwavering respect that was whole-heartedly returned. Above all, he has left a monumental legacy illustrating values worth emulating in our own lives and practices.

# AIA IOWA DESIGN AWARDS

## MEET THE JURY

---



**MARLON BLACKWELL, FAIA**  
MARLON BLACKWELL ARCHITECTS | FAYETTEVILLE, ARKANSAS

Marlon Blackwell, FAIA, is a practicing architect in Fayetteville, Ark., and serves as the E. Fay Jones distinguished professor at the University of Arkansas. His studio consistently challenges convention to demonstrate that architecture can happen anywhere, at any scale, at any budget, for anyone. Its work has received national and international recognition with significant publication in books, architectural journals, and magazines and more than 160 design awards. Marlon is the recipient of the 2020 American Institute of Architects (AIA) Gold Medal.

**KEVIN ALTER, ASSOC. AIA**  
ALTERSTUDIO ARCHITECTURE | AUSTIN, TEXAS

Kevin Alter, Assoc. AIA, is Alterstudio Architecture's founding partner. Alterstudio's work is rooted in deep-seated virtues of architecture: generous space making, shrewd manipulation of daylighting, and meticulous attention to detail. The practice has received more than 100 design awards, including the National AIA Institute Honor Award for Interior Architecture, American Architecture Award, National AIA Housing Design Award, Architecture Master Prize, Residential Architecture Design Award, and AIA Firm Achievement Award.



**KATHERINE CHIA, FAIA**

DESAI CHIA ARCHITECTURE | NEW YORK, NEW YORK

Katherine Chia, FAIA, is a founding principal of Desai Chia Architecture. Desai Chia has established a reputation for authentic design, with a portfolio that includes residential, commercial, and institutional projects as well as commissions for product design and collaborations with artists. Its projects have been published extensively and received accolades including numerous AIA and American Architecture Awards, Interior Design Best of Year Awards, Good Design Awards, and an AIA Institute Honor Award.



**CLAIRE WEISZ, FAIA**

WXY ARCHITECTURE + URBAN DESIGN | NEW YORK, NEW YORK

Claire Weisz, FAIA, is a founding principal of WXY architecture + urban design. WXY is globally recognized for its place-based approach to architecture, urban design, and planning, and has played a vital role in design thinking around resiliency. In 2019, *Fast Company* named WXY one of the World's Most Innovative Architecture Firms. Claire was awarded the Medal of Honor from AIANY in 2018 and was honored with a Women in Architecture Award by *Architectural Record* in 2019.

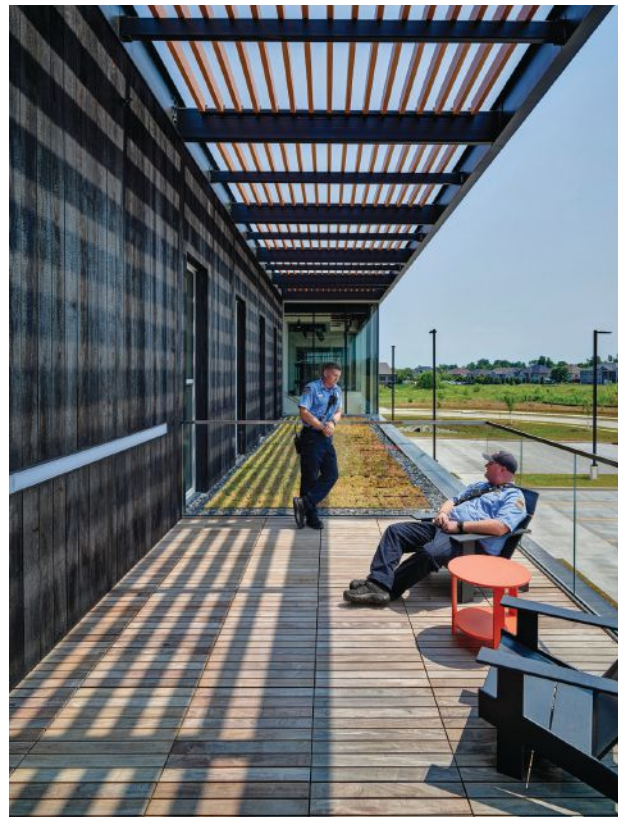
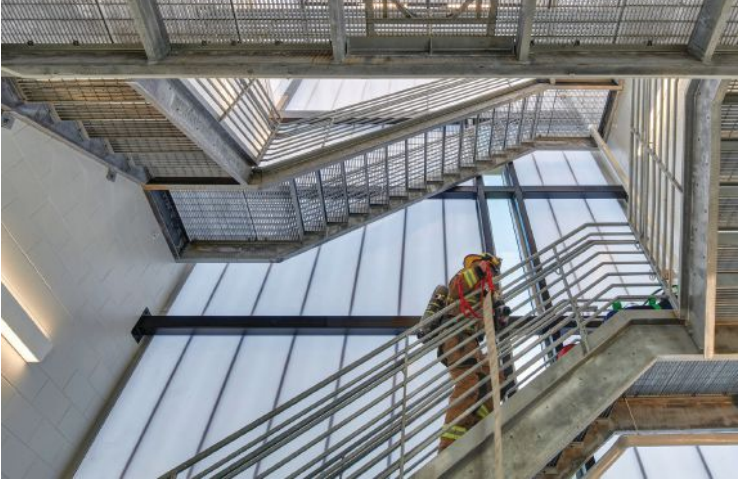


# MARION FIRE STATION NO. 1

EXCELLENCE IN DESIGN, HONOR

LOCATION: MARION, IOWA ARCHITECT: OPN ARCHITECTS SIZE: 21,000 SF COST: \$7,200,000

This two-level 21,000-square-foot fire station in a rapidly growing community reduces response time, establishes a strong and transparent civic presence, and uses biophilic design principles to support firefighters' physical and mental wellness. A two-story apparatus bay anchors the plan and massing. Full-height glass doors on the north and south elevation maximize daylight and establish a connection to the community. Shou sugi ban wood wraps the living and office spaces to add depth, texture, and contrast to the smooth plane of the glass. The lobby stretches to become the primary first-level circulation. This welcoming, light-filled space allows direct views into the apparatus bay and displays the fire department's rich history, pride, and tradition. Strategic spatial sequencing between the bays and the office and living areas mitigates exposure to fire and ash carcinogens. On the opposite side of the bays, the hose-drying tower also serves as a training area. Training opportunities continue at the exterior where the retention pond is used to train for ice rescues. Living areas, wrapped in full-height glazing with exposed wood ceilings, include a full kitchen, a large family-style table, and an entertainment area to ensure the firefighters have a variety of spaces to relax and recharge. Circadian lighting is used throughout to ensure the firefighters' wake-sleep cycle is synchronized with natural light. These interior spaces are complemented by two ipe wood terraces sheltered by a roof and wall trellis. A green roof surrounds all the living spaces and sleeping rooms.

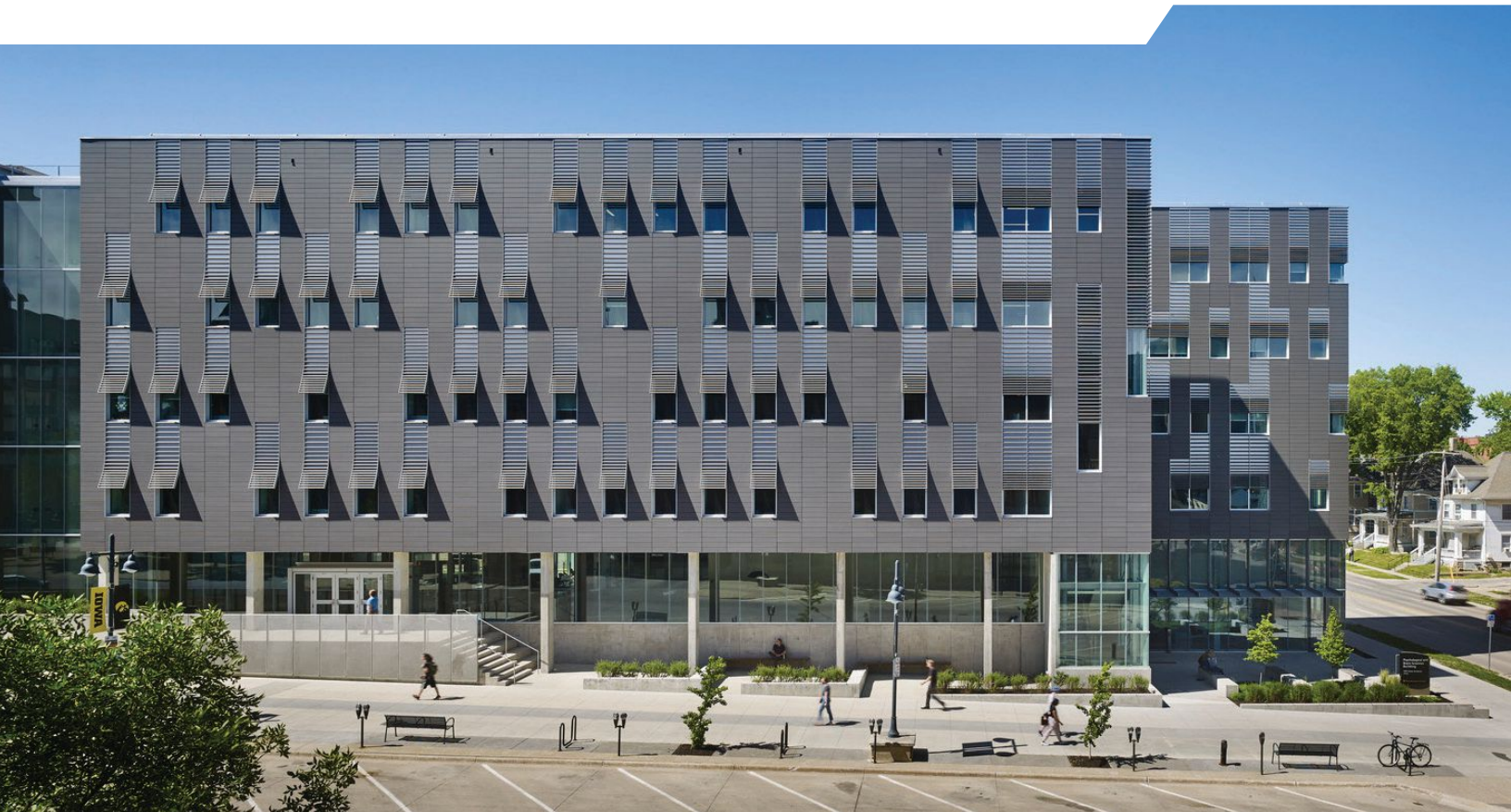


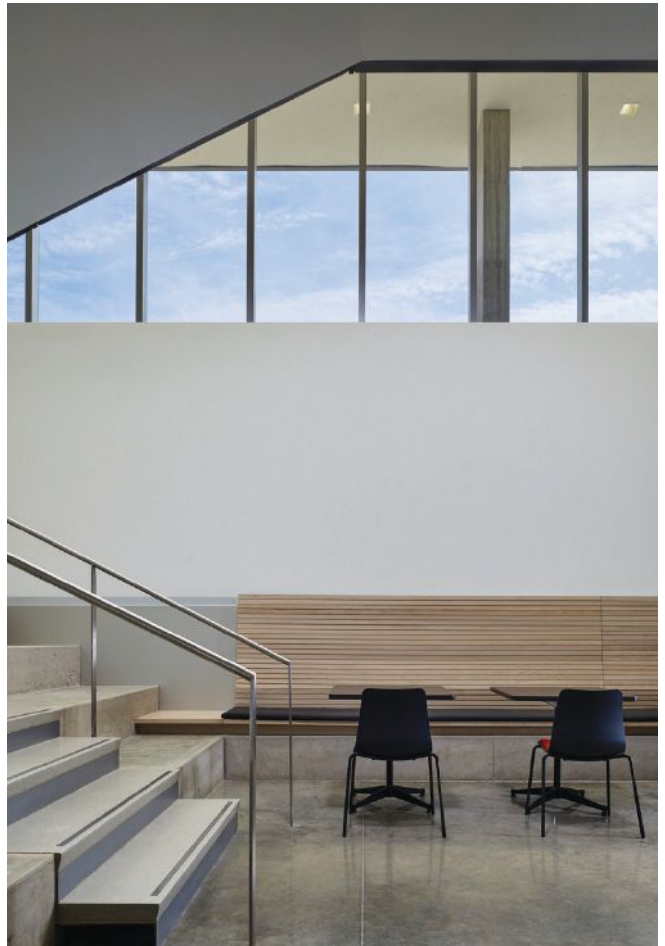
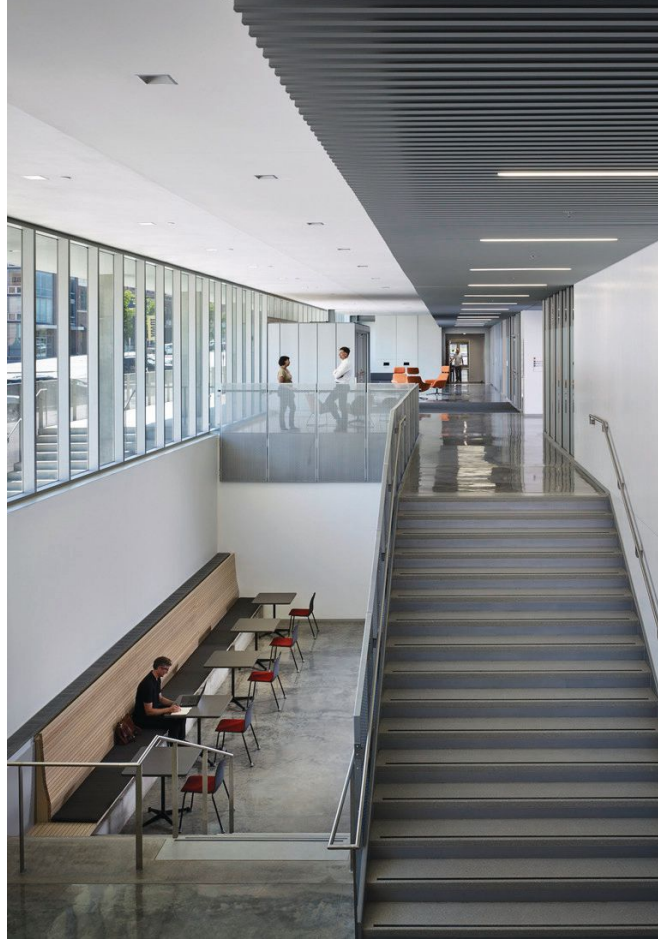
# UNIVERSITY OF IOWA PSYCHOLOGICAL AND BRAIN SCIENCES BUILDING

EXCELLENCE IN DESIGN, HONOR

**LOCATION:** IOWA CITY, IOWA **ARCHITECT:** BNIM ARCHITECTS **SIZE:** 62,000 SF **COST:** \$25,000,000

The Psychological and Brain Sciences Building establishes an important gateway to the university campus while providing active learning classrooms, research laboratories, faculty offices, and collaboration spaces. The teaching and research facility welcomes students, researchers, and a variety of public visitors to the university campus. The academic anchor nurtures a connection to the neighboring downtown central business area. It responds to its site through its reflection of and connection to the adjacent historic lab building. Existing facilities, which did not support the Psychological and Brain Sciences department's current needs, lacked a sense of campus connection. The introduction of daylighting and outdoor views open the building in a transformative way, fostering connection among spaces. The design is comfortable and inclusive. It supports enhanced mobility, accessibility, and wayfinding. As a functioning research facility, a series of research rooms are equipped with specialized light and acoustic controls to aid in experiments. Lab modules can be modified to accommodate different research pursuits.







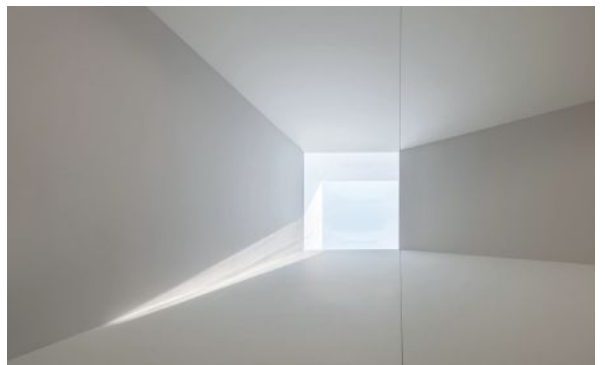
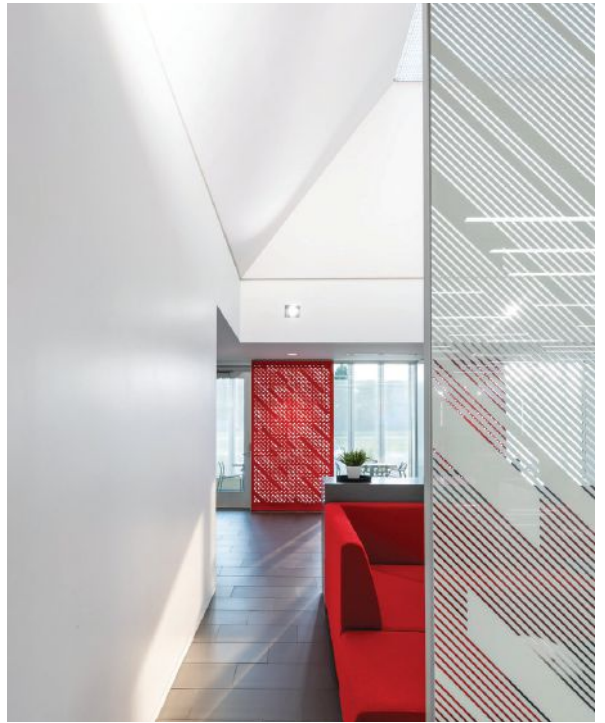
# MIDAMERICAN ENERGY CORPORATE OFFICE AND CONFERENCE CENTER RENOVATION

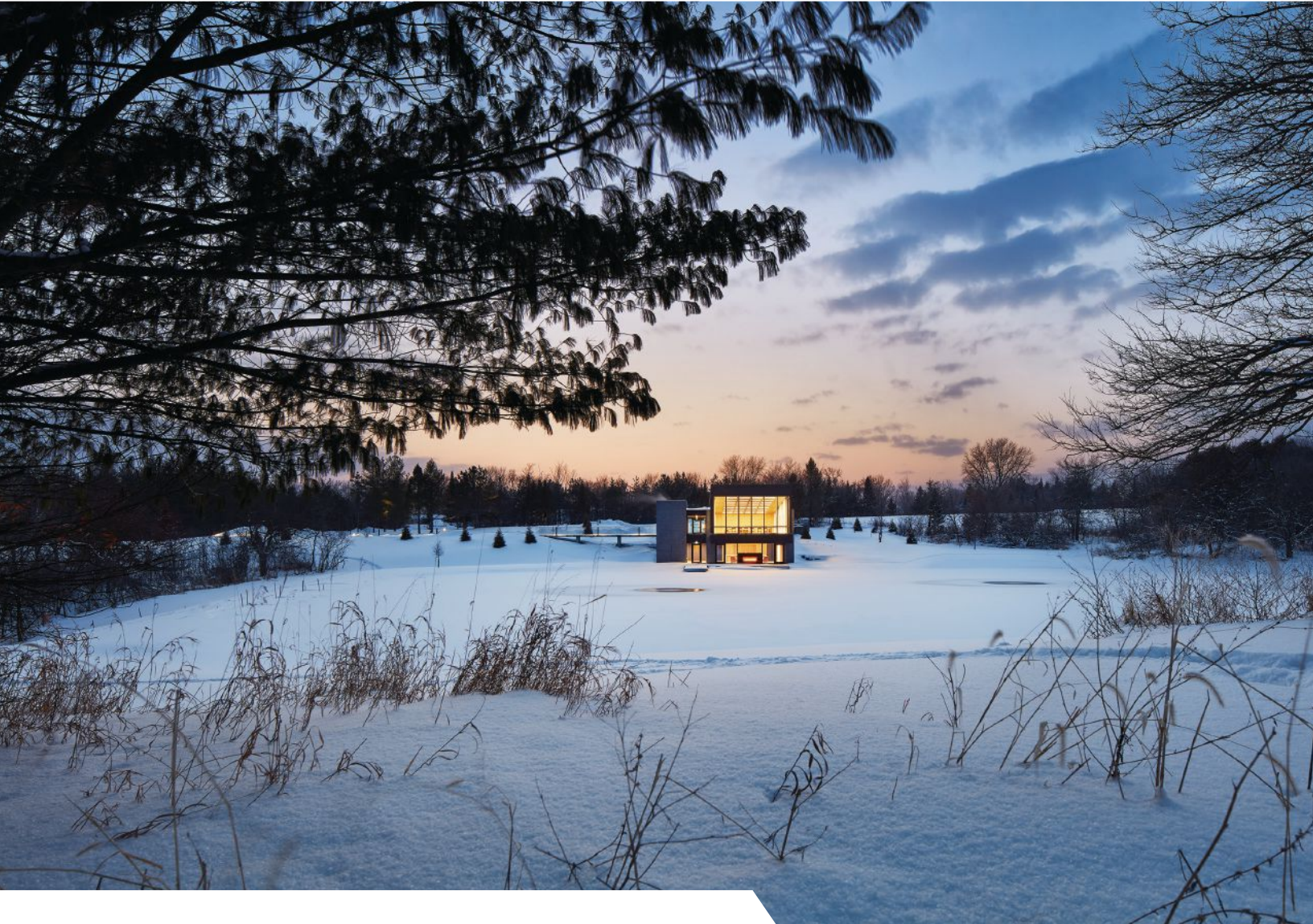
EXCELLENCE IN DESIGN, HONOR

LOCATION: URBANDALE, IOWA ARCHITECT: BNIM ARCHITECTS SIZE: 117,180 SF

The renovated corporate office and conference center transforms a large warehouse into a vibrant environment of workspaces and amenities. The design team maximized the potential of the existing office space through reorganization, modernization, and human-purposed design strategies. Previously, the facility's compartmentalized space organization caused limitations in functionality, wayfinding, and view access. The new design introduces more than 70 formal and informal meeting areas that optimize flexibility and productivity while creating opportunities for improved workflows and interaction among co-located business units. To promote easy collaboration and reconfiguration, 120-degree workstation pods with the flexibility to expand and contract replace the facility's existing cubicles. The 144-seat conference center provides space to host gatherings from across the larger organization. The conference center has the capability to divide into three separate rooms and offers a variety of adjacent public office amenities, including a 95-seat café, lounge area, and game room area. A light-filled "Main Street" circulation area joins work and amenity areas and daylights the heart of the facility. A pedestrian walking circuit invites employees to move around throughout the workday.





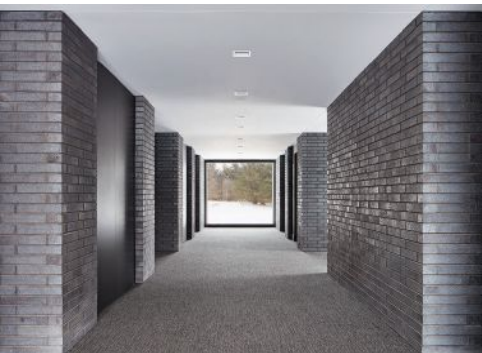
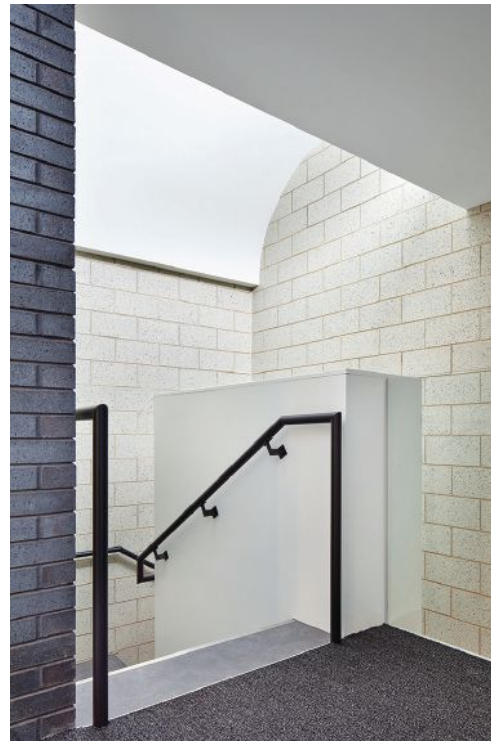


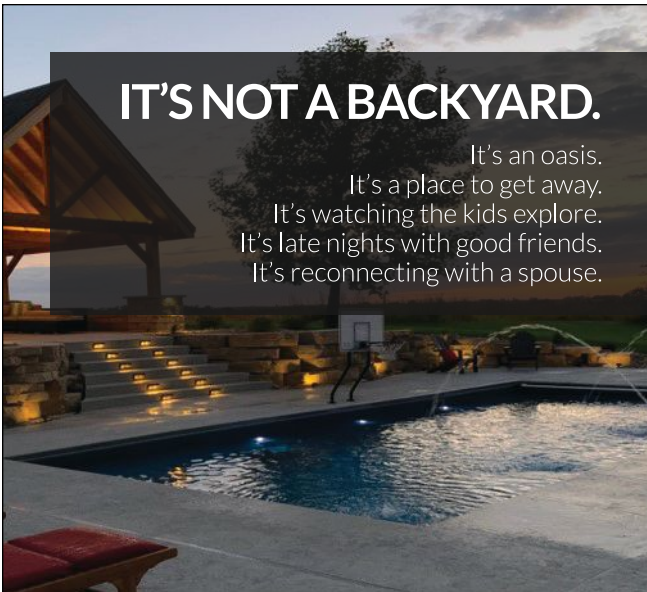
## Treehuis

EXCELLENCE IN DESIGN, MERIT

**LOCATION:** MARION COUNTY, IOWA **ARCHITECT:** SUBSTANCE ARCHITECTURE **SIZE:** 7,000 SF

Situated on a bucolic 65-acre site, this 7,000-square-foot conference center provides a meeting place and respite for the multigenerational family owners of a major manufacturing company in southeast Iowa. The Treehuis provides a place for family members to gather and conduct business annually. The modest building includes a dining space for up to 100 family members, lounge and breakout spaces for adults and children, service spaces, exterior decks, and a dock. The building also serves as a trailhead, inviting guests to explore the wooded site and surrounding wetland. The design leverages its natural setting to create a series of unique spatial sequences. The building nestles into the grade. Its siting, in combination with an extensive green roof, conceals the building and its pond from the primary approach. One path moves visitors down a set of steps along what begins as a low masonry wall. This wall “grows” to become the building. An alternative path crosses a bridge and slides into the building between two masonry masses. Both paths utilize the site topography and forest to gradually reveal the building. Interior spaces frame views out to the site. During the day, the result is a series of warm, daylit spaces. In the evening, the building becomes a lantern, welcoming the family back from the activities of the day for food and fellowship.





# IT'S NOT A BACKYARD.

It's an oasis.  
It's a place to get away.  
It's watching the kids explore.  
It's late nights with good friends.  
It's reconnecting with a spouse.

## IT'S BUILT WITH KING'S.

CONCRETE · MASONRY · LANDSCAPE

**KING'S**  
MATERIAL INC.  
[kingsmaterial.com](http://kingsmaterial.com)



Proudly serving the  
Midwest's precast needs.

(319) 986-2226 (Mount Pleasant)  
(515)214-7771 (Des Moines)  
[sales@mpcent.com](mailto:sales@mpcent.com) / [mpcent.com](http://mpcent.com)

+  
Follow **MPC**  
on **LinkedIn**



**Project:**  
Leapfrog Technologies  
**Contractor:**  
Build to Suit Incorporated  
**Architect:**  
ASK STUDIO  
**Photo:**  
Steve Sullivan (Sullivan Photography)

**M**olin Concrete Products Company, is an innovative manufacturer of high-quality PCI certified structural and architectural precast/prestressed concrete components. We work with your project team from design development to completion, serving as a single source for the complete building system.

**Design » Manufacture » Install**  
PRECAST & PRESTRESSED CONCRETE  
Architectural & Structural Wall Panels  
Hollow Core Plank | Beams | Columns  
Stadia | Stairs

**MOLIN**  
Quality Concrete Solutions since 1897





[MOLIN.com](http://MOLIN.com)  
651.786.7722 800.336.6546  
415 Lilac Street, Lino Lakes, MN 55014



**AIA IOWA  
EXCELLENCE IN  
DESIGN**

Iowa State University  
Student Innovation Center  
Ames • IA

**kpff**

Seattle	San Diego
Tacoma	Boise
Lacey	Salt Lake City
Portland	Des Moines
Eugene	St. Louis
Sacramento	Chicago
San Francisco	Louisville
Los Angeles	Nashville
Long Beach	Washington, DC
Orange County	New York

KPFF is an  
Equal Opportunity Employer.  
[www.kpff.com](http://www.kpff.com)

**TOGETHER WE BUILD SOLUTIONS**





**BUILDING  
STORIES  
OF DESIGN.**

We use our broad expertise in development, construction, management and financing as a way to improve the lives of people and communities. We're driven to create spaces where people thrive and businesses succeed.

We value our design partners and congratulate all of this year's award winners.

**COMMERCIAL  
NEW CONSTRUCTION**  
PROGRAM

*it pays to make energy efficiency part of the plan*

**Congratulations 2021 Excellence in Energy-Efficient Design Award Winners!**

**EYP**  
Grinnell College Humanities and Social Studies Complex

**OPN Architects and Design Engineers**  
Kirkwood Community College Washington Hall Addition and Renovation

**BNIM Architects and KCL Engineering**  
Des Moines Heritage Center

**HGM Associates, Inc. and Engineering Technologies Inc.**  
Mills County Secondary Roads Building



**APPLY TODAY!** [energyassistance.willdan.com/cnc](http://energyassistance.willdan.com/cnc)

Contact the program implementer,  
Willdan: [cnc@willdan.com](mailto:cnc@willdan.com) or 877-939-1874



## 219 E. Grand Ave.

EXCELLENCE IN DESIGN, MERIT

**LOCATION:** DES MOINES, IOWA **ARCHITECT:** NEUMANN MONSON ARCHITECTS **SIZE:** 106,585 SF **COST:** \$19,315,000

Located in Des Moines' burgeoning East Village district, this six-story mixed use building plays on the immediate material and historical context to anchor itself along the primary arterial of Grand Avenue. The design applies variation with a palette of brick and weathered steel, providing a modern and durable complement to the district's historic building fabric. Weathered steel clads the building's south, courtyard-facing elevation and plays off the development teams' other project on the same block whose inward-facing facade also features weathering steel. In addition to harboring stormwater retention chambers beneath its lawn, the courtyard introduces a tenant amenity that is lacking in the East Village and will become more desirable as urban infill projects densify the neighborhood. Residents also enjoy access to the upper-level terrace and shared amenity spaces for small group gatherings. The building's 98 apartments include a mix of unit types, including an optional loft configuration for the fifth and sixth floors. These loft-style units, with private terraces, modulate the building's northern mass. Perforated galvanized steel balconies populate the remainder of the street-side facade. A parking structure across the street provides dedicated spaces for residents, alleviating on-site requirements and maximizing the ground level's flexibility. Along Grand Avenue and East Second Street, 17,000 square feet of retail space extend pedestrian shopping and dining from the East Village core toward the Riverwalk and downtown Des Moines. The project completes a crucial chain of pedestrian-oriented storefronts, bringing new vibrancy to Grand Avenue's gateway to downtown.







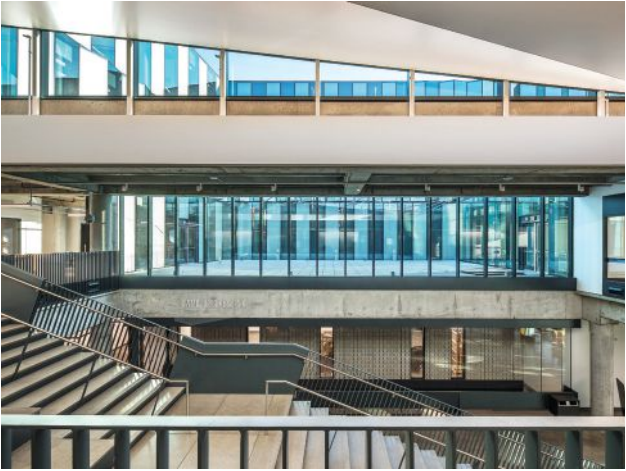
## Student Innovation Center, Iowa State University

EXCELLENCE IN DESIGN, MERIT

**LOCATION:** AMES, IOWA **ARCHITECT:** SUBSTANCE ARCHITECTURE AND KIERAN TIMBERLAKE **SIZE:** 140,000 SF **COST:** \$84,000,000

This centralized resource serves all nine of the university's colleges. The building is open to all 36,000-plus students and represents a shift in campuswide pedagogy away from traditional passive learning toward a hands-on, interactive teaching model. The 140,000-square-foot building is without precedent and required a rigorous, probative programming process. A series of focus groups resulted in each college identifying what their students "make" (from music to food to business plans) and, in turn, what spaces and equipment would facilitate these activities. The building becomes a container filled with an evolving set of "maker" spaces ranging from metal, wood, and composite fabrication shops ... to a test kitchen, café, and retail outlet ... to a rooftop garden. Flexible, technology-enabled classrooms in unique formats support innovative teaching formats and a gallery space displays the results of "making" campuswide.







## The Tom and Ruth Harkin Center

EXCELLENCE IN DESIGN, HONORABLE MENTION

LOCATION: DES MOINES, IOWA ARCHITECT: BNIM ARCHITECTS SIZE: 17,000 SF COST: \$6,979,680

The Tom and Ruth Harkin Center dedicates office and research space on the Drake University campus to notable staff and fellows. It doubles as a center for community engagement. The building implements equitable design principles to ensure that the facility supports all building users' experiences. The Harkin Institute seeks to improve lives by giving policymakers access to high-quality information and engaging citizens as active participants of public policy. It promotes understanding of the issues to which Sen. Tom Harkin devoted his career, including his historic legislation, the Americans with Disabilities Act. The design team worked closely with The Harkin Institute to understand what barriers still exist in the built environment today. The answers that emerged from these important discussions, policy meetings, and research provided deeper understanding of how design must do better to elevate the experiences of all individuals. The Harkin Center sets a new standard in inclusive design by providing generous space in path and ramp width, creating equitable experiences such as "meet in the round" conference room configurations, implementing lighting strategies that create clear paths for individuals with low-vision or hearing, and establishing wellness rooms for individual empowerment.



## Downtown Bridge Reconstruction

EXCELLENCE IN DESIGN, HONORABLE MENTION

**LOCATION:** DES MOINES, IOWA **ARCHITECT:** SUBSTANCE ARCHITECTURE

For nearly two centuries, the Des Moines River has divided its city into distinct halves. A century ago, four significant bridges were constructed. The Court Avenue Bridge was the most elaborate, marking the axis of the Polk County Courthouse. The remaining three bridges were utilitarian but similar. Surprisingly, it was the three workman-like bridges that became a symbol for the city. In 1974, the Des Moines City Council held a competition to design a city flag. After deliberations, a design by Walter T. Proctor was selected. This design, adopted by the City Council on April 15, 1974, featured an abstract representation of these three simple arcuated bridges. In Proctor's words, "these bridges symbolize the unity of the city otherwise divided." This flag flew throughout Des Moines for more than 30 years, but in 2008 was unceremoniously phased out. In 2015, the city decided to replace these three bridges. An engineering team developed a replacement design that was cost-effective and functional—a "DOT" bridge. The arches were gone, along with any symbolism. The City Council objected and asked the engineering team to work with an architect to improve the bridge aesthetics. The architect developed an enclosure system consisting of bent steel panels recalling the arches of the original bridges. These panels concealed the "DOT skeleton" and allowed lighting and other systems to be inconspicuously integrated. The new Grand Avenue bridge was completed in 2018 and the two remaining bridges are currently under construction. The favorable response resulted in a grassroots campaign requesting the city return to the 1974 flag. In 2019, the City Council made it official. The design acknowledges the power of a preexisting symbol and leverages it for the greater community.



# Market House

EXCELLENCE IN DESIGN, HONORABLE MENTION

**LOCATION:** IOWA CITY, IOWA **ARCHITECT:** NEUMANN MONSON ARCHITECTS  
**SIZE:** 27,000 SF **COST:** \$4,900,000

Located in a historically eclectic neighborhood of unique restaurants and retail, this five-story mixed-use building brings vitality to the underutilized corner lot, while tying together pedestrian routes between the neighborhood’s two major thoroughfares. The 27,000-square-foot building creates new housing options near the Central Business District for young professionals and retirees. With an array of one- and two-bedroom units in a variety of sizes, the building offers a unique mix of spaces and maximizes site density, while maintaining the intimate scale of the urban neighborhood. The project features underground parking, a restaurant on the ground level, 14 residential units, and an ipe-paved rooftop terrace with panoramic views of the city and surrounding canopy. Residential units utilize concrete floors and “white canvas” wall surfaces that encourage tenants’ individual expression. Kitchens feature white quartz countertops and contemporary white slab-style cabinets. Living rooms and bedrooms offer views to street life below through 10-foot floor-to-ceiling windows. A townhome-style unit anchors the southwest corner of the building and features a slatted-wall stair. The exterior material palette brings contextuality through masonry, slate tile, and weathering steel, boldly complementing the historic neighborhood with durability and material warmth. The design team also worked with the owner to coordinate a mural for the building’s north facade, which provides a powerful statement supporting racial justice.



Have you liked what you've seen in this awards issue? Learn more details and view more photos about the award winning projects featured in this issue!



DESIGN HONOR  
MARION FIRE STATION NO. 1 | OPN ARCHITECTS



DESIGN HONOR  
MIDAMERICAN ENERGY CORPORATE OFFICE & CONFERENCE CENTER | BNIM ARCHITECTS



DESIGN HONOR  
UNIVERSITY OF IOWA PSYCHOLOGICAL & BRAIN SCIENCE BUILDING | BNIM ARCHITECTS

Visit us online at:  
[IowaArchitecture.org](http://IowaArchitecture.org)

## You Matter

An architect knows the users of a building and their clients matter most.

To find an AIA Architect, visit [www.AIAIowa.org](http://www.AIAIowa.org)



Health

Safety

Wellness

AIA Iowa,  
the voice of the  
Profession of  
Architecture in Iowa

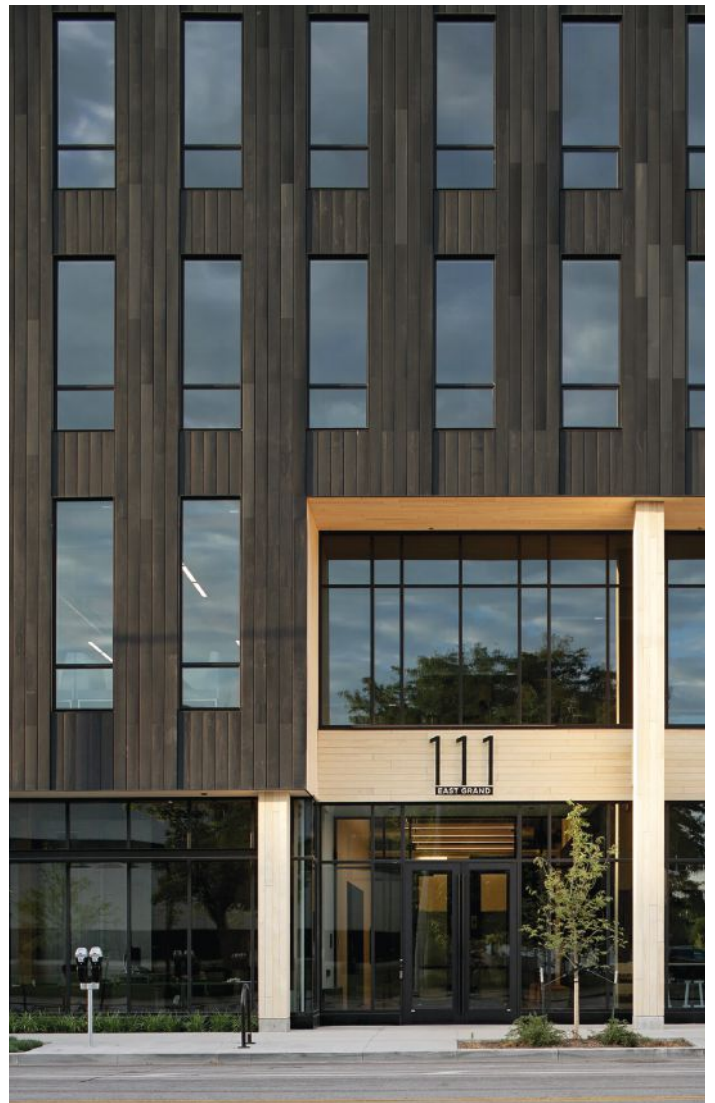
# MASS TIMBER ASSEMBLY – 111 E. GRAND AVE.

EXCELLENCE IN CRAFT, HONOR

**LOCATION:** DES MOINES, IOWA **CRAFT:** STRUCTURECRAFT **ARCHITECT:** NEUMANN MONSON ARCHITECTS **SIZE:** 65,000 SF

The 65,000-square-foot building anchors a high-visibility 265-foot-by-65-foot site two blocks from the river and is the first multi-story office building in North America to employ dowel laminated timber (DLT). After considering cross laminated timber (CLT) and nail laminated timber (NLT) suppliers, the team decided to pursue DLT because the application greatly reduces the need for glue, decreasing off-gassing. In DLT, the manufacturer hydraulically inserts hardwood dowels into softwood dimensional lumber. The hardwood expands upon reaching moisture equilibrium and creates a mechanical, friction bond with the softwood. The engineer-fabricator was integral early in the design process and worked with the team to achieve greater innovation: a hybridized DLT-precast concrete system. At the south, a precast concrete core houses service and mechanical systems. The core addresses fire code compliance and provides lateral stability for the entire building. This approach resulted in competitive building costs with multiple efficiencies such as quick erection time, a smaller site crew, and minimized neighborhood disturbance. The structure was erected in phases as three separate “towers” moving from east to west. This enabled the crane to occupy the footprint of the building and transfer west into the staging area. The structure was completed in just seven weeks, significantly faster than traditional steel frame or concrete building types. DLT’s refined aesthetics enable the structure to remain exposed as an interior finish and eliminate the need to add dropped ceilings or column wraps. Ground-level retail spaces and three floors of office space above offer biophilic materials, carbon sequestration, and the lasting advantages of a sustainable work environment.





# AIA CENTRAL STATES REGION DESIGN AWARDS

## MEET THE JURY

---



JURY CHAIR  
**BRANDON FRAZIER PACE, FAIA**  
SANDERS PACE ARCHITECTURE | KNOXVILLE, TENNESSEE

Brandon Pace, FAIA, is a founding partner of Sanders Pace Architecture, started in Knoxville, Tenn., in 2002 with partner John Sanders. With work that is extensively researched and thoughtfully executed, Brandon has become a critical voice for a region and context often overlooked. In an era of increasing globalization, Brandon approaches architecture with a local mindset, identifying and expanding upon those cultural, physical, and social characteristics and circumstances that define a place and make it unique. By identifying opportunities within these constraints, Brandon has established a foundation and framework for a design process that has led his projects to more than 50 local, regional, and national American Institute of Architects (AIA) design awards and publication in books and magazines throughout the world. In 2019, Brandon was elevated to the AIA College of Fellows for his contributions to the profession.

**JONATHAN TATE, AIA**  
OFFICE OF JONATHAN TATE (OJT) | NEW ORLEANS, LOUISIANA

Jonathan Tate, AIA, is principal of OJT (Office of Jonathan Tate), an architecture and urban design practice in New Orleans. The office engages in numerous design-related activities, including applied research, opportunistic planning, strategic development, and conventional architectural practice. Their work has received numerous awards, including the National AIA Housing Award and the National AIA Honor Award in Architecture. The office has been recognized as a 2017 Emerging Voices awardee by the Architectural League of New York, a Next Progressive by *Architect Magazine* and a 2018 finalist for the international Architecture Review Emerging Architect Award. Jonathan is the recipient of the 2020 Award in Architecture from the American Academy of Arts and Letters.





**ANNE MARIE DECKER, FAIA**

DUVALL DECKER | JACKSON, MISSISSIPPI

Anne Marie Duvall Decker, FAIA, is a founding principal of Duvall Decker Architects, located in Jackson, Mississippi. Duvall Decker is an expanded design practice whose work includes architectural design, community planning, real estate development, and facility maintenance. The firm has been honored with many peer-reviewed design awards and has been selected for national design excellence projects such as the new federal courthouse in Greenville, Miss. (a General Services Administration Design Excellence project), and the new Springdale, Ark., Municipal Complex (a Walton Family Foundation Design Excellence project). The firm's work and approach have been highlighted in publications such as *The New York Times*, *dwel*, *Architect Magazine*, *Journal of Architectural Education*, *Houses for All Regions*, the *Oxford American*, and in exhibits such as AIA's Design for the Decades. In 2017, the Architectural League of New York selected Duvall Decker as one of its Emerging Voices, and in 2019, the firm was highlighted as a "Game Changer" by Metropolis.



**FRANK JACOBUS, AIA**

SILO AR/D AND UNIVERSITY OF ARKANSAS | FAYETTEVILLE, ARKANSAS

Frank Jacobus, AIA, is an associate professor in the Fay Jones School of Architecture and Design (FJSoA+D), and principal architect of SILO AR+D. A recipient of the Imhoff Award and the Tau Sigma Delta Silver Medallion, Frank has coordinated and taught all levels of design studio, furniture design and construction, architectural programming, graduate and undergraduate seminars, and design-build projects. As co-principal of SILO AR+D, Frank has completed residential and institutional projects across the United States. Renowned for its resourceful design and execution, SILO AR+D's work has been featured by *The Wall Street Journal*, CNN, *Architect*, *The Architect's Newspaper*, *Azure*, *Slate*, *dwel*, *Salon*, and *Fast Company*. SILO was selected as an Emerging Voice (2016) by the Architectural League of New York, and as a Next Progressive (2018) by *Architecture Magazine*.

# Tom and Ruth Harkin Center at Drake University

EXCELLENCE IN ARCHITECTURE, HONOR

LOCATION: DES MOINES, IOWA ARCHITECT: BNIM



# Kansas City Art Institute Paul & Linda DeBruce Hall

EXCELLENCE IN ARCHITECTURE, HONOR

LOCATION: KANSAS CITY, MISSOURI ARCHITECT: HUFFT



RONALD CATTELLINO  
CENTER FOR STUDENT SERVICES

# Lester Buresh Family Community Wellness Center

EXCELLENCE IN ARCHITECTURE, HONOR

LOCATION: MOUNT VERNON, IOWA ARCHITECT: OPN ARCHITECTS



# Barbara A. Marshall Residence Hall and Wylie Dining Center

**EXCELLENCE IN ARCHITECTURE, MERIT**

**LOCATION:** KANSAS CITY, MISSOURI  
**ARCHITECT:** HELIX ARCHITECTURE + DESIGN AND CHRISTOPHER CARVELL ARCHITECT



# Kol Rinah Synagogue

EXCELLENCE IN ARCHITECTURE, MERIT

LOCATION: CLAYTON, MISSOURI ARCHITECT: PATTERN IVES, LLC



# Oklahoma Contemporary Arts Center



**EXCELLENCE IN ARCHITECTURE, MERIT**

**LOCATION:** OKLAHOMA CITY, OKLAHOMA **ARCHITECT:** RANDELLIOTT ARCHITECTS

## Hass-Darr Hall Student Center

EXCELLENCE IN ARCHITECTURE, HONORABLE MENTION

LOCATION: WEST PLAINS, MISSOURI ARCHITECT: DAKE WELLS ARCHITECTURE



## Sue Walk Burnett Journalism & Student Media Center

LOCATION: FAYETTEVILLE, ARKANSAS  
ARCHITECT: DAKE WELLS ARCHITECTURE AND MAHG ARCHITECTURE

EXCELLENCE IN ARCHITECTURE, HONORABLE MENTION





# Southeast Community College Academic Excellence Center

**LOCATION:** BEATRICE, NEBRASKA  
**ARCHITECT:** GOULD EVANS AND BVH ARCHITECTURE

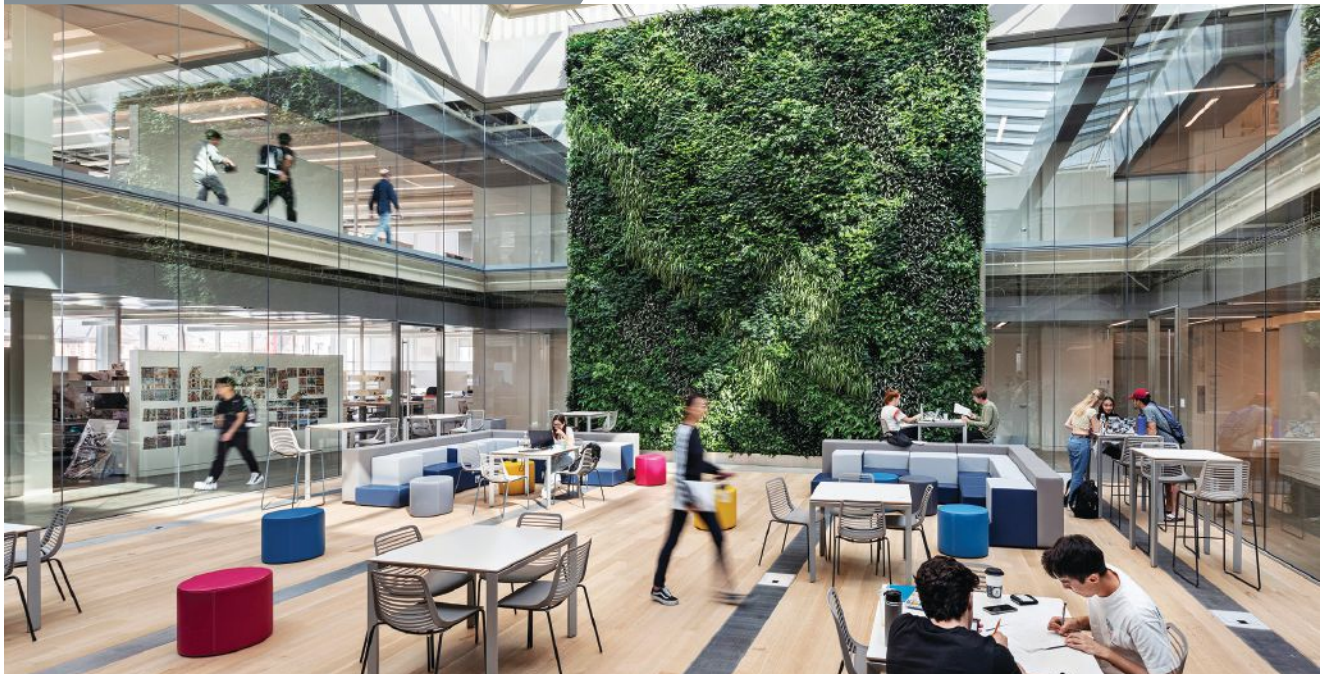
**EXCELLENCE IN ARCHITECTURE, HONORABLE MENTION**



# Anabeth and John Weil Hall

**EXCELLENCE IN ARCHITECTURE, HONORABLE MENTION**

**LOCATION:** ST. LOUIS, MISSOURI **ARCHITECT:** KIERAN TIMBERLAKE  
**LOCAL ARCHITECT:** TAO + LEE ASSOCIATES



# Kirk Family YMCA

EXCELLENCE IN HISTORIC PRESERVATION / ADAPTIVE REUSE DESIGN, HONOR

LOCATION: KANSAS CITY, MISSOURI ARCHITECT: BNIM



# MidAmerican Energy Corporate Office and Conference Center Renovation

EXCELLENCE IN HISTORIC PRESERVATION/ADAPTIVE REUSE DESIGN, HONOR

LOCATION: DES MOINES, IOWA ARCHITECT: BNIM



# Social Capital

**EXCELLENCE IN HISTORIC PRESERVATION/ADAPTIVE REUSE DESIGN, MERIT**

**LOCATION:** OKLAHOMA CITY, OKLAHOMA  
**ARCHITECT:** ALLFORD HALL MONAGHAN MORRIS



# St. Joseph Church Restoration

EXCELLENCE IN HISTORIC PRESERVATION/ADAPTIVE REUSE DESIGN, MERIT

LOCATION: TOPEKA, KANSAS ARCHITECT: SFS ARCHITECTURE



# Department of Music – Ellis Hall Renovation

EXCELLENCE IN DESIGN, INTERIOR, HONOR

LOCATION: SPRINGFIELD, MISSOURI ARCHITECT: PATTERNH IVES, LLC



# Judy Varner Adoption and Education Center

EXCELLENCE IN DESIGN, INTERIOR, MERIT

LOCATION: OMAHA, NEBRASKA ARCHITECT: HDR



# St. Kilda Collective

EXCELLENCE IN DESIGN, INTERIOR, MERIT

LOCATION: WEST DES MOINES, IOWA ARCHITECT: SUBSTANCE ARCHITECTURE

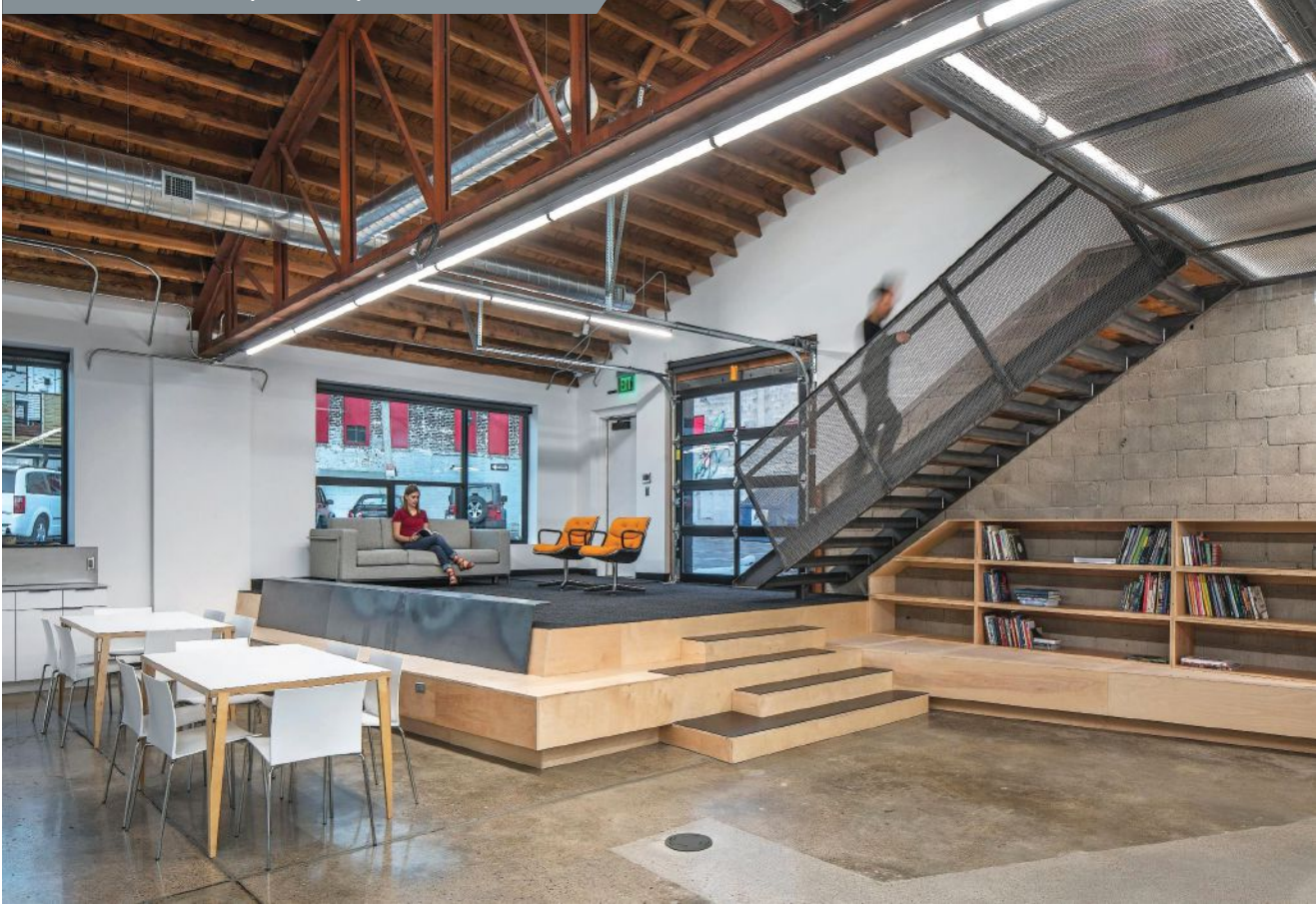




# TACKarchitects Studio/BIN 61

EXCELLENCE IN DESIGN, INTERIOR, HONORABLE MENTION

LOCATION: OMAHA, NEBRASKA ARCHITECT: TACKARCHITECTS



# East Bottoms Vision Study: Industrial Space Reconsidered

EXCELLENCE IN STUDENT DESIGN, BUILT/UNBUILT, MERIT

LOCATION: KANSAS CITY, MISSOURI SCHOOL: KANSAS STATE UNIVERSITY



# Bridge:Park

EXCELLENCE IN STUDENT DESIGN, BUILT/UNBUILT, MERIT

LOCATION: OMAHA, NEBRASKA SCHOOL: UNIVERSITY OF NEBRASKA LINCOLN



2021 AIA Iowa Design Award



Embracing Challenges. Realizing Visions.

[SHUCK-BRITSON.COM](http://SHUCK-BRITSON.COM)



SHIVEHATTERY  
ARCHITECTURE + ENGINEERING  
[shive-hattery.com](http://shive-hattery.com)

ClaimDOC  
New Headquarters  
West Des Moines, IA

# project credits

## AIA National Award

### Market One | 10

**Location:** Des Moines, Iowa  
**Architect:** Neumann Monson Architects  
**Contractor:** Beal Derkenne Construction  
**Structural Engineer:** Raker Rhodes Engineering  
**Landscape Architect:** Genus Landscape Architects  
**LEED Consulting:** C-Wise  
**M/E/P Engineer:** MODUS  
**Steel Stair Fabrication:** Johnson Machine Works  
**Photographers:** Cameron Campbell, Integrated Studio and Jared Heideman

## AIA Iowa Design Awards

### Marion Fire Station No. 1 | 20

**Location:** Marion, Iowa  
**Architect:** OPN Architects  
**Civil Engineer:** Hall & Hall Engineering  
**Contractor:** Christner Contracting, Inc.  
**Foodservice Consultants:** Rapids Foodservice Contract & Design  
**Geotechnical Engineering:** Terracon  
**MEPTF:** Design Engineers  
**Structural Engineer:** M2B Structural Engineers  
**Photographer:** Cameron Campbell, Integrated Studio

### University of Iowa Psychological and Brain Sciences Building | 22

**Location:** Iowa City, Iowa  
**Architect:** BNIM Architects  
**Civil Engineer:** Shive-Hattery Architecture Engineering  
**Contractor:** Knutson Construction Services  
**Engineer:** IMEG  
**MEP Engineer:** KJWW Eng. Consultants  
**Structural Engineer:** Saul Engineering  
**Photographer:** Nick Merrick

### MidAmerican Energy Corporate Office and Conference Center Renovation | 24

**Location:** Des Moines, Iowa  
**Architect:** BNIM Architects  
**Acoustic Engineer:** C&C Consultants  
**Civil Engineer/Landscape Design:** Shive-Hattery Architecture Engineering  
**Contractor:** Hansen Company  
**MEPT Engineer:** KCL Engineering  
**Structural Engineer:** KPFF Consulting Engineers  
**Photographer:** Kelly Callewaert

### Treehuis | 26

**Location:** Marion County, Iowa  
**Architect:** Substance Architecture  
**Contractor:** Neumann Brothers  
**Landscape Architect:** Genus  
**MEPT Engineer:** Design Build: MMC with IMEG  
**Structural Engineer:** KPFF  
**Photographer:** Corey Gaffer

### 219 E. Grand Ave. | 30

**Location:** Des Moines, Iowa  
**Architect:** Neumann Monson Architects  
**Contractor:** Ryan Companies  
**Structural Engineer:** Raker Rhodes Engineering  
**Landscape Architect:** Genus Landscape Architects  
**MEP Engineer:** MODUS  
**Photographer:** Cameron Campbell, Integrated Studio

### Student Innovation Center, Iowa State University | 32

**Location:** Ames, Iowa  
**Architect:** Substance Architecture and Kieran Timberlake  
**Civil Engineer:** Snyder & Associates  
**Construction Manager:** JE Dunn  
**Elevator Consultant:** Learch Bates  
**Enclosure Consultant:** WJ Higgins  
**Food Service Consultant:** Bakergroup  
**Green Roof Consultant:** Roofmeadow  
**Life Safety Consultant:** Jensen Hughes  
**MEPT Engineer:** IMEG  
**Structural Engineer:** KPFF  
**Sustainability Consultant:** C-Wise  
**Photographer:** Tom Kessler

### The Tom and Ruth Harkin Center | 34

**Location:** Des Moines, Iowa  
**Architect:** BNIM Architects  
**Civil Engineer:** Synder & Associates  
**Landscape Design:** Genus  
**MEP Engineer:** Gilmore & Doyle, LTD, dba MODUS  
**Structural Engineer:** Raker Rhodes Engineering, LLC  
**Photographer:** Kelly Callewaert

### Downtown Bridge Reconstruction | 35

**Location:** Des Moines, Iowa  
**Architect:** Substance Architecture  
**Contractor:** Cramer & Associates  
**Engineer: Structural:** Shuck-Britson  
**Photographers:** Jeff Wagner and Paul Crosby  
**Rendering of Locust Street Bridge:** Ryan Ton

### Market House | 36

**Location:** Iowa City, Iowa  
**Architect:** Neumann Monson Architects  
**Civil Engineer:** McClure Engineering  
**Contractor:** McComas Lacina Construction  
**Structural Engineer:** Raker Rhodes Engineering  
**Photographer:** Cameron Campbell, Integrated Studio

### Mass Timber Assembly | 38

**Location:** Des Moines, Iowa  
**Architect:** Neumann Monson Architects  
**Base Building Engineer:** Raker Rhodes Engineering  
**Contractor:** Ryan Companies  
**Electrical Engineer:** Baker Group  
**Engineer of Record for Timber Superstructure:** StructureCraft  
**Plumbing Engineer:** Baker Group  
**Photographer:** Mike Sinclair and Neumann Monson Architects

## AIA Iowa Craft Award

### 111 East Grand | 38

**Location:** Des Moines, Iowa  
**Craft:** StructureCraft  
**Architect:** Neumann Monson Architects  
**Civil Engineer:** Civil Engineering Consultants  
**Contractor:** Ryan Companies  
**Craft Company:** StructureCraft  
**M/E/P Engineer:** Baker Group  
**Structural Engineer:** Raker Rhodes Engineering  
**Photographer:** Mike Sinclair

## AIA Central States Region Design Awards

### Tom and Ruth Harkin Center at Drake University | 42

**Location:** Des Moines, Iowa  
**Architect:** BNIM  
**MEP Engineering:** Modus Engineering  
**Structural Engineering:** Raker Rhodes Engineering, LLC  
**Civil Engineering:** Snyder & Associates  
**Landscape Design:** Genus Landscape Architects  
**Furniture:** Pigott  
**Contractor:** The Weitz Company  
**Photographer:** Kelly Callewaert and Nick Merrick

### Kansas City Art Institute Paul & Linda DeBruce Hall | 43

**Location:** Kansas City, Mo.  
**Architect:** HUFFT  
**General Contractor:** McCownGordon  
**Landscape Architect:** Hoerr Schaudt  
**Structural Engineer:** PMA Engineering  
**MEP Engineer:** Henderson Engineers  
**Civil Engineer:** SK Design Group  
**Furniture Dealer:** GoodLINES  
**Photographer:** Hufft

### Lester Buresh Family Community Wellness Center | 44

**Location:** Mount Vernon, Iowa  
**Architect:** OPN Architects  
**Contractor:** Garling Construction  
**Civil:** HBK Engineering  
**MEPT:** Design Engineers  
**Structural:** M2B Engineers  
**Photographer:** Cameron Campbell, Integrated Studio

### Barbara A. Marshall Residence Hall and Wylie Dining Center | 45

**Location:** Kansas City, Mo.  
**Architect:** Helix Architecture + Design and Christopher Carvell Architects  
**Student Housing Design Consultant:** Christopher Carvell Architects  
**Engineer - MEP:** Henderson Engineers  
**Engineer - Structural:** Bob D. Campbell  
**Engineer - Civil:** SK Design Group  
**Landscape Architect:** PLAID  
**General Contractor:** JE Dunn  
**Consultant - Culinary Design:** Ricca Design Studios  
**Furniture:** encompass and Scott Rice  
**Photographer:** Michael Robinson Photography

### Kol Rinah Synagogue | 46

**Location:** Clayton, Mo.  
**Architect:** Patterhn Ives, LLC  
**Landscape:** Ten x Ten Studio  
**MEPFT:** McClure Engineering  
**Structural:** Alper Audi Associates  
**Civil:** Civil Design, Inc  
**Acoustics:** Kirkegaard Associates  
**Kitchen:** Dennis G. Glore, Inc  
**Specialty Fabrication:** Mademan Design, Troco Custom Fabricators  
**Landscape CA:** Arbolope Studio  
**Cost:** Everest Estimating Services, LLC  
**General Contractor Phase 1:** Lawlor Corporation  
**General Contractor Phase 2:** ISC Contracting  
**General Contractor Phase 3:** BSI Constructors, Inc  
**Photographer:** Sam Fentress

### Oklahoma Contemporary Arts Center | 47

**Location:** Oklahoma City, Okla.  
**Architect:** Rand Elliott Architects  
**General Contractor:** Smith & Pickel Construction Co.  
**Structural Engineer:** Wallace Engineering - Structural Consultants, Inc.  
**Civil Engineer:** CEC  
**MEP:** Alvine and Associates, Inc.  
**Acoustics:** Audio Video Designs  
**Photographer:** Scott McDonald, Gray City Studios

### Hass-Darr Hall Student Center | 48

**Location:** West Plains, Mo.  
**Architect:** Dake Wells Architecture  
**General Contractor:** Cahills Construction  
**Structural Engineering:** Mettemeyer Engineering  
**MEP Engineering:** Smith & Goth Engineering  
**Civil Engineering:** CJW Engineering  
**Photographer:** Gayle Babcock, Architectural Imageworks, LLC

### Sue Walk Burnett Journalism & Student Media Center | 48

**Location:** Fayetteville, Ark.  
**Architect:** Dake Wells Architecture and Mahg Architecture  
**Photographer:** Gayle Babcock, Architectural Imageworks, LLC  
**General Contractor:** CDI Contractors  
**Structural Engineering:** Myers-Beatty Engineering, PLLC  
**MEP Engineering:** Bernhard TME, LLC  
**Civil Engineering:** Morrison Shipley Engineers, Inc.  
**Other Consultants:** Acoustical - Threshold Acoustics, LLC; and Sustainable Building - Entegrity, Inc.

# project credits

## Southeast Community College Academic Excellence Center | 49

**Location:** Beatrice, Neb.  
**Architect:** Gould Evans and BVH Architecture  
**Photographer:** Michael Robinson Photography  
**Contractor:** Hausmann Construction  
**ME Engineer:** Morrissey Engineering  
**Engineer:** Olsson

## Anabeth and John Weil Hall | 49

**Location:** St. Louis, Mo.  
**Architect:** Kieran Timberlake  
**Local Architect:** Tao + Lee  
**Landscape Architect:** Michael Vergason Landscape Architects and Arbolope Studio  
**Engineer - Structural:** KPFF Consulting Engineers, Inc.  
**Engineer - MEP:** Buro Happold Engineering and KAI Engineering  
**Engineer - Central Utilities MEP:** McClure Engineering  
**Engineer - Civil:** Cole  
**Engineer - Geotechnical:** Geotechnology Inc.  
**Construction Manager:** McCarthy Building Companies, Inc.  
**Lighting Designer:** Fisher Marantz Stone  
**AV Consultant:** The Sextant Group  
**Code Consultant:** Code Consultants, Inc.  
**Façade Consultant:** Eckersley O'Callaghan + Partners  
**Acoustics:** Metropolitan Acoustics  
**Soils and Irrigation:** Jeffrey L. Bruce & Company, LLC  
**Campus Mobility:** Schulze + Grassov  
**Cost Estimator:** The Capital Projects Group  
**Waterproofing:** Wiss Janney Elstner Associates  
**Graphics:** Kuhlmann Leavitt, Inc.  
**Specifications:** Heller & Metzger  
**LEED Administration:** Sustainable Design Consulting  
**FFE:** Arcturis  
**Photographer:** Peter Aaron and James Ewing

## Kirk Family YMCA | 50

**Location:** Kansas City, Mo.  
**Architect:** BNIM  
**Civil Engineer:** Taliaferro + Browne Inc.  
**Landscape Design:** Land3 Studio  
**Structural Engineer:** Structural-Engineering Associates  
**Mechanical Engineer:** Henderson Engineering Inc.  
**Plumbing + Electrical Engineer:** Antella Consulting Engineers Inc.  
**Fire Alarm + Fire Protection**  
**Code Consulting:** FSC, Inc.  
**Contractor:** JE Dunn  
**Photographer:** Michael Robinson Photography

## MidAmerican Energy Corporate Office and Conference Center Renovation | 51

**Location:** Des Moines, Iowa  
**Architect:** BNIM  
**Structural:** KPFF Consulting Engineers  
**Civil and Landscape:** Shive-Hattery  
**MEPT:** KCL Engineering  
**Acoustician:** C&C Consultants  
**Contractor:** Hansen and Company  
**Photographer:** Kelly Callewaert

## Social Capital | 52

**Location:** Oklahoma City, Okla.  
**Architect:** Allford Hall Monaghan Morris  
**Contractor:** Cord Construction Services  
**Structural Engineer:** Obelisk Engineering  
**Civil Engineer:** Johnson & Associates  
**Photographer:** Eric Schmid

## St. Joseph Church Restoration | 53

**Location:** Topeka, Kan.  
**Architect:** SFS Architecture  
**Restoration Specialist and Artists:** Conrad Schmitt Studios  
**Structural Engineering; Masonry Preservation;**  
**Civil Engineering:** Bartlett & West  
**MEP Engineering:** PKMR  
**Lighting Specialist:** Lightworks  
**Contractor:** KBS Constructors  
**Painters:** J.F. McGivern, Inc.  
**Marble:** Carthage Stoneworks  
**Altar and Ambo:** Hinge Woodworks  
**Organ Restoration:** Reuter Organ Company  
**Sound System:** Electronic Life  
**Photographer:** Michael Robinson Photography

## Department of Music – Ellis Hall Renovation | 54

**Location:** Springfield, Mo.  
**Architect:** Patterhnlves, LLC  
**Acoustics:** Kirkegaard Associates  
**MEPFT:** McClure Engineering  
**Structural:** Magnusson Klemencic Associates  
**Stage & Lighting:** Schuler Shook  
**Enclosure:** W.J. Higgins & Associates  
**General Contractor:** Carson-Mitchell, Inc.  
**Photographer:** Sam Fentress & Architectural Imageworks, LLC (Gayle Babcock)

## Judy Varner Adoption and Education Center | 55

**Location:** Omaha, Neb.  
**Architect:** HDR  
**Art:** Animal Arts  
**Development:** 4Front Project Development Services LLC  
**Contractor:** Kiewit Building Group  
**Photographer:** Dan Schwalm

## St. Kilda Collective | 56

**Location:** West Des Moines, Iowa  
**Architect:** Substance Architecture  
**Structural Engineer:** KPFF  
**Civil Engineer:** Civil Engineering Consultants  
**Historic Preservation Consultant:** Jennifer James Preservation  
**Contractor:** Hildreth Construction Services  
**Photographer:** Corey Gaffer

**TACKarchitects Studio/BIN 61** | 57

**Location:** Omaha, Neb.

**Architect:** TACKarchitects

**MEP:** Morrissey Engineering

**Structural:** TD2

**Landscaping:** Lanoha

**Millwork:** Workshop Unknown

**Steelwork:** Custom Quality Steel

**Contractor:** KSI

**Photographer:** Tom Kessler/KesslerPhotography

**East Bottoms Vision Study: Industrial Space Reconsidered** | 58

**Location:** Kansas City, Mo.

**Architect:** Kansas City Design Center

**Photographer:** Kansas City Design Center

**BridgePark** | 59

**Location:** Omaha, Neb.

**Architect:** BVH Architecture

**Photographer:** BVH Architecture

**JEDUNN**  
CONSTRUCTION

WE BUILD INSPIRED PLACES TO  
**HEAL**

MERCY  
OF IOWA CITY  
REHABILITATION HOSPITAL

KINDRED MERCY REHABILITATION HOSPITAL  
CORALVILLE

jedunn.com

FIRE LANE NO PARKING

# 2021 Impact Award Winners

Awarded at the 2021 AIA Iowa Spring Conference

## DR. PERCY AND LILEAH HARRIS BUILDING

MERIT

OPN Architects



## UNITARIAN UNIVERSALIST SOCIETY

MERIT

Neumann Monson Architects





Iowa Center for Architecture  
400 Locust Street, Suite 100  
Des Moines, IA 50309  
Change Service Requested

# PRECAST CONCRETE GETS THE WIN!

The Stark Performance Center connects to the existing Bergstrom Football Complex, creating multiple spaces for use by all student-athletes as well establishing a North Endzone Plaza outside of Jack Trice Stadium for all Cyclones to enjoy. Because precast has the unique ability to create nearly any color, finish, or texture, it was used on this project to match the Center's color and finish to existing and separate structures.

## IOWA STATE UNIVERSITY STARK PERFORMANCE CENTER

**General Contractor:** Neumann Brothers Inc. **Architect:** Substance Architecture **Engineer of Record:** Raker Rhodes Engineering

**Precaster:** Wells **Owner:** Iowa State University Athletics **Image Credit:** Nathan Scott Photography

