

Skylines



opul

ansas city missouri 4-53





KANSAS CITY CHAPTER

AMERICAN INSTITUTE OF ARCHITECTS

OFFICERS

President	I. L. Roark, Jr. 5420 Johnson Drive Mission, Kansas
Vice-President	Frank R. Slezak 18 East 11th Street
Treasurer	William H. Simon 25 East 12th Street
Secretary	Ralph E. Myers 1016 Baltimore

DIRECTORS

John T. Murphy	15 West 10th Street
Joseph B. Shaughnessy	3527 Broadway
Albert B. Fuller	Temple Building



SKYLINES is published monthly by the Kansas City Chapter of the American Institute of Architects and mailed without charge. Editor, Frank Grimaldi, 402 Congress Building, Kansas City 2, Missouri. Appearance of names and pictures of products or services in editorial copy or advertising does not constitute an endorsement of either by the A. I. A. or this chapter.

Skylines

Volume 3
Number 4
April, 1953

APRIL CHAPTER MEETING

tuesday april 21

at the advertising and sales executives club
913 BALTIMORE AVENUE

Presentation of

MEDAL AWARDS

for projects completed during 1952

Guests of the chapter will be
the architectural students and faculty members of
Kansas State College and Kansas University

Dr. J. B. Smith, Dean of the Kansas City Art Institute
and School of Design, will be our guest speaker.

The regular chapter
BUSINESS SESSION
will begin at 5:30 sharp.

Watch for the direct mail announcement concerning further details of
this very important meeting.

THIS MONTH							NEXT MONTH						
APRIL							MAY						
S	M	T	W	T	F	S	S	M	T	W	T	F	S
			1	2	3	4						1	2
5	6	7	8	9	10	11	3	4	5	6	7	8	9
12	13	14	15	16	17	18	10	11	12	13	14	15	16
19	20	21	22	23	24	25	17	18	19	20	21	22	23
26	27	28	29	30			24	25	26	27	28	29	30
							31						

Mark Your Calendar

April 17 - Special Meeting
 Home Builders Association of Greater Kansas City
 NAHB Trades Secrets House Panel Discussion
 KC Chapter AIA members cordially invited

21 - Chapter Meeting
 Presentation of Medal Awards

22 - Producers Council
 Clinic on Windows
 7:30 PM at 200 Southwest Blvd.

27 - Richard Neutra speaks at Kansas University
 40th anniversary of the
 KU department of architecture.
 (Details on page 19)

May 4 - Joint Meeting - American Society
 Heating & Ventilating Engineers.
 (See details on Page 16)

May 9 - Annual Meeting
 Missouri State Association of Registered Architects
 Jefferson City, Missouri
 (Details on page 20)

19 - Chapter Meeting

26 - Producers Council
 Clinic on Acoustics

KANSAS STATE COLLEGE is having its Third FINE ARTS FESTIVAL April 23, 24, 25, and 26 and April 30, May 1, 2, and 3. The theme of the Festival is contemporary with emphasis on American arts and will feature painting, architecture, drama, music and dance. The painting exhibition will include the development of American painting since 1908, while the architectural display will show recent buildings which incorporate some of the other arts as part of the basic idea or design. There will be demonstrations, teas, etc., to complete the program.

"The world's greatest display of modern plumbing, heating, air conditioning products and related appliances ever assembled under one roof" will be displayed in the Municipal Auditorium here May 6-9 in conjunction with the 71st convention of the National Association of Master Plumbers.

The closing date for submissions for National AIA Honor Awards is May 28. If you have misplaced your program, contact the Honor Award Committee at Institute headquarters in Washington.

KC

chapter

American Institute of Architects

medal awards

FOR PROJECTS COMPLETED IN 1952.

Synagogue
Omaha, Nebraska
Kivett and Myers, Architects

Residence
Leawood, Kansas
David B. Runnells, Architect

"Special Awards" were given to:

Interiors - Medical Offices, Mission, Kansas
Mackie and Roark, Architects

Plan - House, Ruskin Heights
Louis Geis, Architect

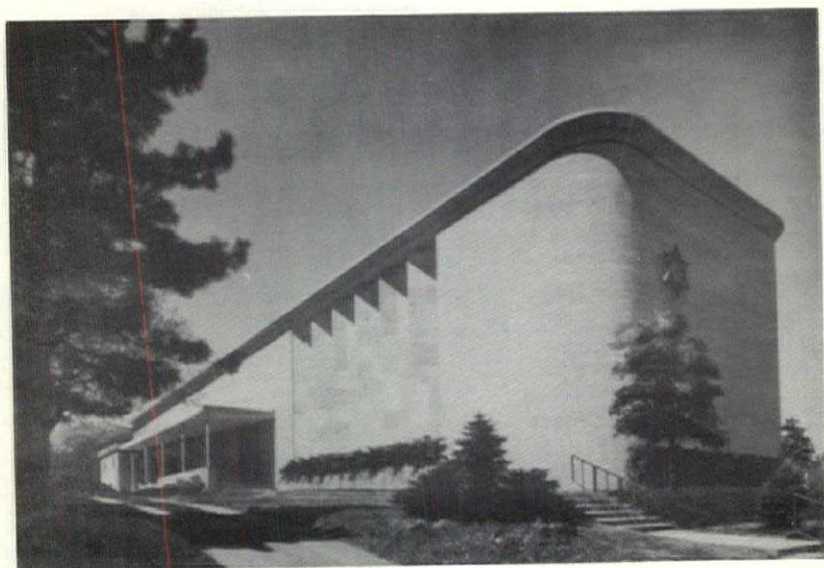
Chancel - Church, Logan, Kansas
Donald Hollis, Architect

Exterior - Eastwood Hills School
Marshall and Brown, Architects

Built-in Furniture, Muehlebach Hotel
Neville, Sharp and Simon, Architects

The jury of J. Woolson Brooks, Harris Armstrong and Donald McCormick announced these awards on April 1st. They are now preparing their report which we will publish in the May issue of SKYLINES.



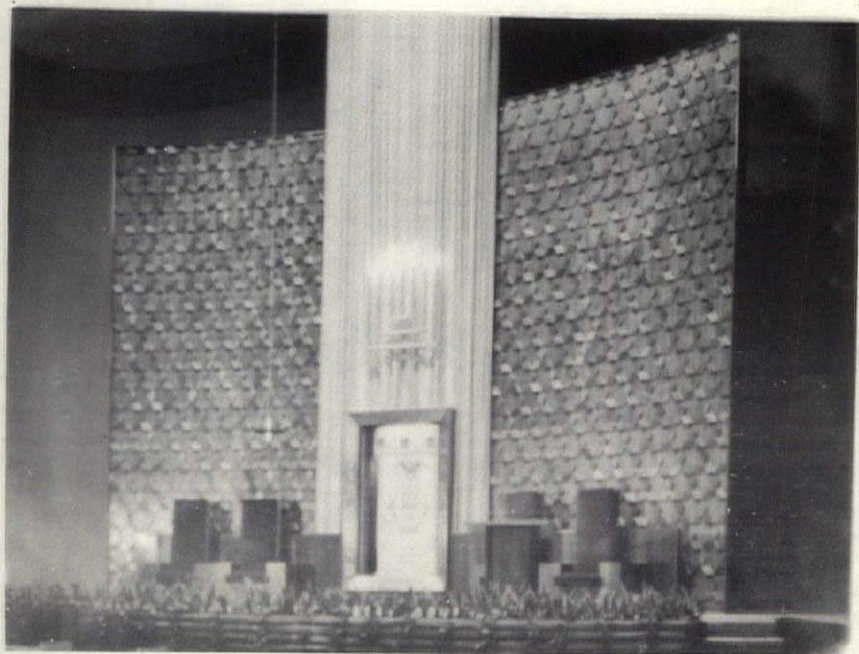


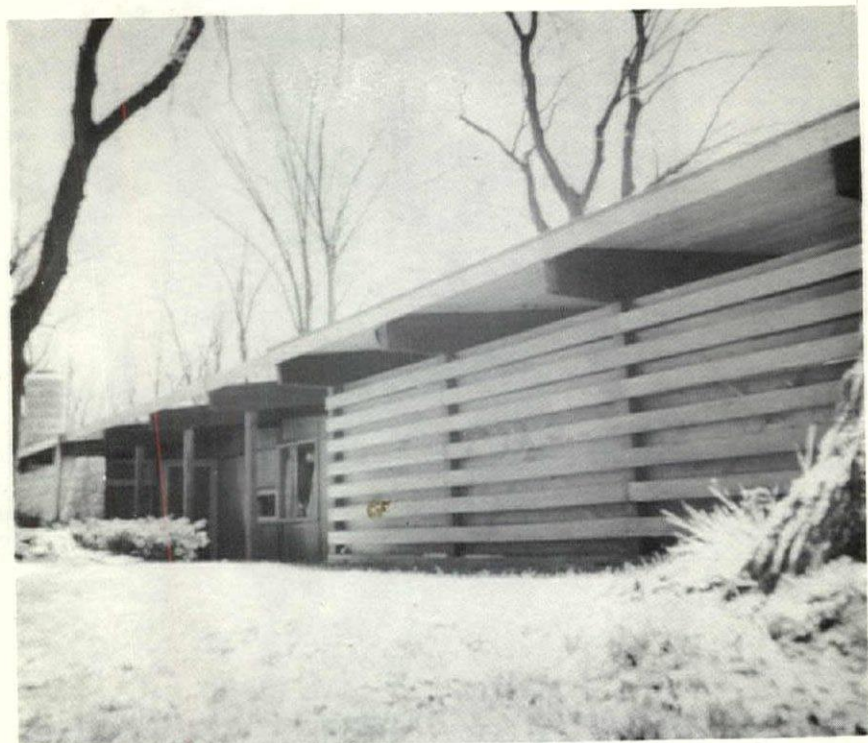
SYNAGOGUE
OMAHA, NEBRASKA
KIVETT & MYERS, ARCHITECTS



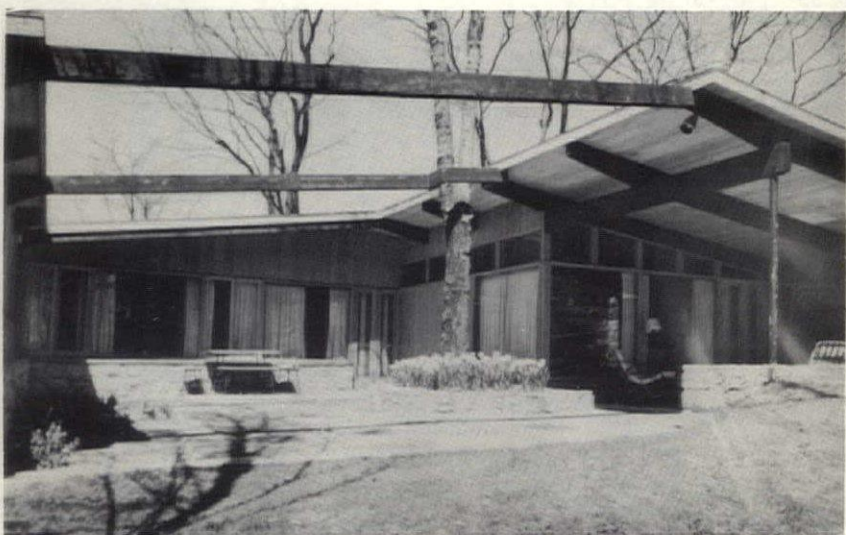
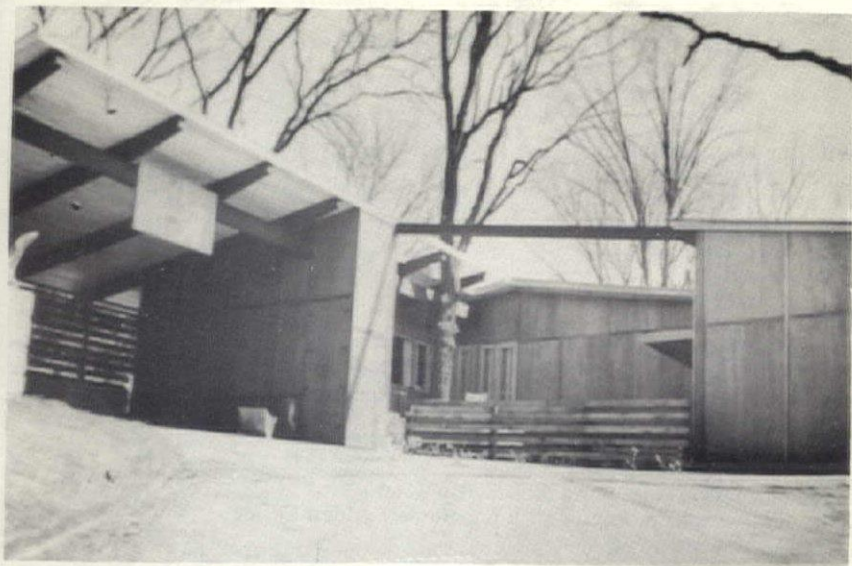
CHAPEL

SANCTUARY





Residence
8550 High Drive
Leawood, Kansas
J. Findlay Reed, Owner
David Benton Runnells, Architect



Home Builders Association of Greater Kansas City

4638 J. C. NICHOLS PARKWAY • PHONE JEFFERSON 6366 • KANSAS CITY 2, MISSOURI

Invite the members of
Kansas City Chapter AIA
to their

APRIL MEETING

at the Hotel Muehlebach

Friday, April 17

Social hour at 6:00 PM

Dinner at 7:00 PM

Program at 8:00 PM

- Panel Discussion

"Operation Trade Secrets"

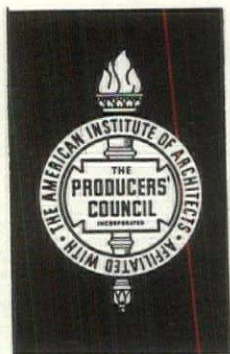
Martin Bartling, Jr., Builder, Knoxville, Tennessee

Andy Place, Builder, South Bend, Indiana

Ned Cole, Builder-Architect, Austin, Texas

\$4.00 per person (including dinner, tip & tax)

Make reservations promptly with the Home Builders Office.



Monthly Clinic

APRIL SESSION ----- WINDOWS

Ten member companies of the KC Chapter of Producers Council will participate in this clinic.

Don't miss this informative meeting.

April 22 at 7:30 PM
200 Southwest Boulevard

VIBRACRETE

PRODUCTS

Call
VA 5300
for
detailed
information



VIBRACRETE

LITE WATE Masonry Units

1. Give uniformity of texture
2. Have less than half the volume change of other lightweight units
3. Weigh only 26.7 pounds
4. Manufactured to produce Grade A structural units, according to A. S. T. M. Designation C 90-44

(A. I. A. File No. 10c)

VIBRACRETE

CONCRETE BLOCKS (Natural Aggregate) Unexcelled for Beauty, Economy, Durability, Fire-Safety, Insulation Value, Weatherproofness.

VIBRACRETE

SPLIT-ROCK Latest for exterior and interior beauty.

VIBRACRETE

DUR-O-WAL Trussed Design Masonry Wall Reinforcing.



CONCRETE BUILDING UNITS COMPANY
3405 Terrace, Kansas City, Missouri

"Serving Kansas City Over a Quarter of a Century"

Patio Slabs, Concrete Joists, Areaways, Splash Blocks,
Aluminum and Steel Sash

KANSAS CITY NATURAL SLATE CO.

2718 MCGEE PHONE VICTOR 3487

KANSAS CITY 8, MISSOURI

CONTRACTORS FOR:

FLOOR COVERINGS _____

Asphalt Tile _____

Rubber Tile _____

Vinyl Tile _____

Cork Tile _____

Linoleum _____

Wood Block Flooring _____

WALL COVERINGS _____

Kalistron _____

Flexwood _____

Metal Wall Tile _____

Plastic Wall Tile _____

Linowall _____

ACOUSTICAL CEILINGS _____

Owens-Corning-Fiberglas _____

Armstrong Cork Co. _____

Asbestospray _____



By John C. Monroe, Jr.

The Kansas City Chapter of the American Institute of Architects, in conjunction with the University of Kansas Extension Center and the Kansas City Art Institute and the School of Design, has just completed presenting a series of lectures entitled "The House For You". This series consisted of one meeting per week for six weeks. Five Architects and two Bankers presented the lectures given in this series.

This is the third year that our Chapter has participated in such a series. The course was organized to provide knowledge that would be of use to any person buying a merchant constructed home or building a home. The committee felt that by broadening the scope of the lectures to include all of these people, the Chapter would be providing a much greater service to the community.

The first lecture was entitled "Where Shall You Live" and was presented by Louis H. Geis, A. I. A. In his lecture, Geis stressed the importance of seeking well planned and established areas to build or buy in. He also stressed the many important factors that must be considered when selecting a site, such as orientation, size of lots, personal factors, practical factors, and the fact that the buyer should consult an Architect, Realtor, Attorney, and Mortgage man.

The second lecture was "What Do You Do About Financing?" This lecture was presented by Watt Webb, Jr., the President of the Missouri Bank and Trust Company, and Francis G. Clark, Assistant Cashier with the Missouri Bank and Trust Company. In this lecture, the latest information on loans, Government restrictions, and F. H. A. financing was given. Mr. Clark presented each person in attendance with a sample F. H. A. Mortgagee's Application For Mortgage Insurance, and very thoroughly explained the information required by this form. This method of approach proved very interesting and informative to the persons attending the series.

The third lecture was entitled "What Plan is Best For You?" William B.

Fullerton, Jr., A. I. A., discussed the do's and don'ts of sound planning principals. He explained that the first step to a good house is proper planning. He discussed the various things that effect planning and step by step explained room sizes, circulation, and arrangements involved in securing a good plan.

Our fourth lecture was entitled "What Will Your House Look Like?", and was given by Donald R. Hollis, A. I. A. Hollis presented a very precise lecture on the things that are involved in good design of present day contemporary homes. His lecture was augmented by the use of color slides showing examples of outstanding contemporary architect-designed homes that have been built throughout the country in the past ten years.

The fifth lecture was entitled, "What Will Be The Material In Construction?" and was given by Frank R. Slezak, A. I. A. This lecture covered in general, sound construction methods and how to obtain the best use of materials. Judging from the interest evoked at this lecture by the persons in attendance, it was felt that the public is very thirsty for knowledge concerning sound construction and the use of materials.

The final session of the lecture series was devoted to a round table discussion with all lecturers taking part. Some lively discussion concerning the various aspects covered by the course ensued.

The average attendance for the entire series was 75 persons. Favorable comments indicate that the people attending benefited materially in their knowledge concerning buying or building a home.

John C. Monroe, Jr. acted as moderator for the series.

In talking to the people that enrolled for the course, I discovered that we had a very fine cross-section of the American public. We had people enrolled who were realtors, builders, material men, and suppliers. As far as the price range in the homes that they were interested in, of course many were interested in moderately priced homes, but it was surprising to me how many were really interested in range of homes over \$20,000.00.

I wish to express the appreciation of the Chapter for the cooperation of the University of Kansas Extension Service and the Art Institute, and John Murphy, Chairman in charge of the entire program, who did a fine job of organizing and coordinating this lecture series for the third successive year.

LATE NEWS BULLETIN

As this issue goes to press word has been received that Mr. Clarence Kivett, a corporate member of the Kansas City Chapter, has been appointed to the Kansas City, Missouri Planning Commission by Mayor Kemp. This action is extremely gratifying to the Board of Directors of our chapter, since much effort has been made to place qualified men of our profession in such positions. A more thorough coverage of Mr. Kivett's appointment and what it means will appear in the May issue.

WESTERN BLUEPRINT CO

909 GRAND AVE. • KANSAS CITY 6, MO.

Artist and Drafting Materials

WE REPRESENT AMERICA'S LEADING
PRODUCERS OF ENGINEERING SUPPLIES



DIETZGEN

Hamilton

DRAFTING ROOM EQUIPMENT

COMPLETE REPRODUCTION SERVICE

YOU ARE INVITED
TO A PREVIEW
AT THE HOME SHOW

At CARTER-WATERS Booth
Municipal Auditorium
April 12 to 18



the *haydite*
HOUSE

first showing of our attractive masonry home in the popular price range. This home will soon be under construction utilizing haydite as conventional building material. You'll find it interesting in many aspects.

DONALD R. HOLLIS, *Architect*
STURGEON & TAYLOR, INC., *Builders*

CONSTRUCTION **THE** MATERIALS
CARTER-WATERS
KANSAS CITY **CORP** 8 MISSOURI
2440 PENNWAY Phone GRand 2570

1952 SURVEY ON EXPENDITURES

Bureau of Labor Statistics recently sent pricing specialists into the homes of typical families in many cities to get a complete record of the kinds, qualities, and amounts of foods, clothing, furniture, and all other goods and services bought in 1952, and how much was spent for each item. Results of the survey showed that: the average family spent 30.1% of its total expenditures for food; 32% for housing, including furnishings; 9.7% for clothes; 11% for transportation; 4.7% for medical care; 2.1% for personal care, such as toilet articles; 5.4% on reading and recreation, including TV; and 5% for "other goods and services", such as tobacco, alcoholic beverages, legal services, etc.

WERE YOU LISTENING?

ARCHITECTS, WERE YOU LISTENING SUNDAY,
NBC-TV 7:30 EST

MARSHALL: Hello. This is Rex Marshall, speaking for Reynolds. They tell me that according to the law of averages there are a couple of thousand *architects* watching this program. I hope so, because I've got some nice things to say about *architects*... as well as aluminum. *Architects*, you know, are always looking for something better. And they're finding it in aluminum—the modern building material that refuses to grow old. Here's just one example of the many ways *architects* are using aluminum for better building... an aluminum window... good looking... won't warp... won't rust or decay. And it's economical. In other words... it's a better window. Reynolds makes aluminum windows, and also supplies the aluminum to many other leading window manufacturers. You might be interested to know that compared with ten years ago, four times as many new homes are being built with aluminum windows. *Architects* realize their advantages. You see... better building is the *architect's* business. That's why—if you're planning a house, or a building of any kind—it makes sense to see an *architect* first.

The above commercial on "Mister Peepers" was presented by the Reynolds Metal Company of 2500 S. Third St., Louisville 1, Ky. Did you hear this? If so, write and tell them so.

.... in the news

SECRETARY RALPH MYERS,

being on a trip to Mexico and Cuba at press time this month, we are without the regular reports of chapter and executive meetings held last month. For the record we will review the minutes of these meetings in the next issue.

THOMAS FITZPATRICK,

head of the department of architecture at Iowa State College and a staunch member of this region of the AIA, is moving to the University of Virginia this year. He will be missed by his many friends in this chapter.

MONEY MAKES NEWS AMONG

AIA chapters. In New York, the Bronx chapter is operating on an announced budget of \$17,000 this year, broken down like this:

\$7,500 for executive secretary
3,000 for stenographic
2,000 for rent and supplies
1,000 for telephone & postage
3,500 for other expenses

The Chicago Chapter is considering a \$10,000 public relations campaign of its own, to be financed with an assessment of \$8.00 per member per year for a three year period.

We note with sorrow the passing of Herber D. Pampel, member emeritus. He practiced architecture here from 1915 until his retirement last year. Born in Salem, Nebraska, he spent his childhood in Centralia, Kansas, attended KU and graduated from the University of Pennsylvania. He served as state architect in Texas and designed many school buildings in the Midwest. Mr. Pampel was an active member of the KC Chapter AIA and served as treasurer for a number of years.

OUR CHAPTER HAS BEEN INVITED to attend the May meeting of the K. C. Chapter of the American Society of Heating and Ventilating Engineers, which will feature C. W. Nessell of Minneapolis, who will talk about residential warm air heating and cooling. Mr. Nessell has been heating specialist for 20 years and is now chairman of the field investigating committee of the Warm Air Association.

Date: May 4
Place: Wishbone Restaurant
4455 Main Street
Time: Social Hour 5:30 PM
Dinner (\$2.25) 6:30 PM

- SINCE 1893 -

CHAMBERLIN'S

Complete Service Covers

- METAL WEATHER STRIPS
- CAULKING
- METAL SCREENS
- COMBINATION STORM SASH
- STEEL SASH REPAIR
- TUCK POINTING
- BUILDING CLEANING
- WATER PROOFING
- PSYCHIATRIC SCREENS
- CEMENT GUN WORK

PROPER INSTALLATION
IS HALF THE JOB

Chamberlin

DOES IT RIGHT

ADVICE ON UNUSUAL PROBLEMS
OR ESTIMATE OF COSTS MAY BE
HAD BY CALLING

CHAMBERLIN

CHAMBERLIN COMPANY OF AMERICA

Vi. 4185

704 TROOST AVE. KANSAS CITY, 6, MISSOURI

From bees wax and bubbles



TO GINGERBREAD

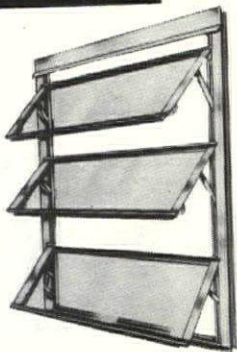
Practically the only purpose served by early windows... from crudely glazed bubbly glass and bee's wax to ornately leaded panes of the "90's" ... was to spur on the search for better windows!

to Modern....

Today, the search for better windows... ends with AUTO-LOK! These are windows perfectly designed and engineered to match steps with modern building trends... to give architectural design wider flexibility and maximum window utility... to save installation time, costs, materials.

Patented AUTO-LOK mechanism provides the *tightest closing windows ever made, easiest to operate, guaranteed for a lifetime of trouble-free service...* maintain tight closure without regular adjustments essential in ordinary awning or other windows.

Specify the only windows of today that meet the demands of the future!
Write for complete information.



B-D-R ENGINEERING CORPORATION

HEADQUARTERS FOR QUALITY MATERIALS

4243 Pennsylvania
Kansas City, Missouri

Telephone
Jefferson 9025

Kansas University

Presents

Richard J. Neutra, F.A.I.A.

MONDAY APRIL 27

In conjunction with the celebration of the 40th anniversary of the Department of Architecture at K. U.

Also the spring meeting of the Kansas Chapter AIA will be held in Lawrence on the same day.

George Beal, head of the Department of Architecture, has cordially invited Kansas City architects and their wives to participate in the all day affair.

10:00 AM - Lecture by Mr. Neutra
"Contemporary Use of Materials"
Strong Hall Auditorium

12:15 PM - Informal Luncheon

During the afternoon the Department will hold open house featuring an exhibition of Mr. Neutra's work and the work of KU students.

5 to 6 PM - Tour of new Memorial Union building

6:15 PM - Banquet in Ballroom of Memorial Union
\$2.00 per person
Make reservations or secure tickets thru Mr. Beal's office by Friday, April 24.

8:00 PM - Lecture by Mr. Neutra
"The Wholesome Setting"
Attendance at the banquet not required, if you wish to come for the lecture only. No ticket required for lecture.

Our host for the day, Mr. Beal, suggests that any golfers in the ranks of the KC Chapter AIA looking for a good match from the Kansas Chapter might very well be accommodated. Just let him know.

MISSOURI STATE ASSOCIATION



OF REGISTERED ARCHITECTS

PROGRAM: First Meeting - 5-9-53 - Governor Hotel, Jefferson City, Mo.

May 8, 7:30 PM - Dinner for Officers and Directors and wives at Governor Hotel. Business meeting after dinner for Officers and Directors.

May 9, 8:00 AM to 10:00 AM - Registration at Governor Hotel. Registration fee \$1.50 per member. Securing tickets for luncheon and dinner. Lunch \$2.25 each, Dinner \$3.50 each.

9:00 AM to 10:00 AM - Tour through New State Office Building from basement to roof by Marcel Boulicault, A. I. A., Architect of New Building.

10:00 AM to 12:00 Noon - General business meeting held on roof of New State Office Building. Senator McCawley, speaker.

During this business session women will be taken on a tour through the Governors Mansion.

12:30 PM - Luncheon in Governor Hotel, Judge Laurence M. Hyde will be speaker.

2:00 PM to 4:00 PM - Seminar on School Plan and Design, Hubert Wheeler, Commissioner of Education, State of Missouri, speaker.

Dr. Geo. D. Engelhart, Director of School Bldg. Service, State of Missouri, speaker.

Lawrence B. Perkins A. I. A. or Philip Will Jr. A. I. A. One of these gentlemen will speak on Modern Schools and show slides of their recent work.

Ladies will be given tour of Cole County Historical Society.

4:00 PM to 6:00 PM - Rest Period.

6:00 PM to 7:00 PM - Cocktail Party on the Mezzanine of the Governor Hotel.

7:00 PM to 9:00 PM - Dinner at Governor Hotel.

9:00 PM - Adjournment.

NOTE: An Exhibit of Photographs and Renderings of Buildings by Architects who wish to submit work, will be held on mezzanine of Governor Hotel. All Exhibit material to be brought directly to the mezzanine of the Governor Hotel. Exhibition space and lighting will be provided.

1953 Standing Committees

MEMBERSHIP AND GRIEVANCE

Joseph B. Shaughnessy, Chairman, JE 2248

Membership Section: J. Carl Jourdan, Frank Brandt, William Fullerton, H. C. Swanson.

Grievance Section: Robert S. Everitt, Harold Casey, William Simon, Luther O. Willis.

PRACTICE OF ARCHITECTURE AND RELATION WITH CONSTRUCTION

Leslie Simpson, Chairman, HA 5142

Cecil Cooper, Edw. Voskamp, Herbert V. Pennington, Frank Slezak, Deitz Lusk.

CITY AND REGIONAL PLAN

David B. Runnells, Chairman, LO 1411

Henry Krug, Ralph Myers, Edw. Fuller, Robert Weatherford, Donald Hollis.

PUBLIC RELATIONS, EDUCATION AND CIVIC DESIGN

Clarence Kivett, Chairman, Vi 8110

E. M. Robinson, Frank Grimaldi, Donald Hollis, Conrad Curtis, John Adams, William Linscott, Martin Moffitt, John Monroe, Jr.

ALLIED ARTS

Edward Buehler Delk, Chairman, JA 6602

David Mackie, Robert S. Everitt, Chester Dean, Robert Cowling, Dan E. Boone, Robert Erwin.

1953 Chapter Committees

ASSOCIATE AND JUNIOR ASSOCIATE

James Mantell, Chairman, HI 7747

Robert Baker, Roger Blessing, Dan E. Boone, Gene E. Lefebvre, Ralph Kiene, Jr., Herman Scharhag.

MEDAL AWARDS

Frank Slezak, Chairman, GR 0321

Edmund L. Bower

Homer Neville

PROGRAM

Louis Geis, Chairman, LO 7566

John Monroe, Alden Krider, John Murphy, John Morley, Evans Folger, Max Sandford, Ethel Sklar.

BY-LAWS

Mark Sharp, Chairman, HA 6804

Joseph B. Shaughnessy, William Simon.

FEES

Ray Voskamp, Chairman, GR 0321

Donald Hollis, Albert Fuller, Ernest Brostrom.

PRODUCERS COUNCIL

John Murphy, Chairman, HA 5142

Angus McCallum, Carlyle Barnhardt, Arthur Pearson, Jr., Wm. Cory, Edw. Hartronft, Steven Kenny

SKYLINES

Frank Grimaldi, Chairman, JE 2248

Ralph Myers, Frank Slezak, Richard Johnson, Betty Brooker, John Murphy, John Daw, William Conrad, Herman Scharhag.

