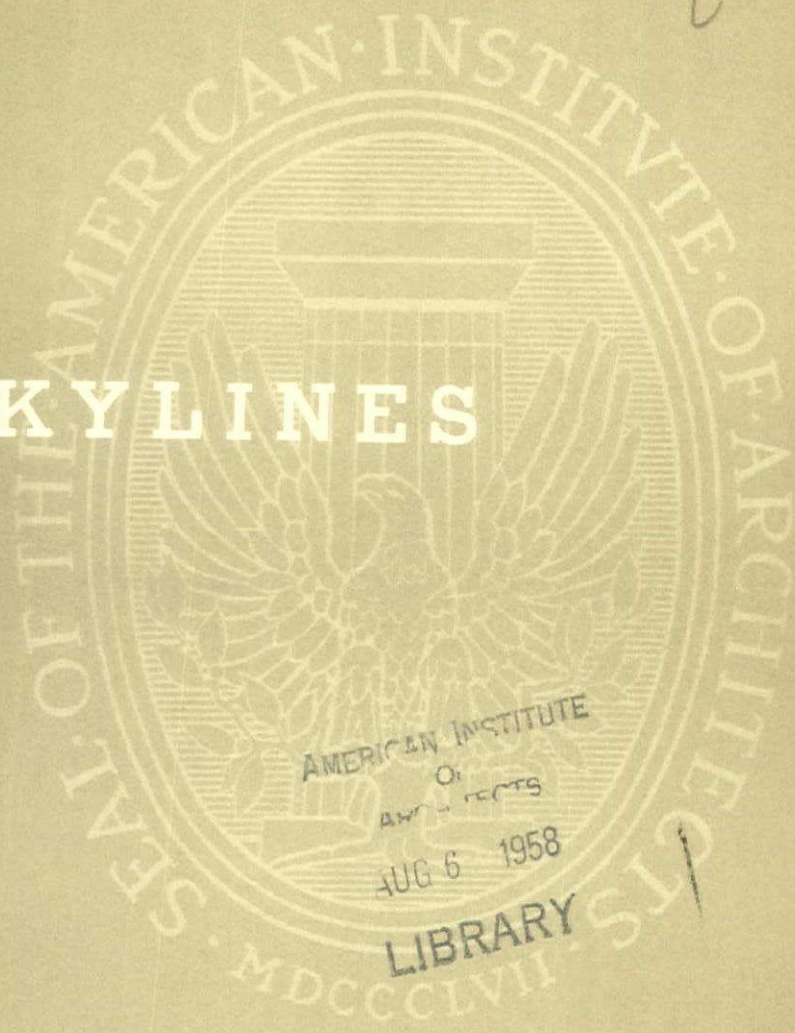


12

SKY LINES



AMERICAN INSTITUTE

OF ARCHITECTS

AUG 6 1958

LIBRARY

KANSAS CITY

CHAPTER OF THE

AMERICAN INSTITUTE

OF ARCHITECTS

8561 Y1UJ

A I A

KANSAS CITY
CHAPTER

PRESIDENT	John T. Murphy 15 West Tenth Street Kansas City 5, Missouri
VICE-PRESIDENT	Henry D. Krug, Jr. 310 Ward Parkway Kansas City 12, Missouri
SECRETARY	William M. Conrad 4149 Pennsylvania Kansas City 11, Missouri
TREASURER	Conrad J. Curtis 912 East 63rd Street Kansas City 10, Missouri
DIRECTOR ('56-'58)	William H. Simon 25 East 12th Street Kansas City 6, Missouri
DIRECTOR ('57-'59)	Angus McCallum 1016 Baltimore Avenue Kansas City 5, Missouri
DIRECTOR ('58-'60)	John M. Hewitt 607 Westport Road Kansas City 11, Missouri

SKYLINES

VOL. 8

NO. 7

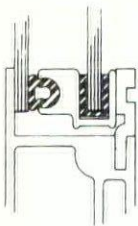
July, 1958

CONTENTS	page
"400 Footsore Acres".....	6
a review of the Brussels World's Fair by Richard N. Bills	
New PR Booklet Available.....	22
New Members.....	23
Chapter News	23
Cartoon	24

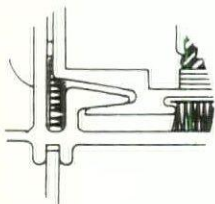
SKYLINES is the monthly publication of the Kansas City Chapter of the American Institute of Architects, and mailed without charge.

EDITOR.....J. DAVID MILLER
7830 FLOYD OVERLAND PARK, KANS.
LITHO.....VOLKMER LITHO CO.

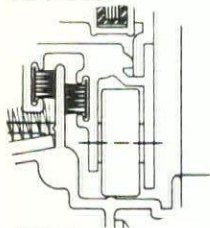
Gladiator



dual-pane



V-shape interlock



roller bearing



automatic locking bolt—
handle sets flush as an integral
part of the vent frame.

for commercial buildings
where economy is

... and for most
priced residential

CLAUDE COOKE COMPANY,

5920 Nall Avenue (P. O. Box No. 2)

MISSION, KANSAS

Our "Specialty of The House" -

TRACING REPRODUCTIONS

**WESTERN
BLUE PRINT CO**

909 GRAND • KANSAS CITY, MO.
SOUTH SIDE PLANT 4241 PENN.

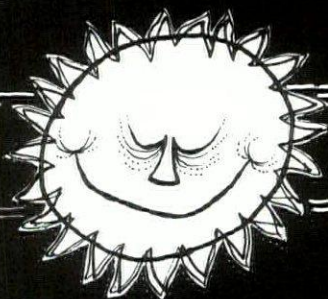
**TECHNICAL
PHOTOGRAPHY**
VICTOR 2-7881

Authorized



Distributor

ageless
concept gives
new comfort!



The stoneage cutie warms her paleolithic swain's heart by using an ageless concept. Her frying-rock is heated by the sun's radiant energy which travels through millions of miles of cold space without heating it. In the same way radiant energy from your BURGESS-MANNING 3-Way Functional Ceiling warms you without heating excess air. Result: more efficient heating. Your BURGESS-MANNING Ceiling makes like the sun—and, by reversing the radiation process, also cools. Either function responds to your fingertip control. On top of it, a BURGESS-MANNING Ceiling offers the utmost in sound control. Using an ageless concept, BURGESS-MANNING offers revolutionary convenience our stoneage cutie — or a pre-war secretary for that matter — never dreamt of.

TO BETTER SERVE OUR CUSTOMERS
IN IOWA AND NEBRASKA
WE HAVE OPENED OFFICES
IN OMAHA AND DES MOINES

ceilings of quiet distinction by **BJ** **ut3** **INC.**

KANSAS CITY, MO. • 1735 Charlotte — Phone HA 1 2288
DES MOINES, IOWA • 1167 25th Street — Phone CH 4 0820
OMAHA, NEBRASKA • 3712 N. 50th Street — Phone PL 5626

REURN

HOT WATER

COLD WATER

BDR

ENGINEERING
CORPORATION

4243 PENNSYLVANIA — KANSAS CITY, MISSOURI

JEfferson 1-8366

the "open" entrance

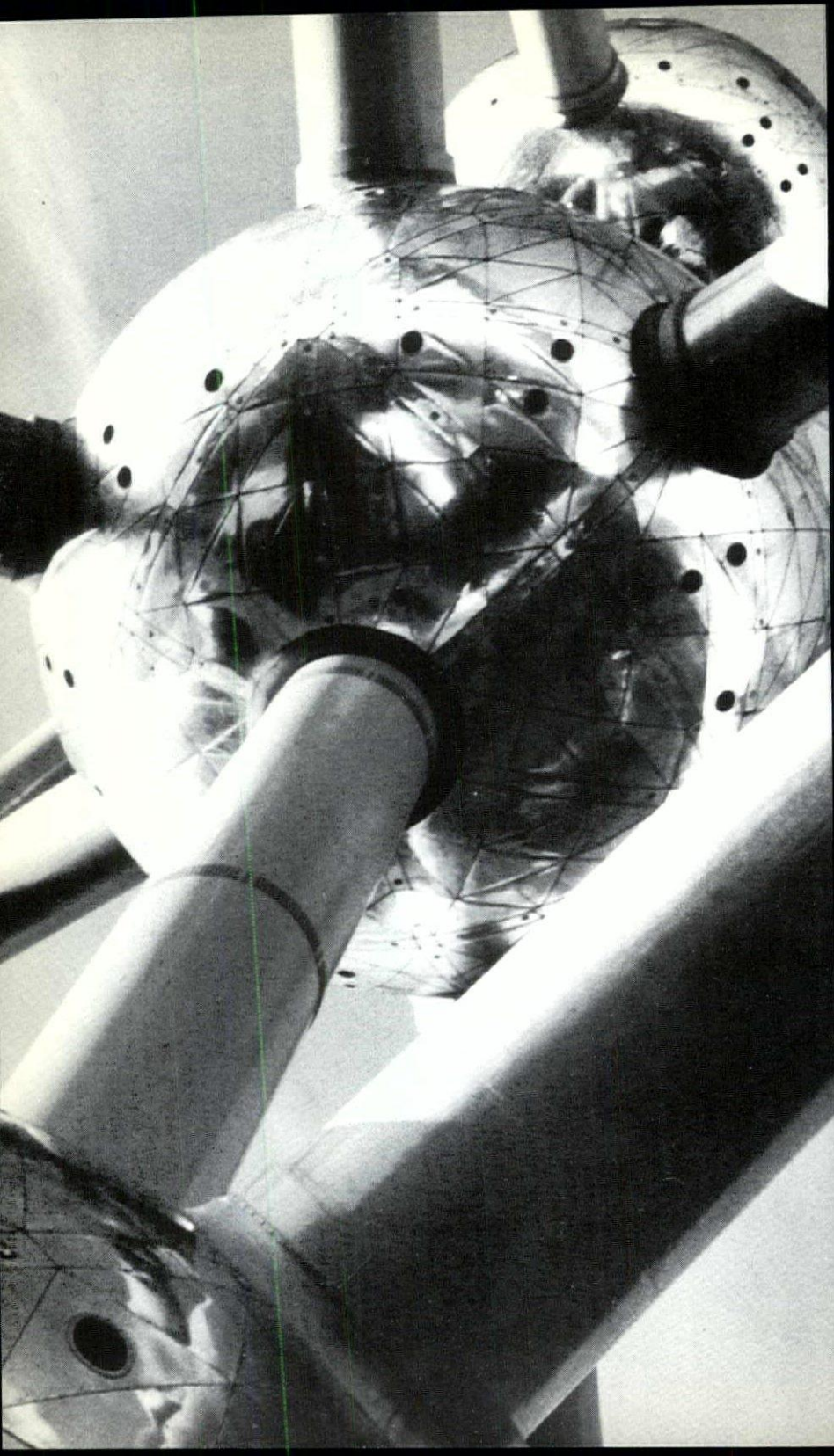
which ushers in
the door-less age of merchandising!

the original ↓

↓ AMERICAN AIR CURTAIN ↓



... Hermetically-sealed layers of air which provide
barrier-free access in stores, theaters,
public buildings, and industrial installations of all kinds.





BRUSSELS 1958

500 FOOTSORE ACRES

A special pictorial report of the least published views of the widely published Brussels World's Fair by SKYLINES foreign correspondent, Richard N. Bills.

Five miles from the center of Brussels, the Belgian Government is playing host to the world with its World's Fair, the Brussels Universal and International Exposition. An estimated 35 million visitors are expected to walk, ride the Swiss loaned aerial tramways, or be propelled in mechanical wicker chairs over at least a portion of the 500 acre fairgrounds before the exhibition closes in mid-October.

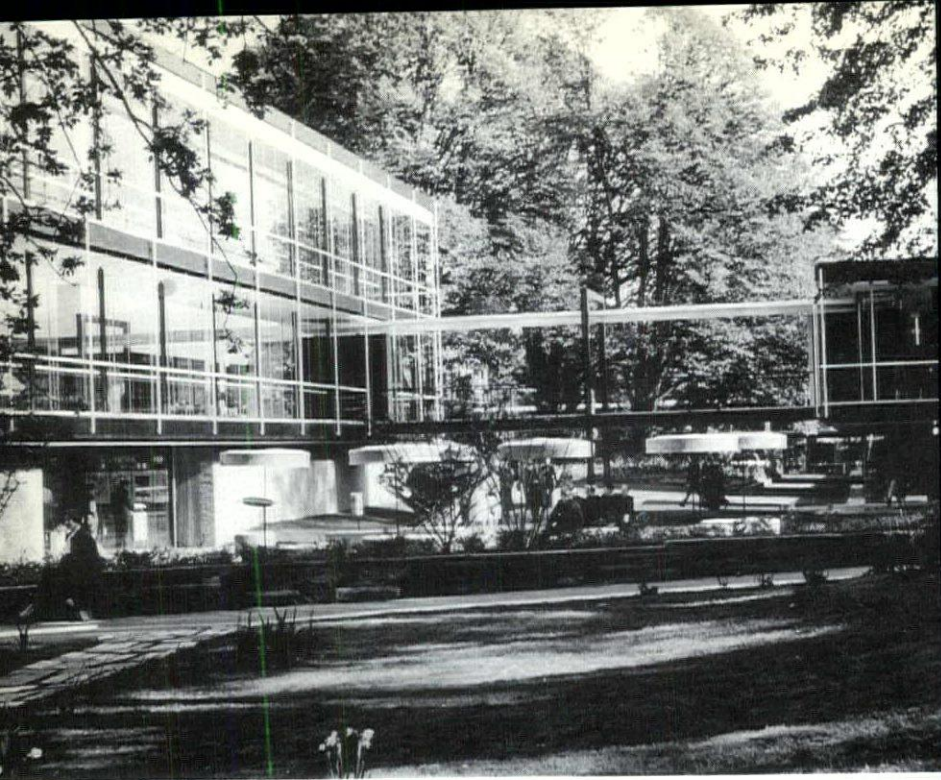
Not since the New York World's Fair in 1939 has there been such an interesting and varied assemblage of contemporary architecture in one area. The best architects and engineers of Belgium and the 47 participating nations have done an excellent job of presenting their architecture to a world audience.

To see the Fair at night is an adventure in itself. Whether you walk along the Belvedere Bridge or take a ride in one of the many little blue Mercedes busses, clever lighting everywhere brings new character and excitement to the pavilions and many government buildings.

There is a serious gaiety about the Fair as men, women, and children from all over the world visit the pavilions of theirs and other countries. They see a gigantic exhibit of culture and science, past, present, and future. At Brussels, as shown in history, architecture proves to be a most profound mirror that reflects the various peoples and cultures represented. It seems a necessary pity then, that by Christmas time this gathering will be dispersed, with only the Atomium remaining to remind Brussels and the world of its 1958 Fair.

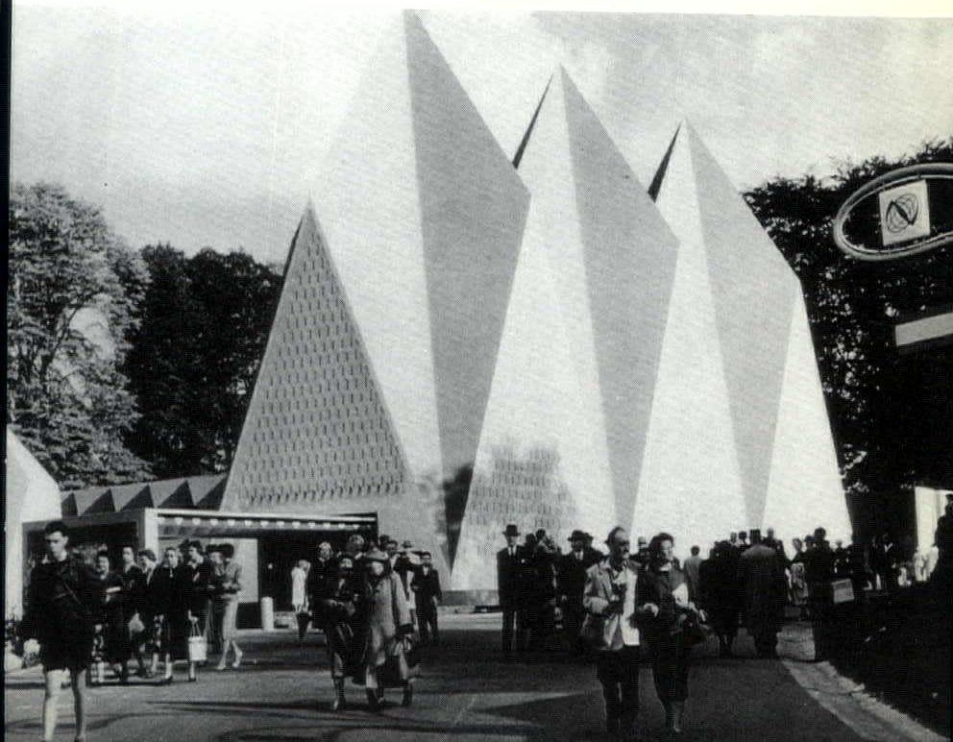


Unquestionable one of the finest and most elegant buildings of the Fair, the pavilion of the United States draws large crowds to its 360 degree exhibit. Admittedly and successfully soft-sel, the U. S. displays its way of life in an orderly and relaxed fashion. The visitor is more likely to recall the U. S. pavilion as an experience rather than an exhibition. Biggest attraction was the voting booths, and the biggest mystery was the location of the rest rooms.



Spreading over a large site, the German Pavilion is perhaps the most precisely detailed building at the Fair. The light curtain wall enclosure, the airy bridges and the beautiful polished wood floors display a degree of craftsmanship seldom seen. One thing of interest at the Fair were the many pools of water at walk level and the many panes of glass with no visible muntins. Either somebody had a lot of insurance, or the matter of public safety is more closely watched in Europe than it is here.

In stark contrast to the many large, glass encased buildings of the Fair, the British Government Pavilion, greatly reminiscent of a contemporary cathedral, utilizes very little natural light in its displays of time-honored tradition and peaceful uses of nuclear energy. Adjacent buildings display cultural and industrial progress.

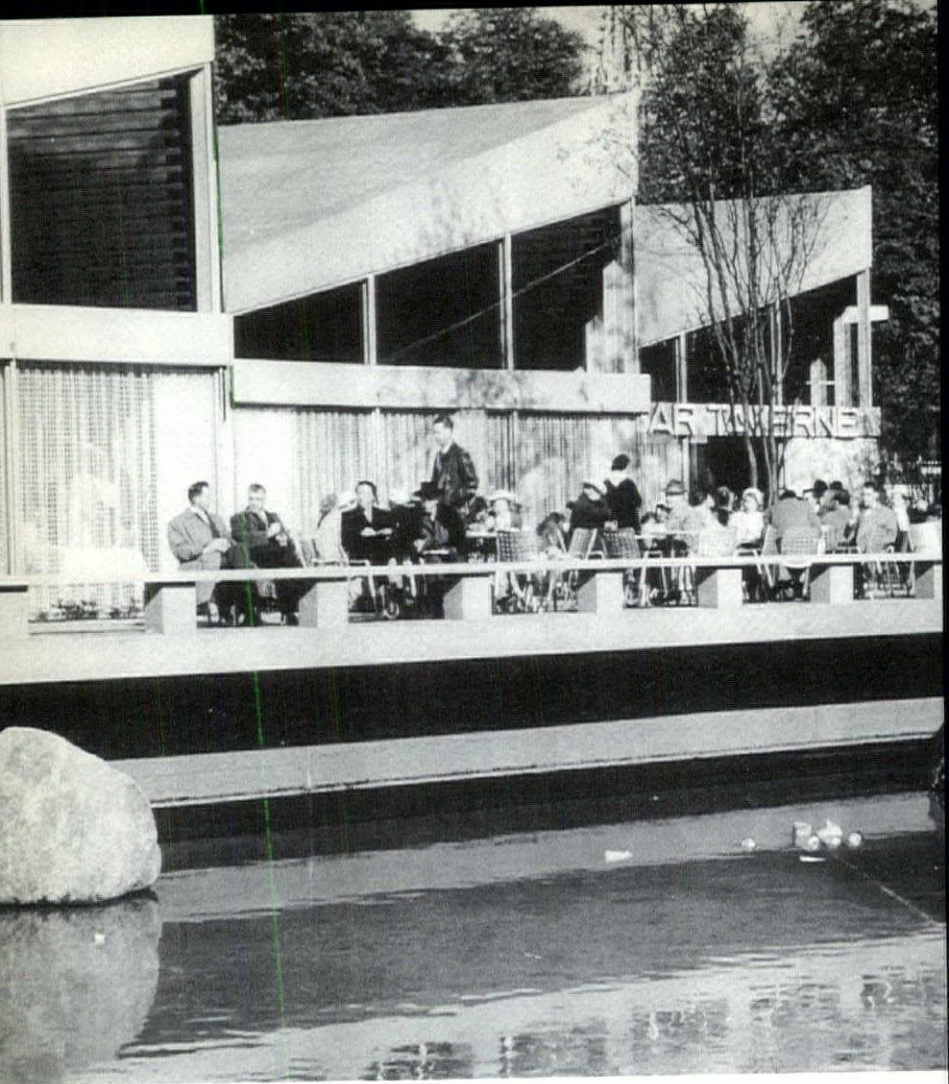




The "wheel" by Isamu Noguchi is but one of several controversial art displays in the United States Pavilion.

The attractive and picturesque formal entrance to the Flemish Gardens, a highlight of the Belgian section of the Fair.

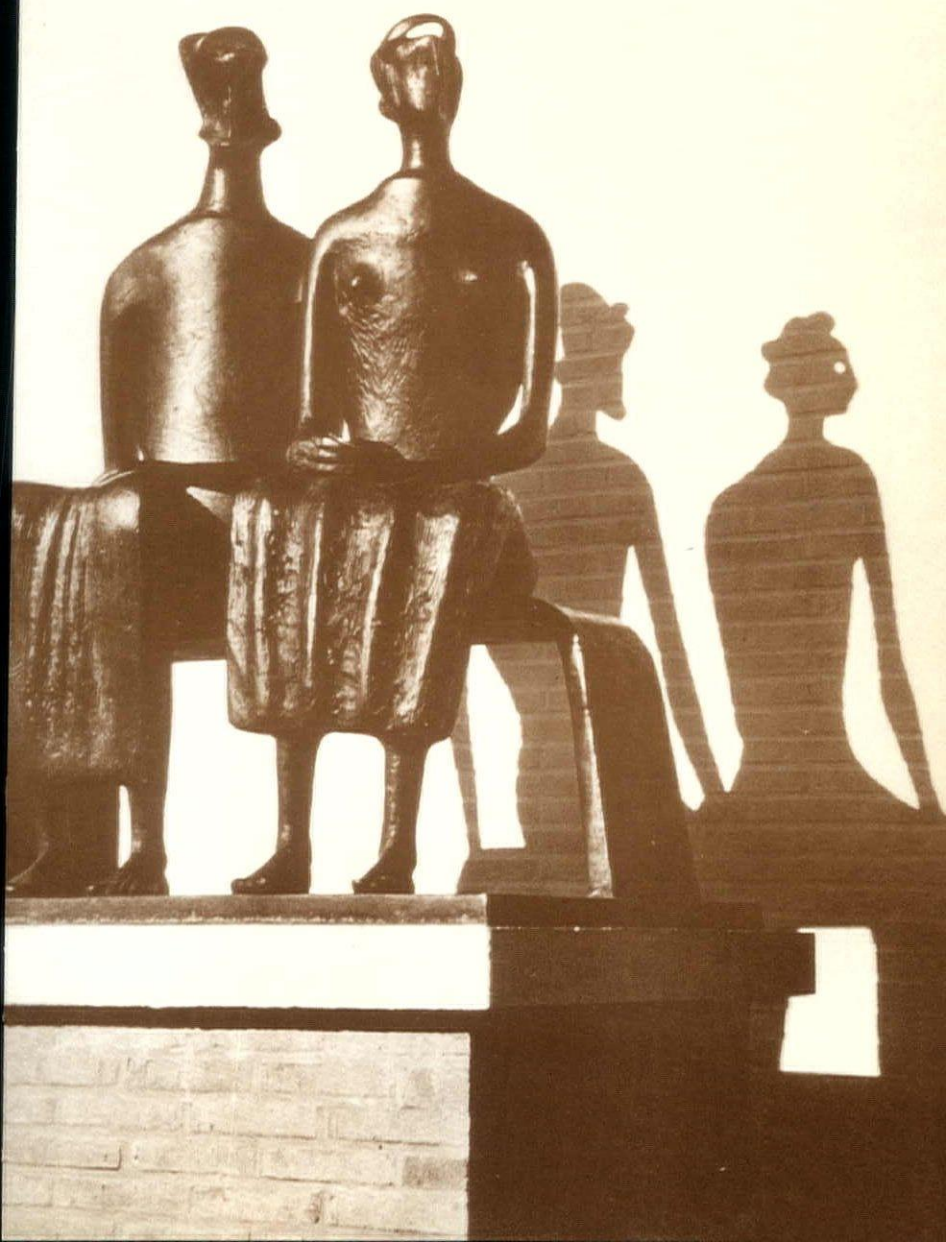






Each Pavilion had an eating place, where favorite foods of each country were enjoyed. Perhaps the most pleasant of these was the outdoor cafe of the Swiss Pavilion, overlooking a lake. Part of the British Pavilion is seen in the background.

The intriguing sculptural talent of Englishman, Henry Moore is interestingly portrayed in this grouping adjacent to the Pavilion of the United Kingdom.





Standing high above the Avenue
des Nations, the Carillon of the
Netherlands adds a melodic note
to the hustle and bustle of the
people and activity below.

Appearing like a giant Christmas tree against the evening sky, the Atomium is the "mascot" of the Fair. Rising 360 feet above the Belgian section, it represents an elementary crystal of metal enlarged 150 million times. The spheres are 59 feet across, linked by tubes $9\frac{1}{2}$ feet in diameter.



NEW PR BOOKLET AVAILABLE



Here is a new and major piece of AIA literature which has been produced as part of the national public relations program. It contains in simple language a comprehensive picture of the architect and his profession. As such, it represents a basic document which can be of great benefit to the AIA and its members, if it is given wide distribution to persons of influence in all communities.

Copies are being sent from the Octagon to selected government personnel, trade association chiefs, editors and chief editorial writers of America's leading newspapers, to leading publishers and magazine editors—both in the general consumer and in certain specialized fields, and to prominent broadcasters, producers, directors, and writers in the motion picture and television industries.

However, this is only part of the needed distribution system. To be effective, this striking and informative booklet should be placed in the hands of your most important clients, prospective clients, representatives of municipal and state government, community educators, heads of local civic and service organizations, and community editors and radio-TV station public affairs directors.

An initial press run of 15,000 copies is on hand at the Octagon. You may order copies of "Facts" by writing to "Facts," The American Institute of Architects, 1735 New York Avenue, N. W., Washington 6, D. C.; individual copies have been priced at 30 cents apiece, with a special price of 25 cents apiece for quantities of 25 or more.

NEW MEMBERS



VOSKAMP



TRENT



HUTCHINS

Three applications for Junior Associateship have been approved by the Executive Committee and we wish to welcome them into the Chapter.

Raymond L. Voskamp, Jr., is well known to the Chapter, having been a member in the past. Born in Kansas City, Ray attended Southwest High School, Junior College and received his B. S. Degree at K. U. Recently on the West Coast, we are glad to welcome Ray back to Kansas City.

Donald Lee Trent was born in Muncie, Kansas, graduated from Turner High School and received his B. S. Degree at K. U. An outstanding student and formerly

President of the Student Chapter AIA at Lawrence, we admire his interest in applying for Chapter membership only a few months after graduating and starting to work in the office of Geis, Hunter and Ramos.

Carroll T. Hutchins comes from Tishomingo, Oklahoma and received his Degree at Oklahoma State University at Stillwater. A resident of Prairie Village, Carroll became a partner in the firm of Frangkiser & Hutchins in 1954.

CHAPTER NEWS

• Congratulations to two Chapter members who have received Fullbright scholarships to Europe. **Dave Runnels** is leaving in August for Vienna, Austria and **Bill Conrad** is leaving in December for Helsinki, Finland. It must be a real chore to wind up professional affairs to get away for a year and to arrange for the fi-

nancial end of taking the families along, but the opportunity is rewarding in every way, as **Jack Morley** has stated many times since his return from Denmark. We wish them all the very best of luck and safety in their travels.

• After display at the Kansas

City (Missouri) Public Library, the Medal Awards Exhibit has been at the Johnson County Public Library (where very favorable public interest has been shown). In the middle of July, the exhibit moves to Springfield, Missouri.

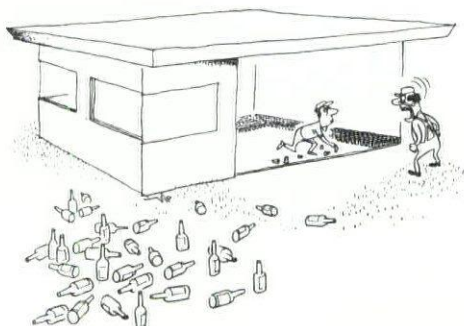
• The annual spring awards given to students at Kansas University and K-State were presented by John T. Murphy and I. Lloyd Roark. Included among award winners at K. U. were: **Douglas C. Smith**, Kansas City Chapter Award of \$50 for High Scholarship and Need; **Richard S. Worrel**, Voskamp and Slezak Award of \$25 for Excellence in Working Drawings; **Jerry F. Eaton**, Kivett & Myers & McCallum Award for \$50 for Excellence in Site and Landscape Design; and **Richard C. Murray**, AIA Medal for High Scholastic Standing in the Five-Year Curriculum (**Ray C. Gross**, runner-up). At Manhattan, award winners included: **Carlton Van Demon**, Kansas City Chapter Award for Sophomore Class Scholastic Rating; and **David M. Spiker**, AIA Medal for General Excellence in Architecture (**Don E. Anderson**, runner-up).

• A double-page reproduction of all major newspaper mentions of KC/80 has been prepared for

distribution at National Convention to Board Members along with a report of the project. The newspaper clippings make an impressive publicity showing for the Chapter and plans have been made for local distribution also to members of the Downtown Committee. It is possible that the report will also be published in the AIA JOURNAL this Fall.

• Word from **Mr. W. Howard Adams**, President of the Jackson County Historical Society is that work in photographing and compiling statistics for a list of Historic Buildings in the area is moving ahead under Mr. Hal Sandy's leadership. A recent building added is a residence in Independence designed by William McCoy in 1914. The house follows closely the lines of Wright's Oak Park, Chicago house and was done after McCoy studied with Wright. However, the Committee still has much work to do and Mr. Adams has requested aid from Chapter members in acquiring early sketches and elevations of houses and buildings in this area. Questions and information should be directed to:

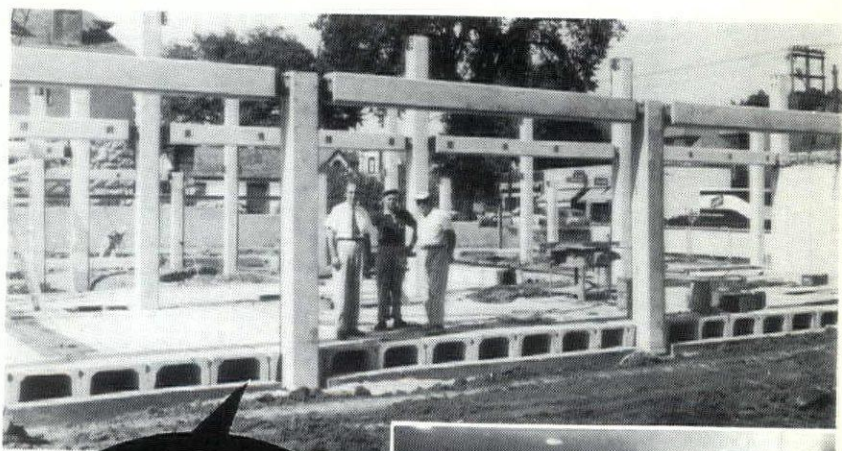
Mr. W. Howard Adams
R. D. Mize Road
Blue Springs, Missouri



"Not that kind of a cork floor, bonehead!"

For your enjoyment—Courtesy Pomona Tile Manufacturing Co.

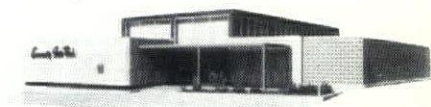
Precast Haydite Concrete Structural Members



Job: Community State Bank
Architect:
Edward H. Waddington
Contractor:
Western Bank Contractors, Inc.



Floor slabs, columns, beams and roof slabs were delivered to the job ready for erection ... another example of fast, economical and attractive construction with exposed precast Haydite concrete structural units.



If you would like more information about precast Haydite concrete construction, call ...

CONSTRUCTION THE MATERIALS
CARTER-WATERS
KANSAS CITY CORP 8 MISSOURI
Phone GRand 1-2570 2440 Pennway

KANSAS CITY NATURAL SLATE CO.

3109 SOUTHWEST BLVD.

PHONE WE 1-6984

KANSAS CITY, MISSOURI

FLOOR COVERINGS

Asphalt Tile
Rubber Tile
Vinyl Tile
Cork Tile
Linoleum
Wood Block Flooring
Hubbellite
Dex-O-Tex

WALL COVERINGS

Kalistron
Flexwood
Metal Wall Tile
Plastic Wall Tile

ACOUSTICAL CEILINGS

Owens-Corning-Fiberglas
Armstrong Cork Co.
Keasbey & Mattison

CHALKBOARDS

U. S. Plywood's "ARMORPLY"
Weber Costello

TACKBOARDS

Armstrong
Nairn
U. S. Plywood

EXPANDED SHALE

concrete

— No. 38 —

CHARTER



MEMBER

1. Lightweight
2. Strength
3. Insulation
4. Fire Insurance
5. Sound Reduction
6. Durable
7. VERSATILE
8. Economical
9. Shock Resistant
10. Minimum Shrinkage
11. Nailable
12. Textured

*"... so much for
so little!"*

facts

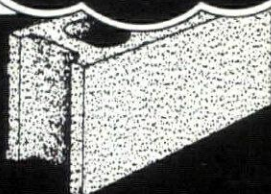
"With Distinction"

Although unusual wall surface treatments are more prevalent in the far South and West, the use of distinctive masonry patterns and projections is becoming more common throughout the country. "House and Home" October 1956 (page 142) featured an unusual treatment of ground face expanded shale units.

Buildex expanded shale masonry units are manufactured in many standard sizes and shapes. The use of combinations of sizes, shapes and patterns produce beautiful surfaces. The units may be exposed, painted, unpainted, ground, plastered, stuccoed or paneled. VERSATILE describes the many choices which result in unbelievable attractiveness.



BUILDEX, INC.
Phone 240
OTTAWA, KANSAS



Now! ALL NEW ZURN ENGINEERED PRODUCTS HELP IMPROVE YOUR BUILDING SPECIFICATIONS!

NEWEST DEVELOPMENT IN
WATER HAMMER ARRESTMENT
THE ZURN

SHOKTROL

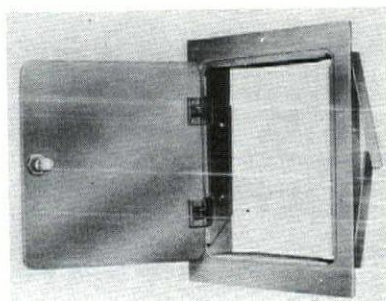


For elimination of destructive shock pressure and disturbing noises in plumbing systems with quick-closing valves—

- ... All stainless steel construction.
- ... Small, compact and lightweight.
- ... Pre-charged with air pressure.

ULTRA-MODERN APPROACH TO
CONTROL CONCEALMENT
THE ZURN

ACCESS DOOR



For full, unhindered entrance to control equipment concealed in walls and ceilings—

- ... Fits any type of wall.
- ... High-quality lustrous finish.
- ... Protective cylinder lock.
- ... Snug door on concealed hinges.

U.S. PATENTS AND PATENTS PENDING



ZURN MIDWEST SERVICES, INC.

Represented by

JAMES V. IRVIN CO.

557 Westport Road Kansas City 11, Missouri

Phone: JEFFerson 1-5452

A COMPLETE LINE OF PLUMBING DRAINAGE PRODUCTS

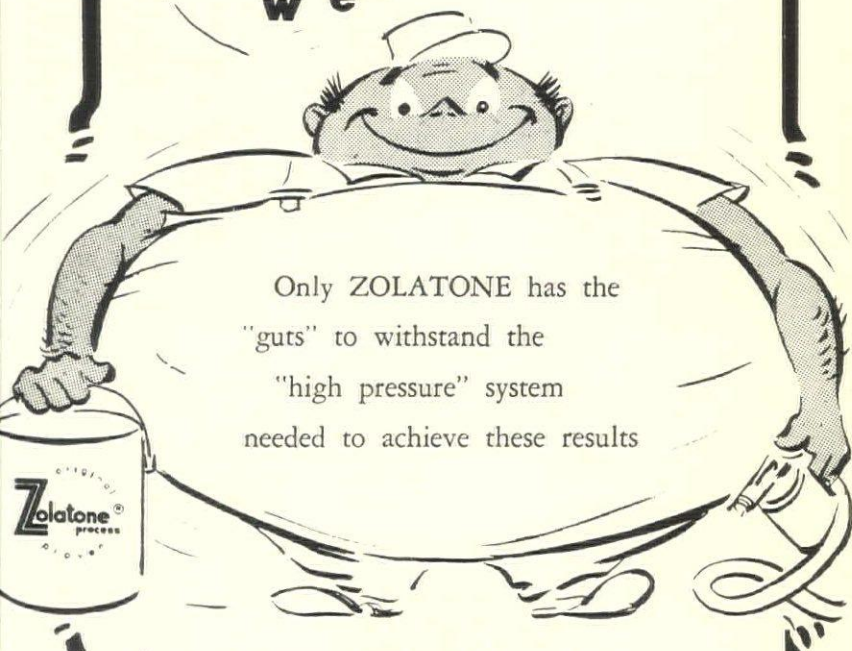
- ZURN SYSTEMS for supporting wall type plumbing fixtures
- NON-FREEZING HYDRANTS
- SUPREMO CLEANOUTS
- SWIMMING POOL FITTINGS
- ROOF DRAINS
- FLOOR DRAINS
- INTERCEPTORS



GREATER

S-P-R-E-A-D-I-N-G rate
per gallon means
applied cost

**l
o
w
e
r**



Only ZOLATONE has the
"guts" to withstand the
"high pressure" system
needed to achieve these results

- ★ FULL SURFACE COVERAGE
- ★ NO SPATTER EFFECT
- ★ TRUE COLOR PATTERNS
- ★ UP TO 175 OR 200 SQ. FT. PER GALLON

avoid the unknown-use ZOLATONE

ZOLATONE is manufactured only by
PARAMOUNT PAINT & LACQUER CO.

DEVOE OF KANSAS CITY, Inc.

STERLING RONAI

General Manager

200 S. W. Blvd.

Phone VI 2-5672

original
Zolatone[®]
process
proved

