

AMERICAN INSTITUTE

ARCHITECTURE

MAR 24 1971

LIBRARY

director

1971



**You don't have
to look ahead very
far to foresee
probable changes
in office layout
requirements . . .
but there's a
much easier way
than *this* to
update an office!**

***Request our current
partitioning catalog.***

IN THIS NEW BUILDING (less than five years old) a tenant needed to revise his office layout to fit changing work patterns. The resultant mess and money were shocking—and unnecessary—but fortunately will not reoccur because the updated floor layout was created with Glen O'Brien "Quick-Change" Partitions. An office interior can be designed to today's needs and decorative taste, and revised with minimum business interruption and expense whenever necessary.

GLEN

**"QUICK-CHANGE"
PARTITIONS**

BRIEN

4905 LISTER
KANSAS CITY, MISSOURI 64130

TELEPHONE
(816) 923-9705



SKYLINES/MIDWEST ARCHITECT/DIRECTORY 1971

EXECUTIVE OFFICERS:

Dwight C. Horner, President
George W. Lund, President Elect
John A. Eggen, Jr., Secretary
Donald C. McReynolds, Treasurer

PUBLISHED BY THE KANSAS CITY CHAPTER
AMERICAN INSTITUTE OF ARCHITECTS

VOLUME 21, NUMBER 1

DIRECTORS:

John C. Monroe, Jr.—1971-1974
Ronald W. Ford—1971-1973
Allan Hunt Selders—1971-1972

EDITORIAL BOARD:

Kenneth Wilson, Chairman
Robert J. Berkebile
Phillip J. Clark
James R. Combs
Conrad J. Curtis
John A. Huffman
Thompson C. Nelson
E. Crichton Singleton
Charles L. Terry
Edward Wimmer

EXECUTIVE OFFICE STAFF:

Elizabeth Brooker, Secretary
Telephone 816-221-3485

SKYLINES is the official publication of, and is published quarterly by the Kansas City Chapter of the American Institute of Architects at 922 Walnut, Suite 816A, Kansas City, Missouri 64106. Telephone (816) 221-3485. Subscriptions for A.I.A. members are included with A.I.A. memberships. Subscriptions for non-members, \$3.00 per year; \$8.00 for three years. Single copies 75¢. Special roster directory issue \$1.50.

Opinions expressed herein are those of the editor or contributors and the appearance of products or services, names or pictures in either advertising or editorial copy does not necessarily constitute endorsement of the product by the Kansas City Chapter of American Institute of Architects. Advertising in SKYLINES is subject to the approval of the Executive Committee. Copyright 1970, Kansas City Chapter of the American Institute of Architects.



1971 OFFICERS AND COMMITTEES



PRESIDENT
DWIGHT C. HORNER
Horner & Blessing, Architect
Phone 221-0540
804 Commerce Bank Bldg.
Kansas City, Mo. 64106

PRESIDENT ELECT
GEORGE LUND
Lund-Balderson
Phone 888-2644
13001 West 95th Street
Shawnee Mission, Kan.
66215



CHAPTER DEVELOPMENT

MEMBERSHIP

William Conrad, Chairman
Phone 931-0200
Keith Edwards
Thomas W. Gibson
Edward H. Harper
G. Patrick Harriman
Maxwell T. Sandford

ASSOCIATES

Edward E. Young, Chairman
Phone 421-4133
Thomas W. Gibson
Herbert L. Looney
Gerald A. Ranney
Larry D. Thomas

BY-LAWS

John Jameson, Liaison
Phone 474-9372

JUDICIARY

Thomas Geraughty, Chairman
Phone 842-8242
Roger F. Blessing, Jr.
Cecil Cooper

FELLOWS

Frank Slezak, Chairman
Phone 381-4360
Dwight Brown
John Murphy

OFFICE PRACTICE

Evans Folger, Chairman
Phone 471-8383
Ralph Kiene, Jr.
James Mantel
James C. Ritchie
I. Lloyd Roark
John Jameson

CONTINUING EDUCATION

Robert Berkebile, Chairman
Phone 474-6910
Marion G. Hymer
Charles K. Kahn
William Love
Julian M. Ominski, Jr.

NOMINATING

William Linscott, Liaison
Phone 531-7700

SECRETARY
JOHN EGGEN, JR.
Seligson, Eggen
Architects, Planners,
Designers
Phone 421-4133
106 West 14th Street
Kansas City, Mo. 64105



PUBLIC COMMUNICATION PROGRAM

William Love—June '70-'71
Mel Solomon—June '71-'72

PUBLIC RELATIONS

Dean Graves, Chairman
Phone 221-5011
Ronald W. Aarons
Dan E. Boone
Robert S. Everitt
William P. Midgley

DISPLAY

Larry Swearingin, Chairman
Phone 842-7110
Robert Duncan
Gary R. Jarvis
Wayne London
Richard H. O'Leary
Frederick S. Truog

AWARDS

Leslie J. Wood, Chairman
Phone 531-7700
James R. Brown
Robert E. Champlin
Aubrey R. Davis
Kermit G. Harper
Will M. Owens

SKYLINES

Kenneth Wilson, Chairman
Phone 842-6044
Robert J. Berkebile
Phillip J. Clark
James R. Combs
Conrad J. Curtis
John A. Huffman
Thompson C. Nelson
E. Crichton Singleton
Charles L. Terry
Edward Wimmer

1971 REGIONAL CONFERENCE

Bruce Patty, Chairman
Phone 474-6910
Elizabeth Brooker, Secretary
R. Keith Herrin, Program
Stuart M. Hutchison, Graphics
Robert J. Koppes, Financial
William Love, Exhibits
David J. Miller, Advisor
E. Crichton Singleton, Hospitality
Julian M. Ominski, University
Mrs. William M. Conrad, Women's Activities
Mrs. Gene E. Lefebvre, Women's Activities

1979 NATIONAL CONVENTION

David Miller—1971—Liaison
Phone 642-6111

TREASURER
DONALD C. McREYNOLDS
Marshall and Brown Inc.
Phone 421-2400
TenMain Center
Incorporated
Kansas City, Mo. 64105



COMMUNITY ACTION

REAL ESTATE BOARD

Roger F. Blessing, Jr., Liaison
Phone 221-0540

DOWNTOWN INC.

Dwight C. Horner
Clarence Kivett

CHAMBER OF COMMERCE

K. C., K.—Robert Jarvis
K. C., Mo.—Frank Fisher
North Kansas City—John Jameson
Overland Park, Kansas—Kenneth R. Boyle

AREA TRANSPORTATION

Herbert E. Duncan, Jr., Liaison
Phone 561-6900



PRESIDENTIAL ADVISOR
BILL LINSOTT
 Linscott-Haylett & Associates
 Phone 531-7700
 917 West 43rd Street
 Kansas City, Mo. 64111



EXECUTIVE SECRETARY
ELIZABETH (BETTY) BROOKER
 Phone 221-3485
 816A Commerce Bank Bldg.
 Kansas City, Mo. 64106

DIRECTOR
JOHN C. MONROE, JR.
 Monroe-Lefebvre-Ritchie
 Phone 421-7478
 1021 Pennsylvania
 Kansas City, Mo. 64105



DIRECTOR
RONALD W. FORD
 Herbert E. Duncan
 Architects Inc.
 Phone 561-6900
 800 West 47th Street
 Kansas City, Mo. 64112



DIRECTOR
ALLAN HUNT SELDERS
 Neville, Sharp & Simon
 Phone 421-2030
 106 West 14th Street
 Kansas City, Mo. 64105



GOVERNMENTAL ACTION

BUILDING CODES

Leslie Hunter, Chairman
 Phone 421-2400
 Dirk Ellis
 Vern Nelson
 S. Charles Perkins
 Ramon Schumacher, Jr.

ZONING CODES

John Daw, Chairman
 Phone 474-9410
 Edward Alexander
 Clarence Frieze, Jr.
 Donald M. Palmer
 Arthur Pearson
 James E. Taylor
 Herschel Tognascioli

CITY/COUNTY GOVERNMENTS

Vernon Reed, Chairman
 Phone 781-0994
 William C. Barton
 Tom Fuehrer
 Robert Koppes
 Dean Lintecum
 Charles E. Mullin, Jr.
 James E. Taylor
 Robert G. Westvold
 Homer Williams

K. C. PLANNING

Ward Haylett, Liaison
 Phone 531-7700

METRO PLAN

Clarence Kivett, Liaison
 Phone 842-8110

REDEVELOPMENT AUTHORITIES

Jack Horner, Chairman, Kansas
 F. William Shuler, Chairman, Missouri

LEGISLATIVE

David Brey, Liaison
 Phone 842-6762

CULTURAL RELATIONS

CULTURAL AFFAIRS

Theodore H. Seligson, Chairman
 Phone 421-4133
 Kenneth Coombs—K. C. Museum
 Robert S. Everitt—Friends of Art
 William Linscott—K. C. Art Comm.
 William Midgley—Philharmonic
 Theodore H. Seligson—Nelson Art Gallery
 Billy D. Wunsch—K. C. Art Institute

HISTORICAL RESOURCES

Edward Wimmer, Chairman
 Phone 531-7700
 Edward A. Baker, Jr.
 John Huffman
 Thompson C. Nelson
 Jacqueline Seligson

RELIGIOUS BUILDINGS

Donald M. Palmer, Liaison
 Phone 333-4150

HEALTH BUILDINGS

Roger H. Swank, Liaison
 Phone 374-2387

EDUCATIONAL AFFAIRS

Joe Oshiver, Chairman
 Phone 421-0866
 James C. Balderson—K.S.U.
 David M. Brey—Library
 Eugene Buchanan—K.C.K./J.C.
 Larry Downs—M.J.C.
 Charles K. Kahn—Advisory
 George P. Keleti—U.M.K.C.
 Edwin W. Korff—Johnson C/CC
 Kenneth A. McCall—Public/Parochial
 Schools
 Lloyd Roark—U. of Kansas

SOCIAL RESPONSIBILITY

William H. Johnson, Chairman
 Phone 421-7482
 Robert Jarvis, Sub-Chairman
 James Marshall, Jr.
 Leon Maslan
 Richard H. O'Leary
 Sam R. Price

CONSTRUCTION INDUSTRY ORGANIZATIONS

C.I.A.C.

Gene Lefebvre, Chairman
 Phone 421-7478
 David M. Brey—CSI
 Frederick P. Chael—CEC
 Frank Grimaldi—Builders Association
 Dale Nelson—AGC
 H. Thorvald Rygaard—MCA
 Allan H. Selders—NECCA
 Gene Lefebvre—SMAC

MCA

Dwight C. Horner
 Phone 221-0540

ASSOCIATED CONSTRUCTION ORGANIZATION

Donald R. Sledd, Chairman
 Phone 371-6402
 Betty Brooker—Women's League
 Jerome D. Jackson—AID
 John C. Morley—AIP
 Will M. Owens—PC
 Paul S. Staats—HBA
 Raymond L. Voskamp, Sr.—ASLA
 Clarence C. (Doc) Watson—WIC's
 Herbert M. Woolley—MCIB

AARONS, RONALD WAYNE Assoc.
Marshall & Brown Incorporated
421-2400
1730 TenMain Center
Kansas City, Missouri 64105
Wife: Sandra
6103 Monrovia / 631-5456
Shawnee, Kansas 66216

ABEND, STEPHEN N. AIA
Urban Architects / 221-5011
1004 Baltimore
Kansas City, Missouri 64105
5525 Mission Drive / 381-3855
Shawnee Mission, Kansas 66208

ABRAHAM, JOHN EDGAR Assoc.
Hewitt & Royer / 561-1070
607 Westport Road
Kansas City, Missouri 64111
Wife: Joyce
1124 North 37th Street / 342-1575
Kansas City, Kansas 66102

ALEXANDER, EDWARD Assoc.
Robert E. Sixta, Architect / 281-5050
103 Gateway Building—State at Fifth
Kansas City, Kansas 66101
5158 Skyline Drive / 362-6996
Mission, Kansas 66205

ANDERSON, WENDELL D. P. Assoc.
R. C. Coffeen and Associates
236-5200
4800 Rainbow Boulevard
Shawnee Mission, Kansas 66205
Wife: Betty
12407 East 46th Place / 353-5925
Independence, Missouri 64050

ANDREWS, LEWIS, P. AIA
Linscott-Haylett & Associates
531-7700
917 West 43rd Street
Kansas City, Missouri 64111
Wife: Jane
6541 High Drive / 362-6423
Shawnee Mission, Kansas 66208

ARNOLD, JAMES Assoc.
Kivett & Myers / 842-8110
TenMain Center
Kansas City, Missouri 64105
7425 Ash / 831-4449
Prairie Village, Kansas 66208

BADER, ALBERT K. AIA
Black & Veatch / 361-7000
1500 Meadow Lake Parkway
Kansas City, Missouri 64114
Wife: Dorothy
8341 Russell / 649-9337
Overland Park, Kansas 66212

BAKER, EDWARD A., JR. AIA
Hewitt & Royer, Architects / 561-1070
607 Westport Road
Kansas City, Missouri 64111
Wife: Shirley
5311 Norwood Road / 362-0718
Shawnee Mission, Kansas 66205

BAKER, JAMES ROBERT AIA
Black & Veatch / 361-7000 Ext. 501
9001 State Line
Kansas City, Missouri 64114
Wife: Frances
8300 Madison / 444-0079
Kansas City, Missouri 64114

BAKER, ROBERT ALLEN P. Assoc.
Crowley-Wade-Milstead Inc.
254-4800
2528 South 71 By Pass
Independence, Missouri 64050
Wife: Jeannette
3028 Scott Avenue / 254-0311
Independence, Missouri 64052

BAKER, ROBERT G. P. Assoc.
Charles E. Mullin, Jr., Architect
321-4227
1401 Fairfax Trafficway
Kansas City, Kansas 66115
Wife: Betty
5804 El Monte Drive / 831-4258
Shawnee Mission, Kansas 66205

BALDERSON, C. JAMES AIA
Lund/Balderson / 888-2644
13001 West 95th Street - Suite 200
Shawnee Mission, Kansas 66215
Wife: Jo Anne
4910 West 101st Terrace / 649-8644
Shawnee Mission, Kansas 66207

BARNES, OTHO A., JR. P. Assoc.
2010 North 34th Street / 279-0587
St. Joseph, Missouri 64506
Wife: Verda Mae

BARTON, WILLIAM C. AIA
William Barton Associates / 931-2866
406 West 34th Street
Kansas City, Missouri 64111
Wife: Betty
9301 High Drive / 381-3570
Leawood, Kansas 66206

BARU, GERALD B. AIA
1004 Baltimore / 421-6444
Kansas City, Missouri 64105
Wife: Evelyn
9509 Linden / 649-2968
Overland Park, Kansas 66207

BAYERL, EMIL O. AIA
Emil O. Bayerl, Architect / 842-1559
20 West 9th Building
Kansas City, Missouri 64105
Wife: Helen
500 Knickerbocker Place / 561-3901
Kansas City, Missouri 64111

BECK, THORNTON P. Assoc.
5000 Oak / 531-1916
Kansas City, Missouri 64112

BEHRMAN, WILLIAM E. P. Assoc.
5826 Russell - Box 1005 / 432-3445
Mission, Kansas 66202
Wife: Joyce
7133 Greeley / 299-8045
Bethel, Kansas 66109

BELL, DAVID H. M. AIA
Fullerton, Carey, Kaster & Oman
842-7110
1009 Baltimore - Room 320
Kansas City, Missouri 64105
Wife: Gay
3117 West 79th Street / 649-1488
Prairie Village, Kansas 66208

BERKEBILE, ROBERT J. AIA
Patty Berkebile Nelson Love
Architects Incorporated / 474-6910
6 Petticoat Lane
Kansas City, Missouri 64106
Wife: Elizabeth Ann (Libby)
7435 Juniper / 722-5898
Prairie Village, Kansas 66208

BLESSING, ROBERT F., JR. AIA
Horner & Blessing, Architects
221-0540
804 Commerce Bank Building
Kansas City, Missouri 64106
Wife: Jeanne
Lake Quivira / 631-4626
Kansas City, Kansas 66106

BLOOM, JACK L. P. Assoc.
Montgomery Ward / 241-5300
6200 St. John Avenue
Kansas City, Missouri 64123
Wife: Marcia
59 East 107th Street / 942-0083
Kansas City, Missouri 64114

BOEDEFELD, WILLIAM AIA
William Boedefeld, Architect
923-6080
4446 Euclid
Kansas City, Missouri 64130

BOONE, DAN E. AIA
Neville, Sharp & Simon / 421-2030
106 West 14th Street
Kansas City, Missouri 64105
Wife: Betty
7215 West 65th Street / 722-4767
Overland Park, Kansas 66202

BOVARD, WILLIAM R. Emeritus
William Bovard, Architect / 561-7724
3614 Wyoming
Kansas City, Missouri 64111

BOWER, EDMUND L. AIA
Bower & Grimaldi / 753-1155
3527 Broadway
Kansas City, Missouri 64111
Wife: Nelle V.
3614 West 50th Terrace / 236-6823
Shawnee Mission, Kansas 66205

BOWKER, LEON JACK AIA
Black & Veatch / 361-7000
1500 Meadow Lake Parkway
Kansas City, Missouri 64114
Wife: Betrenia
1821 East 76th Terrace / 444-6277
Kansas City, Missouri 64132

BOYLE, KENNETH ROY AIA
Boyle and Wilson / 642-3794
6400 West 95th Street
Overland Park, Kansas 66212
Wife: Norma
6520 Eby / 432-6763
Merriam, Kansas 66202

BRADFORD, LEROY DANIEL AIA
Bradford, Smith & Shepherd
356-6800
Blue Ridge Tower, 4240 Blue Ridge
Boulevard
Kansas City, Missouri 64133
Wife: Carol
3819 Trailridge / 461-4773
Independence, Missouri 64050

BRANDT, FRANK O. AIA
Robert W. Jackson Associates, Inc.
471-7070
911 Main - Commerce Tower
Kansas City, Missouri 64105
Wife: Wanda
2008 West 50th Terrace / 722-5870
Shawnee Mission, Kansas 66205

BREY, DAVID MARTIN AIA
D. M. Brey, Architect / 842-6762
306 East 12th Street
Kansas City, Missouri 64106
Wife: Ruth
214 East 73rd Street / 444-4025
Kansas City, Missouri 64114

BROOKER, ELIZABETH Assoc.
AIA Executive Secretary / 221-3485
816A Commerce Bank Building
Kansas City, Missouri 64106
5328 Canterbury Road / 262-1439
Shawnee Mission, Kansas 66205

BROWN, M. DWIGHT FAIA
Marshall & Brown / 421-2400
1730 TenMain Center
Kansas City, Missouri 64105
Wife: Gayle
815 East 77th Street / 333-2777
Kansas City, Missouri 64131

BROWN, JAMES ROBERT Assoc.
Linscott-Haylett & Associates
531-7700
917 West 43rd Street
Kansas City, Missouri 64111
Wife: Darlene
5015 N. Kensington / 454-0197
Kansas City, Missouri 64119

BROWN, JOSEPH R. P. Assoc.
Black & Veatch / 361-7000
1500 Meadow Lake Parkway
P.O. Box 8405
Kansas City, Mo. 64114
Wife: Betty
9231 Outlook Drive / 642-4312
Shawnee Mission, Kansas 66207

BRUNNER, OTTO P. Assoc.
Brunner & Brunner / 279-0809
1105 Corby Building
St. Joseph, Missouri 64501
Wife: Wilma
2007 Ashland / 232-4604
St. Joseph, Missouri 64506

BUCHANAN, EUGENE PAUL AIA
Buchanan-Winters, Architects
334-3211
8104 New Jersey
Kansas City, Kansas 66112
Wife: Georgia
8104 New Jersey / 299-6335
Kansas City, Kansas 66112

BUMGARNER, JIM G. AIA
Jim Bumgarner Architect & Assoc.
363-6266
7546 Troost, Suite 210
Kansas City, Missouri 64131
Wife: Dorothy
1303 East 61st Street / 333-8216
Kansas City, Missouri 64110

CAREY, JOHN L. AIA
Fullerton, Carey, Kaster & Oman Inc.
842-7110
1009 Baltimore, Suite 320
Kansas City, Missouri 64105
Wife: Patricia
3213 West 82nd Street / 381-6616
Leawood, Kansas 66206

CHAEI, FREDERICK P. AIA
Black & Veatch / 361-7000
1500 Meadow Lake Parkway
P.O. Box 8405
Kansas City, Missouri 64114
Wife: Martha
4821 State Line / 561-9036
Kansas City, Missouri 64112

CHAMBON, EDWARD REGIS AIA
Marshall & Brown / 421-2400
TenMain Center
Kansas City, Missouri 64105
7319 Maywood / 356-4662
Raytown, Missouri 64133

CHAMPLIN, ROBERT EARL AIA
Robert Champlin, Architect
931-8119
4550 Main Street
Kansas City, Missouri 64111
Wife: Katherine
7209 Hadley / 722-0034
Overland Park, Kansas 66204

CHATTERTON, ARTHUR R. AIA
Arthur R. Chatterton, Architect
531-3412
640 East Armour Blvd.
Kansas City, Missouri 64109

CHEESEBROUGH, JOSEPH P., JR.
AIA
Joseph P. Cheesebrough, Architect
221-4199
1126 Swift Avenue
North Kansas City, Missouri 64116
Wife: Natalie
3426 N. E. 48th Street / 452-6023
Kansas City, Missouri 64119

CLARK, PHILLIP JEAN Assoc.
Howard, Needles, Tammen &
Bergendoff / 474-4900
1805 Grand Avenue
Kansas City, Missouri 64108
Wife: Barbara
8009 Falmouth
Prairie Village, Kansas 66208

COMBS, JAMES R. P. Assoc.
Howard, Needles, Tammen &
Bergendoff / 474-4900
1805 Grand Avenue
Kansas City, Missouri 64108
Wife: Becky
8201 West 77th Street / 648-4954
Overland Park, Kansas 66204

CONKLIN, RICHARD JAMES AIA
Design Associates, Inc. / 561-0555
7 West 36th Street
Kansas City, Missouri 64111
Wife: Marilyn
12615 Cherokee Lane / 642-3432
Leawood, Kansas 66209

CONRAD, WILLIAM M. AIA
W. M. Conrad, Architect / 931-0200
John Hancock Building - Suite 610
800 West 47th Street
Kansas City, Missouri 64112
Wife: Esther
6120 West 69th Street / 722-3398
Overland Park, Kansas 66204

COOMBS, KENNETH E. AIA
Kenneth E. Coombs, City Architect
274-1444
City Hall, 414 East 12th Street
Kansas City, Missouri 64106
Wife: Gerry
1347 East 109th Terrace / 942-3958
Kansas City, Missouri 64131

COOPER, CECIL E. AIA
Cooper, Robison & Carlson / 421-6587
418 Commerce Trust Building
Kansas City, Missouri 64106
Wife: Theresa
9721 Lee Boulevard / 642-3529
Leawood, Kansas 66206

CORWIN, E. F. AIA
Parks & Recreation Department
274-1456
City Hall - 13th Floor
Kansas City, Missouri 64106
Wife: Samira
513 N. E. 55th Street / 453-0733
Kansas City, Missouri 64118

CORY, LESLIE W. AIA
L. W. Cory, Architect / 649-0272
4518 West 89th
Leawood, Kansas 66206
Wife: Lorene
9808 Mohawk / 649-0603
Leawood, Kansas 66206

COWLING, ROBERT AIA
Robert Cowling, Architect / 421-6550
1221 Baltimore
Kansas City, Missouri 64105
Wife: Grace
11419 Holly Court / 942-3527
Kansas City, Missouri 64114

CURTIS, CONRAD J. AIA
Curtis Associates, Architects
561-5450
4324 Main Street
Kansas City, Missouri 64111
Wife: Mary
4214 West 63rd Street / 262-4185
Prairie Village, Kansas 66208

DAVIDSON, GEORGE J. Emeritus
7305 Penn / 523-6215
Kansas City, Missouri 64114
Wife: Ruth

DAVIS, AUBREY R. AIA
Kivett and Myers / 842-8110
TenMain Center
Kansas City, Missouri 64105
2516 West 91st Street / 649-0812
Leawood, Kansas 66206

DAVIS, THOMAS E. (GENE)
P. Assoc.
Hollis & Miller / 642-6111
9417 West 75th Street
Overland Park, Kansas 66204
Wife: Myrna
8828 Reeds Road / 648-2518
Overland Park, Kansas 66207

DAW, JOHN LAWRENCE AIA
John Lawrence Daw & Associates
474-9410
912 Baltimore - Penthouse
Kansas City, Missouri 64105
Wife: Alberta
812 West 60th Terrace / 444-2567
Kansas City, Missouri 64113

DEARDORFF, FRED M. Emeritus
7214 West 65th Street / 432-1814
Overland Park, Kansas 66202
Wife: Mary

DOWNS, LAWRENCE LIVINGSTON
AIA
Longview Community College
763-7777
5000 South Longview Road
Lee's Summit, Missouri 64063
4209 B Locust Street / 931-4105
Kansas City, Missouri 64111

DRUMMOND, DONALD FOSTER AIA
Biggs & Drummond / 561-0596
403 John Hancock Building
Kansas City, Missouri 64112
Wife: Jo Ann
6021 Brookside Boulevard / 523-3885
Kansas City, Missouri 64113

DRUMMOND, LAWRENCE JOSEPH
Assoc.
408 West 46th Terrace, Apt. 301
531-0962
Kansas City, Missouri 64112

DUNCAN, GARY L. AIA
McArthur-Jarchow & Associates
561-3456
310 Ward Parkway
Kansas City, Missouri 64112
Wife: Betty
11925 East 56th Terrace / 358-6744
Kansas City, Missouri 64133

DUNCAN, HERBERT E., JR. AIA
Herbert E. Duncan Architects Inc.
561-6900
800 West 47th Street
Kansas City, Missouri 64112
Wife: Pat
Lake Quivira / 631-4415
Kansas City, Kansas 66106

DUNCAN, HERBERT E., SR. AIA
Herbert E. Duncan Architects Inc.
561-6900
800 West 47th Street
Kansas City, Missouri 64112
Wife: Evelyn
439 West 58th Street / 333-3811
Kansas City, Missouri 64113

DUNCAN, ROBERT IRWIN Assoc.
UMKC - Dept. of Gen. Engineering
276-1672
1122 East 48th Street
Kansas City, Missouri 64110
7605 Mohawk Drive / 649-4839
Prairie Village, Kansas 66208

DUY, H. DONALD AIA
Cooper, Robison & Carlson / 421-6587
418 Commerce Trust Building
Kansas City, Missouri 64106
Wife: Dorothy
5227 West 63rd Terrace / 722-2124
Prairie Village, Kansas 66208

EDWARDS, KEITH AIA
Burns & McDonnell / 333-4375
P. O. Box 173
Kansas City, Missouri 64141
Wife: Jodean
9717 Baltimore Avenue / 942-9833
Kansas City, Missouri 64114

EGGEN, JOHN A., JR. AIA
Seligson Eggen, Architects, Planners,
Designers / 421-4133
106 West 14th Street
Kansas City, Missouri 64105
Wife: Gayle
428 Westover Road / 523-7889
Kansas City, Missouri 64113

EIDSON, GLEN E. AIA
Glen E. Eidson, Architect / 361-8053
11 East Gregory
Kansas City, Missouri 64114
Wife: Myrabelle
1208 Romany Road / 523-2926
Kansas City, Missouri 64113

ELLIS, GENE DIRK AIA
Folger & Pearson / 471-8383
1009 Baltimore
Kansas City, Missouri 64105
Wife: Judi
4526 Holly - Apt. 17 / 753-1391
Kansas City, Missouri 64111

ELSWOOD, ELWIN S. AIA
Elswood-Smith-Carlson / 432-5656
5920 Nall
Mission, Kansas 66202
Wife: Nathalie
3228 West 83rd Street / 642-3198
Leawood, Kansas 66206

EVERITT, ROBERT STANTON AIA
Robert Stanton Everitt, Architect
471-4100
2305 Commerce Tower,
P. O. Box 13171
Kansas City, Missouri 64199
Wife: Paulina
107 East South Side Boulevard
252-5422
Independence, Missouri 64055

FAIRHURST, DONALD P. Assoc.
Donald P. Fairhurst, Architect
531-9196
4016 Washington
Kansas City, Missouri 64111
Wife: Marjorie
2711 West 73rd Terrace / 362-7312
Prairie Village, Kansas 66208

FENNEL, JAMES E. AIA
Meyn & Fennel, Architects / 371-1747
1612 State
Kansas City, Kansas 66102
Wife: Barbara
4373 Troup / 287-2198
Kansas City, Kansas 66102

FINK, HARVEY ALLEN AIA
1401 Fairfax Trafficway / 621-1555
Kansas City, Kansas 66115
Wife: Jeanette Lee
10230 Fontana Lane / 381-1263
Overland Park, Kansas 66207

FISHER, FRANK H. AIA
Marshall & Brown, Incorporated
421-2400
TenMain Center, Suite 1730
Kansas City, Missouri 64105
Wife: Polly
4509 West 78th Street / 642-3975
Prairie Village, Kansas 66208

FISHER, WALTER LAWRENCE Assoc.
Elswood-Smith-Carlson / 432-5656
5920 Nall
Mission, Kansas 66202
Wife: Kathryn
112 East Winthrope / 333-6516
Kansas City, Missouri 64113

FOLGER, EVANS AIA
Folger & Pearson, Architects
471-8383
1009 Baltimore
Kansas City, Missouri 64105
Wife: Paula
8223 Cherokee Circle / 648-2343
Leawood, Kansas 66206

FORD, RONALD W. AIA
Herbert E. Duncan Architects Inc.
561-6900
800 West 47th Street
Kansas City, Missouri 64112
Wife: Shirley
7800 Ash / 642-3556
Shawnee Mission, Kansas 66208

FORMAN, W. EMIL P. Assoc.
Lerner Shops Corporation
212-532-6330
460 West 33rd Street
New York City, New York 10001
Wife: Virginia
41 Cornwall Lane / 516-883-5378
Port Washington, New York 11050

FOUNTAIN, JOSEPH EDWIN
P. Assoc.
Burns & McDonnell / 333-4375
4600 East 63rd Street Trafficway
Kansas City, Missouri 64141
Wife: Barbara J.
1420 East 108th Terrace / 942-9225
Kansas City, Missouri 64131

FRANKLIN, GEORGE W. AIA
Franklin-Frieze Architects / 753-1010
3706 Broadway
Kansas City, Missouri 64111
Wife: Frances
2921 West 73rd Street / 362-8398
Shawnee Mission, Kansas 66208

FRASHIER, KENNETH M. AIA
Herrin Frashier Architects
Incorporated / 471-3633
1627 Main, Suite 500
Kansas City, Missouri 64108
Wife: Linda
2204 West 71st Terrace / 362-2360
Prairie Village, Kansas 66208

FRIEZE, CLARENCE I., JR. AIA
Franklin-Frieze, Architects / 753-1010
3706 Broadway
Kansas City, Missouri 64111
Wife: Babs P.
10511 Manor Road / 649-4947
Leawood, Kansas 66206

FUEHRER, TOM AIA
Jackson County Capital Improvement
Dept. / 221-8977
Kansas City, Missouri 64106
Wife: Frances
1227 Arno Road / 361-5870
Kansas City, Missouri 64113

FULLER, EDWARD M. AIA
Edward M. Fuller, Architect
471-3479
701 East 14th Avenue
North Kansas City, Missouri 64116
Wife: Eleanor
503 Sagamore Lane / 452-1232
Kansas City, Missouri 64116

FULLERTON, WILLIAM B., JR. AIA
Fullerton, Carey, Kaster & Oman Inc.
842-7110
1009 Baltimore, Suite 320
Kansas City, Missouri 64105
Wife: Ruby E. (Betty)
121 West 48th Street / 753-7347
Kansas City, Missouri 64112

GEIPEL, HENRY OTTO AIA
Kivett & Myers / 842-8110
TenMain Center
Kansas City, Missouri 64105
Wife: Annemarie
6817 N. Dawn Lane / 741-6011
Kansas City, Missouri 64151

GEIS, LOUIS H. AIA
Assistant Director for Technical
Services
Department of Housing & Urban
Development
One Gateway Center / Fifth and State
Kansas City, Kansas 66117
Wife: Helen
8606 Belinder Road / 649-0490
Leawood, Kansas 66206

GERAUGHTY, THOMAS J. AIA
Morley & Geraughty / 842-8242
911 Main, Commerce Tower #2300
Kansas City, Missouri 64105
Wife: Marjory
1121 N. E. 53rd Street / 453-5259
Kansas City, Missouri 64118

GIBSON, THOMAS W. P. Assoc.
Herbert E. Duncan Architects Inc.
561-6900
800 West 47th Street
Kansas City, Missouri 64112
Wife: Gloria
12504 East 33rd Terrace / 461-5873
Independence, Missouri 64055

GIBSON, WARREN E. P. Assoc.
6341 Roswell / 299-2108
Kansas City, Kansas 66104
Wife: Luella

GIESE, WALTER R. AIA
Burns & McDonnell / 333-4375
P. O. Box 173
Kansas City, Missouri 64141
Wife: Jan
908 West 114th Street Terrace
942-3788
Kansas City, Missouri 64114

GILLESPIE, WILES L. AIA
5727 Newton / 362-8774
Overland Park, Kansas 66202
Wife: Margaret

GORDON III, MERRILL KERN Assoc.
Linscott-Haylett & Associates
531-7700
917 West 43rd Street
Kansas City, Missouri 64111
Wife: Pattie Dean
5210 West 77th Terrace / 649-8595
Prairie Village, Kansas 66208

GRAVES, DEAN W. AIA
Urban Architects / 221-5011
1004 Baltimore
Kansas City, Missouri 64105
Wife: Ginny
5328 West 67th Street / 262-0691
Shawnee Mission, Kansas 66208

GRIMALDI, FRANK AIA
Bower & Grimaldi / 753-1155
3527 Broadway
Kansas City, Missouri 64111
Wife: Mary Jane
5505 Oak / 523-4235
Kansas City, Missouri 64113

GROSS, RAY G. P. Assoc.
Tognascioli & Associates / 421-1280
101 West 11th Street
Kansas City, Missouri 64105
Wife: Nancy L.
P. O. Box 217 / 249-3542
Buckner, Missouri 64016

GUNN, CLAUDE M. AIA
Claude M. Gunn & Associates
371-7777
825 North 7th Street
Kansas City, Kansas 66101
Wife: Helen Louise
7805 Carter Drive / 381-1986
Overland Park, Kansas 66204

GYLLENBORG, RICHARD E. AIA
Hollis & Miller / 642-6111
9417 West 75th Street
Overland Park, Kansas 66204
Wife: Anne
4009 West 66th Street / 722-6364
Prairie Village, Kansas 66208

HAMLIN, HUBERT J. AIA
Northern & Hamlin / 531-9196
4016 Washington
Kansas City, Missouri 64111
Wife: Maxine
3510 West 47th Terrace / 236-5684
Shawnee Mission, Kansas 66205

HANSEN, M. NEAL AIA
Neal Hansen & Associates, P.A.
262-7200
Cloverleaf I Building
6811 West 63rd Street
Overland Park, Kansas 66202
Wife: Adda Lee
7402 West 101st Terrace / 649-7733
Shawnee Mission, Kansas 66212

HARPER, EDWARD HAROLD AIA
John Lawrence Daw & Associates
474-9410
912 Baltimore Avenue
Kansas City, Missouri 64105
Wife: Helen
4901 West 70th Street / 432-3471
Prairie Village, Kansas 66208

HARPER, KERMIT GORDON
P. Assoc.
Schumacher & Associates / 221-4665
1102 Grand
Kansas City, Missouri 64106
Wife: Joann L.
4519 West 72nd Street / 362-8501
Prairie Village, Kansas 66208

HARRIMAN, G. PATRICK AIA
Linscott-Haylett & Associates
531-7700
917 West 43rd Street
Kansas City, Missouri 64111
Wife: Janel
5914 West 68th Street / 432-2512
Overland Park, Kansas 66204

HAYLETT, WARD H., JR. AIA
Linscott-Haylett & Associates
531-7700
917 West 43rd Street
Kansas City, Missouri 64111
Wife: Jeanette
801 West 67th Terrace / 444-2764
Kansas City, Missouri 64113

HAYS, R. PRICE AIA
Hays & Meyer / 649-8284
6900 West 80th Street
Overland Park, Kansas 66204
Wife: Betty Jean
7604 Chadwick / 381-0868
Prairie Village, Kansas 66208

HEDEEN, EVERETT AIA
Howard, Needles, Tammen &
Bergendoff / 474-4900
1805 Grand Avenue
Kansas City, Missouri 64108
Wife: Arlene
8835 Hinning Lane / 381-5186
Shawnee Mission, Kansas 66220

HEIN, RALPH LINDSAY P. Assoc.
Architect & Associate / 561-9222
4026 Broadway
Kansas City, Missouri 64111
Wife: Angela
5438 Westover Road / 523-3556
Kansas City, Missouri 64112

HERRIN, R. KEITH AIA
Herrin Frasier Architects
Incorporated / 471-3633
1627 Main, Suite 500
Kansas City, Missouri 64108
Wife: Patricia
3201 West 98th Street / 648-2364
Leawood, Kansas 66206

HEWITT, JOHN M. AIA
Hewitt & Royer / 561-1070
607 Westport Road
Kansas City, Missouri 64111
Wife: Alice
9309 High Drive / 381-2040
Leawood, Kansas 66206

HOFFMAN, JOHN E. AIA
Burns & McDonnell / 333-4375
P. O. Box 173
Kansas City, Missouri 64141
Wife: Ruth
5900 West 88th Terrace / 642-7990
Overland Park, Kansas 66207

HOLLIS, DONALD R. AIA
Hollis & Miller / 642-6111
9417 West 75th Street
Overland Park, Kansas 66204
Wife: Leah
7642 Hemlock / 381-0696
Overland Park, Kansas 66204

HOLMES, EUGENE H., JR. Assoc.
Marshall & Brown / 421-2400
TenMain Center
Kansas City, Missouri 64105
Wife: Ronnita Ann
9309 West 98th Terrace / 888-5504
Overland Park, Kansas 66212

HORNER, DWIGHT C. AIA
Horner & Blessing, Architects
221-0540
804 Commerce Bank Building
Kansas City, Missouri 64106
Wife: Josephine
Lake Quivira / 631-7962
Kansas City, Kansas 66106

HORNER, JOHN R. AIA
Horner & Krause / 371-1132
1401 Fairfax Trafficway
Kansas City, Kansas 66115
Wife: Beryl
Lake Quivira / 631-8151
Kansas City, Kansas 66106

HUFFMAN, JOHN A. AIA
John A. Huffman, Architect
471-5522
1317 Grand Avenue
Kansas City, Missouri 64106
Wife: Evelyn L.
5701 Central / 444-2065
Kansas City, Missouri 64113

HUBER, DUANE CHARLES P. Assoc.
The Ramos Group, Inc.
Architects/Planners / 421-0270
1004 Baltimore, Suite 316
Kansas City, Missouri 64105
Wife: Joan
1737 Ohio, #10 / (913) 843-3585
Lawrence, Kansas 66044

HUNTER, BENJAMIN ROBERT AIA
4601 Madison Avenue / 531-5777
Kansas City, Missouri 64112
Wife: Jo Ann
8728 Metcalf / 381-4589
Shawnee Mission, Kansas 66212

HUNTER, JOSEPH LESLIE AIA
Marshall & Brown / 421-2400
1730 TenMain Center
Kansas City, Missouri 64105
Wife: Virginia
804 East Devon / 254-7798
Independence, Missouri 64050

HUTCHISON, STUART M. AIA
Linscott, Haylett & Associates
531-7700
917 West 43rd Street
Kansas City, Missouri 64111
Wife: Sarah V.
4637 Charlotte / 753-5364
Kansas City, Missouri 64110

HYMER, MARION G. Assoc.
7918 Johnson Drive / 722-4347
Shawnee Mission, Kansas 66202
Wife: Sandy

JACKSON, JEROME D. AIA
Linscott, Haylett & Associates
531-7700
917 West 43rd Street
Kansas City, Missouri 64111
Wife: Mary
5333 Mission Road / 262-1333
Shawnee Mission, Kansas 66205

JACKSON, ROBERT W. AIA
Robert W. Jackson Associates Inc.
471-7070
911 Main Street,
Commerce Tower #2200
Kansas City, Missouri 64105
Wife: Thelma
724 West Gregory Boulevard
523-3199
Kansas City, Missouri 64114

JAMESON, JOHN E. AIA
John E. Jameson Architect
474-9372
106 West 14th Street
Kansas City, Missouri 64105
Wife: Beverly
8800 Horton / 642-5001
Overland Park, Kansas 66207

JARCHOW, GORDON C. AIA
McArthur-Jarchow & Associates Inc.
561-3456
310 Ward Parkway
Kansas City, Missouri 64112
Wife: Frances
9300 Roe Avenue / 648-3760
Shawnee Mission, Kansas 66207

JARVIS, GARY ROBERT Assoc.
Marshall & Brown / 421-2400
1730 TenMain Center
Kansas City, Missouri 64105
Wife: Claudia Ann
3730 Stonewall Court / 254-2561
Independence, Missouri 64055

JARVIS, ROBERT B. AIA
Marshall and Brown of Kansas
371-6402
255 New Brotherhood Building
Kansas City, Kansas 66101
Wife: Mary
7003 Greeley / 299-3076
Kansas City, Kansas 66109

JOHNSON, WILLIAM HENRY AIA
Wm. H. Johnson, Architect / 421-7482
1207 Grand - #424
Kansas City, Missouri 64106
Wife: Clarissa M.
100 West 95th Street / 363-4354
Kansas City, Missouri 64114

JONES, ELLIS R., II AIA
Ellis R. Jones, Architect / 444-9029
6225 Brookside Blvd.
Kansas City, Missouri 64113
Wife: Nannette
2110 West 71st Terrace / 362-6205
Shawnee Mission, Kansas 66208

JONES, GERRE L. Honorary
Vincent G. Kling & Partners
215/569-2900
1401 Arch Street
Philadelphia, Pennsylvania 19102
Wife: Charlotte
218 Virginia / 201-233-6867
Westfield, New Jersey 07090

KASTER, ROGER P. Assoc.
Fullerton Carey Kaster & Oman Inc.
842-7110
1009 Baltimore
Kansas City, Missouri 64105
Wife: Diane
10701 West 92nd Street / 888-3003
Overland Park, Kansas 66214

KEELING, G. ROBERT AIA
G. Robert Keeling, Architect
648-7254
5419 West 100th Terrace
Overland Park, Kansas 66207
Wife: Barbara
5419 West 100th Terrace / 648-7254
Overland Park, Kansas 66207

KELETI, GEORGE PETER AIA
Peter Keleti & Associates / 561-1131
4550 Main Street
Kansas City, Missouri 64111
Wife: Patricia Lee
4310 Gillham / 931-4220
Kansas City, Missouri 64110

KIENE, RALPH E., JR. AIA
The Kiene & Bradley Partnership
221-2139
1006 Grand Avenue
Kansas City, Missouri 64106
Wife: Marilyn
6536 Belinder / 362-0209
Shawnee Mission, Kansas 66208

KINNEY, EDWIN D. Assoc.
Marshall & Brown / 421-2400
1730 TenMain Center
Kansas City, Missouri 64105
Wife: Barbara J.
1011 West 56th Street / 444-0959
Kansas City, Missouri 64113

KIVETT, CLARENCE FAIA
Kivett and Myers / 842-8110
TenMain Center
Kansas City, Missouri 64105
Wife: Margaret
414 East 45th Street / 561-2846
Kansas City, Missouri 64110

KLUSMAN, ERNEST P. Assoc.
Hollis & Miller / 642-6111
9417 West 75th Street
Overland Park, Kansas 66204
Wife: Rose
5500 West 85th Street / 642-2797
Overland Park, Kansas 66207

KOPPES, ROBERT J. AIA
Herbert E. Duncan Architects Inc.
561-6900
800 West 47th Street
Kansas City, Missouri 64112
Wife: Carolyn
5001 West 66th Terrace / 432-7051
Prairie Village, Kansas 66208

KORFF, EDWIN W. AIA
Marshall & Brown Incorporated
421-2400
1730 TenMain Center
Kansas City, Missouri 64105
Wife: Marvel
6925 West 87th Terrace / 642-9473
Overland Park, Kansas 66207

KOUPAL, HOWARD R. Assoc.
Curtis Associates / 561-5450
4324 Main Street
Kansas City, Missouri 64111
Wife: Janice
8112 Briar / 642-2054
Shawnee Mission, Kansas 66208

KRATZ, EDWIN G. AIA
c/o F. H. A. / 374-5619
601 East 12th Street
Kansas City, Missouri 64106
Wife: Edith
2101 East 73rd Street / 333-3591
Kansas City, Missouri 64132

KRAUSE, PAUL EDWARD AIA
Horner & Krause / 371-1132
1401 Fairfax Trafficway
Kansas City, Kansas 66115
Wife: Donna
Lake Quivira / 631-5643
Kansas City, Kansas 66106

KREEGER, KARL KEITH P. Assoc.
5328 Briar / 236-5333
Mission, Kansas 66205
Wife: Jean Ann

KRIEHN, ARTHUR Emeritus
Arthur Kriehn, Architect / 262-3032
5435 Pawnee
Shawnee Mission, Kansas 66205

KRUG, HENRY D., JR. AIA
McArthur-Jarchow & Associates Inc.
561-3456
310 Ward Parkway
Kansas City, Missouri 64112
Wife: Josephine
4123 West 68th Terrace / 262-5127
Prairie Village, Kansas 66208

KUEHN, SIEGFRIED N. AIA
Angus McCallum & Associates
421-4998
1221 Baltimore
Kansas City, Missouri 64105
Wife: Patricia
4332 Claymont Drive / 453-3622
Kansas City, Missouri 64116

LAKEY, JACK E. AIA
Marshall & Brown Incorporated
421-2400
1730 TenMain Center
Kansas City, Missouri 64105
Wife: Norma K.
8008 Meadow Lane / 648-3443
Leawood, Kansas 66206

LANCE, THOMAS O. AIA
Kivett and Myers / 842-8110
TenMain Center
Kansas City, Missouri 64105
Wife: Susan
7208 Lowell Avenue / 432-1430
Shawnee Mission, Kansas 66204

LAW, BRUCE E. AIA
Marra & Law / 931-9366
1103 East 47th Street
Kansas City, Missouri 64110
Wife: Joan
7104 Harecliff / 353-5543
Kansas City, Missouri 64133

LAWHON, C. EDWARD Emeritus
3884 East 62nd Street / 361-1281
Kansas City, Missouri 64130
Wife: Beatrice

LAWRENCE, PHILLIP ARCHER AIA
Lawrence Associates, Architects
405 Corby Building
St. Joseph, Missouri 64501
Wife: Shirley
2534 Francis Street
St. Joseph, Missouri

LEFEBVRE, GENE E. AIA
Monroe-Lefebvre-Ritchie / 421-7478
1021 Pennsylvania
Kansas City, Missouri 64105
Wife: Bertha
5907 West 77th Terrace / 648-5167
Prairie Village, Kansas 66208

LEIMKUEHLER, ELMER DANIEL, JR.
Assoc.
Hollis & Miller / 642-6111
9417 West 75th Street
Overland Park, Kansas 66204
Wife: Patricia
7709 West 97th Street / 381-3787
Overland Park, Kansas 66212

LEWIS, PAUL F. AIA
Black & Veatch / 361-7000
1500 Meadow Lake Parkway
Kansas City, Missouri 64114
Wife: Hazel
6616 West 80th Terrace / 642-2390
Shawnee Mission, Kansas 66204

LINSCOTT, MAYOL H. AIA
Linscott-Haylett & Associates
531-7700
917 West 43rd Street
Kansas City, Missouri 64111
Wife: Susan
4938 Summit / 561-4873
Kansas City, Missouri 64112

LINSCOTT, WILLIAM MASON AIA
Linscott-Haylett & Associates
531-7700
917 West 43rd Street
Kansas City, Missouri 64111
Wife: Mary
6551 Overbrook Road / 362-6268
Shawnee Mission, Kansas 66208

LINTECUM, DEAN P. AIA
Dean P. Lintecum, Architect
842-4192
127 West Tenth Street
Kansas City, Missouri 64105
Wife: Frances
4820 West 78th Terrace / 642-6858
Prairie Village, Kansas 66208

LINVILLE, WALTER N. AIA
McArthur-Jarchow & Associates Inc.
561-3456
310 Ward Parkway
Kansas City, Missouri 64112
318 West 46th Terrace / 753-5521
Kansas City, Missouri 64112

LOCKWOOD, LARRY GEORGE AIA
McArthur-Jarchow & Associates Inc.
561-3456
310 Ward Parkway
Kansas City, Missouri 64112
Wife: Dallas
6900 West 72nd Terrace / 722-0509
Overland Park, Kansas 66204

LOGAN, PHILLIP W. Assoc.
Hollis & Miller / 642-6111
9417 West 75th Street
Overland Park, Kansas 66204
Wife: Marlene
6007 East 14th Street / 483-1848
Kansas City, Missouri 64126

LONDON, WAYNE C. Assoc.
Herbert E. Duncan Architects Inc.
561-6900
800 West 47th Street
Kansas City, Missouri 64112
5158 Skyline Drive / 362-6996
Mission, Kansas 66205

LOONEY, HERBERT L. Assoc.
Southwestern Bell Telephone Co.
275-2009
1103 Grand Avenue
Kansas City, Missouri 64106
6315 West 62nd Terrace / 362-6329
Shawnee Mission, Kansas 66202

LOTH, WILLIAM S. AIA
Wm. S. Loth, Architect / 432-1020
5437 Johnson Drive,
Mission State Bank Building
Shawnee Mission, Kansas 66205

LOVE, WILLIAM AIA
Patty Berkebile Nelson Love
Architects Incorporated / 474-6910
6 Petticoat Lane
Kansas City, Missouri 64106
Wife: Jimmy
9579 Perry Lane / 888-5948
Shawnee Mission, Kansas 66212

LUND, GEORGE W. AIA
Lund-Balderson / 888-2644
13001 West 95th Street, Suite 200
Shawnee Mission, Kansas 66215
Wife: Jann
8324 High Drive / 642-9741
Leawood, Kansas 66206

McARTHUR, FRANK P. AIA
McArthur-Jarchow & Associates Inc.
561-3456
310 Ward Parkway
Kansas City, Missouri 64112
Wife: Elizabeth
3008 West 71st Street / 362-2460
Prairie Village, Kansas 66208

McCALL, KENNETH A. AIA
McCall-Watson / 931-8000
1200 West 39th Street
Kansas City, Missouri 64111
Wife: Jo
2 N. E. 43rd Terrace / 452-8200
Kansas City, Missouri 64116

McCALLUM, ANGUS FAIA
Angus McCallum and Associates
421-4998
1221 Baltimore
Kansas City, Missouri 64105
Wife: Kathleen
1001 West 61st Street / 361-0063
Kansas City, Missouri 64113

McELWEE, WAYNE HUNT AIA
Black & Veatch / 361-7000
1500 Meadow Lake Parkway - P.O.
Box 8405
Kansas City, Missouri 64114
Wife: Pauline
5900 West 88th Street / 642-3321
Overland Park, Kansas 66207

McGLASHON, J. ROBERT AIA
201 East Santa Fe / 471-6252
Olathe, Kansas 66061
Wife: Dolores
R. R. #1, Box 144 / 441-4615
Olathe, Kansas 66061

McLAIN, KENNETH ROBERT AIA
McLain & Sidorowicz / 287-7727
5407 State Avenue
Kansas City, Kansas 66102
Wife: Ruthelene
8311 Garfield / 299-6611
Kansas City, Kansas 66112

McMULLEN, MAURICE D. AIA
Black & Veatch / 361-7000
1500 Meadow Lake Parkway - P.O.
Box 8405
Kansas City, Missouri 64114
Wife: Dorothy
7302 Edgewood Boulevard / 631-5060
Shawnee Mission, Kansas 66203

McREYNOLDS, DONALD C. AIA
Marshall and Brown / 421-2400
TenMain Center
Kansas City, Missouri 64105
Wife: Wilma E.
6521 Eby / 722-0689
Merriam, Kansas 66202

MANTEL, JAMES E. AIA
Mantel & Steele / 561-0273
4550 Main
Kansas City, Missouri 64111
Wife: Alyce M.
8403 Cherokee Lane / 649-1631
Leawood, Kansas 66206

MARCOUX, JOSEPH V. Emeritus
6528 Montrose Street / 354-9474
Alexander, Virginia 22312
Wife: Clara

MARRA, JAMES V. AIA
Marra & Law / 931-9366
1103 East 47th Street
Kansas City, Missouri 64110
Wife: Ada
8600 Summit / 363-0837
Kansas City, Missouri 64114

MARSHALL, JAMES D., JR. Assoc.
Marshall & Brown / 421-2400
1730 TenMain Center
Kansas City, Missouri 64105
Wife: Shelley M.
9737 Slater Lane / 381-4091
Overland Park, Kansas 66212

MARSHALL, JAMES D., SR. AIA
Marshall & Brown / 421-2400
1730 TenMain Center
Kansas City, Missouri 64105
Wife: Helen
110 East 69th Terrace / 363-3662
Kansas City, Missouri 64113

MASLAN, LEON AIA
Leon Maslan & Company / 842-1528
1005 Grand
Kansas City, Missouri 64106
Wife: Sarah
1215 West 76th Street / 523-5610
Kansas City, Missouri 64114

MAXWELL, WILLIAM DOYLE Assoc.
Herschman & Douglas / 233-8841
1311 Village Drive
St. Joseph, Missouri 64506
Wife: Mary
2709 Faraon Street / 233-5521
St. Joseph, Missouri 64501

MEYER, DALE H. P. Assoc.
Hays & Meyer / 649-8284
6900 West 80th Street
Overland Park, Kansas 66204
Wife: Marilyn
7801 Chadwick / 649-8679
Prairie Village, Kansas 66208

MEYN, RAYMOND E. AIA
Meyn & Fennel / 371-1747
1612 State
Kansas City, Kansas 66102
Wife: Nadine
8722 Greeley Drive / 788-7736
Kansas City, Kansas 66109

MIDGLEY, WILLIAM P. AIA
Kivett and Myers / 842-8110
TenMain Center
Kansas City, Missouri 64105
Wife: Laura
440 West 57th Terrace
Kansas City, Missouri 64113

MIKESELL, RICHARD LEE P. Assoc.
J. Kay Cleavinger / 263-3284
211 West Reed
Moberly, Missouri 65270
Wife: Judith
523 South 5th Street / 263-2638
Moberly, Missouri 65270

MILES, CURRY WARD Assoc.
Nearing and Staats / 831-1415
4800 Rainbow
Shawnee Mission, Kansas 66205
Wife: Barbara
10224 Dearborn / 649-4203
Overland Park, Kansas 66201

MILLER, J. DAVID AIA
Hollis & Miller Architects & Engrs.
642-6111
9417 West 75th Street
Overland Park, Kansas 66204
Wife: Diana
4840 West 75th Street / 362-1191
Prairie Village, Kansas 66208

MISCHLICH, JOHN HENRY P. Assoc.
Burns & McDonnell-Engineering Co.
333-4375
P. O. Box 173
Kansas City, Missouri 64141
4029 North Cleveland / 452-6043
Kansas City, Missouri 64117

MITCHELL, RALPH M. AIA
Burns & McDonnell / 333-4375
P. O. Box 173
Kansas City, Missouri 64141
Wife: Edith
9630 Linwood / 252-9886
Independence, Missouri 64052

MONROE, JOHN C., JR. AIA
Monroe-Lefebvre-Ritchie / 421-7478
1021 Pennsylvania
Kansas City, Missouri 64105
Wife: Wallie
123 Greentree Lane / 453-2123
Kansas City, Missouri 64116

MOORE, ROBERT FINLEY AIA
Marshall & Brown, Incorporated
221-2400
TenMain Center - Suite 1730
Kansas City, Missouri 64105
6528 Summit / 363-2608
Kansas City, Missouri 64113

MORLEY, JOHN C. AIA
Morley & Geraughty / 842-8242
911 Main Street
Commerce Tower, #2300
Kansas City, Missouri 64105
Wife: Marie
6735 Belinder Road / 362-9663
Shawnee Mission, Kansas 66208

MORRIS, MANUEL AIA
Manuel Morris, Architect / 561-7558
Plaza West Center
4528 Belleview, Suite 310
Kansas City, Missouri 64111
Wife: Victoria
2201 West 71st Street
362-6071 & 362-2941
Shawnee Mission, Kansas 66208

MORRIS, MICHAEL L. Assoc.
GSA
1500 East Bannister
Kansas City, Missouri 64131
Wife: Marjorie
9710 Kessler
Overland Park, Kansas 66212

MULLIN, CHARLES E., JR. AIA
Charles E. Mullin, Jr., Architect
321-4227
1401 Fairfax Trafficway
Kansas City, Kansas 66115
Wife: Irene
608 Glen Park Lane / 342-8990
Kansas City, Kansas 66102

MURPHY, JOHN T. FAIA
Keene, Simpson & Murphy / 421-7633
911 Main Street
Commerce Tower, #2300
Kansas City, Missouri 64105
Wife: Martha
968 West 32nd Street / 531-0825
Kansas City, Missouri 64111

MYERS, ALBERT O. Assoc.
Western Electric Co.
WO 4-5400 x 4695
220 Church Street
New York City, New York 10007
Wife: Frances
5111 Poe Avenue
Tampa, Florida 33609

MYERS, RALPH E. FAIA
Kivett and Myers, Architects and
Engineers / 842-8110
TenMain Center
Kansas City, Missouri 64105
Wife: Jean
5530 Mission Drive / 362-8786
Shawnee Mission, Kansas 66208

NEARING, HOWARD H. AIA
Nearing & Staats / 831-1415
4800 Rainbow
Shawnee Mission, Kansas 66205
Wife: Ann
3704 West 67th Street / 831-4474
Shawnee Mission, Kansas 66208

NELSON, DALE A. AIA
Marshall & Brown Incorporated
421-2400
1730 TenMain Center
Kansas City, Missouri 64105
Wife: Lorraine E.
5109 Cambridge / 924-6627
Kansas City, Missouri 64129

NELSON, THOMPSON C. AIA
Patty Berkebile Nelson Love
Architects Incorporated / 474-6910
6 Petticoat Lane
Kansas City, Missouri 64106
Wife: Gillian
621 Huntington Road / 361-7362
Kansas City, Missouri 64113

NELSON, VERN A. AIA
1920 Swift / 221-9838
North Kansas City, Missouri 64116
Wife: Rosa Lee
710 West Red Bridge Road / 942-1710
Kansas City, Missouri 64114

NEVILLE, HOMER F. Emeritus
Neville, Sharp & Simon / 421-2030
106 West 14th Street
Kansas City, Missouri 64105
Wife: Alice
5318 Mission Wood Terrace
722-1479
Shawnee Mission, Kansas 66205

NEWELL, ROBERT EUGENE P. Assoc.
1828 Walnut Street / 471-6338
Kansas City, Missouri 64108
Wife: Roberta
8016 Barkley / 648-7855
Overland Park, Kansas 66204

NIEMACKL, DONALD E. AIA
Kivett and Myers / 842-8110
TenMain Center
Kansas City, Missouri 64105
Wife: Patti
10020 West 68th Street / 432-8671
Merriam, Kansas 66203

NORTHERN, JAMES E. AIA
Northern & Hamlin / 531-9196
4016 Washington
Kansas City, Missouri 64111
Wife: Shirley
6003 East 97th Terrace / 763-2386
Kansas City, Missouri 64134

NORTON, M. GENE AIA
Marshall & Brown
421-2400
1730 TenMain Center
Kansas City, Missouri 64105
Wife: Sallie
4000 West 66th Street / 432-1539
Shawnee Mission, Kansas 66208

NOVAK, GILBERT A. AIA
Turnbull-Novak, Inc. / 363-6525
6724 Troost
Kansas City, Missouri 64131
Wife: Donna
6711 Holmes / 523-2681
Kansas City, Missouri 64131

O'LEARY, RICHARD HUGHES Assoc.
1216 West 25th Street / 836-2966
Independence, Missouri 64052

OMINSKI, JULIAN M. AIA
Lund/Balderson / 888-2644
13001 West 95th Street
Shawnee Mission, Kansas 66215
Wife: Mary Patricia
5206 W. 77th Terrace / 381-4654
Prairie Village, Kansas 66208

OSHIVER, JOSEPH J. AIA
1005 Grand - Lathrop Building, 8th
421-0866
Kansas City, Missouri 64106
Wife: Theodora R.
735 West 101st Terrace / 942-5963
Kansas City, Missouri 64114

OWENS, WILL M. Assoc.
Kansas City Power & Light Company
471-0060, Ext. 444
1330 Baltimore
Kansas City, Missouri 64105
Wife: Ruth Ann
10031 Roe / 381-3565
Overland Park, Kansas 66207

PALMER, DONALD M. AIA
Donald Palmer, Architect / 333-4150
7942 Washington
Kansas City, Missouri 64114
7942 Washington / 333-9250
Kansas City, Missouri 64114

PARRISH, DONALD A. P. Assoc.
Donald A. Parrish & Associates
221-6878
1003 Commerce Tower
Kansas City, Missouri 64105
Wife: Loretta Ann
1231 West 60th Terrace / 361-9443
Kansas City, Missouri 64113

PATTY, R. BRUCE AIA
Patty Berkebile Nelson Love
Architects Incorporated / 474-6910
6 Petticoat Lane
Kansas City, Missouri 64106
Wife: Donna
3840 West 56th Street / 722-4727
Shawnee Mission, Kansas 66205

PAYNE, MORTON AIA
2301 West 63rd Street / 362-7875
Shawnee Mission, Kansas 66208
Wife: Barbara

PEARSON, ARTHUR E. AIA
Folger and Pearson / 471-8383
1009 Baltimore
Kansas City, Missouri 64105
Wife: Zula
4419 North Grand / 452-8460
Kansas City, Missouri 64116

PEEL, THOMAS S. P. Assoc.
Seligson Eggen / 421-4133
106 West 14th Street
Kansas City, Missouri 64105
Wife: Sarah
8303 High Drive / 649-9883
Leawood, Kansas 66206

PERKINS, S. CHARLES AIA
Marshall & Brown Incorporated
421-2400
TenMain Center
Kansas City, Missouri 64105
Wife: E. Fay
2401 North 35th Street / 371-1459
Kansas City, Kansas 66104

PETTIJOHN, JAMES A. Assoc.
Marshall & Brown / 421-2400
TenMain Center
Kansas City, Missouri 64105
Wife: Jan
9709 Bennington / 763-5180
Kansas City, Missouri 64134

PHILO, DONALD R. AIA
McGlashon & Philo / 471-6252
702 Commerce Tower
Kansas City, Missouri 64105
1818 North 30th Street / 281-1641
Kansas City, Kansas 66104

PRICE, SAM R. AIA
Sam R. Price, Architect / 561-2711
4638 J. C. Nichols Parkway
Kansas City, Missouri 64112
Wife: Jean A.
10221 El Monte Lane / 648-7990
Overland Park, Kansas 66207

PRYOR, EUGENE FRANKLIN AIA
621 Fenimore Road
Mamaroneck, New York 10543

RADOTINSKY, JOSEPH W. AIA
Joseph W. Radotinsky & Associates
6224 North 107th Street
Piper, Kansas 66074
Wife: Edna
2901 North 55th Street / 289-5799
Kansas City, Kansas 66104

RAMOS, CHRIS PETER AIA
The Ramos Group Inc.,
Architects/Planners / 421-0270
1008-09 Insurance Exchange Building
21 West 10th Street
Kansas City, Missouri 64105
Wife: Fannie
10311 High Drive / 649-9036
Leawood, Kansas 66206

RANNEY, GERALD A. Assoc.
Hewitt & Royer / 561-1070
607 Westport Road
Kansas City, Missouri 64111
Wife: Barbara
8106 Sagamore Road / 649-7742
Leawood, Kansas 66206

REED, VERNON AIA
Roger Vernon Reed & Associates
781-0994
9 West Franklin Street
Liberty, Missouri 64068
Wife: Darlene
24 Main Court / 781-0994
Liberty, Missouri 64068

RICHARDS, LYNN F. Assoc.
Hollis & Miller / 642-6111
9417 West 75th Street
Overland Park, Kansas 66204
Wife: Claudine
9843 Aberdeen / 649-5184
Leawood, Kansas 66206

RICHARDS, NORBERT E. P. Assoc.
316 Seminole Drive / 796-4492
Independence, Missouri 64056
Wife: Winifred

RITCHIE, JAMES C. AIA
Monroe-Lefebvre-Ritchie / 421-7478
1021 Pennsylvania
Kansas City, Missouri 64105
Wife: Arlene
9512 Horton / 269-4705
Overland Park, Kansas 66207

ROARK, I. LLOYD FAIA
Roark & See / 523-8368
7447 Holmes, Tower Park Building
Kansas City, Missouri 64131
Wife: Aldene
5017 West 66th Terrace / 432-2052
Prairie Village, Kansas 66208

ROBISON, EMMIT M. AIA
Cooper, Robison & Carlson
421-6588
418 Commerce Bank Building
Kansas City, Missouri 64106
Wife: Cora May
7123 Grand Avenue / 523-9143
Kansas City, Missouri 64114

ROONEY, CRAIG EDWARD P. Assoc.
Craig Edward Rooney, Architect
649-7707
4511 West 78th Terrace
Prairie Village, Kansas 66208
Wife: Lois

ROYER, ROBERT W. AIA
Hewitt & Royer / 561-1070
607 Westport Road
Kansas City, Missouri 64111
9205 West 72nd Street / 262-2427
Shawnee Mission, Kansas 66204

RUNNELLS, DAVID B. AIA
Robert W. Jackson Associates Inc.
471-7070
2200 Commerce Towers
Kansas City, Missouri 64105
Wife: Helen
6017 Windsor Drive / 362-2407
Shawnee Mission, Kansas 66205

RYGAARD, H. THORVALD AIA
Southwestern Bell Telephone Company
275-8771
1103 Grand Avenue - Room 1522
Kansas City, Missouri 64106
Wife: Virginia
207 Sunset / 524-2963
Lee's Summit, Missouri 64063

SALISBURY, JOHN L. AIA
Burns & McDonnell Engineering Co.
333-4375
4600 East 63rd Trafficway
Kansas City, Missouri 64130
Wife: Ruby
3911 Homestead Drive / 262-4645
Prairie Village, Kansas 66208

SALTS, RONALD A. P. Assoc.
Black & Veatch / 361-7000
1500 Meadow Lake Parkway
Kansas City, Missouri 64114
Wife: Betty L.
8027 Cleveland / 299-9840
Kansas City, Kansas 66109

SANDFORD, DAN R., SR. Emeritus
Dan R. Sandford & Sons / 531-3450
800 Westport Road
Kansas City, Missouri 64111
Wife: Grace
7736 Howe Drive / 649-0201
Prairie Village, Kansas 66208

SANDFORD, DAN R., JR. AIA
Dan R. Sandford & Sons / 531-3450
800 Westport Road
Kansas City, Missouri 64111
Wife: Aline
845 West 71st Terrace / 333-7372
Kansas City, Missouri 64114

SANDFORD, MAXWELL T. AIA
Dan R. Sandford & Sons / 531-3450
800 Westport Road
Kansas City, Missouri 64111
Wife: Mary
5715 Kenwood / 444-7398
Kansas City, Missouri 64110

SCHARHAG, HERMAN A. AIA
Herman A. Scharhag, Architect
221-9297
1806 Swift Avenue
Kansas City, Missouri 64116
Wife: Phyllis
2 West Englewood / 452-9224
North Kansas City, Missouri 64118

SCHNORF, ALLEN C. P. Assoc.
The Ramos Group Inc.,
Architects/Planners / 421-0270
21 West Tenth
Kansas City, Missouri 64105
Wife: Wilma H.
125 Peck Drive / 257-0857
Independence, Missouri 64056

SCHUETZ, RICHARD J. AIA
7600 East 90th Street / 763-7932
Kansas City, Missouri 64138
Wife: Joan

SCHUMACHER, RAMON Emeritus
Ramon Schumacher, Architect
561-5155
750 West 47th Street
Kansas City, Missouri 64112
Wife: Ina

SCHUMACHER, RAMON, JR. AIA
Schumacher & Associates / 221-4665
1102 Grand Avenue
Kansas City, Missouri 64106
Wife: Helen
5615 West 79th Street / 642-4948
Prairie Village, Kansas 66208

SEE, JOHN J. AIA
Roark & See / 523-8368
7447 Holmes, Tower Park Building
Kansas City, Missouri 64131
Wife: Mary
6039 Walnut / 523-0726
Kansas City, Missouri 64113

SELDERS, ALLAN HUNT AIA
Neville, Sharp & Simon / 421-2030
106 West 14th Street
Kansas City, Missouri 64105
Wife: Mabel
7756 Briar Drive / 648-7664
Shawnee Mission, Kansas 66208

SELIGSON, JACQUELINE ROSE
Assoc.
3800 Baltimore Avenue / 753-2380
Kansas City, Missouri 64111
Husband: Theodore

SELIGSON, THEODORE H. AIA
Seligson Eggen, Architects, Planners,
Designers / 421-4133
106 West 14th Street
Kansas City, Missouri 64105
Wife: Jacqueline "Jacki"
3800 Baltimore Avenue / 753-2380
Kansas City, Missouri 64111

SHARP, MARK S. AIA
Neville, Sharp & Simon / 421-2030
106 West 14th Street
Kansas City, Missouri 64105
Wife: Mary A.
2901 West 51st Street / 236-8618
Shawnee, Mission, Kansas 66205

SHAUGHNESSY, JOSEPH B., JR. AIA
Shaughnessy Associates / Architects
221-7979
1004 Baltimore
Kansas City, Missouri 64105
Wife: Patricia
3668 Madison / 931-3920
Kansas City, Missouri 64111

SHAUGHNESSY, JOSEPH B., SR.
Emeritus
Shaughnessy Associates / Architects
221-7979
1004 Baltimore
Kansas City, Missouri 64105
Wife: Frances
221 West 48th Street / 931-6498
Kansas City, Missouri 64112

SHEPARD, JIM B. P. Assoc.
Jim Shepard Associates
1700 Humboldt
Manhattan, Kansas 66502
Wife: Virginia
7207 Norton / 361-3625
Kansas City, Missouri 64132

SHULER, F. WILLIAM AIA
Dept. Health, Education & Welfare
374-3701
601 East 12th Street,
New Federal Office Building
Kansas City, Missouri 64106
Wife: Alice Jean
3707 East 49th Street North
453-1522
Kansas City, Missouri 64119

SIDOROWICZ, NORBERT J. AIA
McLain & Sidorowicz / 287-7727
5407 State Avenue
Kansas City, Kansas 66102
Wife: Florence
1407 North 81st Street / 299-4393
Kansas City, Kansas 66112

SIEBEN, SIGMUND H. Emeritus
6436 Morningside / 523-8634
Kansas City, Missouri 64113
Wife: Helen

SIME, RICHARD WALLACE AIA
Black & Veatch, Consulting Eng.
361-7000 Ext. 401
1500 Meadow Lake Parkway
Kansas City, Missouri 64114
Wife: Rosetta
7622 Chadwick / 649-1878
Prairie Village, Kansas 66208

SIMON, W. H. AIA
Neville, Sharp & Simon / 421-2030
2002 Power & Light Building
Kansas City, Missouri 64105
Wife: Pam
4900 Pawnee Drive / 432-5832
Shawnee Mission, Kansas 66205

SIMPSON, MAX R. AIA
McArthur-Jarchow & Associates Inc.
561-3456
310 Ward Parkway
Kansas City, Missouri 64112
Wife: Pat
38 West 59th Street / 333-2798
Kansas City, Missouri 64113

SINGLETON, E. CRICHTON AIA
Urban Architects / 221-5011
1004 Baltimore
Kansas City, Missouri 64105
Wife: Marty
4940 Wyoming / 561-9930
Kansas City, Missouri 64112

SIXTA, ROBERT E. AIA
103 Gateway Building / 281-4550
State at Fifth
Kansas City, Kansas 66101
Wife: Betty
9619 State / 788-5974
Edwardsville, Kansas 66022

SKLAR, ETHEL P. Assoc.
Burns & McDonnell / 333-4375
Box 173
Kansas City, Missouri 64141
4127 Locust / 931-5366
Kansas City, Missouri 64110

SLEDD, DONALD ROBERT AIA
Marshall & Brown Incorporated
371-6402
255 New Brotherhood Bldg.
Kansas City, Kansas 66101
7605 Mohawk Drive / 649-4839
Prairie Village, Kansas 66208

SLEZAK, FRANK R. FAIA
Kivett & Myers / 381-4360
7600 State Line - Suite 134
Prairie Village, Kansas 66208
Wife: Lora
827 Valentine Road / 753-1164
Kansas City, Missouri 64111

SMITH, JAMES R. AIA
McArthur-Jarchow & Associates, Inc.
561-3456
310 Ward Parkway
Kansas City, Missouri 64112
Wife: Nadine
8121 Granada / 648-7680
Prairie Village, Kansas 66208

SMITH, LAWRENCE F. AIA
Bradford, Smith & Shepherd
356-6800
4240 Blue Ridge Boulevard,
720 Blue Ridge Tower
Kansas City, Missouri 64133
Wife: Louise
3900 South Chrysler / 254-4808
Independence, Missouri 64055

SMITH, MERLE H. Honorary
American S. & L. Association
236-2234
221 North LaSalle
Chicago, Illinois
6910 North Oakley / 262-0324
Chicago, Illinois

SMITH, PORTER JACKSON AIA
Holly-Aire, Box 110A
Sunrise Beach, Missouri
Wife: June

SMITH, WILLARD G. AIA
Herbert E. Duncan Architects Inc.
561-6900
800 West 47th Street
Kansas City, Missouri 64112
Wife: Phyllis
3005 West 90th Street / 649-1756
Leawood, Kansas 66206

SOLOMON, MEL AIA
220 West 67th Terrace / 363-0222
Kansas City, Missouri 64113
Wife: Linda

STAATS, PAUL S. AIA
Nearing & Staats / 831-1415
4800 Rainbow
Shawnee Mission, Kansas 66205
Wife: Barbara
10215 Dearborn Drive / 642-6824
Shawnee Mission, Kansas 66207

STEELE, CHARLES E., JR. AIA
Mantel & Steele / 561-0273
4550 Main
Kansas City, Missouri 64111
Wife: Phyllis Arlene
5710 Valley Road North / 741-6162
Kansas City, Missouri 64151

STEELE, CLARENCE H., JR. Assoc.
Meyn & Fennel / 371-1747
1612 State
Kansas City, Kansas 66102
Wife: Jeannie Kay
2216 North 82nd Terrace / 788-5605
Kansas City, Kansas 66109

STEVENS, MYLES C., JR. Assoc.
Monroe-Lefebvre-Ritchie / 421-7478
1021 Pennsylvania
Kansas City, Missouri 64105
6711 Parallel / 299-2723
Kansas City, Kansas 66102

SUMNER, GUY L. AIA
McArthur-Jarchow & Associates, Inc.
561-3456
310 Ward Parkway
Kansas City, Missouri 64112
Wife: Helen
6839 Granada Road / 262-5075
Prairie Village, Kansas 66208

SUTTON, IRA P. Assoc.
E. H. Waddington, Architect
842-2127
910 Pennsylvania
Kansas City, Missouri 64105
Wife: Minnie
422 North Jackson / 241-2855
Kansas City, Missouri 64123

SWANK, ROGER H. P. Assoc.
Dept. of Health, Education & Welfare
374-2387
ROFEC, Room 448
New Federal Office Building,
Kansas City, Missouri 64106
Wife: Letha
9623 Kessler / 381-2533
Overland Park, Kansas 66212

SWERINGIN, LARRY WAYNE
Assoc.
Fullerton Carey Kaster & Oman Inc.
842-7110
1009 Baltimore
Kansas City, Missouri 64105
Wife: Ruth Ann
6421 Wornall Terrace / 361-1325
Kansas City, Missouri 64113

SWINNEY, FRANK C. Assoc.
Wolff Zimmer Gunsul Frasca & Ritter
1600 Southwest 4th
Portland, Oregon
Wife: Joan
5120 S.W. Scholls Ferry Road
(503) 292-8467
Portland, Oregon 97225

TANNER, EDWARD W. Emeritus
121 West 48th Street / 931-7010
Kansas City, Missouri 64112
Wife: Katherine K.

TAYLOR, JAMES E. AIA
James E. Taylor & Associates
753-8677
414 Nichols Road
Kansas City, Missouri 64112
Wife: Janie
801 West 114th Terrace / 942-0565
Kansas City, Missouri 64114

TEATE, WILLIAM H. P. Assoc.
Burns & McDonnell / 333-4375
Box 173
Kansas City, Missouri 64141
Wife: Sallie A.
4822 Black Swan Drive / 631-5415
Shawnee Mission, Kansas 66216

TERNEY, JAMES AIA
James F. Terney, Architect / 561-0595
800 West 47th Street, Suite 403
Kansas City, Missouri 64112
Wife: Grace
5431 Mission Drive / 362-7065
Shawnee Mission, Kansas 66208

TERRY, CHARLES LEE P. Assoc.
Robert W. Jackson Associates Inc.
471-7070
2200 Commerce Tower
Kansas City, Missouri 64105
Wife: Pat
4918 West 101st Terrace / 642-1792
Overland Park, Kansas 66207

THOMAS, LARRY DALE Assoc.
Marshall & Brown Incorporated
421-2400
1730 TenMain Center
Kansas City, Missouri 64105
Wife: Ellen
2808 Swift / 842-2894
North Kansas City, Missouri 64116

TOGNASCIOLI, HERSCHEL AIA
Tognascioli & Associates / 421-1280
101 West Eleventh Street
Kansas City, Missouri 64105
Wife: Joanne
26 N. E. 61st Street / 452-3631
Kansas City, Missouri 64118

TRUOG, FREDERICK S. P. Assoc.
John Lawrence Daw & Associates
474-9410
912 Baltimore
Kansas City, Missouri 64105
Wife: Susan
633 West 60th Terrace / 361-5789
Kansas City, Missouri 64113

VOSKAMP, EDGAR B. AIA
2525 Gillham Road / 421-6437
Kansas City, Missouri 64108
Wife: Regina "Jean"
9240 High Drive / 649-8917
Leawood, Kansas 66206

VOSKAMP, RAYMOND L., SR. AIA
Voskamp and Voskamp / 471-4575
18 East 11th Street
Kansas City, Missouri 64106
8311 Meadow Lane / 649-0003
Leawood, Kansas 66206

VOSKAMP, RAYMOND L., JR. AIA
Voskamp and Voskamp / 471-4575
18 East 11th Street
Kansas City, Missouri 64106
Wife: M. J.
7813 Fontana / 649-8982
Prairie Village, Kansas 66208

WATSON, CLARENCE F. (Doc) AIA
McCall-Watson / 931-8000
1200 West 39th Street
Kansas City, Missouri 64111
Wife: Patricia (Pat)
T-32, R. R. #1 / 774-3716
Lake Lotawana, Missouri 64063

WEBB, WILLIAM Assoc.
Marshall & Brown Incorporated
421-2400
1730 TenMain Center
Kansas City, Missouri 64105
Wife: Judith Ann
3941 Roanoke Road
Kansas City, Missouri 64111

WESTVOLD, ROBERT G. AIA
Marshall & Brown / 421-2400
1730 TenMain Center
Kansas City, Missouri 64105
Wife: Beverly
4406 West 77th Place / 642-2591
Prairie Village, Kansas 66208
421-4998

WHEAT, RICHARD A. AIA
Angus McCallum & Associates
1221 Baltimore
Kansas City, Missouri 64105
Wife: Sue
8006 Reinhardt Lane / 642-8099
371-7777
Prairie Village, Kansas 66208

WHITE, DONALD WINSTON Assoc.
Claude M. Gunn & Associates
825 North 7th Street, 300 Siebers
Building
Kansas City, Kansas 66101
Wife: Thelma Jean
3160 North 67th Terrace / 299-2378
Kansas City, Kansas 66109

WHITE, JOHN D. Assoc.
Lund/Balderson, Architects
888-2644
13001 West 95th Street
Lenexa, Kansas 66215
Wife: Viki
7437 Flint, A-204 / 631-9360
Shawnee, Kansas 66203

WILKIN, RODGER A. P. Assoc.
Neville, Sharp & Simon / 421-2030
106 West 14th Street
Kansas City, Missouri 64105
Wife: Betty
5312 West 67th Street / 432-1856
Prairie Village, Kansas 66208

WILLIAMS, HOMER LEE AIA
Homer L. Williams & Associates
454-3737
3805 North Oak Trafficway
Kansas City, Missouri 64116
Wife: Linda
319 N. E. Park Circle / 452-9070
Kansas City, Missouri 64116

WILLIS, LUTHER O. Emeritus
234 East Linwood / 753-8137
Kansas City, Missouri 64111

WILSON, DONALD G. AIA
Hewitt & Royer / 561-1070
607 Westport Road
Kansas City, Missouri 64111
Wife: Susie
621 East 66th Street / 523-0342
Kansas City, Missouri 64131

WILSON, EARL R. AIA
7940 Parallel / 334-1197
Kansas City, Kansas 66112
Wife: Grace
2500 Freeman Avenue / 321-2308
Kansas City, Kansas 66102

WILSON, KENNETH GEORGE AIA
Collaborative: Phase One Plus
842-6044
1722 Main Street
Kansas City, Missouri 64108
Wife: Wanda
9706 Bennington / 761-5893
Kansas City, Missouri 64134

WILSON, WILLIAM H. AIA
Boyle & Wilson, Architects
642-3794
6400 West 95th Street
Overland Park, Kansas 66212
Wife: Rowena
6825 West 100th Street / 649-1423
Shawnee Mission, Kansas 66212

WIMMER, EDWARD AIA
Linscott-Haylett & Associates
531-7700
917 West 43rd Street
Kansas City, Missouri 64111
Wife: Doris
6625 West 72nd Street / 432-5325
Shawnee Mission, Kansas 66204

WINK, DICK P. Assoc.
Black & Veatch / 361-7000
Box 8405
Kansas City, Missouri 64114
Wife: Peggy
Lake of the Forest / 422-5927
Bonner Springs, Kansas 66012

WINKLER, WILLIAM MARION Assoc.
Linscott-Haylett & Associates
531-7700
917 West 43rd Street
Kansas City, Missouri 64111
Wife: Lucy
10849 State Line / 942-6935
Kansas City, Missouri 64114

WOOD, LESLIE J. AIA
Linscott-Haylett & Associates
531-7700
917 West 43rd Street
Kansas City, Missouri 64111
Wife: Dee
10207 West 69th Street / 432-4211
Merriam, Kansas 66203

WOOLLEY, HERBERT M. AIA
Marshall and Brown / 421-2400
TenMain Center
Kansas City, Missouri 64105
Wife: Dorothy
7540 Walnut / 333-1725
Kansas City, Missouri 64114

WUNSCH, BILLY DEAN AIA
Kivett and Myers / 842-8110
TenMain Center
Kansas City, Missouri 64105
Wife: Sally
5910 Lockton Lane / 362-4290
Fairway, Kansas 66205

YOUNG, EDWARD EUGENE Assoc.
Seligson Eggen, Architects, Planners,
Designers / 421-4133
106 West 14th Street
Kansas City, Missouri 64105
Wife: Mary Ellen
5622 Chadwick / 722-1134
Shawnee Mission, Kansas 66205

ZACHRY, JAMES R. AIA
Hewitt & Royer Architects / 561-1070
607 Westport Road
Kansas City, Missouri 64111
Wife: Anne C.
3618 West 61st Terrace / 362-8136
Shawnee Mission, Kansas 66205

ZUCK, JOHN K. Assoc.
Burns & McDonnell / 333-4375
Box 173
Kansas City, Missouri 64141
Wife: Patricia
27 West 97th Street / 942-9641
Kansas City, Missouri 64114

1971 ROSTER



KANSAS CITY

PRODUCERS' COUNCIL, INC.

MANUFACTURERS OF QUALITY CONSTRUCTION PRODUCTS

6811 WEST 63rd STREET
SUITE 113 • CLOVERLEAF BUILDING
OVERLAND PARK, KANSAS 66202
TELEPHONE (913) 362-9400

PRESIDENT... JIM GARD

Acme Brick Co.
362-9400

1ST VICE

PRESIDENT... JIM THOENNES

Cook Paint Co.
471-7811

2ND VICE

PRESIDENT... LARRY HANSEN

Wilson Concrete Co.
287-5725

SECRETARY... ROGER COPELAND

Andersen Corp.
381-4429

TREASURER... WILL OWENS

K. C. Power & Light Co.
471-0060

Acme Brick Company

Jim Gard (M)
Ed Groves (A)
6811 W. 63rd St.
Overland Park, Kansas
66202
362-9400

Andersen Corporation

Roger E. Copeland (M)
10007 Oakridge Drive
Overland Park, Kansas
66212
381-4429
Rust Sash & Door
Company
John B. Rust (A)
Box 5383
Lenexa, Kansas 66215
888-5900

Armco Steel Corporation

Joseph Garrett (M)
Dale Gardels (A)
7000 Roberts St.
Kansas City, Mo. 64125
483-5100

Armstrong Cork Company

J. E. Carbonari (M)
S. M. Bartels (A)
500 West 26th
Kansas City, Mo. 64108
842-9154
842-3324

Automated Building Components

R. L. Sweet Lumber Co.
James R. Graham (M)
Mel Wallis (A)
4400 Roe Blvd.
Kansas City, Kansas
66103
236-6000

Azrock Floor Products Division

Charles F. Nelson (M)
5609 W. 61st Terr.
Mission, Kansas 66202
432-1119
Richard Brown (A)
3111 East 17th
Kansas City, Mo. 64108
483-9500

Bradley Washfountain Company

Rivard & Associates
Frank Jones (M)
John Barrick (A)
2540 West 47th Street
Kansas City, Kansas
66103
262-3090

Carthage Marble Corporation

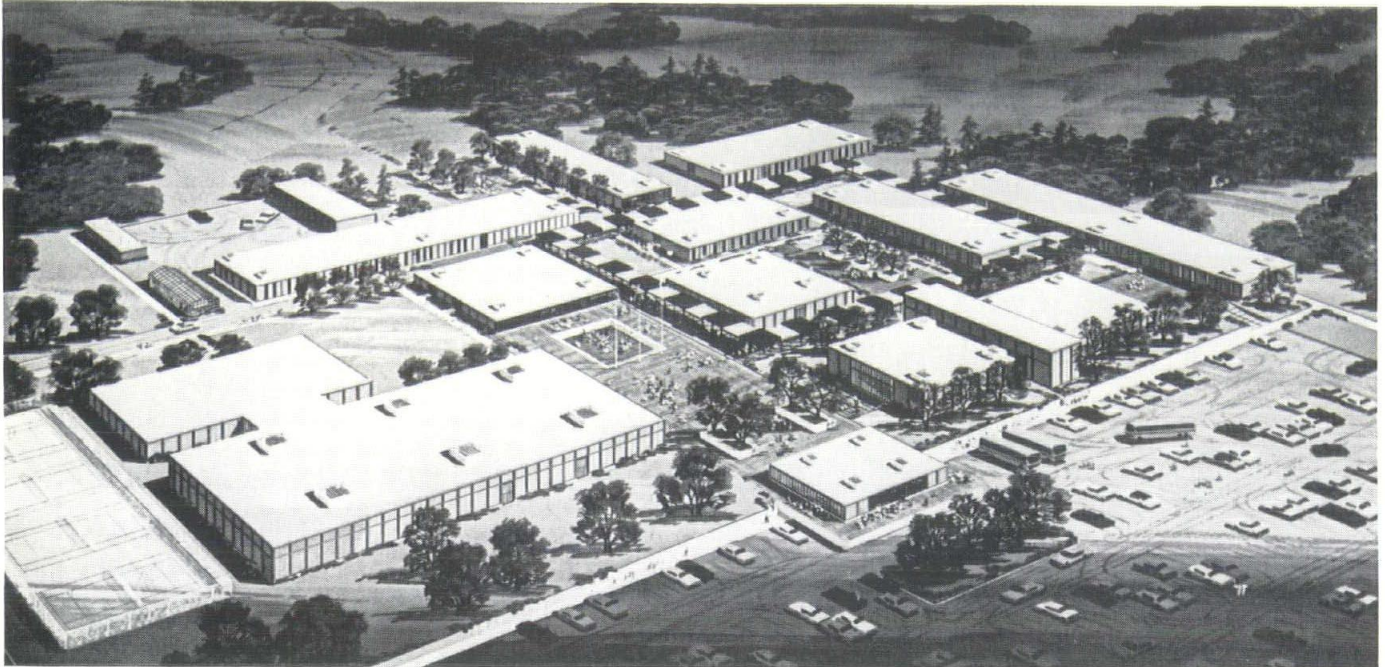
Robert Staats (M)
3030 Wyoming
Kansas City, Mo. 64108
561-7020
Roy Mayes, Jr. (A)
P. O. Box 718
Carthage, Mo. 64836
(417) 358-2145

Construction Specialties, Inc.

E. J. Cody Company
E. J. Cody (M)
C. D. Marshall (A)
228 West 4th Street
Kansas City, Mo. 64105
471-0252

Cook Paint & Varnish Company	James E. Thoennes (M) Jake Richards (A) 1300 Oak Kansas City, Mo. 64106 421-7811	Hillyard Chemical Company	John Oliver (M) 1222 Ash Independence, Mo. 64052 (816) 461-4042 Bill Crawford (A) 302 North 4th St. Joseph, Mo. 64502 (816) 233-1321	Portland Cement Association	Frank A. Beets (M) 1125 Grand Kansas City, Mo. 64106 942-6982 Albin H. Schweers (A) 7221 Woodward Overland Park, Kansas 66204 262-0665
Day-Brite Lighting Company	M. H. Burwell Company Milt Burwell (M) 2022 Main Kansas City, Mo. 64108 221-0868	Inland-Ryerson Construction Products Co.	W. D. (Bill) Epperson (M) 2814 East 87th Terr. Kansas City, Mo. 64132 361-6600	H. H. Robertson Company	Don Sandberg (M) 4518 West 89th Street Room 107 Prairie Village, Kansas 66207 381-3486
Dover Corporation	Elevator Division Al Pinkham (M) Gene Wood (A) 1316 McGee Kansas City, Mo. 64106 531-7806	Johns-Manville Sales Corporation	Dick Triggs (M) 1222 Quebec North Kansas City, Mo. 64116 471-0202	Rohm and Haas Company	Jim Troester (M) W. Sproul (A) 1717 W. 91st Place Kansas City, Mo. 64114 361-7100
Dwyer Products Corporation	Doolittle Equipment Co. Robert H. Rogers (M) Lloyd Doolittle (A) 1301 Westport Road Kansas City, Mo. 64111 753-4455	Kansas City Power & Light Company	Will Owens (M) Ext. 444 Jerry Custead (A) Ext. 448 1330 Baltimore Kansas City, Mo. 64105 471-0060	Sargent & Company	James A. Berg (M) 7815 Wyoming Kansas City, Mo. 64114 444-2440 John B. Miller (A) 7421 Broadway Kansas City, Mo. 64114 361-3674
The Flintkote Company	Harold L. Weaver (M) 1712 North 44th Street Kansas City, Kansas 66102 287-1336	Kentile Floors, Inc.	R. B. Koob (M) Cal Caldwell (A) 106 West 14th, Suite 1900 Kansas City, Mo. 64105 221-0820	The Sherwin-Williams Company	James E. Pike (M) Burk Brinton (A) 1520-22 Grand Kansas City, Mo. 64141 471-3181
GAF Corporation	Floor Tile Division Richard D. Fey (M) 3132 South 53rd Terr. Kansas City, Kansas 66205 831-1161	Kawneer Company	Harry Wittwer (M) Roy Annis (A) 1500 East 12th Ave. North Kansas City, Mo. 64116 221-3911	The Stanley Works	Hardware Division Gordon O'Steen, Jr. (M) 7522 Kay Lynne Road Stanley, Kansas 66084 681-2665
The Gas Service Company	Bob Hays (M) John Luff (A) K. C., Mo. Div. General Office 700 Scarritt Building 824 Grand Kansas City, Mo. 64142 221-3300	Koppers Co., Inc.	Dale Hagan (M) Box 124 Kansas City, Mo. 64141 531-6680 474-9383	U. S. Ceramic Tile Company	Home of Tile Co. Ford Miehl (M) Roger Ewing (A) 2514 Summit Kansas City, Mo. 64108 421-6265
W. R. Grace & Company	Zonolite Division Bob Johnson (M) 408 West 101st St. Terr. Kansas City, Mo. 64114	Libbey-Owens-Ford Company	Allen K. Billingsley (M) 910 Dwight Building Kansas City, Mo. 64105 842-5360	U. S. Plywood Corporation	Jack Sproul (M) 3225 Harvester Road Kansas City, Mo. 66115 342-1210
Granco Steel Products Company	John Kirse (M) R. L. Mathews (A) 1609 West 92nd Kansas City, Mo. 64114 363-2411	Moen Faucet Division	Stanadyne Marty Fannin (M) 409 West 104th Kansas City, Mo. 64114 942-5456 W. E. Barney (A) 732 North 6th St. Terr. Blue Springs, Mo. 64015 (816) 229-8773	Westinghouse Electric Corporation	Joe Rollins (M) 1215 West 12th Street Kansas City, Mo. 64141 421-7122
The E. F. Hauserman Company	Frank Feagles (M) Bill Horner (A) 1637 Iron Street North Kansas City, Mo. 64116 842-9607	Owens-Corning Fiberglas Corp.	Jay Mangan (M) Tom Brossia (A) 4900 Oak Kansas City, Mo. 64112 753-7725	Weyerhaeuser Company	Herb Eck (M) Box 12400 North Kansas City, Mo. 64116 741-1488
		PPG Industries, Inc.	Glass Division Glenn S. Jones (M) 1201 Burlington North Kansas City, Mo. 64116 842-8350	Wilson Concrete Company	Larry Hansen (M) Rich Drakulich (A) P. O. Box 11148 Kansas City, Kansas 66111 287-5725

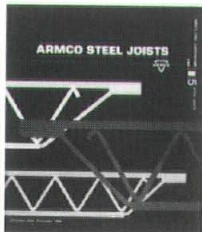
Hillsboro High School, Hillsboro, Oregon; designed by De-Kanter and Holgate, A.I.A., Portland, Oregon; Armco Joists supplied by Meriwether Products, Inc., Portland, Oregon



This school cut costs \$3 per sq ft with help from Armco Deep Shortspan Joists

More and more, designers are using Armco Joists for roof framing to achieve aesthetic objectives as well as economic ones. This Oregon school is a good example of what we mean. Its cluster of buildings creates a series of courtyards and gardens — visual drama that accents the excitement of learning. Yet construction costs were held to \$18.90/sq ft, compared to an average of \$22+ for similar projects in the area.

Part of the reason for lower costs lies in the use of Armco Deep Shortspan Joists. With spans up to 56 feet, they offer a greater choice of load/span/cost combinations. Their machine fabrication also cuts costs. And their load-carrying capacity is greater, with depths to 28 inches. Very likely you, too, will find an attractive application for them in your next school project. Armco Steel Corporation, Department K-101, 7000 Roberts Street, Kansas City, Missouri 64125.



ARMCO STEEL





Offering the
architect the talent
and experience to explore
new approaches for
your clients.

MODERN CENTER INC.

4149 Pennsylvania Kansas City, Missouri Telephone WE 1-9429

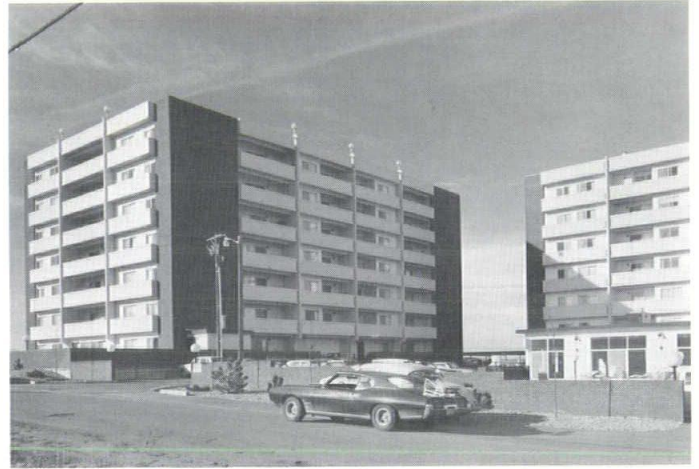
Now, to serve you!

ROCKY MOUNTAIN PRESTRESS, INC.

A complete line of STRUCTURAL Concrete Products from our Kansas City plant.

PRESTRESSED CONCRETE INSTITUTE

ACTIVE MEMBER



Rocky Mountain Prestress, Inc. buildings offer these advantages:

- Minimum interior column spacing: maximum use of floor space.
- Maintenance free concrete provides excellent fire ratings.
- Reduced construction time.
- Low initial costs.

Plant location
8905 Kaw Drive
Edwardsville, Kansas

P. O. Box 11087
Kansas City, Kansas
66111
Phone (913) 441-3100



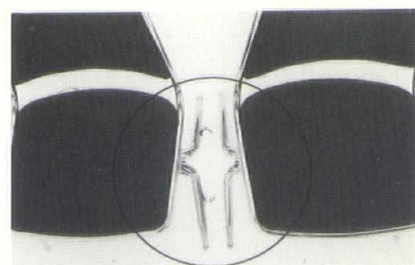


New Astro® Upholstered Stack Chairs

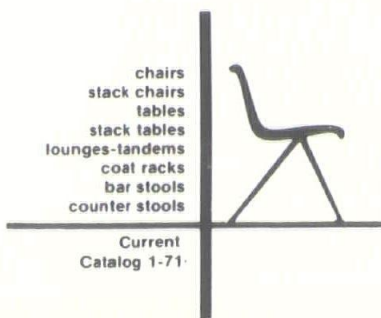
For the first time a truly functional multi-purpose upholstered chair. The patented Astro® gang is available on one side only (it's fast and positive) permitting auditorium row usage but is not obtrusive for dining and other activities. Better stacking for space saving, safety and handling. Patented steel frame surrounds upholstered seat and back, reducing damage to upholstery from handling. Eliminates the expense of dollies by using our two-wheeler. Especially suitable in fine installations for Civic Centers, Convention Headquarters, Motels, Hotels, etc.



Stacks 12 high with or without arms.



Ganging attachment (patented—one side only)



fixtures Mfg. Corp.

Commercial Furniture In Advanced Design

1842 CRYSTAL — KANSAS CITY, MO. 64126
PHONE COLLECT 816/241-4500

WHATEVER IT TAKES TO GET THE JOB DONE . . .



The manager's job has never been easy. That's why we make it our job to plan for what is needed, where and when it is needed. Well-planned working space helps production flow, be it for bank, business office or country club.

Let our design department work with you for Total Environment Planning—office furniture, windows, walls and floor treatments that reflect you and your company's personality.

Remember, whatever it takes to get the job done, we can provide it.

Bauman Business Interiors

Division of **SCOTT-RICE**

"A Partner On The Grow With LVO Corporation"

2940 Main Street
Kansas City, Missouri
Telephone (816) 531-1600

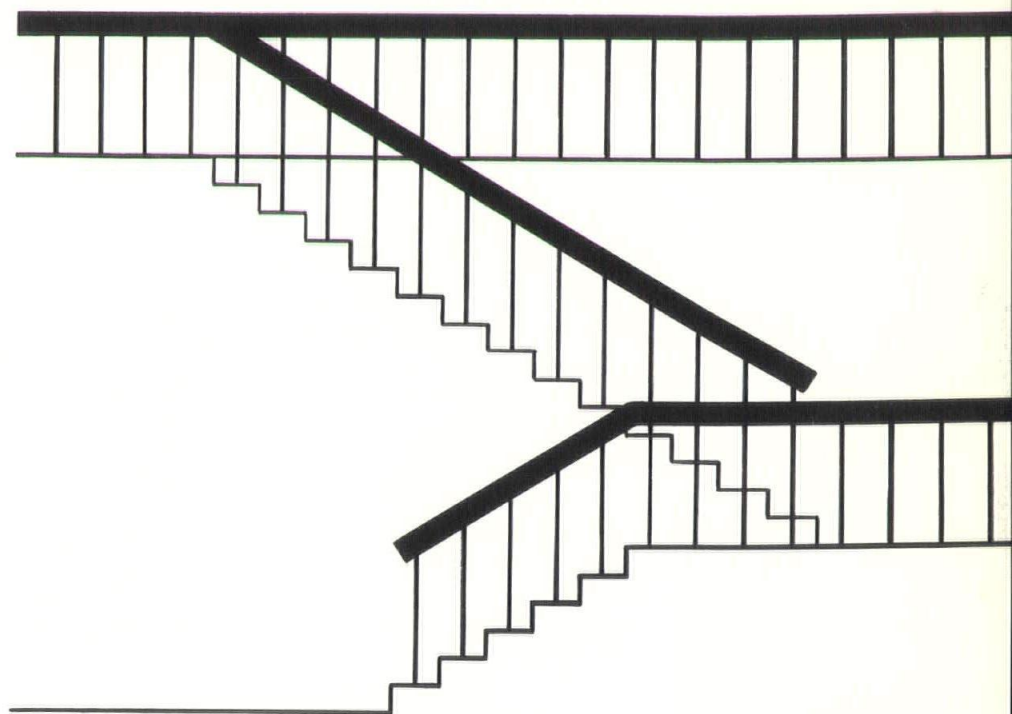
221 North Main
Wichita, Kansas
Telephone (316) 265-2688

LIVERS BRONZE COMPANY
P.O. BOX 6206 KANSAS CITY, MO. 64126

LIVERS BRONZE COMPANY

P.O. BOX 6206 KANSAS CITY, MO. 64126

ARCHITECTURAL METAL
ALUMINUM • BRONZE
STAINLESS STEEL



UNIQUE FOUR-POINT SERVICE

If you want your Aluminum, Bronze and Stainless Steel Railing engineered by experts, built by experts and guaranteed by one of the largest railing fabricators in America, then this service is for you.

1. — A complete engineering and drafting service.
2. — We fabricate your design to approved shop drawings.
3. — Our skilled supervisors install the finished product.
4. — We accept full responsibility for the finished job.

We know it will work after we install it because we see that it does.

CLIP AND MAIL
COUPON FOR
COMPLETE CATALOG



PHONE (816) 833-2828

LIVERS BRONZE COMPANY
Post Office Box 6206
Kansas City, Mo. 64126

Please send complete catalog

Firm _____

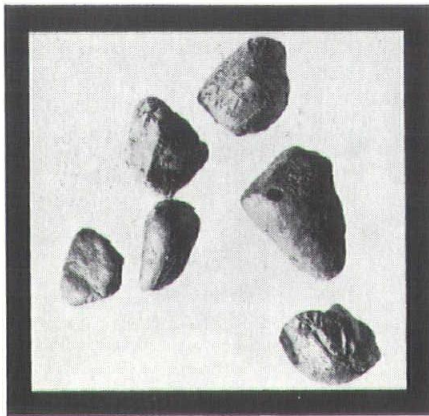
Attention of _____

Address _____

City and State _____ Zip _____



SPECIFY THE BEST



Now Ceramic Coated!

Buildex is the rotary kiln processed expanded lightweight aggregate for structural concrete, with a ceramic coating. Buildex also follows through on each and every structural job with, "on the job," quality control to insure quality structural concrete.

STRUCTURAL LIGHTWEIGHT AGGREGATES

BUILDEX, INC.

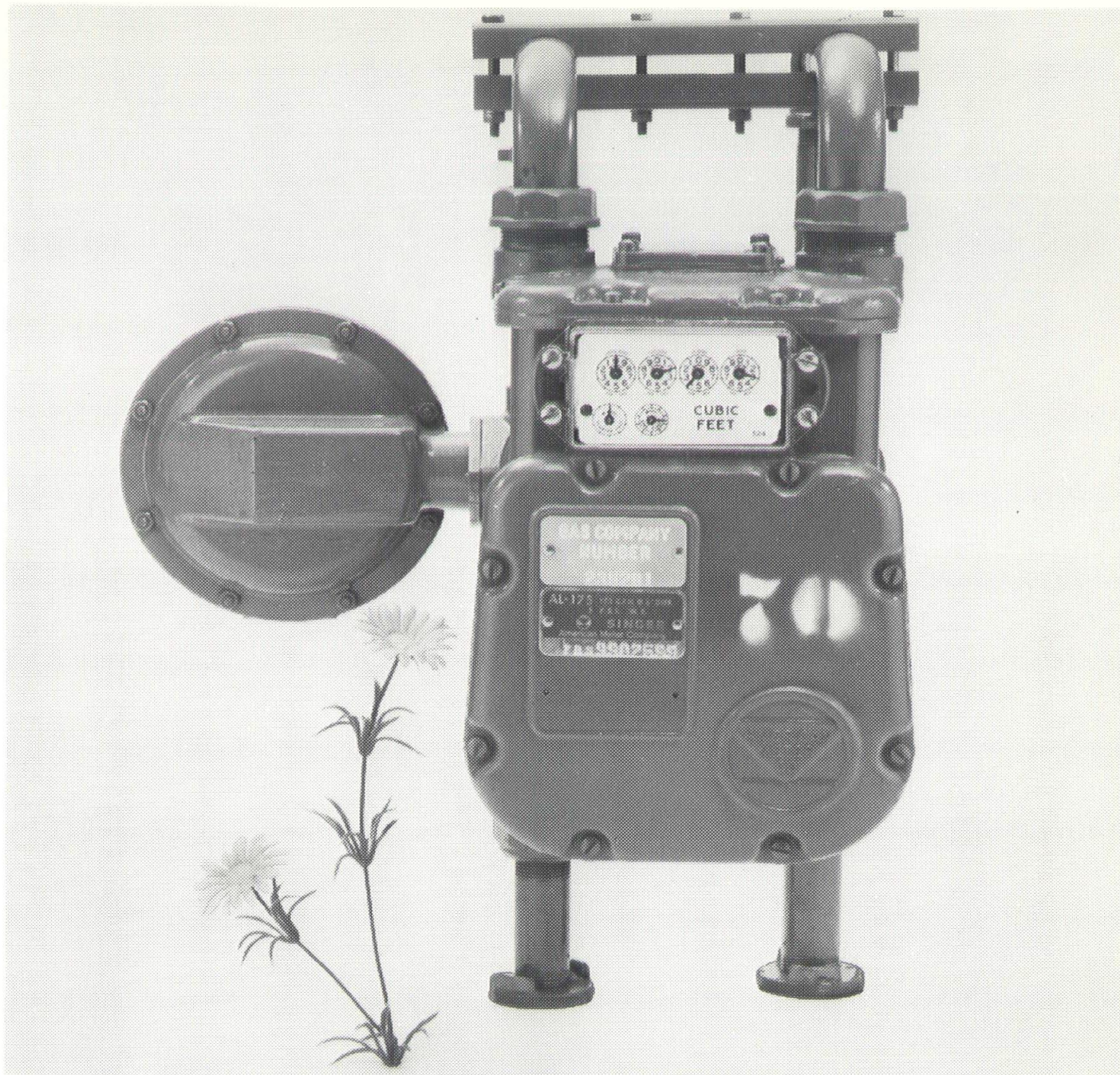
PLANTS AT:

Marquette, Kansas — 913 546-2276

Ottawa, Kansas — 913 242-3271

SALES AT:

Ottawa, Kansas — 913 242-2177



public servant

. . . on duty 365 days a year . . . part of a task force of 700,000 meters on the lines of THE GAS SERVICE COMPANY in a four-state area.

Accuracy is the prime qualification required for this special assignment. In measuring the amount of natural gas you use, your gas meter must function as precisely as a fine watch. By installing only the most accurate equipment and maintaining it properly, our customers are assured their natural gas requirements are accurately measured.

You as a customer of THE GAS SERVICE COMPANY enjoy one of the lowest rates in the nation; however, you can expect your bill to be higher

during the winter months of peak usage when your meter will click off many more cubic feet of gas than normal.

Remember . . . your meter not only registers the amount of gas you use; it also measures the amount of comfort, convenience and dependability you've come to expect from THE GAS SERVICE COMPANY.


THE GAS SERVICE CO.

HAYDITE

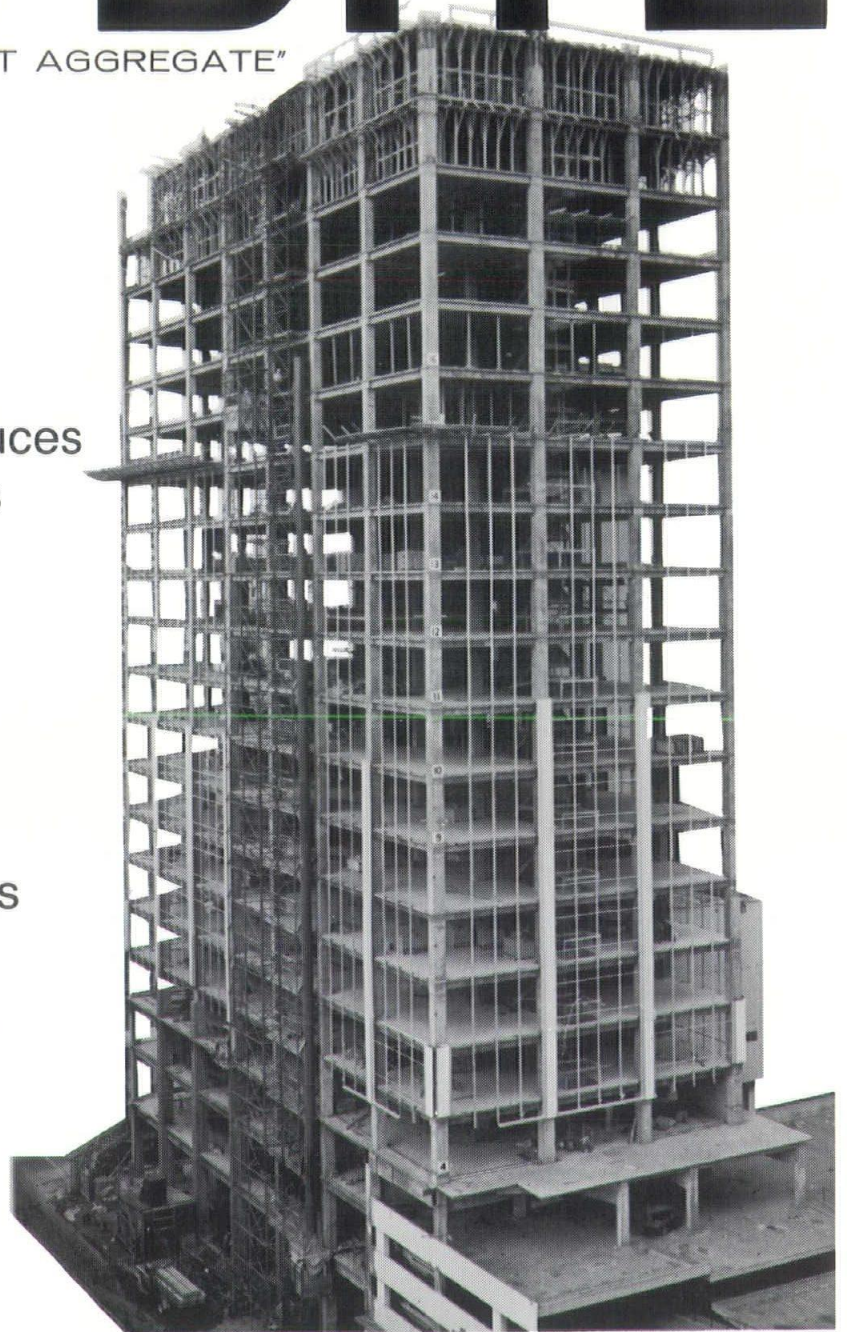
"THE ORIGINAL LIGHTWEIGHT AGGREGATE"

Lightweight Structural
Haydite Concrete Reduces
Weight and Cuts Costs
Through —

- less concrete
- less labor
- longer spans
- smaller columns
- less reinforcing
- smaller foundations

plus —

- superior fire rating



Haydite aggregate is now "VITRI-COATED" for improved quality control through all phases of the job...from mix design to finishing. For detailed information, see your local Ready Mix producer, or contact us direct.

CONSTRUCTION THE MATERIALS
CARTER-WATERS
KANSAS CITY CORP MO. 64108
2440 Pennway GRand 1-2570

Producers of
Haydite aggregate at
Centerville, Iowa, and
New Market, Missouri.



**Remember how it was
when you were a kid?**

It's enough to give you a headache.

Bad lighting anywhere is hard on the eyes.

In a school it's a whole lot worse.

Because 75% of what you learn comes from what you see. If you don't have the light to see as well as you should, you don't learn as well as you should.

And good light means more than just quantity. The light must be directed properly. Or you'll get glare and bright spots which not only cut down on what you see, but also cause eyestrain. The light must be of good quality so colors come out right. And there's much more.

School lighting today is a lot better than it was when

you were a kid. But still, in many cases, it's not as good as it should be.

If you want to know how well your school is lit, why not ask our professional lighting consultants to come out?

They'll analyze the lighting and make specific recommendations on how it can be improved.

Or if you're just building a new school, all the better. It's much easier to install good lighting right from the start.

This service is free for the asking. Just call 471-0060.

It could be a big step toward making your children's educational future a whole lot brighter.

KCPL The Power & Light People

Kansas City Power & Light Company



Cook Colors For Every Body!

115 Cook Paint Colors* are used on many different models and styles of 1971 automobiles. Detroit automobile manufacturers establish rigid specifications for tough, durable colors to meet the demands of a quality demanding public. Cook meets those requirements.

What we do for the automobile manufacturer we also do for you . . . tough, durable finishes, colorful and stylish to meet the demands of your clients. When you're 'making plans' for a new car . . . specify a Cook Color! When you're planning for a client . . . specify Cook products and

Call: JIM THOENNES 421-7811

*A list of these 115 colors will be mailed to you on request.

COOK PAINT AND VARNISH COMPANY

GENERAL OFFICES: KANSAS CITY, MISSOURI

FACTORIES: KANSAS CITY • HOUSTON • DETROIT • MILPITAS • HIALEAH

SKYLINES

Suite 215, John Hancock Building
800 West 47th Street
Kansas City, Missouri 64112

TO:

LIBRARY
AMER INST OF ARCHIT
1735 NEW YORK AVE NW
WASHINGTON DC 20006

BULK RATE
U. S. POSTAGE
PAID
KANSAS CITY,
PERMIT NO. 3