

LOUISIANA ARCHITECT

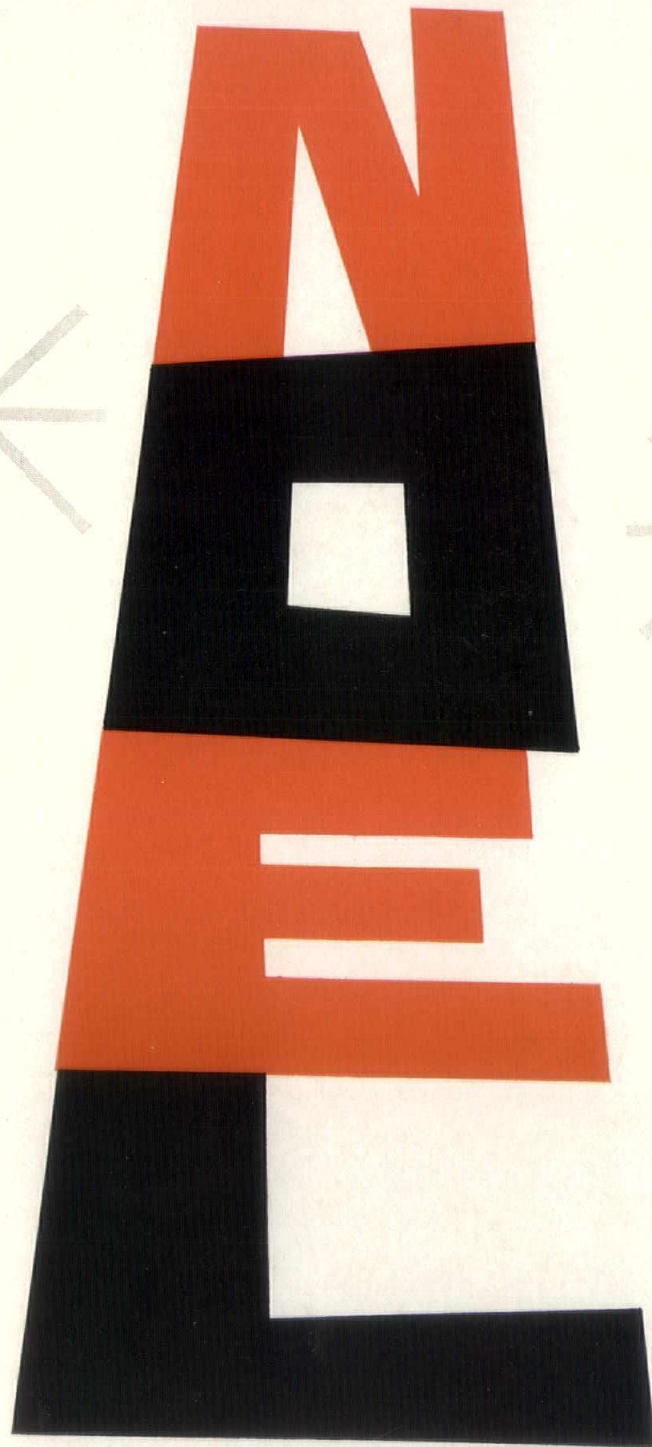
DECEMBER

1962

29.
AMERICAN INSTITUTE
OF
ARCHITECTS

DEC 26 1962

LIBRARY



OFFICIAL PUBLICATION OF THE LOUISIANA ARCHITECTS ASSOCIATION

Scharff



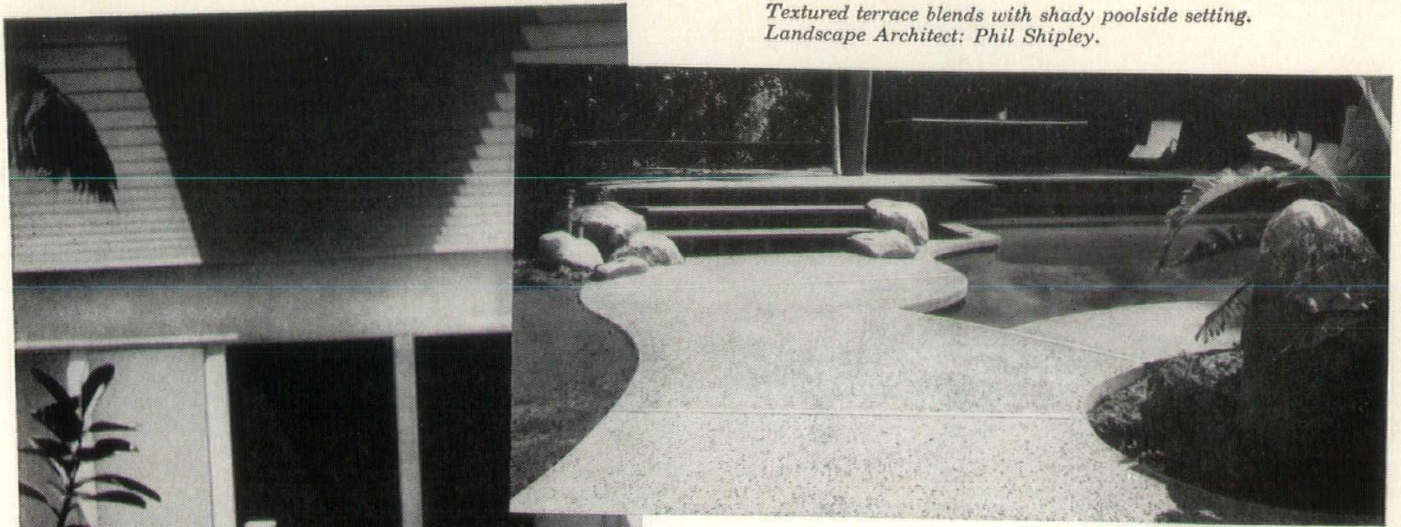
hammering home a point? WELL, MAYBE WE ARE. BUT IT SERVES TO ILLUSTRATE THAT WHEN THE WORLD'S FINEST ALUMINUM WINDOWS ARE MADE, THEY PROUDLY BEAR THE BIG M, SYMBOL OF EXCELLENCE OF MIAMI WINDOW CORPORATION. CHANCES ARE, YOU WON'T HAMMER ON OUR WINDOWS, BUT IT'S COMFORTING TO KNOW THAT THEY'RE DESIGNED TO STAND MANY YEARS OF USE — AND ALMOST ANY ABUSE!

IT'S NOT A MIAMI WINDOW UNLESS IT'S MADE BY
MIAMI WINDOW CORPORATION

P. O. BOX 48-877, INTERNATIONAL AIRPORT BRANCH, MIAMI, FLORIDA



*Textured terrace blends with shady poolside setting.
Landscape Architect: Phil Shipley.*



for dramatic
color
effects

...MODERN CONCRETE

Exposed aggregate techniques are bringing new visual impact to concrete-paved surfaces in today's patios and gardens. Intriguing color and texture possibilities are endless.

Tiny chips to fist-sized rocks, sparkling white to dramatic black, aggregates of all kinds combine with a rainbow choice of concrete colors.

Landscape architects everywhere choose modern concrete to bring new beauty to their best ideas.

PORTLAND CEMENT ASSOCIATION

611 Gravier Street, New Orleans 12, Louisiana

A national organization to improve and extend the uses of concrete



*Pebbled concrete fits the modern approach.
Landscape Architect: Richard Beeson.*



Boxed steps and patio gain added interest from colorful design.

LOUISIANA ARCHITECT

OFFICIAL JOURNAL OF THE LOUISIANA ARCHITECTS ASSOCIATION

1962

NUMBER 2

VOLUME 2

THE LOUISIANA ARCHITECT, Official Journal of the Louisiana Architects Association of the American Institute of Architects, is owned by the Louisiana Architects Association, not for profit, and is published monthly, Suite 200, Capitol House Hotel, Baton Rouge, La., telephone DI 8-4331. Editorial contributions are welcomed but publication cannot be guaranteed. Opinions expressed by contributors are not necessarily those of the Editor or the Louisiana Architects Association. Editorial material may be freely reprinted by other official AIA publications, provided full credit is given to the author and to the LOUISIANA ARCHITECT for prior use.

... Advertisements of products, materials and services adaptable for use in Louisiana are welcome, but mention of names or use of illustrations of such materials and products in either editorial or advertising columns does not constitute endorsement by the Louisiana Architects Association. Advertising material must conform to standards of this publication, and the right is reserved to reject such material because of arrangement, copy, or illustrations.

Printed by Franklin Press, Inc.

Editorial Advisors—W. J. Evans, W. R. Brockway

Editor—Myron Tassin

Publisher—Louisiana Architects Association

Consulting Art Director — John H. Schaeffer.

Cover Art—John H. Schaeffer

LAA OFFICERS — 1962

President — M. Wayne Stoffle, New Orleans Chapter
First Vice-President—Joseph M. Brocato, Central Louisiana Chapter
Second Vice-President — Marshall H. Walker, Shreveport Chapter
Secretary-Treasurer — William R. Brockway, Baton Rouge Chapter

IN THIS ISSUE

St. Christopher Martyr Convent	6
Regional Conference Recipe	8
Vieux Carré Commission — Part II	10
Stone Brothers Brochure	12
LAA May Organize Spring Tour	14
News, Notes, Quotes	16

Christmas Cover by John H. Schaeffer
Technical Assistance by Albert Crochet

DIRECTORS—IMMEDIATE PAST PRESIDENT: W. J. Evans; BATON ROUGE CHAPTER, John Bani, Clifton C. Lasseigne; NEW ORLEANS CHAPTER, Murvan M. Maxwell, Carl L. Olschner, F. V. von Osthoff, August Perez III; SHREVEPORT CHAPTER, Pierce Meleton, Ralph Kiper; SOUTHWEST LOUISIANA CHAPTER, John M. Gabriel; CENTRAL LOUISIANA CHAPTER, Walter Price; SOUTH LOUISIANA CHAPTER, Manny Veltin; MONROE CHAPTER, Roy Johns.



Blumcraft

ADJUSTABLE ANCHORING SYSTEMS

SOLVES PROBLEMS OF SECURING RAILINGS TO CONCRETE BY BECOMING AN INTEGRAL PART OF THE STAIR STRUCTURE

- INSURES EXTREME RIGIDITY
- REDUCES COSTLY FIELD LABOR
- ELIMINATES BREAKAGE IN MASONRY
- ADJUSTABLE FOR POST ALIGNMENT

 *Blumcraft*

OF PITTSBURGH

GENERAL CATALOG OF COMPLETE BLUMCRAFT LINE AVAILABLE ON REQUEST
COPYRIGHT 1962 BY BLUMCRAFT OF PITTSBURGH • 460 MELWOOD STREET, PITTSBURGH 13, PENNSYLVANIA



Award of Merit



A · I · A

**GULF STATES REGION
1962 CONFERENCE**

PHASE ONE: THE CONVENT

**ST. CHRISTOPHER MARTYR
CONVENT
AND SCHOOL ADDITION**

METAIRIE, LA.

**J. BUCHANAN BLITCH, AIA
ARCHITECT**

A new school addition and convent constructed in St. Christopher Martyr Parish, Metairie, as part of a 15-year master plan of parish development, were recently honored with an Award of Merit at the Gulf States Regional Conference of the A. I. A.

The master plan established the orderly development of the rapidly growing Catholic Church facilities on a limited site already overburdened with prior construction. Within the framework of this master plan the first two phases have been completed.

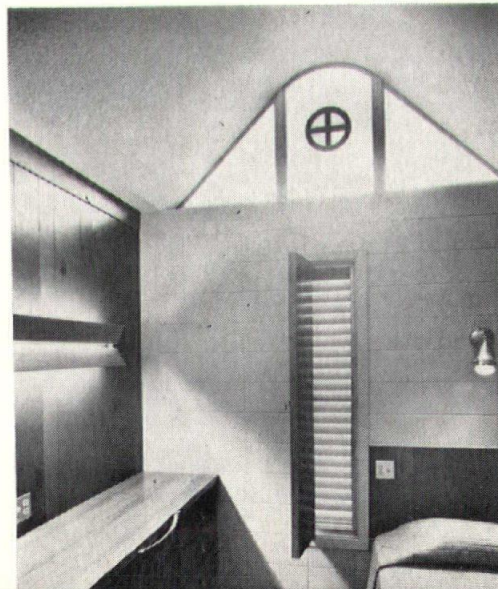
Phase One is a convent for the Marianite Sisters of the Holy Cross, the teaching staff, designed to provide comfortable though austere living accommodations centered about a small chapel symbolizing the true center of dedication and devotion of the nuns. Phase Two is a classroom addition to the existing school plant, the design of which reflects the rhythmic elements of the earlier structure without imitation of its archaic forms.

Pastor of St. Christopher Martyr Parish is Reverend Father Maurice J. Gubler. Both of the completed phases were constructed by Schaff Brothers, Inc.

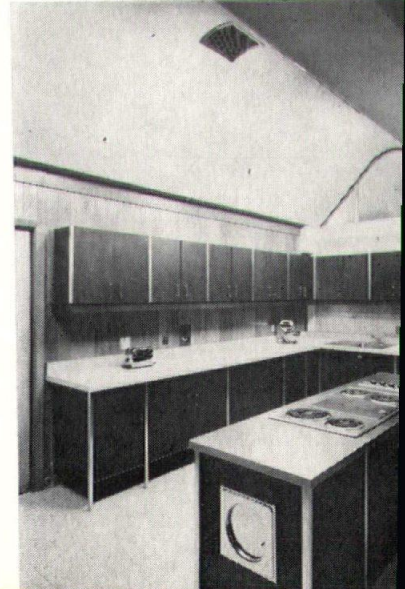
UNDULATING FOLDED PLATES:



... DEFINE BASIC "CELL" UNITS



... ROOF CONTEMPORARY K



The new buildings are of reinforced concrete and masonry construction, with pre-cast folded plate concrete dominating. These undulating units, selected for economy and optimum definition of the basic convent "cell" units, resemble the starched hood of the Marianite habit. They were repeated in the school expansion as a unifying medium to soften the tie-in to the earlier construction.

The convent includes eighteen bedrooms with semi-private baths, office, waiting room and parlors, modern kitchen and laundry, a striking chapel, and large community-recreation and dining rooms overlooking a private patio-cloister.

An outstanding feature of the convent design is the individual sleeping unit, developed after an extensive study of the highly specialized requirements of the nuns.

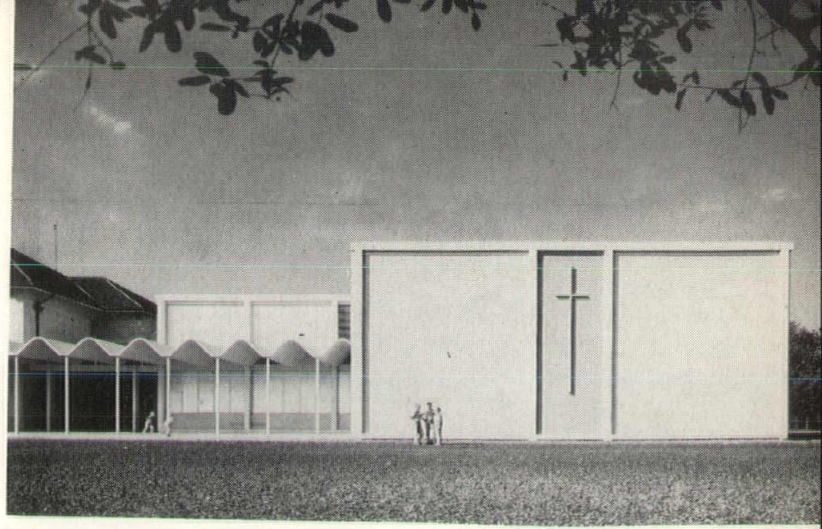
These units include closets for long and short garments, built-in drawer units, space for nun's trunk, built-in desk, niche for bed, and a semi-private bath, all blended together with natural wood and exposed masonry into a private bedroom unique in its comfort, utility, convenience, and beauty.

The convent will ultimately occupy an ecclesiastic complex on the site, for which a new church, Baptistery, rectory, and parking facilities are projected as subsequent phases of the master plan.

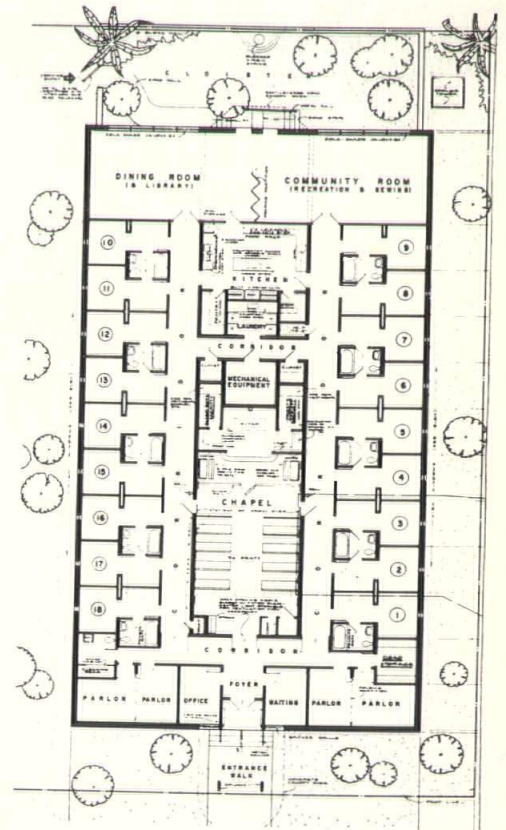
The school addition includes twelve classrooms, office space, first aid room, teachers' lounge and workroom, an all-weather bus unloading dock, and a spacious covered play area convertible overnight into booths for the Parish Fair.

The entire school addition can be closed tightly when desired, without a square inch of glass exposed to the elements.

This is achieved through the use of special solar shade jalousie units, designed by the architect. These units, with outside aluminum slats and inside clear glass slats, allow maximum control of sun, wind, rain, breeze, and glare, and permit room-darkening of all classrooms for visual aids use. In addition they are a formidable barrier against wilful glass breakage, the bane of many post-war schools.

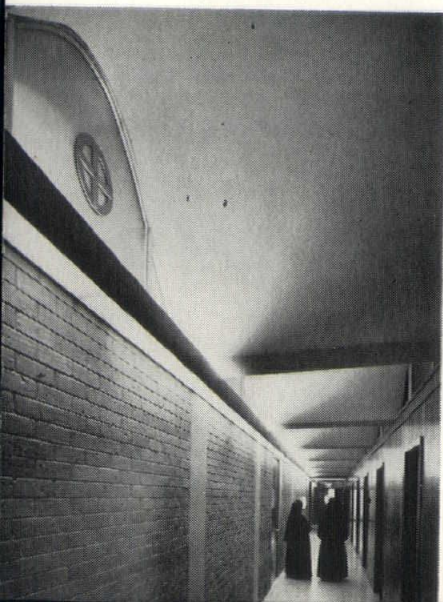


PHASE TWO: THE SCHOOL ADDITION



PLAN
CONVENT
PHASE ONE

SHELTER CLOISTERED CORRIDOR



... AND PIERCE THE SIDE WALLS OF CHAPEL AND SANCTUARY.



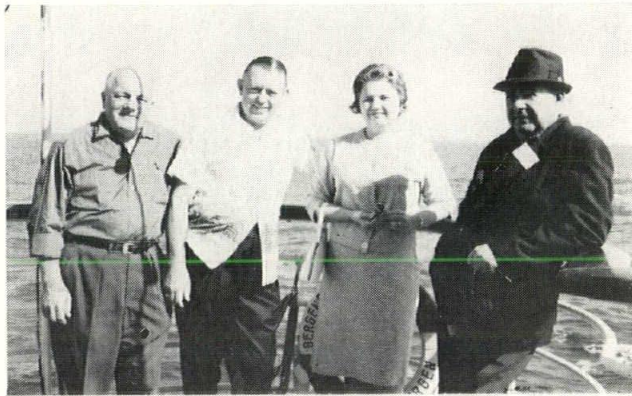
Regional Conference Recipe



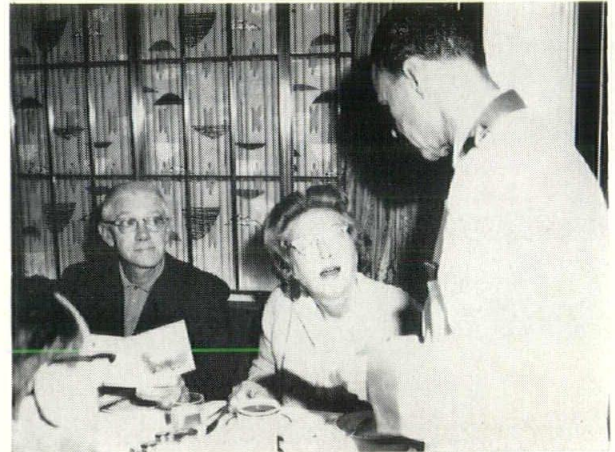
1. First you charter a plane.



2. Then you add refreshments.



3. Bake in the Gulf Stream sun aboard a Norwegian luxury liner.

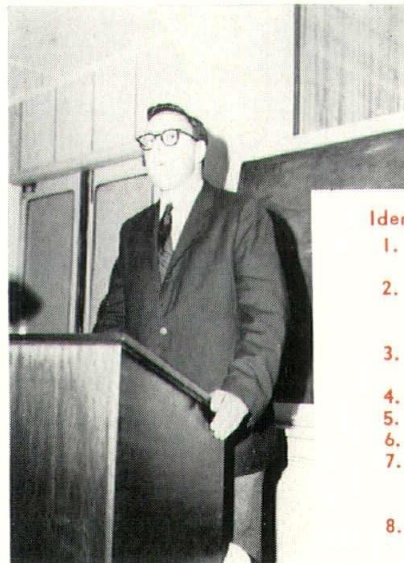


4. Add a touch of Scandinavian cuisine.



5. Mix with the ship's crew.

6. Blend outstanding speakers . . .



7. . . . with seasoned panelists.



Identification (left to right)

1. Mrs. Myron Tassin, Mrs. A. R. Blossman, Jr., Mr. Blossman.
2. (Front) Blossman, George Reitmeyer (Holding pop bottle), Bernard Mason, Owen Brennan, Jr., Mrs. Brennan, Jack Lepperd, Mrs. Lepperd.
3. James Ritter, William Bergman, Mrs. August Perez, Jr., Mr. Perez.
4. Mr. and Mrs. William Scheick.
5. Barbara Brennan, Chief Steward, Jean Perez.
6. James R. Lucas of Herman Miller.
7. William Gillett, past president of Producers Council; Steve Kliment, editor of Architectural and Engineering News; Philip Will, AIA past president.
8. Will; Henry Wright, AIA President; J. Roy Carroll, AIA First Vice President; and Scheick.



8. Select 17 award winners.



9. Cover Nassau with scooters (if you're brave).



10. Stir in calypso singers at the famed British Colonial Hotel.



11. Add more panels on the voyage back to Charleston.



12. And add more panels.



13. Serve an array of Honor Awards winners.



14. Wine and dine . . . naturally.



15. Ice Carve one AIA Emblem.

16. Don't forget a dash of sentimentality.

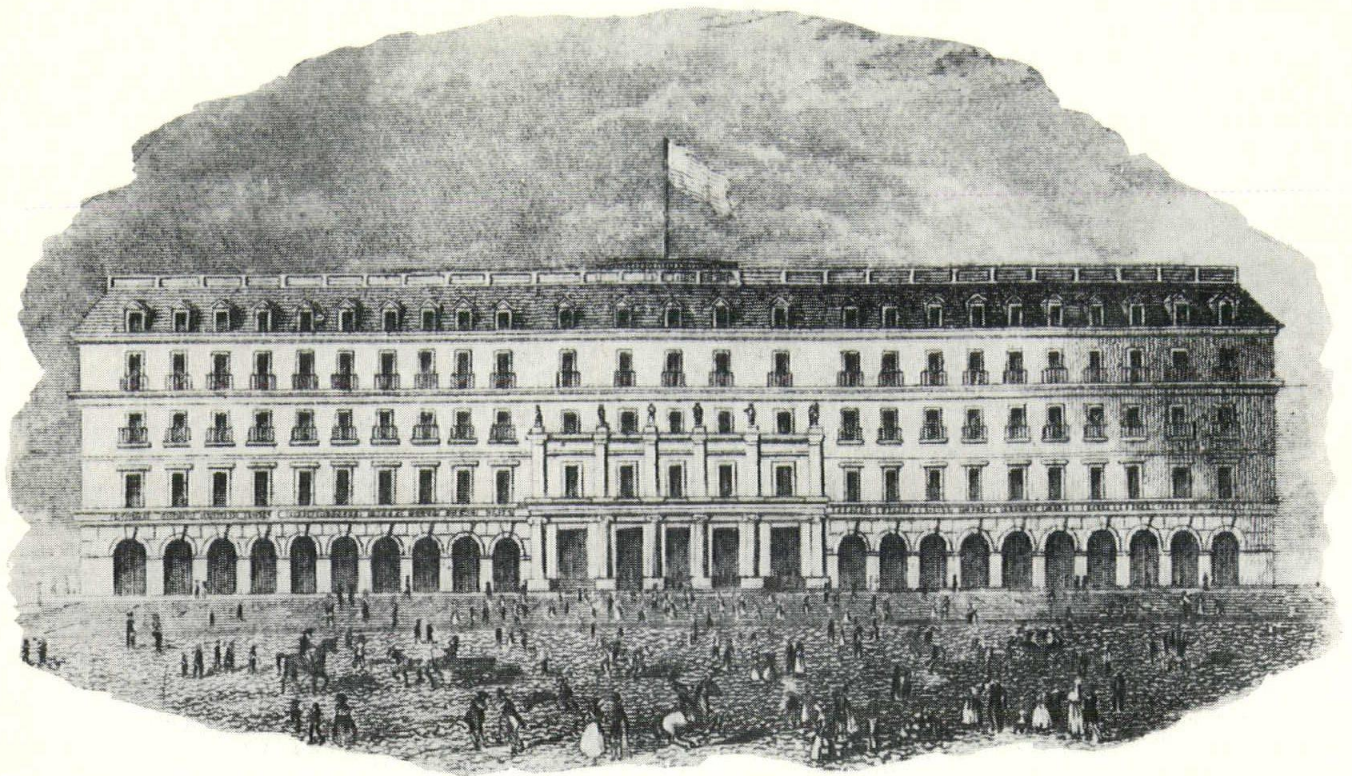


17. Then pour in a few bottles of anything as you fly back to solid Louisiana ground . . . and arrive refreshed?

Identification (left to right)

- 9. (First Row) Shirley Tassin, Barbara Brennan; (Second Row) Brennan, August Perez III, Jean Perez, Mason, with his wife Earline Mason standing behind him; Mr. and Mrs. Fred Blossman
- 10. Unidentified flying objects.
- 11. Kliment and Perez.
- 12. John M. Ware; William P. Cox; Jack Carney, Mississippi-Louisiana Brick and Tile Association; and Edward van Amerongen, Portland Cement Association.
- 13. Carroll.
- 14. Mr. and Mrs. William Evans
- 15. Wright, Will, Scheick, Regional Director G. Scott Smitherman.
- 16. Mr. and Mrs. Lepperd
- 17. More unidentified flying objects.





St. Louis Hotel — 1840

Royal Orleans — 1958-59



THE VIEUX CARRÉ COMMISSION . PART 2

There are many aspects to the preservation of an historic district. However, of equal concern is the over-all scene and the individual buildings of character, and there is, of course, a direct relationship. The historic scene of the Vieux Carré is compounded of many facets; its quaint and distinctive character springing from Colonial Spanish and French influence mixed with early American.

The preservation laws of the Vieux Carré refer to "such buildings as in the opinion of the Commission shall be deemed to have architectural and historical value." This is interpreted to also mean "buildings of historic architectural value" which tie in the over-all scene. Buildings of such character are preserved and restored with considerable attention to authen-

ticity in detail, and examples of this pursuit are illustrated by the Bavly residence. Buildings devoid or despoiled of such architectural character are generally remodeled and restored to suitable traditional style. An example of a new building which recaptures the flavor and spirit of the past is Royal Orleans Hotel.

The St. Louis Hotel of 1840's designed by Architect dePouilly was city's principal auction mart and focal point of Creole social life. After the war it went into decline with the Quarter, was abandoned in early 1900's and became a ghostly habitat of mules and pigeons until it was demolished in 1917.

New Orleanians' long time dream of another such hotel on same site was brought to fruition by the Edgar B. Stern family with a group of new Orleans investors. It is an outstanding example of renaissance of spirit. Influenced by style of old St. Louis Hotel; cornice line, mass, general impression, series of arches on ground floor including five original granite ones, authentic design of iron grillework. It was constructed in 1958-1959 at a cost of approximately \$5 million. The 350-room hotel is owned by the Hotel Corporation of America. Architects were Koch & Wilson and Curtis & Davis and Associated Architects and Engineers.

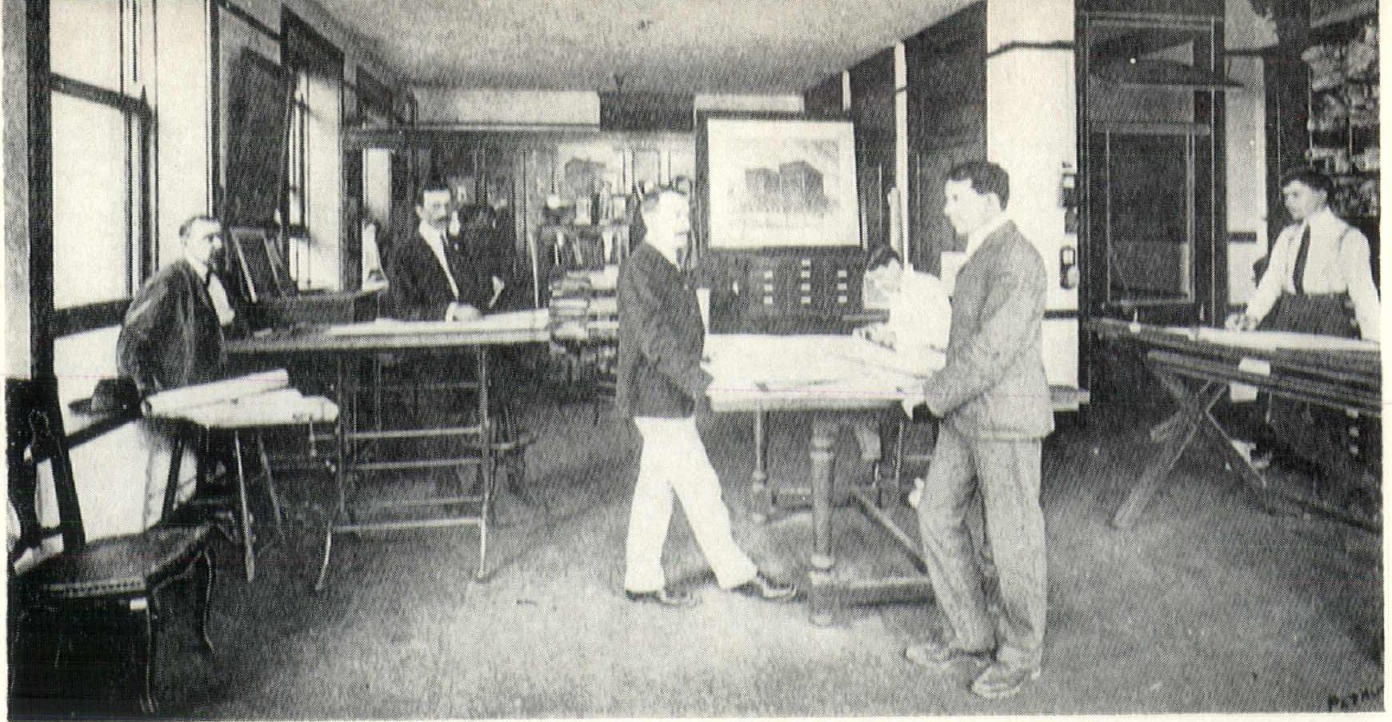


Bavly Residence
1959

New Orleans, La.
1011 Orleans

Bavly Residence
1939





At the early December Awards Meeting of the New Orleans Chapter, Mrs. Bernard Flashpoller was present to receive a plaque in behalf of her father, the late Mr. Guy Stone, a past president of the Chapter. She brought along a treasured memento which may be one of the earliest architectural brochures in existence. Beginning next month, LOUISIANA ARCHITECT will publish pages from this rare book which is entitled, "Examples from the Work of Stone Brothers Architects"—818 Common St., New Orleans, Louisiana. It is dated 1903. The above photo is a reproduction of page 1, captioned "Drafting Room—Stone Bros.' Offices."

PRICE ALONE DOES NOT DETERMINE THE VALUE OF A PRODUCT

Our jobs are based upon furnishing materials of the finest quality, fabricated to exacting tolerances by workmen experienced in quality construction.

A good reputation can't be purchased; it must be earned. We of Alumaglass realize this. That's why throughout our business life we have constantly endeavored to make each year always better in terms of customer service and product selection. Our field installation and maintenance service matches our product quality.

*"Specify the Best — Insist on it —
Don't Settle for Less"*

ALUMAGLASS
BUILDING PRODUCTS INC.

739 S. CLARK ST. NEW ORLEANS 19

**Must acoustical
ceilings be flat
(and dull, dull, dull?)**



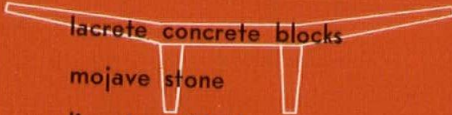
NO, NO, NO, NO, NO!

Zono-Coustic Acoustical Plaster sprays on, stays on the trickiest configurations, gives you high sound absorption (NRC = .60), a choice of attractive surfaces and colors, light reflectivities from 50% to 70%. For complete information, write:

ZONOLITE

ZONOLITE COMPANY 135 S. LA SALLE STREET CHICAGO 3, ILLINOIS

LOUISIANA CONCRETE PRODUCTS INC.



lacrete concrete blocks

mojave stone

limestone blocks

lacrete brick



prestress flat slabs

precast floor and roof slabs

concrete joists



channel slabs

bridges

prestressed longspan girders

splash blocks

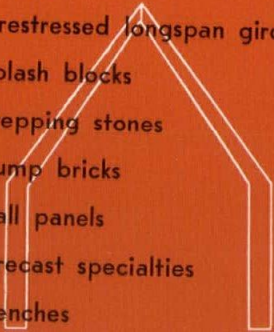
stepping stones

slump bricks

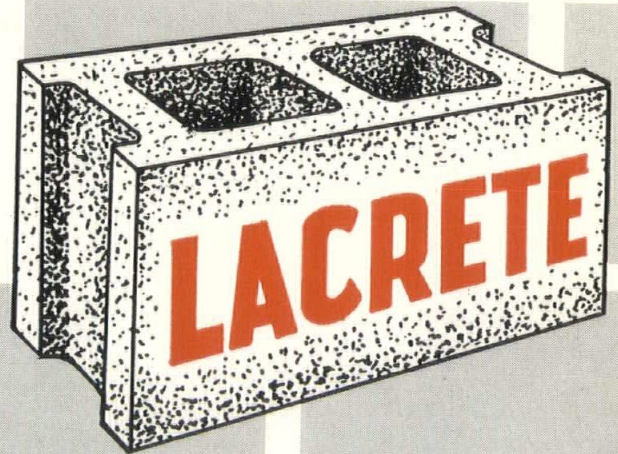
wall panels

precast specialties

benches



feed and water troughs



4747 CHOCTAW DRIVE BATON ROUGE, LOUISIANA
5401 FRANCE ROAD NEW ORLEANS, LOUISIANA
2101 COMMON ST. LAKE CHARLES, LOUISIANA

LAA to Offer Spring Tour(s)

MEXICO OR EUROPE?

Regional AIA architects are invited to participate in architectural education tours to Europe or Mexico City in early Spring of 1963. Regulations now permit a 40% savings in overseas air traffic rates to association groups of 25 or more (wives included). Rate advantages are also available to groups (and couples within such groups) traveling to Mexico City. At a recent LAA Board of Governors meeting, the group authorized a canvass of the membership to learn if enough interest exists to merit organization of either a European or Mexico City tour (or both). Should enough interest come from the Region, formal action may be needed at the Council meeting in January to meet the requirements of the regulations and make participation possible.

Activities with European and Mexican architectural groups will be arranged.

Mexico

The cost of this tour will be approximately \$275.00 per person and will include first class jet air transportation from New Orleans, deluxe hotels in both Mexico City and Taxco, and private sightseeing as out-

lined in itinerary. All meals will be included on side trip to Taxco but no meals have been included in Mexico City as there is such a wide variety of fine restaurants to choose from. This rate will also include the cost of the Mexican Tourist card (\$3.00) and transfer of passengers and baggage from the airport to the hotel and return and will include tips for same.

Europe

The cost per person will be approximately \$995.00 from New Orleans back to New Orleans. This cost is based on first class hotels, twin bedded rooms with private bath; economy class jet transportation; all meals in Europe except in London, Paris and Rome where breakfast only is provided; transportation of two average sized suitcases (weighing not in excess of 44 lbs.); sightseeing as detailed in the itinerary; hotel taxes; and gratuities to porters, waiters and guides.

Please read the itineraries and make known your wishes by returning the form on the next page. Here's hoping your answer will be either OLE' or Oui, Oui!!!

Mexico City Itinerary

Wednesday—MEXICO CITY—By air—First Class Jet — from New Orleans via Eastern departing at 7:40 P.M. and arriving in Mexico City at 9:48 P.M. After brief customs formalities, you will be transferred to the Maria Isabel Hotel—largest and finest in all of Mexico. Located on famed Reforma Boulevard, in the heart of modern, elegant and sophisticated Mexico City, this hotel is a city within a city.

Thursday—MEXICO CITY—A full day of sightseeing will take you first to the

panorama of Mexico's University City: 80 buildings incorporating the best Indian, Spanish and ultra-modern architecture, with lava stone as the basic building material; a crater shaped stadium which seats over 100,000; sports courts reminiscent of an ancient Mayan city; the world's largest swimming pool with glass roofed rooms underneath; a Liberal Arts building over $\frac{1}{4}$ mile long, a 12-story library with room for more than a million books, because it has no windows. Walls are solid and covered with stone mosaic telling the story of Mexico. This "City" is the work of 150 of the country's best architects.

The neighboring residential section "The Pedregal" will be seen, with homes representing the world of tomorrow in design and comfort; some swimming pools, literally scooped out of the lava rocks.

Afternoon tour to include the National Palace, Glass Factory, Cathedral, Archeological Museum, Flower Market, Chapultepec Park and Castle and the residential section of Lomas.

Friday—TAXCO—Overnight trip to Taxco begins at 9:00 A.M. today. The 100 mile drive is over a good highway. Red-tiled houses, from Colonial mansions to cottages, rise on one level after another up the steep hillsides, painted white or in rainbow tones. The pink stone church of Santa Prisca is one of the finest examples of Churrigueresque art in the world. You will enjoy roaming the narrow, cobblestone streets and shopping here in the "silver capital" of Mexico. Watch craftsmen fashion the metal into intricate designs. Hotel De La Borda.

Saturday—MEXICO—Return trip in the afternoon will take you to Cuernavaca—playground of Aztec Emperors, Cortes, Maximilian and Carlota. Then back to Maria Isabel Hotel.

Free evening. Enjoy the night life of fabulous Mexico City.

Sunday—MEXICO—After a morning at leisure, visit floating canals of Xochimilco. From your flower-decked boat you will hear the calls of flower vendors and songs of floating musicians.

Back in Mexico City you will continue to the Bullfights.

Monday—MEXICO—Free morning. Be in time for Shrine of Guadalupe and Pyramids of Teotihuacan Tour. First stop: Acolman Monastery, among the finest of early fortress-type churches, dating from 1539. You will continue to the Pyramids and wonder what people built these temples, why and when . . . On return stop at Shrine of Guadalupe.

Tuesday—MEXICO—Day entirely free.

The return flight leaves tonight at 10:50 P.M. and arrives in New Orleans at 12:45 A.M.

European Itinerary

1st Day—NEW ORLEANS—Morning departure by jet for New York and connecting jet for London

2nd Day—LONDON—Morning arrival. Transfer to hotel Mount Royal. Balance of day at leisure.

3rd Day—LONDON—Tour: Westminster Abbey, Trafalgar Square, Buckingham Palace, Nelson's Column, Tower Bridge, St. Paul's Cathedral, Houses of Parliament, Downing Street, Piccadilly Circus, Marble Arch and shopping district.

4th Day—LONDON—Morning free. Afternoon drive along Thames to Windsor Castle, the country residence of English Royalty, built over 800 years ago by William the Conqueror. Then to Hampton Court, a Tudor Castle built for Henry VIII. Overnight steamer to Hook of Holland.

5th Day—THE HAGUE—Sightseeing includes Peace Palace in The Hague and Scheveningen, North Sea Bathing Beach. Amsterdam included. Hotel Terminus.

6th Day—BRUSSELS—Morning drive via Rotterdam and Antwerp to Brussels for lunch. Afternoon — Medieval Square, Town Hall, Royal Palace, St. Gudule Church and Manneken Fountain. Hotel Albert Lier.

7th Day—WIESBADEN—Morning drive to Luxembourg for lunch. Continue via historical Trier, through Moselle Valley and along the Rhine to Wiesbaden. Hotel Taunus.

8th Day—FREIBURG—Motor via Heidelberg for lunch and visit of famed University and Student Prison—also the Castle overlooking Neckar Valley. Hotel Colombi.

9th Day—LUCERNE—Morning drive to Lucerne with afternoon free. Hotel Luzernerhof.

10th Day—INNSBRUCK—Motor via Vaduz for lunch; then by Southern Bavaria to Innsbruck for Night. View the famed Golden Dachel. Hotel Maria Theresia.

11th Day—VENICE—From Innsbruck, drive through the Austrian Tyrol and enter Italy at Brenner Pass. Motor via Vipiteno and Pusteria Valley to Dobbiacco amidst multi-colored peaks of the Dolomites. Motor along Lake of Misurino and Three Crosses Pass to Cortino "Queen of the Dolomites" for lunch. Continue in afternoon to Venice. Hotel Cavalletto.

12th Day—FLORENCE—Morning sightseeing in Venice includes walking tour to St. Mark's Square, Bridge of Sighs, and Doges Palace. In the afternoon, motor to Florence. Hotel Craft.

13th Day—FLORENCE—Capital of Tuscany and Italy's most beautiful city. Visit Uffizi or Pitty Gallery, Baptistery with famous bronze doors by Ghiberti, Medici Chapel, San Lorenzo and Santa Croce. Afternoon free for shopping along Arno.

14th Day—ROME—Morning drive via Siena. Around the Square are medieval

palaces, Gothic Town Hall and Italian Gothic Cathedral. Hotel Montial.

15th Day—ROME—Day's sightseeing embraces Trevi Fountain, St. Peters Cathedral, the Forum, Catacombs, Colosseum, etc.

16th Day—PISA—Morning free in Rome. Afternoon drive to Pisa. Hotel Mediterraneo.

17th Day—SAN REMO—Pisa sightseeing includes noted cathedral, the Baptistry and world famous Leaning Tower. Motor via Rapallo and Genoa to San Remo. Residence Principe.

18th Day—NICE—Continue to Monte Carlo and Monaco. Afternoon free. Hotel Angleterre.

19th Day—NICE—Free day to enjoy French Riviera. Overnight train to Paris.

20th Day—PARIS—Morning arrival in Paris—then to Grand Hotel. Afternoon tour includes Opera, Madeleine, Place de la Concorde, Champs Elysees, Arch of Triumph, Eiffel Tower, Invalides with Tomb of Napoleon, etc.

21st Day—PARIS—Morning free. Afternoon to Versailles with hall of Mirrors where Treaty was signed in 1919.

22nd Day—PARIS—Entire day free. In the evening, Folies Bergere.

23rd Day—PARIS—Morning free. In late afternoon, jet to New York. Arrive same day and connect to non-stop jet to New Orleans.

Complete and return to *LAA Tours*
Louisiana Architects Association
Capitol House Hotel
Baton Rouge, La.

ATTENTION: LAA TOURS

I am interested in the tour to Mexico City
 Europe

In order that I might make a firm decision, I would like to receive more information on the above indicated tour.

Please include my name (s) on the advance registration list.

I understand that this inquiry does not impose any obligation of any kind on myself nor the Louisiana Architects Association.

Architects Name _____

City and State _____

Address _____ Telephone _____

Order Your
AIA Forms
from
L A A



ELEVATORS — ESCALATORS
DUMBWAITERS — SPEEDWALKS
ELECTRIC AND OIL HYDRAULIC

THROUGHOUT LOUISIANA BY

Gulf States Elevator Corp.

Main Office: 715 CAMP STREET
JA 2-2758 NEW ORLEANS

Dependable
SOUND and COMMUNICATION
SYSTEMS

for every
building
type

Our broad experience in this specialized field is available to you. Contact us for general planning help. No obligation, of course.

Executone SYSTEMS COMPANY

NEW ORLEANS — BATON ROUGE
ALEXANDRIA — SHREVEPORT — MONROE
LAFAYETTE — LAKE CHARLES

frank lotz miller, a.p.a.

ARCHITECTURAL PHOTOGRAPHY

Member of Architectural Photographers Association

1115 Washington Ave. - - TW 5-3680
NEW ORLEANS, LA.

NEWS, NOTES, QUOTES . . .

NEW AIA CORPORATE MEMBERS IN 1962

J. E. FRYAR, Jr.	Central Louisiana
T. G. CONNELLY	Shreveport
C. ASHTON SMITH	South Louisiana
RICHARD E. MIRE, Jr.	South Louisiana
RAYMOND D. REED	South Louisiana
THOMAS B. SMITH, Jr.	New Orleans
STANLEY W. MULLER	New Orleans
KARL E. HARVEY	Baton Rouge
NORMAN J. WILLIS	New Orleans
GUY M. STAUB	New Orleans
FREDERICK R. SUCHKE	New Orleans
WILLIAM C. BLACKSTONE	New Orleans
DONALD H. CALDWELL	New Orleans
U. E. HACKETT, Jr.	Southwest Louisiana
WALTER GEORGE DOELL, Jr.	New Orleans
WILLARD C. SHOLAR, Jr.	Shreveport
JOHN R. HEBERT	Southwest Louisiana
SAM W. HAMILTON	Central Louisiana
ROBERT O. BURNS, Jr.	New Orleans
EUGENE A. WEIR	Baton Rouge
NORMAN L. KOONCE	Baton Rouge
THOMAS A. KNIGHT	Baton Rouge
DONALD JAMES BREAUX	South Louisiana
ROBERT EDWARD BARRAS	Southwest Louisiana

Attention: Executive Director

. . . . concerning our advertisement with your magazine in October of 1962.

The results of said advertisement were very gratifying. We received inquiries from about fifty architectural firms in the Southern states and even from some as far away as Minnesota and Illinois.

We definitely plan to advertise with you again in the near future.

Thank you for your interest.

Sincerely yours,
Glenn Maury Earl,
Contemporary Planters.

BAKER MANUFACTURING CO., INC.

PINEVILLE, LOUISIANA

Offers the Finest in Complete Fabrication

INSIDE and OUT

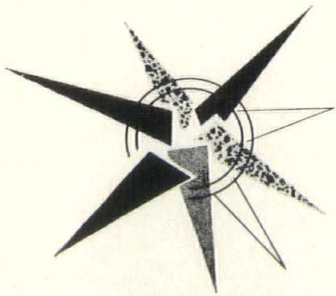
WELDWOOD
MOVABLE
WALLS

Extends to architects and building managers an unusually uninhibited freedom of design for their space division problems.

WELDWOOD
GLASWELD

The permanently colored, mat finished asbestos board for exterior curtain wall facings.

looking for **Dynamic Design?**



BUILDERS OF THE WORLD'S FINEST TERRAZZO FLOORS for

Beauty, Efficiency, Economy

Municipal Auditorium, Lafayette
Sears-Roebuck Stores, Shreveport,
Baton Rouge, Monroe
Highway Dept. Bldg., Baton Rouge
St. Gerard Majella Church,
Baton Rouge

School Projects, Alexandria
State Hospitals, Jackson and Pineville
Shreveport Air Terminal, Shreveport
Newspaper Building, Shreveport
McNeese State College, Lake Charles
City Hall and Jail, Opelousas

College Projects: L.S.U., Northwestern, Centenary, Southeastern, La. College
Public and Commercial Buildings, Factories, Schools, Libraries, Churches,
Office Buildings, Hospitals, Apartment Houses, Homes—throughout Louisiana

TERRAZZO

- Unlimited choice of color and design.
- Durability increases with age.
- Adaptable to any shape, size or contour.
- Slip-resistant surface.
- Economical over-all cost.
- Easy to maintain.

AMERICAN TERRAZZO CO.

Member
NATIONAL TERRAZZO
AND MOSAIC ASSOC.

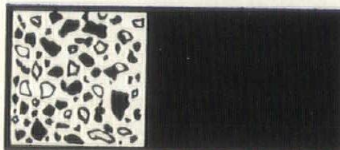
Member
TEXAS TERRAZZO
CONTRACTORS ASSOC.

5607 Dyer

DALLAS

EM 8-2952

try **TERRAZZO**



MIKE FLABIANO
MATTIA FLABIANO, JR.
LUIGI FLABIANO

SERVICES

R. J. Jones & Sons

General Contractors

P. O. Box 991
ALEXANDRIA, LA.
Phone HI 3-2531

Commercial and Residential
CONSTRUCTION CO., Inc.
Construction

TERRAL

Rannie Terral, Pres.
P. O. Box 338
FARMERVILLE, LA.
Phone 3121

L. P. Stevens Co. of Shreveport



General Contractors
P. O. Box 9181 UN 5-2096

ARCHITECTURAL PHOTOGRAPHY

DAVE GLEASON
163 Burgin Ave.
Baton Rouge, La.

DI 2-8989

FORTE AND TABLADA, INCORPORATED
CONSULTING ELECTRICAL ENGINEERS
Commercial — Industrial — Municipal — Institutional

3150 FLORIDA STREET
BATON ROUGE, LA.
348-6661

BRANCH OFFICE:
P. O. BOX 446
PLAQUEMINE, LA.

PRESSURE TREATED LUMBER FOLLEN

WOOD PRESERVING CO., INC.

PENTA-OSMOSALTS — FIRE RETARDANT
WATER REPELLENT PENTA

JACKSON, MISS.
FI 4-1367

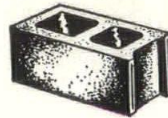
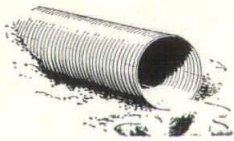
BATON ROUGE, LA.
EL 5-3875

ATTENTION!

December, January and February have been declared by John Hancock as open dates for entrance into the group plan. Please contact us if your firm is interested in participating.

SOUTH LOUISIANA
Joseph H. Baynard
125 Phillips Ave.
Baton Rouge, La.

NORTH LOUISIANA
Byrum W. Teekell
P. O. Box 1655
Shreveport, La.



Serving Your Community . . .

TEXCRETE HIGH PRESSURE STEAM CURED BLOCKS • QUALITY CONTROLLED READY-MIXED CONCRETE • TEXCRETE MO-SAI • CORRUGATED METAL CULVERTS, PLAIN AND ASPHALT COATED • HOLIDAY HILL STONE • CONCRETE CULVERT, PLAIN AND REINFORCED

CENTRAL CULVERT CORPORATION

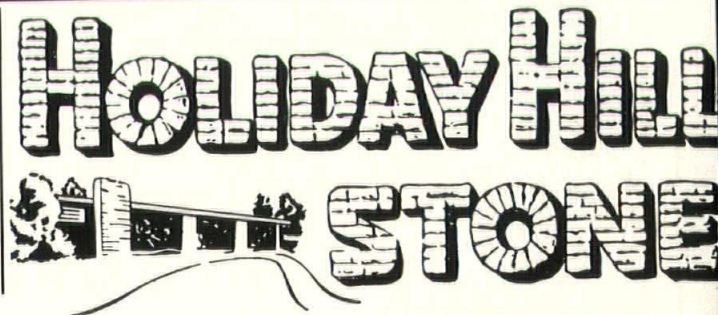
MAIN OFFICE: 600 DeSOTO ST. PHONE HI 2-7712
ALEXANDRIA, LOUISIANA

TEXCRETE COMPANY OF SHREVEPORT

MAIN OFFICE: 1200 E. TEXAS ST. PHONE 422-0321
SHREVEPORT, LOUISIANA

TexCrete

CONCRETE BUILDING PRODUCTS





PRESERVE AND PROTECT INVESTMENTS . . .

Commercial and Industrial

- SAND BLASTING
- TUCK POINTING
- CAULKING
- WATERPROOF COATINGS
- CLEAR SILICONES
- MASONRY REPAIRS
- STEAM CLEANING

call Associated Waterproofing Corp.

Fully Insured

BATON ROUGE PHONE DI 2-2197
4085 Florida

NEW ORLEANS PHONE 523-0631

T. JERRY WOOD
President

FOR FULL INFORMATION
CONSULT YOUR ARCHITECT

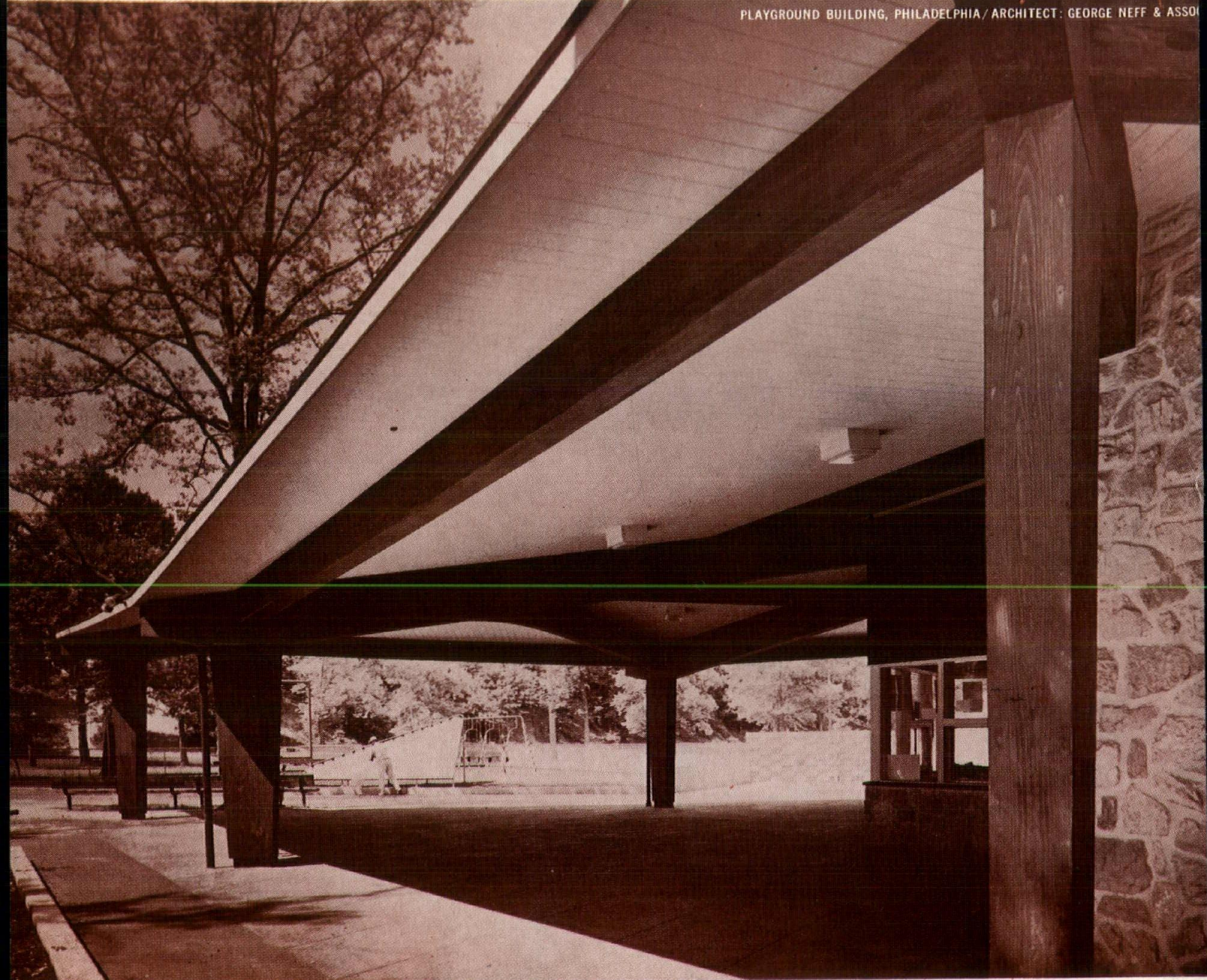
THE LOUISIANA ARCHITECT

Suite 200 — Capitol House Hotel
Baton Rouge, Louisiana

Library
Secretary, The American Ins. of Archts.
The Octagon
1741 New York Ave. N.W.
Washington 6, D. C.

BULK RATE
U. S. POSTAGE
PAID
Baton Rouge, La.
Permit No. 389

PLAYGROUND BUILDING, PHILADELPHIA / ARCHITECT: GEORGE NEFF & ASSO



TUDOR



CONTINUOUS



CONTINUOUS



GOthic



BUTTRESSED

CONFER WITH

COCO

GLUED LAMINATED STRUCTURAL BEAMS AND ARCHES

Our staff includes architects, registered civil engineers and qualified estimators. When your preliminary plans call for glued laminated structural beams and arches, make our staff your staff. We're glad to answer any inquiries, and to provide down-to-the penny estimates. Our quarter of a century working with wood is topped off by half a decade of practical experience in laminating. Coco structural members are in use in buildings in 25 states.

RONALD A. COCO / LAMINATING DIVISION / EL 6-2551 MENGEL ROAD / BATON ROUGE, LA.