

Frederick Gutheim
American Institute of Archts.
1741 New York Ave.
Washington 6, D.C.



MONTHLY BULLETIN

MICHIGAN SOCIETY OF ARCHITECTS

A State Organization of The American Institute of Architects

OFFICERS

LEO M. BAUER, President
RALPH W. HAMMETT, 1st V.-President
ADRIAN N. LANGIUS, 2nd V.-President
JAMES A. SPENCE, 3rd V.-President
PETER VANDER LAAN, Secretary
JOHN O. BLAIR, Treasurer
TALMAGE C. HUGHES, Executive Sec.

TALMAGE C. HUGHES, F.A.I.A., Editor
THEODORE G. SEEMEYER, JR., Adv. Dir.
120 Madison Avenue, Detroit 26
Woodward 5-3680

DIRECTORS
ALDEN B. DOW
SOL KING
CHARLES B. MCGREW
CARL J. RUDINE
LINN C. SMITH
ARTHUR J. ZIMMERMANN

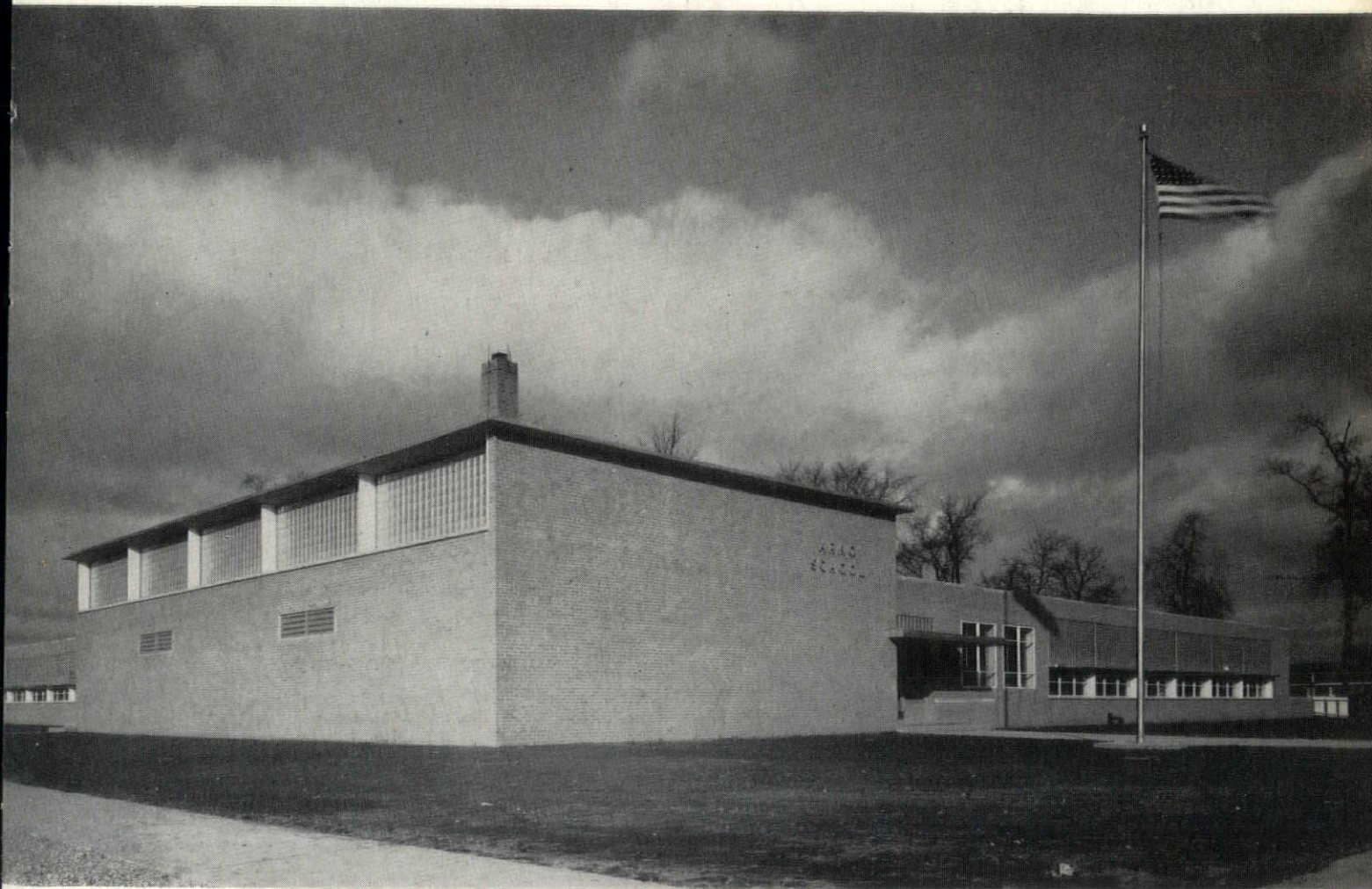
Entered as second class matter January 15, 1946 at Postoffice at Detroit, Mich., under Act of March 3, 1879. Published monthly
Subscription price \$3 per year (Members \$2). 30c per copy (Roster Numbers \$1).

Volume 25

DETROIT, MICHIGAN, APRIL, 1951

Number 4

ODAY'S DESIGNS THAT FIT TOMORROW



EBERLE M. SMITH, ASSOCIATES, INC., DETROIT, MICHIGAN

**HEATING
REFRIGERATION
AIR CONDITIONING**

*Designed-Installed- Serviced
Specialists for Industrial Process*

**OUR
31st YEAR**



Mechanical Heat & Cold Inc.

12320 HAMILTON AVE., DETROIT 3

PHONE TO. 8-9600

**GLASS BLOCK
*Installation***

on

JAMES VERNOR SCHOOL
GRATIOT HIGH SCHOOL
BENTLEY HIGH SCHOOL
CLARA BRYANT FORD SCHOOL
MELVINDALE HIGH SCHOOL

by

WILLIAM BORTOLOTTI & SONS

21070 COOLIDGE HIGHWAY
DETROIT 35, MICHIGAN

Jordan 4-5913

PERMA-COLOR

FACE BRICK

For BEAUTY and PERMANENCE

Distributor for
PITTSBURGH-CORNING GLASS BLOCK

and for
CHEM BRICK

VITRIFIED PIPE

Century Brick Co.

SAM BURTMAN, Mgr.

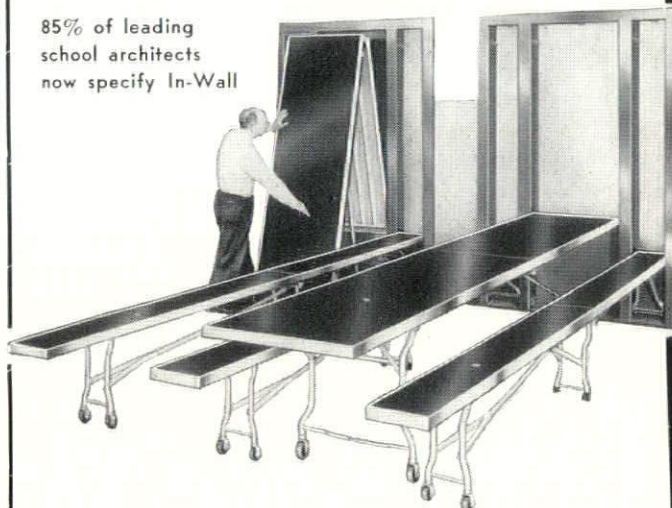
14900 LINWOOD AVENUE

DETROIT 21, MICHIGAN

UNiversity 1-8200

SAVE SPACE !

85% of leading
school architects
now specify In-Wall



Schools from coast to coast are saving on building costs with IN-WALL Equipment. Lunch room for 200 can be rolled down from gymnasium walls in eight minutes.

WRITE FOR CATALOG

SCHIEBER
MFG. CO.
12720 Burt Road
Detroit 23, Mich.

**SCHIEBER
*In-wall***

FOLDING TABLES & BENCHES



An Established Dealer

*Carrying a Complete Line of All
Masonry and Plastering Materials*

Distributors of Concrete Masonry Reinforcing

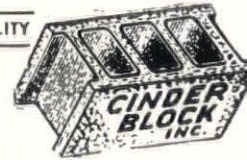
HORN FUEL & SUPPLY CO.

9133 Hubbell Ave., Detroit 28
11841 Kercheval Ave., Detroit 14

VERmont 8-2200
VALley 2-4450

**MANUFACTURERS OF
CINDER CONCRETE MASONRY UNITS
SINCE 1923**

CONTROLLED QUALITY



STEAM CURED

DETROIT 28

9143 HUBBELL AVE.

VERmont 8-3200

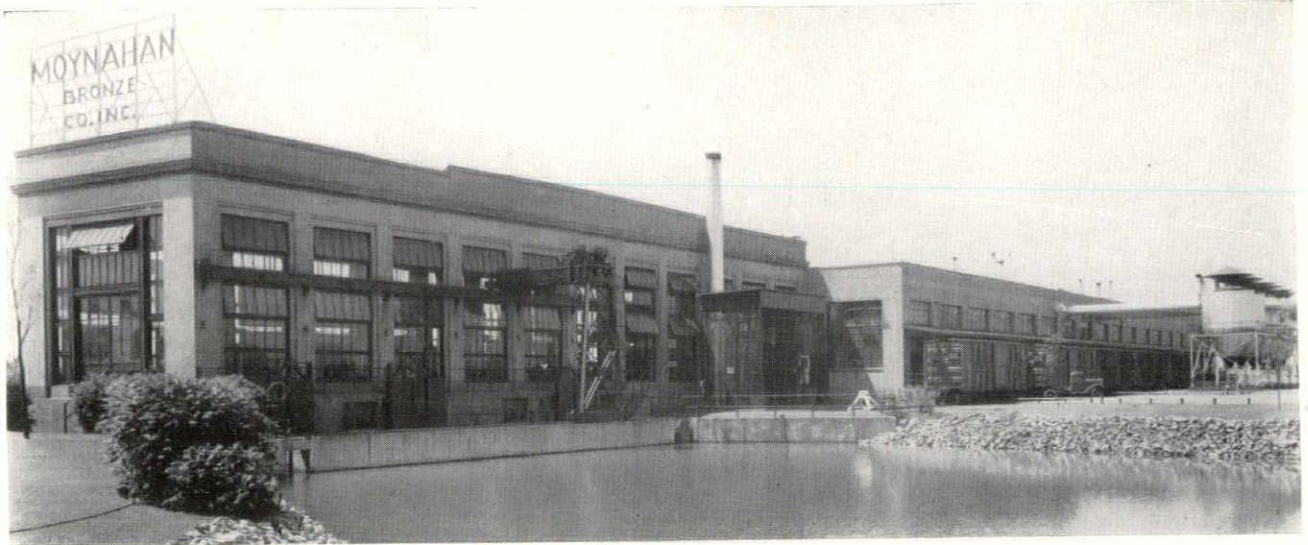
Famous Baked Goods From Gas-Fired Ovens



At the Women's City Club of Detroit, 2110 Park Avenue, members and guests are served baked goods well-known for their excellence and variety. The Club's own bakery products are also sold to members in the lobby bake shop, and shipped throughout the country as a special catering service.

Three Gas-fired bake ovens, each with three individually controlled decks, permit the Club's bakers to handle a variety of products simultaneously at different temperatures—and maintain the quality for which the Club is famous.

MICHIGAN CONSOLIDATED GAS COMPANY



MOYNAHAN BRONZE CO., Inc.

ORNAMENTAL METAL CONTRACTORS

Sales Office, 2833 Cadillac Tower, Detroit 26, Michigan

Phone: WOODWARD 3-9421

Manufacturing—Flat Rock, Michigan

BROEDELL PLUMBING & HEATING COMPANY, INC.

MECHANICAL CONTRACTORS

SINCE 1920



COMMERCIAL
RESIDENTIAL
INDUSTRIAL



20229 Mack Avenue

Grosse Pointe 30

PETER BROEDELL
President

TU. 1-7410

DETROIT ACOUSTICAL CONTRACTING CO.

DISTRIBUTORS FOR

Armstrong Cork Co.

Kelley Island Lime Transport Co.

Certain-teed Products Co.

5050 JOY ROAD, DETROIT 4

TE. 4-7870

ALL MARBLE WORK FURNISHED

and erected on

VERNOR, GRATIOT, BENTLEY, ARNO,

FORD SCHOOLS

and WAYNE COUNTY HEALTH CLINIC

by

WOLVERINE MARBLE CO.

14280 Lumpkin Ave., Detroit 12

TO. 8-7798

TO. 8-7752

F. H. MARTIN CONSTRUCTION CO.

955 E. JEFFERSON AVE.

DETROIT 7, MICHIGAN

WOODWARD 1-4890

MONTHLY  BULLETIN

M. S. A. HAS GOOD CONVENTION

MICHIGAN SOCIETY OF ARCHITECTS
 120 Madison Ave. Detroit 26, Mich.
 Talmage C. Hughes, F.A.I.A., Editor & Publisher
 Theodore G. Seemeyer, Jr., Advertising Director
 Entered as second-class matter Jan. 15, 1946 at
 the Post Office at Detroit, Mich., under Act of
 March 3, 1879. Published monthly. Subscription
 price \$3 per year (members \$2). 30c per copy
 (roster numbers \$1).

Two hundred and thirty-seven were registered at the Michigan Society of Architects Thirty-Seventh Annual Convention at Hotel Statler in Detroit, March 7-9, 1951. Of these, 122 were architects, the remainder were producers and others, including ladies, students, members of the press and other guests. Business sessions were well attended, as well as the ladies'

This Month

As stated elsewhere in this issue, the Michigan Society of Architects Board of Directors has charged its Committee on Administration, headed by Alden B. Dow, with determining the merits of the Bulletin as a monthly publication, as compared with its former format as a weekly. It has now completed the first six months trial period, but the Committee believes that another like period should be given to be able to judge.

We have received favorable letters from Louis G. Rossetti, of Giffels & Vallet, and from Joseph N. French, of the Albert Kahn organization. We have also had some favorable reactions expressed in person.

Mr. Vincent Pellegrino, Chairman of the Committee on Public Information for the Brooklyn Chapter, A.I.A., wrote recently:

"Our Secretary, Mr. Harry Silverman, has recently turned over to us for review the October to January issues of the "Monthly Bulletin."

"In our opinion, the improved presentation of the architectural news in these issues is highly commendable. The pictorial frontispiece, the separation of advertisements from the editorials, the well-organized photos and descriptions of projects included with the "Architect of the Month," the reports from the constituent chapters, and the cartoons are all superior to the former weekly one. The only suggestions we might offer are as follows:

1. Remove to an inner page the names of the officers and directors and further identify them with the chapters they represent.
2. The rear cover would be more attractive if it were devoted to one advertiser. Perhaps this is contingent upon economic consideration with which we are unfamiliar.

"We think you have a magazine which rates with the best in its class, and we look forward to the future issues with the keenest of interest."

Your editor believes the suggestions are well taken, and that they can be put to good use in the near future.

The back cover problem has been solved to a large extent. We have an advertiser for every other issue on the back cover, with color. This will mean color also on the front cover.

social hour, luncheon and style show, and the bus trip to the Ford Motor Company's Open Hearth Furnace and Steel Mill. One hundred attended the luncheon Thursday, about 1,100 were at the banquet.

The Convention began with a social evening, Wednesday, which was made possible through the courtesy of the Clippert Brick Company. The event had been planned under the chairmanship of Carl B. Marr. While partaking of refreshments, members and guests enjoyed piano music by Mrs. Kathleen Beaubien, impersonations by Mrs. Harvey Sanderson, and the magic of William A. Cory. As we have said before, Bill is verse-atile. Now we add that he certainly knows the ropes.

At the breakfast Board meeting, all officers and directors were present except John O Blair, who regularly spends the month of March in Florida. His annual report presented to the Board meeting and to the Convention made good listening.

Incidentally, John has our vote as the Board's best-dressed member. And why shouldn't he be, and go to Florida?

President Bauer named a Resolutions Committee consisting of Andrew R. Morison, Chairman; Linn C. Smith and

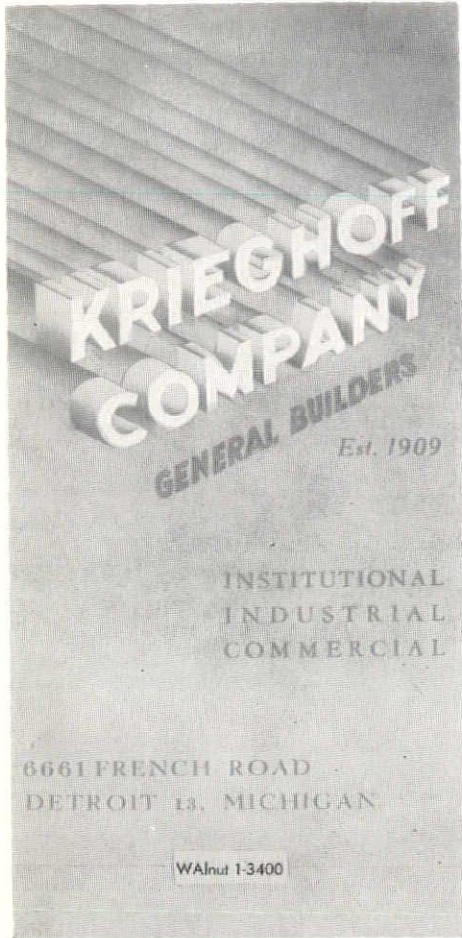
Arthur J. Zimmermann. At the opening session Thursday morning the Committee offered a resolution congratulating the Monthly Bulletin on the occasion of its 25th anniversary, commending its Silver Anniversary number with photographs and biographies of 580 members, and recommending its continuance as a monthly for another six months. It might be explained that the Board had approved changing from a weekly to a monthly on a six-months trial basis. The Committee felt that the time has not been sufficient to prove the value of the change. It would be of interest to have the reactions of subscribers.

The Resolutions Committee also recommended that the Convention adopt as an official document of the Society the statement of duties and recommended minimum fees entitled "Organizing to Build," as published in the March issue of the Monthly Bulletin, and authorize its printing for further distribution. Other resolutions extended thanks to Sol King and his Convention Committee, to the exhibitors, to Clippert Brick Company for the Social Evening, to the speakers, the press, the Detroit Convention and Tourist Bureau, and the Hotel Statler for their contributions in making the

BELOW: A portion of the group attending the Michigan Building Industry Banquet, concluding event of the M.S.A. 37th Annual Convention, March 9.



Photo by William Bradley

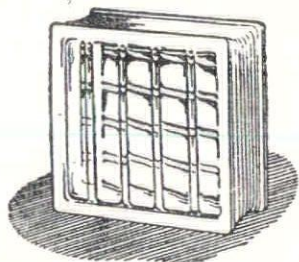


**KRIEGHOFF
COMPANY**
GENERAL BUILDERS
Est. 1909

INSTITUTIONAL
INDUSTRIAL
COMMERCIAL

6661 FRENCH ROAD
DETROIT 13, MICHIGAN

WAlnut 1-3400



Glass Block

FOR YOUR PLANT
Now!

CRITICAL MATERIALS ARE NOT REQUIRED TO ERECT GLASS BLOCK PANELS IN THAT NEW PLANT ADDITION — OR IN REPLACING WORNOUT SASH IN EXISTING BUILDINGS.

Get Insulux Glass Block — Without Delay

CALL VALLEY 1-7200

CADILLAC GLASS COMPANY
2570 HART AVENUE, DETROIT 14, MICHIGAN

SUPERIOR ROOF DECKS
OF
POURED & PRE-CAST GYPSUM

STRONG — DURABLE — FIREPROOF

Materials Immediately Available for Your Needs
GYPSUM CONSTRUCTORS, INC.

5905 Middlebelt Road Garden City, Mich.

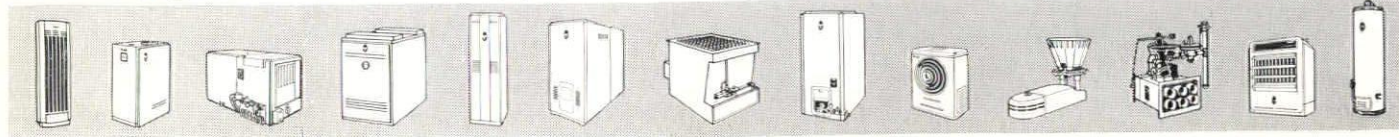
For successful heating...

ALWAYS SPECIFY

bryant
AUTOMATIC HEATING

BRYANT HEATER DETROIT SALES BRANCH
617 Central Detroit Warehouse • Phone, Woodward 3-0182

Your single source of supply for everything in gas heating equipment!



Convention a success. Recommendation was also made that all reports given at Convention be approved.

All of the resolutions were approved by the Convention.

At every session it was suggested that members and guests visit the exhibits and register at the locations provided.

Wednesday's luncheon was presided over by Andrew R. Morison. In introducing him, President Bauer stated that Mr. Morison had rounded out 25 years of service to the profession, with ten continuous years on the State Board of Registration, as President of the Michigan Society and now President of the Detroit Chapter, A.I.A. Mr. Morison introduced Major General Clyde E. Dougherty Director of Civilian Defense for the Detroit Area, who spoke briefly on the work of his office. Next introduced was Prof. Henry L. Bowman, Consultant to the Atomic Energy Commission, who spoke on "The Design of Structures to Resist the Effects of Atom Bombing." His talk is reported elsewhere in this issue.

Following Prof. Bowman's talk, Prof. Ralph W. Hammett presided and introduced George L. W. Schulz, A.I.A., as moderator of a program devoted to "Class Room Lighting and Equipment." Mr. Schulz, in his opening statement, said that the program was under the direction of the Producers' Council, and the speakers were not promoting their own companies' products but were dealing with the part played by their field. Messrs. Horner, Cunningham and Durfee gave talks on their subjects as announced in the program, and illustrated their points with slides and demonstrations. A demonstration by the Cycleweld Division of Chrysler Corporation ended the afternoon session.

Delegates and guests seemed to welcome the open evening Thursday, as many took advantage of it for informal dinner parties and get-togethers afterward. (Visit our Elbow Room.)



So this is where you write those on-the-spot reports for the Bulletin.

Friday morning, with James A. Spence presiding, two University of Michigan educators presented a program on "Living with the Atom." They were Dr. James P. Adams, Provost of

the University and Prof. William Haber, of the Department of Economics. Both touched upon the University's Phoenix Project. Dr. Adams stressed the importance of research in our lives, saying that it creates new tastes, new desires and new needs. Prof. Haber said there was no title to his talk, but it can be said that this did not hamper him. He mentioned that it is fashionable now days to have complexes and to go to psychiatrists. One such person, he said, thought he had an inferior complex, but was told he had no complex—was just inferior.

Prof. Walter H. Sanders, of the College of Architecture and Design at the University of Michigan, spoke at the student project, "A National Science Foundation," in connection with the student drawings which were on display in the meeting room.

Came Friday luncheon. Up to this time, as you may have noted, everything went according to schedule. Now, all of a sudden, it was announced that Gus Languis was called back to Lansing, and your reporter found himself substituting for a vice-president in charge of sales resistance. Fortunately, this session was to hear reports from others, and not from the presiding officer. First there was recognized the guest of honor and banquet speaker, Mr. Charles Luckman; our Great Lakes Regional Director, John N. Richards, and our national secretary of the A.I.A., Clair W. Ditchy. Richards and Ditchy made brief talks on the work of the Institute.

Reports were heard from presidents of the three Michigan A.I.A. Chapters; Andrew R. Morison of Detroit, Elmer J. Manson of Western Michigan and James A. Spence of Saginaw Valley. Each did a good job in the few minutes allotted to him. It was necessary to cut the program short in order to make the buses waiting to take the delegates and guests to the Ford Motor Company. Before adjourning, a resolution aimed at preservation, in its original form, of Gordon Hall, the historic 22-room mansion of the late Judge Samuel W. Dexter, was adopted unanimously. Directed to Governor Williams, the resolution pointed out that "some Michigan buildings are important historically and architecturally as documents of early culture and are valuable educationally." It urged that the Michigan Historical Commission "lead in an effort to get appropriate legislation having for its objective the preservation of those early buildings which are deemed of sufficient significance."

The mansion was presented to the University of Michigan by Mrs. Katherine Dexter McCormick, of Chicago, but is being remodeled into four apartments for U. of M. faculty members. This is being done over the protest of various historical societies who want the building preserved.

At the banquet, Crowning Event, President Bauer announced another change in the program. Judge Jayne had been stricken down with the flu

the day before—and so Clair Ditchy was brilliant as toastmaster. We are indebted to him for his "Life on an Island—somewhere near Upper Sandusky." It is expected that his essay will break forth as a book any day now. There is nothing else that gives one quite so much distinction as the writing of a book—a good book, that is. And you know Clair.

In addressing the assembly, Mr. Bauer said,

"Your Excellency, our Mayor, very distinguished guests, Mr. Toastmaster, members of the Producers Council, the Builders and Traders Exchange; fellow architects, be you democrat or republican; most gracious ladies, gentlemen, and very dear friends, all.

"On behalf of the producers, the builders, and all we architects of Michigan, may I bid you a most hearty welcome to this ninth annual construction industry banquet; and the crowning event of this, our 37th annual convention, perhaps the greatest and most satisfying in our long history.

"We are met on this occasion to partake of refreshments, the festivities and entertainment of the evening, to enjoy the fellowship of one another, and yet the gravity of the day is with us. We Americans are a proud people, and rightly so. We glory in our heritage and our citizenship. Despite our political differences, our economic or uneconomic upheavals portending depression or prosperity, our expanding bureaucracies in government with all the attendant direction or misdirection; in war or in peace, we emerge from each of these trials and errors a stronger and more united nation, and a greater people. A nation and a people like ours is unmatched in all the history of mankind. With God's help may it so continue. Indeed, our America is the hope of all the world.

"The way ahead is not clear. We have been subjected to suffering and sorrow, heartaches and trials, of these and other times, and in the coming days, weeks and months, and perhaps years, we shall be called upon to endure even greater sacrifices. May we accept such in the true spirit of our founding fathers.

"I am sure that I bespeak the minds of all who are here assembled, when I state that I pledge the brawn, the efforts, the mechanization, and the know-how of our great industry to our local, state and federal governments in this national emergency, to its favorable and conclusive end that we may still enjoy our way of life as we all have known it. May this industry of ours prove even more amazing than in World War II when it was said of us then "wonderfully well done, thou good and faithful servant."

"As we pass to our program, I relate the incident of the semi-final boxing match engaged in by two dusky heavyweights. They were superbly conditioned. Came the night of the bout and both were tense. The fighting was

MEIER CUT STONE Co.

FINE BUILDING STONES FOR FINE BUILDING PROJECTS

SERVICE
SINCE
1863

MAIN OFFICE
9664 French Road
at Gratiot

Detroit 13, Mich.
WAlnut 1-3343

Yard No. 2, 6615 French Rd.

*Fireproof, Structural,
Insulated*

POREX ROOF DECKS

FOR CLASSROOMS, AUDITORIUMS, GYMNASIUMS

1. Superior Sound Absorption
90% Absorption at 500 Cycles
2. Good Insulation
Heat Conductivity 0.15 b.t.u.

Used by Eberle M. Smith Associates
on the following schools (Partial List)

| | |
|-------------------|----------------------|
| Disco School | New Baltimore School |
| Gratiot School | Roosevelt School |
| Horger School | Wilson School |
| Lake Orion School | Kenwood School |
| Carr School | Freeman School |
| Taft School | Beacon School |

robbie robinson company

sales engineers
since 1930

306 Murphy Bldg.

Detroit 26, Mich.

M. H. Wilkins Co.

STRUCTURAL STEEL and MISC. IRON

FABRICATION and ERECTION

20501 HOOVER AVENUE, DETROIT 5

LA. 6-1000

DAVID L. CASEY ELECTRIC CO.

ELECTRICAL CONTRACTORS

WIRING and FIXTURES

on SECOND ADDITION of

GEORGE W. BENTLEY HIGH SCHOOL

10312 W. Chicago Ave., Detroit 4

TE. 4-2280



STEVENS HEATING & VENTILATING, INC.

PROMPT SERVICE ON COMMERCIAL AND INDUSTRIAL HEATING

ALL LEADING MAKES OF BOILERS, FURNACES, GAS & OIL BURNING EQUIPMENT
FOR AUTOMATIC HEATING

TRinity 5-7625

LIncoln 3-2752

vicious for three hard rounds without points to either. Then suddenly at 1.48 of round four one threw a haymaker to floor the other for the count. The referee began tolling the seconds—1, 2, 3, 4. Up from the canvas came the voice 'Ain't no use countin, boss, I'se all fru fo da night.'

"It is said our speakers' table is longer than the longest bar in Michigan, and is exceeded only by the table, not the bar, of our own economic club. But for sheer quality of talent ours surpasses all, and so we approach that part of the evening, which I am sure you will find most interesting. May you carry away sombre and pleasant memories of that which is to follow.

"We do, however, have a change in our program. The face of our toastmaster has changed to that of another through the unexpected illness of Judge Jayne, who is now confined to his bed with the flu, which has almost floored this announcer as well. But as truly as the mail must go through, so must the show go on, and so our committee has dug into the bag for its usual good selection.

"We are fortunate in having with us a gentleman famed for his wit and affability. He is widely known, respected, admired and loved by all. He first saw the light of day as a Frenchman on Kelly Island in the midst of Lake Erie, where he also received his early education. He was graduated from the University of Michigan in 1915, where he ably distinguished himself. He established his own practice in 1921. He has served our city with great merit on various boards and commissions. He is one of the incorporators of the Engineering Society of Detroit and was its first secretary. Though not an office-seeker, he has held most every office which our profession can bestow on one of his talent. He is past president of the Detroit Chapter of the American Institute of Architects and of this society.

"He is past regional director for the Great Lakes District, A.I.A., and one of his really good accomplishments is that for the past five years he has been our national secretary.

"Traveler, humorist, scholar, philosopher, humanitarian, a thoroughly grand guy, a fine architect.

"Ladies and gentlemen! The toastmaster of the evening, our own and beloved, Clair W. Ditchy, secretary of the American Institute of Architects."

Mr. Luckman's address was not put at the end of the program because of his plane schedule. This was his first public address since his return to the practice of architecture, and he did a fine job. His lecture is published in full elsewhere in this issue.

Following the lecture, President Bauer thanked the speaker and said that he had paraphrased the motto on Detroit's seal, the Latin of which is interpreted to mean, "We hope for better things. It has risen from the ashes." He called upon Mayor Cobo, who re-

sponded by saying that Mr. Luckman's talk had been a great inspiration to the City and its Plan Commission. He added that Detroit is now doing just what Mr. Luckman recommended—advancing from the planning stage to the doing stage. Pointing out that its Civic Center is becoming a reality, as well as its many expressways.

President Bauer read a telegram of felicitation from our good member, George J. Haas, past president of the Society, now of Miami, Fla. He then made the awards to two distinguished members, Prof. Emil Lorch and Louis Kamper (published herewith). Mr. Kamper was unable to attend, so his certificate was delivered to him at his home by Talmage C. Hughes and C. William Palmer on his 90th birthday, Sunday, March 11. There the citation was read and the presentation made to him amid a group of friends and relatives who had come to do him honor. He was deeply moved and expressed his heart-felt thanks.

And so another star was added to the Society's crown as this great convention came to a close. We had a good press, for which we are grateful. Our personal thanks to the many who made it a success. To Sol King, and all his committee, the exhibitors, to Mrs. Helen Davis of the Convention Bureau, to Ted and Ruby and Nick. To Paul Marshall, the "most wonderful extruded shape ever turned out by the Aluminum Company of America."



"And now—at the request of our sponsor—we interrupt this special broadcast to bring you our program!"

POSITION WANTED—My Forte is the conversion, remodeling, and changing of existing buildings. I enjoy dealing with people. I am familiar with the building, zoning, F.H.A., safety, etc. codes, and am a former Detroit building inspector. I have experience in contracting, construction and complex control systems, and am a graduate engineer. If your architectural, engineering, or management firm can use my pattern of aptitudes, and abilities as a field or liaison representative, analyst, report writer, etc, call or write, George Amber, 18241 Ashton Road, Detroit 19, Mich. Kenwood 2-0379.

Architects (122) Registered at M. S. A. 37th Convention

Samuel C. Allen, Carl Lloyd Ames, Victor J. Basso, Leo M. Bauer, Mossie Belco, Wells I. Bennett, Kenneth C. Black, L. Robert Blakeslee, Charles E. Boardman, Stanley R. Bragg, George B. Brigham, Erwin L. Broecker, Paul B. Brown, Herman H. Bruns.

Louis Chesnow, Erroll R. Clark, W. Glasson Coombe, Julian R. Cowin.

Gerald G. Diehl, George F. Diehl, J. Ivan Dize, Clair W. Ditchy, Walter M. Dole, Alden B. Dow.

Harold H. Ehlert, Robert Finn, Roy French (C. M. Valentine), Peter E. L. Goucher (Paul Tilds & Associates), J. Futymoski, C. L. T. Gabler.

Ralph W. Hammett, Maurice E. Hammond, James K. Haveman, Leo J. Heenan, Leo A. Henning (Eberle M. Smith), Samuel M. Hitt, Gordon Hoyem (Chas. M. Valentine), Talmage C. Hughes, Arthur K. Hyde.

Gilbert J. P. Jacques, Eugene F. Japowicz, L. B. Jameson.

Otto H. Kavieff, Lt. Col. J. A. Kendrick, Donald A. Kimball, Harry S. King (T. Rogvov), Sol King, Walter Kloske, Alwin S. Kolm, William H. Kuni.

A. N. Langius, J. W. Leinweber, Wm. P. Lindhout (Leo M. Bauer), F. A. Loebach, Emil Lorch, Robert J. Lowney, Claus D. Lundblad, Charles Luckman.

Carl B. Marr, W. V. Marchall, Elmer J. Manson, R. H. McClurg, civil engineer; George M. McConkey, Charles B. McGrew, Andrew R. Morison, James B. Morison, Harold Morton, Gustave Muth, C. A. O'Bryon.

R. D. Phelan, Suren Pilafian, Harold E. Pine, Lowell M. Price.

J. Russell Radford, Louis G. Redstone, John N. Richards, Edward G. Rosella, Duane Roycraft, Carl J. Rudine, J. Leonard Rush.

Walter Sanders, Carl A. Scheuffler, Arthur O. A. Schmidt, Albert E. Schoerger, George K. Scrymgeour, Carl G. Schulwitz, George L. W. Schulz, G. W. Scott, James E. Sexton, Gordon A. Sheill, Chris Steketee, Eberle M. Smith, Linn C. Smith, James A. Spence, Stephen J. Stachowiak, Malcolm R. Striton, William A. Stone, Clair A. Stuchell.

Peter Tarapata, Howell Taylor, J. A. Taylor, John C. Thornton, Paul Tilds, Daniel L. Treacy, Alex Linn Trout, Ernest H. Trysell.

Charles M. Valentine, Peter Vander Laan, Dirk Van Reyendam, Vernon L. Venman, Gardiner Vose.

Vernon L. Wheeler, Frederick E. Wigen, Albert E. Williams, David H. Williams, Jr., Urban U. Woodhouse, Frank H. Wright, Lloyd H. Wright.

Robert W. Yokom, George K. Zannoth, Robert A. Zander, Arthur J. Zimmermann.

Producers & Others (115) Registered At M. S. A. 37th Convention

Don Anderson, Universal Sewer Pipe Corp.; K. L. Anderson, R. E. Leggette Co.; Kirby V. Alexander, Adams & Westlake Co. (More)

Acorn Iron Works, Inc.

FABRICATORS and ERECTORS
STRUCTURAL STEEL AND
MISCELLANEOUS IRON



9260 Freeland Avenue
Detroit 28, Michigan
WEBster 3-8672

Palombit Tile Co.

TILE AND TERRAZZO WORK

9750 GRINNELL AVENUE
DETROIT 13
WAlnut 2-2658

Jones-Sherman, Inc.

(Formerly Wayne Electric Co.)

ELECTRICAL CONTRACTORS
on
GRATIOT HIGH SCHOOL

Commercial and Industrial Installations

955 E. Jefferson Ave., Detroit 7

WO. 2-9774

GLANZ & KILLIAN CO.

Contractors

PLUMBING — HEATING — VENTILATING

Fire Protection Sprinkler Systems

1761 WEST FOREST AVENUE — DETROIT 8 — TE. 1-7820

Another Reason . . .

why many architects specify HURON MASONRY CEMENT for mortar. HURON MASONRY CEMENT has the ability to retain the original mixing water during the critical setting period, thus minimizing the possibility of mortar shrinkage. Tests show that HURON MASONRY CEMENT has a water retention factor far in excess of that required by A.S.T.M. and Federal specifications.



HURON PORTLAND CEMENT CO.

—General Offices—

FORD BUILDING DETROIT 26, MICH.

Michigan Plants Located at Muskegon, Alpena, Saginaw, Detroit, Wyandotte

ARM-GLAZE the E-L-A-S-T-I-C GLAZING COMPOUND

● Specified by leading Architects and Engineers — preferred by Contractors. Easy to apply. Never gets rock-hard. Won't chip, crack or crumble. Provides LASTING protection. Reduces maintenance. A type for every type of sash. Try Armstrong's Arm-glazel

● SEE OUR CATALOG IN SWEETS . . . also FREE, upon request, use of Sound Slidefilm, "Application of Glazing Materials."

The ARMSTRONG COMPANY
241 S. Post St., DETROIT, MICHIGAN

Ed D. Baker, Preston Associates; H. Upham Baker, The Celotex Corp.; Leonard Bashaw, Charles Preston Associates; Carl S. Bennett, F. W. Dodge Corp.; R. Berti, Berti Plastering Co.; Ira L. Birner, Celotex Corp.; H. L. Bowman, Atomic Energy Commission; Wm. E. Bradley, photographer; Marvin Brokaw, F. W. Dodge Corp.; William T. Brownson, Concrete Pipe Assn.; Winn Brunner, Builders & Traders Exchange; Sam Burtman, Century Brick Co.

T. S. Clousing, Eagle-Pitcher Sales Co.; Russell J. Collins, Mulcahy & Collins; George W. Combs, Associated General Contractors of America, Mich. Chapter, Lansing; Henry A. Cook, The Detroit Edison Co.; Herbert E. Cook, Electrical Assn., Detroit; W. A. Cory, Yale Rubber & Synco Co.; David C. Crawford, Crawford Door Sales Co.; K. H. Cunningham, American Structural Products Co.

Fred Dathe, Kaylo Div., Owens-Ill. Glass Co.; Eugene Davis, R. C. Mahon Co.; Nick Demos, Monthly Bulletin, M.S.A.; Bill Dewey, Plywood Detroit Co.; Bill DeGrace, The Detroit Free Press; Norris F. Dennis, American Structural Products Co.; W. B. Dixon, Nelson Co.; Don Domino, The Williams Pivot Sash Co.; Karl Domino, same; General Clyde E. Dougherty, Chief of Civilian Defense, Detroit; Earl Drake, Plywood Detroit Co.; S. W. Drews, Peerless Cement Co.; S. A. Durfee, American Seating Co.

Harold F. Eckert, The Detroit Edison Co.; Philip J. Ednlick; N. J. Ermatinger, Nelson Co.

R. C. Faulwetter, U. S. Quarry Tile Co.; John F. Finn, Pittsburgh Plate Glass Co.; Don M. Forrest, Frederic B. Stevens, Inc.; H. E. Fritzam, Otis Elevator Co.; Al Fuchs, Multi-Color Co.

L. Pat Galway, Zonolite Co.; Sam J. Gettleson, L. Sonneborn Sons, Inc.; J. A. Gilman, Kentile, Inc.; O. M. Granum, AAA Engineering Sales Co.; I. A. Gould, Valley Metal Products Co.; Ed Grabowski, Cadillac Glass Co.; Clarence Gudnau, Speakman, & Munro-Van Helms Co.

F. S. Hall, Jr., R. E. Leggette Co.; A. G. Hann, Hilyards Chemical Co.; Phil Harrington, R. E. Leggette Co.; Francis Hart, Schulz & Schulz; Wright Hitt, Owens-Corning Glass Co.

Chester J. Jaros, Detroit Brick & Block Co.; James J. Johnson, Peerless Cement Co.

Clarence M. Kimball, Kimball & Wilson, Inc.; C. J. Kirchgessner, Portland Cement Assn.; Chuck Kleinbrook, Zonolite; Bert G. Kuiper, Fasteners, Inc.

Nathan Levine, U. of M. student; Seymour Levine, same; Tom Lewis, Concrete Pipe Assn. of Mich. Inc.; R. L. Lindall, R. E. Leggette Co.; E. P. Lockart, American Structural Products Co.

Donald D. MacMullan, Gypsum Constructors, Inc.; Herman Marsh, Builders & Traders Exchange; Don McAlonan, Plywood Detroit Co.; Claude McCammon, Cinder Block, Inc., & Horn Fuel

& Supply Co.; Don F. McVey, U. S. Plywood Corp.; Wm. J. Miller, U. of D. student; Alfred A. Moor, American Structural Products Co.; Bill Muir, Reflective Insulation Co.; W. F. Mulcahy, Mulcahy & Collins; G. F. Mullor and J. R. Nicholson, Pittsburgh Plate Glass Co.

Clyde T. Oakley, Truscon Steel Co.; Warner Ohman, Portland Cement Assn.; Donald T. Ollesheimer, and Louis T. Ollesheimer, Fiat Metal C.; R. J. Ogden, Aluminum Co. of America; Wm. E. Ogden, March Wall Products, Inc.; John G. Owen, Libbey-Owens-Ford Glass Co.

Wm. R. Pidgeon, Parham Insulation Co.; Bill Portland, Armstrong Cork Co.; Dayton L. Prouty, Zonolite, Ralph W. Purdy, Water Resources Commission; Allen R. Quirk, Concrete Steel Corp.

Walter Rankin, Fiberglas; Ed Rhode, Cinder Block, Inc.; Paul Rice, Portland Cement Assn.

W. G. Sandrock, U. S. Plywood Co.; Alfred C. Sangster, The Detroit Edison Co.; L. E. Sawitzky, R. E. Leggette Co.; Tom Schlenkert, Crawford Door Sales Co.; Edward C. Schnee, Ruth Adler Designs; Louis U. Schneider, Electrical Assn., Detroit; Charles H. Schroeder, Gypsum Constructors, Inc.; Theodore G. Seemeyer, Jr., Monthly Bulletin, M. S. A.; E. J. Simms, Kentile, Inc.; Horace Sisson, Multi-Color Co.; F. N. Steadman, Peerless Cement Co.; Lynn K. Stedman, Crawford Door Sales Co.; Lynn G. Stedman, Jr., same; John Stover, Plywood, Inc.; Ralph G. Sturrell, The Detroit Edison Co.

Lyle P. Tonne, Tonne Engineering Co.; Robert L. Upchurch, Zonolite; C. E. Van Atlen, heating contractor; Herb Vincent, Cinder Block, Inc.

J. P. Wanko, U. of D. student; Donald N. Whitson, Parham Insulation Co.; F. C. Wilson, Kaylo Div., Owens-Illinois Glass Co.

Ladies (41) Registered at M. S. A. 37th Convention

Sylvia Anderson, Ruby Atkins (Monthly Bulletin, M.S.A.).

Mrs. L. Robert Blakeslee, Mrs. Stanley Bragg, Mrs. Erroll R. Clark, Mrs. W. Glasson Coombe.

Mrs. Clair W. Ditchy, Mrs. Alden B. Dow, Florence Dyer (State Building Department).

Mrs. Douglas Fiske, Mrs. C. L. T. Gabler, Mrs. O. M. Granum, Mrs. Ralph W. Hammett, Dorothy Hammett, Mrs. Talmage C. Hughes.

Margaret Kaufmann, Mrs. H. J. Keough, Mrs. Harry King, Mrs. Sol King, Mrs. Wm. H. Kuni.

Mrs. Wm. P. Lindhout, Mrs. Mary Lou McCabe, Mrs. E. H. McNieme, Mrs. E. W. Mitton, Mrs. Andrew R. Morison, Mrs. James B. Morison, Mrs. Gustave Muth.

Mrs. Irene M. Ollesheimer, Mrs. Wm. E. Ogden, Mrs. Grace J. Pilafian, Mrs. John N. Richards, Marilyn Rosen, Elizabeth T. Roycraft.

Mrs. Arthur O. A. Schmidt, Mrs. George L. W. Schulz, Celia Seedorf,

Mrs. Eberle M. Smith, Mrs. James A. Spence, Mrs. F. N. Steadman, Dorothy Valentine, Mrs. David H. Williams, Jr.

Exhibitors (32) at M. S. A. 37th Annual Convention

AAA Engineering Co., American Structural Products Co., The Adams & Westlake Co., Busch, John D. & Sons, Inc., Cadillac Glass Co., The Celotex Corp., Century Brick Co., Cinder Block Inc., Concrete Pipe Association of Michigan, Cycleweld Division, Chrysler Corp., The Detroit Edison Co., Detroit Steel Products Co., Kentile, Inc., Kimball & Wilson, Inc., R. E. Leggette Co., The R. C. Mahon Co., Michigan Consolidated Gas Co., Multi-Color Co., Owens-Illinois Glass Co., Parham Insulation Co., Peerless Cement Corp., Pittsburgh Plate Glass Co., Plywood Detroit Co., Charles Preston Associates, Reflective Insulation Co., Frederic B. Stevens, Inc., Truscon Steel Co., United States Plywood Corp., Valley Metal Products Co., The Williams Pivot Sash Co., Zonolite Co., Social Evening Courtesy, Clippert Brick Co.



"Now I want to show you how comfortable this bathtub really is."

TREASURER'S REPORT - 1950

| | | |
|----------------------|-------|------------|
| Cash on Hand, | | |
| Jan. 1, 1950 | ----- | \$1,102.77 |
| RECEIPTS | | |
| Jan. 1 to Nov. 30 | — | \$2,157.92 |
| Month of Dec. | | |
| Int. on Govt. Bonds | 51.90 | 2,209.82 |
| | | <hr/> |
| | | \$3,312.59 |
| DISBURSEMENTS | | |
| Jan. 1 to Nov. 30 | — | 1,472.31 |
| | | <hr/> |
| Cash on Hand, | | |
| Dec. 31, 1950 | — | 1,840.28 |
| ASSETS | | |
| Bonds (U.S. Govt.) | | 6,500.00 |
| Cash in Detroit | | |
| Bank | ----- | 1,840.28 |
| | | <hr/> |
| | | \$8,340.28 |
| ACCOUNTING | | |
| Capitol Acct. | ----- | \$7,688.17 |
| Special Legal Fund | | 652.11 |
| | | <hr/> |
| | | \$8,340.28 |

DARIN & ARMSTRONG, INC.

General Contractors

DETROIT 3, MICHIGAN

underground construction

WATER MAINS
SEWER TUNNELS
ELECTRIC CONDUITS

G
E
O
R
G
E
A.
O
D
I
E
N
I
N
C.

1935 McGraw Ave.
Detroit 8, Michigan
TYler 4-0100

*Never before
a brick
like this*

Use

CHEM

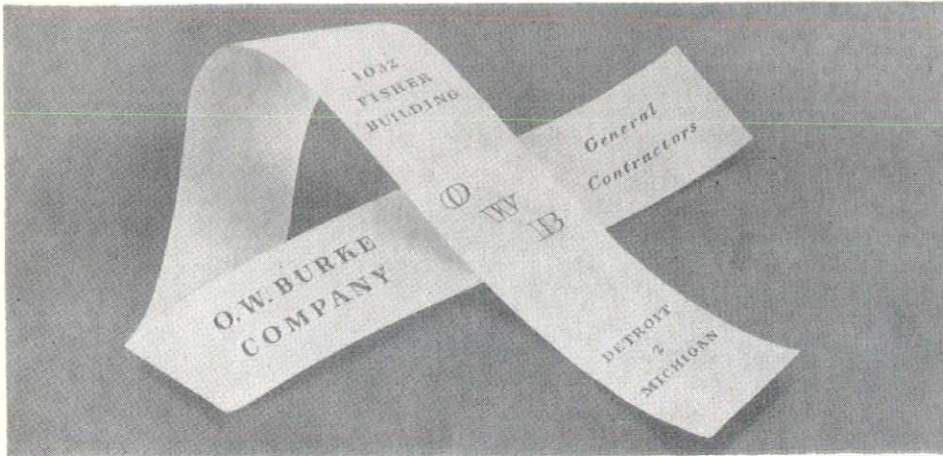
The All Purpose Brick

For
RESIDENTIAL
COMMERCIAL
And
INDUSTRIAL
CONSTRUCTION

DETROIT BRICK & BLOCK CO.

Foot of St. Jean Detroit 14
VA. 2-4879

CHEM BRICK MEETS A.S.T.M.
SPECIFICATION FOR S.W. BRICK



EASTERN CABINET WORKS

ARCHITECTURAL WOODWORK—CUSTOM BUILT FURNITURE—STAFF DESIGNING AVAILABLE

LORAIN 7-9515

3456 EAST JEFFERSON AVE.

DETROIT 7, MICHIGAN

COLORFUL OHIO
SHALE BRICK

KURTZ Brick Company

FOR RESIDENTIAL
AND
COMMERCIAL
BUILDING

Our Fleet of Diesel Powered Highway Trains Deliver Your Brick Direct from Our Ohio Kilns to Your Job Site
NO WAITING — NO DELAY — NOT A CHIP IN A CARLOAD

14183 WYOMING, DETROIT 4

WE. 3-2384

REPORT OF THE CHAIRMAN 37th ANNUAL CONVENTION

By Sol King

This report is an attempt to describe briefly some aspects of the planning and preparation for the 37th Annual M.S.A. Convention, which was held at the Hotel Statler, Detroit, on March 7, 8 and 9, 1951.

A separate financial report is being submitted to the M.S.A. Board at its April meeting.

It was the feeling of the Convention Committee that, in the light of the fast-moving drama of international events and because of the existing confusion on the subject of atomic energy, there was need for those engaged in planning the physical world of tomorrow to look through the dangers of the present and to see in a broad perspective the possibilities of living in the world which is emerging. Hence the selection of the timely theme, "Living With the Atom."

Under the capable direction of Paul Brown, its Chairman, the Program Committee developed an extremely well-balanced program, oriented toward the selected theme.

The program consisted of a Wednesday evening social; M.S.A. business sessions; luncheons; principal speakers on the malevolent and benevolent effects of the atom; a panel on "Class Room Lighting and Equipment"; a demonstration of "Cycleweld"; presentation of a student planning project at the College of Architecture, University of Michigan; ladies' social and luncheon; a tour of the Open-Hearth Furnace and Steel Mill at the Ford Rouge Plant, and exhibits of building materials and products.

Eberly M. Smith and his Committee did a fine job in securing the speakers to implement the principal sessions of the Convention.

The ladies' social, luncheon and tour of the Veterans Memorial Building was arranged by Grace Pilafian and her Committee. From all reports to date, Grace did a splendid job in planning this affair. The ladies were delighted with their suite on the Second Floor, the table flowers, and the complimentary pre-luncheon cocktails. Another hit with the ladies was the complimentary orchids distributed to them at their social and before the banquet by your Committee in behalf of the M.S.A., in honor of the 25th Anniversary of the Bulletin.

Leo Bauer, our President, and his Committee were responsible for planning and arranging the tour of the Ford Steel Mill.

Certainly, all will agree that Bob Blakeslee and his Committee came up with a novel and well designed Brochure containing the printed program, exhibitors, speakers, officers and committees.

Registration was efficiently handled by Suren Pilafian, his Committee and members of Tal Hughes' staff. T. G. Seemeyer deserves a vote of thanks for his efforts.

Our devoted and ubiquitous Tal Hughes gave of his time and efforts in every phase of the Convention planning. Particularly noteworthy was his handling of publicity.

Perhaps the most difficult assignment fell to Gus Muth and his Committee—assisted by Bill Cory (special aide)—who were responsible for the arrangements and sale of space for the exhibits. This Committee performed a yeoman job in overcoming early resistance, and they effectively demonstrated that, with the co-operation of the exhibitors, it is possible to achieve interesting, informative, well-attended and profitable exhibits.

The Convention Committee recommends that the Board give consideration to expanding the exhibits at future conventions because, in addition to its informational value, the financial resources derived therefrom make it possible to plan attractive conventions and permit the presentation of outstanding speakers.

This year, Andrew Morison, Tal Hughes and your Chairman represented the Architects on the Building Industry Banquet Committee. The banquet, which was held on Friday, March 9, 1951, featured Mr. Charles Luckman, A.I.A., as principal speaker, and concluded our 37th Annual Convention.

In conclusion, I am strongly tempted to mention by name all of those members, directors, officers and exhibitors who contributed so much of their time, energy and ability to the successful planning and completion of the Convention, but such a list would grow to undue proportions. So I must content myself by referring to the thirty-seven active participants as the Convention Committee.

I am grateful for the opportunity that has been afforded me to work with this Committee. Their co-operation, interest and active participation was responsible for bringing the Convention to a successful realization. It would be concealing the truth if I did not state that, without their kind and tolerant support, for which I shall always be thankful, it would have been impossible for me to have discharged properly my duties as General Chairman of the M. S. A. 37th Annual Convention.



82 birthday candles on a one-pound cake?

ANNUAL REPORT OF MSA COMMITTEE ON EDUCATION AND RESEARCH

By Ralph W. Hammett, Chairman

Your Committee on Education and Research wishes to indorse the work that is being done by the Special Commission on Education and Registration of the American Institute of Architects under the Carnegie Foundation grant, and that has been spearheaded by President Ralph Walker. We shall await the report of that commission when it is given at the coming national convention of the A.I.A. in Chicago in May, 1951.

Apropos of the work of that commission, your committee wishes to indorse the "Minimum Training Requirements" of the Committee on Education and Research of the Pennsylvania Society of Architects, which requirements have been used as a basis for part of the study of the A.I.A. Commission.

Your committee has changed the order of paragraph headings of those minimum requirements in order to give emphasis, and feels that some of the descriptions might be more clearly stated; however, we wish to indorse these minimum requirements in principal as necessary for the professional practice of architecture.

The following are the requirements:

1. **Composition and Theory.** The ability to analyze architectural problems and to produce their synthesis into architectural form and arrangement, together with an adequate comprehension of the theory of design, including orientation, conventional arrangement and the technique of contemporary planning.
2. **Architectural Design.** The ability to calculate, design and detail all usual and ordinary types of construction, including steel, reinforced concrete, masonry, wood, etc., and to possess a sound judgment and understanding of such construction as is usually designed by structural engineers.
4. **Materials.** A working knowledge of the physical characteristics, use, chemical composition, durability, availability, suitability of combination with other materials, methods and details of manufacture of all normally used building materials and finishes and their assembly.
5. **Mechanical Equipment.** The ability to calculate, design and specify systems of heating, (including air conditioning), plumbing and electrical work such as would ordinarily be required in the simpler types of building; and the general knowledge of elevators, escalators and other special types of mechanical equipment, to the extent that the Owner may be soundly advised and the work of the specialized engineers be incorporated in the building documents.
6. **Site Engineering.** A sufficient knowledge of surveys, topograph-

ALL TILE & TERRAZZO WORK
on
BENTLEY HIGH SCHOOL
and
CLARA BRYANT FORD SCHOOL

by
Boston Tile & Terrazzo Co.
(HUMBERT MULARONI)

23740 Grand River Avenue, Detroit 19
KENwood 1-1530

Brancheau Brothers

PLUMBING and HEATING CONTRACTORS

COMMERCIAL and INDUSTRIAL PIPING

25682 VAN BORN RD., DEARBORN, MICH.

LO. 1-4034

Fabricators & Erectors of Structural Steel for Over Twenty-Five Years

STERLING
STRUCTURAL
STEEL CO.

Structural and Miscellaneous Iron Work

VE. 8-0230

12700 LYNDON
AT MEYERS ROAD
DETROIT 27, MICH.

NEON *and* METAL LETTERS
Long SIGN CO.
6209 HAMILTON AVE.
DETROIT 2, MICH.
PORCELAIN • STAINLESS • ALUMINUM



**Maurice V. Rogers
Company**

GENERAL
CONSTRUCTION

COMMERCIAL BUILDING
CUSTOM RESIDENTIAL

UNiversity 3-3171
15849 WYOMING AVE.
DETROIT 21, MICHIGAN

WALTER O. PLACE CO.

REPRESENTING
MESKER BROTHERS
STEEL WINDOWS

15367 EVERGREEN ROAD, DETROIT 23
KENwood 2-6480

Aluminum & Architectural Metals Co.

Misc. Iron and Ornamental Metal Work
Aluminum, Bronze and Stainless Steel
Steel Stairs

1974 FRANKLIN STREET, DETROIT 7, MICH.
LOrain 7-6880

ical maps, contouring, earth work, site drainage, roadways and the like; to design, delineate and specify work of this character usually encountered in normal practice.

7. **Specifications.** A working knowledge of General and Special Conditions of the Contract, bonds, no lien provisions, guarantees and the like, together with an adequate understanding of the building trades, building materials and their installation in the work, building processes and tests.
8. **Professional Relations and Ethics.** An appreciation and knowledge of proper relations with fellow architects and the other design professionals, the building industry, public officials having jurisdiction over building and the obligations of the architectural profession to the public.
9. **Administration and Law.** A working knowledge of Codes, Laws, Regulations, etc., involved in construction projects in this State, together with the legal implications of contracts, liens, etc., and a working knowledge of office and job administration and architectural supervision, fees and cost accounting.
10. **History:** A well rounded knowledge and appreciation of the historical phases and background of architecture, covering ancient through contemporary, together with their social implications and development.

ANNUAL REPORT OF M.S.A. COMMITTEE ON PUBLIC AND PROFESSIONAL RELATIONS

By Charles B. McGrew, Chairman

Practically the entire activities of this Committee during the past year have been in connection with the practice brochure which has now been published under the title "Organizing to Build" in the March issue of the Monthly Bulletin.

We have had several meetings in connection with this work, in different parts of the State, and believe that our first draft was pretty nearly satisfactory. At the suggestion of the Board, it was submitted to Mr. John P. O'Hara, our counsel, for review as to legal matters, and also to The Octagon for whatever comment they might care to make. All of the criticisms were considered and appropriate revisions made. The published form is subject to further revision as the profession may dictate. It is our hope that we will receive many comments on this which will improve it.

I want to thank all of the members of the Committee for their good work on this project, and for the time and expense which they contributed. A better Committee could not be imagined. Everyone took an active part in all phases of this work.

EDITORS NOTE: "Organizing to Build" was approved by the Convention.

CONCRETE PIPE

If you were to include Concrete Sewer or Culvert Pipe in your specifications, would you have all of the pertinent data available in order to be sure that the class pipe specified would do the job right?

A new pamphlet is being distributed by the Concrete Pipe Association of Michigan Inc. which gives suggested uses of the various plain and reinforced concrete sewer and culvert pipe manufactured in various plants throughout the State of Michigan.

A consolidated table shows the minimum strength test requirements governing the manufacture of these products. Since strength of structure needed under various conditions in underground work, is a constant problem facing the architect and the engineer, these tables should prove to be of great interest—they enable the architect and the engineer to determine at a glance, the relative strengths of the various classifications of concrete sewer and culvert pipe manufactured today.

Modern ditch-digging equipment used in sewer construction today, is resulting in a new trench backfill-loading picture, in so far as width of trench bottom, and backfill is concerned. The material, relative to the suggested backfill depths to be used with each classification of concrete sewer pipe, contained in this pamphlet, should prove to be of interest to all architects, engineers, and contractors.

Copies are available from the Concrete Pipe Association of Michigan Inc. P. O. Box 416, Ann Arbor, Michigan.

HONOR AWARDS

Pursuant to our reminder in the March Monthly Bulletin, Andrew R. Morison, President of the Detroit Chapter, A.I.A., further urges members to participate in the Institutes' Honor Awards at the A.I.A. Convention in Chicago, May 8-11, 1951.

Malcolm R. Stirton, designated by Mr. Morison to promote interest in the endeavor, states that in case architects here have not kept the leaflet on the subject sent them by the Institute, other copies may be obtained by addressing Institute Headquarters at the Octagon, in Washington.

Deadline for entries is April 21, and they should be sent directly to Washington.

TRACE CHRISTENSON, JR., A.I.A., was the victim of misinformation in our recent biographical number, when it was stated that he is "currently a partner in the firm of Traec and Warner, Industrial Designers, Chicago."

This statement was included in a sketch of his earlier career, and it should have been understood that the work "currently" was of several years ago. Mr. Christenson has been with The Kawneer Company, of Niles, Michigan, for some years, as architect, in charge of design and research.

DETROIT CHAPTER HEARD GEORGE NELSON IN MARCH

Spirited discussion follows:

George Nelson, A.I.A., of New York City, was the speaker at the Detroit Chapter A.I.A. monthly meeting at the Rackham auditorium on March 22, following a dinner in the same building. His subject was "Current Problems in Architecture and Design."

His talk was illustrated with color slides and he covered his subject broadly, including architecture, interiors, city planning, industrial products and furniture.

Before adjourning the meeting to the auditorium, President Andrew Morison welcomed members and guests, and especially mentioned the good attendance of ladies, some of whom were with Grace Pilafian, representing the Association of Women in Architecture.

The President called upon Suren Pilafian, Program Chairman to introduce the speaker. Mr. Nelson presented some notions in the form of design elements he had developed with his color camera, and which he stated had been quite absorbing for him for some time. He asked, "how does design begin? Whether the problem is a flat iron or a flat iron building, how does the designer get ideas for form, color, etc.?" His answer was that it comes from the world, by observing the world about us, the individuals in it and the system under which we live. He presented a rather drab picture of these aspects today. In fact, he said a good deal of it is cracking up. As an example, he pointed out that when our traffic and parking problems become intolerable we build more skyscrapers and make automobiles larger.

Mr. Nelson referred to furniture as a vehicle for individual expression and, though he is a furniture designer, he believes that furniture is being absorbed by the buildings.

A most interesting question and answer period followed the lecture and attendants kept the speaker going until time to close the building.

Clair Ditchy asked the question, "how can we arrange to have you come to Detroit every month and put on a spirited discussion like this?"

WILLIAM WIEGAND

William Wiegand, A.I.A., a non-resident member of the Michigan Society of Architects, died at his home in New City, Rockland County, New York, on February 8. He was sixty-six years of age.

Mr. Wiegand, a member of the New York Chapter of the A.I.A., was born in Germany and educated at the University of Darmstadt, where he received his degree. He came to the United States in 1907, became a member of the Michigan Society in 1944, of the Institute in 1949. He was registered as an architect in Michigan, New York and New Jersey.

BELLUSCHI TO BE DETROIT CHAPTER SPEAKER

AT RACKHAM BUILDING, WEDNESDAY, APRIL 18

The April meeting of the Detroit Chapter, A.I.A., has been set for April 18, as a dinner meeting at the E.S.D., to be followed by a lecture in the auditorium of the same building at 8:00 p.m.

Suren Pilafian, Chairman of the Program Committee, states that it may be necessary to change the date to April 23, but the cards for reservations to be sent out later will bear the correct date.



MR. BELLUSCHI

Let us here state that the public, including ladies, will be welcome to both the dinner and the lecture, and, unless stated otherwise, this is always the case. The lecture will be free; the dinner charge \$2.25, except that corporate members are charged \$1.50, the Chapter paying the difference. As usual, tickets for two students from each student branch chapter are complimentary, other students pay the \$2.25 actual cost. Any number of students or others may attend the lecture only without charge.

Reservations necessary for dinner.

Mr. Belluschi, newly appointed Dean of the Massachusetts Institute of Technology's School of Architecture and Planning, has practiced his own regional brand of contemporary architecture in the Northwest for 2 years. A native of Anconia, Italy, and a graduate in architectural engineering from the University of Rome, he came to the United States in 1923 on an exchange fellowship to study at Cornell University. Following graduation, he worked in the Idaho copper mines for nine months, then settled down to a drafting board in the Portland, Ore. office of the late A. E. Doyle, to become chief designer and then partner (the latter in 1933). Since 1943, he has practiced under his own name. His work in the fields of residential, religious, commercial and other types, is characterized by a gifted handling of materials.

Pietro Belluschi served as President of the Oregon Chapter, A.I.A. in 1943-1944. He is past president of the Board of Trustees of the Portland Art Museum, was American Delegate to the League of Nations Institute of Intellectual Cooperation in Madrid in 1934. He was elected a Fellow of The American Institute of Architects in 1948, was appointed by President Truman to the National Commission of Fine Arts in 1950.

NELSON COMPANY

PLUMBING

HEATING

& AIR CONDITIONING
SUPPLIES

WHOLESALE

MAIN OFFICE

and

DISPLAY ROOM

2604 Fourth Ave.

Detroit 1

WO. 2-4160

Royal Oak - Grosse Pointe - Ann Arbor

THE TOLEDO PLATE and WINDOW GLASS CO.

ESTABLISHED 1889

Manufacturers & Distributors
Glass Jobbers and
Glazing Contractors

Glass for Every Purpose

Polished Plate — Crystal Sheet
and Window Glass

Rolled, Figured, Wired
and Polished Plate Wired

L.O.F. Thermopane
Insulating Units

Vitrolite Structural Glass
Safety Glass

Metal Storefront Construction

Tee-Pee Asphalt Roofing
Asbestone Asbestos Siding Shingles

Manufacturers of
Mirrors — Beveled Plate
Beau-Fort Medicine Cabinets

The Home of the Famous
BEAU-VUE MIRRORS

WAREHOUSES

DETROIT — GRAND RAPIDS
CLEVELAND — TOLEDO

"DEPEND ON A DEPENDABLE NAME"

JOHN A. MERCIER BRICK COMPANY

3895 Roulo Ave., Dearborn

VI. 1-0761

MANUFACTURER & DISTRIBUTOR

Slag Block *Mercrete* Slag Brick

Lighter in Weight QUALITY FACE BRICK Lighter in Color

"SPECIFY THE BEST"

Heineman & Lovett Co.

WATERPROOFING ENGINEERS AND CONTRACTORS

GENUINE
IRON BOND
SYSTEMS



HI-TEX
CEMENT
COATINGS

For Basements, Pools, Tanks
And Other Sub Structures

Restoring Concrete & Masonry
Super Structures, Cement Coating
For Waterproofing & Decoration

5327 Tireman Avenue, Detroit 4, Michigan

TYler 6-1226

THE DANGER OF SURVIVAL

By MR. CHARLES LUCKMAN, A. I. A.

An address delivered at the Michigan Building Industry Banquet, concluding event of the Michigan Society of Architects 37th Annual Convention, Hotel Statler, Detroit, March 9, 1951.

For emphasis, may I state at the outset, my profound respect for the master planning work which has been done for the unborn cities of tomorrow.

However, the tragedy of today lies in our apparent willingness to await the total destruction of atomic war, before we accept our obligation to replan and rebuild our existing cities. Now of course you can interrupt me to say that "some master plans have been made for some of our present cities." I know. The vaults are filled with master plans which are gathering dust because, for the main part, they were conceived in a vacuum of unreality. They were based on what the planner felt a city **should** be, instead of what it **could** be.

Those plans could be fruitful only if the cities are obliterated by war. Is that to be the limit of our genius? Perfection is always a desirable goal but, in this case, the opportunity for a perfect plan exists only if through voluntary or involuntary means, the torch of dynamite is applied to our existing cities. Perfect plans require perfect circumstances. Therefore, unless we have atomic war, the layers of dust will continue to accumulate on the perfect plans.

Can we not, instead, truly show our genius? A realistic approach acknowledges that the cities exist; they are tangible; they are here. Every city has much that is good, and they are functioning today—granted, in some ways good and in some ways bad. But what does a doctor do with a patient who is sick? He diagnoses; he applies therapy; he effects a cure. When he is through, he has the same patient with the same personality—only healthy instead of sick. The disease has not been permitted to kill the patient. Can not we do as much for our valuable but sick cities.

This, of course, introduces the element of compromise. But, I don't think that is bad! We exist today because our forefathers had sufficient genius to effect what has been called "The Great Compromise"—the Constitution of the United States. Can we not be the sons of our forefathers? Can we not equally blend imagination with hard-headedness in order to consistently achieve results? Can we not apply a realistic therapy to our sick cities? We **can**—but whether this will be done by the force of intelligence, or by the force of brute disaster, cannot be foreseen."

I hope it is clear in my early remarks that I am not arguing for "piecemeal" planning. However, I would like to say in passing that I know of a few city puzzles that have a few missing pieces—which should be put in their place.

Is it not puzzling to be able to go down the Henry Hudson Parkway from Connecticut to New York City in less than an hour—and then spend more than an hour going a few blocks from the Parkway to the East River Drive?

Is it not puzzling to attend the Rose Bowl game and, as a motorist, have access to four fine freeways—but, as a

pedestrian, not to have access to a single underpass or overpass to cross the highways?

Is it not puzzling to fly from Chicago to Detroit—in slightly more than an hour—and then spend an equal time getting from the airport to the hotel?

If I had the time we could keep on our puzzling tour of the United States. Suffice it to say that perhaps we should not too hastily rule out just a slight touch of "piecemeal planning."

Today's interest in broad city planning is the reaction against a whole century spent in living from day to day. However, in spite of the existence of many conscientious city planning associations, and of trained specialists in the planning and administration of towns, there prevails a shocking lack of direction and an inability to remove the most obvious inconveniences. Thus far we have been unable to save our present cities from becoming simply a vast acreage of hot asphalt and cold stone.

From 1870 on, the great cities developed continuously toward what they are today—unserviceable instruments. No one knows when this tremendous waste of time and health will be cut down; when this pointless assault on the nerves will end; when this failure to achieve a dignified standard of life will be remedied.

But I think we can all agree that the city today is profoundly menaced in all countries, and without exception—not by any outside danger, but from an evil within itself. This is the evil of the machine.

Because of the confusion of its different functions, its growing mechanization, the omnipresence and anarchy of the motor car, the city is at the mercy of industrial machines. If it is to be saved, its structure must change. This change, which will be forced by machinery just as in other days it was brought about by implements of war, is inevitable.

The question then arises whether the large city as it has been inherited from the 19th century, with its chaotic intermingling of functions, should not be allowed to die.

On this question the division is sharp and clear, especially in the United States, where mechanization is so much more advanced than in Europe. One opinion is that the metropolis cannot be saved and must be broken up and eliminated. The other, that instead of being destroyed, the city must be transformed in accordance with the life and

genius of our times.

Between those who believe that the city will disappear, and those who try to preserve it by changing its structure, there is no disagreement on the point that the intricate disorder of the present day cannot continue, that man cannot live forever with the conditions which stimulate ulcers.

From my point of view, cities cannot simply be discarded like worn out machinery. They have too large a part in our destiny. But it is abundantly clear that the life which they have abused is increasingly exacting its revenge—and that this feverish institution must soon be brought within narrower limits.

In the accomplishment of this there are some who, unfortunately, are not aware of the fact that plans do not exist in a political and economic vacuum. That the decision as to what to plan should always be determined by what can in fact be realized. This latter decision is not made by planners. Yet the decision partly depends on the people's and the planners' determination to plan for something substantive; on their determination to change the program if there cannot be a practical realization of the program.

Those who are unwilling or unable to accept the age old philosophy, "A bird in the hand is worth two in the bush," might be well advised to plan for a new job—instead of a new city.

The real issue in redevelopment of our existing cities, is that of revolution versus common sense. As for myself, I do believe in master plans. But I do not believe in the revolutionary master plan. I believe only in the common sense master plan. To put it simply, I am opposed to "dream-able" plans. I am in favor of "do-able" plans.

Here is a ringing quotation from a recently published "manual on city planning."

"The time has come to rebuild our cities. The mere redevelopment of problem areas will not provide the inspiration. The American city mocks at us. The dead hand of the past baffles every effort. Our towns were built hastily and carelessly. Are we to be forever satisfied with mere improvement? Or shall we not instead completely rebuild our cities? Can we not ignore present obstacles and dream big dreams?"

End of quote. End of paragraph. End, I hope, of such marijuana inspired day dreaming.

Now, may I read you a well worded

FACE BRICK
for
RECEIVING HOSPITAL
DETROIT

HANLEY COMPANY

Established 1893

LARGEST MANUFACTURERS
OF GLAZED AND FACE BRICK
IN THE EAST

(Capacity 7,000,000 Units Per Mo.)

FACE BRICK
GLAZED BRICK
ACID BRICK
UNGLAZED FACING TILE
GLAZED FACING TILE
QUARRY TILE
FLOOR BRICK

E. F. ZERGA, MGR.
14545 SCHAEFER HWY. DETROIT 27
VE. 7-3200

GREEN "EZY-RASE" NUCITE CHALKBOARDS

Over 100 Installations in Michigan During the Past 10 Years
Has Proven the Quality of This Material

ALUMINUM FRAMING
CORK BULLETIN BOARDS

PENINSULAR SLATE CO.

Michigan Representative New York Silicate Book Slate Co.

Office and Warehouse
712 Amsterdam Avenue TR. 5-4301 Detroit 2, Michigan

BEN T. YOUNG CO.

Specialists in Spray Method of Dampproofing

ASPHALTIC WATERPROOFING CONTRACTORS

On

James Vernor School, Detroit, Michigan

Bentley High School, Livonia, Michigan

16815 Inverness Ave., Detroit 21

UNiversity 4-4192

R. D. THAYER COMPANY

WATERPROOFING CONTRACTORS AND ENGINEERS

2701 JOY ROAD
DETROIT 6, MICH.
TYler 6-9626

COMPLETE WATERPROOFING SERVICE
For The Preservation of Your Structure

WORKING IN COOPERATION WITH
LEADING WATERPROOFING MANUFACTURERS

842 HALL ST., S. E.
GRAND RAPIDS 7
Phone: G. R. 5-5180

SHEET METAL
VENTILATING

AIR CONDITIONING



WE 3-7494-5-6

M. DEN BRAVEN CO.

9080 ALPINE AVENUE
DETROIT 4, MICHIGAN

Koenig Coal & Supply Co.

SINCE 1870

READY - MIXED CONCRETE — FUEL OIL — COAL

Main Office: 1486 Gratiot Avenue, Detroit 7

WO. 1-1584



castigation of the view which I have been expressing:

"Nothing is more contemptible than the timid or commercial reformers, "practical idealists," who express scorn for the great utopian planners—who even spread the lie that the purpose of 'academic' plans is to prevent anything from being done—but when they press their own plans to the point where they could be effective, they end up by emasculating precisely one of the great plans, usually long out of date."

But where are these "great plans"—these brain children of the Utopian planners? Where in the entire United States is there a single example of an "ideal" master plan having been actually superimposed upon an already existing city? The facts require my question to be answered only by a thundering silence!

I like being labeled a "practical idealist." I suspect each of you also welcomes that tag. When a client brings his problem to you, you give him an imaginative solution. You don't give him a lecture, complete with color slides, on how much better you could have done—if only he didn't have a problem!

Recognizing that we have a problem, we must elevate community planning to the top of our profession, for the future of architecture itself is inseparably bound to the future of planning. A single factory or a single housing development bears little consequence to the total scheme. The inter-relation between living, labor and leisure can no longer be left to chance. Conscious planning is demanded.

A community plan is not a layout of streets and houses, or of viaducts and factories. It is more like a choreography of society in motion and in rest, an arrangement for society to live and do its work, directing itself or being directed. There is, of course, a variety of town schemes: gridirons, radiations, ribbons, satellites, or vast concentrations. What is important, however, is the activity going on—how it is influenced by the scheme and how it transforms any scheme. How it uses or abuses any site. How it actually contributes to the living, labor and leisure of the people.

The community plan does not create its conditions. In fact, it's the reverse; the conditions should stimulate the plan. Therefore the plan must not be imposed as if it were an end—but rather as achievable means to a desirable end.

Consider, for instance, the original laying-out of the District of Columbia and the City of Washington. For various reasons of politics and transportation, the plan was to connect the Potomac waterway with the Ohio, and the new city on the Potomac was thus to become the emporium of the West. But the canal system which would have fulfilled this technological scheme fell through. A hundred years later, therefore, Washington was still a small political center, without economic sig-

nificance, while the commerce of the West flowed through the Erie Canal to New York.

But now, ironically enough, a political change has made Washington a metropolis far beyond its original grandiose plans, and people flock from near and far to the capital, to wander dazedly through a forest of red tape, in the hope of transacting their business. I am sure there is no need to relocate the capitol. No enemy would bomb Washington and deliberately end all that confusion.

Historians can point to, and debate with intense interest, the various facets and comparative qualities of town planning as exemplified in the early days of London, Paris, Frankfurt on Main, Rotterdam and Amsterdam.

Of these Amsterdam is one of the few cities of our times which shows a continuous tradition in town planning, unbroken since 1900. This uninterrupted building activity is particularly important for our purposes this evening, since it affords us a view over a long period of development.

Town planning in Amsterdam operated within the realm of what was really possible. There were no erratic developments, no Utopian enterprises—there was only sensible and steady progress. The method behind the work can only be termed analytic. Both progress and mistakes were made by slow stages at Amsterdam.

In the interval between 1900 and 1920 the population increased by 50%. It was in this period that the maximum building activity took place. For what classes were these buildings raised? The early London squares were for the gentry. The middle classes were the chief objects of Haussmann's boulevard building in Paris. In Amsterdam the building activity was carried on in the interest of the lower middle class and the working people.

The impetus for all of this came from the Dutch Housing Act of 1901. "This enactment," to quote from the Harvard City Planning Studies, "is perhaps the most comprehensive single piece of legislation ever to be adopted in this field. Its eleven chapters provide the essentials of a complete attack upon the national problems."

The general plan for the future development of the city was prepared by a joint commission of architects and the Department of Public Works. A careful and sane analysis was made of all those factors which determine the social and economic makeup of a city.

For example, the recreational needs of the future population were studied in detail. It was found that people make little use of any parks farther than one quarter of a mile from their homes. The maximum distance between any two parks has, therefore, been limited to a half mile. Such planning is consciously proportioned to the human scale. It moves in the direction of those "playgrounds at the doorstep" which Corbusier has proclaimed as one of the fundamental requirements

of city planning.

I wish time permitted us to examine the entire plan. Suffice it to say, in the steady progress of realizing this scheme, only conditions actually in force—and those which calculation established as most probable—were taken into consideration. All measures so far adopted have been approved by the later course of events. It was not, on the other hand, a Utopian plan. Mistakes were made; compromises ensued; but a steady and visible progress was made. Life has filled out and diversified the original plan the way a river occupies and shapes its bed. This is always the inevitable result of a total concept which is based on freedom and flexibility.

Speaking of freedom, I believe our best hope of keeping it lies in a clearer realization of the limitations as well as of the advantages of our system of private enterprise. We have scarcely begun to explore the possibilities of a partnership between government and private enterprise. To the contrary, many rugged individualists are adamant in feeling like the famous admiral who said "We have just begun to fight." However, the nation might benefit greatly by the adoption of the earthly philosophy, "if you can't beat 'em—join 'em!" And as long as the government already participates with its hand so deep in our cash registers, we may as well legalize the relationship.

If we could think of government as the partner rather than as the truant officer of business, we may be able to devise a procedure that relies more on incentive than it does on compulsion. The proper incentives could stimulate the best qualities of private business, instead of restraining it by endless regulations. The task will not be easy! But is that a sufficient reason for not attempting it?

Nor is it easy to secure creative action. Yet it is vitally necessary. Decentralization, as we now see it, affects not only the locality and the surroundings of the city itself, but also the whole state, the region, even the whole nation. This broad field must now be included in our planning. Local, state, or regional planning can be adequate only if it is related to national planning. National planning must develop according to comprehensive principles, in which local and regional planning are inter-related parts.

A broad concept of our task would enable us to find, not only the right location for the decentralized industries, their settlements and their related agricultural areas, but also the best routes for power lines and transportation systems; we could discover new and better ways for the use of land and water; for the development and conservation of local, regional, and national resources.

Every city has its zone of influence, the area where live people who work within its boundaries. The larger the city, the more its zone of influence ex-

ROOFING & SHEET METAL WORK
 NEW ROOF REPAIRS — ASPHALT SHINGLES
 INDUSTRIAL — RESIDENTIAL
 FOR OVER 72 YEARS

On Top Since '79
J. D. Candler
ROOFING COMPANY, INC.
 551 E. VERNOR HWY. • DETROIT
 D. W. CANDLER • DR. C. L. CANDLER



Turner-Brooks, Inc.

FLOOR COVERING AND ACOUSTICAL CONTRACTORS

TOwnsend 8-2470

9910-30 DEXTER BOULEVARD

Detroit 6, Mich.

ATLANTIC METAL PRODUCTS, INC.
 • Hollow Metal Doors & Frames
 • Kalamein & Tinclad Doors

KANE MFG. CO.
 • Light Proof Shades

VENTILOUVRE CO.
 • Louvres

ENGINEERING • MATERIAL • INSTALLATION

N. W. Hamill Co.

GENERAL LEAD CONSTRUCTION CO.
 X-Ray Protection • Engineering
 Fabrication • Installation

UNIVERSAL WINDOW CO.
 Donovan Awning Type Windows
 THE KAWNEER COMPANY
 Institutional Entrances
 Aluminum Flush Doors

Caulking • Tuck-Pointing • Weatherstrips
 407 EAST FORT STREET • DETROIT 26 • WOODWARD 1-0110

COLONIAL ELECTRIC COMPANY

ELECTRICAL CONTRACTORS on
 ARNO SCHOOL and GRATIOT HIGH ADDITION

3816 35th STREET, DETROIT 10

TA. 5-0820

W. T. ANDREW CO.

WHOLESALERS OF
 PLUMBING SUPPLIES

15815 Hamilton Avenue, Detroit 3,

TULsa 3-2000

MUMMA BROTHERS, INC.

PAINTING and DECORATING
 CONTRACTORS

16623 WYOMING AVENUE
 DETROIT 21, MICHIGAN

UN. 2-6230

THOMAS BRICK & TILE COMPANY

Established 1896



FACE BRICK — GLAZED BRICK — PAVING BRICK — ACID BRICK
 REFRACTORY BRICK & CEMENTS
 CUPPLES ALUMINUM WINDOWS — WARE ALUMINUM WINDOWS

Telephone
 TOWNSEND 8-1354

14360 LIVERNOIS AVENUE
 DETROIT 4, MICHIGAN

pands. Inter-urban tracks at first, and later the automobile, have provided the means of transportation within this zone. As transportation has advanced, settlement of such areas has increased. The tendency toward decentralization, the exodus from the city, is manifest here in Detroit.

However, because the growth of these suburban areas has been planless, a disorganized and chaotic suburbanization has resulted, uneconomic and unsatisfactory to the population.

As people leave the city because conditions become unfavorable for good living there, so also do industries seek more convenient locations for their plants outside the city limits. Their movement, like the movement of the population, is proceeding without plan or foresight. This planless decentralization of industry is even more dangerous than the random flight of residents to outlying areas. In a very short time, it will product outside the city the same unfavorable conditions of smoke, soot, fumes and snarled traffic, which now prevail within it.

Such a planless suburbanization must unquestionably be put under control. The zone of influence of the city, as well as the city itself, must be replanned. Even the replanning of this influence zone may not be enough. It becomes evident, as we study our problem more deeply, that adequate solutions can be reached only when planning extends to the entire region, of which the city and its zone of influence is only a part.

The nation needs its urban industrial centers and its agricultural areas, both working together. To render such cooperation possible and efficient, we need national planning, superimposed upon the planning of city, state and region. Only national planning can link together the different functions of different areas and relate them to their respective importance.

Plan we must, not only economically, but always and primarily for the benefit of man. We should always bear in mind that at the center of all things is man—man who creates everything, and for whom everything is created. Our real problem is life itself. Agriculture, industry, and transportation are important only as they contribute to the richness and fullness of life. We should plan to make this world a better place in which to live. And there is nothing wrong with this country that cannot be cured by a good dose of unselfishness.

"In a philosophical sense, the goal of city planning should be the fulfillment of 'life, liberty, and the pursuit of happiness'. Our forefathers were careful to guarantee life and liberty, but equally careful not to guarantee happiness—only the pursuit of happiness. If we gave the people of our nation the proper environment, the proper distribution of those things which are presumably free—the sun and the air—we would be well embarked on the road to eliminating some of the malignancies upon which socialism and com-

munist are born and fed. Upon us rests the principal responsibility for these environments—both physical and psychological. As architects, everything we do directly affects the conditions surrounding the living, labor and leisure of our people.

"In conclusion, therefore, I recommend for your consideration the passage of a National Community Planning Act, which would require every community of 10,000 or more inhabitants to devise a plan encompassing its future expansion. In order to recognize that continued growth inevitably results in changed requirements, the community plan should be revised every ten years. To accomplish this, our primary need is not money but direction. Across the United States there exists countless agencies responsible for various aspects of city planning and development. We have plenty of brain power but not enough co-ordination.

We must recognize that the present emergency is very likely to be an extremely long one. The distribution and use of present building materials; the use and substitution of new materials; the revision of outdated city codes governing the use of materials; the plans affecting the cities' use of these materials all should become part of a national, coordinated effort.

Obviously, we can not have a **uniform** development plan applicable to all communities, but we can have a **common denominator** in conception, cooperation, and courage.

And speaking of courage, "We must not allow the shadow of atomic war to dim our eyes. As architects, we must not accept the fatalistic attitude so prevalent today. For myself, I have no patience with the fearful who cry out "Otomic war will be the end of civilization." Actually, nothing but a power mightier than man will ever end civilization.

Of course atomic war will be fiery beyond imagination! Cities will be obliterated. Some of us will die—some of us will live. It is upon the survivors the world must depend for leadership.

It has ever been thus. Civilization as we know it today is born of the trials and tribulations of yesterday. All through the ages, the cities of the world have been ravaged by fire, earthquakes, plagues, and devastating warfare. Each time, out of the ashes, the survivors have built anew. Even the motto appearing on the great seal of Detroit emprisises "out of the ashes, build anew."

Today, many cities of the world are repairing the ravages of one war, while simultaneously anticipating destruction from a new war. In this country our cities did not have the wrath and destruction of war dumped directly upon them. While this is a blessing, it nonetheless leaves open to question the resiliency of our national character. If atomic warfare should rain down upon us, we must hope and pray for the strength to rebuild for tomorrow. To plan for that tomorrow, is our assign-

ment today. For this, architecture will need great individualists—thinkers, planners, and do-ers. For the only 'danger of survival' would be our failure to prepare for it.

We are now going through the test period of our civilization. The world is filled with uneasiness and unrest. Almost each day, one crisis is superimposed upon another. For at least the next decade, the strength and resiliency of our national character will be sorely tested.

Yet I know we will find the spirit and strength to build and rebuild—to prove in every way that America is truly a great nation—to show that in a very real sense, democracy is a living, breathing, dynamic force, which will carry the world safely through these perilous times.

COURT FAVORS STATE BOARD

The Supreme Court of the State of Michigan recently ruled in favor of the State Board of Registration for Architects, Professional Engineers and Land Surveyors, in the case of Lysle B. Hunting, who had taken an appeal in the nature of mandamus from a decision which denied him registration as an architect without examination.

The question involved was whether or not the plaintiff had practiced as an architect for a period of 12 years prior to the effective date of the act, which was January 1, 1938. The court found that during the greater part of that time he had been employed as an architectural draftsman.

"An architect is primarily a master builder and the term as ordinarily used involves mastery of a responsibility for entire building projects and each and every part thereof," the decision stated.

HENRY G. GROEHN, Executive Secretary of the State Board of Registration for Architects, Professional Engineers and Land Surveyors, reports that the Detroit Department of Buildings and Safety Engineering will not approve plans submitted for building permits without the seals of registered architects or engineers. This, of course, is not new, but the announcement is made because some architects have thought that the showing of their registration cards would suffice. It is pointed out that to comply with the law such plans must bear the seal.

CANDIDATE FOR ESD BOARD

ANDREW R. MORISON, President of the Detroit Chapter of the American Institute of Architects, will be a candidate for Director of The Engineering Society of Detroit its next election.

We believe that it would be highly desirable for the architectural profession to be represented on the ESD Board. Clair W. Ditchy served as secretary during 1936 and 37. He also served as director from 1937 to 1940. Other than that there has not been an architect on that Board.

ARCHITECTS OF THE MONTH

GROSSMAN & KNOWLAND PHOTO

THE ARCHITECTURAL AND ENGINEERING firm of Eberle M. Smith Associates, Inc., organized in 1940, came into being in an attempt to create a well-balanced working team. Its purpose is to create functional buildings, specifically designed to the particular structure requirements of its clients.

The firm, in its service to its clients, both individuals and institutions, has produced a satisfying variety of modern buildings—schools, community buildings, health centers, etc. These diverse structures justify the faith of the principals of the firm in bringing together into one organization several strong individuals with a wide range of experience and training.

Eberle M. Smith, Associates, Inc., is organized around six principal members—Eberle M. Smith, Jonathan A. Taylor, Stewart S. Kissinger, Linn Smith, Peter Tarapata, Arthur T. Bersey, and Leo A. Henning. These principals, all registered as architects or engineers, direct the work of a total staff of forty (40) specialized into four departments—architecture and design, mechanical engineering, structural engineering, and landscaping.

The needs of the client, as revealed by a study of the functions to be performed by the contemplated structure, become the guideposts for the blueprints and specifications to be produced. Serious efforts are directed to create a clean, modern, functional building in keeping with the rapid sweep of modern business and social life.

Beauty of structure is sought through an expression of functionality itself rather than through expensive ornamentation—; clean, crisp lines, balanced masses, modern colors and materials are blended into a useful, artistic creation.

Each client receives individual service directly from one of the principals of the firm. While serving their clients the firm has produced a series of modern schools, institutions and business structures. The schools, most of which are located in this state, serve elementary, secondary and higher educational organizations; some are simple inexpensive buildings, some are highly complex, elaborate structures. Other clients have required buildings for health, office and recreational facilities. It has been the ambition of the firm of Eberle M. Smith, Associates, Inc., that each project satisfactorily reflects the diverse desires of each particular client.



LEFT TO RIGHT: Linn Smith, Stewart S. Kissinger, Leo A. Henning, Jonathan A. Taylor, Eberle M. Smith, Peter Tarapata, Arthur T. Bersey

Each of the 12 self-contained classrooms (including a kindergarten unit) contains commodious storage cabinetwork, a work sink, a drinking fountain, clothes storage, and ample tackboard and chalkboard area. A home-type toilet room adjoins each classroom. The cove tile base and cheerful asphalt tile floor facilitate cleaning. The clear exposed concrete beams, the acoustical ceiling tile, and the cinder block walls combine to reduce room noise.

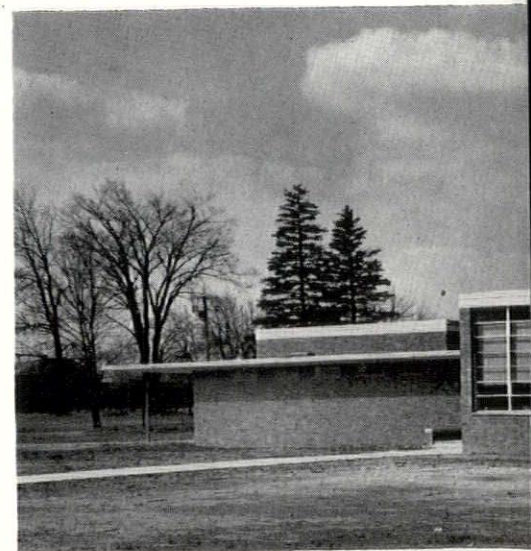
The accompanying photograph testifies to the even light distribution across the room resulting from the bilateral lighting system. The simple, swing type, steel sash windows fit into the concrete frame without additional casements and trim other than caulking.

The accompanying photograph testifies to the even light distribution across the room resulting from the bilateral lighting system. The simple, swing type, steel sash windows fit into the concrete frame without additional casements and trim other than caulking.

TODAY'S DESIGNS

The picture at the right of the exterior of the Clara Bryant Ford School saliently displays some of the inexpensive features of this small, modern, block-type elementary plant. The structure was tightly designed by (1) using industrial type sash, (2) masonry piers, (3) precast soffit cinder blocks as the ceiling slabs, and (4) a warm air tunnel under the corridor in place of traditional metal ductwork.

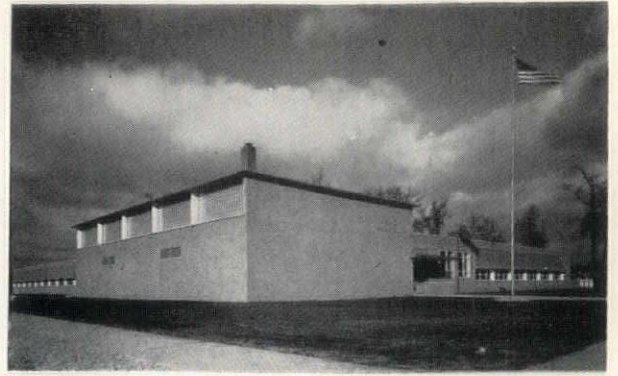
The building includes six classrooms with a kindergarten, office and clinic space, and community facilities served by a small kitchen.



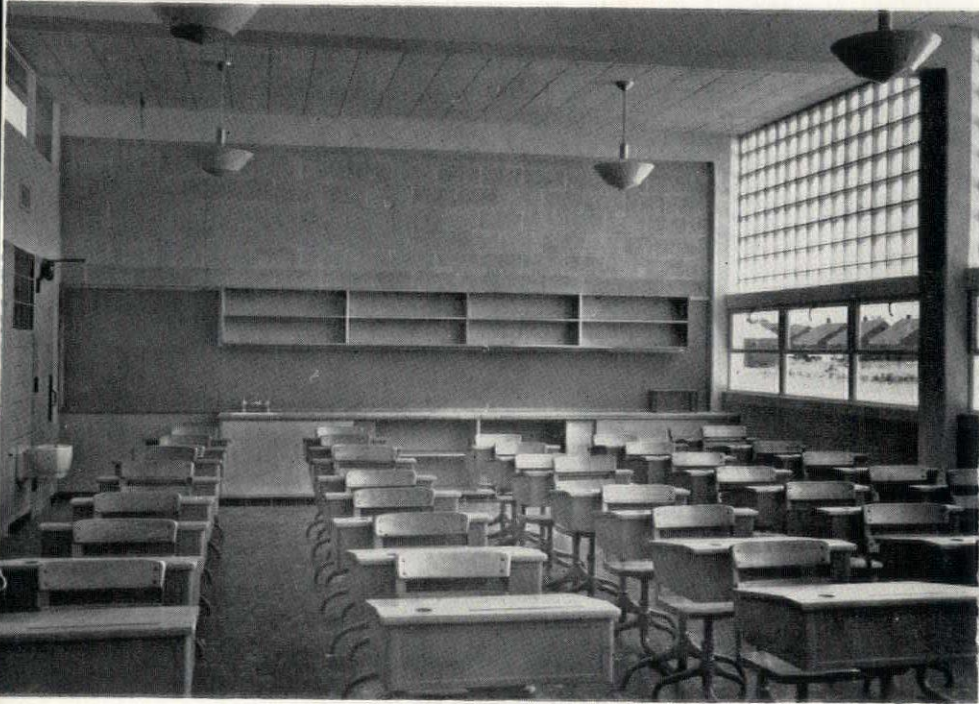
UTILITY ON A LIMITED BUDGET, CLARA BRYANT

ARNO SCHOOL, ALLEN PARK, MICH.

The Arno Elementary School, based on an L-shaped plan, has two classroom wings branching from the centralized auxiliary service units, such as the playroom and clinic. Office facilities are to the right of the main entrance. At the extreme right is a fenced-in playfield for the adjacent kindergarten. The two classroom wings frame the major playfield. The reinforced concrete frame is enclosed with cinder block interior and buff brick exterior walls. Directional glass block and vision strips are combined in a system of bilateral light.



PICTORIAL STUDIOS PHOTO



ALL PHOTOS BY RODNEY McCAY MORGAN-PHOTOLOG, N. Y. UNLESS CREDITED OTHERWISE

CADILLAC GLASS CO.

M. DEN BRAVEN CO.

N. W. HAMILL CO.

PAGE PLUMBING & HEATING CO.

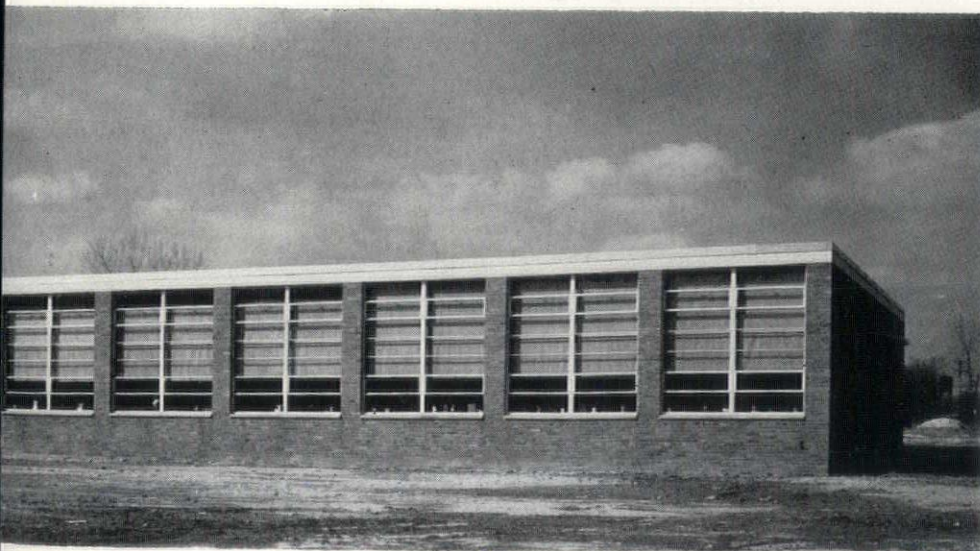
PALOMBIT TILE CO.

WALTER O. PLACE CO.

FREDERIC B. STEVENS, INC.

WOLVERINE MARBLE CO.

THAT FIT TOMORROW



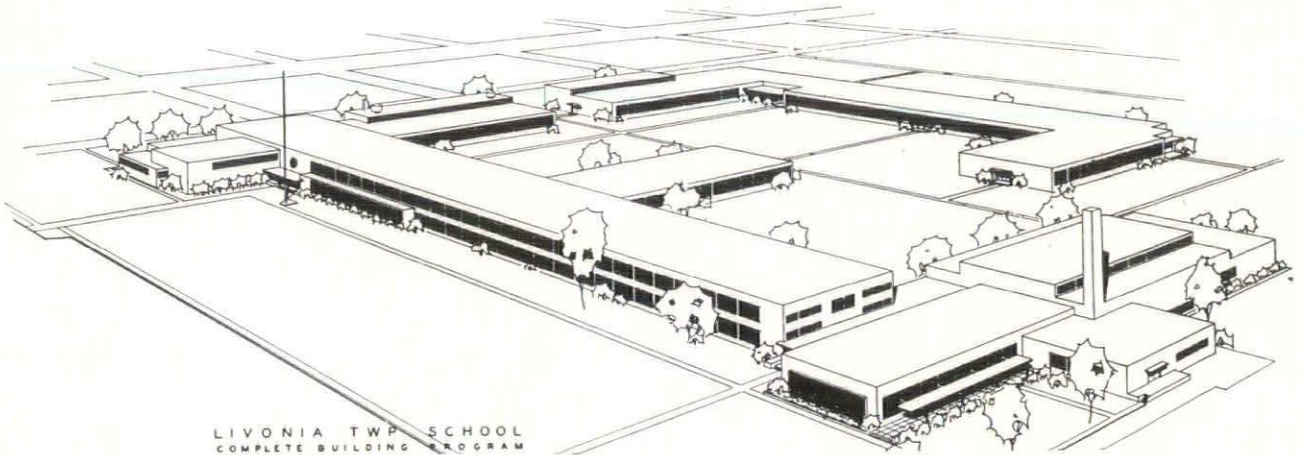
ALLSTATE ELECTRIC CO.
 ALUMINUM & ARCH. METALS CO.
 W. T. ANDREW CO.
 WM. BORTOLOTTI & SONS
 BOSTON TILE & TERRAZZO CO.
 BRANCHEAU BROTHERS
 CADILLAC GLASS CO.
 CINDER BLOCK, INC.
 B. F. FARNELL CO.
 N. W. HAMILL CO.
 HANLEY CO.
 NICK KRUEGER & SON
 LENTZ & CHAFFEE CO.
 JOHN A. MERCIER BRICK CO.
 THE TRANE CO.
 O. C. WITTE CO.

OL, DEARBORN TOWNSHIP, MICHIGAN

PHOTO BY ELMER ASTLEFORD

GEORGE BENTLEY SCHOOL COMBINES TWO-STORY, ONE STORY FEATURES

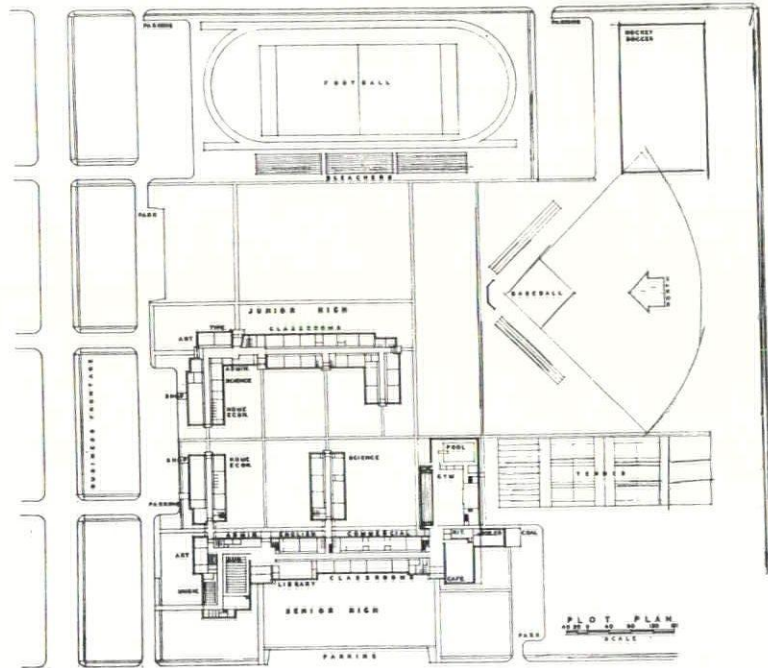
LIVONIA, MICHIGAN



LIVONIA TWP SCHOOL
COMPLETE BUILDING PROGRAM

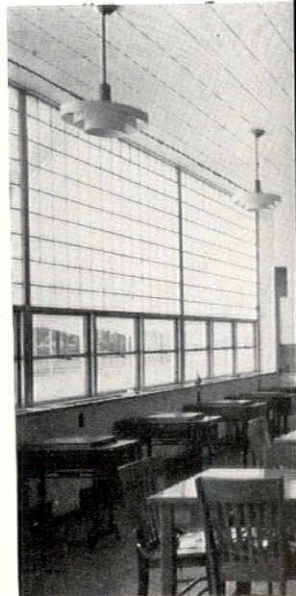
The adjacent perspective and floor plan of the George Bentley School represent another example of long-range planning for future development in a school district with an appalling capacity for future growth. The new City of Livonia recently annexed enough territory to become the second largest city in Michigan in terms of square miles of territory.

The master plan encompasses a rapidly expanding high school and, to further complicate planning, a separate junior high school on the same site. The two schools will be served in common by service facilities, such as the heating plant. The junior high children also will have access to some of the more costly auxiliary facilities, exemplified by the large gymnasium.



ACORN IRON WORKS, INC.
 ATKIN FORDON CO.
 WM. BORTOLOTTI & SONS
 BOSTON TILE & TERRAZZO CO.
 CADILLAC GLASS CO.
 DAVID L. CASEY ELECTRIC CO.
 CINDER BLOCK, INC.
 DETROIT ACOUSTICAL CONT. CO.
 B. F. FARNELL CO.
 N. W. HAMILL CO.
 HANLEY CO.
 NICK KRUEGER & SON
 KUEHNE ELECTRIC CO.
 LENTZ & CHAFFEE CO.
 PAGE PLUMBING & HEATING CO.
 PALMER-SMITH CO.
 PALOMBIT TILE CO.
 PENINSULAR SLATE CO.
 WALTER O. PLACE CO.
 ROBBIE ROBINSON CO.
 MURRAY W. SALES & CO.
 MICHEAL A. SANTORO
 SCHIEBER MFG. CO.
 TINSEY IRON & STAIR WORKS
 TURNER-BROOKS, INC.
 O. C. WITTE CO.
 WOLVERINE MARBLE CO.
 ARCHIE YOUNG
 BEN T. YOUNG CO.

The home economics center, shown at the right, is an example of a complex facility compactly planned into one room. The modern wall cabinets accent the future. The plastered drop ceiling over the unit kitchen gives a touch of home atmosphere and meets the demands for easy cleaning.





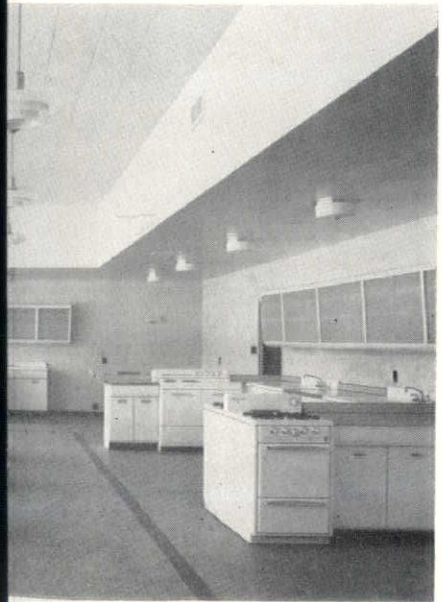
ASTLEFORD PHOTO

The George Bentley High library, depicted above, capitalizes on the structural arrangements of an alcove on the left. This layout, enhanced by the cylindrical columns, permits congregation of library groups and simultaneously improves the daylighting across a wide span. The columns preserve the modular pattern of the basic structural system while the jutting alcove above furnishes the additional expanded space required by the desired size of the library.

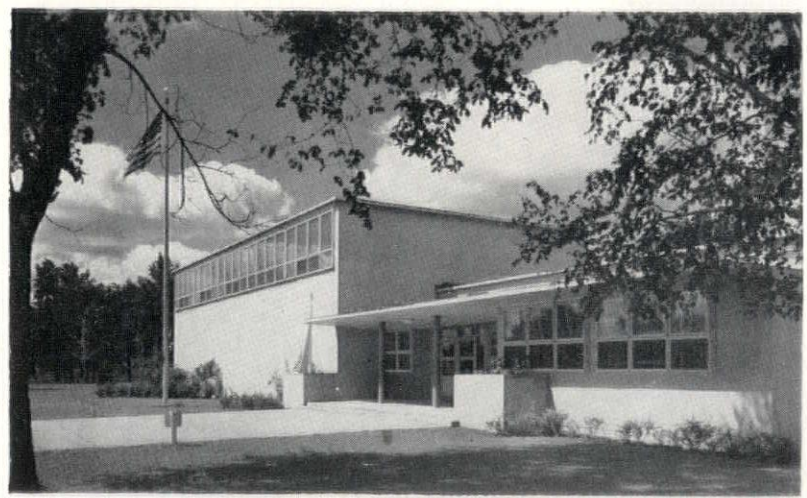
Standard recessed metal adjustable shelving offers a neat and inexpensive solution to the book storage problem.

At the top of the picture can be seen the track for a folding door designed to add further flexibility to the room.

ASTLEFORD PHOTO



COMMUNITY CENTER HOUSES UNUSUAL FACILITIES



OAKDALE GARDENS, FEDERAL HOUSING PROJECT, OAKLAND COUNTY

The Oakdale Gardens Community Center, is an example of a rare type of public building. It was planned to become the focus and nerve center for all community activities in a large Federal housing project.

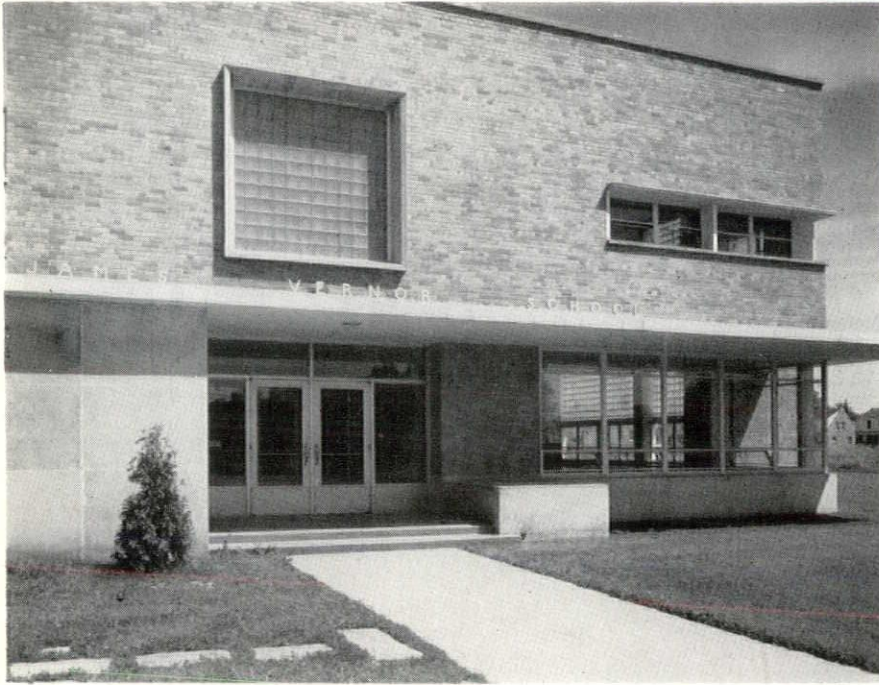
It incorporates some of the facilities commonly expected in schools, civic auditoriums, and other public buildings. The inexpensive, plain exterior encloses facilities for a veritable beehive of activities.

Recreation space is provided for indoor athletic sports, cards and table games, table tennis, billiards and dancing. Large meeting rooms are created by folding doors and are completed by available kitchen equipment. A health center is included. Two classroom-type spaces were used during World War II as a nursery.

The Community Center also serves as the administration office for the housing project and includes a maintenance shop.

A STUDY IN LIGHTING TECHNIQUES—

JAMES VERNOR ELEMENTARY SCHOOL, DETROIT, MICH.

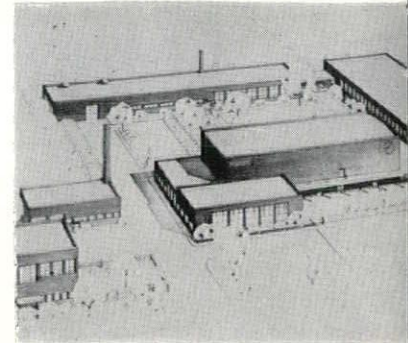
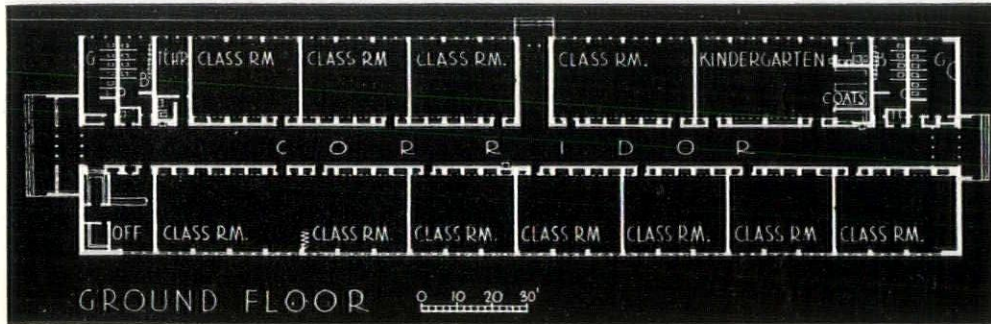


The picture of the main entrance to the James Vernor School shows clearly the effective design interest created by utilizing sharp, plain stone trim in combination with shaded, recessed windows. The useful horizontal hoods, placed to eliminate glare, serve the dual purpose of creating low shadow lines welding the two-story structure to the landscape.

The brightly daylighted classroom, shown at right, illustrates the softness achieved when looking directly at directional glass block. The vision strip is recessed back of the glass block line by a one-piece steel strip. The perimeter wall heating units are recessed into the stack-jointed, glazed hollow tile walls behind removable initial panels. The slab floor is covered with spined hard maple "shorts".

MELVINDALE SCHOOL

TODAY IT SERVES ELEMENTARY CHILDREN



- WM. BORTOLOTTI & SONS
- CINDER BLOCK, INC.
- M. DEN BRAVEN CO.
- DETROIT ACOUSTICAL CONT. CO.
- DIEBOLD, INC.
- B. F. FARNEILL CO.
- HANLEY CO.
- NICK KRUEGER & SON
- MUMMA BROTHERS, INC.
- PENINSULAR SLATE CO.
- SCHIEBER MFG. CO.
- FREDERIC B. STEVENS, INC.
- TURNER-BROOKS, INC.
- O. C. WITTE CO.

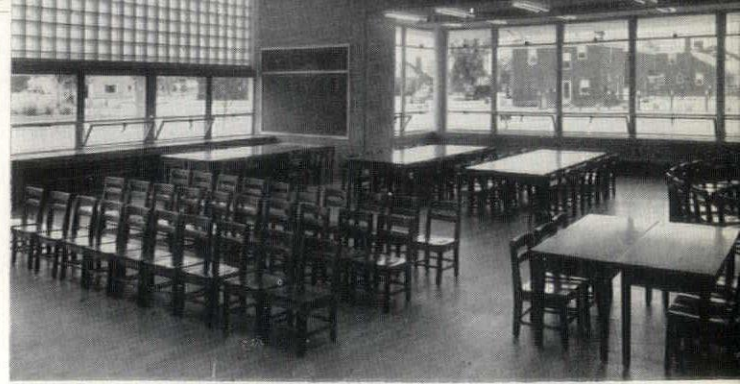
The seemingly unpretentious elementary school floor plan, shown above, is the simple beginning of a well-thought out Topsy. This single-story elementary classroom building is the nucleus of the future two-story evolving high school shown across the page. By glancing at the accompanying floor plan and aerial perspective one can locate the illustrated elementary classrooms as the central, first floor classroom section in the future two-story high school plan.

The evolving plan of this school, whereby the structure is to grow in pace with the chil-

dren it serves, has received recognition in the press, as a facile solution to an extremely difficult planning job. Dire financial straits motivated the architects, school administrators and a farsighted Board of Education to an ingenious answer to a long range

The aerial perspective of the complete high school development is a complete high school development including other refinements of general planning; attached boiler house, for example, is located to serve another small elementary school. Consideration for public convenience

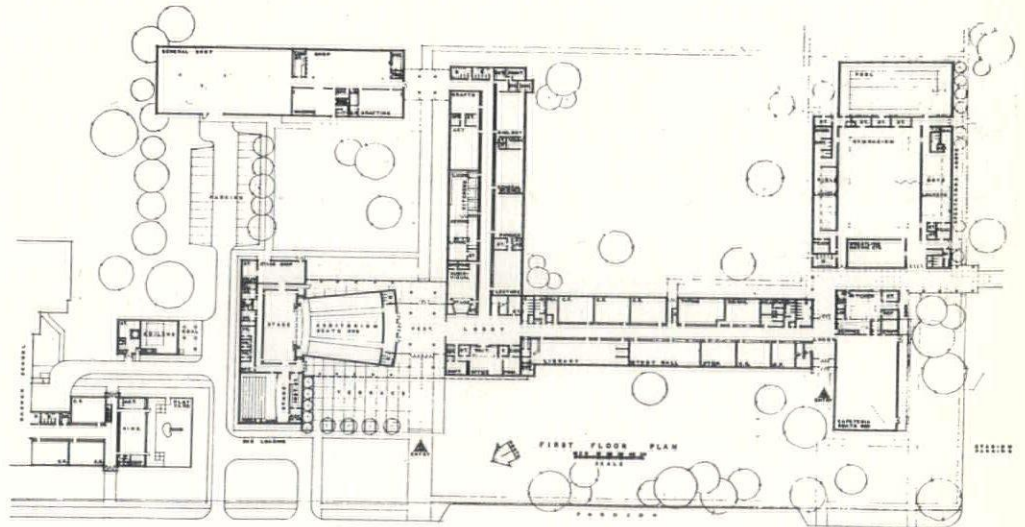
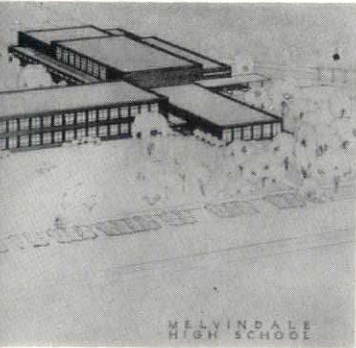
The accompanying photo, at right, of the kindergarten room has been processed to emphasize the cold cathode hairpin, lighting fixtures. Additional interest has been given to the room by a corner wall set-back and an external hood over the clear window sections. The center window panels are fixed; the upper and lower sashes are swing-type.



ACORN IRON WORKS, INC.
 WM. BORTOLOTTI & SONS
 MILBRAND MAINTENANCE, INC.
 MOYNAHAN BRONZE CO., INC.
 PALOMBIT TILE CO.
 PENINSULAR SLATE CO.
 WALTER O. PLACE CO.
 SCHIEBER MFG. CO.
 TURNER-BROOKS, INC.
 O. C. WITTE CO.
 WOLVERINE MARBLE CO.

OW WITH THE CHILDREN

TOMORROW IT WILL BECOME THEIR HIGH SCHOOL



from the extensive walkways and park areas.

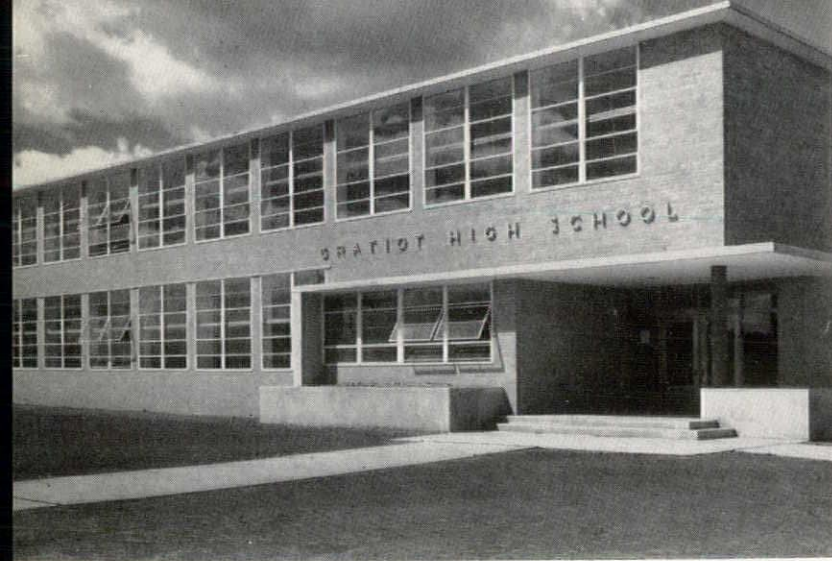
Melvindale High School of the future furnish a strong example of "how the story unfolds out of long range planning.

floor plan, sketched at right, shows Topsy's growth into a complete high school for 800 students. The beginning classroom, section on the opposite page, will have become the first floor of the central classroom section of the completed high school. The original

kindergarten toilet facilities will have been absorbed into the new health clinic. Two elementary classrooms will be metamorphosed into a library. Others will be converted into the commercial education department. Such a high degree of flexibility has been achieved by long-range planning around modular construction units and continuous fenestration.

As the plan is to evolve it will be possible to visualize the attention devoted to complete, over-all planning; the future library will occupy a well-located, central spot; the noise producing areas are widely segregated; the public-use facilities are easily accessible to nearby streets; the play areas are segregated and yet convenient to locker and shower rooms.

GRATIOT HIGH SCHOOL IS SIMPLY DESIGNED FOR A BIG FUTURE



The main entrance corner of the Gratiot Township High School is pictorialized at the right to illustrate the interesting and easily sheltered doorway. The building exemplifies an extremely economical, simplified, and yet satisfactory high school. The second-story window sash fits neatly up under the slab roof. The planting box and adjacent projections conveniently focus public attention to the administrative office.

GRATIOT HIGH SCHOOL, HARPER WOODS, MICHIGAN

COUNTY HEALTH UNIT SERVES METROPOLITAN AREA WAYNE COUNTY, MICHIGAN

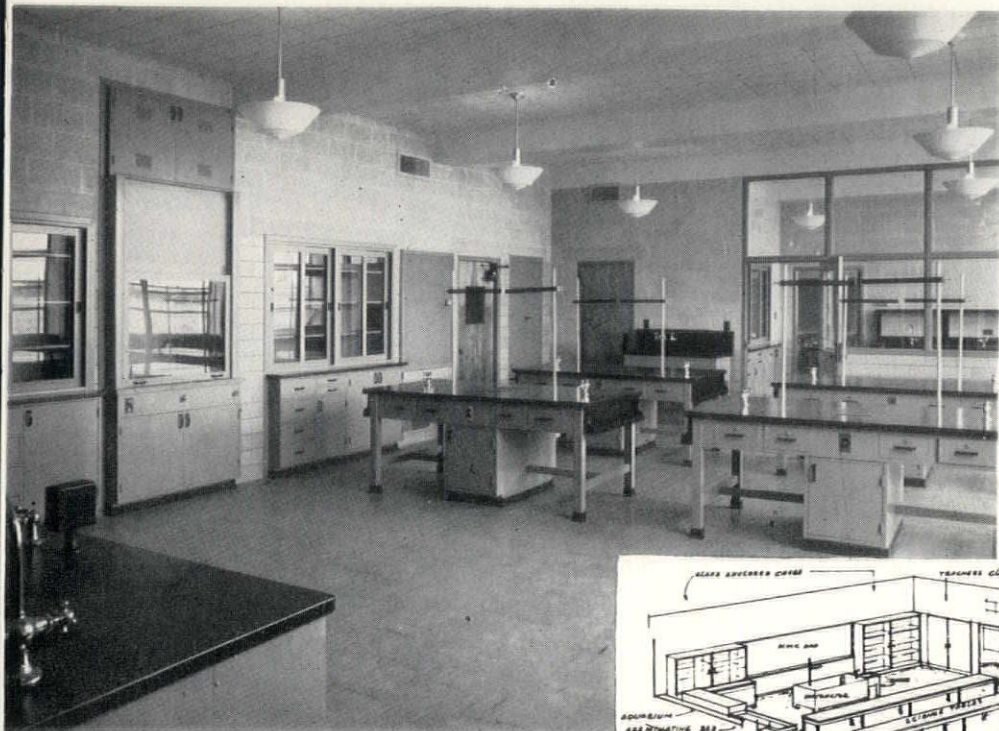
The Wayne County Health Center, Eloise, Michigan, designed by Eberle M. Smith, Associates, Inc., represents another uncommon type of public building. The building has received considerable recognition as a structure well adapted for a variety of highly specialized functions.

The floor plan reveals how a large number of medical and other scientific facilities have been conveniently arranged within a single, rather small structure.

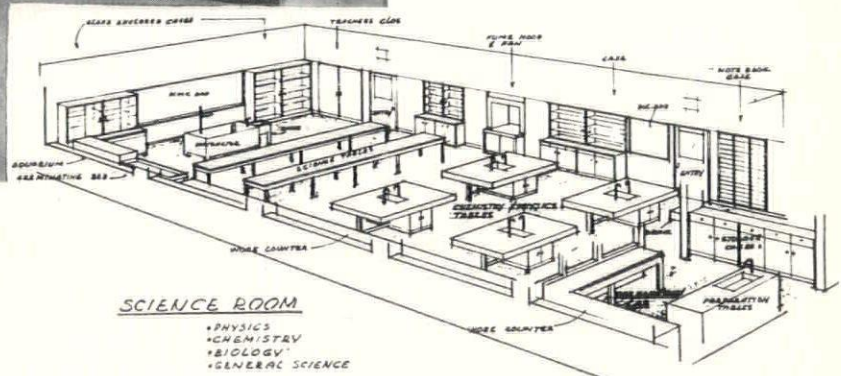
The picture of the Health Center waiting room in lower right corner was taken from an angle properly posed to visualize the ease of traffic flow and control. The desk clerk has an easy view of both the corridors and the waiting patients.

A. W. KUTSCHE & CO.
 MUMMA BROTHERS, INC.
 PENINSULAR SLATE CO.
 TURNER-BROOKS, INC.
 W. WILBUR WHITE
 M. H. WILKINS CO.
 WOLVERINE MARBLE CO.





SCIENCE LAB CONDENSED IN A CAPSULE



The Science Room of the Gratiot High School is shown by both a photograph and a schematic diagram. This double pictorial presentation is included to emphasize more clearly the variety of scientific resources encompassed in one single classroom laboratory. It is noted on the diagram that this room is to function as the basis for several science classes, including physics, chemistry, biology, and general science. This layout is not intended to intimate an optimum arrangement but rather as a workable solution to a problem within the resources available for the project.

The actual photograph reveals the spacious feeling of the room. The types and varieties of the specialized metal recessed cabinets can be seen easily. The semi-glazed partition separating the preparation lab from the main room provides for both segregation and visual supervision.

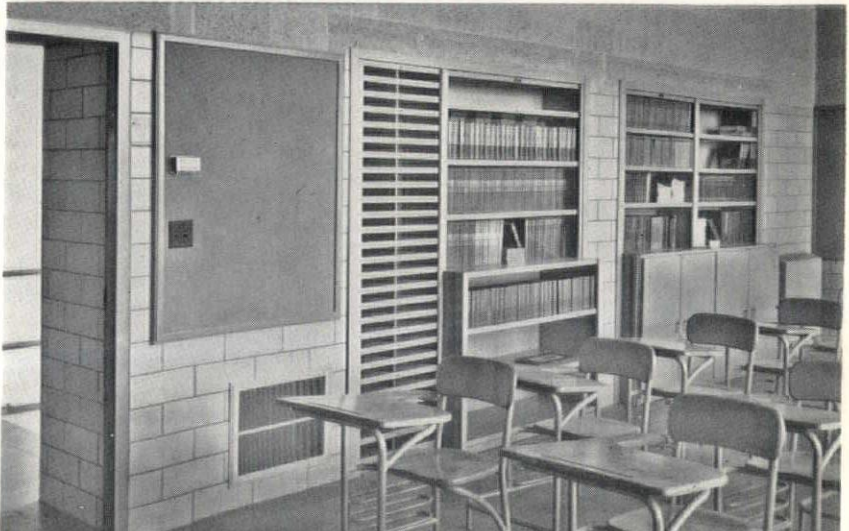
A perusal of the schematic diagram reveals the unusually comprehensive list of various facilities designed into one space. The lengthy

list of scientific resources includes: preparation lab, individual student notebook storage, storage and display cases, fume hood, reference book cases, demonstration sink and lecture station, aquarium, seed germination facilities, student tables for both experimentation and note taking, and general work counters.

The multiplicity of the scientific resources described above and contained in this one room should present an attractive challenge to the teachers and the students destined to work with these resources.

The section of a typical classroom, illustrated below, highlights the flexibility of cabinetwork included in the academic classroom. The bridging over the cabinetwork recesses is an interesting application of the use of pre-cast cinder block lintels.

- ATKIN-FORDON CO.
- ALUMINUM & ARCH. METALS CO.
- WM. BORTOLOTTI & SONS
- BROEDEL PLUMB. & HEAT. CO.
- CINDER BLOCK, INC.
- COLONIAL ELECTRIC CO.
- B. F. FARNELL CO.
- HORN FUEL & SUPPLY CO.
- JONES-SHERMAN, INC.
- MEIER CUT STONE CO.
- ROBBIE ROBINSON CO.
- JOSEPH SCHAFER CO.
- FREDERIC B. STEVENS, INC.
- W. WILBUR WHITE
- O. C. WITTE CO.
- WOLVERINE MARBLE CO.
- ARCHIE YOUNG



A. W. Kutsche & Co.

BUILDING CONSTRUCTION



TRinity 1-8410

2924 West Grand Blvd.

Detroit 2, Michigan

H. H. DICKINSON CO.



Complete Builders' Supplies



OFFICE:

5785 Hamilton Avenue

WAREHOUSE:

9940 Roselawn Avenue

PHONE:

TRinity 5-4950

POST OFFICE BOX:

218 Detroit 2, Michigan

FACE AND GLAZED BRICK

Of Every Kind and for Every Purpose

STRUCTURAL FACING TILE

Ceramic Color Glazes — More than fifty colors and in all sizes.
Clear Glazes - Salt Glazes - Unglazed - Various Colors and Sizes

SPECIAL INDUSTRIAL FACING TILE

Glazed and Unglazed

ANTI-HYDRO — Concrete Waterproofing and Floor Hardened

FREDERIC B. STEVENS INCORPORATED

1800 - 18TH ST.

Detroit 16, Mich.

TAshmo 5-0725

Underwriters Laboratories
Inspected, Fire Resistive

VAULT DOORS

Built to S.M.N.A. Specifications

HOLLOW METAL DOORS

SAFES, MONEY CHESTS

And

BANK VAULTS

Diebold

INCORPORATED

4105 CASS AVE., DETROIT I

TEmp 3-4477

JOHN H. FREEMAN COMPANY

Distributors

Builders' Hardware • Contractors' Supplies

3627 CASS AT BRAINARD
DETROIT I, MICHIGAN
TEMPLE 1-6760

MURRAY W. SALES & CO.

WHOLESALE

PLUMBING AND HEATING SUPPLIES

801 W. Baltimore Avenue,

Detroit 2, Michigan,

TRinity 5-4200

FLINT

WYANDOTTE

PONTIAC

HOW TO BUILD AT LOWER COST

Remarks of C. William Palmer at Detroit Chapter's February Meeting.

Being what they call an "old timer" in the professional field, I suppose that is why Andy picked me for this job. The group assembled here this evening, and the subject to be discussed afford a splendid opportunity not only to this speaker but to every one here to say to himself, "I'm a lone wolf and this is my night to howl."

In other words, since this is to be a friendly, constructive meeting, we should let our hair down and say what is wrong with the building industry in general and perhaps by this discussion aim to lower building costs by working more closely together.

As the architects here assembled are in the majority, it is only fair to our guests that this speaker start the discussion with a few grievances. I feel sure that each one here will have some pet peeve that he would like to air, and we don't want our guests ducking out the back door before the conference begins.

It is assured that the contractors and material men have just cause to complain, the same as we have. So we hope they will not be bashful in speaking their minds, as I am going to do in the

following suggestions:

No. 1. The matter of bidding. This speaker has no grievance on this subject, except that in private work too many contractors want to figure. When I have the opportunity I do not care to ask for a long list of bidders—three and at the outside five responsible bidders are sufficient. Yet it is embarrassing to tell a man he can't figure. We know that these figures cost money and have to be absorbed in the over-all.

No. 2. No matter what size job you have, please don't put a new general superintendent that you have just employed on a new job until you have tested him out as to his qualifications and his co-operation both with your office and the architect's office. He can do a lot of damage before he is found out if he is not the man for the job.

No. 3. My biggest gripe is expediting a job. Too many offices expect their general superintendent on the job to do the very necessary expediting. His job is to build the building after the materials are on the job and you should have some one appointed to see that materials are selected, shop drawings are in and out of the office long before the materials are needed.

No. 4. Reading the specifications—too often we hear that architects have poor specs. Maybe they do and maybe they don't but whatever they are worth it would be a good thing if they were read by those interested. Many times sub-contractors go ahead with their work and don't know what is specified.

Gripe No. 5—to the material men. Don't try to insist that your material be used when an architect has shown his preference for another material. This brings up the old time-worn subject, "or equal." Every architect who is

fair-minded will allow an equal to be substituted for the one specified if it is requested by the general contractor and he, the general, has a good reason for using a substitute.

Now, this speaker has let the bars down as far as this discussion is concerned and let us hope something good will come out of this discussion that will be of benefit to all.

We, in the building industry for the past decade, have been too busy trying to solve our own problems and not thinking of the other fellow. Perhaps some of our problems would be solved if you got together for this reason, monthly, at a luncheon, or at least more often than we have been doing.

Building industry banquets are lots of fun but they don't solve industry problems.

A. S. S. E. PLANS CONVENTION

Detroit's 250th Birthday will be honored September 16th through 21st when nearly one thousand members of the American Society of Sanitary Engineering and their charming ladies hold their National Convention here at the Statler Hotel.

Mr. L. Glenn Shields, President of the Michigan Chapter, is Detroit's Chief Sanitary Engineer in charge of plumbing codes. Mr. Shields invites all branches of the industry to come to Detroit to see and hear about the latest sanitation developments.

A well-rounded program including sports, a trip to Canada, and other entertainment, in addition to the business sessions, will be featured.

Those interested should write Mr. E. J. Anderson, 14 Smith Street, Detroit 2, Michigan, for reservations at the Statler Hotel.

WANTED: Architectural Draftsmen. Experienced, also Junior, and one Student Draftsman. Good opportunity for the right men. Apply to C. W. Palmer, 2663 Penobscot Building, Detroit 26, Mich. Tel. WOodward 2-1535.

Allstate Electric Co.

COMMERCIAL
INDUSTRIAL
INSTITUTIONAL

8945 DAWES AVENUE, DETROIT 4

WE. 3-2992

TRANE

for the projects of

EBERLE M. SMITH

Many products have been selected from the complete Trane line of heating, ventilating, refrigerating and air conditioning equipment.

THE TRANE COMPANY

Main Office, La Crosse, Wisconsin

IN DETROIT

2631 WOODWARD AVENUE

Phone: WOodward 1-5905

Palmer-Smith Co.

GENERAL CONTRACTORS ON BENTLEY SCHOOL ADDITION No. 2

415 BRAINARD STREET, DETROIT 1

TE. 3-2114

Micheal A. Santoro

LATHING and PLASTERING CONTRACTOR

6730 E. McNICHOLS RD., DETROIT 12, MICHIGAN

TW. 3-2500

WO. 1-1297

KUEHNE ELECTRIC CO.

ESTABLISHED 1923

ELECTRICAL CONTRACTORS
ON BENTLEY HIGH SCHOOL
(Original Unit and Third Addition)

Commercial and Industrial Work a Specialty

131 W. LAFAYETTE AVE., DETROIT 26

VE. 7-5362

Lentz & Chaffee

ROOFING & SHEET METAL

INDUSTRIAL & RESIDENTIAL WORK

13801 SCHOOLCRAFT

DETROIT 27

LA. 7-7877

MILBRAND MAINTENANCE, Inc.

ROOFING AND SHEET METAL CONTRACTORS

FIREDOOR MANUFACTURERS

New Address

21047 SCHOENHERR ROAD

EAST DETROIT

VIKING SPRINKLER COMPANY

Manufacturers and Contractors



UNDERWRITER APPROVED "VIKING" DEVICES
FOR MORE POSITIVE PROTECTION AGAINST
FIRE LOSS

This new Flush Sprinkler is available where appearance is important. It is modern, efficient fire protection for today's offices, display rooms and locations of ultra design.

Let us show you these modern installations

4612 WOODWARD AVE., Detroit 1
TE. 1-9604

315 ALLEN ST., N. W., Grand Rapids 4
Tel. 9-6341

woodward 3-7418

woodward 3-0813

Ray T. Lyons Co.

2457 Woodward Avenue, Detroit, Michigan

Distributors

LUDMAN Auto-Lok Aluminum Windows
MIAMI Medicine Cabinets, Mirrors & Acces.
BROAN Ventilating Fans & Electric Heaters
WASCO Copper Flashings
& WASCOLITE Plexiglas Skylights

PENNSYLVANIA, NEW YORK Flagstone
VERMONT Colored Slate Roofing & Floors
CRAB ORCHARD Tennessee Stone
LANNON-WISCONSIN Veneer Stone

"Our 22nd Year"

SPECIALIZED SERVICES
for
ARCHITECTS

DUNN BLUE PRINT CO.

MAIN OFFICE
5920 SECOND-TR.5-2125

EAST SIDE WEST SIDE
17110 BRADFORD 18019 JAS. COUZENS
VE. 9-3900 UN.1-5512

MICHIGAN CONCRETE CONFERENCE

Wayne University and the Portland Cement Association will sponsor the Third Annual Concrete Conference, to be presented in Detroit on April 25 and 26.

Theme of the conference will be uses of precast concrete. Individual topics for discussion include concrete masonry design and construction, precast floor systems, precast structural elements, and applications of prestressed concrete to precast members. Speakers on the program are men with broad experience in the precast concrete construction field.

The program has been planned to be of practical interest to many persons associated with concrete construction,

including architects, general contractors, municipal and county engineers and officials, highway and consulting engineers, concrete masonry manufacturers and house builders. Full details

of the program will be released at a later date.

—Leo M. Bauer, President of the Michigan Society of Architects, will preside at the afternoon session of April 25.

ATKIN-FORDON CO. GENERAL CONTRACTORS



TEXAS 4-4800

7360 West Chicago Avenue

Detroit 4, Michigan

VInewood 1-6230

PAGE PLUMBING & HEATING CO.

PLUMBING AND HEATING
CONTRACTORS

Office and Shop
100 WEST PLEASANT
River Rouge 18, Mich.

SCHOOL
CHURCH
LABORATORY
LIBRARY

Furniture & Equipment

CHALKBOARDS
CORKBOARDS
WINDOW SHADES
DARKENING SHADES

WE STOCK

TOwnsend 8-9231

WE INSTALL

B. F. FARNELL COMPANY

435 W. SEVEN MILE ROAD (Between Woodward and John R)
DETROIT 3, MICHIGAN



VE. 8-0660

WALTER L. COUSE & Co.

GENERAL BUILDERS

12740 LYNDON AVE., DETROIT 27

UNiversity 4-8167

PAINTING

on
BENTLEY, FORD and
MELVINDALE SCHOOLS

by

NICK KREUGER & SON

Established 1919

PAINTING and DECORATING
CONTRACTORS

8035 WEST 8 MILE RD.
DETROIT 21

For over half a century Detroit's quality roofer

Robert Hutton & Co., Inc.

ROOFING AND SHEET METAL CONTRACTORS

622 FORT ST. E. • DETROIT 26 • WOODWARD 2-1073

JOHNS-MANVILLE PRODUCTS

— LUMBER DEALERS —

Wm. F. Back 

LUMBER CO. WA. 1-9460
5172 ST. JEAN AVENUE • DETROIT 13, MICHIGAN

BRAUN LUMBER COMPANY

TO. 8-0320

1555 E. Davison Detroit 3

GRACE HARBOR
Lumber Company

13833 West Chicago ESTABLISHED 1892
DETROIT 28, MICH. WE 3-4913

Restrict Lumber Company

Since 1884
14400 WYOMING AVENUE
DETROIT 21, MICHIGAN
WE. 3-4830



F. M. SIBLEY
LUMBER CO.
LO. 7-5100

6460 Kercheval Avenue
Detroit 14, Mich.

**E
R
W
I
N
D
T
E
E
P
E**

PLUMBING
and
HEATING

Vermont 7-3798
13624 AUBURN ST.
Detroit 23, Mich.

Directory of Advertisers

| | |
|---------------------------------------|-----------|
| Acorn Iron Works, Inc. | 8 |
| Allstate Electric Co. | 29 |
| Aluminum & Architectural Metals Co. | 12 |
| Andrew, W. T. Co. | 18 |
| Armstrong Co., The | 8 |
| Atkin-Fordon Co. | 31 |
| Back, Wm. F. Lumber Co. | 32 |
| Bortolotti & Sons | 2nd Cover |
| Boston Tile & Terrazzo Co. | 12 |
| Brancheau Bros. | 12 |
| Braun Lumber Co. | 32 |
| Broedell Plumbing & Heating Co., Inc. | 2 |
| Bryant Automatic Heating | 4 |
| Burke, O. W. Co. | 10 |
| Cadillac Glass Co. | 4 |
| Candler, J. D. Roofing Co., Inc. | 18 |
| Casey, David L. Electric Co. | 6 |
| Century Brick Co. | 2nd Cover |
| Cinder Block, Inc. | 1 |
| Colonial Electric Co. | 18 |
| Couse, Walter L. & Co. | 31 |
| Darin & Armstrong, Inc. | 10 |
| Den Braven, M. Co. | 16 |
| Detroit Acoustical Contracting Co. | 2 |
| Detroit Edison Co. | 4th Cover |
| Dickinson, H. H. Co. | 28 |
| Diebold, Inc. | 28 |
| Dunn Blue Print Co. | 30 |
| Eastern Cabinet Works | 10 |
| Farnell, B. F. Co. | 31 |
| Freeman, John H. Co. | 28 |
| Glanz & Killian Co. | 8 |
| Grace Harbor Lumber Co. | 32 |
| Gypsum Constructors, Inc. | 4 |
| Hamill, N. W. Co. | 18 |
| Hanley Co. | 16 |
| Harrigan & Reid Co. | 32 |
| Heineman & Lovett Co. | 14 |
| Horn Fuel & Supply Co. | 1 |
| Huron Portland Cement Co. | 8 |
| Hutton, Robert & Co., Inc. | 31 |
| Jones-Sherman, Inc. | 8 |
| Koenig Coal & Supply Co. | 16 |
| Kriehoff Co. | 4 |
| Krueger, Nick & Son | 31 |
| Kuehne Electric Co. | 30 |
| Kurtz Brick Co. | 10 |
| Kutsche, A. W. & Co. | 28 |
| Lentz & Chaffee | 30 |
| Long Sign Co. | 12 |
| Lyons, Ray T. Co. | 30 |
| Martin, F. H. Construction Co. | 2 |
| Mechanical Heat & Cold, Inc. | 2nd Cover |
| Meier Cut Stone Co. | 6 |
| Mercier, John A. Brick Co. | 14 |
| Michigan Consolidated Gas | 1 |
| Milbrand Maintenance, Inc. | 30 |
| Moynahan Bronze Co., Inc. | 2 |
| Multi-Color Co., The | 32 |
| Mumma Bros. | 18 |
| Nelson Co. | 14 |
| Odien, George A., Inc. | 10 |
| Page Plumbing & Heating Co. | 31 |
| Palmer-Smith Co. | 29 |
| Palombit Tile Co. | 8 |
| Peninsular Slate Co. | 16 |
| Place, Walter O. Co. | 12 |
| Plastic Products Co. | 3rd Cover |
| Restrict Lumber Co. | 32 |
| Robinson, Robbie Co. | 6 |
| Rogers, Maurice V. Co. | 12 |
| Sales, Murray W. & Co. | 28 |
| Santaro, Micheal A. | 30 |
| Schafer, Joseph Co. | 3rd Cover |

| | |
|---|-----------|
| Schieber Manufacturing Co. | 2nd Cover |
| Sibley, F. M. Lumber Co. | 32 |
| Sterling Structural Steel Co. | 12 |
| Stevens, Frederic B., Inc. | 28 |
| Stevens Heating & Ventilating Co., Inc. | 6 |
| Teepe, Erwin D. | 32 |
| Thayer, R. D. Co. | 16 |
| Thomas Brick & Tile Co. | 18 |
| Tinsey Iron & Stair Works. | 32 |
| Toledo Plate & Window Glass Co. | 14 |
| Trane Co. | 29 |
| Turner-Brooks, Inc. | 18 |
| Viking Sprinkler Co. | 30 |
| White, W. Wilbur | 32 |
| Wilkins, M. H. Co. | 6 |
| Witte, O. C. Co. | 3rd Cover |
| Wolverine Marble Co. | 2 |
| Young Archie | 3rd Cover |
| Young, Ben T. | 16 |
| Zonolite Co. | 3rd Cover |

**HARRIGAN
and REID CO.**

HEATING
&
PLUMBING
ENGINEERS

SUMMER AND WINTER
AIR CONDITIONING

SHEET METAL WORK

1365 BAGLEY AVE., DETROIT 26
WOODWARD 1-0243

Duplicate!

- BLUEPRINTS (Nu-Blue)
 - PHOTOSTATS (Sharp)
 - PHOTOGRAPHIC MURALS
- ENLARGEMENTS • TONING
MOUNTING

Snappy Delivery Service!
CALL FOR OUR SALESMAN

The Multi-Color Co.

629 Woodward 126 Delaware
WO. 1-0586 TR. 5-0780

TINSEY IRON & STAIR WORKS

ORNAMENTAL IRON and STEEL STAIRS

8900 LYNDON AVENUE, DETROIT 21

WE. 3-7330

W. Wilbur White

PLUMBING
HEATING
VENTILATING

14265 BIRWOOD AVENUE, DETROIT 4

WE. 3-8890

ARCHIE YOUNG

LATHING and PLASTERING CONTRACTOR
FOR OVER 30 YEARS

12322 CHEYENNE AVE., DETROIT 27
WE. 3-7279

Joseph Schafer Co.

OVER 65 YEARS OF FINE QUALITY WORK
PAINTING and DECORATING

7313 MACK AVENUE, DETROIT 14
WA. 1-3760

**FASTER-EASIER
GLASS SETTING**
in all
types of metal sash
Ideal for aluminum



PLASTI-GLAZE TYPE "C" GLAZING COMPOUND

(Dark Grey or Aluminum Grey)

See our 1951 Sweet's File Catalog $\frac{7c}{PI}$

"ONE WIPE" APPLICATION cuts glazing time.
Ready to use. No mixing or thinning required.

FIRM, ELASTIC BOND that sets quickly but
always stays semi-plastic to withstand vibration
and maintain a constant seal.

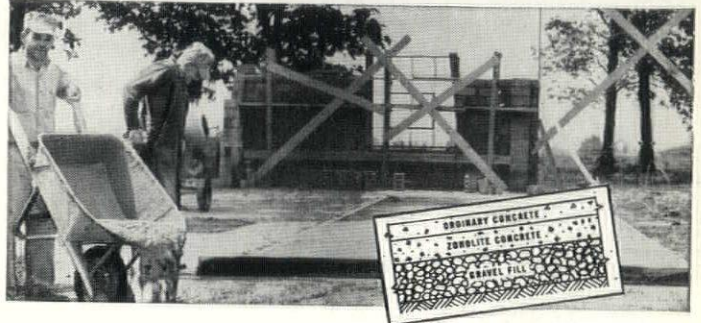
FOUR FACTORIES TO SERVE YOU . . . Detroit,
Chicago, Jersey City, and New Orleans.

**PLASTIC
PRODUCTS
COMPANY**

General Office and Laboratory
6451 GEORGIA AVE.
DETROIT 11, MICH.

NOW! BETTER INSULATED ON-THE-GROUND FLOORS

Cost Less...Easier to Install



Here's that amazing product that solves one of the biggest troubles with basementless homes . . . cold, clammy floors. Concrete made of Zonolite* vermiculite aggregate and Portland cement blocks condensation and prevents heat loss.

Under radiant heat floor systems, Zonolite concrete provides a warmer house, quicker control of room temperature, more economical heating plant operation. Zonolite aggregate weighs only 8 pounds per cubic foot for easier handling, faster application. Can be poured right on the ground! Write for full information today! Sold by lumber and building material dealers.

*Zonolite is a registered trademark



ZONOLITE COMPANY
14300 Henn Ave., Dearborn, Mich.

O. C. WITTE CO.

CHALK BOARDS

GLASS — SLATE — PLASTIC — COMPOSITION

CORK BOARDS

ALL TYPES — TAN, GREEN & SPECIAL COLORS

ALUMINUM & STEEL TRIM

403 DONOVAN BUILDING, DETROIT 1

WOODWARD 2-1001



BOSTON SHOE COMPANY
 19111 Mack Avenue
 Grosse Pointe Woods

Planned Lighting...

FEATURES

Lighted cove. Incandescent down lights over selection areas. Continuous rows of 4 lamp 40 watt unshielded fixtures provide general illumination. Note the window lighting.



"I am sure we are making better sales and have fewer exchanges because of our modern lighting. Many customers have commented on its beauty. Neighborhood merchants have inquired about the equipment used." A. Evans, Manager.

Let an Edison expert help you plan lighting that sells.

Detroit Edison