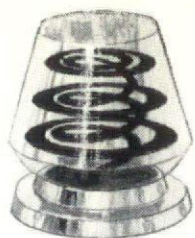


BULLETIN

ANN ARBOR INSTITUTE
OF ARCHITECTURE
JULY 1965
LIBRARY

michigan society of architects august 1965 50c



What would you think about a water heater
without a tank?



Or an oven without sides?



Or a living room without walls?

We've given them a lot of thought. Super-fast tankless gas water heaters will deliver instant hot water in homes of the future. Another new idea in the pilot model stage is a radiant gas oven that will bake a cake in minutes. And

Gas research scientists are perfecting radiant heat that turn your patio into a year 'round living room. These exciting new developments are part of our plan that you'll **LIVE MODERN... FOR LESS... WITH GAS.**

MICHIGAN CONSOLIDATED GAS COMPANY

BULLETIN

michigan society of architects august 1965

THE MONTHLY BULLETIN IS PUBLISHED FOR THE MICHIGAN SOCIETY OF ARCHITECTS TO ADVANCE THE PROFESSION OF ARCHITECTURE IN THE STATE OF MICHIGAN.

EDITOR—
James B. Hughes, AIA
ASSISTANT EDITOR—
Ann Stacy

ART DIRECTOR—
Edward Hutcheson
GRAPHIC ARTS
CONSULTANT—

Gary R. Grout
Ann Arbor Press

ADVERTISING
DIRECTOR—
Charles O. Irvine

CHAPTER ASSOCIATE
EDITORS

Detroit . . .
Wallace Cleland, AIA

Flint Area . . .
Dale A. Suomela, AIA

Grand Valley . . .
Jay H. Volkers, AIA

Huron Valley . . .
Henry S. Kowalewski, AIA

Mid-Michigan . . .
John E. Crouse, AIA

Northern Michigan . . .
Richard H. Greenless, AIA

Saginaw Valley . . .
William Stenglein, AIA

Western Michigan . . .
Donald W. Stearns, AIA

Volume 40 — No. 8

- 3 News
- 7 The Jeffersonian
- 19 Obituary
Announcements
Classified
- 22 Calendar
Advertiser's Index

*September features: Ponchartrain Hotel, Mid-Summer
Conference Report.*

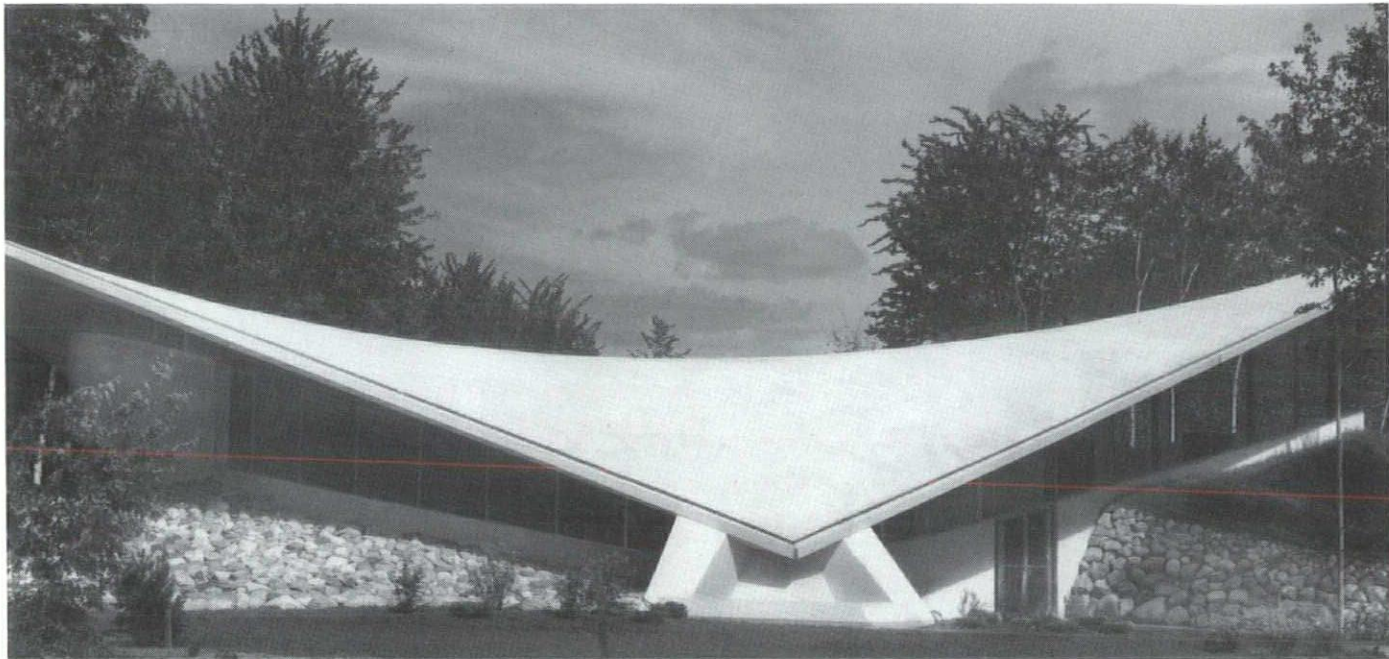
Monthly Bulletin, Michigan Society of Architects, the official publication of the Society; all Michigan Chapters of the American Institute of Architects; Women's Architectural League of Detroit (WALD); Producers Council, Inc., Michigan Chapter; Builders & Traders Exchanges of Detroit, Grand Rapids and Lansing is published monthly by the Michigan Architectural Foundation; Editorial and Advertising Offices—28 West Adams, Detroit 26, Michigan, Phone: 965-4100.

Monthly Bulletin, Michigan Society of Architects, is published monthly at 28 West Adams, Detroit 26, Michigan. Entered as second class matter January 15, 1946 at the Post Office at Detroit, Michigan under Act of March 3, 1879. Subscription price, \$4.00 per year (members \$2.00). 50 cents per copy.

Building a better
Michigan
with **CONCRETE**

One of a series of advertisements showing how top Michigan architects effectively use versatile concrete

Attractive shell roof of modern concrete helps keep cost low for new Midland church



United Church of Christ, Midland, Architects: Blacklock and Schwatz, Midland; Structural Engineers: R. H. McClurg Associates, Detroit; General Contractor: John W. Strahan Construction Co., Riverdale

The impressive United Church of Christ structure makes effective use of a hyperbolic saddle shell roof to achieve striking beauty while retaining the advantages of economy. Designed by the Midland firm of Blacklock and Schwartz, the 6,400-sq.-ft. concrete shell spans 148 ft. from point to point and is 80 ft. across the points of the buttresses. Concrete

for the shell was placed in six hours at a cost of \$3.25 per sq. ft. Total cost of the structure was \$78,000 of which \$29,000 went for the roof, supports and tie beams. Concrete masonry walls completed the structure. This Midland structure provides another outstanding example of how progressive architects are building a better Michigan with concrete.

PORTLAND CEMENT ASSOCIATION 900 Stoddard Building, Lansing, Michigan 48933

An organization to improve and extend the uses of concrete, made possible by the financial support of most competing cement manufacturers in the United States and Canada

Western Mich. — Northern Indiana Joint Meeting

Members of the Western Michigan Chapter met with the Northern Indiana Chapter recently at the Morris Inn, University of Notre Dame. The occasion was the dedication of the University's newly renovated Department of Architecture.

Principal speaker was Morris Ketchum, Jr., FAIA, then Vice President, A.I.A. Other participants in the program included James M. Turner, AIA, president, Indiana Society of Architects; Walter Scholer, Jr., AIA, Director, East Central States Region, A.I.A.; Francesco Montana, FAIA, Head, Dept. of Architecture; Notre Dame; Cornelius Robinson, AIA, president, N. Indiana Chapter and Fr. Jerome Wilson, vice president, U. of Notre Dame.

Western Michigan Chapter members who attended with their wives included H. Chase Black, Jr., James L. Parent, Clarence Roessler, Peter Futymoski, Jerry Fair, William Stone, Donald Stearns, John Burgess and Phillip C. Haughey.

Parent was given an accolade by ISO President Tuner for his work on the Lake Michigan Region Planning Council.

Visitors were given a tour of the campus including the new library building.

DeVries Appointed to State Registration Board

Bernard J. DeVries, AIA, Muskegon architect, was appointed a member of the Board of Registration for Architects, Professional Engineers and Land Surveyors by Governor Romney, effective July 2, 1965. DeVries replaces Robert B. Frantz, FAIA, who had served on the Board for twenty-one years.

DeVries is a member of the Grand Valley Chapter, A.I.A. of which he was president in 1964. Prior to the formation of the Grand Valley Chapter, he had served as a director and secretary of the Western Michigan Chapter.

He has been a delegate to the Lake Michigan Region Planning Council,

has been a member of the Muskegon City Planning Commission since 1945, its chairman since 1950.

Other civic activities in which DeVries has been active include the Muskegon Zoning Board of Appeals, the Muskegon Area Transportation and Planning Committee, the Greater Muskegon Chamber of Commerce and the Muskegon Building Code Committee.



In addition he was a founder and director of the Michigan Society of Planning Officials and has been active in the Muskegon Kiwanis Club, serving as president in 1952.

DeVries joins Thomas J. Sedgewick, Flint, and Charles H. MacMahon, Jr., Bloomfield Hills, as the architect members of the Board.

1965-66 A.I.A. Officers Elected at Convention

Morris Ketchum, Jr., FAIA, of New York City, became president of The American Institute of Architects at the close of the Institute's 97th annual convention. He succeeds Arthur Gould Odell, FAIA, of Charlotte, N.C.

The Convention elected Charles M. Nes, Jr., FAIA, Baltimore, Md., First Vice President; Rex Whitaker Allen, AIA, San Francisco, Vice President; Robert L. Durham, FAIA, Seattle, Wash., Vice President; and George E. Kassabaum, AIA, St. Louis, Mo., Vice President.

Daniel Schwartzman, FAIA, New York City, was elected treasurer of the Institute.

The officers were installed at the close of the five-day joint AIA Convention and Pan American Congress

of Architects which was attended by more than 4,000 architects and guests from many parts of the Western Hemisphere.

Five new national directors of AIA were elected as well. They are: Dan C. Cowling, Jr., AIA, Little Rock, Ark., Gulf States Region; Robert B. Martin, AIA, Portland, Ore., Northwest Region; Philip J. Meathe, AIA, Detroit, Mich., Michigan Region; Bernard B. Rothschild, AIA, Atlanta, Ga., South Atlantic Region; David N. Yerkes, Washington, D.C., Middle Atlantic Region.

Construction Started on GMI Campus Expansion

Ground was broken recently for the first two buildings in a major expansion of the General Motors Institute at Flint. The development is part of a master plan created for the Institute by Tarapata-MacMahon Associates, Inc.

Dr. Harold P. Rodes, president of General Motors Institute, said the architects have been working with the Argonaut Realty Division of General Motors as well as with the Institute's Board of Regents on a master development plan for the GMI campus. Dr. Rodes said the buildings will incorporate the latest architectural principles and design ideas, but will harmonize with buildings on the present campus of the 46-year-old engineering college.

The expansion is on a 40-acre tract at Third and Chevrolet, Flint, across Third Avenue from the present campus. Ground was broken for a campus center and a four-floor men's residence hall to house 400 first-year students.

Maurice B. Allen, Jr., principal in charge of the GMI project for Tarapata-MacMahon Associates, said the new buildings will face a campus green utilizing landscaped courts and separate streets for pedestrian and vehicular traffic. He said the plan makes dramatic use of open spaces, both between the buildings and in a central court of the campus center.

The men's residence hall and the campus center will be fully air-conditioned. Both buildings will be faced with Shenandoah Valley sand mold



Getting the Answer

City statutes, codes and ordinances are common reference books for both architects and utilities. In planning electric and gas service, architects and utility engineers face many common problems. Consumers Power Company can provide information that will save valuable time and possible duplication of effort for the architect.

As a combination utility, we know the characteristic requirements and adaptability of both types of energy.

Our special representatives throughout our service area will be pleased to be of assistance.

Call or write, Consumers Power Company, General Offices, 212 W. Michigan Avenue, Jackson, Michigan—Phone, Area 517 788-0802 or Marketing Department at any of the Company's 15 Division Offices.

CONSUMERS POWER...Electric and Natural Gas Service in Outstate Michigan

red brick and will feature bronzed-tinted glass set in extruded bronze aluminum frames with neoprene glazing.

The 185,000 square-foot residence hall will have four wings leading from a linking corridor. In addition to sleeping and study quarters for first-year students, the residence hall will contain public rooms, meeting rooms and recreation areas as well as rooms for the head resident and assistants.

The four wings will contain student apartments, each apartment using two floors linked by a private stairway. There will be six four-man apartments, nine eight-man units, and two two-man apartments in each wing as well as two apartments for resident advisors. Apartments will have living rooms and study rooms on the lower levels and bedrooms and more study facilities above.

Allen said the five-story, 220,000 square-foot campus center was designed with the top two stories cantilevered above two lower floors. The two lower floors will contain recreation rooms, a reception area, a main kitchen, two student dining halls and a cafeteria. A student lounge, Institute admission and student relations offices and the campus store will also be located in this area.

On the third floor of the building will be the Institute's executive offices, including those of the president and the executive director, and a meeting room for the Board of Regents. There also will be a faculty lounge and recreation area, offices for the alumni

relations department and for student organizations.

The fourth floor will be devoted to the management training program of the Institute. It will have several conference rooms, dining rooms, an amphitheater seating 55, several offices and a small library.

On the top floor will be a large multi-purpose room capable of seating 1,200 persons. Also included will be lounges, guest rooms and a serving kitchen. All floors of the building will be connected by two escalators.

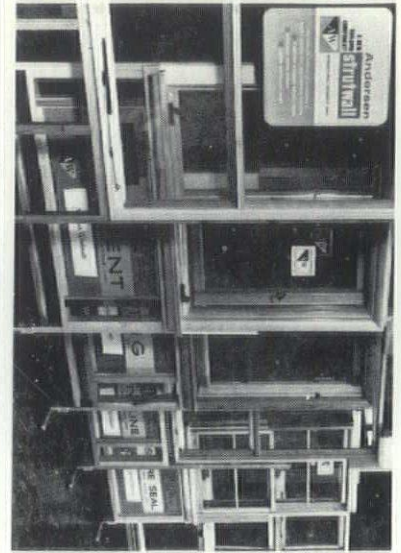
Allen said the residence halls are expected to be occupied in the fall of 1966, with the campus center several months later.

ACSA Commends AKA

Albert Kahn Associates have been commended by the International Relations Committee of the Association of Collegiate Schools of Architecture for "generous support" of a summer work-study Student Exchange Program sponsored by ACSA.

The citation reads: "Your responsible action is an expression of your faith in the future of the architectural profession both here and abroad and reflects your understanding of the obligation of the best elements of any profession to contribute to the constant renewal of that profession."

The ACSA exchange program was initiated in 1963 with 13 U.S. students working for eleven weeks in British architectural offices and a like number from the Architectural Associa-



No Detail Contributes More to the Quality of a Home Than Quality Windows

As important as the satisfaction and pride your client takes in the residence you design and engineer for him, is the impression conveyed to others. Andersen Windowwalls not only have built-in style, but they have built-in performance. Don't invite trouble. Be definite in your specification of Andersen's by name.

A complete line of Andersen windows is on display at our showroom. You are welcome to bring your clients. Nothing is sold here.



KIMBALL & RUSSELL INC.
WHOLESALE SASH AND DOOR DISTRIBUTORS
2127 FENKELL AVE. DETROIT 38, MICH. UN. 13480

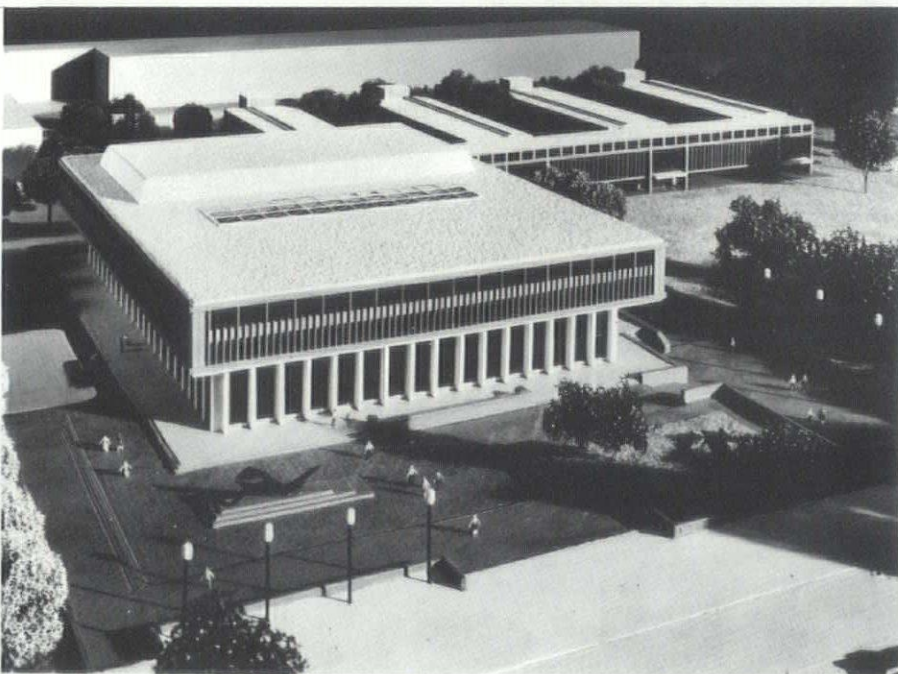


Photo of model — GMI Buildings

tion School in London spending eleven weeks in various offices throughout the U.S.

In 1964 the ACSA exchange program was broadened to include 42 students from the United States, England, Sweden and Finland.

This year's program brings to the Kahn office a Swedish student, B. Martensson, who has just completed his 4th year in architecture at the Royal Institute of Technology in Stockholm.

Martensson will spend 11 weeks in the Kahn office in a work-training program designed to familiarize him with the full responsibilities and scope of the AKA organization, also its approach to "balanced design" in architecture and engineering.

AKA participation in the ACSA program is part of the firm's commitment to recognizing and encouraging educational and artistic attainment through scholarship grants and awards.

Mercer Joins MAPA As Detroit Consultant

Gene Mercer has been appointed Detroit area asphalt paving representative for the Michigan Asphalt Paving Association, according to Allan V. Cooke, President. Mercer's addition to the staff of the Association is in answer to many requests for more service in the Detroit area. He will work in all the Detroit metropolitan counties aiding architects, cities and counties in developing better hot-mix asphalt paving.

"We have not had the manpower to provide constant field service to the busy southeastern corner of the state since the retirement of Bill Wallace," said Walter P. Tervo, Executive Secretary of MAPA. "The addition of Gene Mercer to our staff will allow us to maintain more contact with our members and to re-establish close relations with area asphalt paving designers."

Mercer was attached to a State Geological Survey team of the Michigan Department of Conservation before joining the MAPA staff. Prior to that he had served eight years in South America as a petroleum geologist in charge of exploration and development for Creole Petroleum Corp. and International Petroleum Co., Limited.

Gene Mercer was born and raised in Olney, Illinois. He majored in Geology and Civil Engineering at Michigan State University and received his Bachelor of Science degree in 1954. He is a member of the American Institute of Mining and Metallurgical Engineers and the American Association of Petroleum Geologists.

NAARCO Announces New Fascia, Panel

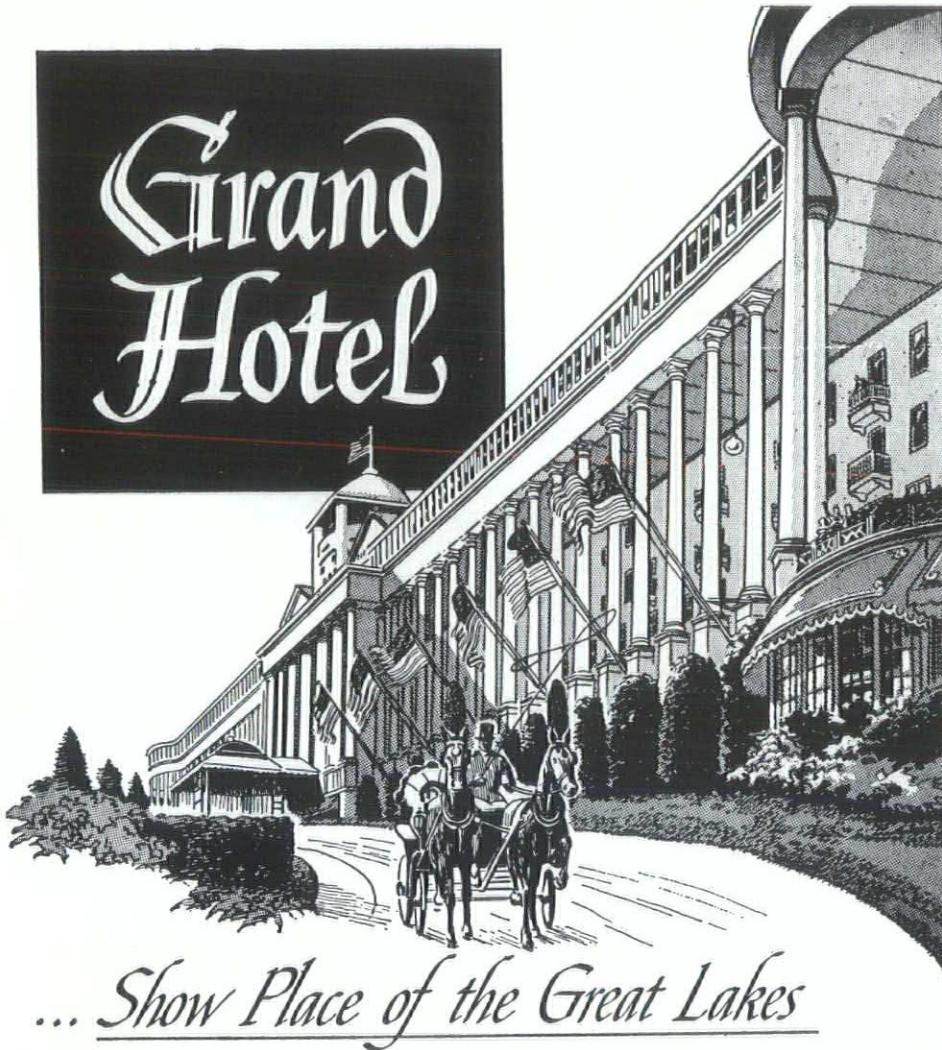
North American Aluminum Corporation (formerly Modu-Wall, Inc.) of Parchment, Michigan has introduced a new NAARCO aluminum fascia design, which can also be incorporated in a curtainwall panel for greater visual continuity.

Two distinct styles are available, each offered in a range of color anodic hardcoat finishes.

The fascia can be erected without exposed fasteners, and is available with head, intermediate and sill trim.

The insulated aluminum fascia panel is sealed in an aluminum panel frame with a polysulfide sealant. The panel face is secured to a polyurethane insulated, laminated panel.

Details and complete specifications are available from the manufacturer.



... Show Place of the Great Lakes

GOLF
DANCING
SADDLE HORSES
GOLDEN SANDY BEACH
SERPENTINE POOL
TENNIS COURTS
LAKE FISHING
BOATING

Gracious and restful vacation pleasures await you at this famous summer hotel. Picturesque views of historic Mackinac Straits from the world's longest porch . . . gaited saddle horses . . . formal gardens and championship golf courses . . . dancing, concerts, nightly entertainment . . . serpentine pool . . . romantic horse-drawn carriages . . . superb cuisine and equally fine service. All are yours to enjoy at Grand Hotel. Too, nights are refreshingly cool. You sleep under blankets. May we send you free literature?



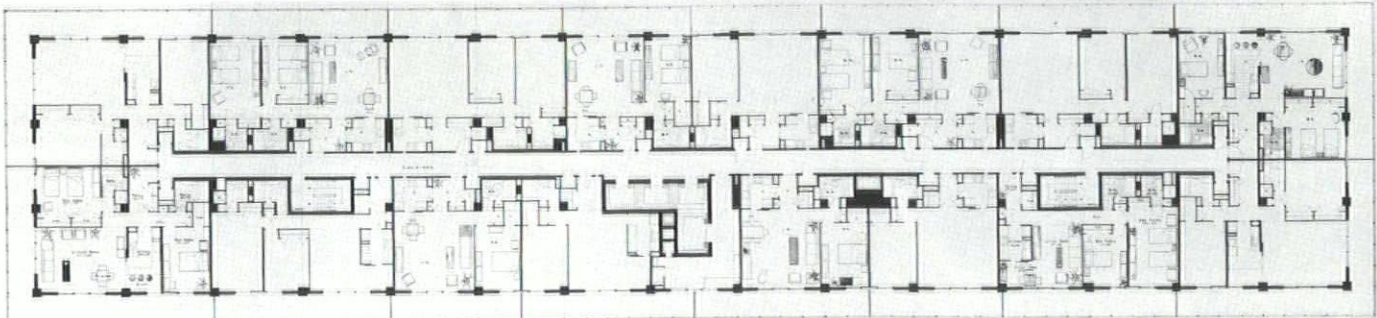
The Jeffersonian Apartment

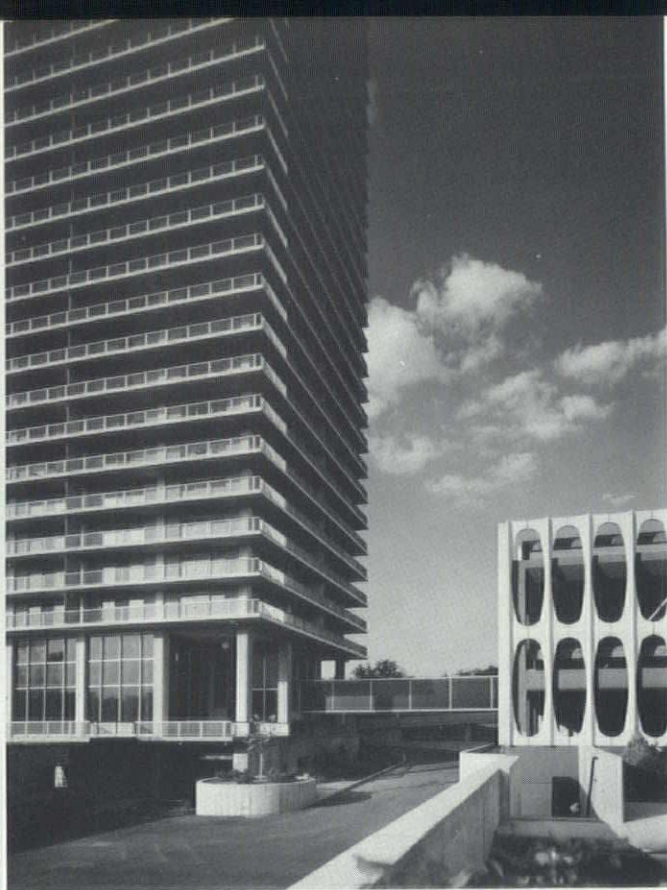
Giffels & Rossetti, Inc.
Architects and Engineers

The Jeffersonian can be referred to as a prestige address because of its riverside location, design concept and living and pleasure conveniences for both tenant and guest.

The 30-story, air conditioned building is located so that each of the apartments has a commanding view of the Detroit River. Adjacent to the site are the Memorial

August, 1965 | 7





Park and Marina, other apartment buildings and custom homes. The Jeffersonian is minutes from the city-wide system of freeways, to downtown Detroit and cultural and civic buildings.

On leaving any one of the apartments, one need go no farther than the building's site to find relaxation. In the recreational area, one may swim in a sunken and wind-free Olympic-size pool, lounge on its sun deck or play a set of tennis. There are also putting and croquet greens available.

The main level features a Fine Arts Lounge, dining room, banquet and meeting room, cocktail lounge, pharmacy and a variety of shops. Complete facilities by the Michigan Bank are also provided. The lower level has a commissary, barber shop, beauty salon, shower and locker rooms for bathers, laundry and trunk storage area.

The apartment dweller who seeks nothing but his own private comfort is accommodated too. He may enter the building by the private tenant lobby and be whisked to his apartment by one of four automatic elevators. The hotel-lobby atmosphere will not prevail.

Another distinct Jeffersonian convenience is the three-level parking garage, adjoining the main structure with parking space for 640 cars.

Each of the 417 apartments is individually planned. The only difference between apartments is the number of bedrooms; the one bedroom unit lacks only one, two or three more of the same. The interior treatment of each apartment is customized; individual balconies are provided and services and fixtures are selected to satisfy the most discriminating tenant.

Each apartment will be continuously supplied with electronically filtered fresh air, circulated by an individually controlled year-round gas air-conditioned system. Intake of air is from the roof 300 feet above the street.

A completely-flexible telephone system is used, permitting service convenience from electrical outlet units in practically all rooms. This is the first such installation in Michigan, and among the largest.

Ultimate in soundproofing is provided by building

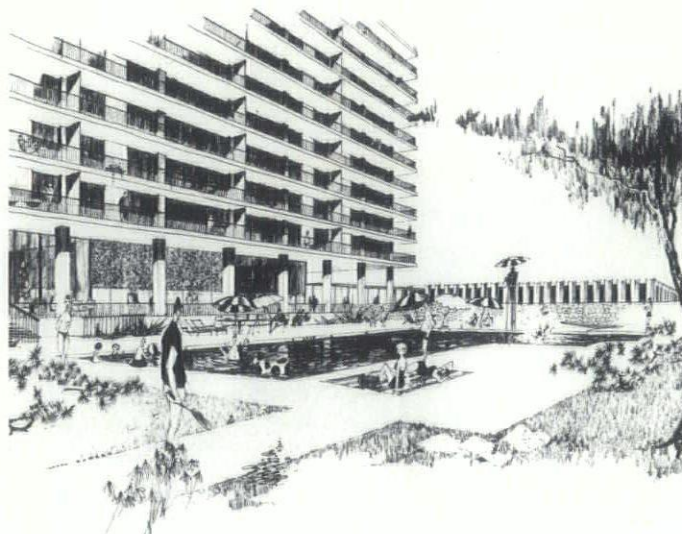


materials of the latest design, utilized to prevent transmission of sound. The noise factor of heating, plumbing and electrical systems is reduced to an absolute minimum. Corridors are covered with deep carpeting.

Service of the plumbing and air conditioning can be maintained without entering the apartment, by wall doors in the corridor.

Each apartment has a deluxe all-electric kitchen, including an eye-view built-in oven, range with hood, refrigerator, food waste disposer and automatic dishwasher.

Bathrooms for every bedroom will have built-in vanities with recessed basins, colored fixtures (wall-hung for ease of maintenance), all having the latest design in chrome trim.





NEW BARTON-MALOW METHODS WIDEN HIGH RISE DESIGN POSSIBILITIES

ONE SOLUTION SIMULATES ANOTHER

Meeting the challenge of delivering a controlled flow of 40,000 yards of concrete speedily and economically to heights of 30 stories on The Jeffersonian Apartment project, demanded a new concrete placing method. When operational, the new placing method designed by Barton-Malow vice-president Floyd Wieland, delivered 45 yards of concrete per hour. This efficiency soon required another Barton-Malow innovation to raise reinforcing steel and forms fast enough and high enough to make Wieland's concrete placing method practicable.

The Solution: A mobile tower crane operating on one side of the structure and the concrete hoist on the other.

Result: Enough reinforcing steel could be supplied to meet the demands of the new high-speed placement method.

Exciting new architectural high-rise design demands break-throughs in construction methods. For more detailed information about the above methods and other new innovations, call or write us soon. At Barton-Malow, serving means solving.



BARTON · MALOW COMPANY
P. O. BOX 5200 · DETROIT, MICHIGAN · LI.8-2000

General Contractors

ACOUSTICAL CONTRACTORS ASSOCIATION
OF GREATER DETROIT

6525 LINCOLN AVENUE
DETROIT, MICHIGAN 48202

July 12, 1965

Gentlemen:

Effective July 15, 1965, the Standard Contract Amendment Rider (copy on opposite page) will be attached and made a part of all Purchase Orders covering work to be performed under the Acoustical Division of all specifications on all projects by the following members of the letterhead organization.

Detroit Acoustical Contracting Company

R. E. Leggette Company

Milbrand Maintenance Inc.

Owens-Corning Fiberglas Supply & Cont, Div.

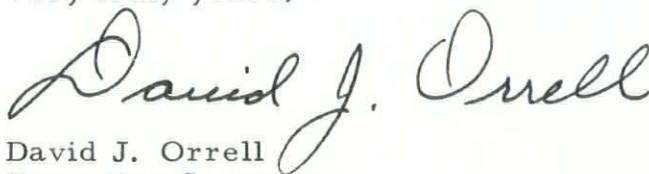
Service Art Plastering Company

Turner-Brooks Inc.

Nichols Company

E. F. Hauserman (Co-operating member)

Very truly yours,



David J. Orrell
Executive Secretary

ACOUSTICAL CONTRACTORS ASSOCIATION OF GREATER DETROIT
871-1141

(Advertisement)

STANDARD CONTRACT AMENDMENT RIDER

(Effective Date, July 15, 1965)

THE ACOUSTICAL CONTRACTOR WILL NOT BE RESPONSIBLE FOR:

1. Irregularities in ceiling when furring runners are fastened to the bottom of bar joist.
2. Level ceiling when tile is to be cemented to irregular concrete pre cast dox blocks, plank or plaster, etc.
3. Changes or repair work to acoustical ceiling caused by other trades when such change or repair work is not specified and shown on drawings.
4. Any finish acoustical ceiling until all overhead work by others is complete.
5. Accepting any back charges unless notified in writing by the general contractor or architect and thereby be given specific and sufficient time to make inspection and/or corrections.
6. Coordination of other trades effecting the finished ceiling, reflective ceiling plans or exact dimensions of finish ceiling around light fixtures unless specified and detailed as to type and dimension.
7. The installation of acoustical materials when building is excessively cold or damp or hot and dry as outlined in the Acoustical Manufacturers Association Bulletin No. 25 Page 86.
8. Furnishing and installing access panels in acoustical ceiling unless specifically called for as to type, size, and quantity.

THE ACOUSTICAL CONTRACTOR SHALL:

1. Furnish a guarantee of warranty for two years from date of completion of work under his contract.
2. Be paid within five days from the date the General Contractor receives payment from owner.
3. Be notified in writing giving reasons or causes if payment is delayed beyond the 20th of the month.
4. Install all suspension for backer boards to receive acoustical tile to guarantee level.
5. Furnish shop drawings showing details of suspension and construction of acoustical ceiling when necessary.

This rider is attached to and hereby made a part of the written contract. The execution of the contract by the acoustical contractor is by reason of this rider and said rider forms an integral part of the contract and acceptance of the buyer.

Issued By:

ACOUSTICAL CONTRACTORS' ASSOCIATION
OF GREATER DETROIT
6525 Lincoln
Detroit 2, Michigan

(Advertisement)

**HEC & S Honors Brown
on 25th Anniversary**

Paul B. Brown, A.I.A., was honored by his associates this week when Julian R. Cowin, president of Harley, Ellington, Cowin and Stirton, Inc., presented him with a plaque marking his 25th anniversary with the firm.

A vice president and member of the board of directors of HEC&S, Brown is the current president and one of the founders of the Forum for Detroit Area Metropolitan Goals as well as a past president of the Detroit Chapter, A.I.A. He is a member of the A.I.A. National Committee on Architectural and Building Informational Services. Brown heads the HEC&S Educational Division.

In his capacity as Educational Projects Director, Brown has served as executive in charge of his firm's work at Michigan State University, Wayne State University, the University of Detroit and the University of Michigan. He has taken a keen interest in the increasingly popular community college program now mushrooming throughout the country and is executive on his firm's Macomb County Community College project. Brown also has been active in insurance building projects and supervised



HEC&S work on the New Home Office Building for the Maccabees Mutual Life Insurance Company in Southfield, Michigan, and the Union Central Life Insurance Company headquarters building in Cincinnati, Ohio.

A native of Lake City, Minnesota, Brown took his B.A. Degree at Oberlin, where he was a Phi Beta Kappa, in 1933 and his B.S. in Architecture at the University of Michigan in 1936. While at the U. of M. he

received the A.I.A. Medal and was a member of Tau Sigma Delta, Alpha Kappa Delta and Phi Kappa Phi. He was awarded the George C. Booth Travelling Fellowship which provided for six months travel and study in South America in 1940.

From 1942 to 1945, Brown was in military service, becoming a Lieutenant Commander and serving in the Atlantic and Pacific Theatres on the USS Hornet and USS Wasp.

DESIGN
WITH THE CHARACTER,
WARMTH and CHARM ONLY
WOOD CAN GIVE

The classic natural beauty, warmth and unique personality of custom mill work will give your project the enduring appeal of crafted quality. When you require unmatched individuality for an original design, Erb Restricks Eton Mill is your source. Everything is made to the order of the discriminating architect.

For your convenience, we will provide complete specification assistance for all the mill work you require. There is no obligation of course.

At Erb-Restricks, high quantity buying assures you the most reasonable prices without sacrificing top workmanship.

Think of wood when you reach for genuine, lasting beauty.

ERB ETON MILL DIVISION
SINCE 1884 **RESTRICK** LUMBER COMPANY
425 S. Eton Road, Birmingham, Mich. • Telephone MI 4-5300

M.S.A. Document No. 65-8

ARCHITECTURAL
SERVICES
including
Schedule of Recommended
Basic Compensation

Now Available From
MICHIGAN SOCIETY
OF ARCHITECTS
28 W. Adams, Detroit 48226

Document No. 65-8 \$.50 per copy
Schedule Only \$.05 per copy

Flint Asphalt Paving 37th Member of MAPA

Flint Asphalt and Paving Company, 817 W. 12th Street, Flint, has been elected to regular membership in the Michigan Asphalt Paving Association it was announced this week by MAPA president Allan V. Cooke. The Flint firm joins thirty-six other asphalt paving contracting companies in the state who are prequalified to bid on state highway projects by the Michigan State Highway Department and are members of the state-wide contractor's association.

Flint Asphalt and Paving Company operates two asphalt mixing plants in the Flint area. The firm was organized in 1949 and received its prequalifications rating from the MSHD in 1956. Warren J. Card, former native of East Lansing and a graduate of Michigan State University, is president of the company.

Blessing Receives Scholarship Grant

The director of the Detroit City Planning Commission, Charles A. Blessing, has been presented with a \$6,000 annual scholarship award by the New York Chapter of the Ameri-

can Institute of Architects (AIA).

Blessing, who received the award at the AIA's national convention in Washington, D.C., will use the grant for development of a book on urban design.

He is a fellow of the AIA and a past president of the American Institute of Planners.

His book is tentatively planned to present a study of the quality, character and spirit of great city building on the six continents in the last 6,000 years.

It will include sketches and explanatory text in an analysis of approximately 50 outstanding examples of significant achievements in urban design, including the central 30 square miles of Detroit.

Biddle Honored at Testimonial Dinner

Representatives of all segments of the construction industry gathered at Roma Hall in Livonia on Sunday, June 27, to honor Jay Biddle at a testimonial dinner.

Biddle, now 80 years old, is still active as the Business Manager of the Michigan Electrical Industry Association and the Thomas Edison Club of

Detroit as well as in the heating field.

Participating in the program were John DeHann, Alfred Keats, Joseph P. Wolff, George H. Smith, Homer Brundage and Ralph MacMullen. The subject of MacMullen's talk was "Jay Biddle, The Man."

Presentations to Biddle were made by Detroit Councilman Mel Ravitz; Jack Kelley, Deputy Commissioner, Dept. of Buildings & Safety Engineering, Detroit; Robert Boelens, Chief, Dept. of Inspection Services, Grand Rapids and Richard Sanderson, Chief Inspector, Livonia.

Long active in his field and association work, Biddle originated the concept of reciprocal licensing in 1939, following the demise of a State Electrical Law.

Prusinski at M.I.T.

Among this nation's leading educators, architects and industry representatives qualified and admitted to M.I.T. for a course in plastics in construction was Richard C. Prusinski, President of Architectural Research Corporation.

Prusinski, of 7533 Hartwell, Dearborn, developed an entirely new concept of making building panels. The

Sure, Freedom Windows have passed tests for Air Infiltration and Water Infiltration and Icing and Condensation.

But that's not even the half of it.

Freedom Windows are Stainless Steel.

No other window material even comes close to stainless steel. That's fact. Only FREEDOM WINDOWS of Stainless Steel, in the natural unpainted state of the metal, will *never* discolor. Or pit. Or corrode. Or stain adjacent materials.

They don't need painting, repainting, and repainting *ad infinitum*. They don't need anything but regular window cleaning to maintain their pristine luster. And we mean *luster*, not a dull gray finish.

Nothing blends with other materials like stainless steel. And no other material lasts so long or requires so little maintenance.

FREEDOM WINDOWS cost a bit more, naturally. But that's first cost only. Through several years of service they *save* money. After all, they can outlive *any* building.

We know you've been swamped with blurbs on aluminum, and aluminum is fine in its place. But here's how it compares with stainless:

	Stainless	Aluminum
Ultimate tensile strength	90,000 psi	22,000 psi
Yield point (2% offset)	40,000 psi	16,000 psi
Melting point	2,570°F	1,270°F
Modulus of elasticity $\frac{(E)}{10}$	28	10
Thermal conductivity (Btu/sf/hr/°F/in)	113	1,393
Thermal expansion ($^{\circ}F \times 10^{-6}$)	9.4	12.1

We rest our case.



MANUFACTURING DIVISION
REPUBLIC STEEL CORPORATION

Dept. ML-1772-A, Youngstown, Ohio 44505

CALL THE MAN FROM
MANUFACTURING!



August, 1965 | 15

company now has three plants in the United States.

The professors in charge of the course, Marvin Goody and Dr. Allen Dietz, are famous for designing the Monsanto All Chemical House in Disneyland and the 1959 United States Pavilion in Moscow.

Representatives of all the major universities including McGill University in Montreal, University of Venezuela and University of Paris also attended.

* * *

S H & G Names Sheoris Medical Facilities Director

John V. Sheoris, AIA, has been named design director for medical facilities by Smith, Hinchman and Grylls Associates, Inc., Detroit, architectural, engineering and planning concern, it was announced by Sigmund F. Blum, Vice President in charge of design.

Sheoris, a native of New York City, joined Smith, Hinchman and Grylls in January, 1963, and became an associate in September, 1964.

A graduate of the Yale University School of Architecture, with a Bachelor's degree in 1953 and a Master's degree in 1954, Sheoris has

won several national awards including a Magnus T. Hopper Fellowship in Hospital Design in 1952 and the Third Annual Ruberoid-Mastic Tile Competition in 1961 for "Long Range Planning for the Medical Care Facilities in the Community."



A registered architect, Sheoris holds a certificate with the National Council of Architectural Registration Boards. He is a member of the Detroit Chapter, A.I.A., and is currently chairman of the Allied Arts committee, vice chairman of the Hospital Architecture committee and a member of the Civic Design Committee. He is a member of the Michigan Society of Architects and a past member of the

board of directors, is a member of the Yale Alumni Association of Michigan and is a former vice president of the Hellenic University Club of Detroit.

* * *

Paulsen Awarded Mention in Dow Competition

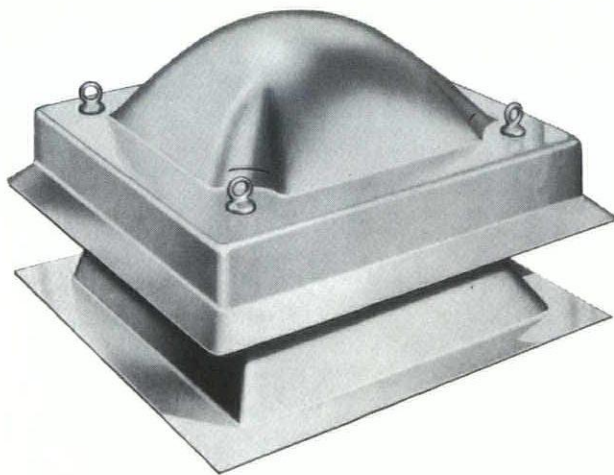
Glen Paulsen & Associates, Bloomfield Hills, Michigan received an honorable mention in the Dow Chemical Company's second annual architectural awards program for the design of a university life sciences building.

The award was one of six honorable mentions given in the program. The cash prize of \$7,000 was withheld by the jury and the money was given to the Architectural Foundation of the A.I.A.

Serving on the jury were Carl Koch FAIA; James Hornbeck, AIA, senior editor of Architectural Record and Dean Reginald F. Malcomson, of the University of Michigan's College of Architecture and Design.

Louis G. Redstone, FAIA, president of the Detroit Chapter was professional advisor for Dow Chemical Co.

For Roof Exhausters that can't be seen or heard...



insist on
the new
**UNITARY
VINYL (PVDC)
SERIES**

by

JENN-AIR

R. DYKSTRA & COMPANY

DETROIT - 6400 Mt. Elliott Avenue, (313) 921-5630
GRAND RAPIDS - 822 Cherry St., S.E. - (616) 454-7097

Michigan Roofers Form New Association

A series of meetings between roofing contractors throughout Michigan terminated at Lansing, Michigan with the formation of a new association. This all-encompassing body consolidates five recognized roofing contractor groups in the state under one central committee to be known as the Michigan Roofing Contractors Association, Inc. It will advise local chapters on formulation of industry policies such as: performance guarantees, education of apprentices, better job specifications, safety and legislative matters affecting roofing contractors throughout the state.

Pictured are: Kenneth S. Baird, President, of Flint, signing the papers of incorporation. At Baird's right is Ken B. Donaldson of Lansing, Vice-President, and on his left is George F. Steyer, Jr. of Detroit, Treasurer. Back row left is Elmer LeClaire, Flint and H. J. Bos, Lansing. On the right is Burleigh Grime, Executive Secretary for the Roofing Industry Promotion Fund in Detroit, who will act as Secretary for the new group. The offices of the newly formed state association will be at 8469 East Jefferson Avenue, Detroit.

Others who make up the state board of directors are: R. Boom, Grand Rapids; P. Covell, Kalamazoo; L. DeRyckere, Livonia; O. Gingrich, Bay City; B. MacArthur, Saginaw; R. Reynolds, Farmington and F. Wilson, Detroit.

Klaetke, Marino Announce New Architectural Firm

Frank W. Klaetke and Anthony R. Marino have announced the opening of their new office under the firm name Klaetke and Marino, Architects, 608 Fine Arts Building, Detroit, Michigan.

Klaetke, who studied at Lawrence Tech, has practiced as a sole principal for the past three years. He was registered in Michigan in 1959 and became a corporate member of the A.I.A., Detroit Chapter and M.S.A. in 1961.

Marino received his Bachelor's Degree in Architectural Engineering from the University of Detroit. Both had been employed for several years by T. Rogvoy, A.I.A.

A.H.A. Member Joins Giffels & Rossetti, Inc.

Albert H. Fiedler, AIA, has joined the staff of Giffels & Rossetti, Inc., architects and engineers of Detroit, as architectural consultant — medical facilities.

He is a member of the American Hospital Association, a registered architect and is accredited with the National Council of Architectural Registration Boards.

Fiedler will bring to the 650-man organization more than 15 years of hospital planning, programming and design experience, with special attention to medical and paramedical



Seated left to right are: George F. Steyer, Kenneth S. Baird, Ken B. Donaldson, standing: Elmer LeClaire, H. J. Bos, and Burleigh Grime.

Turner Engineering Company

**DEPENDABLE
ELECTRICAL
CONSTRUCTION
FOR 48 YEARS**

●
464 Brainard Street
DETROIT 1, MICHIGAN
TEmpLe 1-0470

M. Den Braven

■ Our 52nd Anniversary ■

— SHEET METAL —

— VENTILATING —

— AIR CONDITIONING —

●
9080 Alpine Avenue
Detroit 4, Michigan
WE 3-7494-5-6

space needs and functions of the health professions.

His education includes a certificate from Pratt Institute School of Architecture, a Bachelor of Architecture from New York University and post-graduate work at the College of Architecture, Columbia University. He is active in the American Hospital Association's institutes, workshops and conventions and has contributed to the Journal of the AHA.

Fiedler was formerly an associate with the firm of Deeter & Ritchey, architects of Pittsburgh.

Rucorail Vinyl Handrail Michigan Distributorship to WESCO

It is with pleasure that we, Wesco, Incorporated, introduce to you the newest product added to our line, RUCORAIL.

RUCORAIL is a thermoplastic material formulated from a polyvinyl chloride resin. Heated, the material is easily shaped or formed. It is readily welded without unsightly seams and is warm and smooth to the touch and its toughness provides a firm yet gentle grip. Other characteristics include long, maintenance-free life and attractive decorator colors.

The product, which will be installed as well as distributed by Wesco, Inc., is ideal for stairs, room dividers, bars, retail counters, elevator cabs, balconies, ramps, display cabinets in hotels, motels, hospitals, schools, churches, gymnasiums, sports arenas, parks, fairs, ships, airline terminals, stores, restaurants, high-rise buildings and private homes.

RUCORAIL comes in various profiles in 100-foot and 25-foot rolls in seven contemporary decorator colors to blend with various interiors and exteriors. It is installed on metal or wood supports in accordance with specified sizes.

For additional information see your Wesco man.

Conference on Cellular Plastics in Construction

The Michigan Society of Architects and the Society of the Plastics Industry, Inc. will sponsor a conference on cellular plastics in construction in conjunction with the University of Michigan's College of Architecture and Design and Extension Service. The conference, scheduled for September 22-24, 1965 will be held in the Rackham Building, U. of M., Ann Arbor.

Conference sessions will begin at 9:30 A.M., Wednesday, September 22 and continue until 1:00 P.M., Friday, September 24th. Registration fee is \$20.00 for the entire conference, including luncheon or \$5.00 for Friday only.

Housing will be available at the Michigan League, the Michigan Union or at motels in the area.

Conference programs and registration forms will be mailed to all members of M.S.A.

Haws Company Acquires Schieber Manufacturing Co.

E. R. Haws, president of Robert Haws Company, Melvindale, Mich., announces the acquisition of Schieber Manufacturing Company, Detroit, Mich.

Robert Haws Company manufactures electric-hydraulic powered folding room dividers under the name "Soundwalls." Schieber was originator of "In-Wall" folding tables and benches for schools and introduced the wall pocket storage concept in 1931.

Haws was formerly an officer and general manager of the Schieber firm. He severed connections with Schieber in 1957 to found his own firm. The acquisition will bring back together two of the best known names in architectural equipment in the school and institutional fields.

Schieber will become, under the acquisition, a wholly owned subsidiary of Robert Haws Company with Haws serving as president of both. Both Robert Schieber, Sr. and Robert Schieber, Jr. will remain with the organization, the former in a consulting capacity.

Earl J. Davis, general sales manager, and Bert W. Piper, chief engineer, both vice presidents of the Haws Company, will serve in similar capacities for the present in the Schieber Company.

Activity by Giffels & Rossetti, Inc. In Australia

Giffels & Rossetti, Inc., architects and engineers of Detroit, has formed an Australian affiliate through an association with Buchan, Laird & Buchan, a counterpart firm with offices in Melbourne and Sydney.

C. A. Giffels, president of G&R, announced that the newly formed affiliate is to be known as Buchan Laird Giffels Rossetti, Pty. Ltd. Giffels was appointed chairman and joint managing director. John Buchan, principal of the Australian firm, will serve the new venture as joint managing director for activity in Australia.

Directors of Buchan Laird Giffels Rossetti are M. M. Bush, executive vice president of Giffels & Rossetti, Inc. and T. J. Harding, a principal of the Australian firm.

The decision to establish the affiliate was based on the rapidly expanding, stateside-influenced industrial community of Australia, which indicated requirements for U.S. industrial know-how and familiarity with manufacturing and process equipment.

Working drawings and detailed planning of Australian facilities will be accomplished in Australia by a staff of approximately 150 architects, engineers, specialists and draftsmen.

WALLOK NOW **3** IN GRADES!

STANDARD No. 9 ga. Siderods, No. 10 ga. GALVANIZED Crossrods
SUPERSTANDARD No. 8 ga. Siderods, No. 10 ga. GALVANIZED Crossrods
EXTRA HEAVY 3/16" Siderods, No. 9 ga. GALVANIZED Crossrods

No other reinforcing has all these features—found on all three grades of WAL-LOK—WAL-LOK is double deformed for maximum bond • The tensile strength of WAL-LOK is retained after welding • WAL-LOK has rectangular design for stronger welds and more steel in the mortar • WAL-LOK Crossrods project for 4 extra strong mortar locks at each weld • Crossrods hold WAL-LOK up off the blocks for complete embedment in the mortar. Write for free brochure today.



P. O. BOX 516

DIVISION OF
**LENAWEE
PEERLESS,
INC.**

ADRIAN, MICHIGAN

OBITUARY

William A. Snure

William A. Snure, a past president of the Michigan Chapter, Producers' Council, Inc., died July 9th at the age of 51. Death came as the result of an automobile accident near Jackson, Michigan, which also claimed the life of his wife, Theresa. The Snures were starting on a vacation trip with their daughter, Mary, when the accident occurred.

Bill was born and raised on a farm near Fredericksburg, Ohio. As a young man, he learned to fly and earned a commercial pilot's license. He joined the Air Transport Command of the U. S. Air Force and after service at various posts, became a Link Instructor at Romulus Air Force Base — now Detroit Metropolitan Airport. While stationed there, he met C. W. Attwood and in 1945, he began his career with Unistrut, becoming owner and president of Unistrut Detroit Service Co.

In addition to serving as President of the Michigan Chapter of Producers' Council, Inc. in 1955-56, he was a past president of the Down River Flying Club, was a member of the Romulus Rotary Club, a deacon of the Congregational Church in Wayne and had been a member of the

Romulus Junior Chamber of Commerce.

The Snures are survived by their daughter and one son, Fred.

ANNOUNCEMENTS

American Saint Gobain Corp. has announced the appointment of Victor Specht to the position of Architectural Consultant. Specht, who has 30 years experience in the design and engineering field, is a member of Producers' Council and CSI.

He will be located at ASG's Great Lakes Division office—21500 Greenfield Road, Detroit 48237; telephone: 547-6880.

* * *

Emmett L. Walters, director of engineering—mechanical for Libbey-Owens-Ford Glass Company has been named to the newly created position of director of engineering-planning at the company's Technical Center in East Toledo.

Alfred H. Miller, presently chief mechanical engineer, has been named director of engineering-mechanical, succeeding Walters.

Wayne W. Kohn, assistant to the vice president of engineering, will become chief mechanical engineer.

CLASSIFIED

ARCHITECT-DESIGNER — Excellent opportunity for highly creative architect having outstanding design-planning abilities. Must have experience in large commercial developments. Permanent and excellent opportunity with medium size firm practicing contemporary and historic architecture in wide range of types and sizes. Possibilities for associate-ship or partnership. **FRANK and STEIN**, Architect and Engineer, 219 S. Grand Ave., Lansing, Michigan.

* * *

Staff Architect — to head program of improvement of architectural appearance and landscaping of existing facilities. Requirements: Degree in Architecture and/or Landscape Architecture; AIA membership; minimum 10 years architectural practice including supervision of construction and execution of landscaping contracts. Salary—\$16,000 up. Contact: J. C. Nowell, Manager—Engineering, General Electric Company, One River Road, Schenectady, N.Y. 12305.

12 APRILS

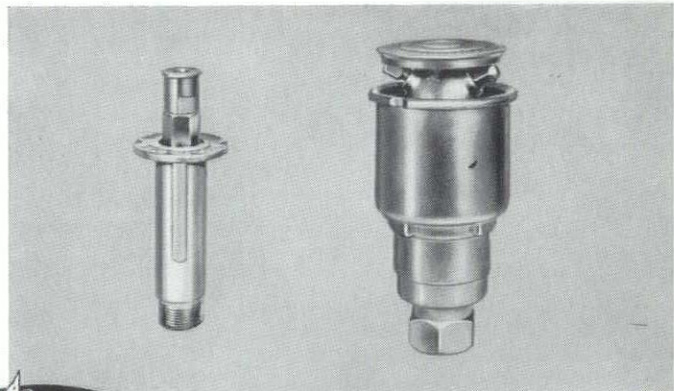
... That is what you can offer your customers when you work with SISCO! Twelve months of controlled rain, any time they want it. SISCO also offers a complete design service backed by over 40 years of experience. Such quality materials as Buckner rotary pop-up sprinklers and automatic controls are recommended and stocked by SISCO and its distributors. Choose materials by SISCO and be an irrigation expert by proxy!!



SPRINKLER IRRIGATION SUPPLY CO.

Division of A. J. Miller, Inc. 1316 North Campbell Road • Royal Oak, Michigan
Detroit Phone: 313, 548-7272 • Chicago Phone: 312, 346-9355

Look under **BUCKNER Sprinklers** in the Yellow Pages



For Variety
and Quality
and Uncommon Brick

CENTURY BRICK COMPANY

Rely on Years of Experience
and Service

14910 Linwood Ave.
Detroit 38, Mich.
861-8200

MICHIGAN DRILLING CO.

for

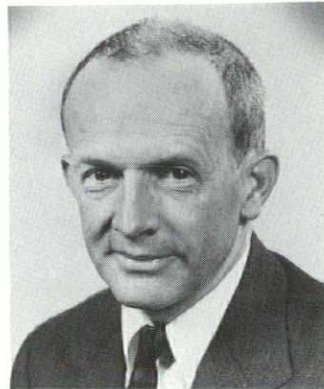
- Complete Laboratory Testing
- Diamond Core Drilling
- Soil Test Borings For Foundation
and Other Structures

14555 Wyoming Ave.
Detroit 38, Michigan
WEBster 3-8717

ACSA Elects Sanders 1965-66 President

At its annual meeting June 11-12, in Washington, D.C., the Association of Collegiate Schools of Architecture elected Walter B. Sanders, FAIA, president for 1965-66.

Sanders, a charter member of the Huron Valley Chapter and former chairman of the Department of Architecture, U. of M., had served previously as a director of ACSA.



He succeeds Henry L. Kamphoefner, FAIA, Dean, School of Design, North Carolina State College.

ACSA was founded in 1912, with Michigan one of the 12 founding schools. Dean Emeritus Emil Lorch served as Vice President in 1912 and as President from 1921 to 1923. Dean Emeritus Wells Bennett also served as President from 1942 to 1945.

* * *

Questionnaires Sent to Michigan Firms

Michigan architectural firms which are interested in doing State work are asked to complete and return questionnaires which have been sent to them by the M.S.A. office at the request of the Legislative Fiscal Agency in Lansing.

Architects who provide the information requested will be considered for retention by the State for the purpose of developing preliminary studies and plans for 69 proposed building projects of various types as listed in Enrolled Senate Bill No. 681.

Retention of architectural firms for this purpose is provided by a Capital Outlay Planning Bill, passed by the Legislature this year.

The Joint Capital Outlay Subcommittee of the Senate Appropriations and the House Ways and Means Committees has requested information on architectural firms, their size, scope of projects they can handle, etc.

Acorn Iron Works

INCORPORATED



FABRICATED 604 HEAVY SPIRAL
COLUMN SECTIONS THAT COMPRISE
THE HEART OF THE STRUCTURES LOAD
SUPPORTING SYSTEM
FOR:

THE JEFFERSONIAN APARTMENTS

ARCHITECTS:
GIFFELS & ROSSETTI, INC.
ARCHITECTS & ENGINEERS

DETROIT 28, MICH.

TE 4-9090

MEMBER AMERICAN INSTITUTE
OF STEEL CONSTRUCTION

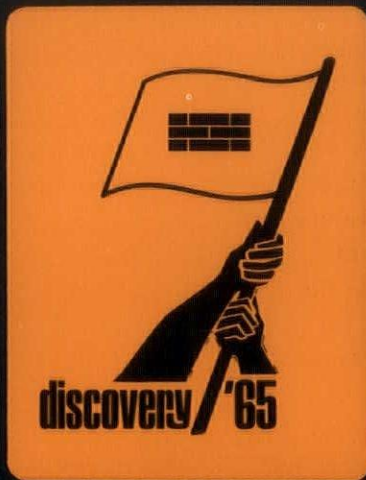
for effective
sealing,
cushioning,
insulation
and protection
for masonry
and concrete
construction...

See the WESCO man!
Sales Representatives and Distributors of:

Dow Corning Silicone Rubber Sealant
Empire Emery Aggregates for Floors
Everlastic Corner Protectors
Everlastic Polyurethane Sealing Compounds
Mastercraft Precast Terrazzo
Pacific Sealants, Compriband
Plastic Mastic Epoxy
Stairbuilders Prefabricated Stair Forms
Williams Efficiency Waterstops
Williams Masonry Coping and Panel Seals
Williams Isolation & Control Gaskets

wesco, inc.

486 W. Eight Mile Road • Hazel Park, Michigan
Telephone: JO 4-6452 & LI 6-2467
Affiliated with Williams Equipment and Supply Co., Inc.



not just quiet . . . but

“night quiet”

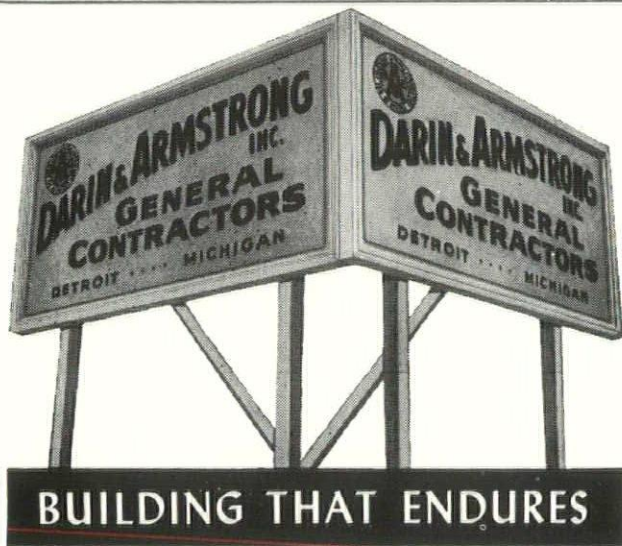
The crying of a baby, laughter, talking, the use of plumbing fixtures . . . all perfectly normal sounds which wouldn't be heard in the next room during the day due to counteracting “masking” noises. At night, however, these same sounds can cut through the silence and become almost unbearable. Proper “night time” sound control can mean the difference between success or failure when designing an apartment, dormitory, or other building where this control is imperative. Brick, as used in the Contemporary Brick Bearing Wall, provides the best type of sound control known—structural mass. This means that no extra materials or no extra systems need be added to insure effective sound control. In reality, this answer to a major design problem is found almost as a bonus, when you use the Contemporary Brick Bearing Wall . . . and at no extra cost.

This is the year of Discovery '65...the year of brick



CALENDAR

- Aug. 5-7 MSA 22nd Annual Mid-Summer Conference
— Grand Hotel — Mackinac Island
- Sept. 22-24 Conference on Cellular Plastics in Construction
— Rackham Building — U. of M.
- Sept. 23 Detroit Chapter Dinner Meeting—Ponchar-
train Hotel — Robert Damora, speaker.
- Oct. 14-16 Ohio Region — Atwood Lake Lodge — New
Philadelphia, Ohio
- 21-23 Pennsylvania Region — Hershey, Penna.

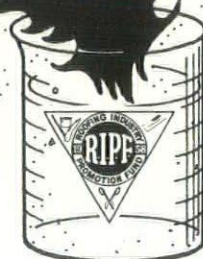


ADVERTISERS' INDEX

Acorn Iron Works	20
Acoustical Contractors Assoc. of Greater Detroit	12-13
Barton-Malow Co.	11
Century Brick Co.	20
Consumers Power Co.	4
Darin & Armstrong, Inc.	22
Den Braven, M.	17
Detroit Edison Co.	Cover, 3
R. Dykstra & Co.	16
Erb-Restrick Lumber Co.	14
Grand Hotel	6
Kimball & Russell, Inc.	5
Lenawee Peerless, Inc.	18
Michigan Asphalt Paving Assn., Inc.	Cover
Michigan Drilling Company	20
Michigan Consolidated Gas Co.	Cover 2
Portland Cement Association	2
Republic Steel Corp.	15
Roofing Industry Promotion Fund	22
Sprinkler Irrigation & Supply	19
Structural Clay Products Institute	21
Turner Engineering Co.	17
Wesco, Inc.	20

S + K + E = BR

Secret formula? No, it's merely our way of saying that *SKILL plus KNOWLEDGE plus EXPERIENCE equals BETTER ROOFING.*



How do you obtain it? By specifying R. I. P. F. contractors, naturally.

R. I. P. F. members are all *skilled* in roofing and waterproofing know-how. They are *knowledgeable* in the use of new products, better techniques and methods of application. And, they are thoroughly *experienced* in the everyday job of getting the work done on schedule.

Next time specify that your work be done by an R. I. P. F. contractor. He is **QUALIFIED, DEPENDABLE and EXPERIENCED.**

Roofing Industry Promotion Fund

Burleigh Grime

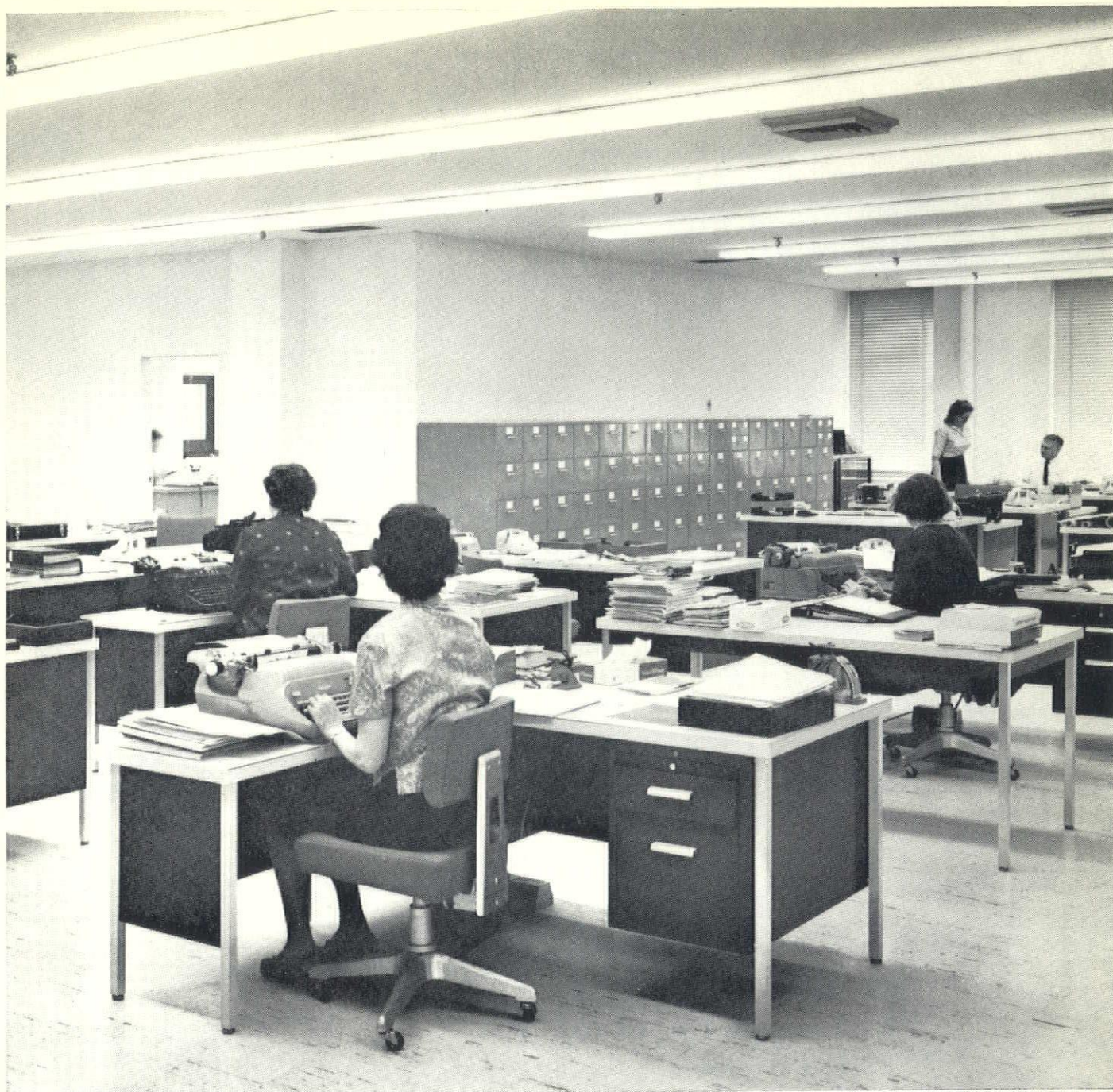
Executive Secretary

8469 E. Jefferson Ave.

Detroit 14, Mich.

Area Code 313

822-0700



LIGHTING ADDS THE FINISHING TOUCH TO A MODERN OFFICE
(BRIGHTENS THE WORK, TOO)

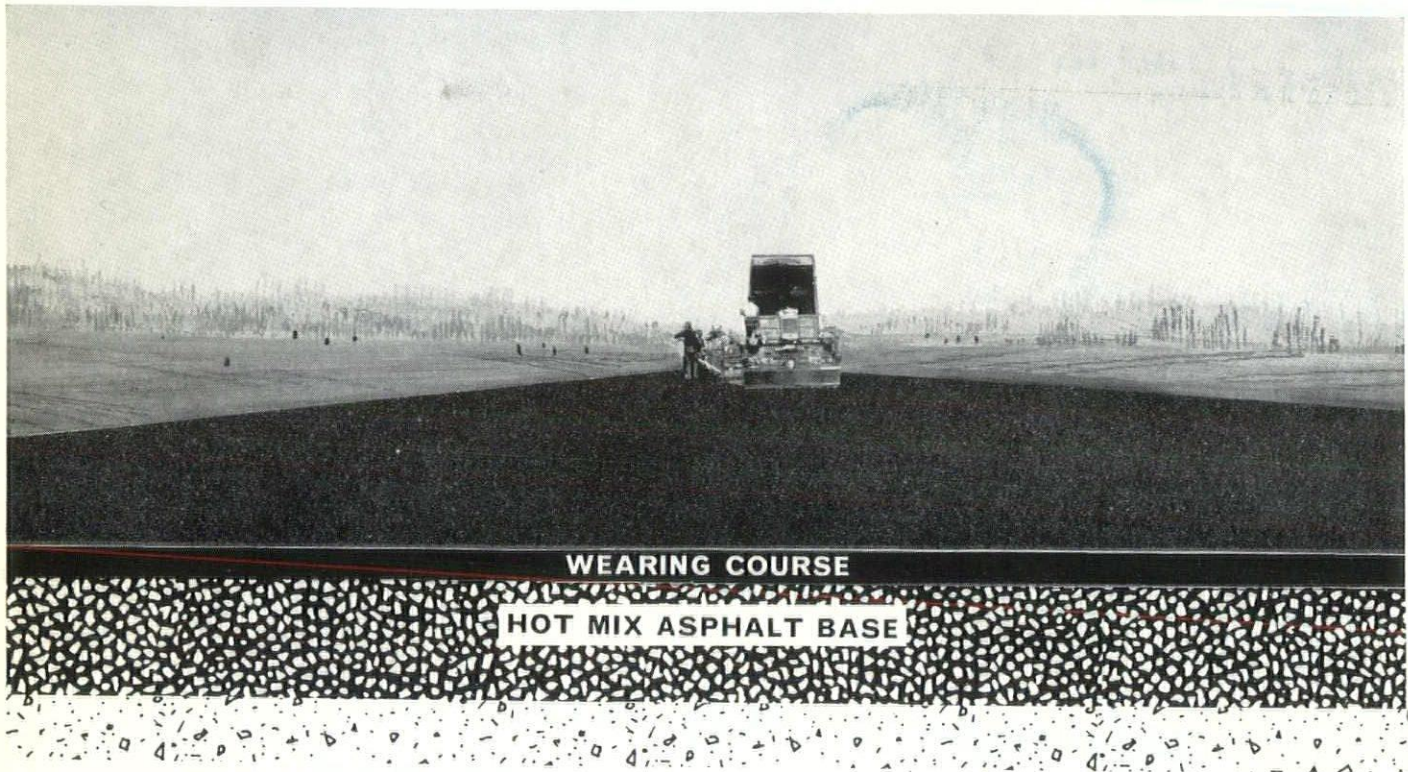
Times change, and a former Detroit department store on the corner of Michigan and Shelby has become the modern 150 Michigan Building. Not just another office building, but a gleaming aluminum and marble structure that reflects a pride in community good will and spirit.

Changes in the interior brought attractive offices, beautiful acoustical ceilings, new floors and modern air conditioning. And the final touch—modern fluorescent

lighting to illuminate the offices and create a most pleasant atmosphere.

Perhaps your modernization program can be brightened, too. Whether you're concerned with older buildings, new construction or outdoor areas, Detroit Edison will be pleased to work with you, your engineers or architect to explore your lighting problems. In the Detroit area, give us a call at WO 2-2100, ext. 2875. Elsewhere, call your Edison office. **EDISON**

Black Base by



FOR GREATER STRENGTH AT LOWER COSTS

No matter how you design it, a paved surface is only as good as its base. Hot mix asphalt base (Black Base), especially recommended for areas where high quality aggregate is in short supply, will produce extraordinary strength at real economy. Black Base utilizes almost any graded aggregate material and, because its asphalt cement content is so low (as little as 3½%) it is extremely economical.

Black Base carries big loads, too. Tests show 1-inch equals the load-carrying capacity of 2½-inches of granular aggregate.

For Black Base design factors, call the MAPA office. For experienced, prequalified contractors to produce your Black Base insist that your contractor be a member of the Michigan Asphalt Paving Association.



MICHIGAN ASPHALT PAVING ASSOCIATION, INC.

708 Prudden Building

Lansing, Michigan 48933

Phone 482-0111

MEMBERSHIP ROSTER

A & A ASPHALT PAVING CO., Birmingham / **ANN ARBOR CONSTRUCTION CO.**, Ann Arbor / **AYLING-CUNNINGHAM ASPHALT PAVING CO.**, Tecumseh / **CADILLAC ASPHALT PAVING CO.**, Detroit / **CENTRAL PAVING COMPANY**, West Branch / **THE COOKE CONTRACTING CO.**, Detroit / **DETROIT ASPHALT PAVING CO.**, Detroit / **DETROIT CONCRETE PRODUCTS CORP.**, Detroit / **FLINT ASPHALT & PAVING CO.**, Flint / **LOUIS GARAVAGLIA CONTRACTORS, INC.**, Warren / **GLOBE CONSTRUCTION CO.**, Kalamazoo / **GRAND RAPIDS ASPHALT PAVING CO.**, Grand Rapids / **THE HICKS COMPANY**, Alma / **HODGISS & DOUMA**, Petoskey / **HOWELL CONSTRUCTION COMPANY, INC.**, Whitmore Lake / **KLETT CONSTRUCTION CO.**, Hartford / **MICHIGAN COLPROVIA CO.**, Grand Rapids / **MIDLAND CONTRACTING CO.**, Midland / **PAUL C. MILLER**, Sparta / **OAKLAND PAVING CO.**, Berkley / **PEAKE ASPHALT PAVING CO., INC.**, Utica / **PENINSULA ASPHALT & CONSTRUCTION CO.**, Traverse City / **RIETH-RILEY CONSTRUCTION CO., INC.**, Battle Creek / **SAGINAW ASPHALT PAVING CO.**, Saginaw / **SPARTAN ASPHALT PAVING CO.**, Holt / **STOLARUK ASPHALT PAVING, INC.**, Oak Park / **FRANK STRAUSBERG & SON**, Saginaw / **THOMPSON-McCULLY ASPHALT PAVING CO.**, Belleville / **THORNTON CONSTRUCTION CO.**, Hancock / **WARD & VAN NUCK, INC.**, Mount Clemens / **WASHTENAW ASPHALT CO.**, Ann Arbor / **WEST SHORE CONSTRUCTION CO.**, Zeeland / **WORKMAN-RICHARDSON ASPHALT PAVING CO.**, Jackson / **JOHN G. YERINGTON**, Benton Harbor / **FOX VALLEY CONSTRUCTION CO.**, Appleton, Wisconsin / **MATHY CONSTRUCTION CO.**, LaCrosse, Wisconsin / **PAYNE & DOLAN OF WISCONSIN, INC.**, Milwaukee, Wisconsin

The Octagon
1735 New York Avenue, N.W.
Washington 6, D. C.

DETROIT, MICH.