

monthly

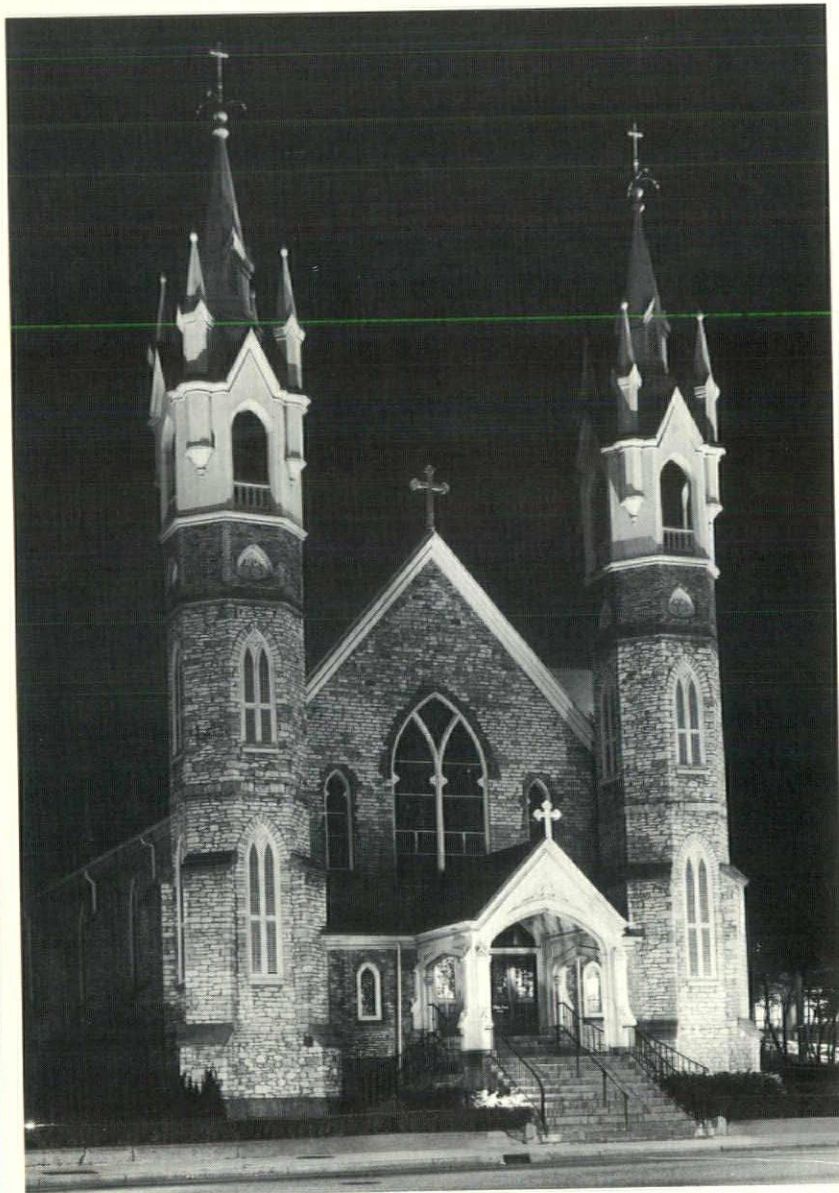
BULLETIN



michigan society of architects october 1971 50c

ARCHITECTURAL FLOODLIGHTING

Reveals Another Dimension of Beauty



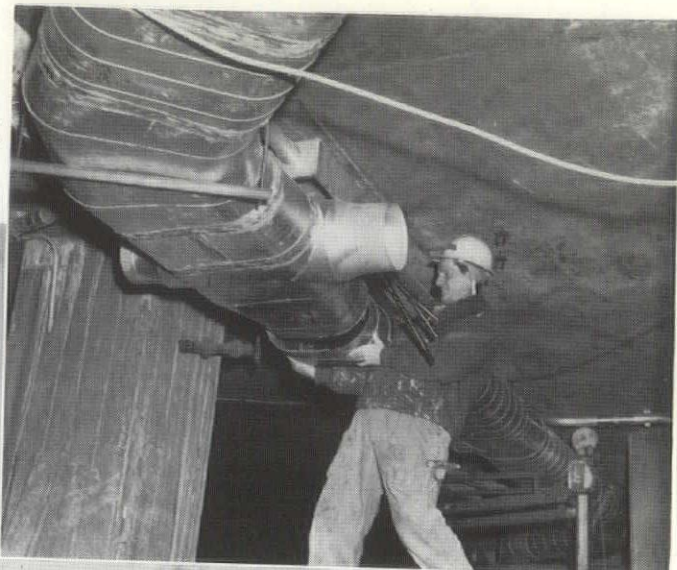
Built in 1838, the old world architecture of St. Marks Episcopal church in Grand Rapids, Mich., now can be enjoyed at night as well as by day. Note how the architectural floodlighting enhances the beauty of the native stone.

The exterior qualities of an architecturally beautiful building provide a natural means of commanding attention during the daylight, but every day must come to an end. That's when floodlighting takes over and reveals another dimension of beauty for all to enjoy.

Call or write George C. Way,
Consumers Power Company,
General Offices – 212 W. Michigan Avenue,
Jackson, Michigan, Phone (517) 788-0802;
or Marketing Department at any
of the Company's 15 Division Offices

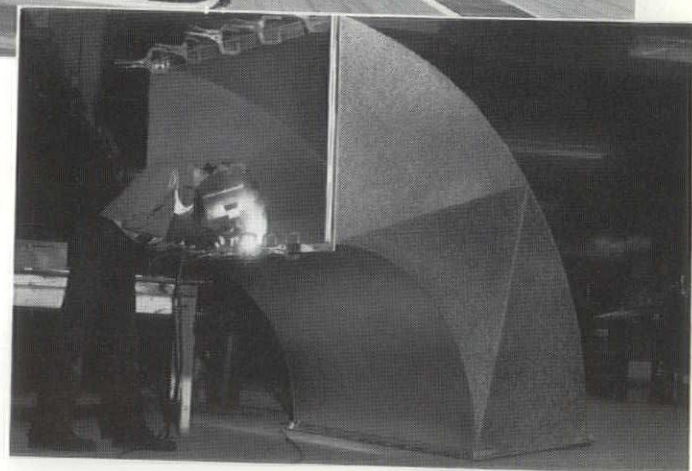


*Wyandotte General Hospital, Wyandotte, Michigan.
Architect & Engineers: Albert Kahn Associates, Detroit.*



Give a Hospital an inch and they'll want a foot

Like most hospitals, the ultra modern Wyandotte General has to utilize every inch of available space. That's why they selected Ventcon as their ventilating and sheet metal contractor. They knew their stringent ductwork requirements could be met by Ventcon—little headroom, lots of piping and conduit to work around, and a wide variety of duct sizes.

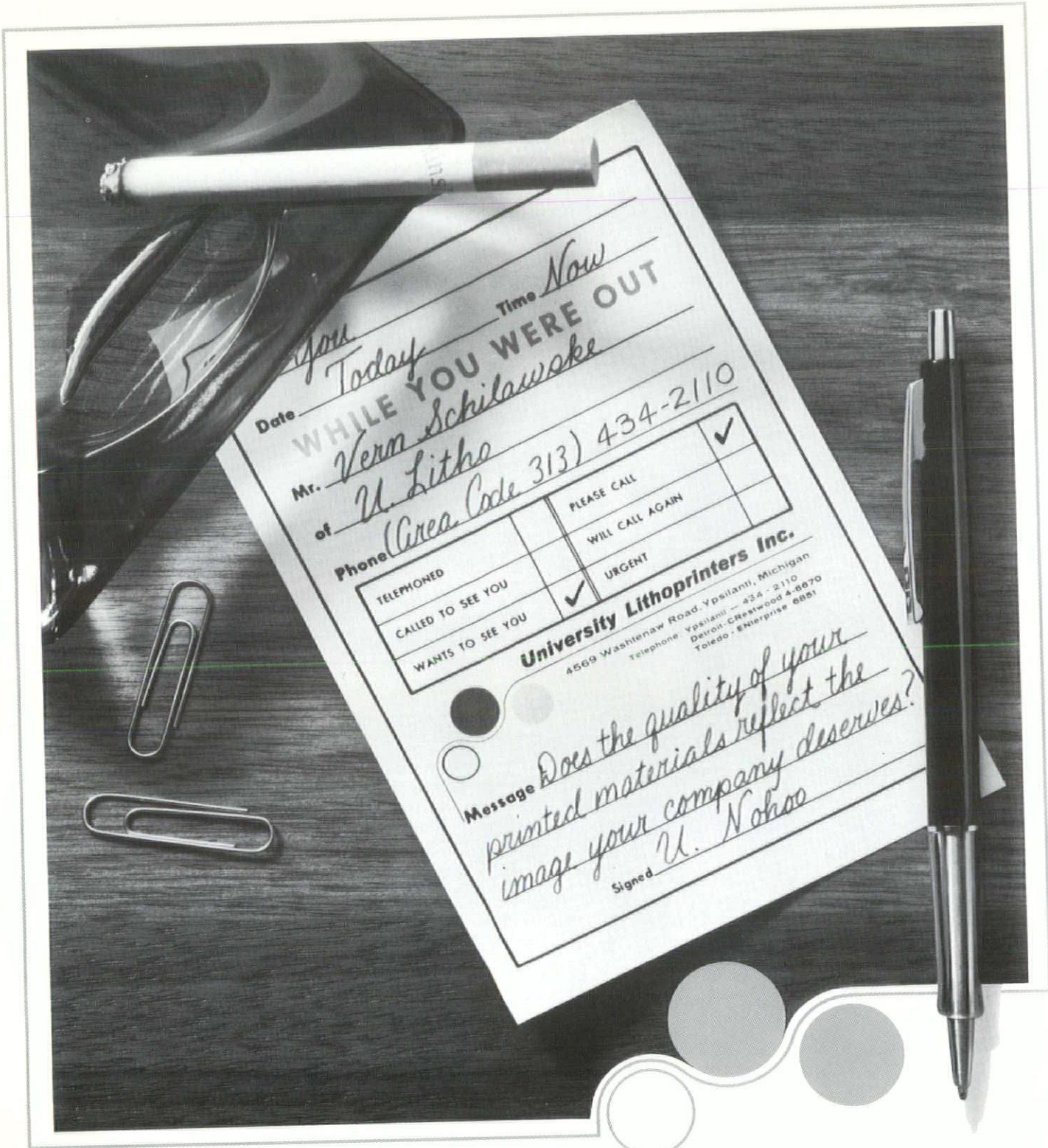


Also, all of the ventilating work performed by Ventcon had to be professionally coordinated and expedited with all of the other construction trades.

Make sure you contact Ventcon for your next job, whether it be new construction or an addition to an existing system. You'll be a foot ahead—in an inch of time.

VENTCON

7650 W. CHICAGO AVENUE • DETROIT, MICHIGAN 48204 • (313) 491-8400



Consider for a moment the quality of the printed materials you use to influence others. Does it measure up to the same standards of excellence you set for your company's products or services? We think it should. That is why it's personally important to us that each job we do represent printing quality at its best, delivered on time, and at a fair price.

Call University Lithoprinters before you order your next printing job.

FREE MESSAGE MEMO PADS

Get the message right. Send us your name and address on your company letterhead, and we'll send you a free supply of message memos (illustrated above actual size).

University Lithoprinters Inc.

4569 Washtenaw Road, Ypsilanti, Michigan

TELEPHONE:
 Ypsilanti—434-2110
 Detroit—CRestwood 4-6670
 Toledo—ENterprise 6851

CONTENTS

VOL. 46 NO. 10

- 6 News
- 8 MSA Firm Members
- 11 News
- 14 National Register and Michigan Historic Sites Survey
- 23 Classified

Copyright © 1971 MSA

All rights reserved

THE MONTHLY BULLETIN IS PUBLISHED FOR THE MICHIGAN SOCIETY OF ARCHITECTS TO ADVANCE THE PROFESSION OF ARCHITECTURE IN THE STATE OF MICHIGAN.

MSA OFFICERS

PRESIDENT

Almon Durkee

VICE PRESIDENT

Howard Hakken

SECRETARY

William Jarratt

TREASURER

Dale Suomela

DIRECTORS

Robert Alpern
John Dawson
Bernard DeVries
Alvin Farnsworth
William Lyman
Warren Poole
Samuel Popkin
Carter Strong
Leslie Tincknell
Norman Ziegelman

REGIONAL DIRECTOR

Walter Sanders, FAIA

MANAGING EDITOR

Ann Stacy

ADVERTISING DIRECTOR

Gary R. Grout

Monthly Bulletin, Michigan Society of Architects, the official publication of the Society; all Michigan Chapters of the American Institute of Architects; Women's Architectural League of Detroit (WALD); Producers Council, Inc., Michigan Chapter; Builders & Traders Exchange of Detroit, Grand Rapids and Lansing is published monthly by the Michigan Architectural Foundation; Editorial and Advertising Offices—28 West Adams, Detroit, Mi 48226, Phone 965-4100.

Monthly Bulletin, Michigan Society of Architects, is published monthly at 28 West Adams, Detroit, Mi 48226. Paid as second class matter January 15, 1946 at the Post Office at Detroit, Michigan under Act of March 3, 1879. Subscription price, \$4.00 per year (members \$2.00). 50 cents per copy.



Book Review

Michigan architects should familiarize themselves with a book written by a Michigan architect, Edmund X. Tuttle, Jr. titled "With Benefit of Architect—a Manual for Those About to Build," the easy-reading, profusely illustrated volume should be on the standing gift list for clients about to embark on their first experience with building or with an architect. It is a particularly good book for members of school boards, church building committees, etc. The material is well organized and arranged, to the point, simply and well stated. Subjects covered run the full gamut from approaches to design to the final punch-list. It is an Owner's Guidebook and Dictionary of the entire design and construction process. Properly used the book should permit the architect more time to concentrate on his own 'thing.' Publisher is MacMillan.

New ASA Chapter Formed in Huron Valley

The Architectural Secretaries Association is a nonprofit, nonunion, nonsectarian association organized to encourage the development of architectural secretaries. Its prime objective is betterment of specialized skills to the architect through the continued education of the secretary in all facets of the profession.

The National Board of Directors, AIA, in April 1969, approved affiliation of AIA Chapters and state organizations with the Architectural Secretaries Association.

The Huron Valley Chapter of ASA represents the counties of Lenawee, Livingston, Monroe, and Washtenaw working in conjunction with the Huron Valley Chapter of AIA. The goals of the Huron Valley Chapter, ASA, include: (a) Providing substitutes for vacation purposes, (b) Exchanging of information and ideas in order to improve architectural office functions, (c)

Advancing and promoting the education and professional standards of an architectural secretary, (d) Cooperate with civic organizations whose undertakings are nonprofit, non-political and of vital community interest, (e) Cooperate fully and contribute all needed services to the Huron Valley Chapter of AIA.

Active membership in the HVC/ASA is open to all clerical personnel employed by an architect and associate membership is open to individuals who are not actively engaged in architectural secretarial work but who have a substantial interest in it, such as landscape architects, professional engineers and interior designers.

Persons interested in joining HVC/ASA may contact the Membership Chairman, Elizabeth (Dee) Marsh at 662-2524. HVC/ASA would be happy to assist girls in other areas of Michigan who are interested in starting a chapter of ASA. For more information please contact Rosemary Palmer at 761-2090.

Birmingham Adopts Design Review

The City of Birmingham recently adopted a Design Review Ordinance. Under the new ordinance, the architect and his client must appear before the Planning Board prior to development of construction drawings for any new multiple-family, commercial or industrial buildings. A presentation of the site plan, parking layout, building heights, preliminary elevations, landscaped open spaces and exterior building material description will be received by the Board. The Board will review the proposal on the basis of its compliance with the Zoning Ordinance, the Urban Design Plan and other pertinent plans of the City. Through this review and a direct dialogue with the architect and his client, it is anticipated that costly mistakes and time consuming changes can be eliminated from the

design process while the City will be able to encourage private interests to preserve and enhance the character of Birmingham.

Second Architects/Engineers Conference On Federal Agency Construction Programs

Architects and engineers will meet November 29-30 in St. Louis to learn about new federal programs from spokesmen for the federal agencies that administer government construction contracts.

Sponsors of the meeting are The American Institute of Architects, Consulting Engineers Council, and the National Society of Professional Engineers. The first federal contracting conference presented by the three professional organizations last January was attended by more than 800 architects and engineers.

The November conference at the Chase-Park Plaza Hotel, St. Louis, will devote a major portion of the discussion to the fiscal 1972 \$2-billion Department of Defense construction program. Time will be allowed for participants to meet in small groups with agency officials.

Great Lakes Fabricators and Erectors Association Announces Meeting Program for Coming Season

The Great Lakes Fabricators and Erectors Association will inaugurate its 13th annual series of breakfast meetings according to J. Gardner Martin, Executive Director of the association.

The first meeting will feature Major Charles Lindbergh, Ph.D., Professor of Civil Engineering, U.S. Air Force Academy, who will present a paper on the subject, "Welding by Explosion." This procedure, which makes use of explosively generated impulses to bring metal surfaces to within interatomic distances for the purpose of bonding,

is a very new and promising technique for use in shop fabrication and in the field construction of steel structures, pipelines, etc. "This is one of the most exciting papers I have heard in a decade," said Martin, "and it should prove stimulating and challenging to all in the construction industry."

Programs will include:

December 7, 1971—Vibrations and Dynamic Loads

February 1, 1972—Composite Design

April 4, 1972—Fire Protection

June 6, 1972—Duality of the Force Displacement Methods

The meetings are designed to be of value to architects, engineers and others in the designing professions and construction industry. Admission is by invitation. Those having a special interest should call 875-4222.

Attention—All Paper Savers!

Somewhere in some attic or garage or basement lovingly "saved" for some reason is one copy of the September 1959 issue of the Monthly Bulletin.

We need it to complete a set for our Bound Copies of the Bulletin and would be eternally grateful to anyone that can produce it. We will pick it up—just call the office 965-4100.

Construction Management Book Available Mid-November

Construction management and project administration are the subjects of a new book to be available in mid-November from the American Institute of Architects.

The assessment of these building techniques, which are both applauded and regarded with some suspicion within the profession, is written by William B. Foxhall, senior editor of Architectural Record.

In the book, Foxhall explains that special management tools are needed in building design and construction to overcome the deficiencies of the low bidder, multiple contract system.

The new publication, the result of a special task force set up by the AIA Planning Committee, is being published by AIA in cooperation with Architectural Record.

The book takes a strong position

that a construction manager should be a professional, according to Dudley Hunt, Jr., FAIA, publishing director of the AIA.

"He should be a professional working for a fee, whether an architect, an engineer, or other person thoroughly experienced in construction. He should not be involved in trying to cut costs in order to increase his own profits," Hunt said.

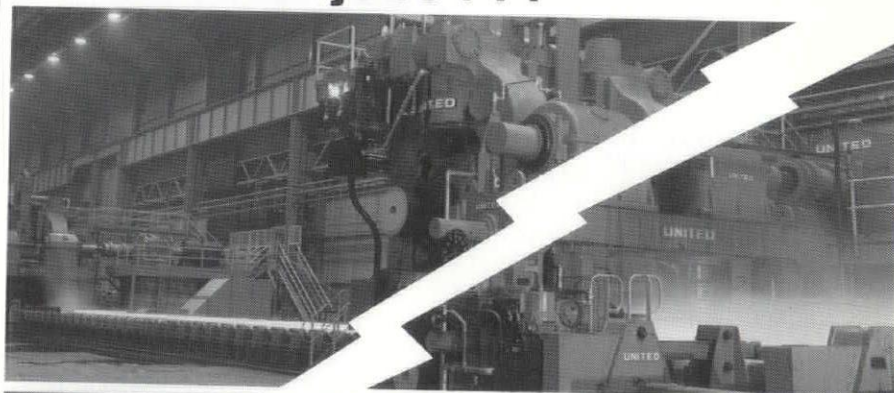
According to author Foxhall, a construction manager will usually be a firm of experts who supply knowledge of construction techniques, conditions, and costs to the project's design and delivery. In

design, he is involved in the cost consequences. In delivery, he is scheduler, purchaser, adviser, and director.

The project administrator is defined as the individual, department, consultant, or consulting firm who represents the owner in the entire building process.

The 124-page book, "Professional Construction Management and Project Administration," sells for \$15 retail, \$12 to AIA members plus tax and handling charges. Call or write: Monthly Bulletin, 28 West Adams, Detroit, Mich. 48226 (313) 965-4100 for delivery.

Industrial jobs . . .



or commercial jobs.

TRIANGLE DOES THEM ALL!

Triangle Electric—the *complete* electrical contractor—has the experience, manpower, facilities, tools and financial status to take on any size contract from bid to job completion.

Today we at Triangle have 48 years of continuing growth, experience and reliability behind us. Our contracting capabilities are unlimited. And with Triangle you can depend on getting realistic, intelligent estimates based on sound, practical knowledge of all aspects of electrical contracting. From complex projects to unusual installations, you can depend on Triangle to get the job done . . . on time. Let us quote.



TRIANGLE ELECTRIC CO.

ELECTRICAL CONTRACTORS AND ENGINEERS

29787 Stephenson Highway • Madison Heights, Mich. 48071
(313) 399-2200

"Providing the power behind progress".



MSA FIRM MEMBERS

An investment toward better professional practice

The Board may elect to Firm Membership any organization (whether doing business as an individual, partnership, corporation or joint stock association) legally entitled to practice architecture in the State of Michigan, of which one or more principals shall be a Member of the Society, who by its application for such classification of membership and its payment of annual dues evidences its interest in and support of the principles, purposes and programs of the Society.

..... from the MSA By-Laws
adopted in April 1967

ANN ARBOR (Area Code 313)

Colvin, Robinson, Wright & Assoc., 210 E. Huron St., 48108	662-4501
Cummins & Barnard, Inc., Architects & Engineers, 2058 S. State St., 48104	662-5638
Daniels & Zermack Assoc., 2080 S. State St., 48104	761-2090
Hobbs and Black Associates, 202½ E. Huron St., 48108	662-4095
Johe, Herbert, 440 Barton North Drive, 48105	662-7955
KMM Associates, Inc., P.O. Box 1148, 48106	662-2525
Livingston, James H., AIA, Architect, 2395 Huron Parkway, 48104	971-7550
Osler, David W., AIA, 916 Fuller Road, 48104	663-7480
Pettys, Linden C. Associates/Architects, 321 S. Main St., 48108	662-0936
Sanders, Walter B., 99 Barton North Drive, 48105	662-9202
Tanner & Kowalewski, AIA, Architects, 308-10 S. State St., 48108	663-1700
Van Curler, Donald E., 201 E. Liberty, 48108	761-3466

BATTLE CREEK (Area Code 616)

Haughey, Black & Assoc., Inc., 1346 W. Columbia, #230, 49015	968-8179
Sarvis Associates, Inc., 258 Champion St., 49014	962-6291

BAY CITY (Area Code 517)

Brysselbout, Starke, Hacker & Simon, Inc. P.O. Box 748, 720 Livingston Avenue, 48706	894-4527
---	----------

BIRMINGHAM (Area Code 313)

Alpern, Robert B. Associates, Architects & Planners, 1500 N. Woodward, Suite 239, 48011	645-0770
Birkerts, Gunnar & Associates, 909 Haynes St., 48009	644-0604
Bissell, Edward E., 1045 Westchester Way, 48009	644-5093
Else, Peter, AIA, Architect, 280 Daines St., 48009	646-0056
Evangelista, Joseph P., 199 W. Brown, 48009	647-3535
Friedman, Jack S. & Associates, 344 Hamilton Road, 48011	642-8686
Jickling & Lyman Architects, 1090 S. Adams Road, 48011	647-1777
O'Dell, Hewlett & Luckenbach, Inc., 950 N. Hunter Blvd., 48011	644-8508
Smith, Linn, Demiene, Adams, Inc., 894 S. Adams Road, 48011	646-3700
Wright, Clifford N., Associates, 4066 W. Maple, 48010	647-2022

CHARLEVOIX (Area Code 616)

Begrow, Jack, AIA, Arch., 101 Bridge, 49720	547-9444
--	----------

DEARBORN (Area Code 313)

Benjamin, Woodhouse & Guenther, Inc., 14430 Michigan Ave., 48126	582-4260
Jahr-Anderson Assoc., Inc., 15011 Michigan, 48126	846-8113
Kissinger-Holzhauer, Inc., 1310 N. Telegraph Road, 48128	274-3200
Nordstrom-Samson & Associates, 19855 Outer Dr., 48124	563-3000
Owens, S. L. (E), 22101 Tenny, 48124	561-3136
Shanayda, Michael, 17481 W. Outer Drive, 48127	565-5397

DETROIT (Area Code 313)

Agree, Charles N. Inc., 14330 W. McNichols, 48235	341-8434
Basso, Victor J., 301 W. 8 Mile Road, 48203	893-0110
Bauer, Leo M., Assoc. (E), 2560 Woodward Ave., 48201	961-1874
Calder, Ralph Assoc., Inc., 1600 Mutual Bldg., 28 W. Adams, 48226	963-6333
Crane, Kiehler & Kellogg, 112 Madison, 48226	962-2750
D'Alessandro and Kloian, Architects & Planners, 9014 Chalmers, 48213	839-2525
De Conti, Ferruccio P., Architect, 19371 James Couzens, 48235	342-3113
Diehl & Diehl Architects, Inc., 120 Madison Ave., 48226	965-1872
Donaldson & Meier, 645 W. Seven Mile Road, 48203	368-2730
Gabler, Cornelius L. T., AIA, 3300 Book Bldg. Tower, 48226	963-8963
Giffels Associates, Inc., 1000 Marquette Bldg., 48226	961-2084
Havis-Glovinsky, Assoc., 14145 Puritan, 48227	273-8171
Johnson, Nathan & Assoc., Inc., 2512 W. Grand Blvd., 48208	898-7223
Kahn, Albert, Associates, Inc., 345 New Center Bldg., 48202	871-8500

BLOOMFIELD HILLS (Area Code 313)

Begrow & Brown, Architects, Inc., 1145 W. Long Lake Road, 48013	646-8877
Newman, Edward M., Architect & Associates, 2355 Franklin Rd., 48013	332-6606
Sherman, Charles & Associates, 860 W. Long Lake Road, 48013	642-0980
Swanson Associates, Inc., 74 W. Long Lake Road, 48013	644-2440
Tarapata-MacMahon-Paulsen, Inc., 1191 W. Square Lake Road, 48013	238-4561

Kamp, Mayotte & DiComo, Inc., 18400 Grand River Ave., 48223	838-9540	Daverman Associates, Inc., 200 Monroe Ave., N.W., Vandenberg Center, 49502	451-3525
Klaetke and Marino, Architects, 608 Fine Arts Bldg., 58 W. Adams Ave., 48226	963-2735	Firant, Edgar, and Co., Inc., 353 Atlas Ave., S.E., 49506	459-0291
Levine, Nathan, Architect, 16150 Meyers, 48235	863-7686	Gastra, Jan T., 1424 Lake, S.E., 49506	459-5850
Marr & Marr, Architects, 100 W. Seven Mile Road, 48203	891-6838	Haveman, James K., 618 Michigan Trust Bldg., 49502	451-0661
Morison & Assoc., Architects, 13160 W. McNichols Road, 48235	345-5050	McMillen, Palmer, Fritz, Inc. 1424 Lake Dr., S.E., 49506	459-4159
Clarence E. Noetzel, 2407 First National Bldg., 48226	963-5333	Obryon & Nachtgall, Inc., 201 Monroe Ave., N.W., 49502	459-3151
Odell, William H., Architect (E), 1941 W. McNichols, 48203	862-4131	Reid, Robert R., AIA, Arch., 2218 Wealthy S.E., 49506	454-5775
Redstone, Louis G., Associates, Inc., Architects, Planners, Engineers, 10811 Puritan, 48238	341-0710	Robinson, Campau & Crowe, Inc., 738 Trust Bldg., 49502	459-4149
Rogvoy, T., Assoc., Inc., 15600 Puritan, 48227	838-3434	Welch, Kenneth (E), 547 Chrery St. S.W., 49502	241-3481
Rossetti/Associates, Architects, 1234 Penobscot Bldg., 48226	964-3240	Wold, Bowers, DeShane & Covert, Architects and Planners, Inc., 345 State St., S.E., 49502	451-0785
Sewell & Schoettley, Architects, 220 Bagley, 48226	961-1267	GROSSE POINTE (Area Code 313)	
Siegal, Leonard G., Assoc., Inc., Architects, 16825 Wyoming Ave., 48221	342-3403	Kessler, William, & Associates, Inc., 18000 Mack Ave., 48224	884-9500
Smith, Eberle M., Assoc., Inc., 950 W. Fort St., 48226	965-8180	HARRISVILLE (Area Code 517)	
Smith, Hinchman & Grylls Assoc., Inc., 3107 W. Grand Blvd., 48202	875-8100	Raseman, Richard P. (E), 48740	724-6245
Stevens, John, & Associates, Inc., 6623 Gratiot Ave., 48207	923-0980	IRON MOUNTAIN (Area Code 906)	
Stewart, Billy D., 20021 Kelly Road, 48236	839-7700	Blomquist-Nelson & Assoc., Architects, 116 E. Ludington St., 49801	774-7000
Vogel, Charles J. (E), 1011 Park Ave. Bldg., 48226	961-8830	JACKSON (Area Code 517)	
ESCANABA (Area Code 906)		Commonwealth Associates, Inc., 209 E. Washington, 49201	787-6000
Arntzen, G. 820 S. 16th St., 49829	786-3301	Kressbach, Carl C. F. & John H. Dabbert, Assoc. Archts., 408 Wildwood, 49202	783-2427
FARMINGTON (Area Code 313)		Snyder, Geo. E. Associates, Inc., 714 W. Michigan Ave., 49201	784-7195
Merritt, Cole & McCallum, 33750 Freedom Road, 48024	476-3614	KALAMAZOO (Area Code 616)	
FERNDALE (Area Code 313)		Diekema, G. E. & Associates, 4615 W. Main St., 49007	343-4641
Abrams, Henry J., 800 Livernois, 48220	547-7900	Kingscott, Louis C. & Assoc., P.O. Box 671, 49003	343-2657
Fusco, Jude T., & Assoc. - Architects, 1318 W. Nine Mile Road, 48220	547-1228	Noordhoek, Adrian R./Associates/AIA, 1611 Portage, 49001	382-2400
FLINT (Area Code 313)		Parent and Phillips, Architects, 808 Kalamazoo Bldg., 49006	343-2651
Dittmer, Ralph T., 436 S. Saginaw St., 48502	239-5824	Prince, Richard & Assoc., Inc., 3623 Douglas Ave., 49007	381-0694
MacKenzie, Knuth & Klein Assoc., Archs., 209 Avon St., 48503	235-4681	Scurlock, Charles, AIA, Architect, 521 S. Riverview, 49004	342-9809
Sedgewick, Sellers & Assoc., Inc. 1168 Robert T. Longway Blvd., 48503	238-9089	Stapert, Pratt & Sprau, Inc., 410 W. Walnut St., 49007	345-2145
Suomela, Dale A., Architect 3111 Corunna Road, 48503	234-5014	Stone, Wm., Architect, 808 Kalamazoo Bldg., 49006	343-2651
Terrill, Gene, Assoc., Architects, 625 S. Grand Traverse St., 48503	235-1460	Trend Associates, Inc., 4502 W. Main St., 49007	381-3400
Tomblinson, Harburn & Assoc., Architects, Inc., 705 Kelso St., 48506	767-5600	LANSING (Area Code 517)	
FLUSHING (Area Code 313)		Ackley, Clark R., 1811 E. Michigan, 48912	487-6031
Roberts, Tommy, Jr., Architect, 2496 Rushbrook, 48433	732-0840	Barber & Mattern, Inc., 930 E. Mount Hope Ave., 48910	482-1261
GRAND HAVEN (Area Code 616)		Black, Kenneth C. & Assoc., Inc., 715 Stoddard Bldg., 48933	372-2030
Gray-Lundwall, Architects, 222 Washington St., 49417	842-8750	Holmes, Warren Co., 820 N. Washington Ave., 48905	484-9428
Vander Meiden & Koteles, 1203 Beech Tree St., 49417	842-7350	Laitala, Nuechterlein, Fowler Architects, Inc., 900 Bauch Bldg., 48933	484-1435
GRAND RAPIDS (Area Code 616)		Manson, Jackson & Kane, Inc., 520 Cherry St., 48933	484-1311
Allen, Roger, Assoc., Inc., 1126 McKay Tower, 49502	456-1527		

Stein Assoc., Inc.,
6810 S. Cedar, Suite 8 48910 694-0425

EAST LANSING (Area Code 517)

DeWolf, Howard E. 402 Abbott Bldg.,
209 Abbott Road, 48823 351-5930
Mayotte, Crouse & D'Haene, Architects, Inc.,
700 Abbott Road, 48823 332-0892

LATHRUP VILLAGE (Area Code 313)

Dubuque, Richard Associates, AIA,
28551 Southfield Road, 48075 358-4522

LIVONIA (Area Code 313)

Lindhout, William P. Assoc., Architect
18518 Farmington Road, 48152 477-2626
Ralls-Hamill-Becker Assoc., Inc.,
15223 Farmington Road, 48154 427-2870
St. Cyr, Joseph, Architect & Associates, Inc.,
10833 Farmington Road, 48150 427-3310

MIDLAND (Area Code 517)

Dow, Alden B., Associates, Inc.,
315 Post St., 48640 835-6761
Hallett, Jackson B., Arch., 110 E. Grove St., 48640 835-7252

MT. CLEMENS (Area Code 313)

Daniell Associates Architects, Inc.,
36001 Harper Ave., 48043 791-4242

MT. PLEASANT (Area Code 517)

Wakely-Kushner-Wakely Assoc.,
205 S. Main St., 48859 773-9945

MUSKEGON (Area Code 616)

DeVries Associates, Inc., Architects-Engineers,
610 Hackley Union Nat'l. Bank Bldg., 49440 722-3626
Hooker, Kenneth N. Associates,
409 Michigan Bldg., 49440 722-3407
Valentine, E. E., AIA (E), Architect,
99 W. Apple, 49440 722-2285

OAK PARK (Area Code 313)

Rollason, Rokicki & Crombe, Architects, Inc.,
10440 W. Nine Mile Road, 48237 547-4800

PONTIAC (Area Code 313)

Denyes & Freeman Associates, Inc.,
615 Community National Bank Bldg., 48058 338-0409

PORT HURON (Area Code 313)

Harman, Harry J. & Associates, Inc.,
407 Fort St., 48060 982-9523

SAGINAW (Area Code 517)

Oeming & Nelson, Archts.,
1119 Gratiot Ave., 48602 799-5211
Prine-Toshach-Spears, Architects & Engineers, Inc.,
709 Federal, 48607 754-6551
Spence, Smith & Forsythe, Architects,
1241 N. Michigan Ave., 48602 753-3401
Wigen, Morris, Tincknell & Associates, Inc.,
3444 Davenport St., 48602 793-3581

ST. CLAIR SHORES (Area Code 313)

Wakely-Kushner Assoc. Archts.,
21429 Mack, 48080 778-8822

SOUTHFIELD (Area Code 313)

Harley Ellington Assoc., Inc., Pierce, Wolf, Yee &
Assoc., Architects, Engineers, Planners,
26111 Evergreen Road, 48075 354-0300
King & Lewis Architects, Inc.,
17515 W. Nine Mile Road, Suite 825, 48075 356-6316
Mandell, Seymour H.,
17220 W. 12 Mile Rd., 48075 557-5271
Pastor, Nicholas S. & Assoc.,
19080 W. Ten Mile Road, 48075 358-3883
Pellerin, Earl W. & Assoc., Architects,
21000 W. 10 Mile Road, 48075 444-1340
Rossen, Neumann Assoc., Architects,
24800 Northwestern Hwy., Suite 408, 48075 352-2520
Sachs Associates, Inc.,
18911 W. Ten Mile Road, 48075 353-3055
Savage, Gilbert W., AIA, Architect & Associates,
20000 W. Twelve Mile Road, 48075 356-1705
Savin, Wycoff & Phillips, Architects,
24500 Northwestern Hwy., 48075 358-2622
Smith-Gardner Architects,
17356 Northland Park Ct., 48075 358-2111
Volk & London Associates, Architects, Inc.,
24472 Northwestern Hwy., 48075 353-4820
Yee, Wah Associates, 17300 W. 10 Mi. Rd., 48075 353-8106

TRAVERSE CITY (Area Code 616)

Cornwell, Gordon Assoc., Architect,
401 E. Front St., 49684 946-7711
Graheck, Bell, Kline & Brown, Architects, Inc.,
521 Randolph St., 49684 946-7116
Mapes, Philip M., Architect,
114½ E. Front St., 49684 946-2260
Stiffler, David L., 300 Grandview Parkway, 49684 946-7858

TROY (Area Code 313)

Stickel, Frederick Associates,
2900 W. Maple Road, 48084 646-7000
Straub, Van Dine Assoc., Architects,
177 W. Big Beaver Road, 48084 689-2777
Yamasaki, Minoru & Associates,
350 W. Big Beaver Road, 48084 689-3500

WARREN (Area Code 313)

Ellis/Naeyaert Assoc., Inc., 11355 Stephens, 48089 755-4000
Germany, O., Inc., 2500 E. Nine Mile Rd., 48091 755-4484

WESTLAND (Area Code 313)

Machida, Yosh & Assoc., 2724 Newburg Rd., 48185 729-4791

WYANDOTTE (Area Code 313)

Gerganoff, Z. T. & Associates, Inc.,
103 W. Michigan Ave., 48197 482-0028
Yops, Jack W., 3005 Biddle, 48192 285-1924

Editor's Note: Please advise Mrs. Rae Dumke of the Bulletin office of any errors, omissions or corrections to be made in this roster. 28 West Adams, Detroit, Michigan 48226.

(313) 965-4100

"MICHIGAN SOCIETY OF ARCHITECTS POSITION PAPER RE: PROFESSIONAL PRACTICE.

PREAMBLE

Act 240, PA 1937, was amended, effective July 31, 1969, by the addition of Section 15a dealing with (1) the sealing of plans and (2) the overlapping of the professions.

From a reading of Paragraph 2 of said Section 15a, it is apparent that it was intended to embody the conclusion of the Attorney General in his opinion of August 9, 1968, which stated, under (3):

"In cases involving overlapping of the professions, a registered practitioner in each of such professions may perform services in the field of the other without necessity of sealing or otherwise attesting to such plans as a practitioner in the field of the other, provided that the rendition of such services is incidental to the architectural or engineering project as a whole."

Unfortunately, in paraphrasing the Attorney General's conclusion, the specific language of Section 15a deletes reference to "sealing of plans," and it is our belief that such deletion was not the purposeful intent of the Legislature.

Furthermore, in the implementation of said Section 15a(2) the meaning of the word "incidental" has subverted the significance given to it by the Attorney General. In practice, "incidental" has been given the connotation "being of minor significance" while the Attorney General was emphatic in his definition as meaning "depending upon or appertaining to something else as primary." He further quoted Webster's definition as "something necessarily appertaining to or depending upon another which is termed the principal."

As to the overlapping of the professions—or, more precisely, the commonalities between the professions—a survey of the State Licen-

ing Examinations reveals that the architects acquire formal training and are examined in the principles of engineering (structural, mechanical, electrical); on the other hand, the engineers do not acquire formal training nor are they examined in the field of architecture. Architecture has a greater degree of commonality with each of the engineering disciplines than does any one of these engineering disciplines have with architecture.

In his August 9, 1968 opinion, the Attorney General quoted from the Utah Supreme Court as follows:

"We do not say that professional engineers can make plans for all kinds of buildings or do whatever an architect can do for, clearly, the entire field of architecture is not embraced within the field of professional engineering."

POSITION

Accordingly, the Michigan Society of Architects, by vehicle of the Architectural Registration Board, hereby submits the following guiding principles pertinent to professional practice:

1. Proper development and planning of buildings and other structures and the spaces and environment in which they are placed is in the interest of public health, safety, and welfare.
2. In that interest, the professional architect, engineer, land surveyor (or any other related professional) should be constrained by law to practice or to offer to practice only in those primary or principal areas of endeavor for which he has been educated and examined, should be permitted by law so to practice or to offer to practice and should be required by law to take full responsibility for the results of his practice, including those disciplines which are incidental to the primary or principal area of endeavor, it being recognized that, -vis-a-vis the Architect and Engineer, the engineering disciplines are embraced within the field of architecture while the field of architecture is not embraced within the field of professional engineering.
3. Professional architects, having been educated and examined in all aspects of building and site planning, design and construction

relating to buildings, other structures, spaces and environment, including the structural, mechanical, electrical and civil engineering disciplines, should therefore be entitled, by law, to practice and to offer to practice all those engineering disciplines and to seal all plans, etc., related thereto when they are incidental to the principal or primary architectural endeavor and should be required, by law, to take full responsibility for the results of such practice.

4. Professional engineers, not having been educated or examined in the aspects of building design and site planning, visual design and construction relating to buildings, other structures, space and environment related to them, should therefore be entitled, by law, to practice or to offer to practice only in those areas which are primarily and principally engineering in nature, and should be required, by law, to take full responsibility for the results of such practice; and, only when the principal or primary endeavor is of such engineering nature, then the engineer may include as part of his practice those disciplines which are incidental to the engineering disciplines."

Jury Chosen for 1972 AIA Honor Awards

Five architects and an architecture student representative have been named to the jury which will select the 1972 Honor Awards of the American Institute of Architects.

Jury members, chosen by the Board of Directors, are: Henry N. Cobb, New York City, Chairman; Antonin Aeck, Atlanta, Ga., student representative; Gerald L. Allison, FAIA, Honolulu; John G. Dinkeloo, Hamden, Conn.; Harry M. Weese, FAIA, Chicago; and Harry C. Wolf, Charlotte, N.C. Milton L. Grigg, FAIA, Charlottesville, Va., the 1971 jury chairman, will serve as adviser.

Last year 10 projects were selected for Honor Awards from among 550 entries—the largest number of projects to be submitted in the 23 years Honor Awards have been awarded.

YOU CAN
THE SY

...WITH THIS



NO BEAT SYSTEMS

Beating *one* system is tough enough. Beating four or five is a miracle—without TSR.

By “the system”, we mean all the mechanical work on your construction project: heating, cooling, ventilating, plumbing. Each one involves contractors. Each means getting separate bids, separate specs, separate orders, scheduling work, fighting delays, meeting deadlines. *Coordinating chaos.*

TSR simplifies all that. TSR means *Total Systems Responsibility*. It sets up *one central authority* to handle the whole ball game. Your mechanical systems contractor puts it all together. He integrates the four or five separate mechanical systems into *one* balanced, smoothly functioning system. He plans, coordinates, follows through—from first bid to final balancing.

You can beat the systems. Put your chips on TSR—the *one* system that’s designed for the streamlined approach to construction in the ’70’s.



Plumbing & Heating Industry *of Detroit*

Representing the people who do pipe work and plumbing

14801 W. Eight Mile Road • 341-7661

The National Register and Michigan's Historic Sites Survey

The August 1970 issue of the *Monthly Bulletin* contained a detailed description of the National Historic Preservation Act of 1966 and how Michigan was organizing to relate to it. For the aid of those who didn't review that issue in depth, and to bring us all up to date with the current effort involved, perhaps a brief re-examination would be helpful.

In the Act, Congress declared that the historical and cultural foundations of the Nation should be preserved as a firm base from which to project the future. The Act provides for an expansion of the National Register of properties—districts, sites, buildings, structures and objects—significant in American history, architecture, archaeology and culture; for financial assistance through a system of matching grants-in-aid to States for surveys and plans, and to States, local governments, private organizations, and individuals for preservation of properties on the National Register; for an Advisory Council on Historic Preservation, responsible to the President to advise on preservation matters; for protection of properties on the National Register, stipulating that any Federal or federally assisted undertaking in any State shall take into account the effect of such undertaking on those properties. Essentially the Act requires that a comprehensive index be accumulated of the significant physical evidences of our national patrimony, and that this index be used to assure that no property on it be destroyed without the consideration of every feasible alternative to its destruction.

To implement this Act in Michigan, The Department of Natural Resources has been designated as State Liaison Officer, and has technical, administrative, and financial responsibility for the program. It is a requirement that each state establish a review process of submissions to the National Register. This, in Michigan, has been set up in the form of the Historic Preservation Advisory Council, one member of which must be appointed to represent the Michigan Region of the AIA. Our present member is Kingsbury Marzolf, AIA of Ann Arbor. In addition, the Department of Natural Resources has formed an interdepartmental Historic Preservation Task Force to assist the State Liaison Officer in carrying out the responsibilities of the program.

The Historic Sites Survey function has been delegated to the History Division of the Department of State. They are responsible for the final gathering and validation of the documentation required to support a Register nomination and the preparation of the nomination form. Although the survey is based on the extensive research files of the History Division, they can be greatly aided by information from local agencies, groups or individuals. A consensus list has been established from which prop-

erties are drawn for nomination. This list is non-static as properties with good potential can be added at any time.

The prime objective of the Historic Site Survey is to accumulate a complete inventory of every historic property extant in our state. Only if this is accomplished will the protective aspect of the Historic Preservation Act be truly meaningful. An attempt is now being made to organize a field effort composed of both government and private individuals to aid in identifying potential historic properties to be added to the state's consensus list. Particular interest is being directed to the obscure but important properties which are sometimes only known to local people—although we have a long way to go to include all of the obvious ones. The architectural profession in Michigan can be of significant assistance to reach the obviously difficult objective of the Survey.

What is the status of the situation now? On the following pages, each Chapter can see what has been accomplished to date in their own areas in three categories. Listed are those properties **on** the National Register; those submitted to the National Register office, but not yet approved; and those presently on the state's consensus list.

As can be seen, the number of entries in all categories vary widely between Chapter areas. Also, the total number of entries far from reaches the stated objective of the Survey. This obviously cannot be directed as a criticism of the architects of Michigan or any specific Chapter. Until now, we have not been invited to be a part of the identification process. However, even merely a cursory glance should clearly indicate that a profession such as ours can and should be helpful in such a widespread effort. The Historic Resources Committees in some Chapters have been working on their own and have lists started. Unfortunately these have not been coordinated with the state's effort and are not a part of the consensus list. Other Chapters have not taken the opportunity to get under way.

Architects, who should know the value of all buildings, particularly in their own area of the state, must become an active part of the searching out and identification of potential historic properties. As organization of the state-wide effort to develop a deeper involvement at a local level becomes more concrete, the Historic Resource Committees of each Chapter will be contacted. There is a genuine need for each to become involved.

Material for this article was furnished to the Bulletin by the office of Johnson, Johnson & Roy, Inc., under the direction of Richard C. Frank, AIA.

Detroit Chapter Area

St. Clair, Oakland, Macomb, Wayne, Huron, Tuscola, Sanilac

NATIONAL REGISTER

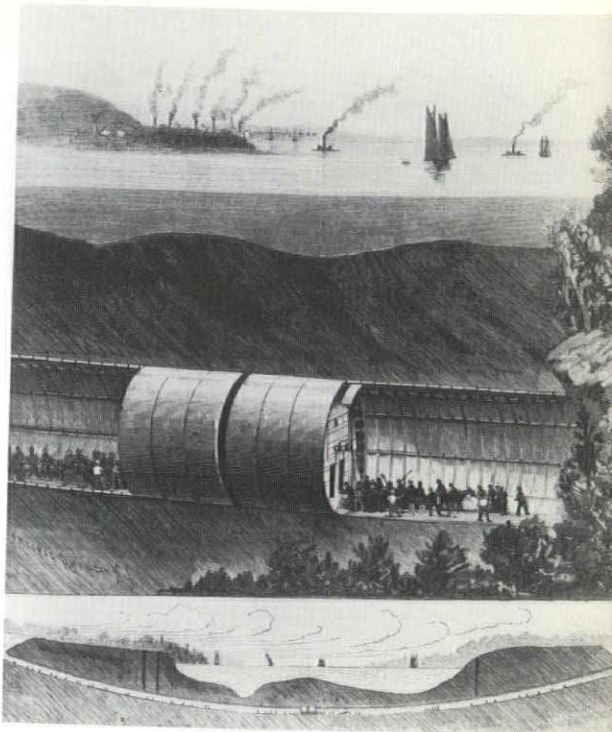
Ford Estate, Fairlane, Dearborn	Wayne
Franklin Village Historic District	Oakland
Greenfield Village & Henry Ford Museum, Dearborn	Wayne
Wisner House, Pontiac	Oakland
Palmer House, Pontiac	Oakland
Romeo Historic District	Macomb
St. Clair River Tunnel, Port Huron	St. Clair
Commandants Quarters, Dearborn	Wayne
Mariner's Church, Detroit	Wayne
West Canfield Historic District, Detroit	Wayne
Fort Wayne, Detroit	Wayne
Ortonville Mill, Ortonville	Oakland
Solomon Sibley House (Rectory of Christ Church), Detroit	Wayne
Christ Church, Detroit	Wayne
Freer House, Detroit	Wayne
Holcombe Site	Macomb
Orchestra Hall, Detroit	Wayne
Sanilac Petroglyphs, Greenleaf Township	Sanilac
Pewabic Pottery, Detroit	Wayne
Saints Peter and Paul Church, Detroit	Wayne
Fort St. Presbyterian Church, Detroit	Wayne
Colonel Frank J. Hecker House, Detroit	Wayne
Washington (Andrus) Octagon House	Macomb
Grindstone City Historic District	Huron

NATIONAL REGISTER PENDING

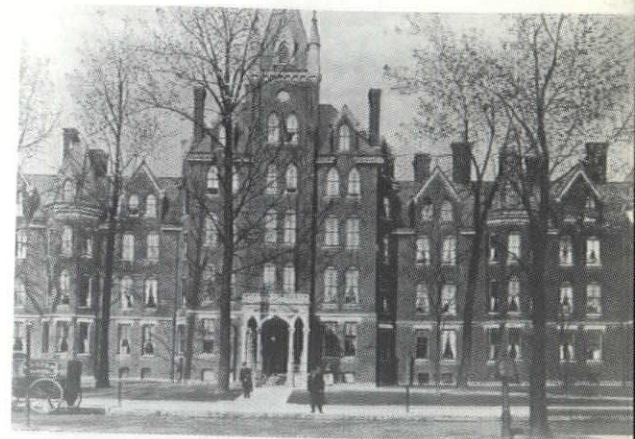
Northville Historic District, Northville	Oakland
Clinton-Kalamazoo Canal, Rochester-Utica Recreation Area	Oakland
Harper Hospital, Detroit	Wayne
John J. Bagley Memorial Fountain, Detroit	Wayne
St. James Episcopal Church, Grosse Ile	Wayne
Dodge Mansion, Grosse Pointe Farms	Wayne
Brooks House, Troy	Oakland
Moross House, Detroit	Wayne
Hunter House, Birmingham	Oakland
Caswell House, Troy	Oakland
Ward-Holland House, Marine City	St. Clair
Frank Murphy Birthplace, Harbor Beach	Huron
Sleeper House, Bad Axe	Huron

CONSENSUS LIST

Ft. Gratiot Lighthouse, Port Huron	St. Clair
Seitz House, Grosse Pointe Park	Wayne
Ford Highland Park Plant, Highland Park	Wayne
Albert Kahn House, Walnut Lake	Oakland
Simmons House, Livonia	Wayne
Second Baptist Church, Detroit	Wayne
Loop House, Port Sanilac	Sanilac



St. Clair River Tunnel, Port Huron



Harper Hospital, Detroit

Orchestra Hall, Detroit



Grand Valley Chapter

Mason, Lake, Osceola, Oceana, Newaygo, Mecosta, Montcalm,
Muskegon, Kent, Ottawa, Ionia

NATIONAL REGISTER

Norton Mound Group, Grand Rapids vicinity	Kent
Turner House, Grand Rapids	Kent
Ada Covered Bridge	Kent
Grand Rapids Art Museum (Pike House), Grand Rapids	Kent
Turner House, Grand Rapids	Kent
Hackley House, Muskegon	Muskegon
Third Reformed Church, Holland	Ottawa
Hall-Fowler Memorial Library, Ionia	Ionia
Heritage Hill Historic District, Grand Rapids	Kent

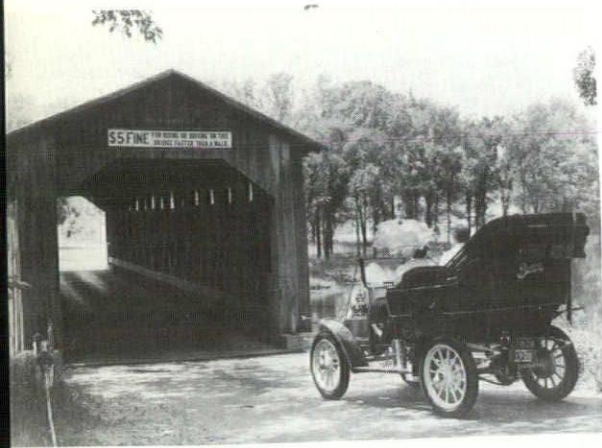
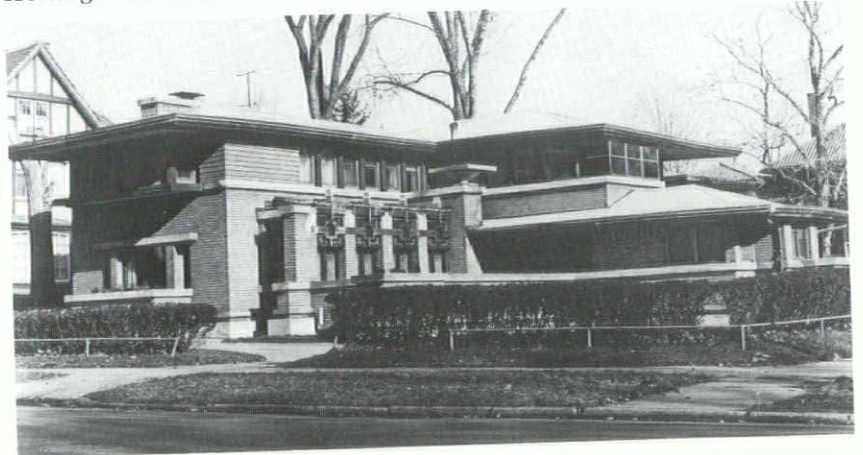
NATIONAL REGISTER PENDING

Spring Creek Site, Egelston Township	Muskegon
Ladies' Literary Club, Grand Rapids	Kent
St. Cecilia Society Building, Grand Rapids	Kent
Lowell Library, Lowell	Kent
Hume House, Muskegon	Muskegon
Toft Lake Village Site, Manistee National Forest	Newaygo

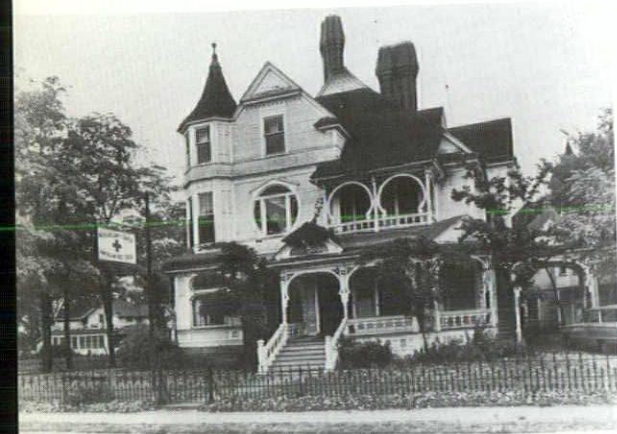
CONSENSUS LIST

Hackley Library, Muskegon	Muskegon
Fallasburg Covered Bridge	Kent
Emery House, Muskegon	Muskegon

Heritage Hill Historic District, Grand Rapids

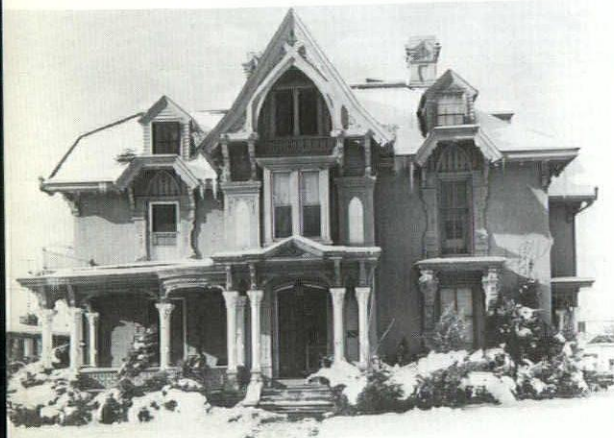


Fallasburg Covered Bridge



Hackley House, Muskegon

Heritage Hill Historic District, Grand Rapids



Huron Valley Chapter

Livingston, Washtenaw, Lenawee, Monroe

NATIONAL REGISTER

Presidents House, University of Michigan, Ann Arbor
 Robert Hodges Residence
 (Orrin White House) Ann Arbor
 Ann Arbor Railroad Station, Howell
 First Presbyterian Church of Blissfield
 Governor Robert McClelland House, Monroe

Washtenaw

Washtenaw
 Livingston
 Lenawee
 Monroe



Presidents House, University of Michigan

NATIONAL REGISTER PENDING

Ann Arbor Fire House, Ann Arbor
 Wilson House, Ann Arbor
 Albert Read House
 (Alonzo Olds House), Green Oak Township
 Kelsey Museum (Newberry Hall) Ann Arbor

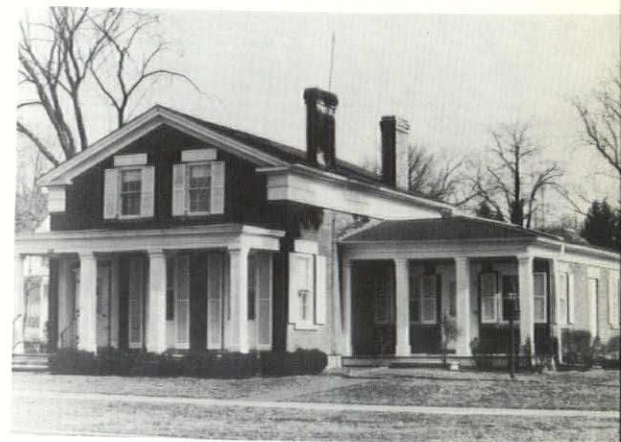
Washtenaw
 Washtenaw

Livingston
 Washtenaw

CONSENSUS LIST

Gordon Hall, Dexter
 Old West Side Historic District, Ann Arbor
 David Carpenter House, Blissfield
 United Methodist Church, Dixboro
 Nims House, Monroe
 Ballard House, Ypsilanti
 Civil War Monument, Adrian
 Huron Street Historic District, Ypsilanti
 Croswell House, Adrian

Washtenaw
 Washtenaw
 Lenawee
 Washtenaw
 Monroe
 Washtenaw
 Lenawee
 Washtenaw
 Lenawee

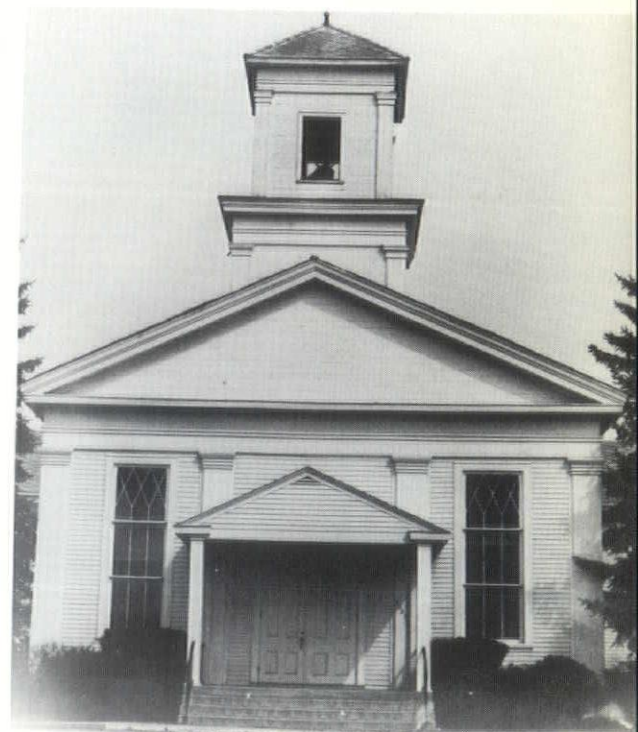


Croswell House, Adrian

Ann Arbor Fire House, Ann Arbor



United Methodist Church, Dixboro



Northern Michigan Chapter

Upper Peninsula—Gogebic, Ontonagon, Keweenaw, Baraga, Houghton, Iron, Marquette, Dickinson, Menomonee, Delta, Alger, Schoolcraft, Luce, Mackinac, Chippewa

Lower Peninsula—Emmet, Cheboygan, Presque Isle, Charlevoix, Antrim, Otsego, Leelanau, Benzie, Grand Traverse, Kalkaska, Crawford, Manistee, Wexford, Missaukee, Roscommon

NATIONAL REGISTER

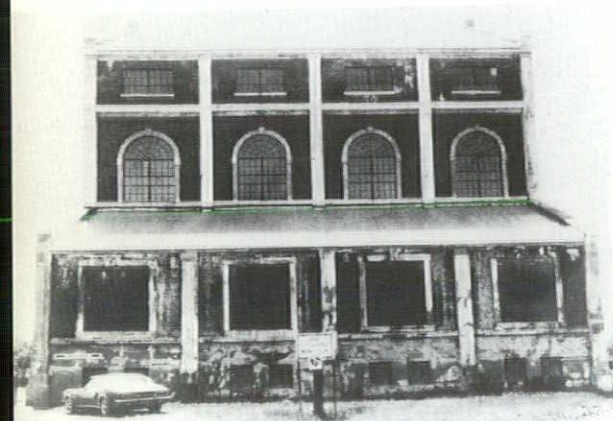
Fort Michilimackinac, Mackinaw City	Emmet
St. Mary's Falls Canal, Sault Ste. Marie	Chippewa
Hemingway Cottage, Windemere	Emmet
Mackinac Island	Mackinac
St. Ignace Mission	Mackinac
Mackinac Point Lighthouse, Mackinaw City	Emmet
Fort Drummond (Fort Collyer)	Chippewa
Fayette	Delta
Quincy Mine No. 2 Shaft Hoist House	Houghton
Fort Mackinac, Mackinac Island	Mackinac
Fort Wilkins, Copper Harbor	Keweenaw
Johnston House, Sault Ste. Marie	Chippewa
Mormon Print Shop, Beaver Island	Charlevoix
C & O Railway Station (Pere Marquette), Petoskey	Emmet
Old Fort Brady, Sault Ste. Marie	Chippewa
Mission Church, Mackinac Island	Mackinac
Central Mine Methodist Church	Keweenaw
Mission House, Mackinac Island	Mackinac
Groscap Cemetery, West Moran Bay	Mackinac
Robert Stuart House, Mackinac Island	Mackinac
Wycamp Creek Site, Cross Village	Emmet
Spider Cave	Delta
Naomikong Point Site, White Fish Bay	Chippewa
Mathew Geary House, Mackinac Island	Mackinac
Lasanen Site, St. Ignace	Mackinac
Hill's Store, Grand Marais	Alger
O'Neill Site, Inwood Creek	Charlevoix
Summer Island Site, Fairbanks Township	Delta
Bay Furnace, Onota	Alger
Jackson Mine, Negaunee	Marquette
Calumet Theatre, Calumet	Houghton

NATIONAL REGISTER PENDING

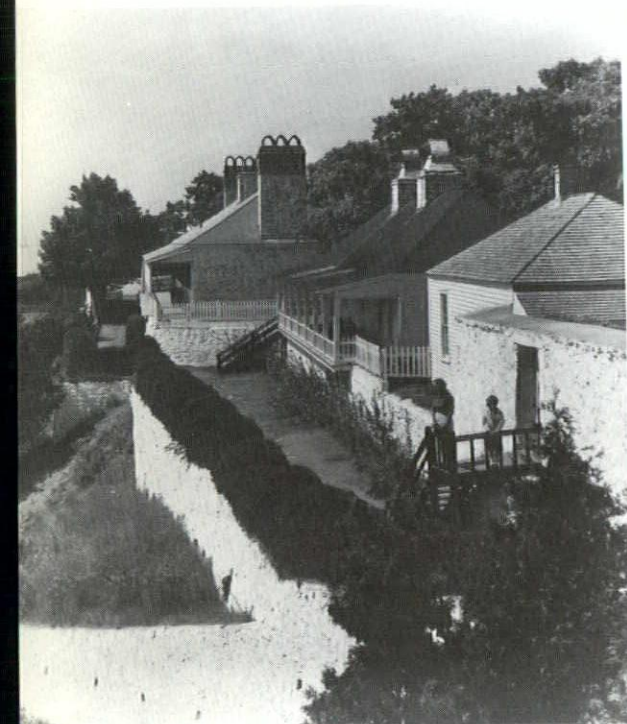
Bay De Noc-Grand Island Trail, Hiawatha National Forest	Delta & Alger
New Fort Brady, Sault Ste. Marie	Chippewa
Skegemog Point Site	Grand Traverse
Holtz Site, Bellaire Township	Antrim
Chippewa Hill, Ironwood	Gogebic
Shay House, Harbor Springs	Emmet
Schoolcraft House, Sault Ste. Marie	Chippewa
Charlevoix City Park Site, Charlevoix	Charlevoix
Our Savior's Evangelical Lutheran Church, Manistee	Manistee
C. H. Call House, Marquette	Marquette



Shay House, Harbor Springs

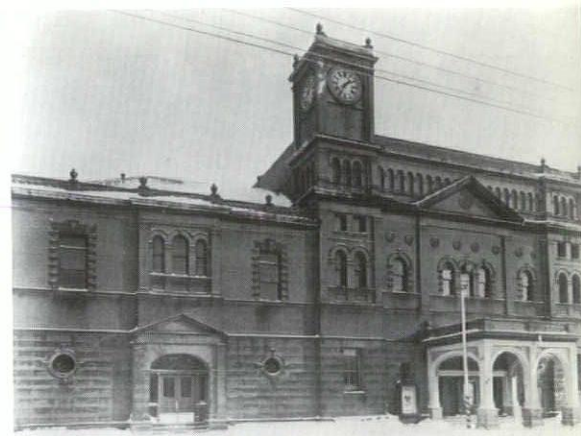


*Quincy Mine No. 2 Shaft Hoist House
Fort Mackinac, Mackinac Island*



Ponshewaing Point Site, Littlefield Township
 Indian Dormitory, Mackinac Island
 Greensky Hill Mission, near Charlevoix
 Assinins
 Ramsdell Theater, Manistee
 Victoria
 Old Main (Suomi College), Hancock
 Holy Redeemer Church
 Ashland Mine, Ironwood
 Stannard Rock Lighthouse, Lake Superior

Emmet
 Mackinac
 Charlevoix
 Baraga
 Manistee
 Ontonagon
 Houghton
 Keweenaw
 Gogebic
 Marquette

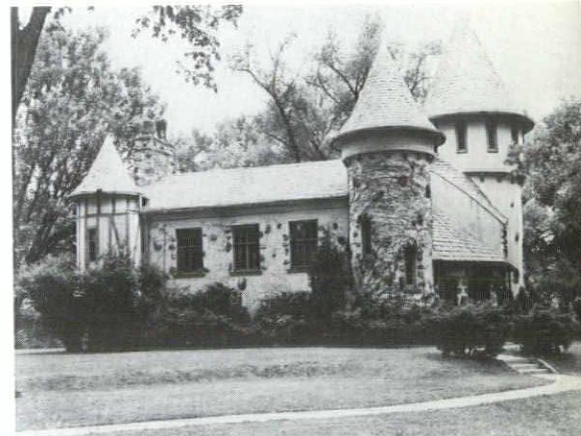


Calumet Theatre, Calumet

CONSENSUS LIST

Round Island Lighthouse, Round Island
 Pequaming
 Baraga House, Sault Ste. Marie
 Protar House, Beaver Island
 Keystone Bridge, Ramsay
 Morgan Heights Sanatorium, Marquette
 Ardis Furnace, Iron Mountain
 Blackbird House, Harbor Springs
 St. Francis Solanus Church, Petoskey
 SS Valley Camp, Sault Ste. Marie
 Harlow House, Marquette
 Cornish Pump, Iron Mountain
 Harvey House, Harvey

Mackinac
 Baraga
 Chippewa
 Charlevoix
 Gogebic
 Marquette
 Dickinson
 Emmet
 Emmet
 Chippewa
 Marquette
 Dickinson
 Marquette



Curwood Castle, Owosso

Lapeer County Courthouse, Lapeer

Flint Area Chapter

Shiawassee, Genesee, Lapeer

NATIONAL REGISTER

Grand Trunk Railway Station, Durand
 Curwood Castle, Owosso
 Lapeer County Courthouse, Lapeer

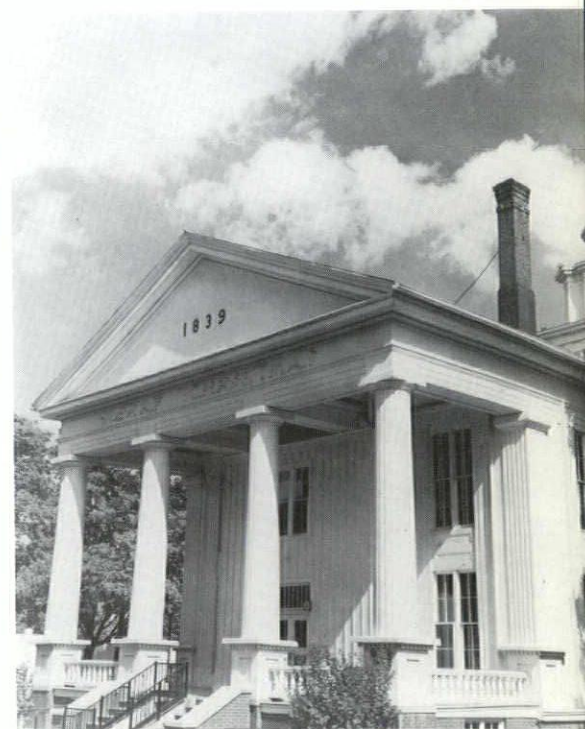
NATIONAL REGISTER PENDING

CONSENSUS LIST

Parsons House, Corunna

Shiawassee
 Shiawassee
 Lapeer

Shiawassee





State Capitol, Lansing

Mid-Michigan Chapter

Clinton, Eaton, Ingham

NATIONAL REGISTER

St. Katherine's Chapel, Williamston,	Ingham
State Capitol, Lansing	Ingham
Eaton County Courthouse, Charlotte	Eaton
First Congregational Church, Vermontville	Eaton
Bailey Building (Horticultural Laboratory Building), East Lansing	Ingham

NATIONAL REGISTER PENDING

Ingham County Courthouse	Ingham
United Church of Ovid	Clinton

CONSENSUS LIST

Meridian Base Line	Eaton
Hance House, Olivet	Eaton

Saginaw Valley Chapter

Montmorency, Alpena, Oscoda, Alcona, Ogemaw, Iosco, Gladwin,
Arenac, Midland, Bay, Saginaw

NATIONAL REGISTER

Fletcher Site	Bay
---------------	-----

NATIONAL REGISTER PENDING

Bradley House, Midland	Midland
Saginaw Post Office	Saginaw

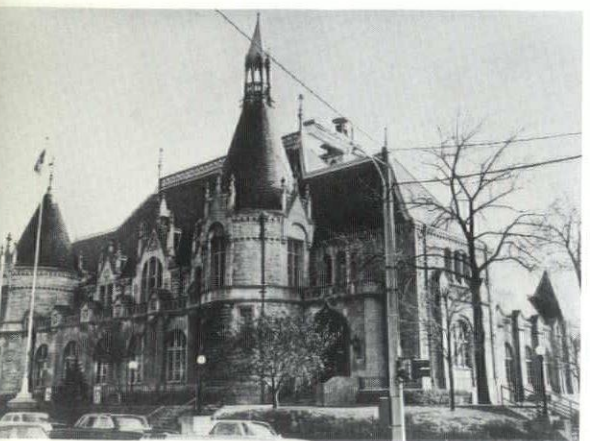
CONSENSUS LIST

Tawas Lighthouse, East Tawas	Iosco
Oscoda County Courthouse, Mio	Oscoda
Tromble House, Bay City	Bay
Gypsum Industry: Alabaster (Port Gypsum)	Iosco



Hance House, Olivet

Saginaw Post Office



Western Michigan Chapter

Allegan, Barry, Van Buren, Kalamazoo, Calhoun, Jackson, Berrien, Cass, St. Joseph, Branch, Hillsdale, Gratiot, Clare, Isabella

NATIONAL REGISTER

Berrien Springs Courthouse	Berrien
Ladies' Library Association Building, Kalamazoo	Kalamazoo
Honolulu House, Marshall	Calhoun
Mann House, Concord	Jackson
Cambridge State Historical Park (Walker Tavern)	Jackson
Penn Central Railway Station, Battle Creek	Calhoun
Grace Church, Jonesville	Hillsdale
A. P. Gardner Mansion, Albion	Calhoun

NATIONAL REGISTER PENDING

Jabez Fitch House, Marshall	Calhoun
Tibbets Opera House, Coldwater	Branch
Carl Sandburg House, Harbert	Berrien
Clark-Stringham Site, Rives Township	Jackson
Sidney Smith House, Grass Lake	Jackson
Trinity Church, Niles	Berrien
Striker House, Hastings	Barry
Nottawa Stone School	St. Joseph
Wagner Block, Marshall	Calhoun
Birth of Republican Party (Under The Oaks)	Jackson
Kalamazoo State Hospital Water Tower	Kalamazoo

CONSENSUS LIST

Paine Bank, Niles	Berrien
Stone Post Office, Jackson	Jackson
Capital Hill School, Marshall	Calhoun
Governor Barry House, Constantine	St. Joseph
Stone Hall, Marshall	Calhoun
Wright-Brooks House, Marshall	Calhoun
Benedict-Joy House, Marshall	Calhoun
Ella Sharp Museum, Jackson	Jackson
Cobblestone School, Pennfield Township	Calhoun
Stuart House, Kalamazoo	Kalamazoo
Ring Lardner House, Niles	Berrien

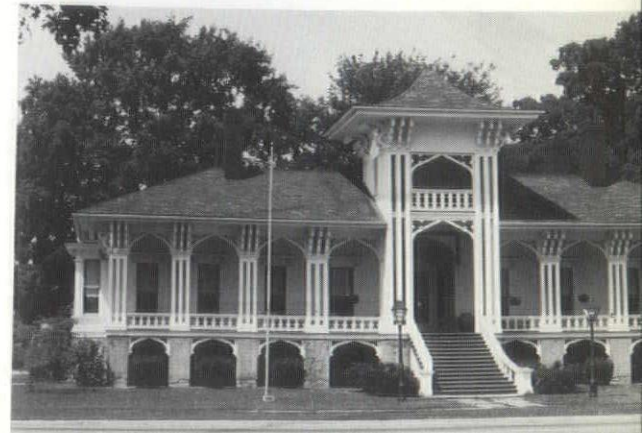


Kalamazoo State Hospital Water Tower

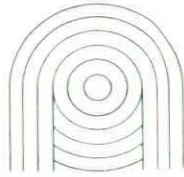


Penn Central Railway Station, Battle Creek

Honolulu House, Marshall



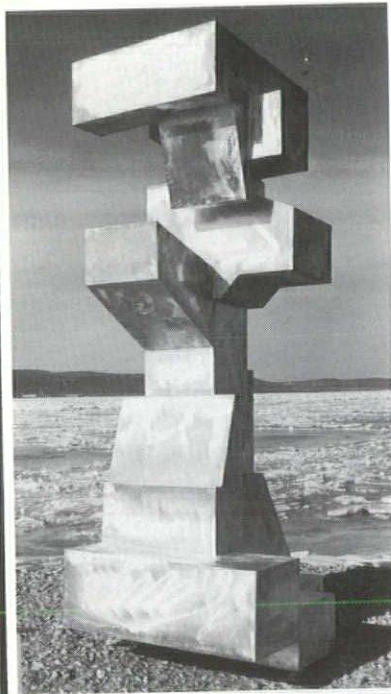
**ART CONSULTANTS
FOR ARCHITECTS AND
INTERIOR DESIGNERS**



**LANTERN
GALLERY**

301 N. Main St.
Ann Arbor,
Michigan 48104
313/761-0707

Jacquelyn Wright
Alice Simsar



Bill Barrett,
"Untitled,"
(welded
aluminum)
commissioned
for the Univer-
sity of Michigan
School of
Dentistry
Complex, by the
class of June,
1944 through
Smith,
Hinchman and
Grylls,
Associates and
Lantern Gallery.

For **LEAK-PROOF ROOFS**
specify



The only **ROOFING INSPECTION SERVICE** which
GUARANTEES performance of roofing systems
covered by the M.R.C.A. **TWO YEAR** warranty.

Now serving the Wayne, Oakland and Macomb
Counties area.

Detroit Roofing Inspection Service, Inc.

Frazier E. Wilson
General Manager

3560 E. 9 Mile Rd.
48091

Warren
(313) 759-2140

modern as tomorrow!

*Mechanical Heat & Cold's Advanced Facilities and
Experienced Personnel Serve Detroit's Leading
commercial, industrial and institutional Buildings.*



Headquarters Building Provides 20,000
square feet of warehouse, shop and office space

Mechanical



Heat & Cold, Inc.

12300 HAMILTON AVE. DETROIT, MICHIGAN 48203 • PHONE: (313) 868-9600

Mechanical Contractors Serving Detroit for 50 Years

Conference on New-Town Planning set for November 3-6

The AIA will sponsor a New Communities Conference in Washington, D.C. on November 3-6 to provide architects with special expertise in the planning and design of the scores of new towns expected to be started in the 1970's.

"A brand new era of public and private urban development has been opened up by the funding provisions for new towns in the 1968 Housing and Urban Development Act and by the broader scope and extensive loan guarantees allowed under Title VII of the 1970 act," according to Michael Barker, director of AIA's urban programs.

"HUD already has guaranteed backing of loans of over \$100 million for six new towns and may approve others soon," Barker explained, underscoring the extent of the new-town movement.

HUD Secretary George M. Romney and Assistant Secretary Samuel Jackson will head a speakers' list that also includes Floyd McKissick, founder of Soul City in North Carolina; Charles Beiderman, president of Levitt Building Systems Inc.; Alan Voorhees, Transportation consultant; David Crane, Philadelphia architect and planner.

The conference at the Washington Hilton Hotel is designed as an intensive three-day course in four major areas of new town development: project organization, economic and social programming, systems design, and development of incentives and controls. Attendance will be limited to 300 participants.

The professionals speaking and conducting seminars during the three days will include mortgage bankers, urban sociologists and economists, HUD officials, and professors, as well as architects and planners who have been involved in the planning of many new towns.

To insure in-depth discussion of the major issues, the conference will be divided into a series of workshops, exploring the specifics of financial modeling, the public skeleton of transportation and utilities, private planned unit developments, contracts and fees, and other subjects.

A tour of Reston, Va., will be included in the conference program, as well as special case studies of

the new towns of Jonathan and Cedar-Riverside, Minn., and Park Forest South, near Chicago.

Nominations Open for Reynolds Award

Nominations now are being received for the 1972 sixteenth annual R. S. Reynolds Memorial Award for distinguished architecture with significant use of aluminum. The American Institute of Architects announced.

The largest cash award in architecture, the international Reynolds Award offers an honorarium of \$25,000 and an original sculpture in aluminum to the honored architect or firm. Administered by the AIA, the program is sponsored by Reynolds Metals Company in honor of its founder.

Brochures listing criteria for the Award are being mailed to all Institute members and to foreign architectural societies.

Architects or other interested individuals may submit nominations by using a form included with the AIA brochure or by writing to the Reynolds Award, The AIA, 1785 Massachusetts Ave., N.W., Washington, D.C. 20036. Data binders describing the entries must be received by the time of the jury meeting Feb. 17-18, 1972.

The 1971 Reynolds Award was won by a Zurich, Switzerland, firm for design of a factory building cited for creating an aesthetically pleasing appearance in its community and a wholesome environment for workers. Principals in the firm were Prof. Walter Custer, Fred Hochstrasser and Hans Bleiker.

Firm Name Change

Morison Shields & Associates Architects firm name is now Morison Associates, Inc. located at 13150 W. McNichols Rd., Detroit, Michigan 48235, phone 345-5050.

CLASSIFIED

Administrative Architect for effective aggressive midwest state housing authority. Housing experience necessary. An opportunity to be effective and do socially useful work. Send complete resume to Box 1.

HEAVY- USE FLOORS

A professionally-installed ceramic tile floor costs less per year to maintain than any other surface. And, it helps create a colorful, clean, pleasant working environment.

**ONLY
33¢
per sq. ft.**

**PER
YEAR!**

Independent study shows that upkeep costs of ceramic and quarry tiles are a third less than other flooring materials, such as carpeting and resilient finishes.

For information, write Great Lakes Ceramic Tile Council, Inc. Suite 109-25100 Evergreen, Southfield, Mich. 48075

Keep it clean

... With
those beautiful
night people.

**Building Service
Contractors
Association** 

Call one today!
557-1121

28660 SOUTHFIELD RD.
LATHRUP VILLAGE, MICHIGAN 48076

Wanted Designer

Designer on part-time or free-lance basis with creative ability in the graphic art field for the field of signage call R. S. Raisch at 313-892-6200.

Architectural Designer

An established Midwest office with broad work base, national reputation, 30 employees, desires to employ a young, experienced, aggressive Architectural Designer. Position: Chief Designer and Principal in firm. Address resume or questions regarding this opportunity to P.O. Box 303-A, Detroit, Mich. 48232.

Engineers Wanted

We would like to hear from Mechanical, Electrical, Structural Engineers—Midwest architectural office with excellent reputation and work supply is considering developing in-house engineering services. Experienced Engineers, preferably from Architect-Engineer offices, who can qualify as department heads and for Michigan license. Please send work resume and qualifications to P.O. Box 303-A, Detroit, Mich. 48232.

All

AIA Documents,

Contracts and

Accounting Forms

may be purchased from the
MSA office by mail or phone.

We ship the same day.

28 West Adams, Detroit

Michigan 48226

(313) 965-4100

A Trouble-Free Roofing System Is

- A Sound Roof Deck
- With Positive Drainage
- With Dimensionally Stable Roof Insulation
- A Four Ply Roof (Mandatory)
- With ASTM Certified Materials Only
- With Reinforced Bituminous Flashings
- With a Two Year Mich. Contractors Warranty

We're Concerned and Anxious to Help
with Free, Unbiased Consultation.

Roofing Industry Promotion Fund

M. E. Smith
Exec. Secty.

3560 E. 9 Mile Rd.
48091

Warren
(313) 759-2140

WHEREVER YOU SEE THIS SIGN . . .



MICHIGAN IS ON THE MOVE

Are your workers spending too much time working to keep warm?

It's no picnic, working in an unheated garage. Or an unheated warehouse. Or on a cold loading dock.

Especially during those months when it's so cold you can hardly feel your hands. Much less what you're working on.

We have the answer.

Warm up the workers.

With a portable electric heater. Designed to radiate warmth right through a chilling draft. Designed to radiate the kind of heat (like the sun's) that warms objects (like people). Not the air.

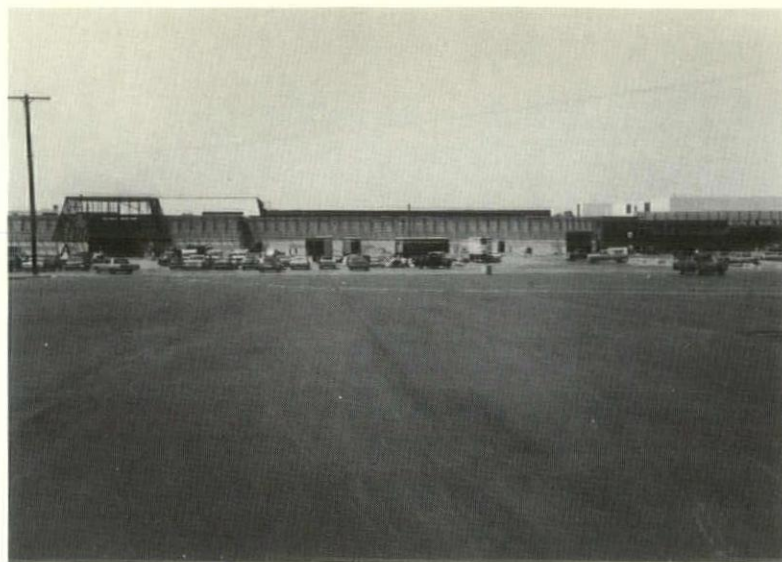
Besides warming workers, portable radiant electric heaters can also help dry paint, plaster or concrete. Preheat engines. Or thaw out frozen equipment.

If you've got workers working in cold places, call us at 962-2100, Ext. 2870. Outside Detroit, just phone the nearest Edison office.



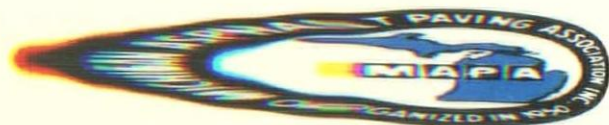
Edison

Stage Construction For Shopping Center



ARCHITECT: Charles N. Agree, Inc.

Stage construction was employed at the Plainfield Shopping Center in Grand Rapids to overcome mud and snow problems and provide clean storage space for supplies. Michigan Colprovia Co. put down this wearing course a year after the hot mix base was laid. You can expect to get fine work like this when you let your jobs to a prequalified MAPA contractor.



MICHIGAN ASPHALT PAVING ASSOCIATION, INC.

909 Washington Square Building

Lansing, Michigan 48933

Phone 517 482-0111

MEMBERSHIP ROSTER: MICHIGAN ASPHALT PAVING ASSOCIATION, INC.

A A ASPHALT PAVING CO., Birmingham
A ANN ARBOR CONSTRUCTION CO., Ann Arbor
A ASPHALT PRODUCTS CORP., Detroit (Affiliate)
A WILLING-CUNNINGHAM ASPHALT PAVING CO., Tecumseh
B BLUE WATER ASPHALT CO., INC., Port Huron
C CADEL LAC ASPHALT PAVING CO., Southfield
C CENTRAL PAVING COMPANY, West Branch
C COOKE CONTRACTING CO., THE, Detroit
D DETROIT ASPHALT PAVING CO., Detroit
D DETROIT CONCRETE PRODUCTS CORP., Novi
F FLINT ASPHALT & PAVING CO., Flint
F FOX VALLEY CONSTRUCTION CO., Appleton, Wisc.

GLOBE CONSTRUCTION CO., Kalamazoo
GRAND RAPIDS ASPHALT PAVING CO., Gd. Rapids
THE HICKS COMPANY, Alma
HODGKISS & DOUMA, Petoskey
HOWELL CONSTRUCTION COMPANY, INC., Indian River
LAMAN ASPHALT & PAVING CO., Ludington
MATHY CONSTRUCTION CO., LaCrosse, Wisc.
MICHIGAN COLPROVIA CO., Grand Rapids
MIDLAND CONTRACTING CO., Midland
MOLESWORTH CONTRACTING CO., Yale
PAUL C. MILLER CO., Sparta
PAYNE & DOLAN OF WISCONSIN, INC., Milwaukee, Wisc.

PEAKE ASPHALT PAVING CO., INC., Utica
PENINSULA ASPHALT CORPORATION, Traverse City
RICHARDSON ASPHALT CO., Jackson
RIEH-RILEY CONSTRUCTION CO., INC., Battle Creek
SAGINAW ASPHALT PAVING CO., Saginaw
SPARTAN ASPHALT PAVING CO., Holt
FRANK STRAUSBERG & SON, Saginaw
THOMPSON-McCULLY CO., Belleville
WARD & VAN NUCK, INC., Mount Clemens
WASHTENAW ASPHALT CO., Ann Arbor
WEST SHORE CONSTRUCTION CO., Zeeland
I. L. WHITEHEAD CO., Sault Ste. Marie
JOHAN G. YERINGTON CO., Benton Harbor

ASSOCIATE MEMBERS

A A-BIN COMPANY, Southfield
A AMERICAN MATERIALS CORPORATION, Detroit
A AMERICAN AGGREGATES CORPORATION, Southfield
A AMERICAN OIL COMPANY, Chicago
A ASPHALT PLANT EQUIP. SPEC., INC., Lansing
B BENTON HARBOR RICHFIELD COMPANY, Chicago
C COLUMBINUS MATERIALS, INC., Jackson
C CLEVELAND IRON ASPHALT CO., Cincinnati
C CHICAGO TESTING LABORATORY, INC., Chicago
C CLARK EQUIP. CO., CONST. EQUIP. DIV., Benton Harbor

DETROIT EDISON COMPANY, THE, Detroit
E.K.S. EQUIPMENT COMPANY, Grand Rapids
R. E. GLANCY, INC., Tawas City
GRAT LAKES PETROLEUM CO., East Lansing
GUSTAFSON OIL COMPANY, Green Bay, Wisc.
INDUSTRIAL FUEL & ASPHALT CORP., Grand Rapids
JENNITE PRODUCTS, INC., Detroit
KAFKA ASPHALT & PETROLEUM CO., Iron Mountain
LEONARD REFINERIES, INC., Alma
EDW. C. LEVY CO., Detroit

MANEGOLD-COLWELL CO., INC., Belleville
MICHIGAN ASH SALES CO., Essexville
MICHIGAN TESTING ENGINEERS, INC., Detroit
MILLER EQUIPMENT CO., Grand Rapids
PAMS PRODUCTS CORPORATION, Detroit
SENECA PETROLEUM CO., INC., Chicago
SPARTAN AGGREGATES, INC., Holt
STRAITS AGGREGATE & EQUIPMENT CORP., Tawas City
TELFORD & DOOLEN, INC., Lansing

Editor
 AIA Journal
 1735 New York Ave. N.W.
 Washington, D. C. 20006



ENTERED AS
 SECOND CLASS
 MATTER AT
 DETROIT, MICH.