

DIRECTORY ISSUE

Cooling Tower

MISSOURI
ARCHITECT

18F

17F

16F

15F

14F

13F

12F

11F

10F

9F

8F

7F

6F

5F

4F

3F

2F

B1F

Office

Office

Executive Suite

Entrance Hall

Office

nd Passage

JULY, 1968

Control Room

St

AMERICAN INSTITUTE
OF ARCHITECTS
LIBRARY
222 200 250

IN THIS ISSUE

President's Message	3
Architects' Day '68	4
Sweeney Looks at the "Architect and Government"	12
1968-69 Committee Chairmen	13
Bower, Grimaldi Firm Announced	25
Thias Announces Plans for Architects' Day '69	26

PAST PRESIDENTS OF M.A.R.A.

(Year shown is year of presidential installation)

1951	A. W. Archer, Kansas City (Deceased)
1952	E. R. Froese, St. Louis (Deceased)
1953	Harold A. Casey 759 South Glenstone, Springfield 65802
1954	Rex L. Becker 705 Olive Street, St. Louis 63101
1955	Luther O. Willis 1305 Armour, Kansas City 64109
1956	Robert Elkington 7916 Kingsbury Avenue, St. Louis 63105
1957	David P. Clark 302 Miller Building, Columbia 65201
1958	John C. Monroe, Jr. 818 Grand Avenue, Kansas City 64106
1959	John D. Sweeney 2102 South Grand Blvd., St. Louis 63104
1960	John M. Hewitt 607 Westport Road, Kansas City 64111
1961	David W. Pearce 721 Olive Street, St. Louis 63101
1962	David M. Brey 306 East 12th Street, Kansas City 64106
1963	Richard P. Stahl 1465 South Glenstone, Springfield 65804
1964	Edward J. Thias 1004 Market Street, St. Louis 63101
1965	Maxwell T. Sandford 800 Westport Road, Kansas City 64111
1966	Edwin C. Waters, III 322 E. Walnut, Springfield 65806
1967	Roy J. Pallardy P.O. Box 52, Jefferson City 65101

COVER

Lines drawn and labeled are the language of the architect . . . the language by which he communicates the shape and dimensions of the building his artistry, imagination and knowledge have created. It is a form of communications between architect and builder. Another form of communications . . . The Missouri Architect . . . will soon be carrying the architect's message to a greater number of persons as plans are shaping up to expand the mailing list and increase the contents. Before long, the accomplishments of M.A.R.A. members will be far better known and appreciated than ever before.

OFFICERS

- President
 JAMES T. DARROUGH
 601 East Broadway
 Columbia, Mo. 65201
- Vice-President
 KENNETH COOMBS
 1347 East 109th Terrace
 Kansas City, Mo. 64131
- Secretary
 WAYNE D. JOHNSON
 815 Woodruff Building
 Springfield, Mo. 65806
- Treasurer
 WILLIAM M. CONRAD
 800 West 47th Street
 Kansas City, Mo. 64112
- Executive Director
 WENDELL LOCKE
 308 East High
 Jefferson City, Mo. 65101
- Counsel
 JOHN E. BURRUSS, JR.
 Central Trust Building
 Jefferson City, Mo. 65101

DIRECTORS

- Terms Expiring 1969
- ARTHUR R. JABLONSKY
 State Bank Building
 Poplar Bluff, Mo. 63901
- DONALD F. WILSON, JR.
 111 S. Bemiston Ave.
 St. Louis, Mo. 63105
- Terms Expiring 1970
- GERHARDT KRAMER
 9640 Clayton Road
 St. Louis, Mo. 63124
- WILLIAM D. PECKHAM
 329 North Euclid Ave.
 St. Louis, Mo. 63108
- Terms Expiring 1971
- C. WYNN BRADY
 909 Cherry
 Columbia, Mo. 65201
- HAL W. HAWKINS
 1432 Bedford Road
 Springfield, Mo. 65804
- Terms Expiring 1972
- DONALD D. BULLER
 308 Gordon Building
 Sedalia, Mo. 65301
- HERBERT E. DUNCAN, JR.
 800 West 47th St.
 Kansas City, Mo. 64112
- Immediate Past President
- ROY J. PALLARDY
 P. O. Box 52
 Jefferson City, Mo. 65101



President's Letter

Dear Members:

This magazine will be one of the last issues in the small format we have used over the years, and although the change will be for reasons of economy, it is hoped that it will be symbolic of other changes which will involve more material, greater circulation, and increased advertising. Beyond these physical changes lies the possibility of making it a vital instrument of communication between architect and architect, and between architect and public.

The sad fact is that today the architect has little or no representation in extant architectural publications. Professional magazines like the **AIA Journal**, or **Skylines** serve a useful purpose in disseminating information relevant to architectural practice. Magazines like **Architectural Record** are helpful in showing us the latest work of other firms and providing technical information. Neither of these, however, represent the architect. Some magazines which purport to do so are little more than misuses of editorial freedom in which the ideas of one man or a few seemingly represent the profession. They do not. It is unfortunate that sometimes these ideas represent the dissident elements of our society, which does the architect much harm. Our office has discontinued our subscription to **Progressive Architecture** for this reason.

To my way of thinking, we need a publication which can genuinely represent the profession, not one small or perverse part of it. Instead of one-point-of view editorials, we need debate. We need it by the practicing architect, not by a journalist-sociologist. We need to have our say, and not have others putting words in our mouths.

Rebuttal, anyone?

James T. Darrough, President, MARA

The MISSOURI ARCHITECT is published quarterly at 308 E. High St., Jefferson City, Missouri 65101, by the Missouri Association of Registered Architects. Second Class postage paid at Jefferson City, Missouri. Subscription rate is \$1.50 per year.

Mailing address: Missouri Architect, P.O. Box 401, Jefferson City, Missouri 65101

Architects' Day 1968

A Look At "The Architect And Government"

Architects' Day 1968 brought Missouri's architects closer to government along with a closer look at the functions of local, state and federal agencies.

Under the theme, "The Architect and Government," MARA's annual convention not only provided a deeper insight into government, but also added entertainment for architects and wives as well.

At the annual business meeting, members elected Directors, approved proposed By-Laws changes, and heard reports of committee activities the year past.

Elected to four-year terms on the

Board of Directors were Donald D. Buller, Sedalia, from the Northwest District; and Herbert E. Duncan, Jr., Kansas City, from the Kansas City District.

Members amended the By-Laws to enlarge the area encompassed by the Northwest District where MARA has formerly enjoyed but seven members. Other approved By-Laws changes permit Board Members to serve on committees at large, allow notice of proposed By-Laws amendments to be given in the official publication, The Missouri Architect, and clarify the wording regarding voting procedures. Richard Nichols,

The Architect and Government panelists are, from left, Joseph Rowley, Director, Mo. Dept. of Community Affairs; Eugene Bushman, Mo. Administrative Hearing Commissioner; Carl Niewoehner, P.E., Member Mo. General Assembly; David M. Brey, Moderator; John Paulus, Mo. Director of Planning and Construction; Ted Herron, Director, Jefferson City Housing Authority; John D. Sweeney, Chairman, State Board of Registration for Architects and Professional Engineers; R. P. Buchmueller, Chairman, Architectural Div., State Board of Registration for Architects and Professional Engineers.



New Officers . . .



1968-69 Officers and Directors are, front row, from left, Wayne D. Johnson, Secretary; Kenneth Coombs, Vice President; James T. Darrough, President; William M. Conrad, Treasurer; Gerhardt Kramer, Director. Back row, from left, are Directors Herbert Duncan, Jr., Don D. Buller, C. Wynn Brady, Roy J. Palardy and Hal W. Hawkins.

Springfield, chairman of the By-Laws Committee, submitted the proposals for his committee.

Active committees during the year brought encouraging reports. Acceptance of the Recommended Minimum Fee Schedule was cited by Chairman William M. Conrad as "excellent." Record participation in the Student Design Competition was reported by Chairman Joseph J. Oshiver. Encouraging meetings with educators and officials were reported by State School Committee Chairman Peter Keleti who announced plans to meet with Mo. Governor Warren E. Hearnes and called for a resolution asking the Governor's support of the MARA project. Members unanimously adopted the resolution.

At the April 27th Board Meeting;

James T. Darrough, Columbia, was elected MARA President; Kenneth Coombs, Kansas City, was elected Treasurer; and Wayne D. Johnson, Springfield, was elected Secretary.

Following his election to the Vice Presidency, Kenneth Coombs resigned his post as Director. The Board then unanimously elected Gerhardt Kramer, St. Louis, to fill the vacancy created.

The Board selected St. Louis as the 1969 convention city.

Banquet speaker Ralph J. Warburton, Special Assistant for Urban Design, U.S. Department of Housing and Urban Development, cited the names of artists, architects, urban designers and city planners who have helped to build Missouri's "heritage of fine environmental design."

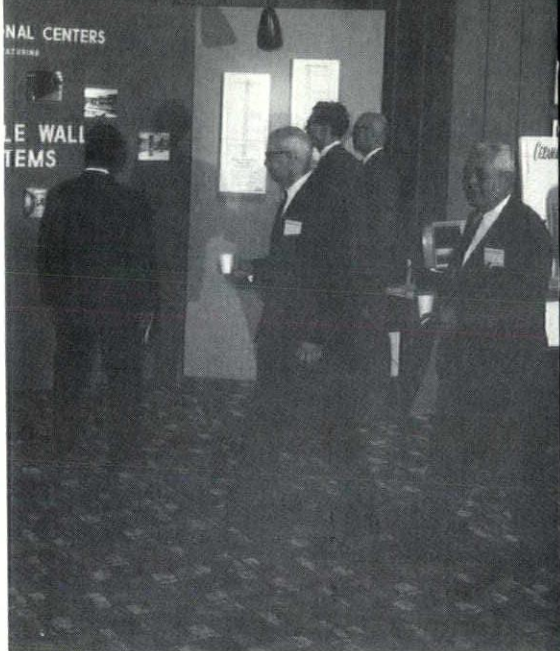
National goals relate to state and local planning, Mr. Warburton stated. He quoted President Lyndon B. Johnson on the national importance of effective design:

" . . . I am convinced that beauty and order in our environment are not frills. I am convinced that they are urgent necessities because they will determine whether our grandchildren can live in a decent land or whether they will be surrounded by glittering junkheaps . . . When the planners and businessmen and architects work together to try to save and improve our cities, I think they are literally saving our lives."

Mr. Warburton summed up his talk as follows:

"SINCE THE PURPOSE OF DESIGN IS TO IMPROVE THE QUALITY OF LIVING, IT MUST BE INTIMATELY RELATED TO THE NEEDS OF SOCIETY . . . AND MUST ALSO CONSIDER INDIVIDUAL AND PERSONAL VALUES. WHETHER ON A MODEST OR GRAND SCALE. Just as sculpture, murals and other works of art can serve a functional as well as artistic purpose, conversely, fire hydrants, utility poles and street lighting can serve an artistic as well as functional purpose today. Sensitive design in building plays multiple roles. A building can stand alone as the setting for a work of art while at the same time forming part of a graceful skyline for the city as a whole. Plans and programs for area development must be conceived in three dimensional forms.

"City planning should consider the role each neighborhood plays in community activities, and should preserve such natural and man-made assets as scenic views and historic landmarks. Physical design concepts must be coordinated with social and economic concepts, and the combination must be expressed in appropriate physical form."



Architects attending take advantage of free time to visit Producers' Council Exhibits.



Shown above is scene at Registration Desk. Below, Secretary of State James Kirkpatrick was featured speaker at lunch.



Student Award . . .

This year's Student Competition was limited to High School students. The project problem was to design a vacation home. Winners were:

1st Place Winner

Richard H. Rudolph, Jr., St. Louis Lindbergh H.S.

Hon. Mentions

Lorri Sipes, Kansas City

Patricia A. Kelly, St. Louis Lindbergh H.S.

Education and Awards Chairman Joe Oshiver poses with winner Richard H. Rudolph, Jr., and runner-up Patricia Kelly. At center right, Chairman Oshiver presents plaque to winner Richard Rudolph, Jr. Below, MARA members view student entries.



Evening Festivities . . .



Evening activities begin with cocktail party hosted by Kansas City and St. Louis Producers' Council, above. Below, MARA members and their ladies enjoy dancing after dinner.





Officers, Directors and ladies are shown at head table. At right, Past President Edwin C. Waters, III, left, presents plaque to outgoing President Roy J. Pallardy as Ralph Warburton, banquet speaker, looks on.



Ladies Activities . . .

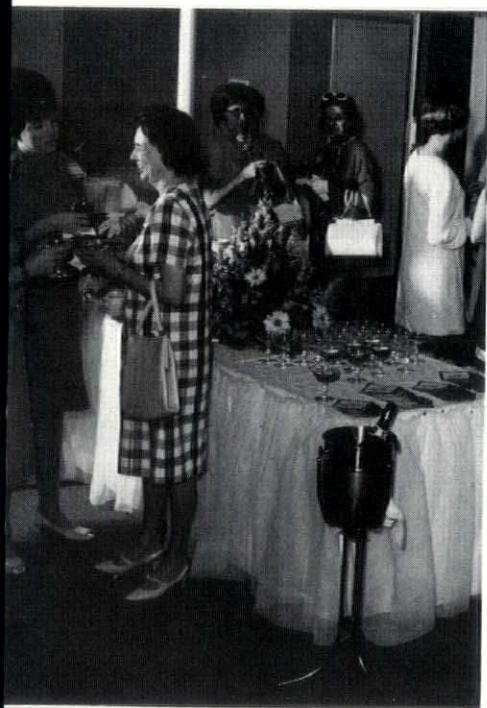
MARA ladies enjoyed a "get acquainted" champagne party to start the day's activities. After a luncheon at the Ramada Inn, where they heard the Mayor of Whoopup, they toured the Cole County Historical Museum where the display of inaugural gowns of Missouri's First Ladies drew special interest.

Ladies activities began with a champagne party, above, which was followed by luncheon. Below, ladies listen attentively to the Mayor of Whoopup as he discusses "Sex and the Senile Girl."





A chartered bus takes the ladies to a tour of the Cole County Historical Museum.



Ladies get acquainted and enjoy conversation with friends at champagne party.



Ladies luncheon was held in the Music Room of the Ramada Inn and was followed by a tour of the Cole County Historical Museum.

. . . 'The Architect And Government'

Presented at Architects' Day, April 27, 1968

by John D. Sweeney, Chairman

State Board of Registration for Architects and Professional Engineers

The Registration Board is represented on this panel by two of its officers. The Chairman of the Architectural Division, Mr. Paul Buchmueller, is more directly concerned with architectural matters since that is the responsibility of the architectural division. The chairman of the board occupies a different position and has different responsibilities. As board chairman I must concern myself with engineers and land surveyors as well as architects. The job of board chairman is to be a coordinator, in order that the functions of the board shall run as smoothly as possible and each division knows what the other division is doing, when pertinent.

I welcome this opportunity to advise this group about two important matters which are with us today. I refer to the matter of the law itself and also to the matter of the budget. This organization assisted with the proposed revisions to the law in 1967, as did other professional groups. A great effort was made by all concerned. I know this because I personally had very much to do with at least twelve major conferences over a period of time, not to mention a good many minor conferences over the phone and otherwise, involving the proposed changes. I think that all of the organizations in the state did a splendid job. In addition to MARA there were members of the MSPE, CEC, AIA, the Joint Council, and the LAND SURVEYING group.

In spite of the heart-breaking disappointment which occurred at the session in 1967, we are not at a complete loss. All of the work done thus far is good and worth-while.

We must now address ourselves to the task of preparing for the 1969

legislature. I am advised that Mr. Cullen Coil is still working with the MSPE in this connection and plans to outline changes of a minor nature sometime in June, with the idea of having them ready sometime in September.

Generally speaking, however, there will be few changes to the bill as prepared for the 1967 session. It is planned to present this proposed legislation pretty much as is, with a relatively small amount of rearrangement of some of the paragraphs and some of the wording.

There are almost as many reasons offered for the lack of success of our legislation in 1967 as there are people to explain it. However, speaking from a "Front Row Seat", it is my own feeling that there is no one outstanding reason. I prefer to think that there were a number of uncontrollable circumstances.

I had a report that one or more legislators felt that our bill was not promoted enough among them by the architects and engineers, I am sure that there are reasons for this, however, I think that they should be studied and eliminated for the '69 legislature.

We, of the board, appreciate the assistance rendered by the professional groups but would like to see a more organized effort by the MARA, MSPE and all others concerned for the 1969 assembly. To be sure we will not know until sometime after November this year, just who to approach. In the first place perhaps about one third of the assembly will be new members.

What is perhaps more important is the membership of the various committees. At this time we do not know to what committee our legislation

will be sent. However, I am sure that wiser heads than mine can advise what key members there are and who we should approach. I am advised that a large area in the state of Missouri is not blessed with architects. Perhaps they do have some engineers. In any case, the concentrated effort will have to be placed upon key members of the House and the Senate and particularly those who will be on the membership of the committee in charge of our legislation. It is altogether possible that the same committee in each house will have our legislation to review again. I am advised that if this is the case it will not be an unhappy choice.

I would urge this group to have appropriate committees working as soon as possible in order that the ground work be fully developed before the need arises. The picture I have in mind is one where all of the "polishing up" required of the work we have already done be accomplished before the elections and that by the time the new assembly convenes that we be ready for the introduction of our material.

When I commenced I said that there were two matters that concerned me for the immediate future, one being the law, about which I have just spoken. The other is the budget. One of the things that we propose to change in the new legis-

lation is the matter of fees for renewals and other fees as well.

There was a time when the legislature retained a sizable portion of the money which we collected each year, however, as time goes on we get more of our own dollars and less goes to the state. I believe now that the percentage is something like 12¢, in the most recent checking. This is not a serious sum. We should expect to pay the state some money.

Because of the increasing cost of operations there is only one answer for the future, in order that we may continue. I know that I do not have to sell this particular group on a change of registration fee because you have already consented to the concept of an increased renewal fee. However, because of the pressure of other matters I was not able to do what I am doing now, back in '67. I refer to the need to appraise the various organizations of the need for a renewal fee increase. Some objection was received from the west end of the state from engineers, however, I believe we can get their support now. Engineer renewal fees elsewhere are all higher than Missouri. The most frequently quoted sum is \$25.00, the minimum is \$10.00 and the maximum is \$50.00.

In conclusion, I say thanks again for past support and I solicit your continued best effort.

1968-69 Committee Chairmen

After all committee appointments are made, the full committee rosters will be published in a future issue of your MISSOURI ARCHITECT. The following Chairmen have been appointed by President Jim Darrough:

ANNUAL MEETING

Edward J. Thias, St. Louis

BY-LAWS

Richard L. Nichols, Springfield

COMMUNITY PLANNING

E. E. Butler, Springfield

EDUCATION AND AWARDS

Joseph J. Oshiver, Kansas City

ETHICS

Theodore Hoener, St. Louis

INSURANCE AND FEES

Robert J. Koppes, Kansas City

LEGISLATION

Maxwell T. Sandford, Kansas City

LONG RANGE PLANNING

Gene E. Lefebvre, Kansas City

MEMBERSHIP

Donald P. Wilson, St. Louis

NATURAL BEAUTIFICATION

Richard P. Stahl, Springfield

STATE SCHOOL

Peter Keleti, Kansas City

1968-69 Directory of MARA Members

- ABELLA, NARCISO E., 725 East 63rd Terrace, Kansas City, Mo. 64110
ABRAHAM, LEONARD, 7731 Gannon Ave., University City, Mo. 63130
ALBRECHT, ROBERT D., 1130 Meadowgrass Court, Florissant, Mo. 63031
ALLEN, CLARK L., 760 Robinwood Drive, Florissant, Mo. 63033
ALLGEIER, ELMER M., 94 Canterbury Lane, Joplin, Mo. 64801
ANDERSON, WENDELL D., 12407 East 46th Place, Independence, Mo. 64050
ANDREWS, LEWIS P., 917 West 43rd Street, Kansas City, Mo. 64111
ANSET, HERBERT C., 4432 Washington Street, Kansas City, Mo. 64111
ARMSTRONG, HARRIS, 180 South Sappington Road, St. Louis, Mo. 63122
ASBY, BILLY G., 613 Minnesota Ave., Kansas City, Kansas 66101
ATKINS, NORMAN C., 314 West 24 Highway, Independence, Mo. 64050
AVIS, FRANCIS GILMORE, 941 North Taylor Ave., Kirkwood, Mo. 63122
BAKER, JAMES ROBERT, 8300 Madison Ave., Kansas City, Mo. 64114
BALES, RAYMOND E., JR., 4500 East 48th Terrace North, Kansas City, Mo. 64118
BARNES, BRUCE F., Patterson, Mo. 63956
BARNHARDT, CARLYLE, 2203 Harvard, Independence, Mo. 64052
BARTON, WILLIAM CLAYTON, 4711 West 65th Street, Prairie Village, Kansas 66208
BARU, GERALD B., 1016 Baltimore, Kansas City, Mo. 64105
BATHE, FRANK A., JR., 11338 Gardenview Lane, Apt. 4, St. Ann, Mo. 63074
BAUER, HENRY H., 1964 North Signal Hill, Kirkwood, Mo. 63122
BAYERL, EMIL O., 500 Knickerbocker Place, Kansas City, Mo. 64111
BEAR, JOSEPH THOMAS, JR., 4444 Westminster Place, St. Louis, Mo. 63108
BEATTY, HAMILTON, 15128 Terrace Road, East Cleveland, Ohio 44112
BECKER, REX L., 705 Olive Street, St. Louis, Mo. 63111
BEISBARTH, CARL A., 7801 Charing Square Lane, St. Louis, Mo. 63119
BERG, GEORGE EDWARD, 11019 Manchester Road, Kirkwood, Mo. 63122
BERGER, CHARLES T., 329 North Euclid Avenue, St. Louis, Mo. 63108
BERGER, F. A., JR., 1501 Locust Street, St. Louis, Mo. 63103
BERNOUDY, WILLIAM A., 281 North Lindbergh Blvd., St. Louis, Mo. 63141
BERRI, LAURANCE P., 9109 Buxton Drive, Crestwood, Mo. 63126
BEUC, RUDOLPH, JR., 138 West Glendale Road, Webster Groves, Mo. 63119
BEUTTLER, W. LEE, 14th and Nebraska Streets, Sioux City, Iowa 51105
BISCHOF, MILTON J., JR., 256 Chambers Road, St. Louis, Mo. 63137
BLACK, LESLIE A., 9430 Manchester Road, St. Louis, Mo. 63122
BLESSING, ROGER F., JR., 7208 Lowell Ave., Overland Park, Kansas 66204
BLOOM, BERNARD, 400 Washington Ave., St. Louis, Mo. 63102
BOCKHORST, R. W., 900 Bernice, Kirkwood, Mo. 63122
BOND, WILLIAM W., JR., 168 Grove Park Circle, Memphis, Tenn. 38117
BOWER, EDMUND, 3543 Broadway, Kansas City, Mo. 64111
BOWKER, LEON JACK, 1500 Meadowlake Parkway, Kansas City, Mo. 64114
BOYLE, KENNETH R., 7500 West 95th, Overland Park, Kansas 66212
BRADFORD, LEROY D., 3900 South Cryslar, Independence, Mo. 64050
BRADLEY, JOHN WILLIAM, JR., P.O. Box 539, Carbondale, Ill. 62902
BRADY, CHARLES WYNN, 909 Cherry, Columbia, Mo. 65201
BRAECKEL, ROBERT, 1204 Broadway, Joplin, Mo. 64801
BRANSON, UZZELL S., First National Bank Bldg., Blytheville, Ark. 72315
BRENEMAN, RODNEY DALE, 7405 Goddard, Shawnee Mission, Kans. 66203
BREWER, LELAND B., 1010 Pine Street, St. Louis, Mo. 63101
BREY, DAVID M., 306 East 12th Street, Kansas City, Mo. 64106
BROWN, KENNETH O., 426 City Hall, St. Louis, Mo. 63101

BROWN, M. DWIGHT, Ten Main Center, Kansas City, Mo. 64105
 BROWN, WILLIAM S., 400 Park Ave., New York, N.Y. 10022
 BROWNE, BERNARD G., 4929 Holly Street, Kansas City, Mo. 64112
 BRUNNER, OTTO, 2007 Ashland Ave., St. Joseph, Mo. 64506
 BRUNNER, WILLIAM A., 1105 Corby Bldg., St. Joseph, Mo. 64501
 BRYANT, ROBERT E., 1519 West Hines, Midland, Mich. 48640
 BUCHMUELLER, R. P., 412 Tanner, P.O. Box 548, Sikeston, Mo. 63801
 BUCHMUELLER, ROLAND P., 10425 Old Olive Street Rd., St. Louis, Mo.
 63141
 BULLER, DONALD D., 308 Gordon Bldg., Sedalia, Mo. 65301
 BUMGARNER, JIM, 1303 East 61st Street, Kansas City, Mo. 64110
 BURKS, VERNER I., 722 Chestnut, St. Louis, Mo. 63101
 BURNS, RAYMOND R., 55 Highgate Road, St. Louis, Mo. 63132
 BUSCH, ULRICH W., JR., 417 Elm, Washington, Mo. 63090
 BUTLER, EVERETT EUGENE, Empire Bldg., Springfield, Mo. 65806
 BUXELL, IRVIN J., JR., 111 South Meramec, Suite 512, Clayton, Mo. 63105
 BYRD, THOMAS SWAYNE, 508 North Main, Charlestown, Mo. 63834
 CAMPBELL, JOHN A., 9353 Parkside Drive, Brentwood, Mo. 63144
 CAMPBELL, W. EVANS, 737 West Jewel Ave., Kirkwood, Mo. 63122
 CANN, WILLIAM F., 7114 Waterman, University City, Mo. 63130
 CANTOR, MARSHALL S., 10366 Sannois Ave., St. Louis, Mo. 63141
 CAOLO, VITO, 57 Pearl Street, Springfield, Mass. 01105
 CAPPS, FORREST O., JR., 1238 West Dunklin, Jefferson City, Mo. 65101
 CASEY, HAROLD A., 412-415 Holland Bldg., Springfield, Mo. 65806
 CERNIK, JOSEPH A., 111 North Fourth Street, St. Louis, Mo. 63102
 CHAPMAN, TERRY W., 2106 West 75th Street, Shawnee Mission, Kansas
 66208
 CHARLE, EDWIN G., 4975 Bancroft Ave., St. Louis, Mo. 63109
 CHINN, PON Y., 5 Willis Ave., Columbia, Mo. 65201
 CHITTENDEN, DUNCAN R., 1438 Shruder Street, San Francisco, Calif.
 94117
 CHRISTIE, JOSEPH I., 1333 Cheshire Lane, Webster Groves, Mo. 63119
 CICCIO, JOSEPH A., 222 Forbes Road, Braintree, Mass. 02184
 CIUFFA, ANTHONY, 6 Sunview Lane, Creve Coeur, Mo. 63141
 CLARK, DAVE P., 417 West Walnut Street, Columbia, Mo. 65201
 CLARK, EARL D., JR., 5001 Reinhardt Drive, Shawnee Mission, Kans. 66205
 CLEAVINGER, J. KAY, 211 West Reed, Moberly, Mo. 65270
 CONKLIN, RICHARD J., 8909 West 97th Terrace, Overland Park, Kans.
 66212
 CONRAD, WILLIAM M., Suite 610, Hancock Bldg., 800 West 47th St.,
 Kansas City, Mo. 64112
 COOMBS, KENNETH E., 1347 East 109th Terrace, Kansas City, Mo. 64131
 COOPER, CECIL E., 418 Commerce Trust Bldg., Kansas City, Mo. 64106
 CORNWELL, WILLIAM A., 116 1/2 West 4th, Joplin, Mo. 64801
 CORRUBIA, ANGELO G., 28 Balcon Estates, St. Louis, Mo. 63141
 COWLING, ROBERT, 1221 Baltimore, Kansas City, Mo. 64105
 COX, DAVID F., 1002 Meadowridge Drive, Kirkwood, Mo. 63122
 CRAGIN, WILLIAM J., 2211 Country Lane, Columbia, Mo. 65201
 CROOK, FRED, Rte. 2, Box 46, Olympia, Wash. 98501
 CROWLEY, R. JEROME, 5941 Louis Drive, North Olmstead, Ohio 44070
 CULLMANN, ALVIN A., 47 Topton Way, Clayton, Mo. 63105
 CURTIS, CONRAD J., 4324 Main Street, Kansas City, Mo. 64111

CURTIS, NATHANIEL C., JR., 2475 Canal Street, New Orleans, La. 70119
 CUSTER, BETTY LOU, 7440 University Drive, St. Louis, Mo. 63130
 DAHL, GEORGE L., 2101 North St. Paul Street, Dallas, Texas 75201
 DALY, WILLIAM T., 3207 Olive Street, St. Louis, Mo. 63103
 DARROUGH, JAMES THOMAS, 601 East Broadway, Columbia, Mo. 65201
 DAVIDSON, F. E., 1791 Breckenridge Drive, N. E., Atlanta, Ga. 30329
 DAVIS, ARTHUR Q., 2475 Canal Street, New Orleans, La. 70119
 DAVIS, AUBREY R., 2516 West 91st, Leawood, Kans. 66206
 DAW, JOHN LAWRENCE, 912 Baltimore, Kansas City, Mo. 64105
 DEAN, JOHN McHALE, 16 Sussex Drive, St. Louis, Mo. 63144
 DERROUGH, BURNS H., 322-330 East Walnut, Springfield, Mo. 65806
 DE TIENNE, MART E., 8416 Engler Ave., St. Louis, Mo. 63114
 DEWITT, L. V., 505 Bradley Court, Decatur, Ill. 62521
 DI CAMPO, JOSEPH EDWARD, 1050 Ferngate Lane, Creve Couer, Mo.
 63141
 DIECKMANN, EDWARD W. H., 256 Chambers Road, St. Louis, Mo. 63137
 DOHM, DANIEL, JR., 7358 Milan, University City, Mo. 63130
 DOUGLAS, LAWRENCE L., Terminal Warehouse Bldg., South St. Joseph,
 Mo. 64501
 DRAKE, CECIL RAY, 10425 Old Olive Street Road, St. Louis, Mo. 63141
 DREW, GLEN M., 118A East High Street, Jefferson City, Mo. 65101
 DULGEROFF, VIRGIL H., 3902 Franklin Ave., Granite City, Ill. 62042
 DUNCAN, HERBERT E., SR., 717 John Hancock Bldg., 800 West 47th St.,
 Kansas City, Mo. 64112
 DUNCAN, HERBERT EWING, JR., 717 John Hancock Bldg., 800 West 47th
 St., Kansas City, Mo. 64112
 ECKART, RUTH, 502 West Main Street, Collinsville, Ill. 62234
 ECKLES, JULIAN F., 317 North 11th Street, St. Louis, Mo. 63111
 EDWARDS, KEITH, 9713 Baltimore, Kansas City, Mo. 64114
 EDWARDS, RONALD R., 1150 Magnet Drive, Olivette, Mo. 63132
 EGGEN, JOHN A., JR., 428 Westover Road, Kansas City, Mo. 64113
 EILERING, RONALD L., 107 West Washington St., Belleville, Ill. 62220
 ELAM, LINNELL B., 3 Marcel Court, Ferguson, Mo. 63135
 ELDRIDGE, JAMES B., 7520 West 63rd Street, Shawnee Mission, Kans.
 66202
 ELKINGTON, ROBERT, 7916 Kingsbury Ave., St. Louis, Mo. 63105
 ELLIS, GENE DIRK, 1009 Baltimore, Kansas City, Mo. 64105
 ENDERLING, WAYNE, 1301 Trelane, St. Louis, Mo. 63126
 ENGEL, ROBERT W., 510 McDaniel Bldg., Springfield, Mo. 65806
 ERWIN, S. RANDOLPH, 715 South Glenstone, Springfield, Mo. 65802
 ESTERLY, ALBURT C., 510 McDaniel Bldg., Springfield, Mo. 65806
 ETZ, CARL E., 2245 Woodgrass, St. Louis, Mo. 63114
 EVANS, JOHN DESMOND, 1 Seneca Place, Upper Montclair, N.J. 07043
 EVANS, SETH, 1511 Hayselton Drive, Jefferson City, Mo. 65101
 FAIRHURST, DONALD P., 1016 Baltimore, Kansas City, Mo. 64105
 FENNEL, JAMES E., 1612 State Ave., Kansas City, Kans. 66102
 FEUERHAHN, A. H., 1551 Whitener Street, Cape Girardeau, Mo. 63701
 FIELD, WILLIAM A., 329 North Euclid, St. Louis, Mo. 63108
 FIELDS, CLIFFORD R., Box N, Mt. Vernon, Ill. 62864
 FISHER, FRANK HARRISON, 4509 West 78th Street, Prairie Village, Kansas
 66208
 FOLGER, EVANS, 1009 Baltimore Ave., Kansas City, Mo. 64105

FOLTZ, ROBERT E., 1918 East Edison Road, South Bend, Ind. 46617
 FORMAN, W. EMIL, 41 Cornwall Lane, Port Washington, L. I., N.Y. 11050
 FOURNIER, RALPH A., 2249 South Brentwood Blvd., St. Louis, Mo. 63144
 FOUST, BYRON, 28 South Hanover, Cape Girardeau, Mo. 63701
 FRANKLIN, GEORGE W., 2921 West 73rd Street, Prairie Village, Kansas
 66208
 FREEMAN, DONALD L., 10 Fielding Road, St. Louis, Mo. 63124
 FRIEZE, CLARENCE I., JR., 2904 West 73rd Street, Prairie Village,
 Kansas 66208
 FULLER, A. B., JR., 6317 Southwood, Clayton, Mo. 63105
 FULLER, SANTRY C., 2566 North Campbell, Tucson, Ariz. 85719
 FULLERTON, W. B., JR., 15 West 10th Street, Kansas City, Mo. 64106
 GATCHELL, HAROLD E., 8128 Lake Andrita Ave., San Diego, Calif. 92119
 GEIS, LOUIS H., 500 Davidson Bldg., Kansas City, Mo. 64108
 GESELSCHAP, J. C., Des Peres, Mo. 63131
 GIESE, WALTER R., 406 West 109th Street, Kansas City, Mo. 64114
 GILLESPIE, WILES L., 4017 Locust, Kansas City, Mo. 64110
 GINSBERG, MARVIN A., 1431 Willowbrook Cove, St. Louis County, Mo.
 63141
 GLAZE, A. S. 16th and Buchanan, St. Joseph, Mo. 64512
 GODWIN, GROVER, 164 North Meramec Ave., Clayton, Mo. 63105
 GOFF, BRUCE ALONZO, 5110 Main Street, Kansas City, Mo. 64112
 GOLDMAN, AL, 748 Trinity Ave., University City, Mo. 63130
 GOODIN, ROBERT H., 3184 East Sunshine, Springfield, Mo. 65804
 GOODMAN, CHARLES MORTON, 814 18th Street, N.W., Washington, D.C.
 20006
 GORDON, EDWARD FRANCIS, 111 South Bemiston, St. Louis, Mo. 63105
 GORNET, E. DONALD, 91 Bellerive Acres, St. Louis, Mo. 63121
 GRAF, KING, 6346 Waterman, St. Louis, Mo. 63130
 GRANSTEDT, JOHN FREDERICK, 9341 Ensley Lane, Leawood, Kans. 66206
 GRAVES, DEAN W., 5328 West 67th Street, Mission, Kansas 66208
 GRIMALDI, FRANK, 5505 Oak Street, Kansas City, Mo. 64113
 GROMM, RICHARD R., 725 Fieldcrest Drive, Crestwood, Mo. 63126
 GRUENINGER, RAYMOND X., 47 Lynnbrook Road, St. Louis, Mo. 63131
 GUNN, CLAUDE M., 300 Siebers Bldg., 7th & Armstrong, Kansas City,
 Kansas 66101
 GUYTON, FRED F., JR., 7255 Princeton Ave., University City, Mo. 63130
 HAARSTICK, DONALD S., N-212 First National Bank Bldg., St. Paul, Minn.
 HAECKEL, LESTER C., 911 Locust Street, St. Louis, Mo. 63101
 HAFNER, JACK E., 929 South 23rd Street, Quincy, Ill. 62301
 HALL, RALPH COLE, 9240 Clayton Road, St. Louis, Mo. 63117
 HAMMOND, FRED R., 42 Pricewoods, Olivette, Mo. 63132
 HANNER, VERDELL, 21 East Acton Ave., Wood River, Ill. 62095
 HARKNESS, GEORGE, III, 6002 Eitman Ave., St. Louis, Mo. 63139
 HARMS, JOE G., 9640 Clayton Road, St. Louis, Mo. 63124
 HASKEW, WALTER W., P.O. Box 13, Branson, Mo. 65616
 HASTINGS, BRYCE, 1262 Charmwood, Kirkwood, Mo. 63122
 HAWKINS, HAL WOODBRIDGE, 1432 Bedford Road, Springfield, Mo. 65804
 HAYLETT, WARD H., JR., 219 West 68th Street, Kansas City, Mo. 64111
 HECKER, WILLIAM F., 317 North 11th Street, St. Louis, Mo. 63101
 HEIMBERG, RALPH, 4147 Weskan, Bridgeton, Mo. 63044
 HELLMUTH, GEORGE F., 1430 Olive Street, St. Louis, Mo. 63103
 HENMI, RICHARD, 721 Olive Street, St. Louis, Mo. 63101

HERR, JNO. R., 1526 East 19th Street, Tulsa, Okla. 74120
 HERRING, JOHN L., 8920 West 80th Street, Overland Park, Kans. 66204
 HERSCHMANN, RAYMOND C., Terminal Warehouse Bldg., South St. Joseph,
 Mo. 64501
 HEWITT, JOHN M., 607 Westport Road, Kansas City, Mo. 64111
 HILLMAN, VERN E., 715 South Glenstone, Springfield, Mo. 65802
 HIRSCH, O. B., 6236 Waterman Ave., St. Louis, Mo. 63130
 HOENER, THEODORE MANN, 4227 Watson Road, St. Louis, Mo. 63109
 HOFFMANN, JOSEPH G., 8429 Rosalind Court, St. Louis, Mo. 63114
 HOHLT, RALPH R., 11 Rolling Rock Lane, St. Louis, Mo. 63124
 HOHMANN, GEORGE H., JR., 2001 Big Bend Blvd., St. Louis, Mo. 63117
 HOLCOMB, JOE C., 2628 East Crestview, Springfield, Mo. 65804
 HOLLANDER, RONALD L., 1518 Laughlin, St. Louis, Mo. 63130
 HOOD, JACK KENT, 2367 East Broadmoor, Springfield, Mo. 65804
 HORN, FRANK W., 720 W.C.U. Bldg., Quincy, Ill. 62301
 HOWISON, RALPH F., 7800 Garden Ave., St. Louis, Mo. 63119
 HUFFMAN, JOHN A., 5701 Central, Kansas City, Mo. 64113
 HUGHES, EUGENE B., 28 South Main, Webb City, Mo. 64870
 HUNTER, BENJAMIN R., 427 East 55th Street, Kansas City, Mo. 64110
 HURLEY, PAUL JOSEPH, 876 Warwick Lane, Glendale, Mo. 63122
 HYATT, PLEAS E., Box 622, Kennett, Mo. 63857
 IMBS, THOMAS JUSTIN, 225 Delaware Ave., Buffalo, N.Y. 14202
 ITTNER, H. CURTIS, 317 North Eleventh Street, St. Louis, Mo. 63101
 ITTNER, WILLIAM B., 317 North Eleventh Street, St. Louis, Mo. 63101
 JABLONSKY, ARTHUR R., State Bank Bldg., Poplar Bluff, Mo. 63901
 JACKSON, ROBERT W., 911 Main, Room 1700, Kansas City, Mo. 64105
 JAMESON, JOHN E., 8800 Horton, Shawnee Mission, Kansas 66207
 JARCHOW, GORDON C., 9300 Roe Ave., Shawnee Mission, Kansas 66208
 JARVIS, ROBERT B., 7003 Greeley, Bethel, Kansas 66009
 JENKS, ROBERT E., 1426 West 50th Terrace, Kansas City, Mo. 64112
 JOCKENHOEFER, T. J., JR., 117 Helfenstein Ave., St. Louis, Mo. 63119
 JOHANSEN, MAURICE C., 112 South Hanley Road, St. Louis, Mo. 63105
 JOHN, HURST, Box 516, Columbia, Mo. 65201
 JOHNSON, EUGENE F., 400 East McDaniel Street, Springfield, Mo. 65806
 JOHNSON, J. E., 5245 Fairview, St. Louis, Mo. 63139
 JOHNSON, WAYNE D., 815 Woodruff Bldg., Springfield, Mo. 65806
 JOHNSON, WILLIAM HENRY, 2214 Tracy Street, Kansas City, Mo. 64108
 JONES, C. NORMAN, 6464 Cecil Ave., Clayton, Mo. 63105
 JONES, LAWRENCE M., 2201 Red Bridge Terrace, Kansas City, Mo. 64131
 JONES, WALK C., JR., 1215 Poplar Ave., Memphis, Tenn. 38104
 KALASZ, STEPHEN D., 2495 Hartland Ave., Overland, Mo. 63114
 KANE, EDWARD A., Bohm Bldg., Edwardsville, Ill. 62025
 KASSABAUM, GEORGE, 1430 Olive Street, St. Louis, Mo. 63103
 KELETI, PETER, 4310 Gillham Road, Kansas City, Mo. 64110
 KEMP, FRED M., 34 Huntleigh Woods, St. Louis, Mo. 63131
 KESSLER, MELVIN E., 598 Madison Ave., New York, N.Y. 10022
 KING, BOYD E., 3716 West 48th Street, Shawnee Mission, Kansas 66205
 KIVETT, CLARENCE, 1016 Baltimore Ave., Kansas City, Mo. 64105
 KLING, VINCENT G., 1401 Arch Street, Philadelphia, Pa. 19102
 KNOESEL, ERWIN, 187 Baker Ave., Webster Groves, Mo. 63119
 KNOTT, EDWARD E., 2103 Maury Avenue, St. Louis, Mo. 63110
 KOBERLING, JOS. R., 569 South Peoria Ave., Tulsa, Okla. 74120
 KOCH, WILLIAM J., JR., 5107 Rock Creek Lane, Mission, Kansas 66205
 KOELLE, ARTHUR E., 7459 Stratford Ave., University City, Mo. 63130

KOERBER, EDWARD W., 2511 Aspen Street, Philadelphia, Pa. 19130
 KOPPE, ROBERT J., 5001 West 66th Terrace, Prairie Village, Kans. 66208
 KORFF, EDWIN WALTER, 1016 Baltimore Ave., Kansas City, Mo. 64105
 KOSTECKI, LEONARD R., 2530 Yorkshire Drive, Florissant, Mo. 63031
 KRAJCOVIC, PAUL, 6400 Marquette Ave., St. Louis, Mo. 63109
 KRAMER, GERHARDT, 9640 Clayton Road, St. Louis, Mo. 63124
 KRIEGSHAUSER, ARTHUR F., 4705 Hamburg Ave., St. Louis, Mo. 63123
 KROEPEL, KENNETH J., 7608 Horatio Drive, Bel-Nor, Mo. 63121
 KROMM, WALTER B., 112 South Hanley Road, St. Louis, Mo. 63105
 KRUG, HENRY D., JR., 310 Ward Parkway, Kansas City, Mo. 64112
 KUNZ, VICTOR JOSEPH, 6806 Alexander Street, St. Louis, Mo. 63116
 KUPFERBERG, PAUL I., 22 Brighton Way, Clayton, Mo. 63105
 KURZ, FRANK W., JR., 10442 Bellefontaine Road, St. Louis, Mo. 63137
 LAKEY, JACK E., 1016 Baltimore, Kansas City, Mo. 64105
 LANDBERG, KURT EDWARD, 722 Chestnut Street, St. Louis, Mo. 63101
 LANGSTON, PERRY C., 7284 Maryland Ave., University City, Mo. 63130
 LANE, WILLIAM BODLEY, 101 South Harrison Ave., Kirkwood, Mo. 63122
 LAW, BRUCE E., 1103 East 47th Street, Kansas City, Mo. 64110
 LAYTON, EMMET J., 1221 Locust Street, St. Louis, Mo. 63103
 LEE, ROBERT E., 1107 Gilbert Ave., St. Louis, Mo. 63119
 LEE, WILLIAM E., JR., 7917 Bennett Ave., St. Louis, Mo. 63117
 LEHMAN, DONALD W., 7487 Kingsbury, University City, Mo. 63130
 LE PIQUE, HARRY C., 4005 West Florissant Ave., St. Louis, Mo. 63107
 LESLIE, FRANK R., 2 Westerly Lane, St. Louis, Mo. 63124
 LE VEQUE, STANLEY, 435 Ward Parkway, Kansas City, Mo. 64112
 LEVY, MORRIS L., 901 600 Bldg., Corpus Christi, Tex. 78401
 LIBRACH, SIDNEY, 35 Rio Vista, St. Louis, Mo. 63124
 LICKHALTER, MERLIN E., 10425 Old Olive Street Road, St. Louis, Mo.
 63141
 LIGHTFOOT, L. E., 753 South Ohio, Salina, Kansas 67401
 LINSKOTT, M. H., 310 Ward Parkway, Kansas City, Mo. 64112
 LINSKOTT, WILLIAM M., 65510 Overbrook, Shawnee Mission, Kans. 66208
 LINVILLE, WALTER N., 310 Ward Parkway, Kansas City, Mo. 64112
 LONG, HAROLD W., 2520 Maria Louise Lane, Cape Girardeau, Mo. 63701
 LOOMSTEIN, MEYER, 9130 Ladue Road, Ladue, Mo. 63124
 LORENZ, CHARLES W., 6611 Clayton Road, St. Louis, Mo. 63117
 McARTHUR, FRANK P., 3008 West 71st, Prairie Village, Kansas 66208
 McCALL, KENNETH A., 1200 West 39th Street, Kansas City, Mo. 64111
 McCALLUM, ANGUS, 1001 West 61st Street, Kansas City, Mo. 64113
 McCARTY, WAITMAN B., 919 Brownell Ave., Glendale, Mo. 63122
 McELWEE, IVAN L., 1910 Empire, Joplin, Mo. 64801
 McGLASHON, ROBERT J., 702 Commerce Tower, Kansas City, Mo. 64105
 McKIBBIN, LOGAN O., 7807 Gregory Blvd., Kansas City, Mo. 64133
 McMULLEN, MAURICE D., 7302 Edgewood Blvd., Shawnee Mission, Kansas
 66203
 McNEILL, FRED S., 12 Babler Lane, Ladue, Mo. 64758
 MAACK, ALBERT C., 705 Olive Street, St. Louis, Mo. 63101
 MACKEY, EUGENE J., JR., 6124 Enright, St. Louis, Mo. 64112
 MAGUOLO, GEORGE, 4908 Delmar Blvd., St. Louis, Mo. 63108
 MAHN, CHARLES H., JR., 253 Horseshoe Drive, Kirkwood, Mo. 63122
 MAJERS, ALFRED, 794 Arcade Bldg., St. Louis, Mo. 63101
 MAJOR, ROBERT FRANCIS, 3628 Wyoming, Kansas City, Mo. 64111

MALIN, LOUIS, 7857 Madison Drive, St. Louis, Mo. 63133
 MANGER, F. H., 911 North Roxbury Drive, Beverly Hills, Calif. 90212
 MANTEL, JAMES E., 8403 Cherokee Lane, Leawood, Kans. 66206
 MARCOUX, JOSEPH V., 6528 Montrose Street, Alexandria, Va. 22312
 MARITZ, RAYMOND E., 4 Fielding Road, Ladue, Mo. 64758
 MARITZ, RAYMOND E., JR., 1113 Chemical Bldg., St. Louis, Mo. 63101
 MARRA, JAMES, 8600 Summit, Kansas City, Mo. 64114
 MARSHALL, JAMES D., 10 Main Center, Kansas City, Mo. 64105
 MARSHALL, ROBERT W., 1716 Sagamont Ave., Springfield, Mo. 65804
 MARTIN, ALBERT C., JR., 1900 Union Bank Sq., 445 S. Figueroa Ave.,
 Los Angeles, Calif. 90017
 MARTIN, CARL WILLIAM, 6824 Etzel Ave., St. Louis, Mo. 63130
 MARTIN, JOHN W., 909 Country Club Drive, Hannibal, Mo. 63401
 MARTIN, OKIE R., 3294 Poplar Ave., Memphis, Tenn. 38111
 MASLAN, LEON, 1215 West 76th Street, Kansas City, Mo. 64114
 MATHEWS, ROBERT M., 4305 West 62nd Street, Shawnee Mission, Kansas
 66205
 MATTHEWS, JAMES W., 715 South Glenstone, Springfield, Mo. 65802
 MEALING, E. THORPE, Box 729, St. Joseph, Mo. 64502
 MERLOTTI, MARIO LOUIS, 3721 Regal Place, St. Louis, Mo. 63109
 MEYER, DONALD R., 718 W.C.U. Bldg., Quincy, Ill. 62301
 MEYN, RAYMOND EVERETT, 1612 State Ave., Kansas City, Kans. 66102
 MIHNOS, JOHN, 525 East 82nd Street, New York, N.Y. 10028
 MILLER, JOHN D., 4840 West 75th, Prairie Village, Kansas 66208
 MILLOT, THOMAS S., 215 Wildbrier Drive, Ballwin, Mo. 63011
 MILLS, L. GEORGE, S-29 Lake Lotawana, Lee's Summit, Mo. 64063
 MILLS, WILLIAM H., JR., 110 Elm, St. Louis, Mo. 63122
 MISCHLICH, JOHN H., 4029 North Cleveland, Kansas City, Mo. 64117
 MITCHELL, RALPH M., Box 173, Kansas City, Mo. 64141
 MITCHEM, LEROY E., 1024 Coffey Court, St. Louis, Mo. 63126
 MOFFITT, MARTIN T., 5101 Walmer, Mission, Kansas 66202
 MONROE, JOHN C., JR., Box 8334, Kansas City, Mo. 64105
 MONTGOMERY, ROGER, 2714 Woolsey Street, Berkeley, Calif. 94705
 MORESI, JOSEPH, 11844 Eddie & Park, St. Louis, Mo. 63126
 MORGAN, DANE D., 314 North Fourth Street, Burlington, Iowa 52601
 MORRIS, MANUEL, 4534 Wornall, Kansas City, Mo. 64111
 MURPHY, EDWARD R., 5042A Winona, St. Louis, Mo. 63109
 MURPHY, JOHN T., 968 West 32nd Street, Kansas City, Mo. 64111
 MURPHY, JOSEPH D., 6124 Enright, St. Louis, Mo. 63112
 MURPHY, ROBERT L., 316 Fillmore Lane, Kirkwood, Mo. 63122
 MYERS, RALPH E., 1016 Baltimore, Kansas City, Mo. 64105
 MYRES, PERSHING H., 266 Geremma Drive, Ballwin, Mo. 63011
 NAGEL, CHARLES, National Portrait Gallery, Smithsonian Inst., Wash-
 ington, D.C. 20560
 NAGEL, FRANK W., 4838 E. Waverly Street, Tucson, Ariz. 85716
 NELSON, DALE A., 5109 Cambridge, Kansas City, Mo. 64129
 NETSCH, WALTER A., JR., 30 W. Monroe Street, Chicago, Ill. 60603
 NEUMANN, ROY C., Stanley Bldg., Muscatine, Iowa 52761
 NEUSITZ, HAROLD W., JR., 1100 Timberlane Drive, Warson Woods, Mo.
 63122
 NEUWIRTH, A. G., 1006 Forder Road, St. Louis, Mo. 63129
 NEVILLE, HOMER F., 25 East 12th Street, Suite 1105, Kansas City, Mo.
 64106

NEWELL, ROBERT E., 8016 Barkley, Overland Park, Kansas 66204
 NICHOLS, RICHARD L., 1461 South Jefferson, Springfield, Mo. 65804
 NICOLOFF, KARL, 7027 Stanley Avenue, St. Louis, Mo. 63143
 NIEHAUS, WALTER L., 2039 Jenner Lane, St. Louis, Mo. 63138
 NORTON, M. GENE, 1016 Baltimore, Suite 700, Kansas City, Mo. 64105
 NOVAK, CHARLES, JR., 107 Huntleigh Drive, Kirkwood, Mo. 63122
 OBATA, GYO, 1430 Olive Street, St. Louis, Mo. 63103
 OBERLECHNER, RALPH F., 6225 Brookside, Kansas City, Mo. 64113
 OLSEN, JACK E., 522 North 43rd Street, Belleville, Ill. 62223
 O'NEIL, EUGENE CAROLL, 6510 Sunset Terrace, Des Moines, Iowa 50311
 OSHIVER, JOSEPH J., 7401 Terrace, Kansas City, Mo. 64114
 OSWALD, ROBERT C., Mosley Lane, Creve Coeur, Mo. 63141
 PALLARDY, ROY J., P.O. Box 52, Jefferson City, Mo. 65101
 PAOLINELLI, FRED, 6246 Northwood Avenue, St. Louis, Mo. 63105
 PAPIN, LAWRENCE E., 11864 Doverhill Court, St. Louis, Mo. 63128
 PARDUE, ROBERT B., JR., 1601 Singleton, Wichita Falls, Texas 76302
 PARHAM, R. AUSTIN, 2545 Tyrell Drive, St. Louis, Mo. 63136
 PATTERSON, RICHARD I., 116 1/2 West Fourth Street, Joplin, Mo. 64801
 PAULUS, JOHN D., JR., State Capitol Bldg., Jefferson City, Mo. 65101
 PAYNE, ARTHUR F., 657 East Essex Avenue, Kirkwood, Mo. 63122
 PEACE, EVERETT E., JR., 7511 Mohawk Drive, Shawnee Mission, Kansas
 66208
 PEARCE, DAVID W., 812 Olive Street, Room 1736, St. Louis, Mo. 63101
 PEARCE, ROBERT L., 812 Olive Street, Room 1736, St. Louis, Mo. 63101
 PEARSON, ARTHUR E., JR., 1009 Baltimore, Kansas City, Mo. 64105
 PENHALL, THEODORE I., P.O. Box 92, Huntsville, Ala. 35804
 PETER, NORMAN ANTHONY, 718 W.C.U. Bldg., Quincy, Ill. 62301
 PETERS, JEROME SAMUEL, 2025 S. Brentwood Blvd., St. Louis, Mo. 63144
 PICKER, KENNETH J., 309 Wildbrier Drive, Ballwin, Mo. 63011
 PISTRUI, WILLIAM M., 7710 Carondelet Avenue, Clayton, Mo. 63105
 PLATT, SIDNEY S., 630 North Stratford, Wichita, Kansas 67206
 POOR, ALFRED EASTON, 277 Park Avenue, New York, N.Y. 10017
 PORTERFIELD, HAROLD, 733 Poplar, Poplar Bluff, Mo. 63901
 POTTER, M. E., Route 4, Carthage, Mo. 64836
 PRAINITO, BERNARD, 1772 Lucille Court, Elmont, N.Y. 11003
 PRICE, SAM, 4638 J. C. Nichols Parkway, Kansas City, Mo. 64112
 PUTNEY, DON S., 106 Acklen Park Drive, Nashville, Tenn. 37203
 RADOTINSKY, JOS. W., 1401 Fairfax Trafficway, Kansas City, Kans. 66115
 RANDALL, J. PARKE, 5350 Cheviot Place at Chatham, Indianapolis, Ind.
 46226
 RATHERT, ARTHUR B., 10015 Elise Drive, St. Louis, Mo. 63123
 REYBURN, NEAL O., 1525 West 7th Street, Sedalia, Mo. 65301
 RICH, PAUL F., 2033 South Kings, Springfield, Mo. 65804
 RIGBY, EDWARD W., 4754 Black Swan Drive, Shawnee, Kansas 66216
 RIKIMARU, YUKI, 112 South Hanley Road, St. Louis, Mo. 63105
 RILEY, ROBERT L., 5603 W. 75th Terrace, Prairie Village, Kansas 66208
 ROARK, I. L., JR., 5017 W. 66th Terrace, Mission, Kansas 66208
 ROBISON, E. M., 418 Commerce Trust Bldg., Kansas City, Mo. 64106
 ROBSON, EDWARD J., 522 Flanders Drive, St. Louis, Mo. 63122
 ROEMER, CHESTER E., 244 Oakwood Avenue, Webster Groves, Mo. 63119
 ROSSETTI, L., 1000 Marquette Bldg., Detroit, Mich. 48226
 ROTH, LESTER O., 16 Parkland Avenue, St. Louis, Mo. 63122

ROTTY, A. J., 1933 East Elm Street, Tucson, Ariz. 85719
 ROYAL, WILLIAM H., 7337 St. Lawrence, Chicago, Ill. 60619
 ROYER, ROBERT W., 607 Westport Road, Kansas City, Mo. 64111
 RUOFF, WILLIAM J., 10425 Old Olive Street Road, St. Louis, Mo. 63141
 SALISBURY, JOHN L., 3911 Homestead Drive, Prairie Village, Kans. 66215
 SALKOWITZ, ABRAHAM H., 151 Westwood Circle, Roslyn Heights, N.Y.
 11577
 SAMMONS, BURL R., R.F.D. 3, Sedalia, Mo. 65301
 SANDFORD, DAN R., JR., 800 Westport Road, Kansas City, Mo. 64111
 SANDFORD, MAXWELL T., 800 Westport Road, Kansas City, Mo. 64111
 SANNER, SAMUEL E., 1662a Washington Avenue, Alton, Ill. 62005
 SARMIENTO, W. A., 7701 Forsyth Blvd., Suite 946, St. Louis, Mo. 63105
 SAUNDERS, PAUL J., 3232 State Street, East St. Louis, Ill. 62205
 SCHARHAG, HERMAN A., 2 West Englewood Road, North Kansas City, Mo.
 64118
 SCHMIDT, ERWIN CARL, 9430 Manchester Road, St. Louis, Mo. 63119
 SCHMIDT, KARL W., Elijah, Mo. 65642
 SCHMIDT, SYL G., 19 Fox Meadows, Sappington, Mo. 63127
 SCHNEIDER, RICHARD P., 1000 Wappapello, St. Louis, Mo. 63141
 SCHWARZ, ARTHUR F., JR., 1620 Chemical Bldg., St. Louis, Mo. 63101
 SEE, JOHN J., 6039 Walnut, Kansas City, Mo. 64113
 SELIGSON, THEODORE H., 3800 Baltimore, Kansas City, Mo. 64111
 SERON, LEVON, 510 Jersey Avenue, Joliet, Ill. 60435
 SHAKOFSKY, SOL PHILIP, 10 Warson Hills, St. Louis, Mo. 63124
 SHAPIRO, BENJAMIN, 550 South Brentwood Blvd., St. Louis, Mo. 63105
 SHARP, MARK S., 25 East 12th Street, Kansas City, Mo. 64106
 SHAUGHNESSY, JOSEPH B., JR., 5746 Harrison, Kansas City, Mo. 64110
 SHAVER, JOHN ALDEN, 205 1/2 South Santa Fe, Salina, Kansas 67401
 SHELLEY, J. RICHARD, 4311 E. Seventh Street, Long Beach, Calif. 90804
 SHELTON, J. M., 96 Poplar Street, N. W., Atlanta, Ga. 30303
 SHEPHERD, C. STEWART, 739 Hillside, Liberty, Mo. 64068
 SIBERZ, LEWIS, 1920 Monroe Street, Madison, Wisc. 53711
 SIMON, W. H., 25 East 12th Street, Kansas City, Mo. 64106
 SINGER, C. C., 301 North Sappington Road, Glendale, Mo. 63122
 SIXTA, ROBERT E., 9619 State, Edwardsville, Kansas 66022
 SKLAR, ETHEL, P.O. Box 173, Kansas City, Mo. 64141
 SKOGLUND, A. FREDRIK, Monsanto Chem. Co., 800 N. Lindbergh Blvd.,
 St. Louis, Mo. 63166
 SKUBIC, LEROY F., 53 West Jackson Blvd., Chicago, Ill. 60604
 SKUBIZ, RAYMOND E., 5436 Lindenwood Avenue, St. Louis, Mo. 63109
 SLABY, HENRY R., 2750 North Teutonia Avenue, Milwaukee, Wisc. 53206
 SLEZAK, FRANK R., 827 Valentine Road, Kansas City, Mo. 64111
 SMITH, JAMES R., 310 Ward Parkway, Kansas City, Mo. 64112
 SMITH, KENT POLLARD, 1026 East Delmar, Springfield, Mo. 65804
 SMITH, LAWRENCE F., 3900 South Crysler, Independence, Mo. 64050
 SMITH, LAWRENCE H., 6432 Colver Avenue, Affton, Mo. 63123
 SMITH, PORTER JACKSON, 516 North Shore Drive, Kansas City, Mo. 64152
 SMITH, WILLARD GREGG, 3005 West 90th Street, Leawood, Kansas 66206
 SNIPES, ALFRED H., 840 Vine Street, Poplar Bluff, Mo. 63901
 SOMMERICH, CHESTER D., 8135 Forsyth, Clayton, Mo. 63105
 SOUTHLAND, BEN H., 6330 San Vincente Blvd., Los Angeles, Calif. 90048
 SPELLMAN, LAWRENCE E., 11715 Administration Drive, Westport Business Campus, St. Louis County, Mo. 63141

SPOTSWOOD, LELAND E., 147 Powell Avenue, Ferguson, Mo. 63135
 STAGMAN, NATHAN, 53 West Jackson Blvd., Chicago, Ill. 60604
 STAHL, RICHARD P., 614 South Avenue, Springfield, Mo. 65806
 STAHL, RICHARD, II, 1665 East Delmar, Springfield, Mo. 65804
 STANDISH, JOSEPH D., 12474 S. 40 Drive, St. Louis, Mo. 63141
 STANLEY, THOMAS E., II. P.O. Box 1554, 3505 Turtle Creek Blvd.,
 Dallas, Texas 75221
 STAUDER, ARTHUR E., 3608 South Grand Blvd., St. Louis, Mo. 63118
 STERNBERG, FREDERICK C., 25 Narragansett Drive, St. Louis, Mo. 63124
 STIFF, ROY L., 2130 Oak Drive, St. Louis, Mo. 63131
 STINSON, NOLAN L., JR., 8 The Knolls, Creve Couer, Mo. 63141
 STOBBE, MANFRED G., 241 Pine Tree Lane, Ballwin, Mo. 63011
 STOKES, RUSSELL T., JR., 733 Jewell Avenue, Kirkwood, Mo. 63122
 STOYANOFF, DIMITER, 7540 Carondelet, Clayton, Mo. 63105
 STRINGER, KIRBY, 1833 Primrose Avenue, Nashville, Tenn. 37212
 STUCK, ELMER A., 215 Wilkins, Jonesboro, Ark. 72401
 SUCHE, WARREN B., 9228 Lavant Drive, Crestwood, Mo. 63126
 SUMNER, GUY L., 310 Ward Parkway, Kansas City, Mo. 63112
 SWEENEY, JOHN D., 857 Diversey Drive, St. Louis, Mo. 63126
 TAYLOR, JAMES E., 801 West 114th Terrace, Kansas City, Mo. 64114
 TERNEY, JAMES F., John Hancock Bldg., Kansas City, Mo. 64112
 THEBY, JAMES ROBERT, 4912 Brockwood Drive, St. Louis, Mo. 63128
 THIAS, EDWARD J., 1004 Market Street, St. Louis, Mo. 63101
 THOMPSON, JOHN A., 14 Lomond Court, Ferguson, Mo. 63135
 TISDALE, ROBERT E., 705 Chestnut Street, St. Louis, Mo. 63101
 TOGNASCIOLI, HERSCHEL JOHN, 2008 Shady Lane Drive, Kansas City,
 Mo. 64118
 TOOLE, HOWARD WILSON, 9 Springbrook Place, Webster Groves, Mo.
 63119
 TORNO, LAURENT JEAN, JR., 7141 Waterman Avenue, University City,
 Mo. 63130
 VALK, DONALD N., 325 Grand Avenue, Maryville, Mo. 64468
 VAN PRAAG, JAMES N., 9820 Clayton Road, St. Louis, Mo. 63124
 VARWIG, HARRY J., 3634 Varwig Lane, Bridgeton, Mo. 63044
 VILLACIS, GUILLERMO, 143 Slocum, Webster Groves, Mo. 63119
 VOGT, ALVIN A., 1710 Ambassador Bldg., St. Louis, Mo. 63101
 VOSKAMP, E. B., 2525 Gillham Road, Kansas City, Mo. 64118
 VOSKAMP, RAYMOND L., 18 East Eleventh Street, Kansas City, Mo. 64106
 VASKAMP, RAYMOND L., JR., 18 East Eleventh Street, Kansas City, Mo.
 64106
 WAHLMANN, H. R., 1002 West Adams, Kirkwood, Mo. 63122
 WAKEFIELD, RICHARD N., 8127 Wornall Road, Kansas City, Mo. 64114
 WALTERS, WILLARD J., Box 533, Pacific Palisades, Calif. 90272
 WARD, R. E., 203 Gregory, Normal, Ill. 61761
 WATERS, EDWIN CAREY, 322-28 East Walnut, Springfield, Mo. 65806
 WATSON, CLARENCE F., 1200 West 39th, Kansas City, Mo. 64111
 WAXELMAN, HERBERT J., 6432 Morningside Drive, Kansas City, Mo.
 64113
 WEDEMEYER, WESLEY W., 111 North 4th Street, St. Louis, Mo. 63102
 WEISENSTEIN, LYMAN, 3201 West Main Street, Belleville, Ill. 62220
 WEISERT, WILSON G., 374 Halcyon Drive, Glendale, Mo. 63122
 WELLS, WILLIS L., 433 Edgewood Drive, Clayton, Mo. 63105
 WERNER, GEORGE W., 5236 McCausland Avenue, St. Louis, Mo. 63109

WESTVOLD, ROBERT G., 4406 West 77th Place, Shawnee Mission, Kans.
66208
 WILLIAMS, HOMER LEE, P.O. Box 588, Hospital Hill, Smithville, Mo. 64089
 WILSON, DONALD FRANCIS, JR., 111 South Bemiston Ave., St. Louis, Mo.
63105
 WILSON, DONALD G., 621 East 66th Street, Kansas City, Mo. 64131
 WILSON, DONALD PORTER, 885 Glen Elm Drive, St. Louis, Mo. 63122
 WILSON, EARL R., 2500 Freeman Avenue, Kansas City, Kansas 66102
 WILSON, WILLIAM HAROLD, 7500 West 95th, Overland Park, Kans. 66212
 WIMMER, EDWARD JOHN, 917 West 43rd Street, Kansas City, Mo. 64111
 WINKLER, GEORGE A., 7 North Brentwood, Clayton, Mo. 63105
 WISCHMEYER, KENNETH E., 317 North 11th Street, St. Louis, Mo. 63101
 WOODHOUSE, URBAN U., 14430 Michigan Avenue, Dearborn, Mich. 48126
 WOOLLEY, HERBERT M., 7540 Walnut Street, Kansas City, Mo. 64114
 WORD, WILLIAM BAKER, 10017 Echoridge Lane, St. Louis, Mo. 63123
 WURST, WILBUR W., 4699 Salem Avenue, Dayton, Ohio 45416
 YANDA, ALBERT J., 1009 Baltimore, Kansas City, Mo. 64105
 ZACHRY, JAMES R., 607 Westport Road, Kansas City, Mo. 64111
 ZAY, JOSEPH, 3 Acordi Drive, Caseyville, Ill. 62232
 ZELSMAN, EARLE PHILLIP, 5106 Westminster Place, St. Louis, Mo. 63108

LIFE MEMBERS

ABRAHAMS, NAT, 8030 Delmar, St. Louis, Mo. 63130
 BOHLEN, AUGUST C., 1308 N. Meridian, Indianapolis, Ind. 46202
 BOVARD, WILLIAM R., 3614 Wyoming, Kansas City, Mo. 64111
 BRINKMAN, THEO. C., 7701 Kenridge Lane, Shrewsbury, Mo. 63119
 BROSTROM, ERNEST O., 1604 Terry Drive, Bridgeville, Pa. 15017
 BRYAN, JOHN A., 21 Benton Place, St. Louis, Mo. 63104
 CAMPEN, CARL, 7399 Bedford Ave., University City, Mo. 63130
 CHAFFEE, ROY O., 6107 Westminster Place, St. Louis, Mo. 63112
 DOLL, PAUL N., 210 Monroe Street, Jefferson City, Mo. 65101
 DUNBAR, IRWIN, 815 E. Illinois St., Kirksville, Mo. 63501
 ELLIOTT, B. C., 100a S. Jefferson St., Mexico, Mo. 65265
 EVERITT, ROBERT S., 2305 Commerce Tower, Kansas City, Mo. 64106
 FAIRBROTHER, FREDERIC A., New Center Bldg., Detroit, Mich. 48202
 FARRAR, BENEDICT, 794 Arcade Bldg., St. Louis, Mo. 63101
 FRANK, C. MELVIN, 1650 W. Fifth Ave., Columbus, Ohio 43212
 FRITON, ERNEST T., 3308 Russell, St. Louis, Mo. 63104
 GENTRY, ALONZO H., 750 W. 47th St., Kansas City, Mo. 64112
 GILBERT, HARRY R., 1821 Dougherty Ferry Road, Kirkwood, Mo. 63122
 GOEDDE, ALBERT M., 100 Signal Hill Blvd., East St. Louis, Ill. 62203
 GRIMM, HENRY C., 501 Settle Ave., Ferguson, Mo. 63121
 HILL, LAWRENCE, 104 Aronimink Drive, Newark, Del. 19711
 HOENER, P. JOHN, 4227 Watson Road, St. Louis, Mo. 63109
 JOHNSON, WILL W., 1329 S. Clay Ave., Springfield, Mo. 65804
 KEENE, ARTHUR S., 911 Main St., Kansas City, Mo. 64105
 KENNEY, STEPHEN C., 7119 Lydia Ave., Kansas City, Mo. 64131
 KERBER, EUGENE V., 2842 Hampton Ave., St. Louis, Mo. 63139
 KLINGENSMITH, PAUL, 4232 West Pine, St. Louis, Mo. 63144
 KOENIG, C. A., 8936 Laclede Station Road, St. Louis, Mo. 63143

KRIEHN, ARTHUR, 5435 Pawnee, Shawnee Mission, Kans. 66208
LANTZ, EDWARD, Country Club Drive, R.R. 3, Waterloo, Ill. 62298
LAUCK, J. F., 6225 Brookside Blvd., Kansas City, Mo. 64113
LYNCH, HAL, 304 N. Central, Clayton, Mo. 63105
McINTYRE, GEO. E., 1550 Lexington Court, Kansas City, Mo. 64124
MACK, CLYDE F., 2959 Nurick Drive, Chattanooga, Tenn. 37415
MACKIE, DAVID, Lodge on the Desert, 306 N. Alveron Way, Tucson,
Ariz. 85711
MANSKE, W. P., 256 Chambers Road, St. Louis, Mo. 63137
MARTINIE, TRUEMAN E., 916 N. Jackson, Joplin, Mo. 64801
MEIER, EUGENE R., 1303 S. 91st Ave., Omaha, Nebr. 68124
MILLER, WARREN D., 604 Tribune Bldg., Terre Haute, Ind. 47802
MUELLER, VINCENT G., 915 Newport, Webster Groves, Mo. 63119
MURPHY, CHARLES F., 224 South Michigan Avenue, Chicago, Ill. 60604
NAESS, S. E., 1300 Gulf Shore Blvd., Naples, Fla. 33940
OSBURG, ALBERT, 5938 Keith Place, St. Louis, Mo. 63109
PAULUS, EUGENE H., 1717 Veronica Ave., St. Louis, Mo. 63115
PETERS, NELLE E., 3935 Clark St., Kansas City, Mo. 64111
PIACENTINI, V., 9005 Sherland, Overland, Mo. 63114
RAMSAY, PERCY E., Gatesworth Manor, St. Louis, Mo. 63108
SANDFORD, DAN R., 800 Westport Road, Kansas City, Mo. 64111
SAUM, FRANK J., 2121 S. Grand Blvd., St. Louis, Mo. 63114
SCAMELL, RALPH E., 6812 Floyd Ave., Overland Park, Kansas 66204
SHAW, ALFRED, 910 Lake Shore Drive, Chicago, Ill. 60611
SIEBEN, S. H., 6436 Morningside Drive, Kansas City, Mo. 64113
STIEGEMEYER, O. W., 3 Sheraton Drive, St. Louis, Mo. 63124
SUTTERFIELD, JOHN A., 12 Hickory Hills Drive, Dexter, Mo. 63841
SUTTERFIELD, J. L., Grubville, Mo. 63041
TARLING, JULIUS E., 7701 Shirley Dr., St. Louis, Mo. 63105
THYE, CARL J., Port Republic, Md. 20676
TRASK, FRANK E., 305 Board of Trade Bldg., Kansas City, Mo. 64106
UNDERHILL, LYLE W., 6172 Sni-A-Bar Road, Kansas City, Mo. 64129
VALENTI, PAUL, 7837 Utica Dr., St. Louis, Mo. 63133
WELCH, AUSTIN H., 1507 Bass Ave., Columbia, Mo. 65201
WETZEL, JOHN, 3646A Bates Street, St. Louis, Mo. 63116
WILLIAMSON, THOMAS W., 1935 Collins Ave., Topeka, Kans. 66604

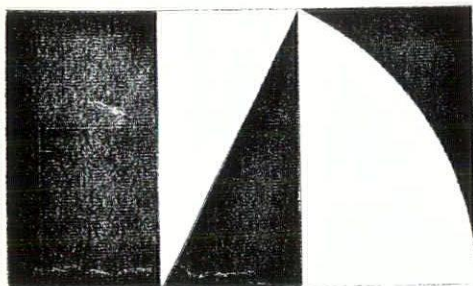
AFFILIATE MEMBERS

LEIBOLD, RODNEY, 1541 East 50th St., Kansas City, Mo. 64110
SWEARINGIN, LARRY W., 6421 Wornall Terrace, Kansas City, Mo. 64113

APPA plans design awards

National competition will recognize esthetic achievements in facilities

By CATHY FRIEDMAN, *contributing editor*, PUBLIC POWER



ESTHETIC EXCELLENCE in electric utility facilities will be recognized in a biennial Awards Program for Utility Design sponsored by the American Public Power Association.

Stimulation of esthetic consideration in project design and recognition of design excellence in projects of APPA member systems are objectives of the awards program approved by the Association's Board of Directors and announced last month. First biennial awards in the national competition will be presented in May, 1969, at the APPA annual Conference in Washington, D. C. The initial awards will honor projects completed before Jan. 1, 1968.

Awards will be made in six categories: electric utility buildings; generating stations; substations; transmission structures and lines; distribution structures and lines; and other electric utility property. Three awards based on the costs of the projects will be made for buildings, generating stations, substations and distribution structures and lines. Three awards

based on voltage will be made for transmission structures and lines.

The APPA Awards Program for Utility Design was developed with the cooperation of professional groups representing architects, city planners, landscape architects and civil engineers. Participating groups will be represented on the awards jury. They are: The American Institute of Architects, the American Institute of Planners, the American Society of Landscape Architects, and the American Society of Civil Engineers.

Factors to be considered by the awards jury will include: community benefits of the project; compatibility of the project with its environment and city planning; adaptation of design to mechanical and electrical equipment; architectural excellence of design; landscape development; fulfillment of the functional purpose of the project; economics of the design solution; and originality of approach.

Plans for the APPA Awards Program for Utility Design already have won wide praise. Secretary of Housing and Urban Development Robert C. Weaver declared, "Programs such as this can contribute significantly to public awareness of the importance of design in all efforts to improve the quality of the environment"

Executive director William H. Scheick of The American Institute of Architects said that the APPA program "is being launched at a propitious moment" and promises "to help meet a public need for

environmental order and quality"

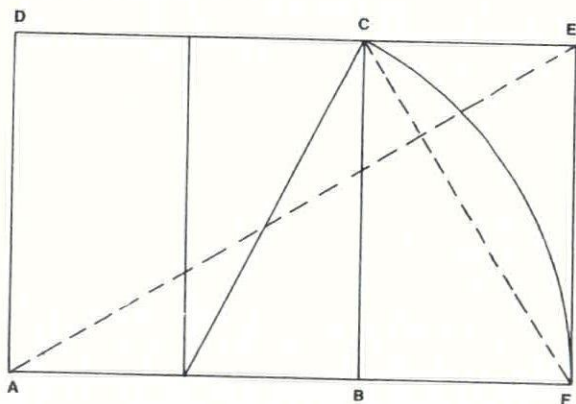
"We think the project has tremendous merit," commented Alfred B. LaGasse, executive director of the American Society of Landscape Architects. "It is encouraging to see that the American Public Power Association is interested in promoting esthetics in utility design. We congratulate you and want to do everything we can to assist you."

Robert L. Williams, executive director of the American Institute of Planners, said, "The recently announced biennial Awards Program for Utility Design by the American Public Power Association is another excellent example of the Association's concern for the public interest. The American Institute of Planners fully supports the objectives and the esthetic emphasis the APPA has given their new program.

"The general national image of utility structures and grounds needs improvement," Mr. Williams continued. "Good design has impact and the APPA program recognizes this fact. Facilities located near the approaches to cities are particularly susceptible to the general public's critical eye.

"In the future we know that urban growth will require equivalent growth in utility structures and that much of this expansion will occur in built up or developing areas. Sensitivity to proper location and to architectural and site planning features will become increasingly important in the industry," Mr. Williams predicted. ■

Reprinted from PUBLIC POWER May, 1968

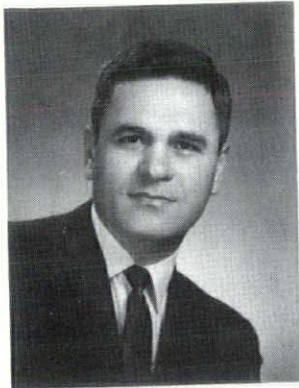


Symbolizing the APPA Awards Program for Utility Design is the Golden Section Rectangle, depicted above. This form, with the ratio 1:618 to 1, was discovered by the ancient Greeks. Plato called the ratio "the section." It was later called "divina proportione" by the 15th century mathematician Luca Pacioli and the "divine section" by German astronomer Johannes Kepler.

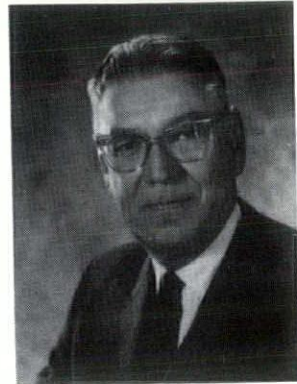
The Golden Section Rectangle is the only rectangle in which the

diagonal of the reciprocal, a rectangular similar in shape but smaller in size than the major rectangle, joins the corner of the square. A side of the major rectangle is a side of the reciprocal, and the diagonal of the reciprocal intersects the diagonal of the major shape at right angles. In the diagram, the area ADEF is the major rectangle, ABCD is the square, and BCEF is the reciprocal.

Bower, Grimaldi Firm Announced



Frank Grimaldi



Edmund L. Bower

The establishment of the firm of Bower and Grimaldi, Architects, successors to Shaughnessy, Bower & Grimaldi, was announced recently following the retirement of Joseph B. Shaughnessy, Sr.

The partners in the new firm are Edmund L. Bower and Frank Grimaldi and the offices remain at 3543 Broadway, Kansas City, Missouri.

The original firm was established by Mr. Shaughnessy in 1926. He was joined in 1942 by Mr. Bower who had established himself in the architectural profession in St. Joseph, Missouri, serving his apprenticeship in the office of Walter Boshen, a

disciple of the Beaux Arts School who engaged in a wide practice throughout the state of Missouri.

In 1947, Mr. Grimaldi came to the firm, after receiving his degree in architecture from the University of Notre Dame.

Mr. Bower and Mr. Grimaldi have been active in affairs of the architectural profession during the past twenty years serving a wide variety of positions in the Kansas City Chapter of the American Institute of Architects. Since 1965, Mr. Grimaldi has served as a member of the Missouri State Board of Registration for Architects and Engineers.

ORDER FORM FOR EXTRA COPIES OF RECOMMENDED MINIMUM FEE SCHEDULE

Send me copies of "Recommended Compensation for Architectural Services @ 50 cents per copy.

Check enclosed in the amount of \$.....

Bill Me.....

.....
Name

.....
Address

Mail to Wendell Locke, Executive Director MARA, P.O. Box 401, Jefferson City, Missouri 65101.



Ed Thias, 1969 Chairman, Announces Plans for Architect's Day

The Annual Meeting of the Missouri Association of Registered Architects will be held at the Stouffer's Riverfront Inn in St. Louis May 16, 17 and 18, 1969, as announced by Edward J. Thias, Chairman of the Convention.

The hotel is located directly south of the great Gateway Arch and Interstate highways 55 and 70 on the Mississippi River with the Jefferson National Expansion for its front yard. It is three blocks from the center of downtown St. Louis and within walking distance of some of St. Louis' major landmarks: Busch Stadium, The Old Courthouse and Museum, Mansion House Center, Spanish Pavilion, Downtown Mall and major department stores. Visitors from out of St. Louis will be amazed at the contemporary construction on the Riverfront.

The newly constructed Inn will

have a revolving Rooftop Restaurant 30 floors high with a view of the entire Metropolitan St. Louis Area.

Mr. James T. Darrough, of Columbia, Missouri, President of the Association, has indicated that the CONVENTION IN ST. LOUIS IS BEING PLANNED TO BE A MEETING OF ARCHITECTS FROM THROUGHOUT THE STATES OF MISSOURI, EASTERN KANSAS AND WESTERN ILLINOIS.

In 1969, a revision of the Missouri Statutes regarding the registration of Architects and Engineers will again be made. The details are to be discussed at the Convention. Members should contact Wendell Locke, Executive Director, for additional information.

The new and exciting design of the building complex was by William B. Tabler, FAIA of New York.



The man with the Cook Book.

A paint salesman he's not. The Cook Architectural Consultant is a professional full-time consultant who's trained to be your right-hand man.

He's a color expert. A paint expert. An expert on ceilings, wall and floor coverings. The Cook Consultant will get what you want—when you want it—and write the specifications as well.

The Cook Book he carries is Cook Paint's new simplified color selection guide. It's the selector that makes sense because it contains only 500 samples—the 500 colors that satisfy 96% of all architects' color requirements. It's slim, simple and easy to use.

To handle the finicky 4%, the Cook Architectural Consultant can mix-up anything you can dream-up.

The man with the Cook Book. He can save you a lot of time.

COULD YOU USE A COOK BOOK?

Mail to Cook Paint & Varnish Company
P.O. Box 389 Kansas City, Missouri 64141

Name

Title

Firm

Address

City State Zip

We Come Not As A Stranger . . .

Have you heard the news? We've purchased an 85-acre site close to the St. Louis metropolitan region — and soon will begin erecting our seventh plant.

Although this will be a brand *new* facility, we come not as a stranger to eastern Missouri and western Illinois. We've already been busy in the area.

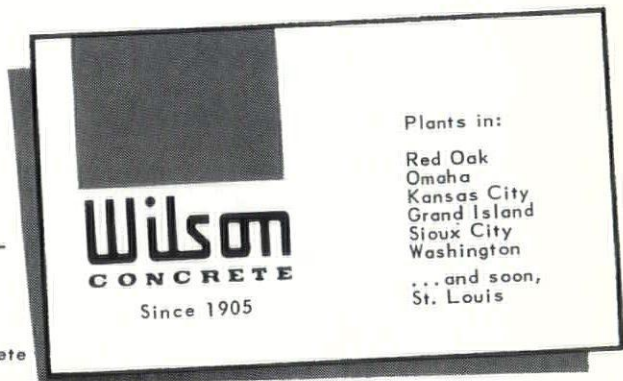
For example, the precast prestressed concrete structural members you see in Busch Memorial Stadium were delivered from our other plants. Likewise the columns, beams and Double-Tee slabs for the giant Hiram Walker Whiskey Ageing Warehouse in Delavan, Illinois. And many attractive and distinctive buildings in Missouri have exterior walls of Mo-Sai exposed aggregate panels made by us.

We'd like to show you examples of our work. Please call us for the money-saving details on precast prestressed concrete structural systems.

Our Sales
Representatives in
St. Louis are as near
as 436-2420
on your dial.



Specify PCI-Certified Concrete
Structural Components



THE ADVERTISERS

on these pages are genuinely interested in supporting your organization . . . They are deserving of your consideration.

VSONA MFG. CO.

3512-26 CHOUTEAU AVENUE

ST. LOUIS 3, MO.

MANUFACTURERS OF

BRONZE
ALUMINUM
IRON
WIRE WORK
STAINLESS STEEL
FLAG POLES



FOUNDRY
PLATING
CADMIUM
ALUMILITING
NICKEL
CHROME

PLAQUES — TABLETS
ARCHITECTURAL METALS

FOR REFERENCE SEE NATIONAL ASSOCIATION HANDBOOK

PHONE MO. 4-8000



WINCO

Winco Ventilator Co.

INCORPORATED

Manufacturers of Aluminum Windows

NOT JUST A WINDOW... A WINCO

C. E. GARRISON
ENGINEERED SALES REPRESENTATIVE

EVERGREEN 1-8033
533 BITTNER ST.
ST. LOUIS 15, MO.



SVERDRUP & PARCEL
Architects-Engineers

STADIUM CLUB in the \$50 Million, 50,000 capacity BUSCH MEMORIAL STADIUM, St. Louis, has a Buckingham Slate Floor in its Cocktail Lounge.

BUCKINGHAM SLATE . . . UNFADING CHARCOAL CHARM WITH SURE-FOOTED, CLEFT SURFACE . . . FREE FROM MORTAR JOINTS

● ● No doubt, one of Nature's most perfectly formed hard-surface floorings, Buckingham Slate inspires designers seeking distinction underfoot at moderate cost. The Stone Center's development of precision sizing for tight, mortarless joints and simplified laying techniques puts Buckingham Slate in a class by itself.

**Outstanding in its VERSATILITY,
ARCHITECTURAL COMPATIBILITY
and FORTHRIGHT ECONOMY**

● Our services include answers to questions which may come to the designer's mind, however technical. We invite inquiries for

LITERATURE • SAMPLES • PRICES

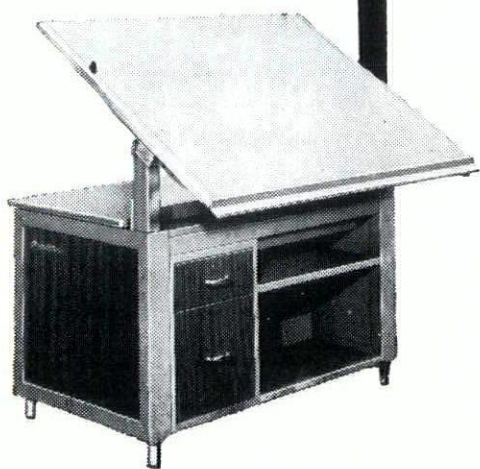


3200 Brannon Ave., St. Louis, Mo. 63139
Phone: 314-771-1000

LEFT: Example of Buckingham Slate in entry or foyer . . . equally applicable to residential or commercial installation.



**NOW
POWERIZED
FOR ADDED
DRAFTING
ROOM
EFFICIENCY!**



THE NEW

Hamilton
POWER SHIFT

- Powershift – a touch of the foot pedal silently raises and lowers board to any desired drafting position.
- Powershift travels the board through a full 14" vertical range.
- Plus Hamilton's exclusive DIAL-A-TORQUE* that gives positive counterbalanced board tilt with fingertip control.

*Patent applied for

Distributors of

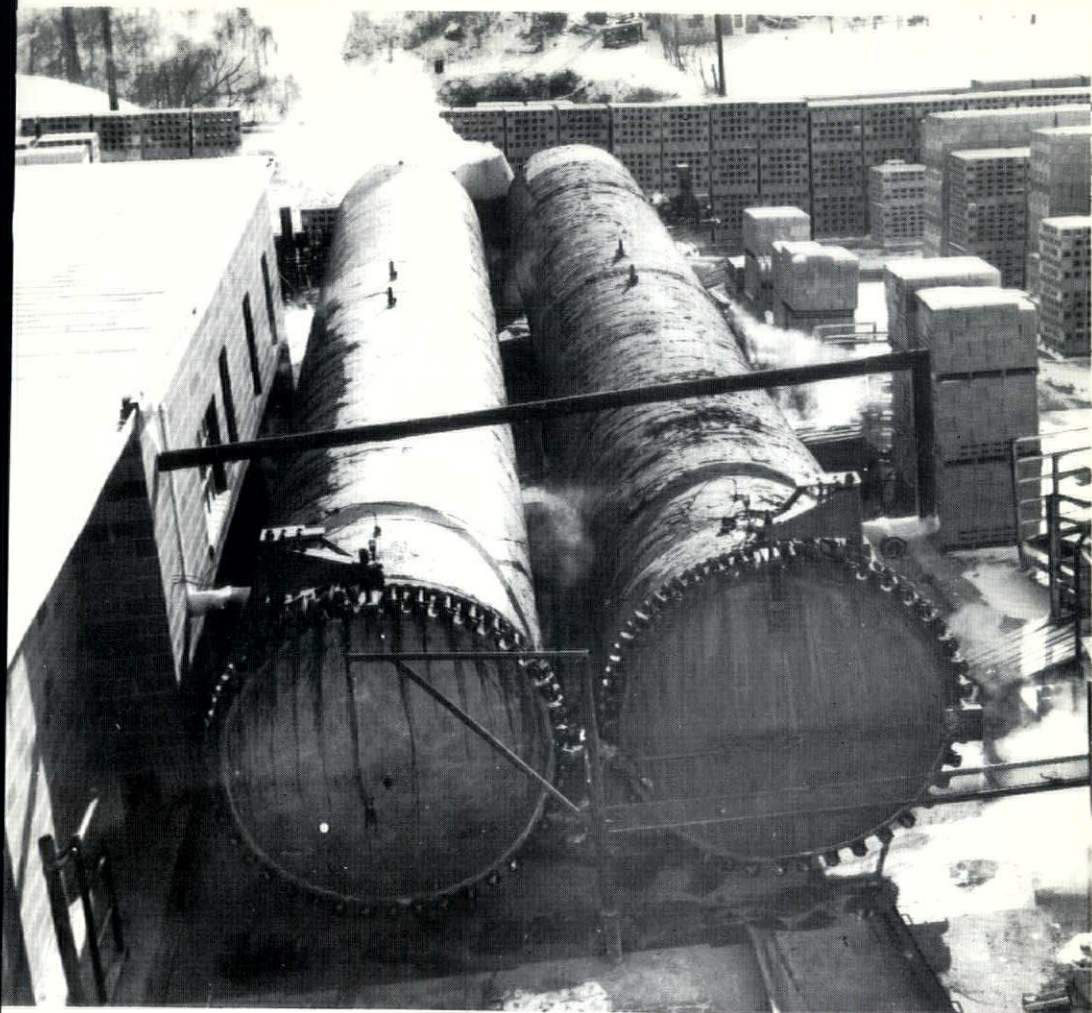


drafting materials

SERVICE

BLUE PRINT & PHOTO COPY CO.

710 PINE STREET • SAINT LOUIS 1, MO. • Chestnut 1-0688



CITY BLOCK AND PRODUCTS CO., has recently installed 2 vessels 80 feet long by 8 feet in diameter for high pressure steam curing masonry units.

For the first time in the Kansas City area you can now have **PRE SHRUNK BLOCKS** in one day's time.

Blocks are cured for 8 hours at a temperature of 360° F. under pressure of 150 lbs. P.S.I.

Delivery - 150 mile radius.

Suggested specifications have been mailed to all architects.

**CITY BLOCK
AND PRODUCTS CO.**
Independence, Mo.

1212 W. 24 Highway

CLifton 2-8760

ARCHITECTS AND ENGINEERS SUPPLIES
 DRAFTING ROOM FURNITURE SURVEYING INSTRUMENTS
 REPRODUCTION EQUIPMENT SENSITIZED MATERIALS
 SCHOOL SUPPLIES
 CLEARPRINT TECHNICAL PAPERS



Commercial Blue Print and Photo Copy Co.

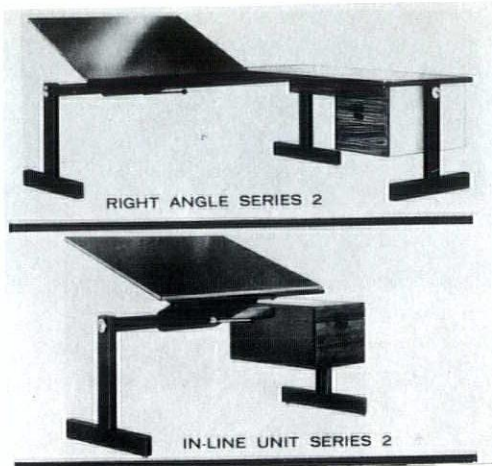
BLUE PRINTS BROWN PRINTS PHOTOSTATS BLACK AND WHITE PRINTS
 MAP MOUNTING SUPPLIES REPRODUCTIONS

1123 LOCUST STREET
 ST. LOUIS 1, MISSOURI

GARFIELD 5141

- BLUE PRINTING
- WHITE PRINTING
- VACUUM FRAME WORK
- DUPLICATE TRACINGS
 CONTACT
 PHOTOGRAPHIC
 CLOTH
 MYLAR
 PAPER
- MICROFILM
 ENLARGEMENTS
- MIMEOGRAPH
 PRINTS
- MULTILITH
 PRINTS
- EKTALITH PLATES
- PHOTOGRAPHIC
 PLATES
- COMPOSITION

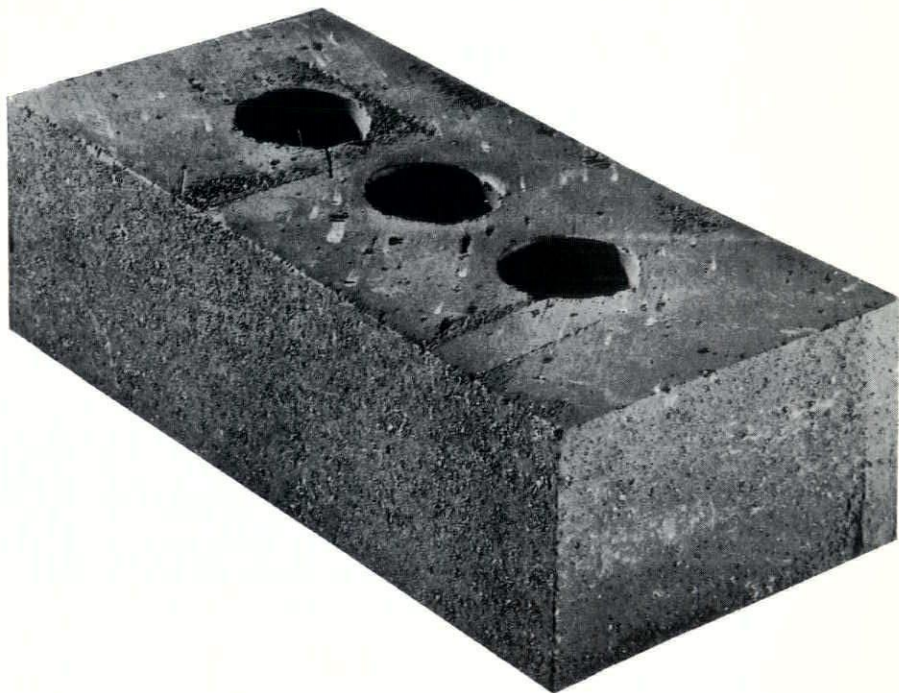
The most workable, convenient and
 good-looking drafting table EVER
 devised . . .



For full information about RADIUS TENSION
 drafting tables contact:

- PHOTOSTATS
- PHOTO MURALS
- PHOTO DISPLAYS
- LINE FILM
- TONE FILM
- SCREEN FILM
- PHOTO MYLARs
- COLOR COPIES
- VU-GRAPH SLIDES
- MOUNTING
 CLOTH
 BOARD
- MATTING
- FRAMING

Commercial Blue Print and Photo Copy Company has been serving the Greater St. Louis area for over forty years. Our collective experience makes many years of reproduction knowledge available to you. Let us help you get the most out of our services for the least money.



Representing more than 30 brick plants from Pennsylvania to Colorado, Carter-Waters offers an unusually large selection of colors, textures and sizes.

Samples, technical data, literature, specification information and quotations... every brick service awaits your call at Carter-Waters. Many selections are available from our yard stock for prompt delivery to eliminate shipping delays, unnecessary jobsite storage and possible damage. We offer the most complete masonry service in this area.

diversified materials service



CLASS SIX HIGH SCHOOL... CLASS

THOMAS, BENJAMIN & CLAYTON THOMAS, BENJAMIN
O. LACY BUILDING & SUPPLY CO. LACY BUILDING &
ETE CO. GRAND ISLAND CONCRETE CO. GRAND IS

recent...

...WATKINS LIBRARY ADDITION

ADY MIX JAMES C. CANOLE LAWRENCE READY MIX
A. GREEN CONSTRUCTION CO. B. A. GREEN CONST
NNEY & TURNIPSEED HOWELLS, HALE & WOHLBERG

...lightweight structural concrete

...HOLY FAMILY PARISH SCHOOL

BRINKMAN & HAGAN PENNY'S READY MIXED BRINKM
D. J. E. DUNN CONSTRUCTION CO. J. E. DUNN CON
DUDLEY WILLIAMS DUDLEY WILLIAMS DUDLEY WILLI

RAMADA INN MOTEL... RAMADA

AUGHAN - KENYON & ASSOCIATES ALLEN'S, INC.
ON CO. BEKEMEYER CONSTRUCTION CO. BEKEMEY

WICHITA CLINIC... WICHITA CLIN

CHAEFER, SHIRMER & EFLIN DUDLEY WILLIAMS SCHA
CO. HAHNER & FOREMAN CONSTRUCTION CO. HA
C. ALLEN'S, INC. ALLEN'S, INC.

...with



...MOTEL... TOWNSMAN MOTEL...

ELEY CONSTRUCTION CO. KIELEY CONSTRUCTION CO
E CO. AMERICAN CONCRETE CO. AMERICAN CONC

BUILDEX, INC.,

BOX 15,

OTTAWA, KANSAS

RENDERINGS

COLOR

BLACK & WHITE

JAMES B. FISHER, JR.

2 GRAYBRIDGE LANE • ST. LOUIS 24, MO. • WY. 3-9460



... Daddy, never mind MY specifications . . . just list your sheet metal items under "Sheet Metal" in YOUR specifications!



JAMES S. CRUMP
Executive Secretary

8301 Maryland, St. Louis, Mo. 63105
Phone: PA 5-1564

GRANCO QUALITY STEEL PRODUCTS FOR TODAY'S CONSTRUCTION NEEDS

FOR FLOORS & ROOFS

Corruform®—The original permanent steel base for concrete floor and roof slabs

Tufcor®—Galvanized tough-temper steel roof deck for lightweight insulating concrete and built-up roof construction

Cel-Way®—for electrified structural slabs that carry telephone, electric, and even signal service to any location

A-E (Air-Electric) Floor — combines air and electrical distribution in one compact floor system

Cofar®—Combined form and reinforcement for structural concrete floor and roof slabs

Cofar Composite — Cofar system with shear connectors for composite design

Roof Deck — Strong, versatile, attractive. Five patterns, six gages. A deck to fit every roof need

FOR HIGHWAYS

S-I-P®(Stay-in-Place) Bridge Forms • Guard Rail • Ful-Flo®Subdrains

See Our Catalogs in Sweet's File • Distributors in Principal Cities

GRANCO / IMAGINATION IN STEEL

GRANCO STEEL PRODUCTS COMPANY, 6506 N. BROADWAY
ST. LOUIS, MISSOURI 63147. A SUBSIDIARY OF GRANITE CITY STEEL COMPANY



MISSOURI
ASSOCIATION
OF REGISTERED
ARCHITECTS

MISSOURI
ASSOCIATION
OF REGISTERED
ARCHITECTS

MISSOURI
ASSOCIATION
OF REGISTERED
ARCHITECTS

MISSOURI
ASSOCIATION
OF REGISTERED
ARCHITECTS

MISSOURI
ASSOCIATION
OF REGISTERED
ARCHITECTS

MISSOURI
ASSOCIATION
OF REGISTERED
ARCHITECTS

MISSOURI
ASSOCIATION
OF REGISTERED
ARCHITECTS

MISSOURI
ASSOCIATION
OF REGISTERED
ARCHITECTS

MISSOURI
ASSOCIATION
OF REGISTERED
ARCHITECTS

AMERICAN INSTITUTE OF ARCHITECTS
LIBRARY
1735 NEW YORK AVE., N.W.
WASHINGTON, D.C. 20006

MISSOURI
ASSOCIATION
OF REGISTERED
ARCHITECTS