



M I S S O U R I
ARCHITECT

AMERICAN INSTITUTE
OF
ARCHITECTS

JUL 27 1970

LIBRARY

JULY, 1970

OFFICERS

President
HAL W. HAWKINS

Vice-President
DONALD D. BULLER

Secretary
HERBERT E. DUNCAN, JR.

Treasurer
C. WYNN BRADY

Executive Director
WENDELL LOCKE

Counsel
JOHN E. BURRUSS, JR.

DIRECTORS

Terms Expiring 1971
DAVID M. BREY
306 E. 12th St.
Kansas City, Mo. 64106

C. WYNN BRADY
909 Cherry
Columbia, Mo. 65201

HAL W. HAWKINS
1516 S. Glenstone
Springfield, Mo. 65804

Terms Expiring 1972
HERBERT E. DUNCAN, JR.
800 West 47th St.
Kansas City, Mo. 64112

THEODOR M. HOENER
4227 Watson Road
St. Louis, Mo. 63109

NOLAN L. STINSON, JR.
8 The Knolls
Creve Coeur, Mo. 63141

Terms Expiring 1973
DONALD D. BULLER
308 Gordon Building
Sedalia, Mo. 65301

BYRON FOST
1805 Rampart
Cape Girardeau, Mo. 63201

FREDERICK C. STERNBERG
25 Narragansett Drive
St. Louis, Mo. 63124

Terms Expiring 1974
WAYNE D. JOHNSON
815 Woodruff Building
Springfield, Mo. 65806

GERHARDT KRAMER
9640 Clayton Road
St. Louis, Mo. 63124

GENE E. LEFEBVRE
Box 8334
Kansas City, Mo. 64105

AIA Chapter Presidents
I. DALE ALLMON
1350 S. Glenstone
Springfield, Mo. 65801

WILLIAM M. LINSOTT
65510 Overbrook
Shawnee Mission, Kansas 66208

KENNETH M. SCHAEFER
1775 Dougherty Ferry Road
Kirkwood, Mo. 63122

Immediate Past President
KENNETH E. COOMBS
1347 East 109th Terrace
Kansas City, Mo. 64131



President's Letter

Dear Members of
Missouri Council of Architects, Incorporated -
A State Organization of The American Institute of Architects:

I want to take this opportunity to express my appreciation to the membership for the election of our new Board and express my own appreciation to the Board for the election of such a fine group of new officers. During a very trying year, Kenneth Coombs certainly did his utmost for what he believed to be in the best interests of the profession, and under his leadership we are in a much better position to make real progress in the coming years.

Although those of us attending the annual meeting in Kansas City were distressed by the below expected turnout, Chairman Richard Schuetz and his committee are to be complimented on the fine arrangements made for our annual meeting. It would seem to me the date the meeting was held may have had some bearing on the number attending. My daughter's graduation ceremonies were on the same weekend and I'm sure a lot of the members were involved in activities of this type.

Plans for next year's annual meeting have been underway for sometime when Springfield will be the host chapter for MCA next spring. Burns Derrough and his wife, Joanie, have been working on the arrangements and plans have been made for the ladies to visit Silver Dollar City and facilities of the Holiday Inn of Table Rock Lake are being expanded and improved and should be most enjoyable. Several of the architects plan on some boating excursions for the members on the beautiful Table Rock Lake.

I would like very much to get our state chapter off to a good start. During the past year we have had many problems, which in my opinion are rapidly being resolved. As a state chapter of the American Institute of Architects, we are a part of an organization containing some 22,000 registered architects, roughly two-thirds of all those registered. With the talent available on a national level involved in the different committees and the successful work of their efforts with the federal government, it is inconceivable to me that anyone would fail to see the many benefits brought about by the recent merger.

At the present time, I am trying to organize some priorities to be taken up at our next Board meeting, July 17, in Jefferson City. First of all, I want to present a new slate of committee chairmen.

Next I would like to establish some priorities and goals for the coming year. High on this list of priorities will have to be some minor changes in our By-Laws. It's obvious that the fiscal year of our State Organization must be made to coincide with both the National and the Chapters which are presently on a calendar year

Continued page 12



*The
Editor
Observes:*

souri. There is now no basis for petty differences, jealousies or conflict of areas of responsibility among the different organizations representing our architects, because the excuses of the past are no more.

This may be our most trying year as we begin to regroup for a new attack on our professional problems, but with total cooperation of all architects this can and will be the beginning of a new and greater bond between Missouri architects.

In our next issue of this magazine, we will open a page or two for letters to the Editor to share your views on areas of concern to our profession, so please let us hear from you.

Donald D. Buller
Editor

As we start a new year under the new name of MCA we face a new challenge far greater than we may realize. Our members are the same but our organization is now one that not only represents the architects of Missouri but also a more effective coordinating force for the various AIA chapters in our state. I would hope that this might be the catalyst to energize a more meaningful and effective statewide effort for areas of concern to the Architects of Mis-

IN THIS ISSUE

President's Letter	IFC
The Editor Observes	3
Action Marks First Meeting of MCA	5
Student Award Presented	9
MCA Opposes Excessive Wage Demands	12
Kramer Elected to College of Fellows	13
Two Firms Announce Changes	13
Papers Invited for Symposium	13
Grimaldi Reappointed	14
Carter Waters Appoints Roderique	14
Summer Seminar Offered	14
Special Legislative Report	15

MISSOURI ARCHITECT

Editor - Donald D. Buller

Staff - Wendell E. Locke

The MISSOURI ARCHITECT is published quarterly at 308 E. High St., Jefferson City, Missouri 65101, by the Missouri Council of Architects. Second Class postage paid at Jefferson City, Missouri. Subscription rate is \$1.50 per year. Mailing address: Missouri Architect, P. O. Box 401, Jefferson City, Missouri 65101.

THE COVER - The July cover is symbolic of the second stage in the architect's creative process . . . the first being the creativity of the mind. The third stage, of course, is the translation of this creativity, via his drawings, into structures serving the needs of society and industry.



"LAST OF ITS KIND" incoming President Hal W. Hawkins, AIA, right, tells outgoing President Kenneth E. Coombs, AIA, as he presents Coombs MARA plaque in recognition of year's service in organization's highest office. Future plaques will bear MCA inscription.

MCA OFFICERS AND DIRECTORS pose for photo at annual banquet. From left are: Gerhardt Kramer, FAIA, I. Dale Allmon, AIA, Kenneth M. Schaefer, AIA, Education & Awards Committee Chairman Joseph J. Oshiver, AIA, Vice President Donald D. Buller, AIA, Immediate Past President Kenneth E. Coombs, AIA, Theodor M. Hoener, AIA, Wayne D. Johnson, AIA, Secretary Herbert E. Duncan, Jr., AIA, President Hal W. Hawkins, AIA, Executive Director Wendell Locke, Treasurer C. Wynn Brady, AIA, and Gene E. Lefebvre, AIA. Directors not present for photograph were David M. Brey, AIA, Byron Foust, AIA, William M. Linscott, AIA, Frederick C. Sternberg, AIA, and Nolan L. Stinson, Jr., AIA.



Action Marks First Business Meeting of Missouri Council of Architects

Action and planning keynoted the first annual meeting of the Missouri Council of Architects, May 23rd, at the Plaza Inn, Kansas City.

Needed By-Laws provisions, election of Directors, state school of architecture, high school counseling and the proposed AIA code of ethics were key topics in the discussions.

Amending the MCA By-Laws to establish a fiscal year coinciding with the calendar year was urged by the members in view of the provision that the President of each Chapter be a member of the MCA Board. Presidents of the local Chapters serve on a calendar year basis.

Also, it was the consensus that a January 1 - December 31 fiscal year would simplify the dues collection procedures since dues historically have been collected by MARA on a calendar year basis.

The members charged the next By-Laws Committee to review the existing By-Laws and propose the needed changes at the earliest possible time.

Members elected the following Directors: Dale Allmon, C. Wynn Brady, David M. Brey, Donald D. Buller, Kenneth E. Coombs, Herbert E. Duncan, Jr., Byron Foust, Hal W. Hawkins, Theodor M. Hoener, Wayne D. Johnson, Gerhardt Kramer, Gene E. Lefebvre, William M. Linscott, Kenneth M. Schaefer, Frederick C. Sternberg and Nolan L. Stinson, Jr.

A show of hands, called for by State School Committee Chairman Peter Keleti, indicated a preponderance of the members favored a Missouri School of Architecture. Chairman Keleti outlined the avenues he and his committee had explored in efforts to create a state school of architecture, and stated he would appreciate invitations from groups throughout the state to speak on Missouri's need for a school of architecture.

Education and Awards Committee Chairman Joseph J. Oshiver reported on the response to this year's student design contest and introduced the winner, Jim Read, of Salem.

Chairman Oshiver pointed to the need for the local Chapters to enter into greater dialogue with the high schools because his work on the committee had revealed that high school students receive little or no counseling on the profession of architecture. Roy J. Pallardy reported on a series of talks he had made on architecture as a career to Jefferson City high school students.

The proposed AIA code of ethics drew a substantial amount of discussion. The members concluded that the MCA delegate, incoming President Hal W. Hawkins, should exercise his own judgment after attending the AIA sessions and discussions on the matter.



KENNETH E. COOMBS, President, presides over first annual meeting of Missouri Council of Architects.

Following the business meeting, AIA members from central Missouri met to discuss the possibility of forming a new Chapter in the central part of the state.

The members also heard reports from Treasurer C. Wynn Brady, Membership Committee Vice-Chairman Maxwell Sanford, Missouri Architect Editor Hal W. Hawkins, Executive Director Wendell Locke, Long-Range Planning Committee Chairman Gene Lefebvre, Ethics Committee Chairman Edwin C. Waters, Insurance & Fees Committee Chairman Roy J. Pallardy, Natural Beautification Committee Chairman David M. Brey, and Richard J. Schuetz, Chairman of the Legislative and Annual Meeting Committees.

The By-Laws Committee report was given by Hal Hawkins in the absence of Chairman Richard L. Nichols, and the Counsel's report was given by President Kenneth E. Coombs in the absence of Counsel John E. Burruss, Jr.

The meeting, one of great significance to Missouri architects, was disappointing in but one respect, that of attendance. Nineteen Kansas City architects were registered, fourteen were registered from Springfield and three were registered from St. Louis. Out-state architects comprised the remainder of the attendance.

Although the date for Architect's Day 1971 was not set, plans for it are already being made by the Springfield Chapter where members and their wives are working on a fun convention at Table Rock Lake.

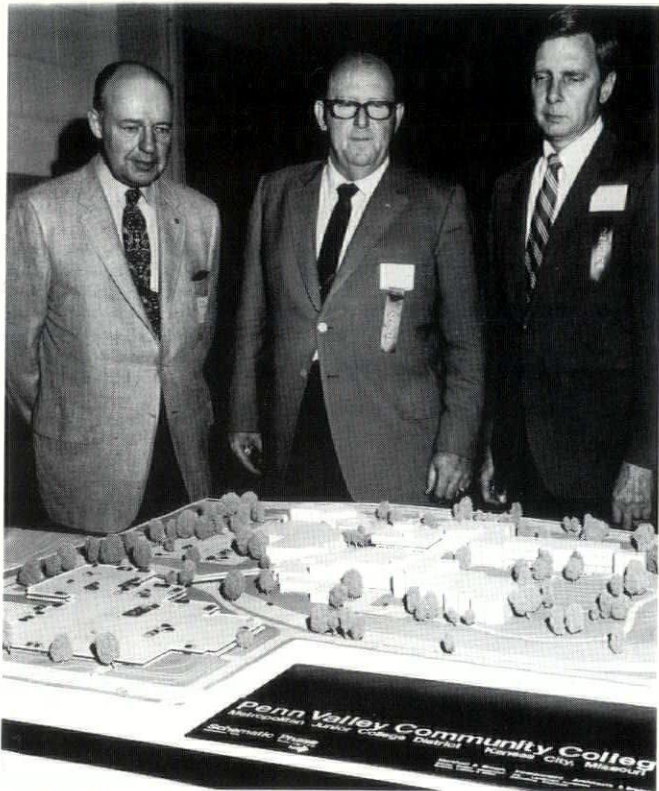


FLOYD O. WOLFENBARGER, FAIA, central states director, AIA, outlines proposed code of ethics to be voted on at national convention in June.

. . . Exhibits Highlight Meeting



WILLIAM M. LINSOTT, AIA (left) and GENE E. LEFEBVRE, AIA, visit display area between sessions.



DAVID M. BREY, AIA, HAL W. HAWKINS, AIA, and THEODOR HOENER, AIA, view table top exhibit of Penn Valley Community College, designed by Marshall & Brown.



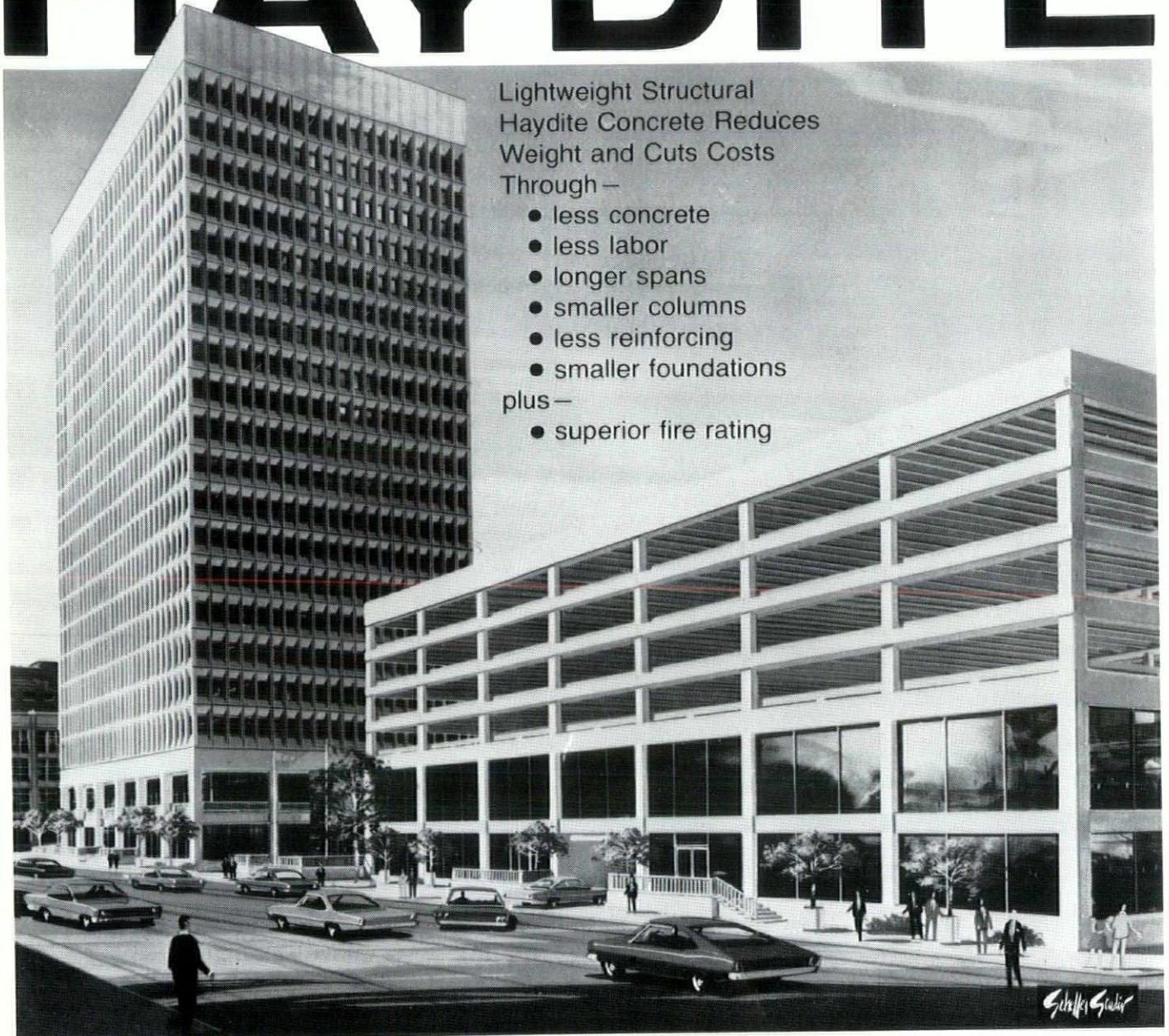
JAMES W. MATTHEWS, AIA, (left to right), WILLIAM M. CONRAD, AIA, BURNS DERROUGH, AIA, and EDWIN C. WATERS, AIA, view model of airport.



HARRY S. TRUMAN SPORTS COMPLEX model draws interest in display area. Complex is design of Kivett & Myers.

"THE ORIGINAL LIGHTWEIGHT AGGREGATE"

HAYDITE



Lightweight Structural
Haydite Concrete Reduces
Weight and Cuts Costs

Through —

- less concrete
- less labor
- longer spans
- smaller columns
- less reinforcing
- smaller foundations

plus —

- superior fire rating

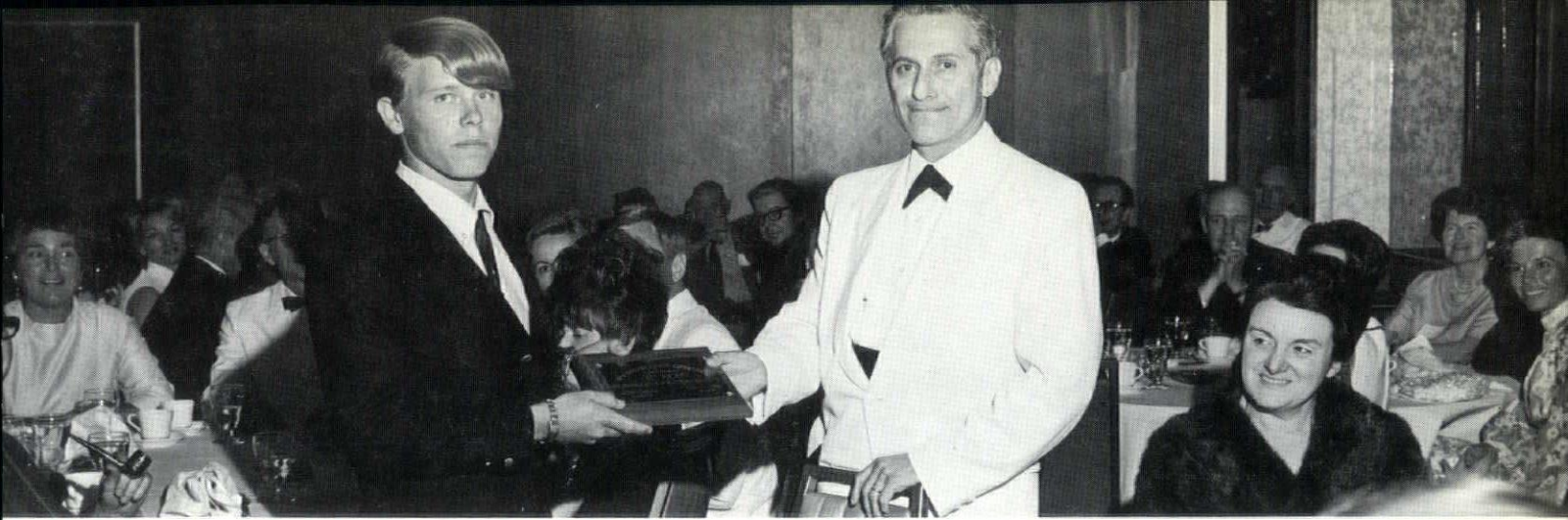
TENMAIN BUILDING...The TenMain Building in Kansas City is a striking example of the economies of Haydite lightweight structural concrete. Complete design analysis for various structural systems, considering both Haydite concrete and conventional concrete, indicated a pan-joint system using Haydite lightweight concrete would be most economical. Using Haydite concrete in the parking garage adjoining the building permitted a reduction in the column size... an important factor where open floor and ramp space is paramount to operating efficiency.

ARCHITECT:
Charles Luckman & Associates, Los Angeles
ENGINEER:
Howard-Needles-Tammen & Bergendoff, Kansas City
ASSOCIATE ARCHITECT:
Marshall & Brown, Kansas City
CONTRACTOR:
Winn-Senter Construction Company, Kansas City
CONCRETE SUPPLIER:
Fordyce Concrete Company, Kansas City

Haydite aggregate is now "VITRI-COATED" for improved quality control through all phases of the job...from mix design to finishing. For detailed information, see your local Ready Mix producer, or contact us direct.

CONSTRUCTION THE MATERIALS
CARTER-WATERS
KANSAS CITY CORP MO. 64108
2440 Pennway GRand 1-2570

Producers of
Haydite aggregate at
Centerville, Iowa, and
New Market, Missouri.



Student Award Winner, Jim Read, Salem, Mo., left, receives a plaque from Joseph J. Oshiver, AIA, Chairman of the MCA Education and Awards Committee.

. . . Student Award Presented

Winner of the 1970 Student Design Contest, Jim Read, a Salem, Missouri Licking High School student, was presented a plaque at the annual banquet by Joseph J. Oshiver, Chairman of the MCA Education and Awards Committee.

The winning student will be awarded a college scholarship upon enrollment in a school of architecture, or a school of higher education with credits acceptable to a school of architecture, by September 15, 1970.

Michael W. Moehle, of Macon High School, and Jim Baker, of Hillcrest High School, Springfield, won honorable mentions for their entries in the contest open to seniors in Missouri high schools.

The 1970 contest was based on the design of a residence for a family of six.

The winning designs, along with those of 19 other entrants, were on display at the Plaza Inn during the MCA annual convention.

A panel of Missouri architects judged the entries.

The contest is an annual project of the state architects association and is intended to encourage and develop talented students' interest in the profession of architecture.

Entries were received from the following high school students:

Winner -

Jim Read, Licking High School, Salem, Missouri

Honorable Mention -

Michael W. Moehle, Macon High School, Macon, Missouri

Honorable Mention -

Jim Baker, Hillcrest High School & Area Vocational Technical School, Springfield, Missouri

Entries -

Steve Marrs, Brookfield High School, Brookfield, Missouri

Tom Marshall, R-VII Lee's Summit High School, Lee's Summit, Missouri

Tom DeGroodt, Mexico High School, Mexico, Missouri

Mike G. Tarrants, Mexico Senior High School, Mexico, Missouri

Glen Van Vactor, Mexico Senior High School, Mexico, Missouri

James E. Grimshaw, Macon High School, Macon, Missouri

James A. Simpson, Mexico Senior High School, Mexico, Missouri

Sherman L. Garrison, R-5 Jasper High School, Jasper, Missouri

John David May, Jr., Mexico Senior High School, Mexico, Missouri

Frederick Spoethe, Lindbergh High School, St. Louis, Missouri

Douglas A. Blunt, Brookfield High School, Brookfield, Missouri

Sam Conyers, Charleston High School, Bertrand, Missouri

Jon Jenkins, Potosi R-3 High School, Potosi, Missouri

Steve L. Slaten, Charleston High School, Charleston, Missouri

John Reed, Potosi R-3 High School, Bonne Terre, Missouri

R. K. Stewart, St. Louis, Missouri

Stephen E. Jackson, Mexico Senior High School, Mexico, Missouri

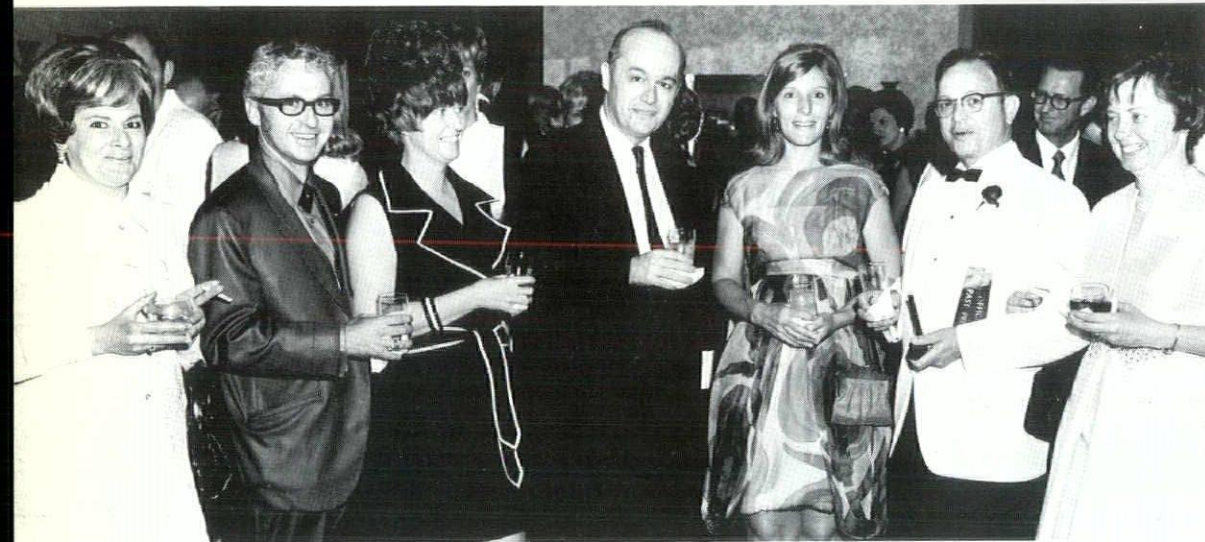
Rick Contratto, Macon High School, Macon, Missouri

Edward K. Phillips, R-IV Pemiscot High School, Cooter, Missouri

... Banquet Scenes



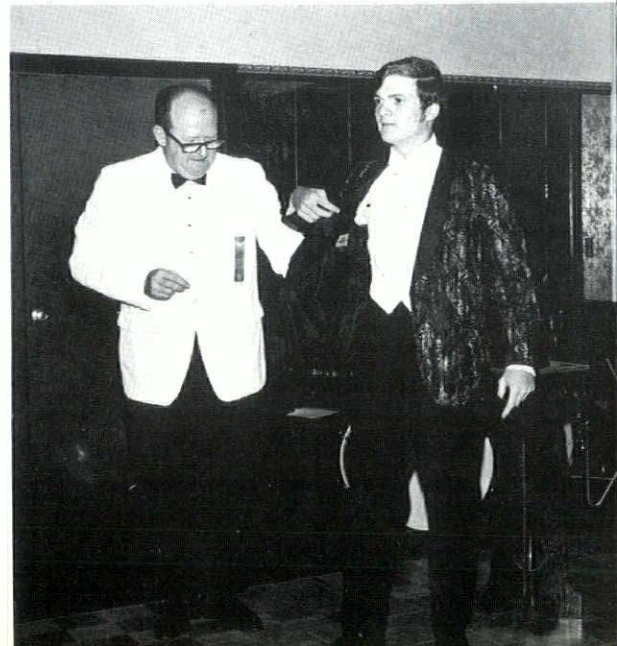
Photographer catches MCA top officers and wives at banquet. From left are Donald D. Buller, AIA, Vice-President, Mrs. Don Buller, Mrs. Hal Hawkins and President Hal Hawkins, AIA.



Happy group at banquet is interrupted by photographer. From left are Mrs. Roy J. Pallardy, Richard J. Schuetz, AIA, Mrs. Schuetz, Peter Keleti, AIA, Mrs. Keleti, Kenneth E. Coombs, AIA, and Mrs. Coombs.

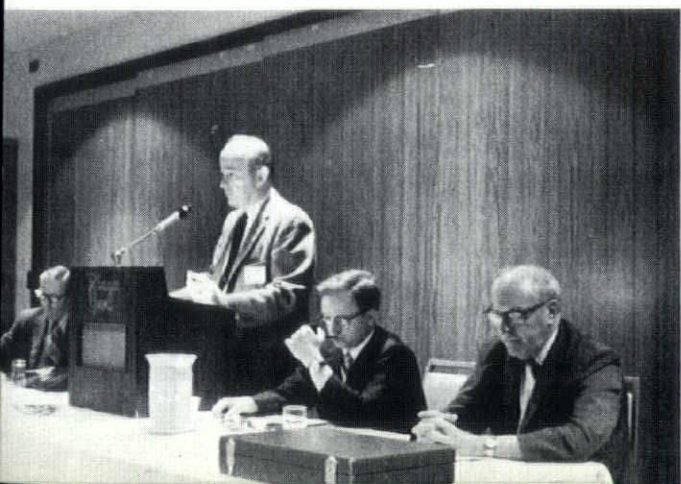
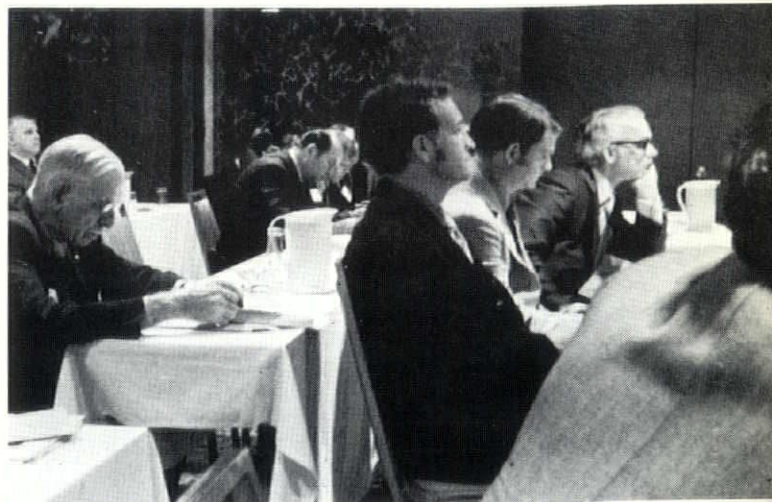
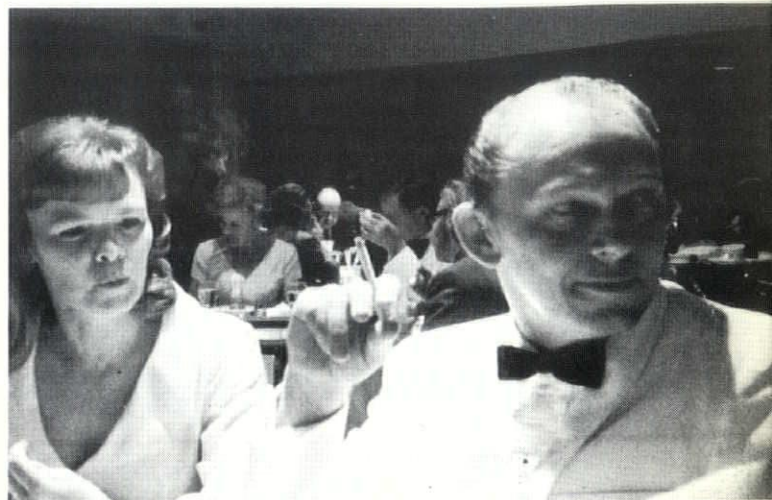
St. Louis delegation smiles for cameraman. From left are Gerhardt Kramer, FAIA, Mrs. Kramer, Kenneth M. Schaefer, AIA, Mrs. Schaefer, Mrs. Linscott and William M. Linscott, AIA.

MCA Prexy, Hal W. Hawkins, AIA, gives magician Kirk Patee a hand with the old egg trick. Thanks to Hal, trick went off smoothly.



... New Prexy Hawkins Records Meeting in Pictures

New MCA President, Hal Hawkins, proficient with his Minox, recorded more than two dozen scenes at the annual meeting. Here are a few of the available-light photos he shot for the Missouri Architect. They reveal the serious side of the meeting . . . and the fun side.



... MCA Goes On Record Against Excessive Wage Demands

Concerned over the serious impact on the economy created by the continuing construction strike by four Kansas City unions, the MCA Board of Directors adopted the following statement at the annual meeting and delivered copies to the news media of the area:

"The Missouri Council of Architects, meeting in annual session on May 23, 1970, has been appraised of possible effects of the present construction strike in Kansas City, Missouri and concur with the Kansas City Chapter of the American Institute of Architects that the general public is unaware of the excessive wage and benefit demands being made by the four striking unions. The members of MCA are particularly concerned that the long term effects of acquiescence to these demands could be disastrous to the projected growth of the State of Missouri as well as to Metropolitan Kansas City.

"It is the understanding of MCA that current requests of the Construction Laborers' Union would result in an immediate wage increase including fringe benefits from \$4.01/per hour to \$8.01/per hour with additional increases to a total of \$10.01/per hour by 1972. This would be a 150% wage increase over a three year period.

"Current demands would place the four unions among the highest paid construction groups in the entire United States. If these demands are met and the other building trades are given corresponding increases consistent with traditional relationships, it could result in total chaos in the construction industry. Due to the combination of high interest, tight money, and excessive costs, new construction would completely stop in Kansas City.

"New work of recent months has fallen to all time lows in many Architectural offices throughout the state. Many projects have been abandoned completely and others have been

held in abeyance after determination of current construction costs. Many new industries are choosing to eliminate this area from consideration for new facilities due to the unstable labor situation.

"The profession of architecture has always served as a barometer to future construction and to the resultant effect on the economy of a given area. Because of the seriousness of the present situation, the members of MCA call on City officials, professional groups, businessmen, responsible labor leaders, and the general public in Kansas City to properly evaluate the consequences of bowing to the current demands of the four striking unions.

"As a further statement of their interest and concern in regard to this matter, the members of MCA make the following recommendations:

1. That every effort be made to reestablish traditional wage relationships based on experience and work skills.
2. That the striking unions consider the staggering effect of their requests on the future of construction activity and every aspect of the economy in Kansas City and the State of Missouri.
3. That the Public be asked to evaluate this particular strike and to comment on its direct and indirect effect on each member of the community.

"The Missouri Council of Architects represents the majority of all Registered Architects in Missouri including members of the Kansas City, St. Louis and Springfield Chapters of the American Institute of Architects. The annual meeting of MCA was held at the Plaza Inn in Kansas City on May 22-23, 1970."

A comparison of wage rates and their growth for the Kansas City area is shown on page 16.

PRESIDENT'S LETTER from page 2

basis. I would like to call on the membership to present any suggestions or constructive criticisms either directly to me or to their board representative. In a period of such rapid change in our country today, it is essential that we all work together for the good of our profession. One criticism that I'm always hearing about the National AIA is that some architects are under the opinion that it is working mainly for the good of the large office. Yet, an actual breakdown of our members shows that the vast majority of the AIA members are from small firms. In recent years, the small firm has been in a squeezed position and the new document service, master specification service and other benefits are aimed directly at being of help to the smaller firms.

I have already been alerted to a matter to be brought before the next session of our legislature. This would be detrimental to the architects. We are assured of receiving help in this matter from the Octagon and valuable advice where similar legislation has been introduced in other states. Again I would like to request the participation of all our membership; as at a critical time such as we are going through it seems essential for the profession's survival. Suggestions will be welcomed.

Hal Hawkins, President



"See you at 1971 Architect's Day!"



Gerhardt Kramer

. . . Kramer Elected To College of Fellows

Gerhardt Kramer, architect, who has been a leader in preservation and restoration of vintage buildings, has been elected to the College of Fellows of the American Institute of Architects. He was formally invested during ceremonies at the annual convention of the AIA in Boston, June 21-25.

Kramer, of Kramer and Harms, Inc., Architects, 9640 Clayton Road, becomes the twelfth St. Louis architect to hold the rank of Fellow in the AIA. The rank is given for outstanding achievement in architectural fields.

Although AIA is the 23,300 member national professional society of architects, only 958 members have been advanced to Fellowship. As a Fellow, Kramer will have the right to use the initials FAIA following his name to symbolize the esteem in which he is held by his peers. Other than the Gold Medal, which may be presented to a single architect from any part of the world, Fellowship is the highest honor which the Institute can bestow on its members.

Kramer has served as restoration architect for the Chatillon-DeMenil House, General Bissell House, McKendree Chapel, Hanley House, and several projects for the State of Missouri, including the Hunter-Dawson House in New Madrid and the Bollinger Mill at Burfordville.

Kramer has been a leader in the drive to save the old St. Louis Post Office from demolition.

He is past president of the St. Louis Chapter of the AIA. He is a founder and current president of Landmarks Association of St. Louis. He is also president of Concordia Historical Institute.

Last October, Kramer retired as captain in the U.S. Naval Reserve.

He is married to the former Miss Ravenna Ross of New Orleans, where Kramer was born in 1909. The Kramers live at 243 East Jefferson, Kirkwood. They have a daughter, Mrs. Gerald Grommet, of 415 Fairway Lane, Kirkwood, and a son, Ross Kramer, who is a design engineer in New Orleans. Mr. and Mrs. Kramer have five granddaughters, with whom they travel extensively.

. . . Papers Invited For International Symposium

Papers are invited for the International Symposium on problems of low cost housing related to urban renewal and development to be held at the University of Missouri-Rolla, October 8-9.

The topics of interest are: Low Cost Housing Projects Around the World and in the United States, Construction Methods for Low Cost Housing, Analytical and Experimental Research Related to Low Cost Housing, Financing of Low Cost Housing and Sociological and Psychological Problems Related to Low Cost Housing and Management of Low Cost Housing Systems.

Persons interested in participating in the program should submit a short abstract of 200 to 300 words of their papers on the above mentioned or related topics to: Dr. Oktay Ural, associate professor, Civil Engineering Department, University of Missouri-Rolla, Rolla, Missouri 65401, by August 15. The final complete manuscripts will be required by September 10.

Some papers will be selected for presentation and all will be considered for publication as the Proceedings of the Symposium.

The Symposium is sponsored by the civil engineering department of the University of Missouri-Rolla and American Society of Civil Engineers, Midwest Section.

Two Firms Announce Organization Changes

The Springfield architectural firm of Robert W. Marshall, AIA, and Edwin C. Waters, AIA, announces that Burns C. Derrough, AIA, has been promoted to Associate. The firm name is being changed to Marshall-Waters-Associates, Inc. Architects & Planners.

In St. Louis, the firm of Hammond, Charle & Burns, Architects has announced the admission of Harold L. Le Pere, AIA, as a senior partner and a change of the firm name to Hammond, Charle, Burns & Le Pere, Architects.

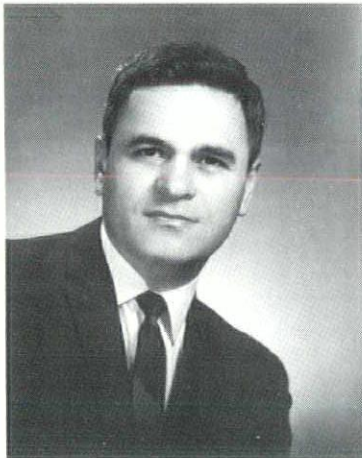
Grimaldi Reappointed to State Board

Frank Grimaldi, Kansas City architect, has been reappointed to the Missouri Board for Architects, Professional Engineers and Land Surveyors by Governor Warren E. Hearnes for a term to expire September 1, 1972.

Originally named to the board in 1965, the extension of Grimaldi's term will conform to a new schedule of board membership established by a revision of the registration law passed by the Missouri legislature last year. After 1972, all terms will be for four years.

There are seven members on the joint board for registration of architects and engineers, appointed by the governor from various parts of the state. Other architect members are R. P. Buchmueller of Sikeston, Wm. A. Cornwell of Joplin and John D. Sweeney of St. Louis, who is board chairman.

Engineer members of the board are Wm. M. Spann of Kansas City, Louis L. Hamig of St. Louis and J. Kent Roberts of Rolla.



Frank Grimaldi

Carter-Waters Appoints Roderique General Sales Manager

The Carter-Waters Corporation, of Kansas City, has announced the assignment of Glen W. Roderique to the position of general sales manager of the construction materials firm.

Joining Carter-Waters in 1952 as a draftsman and estimator, Roderique was later transferred to the sales department to do promotional work among the area architects and engineers. In 1966 he was made manager of the company's building materials sales department.

Roderique, age 43, is a graduate of Civil Engineering from the University of Missouri at Columbia. Prior to joining Carter-Waters he was employed by McDonnell Aircraft Corporation and the Link Belt Company.

Roderique is currently a director of the Midwest Concrete Industries Board of Kansas City, Treasurer of the Expanded Shale, Clay & Slate Institute, an international association of lightweight aggregate producers, and a member of the Builders Association of Kansas City.

Summer Seminar Offered By Washington University

A seminar on "Design and Construction of Masonry in Architecture," the first of its kind in this area, will be offered by Washington University six evenings at 7:30 p.m., July 30-August 17.

Designed to be of value to all architects, structural designers and students in these fields, the course will be led by Joseph Wise, structural engineer at Sverdrup and Parcel, and Larry Berlow, architect and regional director at Structural Clay Products Institute, Chicago, Ill.

Lectures and discussions will cover topics including: basic masonry construction; contemporary building walls; reinforced brick masonry; cold weather masonry; code requirements, materials and structural systems; and structural design and details.

The seminar is sponsored by the University's Schools of Architecture and Continuing Education in cooperation with Hydraulic Press Brick Company and Structural Clay Products Institute. For more information or to register, call Professor Robert C. Oswald, 863-0100, ext. 4348, or write Washington University, Box 1099, St. Louis, Mo. 63130.

Schedule:

Date	Description of Lecture	Lecturer
July 30	Basic Masonry Construction	Mr. Larry Berlow
Aug. 3	Contemporary Building Walls	Mr. Larry Berlow
Aug. 6	Reinforced Brick Masonry	Mr. Larry Berlow
Aug. 10	Cold Weather Masonry	Mr. Larry Berlow
Aug. 13	Code Requirements, Materials, and Structural Systems	Mr. Joe Wise
Aug. 17	Structural Design and Details	Mr. Joe Wise

Time: All lectures 7:30 p.m. to 9:30 p.m.

Place: Cupples II, Room 215 (comfortable and air-conditioned)

Registration fee: \$40.00



Glen W. Roderique

... Special Legislative Report

Here is a report on the Missouri General Assembly's third special session, just ended, reflecting the bills that were passed.

Significantly, the legislature cut the funds sought for junior colleges for the 1970-71 fiscal year which began July 1. An additional \$1.9 million to accommodate an estimated student enrollment was eliminated, leaving the junior colleges the same appropriation as last year, \$310 per student based on last year's enrollment. Increased enrollment, however, is expected to dilute the value of the \$310 per student to \$261.

The General Assembly approved a Kansas City Medical School and appropriated \$4 million for it to be matched by \$8.8 million of federal funds.

Efforts to place the Mo. Public Service Commission and Department of Liquor Control in the State Merit System failed.

Other bills to fail of passage were a proposed drug control bill and a bill to repeal the controversial state employees retirement measure which now will be voted on by the citizenry in a November referendum. It is expected to be defeated.

Thirteen appropriations bills and the following legislation were approved:

HJR 1 - EDUCATION/TAXATION: Constitutional bond limit - If adopted by the people would provide that school district levies could be raised to an amount not exceeding three times the constitutional maximum for an indefinite period of time by a majority vote of the electors. This bill is similar to a constitutional amendment already passed but containing conflicts. (Gralike, et al)

HB 17 - LOCAL GOVERNMENT/POLICE PENSIONS: Relates to retirement benefits for widows of policemen in cities of 700,000 or more inhabitants. (Walsh)

HB 18 - MISCELLANEOUS: Search and Seizure Powers of Patrol - Would give all members of the Highway Patrol the same search and seizure powers that may be exercised by any Sheriff in the State. Formerly Highway Patrol had search and seizure powers only on public highways and in connection with dangerous weapons taken from arrested persons. (Rothman, Goode and Meyer)

HB 20 - FINANCIAL: Savings and Loan Associations - Changes intangible tax base designations from "dividends declared and credited" to "earnings including dividends and interest paid or credited." (Devoy, Belt and Broomfield)

HB 21 - TAXATION: Insurance - Extends the premium tax law to cover reciprocals and inter-insurance exchanges. Requires attorneys to renew certificates of authority annually on the first day of July and applies exemptions sections to financial institutions operating under Chapter 148, RSMo 1969 Supp. (Devoy)

HB 22 - CORPORATIONS: Adds to the purposes for which not-for-profit corporations may be organized, that of owning and operating a water supply facility. (Dickey, et al)

HB 23 - LOCAL GOVERNMENT/TAXATION: Parks and Museums - Authorizes the establishment of a metropolitan zoological park and museum district in the city of St. Louis and St. Louis County and authorizes the submission of tax levies and bond issues to the voters to finance those districts. (Valier, et al)

HB 25 - TAXATION/FINANCIAL: Intangible Tax Collection - Requires intangible taxpayers to file tax returns and make payments on April 15 of each year instead of on June 1 of each year. Establishes an intangible tax fund, and requires the investment of all funds not immediately needed. Makes other changes in the administration of the intangible tax. (Broomfield)

HB 26 - LOCAL GOVERNMENT/FINANCIAL: Would allow housing authorities, land clearance for redevelopment authorities and other local governmental units to sell revenue bonds to the federal government at private sale at a rate not exceeding 8% a year. (DeField, et al)

HB 28 - GOVERNMENT/FINANCIAL: Raises the maximum amount of bond interest which may be paid by the State Park Board under 253.210 to 253.280, RSMo 1969, Supp. The bill would raise the present 5% maximum to a maximum of 8%. (Dinger and Cox)

HB 30 - MOTOR VEHICLES: Safety Responsibility Law - Amends the Motor Vehicle Safety Responsibility Law to give the Safety Responsibility Unit 90 days instead of 45 days to process a motor vehicle accident and suspend the licenses of operators not able to demonstrate financial responsibility. (Rabbitt and Fazzino)

HB 33 - MEDICAL: Provides for licensing and regulation of administrators of nursing homes. Contains penalty provisions and an emergency clause. (Dickey, et al)

HB 34 - GOVERNMENT: Supreme Court - Raises the monetary jurisdictional requirement of the Missouri Supreme Court from \$15,000 to \$30,000. (Rabbitt and Godfrey)

HB 36 - GOVERNMENT: Elections - Raises the compensation of certain election officials in the City of St. Louis. (Kay)

HB 37 - LOCAL GOVERNMENT: Sports Complex - Alters the powers and duty of the Jackson County sports complex authority. (Ryan)

HB 39 - FINANCIAL: Bank Closing - Provides for the banks and trust companies to close during emergencies arising from national disaster or riot. Also allows the Governor to order the closing of banks by proclamation and makes other changes related to closing. (Dale)

HB 40 - LOCAL GOVERNMENT: County Auditors - Raises the salaries of county auditors in second class counties to \$12,000 per year. (Jasper, et al)

GRANCO

QUALITY STEEL PRODUCTS FOR TODAY'S CONSTRUCTION NEEDS

FOR FLOORS & ROOFS

Corruform[®]—The original permanent steel base for concrete floor and roof slabs

Tufcor[®]—Galvanized tough-temper steel roof deck for lightweight insulating concrete and built-up roof construction

Cel-Way[®]—for electrified structural slabs that carry telephone, electric, and even signal service to any location

A-E (Air-Electric) Floor — combines air and electrical distribution in one compact floor system

Cofar[®]—Combined form and reinforcement for structural concrete floor and roof slabs

Cofar Composite—Cofar system with shear connectors for composite beam design

Roof Deck — Strong, versatile, attractive. Five patterns, six gages. A deck to fit every roof need

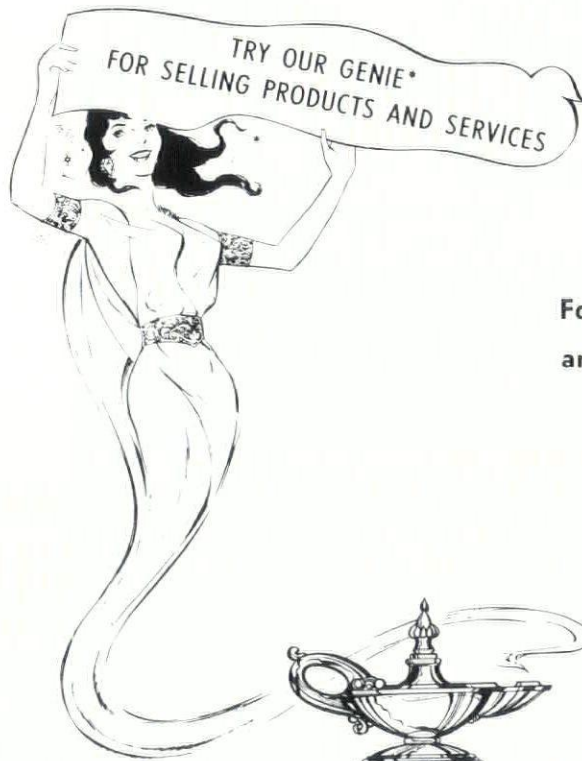
FOR HIGHWAYS

S-I-P (Stay-in-Place) Bridge Forms • **Guard Rail** • **Ful-Flo**[®] **Subdrains**

See Our Catalogs in Sweet's File • Distributors in Principal Cities

GRANCO / *IMAGINATION IN STEEL*

GRANCO STEEL PRODUCTS COMPANY, 6506 N. BROADWAY
ST. LOUIS, MISSOURI 63147. A SUBSIDIARY OF GRANITE CITY STEEL COMPANY



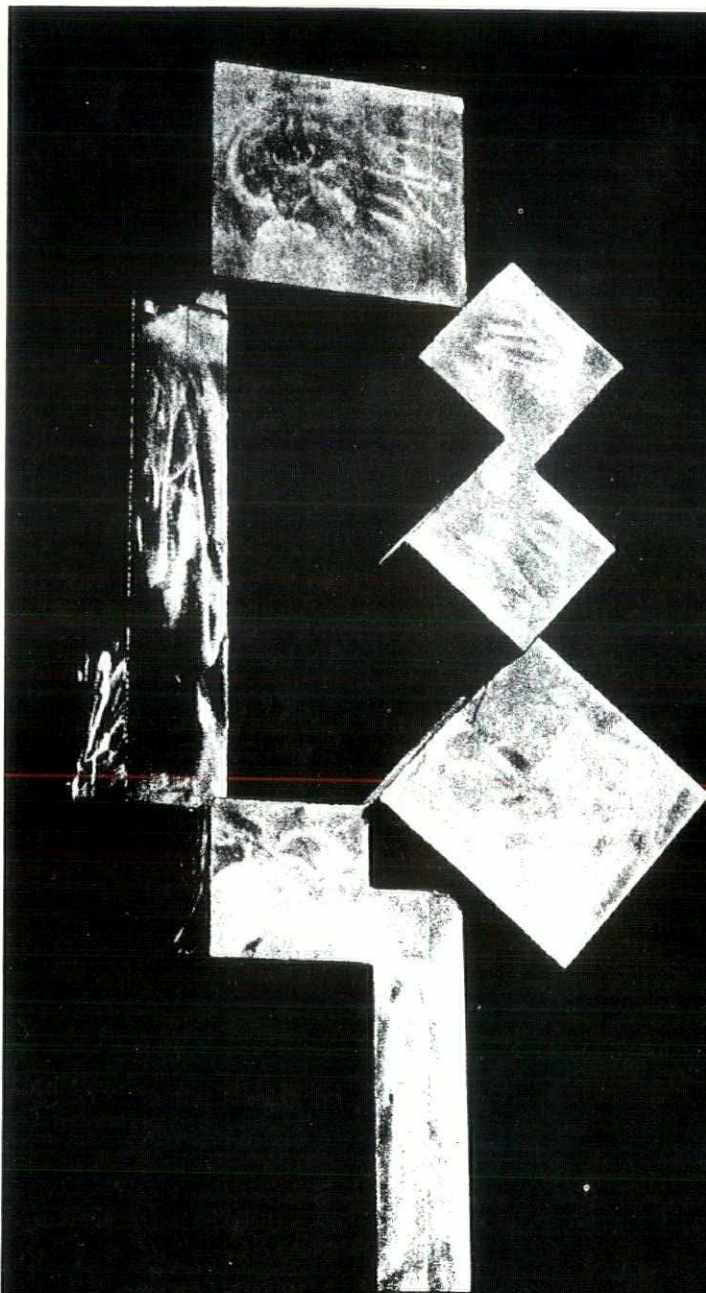
*THE MISSOURI ARCHITECT

For information on how to reach your customers easily,
and at modest cost, write

THE MISSOURI ARCHITECT

Jefferson City, Mo. 65101

P.O. Box 401



Metalworking is a form of art...when performed by true craftsmen.

Whether in the field of sheet metal, heating, ventilating, blow piping or air conditioning, it is an expression of creative technology by trained specialists.

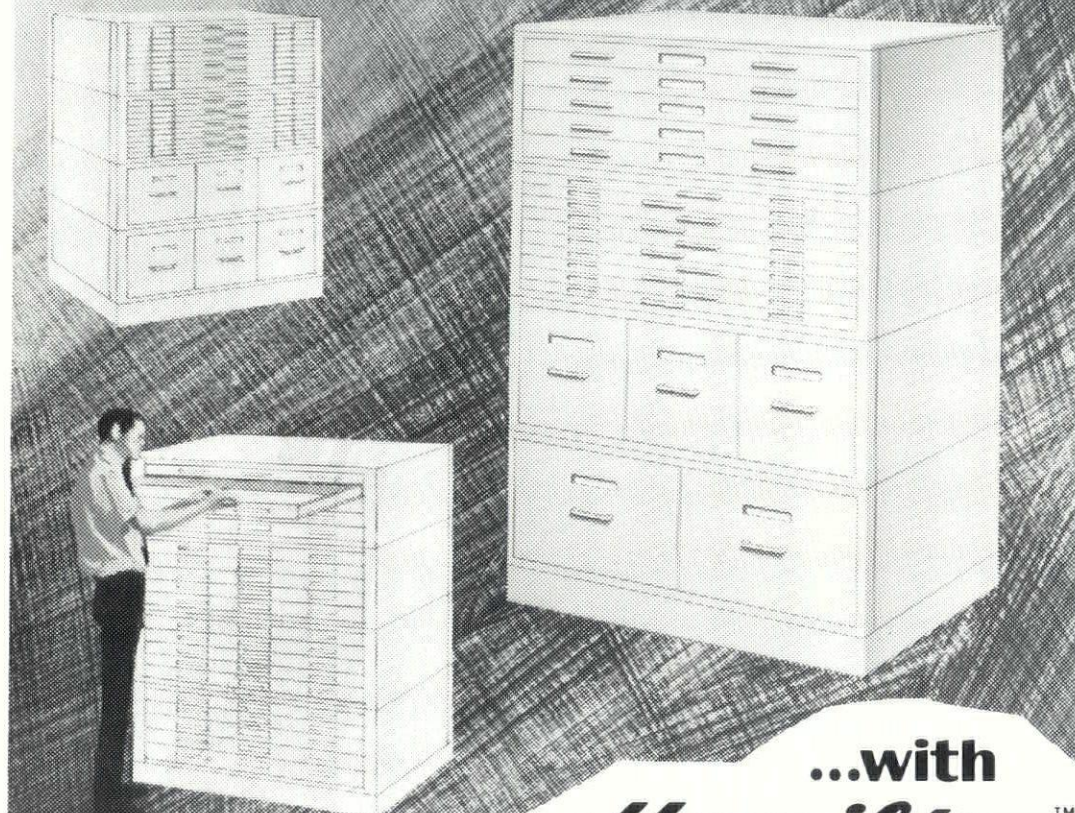
Consult a heating, ventilating, air conditioning, sheet metal contractor who is a member of the Metalworking Industry, when you want the unusual or need the ordinary. He's an unusually ordinary expert.

METALWORKING INDUSTRY
OF ST. LOUIS

A SERVICE BUREAU FOR HEATING, VENTILATING, AIR CONDITIONING & SHEET METAL

2222 SCHUETZ RD., ST. LOUIS (63141) MO. • 432-8307

Design for maximum protection and organization



...with

HamiltonTM

Do your drafting files afford your expensive drawings and tracings all the protection they deserve? Do they really provide your draftsmen with an organized filing system that's easy to use and that eliminates time-consuming searching and hunting? Remember, filing without a system can virtually take money out of your pocket. In loss of efficiency, and unnecessary damage. That's where Hamilton comes in, with a pacesetting UnitSystem of filing. UnitSystem files put an end to time-wasting file fumbling and frustration. Tracings are always readily accessible. Crisp, clean, and unwrinkled. Providing a total activity and usage approach to filing. For more information on UnitSystem, call or see us today.

SERVICE

BLUE PRINT & PHOTO COPY CO.

710 PINE STREET • SAINT LOUIS 1, MO. • CHestnut 1-0688

VSONA MFG. CO.

3512 26 CHOUTEAU AVENUE

ST. LOUIS 3, MO

MANUFACTURERS OF



BRONZE
ALUMINUM
IRON
WIRE WORK
STAINLESS STEEL
FLAG POLES

PLAQUES — TABLETS
ARCHITECTURAL METALS

FOUNDRY
PLATING
CADMIUM
ALUMILITING
NICKEL
CHROME

FOR REFERENCE SEE NATIONAL ASSOCIATION HANDBOOK

PHONE NO. 4-8000



WINCO

Winco Ventilator Co.

INCORPORATED
Manufacturers of Aluminum Windows

NOT JUST A WINDOW... A WINCO

C. E. GARRISON
ENGINEERED SALES REPRESENTATIVE

EVERGREEN 1-8033
533 BITTNER ST.
ST. LOUIS 15, MO.

RENDERINGS

COLOR

BLACK & WHITE

JAMES B. FISHER, JR.

2 GRAYBRIDGE LANE

● ST. LOUIS 24, MO. ● WY. 3-9460



CITY BLOCK AND PRODUCTS CO., has recently installed 2 vessels 80 feet long by 8 feet in diameter for high pressure steam curing masonry units.

For the first time in the Kansas City area you can now have **PRE SHRUNK BLOCKS** in one day's time.

Blocks are cured for 8 hours at a temperature of 360° F. under pressure of 150 lbs. P.S.I.

Delivery - 150 mile radius.

Suggested specifications have been mailed to all architects.

**CITY BLOCK
AND PRODUCTS CO.**
Independence, Mo.

1212 W. 24 Highway

CLifton 2-8760



SPECIFY THE BEST



Now Ceramic Coated!

Buildex is the rotary kiln processed expanded lightweight aggregate for structural concrete, with a ceramic coating. Buildex also follows through on each and every structural job with, "on the job," quality control to insure quality structural concrete.

STRUCTURAL LIGHTWEIGHT AGGREGATES

BUILDEX, INC.

PLANTS AT:

Marquette, Kansas — 913 546-2276

Ottawa, Kansas — 913 242-3271

SALES AT:

Ottawa, Kansas — 913 242-2177

ARCHITECTS AND ENGINEERS SUPPLIES

DRAFTING ROOM FURNITURE

SURVEYING INSTRUMENTS

REPRODUCTION EQUIPMENT

SENSITIZED MATERIALS

SCHOOL SUPPLIES

CLEARPRINT TECHNICAL PAPERS

COMMERCIAL
BLUE PRINT & PHOTO COPY CO.

1123 LOCUST ST. ST. LOUIS MO. 63101

421-5141

Ultra-Copy®
TRADE MARK

Magnum size "miniature" film
focused with a micrometer and
registered with serial control
number for precise blowbacks

TECHNICAL PHOTOGRAPHY

PRECISE FILM AND
PHOTO TRACINGS

Ultra-Copy® Camera-Projector represents the latest
state of the art in industrial photography. A great new working tool
for drafting, engineering, cartography, and all forms of creativity.

Ultra-Copy® is a blend of superb optics, chemistry,
electronics, and uninhibited thinking. It is big and it is fast. It will
make money for its users.

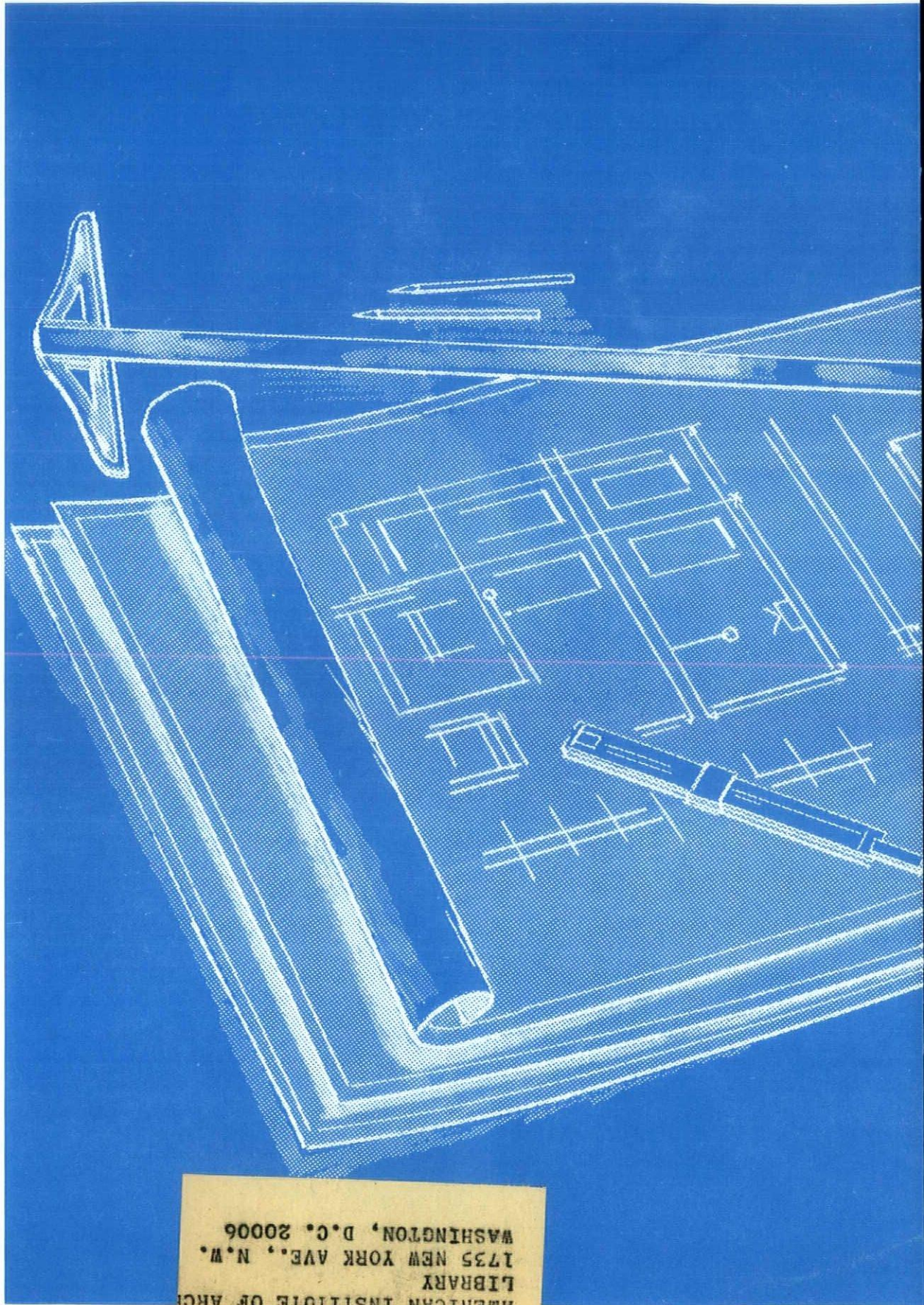
MODERN REPROGRAPHY

1. BY UP-DATING OLD DRAWINGS WITHOUT COSTLY REDRAFTING.
2. BY SPEEDING DRAWING CHANGES.
3. BY QUICKLY, EASILY REPRODUCING WHITE PRINTS.
4. BY EASILY RESTORING DIMEST DRAWINGS.
5. BY REDUCING DRAFTING TIME THROUGH HALF-TONE PHOTO-DRAWINGS.
6. BY ENLARGING MICROFILMS OF DRAWINGS TO HIGHLY LEGIBLE HALF-SIZE OR FULL SIZE POSITIVES WITH A DRAFTING SURFACE.
7. BY REDUCING DRAFTING TIME FOR MAP COMPILATION THROUGH CONTINUOUS-TONE PHOTOMAPS.
8. BY PROVIDING SUPERIOR FILM INTERMEDIATES FOR MAP REPRODUCTION AND ALSO FACILITATING MAPPING CHANGES STANDARDIZING THE SIZES OF A SERIES OF MAPS BY ENLARGING OR REDUCING.
9. BY SPEEDING, SIMPLIFYING PREPARATION OF ETCHED CIRCUIT LAYOUTS AND MAINTAINING DIMENSIONAL CONTROL.
10. BY SPEEDING PREPARATION OF ARTWORK FOR PRINTED CIRCUIT BOARDS.

- BLUE PRINTING
- WHITE PRINTING
- VACUUM FRAME WORK
- DUPLICATE TRACINGS
CONTACT
PHOTOGRAPHIC
CLOTH
MYLAR
PAPER
- MICROFILM
ENLARGEMENTS
- MIMEOGRAPH
PRINTS
- MULTILITH
PRINTS
- EKTALITH PLATES
- PHOTOGRAPHIC
PLATES
- COMPOSITION

- PHOTOSTATS
- PHOTO MURALS
- PHOTO DISPLAYS
- LINE FILM
- TONE FILM
- SCREEN FILM
- PHOTO MYLARS
- COLOR COPIES
- VU-GRAPH SLIDES
- MOUNTING
CLOTH
BOARD
- MATTING
- FRAMING

Commercial Blue Print and Photo Copy Company has been serving the Greater St. Louis area for over forty years. Our collective experience makes many years of reproduction knowledge available to you. Let us help you get the most out of our services for the least money.



AMERICAN INSTITUTE OF ARCHITECTS
LIBRARY
1735 NEW YORK AVE., N.W.
WASHINGTON, D.C. 20006



MISSOURI ASSOCIATION OF REGISTERED ARCHITECTS