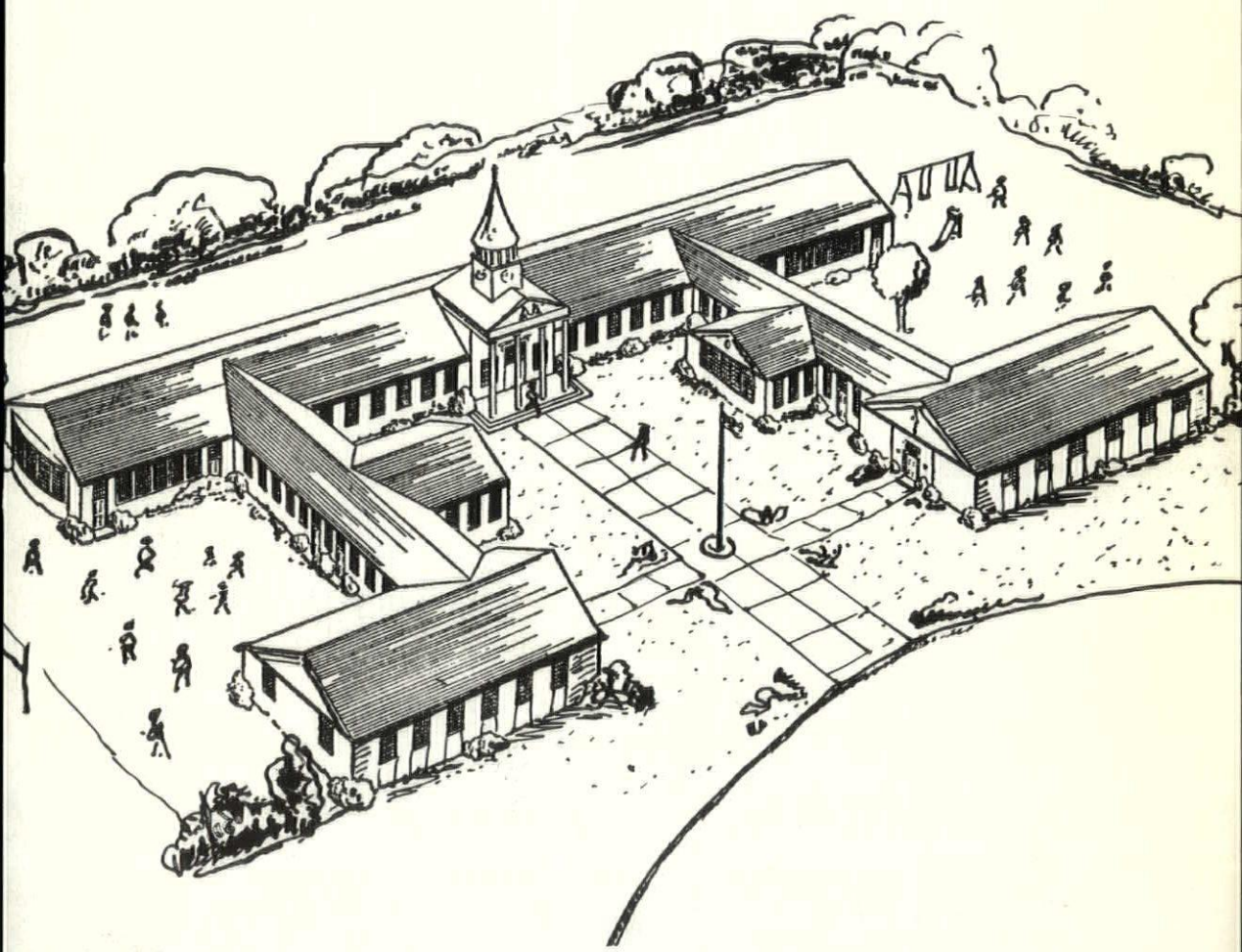


DECEMBER  
1955

libray

PS  
libray

# New Hampshire ARCHITECT



OFFICIAL PUBLICATION

*New Hampshire Chapter of the American Institute of Architects*

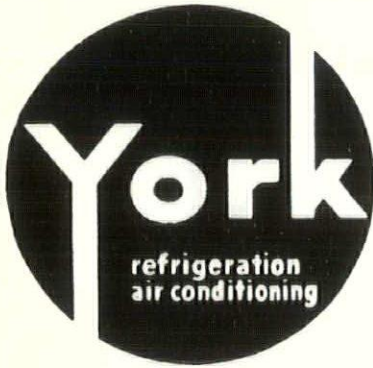


## School Costs Issue

20¢ COPY  
\$2.00-YEAR

**AIR CONDITIONING**

Residential - Commercial - Industrial



Year-Round or Summer

Engineering Assistance Available For Your  
Air Conditioning Problems

**NEW HAMPSHIRE YORK CO.**

254 Lincoln St.      Manchester, N. H.

**DERRYFIELD SUPPLY  
CO., INC.**

EUGENE O. MANSEAU, Treas.

— WHOLESALERS —

**Plumbing - Heating - Mill Supplies**

Granite and Franklin Streets

Manchester, N. H.

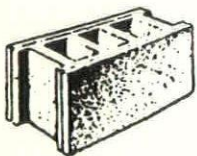
**Concrete Blocks**

**Cinder Blocks**

**Bricks - All Kinds**

**WEL-BILT Overhead  
Operating Doors**

**Masonry Supplies**



**CORRIVEAU-ROUTHIER  
CEMENT BLOCK CO.**

266 Clay Street      Manchester, N. H.

Dial 3-5293

**NEW ENGLAND INSULATION CO.**  
*Contractors - Distributors*

ASBESTOS    MAGNESIA    FIBERGLASS

KAYLO and CORK PIPE COVERINGS

ASBESTOS MILLBOARD & PAPER

Tel. Highlands 5-7800

839-845 Albany St.      Boston 19, Mas

ARTHUR E. SWANSON, Manager



# New Hampshire ARCHITECT

## OFFICERS

### President

NORMAN P. RANDLETT, Laconia

### Vice-President

JOHN D. BETLEY, Manchester

### Secretary

WALTER THOMAS WILLIAMS  
Rochester

### Treasurer

ROBERT SNODGRASS, Nashua

## DIRECTORS

ARCHER HUDSON, Hanover

ALEXANDER MAJESKI, Bedford

MITCHELL P. DIRSA, Manchester

## EDITOR

ALEXANDER MAJESKI, R. A.  
Palomino Lane  
Manchester, N. H.

## PUBLISHER

LAWRENCE J. MOYNIHAN  
P. O. Box 291  
Concord, N. H.

VOL 7

DECEMBER, 1955

NO. 5



## School Costs Issue

Through the cooperation of the Architects, General Contractors and Sub-Contractors, and with an assist from Paul E. Farnum of the State Board of Education, New Hampshire Architect is again publishing an analysis of the costs of new schools and additions in New Hampshire.

School board members in every community in the Granite State should profit from this opportunity to study the costs of school construction in the cities and towns represented in this issue.

At the same time it affords the architects and contractors an opportunity to exchange approximate costs with each other.



# Merry Christmas

New Hampshire Architect is published monthly at 181 North Main Street, Concord, N. H., under the direction of the president and board of directors of the New Hampshire Chapter, American Institute of Architects, to promote the objectives and public relations of the chapter. Advertising rates furnished upon request.

## The President's Message

After a year of almost unprecedented activity in building construction, it is good to relax and think of the many factors that have been joined to create this period of prosperity.

There are many of them, some of which are so intangible that they are not realized. We do know, however, the fine people whom we have met and with whom we have worked, some of them old acquaintances and others new. Of these the ones with whom we are most frequently in contact are our good friends the clients and the contractors both of whom are so essential to our profession.

To these good people, and to all others with whom we have been associated throughout the year, the New Hampshire Chapter of the American Institute of Architects extends sincerest greetings and the best wishes of the Christmas season.

*Thomas D. Powell*

# The Trend Toward Functionalism in School Design

Alexander J. Majeski, AIA Editor  
New Hampshire Architect

Functionalism in design, which has been popularly confused with overemphasis and experiment in architecture, is becoming an important measure of achievement in school planning. This is because the modern school architect does not set out to design a structure in which school children can be housed at minimum financial distress to the school district. Instead, he studies the operation of the educational system and encloses it with a building which can grow and change to meet probable needs over the expected thirty-year life of the structure.

The exterior appearance is important only in its psychological aspect, as far as the children are concerned. However, acceptability by the students is valuable. The exterior style also must be aimed at a thirty-year lifetime for the school. Conservative thinking is probably the best guide here.

Economy in a school building is measured first by initial cost, and second by expense of maintenance and repairs. No intelligent school board would sacrifice educational facilities to get cheap building, and no board would wish to save at the

outset only to incur needlessly expensive upkeep and repair costs later.

This gauge of long-term cost applies throughout the building. Terazzo floors no longer are necessary as asphalt tile is cheap to replace and has a life of twenty years, after which it is affordable to replace it. Ventilation, which has been a bugaboo in public schools for years, is readily handled by forced ventilation for all rooms, with janitor control. Green lights indicate that the system is functioning.

Most of the better schools have individual room thermostats to control heat. This is expensive, but more than justified by the results. It is particularly desirable because of the trend toward large glass areas regardless of orientation.

The great saving available in construction is simplicity. This applies to structural components and exterior design, and also means consistency in planning. Another point which may assure economy is engaging the architect before the site is finally selected. The school board is probably better informed as to the location with respect to population centers and bus routes, but the architect usually can help in appraising a piece of property from the standpoint of building on it.

**PASSENGER & FREIGHT ELEVATORS**

**ROTARY OILDRAULIC & ELECTRIC**

**RESIDENCE ELEVATORS & STAIRCARS**

**INDUSTRIAL - HYDRAULICS**



**Sales - Service - Repair**

444 S. Main

Nashua

Tuxedo 2-9591

# New Hampshire Continues To Build Schools

☆

By Paul E. Farnum—State Dept. of Education

☆

☆

☆

All of us who are interested or concerned with the education of youth have been impressed at the way and in the manner in which New Hampshire school districts have provided new school buildings or major additions for the increase in our school population. There is hardly a community that hasn't during the period since 1946 provided more classroom space, modernized or replaced obsolete classrooms, consolidated their pupils into a central building or assigned these problems to either the school board or a local planning committee for further study. During the period following World War II 160 projects have been completed. These of course include all of the new structures and major additions. The following summary shows the yearly expenditures for capital outlay since 1949-50:

1949-50	\$2,960,229.00
1950-51	3,480,920.00
1951-52	3,175,672.00
1952-53	2,733,306.00
1953-54	2,334,786.00
1954-55	4,000,000.00 (Estimate)

	Elementary	Secondary	Total
1949-50	54,491	18,823	73,314
1952-53	60,067	18,991	79,058
1955-56	68,853	20,304	89,157
1958-59	73,629	22,823	96,452
1961-62	75,509	25,642	101,151
1964-65	72,540	29,305	101,845

During the next five years we can expect even greater annual capital expenditures for construction. This is a critical period for school districts for a number of reasons.

- (1) Many communities have bonded themselves for elementary construction and have left very limited borrowing leeway for their secondary schools.
- (2) The cost of school construction has risen markedly since 1946 when

\$10,000 to \$12,000 would build an elementary classroom.

- (3) The major burden of construction is now in the junior and senior high school field where the cost per pupil has increased from \$800 - \$1,000 for elementary construction up to \$1,200 - \$1,500 or even more for secondary schools depending on the amount of space provided and the quality of construction required.
- (4) Reluctance on the part of the small communities to cooperate with each other and work out more efficient housing facilities particularly in the secondary school field.
- (5) Lack of an adequate school building aid program to help the poor districts in constructing new classroom facilities.

We are all concerned with the increase in school enrollment within our community. Some areas will experience greater growth than others and consequently a greater burden will be placed upon these particular localities. The following table shows the rate of pupil growth since 1949 projected up to 1965.

Today there are about 3,600 teachers in New Hampshire accommodating the 89,000 pupils in our public schools. To house the 101,000 projected into 1964-65 there will be a need for at least 4,300 teachers with as many teaching stations.

New Hampshire architects can feel proud of the manner in which they have helped local communities and this office in providing these many new facilities. We have all learned by doing and all the while

(Continued on Page 26)

**M. J. MURPHY  
& SONS, INC.**

(Established 1921)

**BARRETT and JOHNS MANVILLE  
BONDED ROOFERS**

Kentile Asphalt, Rubber  
Vinyl and Cork Tile Flooring

at

**PLYMOUTH GYMNASIUM**

12 Portland Ave. DOVER Tel. 169  
502 Islington St. PORTSMOUTH Tel. 3590

**C. R. SWANEY CO.**

Nash Engineering Co.

Vulcan Radiator Co.

Economy Pumps, Inc.

H. A. Thrush & Co.

Pumps for Vacuum Heating,  
Condensation, Boiler Feed, Sewage,  
Hot and Cold Water and Process

Trimline Baseboard and  
Commercial Fin Tube Radiation

335 Newbury Street - Boston 15, Mass.  
KENmore 6-5613



**EYESIGHT IS PRECIOUS . . .  
GOOD LIGHT IS CHEAP**

Every architect knows that a modern, efficient lighting system in a schoolhouse is of highest importance, but is a comparatively small item in the total cost of the project.

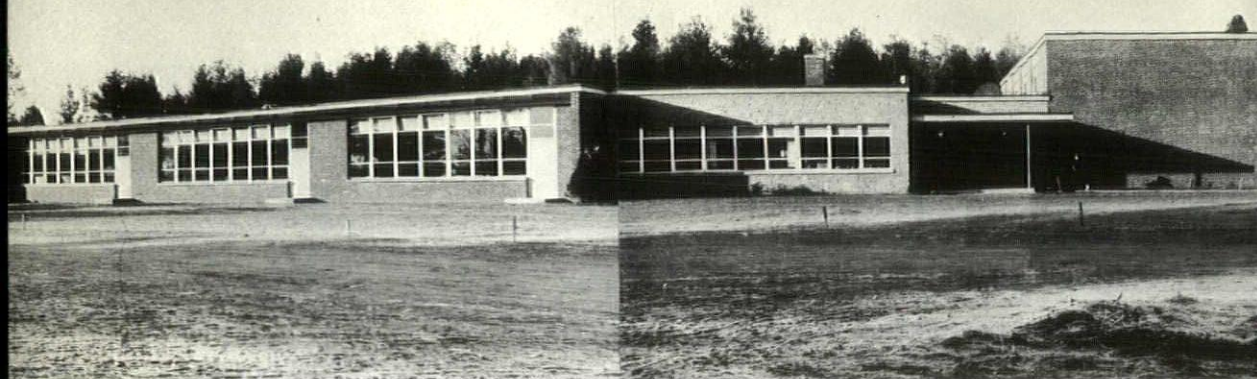
The planning of such a system proceeds along standardized lines, but new ideas and methods are developed every day by the best minds in the profession.

We would be most happy to consult with you on any detail problem if you so desire . . . we are constantly receiving new data, and our time is at your disposal.

Call or write our office —any time!

**Public Service Company of New Hampshire  
and New Hampshire Electric Company**

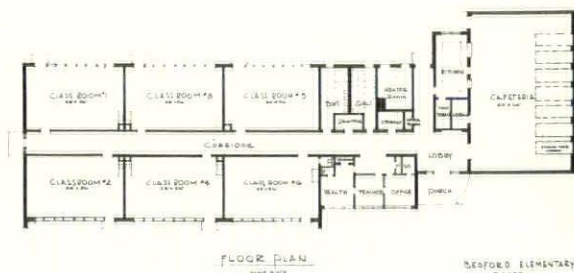
Serving 153,000 customers with dependable, low-cost ELECTRICITY



## BEDFORD MEMORIAL SCHOOL - BEDFORD

### DESCRIPTION:

Footings and foundation walls reinforced concrete; cafeteria, steel frames; roof framing, long-span joist; exterior walls, brick veneer with cinder block backup. Classroom wing, brick veneer cinder block backup; load bearing walls, roof framing, open web joists; office section exterior walls of 4" Bestone Veneer, ashler, cinder block backup; roof deck, precast; roofing, 20-year bonded, asphalt builtup roofing. Interior partitions are cinder block, 4'-0" glazed tile dado. Toilet rooms ceramic tile floors and walls; floor-covering, asphalt tile; ceilings, acoustical plaster; door frames interior, steel; sash, aluminum; lighting, incandescent fixtures; heating, one pipe steam individual room control; ventilation, mechanical in classrooms, toilet rooms and cafeteria. Folding tables, inwall, in cafeteria; wardrobe 12' unit each classroom. Teacher storage, 4' unit each classroom. Sink and fountain unit, stainless steel sink with hot and cold water, with bubbler in each room.



ITEM	Cost	% of Total Cost	Cost Per Sq. Ft.	Cost Per Cu. Ft.
STRUCTURE.....	\$105,956.00	78.5	\$8.45	\$ .58
PLUMBING.....	6,700.00	5.0	.53	.036
HEATING AND VENT.....	16,600.00	12.3	1.32	.09
ELECTRICAL.....	5,610.00	4.2	.47	.029
<b>TOTAL COST OF BUILDING.....</b>	<b>\$134,866.00</b>	<b>100</b>	<b>\$10.77</b>	<b>\$ .735</b>

TOTAL VOLUME: 183,660 cu. ft.—FLOOR AREA: 12,525 sq. ft.—  
DATE OF BIDS: February 1, 1955.

**Alexander J. Majeski, A.I.A., Architect - Bedford, N. H.**

DAVID W. DAVISON, MANCHESTER, N. H.  
GENERAL CONTRACTOR



## ERIC ANDERSON

482 Reservoir Ave. Tel. 5-5640  
Manchester, N. H.

It was a pleasure to work with  
Alexander Majeski, Architect  
and

David Davison, General Contractor  
as

### Painting Contractor

for

BEDFORD MEMORIAL SCHOOL

**On ANY Wall**

**MASURY  
IS GOOD  
PAINT!**



**Stan's Paint**

and

### Wallpaper Store

125 Merrimack St. Dial 5-8861  
MANCHESTER, N. H.

# DAVID W. DAVISON



449 HAYWARD STREET  
MANCHESTER, NEW HAMPSHIRE

Tel. 4-4041

## GENERAL CONTRACTOR

for

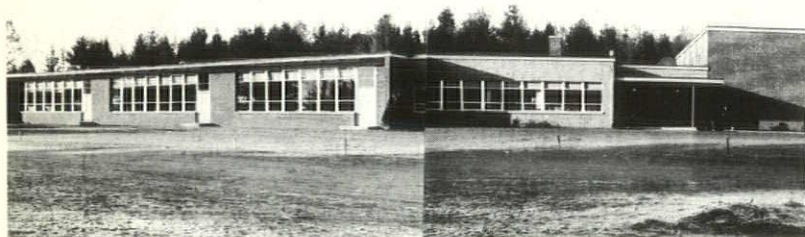
**B E D F O R D**

**M E M O R I A L S C H O O L**

# MODERN SCHOOLS DESERVE THE BEST!

*Are You Using . . .*

## LIGHTWEIGHT EXPANDED *Duralite* AGGREGATE?



Bedford Memorial School  
Bedford, N. H.

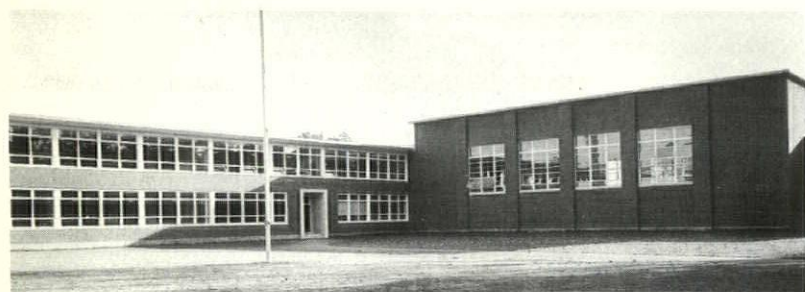
Alexander J. Majeski, Architect  
Bedford, N. H.

David W. Davison, General Contractor, Manchester, N. H.

In these fine schools, lightweight expanded slag aggregate concrete units were used for interior partitions and walls.

For schools, residential, commercial or industrial design, you are building best when you build with concrete masonry units made with lightweight expanded slag aggregate.

A modern, practical, permanent construction material that combines beauty with many points of utility.



Tuck Senior High School  
Exeter, N. H.

Alfred T. Granger Associates, Architect  
Hanover, N. H.

Swanburg Construction Corp., General Contractor, Manchester, N. H.

- ARCHITECTURAL TEXTURE
- NAILABLE
- ACOUSTICAL
- DURABLE
- LIGHTWEIGHT
- HIGH STRENGTH
- INSULATING
- FIRE-RESISTING

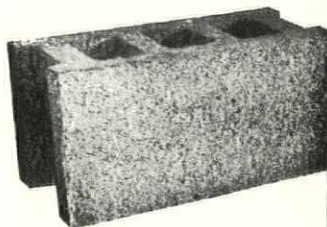
MEETS ASTM SPECIFICATIONS FOR CONCRETE MASONRY UNITS  
APPROVED BY NATIONAL BOARD OF FIRE UNDERWRITERS AND NATIONAL BUREAU OF STANDARDS

For Complete Information, See Your Local Concrete Block Producer  
or Call or Write

## DURACRETE BLOCK CO., INC.

Dial Manchester 5-6293 - 2-7011

Rear Manchester Sand and Gravel Co., Hooksett, N. H.



## **Tolles-Bickford Lumber Co., Inc.**

---

Lumber and Builders Finish — Mill Work  
Detail Frames, Sash, Doors and Box Shooks

---

20-30 Quincy Street

Telephone TU 2-5141

**NASHUA, NEW HAMPSHIRE**

Manufacturers of Millwork

for

**BEDFORD MEMORIAL SCHOOL**

## **Eckhardt & Johnson, Inc.**

Plumbing & Heating Contractors  
213 Hanover St. Tel. 2-7493  
**MANCHESTER, N. H.**

---

Plumbing, Heating Contractor

for

Bedford Memorial School

and

Goffstown Elementary School

## Beautiful **STYLON** TILE

☆ ☆ ☆

for

Dame School, Concord

Charlotte Avenue School, Nashua

Fairgrounds School, Nashua

Goffstown Elementary School

Somersworth High School

☆ ☆ ☆

## **Merrimac Tile Co., Inc.**

DERRY, N. H.

Frank J. Indoccio, Pres.



## **PITTSBURG GLAZING**

will be found in many  
New Hampshire Schools

including

Bedford Memorial School

Exeter High School

Goffstown Elementary School

Pembroke Academy

Charlotte Avenue and Fairgrounds

Elementary Schools, Nashua

PAINTS • GLASS • CHEMICALS • BRUSHES • PLASTICS

**PITTSBURGH PLATE GLASS CO.**  
23 So. Commercial St., Manchester, N. H.



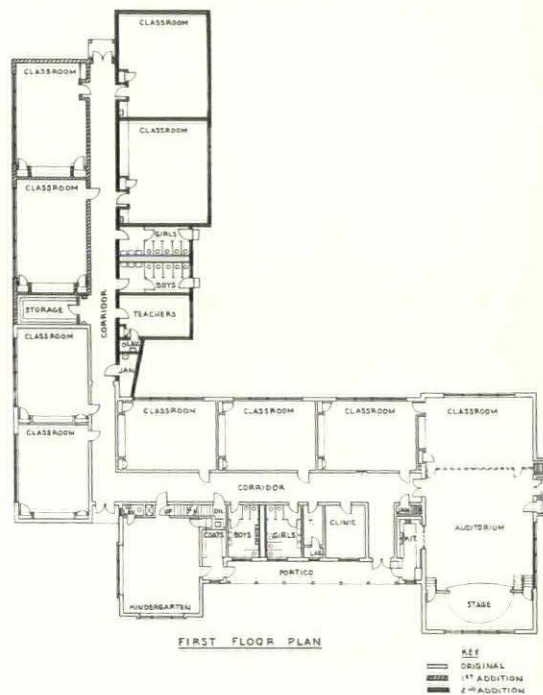
## DAME SCHOOL ADDITION - CONCORD

### DESCRIPTION:

The original new Dame School was erected in 1941. A year earlier the Concord School Board had held a formal design competition with Dean Walter McCornack of M.I.T. as professional advisor. This was won by the Concord firm of Lyford and Magenau.

The recently completed two-room addition, which is the third stage of a planned expansion, included boys' and girls' toilets, teachers' room and toilet, and alterations to existing end classroom. Materials were kept similar to existing work, brick exterior, wood windows, with asphalt tile and ceramic tile flooring, structural facing tile and concrete block partitions, acoustical tile ceilings, etc. Glass blocks over the low toilet roof light up the corridor. One exception was the roof which was kept flat, after careful study by the committee, and after estimates showed an approximately saving of \$2,400.00 as compared with a pitched roof.

An unusual plan feature is the outside door in boys' and girls' toilets. This is an experiment, requested by the City Recreation Department to avoid the cost of providing separate toilets for the nearby playground and is a good example of the current trend to broaden the use of school facilities for community use.



ITEM	Cost	% of Total Cost	Cost Per Sq. Ft.	Cost Per Cu. Ft.
STRUCTURE.....	\$34,688.95	78.2	\$11.51	\$ .90
PLUMBING, HEAT., VENT.....	8,600.00	19.4	2.86	.22
ELECTRICAL.....	1,060.00	2.4	.35	.03
<b>TOTAL COST OF BUILDING.....</b>	<b>\$44,348.95</b>	<b>100.</b>	<b>\$14.72</b>	<b>\$1.15</b>

TOTAL VOLUME: 38,472 cu. ft.—FLOOR AREA: 3,012 sq. ft.—CEILING HEIGHT 11'-1" Class Rooms, 7'-6" Teachers' Room.

**Lyford and Magenau, A.I.A., Architects - Concord, N. H.**

FOSTER AND BAMFORD, INC., CONCORD, N. H.  
 GENERAL CONTRACTOR

## **Francoeur-Gill Co., Inc.**

214 Union Ave.

Tel. 1090

LACONIA, N. H.



### **Plumbing and Heating Contractors**

for

ALTON ELEMENTARY SCHOOL

DAME SCHOOL, CONCORD

## **Foster & Bamford, Inc.**

71 Clinton St.

Dial CA 4-1031

Concord, N. H.

---

### **General Contractor**

— for —

DAME SCHOOL, CONCORD

### **Millwork for Addition To Dame School**

furnished by

**Concord Lumber Co.  
Concord, N. H.**

---

Dial CA 5-5559

---

“Serving Local Builders  
for over Half A Century”

Preston W. Colbroth

Clyde E. Fitts

### **Superior Electric Co.**

Tel. CA 4-0451

10 Warren St.

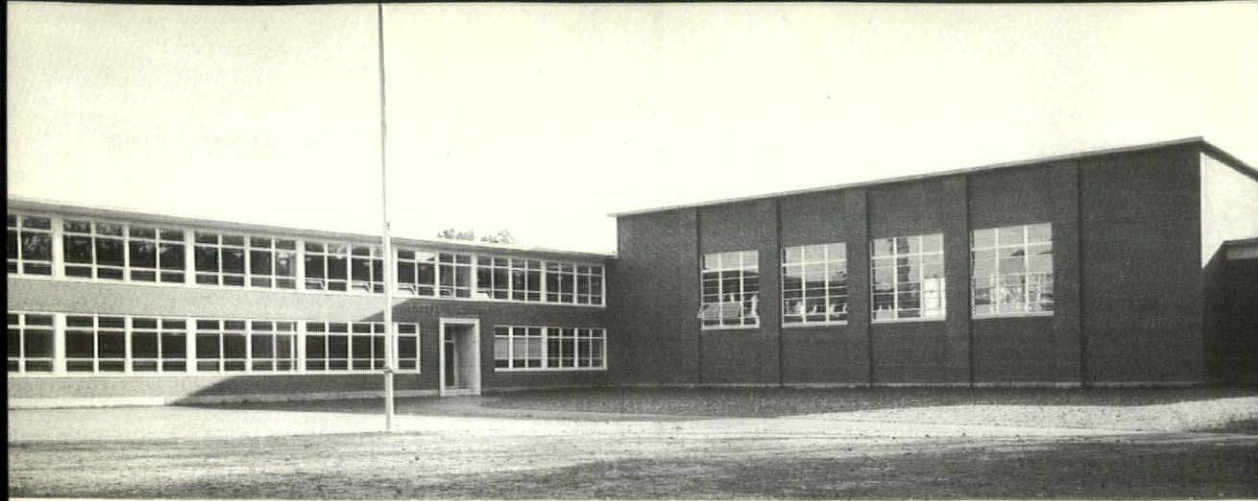
CONCORD, N. H.

☆ ☆ ☆

### **Electrical Contractor**

for

DAME SCHOOL, CONCORD



High School Entrance and Courtyard

**SENIOR HIGH SCHOOL ADDITION TO PRESENT TUCK SCHOOL - EXETER**

**DESCRIPTION:**

Outside walls—face brick and concrete block; roof construction of Basement—reinforced waterproof concrete slab on earth covered with asphalt tile throughout excepting toilets and showers which have ceramic tile: First floor—reinforced waterproof concrete slab on earth with floor covering of asphalt tile and ceramic tile and portion—open truss joists with Steeltex and concrete; Second floor—open truss joists, Steeltex and concrete covered with asphalt tile excepting toilets which have ceramic tile floors and dados; Corridors of first and second floor—Vitratile dados, locker height; steel stairs with asphalt tile treads and smoke screens; roof—Douglas fir rafters, planking or roofing with insulation, 20-year tar and gravel roof, flashing and drip edge—copper; interior partitions—concrete block painted; door frames and trim—metal combination; built-in steel lockers in Corridors; ceilings—J. M. Fibertone acoustic panels; windows—structural wood in school portion, steel in Gymnasium and Locker Room portion; plumbing—30 water closets, 23 lavatories, 13 urinals, 13 sinks, gang showers off Boys Locker Room, separate showers



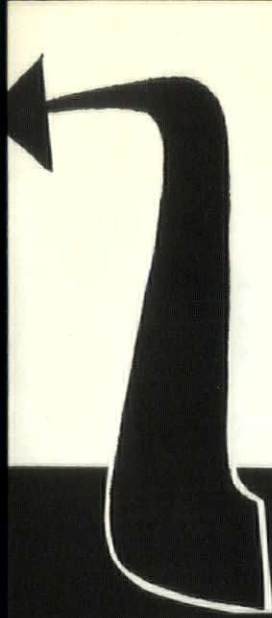
Home Economic Room

off Girls Locker Room, 7 drinking fountains; heating—new Boiler Room with two-pipe vented return steam and with steam and returns connection to present High School; electric—rigid conduit, ventilation fans.

ITEM	Cost	% of Total Cost	Cost Per Sq. Ft.	Cost Per Cu. Ft.
STRUCTURE.....	\$394,177.28	69.2	\$7.10	\$ .426
PLUMBING, HEATING AND VENT.....	136,939.00	22.0	2.47	.148
ELECTRICAL.....	52,223.00	8.8	.93	.056
<b>TOTAL COST OF BUILDING.....</b>	<b>\$583,338.28</b>	<b>100.0</b>	<b>\$10.50</b>	<b>\$ .63</b>

TOTAL VOLUME: 925,000 cu. ft.—FLOOR AREA: 55,500 sq. ft.—DATE OF BIDS: August 17, 1954—CONSTRUCTION STARTED: September, 1954—CONSTRUCTION COMPLETED: August, 1955.  
FLOOR HEIGHTS: Ground floor to 1st floor, 10' 5"; First floor to 2nd floor, 11' 5"; Gymnasium, 23' to bottom of trusses.

**ALFRED T. GRANGER Associates, A. I. A.**  
Architects and Engineers - Hanover, N. H.



ANOTHER  
FINE SCHOOL BUILDING  
BY

**SWANBURG  
CONSTRUCTION CORP.**

**Manchester, N. H.**



*"Steel When You Want It"*

**LYONS IRON WORKS. Inc.**

STEEL STRUCTURES DESIGNED AND FABRICATED  
ARCHITECTURAL AND ORNAMENTAL IRON  
*Office and Works*

**MANCHESTER NEW HAMPSHIRE**

It was our privilege to furnish the STEEL  
for the Construction of the following Schools

BEDFORD MEMORIAL SCHOOL

DAME SCHOOL, CONCORD

GOFFSTOWN ELEMENTARY SCHOOL

PLYMOUTH GYMNASIUM

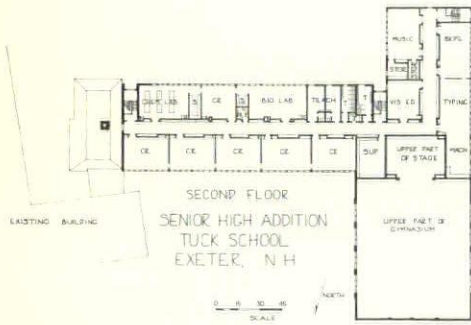
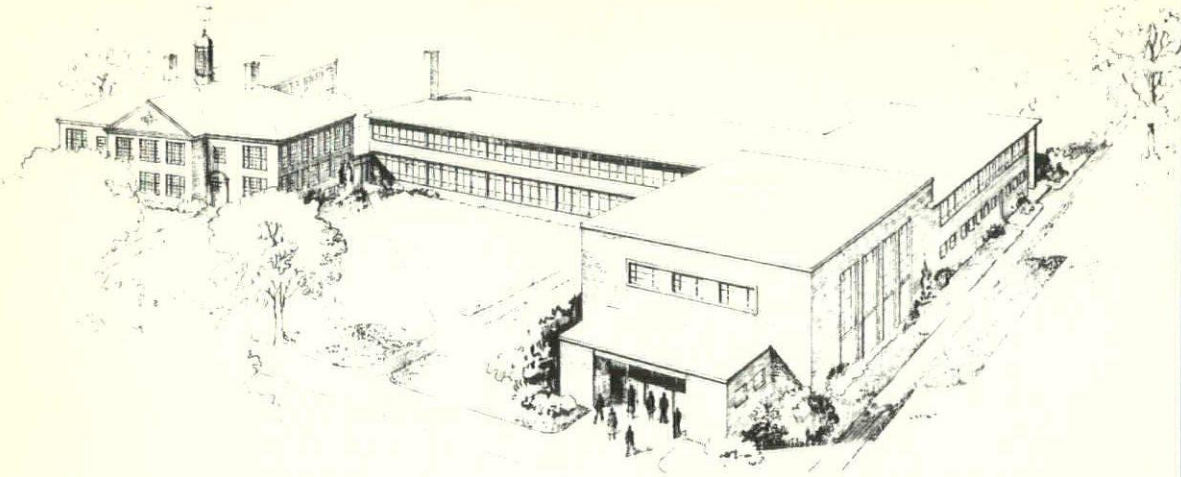
KEENE TEACHERS COLLEGE

TUCK HIGH SCHOOL, EXETER

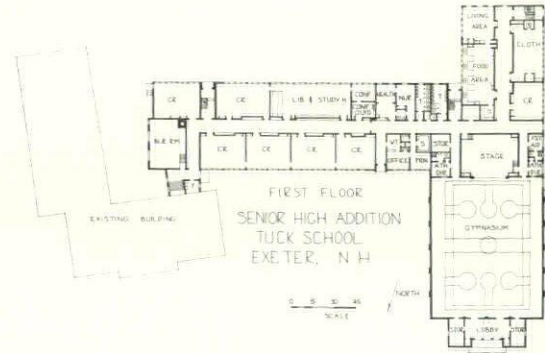
PEMBROKE ACADEMY

SOMERSWORTH HIGH SCHOOL

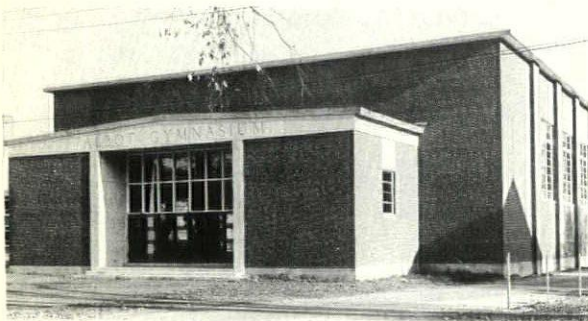
ELEMENTARY SCHOOLS AT NASHUA



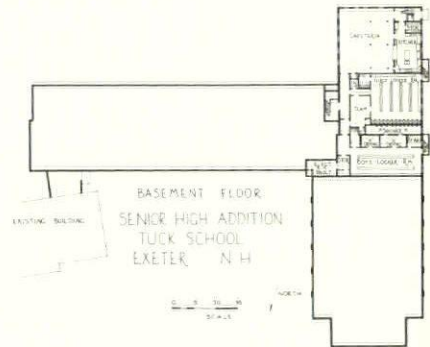
2nd. Floor



1st. Floor



Entrance to Talbot Gym.



Basement Floor Plan

**ALFRED T. GRANGER Associates, A. I. A.**  
**Architects and Engineers - Hanover, N. H.**

**SWANBURG CONSTRUCTION CORP., MANCHESTER, N. H.**  
**GENERAL CONTRACTOR**





**Another  
GOOD  
ROOF**

by

**THERRIEN**

ROOFING and SHEET METAL WORK

**A. W. Therrien Co.**

199 Hayward St. Tel. 3-6193

Manchester, N. H.

**W. J. PARENTEAU**

MANCHESTER, N. H.

Res: 88 Belmont St. Shop: 147 Maple St.

Dial 2-9413

Dial 2-8130

---

**Plumbing and Heating  
Contractors**

for

TUCK SENIOR HIGH SCHOOL

EXETER, N. H.



**Electrical Contractor**

— for —

Bedford Memorial School

Goffstown Elementary School

Pembroke Academy

Exeter High School

---

53 Hollis St. Dial 3-3568  
Manchester, N. H.

Tel. 2-3293

Established 1871

**J. Hodge Company, Inc.**

Sundial Avenue

Manchester, New Hampshire

---

**MILLWORK**

for

Exeter High School

and

Goffstown Elementary School

---

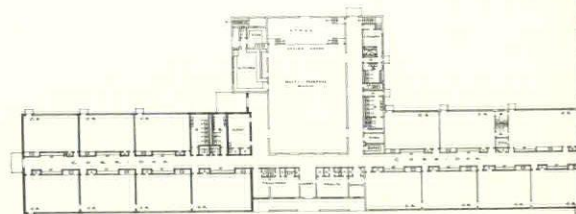
Wardrobe and Teacher Storage Units  
for Bedford School



## CHARLOTTE AVENUE ELEMENTARY SCHOOL - NASHUA

### DESCRIPTION:

This is one of two identical schools erected simultaneously in the City of Nashua. The first stage of construction was completed in 1954 and consisted of 7 classrooms, multi-purpose room, administrative offices, health suite, etc. The second stage of construction has just been completed and consists of 7 additional classrooms, toilet rooms and conference room. Construction Details: Concrete foundations, concrete floor slabs, exterior walls of brick, with cinder block backers, roof frame of steel joists with gypsum plank deck, built-up roofing, aluminum awning windows, asphalt tile floors, acoustical tile ceilings, glazed structural tile wainscots, enameled steel chalkboards, steel lockers, concentric ring incandescent fixtures, unit ventilators



FLOOR PLAN  
ADDITION TO NEW ELEMENTARY SCHOOLS, NASHUA, N. H.  
TRACY & HILDRETH, ARCHITECTS  
NASHUA, N. H.

<i>ITEM</i>	<i>Cost</i>	<i>% of Total Cost</i>	<i>Cost Per Sq. Ft.</i>	<i>Cost Per Cu. Ft.</i>
STRUCTURE.....	\$ 89,420.00	73.	\$9.98	\$ .67
PLUMBING, HEATING AND VENT.....	24,776.00	20.	2.76	.18
ELECTRICAL.....	8,611.00	7.	.96	.06
<b>TOTAL COST OF BUILDING.....</b>	<b>\$122,807.00</b>	<b>100.</b>	<b>\$13.70</b>	<b>\$ .91</b>

TOTAL VOLUME: 134,700 cu. ft.—FLOOR AREA: 8,984 sq. ft.

**Tracy and Hildreth, A.I.A., Architects - Nashua, N. H.**

BLANCHARD STEBBINS, INC., MANCHESTER, N. H.  
GENERAL CONTRACTOR



**Another  
GOOD  
ROOF**

by

**THERRIEN**

ROOFING and SHEET METAL WORK

**A. W. Therrien Co.**

199 Hayward St.

Tel. 3-6193

Manchester, N. H.

**CHARLES H. AUSTIN, INC.**

ESTABLISHED 1893

ELECTRICAL INSTALLATIONS AND SUPPLIES

178 MAIN STREET

NASHUA, N. H.

**Electrical Contractor**

— for —

Nashua's

Two New Elementary Schools

**BLANCHARD STEBBINS, INC.**



**Commercial and Industrial Work**

330 Lincoln Street

Dial 3-2273

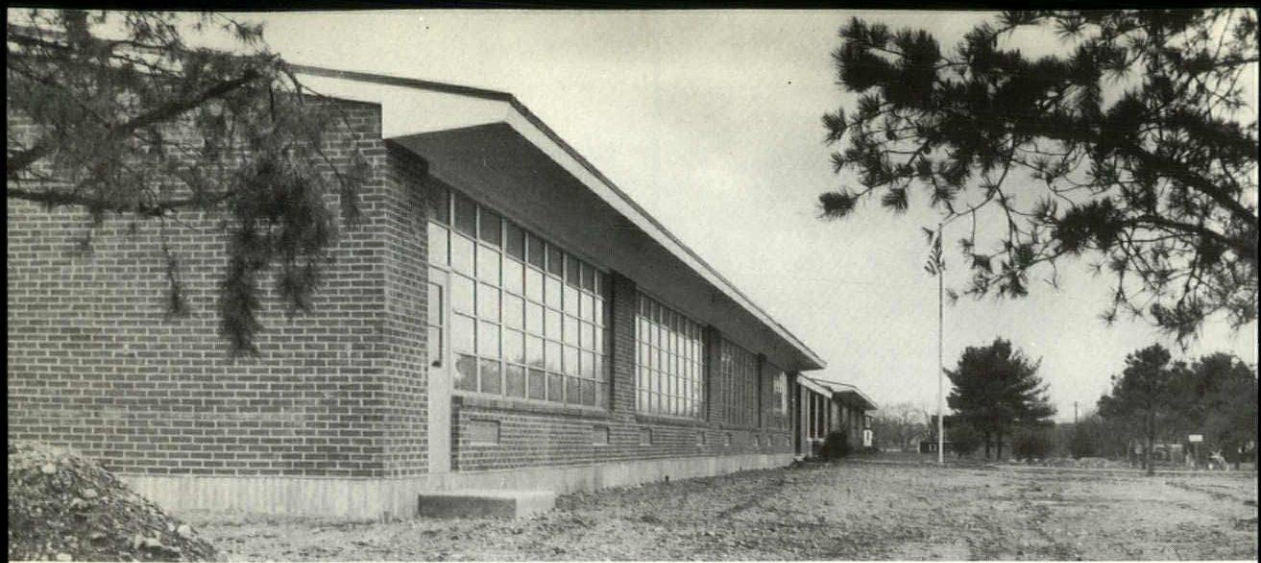
MANCHESTER, N. H.

*General Contractor*

**CHARLOTTE AVENUE ELEMENTARY SCHOOL**

**FAIRGROUNDS ELEMENTARY SCHOOL**

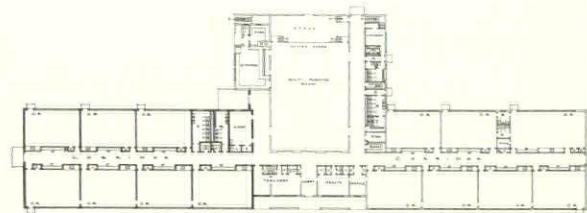
**Both at Nashua**



## FAIRGROUNDS ELEMENTARY SCHOOL - NASHUA

### DESCRIPTION:

This is one of two identical schools erected simultaneously in the City of Nashua. The first stage of construction was completed in 1954 and consisted of 7 classrooms, multi-purpose room, administrative offices, health suite, etc. The second stage of construction has just been completed and consists of 7 additional classrooms, toilet rooms and conference room. Construction Details: Concrete foundations, concrete floor slabs, exterior walls of brick, with cinder block backers, roof frame of steel joists with gypsum plank deck, built-up roofing, aluminum awning windows, asphalt tile floors, acoustical tile ceilings, glazed structural tile wainscots, enameled steel chalkboards, steel lockers, concentric ring incandescent fixtures, unit ventilators



ADDITION TO NEW ELEMENTARY SCHOOLS, NASHUA, N. H.  
TRACY & HILDRETH, ARCHITECTS  
NASHUA, N. H.

ITEM	Cost	% of Total Cost	Cost Per Sq. Ft.	Cost Per Cu. Ft.
STRUCTURE.....	\$ 89,420.00	73.	\$9.98	\$ .67
PLUMBING, HEATING AND VENT.....	24,776.00	20.	2.76	.18
ELECTRICAL.....	8,611.00	7.	.96	.06
<b>TOTAL COST OF BUILDING.....</b>	<b>\$122,807.00</b>	<b>100.</b>	<b>\$13.70</b>	<b>\$ .91</b>

TOTAL VOLUME: 134,700 cu. ft.—FLOOR AREA: 8,984 sq. ft.

**Tracy and Hildreth, A.I.A., Architects - Nashua, N. H.**

BLANCHARD STEBBINS, INC., MANCHESTER, N. H.  
GENERAL CONTRACTOR

## Lathing and Plastering

Bedford Memorial School  
Exeter High School  
Nashua Elementary Schools  
Goffstown Elementary School  
Somersworth High School

— by —

### **P. H. McGranahan Company, Inc.**

555 Valley St. Manchester, N. H.  
Dial 2-9373

L A T H I N G

by

ECONOMY SYSTEM OF LATHING  
Manchester, N. H.

## R. C. Peabody Co., Inc.

Plumbing • Heating • Sprinkler

### **Contractors**

Sales Installation Service

720 Union St.

Dial 2-0824

Manchester, N. H.

Plumbing, Heating and Ventilating  
Contractor

for

NASHUA ELEMENTARY SCHOOLS  
and  
PEMBROKE ACADEMY

## **OUR SPECIALTY IS COMMERCIAL AND RESIDENTIAL FLOORING INSTALLATIONS**

The Asphalt Tile for the Schools Listed Below was



*Asphalt Tile* **FLOORING**

Installed by

*Elliott's*

98 Main St., Nashua  
Tel. TUxedo 2-1731

1040 Elm St., Manchester  
Tel. 5-9074

62 Congress St., Portsmouth  
Tel. 392

PEMBROKE ACADEMY — SOMERSWORTH SCHOOL — GOFFSTOWN SCHOOL  
BEDFORD SCHOOL — EXETER HIGH SCHOOL — LITTLETON SCHOOL  
CHARLOTTE AVE. AND FAIRGROUNDS ELEMENTARY SCHOOLS, NASHUA

Elliott's Furnishes and Installs All Types of Floor Coverings,  
Wall Tiles, Carpets and Venetian Blinds.



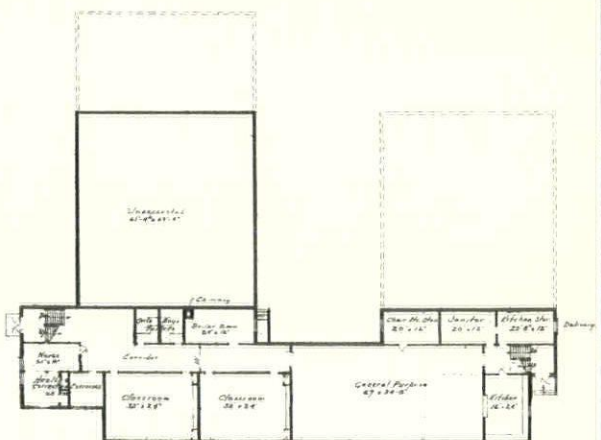
## ELEMENTARY SCHOOL - GOFFSTOWN

### DESCRIPTION:

Ten room unit with an all purpose room. There are two classrooms on the Ground Floor; an all purpose room with kitchen adjacent, medical unit, kitchen storage, boys and girls toilets, heating rooms, janitor's room and storage rooms are also included on the Ground Floor.

The First Floor has eight classrooms, superintendent's office and waiting room, library, girls and boys toilets, storage rooms. Four lower grades have individual toilets for each classroom:

Construction Data: Exterior walls: brick facing and cinder block backing. Floors: reinforced concrete slab on bar joists and reinforced slab on gravel fill. Ceiling finish: acoustical plaster on wire lath: Asphalt tile finish floors. Aluminum exterior windows; strip windows with glass blocks above in classrooms. Lighting: indirect incandescent. Heating: steam oil fired; each room has an automatic valve for individual control. Roof is tar and gravel laid over 2" insul-rock fiber insulating board.



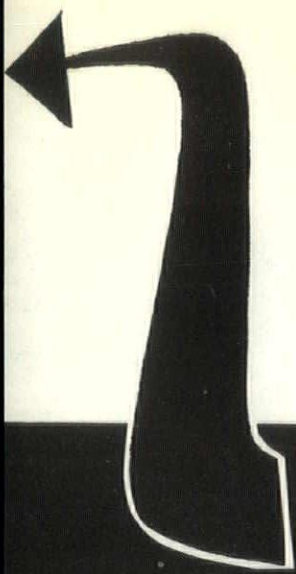
PROPOSED GROUND-FLOOR PLAN OF  
GOFFSTOWN SCHOOL  
Carl E. Peterson - Architect - Manchester, N. H.  
So. 11/24-11-50 Date: 11/27/50  
Per: [Signature]

ITEM	Cost	% of Total Cost	Cost Per Sq. Ft.	Cost Per Cu. Ft.
STRUCTURE.....	\$128,046.00	61.0	\$6.08	\$ .467
PLUMBING, HEATING.....	36,000.00	17.1	1.70	.131
ELECTRICAL.....	18,580.00	8.8	.88	.067
PAINTING.....	5,500.00	2.6	.26	.02
STRUCTURAL STEEL.....	22,000.00	10.5	1.05	.08
<b>TOTAL COST OF BUILDING.....</b>	<b>\$210,126.00</b>	<b>100.0</b>	<b>\$9.97</b>	<b>\$ .765</b>

TOTAL VOLUME: 274,600 cu. ft.—FLOOR AREA: Ground Floor 8,314 sq. ft.; First Floor 12,762 sq. ft.—FLOOR HEIGHTS: Ground Floor to First Floor 11'-9"; First Floor to Ceiling 10'-6"+

**Carl E. Peterson, A. I. A., Architect - Manchester, N. H.**

**SWANBURG CONSTRUCTION CORP., MANCHESTER, N. H.  
GENERAL CONTRACTOR**



**ANOTHER  
FINE SCHOOL BUILDING  
BY**

**SWANBURG  
CONSTRUCTION CORP.**

**Manchester, N. H.**

**D. G. HOULE COMPANY**

**Bonded Roofers**

---

ROOFING — SIDING — SHEET - METAL — FLOORING

---

Lynchville Road — Dial 2-9163 — Grasmere, N. H.

---

**ROOFING CONTRACTOR**

for

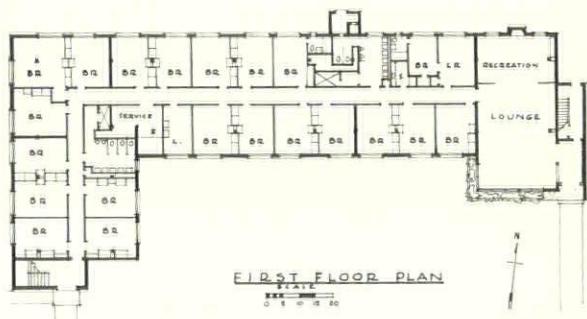
BEDFORD MEMORIAL SCHOOL      GOFFSTOWN SCHOOL  
NEW BOSTON SCHOOL      HOLDERNESS SCHOOL, PLYMOUTH  
ARROW NEEDLE MFG. COMPANY, MANCHESTER  
BURKE SHOE COMPANY, RAYMOND



## KEENE TEACHERS COLLEGE - MENS' DORMITORY - KEENE

### DESCRIPTION:

Dormitory for 150 students with 75 double rooms, proctor's suite, lounge and recreation room, laundry room, lobby and two stair towers. Foundation footings, walls and perimeter trench concrete; 10" cavity type exterior walls, 4" brick and 4" cinder concrete blocks; Structural system Youtz-Slick Lift Slab Method; Columns 8x8 structural angles welded, first floor 4" reinforced concrete, second and third floor and roof reinforced concrete flat plate design; Interior partitions truss steel stud, rock-lath and light weight plaster; Ceramic tile floors and wainscot in toilets, "Spectra Glaze" blocks in stair towers; Flooring asphalt tile and vinyl asbestos; Ceilings acoustical tile; Exterior doors aluminum, interior doors wood with metal frames; Windows aluminum double hung and projected; Electric rigid conduit and incandescent lighting, fixtures included; Heating steam (central plant) with fin type base-



board radiation; Plumbing 21 water closets, 33 lavatories, 12 urinals, 12 showers, 2 tubs; Built-in furniture 150 wardrobes, storage units, dressers and bookshelves, used as room dividers.

ITEM	Cost	% of Total Cost	Cost Per Sq. Ft.	Cost Per Cu. Ft.
STRUCTURE.....	\$194,700.00	70.4	\$8.43	\$ .927
PLUMBING.....	21,200.00	7.7	.92	.10
HEATING.....	24,000.00	8.8	1.04	.114
ELECTRICAL.....	14,300.00	5.2	.62	.068
BUILT-IN FURNITURE.....	22,200.00	8.0	.96	.107
<b>TOTAL COST OF BUILDING.....</b>	<b>\$276,400.00</b>	<b>100.0</b>	<b>\$11.97</b>	<b>\$1.316</b>

TOTAL AREA: 23,088 sq. ft.—CUBIC VOLUME: 210,000 cu. ft.—FLOOR HEIGHT 8' - 10½"—BIDS TAKEN: November, 1954—CONSTRUCTION STARTED: April 1, 1955.

**John R. Holbrock, A.I.A., Architect - Keene, N. H.**

THE MacMILLIN COMPANY, INC., KEENE, N. H.  
GENERAL CONTRACTOR



ROOFING and METAL WORK  
MEN'S DORMITORY  
KEENE TEACHERS COLLEGE

by

**Brattleboro Roofing  
and  
Sheet Metal Co., Inc.**

40 Years Experience

154 Elliot St., Brattleboro, Vt.

BARRETT ROOFING IS  
OUR SPECIALTY

**Plumbing and Heating**

— for —

MEN'S DORMITORY  
KEENE TEACHERS COLLEGE

Installed by

**RIVERS and HENRY**

O. A. Rivers

R. H. Henry

KEENE N. H.

Rear 97 Main St.

Tel. 2044

# **THE MacMILLIN COMPANY, Inc.**

## **BUILDERS**

28 MECHANIC STREET

KEENE, NEW HAMPSHIRE

**BUILDERS**

of

**Men's Dormitory Keene Teachers College**

and

**North Walpole Elementary School**

## New Hampshire Schools—

(Continued from Page 6)

made improvements in the classroom space. I think the most serious problem is the sacrifice of quality to get this additional space. Many times local school building committees expect the impossible. Elementary classrooms should be larger than they were prior to World War II. We used to plan a classroom area with a little more than 600 square feet for 35 pupils. Today we feel that an elementary classroom needs at least 800 square feet to carry on the kinds of things that go on in an elementary school. Movable furniture is now taken as accepted practice and individual room toilets for small children are rapidly becoming commonplace in elementary schools. There are now very few schools of six or more classrooms that do not have an activity room and a well equipped kitchen, while a teachers' room, and a place for the school nurse and the principal is almost a must. All of these kinds of things have increased the per pupil cost of schools.

The New Hampshire legislature in 1955 enacted three laws which should be of particular interest to architects and school administrators. The Municipal Bonds Statute, Revised Laws, Chapter 72 was amended for school districts to provide in RSA Chapter 33 the following important changes:

- (1) Debt limit—Cities and school districts shall not incur net indebtedness for school purposes to an amount at any one time, exceeding 3% of said valuation except with approval of the board of investigation. Such debt limitation may be increased with the approval of this board to an amount not exceeding 4.5%.
- (2) Debt limit—Computation. (a) The debt limitation shall be based upon the applicable last locally assessed valuation of the municipality as last equalized by the tax commission. (b) Whenever several municipalities cover identical territory, each corporation shall so exercise the power

(Continued on Page 28)

# ON THE LEVEL



At B. L. MAKEPEACE you'll find the most complete stock of quality engineering instruments in New England . . . famous Keuffel & Esser levels, transits, tapes, drafting instruments . . . in fact, *everything* for the engineer, draftsman and artist.

### SPECIALISTS IN

## ● BLUEPRINTS ● PHOTOSTATS ● PLAN REPRODUCTIONS

The way you want them . . . when you want them!

### INSTRUMENT REPAIR DEPARTMENT

CALL  
COpley  
7-2700

Completely equipped and staffed with skilled craftsmen to give you prompt, efficient service in repairing and rebuilding engineering instruments of all kinds.

New England's Largest Distributors of Drawing Materials, Art, Engineering and Architectural Supplies



## B. L. MAKEPEACE Inc.

1266 BOYLSTON STREET • BOSTON

# **Fabricated Steel Products Company**

Agents for  
Ceco Steel Products Corporation

---

STEEL JOISTS - ROOF DECK  
STEEL SASH - ALUMINUM SASH  
REINFORCING MESH  
DUR-O-WAL

---

Warehouse and Office  
115 Old Colony Avenue  
Wollaston 70, Mass.  
Mayflower 9-5218

# **The Loyal Appliance Co.**

6 Main St. Alpine 4-9511  
BRATTLEBORO, VT.

---

## **Electrical Contractors**

— for —

MEN'S DORMITORY  
KEENE TEACHERS COLLEGE

## **GLASS and GLAZING**

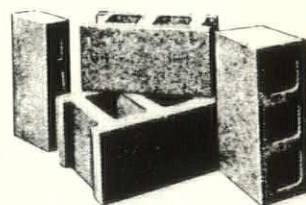
— for —

Dame School, Concord  
Men's Dormitory  
Keene Teachers College  
Plymouth Gymnasium

— by —

## **Adams Glass Co., Inc.**

Concord, N. H.  
7 Odd Fellows Ave. — Dial CA4-1062



## **"MONADNOCK BLOCKS"**

CONCRETE — CINDER

---

Made to Meet A.S.T.M. Requirements

## **Arthur Whitcomb, Inc.**

725 Main St. Keene, N. H.

Phone 110

## New Hampshire Schools—

(Continued from Page 26)

to increase its debts so that the aggregate net indebtedness of such municipal corporations shall not exceed 7.25% of the valuation of the taxable property.

- (3) The first payment of principal on any loan shall be made not later than 2 years and the last payment not later than 30 years after the date of issuance.

The new School Building Aid Statute (RSA Chapter 198) provides an annual grant for the payment of debt service for school construction with the following features.

- (1) The amount of the annual grant to any school district or city maintaining a school department is a sum equal to 20% of the amount of the annual payment of principal issued for the cost of construction and 40% for cooperative school districts. Construction shall include the acquisi-

tion and development of the site, construction of new buildings, additions to existing buildings providing for additional pupil capacity, architectural and engineering fees, purchase of equipment and other costs necessary for the completion of the building as approved by the state board of education.

- (2) Any school district which desires to avail itself of the grant shall submit its plans and specifications and make application in writing to the state board of education on such forms as the board may prescribe for the approval of the plans and specifications. The state board of education shall approve such costs as it deems necessary. Necessary costs shall be computed on the basis of the pupil capacity of the building multiplied by a per pupil allowance. Pupil capacity shall be based upon the square footage per pupil and/or pupil stations including laboratories and shops ad-

Continued on Page 40)

## THE PERFECT TEAM BY MARTIN-SENOUR

Now . . . Paint 2 coats, prime and finish, right around the room in only one day!

"QUICK - SEALER and PRIMER"

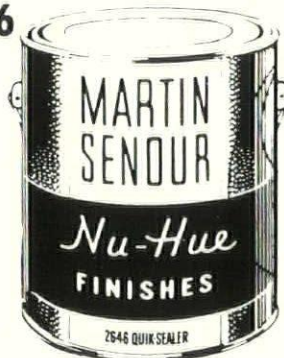
No. 2646

Right...it's done with  
Nu-Hue Quik-Sealer

Right...it's a primer  
and a sealer

Right...

it dries to recoat in only 2 hours

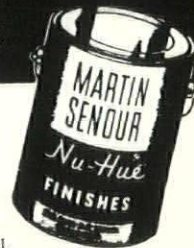


## Alkyd Flat Enamel

No. 2600

For walls and woodwork

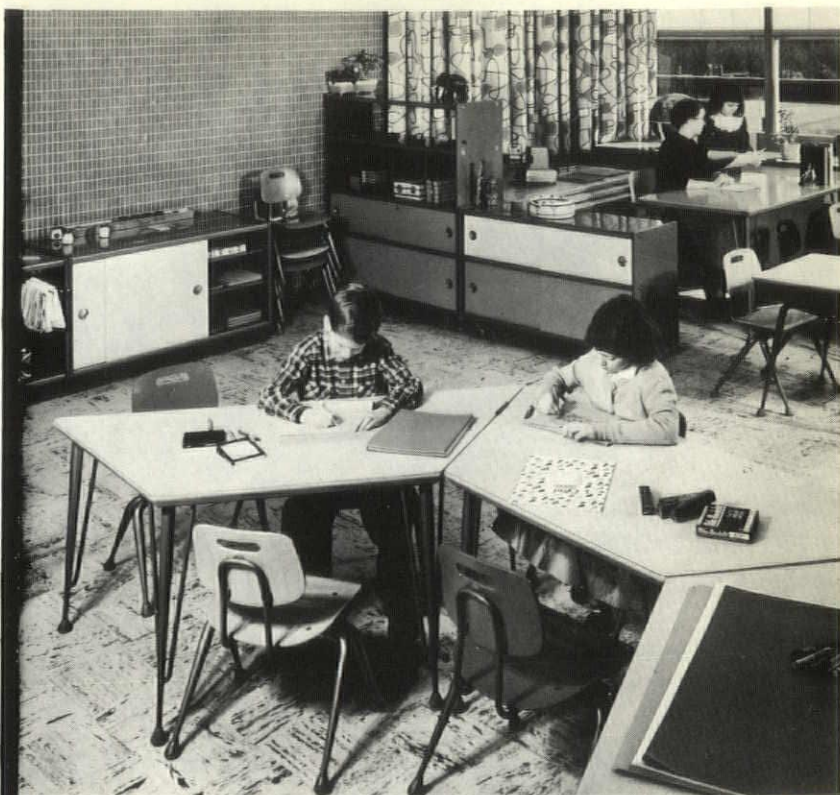
Martin-Senour  
**QUIK-FLAT**  
Enamel



Here's big news—an alkyd flat enamel, developed exclusively by Martin-Senour, that is fast drying, gives one-coat coverage, is guaranteed washable and glides on smooth as velvet with brush, spray or roller. Quik-Flat Enamel is available in any color you want. Simply tint with Martin-Senour Nu-Hue Liquid Tinting Colors—work right from the Martin-Senour Color Coordinator.

## SEAMANS SUPPLY COMPANY - Distributors

Manchester, New Hampshire



Versatility  
Unlimited

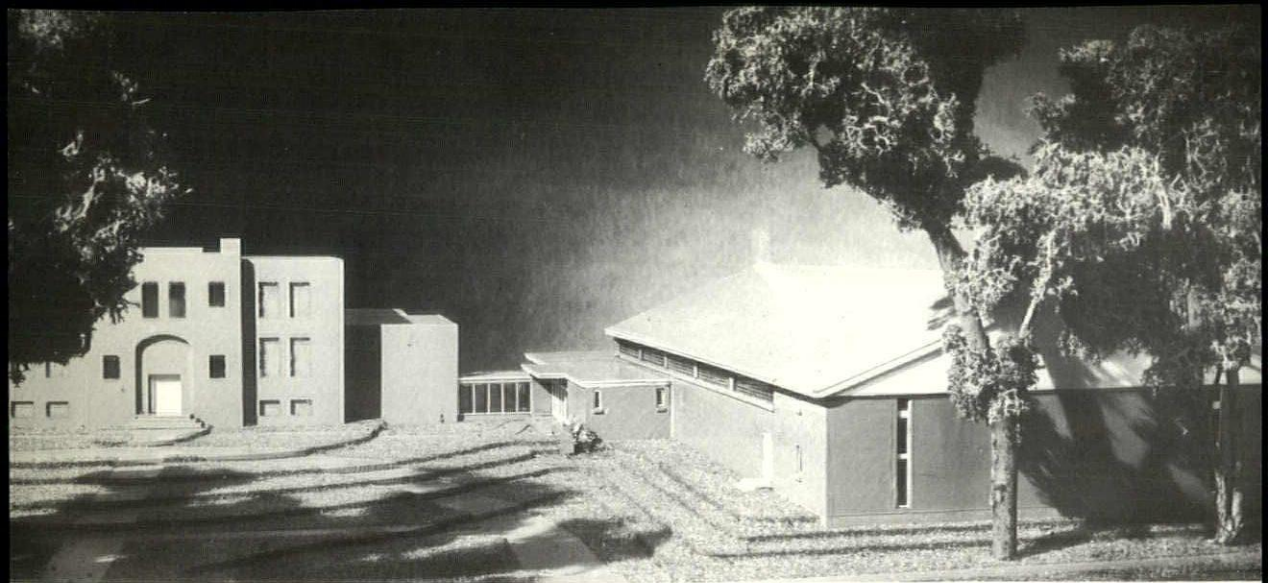
FLEXIBLE FURNITURE By *Brunswick*

Every bit of space is "put to work" in the classroom. The colorful storage cabinets by Brunswick can be used as room dividers or supplementary work surfaces . . . and can be easily moved where you want them when you want them. Brunswick furniture stacks, nests and groups . . . creates free space quickly, simplifies storage, facilitates maintenance. A complete line of modern furniture.

Represented by

**Robert A. Bennett, Inc.**

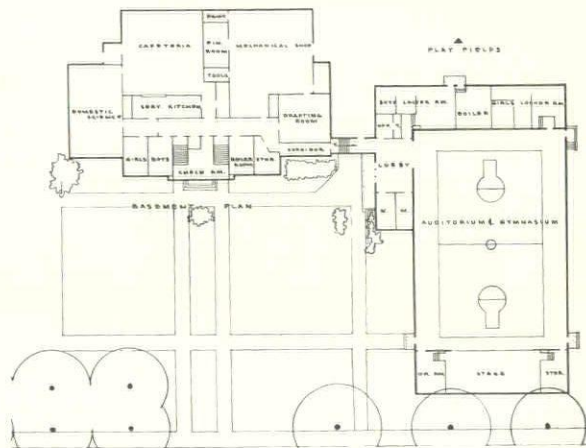
Hurricane Road — Tel. 400 — Keene, New Hampshire



## PEMBROKE ACADEMY ALTERATION AND ADDITION - PEMBROKE

### DESCRIPTION:

Foundation: Reinforced concrete foundation walls and footings. Frame: Structural Steel bents, steel purlins. Roof Deck: 2" thick fire-resistant asbestos bound fiber insulating deck on steel purlins. Roofing: 20 year tar and gravel built-up roof and S. I. S. (steep) roofing bonded for 15 years. Copper flocking. Exterior Walls: Brick with concrete block back-up. Floors: (a) Gymnasium—Base concrete slab, vented air space, anchored wood screeds, wood subfloor, Northern Rock Maple finish floor, game line scored. (b) Lockers and Showers: steel-troweled concrete. (c) Other: Asphalt tile on concrete. Partitions: Concrete Block. Doors: Flush. Painting: 3 coat work on walls and 4 coat on Gymnasium floor. Plumbing: Boys' and Girls' Shower and Toilet Rooms, Public Toilet Rooms. Heating: Steam, oil, unit ventilators, radiators. Electric Temperature controlled. Ventilation: Gymnasium and all other rooms automatically ventilated. Electrical: Complete lighting for competition play. Present School Alteration: Concrete footings, exterior walls: brick face. Interior partitions: concrete block, stud rock lath and plaster. Floor construc-



tion: steel frame, joists. Wall finish: Plaster painted. Ceiling finish: Acoustical plaster. Floor finish: Asphalt Tile. Range Hood and exhaust system from Kitchen and Paint Rooms. Dishwashing equipment: Disposal, and washer. New automatically controlled roof ventilators connected to redesigned existing ventilating system.

ITEM	Cost	% of Total Cost	Cost Per Sq. Ft.	Cost Per Cu. Ft.
STRUCTURE.....	\$139,449.00	74.73	\$6.68	\$ .381
PLUMB., HEAT., VENT. ....	36,600.00	19.61	1.75	.100
ELECTRICAL.....	10,550.00	5.66	.51	.029
<b>TOTAL COST OF BUILDING.....</b>	<b>\$186,599.00</b>	<b>100.00</b>	<b>\$8.94</b>	<b>\$ .510</b>

TOTAL VOLUME: 365,763 cu. ft.—FLOOR AREA: 20,889 sq. ft.—DATE OF BIDS: July 1, 1955.

Alterations to existing building are included in new construction costs.

**Koehler and Isaak, A.I.A., Architects - Manchester, N. H.**

HARVEY CONSTRUCTION CO., INC., MANCHESTER, N. H.  
GENERAL CONTRACTOR

FOOD SERVICE EQUIPMENT  
and  
DINING ROOM FURNITURE

for —

HOTELS  
SCHOOLS  
RESTAURANTS  
INSTITUTIONS

**Interstate Restaurant  
Equipment Co.**

28 Lake Ave. Dial 3-1922  
MANCHESTER, N. H.

"If serving people is your business  
. . . serving you is our business."

**MacArthur and Sons**

Penacook, N. H.

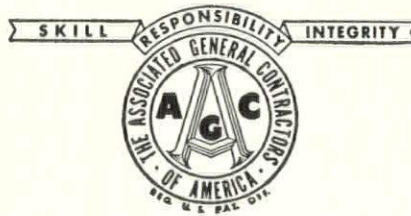
188 So. Main St. Dial PL3-4411

**Painting Contractors**

— for —

**Pembroke Academy**

**Harvey Construction Co., Inc.**



450 Valley Street

MANCHESTER, N. H.

Tel. 2-3745

**GENERAL CONTRACTOR  
FOR**

**PEMBROKE ACADEMY GYMNASIUM**

and

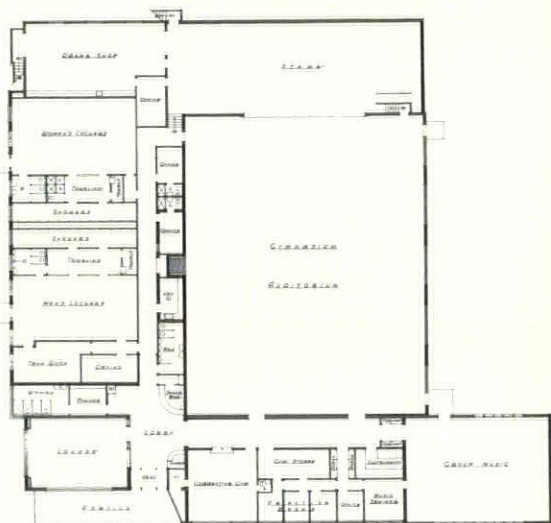
**SCHOOL ALTERATIONS**



## GYMNASIUM - AUDITORIUM - MUSIC CENTER PLYMOUTH TEACHERS COLLEGE - PLYMOUTH

### DESCRIPTION:

Concrete footings, pipe tunnel, tank room; exterior walls cinder concrete blocks and face brick; slate sills; interior partitions glazed tile and cinder concrete blocks; finishes on cinder concrete blocks include paint, plaster, ceramic tile, and glazed facing tile; end wall of gymnasium-auditorium opposite stage acoustically treated; end walls of gymnasium-auditorium covered with safety cushion wainscot; ceilings include plaster, smooth tile and acoustical tile; floor construction in general is concrete on fill; minor rooms not on fill framed with concrete framing and with wood framing; flooring includes concrete, quarry tile, ceramic tile, asphalt tile, and wood; twenty year bonded and insulated roof with extruded aluminum copings; aluminum sash; wood, steel, and aluminum doors; metal toilet partitions; steam and forced air heat, steam supplied by college's central heating plant; electric system includes stage lighting and sound system; plumbing includes water heating equipment in tank room; pocket, framing and power provided for future folding partition in gymnasium-auditorium.



GYMNASIUM - AUDITORIUM - MUSIC CENTER  
PLYMOUTH TEACHERS COLLEGE  
PLYMOUTH - NEW HAMPSHIRE  
NORMAN RANDLETT ARCHITECT  
LACONIA - NEW HAMPSHIRE

ITEM	Cost	% of Total Cost	Cost Per Sq. Ft.	Cost Per Cu. Ft.
STRUCTURE.....	\$228,239.00	77.9	\$8.59	\$ .449
HEATING AND VENT.....	34,382.00	11.7	1.29	.068
PLUMBING.....	17,392.00	5.9	.66	.034
ELECTRICAL.....	13,372.00	4.5	.50	.026
<b>TOTAL COST OF BUILDING.....</b>	<b>\$293,385.00</b>	<b>100.0</b>	<b>\$11.04</b>	<b>\$ .577</b>

TOTAL VOLUME: 508,509 cu. ft.—FLOOR AREA: 26,568 sq. ft.—DATE OF BIDS: June 30, 1955.

CEILING HEIGHTS: Gymnasium-auditorium 22'-0"; drama shop 15'-2"; stage (above stage floor) 27'-2"; group music room 16'-9"; locker rooms 10'-4".

**Norman P. Randlett, A. I. A., Architect - Laconia, N. H.**

WINSTON P. TITUS, LACONIA, N. H.  
GENERAL CONTRACTOR



## **CHARLES A. GOVE, INC.**

Electrical Contractor    Wiring Supplies  
367 Union Ave.                      Phone 610  
Laconia, N. H.

**SAFWAY STEEL SCAFFOLDS**

Sold — Rented — Erected

**Electrical Contractor**

— for —

**PLYMOUTH GYMNASIUM**

N  
↑  
**NORTHERN**

**HEATING & PLUMBING CO., INC.**

A. C. TROMBLY, President

Plumbing, Heating and Ventilation  
Contractors - Engineers  
for

**PLYMOUTH GYMNASIUM**

Serving Northern New Hampshire in Domestic,  
Commercial and Industrial Installations

17-21 Water St.

Laconia, N. H.

Tel. Laconia 706

**STOKERS**

**OIL BURNERS**

# **WINSTON P. TITUS**

**GENERAL CONTRACTOR**

---

Specializing in Modern Industrial  
and Commercial Construction

---

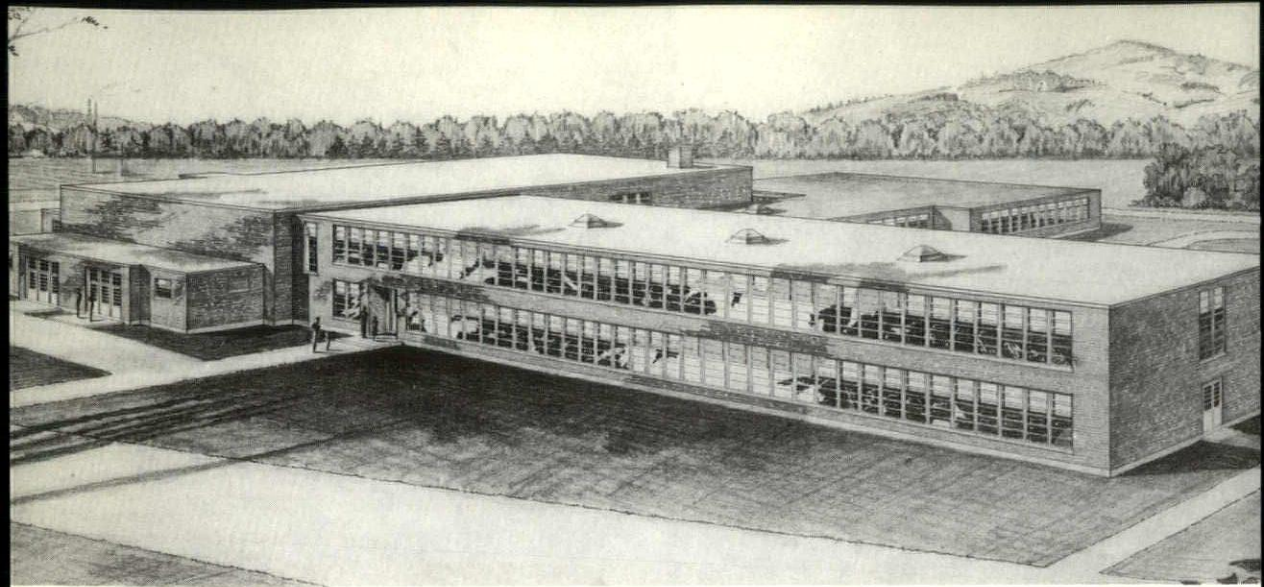
Tel. 897

**Lakeport, N. H.**

**GENERAL CONTRACTOR**

for

**PLYMOUTH GYMNASIUM**



## SOMERSWORTH HIGH SCHOOL - SOMERSWORTH

### DESCRIPTION:

Foundations; Reinforcing Concrete; Structural Frame; Structural Floors; Reinforcing Concrete; Floor and Roof Joists; Steel; Roof Decking; Pre-Cast Insulating Concrete Slabs and Wood; Twenty-year Bonded Roofing; Brick Exterior Wall Facing with Cinder Tile Backing; Cinder Tile Interior Partitions; Asphalt Tile Floors, Classroom Sections; Gymnasium Floors, Rock Maple; Acoustical Tile Ceilings; Steel Interior Door Frames; Aluminum Sash; Interior and Exterior Doors, Wood; Modern Paint Decorations; Complete Modern Electrical including Program System and Sound System; Five (5) Zone Forced Hot Water System; Forced Ventilation. Eighty (80) Plumbing Fixtures.

(See Plans on Page 36)

<i>ITEM</i>	<i>Cost</i>	<i>% of Total Cost</i>	<i>Cost Per Sq. Ft.</i>	<i>Cost Per Cu. Ft.</i>
STRUCTURE.....	\$314,867.66	78.3	\$6.58	\$ .419
PLUMBING.....	22,000.00	5.4	.46	.029
HEATING AND VENT.....	37,984.00	9.4	.79	.051
ELECTRICAL.....	27,652.40	6.9	.57	.037
<b>TOTAL COST OF BUILDING.....</b>	<b>\$402,504.06</b>	<b>100.</b>	<b>\$8.40</b>	<b>\$ .536</b>

TOTAL VOLUME: 751,235 cu. ft.—FLOOR AREA: 47,913 sq. ft.—CEILING HEIGHTS: First Floor 10'-0"; Second Floor 10'-0"; Gymnasium 20'-0".

**Irving W. Hersey Associates, A.I.A., Architects, - Durham, N. H.**

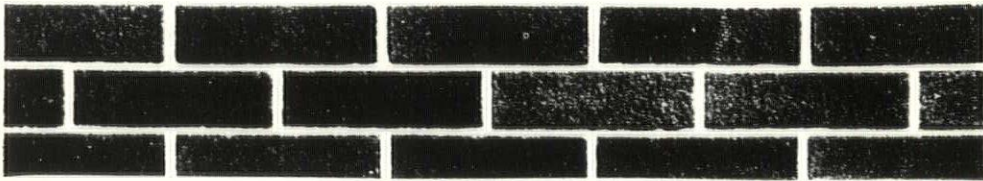
CARON CONSTRUCTION CO., INC., MANCHESTER, N. H.  
GENERAL CONTRACTOR

**BUILD WITH BRICK and TILE**



**SCHOOLS FEATURED IN THIS ISSUE WHICH WERE BUILT WITH  
DENSMORE FACE BRICK AND NATCO GLAZED TILE**

- Exeter High School — NATCO Clear Glaze Facing Tile  
Somersworth High School — DENSMORE Sandstruck Face Brick  
Elementary Schools (2), Nashua — DENSMORE Waterstruck Face Brick  
and NATCO Glazed Tile  
Dame School, Concord — DENSMORE Sandstruck Face Brick



**DENSMORE BRICK COMPANY**

**Brick Manufacturers  
Distributors For All Clay Products  
Lebanon New Hampshire**

**CARON CONSTRUCTION CO., INC.**

**General Contractors and Builders**

161 BAKER STREET

PHONES: 2-4073 — 2-8475

MANCHESTER, NEW HAMPSHIRE

**GENERAL CONTRACTORS**

**for**

**SOMERSWORTH**

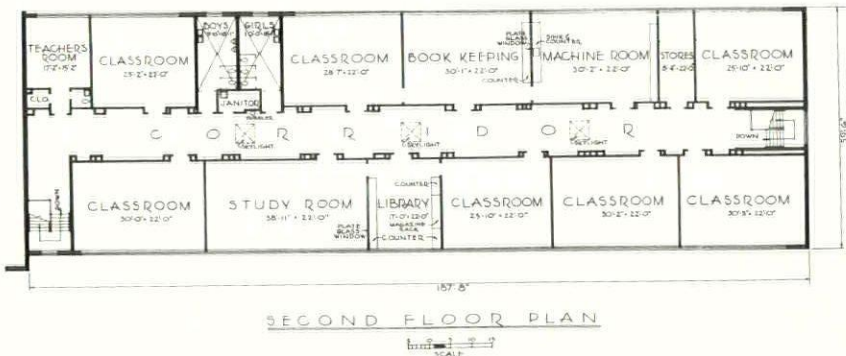
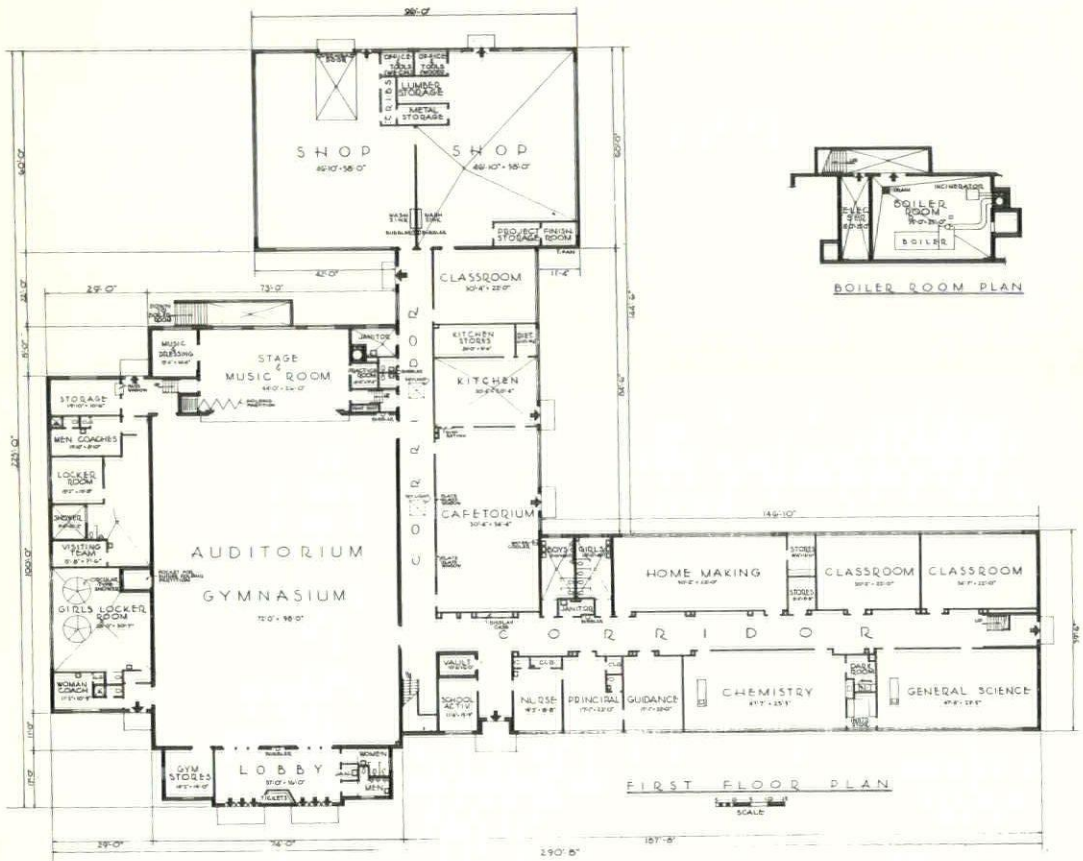
**HIGH SCHOOL**

# THE LITTLE RED SCHOOL HOUSE

A handsomely illustrated popular article on modern school buildings that gives full credit to the architectural profession appeared in the October issue of *McCall's* magazine. Answering the question, "What's happened to the little red school-house?" the author, Elizabeth Pope, points out that it is being replaced by a new kind of building—one that offers important advantages to teachers, pupils, parents and taxpayers.

She writes, "If stone and steel and glass can bring the focus of education back to the individual, if a school building can give a child a feeling of inner security and warmth, if atmosphere is as important to learning as psychologists say it is, then every parent in the country owes a tremendous debt to the architects who are designing our new schools."

## SOMERSWORTH HIGH SCHOOL - SOMERSWORTH



**JOHN J. GAFFNY  
and SONS**

28 Smith St.      Tel. 3-1466—2-0098  
LAWRENCE, MASS.

---

**Plumbing Contractor**

for

SOMERSWORTH HIGH SCHOOL

- Heating
- Air Conditioning
- Ventilation
- Sheet Metal Work

Dial 3-0813



HEATING and VENTILATING  
CONTRACTOR

for

SOMERSWORTH HIGH SCHOOL

**Celotex Acoustical Ceilings**  
(All Types)

---

**Lumicel Translucent Ceilings**

---

**Burgess Manning Radiant Heating  
and Cooling Ceilings**

---

**Insulrock Structural, Insulating,  
Acoustical Roof Decks**

---

**Martin Parry Cemesteel Movable  
Office Partitions**

---

**PITCHER and COMPANY, Inc.**

67 Rogers St.,      Cambridge, Mass.,      Tel. University 4-9733  
GOFFSTOWN, N. H. — WORCESTER, MASS. — PROVIDENCE, R. I.

# N. H. Chapter A. I. A. Committees

## For 1955 - 1956

<b>A—ADMINISTRATIVE COMMITTEE</b>		Nicholas Isaak, G. C.
a	Finance	Robert Snodgrass
b	Jury of Fellows	Eric T. Huddleston
c	Public Relations	Stephen P. Tracey
d	Chapter Committee on Public Relations	Alexander J. Majeski
e	By Laws	Maurice E. Witmer
f	Board of Examiners	John D. Betley
g	Chapter Committee on Membership	Willis E. Littlefield

---

<b>B—PUBLIC &amp; PROFESSIONAL RELATIONS</b>		Arnold Perreton
a	Architectural Competitions	Edward B. Miles
*b	Urban Design & Housing	W. Brooke Fleck
c	Architect & Government	Richard Koehler
*d	Collab. with Design Professions	Margaret K. Hunter
*e	Architectural Practice	John R. Holbrook
f	Chapter Public Relations	Alexander J. Majeski
g	N. H. Architect	Alexander J. Majeski
h	Travelling Exhibit	Nicholas Isaak

---

<b>C—MEMBERSHIP ACTIVITIES</b>		Leo P. Provost
a	Convention Committee	William L. White
b	Honor Awards	Douglas G. Prescott
*c	Chapter Affairs	Malcolm D. Hildreth

---

<b>D—EDUCATION &amp; RESEARCH</b>		John A. Carter
a	Awards & Scholarships	Horace G. Bradt
*b	Education	Edgar H. Hunter
*c	Preservation of Historic Buildings	William L. White
*d	Research & Research Material	Joseph F. Lampron
e	Hospital & Public Health	Stewart A. Lyford
*f	School Buildings	Alfred T. Granger
*g	AIA & Producers Council	Joseph F. Lampron
h	AIA & AGC	Carl E. Peterson
*i	AIA & Home Building Industry	Henry W. Erickson

---

\*-Regional Members.



—Photo by Fay Foto Service, Inc., Boston, Mass.

New Hampshire Architects in a huddle over high school building problems at a recent two-day seminar at Harvard University, sponsored by the New England Council of the American Institute of Architects. Scanning the blueprints of the future are (seated, left to right) Mrs. Margaret K. Hunter, Archer E. Hudson, both of Hanover, and Mrs. Eugene Magenau, Concord. (Standing, left to right) Edgar H. Hunter, Hanover; Shepard Vogelgesang, Dalton; Norman P. Randlett, Laconia; John Davis, New England School Development Council of Harvard; and Eugene Magenau, Concord, Secretary of the New England Council of American Institute of Architects.

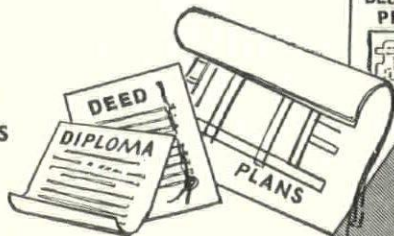
# PHOTOSTATS-BLUELINE PRINTS

LEGAL COPIES OF ANYTHING

COPIES OF:  
LETTERS, CHECKS, DOCUMENTS, DEEDS  
COURT EXHIBITS, LICENSES, TITLES,  
DISCHARGE PAPERS & MAPS

DCN'T TAKE A CHANCE  
ON ORDINARY PHOTO COPYING  
CALL US  
"WE ARE REPRODUCTION SPECIALISTS"

PHOTOSTATS  
BLUEPRINTS  
BLUELINE PRINTS



BUSINESS PHOTOGRAPHY  
AUTO POSITIVES  
24 HOUR SERVICE

"ONE TO A MILLION COPIES OF ANYTHING"

## GEORGE C. BENJAMIN

92 MARKET STREET

DIAL 2-2273

MANCHESTER, N. H.

## New Hampshire Schools —

(Continued from Page 28)

justed to elementary, junior high and secondary school facilities. The per pupil allowance shall be based upon the actual cost to the school district or city, or the state average per pupil construction costs of elementary or secondary facilities for the preceding 5 year period, whichever is lower.

The state average per pupil construction cost for a particular school building may be adjusted whenever in the judgment of the state board of education the expenditures for construction, land, equipment and/or furnishings were or are of necessity in excess of average requirements.

- (3) The computation shall be based upon the total of approved costs of construction of school buildings for which loans are outstanding for the preceding fiscal year.
- (4) If in any year the amount appropriated for distribution is insufficient, the appropriation shall be prorated proportionally among the districts entitled to a grant.
- (5) Funds Provided. If unrestricted general fund revenue for the fiscal year ending June 30, 1956 shall exceed the sum of \$16,419,527.00 a sum of not exceeding \$350,000 is hereby appropriated for the purpose of school building aid for distribution beginning July 1, 1956.

Application forms and information relative to the Building Aid law will be available to all school board members, school administrators and architects early in the year 1956. Since this program will materially affect the tax burden on local school districts it is important that architects be familiar with this program.

The Cooperative School Act originally enacted in 1947 was again amended in 1955 to more nearly meet the needs of school districts. With the increasing school tax burden more and more school administrators, board members and tax payers are

becoming interested in the formation of larger administrative units. Already five areas of the state have organized under the provisions of this act. While the units are for the most part small, only involving two or three school districts, each one is a potential center for a larger more effective district.

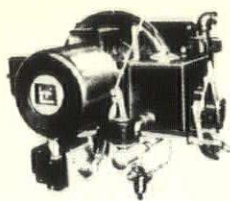
It is here that architects can be of real service in helping to plan facilities that are flexible, easily expandible and have sufficient area in the site for future growth.

The new 1955 amendment does provide for more extensive borrowing leeway than was available in the old act. Following are the important features of the new statute.

- (1) Each cooperative district shall have the power to borrow money and issue its bonds in conformity of Chapter 33 RSA "Municipal Finance Act" and when it shall appear necessary to the board of investigation, indebtedness may be incurred to an amount not to exceed 6% of their assessed valuation as last equalized by the state tax commission.
- (2) Whenever only a part of the educational facilities of a local school district are incorporated into a cooperative district, such local district shall continue in existence and function as previously. The cooperative district shall for elementary school purposes incur debt to an amount not exceeding 1½% and for secondary purposes not in excess of 3% of the assessed valuation as last equalized by the tax commission. In the event that it shall be necessary, this limit may be increased to 6% for either elementary or secondary construction by the board of investigation as indicated above. Consequently this change in the borrowing does permit the same leeway as in the case of a regular school district. This change in statute now gives added inducement for the formation of such a district.







**D. H. McClarty Co.**  
**Heating and Plumbing**

**JOHNSON  
 OIL BURNERS**

THE FINEST IN HEAVY OIL  
 BURNING EQUIPMENT

57 McCauley St.      Manchester, N. H.  
 Phone 5-8693

**LATEST DIVIDEND**

**3<sup>1</sup>/<sub>4</sub>%**      **Per  
 Annum**

Accounts Started or Added to  
 on or before the 10th, earn a  
 Full Month's Dividend

Accounts insured to \$10,000  
 by the Federal Savings and  
 Loan Insurance Corporation.

**Manchester**  
**FEDERAL SAVINGS**  
F. S. L. AND LOAN ASSOCIATION  
 48 MARKET STREET, MANCHESTER, N. H.

**Sanel Industrial and  
 Equipment Supply**

159 So. Main St. - Concord, N. H.

— We Now Stock —

Chicago Pneumatic Compressors  
 and Air Tools, Timken Rock Bits,

Air Hose, Suction Hose,

Black and Decker Electric Tools

Skil Saws - Atlas Saw Benches

We stock machine bolts and cap screws,

All sizes to 12"

We can make any size bolt

**TRY OUR PRICES and SERVICE**

**A. L. FRANKS & CO.**

**Electrical Engineers**

**and**

**Constructors**

**BUSINESS OFFICE**  
 1217 Elm Street

**REPAIR SHOP**  
 29 No. Hampshire Lane  
 MANCHESTER, N. H.

Electrical Design

Electrical Consultation

Electrical Investigations and Reports

**JOSEPH W. MOORE**

Registered Professional Engineer  
 Manager

State of New Hampshire Serial No. 482

BEST WISHES  
for  
CHRISTMAS and the NEW YEAR



John D. Betley,  
Manchester

Horace G. Bradt,  
Exeter

Dirsa and Lampron,  
Manchester

Alfred T. Granger Associates,  
Hanover

Irving W. Hersey Associates,  
Durham

John R. Holbrook Associates  
Keene

Hudson and Ingram,  
Hanover

Koehler and Isaak,  
Manchester

Willis Littlefield,  
Dover

Lyford and Magenau  
Concord

Alexander Majeski,  
Bedford

Edward Benton Miles,  
Exeter

Arnold Perreton and Associates,  
Concord

Carl E. Peterson,  
Manchester

Prescott and Erickson  
Laconia

Leo P. Provost,  
Manchester

Norman P. Randlett,  
Laconia

Tracy and Hildreth,  
Nashua

William L. White,  
Exeter

Walter Thomas Williams  
Rochester

Maurice E. Witmer,  
Portsmouth

*Each of the above firms has one or more individuals in the*

A. I. A.

**Better Builders  
Buy  
Indian Head**

Doors  
Windows  
Finish  
Builders' Hardware

See New England  
Through  
INDIAN HEAD WINDOWS

**INDIAN HEAD  
MILLWORK  
Corporation**



90 East Hollis Street Nashua, N. H.

TUxedo 3-5537

FOR MODERN SCHOOL DESIGN  
**BRUNSWICK HORN -**

Gymnasium Folding Seating, Folding  
Partitions and Folding Stages for  
Gyms and Auditoriums, Folding Class-  
room Wardrobes.

TRUSCON STEEL SASH  
ALUMINUM WINDOWS - ALL TYPES

**SCHLAGE  
LOCKS**



**CRAFTSMEN, INC.**

Overhead Door Building, Tel. 707  
MILFORD, N. H.

**PALMER**

**PLUMBING SUPPLY COMPANY**

Wholesalers

Plumbing - Heating - Mill Supplies

Distributors of

**VEIL-McLAIN BOILERS**

**KOHLER ENAMELWARE**

**PETRO OIL BURNERS**

ROCHESTER, LACONIA, KEENE, N. H.

PORTLAND, ME.

"Competent Engineering Service"

**REFRIGERATION  
DISTRIBUTORS  
FOOD SERVICE  
CONSULTANTS**

Complete Planning Service

For Markets and Food Stores  
Special Industrial Refrigeration  
Complete Air Conditioning  
Hotel, Restaurant and  
Institutional Kitchens,  
Cafeterias, Dining Areas  
Cocktail Lounges

**HUMPHREYS, INC.**

180 No. Main Street - Concord, N. H.

A Business Devoted To Those  
Who Serve Food

# NEW HAMPSHIRE ARCHITECT

181 N. Main St., Concord, N. H.

Frederick Gutheim A.I.A.  
1741 New York Ave.  
Washington 6 D.C.

Sec. 34.66 P. L. & R.  
U. S. POSTAGE  
PAID  
Concord, N. H.  
PERMIT NO. 297

Form 3547 Requested

## **Dutch Boy** —THE NAME TO GO BUY—FOR EVERY PAINT JOB

First choice of professional painters—first choice with home owners—that's *Dutch Boy*. There's a *Dutch Boy* finish specially blended for every painting need, inside or outside your home, and you can depend on it for long-lasting beauty. Choose yours today at—



EXCLUSIVE DEALER

**J. J. MOREAU & SON, INC**

MANCHESTER, N. H.

Dial 4-4311

## BUILD WITH BRICK and TILE

Face Brick— Flue Lining—  
Facing Tile— Sewer Pipe— Metal Specia

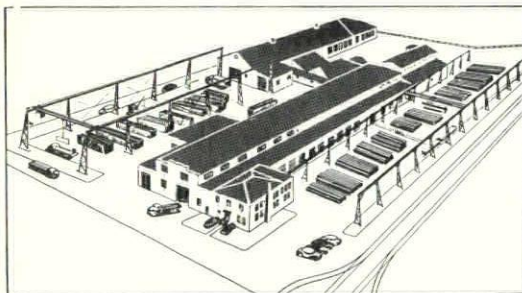
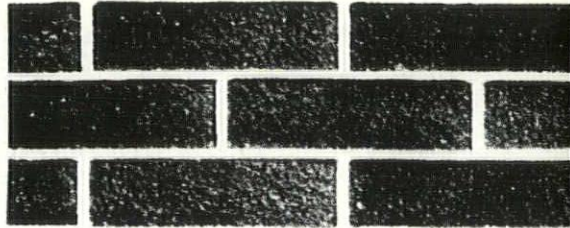


## DENSMORE BRICK COMPANY

Brick Manufacturers

Lebanon,

New Hampshire



*Aerial view of Vermont Structural Steel Corp.*

Serving  
Northern New England  
and New York  
with Steel Products

LET US  
QUOTE ON YOUR  
REQUIREMENTS

# VERMONT STRUCTURAL STEEL CORP.

207 Flynn Ave.

Tel. 4-9844

Burlington, Vermont