

Lib

New Hampshire ARCHITECT



OFFICIAL PUBLICATION

New Hampshire Chapter of the American Institute of Architects



JUNE
1956

20¢ COPY
\$2.00-YEAR

AIR CONDITIONING

Residential - Commercial - Industrial



Year-Round or Summer

Engineering Assistance Available For Your
Air Conditioning Problems

NEW HAMPSHIRE YORK CO.

254 Lincoln St. Manchester, N. H.

**DERRYFIELD SUPPLY
CO., INC.**

EUGENE O. MANSEAU, Treas.

— WHOLESALE —

Plumbing - Heating - Mill Supplies

Granite and Franklin Streets

Manchester, N. H.

**THOROSEAL
DUROWALL**

Brick - Blocks

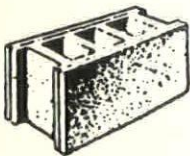
"OVERHEAD"
GARAGE DOORS

GLAZED TILE

MASONRY SUPPLIES

"SONNENBORN"
PRODUCTS

**STEEL & ALUMINUM
SASH**



**CORRIVEAU-ROUTHIER
CEMENT BLOCK CO.**

266 Clay Street Manchester, N. H.

Dial 3-5293

NEW ENGLAND INSULATION CO.

Contractors - Distributors

ASBESTOS MAGNESIA FIBERGLASS

KAYLO and CORK PIPE COVERINGS

ASBESTOS MILLBOARD & PAPER

Tel. Highlands 5-7800

839-845 Albany St. Boston 19, Mas

ARTHUR E. SWANSON, Manager



New Hampshire ARCHITECT

OFFICERS

VOL. 7

JUNE, 1956

NO. 11

President

NORMAN P. RANDLETT, Laconia

Vice-President

JOHN D. BETLEY, Manchester

Secretary

WALTER THOMAS WILLIAMS
Rochester

Treasurer

ROBERT SNODGRASS, Nashua

DIRECTORS

ALEXANDER MAJESKI, Bedford

MITCHELL P. DIRSA, Manchester

JOHN R. HOLBROOK, Keene

EDITOR

ALEXANDER MAJESKI, R. A.
Palomino Lane
Manchester, N. H.

PUBLISHER

LAWRENCE J. MOYNIHAN
P. O. Box 291
Concord, N. H.

TABLE OF CONTENTS

The President's Message	4
Convention Sidelights	5-8-9
Dimensional Standardization	6
Arnold Perreton, Author of Peace Formula	10
Randlett Reelected President	12
W. Brooke Fleck Opens New Office	13
Brown and Currier Office Building 14-15-16-17-18-19-20-21	
N. H. Chapter Committees	23

OUR COVER

New Brown and Currier Office Building at
Portsmouth, N. H.

Photos By
Douglas Armsden
Kittery Point, Maine

New Hampshire Architect is published monthly at 181 North Main Street, Concord, N. H., under the direction of the president and board of directors of the New Hampshire Chapter, American Institute of Architects, to promote the objectives and public relations of the chapter. Advertising rates furnished upon request.

The President's Message

Having returned so recently from the Los Angeles Convention of the American Institute of Architects my mind remains refreshed with the many interesting meetings and people associated with this annual event.

Elsewhere in the magazine Eugene Magenau has an excellent and detailed account of convention activities which, since they generally parallel mine, need not be recounted again on this page. However, I do wish to emphasize the splendid hospitality of the host chapter which seemed to have overlooked nothing to add to the comfort and entertainment of the delegates and their guests.

Until one has attended a national convention of the Institute it is not possible to visualize the effectiveness of the organization to which we belong, or the value it has to us in the practice of our profession. At two of the sessions which I attended the subject matter was largely directed toward chapter problems. As a result there will shortly be offered to the New Hampshire Chapter for its consideration several changes in policy and organization which have proved successful elsewhere.

Although I appreciated the attractiveness of California, and friendliness of its people, and the atmosphere of the convention, I was glad to return to New Hampshire and what it, too, has to offer.



A ROOF BY THERRIEN IS A GOOD ROOF

TEL. 3-6193

199 HAYWARD STREET

MANCHESTER, N. H.

CONVENTION SIDELIGHTS

By Eugene F. Magenau, A. I. A.

Having put aside all thoughts of attending the 1956 Annual Convention in far-off Los Angeles, I was astonished to find myself taking off from Logan Airport in Boston at 10:45 A. M. on Monday, May 14, for that very purpose. It seems that my presence was desired as a member of the national Committee on Chapter Affairs, and never have I changed my mind with greater pleasure or anticipation.

The day-time flight across the entire country was full of fascination. We were above clouds in the East and to some extent over the Rockies but the rest of the time I gazed with avid interest on the broad landscape, getting a stiff neck in the process. Half of the country appeared to be pasture land or under cultivation with almost no trees. Approaching and over the Rockies there is much wasteland where the processes of erosion are clearly visible. Our route took us across Lake Michigan, Omaha, the North end of Grand Canyon, Las Vegas, and on to Los Angeles, arriving at 8:15 P. M., Pacific Time.

On Tuesday morning we plunged into committee work, which also occupied all of Wednesday and Thursday mornings as well as other odd moments. Thus I was able to attend only one of the business sessions, on Friday morning. However, New Hampshire was well represented there by Delegate and Chapter President Norm Randlett.

Eleven of the twelve members of the Chapter Affairs Committee were present and some of the problems we wrestled with were the following:

Reclassification of Associate Members including Juniors and Students as national A. I. A. instead of Chapter members.

Chapter dues based on number of technical employees instead of individual basis (now done by some chapters).

Chapter report forms, usefulness already approved.

Student chapters increasing, status

of existing student chapter charters needs clarification.

Chapter awards to be standardized and made available through the Octagon.

Should regional associations be incorporated, to eliminate personal liability in connection with handling of funds or judiciary cases?

Need for wider distribution of "Documents of the Month."

Complimentary ads on new buildings—on chapter basis instead of individual architect.

One of the Convention highlights was certainly the Chapter Affairs Breakfast on Wednesday morning, attended by Officers and Directors of the Institute, our Committee, Chapter Presidents and Chapter Representatives. Presiding officer was Beryl Price, our dynamic Chapter Affairs Chairman. All of the tables were round tables, with two or three top-level men sitting at each one, with no head table. It was delightfully informal. This meeting set a precedent in bringing together for the first time the "summit" and the "grass roots" and the values of the down-to-earth discussions were so fully demonstrated that this affair will undoubtedly become a permanent feature of all A. I. A. conventions.

The Biltmore Hotel, headquarters for the Convention, is one of the city's older hotels, but was very spacious and comfortable. At the Luncheon on Tuesday, President Cummings gave an address on "State of the Institute," announcing that total membership had gone over the 11,000 mark, with 125 chapters. The Awards Luncheon was on Wednesday and this was notable for the number of repeats among Honor Award recipients. Thursday's Luncheon was, for me, an M. I. T. Alumni affair at the nearby Jacobin Club. At the annual dinner Thursday evening, 35 members were advanced to Fellowship in a colorful ceremony; a report was made of

(Continued on Page 8)

DIMENSIONAL STANDARDIZATION

WASHINGTON, D. C. — Dimensional standardization—an elusive but very practical method of lowering home building costs—came one step closer to being a reality here recently during a joint meeting of members of the National Association of Home Builders and the Producers' Council, Inc. The Council is the organization of building products manufacturers and associations.

The purpose of the meeting, which was held on May 17 at the National Housing Center, was to determine practical standards for dimensioning windows and window openings. The builders and manufacturers chose this area for their initial discussion, because of the multiplicity of sizes in which windows are manufactured.

Participating in addition to PC and NAHB members were representatives of the Aluminum Window Manufacturers Association, the National Woodwork Manufacturers Association, and the Steel Window Institute. The conferees agreed that dimensional standardization was desirable and could eventually lead to lower window costs.

Their plan of action is for the NAHB's Research Institute to determine which window sizes are generally preferred by builders. This information will then be made available to window manufacturers for study, prior to the group's next meeting. At that time, they plan to set forth acceptable standards for dimensioning windows and openings.

This work of creating dimensional standards for structural components of houses was begun last year by the NAHB's Research Institute and is being pursued by the PC-NAHB Joint Committee. Although their efforts at present are limited to windows and openings, the Institute and the committee will soon undertake additional activities in which dimensional standardization is a problem. The joint committee is under the co-chairmanship of Chicago builder Bruce Blietz and Robert W. Lear, New York, the national representative of American Radiator & Standard Sanitary Corporation to the Council.

The cost-cutting advantages of standardization of sizes will result from the elimination of much extra cutting, fitting and fabricating at the site of construction. At the same time, it will enable many manufacturers to mass produce a limited number of window sizes. Some firms now produce windows in as many as 350 different sizes.

The conferees agreed that their efforts to simplify the window-selecting process would not in any way standardize home design. Nor will they be eliminating the market for special window sizes.

All proposed standards will utilize the 4" module as a basic unit of dimensioning, in accordance with the concept of Modular Measure as practiced in the building industry. Modular Measure is a system of coordinating sizes so that different materials such as windows and brick will fit together properly with a minimum of cutting or fitting.

PASSENGER & FREIGHT ELEVATORS

ROTARY OILDRAULIC & ELECTRIC

RESIDENCE ELEVATORS & STAIRCARS

INDUSTRIAL - HYDRAULICS



Sales - Service - Repair

444 S. Main

Nashua

Tuxedo 2-9591

C. R. SWANEY CO.

Nash Engineering Co.

Vulcan Radiator Co.

Economy Pumps, Inc.

H. A. Thrush & Co.

Pumps for Vacuum Heating,

Condensation, Boiler Feed, Sewage,

Hot and Cold Water and Process

Trimline Baseboard and

Commercial Fin Tube Radiation

335 Newbury Street - Boston 15, Mass.

Kenmore 6-5613

CALIFORNIA PAINTS

provide:

1. LOWER COST PAINTING through ease of application. They are formulated for professionals.
2. MAXIMUM COVERAGE with the desired paint film. Leading painting contractors have job-proved California Paints.
3. UNSURPASSED DURABILITY assured by use of finest raw materials and thoroughly tested formulations.



PLEXICOLOR acrylic exterior flat
Gives wonderful coverage on all exterior surfaces and lasts longer than ordinary paints. Seals and protects all masonry, stucco, painted wood, and unglazed tile. Excellent over asphalt and asbestos shingles. Doesn't water-spot and rain washes clean to give a new-paint look. Withstands high temperatures.

ALLWALL vinyl interior flat
Made for all interior walls, ceiling, and trim — even steam radiators — where brilliant deep or pastel colors are desired. Flows evenly over smooth plaster to give a hard, tough finish. Colors remain fresh-looking longer. Most scrubbable interior paint.

PRIMER-SEALER vinyl
Provides a perfect base for all kinds of paints. Seals the surface so the finish coat goes on evenly and easier.

So little effort to brush on, yet it has excellent adhesion. You can apply the finish coat in 30 minutes to 2 hours for 2-coat-a-day painting.

RAYLITE rubber latex interior flat
Economical in cost. Brushes on so quickly. Dries in about 30 minutes. Second coat or touching-up immediately afterwards. Very abrasion resistant and can be scrubbed in 3 days.

RAYTINT alkyd latex flat
Lowest in cost of new modern paints. Gives superior one-coat coverage. Recommended especially for use on rough or irregular surfaces such as masonry block. Used in light pastel colors only. Withstands washing after 30 days.

RAYGLOS latex
Semi-gloss quick drying, self priming, water thinned paint for all interior surfaces. Will not raise wood grain, non-tacky, easy flowing.

Produced by New England's original latex paint manufacturer
CALIFORNIA STUCCO PRODUCTS OF N.E., INC.
169 WAVERLY STREET, CAMBRIDGE 39, MASS.
Architects Specification Guide available on request.

ON THE LEVEL



At B. L. MAKEPEACE you'll find the most complete stock of quality engineering instruments in New England . . . famous Keuffel & Esser levels, transits, tapes, drafting instruments . . . in fact, *everything* for the engineer, draftsman and artist.

SPECIALISTS IN

● BLUEPRINTS ● PHOTOSTATS ● PLAN REPRODUCTIONS

The way you want them . . . when you want them!

INSTRUMENT REPAIR DEPARTMENT

CALL
COpley
7-2700

Completely equipped and staffed with skilled craftsmen to give you prompt, efficient service in repairing and rebuilding engineering instruments of all kinds.

New England's Largest Distributors of Drawing Materials, Art, Engineering and Architectural Supplies



B. L. MAKEPEACE Inc.

1266 BOYLSTON STREET • BOSTON

Convention —

(Continued from Page 5)

next year's Centennial Observance; the Institute's highest award, the Gold Medal, was presented to Clarence Stein, FAIA, of New York; and the new Institute Officers were announced. President George Bain Cummings' successor is Leon Chatelaine, Jr., of Washington, D. C., former Institute Treasurer.

There were so many interesting seminars and building tours offered that it was difficult to choose among them, as it was necessary to do because several came at the same time. My choices were:

Seminar on School Building Trends—in which Dr. Charles Bursch, former head of the planning division of California State Department of Education, told of the fine results possible by means of enlightened "Regulation without Standards."

Seminar on Architectural Specifications—this meeting was conducted by the up-and-coming Construction Specifications Institute, whose efforts to improve this important branch of architectural practice are filling a great need, and with which I was already familiar, having joined several years ago. At this meeting I ran into Phil Gatz, Maine's only delegate at the Convention.

Tour of Church Buildings—riding on the bus between visits to an exhibition of church architecture and four outstanding new churches, gave us an opportunity to see a good deal of the City. Los Angeles spreads out over an immense area, which is quite monotonous except for isolated structures or other points of interest.

The Exhibition of Building Products sponsored by the Producers Council was open throughout the Convention and deserves special commendation. These exhibitions seem to get better every year, with more skillful displays and less high-pressure selling on the part of exhibitors. I could not find nearly enough time to visit the booths here, but every visit was rewarding as to information and the chance to feel and see the new products.

Social events of the Convention were tops, starting with the President's Reception held Tuesday evening at the Gardens of the Ambassador Hotel. President Cummings and his staff met and mingled with all of us around a beautiful outdoor pool—a fine environment for making and renewing acquaintances with architects from other states. This was followed by a pleasant surprise for me when Norm Randlett came forth with an extra ticket to the Host Chapter's (Southern California) Show Night at the famous Moulin Rouge. If this is a "clip joint" it is a very high class one, with good food, good music, a wonderful show with colorful costumes, intricate dances, and comedy singing.

These fun times were a welcome relief from the concentrated work and business of the Convention. Wednesday night we enjoyed Premiere Night at Grauman's Chinese Theatre, with a first showing of "The Man Who Knew Too Much" and personal appearances of Director Alfred Hitchcock and stars Doris Day and Jimmy Stewart, emceed by Art Linkletter. These people are great entertainers and made us enjoy every minute. Jimmy Stewart admitted having graduated from the Prince-

A. L. Melanson Company, Inc.

ROOFING

SHEET METAL, WATERPROOFING CONTRACTORS

KEENE, NEW HAMPSHIRE

353 West Street

Tel. 2976

22 East Broadway, Gardner, Mass. — Tel. 651

ton School of Architecture but explained his subsequent career as the result of an "incurable disease" contracted at a summer theatre in Falmouth, Massachusetts, while still a student!

Among the many friends encountered during the Convention was our former Regional Director, Phil Creer of Providence, whom we are about to lose to Texas, where he will head up the Design Department at one of the big universities.

I topped off my Convention trip with visits to friends in Los Angeles for a day and a half, then flew to San Francisco for two wonderful days there. We visited many schools, churches, homes, shopping centers, scenic wonders, world-famous restaurants and bars, the Redwood Forest, and rides on the cable cars, to mention the high spots. The flight back home was uneventful, most of it during the night or high above the clouds. It was great to get home, and just a bit hard to settle down to work, after such a fine trip and so many interesting sights and experiences.

VERMONT SLATE

for

Fine Buildings

Floors - - - Roofing

Flagstone - - - - - Structural

Our quarries and finishing plants producing all colors of natural Vermont slate are at your service. Consult our estimating department for prompt quotations and general information.

VERMONT STRUCTURAL SLATE CO, Inc.

FAIR HAVEN, VT.

TEL. 28

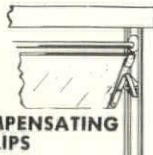
ONLY

WEATHER-TITE

GIVES YOU THESE THREE
IMPORTANT DESIGN FEATURES



WEATHER-TITE CONTROL BAR



WEATHER-TITE COMPENSATING
SPRING CLIPS



WEATHER-TITE "SNAP-IN"
REGLAZING FEATURE

Johnson's Venetian Blind Service

163 Douglas St. Dial 3-2622
MANCHESTER, N. H.

Architects

have long recognized the benefits derived from the timely, systematic interchange of information in the construction field. They find that this benefits their clients and all concerned . . . brings a wider range of bids . . . brings more complete news of new products, new trends, new techniques. And it saves much time that might otherwise be wasted on salesmen uninformed as to the architects' current interests.

This information, incorporated in Dodge Reports, is helpful to all firms in new construction. And it guides the *right* supplier's salesman to the *right* architect at the *right* time.

That's why for more than 65 years architects have found it good practice to provide their Dodge reporters with complete information about their work.

DODGE REPORTS

Construction News Service

31 St. James Avenue, Boston 16
119 West 40th Street, New York 18

Dept. NYA-656

ARNOLD PERRETON AUTHOR OF NEW PEACE FORMULA



BOOKLET "OUR TASK" NOW ON SALE

A plan to promote world peace through the formations of Peace Assemblies on a local, state, national and international basis has been outlined in a pamphlet by Arnold Perreton, Concord architect.

The booklet, "Our Task," which is now on sale, is a summary of a nearly-completed book-length manuscript which will have the same title. The author is a member of New Hampshire Chapter, A. I. A., and the American Society of Planning Officials.

Major theme of the 40-page booklet is the "properly organized action of all free peoples—the terrific force of the citizens

of free nations" in eliminating the "Communist menace." Perreton recommends a local Citizens' Peace Assembly which can be comprised of representatives from various civic organizations, through which proposals made for freedom and peace by these citizens could be channeled to a common center where they could be properly considered and adopted if found worthy.

Implements U. N.

Such an assembly on an international level, Perreton states, can implement the work of the United Nations. "All action for peace from all levels," he writes, "could now be culminated on the world level, whereby the Citizens' Peace Assembly of the world could exercise its right of power to nullify the Communists' or any other objectionable veto by its vote, in order to break a stalemate in the United Nations, and thus a free-peace could be won throughout the world."

The booklet concludes with the statement that information on these proposals and the proposed program of action on such assemblies, may be obtained from the author whose address is 12 Center Street, Concord, N. H.

NEW HAMPSHIRE ARCHITECT SCHEDULE 1956

<i>Architect</i>	<i>Date Due</i>
Prescott & Erickson	July 1, 1956
Alexander J. Majeski	August 1, 1956
William L. White	September 1, 1956
Leo P. Provost	October 1, 1956
Alfred T. Granger Associates	November 1, 1956
Norman P. Randlett	December 1, 1956



PLEXTONE[®]

MULTICOLORED ENAMEL

TYPICAL PLEXTONE APPLICATIONS

RESIDENTIAL CONSTRUCTION

Levittown - Pennsylvania - Long Island
H. Leslie Hill - Dallas
Huber Construction Co. - Dayton

SCHOOLS & COLLEGES

Seton Hall University
Rice Institute
Northwestern University

DEPARTMENT STORES & COMMERCIAL BUILDINGS

Bamberger's - Newark
Strawbridge - Clothier - Philadelphia
Western Electric Co.

HOTELS & MOTELS

Roosevelt Hotel - New Orleans
Hotel Sherman - Chicago
Holiday Inn Motels

RELIGIOUS INSTITUTIONS

Temple Bethel - South Orange
St. Jude Church - Montreal
Baptist Church - Houston

HOSPITALS & INSTITUTIONS

Doctors Hospital - Kansas City
Presbyterian Hospital - Newark
Mt. Sinai Hospital - Cleveland

GOVERNMENT INSTALLATIONS

Fort Monmouth
Fort Dix
Lake Charles Air Force Base

PRODUCT FINISH APPLICATIONS

The Magnavox Co.
Rudolph Wurlitzer Co.
Lightolier

Never before a paint for school interiors like amazing, rugged Color-flecked PLEXTONE. It's revolutionary . . . two or three *different* colors (sprayed at ONE time from ONE gun WITHOUT SPRAY DUST) which form a multi-colored, textured pattern. SCHOOL AUTHORITIES find this new multicolored decorator finish easy on the budget. SCHOOL ARCHITECTS find that PLEXTONE's uniform coverage on different types of low-cost surface materials gives them new styling resources . . . and new design possibilities because of its *high light reflectivity* and durability. PAINTING CONTRACTORS say PLEXTONE goes on easier, WITHOUT SPRAY DUST, makes possible neater, cleaner jobs. And MAINTENANCE MEN find it unmatched for ease and low cost of upkeep.

ROYAL PAINT CO.

540 CHESTNUT ST., MANCHESTER, N. H.

Tel. NA 2-5262

Write for our Literature and Brochures

RANDLETT REELECTED PRESIDENT

Norman P. Randlett of Laconia was reelected president of New Hampshire Chapter, A. I. A., at the annual meeting and dinner of the chapter at the New Hampshire Highway Hotel at Concord on May 17.

Also reelected were John D. Betley, Manchester, vice-president; Walter Thomas Williams, Rochester, secretary; and Robert Snodgrass, Nashua, treasurer.

John R. Holbrook of Keene was elected to the board of directors and he will serve with Alexander J. Majeski of Bedford and Mitchell P. Dirsra of Manchester who were also reelected.

A screen presentation, "Architecture U. S. A." followed the business meeting and dinner.

John D. Betley, vice-president, presided in the absence of President Randlett who was in attendance at the National A. I. A. Convention at Los Angeles.

RIVERS and HENRY

O. A. Rivers

R. H. Henry

KEENE, NEW HAMPSHIRE

Rear 97 Main St.

Tel. 2044

Plumbing and Heating Contractors



The Color Coordinator System

The Color Coordinator System is a positive system of color selection, specification and duplication in Paints. It consists of 497 colors, selected to provide maximum coverage of all color possibilities. This vast array of colors is arranged in handy chart form for quick matching, selection and creation of color harmonies. It is also available in actually painted 3" x 5" removable samples. Martin-Senour maintains a library of these color samples. Orders for individual color samples are promptly handled.

MARTIN-SENOUR Nu-Hue Colors

To tint the colors in the Coordinator System requires a minimum of elements—only 16 basic tinting colors are needed. Never more than three colors are used, and they are always combined in equal parts! The name of each color is its mixing formula too—easy to specify—easy for the contractor to achieve. Famous Nu-Hue Liquid Tinting Colors combined with Nu-Hue whites deliver the desired color in finest quality paint!

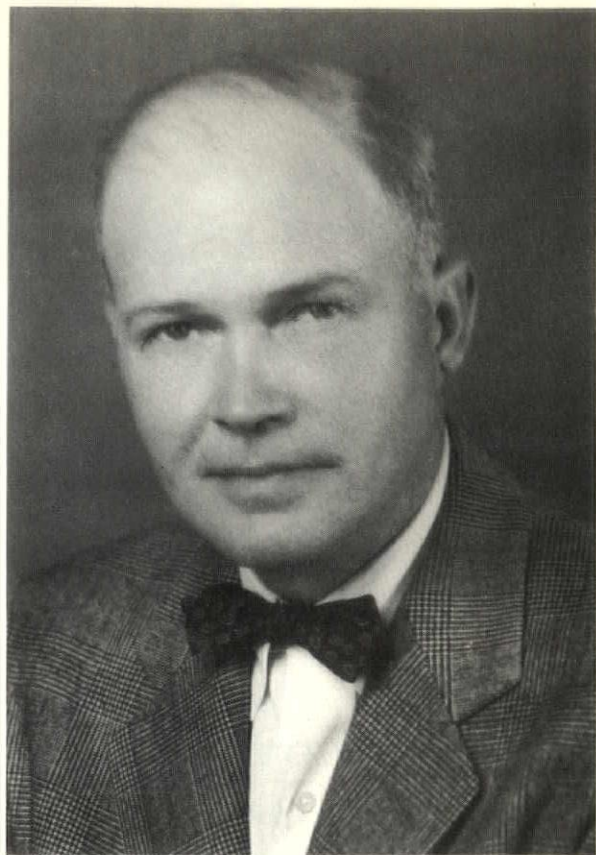
Distributed by:

SEAMANS SUPPLY CO. Manchester, N. H.

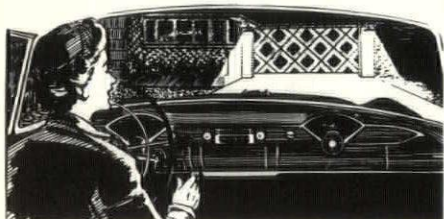


W. BROOKE FLECK OPENS NEW OFFICE IN HANOVER

W. Brooke Fleck has opened a new architectural office in the Bridgeman Building, Main Street, Hanover, N. H. He received his architectural degree from the University of Pennsylvania and has worked with the U. S. Treasury Department and the Office of the Chief of Engineers in Washington, D. C. In Philadelphia he was with the offices of Heacock and Platt, Karcher and Smith and G. Edward Brumbaugh. In 1942 he went to Iceland for the George F. Fuller Construction Company as designing engineer. Later he was a member of the U. S. Army in Photo Intelligence at Leyte and Okinawa. For the last ten years he has been with A. T. Granger Associates in Hanover.



Edward C. Lewis has recently joined Mr. Fleck's firm. He was graduated from Franklin Technical Institute and has a background of varied architectural experience.



Delco-matic

GARAGE DOOR OPERATOR

DELCO-MATIC MECHANIZES THE LARGEST SINGLE PIECE OF MOVING EQUIPMENT IN ANY HOME — THE GARAGE DOOR

As you enter your driveway, touch a button on the dash of your car and your garage door opens and lights turn on; you drive in, dry, comfortable, safe, day or night in any weather. Delco-matic fits any car, any garage, any door, single or double or two singles. Makes your garage door as modern as your car and your home.



RESIDENTIAL — COMMERCIAL — INDUSTRIAL
DEALER INQUIRES INVITED
BROCHURES UPON REQUEST

NEW HAMPSHIRE DISTRIBUTOR

CRAWFORD DOOR SALES CO. of N. H., Inc.

Route #1 Box 219A or
2566 Elm St., Manchester, N. H.
Telephone NA 2-4274

BROWN and CURRIER

PORTSMOUTH,

LYFORD and MAGENAU, A. I. A.

Concord, New Hampshire

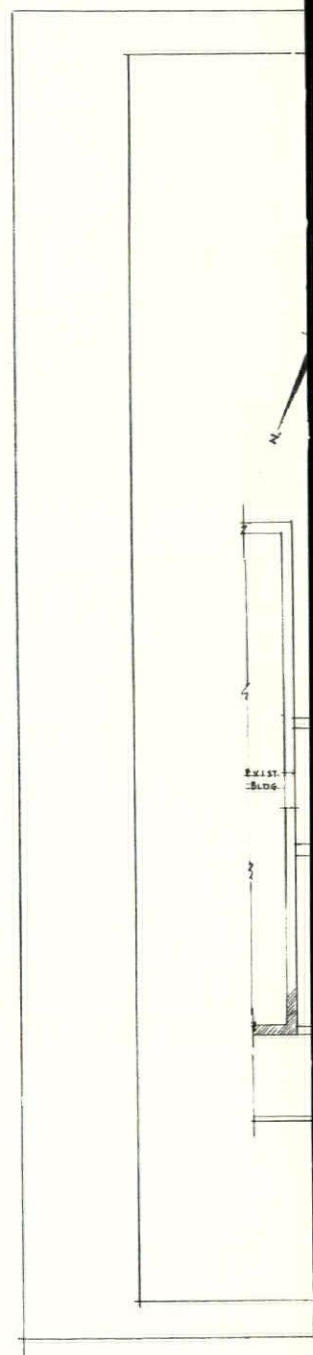
ARCHITECTS



E. L. PATERSON and SON

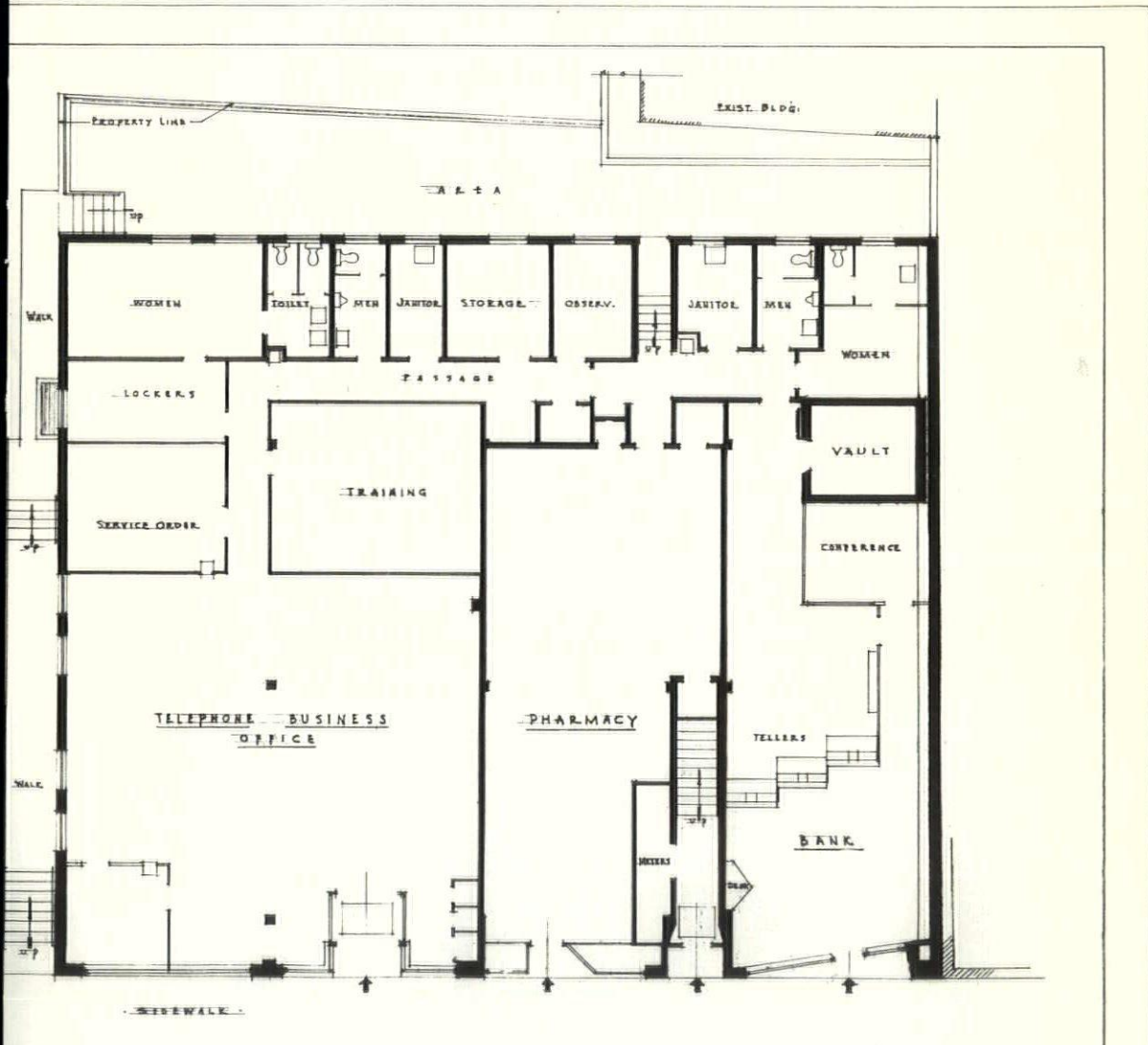
Portsmouth, New Hampshire

GENERAL CONTRACTORS



OFFICE BUILDING

NEW HAMPSHIRE



• FIRST FLOOR PLAN •

SCALE: - 0 5 10

Brown and Currier Office Building Portsmouth, New Hampshire

Construction of this building was started immediately after preliminary sketches were approved. Thus it was necessary to make quick decisions on many structural and mechanical equipment items before details of the superstructure could be worked out. The original ground elevation being some seven feet above sidewalk grade and the presence of ledge made a basement impractical, so to conserve higher value street floor space the boiler room was raised to the second floor. The boiler room also houses the air conditioning and pneumatic control system.

The building is of "semi-fireproof" construction with steel frame, reinforced concrete foundations, concrete masonry walls with brick exterior and plastered interior, steel joist floor and roof systems, gypsum plank roof deck, hung acoustical plaster ceilings, steel windows, aluminum store fronts, hollow metal door frames, flush wood doors, vinyl-plastic flooring tile. Heating and air conditioning is provided year-round by a gas-fired boiler and package type chiller plant with electric pumps

and pneumatic control system arranged to circulate either hot or cold water through the same pipes to remote air conditioning units, both floor type and suspended. Mechanical ventilation is provided in service rooms. Principal lighting is fluorescent.

The conservative design is appropriate for the location and type of occupancy, which includes a bank, pharmacy, telephone business office, insurance office and several attorneys. All office partitions are flush movable type, providing complete flexibility. Interiors are made attractive by the coloring and excellent lighting, both natural and artificial. On the exterior the blue porcelain-enamel canopies over windows unify the design and contrast pleasantly with the variegated tapestry brick, cast stone and aluminum trim.

Heating, Ventilating and Air Conditioning — Standard Plumbing and Heating Company, Portsmouth.

Plumbing — Fred L. Wood Company, Portsmouth.

Structural Steel — Lyons Iron Works, Manchester.

Movable Partitions—C. A. Bader Company of Vermont, Burlington, Vt.



Aluminum and Porcelain Enamel Work
—Gatchell Glass Company, Watertown,
Mass.

Sanymetal Toilet Partitions — Maurice
LaFramboise, Manchester.

Cast Stone—Cambridge Cement Stone
Company, Brighton, Mass.

Steel Windows—Hope's Windows, Inc.,
Boston, Mass.

Vault Door—Herring-Hall-Marven Safe
Company, Portland, Me.

Pneumatic Temperature Controls —
Johnson Service Company, Cambridge,
Mass.

Painting—Edward H. Paterson, Ports-
mouth.

Ceramic Tile—Galassi Company, Bright-
on, Mass.

Roofing—Robert D. Forsyth & Sons,
Haverhill, Mass.

Floor Coverings — Elliott's, Lawrence
Mass.

Plastering—E. A. Ricci, Portsmouth.

Bricks—Waldo Brothers, Boston, Mass.

THE *Bader* COMPANY
ACOUSTICAL & PARTITION

CONTRACTORS

ACOUSTI-CELOTEX
sound conditioning products

UNIT-PANEL
movable office partitions

MODERNFOLD
doors

HOPE'S
windows

BURGESS-MANNING
radiant acoustical ceilings

ALPRO
aluminum ceiling panels

U. S. PLYWOOD
WELDWOOD
chalkboard

CHEMCLAD
doors

BAKER
scaffolds

FLUSH METAL
toilet partitions

699 Pine Street
BURLINGTON
VERMONT
TELEPHONE 3-3510

46 North State Street
Concord, New Hampshire
Telephone CApitol 5-3134

Oak Bluff Road
Kennebunk, Maine
Telephone 5-2124

130 Crescent Street
Rutland, Vermont
Telephone PRospect 3-3177

E. L. PATERSON and SON

GENERAL CONTRACTOR

FOR

**BROWN and CURRIER OFFICE BUILDING
PORTSMOUTH, N. H.**

CONTRACTORS and BUILDERS

OFFICE: 1808 ISLINGTON STREET

SHOP: PLAINS AVENUE

PORTSMOUTH, N. H.

PATERSON'S

PAINT and WALLPAPER STORE

Painting and Decorating Contractor For
Brown and Currier Office Building
PORTSMOUTH, N. H.

Industrial Brush and Spray Painting
SHERWIN - WILLIAMS PAINTS

FOR PAINTING SEE PATERSON

21 Daniel Street Portsmouth, N. H.
GE 6-3031

CAMBRIDGE CEMENT

STONE COMPANY

INCORPORATED

CAST STONE SILLS

For The

Brown and Currier Office Building
Portsmouth, N. H.

156 Lincoln St. Allston 34, Mass.
Tel. STadium 2-7610 - 2-7611

WE FURNISHED AND INSTALLED
Ceramic Tile for the Toilets—Slate Stools for
the Windows — Precast Terrazzo Treads for
the Stairs:

In The
Brown and Currier Office Building
Portsmouth, N. H.

Our reputation insures your satisfaction

GALASSI COMPANY
INCORPORATED

Tile, Terrazzo, Marble, and Slate
300 North Beacon Street
BRIGHTON 35, MASS.
Telephone Algonquin 4-7450

GATCHELL GLASS CO.

INCORPORATED

46 - 48 No. Beacon Street
WATERTOWN, MASS.
Tel. Watertown 4-4095

GLAZING

and

STORE FRONT INSTALLATION
For
BROWN and CURRIER BUILDING
Portsmouth, N. H.

JOHNSON CONTROL

TEMPERATURE AIR CONDITIONING
SINCE 1885



The Johnson Service Company has consistently devoted its efforts to the kind of product improvements in temperature control systems that today make it possible for the Brown Office Building to depend on the Fullest Flexibility in comfort advantages and production efficiencies of its air conditioning, heating and ventilation investment.

Milwaukee, Wisconsin

All principal cities

64 Moulton St.
Cambridge 38, Mass.

739 Congress St.
Portland, Maine

PLANNING MANUFACTURING INSTALLING

PLUMBING CONTRACTOR

For

Brown and Currier Office Building

FRED L. WOOD CO.

65 BOW STREET

Portsmouth, N. H.

- PLUMBING
- HEATING
- AIR CONDITIONING
- AUTOMATIC OIL BURNERS

Robert D. Forsyth

and Sons

17 Cedar St.

Dial 2-2933

HAVERHILL, MASS.

Roofing Contractor

for

BROWN and CURRIER BUILDING

at

Portsmouth, N. H.

Compliments

of

REDDEN and POPE

ELECTRICIANS

Portsmouth, N. H.



INTERIOR VIEWS of BROWN and CURRIER
OFFICE BUILDING



Everybody...WHO IS ANYBODY READS

THE

New Hampshire
ARCHITECT



N. H. Chapter A. I. A. Committees

For 1956

A—ADMINISTRATIVE COMMITTEE		Nicholas Isaak, G. C.
a	Finance	Robert Snodgrass
b	Jury of Fellows	Eric T. Huddleston
c	Public Relations	Stephen P. Tracey
d	Chapter Committee on Public Relations	Alexander J. Majeski
e	By Laws	Maurice E. Witmer
f	Board of Examiners	John D. Betley
g	Chapter Committee on Membership	Willis E. Littlefield

B—PUBLIC & PROFESSIONAL RELATIONS		Arnold Perreton
a	Architectural Competitions	Edward B. Miles
*b	Urban Design & Housing	W. Brooke Fleck
c	Architect & Government	Richard Koehler
*d	Collab. with Design Professions	Margaret K. Hunter
*e	Architectural Practice	John R. Holbrook
f	Chapter Public Relations	Alexander J. Majeski
g	N. H. Architect	Alexander J. Majeski
h	Travelling Exhibit	Nicholas Isaak

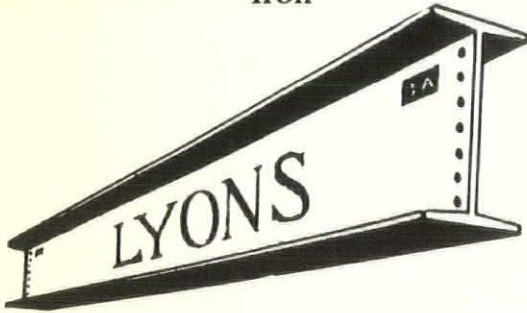
C—MEMBERSHIP ACTIVITIES		Leo P. Provost
a	Convention Committee	William L. White
b	Honor Awards	Douglas G. Prescott
*c	Chapter Affairs	Malcolm D. Hildreth

D—EDUCATION & RESEARCH		John A. Carter
a	Awards & Scholarships	Horace G. Bradt
*b	Education	Edgar H. Hunter
*c	Preservation of Historic Buildings	William L. White
*d	Research & Research Material	Joseph F. Lampron
e	Hospital & Public Health	Stewart A. Lyford
*f	School Buildings	Alfred T. Granger
*g	AIA & Producers Council	Joseph F. Lampron
h	AIA & AGC	Carl E. Peterson
*i	AIA & Home Building Industry	Henry W. Erickson

*-Regional Members.

Steel Structures Designed
and Fabricated

Architectural and Ornamental
Iron



"Steel when you want it"

LYONS IRON WORKS, INC.

62 MAPLE ST. MANCHESTER, N. H.

DIAL 5-6975

Dutch Boy —THE NAME TO
GO BUY—FOR EVERY PAINT JOB

First choice of professional painters—first choice with home owners—that's *Dutch Boy*. There's a *Dutch Boy* finish specially blended for every painting need, inside or outside your home, and you can depend on it for long-lasting beauty. Choose yours today at—



PAINT DEPARTMENT
Main Store — Street Floor

BUILDERS' PAINT DEPARTMENT
Opposite Main Store
(Rear of State Theatre)

EXCLUSIVE DEALER

J. J. MOREAU & SON, INC

MANCHESTER, N. H.

Dial 4-4311

PHOTOSTATS-BLUELINE PRINTS

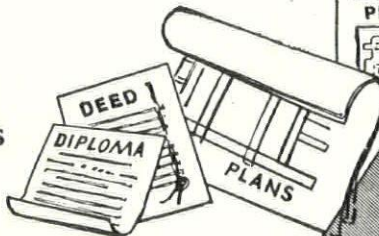
LEGAL COPIES OF ANYTHING

COPIES OF:
LETTERS, CHECKS, DOCUMENTS, DEEDS
COURT EXHIBITS, LICENSES, TITLES,
DISCHARGE PAPERS & MAPS

DON'T TAKE A CHANCE
ON ORDINARY PHOTO COPYING
CALL US

"WE ARE REPRODUCTION SPECIALISTS"

PHOTOSTATS
BLUEPRINTS
BLUELINE PRINTS



BUSINESS PHOTOGRAPHY
AUTO POSITIVES
24 HOUR SERVICE

"ONE TO A MILLION COPIES OF ANYTHING"

GEORGE C. BENJAMIN

92 MARKET STREET

DIAL 2-2273

MANCHESTER, N. H.

W. L. TRUBBLE CO.

341 Elm Street
MANCHESTER, N. H.

— Wholesalers —

PLUMBING — HEATING SUPPLIES

— Distributors of —



AMERICAN-Standard

We invite you to visit our display of
COLORED BATH ROOMS

Sanel Industrial and Equipment Supply

59 So. Main St. - Concord, N. H.

— We Now Stock —

Chicago Pneumatic Compressors
and Air Tools, Timken Rock Bits,
Air Hose, Suction Hose,
Black and Decker Electric Tools
Skil Saws - Atlas Saw Benches

We stock machine bolts and cap screws,

All sizes to 12"

We can make any size bolt

TRY OUR PRICES and SERVICE

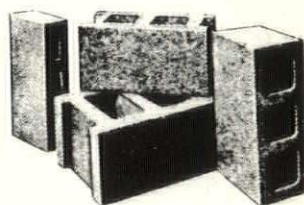
LATEST DIVIDEND

3 1/4% Per Annum

Accounts Started or Added to
on or before the 10th, earn a
Full Month's Dividend

Accounts insured to \$10,000
by the Federal Savings and
Loan Insurance Corporation.

Manchester
FEDERAL SAVINGS
AND LOAN ASSOCIATION
48 MARKET STREET, MANCHESTER, N. H.



"MONADNOCK BLOCKS"

CONCRETE — CINDER

Made to Meet A.S.T.M. Requirements

Arthur Whitcomb, Inc.

725 Main St.

Keene, N. H.

Phone 110

Serving the People of NEW HAMPSHIRE

John D. Betley,
Manchester

Horace G. Bradt,
Exeter

Dirsa and Lampron,
Manchester

W. Brooke Fleck,
Hanover

Alfred T. Granger Associates,
Hanover

Irving W. Hersey Associates,
Durham

John R. Holbrook Associates
Keene

Hudson and Ingram,
Hanover

Koehler and Isaak,
Manchester

Willis Littlefield,
Dover

Lyford and Magenau
Concord

Alexander Majeski,
Bedford

Edward Benton Miles,
Exeter

Arnold Perreton and Associates,
Concord

Carl E. Peterson,
Manchester

Prescott and Erickson
Laconia

Leo P. Provost,
Manchester

Norman P. Randlett,
Laconia

Tracy and Hildreth,
Nashua

William L. White,
Exeter

Walter Thomas Williams
Rochester

Maurice E. Witmer,
Portsmouth

Each of the above firms has one or more individuals in the

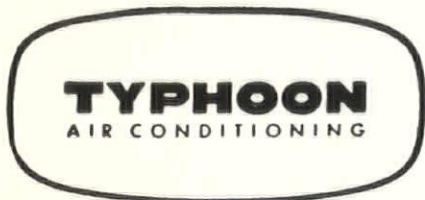
A. I. A.

Cobe and Foster, Inc.

156 Bridge St. Dial 2-9642

Manchester, N. H.

REGISTERED
PROFESSIONAL ENGINEERS



Air Conditioning and Heating
and
Refrigeration and Supply Jobbers

WHOLESALE ONLY

PALMER

PLUMBING SUPPLY COMPANY

Wholesalers

Plumbing - Heating - Mill Supplies

Distributors of

WEIL-McLAIN BOILERS

KOHLER ENAMELWARE

PETRO OIL BURNERS

ROCHESTER, LACONIA, KEENE, N. H.

PORTLAND, ME.

"Competent Engineering Service"

FOR MODERN SCHOOL DESIGN

BRUNSWICK HORN -

Gymnasium Folding Seating, Folding
Partitions and Folding Stages for
Gyms and Auditoriums, Folding Class-
room Wardrobes.

TRUSCON STEEL SASH
ALUMINUM WINDOWS - ALL TYPES



CRAFTSMEN, INC.

Overhead Door Building, Tel. 707

MILFORD, N. H.

REFRIGERATION DISTRIBUTORS FOOD SERVICE CONSULTANTS

Complete Planning Service

For Markets and Food Stores
Special Industrial Refrigeration
Complete Air Conditioning
Hotel, Restaurant and
Institutional Kitchens,
Cafeterias, Dining Areas
Cocktail Lounges

HUMPHREYS, INC.

180 No. Main Street - Concord, N. H.

A Business Devoted To Those
Who Serve Food

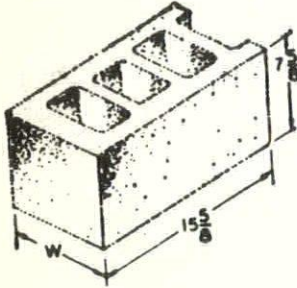
NEW HAMPSHIRE ARCHITECT

P. O. Box 291, Concord, N. H.

Frederick Gutheim A.I.A.
1741 New York Ave.
Washington 6 D.C.

Sec. 34.66 P. L. & R.
U. S. POSTAGE
PAID
Concord, N. H.
PERMIT NO. 297

Form 3547 Requested



CONCRETE, CINDER AND CATCH BASIN BLOCKS

DURACRETE

BLOCK CO., INC.

DIAL MAN. 5-6293 - 2-7011

Plant located at rear of
Manchester Sand & Gravel Co., Hooksett, N. H.

BUILD WITH BRICK and TILE

Face Brick— Flue Lining—
Sewer Pipe—
Facing Tile— Metal Specialties—

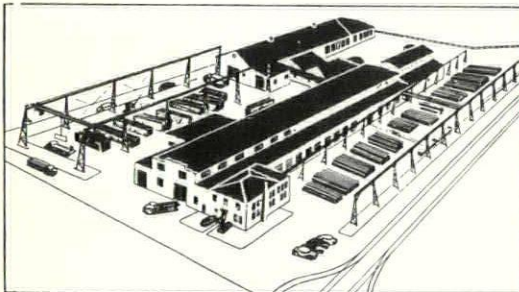
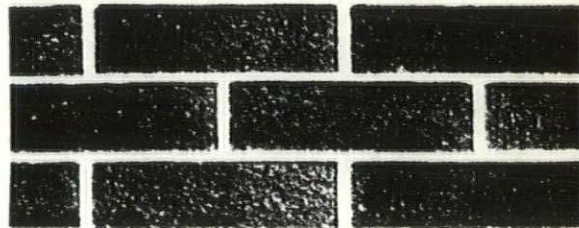


DENSMORE BRICK COMPANY

Brick Manufacturers

Lebanon,

New Hampshire



Aerial view of Vermont Structural Steel Corp.

Serving
Northern New England
and New York
with Steel Products

Our large steel fabrication plant can provide you with structural steel, longspan trusses, ornamental iron and fabricated platework. Our warehouse is kept stocked with complete inventories of steel and steel products. Prompt delivery is our goal on all orders, large or small.

LET US
QUOTE ON YOUR
REQUIREMENTS

VERMONT STRUCTURAL STEEL CORP.

207 Flynn Ave.

Tel. 4-9844

Burlington, Vermont