



**NEW HAMPSHIRE  
ARCHITECT**

AMERICAN INSTITUTE  
OF  
ARCHITECTS

OCT 20 1961

LIBRARY

OFFICIAL PUBLICATION

NEW HAMPSHIRE CHAPTER

AMERICAN INSTITUTE of ARCHITECTS

SEPTEMBER

1961

# Colonial Supply Corp.

25 Union Street  
 MANCHESTER, N. H.  
 Plumbing - Heating - Mill Supplies

## DUNHAM- BUSH

Central  
 System Air Conditioning

HEATING—in Winter

COOLING—in Summer

Today's Trend In Building

WE INVITE YOU TO VISIT THE  
 LARGEST SHOWROOM IN NEW ENGLAND

WHOLESALE ONLY

# Panel Industrial, Inc.

Distributors of  
 Construction Equipment and Supplies

159 SOUTH MAIN STREET • CONCORD, N.H.

TEL. CA 5-2726

- Sonneborn Building Materials
- Delta Power Tools
- DeWalt Radial Saws
- Schlueter Artic Boy Water Coolers
- Timken Bits
- Crosby Clips
- Aeroquip Hose & Couplings
- Vulcan Drill Steel & Pavement Breaking Tools
- Laughlin Drop Forge Fittings
- Dixon Valves & Couplings
- Springs—New & Repaired
- Welding Supplies—Marquette, Victor & Stulz-Sickles
- Complete Motor Rebuilding
- Kohler Electric Plants
- Complete stock of all sizes Machine Bolts & Cap Screws

now . .  
**ONE  
 STOP**  
 for  
 every  
 paint  
 need!



First choice of professional painters—first choice with home owners—that's Dutch Boy. There's a Dutch Boy finish specially blended for every painting need, inside or outside your home. Choose yours today at—

## PAINT DEPARTMENTS Main Store and Annex

EXCLUSIVE DEALER

**J. J. MOREAU & SON, INC**

MANCHESTER, N. H.

Dial NA 4-4311

# ANDREW T. JOHNSON CO., INC.

<b>4</b> LOCATIONS	3	}	15 TREMONT PL.
	IN		103 NEWBURY ST.
	BOSTON		173 MILK ST.

BURLINGTON, MASS. ON MIDDLESEX TURNPIKE 11  
 (AT EXIT 35 OFF ROUTE 128)

Richmond 2-1610

(Connecting all Plants)

## REPRODUCTIONS OF ALL TYPES

- BLUEPRINTS (on Paper or Cloth)
- BLUELINE PRINTS (on Paper or Cloth)
- PHOTOSTATS (Negatives or Positives)
- DIRECT WHITE POSITIVES (Blue or Black Lines)
- AUTOPOSITIVES (Direct Positive Prints)
- "PHOTO-ARC" TYPE (Negatives or Positive Prints)
- KODALITH PAPER (Negatives or Positives)
- J-R REPRODUCTIONS (on Blue or White Tracing Cloth)
- VAN DYKE NEGATIVES AND POSITIVES
- "B & W" SEPIA PRINTS "Transparents" on Vellum, Etc.
- FILM NEGATIVES AND POSITIVES (Enlarged or Reduced)
- CAMERA ENLARGEMENTS or BROMIDE POSITIVES (Up to 60" x 120" made in one piece on one of the largest commercial cameras in New England)
- PHOTO VELLUM PRINTS (Enlarged or Reduced)
- GLOSSY PHOTOGRAPHIC PRINTS
- PHOTO-OFFSET OR PLANOGRAPH PRINTING



# NEW HAMPSHIRE ARCHITECT

## OFFICERS

### *President*

ANDREW C. ISAAK, Manchester

### *Vice-President*

WALTER T. WILLIAMS, Rochester

### *Secretary*

GEORGE SOULE, Manchester

### *Treasurer*

FRANK E. KENNETT, JR., Conway

## DIRECTORS

W. BROOKE FLECK, Hanover

JOHN CARTER, Nashua

EDGAR H. HUNTER, Hanover

### *Regional Council Delegates*

A. ISAAK, *ex-officio*

J. HOLBROOK, 1 yr.

N. ISAAK, 1 yr.

N. RANDLETT, 2 yrs.

M. WITMER, 3 yrs.

### *Member of National Chapter Affair Committee*

ALEXANDER R. JAMES

### *Member of Sub-Committee on Building Products Registration*

EDWARD B. MILES

### *Members of AIA - AGC Committee*

NICHOLAS ISAAK, Manchester

JOHN CARTER, Nashua

MAURICE E. WITMER, Portsmouth

W. BROOKE FLECK, Hanover

STEPHEN P. TRACY, Nashua

## EDITOR

ALEXANDER MAJESKI, R. A.  
Palomino Lane  
Manchester, N. H.

## PUBLISHER

ROBERT P. MOYNIHAN  
P. O. Box 291  
Concord, N. H.  
Tel. CA 5-6760

VOL. 13

SEPTEMBER, 1961

NO. 2

## TABLE OF CONTENTS

Summer Meeting of New Hampshire Chapter .....	6
New AIA-AGC Committee Meets .....	6
Office Building for Seven Sixty Realty Corporation by Andrew C. Isaak, AIA .....	9-12
Grace Episcopal Church by Maurice E. Witmer, AIA .....	16-17

New Hampshire Architect is published monthly, under the direction of the president and board of directors of the New Hampshire Chapter, American Institute of Architects, to promote the objectives and public relations of the chapter. Advertising rates furnished upon request.

25c A COPY  
\$3.00 A YEAR

# REFRIGERATION DISTRIBUTORS FOOD SERVICE CONSULTANTS

## Complete Planning Service

For Markets and Food Stores  
Special Industrial Refrigeration  
Complete Air Conditioning  
Hotel, Restaurant and  
Institutional Kitchens,  
Cafeterias, Dining Areas  
Cocktail Lounges

## HUMPHREYS, INC.

180 No. Main Street - Concord, N. H.

A Business Devoted To Those  
Who Serve Food

Nash Engineering Co.

Union Pump Sales Inc.

Layne & Bowler, Inc.

C. H. Wheeler Mfg. Co.

Rank Cintel      Metal Detectors

# PUMPS

## C. R. SWANEY CO.

335 Newbury St.,      Boston, Mass.



COMMITTEES  
1961 - 1962

## CHAPTER ACTIVITIES

Norman P. Randlett, Chapter Affairs,  
Chairman  
Maurice E. Witmer, Membership  
John Carter, Education  
Richard Koehler, Office Practice  
George R. Thomas, Awards and Scholar-  
ships

## PUBLIC RELATIONS

Nicholas Isaak, Public Relations, Chair-  
man  
Douglass C. Prescott, Government Rela-  
tions  
Alexander J. Majeski, N. H. Architect  
Bliss Woodruff, Construction Industries  
Edgar H. Hunter, Collaboration with  
Design Professions

## COMMUNITY DEVELOPMENT

Mitchell P. Dirsra, Community Develop-  
ment, Chairman  
Horace G. Bradt, Preservation of His-  
toric Buildings  
Arnold Perreton, Research  
Stephen P. Tracy, School Buildings  
Alfred T. Granger, Hospitals and Health



# Serving the People of NEW HAMPSHIRE

---

John D. Betley,  
Manchester

Horace G. Bradt  
Exeter

Dirsa and Lampron,  
Manchester

W. Brooke Fleck,  
Hanover

Alfred T. Granger Associates,  
Hanover

Russell S. Harmon,  
Durham

Irving W. Hersey Associates,  
Durham

John R. Holbrook Associates,  
Keene

Andrew C. Isaak  
Manchester

Koehler and Isaak,  
Manchester

Littlefield and Williams  
Dover

Alexander Majeski,  
Bedford

Arnold Perreton and Associates,  
Concord

Douglass G. Prescott,  
Laconia

Leo P. Provost,  
Manchester

Norman P. Randlett,  
Laconia

Tracy and Hildreth,  
Nashua

William L. White,  
Exeter

Maurice E. Witmer,  
Portsmouth

Participating Members of the New Hampshire Chapter

# A. I. A.

*Mr. Architect:*

At present we have some century-old hand-hewn 8 x 8 timbers on hand; if you are interested, please let us know at once.

Meanwhile, we still offer the quality of construction you seek from General Contractors, as we have done continuously since 1909.

**W. M. Bisson & Son**

*Building Construction*

P. O. Box 234 • LACONIA, N. H.

OFFICE AND YARD  
28 RIVERSIDE CT.  
TEL. LA 4-4046



## SUMMER MEETING OF NEW HAMPSHIRE CHAPTER, AIA HELD SEPTEMBER 7

New Hampshire Chapter, American Institute of Architects held their summer meeting on September 7 at a picturesque ski lodge called "Keene" at Etna, New Hampshire.

A meeting of the executive committee preceded the social hour and dinner. Following dinner Professor Hugh Morrison, Department of Art, Dartmouth College, gave an interesting commentary along with slides on recent contemporary architecture. His subjects were General Motors Research Laboratories, United States Air Force Academy, University of Mexico and Brazilia. Having visited these sites in recent years Professor Morrison and his slides spoke with authority of the scope, exciting design and magnitude of these renowned places. Following the showing the evening was spent in a general discussion of these works and others.

Next scheduled meeting of the Chapter is November 17 in the Manchester area.

## NEW AIA-AGC COMMITTEE MEETS

Many topics of vital interest discussed.  
Further meetings planned.

Meeting at Manchester recently the newly appointed members of the AIA-AGC committee were enthusiastic about the formation of the committee and agreed that it had tremendous potential for creating better understanding between the two groups and advancing the common cause of both segments of the industry.

The purpose of the first meeting was mainly organizational, with a variety of topics suggested for exploratory purposes.

It was proposed that the committee be a continuing committee meeting regularly at periodic intervals to maintain the lines of communication between the associations and to develop long range programs for the advancement of the common causes of the two groups. It was generally agreed that both architects and contractors in New Hampshire had done little in the way of a joint effort to promote the construction industry and it was also agreed there is a sizeable potential in this field.

It was also agreed that after several

(Continued on Page 18)

**A.W. THERRIEN CO.**  
INC.

*"A Roof by Therrien is a Good Roof"*

**ROOFING CONTRACTORS**

PHONE NA 3-6193 • 199 HAYWARD STREET • MANCHESTER, N. H.



# WOOD POST

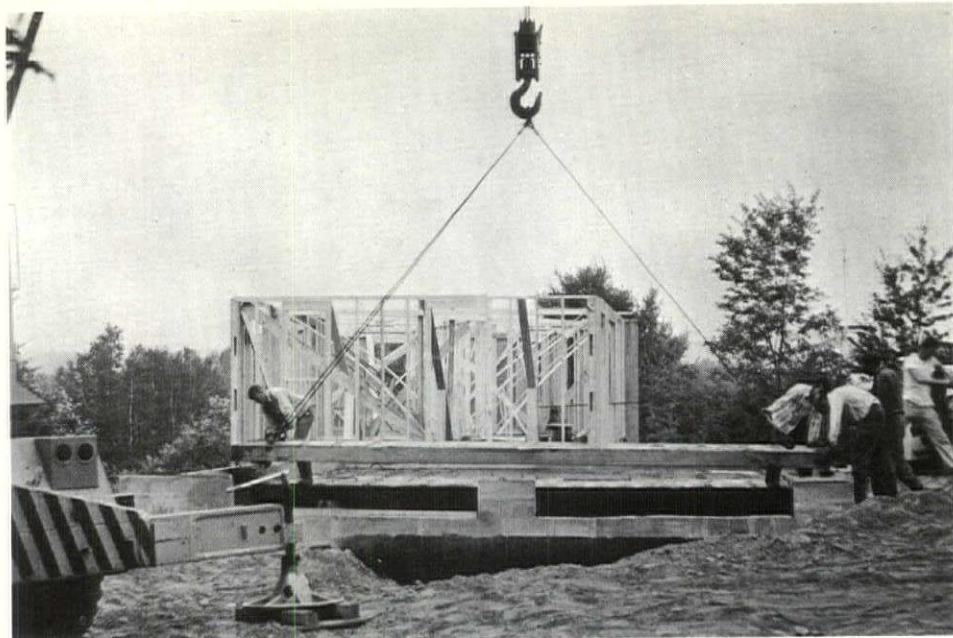
SCULPTURED BY BLUMCRAFT IN HAND RUBBED OIL FINISH • SEND FOR GENERAL CATALOG M-61



*Blumcraft*

OF PITTSBURGH

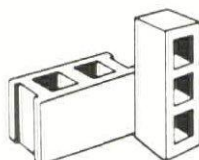
COPYRIGHT 1961 BY BLUMCRAFT OF PITTSBURGH • 460 MELWOOD ST., PITTSBURGH 13, PENNSYLVANIA



The new Robert King residence, directly across from the Laconia Country Club, has incorporated a fall out shelter as part of the house. The foresight of Architect Douglas Prescott A. I. A. of Laconia, and owner Robert King has developed a first quality shelter at little or no added expense to the cost of this new Colonial styled Home.

The accomplishment was made by the use of Precast Prestressed 7" x 4' x 25' Flat Slabs, acting as the floor of the garage and spanning 25' from one concrete wall to the other concrete wall of the 25' x 25' combination shelter below and garage on top. Prestressed Concrete offers the best blast resistant material due to its ability to withstand extreme heat and overload pressures, give with the force, and return to its original shape. The shelter has access to the basement, or lower story, of the house through protective masonry shield walls.

"RUGGED AS MONADNOCK"



standard block  
half-hi block  
hilite block  
glazon block  
formbloc

## MONADNOCK BLOCKS

... the best in concrete masonry ...

### READY-MIX CONCRETE

available at plants in  
Keene, Charlestown,  
Peterborough and Newport

### COMPLETE LINE

OF  
MASONRY SUPPLIES

# ARTHUR WHITCOMB, inc.

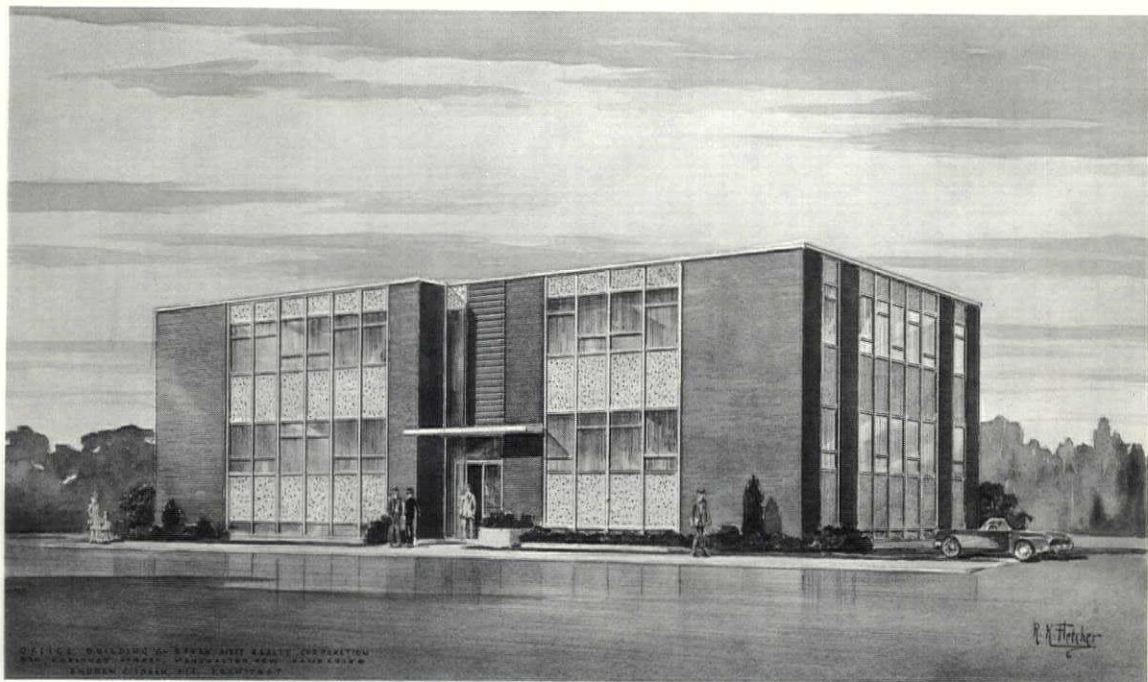
725 MAIN ST.  
KEENE N. H.



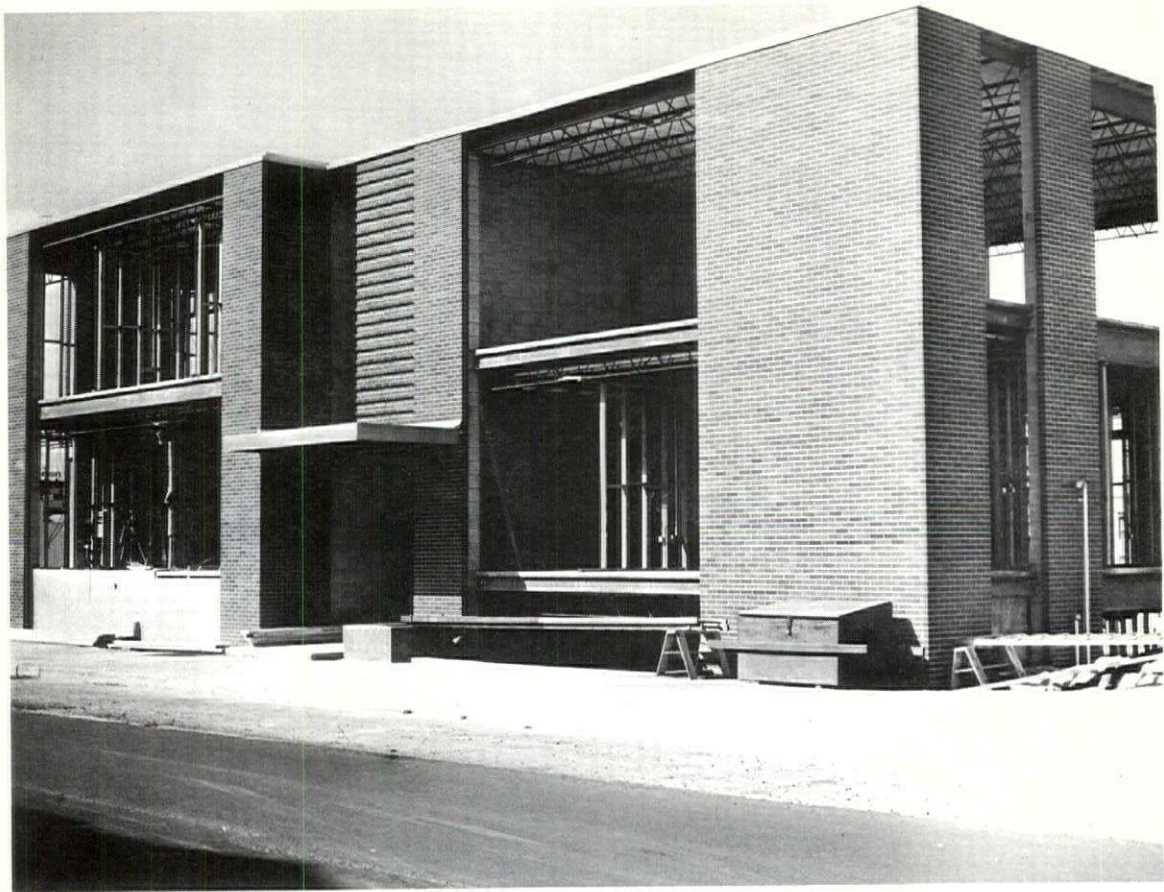
**OFFICE BUILDING for  
SEVEN SIXTY REALTY CORPORATION**

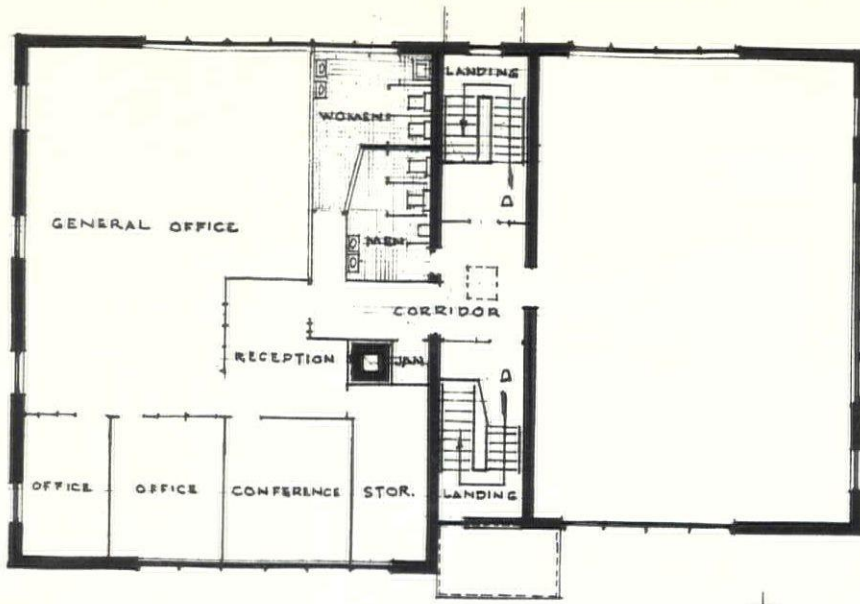
**ANDREW C. ISAAC, AIA  
MANCHESTER  
ARCHITECT**

**CARON CONSTRUCTION CO., INC.  
MANCHESTER  
GENERAL CONTRACTOR**

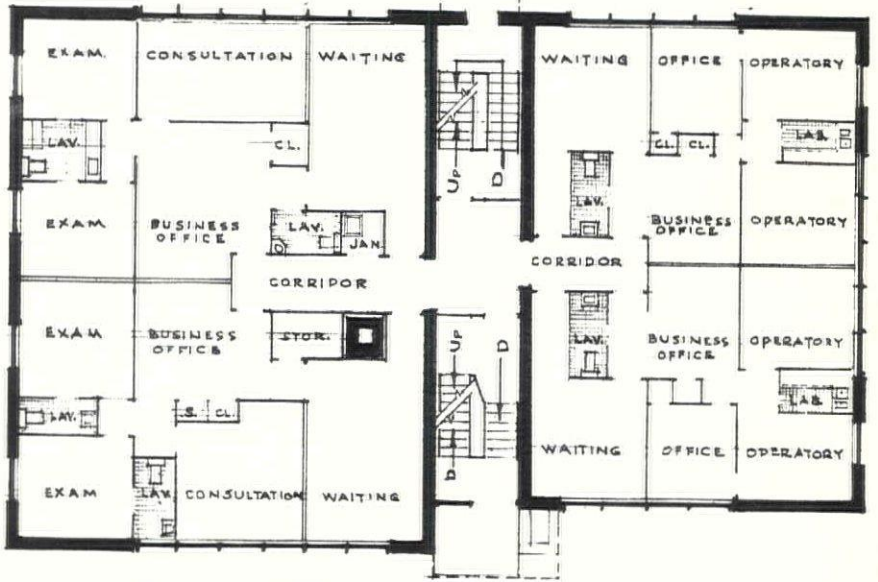


OFFICE BUILDING FOR SEVEN SIXTY REALTY CORPORATION  
MANCHESTER, MASSACHUSETTS  
ARCHITECT: ANDREW C. ISAAC, AIA  
GENERAL CONTRACTOR: CARON CONSTRUCTION CO., INC.

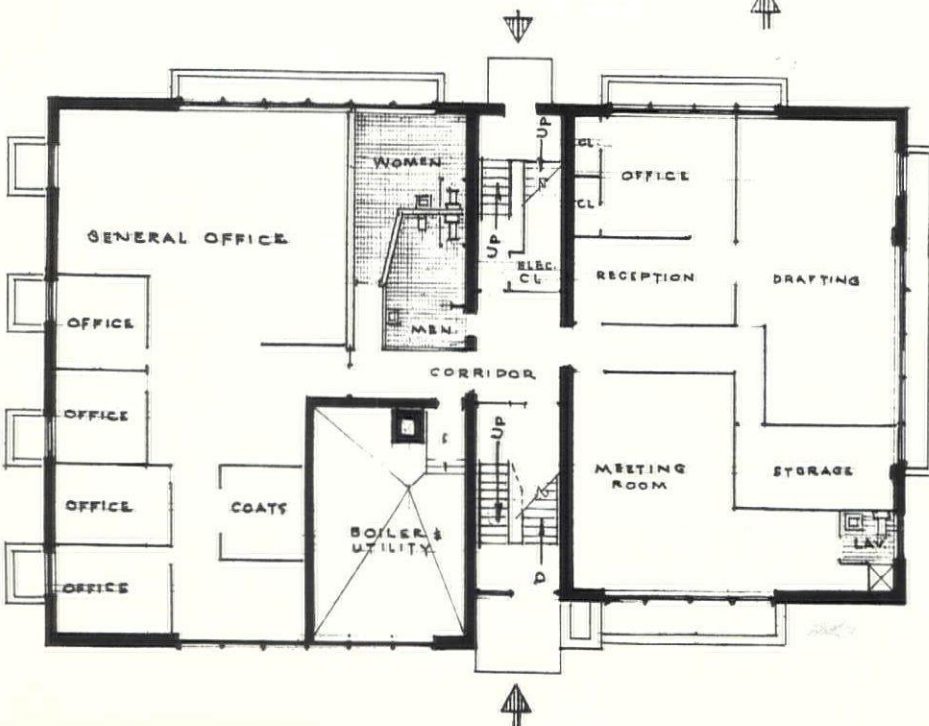




Second Floor Plan



First Floor Plan



Ground Floor Plan



**Celotex Acoustical  
Products**

**Office Partitions**

**Porex Roof Decks**

by

**Pitcher & Company, Inc.**

167 Albany St., Cambridge 39, Mass.  
Goffstown, N. H. HYacinth 7-2376

**Eckhardt & Johnson,  
Inc.**

Plumbing & Heating Contractors  
213 Hanover St. Tel. NA 2-7493  
MANCHESTER, N. H.

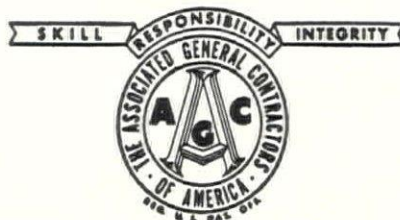
**Plumbing - Heating  
COOLING**

at  
**OFFICE BUILDING**  
for  
**SEVEN SIXTY REALTY  
CORPORATION**  
Chestnut St. Manchester, N. H.

# **CARON**

**CONSTRUCTION CO., INC.**

**Manchester, N. H.**



**GENERAL CONTRACTOR**

for

**OFFICE BUILDING**

of

**SEVEN SIXTY REALTY CORPORATION**

**MANCHESTER**

# SCORBORD\*



**new perimeter  
insulation  
cuts building costs!**

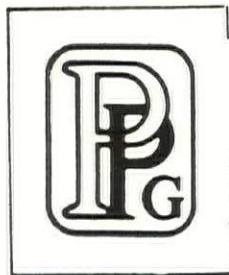
- Pre-scored to snap off at almost any width
- Reduces sawing, cutting, fitting time up to 80%
- Big, easy-to-handle, 8-foot x 2-foot sections
- Resists moisture, heat, cold, deterioration
- Withstands weights of 2000 pounds per sq. foot

**Complete Masonry Supply Center**

**CORRIVEAU-  
ROUTHIER**

266 CLAY STREET MANCHESTER, N. H.

NA 3-5293 — 2-3506



**Glazing  
and  
Entrances  
By  
Pittsburgh**

at  
**OFFICE BUILDING**  
for  
**SEVEN SIXTY REALTY  
CORPORATION**

Chestnut St. Manchester, N. H.

PAINTS • GLASS • CHEMICALS • BRUSHES • PLASTICS

**PITTSBURGH PLATE GLASS CO.**  
23 So. Commercial St., Manchester, N. H.



Standard finish on all MODU-WALL material is 204R-1 anodized finish, which is also available in KAL color natural color anodizing.

Furnished and  
Installed by

**GEORGE J. KEHAS CO.**

967 ELM STREET

• MANCHESTER, N. H.

MODU - WALL Precast concrete panels with natural white quartz raised facing at the new —

**OFFICE BUILDING OF SEVEN  
SIXTY REALTY CORPORATION**  
Manchester, N. H.

Other recently completed projects using MODU - WALL are:

Mt. St. Mary's Dormitory and Administration Building.

Westbrook High School, Westbrook, Maine.

Rockland High School, Rockland, Maine.



*Contoocook Valley Telephone Company, Inc.  
Hillsborough, New Hampshire*

This building, scheduled for completion in late 1961, exemplifies the clean, flameless, flexible approach to modern commercial construction. Two of the outstanding features of this building are electric heating and the modern lighting system.

The heating system consists of electric baseboard units in the office areas and fan type electric heaters in the equipment rooms. Individual room thermostats control the temperature in each room. Cleanliness was one of the primary considerations for the selection of electric heat. Company officials have estimated large annual savings because of this one feature associated with electric heat. Flexibility is another feature which decided officials on electric heat. Time clocks associated with room thermostats automatically program the desired temperature at the desired time for each room in the building.

Lighting is fluorescent throughout, with over 1300 square feet of luminous ceiling. Lighting levels vary from 35 footcandles in the service area to 150 footcandles in the test room. General office areas are designed for 75 footcandles.

Throughout New Hampshire there's a big swing to flameless electric heating in commercial buildings as well as homes. For the architect, builder or developer, additional information and assistance concerning flameless electric heating is available from Public Service Company of New Hampshire.

ARCHITECT: Andrew C. Isaak, A. I. A.  
GENERAL CONTRACTOR: E. K. Wheeler & Sons, Inc.  
ELECTRICAL CONTRACTOR: John J. Reilly, Inc.

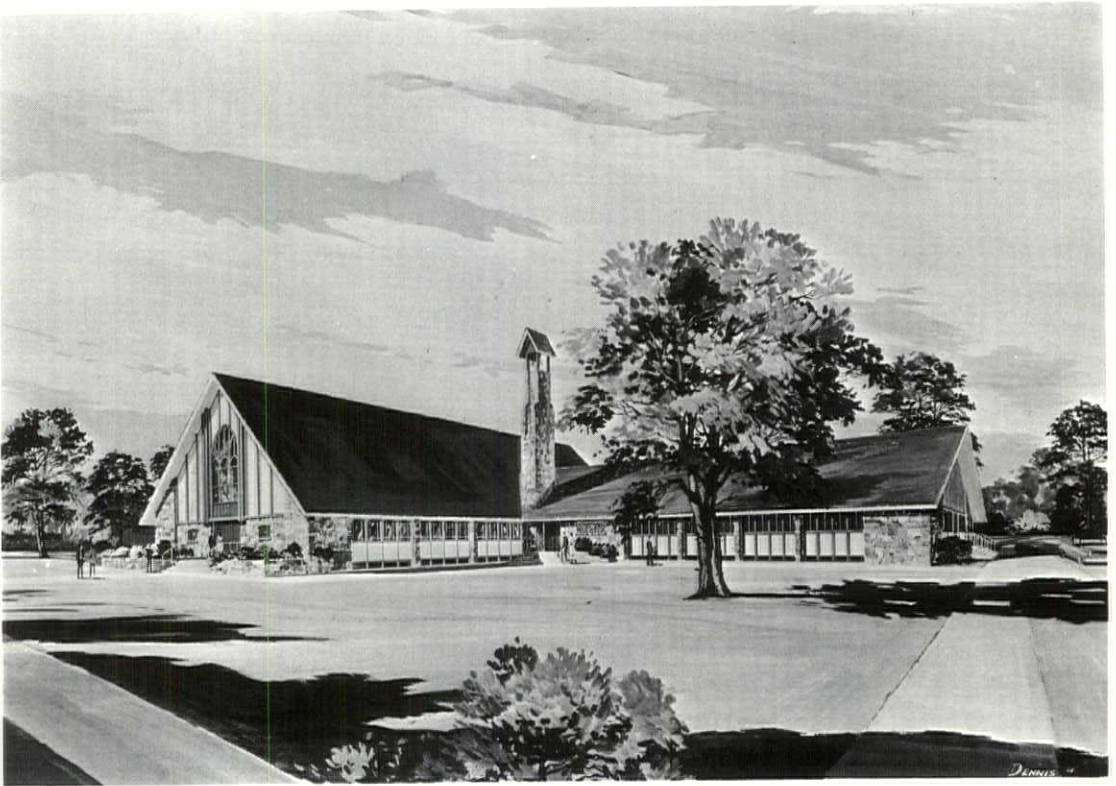
---

**PUBLIC SERVICE COMPANY OF NEW HAMPSHIRE**

---

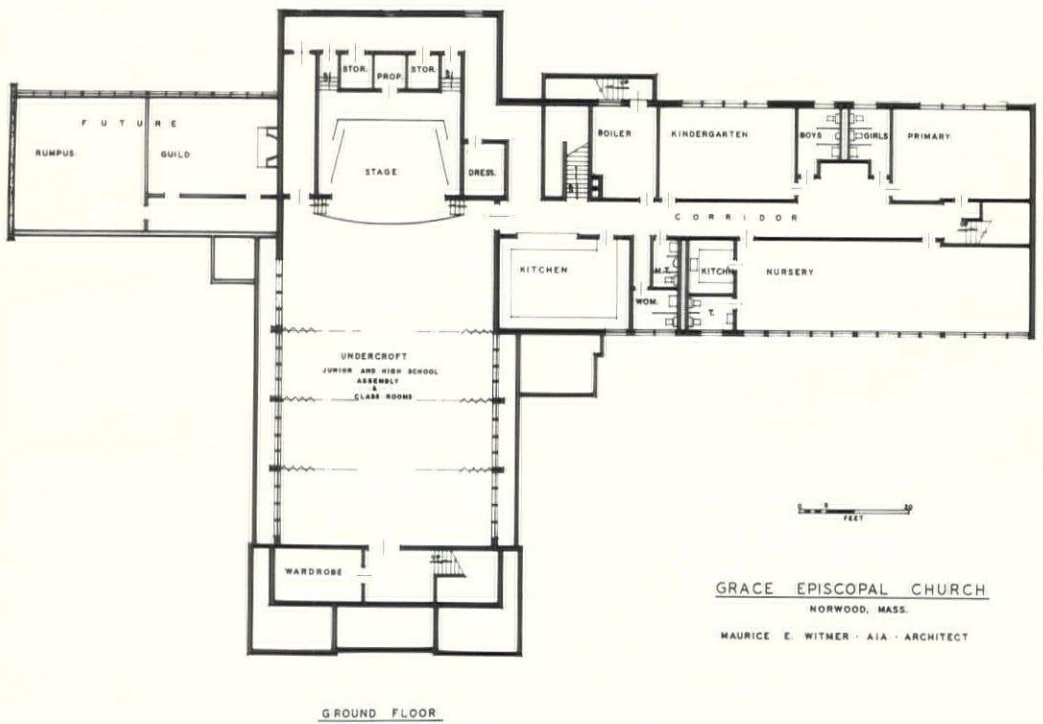
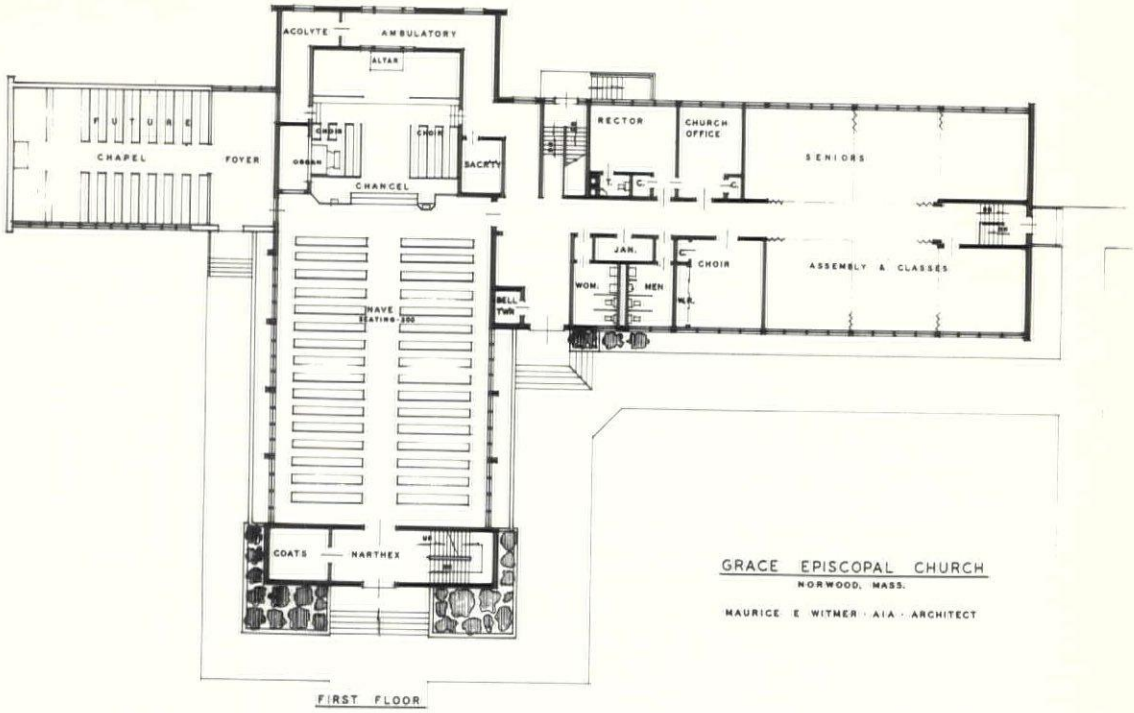
**GRACE EPISCOPAL CHURCH  
NORWOOD, MASSACHUSETTS**

**MAURICE E. WITMER, AIA  
PORTSMOUTH  
ARCHITECT**



Exterior View of Church Plant and Educational Wing





# Architects

have long recognized the benefits derived from the timely, systematic interchange of information in the construction field. They find that this benefits their clients and all concerned . . . brings a wider range of bids . . . brings more complete news of new products, new trends, new techniques. And it saves much time that might otherwise be wasted on salesmen uninformed as to the architects' current interests.

This information, incorporated in Dodge Reports, is helpful to all firms in new construction. And it guides the *right* supplier's salesman to the *right* architect at the *right* time.

That's why for more than 65 years architects have found it good practice to provide their Dodge reporters with complete information about their work.

## DODGE REPORTS

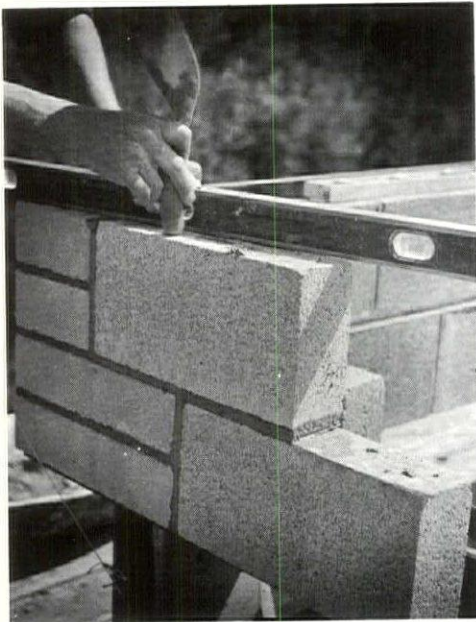
Construction News Service

31 St. James Avenue, Boston 16  
119 West 40th Street, New York 18

(Continued from Page 6)

meetings, a joint meeting of the general membership of both associations with panel discussions, with the objective of educating the rank and file members of both associations as to the committee's findings.

Among topics discussed were the following: Bidding procedures, architectural specifications of a particular product, retainages, the number of sets of drawings the architect should supply the general contractor and sub-contractors, alleged lack of correlation between the mechanical and architectural drawings and specifications, alternates, addenda, the amount of time given for figuring a job, the preparation of quantity surveys, insurance, and a standard outline of specifications to insure that all work normally performed by one trade or all materials normally furnished by one type of supplier is listed under one section of the specifications.



# DURACRETE



ELECTRICAL  
CONTRACTOR

Residential and Industrial Wiring

---

DIAL MAN. 3-3568

875 South Willow St., Manchester, N. H.

Motor Repairing

**PALMER  
Plumbing Supply Co.**

Wholesalers

Plumbing - Heating - Mill Supplies

---

Distributors of

WEIL-McLAIN BOILERS

KOHLER ENAMELWARE

PETRO OIL BURNERS

---

ROCHESTER, LACONIA, N. H.  
PORTLAND, ME.

"Competent Engineering Service"

**S  
T  
E  
E  
L**

*Lyons*

IRON WORKS, Inc.  
MANCHESTER, NEW HAMPSHIRE

**NEW HAMPSHIRE ARCHITECT**

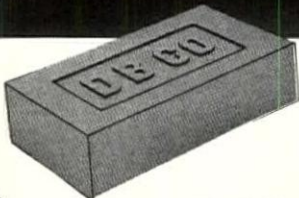
P. O. Box 291, Concord, N. H.

BULK RATE  
U. S. POSTAGE  
PAID  
Concord, N. H.  
PERMIT NO. 297

Library—American Inst. of Archt's.  
1735 New York Ave. N.W.  
Washington 6, D.C.

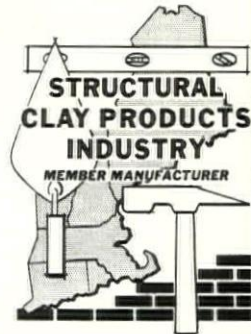
Form 3547 Requested

Call **DENSMORE** For Fast Delivery . . .



of  
**CLAY PRODUCTS**  
and  
**MASONRY SUPPLIES**

- Face Brick — Glazed Facing Tile
- Sewer Pipe — Flue Lining
- Fire Brick — Sonneborn Products
- Scaffolding — Cardinal Masonry Blades



**Densmore Brick Company**

HANOVER STREET, LEBANON, NEW HAMPSHIRE

MANUFACTURERS OF WATERSTRUCK AND SANDSTRUCK BRICK



**QUALITY PRODUCTS and PRECISION INSTRUMENTS**

- **MICRO-MASTER®** — an amazing new process providing clear, distortion-free "second originals". Tiny 4 x 6" negatives can be projected up to original size and more. Save storage space, mailing costs.
- **HERCULENE®** Drafting Film — the newest, most durable drawing medium. Ideal surface "take" for pencil, ink, or typewriter. Balanced transparency. Lies flat. Resists rough handling. Matted one or both sides. In Rolls or Sheets. *Find out Today!*
- **K & E INSTRUMENTS** — select from our complete line . . . for every engineering and drafting use.

*Choice of Engineers for OVER 60 YEARS*

- Expert Blueprint, Photostating and Plan Reproduction Service
- Engineering, Surveying and Drafting Equipment
- Professional Repair Service

**B. L. MAKEPEACE Inc.**  
1266 BOYLSTON ST BOSTON, MASS

Call Copley 7-2700