

GRANITE STATE

ARCHITECT

JUNE 1970 · FIFTY CENTS



AMERICAN INSTITUTE
OF
ARCHITECTS

AUG 7 1970

LIBRARY

We won't pay you to install Oilheat

but it might pay for itself.

As everyone knows, you can install a heating system in a home for less money if you don't insist on Oilheat. In fact, you might even be paid to do it. Here are some of the disadvantages you're being paid for!

1. **Land Cost:** When utility heat is installed, houses must be located on utility lines, in concentrated areas, where land costs are higher.
2. **Building Schedules:** If the utility lines don't keep pace with your construction schedule, you can end up paying your workers for wasted time on the job. At today's wages, that adds up.
3. **Sample Home Costs:** Since you won't be using utility fuel for cooking or hot water in your sample homes, you'll be obliged to pay the utility's highest "step rate." You'll be surprised to find out how high it is.

There are other considerations, too; Oilheat's reputation for quality, its universal popularity and the huge selection of Oilheat equipment available, to name just three.

So, before you decide to settle for "the cheapest heating system I can get," talk to a progressive Oilheat dealer. In the long run, the "cheapest" one may not be the one that costs the least money.

**BETTER HOME HEAT COUNCIL
OF N.H., INC.**

Affiliated with National Oil Fuel Institute
and New England Fuel Institute



YOU'RE ALWAYS AHEAD WITH OIL

SONOCO SONOTUBE* FIBRE FORMS

For round columns of concrete

Easy-to-use SONOTUBE Fibre Forms are the fastest, most economical method of forming concrete columns because they place, brace, pour and strip quicker to save time, labor and money.

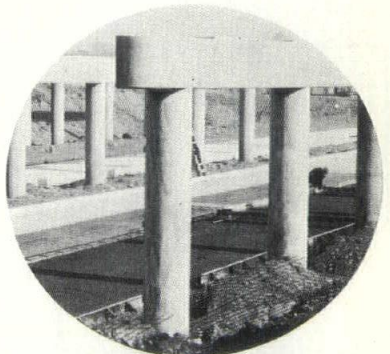
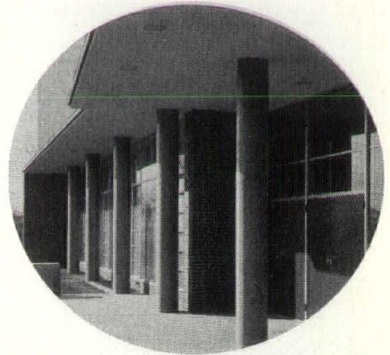
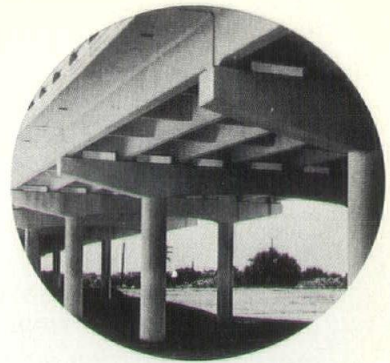
These one-time-use forms are made from many layers of high quality fibre, spirally wound and laminated with a special adhesive. Inside coatings vary according to designated uses. SONOTUBE Fibre Forms contain a "moisture barrier" within the wall to provide uniform "wet curing" of the concrete without impairing the sturdiness of the form.

SONOTUBE Fibre Forms are designed to cut costs in any structure where concrete columns are required. These economical forms may be used also to form piles, piers, posts, underpinning and stub piers. They require no cleaning, oiling or assembly — and no form inventory is required.

**Reg. U. S. Pat. Off.*

COMPARE

- costs of cleaning and reshipping metal forms. SONOTUBE Fibre Forms are designed for one-time use — no form inventory.
- fabricating and assembly costs — No unit assembly needed with one-piece SONOTUBE Fibre Forms.
- placing and bracing costs — light-weight SONOTUBE Fibre Forms place quickly and easily, require only minimum bracing with light lumber.
- stripping time and labor — form easily cut from column.
- job time. Any number of SONOTUBE Fibre Forms may be set and poured at one time.
- curing time and labor — no special compounds or expensive treatments needed.
- form inventory. No permanent investment in forms necessary.

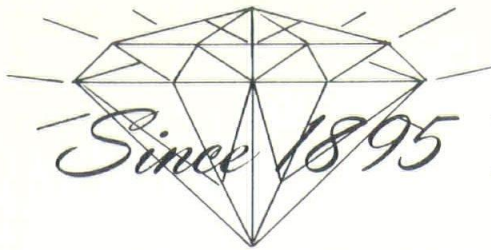


**CORRIVEAU-
ROUTHIER**

159 Temple Street
Nashua, N. H.
Tel. 889-2157

266 Clay St.
Manchester, N. H.
Tel. 627-3805

71 Broadway
Dover, N. H.
Tel. 742-1901



REPROGRAPHICS

...A Makepeace Specialty

For three-quarters of a century, Makepeace has pioneered new developments and services, and today offers New England's most modern and complete reproduction facilities to meet your most exacting requirements on time, every time — blueprints, photostats, whiteprints, washoffs, photo reproductions, 105 mm. miniaturization, electrostatic and offset printing.

In addition, Makepeace has grown into New England's largest in-stock dealer in engineering, drafting and architectural equipment, instruments and supplies.

You'll find hundreds of different products bearing such famous brand names as:
KEUFFEL & ESSER • HAMILTON • BLU-RAY
PLAN HOLD • KOH-I-NOOR
and many more, at Makepeace — your one-stop shopping center.

First choice of professionals

B. L. MAKEPEACE INC.
1266 Boylston St., Boston, Mass. 02215 • (617) 267-2700



BEAN

R. E. BEAN CONSTRUCTION CO., INC.

Industrial — Commercial — Institutional

25 ROXBURY STREET, KEENE, N.H. — TEL. 352-1774

Seppala & Aho Construction Co., Inc.

has been busy as
Builders of Confidence



*Confidence continues to be the by-product
of our Building Projects . . .
some of which are:*

Nashua Shopping Mall
Nashua, N.H.

Improved Machinery Co.
Nashua, N.H.

Colonial Trust Co.
Nashua, N.H.

Stuart's Department Store
Nashua, N.H.

Hanover Nursing Home
Hanover, N.H.

Dover Nursing Home
Dover, N.H.

Gregg & Son, Inc.
Nashua, N.H.

Grossman's Lumber Co.
Nashua, N.H.

New England Telephone Building
Somersworth, N.H.

Edgcomb Steel of New England, Inc.
Nashua, N.H.

Aubuchon Hardware
Westminster, Mass.

Simonds Saw & Steel
Fitchburg, Mass.

Nashua Trust Co.
Nashua, N.H.

Noyes Tire Co.
Nashua, N.H.

Globe Discount Stores: Exeter, N.H., Shopping Center
and Littleton, N.H. Shopping Center



Seppala & Aho

CONSTRUCTION CO. Inc.

NEW IPSWICH, N. H. • TEL. Greenville 878-2424 • Nashua 889-0124

An Editorial

That New Hampshire still has places of exceeding grace is amply supported by a visit to Strawberry Banke, that absorbing and agreeable corner of Portsmouth which is by example spurring an upgrading of the city's old riverside district. A recent visit to see the Governor Goodwin Mansion (1811), given in May by the State of New Hampshire to this growing, lively campus of restored early buildings, brought on a tour of not only all the rest but also much of the neighborhood.

The Thomas Bailey Aldrich House (1790), a few steps away, is a familiar landmark and unusual museum, but just one of dozens of olden structures still serving as dwellings. Many had kept their character and comfort over the generations but many others have only recently been returned to their rightful roles, repaired, cleaned, with bay windows removed, white paint gleaming and fan glass glistening.

There are openings on the Piscataqua River, as afforded by Prescott Park and the waterside plot where stands Sheafe's Warehouse and ancient stone dock. This sweetens the views, and better admits



the salt air and tidewater sounds, all part of this district's special essence, and its legacy from the 17th and 18th Centuries.

The dump in our photo was on the present site of the Goodwin Mansion, whose front door is also shown. Much of the rest of the area was in the same condition when the project began 13 years ago. The dump is gone and restoration work continues on structures of first rank in New Hampshire's heritage, as Stoodley Tavern, the Old State House, Daniel Webster House and Sherburne House. Besides offering visitors a genuine encounter with history, besides its impact upon the area, Strawberry Banke has special sprightly touches, as lunch al fresco, exhibits of recognized artists and a summer concert series. It was pleasant and rewarding to walk about.





GRANITE STATE

ARCHITECT

Volume VII Number 3

JUNE, 1970

OFFICERS

- President
Edward C. Lewis
- Vice President
Richard H. Dudley
- Secretary
John H. Benson
- Treasurer
Donald T. Dennis

DIRECTORS

- Roy M. Palhof
Guy K. C. Wilson
Roy W. Banwell, Jr.
John A. Carter

EDITORIAL STAFF

- Editor: John A. Carter,
111 Concord St.,
Nashua, N.H.
- Executive Editor: Stephen W. Winship
- Staff: Jane H. Vigneault, Associate.
Hank Nichols, Robert A. Lockwood,
Ken Paul, Contributors.

Notes and Comments	6
Derryfield School, Manchester	8
St. Patrick's Center, Nashua	14
New School Emphasis on Environment	20
"A Dignified, Well-Built House"	26
Index of Advertisers	32

Cover: On the wooded side of Derryfield School, Manchester, Designed by Carter & Woodruff.

Photo credits: Pages 14-19, Walt St. Clair; 26, 28, 29, 30, Douglas Armsden.

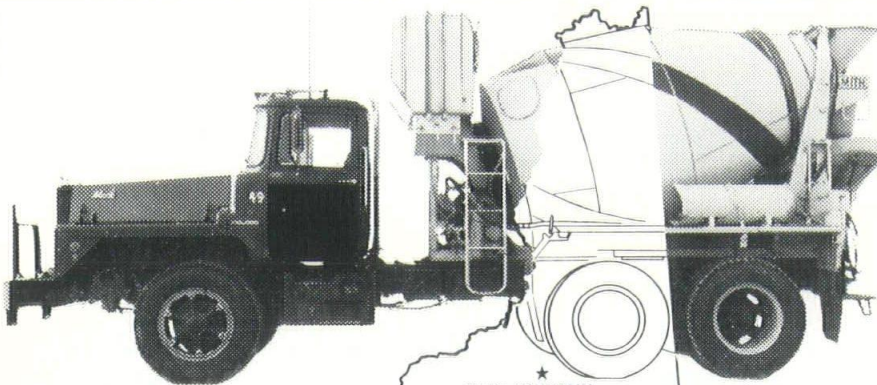
GRANITE STATE ARCHITECT is published bi-monthly under the direction of the president and board of directors of the New Hampshire Chapter, American Institute of Architects, and is the official publication of that chapter. Advertising rates furnished on request. Controlled circulation postage paid at Concord, N.H. 03301. Postmaster: Please send Form 3579 to P.O. Box 108, Concord, N.H.

FIFTY CENTS A COPY

THREE DOLLARS A YEAR

Produced and circulated by Stephen W. Winship & Co., 79B South St., Concord, N.H. 03301, for the N.H. Chapter, AIA. Tel. 603-224-4231. Advertising Sales: Ruth & Carll Downs, 120 Manchester St., Nashua, N.H.

BUILDING NEW HAMPSHIRE from 12 locations!



ARTHUR WHITCOMB, inc.

MAIN OFFICE
KEENE, NEW HAMPSHIRE
352-0101



★ TWIN MOUNTAIN
SAND & GRAVEL, INC.
★ CONWAY AGGREGATES ★
★ CAMPTON
SAND & GRAVEL, INC.
★ LEBANON CRUSHED STONE, INC.
★ TILTON
SAND & GRAVEL, INC.
★ NEWPORT READY MIX, INC.
★ CHARLESTOWN READY MIX, INC.
★ KEENE READY MIX
KEENE SAND & GRAVEL, INC.
MONADNOCK BLOCKS
ARTHUR WHITCOMB CONSTRUCTION CO., INC.
★ PETERBOROUGH
READY MIX

In Our 39th Year

Notes And Comments

Andrew Isaak, of Manchester, was reappointed to the State Board of Registration of Architects in June by Governor Walter Peterson.

Guy C.K. Wilson, of Concord, was reappointed by Gov. Peterson to the State of N.H. – Capital City Liaison Commission.

Reuther Scholarship

Directors of the American Institute of Architects announced at the start of the annual convention in Boston on June 21 that the organization is establishing a \$2,500 scholarship in memory of the late Walter Reuther. The labor leader was to have been the Purces Memorial Lecturer at the convention but was killed in a plane crash in early May. As the "AIA Journal" noted, "his social concepts were often far ahead" of much of contemporary activity.

Some 3,500 architects, of approximately 22,000 AIA members, converged on Boston for the convention. It discussed environmental questions at length, considered proposed AIA Standards of Ethical Practice, and debated a suggested dues increase. Architectural students allied with some members raised questions on priorities for the profession in the early 1970s. A report of the meeting will be made, through the cooperation of several New Hampshire Chapter members, in the next issue.

AIA 1970 Honor Awards

The AIA 1970 Honor Awards included two museums, an apartment house

Continued on Page 2

LEBANON CRUSHED STONE INC.

Finest quality aggregate in the upper Connecticut Valley. Crushed, graded, concrete & asphalt aggregates meeting state & federal specifications

Plainfield Road
West Lebanon, N.H.
Tel. 298-8554

TILTON SAND and GRAVEL, INC.

SCREENED LOAM
COLD PATCH
DRIVEWAY GRAVEL

Washed, crushed, graded concrete & asphalt aggregates meeting state & federal specifications

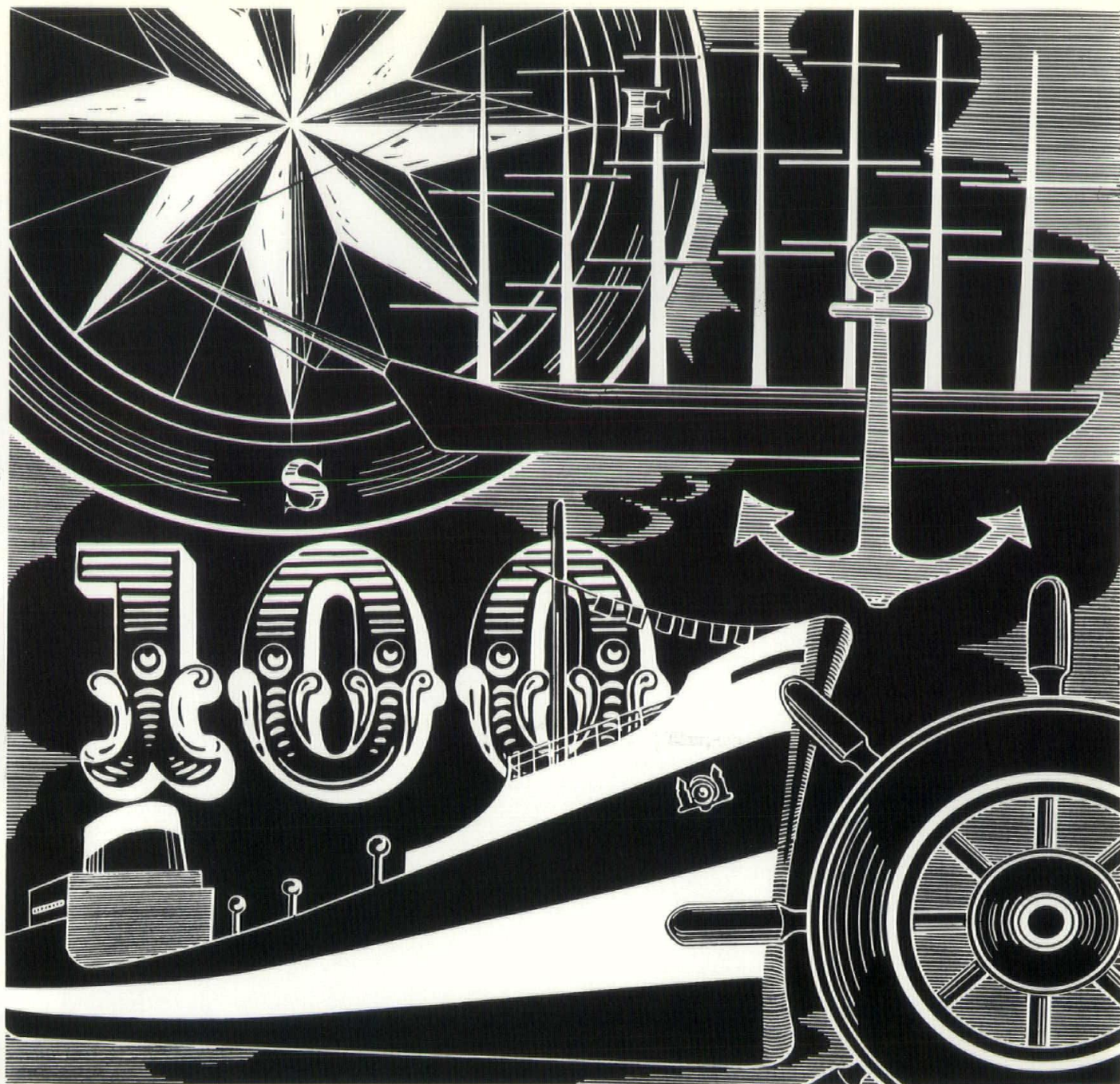
Tilton, N.H. Tel. 286-4351

CAMPTON SAND AND GRAVEL, INC.

Washed, crushed sand & gravel
Driveway gravel
Loam Cold Patch Blocks

All materials meet state and federal specifications.

West Campton N. H.
Tel. 726-8982



FROM SAILING SHIPS to SUPERTANKERS...

Sprague has spanned a century, growing and changing to meet the ever increasing demands of New England industries for fuel and raw materials. Today our six strategically located New England terminals accommodate supertankers hundreds of times the size of the little colliers which started our business. We are deeply committed to New England, its economy and future. Sprague is facing its second century ready to meet its fuel commitments and the challenge of ever changing raw material requirements.



Terminals:

Brewer, Me. 04412 — Tel. (207) 942-1171
 Bucksport, Me. 04416 — Tel. (207) 469-3404
 Newington, N.H. 03801, P.O. Box 446 — Tel. (603) 436-0820
 Portsmouth, N.H. 03801, P.O. Box 478 — Tel. (603) 436-4120
 Providence, R.I. 02903, 1141 Hospital Trust Bldg. — Tel. (401) 421-8500
 Searsport, Me. 04974, Mack's Point — Tel. (207) 548-2531



SPRAGUE ENERGY

C. H. SPRAGUE & SON CO.
Fuels & Raw Materials for Industry Since 1870

125 High Street, Boston, Mass. 02110 Tel. (617) 542-7807

Sprague Energy Companies: C. H. Sprague & Son Co. • Atlantic Terminal Sales Corporation • Petroleum Heat & Power Co. of R.I.

Derryfield School

Manchester

Carter and Woodruff Architects

Donald D. Snyder and Son, Inc. General Contractors

View of the school's terrace, on the east, or ravine and wooded side; this photo looks in the opposite direction from that of the cover.





The west side; the slanting structures are skylights.

The one-building public school in New Hampshire has been the usual case for over two centuries but a more specialized application of the custom, at Derryfield, Manchester, a private school, brought on a special set of problems and an absorbing solution.

The Derryfield School is New Hampshire's only independent private coeducational day school for high school age students. Established in 1965, the school is situated in a wooded area near a ravine on a winding road in a residential neighborhood several miles north of central Manchester.

Its 200 students live within driving distance and commute daily, yet Derryfield strives to maintain a community of students much the same as that at a private boarding school. When the trustees thought through the needs for the first new building they turned to Carter and Woodruff, of Nashua, and placed before them three demanding problems to be resolved:

They wanted one building to offer all the facilities of a complete secondary

school for 200 students, yet they wanted plans flexible so that the school could later be expanded to accommodate 400. They wanted a building well integrated with the location's unique geography. Above all the trustees wanted a building that was low in cost.

The architects gave them a building that headmaster Ralph Scozzafava calls "extremely functional—the students respond well to the environment here."

One Building, 3 Levels

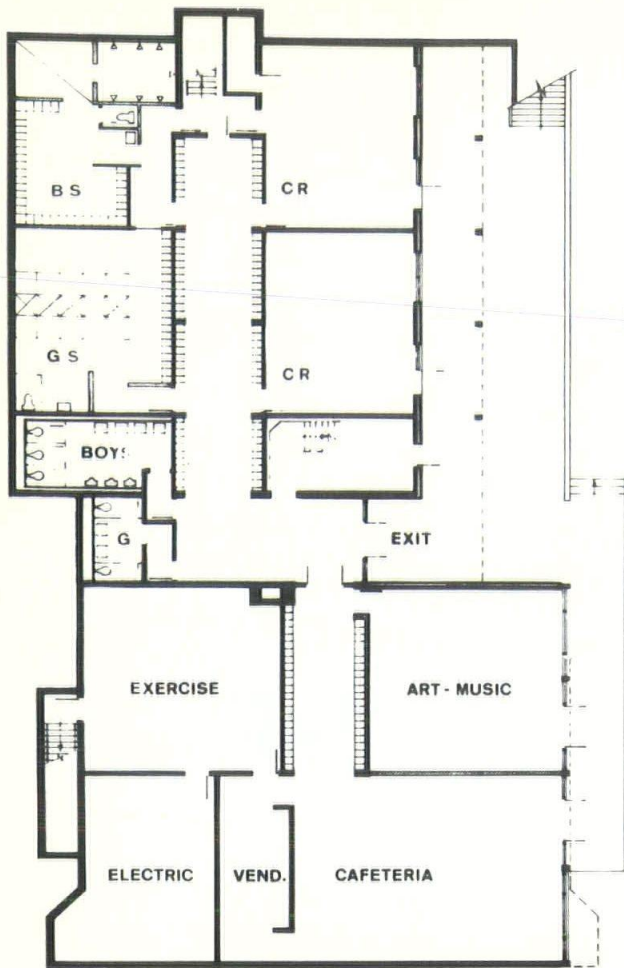
The single building school has been constructed on three levels containing eight classrooms, each large enough for about 20 students, an art and music room, a library, a cafeteria, three science laboratories, an exercise room, shower rooms, offices and teachers' rooms. This, then, is the Initial Unit.

"In designing the school," Mr. Carter said, "I tried to underscore the value of the individual, to reduce the mass aspect of the institution.

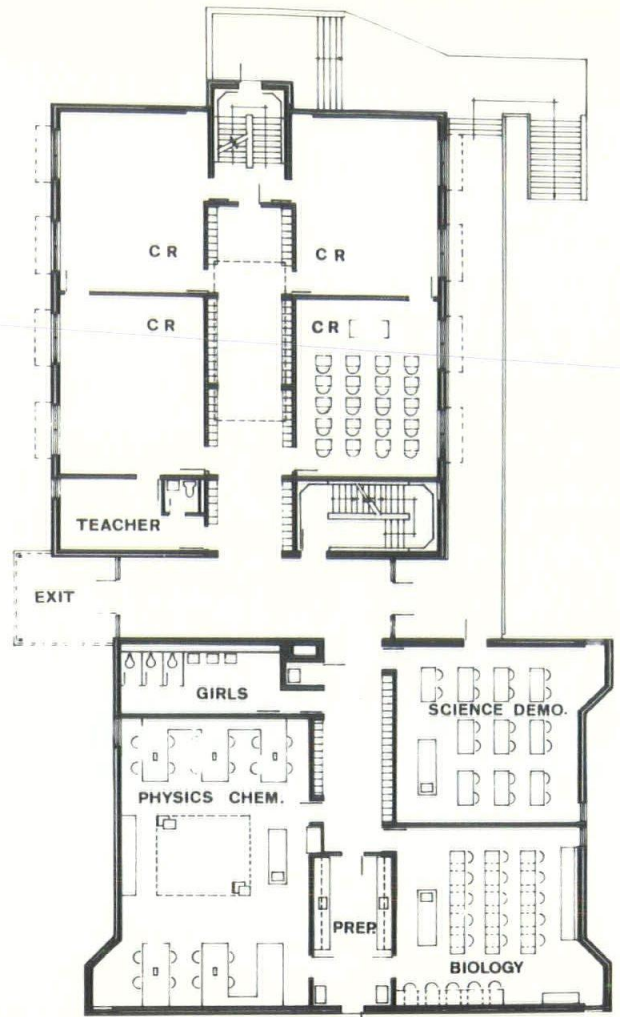
"It is hard to put a quart into a pint pot and have some quality to that pint, keeping concern for the individual."

Details of the terrace.

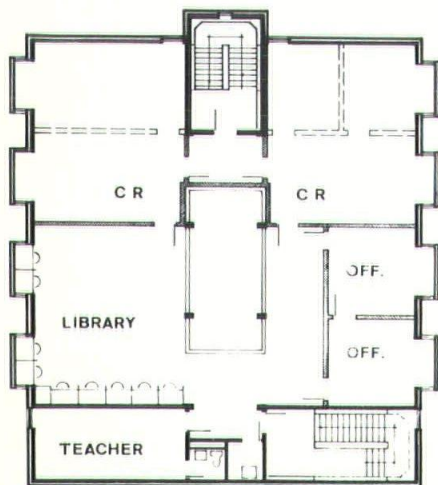




GROUND FLOOR



FIRST FLOOR



SECOND FLOOR

The Second Floor plan, just above, should be superimposed upon the classroom spaces occupying the upper half of the other drawings. Terrace area is on the right.

In his design, Mr. Scozzafava said, Mr. Carter has succeeded in providing a "village atmosphere" where students may work in comfortable, relaxed surroundings.

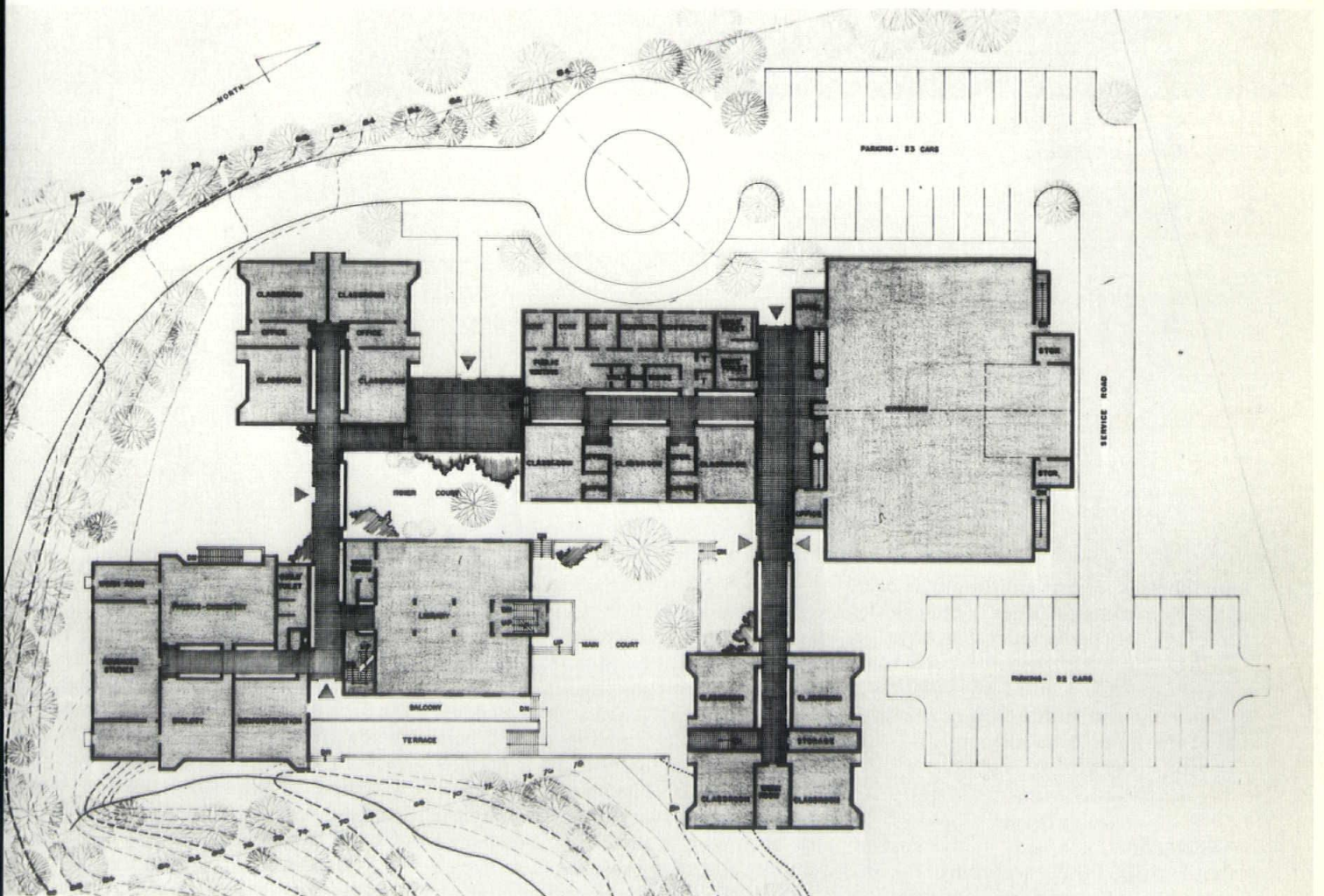
The building is insulated from the nearby road by tall pine trees and the East side looks out over a steep wooded ravine. To the north of the building is a large level playing field.

Originally, Mr. Carter said, he had planned to put the school farther from the ravine near the center of the level land, but "the tyranny of the playing field" and the savings in utility costs moved the building away from the center of the field and closer to the road.

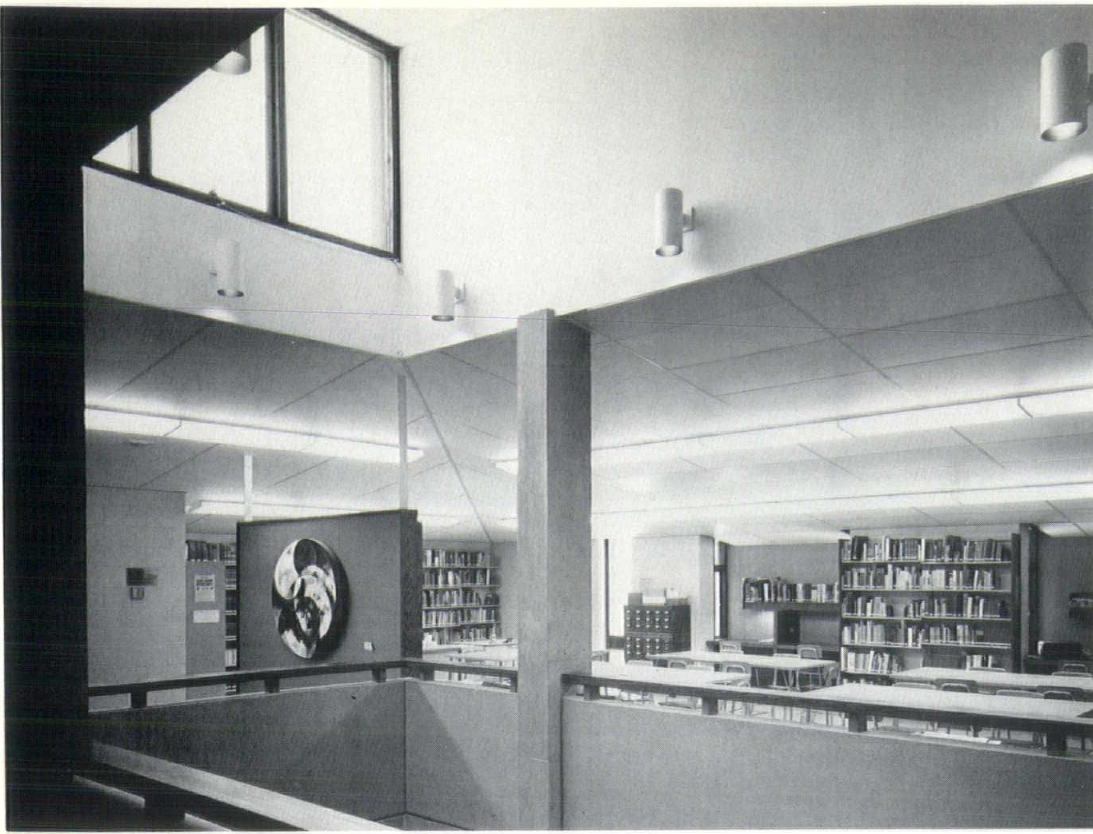
The move was a beneficial one. With no auditorium now available, the school's patio bordering the ravine serves as a natural amphitheater for the students during the fall and winter months and locates the school in more indulgent wooded surroundings. Mr. Scozzafava



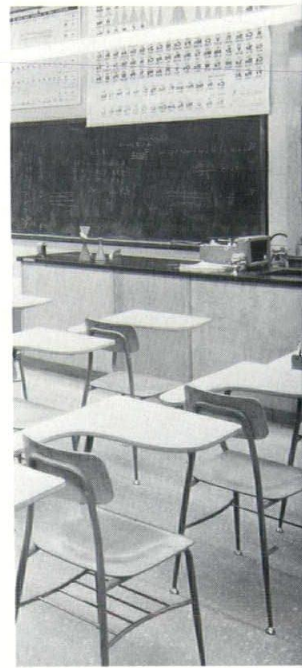
Elevation looking west; the portion completed is at left, terrace area in view.



Plan view shows the completed part in lower left corner. North River Road runs in vertical direction at left.



Part of the Library, with skylight.



said the lack of an auditorium is overcome by renting facilities in Manchester for plays, concerts and other large gatherings. He has placed the need for a multi-purpose structure to serve as a gymnasium and auditorium next on the list of the school's building needs.

Building Details

The school was built at the cost of "about \$500,000" according to Mr. Scozzafava. To save on construction costs the foundations are of reinforced concrete with interior concrete block foundations. All interior floors are pre-cast concrete with hollow cored members.

12

"This," Mr. Carter said, "gives very good sound isolation and makes the building virtually incombustible."

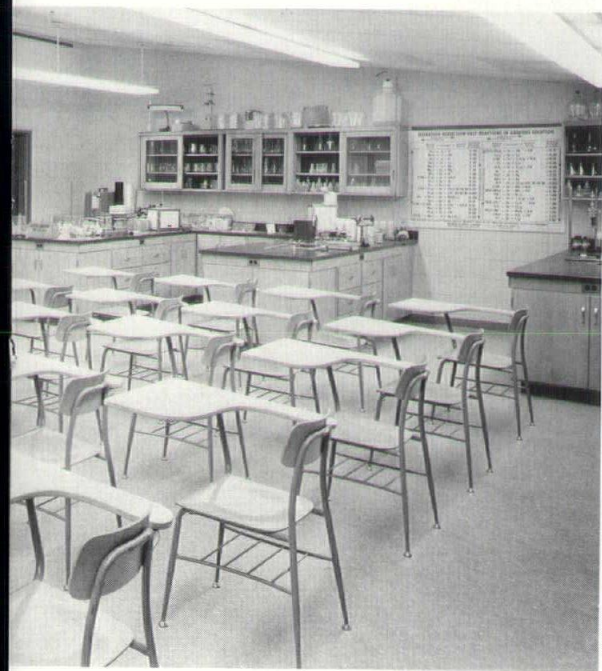
The steel roof construction was used for speed of erection, lightness and economy. When expansion to 400 students comes later, the building will be converted to just a library and a science facility with the lunchroom and classrooms on the lower floor. Electric heat has been used in the present building to simplify future expansion and to bypass the initial cost of a large boiler plant.

Aside from touches of wood trim, brick and concrete predominate because of maintenance considerations. Floors are tiled and are to be carpeted. Work was completed in 1966.

The building at its tallest is three floors high, each story rising approximately nine and a half feet. At its widest point the structure is 60 feet wide; 130 feet at its longest. The interplay of the ravine, the wooded area on one side, shade trees and plantings (and the athletic field, as well as a parking lot) plus variations in the school's profile prevent it from simply rising starkly from the ground like a factory in the Prairie.

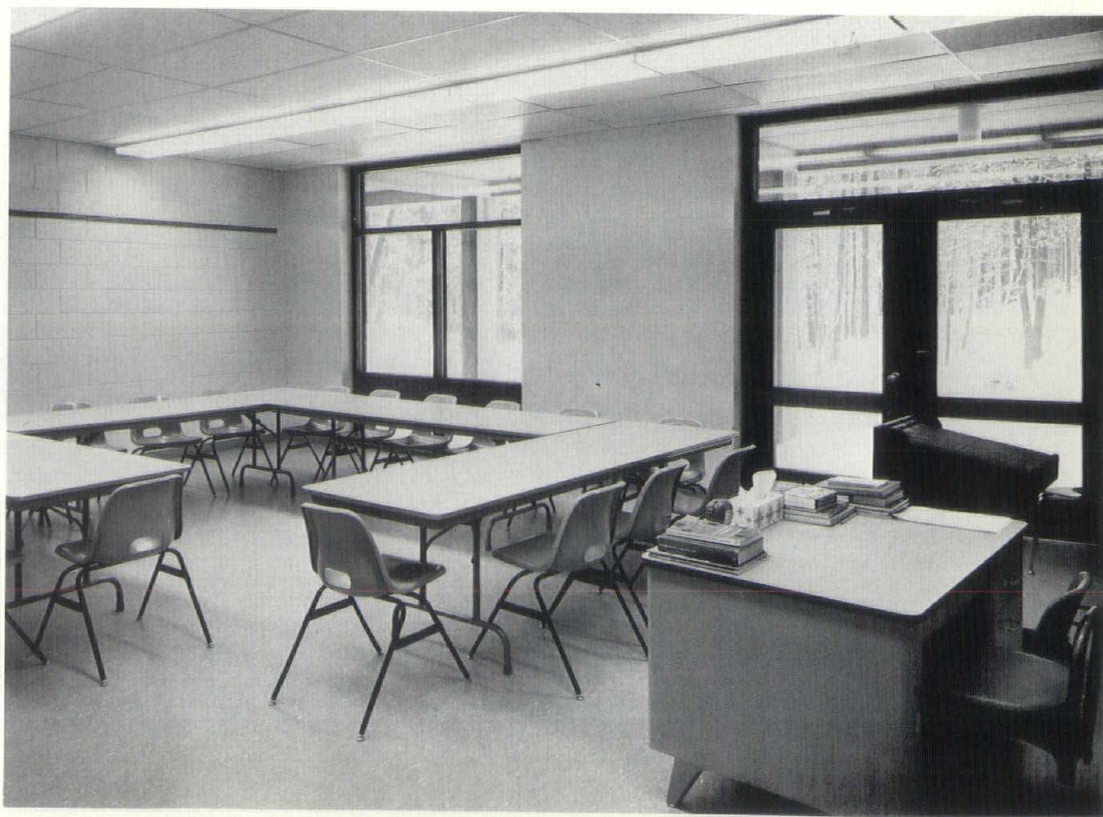
"What we have tried to do," Mr. Carter said, "is set up a first unit that could then unfold, to be a permanent part of a larger school but not damaged by its first use or compromised by it."

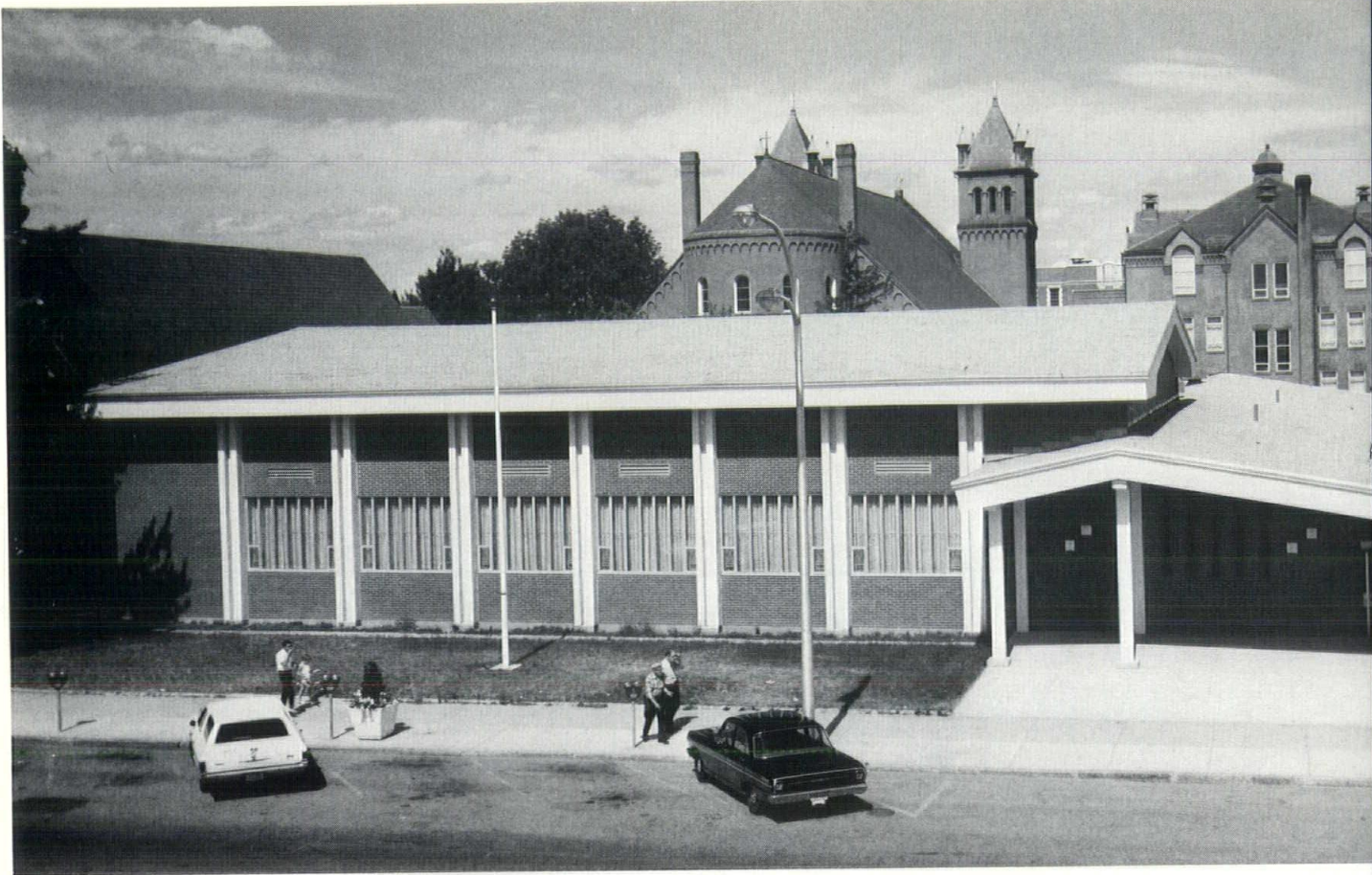
— Hank Nichols.



Physics and Chemistry room.

A classroom as set up for 16 to 20 students.





General view, from west side of Main St. Multi-purpose room, left, classrooms and library building forming long limb of the "L," right. St. Patrick's Church, left background; earlier school building, right.

As one of the oldest and largest Catholic parishes in the state, St. Patrick's in Nashua was pinched by severe growing pains in its valuable, convenient but limited plot of land on Main St. in the center of the city. Rapid population growth by the mid-60s as well as widening cultural and community horizons meant the school and the parish, of 1,100 families, had to have added facilities.

A paved courtyard facing on Main St. was available for development but the project was complicated by the need for two radically different types of buildings—a large space for multi-purpose use including athletics; and a library for the school (367 pupils) as well as rooms for classes and other group use. Preservation of part of the courtyard in this heavily built-up area near City Hall was also desired. The new construction also

needed to harmonize with the existing school building and with St. Patrick's Church, built 60 years ago.

The upshot of discussions involving the architect, the Rt. Rev. James R. McGreal, Pastor, and the church Advisory Committee, Lawrence E. Elliott, chairman, as well as the Diocesan Real Estate Board, was two structures forming an "L" turned around, as viewed by a bird over Main St. The longer limb perpendicular to Main, contains the library, classrooms, wash rooms, work room, lecture room and corridor giving access to each of these spaces, the courtyard, Main St., the old school building and the new, multi-purpose room.

The latter forms the shorter limb of the "L", running parallel to Main St. Nominally in the L's longer limb but directly serving the gym-like multi-purpose room are a kitchen, two locker and

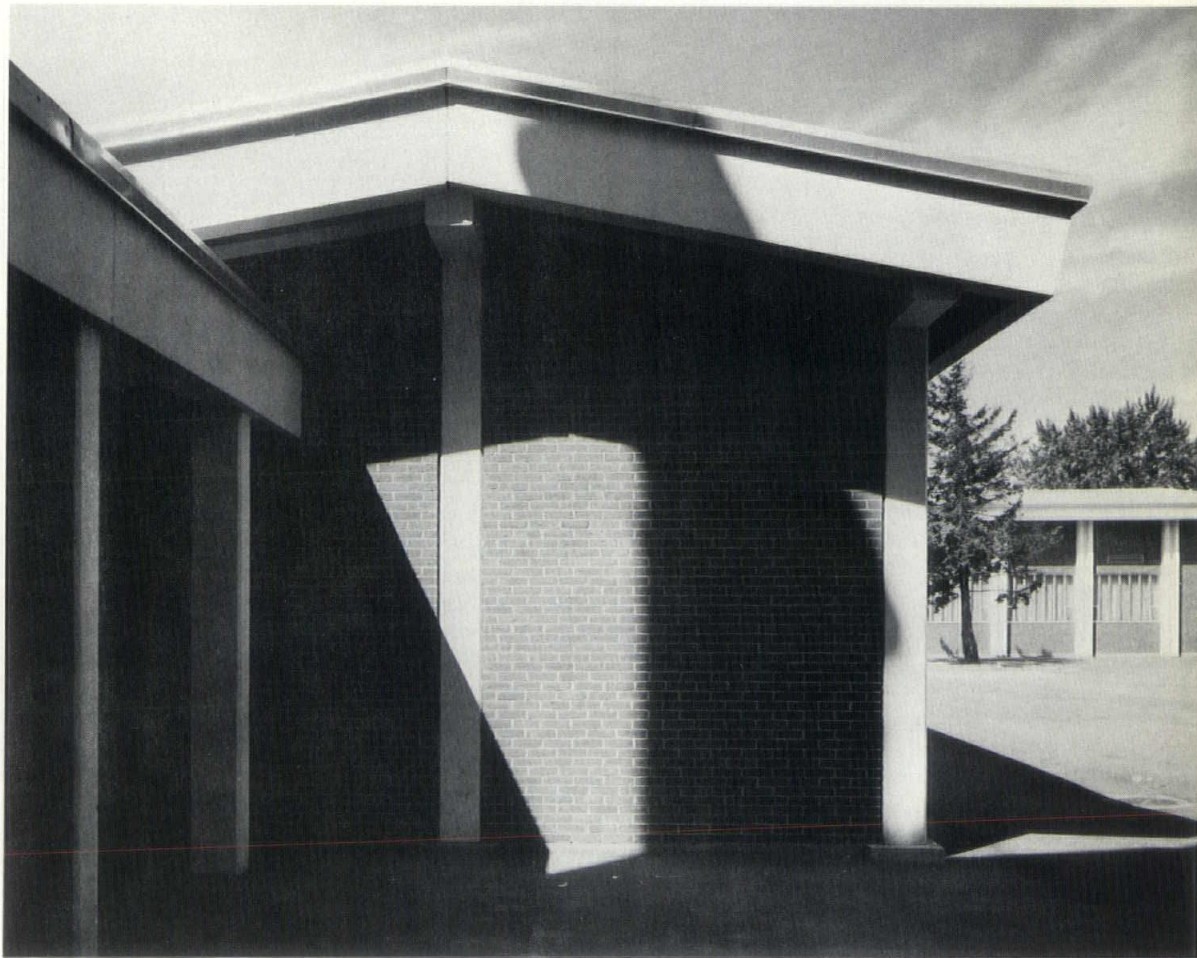
St. Patrick's Center

Nashua

Andrew C. Isaak Associates Architects

Blanchard Stebbins, Inc. General Contractors

At the other end of the long limb, with the courtyard and multi-purpose building, right. Covered passage to old school, extreme left. White masonry provides strong, simple lines while multiple windows are effective light sources and impart a contemporary flavor.





The court yard and multi-purpose building.

shower rooms, two storerooms, janitor's closet, and corridor connecting these spaces, the lobby on Main St., and the multi-purpose room.

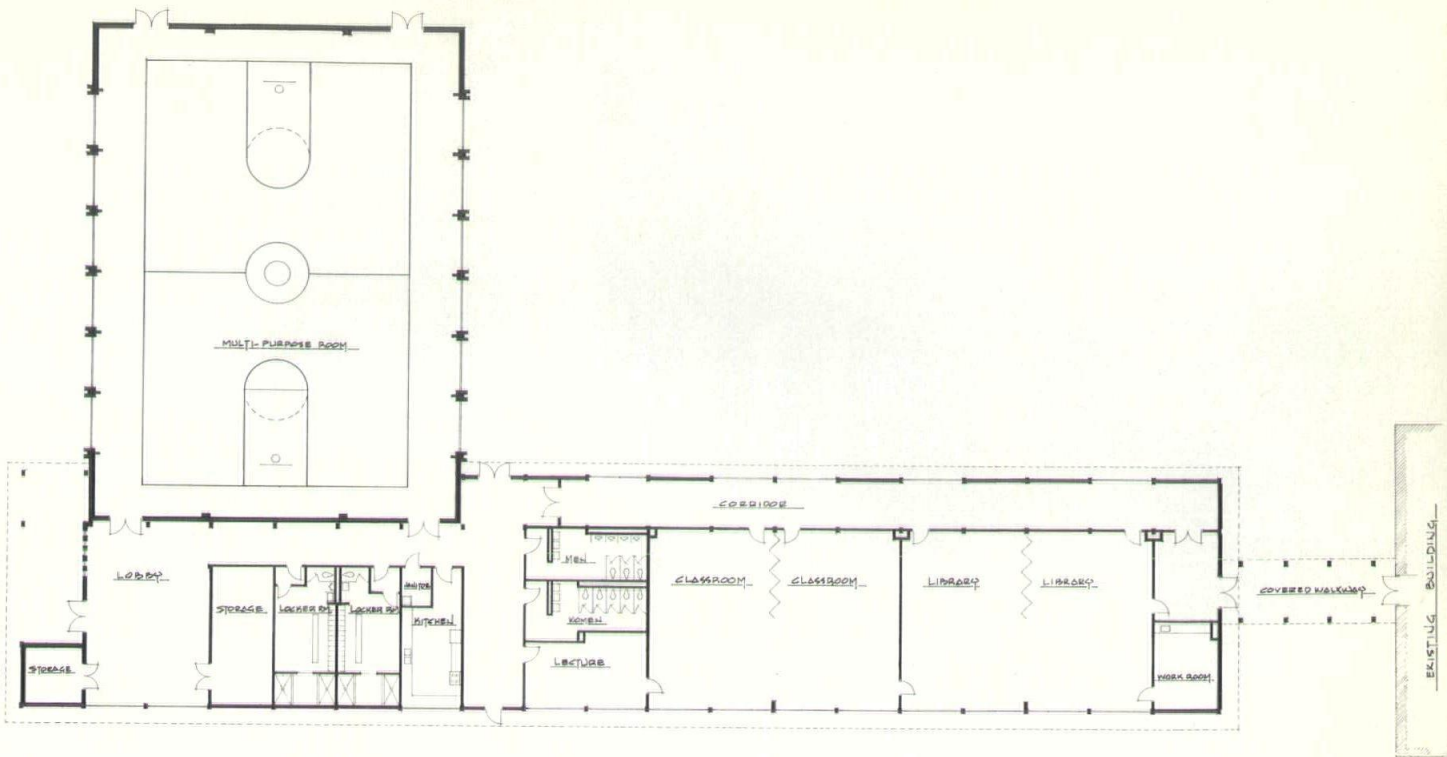
The latter measures 70 x 98 feet, for basketball, volleyball and other sports as well as creating a hall accommodating up to 500 persons for banquets, dances, plays, programs with speakers, and large meetings. Adding the lobby space, 36 feet, to the long dimension gives a frontage on Main St. of just over 134 feet. The long limb with classrooms/library extends back from Main 228 feet, a 32-foot covered walkway connecting it with the existing school building. This limb is 46 feet wide and the position of the

buildings establishes an inner courtyard and play area covering 1000 square feet. The complex is called St. Patrick's Center and Msgr. McGreal reports that from September to June it is busy almost every day.

Since a quiet, dignified contemporary appearance was desired, to harmonize with the older brick church and school buildings—as well as the stone Episcopal Church next door and brick City Hall nearly opposite on Main—brick in restrained red and white pre-cast concrete for exterior posts, columns, and trim were employed. The latter were coated to make the surfaces smooth.

The multi-purpose room has deep aluminum-lined windows almost its entire length on street and courtyard side. The relatively small, aluminum windows located high on the walls are used in the corridors and lobby. (The latter's street side has a bank of tall windows next to the doors.) Classrooms and library have a limited number of small, high windows, facing on Eldridge St., the complex's narrow southern boundary.

Folding partitions permit division of the library into two rooms, each approximately 24 by 35 feet; and the classroom space into two rooms about the same size. The multi-purpose room is supported inside by laminated arches affor-



Multi-purpose room; laminated arches add interest to this large space. There is room for

seating around the basketball court; stage may be erected at one end.



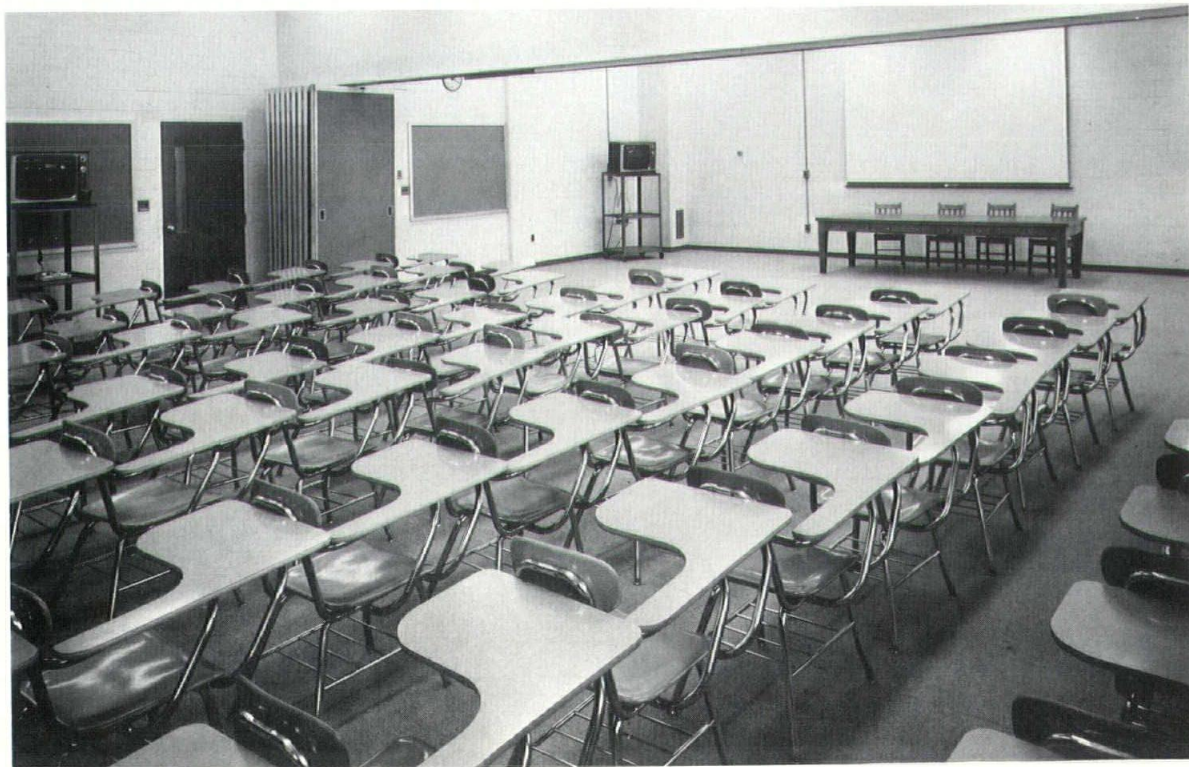


Part of the main lobby, on Main St. side. Glass above the doors enhances lighting; high windows at left are also employed in the classrooms and library as well as the main corridor. Left-hand doors serve a storeroom. Msgr. McGreal reported that "Everything has worked out wonderfully."

ing a pleasing ship's ribs effect; a vinyl asbestos floor surface rests on a concrete slab. Other floors are carpeted except for the wash and shower rooms and storage. Coats, winter boots and the like are stored by students at points in the corridor with shelves and hooks.

The buildings were completed in 1966 and have no cellar. Heat is furnished by a central two-boiler plant operated by the parish. The soil here being a fine, beach-like sand, concrete post-and-beam pieces down to 10 feet were used for foundations. Rooms are used not only by the school (Grades 1-8) and by the parish for its religious education programs and its organizations, but also are available to charitable organizations in the community at large.

Classroom space, showing partition opened. Rooms are used much of the time for audio-visual instruction and may double in evening for meetings.

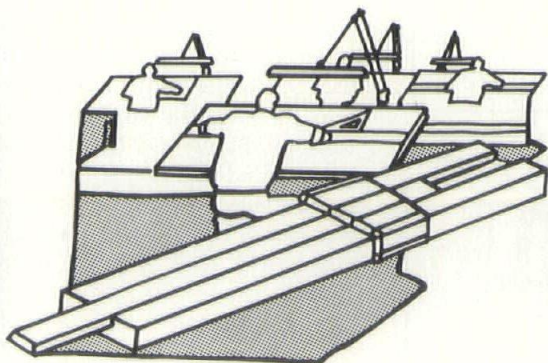




The library rooms, with partition opened.

the ultimate in flexibility...

**all electric
design!**



Because All-Electric systems eliminate the need for boilers, flues and fuel storage areas, architects benefit from greater design freedom . . . owners enjoy substantial savings. Year 'round comfort conditioning at lower total owning and operating costs, is the result. Ask Public Service for further details now.

PUBLIC SERVICE
Company of New Hampshire



**AT
BLANCHARD
STEBBINS
... PEOPLE
ARE
OUR FINEST RESOURCE**

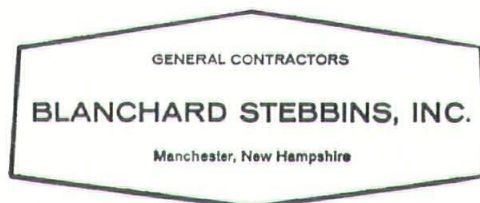


Blanchard Stebbins stands ready to serve your

- Industrial
- Commercial
- Institutional
- Residential

Contracting Needs

Jake Dillingham, As Project Manager in Blanchard Stebbins' Industrial and Commercial Heavy Building Division, Mr. Dillingham has brought his know-how to such Blanchard Stebbins construction sites as the Intensive Care Wing at the Laconia State School, the New England Telephone motor vehicle terminal and offices in Manchester, and the Hopkinton Elementary School addition.



330 Lincoln Street Manchester, New Hampshire 669-6323



"A Roof by Therrien is a Good Roof"
ROOFING CONTRACTORS

for
DERRYFIELD SCHOOL, MANCHESTER, N.H.
ST. PATRICK'S CENTER, NASHUA, N.H.

PHONE 603-669-3344 199 HAYWARD STREET MANCHESTER, N.H.

NOTES(Cont'd from Page 6)

three homes, a college dormitory complex, a cable car terminal, a pre-forming arts center, two schools, a pedestrian bridge, and a restoration. Of greatest interest in this area are Bancroft Elementary School, Andover, Mass., the only winner from New England; the restoration of The Cannery, San Francisco, to an eating, drinking, shopping, entertainment complex; the Lincoln Elementary School, Columbus, Ind.; and the Milligan vacation house, Sea Ranch, Calif.

Ft. Dearborn Study

The State Public Works and Highways Department is seeking \$7,400 in state money to retain consultants to develop a master plan for Ft. Dearborn Park, Rye. Lying along several miles of the seacoast in the Little Harbor - Odiorne's Point area, and extending inland to Route 1A, this is one of the most valuable pieces of land in the state. It is given an immense potential as a public park, with space enough for ample swimming, boating, fishing, camping, picnicking and Nature study. This land was taken from private owners by the Army as a defense measure in 1941-42, was acquired by the State for a park around a decade ago and has lain unused owing to lack of development money.

I-93 Kept Out of Notch

Secretary of Transportation John Volpe inspected Franconia Notch and the highway for some miles south on June 13 before announcing at a press conference in Concord that his earlier order to stop building Interstate Highway 93 in the White Mountains is modified to build the road near to but not through Franconia Notch. Though his ban on road-building in the region, made in February to preserve the scenic area, was eased, he said with finality that the expressway will not go through the Notch.

His Department must approve all interstate construction proposed by the states and puts up 90 per cent of the costs. The dual highway permits speeds up to 70 miles an hour and has been under construction paralleling U.S. Route 3. Mr. Volpe's modified order explained in Concord permits extension of I-93 to an ending opposite North Woodstock

Continued on Page 22

d
d S

DONALD D SNYDER & SON, INC.

198 Loudon Road

Tel. 603-225-2777

Concord, New Hampshire 03301

GENERAL CONTRACTORS

Derryfield School - Manchester, N. H.

ARCHITECT: CARTER & WOODRUFF, AIA

NORTHERN

HEATING & PLUMBING CO., INC.

RICHARD L. TROMBLY, President

PLUMBING — HEATING

VENTILATING

SHEET METAL WORK OF

ALL KINDS



Serving Northern New Hampshire
in Domestic, Commercial and
Industrial Installations

91 Bisson Ave. — Laconia, N.H.
524-0800

Main St. — Meredith, N.H.

PLASIK

THE LOW MAINTENANCE SEAMLESS FLOOR
IN AN UNLIMITED COLOR RANGE

installed by

NEW HAMPSHIRE FLOOR COVERING CO., INC.

- ||| **PLASIK** requires no waxing, stripping or buffing.
- ||| **PLASIK** is non-skid, non-dusting - is resistant to abrasion, oils, ink & a wide range of acids & chemicals.
- ||| **PLASIK** may be applied - usually without seams or joints - on almost any subfloor, including those with under-floor heating & removable computer floor panels.
- ||| **PLASIK** is also adaptable to cove moldings, stair treads & risers.
- ||| **PLASIK** weighs 1.1 lb. per square foot at 1/8" thickness.

for specifications & mechanical data, contact:
EMILE A. CHAGNON, JR., PRES. — JOHN BATCHELDER, SALES.

NEW HAMPSHIRE FLOOR COVERING CO., INC.

COMMERCIAL ST., NASHUA, N.H. — TEL. 603-883-7776

ALUMINUM WINDOWS & CURTAIN WALLS —

Saint Patrick's Center — Nashua, N.H.

furnished and installed

by

**GEORGE J. KEHAS
COMPANY**

Distributors and Erectors of Quality Curtain Walls And Windows

WE ARE BACKED BY 22 YEARS OF CONTINUING
SERVICE TO THE ARCHITECTURAL PROFESSION

Inquiries invited at Building 230 —
GRENIER FIELD — MANCHESTER, N. H.
DIAL 603-627-7646

**PLUMBING
and
HEATING**

ST. PATRICK'S CENTER, NASHUA, N.H.



CONTRACTORS
PLUMBING - HEATING - AIR CONDITIONING

W.J. PARENTEAU, INC.

147 MAPLE STREET - MANCHESTER, N.H.
Tel. 603-669-7111

ELECTRICAL CONTRACTORS



JOHN J. REILLY, INC.

875 S. WILLOW ST., MANCHESTER, N. H. 623-3568

Continued from Page 20

village. Motorists then rejoin Rte. 3, which the Secretary said D. O. T. will help improve from that point through the Notch.

After the announcement at the Concord Airport State Parks Director Russell B. Tobey, whose domain includes the Notch as part of Franconia State Reservation, exclaimed, "Beautiful!" Paul O. Bofinger, forester of the Society for Protection of N. H. Forests, led a committee which campaigned to have the road end at North Woodstock. This approach was apparently acceptable to Governor Peterson and the State Highway Dept. if the ban on I-93 in the Notch was continued — to relieve traffic and safety problems on Rte. 3.

Planning Commissions Advance

The Southern N. H. Planning Commission, centered on Manchester and four years old, has been relying on assistance and office space provided by the city's Planning Board but went independent in May. T. Ray Walker, with the organization two years, has been named Executive Director. Raymond Closson, of Manchester, is chairman.

Members besides the city are Auburn, Bedford, Goffstown and Hooksett. A three-year planning program has been developed, most of its \$191,000 to come from the U. S. Department of Housing and Urban Development.

The Central N. H. Planning Commission was in part brought into being early this year by New Hampshire Tomorrow and will be busy organizing and developing projects during the summer, according to Pasquale Rufo, of Concord, chairman. He is a former member of the N. H. House and has to date brought Concord, Hopkinton, Henniker, Pembroke, Canterbury, Boscawen, Bow and, Allenstown into the organization.

David H. Rogers has been named the commission's Executive Director, taking over in July. He is a graduate of the University of New Hampshire, Durham, has worked on planning projects and obtained a Master's Degree in Planning from the University of Rhode Island. The Commission anticipates receiving support from Federal "701" funds; membership by municipalities in such commissions permits them to draw on United States moneys not otherwise available for studies of needed projects such as housing, water supply and pollution abatement.

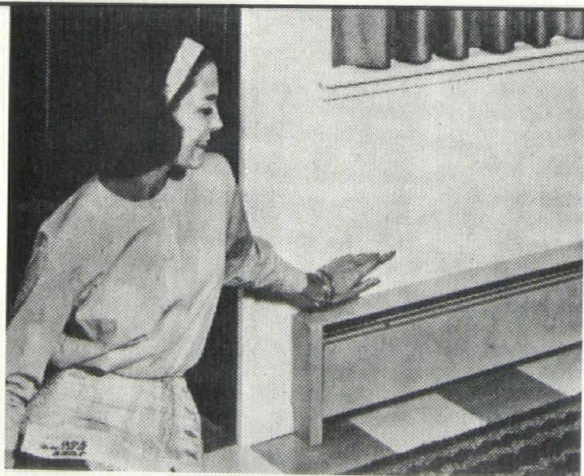


Do bond underwriters
leave you feeling a wreck?
We at the Rowley Agency
were trained by America's
leading bonding and
insurance companies.

We speak their language.

May we speak for you?

The
Rowley Agency, Inc.
139 Loudon Road
P. O. Box 428
Concord, N. H.



New Development Revolutionizes Home, Apartment, Individual Cold Room Heating Problems.

For free brochure write:

WAGHORNE-BROWN COMPANY OF N.E., INC.

P.O. BOX 343 - MERRIMACK, N.H. 03054

DISTRIBUTORS

Hot Water Heat Without Plumbing

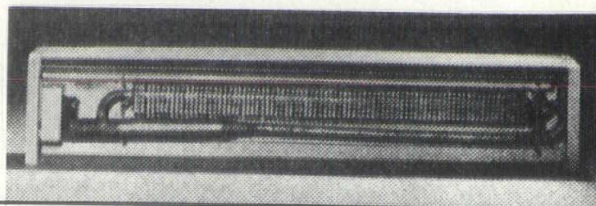
Hot water heat without plumbing is embodied in a new type of baseboard heating system which combines the best advantages of hydronic heat and electric heat while minimizing the disadvantages of both.

It's called electro-hydronic heating. Each of the baseboard heaters is a self-contained unit. An electrical element in each unit is immersed in water which is sealed in a copper tube. As the element heats the water, it causes it to circulate through a finned part of copper tube and back over the element.

The heating effect is identical to conventional hydronic systems with the extra advantages of no plumbing, furnace, chimney or annual furnace maintenance. Further, temperatures in any or every room can be precisely controlled.

Field tests indicate a dimension of comfort, safety, cleanliness, healthfulness and economy available in no other method of heating.

The electro-hydronic baseboard heaters are 9½ inches high and from 20 inches to 9 feet in length.



Schools' New Environmental Emphasis

Dartmouth College will start a new Environmental Studies Program in the fall of this year, an undergraduate activity "to understand, to anticipate and to exert some measure of control" over manmade changes in the environment. Associate Dean James F. Hornig in presenting the report of a two-year study suggesting the program added that the new curriculum is "a venture in gen-

eral education rather than a pre-professional program to prepare students for graduate work in environmental sciences."

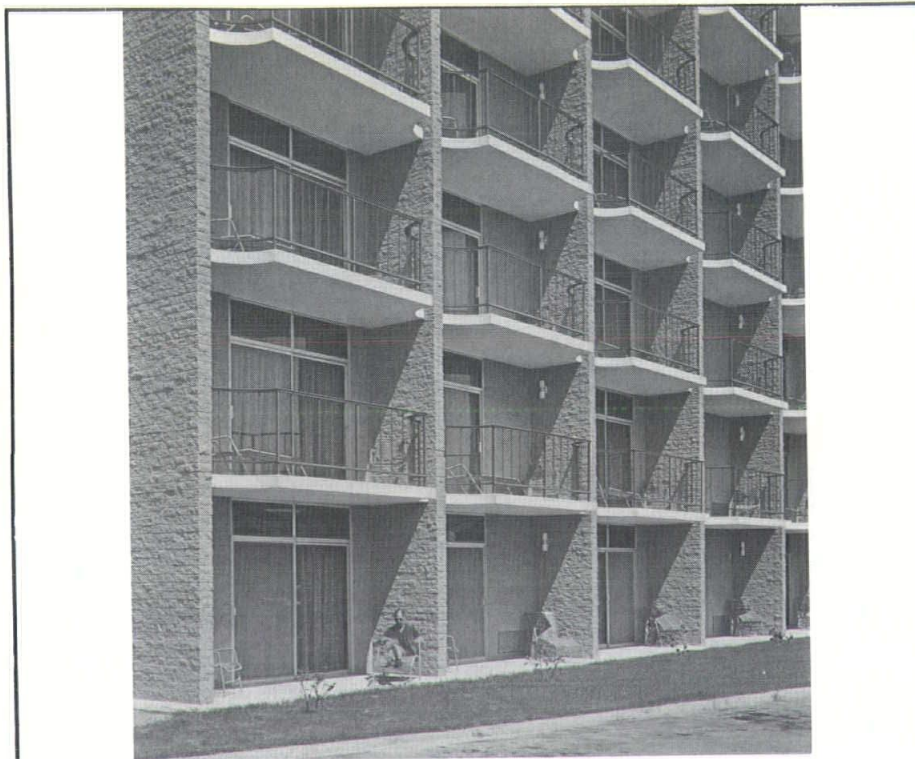
The report was approved and planning for the fall sessions set in motion not long after Earth Day April 22. Stressing a notably interdisciplinary structure, the courses will draw from the faculties in Biological Sciences, Earth

Sciences, Engineering, Economics, Chemistry, Geography and Political Science. The college announcement called this "an unprecedented integration of specialized fields of knowledge, all focused on the relationship of man and his environment."

At the start the program will offer a series of three essentially freshman and sophomore courses geared to supplement, and be supplemented by the traditional major fields of the students. It will bring all learning together in a senior-year course featuring major problem-solving research projects, such as a coordinated research attack on the ecological problems of the Connecticut River Valley. It is possible that a graduate program may develop; first priority, it was explained, will be given to undergraduate study as well as community education and public service.

The major problem-solving course will be for seniors and students will make up interdisciplinary teams to develop possible solutions. The Connecticut Valley, a living laboratory which has long engaged the college's interest, is planned to receive first attention.

Emphasis is on "the seeding role of the program," means that future leaders "in many progressions should not only have an awakened concern, but also a reasonable understanding of the principles and problems of human ecology." "We all recognize," Dean Hornig said,



CONCRETE MASONRY PARTITIONS

... assert environmental influences by their sound absorbing and insulating qualities.

That's why you find them in so many modern homes, office buildings, high-rise hotels, motels and apartment buildings.

DURACRETE BLOCK CO., INC.

MANCHESTER, N.H. — MANUFACTURERS OF CEMENT BLOCKS

VERMONT STRUCTURAL SLATE CO., INC.

Fair Haven, Vermont

(Established 1859)

Tel. 802-265-4933

Producers and finishers of natural Vermont slate in unfading colors of permanent beauty.

Consider The Uses Of This Quality Building Material:

FLOORING — VENEER SLABS FOR
SPANDRELS & CURTAIN WALL
PANELS — EXTERIOR & INTERIOR
WINDOW SILLS — WALL COPING —
BASE — STAIR TREADS — ROOFING

"that conventional disciplinary approaches have produced citizens who are incapable of detecting and dealing with some of the complex problems of our society."

Charles L. Drake, Professor of Geology, and Frank Smallwood, Professor of Public Affairs, will be co-directors of the new effort. Dartmouth took part last year in formation of New Hampshire Tomorrow, a demonstration project in environmental enhancement and development. In a related development the students' Dartmouth Outing Club launched an environmental studies activity, to work on local conservation problems.

Concord and Hanover

Through the initiative of the N.H. Audubon Society, N.H. Tomorrow, St. Paul's School and the Concord School Board a new environmental studies program for the Concord schools, and on a limited basis for the Hanover schools, will commence with the fall term. St. Paul's has made available 330 acres of land and water as a field laboratory to supplement classroom sessions and experiments. The School Board, N.H. Tomorrow and several several anonymous donors together raised about \$30,000 to hire an environmental education coordinator and cover other necessary outlays over two years.

The program is intended to embrace the entire school system, from kindergarten through twelfth grade. It is "not just to provide a close-up look at Nature but to develop in the students an appreciation for the environment they live in and a determination to preserve and protect as much of it as possible as the state grows and changes." (Concord Monitor).

In-school environmental studies will also be intensified, in the social sciences as well as the sciences. The coordinator will work with administrators and faculty to plan programs, passing one day every two weeks in Hanover, the balance in Concord.

The idea stemmed in part from the Environmental Education Team established last year by N.H. Tomorrow, for which the Rev. Edward Cahill, of the Concord Unitarian Church, and Sister May Vianney, president of Mt. St. Mary College, Hooksett, were co-chairmen.



Symbol of

MACMILLIN CRAFTSMANSHIP

THIS FLAG, DISPLAYED AT THE SITE OF EACH MACMILLIN CONSTRUCTION PROJECT, SYMBOLIZES THE SKILL AND PRIDE OF NEW ENGLAND CRAFTSMANSHIP WHICH IS BUILT INTO EVERY STRUCTURE



THE MACMILLIN COMPANY
KEENE • NEW HAMPSHIRE



BUILDERS



NATIONAL PARTITIONS INC.

18 HARBOR AVE., NASHUA, N.H. 603 883-4171

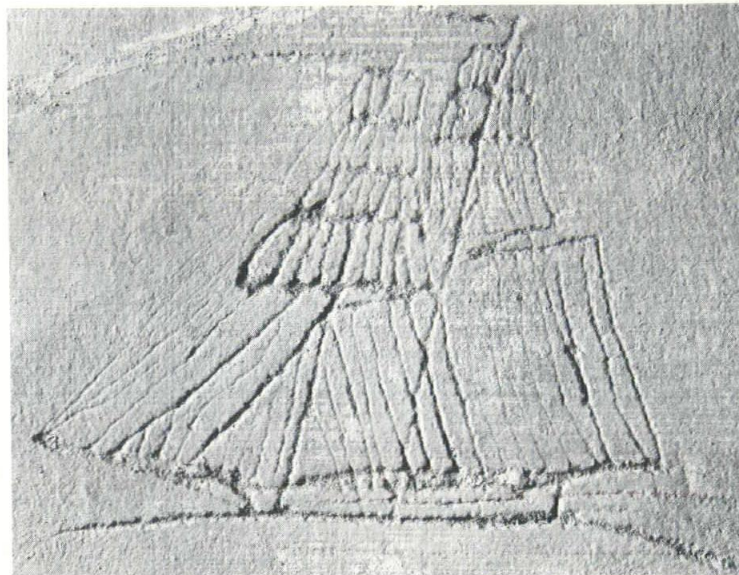
Specification and Detail Service

Available to All Architects

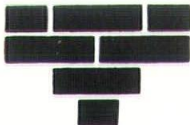
DRYWALL & MOVABLE PARTITIONS CONTRACTORS

"A Dignified, Well-Built Type of House"

The Gov. Goodwin Mansion Enhances Strawberry Banke



The Gov. Goodwin Mansion in full bloom, as restored and turned over by the State to Strawberry Banke, Portsmouth. As built the house is of Federal style, the porches at the front door and at left being Greek Revival period additions. Top right, the ship scratched into a wall was a fetching discovery made during restoration of the Capt. Keyran Walsh House, built around 1775.



W. S. GOODRICH, INC.

MANUFACTURERS OF

Water Struck Brick

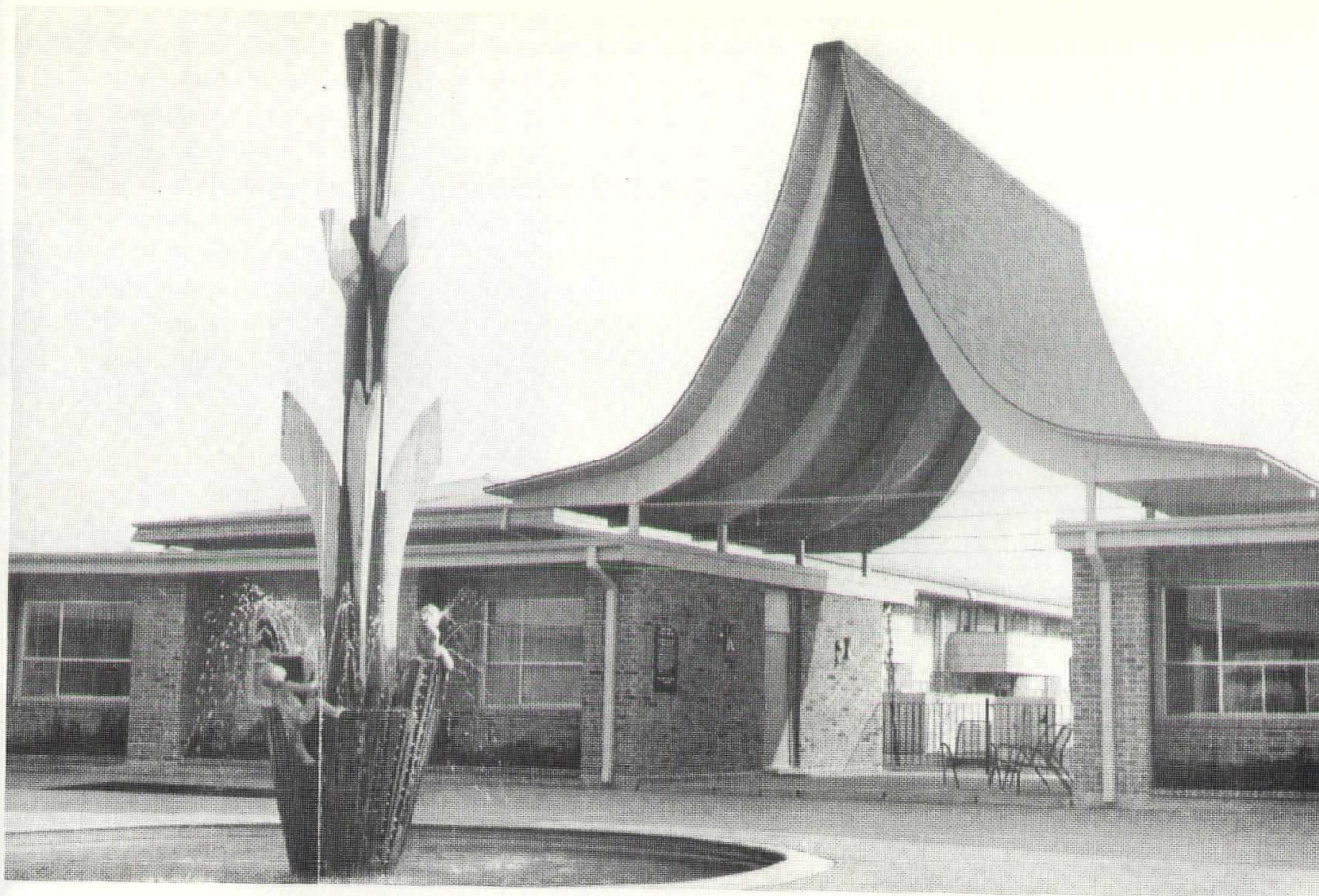
HARVARD, COLONIAL, ANTIQUE, FACE AND COMMON BRICK

Established 1906 Epping, New Hampshire
 Telephone 679-5338
 Telephone 679-5339

**Also Sales Outlet for a complete line of Masonry Supplies
Supplying Schools, Churches, Industrial Buildings,
Town Houses, Apartments and Home Construction.**

The notion that Portsmouth need not become "just another Main Street, U.S.A." has been moving at a heartening pace toward reality, a state of affairs intended to make the old port unique, not only as a living, working community but also as an especially-qualified custodian of American history. Renewed attention has been focused on Strawberry Banke, the enterprise restoring early homes and buildings with its receipt from the State in May of title to the Governor Goodwin Mansion. The old home is in the mainstream of New Hampshire's architectural and cultural heritage as well as its political life.

Strawberry Banke's 10-acre, busy reservation near the Piscataqua River; neighboring old homes; park and other open land on the river, a dozen early dwellings and churches long open to visitors, the efforts to renovate many other 18th Century structures as homes



better built with gas.

No matter what you are planning, an ultra modern office building or an apartment house, plan to use gas. Gas is the clean, efficient modern fuel. It is less trouble to build with, cheaper to buy and install. And a lot less expensive to operate.

Gas 

For the best in modern living,
Gas makes the big difference
...costs less, too

NORTHERN UTILITIES, INC.
ALLIED N.H. GAS DIVISION

Dover • Exeter • Gonic
Hampton • Hampton Beach
Newington • Portsmouth
Rochester • Somersworth
Seabrook Beach

CONCORD NATURAL GAS CORP.

66 North Main Street
Concord, N. H.
Also serving: Bow • Loudon
Penacook • Boscawen • Pembroke
Allentown • Northern Hooksett

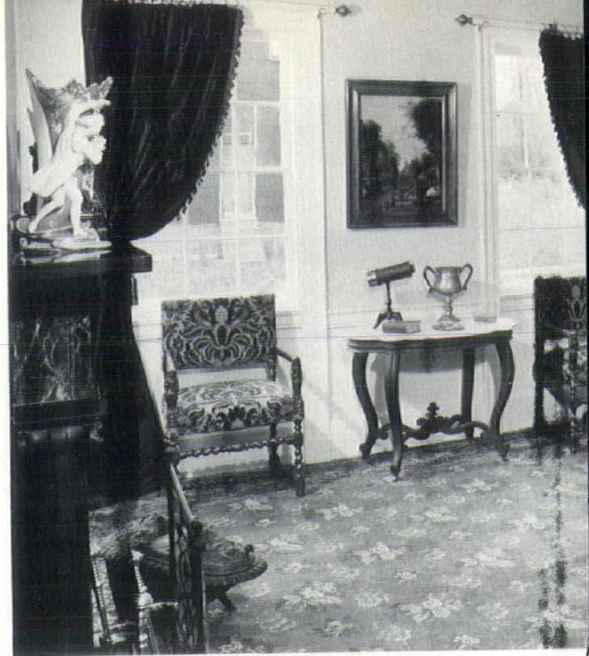
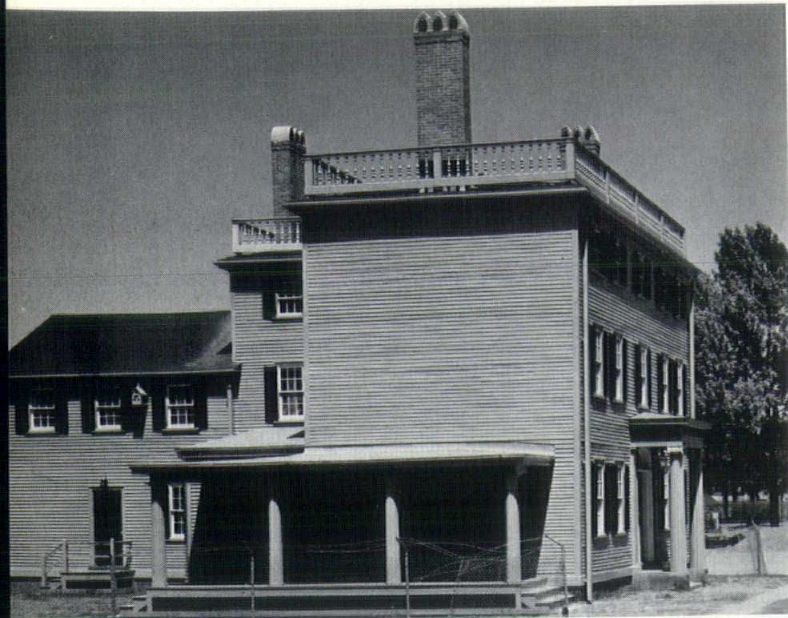
GAS SERVICE INC.

Nashua • Hudson
Keene • Laconia
Franklin • Tilton

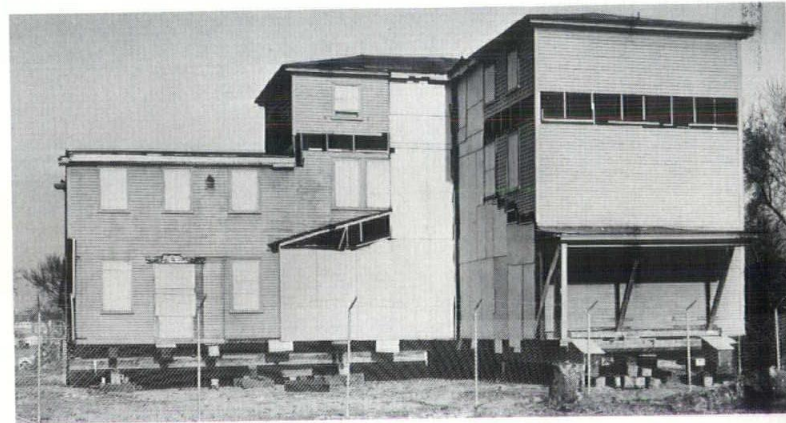
MANCHESTER GAS CO.

1260 Elm Street
Manchester, N. H.





Goodwin Mansion is furnished in early Victorian style, top, after the Governor's tastes; house was built in 1811 and he bought it in 1832. Below, the mansion's south side, looking up Washington St. toward the river. Below, right, the mansion on site after being cut apart and moved from Islington St.; part of porch and main house (white area) yet to be put in place.



SPAULDING BRICK CO., INC.

Distributors of Brick and Structural Tile

ESTABLISHED
1933

120 MIDDLESEX AVENUE, SOMERVILLE, MASSACHUSETTS

P. O. BOX 132
WINTER HILL STATION
BOSTON 45, MASSACHUSETTS
MONument 6-3200

CHARTER MEMBER

National Association of Distributors and Dealers of Structural Clay Products

confirm the community is more than merely another drive-in, another host to Auto City and the Qwik Launderette.

Leaders as Dorothy Vaughan, who made the Main St. U.S.A. observation 13 years ago in her preservation/restoration campaign are the first to say the pace is too slow. Take-over of the Goodwin Mansion is a landmark event, though, and an appropriate testimonial to collective imagination.

On first look the house is a big, boxy light gray wooden pile trailed by a sizable ell, but its essential blend of solid dignity and grace quickly banish that first impression. Though built in 1811 as a Federal showpiece, it added Greek Revival and Victorian features to become a handsome, absorbing mutation. To square, Federal lines and gently hipped roof were added, among others, over the years a Doric side porch; period marble



Papa's home - his hat's on the chair. Front hall staircase at the Goodwin Mansion.



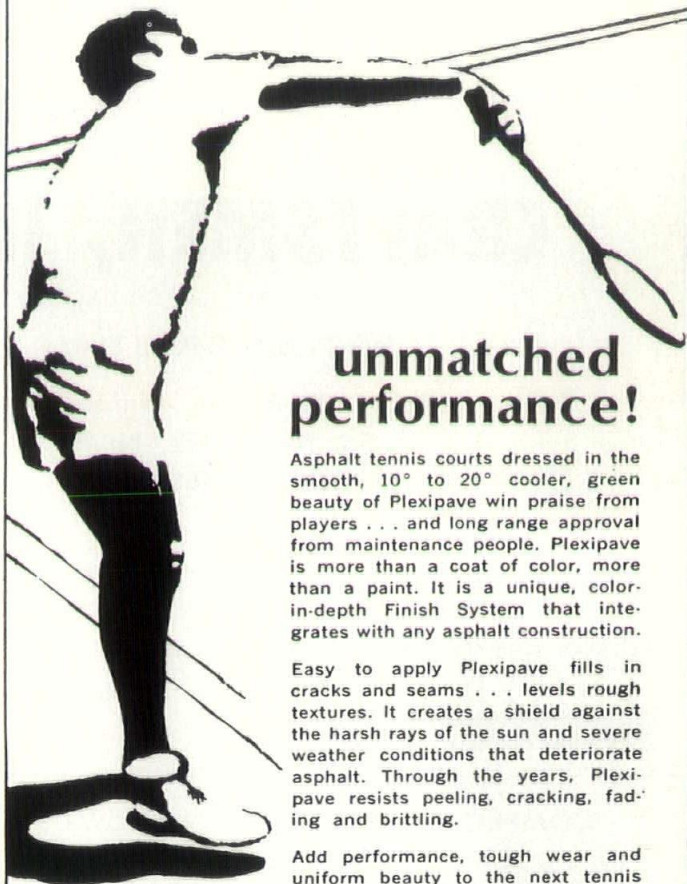
**W. B. HILL
CO.
Building
Movers**

TILTON, N.H.

Movers of the Gov. Goodwin House
to Strawberry Banke



**slower, cooler,
handsomer courts!**



**unmatched
performance!**

Asphalt tennis courts dressed in the smooth, 10° to 20° cooler, green beauty of Plexipave win praise from players . . . and long range approval from maintenance people. Plexipave is more than a coat of color, more than a paint. It is a unique, color-in-depth Finish System that integrates with any asphalt construction.

Easy to apply Plexipave fills in cracks and seams . . . levels rough textures. It creates a shield against the harsh rays of the sun and severe weather conditions that deteriorate asphalt. Through the years, Plexipave resists peeling, cracking, fading and brittling.

Add performance, tough wear and uniform beauty to the next tennis court you build or resurface with . . .

PLEXIPAVE

COLOR FINISH SYSTEM FOR SURFACES

For more details on performance, easy application and variety of uses, send for this free brochure now! For quick information, call John Wood "COLLECT" at (617) 547-5300.



NEW ENGLAND MANUFACTURERS OF DECORATIVE AND PROTECTIVE FINISHES FOR OVER 40 YEARS
CALIFORNIA PRODUCTS CORPORATION
169 WAVERLY STREET CAMBRIDGE, MASS. 02139 TEL: 617 547-5300

BUILDERS' HARDWARE
Furnished for

ST. PATRICK'S CENTER — NASHUA, N.H.
by

CRAFTSMEN, INC.

Jack Price — Roland Lavoie

Route 101A — Milford Rd.
So. Merrimack, N. H.
Tel. 603-889-6166



Store Front Glass & Glazing Contractors
Distributors Erectors
For Windows and Curtain Walls

- **COMPRO CORP.** — P.V.C. WINDOWS & CURTAIN WALLS
- **E.K. GEYSER** — CURTAIN WALLS

DISTRIBUTORS IN NEW HAMPSHIRE & VERMONT -
KAWNEER CURTAIN WALLS & WINDOWS

United Glass & Aluminum Co., Inc.

CONTRACTORS FOR:
NEW ENGLAND TELEPHONE & TELEGRAPH CO., MANCHESTER, N.H.
— GLASS & ALUMINUM WINDOWS, DOORS and ENTRANCES —

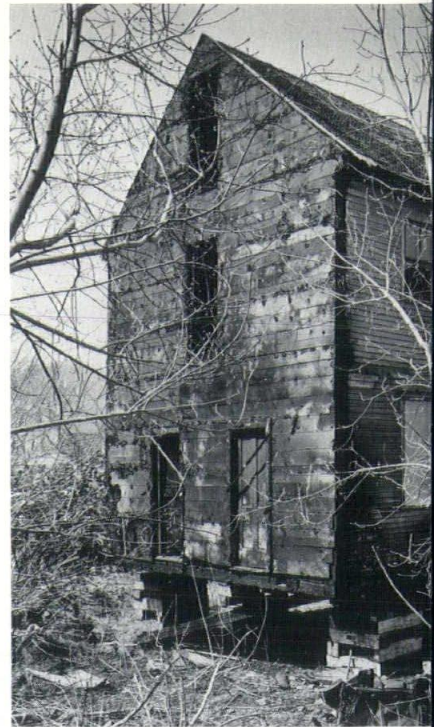
Landscaping for Sewerage Treatment Plant
Merrimack, N.H.
Harvey Construction Company, Inc. — CONTRACTOR

by



NORTHERN LANDSCAPE, Inc.
Industrial and Commercial Landscaping

468 MERRIMACK ST., METHUEN, MASS. TEL. 617-686-6583



The Daniel Webster House before restoration began; it lost much of its old boarding and window frames but the rounded pediment remains over the door. Webster lived here while practicing law in Portsmouth and serving in Congress, 1814-1816.

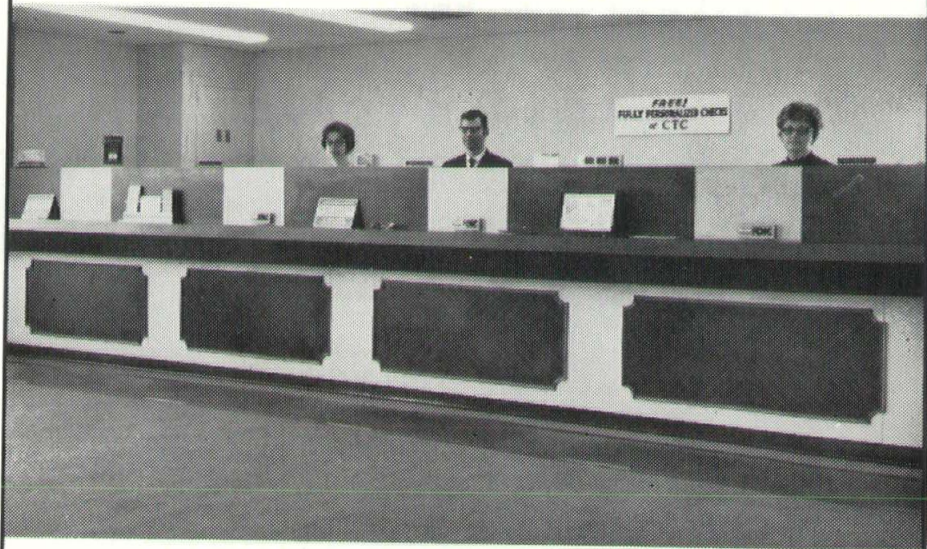
mantlepieces; window pilasters of Civil War vintage. The Federal fan over the front door blends with its Ionic front portico; the front hall's flying staircase, from the early 1800s, lives gracefully with furniture representing Ichabod Goodwin's occupancy, 1832-1882.

"This house certainly should have been saved — it is representative of a typical dignified, well-built home," said William G. Perry, of Boston, architectural consultant to Strawberry Banke who recommended its preservation. "It is steadfast, not too pretentious, and modifications show excellent examples of changing tastes."

The house has been attributed to Bulfinch, but Mr. Perry and others connected with Strawberry Banke quickly state that the architect is unknown. If not Bulfinch, Mr. Perry feels it unmistakably shows his influence, in its general lines, sure proportions and front hall.

As Portsmouth's leading businessman and a Civil War Governor (he raised money from his own pocket and the public to pay for the first troops), Mr. Goodwin kept an office at the house. Entertainments were highlighted by the wedding of his daughter, Susan, and a

A New Concept in Bank Appointments



CUSTOM-BUILT TO ARCHITECT'S SPECIFICATIONS FOR
THE NEW COLONIAL TRUST COMPANY OF NASHUA

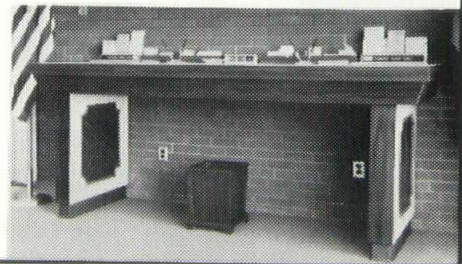
CHAGNON LUMBER specializes in
Formica Fixtures — notice the inlay on
Teller Counter and Table Panels.



CHAGNON LUMBER

"Nashua's Most Progressive Lumber Company"

Commercial Street
Dial 603-883-7776
or write to Box 576
Nashua, N.H.



young naval officer, later Admiral George Dewey.

Later a home, tea shop, antique shop, amusement and then empty, the mansion was to be demolished in 1960 to make room for an expanding furniture store on Islington St. Miss Vaughan and others intervened so that L. Atwood Atherton, West Newbury, Mass., and Erminio A. Ricci, owners, offered it to Strawberry Banke along with \$1,000 for moving costs. Wesley Powell, then Governor, was interested since his mother had lived at the house on first coming to Portsmouth; Strawberry Banke was strapped but the State appropriated \$150,000 for restoration.

The building was cut into five parts. The third floor was sheared off, cut into three pieces and each moved by truck. The rest of the mansion was cut in two parts, each moved slowly through the city by W.B. Hill, of Tilton. By February, 1963, the mansion was on its new site. It has been open to visitors for several years and not the least of its features is Mr. Goodwin's office. It is a thoroughly Victorian room and accessible through a somewhat circuitous route from outdoors, a custom of the day to enhance the privacy of all concerned.

LATHING, PLASTERING & SPRAY FIREPROOFING

Francis P. Connor & Son, Inc.

18 HARBOR AVE. — NASHUA, N.H. — 603-889-1164



"WE CAN GET YOU PLASTERED"



Contractors for

DERRYFIELD SCHOOL

Manchester, N.H.

by

ECKHARDT & JOHNSON, Inc.

PLUMBING AND HEATING CONTRACTORS

213 HANOVER STREET

MANCHESTER, N. H.

Tel. 603-622-7493

**We
proudly
served...**

DERRYFIELD SCHOOL — MANCHESTER, N.H.

Architect: Carter & Woodruff, AIA

General Contractor:

Donald D. Snyder & Son, Inc.



WESTERN
WATERPROOFING CO., INC.

325 Old Colony Ave., So. Boston, Mass. 02127 — 269-5706

Charles M. Adams, Jr., Vice President

*Frank T. Cody
Company*

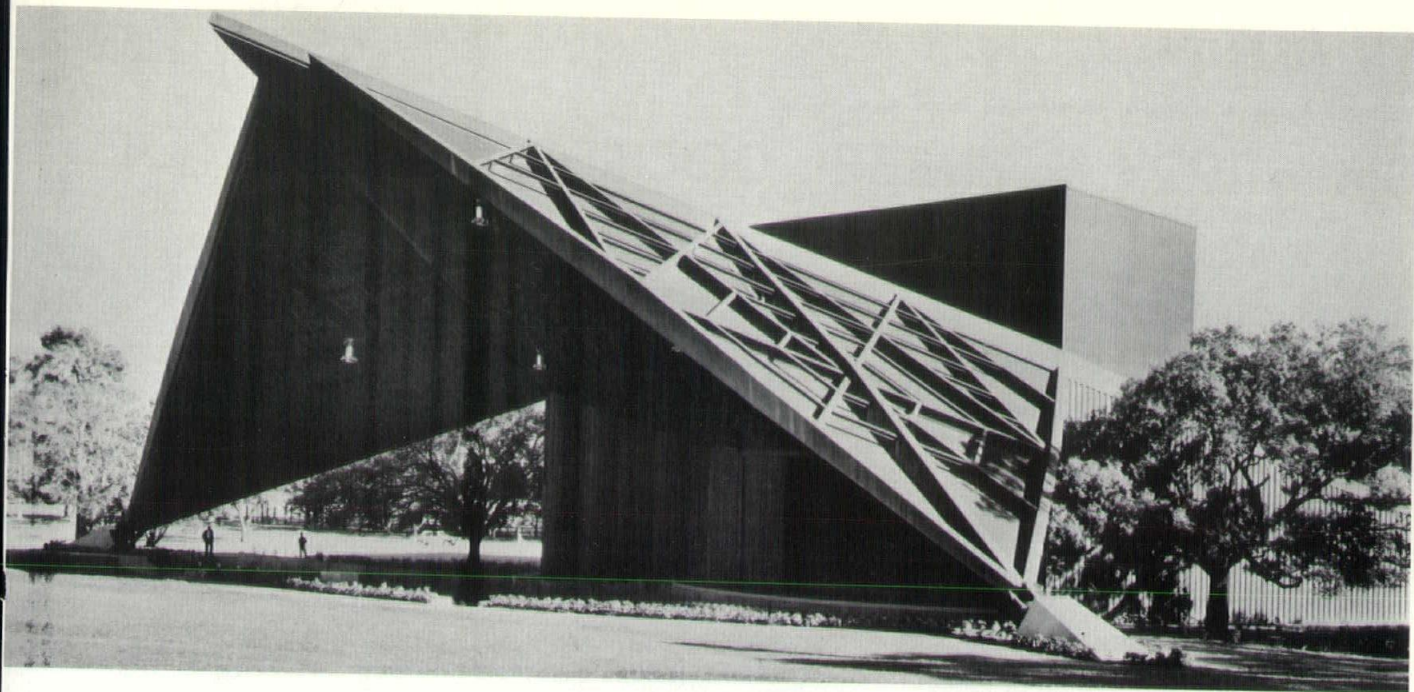
ELECTRICAL CONTRACTORS — SUPPLIES & FIXTURES

3 ALLEN STREET HANOVER, N.H.

DIAL 603-643-3508

**Index
To
Advertisers**

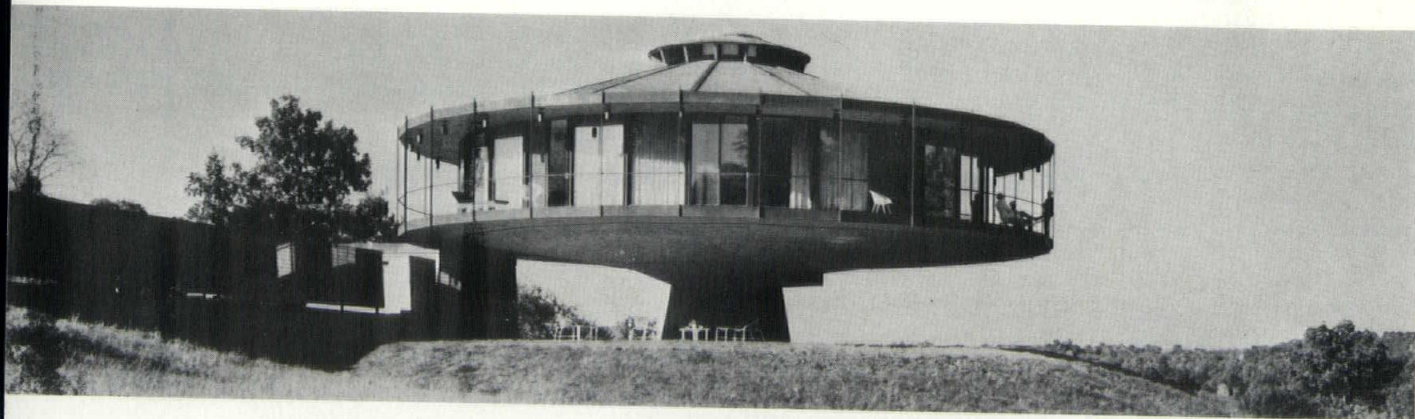
R.E. Bean Construction Co., Inc.	2
Better Home Heat Council of N.H.	Cover II
Blanchard Stebbins, Inc.	20
California Products Corp	29
Campton Sand & Gravel, Inc.	6
Chagnon Lumber Co.	31
Frank T. Cody Co.	32
Francis P. Conner & Son, Inc.	31
Corriveau-Routhier	1
Craftsmen, Inc.	30
Duracrete Block Co., Inc.	20
Eckhardt & Johnson, Inc.	32
Fimbel Door Corp.	Cover IV
Gas Industries	27
W.S. Goodrich, Inc.	26
W.B. Hill Co.	29
George J. Kehas, Inc.	22
Lebanon Crushed Stone, Inc.	6
Lyons Iron Works	Cover III
The McMillin Co., Inc.	25
B.L. Makepeace, Inc.	2
National Partitions, Inc.	25
N.H. Flooring, Inc.	21
Northern Heating & Plumbing	21
Northern Landscape, Inc.	30
W.J. Parenteau, Inc.	22
Public Service Co. of N.H.	19
John J. Reilly, Inc.	22
The Rowley Agency	23
Seppala & Aho	3
Donald D. Snyder & Son, Inc.	21
Spaulding Brick Co., Inc.	28
C.H. Sprague & Son, Co.	7
Tilton Sand & Gravel, Inc.	6
H.W. Therrien, Inc.	20
United Glass & Aluminum Co., Inc.	30
Vermont Structural Slate Co., Inc.	24
Waghorne-Brown Co. of N.E., Inc.	23
Western Waterproofing, Inc.	32
Arthur Whitcomb, Inc.	6



Above:
Miller Outdoor Theatre, Houston, Texas; architect, Eugene Werlin & Associates, Houston. The clear span of the roof between main supports is 195 feet, offering unobstructed vision from the contoured hillside.

Create
WITH
STEEL!

Below:
Foster Residence, Wilton, Conn.: architect, Richard Foster, New York, N.Y. On command, this unusual home can be rotated in either direction to change the view and orientation of the house.



The Architectural Awards of Excellence, sponsored by the American Institute of Steel Construction, recognize and honor outstanding architectural design in structural steel. They encourage further exploration of the many aesthetic possibilities that are inherent in steel construction.

Illustrated are two of the twelve 1969 award winners. To enter the 1970 competition, contact AISC, 101 Park Avenue, New York, New York, 10017.

Lyons

STEEL WHEN YOU WANT IT

IRON WORKS, INC.

62 MAPLE STREET • MANCHESTER, N. H. • TELEPHONE: 625-6975

DIRECTOR
AIA STATE CHAPTER & STUDENT A
1735 NEW YORK AVE
WASHINGTON D C 20006

Of Interest to Architects

~~~~~  
**Since 1924 — FIMBEL DOOR CORPORATION**



**MANUFACTURING • SALES • SERVICES**  
**OUR "OVERACTION DOOR"**

The Fimbel "Overaction Door" Meets All Specification Requirements  
for Any Residential, Commercial or Industrial Installation

- Finest Materials and workmanship in wood, aluminum, fiberglass and steel.
- Electric operators and remote electronic controls.
- Standard installations are routine, but if you do have a door problem, our engineering department can cope with the situation.

For Technical  
Information See  
Sweet's  
1970 Catalog

~~~~~  
Look for this trademark



FIMBEL
DOOR CORPORATION

For Distributors and Dealers
in principal New England cities—
Write or Call:

**MAIN OFFICE: 24 Fox St., P. O. Box 848
Nashua, New Hampshire
603-882-9786**