

new orleans

ARCHITECT

AMERICAN INSTITUTE
OF
ARCHITECTS
NOV 12 1963
LIBRARY

LAA

LOUISIANA ARCHITECTS ASSOCIATION
1963 CONVENTION - NEW ORLEANS
NOVEMBER 14, 15, 16, 1963

NOVEMBER, 1963

IA

ROSTER OF MEMBERS

NEW ORLEANS CHAPTER, THE AMERICAN INSTITUTE OF ARCHITECTS

Including Parishes of St. James, St. John the Baptist, St. Charles,
Jefferson, St. Bernard, Orleans and Plaquemines



WILLIAM E. BERGMAN, *President*
H. MORTIMER FAVROT, JR., *Sec'y.*
JOSEPH G. BERNARD, *Director*
MURVAN M. MAXWELL, *Director*

SIDNEY J. FOLSE, JR., *Vice-President*
PHARES A. FRANTZ, *Treasurer*
JAMES R. LAMANTIA, JR., *Director*
LEMUEL W. McCOY, *Director*

MISS STELLA FAGET, *Executive Secretary*, 510 Esplanade Ave., New Orleans 16, La.

CORPORATE MEMBERS

Allison, Patrick M.
Ammen, Charles E.
Andry, Charles G.
Applegarth, Raymond T.
Bear, Albert G. — Emeritus
Berg, William J.
Bergman, William E.
Bernard, Joseph — Emeritus
Bernard, J. Grima
Blackstone, William C.
Blitch, J. Buchanan
Bonie, Walter C.
Boudreaux, Raymond J.
Burk, Thompson B.
Burns, Robert O.
Caldwell, Donald H.
Cazale, Philip P.
Chachere, Tilghman G., Jr.
Cimini, Benedetto, Jr.
Corry, Joseph B.
Coupland, Robert S., Jr.
Cummins, Robert
Curtis, N. C., Jr. — Fellow
Danserau, Valetton, Jr.
Davis, Arthur Q. — Fellow
Delatte, Martin J.
de la Vergne, Jules K.
Diboll, Collins C.
Doell, Walter G., Jr.
Drew, Robert L.
Dreyfous, F. Julius — Emeritus
Dufrechou, Leo F.
Favrot, H. Mortimer, Jr.
Feitel, Arthur — Fellow-Emeritus
Finger, Milton H., Jr.
Folse, Sidney J., Jr.
Frantz, Phares A.
Freret, Douglass V.
Fuhrmann, Emile F.
Fulco, Jos. T.
Gardner, Wm. P.

Gibert, Eugene — Emeritus
Gibert, James H.
Goldstein, Louis A.
Goldstein, Moise H. — Fellow-Emeritus
Grimball, Henry G.
Haase, Lucien M.
Heck, Eldon C.
Hess, William J., Jr.
Hogg, Mary C. (Miss)
Hooper, Janet E. (Miss)
Hooton, Claude E.
Hymel, Alton C.
Johnson, Kamlah L.
Keenan, Walter Cook, Jr.
Keenan, Walter Cook, Sr. — Emeritus
Kessels, J. Jack H.
Koch, Richard — Fellow — Emeritus
Kohler, Irving, Jr.
Labouisse, F. Monroe
Lachin, John M., Jr.
Lamantia, James R., Jr.
Lawrence, John W.
Leake, George M.
LeBreton, D. C.
Ledner, Albert C.
Lowrey, Mark P.
Lohman, Ben K.
Mason, E. B. — Emeritus
Mathes, Earl
Mathes, Mildred A. (Miss)
Maxwell, Murvan M.
McCoy, Lemuel W.
Meric, Thomas S.
Montz, Andrew S. — Emeritus
Mouledous, Richard C.
Muller, Stanley W.
Murray, Paul
Mykolyk, Mary
Nolan, Ullisue M.
Nolan, Warren
Olschner, Carl L.

Oppenheimer, Leo M.
Osborne, Thomas L.
Oubre, James P.
Parham, Frederick D. — Fellow
Perez, August, Jr.
Perez, August, III
Perrier, Theodore L. — Emeritus
Riehl, George
Reilly, Maurice E.
Reisch, Erston H.
Ricciuti, I. Wm.
Rock, John W.
Roessle, Rudolph B. — Emeritus
Rolf, Arthur, Jr.
Rosenthal, Sol — Fellow — Emeritus
Rowe, Charles J.
Rubin, Maury I.
Sanderson, George A.
Saputo, Albert J.
Saunders, George A.
Schneider, Andrew L.
Seifert, Solis — Fellow
Silverstein, Edward B.
Simoni, R. T.
Singer, Maurice
Smith, Thomas B.
Staub, Guy M.
Staffle, M. Wayne
Suchke, Frederick R.
Thomson, John H. — Emeritus
Trepagnier, Horace E.
Tsoi, Edward M. Y.
Underwood, H. T.
Valladares, Rene
Verges, Ernest E.
von Osthoff, Frederick V.
Wagner, Leo F., Jr.
Wicker, Chester
Willis, Norman J.
Wilson, Samuel Jr. — Fellow
Wolf, Albert J., Jr.

ASSOCIATE MEMBERS

Be'ler, Leonard E.
Conger, Thomas D.
Etheredge, Leonore U. (Mrs.)
Farah, Frederick
Freret, Jack B.

Haller, Harold O.
Moss, Betty A. L. (Mrs.)
Pique, Harold E.
Rezza, Martin D.

JUNIOR ASSOCIATE MEMBERS

Weinstein, Norman J.

HONORARY ASSOCIATE MEMBERS

Donaldson, Joseph, Jr.

ASSIGNED ASSOCIATE MEMBERS

Olsen, Ole K.

New Orleans Architect is published monthly by the New Orleans Chapter of the American Institute of Architects in conjunction with Construction News, Inc. Opinions expressed herein are those of the contributors and not necessarily those of the New Orleans Chapter, A.I.A. Inquiries may be addressed to 510 Esplanade Ave., New Orleans 16, La.

Publications Committee: Lemuel W. McCoy,
Chairman
Mark P. Lowrey
Robert L. Drew
Ernest E. Verges
H. Mortimer Favrot, Jr.
Tilghman G. Chachere, Jr.
Raymond J. Boudreaux
Mary Mykolyk

Louisiana Architects Association

1963 Convention Schedule Jung Hotel New Orleans

THURSDAY, NOVEMBER 14

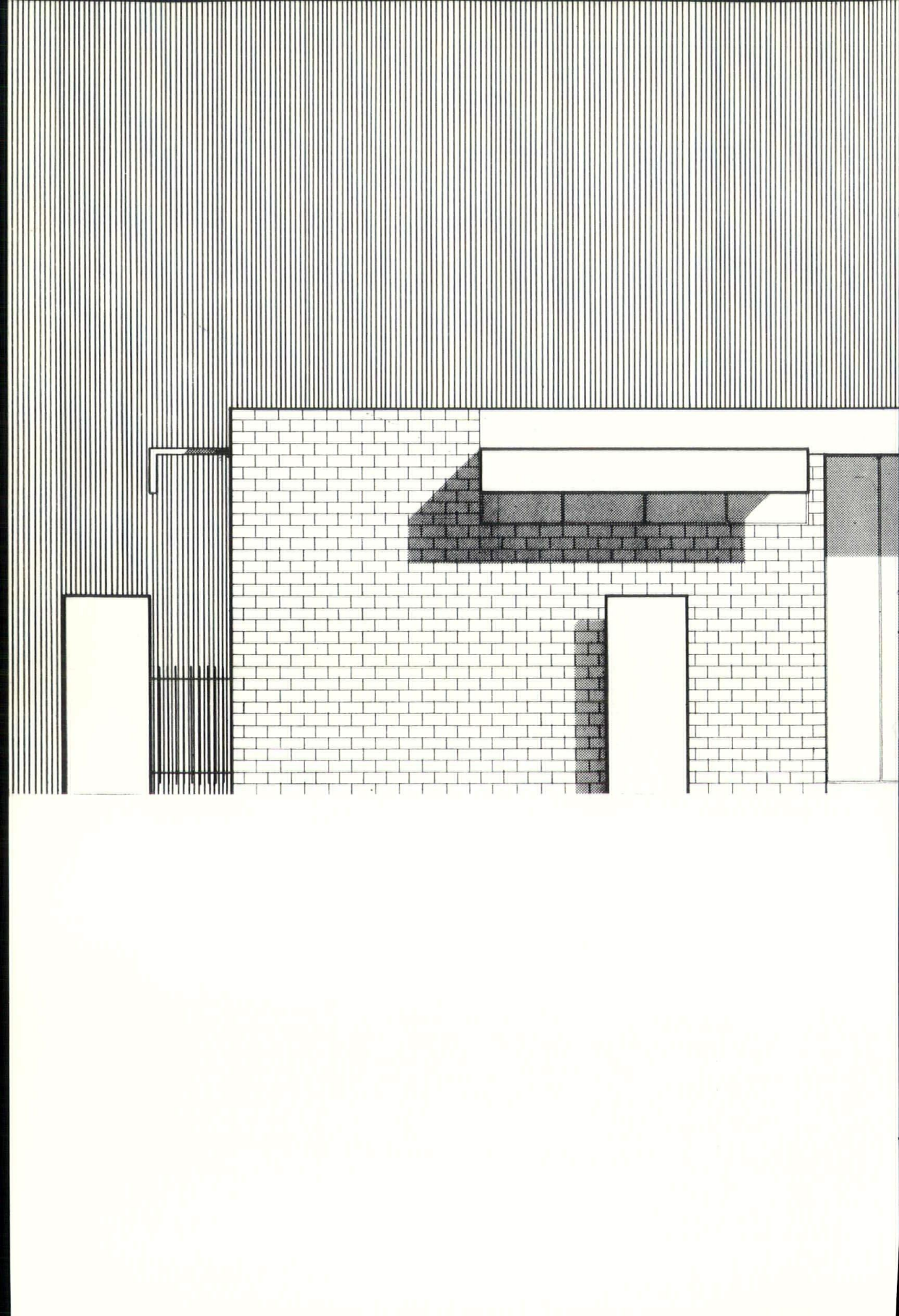
- 12:00 Noon LAA Board Luncheon (Bienville Room)
- 1:00 p.m. Begin erection of exhibits (Exhibition Hall)
- 2:00 p.m. Registration (Mezzanine Floor)
- 7:00 p.m. Social Function

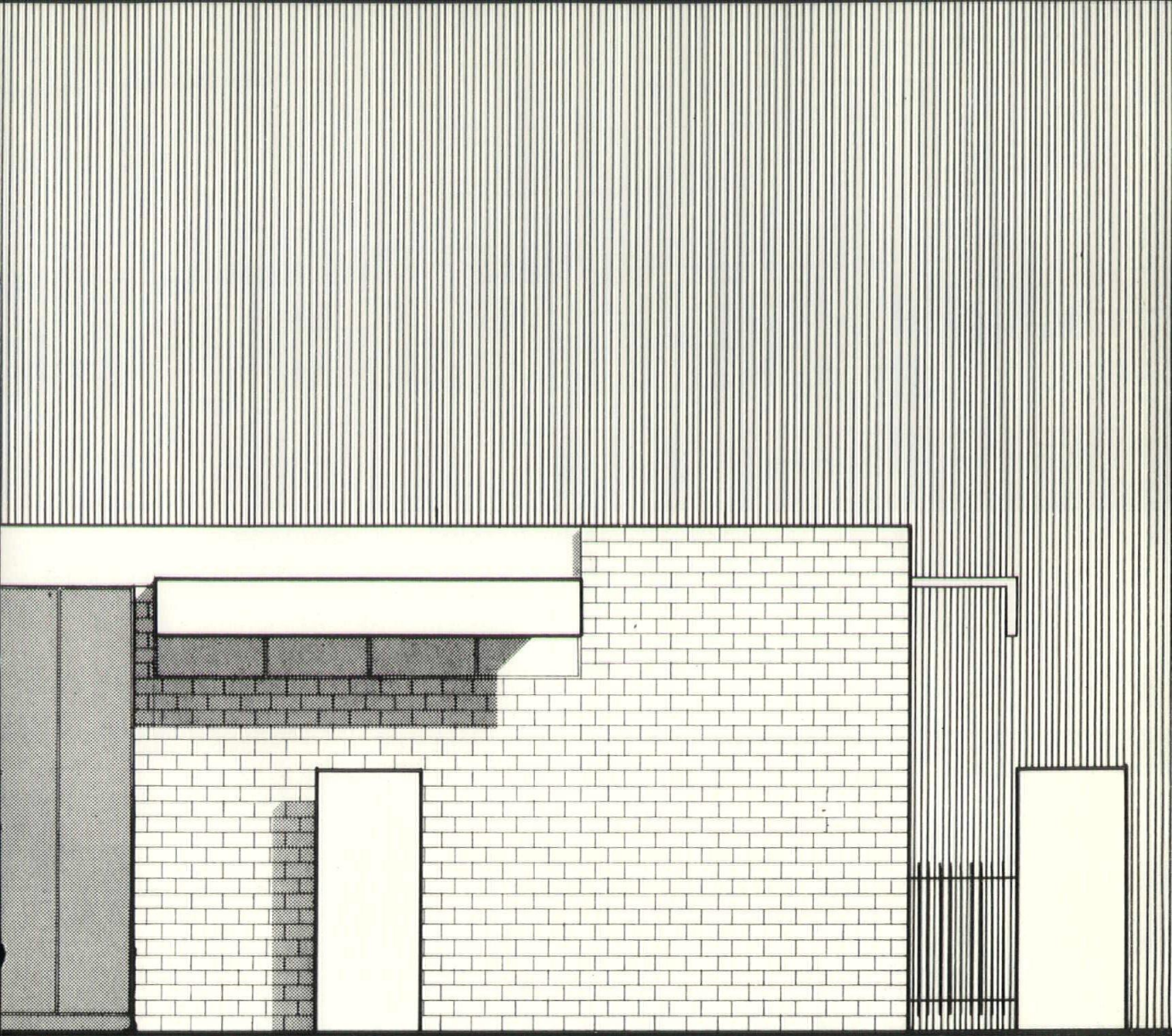
FRIDAY, NOVEMBER 15

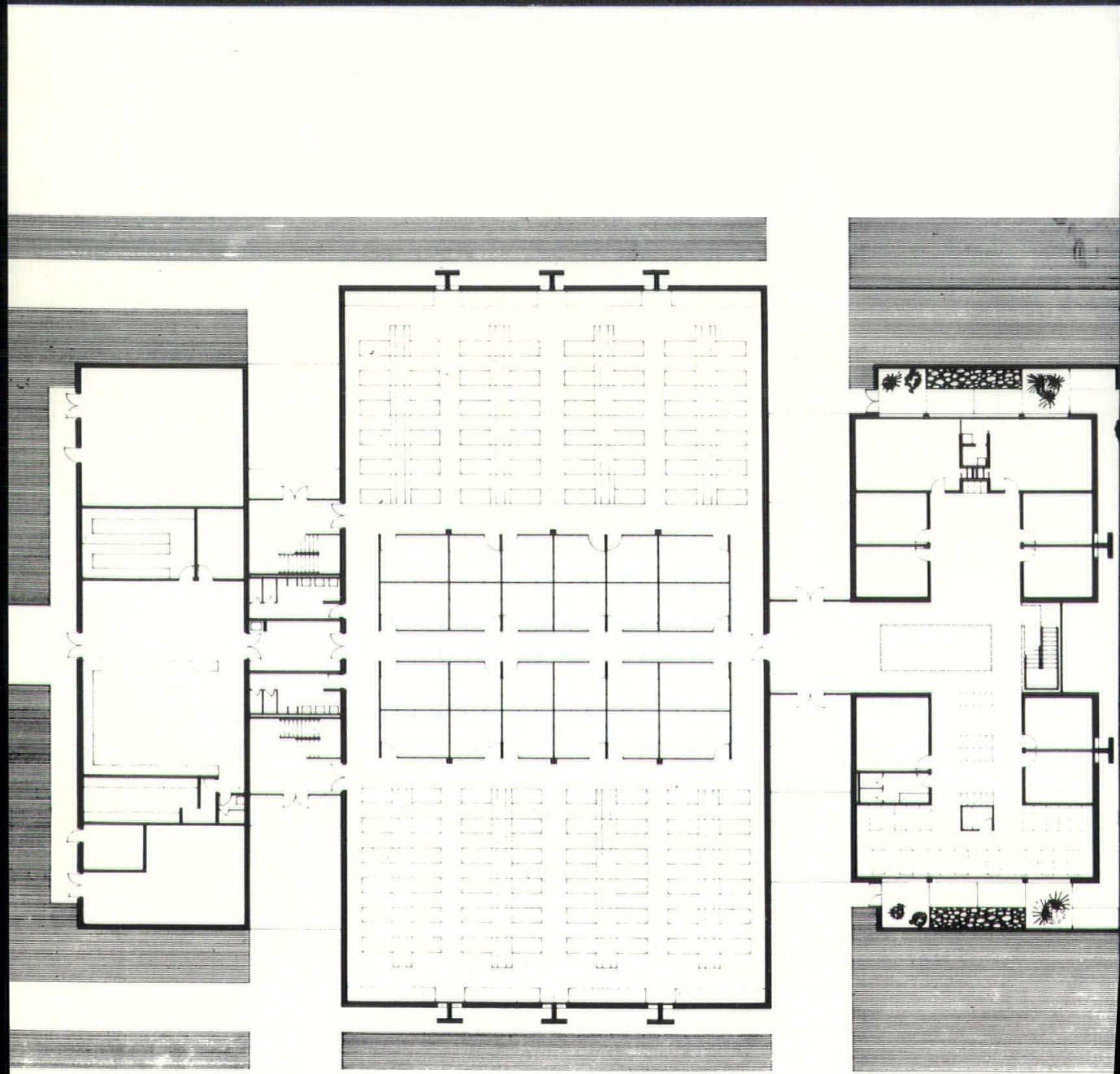
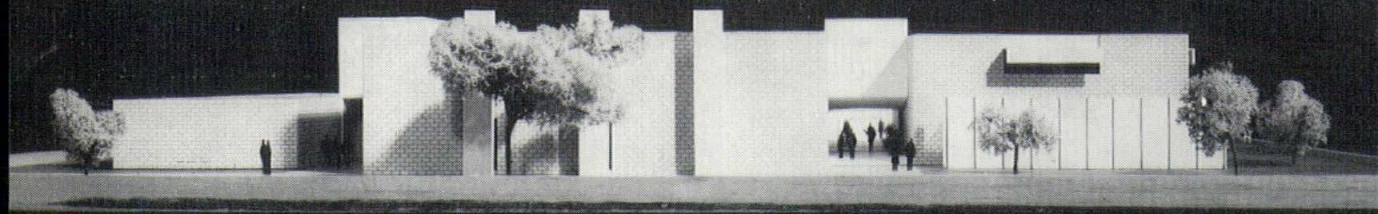
- 9:00 a.m. Seminar
- 10:30 a.m. Coffee Break
- 10:45 a.m. Seminar
- 12:00 Noon Exhibitors Luncheon
Ladies Luncheon
- 1:00-7:00 Exhibits Visit
- 4:00 p.m. Cocktail Party, Hors D' Oeuvres, Dixieland Jazz Band
(In Exhibition Hall) Free
- 7:00 p.m. Adjourn Product Exhibit
- 8:00 p.m. Nightclub Tour

SATURDAY, NOVEMBER 16

- 10:00 a.m. LAA Annual Meeting
- 12:00 Noon Luncheon — Main Address
Honor Awards Presentation
- 1:30 p.m. Seminar
- 2:30 p.m. Coffee Break
- 2:45 p.m. Seminar
- 3:45 p.m. Adjourn Seminar
- 7:30 p.m. Cocktails
Banquet
Dance







MOONEY EQUIPMENT COMPANY

2704 St. Claude Avenue New Orleans 17, La.

WHitehall 3-6676

"Shepard Home Elevators"

Rotary "Levelator" Lifts

"Living Shelter" Fallout Shelters



Ultra-High Pressure Pumps & Valves

Ridgway's



Your Trade Mark of Dependable Quality

Blue Prints • Photo Copying
Architectural & Engineering Supplies
Direct & Blue Print Paper & Print Making Supplies
"Ditto," Formerly: Pease Ammonia Machines
Copymation White Print Machines
Off Set Printing & Reproduction
Hamilton Drafting Room Equipment

Jackson 2-3831 JACKSON 2-4059

L. L. RIDGWAY CO.

433 O'Keefe Ave. Off Street Parking

SHEET METAL SPEARS-GUTKNECHT ENTERPRISES INC.

FABRICATORS & ERECTORS
INDUSTRIAL • COMMERCIAL

- Heating
- Ventilating & Air Conditioning — Duct Work
- Blow Piping
- Hoppers & Chutes
- Drive Guards & Safety Shields
- Vents & Stacks
- Hoods • Sinks • Trays
- Tanks
- Other Products Made to Order

Manufactured of Conventional or Stainless Steel

431 DECATUR WHitehall 9-7828

CASH AND SAVE

PREFINISHED WALL PANELING \$3.84 up

12 x 12 x 1/2 Ceiling Tile \$.10 1/2

9 x 9 Vinyl Floor Tile .09 1/2

4 x 8 x 1/4 Prefinished Birch 7.98

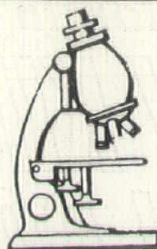
Disappearing Stairs 15.93

LUMBER • PLYWOOD • PAINTS

PLYWOODS, INC.

7300 Washington Ave. HU 6-6277

New Orleans, Louisiana



WE TEST WATER

and give you proper recommendations for treating it — so that your boilers — heating units — air conditioning systems and cooling towers perform properly

Specialized Engineering Service for the Correction of Cooling & Heating Water Problems in Industry—Slime & Algae Control—Corrosion Control—Water Treatment Consulting Service

ACCURATE INDUSTRIES, INC.

Telephone 949-8315

2831 New Orleans Street

New Orleans 19, La.

PITTSBURGH TESTING LABORATORY

Established 1881

INSPECTING ENGINEERS AND CHEMISTS



New Orleans Office

724 Central Ave.

VErnon 5-0341

P. O. Box 10398

NEW ORLEANS 21, LA.

Branches in all Principal Cities

Approaching a quarter century of Architectural Specification assistance and Technical advice.

Resilient Floor Tile
Carpeting & Padding
Wall Covering

Residential
Commercial
Institutional

BROWN and DAMARE', INC.

633 So. Broad St.

New Orleans 19, Louisiana

Distributors & Factory Representatives
Dealer Sales Only

S. K. WHITTY AND CO., INC.



PILE DRIVING

PROMPT, FRIENDLY SERVICE

3600 DESIRE ST.

PHONE 943-6601

NEW ORLEANS 26, LOUISIANA

P.O. BOX 26186

the new dimension in creating with masonry

WHAT NEW KING SIZE ACME BRICK CAN DO FOR A WALL

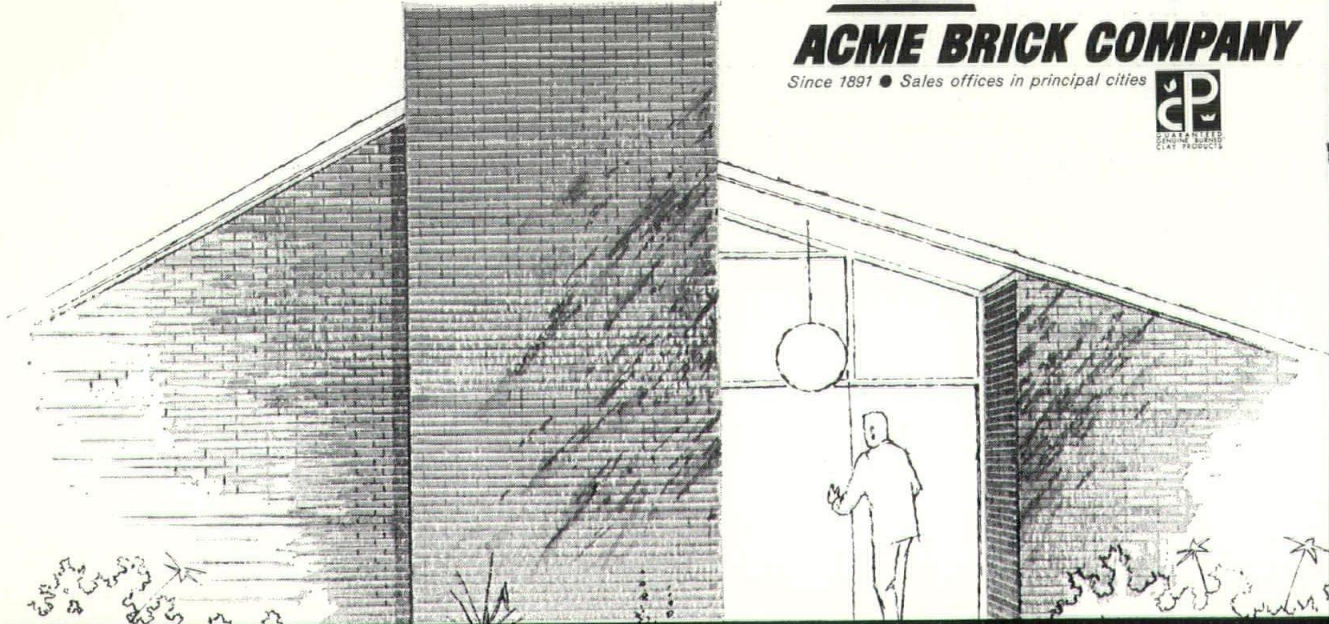
WITH ONE-THIRD LESS BRICK

Few if any other building materials available combine so many needed advantages in **one** product, offering such versatility, as does new King Size Brick by Acme.

King Size Brick by Acme is a new form of one of the most reliable and proven building materials ever made: genuine new burned clay. Without any additional finishing or maintenance, Acme King Size Brick provides an almost limitless range of design opportunities, through a wide

variety of colors and textures. Because Acme King Size Brick is larger than regular modular brick, it gives a proportional cleanness of line in the wall, **with one-third fewer brick.**

A visit to your Acme Brick sales office will enable you to see quickly the design possibilities now open to you, with new King Size Brick by Acme.




ACME BRICK COMPANY

Since 1891 • Sales offices in principal cities



CAST CONCRETE is now cast in a new role as a highly sophisticated and flexible art form for building ornamentation.

Arts for Architecture, Inc., has adapted this material into three-dimensional squares of sculptured designs which can be joined together to create sculptured wall facings for exterior and interior building walls.

Each square is a different design but all utilize a basic 12" x 12" module. This makes it possible for architects and designers to interrelate, arrange and rearrange these modules to create wall facings of their own patterns and to any height and length desired.

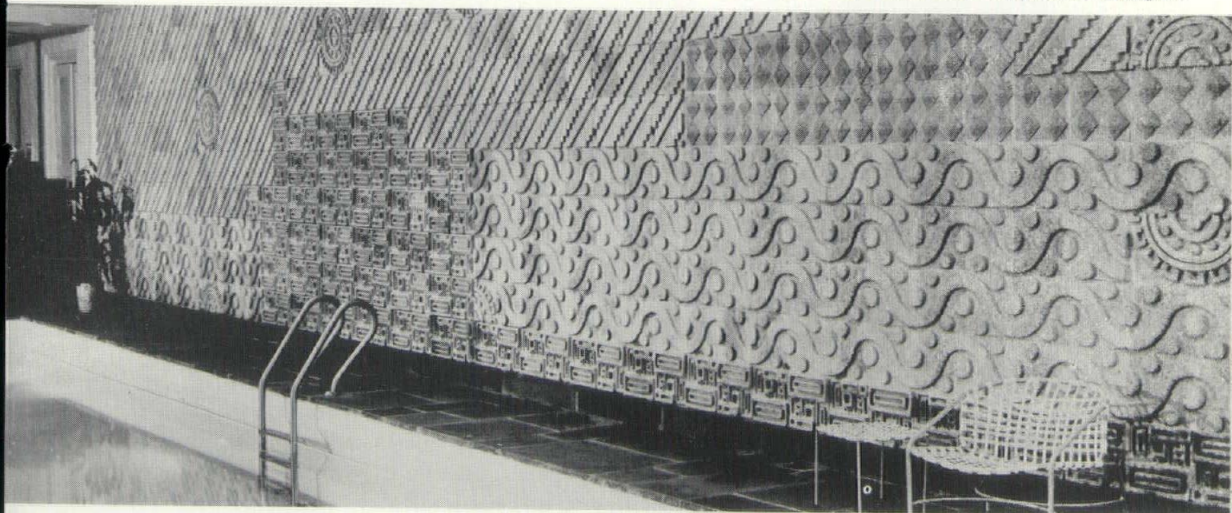
The designs are inspired by stone carvings of ancient Yucatan, Mayan, Gothic and South Seas origin. James Seeman, president of Arts for Architecture, Inc., who is both artist and engineer, united these talents to adapt the basic design elements of the ancient stone sculptures within modern-day



Full wall of sculptured stone gives stunning impact to lobby of famous Americana Hotel in Miami Beach. The designs are authentic adaptations of stone carvings from ancient Mexican cultures.

Indoor swimming pool enhanced into unusual originality and elegance with a sweeping wall of sculptured stone. Blocks may be arranged and interrelated in unlimited choice of pattern designs.

Cast Concrete Transformed Into Modules Of Design For Building Ornamentation



modular concept.

Special paper patterns are made available for architects and designers who can then shift them about, much like cutouts, to work out their own arrangements.

In the lobby of the famous Americana Hotel in Miami Beach, the use of an Arts for Architecture wall in Mayan and Aztec designs, achieves stunning effect in this important public area. And in New York and elsewhere, sculptured walls appear as facades across the entire exteriors of office buildings.

In addition to his own design creations, James

Seeman also commissions outstanding artists of the world.

For example, "Taniko," a stone mural consisting of individually designed squares whose inspiration derives from the art of the South Sea Islands, is the work of Mr. Perli Pelzig, internationally known artist. Among other honors, Mr. Pelzig holds the American Institute of Architects Gold Medal.

"Sculptured walls," notes Mr. Seeman, "have been a major art expression in every highly civilized society and, in fact, are an essential complement to the general austerity of contemporary architecture and design."



CITY SQUIRE MOTOR INN

MIDTOWN MANHATTAN, long the taxi-terrorized scourge of the unwary out-of-town motorist, became a vertiable Mecca for the highway traveler with the opening of the 724-room City Squire Motor Inn—largest of its type in the world—in the block bounded by Broadway, Seventh Avenue, 51st and 52nd Streets.

With a five-level garage accommodating 500 cars, the City Squire will guarantee free parking for all guests, including free in-and-out service if the guest wishes to drive to the World's Fair grounds or other nearby tourist attractions during his visit.

Combining the best features of a modern city hotel, and its variety of services, with the informality of the suburban motel, the City Squire Motor Inn has a special garage entrance for motorists, wheeled racks that can handle an entire family's luggage, and the fastest bellman in New York to speed the racks into high-speed elevators and de-

posit the luggage in one or more of the 22-story City Squire's oversized rooms.

Reserved for guests only is a health club located in a special fifth-floor wing. Here the guest may enjoy the beneficial dry heat of the Finnish-style saunas, receive an expert massage and then cool off in the all-weather pool. In warm weather, the glass wall of the pool housing slides open for easy access to a large sundeck, where cocktails and light refreshments are available.

In an unusual reversal of hotel decorating trends, the City Squire's decor is handsome and traditional Early American, even to the now-familiar rocking chair that is provided with every suite. The same theme also applies to the Squire's Corner coffee shop and Red Coach Grill.

A series of meeting rooms and executive suites has been provided to meet the demand of small groups for such facilities.

Cafeteria For Argonne National Laboratory

CONSTRUCTION is underway on a new \$1 million, 950-seat cafeteria for the Argonne National Laboratory in Argonne, Ill., according to announcement by John H. McKinley, Business Manager of the Laboratory.

The new building was planned, designed and engineered by Welton Becket and Associates, architects and engineers.

Complete food preparation, serving and dining facilities for 950 persons will be provided in the cafeteria. On the basis of two and a half times turnover, the building's feeding capacity is estimated at 2375 persons.

The 33,402 sq. ft. structure will feature precast exposed concrete window units with quartz aggregate window frames on its west and portions of the north, south, and east exposures. The glass will be deeply recessed in the 10- by 22-ft. sculptured frames, providing solar protection and reducing air-conditioning requirements.

The north and south sides of the building are formed of solid, precast exposed aggregate panels. The use of these durable modular panels will speed construction, resulting in earlier occupancy than if more conventional masonry construction were used.

The main entrance to the cafeteria, on the north side of the building, will have a glass-enclosed lobby leading into the main dining room.

Besides the main dining area, the cafeteria building will include a small private dining room, a

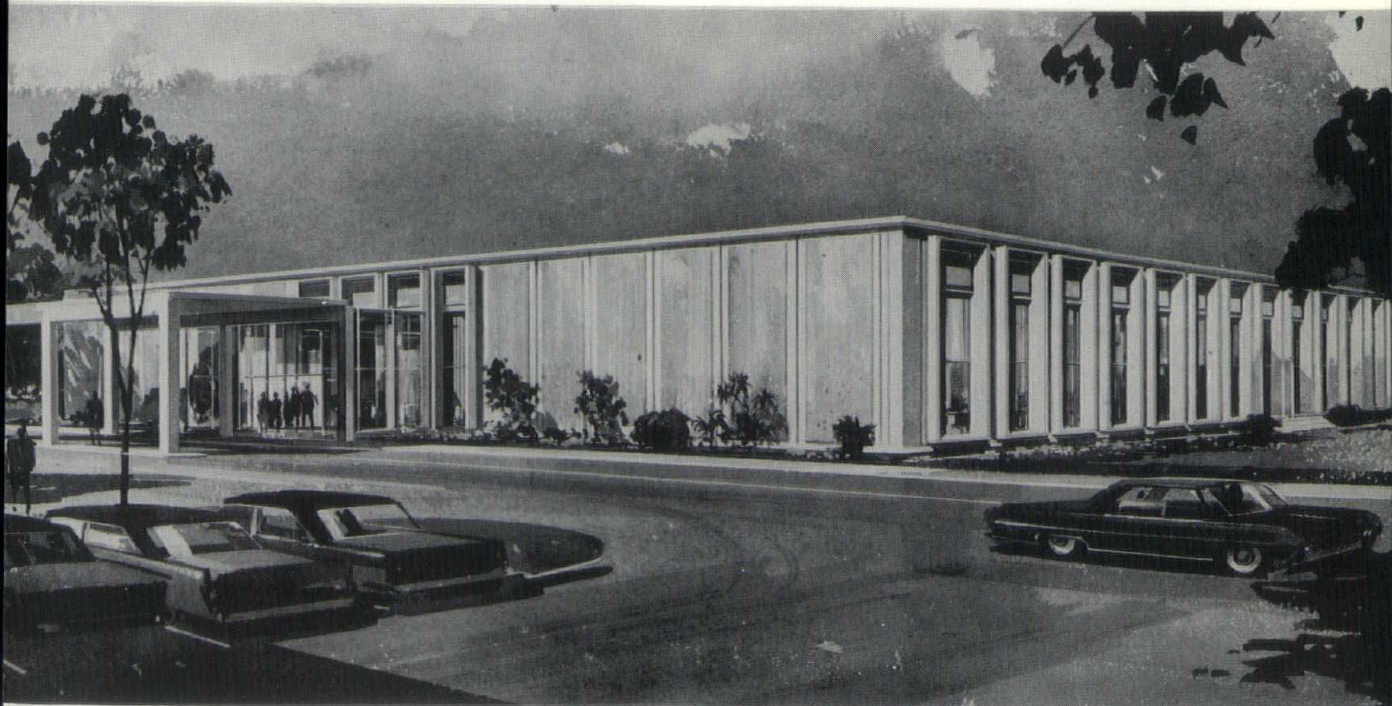
central food serving area, a kitchen complete with the latest equipment for food preparation, dishwashing, refrigeration and dry storage. Offices for managerial and supervisory personnel are strategically located within the kitchen area for proper control of operational procedures and the receiving of supplies.

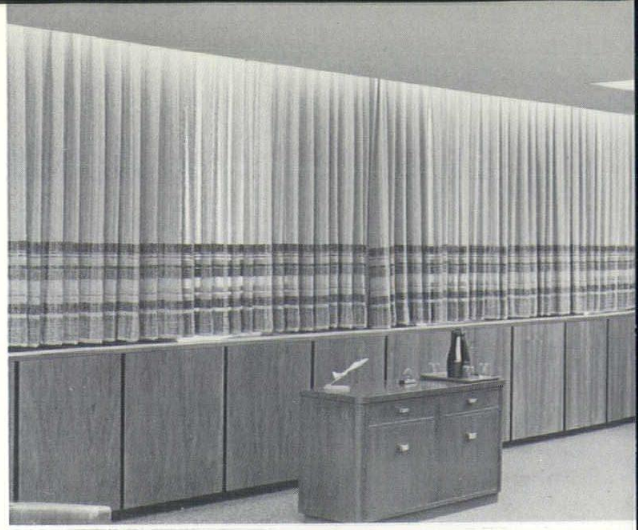
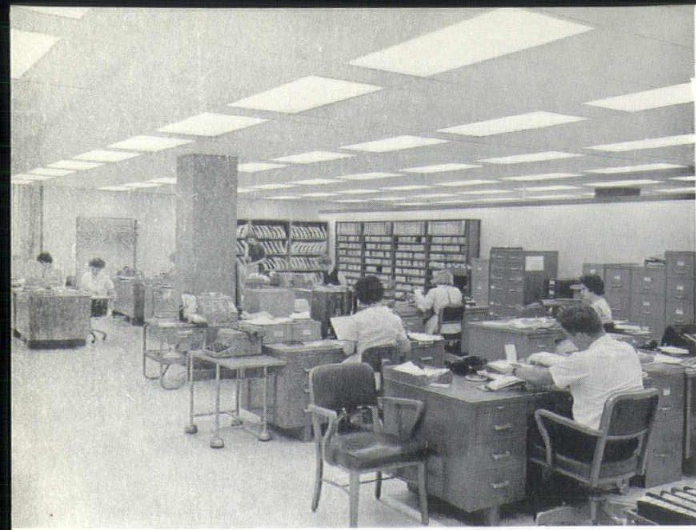
The "scramble" system, a method by which persons circulate while making selections rather than waiting in line, will be used in the central food serving area. Experience has proved this method of food serving facilitates traffic flow and expedites the serving of meals.

The column-free main dining area will have a 14-ft.-high coffered ceiling, supported by tapered steel girders. Since the dining area will be used for meetings as well as food service, the absence of columns will provide maximum seating flexibility as well as increase the number of persons to be accommodated.

Separated from the main dining area will be the private dining room designed to accommodate 100 persons. This room, which may be divided in half for smaller groups, has been located by the architects so that it can be adapted to either cafeteria or table service.

Effective sound control in the main dining area will be provided by the specially designed, coffered, demountable acoustical ceiling. The ceiling will add visual interest to the area.





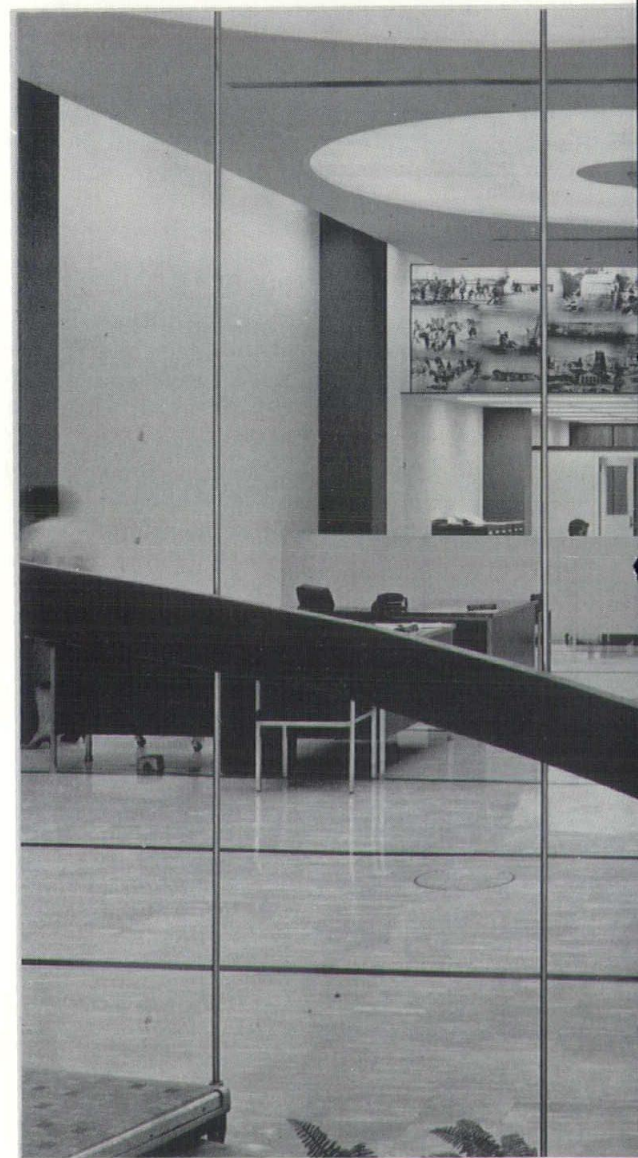
This view of a general office area is typical of the evenly-distributed lighting throughout the building. KPL Tower's lighting also heats the 12-story structure, making the new building one of the largest installations in the country of this "Electrical Space Conditioning" concept.

THE NEW 12-story headquarters of Kansas Power Light Co. here represents one of the nation's largest installations of Electrical Space Conditioning—the use of lighting to heat a building. This concept was demonstrated experimentally several years ago by General Electric Co., and its operation in this 156,000 square foot building is another example of how this concept is being implemented.

KPL Tower, as it is called, is one of the largest total-electric office buildings in the Midwest—and its up to 600 footcandles of fluorescent lighting alone could heat the entire building even if the outside temperature were low as -20 degrees. More than 13,000 G-E lamps provide the comfortable illumination and source of heat for the building's mechanical system.

There are obvious economies in using internal heat already purchased in the form of lighting (and business machine energy, too) to heat the building. Such a heating system makes all-electric buildings more practical because it involves only modification of the air conditioning system. No boilers and inherent plumbing and stacks are required.

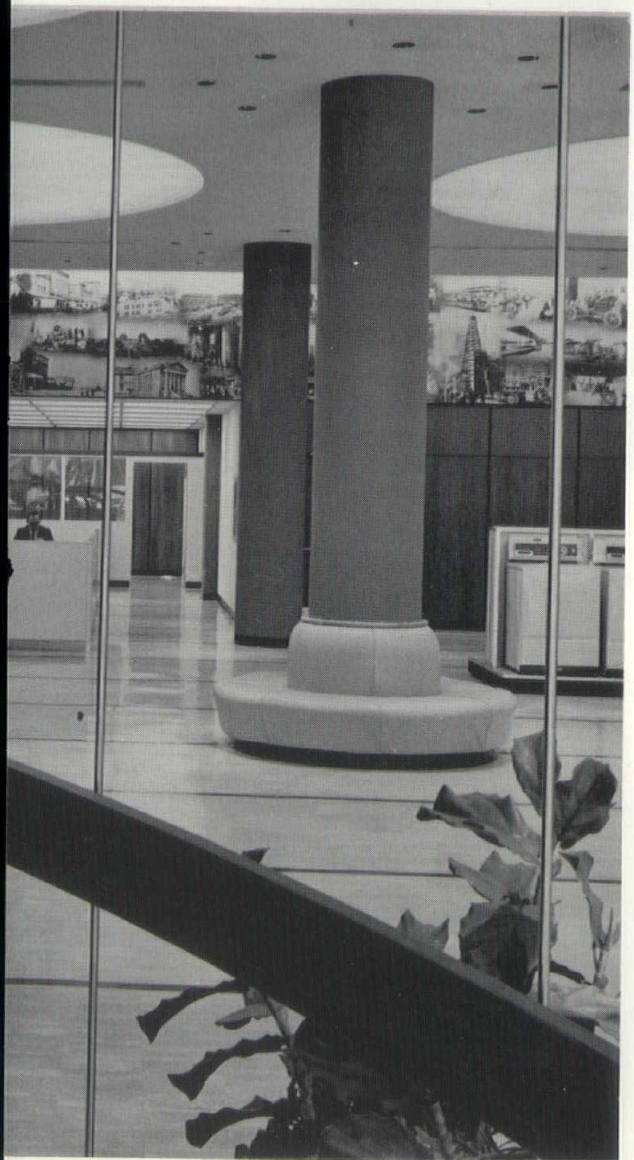
Heart of Electrical Space Conditioning of KPL Tower is a 516-ton centrifugal air-source heat pump system, which redistributes the lighting heat where it is needed throughout the building. While there is enough of this heat alone to warm the building, perimeter offices need more heat than interior offices. The heat pump, which supplies both heating



LIGHTING HEATS BUILDING



This is the office of Deane A. Ackers, Chairman of the Board of Kansas Power & Light Co., Topeka. There are more than 200 footcandles of illumination from 40-watt lamps in Mr. Ackers' and other executive offices.



and cooling, takes excess heat from interior offices and transfers it to the perimeter. It also provides cooling for the interior offices, which are affected very little by outside temperatures. Thus, heat exhausted from the air conditioning during the cooling cycle and cool air available during the heating cycle can give complete comfort to every building zone throughout the year.

Interior zones have only a cold air supply since they need cooling year-round. Primary air supplied at high velocity through induction units conditions perimeter zones. These units are supplied with hot or chilled water, depending on ambient temperatures, to temper the air and provide zone control within a 12-foot square floor area.

An air-handling unit on each floor moves secondary air a low velocity into each room through 2' x 4' lighting troffers. This air also returns to the ceiling plenum through these troffers, picking up heat from the lighting fixtures on the way. The return air circulating through the plenum picks up additional heat from the back of the fixtures and is then reconditioned and recycled or exhausted outside, whichever is more economical.

Each occupant of a perimeter office can have the temperature most comfortable to himself because there is a cool and a warm source available at each induction unit. Result: workers can gather in an office, or the sun shine on it, and the system automatically compensates for the changes in heat load and humidity in that area without affecting any other area.

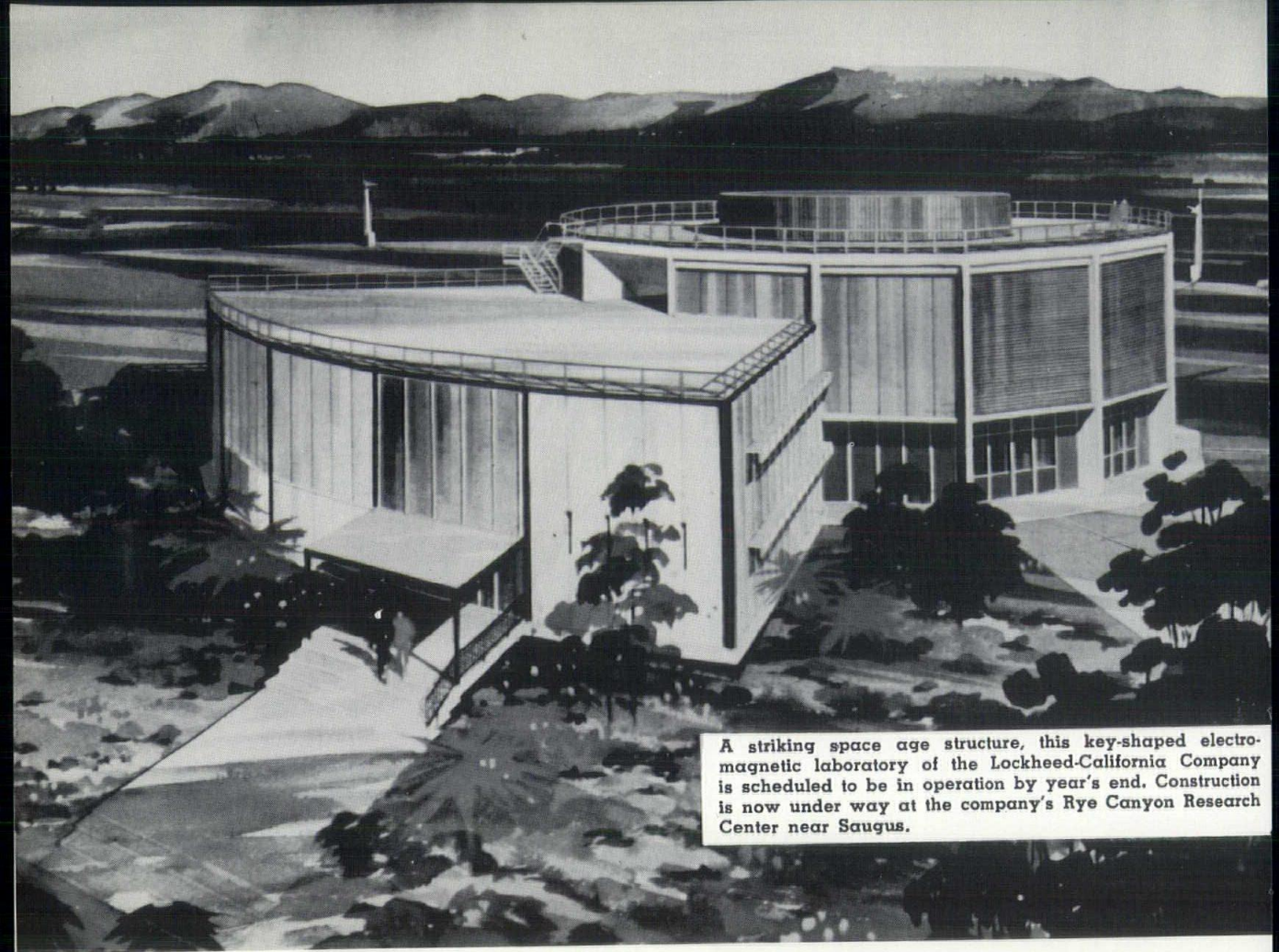
The building is exceptionally well-lighted, to a minimum of 200 footcandles in all office and public areas and up to 600 footcandles in the appliance demonstration room.

All areas in the building except the demonstration room, auditorium, and lobby are lighted by 40-watt G-E Cool White lamps in 4-lamp Daybrite fixtures, with prismatic glass lenses, on 6-foot centers. There are more than 3300 of these fixtures, each consuming an average of 6.4 watts per square foot of floor space.

All windows are lighted with continuous rows of fluorescent lamps concealed in an inverted cone for attractive night lighting effects. And these lamps create a more stimulating atmosphere in executive offices, with interesting light and shadow patterns on drapes and wall surfaces.

The lighting of the lobby has been designed to help provide a smooth visual transition from high brightness outdoors into the building's interior. Six custom-designed circular pads 20 feet in diameter light the lobby to about 200 footcandles.

There are 48 General Electric Power Groove lamps in a spoke-wheel pattern in each of the 20-foot diameter circular pads shown here in the lobby of the new headquarters of Kansas Power and Light Co., Topeka, Kansas. The mural on the rear wall is lighted by 4-foot Power Groove lamps in vertical surface fixtures mounted 9" from the wall.



A striking space age structure, this key-shaped electromagnetic laboratory of the Lockheed-California Company is scheduled to be in operation by year's end. Construction is now under way at the company's Rye Canyon Research Center near Saugus.

Aerospace Electromagnetic Laboratory

A NEW electromagnetic laboratory to develop antennas and components for advanced space and aircraft communication-detection systems will be in operation by December, the Lockheed-California Company has announced.

Based on a Lockheed concept, the electromagnetic building was designed by Albert C. Martin and Associates of Los Angeles, planners, architects and engineers. Raymond Flanders is Martin's project manager for the structure.

It is believed the laboratory and its antenna pattern ranges, when fully developed at a later date, will equal or surpass any known in the free world.

Construction is well under way on the two-story building in Lockheed's Rye Canyon Research Center near Saugus, 26 miles north of the company's main Burbank plant.

Lockheed engineers note the \$750,000 laboratory and attached open radiating ranges will save thousands of flight hours that would be otherwise necessary in evaluating new radio, radar, counter-measure, navigation, and telemetry antenna systems.

The electromagnetic laboratory will continue to

broaden its capabilities to meet future space age requirements, said J. B. Wassall, Lockheed-California Company director of engineering.

Extending spoke-like from the cylindrical section of the building will be four antenna ranges—150 feet to a quarter-mile long—equipped with rails and movable towers. Four more outdoor ranges and an indoor anechoic (radiation-absorbing) range are scheduled in the future.

Aircraft and space vehicle models will be mounted on the 25-foot tall towers that will travel the length of the range tracks.

Engineers in the building will be able to rotate the tower and position the model via remote control during tests.

Radio waves will be beamed from the transmitting antenna in the building to the receiving model. The signals will return to recording and data processing consoles in the laboratory for radiation pattern analysis and "echo area" measurements.

To insure accurate readings, the scale models will be near-exact duplicates of present or planned aircraft and spacecraft or their components.

TWIN BUILDINGS

Separated By 455 Miles

IT'S A SHAME twins have to be 455 miles apart, except when those twins are identical 17-story office buildings.

The structures are the Del Webb Building in Phoenix and the First National Bank Building East in Albuquerque, both of which are owned by the Del E. Webb Corporation.

Designed by the Albuquerque and Phoenix architectural firm of Flatow, Moore, Bryan & Fairburn, the buildings have a special type of glass to protect against the sunny climate of the two southwestern cities.

A relatively new product, called Parallel-O-Grey, the glass is used in the buildings to reduce heat and glare from the bright southwestern sun. It is a twin-ground polished plate glass that was developed by the Libbey-Owens-Ford Glass Company.

This neutral grey tinted glass reduces the glare of sunlight, yet permits persons inside to see true colors outside. It also enables air conditioning to operate more efficiently by reducing the solar heat that normally passes through ordinary glass.

Del Webb Building houses the international headquarters of the corporation whose name it bears, while the main tenant of the Albuquerque building is the bank it is named after.

After looking at the structures it is evident why they are called twin buildings. Both have murals in the elevator lobbies on each floor, depicting the history of Arizona in one and the history of New Mexico in the other. They have the same number of floors and both have a similar exterior—white vertical columns with horizontal gold ceramic tile accentuated by the grey color of the glass.

Separated by 455 miles, these twin 17-story office buildings add to the sky lines of their home cities of Phoenix and Albuquerque. The Del Webb Building, right, in Phoenix, houses the international headquarters of that firm, while the building in Albuquerque is the home of the First National Bank. On the exterior are white vertical columns with horizontal gold ceramic tile accented by the grey of the glass. Architects were Flatow, Moore, Bryan & Fairburn.



A 47-YEAR OLD storage warehouse was recently transformed into a modern classroom building for students at Drexel Institute of Technology in Philadelphia. Vermont marble, used extensively for both exterior and interior applications, contributes to the overall design which was executed by the architectural firm of Supowitz and Demchick, A.I.A., of Philadelphia.

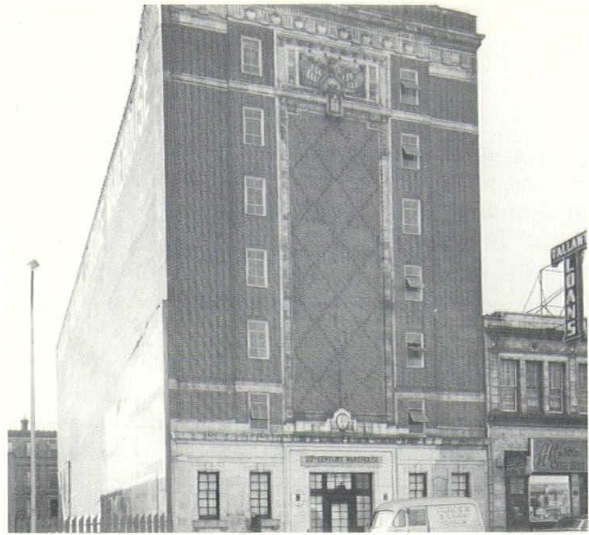
The first step in this extensive renovation was initiated well over a year ago when exterior walls were stripped to make way for a modern facade of marble and glass. Following this procedure, the application of Vermont Light Danby marble was begun on wall panels as well as on imposing corner walls.

The seven-story structure, designated as Commonwealth Hall, contains 33 classrooms, six laboratories, four drawing rooms, three research areas, six seminar rooms, a reference reading room, faculty lounge, 46 offices and a computer laboratory.

Before launching this \$1,750,000 renovation, Drexel Institute asked an engineering consultant to study both the advantages offered by high-rise structures in an urban setting, and the economies of time and funds to be gained through the conversion of existing structures.

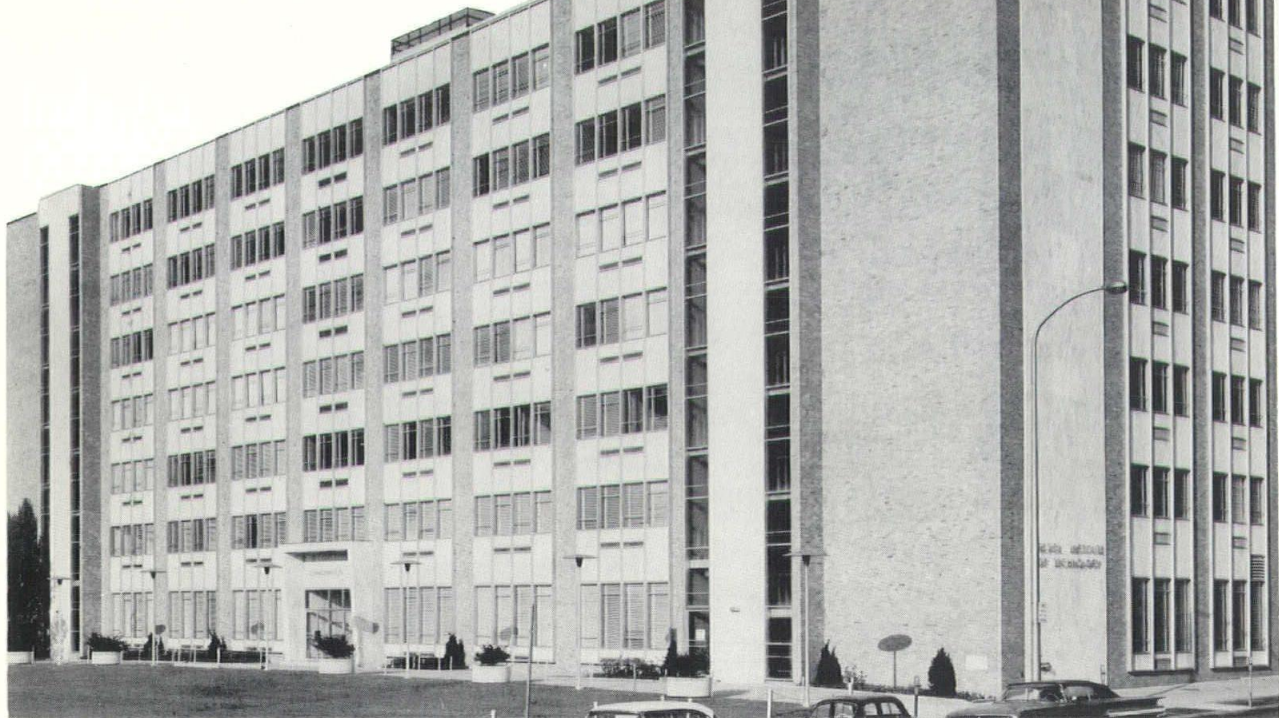
Interesting enough, results of this study showed an estimated \$500,000 in cost and a valuable year in time was saved by converting this warehouse into Commonwealth Hall.

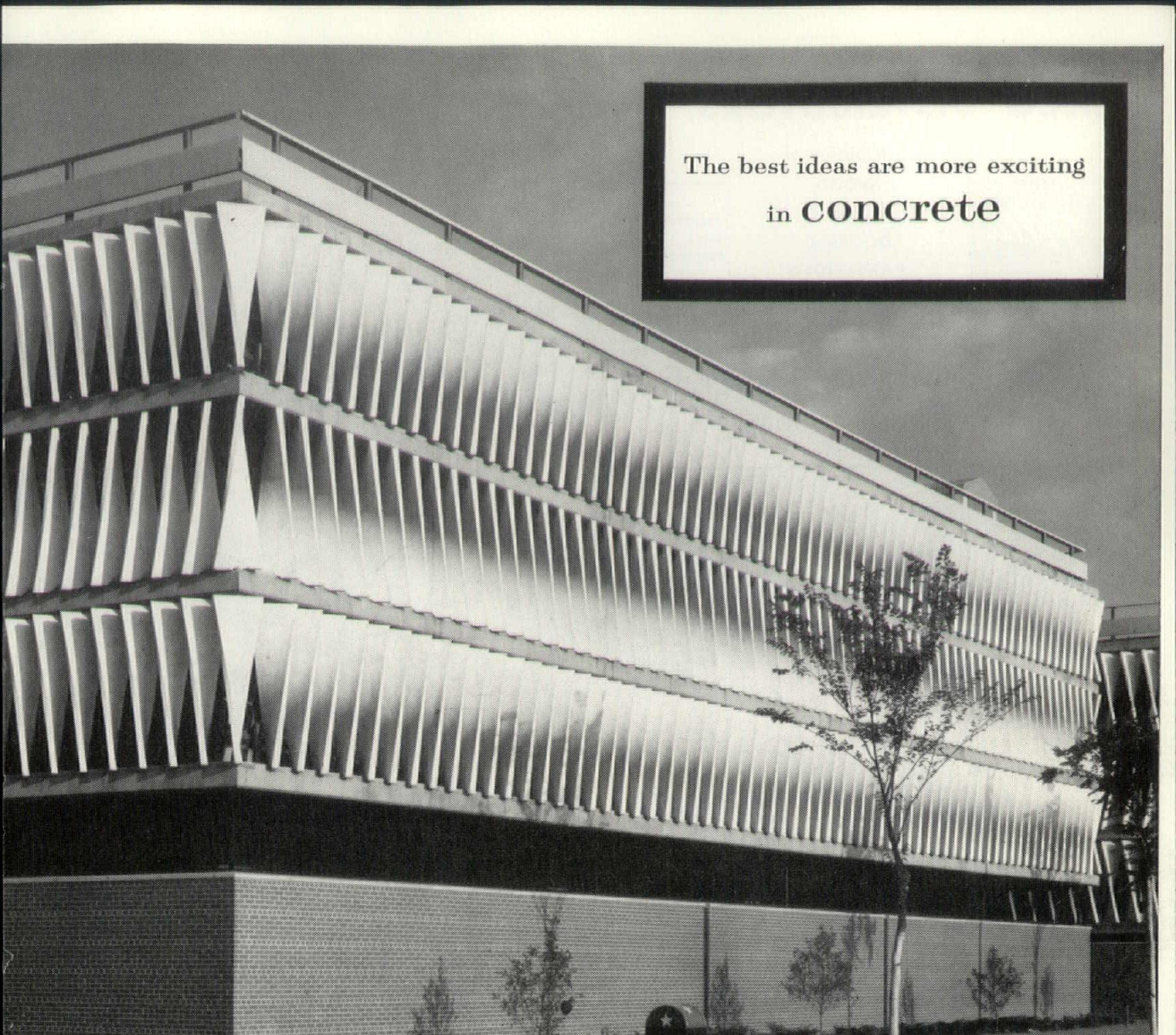
The warehouse before alterations began.



47-Year-Old Warehouse Goes To College

Redesigned as a modern classroom building.



A black and white photograph of a large, modern parking structure. The building features a series of horizontal concrete slabs with vertical louvers that create a rhythmic, textured facade. The structure is multi-storied and has a distinctive, angular design. A small tree is visible in the foreground to the right, and a brick wall runs along the base of the building.

The best ideas are more exciting
in **concrete**

Henry Ford Hospital 870-car parking structure, Detroit, Michigan. Architect: Albert Kahn, Associated Architects and Engineers, Inc., Detroit, Michigan

Louvers give a new beauty twist to concrete curtain walls!

Precast concrete curtain walls have given Henry Ford Hospital an off-the-street parking structure that blends attractively into a residential area. 1,716 hyperbolic paraboloid panels, precast from white cement, white quartz and sand aggregates, form the unique walls. An intriguing visual effect is obtained from these louvers which seem to change shape and position, depending on lighting and angle of view. Practicality is everywhere. In the light, open feeling of the interior . . . in the enduring solidity of the concrete frame and floors. The versatility of concrete is today winning new appreciation as architects express fresh concepts in design.

PORTLAND CEMENT ASSOCIATION 611 Gravier Street, New Orleans 12, La.

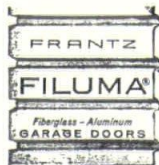
A national organization to improve and extend the uses of concrete

EKCO DISTRIBUTORS, Inc.

Distributors of



WOOD
FOLDING
DOORS &
PARTITIONS
and



OTHER TOP QUALITY BUILDING SPECIALTIES

4102 ST. CLAUDE AVE.
NEW ORLEANS 17, LOUISIANA

WH 9-4821
7-0355



RESIDENTIAL AND INCOME PROPERTY

MORTGAGE LOANS

F. H. A. - G. I. Terms

75% Conventional at Low Interest Rates



225 Baronne St.

Phone 525-5273



ROUBION
TILE & MARBLE CO
CONTRACTORS

"Visit our showroom"

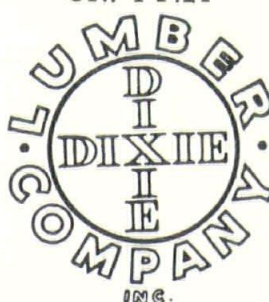
- CERAMIC TILE
- VINYL TILE
- ACID PROOF FLOORS
- MARBLE
- CARPETING
- BUILDING SPECIALTIES

1128 Dublin St.

Phone 866-3677

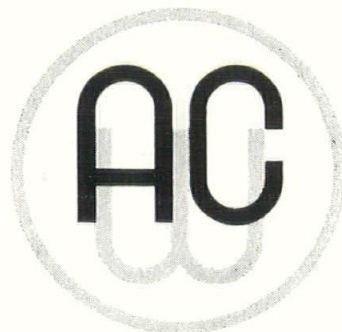
New Orleans, La.

UN. 1-1421



"For Building Needs DIXIE Leads"

8201 Fig Street — P.O. Box 4310
New Orleans 18, Louisiana



POLES, PILING, CROSSTIES, CROSSARMS,
FENCE POSTS, LUMBER — PRESSURE-
TREATED WITH CREOSOTE, CREOSOTE-
COAL TAR OR PENTACHLOROPHENOL

AMERICAN CREOSOTE WORKS, INC.

"Built on 61 years' experience"

1305 Dublin St., New Orleans

Other sales offices: Jackson, Tenn.
Pensacola, Fla. • Chicago, Ill.
Houston, Texas • Tulsa, Okla.

Plants: Slidell and Winnfield, La.
Louisville, Miss. • Jackson,
Tenn. • Pensacola, Fla.

A. G. SIEGEL

ELECTRICAL CONTRACTOR



4136 Jefferson Highway

VE 831-1386

New Orleans 21, Louisiana

DELTA MORTGAGE CORPORATION

DOUGLAS L. BLACK, *President*
CLAUDE E. MEYER, *Vice Pres. & Secty.*
EMMETT ST. GERMAIN, *Vice President*



802 Perdido Street New Orleans 12, La.
Telephone 523-6221

COMMERCIAL — INSTITUTIONAL — RESIDENTIAL FINANCING

BRANCH OFFICES

BATON ROUGE — SHREVEPORT — MONROE

W. D. FAUST

Electrical Sales Agency

manufacturers representative

- **THE MILLER CO. (Since 1844)**
Industrial & Commercial Lighting
- **CENTURY LIGHTING, INC.**
Stage Lighting — Control Systems
- **N. L. CORPORATION**
Church Lighting Since 1904
- **SILVRAY LIGHTING, INC.**
Indirect Lighting for seeing comfort

833 HOWARD AVE. JACKSON 2-5791
NEW ORLEANS 12, LOUISIANA



DAVIS MANUFACTURING CO., INC.

MILLWORK — SASH & DOORS

PHONE HU. 6-6201

1075 S. CLARK STREET NEW ORLEANS, LA.

SEAL
WET WEATHER
OUT



THE lasting paint for masonry

Distributed By

SOUTHEAST DISTRIBUTORS, Inc.

NEW ORLEANS, LA.

3914 HOWARD AVE. TEL. 822-1684
WATERPROOFING CONTRACTORS

**Architects, Artists, Advertising Agencies,
Contractors, Engineers, Lawyers,
Publishers and Executives**

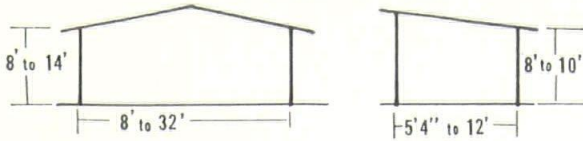
WHO REQUIRE EXCEPTIONALLY LIGHT, NORTH LIGHT,
QUIET, AIRY, WELL-ARRANGED SMALL OR LARGE
OFFICES AND SELECT TENANT-NEIGHBORS SHOULD
VISIT

BALTER BUILDING

404 St. Charles Ave. • Commercial Pl. • Camp St.

This publication comes to you through
the courtesy of the Sponsor, whose
name appears on the front cover, and
the responsible group of firms listed
on these pages.

Armco Frameless Steel Building for Industry

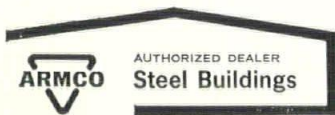


**Insulated Wall Panels—Factory Baked-on Colors
Full Line of Accessories**

**Low-Cost Steel Canopies for Schools
Parking, Commercial Uses**



LANDIS CONSTRUCTION CO.



**UN 6-7437
NEW ORLEANS**

W. B. LEEDY & CO., INC.

Newell M. Leslie, Vice President

**MORTGAGE LOANS
RESIDENTIAL AND COMMERCIAL**



**FHA — VA
INCOME PROPERTY**



505 1st NATIONAL LIFE BLDG. 523-5764
NEW ORLEANS 12, LOUISIANA



LOU WALLACE
Territory Manager
419 Rosa
Metairie, La.
Phone 834-7187

LENNOX Industries Inc.

Established 1895

**Specify *full* HOUSEPOWER
for your clients . . .**

ENOUGH ELECTRIC OUTLETS so lamps and appliances can be plugged in without moving furniture or using extension cords.
ENOUGH BRANCH CIRCUITS of proper size wire to distribute electricity properly and prevent blown fuses—plus spare circuits for the future.
ENOUGH LIGHTS and SWITCHES properly placed so there's never any need to grope around in the dark.
ELECTRIC SERVICE ENTRANCE of at least 100-ampere capacity to take care of today's electrical needs—and tomorrow's, too.



THE ARCHITECT

The word architect, like many words derived from the Greek, is made up of two parts: archi—"chief", and tecton—"a builder." Thus the original meaning of the word explains a union of designing and building activities, a union which the architect maintained up to the middle of the 19th century. At that time, he was thought of more as a designer than as a builder. Architecture was seen as a "fine art", and transferred from the outdoors to an inside atelier, where it remained for nearly 100 years.

Today's interpretation of architecture places the architect somewhat nearer to that original meaning of the word. But the complex social and technical conditions of our highly industrialized society no longer makes that original union of designing and building quite possible.

An architect is a composite personality made up of two basic ingredients: the artist and the technician. As an artist, the architect possesses qualities which artists have possessed throughout the ages; an extraordinary imagination, and a keen awareness and expression of feelings.

As a technician, an architect must possess more than a speaking acquaintance with the available building materials and technology of his day; he must follow the ever-growing variety of equipment and appliances which form the core of modern building.

Today's architect comes closer than ever to fulfilling his historic mission by serving as "chief builder."

THE design was predicated on the fact that this project is the nucleus of a larger terminal which will grow to meet the requirements of increased air traffic. The Architect has given much thought to the expansion of these buildings as well as the location of future facilities. The Terminal Building has some space allotted for airline expansion which is contemplated in the immediate future. Future ticketing and office space may be added by expanding the building to the south. A similar expansion to the north will provide additional baggage claiming and baggage concourse space along with second floor airline office space.

The waiting room may be expanded to the east. Provisions have been made to expand the North and South Passenger Concourses at ground level to handle increased traffic. The concourse roofs have been designed for a future second floor which will facilitate passenger loading of large transports.

Both the South Ramp and Boiler Buildings may expand to the south and north respectively.

The interior public spaces of the Terminal Building are basically two stories high. Both the Ticket and Baggage Concourses are such with a balcony walkway serving the second floor airline offices. At the intersections of the ticket and baggage concourses with the main concourse, the second floor walkways are connected by a bridge which is in full view of the main entrance and waiting rooms. The waiting room is essentially two stories high except at the east window wall which is 39 feet high. Occupants of the Third Floor restaurant and First Floor waiting room have a full view of the airplane ramp facilities, Salt Lake City and the Wasatch Mountains through this window wall.

SALT LAKE CITY AIRPORT NUMBER ONE



Visit One of America's Most Modern Lumber Yards
and Millwork Factories

Bernard LUMBER COMPANY, INC.

4333 EUPHROSINE STREET
NEW ORLEANS 19, LOUISIANA
822-4130

Architectural Millwork and Fixtures — Construction Lumber and Plywood
Whitehall and Brandom Kitchens — Architectural Formica Work
Formica Clad Doors — Paniflex Folding Door Unit

New Orleans Blue Print & Supply Co.

INCORPORATED

Architectural and Engineering Supplies
Surveying Instruments — Drafting Room Furniture
Blue Printing — Photostat Prints
Super Photostat Prints — Photo Murals
Phone JA 5-4271

820-824 Union Street New Orleans 12, La.
Authorized Representatives KEUFFEL & ESSER CO.
HOBOKEN, NEW JERSEY

Jno. Worner & Son, Inc.
Builders' Hardware



401-405 DECATUR STREET
PHONE: 529-2592
NEW ORLEANS 16, LA.

C. R. BRANDON CO.

"Screening the Gulf Area Since 1920"

KOOLSHADE[®]
SOLAR HEAT and GLARE CONTROL



DISTRIBUTOR
• KOOLSHADE CORP.
• KANE MFG. CORP.

421 So. Salcedo St.
HU 2-6921
New Orleans 19, La.

ARKLA-SERVEL
GAS AIR CONDITIONERS
SELF CONTAINED AND REMOTE
CHILLER-HEATER UNITS

GULF ENGINEERING CO. INC.

1000 So. Peters Street New Orleans, Louisiana
JA 2-4421

See Our Fine Displays of
LOCKWOOD HARDWARE and ELJER PLUMBING FIXTURES

Woodward, Wight & Co. LTD.

THE LARGEST GENERAL SUPPLY HOUSE SOUTH SINCE 1867

451 HOWARD AVE. •

• NEW ORLEANS 9, LA.

TELEPHONE 524 - 2471



PERSONNEL



First National MORTGAGE CORPORATION
 LOUIS P. WOLFORT, President



MORTGAGE LOAN SPECIALIST

INCOME PROPERTY • RESIDENTIAL PROPERTY • CONVENTIONAL — FHA — VA

New Orleans, La.
 600 Maritime Bldg. — 529-5581

Baton Rouge, La.
 1412 Florida Blvd. — DI 4-0328

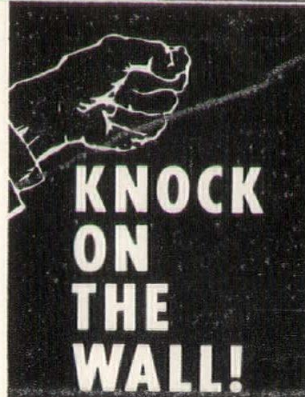
Pelican



Plumbing Supply Inc.

2310 Perdido Street New Orleans 19, La.
 Phone 522-8184

Wholesale Distributors for:
**KOHLER OF KOHLER
 PLUMBING FIXTURES**



Be sure it's
**GENUINE
 LATH AND
 PLASTER**

LOUISIANA BUREAU FOR
 LATHING & PLASTERING

H. RITCHIE, JR., Executive Secretary
 4805 DANNEEL STREET NEW ORLEANS, LA.



**ELEVATORS — ESCALATORS
 DUMBWAITERS — SPEEDWALKS
 ELECTRIC AND OIL HYDRAULIC**

THROUGHOUT LOUISIANA BY

Gulf States Elevator Corp.

Main Office: 715 CAMP STREET
 JA 2-2758 NEW ORLEANS

- Custom Aluminum Fabrication
- Special Windows
- Aluminum Door Frames
- Sunscreens and Decorative Grilles
- Aluminum Flush Doors
- Window Wall and Curtain Wall

We are at Your Service . . . Call Us for Complete Assistance including Preliminary Designs and Estimates

ALUMAGLASS
 BUILDING PRODUCTS INC.

739 S. Clark Street, New Orleans 504 486 6581

Avegno & company incorporated

- bonds
- insurance

512 whitney building 529-5571
 new orleans 12, louisiana

Every Drafting Room Needs

Rotolite
 FOR MODERN COPYING

- For low-cost, on-the-job, blueline prints, black-lines, sepias, foils! Dial control. Thermomatic rotary developing unit!

BLOUNT & COMPANY

806 Perdido Street Phone 523-5649
 New Orleans, Louisiana

**CONSTRUCTION
NEWS, INC.**

P. O. Box 679

Mount Vernon, New York

BULK RATE
U. S. POSTAGE
PAID
Permit 1459
New York, N. Y.

G E PETTENGIL-LIBR
AMERICAN INST-ARCHTS
1735 NEW YORK AVE NW
WASHINGTON D C
C-266

Guarantee Yourself

SKILLED CRAFTSMEN

For Every Piping Need

The Pipe Council of Greater New Orleans, 866-7541, can provide you a mechanical contractor who specializes in meeting your particular piping requirements. This may be the installation, repair and maintenance of industrial process piping in plants or plumbing, heating and air conditioning systems in industrial and commercial buildings. Whatever your need, the Pipe Council can guarantee a mechanical contractor to serve you!

Dealing with a member of the Pipe Council assures you

**A Completely Bonded, Licensed
Company**

Fully Trained, Union Journeymen

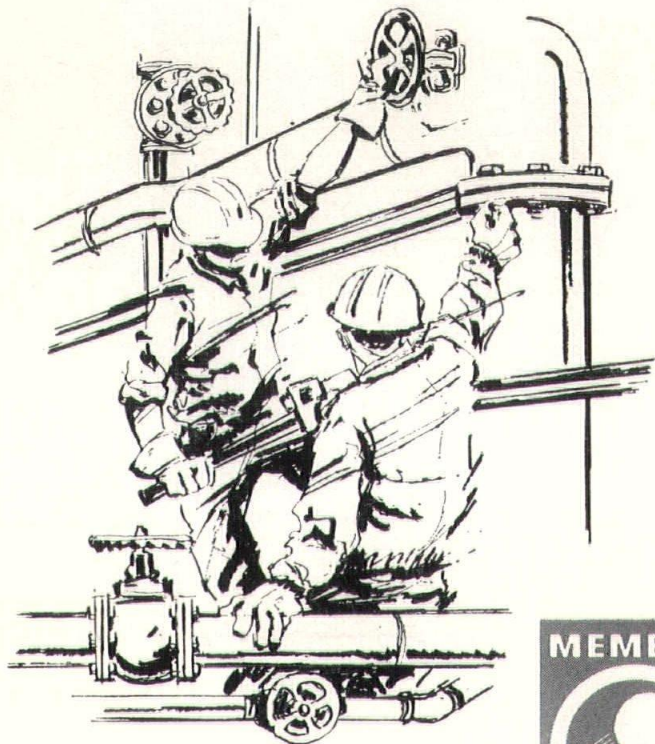
Highest Quality Materials

Competitive Prices

Prompt Service

Reliable Performance

Guaranteed Installations



THE PIPE COUNCIL OF GREATER NEW ORLEANS
1420 South Jefferson Davis Parkway / Telephone: 866-7541

