

AMERICAN INSTITUTE  
OF  
ARCHITECTS

AUG 29 1960

LIBRARY



Toledo Chapter



Cleveland Chapter



Dayton Chapter



Columbus Chapter



Eastern Ohio Chapter

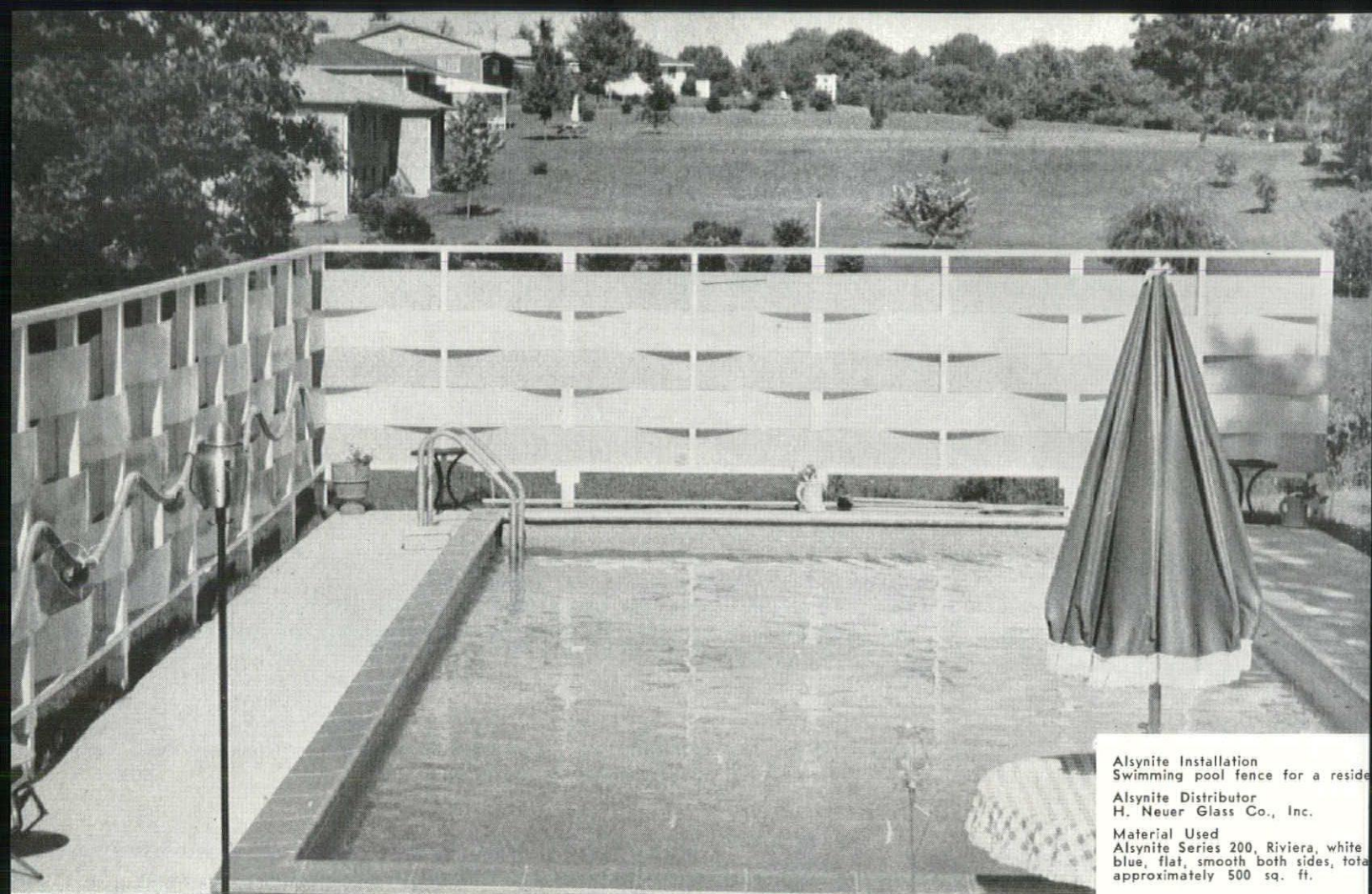


Cincinnati Chapter

# OHIO ARCHITECT

OFFICIAL PUBLICATION OF THE ARCHITECTS SOCIETY OF OHIO  
OF THE AMERICAN INSTITUTE OF ARCHITECTS, INC

august  
1960



Alsynite Installation  
Swimming pool fence for a residence  
Alsynite Distributor  
H. Neuer Glass Co., Inc.  
Material Used  
Alsynite Series 200, Riviera, white  
blue, flat, smooth both sides, total  
approximately 500 sq. ft.

TEN YEAR GUARANTEE ON



PANELS

Of the modern building materials available to architects Alsynite is one of the most versatile. Design possibilities of these translucent fiberglass panels—for fences, walls or partitions . . . indoors or out—are limitless.

Ideal for fences, Alsynite panels are lightweight and easy to work with. They can be sawed, cut, drilled and nailed with ease.

Alsynite **Superglaze** process locks in the decorator colors and assures carefree lasting beauty. An exclusive heat-block, **Filtron 25**, controls heat and glare. Only soft, diffused light is transmitted by Alsynite.

Whatever your design, there's just the right Alsynite panel to fit it: flat, corrugated, decorative embedment and the exciting new shape—**Ridgeway**.

Superglazed Alsynite's color, strength and surface are guaranteed in writing for 10 years. Ohio Representatives will be happy to serve you.

H. Neuer Glass Co., Inc.  
508-524 Reading Rd.  
Cincinnati, Ohio

The Palmer Donavin Mfg. Co.  
750 Twin Rivers Dr.  
Columbus, Ohio

Levinson Steel Co.  
37 S. 20th St.  
Pittsburgh, Pa.

The Dougherty Lumber Co.  
12100 Euclid Ave.  
Cleveland 6, Ohio

Davids Reliable Glass, Inc.  
3306 N. Dixie Dr.  
Dayton 14, Ohio

Holly Reserve Supply Inc.  
3058 Monroe St.  
Toledo 6, Ohio

DISTRICT OFFICE

Alsynite Division of  
Reichhold Chemicals, Inc.  
1220 Goodale St.  
Columbus 12, Ohio

# One of the Nation's 10 largest motels ... Nationwide Inn uses:

*GAS for cooling... GAS for heating...  
GAS for cooking... GAS for heated  
swimming pool... GAS for hot water*



This beautiful Albert Pick Motel, at 4104 W. Broad Street, in Columbus, takes full advantage of the excellent service and practical economy offered by Gas equipment.

A 200-ton York Absorption Refrigeration Machine cools all 275 rooms. It utilizes steam from the Gas-fired heating system for economy and year 'round use of expensive equipment.

Only flame-fast Gas equipment can provide the fine foods and prompt service necessary for the spacious dining areas served by Nationwide Inn's "100% Gas-equipped kitchen," according to Cliff Potts, motel manager.

Gas keeps pace with the heavy hot water de-

mands of motel patrons, as well as kitchen and laundry needs. A Gas-fired water heater is expected to "double the length of the swimming season" at the motel pool.

Architect. . . . . Gamble Pawmall & Gilrow, Ft. Lauderdale, Fla.  
Builders & Engineers. . . . Robert W. Setterlin & Sons Co., Cols.  
Mechanical Contractor. . . . . The Limbach Company, Columbus

*Whatever the job, remember . . .  
There's Nothing Like a Flame!*

And for specific information concerning the cooling, heating, cooking and other needs of your client, contact the Industrial Engineers or the Commercial Representatives at your nearest Gas Company Office.



THE OHIO FUEL GAS COMPANY



# Exercise on it!

and Feel the Cushioned  
Flex of **KREOLITE Gym Floors**

Whatever the action . . . running, jumping, or calisthenics . . . Kreolite gym floors are kinder to the feet.

This lessening of fatigue is a result of Kreolite Flexible Strip End Grain Wood Flooring's cushioned flex and high *resiliency*.

For durable beauty, ease, and economy of maintenance Kreolite flooring has proved its ability to outlast ordinary floors.

For better *resilient* flooring in gyms, multi-purpose rooms, and shops, get all the facts on Kreolite's many money-saving advantages.

Write today for installation data and specifications.

**KREOLITE**

**FLEXIBLE STRIP**

**END GRAIN FLOORING**

↓  
**THE  
JENNISON-WRIGHT  
CORPORATION**  
TOLEDO 9, OHIO

## OFFICERS

**President**  
**Harold W. Goetz, AIA**  
 56 South Main Street  
 Middletown, Ohio

**First Vice-President**  
**Gilbert Coddington, AIA**  
 Brooks & Coddington  
 3826 North High Street  
 Columbus, Ohio

**Second Vice-President**  
**Howard B. Cain, AIA**  
 614 Park Building  
 Cleveland 14, Ohio

**Immediate Past-President**  
**Hermon S. Brodrick, AIA**  
 312 Harries Building  
 Dayton 2, Ohio

**Third Vice-President**  
**Orville H. Bauer, AIA**  
 Bellman, GHeff & Richards  
 1600 Madison Avenue  
 Toledo 2, Ohio

**Secretary**  
**Frank E. Poseler, AIA**  
 Britsch, Macelwane & Assoc.  
 2446 Sylvania Avenue  
 Toledo, Ohio

**Treasurer**  
**Joseph Tuchman, AIA**  
 Tuchman & Canute  
 777 West Market Street  
 Akron 3, Ohio

**Executive Director**  
**Clifford E. Sapp**  
 5 East Long Street  
 Columbus, Ohio

## EDITORIAL STAFF

**Publication Committee**  
**Chairman**  
**Howard B. Cain, AIA**  
 614 Park Building  
 Cleveland 14, Ohio

**Technical Editor**  
**David A. Pierce, AIA**  
 4501 North High Street  
 Columbus 14, Ohio

**Managing Editor**  
**Clifford E. Sapp**  
 5 East Long Street  
 Columbus 15, Ohio  
 Telephone: Capital 1-9630

**Editor**  
**Mary Flannery**  
 5 East Long Street  
 Columbus, Ohio

## ASSOCIATE EDITORS

**Cincinnati**  
**William R. Bogart, AIA**  
 6102 Ridge Ave.  
 Cincinnati 13, Ohio

**Cleveland**  
**Charles E. Rimer**  
 Mather Lane  
 Hunting Valley Village  
 Chagrin Falls, Ohio

**Columbus**  
**Richard H. Eiselt, AIA**  
 332 S. Cassady Ave.  
 Columbus 9, Ohio

**Dayton**  
**Robert J. Makarius, Jr., AIA**  
 312 Harries Building  
 Dayton 2, Ohio

**Eastern Ohio**  
**Roger F. Buzzard, AIA**  
 532 West Park Ave.  
 Barberton, Ohio

**Toledo**  
**Noel J. Blank**  
 Security Building  
 Toledo 4, Ohio

**OHIO ARCHITECT** is the monthly official magazine of the Architects Society of Ohio, Inc., of the American Institute of Architects. Opinions expressed herein are not necessarily those of the Society.

Editorial and Advertising office: Five East Long Street, Columbus 15, Ohio. Printed at: The Lawhead Press, 900 East State Street, Athens, Ohio.

**OHIO ARCHITECT** publishes educational articles, architectural and building news, news of persons and the activities of the Architects Society of Ohio.

**OHIO ARCHITECT** is available at a subscription cost of \$4.00 each year or .50 cents each issue. Roster issue: \$1.00.

AUGUST, 1960

# OHIO ARCHITECT

OFFICIAL PUBLICATION OF THE ARCHITECTS SOCIETY OF OHIO  
 OF THE AMERICAN INSTITUTE OF ARCHITECTS, INC

AUGUST, 1960

Volume XVIII

Number 8

## CONTENTS

### FEATURES

The Elmwood High School .....	6
Crestview of Ohio .....	8
Toledo Opens Second Downtown Mall.....	13
Ohio Architects Meet The Press .....	15
By Charles J. Elia, Business Editor Columbus <i>Citizen Journal</i>	

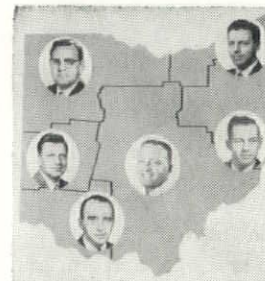
### AIA AND ASO NEWS

Chapter Presidents serve Ohio Architects ....	11
Convention IMAGE .....	13
Advertisers in <i>Ohio Architect</i> .....	20

### COVER AND FEATURE MATERIAL

Feature material in this issue was furnished by Noel J. Blank, associate editor of the Toledo Chapter of the American Institute of Architects.

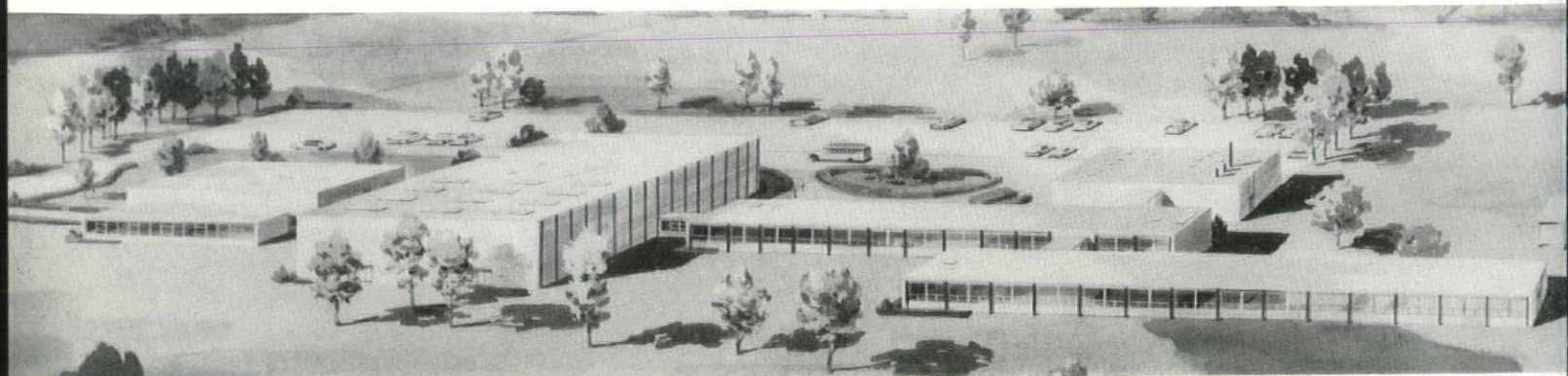
Pictured on the cover are the presidents of the six chapters of the Architects Society of Ohio.



Copyright 1960 Architects Society of Ohio, Inc. of the American Institute of Architects. All rights reserved.

# The Elmwood High School

## Architects Munger, Munger and Associates



### A CAMPUS PLAN HIGH SCHOOL . . . . Serving Five School Districts

A rural high school campus—five brick, glass and steel buildings connected by glass walled corridors—the new Elmwood Consolidated High School was constructed on 40 acres of open, flat rural land in Wood County, Ohio. The country site is a midpoint for transportation from five school districts. Before consolidation students attended four small high schools. Expanded facilities of the new consolidated school offer greatly increased educational opportunities for 600 students. Offerings for students jumped from 20 courses to 50 courses in the new building. It was possible to assign teachers according to their major field of training and to group the students on the basis of ability in each subject area for increased classroom effectiveness in English, science and mathematics courses.

Elmwood, completed in September 1959, was designed on a modified-campus-style so that special areas could be separated. General classrooms, library, speech and art are in one unit; special classes in home economics, science and commerce occupy a second unit; a third unit was planned for vocational, agriculture shop, metal and

wood shops, mechanical drawing and boiler rooms; cafeteria, offices and music have a separate unit. The fifth unit is a separate auditorium-gymnasium offering a full time physical education program. The 9000 sq. ft. accommodates two full crosscourt basketball floors as well as the full length playing floor. Elmwood's auditorium has a seating capacity of 850 and is used extensively by the entire community.

The entire Elmwood High School complex is a series of steel framed buildings, except for the shop building where extensive openness of the exterior wall would have been detrimental. The frames of the two classroom units have tee columns visible from the exterior that call out the 15 feet structural module. A kind of 'L' shaped steel deck is used as a roof structure. Acoustic tile and recessed fluorescent troffers are accommodated by this deck. The shop building is a masonry bearing wall structure with a bar joist roof construction.

In the connecting corridors as well as in the office section a repetitious shop fabricated structural curtain wall was developed that permitted entire

connector lengths to be erected at once. These walls are bolted to the foundation and have glass stopped directly between the posts, eliminating the conventional sash.

The auditorium-gymnasium building is a large steel cube, using 98 feet long-span joists, that encompasses the functions and shapes of the auditorium, locker rooms, gymnasium, lobby and auxiliary rooms. Again the columns for this structure are placed on the 15 feet module.

In addition to the steel skeleton the major portion of the exterior surface is brick and glass. Steel sash and steel entry doors are used everywhere except in the two classroom units where aluminum is used.

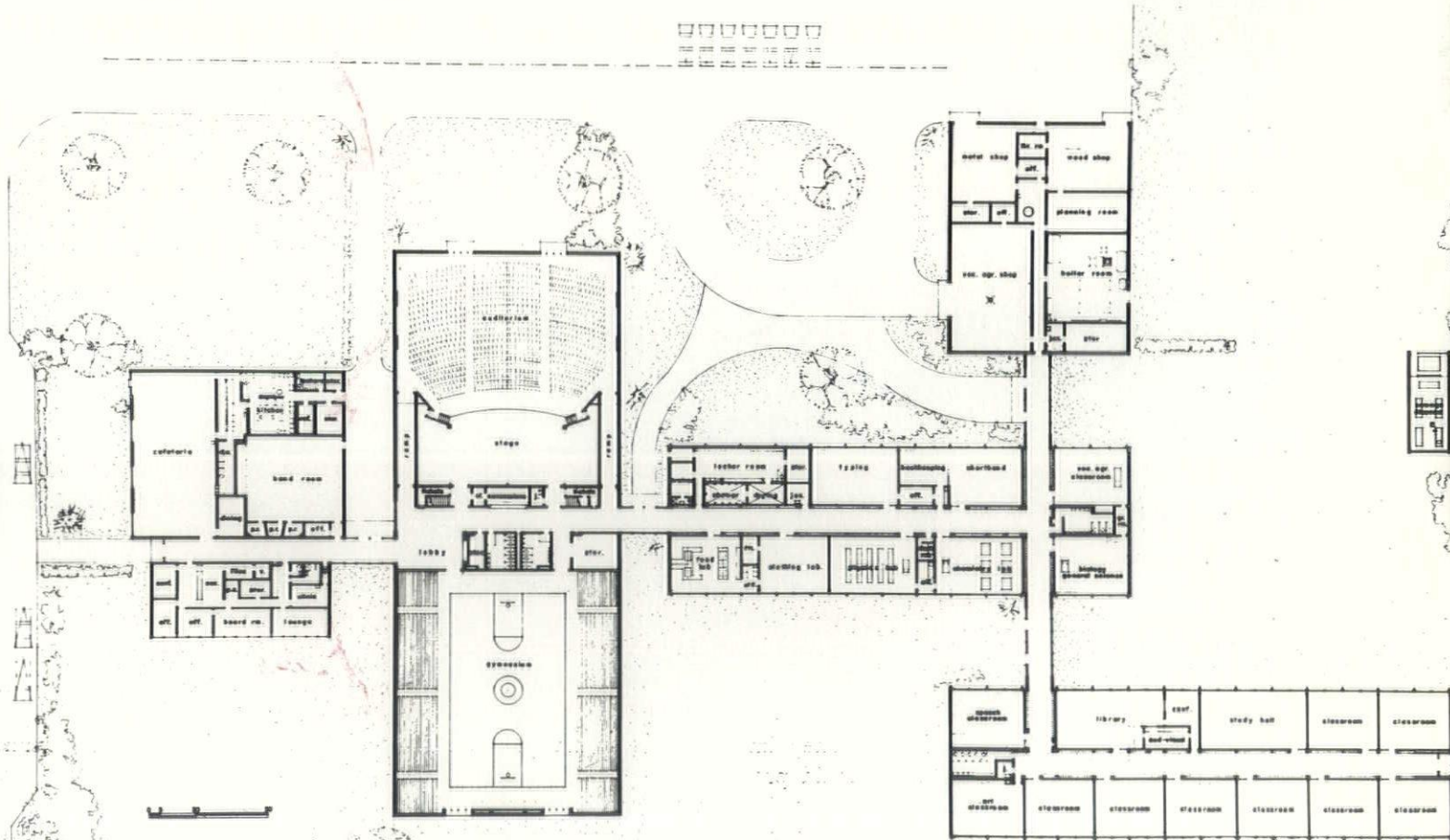
In the interior all corridor floors are terrazzo. Gymnasium and stage floors are maple strip, and all remaining floors are asphalt tile.

Classroom and office walls are plaster on metal studs; corridors have ceramic tile on metal stud walls. Structural facing tile is used, floor to ceiling, in all toilet and locker rooms. All door frames are metal. Ceilings are steel deck and acoustic tile, except in areas of steel roof joist construction.



North view of the Elmwood High School shows at left a portion of the two-story auditorium-gymnasium building. A glass-walled corridor connects the gymnasium with the academic-classroom building, right. Elmwood architectural plans were exhibited at the 1960 National School Boards Association Convention, Chicago; the 1960 convention of the American Association of School Administrators and the 1959 Ohio School Boards Convention.

(Below) Floor plan of Elmwood's five connected buildings; second floor of auditorium-gymnasium, not shown, accommodates locker rooms, showers, laundry and storage areas.





## Crestview of Ohio

### Engineers and Architects Samborn, Stekete, Otis and Evans

#### The New Approach to Old Age

The philosophical concept of old age has changed markedly in this mid-Twentieth Century. A person of 65 or older is no longer a "has-been"—rather is this person a "Senior Citizen," in most instances healthy, responsible, useful, financially independent with a keen desire to spend late years in a purposeful way.

Today, realistic people look upon old age as a period of life capable of meaningful content. It is not a time of helplessness . . . rather a time of respectability. They realize that any program

for senior citizens should help develop their potentialities, bring the benefits of health and happiness resulting from new resources of science and society. They know that such a program must relate the lives of its participants to the surrounding community, that it must help the senior citizen gain and maintain a sense of personal adequacy in our complex social structure.

They know that a sound program should provide

- . . . spiritual inspiration and comfort
- . . . sound physical and mental health
- . . . pleasant living arrangements

- . . . happy social relationships
- . . . economic security through socially useful and personally satisfying occupations.

#### An Approach to One Elderly Housing Project . . .

It was in 1957 that Victor D. Bjork, administrator of Flower Hospital in Toledo, first visited with the principals of Samborn, Stekete, Otis and Evans, engineers and architects, about the "Senior Citizen." He had certain basic ideas in mind and sought assistance in their development.



A year of research by the architects was the result of this first visit, a year spent in deep, co-operative study of old age philosophy, of new ideas in old age living. Senior citizens projects were visited in all sections of the country, data was collected and co-ordinated on the thoughts, desires and aspirations of the elderly, their health maintenance requirements, dietary and occupational needs, hobbies, recreation.

Studying and working together, Mr. Bjork and John H. V. Evans of Samburg, Steketee, Otis and Evans developed a plan for a thoughtfully-integrated "village" for senior citizens, complete with living apartment units, a chapel, nursing and acute hospital care facilities, a hobby achievement center with an exhibit hall, a lodge hall and other recreational elements.

### The First Step

The site was chosen—an 85-acre, beautiful, partly-wooded estate near Sylvania in suburban Toledo. Because of the low roll of the land the new village was named "Crestview" and plans were drawn for the first of many buildings which would eventually accommodate a population of up to 3,000 senior citizens.

"Crestview of Ohio, Inc.," a non-profit corporation, was formed to construct, operate and maintain the new village. It was constituted as a non-profit organization, sponsored by Flower Hospital and affiliated with the organization of Methodist Hospitals and Homes of the Ohio Annual Conference of the Methodist Church. Crestview of Ohio immediately became a member of the American Hospital Association and the Ohio Hospital Association.

Financing was secured—an FHA guaranteed 40-year mortgage, one of the first of its type in the midwest—and work began on the initial phase of the overall project—a modern, fire-proof, six-floor apartment building with 175 private apartment-residences to accommodate 207 people. It was completed in January 1960 by Fred W. Entenman, Inc., general contractors.

Eight types of living units have been designed into the building from single studios to two-bedroom apartments, ac-

commodating the single person as well as the married couple. Prices vary according to size and location in the building.

Private kitchenettes are a part of many units, permitting the preparation of a light breakfast or a mid-day party snack.

Although the residents of Crestview are healthy and ambulatory, these special provisions have been included within the individual apartments for comfort and safety: sliding doors; 24-hour intercommunication to a central control point; and, in the bath, ceramic tile walls, showers, low tubs, securely anchored grab bars and medicine cabinet fixtures arranged for use by a person in a wheelchair.

Heating is by perimeter hot water radiation with additional heat and fresh, filtered air provided by a ventilating system that changes the air in the building three to four times every hour. Wiring is installed, ready for air conditioning units if the resident wishes.

And when they wish it, the residents have many things to do, many places to go throughout the building. Every element of safety and comfort has been considered. There are no steps or ramps in the building and provision has been made for adequate handrails, particularly in corridors. Nonskid flooring that requires no wax has been used. The elevators are equipped with all known safety devices.

The architects designed a "commons"

room into each floor for small, convivial get-togethers during the day or in the evening hours. On the first floor this room was converted into a beauty salon so lady residents may have the assistance of a trained beautician in keeping up their appearance—so important to morale.

The main dining room, cheery and sunlit, has a club-like atmosphere with carefully chosen decorative appointments and leisurely service that makes for contentment. Residents are asked to enjoy at least two meals a day in this room, thus insuring them some measure of dietary control and offering the important psychological benefit of meeting and mixing with neighbors.

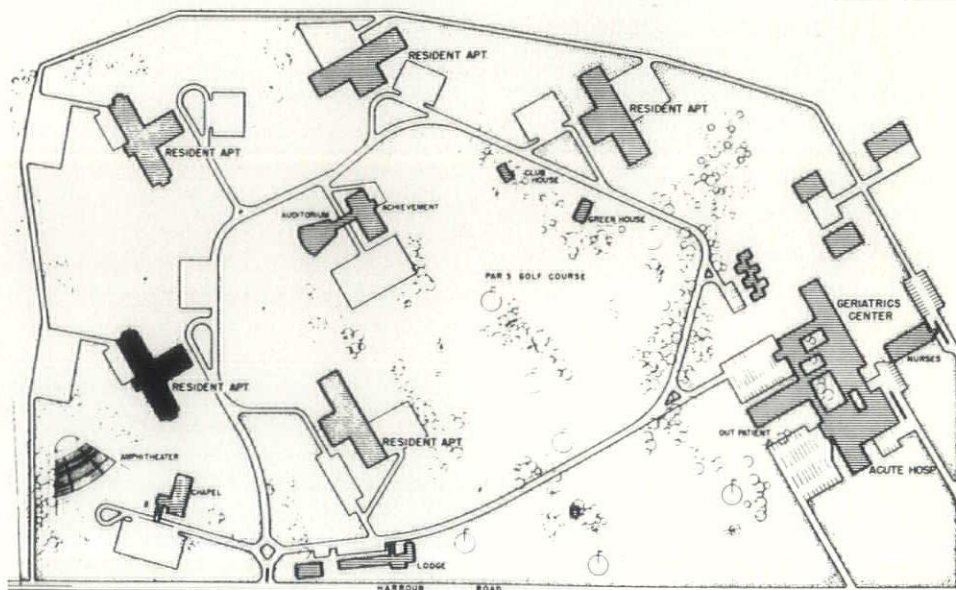
On the ground floor there is a multi-purpose room for social gatherings with hobby and craft shops adjoining. Residents are urged to enjoy the satisfaction that comes from leisurely but purposeful manual work.

In the plot plan of the apartment building individual outdoor garden space can be provided the residents so they may plant, nurture and harvest their own "stand" of flowers or vegetables. Near by are outdoor lounges and patios.

Quite often the senior citizen has a fear of sudden illness. This fear is allayed at Crestview by the on-call duty of a doctor and a registered nurse 24 hours a day. In case of acute illness

(Continued on Page 10)

PLOT PLAN





This spacious lounge room is available to all "Crestview" residents and guests. The dining room is partially visible through the draped windows in the center of the photo.

(Continued from Page 9)

the resident may be transported quickly to affiliate Flower Hospital in Toledo. As the Crestview "village" develops, an eight-story, 300-bed medical building will be constructed, providing long-term, self, intermediate and acute care for the residents and for people in the surrounding geographic area.

A total of four more apartment buildings is planned, similar in design to the first one now completed. As in the initial unit, residents will actually "buy" their individual apartments with their "Founders Security Fee," ranging from \$8,000 up. This provides lifetime occupancy of the apartment as well as the use of all facilities. In addition, a "Monthly Life Care Fee" of \$150 per person covers the cost of three well-planned meals a day, special dietary services, maintenance and upkeep of the apartment building, laundering of apartment linen, the house physician and infirmary service and standard hospitalization.

Throughout the entire development of the Crestview concept for senior citizen living, close co-operation of the sponsor and the architect has been the keynote. This co-operation, and its re-

sultant attention to the details of comfort and convenience for Crestview residents, has led to the successful completion and operation of the first unit—the forerunner of many such units in this "village" facility.

## A Construction First At Crestview

### . . . Two-Way Voided Lift Slab Design

From the standpoint of engineering and architecture the two-way voided lift slab method is not a method of design—rather it is a technique of construction which consists of pouring the upper floors and roof of a structure at ground level, using the building's ground floor as a soffit form and utilizing a maximum of voids in the slab.

After the slabs have cured properly, each one is lifted by hydraulic jacks to its proper elevation and permanently fastened to the columns. Concrete voided slabs and steel columns are employed as the basic structural system.

This method has many practical advantages in both construction and design and offers economics not readily apparent at first glance.

One important advantage inherent

in this type of construction is that a lighter slab with less mass is required to be raised by each jack. With the maximum use of voids a thicker and stiffer slab is provided, yet it is lighter. This allows more working room in the area of the column shear heads, a critical area in flat slab construction.

With less deflection construction problems created by unequal deflection between slabs are decreased. Often, in cases in which movable partitions and siding are used, the stiffer slab minimizes problems of caulking, plumbness and clearance.

Design advantages over conventional methods of construction such as beam and slab, joist or waffle slab include

1. Maximum flexibility—the ability to relocate partitions in a multiple number of positions for a variety of room arrangements;
2. Completely optional ceiling treatment—paint can be applied, or acoustical plaster or tile may be attached where desired, permitting maximum pattern selection and flexibility;
3. Enhanced exterior appearance—this may be gained by the use of cantilevers. The stiffer slab reduces the sine wave effect often found in flat slabs having relatively long spans.

Slab in place costs may exceed other methods of construction. But savings realized by eliminating or lowering costs in other construction trades often make the voided lift slab the most economical method. The "Crestview" project represents, it is believed, the first time the two-way voided lift slab method has been used in the United States. As the name implies, voids, as well as reinforcing, run in both directions. The design is basically that of a two-way flat slab with maximum use of voids where concrete is not required for shear or movement in each direction.

In the case of "Crestview," the span is 24 feet, 6 inches. Slabs are 10 inches thick with 5-inch and 6-inch diameter fiber tubes as voids. With this technique the dead load has been reduced from 125 psf to 84 psf which, of course, has reflected a decrease in column footings, slab reinforcing and concrete.

# Chapter Presidents Serve Ohio Architects

## Richard H. Wheeler, President Cincinnati Chapter, AIA



Richard Wheeler, AIA, has been a member of the faculty of the University of Cincinnati as an assistant professor of architecture in the College of Applied Arts since 1953. He also taught architecture at Washington University in St. Louis, Mo.

Presently a partner in the Cincinnati firm Garber, Tweddell & Wheeler, Mr. Wheeler has practiced architecture in Boston, Carl Koch & Associates; Detroit, Eberle M. Smith & Associates; and St. Louis, Hellmuth Yamasaki & Leinweber.

A native of Massachusetts, Mr. Wheeler was graduated from Harvard University in 1946 and Harvard School of Design with a Bachelor of Architecture degree in 1951.

He has devoted much time to the service of both the Cincinnati Chapter and the Architects Society of Ohio.

## Noverre Musson, President Columbus Chapter, AIA



Noverre Musson, AIA, became a partner in the Columbus firm of Tibbals-Crumley-Musson, Architects in 1945. In addition to his private practice Mr. Musson has worked extensively in the fields of education and newspaper writing.

He was assistant professor of architecture at The Ohio State University in 1946-47; conducted architecture courses there in 1957-59; and has lectured on architecture, planning and travel at Stanford University, Otterbein College, Ohio University and Middlebury College, Vermont.

From 1941-52 Mr. Musson was a columnist for the *Columbus Citizen* now the *Citizen-Journal*, on architecture and planning. Currently he is writing a feature series for the *Citizen-Journal* on architecture and travel.

A graduate of OSU with a Bachelor

of Architecture, Mr. Musson was awarded first prize in the 1944 NAHB Nationwide Residence Competition.

## Robert N. Yoder, President Cleveland Chapter, AIA



Robert Yoder's professional career both with the firm of Dalton-Dalton Associates and with the Cleveland Chapter of the AIA has been one of continual progress.

Mr. Yoder began his association with Dalton-Dalton Associates in 1946. Until 1950 he served as chief draftsman and was responsible for project design and field supervision from 1950-53. At that time he was promoted to project director for the firm and became a partner in 1959.

Made a corporate member of the Cleveland Chapter in 1951, he has since been active in many committees and offices. He has served on the Executive Committee of the Chapter since 1955 as director, secretary, vice president and president.

Mr. Yoder attended Ohio Wesleyan University and was graduated from the University of Michigan with a Bachelor of Architecture degree in 1944.

## James E. Hart, President Dayton Chapter, AIA



James E. Hart, AIA, served a term as secretary of the Dayton Chapter prior to his recent election to the presidency.

Having been associated with his father, Erskine A. Hart, AIA, for three years, Mr. Hart joined in partnership with him in 1955 under the firm name of Hart and Hart, Architects for the general practice of architecture.

Previous to this association Mr. Hart was employed for one and one-half years in the Headquarters Air Installation Division of Air Material Command at Wright Patterson Air Force Base.

He was graduated from the University of Cincinnati in 1950 with a Bachelor of Science degree in architecture.

## James F. Knapp, President Eastern Ohio Chapter, AIA



James Knapp, AIA, was graduated from The Ohio State University with a Bachelor of Architecture degree in 1948 and joined the firm of Charles J. Marr, Architect the same year. He was made an associate in 1951 and two years later became a partner in the firm Marr, Knapp & Crawfis.

Mr. Knapp's service to the Eastern Ohio Chapter, prior to his election as president, includes three years as director and one each as secretary and vice president.

During his years at OSU Mr. Knapp worked part-time in a Columbus architectural office.

Among his other activities are local chairman of the State House Conference on Education, president of the board of trustees of the Presbyterian Church, past president of Alpha Rho Chi, architectural fraternity and member of the Lions Club.

## Charles D. Scott, President Toledo Chapter AIA



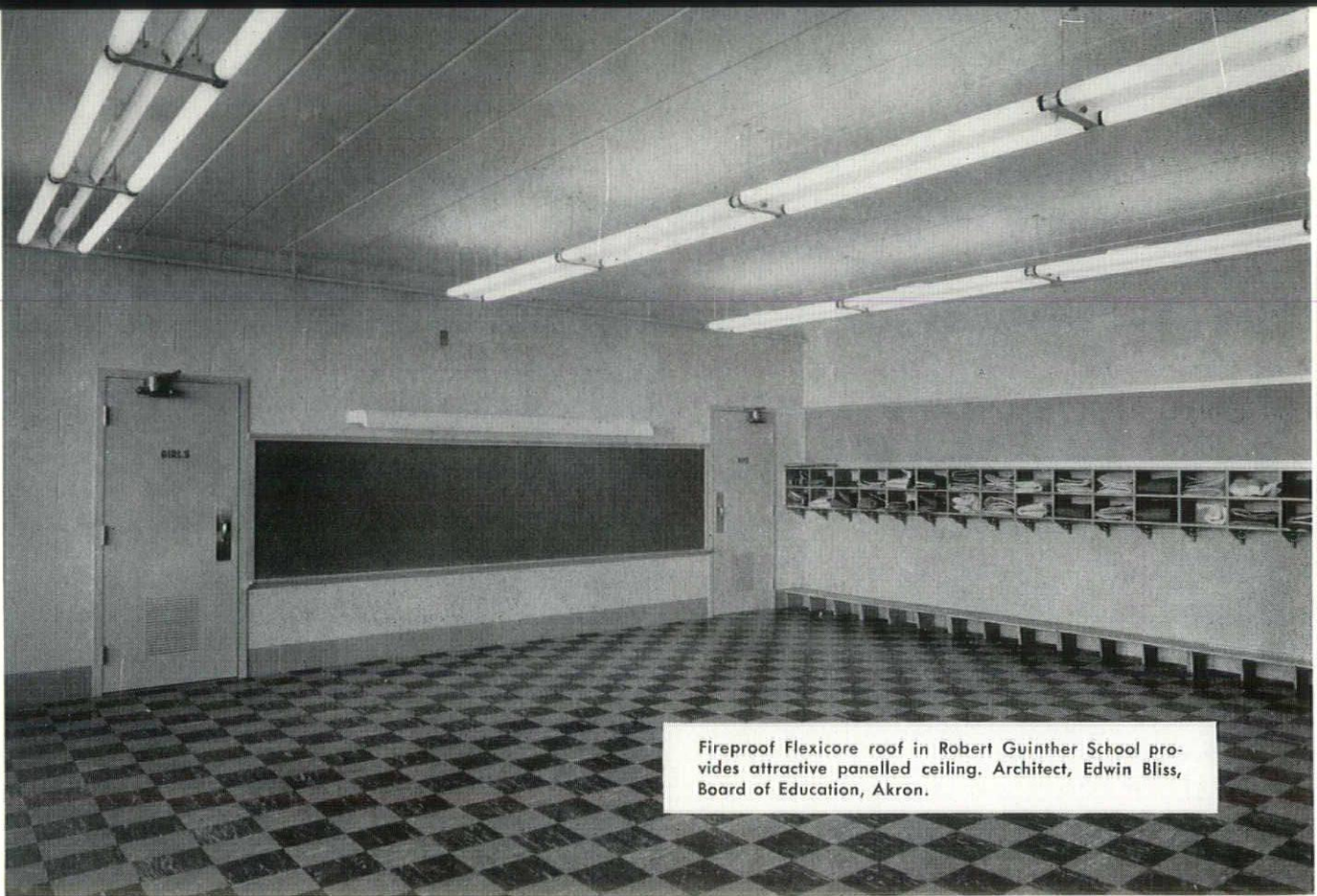
Charles Scott, AIA, came to Toledo in 1950 to work for the firm of Wernert, Taylor, Sanzerbacher & Morris.

He became the architect partner in the firm Sanzenbacher, Miller & Brigham, consulting engineers, in 1959.

A native of New York, Mr. Scott attended Pratt Institute in Brooklyn and was graduated in 1948 with a Bachelor of Architecture degree. He then spent two years in the architectural department of American Can Co. as a draftsman.

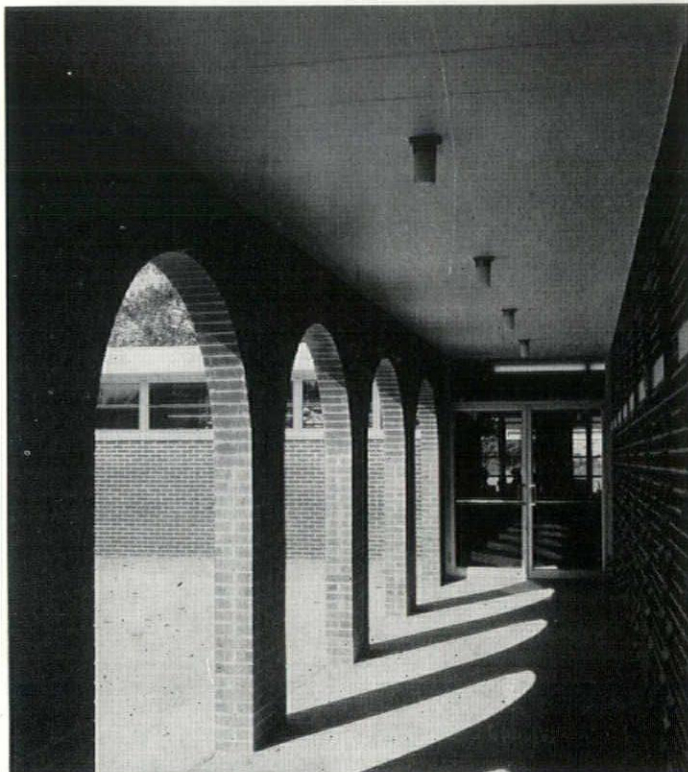
Having held many executive offices and committee chairmanships in the Toledo Chapter, Mr. Scott has also been a loyal contributor to the activities of the Architects Society of Ohio.

During World War II Mr. Scott served in the U.S. Army Air Force.



Fireproof Flexicore roof in Robert Guinther School provides attractive panelled ceiling. Architect, Edwin Bliss, Board of Education, Akron.

## Two Fireproof Schools For Akron Children



Fairlawn Elementary School. Architects, Tuchman and Canute; engineer, David R. Simpson, Akron.

The Number 1 consideration in the design of a school building is the safety of the children. In Akron, two architects designed all-concrete school buildings to provide the ultimate in fire safety.

Both schools have masonry bearing walls and Flexicore precast concrete roofs. A Flexicore deck, similar to the ones used on these buildings, plus 1½ inches of topping, has a three-hour fire rating from Underwriters' Laboratories.

Flexicore construction has other advantages. The Fairlawn School, for example, was completed four months ahead of schedule, due in part to the high speed erection of the roof.

For more information, call or write the Flexicore manufacturer nearest you.

# flexicore®

AKRON-CLEVELAND: Lake Erie Flexicore, Kent, Box 563, Orchard 3-9881  
 CINCINNATI: Price Brothers Company, 7617 Reading Road, Poplar 1-6291  
 COLUMBUS: Arrowcrete Corporation, 816 McKinley Avenue, Capital 1-5506  
 DAYTON: Price Brothers Co., 1932 E. Monument Ave., Baldwin 2-7861  
 DETROIT: Price Brothers Co., 12651 Newburg Rd., Livonia, Garfield 1-4030

# Toledo Opens Second Downtown Pedestrian Mall

On July 11 the City of Toledo officially opened its second experimental downtown pedestrian mall in a three-block section of Adams St. in the central business district.

The new mall was approved by the Toledo City Council upon recommendation of that body's Traffic and Off-Street Parking Committee and of last year's Mall Technical Committee. A city appropriation of \$18,000 to cover estimated costs was also approved.

Thus, Toledo boasts the distinction of being the only city in the country to operate two experimental malls in as many years, as well as a permanent mall that has been enjoyed by its citizens for many years.

Based on the experience of last year's malls which lasted three and one-half months, several innovations and changes have been introduced this year. These include a Parisian sidewalk effect with art displays to be provided by local art groups; sculptured concrete animals serving both as decorations and play facilities; two pools, deeper than those used last year; wider walks to provide lanes for emergency vehicles; more seats and seating areas; and an abundance of greenery, shrubs, flowers and trees.

Many of the features of last year's malls have been repeated this year, such as decorative pools, planter boxes with flowers, trees, statuary, a children's enclosed play area, painted sidewalks and roadways, newly painted utility poles and colorful patio blocks. Again this year the Mall Technical Committee will meet regularly to pass on changes and innovations. No commercialization is permitted.

This year's malls are in a completely different location from those of last year which were located on two parallel streets in the heart of downtown Toledo, with two blocks on each street. This year's design on three blocks of one street is expected to be more advantageous from the standpoint of moving emergency vehicles and less interference with the normal traffic flow patterns.

Early reaction to the present malls indicates that the public and downtown merchants approve the idea. A number of polls last year indicated that business showed improvement in most cases, and the public likes the idea of downtown streets converted to a park-like atmosphere. Informal polls again this year show enthusiastic acceptance of the new experiment.

No definite time limit has been set on this year's malls, but some members of the Mall Technical Committee have expressed the hope they will be continued until Christmas. No further experimental mall is contemplated. On the basis of the two-year experiment with the temporary malls, officials hope to reach a decision this year on the matter of making the malls a permanent feature of downtown Toledo.

AUGUST, 1960



IMAGE, its definition and its look are nearly upon us.

IMAGE shall be what we make it to be. Shall it be beautiful or ugly, or shall it be in the middle with nothing to distinguish it from the run of the mill.

We as Architects create IMAGES for others as well as ourselves to view or to think about. We also create IMAGES of ourselves and of our profession. As creators we are looked upon to possess the skill, knowledge, and know how to form pleasant IMAGES for all to see and review.

Let us not create any one item which shall be looked down upon and which shall be left standing to degrade the profession and the individual creator. All creation must have a fine IMAGE for all to see and be pleased in seeing.

It is up to all of us, Architects as a professional people, to IMAGine what is needed to form the IMAGE which shall be accepted by the public in the manner which we would like. The IMAGE of the profession shall be the responsibility of all members of the profession. The IMAGE which we form shall be decided by the group.

Let us all attend to the work at hand and make the IMAGES which we create be the best that have been created to this time. We must work at the task of forming all IMAGES as we would have others see.

1960 ASO Convention  
Dayton, Ohio  
Biltmore Hotel  
October 19-20-21, 1960



# CV DURATHIN PANELWALL

Prefabricated,  
insulated,  
it provides a  
time-tested material  
for curtain-wall  
construction

Nominally 2" thick, the panel will be  $\frac{3}{8}$ " CV Durathin bonded to Pittsburgh Corning Foamglas sandwich-type panel composed of  $1\frac{1}{4}$ " Foamglas faced on both sides with  $\frac{1}{8}$ " cement-asbestos boards. The interior as well as the exterior surface can be faced with CV Durathin of color and finish selected by architect. CV Durathin Panelwall is available in modular sizes up to 4' x 8' in Federal Seaboard's virtually unlimited range of colors and textures. Added advantages that are always assured when you specify CV Durathin Panelwall include permanent colors, high quality and a uniformly glazed finish that retains its original beauty with minimum maintenance. Ease and speed of installation are other important features.

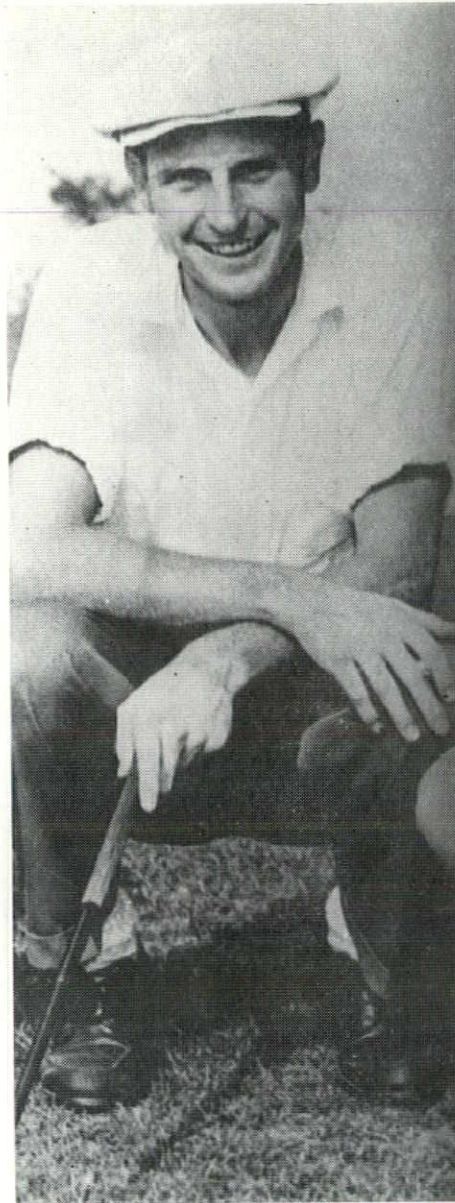
For complete data  
and color guide brochure,  
write today to:

FEDERAL  
SEABOARD  
TERRA COTTA  
CORPORATION

10 East 40th St., New York 16, N. Y.  
Plant at Perth Amboy, New Jersey



## Architect Wins Ohio Amateur Golf Title



Architect Dan Carmichael poses with club after winning the 1960 Ohio Amateur Golf Championship.

Columbus architect Dan A. Carmichael recently won the coveted Governors trophy, emblematic of the 1960 Ohio Amateur Golf Championship.

"I'm sure better golfers have won it," he said, "but none have been more proud than I."

This statement is typical of the 41-year-old architect, whose athletic prowess has been long established. He played four sports at Columbus Academy and first played in the Ohio Am tournament in 1936. At Princeton he tried to do the same, but was ruled out of football by a knee injury. However, he did star as captain of the basketball team, played baseball and represented the school in the 1940 NCAA golf tournament where he lost out in the quarter-finals.

Eight years ago Dan virtually gave up competitive golf to become a week-end player. This was after he assumed the principal role in his father's architectural firm.

The perfectly co-ordinated and precision-thinking Carmichael played only eight rounds of golf this summer before entering the Amateur Tournament, where he packed 10 rounds of golf into six days—and won!

Dan's love for flying and his excellence in this activity are legend to those who know him well. A Navy fighter pilot in World War II, he is officially credited with shooting down 15 enemy aircraft. He is still in the Naval Reserve and flies jets from the Reserve Base in Willow Grove, Pa. at least one week end each month. A Reserve pilot once told this writer that when other aircraft are landing because of approaching foul weather, Carmichael is rushing his "blow-torch" into the skies before the weather hits.

In winning the Amateur title Dan was never over par on the tough 7020 yard Zanesville Country Club course. He finished with a seven under par for the 170 holes played.

A Navy fighter pilot in World War II, Carmichael is credited with shooting down 15 enemy aircraft.



OHIO ARCHITECT

# Ohio Architects Meet The Press, Air Their Views

By Charles J. Elia, Business Editor  
Columbus Citizen Journal

*Editor's Note:* The following article is reprinted from the June 22, 1960, edition of the *Columbus Citizen Journal* newspaper, Columbus.

We had the pleasure Tuesday evening of participating in a panel discussion. It was the first in a series bringing together members of the press and of the professions.

It was an endeavor of the Press Club of Ohio and the device — to judge from its reception at the initial meeting — holds great promise for some bridging of gaps in understanding that exist between professional groups and, ultimately, the public.

This session was with members of the Architects Society of Ohio. On the panel were Columbus Architects Noverre Musson and Richard H. Eiselt; Miss Mary McGarey, of *The Dispatch*, and ourselves. Art Parks of the Associated Press and president of the Press Club was the moderator.

As we see it, the session was helpful if only in bringing expression to the misconceptions the profession holds of the press and our own about the profession.

The participants — and this included not only the panelists but also the architects and other newsmen who attended — made good use of the forum.

The architects, on one hand, brought clarity to the role they play in creating the environment in which we live . . . and, we might add, voiced also their apprehension at the apparent apathy of both press and public to the visual affront of buildings without purpose, without beauty and without idea.

The members of the press, who are preoccupied with reporting and in some cases trying to influence environment, suggested some ways in which the architect's function can be made a more vital part of the public consciousness.

We are of the opinion that there are valid and newsworthy ways in which we can make some contribution.

Broadly speaking, the architect, like many another artist, deals with ideas and imposes his ideas — in the form of a building and the motivation for its precise design — on a larger public.

The press can be an important medium in the expression and explanation of those ideas; the reporter, working with words, can logically be the avenue for relating the architect's purpose to public purpose.

There are meeting places for press and profession and they can be of mutual benefit. If discussions such as this can provoke efforts to find them, they too will have served to enlarge the area of understanding.

AUGUST, 1960



**RUSSWIN  
DOORWARE**

...the architect's  
favorite

for **BEAUTY OF DESIGN**  
for **DURABILITY**  
for **WIDE SELECTION**

**COME AND SEE  
OLD Friends  
NEW Products  
BOOTH 59  
Your Convention  
Dayton Biltmore Hotel**

**RUSSWIN**  
Authorized Contract Distributors for Ohio

**AKRON**  
Beight Hardware Co., 1022 North Main St.

**ASHTABULA**  
The Mitchell Hardware Co., 4712 Main Ave.

**CINCINNATI**  
The McClure Hdwe. Co., 715 Reading Road, Reading

**CLEVELAND**  
Cleveland Architectural Hdwe., 4254 Pearl Road  
The Midland Hdwe. Co., 1839 East 18th St.

**COLUMBUS**  
Smith Brothers Hdwe. Co., 580 North Fourth St.

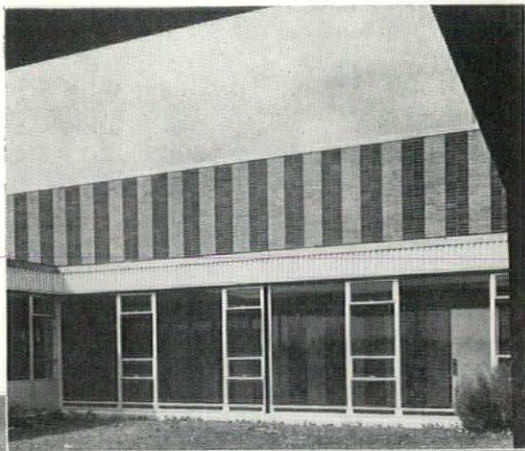
**DAYTON**  
Carl D. Himes, Inc., 317-319 South Main St.

**MANSFIELD**  
Martin Hardware Co., 17-19 North Main St.

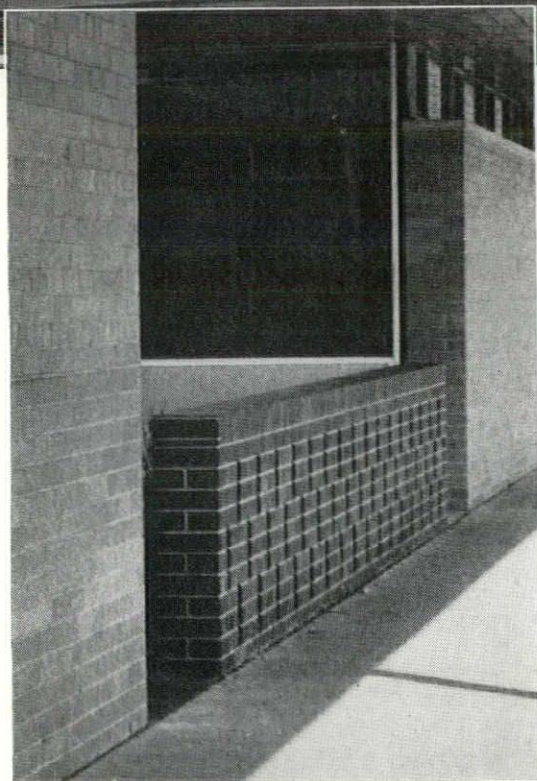
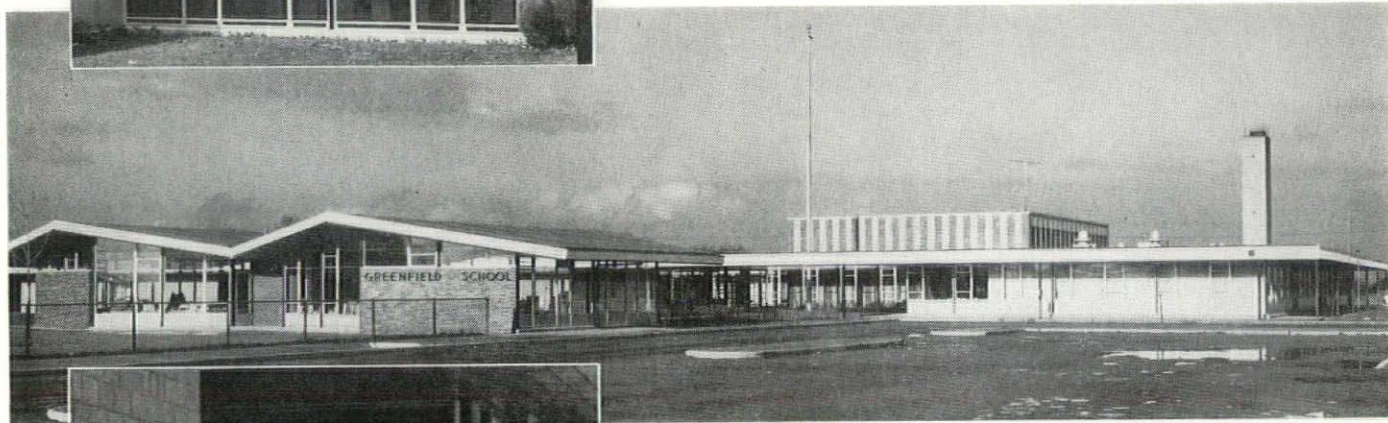
**TOLEDO**  
Otto C. Buehler & Son, Inc., 24 North Erie St.

**RUSSWIN**

**RUSSELL & ERWIN DIVISION**  
The American Hardware Corporation  
New Britain • Connecticut



*school budget gets extra*  
**BEAUTY • DURABILITY**  
*and ECONOMY with*  
**BELDEN BRICK**



School construction dollars must do double—even triple duty these days. Inside and outside the Greenfield Elementary School (Birmingham, Mich.), for example, Belden Semi-Black and Belden Dark Gray Trim Brick provide modern Beauty, time-tested Durability and proven Economy . . . economy that is adequately assured by reduced maintenance expense and the elimination of painting and replacement cost.

Among the more than 200 colors, textures and sizes in which Belden Brick are available, you'll find just what you want to interpret your newest design ideas and meet the demands of school board budgets. There's a Belden Dealer and samples as close as your phone!

GREENFIELD ELEMENTARY SCHOOL, BIRMINGHAM, MICHIGAN  
ARCHITECTS - ENGINEERS: EBERLE M. SMITH & ASSOCIATES, INC., DETROIT

THE **B**elden

**B**rick Company • CANTON, OHIO



EIGHT MODERN FACTORIES LOCATED AT CANTON, SOMERSET, PORT WASHINGTON, SUGARCREEK, AND UHRICHSVILLE, OHIO



## Letter From The Editor

It has been my pleasure to run the gamut of a full year as editor of **Ohio Architect**—the August, 1959, issue being the first published under my editorship.

That this has been a period of learning and growth for me is self-evident. That I have been able to project some of my own thinking and training into the publication to a positive result is certainly my hope.

Any degree of success this year has brought **Ohio Architect** can be credited to the outstanding co-operation and help I have received from my associate editors—Bill Bogart, Cincinnati; Chuck Rimer, Cleveland; Dick Eiselt, Columbus; Bob Makarius, Dayton; Roger Buzard, Eastern Ohio; and Bob Martin, Toledo. Without their hard work the "show" could not go on, and I take this opportunity to say a loud and sincere Thank You. A special thank you goes also to Publication Committee Chairman Howard Cain and Technical Editor David Pierce for their guidance and interest.

M.W.F.

## Williams Pivot Sash Co. Moves to New Quarters

The Williams Pivot Sash Co. of Cleveland is being relocated after 39 years, announced Company President K. A. Domino.

New offices and factory, just recently completed, are located at 22841 Aurora Rd., Bedford Heights.

"Our new quarters will give us better facilities for the manufacture of our product for both wood and aluminum windows," President Domino said.

The company was previously situated at 1827 E. 37th St., Cleveland.

## Engineer-Architect Firm Moves Into New Offices

Samborn, Steketee, Otis and Evans, engineers and architects, have moved into new offices in the Libbey-Owens-Ford Bldg., in downtown Toledo.

The move was made from the Toledo Terminal Railroad building at 1214 Cherry St., where the firm has been located since its founding in 1948 as A. H. Samborn and Associates.

The new quarters will occupy half of the L. O. F. Building's sixth floor and provide two all-purpose conference rooms, departments for engineering and

AUGUST, 1960

# PROVE IT YOURSELF!



## NON-COM\* LUMBER WILL NOT FLAME

You can make your own fire test right at your desk and prove that Non-Com lumber will not flame. This "prove it yourself" Non-Com Fire Test Kit contains both untreated wood that "burns like blazes" and chemically fire-protected Non-Com wood that's self-extinguishing.

Non-Com fire-protected wood through catalytic, chemical action retards the spread of fire. It is UL listed with a Fire Hazard Classification of 10-15, for both flame spread and fuel contribution, approved by Factory Mutual Engineering Division as a non-combustible material, classed non-combustible by Ohio Inspection Bureau, 21 other States, and Washington Surveying and Rating Bureau.

\*Koppers Trademark



## NON-COM\*

### WRITE TODAY FOR YOUR FREE FIRE TEST KIT

The Fire Test Kit is yours without obligation. There is sufficient material in it to make tests for yourself and others. Write today on your letterhead.

Wood Preserving Division,  
Koppers Co., Inc.,  
743 Koppers Bldg.,  
Pittsburgh 19, Pa.

K-3

### FIRE-PROTECTED WOOD PRODUCTS

architectural drafting, structural steel detailing, in addition to private offices and a blueprint department.

The firm has 72 employees. Princi-

pals are Alfred H. Samborn, Jack N. Steketee, Fred C. Limbert, Erwin J. Otis, Jr., John H. V. Evans, Rodger D. Rogers, Nathan J. Schwartz, Carl Thaller and Willard J. Wendt.

### Hixson, Tarter and Associates

CONSULTING-STRUCTURAL ENGINEERS

2306 PARK AVENUE  
CINCINNATI 6, OHIO  
CAPITOL 1-1473

### RUSSELL S. FLING & ASSOCIATES

CONSULTING ENGINEERS

DESIGN — CONSULTING — REPORTS

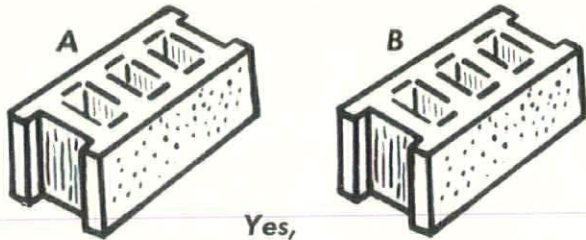
REG. ENGINEERS — REG. ARCHITECT

101 N. HIGH

COLUMBUS 15, OHIO

CA. 4-7718

## Frateral Twins?



Yes,  
they look alike, but  
are **DIFFERENT** — **INSIDE**.

Block "A" is Autoclaved, cured by high heat and pressure. A new chemical structure has been created internally for more strength, less shrinkage and volume change, and it is drier.

for highest quality concrete masonry

Specify



# AUTOCLAVE

**NATIONAL CEMENT PRODUCTS CO.**

2930 WAYNE ST. • TOLEDO 9, OHIO • EV 2-3477

# SANDS

GAS OR ELECTRIC  
**WATER  
HEATERS**

with  
**SANI-GLASS  
TANKS**

styled and  
priced for  
every  
requirement



Whatever your client desires in size, price and quality may be found in the extensive Sands line.

There are 10 and 15 year models for gas and 10 year electric models, all with Sani-Glass tanks. Also a large number of sizes with galvanized tanks — gas or electric.

For ample supplies of clean, hot water and economical operation Sands Water Heaters are outstanding. Write or call for literature.

**The SANDS Manufacturing Co.**

5416 Sweeney Avenue  
Cleveland 27, Ohio



## New Architects Announced By State Board of Examiners

The State Board of Examiners of Architects announces that the following passed the examination for Certificate of Qualification to practice the profession of Architecture in the State of Ohio:

Buchanan, C. Robert, 4210 Woodmere Dr., Youngstown 9, Ohio.

Bredemeier, Ronald A., 3008 Montana Ave., Cincinnati 11, Ohio

Castronovo, Thomas P., 405 Cornell St., Akron 10, Ohio  
Clipson, Addison H., 2915 Maisel Dr., Cincinnati 20, Ohio

Cox, Don L., 3990 Ridgecomb Dr., Cincinnati 11, Ohio

Dorsey, Robert W., 1082 Witt Rd., Cincinnati 30, Ohio

Evans, Merlin K., 162 West Weber Rd., Columbus 2, Ohio

Hahn, Alfred A., Jr., 1619 Canton St., Toledo 2, Ohio

Herzberg, Sonji L., R.D. #1, Bellaire, Ohio

Howe, H. David, Jr., 2849 Van Aken Blvd., Cleveland 20, Ohio

Kehlmeier, Richard H., 1285 Landis Lane, Cincinnati 31, Ohio

Klose, Albert A., 4230 Wilmington Pike, Dayton 40, Ohio

Lewis, Gordon E., 427 College Ave., Fostoria, Ohio

Mitchell, Stanley L., 232 West Orchard-Springs Dr., Dayton 15, Ohio

Mong, H. Bryn., 8827 Charward Rd., Reynoldsburg, Ohio

Rode, John A., Jr., 2277 South Overlook Rd., Cleveland Hts. 6, Ohio

Samson, Daniel I., 1360 Vandemar Rd., Cleveland Hts. 21, Ohio

Sherer, James K., 2110 Ridgeview Rd., Columbus 21, Ohio

Short, Wayne H., 1140 Belrose Rr., Cleveland 24, Ohio

Tamuelwicz, Joseph A., 3623 East 75th St., Cleveland 5, Ohio

Weber, Robert M., 816 Weldon Ave., Columbus 24, Ohio

### TREFZGER'S inc.

planning and design division  
3010-14 woodburn avenue  
cincinnati 6, ohio

consultants  
contemporary interior furnishings

## AIA Building Products Register Published After 10-Year Study

Building industry editors, leaders and individual subscribers have joined in praising the first edition of the AIA Building Products Register, which recently became available to architects following a 10-year study aimed at solving the problems of publishing a single reference work on which product analysis could be based.

Norman P. Mason, HHFA administrator, labeled the new AIA Register "an impressive volume." John James Carlos, AIA, editor, *Architectural & Engineering News*, called it ". . . A significant technical service . . . an exceedingly useful professional tool . . . a consistent time-saver."

The AIA Building Products Register technically describes and provides comparative performance criteria for more than 1300 building products. It also is the only source of professional digests of 700 standards and specifications as contained in ASTM specifications, Federal specifications and other valid technical sources. In addition to the Register itself subscribers will receive a new-product newsletter and a reporting service aimed at improving product use. Products are listed in 18 major categories.

The Register is available to all AIA members at \$25 per copy. It may be obtained by writing to The American Institute of Architects, 1735 New York Ave., N.W., Washington 6, D. C. A descriptive brochure is available without charge.

## NORMAN BRICK

*For beauty and economy*

The  
**CLEVELAND BUILDERS SUPPLY**  
Co.

1276 West 3rd Street • Cleveland 13, Ohio • MAin 1-4300

Your dependable source for fire-safe building materials.

## Architectural Models and Renderings

Ask us for quotations on models constructed in plastic and on renderings in tempera. Send plans with request.

Model of  
Glenwood Elementary School, Toledo, O.  
Architects:  
Charles L. Barber and Associates



**RICHARD P. HOWARD AND ASSOCIATES**

7229 ORVIETO DRIVE • SYLVANIA, OHIO • PHONE: TUrner 2-6135

# TO THE POINT

## YOU'LL NEVER MISS A WARRANTY UNTIL YOUR ROOF BEGINS TO LEAK!

A frequent grievance among the complaints we hear concerns faulty roof installations where the architect or building owner learns to his surprise that his roof is not covered by a performance warranty. A little investigation turned up some interesting reasons why. It seems that many of the newer metal roofing fabricators are involved in strictly local operations. Most of these firms have had no national experience on metal mechanical batten roofing, and are really graduate built-up roofers taking a fling at metal roofing. Problems relating to climatic conditions, expansion and contraction, and leak-proof engineering design are beyond their ken.

Even for many major-sized companies, roof fabrication has been a recent marketing experiment to make use of idle facilities. Few of these larger fabricators will chance a lengthy warranty on this highly specialized fabrication and erection. As far as we know, no metal roof fabricator offers a warranty comparable to Overly's 15-year, leak-proof performance.

\* \* \*

*More Innovations were made in door styles and finishes in the year of 1959 than any other, but 1960 promises to set new records. More color variations in textured enamel finishes will be used, indicating a trend to bright, complementary colors in non-residential building. New laminated vinyls and hand-grained finishes will add new color and texture to modern office decors. Regardless of how you look at it, the architect will have a larger selection of door styles, colors and finishes in 1960.*

\* \* \*

Kill "Or Equal" Performance Clauses in specifications, a Chicago architect suggests, by replacing them with specific brand name requirements that are mandatory. He'll find no dissenters in our corner!

## Overly

Manufacturers of hollow metal products, stainless steel entrances, architectural metal work and church spires.

"To The Point" is published by Overly Manufacturing Company for the express interest of the architectural and building professions. Your comments are welcome and will be discussed in this column. Write: H. W. Wehe, Jr., Executive Vice President, Overly Manufacturing Company, Greensburg, Pa. Other Overly plants at St. Louis, Mo., and Los Angeles, Calif.

exclusively for members

- SERVICE
- INTEGRITY
- PROTECTION

are assured to you at all times when you enroll in the Accident and Sickness plan of income protection underwritten by Continental Casualty Company and Approved and Endorsed for members by the

## ARCHITECTS SOCIETY of OHIO

For full information about our plan, phone or write to the Administrator,

**MR. SAMUEL WHITE**

810 The Arcade • SU. 1-1540  
Cleveland 14, Ohio

## Advertisers In Ohio Architect

Alsynite Division of Reichhold Chemicals, Inc.	2	Ohio Concrete Block Assn., Inc. (John F. Royer & Assoc.)	24
Belden Brick Co. (Ted Witter Adv.)	16	Ohio Fuel Gas Co.	3
Cleveland Builders Supply Co. (Louis C. Oswald & Assoc.)	19	Overly Manufacturing Co. (Marsteller, Rickard, Gebhardt & Reed, Inc.)	19
Federal Seaboard Terra Cotta Corp. (Persons Advertising, Inc.)	14	Russwin Distributors Beight Hdwe. Co. The Mitchell Hdwe. Co. The McClure Hdwe. Co. Cleveland Architectural Hdwe. The Midland Hdwe. Co. Smith Brothers Hdwe. Co. Carl D. Himes, Inc. Martin Hdwe. Otto C. Buehler & Son, Inc.	18
The Fielding-Wales Co.	20	Sands Mfg. Co. (Allied Adv. Agency Inc.)	18
Flexicore Mfgs. of Ohio (Yeck and Yeck)	12	Trefzger's	18
General Dredging Co., Inc. Masolite Division	22	White Insurance Agency, Inc.	20
Richard P. Howard & Assoc. (Blaco Advertising Agency)	19	The Will-Burt Co. (Clark & Bobertz, Inc.)	24
Illuminating Co. (McCann-Marschalk, Inc.)	23	Williams Pivot Sash Co.	20
Janson Industries	20	Wooster Products, Inc. (McDaniel Fisher & Spelman Co.)	21
The Jennison-Wright Corp. (Phillipps-Thackeray Adv.)	4		
Koppers Wood Preserving Div. Koppers Co., Inc. (Smith, Taylor & Jenkins Inc.)	17		
Louisville Lamp Co., Inc.	22		
Lustrolite Cleve. Corp.	22		
Meierjohan-Wengler Co. (L. F. McCarthy Co.)	22		
National Cement Products Co. (Degnan & Cook)	18		

Air Conditioning - Heating - Ventilating  
Plumbing

**THEODORE REDNER**  
*Mechanical Engineer*

198 East Aurora Road  
Northfield, Ohio

Tel: IM 7-5585

### Designing a Stage?

- LOADING INFORMATION FOR STEEL DESIGN
- CIRCUITING LAYOUT FOR STAGE LIGHTING
- SPECIFICATION DRAFT FOR EQUIPMENT



Complete line of Fiberglas and Plastic Draperies, Tracks, Dimmerboards, Spotlights, Gym Dividing Curtains, etc.

**The Janson Industries**

Phone Collect GL 5-2241

Box 985

Canton, Ohio

## WILLIAMS

### Reversible Window Fixtures

have now been on the market

### OVER FIFTY-FIVE YEARS

All window cleaning done from inside —

SAFELY, ECONOMICALLY  
and CONVENIENTLY

Available in aluminum and wood

## THE WILLIAMS PIVOT SASH CO.

1827 East 37th St. Cleveland, Ohio

## THE FIELDING - WALES COMPANY

Manufacturers'  
Representatives

Serving the  
Construction Industry

Since 1927

1836 EUCLID AVENUE

CLEVELAND 15

## Brass and Bronze Ingot Institute Extends Competition Dead Line

The Brass and Bronze Ingot Institute announced this week that it had extended the date line for entries in its Progress '60 Brass and Bronze Casting Competition. The new date line is September 30th.

The annual competition for the best new or projected uses for brass or bronze castings offers \$1000 in cash awards. Two series of awards will be made:

—"Progress '60." First prize of \$500 and a suitable trophy for the best new use for a brass or bronze casting; the use of a brass or bronze casting as a substitute for other material in an existing product or part; or for improvement in design or efficiency of brass or bronze casting already in use. Four other prizes also will be awarded in this category.

—"Projection '60." First prize of \$500 and a suitable trophy awarded for ideas that project a new use for brass and bronze castings; suggest use of brass or bronze casting as a substitute for other material in an existing product or part; or describe how an existing brass or bronze casting can be improved in design or efficiency. Four other prizes also will be awarded.

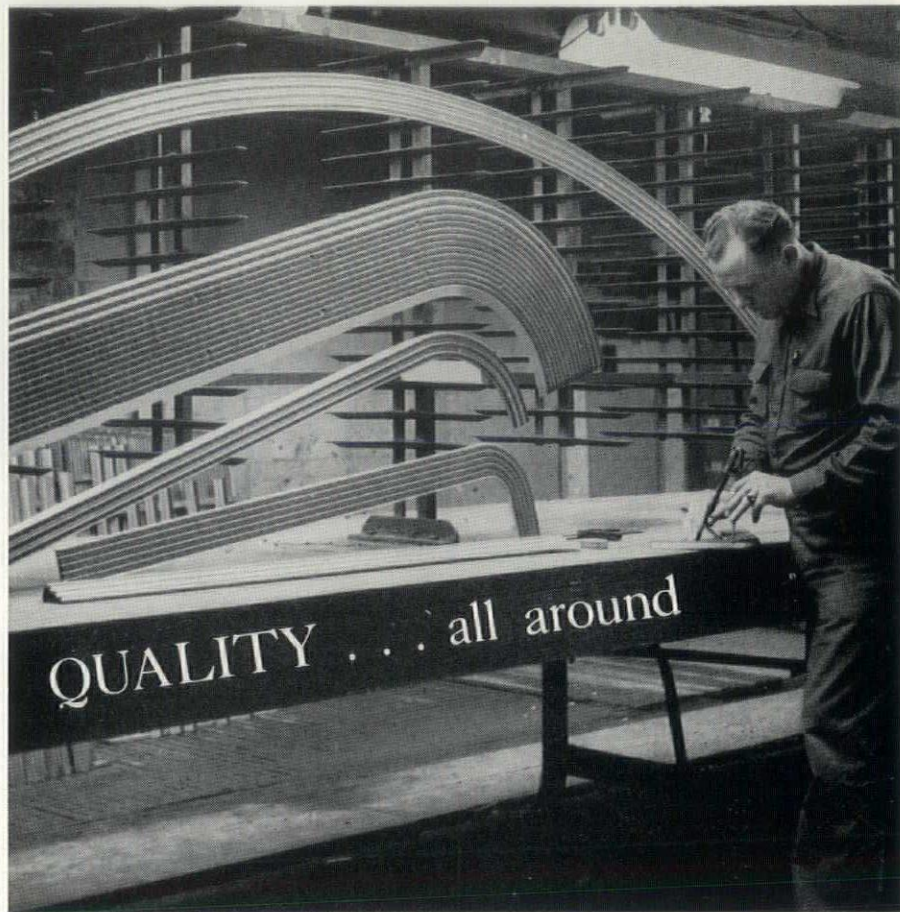
Entry blanks and a folder describing the First Annual Brass and Bronze Casting Progress Awards may be obtained from the Brass and Bronze Casting Institute, 308 Washington St., W., Chicago 6, Ill.

## J. M. Seidel Elected Optimist Officer

An Ohio architect and member of the Architects Society of Ohio has been elected a vice president of the world's fourth largest men's service organization.

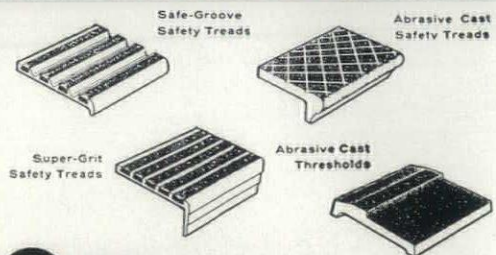
John M. Seidel, of Seidel and Dunn, Columbus, was elected a 1960-61 vice president of Optimist International by the 1500 delegates to the 70,000-member organization's 42nd annual convention in Grand Rapids, Mich. In this capacity he will supervise Optimist International's western region, which includes the states of Vermont, New Hampshire, Massachusetts, Indiana, Connecticut, Rhode Island, Ohio,

AUGUST, 1960



The curving of Wooster Super-Grit and Safe-Groove Safety Treads is just one of many exacting operations necessary to meet specific requirements of our customers.

The know-how, experience and skill of our veteran craftsmen is the personal factor that stands behind every Wooster tread and threshold, guaranteeing that each step in our manufacturing process receives the care and precision required to produce quality products.



# WOOSTER

**QUALITY SAFETY TREADS AND THRESHOLDS**

See our new enlarged catalog in Sweets architectural file <sup>13b</sup> <sub>Wo</sub> or send for free copy

**WOOSTER PRODUCTS INCORPORATED** • **WOOSTER, OHIO**  
Representatives in all principal cities

Iowa, Wisconsin, Michigan, Montana, North Dakota, South Dakota, Minnesota and Maine, in addition to the Canadian provinces of Manitoba, Alberta, Quebec, Ontario and Saskatchewan.

Before his election to the vice presidency Seidel served in 1955-56 as Lt.-governor and in 1957-58 as governor of Optimist District 24.

### VARO ENGINEERS

ARTHUR VAJDA, P. E.  
H. S. ROCKOFF, P. E.  
D. W. McCLINTOCK, P. E.  
STRUCTURAL, ELECTRICAL, MATERIAL  
HANDLING, PROCESSING, SURVEYING  
1641-1649 BROADVIEW AVE. MEMORIAL BLDG.  
COLUMBUS 12, O. NEWARK, O.

### GORDON H. FROST & ASSOCIATES

CONSULTING MECHANICAL ENGINEERS  
HEATING - VENTILATING  
AIR CONDITIONING  
PLUMBING - DRAINAGE  
725 CHERRY ST. REGISTERED  
TOLEDO 4, OHIO OHIO-MICHIGAN  
TE-CH 4-3401 INDIANA

**QUALITY  
FLUORESCENT LIGHTING  
FIXTURES**

for  
SCHOOLS  
OFFICES  
STORES  
FACTORIES

**LOUISVILLE  
LAMP CO., INC.**

LOUISVILLE 3, KENTUCKY

FOR QUICK SERVICE  
CALL JU 7-6094

OHIO REPRESENTATIVE  
**JOHN G. LEWE**  
H. H. (SANDY) HOMAN  
MARIEMONT CENTER BLDG.  
ROOM 102  
CINCINNATI 27, OHIO  
Phone BRomble 1-5502

**Annual Award Goes for Best  
Ohio Prestressed Structure**


Ohio architects and engineers are eligible to compete for an annual award for the outstanding prestressed concrete structure in the state.

The first such award, to be made in November by the Ohio Prestressed Concrete Association, will consist of a framed certificate and a \$250 cash prize. Honorable mention awards will be presented to the three top runners-up.

Competition is limited to architects or engineers registered in Ohio, and the structure entered must be located in Ohio. Entries are to be submitted to the Ohio Prestressed Concrete Association, P. O. Box 825, Dayton 1, Ohio, by September 10. An entry will consist of photographs and drawings of the structure along with a description of not more than 500 words.

The structure must be substantially completed by September 1, 1960, but cannot have been completed before January 1, 1958. The structure does not need to be entirely of prestressed

concrete, but should uniquely incorporate prestressed concrete in its design.



**MEMORIALS  
PORTRAIT TABLETS  
HONOR ROLLS  
NAME PLATES  
MARKERS**

and other Bronze Tablets are custom made and hand finished. Tell us your requirements.  
Send for Free Catalog

**MEIERJOHAN-WENGLER**  
1102 W. NINTH ST. — CINCINNATI 3, OHIO

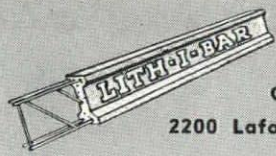


***Lith-I-Bar* CONCRETE JOIST  
PRE-CAST**

**FOR FAST ERECTION**

- FIRESAFE
- MAINTENANCE FREE
- RIGID FLOORS
- LOW COST
- FLEXIBLE FRAMING
- QUALITY CONTROLLED CONCRETE

WRITE OR PHONE A-1453 FOR DETAILS



**MASOLITE DIVISION**  
GENERAL DREDGING CO., INC.  
2200 Lafontain St., Fort Wayne, Indiana

**Look for this  
Trademark**

**"THE SIGN OF A GOOD SIGN"**

**LUSTRO  
LITE**

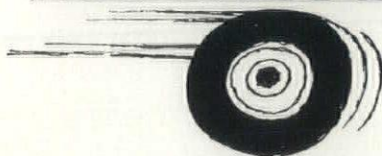
CLEVELAND CORP. TO 1-6789

Your assurance of top quality material and workmanship in Illuminated Signs, Porcelain enamel Signs, Plexiglas Letters, Stainless Steel Letters, Cast Aluminum Letters.

**LUSTROLITE**  
CLEVELAND CORPORATION

2439 St. Clair Ave.  
Cleveland 14, Ohio

TOwer 1-6789



## It takes the *Light* touch to move merchandise!

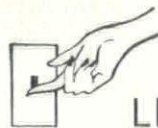
People feel more like buying when merchandise is attractively lighted. Colors take on new sparkle and sheen. Fabrics look richer—more desirable. And nothing sets the buying mood like a bright, cheery store, dramatically lighted.

Good store lighting simply adds up to more sales. It helps attract attention, brings people in, makes them want to buy. Store employees like modern lighting, too. It boosts morale, makes them more efficient, more pleasant with customers because they're less fatigued.

Why not get the whole store lighting story? If you're in the Northeast Ohio area see The Illuminating Company's new film, "*Profit and Light*." A call to CHerry 1-4200, line 898, will reserve a showing for you and your associates. If you like, we'll send a lighting specialist out to your office. And in either case, there's no obligation, of course.

*The Illuminating Company*  
ALWAYS AT YOUR SERVICE IN THE BEST LOCATION IN THE NATION

BUSINESS IS A PLEASURE WHEN IT HAS THE

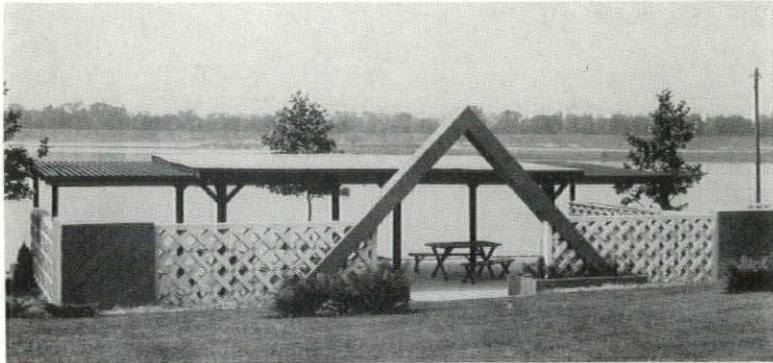


LIGHT TOUCH!

ARCHITECTS SOCIETY OF OHIO  
 FIVE EAST LONG STREET  
 COLUMBUS 15, OHIO  
 RETURN POSTAGE GUARANTEED

MR. E. R. PURVES,  
 EXECUTIVE DIRECTOR AIA  
 1735 NEW YORK AVE., N.W.  
 WASHINGTON 6, D.C.

Accepted as controlled circulation  
 publication at Athens, Ohio.



Builders Exchange of Columbus Pavilion Enclosure Arthur J. Dupre, AIA.  
 Designed for Columbus Concrete Block Association, Donor

## design ... in block ...

Screen wall, left, built entirely with standard units, suggests countless design variations limited only by the Architect's imagination.

### ohio concrete block association

50 east broad CA. 1-0747 columbus 15, ohio

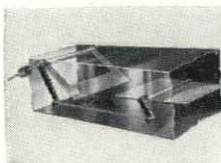
*to enhance, improve the use of block*

# STOKER CARE?

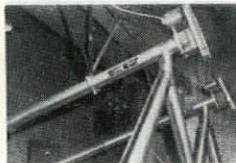
... just a "look-in at lunch" with Will-Burt's firing and control system!

A Will-Burt Firing and Control System will bring coal from bin to stoker ... feed coal to the fire at any of three adjustable rates ... automatically adjust air supply, minute by minute, according to fuel bed needs ... and operate one, two, or more stokers on a pre-set cycle, according to hourly temperature requirements.

What could be more automatic ... or more sensible?



W-B Automatic self-adjusting Air Control ... part of every W-B Stoker.



W-B Coal Conveyor ... power-reversing to clear obstructions ... operates at any angle.



Take our word for it, it's economical. Write direct - or ask your Will-Burt Stoker Specialist for bulletins and help on selection and installation.

# WILL-BURT STOKERS • Orrville, Ohio