

# C O L U M N S



## 16:62 Design Zone

ARCHITECTURAL CHARRETTE  
LEARNING IN LAS VEGAS

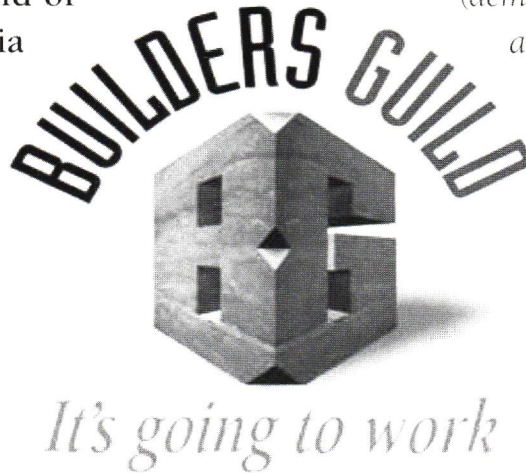


# The Pride of Craftsmanship, the Power of Partnership.

A new way of doing business,  
The Builders Guild of  
Western Pennsylvania

The VALUE of Union Construction . . .  
(demonstrated, signed, sealed  
and delivered . . .)

It's a first – The Builders Guild is an industry-wide initiative bringing management and labor unions together with a single goal; to move every construction project smoothly from concept to completion by working collaboratively as the premier providers of construction services in the region.



Customer Bill of Rights is our promise that customers receive:

- Professional, cost-conscious project management team
- Smart Business know-how
- The best trained most capable work force
- Pre-job planning through completion

**The Builders Guild of Western Pennsylvania,**  
... representing a unified construction industry of building trades unions, 33,000 skilled craftsmen, union contractors, contractor associations and industry professionals working together to deliver **value** at every phase of the construction project.

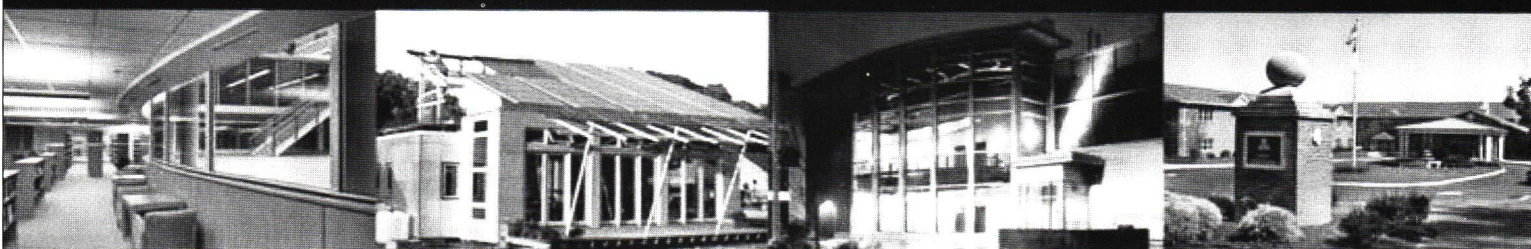
- A diverse, drug-free work force
- Safe workers, safe job sites, quality performance
- Service you can count on
- Bottom line dollar-for-dollar value

**Building quality projects on time and on budget.**

---

Find out how this new and unique labor/management partnership can help you get the best return on your construction investment.

Visit [www.buildersguild.org](http://www.buildersguild.org) to learn more, obtain a comprehensive list of contacts and see projects and testimonials from satisfied customers



## Zoning in on Creativity By Tracy Certo



*One person can make a difference in Pittsburgh and the people mentioned here are proof.*

### IN THIS ISSUE

<i>In the Zone</i> . . . . .	6
Columns explores Lawrenceville's 16:62 Design Zone, home to this year's Design Pittsburgh events	
<i>Architectural Charrette</i> . . . . .	12
A design studio in conjunction with <i>Michael Maltzan: Alternate Ground</i>	
<i>Meet the Fellows</i> . . . . .	14
AIA Pittsburgh's September membership meeting	
<i>Learning in Las Vegas</i> . . . . .	18
Continuing education at the center of AIA National Convention and Design Exposition	
News . . . . .	5
Breaking Ground . . . . .	20
Calendar . . . . .	23

**On the cover:** Since 1999, hot haute hot at 22nd St. off Penn Avenue has offered a modern primitive fusion of furniture and unique and exotic objects from around the world. Photo by Tracy Certo.

### In this issue you will learn

how a drunk in a bar inspired a young designer from New Jersey to move to Pittsburgh (p. 6) and how architects are helping to keep people fit and our city diverse (p.4)

Although it wasn't planned, there's an underlying theme in this issue: behind every story and column are people—sober or otherwise—who are really making things happen. From the go-getters in Lawrenceville and the Strip District who make up the Design Zone to Steve Quick whose conversation with his personal doctor led to a new direction for AIA Pittsburgh. Not to mention the students and architects at the recent charrette at the Carnegie Museum (p. 12). And the perfect match of Design Awards 2005 with the 16:62 Design Zone, a great idea from Mary Irwin-Scott (p. 6).

The 16:62 Design Zone itself was a gem of an idea from Joe Kelly of Kelly Custom Furniture and Cabinetry who visited the Pearl District in Portland, Oregon. He discussed the idea of rebranding the burgeoning community—similar to the Pearl District—with others and in no time, an organization was born.

It's interesting, noted Steven Casey, AIA, who works in the Strip and sees new galleries and stores opening almost weekly, how it was declared a Design Zone and then truly became one. Like everyone interviewed for this story, Casey enjoys being part of it. And he does his share of work with other Design Zone businesses, including the Crane Building where his office is located, and street fronts in Lawrenceville, another factor contributing to the area's dramatic change. What Casey really likes about the Zone is the fact that it's made of real communities. The architect expects to see a tremendous impact on his neighborhood when the Armstrong Cork Building nearby is recast as 300 new condos.

Another complex, the Blackbird Lofts, will have quite an effect on the Lawrenceville area when completed, including street level artist studios. Seeing artists in action will only add to the allure of the Design Zone.

As mentioned in the article here, the transformation of Lawrenceville to an artsy community was driven by a number of factors, starting with the exit of the mills and the resulting cheap real estate. People such as Mark Mentzer, an artist and professor at Carnegie Mellon University, and Jerry Wilson of Wilson and McCracken, bought buildings in Lawrenceville decades ago, before there was even a hint of revitalization. Wilson purchased a 100-year-old firehouse which he got for a song. Mentzer needed studio space and liked what he saw. "It's a really good neighborhood and a great group of people," Wilson says. And it's safe, he assures. (I can attest to that. On a busy Saturday I parked and locked my car on Butler St. not knowing the back window was wide open, purse in easy range, only to return hours later with nothing missing.)

It takes people like Mentzer and Lewis—and Janice Donatelli—to get a good neighborhood back on its feet. Janice owned an antiques store in Lawrenceville and she begged "everyone" to open a much-needed coffee shop in the area. Finally, in a what-the-hell moment, she opened her own: the Coca Café, which soon became the best kind of a community center. When someone walked in one day not too long ago and offered to buy it, she sold, only to open another business, this time with Linda Metropoulos. Their store, Artemis, features a sizeable selection of environmentally-friendly products for any and all parts of buildings, from the infrastructure to interior design. (Check out their amazing tile.) It's the only shop of this kind in the tri-state area, says Donatelli, who gets a lot of business from out of state through their web site.

It's hard for one person to make a difference in New York, says designer Quinn Leonowicz, whose humorous story is featured here. But one person can make a difference in Pittsburgh, he says and the people mentioned here are proof. It's one reason why Quinn and his girlfriend chose to move here. Well, that, and the sage advice of an inebriated gent in a bar. And hey, cheers to that!



AIA Pittsburgh serves 12 Western Pennsylvania counties as the local component of the American Institute of Architects and AIA Pennsylvania. The objective of AIA Pittsburgh is to improve, for society, the quality of the built environment by further raising the standards of architectural education, training and practice; fostering design excellence; and promoting the value of architectural services to the public. AIA membership is open to all registered architects, architectural interns, and a limited number of professionals in supporting fields.

AIA Pittsburgh  
945 Liberty Avenue, Loft #3  
Pittsburgh, PA 15222  
Telephone: 412/471-9548  
FAX: 412/471-9501

#### Chapter Officers

Stephen L. Quick, AIA, President  
Tom Briney, AIA, 1st V.P.  
Jim Radock, AIA, 2nd V.P.  
Rebecca Henn, AIA, Secretary  
Chip Desmone, AIA, Treasurer  
Anne J. Swager, Hon. AIA,  
Executive Director

#### Columns Staff

Tracy Certo, Editor  
Maya Haptas, Coordinator  
Joseph Ruesch, Art Director

#### Editorial Board

Robert J. Bailey, AIA  
Thomas Briney, AIA  
Alan L. Fishman, AIA  
Donald G. Zeilman, AIA

COLUMNS is published ten times a year by, and primarily for, members of AIA Pittsburgh, A Chapter of the American Institute of Architects. Preference may be given to the selection of works, articles, opinions, letters, etc. of members for publication. However, in the interest of furthering the goals of the Chapter, as stated monthly at the top of the masthead and in the membership directory, COLUMNS will publish the names of and properly credit non-members, whether as participants in the design of works submitted by a member, or as designers of their own work, or as authors of articles, opinion or letters.

Opinions expressed by editors and contributors are not necessarily those of AIA Pittsburgh. The Chapter has made every reasonable effort to provide accurate and authoritative information, but assumes no liability for the contents.

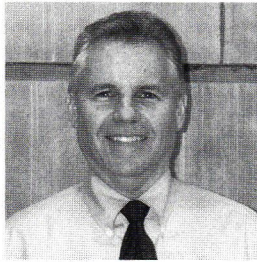
For information about AIA Pittsburgh, AIA Middle PA and the Northwest PA Chapter, call 1-888-308-9099. Online: [www.aiapgh.org](http://www.aiapgh.org) email: [info@aiapgh.org](mailto:info@aiapgh.org)

# Building Healthy and Diverse Communities

By Stephen Quick, AIA

## AIA Pittsburgh has recently become

involved in two major initiatives: the Western Pennsylvania Obesity Task Force and the Diversity Initiative. Both have an impact on our members and point to new directions for the practice of architecture and for AIA Pittsburgh.



*As we expand the definition of architecture to include the design of communities in addition to the design of buildings, we broaden our horizons and our influence.*

Sometimes the opportunities we create for ourselves are surprising.

The Obesity Task Force, begun about a year ago by the Medical Society of Allegheny County, has already grown into a state-wide program. The Medical Society, representing physicians throughout the county and similar to AIA Pittsburgh as a professional organization, chose to be pro-active in educating its members and the public about the problem and begin to initiate local programs to address it. Led by Terence Starz, MD, the task force has brought together a number of organizations and people with the ability to do something about the obesity problem. Represented are doctors, the major hospitals, health care insurers, educators, the local press, drug companies, and, yes, AIA Pittsburgh. Why, you ask?

Dr. Starz happens to be my personal physician who, during a check-up told me about the BMI chart and some of the medical issues involving obesity. I asked him if he had heard Dr. Richard Jackson, formerly of the Center for Disease Control, speak about the relationship between community design and obesity. He hadn't, but quickly understood the impact of design and asked for our participation on a new task force he was organizing. Well, one thing led to another and the AIA is now an active participant on the task force. So far, Tom Briney and I have been involved and we'd like to encourage others to join us.

AIA Pittsburgh presented the impact of community and building design on obesity and health at a region-wide obesity conference held at Pitt's Institute for Public Policy. We are also helping to spread the word that the design of communities is critical to addressing our region's and nation's obesity problem. And we are beginning to network with other members of the task force, helping to make linkages between architects and other professions.

In a related initiative sponsored by Highmark that focuses on early childhood obesity, Wanda Wilson at City Planning is leading a built-environment sub-committee to identify physical design parameters and pilot projects. Other

committees are contributing ideas including: increasing community awareness, obesity "tool kits" for local doctors, and establishing safe walking routes to schools. The United Way, working with neighborhood organizations, recently announced that they will be funding programs based on these ideas in four Pittsburgh neighborhoods. AIA Pittsburgh is involved there, too. This in turn has spurred discussions of the possibility of integrating a "healthy community" agenda, centered on early childhood obesity design needs, into affordable housing in-fill projects in two Pittsburgh neighborhoods.

The other area of recent AIA involvement is the Diversity Initiative, a new task group comprised of Pittsburgh minority organizations, professional organizations and major employers. This one addresses two important issues: how to attract minorities to Pittsburgh and, once here, how to retain them. Led by representatives of the American Bar Association and several minority non-profits, the Initiative was introduced to AIA Pittsburgh by the Allegheny County Medical Society. The medical connection comes from the hospitals' difficulty in retaining foreign doctors once they've completed their residency requirements, a concern expressed by all of the involved major employers. What makes this initiative different from ones in the past is the active involvement of some of Pittsburgh's largest employers. A region-wide issue, it's fundamental to keeping Pittsburgh competitive. Leading our Chapter's efforts are Ken Lee, AIA and Art Sheffield, Assoc. AIA who invite you to a kick-off event on September 22<sup>nd</sup> at 5:30 at Dowe's on 9th. A number of our member firms are helping to sponsor the event and, for a nominal \$5.00 cover charge, you can meet some of Pittsburgh's finest professionals and begin working for a better Pittsburgh.

Healthy communities are sustainable communities, whether it is our community of AIA architects or the neighborhood communities where we live. As we expand the definition of architecture to include the design of communities, we broaden our horizons and our influence. All of the participants on the Obesity Task Force and the Diversity Initiative—new connections we are making—have welcomed our participation with open arms. The feeling is reciprocal—who would have ever thought an architect and a doctor had much in common or a major employer would understand the linkage between livable communities and human resource problems? We can continue to surprise ourselves with the new opportunities we can create for ourselves. We just need to adjust our design perspective.

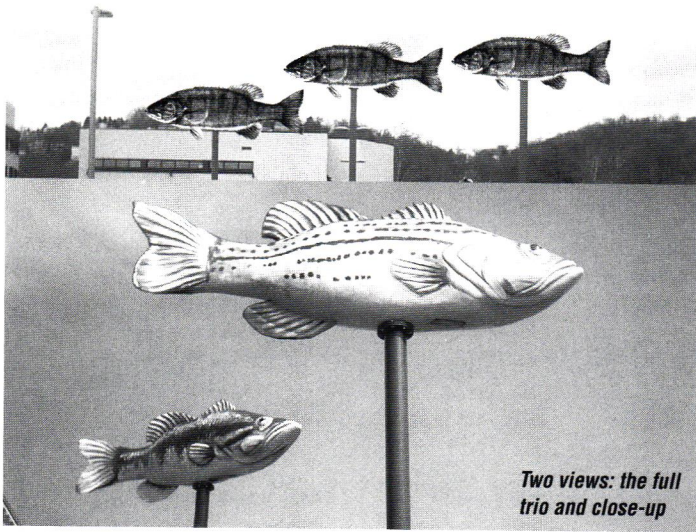




### Cast your eye on this

Just in time for the Citgo Bassmaster Classic, three 14-foot long sculptural bass designed by Chris Siefert and his daughter, Elizabeth, were erected in the parking lot of the Children's Museum of Pittsburgh. Although Siefert was concerned the fish would not be "fin"ished in time for the Citgo Bassmaster Classic, the installment was completed on July 29<sup>th</sup>, the first day of the nationally televised tournament.

Brian Reneski created the large scale fish from the Seiferts' design and Sandy Kessler was the lead painter. Weighing in at 400 lbs. each, the large scale fish whirl with the wind.



PHOTOS BY JOHN CLINES PHOTOGRAPHY

*Two views: the full trio and close-up*

### Logo Design Competition

Feeling creative? Why not try your hand at creating a new logo for The Construction Specification Institute Pittsburgh Chapter. A design competition is underway and open to anyone. The winner will receive either a cash prize of \$200 or a year's paid membership valued at \$250. Membership is not required. For more information, contact Theresa Giacomino at [tgiacomino@radeletmccarthy.com](mailto:tgiacomino@radeletmccarthy.com) or (412) 471-4445.

### McGraw-Hill Construction Reports

McGraw-Hill Construction reported on June contracts for future construction in the metropolitan statistical area of Pittsburgh, consisting of Allegheny, Beaver, Butler, Fayette, Washington, and Westmoreland counties in Pennsylvania.

An authority on the construction market, the firm produces Dodge Reports and Sweets Catalog Files. According to the Dodge Analytics unit of McGraw-Hill Construction, the latest month's construction activity followed this pattern:

	2005	2004	% Change
Nonresidential	\$89,918,000	\$301,101,000	-70
Residential	\$106,228,000	\$110,812,000	-4
TOTAL BUILDING	\$196,146,000	\$411,913,000	-52

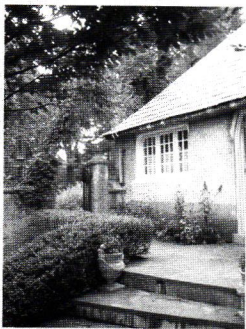
#### For the year-to-date on a cumulative basis, the totals are:

	2005	2004	% Change
Nonresidential	\$418,438,000	\$818,768,000	-49
Residential	\$487,507,000	\$611,950,000	-20
TOTAL BUILDING	\$905,945,000	\$1,430,718,000	-37

- Nonresidential buildings include commercial, manufacturing, educational, religious, administrative, recreational, hotel, dormitory and other buildings.
- Residential buildings include one and two family houses and apartments.

Visit us at: [www.construction.com](http://www.construction.com)

### AIA Middle Annual Celebration



*Each year the AIA Middle PA Chapter celebrates with an annual picnic hosted by Robert Kimball and his family at their summer home in Loreto, PA. The estate, Klein Immergrun, which was once owned by Charles Schwab, provides a spectacular setting for the highly anticipated event. On July 29th, Chapter members gathered again to enjoy another unforgettable midsummer's eve gathering.*



# In the Zone

BY TRACY CERTO



Stretching from the 16th Street Bridge in the Strip District to the 62nd Street Bridge in Lawrenceville, the **16:62 Design Zone** is a lively, creative neighborhood that continues to emerge as a vibrant home to artists, craftsmen, designers and architects. This October, AIA Pittsburgh brings **Design Pittsburgh**, our annual celebration of architectural excellence, to the Design Zone. As we prepare for the festivities, *Columns* explores some of the fascinating people and places **in the Zone**.







PHOTO BY 1662 DESIGN ZONE

**Jerry Gardner of Gerald's Forge on Plummer St.****Design Zone banner on Butler St.**

**D**uring a first-time visit to Pittsburgh a few years ago, designer Quinn Leonowicz and his girlfriend, fabric artist Christine Domanic, visited the Mattress Factory and the Andy Warhol Museum and then, in a visit that would change their lives, a Market Square bar. There they sat next to a professor from Carnegie Mellon who was—no way to put this delicately—quite drunk. “He asked if we were artists,” said the designer, now 30. “And then he kept saying over and over how much he hates artists.” Leonowicz laughed. “But he said, if you’re an artist, you should check out Lawrenceville.” He was really drunk, and he said it a million times.”

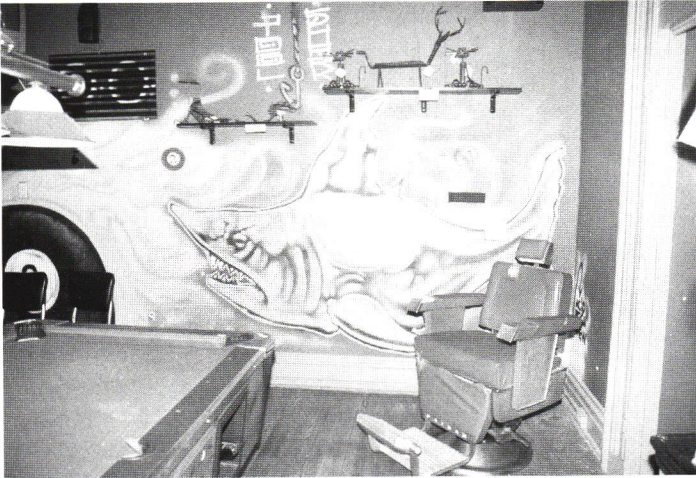
And so they did. The next day, during a blizzard, the couple walked from Oakland, through Shadyside and arrived in Lawrenceville (somehow). Despite single-digit temperatures they liked the place a lot. Back in New Jersey

Leonowicz was trying to establish a business beyond the “online presence” for his artwork and that of his girlfriend. Things were very expensive and he was finding it difficult. Within a year they took a chance and moved to Lawrenceville, where they have just opened a store called Craft at 4032 Butler St.

Leonowicz had seen the building, thought it would be perfect, and then when it became available a year or so later, snapped it up. “It’s all been very strange,” he says looking back at the path that led him there. “We’re not asking questions anymore. We’re just going with the flow.”

It’s a plan that’s worked well so far. Lawrenceville, he says, is perfect. “It’s different than what we’re used to in New York and New Jersey. People are different. I’ve already been in every one of my neighbor’s houses. That doesn’t happen where we come from!”

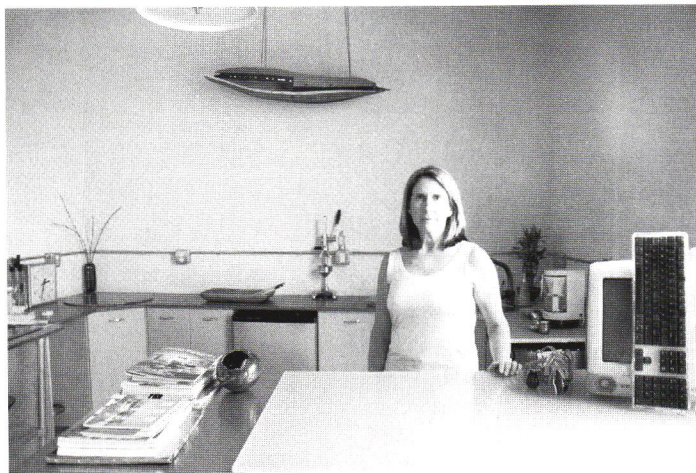




*The upstairs pool room at Ray's Marlin Beach Bar & Grill.*



*Owners Jeff Gordon and Roger Levine of Who New? offer a large variety of "artful vintage" furniture and accessories.*



*Co-owner Linda Metropulos in the kitchen of Artemis, a new show-room for green building materials at 3709 Butler St.*



*Owner Angie Fischer in her newly opened store called Divine at 3609 Butler St.*

PHOTOS BY TRACY GERTD

Although the success of the 16:62 Design Zone, a 46-block area that stretches from the 16<sup>th</sup> St. Bridge in the Strip District to the 62<sup>nd</sup> St. Bridge in Lawrenceville, is hard to measure—success stories like Quinn speak volumes.

There are other stories like his, of artists and young people who have moved from Pittsburgh only to boomerang back, this time landing in the Design Zone. The area, says Pam Devereux, business development manager for the Lawrenceville Corporation, "really has the potential to become a regional destination." The National Geographic Traveler thinks so. The magazine highlighted the neighborhood concept in a recent issue.

Other artists, craftsmen, designers and architects agree. Chip Desmone, AIA of Desmone & Associates Architects

in Lawrenceville, credits the Design Zone for attracting new design-oriented businesses to the area. "It's a wonderful thing that has done a lot to solidify a purpose for the business district." Success breeds success, he notes, adding that the influx of residents help improve the homes and buildings which has increased real estate values as well.

You can still get a great deal in real estate. But back in the 1960's and 70's when the mills were in decline, it was a steal, says Devereux. Artists and craftsmen who see buildings as raw material saw the potential back then and started moving in. The growth was slow but steady until eventually there was a sizeable cluster of a design community.

Then Joe Kelly, owner of Kelly Custom Furniture and Cabinetry on Butler St., had a bright idea. In 1999, he vis-



ited Portland, Oregon's Pearl District, a former industrial area transformed into an arts district and saw the parallel between it and Lawrenceville. Curious, he asked a furniture dealer (who turned out to be originally from Pittsburgh) about the transformation of the neighborhood. The dealer gave him a guidebook to the district along with the contact of the President of their Chamber of Commerce who, strangely enough, was also from Pittsburgh.

Kelly returned home armed with information about the creation of the Pearl District and determined to do something similar. He tossed around the idea with Mark Mentzer, who owns a building/studio in Lawrenceville, Rebecca White, formerly of the Lawrenceville Business Association, and others.

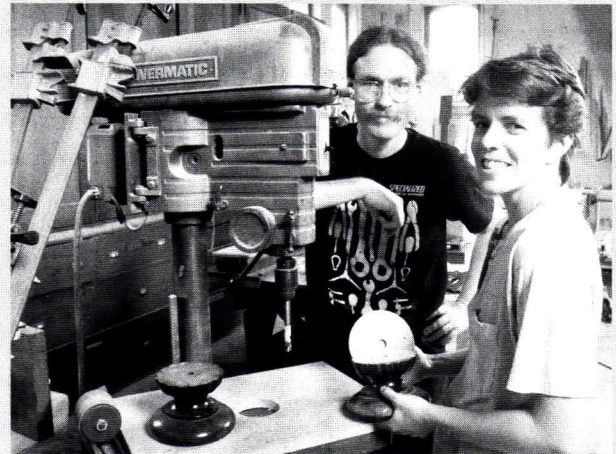
Lawrenceville had the makings of a niche, Kelly told the Board of Directors of the Lawrenceville Corporation in a presentation. It wasn't a hard sell: The Board welcomed the idea as did the area business owners. "I personally went around to every business and everyone without exception was enthusiastic," says Kelly.

The most difficult part, he says, was getting funding. "The first funding was through PPND (Pittsburgh Partnership for Neighborhood Development) with an initial grant of \$30,000 I believe. And we asked all the businesses for membership."

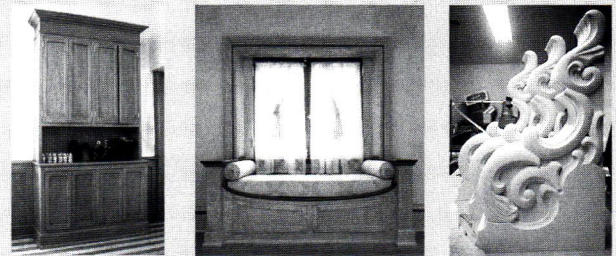
Meanwhile, Mentzer, associate head of Carnegie Mellon's School of Design, proposed the branding for senior projects for students. As funding efforts got underway, a membership group with fees was created along with a colorful and well-designed guidebook that designated every architect, interior designer, craftsman, artist, kitchen and bath supplier and related design business from the 16<sup>th</sup> St. Bridge in the Strip District to the 62<sup>nd</sup> St. Bridge in Lawrenceville. The first guidebook of the 16:62 Design Zone was distributed in November of 2000.

Five years later they are on well on their way with a great deal accomplished and much more left to do.

For every building that's been renovated there's another that could use it. And in an area that stretches 46 blocks, it's going to take a lot of time and money. Every bit helps. Recently, the Pennsylvania Department of Tourism gave



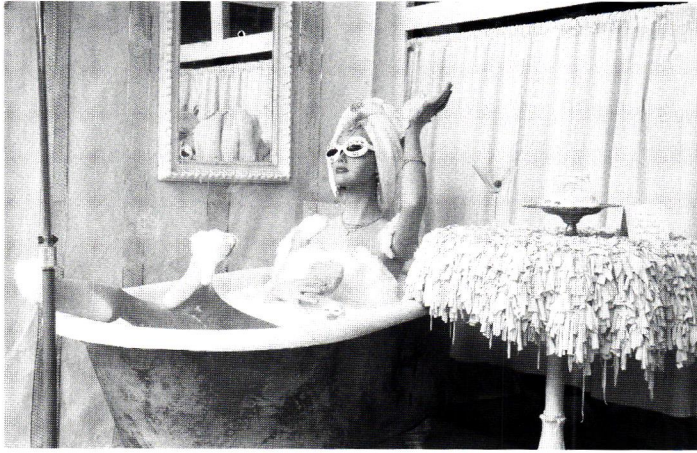
**Jerry Wilson and Vicki McCracken**



Wilson & McCracken, a custom architectural millwork and furniture shop, is located on Butler St. in a firehouse constructed in 1885. The historic landmark was last used by the city as a firehouse in the 1970s, then briefly as a paramedic house. Wilson & McCracken purchased the building from the City of Pittsburgh in 1984, becoming its first private owner. The building (not to be confused with the Firehouse Lounge) retains most of its original features, including the hose-drying tower. The hayloft is now an office, the barracks a finishing room, and the stable area is now filled with work tables and woodworking tools.







*The festive and fun storefront of Jay Design Soaps & Gifts on Butler St. in Lawrenceville.*



*David Moot, an interior painter who specializes in faux finishes, in his store Embellishments at 5142 Butler featuring antiques and decorative accessories.*

PHOTOS BY TRACY CERTO EXCEPT WHERE NOTED



*A strong design presence in the Strip District, hot haute hot's owners Keneva and Rose sell eclectic goods from around the world.*



*Joe Kelly with Sam Maloof, world-renowned furniture maker, during a visit to Los Angeles looking for more Design Zone inspiration.*

PHOTO BY MIKE IZZO

seven neighborhoods in Pittsburgh, including the Design Zone a Heritage Tourism Grant of \$60,000.

"The URA has been very helpful for the facade renovation program," adds Mentzer who has owned his building for 13 years. Through his teaching at Carnegie Mellon, Mentzer meets visitors to Pittsburgh from around the world and he likes to spread the word about the Design Zone. "I share with them the idea and they're impressed. It's neat to have all these related artists and artisans and designers in one area and it helps spread the business around." The attitude is one of cooperation, not competition. They look after their own, he notes.

And the area continues to grow. An average of 10 new businesses open each year. This past year that spiked to 18, which included Artemis, a business dealing with only environmentally friendly building materials such as tile and carpet, owned by Janice Donatelli, who started the café named Coca in the same block, and Linda Metropulos.

Population is also increasing annually. Kate Trimble, executive director of the Lawrenceville Corporation, moved to Lawrenceville in part because of the Design Zone.



"The work we've done with the Design Zone has made the neighborhood that much more attractive to residents. It's attracted great restaurants and other interesting stores that have helped make this place a desirable place to live," says Kelly.

The "lively creative environment" enticed designer Mary Irwin-Scott, president of Riverside Design Group and spouse of Grant Scott, AIA. She relocated her business two years ago, renting space in KSBA's renovated Stable Building, and has since become involved with the Design Zone. It was Irwin-Scott who had the idea of linking AIA Pittsburgh's Design Awards with the Design Zone.

Location isn't critical to Irwin-Scott's business since she ships tableware and gift items—"functional art"—all over the world to the trade. Her works are in the permanent collection of the Brooklyn Museum, in top resorts worldwide and have been featured on television and in major design magazines.

**ARCHITECTS IN THE DESIGN ZONE**

- Brenenberg Brown Group
- Cochran Associates Architects
- Desmone & Associates
- Joyce Design Group
- Kingsland Scott Bauer Associates
- Paul Graf, Architect
- Quad Three Group
- Stephen Casey Architects

"I love it here. You step out the door and there are all kinds of things to see and do," she says. "The energy I feel from people like Pam and other Design Zone architects and business owners makes for a great environment."

As Kelly says, "What we're doing to promote our design businesses, through our web site and booklet, is more than any other neighborhood is doing. There are plenty of available spaces for architects and designers."

When asked what the Design Zone needs at this point Devereux responds, "We have the critical mass. What we need is a strong customer base."

On a sunny and hot Saturday in late July, the district held a sidewalk sale, attracting loyal as well as new shoppers. As a young girl left the store Who New? with her mom and brother, she told them, "That is a very, very, very nice store. It has a lot of color." Developing future customers such as this enthusiastic shopper could be just the key.



CASSANDRA SCOTT OTT

(Left) KSBA's renovated Stable Building (Right) Grant Scott's designs for Riverside Design Group.



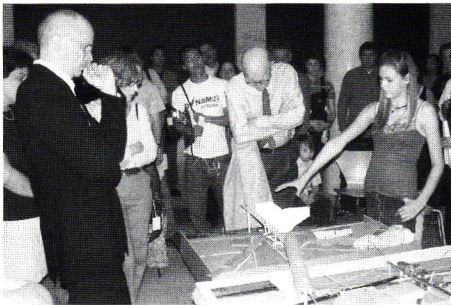
# ARCHITECTURAL CHARRETTE

By Mattie Schloetzer

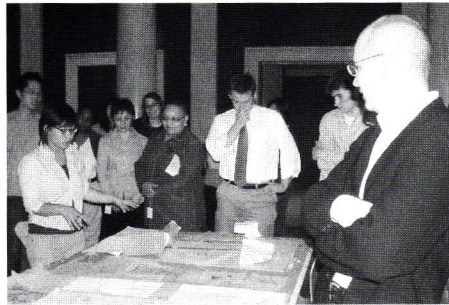
## A DESIGN STUDIO IN CONJUNCTION WITH MICHAEL MALTZAN: ALTERNATE GROUND



Students and professionals explore the building process in the Carnegie Museum of Art's Hall of Sculpture.



Michael Maltzan and William Boyd, Jr., who serves on the Heinz Architectural Center's Advisory Committee, listen to Rachel Cowen present her team's model of a kindergarten and an amphitheater situated along Pittsburgh's riverfront.



Carnegie Mellon University School of Architecture student, Stephanie Chu discusses her team's design process as Steven Lee (back left), Bob Reppe (center) and Michael Maltzan listen and provide criticism.

Five large worktables, each displaying a unique sectional model made of masonite, set the stage with glue guns, cardboard, blue foam and cutting knives littering the workspaces. Gathered around the tables, intent participants cut, glued, and drew with the speed and agility typically reserved for video games. It's not often that high school and college students work alongside professionals to actively solve a problem, but that was the scene in the Carnegie Museum of Art's Hall of Sculpture during the week of May 9 – May 14.

In conjunction with the special exhibition *Michael Maltzan: Alternate Ground* (February 12 – June 12, 2005), the Heinz Architectural Center and Carnegie Mellon University's School of Architecture invited five teams of students and professionals to explore the building process through a week-long charrette. The twist? Each group focused on a different and unusual pairing of programs, such as a greenhouse and Laundromat and a car wash and motel, to illustrate how innovative design can influence the way people live.

In another twist, each team was comprised of three high school students and two architecture students from Carnegie Mellon who were joined by a professional architect. Those lending a hand included: Matthew Fineout, AIA, principal of EDGE studio; Kevin Gannon, AIA, LEED AP, principal of Davis Gardner Gannon Pope (dggp); Jennifer Lucchino, AIA, principal, inter\*ARCHITECTURE; Spike Wolff, designer and adjunct professor of Architecture, Carnegie Mellon; and Raymund Ryan, architect and a curator of the Heinz Architectural Center. Steven Lee, of Michael Maltzan Architecture, served as on-site advisor to the project.

Representatives from each team selected at random sites located in the museum's Oakland neighborhood from Bates



Street to the Pittsburgh Technology Center on the Monongahela riverfront. The sites offered social, programmatic, and geographic diversity ranging from the university setting of the first site, between the Frick Fine Arts Building and Katz School of Business, to the residential and commercial locations in South Oakland. To challenge the participants even more, the terrain of the sites varied: hillside, level, riverfront, and wooded.

Teams selected from each of two lists of potential building programs: one of structures with constraints (predetermined sizes) and one without constraints where decision making was left to the teams. The final pairings included: a movie theater and auto body shop (on the lawn between Frick Fine Arts building and Katz School of Business); a greenhouse and Laundromat (on Dawson Street at South Bouquet); a basketball court and skateboard park (on Bates Street at South Oakland); a car wash and motel (on Bates Street below Boulevard of the Allies) and a kindergarten and amphitheater (along the riverfront at Pittsburgh Technology Center).

Judging from the varied programs, it was clearly an interesting, albeit challenging, task to unify the buildings on the sites. As they collaborated to respond to the diverse requirements and parameters of their programs, each team member contributed from his or her own unique perspective. Working Monday through Friday afternoons and all day Saturday, the teams brainstormed ideas for architectural projects and then gave visual form to their final concepts in models and drawings.

Providing the inspiration for this brainstorming session was *Michael Maltzan: Alternate Ground* which the teams visited throughout the week. In addition, they sought Steven Lee's insights into Maltzan's architectural style. The exhibition, particularly the gallery *City of Process*, which included more than a hundred different study and process models to demonstrate the complex task of designing a building, reinforced the iterative process. Through the display of massing and study models, as well as material studies for various projects, this gallery showed how architects continually refine and modify their concepts. The design of the exhibition space, itself a joint effort of Michael Maltzan Architecture and Carnegie Museum of Art, also encouraged visitors to compare different solutions to the

same problem. The ability to creatively work through a problem while remaining flexible and open to change was key to the charrette. It was also crucial for the younger participants to realize that the first attempt is rarely, if ever, the last.

The week began with a brief orientation session, which included a field trip to the five sites. Rather than trying to match the programs to the sites, participants were encouraged to think about the attributes of each one. At each location, participants discussed issues and sketched, scribbled notes and shot digital photography.

For the duration of the week and in full view of museum visitors, participants debated ideas and constructed models of cardboard, at times discussing their progress with each other. Throughout, they considered the interconnectedness of architecture, program and site as they relate to the topographical and historic conditions of Pittsburgh. While some were disappointed to be working sans computer, they compensated well by collaborating with team members and working hands-on to create models.

A highlight of the charrette was interacting with Michael Maltzan on the last day prior to the public critique. The architect arrived early in the day and met with each team to offer reinforcement and criticism before the critique. He even provided some practical advice such as this: hold an air can upside down for maximum effect.

One of his major goals? Making sense of the programs, which he acknowledged was a difficult challenge. The concept of pairing unusual programs was intended to get participants thinking about how innovative design can change the way people live. Case in point: the design of a greenhouse/Laundromat which impressed Maltzan. In an experimental move, the team designed the Laundromat with eco-friendly washers. The hitch: washing your clothes in these machines would take up to a week! Rather than viewing this as a negative, Maltzan recognized the potential for the Laundromat to become a local meeting place for its customers, transforming the mundane into a social experience that builds community. This type of positive change, he argued, occurs with simple, everyday businesses such as bookstores and coffee shops, not large-scale sports



**Kelly Docter (left), Coordinator, K-12 Outreach at Carnegie Mellon University and Mattie Schloetzer, Departmental Assistant at the Heinz Architectural Center admire the completed model of a greenhouse/Laundromat.**

arenas or convention centers. The idea that architecture could ignite change and improvement was an empowering concept to the teams. Even if the student participants decide not to pursue a career in architecture, this experience certainly helped reshape how they think about architecture, and their city.

To cap the charrette, more than one hundred people crowded into the museum's Hall of Sculpture to survey the teams' final projects. Laura Lee, head of Carnegie Mellon University's School of Architecture, and Bob Reppe, zoning administrator for the City of Pittsburgh, joined in a public discussion led by Maltzan about the projects presented by each team. Audience members listened intently as team representatives explained their designs, as well as the successes and challenges they faced that week. Following each presentation, Maltzan asked questions and provided comments in an effort to tie the discussion to larger architectural and urban issues. Although these programs will not be realized, it is exciting to consider what the future holds for Pittsburgh's neighborhoods. Who knows: perhaps the novelty of a one-week Laundromat will inspire an enthusiastic following. One lasting impression is the idea that the teams' creative design solutions and Maltzan's enthusiastic reactions to them suggest that our city is full of potential.



# Meet the Fellows

## Fireside Chats at the Firehouse Lounge

**THURSDAY, SEPTEMBER 15**

*Meet members of  
AIA's College of Fellows  
at the September  
membership meeting.*

**EVENT SCHEDULE:**

- 5:30-6:00 p.m. Cocktails
- 
- 6:00-6:20 p.m. AIA Business Meeting
- 
- 6:20-7:00 p.m. Fireside chats with AIA College of Fellows
- 
- 7:00- ? p.m. Enjoy a chance to stay and network with your colleagues at the Firehouse Lounge. Live music at 9 p.m.

\$10 Members \$20 Non-members  
RSVP to AIA Pittsburgh by  
September 14<sup>th</sup> at 412-471-9548

**Drop off your Design Awards Binders!**  
**5:30-8:00 p.m. Firehouse Lounge**  
**2216 Penn Avenue**



**Louis D. Astorino, FAIA**

**LOUIS D. ASTORINO, FAIA**

Louis Astorino, FAIA founded Astorino in 1972 and serves as chairman of the firm. Under his leadership, the firm has been consistently ranked as one of America's top 500 Design Firms by *Engineering News Record*. Beyond his leadership role at Astorino, Mr. Astorino was also recognized as a leader in the Pittsburgh community when the *Pittsburgh Post-Gazette* named him as one of Pittsburgh's Top 50 Business Leaders in 2001.

Mr. Astorino was elected to the College of Fellows of the American Institute of Architects in 1987; received the Alumni Achievement Award of the College of Arts and Architecture from the Pennsylvania State University in 1989; and was made an Alumni Fellow by the Pennsylvania State University in 1991. Mr. Astorino has also served as President of the American Institute of Architects, Pittsburgh Chapter, and as President of the Pennsylvania Society of Architects. He was a cofounder of the AIA Pittsburgh Architects Workshop, as well as a member of the AIA National Design Committee, and is a Jury member for the AIA College of Fellows.

Mr. Astorino is on the Board of Directors Committee and Executive Committee for the Pittsburgh Regional Alliance, as well as being Co-Chair of its International Committee. He was appointed by the Governor of Pennsylvania to serve on the Pennsylvania Department of Labor & Industry's Industrial Board and the Pennsylvania Veterans Memorial Commission. He also served on Governor Rendell's 2003 Transition Committee for the Department of General Services.

Aside from his professional and civic involvement, Mr. Astorino is involved in a number of charitable organizations, including Holy Family Institute and the Roberto Clemente Foundation. He is Chairman of the Pittsburgh Civic Light Opera, serves on the Advisory Board for the Little Sisters of the Poor, and is a member of the Christian Leaders Fellowship Christmas Creche Committee, among others.

Some of the projects completed under his direct supervision include the Chapel of the Holy Spirit, Vatican City, Italy; the Domus Sanctae Marthae (the Hospice Santa Marta), Vatican

City, Italy; the Trimont condominium high-rise in downtown Pittsburgh; the historic preservation of Frank Lloyd Wright's Fallingwater, PNC Park, the new Pirate stadium (with HOK Sports); PNC Firstside Center, the spring training facility for the Pittsburgh Pirates, McKechnie Field, Bradenton, Florida; and currently the design of the new Children's Hospital of Pittsburgh.

Mr. Astorino received a Bachelor of Architecture degree from the Pennsylvania State University in 1969. He is a member of the College of Fellows of the American Institute of Architects and is a registered professional architect in the States of Pennsylvania and 13 other states.

**SYLVESTER DAMIANOS, FAIA**

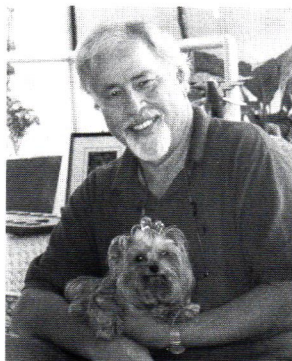
Sylvester Damianos, FAIA is president of Damianos-group, a multidisciplinary architectural firm in Pittsburgh, P.A. His firm's work is broad in scope with particular emphasis on art-related projects: museum, gallery, theater, library and educational facilities; exhibit design; furniture design and graphics.

After graduating from Carnegie Mellon University, Mr. Damianos was a Fulbright Scholar at the Technological Institute of Delft, The Netherlands, followed by two years of service in the US Army Corps of Engineers. He then returned to Pittsburgh and a dual career in art and architecture. He is a practicing sculptor, craftsman and a one-time painter.

Mr. Damianos was elevated to the American Institute of Architects (AIA) College of Fellows in 1982 and elected to its Executive Committee in 1999. He received the AIA's Edward C. Kemper Award, AIA Pennsylvania's Medal of Distinction and AIA Pennsylvania's Honor Award for Furthering Artistic Appreciation. Mr. Damianos is also an Honorary Member of the Japan Institute of Architects, Membro De Honor—Seccion Nacional Mexicana, and Honorary Fellow of The Royal Institute of Architecture in Canada.

A member of the AIA since the 1950s, Mr. Damianos has served on all levels of the Institute and was national

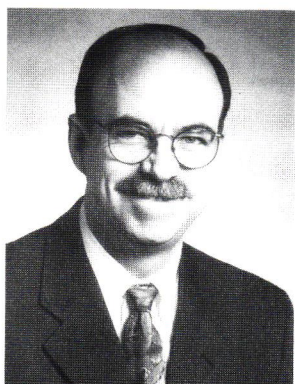




**Sylvester Damianos, FAIA**



**Steve George, FAIA**



**David Hoglund, FAIA**

president in 1990. Active with the American Architectural Foundation since 1988, he served as Chairman/Co-Chairman from 1991-98 and has been honored with lifetime membership on the Board as a Life Regent.

Mr. Damianos is sensitive to the needs of people with disabilities. He is a strong and passionate advocate of Universal Design and has served on a number of boards and committees involved with ADA issues at Carnegie Mellon.

Mr. Damianos currently serves as Chancellor of the College of Fellows and recently became co-chair of the District Design Committee of the Pittsburgh Cultural Trust.

#### **STEVE GEORGE, FAIA**

Steve George, FAIA graduated from Carnegie Tech and worked in a number of offices until 1970 when he went into public service. Mr. George was Director of Land and Building for the City of Pittsburgh and then from 1971-1973 he was the Director of Parks and Recreation for the city. From 1973-1982 he served as the Executive Director of the Urban Redevelopment Authority until he went back into private practice. From 1984-1988 Mr. George was the Director of Aviation for Allegheny County when the new Pittsburgh International terminal was built. Mr. George then returned to private practice until he retired. Mr. George now runs a Bed & Breakfast in Bedford, PA with his wife called The Chancellor's House.

#### **DAVID HOGLUND, FAIA**

David Hoglund, FAIA a principal and director of Perkins Eastman, has led the firm's Pittsburgh office since its inception. Mr. Hoglund is a recognized expert in the design of senior living facilities and is at the forefront of deinstitutionalizing and reinventing the culture of senior living in the United States and abroad. Woodside Place, the first of a series of revolutionary senior living facilities designed by Mr. Hoglund, brought to fruition his ability to create spaces that improve the quality of life for people with special needs. Since then, Mr. Hoglund has been involved in the design of numerous other senior living facilities, as well as homes for emotionally disturbed children, residences for disabled

veterans, live-in drug-treatment facilities, and an AIDS hospice.

Mr. Hoglund is a licensed architect in several states and is a past president of the Pittsburgh chapter of the American Institute of Architects (AIA). He is also a member of the College of Fellows of the AIA, as well as a member of the Environmental Design Research Association (EDRA), the American Association of Homes and Services for the Aging (AAHSA), and the National Association of Home Builders (NAHB).

Mr. Hoglund received his Bachelor of Science in Architecture from Rensselaer Polytechnic Institute and a Master of Architecture degree from the University of Illinois at Urbana-Champaign. During his graduate studies, Mr. Hoglund received a National Endowment for the Arts grant and a university fellowship in order to visit group homes in Scandinavia and England—an instrumental source of his approach to senior living design.

#### **LAURA LEE, FAIA**

Laura Lee, FAIA, a faculty member in Carnegie Mellon University's School of Architecture since 1990, was appointed head of the school in July 2004. Ms. Lee teaches courses in design studio, professional practice, and interdisciplinary arts on campus and abroad. In addition to her teaching experience at Carnegie Mellon, Ms. Lee has taught at the Higher Institute of Architecture in Antwerp, Belgium; Royal Danish Academy of Fine Arts in Copenhagen, Denmark; and the Swiss Federal Institute of Technology in Zurich, Switzerland. She has presented and published many papers and co-authored "Uncovering the City: Architectural Dialogues," an exhibit that traveled throughout the United States, Canada, and Europe.

Ms. Lee is an appointed member of the AIA National Board Knowledge Committee, member of the AIA National Case Studies Work Group, and Past-Chair of the AIA National Educator/Practitioner Net. She has lectured and served on panels over the past several years for the AIA, AIAS, NCARB, and ACSA on issues concerning the relationship between education, internship, and practice. Her work focuses on the development and implementation of collaborative programs between the academy and the profession. She





**Laura Lee, FAIA**

is a team chair for the National Architectural Accrediting Board.

Ms. Lee is the recipient of Carnegie Mellon's highest teaching honor – The Ryan Award, in 2002. Nationally, she earned the AIAS National Educator Award and recently received her Fellowship in the American Institute for Architects (FAIA) for advancing the science and art of building by advancing architectural education, training and practice. In January 2005, Ms. Lee was presented with the Henry van de Velde Institute Award for Architecture Education in recognition of her development of intercultural and interdisciplinary programs.

#### **DAVID LEWIS, FAIA**

David Lewis, FAIA is an architect/urban designer. He is currently a Distinguished Professor of Urban Studies in the School of Architecture, and head of the Fifth Year Studio. He is the founder of Urban Design Associates, a firm that practices from Pittsburgh and works in cities throughout the United States and in Britain and France.

Mr. Lewis came to Carnegie Institute of Technology in 1963 as the Andrew Mellon Professor of Architecture and Urban Design, where he started one of the first educational programs in urban design in which students worked hands-on with elected officials, agency representatives and citizens in communities in the Pittsburgh metropolitan region. From 1968 to 1974 he taught at Yale where he was the William Henry Bishop Professor of Urban Design and formed the urban design workshop. In 1988-89 he was the Hyde Professor at the University of Nebraska. In 1990 he returned to Carnegie Mellon University and started the Urban Laboratory, which continues to this day. In the late sixties and early seventies he was a core member of the AIA's Regional/Urban Design Assistance Teams (R/UDAT's), and Chairman of the AIA's National Urban Design Committee in 1976-77. In 1976 he was a Founder-Member of the International Institute of Urban Design. In 1988 he chaired the International Remaking Cities Conference at which HRH The Prince of Wales was the Honorary Chair.

Mr. Lewis has received several local, state and national awards. In 1988 he was honored with the AIA's Kemper Award for service to the profession. In 1988 he was

also honored with the Pennsylvania Gold Medal for Architecture.

Mr. Lewis has written a number of books on art, architecture and urban design. He is also a painter and has held a number of one-person exhibitions.

Born in 1922, he served in the navy in World War II. His wife is Judith Tener-Lewis, and he has a daughter and a son.

#### **ROBERT DALE LYNCH, FAIA**

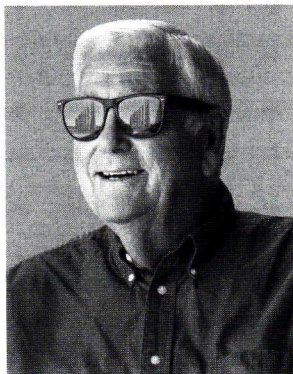
A registered architect for 34 years, Robert Dale Lynch, FAIA is a principal of Lynch & Associates, Architects in Pittsburgh which was started in 1982. In 1991, he was awarded the PSA Medal of Distinction, the gold medal and highest honor bestowed by the Pennsylvania Society of Architects. In 1996, he was elected to the College of Fellows of the American Institute of Architects in recognition of his contribution as an architect for the good of the nation.

Mr. Lynch participated in the refinement and the enactment of the Americans with Disabilities Act of 1990, testifying before Congress and working with congressional staff on behalf of the American Institute of Architects.

He worked for Senator James Rhodes as a volunteer from 1984 through 1988 to write and testify before the Pennsylvania Legislature for the enactment of the state's Universal Accessibility Law of 1988. Subsequently, appointed by Harris Wofford, Secretary of Pennsylvania's Department of Labor & Industry, Mr. Lynch served as a founding member of the Pennsylvania Universal Accessibility Review Board for a term of four years.

In 1992, he was commissioned by the Architect of the Capitol to undertake an ADA survey of the United States Capitol Building, a month long study of 632 rooms.

Mr. Lynch has been a member of the faculty of the University of Pittsburgh's School of Health & Rehabilitation Sciences for the last eight years, teaching courses in architectural design & construction.



**David Lewis, FAIA**



**Robert Dale Lynch, FAIA**





ready for graduate school?

ENROLL IN THE COEDUCATIONAL **INTERIOR ARCHITECTURE** OR **LANDSCAPE ARCHITECTURE** PROGRAM AT CHATHAM COLLEGE

### **NEW INTERIOR ARCHITECTURE PROGRAM**

- Three degrees offered:
  - **Bachelor of Interior Architecture** (for women only)
  - **Master of Interior Architecture**, for students with a bachelor's degree in a discipline other than interior design or architecture
  - **Master of Science in Interior Architecture**, for students with an accredited degree in interior design or architecture
- Program emphasis on social responsibility and a holistic design process in which interior design is integrated with the surrounding architecture
- Sample courses include Interior Architecture Studios, Computer Design Technology, 20th & 21st Century Architecture, Materials & Assemblies, Environment & Behavior, Environmental Systems, Lighting & Acoustics

### **MASTER OF LANDSCAPE ARCHITECTURE**

- Pittsburgh's *only* landscape architecture program
- Earn a professional, applied degree leading to licensure
- Curriculum emphasizes environmental concerns and sustainability
- Sample courses include Landscape Ecology, Historic Landscape Preservation, Soil Science, and Community Design of Public Landscape
- Field work and design integral to curriculum

---

### **MASTER OF ARTS IN LANDSCAPE STUDIES ALSO AVAILABLE**

---

[www.chatham.edu](http://www.chatham.edu) ■ 800-837-1290 ■ [admissions@chatham.edu](mailto:admissions@chatham.edu)  
 Chatham College ■ Woodland Road ■ Pittsburgh, PA 15232



# Learning in Las Vegas

## *Continuing Education at AIA National and Highlights of 2005 Convention*

BY MAYA HAPTAS

Exiting the gate at the Las Vegas airport, I was immediately surrounded by the electronic whir of slot machines, a strange jingle that would provide the constant backdrop for the rest of my trip. Outside the airport, I encountered a taxi line rivaled only by the Phantom's

Revenge at Kennywood. The payoff? I'm convinced that 2005 AIA Gold Medal Winner Santiago Calatrava, FAIA was in the same line just ahead of me.

I arrived in Las Vegas on the evening of Monday, May 16<sup>th</sup>. As the component staff

member in charge of Continuing Education, AIA National had awarded me a Cornerstone Partner Scholarship to attend the CES Providers Convention, a pre-convention to AIA National Convention and Design Exposition. Although AIA does not require me to complete 18 AIA/CES Learning Units (8 of which must qualify for HSW), as part of my job at AIA Pittsburgh, I am in charge of planning and scheduling Continuing Education Seminars. Our largest event is Build Pittsburgh, a two-day conference with seminars following three tracks, focused on regional issues, architectural practice, and new technologies. Over the year, we provide many seminars to our members which add up to well over the required 18 LU's; 11 of these, including at least 8 HSW credits, can be received by attending Build Pittsburgh.

What struck me the most this year was the variety of activities that qualify for CES credit. As component staff from all over the country gathered in Las Vegas we were able to share our best practices for providing education for our members. While I believe we are on the right track in Pittsburgh, seeing such diversity in programming encouraged me to think outside the box. I'm convinced the Build Pittsburgh Committee did this several years ago by incorpo-

rating a Regional Issues track to the conference. I'm continually impressed by the caliber of speakers and diversity of issues we attract for Build Pittsburgh, and I'm happy to report many of my compatriots across the country were excited to hear about the success of our conference. And I must admit to feeling quite proud to be representing AIA Pittsburgh when I was asked "So, who was your Keynote Speaker?" and I answered, "Why, The Honorable Thomas Vilsack, Governor of Iowa." They may have encouraged me to think outside the box, but I encouraged them to "think bigger."

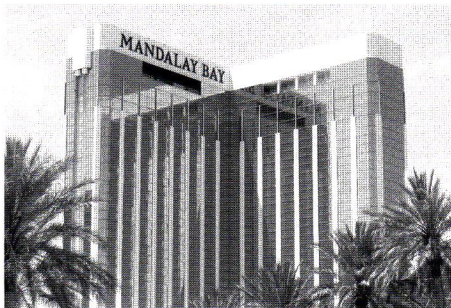
This year AIA National found that the top reason architects attend AIA National Convention was for continuing education. I encourage every member, if they get the opportunity, to attend this convention. Just the same, we shouldn't lose sight of what we have available to us locally.

If you have an idea for a Continuing Education Seminar or would like to find out if something qualifies for LU's, drop me a line here at the office. [mhaptas@aiaappgh.org](mailto:mhaptas@aiaappgh.org)

Below are some highlights of this year's AIA National Convention. As you can see from 2005 AIA President Douglas L. Steidl, FAIA's comments below, I think we are on the right track.

### **137th AIA National Convention in Las Vegas Partners Architects with Society**

WASHINGTON, D.C., MAY 26, 2005 — The American Institute of Architects (AIA) National Convention and Design Exposition concluded with a record number of architects, exhibitors, and design industry professionals in attendance. Highlights of the convention included the unveiling of the U.S. Postal Service stamp commemorating the Masterworks in Modern Architecture, the airing of the documentary entitled, *com•mu•nit•ty*, a conversation with noted Las Vegas developer Steve Wynn and architect Tony Marnell, and 2005 AIA Gold Medal Winner, Santiago Calatrava, FAIA, closing the general session with remarks



*They may have encouraged me to think outside the box, but I encouraged them to "think bigger."*



that focused on how his work is inspired by the human form, and that architecture is an extension of man and nature.

As of Saturday afternoon, the convention had attracted 24,444 registrants, a record number for the AIA's annual convention and an increase of more than 10% over last year. The number of exhibiting companies at the Mandalay Bay Convention Center reached 860, just slightly higher than the previous year, as the AIA convention staff made a concerted effort to maintain a manageable size of the show in order to ensure a positive experience for the attendees.

A survey of convention attendees indicated that AIA members chose continuing education programs as the top reason to attend the annual convention, and the response to the subject matter discussed was quite strong.

"We are thrilled that the content of the convention was so very pertinent to the issues facing American society. The idea of 'community' and how architects, by design of the built environment, affect the quality of life for all citizens, and the role architects play in creating places of significance, both physically and inspirationally, within our urban centers," stated 2005 AIA President Douglas L. Steidl, FAIA. "The convention addressed the importance of architects to society, and the responsibilities that that role places on the professional."

At the May 21 business meeting of the 137th AIA convention, a greater than two-thirds majority of delegates voted in favor of "Bylaws Amendment 05-A: Addition of International Director to the Institute's Board of Directors." This director will represent the approximately 1,000 architect and associate members who currently reside and work outside the U.S. Additionally, the delegates took action on the following resolutions:

■ **RESOLUTION 05-1: *The Health, Safety, and Welfare of the Public, Profession, and Institute***

Delegates approved this resolution, which is intended to raise awareness and knowledge about the number of architecture school graduates completing the registration process, and the subsequent impact on the public, profession, and Institute. The

resolution calls for the AIA to work collaboratively with the National Council of Architectural Registration Boards and state boards to conduct a comprehensive survey of newly licensed architects over the past 10 years, to be updated annually in the future.

■ **RESOLUTION 05-2: *Advocating for a Sustainable Future***

Delegates voted overwhelmingly for this resolution, targeted at raising awareness about the need for a national energy policy and to support the AIA Public Policy regarding sustainability. It urges that AIA members, as responsible stewards of our natural and built environments, acknowledge and seize the opportunity to advocate for a sustainable future. It further calls for the sharing of knowledge among all interested parties in the process.

■ **RESOLUTION 05-3: *Promoting Leadership in Building Science and Technology***

In adopting this resolution to promote architects as the leaders in harnessing building science and technology to create higher performing buildings, delegates voted in favor of the AIA's recognizing the role of building science (i.e., the management of heat, air, and moisture) and building technology in architecture. It calls for the Board Knowledge Committee and the Building Science Knowledge Community to recommend how the Institute can advance its leadership in the area of building science and building technology to promote the creation of better building enclosures.

■ **RESOLUTION 05-4: *Addressing Specialty Certification***

Delegates voted down a resolution that would have discouraged specialty certification through the AIA itself or by other groups. (The AIA currently has an ongoing task force examining the issue of specialty certification.)

■ **RESOLUTION 05-5: *Recognition of Newly Licensed Architect Members***

By acclamation, delegates voted to recognize those members of the AIA who became licensed in 2004 and to welcome them as the next generation of architects.

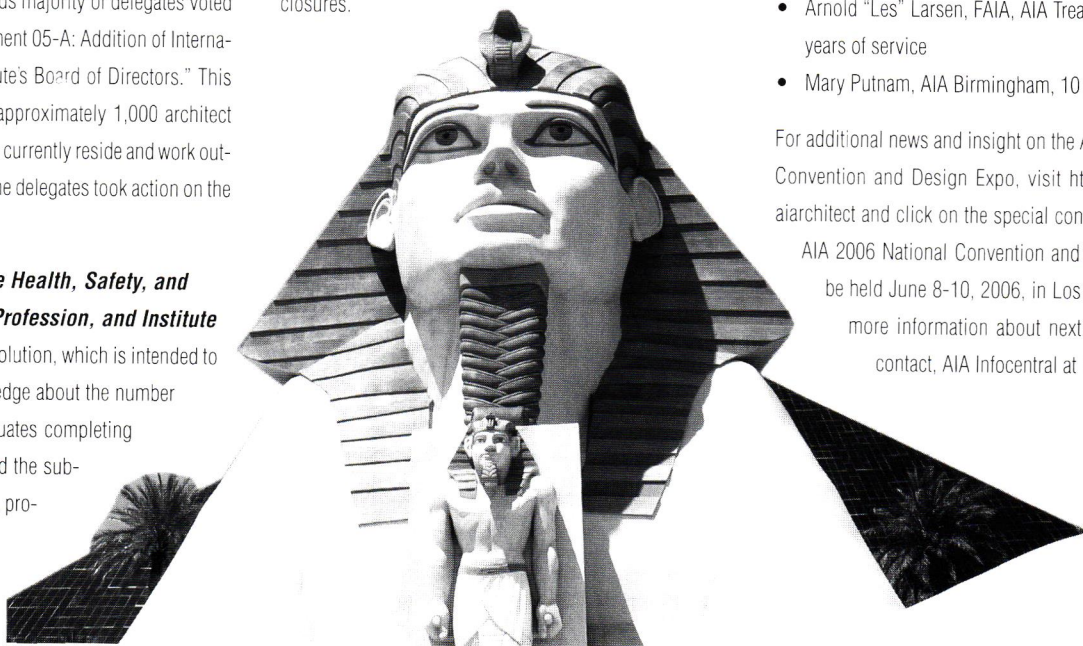
■ **RESOLUTION 05-6: *Creation of a Small Firm Committee*** was withdrawn, in part because the Board has appointed a task force to study the needs of small firms and how the AIA can best serve them.

■ **RESOLUTION 05-7: *Appreciation to Retiring Members of the Council of Architectural Component Executives***

Delegates by acclamation voted to acknowledge the exemplary service to local and state AIA components by the following retiring component executives:

- Diana Barnwell, AIA Pasadena and Foothill, 8 years of service
- Kathy C. Boutwell, Hon. AIA, CAE, AIA Mississippi, 30 years of service
- Sheila G. Bronfman, AIA Arkansas, 9 years of service
- Arnold "Les" Larsen, FAIA, AIA Treasure Coast, 5 years of service
- Mary Putnam, AIA Birmingham, 10 years of service.

For additional news and insight on the AIA 2005 National Convention and Design Expo, visit <http://www.aia.org/aiaarchitect> and click on the special convention logo. The AIA 2006 National Convention and Design Expo will be held June 8-10, 2006, in Los Angeles, CA. For more information about next year's exhibition contact, AIA Infocentral at 1-800-242-3837.





## From the Firms

→ **Phil Hundley, AIA**, principal at **DRS Architects** and Mario diCorcia, project architect, recently celebrated the opening of 30 East Main Street in Uniontown, PA, an upscale restaurant owned by Maggie Hardy Magerko, President of 84 Lumber. Located across from the historic State Theater, the restaurant adds an important element to the revitalization of downtown Uniontown.

**Celli-Flynn Brennan** is currently involved in the design and renovation of campus dining facilities at both Grove City College and Westmoreland County Community College. CFB is also the design firm for the rehabilitation of the Lutheran University Center in Oakland, which will replace the existing gray and white brick front with a glass-enclosed façade with a backlit cross facing Forbes.

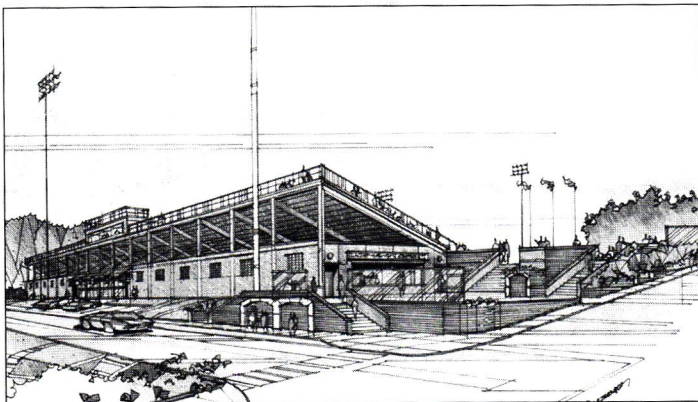
**KSBA Architects** was hired by Klingensmith Healthcare of Ford City, PA to design an 18,900 sf facility combining retail, office and warehouse space to be completed by December 2005.

**JSA** was selected as the architecture, engineering and interior design firm to Sewickley Savings & Loan for a 4,000 sf renovation and adaptive re-use project in Sewickley, PA.

**JSA** has also been selected as the architecture, engineering and interior design firm for two Parkvale Bank Branch Locations – Millvale and Hempfield Township, PA. The Millvale location includes a new facility with drive-thru access while the Hempfield Township location is a renovation project and interior fit-out.

**Moshier Studio** has been retained by Pittsburgh Voyager to champion the LEED™ certification process for their newest vessel, Voyager II. Voyager II is a new state-of-the-art green engineered boat, and will be the world's first boat to seek LEED™ certification from the U.S. Green Building Council.

Significant renovations are occurring this summer at the Keystone Oaks School District's Dormont Memorial Stadium (below). The improvements, designed by **Valentour English Bodnar & Howell**, will provide a new field surface, renovations to the stadium fieldhouse and bleachers, and major site improvements.



Duquesne University has selected **WTW Architects** to design a major renovation for the University's St. Martin's Dormitory. The \$3.3 million, three-phase renovation project began earlier this year and should be completed in the summer of 2008. The 14-story freshmen dormitory structure was built in 1962, and serves as the residence for 500 students.

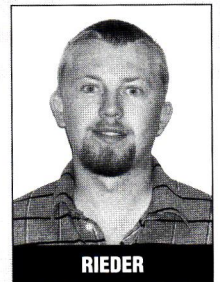
## Business Briefs

→ **DRS Architects** announced that **Tom Gray, AIA** is serving as project architect for the Erie Convention Center Hotel in Erie, PA.

Howard Braxton and Chad Tripp join **DRS Architects** as a CADD Technicians. Vicci Franz has recently joined DRS as an interior designer and is developing corporate and educational interior projects. William Michael moved to the firm from George Conte Associates and will be working in the hospitality group on the Erie Convention Center Hotel and other projects.

**Celli-Flynn Brennan** welcomes the following additions to the firm: **Gregory Galford, AIA**, as design architect, Kristin C. Kennedy as lead specification writer and project architect, Bryan Grasso, Anita Gallo and Alistair Lowe as graduate architects and Nathan Burdette as IT director and CAD manager.

**Jay Rieder** has joined the DuBois based architectural firm **KTH Architects, Inc.** Rieder will join the Health Care Division as a Cad Operator.

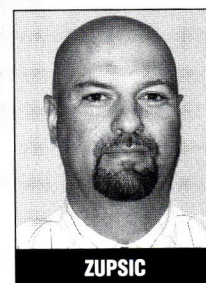


RIEDER

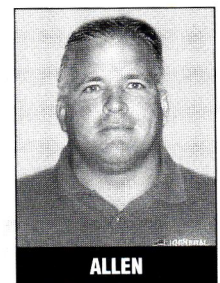
**Perkins Eastman** announced the following promotions: **Ken Kuligowski, AIA** John Lingley, and **Arch Pelley, AIA**, have all been promoted to senior associate. **Paul Cali, AIA** and Scott Fitzgerald, LEED have been promoted to associate.

**Perkins Eastman** has hired **Kent Edwards, AIA** as a senior associate, Douglas Lieb as a project architect and Megan Williams as a construction administrator.

General Industries has appointed Mark Zupsic as senior estimator and Michael Allen as superintendent.



ZUPSIC



ALLEN



## Kudos

→ **Vern L. McKissick III, AIA**, principal at Missick Associates, was recently appointed to the Commonwealth Department of General Services Review Board for a two-year term by Pennsylvania Governor Edward G. Rendell.

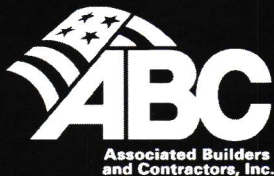
The Preservation League of New York state selected The Sage Colleges for its Excellence in Preservation Award for 2005, honoring Sage's work in Albany and Rensselaer counties. This statewide awards program recognizes individuals and organizations for demonstrating an outstanding commitment to the preservation of New York State's irreplaceable architectural heritage. Contributing to the success of the project were **Celli-Flynn Brennan** and architect Vincent Lepera of Architecture Plus in Troy, NY. The Congress Park and the 1895 and 1897 buildings where the Suffragettes met regularly were all restored.

**JSA Architecture Planning Engineering and Interior Design** announced the professional registration of **Steven N. Ackerman, AIA**. Mr. Ackerman, a JSA employee for the past 5 years, currently serves as project architect and has been instrumental with May Department Stores Company, University of Pittsburgh, Pennsylvania Turnpike Commission and A.C. Moore Projects. He graduated from Kent State University with a Bachelor of Science degree in 1997 and a Bachelor of Architecture degree in 1998.

Carnegie Library of Pittsburgh and **Loysen + Kreuthmeier Architects** of Pittsburgh received the 2005 American Institute of Architects/American Library Association's 2005 Library Building Award. The award, presented during the American Library Association Annual Conference, celebrates the finest examples of library design by architects licensed in the United States. Nationally, Carnegie Library of Pittsburgh - Brookline was among eight libraries chosen by the panel of judges. More details at <http://www.carnegielibrary.org/about/cip/press/brooklineaward2005.html>

**Richard De Young, AIA**, president and chief executive officer of **WTW Architects**, has been elected to the board of trustees of the Pittsburgh Public Theater.

## PROJECTS OF MERIT



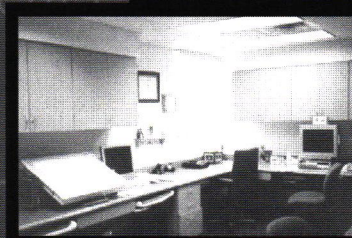
Associated Builders  
and Contractors, Inc.

Western  
Pennsylvania  
Chapter

412-231-1446

[www.abcwpa.org](http://www.abcwpa.org)

ABC of Western Pennsylvania members  
work hard to make our region a  
competitive and attractive place by  
offering great value and  
quality construction.



### BRIDGES & Company

#### ROBERT E. EBERLY PAVILION CANCER CENTER

BRIDGES & Company completed several additions and renovations to the Robert E. Eberly Pavilion cancer treatment center in Uniontown, PA. The center presented unique and dramatic construction challenges. Under the auspices of UPMC, BRIDGES added a mobile CT scanner dock and built a new linear accelerator vault. To contain the radiation within the vault it required an unusual amount of concrete. The project was completed December, 2005. BRIDGES was awarded the ABC "Excellence Award" for this project.

Owner: UPMC / Fayette Oncology Associates  
Architect: Burt Hill Kosar Rittelmann



# CONTRACTORS' DIRECTORY

\* Member of the MASTER BUILDERS' ASSOCIATION.

† Member of ASSOCIATED BUILDERS AND CONTRACTORS, INC.

A LISTING OF AREA CONTRACTORS AND THEIR PROFESSIONAL SERVICES. To include your firm in this directory, call AIA Pittsburgh at 412-471-9548.

## ■ ALLEGHENY CONSTRUCTION GROUP, INC.\*

456 Washington Avenue, PO Box 425  
Bridgeville, PA 15017  
PHONE: 412-221-0500 FAX: 412-221-0188  
CONTACT: Laura S. Deklewa

**Commercial / Construction management  
Exterior / General / Industrial / Interior  
Renovations / Pre-engineered Metal  
Buildings / Certified DBE/WBE**

## ■ BRIDGES†

1300 Brighton Road, Pittsburgh, PA 15233  
PHONE: 321-5400 FAX: 321-9823  
CONTACT: Paul R. Bridges/Gus Marquart  
WEB SITE: www.BRIDGESPBT.com

**Commercial / Construction management  
Exterior / General / Industrial / Interior  
Renovations**

## ■ BURCHICK CONSTRUCTION CO., INC.\*

500 Lowries Run Road, Pittsburgh, PA 15237  
PHONE: 369-9700 FAX: 369-9991  
CONTACT: Joseph E. Burchick  
E-MAIL: burchick@burchick.com  
WEB SITE: www.burchick.com

**Commercial / Construction management  
General / Industrial / Interior / Renovations**

## ■ JOHN DEKLEWA & SONS, INC.\*

1273 Washington Pike, P.O. Box 158  
Bridgeville, PA 15017-0158  
PHONE: 412-257-9000 FAX: 412-257-4486  
CONTACT: David Deklewa  
WEB SITE: www.deklewa.com

**General construction / Construction  
Management / Design-Build / Development  
Services**

## ■ DYNAMIC BUILDING CORPORATION†

51 Pennwood Place, Suite 200  
Warrendale, PA 15068  
PHONE: 724-772-9020 FAX: 724-772-5770  
CONTACT: John Nolan

E-MAIL: jnolan@dynamicbuilding.com  
**Commercial / Construction management  
General / Industrial / Interior Renovations  
Multi-Family**

## ■ FLYNN CONSTRUCTION

600 Penn Avenue, Pittsburgh, PA 15221  
PHONE: 412-243-2483 FAX: 412-243-7925  
CONTACT: Gemma Kirwan  
E-MAIL: gkirwan@flynn-construction.com  
WEB SITE: www.flynn-construction.com

**Commercial / Construction management  
General / Interior / Renovations**

## ■ GENERAL INDUSTRIES†

15 Arentzen Blvd., Charleroi, PA 15022  
PHONE: (724) 483-1600 FAX: (724) 483-0990  
CONTACT: Donald Ivill, divill@genindustries.com  
WEB SITE: www.genindustries.com

**Design-Build/Commercial Building  
Contractors**

## ■ HARCHUCK CONSTRUCTION CO., INC.

4203 Route 66, Building II, Suite 222,  
Apollo PA 15613  
PHONE: (724) 727-3700 FAX: (724) 727-2800  
CONTACT: David A. Harchuck

**Commercial / Construction management  
Exterior / General / Industrial / Interior  
Renovations**

## ■ A. RICHARD KACIN, INC.†

3875 Old William Penn Hwy.  
Murrysville, PA 15668  
PHONE: 724-327-6694 FAX: 724-733-5993  
CONTACT: A. Richard Kacin, Pres.

**Commercial / Construction management  
General / Industrial / Residential**

## ■ KUSEVICH CONTRACTING, INC.

3 Walnut Street, Pittsburgh, PA 15223  
PHONE: 412-782-2112 FAX: 412-782-0271  
CONTACT: George Kusevich, Jr.  
E-MAIL: gkjr@kusevich.com  
WEB SITE: www.kusevich.com

**Commercial / General / Renovations  
Education / Design-Build**

## ■ LLI/CFI CONSTRUCTION, INC.

9800 A McKnight Road, Pittsburgh, PA 15237  
PHONE: 412-369-9220 FAX: 412-369-9223  
CONTACT: Don Dempsey  
E-MAIL: ddempsey@llitechnologies.com  
WEB SITE: www.llitechnologies.com

**Commercial / Construction management  
General / Industrial / Interior / Renovations**

## ■ MARCO CONTRACTORS, INC.

100 Commonwealth Drive P.O. Box 805  
Warrendale, PA 15095-0805  
PHONE: 724-741-0300 x.35 FAX: 724-741-0335  
CONTACT: Amy Fonzi  
E-MAIL: afonzi@marcocontractors.com

WEB SITE: www.marcocontractors.com  
**Commercial / Construction management  
Interior / Renovation / Restaurants / Retail**

## ■ A. MARTINI & CO.

320 Grant Street, Verona, PA 15147  
PHONE: 412-828-5500 FAX: 412-828-6488  
CONTACT: Anthony Martini

E-MAIL: afm@amartinigc.com  
WEB SITE: www.amartinigc.com  
**Commercial / Construction management  
General / Industrial / Interior  
Pre-engineered metal buildings**

## ■ MISTICK CONSTRUCTION†

1300 Brighton Road, Pittsburgh, PA 15233  
PHONE: 322-1121 FAX: 322-9336  
CONTACT: M. Robert Mistick

**Commercial / Construction management  
Exterior / General / Interior / Renovations  
Residential**

## ■ NELLO CONSTRUCTION COMPANY\*

100 Houston Square, Suite 200  
Cannonsburg, PA 15317  
PHONE: 724-746-0800 FAX: 724-746-1966  
CONTACT: Janet Torriero  
WEB SITE: www.nello.net

**Commercial / Construction management  
Exterior / General / Industrial / Interior  
Renovations**

## ■ RAIMONDO CONSTRUCTION CO. INC.

131 South Lincoln Avenue, Greensburg, PA 15601  
PHONE: 724-837-3146 FAX: 724-837-3154  
CONTACT: David A. Raimondo  
WEB SITE: www.raimondo.com

**General Construction / Concrete / Pre-  
Engineered Metal Buildings / Interior  
Renovations / Commercial / Industrial**

## ■ SOTA CONSTRUCTION SERVICES INC.†

80 Union Avenue, Pittsburgh, PA 15202  
PHONE: 412-766-4630 FAX: 412-766-4634  
CONTACT: Ernie Sota  
E-MAIL: esota@sotaconstruction.com

WEB SITE: www.sotaconstruction.com  
**Commercial / Construction management  
Exterior / General / Industrial / Interior  
Renovations**

## ■ TEDCO CONSTRUCTION CORPORATION\*

TEDCO Place, Carnegie, PA 15106  
PHONE: 412-276-8080 FAX: 412-276-6804  
CONTACT: James T. Frantz

WEB SITE: www.tedco.com  
**Commercial / Construction management**

## ■ TORRIERO CONSTRUCTION

100 Houston Square, Suite 102  
Cannonsburg, PA 15317  
PHONE: 724-746-0800 FAX: 724-746-1966  
CONTACT: Gino Torriero

E-MAIL: gino@torrieroconstruction.com  
WEB SITE: www.torrieroconstruction.com  
**Commercial / Construction management  
Exterior / General / Interior / Renovations**

## ■ TURNER CONSTRUCTION COMPANY\*

Two PNC Plaza, 620 Liberty Ave.,  
27th Floor, Pittsburgh, PA 15222-2719  
PHONE: 412-255-5400 FAX: 412-255-0249  
CONTACT: Joseph Milicia, Jr.  
**Commercial / Construction management  
General / Industrial / Interior / Renovations**

## ■ WJM CONTRACTING, INC.†

P.O. Box 1324, Wexford, PA 15090  
PHONE: 724-933-9136 FAX: 724-933-9147  
CONTACT: William J. Gormley, Jr.  
E-MAIL: wgormley@connfetttime.net  
WEB SITE: www.wjmc.net

**Commercial / Construction management  
Exterior / General / Industrial / Interior**

## ■ VOLPATT CONSTRUCTION CORPORATION\*

250 Curry Hollow Road, Pittsburgh, PA 15236  
PHONE: 412-653-5454 FAX: 412-653-5755  
CONTACT: Raymond A. Volpatt

E-MAIL: rayjr@volpatt.com  
WEB SITE: www.volpatt.com  
**Commercial / Construction management  
Exterior / General / Industrial / Interior  
Renovations**



# CALENDAR

## AIA ACTIVITIES

SEPTEMBER 2, FRIDAY

**AIA Communications Committee Meeting**

Noon at the Chapter office. All members are welcome. 412-471-9548

SEPTEMBER 12, MONDAY

**AIA Programming Committee Meeting**

Noon at the Chapter office. All members are welcome. 412-471-9548

SEPTEMBER 13, TUESDAY

**AIA Pittsburgh Board Meeting**, 5 p.m. at the Chapter office. All members are welcome.

412-471-9548

SEPTEMBER 15, THURSDAY

**Annual Membership Meeting**, 5 p.m. at the Firehouse Lounge. Don't forget to bring Design Awards binders – This is the extended due date and your last chance for submission!

SEPTEMBER 26, MONDAY

**Design Awards boards due!** 5 p.m. at the Chapter office.

## Save these Dates

### DESIGN PITTSBURGH IN THE DESIGN ZONE

**October 6**

**DESIGN PITTSBURGH GALA**

51st Street Business Center,  
6:00 - 9:00 p.m. \$65/person

**October 6 – October 30**

**EXHIBIT**

Exhibit of all entries in  
AIA Pittsburgh Design Awards  
51st Street Business Center, Free

**October 25**

**DESIGN AWARDS CEREMONY**

51st Street Business Center  
6:00 - 9:00 p.m. \$15/person

**SUBMIT YOUR WORK TO COLUMNS!**

## Upcoming Issues

**OCTOBER:**

The Allegheny County Comprehensive Plan: How will it affect architects? How architects are involved in the Blair County Comprehensive Plan

**NOVEMBER**

The Pittsburgh Gaming Task Force

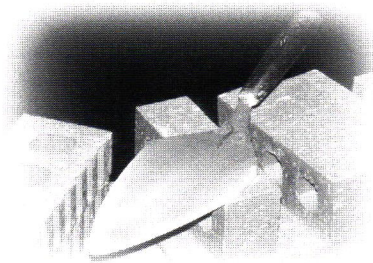
**DECEMBER**

Design Pittsburgh 2005 Award Winners

Contact editor Tracy Certo at 412-563-7173 or at [tcerto@adelphia.net](mailto:tcerto@adelphia.net)

## The Right Materials

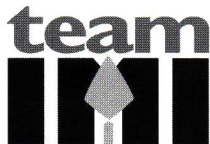
- ◆ Fire Resistant
- ◆ Low Maintenance
- ◆ Durable & Safe
- ◆ Aesthetically Valuable



- ◆ Design Flexible
- ◆ Superior Longevity
- ◆ Cost Effective
- ◆ Fast Construction Time

## The Right Way

Constructed by Experienced Union Craftworkers & Contractors



UNION MASONRY CRAFTWORKERS  
CONTRACTORS & CONSULTANTS

**International Masonry Institute**

**We Build For Life**

For answers to your masonry questions, call 1-800-IMI-0988.

300 Northpointe Circle, # 303  
Seven Fields, PA 16046  
Ph: (724) 776-1930  
Fax: (724) 776-4963  
[btrimble@imiweb.org](mailto:btrimble@imiweb.org)  
[www.imiweb.org](http://www.imiweb.org)



# ENGINEERS' DIRECTORY

A LISTING OF AREA ENGINEERS AND THEIR PROFESSIONAL SERVICES. To include your firm in this directory, call AIA Pittsburgh at 412-471-9548.

## ■ ALLEN & SHARIFF CORPORATION

700 River Avenue, Suite 333  
Pittsburgh, PA 15212  
PHONE: (412) 322-9280 FAX: (412) 322-9281  
CONTACT: Anthony E. Molinaro, P.E.  
**Consulting / Electrical / Mechanical  
Telecommunications**

## ■ BARBER & HOFFMAN, INC.

215 Executive Drive Suite 202  
Cranberry Twp. PA 16066-6409  
PHONE: (724) 741-0848 FAX: (724) 741-0849  
CONTACT: Michael R. Miller, P.E.  
E-MAIL: bhp@barberhoffman.com  
**Consulting / Structural**

## ■ BRACE ENGINEERING, INC.

3440 Babcock Boulevard, Box 15128  
Pittsburgh, PA 15237  
PHONE: 367-7700 FAX: 367-8177  
CONTACT: Frank C. Brace  
**Structural**

## ■ CIVIL & ENVIRONMENTAL CONSULTANTS, INC.

333 Baldwin Road, Pittsburgh, PA 15205  
PHONE: 412-429-2324 FAX: 412-429-2114  
CONTACT: Gregory P. Quatchak, P.E.  
**Civil / Geotechnical / Surveying  
Environmental / Construction Consulting  
Testing & Inspection / Landscape  
Architecture**

## ■ CJL ENGINEERING

1550 Coraopolis Heights Road, Suite 340  
Moon Township, PA 15108  
PHONE: 412-262-1220 FAX: 412-262-2972  
CONTACT: John J. Wilhelm  
WEB SITE: www.cjlengineering.com  
**Consulting / HVAC / Plumbing / Fire  
Protection / Electrical / Telecommunications  
Building Audits / LEED Accredited  
Professionals**

## ■ CLAITMAN ENGINEERING ASSOC., INC.

1340 Old Freepport Road, Pittsburgh, PA 15238  
PHONE: 412-963-6700 FAX: 412-963-7217  
CONTACT: Robert Rosenthal  
**Consulting / HVAC / Plumbing / Fire  
Protection / Electrical**

## ■ CONWAY ENGINEERING

Investment Building  
235 4th Avenue, Suite 1408  
Pittsburgh, PA 15222  
PHONE: 765-0988 FAX: 765-2530  
CONTACT: Bob Conway  
**Consulting / Structural**

## ■ DODSON ENGINEERING, INC.

420 One Chatham Center, Pittsburgh, PA 15219  
PHONE: 412-261-6515 FAX: 412-261-6527  
CONTACT: Gregory L. Calabria, P.E.  
**Consulting / Mechanical**

## ■ ENGINEERING MECHANICS, INC.

4636 Campbells Run Road, Pittsburgh, PA 15205  
PHONE: 788-3650 FAX: 787-5891  
CONTACT: Daniel Grieco, Jr., P.E.  
**Geotechnical / Consulting / Testing &  
Inspection / Blasting Vibrations**

## ■ FAHRINGER, McCARTY, GREY, INC.

1610 Golden Mile Highway  
Monroeville, PA 15146  
PHONE: 724-327-0599 FAX: 724-733-4577  
CONTACT: Dale K. Earl  
E-MAIL: design@fmginc.us  
**Landscape Architecture / Site Master  
Planning / Civil / Consulting**

## ■ FIRSCHING, MARSTILLER, RUSBARSKY AND WOLF ENGINEERING, INC.

2 Parkway Center East  
2030 Ardmore Boulevard, Suite 250  
Pittsburgh, PA 15221  
PHONE: 271-5090 FAX: 271-5193  
CONTACT: Daniel J. Wolf / David D. Rusbarsky /  
Ted Marstiller, P.E.  
**Consulting / HVAC / Plumbing  
Fire Protection / Electrical  
Telecommunications**

## ■ GAI CONSULTANTS, INC.

385 East Waterfront Drive  
Homestead, PA 15120-5005  
PHONE: 412-476-2000 FAX: 412-476-2020  
CONTACT: Anthony F. Morrocco, PE/PLS  
**Testing & Inspection / Civil / Construction  
Monitoring / Consulting / Environmental /  
Geotechnical / Structural / Transportation /  
Archaeological / Surveying**

## ■ GARVIN BOWARD ENGINEERING, INC.

180 Bilmar Drive, Suite IV  
Pittsburgh, PA 15205  
PHONE: 412-922-4440 FAX: 412-922-3223  
CONTACT: Joseph F. Boward, P.E.  
E-MAIL: jboward@garvinboardeng.com  
**Geotechnical / Forensic / Testing &  
Inspection / Consulting / Environmental**

## ■ THE GATEWAY ENGINEERS, INC.

1011 Alcon Street, Pittsburgh, PA 15220  
PHONE: 921-4030 FAX: 921-9960  
CONTACT: Rose Griffin  
**Civil / Testing & Inspection / Consulting  
Environmental**

## ■ HORNFECK ENGINEERING, INC.

1020 North Canal Street, Pittsburgh, PA 15215  
PHONE: 781-1500 FAX: 781-5593  
CONTACT: Richard W. Petrie, P.E.  
**Consulting / Electrical / Instrumentation  
Lighting / Telecommunications**

## ■ JSA

6450 Steubenville Pike, Pittsburgh, PA 15205  
PHONE: 412-788-1500 FAX: 787-5960  
CONTACT: Christopher DiCianna  
**Consulting / Electrical / Mechanical  
Telecommunications / Commissioning**

## ■ THE KACHELE GROUP

1014 Perry Highway, Suite 100  
Pittsburgh, PA 15237  
PHONE: 412-369-9020 FAX: 412-369-9021  
CONTACT: Tony Moscollic  
**Structural**

## ■ L. ROBERT KIMBALL & ASSOCIATES

Architects and Engineers  
**CORAOPOLIS OFFICE:**  
415 Moon Clinton Road, Coraopolis, PA 15108  
PHONE: 412-262-5400 FAX: 412-262-3036  
CONTACT: Emil R. "Jack" Lerch, PE  
**DOWNTOWN PITTSBURGH OFFICE:**  
Frick Building - North Mezzanine  
437 Grant Street, Pittsburgh, PA 15219  
PHONE: 412-201-4900 FAX: 412-201-2338  
CONTACT: Christopher R. Haupt, AIA  
WEB SITE: www.lrkimball.com  
**Civil / Site / Water / Wastewater / Indoor  
Air Quality / Environmental Site  
Assessments / Land Development  
Industrial Hygiene and Safety / Mechanical  
Electrical / Structural / Telecommunica-  
tions / Geotechnical / Transportation**

## ■ LLI ENGINEERING

808 Penn Avenue, Pittsburgh, PA 15222  
PHONE: 412-338-0700 FAX: 412-338-0237  
CONTACT: James D. White, P.E.  
E-MAIL: jwhite@llitechnologies.com  
WEB SITE: www.llitechnologies.com  
**Construction / Electrical / Mechanical  
Structural / Telecommunications  
Commissioning**

## ■ LOFTUS ENGINEERING, LLC

555 North Bell Avenue, Carnegie, PA 15106  
PHONE: 412-429-1396 FAX: 412-429-6474  
CONTACT: Glenn Avick, P.E.  
E-MAIL: gavick@loftusllc.com  
WEB SITE: www.loftusllc.com  
**HVAC / Plumbing / Fire Protection  
Structural / Electrical / Data-Telecom  
LEED Accredited Professionals in all  
disciplines**

## ■ MURRAY ASSOCIATES, INC.

413 Penn Avenue, Turtle Creek, PA 15145  
PHONE: 412-823-2020 FAX: 412-824-7302  
CONTACT: Jack G. Murray, P.E.  
**Geotechnical / Civil / Environmental  
Structural / Testing & Inspection  
Forensic**

## ■ PROFESSIONAL SERVICES INDUSTRIES, INC. (PSI)

850 Poplar Street, Pittsburgh, PA 15220  
PHONE: 412-922-4000 FAX: 412-922-4013  
CONTACT: Thomas G. Aii, P.E.  
E-MAIL: tom.aai@psiusa.com  
WEB SITE: www.psiusa.com  
**Testing & Inspection / Consulting  
Environmental / Geotechnical**

## ■ RAY ENGINEERING

1841 Universal Road, Pittsburgh, PA 15235  
PHONE: 412-795-5972 FAX: 412-792-5974  
CONTACT: Richard A. Yates, P.E.  
**Consulting / Mechanical / Electrical  
Plumbing / Telecommunications  
LEED Building Design / Sustainable  
Building Design / Energy Analysis  
Building Commissioning**

## ■ TAYLOR STRUCTURAL ENGINEERS

250 Mt. Lebanon Blvd.  
Pittsburgh, PA 15234  
PHONE: 412-344-1889 FAX: 412-344-4898  
CONTACT: Dirk A. Taylor  
E-MAIL: pkoval@taylorstructuralengineers.com  
**Structural**

## ■ TOWER ENGINEERING

115 Evergreen Heights Drive, Suite 400  
Pittsburgh, PA 15229  
PHONE: 412-931-8888 FAX: 412-939-2525  
CONTACT: Theodore H. Dannerth, P.E.  
WEB SITE: www.estower.com  
**Consulting / Electrical / Mechanical  
Telecommunications / Sustainable  
Building Design / Energy Analysis  
Building Commissioning**

## ■ TRANS ASSOCIATES ENGINEERING CONSULTANTS, INC.

4955 Steubenville Pike, Ste. 400  
Pittsburgh, PA 15205  
PHONE: 412-490-0630 FAX: 412-490-0631  
CONTACT: Mark J. Magalotti, P.E.  
E-MAIL: magalottim@transassociates.com  
**Civil / Consulting / Transportation**

## ■ WIDMER ENGINEERING, INC.

806 Lincoln Place, Beaver Falls, PA 15010  
PHONE: 724-847-1696 FAX: 724-847-0419  
CONTACT: David H. Widmer, President  
E-MAIL: dwidmer@widmerengineering.com  
WEB SITE: www.widmerengineers.com  
**Structural / Site Development / Traffic  
Engineering**



**THE MASTER BUILDERS ASSOCIATION OF WESTERN PENNSYLVANIA (MBA)**

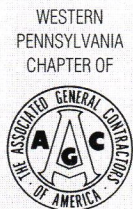
# *The Book of Recommended Construction Practices*

*By The AIA/MBA Joint Committee*

Since 1967, members of AIA and MBA have teamed up to educate local architects, contractors and owners with the Book of Recommended Construction Practices. Today, this resource continues to serve as a respected, valid source of information as the AIA/MBA Joint Committee update it to accommodate changing jobsite conditions and construction procedures.

The industry's endorsement of this resource has contributed to the community at large in keeping the industry efficient and providing the greatest value for the construction dollar.

To locate the Book of Recommended Construction Practices, visit [www.mbawpa.org/aia-mba/](http://www.mbawpa.org/aia-mba/). For questions about this resource or about the AIA/MBA Joint Committee contact Jon O'Brien at 412-922-3912 or [jobrien@mbawpa.org](mailto:jobrien@mbawpa.org).



Associated Builders and Contractors, Inc.

**Western Pennsylvania Chapter**

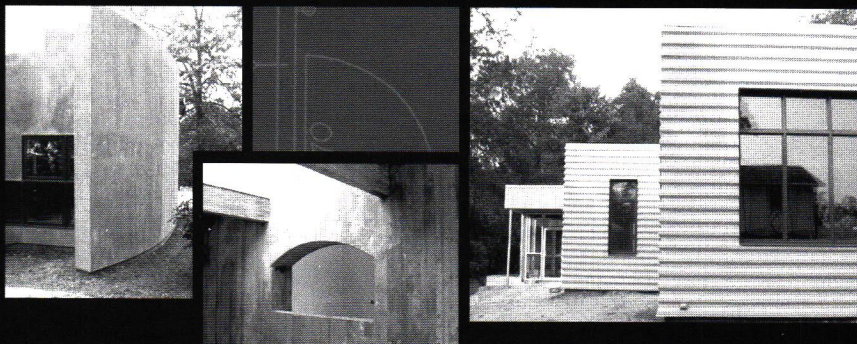
**412-231-1446**

[www.abcwpa.org](http://www.abcwpa.org)

Associated Builders and Contractors of WPA members support Apprentice training in Carpentry, Electrical, Sheet Metal and Sprinkler Fitting to insure quality work and career development for employees.

## PROJECTS OF MERIT LEED PLATINUM

### The Clearview Center



Project:  
The Clearview Center

Design/Build Team:  
Robert J. Kobet, AIA  
dgpp Architecture  
Clearview Project Services Company

The Clearview Center is a celebration of ideas, innovation and extraordinary building performance expressed as beautiful architecture. Aiming to be one of only 10 LEED Platinum-rated projects in the world, this 6,200 sf building reflects the potential of a truly integrated design-build team when coupled with extensive creativity. Home to Clearview Project Services Company, the building and site will also function as a dynamic learning center displaying the benefits of thermal massing, energy efficiency, daylighting and systems integration to be shared with the design and construction community. We invite you to discover the potential.



CONSTRUCTION MANAGEMENT | SUSTAINABILITY | GENERAL CONTRACTING

*We Make Great Projects Remarkable*

2400 Wildwood Road • PO Box 309 • Wildwood, PA 15091-0309  
Phone: 412-487-3984 • [clearviewpsc.com](http://clearviewpsc.com) • [chris@clearviewpsc.com](mailto:chris@clearviewpsc.com)  
LEED Accredited General Contractor



# GENERAL SERVICES DIRECTORY

A LISTING OF AREA BUSINESSES AND THEIR PROFESSIONAL SERVICES. To include your firm in this directory, call AIA Pittsburgh at 412-471-9548.

## CADD SERVICES

### ■ KG DRAFTING SERVICES

507 West 3rd Avenue, Dairy, PA 15627  
PHONE: 724-694-8366 FAX: 724-694-0209  
CONTACT: Katrina Gray  
*CADD Services*

## FINE APPLIANCES

### ■ DORMONT APPLIANCE CENTERS

2875 West Liberty Ave., Pittsburgh, PA 15216  
PHONE: 412-531-9700 (South)  
412-369-0200 (North)  
FAX: 412-531-5695  
CONTACT: Michael Galvin  
E-MAIL: dacadesk@aol.com  
WEB SITE: www.dormontappliance.com  
*Over 30 brands of general and fine appliances: Sub Zero, Viking, Wolf, Asko, GE, Jennair & more. Knowledgeable consultants on built-ins and ventilation.*

## GRAPHIC DESIGN

### ■ SEWICKLEY GRAPHICS & DESIGN, INC.

605 Beaver Street, Suite 102, Sewickley, PA 15143  
PHONE: 412-741-3777 FAX: 412-741-2346  
CONTACT: Donna P. Barger  
E-MAIL: dbarger@sewickleygraphics.com  
WEB SITE: www.sewickleygraphics.com  
*Certified WBE / Corporate Identity / Collateral / Web Design and Multimedia Ad and PR Campaigns / Direct Mail / Event Planning*

## LANDSCAPE ARCHITECTS

### ■ DAHLKEMPER LANDSCAPE ARCHITECTS AND CONTRACTORS

P1650 Norcross Road, Erie, PA 16510  
PHONE: 814-825-3253 FAX: 814-825-0775  
CONTACT: Daniel J. Dahlkemper  
E-MAIL: diaac@erie.net  
*Athletic Sports Complexes, Environmental Green Design, Park and Recreation Planning, Site Master Planning, Ordinance Development*

### ■ KENDALL O'BRIEN LANDSCAPE ARCHITECTS

524 Locust Place, Sewickley, PA 15143  
PHONE: 412-741-5244 FAX: 412-741-0809  
CONTACT: Heather O'Brien or Patricia Kendall  
E-MAIL: design@kendallobrien.com  
*Women Owned Business, Parks and Recreation Planning, Estate Landscapes, Site Master Planning, Streetscapes*

### ■ MARSHALL TYLER RAUSCH LLC

101 Bellevue Road, Pittsburgh, PA 15229  
PHONE: 412-931-6455 FAX: 412-931-7764  
CONTACT: Cindy Tyler  
E-MAIL: mtr@mtrla.com  
*Woman Owned Business, Environmental Green Design, Site Master Planning, Estate Landscapes, Conservatory Design, Playground and Educational landscapes*

### ■ PASHEK ASSOCIATES, LTD.

619 East Ohio Street  
Pittsburgh, PA 15212  
PHONE: 412-321-6362 FAX: 412-321-9202  
CONTACT: Nancy Lonnett Roman RLA  
E-MAIL: nlonnett@pashckla.com  
WEB SITE: www.pashckla.com  
*Environmental Green Design, Historic Preservation, Park and Recreation Planning, Site Master Planning, Streetscapes, Urban Planning*

### ■ THE GATEWAY ENGINEERS, INC.

1011 Alcon Street, Pittsburgh, PA 15220  
PHONE: 412-921-4030 FAX: 412-921-9960  
CONTACT: Jason Jesso  
*Civil / Testing & Inspection / Consulting Environmental*

## MASONRY

### ■ M. I. FRIDAY

148 Perrysville Avenue, Pittsburgh, PA 15229  
PHONE: 412-931-7444 FAX: 412-931-2601  
CONTACT: Mark Friday  
*Commercial, Industrial, Institutional Masonry Work, Brick/Block/Limestone/Granite*

## OFFICE FURNITURE

### ■ FRANKLIN INTERIORS

Suite 600, 2740 Smallman Street,  
Pittsburgh, PA 15222-4720  
PHONE: 412-261-2525 FAX: 412-255-4089  
*Complete project and furniture management. Reconfigurations and installations: non-union and union. Meeting any budget—we are your authorized Steelcase dealer.*

## PHOTOGRAPHY

### ■ MICHAEL HARITAN PHOTOGRAPHY

184 Fireside Drive, Pittsburgh, PA 15317  
PHONE: 724-941-2002 FAX: 724-941-2002  
CONTACT: Michael Haritan  
E-MAIL: michaelharitan@hotmail.com  
WEB SITE: www.haritan.com  
*Creative architectural photography of interiors, exteriors and landscape design. Building products, industrial and corporate. Digital and film formats, custom printing. Member: PPA Certified, ASMP*

### ■ CRAIG THOMPSON PHOTOGRAPHY

5471 Coral Street, Pittsburgh, PA 15206  
PHONE: 412-661-7300 FAX: 412-661-6966  
CONTACT: Craig Thompson  
E-MAIL: craig@nidhog.net  
WEB SITE: www.craigthompsonphoto.com  
*Architectural Interior, Exterior and Landscape Photography, Corporate, Industrial, public and Residential. We provide both digital and custom prints.*

## REPROGRAPHICS

### ■ F.L. HAUS COMPANY

921 Ridge Avenue, Pittsburgh, PA 15212-6093  
PHONE: 412-231-7700 FAX: 412-231-7709  
CONTACT: Mike Collett  
E-MAIL: mcollett@flhaus.com  
WEB SITE: www.flhaus.com  
*Construction Management, Digital B&W Printing/Plotting/Copying/Scanning, Spec Books/Binding, Large & Small Format Color Printing/Plotting/Copying/Scanning, Finishing Services including Mounting and Laminating, Sales & Service of Equipment & Supplies for the A/E/C Market. Authorized OCE Dealer, Advertising Specialty Items, Embroidery, Screen Printing, Awards Programs, Forms Printing, Pick-up and Delivery*

### ■ TRI-STATE REPROGRAPHICS, INC.

907 Penn Avenue, Suite 700, Pittsburgh, PA 15222  
PHONE: 281-3538 FAX: 281-3344  
CONTACT: George R. Marshall  
*Document Management, Digital B&W Plotting, Blueprinting, Specs/Binding, Large & Small Format Color Copies, Mounting/Laminating, Supplies, Pickup & Delivery*

## ROOFING

### ■ ALPHA CONSULTANTS INC.

2295 Preble Avenue, Pittsburgh, PA 15233  
PHONE: 412-321-2493 FAX: 412-321-8981  
E-MAIL: rflorida@alpha-consultants.com  
CONTACT: Rich Florida  
*Roof analysis, Infrared moisture surveys, Design, Budgets, Quality assurance monitoring, Asbestos sampling, Financial life cycle cost analysis, Roof asset evaluation*

## SIGNAGE

### ■ BUNTING GRAPHICS, INC.

20 River Road, Verona, PA 15147-1159  
PHONE: 412-820-2200 ext. 240  
FAX: 412-820-4404  
E-MAIL: jody@buntinggraphics.com  
WEB SITE: www.buntinggraphics.com  
CONTACT: Jody Bunting  
*Fabricated Graphics & Signage, Custom Railings & Architectural Metal Work, Decorative Truss Work, Cold Cathode Lighting, Custom Lighting Fixtures, Sculpture & 3D Graphics, Custom Fabrication, Latest Technology & Skilled Craftsmen. (Local 110,000 Sq. Ft. Mtg. Plant)*

### ■ KOLANO DESIGN

6026 Penn Circle South, Pgh, PA 15206-3921  
PHONE: 412-661-9000 FAX: 412-661-9606  
E-MAIL: wk@kolano.com  
CONTACT: William Kolano  
WEB SITE: www.kolano.com  
*Design of sign & wayfinding systems, design standards, fabrication packages and contract administration. For facilities, corporate, transportation, education, medical, retail, government, hospitality*

## LIST YOUR SERVICES IN THE GENERAL SERVICES DIRECTORY

With the General Services Directory, you can list your business by specialty in *Columns*. List your firm under the heading of your choice.

- Security Systems
- Blue Prints
- HVAC
- Electrical Service
- Design
- Roofing
- Signage
- Windows and Doors
- Brick Waterproofing
- Interior Design
- CADD Services
- Lumber
- Masonry
- Data
- Flooring
- Carpeting
- Tile
- Plumbing

Call AIA Pittsburgh at 412-471-9548 for details.



## We're releasing new software. To release you from old frustrations.

We've totally redesigned our AIA Contract Documents software to offer world-class simplicity. So we incorporated familiar toolbars, pull-down menus, and icons, to make sure everything is as streamlined and intuitive as possible. We've also included Microsoft® Word and PDF file-saving so you can create, share, and manage documents with ease. You can organize documents by project or by document type. And share them on your network or through e-mail as either Word or PDF files.



Special dialog boxes help you enter data quickly and accurately. Enhanced storage and retrieval lets you call up project data so it can be automatically incorporated into new documents. Plus, as you create new documents, any variances from AIA standard contract language can be displayed in a special report.

It's all here. And it's all easy. To learn more or to download our new and improved software, just visit our Web site at [www.aia.org](http://www.aia.org) or call 1-800-365-2724.

## AIA Contract Documents

**New software just released. Order now at [www.aia.org](http://www.aia.org).**

© Copyright 2003, The American Institute of Architects. Microsoft® and Microsoft® Word are either registered trademarks or trademarks of Microsoft Corporation in the United States and/or other countries.



# THE EAGLE HAS LANDED!



*WillowPointe Plaza  
Architect: Gerard-Nagar Associates*

Since 1973 General Industries has constructed over 300 world class commercial facilities representing over 6 million square feet of success for our clients, with many being awarded the "Best Of" by our peers.

We are honored to win the Associated Builders and Contractors (ABC) of Western Pennsylvania Eagle Award of Excellence in the general contractor category for projects over \$5 million for construction of the new WillowPointe Plaza facility on Route 51 in Rostraver, PA.

To learn more about our award-winning projects and General Industries, visit [www.genindustries.com](http://www.genindustries.com).



*ABC Eagle Award of Excellence*



▶ **CAN WE BUILD AN AWARD-WINNER FOR YOU?**

FIND OUT MORE ABOUT BUILDING WITH GENERAL INDUSTRIES. CALL DON IVILL OR DONNIE CLOUD AT (724)483-1600  
15 ARENTZEN BOULEVARD ▶ CHARLEROI, PA 15022 ▶ [www.genindustries.com](http://www.genindustries.com)