

*The*

# Florida Architect

OFFICIAL JOURNAL of the FLORIDA ASSOCIATION OF ARCHITECTS of the AMERICAN INSTITUTE OF ARCHITECTS

*Principles and Purposes . . .*

## THE ADMINISTRATION OF FLORIDA'S SCHOOL PLANT AFFAIRS

---

By Dr. CARROLL W. McGUFFEY,  
SCHOOL PLANT ADMINISTRATOR,  
STATE DEPARTMENT OF EDUCATION

This article is a matter of important concern to every individual who is linked in any way to the development of school plants in Florida. It not only clarifies the principles and purposes which underlie operation of the School Plant Section, but also constitutes a statement of the policies which will determine the day-to-day conduct of the School Plant Administrator's office.

**October  
1958**



8  
10



FAA-1958



The Falls at Ochos Rios



Spanish History in Ciudad Trujillo



River-rafting on the Rio Grande

If you are the lucky couple, you'll have a choice of ten sailing dates from December 8 to April 21, next year. On the gleaming cruise ship "Evangeline", pictured here, you'll make first landfall from Miami at Port Antonio, Jamaica, then Kingston. Ciudad Trujillo is next, then on to San Juan, Puerto Rico, with St. Thomas as the last thrilling port of call before the pleasant three-day voyage back to home port.



# Just One Convention Highlight

Prize awards are part of the fun-program of every Convention; and next month — November 20, 21 and 22 — FAA Conventioneers will have before them all that anyone could wish for. Topping them all will be the fabulous 10-day, all-expense around-the-Caribbean cruise — a care-free and money-free vacation tour for two . . . Starting from Miami the beautifully comfortable "Evangeline" will be a sea-going hotel for some fortunate couple. They will visit The Dominican Republic, Puerto Rico, the Virgin Islands and Jamaica — with nothing to do but enjoy themselves with the friends they'll make on board . . . YOU might be the lucky one! But you MUST be at the Convention to claim your prize . . . Plan for it now!

## 44th ANNUAL FAA CONVENTION

NOVEMBER 20, 21, 22, 1958 — DEAUVILLE HOTEL, MIAMI BEACH

GLAZED CERAMIC TILE • MADE IN FLORIDA

# FLORIDA TILE

... offers architects a Florida-made ceramic tile of the highest quality in a wide range of popular colors. Sample available upon request from the distributors' showrooms listed below.

DURABILITY • ECONOMY • QUALITY • BEAUTY • FLEXIBILITY

# FLORIDA TILE

Florida Tile Industries, Inc.  
608 Prospect Street, Lakeland, Florida

**DISTRIBUTORS:**

Atlanta — Tile Contractors' Supply  
Columbia, S. C. — Renfrow Dist. Company, Inc.  
Ft. Lauderdale — Miami Tile Dist., Inc.  
Ft. Myers — Gulf Tile Dist.  
Jacksonville — Miami Tile Dist., Inc.  
Melbourne — East Coast Tile and Terrazzo Supply  
Miami — Miami Tile Dist., Inc.  
Sarasota — Palm Tile Dist.  
St. Petersburg — Tile Dist., Inc.  
West Palm Beach — Sikes Tile Dist.  
Winter Park — South East Tile Dist., Inc.

# The Florida Architect

OFFICIAL JOURNAL OF THE FLORIDA ASSOCIATION OF ARCHITECTS

## In This Issue ---

Forrest Kelley to Head Staff of Board of Control . . . . .	4
Architectural Exhibit to Stress Project Houses . . . . .	6
Sanford W. Goin, FAIA — 1908 - 1958 . . . . .	8
<i>A Memorial by Alfred Browning Parker</i>	
The Administration of Florida's School Plant Affairs . . . . .	11
<i>By Dr. Carrol W. McGuffey</i>	
FAA — 44th Annual Convention . . . . .	15 to 18
<i>Convention Theme and Purpose</i>	
<i>Guest Speakers and Panelists</i>	
<i>Convention Information</i>	
What They Do in Michigan. . . . .	20
<i>MSA Schedule of Minimum Fees</i>	
Message From The President . . . . .	23
<i>By H. Samuel Kruse</i>	
News and Notes . . . . .	26
Products and Practice . . . . .	29
Advertisers' Index . . . . .	31

### F.A.A. OFFICERS — 1958

H. Samuel Kruse, President, 811 Chamber of Commerce Bldg., Miami  
 Arthur L. Campbell, First Vice-President, 115 S. Main St., Gainesville  
 William B. Harvard, Second Vice-President, 2714 Ninth St. N., St. Petersburg  
 Verner Johnson, Third Vice-President, 250 N. E. 18th St., Miami  
 Ernest T. H. Bowen, II, Secretary, 2910 Grand Central Ave., Tampa  
 Morton T. Ironmonger, Treasurer, 1261 E. Las Olas Blvd., Ft. Lauderdale

Roger W. Sherman, Executive Director, 302 Dupont Plaza Center, Miami 32.

### DIRECTORS

IMMEDIATE PAST PRESIDENT: Edgar S. Wortman; BROWARD COUNTY: William F. Bigoney, Jr., Robert E. Hansen; DAYTONA BEACH: Francis R. Walton; FLORIDA CENTRAL: Eugene H. Beach, Elliott B. Hadley, Anthony L. Pullara; FLORIDA NORTH: Turpin C. Bannister, Myrl J. Hanes; FLORIDA NORTH CENTRAL: Prentiss Huddleston; FLORIDA SOUTH: James L. Deen, Theodore Gottfried, Herbert R. Savage; JACKSONVILLE: James A. Meehan, Jr., Walter B. Schultz; MID-FLORIDA: L. Alex Hatton; FLORIDA NORTH WEST: Hugh J. Leitch; PALM BEACH: C. Ellis Duncan, Jefferson N. Powell.

"AS A MAN THINKETH . . ."

From A. Eugene Cellar, of Jacksonville, comes a remembered quotation from SANFORD W. GOIN, FAIA, who was so well-known and well-loved by architects in every section of the Southeast. It goes: "The price of intellectual honesty is criticism and suspicion of the uninformed."

The FLORIDA ARCHITECT, Official Journal of the Florida Association of Architects of the American Institute of Architects, is owned by the Florida Association of Architects, Inc., a Florida Corporation not for profit, and is published monthly at Rm. 302 Dupont Plaza Center, Miami 32, Florida; telephone FR 1-8331. Editorial contributions, including plans and photographs of architects' work, are welcomed but publication cannot be guaranteed. Opinions expressed by contributors are not necessarily those of the Editor or the Florida Association of Architects. Editorial material may be freely reprinted by other official AIA publications, provided full credit is given to the author and to The FLORIDA ARCHITECT for prior use. . . . Advertisements of products, materials and services adaptable for use in Florida are welcomed, but mention of names or use of illustrations, of such materials and products in either editorial or advertising columns does not constitute endorsement by the Florida Association of Architects. Advertising material must conform to standards of this publication; and the right is reserved to reject such material because of arrangement, copy or illustrations. . . . Accepted as controlled circulation publication at Miami, Florida.

Printed by McMurray Printers

ROGER W. SHERMAN — Editor  
 FAA Administrative Secretary  
 VERNA M. SHERMAN

NUMBER 10  
 VOLUME 8 1958

THE FLORIDA ARCHITECT



## Wet Feet Mean Dirty Floors . . . !

. . . And moisture seeping from partition sills soaked in colored solutions to ward off termites can mean deep-stained damage to terrazzo. But there's no need to risk such damage. Clean, colorless WOODLIFE cannot stain, cannot leach from the cells of the wood it protects — and its "anti-wicking" action prevents moisture seepage. Thus, WOODLIFE eliminates moisture-damage two ways — it guards against wood deterioration caused by moisture; and it prevents damage to other materials which often results when water-soluble chemicals are used to stop termite attacks.

**WOODLIFE**  
The Original  
WATER REPELLENT  
PRESERVATIVE  
containing  
PENTACHLOROPHENOL

Ingredients in Woodlife also protect wood from decay, fungus, stain and attack by wood-eating insects. They act as a poison to render wood immune from attack by the micro-organisms and insects which feed on untreated wood.



**A. H. RAMSEY AND SONS, INC.**

71 N. W. 11th TERRACE, MIAMI - - FRANKLIN 3-0811

Service to Florida's west coast is from our warehouse at Palmetto . . . Call Palmetto 2-1011

## SPEEDY . . . VERSATILE



● For the rapid transportation of orders between departments — in factory, office, or hospital . . . to speed a "hot" sample from mill to laboratory . . . delivering a canister of oil from tanker to test lab before unloading . . . nothing—**but nothing**, — is as versatile as a Grover Transitube installation.

● Whether you specify the conventional type system with but four or five stations, or decide on the newest electronically controlled Dial-A-Matic installation of fifty or more stations, you'll be serving your client best by using Grover equipment, backed by 43 years of constant application in this field alone.

● May we be of service to you — anywhere in Florida?

**ASSOCIATED ELEVATOR  
& SUPPLY COMPANY**

501 N. W. 54th St., Miami

## Forrest Kelley To Head Staff Of Board of Control

FORREST M. KELLEY, JR., for the past two years supervising architect for the Dade County Board of Public Instruction, has resigned his post to accept the chief administrative position in the architectural office of the State Board of Control. His vacancy on the Dade County Board's roster will be filled by RICHARD L. LEMON. Kelley will assume his new duties officially on October 8.

Kelley's new headquarters will be in the Board of Control's offices in Tallahassee; and among his new duties will be that of reorganizing the Board's architectural office in line with the new policy of centralization outlined in the July issue of *The Florida Architect* (Report from Tallahassee page 17). This means he will shortly take over fully the responsibilities of GUY FULRON, who as chief architect for the Board has for many years conducted the Board's architectural operations from his own office in Gainesville. Presumably one of Kelley's immediate concerns will be to untangle the financial and budgetary problems now dogging progress of the new University of South Florida at Tampa.

Most of Florida's architects would probably agree that in Kelley the Board of Control has found the logical man for the job of heading up the program of internal reorganization to which the Board has committed itself. During the nearly eight years in which he has served as head of governmental supervising architects' offices—five as the State School Architect in Tallahassee and over two with the Dade County School Board—he has demonstrated his capacity as both a skilled and conscientious administrator as deft at dealing with policy and budget committees as with the many architectural firms and building organizations with which he has worked.

Kelley has stated that the current operating policy of the Board of Control's architectural office will be continued. That is, the office will be staffed and run on the basis of supply-



Forrest M. Kelley, Jr. . . . from Dade County to the State Board of Control.



Richard L. Lemon . . . from Broward to the Dade County School Board.

ing full architectural services for about 20 to 25 percent of budgeted work, the remainder being commissioned to private firms. In one particular, however, operation of the office will be expanded. It will serve as a planning and technical liaison between the Board's overall program and the specific requirements of the institutions of higher learning which come under the Board's jurisdiction. Formerly no such central planning liaison has existed—a situation which was the basis for the recent efforts

(Continued on Page 6)

THE FLORIDA ARCHITECT

the eye-appeal of a  
**MUTSCHLER KITCHEN**  
 up-grades any builder's home



—courtesy Family Circle Magazine



...and at less cost  
 than you'd believe!

Custom tailored to your specifications, or planned for you at no extra cost by a Mutschler kitchen specialist, here's an idea worth investigating. These kitchens are complete . . . ready for installation. The line includes all the latest advanced features to please the homemaker, and cabinets for any built-in appliance of any manufacture. Choice of natural grain finishes and decorator colors; stylings to complement any type of home. Send coupon for details.



*first name in the  
 kitchen since 1893*

**MUTSCHLER KITCHENS OF FLORIDA**  
 Subsidiary of Mutschler Brothers Company, Nappanee, Indiana  
 2959 N. E. 12th Terrace, Oakland Park, Fla. Phone: Logan 4-8554

Please send complete information on your kitchens and planning services.

name \_\_\_\_\_  
 firm \_\_\_\_\_  
 address \_\_\_\_\_  
 city, state \_\_\_\_\_

## Forrest Kelley . . .

(Continued from Page 4)

on the part of university administrators to set up planning and architectural offices at each institution.

For the immediate future, at least, the Board's architectural office at Gainesville, headed by GUY FULTON, will continue operations, but as a branch office under Kelley's supervision as chief architect. The Board has stated that Mr. Fulton will continue his connection with it as long as he may wish. His service to the Board spans over 30 years, for the Gainesville office was established by RUDOLPH WEAVER, with Mr. Fulton as his associate, in 1926.

The man who will fill Kelley's vacancy on the Dade County Board has served in a similar capacity as school architect for the Broward County Board for the past two and one-half years. RICHARD L. LEMON, 37, a native of North Florida, a US Marines veteran of both World War II and the Korean conflict, and a 1950 graduate of the College of Architecture and Fine arts.

His initial architectural experience was gained in the office of the late SANFORD W. GOIN, FAIA; and for the two years prior to his appointment by the Broward County Board he was assistant School Architect for the State Department of Education,

working closely with FORREST M. KELLEY, JR. His policies of administration are in close alignment with those of Kelley.

Lemon is married and the father of two children. He assumed his duties October 1.

## Architectural Exhibit To Stress Project Houses

Plans for the exhibit of architects' work at next month's FAA Convention indicate this phase of the convention program will be an important highlight of the three-day meeting. In an invitation mailed to all practicing members of the FAA late last month were outlined the exhibit rules and regulations governing submissions, judging, awards and deadlines. It is anticipated that between 60 and 75 presentations will be received. From these it is planned that a jury will select a number to form the basis for another traveling exhibition.

Heading the Mid-Florida Conven-

tion Exhibit Committee is GEORGE W. BAGLEY, JR., of Orlando. He has set November 5 as the deadline for exhibit registration and November 17 as the final date for receipt of exhibit material at the Deauville Hotel, Convention headquarters.

This year the scope and content of the Architectural Exhibit has been expanded. There will be five general categories for award judgment—Industrial, Institutional (to include buildings designed for commercial operation and use), Recreational, Residential and Builder-Residential.

(Continued on Page 31)

## NEW PANELING *Discovery*



A great new paneling world has opened! With Plywall, your clients can enjoy the beauty of fine paneling at a fraction of the normal cost . . . with no sacrifice in quality! Let us give you full information. Call your nearest Hamilton outlet. Call collect . . . now!

# Plywall®

### WHOLESALE DISTRIBUTORS

Hamilton Plywood of Orlando, Inc. Garden 5-4604  
Hamilton Plywood of St. Petersburg, Inc. 5-7627  
Hamilton Plywood of Ft. Lauderdale, Inc. Jackson 3-5415





# Complete Protection Against

# Sea-Shore Weather



Exterior of the Springtide Coop Apartments at Ft. Lauderdale, Florida, Polevitsky & Johnson, architects, has been coated with Evershield Liquid Tile over cement stucco and concrete block surfaces.

Protection's a problem — particularly in a climate that combines high humidity, hot sun, driving wind and rain with the corrosive action of sea-salted air. EVERSCHILD LIQUID TILE was formulated to solve just such tough problems of protection. It's a specialized liquid resin that bakes itself into a rock-hard film that's impervious to moisture and highly resistant to the severest corrosive agents . . . . This product of modern chemistry penetrates the coated surface, becomes an integral part of the material itself. You can specify EVERSCHILD LIQUID TILE with confidence for **complete** protection under the most severe conditions . . . .

*A New Standard for*

*Versatility & Permanence*

**EVERSHIELD**  
*Liquid Tile*

EVERSHIELD LIQUID TILE OF FLORIDA 1111 N. E. 7th AVE., FT. LAUDERDALE

OCTOBER, 1958

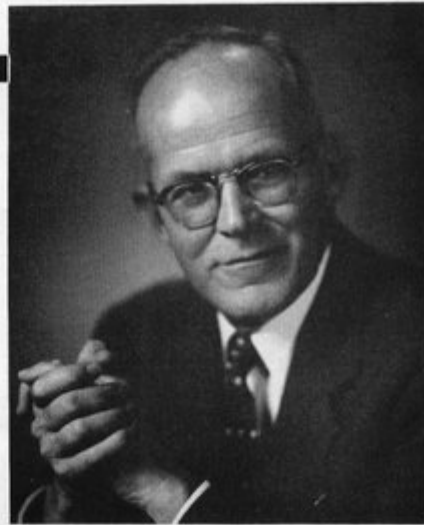
73

**Sanford W. Goin**

**F. A. I. A.**

**1908 - 1958**

---



By ALFRED BROWNING PARKER

Rarely has any architect devoted so much of his time through the related organizations of the A. I. A. and the F. A. A. as did Sanford Goin. Sanford once wrote that his greatest satisfaction from such service came from creating friendships with a large number of his fellow architects. Certainly a wonderful reason and a true indicator of his worth.

His was a perfect example of devotion to his profession, a devotion which while compounded in friendships had its deep roots also in a clear understanding of the responsibilities of an architect. As a hard-working and effective officer, he served in virtually every office of the Florida Association of Architects, including two years as its President. He was equally active in the American Institute of Architects and at the time of his death held the office of Regional Director in the American Institute of Architects. His thorough preparation and qualifications for the office of Regional Director can be surmised from the fact that he attended every South Atlantic Regional Conference that has been held.

Sanford keenly felt that architects have the same obligations to their communities as other business and professional people. He paid more than lip service to this ideal and served as a member of his City Commission, a member of his City Plan Board, a member of his County Zoning Commission, a member of the Board of Trustees of his County Hospital, Chairman of the Empty Stocking Fund. He was a Trustee of his Church, and a Director in his local building and loan association.

Sanford's architectural practice encompassed a wide range of building types. In these many projects, he exercised skill and care in guiding and counseling his clients through the complete building process. Some of his finest opportunities were found in the planning and construction of public schools. Educational plants in many sections of this State attest to his careful study and supervision.

Sanford followed with integrity in the footsteps of his father, an architect who established his office in Florida in 1911. While architects leave more tangible records than most, Sanford's heritage is not alone in the buildings he created, but also in the esteem and affection which he held in the hearts of all who knew him. This number includes virtually every architect in the entire South Atlantic Region, as well as many friends throughout these United States. I believe I speak for all these men when I write that we will miss his gentle manner, his restraint and calmness, his humor and his complete selflessness in every matter wherein his work and life principles were concerned.



*NEW*

**WOOD TRIMMED**  
ALUMINUM RAILING POST BY

*Blumcraft* OF PITTSBURGH

SEE 1958 SWEETS 6e/BIU OR SEND FOR CATALOGUE M-58  
460 MELWOOD STREET, PITTSBURGH 13, PENNSYLVANIA



**WHY**  
**tiffany**  
**TILE IS BETTER!**

There are so many reasons for the superiority of Tiffany Tile . . . not just claims but down-to-earth practical advantages. The Tiffany organization is headed by a Master Tile Setter, truly a tile craftsman who is thoroughly familiar with every phase of the designing, manufacturing and installation of ceramic tile.

*For example...*

**MORE PRACTICAL DIMENSIONS**

Tiffany wall tile measures 4 3/8" x 4 3/8" - 1/8" larger than most. A small difference but mighty important to you. 5% to 7% greater coverage. Fits standard bathtubs without time-consuming cuts. Eleven courses gives a wainscot height of 54 1/2" . . . again without cutting. Sill tile is available in the 5 1/8" x 6" size to fit standard sills.

Tiffany's more practical dimensions cut installation time, reduce costs . . . but most important, result in a more uniform and attractive tile surface.

*Available in rectangular design or Mecca . . . a Tiffany exclusive. Tested and approved by independent testing laboratories. Your inquiry cordially invited.*

**tiffany**



**"America's finest ceramic tile"**

\* Architect—Robert Wielage, A.I.A.  
of Wielage & Eaton, Architects  
Tampa, Florida

**TIFFANY TILE CORPORATION • 500 N. WEST SHORE DRIVE • PORT TAMPA, FLORIDA**  
10 THE FLORIDA ARCHITECT



#### BACKGROUND OF THE AUTHOR — AND THIS ARTICLE

Dr. Carroll W. McGuffey, School Plant Administrator of the State Department of Education since June 16, this year, was trained as an educator at the George Peabody College for Teachers at Nashville and received his doctorate in education at Florida State University. He assumed his present duties in Tallahassee after a two-year term as Head of the Office of School Plant Services of the Georgia State Department of Education, with which he had been connected since 1950. Though not an architect, Dr. McGuffey has worked closely with architects in Georgia; and he has been given administrative authority over the State School Architect's Office. . . . Architects who have been accustomed to direct and authoritative contact in that office with a member of their own profession have seemed dismayed by the initiation of new administrative procedures. This article has been prepared toward the end of clarifying policies and programs which underlie new procedures — hopefully to avoid possible misunderstanding relative to them.

# The Administration Of Florida's School Plant Affairs

By DR. CARROLL W. MCGUFFEY

School Plant Administrator, State Department of Education

During recent months, changes in personnel and procedures connected with the operation of the School Plant Section of the State Department of Education have received much comment. The interest manifested in these changes is commendable.

The purpose of this presentation is to make a statement of principle, purpose and policy regarding the functions of the School Plant Section and of the program and services designed to implement those functions. Administrative policy and procedure are considered as they relate to the implementation and conduct of the functions which are being or may be performed by the School Plant Section.

### Statement of Purpose and Principle

Behind any program of magnitude and consequence are basic philosophic assumptions and principles. These become the basis for making policy and for the exercise of administrative discretion in carrying out administrative responsibility. The success or failure of a program will depend

largely upon the extent to which these basic assumptions and principles are understood and accepted and the degree to which their intent and purpose are fulfilled in the outcomes of the program.

PURPOSE: Some assumptions relating to the purpose of a state school plant program for Florida are:

1. *The ultimate aim of a state program of school plant administration is to make maximum contribution to the improvement of education.*
2. *The policies and procedures involved in a state school plant program should be consistent with accepted principles of democratic school administration.*
3. *The relationship between the state educational agency and the local school system should be based upon a concept of leadership which is consistent with democratic principles rather than one of dictatorship and oppressive regulation.*

PRINCIPALS: There are several generally accepted principles which have

implications for any state program of school plant services. These are accepted by the writer as being basic to the development of an adequate and effective school plant services program for Florida.

The control of education in Florida has been delegated by statute or constitutional provision to governmental agencies at both state and local levels. Although much responsibility and control has been delegated to local school systems, education remains the primary obligation of the state. This is a well established principle in educational administration. Consequently, most state agencies have conceived of their responsibilities in two broad categories:

1. *Regulatory functions designed to carry out the intent and purpose of state laws and regulations; and*
2. *Leadership functions designed to effect general improvement of the state's educational program.*

Each general division of work within the state agency, including the School Plant Section, has to assume  
*(Continued on Page 12)*

## Administration of Florida's School Plant Affairs . . .

(Continued from Page 11)

its share of both leadership and regulatory functions in order that the state's obligations are properly discharged.

Good administrative practice requires that the internal organization of state department service programs be co-ordinated properly and that the entire department staff work as a unit to improve education in the state. Adherence to basic policies and operational procedures of the Department is one means whereby proper co-ordination and unity of effort in the total program of services can be accomplished. The program of school plant services must be in step with this principle if its services are to prove effective and worthwhile.

Florida's policy is to guarantee minimum educational opportunities to every child. The state educational agency should exercise sufficient controls to see that these opportunities are provided. The principle of equalization as applied to financial support is widely accepted. In Florida, this principle has been extended to include the provision of satisfactory minimum school facilities for individual school programs. This is necessary if a minimum of educational opportunity is to be provided.

Concomitant with the authority of the state to tax and to allocate money for school buildings is an obligation to guarantee the wise and prudent use of these funds. The resources of most states — and Florida is no exception — are not so abundant as to afford the careless and wanton waste of public tax money. Current estimates of school building needs in Florida indicate that construction budgets are in for a tighter and tighter squeeze if the demands for minimum school facilities alone are to be met.

From a strictly legal point of view, county school systems are agents of the state; and the property of the system is state property, subject to state control and direction. Consequently, the mere act of delegating maintenance and operation responsibilities for school plants to local systems does not relieve the state of its obligation for seeing that these delegated responsibilities are properly executed. Similarly, the state is not relieved of its responsibility for seeing

that public interests are safeguarded. Consequently, a program of school plant services should promote the protection of the public's investment in its school plant.

State laws force parents to send their children to school. In so doing, the state does not confer a benefit upon either the parent or the child, but is doing that which is required for the well-being and safety of the state. Therefore, it seems only reasonable that the state ensure that all school plants meet adequate standards of safety and healthfulness.

If a program of services is to be effective, it must have the confidence of those for whom it is intended. Without this confidence, the very best program cannot fully succeed. The staff which is to provide the services must be adequate in number and must have competencies in all areas in which services are to be provided. The relationship of those who are involved should be such that good-will is created by developing a way of working which generates confidence and which emphasizes service rather than control. If good-will and confidence are promoted, it is reasonable to expect that those needing assistance will seek the help of the school plant services staff.

When groups of children are brought together, numerous problems involving their health and safety are created. Because of this, other state agencies have become involved in matters relating to the planning and construction of school plants. State laws give some of these agencies responsibilities which overlap and occasionally conflict with those of the State Department of Education. Co-operatively developed programs are needed in the overlapping areas; and a co-ordinated program of activities may be required in other areas to avoid conflicting practices and to prevent duplication of effort. The program of services should provide for the co-ordination and constructive use of the efforts of other agencies responsible for some phase of the planning and construction of school plants.

The school plant functions, which are clearly and unequivocally the responsibility of the state educational agency, should be administered effi-

ciently and performed in a creditable manner. Obviously, there must be a continuous evaluation of existing practices, procedures, and regulations which govern the activities of the school plant program if there is to be efficiency. Outcomes of services should be studied and evaluated to determine the program's overall effectiveness. Objective data are needed to provide the basis for making intelligent decisions about significant problems involved in the program. Since the effectiveness of a service depends largely on the abilities of staff members, ways of improving their competencies should be sought so that the quality of the services rendered can be improved.

### Policies and Implementing Services

The foregoing statement of purpose and principles forms the basis for the routine program of the School Plant Section. Routine policies and the services for implementing these policies are discussed in the following paragraphs.

*The School Plant Section shall seek compliance with all statutes and regulations applicable to school construction in Florida.* In the implementation of this policy, architectural plans will be reviewed at the preliminary and final stages of planning, and final inspections will be made of completed projects financed from State funds. All drawings will be considered in the order of their receipt by the School Plant Section, with the possible exception of projects which are considered as emergencies. Changes to the contract documents will be reviewed and approved as required. "Walk through" checking will be replaced by a more thorough examination to make certain that sound educational, safety, design, and construction practices are satisfied.

*Leadership functions shall be performed as directed by the State Superintendent and as is required to protect the public interest and to conform to sound "public policy."* The services required to implement this policy are primarily advisory and consultative in nature. It is generally accepted that school plants should promote and facilitate the provision of an adequate school curriculum and that a comfortable, attractive and

functional building is one prerequisite to the development of a satisfactory learning environment. The School Plant Section will assist in the development of brochures on the educational planning of special instruction facilities. Assistance will be provided local school systems in the development of educational requirements for school plants in the early stages of planning. Services will be provided in planning, executing, and evaluating local insurance programs. Local insurance surveys, evaluation of insurance coverages, elimination of fire hazards and the development of methods and techniques for reducing insurance rates illustrate some of the services to be rendered in this area.

*Activities of the School Plant Section shall promote the wise and prudent expenditure of public tax money for school construction.* Studies of costs of construction will be maintained so that school costs in Florida can be readily compared with costs in other states. The relationship between quality and costs of construction will be studied so that valid comparisons can be made within Florida. In every school plant that is constructed, choices are made which affect both cost and quality. Too often these choices are made by persons other than those who are responsible to the public for the decisions. The School Plant Section, because of its position, has an obligation to provide data and information which will aid responsible officials in making choices regarding costs of school construction. This is an obligation which follows the allocation and expenditure of public tax money.

*The services of the School Plant Section shall promote the protection of the public's investment in its existing school plant.* Two major areas of service are involved here. One involves the development, evaluation and improvement of local custodial service programs. The other is concerned with local and state activities designed to preserve school plants in their original condition or state of repair. Plans have been advanced to employ a maintenance engineer as a member of the school plant staff. In the meantime, a state-wide survey of maintenance conditions and needs will be made as a basis for planning and implementing a maintenance program.

*An aggressive and constructive course of action will be taken to bring about the co-ordination of activities involved in programs of joint responsibility with other public agencies.* A number of other agencies, both public and private, have service programs which are in some way related to activities of the School Plant Section. The Insurance Department, Industrial Commission, Health Department, and Florida Inspection and Rating Bureau are examples. Liaison will be established with these agencies, and an intensive effort will be made to eliminate or avoid overlapping responsibilities and areas of conflicting practices and to facilitate the co-operative discharge of joint responsibilities.

*The services and way of working should promote good-will toward and confidence in the School Plant Section.* Promotional methods will not be used. Demands for service will be met when needed. An adequate and competent staff will be maintained insofar as budgetary limitations and Department policy will permit. Service rather than control will be emphasized, and personal contact with both superintendents and their architects will be sought and valued. Processing of plans will be handled on a fair and efficient basis. Requests for special handling of projects will be considered in view of the extenuating circumstances surrounding the particular cases. The overall effort will be to provide a continuity of policy and personnel and a large measure of stability, which should result in a fair and efficient administration of school plant affairs—one worthy of respect and confidence by all involved.

*Discretionary action involving administrative decision and the formulation of administrative procedures will be based on results of field tests, research results, sound public policy and proven experience where possible.* Statutes and regulations cannot cover all possible situations involved in the planning and construction of school plants. Discretion has to be exercised in the interpretation of statutes and regulations and in the formulation of procedures required in their implementation. Changing educational programs, the introduction of new construction materials and new developments in the construction industry require continuous study and research to assure that wise and intelligent

decisions are made. Issues and problems relating to the activities of the School Plant Section must be confronted with a positive, sound and intelligent approach to their resolution.

*Outcomes of the program of activities will be evaluated continuously to determine the efficiency and effectiveness of the services rendered by the School Plant Section.* The services to implement this policy involve evaluative type activities, such as relating the program of educational activities to the type of facilities provided, making illumination and brightness surveys of school lighting conditions and surveying maintenance conditions resulting from the use of various materials and equipment in new school plants. Cost-quality studies designed to show the effectiveness and durability of equipment and materials used in construction will be made. Outcomes which result from the implementation of laws and regulations will be studied to ascertain if such are costing money unnecessarily, causing undue hardship on local school systems, or restricting the provision of adequate educational services.

## Issues and Problems

There are a number of problems and issues involved in the administration of Florida's school plant program. Some which are of immediate concern to the School Plant Section are discussed in the following paragraphs.

Editorial and feature writers in numerous popular magazines have criticized the "lack of economy in school construction." While there may be cause for criticism in a few isolated cases, it is widely known that the majority of schools have been constructed with economy well in mind. The concern of the School Plant Section is that unjust criticism should not be allowed to interfere and thwart efforts to meet the growing needs for school facilities and to satisfy the requirements of expanding educational programs. A fund of objective information must be readily available for use by the School Plant Section in dealing with this issue. Architects and county superintendents will be called upon to assist in this endeavor.

Proposals for economy in school  
(Continued on Page 21)



Scored Tiles achieve new costly-appearing effects at moderate cost. Here you see Design SD-1 on floor and countertop and Design SD-3 on the rear wall of a Hill York Solorama Home, Sans Souci Estates, Miami. Architect: Walter W. Baggesen. Realtor: Hamilton Realtors, Inc. Contractor: Stobs Bros. Construction Co. Tile Contractor: Continental Tile Company.

Two of the smartest new ideas in tile are American-Olean's new rich-textured Crystalline Glazes and Scored Tiles\*. In no time at all, architects, builders and realtors have discovered that the new effects possible with them can add substantially to the sales appeal of a home.

*Booklet 1020 beautifully illustrates Crystalline Glazes and Scored Tile. Write for it.*

CERAMIC TILE  
**American  
 Olean**

\*PAT. APPLIED FOR

AMERICAN-OLEAN TILES OF MIAMI, INC. • DISTRIBUTORS IN SOUTHEAST FLORIDA • OFFICE AND DISPLAY LOUNGE: 1150 S. MIAMI AVE. TELEPHONE: FRANKLIN 4-4976



# FAA

## 44th ANNUAL CONVENTION

### "OPPORTUNITY IN AN EXPANDING ERA"

Florida is the site of one of the most significant and far-reaching developments of our time. At Cape Canaveral a rocket launched the first U.S. Space Satellite. And at Cape Canaveral our old horizons disappeared. A new phase of our world and its life was blasted into existence.

Like it or not, we are all involved. The roaring flames that signalled our initial contact with space have lighted new trends of thought, of purpose, of objective developments. Their influence may be felt soon or later. But it is inevitable that it will be felt. Projects, plans and programs even now under way will touch everyone.

Let us make no mistake. The orbiting of a satellite signalled the threshold of a new and expanding era — an era to which architects especially must adjust their thinking, temper their understanding, measure and match their professional growth.

How . . . ? To what extent . . . ? In what ways . . . ?

These facts and these questions have furnished the theme for this 1958 FAA Convention. It is presumptuous to think that any Convention program could furnish a guide to the future or a timetable for action. But contact with some of those who have had a hand in shaping the foundations of our new world can be both provocative and productive.

So this Convention offers you significant food for thought as well as fellowship. Not all of it is geared to the space-conquered future — or to entertainment of the moment. But *all* of it is geared to progress and improvement. And in at least some of its several phases, each visitor should find a true value for himself.

It will be a Convention of Challenge rather than Reassurance. Above all, we believe, it will be interesting. As Convention Hosts, the Mid-Florida Chapter, AIA, joins with the FAA Convention Committee in a cordial invitation to attend.



# SYMPOSIUM ON SPACE...

Events and inventions have led us to the very threshold of the new age of Space. What lies behind the door — what new ways of working and living, what new materials and structures, what new opportunities for accomplishment? These three men have, through training and experience, more authority than most to probe possibilities for answers.



**DR. J. PAUL WALSH**

Trained as an Engineer, Dr. Walsh has been connected with the Naval Research Laboratory since 1943; and since 1955 has been a top member of the "Project Vanguard" team. As one who has researched some of the problems of Space, he recognizes the possibilities which its conquest will bring.



**RALPH DELAHAYE PAINE, JR.**

As Publisher of *Fortune* and *Architectural Forum*, as a vice president of *Time, Inc.* and as a writer and editor he is one of the best-informed men in the country on how current developments are shaping the pattern of our future. He will discuss the emerging trend of architectural activity.



**CHARLES A. BLANEY, JR.**

An Engineer whose background is the aircraft industry, the present Director of Procurement for the Martin Orlando Co. is concerned with the down-to-earth job of helping to build the various guided missiles that are forerunners of space-age carriers. He will discuss trends in materials and construction.

# NEW PROFESSIONAL HORIZONS...

As the basic ingredient of living is change, so the architectural profession must adapt its outlook, its philosophy, perhaps even its pattern of activity, to the demands of a new and expanding era. The Institute must point the way to that goal. Who are better qualified to discuss the signs along the road than leaders of the profession which will follow it?



**JOHN N. RICHARDS, FAIA**

The President of the AIA has been active in professional affairs since 1935, serving at local, regional and national levels on many important committees. Equally active as a civic leader, he is especially qualified to clarify trends of professional growth in terms of current organizational needs.



**PHILIP WILL, JR., FAIA**

A top designer whose work has had a major influence in the public school field, the Institute's first Vice President is also known for his ability in the field of professional organization. His talents have shown not only in his own firm, but in direction of many civic activities and on important AIA committees.



**WALTER A. TAYLOR, FAIA**

As architect, educator, editor, researcher and administrator, the Director of the AIA's Department of Education and Research is uniquely able to highlight the increasing need for professional research and to relate this need to practical methods for satisfying it. He will sketch a perspective of trends in this area.

# TWO IMPORTANT "WORKSHOPS"

**Public Relations--** Greater understanding and acceptance of professional activity is now generally regarded as essential. But the techniques of generating it are not so widely understood. Here, then, is specialized knowledge to clarify ways in which our public relations can be strengthened and improved.



**ROBERT E. DENNY**  
As Public Relations Director of Henry J. Kaufman & Associates, he works closely as P/R counsel with the Octagon and with AIA Committees. He will discuss P/R policies and programs particularly applicable to the local needs of Florida AIA Chapters and members.



**FREDERIC SHERMAN**  
As a working newspaperman with varied experience in both reporting and feature assignments, he will discuss what makes news in architecture and how to report it. As Editor of the Miami Herald's Real Estate section, he will outline mechanics of meeting editorial needs.



**RALPH RENICK**  
Nationally recognized for his outstanding development of TV news reporting, this Vice President of WTVJ-TV will discuss TV's role in a P/R program, some of its technical requirements and the manner in which it can best be used in a P/R program for architects.



**EDWARD G. GRAFTON**  
Moderator of this P/R workshop panel is active in the Florida South Chapter and is now serving as a member of the national AIA P/R Committee. As a former Chapter secretary and FAA Director, he is a vigorous advocate of a coordinated P/R program.

## The Widening Scope of Service--

Is the challenge of the building-package operator a sign that the architectural profession must re-evaluate its traditional field of service — and, perhaps, widen its range of professional concern? Thoughtful leaders are seeking an answer to that question. These three, in particular, have studied the matter and will discuss their findings in practical terms.



**VINCENT G. KLING, AIA**  
Heading his own office since 1946, this perennial award-winner has coupled an outstanding ability in design with penetrating understanding of the social and economic forces that are shaping new and broader areas for professional service. He is an able advocate of adjusting professional service to economic demands.



**GRAYSON GILL, AIA**  
As both an architect and an engineer with a background which emphasizes the technical phases of architectural practice, he has evolved a pattern of professional operation which is proving to be a successful answer to the challenge of the package-building operator. He will relate his experience to this problem.



**HERBERT C. MILLKEY, AIA**  
Through various AIA activities, particularly as chairman of the Package Deal Committee, he brings an experienced approach to his assignment as moderator of this workshop panel. His detailed knowledge of current conditions is both a background and a guide to considering means for extending professional service.

# Convention Information

## CONVENTION SITE

Site of the 1958 FAA Convention will be the Deauville Hotel, 6701 Collins Avenue, Miami Beach. The Registration and Headquarters desk will be located in the South Lobby adjacent to the entrance of the Napoleon Room which will house both the Exhibit of Building Products and the Convention's Banquet Room. Architects' and Students' work will be exhibited in Peacock Alley, adjacent to the Napoleon Room and overlooking the hotel pool and the ocean.

## ROOM RESERVATIONS

Forms for room reservations and Convention pre-registration, as well as a detailed Convention program, will be mailed to reach individuals early this month. Reservations should be made as soon as possible after forms are received, since the number of rooms available for Convention use in the Deauville is necessarily limited. However, space at nearby hotels will be available and will be assigned as may become necessary.

## PRE-CONVENTION MEETINGS

The State Board of Architecture will hold its Fall meeting in the Normandy Room from Monday, November 17, to Wednesday, November 19.

A meeting of the Joint Cooperative Committee, FAA-AGC-FES will be held November 19, in the Charlemagne Room beginning with a 12:30 luncheon. Business will include full discussion of the work now in progress of changing the Charter to include Florida Home Builders and The Florida Building Industries Council; and the naming of sub-committees to work closely with allied groups and the Joint Committee. Reservations should be sent to Paul Hinds, Secretary, South Florida Chapter, AGC, Congress Building, Miami.

The pre-Convention meeting of the FAA Board of Directors will start with a dinner in the Charlemagne Room at 6:30 PM, November 19. The Board's business session will begin at 8:00 and will be open to all FAA members who care to attend, in the Casanova Room.

## REGISTRATION SCHEDULE & FEES

Registration for FAA members, visitors, guests, students and exhibitor personnel will start at 11 AM, Wednesday, November 19, at the South Lobby and will continue until 9 PM, Wednesday night. On Thursday, November 20, and Friday, November 21, the registration desk will be open from 9 AM to 12:30 PM and from 2:00 PM to 5:00 PM. Registrations for the Convention will close at 5:00 PM Friday.

Registration fees are as follows:

Corporate members, AIA	\$ 5.00	Extra Exhibitor personnel	\$ 5.00
Associate members, AIA	5.00	Non-exhibiting representatives	50.00
Guests of Members	10.00	Associates of representatives	25.00
Non-professional visitors	10.00	Students and Ladies	Free

## TICKET PURCHASES

Tickets for scheduled meals and events should be purchased at the time of registration to assure accommodation. It is desirable that pre-registration, including ticket purchases, be made via mail as early as possible after receipt of material. This will save time for those planning to attend the Convention and will ease the burden of detail from the Convention staff.

Correspondence relative to Convention Arrangements or Product Exhibits should be addressed to:

OFFICE OF THE FAA  
EXECUTIVE DIRECTOR  
302 Dupont Plaza Center  
Miami 32

### COMMITTEE CHAIRMEN —

#### MID-FLORIDA CHAPTER, HOSTS, 44th ANNUAL FAA CONVENTION

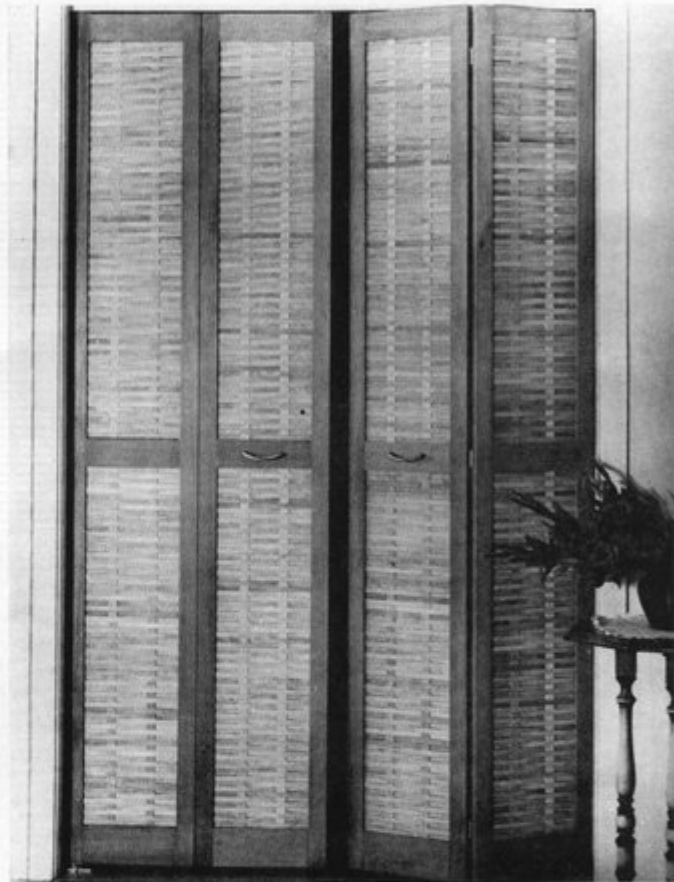
General Chairman: Joseph M. Shifalo — Co-Chairman: Robert B. Murphy  
Program: Joseph M. Shifalo      Hospitality: George A. Tuttle, Jr.  
Entertainment: J. E. Carlisle      Architects and Students Exhibits: George W. Bagley, Jr.  
Registration: John T. Hart      Awards and Prizes: James E. Windham, III  
Arrangements: Charles L. Hendrick

# TROPIX-WEVE

TRADE MARK REGISTERED

## Woven Wood Doors and Shutters

Provide complete accessibility without requiring the floor and wall space of swinging doors . . . This new development using Slide-A-Fold door principle provides smooth, dependable action for a lifetime . . . Saves space — and creates beautiful effects at minimum cost . . . Available in Shoji, Louver and Woven Wood designs. All standard and custom sizes . . . Also produced in accordion doors, window shutters, etc. . . .

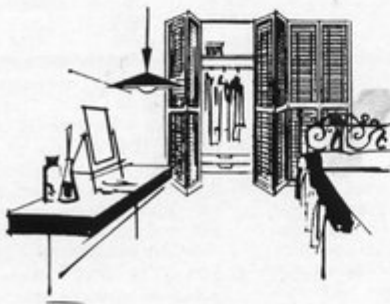


• for space dividers

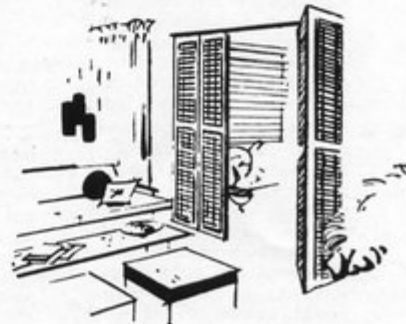
Also Available in . . .

## "Shoji" and Louver Panels

• for wardrobes



• for room dividers



TROPIX-WEVE PRODUCTS, Inc. • 3590 N. W. 52nd St., Miami, • NE 4-1749

# What They Do in Michigan . . .

This fee schedule, as published recently in the Bulletin of the Michigan Society, should be of interest to Florida architects as a comparative study of compensation rates and also because of its approval, for use on a state wide basis, by AIA architects practicing in various sections of Michigan . . .

THIS SCHEDULE OF RECOMMENDED MINIMUM FEES FOR ARCHITECTS in Michigan has been approved by the three chapters of The American Institute of Architects in Michigan and ratified by the Michigan Society of Architects.

It is subject to variation with each project, depending upon its complexity and nature. In instances wherein projects do not clearly fall within the categories mentioned they are subject to special consideration. No such schedule can be all-inclusive, therefore, judgement is required in determining the appropriate category and its corresponding fee.

The chart indicates projects costing from \$100,000 (.1 million) to \$3,000,000. Projects costing more than \$3,000,000 are indicated in the table.

Methods of making payments to the architects—for schematics, preliminaries, working drawings and specifications, and for supervision—are to be in accordance with the Standard Form of Contract between Owner and Architect.

This Schedule will be included in the Society's new publication, entitled "Owners Manual," soon to be published. In the meantime, it is hoped that this publication will prove useful to architects of Michigan. Additional copies are available at the Bulletin office.

## Types of Buildings:

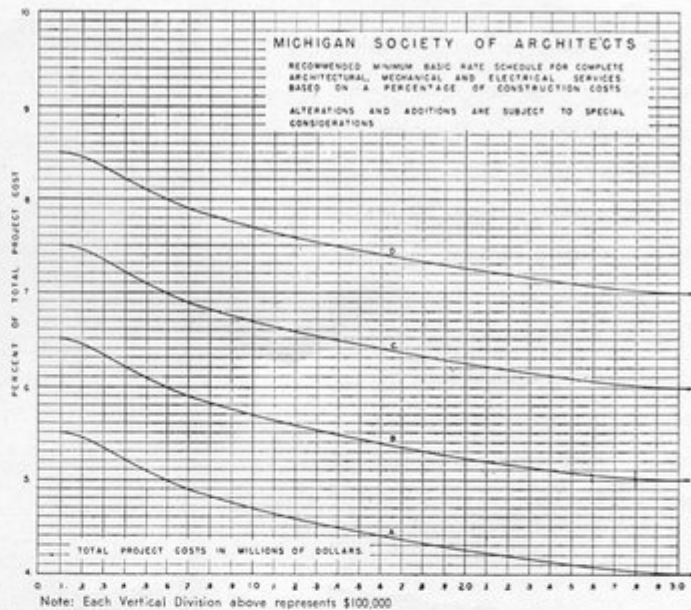
**Type A:** Warehouses, storage garages, maintenance buildings, barns and other similar structures containing a minimum of simple interior finish, mechanical and electrical work.

**Type B:** Housing, apartments, college buildings (except as provided hereafter under C), schools, dormitories, detention or custodial buildings, recreation buildings, hotels, theatres, auditoriums, libraries, food service buildings, laundries, offices of administrative buildings; buildings for manufacturing and processing; armories and other structures having a similar amount of interior finish and mechanical or electrical work.

**Type C:** Hospitals, health clinics, power plants, laboratories; buildings for research, the teaching of medicine, dentistry, veterinary medicine, chemistry or other sciences requiring a comparatively large amount of scientific equipment, and other equally complex structures with a comparable amount of mechanical and electrical work.

**Type D:** Churches

**Type E:** Residences



Schedule of Recommended Minimum Fees

CONSTRUCTION COST	A	B	C	D	E
0—100,000	5.5	6.5	7.5	8.5	10
200,000	5.45	6.45	7.45	8.45	
300,000	5.325	6.325	7.325	8.325	
400,000	5.2	6.2	7.2	8.2	
500,000	5.075	6.075	7.075	8.075	
750,000	4.85	5.85	6.85	7.85	
1,000,000	4.7	5.7	6.7	7.7	
1,250,000	4.575	5.575	6.575	7.575	
1,500,000	4.45	5.45	6.45	7.45	
1,750,000	4.35	5.35	6.35	7.35	
2,000,000	4.25	5.25	6.25	7.25	
2,250,000	4.16	5.16	6.16	7.16	
2,500,000	4.10	5.10	6.10	7.10	
2,750,000	4.03	5.03	6.03	7.03	
3,000,000	4.00	5.00	6.00	7.00	
4,000,000	3.8	4.8	5.8	6.8	
5,000,000	3.7	4.7	5.7	6.7	
6,000,000	3.65	4.65	5.65	6.65	
7,000,000	3.6	4.6	5.6	6.6	
8,000,000	3.55	4.55	5.55	6.55	
9,000,000	3.50	4.50	5.50	6.50	

## OTHER METHODS OF DETERMINING FEES

- FIXED FEE:** The architect is reimbursed the total of his direct expenses and an appropriate amount of overhead plus either an agreed percentage of these total production costs or an agreed fixed sum for the architect's services (usually not less than 25% of the applicable percentage rate as determined by the "Schedule of Recommended Minimum Fees.")
- PAYROLL BASIS:** The charge is the actual payroll of the architect's employees engaged on the project plus a percentage of the payroll cost for overhead and profit. This percentage normally is between 100% and 150%.
- LUMP SUM:** The fee is a sum not subject to change because of variations in cost. This form is equitable only when both the extent of the project and scope of services can be definitely established.
- PER DIEM RATE:** Charges for consultations, opinions, and reports may vary from \$50.00 per day upward, travel time included. Travel costs and other similar expenses are proper additional charges.

## School Plant Affairs . . .

(Continued from Page 13)

planning are offered from many quarters. The use of "stock plans" has been advocated as one panacea to effect economy in school construction. The advocates would eliminate architect's fees which are considered an unnecessary expense involved in school planning. The School Plant Section has taken the position that stock plans are neither practical nor desirable, and that one of the best ways to safeguard public funds is to prescribe minimum regulations governing the use of tax funds and to employ well qualified and experienced architects to prepare the plans and specifications for new buildings.

Most everyone involved in school planning recognizes the desirability and need for a statement of educational requirements to guide the architect in making adequate provision for the educational program in his planning. However, because too little time has been allowed for planning schools, this important step in the planning process frequently has been disregarded. The School Plant Section

takes the position that a complete statement of educational needs is an essential to good planning. Further, to fail to provide this statement as a prerequisite to the development of architectural drawings is to invite mistakes and errors which may be costly and may adversely affect the school's educational program. Therefore, adequate time must be allowed for the proper planning of new schools so that maximum economy and desired educational functions are satisfied.

To many people, school lighting is a matter of providing a given number of footcandles at task level in the classroom. Little attention is given to high brightness contrasts and the effects which these brightnesses have on seeing conditions. Concerted efforts will be made to change the emphasis now given to quantity to a full consideration of all the factors required to achieve a good seeing environment in instructional areas.

Numerous other problems and issues relating to school planning and construction are much in evidence. Examples are: increasing taxes for school construction, the reuse of archi-

tectural plans, the fee schedule of architects, school sanitation requirements, heating requirements at the various latitudes in the State and the types of materials used for finished floors in classroom areas. The list is extensive. The School Plant Section will give study to those which are properly within its sphere of responsibility, and courses of action will be planned to seek their proper resolution.

### In Conclusion

The School Plant Section seeks the full co-operation of all who are vitally concerned with improving the quality of the State's educational plant. Suggestions and constructive criticisms are invited; and due consideration is guaranteed every comment which is made in good faith without bias. The promotion of higher educational planning standards, better planning and design techniques and more efficient procedures involving technical matters are the specific aims of the School Plant Section. The accomplishment of these should make a most valuable contribution to the improvement of education for our people.



*First* CHOICE OF AMERICA'S FINEST  
*Architects!*

**VICRTEX**  
**V. E. F. \* WALLCOVERINGS**

Write for brochure  
of our outstanding  
collection of luxury and  
standard-priced wallpapers  
and wallcoverings.

Vicrtex Vinyl Wallcovering and Upholstery Fabrics can help you create decorating magic, building efficiency and exciting new avenues of design. Practically indestructible, Vicrtex never snags, frays or fades. Cleans easily with a damp cloth, and stays fresh and bright always.

Ask about our complete line of textural and tri-dimensional patterns, in dramatic colors and color combinations. See the hundreds of wallpapers and wallcoverings of distinction, displayed and stocked for immediate delivery.

\* VINYL ELECTRONICALLY FUSED

**DWOSKIN**  
INCORPORATED

*South's* LEADING WALLPAPER DISTRIBUTOR

ATLANTA • DALLAS • MIAMI      FLORIDA SHOWROOMS: 4029 North Miami Ave., Miami, Fla.

**SPECIFY PERMANENT WATER-PROTECTION AT 1/2 THE COST OF COPPER**



PROJECT: Dental Arts Bldg.  
Gainesville, Florida  
ARCHITECT: David Reaves  
Gainesville, Florida

*for open valley, fascia and thru-wall flashing*



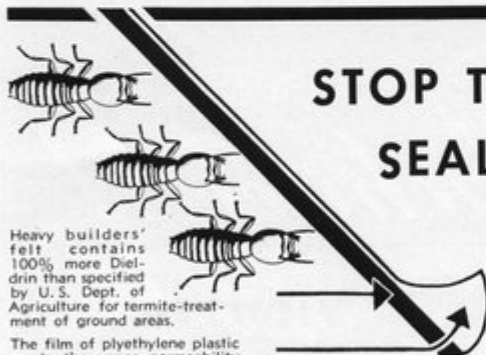
- **economical** — cost of ZINALOY is approximately half that of copper due to its lower pound price and its lesser weight (20% less than copper).
- **corrosive resistant** — ZINALOY forms a protective coating of its own against the elements — resists atmospheric corrosion. Will not crack or peel. Will not stain adjoining materials.
- **permanent** — virtually indestructible, ZINALOY requires no protective coating when set in concrete or mortar, weathers to a pleasing gray. Suitable for marine atmosphere conditions.
- **versatile** — ZINALOY can be cut, hammered and formed on the job or in the shop without special tools. Will bend flat on itself without fracture at 70°. Easily soldered with medium hot iron, 50-50 solder.

**FLORIDA SALES AGENT:** D. W. Lansing, Southern Sales, P. O. Box 1993, Ormand Beach, Florida

**DISTRIBUTORS**

Conklin Tin Plate & Metal Co., Atlanta, Ga.	Ahrens Materials, Inc., West Palm Beach, Fla.	Eagle Roofing & Art Metal Works, Tampa, Fla.	Horne-Wilson, Inc., Jacksonville, Miami, & Orlando, Fla., Atlanta & Albany, Ga., Charlotte, N. C.	J. M. Tull Metal & Supply Co., Atlanta, Ga.
--	--	---	--	--

**MATTHIESSEN & HEGELER ZINC COMPANY • established 1858 • La Salle, Illinois**

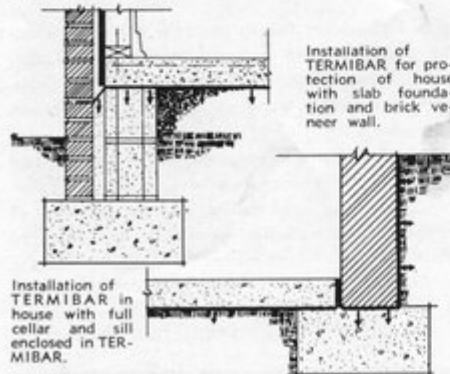


Heavy builders' felt contains 100% more Diel-drin than specified by U.S. Dept. of Agriculture for termite-treatment of ground areas.

The film of polyethylene plastic meets the vapor permeability requirements of Federal Specification UU-P-147b.

**STOP TERMITES DEAD... and SEAL OUT MOISTURE with**

**BIRD TERMIBAR<sup>TM</sup>\***



One easily-installed product now can solve two of Florida's most pressing construction problems . . . BIRD TERMIBAR actually kills wet-wood termites while acting as an effective vapor barrier. It's a membrane combining a 4 M film of polyethylene plastic with a layer of felt impregnated with Diel-drin, one of the most lethal and stable insecticides known . . . The plastic keeps moisture out; the Diel-drin kills the bugs — and TERMIBAR meets U.S. Govt. specs on both important counts. For complete termite protection specify that TERMIBAR CAULK be used to seal all openings around pipes and structural members . . . Full data on how to use and specify TERMIBAR is yours for the asking . . .

**BIRD & SON, INC.**

P. O. Box 4336, Charleston Heights, S. C.







## Message from The President

By H. SAMUEL KRUSE  
President, FAA

This is being written as I sit in the quiet park of the Thomas Hotel in Gainesville awaiting the tolling of the bells over SANFORD W. GOIN, FAIA. Possessing no talent for writing eulogies, I attempt none. God took Sanford from us. Why, He, in His infinite wisdom, alone knows. Those who were close to Sanford have lost a witty and congenial friend; the profession, a wise and energetic servant; and I, a very dear friend and confidant.

A memorial scholarship is being prepared for use in the Department of Architecture, University of Florida in memory of Sanford. I am sure every architect will want to participate in this memorial. Details concerning the way you can participate in the scholarship will be announced in a later issue of *The Florida Architect*.

The Board of the Institute will be Florida's guests at Clearwater during the second week in November. The Central Chapter is shaking out the wrinkles and airing the smell of moth balls from their red jackets, for the boys of the Florida Central Chapter Hunt Club ride again. Your Executive Committee is busy trying to remedy the interruption of the coordinated

action by Board, Region and our Association toward creating the Florida District which Sanford Goin managed so well. The Board of the Institute undoubtedly will have on its agenda, items of special interest to Florida.

Although the FAA does not officially participate in the program for the Board meeting, the FAA is giving a dinner for the Board members and their ladies on one of the evenings in Clearwater. As many FAA officials and directors as possible will attend so our guests shall feel "to home." It might be possible that the holding of Institute Board meetings in Florida can become a regular and frequent affair.

The Dues Committee, with ERNEST T. H. BOWEN, II as the Chairman, is preparing a method by which it is possible for FAA to pay for its activities and at the same time permit Chapter autonomy in assessing dues on its membership in the way the membership elects. It is believed that such a method will allow wide variation in the assessing and collecting of dues in the Chapters without confusing the financial situation on the State level. On the surface the proposed change seems a simple under-

taking. But when dues are tied to the budget, budget to program, program to the needs, and the whole to the ability of individual members to pay (psychologically and financially), the Committee's work takes on the complexity of an international situation. It is believed a realistic procedure will be ready for membership approval at the 1958 Convention.

G. CLINTON GAMBLE, 1407 E. Las Olas Boulevard, Ft. Lauderdale, is Chairman of the Resolutions Committee for the Convention. Please send your resolutions to him well in advance of the Convention so that his committee can collate, rewrite or formulate resolutions to be introduced to the Convention. RICHARD E. JESSEN of Tampa and IVAN H. SMITH of Jacksonville are the other members of the Resolutions Committee.

A meeting was held 17 September in Jacksonville for the purpose of organizing a Florida Committee for ACTION, a national organization for the improvement of neighborhoods. The FAA was represented by WILLIAM T. ARNETT and ROBERT C. BROWARD. I invited the temporary chairman for the meeting to make full use of our Committee on Community Development since the Committee's activities embrace the same goals as that of ACTION. ACTION is our opportunity to give our Community Development program a broad base. We mustn't muff it. Give it the leadership we can give and our own program will develop along with ACTION'S.

## CHROMASTATS - Photo Copies in Full Color

Direct color prints by Chromastat, provide sharp, clear definition, brilliant depths and highlights, color accuracy to match the original. In only 3 days plant time you can get them in sizes from 8" x 10" to 20" x 30" at surprisingly low cost. Price of an 8" x 10", for example, is little more than that of a standard black and white photo.

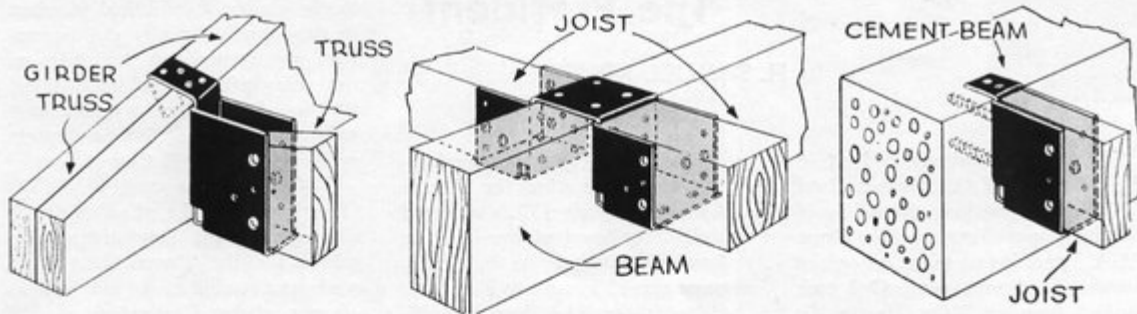


32 S. W. 1st Street, Miami 32, Florida  
Phone: FRanklin 9-4501

**SQUARE MIAMI** *Blue Print Co., Inc.*

Chromastats in 8" x 10" were made of this rendering, by Joseph N. Smith, III, AIA, of the Dade Federal Savings & Loan building, Miami, Edwin T. Reeder Associates, architects. Size of original was 18" x 24".

# For Safety-Follow the "Hurricane" Code



## Specify "Advance" Hangars with Full 4-Inch Bearings

- For Joists, Beams or Trusses. • Sized for any lumber, from 2" x 6" to 4" x 12".
- Rugged — to withstand hurricane conditions. Available in single or double style. Adapted to any size beam — and to block or masonry walls.



*"... For Safer  
and Better  
Construction"*

**METAL PRODUCTS, Inc.**

2445 N.W. 76th STREET, MIAMI

Manufacturers of Specialty Building Products

*Available from  
Leading  
Material  
Dealers*

## DuPont Plaza Selects McKinley Products!

The beautiful new DuPont Plaza Center, Miami, Florida, chose McKinley Ventilated Sun Cornices for protection against sun's glare and heat, and for attractive appearance.

Architects: Frank A. Shufflin, AIA; John E. Petersen, AIA.



For details, contact your McKinley Representative—see Sweet's Architectural File 19e/Mc.



engineered and manufactured by the **o. o. MCKINLEY co., inc.**  
Indianapolis 5, Indiana

LOCAL MCKINLEY REPRESENTATION: CLEARWATER, PHONE 35-7094



## New Lien Law Bill Slated for Legislature

Work on the drafting of a new Mechanic's Lien Law as a bill designed for introduction to next year's State Legislature is now well under way. Headed by MELBOURNE L. MARTIN, Miami attorney representing the Florida Land Title Association, a five-man drafting committee has been engaged, since August 12, in assembling and studying technical background material as a basis for the task of drawing up a new statute. Included in the committee are: PAUL H. HINDS, Manager, South Florida Chapter, AGC; JOHN S. DUSS, Real Property Section of the Florida Bar Association; FRANK ROCHE, organized labor representative; and LON WORTH CROW, JR., Mortgage Bankers Assoc. of Florida.

This committee is part of a larger group representing virtually all interests in Florida's Construction industry which last April met for preliminary discussion at Winter Park and formed the Mechanic's Lien Law Revision Committee. The group's sole object is the perfecting of new lien legislation which will do away with the ambiguity and inequities of the present statute and which will guarantee fair and adequate protection to the rights of owners, professional people and contractors as well as suppliers of material and labor. Lawyers charged with the task of interpreting various clauses in the present lien law have called it "atrocious", "abominable" and "impossible to work with".

Aside from the fact that they have found the law to be a hardship for clients in many instances, architects have a direct stake in possible provisions in the new law now being developed. At present, compensation for architectural services performed, but abandoned or repudiated prior to the actual start of a building project cannot be protected under the existing statute. The proposed new lien law should be drawn to furnish such protection, according to the drafting committee members.

Architects will have ample time to study and criticize the draft of the new law prior to its submission to the legislature according to present plans of the drafting committee.

OCTOBER, 1958



# FLORILITE PERLITE

*Keeps*

*the Heat*

*Outside...*

- A poured roof deck or fill of Perlite Insulating Concrete is one of the most efficient and inexpensive means you can specify for reducing interior heat loads. For example, "U" factors of a 1:6 mix ratio range from .200 to .098 — depending on the type of construction and the thickness of roof fill used.
- This high insulating effectiveness makes possible a substantial reduction in air-conditioning costs. With lessened heat loads, smaller units, less tonnage and power are required — and economies like these are often greater than the costs of the Florilite Perlite insulating fills that produced them.
- In addition . . . Perlite concrete is lightweight — about one-fifth the weight of standard concrete. So its use makes possible construction economies, too — thus still further reducing the cost of using one of the most versatile and effective materials in building . . .



Your guide to  
ASTM quality  
lightweight  
aggregate is  
this certificate

**PERLITE  
INCORPORATED**

1050 S.E. 5th St., Hialeah—TU 8-8791

# News & Notes

## Required Procedures on Resolutions and By-Laws

Last year's October issue of *The Florida Architect* carried two pieces of information important to those attending the 1957 Convention as delegates from their Chapters. One was a series of resolutions slated for Convention action. The other was a number of By-Law changes proposed for adoption at the Convention.

This issue of the FAA's magazine contains nothing of a similar character. As to resolutions which will be presented to next month's Convention for action, none have been received at the FAA Executive Director's office for October publication according to the routine method adopted at the 1956 Convention. This provided that submission of any resolution for Convention consideration which had not been forwarded to the Executive Director's office for Resolutions Committee considera-

tion two months prior to the Annual Convention would require approval by a two-thirds vote of Convention delegates.

Presumably, therefore all resolutions, from either individuals or Chapters, prepared for action at next month's Convention must be so approved as to their submission to the Convention by the Resolutions Committee. Chairman of this Committee is CLINTON GAMBLE, 1407 East Las Olas Blvd., Ft. Lauderdale. Members are IVAN SMITH, Jacksonville, and RICHARD JESSEN of Tampa.

As to By-Law changes, a number of important proposals are in the making, but the Committee, chairmanned by WALTER SCHULTZ, of Jacksonville, had not completed work on them in sufficient time for their publication in this issue of *The Florida Architect*. The FAA By-Laws require that all proposed changes to them must be submitted to the FAA membership at least 30 days prior to

the annual convention. This means that the proposed changes will be processed and mailed to reach FAA members by October 20. Serving as members of the By-Laws Committee are JAMES DEEN, A. WYNN HOWELL and JEFFERSON N. POWELL.

## ACTION Starts in Florida

In 1954 an organization was launched in Washington, D. C., called American Council to Improve Our Neighborhoods — ACTION, for short. By last month the purposes, policies and programs of the organization had filtered down to Florida where a Florida Committee for ACTION had been formed with BROWN WHATLEY, President of Stockton, Whatley, Davin and Company, of Jacksonville, acting as Chairman and J. E. BARIL, Manager of the Planning and Community Services Department of the Florida Development Commission, as Executive Secretary.

On September 17 the Florida  
*(Continued on Page 28)*

Worthy Of Consideration —

Your Reputation  
...and Ours!



You take no chances when you specify UNIT laminated products and UNIT DECK . . . we feel that our quarter of a century of experience and service to the architectural field is a safeguard to your reputation.

Unit Structures, Inc., is the pioneer laminator, offering a product designed, fabricated and finished to your exacting specifications.

Specify in confidence — specify UNIT products

For factual data and planning Contact— Unit Sales Office

**WALTER & JOHNSON**  
430 Kanuga Drive — P. O. Box 710  
Phone TEmple 2-4956 West Palm Beach, Florida

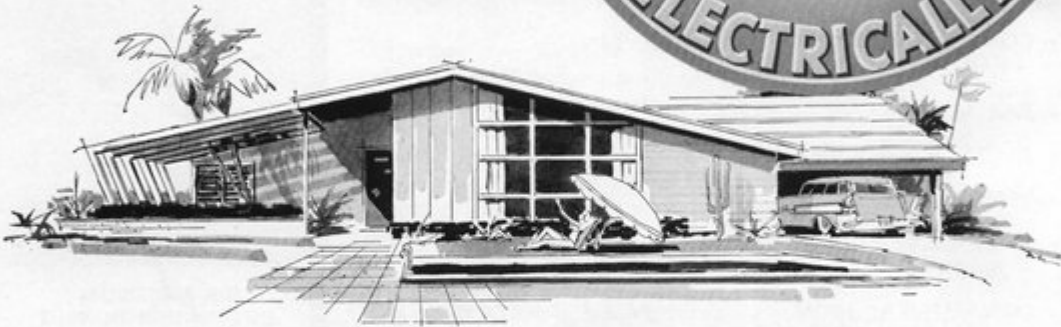
**UNIT STRUCTURES, Inc.**

GENERAL OFFICES: Peshigo, Wisconsin  
PLANTS — Peshigo, Wisconsin and Magnolia, Arkansas  
Offices and Representatives in all Principal Cities



THE FLORIDA ARCHITECT

# THIS HALLMARK IS YOUR PROOF OF EXCELLENCE



Now, there's a way to further emphasize, in terms your client will understand, that the homes you design are **completely** modern! Be sure they qualify for the Live Better Electrically Medallion. Your clients will quickly recognize this "seal of approval" because it's backed by a multi-million-dollar, nation-wide promotion to guide homeowners to better living — more modern living **electrically!**

#### A MEDALLION HOME MUST MEET THESE BASIC REQUIREMENTS:

- **Full Housepower** with large enough wire — and ample circuits, outlets and switches for maximum convenience and efficiency.
- **All-Electric Kitchen** designed for a full array of modern basic electric appliances to save time, work and money.
- **Light Conditioning** to provide ample light in every room — outdoors, too.
- **"Fuel-type House Heating"** with a permanently installed central system to warm the entire house.



*FPL is at your service for free consultation and assistance. Call our office for full details and specifications . . . to qualify your homes for the Live Better Electrically Medallion . . . the architect's hallmark of excellence.*



**FLORIDA POWER & LIGHT COMPANY**



# Serving Florida Architects and Builders...

- REINFORCING STEEL
- STRUCTURAL STEEL
- COMPLETE ENG. & FAB. FACILITIES
- BAR JOISTS
- ALUM. & STEEL SASH
- STEEL DOORS & FRAMES
- MISC. IRON AND ALUMINUM
- ORNAMENTAL IRON
- STEEL ROOF DECK
- STEELTEX
- HIGHWAY PRODUCTS
- CORRUFORM
- SONOTUBES
- METAL CULVERTS
- POLYETHYLENE PLASTIC FILM

**FLORIDA STEEL  
CORPORATION**

*"Steel when you want it"*

TAMPA 8-0451

ORLANDO GArden 2-4539

MIAMI NEwton 4-6576

JACKSONVILLE ELgin 5-1662

## News & Notes

(Continued from Page 26)

Committee held an all-state meeting to which went, as FAA representatives, WILLIAM T. ARNETT, and ROBERT C. BROWARD who had this to say about the meeting:

*"My reaction to the meeting is that it represented the sincere interest and will of the people of Florida. The problems of the downtown urban areas as well as the great peripheral suburbs have begun to create a definite reaction in the minds of the people from many walks of life. I believe that the formation of this group is a vote of confidence for comprehensive planning, zoning and the need for public awareness of the importance of a physical environment that takes the nature of man into account.*

*"With ACTION spearheading an educational program throughout the State, the architects who are aware of the possibilities for total design in a community will most certainly find a more receptive audience. This has happened none too soon; and I, for one, feel that it is probably one of the most significant steps yet taken to breach the gulf between the architect's and planner's vision and the public at large."*

### New FAA Committee

FRANCIS R. WALTON, of Daytona Beach, has been named chairman of a new FAA Committee on Ethical Practice with HUGH J. LEITCH, Pensacola, and ANTHONY L. PULLARA, Tampa, as members. Purpose of the new committee is to study methods for assuring ethical practices among Florida Architects.

### People and Offices

HOWARD M. DUNN, AIA, and MILTON C. HARRY have joined to form the new architectural firm of Dunn-Harry Associates, Architects, with offices at 2968 Coral Way, Miami.

In Daytona Beach, WILLIAM P. GREENING, AIA and JOEL W. SAYERS, JR., AIA, have announced formation of a partnership to be known as Greening and Sayers, Architects, with new offices at 200 Seabreeze Boulevard, Daytona Beach.



**BROWN & GRIST**

**ALUMINUM  
AWNING WINDOWS**

**and  
WINDOW WALLS**

**PROVED BEST FOR  
SCHOOLS • HOSPITALS  
HOTELS • OFFICES**

**Heavier Sections  
Stronger Alloys  
No Cranks or Gears  
Simple, Push-out Operation  
CUSTOM SIZES**

**FOR ADDITIONAL  
INFORMATION IN YOUR  
LOCALITY — CALL:**

Pensacola . . . (Call Jax)  
Tallahassee . . . Al Yates

Jacksonville . . . Geo. Griffin  
Daytona Beach . . . Bob Gall  
Orlando . . . (Call Jax)

Ocala . . . . . Van Akin  
Tampa . . . . . Doug LaHayne

Palm Beach . . . Ed Kader  
Miami . . . . . Ed Henderson

SWEET'S CATALOGS WINDOWS 17a-Br  
WINDOW WALLS 3a-Br  
Factory, Warwick, Virginia

FLORIDA SALES REPRESENTATIVE  
**GEORGE C. GRIFFIN**  
P. O. Box 5151  
Jacksonville, Florida

## PRODUCTS & PRACTICE



### The Mobile Mirror Is Really a Door

Why some designer hasn't used mirror for doors before this may never be known. The Carolina Mirror Corporation has done it and the company's new line of Signet Mobile Mirrors attests to the fact that the idea is practical and can be developed in more than one way.

These mobile mirrors have been designed as by-pass closures which are more or less conventional types of sliding doors. But the Carolina people have also perfected the design of a unit which actually becomes a sliding wall of mirror, as pictured above. It is a floor-to-ceiling installation which is top-hung and slides on nylon rollers into a wall pocket. It is now being used primarily as a closure for closets and other storage areas—although it could probably be faced with mirror on both sides and utilized as a space-divider, embodying the double advantages of flexibility and reflectivity.

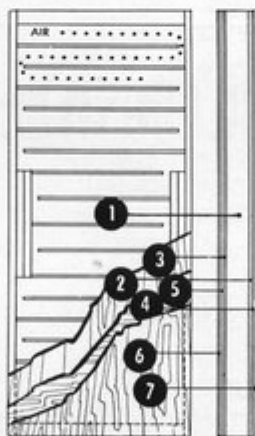
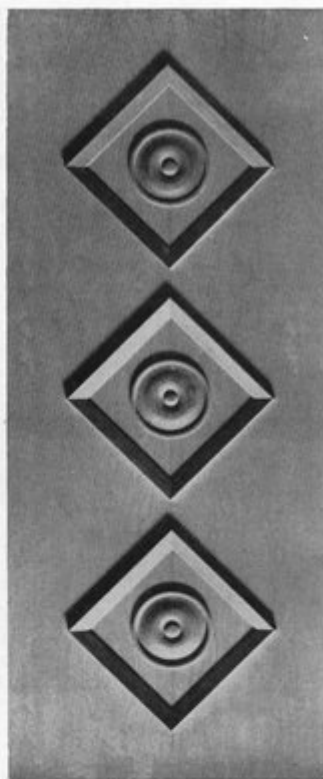
The new mobile mirror units can be furnished with clear plate glass or with "Glasswich", the Carolina company's new glass-plastic sandwich that embodies a variety of decorative motifs. The plastic sheet core is available in a wide range of patterns and colors subject to many combinations.

*(Continued on Page 30)*

## BEHIND THIS DOOR

AND ALL Thompson doors stands the guarantee that the finest materials and workmanship have been employed in the manufacturing of a quality product.

Thompson flush doors, in beautiful figured gum, lauan ash and birch can be specified for both exteriors and interiors in both standard and special sizes.



### 7 - PLY CONSTRUCTION

Lightweight, but sturdy, Thompson flush doors are noted for their rigidity and resistance to warping and twisting. This quality is the result of high manufacturing standards that include: **cores** of wood ribs spaced 4-inches apart and butted against stiles on alternate sides to provide continuous vent space; **stiles** of a 1 1/8-inch minimum width; **rails** of a minimum 2 1/2-inch width; **panels** of 3-ply, cross-banded plywood, hardwood faced; and **lock-blocks** 4-inches wide, 20-inches long centered on both sides. Only non-shrinking, craze-resistant adhesives are used to produce integrated bonding that is highly resistant to both moisture and mildew.

In addition to 11 standard sizes—1/6 x 6/8 to 3/0 x 6/8 interior and 2/6 x 6/8 to 3/0 x 7/0 exterior—Thompson flush doors are obtainable in special sizes.



DISTRIBUTED IN FLORIDA BY:

**A. H. RAMSEY AND SONS, INC.**  
71 N. W. 11th Terrace  
Miami, Florida  
FR 3-0811

**HUTTIG SASH & DOOR COMPANY**  
1090 N. W. 23rd Street  
Miami, Florida  
NE 4-2691

**RODDIS COMPANY**  
315 N. E. 73rd Street  
Miami, Florida  
PL 4-9568

**U. S. PLYWOOD CORP.**  
3545 N. W. 71st Street  
Miami, Florida  
NE 5-4541

**A. H. RAMSEY AND SONS, INC.**  
905 - 8th Avenue  
Palmetto, Florida  
2-1011

**JACKSONVILLE SASH & DOOR CO.**  
1730 Evergreen Avenue  
Jacksonville, Florida  
EL 3-8458

Mel Banks, Inc.  
ST. PETERSBURG  
Ph. HE 6-3400  
TAMPA  
Ph. 2-0871  
CLEARWATER  
Ph. 3-5911

Electrend East  
Coast Co., Inc.  
BOCA RATON  
Ph. 5101  
LAKE WORTH  
VERO BEACH  
FT. PIERCE  
Call Collect —  
Boca Raton 5101  
FT. LAUDERDALE  
Ph. JA 3-6464

Electrend  
Sales & Service  
ORLANDO  
Ph. GA 2-7166

Electrend Sales  
& Service Co.  
SARASOTA  
Ph. RI 7-3380

Mitch's Electrend  
Sales & Service  
PENSACOLA  
Ph. HE 8-4363

Carlos M. Hope  
Electrical Contractor  
GAINESVILLE  
Ph. FR 2-9867

Milky Way  
Building & Heating  
EUSTIS  
Ph. EL 7-2367



## Electric Heat at SURPRISINGLY LOW COST



### Electrend Electric Circulating Air Heating System

Clean, comfortable, convenient electric heat at a low cost never before possible. See the revolutionary new Electrend and all its advantages today — or just call us, we'll be glad to demonstrate its many features.

**Electrend** DISTRIBUTING COMPANY  
4550 37th Street No.  
St. Petersburg 14, Florida  
Telephone HEmlack 6-8420  
WRITE FOR FREE MANUAL AND A.I.A. FILE FOLDER.

## Products and Practice . .

(Continued from Page 29)



### Bedside Control Panel

A new electronic robot control that puts command of a dozen comfort-type services at a hospital patient's fingertips has been developed by Minneapolis-Honeywell Regulator Company in collaboration with hospital officials. The new unit was designed to permit patients to help themselves, thus cutting down the costs of patient care through freeing nurses from many bedside tasks.

By merely adjusting the knob and dials of the control center a patient can: Adjust both heights and contours of a motorized bed; open and close motorized window drapes; turn bedside lights on or off; adjust room air-conditioning; operate both a closed-circuit TV setup permitting room-to-lobby communication with visitors and the hospital radio circuits; control commercial TV programs from a pillow speaker; operate a two-way intercom with the nurses' station. The control setup also includes a new-type automatic telephone.

The new control center is said to be the first completely integrated system to apply, by mechanical means, the "self-help" concept to patient care. The unit is mounted on a bedside table equipped with ball-bearing casters so it may be moved easily to serve "situp" or ambulatory patients.

THE FLORIDA ARCHITECT

## Custom - Cast Placques

We can fill all your design  
needs for any type, size or  
shape of cast bronze or  
aluminum placques, name  
panels or decorative  
bas-reliefs . . .

### FLORIDA FOUNDRY & PATTERN WORKS

3737 N. W. 43rd Street, Miami

## A. R. COGSWELL

"SINCE 1921"

THE BEST  
in  
Architects' Supplies

Complete Reproduction  
Service

433 W. Bay St.  
Jacksonville, Fla.



## Architectural Exhibit . . .

(Continued from Page 6)

The last is an addition to classifications established in past years.

Heretofore Florida architects have made little effort to display, at least in the form of exhibited work, the results of their design activities in the project-house field. Elsewhere, notably in California, this phase of architectural practice has been widely publicized to the benefit of all concerned. As code requirements and planning and zoning restrictions have tightened in most sections of the state, architects have become more and more involved with the special problems involved in the design of small, project homes. Thus, it is the Exhibit Committee's conviction that work in this field should be publicized. For this reason the new exhibit category was established; and the Committee hopes it will prove to be one of the most important in the November Convention show.

### ADVERTISER'S INDEX

Advance Metal Products, Inc. . . . .	24
American Olean Tiles of Miami, Inc. . . . .	14
Associated Elevator & Supply Co. . . . .	4
Bird & Son, Inc. . . . .	22
Blumcraft of Pittsburgh . . . . .	9
A. R. Cogswell . . . . .	30
Dwoskin, Inc. . . . .	21
Electrend Distributing Co. of Florida . . . . .	30
Evershield Liquid Tile Co. . . . .	7
Florida Foundry & Pattern Works . . . . .	30
Florida Home Heating Institute	32
Florida Power & Light Co. . . . .	27
Florida Steel Corporation . . . . .	28
Florida Tile Industries, Inc. . . . .	1
George C. Griffin Company . . . . .	28
Hamilton Plywood . . . . .	6
Ludman Corporation . . . . .	3rd Cover
O. O. McKinley Company, Inc. . . . .	24
Matthiessen & Hegeler Zinc Co. . . . .	22
Miami Window Corp. . . . .	4th Cover
Mutschler Brothers Co. . . . .	5
Perlite, Inc. . . . .	25
A. H. Ramsey & Sons, Inc. . . . .	3
T-Square Miami Blueprint Co. Inc. . . . .	23
Thompson Door Co. . . . .	29
Tiffany Tile Co. . . . .	10
Tropix Weve Products . . . . .	19
Unit Structures, Inc. . . . .	26
F. Graham Williams Co. . . . .	31

F. GRAHAM WILLIAMS, Chairman  
 JOHN F. HALLMAN, JR., Pres. & Treasurer      JACK K. WERK, Vice-Pres. & Secretary  
 MARK P. J. WILLIAMS, Vice-Pres.                  FRANK D. WILLIAMS, Vice-Pres.



ESTABLISHED 1910

## F. GRAHAM WILLIAMS CO.

INCORPORATED

*"Beautiful and Permanent Building Materials"*

TRINITY 6-1084  
LONG DISTANCE 470

ATLANTA  
GA.

1690 BOULEVARD, N. E.  
OFFICES AND YARD

FACE BRICK	STRUCTURAL CERAMIC
HANDMADE BRICK	GLAZED TILE
"VITRICOTTA" PAVERS	SALT GLAZED TILE
GRANITE	UNGLAZED FACING TILE
LIMESTONE	HOLLOW TILE
BRIAR HILL STONE	ALUMINUM WINDOWS
CRAB ORCHARD FLAGSTONE	ARCHITECTURAL BRONZE
CRAB ORCHARD RUBBLE STONE	AND ALUMINUM
CRAB ORCHARD STONE ROOFING	ARCHITECTURAL TERRA COTTA
PENNSYLVANIA WILLIAMSTONE	BUCKINGHAM AND VERMONT
"NOR-CARLA BLUESTONE"	SLATE FOR ROOFS AND FLOORS

We are prepared to give the fullest cooperation and the best quality and service to the ARCHITECTS, CONTRACTORS and OWNERS on any of the many Beautiful and Permanent Building Materials we handle. Write, wire or telephone us COLLECT for complete information, samples and prices.

Represented in Florida by

**LEUDEMANN and TERRY**

3709 Harlano Street

Coral Gables, Florida

Telephone No. HI3-6554  
MO 1-5154



During Cold Snaps  
**FLORIDA HOMES**  
CAN BE  
**HAPPIER HOMES!**



Let's face it... **ARCHITECTS** do!

*Donald G. Smith says:*

I seldom plan a house or other structure without central heating. Practically all of my clients ask for it; and I know that most of those who don't will want to put it in later on.

In my opinion, central heating is of even more importance than central air conditioning.

DONALD G. SMITH, ARCHITECT, A. I. A.

After last winter's record-breaking chills and ills, you will rarely encounter any client-resistance to your recommendations of central fuel-type home heating equipment in Florida.

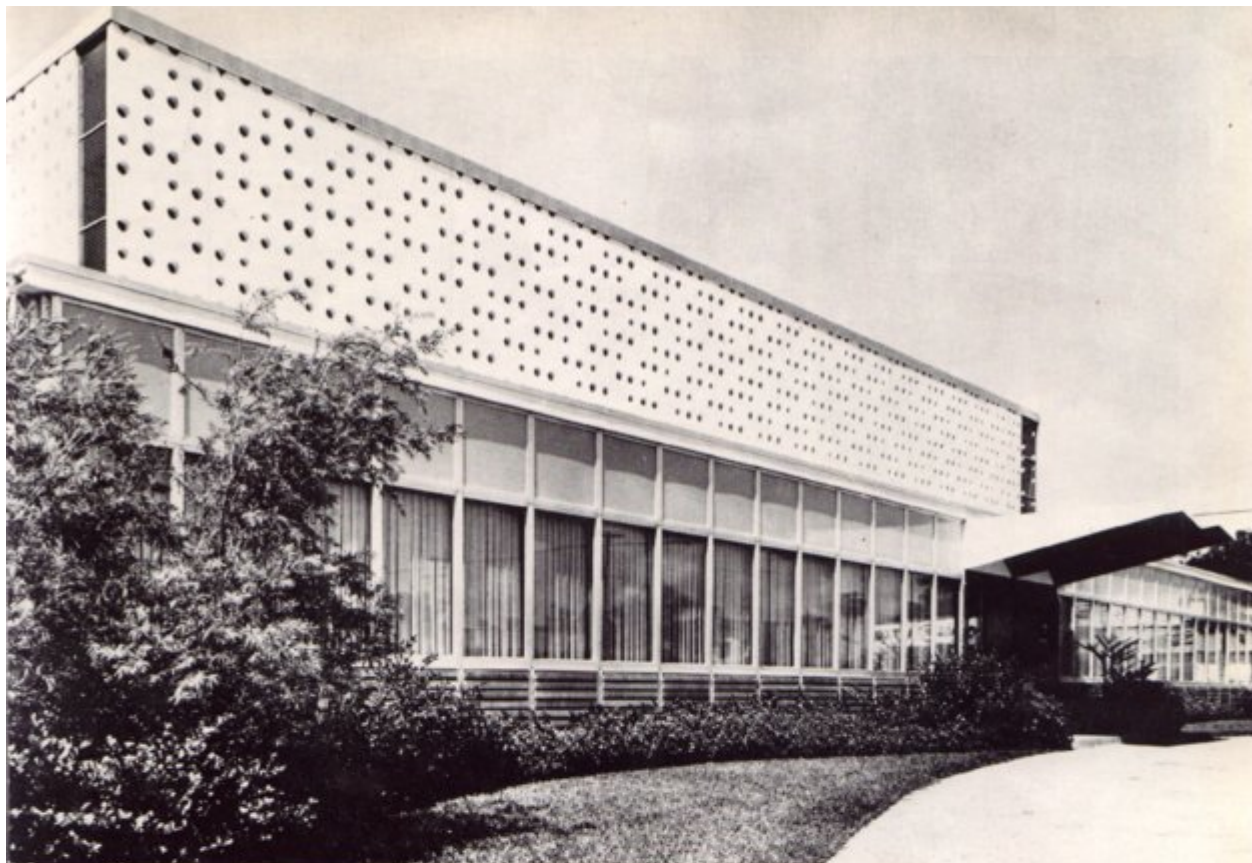
Unprecedented thousands of these units were installed in both new and existing houses during the summer throughout the state.

In a concentrated fall advertising campaign Floridians are telling their neighbors why fuel-type heating is a "must" in Florida.

We hope this "testimonial" advertising will erase any vestige of doubt in your clients' minds that central heating will assure happier, more comfortable homes for their families during our Florida cold snaps.



1827 S. W. 8th STREET, MIAMI



Dade County Medical Association Building, Curtain Wall by Ludman. Robert M. Little, A.I.A., Miami, Fla., Architect.

## Performance Is The Test of Leadership

● In architecture, creative effort, independent thinking, constructive innovation are all marks of the professional leader. But the real test of that leadership is the overall performance of the structure which the designer's skill and imagination has developed. The building must satisfy fully the practical requirements of today. But it must also meet — in both concept and conformation — the dynamic challenge of tomorrow.

● That's as true in manufacturing as in architecture. We at Ludman are fully aware of this. As a pioneer in the production of aluminum building products, we are keeping pace with the expanding scope of architectural design. Ludman products have been tested in countless instances and in thousands of buildings the country over. And their high performance under all conditions of use has been the measure of our company's success and leadership in its field.

● Today, more than ever, we stand ready to help America's architects reach new heights of design achievement. Today we have a whole "family of products" — an expanding group of building units engineered for lasting quality and well adapted for economical use in any type of building. Tomorrow there will be others. For, with architects, we recognize both the challenge and the opportunities of the future.

*... with Ludman's  
Family of Products*

AUTO-LOK WINDOWS  
CURTAIN WALLS  
SLIDING GLASS DOORS  
SLIDING WINDOWS  
JALOUSIE WINDOWS  
PROJECTED WINDOWS

**LUDMAN**  
**CORPORATION**  
NORTH MIAMI, FLORIDA

# miami

ALUMINUM WINDOWS



**\*PROVEN  
PERFORMANCE**



*Specs Memo . . . The Miami Window operator — guaranteed for the life of the window.*

It's based on top materials, precisely engineered design, quality-controlled manufacture. It's developed through double-checked shop detailing, factory-supervised field installation. The end result is life-of-the-building economy — the true measure of trouble-free, dependable performance of windows in any type of structure . . .

**\*** *Miami Window operation is unaffected by extremes of climate or use. Data on request.*



**miami window corporation**

P.O. BOX 877, INTERNATIONAL AIRPORT BRANCH, MIAMI 48, FLORIDA