



**Opportunity
In An
Expanding Era**

44th Annual FAA Convention Issue

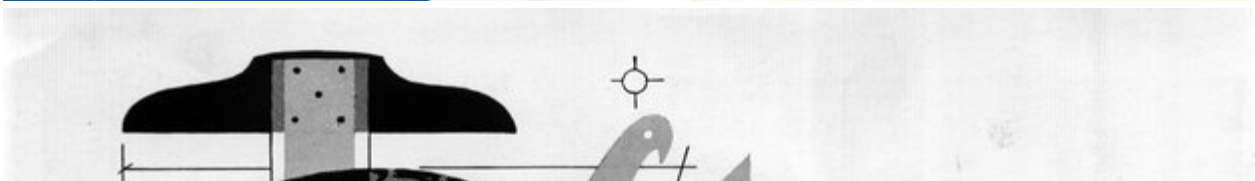
November, 1958




The
Florida Architect

OFFICIAL JOURNAL of the FLORIDA ASSOCIATION OF ARCHITECTS of the AMERICAN INSTITUTE OF ARCHITECTS

V. 8
11





**1st STEP TO
SUCCESSFUL
BUILDING...**

CONSULT AN ARCHITECT

The architect is the captain of your building team. He is the person who draws the plans . . . specifies materials . . . takes bids on the job . . . supervises construction and approves payment of the bills.

An architect is an artist — a creator — a person with the unique ability to combine art and business, inspiration and science, imagination and sound judgment. To become a qualified architect calls for 10 or more years of intensive study and apprenticeship, and licensing by the state in which he practices. All this is to prove an ability to solve whatever type building problem you may have.

Building a home, or any other structure, is one of the biggest investments most people make in a lifetime. To protect that investment, consult a professional . . . an architect. He is your guide to greatest value for your building dollar.

R. H. Wright & Son is proud of its friendship with the architectural profession in this area. As a leading producer of concrete and concrete products, we constantly strive to produce the materials and render the services the architect requires for sound, successful building.



PRESSURED CONCRETE INSTITUTE

Member



R. H. WRIGHT & SON

**POMPANO HIGHLANDS DANIA
FORT LAUDERDALE**

Pre stressed Concrete · Transit Mixed Concrete · Sand Plaster · Mortar · Stucco

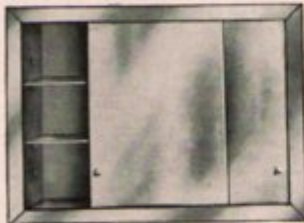


when looking for the finest
in bathroom
cabinets . . .
look to **TIFFANY**

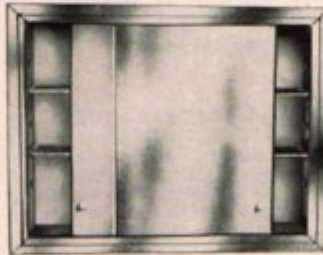


The Mic-A-Lum . . . newest idea in cabinets. Mica frame is designed to match today's luxury vanities. Rough openings from 22" x 15" to 55" x 18".

Tiffany bathroom cabinets add new glamour and convenience . . . give any bathroom that powder room appearance. Designed for the homemaker. Easy to clean, require no upkeep because they're aluminum. No rust, no paint chipping, no discoloration. Glass shelves and finest quality mirrors easily removed for cleaning and adjusting. When your customer asks for the finest . . . specify Tiffany.



Promotional #150 — Inexpensively priced sliding mirror cabinets with all the features of the finest. Fits 20 3/4" x 14 3/4" opening.



Tiffany Gem #30P — The best there is. Picture frame moulding in high luster "Chromite" or choice of rich bathroom colors. Plate mirror. 28 3/4" x 19".



Stainless Steel #27 — A lifetime frame artistically blended with satin-finished aluminum pan. For the quality, cost-conscious buyer. 25" x 18 3/4".



All Cabinet Models Available In Various Sizes and Styles.

TIFFANY *Mfg. Co. Inc.*

3640 N. W. 41ST STREET, MIAMI 42, FLORIDA

NOVEMBER, 1958

The Florida Architect

OFFICIAL JOURNAL OF THE FLORIDA ASSOCIATION OF ARCHITECTS

In This Issue ---

Letters	4	Planning and Zoning	37
The EXPO' in Brussels	11	<i>By William T. Arnett</i>	
<i>By Emily V. Obst, AIA</i>		FAA Convention Committee	39
The Urban Renewal Amendment	17	<i>By Verner Johnson</i>	
<i>By J. E. Baril, Florida Development Commission</i>		Public Relations	40
Background for The Future	19	<i>By Roy M. Pooley, Jr.</i>	
<i>By Roger W. Sherman, FAA Executive Director</i>		Hospitals and Health	40
44th Annual Convention Program	29 to 34	<i>By R. Daniel Hart</i>	
Message From the President	29	School Buildings	40
<i>By H. Samuel Kruse, AIA</i>		<i>By James E. Garland</i>	
Speakers on the Convention Program	30, 31	Collaboration with Design Professions	43
Roster of 44th FAA Convention		<i>By C. Ellis Duncan</i>	
Product Exhibitors	34	Student Loan Fund	43
FAA Committee Reports:		<i>By John L. R. Grand</i>	
Chapter Affairs	23	Nominating Committee	45
<i>By John L. R. Grand</i>		<i>James L. Deen, Chairman</i>	
Home Building—Construction Industry	23	Kay Pancoast Designs A Prize	46
<i>By John Stetson</i>		Progress on the C.S.I. Front	49
Joint Cooperative Committee, FAA-AGC-FES	25	<i>By Donald G. Smith, AIA</i>	
<i>By John Stetson</i>		The Student's Column	51
Education	26	<i>By George Chellag</i>	
<i>By William B. Eaton</i>		Resolutions Submitted	53
Legislative	27	News and Notes	56
<i>By James K. Pownall</i>		4th Annual Roll Call of Advertisers—1957-58	60, 61
		Advertisers' Index	63

F.A.A. OFFICERS — 1958

H. Samuel Kruse, President, 811 Chamber of Commerce Bldg., Miami
 Arthur L. Campbell, First Vice-President, 115 S. Main St., Gainesville
 William B. Harvard, Second Vice-President, 2714 Ninth St. N., St. Petersburg
 Verner Johnson, Third Vice-President, 250 N. E. 18th St., Miami
 Ernest T. H. Bowen, II, Secretary, 2910 Grand Central Ave., Tampa
 Morton T. Ironmonger, Treasurer, 1261 E. Las Olas Blvd., Ft. Lauderdale

Roger W. Sherman, Executive Director, 302 Dupont Plaza Center, Miami 32.

DIRECTORS

IMMEDIATE PAST PRESIDENT: Edgar S. Wortman; BROWARD COUNTY: William F. Bigoney, Jr., Robert E. Hansen; DAYTONA BEACH: Francis R. Walton; FLORIDA CENTRAL: Eugene H. Beach, Elliott B. Hadley, Anthony L. Pullara; FLORIDA NORTH: Turpin C. Bannister, Myrl J. Hanes; FLORIDA NORTH CENTRAL: Prentiss Huddleston; FLORIDA SOUTH: James L. Deen, Theodore Gottfried, Herbert R. Savage; JACKSONVILLE: James A. Meehan, Jr., Walter B. Schultz; MID-FLORIDA: L. Alex Hatton; FLORIDA NORTH WEST: Hugh J. Leitch; PALM BEACH: C. Ellis Duncan, Jefferson N. Powell.

The FLORIDA ARCHITECT, Official Journal of the Florida Association of Architects of the American Institute of Architects, Inc., a Florida Corporation not for profit, and is published monthly at Rm. 302 Dupont Plaza Center, Miami 32, Florida; telephone FR 1-8331. Editorial contributions, including plans and photographs of architects' work, are welcomed but publication cannot be guaranteed. Opinions expressed by contributors are not necessarily those of the Editor or the Florida Association of Architects. Editorial material may be freely reprinted by other official AIA publications, provided full credit is given to the author and to The FLORIDA ARCHITECT for prior use. . . . Advertisements of products, materials and services adaptable for use in Florida are welcomed, but mention of names or use of illustrations, of such materials and products in either editorial or advertising columns does not constitute endorsement by the Florida Association of Architects. Advertising material must conform to standards of this publication; and the right is reserved to reject such material because of arrangement, copy or illustrations. . . . Accepted as controlled circulation publication at Miami, Florida.

Printed by McMurray Printers

ROGER W. SHERMAN — Editor
 VERNA M. SHERMAN
 FAA Administrative Secretary

VOLUME 8
 NUMBER 11 1958

THE FLORIDA ARCHITECT



This cheery and charming entrance hall features the new American-Olean Scored Tiles in Crystalline Glazes. Wall is 315 Cr. Tan in Scored Design 5D-1; floor is 345 Cr. Cobalt in Scored Design 5D-4. Color Plate 82.

The first area to greet you in any home is the entrance hall. Make it forever lovely, practical, and different with American-Olean Crystalline Glazes and Scored Tile*. They're inspiringly distinctive in color and texture. On floors, they'll last a housetime, without waxing, scrubbing

or replacement. Crystalline Glazed Tile is made in thirteen new colors, as well as in four Scored Tile designs—permitting hundreds of different patterns and color combinations. Send for full color booklets which give complete information.

*Pat. applied for

AMERICAN-OLEAN TILE COMPANY
1401 Cannon Ave., Lansdale, Pa.

Please send me Booklets 1020, "Crystalline Glazes and Scored Tile", 421 "New Ideas in Tile", and Color Chart GC-1.

NAME _____

(PLEASE PRINT)

COMPANY _____

STREET ADDRESS _____

CITY _____ ZONE _____ STATE _____

CERAMIC TILE
**American
Olean**

AMERICAN-OLEAN TILES OF MIAMI, INC. • DISTRIBUTORS IN SOUTHEAST FLORIDA • OFFICE AND DISPLAY LOUNGE: 1150 S. MIAMI AVE. FRANKLIN 4-4976

NOVEMBER, 1958



FLOORS

Architect: Richard L. Dorman.
Tile Contractor: Selectile.



WALLS

Architect: Gejya Parsons.
Tile Contractor: Beverly Hills Tile Co.



COUNTERS

Architects: Palmer and Krisek.
Tile Contractor: Continental Tile and Marble.



america
is
entering
the
ceramic
tile
age

THE
MOSAIC
TILE COMPANY

America's largest
ceramic tile manufacturer
Member: Tile Council of America, Inc.
and The Producers' Council, Inc.
General Offices: Zanesville, Ohio

SHOWROOM — WAREHOUSES:
7250 N.W. 36th Avenue
Miami 47, Florida
Phone: Newton 5-0601
702 N.W. 9th Avenue
Ft. Lauderdale, Florida
Phone: Jackson 4-0216
308 N. Newport Avenue
(P.O. Box 2559), Tampa, Florida
Phone: 8-5314

Letters

QUERY ON SCHOOL CONSTRUCTION COSTS

Mr. Roger W. Sherman, Executive Director. The Florida Association of Architects, Inc.
Suite 302, DuPont Plaza Center
Miami 32, Florida

Dear Mr. Sherman:

Thank you for yours of August 28 relative to the article in the September issue of *The Florida Architect*.

While I am in complete accord with your thinking relative to this particular matter, I am nonetheless quite concerned about the present cost of constructing school facilities and the need toward which we must all strive to reduce this cost. When one is familiar with construction costs of similar facilities of a private nature, it is appalling indeed that public funds are literally squandered where public facilities are involved.

Any suggestions you might have in this regard would be deeply appreciated.

Thanking you for your attention and with warmest personal regards, I remain

Sincerely,

TOM ADAMS
Florida State Senate
29th District

... AND A COMMENTARY

The Honorable Tom Adams
Florida State Senate
29th District
Orange Park, Florida

My Dear Senator Adams:

Thanks for your cordial letter of September 2. I am most happy that you found the article in the September issue of *The Florida Architect* interesting and that you are in accord with the thoughts which it expressed.

Your sincere concern with the problem of reducing costs of the construction of public facilities does you credit. I can assure you that this concern is shared by the architectural profession in Florida. The vast majority of architects are intensely interested in designing for economy as well as efficiency. An architect's sense of

professional accomplishment is strengthened when he can produce a building which meets the technical and esthetic requirements of his problem substantially below the budget set up for it. To any conscientious architect, this is a justifiable source of pride.

The point is that we must look beyond the designers of buildings for a solution to the construction cost problem. Part of this problem is made up of elements over which we, as individuals, the public bodies charged with providing facilities and even the technicians employed to produce them have virtually no control. Cost of materials and labor have skyrocketed in our State as others. In addition, the quality of both labor and many categories of material has lessened to effect an increase in both first cost as concerns labor, and in the cost of maintaining public facilities relative to poor performance of materials.

There are, of course, instances of public funds being squandered with very little conscience where public facilities are involved. I know of a few cases wherein this could refer to a few school buildings. But the great majority of schools throughout our State have been planned, designed and built to provide unit costs of construction which compare very favorably, not only with private construction, but with costs of schools in other parts of the country. For example, Florida schools average between \$8.00 and \$10.00 per square foot; a figure which is substantially under the national average and one which provides instructional and community facilities which are, in general, above the average. For example, some schools on Florida's West Coast have been built for under \$8.00 per square foot; and the new Elementary School illustrated on the cover of the September issue of *The Florida Architect* cost approximately \$8.50 per square foot.

The inescapable truth seems to be that so far as design and construction are concerned, building professionals are doing a commendable job of meeting the construction budgets set up for individual projects.

What beclouds the whole issue is
(Continued on Page 6)

THE FLORIDA ARCHITECT



WELDWOOD WALNUT PANELING. Hillsborough County Courthouse, Tampa, Fla. Architect: Richard S. Himes. Installed by Kreuger Manufacturing Company.

How busy places keep their dressed-up look with beautiful Weldwood real wood Paneling

In offices, stores, or institutions—wherever practical considerations such as durability and easy maintenance are as important as handsome appearance—Weldwood Paneling is often the most effective solution.

Whether the desired effect is simple or splendid, Weldwood offers you three ways to provide the low-maintenance beauty of natural wood interiors:

- *Weldwood Paneling* in easy-to-install panels.
- *Weldwood Flexwood* for real wood paneling even on curved walls.
- *Weldwood Movable Partitions* that let you change office layouts overnight.

WELDWOOD PANELING makes a pleasant background for eating, is easy to keep clean even near cooking areas. Shown: antiqued Weldwood walnut Paneling, B/G Restaurant, 10 E. 44th St., New York. Architect: Herbert B. Beidler, Chicago. Cabinet Contractor: Equipment Manufacturing Company of Chicago.



Whichever you select, for business or home installations, Weldwood Paneling is guaranteed for the life of the building.



FREE WELDWOOD BOOKLET. "Functional Beauty for Business and Institutional Interiors." Write for your copy. We will be glad to have a Weldwood Architects' Service Representative consult with you—no obligation. United States Plywood Corporation, Dept. SB 10-58, 55 W. 44th St., New York 36, N. Y.



Weldwood®

Paneling • Flexwood • Partitions

Offices in 114 principal cities in the United States and Canada

WELDWOOD FLEXWOOD®—selected wood veneer backed with cloth—comes in more than 40 woods, can be hung quickly on curved or flat walls for low maintenance, real wood luxury. Shown: Korina® Flexwood, Altman Galleries, Metropolitan Museum of Art, N. Y. Installed by Kalflex, Inc.



Serving Florida Architects and Builders...

- REINFORCING STEEL
- STRUCTURAL STEEL
- COMPLETE ENG. & FAB. FACILITIES
- BAR JOISTS
- ALUM. & STEEL SASH
- STEEL DOORS & FRAMES
- MISC. IRON AND ALUMINUM
- ORNAMENTAL IRON
- STEEL ROOF DECK
- STEELTEX
- HIGHWAY PRODUCTS
- CORRIFORM
- SONOTUBES
- METAL CULVERTS
- POLYETHYLENE PLASTIC FILM

**FLORIDA STEEL
CORPORATION**

"Steel when you want it"

TAMPA 8-0451

ORLANDO GArden 2-4539

MIAMI NEwton 4-6576

JACKSONVILLE ELgin 5-1662

Letters

(Continued from Page 4)

the fact that the initial construction cost itself is only a comparatively small portion of the total educational budget. Construction figures are large because the whole educational program is large; and it is true that certain costs for prime construction have, in certain instances, been higher than would have otherwise been necessary if the factor of continuing maintenance expenses had not been taken importantly into consideration. This part of the overall school cost problem is often forgotten in an effort by well-meaning school boards to reduce cost of original construction. Yet it has a very important continuing effect on the total school budget.

If I were to offer any suggestions relative to methods of achieving practical reductions in school construction costs, they would refer first to the budget developed as a result of an original educational survey; and second to the values which lie in continuing research on new materials and construction techniques.

As to the first point, this is largely an educational consideration. We can all be in sympathetic agreement with efforts of educators to improve the standards of instruction and can understand their desire to provide all school districts with facilities for maintaining these standards at top levels. But you and I both probably know of areas in which elaborate schools have been built to serve sparsely populated or even backward areas. It may not be fair to question the judgment of the educators who recommend such facilities for such areas; but it would be certainly in error to blame an architect or a contractor for constructing the educational facilities programmed for them by the developers of the educational survey and the county school board. Does it not seem probable that a more intensive analysis of individual area needs might prove one practical step toward reducing—or at least controlling—the extent of our overall school budget?

The second point—technical research—is a much more complicated matter. In the building field new materials and methods of construction

are being constantly proposed by manufacturers alert to the need of reducing costs in every category of construction. Many of these proposals are increasingly taking the form of combining elements of construction and equipment into a series of pre-fabricated units, the object of which is to speed construction and reduce field labor. Time and time again such technical advances have proved virtually impossible to consider by either architect or contractor, first because the new method ran counter to established building codes and second, because they were unacceptable to labor for one reason or another. In spite of these very real handicaps, construction techniques are improving and architects and contractors are utilizing them whenever conditions on individual projects will permit.

This is an area in which the State School Architect's office might well interest itself to a greater degree than heretofore. As new construction methods are developed, this office might well work with school architects and county school boards throughout the State in proving their practicability, safety and efficiency to local building officials charged with code administration. I am certain that such activity would be welcomed by architects throughout the State, and I am sure that they would offer their active cooperation toward it.

I have no immediate formula for estimating the reductions in expenditures for school plants which might result from application of these two suggestions. However, they might prove to be substantial over a period of time, not only as a means of controlling budgets for initial construction but as one means for reducing the continuing cost of maintenance, financing and probably insurance.

Thanks much for your interest in our thoughts on this matter. Let me assure you of the architectural profession's interest in your own efforts in behalf of the public which both you and this profession serve. With all good wishes and best personal regards.

Most cordially yours,

ROGER W. SHERMAN

THE FLORIDA ARCHITECT



Colorful Capri tile has been specified for use throughout the new Edgewater Arms apartment building now under construction on a beach-front site at North Ft. Lauderdale. The architect is George J. Sole, the builder, Frank J. Rooney, Inc.

A beautiful new collection of hard-bodied glazed tile, imported from Italy. CAPRI is available in sizes from $\frac{7}{8}$ " square to 1" x 3". Over 250 standard and special colors and patterns offer the architect a virtually unlimited range of design possibilities . . .

INTERSTATE MARBLE & TILE CO. *"The Finest is Our Standard of Quality"*

4000 NORTH MIAMI AVENUE, MIAMI 37 — PLaza 8-2571 — 912½ RAILROAD AVENUE, TALLAHASSEE — PHONE 3580

Letters

(Continued from Page 6)

REPRINT REQUEST

DEAR EDITOR:

Very recently in our Architects' offices, we thrilled to the reading of your excellent article, "Know Your State Board, Law Enforcement Is a Two-Way Job," on several pages of your September, 1957 issue.

This terrific article so perfectly sets forth the professionalism of your profession, in parallel comparative needs

of our profession, that it is my wish to personally supply each and every licensed Funeral Director and Embalmer of Florida with an exact reprinting of the entire article, even including the box at your story's beginning, "This is the first, etc."

Full and entire credit will be given to your publication, and highly complimentary statements will give you due credit for the outstanding cooperation of your Florida Association

and member Architects with your State Board.

Trusting that permission will be granted by you for our helpful use of this editorial content, and advising you that we will proceed to our offset printing as above, unless specifically informed otherwise, with all appreciation and thanks to you, I am,

W. L. PHILBRICK,
Funeral Director.

DEAR EDITOR:

Thank you for permission to reprint "Know Your State Board . . . LAW ENFORCEMENT IS A TWO-WAY JOB" of your "Florida Architect" professional magazine, about which I recently wrote you.

The enclosed copy of "Brick Bats by Philbrick" for July-August, 1958 contained exact reproduction of your story, even to its format and type-set, by offset printing on our part.

You and your splendid professional "Florida Association of Architects" will appreciate and be interested in knowing how our Florida Funeral Directors Association membership, all licensed Funeral Directors and Embalmers of Florida, and members of the State Board of Funeral Directors and Embalmers of Florida, together with Presidents of all professional associations, such as Law, Medicine, etc., as well as our Governor LeRoy Collins, and other State officials were similarly informed by their receipt of copies of the attached.

Will you kindly advise your President Kruse and your Association membership of our appreciation and professional cooperation.

W. L. PHILBRICK
Funeral Director.



the first thin-bed, Portland cement compound for dry installation of real clay, ceramic and glass mosaic tiles.



Architects and tile men agree that Crest has permitted more use of tile . . . in places where tile was once considered too expensive. Crest Tile-Set cuts weight up to 65 per cent, saves time by eliminating mortar box mixing, tile soaking, waterproofing and lathing. No wonder Crest Tile-Set is being acclaimed and used from mile-high Denver to sea-level Miami . . . from dry-as-a-bone Phoenix to humid Jacksonville. Specify Crest Tile-Set* for every tile job.

*and Crest Supreme Dry Tile-Grout

See our display at the Florida Association of Architects Convention or write for full information.



Kaiser Manufacturing Inc.

2000 HARRINGTON, HOUSTON 26, TEXAS

OTHER PRINCIPAL OFFICES IN MIAMI • LOS ANGELES • CHICAGO • PHILADELPHIA

Telephone Company

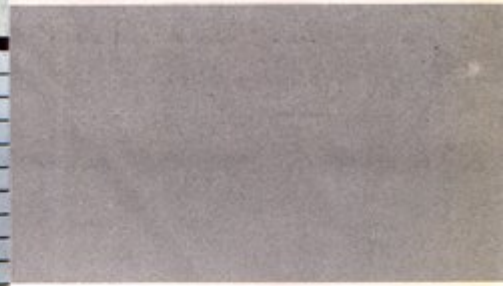
Errs in FAA Listing

In the Miami Telephone Directory, just issued, listings for the Florida Association of Architects and *The Florida Architect* make it appear that both Association and magazine are engaged in the practice of architecture. Due solely to an error in the Bell Telephone's commercial office, both listings appear in the

(Continued on Page 40)

THE FLORIDA ARCHITECT

tile by tiffany



beauty is a practical matter!

As modern as tomorrow . . . real ceramic tile is as practical as it is beautiful. It cannot fade, tarnish or stain. No more painting or repapering. Illustrated above is Mecca . . . a new con-

cept in tile design, exclusively yours from the Tiffany kilns. Whether you select the distinctive Mecca or the conventional square design you can be sure of unexcelled clarity of color and uniformity of size with Tiffany Tile.

"America's finest ceramic tile"



Tiffany . . .
a symbol of your good taste

TIFFANY BRINGS YOU

A World of Color!



220
CREAM



260
YELLOW



520
PERSIAN BROWN



103
CORRALLIN



111
MAUVE PINK



180
SPRING LILAC



312
ICE GREEN



330
MING GREEN



480
SPRUCE GREEN



418
SKY BLUE



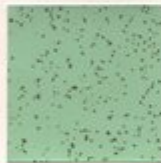
430
REGENCY BLUE



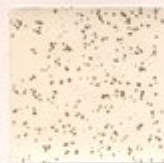
712
LIGHT GREY



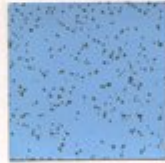
5-260
SURFSAND YELLOW



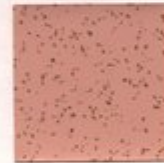
5-312
SURFSAND ICE GREEN



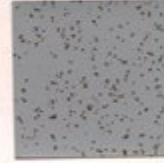
5-20
SURFSAND WHITE



5-418
SURFSAND SKY BLUE



5-103
SURFSAND CORRALLIN



5-712
SURFSAND
LIGHT GREY



610
OATMEAL



360
HUNTER GREEN



160
WINE



540
NUTMEG



760
CHARCOAL



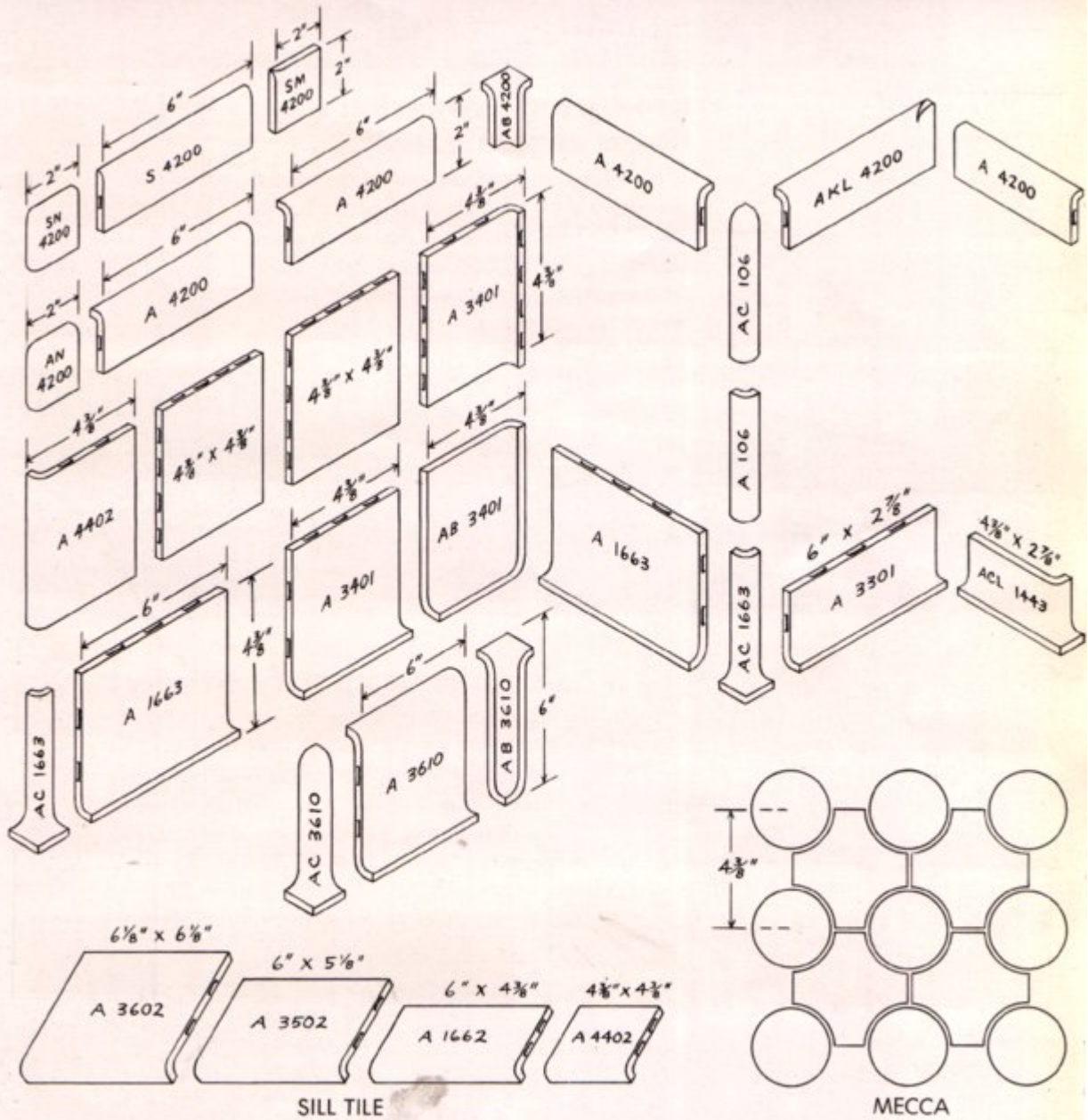
910
EBONY

ALSO AVAILABLE IN SHELL WHITE — NO. 20 (NOT ILLUSTRATED)

A wide selection of tile patterns and a choice of twenty-five attractive colors that match, blend or contrast to produce beautiful interior effects are found in the Tiffany line.

SHAPES AND SIZES

Wall and Trim Tile



Created and produced by master craftsmen, Tiffany has many practical advantages. Slightly larger than most tile . . . Tiffany gives 5% to 7% greater coverage. Fits around standard bathroom fixtures

with fewer cuts. Deeper cushions enhance the 3-dimensional effect. All Tiffany Tile, including trim, have spacers as an integral part of the tile to give you a more uniform and attractive tile surface.



producing "America's finest ceramic tile" . . .

Tiffany Tile Corporation is one of the largest producers of ceramic tile in the entire South. Over 150 highly skilled craftsmen are employed at the 60,000 square foot plant. Production is over several million square feet of tile each year.



it pays to specify tiffany!

Construction of a new building . . . or remodeling an old one . . . is an exciting and important event. No matter whether it is a multi-million dollar industrial plant or a modest home, owners want and deserve only the finest . . . that's Tiffany.

**tiffany**

TILE CORPORATION
PORT TAMPA FLORIDA



These pieces won Certificates of Merit in NAHB-Producers' Council 1957 Ideas for Homebuilders Contest. "Good descriptive information . . . Excellent guide and presented in a clear, concise manner," the judges commented.

AND NOW *Another* **COVETED**
Certificate of Merit

awarded at the 1958 A.I.A. Convention
 for the STRONGHOLD LINE® Sample Board



See us at
 Booth 49

Florida
 Association
 of Architects
 Convention

1958
Award-Winning
NAIL SAMPLE BOARD

Handy to stand on a desk or drawing table, this 12" x 18" easel-back display carries actual samples of 50 improved fastenings that hold tighter, longer—enable you to use new cost saving techniques and materials.

Award-Winning
**Literature — plus a sample board and
 technical bulletins—yours for the asking!**

STRONGHOLD® Annular Thread and SCREW-TITE® Spiral Thread Nails have revolutionized construction methods. Scientifically engineered threads "lock" with the wood fibres; the nails hold tight, actually *gain holding power after driving*. They make house frames up to 5.7 times as strong—keep wood floors and underlayment smooth and squeak-free—virtually eliminate "popping" nail heads that mar beautiful gypsum board drywall—hold shingles secure in winds up to three times hurricane force. They permit the use of fewer nails, shorter nails, slimmer nails; with important savings in time, labor, materials. Many architects are finding this award-winning literature and the sample board helpful. They are yours for the asking, along with an up-to-date binder of bulletins reporting data and findings resulting from the continuing program of research and testing carried on at Wood Research Laboratory, Virginia Polytechnic Institute.



Practically all of the authoritative data available on the holding power of threaded nails is the result of research reported in these VPI Bulletins.

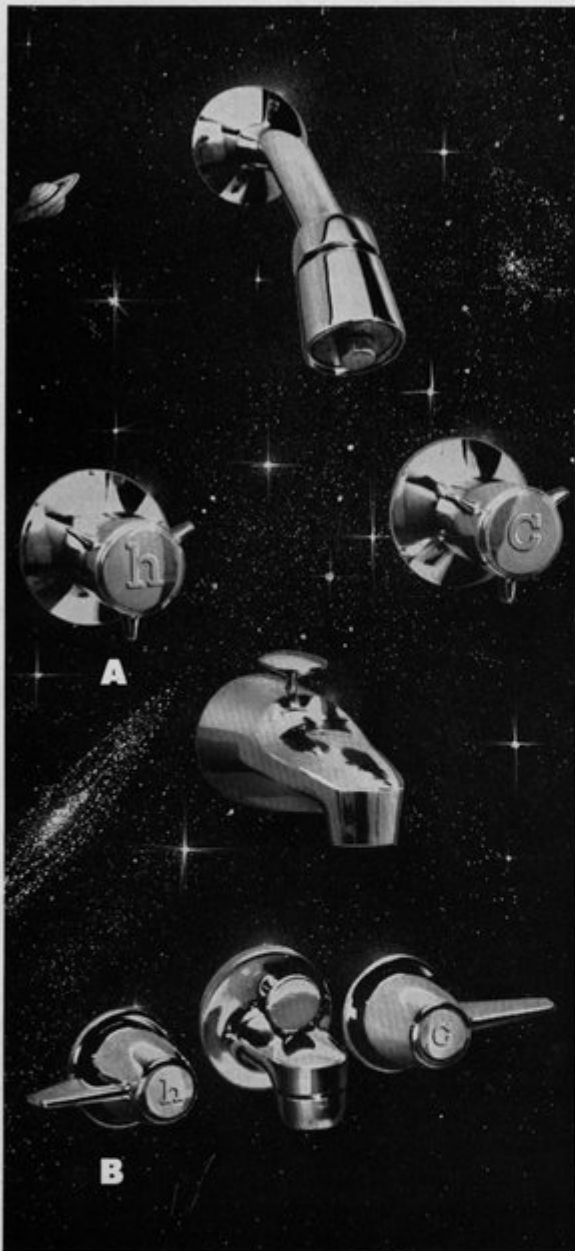


"Drives Like A Nail... Holds Like A Screw."

INDEPENDENT NAIL & PACKING CO.

Pioneer Developers and Largest Manufacturers of Threaded Nails
 BRIDGEWATER, MASSACHUSETTS, U. S. A.

© Copyright Independent Nail & Packing Company, 1958. Trade Marks Reg. U.S. Pat. Off.



**NEW
BEAUTYWARE
FITTINGS
...PERFECT COMPLEMENT
TO
BRIGGS
FIXTURES**

Sleek, functional design with color impact

Briggs delivers the most advanced styling possible today in brass fittings! Contemporary lines in complete harmony with the modern look of Briggs Beautyware fixtures. Designed by Harley Earl, Inc., these bright chrome-plated brass fittings are available with interchangeable inserts to match Briggs compatible colors as well as white and chrome. Specify them for residential and commercial uses. Write now to Briggs for complete information.

BRIGGS MANUFACTURING COMPANY
WARREN, MICHIGAN

A T-8116. Combination bath-shower fitting, with automatic diverter valve in spout.

B T-8715-S. Shelf-back lavatory fitting, 5¼" centers, with aerator and pop-up drain.

BRIGGS

B E A U T Y W A R E



Far left, the Atomium; and right, the European Coal and Steel Community Pavilion.

THE EXPO' in BRUSSELS

By EMILY V. OBST, AIA

"Hang it from sky hooks!" How many times have we said this in jest when faced with the problem of how to support a roof. Yet, this summer, when I visited the World Expositions in Brussels, I saw not only the roofs, but also the walls of many of the Expo' structures actually supported from cables stretching from the tops of many of the pavilions, upwards, as if veritably hung from sky hooks.

This architecture of suspension, used for almost a century in bridge construction, is employed profusely this time in architecture. While these buildings are of temporary nature, designed for limited occupancy and mainly for visual effect, still the principles employed could also be utilized for permanent structures as well.

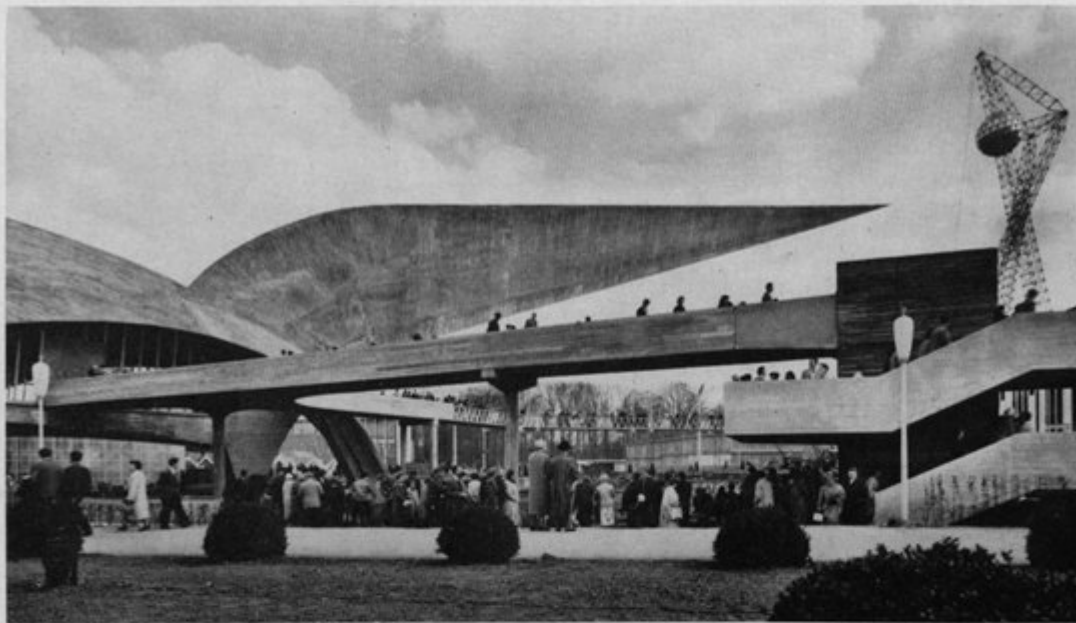
Cables have become a part of this architecture, structurally and aesthetically. They are not a necessary evil as tie rods, restraining the thrust of a vault, to be denied, subdued, or minimized. Instead, they are integral parts of a dynamic whole, vital elements to be displayed instead of concealed.

In my opinion, one of the finest structures at Expo' 58 is the European Coal and Community Pavilion. Its roof is suspended from gigantic tripod-type frames, silhouetted against the sky. In turn, the walls are suspended from the roof. Both parts therefore are in tension, with the gravitational thrust taken by the dominant frames, towering above the building itself.

'Telexpo', the Belgian postal and communications building, is a circular structure, suspended by cables from a large central mast, like a maypole. This antenna rises high above the roof, with many cables stretching down from it to support the ceiling. Again, like the European Coal and Steel Community Pavilion, the walls are non-structural and merely curtains of glass.

The French Pavilion, designed by M. GUILLAUME GILLET, architect, and M. J. PROUVE and M. R. SARGER, engineers, is, in my opinion, the most ambitious and pretentious structure of Expo'. One critic has called it "roller coaster architecture." This epithet is rather harsh. Actually, it is

(Continued on Page 13)



The Civil Engineering Pavilion



The French Pavilion



Telexpo' Pavilion

EXPO' in Brussels...

(Continued from Page 11)

a direct descendant of the 1851 Crystal Palace of London, with walls of plastic on a steel framework. Because of a street car tunnel beneath the site, and a somewhat marshy soil, the points of support are limited to one immense concrete foundation and two lesser ones, from which spring a multiplicity of steel columns supporting a double hyperbolic paraboloid, original in concept and daring in design, performing admirably its function of housing one of the most factual, comprehensive, dignified and impersonal exhibits of the EXPO'.

Native pride does not prompt the next statement: namely that I thought the United States Pavilion one of the most beautiful of EXPO'. The good and bad points of its contents itself have been discussed widely. My only thought is that the exhibit itself is sparse. Much more could have been shown without crowding the allotted space. My interest is more in the architecture than in its displays, and the pavilion itself is wanting in no respect. Designed by EDWARD STONE, it is impressive without evidence of bulky stolidity, graceful with-

out a loss of scale. It is the only foreign pavilion of its size with entourage and a foreground, which enhances its beauty as well as enables a viewer to comprehend it as a complete unit. The roof has been described as a bicycle wheel. The enveloping plastic skin wall is 340 feet in diameter, approximately the size of the Colosseum in Rome. The diameter of the roof is 381 feet, consequently there is an overhang, shading a balcony around the circumference of the building. The roof is supported from exterior vertical ties around the circumference, from which horizontal cables stretch to a central circular steel ring. The wall covering, of a meshed transparent plastic, admits natural light in the daytime, while at night, illuminated from within, the whole structure shines in nocturnal glory.

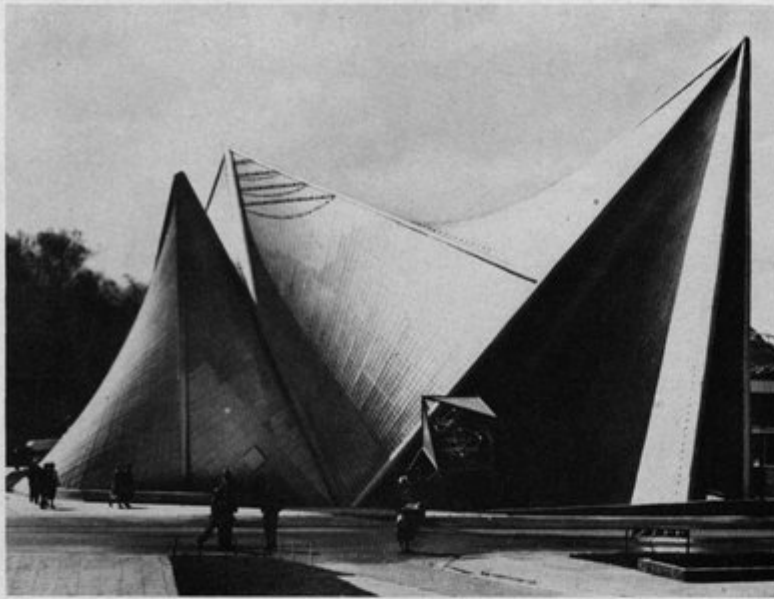
The walls of the Soviet Pavilion are also suspended from its roof, which in turn is supported by short cantilever trusses on either side of the center of the hall, which is roofed by a plastic vault. An excellent exhibition hall, the Russian Pavilion lacks the aesthetics, originality, and ingenuity of either the French or the United States buildings.

The German group, designed by architect EGON EIERMAN, SEP RUF, associate, consists of eight individual buildings with glass walls, alternating with black horizontal fasciae, with interior columns supporting roofs and floors, which in turn support the walls. Suspended walkways connect the different buildings, with a bold and prominent cantilever stairway as a dominant element. Crispness, simple elegance, elimination of the superfluous, and scale make this group one of the most pleasing of the EXPO'.

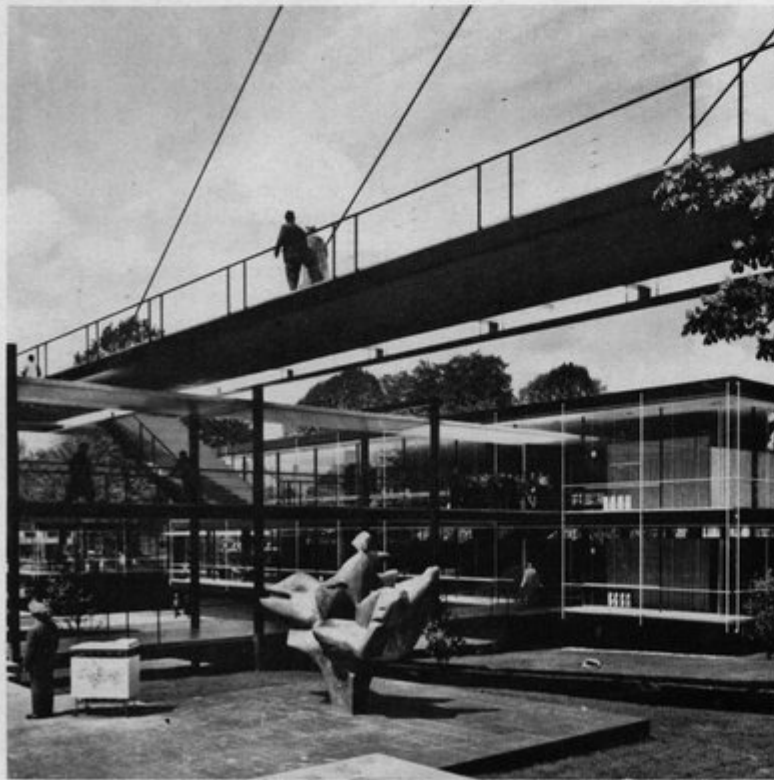
The pavilion of Solvay and Company, housed in a building using many of Solvay's own plastics, is one of the best of the Belgian sector. Architect VICTOR PULPAS has made extensive use of interior landscaping, contrasts of textures, and subdued lighting, creating a unique Oriental quality, human, yet dramatic.

Near the Solvay Pavilion is that of International Business Machines, an impressive building, with dominant clarity of form. It contains one of the outstanding exhibits of the Fair. This building, with its glass facade, roof of thin concrete slab folded planes, and its clean, crisp interiors, is an appropriate shell for an exhibit which

(Continued on Page 14)



Philips Lamp Society of Holland Pavilion



German Pavilion

Expo' in Brussels . . .

(Continued from Page 13)

challenges the intellect of the visitor. Like most of the pavilions, there is a cinema inside, and a part of the I.B.M. exhibit is an eight minute documentary produced by CHARLES EAMES on data processing.

Two other structures of interest are the Civil Engineering Pavilion, an inclined cantilevered "arrow," over 100 feet long, restrained by a large concrete mass at the base. To its right is the Belgian Urbanism Pavilion, with displays of housing and community planning, and a large outdoor model garden city. Miniature scenes of the unfortunate and catastrophic results of a lack of town planning are on exhibit within.

The Pavilion of Arts of Fire, housing the Belgian glass and ceramic industrial displays, is another of the finer EXPO' buildings. Designed by architects V. COLS, J. DE ROECK and Associates, the building itself demonstrates the uses of glass, terra cotta, and ceramics. There is a flight of stairs with open risers and plate glass treads. The front facade is a curved mural, behind which are stairs, then a plate glass facade. Among the industrial displays, there is one consisting of clay drainage pipe, vertically erect, with elbows and tees resembling a forest of stripped tree trunks with stumps of branches . . . very surrealistic, and very effective.

An exhibit to avoid is that one loftily titled "Edifices and Habitations." The casual visitor is duly impressed with memorial plaques in the entry, to architects VICTOR HORTA, HENRI VAN DER VELDE, and P. HARKER. The first exhibition hall inside contains a show of drawings of sepia washes, Beaux Arts technique of 1900, followed by displays of building materials. After a plastics exhibit, followed by that of heating equipment, there is a display of mediocre lighting fixtures, an omen of things to come. From here on, it goes from bad to worse. The unfortunate visitor finds himself in Macy's basement, à la Vlamand. Belgian kitchen appliances are on display, each demonstrator trying to outshout the adjacent hawker of a competing product. To make matters worse (if pos-

(Continued on Page 62)



Are
LENZITES TRABEA
Creating Problems for Your Clients?



Ingredients in Woodlife also furnish positive protection from the ravages of air-borne, dry-wood termites which can honeycomb finish and structural lumber alike. They coat wood cells with poison, thus rendering it immune from attack by wood-eating insects of many kinds.

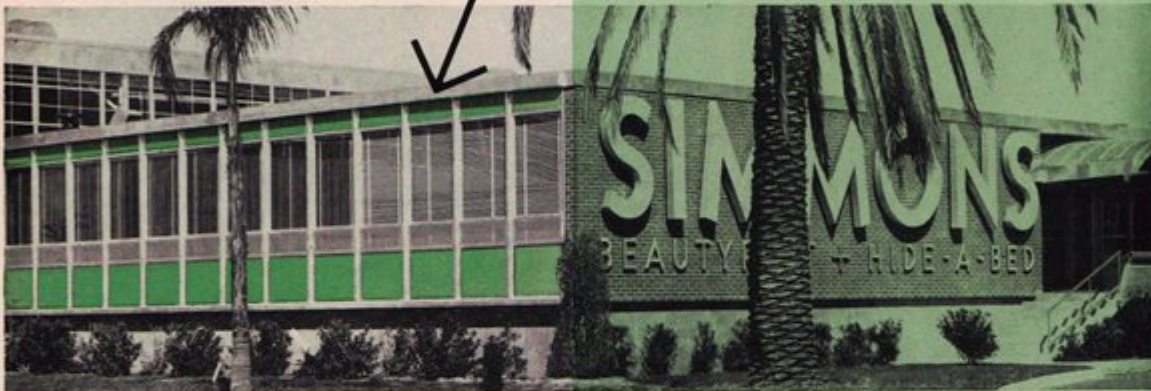
They're one of the micro-organisms which feed on wood cells and cause stain, fungus and decay. Damage they do can be costly and dangerous . . . To prevent it, specify that *all* woodwork in *any* building be WOODLIFED by dipping or flooding . . . WOODLIFE'S ingredients act as a poison to render wood immune from attack by such micro-organisms. Also, by coating the surface with an invisible, water-repellent solution, WOODLIFE provides double protection by preventing moisture conditions which foster growth of mold and mildew. It preserves as it protects . . .



A. H. RAMSEY AND SONS, INC.
 71 N. W. 11th TERRACE, MIAMI . . . FRANKlin 3-0811
 Service to Florida's west coast is from our warehouse at Palmetto . . . Call Palmetto 2-1011



Window Walls



with COLOR

Mirawal porcelain panels, factory installed in B & G window walls and available in 34 sparkling colors, were approved by architects Fuller & Beckett-A. G. Smith for the new Simmons Beautyrest plant at Jacksonville. Providing custom design at stock prices, the colorful units were furnished and installed for Flagler & Co., engineers and builders, by George C. Griffin Co. of Jacksonville.

Miami . . . Ed Henderson	Jacksonville . . . Geo. Griffin
Tampa . . . Doug LaHayne	Daytona Beach . . (Call Jax)
Orlando . . . (Call Jax)	Ocala Van Akin
Palm Beach . . . Ed Kader	Tallahassee Al Yates
Pensacola (Call Jax)	

Brown and Grist aluminum window walls provide architects with a colorful and versatile tool for contemporary design — and save their clients money through *fast* job installation. This million-dollar plant—130,000 square feet of efficient manufacturing space — was completed just seven months after ground-breaking!

Light-weight, high-strength B & G window walls are factory-fabricated, delivered to the job as complete units—and on the dot of schedule! Erection is fast and easy, even without special crews. Rugged, simple construction of B & G window walls assures long, maintenance-free life. And panels of Mirawal, or such other material as the architect may select, make possible a tremendous range of design possibilities. Ask us about them—without obligation of course.

GEORGE C. GRIFFIN CO.
4201 St. Augustine Road
Jacksonville, Florida

B & G Window Walls
Mirawal Panels

Needed Aid for Slum Clearance

The Urban Renewal Amendment

Last year a House Bill was presented to the State Legislature by Representative Samuel A. Gibbons proposing a constitutional amendment permitting public bodies to acquire land under powers of eminent domain for the purpose of slum clearance and redevelopment by private agencies. The Bill was killed in Committee. But interest in its objectives has deepened this year; and it is probable that some similar measure will be introduced to the Legislature next session. Here are some comments in support of the measure.

By J. E. BARIL

Manager, Community Planning Division,
Florida Development Commission

The proposed amendment may be confused with other types of legislation relating to slum clearance or to public housing, therefore it is well to set forth the facts, as clearly as possible.

The amendment, *standing alone*, would not result in the acquisition or clearance of a single square foot of slum area. Its purpose is to clear an existing barrier to effective action regarding slums, but it would have to be followed up by statutory authorizations adopted by the Legislature. *The Legislature will at all times be master of the situation and can determine at will where the slum clearance powers shall be exercised, by whom, and in what manner.*

Florida is apparently the only state where the powers that are sought in the amendment cannot be exercised because they have been declared unconstitutional by the State Supreme Court. Georgia was in the same position two years ago, but Georgia has amended her Constitution and has enacted follow-up legislation. About thirty states are now participating in the Federal urban renewal program.

Slums and blighted areas do exist in Florida and they are by no means confined to the three major metropolitan communities of Miami, Jacksonville, and Tampa.

There is abundant evidence that private enterprise alone and unaided has not eradicated the slums and apparently it cannot do the job with-

out some measure of public assistance.

In many, if not most cases, a practicable approach to slum elimination must be a broad, many-sided approach. It is not enough to enforce a housing code, or to undertake a public housing program, or to build public works, or to provide playgrounds and schools, or to condemn nuisances. The slum area must be *re-planned*, as a unit, and many or all of these measures must be applied. Such a program must involve a working partnership between private interests and public agencies, *with a heavy reliance on private investment.*

The national urban renewal program is such a program. It is the declared policy of the Congress that in carrying out the program *there shall be a maximum reliance on private enterprise.* No local urban renewal project can be started until and unless there has been a finding by the *elected local governing body* that the area in question is a blighted or slum area, that the public powers and funds are necessary, that the plan for renewal conforms to an approved general community plan, *and that the project is one that affords a maximum opportunity for private investment.*

In this manner are the public interest and private enterprise mutually protected. Furthermore, to insure a broad attack on the causes of slums and blight, there must be a local "workable program" that includes

building and housing code enforcement, community planning and zoning, neighborhood studies and improvement programs, and the like. Everything possible is being done to insure that urban renewal shall not be confined to tearing down slum areas in order to build public housing projects.

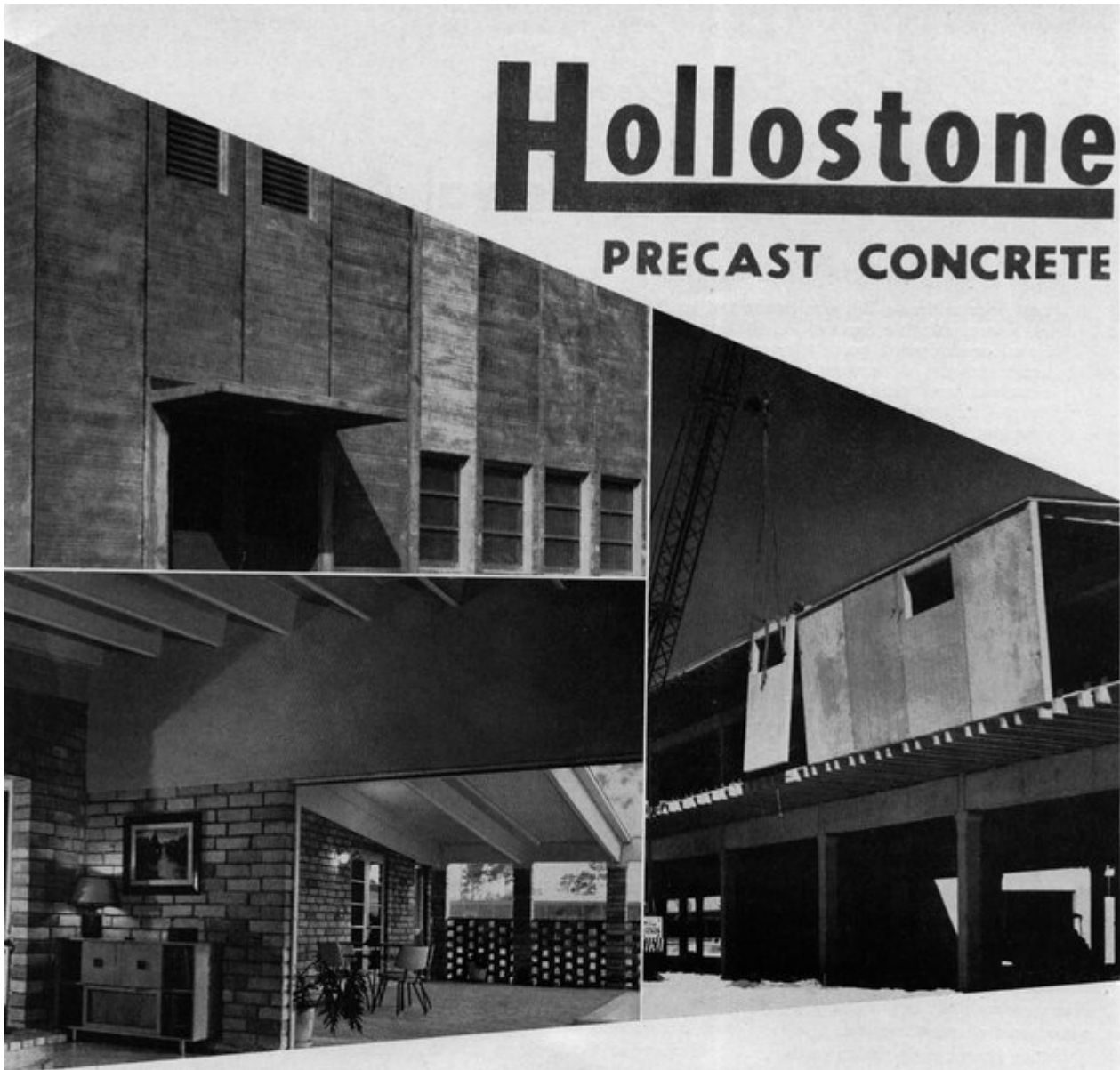
Urban renewal provides a degree of flexibility that is required if broad aspects of the public welfare are to be served. Thus, a residential slum area may be replanned and converted to another kind of use if the area is not suitable for residence. In this connection should be mentioned the opportunity that will arise to coordinate slum clearance with the highway program, easing the problems of acquiring adequate right-of-way in heavily built city areas, with a saving to the taxpayers of this State and a chance to cash in on the land-use potentials arising from improved access.

Similarly, there are blighted areas that are mainly non-residential, but which could be replanned and converted into desirable residential locations. Such benefits can rarely be attained without public action involving the power to acquire real property and to sell or lease it for the purposes of the new plan. This is the power that the proposed amendment would give to the Florida Legislature, to be delegated and exercised as the Legislature may deem to be in the public interest.

Such powers are necessary and desirable, whether or not *Federal* urban renewal assistance is ever obtained for Florida. *The National Association of Real Estate Boards*, best known and probably the *largest representative of private property interests in this country*, has endorsed this principle in supporting the move to establish urban renewal and conservation authorities throughout the United States and in drafting a model statute with appropriate powers.

Hollostone

PRECAST CONCRETE



Flexibility of use ---

That important ingredient is part and parcel of the Hollostone idea. For any type of building, pre-cast, standard units enlarge the architect's vocabulary of design. And their imaginative use is bringing new construction efficiency, lower job costs to both owner and builder . . .

HOLLOSTONE CO. OF MIAMI, OPA-LOCKA, FLORIDA •

P.O. DRAWER 1980
PHONE, MU 8-2526



Background for The Future . . .

By ROGER W. SHERMAN

Executive Director, FAA

The FAA's Executive Director outlines six broad objectives for the Association and suggests four fields of organized professional activity in which cooperative interest and joint effort can speed progress of the FAA toward the goals it wishes to reach . . .

Whoever it was that first voiced such sayings as "The past is prologue" and "Today is the yesterday of tomorrow" provided as apt a basis for a commentary on the state of current affairs as any reporter could wish. Certainly it's true that the beginnings of what is now taking place were made some time ago. It's just as true that what we are doing now will have a direct effect on what we will be doing in years to come.

There's not too much reason for dwelling on what we are now doing. Those who wish to measure present accomplishment against the yardstick of recent FAA history can easily do so. All they need do is to contrast present FAA activities—in terms of organization, size or extent of coverage, and depth of influence—with those of a few—say five or six—years ago. As he notes the progressive increase in membership, the widening scope of contacts and the strengthening of that intangible professional value called "prestige", each can tot up his own estimate of comparative growth and progress.

But where do we stand right now in terms of what lies ahead—or, to put it the other way round, what's the outlook for FAA's future on the basis of its current situation? I, for one, believe it is so bright as to be almost dazzling.

Here, for example, are some specific goals, which in all humility we might expect to reach in years ahead:

1...*The FAA can become truly the authoritative voice of the architectural profession in Florida—heard, listened to and respected as a pro-*

ponent of sound public policy in every section of our State.

2...*The FAA can become a vital force for leadership in movements to develop communities of our State along sound lines of growth and use.*

3. *The FAA can develop in the public mind a better understanding of what constitutes such sound growth—and with that a clearer realization of the penetrating values which competent architectural services can create.*

4...*The FAA can become a headquarters source of information for the building public—as an advisory agency to assist development of policies and procedures of governmental bodies; as a help in determining improvement patterns in our communities, and as a reliable guide to better construction practices on the part of individual building owners.*

5...*The FAA can become a motivating center for coordinating and rallying the interests and activities of various elements of Florida's construction industry toward improving professional and trade practices—thus meeting one of the architectural profession's highest public obligations.*

6...*The FAA can thus become an important force in the public affairs of Florida. As such it will have a constant hand in creating and controlling the conditions under which the architectural profession works—and in shaping the public's attitude toward the services which architects offer and the contributions they can make toward the progressive improvement of the whole state community.*

As it's now organized and operating, the FAA is a comparative infant. But substantial progress has already been made along some of the lines just noted—progress which can be better reported by FAA officers and the chairmen of its various committees. So, on the basis of experience to date, I believe each one of these goals can be reached.

But how soon and with what specific individual returns to the FAA membership are matters over which any FAA administrative staff has only a small measure of control. For the FAA is not a "staff" or an "office" or an "executive committee" or even a "board of directors". The FAA is you—the 10 AIA Chapters in Florida and the entire membership of those Chapters.

If You wish to reach the goals set forth, they can be attained.

If You will staff the FAA organization with the best brains and experience and judgment your Chapter provides, you will provide the collective leadership needed to reach those goals.

If You will cooperate with your selected leaders by meeting promptly and cheerfully your pro-rated share of the inevitable operating expenses, you will provide the means your leaders need for making the progress you want.

If You will recognize that FAA Committee assignments are part of the mechanics necessary for the FAA to travel toward the goals you have set for it—and will dedicate yourself to producing the results for which

(Continued on Page 21)

...two great names



Quality joins Quality. . . . Now, from one source, you can specify the wonderful texture and long-wearing beauty of DOWNS jacquard-woven, all-wool wiltons — or the rugged resiliency, rich color and dependable durability of ROBBINS Floor Products. . . . These two great names mean superb value and performance on any floor. . . .

Robbins
FLOOR PRODUCTS, INC.

See Our Booths — 44 - 45

FLAMINGO • WHOLESALE • DISTRIBUTORS

Tampa . . . Jacksonville ————— "WE COVER THE STATE" ————— Miami . . . Orlando

Background for The Future . . .

(Continued from Page 19)

a committee was established — you will go far in helping to make your financial support of your leadership an investment of high return rather than a mere out-of-pocket expense.

There is very little point, it seems to me, for any man or any organization setting up any sort of a goal unless that man or that organization is willing to spend the time and the money and the effort to reach it. If these FAA goals are worth the reaching — and I certainly believe they are — a little progress toward them is not enough. Here, for example, are some fields of organized professional activity which are still virtually uncultivated:

1...*Professional education and competence:* The FAA — like State Associations in other regions — could well work more closely with our schools and colleges; could establish an Educational Foundation (like North Carolina); could promote refresher courses (like Texas); could establish regular visiting lecture programs for students; could stimulate recruitment interests at pre-college levels; could sponsor educational field tours for student and practitioner alike.

2...*Community development:* A start here has been made — in Jacksonville notably and in the activity of the Mid-Florida Chapter toward stimulating a multi-county development survey and planning program. But in Kansas City architects developed "KC-80" — a civic replanning and a guide to urban redevelopment with a 1980 goal which won tremendous public acclaim and placed the architectural profession in the forefront of public recognition and respect. Much can be done along these lines throughout our State — and at governmental levels with the Development Commission, the Cabinet and the State Road Board, as well as in individual communities.

3...*Research:* This is a term for a broad series of FAA activities. It could embrace continuing activity in greater depth toward building code simplification and improvement. It would cover cooperative programs with the State Department of Public Health, the Department of Public Instruction, the Hotel and Restaurant

Commission, the Development Commission. It could embody initiation of technical investigations on various types of new structural systems (such as prestressed concrete and curtain walls;) and could also include programs to test performance, under local Florida conditions, of various space enclosures as well as the components of their construction and equipment.

4...*Collaborative public relations:* That's a broad field also. It means working more closely with other elements of the construction industry — realtors, bankers, management, as well as engineers and builders. In Texas, for example, the Governor declares a yearly "Architects' Week" highlighted by huge all-industry dinners in various Texas cities at which city, county and state officials are glad to visit with leaders of various civic, trade business and professional leaders — with architects as hosts. It means a more specific interest and activity in political policies and actions — at state as well as local community levels. And, furthermore, it means a continuous expression of public-spirited comment and opinion on the manifold matters involved in the growth and developing improvements of our State — state-wide as well as locally.

These are only a few of the things which can help the FAA progress toward whatever goals it sets for itself. Thus far the FAA has hardly scratched the surface of the interests and activities they represent. And the real depths of value that lie below that surface can, of course, never be reached at all unless the member Chapters and individuals of the FAA will make the concerted necessary effort to reach them.

Realization of the values that are inherent in FAA activities can never come fully from even a succession of administrative officers — however dedicated and however clothed with the authority for accomplishment. It requires joint interest, joint activity, joint support. Given these, a far-reaching FAA program can be organized. Given these *continuously*, the FAA's most ambitious goals will be easy to reach.

Yes...Two

DOWNNS

• For durability, for resiliency, for beauty, for long-lived economy—there's no substitute for the deep-piled, tightly woven values of wilton carpeting. . . . Downs wiltons are woven of 100 percent wool, the soft, warm, tough natural fiber that feels "so wonderful underfoot." . . . Because of its deep, lush pile, Downs wilton carpeting can be textured in almost endless variety and with Jacquard looming an infinity of color and pattern is yours for the asking. . . .



ALL-WOOL
WILTONS

Robbins

• Whatever the specification requirement—economy, durability, resiliency, high-fashion or bed-rock utility—there's a Robbins floor product to meet it. . . . For long-wearing vinyl, soft, warm cork or practical, low-cost rubber, a Robbins specification provides top values in wearability and good looks. . . . You can't do better.



FLOOR
PRODUCTS

FLAMINGO •
• WHOLESALE
DISTRIBUTORS

"WE COVER THE STATE"

Miami . . . Jacksonville, _____
_____ Tampa . . . Orlando

inspiration unlimited

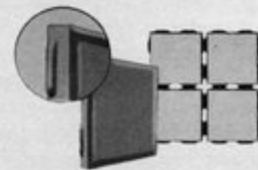
GLAZETTES . . . small, hard-glazed tile with a tough, vitreous ceramic body fused with a crystalline surface rugged enough for hard use on walls, floors or counters — indoors or out . . .

Twenty deep glowing colors, mounted in standard or custom patterns of 2"x2", 2"x1" and 1"x1", 1/4-in. thick.



See our booth #38 at the 44th Annual Convention

Stylon 4 1/4"x4 1/4" bright or matt-glazed wall tiles and crystal-glazed floor tiles are made with Stylon "Sure-Space" lugs which project on all four sides. These projections make proper setting and true alignment automatic, thus assure uniform joints for grouting . . . Stylon's Florida distributors invite you to see the complete Stylon line — tiles which can be specified with confidence and which suggest unlimited new areas of design for architects . . .



Stylon

CERAMIC
TILE

STYLON OF MIAMI — 1400 N. W. 54th Street, Miami

STYLON OF TAMPA — 3813 Grand Central Avenue, Tampa

STYLON TILES — 815 N. W. 8th Avenue, Ft. Lauderdale

THE FLORIDA ARCHITECT

Chapter Affairs

By JOHN L. R. GRAND

Chairman

DUTIES:

To unify the efforts and objectives of all Chapters; to encourage an interchange of information on Chapter affairs and problems. In 1958 to continue the study and promote the recommendation of the 1957 Committee on Chapter Coordination and Committee on Committees.

DIRECTIVE:

Submit to *The Florida Architect* for publication a description of the Chapter - Affair - of - the - Quarter selected by the Committee after a study of the activities of the various Chapters.

At the F.A.A.'s Clearwater Convention Chapter Affairs breakfast, BERYL PRICE emphasized chapter P/R programs, professional performance, and continuous personal contact in community affairs as being of top importance. Any review of the last year's issues of *The Florida Architect* will show that achievement has been high in all of these areas. The record of F.A.A., Chapter, and individual accomplishment fills the predominant number of the more than four hundred pages contained in the twelve issues, November 1957 to October 1958 inclusive. Obviously so rich a record cannot be condensed in so brief a report as this.

Recognition should be given to the great strides made in chapter and committee coordination and organization during the year. While this activity was delegated to the Chapter Affairs Committee, credit for progress belongs rightfully to the President, the officers, and the Board of Directors. Prompt committee appointments, clear administrative directives, and systematic follow-up and reporting have been the foundations upon which this progress was built.

National recognition was given at the A.I.A. Convention in Cleveland when the Institute recognized that Florida was organized and ready to become a District, and the Committee on Chapter Affairs read its citation "To the Florida Association of

Architects who through their annual conventions, their magazine *The Florida Architect* and their many activities are furthering the work of the Committee on Chapter Affairs, and who have initiated in their state an award for the Chapter-Affair-of-the-Year."

That *The Florida Architect* has received such recognition is important, but more important has been the function it performs as a forum for exchanging ideas and reporting accomplishment. Most informative is the new practice of publishing the Presidents' programs for the year in the January issue—a veritable guidebook to effective action in Chapter Affairs.

Following its meeting at the Reg-

ional Conference in Sarasota, the committee recommended a Chapter-Affair-of-the-Year be instituted in place of the Chapter-Affair-of-the-Quarter, after concluding that a quarter is too small a segment of the year to contain representative activities from a substantial number of chapters. During the weeks prior to the convention the committee will be engaged in selecting the first Chapter-Affair-of-the-Year. The procedure consists of the cross circulation of reports among the committee members in the several chapters, taking the poll, and the report of the award.

The F.A.A. and its members can take credit for a year of real achievement.

Home Building-- Construction Industry

By JOHN STETSON

Chairman

This committee as a whole did not function this year, its first in the Association. Failure to produce any instructive program was partly brought about by the application of the Florida Home Builders Association for membership in the Joint Cooperative Committee, of which the chairman of this committee also heads. Faced with the probability that the structure of the new Joint Cooperative Committee will include a sub-committee for cooperation between the architects and the home builders, your chairman withheld any active program for this committee this year.

The recommended structure of the Joint Cooperative Committee is such that the sub-committees will become the liaison groups between the architects and the various component parts of the Cooperative Committee. Your chairman therefore recommends that

the President of the FAA appoint a much smaller Home-Building and Construction Industry Committee next year, to serve as a sub-committee to the Joint Cooperative Committee.

A closer cooperation of effort with the home builders is very necessary since their membership includes firms now producing a great percentage of the building being done each year in Florida. The architects have failed to participate in this large program in too many cases. Part of this is our lack of interest in designing small houses, part in our failure to produce a better house than the average draftsman could accomplish, and failure on the part of the home builders to seek out a better service and to include in their budget a fee sufficient for the architect to become interested therein.

New Facings For Florida's Future . . .



Mo-Sai PRECAST FACING

Mo-Sai lightweight, precast panels 8'-4" square and 4" thick formed the facing for the original Jordan Marsh building in Miami, pictured above, and for the two-story addition, now virtually completed, below. Panels are surfaced with quartz chips embedded in white cement mixed with buff-colored sand with about 85 percent of the aggregate exposed. The architect was Weed, Russell, Johnson, Associates; the builder, Frank J. Rooney, Inc.

Now, more than ever, Florida architects can make full design of the wide color range, the versatility and the sound structural values of Mo-Sai precast facings . . . A new, thoroughly modern concrete products plant is now in operation in Miami where experienced engineers and plant technicians are ready to help solve any architectural problem — and to work with designers in the development of special Mo-Sai finishes in a variety of textures and a virtually unlimited range or combinations of colors . . . Visit our Display at Exhibit Booth No. 3 during the FAA Convention.

24



THE MABIE-BELL COMPANY

GREENSBORO, N. C.

P. O. Box 47546 N. W. Branch, Miami 47, Florida

THE FLORIDA ARCHITECT

Joint Cooperative Committee, FAA-AGC-FES

By JOHN STETSON

Chairman

The Joint Cooperative Committee adopted one major segment of its 1958 program which has consumed much of the time and effort of the committee for the year. This is the expansion of the committee to include the Florida Home Builders Association and the Florida Building Industry Council. In addition to this, certain "beefs" that annually occupy the agenda continued to make themselves manifest. This report will serve as an explanation of the reasoning behind the expanded committee recommendations and a brief look at the complaints of the present membership groups.

The Joint Cooperative Committee originally stemmed from the idea that the architect and the general contractor should meet on common ground to work out ways and means of producing a more harmonious relationship and to produce better buildings for clients. The engineers joined us primarily as a means of settling disputes over design jurisdiction and to also reach a closer association with the general contractors. The success of the committee over the years has justified its existence. We have achieved much in producing a more harmonious co-existence of the three major bodies in the building picture.

While we were occupied with this worthy endeavor, a new and very well organized group arrived on the building scene, the Home Builders Association. This group, actually composed of a larger membership statewide than any of the three members of the Joint Cooperative Committee at the present, has become so powerful nationally that this year for the first time the Florida Association of Architects has had a committee to work exclusively with this group, as was recommended by the National. The writer some years ago served on the A.I.A. Committee on the Building Industry. During this time I

gained firsthand knowledge of this group and learned to respect their fine organization.

This year the Joint Cooperative Committee was approached by the Florida Home Builders Association to ascertain what was required of them to enable their participation in our already organized committee. In the discussions that followed it seemed evident that in order to have a satisfactory committee encompassing the Florida Building Industry, we needed their assistance and cooperation in our continued efforts to provide "watch dog legislation" in Tallahassee and to improve building codes, etc., at the local level. The experience of the Palm Beach County Joint Cooperative Committee in which the Home Builders were members provided a tabloid of the results to be gained from a thoroughly cooperative effort by all segments of the Industry.

About the time the Home Builders were being considered for membership in our Joint Cooperative Committee, the Florida Building Industry Council, composed of electricians, roofers, plumbers, etc., also asked to join our committee structure. The first reaction of many of us was that our committee would be top-heavy if we took in too large a group. In discussions regarding this it was suggested that rather we were being provided with a wonderful opportunity to achieve a long-sought goal of a unified building industry aimed at producing the best solutions to the problems of the individual groups. Rather than the continued fights of one side of the industry against another such as has occurred in the past, architects, contractors, engineers and home builders would have an opportunity to solve their problems amicably for the benefit of all.

In order to keep this unwieldy group down to a workable size, it is recommended that no more than three members of each of the five

groups serve on the top committee, but that sub-committees of this organization be instituted to work out the differences of the individual components; that is, an architect-engineer sub-committee, an architect-home builders sub-committee, etc. These committees should also be kept small and flexible, and rather than a meeting held as we have in the past with some thirty committee members present, with the ensuing long-winded discussions over trivial matters, we could look forward to a well-organized sub-committee structure feeding the more important items to the master committee, who, in turn, armed with the ammunition needed, could put over almost any action desired by the committee. To this writer, this is the most important step that the Florida Association of Architects can make not only to better its own position statewide, but also to improve the standards of the entire building industry in Florida.

With the aforementioned momentous report, the trivialities of some of our "beefs" became almost humorous. The engineer complains that the architect either does not use an engineer or pays too low a fee. This is generally quite true, but is produced by the vicious circle in which we find ourselves enmeshed. The engineer wants higher fees while working with the architect. On the other hand, we find engineers practicing architecture at fees so low that we are forced into a competitive fee schedule, making it impossible to hire any outside technical help. The net result is that many architects have added engineers to their organization, others have attempted to do their own engineering or have left the engineering up to product manufacturers. We thought we had an agreement specifically listing the work which each profession would consider its justifiable right to accomplish. We had a letter from the

(Continued on Page 26)

Joint Cooperative Committee, FAA-AGC-FES

By JOHN STETSON

Chairman

The Joint Cooperative Committee adopted one major segment of its 1958 program which has consumed much of the time and effort of the committee for the year. This is the expansion of the committee to include the Florida Home Builders Association and the Florida Building Industry Council. In addition to this, certain "beefs" that annually occupy the agenda continued to make themselves manifest. This report will serve as an explanation of the reasoning behind the expanded committee recommendations and a brief look at the complaints of the present membership groups.

The Joint Cooperative Committee originally stemmed from the idea that the architect and the general contractor should meet on common ground to work out ways and means of producing a more harmonious relationship and to produce better buildings for clients. The engineers joined us primarily as a means of settling disputes over design jurisdiction and to also reach a closer association with the general contractors. The success of the committee over the years has justified its existence. We have achieved much in producing a more harmonious co-existence of the three major bodies in the building picture.

While we were occupied with this worthy endeavor, a new and very well organized group arrived on the building scene, the Home Builders Association. This group, actually composed of a larger membership statewide than any of the three members of the Joint Cooperative Committee at the present, has become so powerful nationally that this year for the first time the Florida Association of Architects has had a committee to work exclusively with this group, as was recommended by the National. The writer some years ago served on the A.I.A. Committee on the Building Industry. During this time I

gained firsthand knowledge of this group and learned to respect their fine organization.

This year the Joint Cooperative Committee was approached by the Florida Home Builders Association to ascertain what was required of them to enable their participation in our already organized committee. In the discussions that followed it seemed evident that in order to have a satisfactory committee encompassing the Florida Building Industry, we needed their assistance and cooperation in our continued efforts to provide "watch dog legislation" in Tallahassee and to improve building codes, etc., at the local level. The experience of the Palm Beach County Joint Cooperative Committee in which the Home Builders were members provided a tabloid of the results to be gained from a thoroughly cooperative effort by all segments of the Industry.

About the time the Home Builders were being considered for membership in our Joint Cooperative Committee, the Florida Building Industry Council, composed of electricians, roofers, plumbers, etc., also asked to join our committee structure. The first reaction of many of us was that our committee would be top-heavy if we took in too large a group. In discussions regarding this it was suggested that rather we were being provided with a wonderful opportunity to achieve a long-sought goal of a unified building industry aimed at producing the best solutions to the problems of the individual groups. Rather than the continued fights of one side of the industry against another such as has occurred in the past, architects, contractors, engineers and home builders would have an opportunity to solve their problems amicably for the benefit of all.

In order to keep this unwieldy group down to a workable size, it is recommended that no more than three members of each of the five

groups serve on the top committee, but that sub-committees of this organization be instituted to work out the differences of the individual components; that is, an architect-engineer sub-committee, an architect-home builders sub-committee, etc. These committees should also be kept small and flexible, and rather than a meeting held as we have in the past with some thirty committee members present, with the ensuing long-winded discussions over trivial matters, we could look forward to a well-organized sub-committee structure feeding the more important items to the master committee, who, in turn, armed with the ammunition needed, could put over almost any action desired by the committee. To this writer, this is the most important step that the Florida Association of Architects can make not only to better its own position statewide, but also to improve the standards of the entire building industry in Florida.

With the aforementioned momentous report, the trivialities of some of our "beefs" became almost humorous. The engineer complains that the architect either does not use an engineer or pays too low a fee. This is generally quite true, but is produced by the vicious circle in which we find ourselves enmeshed. The engineer wants higher fees while working with the architect. On the other hand, we find engineers practicing architecture at fees so low that we are forced into a competitive fee schedule, making it impossible to hire any outside technical help. The net result is that many architects have added engineers to their organization, others have attempted to do their own engineering or have left the engineering up to product manufacturers. We thought we had an agreement specifically listing the work which each profession would consider its justifiable right to accomplish. We had a letter from the

(Continued on Page 26)

Committee Reports

(Continued from Page 26)

Architecture in Gainesville with arrangements for having copies made of them for each Chapter that wished to make use of them. These slides would form a nucleus for use in presentation to High School Student groups and could be supplemented by any additional slides of local architectural work.

2. The assembling of information from the National A.I.A. Headquarters concerning any available published literature of particular interest to prospective students of Architecture with costs of same.

3. Information from National A.I.A. Headquarters as to rental/or purchase of sound film "Architecture U.S.A." for use by Chapters. Also suggested method of scheduling its use by Chapters expressly for High School Student presentations.

4. Assembling of complete information concerning tuition costs, living costs, available scholarship aid, available Student Loan funds, and any other necessary cost information from all of our nearby Schools of Architecture.

All of these assignments are being pursued at the date of this writing. The final organization of this material and its presentation in useable form to each of the Chapters will, it is hoped be accomplished by the time of our Annual Convention in November.

A meeting of all of the Members of the Committee is being called at the Convention at which time we expect to be able to present the final stage of this report together with additional supplementary recommendations to the Board of Directors.

Legislative

By JAMES K. POWNALL

Chairman

Planned Program—1957-58. Due to off-season legislature this year, a "grass roots" campaign was proposed to develop better relationship between the Arch. profession and members of State Legislature and State Boards & Committees by following:

(1) *Chapter information program to better advise all members of FAA on legislative processes and to stimulate maximum individual efforts at local level towards above goal.*

(2) *Direct Board, Committee and Legislator contact program, headed by Executive Director.*

Under (1) above, each chapter was requested to designate one meeting as a "Legislative" meeting to be attended by the Executive Director as moderator, and local State Legislature members as guests. To date three chapters—Florida South, Daytona Beach & Florida North have complied and such meetings were accomplished. The effectiveness can only be gauged by quantity and quality of future "individual" activity. Other

such meetings have been scheduled by some chapters—the requested program ignored by others.

A series of articles in *The Florida Architect* have provided rather thorough coverage of activities under (2) above. This includes principally, a series of meetings with the State Legislature's Interim Committee on Education wherein the committee was, effectively we believe, informed as to the fallacies of Stock School Plans, which was a major item of consideration for policy recommendation on the agenda of said committee. Supplementary to the meeting discussion a thorough written analysis of the subject was forwarded to each member of said committee by the Executive Director. In addition other Board, Committee and Legislator contacts have been accomplished.

Although well publicized to date, this report must include mention of "Construction Industries Committee," known as the Florida Mechanic's Lien Law Revision Committee

BY-LAW CHANGES

A number of important changes to the FAA By-Laws have been prepared for discussion and ratification at the 44th FAA Convention. Since the By-Laws Committee, of which Walter B. Schultz, of Jacksonville, is chairman, had not completed work on the changes in time for publication last month, copies of all revisions proposed were mailed to all FAA members during the week of October 13 to provide the 30-day notice prior to the Convention's opening which the FAA By-Laws currently require.

FAA members entitled to vote on matters for Convention consideration should study the By-Law changes proposed and be prepared to approve them or to offer amendments to them during the Convention.

formed to study, prepare and subsequently submit to the State Legislature a thorough revision to the Mechanic's Lien Law. The FAA is represented on this committee by the Executive Director. Specific chapter recommendations on such revisions have been solicited, but have not been forthcoming. When a draft of the new proposal has been completed, it is planned to submit it to each chapter for review and recommendations which will establish the FAA policy as regards the final draft of the proposed new law.

The size and wide geographic distribution of the FAA Legislative Committee is such that meetings are not feasible other than at times of convention. However, each member has been kept well informed as to committee activities in process or contemplated and each has been solicited for opinions on such through the office of the Executive Director.

There remain several matters to be included in this report including a 1958-59 budget request which, in the opinion of this chairman of the Legislative Committee, should be referred to the Committee in its called meeting during the forthcoming convention. Should circumstances warrant it, a supplementary report will be presented prior to adjournment of the convention.



Architects—Edwin T. Reeder Associates • General Contractor—Arkin Construction Co.

Build Big for less . . . with the **Arketex 8W** Series

• It goes into the wall for less. A single material—decorative as well as structural—installed by a single trade. That's colorful ceramic glazed structural tile by Arketex.

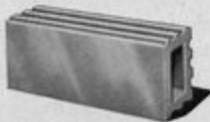
Architects also like the 8W Series for its latitude of design. You have a freedom of architectural expression with this material. Remember these points. In your next design, specify this superlative series. It's ready for you . . . when you're ready for it!

- 8" x 16" faces—single or double. 2" and 4" thickness.
- Permanent colors in many shades.
- Load-bearing. Saves back-up walls.
- Maintenance-free. Cleans with soap and water.
- Made from the world's finest fire clays.

See us at booth 26

Florida Association of Architects Convention

Nov. 20-22



ARKETEX CERAMIC CORPORATION • BRAZIL, INDIANA

F. Graham Williams • Distributor

Represented in Florida by LEUDEMANN and TERRY, Coral Gables

44th Annual Convention

OF THE FLORIDA ASSOCIATION OF ARCHITECTS
OF THE AMERICAN INSTITUTE OF ARCHITECTS

CONVENTION MESSAGE FROM THE FAA PRESIDENT

Recent events have shown us again that we of the 20th Century live in an era of potential disaster—or unlimited possibilities for human growth in a better environment. The theme of this 44th FAA Convention—*Opportunity in an Expanding Era*—illustrates the optimism with which architects of Florida view the future. We, the architects of Florida, want to understand fully the dimensions of both the challenge and the possibilities. With our optimism tempered by an understanding of the new dimension, we will prepare, collectively as well as individually, our profession and ourselves to shape exploding change into human happiness and dignity in a materially and spiritually happy environment.

How well we meet the challenge of new dimensions is a reflection of our ability to foresee the need for expanding the breadth and depth of our professional service for meeting the challenge, and to solve the number of problems our expanding era presents.

In the January issue of *The Florida Architect*, I noted in the forecast for 1958 the apparent feeling that men of good will, dedicated to service to society, organized for a high degree of integrated effort, will shape an exciting and beautiful future for the Florida Community. I further noted that FAA has the strength, the organization and the prestige to shape the future and that now is the time to solidify ideas into programs, translate programs into real benefits for our community, our profession and our individual interests.

The program for 1958 was tri-partite: (1) to direct the activities of our new vertical and standing committee organization toward productive results; (2) to broaden the scope of our professional activity and public influence through regional status in the AIA; and (3) to organize our new operational arrangement into an effective and efficient representation of the FAA.

All parts of the 1958 program are going. Committees are working on assigned programs; only the orderly change-over details remain for Florida's regional status; and the Executive Director's administrative and operational organization is accomplished. However, these accomplishments can be considered only as a preliminary phase to the high degree of integrated effort required for real effectiveness.

At this 44th FAA Convention we shall translate the recommended committee programs into action; we shall discharge the remaining details required to make Florida a functioning District of the Institute; and we shall give direction for the continuing program to meet the ever increasing number of professional problems confronting our profession.

I appeal to you to attack our problems with imagination and vigor, so that our solutions are timely, sound, effective approaches to our high goals. These goals are your goals. The FAA is each of you in collective action; FAA's success in achieving its goals is in direct proportion to coordinated individual effort. Let us meet the challenge fully; let us get to work.



H. Samuel Kruse, AIA
President, FAA

SYMPOSIUM ON SPACE...

Events and inventions have led us to the very threshold of the new age of Space. What lies behind the door — what new ways of working and living, what new materials and structures, what new opportunities for accomplishment? These three men have, through training and experience, more authority than most to probe possibilities for answers.



DR. J. PAUL WALSH

Trained as an Engineer, Dr. Walsh has been connected with the Naval Research Laboratory since 1943; and since 1955 has been a top member of the "Project Vanguard" team. As one who has researched some of the problems of Space, he recognizes the possibilities which its conquest will bring.



RALPH DELAHAYE PAINE, JR.

As Publisher of *Fortune* and *Architectural Forum*, as a vice president of Time, Inc. and as a writer and editor he is one of the best-informed men in the country on how current developments are shaping the pattern of our future. He will discuss the emerging trend of architectural activity.



CHARLES A. BLANEY, JR.

An Engineer whose background is the aircraft industry, the present Director of Procurement for the Martin Orlando Co. is concerned with the down-to-earth job of helping to build the various guided missiles that are forerunners of space-age carriers. He will discuss trends in materials and construction.

NEW PROFESSIONAL HORIZONS...

As the basic ingredient of living is change, so the architectural profession must adapt its outlook, its philosophy, perhaps even its pattern of activity, to the demands of a new and expanding era. The Institute must point the way to that goal. Who are better qualified to discuss the signs along the road than leaders of the profession which will follow it?



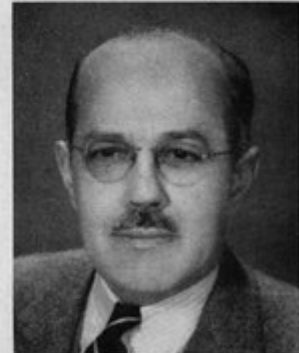
JOHN N. RICHARDS, FAIA

The President of the AIA has been active in professional affairs since 1935, serving at local, regional and national levels on many important committees. Equally active as a civic leader, he is especially qualified to clarify trends of professional growth in terms of current organizational needs.



PHILIP WILL, JR., FAIA

A top designer whose work has had a major influence in the public school field, the Institute's first Vice President is also known for his ability in the field of professional organization. His talents have shown not only in his own firm, but in direction of many civic activities and on important AIA committees.



WALTER A. TAYLOR, FAIA

As architect, educator, editor, researcher and administrator, the Director of the AIA's Department of Education and Research is uniquely able to highlight the increasing need for professional research and to relate this need to practical methods for satisfying it. He will sketch a perspective of trends in this area.

TWO IMPORTANT "WORKSHOPS"

Public Relations-- Greater understanding and acceptance of professional activity is now generally regarded as essential. But the techniques of generating it are not so widely understood. Here, then, is specialized knowledge to clarify ways in which our public relations can be strengthened and improved.



ROBERT E. DENNY

As Public Relations Director of Henry J. Kaufman & Associates, he works closely as P/R counsel with the Octagon and with AIA Committees. He will discuss P/R policies and programs particularly applicable to the local needs of Florida AIA Chapters and members.



FREDERIC SHERMAN

As a working newspaperman with varied experience in both reporting and feature assignments, he will discuss what makes news in architecture and how to report it. As Editor of the Miami Herald's Real Estate section, he will outline mechanics of meeting editorial needs.



RALPH RENICK

Nationally recognized for his outstanding development of TV news reporting, this Vice President of WTVJ-TV will discuss TV's role in a P/R program, some of its technical requirements and the manner in which it can best be used in a P/R program for architects.



EDWARD G. GRAFTON

Moderator of this P/R workshop panel is active in the Florida South Chapter and is now serving as a member of the national AIA P/R Committee. As a former Chapter secretary and FAA Director, he is a vigorous advocate of a coordinated P/R program.

The Widening Scope of Service--

Is the challenge of the building-package operator a sign that the architectural profession must re-evaluate its traditional field of service — and, perhaps, widen its range of professional concern? Thoughtful leaders are seeking an answer to that question. These three, in particular, have studied the matter and will discuss their findings in practical terms.



VINCENT G. KLING, AIA

Heading his own office since 1946, this perennial award-winner has coupled an outstanding ability in design with penetrating understanding of the social and economic forces that are shaping new and broader areas for professional service. He is an able advocate of adjusting professional service to economic demands.



GRAYSON GILL, AIA

As both an architect and an engineer with a background which emphasizes the technical phases of architectural practice, he has evolved a pattern of professional operation which is proving to be a successful answer to the challenge of the package-building operator. He will relate his experience to this problem.



HERBERT C. MILLKEY, AIA

Through various AIA activities, particularly as chairman of the Package Deal Committee, he brings an experienced approach to his assignment as moderator of this workshop panel. His detailed knowledge of current conditions is both a background and a guide to considering means for extending professional service.



CONVENTION HOSTS

Mid-Florida Chapter, AIA, Joseph M. Shifalo, President; Robert B. Murphy, Secretary; John T. Hart, Treasurer.

CONVENTION COMMITTEE

Joseph M. Shifalo
Chairman

Robert B. Murphy
Co-Chairman

Joseph M. Shifalo
Program

George A. Tuttle, Jr.
Hospitality

Joseph E. Carlisle
Entertainment

George W. Bagley, Jr.
Architects & Students' Exhibits

James E. Windham, III
Awards and Prizes

John T. Hart
Registration

Charles L. Hendrick
Arrangements

**Opportunity in
An Expanding Era**

Program -

THE FLORIDA ASSOCIATION DEAUVILLE

WEDNESDAY, NOVEMBER 19

- 8:00 A. M. — Installation of Products Exhibit and Architectural Exhibit.
- 9:00 A. M. — Registration for Chapter Members, Students, Guests and Exhibitors.
- 12:30 P. M. — Registration for Chapter Members, Students, Guests and Exhibitors. Identifying badges will be required for admission to all FAA business sessions and other scheduled Convention affairs.
- 12:30 P. M. — Luncheon Meeting, Joint Cooperative Committee, FAA-AGC-FES, Charlemagne Room, John Stetson, W. W. Arnold co-chairmen.
- 7:00 P. M. — FAA Board of Directors Dinner Meeting, Casanova Room, President H. Samuel Kruse presiding.
- 8:00 P. M. — Open Board Meeting, FAA, Casanova Room. FAA members are invited to attend and participate.

THURSDAY, NOVEMBER 20

- 9:00 A. M. — Registration Continues, Upper Exhibit Lobby.
- 12:30 P. M. —
- 9:00 A. M. — Opening Ceremony, Building Products and Materials Exhibit, Napoleon Room. H. Samuel Kruse, President FAA; Joseph M. Shifalo, President, Mid-Florida Chapter; Robert B. Murphy, Co-Chairman FAA Convention and Judge Kenneth Oka Mayor of Miami Beach, officiating. Architects' and Students' Exhibit opens Peacock Alley.
- 10:00 A. M. — First Business Session, 44th FAA Convention, Casanova Room, FAA President H. Samuel Kruse, presiding. Report of Nominating Committee. Nominations from the floor. Reports of FAA officers. Reports of FAA Committees.
- 11:30 P. M. — Visit Products Exhibit.
- 12:30 P. M. — Luncheon Meeting, Napoleon Room, Third Section, President H. Samuel Kruse, presiding. Address, "You and the AIA" by John Noble Richards, FAIA, President, AIA.
- 2:00 P. M. — Election Polls open, Registration Desk, Upper Exhibit Lobby. Only AIA Corporate Members duly registered at the Convention are eligible to ballot.

44th Annual Convention

OF ARCHITECTS OF THE AMERICAN INSTITUTE OF ARCHITECTS

MIAMI BEACH — NOVEMBER 20, 21, 22, 1958

- 2:30 P. M. — Convention Workshop Session, FAA Vice President Verner Johnson, presiding.
Address, "Professional Opportunity", by Philip Will Jr., FAIA, First Vice President, AIA.
Panel, "The Widening Scope of Architectural Service", Moderator, Herbert C. Millkey, AIA, Panelists, Grayson Gill, AIA; Vincent G. Kling, AIA.
- 5:00 P. M. — Visit Products Exhibit.
- 7:00 P. M. — Cocktail Party for Product Exhibitor Personnel, Napoleon Room, Third Section.
- 8:00 P. M. — Party and Awards Dinner, Casanova Room, Host Chapter President, Joseph M. Shifalo, presiding.
Presentation of Product Exhibit Awards.
Entertainment and Dancing.

FRIDAY, NOVEMBER 21

- 8:00 A. M. — Public Relations Workshop Breakfast, Richelieu Room, Edward G. Grafton, AIA, Presiding Moderator. Panelists: Robert E. Denny, Ralph Renick, Frederic Sherman.
All FAA members and guests are welcome to attend, but tickets must be purchased prior to the close of the Registration Desk, Upper Exhibit Lobby, Thursday, November 20, at 5:00 P. M.
- 9:00 A. M. — Registration and Balloting continue, Registration Desk.
- 12:30 P. M.
- 9:00 A. M. — Visit Products Exhibit.
- 10:00 A. M. — Second Business Session, 44th Convention, Casanova Room, President H. Samuel Kruse, presiding.
Convention consideration and action on FAA Board of Directors' recommendations.
- 11:30 A. M. — Visit Products Exhibit.
- 12:30 P. M. — Awards Luncheon, Napoleon Room, Third Section, First Vice President Arthur Lee Campbell, presiding.
Address, by Walter A. Taylor, FAIA.
Architects' Exhibit Awards; Students' Exhibit Awards.
- 2:00 P. M. — Registration and Balloting continue.
- 5:00 P. M.

- 2:30 P. M. — Opportunity Session, Casanova Room, Second Vice President William B. Harvard, presiding.
Address, "How Science Sees Our Future", by Dr. J. Paul Walsh.
Address, "Expanding Horizons at Home", by Charles A. Blaney, Jr.
- 4:30 P. M. — Visit Products Exhibit.
- 5:00 P. M. — Registration for the 44th Convention closes.
Election Polls close.
- 7:00 P. M. — Cocktail Party, Poolside Patio.
- 8:00 P. M. — Annual Banquet, Napoleon Room, Third Section, President H. Samuel Kruse, presiding (dress optional).
Address, by Ralph Delahaye Paine, Jr.
Announcement of 1959 FAA Officers.

SATURDAY, NOVEMBER 22

- 8:00 A. M. — Students' Breakfast Panel, Student AIA Chapter, President Lowell Lotspeich, presiding.
Address by Walter A. Taylor, FAIA.
- 9:00 A. M. — Visit Products Exhibit.
- 11:00 A. M. — Final Convention Business Session, President H. Samuel Kruse, presiding.
New Business.
Report of Resolutions Committee.
Announcement of Exhibit Attendance Awards.
- 12:00 P. M. — Exhibits close.
- 12:30 P. M. — 44th Annual FAA Convention adjourns.
- 2:00 P. M. — Orientation of FAA Board of Directors.
All newly elected officers, FAA directors and all hold-over directors are urged to attend.

CONVENTION NOTES:

All AIA Corporate members must be registered for the Convention prior to voting on all Convention business requiring formal action as covered in the current FAA By-Laws.

Ladies of the Convention are cordially invited to attend all business and panel sessions of the Convention if they so desire. Full information on the Ladies' Program planned for the Convention period may be obtained at the Registration Desk, Upper Exhibit Lobby.

Eligibility for Products Exhibit attendance awards must be established by obtaining, in person, stamps on the Products Exhibit Card covering all exhibit booths. Awards will be made in three classifications: Corporate, Associate and Student. At least two top-quality prizes will be awarded in each classification; and award announcements will be made at the close of the Final Business Session Saturday morning.

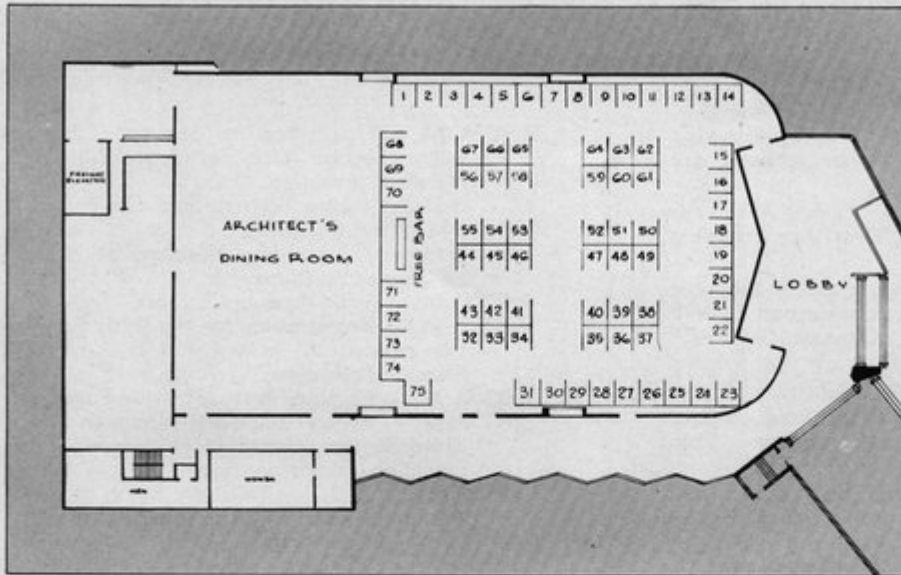
All those attending the Convention are urged to consult the hotel bulletin board for information relative to location and times of committee meetings, for possible changes in Convention schedule, for messages, etc.

Check-out time for all Conventioneers will be 5:00 P.M. during the three-day Convention period.

The Florida State Board of Architecture will hold its 1958 fall meeting beginning Monday, November 17, through Wednesday, November 19. Location of the meetings will be posted on the hotel bulletin board.

Facts From Seventy-five Sources . . .

The 1958 Building Products Exhibit



To become eligible for any of the top-quality exhibit attendance prizes, visit every booth yourself and be sure that your Product Exhibit Card, available at the registration desk, is properly stamped... But prize or not, this fine exhibit can be rewarding in itself. Here you will find data and samples of an amazing variety of building products—all displayed by firms who know their business and a goodly bit of yours. They're eager to help you — so let them!

- | | | |
|---|--|--|
| 1...Dunan Brick Yards, Inc. | 27...Cellular Concrete Corp. | 52...Lotspeich Flooring Co. |
| 2...Benjamin Moore & Co. | 28...Formica Corp. | 53...United States Plywood Corp. |
| 3...The Mabie-Bell Co. | 29...Lambert Corp. of Florida | 54...Ther-Mo-Roof Corp. |
| 4...Cement Enamel of The Caribbean, Inc. | 30...General Electric Textolite | 55...Rilco Laminated Products, Inc. |
| 5...Ruby-Philite Corp. | 31...Ware Laboratories, Inc. | 56...Schlage Lock Co. |
| 6...Rotolite Distributor | 32...Owens-Corning Fiberglas Corp. | 57...No. Miami Hardware & Builders Supply Co. |
| 7...Lift Slab of Florida, Inc. | 33...American Olean Tile Co. | 58...Malone Millworks |
| 8...NuTone, Inc. | 34...Giffen Industries | 59...Wenzel Tile Co. |
| 9...Miami Window Corp. | 35...United States Rubber Co. | 60...Mosaic Plasti-Glass Corp. |
| 10...Miami Window Corp. | 36...Kaiser Manufacturing Co. | 61...Harris Standard Paint Co., Inc. |
| 11...Jay Wholesale Corp. | 37...Farrey's Wholesale Hardware Co., Inc. | 62...Aluminum Co. of America |
| 12...Sierra Electric Corp. | 38...Stylon of Miami Sunshine State Tiles | 63...Hillyard Chemical Sales Company (Eastern) |
| 13...The Mosaic Tile Co. | 39...Bird & Son, Inc. | 64...Pittsburg Plate Glass Co. |
| 14...Electrend Distributing Co. of Florida | 40...Wilcox-Woolford Corp. | 65...Prestressed Concrete Institute |
| 15...Briggs Manufacturing Co. | 41...Bond-Howell Lumber Co. | 66...Prestressed Concrete Institute |
| 16...Libbey, Owens, Ford Glass Co. | 42...Miller Brothers Co. | 67...L & M Tile Products |
| 17...Florida Home Heating Institute | 43...Hotpoint Appliance Sales Co. | 68...Fred L. McCord, Romany-Spartan Tiles |
| 18...Florida Home Heating Institute | 44...Flamingo Wholesale Distributors, Inc. | 69...Norman Ascher & Assoc., Inc. |
| 19...Florida Home Heating Institute | 45...Flamingo Wholesale Distributors, Inc. | 70...Arcadia Metal Products |
| 20...Kaiser Aluminum & Chemical Sales, Inc. | 46...American-Marietta Co. | 71...Perlite Incorporated |
| 21...Florida Power & Light Co. | 47...Rohm & Haas Co. | 72...Southern Tile-Lite, Inc. |
| 22...Florida Power & Light Co. | 48...Rohm & Haas Co. | 73...Tiffany Tile Corp. |
| 23...Crane Company | 49...Independent Nail & Packing Co. | 74...T-Square Miami Blueprint Co., Inc. |
| 24...Pro-Tect-U Jalousie Corp. | 50...Russell & Erwin Division, American Hardware Corp. | 75...Jones-Sylar Supply Co., Inc. |
| 25...Ben Thomson, Inc. | 51...Tiffany Mfg. Co. | |
| 26...Arketex Ceramic Corp. | | |

decor blok:

more from maule



The new Maule Decor Blok line, which includes Shadowal, River Gravel, and Town and Country, has been expanded to include three more new specialty block. Because they permit privacy plus ventilation, these block are ideal for decorative room dividers, interesting facades, and garden walls.

lattice block: modular 8 x 16 x 4... moulded by Maule into unusual lattice pattern.

square block: modular 8 x 8 x 4... 5 x 5 cell, designed especially for small areas.

rectangular block: modular 8 x 16 x 4... 4 1/2 x 12 1/2 cell, excellent for fences.

MAULE INDUSTRIES, INC.

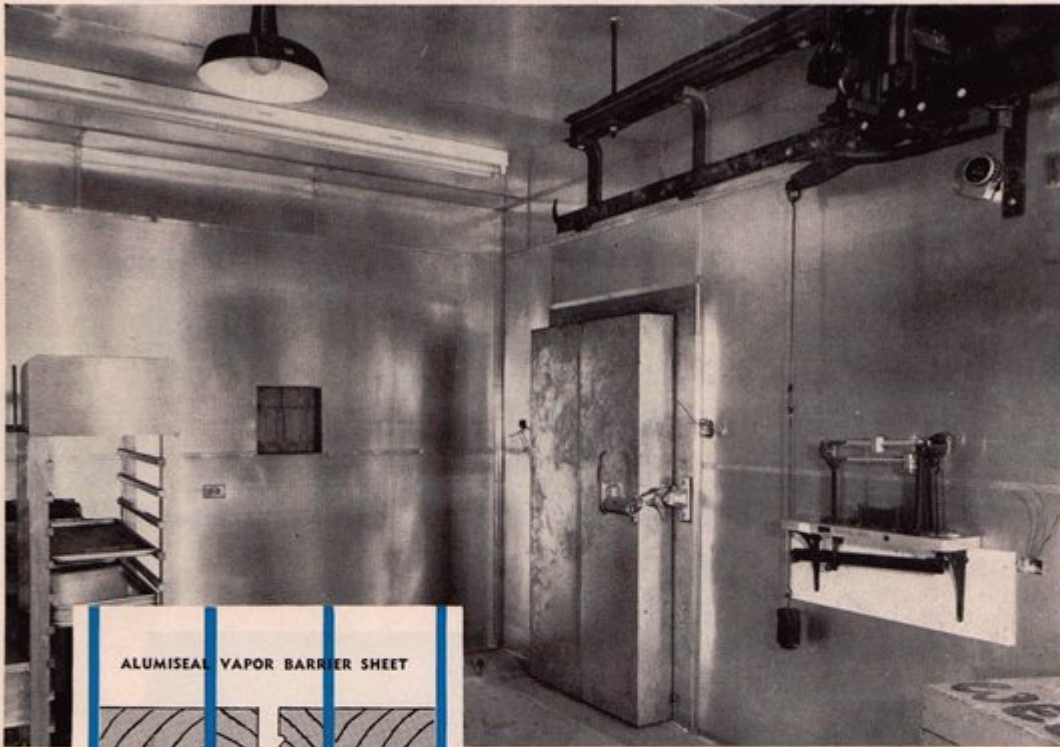
GENERAL OFFICES: 5220 Biscayne Boulevard, Miami, Florida
PLANTS from Fort Pierce to Homestead

NEWEST PLANT serving West Coast at Murdock, Florida
• Ready Mix Concrete • Concrete Block • Rock and Sand
• Precast Concrete Products • Reinforcing Steel • Lumber
• Millwork • Plaster and Masonry Materials • Building Supplies

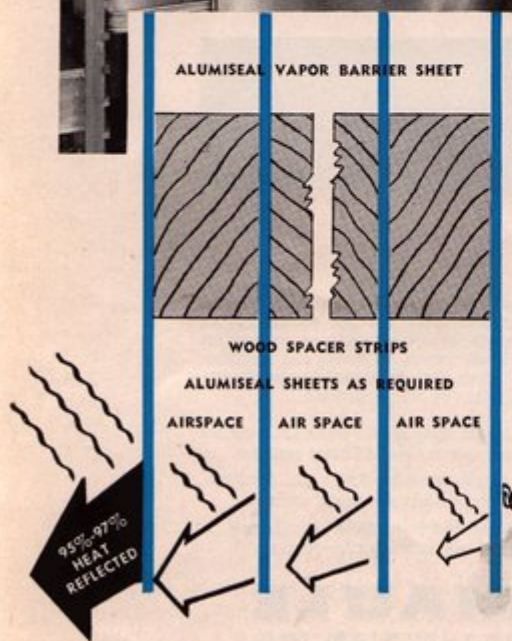
*Maule salutes the 44th
Annual Convention of Florida Association of Architects
November 20, 21, 22*

Cold is a Commodity...

Specify the amount you need



Pre-pack room in one of the Florida Food Fair stores—typical of more than 30 such installations we have made for this organization.



... It can be done exactly with ALUMISEAL — even to 125°. ALUMISEAL is the lightweight, durable construction for low-temperature insulation using special alloy aluminum sheets (not foil) that reflect up to 97% of all radiant heat. As a proven, economical means for making a commodity of cold, ALUMISEAL can easily solve any insulation problem you may have . . . For help with specification facts and engineering details, calls us . . .

Trade Mark Reg. U.S. Pat. Office
ALUMISEAL
U.S. Patents Applied For

ALUMINUM INSULATING CO., INC.

1050 E. 15th Street, Hialeah

Phone: TU 7-4814

Planning and Zoning

By WILLIAM T. ARNETT

Chairman

What is the status of planning and community development programs in Florida today? What part are architects and AIA chapters taking in such programs? What is being done to stimulate public interest and understanding? These questions have engaged the attention of the FAA Committee on Community Development this year.

The duties of the Committee are listed in the March, 1958, issue of *The Florida Architect* and, as the name indicates, the Committee is concerned with problems of urban planning, development and renewal in Florida.

Status of Planning and Development

In Florida, as elsewhere, planning is fast becoming an accepted responsibility of local government. This is neither new nor novel, for cities from time immemorial have engaged in planning as a basis for intelligent governmental action.

A recent survey indicates that 68 percent of the communities in the country in the same population bracket as Sarasota have official planning agencies. 70 percent in the same bracket as Gainesville have, 83 percent in the same bracket as Orlando have, 89 percent in the same bracket as Jacksonville have and 100 percent in the same bracket as Atlanta have. Among these same communities, 10 percent in the lowest population bracket have full-time planning directors, 24 percent in the next, 57 percent in the next, and 100 percent in the next.

Few architects claim to know all about planning and development, but no architect can afford to remain ignorant of what planning and development is all about. Here are the highlights of what is happening around Florida.

BROWARD: The Broward County League of Municipalities is pushing a County-wide planning board to pro-

vide a general approach to the planning problems of that area. Each city or community of any size has a planning or zoning commission, but the Chapter chairman reports the need for competent professional guidance in many planning departments. Pompano Beach has an approved "workable program" designed to eliminate slums and blight, prevent their recurrence, and guide future growth and development.

DAYTONA BEACH: A planning consultant has been secured and a slum analysis program is under way, according to a report from the Chapter chairman.

FLORIDA CENTRAL: St. Petersburg, with a substantial planning staff and consultant assistance, has completed a new text for its zoning ordinance, is in the final stages of preparing a new schedule of district regulations, and is well underway on preparations of a new zoning map. An off-street parking ordinance requires owners of new buildings to provide a specified amount of off-street parking. Clearwater is organizing a planning program and a consultant has been secured. Lakeland has a new planning director and is pushing forward with a small staff and consultant assistance to prepare elements of a comprehensive plan. Lake Placid has completed preparation of its first zoning ordinance and is about to adopt it. Bradenton, Plant City, Sarasota and Tampa have approved "workable programs." Sarasota County has decided that a full-time staff is necessary and has employed a professional planning director.

FLORIDA NORTH: In Gainesville, planning has taken on new significance. An annexation study has been completed and agencies concerned with development are beginning to co-ordinate their efforts. With the assistance of a professional consultant, a comprehensive revision of the zoning ordinance has been adopted. An

unsafe building ordinance has been adopted and a "workable program" has been approved. Ocala has secured the services of a planning consultant to carry on the work begun by the late Arthur McVoy. Fernandina Beach has an approved "workable program."

FLORIDA NORTH CENTRAL: Tallahassee has employed a full-time planner and is exploring an urban renewal project. The following have approved "workable programs": Cottondale, Cross City, Greenwood, Jasper, Live Oak, Panama City, Springfield and Tallahassee.

FLORIDA NORTH WEST: The Chapter chairman reports that problems resulting from uncontrolled growth in the Pensacola area are producing increased interest on the part of community and county leaders in a long-term planning program to guide future development. Apalachicola has employed a planning consultant, has adopted a "workable program," and is moving forward with a number of planning studies.

FLORIDA SOUTH: The Chapter committee is active in the field of slum clearance which has become a major issue in the Miami metropolitan area.

JACKSONVILLE: The Chapter chairman reports that there is no comprehensive metropolitan planning in the Jacksonville area, but that architects face a wonderful opportunity to influence planning there. The nearing completion of the expressway has shown that even limited planning betters certain facets of community living. He expresses great interest in the result of a coordinated planning effort looking to the future as well as the present. Jacksonville Beach has an approved "workable program."

MID-FLORIDA: Professional planning consultants have been secured in Orlando, Winter Garden and Winter Park and planning programs

(Continued on Page 38)

Committee Reports

(Continued from Page 37)

are under way. The Chapter has been instrumental in the establishment of county-wide planning and zoning in Orange, Seminole and Brevard Counties. A Chapter committee is working with city officials in Orlando on a plan for a civic center. Cocoa has an approved "workable program."

Participation of Architects

Whether he likes it or not, every architect whose practice takes him into something larger than a single structure on a single lot, finds himself enmeshed in a tangle of city planning. In self-defense, if for no other reason, he must have some understanding of why the tangle exists, and what can be done to help unsnarl it. Here is a quick look at what Florida architects are doing.

BROWARD: Architects are members of three planning and zoning commissions: W. G. CRAWFORD in Fort Lauderdale, CEDRIC START in Hollywood and JOSEPH T. ROMANO in Pompano Beach.

FLORIDA CENTRAL: In Clearwater, ROBERT H. LEVISON is vice-chairman of the City Planning and Zoning Board and HORACE HAMLIN is chairman of the Zoning Board of Appeals. In Sarasota, WILLIAM B. ZIMMERMAN is a member of the Zoning Board of Adjustment, ERWIN GREMLI is a member of the Appeals to the Building Code Board, and EDGAR C. HANEBUTH is a member of the Housing Board. In Tampa, FRANKLIN O. ADAMS is a member of the Planning and Zoning Board, and WILLIAM B. EATON is a member of the Citizens Advisory Committee for Urban Renewal.

FLORIDA NORTH: MYRL HANES is mayor-commissioner of Gainesville, LESTER N. MAY is chairman of the Citizens Committee on Annexation and a member of the Board of Adjustment, and WILLIAM T. ARNETT is chairman of the City Plan Board.

FLORIDA NORTH CENTRAL: In Tallahassee, ERNEST DAFFIN is a member of the City Planning Board, PRENTISS HUDDLESTON is a member of the Chamber of Commerce Committee on Planning and Development, and FORREST COXEN is a member of the Junior Chamber of Commerce Action for a Better Community Committee.

FLORIDA SOUTH: Architects are represented on the majority of the zoning and planning boards of the 27 municipalities incorporated in Dade County.

MID-FLORIDA: In Orlando, L. ALEX HATTON is a member of the Planning Board, the Zoning Board, and the Board of Adjustment for the Building Code. In Winter Park, JOSEPH SHIFALO is a member of the Planning and Zoning Board. An architect is a member of the long-range planning committees for Sanford and Orlando, and a member of the Planning and Zoning Board in Sanford.

PALM BEACH: In Delray Beach, KENNETH JACOBSON is a member of the County Zoning Board and president of the Florida Planning and Zoning Association. In West Palm Beach, FREDERICK W. KESSLER is a member of the Planning Board, HAROLD A. OBST is a member of the Building Board of Appeals, and ROBERT M. NEVINS is a member of the Contractors Licensing Board. In Lake Worth, HILLIARD T. SMITH, JR., is a member of the Civic Affairs Committee of the Chamber of Commerce and of the Contractors Examining Board.

Stimulation of Interest

From Chapter reports, it seems obvious that the need for sound planning often exceeds the ability to plan. For example, Florida is one of the three or four states without a general permissive enabling act to allow cities and counties to guide their growth and development. And Florida is one of the few states unable to participate in urban renewal programs, even though our tax money helps undergird such programs elsewhere. Here are a few of the activities aimed at stimulating interest and understanding.

BROWARD: The Chapter has offered aid and individual service to planning boards in Fort Lauderdale, Hollywood, Pompano Beach and elsewhere.

DAYTONA BEACH: A Chapter committee is set up to advise the city commission on planning matters.

FLORIDA NORTH: Chapter members will present a series of programs, "Planning Means You," when the new University of Florida educational

TV network begins operation. Sponsor is the College of Architecture and Fine Arts.

FLORIDA NORTH CENTRAL: Chapter members are working toward a common goal of establishing an active planning program and of qualifying Tallahassee for an urban renewal project.

FLORIDA NORTH WEST: Pensacola has been considering the establishment of a metropolitan planning commission. The Chapter would like pertinent information.

FLORIDA SOUTH: The Chapter has started a program of public education in urban renewal. Actual organization of an urban renewal program must await State constitutional revision.

JACKSONVILLE: The Chapter has stimulated interest in planning, and through speeches and panels has achieved much in the realm of catalytic action. The goal is a county-wide metropolitan planning commission with a professional planning director.

MID-FLORIDA: The Chapter recognizes the need for a five-county area study and has met with county commissioners in Orange, Seminole, Brevard, Lake and Osceola counties to discuss the matter. The Chapter hopes that the coming session of the Florida Legislature will make it possible to secure Federal assistance.

Among other groups working to stimulate interest in the problems of growth and development, two deserve mention. They are the Florida Planning and Zoning Association, now in its ninth year, and the Florida Committee for ACTION, newest of the state-wide organizations.

KENNETH JACOBSON (Palm Beach) has been serving effectively as President of the FPZA during the past two years and H. SAMUEL KRUSE (Florida South) has been newly appointed as a member of the Board of Directors of the Florida Committee for ACTION, an agency of the American Council to Improve Our Neighborhoods.

Individual and Chapter Activity

At the first meeting of the Committee in Sarasota last April, deep and moving interest was expressed in the problems brought about by growth and development. At the national level, that interest has been expressed in a recent action of the Board of

Telephone Co. Errs . . .

(Continued from Page 8)

Classified Directory under *Architects*.

From the standpoint of the FAA's administrative office, this seems like an almost inexcusable error on the company's part. When the FAA offices moved into their Dupont Plaza Center quarters, two telephone lines were ordered. One—FRanklin 1-8253—was ordered in the name of the FAA; the other—FRanklin 1-8331—in the name of its publication. The orders specified that the phones were to be listed under these names in the new general directory. This was done.

But in the classified directory, for which a free listing is available for each business telephone, listing for the FAA was specified to be under the classification of *Associations*; and that for *The Florida Architect* under the classification of *Publishers*. That word "architect" must have done it! And the trouble is, nothing can be done to correct the mistake until the next directory is issued in September, 1959!



From her home studio on Miami Beach, Ceramist Kay Pancoast has pioneered the difficult art of architectural ceramics with such success that the products of her skill in design and craftsmanship now enjoy a nationwide demand. Trained as an architect and the wife of Russell T. Pancoast, FAIA, Kay Pancoast is designing an architectural tile panel to be used as an FAA Convention award.

Kay Pancoast Designs A Prize

Besides the wonderful 10-day Caribbean Cruise announced in last month's *Florida Architect*, the FAA Convention Prize Award list will include a panel of hand-crafted tiles designed and executed by Kay Pancoast of Miami, one of the country's foremost ceramic designers. This panel, which will measure two by three feet, is, of course, a one-of-a-kind original; and the FAA corporate member lucky

enough to become its owner will be justified in treasuring it as an example of ceramic art that represents the very finest in design quality and craftsmanship. Mrs. Pancoast is now working on the panel.

There will be several other prizes, of course. This year the prize awards will be given in three categories of FAA membership—Corporate, Associate and Student.

SPECIFY PERMANENT WATER-PROTECTION AT 1/2 THE COST OF COPPER



PROJECT: Dental Arts Bldg.,
Gainesville, Florida

ARCHITECT: David Reaves
Gainesville, Florida

for open valley, fascia and thru-wall flashing



- **economical**—cost of ZINALOY is approximately half that of copper due to its lower pound price and its lesser weight (20% less than copper).
- **corrosive resistant**—ZINALOY forms a protective coating of its own against the elements—resists atmospheric corrosion. Will not crack or peel. Will not stain adjoining materials.
- **permanent**—virtually indestructible, ZINALOY requires no protective coating when set in concrete or mortar, weathers to a pleasing gray. Suitable for marine atmosphere conditions.
- **versatile**—ZINALOY can be cut, hammered and formed on the job or in the shop without special tools. Will bend flat on itself without fracture at 70°. Easily soldered with medium hot iron, 50-50 solder.

FLORIDA SALES AGENT: D. W. Lansing, Southern Sales, P. O. Box 1993, Ormand Beach, Florida

DISTRIBUTORS

Conklin Tin Plate
& Metal Co.,
Atlanta, Ga.

Ahrens Materials,
Inc., West Palm
Beach, Fla.

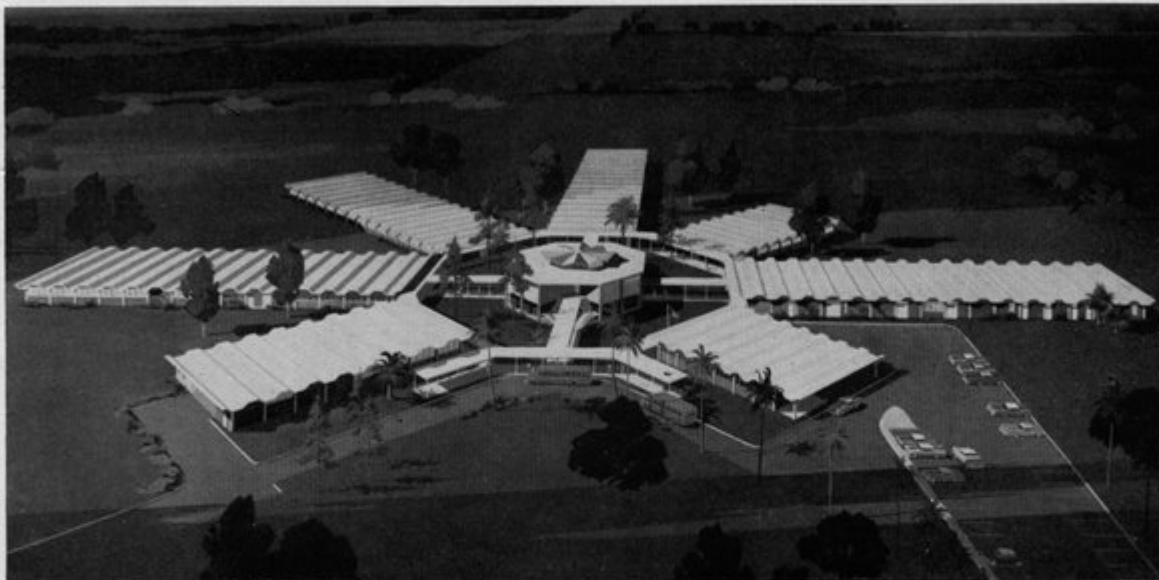
Eagle Roofing &
Art Metal Works,
Tampa, Fla.

Horne-Wilson, Inc.,
Jacksonville, Miami, &
Orlando, Fla., Atlanta &
Albany, Ga., Charlotte, N. C.

J. M. Tull Metal
& Supply Co.,
Atlanta, Ga.

MATTHIESSEN & HEGELER ZINC COMPANY • established 1858 • La Salle, Illinois

Maintenance will be Low and Easy Inside This Fine New School



Desco Vitro-Glaze will be extensively used in Duval County's newest Senior High School pictured above and designed by Hardwick & Lee, architects.

Colorful Vitro-Glaze for Curtain Walls



The rugged qualities which make Desco Vitro-Glaze ideal for hard-use interior surfaces make it ideal as a decorative finish for curtain wall panels. Its vitreous-hard glaze isn't affected by wind, weather or even corrosive atmospheres. It won't harbor mold or mildew; and Vitro-Glaze itself is incombustible. It's virtually self-cleaning during a rain; and all of the Vitro-Glaze colors have been proven, by colorometer test to be highly resistant to fading.

DESCO VITRO-GLAZE is a vitreous-hard, glazed wall finish that is attractive, sanitary, washable, colorful, waterproof and economical. It is skillfully mottled and textured in many beautiful colors that are permanent and non-fading.

The marble hard surface, ease of cleaning, sanitary finish due to elimination of joints and economical installation cost make DESCO VITRO-GLAZE an ideal material for use on the interior walls of schools, hospitals, churches and all public and commercial buildings.

DESCO VITRO-GLAZE is not merely a surface covering, but actually becomes a permanent part of the wall itself. The enduring qualities of DESCO VITRO-GLAZE coupled with the minimum of maintenance it requires, reduces its cost to an insignificant amount per square foot per year of service given. DESCO VITRO-GLAZE can be applied to any type of wall surface which is solid and rigid and in which there is a negligible amount of expansion and contraction. Walls constructed with Cement and Cinder Block, Brick, Concrete, Plaster, Masonry and Asbestos Building Boards provide an ideal surface for the application of DESCO.

Authorized Distributors:

**STEWART-MELLON CO.,
OF JACKSONVILLE**

945 Liberty Street, Jacksonville — Phone: ELgin 3-6231



From Fireproofing to Finish . . .

FLORILITE PERLITE



The Seville Hotel at Miami Beach was designed by Melvin Grossman, architect. Milone Plastering Co. did the plastering; and Stewart Tile Co., the tile work.

Specified Because . . .

1 . . . It's Lightweight

Perlite plaster is 60 per cent lighter than sanded gypsum, saves 2,000 pounds deadload per 100 square yards of plaster surface.

2 . . . It's Easy to Handle

Perlite's bagged conveniently, thus can be easily stored and mixed at point of use. As an aggregate in cement or plaster it's 1/12 the weight of sand.

3 . . . It's Insulating

Perlite has four times the heat insulation value of sanded plaster. That means a lower initial capacity for air-conditioning installations — and a perpetual saving in operating costs.



In the Seville Hotel at Miami Beach, Florida Perlite helps provide safety, comfort and beauty for Convention guests . . . As fire-proofing for steel it gives a 4-hour rating with as little as a one-inch thickness . . . In plaster it makes possible smooth, sound-absorbing, heat-insulating surfaces . . . And, indoors and out, all ceramic tile are set in easy-to-handle, resilient Florida Perlite tile mortar.

PERLITE INCORPORATED
1050 S. E. 5th Street, Hialeah, Fla.

Phone TU 8-8791
for facts



Committee Reports

(Continued from Page 38)

the AIA in adopting four resolutions on community development as Institute policy. In substance, they are:

1. *That individual architects and local chapters assume leadership in their communities in initiating dynamic programs to improve cities.*

2. *That advance planning for public works be assured through appropriate legislation setting aside a proper percentage of funds on all*

public works programs for such planning, and for advance planning for such programs as urban renewal, highways and housing.

3. *That legislation be enacted at state and community levels to coordinate, implement and provide continuity for nation-wide construction programs designed to improve environment.*

4. *That, following support given*

by the Board to the Federal billboard control amendment for new limited-access highways, members be alerted to the urgent need for state legislation to follow up Congressional action to control highway advertising.

A second meeting of the Committee on Community Development will be held in Lakeland early in November. At this meeting, it is hoped that a definite program of action can be worked out for presentation to the FAA Convention.

FAA Convention Committee

By **VERNER JOHNSON**

Chairman

The Convention Committee of the FAA has endeavored to carry out during this first full year of operation the policies presented in report to the 1957 Convention. Namely, to select convention sites completely suited to the needs of the FAA Conventions, irrespective of location; to select host chapters willing to carry out the full responsibilities of program planning and execution, together with details of entertainment and architectural exhibits; to work with and assist the Executive Director and Secretary in the preparation of the convention budget, contracts, promotion, exhibit space, and the detailed financial arrangements of the convention.

At meetings in Miami, Sarasota and Winter Park, concurrent with FAA Board meetings, this committee selected the Deauville Hotel in Miami Beach for 1958, the Robert Meyer Hotel in Jacksonville for 1959, and established dates and contracts through the Executive Director. The Mid-Florida Chapter graciously accepted the offer to be host to this, the 1958 Florida convention, and the Jacksonville Chapter has accepted the position of host to the 1959 convention. Investigation of the Diplomat Hotel in Hallandale is now underway in anticipation of the 1960 convention. Budget and policy problems

were resolved with the Executive Director and Secretary.

This committee has functioned effectively this year through the very diligent and conscientious study, research, analysis, and hard work of the Executive Director and Secretary. This excellent job insured the success of this convention and will be invaluable to the FAA in future conventions.

The Mid-Florida Chapter accepted the challenge, first introduced this year, to be host at a convention assembled outside the chapter area. This chapter has met this challenge, executed all programs and entertainment arrangements, and proved that a

chapter, though small in numbers, can effectively give to the FAA Convention the most valuable contribution, an outstanding program.

The Jacksonville Chapter has already begun to study program themes for 1959 to assure the FAA of another fine convention.

To assure continuity of policy, experience, and successful conventions, this committee recommends that its present three man membership be retained; that a host chapter and committee member from that chapter be selected two years in advance to serve three years and as Chairman during the second year; that the host chapter begin active program studies at least 18 months before a convention to insure speaker and guest arrangements; that the host chapter assist, whenever possible, the Executive Director in his duties, especially the promotion of manufacturers' exhibit space; and that this committee shall coordinate its work with the Budget Committee of the FAA in the preparation of the convention budget.

It is the sincere hope that this committee can strengthen and insure successful FAA and, shortly, Florida Regional Conventions, and make possible active participation by any and all chapters in the most vital element of any convention, the program.

FUTURE CONVENTIONS

Because of the growth of FAA Conventions, it is desirable that each convention site and host chapter be determined at least two years in advance . . . The Jacksonville Chapter will sponsor the 1959 Convention at the Robert Meyer Hotel in Jacksonville. The Convention Committee would like expressions, during the Convention, as to the site and sponsorship of those for 1960 and 1961.

Progress On The C.S.I. Front

By DONALD G. SMITH

President, Greater Miami Chapter, CSI



I would like to keep you informed as to what we are doing in the local Construction Specification Institute.

At the last meeting — Monday, October 6 — the Chapter adopted a set of By-Laws to govern activities of the Chapter, based upon National C.S.I. By-Laws, officially designated the local chapter as the GREATER MIAMI CHAPTER OF THE C.S.I. and elected permanent officers.

I am enclosing herein the "Code of Ethics" of the C.S.I. This code, better than any other words, expresses the purpose of the C.S.I.

As of this date the Greater Miami Chapter has 32 members of which 22 are active and the remaining 10 are Associate members. All are charter members.

At our next scheduled regular meeting — Monday, November 3 — we hope to have present WILLARD H. BARROWS, AIA, Chairman, New Chapter and Development Committee of New York; J. STEWART STEIN, National President of V.C.I. of Washington; C. J. HUCKELBERRY, V.S.I. of Sanymetal Products, Decatur, Georgia and J. GRIFFITH EDWARDS, AIA, of Atlanta, Georgia, Past President of the Georgia Chapter and organizer and President of Atlanta C.S.I.

Mr. EVERETT EIGNUS of Edwin T. Reeder and Associates has been appointed Chairman of the Program Committee and he is arranging for a very interesting and informative program entitled "Complaints on Specifications by Contractors." He will invite two general contractors, one electrical contractor and one mechanical

contractor as guest speakers. Each will be allowed about 12 minutes to analyze their complaints and perhaps enlighten the members and their guests as to "Pitfalls" in specification writing. Following their discussion, there

will be a question and answer period. All will be tape recorded — for future reference and publication. I believe this will be good.

In attendance we are also inviting

(Continued on Page 50)

CODE OF ETHICS

CONSTRUCTION SPECIFICATION INSTITUTE

1. Each member shall discharge his duties and responsibilities to his clients or employers in such a manner as to inspire respect and confidence.
2. Each member shall cooperate in extending the effectiveness of the profession and the Institute by the interchange of information and experience with his fellow members as the opportunity presents itself.
3. Each member shall endeavor to write specifications which will permit and encourage fair and equable competition.
4. Each member shall endeavor to write specifications that are thorough, clear, and concise, and to refrain from the use of loose, ambiguous or unenforceable, unfair requirements.
5. Each member shall specify materials, equipment, services and construction methods only on merit, without consideration for, or expectation of, personal gain or favors other than from his employer or his client.
6. Each member shall refrain from disclosing the interest or business affairs of any client or employer without his knowledge and consent.
7. Each member shall uphold the principle of appropriate and adequate compensation to those engaged in specification writing and refuse to knowingly compete on basis of compensation.
8. Associate members shall pledge themselves never to misrepresent their products in any manner, either as to composition, quality or use, and to assist their fellow members in maintaining the high standards of service set forth in this Code of Ethics.

OFFICE FURNITURE



that is
**FUNCTIONAL and
DISTINCTIVE**

*At Mr. Foster's Store the architect
will find the office furniture that
fits his profession. Distinctive
groupings of all periods designed
in fine woods, formica and steel with
large work areas and drawer space.*

*At Mr. Foster's Store the architect
will find steel lockers, shelving,
bookcases, steel counters, vault
doors, steel and formica partitions
and a full line of the nation's
most beautiful office furniture.*

Our sales representatives and interior
decorating department await your pleasure



10,000 Square Feet of display space at

835 WEST FLAGLER ST. • MIAMI, FLORIDA • PHONE FR 9-7673

Progress on C.S.I....

(Continued from Page 49)

representatives of all local architectural and engineering societies, contractors organizations, building trades and building material representatives.

This program falls in line with the present activities of the Specifications Methods Committee, of which JOHN GRIMSHAW is Chairman. We are now busy studying a complete specification index and before we get too far along would like to hear from some of the interested members of the construction industry who have to read, Interpret and work with our specifications.

As of date we have a tentative index formulated and are now determining a check list of what is included in each section. It is our aim to ultimately arrive at a form of specification that is not ambiguous and that mentions a trade only once. By separating out from each trade section those particular items that are quoted separately, a double set of "overhead and profit" is avoided. When our index is completely studied, it will be submitted to local trade unions for approval and then forwarded to National C.S.I. Technical Committee for review. Ultimately we hope to have an index that can be used on a National basis and one that all contractors will recognize and be able to pattern their estimate and take off sheets to this index.

This is not a one man job and our entire organization is helping. Each section of the index is given to a different committee for study. This committee makes a careful analysis of their subject and then makes a report back to the committee. This report is then studied, corrected and/or revised at one of our regular meetings.

I have contacted Huckleberry and Barrows relative to interesting Jacksonville Chapter to go along with the Miami Chapter in using *The Florida Architect* as the official voice of the C.S.I. They wholeheartedly approve and state that chapters are in the process of being formed in Tampa and St. Petersburg. We can make this a big item in our state construction industry and believe that *The Florida Architect* is the best means of selling the C.S.I.

THE FLORIDA ARCHITECT

Public Relations

By **ROY M. POOLEY, JR.**

Chairman

"Assignment: Submit to the Board at its 3 May Meeting a practical plan for sampling public reaction to present Public Relations programs of the various Chapters."

Committee Budget: No funds have been appropriated for this committee.

Meetings: The Committee has held one meeting during the year. This was 12:30, April 12, 1958 at Morrisons' Imperial House, Daytona Beach and has been rather fully reported to the Board under a communication titled: "Informative Data Concerning Activities of the Committee on Public Relations and dated, April 20, 1958."

Subject: Briefly, the purpose of this meeting was to explore the Public Relations problem in an effort to propose a definite plan for sampling Public Opinion as directed by the Executive Committee.

Mr. Wm. H. Wahl, Research Consultant was invited to meet with the Committee and outlined a proposed research program. The scope of Public

Relations problems and possibly the newness of some of the ideas injected resulted in the meeting being adjourned at 5:30 p. m. without having resolved a definite conclusion. It was agreed to hold the next meeting in Orlando, probably in July or August. This meeting was not held.

Mr. Wahl subsequently prepared an impressive Brochure on Motivation Research and supplied 35 copies which were distributed along with the Committee Interim report, to all Committee members, Executive Committee members, National Committee member and the Octagon.

Recommendations: Due to the importance of the research program being studied, it is suggested that Mr. Wm. H. Wahl be invited to discuss objectives and mechanics of Motivation Research in a joint meeting of the Executive Committee and the Committee of Public Relations, to be held at the convenience and invitation of the Executive Committee at the November Convention.

This report is being submitted to the Executive Director with the request that he read same on the floor of the Convention, due to the fact that the Chairman will probably be on vacation in another part of the country at the time the Florida Association of Architects Convention meets.

School Buildings

By **JAMES E. GARLAND**

Chairman

Report of The Committee on School Buildings:

There has been much activity and change on the school front during the past year:

1. **GEORGE MEGGINSON** resigned as State School architect to accept a planning position with the Broward County School Board.

2. **DR. CARROL W. MCGUFFEY** was appointed School Plant Administrator.

3. **FORREST R. COXEN** was appointed State School Architect.

4. **FORREST KELLEY** resigned as architect to the Board of Public Instruction of Dade County to accept the appointment as architect to the State Board of Control with offices in Tallahassee.

5. **RICHARD LEMON** was appointed as architect to the Board of Public Instruction of Dade County.

6. **ROBERT B. MURPHY** was named as coordinator for the school building program in Orange County.

There has been much concern and speculation about the policy on stock plans. **ROGER SHERMAN** effectively represented the architects as well as the public's best interest when he spoke before the Legislative Interim Committee on Education, listing the tremendous advantages accruing to the public as taxpayers as well as to the actual users which result from the serious study of the individual building problems.

The activities on the several phases of the school activity published in *The Florida Architect* were in each case sent to all the County Superintendents in the State.

THE FLORIDA ARCHITECT

Hospitals and Health

By **R. DANIEL HART**

Chairman

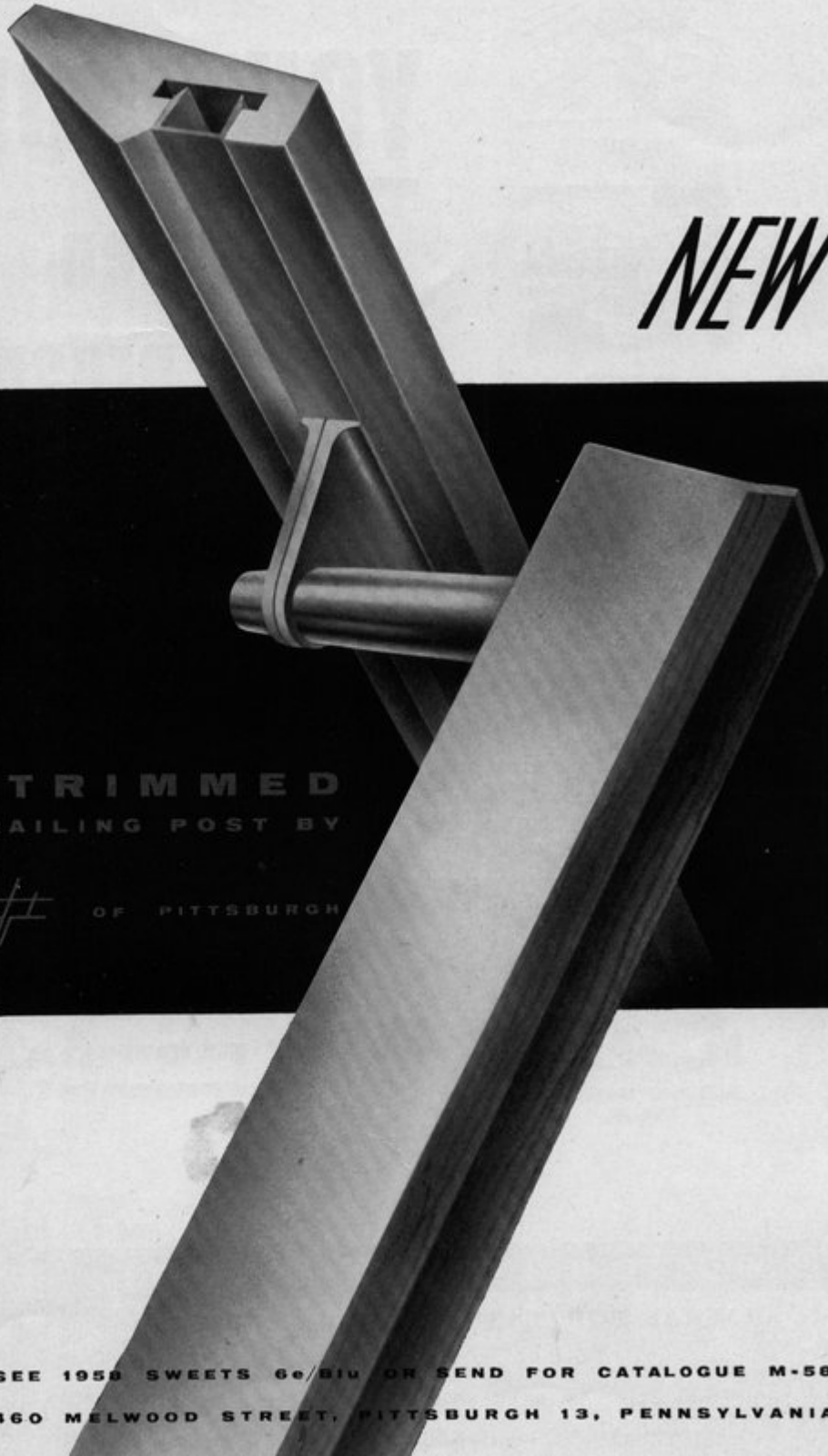
Committee Directive: *To cooperate with state agencies engaged in programs affecting hospitalization and public health; to cooperate with private agencies likewise engaged for the purpose of establishing procedures and design criteria of mutual value.*

This committee has not met in a body during the year. It has, however, been canvassed by the Chairman and suggestions made and herewith is an abstract of the opinions gained:

1. The State Board of Health and the State School Architect have been notified in writing (copies of letters are available) of the desire of this

committee to be of any help whatsoever in meeting with them to work out any differences that are occurring in the enforcing of their regulations and to help to make suggestions toward the formulation of clear and more concise rules and regulations.

2. The new sanitary standards which have been set up for public schools by the State Department of Education in Tallahassee have been under observation and it is thought that during the coming Florida Association of Architects' year a meeting with this department will be beneficial to the profession throughout Florida.



NEW

WOOD TRIMMED
ALUMINUM RAILING POST BY

Blumcraft OF PITTSBURGH

SEE 1958 SWEETS 6e/B10 OR SEND FOR CATALOGUE M-58
460 MELWOOD STREET, PITTSBURGH 13, PENNSYLVANIA



ARCHITECT



ENGINEER



CONTRACTOR



CONCRETE PRODUCTS
MANUFACTURER



BUILDING MATERIAL
DEALER

YOU PROFIT **when** **Florida prospers**

Every time you buy Florida products,
you help your state grow and prosper.

When Florida prospers--you profit!

Keep Florida prosperous! . . . Buy Florida
products . . . Use Florida cements!



KEEP FLORIDA
prosperous!

BUY FLORIDA
products!

USE FLORIDA
cements!

FLORIDA PORTLAND CEMENT DIVISION

GENERAL PORTLAND CEMENT COMPANY



Collaboration With Design Professions

By C. ELLIS DUNCAN

Chairman

Assigned duties: "To cooperate on problems of mutual interest to the design professions and other groups dealing with basic elements of design and site planning" and "the chairman will represent FAA on the state AGC-FES Joint Cooperative Committee."

The Committee is composed of eleven members spread from Miami to Jacksonville, across to Sarasota and out to Pensacola. With this geographic separation we have had few conferences together and have not had a specific instance of general interest to the profession sufficient to inspire a state meeting. Members along the East Coast have conferred on occasions, but with no action at state level.

In the Palm Beach area the active Joint Cooperative Committee, composed of representatives of A.I.A., NSPE, AGC, HBA, ASCE and the

National Association of Real Estate Boards, has met regularly on a monthly basis at a luncheon and has accomplished a great deal. Projects and subjects covered include: taxes and tax investigation; national housing bill S 4035; freight traffic bureau; jet airport project; building codes; licensing laws; municipal auditorium; and conservation.

The Florida South Chapter, through the efforts of EDWIN T. REEDER and his committee, has arranged "for the 'Design Derby' to be held in the Architects' Institute of Building Products beginning the latter part of October. This design derby is a collaborative effort between The American Institute of Architects, the American Institute of Decorators, the Designers and Decorators Guild, and other design organizations in the area.

It is a nationally advertised display of design products and attracts national attention." They also have an arrangement with the American Institute of Decorators to help with their design program for student competition during the coming year.

Contact has been made with PRESIDENT HAROLD D. BRILEY of the FES for a Collaboration Committee at state level, however the appointment of such a committee has been delayed due to several activities in the FES including waiting for the activities of the Joint Committee to materialize. A suggestion has come from John Crowell that the Director of the Ringling Museum would probably offer the use of the Museum for forwarding the purposes of this committee.

Your committee chairman has attended the meeting of the state Joint Cooperative Committee in Winter Park in September and also attended a special sub-committee meeting in Palm Beach, later, to consider recommendations for enlarging the scope of the Joint Cooperative Committee. These items I am sure will be reported under the FAA-AGC-FES Committee.

Student Loan Fund

By JOHN L. R. GRAND

Chairman, Board of Trustees

For several years, the F.A.A. loan fund had not been active. In an earlier report this was attributed to new opportunities made available in the form of scholarship grants by A.I.A. chapters, this association, and other friends of the College, and to the fact that the fund was somewhat less attractive due to a higher interest rate than most other funds available at the University. The latter detriment was removed by action of the 1956 Convention lowering the interest rate. At the beginning of the year, the Board of Trustees decided to conduct a campaign to advise worthy students in architecture of the availability of the fund. The success of

the campaign is attested by the fact that the fund is now almost completely depleted.*

Because of this it is again appropriate to urge the membership to make contributions (tax deductible) to the F.A.A. loan fund. While the fund has doubled since it was instituted 32 years ago, the need has been multiplied many fold. It has been estimated that in 1926 an average student might have completed the four year professional curriculum in architecture for \$1,200, while it would cost his son \$6,500 to complete the five year curriculum today.

It should be added that the University of Florida is one of a very few

State-supported institutions where a professional education in architecture could be obtained for so low a figure.

At the same time enrollment has sky-rocketed. In 1926 when there were 1,968 students at the University, 39 were enrolled in the School of Architecture. The latest statistics list the enrollment of the College of Architecture and Fine Arts at 319, and University enrollment at 12,304; an increase in architecture of about 800%. The obvious deduction from the two sets of figures is, that the fund ought to be 20 times what it is in order to be on the same forward looking plane it stood upon 32 years ago.

Renewed support of the student loan fund is again a challenge to the F.A.A.

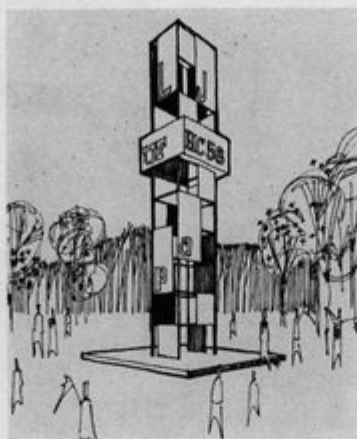
**A detailed account of the fund has been arranged in tabular balance sheet form. Interested members are invited to consult copies which have been made available to FAA officers and members of the Board of Directors.*

The Students' Column . . .

By GEORGE CHELLAG

Homecoming alumni have annually rallied at the University of Florida in great numbers. Their activities have consisted, and will probably continue to do so, of meanderings amongst ivy halls and cheering the Fightin' Gators to victory on the home field. This year a modification has been incorporated and the student architect, with his creativity and ingenuity, has played an important role in the development of Homecoming 1958.

Under the auspices of the Student Government a movement was put forth to study this alumni affair and if possible, make necessary adjustments. It was found that the mass of people attending participated in scattered meetings and more often did nothing more than "wander" through the campus. The general problem was located and a tentative solution was proposed: "That an area should be developed where all colleges may meet with their respective alumni." At this stage the "lay" student called on the more informed students of the Department of Architecture, a group which has studied the problems of physical controls and aids to mass gatherings. Through the Student



Rendering by Charles Pattillo, III

A.I.A. a volunteer committee was formed to study and solve the problem.

Under the chairmanship of CHARLES PATTILLO, III, graduate student in architecture, three assistants worked: DONALD PECK, DAVID GODSCHALK and RONALD GARMAN, students all. The problem was further scrutinized and a definition of the situation resulted: "To develop a unifying Rallying Ground for the massing of alumni." The most likely loca-

tion for such a "ground" was chosen: the Plaza of the Americas, an area 350' by 450' of scattered pines and oaks nestled in the heart of the campus within the shadows of the academic buildings. Finances were then studied with the net expenditure of \$10.00 resulting. Ingenuity indeed was to be called for.

The solution was proposed over cups of coffee (probably sketched on a napkin), the use of scaffolding and plywood panels (donations most definitely) to create a "theme structure" or focal point uniting the area. The theme structure upon erection October 16 towered 40' above the plaza. This tower form was arrived at, amongst other considerations, due to the many trees in the vicinity with which it would have to counter-play. Attached to the network of vertically-stacked construction scaffolding will be intermittent paneling of plywood, lettered and colored symbolically to represent the various schools and colleges of the University. With footings of sunken pipe sections and braced by guy wires, it will set off the area as a rallying ground. Subsidiary plywood triangular markers will dot the area to form the independent college rallying points.

Only when the alumni have completed the picture will the area truly become a festive and living homecoming, for this mass of people will create a circus of tones united by the various architectural forms.

DuPont Plaza Selects McKinley Products!

The beautiful new DuPont Plaza Center, Miami, Florida, chose McKinley Ventilated Sun Cornices for protection against sun's glare and heat, and for attractive appearance.

Architects: Frank A. Shuffin, AIA; John E. Petersen, AIA.



For details, contact your McKinley Representative—see Sweet's Architectural File 19e/Mc.



engineered and manufactured by the **o. o. MCKINLEY co., inc.**
Indianapolis 5, Indiana

LOCAL MCKINLEY REPRESENTATION: CLEARWATER, PHONE 35-7094

NOVEMBER, 1958



Advance-For Safer and Better Construction...

...For Safer and Better Construction

ADVANCE METAL PRODUCTS, Inc.
2445 N.W. 76th STREET, MIAMI

JOIST ANCHOR

TRUSS ANCHOR

SLIP ANCHOR
FRAM CONSTRUCTION

FOUNDATION CHAIRS
FOR 12", 20" AND 24" DIMENSIONS
SAVED TIME AND MONEY IN PLACEMENT OF FOUNDATION WALLS

LOCK SEAT PLATE

PERFORATED STRAPS
10 DIMENSIONS & COLORS - 18 & 20 GAUGE GALV. STEEL
ALSO AVAILABLE 1/2" & 1" BLACK OR ENAMELED STEEL

RAFTER TIES
BLACK OR ENAMELED

FOUNDATION CHAIRS

SNAP TIE WEDGE

WIRE HANGER
FOR 4" POURED BEAM

WIRE HANGER
FOR 6" & 8" POURED BEAM

WIRE HANGER
FOR 10" POURED BEAM

WIRE HANGER
FOR 12" POURED BEAM

WIRE HANGER
FOR 14" POURED BEAM

WIRE HANGER
FOR 16" POURED BEAM

WIRE HANGER
FOR 18" POURED BEAM

WIRE HANGER
FOR 20" POURED BEAM

WIRE HANGER
FOR 24" POURED BEAM

WIRE HANGER
FOR 28" POURED BEAM

WIRE HANGER
FOR 32" POURED BEAM

WIRE HANGER
FOR 36" POURED BEAM

WIRE HANGER
FOR 40" POURED BEAM

WIRE HANGER
FOR 44" POURED BEAM

WIRE HANGER
FOR 48" POURED BEAM

WIRE HANGER
FOR 52" POURED BEAM

WIRE HANGER
FOR 56" POURED BEAM

WIRE HANGER
FOR 60" POURED BEAM

WIRE HANGER
FOR 64" POURED BEAM

WIRE HANGER
FOR 68" POURED BEAM

WIRE HANGER
FOR 72" POURED BEAM

WIRE HANGER
FOR 76" POURED BEAM

WIRE HANGER
FOR 80" POURED BEAM

WIRE HANGER
FOR 84" POURED BEAM

WIRE HANGER
FOR 88" POURED BEAM

WIRE HANGER
FOR 92" POURED BEAM

WIRE HANGER
FOR 96" POURED BEAM

WIRE HANGER
FOR 100" POURED BEAM

WIRE HANGER
FOR 104" POURED BEAM

WIRE HANGER
FOR 108" POURED BEAM

WIRE HANGER
FOR 112" POURED BEAM

WIRE HANGER
FOR 116" POURED BEAM

WIRE HANGER
FOR 120" POURED BEAM

WIRE HANGER
FOR 124" POURED BEAM

WIRE HANGER
FOR 128" POURED BEAM

WIRE HANGER
FOR 132" POURED BEAM

WIRE HANGER
FOR 136" POURED BEAM

WIRE HANGER
FOR 140" POURED BEAM

WIRE HANGER
FOR 144" POURED BEAM

WIRE HANGER
FOR 148" POURED BEAM

WIRE HANGER
FOR 152" POURED BEAM

WIRE HANGER
FOR 156" POURED BEAM

WIRE HANGER
FOR 160" POURED BEAM

WIRE HANGER
FOR 164" POURED BEAM

WIRE HANGER
FOR 168" POURED BEAM

WIRE HANGER
FOR 172" POURED BEAM

WIRE HANGER
FOR 176" POURED BEAM

WIRE HANGER
FOR 180" POURED BEAM

WIRE HANGER
FOR 184" POURED BEAM

WIRE HANGER
FOR 188" POURED BEAM

WIRE HANGER
FOR 192" POURED BEAM

WIRE HANGER
FOR 196" POURED BEAM

WIRE HANGER
FOR 200" POURED BEAM

WIRE HANGER
FOR 204" POURED BEAM

WIRE HANGER
FOR 208" POURED BEAM

WIRE HANGER
FOR 212" POURED BEAM

WIRE HANGER
FOR 216" POURED BEAM

WIRE HANGER
FOR 220" POURED BEAM

WIRE HANGER
FOR 224" POURED BEAM

WIRE HANGER
FOR 228" POURED BEAM

WIRE HANGER
FOR 232" POURED BEAM

WIRE HANGER
FOR 236" POURED BEAM

WIRE HANGER
FOR 240" POURED BEAM

WIRE HANGER
FOR 244" POURED BEAM

WIRE HANGER
FOR 248" POURED BEAM

WIRE HANGER
FOR 252" POURED BEAM

WIRE HANGER
FOR 256" POURED BEAM

WIRE HANGER
FOR 260" POURED BEAM

WIRE HANGER
FOR 264" POURED BEAM

WIRE HANGER
FOR 268" POURED BEAM

WIRE HANGER
FOR 272" POURED BEAM

WIRE HANGER
FOR 276" POURED BEAM

WIRE HANGER
FOR 280" POURED BEAM

WIRE HANGER
FOR 284" POURED BEAM

WIRE HANGER
FOR 288" POURED BEAM

WIRE HANGER
FOR 292" POURED BEAM

WIRE HANGER
FOR 296" POURED BEAM

WIRE HANGER
FOR 300" POURED BEAM

WIRE HANGER
FOR 304" POURED BEAM

WIRE HANGER
FOR 308" POURED BEAM

WIRE HANGER
FOR 312" POURED BEAM

WIRE HANGER
FOR 316" POURED BEAM

WIRE HANGER
FOR 320" POURED BEAM

WIRE HANGER
FOR 324" POURED BEAM

WIRE HANGER
FOR 328" POURED BEAM

WIRE HANGER
FOR 332" POURED BEAM

WIRE HANGER
FOR 336" POURED BEAM

WIRE HANGER
FOR 340" POURED BEAM

WIRE HANGER
FOR 344" POURED BEAM

WIRE HANGER
FOR 348" POURED BEAM

WIRE HANGER
FOR 352" POURED BEAM

WIRE HANGER
FOR 356" POURED BEAM

WIRE HANGER
FOR 360" POURED BEAM

WIRE HANGER
FOR 364" POURED BEAM

WIRE HANGER
FOR 368" POURED BEAM

WIRE HANGER
FOR 372" POURED BEAM

WIRE HANGER
FOR 376" POURED BEAM

WIRE HANGER
FOR 380" POURED BEAM

WIRE HANGER
FOR 384" POURED BEAM

WIRE HANGER
FOR 388" POURED BEAM

WIRE HANGER
FOR 392" POURED BEAM

WIRE HANGER
FOR 396" POURED BEAM

WIRE HANGER
FOR 400" POURED BEAM

WIRE HANGER
FOR 404" POURED BEAM

WIRE HANGER
FOR 408" POURED BEAM

WIRE HANGER
FOR 412" POURED BEAM

WIRE HANGER
FOR 416" POURED BEAM

WIRE HANGER
FOR 420" POURED BEAM

WIRE HANGER
FOR 424" POURED BEAM

WIRE HANGER
FOR 428" POURED BEAM

WIRE HANGER
FOR 432" POURED BEAM

WIRE HANGER
FOR 436" POURED BEAM

WIRE HANGER
FOR 440" POURED BEAM

WIRE HANGER
FOR 444" POURED BEAM

WIRE HANGER
FOR 448" POURED BEAM

WIRE HANGER
FOR 452" POURED BEAM

WIRE HANGER
FOR 456" POURED BEAM

WIRE HANGER
FOR 460" POURED BEAM

WIRE HANGER
FOR 464" POURED BEAM

WIRE HANGER
FOR 468" POURED BEAM

WIRE HANGER
FOR 472" POURED BEAM

WIRE HANGER
FOR 476" POURED BEAM

WIRE HANGER
FOR 480" POURED BEAM

WIRE HANGER
FOR 484" POURED BEAM

WIRE HANGER
FOR 488" POURED BEAM

WIRE HANGER
FOR 492" POURED BEAM

WIRE HANGER
FOR 496" POURED BEAM

WIRE HANGER
FOR 500" POURED BEAM

WIRE HANGER
FOR 504" POURED BEAM

WIRE HANGER
FOR 508" POURED BEAM

WIRE HANGER
FOR 512" POURED BEAM

WIRE HANGER
FOR 516" POURED BEAM

WIRE HANGER
FOR 520" POURED BEAM

WIRE HANGER
FOR 524" POURED BEAM

WIRE HANGER
FOR 528" POURED BEAM

WIRE HANGER
FOR 532" POURED BEAM

WIRE HANGER
FOR 536" POURED BEAM

WIRE HANGER
FOR 540" POURED BEAM

WIRE HANGER
FOR 544" POURED BEAM

WIRE HANGER
FOR 548" POURED BEAM

WIRE HANGER
FOR 552" POURED BEAM

WIRE HANGER
FOR 556" POURED BEAM

WIRE HANGER
FOR 560" POURED BEAM

WIRE HANGER
FOR 564" POURED BEAM

WIRE HANGER
FOR 568" POURED BEAM

WIRE HANGER
FOR 572" POURED BEAM

WIRE HANGER
FOR 576" POURED BEAM

WIRE HANGER
FOR 580" POURED BEAM

WIRE HANGER
FOR 584" POURED BEAM

WIRE HANGER
FOR 588" POURED BEAM

WIRE HANGER
FOR 592" POURED BEAM

WIRE HANGER
FOR 596" POURED BEAM

WIRE HANGER
FOR 600" POURED BEAM

WIRE HANGER
FOR 604" POURED BEAM

WIRE HANGER
FOR 608" POURED BEAM

WIRE HANGER
FOR 612" POURED BEAM

WIRE HANGER
FOR 616" POURED BEAM

WIRE HANGER
FOR 620" POURED BEAM

WIRE HANGER
FOR 624" POURED BEAM

WIRE HANGER
FOR 628" POURED BEAM

WIRE HANGER
FOR 632" POURED BEAM

WIRE HANGER
FOR 636" POURED BEAM

WIRE HANGER
FOR 640" POURED BEAM

WIRE HANGER
FOR 644" POURED BEAM

WIRE HANGER
FOR 648" POURED BEAM

WIRE HANGER
FOR 652" POURED BEAM

WIRE HANGER
FOR 656" POURED BEAM

WIRE HANGER
FOR 660" POURED BEAM

WIRE HANGER
FOR 664" POURED BEAM

WIRE HANGER
FOR 668" POURED BEAM

WIRE HANGER
FOR 672" POURED BEAM

WIRE HANGER
FOR 676" POURED BEAM

WIRE HANGER
FOR 680" POURED BEAM

WIRE HANGER
FOR 684" POURED BEAM

WIRE HANGER
FOR 688" POURED BEAM

WIRE HANGER
FOR 692" POURED BEAM

WIRE HANGER
FOR 696" POURED BEAM

WIRE HANGER
FOR 700" POURED BEAM

WIRE HANGER
FOR 704" POURED BEAM

WIRE HANGER
FOR 708" POURED BEAM

WIRE HANGER
FOR 712" POURED BEAM

WIRE HANGER
FOR 716" POURED BEAM

WIRE HANGER
FOR 720" POURED BEAM

WIRE HANGER
FOR 724" POURED BEAM

WIRE HANGER
FOR 728" POURED BEAM

WIRE HANGER
FOR 732" POURED BEAM

WIRE HANGER
FOR 736" POURED BEAM

WIRE HANGER
FOR 740" POURED BEAM

WIRE HANGER
FOR 744" POURED BEAM

WIRE HANGER
FOR 748" POURED BEAM

WIRE HANGER
FOR 752" POURED BEAM

WIRE HANGER
FOR 756" POURED BEAM

WIRE HANGER
FOR 760" POURED BEAM

WIRE HANGER
FOR 764" POURED BEAM

WIRE HANGER
FOR 768" POURED BEAM

WIRE HANGER
FOR 772" POURED BEAM

WIRE HANGER
FOR 776" POURED BEAM

WIRE HANGER
FOR 780" POURED BEAM

WIRE HANGER
FOR 784" POURED BEAM

WIRE HANGER
FOR 788" POURED BEAM

WIRE HANGER
FOR 792" POURED BEAM

WIRE HANGER
FOR 796" POURED BEAM

WIRE HANGER
FOR 800" POURED BEAM

WIRE HANGER
FOR 804" POURED BEAM

WIRE HANGER
FOR 808" POURED BEAM

WIRE HANGER
FOR 812" POURED BEAM

WIRE HANGER
FOR 816" POURED BEAM

WIRE HANGER
FOR 820" POURED BEAM

WIRE HANGER
FOR 824" POURED BEAM

WIRE HANGER
FOR 828" POURED BEAM

WIRE HANGER
FOR 832" POURED BEAM

WIRE HANGER
FOR 836" POURED BEAM

WIRE HANGER
FOR 840" POURED BEAM

WIRE HANGER
FOR 844" POURED BEAM

WIRE HANGER
FOR 848" POURED BEAM

WIRE HANGER
FOR 852" POURED BEAM

WIRE HANGER
FOR 856" POURED BEAM

WIRE HANGER
FOR 860" POURED BEAM

WIRE HANGER
FOR 864" POURED BEAM

WIRE HANGER
FOR 868" POURED BEAM

WIRE HANGER
FOR 872" POURED BEAM

WIRE HANGER
FOR 876" POURED BEAM

WIRE HANGER
FOR 880" POURED BEAM

WIRE HANGER
FOR 884" POURED BEAM

WIRE HANGER
FOR 888" POURED BEAM

WIRE HANGER
FOR 892" POURED BEAM

WIRE HANGER
FOR 896" POURED BEAM

WIRE HANGER
FOR 900" POURED BEAM

WIRE HANGER
FOR 904" POURED BEAM

WIRE HANGER
FOR 908" POURED BEAM

WIRE HANGER
FOR 912" POURED BEAM

WIRE HANGER
FOR 916" POURED BEAM

WIRE HANGER
FOR 920" POURED BEAM

WIRE HANGER
FOR 924" POURED BEAM

WIRE HANGER
FOR 928" POURED BEAM

WIRE HANGER
FOR 932" POURED BEAM

WIRE HANGER
FOR 936" POURED BEAM

WIRE HANGER
FOR 940" POURED BEAM

WIRE HANGER
FOR 944" POURED BEAM

WIRE HANGER
FOR 948" POURED BEAM

WIRE HANGER
FOR 952" POURED BEAM

WIRE HANGER
FOR 956" POURED BEAM

WIRE HANGER
FOR 960" POURED BEAM

WIRE HANGER
FOR 964" POURED BEAM

WIRE HANGER
FOR 968" POURED BEAM

WIRE HANGER
FOR 972" POURED BEAM

WIRE HANGER
FOR 976" POURED BEAM

WIRE HANGER
FOR 980" POURED BEAM

WIRE HANGER
FOR 984" POURED BEAM

WIRE HANGER
FOR 988" POURED BEAM

WIRE HANGER
FOR 992" POURED BEAM

WIRE HANGER
FOR 996" POURED BEAM

WIRE HANGER
FOR 1000" POURED BEAM

JOIST HANGER
FOR HANGING JOIST
RAFTER, TRUSS
BYPASSING ALL SIZES

5 WAY GRIP CLIP

RAFTER, ROOF AND BEAM CONSTRUCTION

SIZE	LENGTH
1/2"	1 1/2"
3/4"	2"
1"	2 1/2"
1 1/4"	3"
1 1/2"	3 1/2"
1 3/4"	4"
2"	4 1/2"

CAVITY CAP
10 FOR 1 CAVITY BLOCK
15 FOR 2 CAVITY BLOCK

HURRICANE CLIPS
100% AND 50% SIZES

SNAP TIES

TRUSS TIE SPACER No. 75
• TOP CHORD SPACER (SPREAD TRUSS PLACEMENT AND SECTION)
• SUBSTITUTES SPACING FOR ALUMINUM TRUSSING

TRUSS TIE SPACER
• ROCK LATH APPLIED DIRECTLY TO TRUSS

TRUSS TIE SPACER No. 150
• STRUCTURAL HORIZONTAL TRUSS MEMBERS USE OF COLLARED TRUSS SPACERS RESULTS IN LOWER WEIGHT AND COST THEREBY ELIMINATING USE OF ANY WOOD STRIPPING

TIE BEAM CLAMPS
FOR ALL SIZE BLOCK & BEAMS

STUD MEND PLATES

CHROMASTATS have a Brand New Home



T

Chromastats in the 8" x 10" size were made of this rendering by Joseph N. Smith, III, AIA, of a building designed by architect Charles F. McKirahan, AIA, of Ft. Lauderdale.

SQUARE MIAMI *Blue Print Co., Inc.*

NEW ADDRESS: 635 S. W. First Avenue
Miami 32, Florida — FRanklin 9-4501

SEE OUR BOOTH NO. 74 AT THE FAA CONVENTION

THE FLORIDA ARCHITECT

Nominations for FAA Officers, 1959

For Secretary



ERNEST T. H. BOWEN, II
Florida Central Chapter

Institute membership dates from 1953. . . . Has held Chapter positions as Secretary-Treasurer (1954) and Secretary (1955). Was an FAA Director for two years (1956-57) and is currently serving as FAA Secretary. . . . Service on FAA Committees includes: Resolutions (1957); Convention, 1957, as chairman, and 1958; and currently as chairman of Committee on Dues. . . . Service on AIA Committees includes: Hurricane Resistance, 1957; and Disaster Control, 1958.



FRANCIS R. WALTON
Daytona Beach Chapter

Institute membership dates from 1946. . . . Has held Chapter positions as Secretary, Vice President and President (for three years). Was FAA Director from his Chapter in 1947-48, 1951, 1953-54, 1957-58. . . . FAA Secretary-Treasurer, 1952. Ch., Committee on FAA Exec. Secy., 1952; FAA Convention Ch., 1949, 1955; Served on these FAA committees: Legislative, 1957; Joint Cooperative, 1957; Convention, 1957; Public Relations, 1957-58; Ethical Practice, 1958.

For Treasurer



MORTON T. IRONMONGER,
Broward County Chapter

Institute membership dates from 1947. . . . Was Secretary-Treasurer of his Chapter for five years; president for two. Has also served two years as FAA Director from his Chapter. . . . Since 1955 to date has served as FAA Treasurer. . . . FAA Committee memberships include Joint Architect-Engineer; Membership and Chapter Affairs. . . . Was a member of AIA Office Practice and Accounting Committee for one year (circa 1950).



JOSEPH M. SHIFALO,
Mid-Florida Chapter

Institute membership dates from 1953. . . . Served as Secretary of Mid-Florida Chapter, 1955-56; and as President, 1956-57 and 1957-58. . . . Has served as Chairman of FAA Uniform Codes Committee. . . . FAA Convention Chairman, 1958.

For Third Vice President



ARTHUR LEE CAMPBELL
Florida North Chapter

Institute membership dates from 1947. . . . Served on these Chapter committees: Civic Design, 1947; Practice, 1954; Hospital & Health (chairman), 1955; Centennial Observance, 1956. . . . Was Chapter treasurer in 1955, Secretary in 1956, President in 1957. . . . FAA Committee service includes: Election, 1948; Advisory Com. for Student Chapter, 1950; Legislative, 1957. He was alternate FAA director from his Chapter in 1949. . . . Currently is FAA vice president, elected in 1957 to fill vacancy created by resignation.



WALTER B. SCHULTZ
Jacksonville Chapter

Institute membership dates from 1944. . . . Served Florida North Chapter as Director, 1947-48, Vice President, 1949, and President, 1951; and as Director of the Jacksonville Chapter in 1956-57-58. . . . Served as an FAA Director from Florida North Chapter in 1947-48; and from Jacksonville Chapter in 1956 and 1958. Was FAA Vice-President in 1952. . . . Service on FAA committees includes: Architect-Engineer Relations, 1952-53 (as co-chairman) -54-55; By-Laws in 1957 and 1958 (currently chairman); Convention, 1958.

Report of The Nominating Committee . . .

The FAA Nominating Committee, chairmanned by JAMES L. DEEN, Florida South, and including W. STEWART MORRISON, Florida North West, and ROBERT L. LEVISON, Florida Central have presented the following names as candidates for election of officers.

For President: H. SAMUEL KRUSE, Florida South; and JOHN STETSON, Palm Beach.

For Secretary: ERNEST T. H. BOWEN, II, Florida Central; and FRANCIS R. WALTON, Daytona Beach.

For Treasurer: MORTON T. IRONMONGER, Broward County; and

JOSEPH M. SHIFALO, Mid-Florida.

For Vice-President: ARTHUR LEE CAMPBELL, Florida North; and WALTER B. SCHULTZ, Jacksonville.

Terms of all offices are for one year except that of the Vice President. Election to this office is for a three-year term; and the successful candidate will be designated, under FAA By-Laws, as Third Vice President during his first year of office, advancing to second and first vice president during succeeding years.

Nominations will be presented by the Committee at the Convention's first business session, Thursday,

November 20, to be followed by nominations from the floor. As ruled by Convention action last year, voting will be by ballot; and polls will be open at the Registration Desk during hours noted on the program schedule on pages 32 and 33. Election results will be announced at the Annual Banquet, Friday evening.

According to current FAA By-Laws, only Corporate members of Florida's 10 AIA Chapters are entitled to vote for FAA officers; and election will be by majority of those qualified to vote and registered at, and attending, the Convention.

For President . . .



H. SAMUEL KRUSE
Florida South Chapter

His Institute membership dates from 1949 . . . He was named Vice-President of his Chapter in 1954 and served as its President during 1955. Subsequently he served as a Director of the Chapter for three years, in 1956, 1957 and 1958. . . . He has served on two FAA Committees — the Publication Committee for two years, 1956 and 1957, serving as chairman during 1957; and on the Convention Committee during 1956. . . . He was elected Secretary of the FAA in 1957 and has served as FAA President during 1958. . . . He was appointed to the Advisory Panel, the AIA Committee on Building Products Registration, in 1957 and is currently a member. He has also been a Chapter Representative to the Department of Education and Research of the Octagon Staff since 1955 and its currently acting as such.



JOHN STETSON
Palm Beach Chapter

His Institute membership dates from 1947 . . . He was a Director of his Chapter in 1952-53 and from 1955 to date; served as Chapter Treasurer in 1952; as Vice-President in 1953 and as President in 1955. . . . Has served on the FAA Joint Cooperative Committee since 1954 and as its chairman from 1955 to date; and on the FAA Home Building - Construction Industry Committee as chairman, 1958. Served as FAA Director from his Chapter from 1951 to 1955; and as FAA Vice-President in 1956 and 1957. . . . Was a member of the AIA Committee on Home Building Industry from 1953 to 1955; and the Hurricane Resistance Committee in 1957 and 1958. . . . Was U. S. Delegate to Pan-American Congress of Architects in 1951 and 1953 and an AIA Delegate to RIBA Convention in England, 1954.

Resolutions Submitted...

Received from sources as noted for pre-Convention publication

Salary of the State School Architect

Received from the Jacksonville Chapter as proposed by A. Robert Broadfoot of the Chapter:

WHEREAS, the position and office of the State School Architect has existed over the past 15 or 20 years; and,

WHEREAS, over this period of time the office has proved its worth to the State of Florida by assisting all County School Boards and their architects in raising the quality of school construction and at the same time getting more for the school construction dollar; and,

WHEREAS, this position and office has existed longer than equivalent architectural positions in State Governments; and,

WHEREAS, this position and office has a more direct connection with the laws of the State of Florida as set forth in Chapter 235, Florida Statutes; and,

Now, THEREFORE, BE IT RESOLVED: The Jacksonville Chapter of the American Institute of Architects realizing the importance of the office and position of State School Architect feel the position should be equal to that of other Supervising Architects in the employ of the State, hereby endorse the equalizing of the salary of the State School Architect with that of other equivalent positions and,

BE IT FURTHER RESOLVED: That a copy of this resolution be sent to the Convention of the Florida Association of Architects to be held in Miami this November urging their adoption and support.

Memorial to Sanford W. Goin, FAIA

Received from the Florida Central Chapter as proposed by A. Wynn Howell of that Chapter:

WHEREAS, God in his infinite wisdom has taken from this earth SANFORD W. GOIN, Fellow of the American Institute of Architects; and,

WHEREAS, he was a past officer in the Florida Association of Architects, and at the time of his death, a Regional Director in The American Institute of Architects; and,

WHEREAS, he was a friend to scores of his fellow architects, other professional people, lay people and others; and,

WHEREAS, he affirmed again and again the responsibility of the architect to his community; and,

WHEREAS, he always affirmed his conviction that a measure of any man's success come from a Divine Source; and,

(Continued on Page 55)

IT'S NEW! IT'S GREAT!

Plywall®

PREFINISHED WALL PANELING



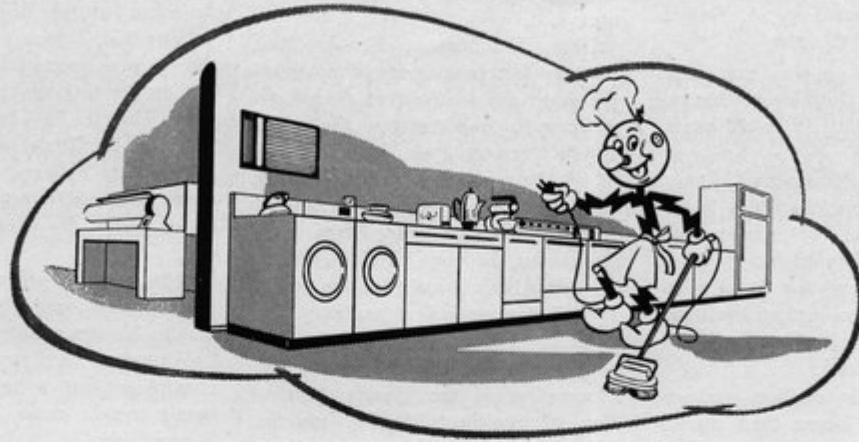
Here at last is the paneling you've asked for! Handsome, pre-finished, wide selection of grains. Best of all, you can fit it into the lowest budget. You won't believe it until you see it. Call collect for full details.



WHOLESALE DISTRIBUTORS

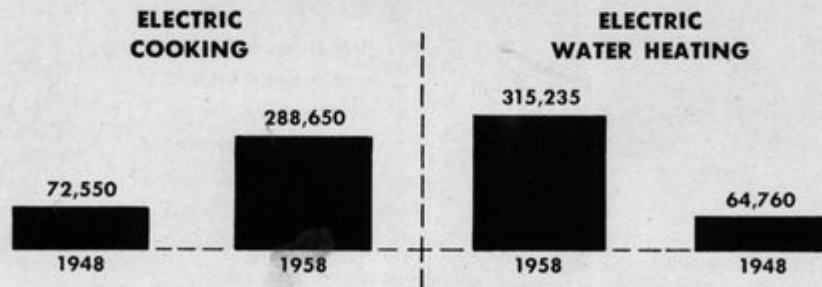
Hamilton Plywood of Orlando, Inc. GArden 5-4604
Hamilton Plywood of St. Petersburg, Inc. 5-7627
Hamilton Plywood of Ft. Lauderdale, Inc. JAcKson 3-5415

How to design homes with "built-in" maid service!



Combine the ingenuity of architectural design with the wonderful ease of built-in electrical equipment . . . and you'll give your clients leisure they will praise you for through the years. Built-in electric appliances save so much time and work — they're like having an extra maid on the job 24 hours a day. They're the most glamorous, most work-free helpmates you can choose . . . the first choice of Florida home buyers.

The trend is overwhelming to Electric Living!



Give your clients a blueprint for Better Living . . . Electrically!



FLORIDA POWER & LIGHT COMPANY

HELPING BUILD FLORIDA



Resolutions...

(Continued from Page 53)

WHEREAS, he was a devoted father and husband, ever faithful to family, Church, Nation and Community, holding malice toward none;

THEREFORE BE IT RESOLVED: that the Florida Association of Architects does mourn the loss of this member and miss him from among its ranks; and,

BE IT FURTHER RESOLVED: that a copy of this resolution be sent to the surviving members of the family and spread upon the minutes.

New Procedure for Electing FAA Officers

Received from the Florida Central Chapter as proposed by Richard E. Jessen of that Chapter:

WHEREAS, The American Institute of Architects has authorized the formation of a new Region for the State of Florida, comprised of the Florida Association of Architects and the 10 Chapters of the American Institute of Architects; and,

WHEREAS, this transition is a result of recognition of the size and importance of the Florida Association in the National organization; and,

WHEREAS, the existing procedure for the election of Officers to the Florida Association of Architects is similar to that of most Chapters in this State; and,

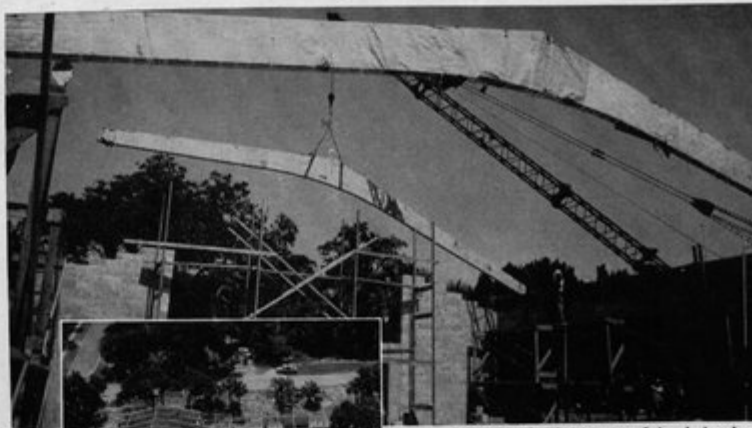
WHEREAS, this procedure does not adequately meet the needs of this widely distributed geographic area to insure equal representation of the voting membership of all Chapters;

NOW, THEREFORE, BE IT RESOLVED: that the By-Laws of the Florida Association of Architects be revised to be more nearly parallel those of the National Institute with regard to election of Officers by duly authorized Chapter delegates.

Be it further resolved that this Resolution be forwarded to the Executive Director of the Florida Association of Architects with a request that it be published in *The Florida Architect*,

And that it be placed on the Agenda for presentation to the membership of the Florida Association of Architects during the coming Annual Convention in the year 1958.

NOVEMBER, 1958



Beachland Elementary School (project C), Vero Beach, Florida. Architect: David V. Robison, Vero Beach, Florida. Contractor: Clutter Const. Corp., Miami Springs, Florida.



Rilco pitched beams, 36', 40', 56' long, spaced 10' o.c. Rilco western red Cedar Deck serves as ceiling, decoration and insulation.

"FINISHED COST IS SURPRISING-ECONOMICAL"

Contractor says: "Final appearance of these Rilco trusses gives the warm natural appearance of wood. We were very well satisfied with this method of construction. If you consider the finished product the cost is surprising . . . economical for such a finished product."

Architect agrees: "It has long been my thought that schools are too 'cold' and impersonal. Wood produces a warmth that reduces that feeling and lends itself to homier atmospheres. Rilco laminated beams and deck answered the problems and also permitted quick erection. They lend themselves to both beauty and function along with dollar savings. The results are satisfying."

Beauty plus function plus dollar savings — Rilco offers these and more. You complete the job faster with Rilco, for every member is precision-fabricated at the factory. Your regular crews erect Rilco trusses, arches, beams fast, saving you time and money. Clients like Rilco too, for these members are fire-safe, cannot corrode or rust, withstand temporary over-load or impact without damage.



RILCO LAMINATED PRODUCTS INC.
155 WASHINGTON STREET
NEWARK 2, NEW JERSEY

YEANDLE & FOX LAMINATED PRODUCTS

702 E. BROWARD BLVD.
FT. LAUDERDALE, FLA.
PHONE: JACKSON 3-0291
P. O. BOX 1715
CLEARWATER, FLA.
PHONE: 38-6751

SEE OUR EXHIBIT #55 AT THE FLORIDA ASSOCIATION OF ARCHITECTS CONVENTION

Custom-Cast Plaques



We can fill all your design needs for any type, size or shape of cast bronze or aluminum plaques, name panels or decorative bas-reliefs.



FLORIDA FOUNDRY 3737 N. W. 43rd Street
& PATTERN WORKS Miami, Florida

Mel Banks, Inc.
ST. PETERSBURG
Ph. HE 6-3400
TAMPA
Ph. 2-0871
CLEARWATER
Ph. 3-5911

Electrend East
Coast Co., Inc.
BOCA RATON
Ph. 5101
LAKE WORTH
VERO BEACH
FT. PIERCE
Call Collect —
Boca Raton 5101
FT. LAUDERDALE
Ph. JA 3-6464

Electrend
Sales & Service
ORLANDO
Ph. GA 2-7166

Electrend Sales
& Service Co.
SARASOTA
Ph. RI 7-3380

Mitch's Electrend
Sales & Service
PENSACOLA
Ph. HE 8-4363

Carlos M. Hope
Electrical Contactor
GAINESVILLE
Ph. FR 2-9867

Milky Way
Building & Heating
EUSTIS
Ph. EL 7-2367

Electric Heat
at
SURPRISINGLY LOW COST



Electrend Electric Circulating
Air Heating System

Clean, comfortable, convenient electric heat at a low cost never before possible. See the revolutionary new Electrend and all its advantages today — or just call us, we'll be glad to demonstrate its many features.

Electrend DISTRIBUTING COMPANY
4550 37th Street No.
St. Petersburg 14, Florida
Telephone HEMlock 6-8420
WRITE FOR FREE MANUAL AND A.I.A. FILE FOLDER.

News & Notes—

Appreciation . . .

The following note, which belongs to all members of the FAA, was received last month at the Executive Director's office from Mrs. SANFORD WILLIAMS GOIN, of Gainesville:

"The family and I sincerely appreciate the loving sympathy of The Florida Association of Architects as expressed by the flowers, the wires and letters and the wonderful tribute in *The Florida Architect*.—Affectionately, Mama."

New Firm at Palm Beach

Recently announced was the formation of a new firm of Architects-Engineers-Surveyors in Palm Beach. The new organization, O'NEAL, OBST & BRADY, includes HAROLD A. and EMILY V. OBST, who will continue to operate the office at 289 Hibiscus Avenue. The new firm's other office is at 214 Royal Palm Way. Engineering partners include DAVID H. BRADY, BEN F. O'NEAL and THOMAS W. CAREY.

Worth Quoting — and Worth Thinking About . . .

The following has been lifted, with appreciation, from the *News of the Georgia Chapter, AIA*, edited by WILLIAM E. WILLNER. It is especially timely, since one of the FAA's 1958 Convention "workshops" will discuss ways and means for meeting the competition of the "package dealer".

"Much has been said lately about communication — which is, after all, just another word for talking. But it will take more than talking to insure the survival of architecture as a profession in this epoch of package deals, company architects and competitive bidding for the business of those shrewd clients who price architecture as they price grain or fish.

"Since he became Chapter President, CLEM FORD has heard a good deal about unethical competition. Not wishing to run a complaint bureau, yet concerned over symptoms of professional *hara-kiri*, he thinks it is time we developed better ways for

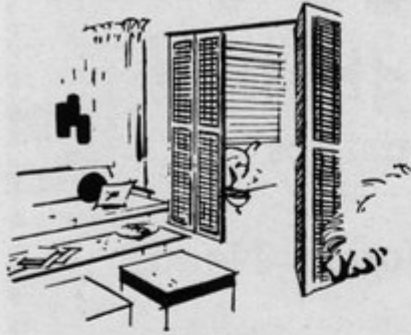
(Continued on Page 59)

THE FLORIDA ARCHITECT

TROPIX-WEVE

TRADE MARK REGISTERED

Doors and Shutters



Use Tropix-Weve Doors for:

- Space Dividers • Wardrobes
- Storage Closets • Screens
- Room Dividers



• Woven Wood



• Shoji Panel

Provide complete accessibility without requiring the floor and wall space of swinging doors . . . This new development using Slide-A-Fold door principle provides smooth, dependable action for a lifetime . . . Saves space — and creates beautiful effects at minimum cost . . . Available in Shoji, Panel and Woven Wood designs. All standard and custom sizes . . . Also produced in accordion doors, window shutters, etc. . . .

TROPIX-WEVE PRODUCTS, Inc. • 3590 N. W. 52nd St., Miami • NE 4-1749



NOW!

TILE LITE Adhesive Thinset Mortars

Made in Florida to meet Florida Needs

- Wet and Dry Grouts -

Booth No. 72 — Florida Association of Architects Convention
November 20, 21 and 22

SOUTHERN TILE-LITE, INC.—1108 Sligh Blvd., Orlando — GArden 5-7493

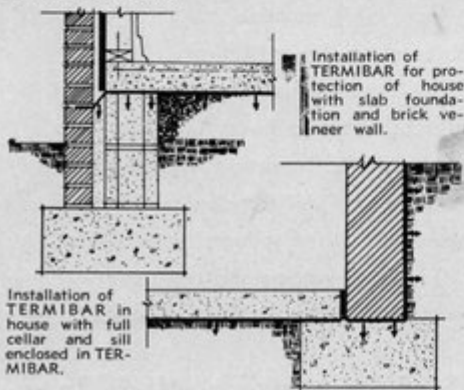


Heavy builders' felt contains 100% more Dieldrin than specified by U.S. Dept. of Agriculture for termite-treatment of ground areas.

The film of polyethylene plastic meets the vapor permeability requirements of Federal Specification UU-P-147b.

STOP TERMITES DEAD... and SEAL OUT MOISTURE with

BIRD TERMIBARTM*



Installation of TERMIBAR in house with full cellar and sill enclosed in TERMIBAR.

Installation of TERMIBAR for protection of house with slab foundation and brick veneer wall.

One easily-installed product now can solve two of Florida's most pressing construction problems . . . BIRD TERMIBAR actually kills wet-wood termites while acting as an effective vapor barrier. It's a membrane combining a 4 M film of polyethylene plastic with a layer of felt impregnated with Dieldrin, one of the most lethal and stable insecticides known . . . The plastic keeps moisture out; the Dieldrin kills the bugs — and TERMIBAR meets U.S. Govt. specs on both important counts. For complete termite protection specify that TERMIBAR CAULK be used to seal all openings around pipes and structural members . . . Full data on how to use and specify TERMIBAR is yours for the asking . . .

VISIT OUR BOOTH #39

BIRD & SON, INC.

P. O. Box 4336, Charleston Heights, S. C.



News & Notes

(Continued from Page 56)

getting business. For there are better ways than those that inspire some of the complaints—viz., offering to do the work cheaper; furnishing free sketches; or taking part in informal competitions without rules of any kind or competent juries to judge the results, so that the best man will win only by a miracle.

"The most recent competition of this sort involved parties who ought to be especially sensitive to nice ethical questions. The object of struggle, that is to say, was the commission to design a church. And 'struggle' is the word! For the four architects were asked to make two designs apiece, one in a traditional style, the other as modern as they pleased. And for all this, they were to be paid an honorarium that might possibly cover the cost of one day's real study.

"Contrast this with the approach of the usual package dealer, who may not be any great shakes at design, but who is, and has to be, a half-way intelligent business man. Does he begin by going into a frantic charette to produce beautiful perspectives? Indeed not; he knows his limitations. He concentrates instead on the kind of thing most business men understand. He attempts to find out what kind of building the client needs—sometimes before the client knows he needs a building. He hunts up a suitable piece of property, goes into costs, taxes, insurance, transportation, labor supply—all the factors that determine whether or not the project is feasible. Then he hires a draftsman to doll it up.

"We don't think much of the average result achieved by this method; but at least it is a method that works. The so-called 'unethical' methods cited above do not work. That is the real objection to them. If we expect to survive as an independent profession, we had better study the campaigns of our successful competitors, adopting their good ideas and discarding their bad ones. That seems more likely to improve matters than just wringing our hands over the bad boys who come in at the wrong end of a job and offer cut rates."

NOVEMBER, 1958



AN INVESTMENT IN *Better Living for You*

SHOWN ABOVE are the Portland Cement Association's new research and development laboratories near Chicago. They represent a \$3,000,000 investment by member companies of the Association. The research carried on in these laboratories will benefit every American citizen because it will result in longer service life and lower annual cost of concrete construction.

PCA has conducted an ever-expanding research and educational program since it was established with headquarters in Chicago in 1916. Out of this program have come many new uses for and significant improvements in cement and concrete. One of these is air-entrained concrete, a new kind of concrete which adds years to the life of concrete pavements wherever they are subjected to severe freezing and the action of chemicals used for ice and snow removal. Another is tilt-up construction, an economical method of casting walls flat and literally tilting them up into position. Still another is the development of firesafe, watertight, long-lasting, stormproof concrete construction for homes, hospitals, schools, farm structures and improvements and public buildings.

PCA's new laboratories will make possible an even more intensified research and development program. In these laboratories research engineers and chemists have the finest facilities available anywhere for cement and concrete research. As in the past, results of this research will be freely dedicated to the people of America.

PORTLAND CEMENT ASSOCIATION

227 NORTH MAIN STREET, ORLANDO, FLORIDA

A national organization to improve and extend the uses of portland cement and concrete . . . through scientific research and engineering field work

4th Annual Roll - Call --- 1957 - 1958

Listed here are the firms which have helped this Official Journal of the FAA grow during the past year. All services, materials and products which they make or sell are of a quality to merit specification. They seek your approval of what they offer; and in giving it you serve the interests of all concerned.

ADOR SALES, INC.

Fullerton, California
Gibert Viola, 610 Biscayne Bldg., Miami
Aluminum sliding glass doors.
Agency—Boylhart, Lovett & Dean, Inc., 135 S. Alvarado St., Los Angeles

ADVANCE METAL PRODUCTS, INC.

2445 N. W. 76th St., Miami
Mfgs. specialty building products.

ALPHA STUDIOS, INC.

640 Minnesota Bldg., St. Paul, Minn.
Designers stained glass, mosaic glass and marble, statuary, religious art.

ALUMINUM INSULATING CO., INC.

1050 E. 15th St., Hialeah
Distributor Alumiseal reflective and vapor barrier materials.

AMERICAN OLEAN TILES OF MIAMI INC.

1150 So. Miami Avenue, Miami
Ceramic Tile
Agency—Arndt—Preston—Chapin—Lamb & Keen, Inc., 160 No. 15th St., Phila., Penna.

ARKETEX CERAMIC CORPORATION

6 No. Walnut St., Brazil, Indiana
Ceramic glazed structural building tile.
Agency—Caldwell, Larkin & Sidener-Van Riper, Inc., Merchants Bank Bldg., Indianapolis, Indiana.

ASSOCIATED ELEVATOR & SUPPLY CO.

501 N. W. 54th Street, Miami
Pneumatic tube systems, access panels.

ATLAS ENAMELING CO., INC.

2030 No. Broadway, St. Louis, Missouri
Porcelain enamel building panels.
Agency—Flavin Advertising Agency 4 No. 8th St., St. Louis, Mo.

BIRD & SON, INC.

Box 4336, Charleston Heights, S. C.
Termibar, termite and moisture resistant vapor barrier.

BLUMCRAFT OF PITTSBURGH

460 Melwood St., Pittsburgh, Pa.
Aluminum railings, wood trimmed aluminum railing posts.

BOURNE MANUFACTURING CO.

1573 E. Larned St., Detroit, Mich.
Plastic laminate faced doors.
Agency—Sales & Merchandise Counsellors, 1010 Boubien., Detroit, Mich.

BRIGGS MANUFACTURING CO.

Warren, Michigan
Plumbing fixtures for residential, commercial and industrial use.
Agency—McManus, John & Adams, Inc., Bloomfield Hills, Michigan

A. R. COGSWELL

433 West Bay Street, Jacksonville
Architects' supplies and Reproduction service.

COQUINA CORAL, INC.

No. 1 Lincoln Rd. Bldg., Miami Beach
Coral limestone.

DAY-BRITE LIGHTING, INC.

6288 No. Broadway, St. Louis, Mo.
Lighting equipment

GEORGE DORO FIXTURE COMPANY

102-28 Florida Avenue, Jacksonville
Custom-designed interiors and fixtures.
Agency—Bacon, Hartman & Vollbrecht, Inc., Exchange Bank Bldg., St. Augustine

DUNAN BRICK YARDS, INC.

1001 S. E. 11th St., Hialeah
Decorative masonry materials.
Burr-Southern barbecue units.

DWOSKIN, INC.

Atlanta, Georgia and
4029 No. Miami Avenue, Miami
Wallpaper and wallcoverings.
Agency—Bearden-Thompson-Frankel, Inc., & Eastman-Scott, 22 8th St., Atlanta, Ga.

ELECTREND DISTRIBUTING CO.

of Florida
4550 37th St., North, St. Petersburg
Electric heating systems.

EVERSHIELD LIQUID TILE OF FLORIDA

1111 N. E. 7th Ave., Ft. Lauderdale
Finishing material.

FLAMINGO WHOLESALE DISTRIBUTORS, INC.

1002 East 27th St., Hialeah
205 North 11th St., Tampa
Robbins floor products.
Downs carpeting.

FLORIDA FOUNDRY & PATTERN WKS.

3737 N. W. 43rd St., Miami
Ornamental castings.

FLORIDA HOME HEATING INSTITUTE

1827 S. W. 8th St., Miami
Oil and gas heating.
Agency—Bevis Associates, Inc., Ingham Bldg., Miami.

FLORIDA PORTLAND CEMENT DIV.

General Portland Cement Co., Tampa
Manufacturers of cement.
Agency—R. E. McCarthy & Asso., Inc., 206 S. Franklin St., Tampa

FLORIDA POWER & LIGHT CO.

Miami, Florida
Electric utility.
Agency—Grant Advertising, Inc., 201 S. W. 13th St., Miami

FLORIDA STEEL CORPORATION

215 So. Rome Avenue, Tampa
Reinforcing steel and accessories.

FLORIDA TILE INDUSTRIES, INC.

608 Prospect St., Lakeland
Manufacturers of glazed wall tile and trimmers.

Agency—Henry Quednau, Inc.,

404 Thirteenth St., Tampa

GEORGE C. GRIFFIN CO.

4201 St. Augustine Rd., Jacksonville
"B" & "G" Aluminum windows and window walls. Mirawall panels.

HAMILTON PLYWOOD

Orlando, St. Petersburg, Ft. Lauderdale
Cabinet and paneling plywoods.
Agency—Travis Messer, Advertising, P. O. Box 7368, Orlando, Florida

HOLLOSTONE COMPANY OF MIAMI

480 Ali Baba Avenue, Opa-Locka
Precast concrete products.
INDEPENDENT NAIL & PACKING CO.
Bridgewater, Massachusetts
Fastenings.

Agency—Warner Alden Morse, P. O. Box 720, Brockton, Mas.

INTERSTATE MARBLE & TILE CO.

4000 No. Miami Avenue, Miami
Marble and ceramic tile.

KAISER MANUFACTURING, INC.

2000 Harrington, Houston, Texas
Crest tile set.
Agency—Max H. Jacobs
3323 Yoakum St., Houston, Texas

KEUFFEL & ESSER CO.

Adam & Third Sts, Hoboken, N. J.
Architectural & Engineers material.

LEAP CONCRETE, INC.

Lakeland, Florida
Prestressed concrete units.

LIFT SLAB OF FLORIDA, INC.

410 E. Beach Blvd., Hallandale
Method of construction.

LUDMAN CORPORATION

North Miami
Aluminum windows. Curtain walls.
MABIE-BELL COMPANY, THE
Greensboro, North Carolina
Mo-Sai precast facings.

MASTER BRONZE POWDER CO., INC.

Box 2429, Sarasota
Rust preventative coatings.

MATTHIESSEN & HEGELER ZINC CO.

LaSalle, Illinois
Flashings
Agency—Kenneth B. Butler & Asso.
700 14th Ave., Mendota, Ill.

MAULE INDUSTRIES, INC.

5220 Biscayne Blvd., Miami
Concrete and building products
Agency—R. K. Heady Advertising, Inc.
561 N. E. 79th St., Miami

O. O. MCKINLEY COMPANY

Indianapolis, Indiana
Metal building products, canopies, cornices and sun shades
Agency—Jim Bradford, Advertising
K of P Bldg., Indianapolis, Ind.

MIAMI WINDOW CORP.

5200 N. W. 37th Ave., Miami
Aluminum awning windows
Agency—E. J. Schaeffer & Associates
1101 N. E. 79th St., Miami

MR. FOSTER'S STORE

835 W. Flagler St., Miami
Office furniture, equipment, supplies
Agency—Miller, Bacon, Avrutis & Simons, Inc.
503 Ainsley Bldg., Miami

BENJAMIN MOORE & COMPANY

511 Canal St., New York City
 Paints and paint products
Agency—Monroe F. Dreher, Inc.
 30 Rockefeller Plaza, New York City

MOSAIC TILE COMPANY, THE

Zanesville, Ohio
 Manufacturers, ceramic tile.
Agency—Farson, Huff & Northlich, Inc.
 Terrace Hilton Bldg., Cincinnati, Ohio.

MUTSCHLER KITCHENS OF FLORIDA

2959 N. E. 12th Terrace, Oakland Park
 Design original kitchens.
Agency—Juhl Advertising Agency
 2nd at Harrison Sts., Elkhart, Ind.

PERLITE INC.

1050 S. E. 5th St., Hialeah
 Lightweight aggregate.

PORTLAND CEMENT ASSOCIATION

227 No. Main St., Orlando
 Portland cement and products.
Agency—J. Walter Thompson Co.
 410 No. Michigan Ave., Chicago, Ill.

PRESCOLITE MANUFACTURING CO.

Berkeley, Calif., Neshaminy, Penna.
 Lighting fixtures.
Agency—John O'Rourke Advertising
 Flood Bldg., San Francisco, Calif.

A. H. RAMSEY & SONS, INC.

71 N. W. 11th Terrace, Miami
 Architectural woodwork and supplies.
 Woodlife.

RILCO LAMINATED PRODUCTS INC.

155 Washington St., Newark, N. J.
 Designers, fabricators wood products
Agency—E. T. Holmgren, Inc.
 National Bank Bldg., St. Paul, Minn.

SHAFFER SIGN SERVICE, INC.

500 Datura St., West Palm Beach
 Porcelain enameling. Mfgs. signs.

SOUTHERN TILE-LITE, INC.

1108 Sligh Blvd., Orlando
 Thinset mortars.
Agency—A. P. Phillips, Co.
 1045 Legion Place, Orlando.

STERLING EQUIPMENT MFG. CO.

2301 No. Miami Avenue, Miami
 Food service equipment fabricators.
Agency—Harris & Company Adv. Inc.
 DuPont Plaza Center, Miami.

STEWART-MELLON COMPANY

945 Liberty St., Jacksonville
 2210 Alden Road, Orlando
 Tile, marble, terrazzo,
 composition floors.

STYLON

1400 N. W. 54th St., Miami
 3813 Grand Central Ave., Tampa
 815 N. W. 8th Ave., Ft. Lauderdale
 Ceramic tile.

THOMPSON DOOR COMPANY, INC.

5663 N. W. 36th Ave., Miami
 Fine quality doors.

TIFFANY MANUFACTURING CO.

3640 N. W. 41st St., Miami
 Bathroom cabinets.
Agency—Louis K. Steiner & Assoc., Inc.
 1415 S. W. Flagler Terrace, Miami.

TIFFANY TILE CORP.

500 N. W. Shore Drive, Port Tampa
 Ceramic Tile Manufacturers.
Agency—Bill Simpson, Jr., Adv., Inc.
 2306 Gray St., Tampa

TROPIX-WEVE PRODUCTS, INC.

3590 N. W. 52nd St., Miami
 Manufacturers woven wood, "Shoji"
 and louver panel doors.

T-SQUARE MIAMI BLUEPRINT CO, INC.

635 S. W. 1st Ave., Miami
 Photo copies—chromastats and
 architectural—engineering supplies.

UNIT STRUCTURES, INC.

Peshtigo, Wisconsin
 Glued laminated timbers.
Agency—Williams Advertising, 213 S.
 Washington St., Green Bay, Wisc.

UNITED STATES PLYWOOD CORP.

55 West 44th St., New York City
 Interior and Exterior plywood.
Agency—Kenyon & Eckhardt, Inc.
 247 Park Ave., New York City

VERMICULITE ROOF DECK**APPLICATORS ASSOCIATION**

Atlanta, Georgia
 Roof decks and insulation.

F. GRAHAM WILLIAMS CO.

1690 Boulevard, N.E., Atlanta, Georgia
 Masonry building materials, products.

WOODCO CORP.

600 Fields Ave., Jacksonville
 Wood awning windows.
Agency—Crisp & Harrison
 502 O'Reily Bldg., Jacksonville

R. H. WRIGHT & SONS

1050 N. E. 5th Terr., Ft. Lauderdale
 Precast, prestressed concrete products
Agency—Peter Larkin
 3132 N. E. 9th St., Ft. Lauderdale

Can Architects in Florida

Specify Your Products?

If they CAN — if you offer Quality to give the Service architects demand — they want to know about it. And the best place to tell them is in THEIR VERY OWN MAGAZINE.

That's THE FLORIDA ARCHITECT — the only magazine of its kind in the State. It's the Official Journal of The Florida Association of Architects, representing the ten Florida Chapters of the AIA. It's wholly owned by the FAA, and goes monthly to every architect registered in the State . . .



The Florida Architect

302 Dupont Plaza Center, Miami 32 FR 1-8331

Owned, read and used
 by the men who speci-
 fy products

FOR WALL BRACKETS

PRESCOLITE IS PREFERRED

HERE'S WHY...

"DieLux"
DIECAST CONSTRUCTION
THROUGHOUT

Thermal
shock and
vibration
proof



Beautiful,
hand-blown,
seamless
white opal
enclosing globes

WB-25
150W
WALL
BRACKET

Wide selection of styles to choose from.

WRITE FOR OUR CATALOG

PRESCOLITE MANUFACTURING CORP.

2229 4th St., Berkeley 10, Calif.
Easton Road, Neshaminy, Penna.

A. R. COGSWELL

"SINCE 1921"

THE BEST
in
Architects' Supplies

Complete Reproduction
Service

433 W. Bay St.

Jacksonville, Fla.

EXPO' in Brussels . . .

(Continued from Page 14)


sible), to reach the only exit, one must struggle through a labyrinth of booth-after-booth, ad nauseam. (Inadequate means of egress are noted in several of the larger pavilions, particularly in the multi-storied Holy See restaurant, Civitas Dei.)

Among the small buildings, that of the Phillips Lamp Society of Holland, designed by LE CORBUSIER, is most interesting. It resembles the shell of a prehistoric crustacean, or, several wigwams side by side. The strange framework is covered with precast concrete slabs, warped to the contours of the hyperbolic paraboloid exterior surface. It houses an eight minute show entitled "Light and Sound, an Electronic Poem." I thought the building ugly, static, and not representative of good Le Corbusian architecture.

Of course, it is impossible to describe each building, let alone visit all the pavilions in only five days at Brussels. There are many other structures of interest, such as the Atomium, designed by A. WATERKEYN and architects A. and J. POLAK. A permanent structure, it is impressive, effective, and well detailed. The planning of the Fair is excellent, though an often heard criticism is that it is too compact and crowded. While this is true in part, the clarity of the plan and its very compactness make for ease of circulation. Always, too, there is a different vista, a unique detail, a grand panorama, and always people, people, people, walking, eating, resting, or sightseeing, to lend scale to these creations, which, although they may seem to be fantastic abstractions of prehistoric monsters, are really shapes resulting from mid-twentieth imagination and research. As an architectural student at Columbia University at the time of the New York World Fair of 1939-1940, one of our design critics remarked that the buildings at the New York World Fair would make architecture in the immediate years following that exposition seem dull and static; furthermore, that exposition architecture might be as much as 20 years ahead of its time.

Certainly this can be true of Expo' 58.

TRUE AS A RIGHT ANGLE

Benjamin ®
Moore paints

BENJAMIN MOORE & CO.

New York	•	Los Angeles	•	Toronto
Chicago	•	Jacksonville	•	Montreal
St. Louis	•	Cleveland	•	Vancouver
Denver	•	Carteret	•	Houston
		Newark		

DO WE HAVE
YOUR CORRECT
MAIL ADDRESS?

If you are not receiving your copies of this FAA magazine, it is probably because your address in our stencil files is incorrect We try hard to keep abreast of all address changes. You can help us do so by following these suggestions:

1...If you change jobs or move your home to another location, get a change-of-address card from your local Post Office and mail it to us.

2...If you join an AIA Chapter, tell us about it, listing your current address. Busy Chapter secretaries sometimes forget to file changes promptly.

Don't let yourself become an "unknown", a "moved", or a "wrong address".....

ADVERTISER'S INDEX

Advance Metal Products, Inc. . . . 52
 Aluminum Insulating Co., Inc. . . . 36
 American Olean Tiles of Miami . . . 3
 Arketex Ceramic Corporation . . . 28

 Bird and Son, Inc. 58
 Blumcraft of Pittsburgh 41
 Briggs Manufacturing Co. 10

 A. R. Cogswell 62
 Dunan Brick Yards 3rd cover
 Electrend Distributing Co. 56
 Florida Foundry & Pattern Works . . 56
 Flamingo Wholesale Distributors, Inc. 20 and 21
 Florida Home Heating Institute . . . 64
 Florida Portland Cement 42
 Florida Power & Light Co. 54
 Florida Steel Corporation 6

 George C. Griffin Co. 16
 Hamilton Plywood 53
 Hollystone of Miami 18

 Independent Nail & Packing Co. . . . 9
 Intersate Marble & Tile Co. 7

 Kaiser Manufacturing Co. 8

 O. O. McKinley Company, Inc. . . . 51
 Mabie-Bell Company, Inc. 24
 Mattheissen & Hegeler Zinc Co. . . . 46
 Maule 35
 Miami Window Corporation . . 4th cover
 Mr. Foster's Store 50
 Mosaic Tile Co., The 4
 Benjamin Moore & Co. 62

 Perlite, Inc. 48
 Portland Cement Assoc. 59
 Prescolite 62

 A. H. Ramsey & Sons, Inc. 15
 Rilco Corp. 55

 Southern Tile-Lite, Inc. 58
 Steward Mellon Co. 47
 Stylon 22

 T-Square Miami Blueprint Co. . . . 52
 Tiffany Manufacturing Co. 1
 Tiffany Tile Corp. opposite page 8
 Tropix Weve Products 57

 United States Plywood 5
 F. Graham Williams Co. 63
 R. H. Wright 2nd cover

NOVEMBER, 1958

F. GRAHAM WILLIAMS, Chairman

JOHN F. HALLMAN, JR., Pres. & Treasurer JACK K. WERK, Vice-Pres. & Secretary
 MARK P. J. WILLIAMS, Vice-Pres. FRANK D. WILLIAMS, Vice-Pres.



ESTABLISHED 1910

F. GRAHAM WILLIAMS CO.

INCORPORATED

"Beautiful and Permanent Building Materials"

TRINITY 6-1084
 LONG DISTANCE 470

**ATLANTA
 GA.**

1690 BOULEVARD, N. E.
 OFFICES AND YARD

- | | |
|----------------------------|----------------------------|
| FACE BRICK | STRUCTURAL CERAMIC |
| HANDMADE BRICK | GLAZED TILE |
| "VITRICOTTA" PAVERS | SALT GLAZED TILE |
| GRANITE | UNGLAZED FACING TILE |
| LIMESTONE | HOLLOW TILE |
| BRIAR HILL STONE | ALUMINUM WINDOWS |
| CRAB ORCHARD FLAGSTONE | ARCHITECTURAL BRONZE |
| CRAB ORCHARD RUBBLE STONE | AND ALUMINUM |
| CRAB ORCHARD STONE ROOFING | ARCHITECTURAL TERRA COTTA |
| PENNSYLVANIA WILLIAMSTONE | BUCKINGHAM AND VERMONT |
| "NOR-CARLA BLUESTONE" | SLATE FOR ROOFS AND FLOORS |

We are prepared to give the fullest cooperation and the best quality and service to the ARCHITECTS, CONTRACTORS and OWNERS on any of the many Beautiful and Permanent Building Materials we handle. Write, wire or telephone us COLLECT for complete information, samples and prices.

Represented in Florida by

LEUDEMANN and TERRY

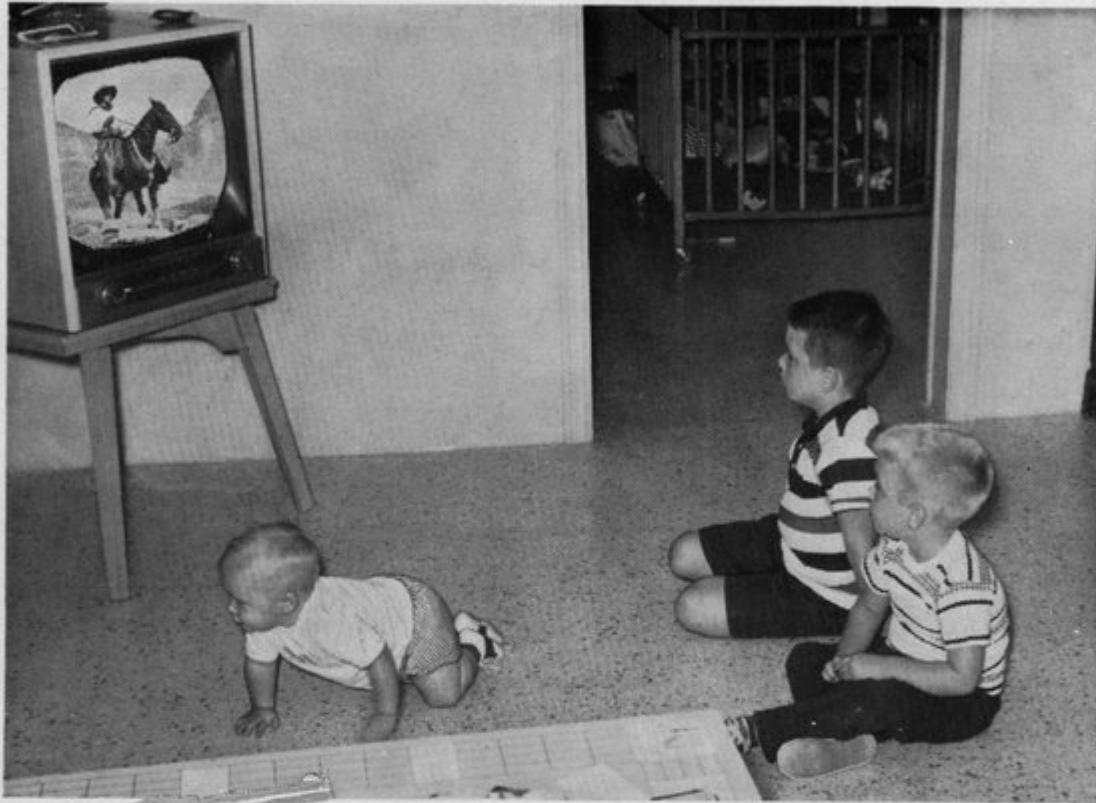
3709 Harlano Street

Coral Gables, Florida

Telephone No. HI3-6554
 MO 1-5154

During Cold Snaps
FLORIDA HOMES
CAN BE
HAPPIER HOMES!

Let's face it...  ...the **EVANSES** did!



"OK, cowboys — start ridin'!"

These three boys live at 1064 N. Haverhill Rd., West Palm Beach. Their mother, Mrs. John H. Evans tells how they fared during the chilly weather last winter:

"Last fall we installed a central fuel-type heating system. During the winter's extended cold snaps the boys were able to enjoy TV and play on the floor because our thermostatically controlled furnace maintained an even temperature all through the house. Our central heating system insured the health and comfort of the whole family."

Now — all over Florida . . . in newspapers and magazines . . . on TV and radio . . .

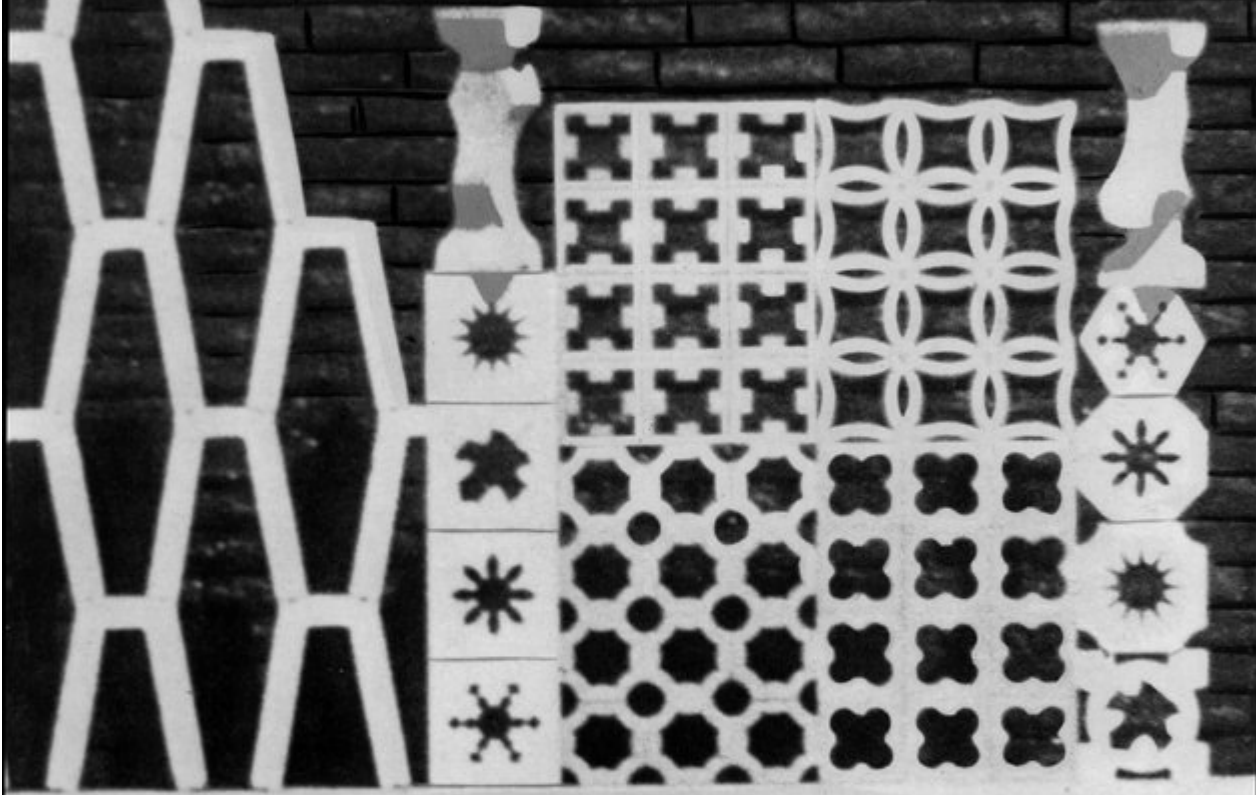
NEIGHBORS ARE TELLING NEIGHBORS WHY CENTRAL FUEL-TYPE HOME HEATING IS A "MUST" IN FLORIDA HOMES.

—◆—
This concentrated fall advertising campaign will help to assure acceptance of your recommendations for central home heating.

FLORIDA **HOME**  **HEATING** INSTITUTE

1827 S. W. 8th STREET, MIAMI

Three Ingredients...



Concrete, Imagination and Know - How ...

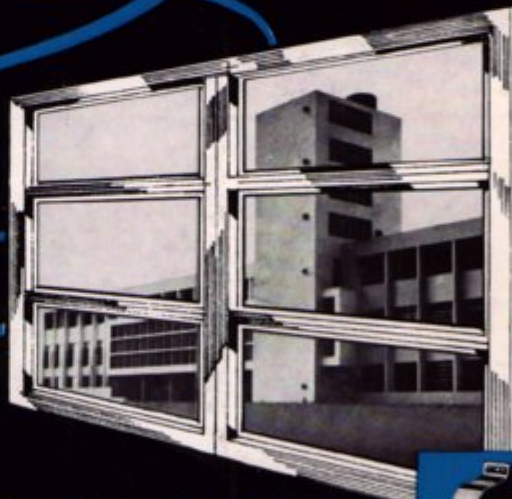
DUNAN

BRICK

Specialists in Decorative Masonry Materials

DUNAN BRICK YARDS, INC., Miami, Florida — Phone TU 7-1525

***PROVEN
ADAPTABILITY**



MIAMI ALUMINUM WINDOWS



Remember — this M-operator is guaranteed for the life of the window.

Fenestration is a powerful element of architectural design, and Miami Window products provide the completely versatile means for solving fenestration problems in any type of building. From a cottage to a cathedral they assure high, economical performance based on efficient engineering and quality-controlled production.

***** *Miami Windows are in world-wide use to meet every fenestration need. Ask for details.*



miami window corporation

P.O. BOX 877, INTERNATIONAL AIRPORT BRANCH, MIAMI 48, FLORIDA