

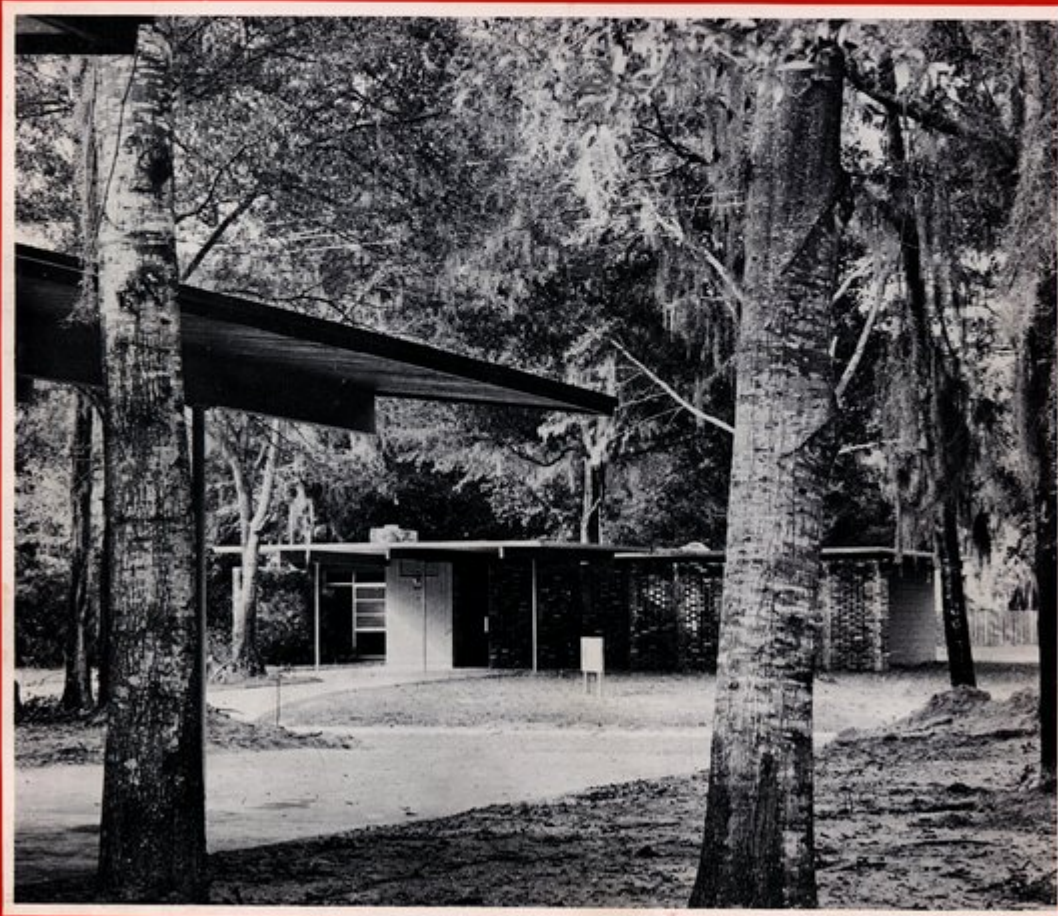
The



March, 1959

Florida Architect

OFFICIAL JOURNAL of the FLORIDA ASSOCIATION OF ARCHITECTS of the AMERICAN INSTITUTE OF ARCHITECTS



In This Issue... **FAA Honor Award Houses... What's Wrong With Specifications?... Architect's Office in Ft. Lauderdale... FAA Committee Personnel and Assignments**

V. 9
#3

MARKOWITZ BROS., INC.

MECHANICAL CONTRACTORS

*HONORS the ARCHITECT
of the new*

Diplomat Hotel
and Country Club



NORMAN M. GILLER, A.I.A.

A native-born Floridian, Norman Giller's brilliant conceptions have contributed much to the growing horizon of his state. One of the outstanding achievements of his career is the Diplomat East and West, a magnificent luxury hotel and country club in Hollywood, comprising 550 guest rooms . . . and incorporating many new architectural and engineering ideas.

Markowitz Bros., Inc. is proud to have been associated on this project as mechanical contractor with responsibility for all plumbing and heating.

*THE BIG
ONES CALL
FOR THE
BIG . . .*

Markowitz Bros., Inc.

5600 N.E. 4th Ave., Miami • PLaza 1-2411

Heating • Plumbing • Air Conditioning • Process Piping

**MECHANICAL
CONTRACTORS**

GLAZED CERAMIC TILE • MADE IN FLORIDA

FLORIDA TILE



... offers architects a Florida-made ceramic tile of the highest quality in a wide range of popular colors. Sample available upon request from the distributors' showrooms listed below.

DURABILITY • ECONOMY • QUALITY • BEAUTY • FLEXIBILITY

FLORIDA TILE



Florida Tile Industries, Inc.
608 Prospect Street, Lakeland, Florida

DISTRIBUTORS:

Atlanta — Tile Contractors' Supply
Columbia, S. C. — Renfrow Dist. Company, Inc.
Ft. Lauderdale — Miami Tile Dist., Inc.
Ft. Myers — Gulf Tile Dist.
Jacksonville — Miami Tile Dist., Inc.
Melbourne — East Coast Tile and Terrazzo Supply
Miami — Miami Tile Dist., Inc.
Sarasota — Palm Tile Dist.
St. Petersburg — Tile Dist., Inc.
West Palm Beach — Sikes Tile Dist.
Winter Park — South East Tile Dist., Inc.

The Florida Architect

OFFICIAL JOURNAL OF THE FLORIDA ASSOCIATION OF ARCHITECTS

In This Issue ---

Junior College Planning Conference Slated for April 10-11 at Gainesville	4
April Board Meeting to Include P/R Workshop	4
Site of FAA's 1959 Convention	6
January Board Meeting Set Attendance Record	9
44th Convention's Architectural Awards	11
In This Project People Come First <i>FAA Honor Award, Robert C. Broward, Architect</i>	12
The FAA's 1959 Committee Structure and Personnel	16-18
Vertical Committee Assignments	16-17
Non-vertical Standing Committee Assignments	18
New Date Set for Regional Conference Cruise	18
Message From The President <i>By John Stetson, President, FAA</i>	19
Workshop For A Professional <i>Office of William G. Crawford, Architect</i>	20
What's Wrong With Specifications?	23
News and Notes	26
State Board Grants 59 New Registrations	29
Advertisers' Index	30

F.A.A. OFFICERS — 1959

John Stetson, President, P. O. Box 2174, Palm Beach
Francis R. Walton, Secretary, 142 Bay Street, Daytona Beach
Joseph M. Shifalo, Treasurer, Suite 8, Professional Center, Winter Park
Robert H. Levison, First Vice-President, 425 So. Garden Ave., Clearwater
Verner Johnson, Second Vice-President, 250 N. E. 18th St., Miami
Arthur Lee Campbell, Third Vice-President, 115 So. Main Street, Gainesville

Roger W. Sherman, Executive Director, 302 Dupont Plaza Center, Miami 32.

DIRECTORS

IMMEDIATE PAST PRESIDENT: H. Samuel Krusé; BROWARD COUNTY: Robert E. Hall, Robert E. Hansen; DAYTONA BEACH: David A. Leete; FLORIDA CENTRAL: Eugene H. Beach, Anthony L. Pullara, Robert C. Wielage; FLORIDA NORTH: Turpin C. Bannister, FAIA, M. H. Johnson; FLORIDA NORTH CENTRAL: James A. Stripling; FLORIDA NORTH WEST: Hugh J. Leitch; FLORIDA SOUTH: James L. Deen, Herbert R. Savage, Wahl, J. Snyder, Jr.; JACKSONVILLE: Robert C. Broward, A. Eugene Cellar; MID-FLORIDA: Robert B. Murphy, Rhoderic F. Taylor; PALM BEACH: Donald R. Edge, Frederick W. Kessler.

THE COVER

Robert C. Broward, of Jacksonville, received the only award given in the Merchant Builder category of the 44th Annual FAA Convention's exhibit of architects' work. The Honor Award was given for seven houses designed for the new Laurel Grove development in Orange Park, near Jacksonville. The illustration suggests how the project has been planned to provide good residential design in a setting wherein the natural beauty of the landscape has been preserved to the greatest possible degree. The story of this development starts on page 12.

The FLORIDA ARCHITECT, Official Journal of the Florida Association of Architects of the American Institute of Architects, is owned by the Florida Association of Architects, Inc., a Florida Corporation not for profit, and is published monthly at Rm. 302 Dupont Plaza Center, Miami 32, Florida; telephone FR 1-8331. Editorial contributions, including plans and photographs of architects' work, are welcomed but publication cannot be guaranteed. Opinions expressed by contributors are not necessarily those of the Editor or the Florida Association of Architects. Editorial material may be freely reprinted by other official AIA publications, provided full credit is given to the author and to The FLORIDA ARCHITECT for prior use. . . . Advertisements of products, materials and services adaptable for use in Florida are welcomed, but mention of names or use of illustrations, of such materials and products in either editorial or advertising columns does not constitute endorsement by the Florida Association of Architects. Advertising material must conform to standards of this publication; and the right is reserved to reject such material because of arrangement, copy or illustrations. . . . Accepted as controlled circulation publication at Miami, Florida.

Printed by McMurray Printers

ROGER W. SHERMAN, AIA — Editor
VERNA M. SHERMAN
FAA Administrative Secretary

VOLUME 9
NUMBER 3 1959

THE FLORIDA ARCHITECT



First Methodist Church, Coral Gables. Dean Parmalee, AIA, architect.

The Lurking Villain is M-O-I-S-T-U-R-E ... the major cause of exposure-damage to wood

Even indoors, absorption of moisture by untreated wood can cause swelling, warping, surface-checking and end-splitting — each the start of progressive deterioration . . . To guard against such moisture-damage, specify that *all* woodwork in *any* building be WOODLIFED, preferably by dipping or flooding . . . WOODLIFE's "anti-wicking" action prevents moisture seepage; and by penetrating the surface with an invisible, water-repellent solution, WOODLIFE coats wood cells and makes protection last and last and last.



Ingredients in Woodlife also protect wood from decay, fungus, stain and attack by wood-eating insects. They act as a poison to render wood immune from attack by the micro-organisms and insects which feed on untreated wood.



A. H. RAMSEY AND SONS, INC.

71 N. W. 11th TERRACE, MIAMI - - FRANKLIN 3-0811

Service to Florida's west coast is from our warehouse at Palmetto . . . Call Palmetto 2-1011

Serving Florida Architects and Builders...

- REINFORCING STEEL
- STRUCTURAL STEEL
- COMPLETE ENG. & FAB. FACILITIES
- BAR JOISTS
- ALUM. & STEEL SASH
- STEEL DOORS & FRAMES
- MISC. IRON AND ALUMINUM
- ORNAMENTAL IRON
- STEEL ROOF DECK
- STEELTEX
- HIGHWAY PRODUCTS
- CORRUFORM
- SONOTUBES
- METAL CULVERTS
- POLYETHYLENE PLASTIC FILM

**FLORIDA STEEL
CORPORATION**

"Steel when you want it"

TAMPA 8-0451

ORLANDO Garden 2-4539

MIAMI Newton 4-6576

JACKSONVILLE ELgin 5-1662

Junior College Planning Conference Slated for April 10-11 at Gainesville

April 10 and 11 have been selected as the dates for a two-day conference on Junior College planning to be held in Gainesville. Sponsors of the meeting — officially designated as "Florida Community Junior College Facilities Conference" — are the FAA, the State Department of Education and the U/F College of Architecture and Fine Arts, in cooperation with the Florida Association of Public Junior Colleges, the U/F College of Education and the College of Education of FSU.

The major purpose of the conference is to provide an opportunity for architects and others interested in and concerned with junior college buildings to gain fuller knowledge and understanding of the overall needs of this specialized type of educational facility. Educators as well as architects will be welcome, according to Dr. James L. Wattenbarger, Director of the Division of Community Junior Colleges of the State Department of Education. Sponsors of the Conference view it as an opportunity for both architects and educators to meet on common ground in discussing some of the technical aspects of junior college planning and in exploring possibilities for the full development of this comparatively new educational facility.

Toward that end a program has been mapped to include three general themes: 1) Responsibilities and Potentialities of Florida's Public Community Junior Colleges; 2) Site Development and Master Campus Planning; 3) Planning Requirements and Problems. Under these headings will be considered such specific subjects as junior college surveys relative to both curricula and buildings; principles of campus planning; cost considerations and data; and space utilization.

As now planned, attendance at the Conference will entail a small registration fee which will be used to defray the costs of reporting the various sessions and panel discussions. It is hoped that results of this two-day meeting can be made available to

those attending in published form.

The Conference program took form as a result of a day-long meeting in Gainesville January 26 at the U/F College of Architecture and Fine Arts. Attending this meeting were JAMES E. GARLAND, representing the FAA on the Conference Steering Committee, E. ELLIS DUNCAN, chairman of the FAA Committee on School Planning, ROGER W. SHERMAN, FAA Executive Director, A. EUGENE CELLAR, SIDNEY R. WILKINSON, FREDERICK W. KESSLER, EDGAR S. WORTMAN, also A. ROBERT BROADFOOT, JR., and FORREST R. COXEN, State School Architect. Representing the College of Architecture and Fine Arts were Dean TURPIN C. BANNISTER and JAMES T. LENDRUM. Present from the State Department of Education were Dr. CARROLL W. MCGUFFEY, School Plant Administrator, and Dr. JAMES L. WATTENBARGER. Other educators attending the meeting included Dr. LEON HENDERSON, Dr. R. L. JOHNS, Dr. EUGENE LAWLER, Dr. JOSEPH M. LEPS, Dr. B. R. TILLEY and Dr. ROBERT L. FAIRING.

A Conference Steering Committee to work out final details for the April meeting was named. Chairman is Dr. Wattenbarger; and members include James E. Garland, Dr. Bannister, Dr. Henderson, Dr. Lawler and Dr. McGuffey.

April Board Meeting to Include P/R Workshop

Attending the Jacksonville FAA Board meeting was LESTER N. MAY. And he left with the assurance that the April meeting of the Florida North Chapter, of which he is president, will become a highlight in annals of the Chapter. As a matter of fact, the affairs of architects will nearly, if not quite, take over Gainesville during the week of April 20. That is the week of the architectural students' Home Show, sponsored and directed by the AIA Student Chapter at the U/F.

(Continued on Page 6)

THE FLORIDA ARCHITECT



WHY
tiffany
TILE IS BETTER!

There are so many reasons for the superiority of Tiffany Tile
... not just claims but down-to-earth practical advantages.
The Tiffany organization is headed by a Master Tile Setter,
truly a tile craftsman who is thoroughly
familiar with every phase of the designing,
manufacturing and installation of ceramic tile.

For example... **MORE PRACTICAL DIMENSIONS**

Tiffany wall tile measures 4 $\frac{3}{8}$ " x 4 $\frac{3}{8}$ " - $\frac{1}{8}$ " larger than most. A small difference but mighty important to you. 5% to 7% greater coverage.. Fits standard bathtubs without time-consuming cuts. Eleven courses gives a wainscot height of 54 $\frac{1}{2}$ " ... again without cutting. Sill tile is available in the 5 $\frac{1}{8}$ " x 6" size to fit standard sills.

Tiffany's more practical dimensions cut installation time, reduce costs ... but most important, result in a more uniform and attractive tile surface.

Available in rectangular design or Mecca ... a Tiffany exclusive. Tested and approved by independent testing laboratories. Your inquiry cordially invited.



* Architect—Robert Wielage, A.I.A.
of Wielage & Eaton, Architects
Tampa, Florida

"America's finest ceramic tile"

TIFFANY TILE CORPORATION • 500 N. WEST SHORE DRIVE • PORT TAMPA, FLORIDA
MARCH, 1959



BROWN & GRIST

**ALUMINUM
AWNING WINDOWS**

**and
WINDOW WALLS**

**PROVED BEST FOR
SCHOOLS • HOSPITALS
HOTELS • OFFICES**

**Heavier Sections
Stronger Alloys
No Cranks or Gears
Simple, Push-out Operation
CUSTOM SIZES**

**FOR ADDITIONAL
INFORMATION IN YOUR
LOCALITY — CALL:**

Pensacola . . . (Call Jax)
Tallahassee . . . Al Yates

Jacksonville . . . Geo. Griffin
Daytona Beach . . . Bob Gall
Orlando . . . (Call Jax)

Ocala Van Akin
Tampa Doug LaHayne

Palm Beach . . . Ed Kader
Miami Ed Henderson

SWEET'S WINDOWS 17a-Br
CATALOGS WINDOW WALLS 3a-Br
Factory, Warwick, Virginia

FLORIDA SALES REPRESENTATIVE

GEORGE C. GRIFFIN

P. O. Box 5151
Jacksonville, Florida

April Board Meeting . . .

(Continued from Page 4)

In addition, the FAA's P/R Committee is planning to stage a two-day "Workshop" session on April 23 and 24, just prior to the Board meeting scheduled for the 25th. The workshop idea is the first of a series of such affairs planned to be held in conjunction with Board meetings and was proposed at the Board's January meeting by EDWARD G. GRAFTON, Florida South Chapter president, who is a member of the National AIA P/R Committee. He and ROY POOLEY, FAA P/R Chairman, are now working out plans for the program with the AIA'S P/R counsel, ROBERT H. DENNY, in Washington. Denny and EDWIN B. MORRIS, JR. of the Octagon staff will conduct the workshop session.

Though the two-day meeting will be largely an instructional session for Chapter P/R men, presidents and secretaries will be urged to attend. And President Stetson has stated that any FAA member from any Chapter will be welcomed also. Dean TURPIN BANISTER has offered full cooperation of

his department; and it is likely that the workshop will be held in one of the architectural college buildings. Details will be released later for publication in the April issue of *The Florida Architect*.

The meeting of the Florida North Chapter will be held Saturday night, April 24. All FAA Board members have been invited to attend.

Decidedly worth quoting is this paragraph from the News of the Georgia Chapter, edited by WILLIAM E. WILLNER.

"So far the Public Relations Committee has never suggested a free coffee hour, but they have some other ideas they'd like us to mention. They think you should have an office brochure of jobs done, film slides with a viewer and a scrapbook — all within easy reach. And, of course, a display of your work in your office. These are part of what they mean when they ask, 'Does your office have available adequate tools to explain the Architect's services to the client?' You are on the right track if you can answer 'Yes'."

Site of FAA's 1959 Convention . . .



The new Robert Meyer Hotel in Jacksonville will be the site of the FAA's 45th Annual Convention scheduled for November 12, 13 and 14, 1959. Hosts to the Convention will be the Jacksonville Chapter; and plans now being formulated suggest that the program will be uniquely varied and full of inspirational value. The stated theme is "Architects' Omnibus". Walter B. Schultz is the Chapter's Convention Chairman. His committee will be named shortly.

THE FLORIDA ARCHITECT

8 Reasons Why



720-ROOM WOMEN'S DORMITORY
Designed by Architect Robert M. Little, Miami, Florida
Engineering by Peabody & Company, Coral Gables, Florida

UNIVERSITY OF MIAMI USES

SelectTemp
TRADE MARK

Ultra-Modern Steam Heating System

1. **THERMOSTAT IN EACH ROOM** — Temperature can be varied in every room to fit personal preference of occupants.
2. **LOW FUEL COST** — Temperature easily reduced in unused rooms. Eliminates overheating.
3. **LOW INITIAL COST** — No other system can be so easily installed in either new or old construction. Small soft copper tubing (1/4-inch I. D.) carries steam to individual room heater units. Return lines are 1/8-inch. Substantial savings in installation costs.
4. **AUTOMATICALLY BALANCED** — No special adjustments of dampers, valves or orifices required to balance heating system. Each unit continuously regulates heat needed for each room. Automatically compensates for external heat sources such as solar heat, without affecting temperatures of other rooms.
5. **MODULATED HEAT** — Air circulation is continuous. Both temperature and volume of air are automatically modulated as required to offset heat loss from each room.
6. **NO POWER COST** — No electricity required to operate circulating fans. Non-electric thermostats; no wiring.
7. **FILTERED, CIRCULATED AIR** — Individual room circulation prevents transmission of odors and bacteria from other rooms. Air is cleaned by a spun-glass filter in each room unit. Filtered outside air can be introduced if desired.
8. **BOILER LOCATION** — Does not require centrally located heating plant. Boiler can be placed in any desired location, with proper distribution of heat to every room.

SelecTemp is the ideal heating system for homes, office buildings, hotels, motels, churches, hospitals, etc. Write for folder showing case histories and specifications.

We'll gladly help you engineer your next installation.

WRITE OR PHONE FOR COMPLETE INFORMATION

TAMCO SUPPLY COMPANY

FLORIDA'S LEADING SUPPLIERS TO THE GAS INDUSTRY

1302 Grand Central Ave.

Phone 8-3141

Tampa, Florida

MARCH, 1959

7

CHROMASTATS . . . Photo Copies in Full Color - at amazingly low cost



HOLY NAME HOSPITAL & MEDICAL CENTER
AROX ASSOCIATES ARCHITECTS ATLANTA

This engraving was made directly from an 11 by 18-inch full-color CHROMASTAT which faithfully reproduced all the colorful technique of Joseph N. Smith, III, AIA, who executed the original rendering. This was approximately 20 by 40-inches. Note how clearly all details and color values have been maintained — even after two reproductions and two reductions in size.

- In the accurate presentation of your design concepts color is king! Only in full color can the complete range of those concepts be shown — and with CHROMASTAT photo reproductions all details are maintained in all their relationships. Colors are clean and brilliant as in the original, the definition sharp, with every tone, every depth and highlight present . . . CHROMASTATS can be processed in three days from any type of rendering and in sizes from 8 by 10-inches to 20 by 30-inches. Costs are amazingly low — for example, an 8 by 10-inch CHROMASTAT costs little more than a standard black and white photo . . .



SQUARE MIAMI *Blue Print Co., Inc.*

635 S. W. First Avenue, Miami 32.
Phone: FRanklin 9-4501

January Board Meeting Set Attendance Record

If numbers and the size of the agenda are indications, the FAA's 1959 Administration is off to a rousing start. All but one of Florida's ten AIA Chapters were represented; and the meeting was also attended by a number of Chapter presidents as well as by several interested members of the Jacksonville Chapter

The first meeting of the 1959 FAA Board of Directors was held too late in January to report it in the February issue of *The Florida Architect*. It took place in the Roosevelt Hotel at Jacksonville on January 24, was attended by 43 people and disposed of an agenda containing 26 items to set a new high for both attendance and activity. CLINTON GAMBLE, present as the AIA Regional Director, spotlighted the FAA's rapid growth by commenting that this Board meeting had drawn an attendance greater than that registered for many FAA annual conventions during the last ten years.

The evening before, most Board members had attended a spirited meeting of the Jacksonville Chapter—also well attended by a vigorously vocal membership. In opening the Board's meeting FAA President JOHN STETSON pointed out that a custom had started which he hoped would grow into a firm policy of future FAA administrations. Each Board meeting this year, he said, would be held in conjunction with a Chapter meeting, with the "Host Chapter" membership invited to attend the Board meeting. Before the meeting adjourned, the following itinerary had been approved: April, Chapter meeting April 24, Board meeting April 25, with Gainesville the place, Florida North Chapter the hosts. The June meeting will be in Palm Beach, with the Palm Beach Chapter hosting a party on the preceding evening. In September the Board will meet in Tallahassee with the Florida North Central Chapter; and the pre-convention meeting in November will again be held in Jacksonville, where the local Chapter will act as hosts for the 45th Annual FAA Convention as well as the FAA Board.

The President reported the resignation as First Vice-President of WILLIAM B. HARVARD, from the FAA's Central District. Nominations to fill this vacancy included ROBERT H.

LEVISON, ARCHIE G. PARISH, ERNEST T. H. BOWEN, II, and ROBERT B. MURPHY. In accordance with By-Law procedure, the Board balloted and elected ROBERT H. LEVISON, currently a second-term president of the Florida Central Chapter, to fill the office.

Directors approved the following as named by President Stetson as members of the Board's Executive Committee: H. SAMUEL KRUSE, immediate past president; ROBERT H. LEVISON, first vice-president; VERNER JOHNSON, second vice-president; ARTHUR LEE CAMPBELL, third vice-president; FRANCIS H. WALTON, secretary; JOSEPH M. SHIFALO, treasurer, and CLINTON GAMBLE, AIA Regional Director and a member of the Broward County Chapter.

Also appointed, was a Florida Region Committee to work as a liaison with the Regional Director in coordinating plans and By-Law changes as may be necessary to permit Florida to assume full AIA regional status in



Robert H. Levison of Clearwater was elected by the FAA Board as the FAA's First Vice President to fill the one-year vacancy created by the resignation of William B. Harvard. He is now serving a second term as the president of the Florida Central Chapter.

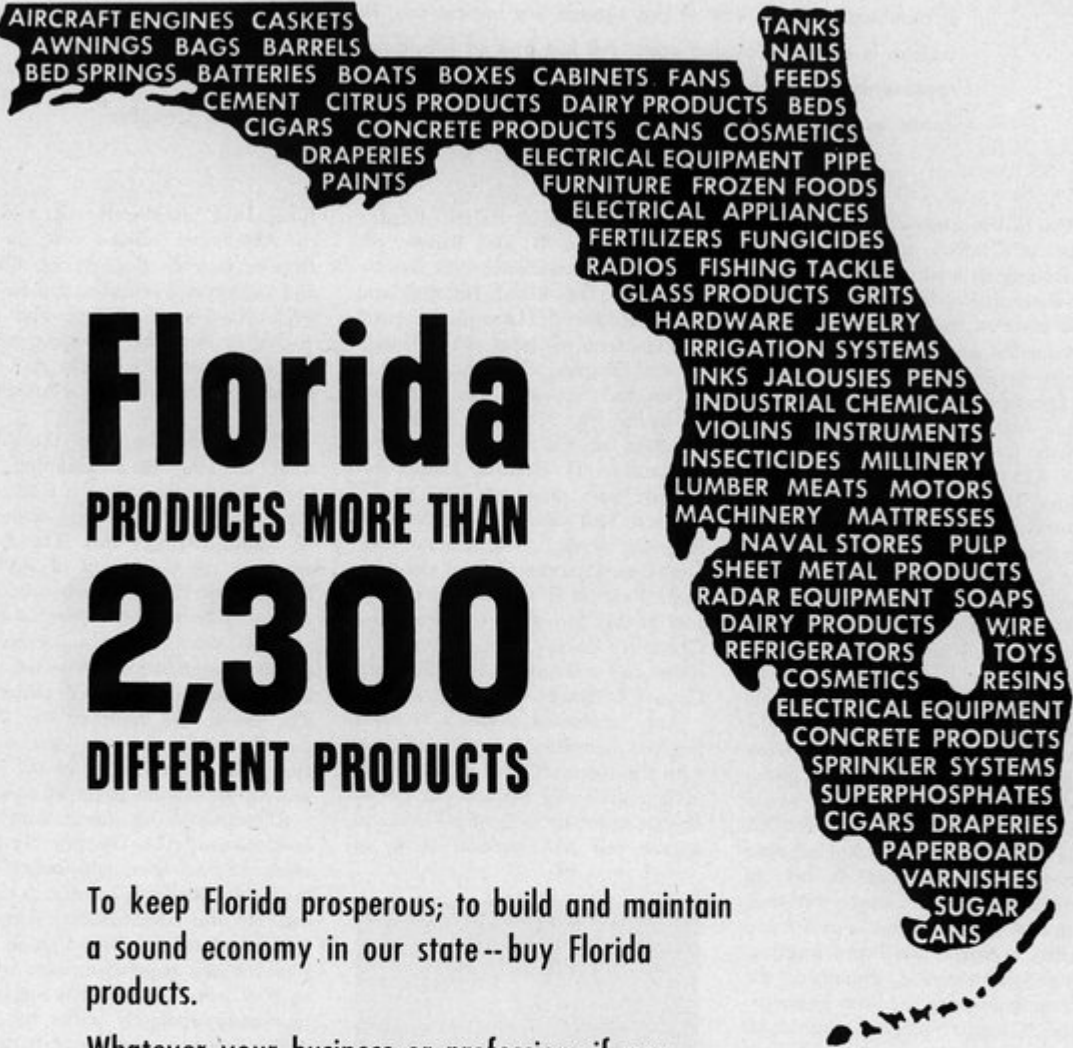
June, 1959, as already approved by the AIA Board. Named were, for the Region, IGOR B. POLEVITZKY, FAIA, and FRANKLIN S. BUNCH, and for the FAA H. SAMUEL KRUSE and ANTHONY L. PULLARA. This committee will work directly with the AIA Regional Director and the FAA President.

The President spoke of the FAA's need for long-range planning and State Board liaison for the FAA, and proposed that a Planning Committee be named to meet this. The Board approved the suggestion of ROBERT H. LEVISON that this committee be composed of the presidents of Florida's ten AIA Chapters; and President Stetson immediately appointed him as the new committee's chairman. The Board also approved the President's nomination for committee chairmen. A full listing of the committees appears on pages 16 and 17.

Reporting on the subject of regional development, AIA Director GAMBLE expressed the hope and belief that the FAA will shortly become "a direct line" to the AIA national organization. He stated he did not think that Florida's new regional director would have or need "a complete organization administratively under his control". But as a member of both the AIA and FAA Boards, close liaison would be possible at all times, thus making it practical to "let the FAA, in this case, act as the administrative part of the region". He pointed out that this arrangement was working out well in Texas and had been adopted in all essentials by the California Region formed last year.

Considerable discussion was held over ways and means for advancing the professional competency of FAA members through enlarging the scope of the FAA's service facilities to members. The president touched on the possibilities of holding seminars on

(Continued on Page 31)



Florida PRODUCES MORE THAN 2,300 DIFFERENT PRODUCTS

To keep Florida prosperous; to build and maintain a sound economy in our state--buy Florida products.

Whatever your business or profession, if you work and live in Florida--*you profit when Florida prospers!*

Keep Florida prosperous! Buy Florida products!
Use Florida cements!

FLORIDA PORTLAND CEMENT DIVISION
GENERAL PORTLAND CEMENT COMPANY



44th Convention's Architectural Awards

Among the outstanding features of the 44th FAA Convention was the exhibit of architects' work, ranged along "Peacock Alley" of the Deauville Hotel which commands a panorama of the hotel's pool and the broad Atlantic beyond. Some 40 mounts had been submitted—this year hung by a hard-working exhibit committee of the Mid-Florida Chapter headed by GEORGE BAGLEY and JOHN LANGLEY. Submissions were divided into five categories—residential, commercial, institutional, remodelling and merchant builder. From them a blue-ribbon, AIA top-brass jury picked five Honor Awards and four Awards of Merit.

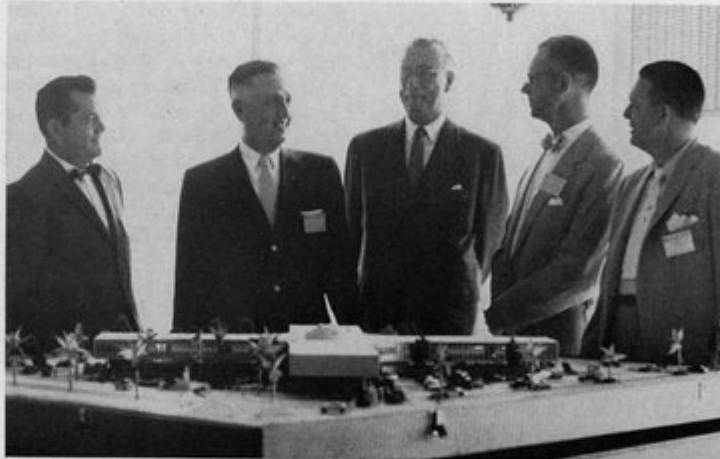
The jury was composed of AIA President JOHN NOBLE RICHARDS, FAIA, AIA Past-President LEON CHATELAIN, JR., FAIA, and PHILIP WILL, JR., FAIA, the AIA's first vice president. It selected the following submissions for FAA honors:

Residential — Honor Award to ALFRED BROWNING PARKER for the Coconut Grove house of Dora Ewing; and a Merit Award to STARNES AND RENTCHER, Miami firm, for a residence in Dade County.

Commercial — The Honor Award went to VICTOR LUNDY, Sarasota, for his design of the Warm Mineral Springs Inn, Venice. Two Merit Awards were given in this category: one to ALFRED BROWNING PARKER for his Alliance Machine Company building in Miami; the other to MARK HAMPTON of Tampa for his design for the Davis Medical Building in Tampa.

Institutional — The firm of PULLARA, BOWEN AND WATSON won the Honor Award for the North Side Bank of Tampa; and the Merit Award went to the Miami Beach firm of SMITH AND KORACH for the design of the Sigma Phi Epsilon Fraternity in Gainesville.

Remodelling — The jury picked only one award in this category — an



The Awards Jury of the 44th FAA Convention. Left to right: FAA President John Noble Richards, FAIA, Leon Chatelain, Jr., FAIA, AIA Immediate Past-President, and Philip Will, Jr., FAIA, AIA First Vice President. Flanking the Jury are, left, Joseph M. Shifalo, 1958 Convention Chairman, and H. Samuel Kruse, 1958 FAA President.

Honor Award to THE EDWIN T. REEDER ASSOCIATES, Miami, for execution of the Central National Bank in Jacksonville.

Merchant Builder — The single Honor Award went to ROBERT C. BROWARD, of Jacksonville, for his design of seven houses in the Laurel Grove project in Jacksonville.

The FAA Annual awards were presented to winning architects by AIA Regional Director CLINTON GAMBLE at the Convention's Awards Lunch-

eon, Thursday, November 20.

This year, unfortunately, no selection was made by the jury for a traveling exhibit as undertaken last year and in 1954 by the Florida Central Chapter. Details of routing and scheduling these former travelling exhibits have been carried out by the College of Architecture and Fine Arts of the U/F, under direction of JOHN L. R. GRAND. This year the College has found it impractical to continue this activity.

PUBLICATION OF AWARD WINNERS . . .

Prior plans had contemplated publication of all award-winning buildings in this issue of *The Florida Architect*. Lack of space, however, and the necessity of including other important FAA activity reports made this impractical. Therefore, only one of the awards is included in this issue — the houses in the Laurel Grove development at Orange Park, for which Robert C. Broward received an Honor Award in the Master Builder category. Publication of other award winners will appear in forthcoming issues. The exception to this is the Warm Mineral Springs Inn for which Victor Lundy received an Honor Award in the Commercial category. This appeared in the August, 1958, issue.

In This Project People Come First . . .



HONOR AWARD

Merchant Builder Category

ROBERT C. BROWARD
ARCHITECT

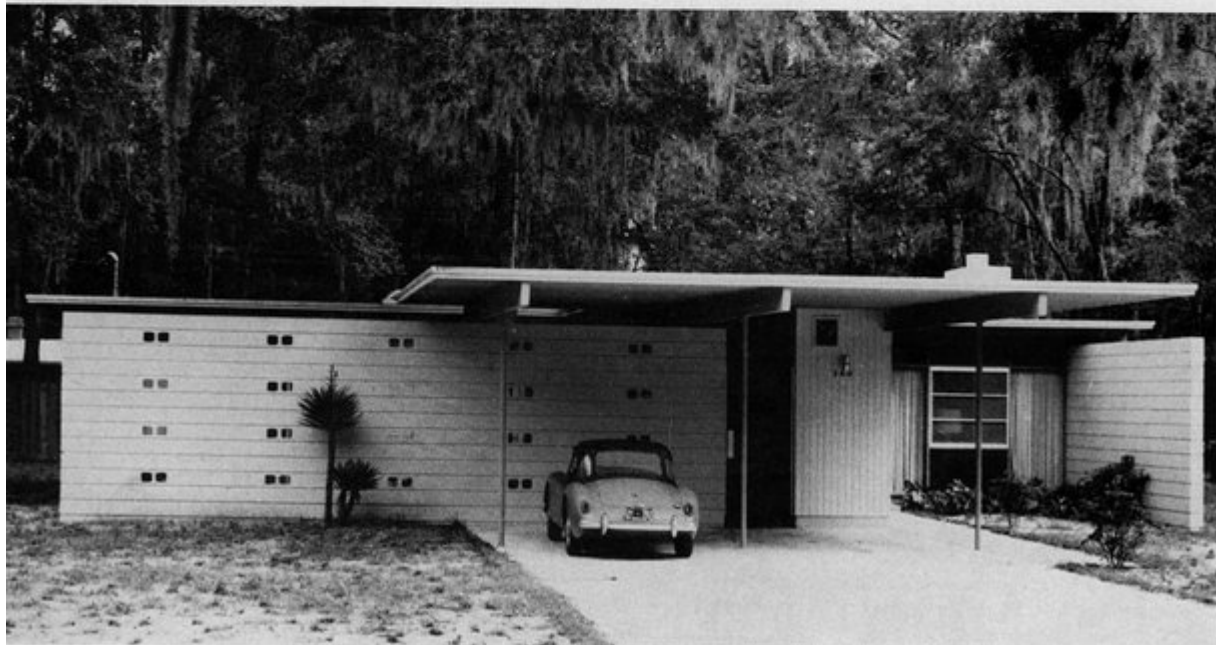
Jacksonville Chapter

The award-winning houses at Laurel Grove are proof in themselves that suburban Florida could, if it wished, escape the crawling curse of the project house devoid of understanding, taste or skill. According to its architect Laurel Grove itself is "... an attempt by an enlightened builder and an architect to create a quiet residential neighborhood conceived, designed and constructed according to the technical, esthetic, social and financial circumstances of the age in which we live".

As developments go, this is a small one. Completed it will contain 48 homes, most of them built according to one of seven standard layouts, but varying widely in three-dimensional treatment and utilization of materials. This, of course, is standard procedure. But where the average project builder runs plans up in lines along a waffle-grid of streets to squeeze the final advantage from site mass-production, in Laurel Grove the standard plan has

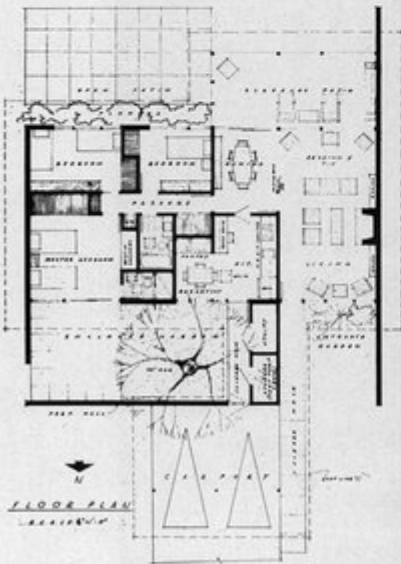
become merely one element of design. Others are the land itself, the growth of pine and palm and palmetto which makes the Florida landscape, finally the people themselves who will make Laurel Grove into the kind of neighborhood its developers have visioned. Thus standardization is, in itself, a variable here. And the whole tract is a kind of complex, unfolding as it grows according to a master plan, but with utmost flexibility of design to maintain the original intent at every stage.

As concerns planning, lots are a minimum of 15,000 square feet. Each house is planned for freedom, openness and convenience—but each is set relative to others so that privacy is secured. Much glass has been used, as the architect expresses it, "... not because it was the thing to do, but because by planning properly we have saved natural beauties of the land which are worth viewing through



glass". Where required, fences of natural wood are used as screens; or a wall of masonry will outline an interior court or patio. In practically every case a wall of glass on one lot looks toward a screening wall of masonry or wood on another.

Construction of these houses is the result of studies to determine methods giving greatest design freedom in the choice and detailing of materials. The structural system is based on the maximum span of a 4 by 12 wood beam and the maximum span of 3 by 6 double t-and-g wood decking. In every house ceilings are the exposed surface of the decking. Exteriors are of patterned masonry (both brick and concrete), board and batten and grooved plywood variously combined. Masonry surfaces are left in natural colors, wood is stained gray or painted in muted, neutral tones. Details, such as door and panels are finished in bright and vivid colors.

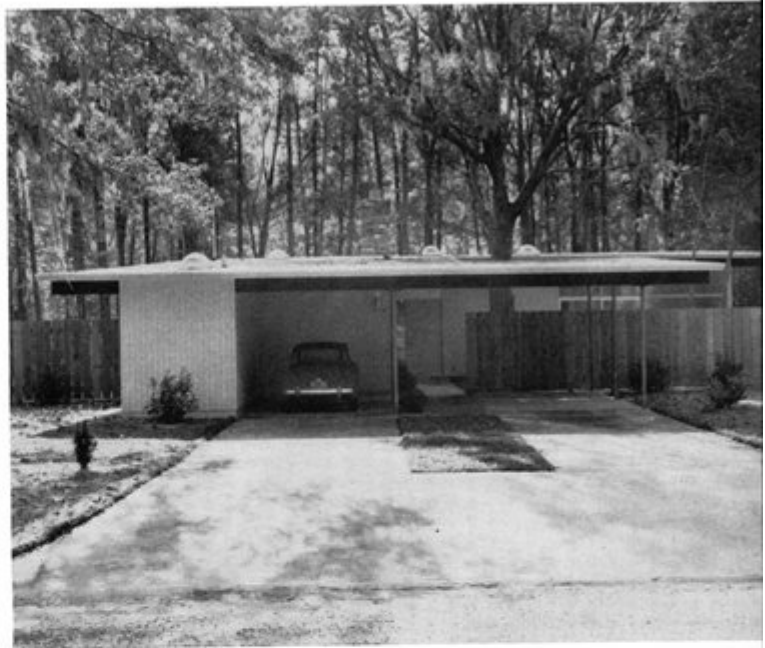




Suburbia's Hope - "Good Design is a Good Investment"



Another of the "standard" plans which is that for the house shown in two views on this page. Houses are in the \$20,000 to \$30,000 class and contain up to four bedrooms.



Personnel and Duties of Vertical Committees for 1959

	BROWARD	DAYTONA BEACH	FLORIDA CENTRAL	FLA. NORTH	FLA. NORTH CENTRAL	FLA. NORTH WEST	FLORIDA SOUTH	JACKSONVILLE	MID-FLORIDA	PALM BEACH
1... CHAPTER AFFAIRS — Chairman, John L. R. Grand (Florida North) Dept. of Arch. Univ. of Fla., Gainesville Duties: To make the Chapter absolutely necessary to the profession locally and to the individual practitioner, and the individual a completely necessary segment of the Chapter, through proper enlightenment of each as to the duties to and benefits each can offer the other.	Herbert S. Johnson	William P. Greening	Sidney R. Wilkinson	Jack Moore	Ernest J. Stidolph	Uls Manning	Edward G. Grafton	Thomas E. Ewart	John A. Burton	Raymond H. Flockholm
2... EDUCATION — Chairman, Thomas Larrick (Florida North) 730 N. E. 9th Ave., Gainesville Duties: To bring the profession closer to higher education and higher education closer to the practicing professional. And to set the machinery in motion to develop a state-wide group of local training programs for draftsmen and office help to accomplish the many tasks required of them by a profession already overcrowded by too many principals.	Robert E. Hanson	Ralph Spicer	Donald J. West	Thomas Larrick	C. Ernest Daffin	R. Daniel Hart	T. Trip Eussell	George R. Fisher	Richard B. Rogers	Edmond A. Fackner
3... OFFICE PRACTICE — Chairman, Robert H. Levison (Florida Central) 425 So. Garden Ave., Clearwater Duties: To immediately set up workshops for the practicing architect to provide training in architectural law, streamlined office operation, specification writing, bidding procedures and better income potentials from professional practice.	Herbert S. Johnson	Edwin M. Smead	Edgar C. Hancock	Thomas Larrick	C. Ernest Daffin	Hugh J. Leitch	Clarence E. Hamer	George R. Fisher	John T. Hart	Millard T. Smith
4... AWARDS and SCHOLARSHIPS — Co-Chairmen, Turpin C. Bannister, FAIA (Fla. North) Dept. Arch., Univ. of Fla., Gainesville Wahl J. Snyder, II (Florida South) 1177 N. E. 79th St., Miami Duties: To encourage scholarships and awards to be given at the high school level, for the purpose of developing better college material and interesting students now lost to the profession.	Robert E. Hall Jorgen G. Hanson	Francis Craig	Donald J. West	Thomas Larrick	C. Ernest Daffin	R. Daniel Hart	Alfred B. Parker	George R. Fisher	Joseph E. Carlisle	Philip M. Julian
5... PUBLIC RELATIONS — Co-Chairmen, Roy M. Pooley (Jacksonville) Suite 209, 233 E. Bay St., Jacksonville Herbert R. Savage (Florida South) 2820 Coral Way, Miami Duties: To make the architect the best known and best liked professional practitioner in the state of Florida.	Joseph T. Romano	Arthur F. Dean	James Y. Bruce	John L. R. Grand	Robert H. Maybin	Roger G. Weeks	Charles S. Broward, Jr.	Roy M. Pooley	Fred G. Oweis	Beed B. Fuller
6... HOME BUILDING—CONSTRUCTION INDUSTRY— Chairman, John Stetson (Palm Beach) P. O. Box 2174, Palm Beach To help obtain a contractor's licensing law and to help obtain a construction industry responsibility law.	Robert G. Jabelka	Joel W. Savers	Edmond N. MacCollin	William A. Stewart	Robert H. Maybin	James A. Look	Irving E. Morsey	H. Lamar Drake	Joseph M. Skiffale	Frederick W. Kessler
7... COLLABORATION WITH DESIGN PROFESSIONS — Chairman, Anthony L. Pullara (Florida Central) 2910 Grand Central Avenue, Tampa Duties: To assist in setting up a state-wide association of the design professions aimed at producing a more beautiful Florida, and to assist in solving the problems jointly encountered by the groups contained therein.	Frederic B. Strosser	Alfred Kemmerer	Edward D. Wyke	William A. Stewart	Robert H. Maybin	F. Treadway Edson	Scott B. Arnold	H. Lamar Drake	George A. Tuttle, Jr.	Donald R. Edge
8... COMMUNITY DEVELOPMENT — Co-Chairmen, William T. Annett (Florida North) Dept. of Arch., Univ. of Fla., Gainesville David A. Leete (Daytona Beach) P. O. Box 1431, Daytona Beach Duties: To assist the Florida Planning & Zoning Commission, to aid in passing the necessary legislation to enable Florida to come under the Urban Development Program of the Federal Government, and to offer full assistance of the profession to all local and state bodies interested in beautification and organized development.	Albert C. Stewart	David A. Leete	James Y. Bruce	William T. Annett	Prentiss Huddleston	F. Treadway Edson	H. Samuel Kruse	Warren C. Hendry	S. Alex Hutton	Norman M. Sabson
9... PRESERVATION OF HISTORIC BUILDINGS — Honorary Chairman, Turpin C. Bannister, FAIA (Fla. N) Coll. of Arch., Univ. of Fla., Gainesville Co-Chairmen, Harry M. Griffin (Daytona Beach) P. O. Box 1671, Daytona Beach Miss Marion I. Manley, FAIA (Florida South) 3356 Virginia St., Coconut Grove Belford Shourmate (Palm Beach) 222 Phipps Plaza, Palm Beach Duties: To prepare for Florida's coming Quadricentennial by making a collection of photographs and data on historic buildings to enable The Florida Architect to produce a special issue commemorating the occasion, and to continue to foster the preservation of these buildings within the State.	Robert G. Jabelka	Harry M. Griffin	James Y. Bruce	William T. Annett	Prentiss Huddleston	Uls Manning	David T. Ellis	Warren C. Hendry	Henry P. Whitworth	David S. Shriver
10... RESEARCH — Chairman, Ernest T. H. Bowen, II (Florida Central) 2910 Grand Central Avenue, Tampa Duties: To cooperate with the present research programs now under way and to encourage the individual in developing new construction techniques.	William A. Gibroy	Craig J. Gubler	Ernest T. H. Bowen, II	David P. Keavon	Prentiss Huddleston	Thomas H. Daniels	Robert K. Freese	A. Robert Broadfoot	Harold W. Johnson	Allan S. Babcock
11... SCHOOL BUILDINGS — Chairman, C. Ellis Duncan (Palm Beach) P. O. Box 695, Vero Beach Duties: To encourage the development of new techniques in school planning and construction to produce more quickly and inexpensively erected and safer school buildings within the State.	Van W. Knox, Jr.	William E. Goman	Richard E. Jensen	David P. Keavon	Prentiss Huddleston	Edis W. Bullock	Frank E. Watson	A. Robert Broadfoot	Robert E. Murphy	Edgar S. Wortman
12... HOSPITALS AND HEALTH — Chairman, Thomas V. Talley (Florida Central) P. O. Box 1104, Lakeland Duties: To encourage better design and the use of in-the-state architects for hospitals planned for within the State.	William A. Gibroy	Walter K. Smith	George E. Tebrugga	David P. Keavon	Prentiss Huddleston	Hugh J. Leitch	Milton Sherman	A. Robert Broadfoot	Lavrence L. Anglin	Frederick G. Seelman

FAA Standing Committees for 1959 . . .

1 . . . LEGISLATIVE —

Chairman, James K. Pownall (Broward)
1407 E. Las Olas Blvd., Ft. Lauderdale

As of this date, membership of this committee has not been named. All Chapter Presidents have been requested to name one or more men from areas within their Chapter jurisdiction who will be willing and able to work with the Committee Chairman and the FAA's Executive Director in maintaining close contacts with legislative affairs toward the end of providing the architectural profession in Florida with an effective and state-wide representation of its coordinated needs.

Charge: To continue a "watch-dog" policy relative to legislation and to cooperate with the State Board of Architecture in formulation of bills to be presented in 1961 clarifying and unifying the profession.

2 . . . MEMBERSHIP —

Chairman, Donald R. Edge (Palm Beach)
230 South County Road, Palm Beach

Membership: **Broward**, Herbert Johnson; **Daytona Beach**, Francis R. Walton; **Florida Central**, Sidney R. Wilkinson; **Florida North**, Jack Moore; **Florida North Central**, Ernest J. Stidolph; **Florida North West**, Ula L. Manning; **Florida South**, Samuel M. Puder; **Jacksonville**, Thomas E. Ewart; **Mid-Florida**, F. Earl DeLoe; **Palm Beach**, George J. Votaw.

3 . . . BUDGET — Personnel to be named at later date.

4 . . . NOMINATING — Personnel to be named at later date.

5 . . . JOINT COOPERATIVE COMMITTEE, FAA-AGC-FES —

Chairman, John Stetson (Palm Beach)
P. O. Box 2174, Palm Beach

6 . . . BY-LAWS — Personnel to be named at later date.

7 . . . RESOLUTIONS — Personnel to be named at later date.

8 . . . BOARD OF TRUSTEES, FAA LOAN FUND —

Chairman, MacMillan H. Johnson (Florida North)
1617 N. W. 12th Road, Gainesville

9 . . . ANNUAL CONVENTION —

Chairman, Walter B. Schultz (Jacksonville)
P. O. Box 4817, Jacksonville

Membership: James M. Hartley, **Broward County**; Ernest T. H. Bowen, II, **Florida Central**; Verner Johnson, **Florida South**.

10 . . . FLORIDA REGION —

Chairman, Clinton Gamble (Broward County)
1407 E. Las Olas Blvd., Ft. Lauderdale

Membership: John Stetson, **Palm Beach**; H. Samuel Kruse, **Florida South**; Anthony L. Pullara, **Florida Central**; Igor B. Polevitzky, **Florida South**; Franklin S. Bunch, **Jacksonville**.

11 . . . FAA EXECUTIVE COMMITTEE —

Chairman, John Stetson (Palm Beach)
P. O. Box 2174, Palm Beach

Membership: Clinton Gamble, **Broward County**; Robert H. Levison, **Florida Central**; Verner Johnson, **Florida South**; Arthur Lee Campbell, **Florida North**; H. Samuel Kruse, **Florida South**; Francis R. Walton, **Daytona Beach**; Joseph M. Shifalo, **Mid-Florida**; Roger W. Sherman, FAA Exec. Director

12 . . . LIEN LAW REVISION —

Chairman, James K. Pownall (Broward County)
1407 E. Las Olas Blvd., Ft. Lauderdale

Membership: Verner Johnson, **Florida South**; Franklin S. Bunch, **Jacksonville**; Robert H. Levison, **Florida Central**; H. Samuel Kruse, **Florida South**; Charles L. Hendrick, **Mid-Florida**.

GENERAL CHARGE:

Duties of each of the Committees listed on the foregoing pages shall be as outlined by the AIA in its vertical committee structure. The Chairman, in addition to the charges noted, is requested to make an active effort to have his committee participate, as required by the Institute, in the affairs of the profession from the Chapter through the national level. Commencing in July this year we will become a region of the AIA; and automatically, due to the vertical committee structure, our chairman becomes a member of the like national committee. Let us make Florida the number one region.

GENERAL ASSIGNMENT:

To start committee work immediately, reporting at each successive Board meeting in person the progress of the program to date.

South Atlantic Region Changes Date for Conference Cruise

Plans for the Cruise-Ship Conference of the AIA's South Atlantic Region have been changed from those reported in *The Florida Architect* last month. The cruise will not take place May 22-27, which were the dates first announced by the Regional Conference Secretary. It will start April 13 and will continue to April 17.

As now scheduled, the cruise-ship *Arosa Sun* will sail from Charleston at 5 PM, April 13th, 1959—but all passengers are requested to be on hand by 3 PM at the latest. It will

cruise to Nassau where passengers will have shore leave until the ship sails for Charleston again on the night of April 15. Its scheduled arrival at Charleston is 11 AM, April 17.

The business session of the Regional Conference will be held early in the voyage. Thereafter two seminars have been planned, one on the way to Nassau, the other on the way back to Charleston. The first will be of a technical character and will include a panel discussion on such matters as mechanical work, lighting and

acoustical treatments.

The other will be a discussion panel by the heads of the architectural colleges of the five educational institutions embodied in the present four-state region. The subject will be "The Continuing Education of the Practicing Architect"—a subject of considerable importance to the firm or individual interested in keeping in touch with current advances.

Good attendance on the part of FAA members is urged by the Regional Director. For those who will not find it possible to attend, the meetings will be tape-recorded. The transcripts will be briefed as necessary; and the substance of the Conference will be published in an early issue of *The Florida Architect*.

Message From The President

By JOHN STETSON

President
Florida Association of Architects

The old dilemma, "Which came first, the chicken or the egg?", seems much easier answered than that facing our profession today. The hue and cry from the membership seems, for the most part, concerned mainly with fee cutting and with the inroads being made by other professions into our design field. Perhaps it is time to make a really complete inspection of our own closets. Bilge water rarely gets there except from a leak in the boat's hull. We may have more leaks in our dike than we have fingers to plug them with; but now is the time to take active steps before we have to use both hands just to keep our heads above water.

Inadequate Service:

Far too many plans prepared by registered architects today are no more than preliminary sketches, and complete specifications covering these are almost non-existent. This has evolved from fee cutting, lack of knowledge and just plain laziness. The result is chaotic. The profession gets a bad name and the participating practitioner is the loser, together with the owner and the community. The general contractor will invariably add a contingency to cover items not specifically detailed. He will either shy away from bidding jobs from offices with poor reputations, if he is tops in his field, or he increases his bid to cover the "Architect's mistakes." So the owner either pays extra for poor plans and specifications, or the job goes to an unqualified operator who turns out a poorly finished product and ends up in a hassle over extras and mistakes.

Fee Cutting:

A firm that cuts fees admits to its inadequacy. This pertains to all professions. Architects never got rich even on full fees. Now, with construction volume at its highest recorded peak, hundreds of practicing architects are barely existing because they are willing to work for nothing. Certainly they suffer, but in this miserable situation they affect the entire

profession. As the sore spreads, the immunity of all is challenged.

My feeling is that here the chicken came first. The start was the inadequate professional who "chickened" into a reduced fee to cover his lack of knowledge. His business boomed, because of bargain seekers, and the fight was on. We are admittedly the world's lousiest salesmen. All business today operates on salesmanship. To be a successful salesman, first you must sell yourself, not only to others but to you. Then you must have a product. Fee cutting—poor product, poorer salesman.

Plan Stamping:

Thanks to the excellent work of our State Board and its legal counsel, this has taken a marked decline within the profession. Here again, practitioners unable to make a legitimate living otherwise find that the flexing of muscles around an architect's seal produces an easier living than pushing a pencil. They have absolutely no pride in their work or their profession, yet usually they are among the first to criticize the lack of pride in his job shown by a mechanic.

With the driving underground of these birds within our profession, we've flushed a real, king-sized covey from one of our sister design professions. At their present rate of taking over the architectural profession, we'll all soon be forced to take up real estate selling. How come? A personal check of a dozen of the criminals proved that not one could make a living in his own chosen art, so his stamp is now producing grits from our grist mill. His State Board? They aren't proud of him, but until we squawk loud enough it appears they won't admit to his existence.

The Answer:

Solomon himself couldn't provide all the answers necessary. Certainly our obvious salvation lies in the innate ability to create a more beautiful structure, plan it to achieve the ultimate in satisfactory usage, detail it in the fullest to provide a clear and



concise pattern for all trades and see it is built to be the strongest and yet least costly possible.

By so doing we have made a full fee the best buy in the building operation. Anything less is worthless to all. This isn't so difficult. For the same fee structure that we recommend, a British architect also provides the owner with a quantitative analysis. To produce this, first must come a complete set of drawings. A contractor bids on the labor and on the material takeoff provided by the quantitative analysis. Here a slip-up can be attributed to the architect.

How would you like that kind of responsibility? Is it any wonder that in a country demanding this kind of service fee cutting and plan stamping are unknown? Let us hasten to accept the offered responsibility, do our best and then watch the others necessarily scurry to other scrap piles.

My comments are based on experience gained with the State Joint Co-operative Committee, through an active liaison with the Associated General Contractors and from a first-hand knowledge of the profession as practiced in other countries. It is my desire that our profession will provide the leadership necessary to promote and have passed during the 1961 Legislature a "building industry responsibility law" whereby, starting with the design professions, each participant in a building program will be required to assume full responsibility for his phase of the operation. But before this can come to pass, we have a job of house cleaning and education ahead of us. When do we start?

Workshop for A Professional...



The Office Of
WILLIAM G. CRAWFORD
ARCHITECT
Fort Lauderdale

—
Designed by The Owner



Photos by Sante, Schwarm, Sheldon, Inc.



All professional men, probably, have at some time visioned an office of their own in terms of what might be considered ideal for their particular needs. Comparatively few, it would seem, actually achieve that ideal. Fewer yet have planned and built their own headquarters as a statement of purpose and conviction and as a tangible reflection of their professional scope and organization. One of these few is WILLIAM G. CRAWFORD, member of the Broward County Chapter.

His office building, located in a fast-growing new section of north Fort Lauderdale, is noteworthy in a number of respects. It is thoughtfully

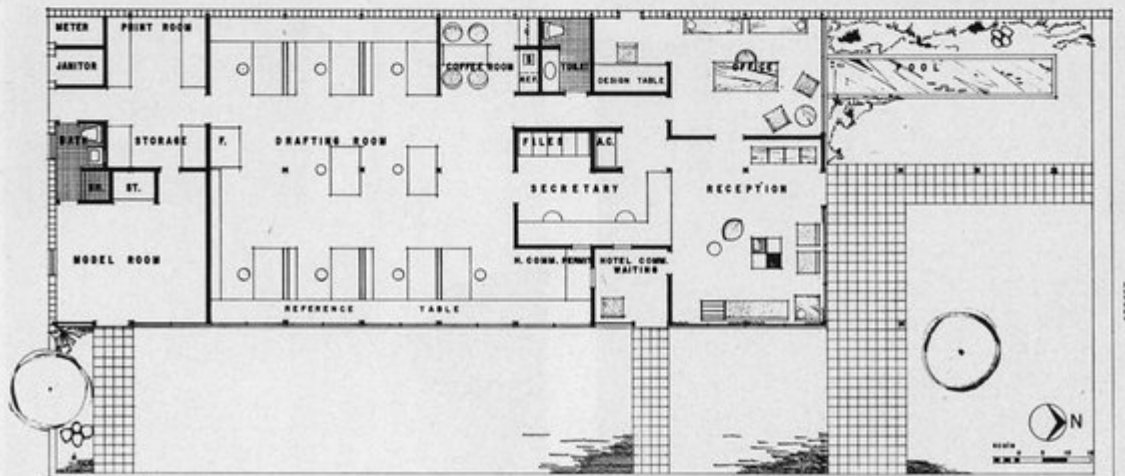
planned as a self-contained working unit. It reflects a decision to operate with a comparatively small staff of high-caliber talents—though possibilities of some future expansion have been taken into account. It provides unusually good working conditions for the office staff as well as its principle. It employs a novel method of construction. And it was completed at the modest cost of slightly over eight dollars a square foot.

As to plan, the drawing below speaks for itself. Administrative control is easily maintained; and the centrally-located secretarial area provides efficient and constant contact

with administration (Mr. Crawford's private office) with the public (reception and the special Hotel and Restaurant Commission waiting room) and with production (drafting room). The drafting room has been laid out to provide each draftsman with a semi-private cubicle, equipped with table, counters and shelves, high-level lighting and peg-board walls.

The structural system is a rigid, two-span welded steel frame with all beams and columns exposed. The corrugated steel roof deck is exposed indoors and covered with insulating board and built-up roofing. On the west, a stacked concrete wall guards

(Continued on Page 22)





Photos by Sante, Schwarm, Sheldon, Inc.



Above, the drafting room, one of the semi-office cubicles of which is shown in detail at the left. Below, at the left, is a view from the reception room through the secretarial space to the drafting room. At the right, below, is a view of the "coffee corner" which includes a built-in sink and coat closet. Furnishings here, in the reception room and in the private office were done by Knoll, Inc.

Architect's Own Office . . .

(Continued from Page 21)

against the afternoon sun; and with surfaces exposed provides an integral decorative pattern. On the east, the wall is made of non-bearing panels, glass with insulating panels below.

Finishes are impressive where needed, but economical and easy to maintain. Exposed concrete is painted, as are exposed steel members and the roof deck. In reception, secretarial and private office areas—and in the coffee room also—walls are surfaced with pre-finished walnut plywood panels. The floor in reception areas is travertine marble; that in the private office is carpeted wall-to-wall. In the drafting room it is surfaced with asphalt tile.

The building is air-conditioned throughout with a reverse-cycle system. Equipment and ducts are on the roof and the drafting room supplied through ceiling grilles. In the private office and reception areas wall grilles are used. A central music and call system have been provided.

This building was the basis for two craftsman awards in the recent Broward Chapter-Builders' Exchange program. One was for work done on the steel work, the other for the craftsmanship displayed in the block wall, particularly for the pierced grille in the exterior wall adjacent to Mr. Crawford's office.



What's Wrong With Specifications . . . ?

Finding the answer to that question is one of the chief reasons for the existence of the Construction Specification Institute, the Greater Miami Chapter of which now numbers over 70 interested and active members. At a recent meeting of that Chapter a panel of contractors explored, from their special viewpoint, some suggested approaches to some of the answers.

A recent meeting of the Greater Miami Chapter, CSI, took the form of a panel discussion by four contractors on ways and means of improving architects' specifications. The meeting developed into a plain-speaking session; and from it came a goodly number of practical hints from the practical men who translate construction documents into three dimensions.

The general topic of the meeting was "What Is Wrong With Our Specifications". Speakers who said what they thought about that topic were, JERRY NAGEL of the Witters Construction Co., and W. H. SPARKS, of the Sparks Construction Co., for the general contractors; LAWRENCE MARR, of the Marr Plumbing Co., and JOHN MEYERS of the LaVigne Electric Co., for the sub-contractors. Here, in part, is what they said.

Mr. Nagle....Most concrete specifications could be shortened. Most of the concrete bought today is ready-mixed; and can be controlled by testing both at the plant and on the job. If owners would pay for inspecting and testing concrete, then the mix could be controlled in strict accordance with specifications — which would then be merely the strength required on a particular job.

Sometimes the architect specifies 3000 lb. concrete. But one of his engineer's structural drawings may contain some little note to the effect that concrete in certain columns shall be 5000 lbs. Job superintendents become confused by reading one thing in the specifications and another thing on the plans. It would help greatly if such contradictory points were more carefully checked.

Relative to insurance, specifications lately have contained "hold harmless" clauses which state that the

contractor has to be liable for about anything that happens on a job. Also, the "hold harmless" clause is put in with the liability paragraph and can be overlooked easily.

One item we would like to see included would save time on the job. That is a contingency allowance which would permit the architect, at his discretion, to approve extras when they are necessary. Expenditures for each extra could be limited if the owner desired. But if this contingency item were \$5000 for a job of any size, no doubt that much could be saved in delays to the contractor and additional work for the architect by eliminating the need for going back and forth to the owner with different cost breakdowns.

Painting suggests another way to improvement. Confusion exists relative to field coats for steel. We would like to see this in the painting specification and not in the structural specifications where architects have been putting it. If it were included in the painting specs, the painting contractor could find it easily and would know just what he had to do —and we could write one purchase order covering his section. Field coat painting is a big item on a large job. Painting structural steel can amount to a great deal of money; and if it is considered necessary to paint steel that is to be encased in concrete, it should be so stated and specified in the painting section.

Some specs are directing that certain trades should install certain items. We do not think specs should state who or what trade will install materials. We have had trouble with unions in regard this point, especially relative to new acoustical materials.

We would like to see a Miscellaneous Section as a kind of catch-

all listing of all the many little items on a plan not called for clearly in the specs. A check-off list of this kind would be of considerable help in accurate bidding. Also, specifications should include a list of items not in the general contract—and also items not furnished by the general contractor, but to be installed by him. In bank work, particularly, this last is important. Such separate listings would also help bidding in that it would do away with the need for a contractor to go through every plan sheet searching for NIGC items.

Finally, we hope to see more standardization of specifications. It would be of tremendous help if all specifications were to follow the same basic outline or index and include the same type of sections covering separately all the various trades and items involved.

Mr. Sparks....The effort toward standardizing specifications is one of the biggest steps towards unity in the construction industry which could be taken. The first of my suggestions for helping this along is concerned with the "or equal" clause, which seems to be in almost every specification today, but which is one of the most unfair of all specifications items.

This clause makes it extremely difficult to prepare a bid, because no one can tell just what "or approved equal" might finally turn out to be. In its place are other methods for permitting a final choice. One is to list alternates under the trade or product sections where they are applicable. This would aid greatly in preparing bids.

The writer of the specification should be familiar with the item he is specifying. Frequently we find an

(Continued on Page 24)

Specification Panel . . .

(Continued from Page 23)

item specified that may or may not be available. Often we can't find it unless we call the architect; and then we often discover that many of these items are obsolete and are actually not available—or if they are, do not meet the intent of the architect specifying them. That's especially true relative to fixtures and appliances; many that are specified are not even in manufacture.

Some of this trouble probably comes from the fact that many specifications for one job are written from those developed for another job. They are applicable in general, but in many cases the items called for are not at all suitable for the particular job being bid and built.

Items specified for the sub-contractors should be clearly specified and the listing of them complete. In the mechanical trades particularly we find things left out. A small example is the disconnect switch on air condi-

tioning equipment. Electrical specifications will carry up to it. Air conditioning specifications will pick up from the disconnect switch. But the switch itself is not listed for furnishing by anybody and the prime contractor is generally stuck for it.

All cash allowances should be listed in one place. Often we find that details and specifications do not jibe. Relative to mistakes in general, the paragraph holding the prime contractor responsible for the architect's errors should be omitted from specifications. This reads, in effect, "...if the architect is not notified in a certain length of time, the contractor is responsible for these errors." The architect is more familiar with the plans than the contractor can be within the time limit set and so should not be held responsible for errors made by the architect's office.

Bonds are another touchy matter. Specifications should state clearly that a bond, if it is to be furnished, will be paid for by the owner. But too often specifications are written in such a way that the bond reference is subject to interpretation—and in that case the contractor usually ends up paying for it. As to a penalty clause, where this exists there should also be a bonus clause. And to be fair to both owner and contractor there should be stipulated a period of time between the penalty and the bonus.

Mr. Meyers....Specialty trade specifications should be more complete, with a cross reference to other sections which contain items concerning a specialty trade. An electrical contractor, for example, won't read everything in the plumbing, air-conditioning and heating and ventilating sections. So, unless all items are covered and cross indexed, some item usually gets left out—like the disconnect switch already mentioned.

Following the panel discussion a question and answer period developed the following pertinent comments:

Q...What is the attitude of the general contractor toward the requirement of listing by name sub-contractors he has used at the time of bidding a project?

A...A general contractor's main objection to that is the time it takes to evaluate which bid is really low. Bids are telephoned in by subcon-



QUIET,

Friendly Walls and Floors and Ceilings
Dry-Wall HAS COME OF AGE...WITH HOMASOTE



Quiet rooms in quiet homes safeguard the nerves, forestall the jitters. With Homasote Dry-Wall, even the slam of a door is muted. Homasote's friendly linen surface absorbs the glare of light, causes no eye-strain. Homasote's size (up to 8' x 14')—combined with great structural strength and top insulation value—means dry walls, free from moisture, mildew, drafts.

To have Dry-Wall at its finest, the basic rule is: Cover all possible walls in ONE piece. Homasote Big Sheets cover all walls up to 14' in length. X-nail all panels; at each stud nail on a line snapped from corner to corner and from 12" to 16" along the edges. The problem of joints between ceilings and walls, at corners, and even between wall panels has been among the most difficult to solve. Taping does not finally solve the problem of expansion and contraction. By a simple device, and due to the high density of Homasote, taping and moldings can be eliminated—also window and door trim; interior trim can be eliminated—except for baseboards. This means real economy.

For a wall joint, round the outer edges of the Homasote panels with a portable router and position them 1/4" apart. For a corner or cornice joint, round the edge of one Homasote panel; leave the other square; position them 1/4" apart. Homasote ceilings and underlayments complete the picture.

There's always news from Homasote—use the coupon below.

50 years
of
SERVICE

HOMASOTE
COMPANY
Trenton 3, New Jersey
Homasote of Canada, Ltd.
224 Merton St., Toronto 12, Ontario

Send the literature and/or specification data checked:

- Dry-Wall Roof Deckings
 One-Man Panels Homasote (72-pg.) Handbook

Name.....

Address.....

City.....Zone.....State..... C-8

tractors. You never know till the last minute who is low; so it's difficult to make up an intelligent list of sub-contractors to turn in on a bid form. It would be ideal if all the subs' bids were in and all bidding stopped two to four hours before the bid opening. This would give time to evaluate all bids and you could turn in an intelligent bid and know your subs were in with you correctly.

Q...Do you as a sub-contractor, believe it is unethical on the part of the architect or engineer to require payment for copies of plans and specifications? If all who requested documents were furnished them free, the printing costs for architects would run to \$10,000 on a big job and on some projects even double that.

A...We usually buy the mechanical plans and, in some cases, complete plans when we consider them necessary or important to prepare an intelligent bid. When we spend the time and money to prepare a bid that will give the kind of a good

and economical job you want, we or the general contractor should not have to pay for these plans.

Q...Penalty clauses are usually written to assure the owner that completion of his project will be done in time to prevent loss to him. It is assumed that work running beyond the contract time will entail additional rent and expense and contracts are let on this basis. If the work is completed ahead of time, it may not shorten the lease nor save other expense. Therefore the owner probably would not be interested in paying a bonus. What is your opinion?

A...There should be a period of time between the bonus clause and the penalty clause depending on the size of the job. If the penalty clause could be a month ahead of the bonus clause, it would give the contractor something to work toward. A contractor can be and has been stalled on bonus clauses with respect to completion due to the architect's postponement of acceptance.

Q...What is the point of specifying by an association or a manufacturer's quality name when grading varies and manufacturers' quality names are not accurate?

A...It is important that the specifier be completely familiar with the product he is specifying.

Q...What do you think of base bid specification—that is, the naming of the product desired as the basis for bidding?

A...That is an ideal way to specify an item wanted. The contractor is then not forced to decide on the quality of some competitive product as when a product is named and "or equal" is added. If two or three different manufacturers of a product were named it would also help the contractor prepare his bid. During a bid period time is not sufficient to get from the architect all needed information on product equality. This lack of information brings up serious trouble after the job is under way.

Plywall

new process creates
GREAT NEW PANELING



You'll be amazed! By a photographic process, beautiful wood grains, prefinished to perfection, are now available at the low cost of inexpensive plywood. There's no plastic, no paper; it's all wood, and it's beautiful! Call collect for full details.

WHOLESALE DISTRIBUTORS:

- Hamilton Plywood of Orlando, Inc. GArden 5-4604
- Hamilton Plywood of St. Petersburg, Inc. 5-7627
- Hamilton Plywood of Ft. Lauderdale, Inc. JAckson 3-5415
- Hamilton Plywood of Jacksonville ELgin 6-8542

News & Notes

Myrl Hanes Wins New Gainesville Honors

MYRL J. HANES, AIA, practicing architect and Mayor-Commissioner of Gainesville, was named Gainesville's Outstanding Young Man of the Year when he was awarded the local Junior Chamber of Commerce's Distinguished Service Award for 1958 at a Jaycee luncheon held late in January. He is the 13th recipient of the coveted award which was presented for the first time in 1941.

The honor is one of several which have marked the 33-year-old University of Florida graduate's rapid rise to the peak of civic leadership in Gainesville. He was successful in his first political venture in 1955 when he was elected to the city commission. Upon his re-election for a three-year term, he was named Mayor-Commissioner by his colleagues after serving on numerous commission committees. Largely as a result of his leadership, major zoning and subdivi-



MYRL J. HANES

sion ordinances were adopted and a slum-clearance, low-cost housing program started.

He is head of his own architectural firm, Myrl Hanes Associates, in Gainesville and has been a member of the AIA since 1951. Last year he served as a director of the FAA

from the Florida North Chapter. He was born in Indianapolis, Indiana, moved to Florida in childhood and graduated from Gainesville High School in 1942. During World War II he served as a naval aviation officer on the USS Boxer and in the Pacific Theater. Hanes has been a member of the Jaycees since 1950; and in addition has been active in service club, charity and civic activities. He is married and the father of two girls.

March 31 Is Deadline for Entry in AIA Program

Architects, builders and home owners from 10 Southern and Gulf States will vie for honors this Spring in the fourth annual "Homes For Better Living Awards" program, sponsored by The American Institute of Architects.

Any house designed by a regis-
(Continued on Page 28)



We're Proud of the DUVAL COUNTY COURT HOUSE

The custom-designed interior and fixtures for the most beautiful court house in Florida were created by our master craftsmen.

For Information Write:

**GEORGE DORO
FIXTURE COMPANY**

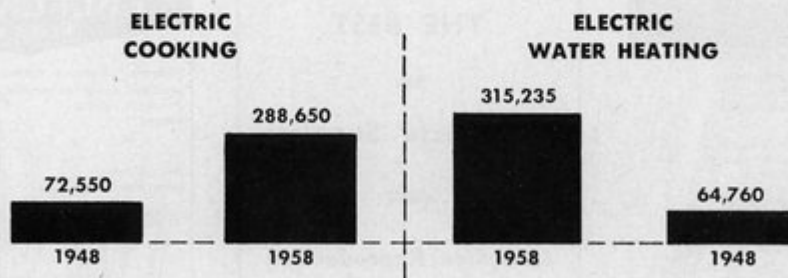
P. O. Box 1836
102-28 Florida Avenue
Jacksonville, Florida

How to design homes with "built-in" maid service!



Combine the ingenuity of architectural design with the wonderful ease of built-in electrical equipment . . . and you'll give your clients leisure they will praise you for through the years. Built-in electric appliances save so much time and work — they're like having an extra maid on the job 24 hours a day. They're the most glamorous, most work-free helpmates you can choose . . . the first choice of Florida home buyers.

The trend is overwhelming to Electric Living!



Give your clients a blueprint for Better Living . . . Electrically!



FLORIDA POWER & LIGHT COMPANY

HELPING BUILD FLORIDA



News & Notes

(Continued from Page 26)



In the AIA's Third Exhibition of Architectural Photography recently held at the Octagon in Washington, Hank Koch, Miami photographer, won honorable mention with this picture of a house for which Rufus Nims was architect.

tered architect and built since January 1, 1956 is eligible for an award.

Awards will be made in two major categories: (1) Houses designed specifically for an individual owner and, (2) Houses designed for a merchant builder and sold speculatively. Each of the categories will have three subclasses; custom houses divided according to floor area and builder houses into price groups. Both categories will be judged separately and the jury is empowered to award as many first awards and awards of merit as they see fit.

This year the AIA will have the cooperation of *House & Home* and *McCall's Magazine*, as well as twelve leading national organizations in the housing industry, including the National Association of Home Builders, the United States Savings & Loan League, and the National Association of Real Estate Boards.

Entries will be judged by a jury of nationally distinguished architects, builders, publishers and consumer representatives meeting in New York.

TO SOFTEN WATER TO CONDITION WATER



EGLIN AIR FORCE BASE INSTALLATION

Above is a heavy duty, fully automatic, double unit softener, designed to supply uninterrupted soft water service.

One of the many softeners and conditioners designed and manufactured by Southern Water Conditioning, Inc. For further data, specifications, bids, or surveys, write to Southern Water Conditioning, Inc., 301 15th Avenue South, St. Petersburg, Florida.

All types of Domestic, Commercial, and Industrial Water Softening and Conditioning Equipment:
Filters - Taste and Odor Removers - Aerators - Demineralizers - Zeolite, Ion Exchange Minerals in stock - Residential and Commercial Package Swimming Pool Filters - Also Rebuilding and Modernizing.

Southern Water Conditioning, Inc.
301 15th Avenue South
St. Petersburg, Florida



A. R. COGSWELL

"SINCE 1921"

THE BEST

in

Architects' Supplies

Complete Reproduction
Service

433 W. Bay St.

Jacksonville, Fla.

FOR **EXIT** LIGHTING

PRESCOLITE
IS
PREFERRED

HERE'S WHY...

"Dielux" Diecast Frames
precision made for greater
strength; lasting
beauty.

Heavy, welded
steel housings.

Die cut metal
letter stencils.



Unbreakable Fiberglass lens
Panels—6 color combinations.

Diecast frame inner section,
with concealed hinge, swings
out for easy access to interior.

WRITE FOR
YOUR COPY OF
OUR CATALOG.

PRESCOLITE MANUFACTURING CORP.

2229 4th St., Berkeley 10, Calif.
Easton Road, Neshaminy, Penna.

Announcement of awards and presentation ceremonies will be held at the AIA Convention in New Orleans June 22-26, 1959. Award winners will be exhibited at the AIA's Octagon in Washington and will be published in *House & Home*. Deadline for entry notifications will be March 31, and material must be postmarked not later than May 1, 1959.

The program and entry slip can be obtained from the Committee for the Homes for Better Living Award, American Institute of Architects, 1735 New York Avenue, N.W., Washington 6, D.C.

State Board Grants

59 New Registrations

The Florida State Board of Architecture announces the following officers for the year 1959, as elected by that body in January: President, FRANKLIN S. BUNCH; Vice President, RICHARD B. ROGERS, Secretary-Treasurer, MORTON T. IRONMONGER, and Assistant Secretary, ARCHIE G. PARISH, FAIA.

Registration by exemption was granted by the Board to CHALMUS E. SUGGS, Philadelphia; THOMAS M. RAINEY, Cleveland; EMMET J. LAUGHLIN, Miami; HAROLD J. LEOPOLD, Scotch Plains, New Jersey; GEORGE B. HALL, Bronxville, New York; PAUL H. ELLIOTT, Jacksonville, and HERMAN R. LICHMAN, Miami Beach.

Registrations to holders of NCARB certificates were granted to EDWARD F. O'DWYER, Westport, Connecticut; HENRY H. CALDWELL, Jr., Birmingham, Alabama, and SAMUEL S. ARLEN, New York City.

Reinstatements of registration were issued to HERBERT J. GRASSOLD, Milwaukee, Wisconsin, and COLEMAN H. SHERWOOD, Scarsdale, New York.

The examining committee of the Board approved registrations for the following persons who passed the written examinations: WILLIAM B. HOLMES, Clearwater; DANNY C. DUCKHAM, CHARLES W. DUEMMING, ROBERT A. DeNYSE, CHARLES R. KERLEY and DONALD R. MOWRY, Fort Lauderdale; WILLIAM R. FRIZZELL, Fort Myers; RICHARD C. STEBBINS, Fort Pierce; CONSTANTINE L. KLONIS, Gainesville; HEUBERT L. ANSON,
(Continued on Page 30)

MARCH, 1959

OFFICE FURNITURE



that is
**FUNCTIONAL and
DISTINCTIVE**

At Mr. Foster's Store the architect will find the office furniture that fits his profession. Distinctive groupings of all periods designed in fine woods, formica and steel with large work areas and drawer space.

At Mr. Foster's Store the architect will find steel lockers, shelving, bookcases, steel counters, vault doors, steel and formica partitions and a full line of the nation's most beautiful office furniture.

Our sales representatives and interior decorating department await your pleasure



10,000 Square Feet of display space at

835 WEST FLAGLER ST. • MIAMI, FLORIDA • PHONE FR 9-7673

Mel Banks, Inc.
ST. PETERSBURG
Ph. HE 6-3400
TAMPA
Ph. 2-0871
CLEARWATER
Ph. 3-5911

Electrend East Coast Co., Inc.
BOCA RATON
Ph. 5101
LAKE WORTH
VERO BEACH
FT. PIERCE
Call Collect —
Boca Raton 5101
FT. LAUDERDALE
Ph. JA 3-6464

Electrend Sales & Service
ORLANDO
Ph. GA 2-7166

Electrend Sales & Service Co.
SARASOTA
Ph. RI 7-3380

Mitch's Electrend Sales & Service
PENSACOLA
Ph. HE 8-4363

Carlos M. Hope
Electrical Contractor
GAINESVILLE
Ph. FR 2-9867

Milky Way Building & Heating
EUSTIS
Ph. EL 7-2367



Electric Heat at SURPRISINGLY LOW COST



Electrend Electric Circulating Air Heating System

Clean, comfortable, convenient electric heat at a low cost never before possible. See the revolutionary new Electrend and all its advantages today — or just call us, we'll be glad to demonstrate its many features.

Electrend DISTRIBUTING COMPANY
4550 37th Street No.
St. Petersburg 14, Florida
Telephone HElock 6-8420
WRITE FOR FREE MANUAL AND A.I.A. FILE FOLDER.

New Registrations . . .

(Continued from Page 29)

Hollywood; DAN P. BRANCH, JAMES O. KEMP, INMAN H. LEFF and FRANK S. ROBERTS, Jacksonville; BRUCE A. RENFROE, Lakeland; JOHN B. GEBOCKER, Lantana; GERALD J. WEMMER, Maitland; RALPH W. CLAYTON, Mrs. CLAIRE D. GILLER, PETER A. JEFFERSON, SIDNEY L. KOTKIN, SIDNEY M. WALKER and JOSEPH N. WILLIAMS, Miami; ALLEN B. BERMAN, Miami Beach; ARTHUR G. MCCREE, Orlando; STEPHEN J. GINOCCHIO and ROBERT W. RICHARDSON, JR., Palm Beach; WALTER L. WILLARD, Panama City; ROBERT L. MILLER, St. Petersburg; FRANKLYN W. TYE, Sanford; JOSEPH R. BLAIS and EARL J. DRAEGER, Sarasota; AUTHA W. FOREHAND, Tallahassee; GEORGE R. McELVY and J. ARTHUR WOHLBERG, Tampa; ROBERT H. BRAIDO, West Palm Beach. Mrs. CONSTANCE L. ZURVER, Columbus, Georgia, and FRED H. CURLIN, Valdosta, Georgia, were out-of-state residents in this group.

The total number of registrations issued in January was 50.

Custom-Cast Placques



We can fill all your design needs for any type, size or shape of cast bronze or aluminum placques, name panels or decorative bas-reliefs . . .

FLORIDA FOUNDRY & PATTERN WORKS
3737 N. W. 43rd St., Miami



DESCO VITRO-GLAZE is a vitreous-hard, glazed wall finish that's attractive, sanitary, washable, colorful, waterproof and economical. It is available in many non-fading, permanent colors and is an ideal material for use on walls of schools, hospitals, churches and all public and commercial buildings.

**STEWART-MELLON CO.,
Of Jacksonville**

945 Liberty Street, Jacksonville
Phone: ELgin 3-6231

ADVERTISERS' INDEX

A. R. Cogswell	28
George Doro Fixture Co.	26
Dunan Brick Yards, Inc. 3rd Cover	
Electrend Distributing Co.	30
Florida Foundry & Pattern Co.	30
Florida Home Heating Institute	32
Florida Portland Cement Co.	10
Florida Power & Light Co.	27
Florida Steel Corp.	4
Florida Tile Industries	1
George C. Griffin Co.	6
Hamilton Plywood	25
Homasote Company	24
Markowitz Brothers . 2nd Cover	
Miami Window Corp. . 4th Cover	
Prescolite Mfg. Co.	28
A. H. Ramsey & Sons	3
Southern Water Conditioning Co., Inc.	28
Steward-Mellon Co. of Jacksonville	30
Tamco Supply Corp.	7
Tiffany Tile Corp.	5
T-Square Miami Blueprint Co.	8
F. Graham Williams Co.	31

FAA Board Meeting . . .

(Continued from Page 9)

technical and professional matters—now the substance of an experimental program by the Florida South Chapter—at regular intervals throughout the year. He also outlined a suggestion for developing “workshop programs” to be held in conjunction with FAA Board meetings. The subject was not concluded, but was referred to the Board’s Executive Committee for further analysis during that Committee’s February meeting.

Of the few FAA Committee chairmen present, ROY POOLEY, for the P/R Committee, reported on an inter-professional meeting recently held in Jacksonville and sponsored by the Florida Medical Association to which the FAA had been invited to send representatives. Purpose was to obtain support for legislation to be introduced at Tallahassee seeking to amend Florida’s insurance statutes so that group insurance rates now covering certain classifications of memberships might be extended to cover professional associations. The Board referred the matter to the Legislative Committee for action.

The FAA P/R Chairman also put before the Board a resolution from the Jacksonville Chapter recommending that the FAA Legislative Committee be directed to study and prepare drafts of new legislation for presentation at the 1961 Legislature. This would constitute what was described as a “sound, progressive, strong architectural statute”. President STEYSON received the resolution and stated that it would become a matter for discussion at the February meeting of the Board’s Executive Committee.

There was evidence of much interest in the Board’s consideration and action on matters before it beyond official limits of the Board itself. Except for Daytona Beach Chapter, all Florida’s Chapters were represented by either regular directors or alternates. Five Chapter presidents attended—from Florida Central, Florida North, Florida Northwest, Florida South and Jacksonville—and eight Corporate members and one Associate from the Jacksonville Chapter. The FAA Executive Director and Administrative Secretary were present, as was BENMONT TENCH, JR., attorney, who attended at the request of President STEYSON.

MARCH, 1959

F. GRAHAM WILLIAMS, Chairman
JOHN F. HALLMAN, JR., Pres. & Treasurer JACK K. WERK, Vice-Pres. & Secretary
MARK P. J. WILLIAMS, Vice-Pres. FRANK D. WILLIAMS, Vice-Pres.



ESTABLISHED 1910

F. GRAHAM WILLIAMS CO.

INCORPORATED

“Beautiful and Permanent Building Materials”

TRINITY 6-1084
LONG DISTANCE 470

ATLANTA
GA.

1690 BOULEVARD, N. E.
OFFICES AND YARD

FACE BRICK	STRUCTURAL CERAMIC
HANDMADE BRICK	GLAZED TILE
“VITRICOTTA” PAVERS	SALT GLAZED TILE
GRANITE	UNGLAZED FACING TILE
LIMESTONE	HOLLOW TILE
BRIAR HILL STONE	ALUMINUM WINDOWS
CRAB ORCHARD FLAGSTONE	ARCHITECTURAL BRONZE
CRAB ORCHARD RUBBLE STONE	AND ALUMINUM
CRAB ORCHARD STONE ROOFING	ARCHITECTURAL TERRA COTTA
PENNSYLVANIA WILLIAMSTONE	BUCKINGHAM AND VERMONT
“NOR-CARLA BLUESTONE”	SLATE FOR ROOFS AND FLOORS

We are prepared to give the fullest cooperation and the best quality and service to the ARCHITECTS, CONTRACTORS and OWNERS on any of the many Beautiful and Permanent Building Materials we handle. Write, wire or telephone us COLLECT for complete information, samples and prices.

Represented in Florida by

LEUDEMANN and TERRY

3709 Harlano Street

Coral Gables, Florida

Telephone No. HI3-6554
MO 1-5154

“Vickie and Paula didn’t even know it was cold outside!”



This talkative dog, “Pretty,” lives at the Garzo home, 3208 Washington Rd., West Palm Beach. Pretty is talking about Paula Garzo, right, and Vickie Minton, a neighbor, shown as they appeared, warm and happy in the Garzo living room on one of those chilly January evenings. Paula’s mother, Mrs. Zonola Garzo, explains: “The determining factor in the purchase of our house two years ago was a built-in fuel-type heating system. We were wonderfully comfortable both winters. The thermostat kept the whole house at a pleasant 72° — the girls could study and play anywhere, even on the floor. And the fuel bills were amazingly low.”

During Cold Snaps
FLORIDA HOMES
 CAN BE
HAPPIER HOMES!



Let’s face it —
 the **GARZOS** did!

Mr. Architect: The only kind of home heating that makes sense in Florida is permanently-installed fuel-type furnaces. They do the job better, cost less to operate and come in full price range. Best of all, they’re now universally accepted as the right answer to Florida’s home heating problem. If you need any information on fuel-type equipment, please consult us at any time.

Let’s face it—**FLORIDA HOMES**
NEED BETTER HEATING!



Install your **FUEL-TYPE**
 “Florida furnace” **NOW!**

FLORIDA **HOME**  **HEATING** INSTITUTE

1827 S. W. 8th Street, Miami



Three

Ingredients...

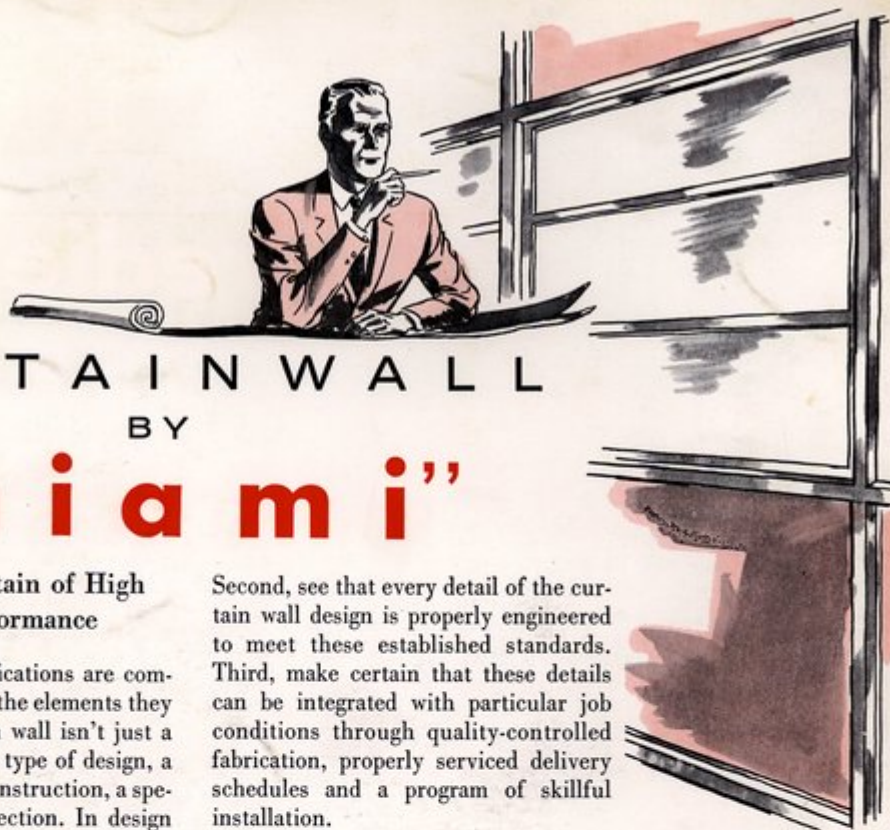
Concrete, Imagination and Know-How ...

DUNAN

BRICK

Specialists in Decorative Masonry Materials

DUNAN BRICK YARDS, INC., Miami, Florida — Phone TU 7-1525



CURTAIN WALL

BY

"miami"

How to Make Certain of High Curtain Wall Performance

Curtain Wall specifications are complicated because of all the elements they must cover. A curtain wall isn't just a product. It's a certain type of design, a particular system of construction, a special method of job erection. In design and engineering it involves material characteristics, thermal values, weight factors, expansion tolerances. There are installation matters to consider, too — as types of anchorage, size of units, solution of joint and drainage problems.

Also, projects vary widely. So there's no single set of "best" standards to write from. With curtain walls, too, the "or equal" clause means nothing — for brilliant performance on one job might mean costly failure on another.

Then what *is* the answer to this specification problem? It is simply this: First determine performance standards—the various technical values needed to satisfy requirements of a specific project.

Second, see that every detail of the curtain wall design is properly engineered to meet these established standards. Third, make certain that these details can be integrated with particular job conditions through quality-controlled fabrication, properly serviced delivery schedules and a program of skillful installation.

Yes, it is complicated. And that's where *we* come in.

We live with curtain walls. It's our job to know every technical fact relative to their possibilities — both the pitfalls and the potentials. So, we can aid you in setting up basic performance standards which will be adequate for any specific job. Through engineering we can help solve the many technical problems involved in detailing, fabrication and assembly. And we can assure you of field installation which combines the skill, experience and service needed to guarantee the curtain wall performance which your specification was written to produce.

NO. 2 OF A SERIES

These advertisements have been developed as suggestive guides to more economical and efficient contemporary construction. Others deal with engineering, design and installation factors of curtain walls. Please call us for answers to any technical questions on curtain wall construction or for any engineering data you might find helpful on any aspect of curtain wall design.



REMEMBER:

Whether you're specifying Curtain Walls, Awning Windows or Projected Sash, it's the quality of skill, knowledge and experience behind the product that will be the real measure of its job performance. For any type of building, anywhere — you can't specify better than Miami Window . . .

miami window corporation

P.O. BOX 877, INTERNATIONAL AIRPORT BRANCH, MIAMI 48, FLORIDA