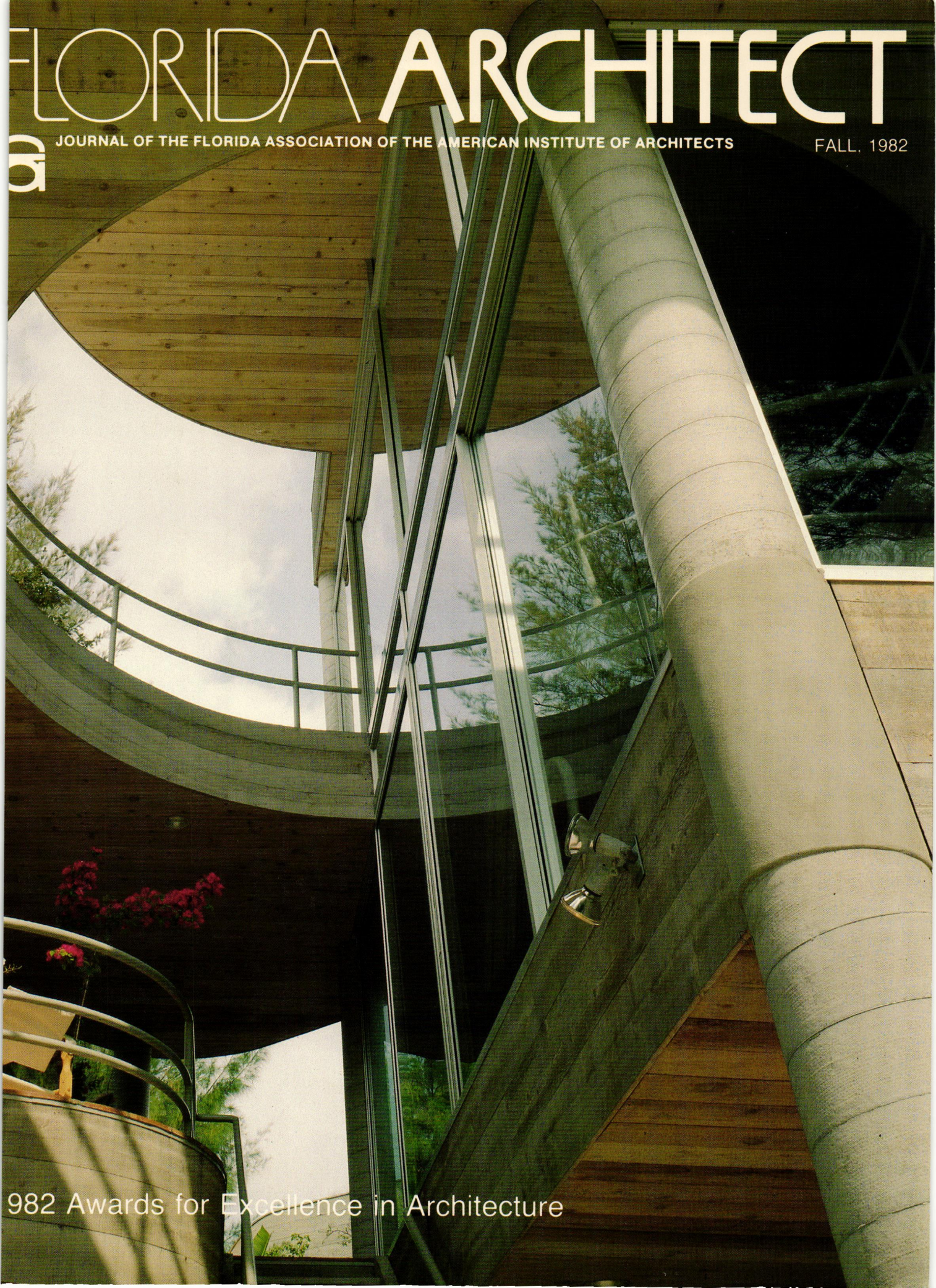


FLORIDA ARCHITECT

JOURNAL OF THE FLORIDA ASSOCIATION OF THE AMERICAN INSTITUTE OF ARCHITECTS

FALL, 1982



982 Awards for Excellence in Architecture

Over-the-top. Good news for bottom lines.

General Elevator's over-the-top installation means cost savings any builder will appreciate.

Installation in 1/3 the time.

Time is money. Over-the-top installation saves both. The elevator arrives on-site pre-assembled and prewired. No on-site reassembly is required. The unit is ready to be hoisted onto shaft guides by crane. The same crane can be used to lower the roof slab into place, and the unit is ready for electrical connections. The entire installation process can be completed in about 1/3 the time of conventional from-the-ground-floor-up.



The elevator's in early.

With over-the-top installation the building's vertical transportation can be an early part of construction. The elevator can be placed after the shaft is completed. Helping construction schedules stay on time, and on budget.

Up to 8 floors.

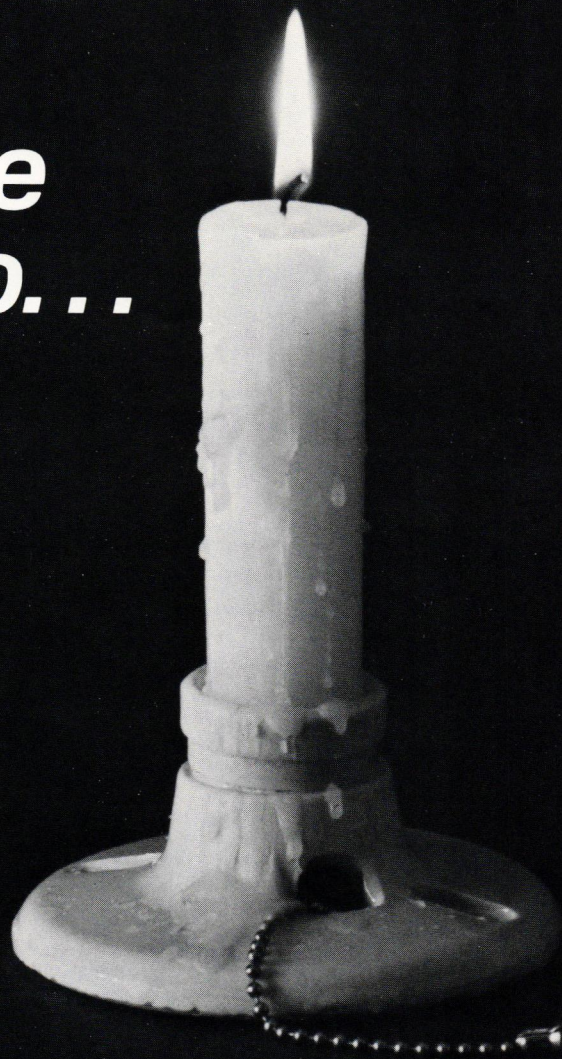
General Elevator can provide economical over-the-top installation for buildings up to 8 floors. Contact us. We'll tell you about our complete elevator package that's tops for bottom lines. Call 305/351-1011. Or write us at 5950 Precision Drive, Orlando, Florida 32809.



The General Elevator Touch



Before Sesco...



The University of Florida College of Architecture didn't have a Lighting Demonstration Laboratory

A little over a year ago, John McRae, AIA, Associate Dean of the College of Architecture, and Mike Segal, Chairman of the Board of SESCO, began talking about a Lighting Demonstration Laboratory for the College. By the end of this summer, that dream will be a reality.

We all agree that good lighting is essential for good architecture. Think of the impact this room - filled with all types of light fixtures - will have on the careers of architecture and interior design students who attend the University of Florida. No longer will the University College of Architecture have to make excuses because their graduates didn't know a troffer from a track light.

SESCO's gift of the Lighting Demonstration Laboratory will help make the University of Florida College of Architecture one of the best in the nation. We are proud to be part of their success.

If your next project demands quality lighting fixtures, state of the art know how, cost-effectiveness and on time delivery - please - for your building's sake - call your nearest SESCO office. We'd like to be part of your success, also.

Miami
305/624-5321

Palm Beach
305/848-1422

Ft. Myers
813/481-6153

Jacksonville
904/743-4942

Ft. Lauderdale
305/753-3342

Winter Park
305/671-4433

Tampa
813/870-3105

Tallahassee
904/222-6220

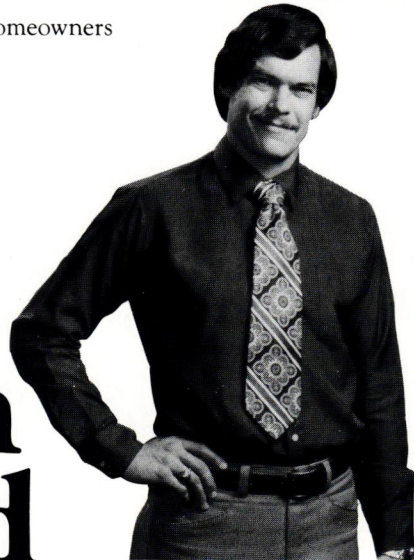
LIGHTING EUTHENICS® by



*Congratulations to Florida AIA on their new headquarters building.
SESCO was pleased to contribute all of the lighting fixtures for this project.*

"9 out of 10 homeowners are energy-conscious."

1981 Survey of Florida Builders and Homeowners



Robert E. Taylor
A.I.A. Architect and P.A.
Palatka

"I design certified Watt-Wise™ Homes."

According to a recent survey, 97% of all homeowners are energy conscious.

And 90% of them think a Watt-Wise Home is a good idea.

So it's no wonder that's the kind of home so many architects are designing.

Electric bills for a certified Watt-Wise Home can be as much as 25% lower than those for a similar conventional home.

In addition, FPL strongly supports the builders and designers in its Watt-Wise

Program with both technical and promotional help.

Call FPL's toll-free Watt-Wise Line at 1-800-432-6563 to request a visit from an FPL representative or a packet of information about Watt-Wise Homes.

We're working hard at being the kind of power company you want.

FPL  ©FPL

Florida Association of the
American Institute of Architects
104 East Jefferson Ave.
Post Office Box 10388
Tallahassee, Florida 32302

Publisher/Executive Vice President
George A. Allen

Editor
Diane D. Greer

Director of Advertising and Art
Ann E. Allen

Editorial Board

J. Michael Bier, AIA
Chairman

Jaime Borelli, AIA
William E. Graves, AIA
Mark Ramaeker, AIA
Peter Rumpel, FAIA

President
Glenn A. Buff, AIA
9369 Dominican Drive
Miami, Florida 33190

Vice President
Robert G. Graf, AIA
Post Office Box 3741
Tallahassee, Florida 32303

Secretary
James H. Anstis, AIA
333 Southern Boulevard
West Palm Beach, Florida 33405

Treasurer
Mark T. Jaroszewicz, FAIA
University of Florida
College of Architecture
331 Architectural Building
Gainesville, Florida 32611

Regional Director
Ted Pappas, FAIA
P. O. Box 41245
Jacksonville, Florida 32202

General Counsel
J. Michael Huey, Esquire
Suite 510, Lewis State Bank Building
Post Office Box 1794
Tallahassee, Florida 32302

FLORIDA ARCHITECT, Official Journal of the Florida Association of the American Institute of Architects, is owned and published by the Association, a Florida Corporation not for profit. ISSN: 0015-3907. It is published five times a year at the Executive Office of the Association, 104 E. Jefferson Ave., Tallahassee, Florida 32302. Telephone (904) 222-7590. Opinions expressed by contributors are not necessarily those of the FA/AIA. Editorial material may be reprinted provided full credit is given to the author, and to *FLORIDA ARCHITECT*, and a copy sent to the publisher's office.

Single copies. \$2.00 subscription, \$20.00 per year. Third class postage.

FLORIDA ARCHITECT

JOURNAL OF THE FLORIDA ASSOCIATION OF THE AMERICAN INSTITUTE OF ARCHITECTS

Fall, 1982
Volume 29, Number 5

Contents

9 1982 FA/AIA Awards for Excellence in Architecture

Departments

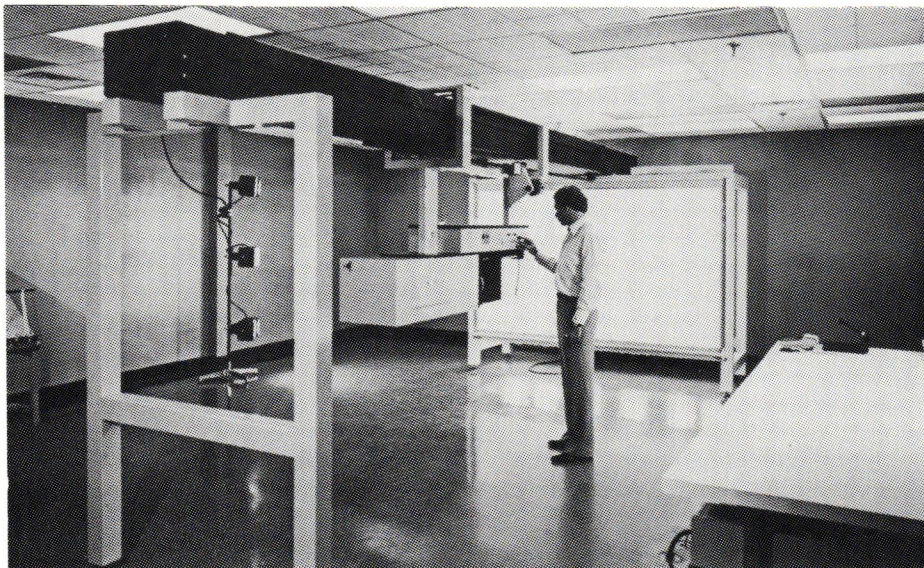
- 5 Editorial
- 6 News and Letters
- 7 Legal Notes
- 31 Viewpoint

Cover photograph of the Gregg Beachfront Residence by Carl Abbott. Photograph is by Steven Brooke. Brooke is the recipient of this year's FA/AIA Honor Award for Photography.

Try Us!
25% Discount
We Know You'll Like Us!

We would
like you to meet
our new Opti-Copy® * . . .

SHARPSHOOTER.



miniMax
INTERNATIONAL
the system of reprodrafting

THE FASTEST, LARGEST and MOST ACCURATE CAMERA/PROJECTOR in the PHOTO WORLD!

The only camera of its kind in the Southeast
(outside of Atlanta)

Its quality exceeds any!

THESE ARE JUST SOME OF THE BENEFITS AND FEATURES

- Size . . . 8' original or reproduction, one of the largest in the state.
- Accuracy . . . to 1/1,000 of an inch.
- Speed . . . 24-hour turnaround. Large better quality standards in shorter time.
- Restoration . . . designed to restore the meanest, nastiest originals . . . easily. Let us restore your old linens, vellums or blueprints that you cannot copy clearly.
- Computer controlled . . . for assured accuracy.
- End product . . . Mylar, washoff, paper and clear film.
- Overlay drafting experts.
- Scissor drafting.
- Photo drafting.

SPECIAL LIMITED TIME ONLY

Sales Representative
J & J REPROGRAPHICS

421 - 24th Street
West Palm Beach, FL 33407

1-800-432-7542

In all things, it seems, the spirit of competition is a driving force in bringing true excellence into public view. There is no field of endeavor where the spirit of competition is not keen and the goal is not either to be first, best or biggest. To deny that competition is one of this country's motivating forces is to deny the very essence of our goal-oriented culture. We are a society that thrives on recognition — in athletics, personal appearance, medicine and science, arts and letters . . . and architecture.

Sooner or later, presumably, we will all be recognized because we are first or best at something.

While much of this recognition is little more than entertainment for the masses, the spirit of competition is important. It stimulates our desire to succeed and become ever better at what we do. A desire for recognition among our peers is healthy, even admirable. I would like nothing better than to win the Pulitzer Prize for journalism. Is that bad? I say no. It causes me to constantly strive to produce my best writing.

Architectural competitions are no different. Architects enter competitions to win. With winning comes a recognition of excellence and with that recognition comes an implied obligation for continued excellence. That's good. It's good for the people who buy architecture. It's good for the future of architecture, for the future of our cities. It is one of the assurances that quality will continue to be a goal.

Diane D. Greer

LETTERS

Dear Editor

The summer issue of FLORIDA ARCHITECT is another fine job you've done. I'll share my copy with the Homes Editor of the Evening Independent, our afternoon paper.

Keep up the fine work.

Charles Benbow
Architecture Writer
St. Petersburg Times

Dear Editor

I have enjoyed the look of the magazine (FA) in the last few issues. The cover on the summer issue was very soft in tone and most effective in displaying the rotunda stair in the Capitol.

Sincerely,
Alfred Browning Parker, FAIA

Dear Editor

I want to compliment you on your very good looking FLORIDA ARCHITECT. It's very well done and I hope that it is profitable for you.

Sincerely,
Helen T. Schneider, Hon. AIA
Executive Director
New Jersey Society of Architects

Dear Editor

The summer issue of FLORIDA ARCHITECT, with the 1982 Governor's Design Awards featured, contained an error. The credits on the Escambia Regional Service Center were incorrect and should have been listed as follows:

THE GOVERNMENTAL CENTER ARCHITECTS, (J.V.)

Hugh J. Leitch, Architect, P.A.
The Bullock Associates, Architects & Planners, Inc.

Look & Morrison, Architects
Marshall & MacNeil, Architect
Ellis W. Bullock, Jr., was the Principal in Charge

Please publish a correction accordingly in your next issue.

Thank you.
Ellis W. Bullock, Jr., FAIA

Ed. Note: FLORIDA ARCHITECT incorrectly listed Ellis W. Bullock, Jr. as the architect of the Escambia Regional Service Center based on information supplied by the coordinators of the awards program. The FA/AIA's involvement in the Governor's Design Awards Program is limited to co-hosting the announcement of the winning designs. FA apologizes to those architects who were mistakenly deleted from the list of winners.

Turn to page 20

Finally, Something Beautiful Comes Easy

Focal Point's exclusive Endure-all™ material provides the beauty you expect with the benefits you need:

- Crisp detail • Lightweight • Factory primed • Paintable • Stainable • Sawable
- Nailable • Fire-retardant • Affordable • Shippable • Weather-resistant

Presenting the first documented American Nineteenth Century Collection of historic mouldings for yesterday, today, and tomorrow endorsed by the Victorian Society in America.

See us at
FA/AIA Conference
Booth #30.



Focal Point Inc.

Dept. H2-3, 2005 Marietta Road N.W., Atlanta, Georgia 30318 (404)351-0820
Send \$2.50 for color brochures.

Fine Photography Anywhere



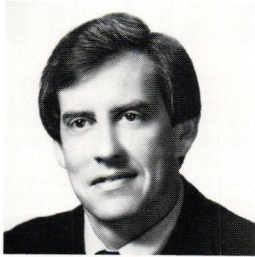
Harvey J. Kelman • Architectural Photography

6406 Eldorado Drive
Tampa, Florida 33615

(813) 885-4166

HK-100

Architecture or Engineering—Clearing Up A Cloudy Issue.



by J. Michael Huey
FA/AIA General Counsel

The professions of architecture and engineering have been regulated in Florida since 1915 and 1918, respectively. Distinctions between the two have, however, never been totally clear to the public, the legislature or the courts. Indeed, there is an acknowledged overlap between architecture and some of the engineering specialties, particularly, structural and civil engineering. This overlap has caused regulation of the architectural and engineering professions to be complex and, at times, frustrating.

From 1915 until 1979, there was a limited definition of architecture contained in the Architects' Practice Act. Persons engaged in the planning or design of buildings for others or furnishing architectural supervision of the construction of buildings were deemed to be practicing architecture. From 1918 until 1979, the Engineers' Practice Act contained an extensive definition of the term "professional engineering." This term included any professional service requiring use or knowledge of mathematics and the principles of engineering rendered or offered to be rendered for public or private buildings, dams, machines, etc., and any consultation, investigation, plan, design or responsible supervision of construction of such buildings, dams, machines, etc.

For years, architects and engineers were at each other's throats over one another's encroachment in the practice. This not only occurred in Florida, but throughout the United States. In 1970, the Florida State Board of Architecture attempted to prosecute an engineer for the unlawful practice of architecture. The now famous case — *Verich v. Florida*

State Board of Architecture — involved the design of a shopping mall by an engineer. The lower court's order enjoined the engineer from continuing with the design of the mall. The District Court of Appeal for the Fourth District of Florida reversed the lower court holding that, upon review of the definitions in the practice acts, a registered architect could plan, design and supervise construction of a building as the practice of architecture and a registered professional engineer could plan, design and supervise construction of a building as the practice of engineering.

The district court also noted that the legislature obviously intended an overlap of these two professions due to the statutory language allowing engineers to perform architectural services incidental to an engineering project and vice versa. The *Verich* decision did not end the controversy between architects and engineers but it substantially precluded encroachment enforcement activities by the respective professional regulatory boards.

In 1979, the legislature reviewed the Architects' Practice Act and the Engineers' Practice Act under the sunset law. Under this law, the two practice acts were to be automatically repealed absent the legislature's finding that the health, safety and welfare of the citizens of the state required re-enactment. The legislature made such a finding and re-enacted both practice acts. In doing so, the definition of engineering was modified only slightly. However, the definition of the practice of architecture was substantially amended to read:

"'Architecture' means the rendering or offering to render services in connection with the design and construction of a structure or group of structures which have as their principal purpose human habitation or use, and the utilization of space within and surrounding such structures. These services include planning, providing preliminary study designs, drawings and specifications, architectural supervision, job-site inspection, and administration of construction contracts."

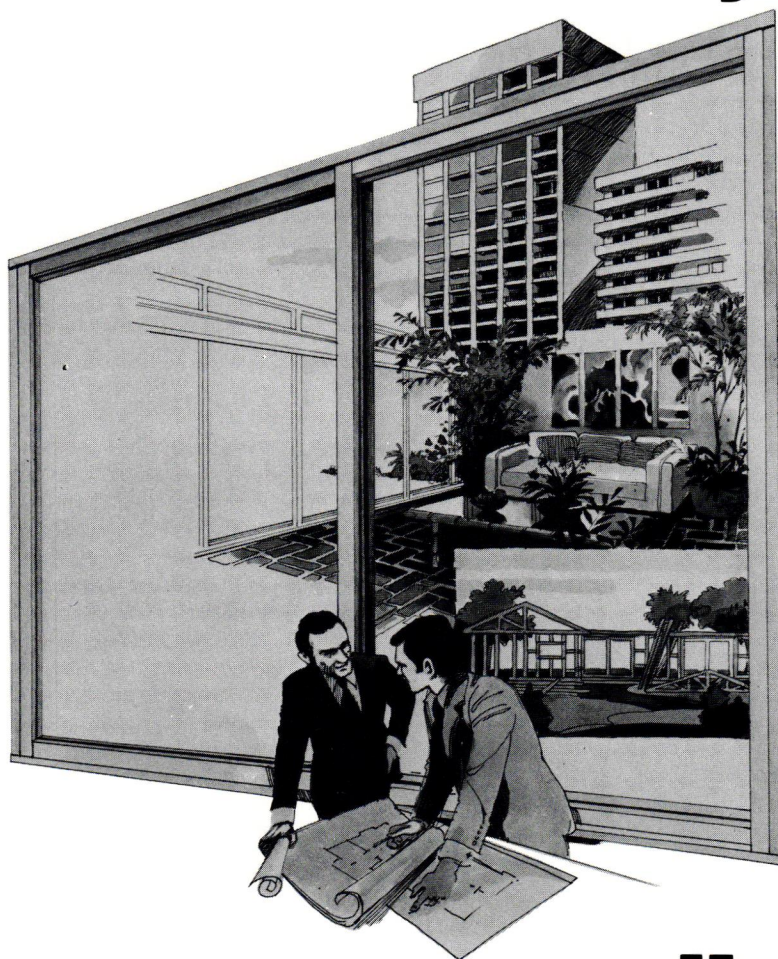
The 1979 Legislature further modified the two practice acts to provide that only civil and structural engineers could render architectural services which were purely incidental to an engineering project. Formerly, such incidental architecture was not restricted to these two engineering specialties. The two modifications have gone a long way toward clarifying the respective practices. The legislature recognized that the disciplines of civil and structural engineering are the only two engineering disciplines applicable to planning, design and construction supervision of buildings. Further, the legislature recognized that architecture, alone, involves overall planning, design and construction supervision of structures for *human habitation or use*.

The legislature, rightfully, did not remove the "overlap" language wherein architects can perform engineering services purely incidental to their architectural practice and vice versa. There are some who will say that this leaves the two professions exactly where they were in 1970, when *Verich* was handed down. However, this is not the case. The Department of Professional Regulation, through the State Board of Architecture and the Florida Board of Professional Engineers, has formed a Joint Architectural/Engineering Committee whose purpose is to review alleged practice encroachments. This committee has consistently applied the "human habitation or use" principle in distinguishing the two practices. The committee, in evaluating complaints received by DPR, has determined that the following building types can only be designed by architects: condominiums, apartment buildings, office complexes, church buildings, public recreational buildings, shopping centers, hotels and detention facilities.

Despite the progress being made by the Joint Committee, many architects continue to be frustrated by the failure of their local building code officials to properly interpret and enforce the law by issuing building permits for architectural buildings when the plans have been sealed by engineers. Building officials have a duty to examine the plans submitted

Turn to page 32

We didn't invent the wheel-but we did find a way to close openings better than anyone in the industry.



MILDOOR, for two decades, has provided the construction industry with a complete line of superbly engineered quality products, and in the process discovered how to beautify aluminum. We call it Magnacolor. There's nothing like it anywhere else, at any price. Colors are electrostatically applied to create a finish that will resist peeling, chipping, cracking, crazing or blistering.

Mildoor products that have passed the test of time:

Aluminum Sliding Glass Doors.

The Executive Series: Commercial and hi-rise applications, and for upgrading of single family residences. Available in single or double glaze 5' x 8' panels in any configuration. KD or assembled.

The Patrician Series: Single and double glaze available in 4' x 6' 8 1/2" panels in any configuration. KD or assembled.

The Performance Series: For upgrading of residential market, 4' x 6' 9" panels, single or double glaze, limited to one fixed and one slide. KD or assembled.

The 1100 Series: For mid-rise applications. Single glaze only. 5' x 8' panels in any configuration. KD or assembled.

Aluminum Windows

The Executive Series: For hi-rise applications and for upgrading single-family residences. Single hung windows available glazed only. Rolling windows available KD or glazed.

The Patrician Series: Single hung windows—glazed only. Rolling windows—glazed only.

Aluminum Mirror Doors

The Residential Series: Top hung 6' 8 1/2" openings. 2, 3, or 4 panels. Double or Triple Slide. KD or assembled.

The Presidential Series: Decorator design for special applications. Panels to 4' wide x 8' high in any configuration. Featuring bottom track rollers. KD or assembled.

The Tri-Mirror Series: 3-panel hinged mirrors. 6' 8 1/2" high or vanity height of 37 1/2". Fixed center panel with top and bottom 'U' channel, and two folding wings. KD or assembled.

Aluminum Tub and Shower Enclosures

The Nob-Look Series: High fashion decorator styling. Polished, buffed, and anodized in a mirror-finish gold or silver. Available in any plumbing configuration. KD or assembled.

mildoor

PRODUCTS THAT HAVE PASSED THE TEST OF TIME

A Division of Miller Industries, Inc.

16295 NW 13th Avenue, Miami, Florida 33169 (305) 621-0501

Palm Beach Branch: 1142 Old Okeechobee Road, West Palm Beach, Florida 33401

North (305) 833-7005/South (305) 278-7011

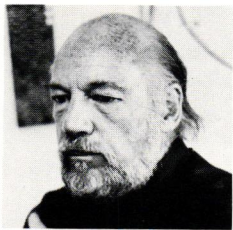
Melbourne Branch: 60-A Sunset Drive, Melbourne, Florida 32901 (305) 676-5055

1982 FA/AIA Awards For Excellence in Architecture

This year's eight winners of the Award for Excellence in Architecture were selected from 150 submitted projects. The jury which convened at the headquarters of the New York Society of Architects in Manhattan, included Charles Gwathmey, FAIA, John M. Johansen, FAIA and Paul Rudolph. While philosophical differences existed among the jury, as they will in any jury, this year's winners collectively represented this jury's different perceptions of excellence in architecture.

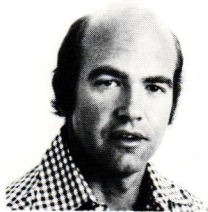


Photo of Senior Citizen's Center by Bob Braun



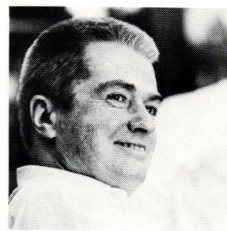
John Johansen, FAIA

John M. Johansen, FAIA, is one of the most widely acclaimed Architects practicing today. Since he established his practice in 1950, his work has received both national and international attention for its boldness, imagination and freshness of approach. Over the years Mr. Johansen has received repeated honors and awards from the National Chapter of the A.I.A., several regional chapters of the A.I.A., the Brunner Award from the National Institute of Arts and Letters, and the U.S. Department of H.E.W., and the Royal Institute of Architects of Ireland.



Charles Gwathmey, FAIA

Charles Gwathmey, FAIA, of the New York firm of Gwathmey Siegel & Associates, received his Master of Architecture from Yale University where he was awarded the Winchester Traveling Fellowship and a Fulbright Grant. Gwathmey has maintained faculty positions at a number of universities including Harvard, Yale, Princeton and Columbia. He is the youngest architect ever to receive the American Academy and Institute of Arts and Letters' Brunner Prize.



Paul Rudolph

Paul Rudolph practices in New York City. He is a former Chairman of the Department of Architecture at Yale University and holds numerous honorary doctoral degrees from such schools as Auburn, Emory and Florida State University. He has a Master of Architecture degree from Harvard University. Rudolph has been the recipient of numerous awards and honors, both nationally and internationally. He is a prolific author and his work has been the subject of a number of books including *The Architecture of Paul Rudolph* by Sibyl Moholy-Nagy and Gerhard Schwab.

“This house is an interesting mixture of nature and human design . . .”
John Johansen



Photography by Steven Brooke

The Aguilera Residence
Dade County, Florida

Architect

George F. Reed, FAIA
Coconut Grove

Landscape Architect

George F. Reed, FAIA

Owner

Mr. and Mrs. Enrique Aguilera

General Contractor

Meares Contracting Company

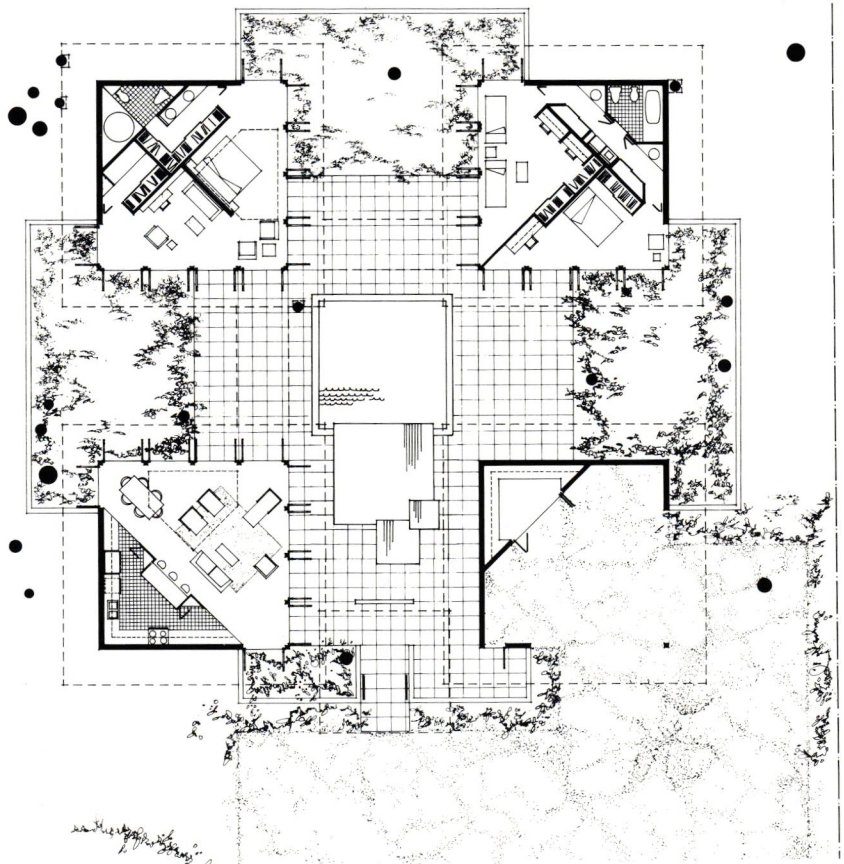
This residence was designed for a family with four children who wished to have complete privacy and save all existing oak trees. In addition, they wanted a home which related to the tropical outdoors and enhanced their energy conservation. Privacy for individual family members was also important, but the spirit of the family and a feeling of security within the house was imperative.

The solution to these criteria was a complex of four sheltering roofs, set among the trees, describing a compound that is enclosed by a continuous meandering masonry wall that provides security and privacy. Altogether, this tropical house was designed to be in harmony with its family and its site.

Jury Comments

“This is the most indigenous and most livable building we saw.” . . . Paul Rudolph

“This house is a haven in the tropics. It is an interesting play between formal and informal. The delight here is in the mixture between plant life and man’s construction. It’s really a marvelous mix.” . . . John Johansen





Photography by ©Hursley/Lark/Hursley

“A most extravagant core of glass wall . . .” Charles Gwathmey

The Overseas Tower

Miami, Florida

Architect

Arquitectonica International Corporation
Coral Gables

Consulting Engineer

John Ross Associates, Inc.

Owner/Developer

The Overseas Tower Corporation, N.V.

Jorge Boza, Jr., Developer

General Contractor

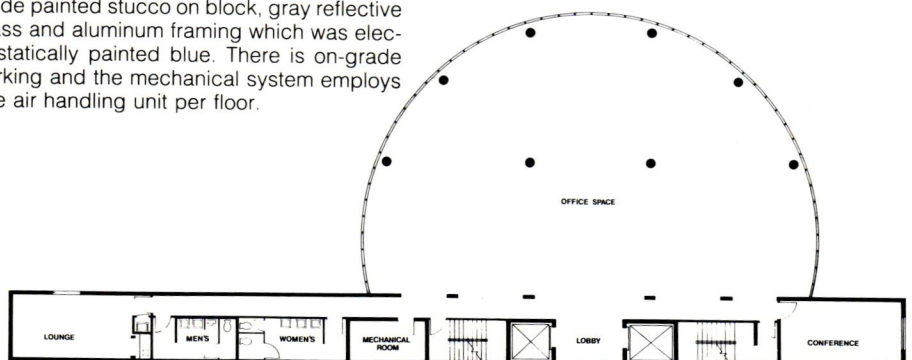
Edward J. Gerrits

This medium rise suburban office building is sited at the entrance to an industrial park on a peninsula. There are expansive views of a large lake from the seven-story building which has 37,000 square feet of gross area. Building construction is reinforced concrete columns and post tensioned slab on pile footings. Building materials include painted stucco on block, gray reflective glass and aluminum framing which was electrostatically painted blue. There is on-grade parking and the mechanical system employs one air handling unit per floor.

Jury Comments

“As a total surreal building, as a graphic idea, both in terms of color and material and articulation . . . as a speculative object, it is very successful.

“The building addresses itself to highway architecture which is unique because it is done all too seldom. It holds its own in the highway by using the most extravagant core of glass wall that one can imagine. The handling of the core, from a purely architectural viewpoint is, I think, brilliant. It is a study in scale. It is simultaneously scale-less at first glance with the continuous glass walls of the office tower, but if you examine the detail more closely, you see that it has great delicacy of scale. The whole building is a study in abstraction.’ . . . Charles Gwathmey



“There is a great inventiveness of gestures here . . .” John Johansen

Alexander Residence
Coconut Grove, Florida

Architect
Henry C. Alexander, Jr.
Miami

Consulting Engineer
Brill-Heyer Associates

Owner
Mr. and Mrs. Henry C. Alexander, Jr.
General Contractor
Henry C. Alexander, Jr., Architect

This single family residence occupies a lot which is 50 by 90 feet with a flood criteria of + 12.0' MSL for all habitable spaces. Foundations are isolated footings for each column and concrete slab on grade. The exterior is stained cypress on plywood sheathing and flooring is oak strip. There are two 37,000 BTU split system air conditioners with heat exchanger for hot water.

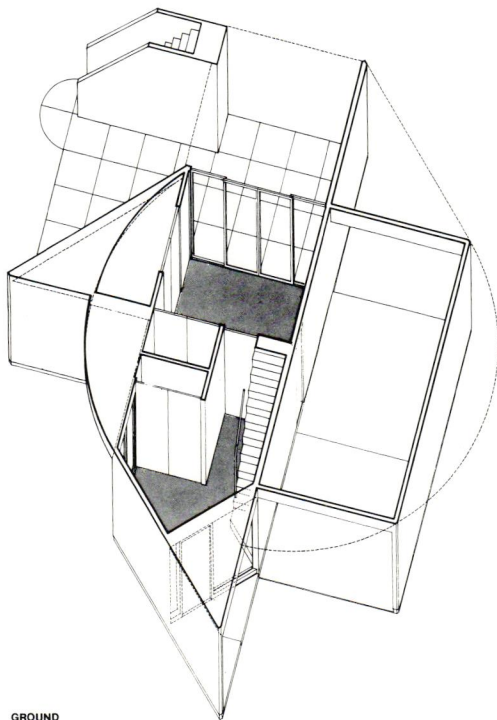
Jury Comments

“There is great unity in this building and it is a marvelous abstraction. There is great inventiveness of gestures here as to the way forms break one into the other. Sometimes it is the flow of a curve, sometimes it is something else. First you're in one geometry, then another. You literally move from one form to another.

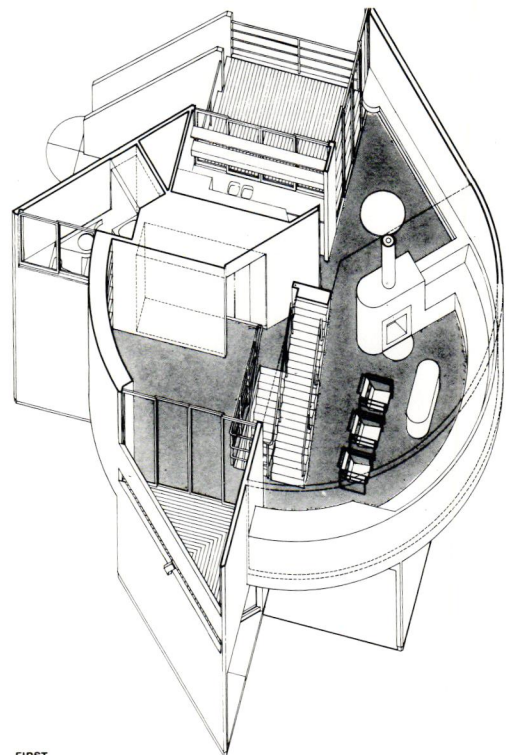
“It is a very sophisticated piece of work and a very able design.” . . . John Johansen



Photography by Martin Fine



GROUND

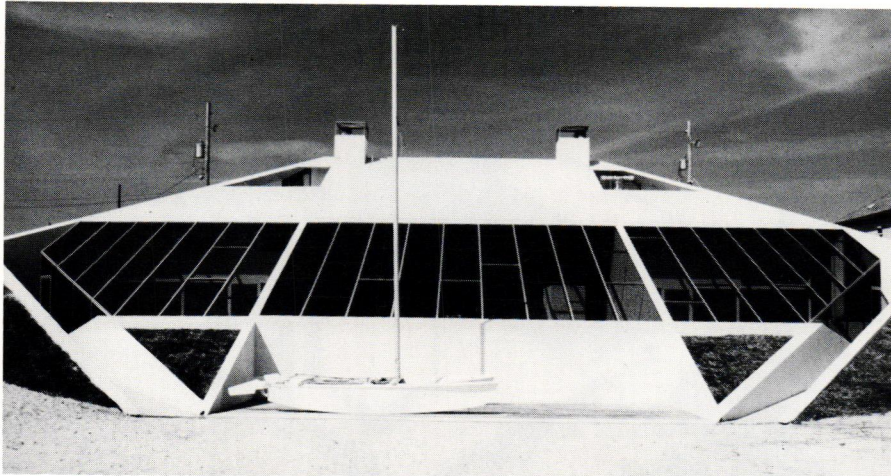


FIRST

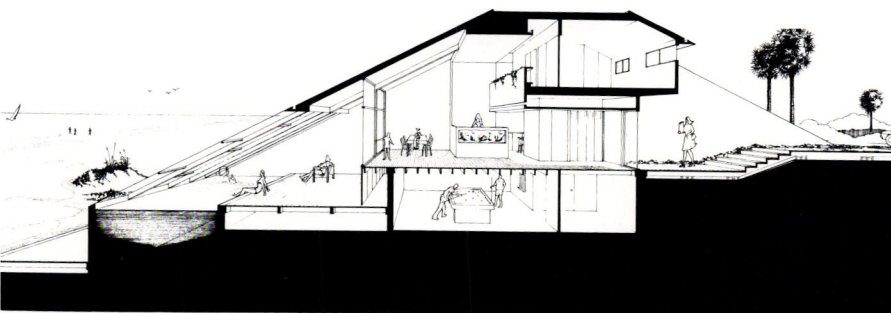
"This use of sloping planes is very successful . . ." Charles Gwathmey



Photography by Steven Brooke



Photography by Bunny Morgan



Oceanfront Townhouses
Atlantic Beach, Florida
Architect
William Morgan Architects, P.A.
Jacksonville
Consulting Engineer
Roy Turknott Engineers, P.A., Mechanical,
Electrical
H. W. Keister Associates, Inc., Structural
Owner
Morgan-Goodloe, Incorporated
General Contractor
E. Vaughan Rivers, Inc.

Taking advantage of the 100' by 150' sloping site, the townhouses are nestled into the sand dune with the center residence's entry at the second floor approached by a landscaped wood deck. The north and south townhouses, mirror images of each other, are entered through a sunken skylit atrium to a landing above the first floor. The sloped roofline is extended by fin walls on the west to subdivide a six-car carport, by sodded berms on the north and south, and by a screen enclosure on the east facing the Atlantic Ocean. Each unit has a balcony leading to the bedrooms which overlook a two-story living area below.

Jury Comments

"The formal concept of this building appears to be one when it is really three living spaces. The house is most convincing in section and I like the feeling that the house is always recoiling away from you. In that regard, its use of sloping planes is most successful." . . . Charles Gwathmey

"The outside is the other side of the inside . . . a very honest approach to architecture." . . . John Johansen



Photography by Bob Braun

Neighborhood Senior Citizens Center
Jacksonville, Florida

Architect

Pappas Associates, Architects, Inc.
Jacksonville

Consulting Engineers

H. W. Kiester Associates, Inc., Structural
Van Wagenen & Searcy, Inc., HVAC and
Electrical

Landscape Architect

Jacksonville Landscaping Company

Owner

City of Jacksonville

General Contractor

Wesley of Florida, Inc.

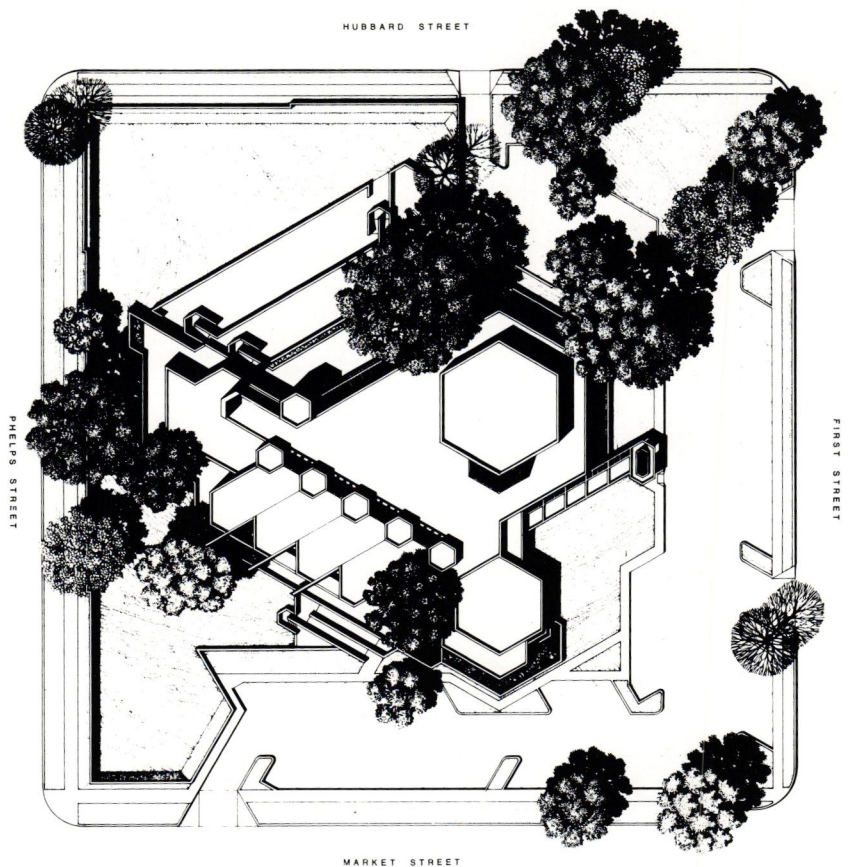
This center was designed to provide recreation for the elderly. Utilizing the asset of a moderate year round climate, the structure combines not only indoor activities, but invites the individual to participate in outdoor recreation, including dining.

Jury Comments

"This building creates its own environment within its own confines. Because of the concrete construction, it's easy to see how it might appear fortress-like to the casual observer, but actually the idea of the elderly coming to a protective place which is clearly defined and where they feel secure is good.

"The plan is admirable. It is essentially simple — laid out around a corridor leading to lounge and library. As far as the auditorium is concerned, what better way to keep out distracting outside noises than to surround the auditorium with storage facilities.

"The geometry of the scheme is consistent throughout. It is a good indication that Wrightian architecture is not dead." . . . Charles Gwathmey



“This is one of the few airports in the world that seems to belong to a given space . . .” Paul Rudolph



Photography by Bob Braun

Passenger Terminal Complex

Orlando International Airport
Orlando, Florida

Architect

Kemp, Bunch and Jackson, Architects, Inc. and Schweizer Associates, Inc. Associated Architects serving as project architect to the Greiner Team, a project led by Greiner Engineering Sciences as project manager.

Consulting Engineers

Tilden, Denson and Lobnitz, Inc., Electrical, Plumbing, Acoustic

Van Wagenen & Searcy, Inc., Mechanical
Greiner Engineering Sciences, Structural, Passenger Transfer system, aprons

Landscape Architects

Wallis-Baker and Associates, P.A.
Foster-Conant and Associates, Inc.

Owner

Greater Orlando Aviation Authority

General Contractors

Gilbane/Mills and Jones - Construction Manager

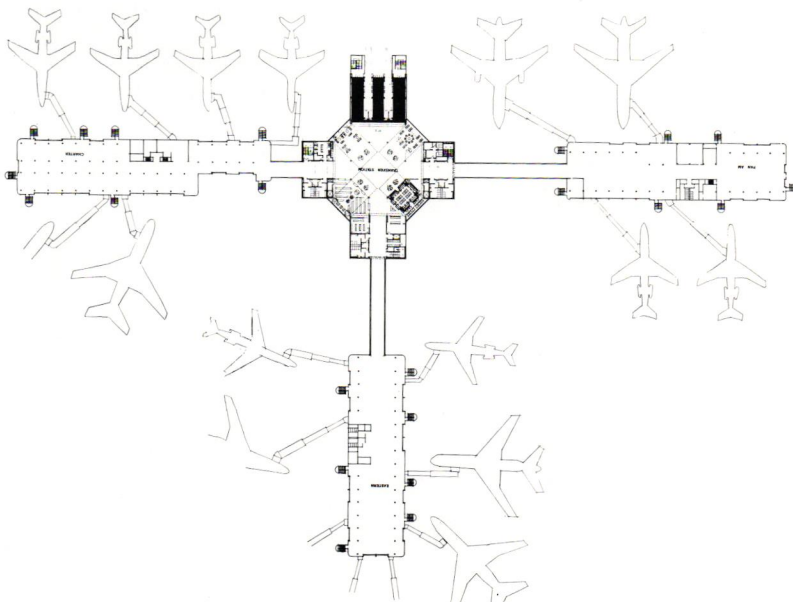
Great Southwest Corporation - Landside Contractor

Metric Constructors - Airside Contractor

Jury Comments

“This is an interesting idea for an airport with terminal building for people, cars and parking separate from the terminal for airplanes. The airport is designed so that you establish passenger transfer at the main terminal and then take a tube to the various airline pods. The whole trip from terminal to airplane building is a part of the sequence of the building. There is very strong site participation with passengers moving over a series of lakes and never losing sight of the land.

“The quality of this building is less automatic than one might expect in this type of public facility, rather the detailing is clear and the overall use of space is much less regular and unexpected than one finds in a typical airport.” . . . Charles Gwathmey



“A logical, intimate building for students who are tired of pretentious architecture . . .” Paul Rudolph



Photography by Peter Rumpel

University of North Florida
Student Activity Center
Jacksonville, Florida

Architect

Clements/Rumpel/Associates
Jacksonville

Consulting Engineer

H. W. Keister Associates, Structural
Wilder Associates, Mechanical, Electrical
David Locklin, Theatre Consultant
Larry Brock, Kitchen

Landscape Architect

Bill Munson

Owner

State of Florida Board of Regents

General Contractor

Greenhut Construction Company

This 700-seat theatre and student activity center has a poured-in-place concrete frame and is built of brick to match existing campus buildings. There is stained exposed concrete, steel and reflective glass over the exterior circulation, the theatre lobby and the greenhouse dining area.

Jury Comments

“There is a sense of intimacy in this building even though it is fairly large. There is a certain logic about the whole which is heightened by that sense of intimacy. I like the spirit of the building. It employs very direct building methods which, I think, young people particularly appreciate. It is really like an informal community, a village if you will, where students go shopping for knowledge. The lineal organization of the building draws on nature . . . it is very organic.” . . . Paul Rudolph



"The relationship of solids to voids is handled in a remarkable architectural way . . ." Paul Rudolph



Photography by Steven Brooke

Gregg Beachfront Residence
Island near Sarasota, Florida

Architect
Carl Abbott, Architect
Sarasota

Consulting Engineer
A. L. Conyers

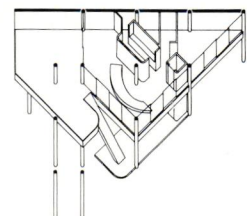
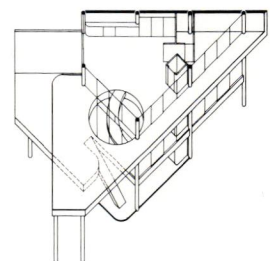
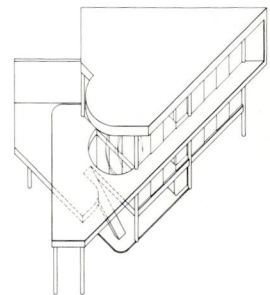
Project Job Captain
Michael O'Donnell

Owner
Mrs. Harry Gregg
General Contractor
Dale Pierce, Inc.

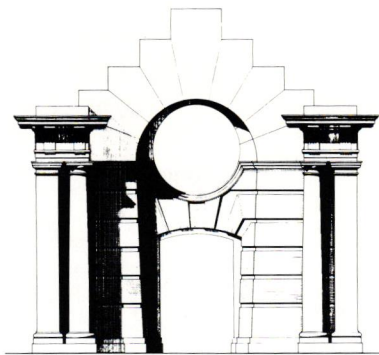
In the canopy of trees, this beach house reads as a series of light, floating terraces supported on tall concrete columns. The tall vertical cylinder of space which runs the full height of the building visually anchors the structure to the site.

Jury Comments

"This house's three horizontal planes, which do not in plan follow each other, but interpenetrate one with the other, is a valid idea, especially when these floors are raised above ground in a tropical climate. The relationships of these three planes and their solids and voids is handled in a remarkable architectural way. The void in one plane is the solid in another. All of that is very formalistic, of course. The thrusting and counter-thrusting and the balancing of solids and voids and the flow of space horizontally and vertically is well thought out." . . . Paul Rudolph



GRAYBOOKS is bookseller to building and design professionals worldwide with one of America's largest collections of **architectural, construction, interiors, landscape** and **urban design** publications, new, used, rare and out-of-print. We provide a search service for out-of-print books and we also buy used books from individuals and institutions. VISA and MASTERCHARGE accepted. Open Monday-Saturday 9-5.



Allan Greenberg, from *Architecture 1980*, Rizzoli

GRAYBOOKS



GA and GA Detail series	13.95
GA Houses series	19.95
GA Document series	14.95
GA Document Special Issue series	27.50
GA Book	995.00
GA set (1-60)	795.00
GA Houses set (1-10)	199.50
Please write for complete Titles List	

1909 Brunson St. 2 Houston, Texas
713/797-0494

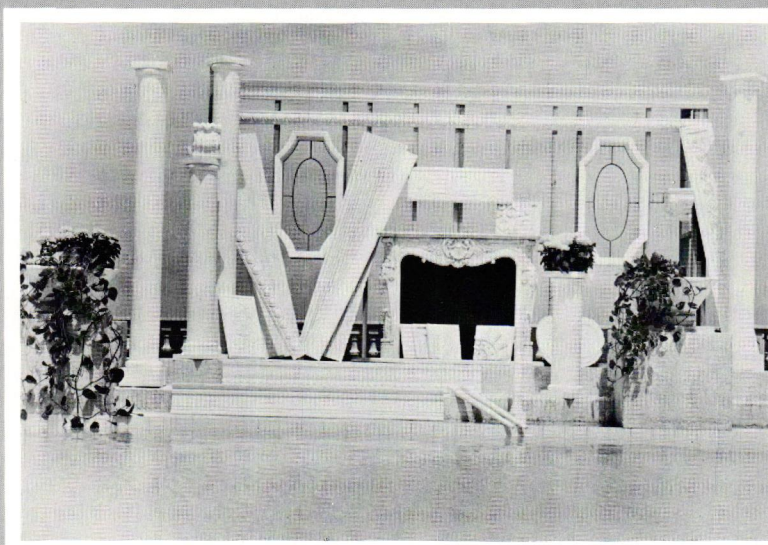


Photo by Jon Fish

CLASSIC MOULDERS

*Designers & Manufacturers of
Decorative Polyurethane Architectural Artwork*

- CORNICE MOULDING • OVER DOOR CARVING • KNEE BRACKETS
- ANTIQUE FIRE PLACES • SCULPTURED WALL DECOR

Custom Furniture & Cabinetry

911 N. Railroad Ave., West Palm Beach, FL 33401 (305) 659-4200 *New Showroom at D & D Centre*

BOOTH #58 / 1982 FLORIDA CONFERENCE AT HYATT REGENCY, TAMPA, OCTOBER 7-9



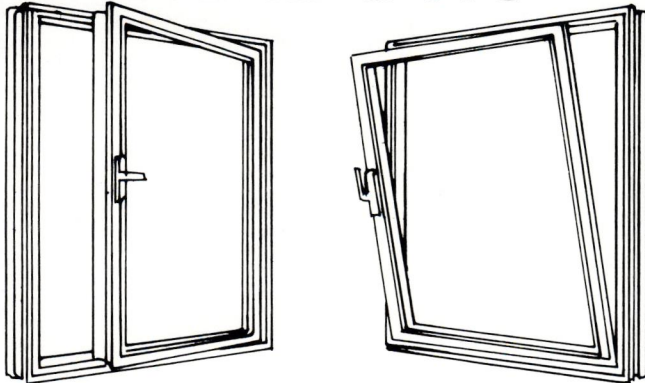
R RICHARD PLUMER INTERIOR DESIGN

South Miami
5838 S. W. 73rd Street
(305) 665-5733

Miami
155 Northeast 40th Street
(305) 573-5533

Vero Beach
2945 Cardinal Drive
(305) 231-4166

DUAL FUNCTION WINDOWS



THE FUTURA 3000 CAN BE OPENED IN A CASEMENT OR HOPPER OPERATION BY ONLY A TURN OF THE HANDLE.



COMMERCIAL/MONUMENTAL APPLICATIONS.

SINGLE VENTS UP TO 4'0" x 8'0"

FOR DEALER NEAREST YOU CONTACT



ALLIED

BUILDING SPECIALTIES, INC.

(305) 582-5342

ONE COLOR COPY OR A HUNDRED ...

... of your renderings, site plans, proposals or from almost any flat art, transparency or 3-D object ... We can make super-sharp, brilliantly colored copies (including enlargements & reductions), quickly and economically, on glossy or matte photographic paper.

"Their work is superior and their service excellent."

Raymond J. Santa; Anderson & Santa, Inc., Ft. Lauderdale

"... Attitude and service to Gee & Jenson has been consistently outstanding and constitutes a relationship we look forward to continuing."

*Philip A. Crannell, Jr.; Sr. V.P. Gee & Jenson
Engineers, Architects, Planners, Inc., West Palm Beach*

"The turn around time is amazing. Also, in the past Magic Marker drawings have not photographed well and the color rendition in no way resembled the original. This new process certainly is the best that I have ever seen."

Michael T. Redd; President, Team Plan, Inc., Palm Beach

LET US HELP YOU SAVE TIME AND MONEY WHILE IMPROVING THE QUALITY OF YOUR PRESENTATION ...



Visit us at Booth No. 71
1982 Fall Designers Conference & Building Products Exhibit
Hyatt Regency Tampa at Tampa City Center, October 7-9

A DIVISION OF FLORIDA PRECISION GRAPHICS CORPORATION

5745 COLUMBIA CIRCLE, WEST PALM BEACH, FL 33407

(305) 842-9500

NEWS and LETTERS

Dear Mr. Lawrence

Please express my appreciation to the Institute's Board of Directors for the resolution presented to me May 3, 1982 by Ellis Bullock. This was quite an honor of which I am proud.

The Institute's Florida Association has played a key role in the initiation and continuation of our Design Awards Program. We look forward to continuing this cooperative effort in the coming years.

Thank you again for this most meaningful resolution.

Sincerely,
Bob Graham
Governor

Florida Firm Selected for AIA/ACA Exhibit

Harper and Buzinec Architects/Engineers of Coral Gables and Tallahassee was one of six firms cited for special recognition by the AIA Committee on Architecture for Justice. The project which was cited was the 100-Man Community Correctional Center in Miami.

Although six projects were cited by the AIA for special design features, a total of forty-three U.S. and Canadian projects illustrating "the continuing increase in the quantity and overall quality of architecture for justice facilities" were selected for the 1982 Exhibition of Architecture for Justice Facilities.

The exhibit, sponsored annually by the AIA and the American Correctional Association, was displayed at the AIA Committee on Architecture for Justice meeting and conference held in Houston September 30 through October 3, 1982.

The projects selected included maximum and minimum security facilities, correctional centers, jails and court-houses. The 43 winning projects will be illustrated in a publication which can be obtained through the AIA's publications marketing division.

AIA Defends Design for Vietnam Veterans Memorial

In response to proposed changes to the design for the Vietnam Veterans Memorial in Washington, D.C., the AIA has urged the federal Commission of Fine Arts to adhere to Maya Ying Lin's original design which was selected through a national design competition.

In a letter from AIA President Robert M. Lawrence to Commission Chairman J. Carter Brown, Lawrence stated that such changes to the winning design were "a breach of faith: the effort of those to compromise the design breaks

SKYVIEW CONTROL SYSTEMS, INC.

4780 Beidler Road, Willoughby, Ohio 44094 - 216/953-1011
 2610 Club Mar Dr. Suite 2-I, Sarasota, Fla. 33577 - 813/366-8353

SUMMER

Reduce air - conditioning cost-

The motor operated translucent acrylic shade closes the skylight opening at the ceiling line forming an insulating air space, controlling up to 75% of heat gain.

The shade provides a free source of working light while controlling direct sun.

WINTER

Reduce heating cost-

Daytime - open the shades for solar heating.

Night - closed shades will reduce interior heat loss.

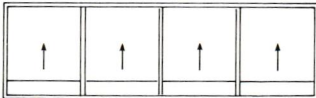
The shades also provide privacy when required.

EXISTING SKYLIGHTS

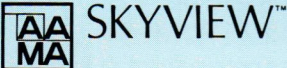
can now be fitted with SKYVIEW "Retro-fit" shade units in standard or custom sizes. Detailing assistance is available.

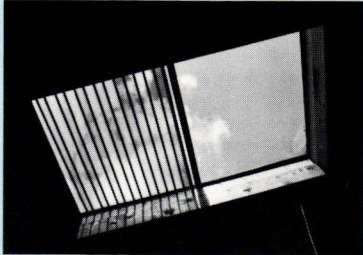
SIZES

Single Skyview units up to 8' - 0" square. Multiple units provide unlimited design possibilities.



MULTIPLE UNITS





DON'T LOSE YOUR COOL!

DON'T LOSE YOUR WARM EITHER



SAWED CORAL CAP



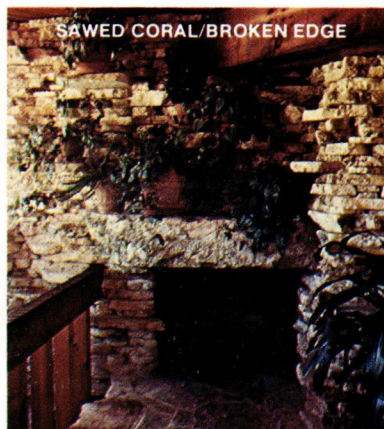
CMI
 NATURAL STONE SUPPLY
Craftsman Masonry, Inc.

Office & Plant
 1995 N.W. 16th Street
 Pompano Beach, Florida 33060
 Telephone (305) 974-1736
 (Enter off Powerline Rd.)

Sawed Keys Coral
 50 Varieties of
 Rubble Stone
 Flagstone & Slate
 Fireplaces

Stone Fabrication
 Stone Installation
 Retail Sales

**Majestic Fireplace,
 Distributor**



SAWED CORAL/BROKEN EDGE

architect, William Morgan

BOB BRAUN

photographer
 orlando, fl.
 P.O. Box 7755, Orlando 32854 (305) 425-7921

The Best from the Past

Decorative Metal Ceilings
129 Patterns



- CEILINGS
- CORNICE
- FRIEZE PLATES
- CENTER MEDALLIONS
- GIRDER FINISHES
- ALSO IN BRASS
AND COPPER

reasonable
permanent
attractive
versatile
easy installation
light weight
CATALOG \$3



HIGH-ART EAST™ representing W. F. Norman Corp.
#6 N. RHODES CENTER N.W., ATLANTA, GEORGIA 30309 • 404-876-4740

faith with the designer who won the competition and all those who participated ..."

In his strongly worded response to the proposed changes, Lawrence went on to say that, "to break faith in this manner says to those who would participate in future competitions that their best efforts can be overturned by a small, vocal minority."

The Commission of Fine Arts, which advises on public parks and buildings in Washington, D.C. is scheduled to review the proposed modifications to Lin's design and arrive at a decision in the early Fall.

Chapters Prepare for Design Awards Programs

On the evening of November 9, 1982, the Mid-Florida Chapter of the AIA will present its annual design awards during a special performance by the Florida Symphony Orchestra in the Bob Carr Auditorium in Orlando.

The Mid-Florida Chapter seeks to honor architects, engineers, interior designers and landscape architects with offices in the five-county area of Orange, Osceola, Seminole, Lake and Brevard.

The Florida Central Chapter, AIA, in conjunction with the Associated General Contractors and the Construction Projects Manufacturing Council have announced the biannual Architects and Builders Awards Program. This program, designed to recognize architects and contractors in a five-county area, is held every two years and provides a showcase for significant achievements in the building industry.

This year's program has been expanded to address achievements in interior design and recognize material suppliers where their efforts warrant it.

The date for this event is November 13, 1982 at the Host International Hotel in Tampa.

Daytona Beach Chapter Applies for RUDAT

The Daytona Beach Chapter of the AIA has initiated a proposal to have the city of Daytona Beach Shores evaluated by RUDAT — the AIA's Regional Urban Design Assistance Team. The Executive Committee and Directors of the Chapter agreed to sponsor the RUDAT application, the first phase of which was just completed with a preliminary evaluation of the City by an AIA Evaluator. Based on the recommendation of the Evaluator, who happened to be an Alabama architect, the AIA should reach its decision by early Fall.

RUDAT is a free service of the AIA which evaluates cities across the country as to their individual needs and problems relating to future growth and de-

DISTINCTIVE DESIGN
The merging of man and nature in harmony.

KERRY BLIND ASSOCIATES
Landscape Architects
Planners

301 B Park Avenue North
Winter Park, Florida 32789
(305) 628-5097


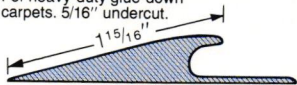
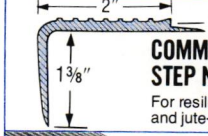

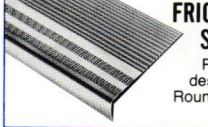
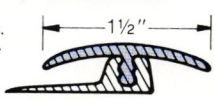
the most versatile tool...

No matter what else installers take to the job, Mercer's Installer's Guide goes along. They know there's a Mercer vinyl moulding to solve any problem.

As the industry's leader, we've developed over 100 vinyl carpet, resilient floor, and wall mouldings—in the widest selection of shapes, sizes, and colors. That's more than all competition combined. And . . . we're innovating new products all the time, to make your job easier and make installations look better.

Here are six current favorites.

For your copy of the Mercer Installer's Guide, drop us a line.

 <p>WALL BASE .085" gauge. Cove and toeless. Six heights. 23 colors.</p>	<p>SUPER IMPERIAL REDUCER For heavy-duty glue-down carpets. 5/16" undercut.</p> 
 <p>COMMERCIAL STEP NOSING For resilient tile and jute-backs. 10 colors.</p>	 <p>SUPERIOR CARPET STAIR NOSING Friction-Grip surface. Flexible undercut. 6 colors.</p>
 <p>FRICTION-GRIP™ STAIR TREADS Pyramidal gripper design. Square and Round nose. 8 colors.</p>	<p>SNAP-DOWN 'T' DIVIDER UNIT For seaming sponge-backs. Super 1 1/2" 'T'. 6 colors.</p> 



Other Mercer products

mirror-finish vinyl wall base

standard vinyl wall base (1965)

vinyl stair treads

customize your installation with color and truly functional mercer vinyl trim. installs easily... no drilling... curves better... looks better... damage resistant... the perfect finish.

Install moldings, trims, nosings with contact bond cement.
Install wall base by applying single coat of vinyl glue base adhesive. Ask for slip setting stair tread adhesive, permitting 15 minute repositioning time.

NOTES:
When installing Snap-Down Edges, insert both ends first and work toward the middle.
Make sure materials are dry and free of dirt, dust, oil and other foreign substances.

mercER PLASTICS COMPANY, INC.
Main Office: 1 Jabez Street, Newark, N.J. 07105
Factory: P.O. Box 1240, Eustis, Florida 32726
Insist on 'Genuine Mercer Vinyl'

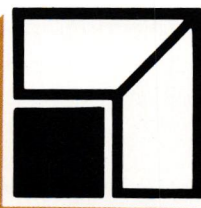
1960
22 YEARS
OF VINYL
INNOVATION
1982



mercER PLASTICS COMPANY, INC.

Main Office: 1 Jabez Street, Newark, N.J. 07105
Factory: P.O. Box 1240, Eustis, Florida 32726
West Coast: Torrance, Calif. (213) 370-6190

SINCE
1928



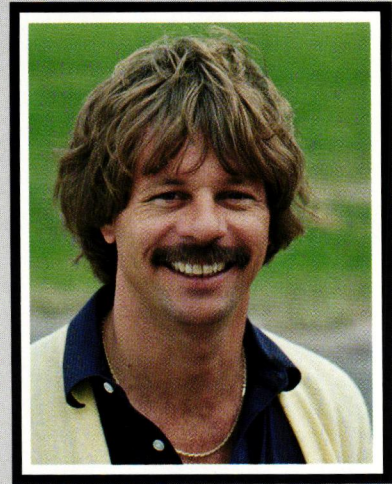
LOTSPEICH

**COMPLETE BUILDING INTERIORS
DESIGN-SPECIFICATION ASSISTANCE**

- CEILING SYSTEMS
- DRYWALL CONSTRUCTION
- SEAMLESS COMPOSITION FLOORS-ATHLETIC SURFACES
- EXTERIOR TRAFFIC DECKS-WATERPROOF SYSTEMS
- GYMNASIUM FLOORS-RACQUETBALL COURTS

275 NE 59th ST./MIAMI 305-757-0315
4180 NW 10th AVE./FT. LAUDERDALE 305-772-2260
4901 WEST RIOVISTA AVENUE, TAMPA ... 813-885-4711

“There’s not another roof tile on the market that compares to Monier with respect to product warranty and color density.”



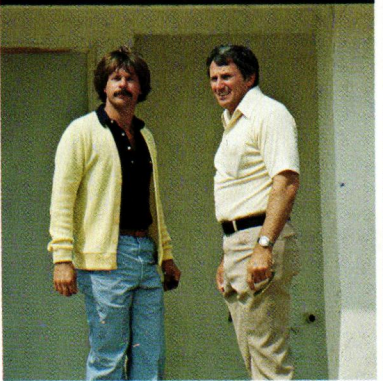
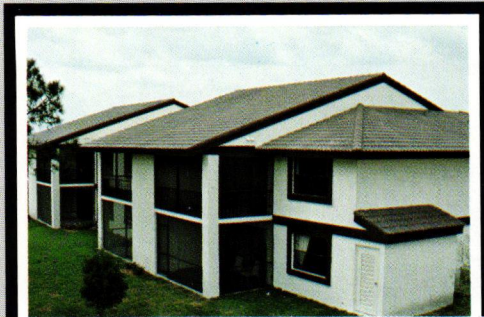
Walter Millet, Vice-President and General Manager, Jupiter Roofing & Sheet Metal Inc.; Member, FRSA

Eastpointe Development
Jupiter, Florida

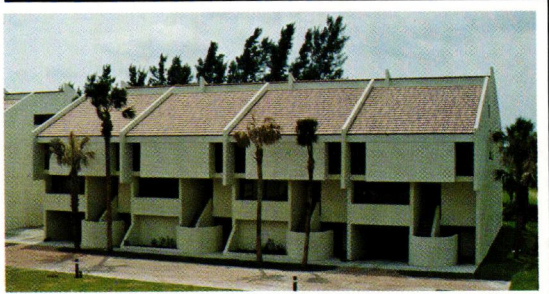
Walter Millet and other FRSA roofers demand top quality appearance and performance from their roofing products. And they get it — with Monier Concrete Roof Tiles. Millet considered other tiles, but Monier’s fast installation, deep color density and 50 year product warranty met the demands of this project.


“After 25 years in the business, we found Monier to really be a time saver. They offer a big color selection, too. . . very attractive.”

You can depend on Monier Concrete Roof Tiles for energy-efficient beauty at competitive prices. It will be the best 50 years your roof ever had.

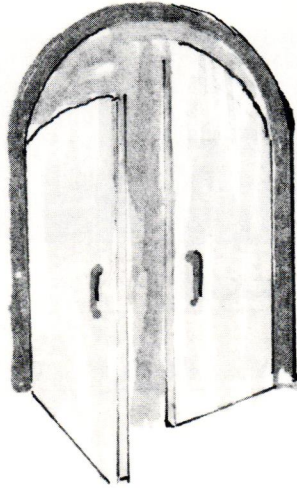


For Samples and Prices
CALL: 1-800-282-7894



 **MONIER**
Monray Roof Tile
4425 HIGHWAY 92 EAST
LAKELAND, FLORIDA 33802

**Shopping for
Professional
Liability
Insurance
Used to Mean
There Was
Little Choice...**



**Now You
Have an
Alternative!**

We've been developing Liability policies for professionals for years...experience we have put to good use in developing a policy especially to meet the needs of Architects and Engineers. Check us out now...before your current coverage expires. Ask your agent about our coverage or call or write us directly. We would be only too happy to provide you and your agent with the facts about our policy.

Meeting the needs of Professionals.

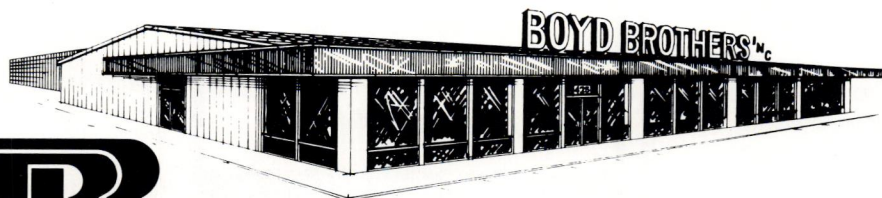


Jordan, Roberts & Company
A Special Kind of Company

P.O. Box 30097 • Tampa, Florida 33630 • (813) 870-2366

Call your local agent (or Doug Vance or Doris Sheffler, collect at 813/870-2366) for more information

**PRINTERS OF
FINE PUBLICATIONS**



BOYD BROTHERS, INC.

425 EAST 15TH STREET / PANAMA CITY, FLORIDA 32401 / (904) 763-1741

Concrete For Indoor Pool Areas?

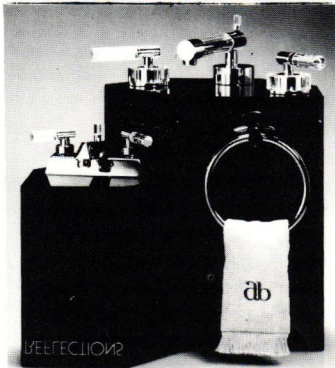
Avoid ugly rust stains and future problems with reinforcing steel. Specify Darex Corrosion Inhibitor® on your next project for effective long-term protection. Obtain complete data from the Corrosion Inhibitor people at:

**Darex® Admixtures Make
Better Concrete**

For Recommended Specifications Contact Your Local Ready-Mix Producer Or:

GRACE

Construction Products Division
W.R. Grace & Co.
1200 N.W. 15th Avenue
Pompano Beach, FL 33060
(305) 974-6700



Let your elegant
lifestyle reflect on
you

Hardware Associates
carries all the accessories
to mirror that reflection.
We are now open on Saturdays
from 9 a.m. to 1 p.m. to
more conveniently help
create that new image
for you!

Hardware Associates

3640 Cypress Street
Tampa, FL 33609
877-2583



AWNINGS of distinction

AWNINGS

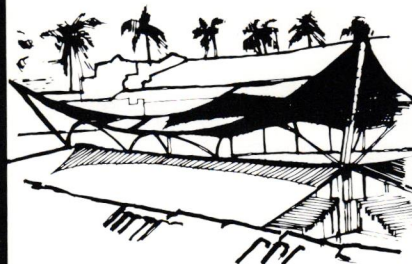
SAVE ENERGY



residential

commercial

industrial



custom design,
fabrication, installation
member I.F.A.I.

AWNINGS BY JAY

1125 BROADWAY RIVIERA BEACH FLORIDA 33404

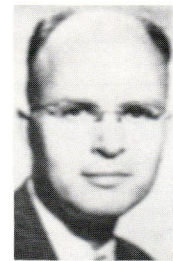
(305) 844-4444

velopment. The only expense to the applicant relates to transportation, food and lodging for the Team that does the survey. That sum, which is estimated at between \$16 and \$20 thousand dollars is raised with City, County and private pledges. The Daytona Chapter has agreed to contribute whatever hours of manpower are necessary to conduct research and be of general assistance to the Team.

The results of a RUDAT evaluation and recommendation are of tremendous benefit to communities which are rapidly developing. The team focuses its attention on future business, building types, road construction and land use planning.

According to Daytona Beach Chapter President Bill Palmer, the community as a whole is supportive of the RUDAT program and long-range benefits can clearly be anticipated if the Chapter is successful in getting the Team to Daytona Beach Shores.

Florida Loses Two Eminent
Professors of Architecture



Turpin Chambers Bannister, FAIA

A fine architect and a great teacher and writer was lost to the profession with the death of Turpin Chambers Bannister on March 15, 1982. Bannister was former head of the University of Illinois Department of Architecture and later dean of the College of Architecture and Fine Arts at the University of Florida. It was there, as both dean and teacher, that so many of the practicing architects in Florida today came to know and love Turpin Bannister.

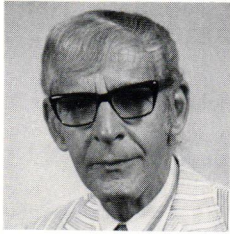
After many years in private practice, Professor Bannister began an academic career that was to last until his retirement. In 1957, he was appointed dean of the College of Architecture and Fine Arts at the U of F.

Bannister's broad career brought him many honors and awards. Significant among those honors were his Fellowship in the AIA in 1953 and the 1955 Edward C. Kepper Award, one of the Institute's most coveted.

Turpin Bannister made significant contributions to the architectural profession as a writer and editor. He was Editor

of *The Architect at Mid-Century* and his publications on the mills of England and St. Peter's Basilica in Rome are models of scholarly research. Bannister is one of the founders and a past president of the Society of Architectural Historians, and he served on advisory boards to the National Park Service and the Historic American Buildings Survey.

Professor Bannister will be greatly missed by his friends and colleagues.



Woodrow W. Wilkins, AIA

Woodrow W. Wilkins, professor of architecture and planning at the University of Miami, died August 20, 1982, in Pensacola. He was 67.

Prof. Wilkins was an internationally known leader in historic preservation. In May, 1982, during Historic Preservation Week, the Woodrow Wilkins Archives of Architectural Records was begun in Miami. The archives will collect, store and display architectural memorabilia.

Wilkins research was chiefly in the field of historic American architecture. He did a great deal of work with the Historic American Buildings Survey. At the time of his death, Wilkins was working on a book about George Merrick, founder of Coral Gables.

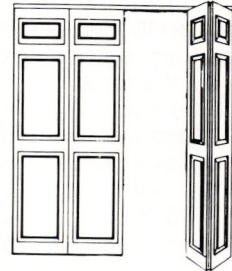
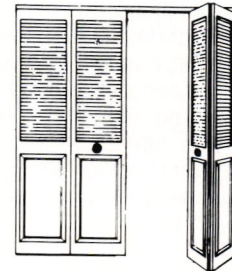
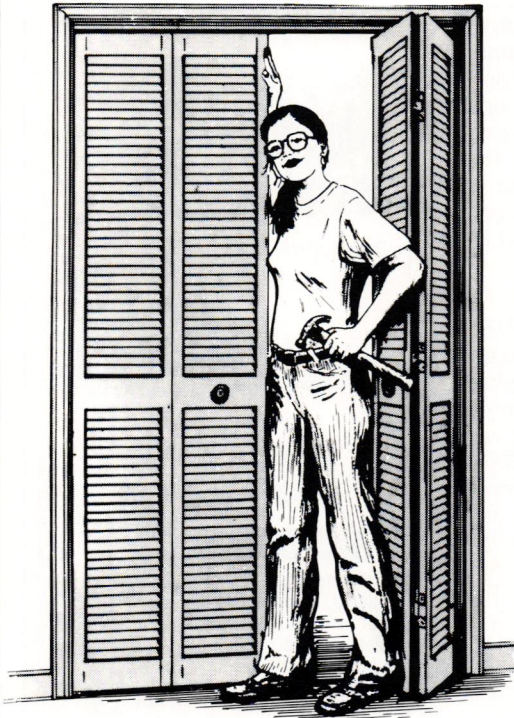
Wilkins was a member of the American Institute of Architects, the Dade Heritage Trust and the Florida Trust for Historic Preservation. In 1978, he was appointed by the Secretary of State to the Florida Review Committee for the National Register of Historic Places. He has been an acting resident architect for the National Park Service in the Caribbean, furnishing full architectural service and all new and preservation work. His work ranged from Spanish forts to Danish sugar factories.

Wilkins received his Bachelor of Architecture degree from the University of Florida in 1949. He went to teach at the University of Miami in 1967 and served as acting department chairman from 1970 to 1972. Professor Wilkins retired in May, 1981.

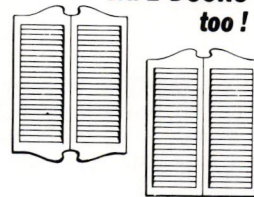
Miscellaneous Items of Note

ARNOLD F. BUTT, has stepped aside as Chairman of the Department of Architecture, effective June 30, 1982. In the fall, he will return to teaching duties within the Department. During his 14-year tenure as Chairman, many major changes have taken place in the Department and the College. Among these was the establishment of the College of Ar-

Beautifully Convenient and Durable... MIMS & THOMAS Real Wood BIFOLD DOORS



Real Wood CAFE DOORS too!



Today's homemakers demand their very own personal decor in every room. With MIMS & THOMAS Ponderosa Pine Wood Bifold Doors, being different is not only easy, but adds convenience too!

Great Looking Doors Anywhere!

PHONE OR WRITE FOR INFORMATION....

MIMS & THOMAS MANUFACTURING CO.

JSI

A Division of U.S. INDUSTRIES, INC.

3535 N.W. 50th Street
MIAMI, FL 33142 USA
305/633-9575
★ EXPORT DIVISION ★

P.O. Box 1596
FAYETTEVILLE, N C 28302
919/484-4195



T-SQUARE MIAMI

The complete supply and reproduction house serving Architects, Engineers and Surveyors since 1924

**Over 50,000 Items in Stock
Rush Delivery Via UPS**

Call Florida Toll Free Number
1-800-432-3360

T-SQUARE MIAMI

635 S.W. First Avenue/Miami, FL 33130/(305) 379-4501
415 N.E. Third Street/Ft. Lauderdale, FL 33301/(305) 763-4211



chitecture as an independent unit, growth of the College of Architecture into one of the largest in the country and construction of the new building for the College.

Tampa architect, GEORGE McEL-VY, AIA, has been appointed to a twenty-member interim study committee established by the Florida legislature to review regulations, construction practices and building inspection procedures relating to residential highrise structures. The Committee was formed in the wake of the 1981 Harbor Cay Condominium collapse that killed eleven workmen and injured twenty-three.

The FLORIDA SOUTH CHAPTER OF THE AIA recently highlighted and explored the growing role women are playing in the field of architecture. Featured speakers at the FSC/AIA meeting devoted to the theme were BEVERLY SANCHEZ who heads a special Task Force on the subject for national AIA and LAURINDA SPEAR, a principal in the award-winning Miami-based firm of ARQUITECTONICA INTERNATIONAL. The two panelists also appeared with Don Webb, host of Channel 17's "Something on 17."

In Miami, a family directorship became a reality with the election of QUENTIN DART PARKER to the Board of Directors of ALFRED BROWNING PARKER, ARCHITECTS, CHARTERED. Mr. Parker is a son of the founder of the firm. ROBIN ZACHARY PARKER, Quentin's brother, has been a director for the past six years. The third director, ALFRED BROWNING PARKER, FAIA, has been active in the profession for almost 50 years.

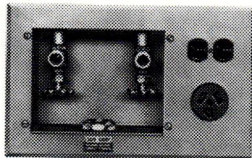
FA/AIA Executive Vice President GEORGE ALLEN has been conferred with the designation "Certified Association Executive" by the American Society of Association Executives. The CAE designation was made during the national society's annual meeting in August to Allen for demonstrating a high level of competence and fitness for association management by passing examinations and fulfilling prescribed standards of performance and conduct.

Due to a misunderstanding, the firm of Sandu Z. Rapp, AIA, 1865 79th Street Causeway, North Bay Village, 33141, was left off the list of architectural firms published in the 1982 Florida Architect Reference Book.

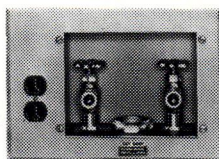
GUY GRAY

WASHING MACHINE SUPPLY & DRAIN

SPACE SAVERS



Top Supply

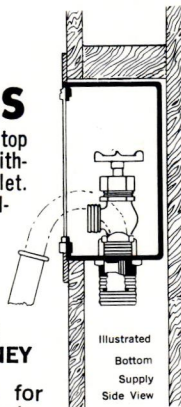


Bottom Supply

57

MODELS

Bottom supply, top supply, with or without electrical outlet. Some models available with plastic drain.



Illustrated Bottom Supply Side View

SAVE TIME SPACE • MONEY

Compact units for water supply, drain, and electrical outlets. Use in residences, apartments, housing projects, hospitals, institutions. These units install into the wall with no exposed piping. Washing machine fits close to wall. Fast installation — no holes in floors. Helps control bugs and mice.



U.L. APPROVED
U.S. PATENT
No. 2952271
and No. 191737.

THE ORIGINAL
SPACE SAVERS

Write for 16-page catalog.

GUY GRAY MANUFACTURING CO., INC.

Blandville Road P. O. Box 2287
Paducah, Kentucky 42001
Phone 502/554-4423

Representative:
John Deam
P. O. Box 245
Jupiter, FL 33458

KOHLER DEALERS AND DISTRIBUTORS IN FLORIDA

All State Pipe
Supply Company, Inc.
2253 Dennis Street
Jacksonville, Florida 32204
(904) 354-3911

1045 North Mills Street
Orlando, Florida 32803
(305) 894-4850

1520 State Avenue
Holly Hill, Florida 32017
(904) 677-1141

Lawrence Plumbing Supply
Company
31 S.W. 57th Avenue
Miami, Florida 33144
(305) 266-1571

405 N. Flagler Avenue
Homestead, Florida 33030
(305) 248-7020

Standard Plumbing and
Industrial Supply
620 S. Woodward Avenue
Tallahassee, Florida 32304
(904) 222-4553

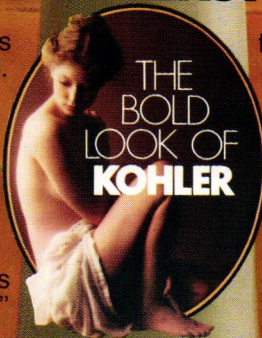


**KOHLER PUTS NOSTALGIA
WHERE YOU'D LEAST EXPECT IT.**

There's one thing you can always expect from Kohler: the unexpected. And our newest toilet, the Vintage, with its turn-of-the-century design, will not disappoint you.

The tank is elevated over the moisture sealed, solid oak seat. And beneath that is a bowl of classic design.

And the Vintage design coordinates beautifully with Kohler's "Antique"



faucets, the Birthday Bath and pedestal lavatory—the Chablis.

Shown here in traditional white, the Vintage, the Birthday Bath and Chablis are available in a variety of Kohler colors.

All available in the U.S. and Canada. For more information, write to Dept. RK, KOHLER CO., KOHLER, WIS. 53044.

The Antique Look by Kohler. A nostalgic glimpse of the past.

CONCRETE PAVING...

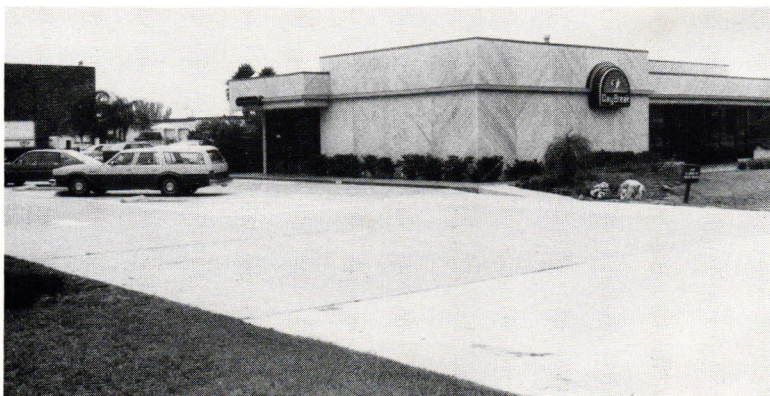
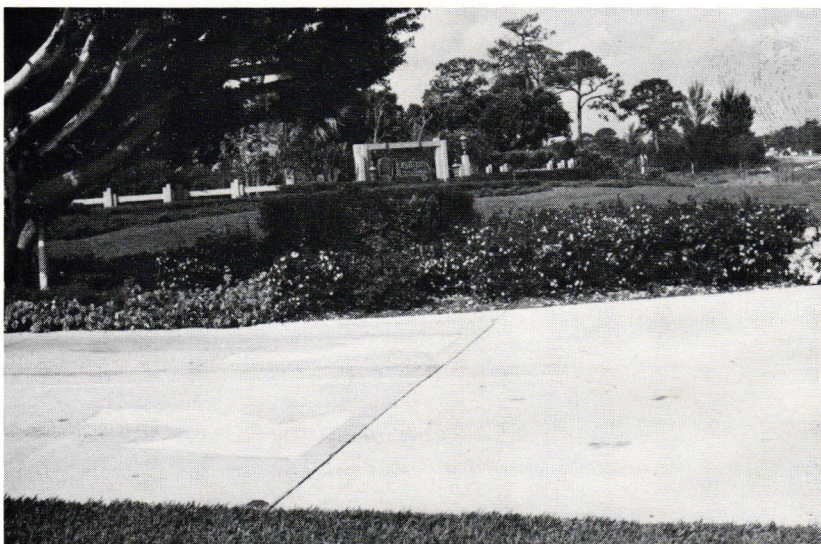
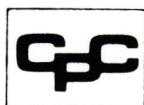
The pleaser VERSATILE PRACTICAL ECONOMICAL

Designers with demanding clients are finding concrete paving gives a pleasing finishing touch. Concrete is aesthetically pleasing as well as functional for parking areas and street, bike paths and cart trails. Concrete paving suits every situation and fits Florida climatic conditions perfectly. Please your demanding clients by suggesting concrete paving. Its cost is competitive with other paving materials and is nearly maintenance free.

WRITE FOR OUR FREE
BROCHURES OR CALL YOUR
LOCAL PRODUCER.

CONCRETE PROMOTION COUNCIL OF FLORIDA, INC.

P.O. BOX 160
305/644-8279
WINTER PARK, FL. 32790



CONCRETE: THE STRENGTH OF FLORIDA

Florida Salary and Benefits Survey Completed

One hundred and fifty-three firms, or 28% of those doing business in Florida, responded to the 1982 Salary and Benefits Survey of Florida Architectural Firms. The results should make very interesting reading for Florida architects.

In early summer, the FA/AIA sent a questionnaire to all Florida architectural firms inviting them to participate in a salary and benefits survey. There were responses from every chapter, but Florida South and Florida Central with the largest memberships prompted the greatest number of responses. This type of information has not been compiled in Florida since 1974, and the data which resulted from the Summary of Major Findings should be both interesting and useful to anyone engaged in the practice of architecture in this State.

The questionnaire explored every facet of architectural practice from firm size to average salaries. Some of the responses were predictable such as the number of hours in the average work week while others were more surprising such as the fact that 62% of the firms responding do not provide parking for their employees and only 1% offer group auto insurance.

By and large, however, the greatest discrepancies could be accounted for by geographic location and/or firm size. For example, the firms employing the largest numbers of people were in the Central and Southern parts of the State where there is a lot of commercial construction. In North Florida and the Panhandle, the majority of firms responding had fewer employees and smaller fee billings. Noteworthy, however, is that fact that regardless of location nearly 50% of the participating firms operated in office space of 1,000 square feet or less.

Relative to salary, the questionnaire had nineteen categories representing a range of positions from executive officer to clerical support. On this portion of the survey the statewide tabulation was accomplished by using median salaries in the high, average and low categories. For example, one firm principal in a very small firm might have an annual income of \$2,000 while another in a much larger firm would have an income of \$84,000. For that particular category, the median figure of \$42,000 would show as a statewide average. This same method was used for tabulating the total number of employees in each of the nineteen categories.

Survey results will be published and distributed free of charge to every firm participating in the project. Any other firm wishing to have a copy of the results may have them upon request, although there will be a charge.

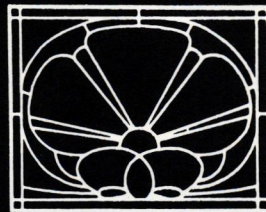
Introducing **STOCO**[®] — the **versatile alternative to stucco**

Ready-mixed Stoco is a synthetic resin plaster for exterior applications. It offers profound labor savings requiring fewer actual application steps than conventional stucco.

Stoco is washable and shock-resistant. Its flexibility allows it to expand with the building without cracking. Available in a wide variety of STO colors, Stoco is an ideal material for use in renovation of older buildings.

Call or write for full details today.

STO FLORIDA DISTRIBUTORS, INC.
10211 W. Sample Road/Suite 200
Coral Springs, Florida 33065
Phone — 305/755-2525



Fine Stained Glass

BISCHOFF STUDIOS

404 N. Madison Street • Quincy, Florida • 904/875-3184

PIA *Specializing in Professional Liability Insurance*

Professional Insurance Associates of the Southeast

• *Serving Florida and Georgia Professionals Since 1976* •

*“Our Clients Save From 20% to 40%
on Their Insurance Costs”*

** Coverage provided only through companies on the AIA approved list of companies.*

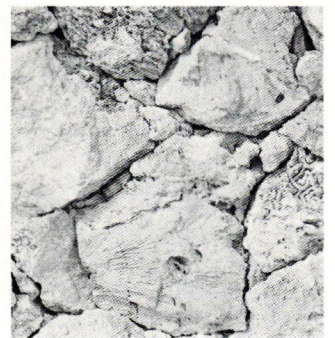
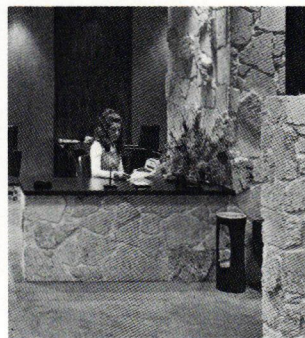
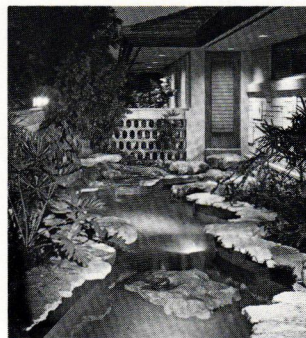
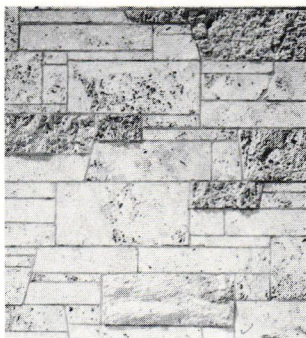
1531 ROSWELL ROAD N.E., ATLANTA / P. O. BOX 1513, MARIETTA, GEORGIA 30061

Hugh Holley - Vice President
(404) 971-8288

KEYSTONE PRODUCTS, INC.

(producers of Fla. Natural Cut Coral)

Office: 945-4223 15162 N.E. 6th Avenue
Miami, Florida 33162 Plant: 245-4716



KEYSTONE-a Florida natural cut coral:
Ashlar Pattern, Random Ashlar Pattern; Split Face; Roughback;
Flagging and Keystone Coral Rubble.
Special sizes available upon request.



BEAUTY IN BLOCK

SPLIT, SCORED, FLUTED, COLORED OR NATURAL

**CLEARWATER CONCRETE
INDUSTRIES, INC.**

Architectural Block Specialist

POST OFFICE BOX 5227
CLEARWATER, FLORIDA 33518

CALL KURT EVERS OR KEN BEATY AT 813-443-2635 FOR
ANY ARCHITECTURAL BLOCK REQUIREMENT

YOUR INQUIRY WILL BE PROMPTLY ANSWERED.
SHIPPING STATEWIDE

See us at the
FA/AA Fall Designers
Conference & Building
Products Show, October 7, 8, 9

Gory introduces something extra. Custom-Flared tile at nothing extra.

We've taken what was already the widest choice in concrete tile and made it an infinite choice.

Now any color of Gory Tile you specify can be Custom-Flared. Custom-Flaring adds a distinctive touch to the tile and allows the creative mind a limitless freedom of expression.

As with almost all Gory Tiles, the base color is all the way through. And they all can be color-


sealed. This exclusive process seals in the color and effectively controls efflorescence. All this makes Gory tile almost maintenance free, and eliminates the need for frequent and costly re-painting.

With the wide variety of colors, textures and styles plus Custom-Flared, you have so many choices, it's mind boggling.

And best of all, this something

extra costs nothing extra.

For further information, write Gory Roof Tile, 1773 Northeast 205th Street, North Miami, Florida 33179. Or call us at (305) 651-7611. Central Florida and North Florida, call (305) 291-2828. Florida WATS line (800) 432-1021.

 **Gory
Roof Tile**
AN ELCOR COMPANY