

# BEAUTY VALUE

**No other roof** matches Gory for enduring beauty. . . or adds as much value per dollar.

**Color-Through:** Our tile isn't just top-coated. It's solid color from top to bottom.

**Color-Blend:** We give you up to 4 colors blended on a roof, not just 1 color of tile flash coated.

**Color Choice:** We offer 75 colors plus textures. In a choice of flat or curved tiles.

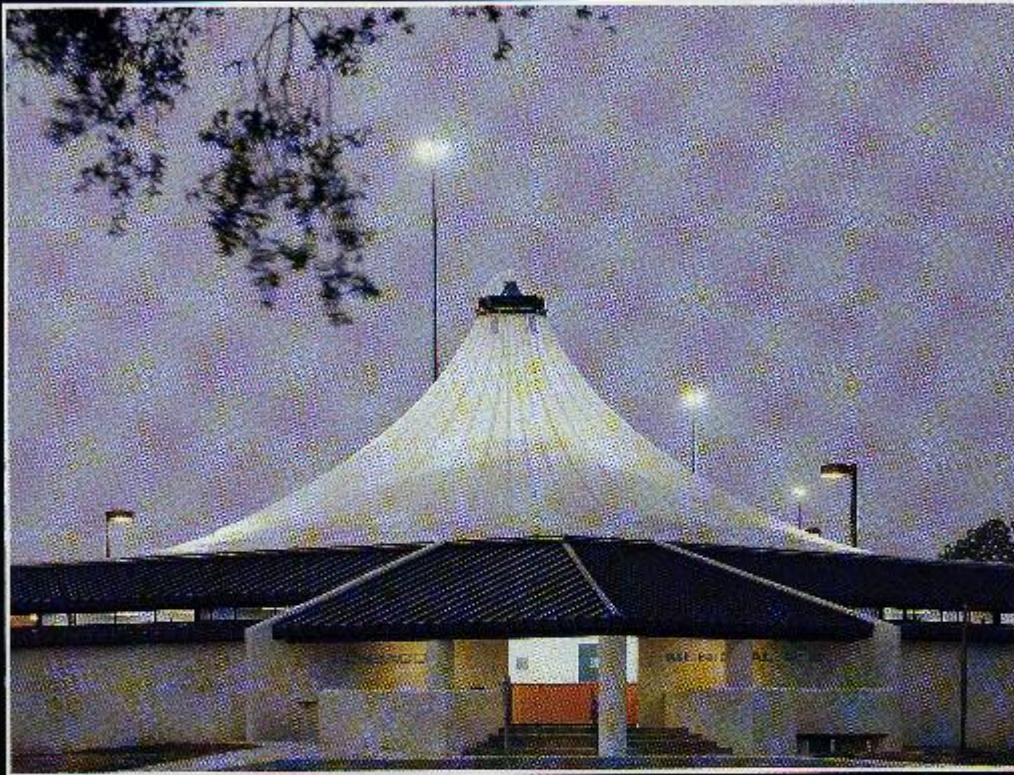
**Gory Roof Tile**®



901 N.W. 58th Ct. • Ft. Lauderdale, FL  
33309 • Call Toll-Free: 800 223-TILE  
In Florida, Toll-Free: 800 432-1021



## Free Your Imagination with Vestar™ Architectural Fabrics



Project: Pensacola Municipal Pool  
Pensacola, Florida  
Consulting Engineer: Future Tents, Inc.  
Photographer: Paul G. Beswick

Sculptural, free-form shapes possible with Vestar Architectural Fabrics provide a new dimension in design freedom. Vestar Architectural Fabrics combine the excellent weathering properties of silicone with the strength and durability of fiberglass. And offer a long-lasting, light weight, highly translucent construction material.

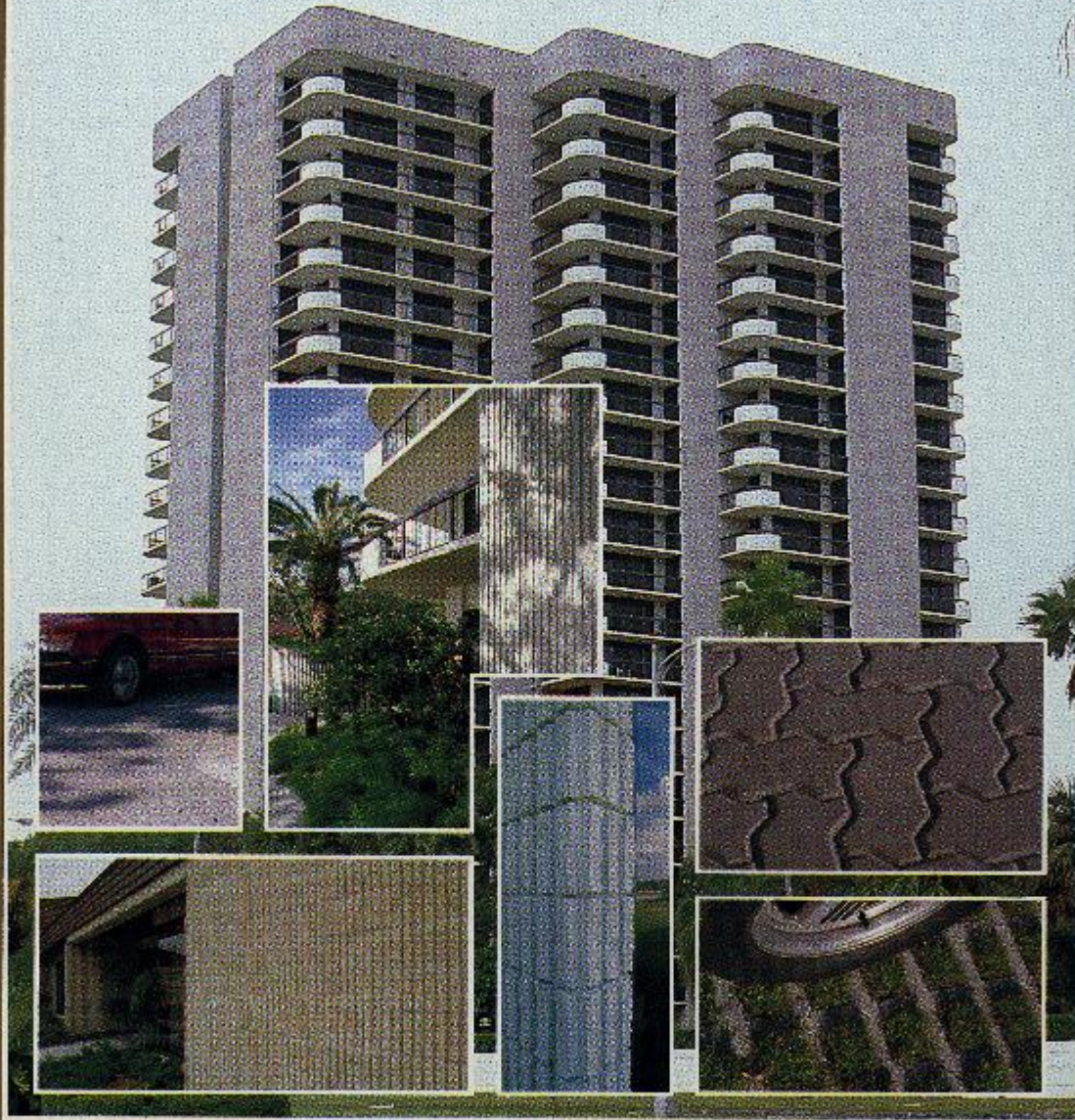
Explore the dramatic potential of Vestar Architectural Fabrics.

**ODC**<sub>INC.</sub>

1281 Communications Drive, Norcross, Georgia 30094 (404) 928-2516 Telex: 733033

# BEAUTY IN BLOCK®

Architectural Masonry Units



Post Office Box 5227  
Clearwater, Florida 33515

Call Kurt Evers or Todd Perry at 813-443-2635  
For any architectural block requirements.

Your inquiry will be promptly answered.  
Shipping statewide.

Elk  
introduces a  
new standard of  
excellence  
in the  
art and  
science  
of roofing.



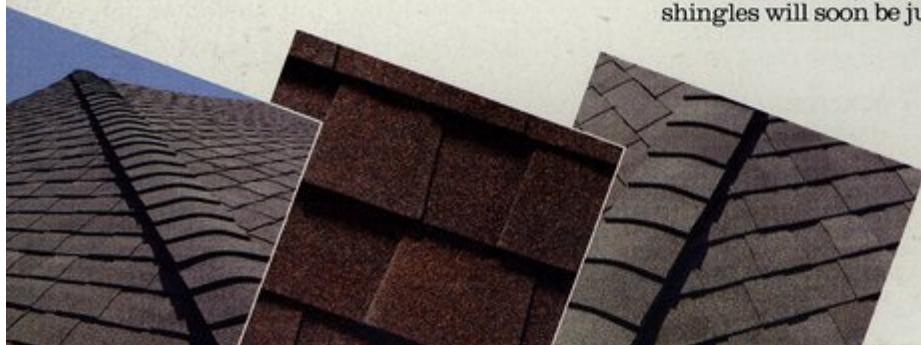
### The art.

**Prestique® Plus.** Behold its exceptional beauty. Notice how the subtle, random variations in depth and thickness play with light and shadow like no other shingle; how they weave texture and dimension reminiscent of more expensive, but less durable, alternatives. And just imagine how Prestique Plus can enhance both the appearance and value of virtually any structure, from the finest, custom homes to the most prestigious office parks. Yet it's not just the beauty that's impressive. It's also the technology behind Prestique Plus.



### The science.

**Prestique® Plus.** Designed like no other shingle. Its vital layers of fiberglass and asphalt are coated with weather resistant granules not just on the top, but also on the bottom for extra thickness. And therein lies the true beauty of Prestique Plus. It not only looks better than ordinary shingles, it handles easier and protects better against weathering and aging, as well. So much better, in fact, that Elk backs Prestique Plus with a Limited 30 Plus 10 Year Warranty — a longer, more comprehensive warranty than that offered by any other fiberglass, organic or wood shingle on the market. Plus, it's U.L. Class "A" rated for fire resistance. And when you consider that, along with its exceptional beauty, it's easy to see why new Prestique Plus is the standard by which all other premium shingles will soon be judged.



**ELK**  
ROOFING  
PRODUCTS

AN ELCOR COMPANY

Corporate Headquarters  
Dallas, Texas / (214) 934-9540  
Tuscaloosa, Alabama / (205) 758-2752  
Ennis, Texas / (214) 875-9611  
Tempe, Arizona / (602) 831-7399  
Mobile, Alabama / (205) 476-6033

# When it comes to windows and gliding patio doors, Andersen is America's frame of reference.



At the Andersen window factory every frame and pane, every sash and screw better be tight and right. Straight and true. Or it will never see the light of day.

At Andersen, there are no compromises. No shortcuts. No "seconds." There are only survivors. Only number "ones." Only quality.

That has been the Andersen reputation for over 80 years. That has made their name the most well-known in windows—the one all others are compared to.

That has driven Andersen onward to innovations like Perma-Shield®, a vinyl exterior covering that won't need painting; Terratone, a blendable earth-color perfect for contemporary designs; and new, optional, High-Performance insulating glass, the state-of-the-art in energy efficient glazing.

Andersen offers a complete line of windows, roof windows and gliding patio doors, in hundreds of sizes and glazings. For residential and commercial designs. For new construction, remodeling and replacement.

That's why all across America, when the topic is windows, the subject is Andersen.

Andersen products are inventoried at four Florida Huttig Sash & Door Company locations, and distributed to lumber and building material dealers throughout Florida.

For more information, contact your local dealer. He's listed in the Yellow Pages under "Windows Wood."

Come home to quality. Come home to Andersen.®

**Andersen Windowalls**   
ANDERSEN CORPORATION      RAPPORT, MINNESOTA 55063

85926 Copyright © 1985 Andersen Corp., Report, MN



Distributed by: Huttig Sash & Door Company

Orlando • Ft. Myers • Clearwater • Jacksonville

# CONTENTS



September/October, 1985  
Volume 32, Number 5

## Features

- The Bus Stops Here**  
The C.K. Steele Plaza  
Ken Walton 14
- Orlando: The City Disney Built**  
"De" Schofield and Lorraine Lax 18
- The 1985 FA/AIA Awards for Excellence  
in Architecture** 23
- An Expanse of Light and Color**  
Additions to the Orlando Science Center  
Gail Fein 42

## Departments

- Editorial 7
- News/Letters 8
- Member News 8
- Office Practice Aids 22
- Legal Notes 40

Cover, *The Hibiscus House*, in Miami, was designed by Andres Duany and Elizabeth Plater-Zyberk, Architects, Photo by Steven Brooke.

These exclusive Mildoor features prove...

## Malldoor is specially engineered for shopping mall installations.



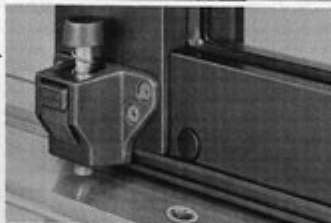
### KEYLOCK

Mortise cylinder (Adams Rite® #4036.) 1-5/32" diameter with a 5-pin tumbler. Finished in hardcolor 313 medium-bronze color. One key is provided per cylinder. Available keyed differently, keyed alike or master keyed on special order.



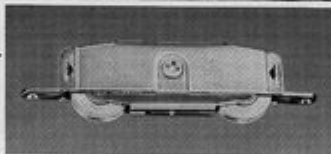
### COMMERCIAL HARDWARE

Adams Rite® MS1850A-505 deadbolt assembly, with heavy-duty laminated steel bolt, provides heavy-duty operation with security. Thumbturn inside and a mortise cylinder outside are standard.



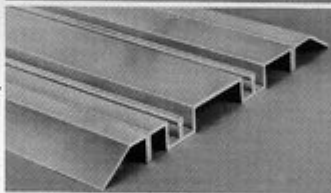
### BACKUP SECURITY DEVICE

This device, attached to the inside of the stile, has been tested to withstand forced entry of 400 pounds. Yet, the foot-operated, spring-loaded device is easily released from the inside. When the cold-rolled, plated steel bolt is engaged into the track grummet (in conjunction with top lift restraint), the door is prevented from being forced off the track runner.



### TANDEM STEEL ROLLERS

Roller assembly has two steel ball-bearing rollers in a 16-gauge steel cold-rolled, stamped case. It is capable of supporting up to 400 pounds per roller assembly.



### LOW PROFILE TRACK

Maximum height of track is 9/16". Basic double track is supplied with single or double add-on pieces to make an infinite number of runners. Low-sloping thresholds are available for the interior and exterior side of the door for on-floor installation. Track can be installed into floor recess for flush floor installation.



### PANEL ADJUSTMENT

Tandem roller assemblies are easily adjusted from the interior side of the unit with panels in either the "locked" or "unlocked" position. Adjustments hole is concealed with a removable black nylon plug.

These features, combined with the monumental extrusions, give you a shopping mall door system that's big, tough and beautiful (available in our exclusive Magnacolor white, bronze or silver).

Malldoor is available in any number of panels, in 9 ft. heights (or higher on special order) for pocket or stack applications.

There are many more features. They're all detailed in our new Malldoor specifications folder which includes a complete set of full-size extrusion profiles... send for it. Stimulate your imagination.

# mildoor

A Division of Miller Industries, Inc.

16295 N.W. 13th Ave., Miami, FL 33189-0910 • 305-621-0501 • Florida 1-800-432-3116 • National 1-800-446-7628

PRODUCTS THAT HAVE PASSED THE TEST OF TIME  
SLIDING GLASS DOORS • BATH AND SHOWER ENCLOSURES • SLIDING GLASS MIRROR CLOSET DOORS • SINGLE HUNG AND ROLLING WINDOWS



# EDITORIAL

## FLORIDA ARCHITECT

Florida Association of the  
American Institute of Architects  
104 East Jefferson Street  
Post Office Box 10388  
Tallahassee, Florida 32302

**Publisher/Executive Vice President**  
George A. Allen, CAE

**Editor**  
Diane Greer

**Assistant Publisher  
Director of Advertising**  
Carolyn Maryland

**Design and Production**  
Creative Services

**Editorial Board**  
Bruce Balk, AIA  
Commissioner  
Commission on Public Relations  
& Communications  
Ivan Johnson, AIA, Chairman  
Charles King, FAIA  
William Graves, AIA  
John Totty, AIA  
Peter Rumpel, FAIA  
Mike Bier, AIA

**President**  
Mark Jaroszewicz, FAIA  
University of Florida  
College of Architecture  
331 Architecture Building  
Gainesville, Florida 32611

**Vice President/President-elect**  
James J. Jennewein, AIA  
101 S. Franklin St.  
Suite 202  
Tampa, Florida 33602

**Secretary**  
John Ehrig, AIA  
2333 E. Bay Drive  
Suite 221  
Clearwater, Florida 33546

**Treasurer**  
John Barley, AIA  
P. O. Box 4850  
Jacksonville, Florida 32201

**Past President**  
James H. Anstis, AIA  
233 Southern Boulevard  
West Palm Beach, Florida 33405

**Regional Directors**  
Glenn A. Buff, FAIA  
4105A Laguna Drive  
Miami, Florida 33134

Howard B. Bochiardy, FAIA  
Post Office Box 8006  
Orlando, Florida 32806

**General Counsel**  
J. Michael Huey, Esquire  
Suite 510, Lewis State Bank  
Post Office Box 1794  
Tallahassee, Florida 32302

*Florida Architect*, Official Journal of the Florida Association of the American Institute of Architects, is owned and published by the Association, a Florida Corporation not for profit, ISSN-0015-3907. It is published six times a year at the Executive Office of the Association, 104 East Jefferson St., Tallahassee, Florida 32302. Telephone (904) 222-7590.

Opinions expressed by contributors are not necessarily those of the FAIA. Editorial material may be reprinted only with the express permission of *Florida Architect*.

Single copies, \$2.00; Annual subscription, \$12.00. Third class postage.

For a few moments each morning, as I drive to my office, I have a perfect view of the Florida Capitol from the northeast. Seeing that grand building, framed in pink crepe myrtle, is a joyous experience. I think I know why.

I was in Williamsburg recently . . . "Colonial Williamsburg" as it has come to be known. I hadn't spent any time in CW since my stint as an interpreter in several of the exhibition buildings. But, the spark of excitement that I always felt upon arriving in America's colonial capital was relit the moment I walked the Duke of Gloucester Street. Because I'd worked there, I had the advantage of feeling right at home and knowing my way around. But, beyond that, a thrill ran through me as I passed the shops and homes of people who probably weren't very different from me. I was there on a hot day and the smell of boxwood mixed with the buzzing of insects and the aroma from herb gardens, flocks of sheep and oxen ambling through the streets made for a very memorable "deja-vu-like" experience. I remember thinking, "this is the way it was." It was hot and humid in Tidewater Virginia 200 years ago and these are the smells of plants and animals mixing in the sultry heat. I felt at home and I liked it.

I also felt comfortable with the architecture just as I always had. I felt comfortable with it in the same way that I feel comfortable with the Florida Capitol. It is elegant, but predictable. It is formal, but comfortable. It's what we come from — it's our architectural heritage. It is balance, symmetry and scale and color that are easy to live with.

I can't help but wonder if beyond the sense of history that these buildings evoke — be they Georgian or Classical — if their main appeal doesn't lie in the fact that we know what they're all about. No surprises. We don't have to guess what's beyond the front door. The plans are regular, the rooms of uniform size and the functions of the rooms predictable. Ornament is subtle, but often regal. Even the houses of shopkeepers possess the beauty of detail that can only be seen in a simple dentilled cornice or a handsome wainscot.

I love the Florida Capitol because of its elegance and its attention to detail. I love its scale and symmetry and I love what it represents. It represents a formality in architecture of which, we, the people, the users of architecture, never seem to tire.



# NEWS/LETTERS

## Two Announce Competitions

The Florida South Chapter of the AIA, the Barbara Gillman Gallery and the School of Architecture at the University of Miami will sponsor a competition for the design of the "ideal" (sub) tropical house.

The purpose of the competition is to promote the generation and development of the widest gamma of architectural solutions to the problem of the individual detached house for our sub-tropical climate and specifically for our South Florida context.

The competition is open to all registered architects in Florida who submit their entry fee of \$25 and request for registration to the Florida South Chapter/AIA by September 6, 1985. For more information on the competition, contact FSC/AIA, 1150 S.W. 22nd Street, #18, Miami, Florida 33129. Atten: The Ideal Tropical House.

Winning entries will be awarded \$1,000 for first place, \$500 for second and \$250 for third.

The 1985 Wood Design Award Program is being sponsored by the American Wood Council. Deadline for submissions is October 15, 1985, and information and entry materials may be obtained by writing to the American Wood Council, 1619 Massachusetts Avenue, N.W., Washington, D.C. 20036.

## Fantasy of Florida: Dreams Expressed Through Architecture

**F**antasy of Florida: Dreams Expressed in Architecture is a five-part series produced by WEDU Channel 3 and Atlantic Productions. It chronicles the development of the myths, legends, and images of Florida. From Ponce de Leon's quest for

the Fountain of Youth to modern claims of the state as the Garden of Eden, a parade of adventurers, eccentrics and entrepreneurs erected exotic monuments to themselves and their dreams. These programs explore the monuments, their meaning and their value to Floridians today. Check your local listings to see when *Fantasy of Florida: Dreams Expressed in Architecture* airs in your community.

Executive Producer Linda Bassett was interested in stirring a sense of pride among Floridians about their state. "We really do have this idea that our history is probably as old as the latest condominium on the block, or as exciting as the newest convenience store on the strip," she says. "Yet St. Augustine, the oldest city in America as well as Cape Canaveral, the launching pad of our future in space are both in our state. We should be proud of our legacy. My hope is that planners, developers and people who live here will begin

to realize that Florida is a special place — the American tropics — and I wish that people would continue to build in ways that speak to those special qualities of Florida.

The series blends archival and contemporary film, photography, and music to create the atmosphere of Florida's heritage of dream builders. Buildings are explored within the context of their creators and the times in which they were built. To provide a deeper understanding of the architecture and its significance, interviews with historical, architectural and preservation experts are tied in with comments from designers, builders and owners of fantasy structures.

*Fantasy of Florida* was made possible by grants from Florida Endowment for the Humanities, Florida Public Broadcasting Service, Inc., Graham Foundation, Saunders Foundation of Tampa, Wedding and Associates, Architects, Inc. and the Koger Foundation.

## Member News

**F**our University of Miami architecture students have won major design awards in national competitions. **Daisy Sanchez** and **Raimundo Fernandez** won a first place award for their design of an art museum from the Architecture Student Chapter of the AIA San Francisco Civic Center Student Design Competition. In addition to splitting the \$4,000 prize money, the two also received \$1,000 to fly to San Francisco for the AIA Annual Meeting. Two third year students, **Suria Yaffar** and **Juan Caruncho** won a second place award and an honorable mention respectively, in two other competitions. ■

FA/AIA President-elect **James J. Jennewein** and **James A. Schemmer**, president of **The Schemmer Associates, Inc.**, have announced the formation of a new corporation, **Jennewein Schemmer & Associates, Inc.** The new architecture, engineering and planning firm will be located in Tampa. ■ **Atlas & Associates** has been awarded a contract to design a private sector jail for Immigration and Naturalization Services in Buffalo, New York. In addition, firm principal **Dr. Randy Atlas** has been chosen to be a speaker for two sessions at the American Correctional Association Conference held in New York in August. ■

The Annual Service Award for outstanding dedication, integrity and service to the Florida South Chapter Designers of the ASID was given to **Design West** and its principals, **Jamie** and **Michelle Hiss** and **Ned Hickson**. ■ **Chris Miles**, Director of Leisure Recreation Planning and Design Division and a Vice President of HHCP/Architects in Maitland, has been awarded the contract to design the new home for Shakespeare's in Orlando. The new medieval manor dinner theatre should be ready in December 1985. ■ **Oliver & Glidden Architects Inc.** has designed a landscape-oriented business complex

*Continued on page 16*



# Introducing: A roofing system that's new, yet proven for hundreds of years.



It's a metal roof from ECI. And it's designed to last a lifetime.

ECI's metal roofing panels are patterned after those that were created in Renaissance architecture. Panels that still protect the castles and cathedrals of Europe.

But today's version incorporates modern installation techniques that make it incredibly simple to install a metal roof in hours. There

are no through-the-roof fasteners.

The cost of a metal roof is a true value. It's the value that comes with quality and increased longevity that convinces many homebuilders to decide on a metal roof for their finer homes and remodeling projects.

For information on the variety of styles, colors and metals available, write ECI.



Please send me more information on your metal roofing system.

I am a \_\_\_\_\_ Builder/Contractor \_\_\_\_\_ Architect \_\_\_\_\_ Developer

Name \_\_\_\_\_ Title \_\_\_\_\_

Company \_\_\_\_\_ Phone \_\_\_\_\_

Address \_\_\_\_\_

City \_\_\_\_\_ State \_\_\_\_\_ Zip \_\_\_\_\_

PO Drawer C, Stafford (Houston), Texas 77477, 713-498-5611. Offices and plants: Houston, TX; Arterello, TX; Anniston, AL; East, CA; Tualatin, OR; Lakeland, FL.



Create a little  
piece of Paradise.



intriguing  
canvas  
architectural  
creations  
for your  
pool, patio,  
and deck.



3860 NORTH TAMiami TRAIL  
NAPLES, FLORIDA 33940  
(813) 261-3581

# GENESIS STUDIOS

EXCELLENCE IN ARCHITECTURAL ILLUSTRATIONS

FRANK BARTUS, PRESIDENT

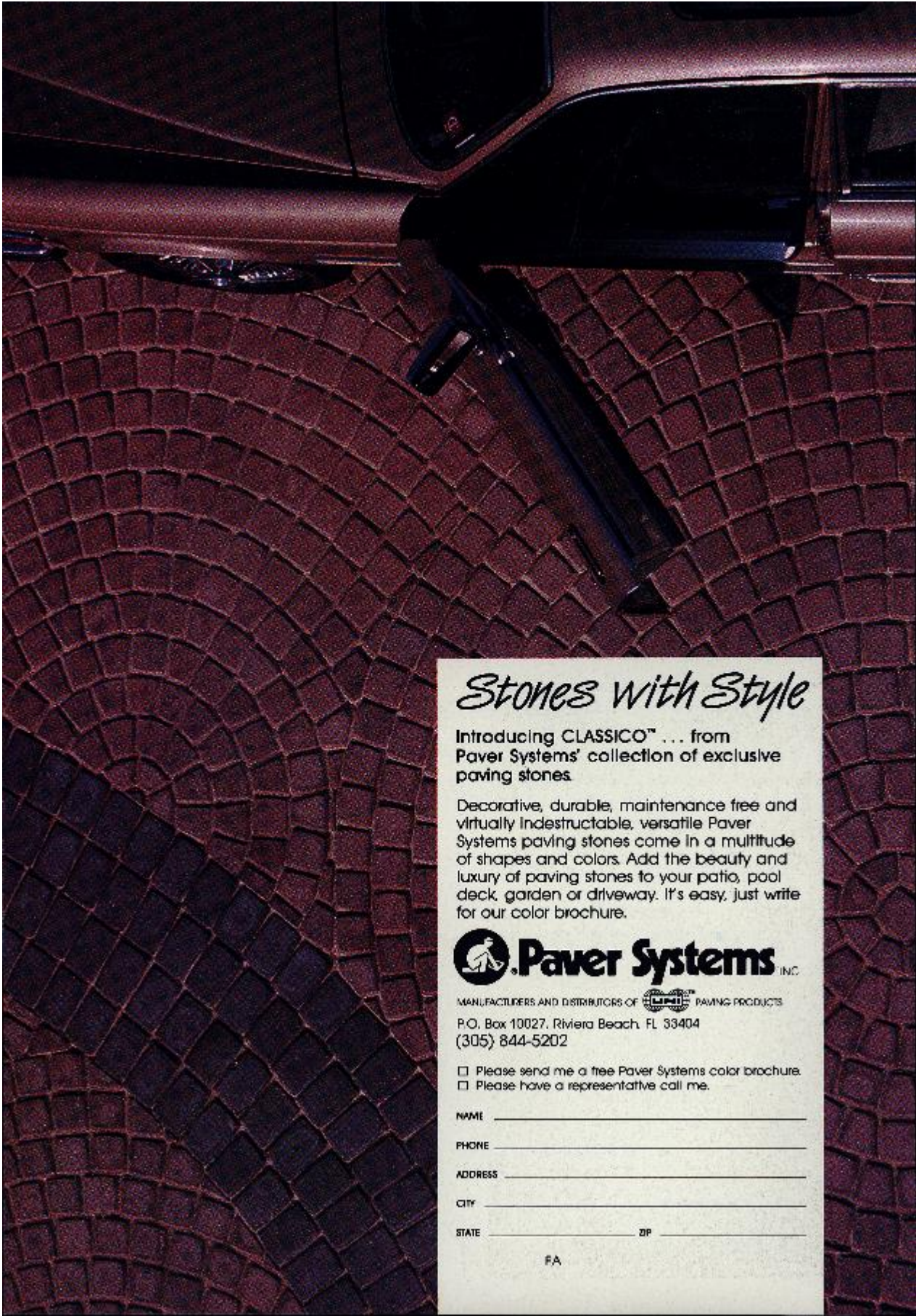
3100 CLAY AVE., SUITE 251 • ORLANDO, FL 32804 • 3051894-5840



Mary Queen of the Universe Catholic Shrine — M.O.A. Architects, Orlando

Catalyst, Inc. Architecture, Orlando

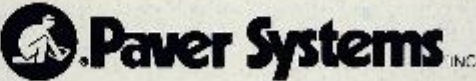





## *Stones With Style*

Introducing CLASSICO™ ... from Paver Systems' collection of exclusive paving stones.

Decorative, durable, maintenance free and virtually indestructable, versatile Paver Systems paving stones come in a multitude of shapes and colors. Add the beauty and luxury of paving stones to your patio, pool deck, garden or driveway. It's easy, just write for our color brochure.



MANUFACTURERS AND DISTRIBUTORS OF  PAVING PRODUCTS

P.O. Box 10027, Riviera Beach, FL 33404  
(305) 844-5202

- Please send me a free Paver Systems color brochure.
- Please have a representative call me.

NAME \_\_\_\_\_

PHONE \_\_\_\_\_

ADDRESS \_\_\_\_\_

CITY \_\_\_\_\_

STATE \_\_\_\_\_ ZIP \_\_\_\_\_

FA

# AWNINGS of distinction

custom design, fabrication, installation  
residential • commercial • industrial



Twin City Mall, North Palm Beach, Florida

canvas / vinyl awnings  
canopies • cabanas • curtains  
cushions • boat canvas • custom welding

**844-4444**  
**AWNINGS BY JAY**

1125 BROADWAY, RIVIERA BEACH, FLORIDA 33404

## FINALLY, CONCRETE SET ACCELERATION WITHOUT CORROSION.

## SPECIFY DARASET.™

Acceleration without corrosion. What you've been looking for in a set accelerator but haven't found. Until now.

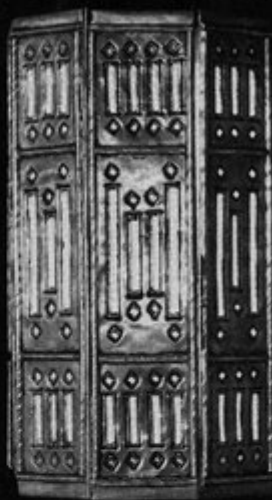
Now there's Daraset, the non-chloride, non-corrosive accelerator, that reduces cold weather concrete setting times without side effects. Daraset has no corrosion-inducing effects on rebars, decks, tensioning cables, or other steel embedded in concrete.

Daraset. What you've been looking for.

Want more proof? Send for our laboratory test results. Write to: W. R. Grace & Co., 1200 N.W. 15th Avenue, Pompano Beach, Florida 33060. Or call: (305) 974-6700

**GRACE**  
Construction Products

# Luminarios™



LUMINARIOS,™ Unique Handcrafted Lighting  
Ceramic, Copper, Brass, Glass

Free color brochure:

342 W. Sunset, San Antonio, TX 78209, 512/824-5572



## PREMIX-MARBLETITE Manufacturing Co.

Serving the building industry since 1955.

STUCCO, PLASTER, DRYWALL AND  
POOL PRODUCTS  
SOLD BY LEADING

BUILDING MATERIALS DEALERS

For specifications and color chart  
refer to SWEET'S CATALOG 9.10/Pr

3009 N.W. 75th Ave. • Miami, FL 33122  
Oviedo & Sanford Rd. • Orlando, FL 32707

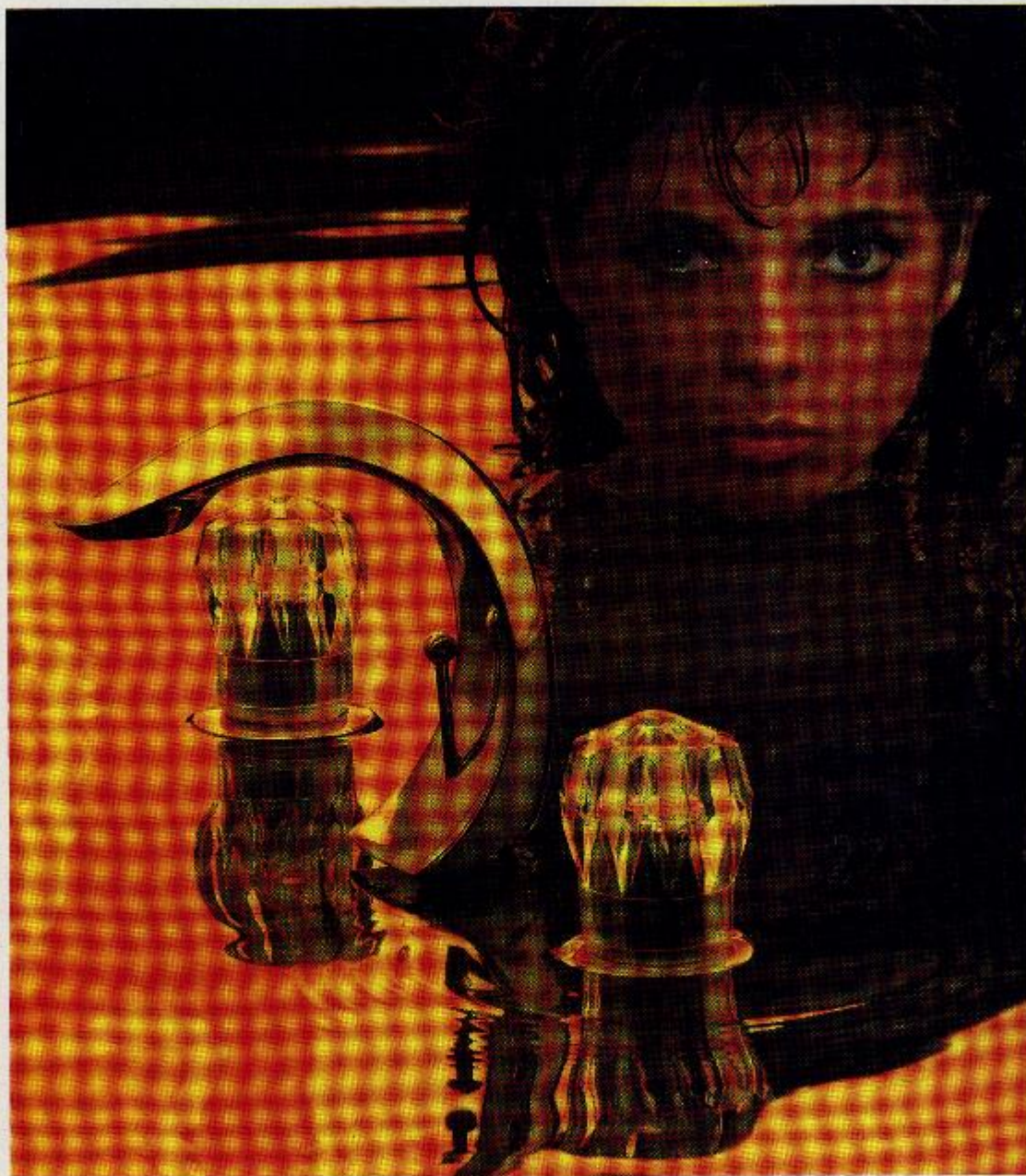
<b>Miami</b>	<b>Orlando</b>
(305) 592-5000	(305) 327-0830
(800) 432-5097	-Fla. Watts- (800) 432-5539

### MANUFACTURERS OF:

- |  |  |
|--|--|
| • <b>MARBLETITE</b><br>(All Marble) Stucco | • <b>ACOUSTICOTE</b><br>Acoustical Plaster |
| • <b>MARBLECRETE</b><br>Trowel Stucco      | • <b>WONCOTE</b><br>Veneer Plaster         |
| • <b>POOLCOTE</b><br>Swimming Pool Stucco  | • <b>P.V.L.</b><br>Vinyl Ceiling Spray     |
| • <b>FLO SPRAY</b><br>Ceiling Spray        | • <b>ACOUSTEX</b><br>Ceiling Spray         |
| • <b>CEMCOTE</b><br>Cement Paint           | • <b>BEDDINGCOTE</b><br>For Rock Dash      |
| • <b>FLOTEX</b><br>Wall Spray              | • <b>SNOWFLAKE</b><br>Ceiling Spray        |

### AND OTHER BUILDING PRODUCTS

An Imperial Industries Company



THE BOLD LOOK  
OF **KOHLER**

In the world of Kohler, form and function emerge triumphant. Here, the Flair II™ faucet in cast brass, a tribute to Kohler imagination. Available in polished brass and chrome to suit any decorating scheme. For more details see the Yellow Pages, or send \$2 for a color catalog to Kohler Co., Dept. AE4, Kohler, Wisconsin 53044.

©1991 Kohler Co.



For more information about  
Kohler Plumbing Products  
see these Kohler distributors:

**Lawrence Plumbing Supply  
Company**

31 S.W. 57th Avenue  
Miami, Florida 33144  
(305) 266-1571

405 N. Flagler Avenue  
Homestead, Florida 33030  
(305) 248-7020

8940 S.W. 129th Terrace  
Miami, FL 33176  
(305) 251-7022



**Do You Have a Disability That's Stopping  
You From Being Employed**

Florida has a wide range of programs that provide vocational  
rehabilitation services for people with disabilities.

People with a variety of vocationally handicapping condi-  
tions may be eligible for rehabilitation services  
which could lead to competitive employment.

**Employment Means Independence**

Find Out More Write:  
The Governor's Commission on Advocacy  
for Persons with Disabilities  
Office of the Governor • The Capitol  
Tallahassee, FL 32301

A public service of this publication

## ARCHITECTURAL PHOTOGRAPHY



FA Award—1985

### ERIC OXENDORF

represented by  
**JIM CUNEO**  
813-848-8931

## The Bus Stops Here

By Ken Walton

### C.K. Steele Plaza Taltran Bus Transfer Facility, Tallahassee

**Architect:** Jim Roberson & Associates Architects, Inc., Tallahassee

**Civil Engineer:** Barr Dunlop & Associates, Inc., Tallahassee

**Mechanical/Electrical:** Hines Hartman & Associates, Inc., Tallahassee

**Structural:** Charles Mitchell, Miami



Tallahassee's new Taltran Bus Transfer Facility is no ordinary bus terminal. Officially named the C.K. Steele Plaza in honor of a prominent black leader, the terminal occupies an entire city block in downtown Tallahassee. Barely out of the shadow of the State's monolithic Capitol, the terminal needed to make a statement about the city's progressiveness and its commitment to mass transit.

When the terminal project began, it presented a number of challenges to the 10-year-old architectural firm. First, the site is across the street from a church and a day-care center, both of which objected to the idea of a noisy, dirty bus station as a neighbor. In addition, the city's transit system required that the facility be designed to accommodate twenty 40-foot buses simultaneously on a relatively small site and to preserve several large oak trees. The Tallahassee Police Department was concerned about security and was invited to review the design with the architects.

Three design concepts were developed and presented to the community for input through public hearings.

The result was a modern facility in an urban setting with park benches and extensive land-

scaping. Noise abatement measures consisted of scooping out the sloping site and leveling it for bus movement, thereby creating a 16-foot retaining wall and a landscaped berm on the side facing the church and day-care center. The large berm and wall reflect the noise back to the source.

The high retaining wall provided an additional opportunity to improve the site's appeal from both the street and the plaza. A fountain was placed on the street adjacent to a residential neighborhood and water falls sixteen feet into a pool on the plaza side. These enhancements provide additional aesthetics for the neighbors and the waterfall softens the noise within the plaza.

The \$2.4 million facility was designed to accommodate twenty buses and 400 passengers in two triangular pavilions. Each pavilion is extensively landscaped and has a 2,000-square-foot skylight for natural light. A computerized signage system with voice synthesizer keeps passengers advised of routes, schedules, boarding positions and arrival and departure times. Additionally, plaza facilities include information, ticketing, restrooms and concessions, administrative offices, drivers lounge and maintenance areas.

Security as a design determinant was addressed by providing good lighting, an active security system and an opportunity for police patrols to see through the plaza from their cars.

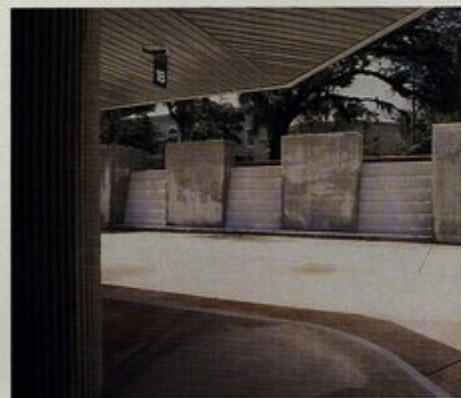
No matter which side the building is viewed from, this is no ordinary bus station.

*Ken Walton is a public relations consultant in Tallahassee.*





Opposite page, main ticket area and administration offices for the Taltran facility are located in the center of the complex. Below, center, the two buildings composing the facility are joined by a spanning element which transverses the central plaza. The giant lowered vents are decorative. Left, the exterior of the Plaza from the southwest corner clearly shows the two separate terminal buildings. Below, top, view of one of the pavilions from the South showing one of two 2,000 ft. skylights which top the buildings. Right, the fountain on the south side of the Plaza which acts as both a visual and noise buffer. Photos by Bob Martin.



Continued from page 8

for Gardens Plaza in Palm Beach Gardens. The development includes two nine-story towers which feature glass curtain wall.

**Gerken & Upham, Architect, Inc.** has added **Dana M. Smith, AIA**, to the firm. The firm will now be known as **Gerken, Upham, Smith, Architects and Consultants, Inc.** Smith is a 1976 graduate of the University of Florida and will receive his Master of Architecture from UF this summer. ■ **Strategic Planning Group (SPG)** has been selected by the Northeast Florida Regional Planning Council to assist in the analysis of potential impacts resulting from large scale developments. SPG has just opened its new Southeast Regional Offices in Barnett Plaza Southpoint in Jacksonville. ■ **Alyo International Architects** in Miami has been invited to prepare a masterplan to expand the existing 50-bed International Hospital of Bahrain. Architect **Al Ramphal, AIA**, will head up the initial consulting visit to Bahrain. ■ **Slattery and Root Architects** in Boca Raton has moved into new corporate headquarters at 2101 N.W. Second Avenue in Boca. The firm is utilizing 2,200 s.f. of the building which they designed. ■ **Post, Buckley, Schuh & Jernigan** is now the 46th largest engineering, planning and architecture firm in the US according to *Engineering News Record* magazine's listing of the Top 500 Design Firms. ■ **Schwab & Twitty Architectural Interiors and Environmental Graphics** has been retained to design the corporate offices for Holyfield & Company, CPA's in West Palm Beach.

**Robert M. Swedroe Architect-Planners** has been selected as the firm for Costain of Florida's new estate/patio home residential community on Boca Pointe known as Valencia. ■ Design is nearing completion at **Studio One, Architecture, Planning and Landscape Architecture** of Winter Park, on 30,000 s.f. of commercial space for Gale Enterprises. ■ Plans have been completed for a seven-story office complex, Bayview



Bayview Executive Plaza in Coconut Grove by Baldwin Sackman + Associates Architects.

Executive Plaza, to be located in Coconut Grove. Construction has begun on the project according to **Don Sackman, AIA**, with **Baldwin Sackman + Associates, Architects**. In addition to the design of the building, **Baldwin Sackman** will be responsible for the majority of the interior space planning and public space design. ■ **The Evans Group** has moved its South Florida base of operations to Coral Gables Corporate Plaza to accommodate an expanded staff.

**The Smith Architectural Group, Inc.** has changed its name to **Smith-Lunz Group, Inc., Architects**. Principals are **Warren H. Smith, AIA**, and **Edward G. Lunz, AIA**. ■ **Urban Design Studio** in West Palm Beach has completed a comprehensive land planning and landscape design plan for Breakers West, a 631-acre residential community in West Palm Beach. ■ **Warren Emo, AIA**, has been named to the Board of Directors of **Barrett Daffin and Carlan, Inc.**, an architecture, engineering and planning firm with corporate offices in Tallahassee, Pensacola and Mobile, Alabama. ■ **Fugleberg Koch Architects**, Orlando, Melbourne

and Dallas, and **Devcon Development Consultants, Ltd.** of Lagos, Nigeria, have formed a joint-venture consortium known as **FKA/DDCL**. The consortium has been established for the purpose of providing architectural design, planning and development services to clients in Africa, the Middle East and the Caribbean. ■ **Peacock & Lewis Architects and Planners, Inc.** has been commissioned to design Indian Trails, a residential community in Indian River Shores. A new branch of **Flagler National Bank**, also designed by **Peacock & Lewis**, is complete and open for business in Boca Raton. ■ **Slattery and Root** will design new facilities for **Harder Hall Golf and Tennis Resort** in Sebring. The firm will do master site planning and initial designs for a new convention center that is part of a 40,000 s.f. multi-use facility on four acres of land. They will also design a 30,000 s.f. spa/hotel with thirty rooms for **Harder Hall**.

Two national magazines ranked **Gresham, Smith and Partners**, an Architectural/Engineering/Planning firm, high on their

list of outstanding companies. **Gresham, Smith** was ranked fourth by *Modern Healthcare* magazine and 25th in *Interior Design* magazine's "100 Interior Design Giants." ■ The Tallahassee-based architecture, planning and interior design firm of **Graf Nichols Elliott, P.A.** has changed its name to **Graf Elliott Marshall, P.A.** The change reflects the withdrawal from the firm of former partner **Bob Nichols** who is forming an independent structural engineering firm. ■ **Charlan Brock & Associates** has been asked to design a multi-family prototype product for universal application within **Fairfield Communities'** rapidly growing resort division. **Fairfield** is a national resort land development company. ■

**James P. O'Shaughnessy**, formerly an interior associate of **Skidmore, Owings and Merrill** in New York, has joined the **Richard Plumer Design** firm in Miami. A registered architect, O'Shaughnessy will design projects for **Plumer's Architecture and Commercial Design** divisions. ■ **HCCP** in Maitland has appointed seven new associates, including **Alex**

ander W. Stone, Ronald I. Manco, Henry R. Wold, David J. Skufza, Richard W. Cherry, John D. Malinson and Janice N. Roberson. In addition, HCCP has named five new Vice Presidents, Thomas E. Peacock, David G. Cameron, Christopher L. Miles, John W. Anderson and Laura M. Bailey. ■ The Haskell Company has completed an oceanfront condominium for the Dunes Club Company. Turtle Dunes is a seven-story building with 58 condos located adjacent to the Amelia Island Plantation. ■

**Roberto A. Smith, AIA**, has been promoted to Associate Architect with **Maspons · Goucouria · Estevez** in Coral Gables. Smith received his architecture degree from the University of Miami. ■ **Shoup/McKinley Architects and Planners, Inc.** of Boca Raton has been commissioned to design a prototype upscale, fast-food bar and grill. The restaurant will be known as Flamingos Bar and Grill and it will be constructed on several sites in Palm Beach County. ■ **Studio One** in Winter Park is the recipient of a 1985 Golden Brick Award from Downtown Orlando, Inc. for the reconstruction/renovation of 18 Wall Street. ■ **Edward D. Stone, Jr., and Associates** has been recognized by the American Society of Landscape Architects with a Merit Award for the Mayport, Florida Naval Air Station Base Exterior Architectural Plan. ■

**Bell Associates, P.A. Architects and Planners**, has announced the addition of **Robert J. Aude, AIA**, as an Associate. Aude will serve as Project Manager and Director of Design, heading up the firm's Design Department. ■ The officers of **KSD Architectural Associates, Inc.** recently named three new associates: **James R. Dowling**, **Margaret S. Espy** and **Robert E. Johnson**. **Roy Ricks**, formerly with the firm, recently resigned to make his residence in Avon, Colorado. ■ **Bob Webb** has left the University of Central Florida to join the **Architects Design Group of Florida, Inc.** in Winter Park, as Project Architect. **Sergio Baca** has also joined ADG after twelve years of experience in both Mexico and the U.S. ■ **Currie Stubbins Schneider AIA**, a Delray Beach-based firm has

recently completed the plans for new additions and renovations for the O.C. Taylor Chrysler dealership in Delray Beach. ■ **Dale Siska** has been named manager of business development for **Post, Buckley, Schuh & Jernigan's** Central/North Florida District.

**Forms & Surfaces, Inc.** of Miami has won the regional Spec-

trum '85 Commercial Renovation award sponsored by the Ceramic Tile Distributors of America (CTDA). The winning entry was the Dadeland Mall Renovation project featuring over 250,000 individual tiles, custom colored and sized for intricate modular interlocking. Winners of the regional awards will vie for the coveted national awards to be an-

nounced at the CTDA's annual convention held in Dallas, Texas in October.



## Right Place. Right Time. Right "Bottom Line."

Measure nothing but cost, and Northbridge Centre is competitive. Measure image, environment and "futures," and Northbridge Centre is clearly in a class of its own.

### Consider:

- Profitable lease equity plan, allowing major space users to share in the cash flow, appreciation and tax benefits.
- Charter Tenant advantages, available for tenants of as little as 1,000 square feet.
- Free undercover parking.

### Add:

- Views of the Atlantic Ocean and Intracoastal Waterway.
- Elegant and informal restaurants, banking and shops.
- Swift traffic access.
- On-site owner/management.

Northbridge Centre I: NOW READY FOR OCCUPANCY.  
The question is—NOT can you afford to, but can you afford NOT to?



## NORTHBRIDGE — CENTRE I —

515 North Flagler Drive, West Palm Beach, Florida  
For information, call Hamilton & Associates—(305) 686-5793

# Orlando: The City Disney Built

by "De" Schofield and Lorraine Lax



With a twist of the turnstile on that opening day in 1971, the first visitor to Walt Disney World set Florida's major tourism industry into motion. In little more than a decade, Orlando has been transformed from a sleepy, agricultural village into a vacation mecca and cosmopolitan center of industrial development, commerce, finance, insurance and high-technology.

Thirty years ago there were less than 20 architectural firms in the Central Florida area. Today, there are over 200. The number of practicing architects has escalated on a par with the tremendous economic and industrial growth that has occurred since the tourist industry got a real foothold in the early 70's.

The key to Central Florida's present economic strength is attributed not only to the millions of visitors who come each year, but to the rapid increase in population. In 1984, about 360,000 people moved to Florida . . . 81,000 settled in and around Orlando.



The proliferation of companies relocating or expanding in Central Florida has had a pronounced effect on the housing industry. In 1983, there were over 773,000 people living in the tri-county area of metropolitan Orlando. An estimated 22,000 people per year are projected to move to Orlando by 1990, bringing the total population to just under one million.

According to the East Central Florida Regional Planning Council, the availability of affordable housing is a big problem for low and moderate income families. The housing industry is addressing this problem in a variety of ways including zero lot line developments, manufactured housing, condominium conversions and various multi-family unit configurations such as duplexes, triplexes and so on. A resurgence of apartment construction in the last few years should also help by creating an alternative to home ownership.

Many of Orlando's recently-announced residential communi-

ties are massive developments that deliver affordable housing, desired amenities and the convenience of nearby shopping and office space. Sporting such catching names as Hunter's Creek, Lake Nona and Huckleberry, the developments range in scope from 1,800 acres to 7,000 acres and are designed to contain as many as 9,000 units.

Opposite page, *Harcourt, Bruce, Jovanovich Building* was designed by Reynolds, Smith & Hills. Middle, the *duPont Centre, Phase 1*, is comprised of a 425,000 s.f. Class "A" office building and a 350-room luxury hotel. Designed by Morris/Aubry of Houston, the completion date is set for the mid-1990s. This page, top, *Barnett Plaza* showing the CNA Building. Architects for the Barnett Plaza are Reynolds, Smith & Hills. Bottom, the *Atlantic Bank Building* and *Wall Street Plaza* in the foreground. All photos by Bob Braun.



Although people over 65 constitute the second largest group of new arrivals to the State, Florida is losing some of its original image as a retirement state. The largest group of newcomers is now in the 25 to 44 age bracket and they are the people most interested in the employment opportunities offered by the ever-present construction of offices, hotels, warehouses, hospitals and health facilities and retail space. Since 1980, over 200 companies have either moved into or expanded in Central Florida. These companies have projected 36,880 jobs, spending \$1.5 billion in capital investments and building 13.37 million square feet of office complexes, warehouses and manufacturing plants.

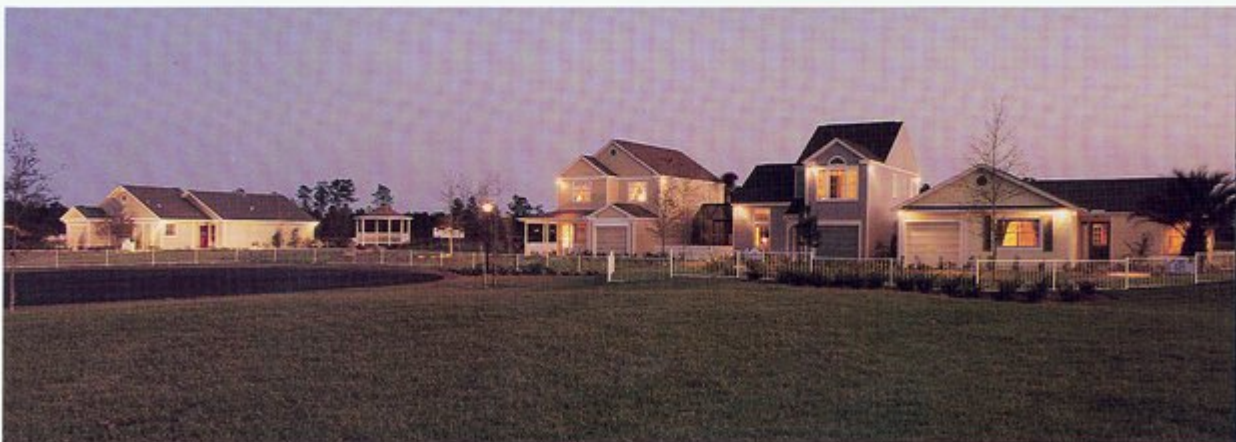
At the beginning of 1985, a Coldwell Banker survey reported that the Central Florida area had nine million square feet of commercial space either planned or under construction. Several large-scale projects, such as the \$150 million Sun Bank Center and the \$400 million duPont Center, both scheduled to begin construction this year, have placed most of that space in Orange County.

Despite the apparent increase

in demand for office space, the construction of traditional office space, i.e. small, single office buildings, is expected to decline.

Retail space is also on the increase, and in metropolitan Orlando alone, 850,000 s.f. of shopping center space was built in 1983. Forty new shopping centers, each with over 50,000 s.f., are slated for construction to begin before the end of 1985. The \$200 million Florida Mall is currently under construction and the activity it has generated has already spawned more retail construction in the same area of Orlando.

With the opening of Orlando International Airport in 1981 and Epcot Center in 1982, a second wave of unprecedented growth swept Orlando. Not only did Epcot boost the tourist and hospitality industries, attracting 22.7 million visitors in 1983, but it also helped attract national and international business to the area. These two projects, added to the opening of the Orange County Convention/Civic Center in 1983, marked a milestone for the State's tourist and convention business. Currently ranked fifth in the world in the number of available hotel rooms, the Orlando/Walt Disney World



*Huckleberry, top and above, is typical of the many new residential communities coming into the Central Florida area. These massive developments offer affordable living with desired amenities such as the children's play area seen in the upper photo. Photos by Bob Braun.*



area "is undergoing growth as a meeting and incentive destination unequalled by any location in such a short period of time," according to *Corporate Meetings & Incentives*, a reputable industry source.

Four world class resorts, the Hyatt Regency Grand Cypress, the Wyndham Hotel Sea World, the Buena Vista Palace and the Hilton at Walt Disney Village, have added 3,000 rooms to the area's total in the last few years . . . an increase of nearly ten percent. Marriott's soon-to-be-completed Orlando World Center will add another 1,500 luxury rooms in the Disney area. Other sections of the city, particularly downtown and Maitland Center, are also experiencing a hotel boom. The 344-room Radisson Orlando and the 265-room Omni International will be completed in downtown Orlando in late 1985 and at least two more luxury facilities are being planned for construction over the next two years.

Walt Disney World recently announced plans for the construction of two luxury convention hotels, involving the Sheraton Corporation and Holiday Inns' Crowne Plaza Division. Upon completion of the \$265 million venture in 1988, the facilities will comprise the largest convention/hotel complex on the East Coast of the U.S. The 68-acre project is the largest to be constructed on Disney World property since Epcot and will offer 2,300 guest rooms and 200,000 s.f. of convention space. In addition to all of this, work is progressing on the \$35 million Holiday Inn Crowne Plaza in Florida Mall, a 500-room facility scheduled to open in the spring of 1986.

---

**"De" Schofield and Lorraine Lax** are partners and owners of *D'Lor Communications* in Maitland, Florida.



*New world-class resorts have added 3,000 rooms to the Orlando area's total in recent years. Among these are the Radisson Hotel, top, the Wyndham Hotel Sea World, above left, and the Buena Vista Hilton, above right. Photos by Bob Braun.*

## OFFICE PRACTICE AIDS

# Storm Power Scale Designed By Miamians

By Jeanne Bellamy

The Richter Scale is to earthquakes as the Saffir-Simpson Scale is to hurricanes.

People have been understanding the magnitude of earthquakes for nearly half a century since Prof. Charles F. Richter published his scale in 1935. The power of hurricanes stayed nameless until a Miami engineer devised the Saffir-Simpson Scale in 1978.

In that year, Herbert S. Saffir wrote a report for the United Nations on low-cost construction to resist high winds. While studying hurricanes all over the world for the project, he devised a tabulation to explain the destructive strength of these tropical cyclones. The full text spells out the kind of wreckage to be expected at each level of wind speed.

For instance, a Grade One storm is "nominal," with winds only 74 to 95 miles an hour. The worst kind, Grade Five, would be "catastrophic," like the Labor Day Hurricane of 1935 which knocked over a railway train in the Florida Keys and drowned 400 persons with a storm surge that roared over the low islands 11 to 18 feet higher than the normal level of the sea.

The narrative part of the Saffir-Simpson Scale gives this frightening description of a Grade Five storm: "Winds greater than 155 miles per hour. Shrubs and trees blown down; considerable damage to roofs of buildings; all signs down. Very severe and extensive damage to windows and doors. Complete failure of roofs on many residences and industrial buildings. Extensive shattering of glass in windows and doors. Some complete building failures. Small buildings overturned or blown away. Complete destruction of mobile homes. And/or: storm surge greater than 18 feet above normal. Major damage to lower floors of all structures less than 15 feet above sea level within 500 yards of shore. Low-lying escape routes inland cut by rising water 3 to 5 hours before hurricane center arrives. Massive evacuation of residential areas on low ground within 3 to 10 miles of shore possibly required."

Saffir gave the scale to the Hurricane Center in Miami for the use of its forecasters. The director of the center, Robert Simpson, added the estimates of the height of storm surges, so the table has been known since then as the Saffir-Simpson Scale.

Saffir, the head of Herbert Saffir Consulting Engineers in Coral Gables, has studied and reported on hurricane damage to structures in many parts of the world for 30 years. He is the author of the South Florida Building Code's section on wind load requirements. His work made this code the first in the land to set design standards based on sound engineering principles.

Few laymen know that wind gets stronger with height. A three-story building would feel a 120-mile-an-hour wind at that speed. The same wind would strike the top of a 30-story skyscraper at 167 miles an hour, according to a widely used engineering formula. On this basis, Saffir recently calculated exactly how strong buildings must be at various heights to survive hurricanes. Using these figures, the South Florida Building Code will let one-story buildings be a little weaker than those 30 feet or more in height, thus saving construction costs.

The 120-mile-an-hour wind is Grade Three on the scale — one likely to cause extensive damage once in 50 years. Saffir explains that building for total resistance to hurricanes would be very expensive and not practical.

Saffir's report on a tornado that battered parts of Fort Lauderdale on May 24, 1979, was printed for the convention of the American Society of Civil Engineers at Miami Beach in 1980. He found that the tornado's wind speeds at touchdown were those of a Grade Five hurricane, at least 155 miles an hour. He concluded that the destruction he saw was "the type of damage that would ensue under hurricane conditions even with a strong hurricane-resistant code."



## The Saffir-Simpson Hurricane Scale

Category	Description	Mean wind speeds (mph)	Storm surge (ft.)	North Atlantic & Gulf examples
1	Minimal	74-95	4-5	Agnès 1972
2	Moderate	96-110	6-8	Cleo 1964
3	Extensive	111-130	9-12	Betsy 1965
4	Extreme	131-155	13-18	David 1979
5	Catastrophic	Greater than 155	Greater than 18	Camille 1969

---

---

## 1985 FA/AIA AWARDS FOR EXCELLENCE IN ARCHITECTURE

---

---

The 1985 Awards for Excellence in Architecture brought together a prestigious jury to view one hundred and forty-five projects submitted by AIA members in Florida and the Caribbean. This year, there were twelve winning projects.

The consensus of the jury was that the overall quality of the submitted designs was not as high as it should have been. Criticism of the projects ran high and stemmed from specific comments relating to a lack of care in the submissions to a general concern that the architects in the region are not looking to the sources of design for their inspiration. One juror felt they should be looking to the cultural and indigenous as inspiration for their designs.

Juror Kevin Roche summed up the jury comments, "Florida has a specific environment. You don't get any sense [from the projects submitted] that there is any original thinking indigenous to Florida."

### The Jury

Cesar Pelli was born in Tucuman, Argentina, where he earned a Diploma of Architect from the Universidad Nacional. He came to the United States to attend the University of Illinois, where he earned a Master of Science in Architecture. For the next ten years, he worked in the offices of Eero Saarinen and Associates.

In January, 1977, Pelli assumed the duties of Dean at the

Yale School of Architecture, and he opened his own architectural office, Cesar Pelli & Associates, in New Haven, Connecticut. In 1985, he resigned from Yale to attend his architectural practice on a full-time basis, although he remains a member of the faculty of the School.

Cesar Pelli is a Fellow of the American Institute of Architects, a member of the American Academy and Institute of Arts and Letters, a Trustee of the Institute of Architecture and Urban Studies, New York, and a Board Member of the National Building Museum in Washington, D.C. His work has been written about and exhibited all over the world.

Kevin Roche was born in Dublin, Ireland in 1922. He received his Bachelor of Architecture degree at the National University of Ireland and came to the United States in 1948. In 1950, he joined the firm of Eero Saarinen and Associates. Roche served as Saarinen's principal associate in design from 1954 until Saarinen's death in 1961. At that time he formed a partnership with John Dinkeloo to continue Saarinen's practice and to complete the ten major projects underway at that time.

Kevin Roche has been the recipient of many honors and awards including the Academie d'Architecture 1977 Grand Gold Medal and the Pritzker Architecture Prize in 1982. He is registered to practice architecture in 17 states and is a member of the National Council of Architectural Registration Boards.

## 2424 South Dixie Highway Office Building

Coconut Grove, Florida

### Architecture for the Fast Lane

The speed at which drivers pass this building which is sited on a wedge-shaped lot on busy U.S. 1, was a determining factor in the architect's decision to streamline the facade. By visually "striping" the long elevation, the designers reinforced the low, horizontal lines of the building. The "striping" consists of stucco bands and ribbon windows alternating and organized on a three-foot module.

The shape of the site suggested the rounded glass block ending to the "point" in this tropical Flatiron building. Behind it sits a conference room. By using the core of the building for service and storage, the architects could give most offices window walls. Glass sliding doors allow natural light into the internal circulation.

*"This project is most successful in aesthetic resolution and control. A very good piece of architecture with a difficult site and minimum program. It was designed with a high level of sophistication." Cesar Pelli*

#### **Architect**

Mateu Associates

#### **Consulting Engineer**

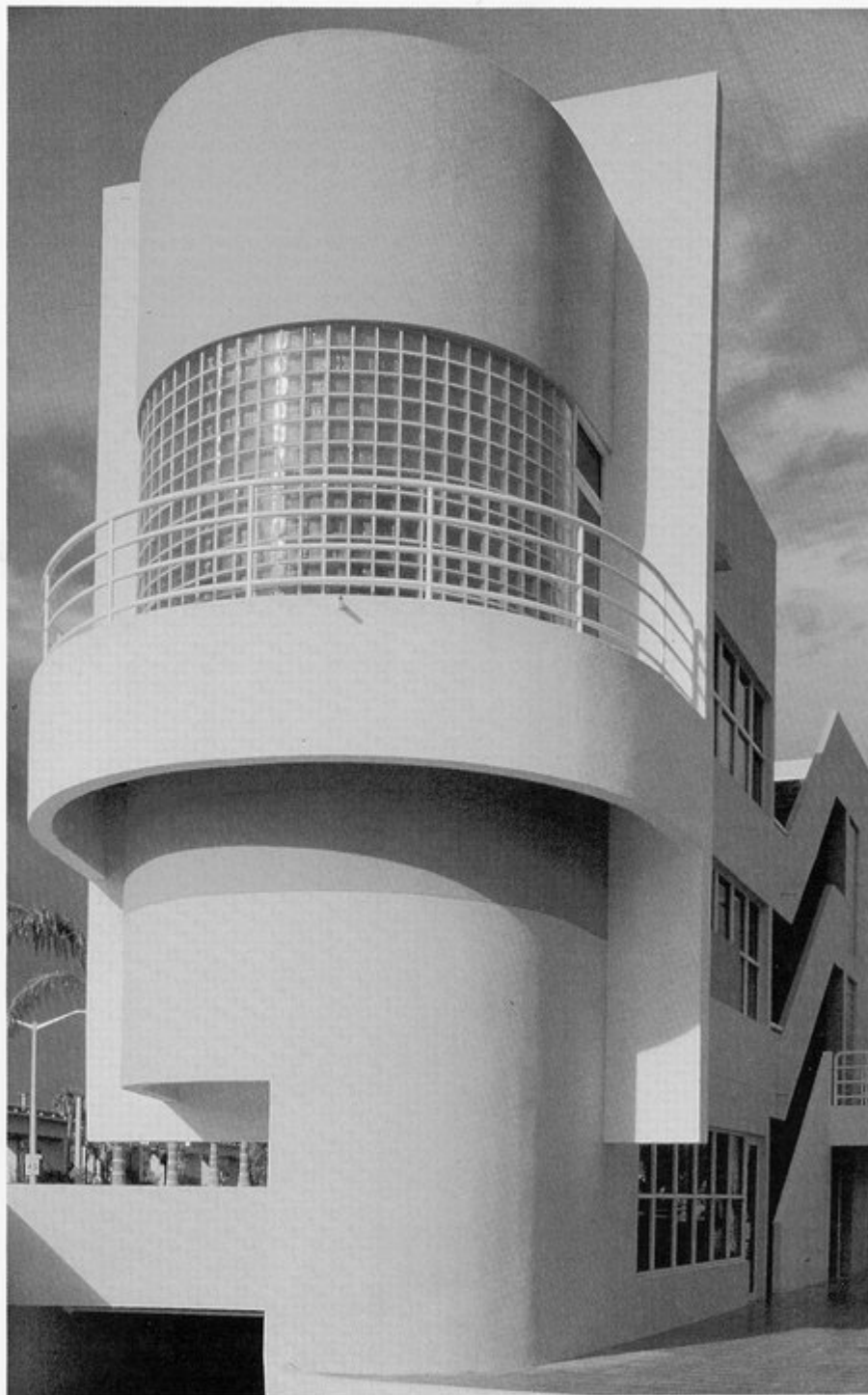
M.A. Suarez and Associates, Inc.

#### **Owner**

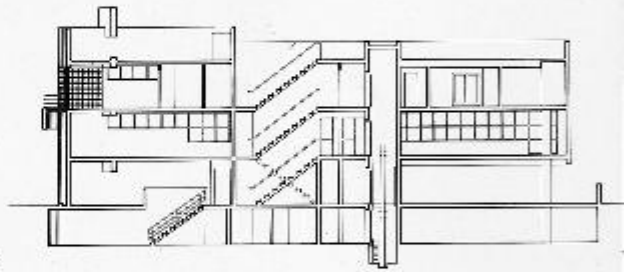
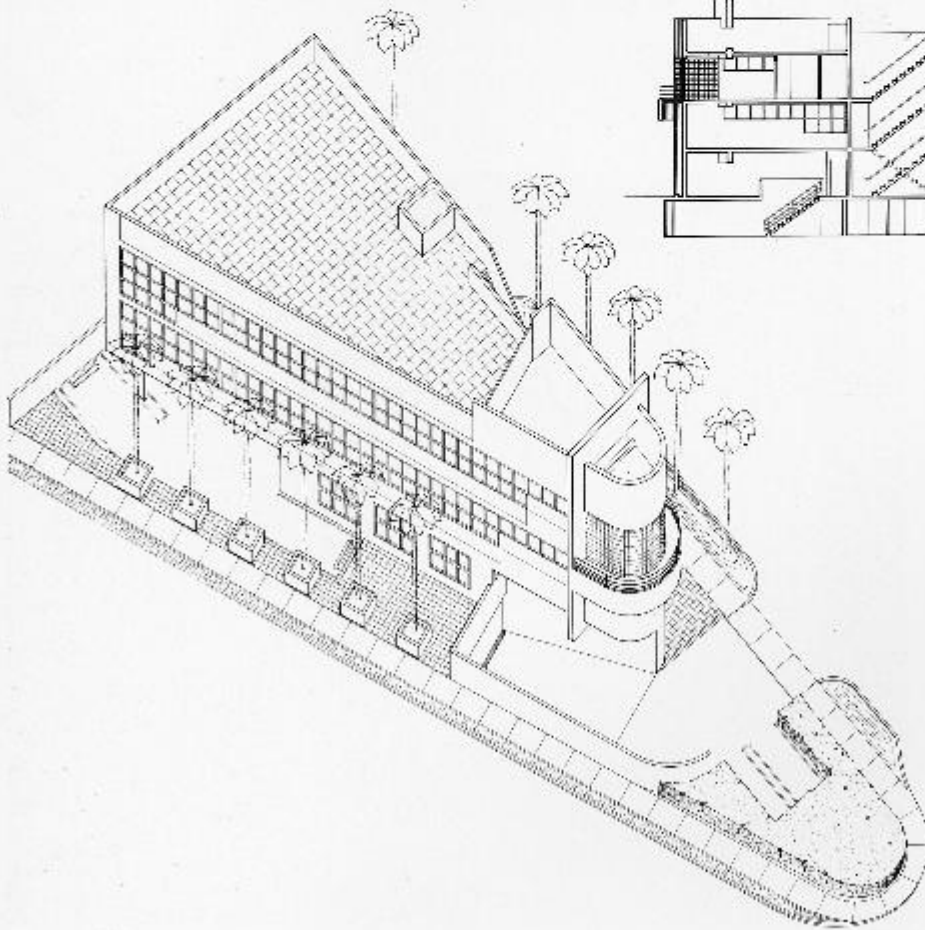
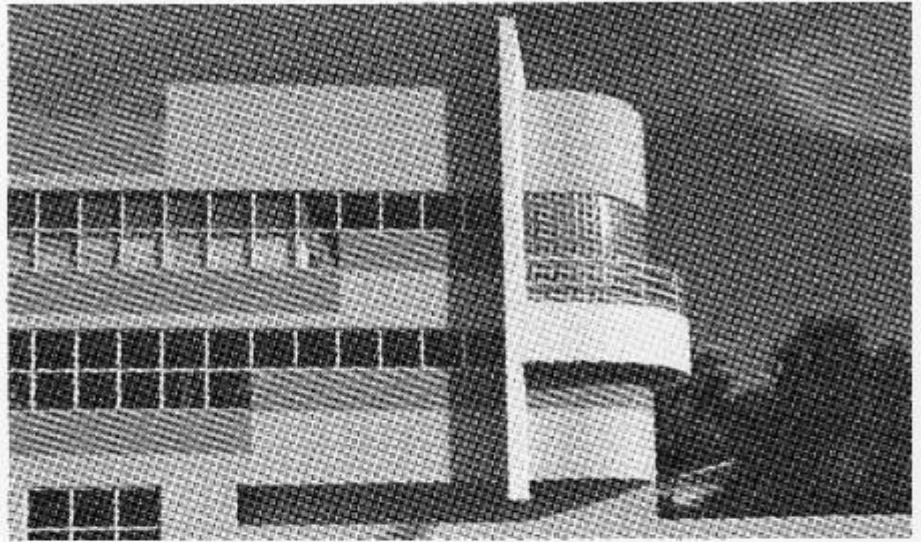
Marcus, Dixon & Friedman

#### **General Contractor**

2424 Building, Inc.  
Edward J. Gerrits,  
Construction Manager



Photos by Kathlynn A. Hill



## 101 S. Franklin Street

Tampa, Florida

### A Restoration Sensitive to Detail

Located on the southern edge of downtown Tampa near turn-of-the-century warehouses, this two story corner building housed wholesale establishments and a saloon on the main level and offices on the second floor in 1900.

The main entry space from Franklin Street was enlarged, recessed and made two stories high with a new glass enclosed elevator connecting to a second level gallery. Its 12,000 square feet now converted to modern office and retail space, the structure contains a law firm, insurance company, architect's office and printing facility.

Particular attention was given to tying the renovation work in with the appearance of its adjacent brick neighbors. Lighting, finishes, textures and colors were recognized and coordinated. Sidewalks were extended and matching trees and planters were installed to treat this existing area as a whole.

*"The genius of this very fine restoration was making the decision to strip away the stucco and expose the original brick."*  
Mildred Schmertz

#### Architect

John Howey Associates

#### Consulting Engineer

Rast Associates

#### Landscaper

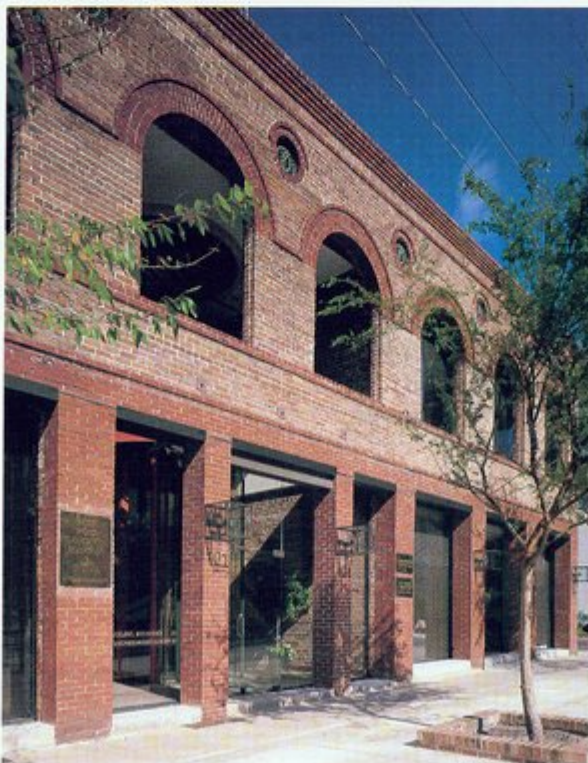
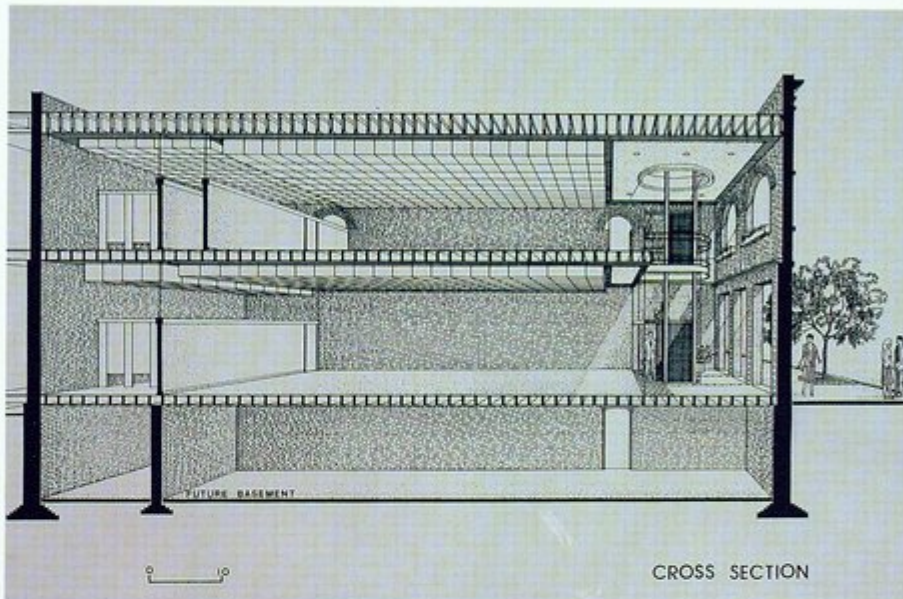
John Howey, AIA

#### Owner

John Howey/Peter Farago/  
Dorothy Howey

#### General Contractor

Ostie Miller and Norbert Fuller



Photos by George Cott

## Audubon Park

Tampa, Florida

### Contemporary Housing With Traditional Values

This small development of seven houses is situated on two acres near downtown Tampa. A barrier wall provides privacy and an entrance. The traditional values of the neighborhood are reflected in this contemporary housing. House facades use a classical tripartite division of base, frame and head, but the familiar ingredients of the classical architectural language are used with a twist.

*"Residential groupings on a street, especially around a cul de sac, have a rich American tradition, but haven't been done well in recent times. It could make a very decent neighborhood."* Cesar Pelli

**Architect**

The Jan Abel Kenneth Garcia Partnership

**Owner**

Five Apples Limited

**Landscaper**

BHR Planning Group

**General Contractor**

R. Hamilton & Son, Inc.

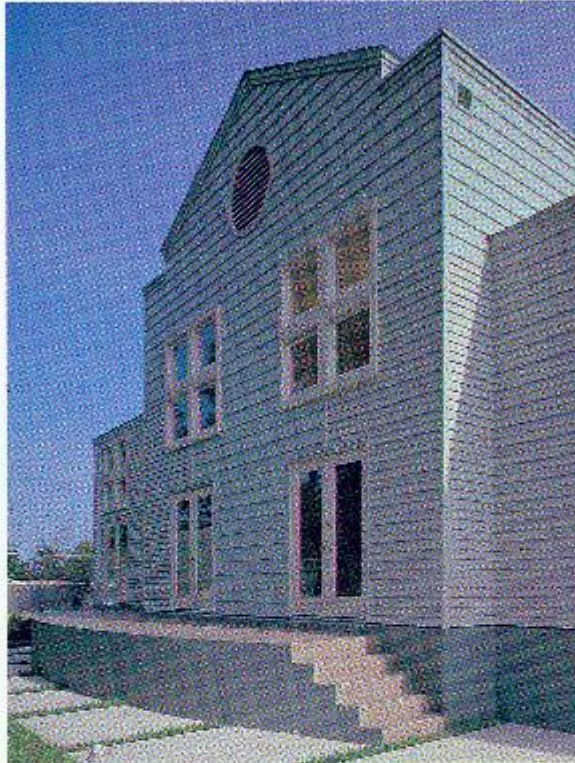
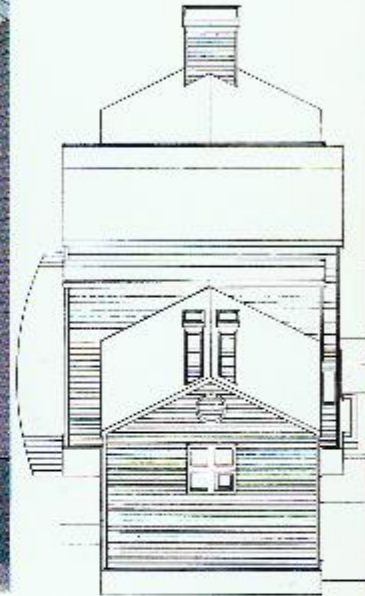


Photo by Walter Smalling, Jr.



## Turabo Park

Caguas, Puerto Rico

### A Recreational Retreat in the Puerto Rican Hills

A recreational park on three hundred acres of mountainous terrain required the design of an initial facility to serve as gateway to the park and house administration and security facilities. Bathrooms and the lower terminal of a chairlift to the mountain top were also in the entrance facility. An amphitheatre completed the program requirements. All of these facilities were grouped in a building terraced around a fountain-pond. The terraces establish the access from parking facilities as well as an egress to the children's play areas, equestrian, camping and picnic facilities. Over the entrance building the chairlift structure serves as the focal point of the design.

*"The most handsome and creative of the public facilities we've seen. It gives the public space a dignity and monumentality."*  
Cesar Pelli

#### Architect

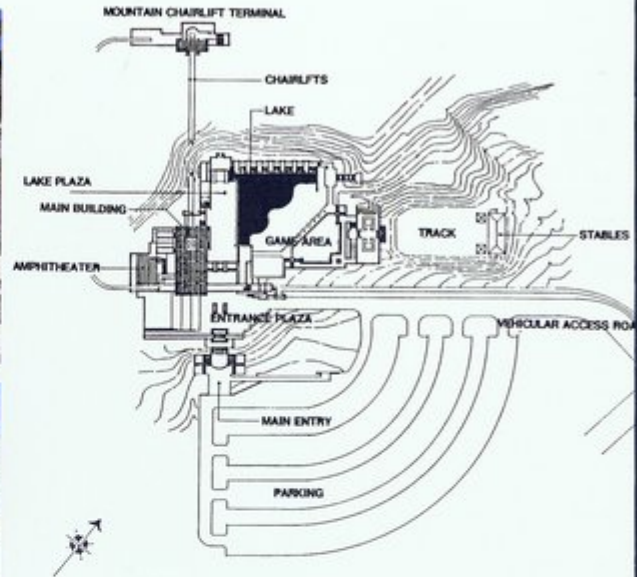
Luis Flores  
Torres • Marvel • Flores Y  
Asociados

#### Consulting Engineers

Structural — Jose Morla  
Electrical — Ricardo Rodriguez

#### Owner

Municipality of Caguas  
Caguas, Puerto Rico





## Giambelli's Pastificio

Lake Park, Florida

### The Gourmet Restoration of a Fast Food Restaurant

The client program called for the renovation of a fast food chicken outlet into a gourmet Italian restaurant and pasta "boutique" involving an 1,100 square foot addition to the existing building. Conceptually the building evolved using solid geometrical elements with historical and contextual references within a modern framework.

Because a major intersection was one block away, a secondary facade was pulled from the building to provide a "sign" as well as set up the pattern for spacial organization. This created a pleasant entry sequence through the garden space and into the building itself.

*"Here the architect has managed to overcome the limitations of a pre-existing building to create a pleasant structure that was handled with skill and care." Cesar Pelli*

#### Architect

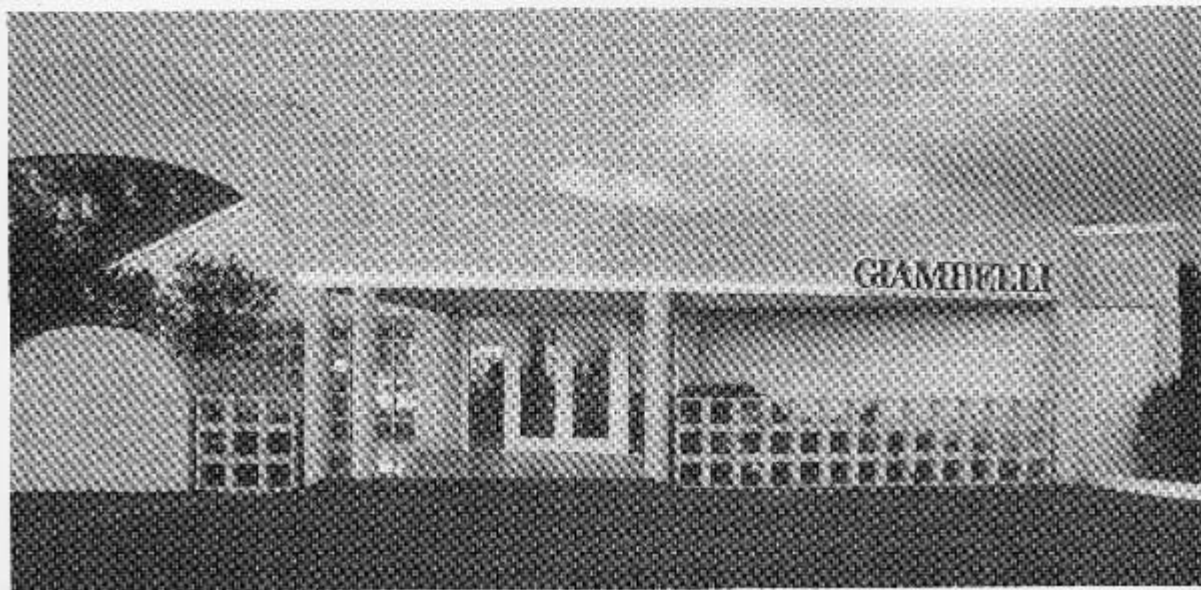
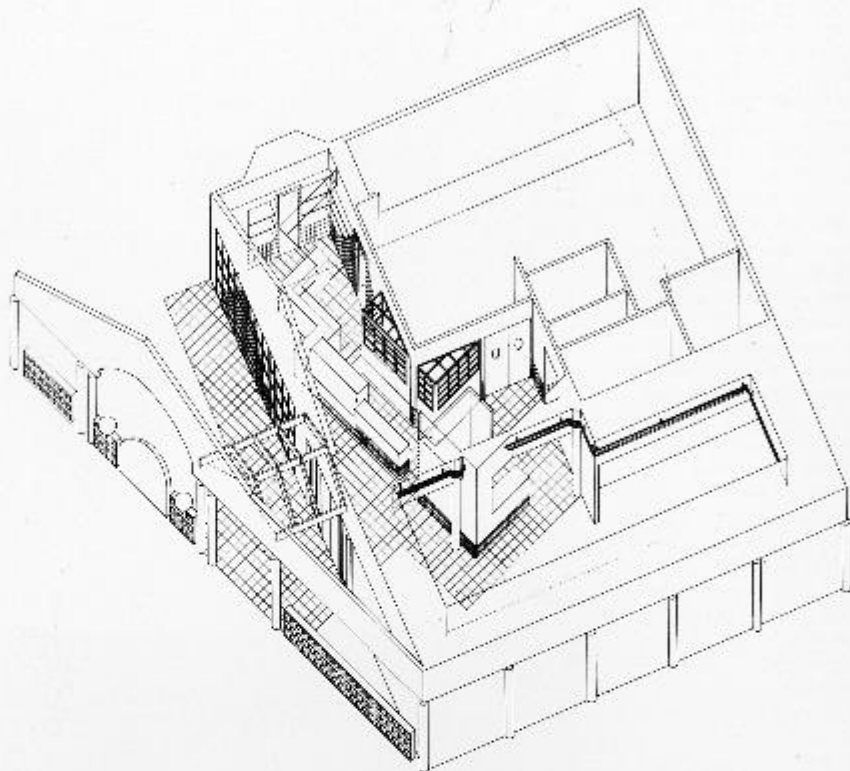
Yeckes-Luchner Architects,  
P. A.

#### Owner

Alessandro Giambelli

#### Contractor

Seaspray Construction Co.



## School of Architecture, Florida A&M University

Tallahassee, Florida

### A Hands-on Laboratory for Architecture Students

This new School of Architecture is a 3-story steel frame utilizing simple industrial components. Floors are concrete over a steel deck. The brick, one-story east facade relates to the adjacent residential neighborhood. Four south-facing wings incorporate a continuous thermal chimney wall. The adjacent spaces are cooled by inducing ventilation through solar updrafts. In winter, heat is captured inside the chimney and re-circulated on the interior. The system combines solar and wind in a synergistic system to provide the maximum air movement with a minimum of electrical power and controls.

The building occupies a sloping site on the edge of the campus and major circulation is open, but covered.

*"Very sophisticated forms and shapes. I like the way the architect has provided for the students."* Kevin Roche

#### Architect

Clements/Rumpel/Goodwin, Asso., Inc.

#### Consulting Engineers

Structural, HVAC, Electrical — Tilden, Lobnitz, Cooper, Inc.

Passive — Dubin/Bloom Asso.

Civil — Richard P. Clarson & Asso.

#### Landscaper

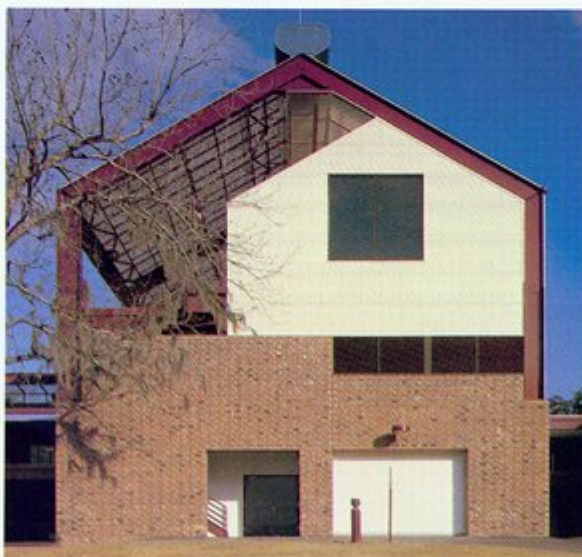
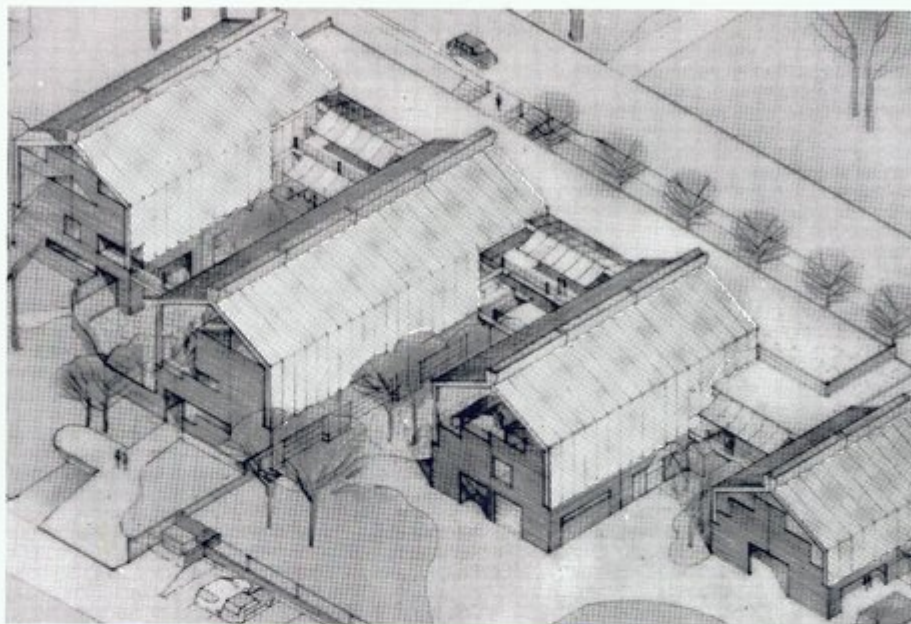
Nancy Jenkins

#### Owner

Board of Regents

#### General Contractor

W/CRS



Photos by Steven Brooke



## Sabal Center

Longwood, Florida

### Color As A Major Design Element

Because of the very limited budget for this speculative office building, the goal of the design team was to create a dynamic, attractive structure without resorting to unusual building shapes which would have resulted in construction costs and rental rates that were higher than marketing demands. The resulting shape is a simple rectangle, the proportions of which are dictated by optimum lease space depths and an efficiency factor of over 87%.

The building's design is very two dimensional and because of the low budget, color is used as the major design element. Other than the color red, used on columns and aluminum half-round window sills, details are minimized, except at the entrance which is delineated by a white grid and a red metal ceiling which extends into the interior. The gridded storefront is reflected on the floor of the entrance area which is two stories in height.

*"The simple, straightforward design has excellent proportion and a feeling of elegance."*  
Kevin Roche

#### Architect

The Design Arts Group, Inc.

#### Landscaper

Foster-Conant & Associates, Inc.

#### Owner

The Lando Group

#### General Contractor

Williams Development Co.



Photos by Eric Oxendorf.



## Barnett Residence

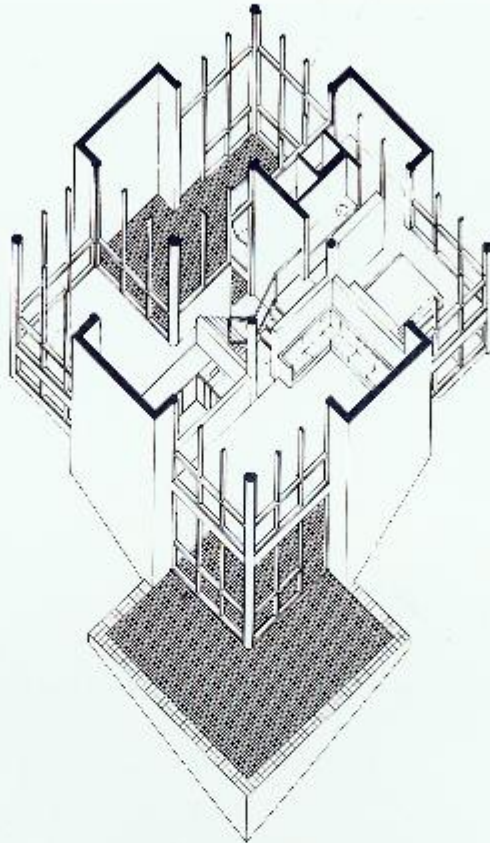
Leon County, Florida

### Vintage Elements in a Contemporary Dwelling

The passive systems and mild climate during much of the year allows the house to use minimal mechanical assistance. The program was for an active family with two young children who frequently entertain large groups. The major spaces had to accommodate 15-75 people, yet have the intimacy for family groupings or individual privacy. The family loves the outdoors and wanted to experience changing seasons from all the major rooms of the house.

The concept was to use the sloping site and a compact form to minimize the site presence. There was also a desire to use the building knowledge unique to North Florida's architectural past, combined with contemporary construction techniques to produce an energy efficient, minimal maintenance home.

The form generator was the six major living areas which were approximately equal in size. The form was a square which pinwheels on a central core allowing the upper levels to stack over the lower levels. By entering at the midpoint between the adult and children's areas and rotating up to the adult living spaces or down to the children's spaces, all the areas were afforded view of the lake and woods.



*"This house picks up traditional forms from the North and transplants them to South-era forms. Because of careful planning, a pleasant living space has been created."*

Kevin Roche

**Architect**

Rowe Holmes Barnett Architects, Inc.

**Owner**

Rick and Martha Barnett

**General Contractor**

Ajax Construction Company of Tallahassee



## Hibiscus House

Miami, Florida

### European Modernism in a Miami Residence

The house recalls that period when Miami's classically trained architects first encountered European Modernism. In the style which developed, traditional compositional devices were freed from ornament and appear with unusual clarity.

This design consists of three separate buildings in juxtaposition: a loggia to the street, a ceremonial living room in the middle, and a block of utilitarian rooms in back. Each of these has its own particular and appropriate systems of openings. The three buildings have a slipped relationship in response to the site, while sharing several important internal axes.

*"A handsomely designed house. One of its charms is its richness in a very compact package. It's a very intelligent design."* Cesar Pelli

#### Architect

Andres Duany & Elizabeth Plater-Zyberk, Architects  
Rafael Sixto, Assistant

#### Consulting Engineer

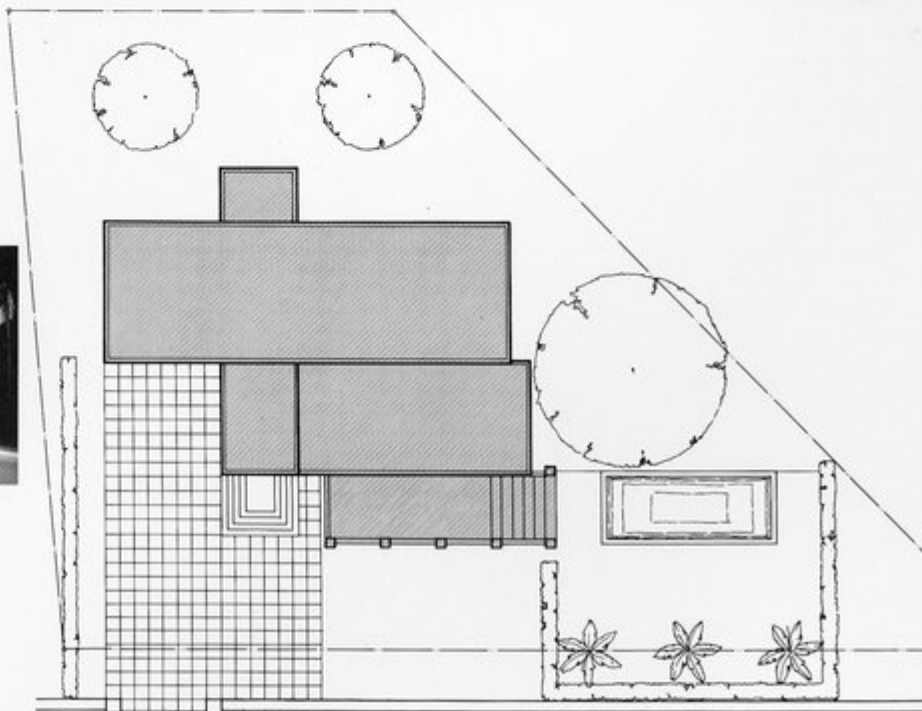
Juan Vazquez

#### Owner

Hugo Zamorano

#### General Contractor

Gamma Construction Co.



## Westinghouse Electric Corporation World Headquarters for Steam Turbine-Generator Division

Orlando, Florida

### An Efficient, Flexible Office on a Central Florida Lake

This 257,500 s.f. facility contains 898 work stations for personnel in technical research, marketing and management. Located on a rural site ten miles east of Orlando, the building takes maximum advantage of its Central Florida location. The building's configuration is recessed into a gentle hillside that slopes to a lake. The two-story entry lobby opens onto a day-lighted atrium that spatially interconnects the four story central mass. The building steps down to the north and south, reflecting the hierarchical organization of the company.

*"The building is well thought out, well detailed and well sited."* Kevin Roche

#### Architect

William Morgan Architects, P.A.

#### Consulting Engineers

**Structural** — Tilden, Lobnitz & Cooper, Inc.

**Mechanical/Electrical** — Roy Turknett Engineers, P.A.

#### Interior Designer

Interspace, Inc.

#### Lighting Designer

William Lam Associates, Inc.

#### Acoustician

Jaffe Acoustics, Inc.

#### Landscaper

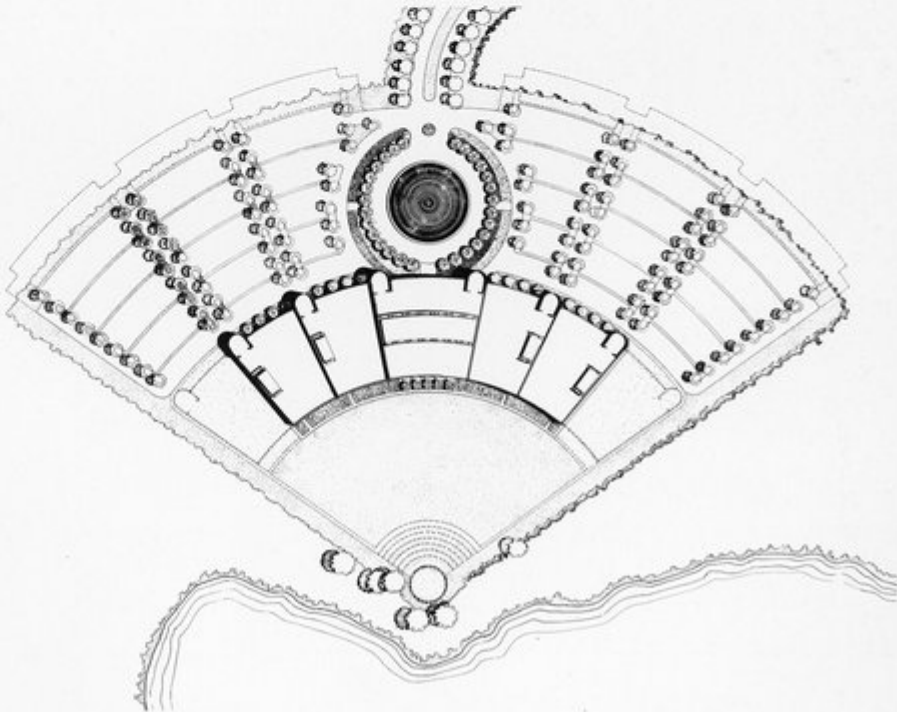
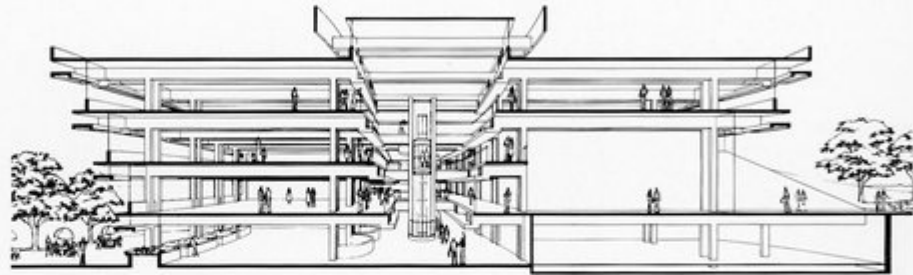
Herbert/Halback, Inc.

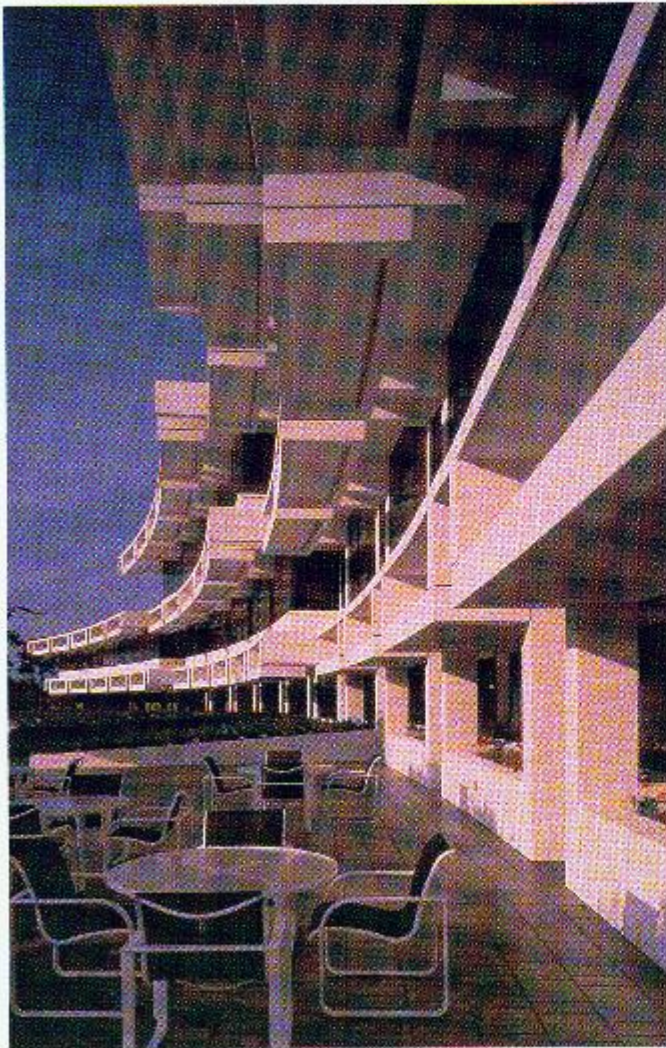
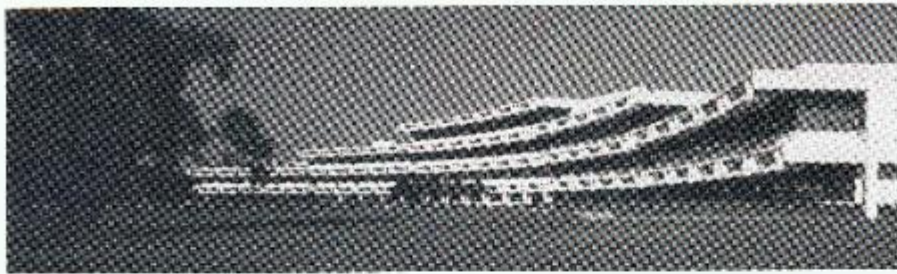
#### Owner

Westinghouse Electric Corporation

#### General Contractor

Scandia, Inc.





## Restoration of H. B. Williams Residence

Sarasota County, Florida

### The Sensitive Restoration of a Fine Indigenous Building

This project involved the restoration of a doctor's office and residence to be used as an architect's office and residence. The building had clay tile masonry bearing walls and roof with Portland cement plaster inside and out. During the restoration, original plaster textures were matched. Colors were determined by scraping down to the original finish.

*"This restoration was done with great care and sensitivity, giving new life to the building."*  
Cesar Pelli

#### Architect

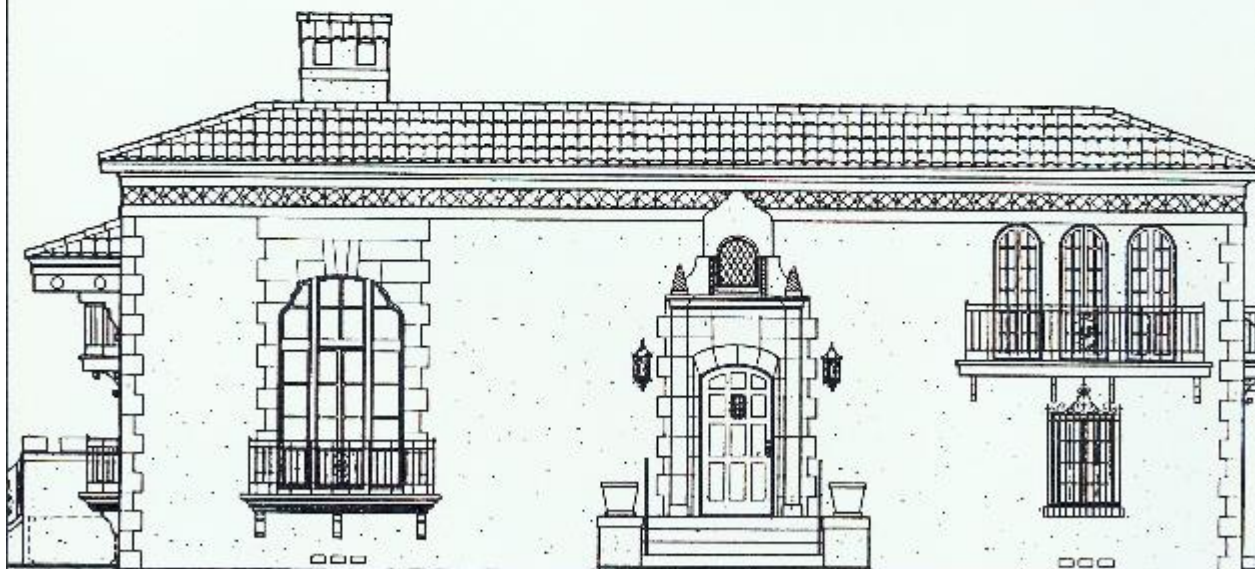
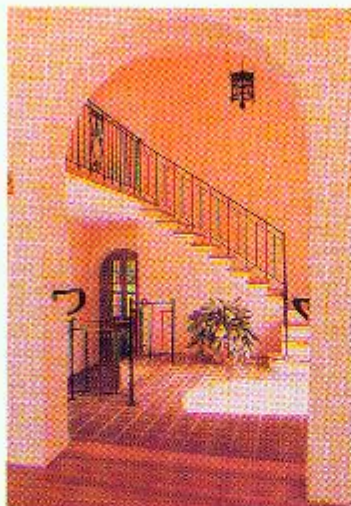
Philip E. Skirball

#### Owner

Philip E. Skirball

#### Contractor

Philip E. Skirball





### Safe Housing With A Warm Tropical Flavor

The decision to rotate this building on its axis away from the dominant urban street grid drew its inspiration from various sources. Concern for the age of the users dictated the desirability that all units receive direct sunlight. Conventional orientation would have condemned all north-facing units to little or no sunlight.

The perception of the building in its urban context is molded by its unique placement on the site. Volumes are perceived as a sequence and juxtaposition of planes, unencumbered by the formal conventions of "front," "rear" or "side."

In a departure from conventional housing projects, no living units are located at grade, thereby minimizing security risks. Community spaces, administrative and maintenance functions are all accommodated on the ground floor, as well as the main lobby.

As a visual signature, the exterior curved wall of the community room is clad in a glazed red tile. In plan, the community room features a north wall of sliding glass doors opening to an outdoor terrace designed to handle overflow activities.

*"This project is a socially important type of building. The architect created a good design within the budget." Cesar Pelli*

#### Architect

F & F/Fraga and Feito/  
Architects-Planners, Inc.  
Jose Feito, AIA,  
Principal-in-Charge  
Peter J. Gordo, R.A.,  
Project Manager in Charge  
of Production  
Jose A. Rodriguez, AIA,  
Project Architect-in-Charge  
of Design  
Jorge L. Bouza and Salvador  
Subira, Technical Staff

#### Consulting Engineer

Professional Associated  
Consulting Engineers, Inc.  
Antonio Novo, Jr., PE —  
Partner-in-Charge  
Plinio Villanueva —  
Civil Engineer  
Eugenio Santiago, PE  
Structural Engineer  
Eduardo Blanco — Plumbing &  
Fire Protection Engineer  
Lionel Del Valle —  
Mechanical & HVAC  
Luis Soro, P.E. — Electrical  
Engineer

#### Landscaper

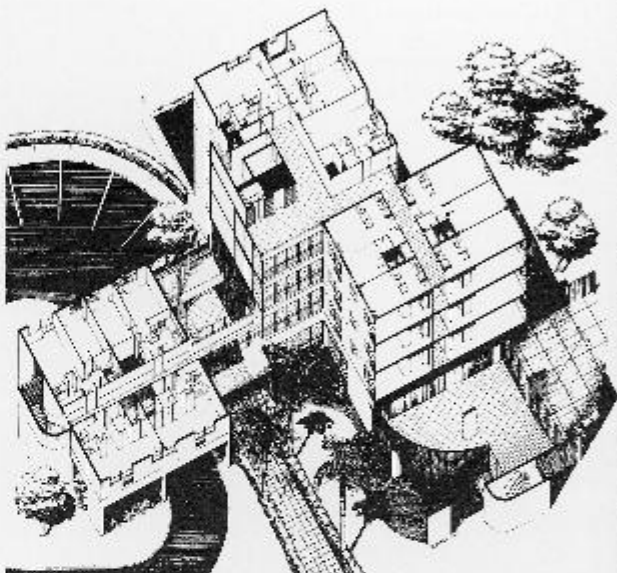
Llerena & Associates, Inc.  
Laura Llerena, ASLA

#### Owner

Metropolitan Dade County  
Housing & Urban Development

#### General Contractor:

Enner Development Corp.



**Getting  
Tangled Up In  
The Rehabilitation  
Process?**

**The Client Assistance  
Program Can Help!**

Your rehabilitation needs are as individual as you are. If you are having a problem, let us try to work it out with you or someone

that doesn't solve it.

— WRITE —

The Governor's Commission on Advocacy  
for Persons with Disabilities  
Office of the Governor - The Capitol  
Tallahassee, FL 32301-9347

— OR CALL —

The Client Assistance Program  
Toll Free...  
1-800-342-0823

Available in Florida only.

**WHEN QUALITY MATTERS MOST  
INSIST ON PERMACRETE.**



- Permacrete Stucco • Veneer Plaster
- Bedding Coat • Poolite • Kooldeck
- Rip Rap • Perma Bond 880 • Perma Coat

Permacrete cementitious coatings offer a wide range of colors and textures. Architects are afforded a creative freedom and builders have the assurance of quality and permanence. For the strongest, most durable, permanent and highest quality exterior and interior wall surfaces, pool coatings and pool decks, you can't specify better than Permacrete.

Call or write now for our new 4 color brochure and fact-filled specification sheets.



**C. L. INDUSTRIES, INC.**  
P.O. Box 13704  
8360 South Orange Avenue  
Orlando, Florida 32813-3704  
(305) 851-2660; (904) 787-8343  
1-800-432-0891

**AND BEST OF ALL, PERMACRETE COSTS NO MORE  
THAN ORDINARY CEMENTITIOUS COATINGS.**



**T-SQUARE MIAMI**

The complete supply and  
reproduction house serving  
Architects, Engineers and  
Surveyors since 1924

**Over 50,000 Items in Stock  
Rush Delivery Via UPS**

Call Florida Toll Free Number  
**1-800-432-3360**

**T-SQUARE MIAMI**

998 W. Flagler Street/Miami, FL 33130/(305) 379-4501  
115 N.E. Third St./Ft. Lauderdale, FL 33301/(305) 763-4211



**Are You Using Today's Tools  
Today?**



We're committed to providing Architects, Engineers,  
and Contractors with the tools for success and the  
support and service to make it all work. When can  
we go to work for you?



**AE DATAMASTERS, INC.**  
4508 OAK FAIR BLVD.  
SUITE 100  
TAMPA, FLORIDA 33610  
PH: (813) 626-2599



**DATAMASTERS**

## UNIVERSITY OF **Miami**

**INTERNATIONAL CAMPUS PLAN COMPETITION.** The University of Miami, the largest independent university in the southeast, announces a Competition for the comprehensive conceptual plan for its Coral Gables Campus of over 250 acres. The Competition is open to environmental designers in architecture, landscape architecture or planning who are college or university graduates, and whose Competition Registration has been received by the Professional Adviser by October 15, 1985. 5 Grand Prizes of \$5,000 each, and 10 Honorable Mentions of \$1,000 each, will be awarded by a multi-disciplinary Jury of outstanding environmental design experts; and all entries will be exhibited and published by the University. Florida licensed entrants will be actively considered for the design of projects under an annual budget of over \$15 million. For details and Competition Registration information please write: Professor Ralph Warburton, AIA, AICP, P.E., Hon. ASLA, Professional Adviser; Campus Plan Competition; University of Miami; Coral Gables, FL 33124-9178.

**PIA** *Specializing in Professional Liability Insurance*

## **Professional Insurance Associates of the Southeast**

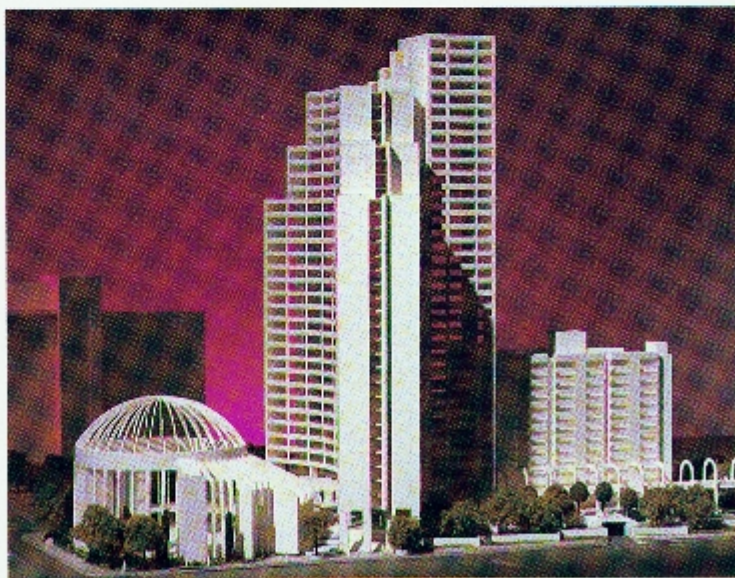
216 Powers Ferry Rd., S.E. / P.O. Box 1513 / Marietta, Georgia 30061

*"Our Clients Save From 20% to 40% on Their Insurance Costs."*

- *Serving Florida and Georgia Professionals Since 1976* •
- *Coverage provided through companies on the AIA approved list of companies*

Hugh Holley, Vice President  
(404) 971-8288

*"Serving Professional Firms Since 1979"*



**BOB BRAUN** **photographer**  
**orlando, fl**

P.O. Box 7755, Orlando, FL 32854 (305) 425-7921

*Special effect or natural lighting and backgrounds for model photography.  
One day service: By appointment.*

## 1985 Growth Management Legislation — Impact on the “Built” Environment

By J. Michael Huey

During the 1985 Legislative Session, many pertinent issues were addressed including growth management, medical malpractice, child care, the drinking age, education and the passage of a \$14.099 billion budget.

In addition to these issues, there were several others that hit closer to home to the architectural profession such as: the establishment of local construction regulation boards; the passage of the Small and Minority Business Assistance Act; the funding of two new architectural schools in Florida, and the passage of general rulemaking authority legislation for the board of Architecture.

### HB 287 — Growth Management Omnibus Bill

Regardless of the impact of the above issues on each of us as citizens and professionals, the most far-reaching and long-term impact will probably come from the passage of House Bill 287, the omnibus growth management bill. This comprehensive legislation deals with local government comprehensive plans, coastal protection, and developments of regional impact.

### Local Government Plans

The Local Government Comprehensive Planning Act (LGCPA) is addressed in the first section of the new bill. Under the prior law, local governments were required to adopt comprehensive plans. The state land planning agency, referred to as the Department of Community Affairs (DCA), was then authorized to review and comment on local plans proposed for adoption or amendment. The state had no authority, however, to ensure that necessary changes to a plan were actually adopted. This lack of quality control was a chief cause for criticism of the LGCPA.

Under the revised law, however, local governments are mandated to submit their new plans to the DCA, within a specified time frame, for a determination of compliance. Each plan is required to contain a new capital improvements element for public facilities — sewer, roads, water, parks, hospitals and schools — which sets forth the principles for construction or extension of such public facilities, estimated public facility cost, projected revenue sources to fund the facilities, timetable of when facilities are needed and standards to ensure the availability and adequacy of facilities.

Local plans must also contain a new land use map which shows the proposed distribution, location, and extent of the different categories of land use. Each category shall set forth the type of use and shall contain specific standards for the density or intensity of use. The land use map must also show wetlands, water wells, rivers and bays.

Local plans must be updated at least once every five years and may be amended only twice per year. However, amendments due to a development of regional impact (DRI) are not included in the two amendment per year restriction.

Local governments must also adopt **land development regulations** within one year of submission of a new local plan. These new regulations must: contain subdivision regulations; protect well fields; regulate drainage, protect environmentally sensitive land; regulate signage; provide for open space; ensure safe and convenient traffic flow and parking; and provide for public facilities to serve the proposed development.

The issue of citizen's standing or right to challenge local govern-

ment comprehensive plans was one of the most controversial issues in passage of the growth management bill. HB 287 virtually allows any citizen to challenge the Department of Community Affairs' review of a particular comprehensive plan on the basis that it is inconsistent with state standards. This review is not heard in a court of law, but before an administrative hearing officer, and is appealable to the Governor and Cabinet.

Similarly, citizen's standing has been increased in the area of a local government land development regulation, with such challenges also heard in an administrative forum. A local government's ordinance will come before the hearing officer with a presumption of correctness, and will be difficult to overturn. **Specifically excluded** from the definition of land development regulations will be all zonings and rezonings.

Finally, in reference to specific development orders, a citizen's right to challenge such action remains the same — the individual challenging a development order must show a special injury.

### Protection of Florida's Coastline

The second major area addressed in House Bill 287 is the issue of coastal protection. Under the new law, the Department of Natural Resources (DNR) will not issue any permit for any structure (with few exceptions provided) proposed which, based on DNR's projection of erosion, will be seaward of the “seasonal high water line” within thirty years after the application date. DNR may, however, issue a permit for the repair or rebuilding of a structure if such activity does not expand the capacity of the original structure seaward of the thirty-year erosion projection. Single-family dwellings are ex-

empted if meeting the requirements of Section 161.063(6)(c).

The law also requires a mapping of undeveloped coastal barrier areas. The coastal preservation policy was strengthened specifying that no state funds shall be used for constructing bridges or causeways to coastal barrier islands which were not connected on the effective date of this bill (October 1, 1985). Furthermore, no unobligated state funds may be expended for increasing the capacity of infrastructure in the coastal building zone or on a coastal barrier island, except when consistent with the coastal element of the local government comprehensive plan.

A new **building zone** is also established by this law which includes the land area 1,500 feet inland of the coastal construction control line, or, if there is no control line, 3,000 feet inland of the mean high water line. In this area, stringent building standards will apply, centered around load factors capable of withstanding 140 mph winds.

#### Developments of Regional Impact

The final section of the bill attempts to streamline the development of regional impact (DRI) process. A DRI is a proposed project, due to its character, magnitude, or location, which would have a substantial impact upon the health, safety, or welfare of citizens of more than one county. Of course, large residential developments, shopping centers, regional airports, ports and mining proposals normally fall within this process. HB 287 encourages participation in the DRI process by establishing fixed thresholds with a presumptive banding. A "band" of 80 to 120 percent of the applicable thresholds is established. Developments within the "band" would be subject to the presumption. Certain provisions of the bill allow the Department of Community Affairs, the Regional Planning Council or local government to petition the Governor and Cabinet for an increase or decrease of a threshold up to 50%, upon approval of the Legislature.

This law also authorizes developers of a DRI to enter into preliminary agreements with

the DCI which will allow the developer to proceed to develop up to 25% of a DRI prior to receiving DRI approval.

Limitations are also established on development order "exactions" (contributions of money and land made by developers) from an applicant. The developer of a DRI may not be required by local governments to provide for land or public facilities beyond that required of

all developers. Facilities contributed by the developer of a DRI may be credited against impact fees required by local government to meet the same public facility needs.

#### 1985 — Only a Beginning

The year 1985 should be viewed as merely the beginning of significant changes in our laws and regulations that will substantially impact Florida's

built environment. Much of the responsibility for the implementation of positive changes in accordance with House Bill 287 as well as influencing further positive legislation is borne by the architectural profession in Florida. After all, you are the designers of Florida's built environment.

**J. Michael Huey** is General Counsel to the FA/AIA. He is a partner in the firm of Akerman Senterfit & Eidson, Tallahassee.

**Picture color and texture in concrete. Then talk to Scofield.**

With Scofield's coloring and finishing systems, concrete comes alive. As the final point of completion to your design, Scofield gives you the cost-effective tools to make the ordinary...and make it extraordinary.

**The Scofield system.**  
From beautiful granite piers to rich grays, Scofield's CHROMIX™ finishes give you a uniform, non-fading color and texture to match the virtually infinite spectrum of natural or custom colors.

Add creative texture and shadow effects with our high-resist abrasives LITHO-TEX™ Form-Tex, and the possibilities are endless.

**The Scofield promise.**  
We will protect your texture in concrete for over 52 years. Our systems work.

If you want a project to look great and stay looking great, picture color and texture in concrete. Then talk to Scofield.

**L. M. SCOFIELD COMPANY**  
WASHINGTON STATE UNIVERSITY BUILDING 3167-002  
6835 Rainier Blvd. • Los Angeles, CA 90049 • (213) 775-7111  
(800) 222-1100 (Outside CA) • (800) 262-6300 (IN CA)

**Regional Offices:**  
Houston, TX (800) 224-5652 • St. Louis, MO (816) 592-8712  
San Diego, CA (619) 271-1205 • Chicago, IL (312) 295-9646  
Dallas, TX (214) 458-8501 • Houston, TX (713) 285-8501  
Atlanta, GA (770) 858-8128 • Washington, DC (301) 289-8549  
Tampa, FL (813) 275-1100  
28620 South Bruce, Channahon, Illinois • L. M. Scofield Company



## An Expanse of Light and Color

By Gail Fein

Opposite page, the *Tamara of Discovery* defines the access to the Physical and Natural Science Arcades of the Science Center. Computer-generated neon lights create directional flow and introduce the individual to the exhibits. These new arcades use color extensively to identify space function and define areas. This page, top, poster of Orlando Science Center designed by ADG as a promotional piece. Below, left, exterior view of major addition to Center. This diversified expansion provides for increased exhibit areas. Right, tubular railing throughout second floor observation deck allows for viewing access to both the Physical Sciences Arcade and Natural Sciences Gallery. Photos by J. Kevin Haus.

**Architect:** Architects Design Group of Florida, Inc.  
**Project Designer:** I.S.K. Reeves V, AIA  
**Owner:** Orlando Science Center  
**Mechanical and Electrical Engineer:** GRG Consulting Engineers  
**Structural Engineer:** Don Moe Engineering  
**Interior Designer:** Laura Shapiro  
**General Contractor:** General Construction

Several years ago the directors of the Orlando Science Center were faced with expanding programs and no physical space in which to house them. The decision was made to make a major expansion at a cost of a million-dollars-plus. Architects

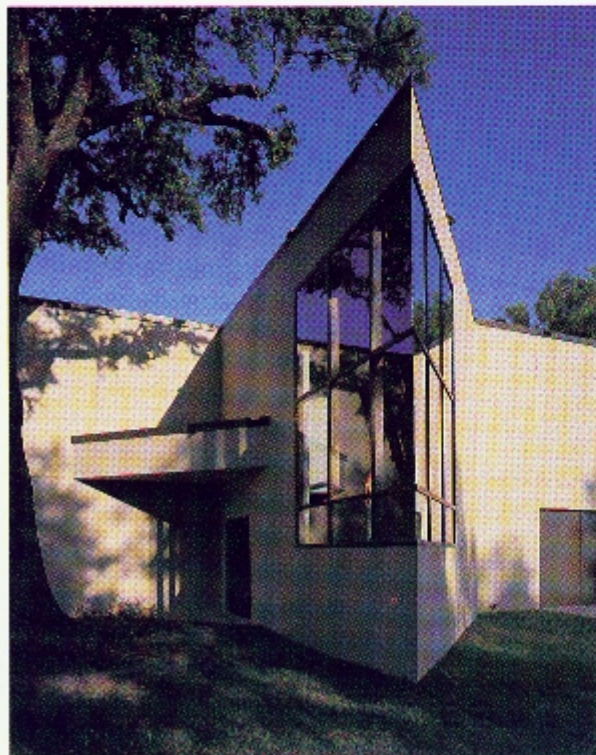
Design Group of Winter Park was chosen to design the expanded facilities.

The expansion increased exhibit space within the Science Center by 90 percent. It was funded in part by a \$100,000 state grant and the help of several local contributors. The new expansion represents the largest addition to the center since 1976.

The 6,000 feet of new or newly renovated space houses two new exhibit areas, the Physical Sciences Arcade and the Natural Sciences Gallery. Also included in the design and construction was additional exhibit fabrication space.

Phase I of the project was the construction of the 4,000 s.f. Physical Sciences Arcade. This space is a learning and fun center

in which visitors guide lasers, interact with computers, activate sound synthesizers, control robots and learn through active participation. In Phase II of the construction, the Natural Sciences Gallery was built. This 2,000 s.f. structure houses a variety of natural history exhibits. The Natural Sciences



Gallery was designed to contain four eco-systems typical of Florida environments.

Within the Physical Sciences Arcade, there are four halls in the open exhibit area; the Halls of Waves, Electricity, Forces and Light. Each exhibit pertains to that particular unit and all of the exhibits are designed to be relocated to a different space.

Color was utilized throughout the Science Center in various capacities. Red was used in the entrance to stimulate people and other colors such as blues, greens and yellows were used to create visual differences between halls. The neon tunnel creates a circulation path that is symbolic and not rigid. The neon lights are computer-generated and controlled, thereby creating motion and drawing people into the tunnel.

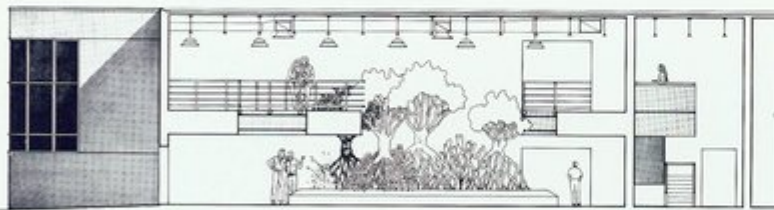
The building is heated and cooled by an energy-efficient heat pump. The entire building has a fully automatic fire suppression system. The ceilings are an exposed system of bar joists and mechanical ductwork with polished aluminum used in some places. Artificial lighting is the predominant source of illumination in the exhibit area. At the stairwell, the window opens up the space and provides a source of natural light.

The expansion of the Orlando Science Center is very exciting and very innovative. It utilizes materials in space-age fashion, stimulates children to want to look at the exhibits while holding adults' interest as well. Most of all, the space was designed to encourage the participation of visitors and it seems to do that very well.

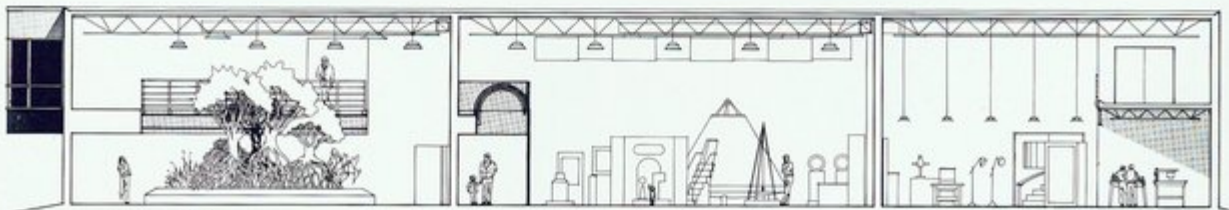
**Gail Fein** is a writer living in Orlando.



*The Physical Sciences Arcade with the Hall of Waves seen in foreground. The observation deck at the far right allows better viewing of the first floor exhibits. Photo by J. Kevin Haas.*



section 'a'



section 'b'



**Selecting the right lighting  
is more than just  
flipping a few switches.**

Lighting is the "tool" for creating architecturally-integrated luminous environments.

In planning your lighting layout, the space must be analyzed in terms of desired brightness patterns.

Which objects or areas are to be focal points? And finishes of the floor, walls, and ceiling must be considered. Our lighting consultants will team-up with you to review the desired effect, and then make recommendations that will provide your client with illumination that was designed to fill a specific need.

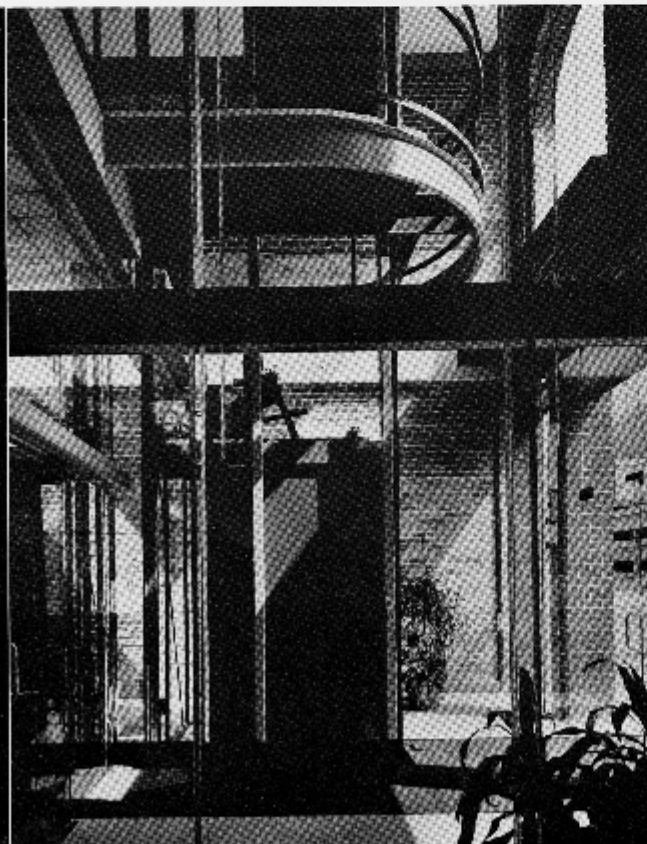
Like Lightolier's Manor series. Crafted in solid brass and rich in the tradition and flavor of an English manor. We stock Lightolier and most other major brands. You select from the largest inventory in South Florida.

Farrey's Lighting Collection  
1850 N.E. 146 St., Miami, FL 33181  
947-5451, Broward 524-8675

**LIGHTOLIER**

**FARREY'S**

HERE YOU GET A TEAM OF LIGHTING CONSULTANTS



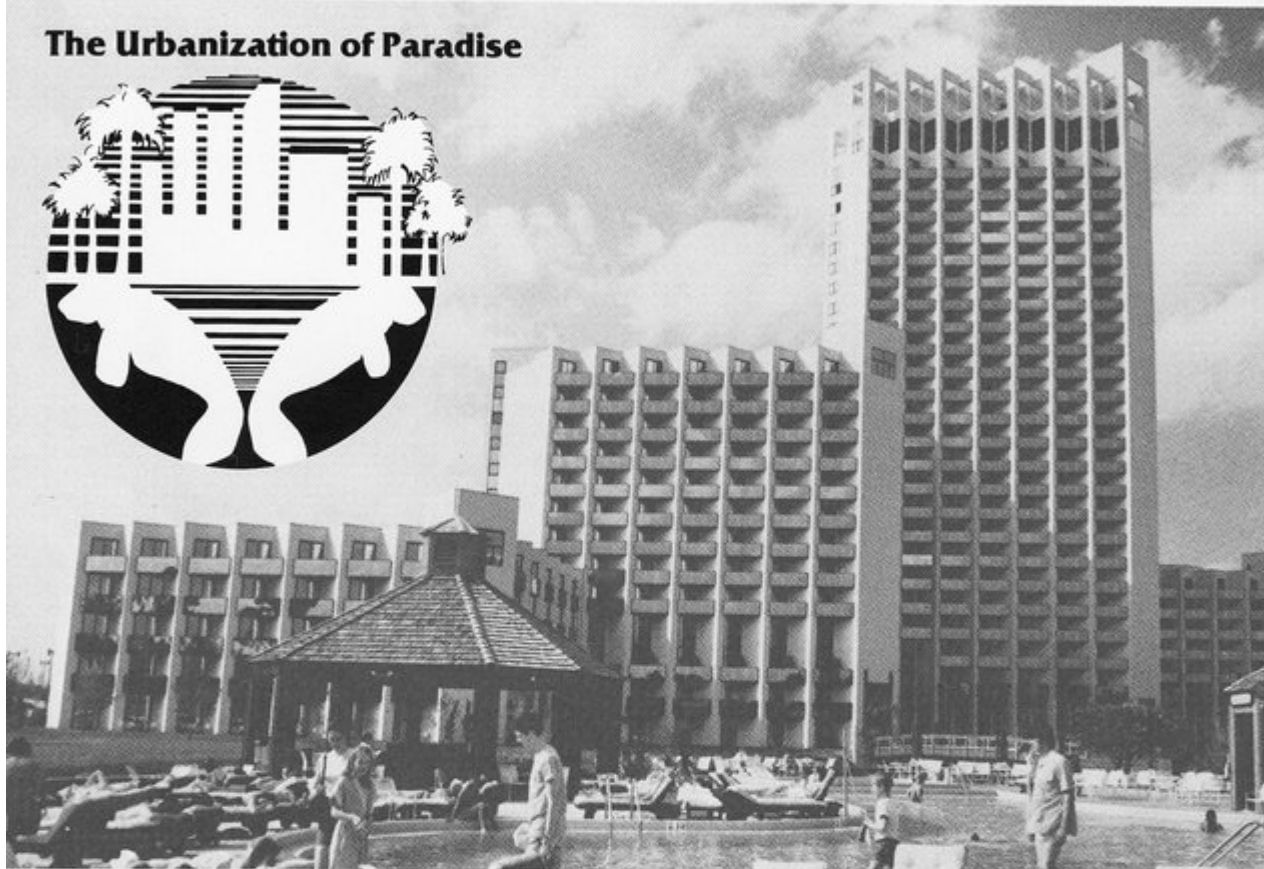
**GEORGE COTT**  
ARCHITECTURAL/INTERIOR DESIGN PHOTOGRAPH

**ei** CHROMA INCORPORATED  
5159 WEST CLIFTON • TAMPA, FLORIDA • (813) 884-0211

ARCHITECTS: JOHNSON HOWEY ASSOCIATES

# FA/AIA FALL DESIGN CONFERENCE '85, SEPTEMBER 26-29 LAKE BUENA VISTA PALACE HOTEL

## The Urbanization of Paradise



## highlights

*The Florida Association of the American Institute of Architects will hold its annual Fall Design Conference and Building Products Show at the Lake Buena Vista Palace Hotel at Walt Disney World Village, September 26-29, featuring:*

• **“Urbanization of Paradise” Panel Discussions I & II** — At this critical time in our state’s growth, we as architects and as responsible participants in physical development must be willing to confront and deal with important questions of endangered water resources, disruption of natural eco systems and destruction of the natural beauty which has earned Florida the reputation of a sub-urban paradise.

The effort to deal with these issues in ways that can encourage intelligent development will be the subject of two panel discussions moderated by Dr. John M. DeGrove, former Secretary of the Department of Community Affairs. Panelists will be Walter Collins, President of Weston; Robert Davis, President of Seaside; Pat Rose, Vice Chairman of the Save the Manatee Committee; Dr. Bernard Yokel, President of the Florida Audubon Society. These discussions should not be missed by any architect with a sincere concern for Florida and for Architecture.

• **Exhibits** — Meet with representatives of industry suppliers at specified times that have been set aside so as not to conflict with any scheduled programs. At least 85 companies will be on hand to display products that are an integral part of the construction industry.

• **Luncheon with the Governor** — Governor Bob Graham, who has pin-pointed growth management as his chief legislative program this year, will address the group over lunch. The Governor will be able to enlighten the group on the far reaching effects of the growth management legislation passed by the legislature this year.

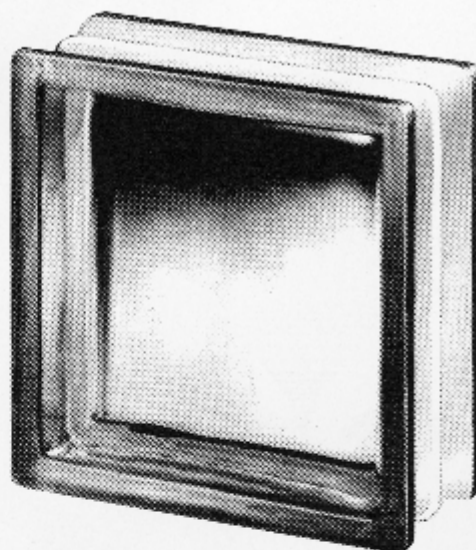
• **Awards for Excellence** — Kevin Roche, Cesar Pelli, FAIA, and Walter Wagner, FAIA, will be on hand to present and discuss their selections of designs awarded for excellence. This year, using a slightly new format, the Awards for Excellence will be presented by the jury, Friday afternoon in the Exhibit Hall.

• **Awards Banquet & Reception** — The FA/AIA President will host a reception between 6:30 and 7:30 p.m., followed by the annual Awards Banquet which will begin at 7:30 p.m., at which time the Awards of Honor will be presented.

# WE LET THE GOOD IN AND KEEP THE BAD OUT

- SAVES ENERGY
- PROTECTS AGAINST NOISE
- ADMITS LIGHT
- DISCOURAGES BURGLARIES

*Complete Line of Glass Block  
and Accessories*



P.O. BOX 8325, PEMBROKE PINES, FLORIDA 33024 • (305) 432-3806

## WHEN YOUR ABSTRACT DESIGN BECOMES CONCRETE, PROTECT ITS DURABILITY AND BEAUTY WITH SEAL-KRETE®...

...the superior waterproofing sealer for  
stucco, masonry, cement and other porous building materials.

### SEAL-KRETE SUPERIOR WATERPROOFING SEALER.

A high binding, acrylic base, penetrating sealer. Formulated for use on Cement, Masonry and Stucco surfaces. May also be used on Wood, Stone, Brick, etc. It waterproofs, protects and highlights the natural beauty in the colors of the material used on. May be used under or over paint, above or below grade, is milky white but **DRIES CLEAR** assuring complete coverage. Fast-drying, non-staining, mildew resistant, water cleanup before drying. Easy to apply. Hand pump garden sprayer recommended for application.



FOR COMPLETE SPECIFICATIONS CONTACT

SEAL-KRETE, INC.  
P.O. BOX 1527  
AUBURNDALE, FLA. 33823



**CLASSIFIED**

Ideal for architect!  
Office space or suite  
Colonial Park Plaza  
Hwy. 54 West and Coats Road  
ZephyrHills, FL  
Contact Deloris at  
813/782-4505 or 813/782-6553



Randy Atlas  
Ph.D. AIA

**Atlas  
& Associates**  
600 N.E. 36 St.  
Suite 711  
Miami, Florida 33137  
Office (305) 325-0076

Architectural Security  
Design Consultant

Criminal Justice,  
Facility Design,  
Building Security



# FCW COMMERCIAL

## Commercial Art & Drafting Supplies

Koh-I-Noor, K & E,  
Chartpak, Berol, Pickett  
& X-acto are just a few  
of the brands we stock.  
Rush delivery via UPS.

**CALL FOR A QUOTE**  
**1-800-321-8142**

300 PROSPERITY FARMS RD.  
NORTH PALM BEACH, FL 33408  
(305) 842-3635



## The Art of Environment.

Learned skills. Human  
creativity. Nature's beauty. The interplay that produces  
functional environments that arouse the senses.

Wallis, Baker & Associates, masters since 1961.  
Their collection includes metropolitan civic centers,  
international airports, major hotels, office buildings,  
malls and resorts. Discover the art in your environment.



**WALLIS•BAKER  
& ASSOCIATES, P.A.**

Landscape Architects  
Site Planners  
820 South Denning Drive  
Winter Park, Florida 32789  
(305) 647-5726

# What's the difference between a roof window and a skylight?



Model TPS top-hung roof window



Model VS ventilating skylight

**T**he difference is very straightforward. A roof window opens and pivots so both glass surfaces can be cleaned from inside. A skylight does not pivot for cleaning. Of course, there is a difference in quality and value among manufacturers. But, a simple comparison of features, quality and price will show you why VELUX, with 44 years of experience and craftsmanship, is the world leader.



In addition to our four distinctive models, VELUX provides precision-engineered prefabricated

flashings to make installation easy and weathertight. We also offer quick delivery and a full range of optional accessories and glazing.

To learn more about the difference and the possibilities, write for our free 24-page full-color brochure, "The Complete Guide to Roof Windows and Skylights."



The world leader in roof windows and skylights.

Mail this coupon. We'll send you a free copy of "The Complete Guide to Roof Windows and Skylights" and a price list within 24 hours.

VELUX-AMERICA INC.  
6180-A Atlantic Blvd.  
Norcross, GA 30071

PA785

FREE 24-page full-color brochure.

Name \_\_\_\_\_

Address \_\_\_\_\_

City/State/Zip \_\_\_\_\_





## ***Take A Closer Look At Why Smart Businesses Use Natural Gas.***

### **Availability.**

Smart businesses in Florida and around the nation know that natural gas will remain our number one fuel long into the future. Current underground supplies, with new technologies leading the way, promise ample supplies of our most efficient energy system.

### **Versatility.**

Smart businesses have adapted natural gas to their unique needs. Health care, high-tech, agriculture and food service are but a few in Florida. The reason: No other energy equals the design flexibility of gas. It's economical, efficient, and clean. And provides precise heat control and rapid response.

### **Profitability.**

Compared to electricity, natural gas can cut energy costs by more than half. And studies show that it will maintain its cost advantage for years to come. Even more, natural gas offers the benefit of cogeneration, by using excess heat to generate electricity.

### **Gas: America's Best Energy Value**

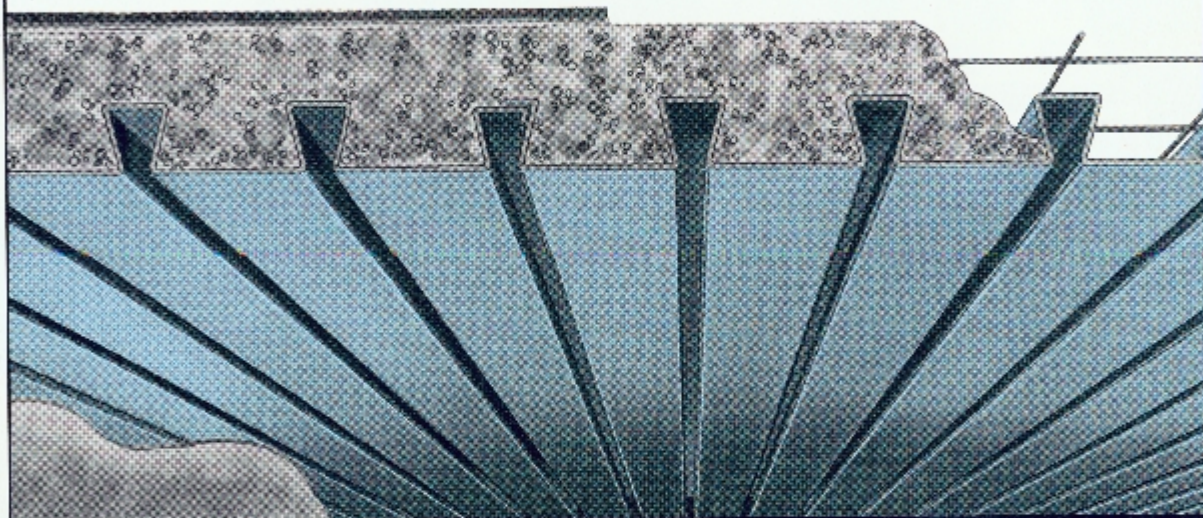
*For more information on natural gas in your area, contact your local natural gas company.*



Florida Natural Gas Association

# EPICORE®

## CONCEPT 2 COMPOSITE FLOOR SYSTEM



### THE MOST ECONOMICAL CONCRETE FLOOR SLAB SYSTEM BECAUSE:

- Manufactured In Lakeland, Florida
- 48-hour Delivery
- Reduced Construction Time
- Fast, Simple Installation by One Sub-Contractor
- All Necessary Building Code Approvals
- Long Uninterrupted Spans
- Unbeatable Fire Ratings
- Excellent Sound Attenuation
- Monolithic Construction

#### Distributor/Installers Throughout Florida

<b>Commercial Roof Decks</b>	Jacksonville	904-743-5222
<b>Epic, Inc.</b>	Oldsmar	813-937-0988
<b>Gulf Coast Building Contractors</b>	Pensacola	904-438-5416
<b>Richler Construction, Inc.</b>	Cocoa Beach	305-784-5084
<b>Roberts Industries</b>	Port St. Lucie	305-335-2802
<b>Slabs of South Florida, Inc.</b>	Miami	305-653-3820
<b>Structural Systems</b>	Naples	813-774-2767
<b>Sun Coast Structures, Inc.</b>	Gulfport	813-345-2985

*For information on how we can save you money on your next project, call one of our Franchised Installers or our resident salesman, Charles Lands in Lakeland at 813-688-7686.*

**EPIC®**  
METALS CORPORATION

Eleven Talbot Avenue, Rankin PA 15104  
PHONE: 412/351-3913  
TWX: 710-664-4424  
EPICMETAL BROK

# Florida Is Going To Look A Lot Better.



# Lifetile Is Here.

At last Florida architects can specify Lifetile, the preferred tile system wherever it has been offered.

For the Lifetile "concrete advantage" and a complete book of styles, specifications, colors, textures and accessories, call us at (813) 676-4329. In Florida 800-282-3633. Or write: Lifetile Corporation, P.O. Box 632, Lake Wales, Florida 33859-0632.



**LIFETILE**®

*fire-safe*  
Beautiful roofs for the good life