

7 20 6
7 51 236

CONTENTS



March/April, 1986
Volume 33, Number 2

Features

Students Tag New School "Calvin Klein High" 14

The Design Arts Group created an exciting new high school in Tampa — Vivian Gaither High School.
Peter Gottschalk, AIA

Prairie School, Florida-Style 18

South Fork High School in Martin County is Ranon, Bentler & Partners' energy-efficient response to the "village concept" in school design.
Diane D. Greer

A Campus That Hugs The Land 21

At Manatee Community College, Richard G. Allen designs breezy passageways to connect low-slung, ground-hugging buildings.
Francine C. DiFilippo

Shape As A Program Solution 24

In rural Dade County, Maspons/Gaicourial/Estevez creates a "showplace" for clients and the Arabian horses they raise.
Diane D. Greer

New River Residence 30

On the New River in Fort Lauderdale, architect Don Singer designs a house with "a continuous series of visual surprises."
Diane D. Greer

Ron Garl, Golf Course Architect 35

A close look at a well-known designer of some famous "links" and how he works with architects.
Lillian Morse

Departments

Editorial 3

Member News 4

Legal Notes 7

Viewpoint 47

Florida Architect, Official Journal of the Florida Association of the American Institute of Architects, is owned and published by the Association, a Florida Corporation not for profit. ISSN-0015-3907. It is published six times a year at the Executive Office of the Association, 104 East Jefferson St., Tallahassee, Florida 32302. Telephone (904) 222-7590.

Opinions expressed by contributors are not necessarily those of the FA/AIA. Editorial material may be reprinted only with the express permission of *Florida Architect*.

Single copies, \$2.00; Annual subscription, \$12.00. Third class postage.

Cover photo of a private Fort Lauderdale residence by Donald Singer Architect P.A. is by Steven Brooke.

Heavy-duty beauty.

Mildoor's line of "Nob-Look" tub and shower enclosures.

You can choose from six tub enclosures and seven shower enclosures. Order polished brite-dipped and anodized silver or antique brass, or Magnacolor acrylic white or black. Or any custom color as an option.

Get the full facts about our contemporary handle, the self-cleaning track, concealed caulking receptor, dual hanger hooks, drip guard, continuous hinge, exclusive leveling system and rigid corner construction.

We have a four-color specification brochure waiting for you. Send for your copy.


mildoor[®]

A Division of Miller Industries, Inc.

16295 N.W. 13th Ave., Miami, FL 33169-0910
305-621-0501 • Florida 1-800-432-3116
National 1-800-446-7528

PRODUCTS THAT HAVE PASSED THE TEST OF TIME
SLIDING GLASS DOORS
BATH AND SHOWER ENCLOSURES
SLIDING GLASS MIRROR CLOSET DOORS
SINGLE-HUNG AND ROLLING WINDOWS

EDITORIAL

FLORIDA ARCHITECT

Florida Association of the American Institute of Architects
104 East Jefferson Street
Post Office Box 10388
Tallahassee, Florida 32302

Publisher/Executive Vice President
George A. Allen, CAE

Editor
Diane D. Greer

**Assistant Publisher
Director of Advertising**
Carolyn Maryland

National Sales Representative
Lee T. Griffin, Inc.

Design and Production
Peter Mitchell Associates, Inc.

Editorial Board
Ivan Johnson, AIA, Chairman
Carl Abbott, AIA
Stuart L. Bentler, AIA
Bill Hegert, AIA
John Totty, AIA

President
James J. Jennewein, AIA
780 Ashley Tower
100 S. Ashley Drive
Tampa, Florida 33602

Vice President-President-elect
John Barley, AIA
P. O. Box 4850
Jacksonville, Florida 32201

Secretary/Treasurer
John Ehrig, AIA
2333 E. Bay Drive
Suite 221
Clearwater, Florida 33546

Past President
Mark Jaroszewicz, FAIA
University of Florida
College of Architecture
331 Architecture Building
Gainesville, Florida 32611

Regional Directors
Glenn A. Buff, FAIA
1821 SW 98th Avenue
Miami, Florida 33157

Mark Jaroszewicz, FAIA
University of Florida
College of Architecture
331 Architecture Building
Gainesville, Florida 32611

Vice President for Professional Society
Larry Schneider, AIA
115 Woodland Road
Palm Springs, Florida 33461

Vice President for Governmental Relations
Lee Ramos, AIA
7000 S.W. 62nd Avenue, Suite 510
Miami, Florida 33143

Vice President for Professional Development
Dean Rowe, AIA
777 S. Harbor Island Blvd.
Suite 300
Tampa, Florida 33602

Vice President for Public Relations/Communications
Don Sackman, AIA
2869 S.W. 27th Avenue
Coconut Grove, Florida 33133

General Counsel
J. Michael Huey, Esquire
Suite 510, Lewis State Bank
Post Office Box 1794
Tallahassee, Florida 32302

The Influences of Style on Florida Architecture" is the theme of the Florida Design Conference '86 to be held this May in Howey-in-the-Hills. The intent of the conference is to assess the impact of classic revival, vernacular, modern and post-modern architecture on the Florida architecture that is being produced today. I assume that the aforementioned styles are familiar to most people, certainly to most architects, although the term "vernacular" seems to cause a few to pause and grope for a definition and there is the ever-present confusion about modernism, post-modernism and its apparent offspring, neo-modernism. The conference should be interesting, and I suspect there'll be a lot of conflicting opinions.

All architects are influenced by work that's been done historically or by current work they admire. Why so many architects tense when a label of style is assigned to their work is an interesting question. Perhaps those who refuse to categorize their work view their designs as statements of pure form that have a certain moral force which overrides any known style. Perhaps they just don't like being categorized. Perhaps they don't know.

Paul Goldberger, architecture critic of the *New York Times*, says we'll never again see the rejection of history that was central to modernism's ideology. We will continue to see, instead, more buildings that rely heavily on historical form.

As surely as an historical thread wove its way from the Acropolis to Andrea Palladio to Sir Christopher Wren and to Thomas Jefferson, every time we see a building with classical proportions, we are looking at a "style." In terms of ornament and detail, isn't it a current group of post-modernists who borrow heavily from the classicists? Modernism is probably dead, but its grandchild, neo-modernism, is alive and well. This confident new phase in the history of architecture is already very visible on the Florida landscape. You can recognize it by its sense of bravado, and as Goldberger says, "its concern more with aesthetics than ethics."

"If there is anything that denotes the architecture of our time, modern or post-modern alike," Goldberger says, "it is the concentration on what we might call formal issues, the preoccupation with what things look like as opposed to what they mean."



Member News

Construction has been completed on the Magnetic Resonance Unit — M.R.I. — at St. Mary's Hospital. The 8,000 s.f. unit, which is the largest and most advanced in the Southeast, was designed by **Peacock & Lewis Architects & Planners, Inc.** of West Palm Beach. ■ The architectural firm of **Miller & Meier & Associates** has changed its name to **Miller, Meier, Kenyon and Cooper, Architects and Engineers**. **Craig W. Kenyon, AIA** and **Robert D. Cooper, AIA**, are the new principals in the firm. ■ **Barnett + Fronczak Architects** with consultants **The Design Arts Group, Tilden, Lobnitz & Cooper, Inc.** and **Post, Buckley, Schuh and Jernigan, Consulting Engineers** have been awarded the design of the **FAMU/FSU Engineering Facility**. The 118,000 s.f. facility has a \$13 million budget and will contain classrooms, student services, teaching and research laboratories to support the civil, mechanical, electrical, industrial and chemical engineering programs at the two schools. The project is scheduled for completion in September, 1987. ■

Ronald D. Schwab, principal of **Schwab & Twitty Architects, Inc.** has been selected a member of the panel of **ULI**, the **Urban Land Institute**, one of America's most highly respected and widely quoted sources of information on

urban planning, growth and development. Schwab was selected for his expertise in the design of mixed-use projects for downtown redevelopment. ■ **Ian A. Nestler, AIA**, has joined the Coral Gables office of **Sasaki Associates, Inc.**, a planning and design firm, as senior architect. ■ **Sasaki Associates, Inc.** of Coral Gables will conduct a feasibility study and do a schematic design for the restoration of a venerable Miami Beach Art Deco hotel. The **St. Moritz Hotel** was built in 1939 and its new owners, **Mount Rushmore Associates** of Miami, want the building restored for commercial use. ■ **Currie Stubbins Schneider Architects AIA, PA**, will design **Rainberry Bay Clubhouse II** for **Rainberry Bay Development Corp.** ■ **St. Andrews Country Club** will be designed by **Kenneth Hirsch Associates Architects** at **Fairway Terrace**, a joint venture of **Par Four Group, Inc.** and **Saxoney Builders**. ■

Palm Beach Park of Commerce, the first development approved under the county's new **Planned Industrial Park District zoning ordinance**, has received an **Award of Excellence** from the **South Florida Chapter of the National Association of Industrial and Office Parks (NAIOP)**. **Urban Design Studio**, of **West Palm Beach** and **Stuart**, was responsible for creating the land use and long range

plans, overall design and obtaining the necessary permits for the multiple use project. ■ The **City of New Smyrna Beach** has selected **Keith C. Hock, AIA**, of **Daytona Beach**, to design the **City Hall addition** for administrative offices. ■ **Wolfberg/Alvarez & Associates** has opened a branch office in the metropolitan **Tampa area**. Through its new office in **Largo**, the firm is extending its services into the highly competitive western and north Florida market. ■ **Leandro J. Ona, P.E.**, is now an associate of **Wolfberg/Alvarez & Associates**. ■

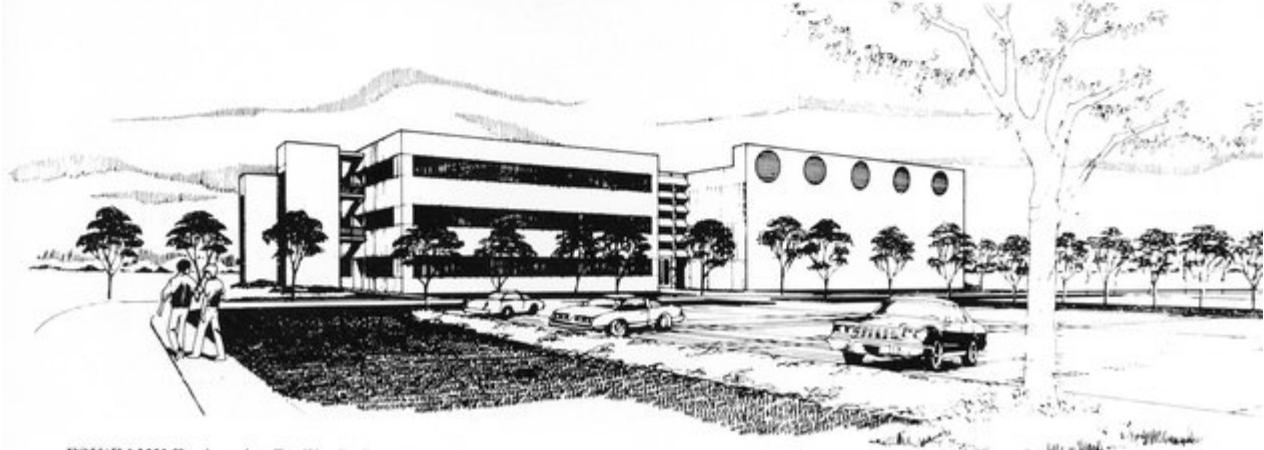
GBS Architects, Landscape Architects, Planners, Inc. has been selected to design and prepare full architectural and landscape plans for the expansion and renovation of the golf clubhouse at **Turtle Creek Country Club** in **Tequesta**. The 5,000 s.f. expansion will include a large dining room and lounge. ■ Site work recently began for the new **Delray Beach mixed use project** of **Waterford Place**. When completed, the complex, designed by **Currie Stubbins Schneider Architects**, will have 236 apartments, a 250-room hotel and eight office buildings. ■

Rogers, Lovelock & Fritz, Inc. of **Winter Park**, was recently awarded the contract to design the **Social Sciences Building** at **Rollins College**. The project will

include classroom and laboratory facilities. ■ The **Acura Automobile Dealership** is under construction in **West Palm Beach**. The 30,000 s.f. facility was designed by **Anstis Ornstein Associates Architects & Planners, Inc.** and will be complete April 1, 1986. ■ **Justus Hellmuth**, internationally recognized aviation consultant, architect and engineer, has joined **Greiner Engineering, Inc.** **Hellmuth** recently directed the master plan study for **Brussels's National Airport** in **Belgium**.

■ **Anderson Parrish Associates, Inc.**, an architectural/engineering firm in **St. Petersburg**, will merge with **Havens & Emerson, Inc.**, an environmental/engineering firm, pending approval by shareholders of both companies. The present principals of **Anderson Parrish** will remain in key management roles and the firms' names will continue to be used. ■

Fugleberg Koch Architects provided design services for three newly completed prison industries facilities in **Polk, Volusia and Sumter Counties**. The three facilities will be operated by the state-sponsored non-profit corporation, **PRIDE: Prison Rehabilitative Industries and Diversified Enterprises, Inc.**, founded by **Jack Eckerd**. The plants consisted of a custom furniture design facility, a vehicle repair and remodeling facility and an electri-



FSU/FSU Engineering Facility by Barnett + Fronczak Architects.

cal work plant. PRIDE is the first private non-profit corporation in the country that is authorized by a state government to sell items or services manufactured or performed by prison inmates. ■

Baldwin Sackman + Associates Architects, Planners and Interior Designers has promoted three people in their firm. **David H. Carrington, AIA**, is a partner and **Pedro Diez, RA**, and **Alex M. Sturman, RA**, are associates. ■ **Studio One, Architecture, Planning and Landscape Architecture** in Winter Park won the Sterling MIRM Award for Best Model Complex Landscaping. **Cindy E. Cleary, ASLA**, Director of Planning and Landscape Architecture, and **August C. Schwartz, ASLA**, were responsible for the design and production of the Spring Hill Model Center for Catalina Homes of Orlando. ■ **Susan Schuyler Smith, ASID, IBD**, was awarded first place in the statewide ASID competition for the restoration of a 25-year-old paint store in West Palm Beach for the corporate headquarters of Spectrum, her interior design firm. Working with Ms. Smith on the project was **Gordon Mock, AIA**. ■ **Albert J. Cooper, III** and **David B. Porterwood** are new partners in the Maitland firm of **Charlan Brock & Associates**. ■ **Schwab & Twitty Architects, Inc.** has moved its offices to Northbridge Centre where it will occupy the entire 14th floor of the complex they designed. ■ **Slattery & Root, AIA**, of Boca Raton designed a new 200-home development for Westbury Homes Corporation. Known as Rainbow Lakes, the community for single family homes will be in Boynton Beach.

Harper Buzinec Carreno Architects/Engineers in Miami designed the expansion and rehabilitation of the existing 11.3-acre island base of the U.S. Coast Guard on Miami Beach. The project, which includes the demolition of many obsolete buildings, is the largest construction project being undertaken by the Coast Guard this year. It includes a new 4-story



The 1939 St. Moritz Hotel in Miami Beach will undergo a restoration based on Sasaki Associates' schematic design.



Schwab & Twitty's design for one of the 140 private residences at Epping Forest in Jacksonville.

housing/health care/food service building and an operational support building for boat and equipment maintenance. ■

Epping Forest, the former home of Alfred I. duPont which was built in 1927, is being developed by Gate Petroleum Co. of Jacksonville. The property embraces 58 acres and sits on the St. John's River. The duPont mansion will be restored by Jacksonville architect **Ted Pappas, FAIA**, for use as a club. The Palm Beach firm of **Schwab & Twitty** is creating the designs for 140 residences on the site. ■

Studio One has received the Renaissance '85 Award from *Remodeling* magazine and the National Remodelers' Council. The award was presented to the firm for the remodeling of 18 Wall Street in Orlando. ■ **Charlan Brock & Associates** will design a medium-density residential project near Wilmington, North Carolina for Structures, Inc. The Fairways at the Cape will be located within The Cape Golf and Racquet Club. ■ **Robert Koch, AIA**, was the featured speaker at a seminar on the Florida Mechanics' Lien Law. The seminar was part of an ongoing program conducted by Orlando attorney Donald F. Wright, an expert on lien law. ■ **Richard Allen, AIA, PA**, announced the

organization of an area of specialized services under the name of **Architectural Roofing Consultants**. ARC is the result of **Allen's** 25 years of experience providing consultation, design and supervision services about roofing. **Norman V. Sharrit** will serve as project coordinator. ■ The **Holiday Inn Riverfront** in Bradenton, designed by **Currie Stubbins Schneider AIA, PA**, won the Torchbearer Award given by Holiday Inn International. The five-story hotel was completed in 1985 and was designed in a contemporary Caribbean style. ■ **The Russell Partnership, Inc.** has been commissioned to design a new radio therapy facility for the Radiology Department of the V.A. Medical Center in Miami. Construction for the \$1.5 million facility is scheduled to begin in the summer of 1986. ■

Urban Design Studio of West Palm Beach won the State Award of Excellence in the Florida Nurserymen and Growers Association 1985 Landscape Awards Program. The firm received the award for their design of Royal Palm Savings in West Palm Beach. ■ **Dean Ellis, RA**, has been named Architectural Department Head and **Bill Ramirez** has been named Chief Draftsman at **Watson and Company** in Tampa. ■ **William Trotter** of **Spillis Candela & Partners** received a "Special Award" and an Education Commendation from the Miami chapter of the Construction Specifications Institute (CSI). ■ **KBJ Architects, Inc.** has been selected to design the State Regional Service Center in Daytona Beach. ■ **Gresham, Smith and Partners** has added four new partners — **Gary F. Hunt**, professional engineer, **George C. Grigg**, architect, **Paul J. Plummer**, architect, and **Brackney J. Reed**, certified public accountant. The firm has been awarded the contract to produce the documents for construction of two prototypical Albertson's stores in Port St. Lucie and Pembroke Pines, Florida. ■ **Spillis Candela & Partners** will design

Picture color and texture in concrete. Then talk to Scofield.

With Scofield's coloring and texturing systems, concrete comes alive. As the focal point or a complement to your design, Scofield gives you the cost-effective tools to take the ordinary... and make it extraordinary.

The Scofield system.
From beautiful granite pinks to rich grays, Scofield's CHROMIX® Admixtures give you uniform, non-fading color-conditioned concrete and a virtually infinite spectrum of standard or custom colors. Add creative texture and shadow interest with our high-reuse elastomeric LITHOTEX® Formliners, and the possibilities are endless. Of course we also offer shake-on LITHOCHROME® Color Hardener and a full line of color-matched cures, stains, caulking and coatings.

The Scofield promise.
We've put color and texture in concrete for over 52 years. Our systems work. If you want a project to look great and stay looking great, picture color and texture in concrete. Then talk to Scofield. Our products are distributed nationally for easy availability.

L.M. SCOFIELD COMPANY
MANUFACTURER & MARKETER OF BUILDING SPECIATIES SINCE 1933
5533 Sandlin Blvd. • Los Angeles, CA 90040 • (213) 725-7112
18031 222-4100 (Outside CA) • 18031 382-8300 (In CA)

Regional Offices:
Phoenix, AZ (602) 224-5862 • No. CA (415) 930-6712
San Diego, CA (619) 271-1255 • Ft. Lauderdale, FL (305) 491-2105
Orlando, FL (305) 258-8646 • Dallas-Ft. Worth, TX (214) 458-8801 • Houston/
San Antonio/Austin, TX (713) 558-8128 • Washington, D.C. (202) 296-5562
Telex: 215560 LMSC UR
CHROMIX and LITHOTEX are registered trademarks of L.M. Scofield Company

The **Barbar Center**, a new mix-use complex in downtown Boca Raton. ■ **Kenneth Hirsch** has appointed **Lee Kvarnberg** to a staff position at **Kenneth Hirsch Associates Architects, Inc.** ■ **Schweizer Incorporated** honored co-founder **Nils Schweizer, FAIA**, at a luncheon attended by friends and long-time business associates. In commemoration of Nils' 25 years of service to the firm, he was presented with a commissioned original bronze sculpture

by Florida artist **Charles Fager**, Professor of Art at the University of South Florida. Nils will no longer be associated with the firm on a daily basis, but will actively pursue professional and community activities. ■

The School of Architecture at Florida A&M presented three prominent developers for its Spring '86 Lecture Series. The speakers are **Jack Wilson**, President of The Wilson Company in Tampa, **Preston Haskell**, Presi-

dent of **The Haskell Company** in Jacksonville and **Robert Davis**, President of the Seaside Community Development Corporation in Seaside, Florida. The speakers emphasized the behind-the-scenes workings of the development process and the keys to achieving a successful project.

LEGALNOTES

Professional liability - is there legislative relief?

by J. Michael Huey

A monetary ceiling on noneconomic damages, modification of the doctrine of joint and several liability, increased rate authority for the Commissioner of Insurance — these are just a few of the “legislative solutions” to the current insurance dilemma which are under discussion in the business, professional, and governmental communities. Once again, as in the mid-1970’s, we are in the midst of an insurance crisis. Only this time, it’s worse. While architects and others suffered increased insurance premiums in the 1970’s, doctors bore the brunt of the crisis. This time, the suffering insureds include architects, accountants, doctors, municipalities, big business and, yes, even lawyers. The “suffering” ranges from premium increases of 100 percent to 900 percent for some to lack of insurance coverage for others.

Some specialty medicine groups are experiencing 100 percent or greater premium increases this year in spite of dramatic yearly increases since the last crisis. Lawyers, accountants, and architects are experiencing 300 percent to 900 percent premium increases. Municipalities are experiencing 300 percent to 1,000 percent increases. Corporations, such as Florida Power and Light, are reportedly paying double or triple the premium for less than one-half the insurance coverage of a year ago. And the list goes on, and on. No wonder we are seeing the establishment of professional association and industry task forces on liability nationwide, including FA/AIA’s Professional Liability Task Force, PES’s Liability Task Force, Project Civil Reform, Inc., and others.

Many of these task forces and coalitions are actively seeking changes in our federal and state laws to combat the insurance crisis. The focus of Florida’s medical doctors, headed by the Florida Medical Association, is to place a ceiling of \$250,000 on damages which may be awarded an injured party for pain and suffering (noneconomic damages). This measure, they contend, will substantially reduce jury awards and out-of-court settlements, thereby reducing insurance premiums. They point to California, which has such a law, where malpractice premiums are significantly lower than Florida. The California law has just recently been upheld by the California Supreme Court and the Federal Circuit Court of Appeals. The doctors face an uphill battle on this issue, but they seem to have regained momentum after Florida’s Supreme Court struck down the FMA’s tort reform constitutional amendment attempt.

The remainder of the professional and business community has concentrated primarily on modification of the doctrine of joint and several liability. This doctrine presently allows an injured party to recover his entire damages from any of the defendants in a suit regardless of the percentage fault of a particular defendant. Florida’s House of Representatives passed a bill limiting this doctrine last year, but no action was taken in the Senate. The Legislature appears to be in a mood to make some modifications to this doctrine in 1986. Any change should benefit architects as they are often included in suits because of the possibility of a slight degree of negligence on their part.

One of the more interesting proposals which should be considered by the Florida Legislature in 1986 pertains directly to design professionals. This proposal, adopted in Kansas and Oklahoma, would limit the liability of design professionals for job site injuries compensable under the Worker’s Compensation Law. In Florida, such a law would benefit architects, engineers, landscape architects, and land surveyors by limiting the nuisance suits filed by injured construction workers after they have collected their worker’s compensation benefits.

As the 1986 Legislative Session approaches (it commences in April), these and other proposals will be reviewed. The success or failure of these legislative attempts will be in direct proportion to the effort of the professions and business to persuade legislators that the crisis is real and relief is *absolutely* necessary. While legislative relief is not a total answer, it is a beginning — a sign — that our system must be rebalanced and realigned to achieve justice.

J. Michael Huey is General Counsel to the FA/AIA. He is a partner in the firm of Akerman Senterfitt & Eidson, Tallahassee.



T-SQUARE MIAMI

The complete supply and reproduction house serving Architects, Engineers and Surveyors since 1924

**Over 50,000 Items in Stock
Rush Delivery Via UPS**

Call Florida Toll Free Number
1-800-432-3360

T-SQUARE MIAMI

998 W. Flagler Street/Miami, FL 33130/(305) 379-4501
415 N.E. Third St./Ft. Lauderdale, FL 33301/(305) 763-4211



Coquina Shell

for:
Architectural Precast Concrete
Coquina Stucco
Shell Epoxy Decks

Scallop and Oyster Shell
Also Available

Seamont
VENTURES



P.O. Box 4173
St. Augustine, FL 32085
(904) 824-5886



GEORGE COTT

ARCHITECTURAL/INTERIOR DESIGN PHOTOGRAPHY



CHROMA INCORPORATED
5159 WEST CLIFTON • TAMPA, FLORIDA • (813) 884-0211

ARCHITECTS: JOHN HOWEY ASSOCIATES

BEAUTY VALUE

No other roof matches Gory for enduring beauty. . . or adds as much value per dollar.

Color-Through: Our tile isn't just top-coated. It's solid color from top to bottom.

Color-Blend: We give you up to 4 colors blended on a roof, not just 1 color of tile flash coated.

Color Choice: We offer 75 colors plus textures. In a choice of flat or curved tiles.

Gory Roof Tile®



901 N.W. 58th Ct. • Ft. Lauderdale, FL
33309 • Call Toll-Free: 800 223-TILE
In Florida, Toll-Free: 800 432-1021



ARCHITECTURE **87**

FACT FUTURE **+ FANTASY**

ARCHITECTURAL PHOTOGRAPHY



ERIC OXENDORF

represented by
JIM CUNEO
813-848-8931

Circle 44 on Reader Inquiry Card

For more information about
Kohler Plumbing Products
see these Kohler distributors:

Lawrence Plumbing Supply Company

31 S.W. 57th Avenue
Miami, Florida 33144
(305) 266-1571

405 N. Flagler Avenue
Homestead, Florida 33030
(305) 248-7020

8940 S.W. 129th Terrace
Miami, FL 33176
(305) 251-7022

5700 W. Flagler St.
Miami, FL 33144
(305) 266-3338

Circle 6 on Reader Inquiry Card

Around The Codes...

Few would argue with the critical need to conscientiously comply with building codes.

Yet, for those who's task it is to design beautiful, functional buildings, the influence of volumes upon volumes of code requirements is undeniable.

Fortunately Won-Door's folding fire doors now provide a way to comply with critical building codes and still allow you to design your building to look and function the way you choose.

For example, Won-Door FireGuard™ doors can provide:



CODE REQUIRED FIRE EXIT CORRIDORS as long and as high as needed by folding from a hidden wall pocket.



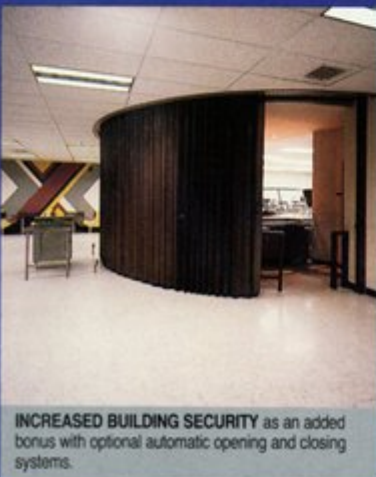
CODE REQUIRED SEPARATION of stairways and elegant atriums or other special design features. They can even follow a curved track.



CODE REQUIRED AREA AND OCCUPANCY SEPARATION preserving the design prerogative for large open space areas.



CODE REQUIRED ELEVATOR LOBBY SEPARATION without cumbersome swing doors or floor tracks.



INCREASED BUILDING SECURITY as an added bonus with optional automatic opening and closing systems.

CALL WON-DOOR TOLL FREE 1 (800) 453-8494 OR YOUR WON-DOOR DEALER FOR ALL THE DETAILS.

WON-DOOR FIREGUARD,™ PROTECTING LIFE, PROPERTY BUILDING DESIGN.



WON-DOOR CORPORATION

1865 S. 3480 W.
Salt Lake City, Utah 84104

LEGALNOTES

1987 Legislative Issues

by J. Michael Huey

The 1987 Florida Legislature is already gearing up for the onset of the Regular Session on April 7, 1987. To date, there have been approximately 200 House and Senate Bills pre-filed and the new legislative committees have been meeting on a regular basis since the beginning of December. Although 1986 was known as the year for tort and insurance reform, we anticipate that 1987 will be considered more appropriately as the "year of the tax." In addition to legislative efforts to generate revenue, we will also face several other familiar issues which will impact the architectural profession. At present the FA/AIA is paying close attention to four major issues as outlined below:

Sales Tax on Professional Services

During the 1986 Session of the Legislature, House Bill 1307 was passed which repealed the sales tax exemption for professional services, effective July 1, 1987. It is estimated that the repeal of exemptions on architectural, engineering and surveying services alone will produce \$118.3 million in new taxes.

Legislative leaders are now scrutinizing this year's repealer bill to determine whether or not some of the exemptions should be retained. An estimated total of \$1.3 billion in revenue will be generated if no action is taken during the 1987 session. If the exemptions are kept in place, however, where will Florida look for badly needed revenue?

According to the Statewide Comprehensive Plan Committee, Florida's current tax structure will not generate sufficient state revenues in the future to finance the needs of our growing state. As a matter of fact, the committee recently reported that Florida is facing \$58 billion worth of needs throughout the next decade. According to the committee, if legislators fail to repeal the sales tax exemptions they will eventually have to consider a gross receipts tax on bus-

iness or personal income tax. The committee's recommendations are based on conservative conclusions that the state will need \$39.9 billion through 1995 and local governments will need \$17.9 billion through the next century to implement the Statewide Comprehensive Plan.

The question remains, however, whether or not architectural services should be taxed. Furthermore, if the exemption is repealed, how should this tax be administered and "passed-through?"

The House and Senate Finance and Taxation Committees are currently reviewing criteria for each sales tax exemption including impact of the exemption as well as the impact of the tax on service entities.

Accordingly, FA/AIA is trying to answer questions such as:

1. What is the basic rationale for exemption of architectural services from sales tax?
2. Does the exemption promote the retention of jobs in the state or the expansion of architectural firms in the state?
3. Does the exemption serve the purpose of treating architectural firms and other businesses within the state fairly?
4. Does the exemption allow Florida architectural firms to compete favorably with out-of-state businesses?
5. Does the exemption provide incentive for Florida architectural graduates to practice in Florida?
6. Does the exemption promote the practice of architecture and other businesses which are vital to the local economy?
7. Are the reasons for granting the exemptions still valid?

Licensure of Interior Designers

The FA/AIA will be busy this Legislative Session in efforts to defeat legislation providing for licensure of interior designers. The Department of Professional Regulation has indicated that

the interior designers are planning to file a bill that would establish a licensure program and regulatory board for the interior design profession. The FA/AIA continues to question the intent of licensure of interior designers and will continue to closely monitor pre-filed legislation that may impact this issue.

Statute of Limitations

Architects, engineers and contractors currently have a fifteen-year cap on suits for design and construction negligence. The Florida Supreme Court recently upheld the products liability statutory cap which was attacked as unconstitutional. That decision gave design professionals and contractors hope that our highest state court recognizes the validity of a maximum time period of exposure.

The FA/AIA must now consider if legislation is necessary to lower this cap and, if so, the necessary course of action to be taken.

Uniform Building Codes

Following the 1986 Legislative Session, Governor Graham, with the support of Tom Lewis, AIA, Secretary of the Department of Community Affairs, appointed a special task force to study the problem of the multiplicity of codes and standards which affect the building industry in Florida. Legislative action on this issue may depend greatly on the results of the task force report, due in March, 1987.

Keeping in mind the historical battle waged against the Florida League of Cities on this issue, the FA/AIA may not wish to take a lead in pushing revisions in this controversial area during 1987 (Governor Bob Martinez is a former President of the Florida League of Cities). Another issue, however, has recently surfaced which may help set a precedent for future attempts to standardize building codes.

Following the 1986 Legislative Session, the Department of Community Affairs established an ad hoc committee under the Bureau of Housing and Community Development to make recommendations for revisions to Chapter 553, Part V, Florida Statutes (Accessibility by Handicapped Persons). Current state law regarding handicapped codes is primarily based on 1961 American National Standards Institute, ("ANSI"), guidelines. During 1986, the ANSI Accessibility Standards were revised and the objective of the ad hoc committee was to review these changes and determine the extent to which Florida should adopt the ANSI revisions.

Following over two months of biweekly meetings, the committee has now prepared draft legislation which, although tailored after the ANSI standards, proposes several modifications. Of major importance to the FA/AIA, however, is the intent of this legislation to limit the cities' authority to impose more stringent codes and an additional provision which grants the Florida Board of Building Codes and Standards "final administrative interpreting authority." The FA/AIA remains supportive of provisions which limit local governmental authority over the implementation of building codes.

J. Michael Huey is General Counsel to the FA/AIA. He is a partner in the Tallahassee law firm of Huey, Guilday, Kuersteiner & Tucker, P.A.



PREMIX-MARBLETITE Manufacturing Co.

Serving the building industry since 1955.

STUCCO, PLASTER, DRYWALL AND
POOL PRODUCTS
SOLD BY LEADING

BUILDING MATERIALS DEALERS

For specifications and color chart
refer to SWEET'S CATALOG 9.10/Pr

3009 N.W. 75th Ave. • Miami, FL 33122
Oviedo & Sanford Rd. • Orlando, FL 32707

Miami (305) 592-5000
(800) 432-5097 -Fla. Watts-

Orlando (305) 327-0830
(800) 432-5539

MANUFACTURERS OF:

- **MARBLETITE**
(All Marble) Stucco
- **MARBLECRETE**
Trowel Stucco
- **POOLCOTE**
Swimming Pool Stucco
- **FLO SPRAY**
Ceiling Spray
- **CEMCOTE**
Cement Paint
- **FLOTEX**
Wall Spray
- **ACOUSTICOTE**
Acoustical Plaster
- **WONCOTE**
Veneer Plaster
- **P.V.L.**
Vinyl Ceiling Spray
- **ACOUSTEX**
Ceiling Spray
- **BEDDINGCOTE**
For Rock Dash
- **SNOWFLAKE**
Ceiling Spray

AND OTHER BUILDING PRODUCTS

An Imperial Industries Company

Are You Using Today's Tools Today?



We're committed to providing Architects, Engineers,
and Contractors with the tools for success and the
support and service to make it all work. When can
we go to work for you?



AE DATAMASTERS, INC.
4508 OAK FAIR BLVD.
SUITE 100
TAMPA, FLORIDA 33610
PH: (813) 626-2599



DATAMASTERS

For ASSURED QUALITY concrete projects

Assure the concrete advantages you are paying for.

• STRENGTH • LONG LIFE • LOW MAINTENANCE • GOOD LOOKS

Use an approved concrete testing laboratory.

The firms listed below are approved for 1986 by the
Engineering Laboratories Forum and the Florida
Concrete & Products Association Joint Technical
Committee, Inc. as meeting the requirements of
ASTM-E329 standards.



A & E Testing, Inc. - St. Petersburg
American Testing Lab Inc. - Orlando
Ardaman & Associates, Inc. - Barlow
Ardaman & Associates, Inc. - Cocoa
Ardaman & Associates, Inc. - Ft. Myers
Ardaman & Associates, Inc. - Orlando
Ardaman & Associates, Inc. - Riviera Beach
Ardaman & Associates, Inc. - Sarasota
Ardaman & Associates, Inc. - Tallahassee
AT&E Consultants, Inc. - Lakeland
AT&E Consultants, Inc. - Tampa
Bromwell & Carrier Inc. - Lakeland
Cline/NTH, LTD - Oldsmar
Ewell Industries Laboratory - Tampa

Florida Testing & Engineering - Ft. Lauderdale
Jacksonville Engineering & Testing Co. - Jacksonville
Jammal & Associates, Inc. - Ormond Beach
Jammal & Associates, Inc. - Tampa
Jammal & Associates, Inc. - West Palm Beach
Jammal & Associates, Inc. - Winter Park
Keith & Schars, PA. - Ft. Lauderdale
Law Engineering Testing Co. - Lake Buena Vista
Law Engineering Testing Co. - Miami
Pittsburgh Testing Lab. - Jacksonville
Pittsburgh Testing Lab. - Miami
Pittsburgh Testing Lab. - Sarasota
Pittsburgh Testing Lab. - Tampa
Pittsburgh Testing Lab. - West Palm Beach

Professional Service
Industries, Inc. - Sarasota
Quality Assurance Testing Lab. - Sarasota
Soil & Material Engineers, Inc. - Altamonte Springs
Soil & Material Engineers - Deerfield Beach
Soil & Material Engineers - Tampa
Test Lab Inc. - Tampa
Universal Engineering Testing Co., Inc. - Gainesville
Universal Engineering Testing Co., Inc. - Orlando
Williams & Associates, Inc. - Clearwater
Wingerter Testing Laboratory - Ft. Myers
Wingerter Laboratories, Inc. - North Miami

For information on quality concrete or concrete testing write or call

ELF/FC&PA JOINT TECHNICAL COMMITTEE, INC.

649 VASSAR STREET • ORLANDO, FLORIDA 32804 • 305/423-8279



THE BOLD LOOK
OF **KOHLER**

In the world of Kohler, form and function emerge triumphant. Here, the Flair II™ Faucet in cast brass, a tribute to Kohler imagination. Available in polished brass and chrome to suit any decorating scheme. For more details see the Yellow Pages, or send \$2 for a color catalog to Kohler Co., Dept. AE4, Kohler, Wisconsin 53044.

© 2006 Copyright 1985 Kohler Co.

For more information about
Kohler Plumbing Products
see these Kohler distributors:

Lawrence Plumbing Supply
Company

31 S.W. 57th Avenue
Miami, Florida 33144
(305) 266-1571

405 N. Flagler Avenue
Homestead, Florida 33030
(305) 248-7020

8940 S.W. 129th Terrace
Miami, FL 33176
(305) 251-7022



Right Place. Right Time. Right "Bottom Line."

Measure nothing but cost, and Northbridge Centre is competitive.
Measure image, environment and "futures," and Northbridge
Centre is clearly in a class of its own.

Consider:

- Profitable lease equity plan, allowing major space users to share in the cash flow, appreciation and tax benefits.
- Charter Tenant advantages, available for tenants of as little as 1,000 square feet.
- Free undercover parking.

Add:

- Views of the Atlantic Ocean and Intracoastal Waterway.
- Elegant and informal restaurants, banking and shops.
- Swift traffic access.
- On-site owner/management.

Northbridge Centre I: NOW READY FOR OCCUPANCY.
The question is—NOT can you afford to, but can you afford NOT to?



NORTHBRIDGE —CENTRE I—

515 North Flagler Drive, West Palm Beach, Florida
For information, call Hamilton & Associates—(305) 832-6043

SOUTHERN GAS ASSOCIATION TO MEET APRIL 20-22 IN DALLAS

The Southern Gas Association, an organization of gas companies throughout the southern states, will hold its 1986 convention at the Loews Anatole Hotel in Dallas, TX, April 20-22.

The changes and progress in the natural gas industry will be the theme of this year's convention. Speakers include: Dr. John McLaughlin, McLaughlin Group, James E. Tyree, Chairman of the Board of the SGA, Roger Taylor, Vice President of Salomon Brothers, and Dr. John McKetta, University of Texas.

Students tag new school “Calvin Klein High”

Vivian Gaither Senior High School, Tampa

Architect: The Design Arts
Group, Inc.

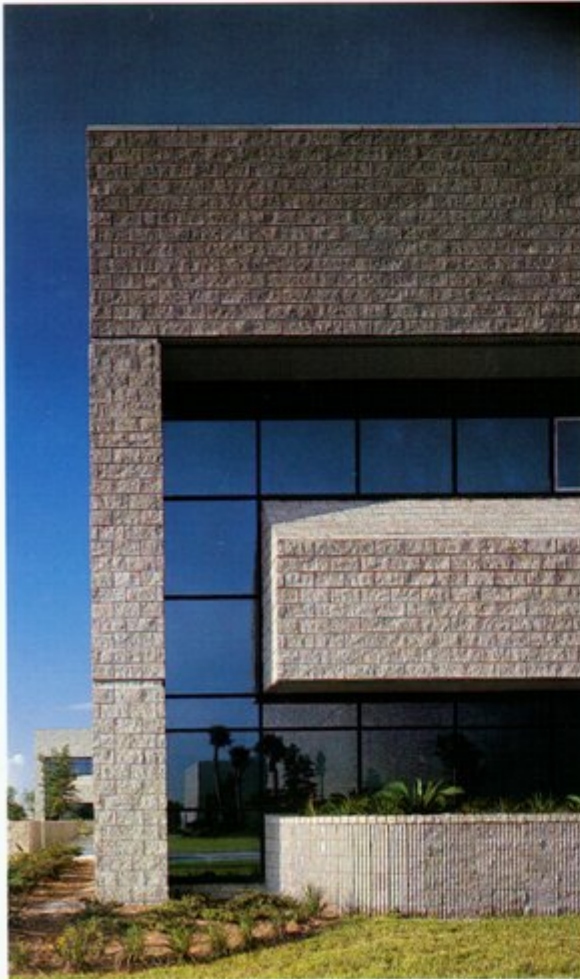
Design Studio Director: Peter
Gottschalk, AIA

Project Manager: Dennis Wm.
Hughes, AIA

Project Team: Doug Mann, Ron
Harden, Boozer Payne, CSI

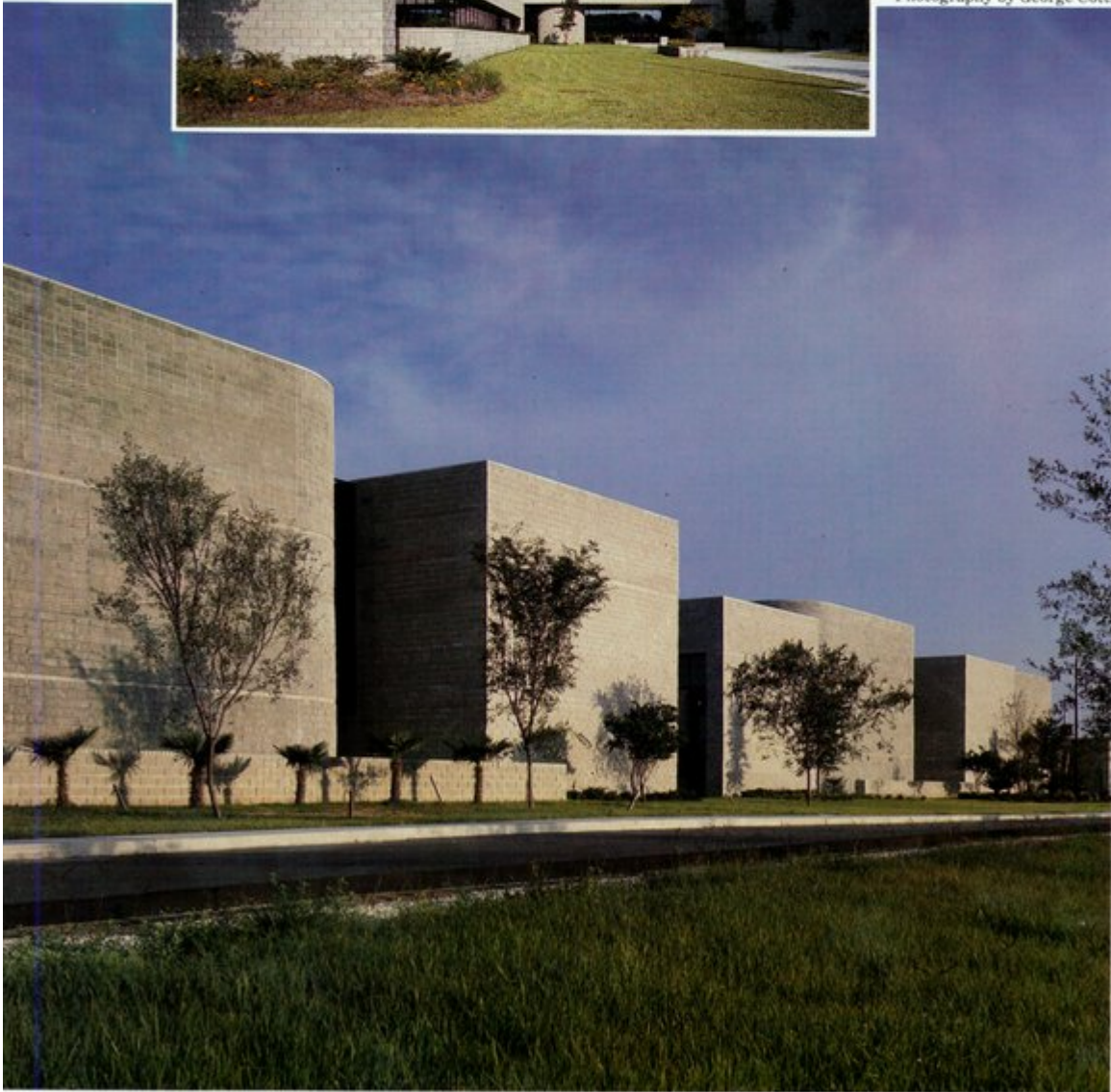
Contractor: Metric Construc-
tors, Inc.

Owner: Hillsborough County
School Board





Photography by George Cott.

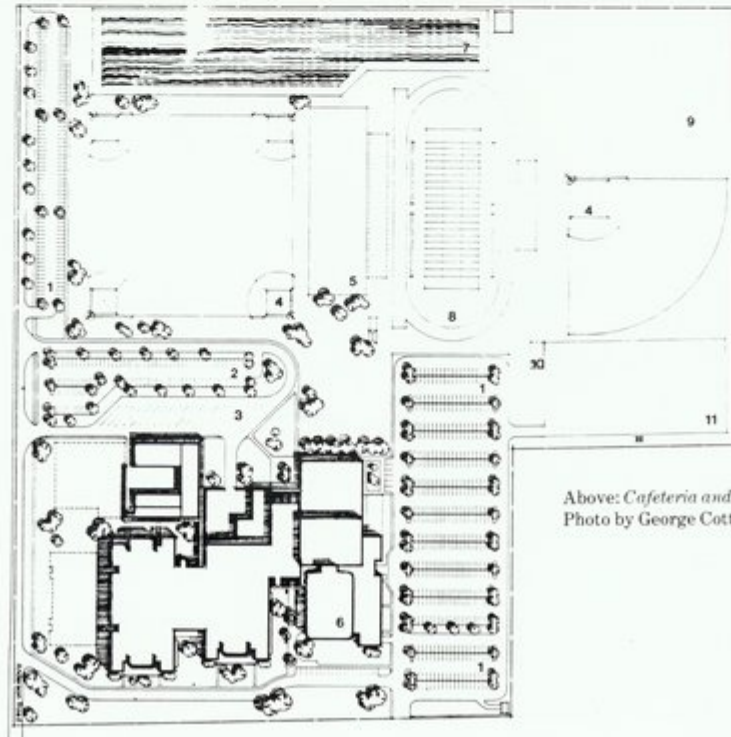


As anyone who has worked with it knows, Florida Educational Facilities Regulation 6A-2 represents a significant design restraint. One aspect of 6A-2, the requirement for natural light and ventilation in each classroom, typically generates some variation in the familiar, sprawling, finger plan. That requirement was lifted for an interim period including the design phase of Vivian Gaither Senior High School in Tampa. And that, together with the School Board's decision to accept a two-story structure, afforded The Design Arts Group a unique opportunity to design an efficient school building.

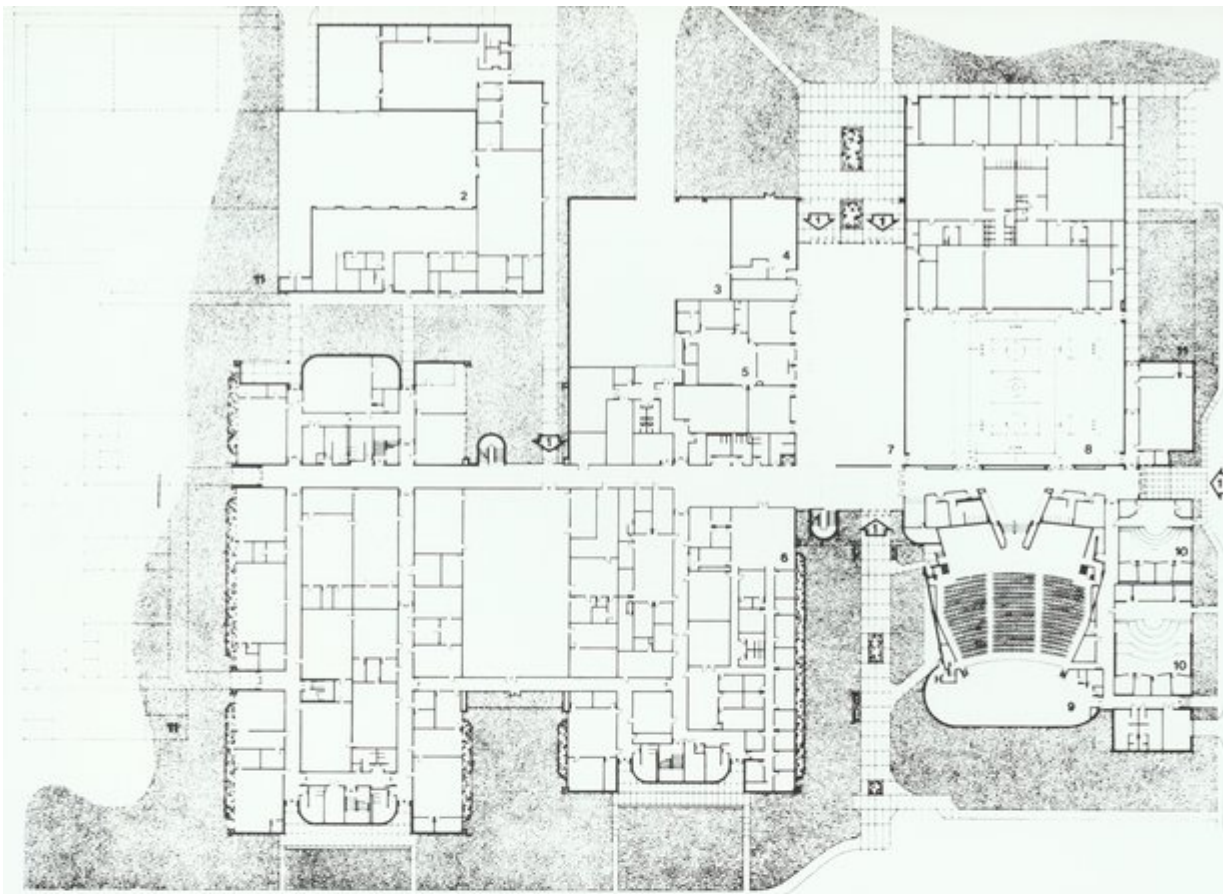
There are two blocks of classrooms on a pair of double-loaded corridors backing up to one another. Between them, literally as the focus of the classroom facilities is the media center. This compact block constitutes the academic "wing," so to speak, and occupies only a fraction of the site required for a conventional plan.

A second design theme, energy efficiency, directed the orientation of the academic wing on the site. Those classrooms afforded natural light are oriented north and south, with south facing sunscreens. Major exterior east-west walls are masonry cavity walls punctuated by windows primarily in common spaces.

The nature of circulation and other common spaces represents a third major design objective, also related to 6A-2, which severely limits the percentage of space which may be devoted to non-net assignable use. The designers believed that in a high school, where students move from class to class, the quality of common space represents a major component of the quality of life in the building. Their response was to maximize views along circulation paths to the outdoors and into other important spaces such as the media center and cafeteria. In fact, the cafeteria, lobby and entrance are combined into a mall



Above: Cafeteria and left, site plan.
Photo by George Cott.



linking the academic wing with the other major block of space consisting of the gymnasium and auditorium.

On the exterior, the two classroom blocks and the gymnasium/auditorium block present three windowless masses to the principal street front, Dale Mabry Highway. To give those relatively huge masses a comprehensible scale and pattern, they were broken down into a rhythmic series of curved and rectilinear forms interrupted by glass surfaces. The curved forms are accentuated by ribbed block in contrast to the split-face surface on the rectilinear forms.

The structure appears to be well received by both the public and the users alike. That, and the fact that it was delivered on time and under budget, no doubt contributed to the School Board's decision to ask Design Arts to do an adaptation of the design for a site in South Brandon.

Peter Gottschalk

The author was Design Studio Director for this project.



Auditorium. Photo by George Cott.

Prairie school, Florida-style



South Fork High School Martin County, Florida

Architect: Ranon, Bentler & Partners, Inc., Architects

Civil Engineer: Montgomery Associates

Structural Engineer: Brink Associates

Mechanical/Electrical Engineers: Tanase & Associates

Landscape Architects: Thomas Shepard Associates

Interior Designs: Ranon, Bentler & Partners, Inc., Architects

On a rural and relatively remote site in Martin County, Ranon, Bentler's problem was to design a high school for approximately 2,000 students, with Phase I providing for approximately half that number. The client wanted a "shopping center" organizational concept with energy-efficient buildings.





The design which finally evolved allows the school buildings to participate with the prairie site. The building nestles against the more densely populated wooded areas and opens the exterior mall concourse to views of the natural environment. Conversely, hard edges, including parking bus loops and service drives are located in the sparsely vegetated areas to the west and north.

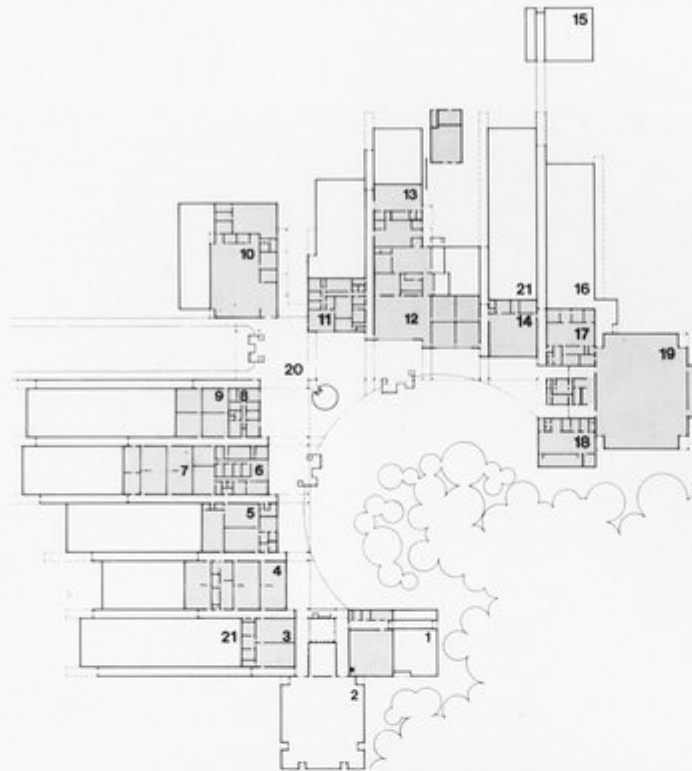
The school building is organized to imply the scale of a village square with the natural vegetation forming a portion of the enclosure. The design intent is to allow the pine and palmetto to infill this open space over time.

The design response to energy conservation is utilization of an open, shaded student concourse instead of the enclosed, conditioned mall first envisioned by the client. The concourse additionally provides a shaded microclimate adjacent to conditioned spaces. Classrooms and ancillary functions are grouped to present less surface area to outside air temperatures. Corridors are conditioned with secondary air released from instructional spaces during class changes.

The corridors are provided with high operating windows. The windows serve to pass daylight into the circulation areas and offer some visual release to the users. Additionally, the windows are a major component of a supplementary mechanical ventilation system. The school is designed to allow energy conservation during periods of favorable climate and can remain operational in the event that mechanical cooling cannot be supplied due to energy shortages. The windows are typically oriented to the north and east to minimize additional heat gain. Windows



Photos by George Cott.



are provided within the media center, administrative offices, dining area and kitchen. All "store front" activities are provided with sliding windows to serve the supplementary ventilation system. Solar water heating serves the physical education and kitchen spaces.

The mechanical cooling/heating/ventilation system provides a range of flexibility which allows the optimum balance of energy efficiency and human comfort to occur during seasonal variations. The system is monitored and operated by computer and can be manually controlled at the discretion of the operator. The building is divided into several environmental zones enabling portions to receive mechanical heating or cooling while others receive only ventilation.

Diane D. Greer



A campus that hugs the landscape

Manatee Community College

South Campus Venice

Architect: Richard G. Allen, AIA
Civil Engineer: Bennett & Bishop
Structural Engineer: Olsen-White, Inc.
Mechanical Engineer: Cadwallader
Electrical Engineer: Cadwallader
Construction Management: Barton-Malow Southern, Inc.

Right: *Lakeside view of administration building.* Below: Administration and Computer Science Building. Library will be constructed in foreground. Photos by C. R. Erickson.



The Board of Trustees of the Manatee Community College asked Richard G. Allen, AIA, to devise a plan for their new campus in Venice. Allen was principal architect for the school's Bradenton campus.

As with most publicly funded buildings, there were inherent concerns regarding costs and materials. Six years elapsed between the time the initial budget proposal was submitted and the first allocation was approved by the State. During that time, many factors, including inflation, came into play and the project required a great deal of careful planning and close monitoring to stay within the budget.

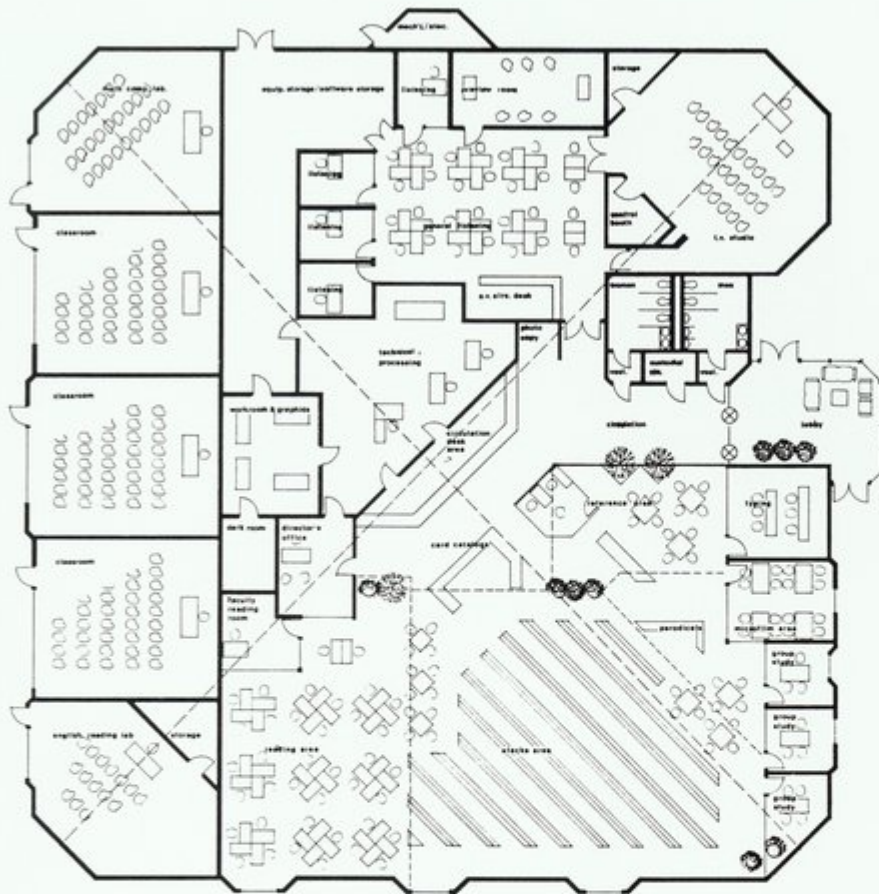
Working with an outdated budget was the biggest challenge to Allen's creativity. The project was funded for \$6,125,000, an amount that was to cover the cost of land acquisition, site work and the design and construction of the buildings.

The decision to build the campus in phases so as to take advantage of partial funding has enabled the new campus to make the best use of its resources. Phase I consists of the Administration Building, a computer science facility, the science building and the Student Center. Classroom space is a component of each of these buildings.

Allen had already designed over a dozen educationally-related projects and after surveying other community colleges around the state, he decided that something different was needed at the Venice campus — something that took the site and the climate into consideration and expressed a relationship with the area.

A lake existed on the property and it was around this lake that he established a concept for the campus. With an intimate spacing between buildings that were designed for the Florida environ-





ment, costs were also reduced. Dramatic sloping roofs of varying pitch with overhangs averaging eight feet or more produced the net result of shaded walks and breezy sheltered passageways between buildings.

This "village" concept has met with great approval from students, faculty and staff. Phase I was completed on time and was ready for class meetings in June, 1985. That same month funding approval by the legislature allowed groundbreaking for the new library to take place in November, 1985. There are nineteen buildings planned for the future.

Francine C. DiFilippo

The author is a writer living in Sarasota.

Opposite page shows a detail of the Science Building. This page, plan of Learning Resources Center and photos of Administration Building. Photos by C. R. Erickson.



Shape as a program solution

The Knapp Residence Dade County, Florida

Architect: Maspons/Goicouria/
Estevez, P.A.

Principal-in-Charge: Eric
Maspons, AIA

Project Designer: Rolando
Conesa, AIA

Engineer: Gomez-Pina
Engineering, P.A.

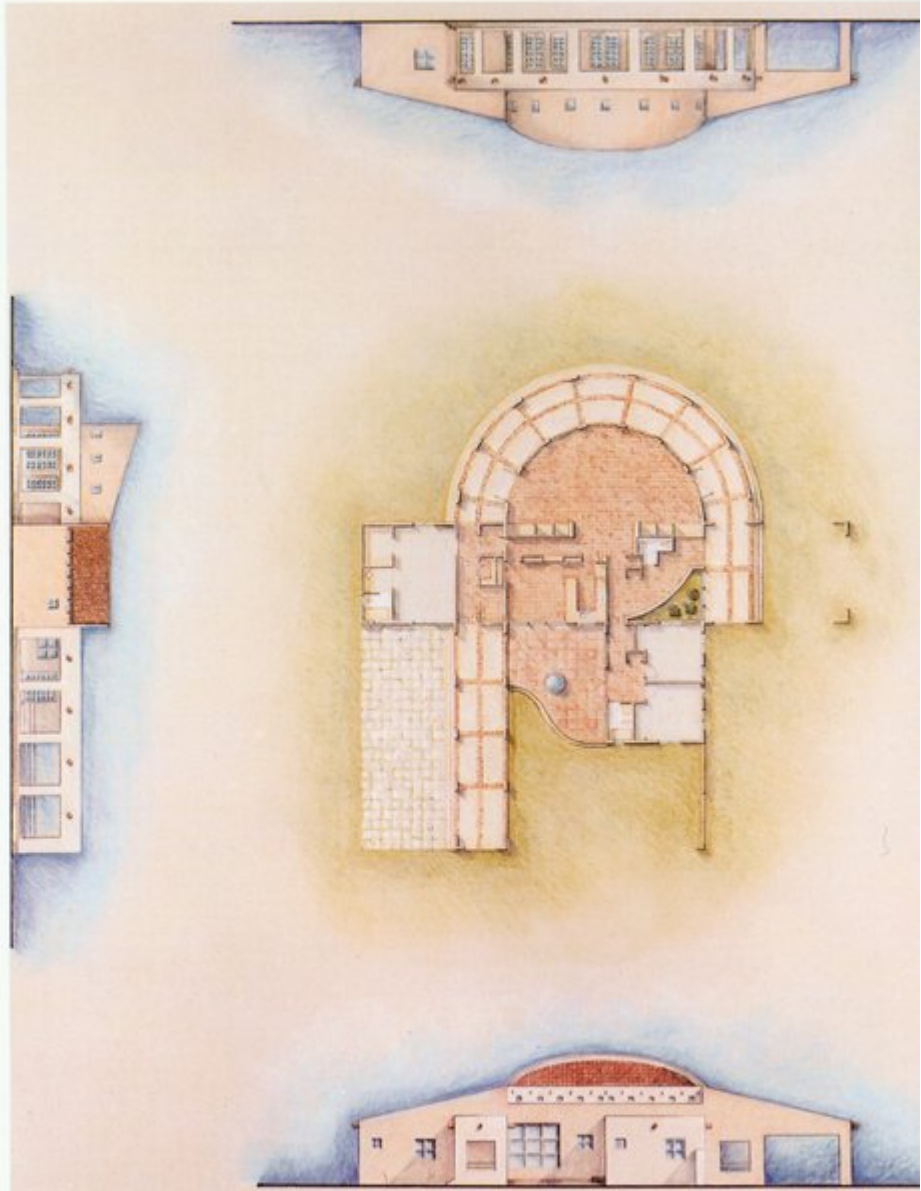
Owner: Barry and Maria Knapp

Contractor: RPA Construction
Corp.

On a five-acre site in southern Dade County, the Knapp House is an architectural response to a number of specific requirements. First and foremost, aside from wanting a home, the clients wanted the residence to symbolically reflect their business interest, the breeding and selling of Arabian stallions.

The large rectangular lot is in an area of generally small homesteads with single family residences. The Knapp property is bordered by rows of tropical mamey trees on its perimeter and it is basically flat and grassy in the middle. The location of the house on the lot evolved from programmatic needs. The house is positioned on the center front of the property with the horse training area to the north, grazing pasture to the south and stables to the east. The property is entered from the west.

The unique massing and shape of the house gives it great "force." The client's fascination with round structures also helped in the development of the house



Architect's rendering of plan and main elevations. Opposite page, top: View of the porte cochere where horses are shown and below, proximity of grazing area to the house. Photos courtesy of the architect.



plan and later became a solution to one of the main requirements.

The program for the house consisted of basic residential requirements along with a series of more complicated functional relationships derived from the intended use of the house. The ability to show the horses, for business or pleasure, was a prime criteria. The ability to see the horses from different areas at different times of the day, while maintaining privacy, was another challenge.

The architectural response to these and other climatic criteria evolved a semi-circular house, based on a superimposed twenty foot radius module. This circle is depicted in the living area and carried through the foyer and dining area by the use of low curvilinear walls and ceiling soffits. The quarter circle module is where the bedroom wings are derived from and break beyond the circle. The introduction of a ten-foot wide sweeping arcade, stemming from the porte cochere around the living room, through the main intersecting body of the house and finally free standing







on the east side facing the stables, served as the means of solving many program requirements. First, the arcade provides shade to the living room which faces south and it also serves as an extension of the living room when the French doors are opened. During social functions, a sweeping view of the horses at pasture is provided. At the same time, the arcade serves as a covered promenade from the main entrance of the house to the free standing extension, where refreshments are served at the time of showing the horses. This can be done without interrupting the family routine inside the house.

At the center of the site, the Knapp House was designed to be viewed from different angles, changing in configuration as it responds to function and climatic criteria. The exterior of the house incorporates the use of local technology and materials and attempts visually to recall a western vernacular transformed into modern imagery.



Top photo, West elevation and lower photo, porte cochere interior. Photos by Patti Fisher.

Coming Attractions

FA/AIA Legislative Conference
Tallahassee
April 16-17, 1986



Florida Design Conference
Howey-in-the-Hills
May 16-18, 1986

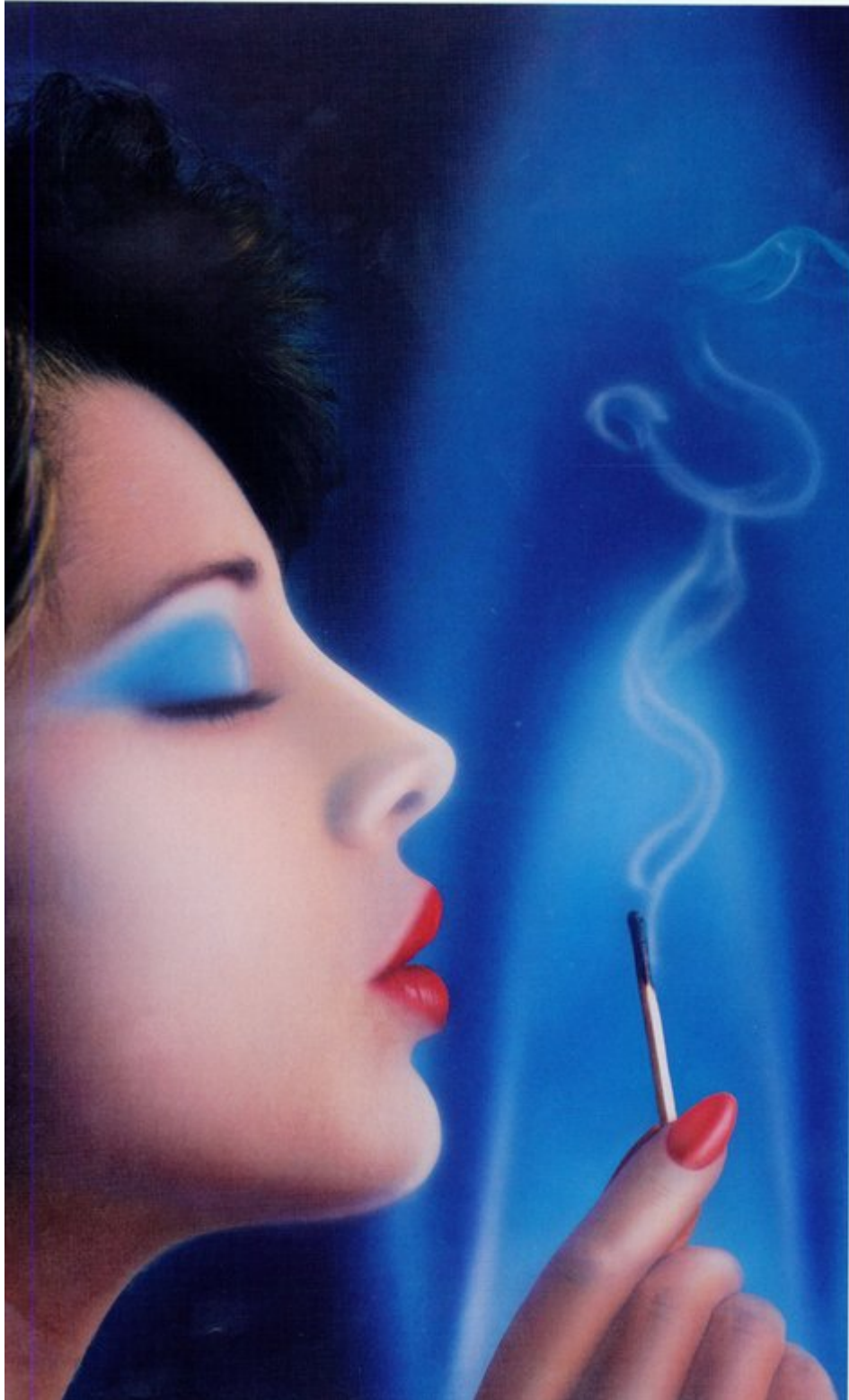


FA/AIA Fall Convention
Miami
September 26-28, 1986



Florida Association of the American Institute of Architects

You'll Never Match Natural Gas!



A smart builder is always looking for ways to improve the bottom line. It's time you took a close look at building with natural gas appliances.

Profits Soar!

Builders who already use gas appliances know natural gas helps homes sell faster, and when your homes sell faster, your profits get hot.

But You Pay No More.

Because of attractive allowances and incentive programs* offered by some gas companies, natural gas appliance installations cost little more than electric.

Get the facts from your local Natural Gas Company. You'll find natural gas is available to a greater number of developments than ever before, with supplies that will last long into the future.

Today's technologies make natural gas appliances convenient to use and highly efficient. Natural gas appliances can cut the cost of home heating, water heating, and cooking by as much as 50%! Is it any wonder homeowners prefer natural gas?

For more detailed information about how you can make the switch to natural gas, call your local Gas Company or write: FNGA, P.O. Box 2562, Tampa, Florida, 33601.

There is no match for natural gas when it comes to making the homes you build stand out against all the competition.



FNGA

Florida Natural Gas Association

*Allowances and incentives may vary between companies in different areas of the state.

New River residence

Private Residence Fort Lauderdale

Architect: Donald Singer •
Architect • P.A.

Structural Engineer: DeZarraga
Donnell & Duquesne

Contractor: John R. Elwell
Construction Co.

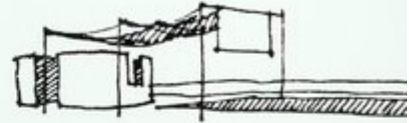
Landscape Architect: Ted Baker

In 1932, the brilliant photographer Edward Weston said that "form that is beautiful is so because its function is the ultimate expression of potentiality."

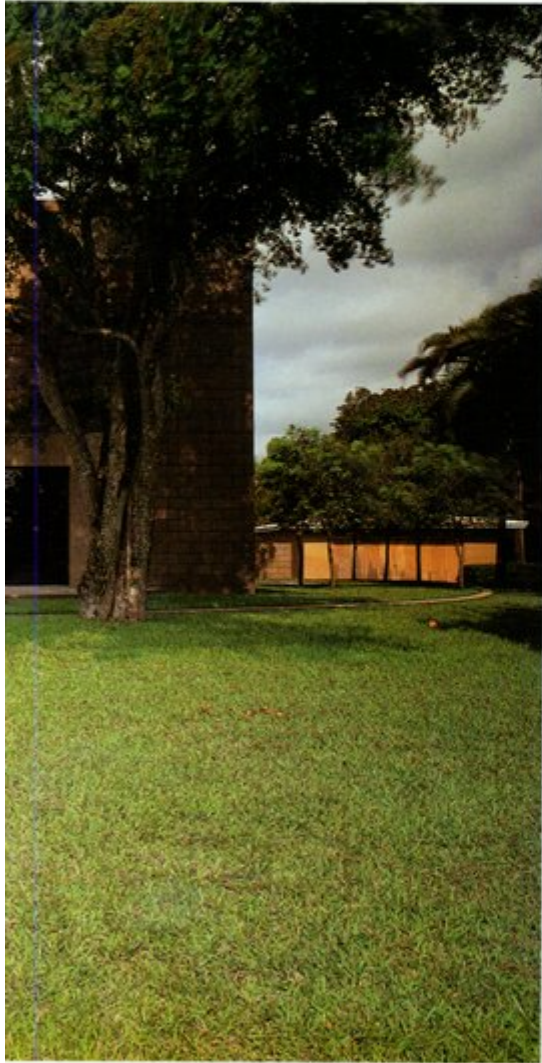
This private residence by Donald Singer grew from a concept based on the paradoxical aspects of private living on a public waterway. The design resolution is based on strong hierarchical arrangements of space and its beauty is in its form and its function.

This house was planned at the edge of a 4.5 acre site along New River in Fort Lauderdale. It is a protective enclosure isolating the garden for the private use of the client while affording controlled views of the public waterway.

Beginning with the idea of waterside functions (entertaining room, study, dining room and master sleeping room) and landside functions (entry, kitchen-breakfast, children's sleeping rooms and help's quarters), the plan was created along two major axes intended to provide framed views of the waterway and a third to provide vertical movement between levels. The placement of openings allows the sense of privacy to be maintained.



Exterior views and details show the building's form both inside and out. Photos by Steven Brooke.





The master study on the ground floor and the bedroom on the upper floor are organized at the core of the plan, which immediately established order. The circular shape at the center of the house represents the still-point around which all of the other functions of the house revolve. The circle is "protected" by the rectangle and the individual is a part of the greater "whole."

The stair at the core allows access to the stair and to the circle. The house thus becomes an object to be seen from below, above and around. It is a participatory space and a viewing place. Earth colored block was used for all structures.

The residence was designed for Mr. and Mrs. Howard Brody, a young enthusiastic couple with whom the architect established a good working relationship. Unfortunately, Howard Brody never spent one day in the house. In June, 1985, the Drug Enforcement Administration confiscated the property and it was sold at auction to a developer.

The house is a continuing series of visual surprises and is, in the architect's words, "erotic." "I would love to live in it myself," Singer says.

Previous pages, left: View into dining room, right, view from master bedroom looking toward stair. Inset is of bathroom detail showing glass block shower stall. Photos by Steven Brooke.





Ron Garl, golf course architect

Florida . . . home of the leisure lifestyle and country club communities. What better place in which to build the reputation of a golf course architect than here in a place where golf is one of the leading leisure activities of people of all ages and both sexes?

Ron Garl is just such an architect. He is ranked among the top five golf course architects in the world and unlike other course designers, he holds a degree in horticulture and turf grass. He was the first student to receive a full scholarship from the Florida State Golf Association to study golf course architecture at the University of Florida. After graduation, he apprenticed with Robert Trent Jones and Joe Lee and to date, the 40-year-old Garl has designed over 100 golf courses nationwide, including the prestigious Fiddlesticks Country Club course in Ft. Myers, the golf course at Heathrow in Lake Mary and the new 18-hole course at the Palm Beach Polo and Country Club.

Garl spends a lot of time up front searching for a concept which will fit the property, the needs of the development and the people who will play the course. In the design process, the game of golf has to be defended and, according to Garl, "it takes guts to tell a developer when he's wrong."

Traffic patterns associated with golf courses are studied such as where to place the bag drops, the flow of people to and from the clubhouse, staging areas for tournaments and particularly, where to put the pro shop. Pro shops should offer a view of the first and tenth tees to keep control on the number and pace of golfers.

The clubhouse is the main focus of Garl's golf course designs and it is here that he works closely with the building architect on the orientation of the building allowing for vistas from the dining room, lounges and pro shop, while meeting the functional needs of the golfers. Garl considers every project a different kind of challenge.

The clubhouse design should be based on the priorities of the owners and/or developers of the club. For example, if the number one priority is attracting golfing members, then the men's locker room design would be of paramount importance to the architect. Its layout, size and comfort is a major concern to prospective golf course users.

However, if the clubhouse is used as a sales tool for real estate development, then the lobby has a high priority. Its decor and immediate access to the sales center, as well as its potential as a social center, should be the main focus of the design.

Garl also has a keen mind for incorporating innovative golf course designs with revenue-producing ideas. His concept of "cloverleafing" has been extremely successful at places like Golf Hammock in Sebring and Fairway Oaks, home of the \$400,000 PGA Classic in Abilene, Texas. Cloverleafing creates four or five holes in a loop that starts and ends at the clubhouse. It allows for two tees on each nine holes near the clubhouse, a measure that can generate additional income because it enables more players to start faster. Cloverleafing also brings golfers repeatedly back to the clubhouse where they can buy a drink and use the facilities.

When it comes to the length of holes, Garl believes that less is often more. A finessed iron shot to an undulating green can be as much of a test as a 230-yard shot. He believes that the longest distance on a golf course is the six inches between a player's ears.

More often than not, developers consult with Garl prior to selecting a building architect. Many times it is Garl who recommends a particular architect for a project in which he will be designing the golf course. For developers, a golf course can mean money in the bank because of the real estate value it creates, and in many cases they rely on Garl as a consultant on potential architects to help create the first class golf course community they seek.

Garl's singular ambition is to become the Frank Lloyd Wright of golf course architecture. His exclusive designs are increasingly obvious in a variety of country clubs and residential communities throughout Florida. With his high design and ecological standards, as well as his capabilities of satisfying architects and developers, Garl is well on his way.

Lillian Morse

The author is a freelance writer who specializes in writing about the outdoors and interesting personalities.



Top: Garl's Scottish links-style design at the Palm Beach Polo and Country Club's new golf course combines the strategic characteristics of the historic courses with American terrain. Above: Fiddlesticks Country Club (architects: Reynolds, Smith & Hills, Jacksonville) is one of the most challenging courses designed by Ron Garl. The clubhouse is strategically located to face the waterways and the famous 9th tee.

The rendering at left shows Prestancia in Sarasota (architects: Corbin, Yamafuji and Partners, Ft. Lauderdale) which is currently under construction. Both building and golf course architecture work together in the design of this new TPC course.



BEAUTY IN BLOCK®

Architectural Masonry Units



Post Office Box 5227
Clearwater, Florida 33515

For any architectural block requirements,
Call 1-800-282-5850.

Your inquiry will be promptly answered.
Shipping statewide.

For the fine homes of the world



SR 301

poggenpohl

The ultimate in kitchen and bath cabinetry

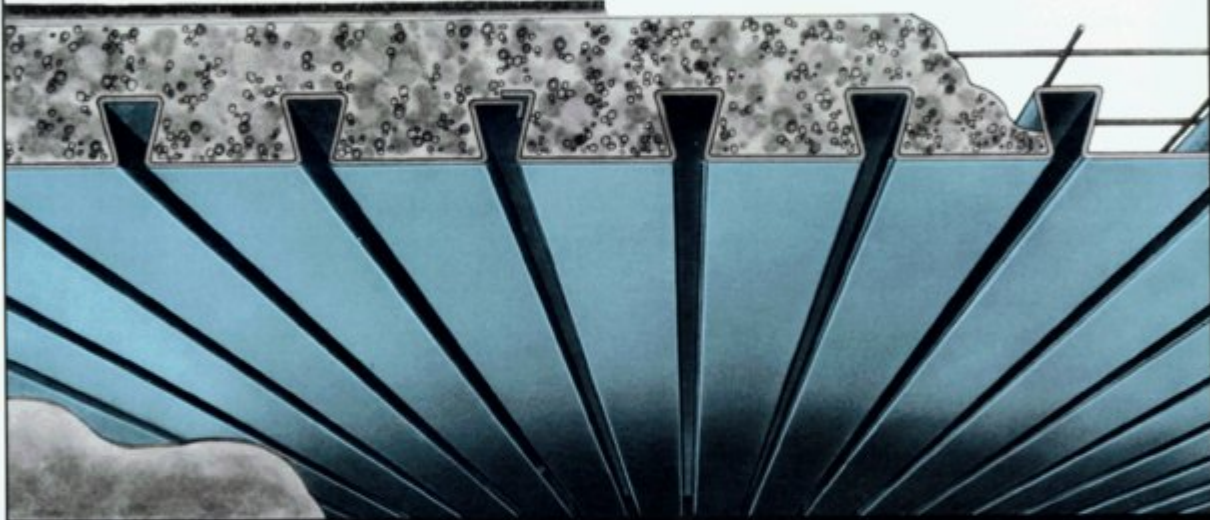
Please contact your nearest dealership for complimentary brochures and information on design services available.

The Ultimate Kitchen, Inc.
914 South Orlando Avenue
Winter Park, Florida 32789
(305) 628-4985

Kitchen Center, Inc.
3968 Curtiss Parkway
Miami Springs, Florida 33166
(305) 871-4147

EPICORE®

CONCEPT 2 COMPOSITE FLOOR SYSTEM



THE MOST ECONOMICAL CONCRETE FLOOR SLAB SYSTEM BECAUSE:

- Manufactured in Lakeland, Florida
- 48-hour Delivery
- Reduced Construction Time
- Fast, Simple Installation by One Sub-Contractor
- All Necessary Building Code Approvals
- Long Uninterrupted Spans
- Unbeatable Fire Ratings
- Excellent Sound Attenuation
- Monolithic Construction

Distributor/Installers Throughout Florida

Commercial Roof Decks	Jacksonville	904-743-5222
Epidec, Inc.	Oldsmar	813-937-0988
Gulf Coast Building Contractors	Pensacola	904-438-5416
Richter Construction, Inc.	Cocoa Beach	305-784-5084
Roberts Industries	Port St. Lucie	305-335-2802
Slabs of South Florida, Inc.	Miami	305-653-3820
Structural Systems	Naples	813-774-2767
Sun Coast Structures, Inc.	Gulfport	813-345-2985

For information on how we can save you money on your next project, call one of our Franchised Installers or our resident salesman, Charles Lands in Lakeland at 813-688-7686.

EPIC®
METALS CORPORATION

Eleven Talbot Avenue, Rankin PA 15104
PHONE: 412/351-3913
TWX: 710-664-4424
EPICMETAL BRDK



We know windows inside & out.
Guaranteed.
3860 North Tamiami Trail,
Naples, FL 33940
(813) 261-3581

Awnings make the difference...

by adding pizzazz and personality to what could have been an ordinary run-of-the-mill shopping center. We work closely with architects and developers — the result is international award-winning canvas awnings that compliment the architect's creations. Our engineered welded aluminum frames and use of quality canvas materials assures the durability as well as the beauty of each awning. Write or call today for a complete packet of information.



Hartco
The Quality
Wood
Flooring

Impregnated Hartco Solid Oak Parquet

Hartco Acrylic Impregnated Solid Oak Parquet costs a little more than carpeting in the beginning. But long after all those footsteps have worn a path and your client has paid to have that carpeting replaced and replaced, Hartco is still beautiful. This means it is less expensive in the long run — perhaps the least expensive floor you can specify.

Tough acrylic and stain are forced inside the wood for a beautiful finish that resists scratches and wear. Color never wears off. Never needs refinishing.

For further information call or write




Jim Westman, V.P.
Walton Wholesale
7110 N.E. 4th Court
Miami, FL 33138
1-800-432-5024

In business for over 29 years.
Refer to Sweets No. 9.22/HAT.



More people have survived cancer than
now live in the City of Los Angeles.
We are winning.

Please support the
 **AMERICAN CANCER SOCIETY®**

This space contributed as a public service.

ARCHITECTURAL
PHOTOGRAPHY



ERIC OXENDORF

represented by
JIM CUNEO
813-848-8931



Randy Atlas
Ph.D. AIA

**Atlas
& Associates**
600 N.E. 36 St.
Suite 711
Miami, Florida 33137
Office (305) 325-0076

Architectural Security
Design Consultant

Criminal Justice,
Facility Design,
Building Security



**THOSE WHO INSIST
ON QUALITY, SPECIFY
PERMACRETE
PRODUCTS**



**Permacrete Stucco • Venser Plester
• Pooltite • Beddingcoat • Rip Rap •
Permabond BBO • Kooldeck • Permacoat**

Some still *think* they can't afford quality—*untrue!* Permacrete costs no more than other cementitious coatings! Architects are offered a creative freedom with the wide range of colors and textures. Builders have the assurance of quality and performance.



THE MEASURE OF QUALITY IN 1986

FOR FURTHER INFORMATION WRITE:
C.L. INDUSTRIES, INC.
P.O. BOX 13704
ORLANDO, FL 32859
800-432-0891

**GREATER
ORLANDO
CHAPTER
CONSTRUCTION SPECIFICATIONS INSTITUTE**

On March 19, 1986, the second annual C. S. I. Products Fair in Central Florida will take place at the Orlando Fairgrounds.

Cosponsored by the Greater Orlando Chapter of the Construction Specifications Institute and the Mid Florida Chapter of the American Institute of Architects, this display of over 200 construction products and related services will provide a unique opportunity for Architects, Developers, and Contractors to have hands-on the materials they specify and to view new products.

Join your friends for an evening of exhibits, stunning list of door prizes, beverages, and free buffet.

Don't miss out, see you on March 19.

WHERE: Central Florida Fairgrounds, 4603 W. Colonial Drive, Orlando, Florida
Highway 50, 4 miles west of I-4

TIME: 4:00 p.m. — 10:00 p.m.

For information contact Jim Hargan, Lambert Corporation, (305) 841-2940.

**AWNINGS
of distinction**

**custom design, fabrication, installation
residential • commercial • industrial**



Twin City Mall, North Palm Beach, Florida

**canvas / vinyl awnings
canopies • cabanas • curtains
cushions • boat canvas • custom welding**

1986-87

**844-4444
AWNINGS BY JAY**

1125 BROADWAY, RIVIERA BEACH, FLORIDA 33404

CLASSIFIED

INTERIOR ARCHITECT

Thoroughly experienced in hotel, commercial office and corporate headquarters design required for leadership position in South Florida-based architectural firm. Marketing and public relations skills essential. Salary commensurate with experience. Send resumes to Barretta & Associates, 400 S. Dixie Highway, Building 2, Boca Raton, FL 33432.

SPECIFICATIONS WRITER

Well established architectural firm in Tampa, has opening for Specifications Writer with minimum 3 years experience. Salary commensurate with experience. Excellent benefits. Send resume to Ray Bernardo at Ranon, Bentler & Partners, Inc.; 515 Bay Street, Tampa, Florida 33606. (813) 253-3465.

DEVELOPMENT MANAGER

National medical building developer seeks self-starting architectural professional who wishes a career in this rapidly growing, specialized real estate field. Experience in health care projects helpful. College education with a proven record of accomplishment necessary. Good verbal and writing skills a requirement. Send resume and salary requirements to Turner Medical Building Services, Inc., 1215 Louisiana Avenue, Winter Park, FL 32789.

Director/Commercial Business Development

National Architectural / Engineering firm seeks experienced architect to lead commercial marketing effort for its 100-plus person office in Orlando. Challenging opportunity to direct project teams and lead the commercial business development effort. Requires architectural registration, a minimum of 8 years experience, and a proven track record in the design and marketing of large scale commercial development projects. If you are a dynamic, results oriented individual who wants to play a key role in the growth and continued success of a nationally recognized firm, we invite you to submit your resume, including project listing, to:

Hansen Lind Meyer
455 S. Orange Avenue
Suite 400
Orlando, FL 32801

An equal opportunity affirmative action employer.

ARCHITECT

Licensed Architect with proven abilities in at least two of the following disciplines: Design, Production and Project Management. Send resume to William Graves Architects, 207 E. Main Street, Pensacola, FL 32501.

Do you have an opening in your firm? Do you have office equipment for sale? A service to sell to architects? Use *Florida Architect* classifieds.

Send material to be typeset to: *Florida Architect*, P.O. Box 10388, Tallahassee, FL 32302, Attn: Carolyn Maryland.

Material must be received 45 days prior to publication dates. Publication dates are the first day of January March, May, July, September, and November.

Classified listings are charged at the rate of \$3.00 per typeset line.

FLORIDA NATURAL GAS ASSOCIATION SALES SECTION TO MEET APRIL 16-18 IN ORLANDO

"Gas Sales, It's Time For a Change" will be the theme of the Florida Natural Gas Association Sales Section Meeting scheduled for April 16-18 at the Harley Hotel in Orlando.

Members of the association, comprised of gas companies throughout the state will gather to discuss topics such as the growth and trend in the natural gas industry and the Florida Energy Code which is now in effect.

Media Services and Production Group, the association's advertising agency, will introduce *Energy Update*, a full color magazine which is being published by the association for Florida builders to inform them of changes and growth of the industry.

People interested in learning more about the Florida Natural Gas Association can contact Mr. Albert L. Weldy at (904) 589-4753.



The Art of Environment.

Learned skills. Human creativity. Nature's beauty. The interplay that produces functional environments that arouse the senses.

Wallis, Baker & Associates, masters since 1961. Their collection includes metropolitan civic centers, international airports, major hotels, office buildings, malls and resorts. Discover the art in your environment.



**WALLIS • BAKER
& ASSOCIATES P.A.**

Landscape Architects
Site Planners
820 South Denning Drive
Winter Park, Florida 32789
(305) 647-5726

Selecting the right lighting is more than just flipping a few switches.

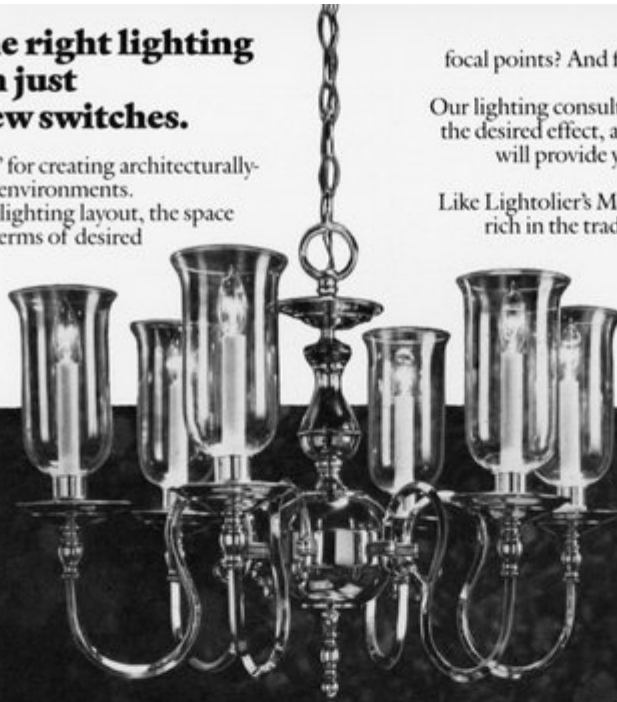
Lighting is the "tool" for creating architecturally-integrated luminous environments.

In planning your lighting layout, the space must be analyzed in terms of desired brightness patterns.

Which objects or areas are to be focal points? And finishes of the floor, walls, and ceiling must be considered. Our lighting consultants will team-up with you to review the desired effect, and then make recommendations that will provide your client with illumination that was designed to fill a specific need.

Like Lightolier's Manor series. Crafted in solid brass and rich in the tradition and flavor of an English manor. We stock Lightolier and most other major brands. You select from the largest inventory in South Florida.

Farrey's Lighting Collection
1850 N.E. 146 St., Miami, FL 33181
947-5451, Broward 524-8675



LIGHTOLIER

FARREY'S

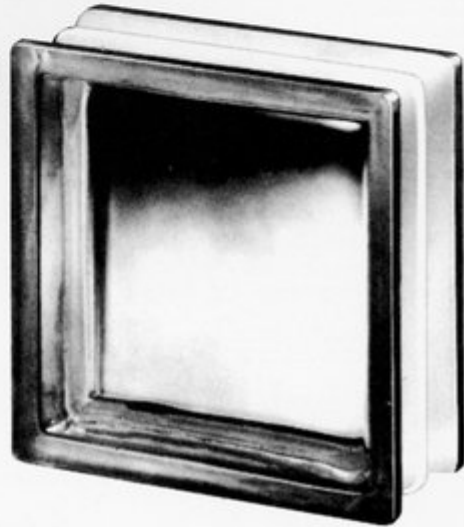
HERE YOU GET A TEAM OF LIGHTING CONSULTANTS



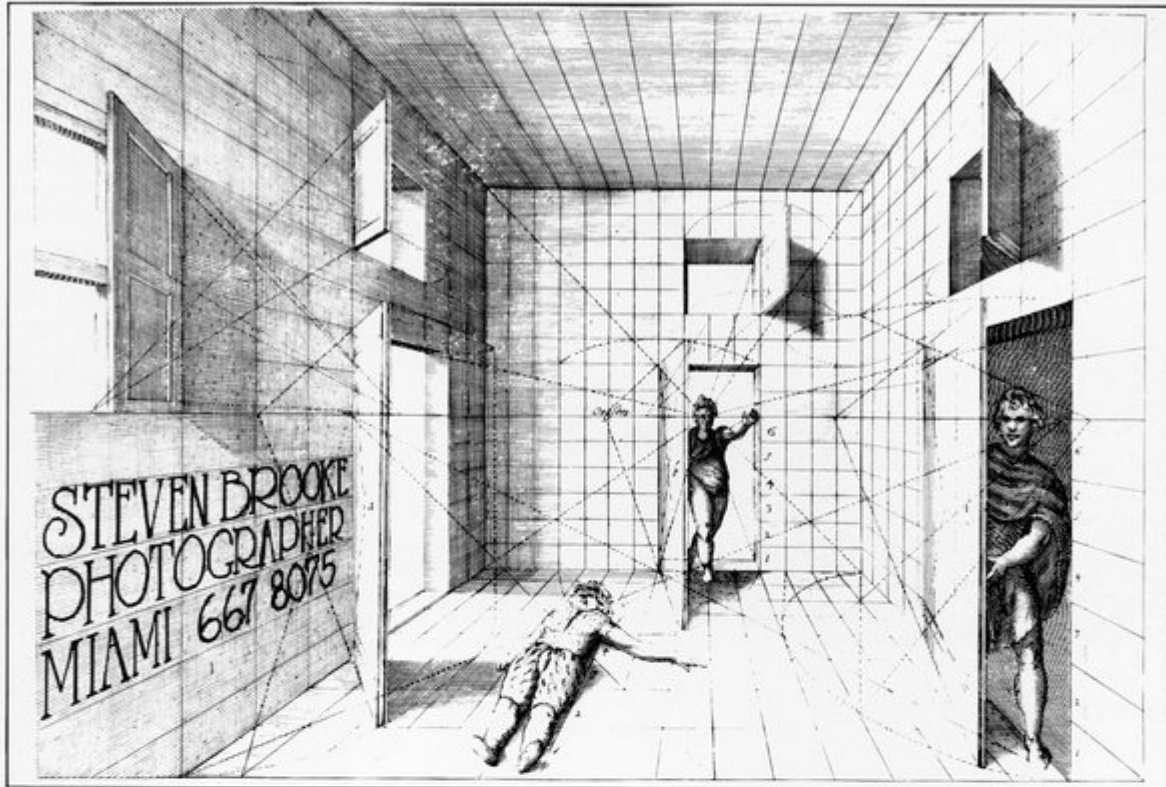
WE LET THE GOOD IN AND KEEP THE BAD OUT

- SAVES ENERGY
- PROTECTS AGAINST NOISE
- ADMITS LIGHT
- DISCOURAGES BURGLARIES

*Complete Line of Glass Block
and Accessories*



P.O. BOX 8325, PEMBROKE PINES, FLORIDA 33024 • (305) 432-3806



**WHEN YOUR ABSTRACT DESIGN BECOMES CONCRETE,
PROTECT ITS DURABILITY AND BEAUTY
WITH SEAL-KRETE®...**

...the superior waterproofing sealer for
stucco, masonry, cement and other porous building materials.

SEAL-KRETE SUPERIOR WATERPROOFING SEALER.

A high binding, acrylic base, penetrating sealer. Formulated for use on Cement, Masonry and Stucco surfaces. May also be used on Wood, Stone, Brick, etc. It waterproofs, protects and highlights the natural beauty in the colors of the material used on. May be used under or over paint, above or below grade, is milky white but **DRIES CLEAR** assuring complete coverage. Fast-drying, non-staining, mildew resistant, water cleanup before drying. Easy to apply. Hand pump garden sprayer recommended for application.



FOR COMPLETE SPECIFICATIONS CONTACT

SEAL-KRETE, INC.
P.O. BOX 1527
AUBURNDALE, FLA. 33823



**AA&C HAS A
SPECIAL MACHINE
TO PAY YOUR CLAIMS**



Mickey Hergenroder, FA/AIA Senior Benefit Analyst

IT'S CALLED A PERSON!

AA&C's claims service features "real people" who care — a lot. Files are kept by family name, not a number, and claims are processed within 48 hours of receipt by AA&C. All of our analysts have been trained in-house because those who had outside experience couldn't give the personalized, caring service that our clients demand. Each analyst tries to find ways to "pay" claims, not to deny them, which is why 99.5% of the FA/AIA claims are paid vs. the normal 90%.

For further information, please contact the FA/AIA Group Insurance Service Organization:



Association Administrators & Consultants, Inc.
19000 MacArthur Boulevard, Suite 500
Irvine, California 92715
1-800-854-0491 Toll Free

VIEWPOINT

Teamwork experience for architecture students

Muhamed M. Aburawi

The idea of using small groups to avoid the impersonality of large undergraduate courses is hardly new. Unfortunately, however, there have been few large-scale attempts to alter the traditionally individualistic experience of college students by encouraging and strongly rewarding participation in cooperative endeavors. Most of that type of experimentation has been carried on in elementary and high school classrooms and the traditional instruction method of lecturing has dominated in college classrooms. The Architectural Structures courses at the University of Florida were no exception.

The most obvious drawbacks to the lecture method of teaching an architecture course are that the approach mainly promotes cognitive learning and emphasizes individual competition. Lectures do not fully prepare the architecture student to grasp the life-size scale of the elements he or she designs. In addition, the student is not prepared to work in a cooperative climate which he or she will probably face in the professional world. Furthermore, the present method lets the student design and analyze architectural structures working in an ideal situation, without taking into account any additional difficulties which may occur in reality such as site restrictions, or problems encountered during the construction process.

Research done in college classrooms document the fact that in experimentally created groups the introduction of cooperative climates tends to improve certain types of performance while lowering students' tension and anxiety. Since one of the goals of group experience is to provide students with the opportunities to share ideas with their fellows, work toward common goals, and receive joint rewards, one of the concerns was with the viability of the groups which would be functioning unsupervised outside the classroom. Pilot results

indicated that there is a relationship between group viability and the nature of the rewards. It was found that groups created on the basis of interpersonal attraction among their members would be more likely to operate effectively under conditions of individual reward than would groups formed on the basis of random assignment of members. Conversely, under conditions that involved working for shared rewards, both types of groups would stay together and function. Furthermore, prior research and pilot studies suggested that most students would tend to have positive attitudes toward group work. Reports indicate that they preferred working in groups to working individually, regardless of whether they had actually participated in groups during the class.

To validate these findings for undergraduate architecture students, an experiment was conducted in the third year architectural structures class, at the University of Florida, in the Spring 1985 semester. The students were assigned a teamwork project: to design and build a life-size scale structure. The objectives of the project were to:

1. provide a teamwork experience;
2. improve learning skills and put theory into application;
3. allow students to take greater responsibility in their learning tasks;
4. promote peer tutoring and cross-age help with the participation of the graduate teaching assistants in the Architecture Department; and
5. create a cooperative environment within groups and competition between groups that would resemble professional design competitions.

The Architectural Structures class (ARC 3551), consisting of two sections, participated in the project. It was directed by two professors, George Scheffer and Ronald Haase, with the assistance of two graduate students, Beth McDougal and the author.

Four groups of 23-30 students each were created from two sections, following the composition of their design studios.

Each group was assigned to design a structure consisting of two crossing large-scale 3-hinged arches. The group was to build the structure and erect it, using any materials and any erection technique which would be appropriate for the design. Each arch, covering an area of 30 x 40 feet and 25 feet high, was assembled into a four-legged configuration crossing at its center connection. Each project was to be tested by adding live loads using platforms hanging from the structure until a point of failure was reached.

Criteria for evaluation of the project were set by the two professors of the course stressing structural innovation/clarity, aesthetic qualities/craftsmanship, and load carrying capacity.

The four group projects were judged by the Architecture Department Chairman. In addition to the grade rewards, there was special recognition for the winning group.

The project schedule required six meetings between each group and the two professors who discussed the project status and gave feedback to the students. The graduate teaching assistants were assigned to visit the four groups in their studios every day to provide help and clarification.

In the first meeting with the groups, the professors introduced the project, described and discussed the main objectives and assigned students to their respective groups.

In the second meeting, a design proposal was due from each group for discussion and approval of staff. After the students in each group received approval of their design, they submitted their final design proposal in the form of a model. They discussed and tested this model with the staff before building the full-scale structure. The second week of the project was dedicated to the building of arches.

During the two weeks, the graduate assistants provided the groups with the help they needed; in addition, they acted as observers and reported the interaction of the group members. Following the completion of the project, a diagnostic survey instrument for team effectiveness was administered. In addition, the participants in the project were asked to write down their overall evaluation and suggestions.

The evaluation of this experimental project was based on the students' responses to the survey (quantitative data), and the observations and comments provided by the professors and the graduate teaching assistants (qualitative data).

The survey instrument was divided into eight scales dealing with the following points:

- 1) Goal Clarity and Conflict;
- 2) Role Ambiguity;
- 3) Role Conflict;
- 4) Participation/Influence;
- 5) Commitment/Understanding;
- 6) Conflict Management;
- 7) Recognition/Involvement;
- 8) Support/Cohesiveness.

Each scale was divided into ratings, i.e. from 1 to 5, with 5 representing the most positive attitude and 1 representing the most negative attitude.

The data from the survey were coded for each student in each group along with his/her average final score achievement for the whole structures course. Using SAS, a computer program was developed to analyze the data using Analysis of Covariance Model.

Testing the hypothesis that the attitude of each group towards the effectiveness of teamwork is the same, it was found that there was a significant difference between groups. Teamwork was more effective in the group which gained first place in the competition as compared to the fourth place group. At the same time, in testing the relationship between the students' achievement and their attitude,

it was found that there is no significant relationship.

From the observations, it was found that the selection of a leader, which was left to group decision, contributed significantly to teamwork success. In addition, it was found that in the architecture students' teamwork projects, the chosen leader was the person who came up with the design. Observations of the first group, the one with the most positive attitudes, revealed that the designer (leader) was chosen the first day. The leader was responsible for dividing up and supervising the group members' work assignments. On the other hand, in the fourth group leadership wasn't established resulting in sub-groups that did not get along too well.

The qualitative results were derived from the students' responses to the question in the survey and from the observations recorded by the graduate teaching assistants. It is important to note that, in response to the questions, all students except one noted that after completing the projects, they had a better understanding of the different issues involved in the design, building and assembly of structures.

In general, dividing the students' reactions into two contrasting attitudes, i.e. into those with positive and those with negative points, reveals the following:

Positive points:

- The project gave them the opportunity to work within groups, allowing them to learn more about teamwork environment. They learned how to adjust to their peers and to work in a cooperative climate toward a common goal.
- They learned about the importance of small details, which are usually not sufficiently covered in lectures, even though they are crucial parts of the structure as a whole.
- They learned more about the actual behavior of structures during the assembly and erection process.
- The project gave them the opportunity to use power tools in the shop and to learn special skills, such as arc welding and brazing, which may be beneficial to them in the future.
- The students grasped the reality of the large-scale structures which they had designed on paper.
- They learned the skills of cost-effective decision making when they had to choose appropriate

material for the structure.

In general, nearly all the respondents agreed that they had the chance to learn a great deal about such aspects of structures as: behavior, assembly, connections and kinds of failure that may occur.

Negative points:

The students' negative comments about the project stressed two basic problems in its design, namely, that there was not enough time to complete the work satisfactorily, and that there were too many students in each group.

The review of the quantitative and qualitative results indicates that the project was a successful learning experience for the architectural structure students in spite of the negative issues that were reported. Strong, effective leadership within groups made the difference in both success of the project and in students' positive attitudes toward their work. The students were faced with a challenging task. They had to make critical decisions concern-

ing issues such as material selection, connection details, assembly techniques, etc. Lectures seldom provide such opportunities.

The project provided good experience for the students in allowing them to witness different modes of failure in structures and to evaluate strength or weakness of their design. They came up with conclusions based on actual rather than theoretical performance. In general, they had the chance to apply the lecture theory to a full-size structure.

It is important to note that the project has generated great interest within the college, along with the desire on the part of other students, to participate in similar projects in the future.

The author is a graduate teaching assistant in the Architecture Department, University of Florida, and currently is working toward a Ph.D. degree in Architecture Education.

A structure consisting of two large-scale arches was erected by students in the University of Florida Architectural Structures course. Photo courtesy of the author.



THIS FLOOR SYSTEM NEEDED GYP-CRETE

RATED:

Flame Spread - 0
Fuel Contributed - 0
Smoke Density - 0

GYP-CRETE Floor Underlayment

- U.L. Fire-Rated Systems
- Sound Control
- Lightweight
- Sets in 90 Minutes
- No Shrinkage Cracks
- Eliminates Creaks and Nail-Pops
- Smooth Base for All Finished Floor Products

Lacking impervious seal, plates subject to flame erosion; chimney effect of walls.

No defense against "burn-through;" spreading fire to lower floors.

GYP-CRETE "key" to sound, fire and thermal control. Gypsum wallboard and GYP-CRETE Underlayment completely seal base of room.

Outside wall plate sealed against cold air with impervious seal.

GYP-CRETE Underlayment isolates plywood subfloor from more flammable floor coverings.

GYP-CRETE
FLOOR UNDERLAYMENT

GYP-CRETE CORPORATION

900 HAMEL ROAD • P. O. BOX 253 • HAMEL, MINNESOTA 55340 • (612) 476-0072
For more information and local approved applicators, call Irwin Enterprises, Inc., Distributor
800-282-9821 Statewide • 443-7636 Pinellas County



**MONIER ROOF TILE...
WHERE QUALITY GOES IN BEFORE TILE GOES OUT.**

At Monier, manufacturing roof tile that looks good isn't enough. Like vintage champagne our products are made with meticulous care and conscious concern for quality. Monier has always set the highest quality performance standards...and met them by combining a tough quality assurance program with production techniques derived

from 50 years of international experience. The result: consistently superior tile roofs, with jobs completed on time and within budget. Monier tile produces roofs of distinction that provide the necessary edge in a competitive market. Experience the superior tile. Don't compromise. Call or write for complete information now.



**MONIER
ROOF TILE**

4425 HIGHWAY 92 EAST LAKELAND, FLORIDA 33801 (800) 282-7894 (TOLL FREE) (813) 665-3316

Miami, Florida
(305) 944-6456

West Palm Beach, Florida
(800) 432-2715 (toll free)
(305) 968-9111

Atlanta, Georgia
(404) 266-4589