



# Not just another pretty face.



Eterna Roof tile will enhance the beauty of your next project. But then so will most other concrete roof tile.

So why Eterna?

For starters, Eterna tile is color-through and unsurpassed in quality by anyone in the industry. They are acrylic sealed and can be artistically antiqued at no extra

cost. Our efficient state-of-the-art manufacturing plants are strategically located allowing us to deliver

our quality tile quickly and at very competitive prices.

Because Eterna is family owned and operated, we offer personal service. If there's ever a problem you can rest assured we'll take care of it. Personally.

When you want more than just a pretty face call Eterna. You'll find our beauty is more than skin deep.



*The roof tile company with the personal touch.*

1201 NW. 18th Street, Pompano Beach, Florida 33060. (305) 979-2717.

Circle 4 on Reader Inquiry Card

# Bomanite® & Bomacron

## THE IMPRESSION OF QUALITY THROUGH QUALITY IMPRESSIONS

Creating a Beautiful drive, patio, or pool area from ordinary concrete is probably the most durable, unique and cost effective way to enhance your residence. Although the process seems simple enough, attention to details and dedication to quality are imperative each step of the way, G & M Terrazzo Company has been installing Bomanite & Bomacron for over seventeen years.

Our experience is unmatched, our equipment; the best. That is why we are confident in saying, when you choose a Bomanite drive, pool area, or patio, or walkway you'll not only have a quality impression, but also a lasting one.

Look for the Bomanite Stamp on each and every installation - Your assurance of a quality, lasting impression.

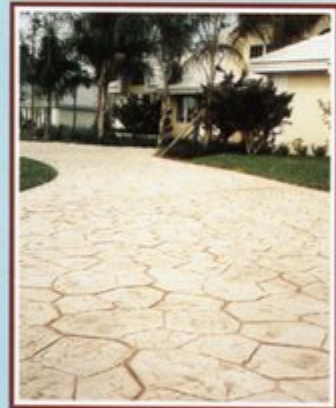
**G & M Terrazzo Co.**  
1760 N.W. 22nd Ct.  
Pompano Beach, FL  
305-979-7770  
1-800-824-8470

**Bomanite Gulf Coast, Inc.**  
12721-8 Metro Parkway  
Ft. Myers, FL 33912  
813-768-0070  
813-598-1801

80-1953-CP U-8177 Palm Bch Cty 000014145 Dade Cty  
5275P Collier City FFLXO-0-447350 Charlotte Cty CW 006963 Lee Cty



12 x 12 Slate



Canyon Stone



Herringbone Slate

Circle 28 on Reader Inquiry Card

# RIVA™

Tungsten-Halogen ambience presented with a European flair. A new collection of lighting expressions captured by the precision craftsmanship of Fredrick Ramond.

32 exciting variations are in stock for your viewing at Farrey's.

RIVA™  
by *F. Ramond*

**FARREY'S**

Lighting and  
decorative hardware

1850 NE 146 Street  
Miami, FL 33181  
947-5451  
Broward 524-8675

Circle 17 on Reader Inquiry Card

# CONTENTS



May/June 1988  
Vol. 35, No. 3

## Features

- A Coastal Cottage in the City** 14  
*Architect William Morris' urban residence has its origin in the vernacular architecture of the Southern Coast.*  
Lesley Roberts
- A Curving Colonnade Connection** 16  
*Morris Architects' Island Center rises from the edge of Tampa Bay and mirrors the configuration of its site.*  
Diane D. Greer
- A Sculpted House Hides from the Street** 20  
*Arquitectonica designed a sculptural residence for a quiet street in Lima, Peru.*  
Esther Perez
- Where Parking is a Pleasure** 22  
*The Mount Sinai Medical Center Parking Pavilion by Marcus Frankel, AIA, uplifts the urban essence of its environment.*  
Al Alschuler
- A Classic Cloaked in Arabian Garb** 26  
*Beilinson Architects' restoration of the Opa-Locka City Hall recalls 1,001 Arabian Nights.*  
Maggie McPherson
- A Song for the Unsung** 32  
*1988 Unbuilt Design Awards*

## Features

- Editorial 5  
News 6  
Legal Notes 11



*Florida Architect*, Official Journal of the Florida Association of the American Institute of Architects, is owned and published by the Association, a Florida Corporation not for profit. ISSN-0015-3907. It is published six times a year at the Executive Office of the Association, 104 East Jefferson St., Tallahassee, Florida 32302. Telephone (904) 222-7500.

Opinions expressed by contributors are not necessarily those of the FA/AIA. Editorial material may be reprinted only with the express permission of *Florida Architect*.

Single copies, \$2.00; Annual subscription, \$12.00. Third class postage.

The cover photo is of Miami's Mount Sinai Medical Center Parking Pavilion by Marcus A. Frankel, AIA. Photo by Robert Wasserman.

And then, there was

# LightAwn™



**LightAwn™** by Awnings International is the finest and most complete backlit awning system available today.

**The System**

**Design** - Our design team is available to create a whole new concept or refine an existing one.

**LightAwn™** designs are presented with full color renderings depicting the design in a medium for all to appreciate.

**Manufacturing** - **LightAwn™** backlit system is constructed out of the finest components, from an



Designers/Manufacturers/Contractors

all-welded galvanized steel frame, which has been electrostatically primed and painted, thru the finest fabrics, such as Dupont Tedlar®\* laminated vinyl, which carries an 8-year warranty and requires little or no maintenance.

**Contracting** - The **LightAwn™** network of consultants will arrange for installation of our product in your city.

Call today for more information or to have a consultant visit and illuminate you about our **LightAwn™** backlit awning system.

FL Toll Free

**1-800-330-6103**

(305) 633-6600

\*Tedlar is a reg. trademark of the Dupont Co.

Circle 3 on Reader Inquiry Card

Florida Association of the  
American Institute of Architects  
104 East Jefferson Street  
Post Office Box 10388  
Tallahassee, Florida 32302

**Publisher/Executive Vice President**  
George A. Allen, CAE

**Editor**  
Diane D. Greer

**Assistant Publisher**  
**Director of Advertising**  
Carolyn Maryland

**Design and Production**  
Peter Mitchell Associates, Inc.

**Printing**  
Boyd Brothers Printers

**Editorial Board**  
Ivan Johnson, AIA, Chairman  
John Titty, AIA  
Larry Wilder, AIA  
John Howey, AIA

**President**  
John Ehrig, AIA  
4625 East Bay Drive, Suite 21  
Clearwater, Florida 34624

**Vice President/President-elect**  
H. Dean Rowe, FAIA  
100 Madison Street  
Tampa, Florida 33602

**Secretary/Treasurer**  
Larry Schneider, AIA  
25 Seabreeze  
Delray Beach, Florida 33483

**Past President**  
John Barley, AIA  
3345 Ortega Boulevard, Suite 9  
Jacksonville, Florida 32210

**Regional Directors**  
Mark Jaroszewicz, FAIA  
331 Architecture Building  
University of Florida  
Gainesville, Florida 32611

James Greene, FAIA  
254 Plaza Drive  
P.O. Box 1147  
Oviedo, Florida 32765

**Vice President for  
Professional Society**  
R. Jerome Filer, AIA  
250 Catalonia Avenue, Suite 805  
Coral Gables, Florida 33134

**Vice President for  
Governmental Relations**  
Bruce Balk, AIA  
290 Coconut Avenue  
Sarasota, Florida 33577

**Vice President for  
Professional Development**  
Rudolph Arsenicos, AIA  
2560 RCA Boulevard, Suite 106  
Palm Beach Gardens, Florida 33410

**Vice President for  
Public Relations/Communications**  
Raymond Scott, AIA  
601 S. Lake Destiny Road, Suite 400  
Maitland, Florida 32571

**General Counsel**  
J. Michael Huey, Esquire  
Suite 510, First Florida Bank  
Post Office Box 1794  
Tallahassee, Florida 32302

It sometimes seems that Florida has more than its share of architectural folly. Contributing to that feeling, of course, is the recent surge in mid-state tourist attractions which range from small Eiffel Towers to even smaller pagodas. There is no doubt that the theme park developers have given Floridians more than their fair share of pseudos, neos and hybrids ... architecturally speaking.

There are, however, a handful of genuinely interesting architectural "oddities" that have survived the ravages of development. In most cases, they were built as one man's folly. I cite as examples Plant's Tampa Bay Hotel, Deering's Viscaya and Merrick's coral house in Miami's Gables. In each case, they epitomize some sort of dream, usually of a distant land sizzling in the glare of the Eastern sun. There was clearly no desire on the part of early land magnates and developers to reproduce Blenheim Palace or Mount Vernon. No, these men's hearts were in sunnier climes ... in desert kingdoms where bulbous domes and tall minarets dotted the landscape and everywhere the setting sun was framed in a horseshoe arch or threaded through a crenellated parapet.

Nowhere in Florida are "the dreams of the past" more obvious than in Opa-locka, a "classic garden city cloaked in Arabian garb." Inspired by the writings of Ebenezer Howard, developer Glenn Curtiss envisioned a self-sustaining community that would thrive on local industry, most notably Curtiss Aviation. Designed by architect Bernhardt Muller, Curtiss' legacy to the state survives with most of its original buildings intact. Most notable among them is the City Hall where stuccoed crescent moons and stars abound, testimony to one man's obsession with balmy times.

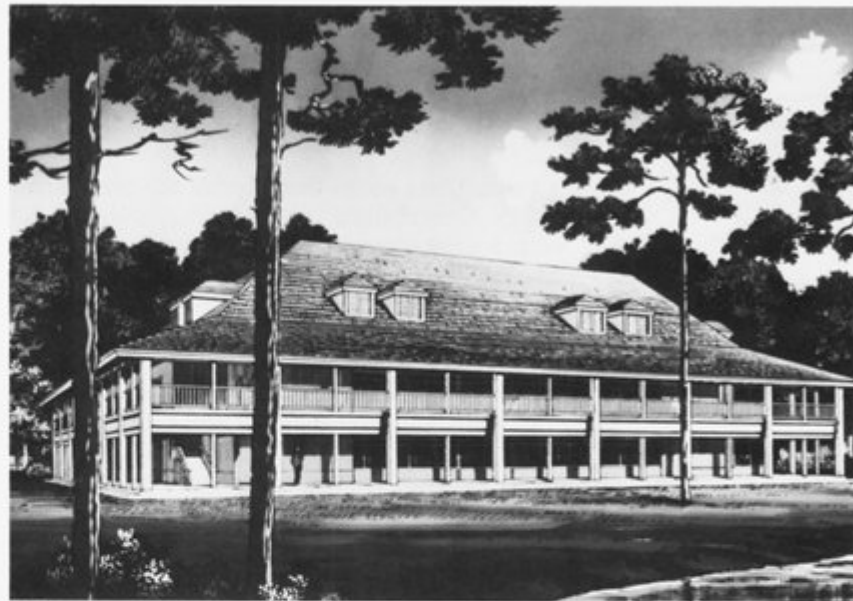
I suppose we've come 'round, as they say ... or full circle, in the sense of our architectural heritage. Horseshoe arches have gone the way of flying buttresses, only to be replaced with symmetry, order and dare I say it, classicism. But, on the same note, most of the dreams of wealth and new found land for development are gone, too. The dreamers are no more. We're more ordered now, more symmetrical, more realistic.

Except, of course, for Donald Trump. Doesn't he live in Mar-A-Lago? Maybe the dream lives on. DG

## New Commissions

**T**he Smith Korach Hayet Haynie Partnership is completing the design for the renovation of the Sanson Science Building on the Boca Raton Campus of Florida Atlantic University. The facility provides the Departments of Chemistry, Physics and Psychology with new teaching facilities and laboratories. **Smith Korach** has also designed a new Municipal and Community Services Complex for the City of Margate. The complex, which contains a combined City Hall and Public Safety Building, a two-bay fire station and a Senior Citizens and Community Building, was completed in March, 1988. • **Brown-Cleary-Smith & Associates** has provided the architecture and landscape design for the pool and cabanas at the 24-story Grosvenor Resort at Lake Buena Vista. The work is part of an \$8 million renovation currently in progress. • **The Russell Partnership Inc.** has been retained by the State of Florida Board of Regents to design a 55,000 s.f. expansion to the University House at the Tamiami Campus of Florida International University. The expansion will house new dining facilities, student health complex, book store, shops and related offices. Project completion is expected in the Fall of 1990.

**Dow Howell Gilmore Associates, Inc.** has just completed construction documents for the Haverhill Place Apartment Complex. This \$4 million project includes 66 rental units, a laundry and maintenance facility and recreation areas. Dow is also designing the Robinson Village Neighborhood Center, a mixed-use facility which will accommodate two adjacent housing complexes. • **Arquitectonica International Corporation** has been retained to design the new 18-story Convention Center Hotel in San Jose, California. The 400-room hotel will be directly linked to the new Convention Center currently under construction. • **Oli-**



*The St. Andrews School Library Building designed by Kenneth Hirsch Associates Architects, Inc.*



*Bolero Corporation Headquarters by Gregory K. Wall AIA, Inc.*

**ver-Glidden & Partners, Architects and Planners**, has been selected for the Master Planning of a 20-acre mixed-use project on the Boca Raton Airport property and the design of the first phase of the Boca Raton Airport Center. The overall project consists of twin four-story signature office buildings, a 135-room hotel and two theme restaurants.

**Merv Weinstein Architect and Planner** has designed the Ocean Tower at the Hamptons in North Miami Beach, a 259-unit condominium and townhouse project for Ocean Tower Development of Dade County. • **Florida Residential Communities** has begun construction of Foxhaven at

Hunter's Creek, a community of 137 single-family residences in South Orlando. The homes were designed by **Ben Butera, AIA**. • The Landfall Group has completed its second luxury estate at Palm Beach Polo and Country Club. The \$375,000 home encompasses over 5,000 square feet and was designed by **Schwab & Twitty Architects**. • The Interior Architecture department of **Fugleberg Koch Architects** is donating design and space planning services to renovate the facilities of We Care, Inc., Central Florida's only 24-hour suicide prevention/crisis intervention service. • A groundbreaking ceremony was held in late January

for the new 28,000 s.f. Learning Resource Center at South Florida Community Center designed by **VOA Associates, Inc.** A 40,000-volume library will be housed in the building.

**Barretta & Associates** recently completed space planning for the new offices of the international engineering firm of CH2M Hill Engineering. The company has 44 offices worldwide and the one in Deerfield Beach will be 21,000 s.f. and house 107 engineers and planners. • **The Azalea Library** has recently been completed. It was designed by **Harvard, Jolly, Marcet & Associates**. The new library was designed to be jointly operated by the Pinellas County School Board and the City of St. Petersburg. • **The Smith Korach Hayet Haynie Partnership** is designing new facilities for the U.S. Naval & Marine Corps Reserve Training Center in West Palm Beach. • **Currie Schneider Associates, AIA, PA**, has been selected to provide architectural design services and project coordination for the interior design of the City of Boca Raton's Community Center. •



Construction is nearly complete on Shoppes at Maitland, a 20,000 s.f. retail project designed by **Miller Associates**. Miller has also completed design work on a 24,000 s.f. office/industrial building in Orlando and construction has begun on the 140,000 s.f. Walmart Plaza in Orange Park which the firm designed. • Pahokee Junior/Senior High School, designed by **Oliver-Glidden & Partners**, is complete and will provide numerous services not previously available to area residents such as a multi-purpose gym with seating capacity of 1200 and an auditorium/theatre.

**Wolfberg/Alvarez & Associates** has been selected to provide complete architectural and engineering services for the planning and design of the 90,000 s.f. David and Mary Alper Jewish Community Center of South Dade. The Center is being designed in campus-style and will feature a wide range of specialty uses. **Wolfberg** has also been selected to provide A & E services for the \$3.5 million Jacksonville Community Mental Health Center. • **Slatery & Root Architects** has recently been selected to design the newest building for Whispering Lakes Commerce Center in Pompano Beach. • More than 32,000 s.f. of space will be added to the existing facilities at Saint Andrew's School in Boca Raton in two new buildings designed by **Kenneth Hirsch Associates Architects, Inc.** • **Arquitectonica** has been awarded the contract for River Club, a 69-unit

condominium on the Hudson River in North Bergen, New Jersey. The 18-story building will contain units ranging from \$500,000 to over a million dollars. • **Urban Design Studio** has been named to the team developing the 700-acre Turtle Creek project in Brevard County. • **Harper Carreno Inc.** is completing final construction documents for the U.S. Navy Brig at the Pensacola Naval Air Station. The \$3 million project is a prototype design utilized previously at the Naval Station in Memphis, Tennessee. • The Dade County Aviation Department has selected **Sasaki Associates, Inc.** to provide design services for landscape improvements at Miami International, Opa-locka, Tamiami and Homestead Airports. • Architectural details for The Polo Lounge in the new Palm Beach International Airport have been designed by **Peacock & Lewis Architects** in conjunction with the Office of Philip George Associates of New York. • Construction is underway on the new Fred Astaire Dance Studio in Sarasota designed by **Gregory K. Wall AIA, Inc.** The 17,000 s.f. building will house the headquarters of the Bolero Corporation as well as the dance studio, three ballrooms, retail space and a private hair salon.

**Sasaki Associates, Inc.** in joint venture with **Borrelli, Frankel & Blitzstein** has begun working drawings for the \$14.5 million renovation of The Jackie Gleason Theatre of the Performing Arts

in Miami Beach. The 2,699-seat building will be transformed from a limited to a multi-purpose center which will accommodate plays, symphony and ballet.

## Awards and Honors

The National Association of Home Builders, *Better Homes and Gardens* and *Professional Builder* magazines recognized **The Architects Studio, Inc.** with a Best in American Living Award for the design of the Flagship Spec House in Naples. The award was presented for the Best Single Family Detached Home from 1,800 s.f. to 2,400 s.f. Project architect was **Robert D. Hall**.

**Donald F. Evans**, president of **The Evans Group**, spoke at the 20th Annual Multi-Housing World Convention which met in Washington, D.C. in March. Evans addressed "State-of-the-Art Midrise Design" in a seminar which also featured input from New York architect **Stuart Kessler**.

The Banbury model at Devon Green, a zero-lot-line community in Heathrow, Florida, was selected as one of eight projects in the country, and the only one in the east, to receive an American Living Grand Award for outstanding design and planning. The award was presented

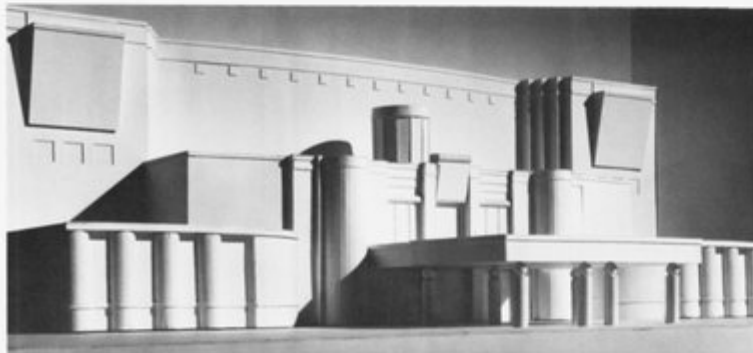
to **Charlan, Brock & Associates** at the National Association of Home Builders Convention in Dallas last January.

The City of Hialeah Police Administration Building, designed by **Wolfberg/Alvarez & Associates** has been selected by the American Institute of Architects and the American Correctional Association to appear in the "AIA/ACA Architecture for Justice Exhibition," a traveling national exhibit of outstanding correction facility designs. Grove Harbor, also by **Wolfberg/Alvarez** was the recipient of the Grand Aurora Award as the Best Commercial or Industrial project by the Southeast Builders Conference.

**Gerry Curts, AIA**, and **Robert Hall** were invited by the National Association of Home Builders to participate in the annual convention and exposition. Curts and Hall, who are with **The Architects Studio, Inc.** in Tampa, participated in a workshop on land planning.

The architecture and design firm of **VOA Associates, Inc.** has won the AISC's 1987 Architectural Award for Excellence for its work at Clarke College in Dubuque, Iowa. The new 121,000 s.f. building replaces a group of four historic buildings that were destroyed by fire in 1984 and its style echoes the Victorian spirit of its predecessors.

**Flad & Associates of Florida, Inc.** has been ranked as the seventh largest architectural renovation firm in the country by *Commercial Renovation* magazine.



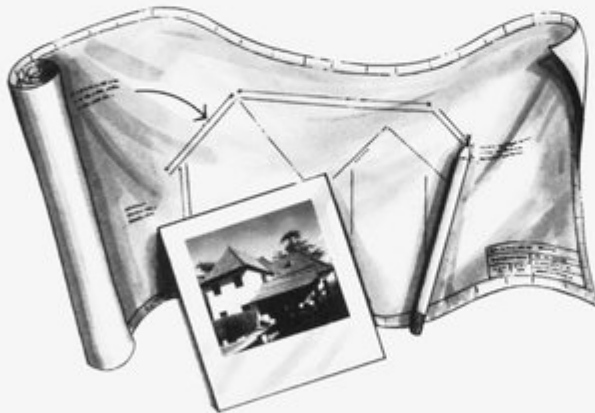
*The Jackie Gleason Theatre of the Performing Arts is a renovation designed by Sasaki Associates, Inc.*

**GET  
THE CARD.  
GET  
THE POWER.**

**Register to Vote!**



# A CAL-SHAKE ROOF WON'T COME BACK TO HAUNT YOU.



You can count on roofs made by Cal-Shake. We know you want to keep a project from coming back across your desk, so we produce Cal-Shake to meet your highest quality expectations.

Cal-Shake is made to withstand the most severe Florida weather conditions.

Fireproof Cal-Shake is Class "A" fire rated and lightweight, making it ideal for your remodeling project. Cal-Shake is guaranteed to brighten your spirits.

Specify Cal-Shake on all of your projects, and may you forever rest in peace.



(305) 287-7040

(Florida Representative)

(800) 826-0072

P.O. Box 2048, Irwindale, CA 91706

Circle 13 on Reader Inquiry Card

For more information about Kohler Plumbing Products see these Kohler distributors:

### Lawrence Plumbing Supply Company

31 S.W. 57th Avenue  
Miami, Florida 33144  
(305) 266-1571

405 N. Flagler Avenue  
Homestead, Florida 33030  
(305) 248-7020

8940 S.W. 129th Terrace  
Miami, Florida 33176  
(305) 251-7022

5700 W. Flagler St.  
Miami, Florida 33144  
(305) 266-3338

### Wool Plumbing Supply

*Distributors of Plumbing and Decorative Hardware*

#### Showroom:

5910 Shirley St.  
(off Pine Ridge Rd.)  
Naples, Florida 33942  
(813) 597-8155

#### Showroom:

1321 NE 12th Avenue  
Ft. Lauderdale, Florida 33304  
(305) 763-3632

#### Showroom:

4340 SW 74th Avenue  
Miami, Florida 33155  
(305) 266-7111

#### Showroom:

6778 N. Military Trail  
West Palm Beach, FL 33407  
(305) 863-7788

Circle 6 on Reader Inquiry Card



THE BOLD LOOK  
OF **KOHLER**.

Finally, a faucet that turns heads. The new Finesse™ faucet with fashionable blade handles and our unique Multi-Swivel™ spout that directs water wherever you desire. In beautiful finishes for kitchens and bathrooms. For more details see the whole line of Kohler possibilities at your nearest Kohler distributor or write Kohler Co., Dept. 100, Kohler, Wisconsin 53044.

© 2013 Copyright 1981 Kohler Co.

# Multiply the Possibilities



**V**ELUX® prefabricated gang flashings let you group VELUX roof windows and skylights in almost any combination quickly and easily. The precision engineering of VELUX gang flashings allows weather tight installation without the need for caulk or mastic. This means no weather delays, no mess, and less chance of callbacks. In

addition, VELUX gang flashings are readily available nationwide in a wide range of standard sizes to meet your building requirements and your deadline.

**VELUX**

The world leader  
in roof windows and skylights.

## Sales, Warehousing and Service Nationwide

©1991 VELLUX AMERICA INC. #VELUX is a registered trademark.

For more information about VELUX Gang Flashings, send for a free copy of our VELUX Gang Flashing brochure, plus "The Complete Guide to Roof Windows and Skylights", and a price list. Your inquiry will be answered within 24 hours.

VELUX-AMERICA INC. 1-800-282-3342 (in GA)  
1865 Corporate Dr., Suite 200 1-800-241-5611 (outside GA)  
Norcross, GA, 30093

6FAS88 **FREE 28 page full color brochure**

Name \_\_\_\_\_

Firm \_\_\_\_\_

Address \_\_\_\_\_

City/State/Zip \_\_\_\_\_



Circle 2 on Reader Inquiry Card

# LEGALNOTES

## Mediation — the art of voluntary settlement

by J. Michael Huey

Although mediators have long been utilized in the context of labor and employment relationships, parties to commercial disputes have traditionally relied upon litigation or arbitration for resolution of their conflicts. Now, because of growing disenchantment with these two forums, more and more professionals are examining the alternatives and recognizing that mediation is a cost-effective dispute resolution process which can be undertaken without waiver of the parties' right to pursue litigation or arbitration.

To the general public, these three dispute resolution processes may seem indistinguishable. However, litigation and arbitration are rule-based processes predicated upon an adjudication of the legal and factual merits of the parties' claims and defenses. By contrast, mediation does not involve an adjudication. Webster defines mediation as "intervention between conflicting parties to promote reconciliation, settlement or compromise." As generally applied, mediation is a process where a neutral third party acts to encourage and facilitate the resolution of a dispute. It is a confidential, informal and nonadversarial process with the objective of helping the disputing parties reach a mutually acceptable agreement. Mediation is not an alternative to litigation or arbitration, but is an optional settlement process that, if unsuccessful, does not preclude an adjudicatory process.

Unfortunately, lawyers, insurers, professionals and commercial entities have had to "experience" the joy of litigation and arbitration to the point of exhaustion in order to seriously consider mediation. This is not unusual when you consider that most persons prefer a "black or white," "right or wrong" dispute resolution process. However, as the standards of care for negligence and breach of contract and the permissible defense to claims have changed through the years,

we find fewer and fewer "black or white," "right or wrong" cases. Thus, processing disputes within the traditional rule-based modes has proved extremely costly and inefficient. This point is poignantly demonstrated by the

fact that over 90 percent of commercial disputes which are initiated as litigation or arbitration claims are settled before final adjudication on the merits.

Mediation, if pursued by counsel and clients with the same dil-

igence as litigation and arbitration, will, in my opinion, prove to be a much more satisfactory process for many of today's commercial disputes. That is not to suggest that the mere change of dispute processes will solve all

## Two Important Reasons

why you should use an ACCREDITED lab....

... Quality Testing will assure Quality Products

and

.....ASTM C-1077 Compliance

These commercial laboratories have been inspected and accredited for 1988 by the Concrete Materials Engineering Council, Incorporated.

### ALTAMONTE SPRINGS

S & M E, Inc.

### BARTOW

Ardaman & Assoc.

### BOCA RATON

Gillotti, Walsh & Assoc

### CLEARWATER

Driggers Engineering Services Inc.

Professional Services Ind., Inc. div  
Pittsburgh Testing Laboratory  
Williams & Associates, Inc.

### COCOA

Ardaman & Assoc., Inc.

### DEERFIELD BEACH

S & M E, Inc.

### FT. LAUDERDALE

Bromwell & Carrier, Inc.  
Keith & Schnars, P.A.

### FT. MYERS

Ardaman & Assoc., Inc.  
Wingerter Laboratories, Inc.

### GAINESVILLE

Universal Engineering Testing

### JACKSONVILLE

Atlanta Testing & Engineering, Inc.  
ATEC Associates, Inc.  
Ellis & Associates

Professional Services Ind., Inc. div  
Pittsburgh Testing Laboratory

### LAKELAND

Bromwell & Carrier Inc.

### LARGO

Central Florida Testing Laboratories Inc.

### MERRITT ISLAND

Universal Engineering Testing Co., Inc.

### MIAMI

ATEC Associates Inc.  
KBC Inspection & Testing Inc.  
Wingerter Laboratories Inc.

### OCALA

Jammal & Associates Inc

### OLDSMAR

Cline/NTH,Ltd.

### ORLANDO

American Testing Labs., Inc.  
Ardaman & Assoc., Inc.  
Universal Engineering Testing Co., Inc.

### ORMOND BEACH

Jammal & Associates, Inc.

### RIVIERA BEACH

Ardaman & Assoc., Inc.  
Universal Engineering Testing Co., Inc.

### ST PETERSBURG

A & E Testing Inc.

### SARASOTA

Ardaman & Assoc., Inc.  
Quality Assurance Testing Inc.

### TALLAHASSEE

Ardaman & Assoc. Inc.

### TAMPA

Atlanta Testing & Engineering Inc.  
Jammal & Associates, Inc.  
Law Engineering Inc.  
Professional Services Ind., Inc. div  
Pittsburgh Testing Laboratory  
S & M E Inc.  
Test Lab, Inc.

### WEST PALM BEACH

ATEC Associates Inc.  
Jammal & Associates, Inc.

### WINTER PARK

Jammal & Associates, Inc.



Concrete Materials Engineering Council

649 Vassar Street, Orlando, Fl 32804

(305) 423-8279 (800) 342-0080

Circle 16 on Reader Inquiry Card

problems arising in the construction industry or the commercial sector. In order to succeed, parties and their counsel must approach **mediation** with the idea that pragmatic dispute settlement makes more sense than proving that one party is right and the other party is wrong. Furthermore, third party mediators will have to be skilled negotiators — not necessarily technical experts or judges — who have training in dispute mediation.

The Florida Legislature has recognized the validity of voluntary dispute resolution processes in civil disputes. Last year, the Legislature authorized Florida courts to refer all or any portion of a contested civil action to **mediation** or court-annexed nonbinding arbitration. Following suit, the State University System is presently rewriting its General Conditions of the Contract for Construction to include a nonbinding **mediation** clause similar in scope to

those presently being suggested by the American Institute of Architects.

Insurers are also joining the ranks of those interested in voluntary dispute resolution. It is reported that, beginning February 1, DPIC is offering its A/E professional liability policyholders a financial incentive to mediate claims against them. Any DPIC policyholder whose claim is successfully concluded by **mediation** will receive a 50 percent reduction of the out-of-

pocket deductible expenses for that claim, up to \$12,500, except for exceptional cases. DPIC has indicated that 74 percent of its insureds' claims which have been submitted to **mediation** have been successfully resolved. Similarly, the American Institute of Architects, in the "AIA Memo," March, 1988, recommended two alternative **mediation** clauses which can be added to AIA contract B-H1 as Article 12.1 **Mediation**. These alternatives are set out below:

**Alternative #1:**

In addition and prior to arbitration, the parties shall endeavor to settle disputes by mediation through (insert name of mediation service) using its rules currently in effect. Mediation shall commence, unless otherwise agreed, within the same time limits stipulated in Subparagraphs 4.5.1 and 4.5.4 and clause 4.5.4.1 for filing of a notice of a claim and arbitration. Such time limits shall then be extended for arbitration by 10 days and the duration of the mediation process.

**Alternative #2**

If a dispute arises out of or relates to this contract, or the breach thereof, and if the said dispute cannot be settled through direct discussions, the parties agree to first endeavor to settle the dispute in an amicable manner by mediation through (insert name of mediation service) before having recourse to arbitration or a judicial forum.

**Mediation** seems to offer the construction industry and all elements of the commercial sector some optimism in the field of dispute settlement. Having litigated and arbitrated for the past sixteen years, I encourage you to attempt **mediation** either prior to the initiation of litigation or arbitration or prior to adjudication if you are presently involved in litigation or arbitration. It's time we all got smart and at least attempted to use a dispute resolution process which can save time, money and, most importantly, the business relationship of the parties involved.

*The author is a principal in the Tallahassee law firm of Huey, Guilday, Kuersteiner & Tucker.*

# DECKades

## OF DURABILITY



**At Last There is a Superior Alternative to Pool Decks, Sidewalks, Patios & Driveways.**

**Years of life in a surface more and more builders are signing their name to.**

- TEXTURE
- COLOR
- DESIGN
- BRICK EFFECT
- TILE EFFECT
- An acrylic cement product applied in layers
- More stain resistant
- Harder than concrete
- Highly mildew resistant
- Non fade
- **GUARANTEED**

Approved by  
the International  
Conference of  
Building Officials

**305-345-9245**

Super Crete, Inc.  
Manufacturers and Distributors of  
Sundek Products  
5876 Precision Dr., Orlando, FL 32809



Installations available statewide.

Circle 8 on Reader Inquiry Card

# ONCE AGAIN, DRAMATIC OUTDOOR LIGHTING IS IN THE SPOTLIGHT.

## Announcing The Second Annual Night Beautiful Contest.

Beautifully lit buildings attract more attention. Especially when Florida Power & Light and the Illuminating Engineering Society stage their annual salute. Any building with exceptional lighting design in the FPL service area can be entered.

For information and entry forms that could put your building in the spotlight, call Dolores Puls, (305) 227-4323. Deadline: April 1, 1988. Sponsored by IES in cooperation with FPL.



Circle 1 on Reader Inquiry Card

## A coastal cottage in the city

### The Morris Residence Jacksonville, Florida

**Architect:** KBJ Architects, Inc.  
**Principal Designer:** William Morris, AIA  
**Engineer:** Van Wagenen & Beavers, Inc.  
**Landscape Architect:** Hilton T. Meadows, ASLA  
**Contractor:** Tharin Kimball

In the design of his own home, Jacksonville architect William Morris chose to reference the vernacular architecture of the Southern coastal region. The gabled porch, double galleries and the materials used in this three-story residence recall an historic response to climate, prevailing breezes and the sun.

The modest 2,400 square foot house is sited on a small corner lot in an old established neighborhood of large residences. The main entrance faces the major street in the area, with the motor entrance relegated to the rear of the narrow lot. It is interesting to note that nine of the houses on this boulevard have used shades of pink and peach, similar to the color of the Morris house, as an exterior color.

Designed for a family of five, the Morris house was arranged in a typical "raised cottage" configuration. Entry is made directly into the second level, which is zoned as a public space. It is here that the principal living functions are located. The separation of the large master suite from the children's rooms, both zoned as private spaces, is a vertical interpretation of the standard "H" plan.

Throughout the house, an interrelationship between the indoors and outdoors was achieved by the creation of a series of fluid spaces. Every major interior space has access to a balcony.

*Center, main entrance with gabled pavilion faces the boulevard. Top left, at night the house becomes transparent. Top right, living area shows access to balcony, and right, the balcony of the master suite overlooks the south courtyard. Photos by Steven Brooke.*







The lower level is the province of three young children. Security and privacy from the street has been maintained by the use of walled courtyards as play areas. The use of current technology in the form of an intercom/monitoring and security system enhances the historic vertical configuration of this three-child residence.

The slender footprint of this house allowed all twelve of the existing pines to be incorporated into the design. Four of five existing sago palms were also saved by relocating them.

*Lesley Roberts*

*The author is a writer living in Jacksonville.*

## A Curving Colonnade Connection

### Island Center Tampa, Florida

**Design Architect:** Morris Architects

**Production Architect:** Chapman Coyle Chapman & Associates

**Consulting Engineers:**

**Structural** – Walter P. Moore and Associates, Inc.

**MEP** – Brady & Anglin

**Consulting Engineers,**

**Civil** – Post, Buckley, Schuh & Jernigan, Inc.

**Geotechnical** – Soil and Material Engineers, Inc.

**Landscape Architect:**

The SWA Group

**Interior Design:** Interspace Inc.

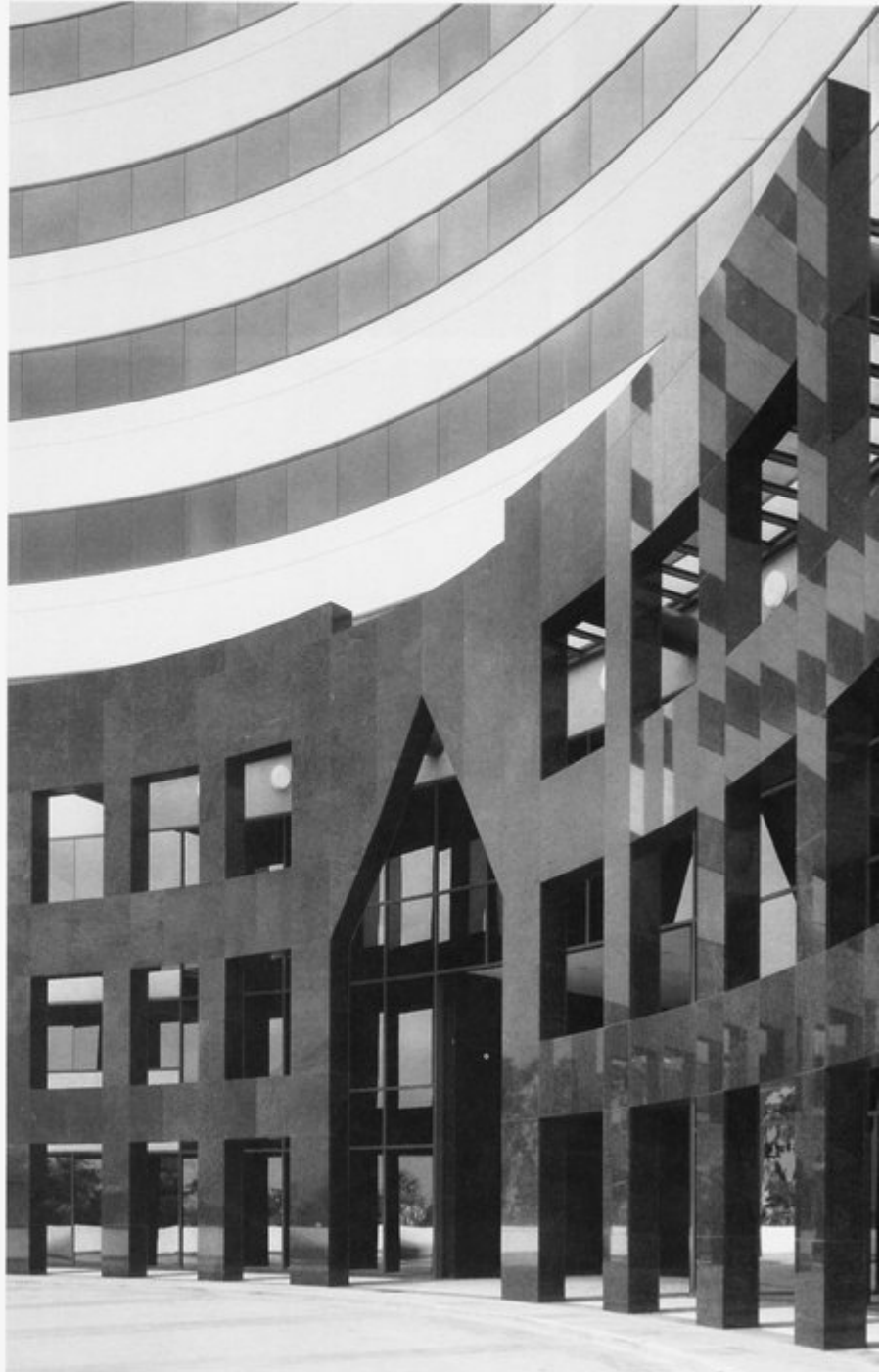
**General Contractor:** Holder Construction Co.

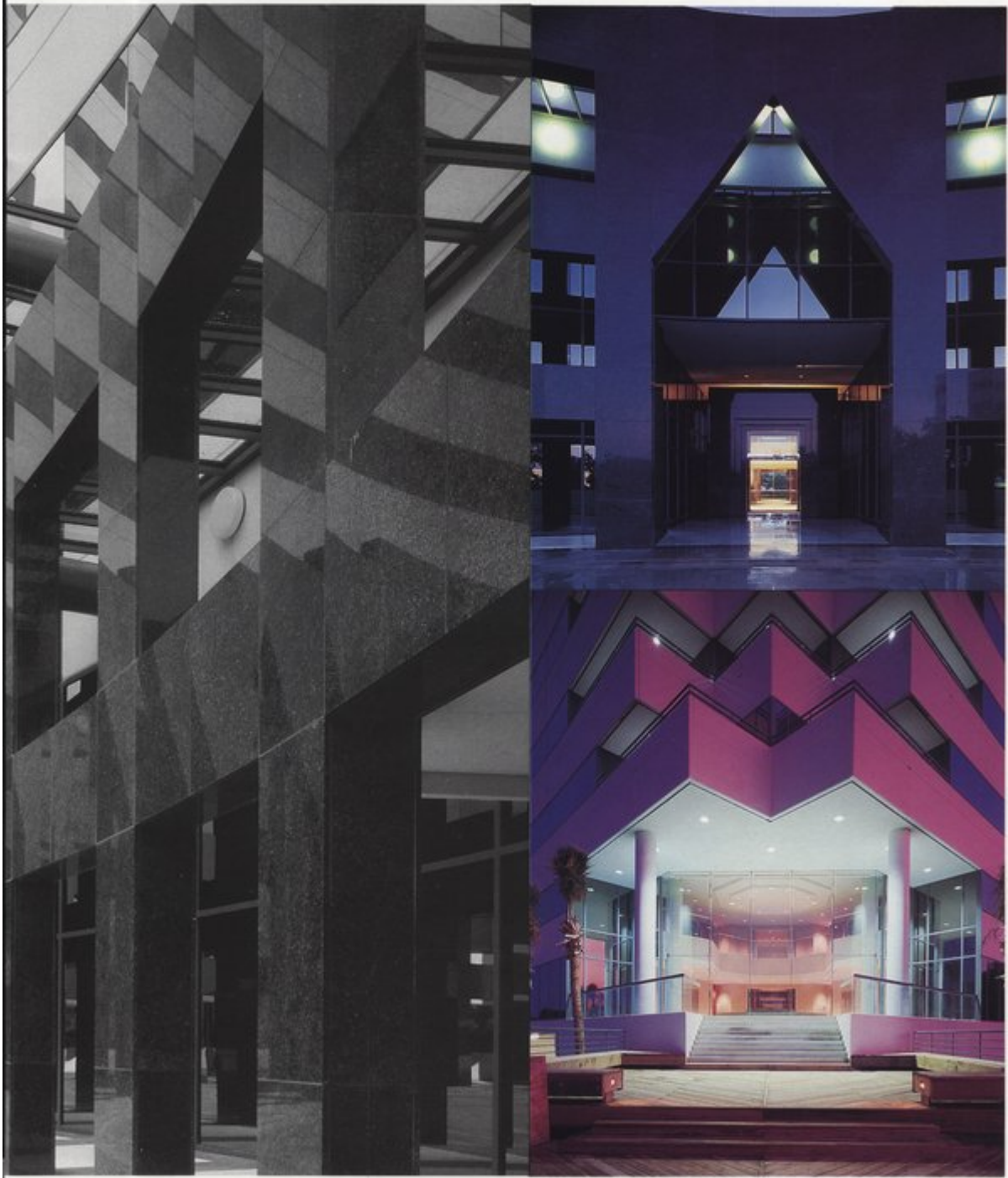
**Owner:** Island Center

Associates, Ltd., a joint venture of Albritton Development Company and Noro Realty Advisors, Inc.

With an entrance portal approximating a triumphal arch, the 12-story Island Center rises from the edge of Tampa Bay as an interesting example of "hybrid classicism." The 260,730 square foot building mirrors the configuration of the 2.6-acre site it occupies while providing views from every level of the surrounding mangrove wetlands and the bay. Although the office building is basically rectangular, a quarter circle was "carved" from its northwest corner, thereby creating a great concave arcade which sweeps around and connects the office tower with the parking garage. It is this bit of classical detailing, which has been used to connect buildings in this country since Jefferson attached the main house at Monticello to its dependen-

*The brise-soleil, right, and a detail of the granite entranceway on the northeast facade, right top. Right bottom, exterior of Bay Room with steps to a series of decks. Photos by George Cott.*





cies via a curving arcade, that gives the building its greatest interest and lifts it out of the realm of the ordinary. The use of the abstracted brise-soleil, or sunscreen, which is clad in polished verde fiorito granite, creates interest at the building's entrance and draws the eye down from the bands of pre-cast and reflective glass which are far more typical of this type of building.

Although there is executive parking for 56 cars directly beneath the tower, there is a 704-car, eight-and-a-half level parking garage on the west side of the site. Aside from creating a visual entrance from Rocky Point Road, the garage works with the main building to embrace a circular motor court which nestles in the curve of the entry portal. Due to the importance of preserving as much of the site's lush vegetation as possible, the motor court was designed above grade which cre-

ates another interesting visual effect, particularly at night when the underground parking is lit.

The lobby level of the office tower is fifteen feet above grade, a response to the client's desire to provide optimal views and the need to preserve the botanical integrity of the site. During planning, the client was specific that the building must provide water views from all floors with only the elevator excluded. At the entry, the glass lobby doors provide the first glimmer of the view of the bay which lies beyond. Just past the entry are a series of octagonal spaces, the first of which is the two-story lobby which is overlooked by a brass-railed balcony. The lobby floor is polished white siera and verde fiorito granite. The octagonal design is repeated in the elevator lobby where African mahogany panels trimmed in brass cover the walls. The ceil-

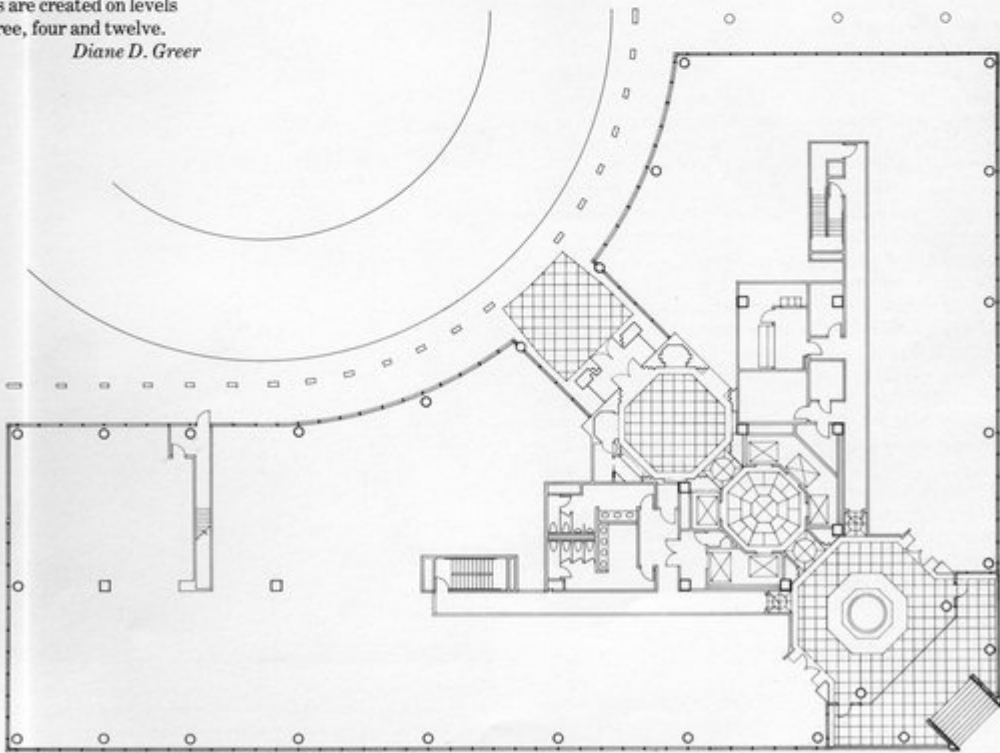
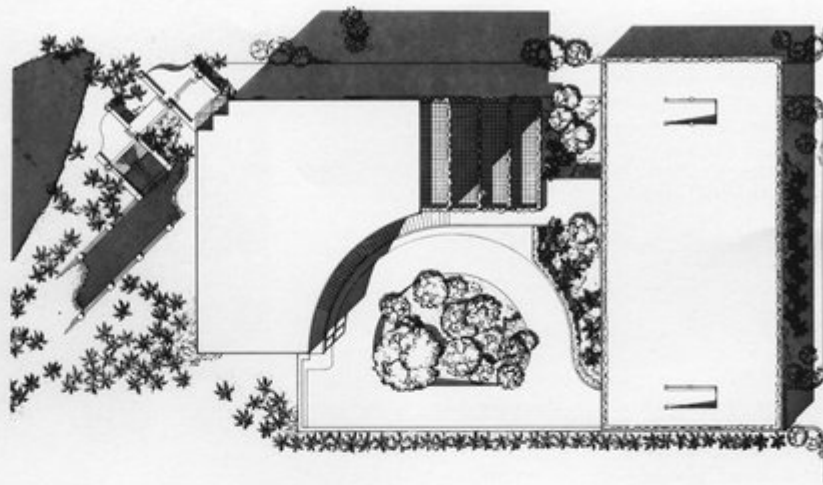


Opposite page, site plan and lobby floor plan courtesy of Morris Architects. This page, top, northeast front showing arcaded walkway to parking garage. Below, northeast facade from across the bay. Photos by George Cott.

ing is also brass and the elevator doors are polished stainless steel. The five tenant elevators, which serve the first ten floors, are paneled in rich saddle leather edged in brass. A separate executive elevator serves the 11th and 12th floor penthouse suite.

Just beyond the elevator lobby is the aptly-named Bay Room which provides an expansive panorama of Tampa Bay through a 40-foot-wide window wall. Taking advantage of the spectacular site, tenants can move from the Bay Room to a series of stairstepped decks complete with tiled fountain and dramatic landscaping. Overhead there are three staggered balconies facing south and a single balcony facing north and east across the bay. Through the use of stairstep setbacks, landscaped terraces are created on levels two, three, four and twelve.

*Diane D. Greer*



## A sculpted house hides from the street

**Casa Los Andes**  
Lima, Peru

**Architect:** Arquitectonica International Corporation  
**Principals-in-Charge:** Bernardo Fort-Brescia, AIA and Martin J. Wander, AIA  
**Project Architect:** Martin J. Wander, AIA  
**Production Architect:** Enrique Chuy Cuya

From a quiet street in Lima, Peru, a mysterious and sculptural form rises above the white stucco wall. To the passerby, what's inside is a mystery. Inside, hidden from the street, two intersecting walls create a framework for a young family's house. The two walls divide the house into four quadrants, each with its own function, form and orientation. The true organization of the house, however, does not reveal itself until the compound is entered.

The house was placed on an angle on the narrow lot, thus affording views from the interior to the far corners of the site. The first quadrant, the sculptural form seen from outside, is the two-story entry foyer which features a free-form mahogany stair, slate floor and glass blocks set into peach-colored walls. The entry is capped by an elliptical skylight which captures light from above and balances the diffused light entering the house through the glass blocks.

The living room is the second quadrant. It is a segment of an ellipse and features floor to ceiling glass at its perimeter, interrupted only by the bright red mass of the fireplace. The shape of the room takes advantage of the most expansive view of the property.

The house is owned by a married couple with young children. A special need for privacy is accommodated in the third quadrant, which contains the

family's sleeping quarters upstairs as well as a dining room and library downstairs. The husband required a quiet library where he could work undisturbed by his children, so an exterior breezeway was created to separate his library from the rest of the house. The library is also accessible through a cantilevered yellow stair which connects with the master suite above.

The final quadrant of the house contains the kitchen and servant's quarters downstairs and the guest rooms above.

The last two quadrants are the most functional part of the house and they are organized in a rectangle. In elevation, a band of windows on this rectangle is punctuated by specialty windows which provides an interesting pattern of fenestration.

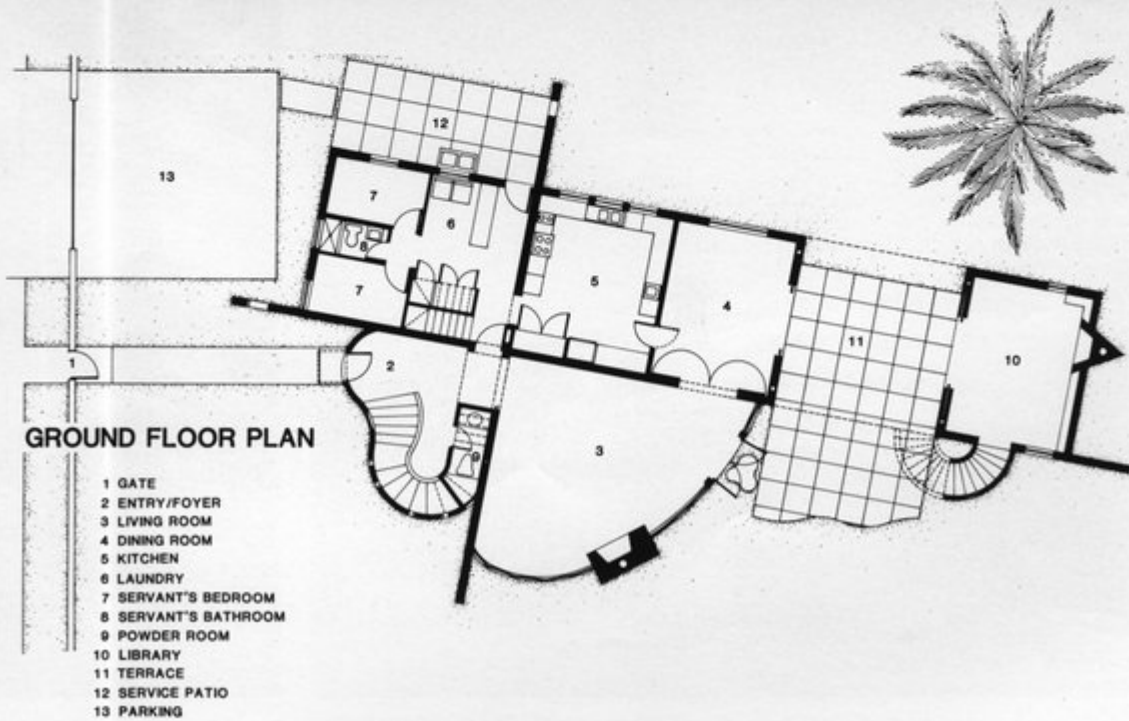
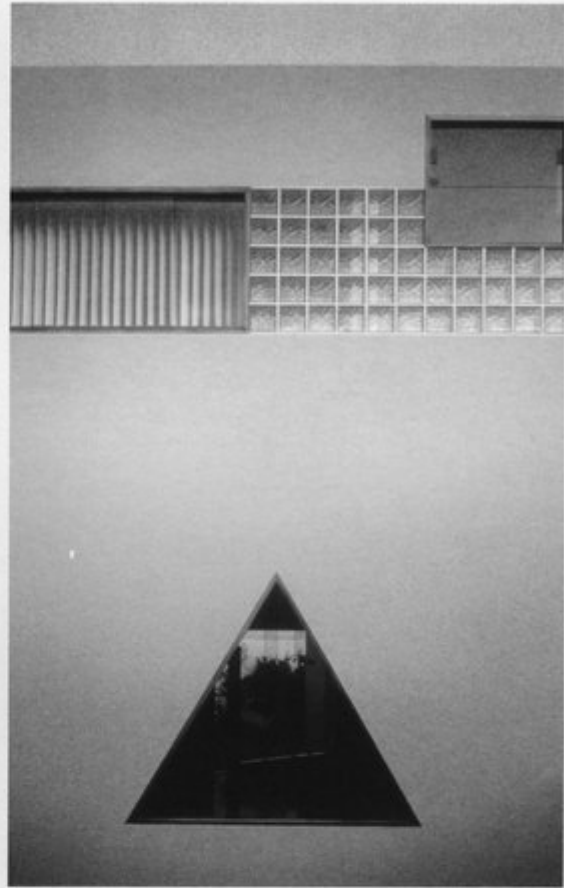
Always present, inside and out, are the two intersecting walls. They have special sculptural cutouts which emphasize their thinness and linear qualities, play with the light and shadow and frame special views. The walls are the structural element which allows the house to be simple, yet unusual...dividing its functions while tying them all together.

*Esther Perez*

*The author is an architecture writer living in Miami.*



This page, top, a white stucco wall ensures privacy for the Casa Los Andes. Above, end wall showing projecting stair tower. Opposite page, top left and right, wall openings of various shapes and sizes emit light. Below plan courtesy of the architect. All photos by Tim Hursley.



## Where parking is a pleasure

### Mount Sinai Medical Center Parking Pavilion Miami Beach, Florida

**Architect:** Frankel & Associates

**Principal-in-Charge:** Marcus A. Frankel, AIA

**Project Manager:** Laurence F. White

**Project Architect:** Michael

Agnoli, AIA

**Engineer:** A. Epstein

& Sons, Inc.

**Contractor:** Arkin Construction Co.

**Security Consultant/Interiors:**

Charles Levine, IDG

**Color Consultant/Interiors and**

**Exteriors:** Roz Kovens

**Owner:** Mount Sinai Medical Center

**P**arking facilities, prosaic at best, are seldom inspiring. Rather than uplift any urban essence, these structures generally elevate little more than our automobiles ... floor-by-functional-floor.

To prevent this from happening on a triangular site lying beside a well-traveled thoroughfare in Miami Beach, the Mount Sinai Medical Center commissioned Frankel & Associates to design its proposed, and indisputably essential, parking pavilion.

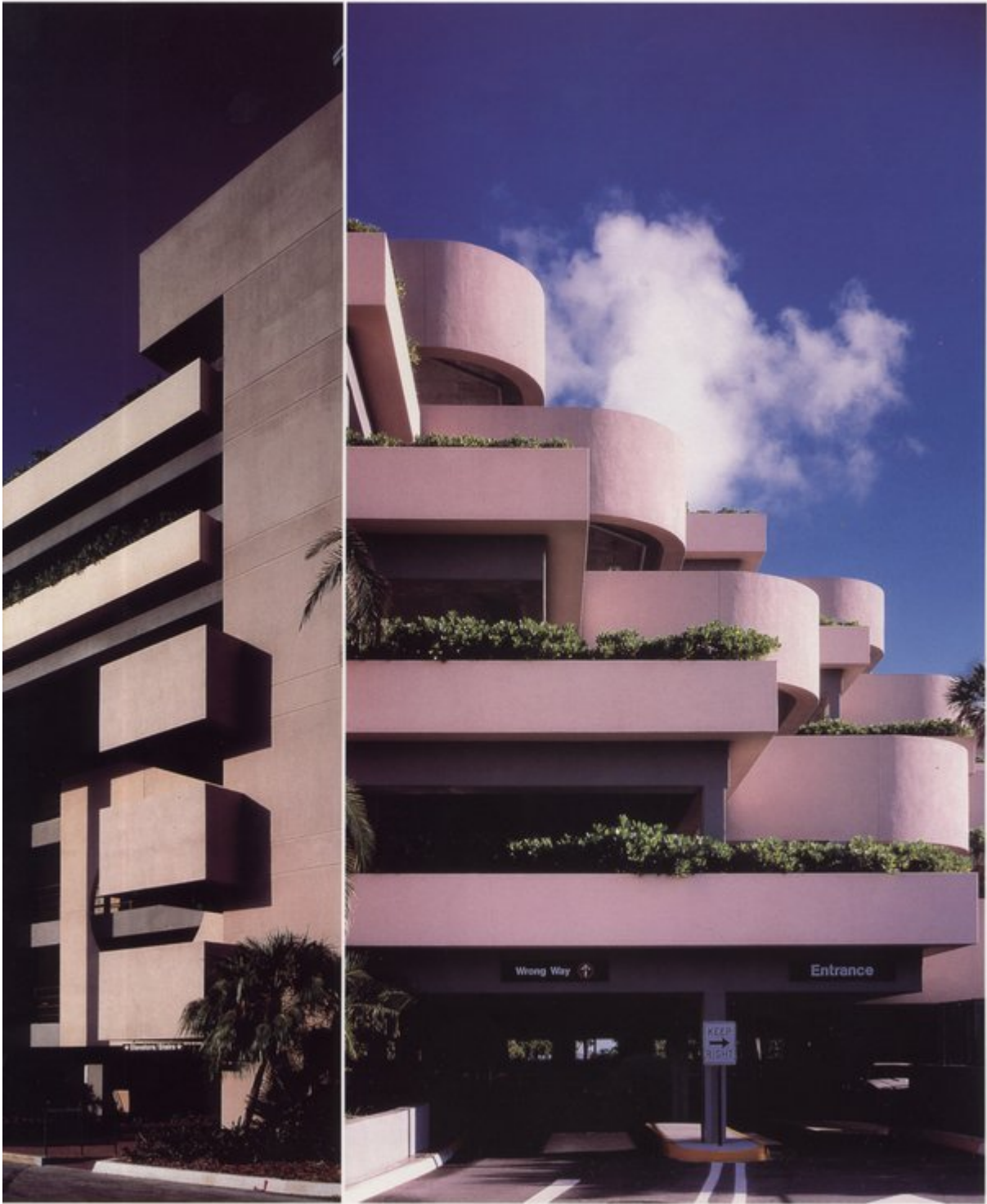
Historically, hospital visitors parked in remote lots occupying valuable bayside realty. More and more, this peripheral acreage had been yielded for additions to the flourishing medical complex. Unsheltered, sun-baked asphalt was the sole alternative for attending physicians, staff personnel and outpatient visitors, with safety yet another particularly vital concern.

For years, Mount Sinai's overloaded security force operated out of a crowded trailer. From the outset, it was determined



Above, overall view of north elevation. Elevator tower on left, and back parking decks on right, reducing impact of the main thoroughfare. Right, view of west facade with 4-level pedestrian entrance in foreground, and far right, partial view of southeast corner showing terracing. Photos by Robert Wasserman.







that any new parking structure must be adequately safeguarded, perhaps even accommodating the Central Security Facility for the entire medical complex.

Such a comprehensive program was a challenge, given the physical constraints of the site. While the architect's calculations indicated six floors were necessary to suitably accommodate 600 autos, the residential character of the surrounding neighborhood mandated a low profile. Integration of the proposed parking pavilion with the adjacent medical campus buildings was essential.

The parking structure was also to compose a new entry for the Medical Center, which would eventually include a proposed Medical Staff Office Building/Diagnostic Clinic also being designed by Frankel & Associates.

Frankel's innovative solution to the client imperatives was to

step back each ascending tier, creating a terraced east facade along a major thoroughfare. This effectively reduced the apparent building scale from the perspective of the neighborhood and the public right-of-way. The sawtoothed building plan, while promoting parking circulation, appropriately conforms to the triangularity of the site.

Louvered screen walls face on the north and west and relate these elevations to surrounding hospital buildings both in scale and proportion. Cantilevered linear planters evoke a less utilitarian appearance, employed as they are to help integrate the parking pavilion into the existing landscape.

Precast prestressed concrete joist and soffit-beam elements constitute virtually all structural floor framing, with joist spans ranging from 42 to 60 feet

across double-loaded parking bays. This structural system provides an almost column-free parking area. Overall erection time was estimated to have been halved by using precast structural elements as compared with conventional poured-in-place methods.

On the ground floor is a four-story pedestrian plaza with stairways and elevator stops, parking for physicians and centralized security offices. The atrium, which occupies the concave space adjacent to all vehicular ramps, provides landscaped views from the security offices.

Since security is a major concern in any parking facility, many provisions were made to assure the safety of the building's users. Closed-circuit TV monitors oversee the entire facility which is manned round-the-clock by a 60-officer security force and unusual sounds are enough to trigger an immediate

audio and visual surveillance of the disturbed area.

Far too often, a garage receives a perfunctory form-follows-function treatment. At Mount Sinai, however, a graceful structure has proved to be well-tailored to its function, its environment and its site.

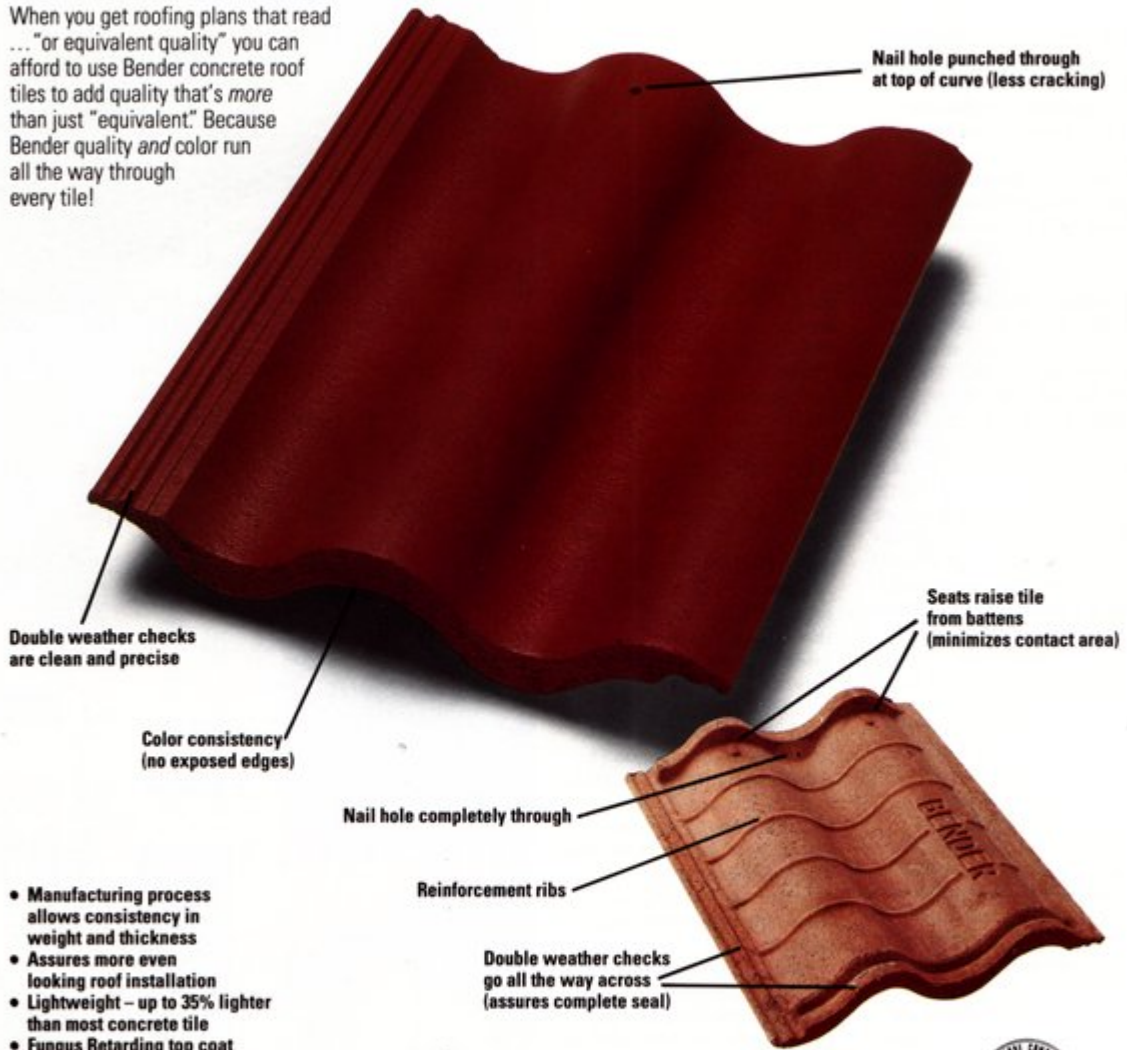
*Al Alschuler*

*The author is Managing Editor of Design South.*

# SPEC THE BEST!

## Why settle for "equivalent" quality.

When you get roofing plans that read ... "or equivalent quality" you can afford to use Bender concrete roof tiles to add quality that's *more* than just "equivalent." Because Bender quality *and* color run all the way through every tile!



- Manufacturing process allows consistency in weight and thickness
- Assures more even looking roof installation
- Lightweight – up to 35% lighter than most concrete tile
- Fungus Retarding top coat
- Color throughout

Specify superior quality and value with Bender Roof Tile.

For more information contact:

**bender**  
ROOFTILE IND., INC.

3100 S.E. County Road 484 • P.O. Box 190 • Belleview, Florida 32620  
(904) 245-7074 • FAX (904) 245-1873 • 1-800-527-5808 Florida Only



SBCCI No. 8736

## A classic cloaked in Arabian garb

### Opa-locka City Hall Opa-locka, Florida

Architect: Beilinson Architects  
Design Principal: Les Beilinson,  
AIA

Development Consultant for  
Preservation: Michael Maxwell  
Associates

Structural Engineer: Maurice

Gray and Associates, Inc.

Owner: City of Opa-locka

In 1926, at the height of Florida's real estate boom, aviation pioneer Glenn Curtiss developed his third land deal...a subdivision in Miami which he designed with the help of architect Bernhardt Muller and planner Clinton McKenzie. Based on the tenants of the Garden City movement, Curtiss selected an "Arabian Nights" theme for his new community. What followed was the construction of nearly 100 Moorish Revival structures with a particularly whimsical City Hall as the focus. The City Hall has recently been restored by Beilinson Architects with the City of Opa-locka as client.

The 6,784 square foot City Hall is a building which is entered through a two-story gatehouse located across a forecourt from the main structure. The gatehouse remains substantially unaltered and has an arched entranceway located between a square tower on the west and a smaller domed tower on the east.

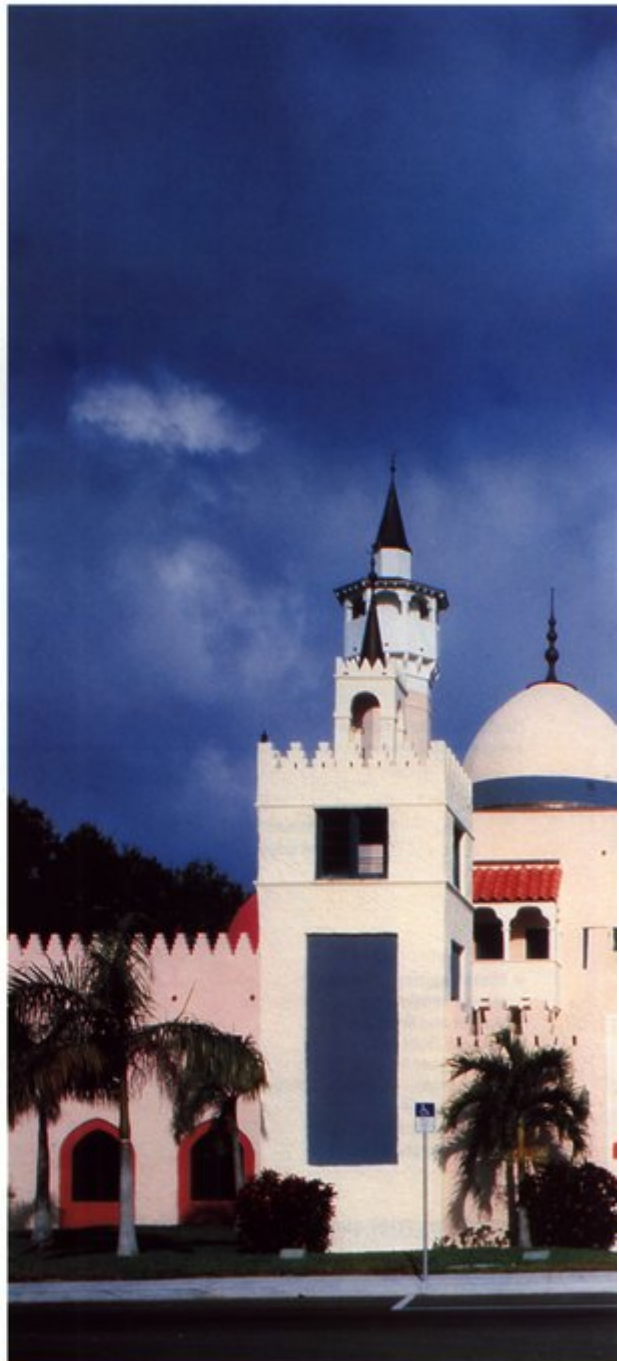
Pavilions, onion domes and spires abound within the complex and the three-story main building is ringed by minarets. Exterior stucco is interrupted in patches to expose decorative "distressed" brickwork. The main facade of the City Hall has rusticated stucco broken by horseshoe arches with painted radiating voussoirs and a tiled portal leading into the building's wings or the courtyard be-

yond. There are seven bays of windows set into pointed and semicircular arches and a wooden bridge with Chinese Chippendale railings spans the distance from the main building to the second floor wings. The crenellated roofline meanders through a field of onion domes, slender spires and conical domes which rise from all parts of the complex.

The restoration program called for total rehabilitation of the building. Through extensive research of the original drawings and early photographs, the exterior of City Hall and all public spaces were restored to their original appearance. The interior was adapted for administrative use, but it retains its original flavor. In the main ground floor chamber where the city commission meets, polychromed frescoes and stencilled beams were restored to original splendor.

Site improvements were kept to a minimum. Since the original setting for the building was a barren landscape, a la desert, no new plants were added. The City did add a landscaped median to Sharazad Boulevard with new street lamps to match the 1926 originals.

*Maggie McPherson*



Photography by Patricia Fisher.



# HAVE A LARGE INTERIOR INSTALLATION?

## You've Got It Made in the Shade With **EAST MARSH NURSERY**

Sure, supplying the professional with professionally grown interior trees up to 50 feet is our specialty. However we can also supply the plants you need for all your needs.



CG  
03-88

### **EAST MARSH NURSERY, INC.**

7100 Hillsboro Canal Rd. • Pompano Beach, Florida 33067  
National Wats 1-800-327-9424 • Florida Wats 1-800-533-2275 • Canadian Wats 1-800-328-7006

Circle 42 on Reader Inquiry Card

# When your design is something special, your roof can't be anything else.



**"There were an infinite number of more difficult ways to handle the 95,000 square feet of roof for the Arbern Financial Centre in Boca Raton, but we chose the Celcore lightweight cellular concrete system because it met all of our criteria, economically and efficiently."**—

*Derek Vander Ploeg, President, Vander Ploeg and Associates, Inc., Boca Raton, Florida  
Architect: Arbern Financial Center, a Stoltz Brothers building*

Mr. Vander Ploeg, Arbern Financial Centre architect says, "The Celcore system is light-years ahead of conventional tapered insulation and it gave us a lot of other advantages as well. The Celcore system is ideal for large surface areas, eliminating most weight, movement and R value problems. It's easy to install, and because any type of roofing membrane can be



anchored to it, it allows us considerable latitude in design."

"The ability to slope Celcore makes it very attractive, and because of its closed celled properties, we don't have to worry about moisture problems either."

"And from a very pragmatic point of view, Celcore fits well into UL approved systems, making it readily acceptable

by building officials. We have used the Celcore cellular lightweight concrete system on many buildings in the past and I expect to use them in the future as well," Mr. Vander Ploeg concluded.

Celcore lightweight concrete systems are water resistant, fireproof and rot and insect proof. They can be sloped, contain highest R values and are unsurpassed for strength and durability.

Why not call or write us today. We'll be glad to show you



how Celcore lightweight concrete systems can be part of the solution to your design and engineering problems.



The Dry Deck Company®

Circle 51 on Reader Inquiry Card

2655 NW 19 Street, Fort Lauderdale, FL 33311. (305) 731-0600; In Florida 1-800-432-9675  
Serving Florida with offices in Tampa and Fort Lauderdale.

# HANDI-LIFT, INC.



7703 University Gardens  
Winter Park, FL 32792  
305/679-0055



Member, National Association of  
Elevator Contractors

## Overcome Architectural Barriers In Public Buildings

Sales, Installation and 24 hour service of Vertical  
and Inclined Wheelchair Lifts.  
Residence Elevators

Call for Consultation and Free Evaluation for  
Handicapped ACCESS and EGRESS.

**EXPERIENCED - CONSIDERATE**

Circle 15 on Reader Inquiry Card



## PREMIX-MARBLETITE Manufacturing Co.

Serving the building industry since 1955.

STUCCO, PLASTER, DRYWALL AND  
POOL PRODUCTS  
SOLD BY LEADING

BUILDING MATERIALS DEALERS

For specifications and color chart  
refer to SWEET'S CATALOG 9.10/Pr

3009 N.W. 75th Ave. • Miami, FL 33122  
Oviedo & Sanford Rd. • Orlando, FL 32707

<b>Miami</b>	<b>Orlando</b>
(305) 592-5000	(305) 327-0830
(800) 432-5097 -Fla. Watts-	(800) 432-5539

### MANUFACTURERS OF:

- |  |  |
|--|--|
| • <b>MARBLETITE</b><br>(All Marble) Stucco | • <b>ACOUSTICOTE</b><br>Acoustical Plaster |
| • <b>MARBLECRETE</b><br>Trowel Stucco      | • <b>WONCOTE</b><br>Veneer Plaster         |
| • <b>POOLCOTE</b><br>Swimming Pool Stucco  | • <b>P.V.L.</b><br>Vinyl Ceiling Spray     |
| • <b>FLO SPRAY</b><br>Ceiling Spray        | • <b>ACOUSTEX</b><br>Ceiling Spray         |
| • <b>CEMCOTE</b><br>Cement Paint           | • <b>BEDDINGCOTE</b><br>For Rock Dash      |
| • <b>FLOTEX</b><br>Wall Spray              | • <b>SNOWFLAKE</b><br>Ceiling Spray        |

### AND OTHER BUILDING PRODUCTS

An Imperial Industries Company

Circle 14 on Reader Inquiry Card



*Become  
a  
Notary*

- *No examination required*
- *Notary appointment for four years*
- *Required bond, stamp, seal and procedural manual provided*

**Call 1-800-432-4254**

**FLORIDA  
NOTARY ASSOCIATION, INC.**

1918 E. Hillcrest Street  
Orlando, Florida 32803

Circle 36 on Reader Inquiry Card

## AWNINGS of distinction

custom design, fabrication, installation  
residential • commercial • industrial



Twin City Mall, North Palm Beach, Florida

canvas / vinyl awnings

canopies • cabanas • curtains  
cushions • boat canvas • custom welding

**844-4444**

**AWNINGS BY JAY**

1125 BROADWAY, RIVIERA BEACH, FLORIDA 33404

Circle 24 on Reader Inquiry Card



# The Ultimate Roof Technology

## Aesthetics Without The Weight



Utilizing Gerard lightweight, fire-safe roof tiles, you now can specify the distinctive and timeless aesthetics of clay or concrete without the excessive weight or breakage. Gerard tiles weigh only 1½ pounds per square foot, yet are more durable than tiles weighing up to 10 times as much. The underlying strength of Gerard tiles is rugged 26 gauge galvanized steel, pre-painted and reinforced for durability by a patented profile design. A deep coating of polymer acrylic resin bonds earthstone granules to the steel, and finally a pure acrylic overglaze is applied prior to kiln curing. The process creates an aesthetically pleasing, weatherproof, non-cumbustible roof tile that outperforms the alternatives.



Gerard tiles are available in a spectrum of twelve colors including six mediterranean accent shades designed to compliment architectural styles, and provide the versatility of making structures at one with their environment or setting them apart from the crowd. The lightweight durability of steel combined with the subtle elegance of colored stone granules, provides a unique blend of permanence and beauty in a roofing system that has surpassed thorough testing to withstand 100 m.p.h. winds, driving rain, hailstone impact, searing flame and freeze/thaw cycles. Gerard tiles have been proven in North America and throughout the world for more than 20 years. Gerard roof tiles, the perfect combination of beauty, protection, security and lasting durability.



For free architectural design package, call  
1-800-641-3002 Inside California,  
1-800-841-3213 Outside California,  
or write to:



I.C.B.O. Evaluation Report #3859  
U.L. Listed - Class A Fire rated #R12596

**GERARD**  
— ROOF TILES —

**Gerard Tile Inc.** Corporate Head Office/Technical Services Division

P.O. Box 9459 • 955 Columbia St., Brea, CA 92622-9459  
Telephone: (714) 529-0407

Sales Branch Offices:

**NORTHERN CALIFORNIA, TEXAS and FLORIDA**

Circle 7 on Reader Inquiry Card

## 1988 FA/AIA Unbuilt Design Awards

### A song for the unsung

Bringing attention to the design process is the goal of the annual FA/AIA Unbuilt Design Awards Program. The program is open to projects of all sizes and classifications that have been designed by members of the Florida Association of the American Institute of Architects, but have not yet been built. All entries, however, must have been commissioned for compensation on behalf of a client.

This year, 132 projects were submitted and every conceivable building type was represented including a kennel, a mausoleum, a circus, two fire stations, three marinas, three museums and

the usual variety of residences, public buildings and institutional facilities.

Harwell Hamilton Harris, FAIA, was Chairman of the Jury and serving with him were Charles Reed, Jr. and Mark Hampton, FAIA. Harwell Harris has been practicing architecture for 55 years and his work has been exhibited and published internationally. His long career began as a sculptor and includes working with Richard Neutra, practicing architecture in Texas, California and North Carolina and teaching architecture at the University of Texas and North Carolina State University. Harris is perhaps best

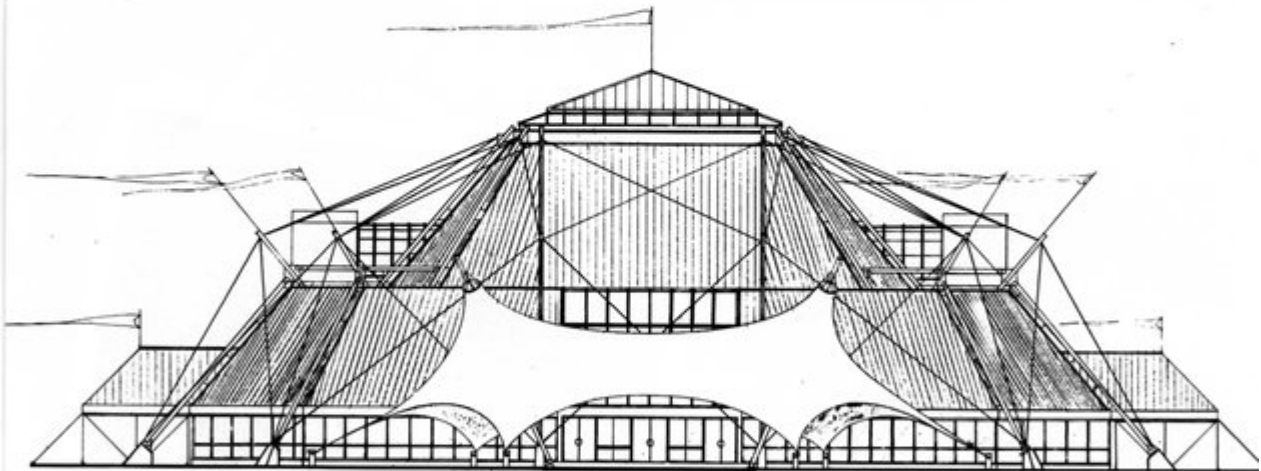
known for his contributions to the development of the California House and his work has twice been included in the Museum of Modern Art's selection of the most significant buildings of the preceding decade.

Charles Reed, Jr. is a graduate of the University of Miami's School of Architecture. For six years he worked in the Miami office of Igor Polevitzky before opening his own South Florida practice. Reed is now in North Carolina serving as Senior School Planning Architect for the State of North Carolina.

Mark Hampton, FAIA, was the 1987 recipient of the FA/AIA

Award of Honor for Design.

This award is given by the state association in recognition of excellence in architectural design over a sustained period of time. After receiving his degree in architecture from Georgia Tech, Hampton studied architecture in France before going to work for the firm of Twitchell & Rudolph in Sarasota, Florida. Along with architect Paul Rudolph, Hampton and a small group of now prominent architects are credited with founding what has come to be known as the Sarasota School of Architecture. Hampton opened his own office in Coconut Grove in 1974.



"Robbie's Big Top"  
Orlando, Florida

Helman Hurley Charvat Peacock/  
Architects, Inc.  
Francis A. Lizardo —  
Project Designer  
Orlando, Florida

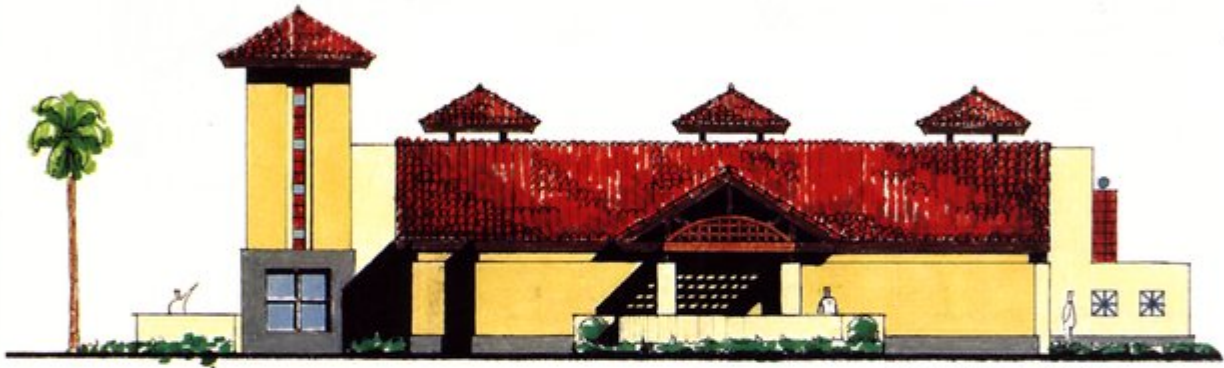
Jury: "A unique type of building which has been executed in a playful manner. It suggests a high tech circus tent."



Princess Hotel  
Emerald Coast, Florida

Reynolds, Smith and Hills  
Architects, Engineers and  
Planners, Inc.  
Jacksonville, Florida

Jury: "This is a most ingenious plan for a hotel. The lobby is very expressive of recreational pleasures. The building suggests holiday fun."



Emergency Services Building  
Venice, Florida

Jury: "This is a most fun firehouse. The project needs to be constructed with the same lightheartedness found in the design and drawings."

Villa Am Meer  
Florida West Coast Barrier Island

Rowe Holmes Hammer Russell  
Architects, Inc.  
H. Dean Rowe, FAIA —  
Principal-in-Charge  
Richard T. Reep, AIA —  
Project Manager  
Tampa, Florida

Jury: "Luxury is evident in every aspect of this project. A great sense of security and privacy is maintained despite the high density. Circulation throughout the community has been well considered."

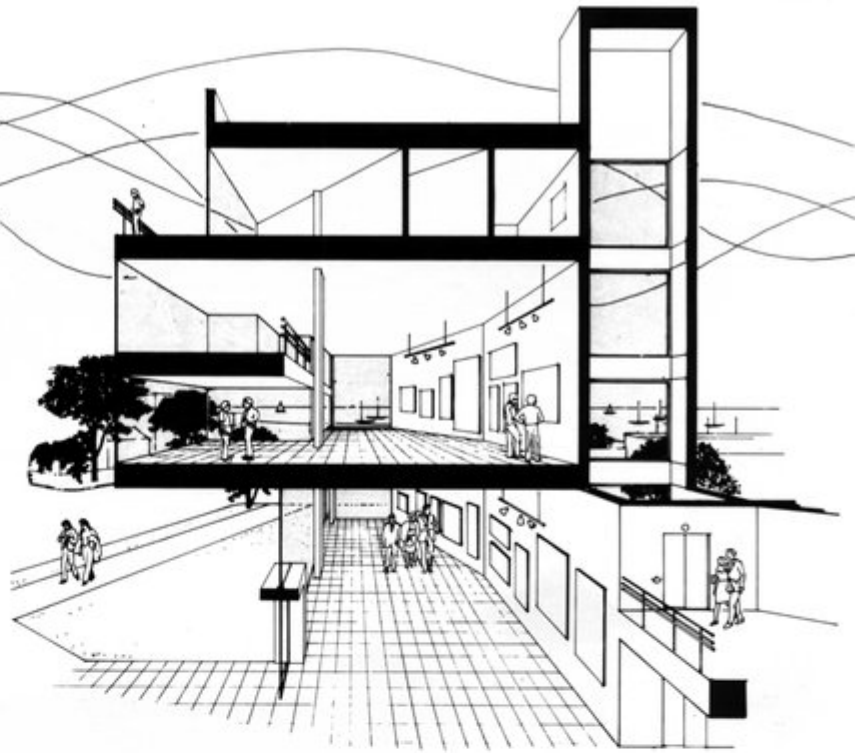


Johnson Peterson Holliday  
Architects, Inc.  
J. Michael Holliday, AIA and  
W. Kent Johnson —  
Design Team  
Sarasota, Florida office

**Art Gallery, Studio and Guest  
Apartment for P. Buckley Moss**  
St. Petersburg, Florida

Harvard, Jolly, Marcet and  
Associates, Architects, P.A., AIA  
Jonathan R. Toppe, AIA —  
Project Manager  
Mark Slazinski, AIA —  
Associate Manager  
St. Petersburg, Florida

*Jury: "The architect obviously  
had a strong feeling for the own-  
ers's needs. The program was  
carried out with verve to pro-  
duce a building of great  
interest."*



**Latin Quarter Specialty Center**  
Miami, Florida

Willie A. Bermello, AIA  
Bermello, Kurki & Vera, Inc.  
Coral Gables, Florida



*Jury: "This is appropriate architectural expression for the Cuban Quarter's main plaza and marketplace. When people enter this space, it will come alive and the street will be important again as it once was."*

**Chamber of Commerce Building**  
Winter Haven, Florida

Gene Leedy, Architect  
Winter Haven, Florida

*Jury: "This building projects a  
strong presence on the site and  
the design expresses the func-  
tion very well."*





Headquarters, Florida  
Department of Law Enforcement  
Tallahassee, Florida

Johnson Peterson Holliday  
Architects, Inc.  
Ivan Johnson, AIA —  
Project Architect  
Guy W. Peterson, AIA —  
Project Designer  
Joseph P. Jennette —  
Project Manager  
Thomas C. Deckert —  
Programming  
Tallahassee, Florida

Jury: "This project offers an intriguing solution for a low-density office structure. This is a well organized corporate building with a lot of style."

Renovation and addition to  
Seven Star Retail Shop  
Tallahassee, Florida

Mark Griesbach Architect  
Tallahassee, Florida

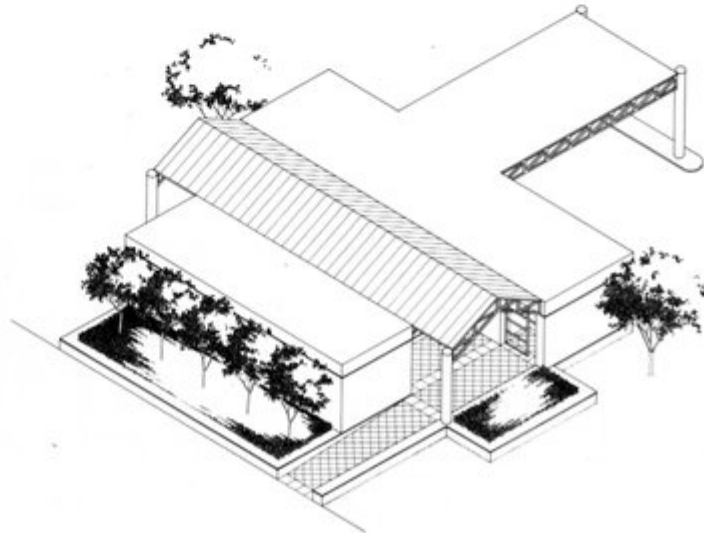


Jury: This is a good example of a standard roadside convenience store that has been made important through the application of current architectural style."

Prototype Branch Bank  
Various Central Florida locations

Rowe Holmes Hammer Russell  
Architects, Inc.  
Tampa, Florida

Jury: "This building was done with style so as not to look like a vault. The gables draw attention to the entrance and the rectilinear walls leave the building strongly centered. A very simple expression of purpose."



**Flagler Hospital**  
St. Augustine, Florida

**Hansen Lind Meyer, Inc.**  
Orlando, Florida

*Jury: "Old, but familiar,  
Mediterranean design elements  
were successfully resurrected to  
form a complex hospital plan."*



**Peshek Residence**  
Orlando, Florida

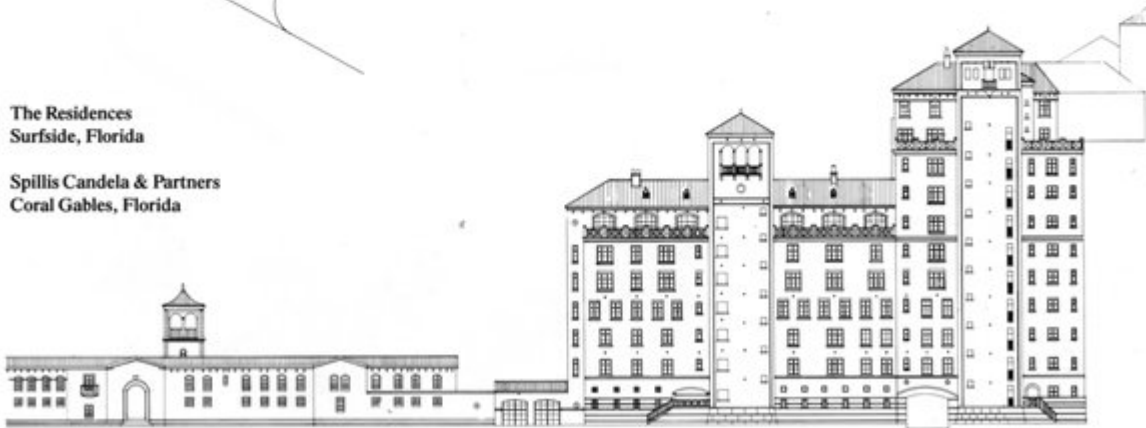
**Maurilio J. Maso, AIA**  
Orlando, Florida

*Jury: "This simple and articulate  
design is an elegant answer  
to a pressing architectural  
problem for the owner."*



**The Residences**  
Surfside, Florida

**Spillis Candela & Partners**  
Coral Gables, Florida



*Jury: "This revival of a 20's style architecture indicates the future direction of beach design."*



**Low Apartments**  
Miami, Florida

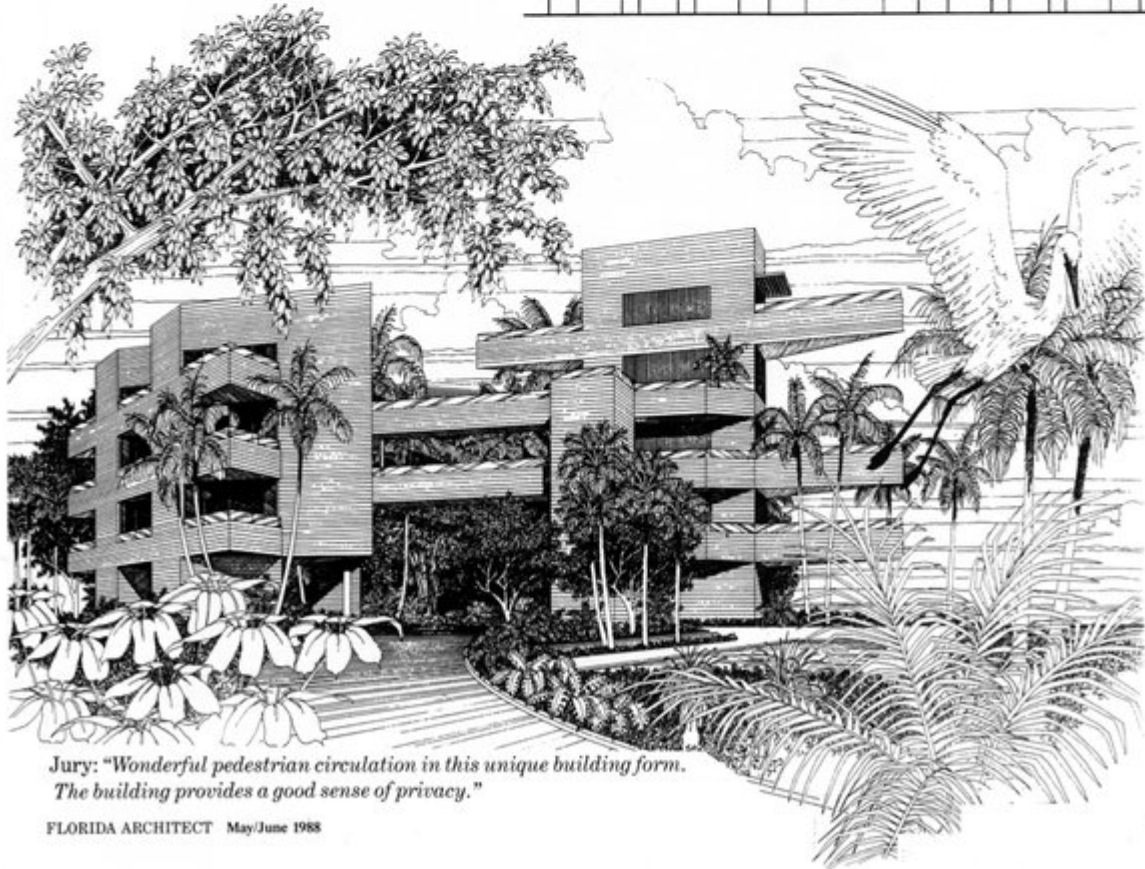
Baldwin Sackman & Associates  
Alfredo Pou —  
Project Architect  
Coconut Grove, Florida

*Jury: "Great achievement in the design of a modest apartment building that provides the covered parking so badly needed in urban areas. To get all this on so tiny a site is exemplary."*



**Gullhouse II**  
South Brevard County, Florida

Ray D. Crites, FAIA  
Tallahassee, Florida



*Jury: "Wonderful pedestrian circulation in this unique building form. The building provides a good sense of privacy."*

# EPICORE<sup>®</sup> CONCEPT 2 COMPOSITE FLOOR SYSTEM



- Manufactured in Lakeland, Florida
- 48-hour Delivery
- Fast, Simple Installation by One Sub-Contractor
- Reduced Construction Time
- All Necessary Building Code Approvals
- Long Uninterrupted Spans
- Unbeatable Fire Ratings
- Excellent Sound Attenuation
- Monolithic Construction
- Distributor/Installers throughout Florida

*Contact in Lakeland  
813-688-7686*

**EPIC<sup>®</sup>**  
METALS CORPORATION

Eleven Talbot Avenue, Rankin PA 15104  
PHONE: 412/351-3913  
TWX: 710-664-4424  
EPICMETAL BRDK

Circle 22 on Reader Inquiry Card



Classified

**ARCHITECTS  
INTERIOR DESIGNERS**

Positions available throughout the SOUTHEAST-MIDWEST-NORTHEAST. Fees paid by client companies.

Contact:  
ED LENZ  
Roth Young of Tampa  
5130 Eisenhower Boulevard  
Suite 222  
Tampa, Florida 33614  
(813) 885-8995

**Announcement!**

The Florida Downtown Development Association has recently instituted a new membership category. This 2nd affiliate/business membership classification is open to businesses with less than 10 employees in a particular firm. The annual fee is \$150.

For further information, contact The Florida Downtown Development office at (904) 222-9684.

**Architect**

Established firm seeks experienced architects with strong production capabilities. Send resume to:

Blais & Sayers Architects, Inc.  
326 South Grandview Ave.  
Daytona Beach, FL 32018

Do you have an opening in your firm? Do you have office equipment for sale? A service to sell to architects? Use *Florida Architect* classifieds.

Send material to be typeset to: *Florida Architect*, P.O. Box 10388, Tallahassee, FL 32302, Attn: Carolyn Maryland.

Material must be received 45 days prior to publication dates. Publication dates are the first day of January, March, May, July, September, and November.

Classified listings are charged at the rate of \$3.00 per typeset line.



**SECURITY  
SYSTEMS  
DESIGN &  
PROGRAMMING**

Randall Atlas, Ph.D., AIA  
Architectural Security  
Specialist

600 N.E. 36 St., Suite 1522  
Miami, Florida 33137

**(305) 325-0076**

Circle 19 on Reader Inquiry Card



Introducing:  
ARCHITECTS & ENGINEERS  
Professional Liability Insurance

- \$1,000,000 Capacity; excess capacity available
- Coverage Provided Thru A BEST'S A+ XIV Rated Company
- Claims Made Form
- Dedicated To Fast, Friendly, Efficient Service
- Realistic Premium and Deductibles

Please Write Or Phone For Additional Information!!



P.O. BOX 530830 / MIAMI SHORES, FLORIDA 33153  
9700 N.E. 2ND AVE. / MIAMI SHORES, FLORIDA 33138  
(FAX: 305-893-1165) PHONE (305) 756-8500

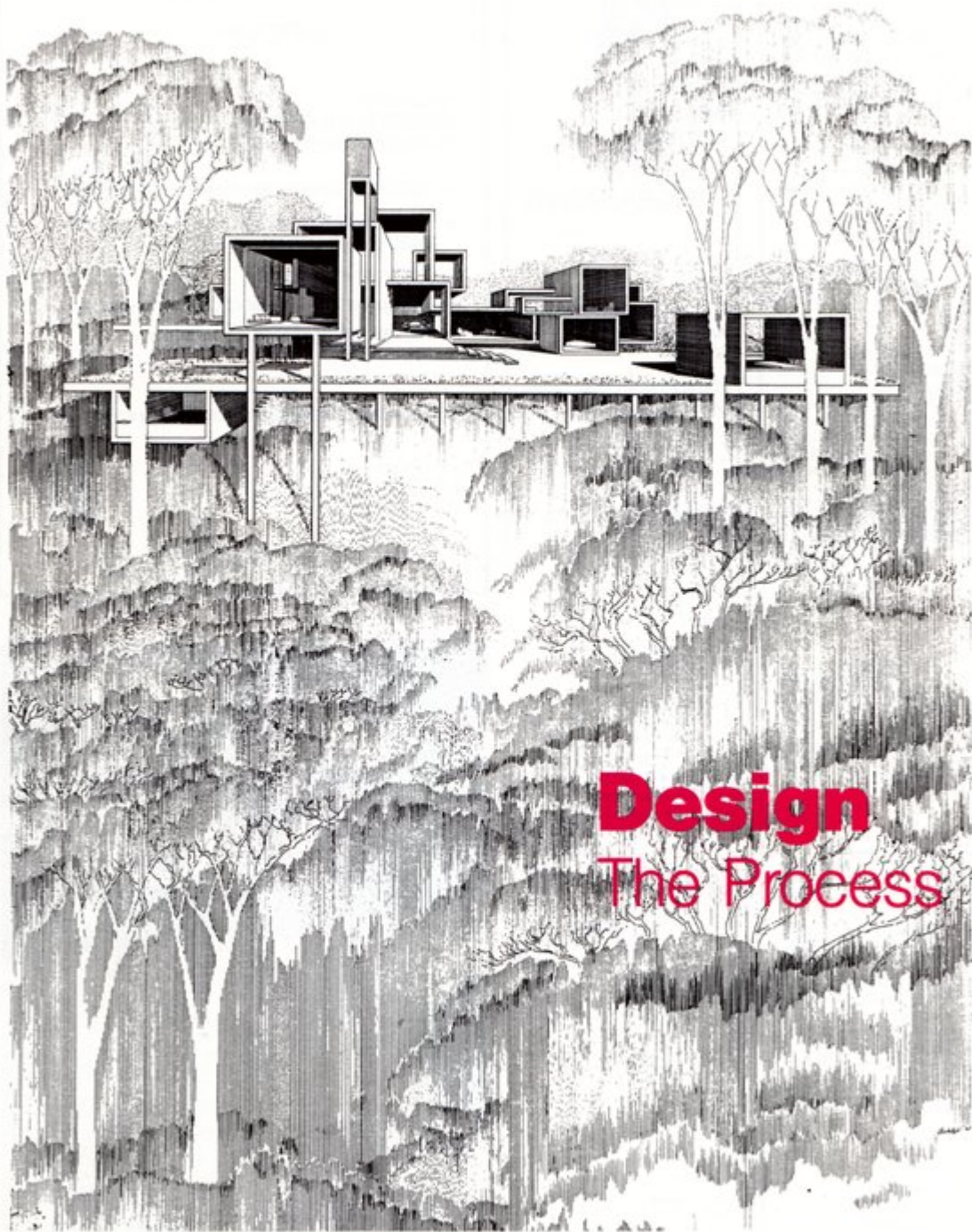
Circle 12 on Reader Inquiry Card

**New Products**

G & M Terrazzo Company, the Bomanite and Bomacron Licensee for the state of Florida, is proud to introduce another new pattern. The Canyon Stone as shown at right reflects a unique and classic look to any home's patio, pool, or spa area. This beautiful new pattern shows off the latest in both stamping and coloring techniques utilized in G & M Terrazzo Company's unique concrete imprinting process. As with all G & M Terrazzo Company's patterns, the Canyon Stone is available in a wide variety of colors. For more information contact G & M Terrazzo Company in Pompano Beach, 305/797-7770.



SARASOTA DESIGN CONFERENCE · JULY 15-17, 1988 · COLONY BEACH INN · LONG BOAT KEY



**Design**  
The Process

Paul Rudolph 1965



## ARCHITECTURAL PRODUCTS

Tarmac Topblock make a wide range of architectural concrete masonry units – all of which conform to current ASTM specifications. Manufactured in our own plants using our own high-quality aggregates, these products are produced under strict quality control standards. TARMAC TOPBLOCK produce all common sizes in a wide variety of surfaces – including fluted, striated, rubbed, split-faced and scored textures. They also have the facilities and technical expertise to manufacture non-standard shapes for specific architectural requirements. Concrete Masonry brick is now available as part of TARMAC's range of architectural products. Its ability to be used as a single width structural wall provides all the benefits and beauty of day brick – at a fraction of the cost.



## GROUND FACE MASONRY UNITS

TRENDSTONE is a range of ground-faced masonry units which combine the proven construction benefits of concrete blocks with the attractive appearance of exposed, selected aggregates. Available for interior and exterior use, for load-bearing or non-load bearing walls in either light or normal weights.

## ARCHITECTURAL CONCRETE MASONRY

TARMAC TOPBLOCK operate 10 concrete block making plants – from Key West to Jacksonville – and producing over 45 million concrete blocks a year, using the very latest automatic machinery. The comprehensive range of products include architectural concrete masonry units of all shapes, colors and sizes – as well as conventional concrete block. A fleet of 'self-unloading' trucks ensures fast and efficient deliveries throughout Florida.

# All the ingredients for the total service . . .



- Ready-mixed concrete
- Quarries
- Ready-mixed concrete and blockmaking
- Blockmaking
- Premium quarry and blockmaking plant

# Tarmac TOPBLOCK

Tarmac Topblock Inc.  
455 Fairway Drive  
Deerfield Beach, Florida 33441  
or call toll-free 1-800/367-8167



## GLAZED MASONRY UNITS

Wherever a glazed wall surface is needed – specify ASTRA GLAZE by TARMAC TOPBLOCK. A range of glazed, lightweight masonry wall units which provide all the benefits of conventional glazed materials – at an economical price. The thermosetting glazing compound is permanently moulded to one or more faces of the block. This ensures an integrated structure with an impervious, satin glazed finish – and exceptional resistance to staining, abrasion, impact and chemical attack. ASTRA-GLAZE can be used inside or out for load-bearing and non-load bearing walls. It also avoids the need for on-site tiling. Easy to clean and hygienic, ASTRA-GLAZE is particularly suitable for hospitals, schools, dairies, processing plants, laboratories and restaurants.



## ROOFBLOK BALLAST SYSTEM

ROOFBLOK is an excellent ballast system for single-ply roof systems. The Roofblok design provides a non-skid surface for foot traffic – protecting the membrane from cuts and punctures. The Class 'A' fire rating also protects the membrane from fire hazards such as wind-blown members. Roofblok units weigh only 11½ lbs/sq.ft. – allowing a uniform weight distribution across the whole roof surface. Their unique design make them simple and efficient to install. The design also provides an efficient drainage system to complement the drainage design of the roof surface.



## Rise above the crowd...

With the new Signature Tile Series by Monier. Create your very own project identity with roof tile factory blended in colors by design. Send for our brochure today and see how Monier can make the difference for you.



4425 U.S. Hwy. 92 East, Lakeland, FL 33801  
(800) 824-0029, in Florida call (800) 282-7894.

Circle 33 on Reader Inquiry Card