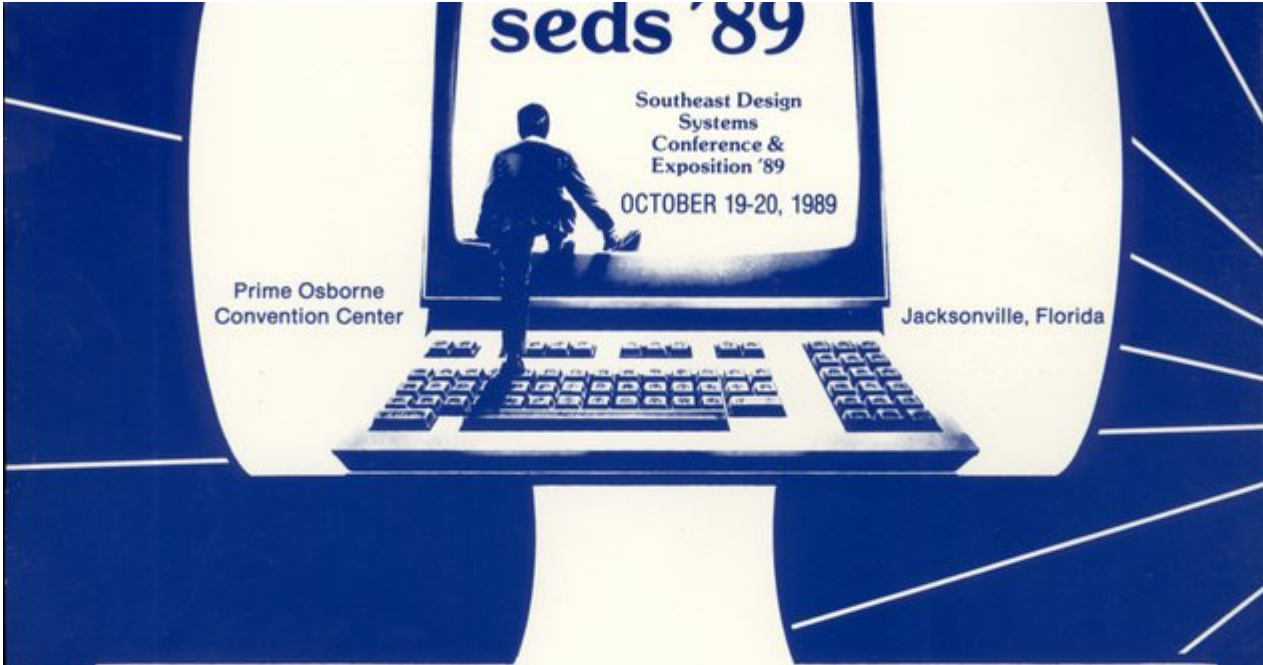


720.6
#51236*





ONE GIANT STEP INTO THE FUTURE ...

Jacksonville, the hub of Florida's First Coast, will host the First Southeast Design Conference and Expo geared for today's innovative market ... SEDS '89. This conference will be indispensable for your planning strategies, productivity, organizational preparedness, education or training.

The conference features: Joel Orr ... Terry Wohlers ... Jerry Hammond ... Doug

Stokes ... Gene Figg ... Mark Hoyt ... David Di Luria ... from automated office to future trends this is the conference you can't afford to miss ... choose from many conference sessions ... strategies for now and the future.

Explore more than 100 exhibits ... The industry's top vendors of hardware, software and services.

***Please Mail My Seds '89 Information
Immediatly:***

Mail To: **SEDS '89**
P.O. Box 5796
Jacksonville, FL 32247
(904) 241-5076

NAME _____
TITLE _____
COMPANY _____
ADDRESS _____
CITY _____ STATE _____ ZIP CODE _____
PHONE _____

I'M INTERESTED IN BEING: VENDOR _____ ATTENDEE _____

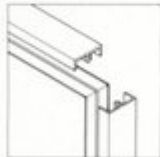
The Beginning of a New Era in Strength and Beauty for Bathroom Partitions, Fitting Rooms, and Shower Units.



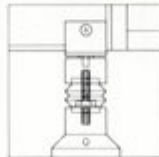
The top hinge incorporates a hinge pin which locates with a nylon bush in the hinge bracket. The hinge is factory fitted. Black rubber bumpers are fitted to the top and bottom of door jambs.



A pre-drilled epoxy coated aluminum wall bracket which is plugged and screwed to the wall.



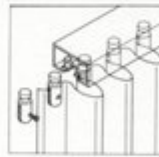
The non-removable extruded aluminum edge trim is available in anodized or epoxy powder coated aluminum. Plastic laminate panel facing or to specification.



Adjustable foot with screw adjuster hidden by bellows-type sleeve. Made from black glass-filled nylon. It also acts as the hinge pivot.



Black glass-filled nylon Lotus lock body with a red rubber bumper incorporating an emergency release facility.



Black glass-filled nylon curtain runners which are non-removable once the headrail is fitted.



Black glass-filled nylon Combat lock with a red rubber bumper incorporating an emergency release facility.

Now Available

CORIAN
Solid Beauty That Lasts

JAMES L. COX & ASSOCIATES, INC.

P.O. Box 80845 • Atlanta, GA 30366 • (404) 452-0097

Florida Wats (800) 826-7698

Thrislington Cubicles

Circle 12 on Reader Inquiry Card



Thrislington Cubicles, 11739 Sheldon Street, Sun Valley, California 91352; Telephone (818) 504-0806; Telefax (818) 504-0913; SEE US IN SWEETS!



THANKS TO THESE SHINING STARS IT'S NIGHT BEAUTIFUL THROUGHOUT FLORIDA

These award-winning examples of innovative, efficient and creative exterior lighting design help make our cities come alive.

We salute the efforts of the developers, architects, engineers, lighting designers, building owners and governmental agencies responsible for making Florida shine long after the sun goes down.

Congratulations to the winners of the third annual Night Beautiful contest for enhancing our sense of community, and inspiring commercial and social vitality.

1989 NIGHT BEAUTIFUL WINNERS

SINGLE STORY

Best of Show
K-92 Radio Station
Orlando

Avila Entrance
Tampa

Burger Max Restaurant
Pensacola

The Clearwater Collection
Clearwater

Florida Coastal Shell
Boca Raton

TWO TO FIVE STORIES

Best of Show
Orange County Convention/
Civic Center
Orlando

First National Bank of Venice
Venice

Museum of Science
and Industry
Tampa

University of Tampa
Tampa

The Village at Beacon Centre
Miami

SIX STORIES AND ABOVE

Best of Show
Island Center
Tampa

The Dattran Center
Miami

Olympia Place
Orlando

SunBank Center
Orlando

Tampa Bay Performing
Arts Center
Tampa

SPECIALTY LIGHTING

Best of Show
Sunshine Skyway Bridge
St. Petersburg/Bradenton

Fountain Square
Tampa

Joe Robbie Stadium
Miami

La Puerta Del Sol Fountain
Miami

Manatee Monument
Ft. Myers

SPONSORS



Circle 1 on Reader Inquiry Card



The best way yet to top your designs.

As an architect, you appreciate the natural beauty of wood shake. However, you also know that a Class "A" fire rated roof offers both value and ultimate protection. With Cal-Shake, your projects can have both.

Cal-Shake provides a heavy shake appearance, and will outlast wood 2 to 3 times over. We guarantee it with our 30 year limited, transferrable warranty. Unlike wood shake, Cal-Shake resists all moisture related problems and offers complete fire protection without treatments or complicated installation procedures.

Compared to heavy shake tiles, Cal-Shake offers double lapping shake installation, lighter weight, and excellent insulation. Costs are comparable to pressure treated wood shake. All this combined with heavy shake appearance means Cal-Shake comes out on top in its class.

Cal-Shake's color range gives you the option to match any color in the natural progression of wood shake life: "Golden Cedar" for a new shake look; "Natural" for the early weathering stage; "Aged Cedar" for a heavily weathered shake appearance; and "Charcoal" for the final color stage of a shake roof.

All things considered, Cal-Shake is the best way to top any design where you want a shake look and spare your client's wood shake headaches.

Find out how a Cal-Shake roof can enhance your projects. For full details, call (407) 287-7040 or toll free (800) 826-0072



Cal-Shake, Inc.
3082 S.E. Jay St. Stuart, FL 34997

Circle 13 on Reader Inquiry Card

When you select new Softone™ Cashmere™ Ceilings from Celotex, you can have the best of both — design choice and size flexibility. Aesthetically, Cashmere Ceilings are characterized by a unique surface treatment that gives the look of fine designer linens, making Cashmere ideal for today's applications where subtle elegance is desired.

New Cashmere From Celotex.

And Cashmere Ceilings achieve excellent sound absorption without the need for conventional pin perforations or mechanical fissuring.

A full range of sizes, choice of edge details and five face-scored styles make Cashmere Ceilings highly versatile for modular flexibility. And when the need for color arises in your design, Cashmere Ceilings can be specified in any of eight designer colors — Heather Gray, Balsa, Reed, Sage, White, Haze, Adobe and Vanilla. Cashmere Ceilings are also available in Protectone®, where time-rated assemblies are required.

Compare the subtle design elegance of Cashmere with ordinary mechanically fissured ceiling tile.



Actual size Softone Cashmere ceiling tile.



Actual size ordinary mechanically fissured tile.

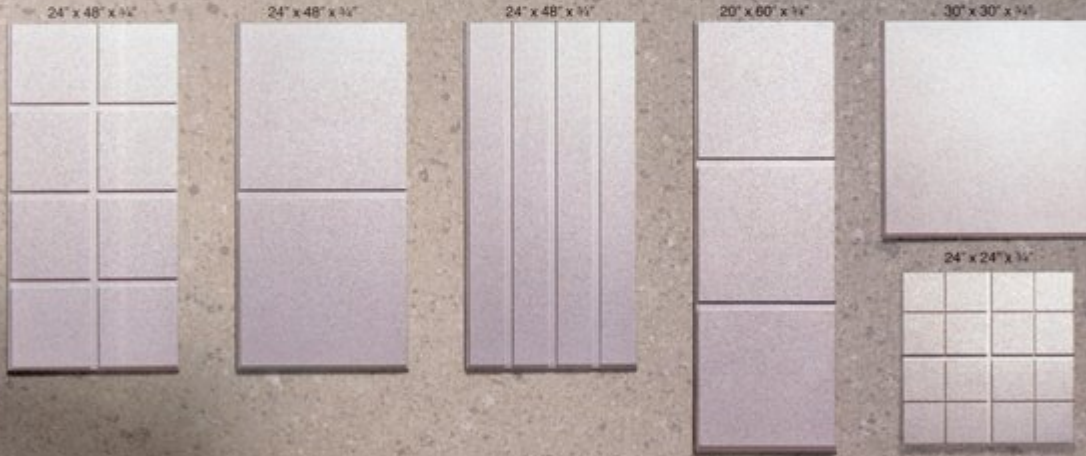


When you consider all the advantages our new Softone Cashmere Ceilings afford, the choice is obvious.



For more information, see the Celotex 1989 Sweet's Acoustical Catalog.

No Other Mineral Acoustical Ceiling Gives You More Designs And More Sizes, All With The Look Of Fine Fabric.



YES, I would like more information about Celotex Ceiling Products. Please have a representative call me for an appointment.

NAME _____
COMPANY NAME _____
ADDRESS _____ PHONE _____
CITY _____ STATE _____ ZIP _____



THE CELOTEX CORPORATION
POST OFFICE BOX 31602
TAMPA, FLORIDA 33631-3602

Circle 16 on Reader Inquiry Card

Strength for Building



TECO Plaza Tampa, Florida

Build on our Strength

Southern Prestressed, Inc. is built on the strength of an international corporate acquisition: The prestressed concrete division of Florida Mining and Materials by Lohja Corp. of Finland in 1988.

The strength created by the synergy of these two industry leaders assures you of high quality, competitively-priced prestressed and precast products, as well as complete service and engineering support, rapid construction and on-time installation. Now you can achieve your structural and functional objectives rapidly and cost-effectively.



Southern Prestressed, Inc.

A Division of LOHJA, Inc.

Corporate Office: 3710 Corporex Park Dr. Suite 260
Tampa, FL 33619

P.O. Box 5539
Tampa, FL 33675

Tel: 813/623-6305
FAX 813/623-6406

Locations: Ft. Myers • Huntsville • Jacksonville • Jonesboro • Lakeland • Montgomery • Orlando • Pensacola
• Pompano Beach • Tampa • Birmingham (Sales)

Circle 20 on Reader Inquiry Card

FLORIDA ARCHITECT July/August 1989

CONTENTS

Features



July/August 1989
Vol. 36, No. 4

Paul Rudolph, FAIA
The Quintessential Modern Architect 11

1989 FAIA Unbuilt Design Awards 13

This year, a distinguished jury met in New York City and selected twelve projects from 106 submittals. In building type, the projects range from a beach house on the Gulf of Mexico to a downtown shopping mall, a government complex and a planned "company town" in the mountains of Puerto Rico.

Chapel Dedicated to Nils Schweizer, FAIA 39

A Link To the Profession 49

University of Florida Architecture Professor Maelee Foster has designed an award-winning teaching internship program.

Departments

Editorial 9

New Products 40

Books 42

Letters 43

Chapter Awards 45



Florida Architect, Official Journal of the Florida Association of the American Institute of Architects, is owned and published by the Association, a Florida Corporation not for profit. ISSN-0015-3907. It is published six times a year at the Executive Office of the Association, 104 East Jefferson St., Tallahassee, Florida 32302. Telephone (904) 222-7590.

Opinions expressed by contributors are not necessarily those of the FAAIA. Editorial material may be reprinted only with the express permission of *Florida Architect*.

Single copies, \$4.00; Annual subscription, \$19.08. Third class postage.

The drawing on the cover is of the Mayaguez Municipal Marina and proposed waterfront development designed by Humberto Betancourt for construction in Mayaguez, Puerto Rico.

SCALINI

by LIGHTOLIER

From Lightolier's International Collection. A unique combination of glass, light and design... producing an absolute stunning effect... never before available in a lighting fixture.

- 9 variations of wall and ceiling fixtures
- Shown: ceiling pendant with clear glass disc.
Also available with a white and gray Carrara marble disc.



FARREY'S

Distinctive lighting and
decorative hardware
1850 N.E. 146 St. • Miami, FL 33181
Dade: 947-5451 • Broward: 524-8675

Circle 17 on Reader Inquiry Card

FLORIDA ARCHITECT July/August 1989

Florida Association of the
American Institute of Architects
104 East Jefferson Street
Post Office Box 10388
Tallahassee, Florida 32302

Publisher/Executive Vice President
George A. Allen, CAE

Editor
Diane D. Greer

Assistant Publisher
Director of Advertising
Carolyn Maryland

Design and Production
Peter Mitchell Associates, Inc.

Printing
Boyd Brothers Printers

Publications Committee
Ivan Johnson, AIA, Chairman
Gene Leedy, AIA
Will Morris, AIA
Keith Bailey, AIA
Don Sackman, AIA

Editorial Board
Ivan Johnson, AIA
Dave Fronczak, AIA
Roy Knight, AIA

President
H. Dean Rowe, FAIA
100 Madison Street
Tampa, Florida 33602

Vice President/President-elect
Larry Schneider, AIA
25 Seabreeze
Delray Beach, Florida 33483

Secretary/Treasurer
Bruce Balk, AIA
290 Coconut Avenue
Sarasota, Florida 33577

Past President
John P. Ehrig, AIA
4825 East Bay Drive, Suite 221
Clearwater, Florida 34624

Regional Directors
John M. Barley, AIA
5345 Ortega Boulevard
Jacksonville, Florida 32210

James A. Greene, FAIA
254 Plaza Drive
P.O. Box 1147
Oviedo, Florida 32765

**Vice President for
Professional Society**
Raymond L. Scott, AIA
601 S. Lake Destiny Road, Suite 400
Maitland, Florida 32571

**Vice President for
Governmental Relations**
Rudolph Arsenicos, AIA
2500 ICA Boulevard, Suite 106
Palm Beach Gardens, Florida 33410

**Vice President for
Professional Development**
John Tice, AIA
909 E. Cervantes
Pensacola, Florida 32501

**Vice President for
Public Relations/Communications**
Henry C. Alexander, AIA
Smith Korach Hayet Haynie
175 Fontainebleau Road
Miami, Florida 33172

In May, I was asked to serve as a judge for the 1989 Tallahassee Parade of Homes. There were fifty-one homes by Tallahassee builders open for inspection over a two weekend period. The least expensive house was \$73,000 and the term "modest" doesn't even come close to describing it. The rest of the homes were between \$90,000 and \$525,000, with over half of them costing over \$200,000.

"The time to buy is now," touted Parade literature, "whether it's your first house or you're ready to move up because of family." Surely they're not suggesting to young couples that their first house should cost \$200,000.

All of this brought home what I've been reading lately about the housing crisis we're experiencing in Florida. Now, the experts are saying that housing will be Florida's biggest crisis of the 1990's.

Anthony Catanese, dean of the University of Florida's College of Architecture, says that the lack of affordable housing hasn't been called a crisis because everyone thought it was a lower class problem that could be swept under the rug. Now, however, it's become a middle class problem, and as such, will be the major problem of the nineties.

According to a National Association of Realtors survey, "less than fifty percent of families can qualify for an average-income home in their counties. In many of Florida's higher priced markets, such as Hillsborough, Orange and Palm Beach counties, the figure dips to as low as thirty percent.

"The only solution for these families," according to Catanese, "is to continue renting. The American dream of home ownership is no longer possible for many families."

Catanese predicts that the housing crisis will cause more elderly people to move in with their adult children, more married children to live with their parents and more single adults to delay moving out of their parents' homes.

When a young, college-educated couple who are both working full time cannot afford to buy a house, that's serious. Affordable housing shortages hurt the poor the most, but they're not the only ones affected anymore.

One of the problems that the housing industry is facing today in addition to rising material costs is impact fees imposed by local governments. These fees are taxes added onto the price of a home to pay for local services such as road maintenance, parks and other community infrastructure. The imposition of impact fees by various localities has wrought great controversy, with homebuyers resenting the extra taxes and homebuilders complaining that the extra fees make it even harder to find buyers who can afford the price.

To solve the housing crisis, Catanese feels that government must make affordable housing a major priority. The government must offer incentive programs and grants to get developers and builders interested in providing moderately priced quality homes. Housing costs would go down if the government overhauled its complicated construction permit system to make it speedier and more efficient.

From what I was able to see on my recent tour of new Tallahassee homes, there is a serious shortage of affordable housing. Without action, the problem will only worsen. *Diane D. Greer*



*Now there's Bathstyle,
a reason to celebrate.*

*Sparkling selections in
style and function*

by *Elyor*



*Bath & kitchen showrooms
... none more elegant*

Call for our complimentary color brochure.

Atlanta 297-8953 • Brunswick 265-2690 • Macon 743-8921 • Columbus 322-8821 • Valdosta 242-2660 • Jacksonville 783-2810 • Miami 477-3045 • Orlando 897-3402

Circle 48 on Reader Inquiry Card

Paul Rudolph, FAIA The Quintessential Modern Architect

by Diane D. Greer

The 1989 FA/AIA Unbuilt Design Awards jury met in New York City in March. Amid the stimulating surroundings of Paul Rudolph's Beekman Place apartment, jury members Rudolph, Gene Leedy and Bert Brosmith considered 106 projects from the Florida/Caribbean region.

During a break in the deliberations, one topic that was discussed was Rudolph's continuing fixation with the possibilities offered architects by the mobile home industry. His projects using modular units of that type clearly stand out in his mind, and in his conversation. Much has been made of Rudolph's fascination with mobile homes, which he has called the true twentieth century "urban brick." Left to his own devices, he may yet insure that "prefabricated" does not remain a dirty word in the architectural profession.

The fact that Rudolph is comfortable working with modules that can be stacked in various configurations is not surprising. After all, Walter Gropius was his teacher at Harvard and while *Architectural Record* Editor Mildred Schmertz feels that Rudolph's work evolved as a reaction against the minimalist design that Gropius tried to teach him, the Bauhaus influence must still have been strong. Rudolph himself described his 1957 work on the Riverview Jr.-Sr. High School in Sarasota this way: "I was happy to be again in a familiar climate and (I) reverted to the much more simplistic demands of the International style. 'Following the rules' insures a degree of completeness, a sophistication, a refinement which is not possible when one deals with the search for the unknown."

In short, the basic elements of the International style are still present in his work although there are strong spatial differences. Rudolph's is not linear space, but multi-directional. Also, unlike Gropius is the way he chooses to asymmetrically arrange his details.

In Rudolph's recent design for the Colonnade Condominiums in Singapore, one sees stacked modules and might be reminded of some of his early projects like the Walker Guest House on Sanibel Island with its interior spaces clearly defined by plywood panels. Although drawing a parallel between the Walker project and the Colonnade is stretching the point in terms of time and technology, both show an obvious concern with spatial complexities. A more obvious and more recent parallel is between his unbuilt Graphic Arts Center for the city of New York and the Colonnade.

Rudolph began, as so many architects do, in wood, and he has evolved to the concrete frame

megastructures that are now dotted throughout Southeast Asia. But through the years, and regardless of the materials, he has held onto the basic tenets of modernism. His concerns with function, materials and space are consistently apparent. His buildings have rich textures and wonderful three-dimensional surfaces that seem to breathe. He remains staunchly post-modern in his refusal to adorn his buildings with historic motifs. His work clearly demonstrates that he believes modern buildings should be shaped to show on the exterior the specific interior function of the space.

In many ways Rudolph has come a long way since his early years in Sarasota with Ralph

Twitchell designing small residences. But, it was these small residences, like the Cocoon House on Siesta Key, that first brought him national attention. The transition he has made from the residences of the fifties to the megastructures of the eighties is fascinating because the parallels are so clear. What is also clear is that Paul Rudolph is probably the quintessential modern architect.



Above, Riverview Jr./Sr. High School (originally Sarasota H.S.) was completed in 1957. Photo by Ezra Stoller. Below, left: Bond Centre, Hong Kong and right, Colonnade Condominiums, Singapore. Photos by Peter Aaron, Esto Photographics.



ANNOUNCING

The New Individual Non-Cancellable Disability Program

Endorsed by Your
FA/AIA INSURANCE TRUST

- Guaranteed renewable
- Level premiums
- Long term benefits
- No group increases
- Pays for total and partial disability in your occupation as an Architect and/or loss of income
- Premium discount to membership
- Liberal underwriting



H. Leslie Walker, FAIA
Chairman, FA/AIA Insurance Trust

ENROLL IN YOUR NEW ASSOCIATION PLAN NOW!

For more information call
Shirley Sandler, CLU
Southern Benefits LTD
1-800-330-1129
or mail coupon below

DI Form 686

Circle 36 on Reader Inquiry Card

name _____

address _____

birthdate _____ phone _____

best time to call _____

Mail to:
Shirley Sandler, CLU
Southern Benefits LTD
4805 W. Laurel Street
Suite 100
Tampa, Florida 33602

A Song For the Unsung

Bringing attention to the design process is the goal of the annual FA/AIA Unbuilt Design Awards Program. The program is open to projects of all sizes and classifications that have been designed by members of the Florida Association of the AIA, but have not yet been built. All entries, however, must have been commissioned for compensation on behalf of a client.

This year, 106 projects were submitted and reviewed by a distinguished jury meeting in New York City. Paul Rudolph, FAIA, served as Chairman of the Jury. He received his Bachelor of Architecture from the Alabama Polytechnic Institute and his Master of Architecture from Harvard University in 1947. Within two years, he received his first Award of Merit for Design from the American Institute of Architects. Today, Rudolph is at the height of his career, with projects underway around the world.

Bert Brosmith, AIA, practiced architecture in Sarasota from 1955 to 1965. In 1961, he was named one of 14 "New Architectural Talents in America" by *Architectural Forum* magazine. From 1961 to 1975, he served as a principal in the firm of Juster/Brosmith/Levine in New York City. Since 1975, he has practiced in relative obscurity in Northern Westchester County, New York in the fond belief that "in time I will get it right."

Gene Leedy, AIA, is a favorite son of Florida architecture. He has been designing all types of buildings with his signature use of T-beams and screen walls for the past thirty years. In 1965, Leedy gained national recognition as one of *Architectural Record's* "Successful Young Architects." More recently, Leedy was the recipient of the FA/AIA's 1988 Award of Honor for Design, the highest award the Association can confer upon an architect for continuous excellence in design.



In this sketch by Don Singer, FAIA, the jury evaluates the submitted projects: Left to right are, Gene Leedy, Bert Brosmith and Paul Rudolph.



Gene Leedy, AIA



Bert Brosmith, AIA



Paul Rudolph, FAIA

UNBUILT AWARDS

The Acropolis at Brickell

Miami, Florida

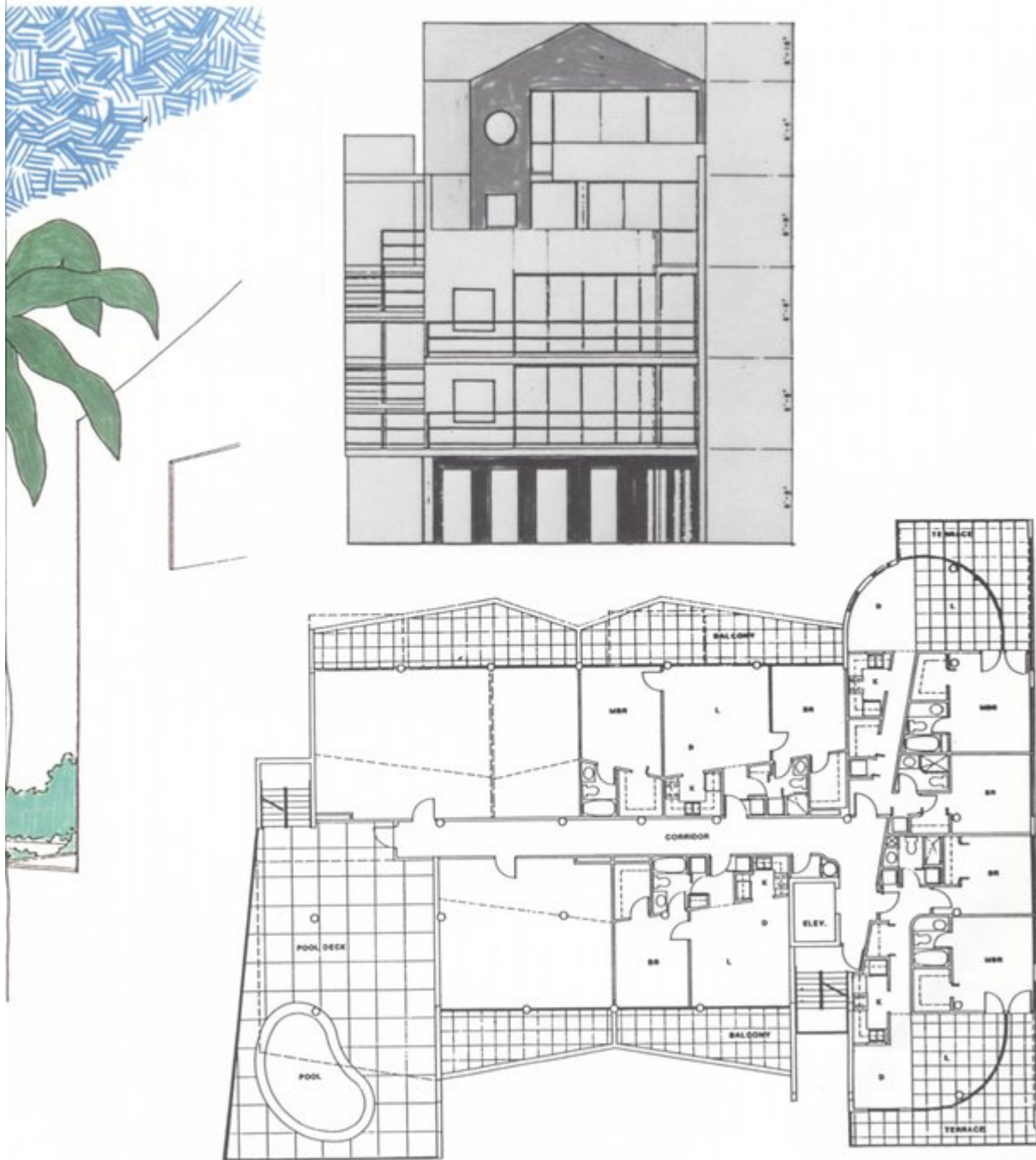
**Hervin Romney Architect,
Inc.
Miami, Florida**

Built with reinforced concrete slabs and columns, this concrete block building will have its exterior stucco painted bright primary colors.

The small site incorporates twenty units into five levels of a rental apartment building with lobby and parking at grade. The second level of the building is being utilized for recreation, while the third and fourth floors contain flats and two-story townhouse/penthouses. The structure meets the scale of both adjacent townhouses and a highrise located across the street.

The jury found the variety of interior spaces appealing, as well as the fact that the building form maintains the identity of each individual unit.





Opposite page, perspective. This page, top, south elevation, and above, second floor, pool deck level.

UNBUILT AWARDS

U.S. Embassy Office Building

Khartoum, Sudan

William Morgan, FAIA
William Morgan Architects,
P.A.
Jacksonville, Florida

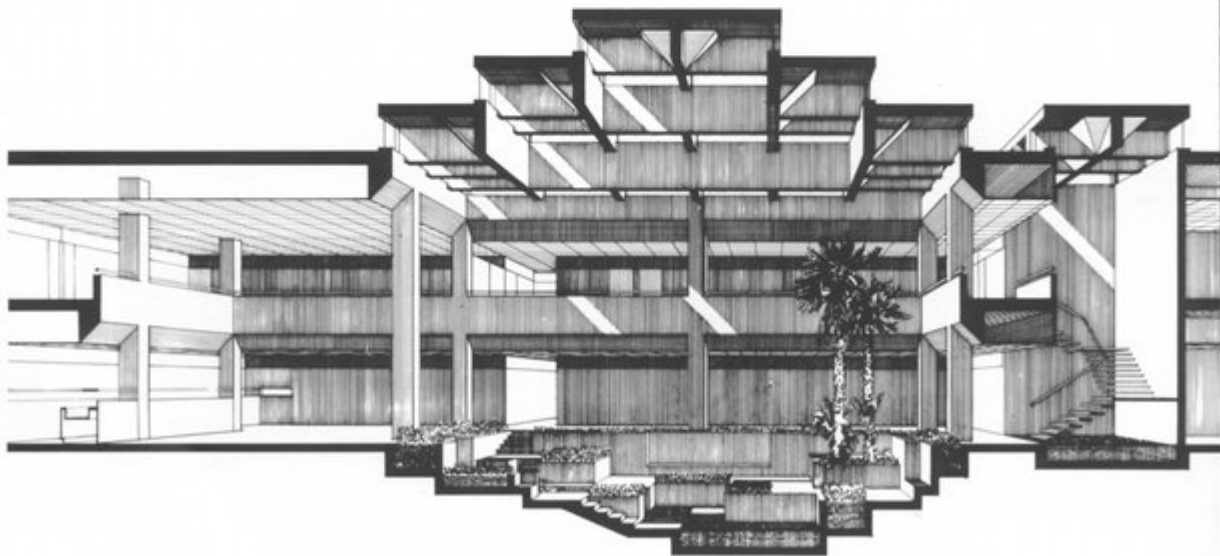
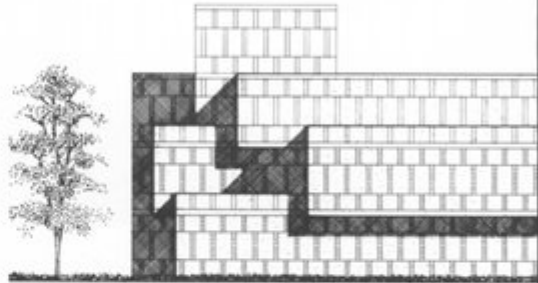
Currently targeted for completion in 1993, this low silhouette office building contains an area of about 70,000 square feet. Sudan is located in sub-Saharan East Africa and the design of this government building recalls the character of anonymous desert forts and oases in the vicinity of the Sahara Desert.

References to architecture that was seen in Sudan between 500 BC and AD 300 appear on the circular reservoir at the main entry, in exterior walls suggesting megalithic masonry construction, in the garden arrangements recalling objects within objects, in the contrast of highly developed interiors with anonymous exteriors, in the stepped pyramid configuration of skylights and in

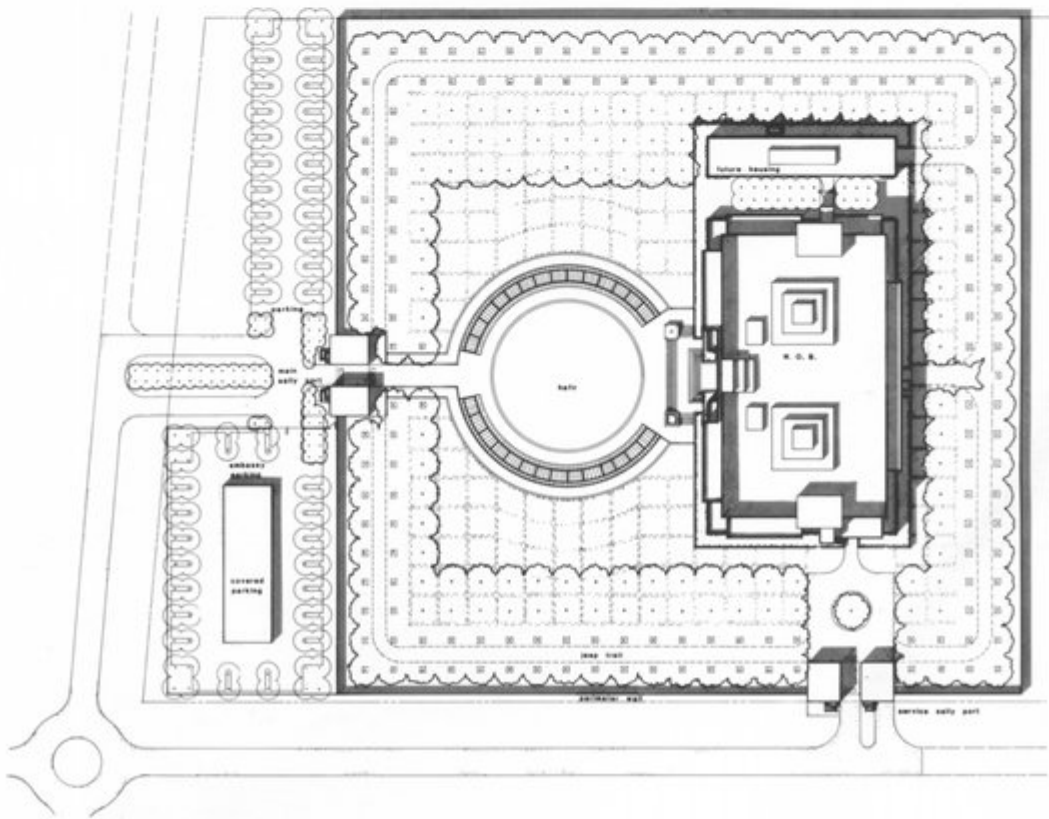
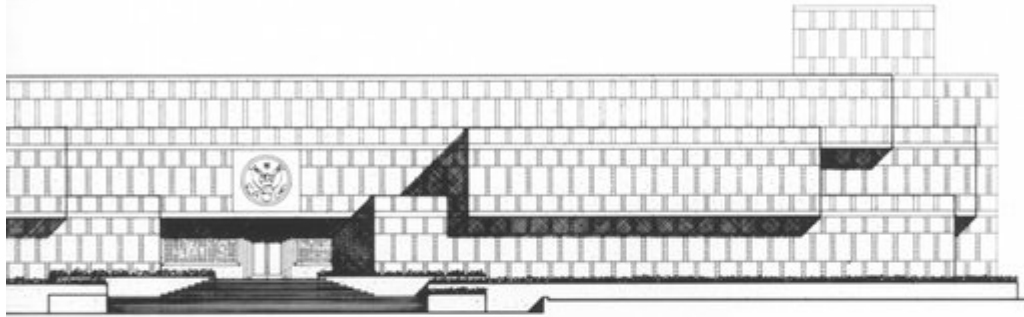
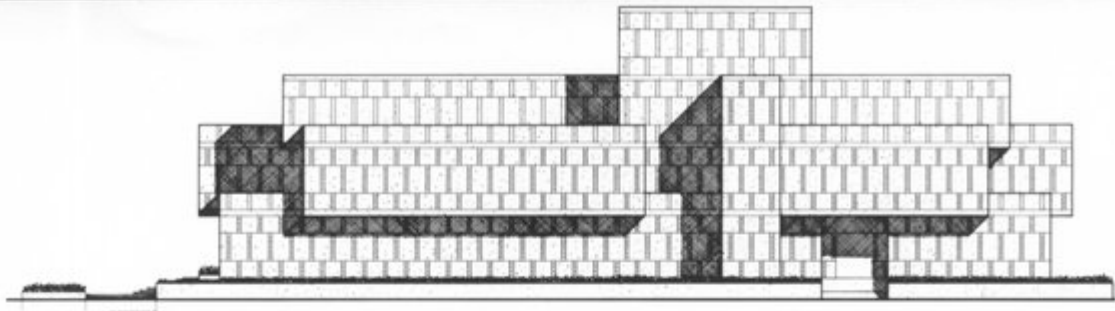
the framing of the entry portal by multiple bands of masonry.

The building construction will be cast-in-place reinforced concrete. Flat-plate floors and roofs will be supported by perimeter bearing walls and square interior columns arranged in square bays. Light is introduced into the building by 8-inch wide vertical slots in exterior walls and by two 50-foot square skylighted gardens located on the centerline of the building's rectangular plan. Security considerations indicated two atriums rather than a large single one.

The jury admired the simple formality of this project with its obvious emphasis on security.



Opposite page, top: South elevation and main facade, west elevation. Bottom, site plan. This page, above: South Atrium perspective.



UNBUILT AWARDS

Winter Park Memorial Hospital Cancer Care Facility

Winter Park, Florida

**Helman Hurley Charvat
Peacock/Architects, Inc.
Alexander W. Stone, AIA -
Project Designer
Maitland, Florida**

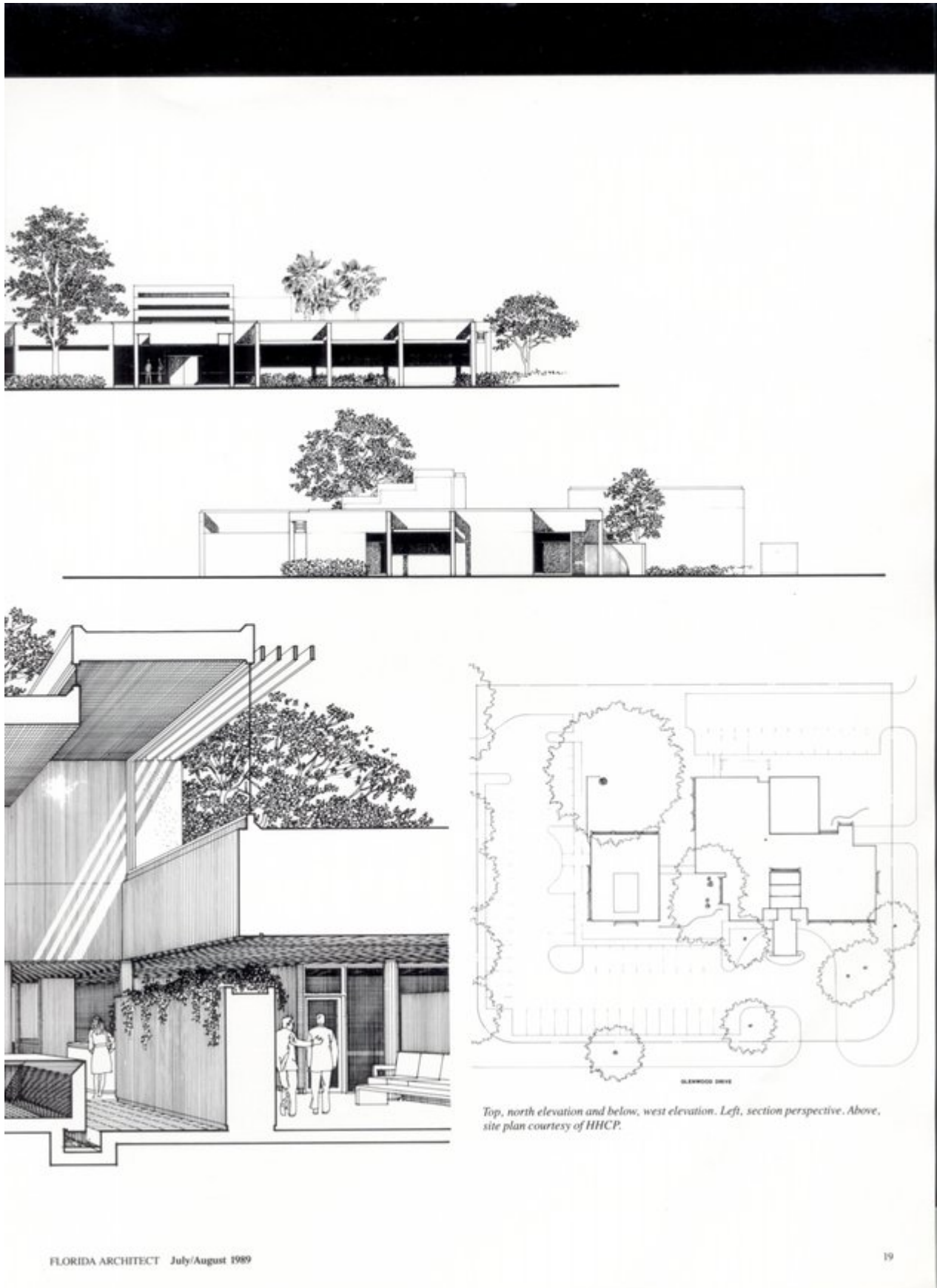
In order to alleviate some of the mental discomfort of the patients who must use this facility, the intent of the design solution was to deal with components that embody the antithesis of death, such as sunlight, water and large existing on-site trees.

As one enters the radiation facility, he is greeted by a ten-foot square pool of water. Reflections of passing clouds may be seen in the water and during the cold winter months, a shaft of sunlight moves across the pool as the day progresses. The water gently flows over the sides of the fountain producing a sound which many people find soothing.

The opposite end of the waiting area is defined by a stand of four large oak trees which are visible through floor to ceiling glass. Here, the canopy which these trees form, in conjunction with the west wall of the satellite building, creates a garden space which will be landscaped with flowering plants.

Although the direct effect of architecture on one's physical health is probably limited to some extent, it was the general consensus of the doctors and hospital, that a peaceful environment would be most conducive to the patient's well-being. The jury felt that this was a very quiet, straightforward solution to a particularly complex problem.





Top, north elevation and below, west elevation. Left, section perspective. Above, site plan courtesy of HHCP.

UNBUILT AWARDS

Bay Plaza Waterfront Retail District

St. Petersburg, Florida

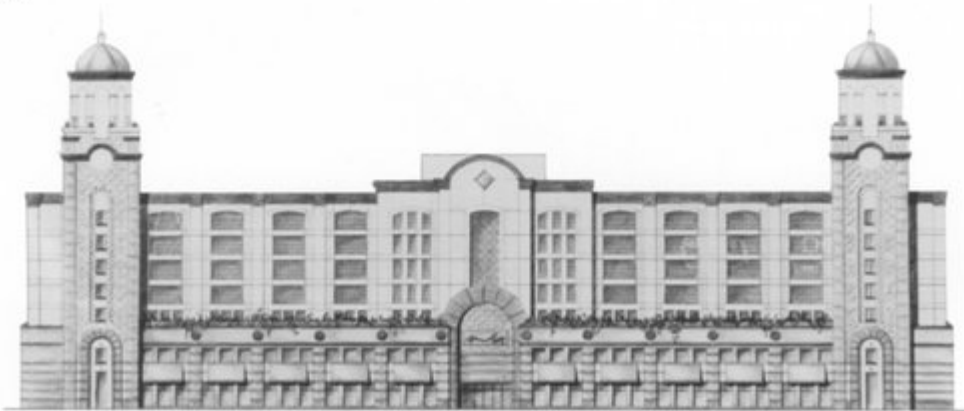
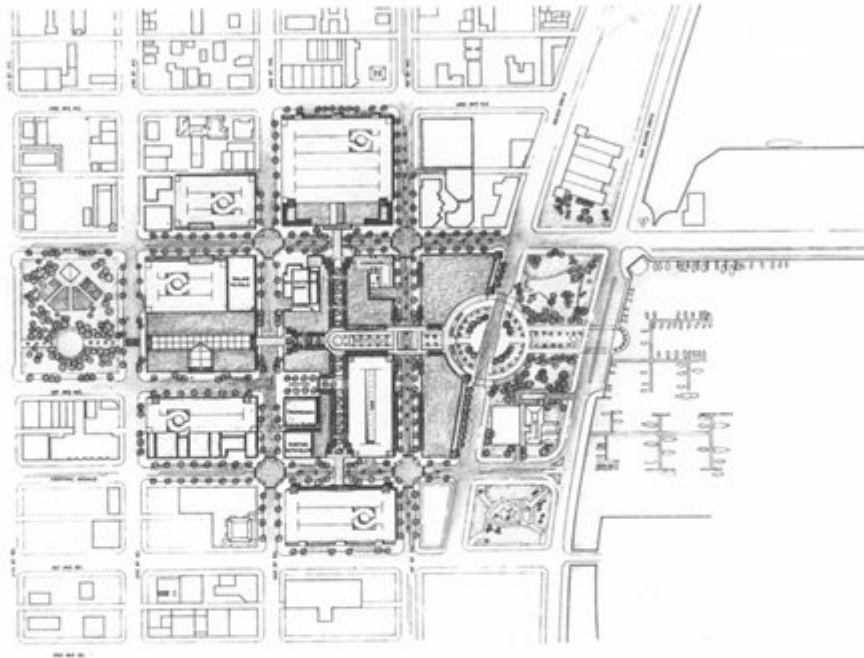
Thomas C. Gruber, AIA,
RTKL Associates, Inc. -
Design Architect
William S. Blizzard, Ander-
son Parrish Associates, Inc. -
Architects of Record

The special requirements of this project are to transform a mostly vacant and underdeveloped downtown core area into an upscale retail district similar in concept to J.C. Nichols' Country Club Plaza in Kansas City.

The design goal was to take advantage of St. Petersburg's waterfront and park system and have strong visual and physical connections to and from the retail district. Food, entertainment and public facilities were located adjacent to the waterfront park so that they became anchor for the district. Parking also had to be organized so that it was convenient, walking distances were reasonable and retail relationships were attractive to perspective tenants.

The most difficult aspect of a project of this scale is accommodating the divergent views of local community groups while still maintaining a viable plan that requires multi-block assemblages.

The jury liked the planning concept and thought it was a very thoughtful solution to relating the city to the water.



This page, site plan and proposed north elevation. Opposite page, main entrance to shopping district.



UNBUILT AWARDS

South County Civic Center

Palm Beach County, Florida

Currie Schneider Associates
AIA, PA
Delray Beach, Florida

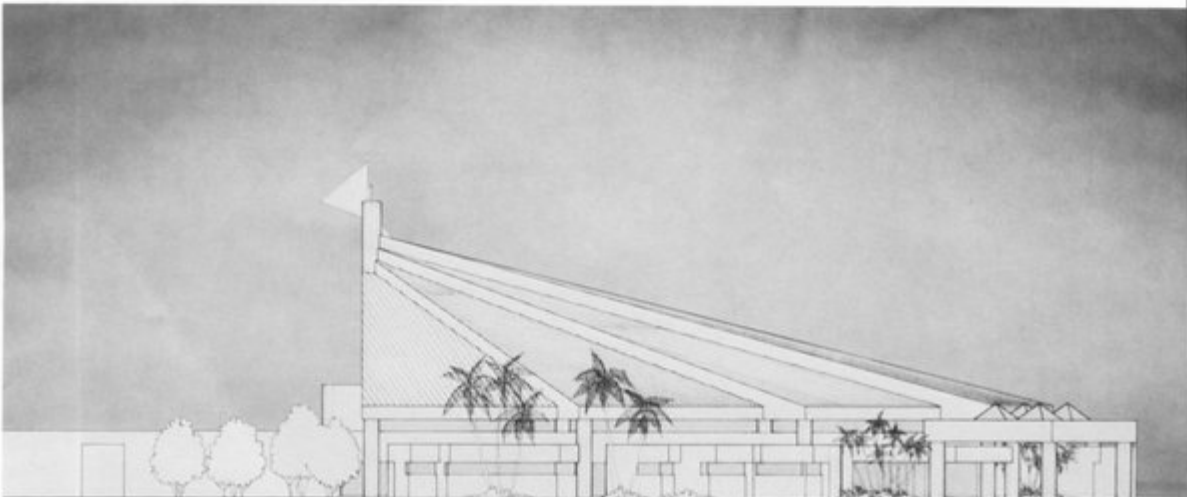
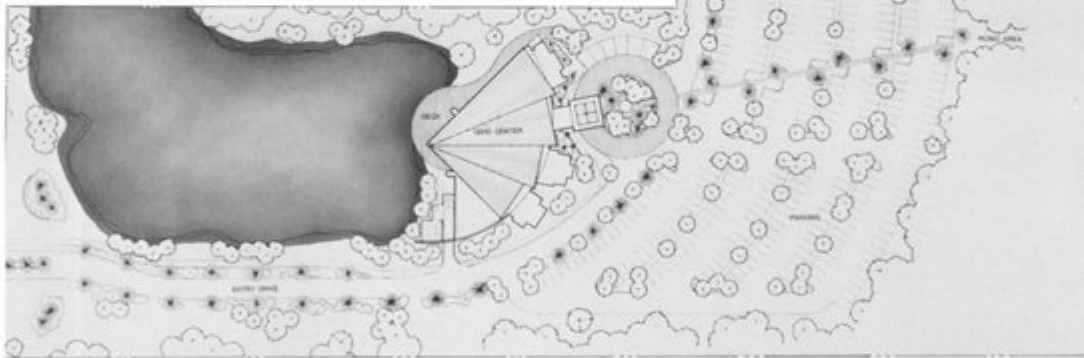
The objective of this project is to provide the residents in southern Palm Beach County with a place to hold civic meetings and to provide administrative offices for the County Commissioners and the Parks and Recreation Department.

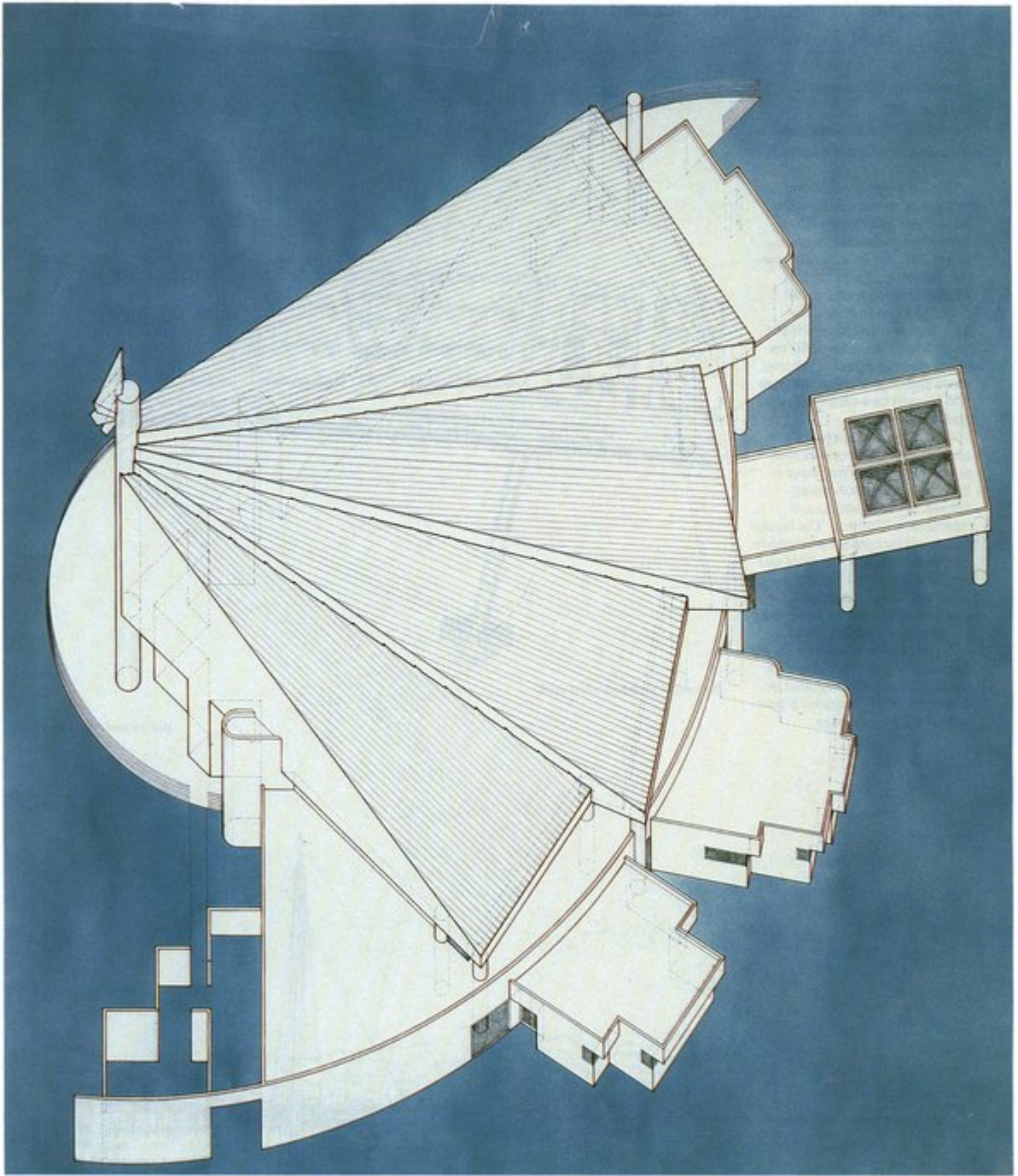
Situated on an existing lake, the building will occupy a fourteen acre site in the immediate vicinity of several residential developments. The external form of the new center reflects the internal function and the building is atypical of others in the area. It

is buffered from its surroundings by existing vegetation.

There will be seating for 1,000 inside the center's usable 20,000 square feet. Interior requirements include flexibility in the main assembly room which can be subdivided into four smaller spaces. Because each room must be able to function independently, it was necessary for the design to provide for acoustical isolation.

The jury felt that this simple building form resolved a complex variety of spatial requirements.





Opposite, top: Site plan and southeast elevation. Above, axonometric courtesy of Currie Schneider Associates.

UNBUILT AWARDS

Mayaguez Municipal Marina and Proposed Waterfront Development

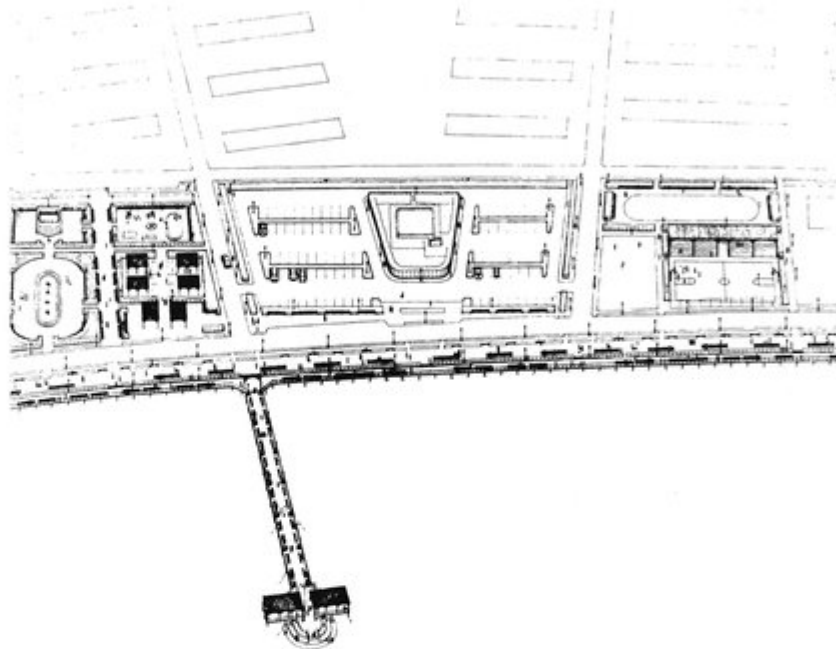
Mayaguez, Puerto Rico

Humberto Betancourt,
Arquitecto
Gaspare Malek, Asociado
San Juan Antiguo, Puerto Rico

This proposed waterfront development will contain marina, restaurants and shops, sailing center and yacht club facilities, boardwalk, drydock, hotel, parking, fishing facilities, middle income housing, commercial areas, piers and a park. The buildings will be constructed of poured-in-place reinforced concrete, wood and steel. Cast iron, wood and copper urban furniture will be used on a variety of paving materials.

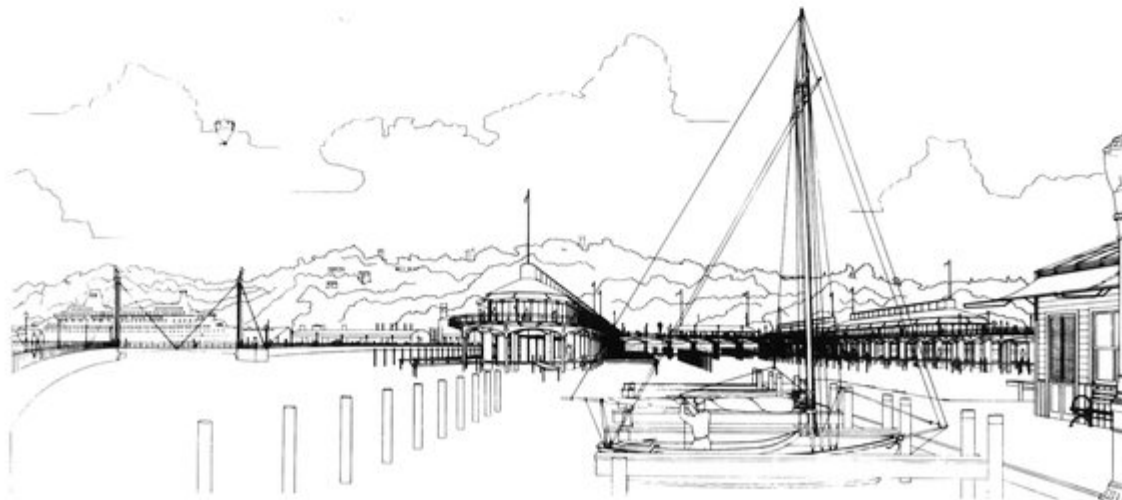
The City of Mayaguez required a phased construction schedule with the first phase to include the marina, housing, fishing, drydock and related recreational facilities. The second phase will include the promenade up to the Yaguez River delta and the third phase will include the boardwalk and fishing pier. Later phases will expand the entire project throughout the bay area.

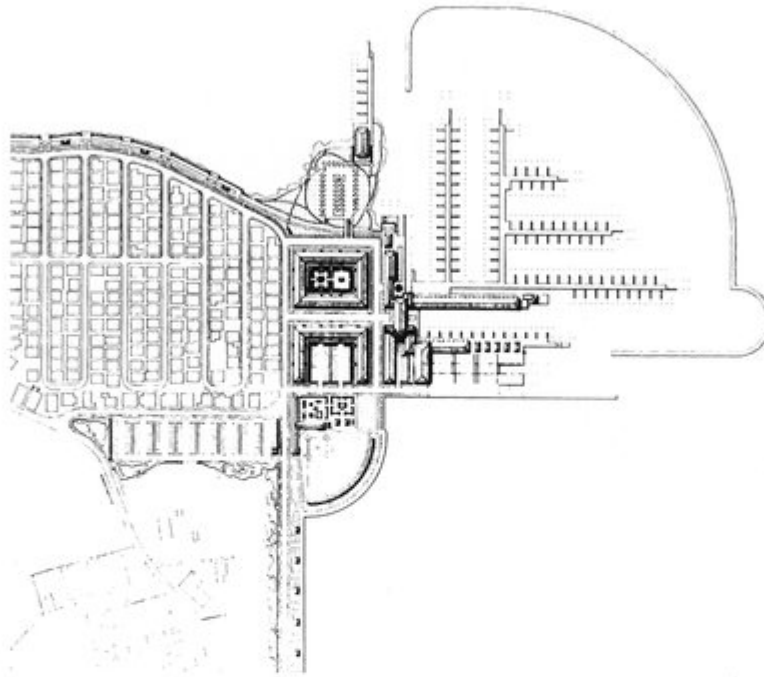
In this major waterfront development, the jury felt that the site features were well integrated by the device of a continuous promenade at the water's edge.



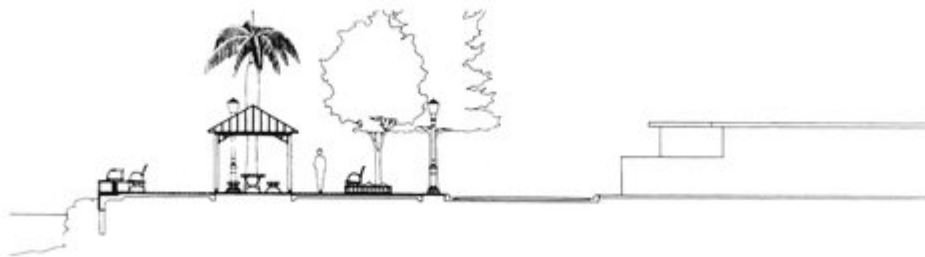
Boardwalk promenade and park.

Marina and cruise ship pier.





Yaguez River Delta showing all of the development's amenities and section of Promenade.



UNBUILT AWARDS

Bay Park Place

Tampa, Florida

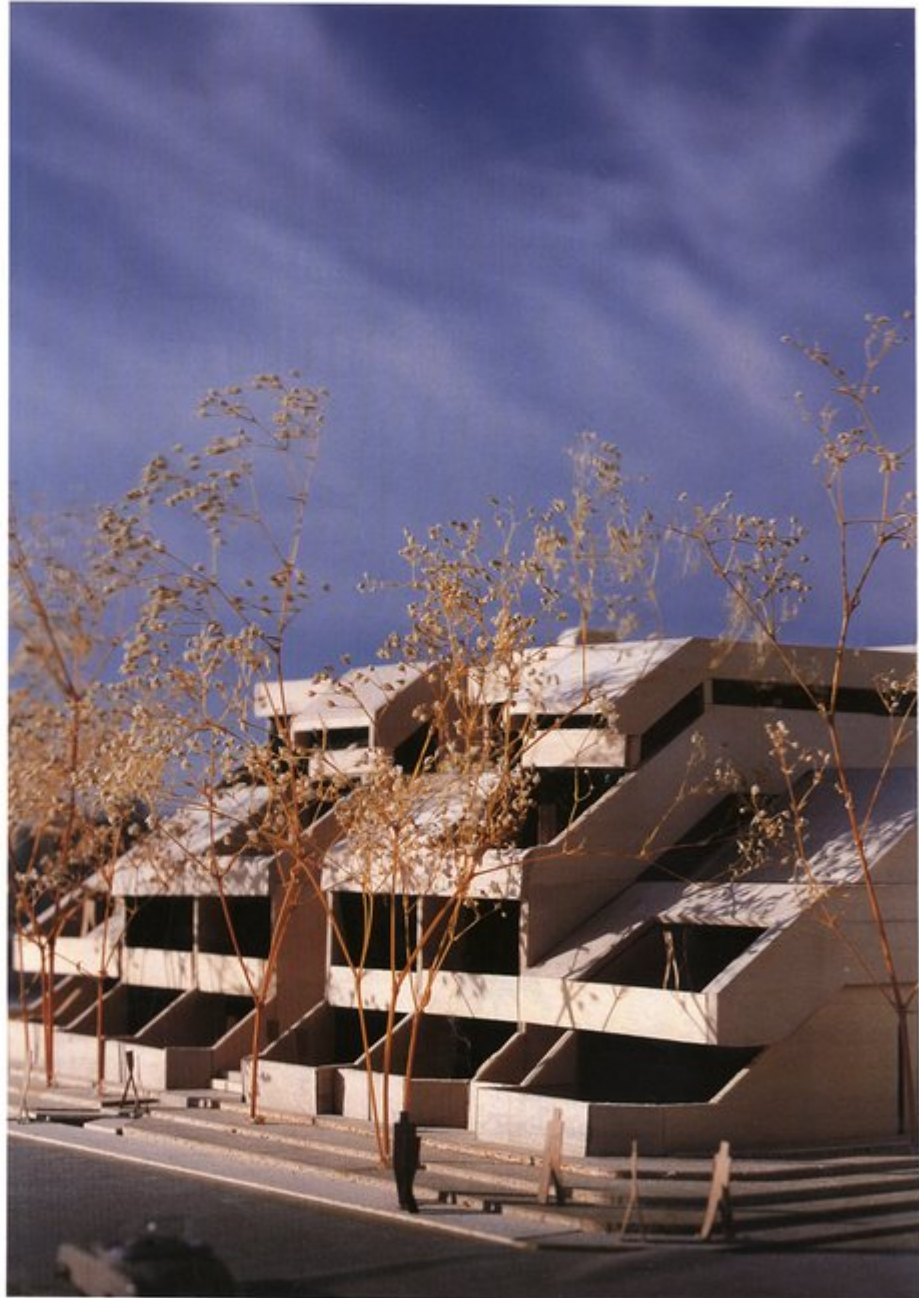
John Howey Associates
Tampa, Florida

Located in a large oak hammock, this site borders a city park and has views to Hillsborough Bay. The client desired to develop the site with luxury parkhomes which would take advantage of both the site and the view.

The design solution places the parking at the lowest site elevation with three levels of paired midrise units over the walled-in parking and separate retention ponds. At each end are multi-level townhomes with their own entrances making a total of eight units in the complex.

The units range in size from 2,000 to 2,600 square feet. All have three bedrooms and three bathrooms, nine foot high ceilings, fireplaces, large kitchens and patio balconies opening off of the master bedroom and living room. The perimeter walls of the building have controlled entry gates. Where tree removal is necessary, oaks and palms are being relocated with the help of the Tampa Parks Department.

The jury was impressed with the human scale of this project, its form and simplicity and the clever solution of parking and site drainage.



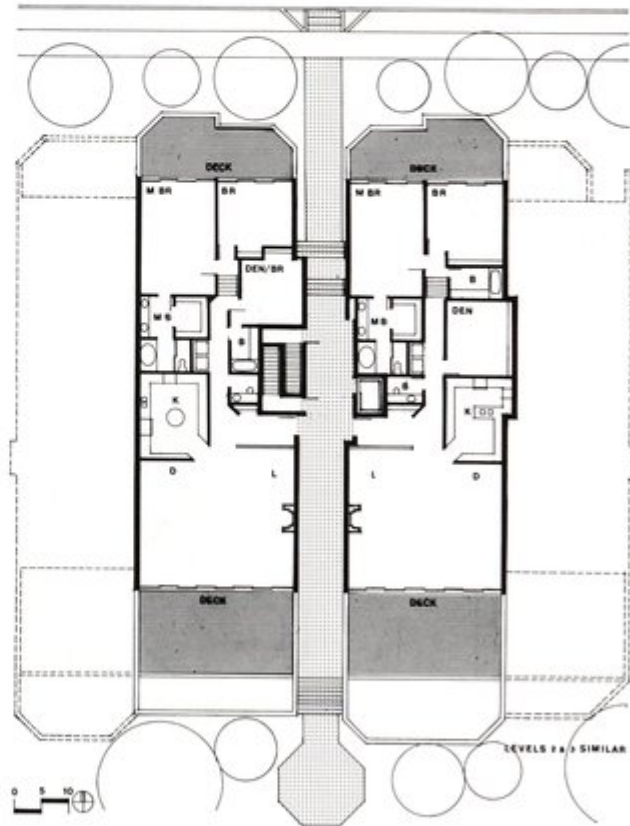


Photo of Model, South elevation and living level plan courtesy of John Howey Associates.

UNBUILT AWARDS

Residence for Mr. and Mrs. Frank Seco de Lucena

Shell Point, Florida

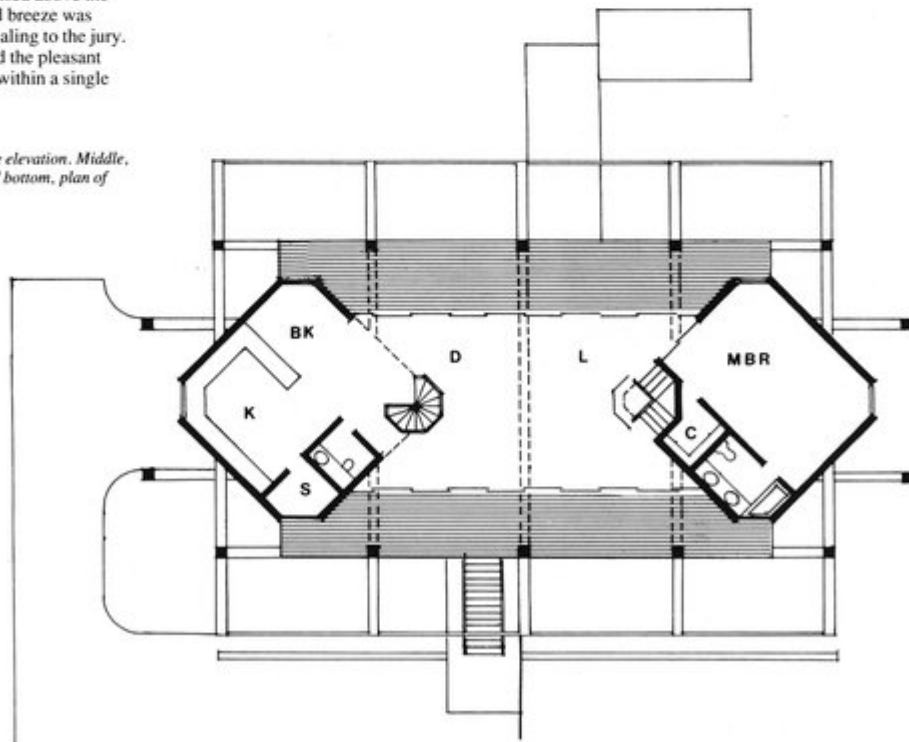
John Howey Associates
Tampa, Florida

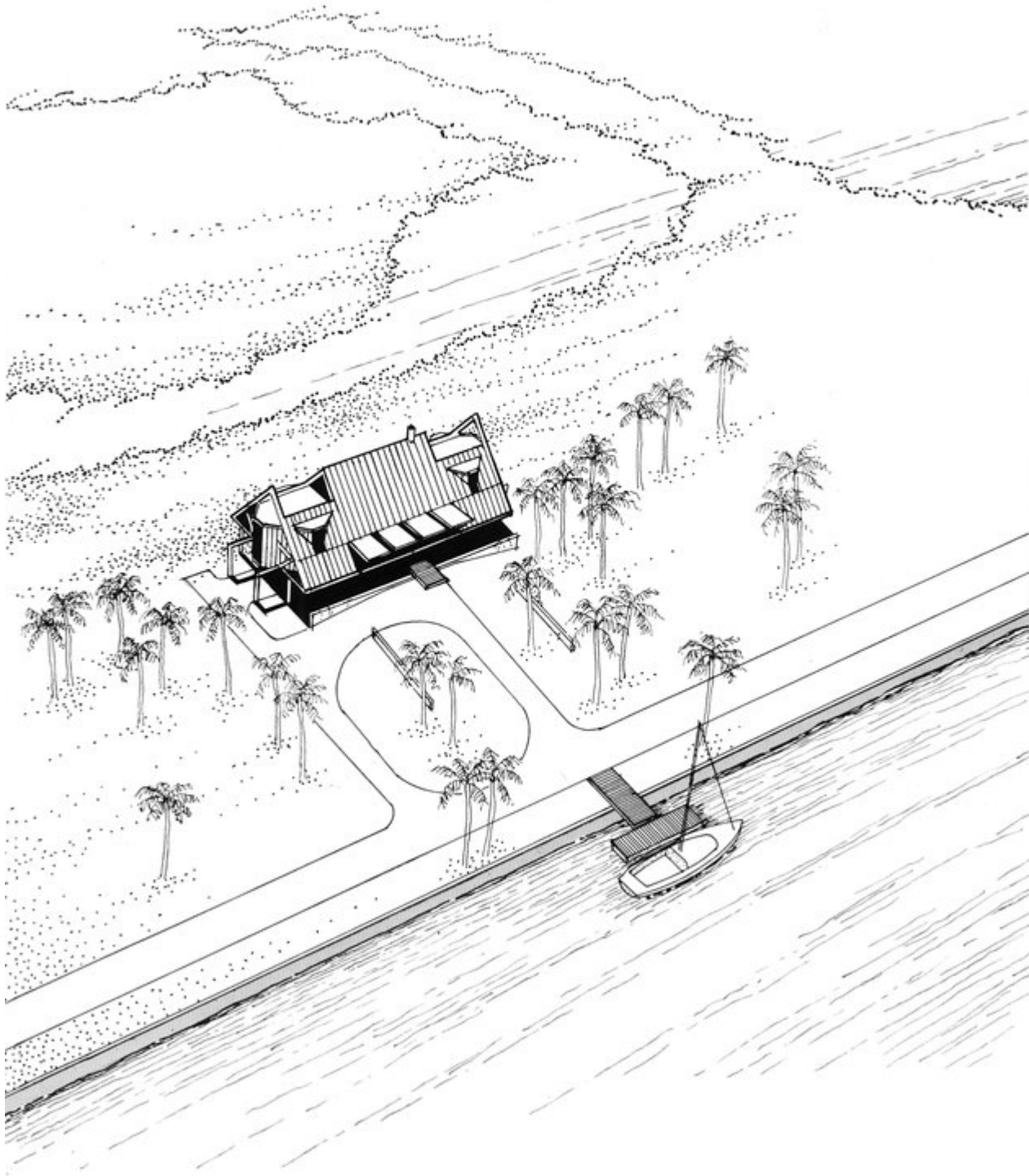
The property on which this vacation house is located is on the Gulf of Mexico in the Florida Panhandle. The owners, who are boating enthusiasts, wanted to incorporate an existing structural frame into their new house. To this end, wood floor framing is secured to new and existing concrete pilings which are driven to a limerock base. There are full wood trusses at the building ends for lateral support.

The owners also wanted a house that could be completely opened and then made secure for long periods of time when it was vacant. In addition to the living area, there are two bedrooms, a loft and three baths. Third floor viewing decks are accessible by ladder and there are various decks at different levels that take advantage of the north-south orientation, views of the Gulf and the prevailing breezes.

The directness of a modest frame structure raised above the earth for view and breeze was immediately appealing to the jury. They also admired the pleasant variety of spaces within a single form.

This page, top: Side elevation. Middle, front elevation, and bottom, plan of main living level.





“Colonos Del Este” - A New Company Town

Rio Grande, Puerto Rico

**Marvel.Flores.Cobian Y
Asociados
Santurce, Puerto Rico**

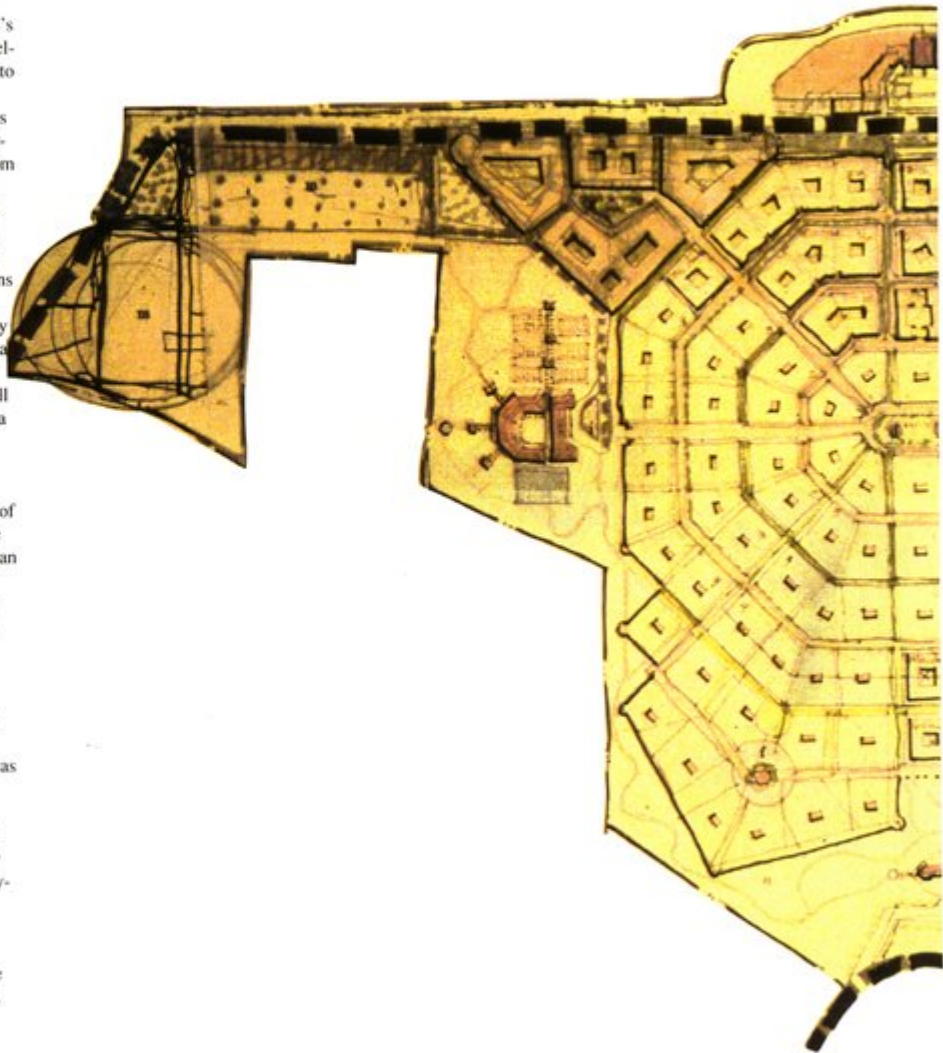
This residential community for 4,000 people is to be developed on a 200-acre mountain site on the coast of Puerto Rico. The project's concept integrates the urban development of the Caribbean culture to its architectural traditions.

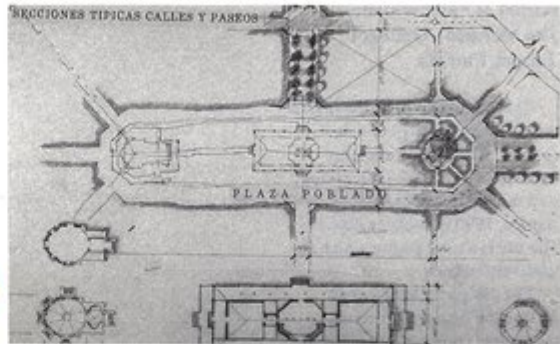
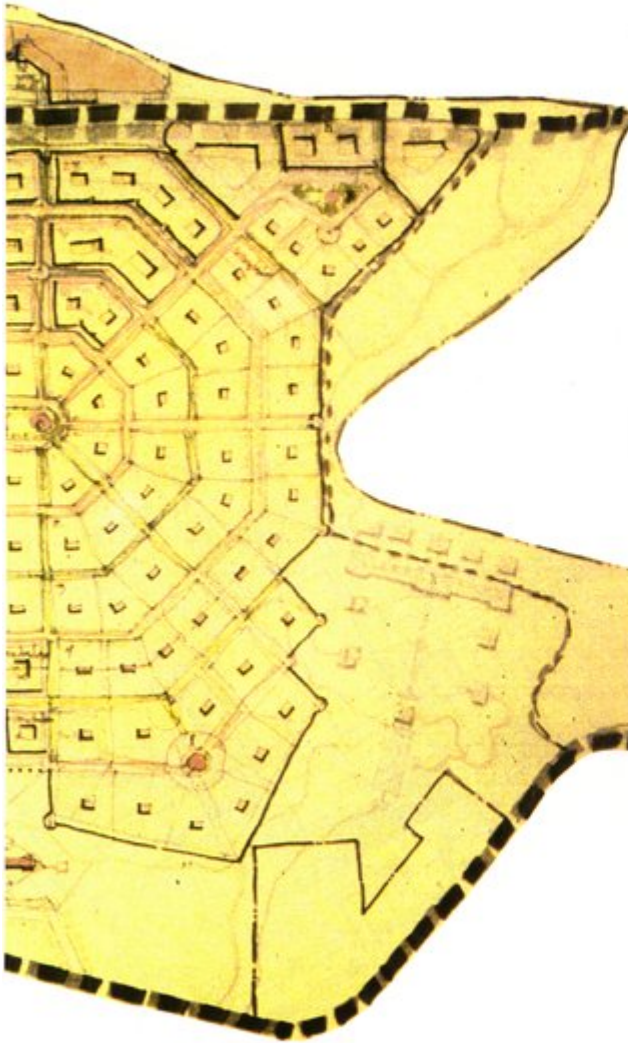
The design scheme maximizes its hilly location. The fan-like arrangement of buildings arises from the central park plaza where the clubhouse, chapel and bandstand are located in the tradition of the octagonal cities of the past. The octagonal street and block patterns conform to the natural grade.

The program required a highly secure environment achieved by a wall surrounding the residential community. The retail center will be located outside the walled area in an analogous relationship between the sugar mill building and its company town. Small shops will be located at the base of the "wall building" served by the main road which anchors the urban grid to its periphery.

The housing types will range from estates on one acre sites to twin houses, row houses and blockhouses, each designed by different architects following a graphic set of rules. These rules are intended to give unity and a common vocabulary to the town as well as allowing for individual creativity.

The jury felt it was clear that the project showed exceptionally sensitive research and form analysis. Although the architectural development has not yet been clarified, the jury felt that the strength of the research would be carried out in the building forms.





Left: General scheme for town with Citadel Plaza at center. Above, top: the main town square, middle, company administrator's house and bottom, town engineer's house. Photos courtesy of Marvel • Flores • Cobian.

UNBUILT AWARDS

Hillsborough Community College Brandon Learning Center

Brandon, Florida

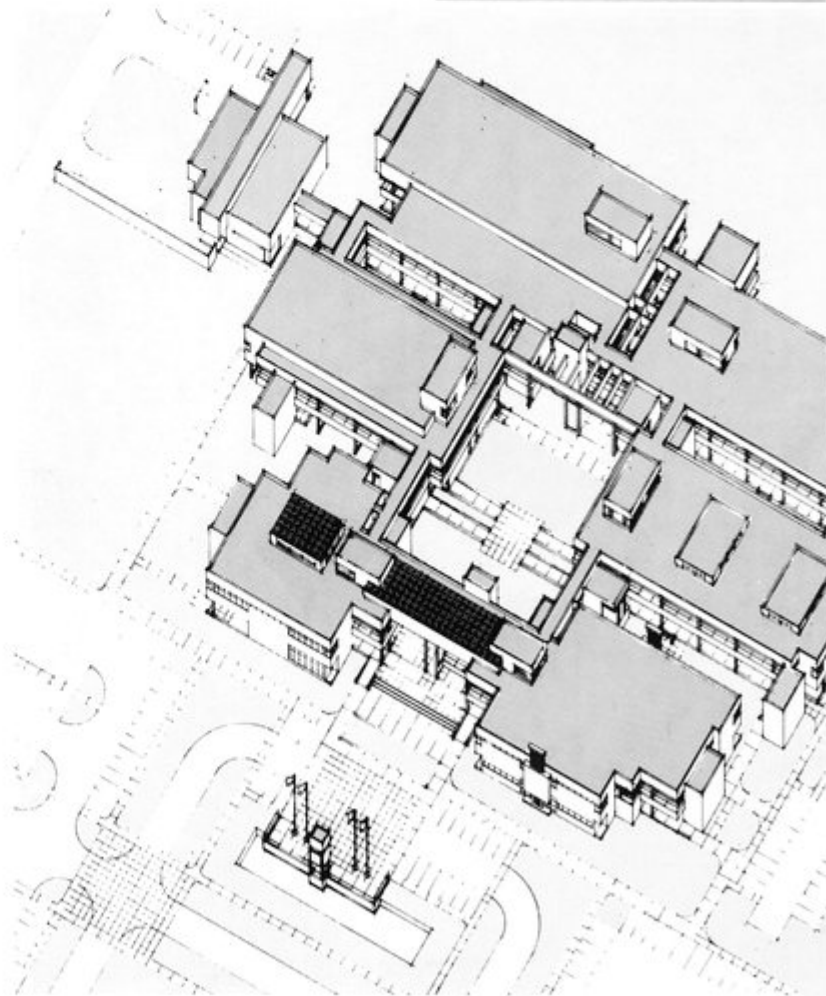
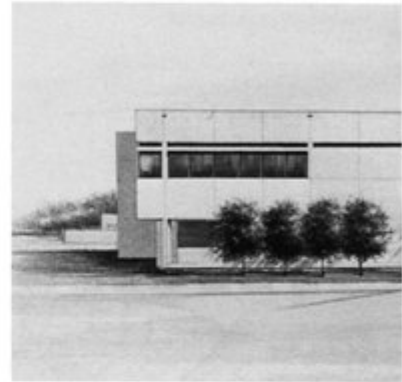
Ranon & Partners, Inc.
Jim McLean, Architect
Tampa, Florida

This building will be the first of three principal phases of a new campus. The facility contains 180,000 sf and 1,057 student study stations and is scheduled for a December, 1990 occupancy date. The site is a rural prairie which is relatively isolated.

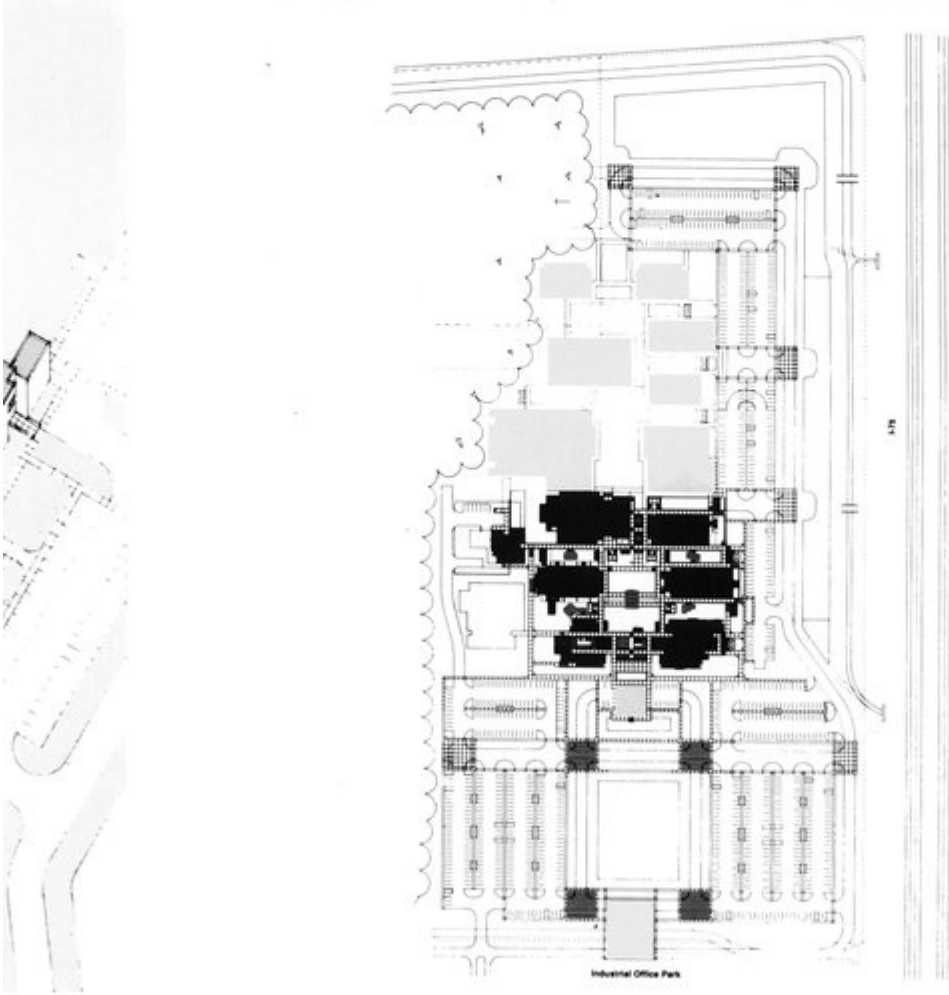
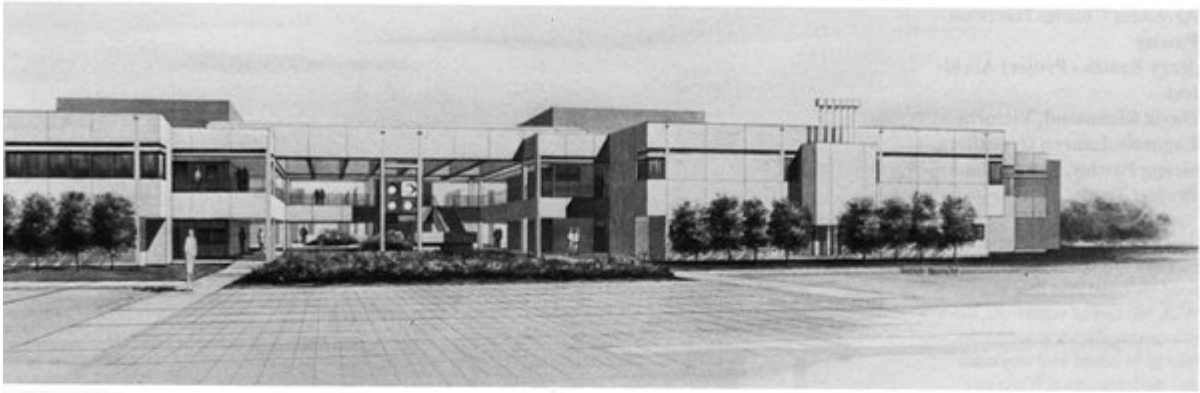
The design for the campus defines the first of a series of connecting courtyards as outlined by the campus masterplan. A concept was developed from both the givens and the opportunities. . . a prairie site, a high tech program, a series of landscaped gardens. The structures are designed to hover slightly above the lush garden supported by an elevated platform. Together, building and garden will combine to provide an educational setting unique to the Florida environment.

Construction materials consist of an aluminum storefront, hollow metal frames and reflective glazing. Porcelain ceramic tile cladding was selected for durability, low maintenance and vandal resistance. It also presents a cool, crisp, modular appearance. This material of earthen origin is contrasted against clear anodized aluminum and jade-colored reflective glass.

The jury felt that this was a sensitive arrangement of six buildings to form an entrance for a major future expansion. The individual buildings are well integrated in both form and material usage. There is a rich variety of spaces between buildings, both axial and subaxial.



*Elevation, axonometric and site plan
courtesy of Ranon and Partners.*



UNBUILT AWARDS

Fomon Residence

Palm Beach, Florida

Architect Charles Harrison Pawley
Jerry Beattie- Project Architect
David Richmond, Victoria Laguette, Lauren Greenberg, Gregg Pawley, John Sklanka- Project Team

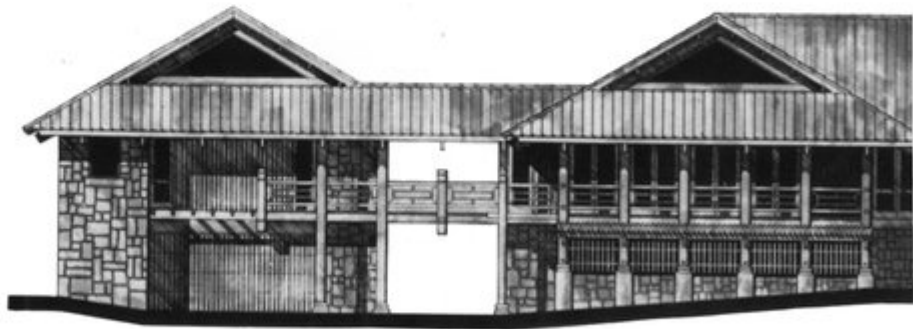
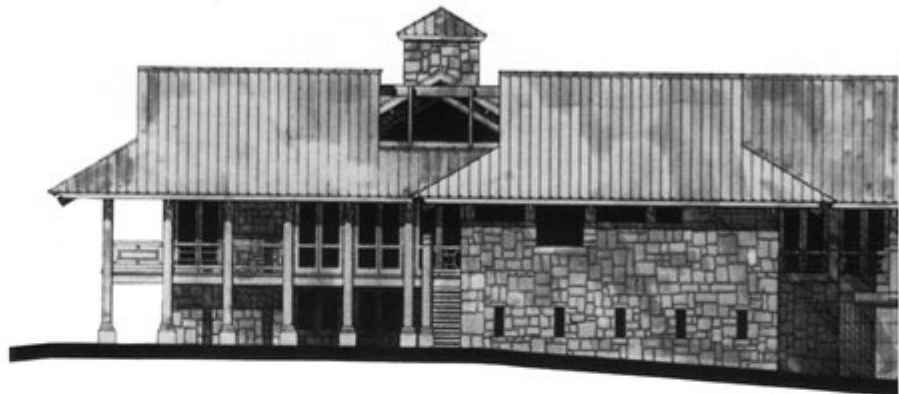
This two-and-a-half acre site on Lake Worth has been undeveloped for more than fifty years. With 560 feet of waterfront, there is a spectacular view across the lake to an island bird sanctuary and the Intracoastal Waterway beyond. Designed to be the client's escape from Northern winters, the house was designed to match the natural beauty of the site. Primary consideration was also given to designing a house that would function efficiently and sympathetically within the natural environment.

The design of the house showcases the beauty of the materials used in its construction including various woods and indigenous stone. There are six-foot deep covered porches on all exposures.

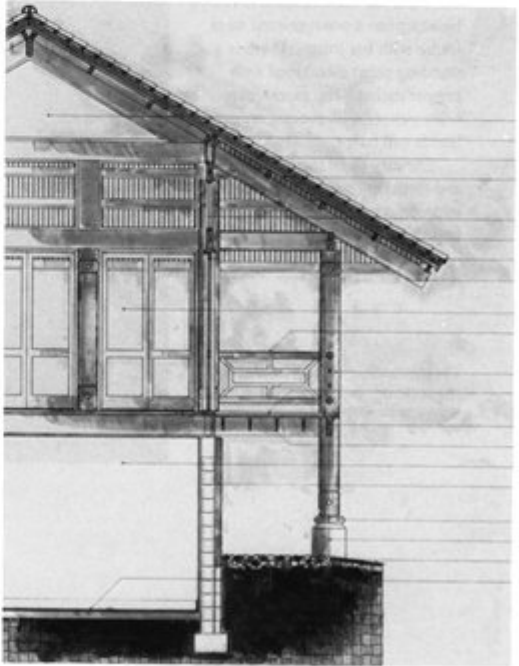
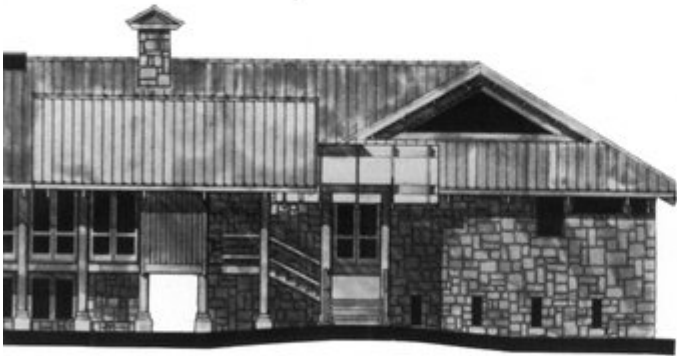
The client also requested that the house be a tropical vernacular type of structure. In keeping with this theme, a pavilion concept was used which maximizes both views and natural cross-ventilation.

There is a separate guest house and pool pavilion and the main living areas are elevated well above ground to better capture the prevailing breezes. The house has high exposed beam ceilings, and French doors were used extensively to permit secure enclosure, as well as to maximize the house's potential to be completely opened up.

The jury liked the organization of the plan, the massing of the room areas, the straightforward detailing and the honest use of materials.



Opposite, top: First floor plan and below, wall section. This page, top: South elevation and below, East elevation.



UNBUILT AWARDS

Brevard County Operations Center

Brevard County, Florida

Hunter/RS&H, Inc.
Tom McCrary, Design
Architect
Jacksonville, Florida

This county government operations center will provide facilities for planning and development, social services, utility services and county commission administration. Completion is scheduled for 1990. The development of the operations facility marks the beginning of a new Town Center in Brevard County. The design addresses the consolidation of public government services and responds to the image and importance of a civic building.

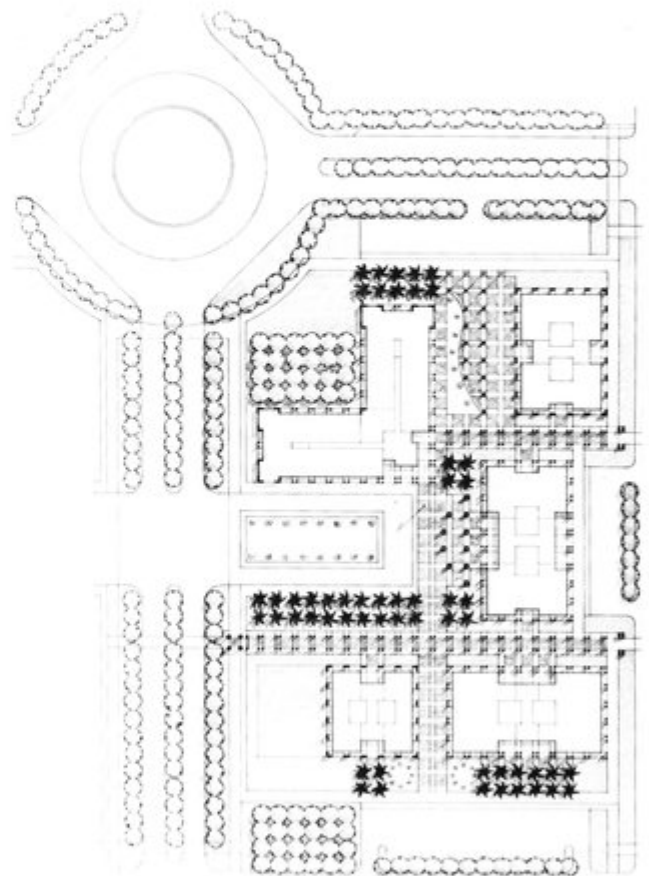
A campus of public structures was developed through the use of separate buildings, covered walks and a variety of public courts and spaces. The formal entry with its fountain, colonnade of palms and entry portico is reminiscent of a classical treatment.

The future Judicial Center will complete the civic complex. The building has a conventional steel frame with bar joists. There is a standing seam metal roof with copper patina. The exterior is brick veneer with precast columns, lintels and bases.

The jury liked the simplicity and formality which they felt is appropriate to this type of building.

Center, Building C Model and above, north elevation of Buildings A and B. Opposite page, site plan.





ROLL MODEL.



New Vanguard™ Roll FasTrack™ Roof Tile from Gory is the perfect example of what's meant by less is more.

Because of its larger double-roll symmetrical design Vanguard Roll requires less pieces per square, only 90. So the structure has to support about 10% less weight. And it takes less time to install.

Yet you have more ways to install it. Either nail-on, batten or mortar-set.

And we have many colors in inventory. All Vanguard Roll roof tile is color-thru, which eliminates repainting. With double weather barriers. And concealed interlocks.

Find out what role Vanguard Roll can play in your next new or remodel project. Write to Gory Roof Tile, 1100 Park Central Blvd. So., Suite 1800, Pompano Beach, FL 33064.

Or call toll free 1-800-223-8453.

(305) 975-7605 locally.



GORY
ROOF TILE

Higher Standards.

Circle 60 on Reader Inquiry Card

Chapel Dedicated To Nils Schweizer, FAIA

The late Nils Schweizer, a past president of the FA/AIA and student of Frank Lloyd Wright, will be honored in a very significant way by the Episcopal Diocese of Central Florida. The project, a memorial chapel, has been named the St. Augustine Chapel and it will be built on the grounds of the Canterbury Retreat and Conference Center near Orlando.

Canterbury Center meant a great deal to Nils as a special place of spiritual renewal. His vision for it became its master plan. The Schweizer family believes there is no better place to create a memorial to Nils through which others will come into an intimate relationship with nature, the self and the spirit of man and God.

It is appropriate that the design team for the chapel consists of Nils' children Kevin Schweizer, Architect; Tamara Schweizer Sims, Interior Designer; and Garth Schweizer, Landscape Architect. They incorporated in its creation the elements of organic architecture with which their father was so long associated.

Plans are being made to give members of the architectural community an opportunity to express their love and respect for Nils by participating in the funding for this memorial project. Further information can be received by contacting the Canterbury Retreat and Conference Center at 1601 Alafaya Trail in Oviedo, Florida 32765. (407) 365-5571.



NEW PRODUCTS

Air Terminal Lightning Rod Available

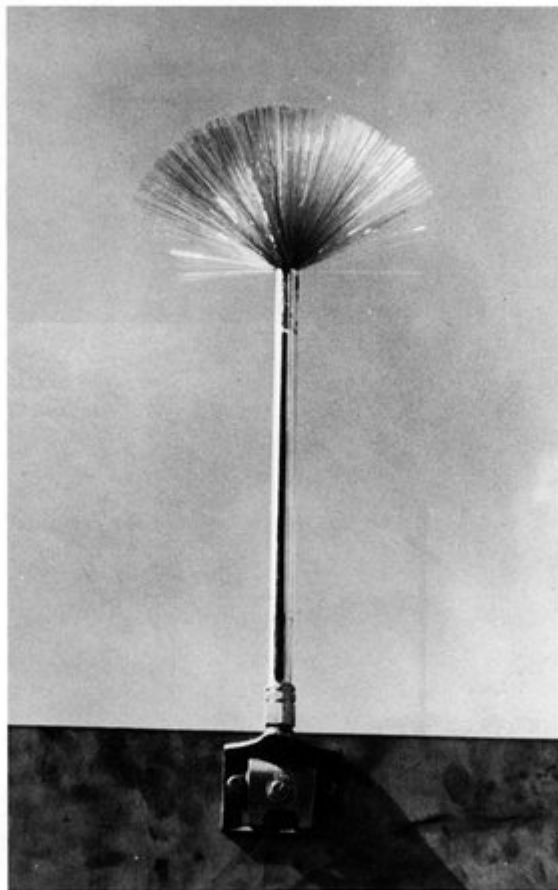
Many times it is an architect who specifies the lightning protection system. Information is presently available from Lightning Master about their new air terminal lightning rod with static dissipating characteristics. The rod, PP-35T, has recently been approved by the Underwriters Laboratories.

Static dissipation has been a buzz word for several years now. Simply, it is the reduction of a ground charge associated with an electrical storm at a rate sufficient to maintain the value of that charge on a protected structure below that at which a lightning strike will occur, thus rendering the site "lightning invisible."

The static dissipating air terminal replaces the traditional air terminal, and enhances dissipation of lightning-causing static ground charge to the atmosphere, thereby reducing the likelihood of a direct strike.

The new rod weighs approximately 12.5 ounces and is mounted on a standard 1/2 inch thread base. The PP-35T must be electrically bonded to ground and to the object or structure upon which it is mounted.

For information, contact Lightning Master in Brooksville, Florida at (904) 799-6800.



New Fireproofing Material Available

Firebrake Perlite Type KG100 is a patented, quick-setting, inorganic fireproofing material. It is a two-part formulation consisting of a dry blended perlite, and a liquid activator solution.

When spray is applied, the components are mixed with the liquid at the nozzle of the spray unit to initiate a rapid chemical reaction, exochemically producing heat and quickly recrystallizing the component to form a fast-setting lightweight material which tenaciously bonds to most building materials. In addition, the quick setting action permits a continuous buildup to the thickness required for a one to four fire rating.

Firebrake Perlite Type KG100 contains no asbestos, no fibers, no vermiculite, and no chloride, and produces a fireproofing that is hard, moisture-resistant and non-friable. The phosphate in the mix inhibits corrosion of substrate materials. It is classified by Underwriters Laboratories, Inc. for up to four fire ratings on structural materials.

Firebrake Perlite is a product of Chemco-Kaltec, Inc. Florida office: 813-942-4234. The company will have an exhibit at the Sarasota Design Conference in July.

TASSO Introduces Paintable Diagonals

TASSO Wallcoverings, manufactured by U.S. TASSO, is a paintable glass fiber wallcovering that is highly permeable when painted with latex (9.5 times more permeable than vinyl wallcoverings according to tests conducted at Georgia

Tech). An oil-based or epoxy paint, however, will seal the finish.

In addition to exceeding the fire standards for flame spread, fuel contribution and smoke generation, woven glass fiber is low in toxicity. When burned and tested in accordance with Airbus standards, TASSO demonstrated toxic gas values far below those set by the airline industry. These qualities make the product

a particularly desirable wallcovering for schools, hospitals and hotels.

Woven glass fiber also has the quality of rehabilitating walls by bridging joints and cracks and smoothing rough surfaces. It can be installed over wood paneling, brick, stucco, tile and drywall.

Now, the company has added a ninth texture to its American line. "Diagonals" is a new texture suited

to a variety of applications. Like its predecessors, it is easy to install and clean and it won't shrink or stretch.

TASSO is delivered pre-trimmed and ready to hang in 39 by 54½ inch rolls.

For complete information, contact U.S. TASSO at 1-800-888-2776.

SCULPTURA
SLIDING GLASS DOORS

HC-85 Rated!

Now that's tough ... even by South Florida standards.

Sculptura is the boldest, strongest door ... tested and approved for your most stringent applications.

A 4' x 9' panel will withstand 120 MPH winds at a 350 ft. elevation in South Florida.

And, Sculptura is an extra-safe door because it features:

- Large profile extrusions for exceptional strength.
- Double screws at all panel corners.

• Tamper-proof, surface-mounted cam latch.

• Burglar bolt at interlocking stiles for added secondary security.

• 15.0 P.S.F. water test pressure satisfies the most stringent code and architectural specifications.

Sculptura can safely fill your door requirements up to a 5-ft.-wide x 9-ft.-high panel.

Send for our Sculptura Spec Kit. When you check all the facts ... you'll move up to Sculptura ... with confidence.

mildoor®

A Division of Miller Industries, Inc.
16295 N.W. 13th Ave., Miami, FL 33169-0910
305-621-0501 • Florida 1-800-432-3116
National 1-800-446-7628

PRODUCTS THAT HAVE PASSED THE TEST OF TIME

- SLIDING GLASS DOORS
- SLIDING MIRROR CLOSET DOORS
- SINGLE-HUNG AND ROLLING WINDOWS



Circle 5 on Reader Inquiry Card

DON'T GET STUCK WITH INFERIOR STUCCO.



Perma Crete™ Stucco is a quality-controlled, pre-blended portland cement and selected aggregate composition which includes a waterproofing agent, fade-resistant pigments, and other chemical combinations to provide a long-lasting finish.

Perma Crete's finish coat is color through so there is never a need to paint. Available in white and many beautiful colors, it can be trowel applied or sprayed for either a textured or smooth finish.

The buttery consistency makes it easier to apply and its greater spread gives extra coverage making it more economical.

All components meet the standards

set forth in
ASTM-C929-81
for stucco.
Coverage is
6-9 yards per
80 pound bag.



For further information write or call C.L. INDUSTRIES, INC.
P.O. Box 13704, 8188 South Orange Avenue, Orlando, Florida 32859-3704
(407) 851-2660; 1-800-333-2660; FAX: (407) 240-2743

Circle 26 on Reader Inquiry Card

Books

Prehistoric Architecture in Micronesia

by William N. Morgan
University of Texas Press, \$49.50

This is William Morgan's second book, the first being *Prehistoric Architecture in the Eastern United States*, which was published in 1980. Clearly Architect Morgan's interest lies in what can be learned from the architecture of our ancestors. His research is thorough, his drawings, diagrams and maps are clear and explicit and his writing style is consistently readable and interesting. Added to all of this is breathtaking color photography of perhaps the most beautiful islands in the world.

This is the first modern study of the richly diverse and innovative architectural tradition in the Western Pacific in the centuries preceding Western contact. *Prehistoric Architecture in Micronesia* presents five distinctly different examples of Micronesia's ancient architecture, comparing the architectural charac-

teristics of the island groups with each other and with monuments outside Micronesia.

The sites include the extraordinary stone cities of Leluh and Nan Madol on the islands of Kosrae and Pohnpei, respectively. Other structures include the meeting houses and residences built on hexagonal stone platforms in the Yap Islands, the earth terraces and ornately decorated meeting houses of Palau, and the megalithic columns and capstones of prehistoric houses in the Mariana Islands.

Morgan's first encounter with the architecture of Micronesia came in 1954 while he was serving in the United States Navy and stationed on Guam. During the nineteen months he was there he saw numerous capstones and stone columns, but could find no reliable source of information about the unusual structures. In Morgan's own words, he describes what followed: "During a chance visit to the neighboring island of Tinian, an elderly Micronesian told me of an immense

latte in the jungle. Following his directions, I found the ruins of the extraordinary House of Taga with two of its original twelve columns still standing." From that point, I believe Morgan was "hooked" and his own interest and curiosity about this remote and impressive architecture grew steadily. Although many years would pass before Morgan began his research in earnest, he did visit the islands of Micronesia in 1984 and begin to review available information. It was then that he decided to prepare a study of prehistoric architecture based on five distinct island groups. In this book, the architectural ideas of each group are presented in their respective cultural and geographical contexts.

In the introduction to the chapter on Methodology, Morgan uses a quote from fellow Florida architect Paul Rudolph which sums up the importance of a study such as this one. Rudolph says, "...pay close attention to what we regard as untutored people and how they approach their problems, how they approached

them in the past, and how they still approach them...quite often people naturally do things when left to their devices, do things very well, and solve an awful lot of problems that architects tend to forget."

Copies of *Prehistoric Architecture in Micronesia* are on sale in the FA/AIA Headquarters Bookstore in Tallahassee. (904) 222-7590.

Interior Signage Catalog of Desk & Door Nameplate Company

Catalog free on request

Desk & Door Nameplate Company developed this manual as an educational guide to interior signage. It was designed to help design professionals better understand the mechanics of and the opportunities for designing fine signage. The manual was designed for easy, efficient and repeated use by architects and their space-planning or interior staffs. It covers everything from brand names and graphic processes to technical specifications

Partial Client List:

Skidmore Owings & Merrill
Taylor Woodrow
Pace Construction Corp.
Ranon & Partners
U.S. Home
ADP Associates
Michael Saunders & Co.
Arvida
Paragon Group
Henson Associates (The Muppets)
The Landings
Freedom Group
Frank Folsom Smith
Tiffany & Co. Jewelers
Francis Thompson
Hack Swain Productions
Kendon Films
H. Aoki Studio

One Scale Model Is Worth A Thousand Pictures

ARCHITECTE MINIATURA

Architectural Scale Models Special Effects
Structural Models Topographical Site Models
Interior Scale Models Computerized 3-D Presentations

P.O. Box 1783 Sarasota, FL 34230-1783 813 955-5555

Circle 28 on Reader Inquiry Card

Rockefeller Center, Inc.
EPR/CRS Sirrine
Cooper Eckstut Associates
Donovan & Green
Douglas Leigh Organization
The Plantation
Neal & Neal
Palm Aire
Bruce Balk AIA
Johnson Peterson Holiday
Murtha DeSola Finsilver Fiore
Ramar Group
The Oaks
Forsythe Architects
First Baptist Church
Tichenor & Lindner
Edwin Schlossberg
Western Inns
And More.

and maintenance instructions.

The catalog depicts four complete interior signage systems. All drawings are approximate and presented to show placement and finished appearance of signs. The catalog also depicts the options available with regard to ANSI regulations for visually impaired, regulations for handicapped access and customizing for distinctive appearance.

To receive a copy of the manual, call the Desk & Door Nameplate Co. in St. Petersburg at (813) 327-1472.

Letters

Editor:

It was with great interest that I read and viewed the articles on "Nine Residences By Florida Architects" in the May/June 1989 issue.

The last article, "An Engineer in Time Saves a Lot," also caught my attention. An article about the benefits of structural engineers to the architectural project is something that I as a structural engineer have often emphasized.

Unfortunately, I had just previously read "Learn and Don't Burn," an article on wood framed multi-family structures and their inherent fire danger potential.

The first example in your article was a nursing home that was converted from precast concrete roofs and interior noncombustible bearing walls to clear span wood trusses and elimination of the noncombustible interior walls. HVAC changes were also made and the project's budget was reduced from \$3 million to \$2.5 million.

It would be interesting to know if the owner, architect or structural engineer had evaluated life cycle costs for the reduced structural costs and higher insurance costs for a nursing home - a facility that requires extra care for safety.

The other examples shown were good ones and indeed show the benefits of early structural engineering participation.

Lane. R. Smith, P.E.
Vice President
GAI Consultants Southeast, Inc.

Order Your Guide to Florida's Historic Architecture Today

Call the FA/AIA Bookstore in Tallahassee at 904/222-7590 to order.



BENEFITS AND SERVICE THAT ARE RIGHT ON TARGET!

Group Health Insurance is a wonderful employee benefit...if it offers the coverage employees want and need at a price employers can afford.

The FA/AIA Insurance Program combines extensive medical coverage, cost containment features, a "Take Care of Yourself/Wellness Campaign", and an unbeatable service package to offer a health insurance program designed exclusively for the design professional.

For information on the FA/AIA Group Insurance Program, please call Ken Hobbs or Kathleen McDonnell at:



Association Administrators
& Consultants, Inc.
The FA/AIA Insurance
Service Organization
19000 MacArthur Boulevard, Suite 500
Irvine, California 92715

1-800-854-0491 Toll Free

Circle 27 on Reader Inquiry Card

Software Solutions to Steel Beam Design®

- Menu operated — easy to use
- For IBM compatible computers
- Variety of video graphics
- Any load, span or framing layout
- Minimum top flange width option
- Select beam from economy list on screen
- Designs end connections

This program designs simple steel beams with or without overhangs. It was written by a structural engineer specifically for architects. A complete printed analysis is provided. Please request a free demonstration disk — specify size.

Applications include:

Lintels • Roof Beams • Floor Beams • Hip & Valley Beams



2729 Bedford Way
Tallahassee, FL 32308
904-386-2736

*Structural Design Solutions
Tailored to Your Needs*

Circle 23 on Reader Inquiry Card

Once Upon a Time . . .

Architects were Master Builders

Join your Florida colleagues as the profession relives the Mizner dream in old Boca Raton and looks to the future of Design Build.

FA/AIA

Fall Convention & Products Show

September 22-24, 1989

Boca Raton Hotel and Club

Boca Raton, Florida

Watch your mail for further information or call
FA/AIA Headquarters at (904) 222-7590

THE ALLEN MORRIS CONSTRUCTION COMPANY



QUALITY CORPORATE CONSTRUCTION

SPECIALIST IN COMMERCIAL INTERIOR CONSTRUCTION

MIAMI
305 358-1000

FORT LAUDERDALE
305 523-2020

DEERFIELD BEACH
305 429-3337

WEST PALM BEACH
407 684-1000

TALLAHASSEE
904 224-8531

Circle 18 on Reader Inquiry Card

CHAPTER AWARDS

Broward County

Broward County's 1988 Awards for Excellence in Architecture was juried by Kenneth Treister, AIA, Miami; Roney J. Mateu, AIA, Miami, and John Thomas Regan, Dean of the School of Architecture, University of Miami. The jury selected a total of four winning projects from two categories, built and unbuilt.

Built Category: Award of Excellence

Private Residence Palm Beach County, Florida

Architect: Donald Singer, FAIA
Ft. Lauderdale, Florida

This design for an oceanfront residence evolved from an effort to capture the beauty of the sea and sky, while offering shelter and protection. The concrete and masonry structure is sheathed in natural coral stone.



Built Category: Award of Merit

Port Everglades Passenger Terminal Ft. Lauderdale, Florida

Architect: Michael A. Shiff & Associates, Inc.
Ft. Lauderdale, Florida

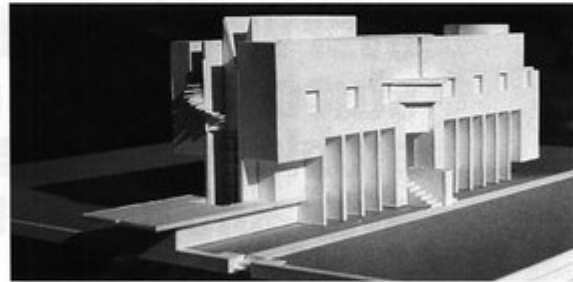
This cruise ship terminal, the first phase of a planned expansion of port facilities, announces itself with technological and sculptural expressiveness.

Unbuilt Category: Award of Excellence

Bay Plaza Waterfront Retail District St. Petersburg, Florida

Architect: RTKL Associates, Inc.
Ft. Lauderdale, Florida

This masterplan for a nine block downtown urban retail district was designed to transform an underdeveloped city core into an attractive waterfront shopping park.



Unbuilt Category: Award of Merit

Twin Palms Apartment Project Ft. Lauderdale, Florida

Architect: Terence O'Connor, AIA
Ft. Lauderdale, Florida

This private residence with two accompanying apartments was designed with a private roof garden. This strong, simple building shields occupants from the sun, funnels the wind and is well-suited to a hot climate.

MAKE A DATE!

**SARASOTA DESIGN CONFERENCE
JULY 14-16
COLONY BEACH RESORT
SARASOTA, FLORIDA**

SPEAKERS: PAUL RUDOLPH, FAIA; BERT BROSMITH, AIA; JIM MURPHY, FAIA

**What wallcovering
affords an unlimited
color palette, won't
shrink, stretch or burn,
does not contribute to
mildew growth, rein-
forces the substrate,
can be applied directly
over wood paneling,
stucco, tile and other
problem surfaces, is
available in a variety of
subtle textures, and...
is paintable?**

For local dealer information
and to request our publication
**Ten Good Reasons To Install
Glass Fiber Wallcovering**, call
1-800-88-TASSO (888-2776).



The Professionals' Choice

See us in **SWEET'S** Section 09950.

Circle 45 on Reader Inquiry Card

For more information about
Kohler Plumbing Products
see these Kohler distributors:

**Lawrence Plumbing
Supply Company**

Showroom:

5700 W. Flagler St.
Miami, Florida 33144
(305) 266-3338

31 S.W. 57th Avenue
Miami, Florida 33144
(305) 266-1571

405 N. Flagler Avenue
Homestead, Florida 33030
(305) 248-7020

8712 S.W. 129th St.
Miami, Florida 33176
(305) 251-7022

**Wool Plumbing
Supply**

*Distributors of Plumbing
and Decorative Hardware*

Showroom:

5910 Shirley St.
(off Pine Ridge Rd.)
Naples, Florida 33942
(813) 597-8155

Showroom:

1321 NE 12th Avenue
Ft. Lauderdale, Florida 33304
(305) 763-3632

Showroom:

4340 SW 74th Avenue
Miami, Florida 33155
(305) 266-7111

Showroom:

6778 N. Military Trail
West Palm Beach, FL 33407
(305) 863-7788

Circle 6 on Reader Inquiry Card

Choosing Sides

Hexsign™ Lavatory and Taboret® Faucet. Side with better design and color on your next project. Kohler's distinctive shapes and exciting color range are not just for residential use. Enameled cast iron fixtures and cast brass faucets stand up to heavy usage in commercial applications. The cost stays within budget. And everyone knows Kohler's reputation for quality.

When you can have so many designs in so many colors, why go white? Make your project look as good as it functions, by simply choosing Kohler.

THE BOLD LOOK
OF **KOHLER**®



**RANDALL ATLAS
ARCHITECTURAL SECURITY
CONSULTANTS**

Offering:

♦
SECURITY SYSTEMS DESIGN

♦
SECURITY PROGRAMMING

♦
SECURITY AUDITS

♦
VULNERABILITY ASSESSMENTS

♦
CRIME PREVENTION THROUGH
ENVIRONMENTAL DESIGN

♦
ARCHITECTS FOR SECURITY

Randall I. Atlas, Ph.D., AIA, CPP
600 NE 36th St., Suite 1522
Miami, Florida 33137

(305) 576-6029
FAX (305) 576-1390

CALL NOW FOR CONSULTATION

Circle 19 on Reader Inquiry Card

CLASSIFIED

**NEWS, FL EDUCATIONAL
FACILITIES OFFICE**

Anticipate 20 jobs in Ft. Lauderdale, 7/1/89, pending legislation. Plan reviews & final inspections. Florida Registered Architects (8); Florida Registered Engineers (5); 1 Program Specialist III; 1 Off. Automation Spec.; 1 Staff Asst.; 1 Admin. Sec.; 1 Sr. Clerk; 2 Sec. Ed. Fac., Dept. of Education, 126 Collins Bldg., Tallahassee, FL 32399-0400. EEO/AA.

FOR SALE - Black Tizio lamp in original box. Also, one George Kovacs "Big Mac." Boxed and never used. Call (813) 286-2652.

SCALE MODELS

Highly detailed and realistic scale models for presentation. Speed the approval process, enhance your sales or leasing effort. Call for our brochure. Scale Model & Design Studios, 100 S. Harrington St., Raleigh, NC 27603. 919/832-4304

Pave it with Imagination!



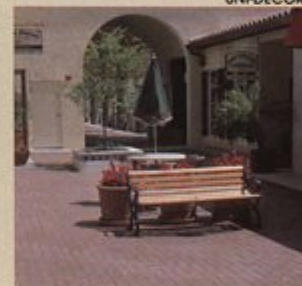
APPIAN-STONE®



UNI-DECOR®



SUPER-DECOR®



HOLLAND-STONE™



Call or write for a FREE color brochure—
P.O. Box 10027, Riviera Beach, FL 33419
• W. Palm Beach (407) 844-5202 • Orlando (407) 859-9117



NAME _____ PHONE _____

ADDRESS _____

CITY/STATE/ZIP _____

FA

Circle 11 on Reader Inquiry Card

A Link To The Profession

by Diane D. Greer

The second annual AIA Education Honors program drew nearly fifty completed submissions from thirty schools nationwide. Jury members, all educators, represented colleges and universities from California to Maryland. One of this year's three recipients of the Education Honors was a teaching internship program entitled "The Bridge That Bonds Incoming Students With Existing Students: A Course in Leadership/Fellowship Training" which was designed, and is directed, by Maelee Thomson Foster, an Associate Professor of Architecture at the University of Florida.

In a congratulatory letter to Professor Foster, AIA President Benjamin Brewer stated that "The Bridge That Bonds" was considered among the most exemplary efforts in the teaching of architecture for its relevance to the profession, its contribution to the advancement of the profession of architectural education and its ability to be transferred to other instructional settings.

"Brewer's high praise was justly deserved. The success of the program can be measured by the many testimonials from graduates who have found themselves "seized" by the experience of teaching in a program that helped to clarify their career goals. Graduate interns who are now educators, have installed modified versions of The Bridge program in their respective institutions and in that way, the program may already have had an impact on architectural education and the profession.

Since its inception in 1973 as a special topics course, the goal of the program has been to train qualified graduate teaching assistants. Since 1984, the course has played an active role in the UF curriculum and appears as a 4th and 5th year elective in the Undergraduate and Graduate catalogue. The course owes its existence to the continuing cooperation of faculty, students, administration and staff. In *The Study and Practice of Leadership in the Discourse of "Liberal Education"*, Frank Pace writes, "In order for our colleges and universities to advance and disseminate knowledge, all students must have courses exploring the nature of leadership and testing

of leadership skills."

Pace's thoughts on this subject may be influenced by the large numbers of students who hesitantly make their way into first-year design studios seeking role models and leaders to set the stage, point the way, inspire and share experiences. The leaders that these future professionals seek must symbolize the group's identity. They must act as leaders to an insecure band of followers. Professors represent the image of a "grade-giving authority" and students find it extremely difficult to talk to a professor in this strange environment with its harsh demands to think, act and solve problems.

The teaching intern, on the other hand, is quite often available late at night and on the weekends, not to solve problems, but to motivate students to seek answers. They are there as role models, eager and encouraging, to create a bond with the students. In turn, it is hoped that the student will bond with the program. The teaching interns have made a commitment. They are self-selected and enrolled in a two-credit elective course for which they will be evaluated and receive a grade.

The primary goal of the Teaching Internship Program, as it should be in all educational experiences, is to make students think, to question and to act. The program, once established, runs itself with the congenial cooperation of the participants. It adjusts easily to fit any degree program, semester or quarter system. Since it requires an insignificant appropriation of time or funds, yet increases quality performance and production, it weathers political shifts in administration. The program can go anywhere and be a viable part of any architectural curriculum.

Since the Teaching Internship Program is self-selective, it has allowed for the identification and involvement of qualified minorities not only in The Bridge program, but also in the innovative Minority Tutorial Program. Here, minority students seeking leadership positions are identified and given an opportunity in a funded program that has an unusual twist. The funding is allocated to provide tutors for

minority students and the minority students become the tutors for all beginning students. They provide well-advertised "Help Sessions" one evening a week during the fall and spring semesters and the funds they earn go into the pocket of the tutor. This interaction has proved to be extremely beneficial to faculty and students alike. Involvement in the Student Internship Program has proved to be extremely valuable to the maturing students as it allows an holistic view of the students' architectural education, a unique opportunity to evolve as a leader and it also fosters conceptual development with verbal and visual communications skills.



Maelee Thomson Foster



Photos of students, top and above, by Maelee Foster. The Teaching Internship Program runs itself with the total cooperation of the participants and increases student performance and production.

Cogeneration and Natural Gas Cooling Systems

Natural gas heating systems are very popular but today new technologies make gas the perfect energy source for commercial cooling. DESICCANT COOLING SYSTEMS provide refrigeration and cooling at lower humidity levels with substantial cost savings over conventional systems. This allows super-market refrigeration and cooling in which food doesn't sweat or frost over and shoppers don't freeze.

Another "cool" technology is COGENERATION — reliable, pollution free power for all kinds of energy needs. Cogen Systems use gas to power an on-site generator that produces electricity and heat. Recaptured heat is used to provide electrical power, space heating, air conditioning, water heating and steam. The cost savings can be substantial. And you won't have to worry about power interruptions or surges affecting sensitive operations.

To find out more about these and other cool new technologies call your local natural gas utility or write:

Florida Natural Gas Association • P.O. Box 533432 • Orlando, Florida 32853

GAS

**America's Best
Energy Value.**



FNGA

Florida Natural Gas Association
Circle 10 on Reader Inquiry Card

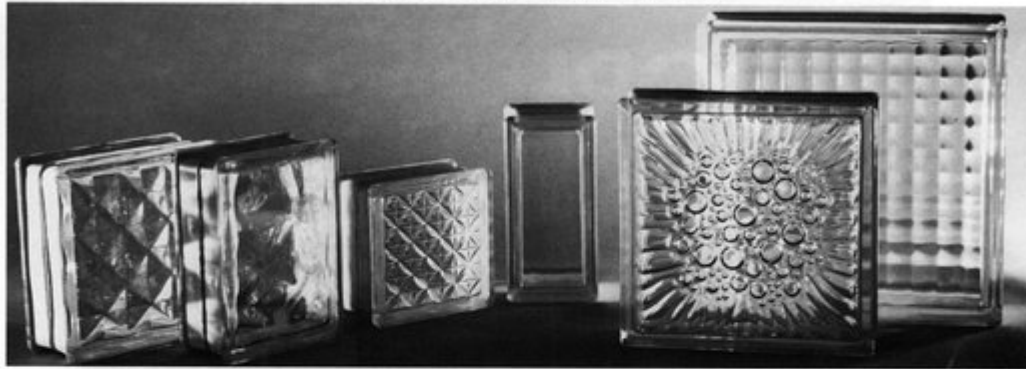
**“We have
some cool
technologies
you can really
warm up to.”**



Express your imagination with

GLASS BLOCKS

OVER 60 DESIGNS • SIZES • COLORS



HIGH SECURITY • THERMAL INSULATION • SOUND INSULATION • LIGHT TRANSMISSION

GLASS MASONRY INC.

P.O. Box 8325 / Pembroke Pines, FL 33024 / (305) 962-6884

MIAMI • ORLANDO • ATLANTA

Circle 37 on Reader Inquiry Card



PREMIX-MARBLETITE Manufacturing Co.

Serving the building industry since 1955

STUCCO, PLASTER, DRYWALL AND
POOL PRODUCTS
SOLD BY LEADING

BUILDING MATERIALS DEALERS

For Specifications and color chart
refer to SWEET'S CATALOG

3009 N.W. 75th Ave. • Miami, FL 33122
Oviedo & Sanford Rd. • Orlando, FL 32707

Miami

(305) 592-5000

(800) 432-5097 -S.E. Watts-

Orlando

(407) 327-0830

(800) 432-5539

MANUFACTURERS OF:

• THE HARD-WALL SYSTEM

- MARBLETITE
(All Marble) Stucco
- MARBLECRETE
Trowel Stucco
- POOLCOTE
Swimming Pool Stucco
- FLO SPRAY
Ceiling Spray
- CEMCOTE
Cement Paint
- FLOTEX
Wall Spray
- ACOUSTICOTE
Acoustical Plaster
- WONCOTE
Veneer Plaster
- P.V.L.
Vinyl Ceiling Spray
- ACOUSTEX
Ceiling Spray
- BEDDINGCOTE
For Rock Dash
- SNOWFLAKE
Ceiling Spray

AND OTHER BUILDING PRODUCTS

An Imperial Industries Company

Circle 14 on
Reader Inquiry Card



AWNINGS BY JAY

WINNER OF INTERNATIONAL DESIGN AWARDS
AWNINGS OF DISTINCTION



CUSTOM DESIGN
FABRICATION-INSTALLATION

CANVAS, VINYL AWNINGS
CANOPIES, CABANAS, CURTAINS
CUSHIONS, CUSTOM WELDING

844-4444

RESIDENTIAL • COMMERCIAL • INDUSTRIAL

1125 BROADWAY, RIVIERA BEACH, FL

SINCE 1974

MEMBER I.F.A.I.

LICENSE #U-10179

Circle 24 on Reader Inquiry Card

EPICORE[®] CONCEPT 2 COMPOSITE FLOOR SYSTEM



- Manufactured in Lakeland, Florida
- 48-hour Delivery
- Fast, Simple Installation by One Sub-Contractor
- Reduced Construction Time
- All Necessary Building Code Approvals
- Long Uninterrupted Spans
- Unbeatable Fire Ratings
- Excellent Sound Attenuation
- Monolithic Construction
- Distributor/Installers throughout Florida

*Contact in Lakeland
813-688-7686*

EPIC[®]
METALS CORPORATION

Eleven Talbot Avenue, Rankin PA 15104
PHONE: 412/351-3913
TWX: 710-664-4424
EPICMETAL BRDK

Circle 22 on Reader Inquiry Card

SPEC THE BEST!

Why settle for "equivalent" quality.

When you get roofing plans that read ... "or equivalent quality" you can afford to use Bender concrete roof tiles to add quality that's *more* than just "equivalent." Because Bender quality *and* color run all the way through every tile!



- Manufacturing process allows consistency in weight and thickness
- Assures more even looking roof installation
- Lightweight - up to 35% lighter than most concrete tile
- Fungus Retarding top coat
- Color throughout

Specify superior quality and value with Bender Roof Tile.

For more information contact:

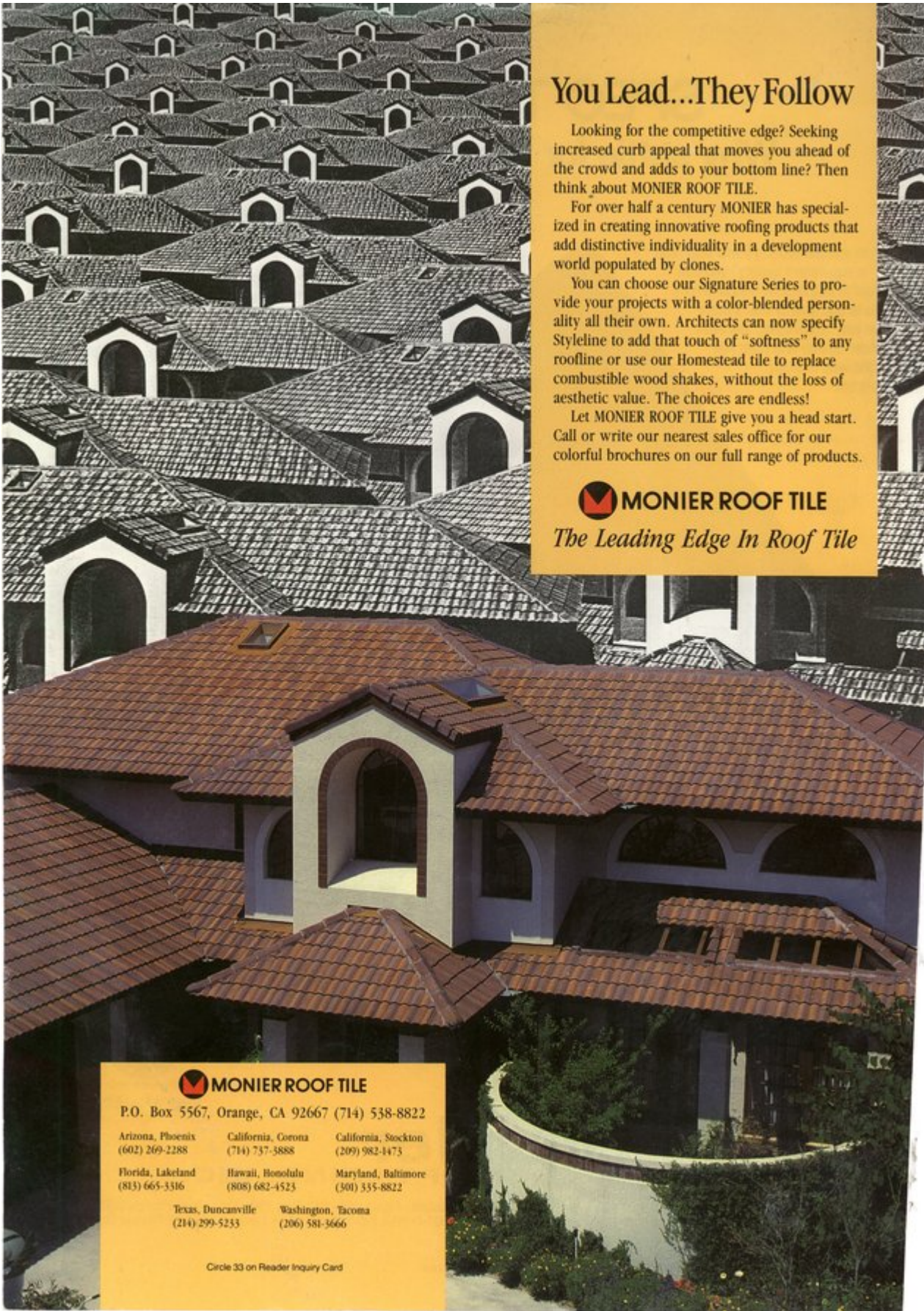
bender
ROOF TILE IND., INC.

3100 S.E. County Road 484 • P.O. Box 190 • Belleview, Florida 32620
(904) 245-7074 • FAX (904) 245-1873 • 1-800-527-5808 Florida Only



SBCCI No. 8736

Circle 43 on Reader Inquiry Card



You Lead...They Follow

Looking for the competitive edge? Seeking increased curb appeal that moves you ahead of the crowd and adds to your bottom line? Then think about MONIER ROOF TILE.

For over half a century MONIER has specialized in creating innovative roofing products that add distinctive individuality in a development world populated by clones.

You can choose our Signature Series to provide your projects with a color-blended personality all their own. Architects can now specify Styleline to add that touch of "softness" to any roofline or use our Homestead tile to replace combustible wood shakes, without the loss of aesthetic value. The choices are endless!

Let MONIER ROOF TILE give you a head start. Call or write our nearest sales office for our colorful brochures on our full range of products.



MONIER ROOF TILE

The Leading Edge In Roof Tile



MONIER ROOF TILE

P.O. Box 5567, Orange, CA 92667 (714) 538-8822

Arizona, Phoenix
(602) 269-2288

California, Corona
(714) 737-3888

California, Stockton
(209) 982-1473

Florida, Lakeland
(813) 665-3316

Hawaii, Honolulu
(808) 682-4523

Maryland, Baltimore
(301) 355-8822

Texas, Duncanville
(214) 299-5233

Washington, Tacoma
(206) 581-3666

Circle 33 on Reader Inquiry Card