



seeds '89

Southeast Design
Systems
Conference &
Exposition '89

OCTOBER 19-20, 1989

Prime Osborne
Convention Center

Jacksonville, Florida

ONE GIANT STEP INTO THE FUTURE ...

Jacksonville, the hub of Florida's First Coast, will host the First Southeast Design Conference and Expo geared for today's innovative market ... SEDS '89. This conference will be indispensable for your planning strategies, productivity, organizational preparedness, education or training.

The conference features: Joel Orr ... Terry Wohlers ... Jerry Hammond ... Doug

Stokes ... Gene Figg ... Mark Hoyt ... David Di Luria ... from automated office to future trends this is the conference you can't afford to miss ... choose from many conference sessions ... strategies for now and the future.

Explore more than 100 exhibits ... The industry's top vendors of hardware, software and services.

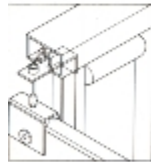
***Please Mail My Sed's '89 Information
Immediately:***

Mail To: **SEDS '89**
P.O. Box 5796
Jacksonville, FL 32247
(904) 241-5076

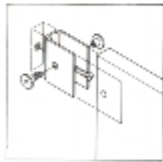
NAME _____
TITLE _____
COMPANY _____
ADDRESS _____
CITY _____ STATE _____ ZIP CODE _____
PHONE _____

I'M INTERESTED IN BEING: VENDOR _____ ATTENDEE _____

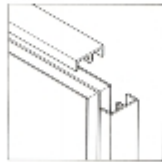
The Beginning of a New Era in Strength and Beauty for Bathroom Partitions, Fitting Rooms, and Shower Units.



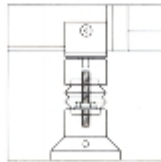
The top hinge incorporates a hinge pin which locates with a pin bush in the hinge socket. The hinge is story fitted. Black rubber bumpers are fitted to the top and bottom of door jambs.



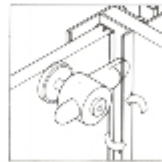
A pre-drilled epoxy coated aluminum wall bracket which is plugged and screwed to the wall.



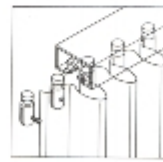
The non-removable extruded aluminum edge trim is available in anodized or epoxy powder coated aluminum. Plastic laminate panel facing or to specification.



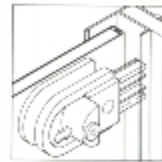
Adjustable foot with screw adjuster hidden by bellows-type sleeve. Made from black glass-filled nylon, it also acts as the hinge pivot.



Black glass-filled nylon Lotus lock body with a red rubber bumper incorporating an emergency release facility.



Black glass-filled nylon curtain runners which are non-removable once the headrail is fitted.



Black glass-filled nylon Combolock with a red rubber bumper incorporating an emergency release facility.

JAMES L. COX & ASSOCIATES, INC.

P.O. Box 80845 • Atlanta, GA 30366 • (404) 452-0097

Florida Wats (800) 826-7698

Now Available

CORIAN
Solid Beauty That Lasts

Thrislington Cubicles

Circle 12 on Reader Inquiry Card



Thrislington Cubicles, 11739 Sheldon Street, Sun Valley, California 91352: Telephone (818) 504-0806: Telefax (818) 504-0913: SEE US IN SWEETS!

When you select new Softone™ Cashmere™ Ceilings from Celotex, you can have the best of both — design choice and size flexibility. Aesthetically, Cashmere Ceilings are characterized by a unique surface treatment that gives the look of fine designer linens, making Cashmere ideal for today's applications where subtle elegance is desired.

New Cashmere From Celotex.

And Cashmere Ceilings achieve excellent sound absorption without the need for conventional pin perforations or mechanical fissuring.

A full range of sizes, choice of edge details and five face-scored styles make Cashmere Ceilings highly versatile for modular flexibility. And when the need for color arises in your design, Cashmere Ceilings can be specified in any of eight designer colors — Heather Gray, Balsa, Reed, Sage, White, Haze, Adobe and Vanilla. Cashmere Ceilings are also available in Protectone®, where time-rated assemblies are required.

Compare the subtle design elegance of Cashmere with ordinary mechanically fissured ceiling tile.



Actual size Softone Cashmere ceiling tile.



Actual size ordinary mechanically fissured tile.

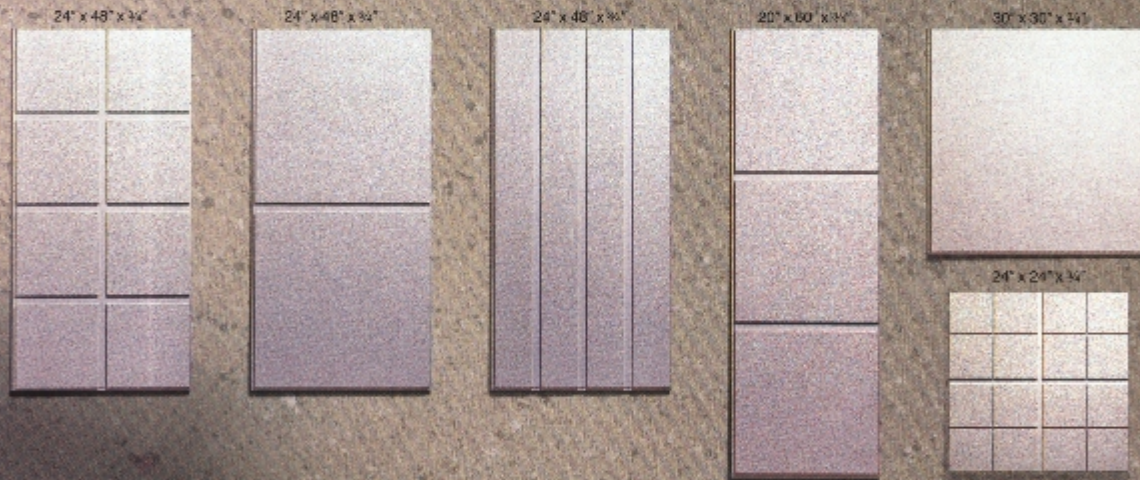


When you consider all the advantages our new Softone Cashmere Ceilings afford, the choice is obvious.



For more information, see the Celotex 1989 Sweet's Acoustical Catalog.

No Other Mineral Acoustical Ceiling Gives You More Designs And More Sizes, All With The Look Of Fine Fabric.



YES, I would like more information about Celotex Ceiling Products. Please have a representative call me for an appointment.

NAME _____
COMPANY NAME _____
ADDRESS _____ PHONE _____
CITY _____ STATE _____ ZIP _____

THE CELOTEX CORPORATION
POST OFFICE BOX 31802
TAMPA, FLORIDA 33631-3802 Circle 7 on Reader Inquiry Card

Multiply the Possibilities



VELUX® prefabricated gang flashings let you group VELUX roof windows and skylights in almost any combination quickly and easily. The precision engineering of VELUX gang flashings allows weather tight installation without the need for caulk or mastic. This means no weather delays, no mess, and less chance of callbacks. In

addition, VELUX gang flashings are readily available nationwide in a wide range of standard sizes to meet your building requirements and your deadline.

VELUX The world leader in roof windows and skylights.

Sales, Warehousing and Service Nationwide

©1999 VELUX-AMERICA INC. ®VELUX is a registered trademark.

8FA99 **FREE 28 page full color brochure**

For more information about VELUX Gang Flashings, send for a free copy of "The Complete Guide to Roof Windows and Skylights", and a price list. Your inquiry will be answered within 24 hours.

VELUX-AMERICA INC. 1-800-282-3342 (in GA)
1865 Corporate Dr., Suite 200 1-800-241-5611 (outside GA)
Norcross, GA 30093

Name _____

Firm _____

Address _____

City/State/Zip _____



Circle 94 on Reader Inquiry Card



*Now there's Bathstyle,
a reason to celebrate.*

*Sparkling selections in
style and function*
by *Eliex*

*Bath & kitchen showrooms
... none more elegant*

Call for our complimentary color brochure.

Atlanta 297-8953 • Brunswick 265-2690 • Macon 743-8921 • Columbus 322-8521 • Valdosta 342-2660 • Jacksonville 783-2810 • Miami 477-3045 • Orlando 897-3402

Circle 46 on Reader Inquiry Card

Strength for Building



Spillis & Candela

©Dan Forer

Build on our Strength

Southern Prestressed, Inc. is built on the strength of an international corporate acquisition: The prestressed concrete division of Florida Mining and Materials by Lohja Corp. of Finland in 1988.

The strength created by the synergy of these two industry leaders assures you of high quality, competitively-priced prestressed and precast products, as well as complete service and engineering support, rapid construction and on-time installation. Now you can achieve your structural and functional objectives rapidly and cost-effectively.

Volusia County Administration Building, De Land, Florida



Southern Prestressed, Inc.

A Division of LOHJA, Inc.

Corporate Office: 3710 Corporex Park Dr. Suite 260
Tampa, FL 33619

P.O. Box 5539
Tampa, FL 33675

Tel: 813/623-6305
FAX 813/623-6406

Locations: Ft. Myers • Huntsville • Jacksonville • Jonesboro • Lakeland • Montgomery • Orlando • Pensacola
• Pompano Beach • Tampa • Birmingham (Sales)

Circle 29 on Reader Inquiry Card



September/October, 1989
Volume 36, No. 5

CONTENTS

Features

1989 FA/AIA Awards for Excellence in Architecture 22

This year, fourteen projects in the Florida/Caribbean region were honored for design excellence.

Departments

Editorial 9

News 10

New Products 51

Viewpoint 14

Mapping The Common Ground
Robert T. Segrest

Office Practice Aids 54

Video: The Marketing Edge for the 1990's
Leslie Draper



Florida Architect, Official Journal of the Florida Association of the American Institute of Architects, is owned and published by the Association, a Florida Corporation not for profit. ISSN-0015-3907. It is published six times a year at the Executive Office of the Association, 104 East Jefferson St., Tallahassee, Florida 32302. Telephone (904) 222-7590.

Opinions expressed by contributors are not necessarily those of the FA/AIA. Editorial material may be reprinted only with the express permission of *Florida Architect*.

Single copies, \$4.00; Annual subscription, \$19.08. Third class postage.

Cover photograph of Arquitectonica International Corporation's Banco de Credito in Lima, Peru was photographed by Paul Warchol.

TREMONT

From our Baldwin collection
of over 50 classic, traditional
and contemporary designs.

All master-crafted to provide
years of superior security...
and compliment your
architectural style.



BALDWIN.

FARREY'S

Decorative hardware and
distinctive lighting
1850 N.E. 146 St.
Miami, FL 33181
Dade: 947-5451
Broward: 524-8675

Circle 17 on Reader Inquiry Card

Florida Association of the
American Institute of Architects
104 East Jefferson Street
Post Office Box 10388
Tallahassee, Florida 32302

Publisher/Executive Vice President
George A. Allen, CAE

Editor
Diane D. Greer

Assistant Publisher
Director of Advertising
Carolyn Maryland

Design and Production
Peter Mitchell Associates, Inc.

Printing
Royd Brothers Printers

Publications Committee
Ivan Johnson, AIA, Chairman
Gene Leedy, AIA
Will Morris, AIA
Keith Bailey, AIA
Don Saisman, AIA

Editorial Board
Ivan Johnson, AIA
Dave Francis, AIA
Roy Knight, AIA

President
H. Dean Rowe, FAIA
100 Madison Street
Tampa, Florida 33602

Vice President/President-elect
Larry Schneider, AIA
25 Seabreeze
Delray Beach, Florida 33448

Secretary/Treasurer
Bruce Balk, AIA
250 Coconut Avenue
Sarasota, Florida 34577

Past President
John P. Ehrig, AIA
4625 East Bay Drive, Suite 221
Clearwater, Florida 34624

Regional Directors
John M. Barley, AIA
6345 Ortega Boulevard
Jacksonville, Florida 32210

James A. Greene, FAIA
254 Plaza Drive
P.O. Box 1147
Oviedo, Florida 32765

**Vice President for
Professional Society**
Raymond L. Scott, AIA
601 S. Lake Destiny Road, Suite 400
Maitland, Florida 32751

**Vice President for
Governmental Relations**
Rudolph Arsenicos, AIA
2560 RCA Boulevard, Suite 106
Palm Beach Gardens, Florida 33410

**Vice President for
Professional Development**
John Tice, AIA
909 E. Cervantes
Pensacola, Florida 32501

**Vice President for
Public Relations/Communications**
Henry C. Alexander, AIA
Smith Korach Hayet Haynie
175 Fontainebleau Road
Miami, Florida 33172

The 1989 FA/AIA Fall Conference is being held in Boca Raton this month. The setting for three days of meetings, seminars and awards activities will be the Boca Raton Hotel and Club, which opened as The Cloister in the winter of 1926. Shortly thereafter, one man's fantastic dream of creating "the greatest resort in the world" became a study in colossal failure. What is historically the most sumptuous hotel in Florida cost the architect and builder his fortune, injured his reputation and some say, his health. But the name Addison Mizner is so inextricably intertwined with the term "Florida Boom" that it is hard to say which came first. Beyond the "chicken and egg" analogy, it is also interesting to consider Mizner's role in the design-build technology that is so common today. Had Mizner designed The Cloister and left the construction and sale of real estate to others more experienced in those matters, might he and The Cloister have survived the winter of 1926?

As it was, Addison Mizner was a man with a dream. The realization of that dream was The Cloister. Toward the realization of his dream, Mizner imported roof tiles and statuary from Spain by the boatload and what he couldn't import or buy, he crafted to look "old" and "Spanish", two of the design criteria he used for his Florida buildings during the twenties.

While Frank Lloyd Wright is credited with having described Addison Mizner with, "Many architects have imagination, but only Mizner had the courage to let his out of the cage", I've never been completely sure of the intent of the statement. There is little doubt among critics that Mizner was a dreamer, and a genius. While Mizner could easily have selected the French Chateau or the Palladian Villa as worthy styles for the wealthy Floridians whose homes he designed, it was to Spain that he looked for his inspiration. And for that reason, and no other, Spanish Revival, as adapted by Addison Mizner for his Palm Beach clientele, became the style of the Florida boom.

I think Mizner's greatness was in the scope and scale of his vision for Boca Raton, to create first a hotel, and then a community with the best of everything - the widest streets, the finest materials, the most elegant residences. Unfortunately, the scale of his vision was also his downfall. His concern extended beyond design and included real estate sales, overseeing construction and publicity. During the 1920's in frontier Florida, the concept of design-build or of architect as designer/developer was unknown. While Mizner should be credited for the originality of his Mizner Development Corporation concept, he literally bit off more than he could chew. The dream was too big and quickly got out of hand. The Cloister remained open for less than a year, closing in late 1926. Mizner lived for five more years and died in Palm Beach.

Mizner's legacy to us is a place to bask in the luxury of the 1920's surrounded by antique furnishings, art and architectural components imported from Spain. At the Awards Banquet on September 23, the recipients of the Awards for Excellence in Architecture will receive the recognition of their peers amidst the grandeur that was Boca Raton in the 1920's - the realization of Addison Mizner's dream of creating "the greatest resort in the world." *Diane D. Greer*

NEWS

More on Housing

To spur public-private initiatives in affordable housing and neighborhood preservation, The American Institute of Architects has urged Congress to support critical legislation that would revitalize historic rehabilitation and low-income housing efforts nationwide.

The Community Revitalization Act of 1989 would increase incentives for private-sector investment in rehab projects across the country. The bill enhances the viability of rehab and low-income housing tax credits while still maintaining limits on credit use. It would also increase the pool of investors eligible to use the credits, reduce transaction costs by expanding the number of practical financial mechanisms and simplify the use of these credits by applying uniform eligibility rules to all taxpayers. The AIA firmly supports Congress' efforts to encourage public-private sector initiatives.

Also related to the matter of housing is the projection that house building in Florida may decline another 4.9 percent in 1990. That statistic is predicted by economists at the University of Florida who believe that single-family housing starts will decline to 103,600 in 1989. They further anticipate that the figure will dip under 100,000 in 1990.

Also down are multi-family houses (apartments and condominiums) which have fallen to a predicted 52,700 in 1989.

UF Gets National Register District

A six-block area on the University of Florida campus has been designated a National Register Historic District, and that recognition of its past could translate into millions of dollars for its future.

The part of the campus

which has been given National Register status has been recognized for its architectural, historical and cultural significance. It lies between University Avenue, 13th Street, Stadium Road and North-South Drive. The area is architecturally significant because many of its buildings were constructed before 1925 and were designed by William A. Edwards in a style now known as Collegiate Gothic. Traces of the original landscape designed by Frederick Law Olmstead can still be seen between Peabody Hall and Library East.

The National Register designation recognizes the historical significance of eight UF buildings and with the designation comes the possibility of funding to rehabilitate several structures that are within the district.

UF is one of two Florida campuses, Florida Southern in Lakeland, is the other, to receive National Historic District designation.

Using Motor Vehicle Reports As A Loss Prevention Tool

For many employees, motor vehicle accidents represent the number one cause of lost work time and on-the-job fatalities. Such accidents caused by the negligent driving of employees while acting within the scope of their employment can, therefore, be costly to their employer in many ways.

Increased losses can translate into increased auto premiums. If your employees are injured, you pay for lost production time. Auto accident injuries, if sustained while on the job, may result in claims against your workers' compensation coverage, even if your employee is not at fault.

You can reduce your potential liability by routinely obtaining Motor Vehicle Reports (MVR's) on existing employees or any potential employees prior to their employment. These reports may be obtained

from your automobile insurance broker and in many states, directly from your department of motor vehicles.

The best loss prevention measure is to encourage your employees to be safe, careful drivers.

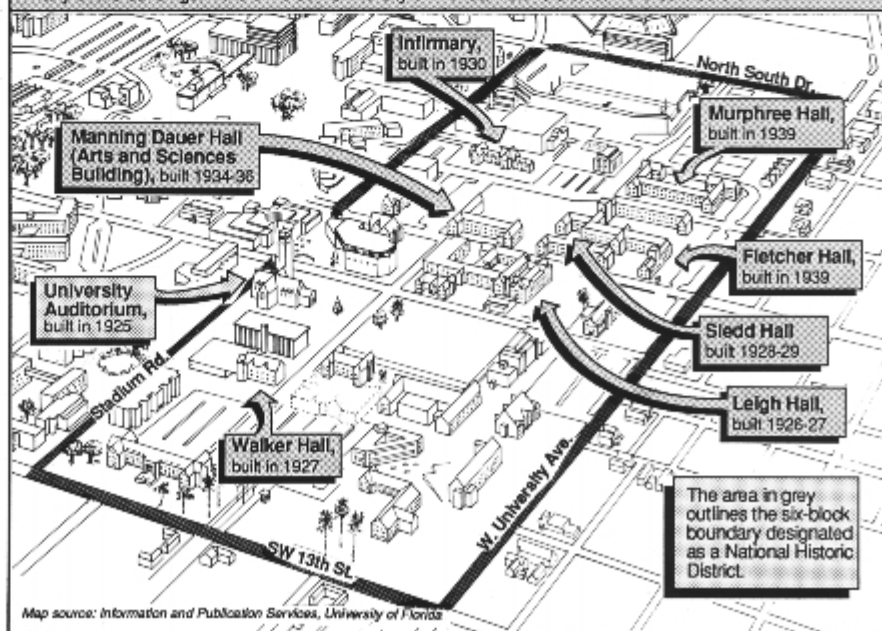
Handling Manpower and Billings Projections

"Manpower needs and billings projections are not a science, but they are definitely an art. As such, at the best, they are judgmental and subjective." So says Robert Olden of Olden Associates, in the current issue of *Professional Design Practices Business Newsletter*.

Olden draws on thirty years of practicing the business of architecture and engineering for the writing of his newsletters. An annual subscription is \$49 and can be obtained by writing to Olden Associates, Business Consultants to Archi-

The historic district at UF

Many of the buildings in the six-block University of Florida historic district were built before 1925.



MICHELLE SHAPRO/The Gainesville Sun

tectural and Engineering Practices, P.O. Box 22772, Tampa 33622.

In his discussion of manpower and billings projections, Olden states the importance of keeping projections flexible enough to react meaningfully to the ebb and flow of workload scheduling. Projections should be updated at a regular time each week using rates backed out of the remaining fees for billings where available, and standard rates where not.

Other topics that are discussed in the current issue include Ownership Transition, Organization for Project Management and Client Management. A/E professionals who are interested in getting office practice information in easily-digested capsule form will find this a helpful publication.

Home of the Future to be Showcased

More than 15,000 people will step into the future this fall when they enter "The New Southern Home", a residential prototype for the 1990's sponsored by the Southeastern Builders Conference.

This annual project combines the best of products and design to build a home that is representative of life in the sunbelt states in the years to come. National sponsors include Pella Windows, Sherwin-Williams, Quaker Maid cabinets and Lightolier.

The house, which will be located in Longwood, Florida, will be open to the public September 4-17. Proceeds from the \$5 admission will go to the Central Florida Zoological Park.

Once Upon A Time.... Architects Were Master Builders.



Florida Association American Institute of Architects
1989 Fall Convention
September 22-24, 1989

Boca Raton Hotel and Club *Boca Raton, Florida*

For registration information call (904) 222-7590

Celcore Cellular Concrete. The lightweight that can lick any heavyweight.

For almost two decades we've been licking them with unsurpassed strength, durability, economy and efficiency.

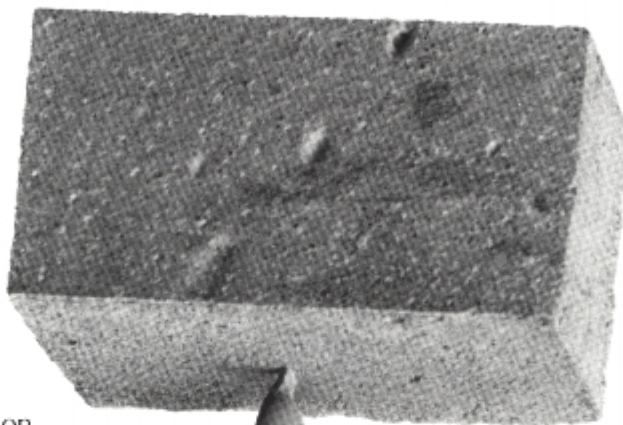
How, you ask, can Celcore do this? Read on.

Celcore Cellular Concrete is a product of the mechanical combination of compressed air and the exclusive Celcore foam solution processed through a special mobile batch plant. The resultant product is a lightweight concrete roofing system that is water resistant, fire-proof and rot and insect proof. It can be sloped and contains the highest R values.

Ideal for large surfaces.

The system is perfect for large surface areas since its lightweight properties eliminate most weight, movement and R value problems.

It's easy to install, and since any type of roofing membrane can be anchored to it, it allows considerable latitude in design. Celcore offers the largest choice in the industry for anchoring roof membranes. It is bitumen compatible, so it may be directly applied. It may also be torch applied, glued or nailed.



Can be put on directly over an old roof.

These exclusive properties can save you considerable time and money by allowing you to put on a new roof without tearing off the old one.

Or you can fill in portions of an old roof with Celcore.

And only Celcore Cellular Concrete systems are tested and approved by Factory Mutual with I-90 uplift ratings over an existing roof.

Call or write us today. We'd like to show you how a lightweight like Celcore is light years ahead of the heavyweights.



The Dry Deck Company®

2579 N.W. 19 Street, Fort Lauderdale, FL 33311
(305) 731-0600; In Florida 1-800-432-9675

Celcore West: Naples to Tampa (813) 622-7900;
Celcore East: Palm Beach, Broward, Dade Counties
(305) 731-0600; Orlando, Daytona, Jacksonville, Tallahassee,
Gainesville - Nancy D. Mullins, Inc. (904) 743-9770;
Martin, St. Lucie, Indian River Counties -
Airlite Processing Corp. (407) 562-3518

Circle 51 on Reader Inquiry Card

Cogeneration and Natural Gas Cooling Systems

Natural gas heating systems are very popular but today new technologies make gas the perfect energy source for commercial cooling. DESICCANT COOLING SYSTEMS provide refrigeration and cooling at lower humidity levels with substantial cost savings over conventional systems. This allows super-market refrigeration and cooling in which food doesn't sweat or frost over and shoppers don't freeze.

Another "cool" technology is COGENERATION — reliable, pollution free power for all kinds of energy needs. Cogen Systems use gas to power an on-site generator that produces electricity and heat. Recaptured heat is used to provide electrical power, space heating, air conditioning, water heating and steam. The cost savings can be substantial. And you won't have to worry about power interruptions or surges affecting sensitive operations.

To find out more about these and other cool new technologies call your local natural gas utility or write:

Florida Natural Gas Association • P.O. Box 533432 • Orlando, Florida 32853

GAS

**America's Best
Energy Value.**



FNGA

Florida Natural Gas Association
Circle 16 on Reader Inquiry Card

**“We have
some cool
technologies
you can really
warm up to.”**



VIEWPOINT

Mapping The Common Ground

by Robert T. Segrest, AIA

"The school is moving too much toward theory," the gentleman from the profession says. "It no longer serves the immediate and legitimate needs of the practice and we, in the offices, must train young architects to do the basic tasks of architectural production. We have to do what you should be doing."

"But we have a mandate and a responsibility not to follow the profession but to lead it," answers the gentleman from the academy. "It is no longer enough—if it ever was—just to train students for their first job and for registration. Rather, we must educate them to be significant participants in solving the difficult problems of this and future societies. We must do what the profession cannot do."

The conversation is real and immediate. It is also fundamental to the debates which have colored the often tense and tenuous relationships between American architecture schools and the profession for the past one hundred and thirty years.

From the beginning, these debates were highly fractionated, that is to say they were structured by the vested interests of the participants as much as, or more than, by the common interests of the institution itself. For example, it has been the interests of the AIA, as the professional consensus of the institution, to unify in the face of disagreement and diversity while it has been the interest of the school, as the autonomous academy and protectorate of academic freedom, to disagree and diversify in the face of homogeneity

and normalization. From the point of view of the profession, then, the school, rather than being a simple mirror of the profession, seems more a funhouse of distortions, an interlude of fantasy in an otherwise too real world. Over-educated, under-trained graduates emerge unable to meet the demands of the common place.

From the point of view of the school, the profession simply doesn't take advantage of these highly educated, innovative, progressive young people.

"It (architecture) has become a secondary service profession, less and less able to maintain the tradition of architecture as a cultural art."

It is important that today's schools of architecture carry out a very real, but partial, function. As an example, the architecture program at the University of Florida is an agency for exchange, a party to the reciprocal relationships which constitute the institution of architecture. We seek linkages and we demand relevance, but we do not displace or replace the functions of others.

Let me briefly explain how I think we do this. The College of Architecture at UF is the largest of its kind in the United States, and the Architecture Department, in terms of student numbers, is also one of the largest. The professional programs lead to a Master of Architecture degree and students follow either a six year course of study (the four

plus two program) or a four year graduate course of study (for students with a non-architecture undergraduate degree). In addition, the Department offers two post-professional: the Master of Architecture in Advanced Studies, for those who wish to undertake specialized work in one of four areas—architectural preservation, architectural management, environmental technology or architectural history and theory; and the Ph.D. in Architecture, for those who wish to pursue highly advanced research or scholarship.

The Department operates a year round program in the Basilica Palladiana in Vicenza, Italy, a summer program in London and Cambridge, and two preservation institutes, one on Nantucket and the other in the Caribbean Basin.

Juxtaposed with these academic programs is an extensive agenda of architectural research—from acoustics and computer technology to historical and theoretical scholarship.

The faculty have a long tradition of intense commitment to teaching, but, rapidly, they are enlarging their contributions to the profession and to society in terms of community service, research and practice. Our new faculty for 1989-90 includes two Skidmore, Owings and Merrill Fellows, one AIA National Teacher of the Year and the recent winner of the Berlin Museum competition. Three of the five are female. During the past year, our current faculty included a winner of the AIA Teacher of the Year Award and the winners of the Florida Solar Energy Competition.

To suggest that there is a quality as well as legitimacy in the program is a confirmation of the present and the past. But there is also worth in the capacity of an institution to change, to respond to criticism, both internal and external, to rechart its course, to innovate. As the University of Florida has evolved into one of the best American research and teaching universities, we, as a department, grow and change as well. The pattern of growth can be summarized in terms of a set of commitments, an itinerary for growth.

1) A renewed commitment to the idea that education must be broadly based in cultural understanding, not narrowly focused in professional training.

2) A commitment to the essential nature of graduate study in professional education; that is to say, a commitment to the necessary relationships between research and scholarship and practice.

3) A commitment to innovation, change, and a continuing influx of the new—as well as the maintenance of the traditions of architecture through critical reassessment.

4) A commitment to social effect, not just abstract understanding.

5) A commitment to communication and extension.

"As part of the University's pattern of growth, one commitment must be to the idea of the professional as an academic subject to be studied, criticized and understood."

These commitments are entangled in a more generalized vision—that the reciprocal necessity between the school and the profession is best served by our being active and participatory rather than passive and reflective. This translates into the expectation that our students will develop probing and critical minds as well as creative and professionally competent ones. Also, we expect them to be clearly and sometimes painfully aware of the nature of the societies to which they will bring a responsibility for service and we expect them to value the conviction that architecture is not just a skill for problem-solving and profit-making, but it is a mode of thought, a form of expression, a tradition and a future tradition which is essential to the perpetuation, renewal and even radical change, of our collective cultures.

Finally, we expect even more of ourselves as teachers; to be active and participatory means to continuously and vigorously join thought to action, practice to theory, and that is our essential responsibility. To the extent that we do that is the extent to which we achieve that vital reciprocity with the profession, and the extent to which we map out and build on that common ground called Architecture.

The author is Chairperson of the Department of Architecture, University of Florida

What wallcovering affords an unlimited color palette, won't shrink, stretch or burn, does not contribute to mildew growth, reinforces the substrate, can be applied directly over wood paneling, stucco, tile and other problem surfaces, is available in a variety of subtle textures, and... is paintable?

For local dealer information and to request our publication **Ten Good Reasons To Install Glass Fiber Wallcovering**, call **1-800-88-TASSO (888-2776)**.



The Professionals' Choice

See us in **SWEET'S** Section 09950.

Circle 45 on Reader Inquiry Card

THE ALLEN MORRIS CONSTRUCTION COMPANY



QUALITY CORPORATE CONSTRUCTION

SPECIALIST IN COMMERCIAL INTERIOR CONSTRUCTION

MIAMI
305 358-1000

FORT LAUDERDALE
305 523-2020

DEERFIELD BEACH
305 429-3337

WEST PALM BEACH
407 684-1000

TALLAHASSEE
904 224-8531

Circle 18 on Reader Inquiry Card

SPRAY-CRETE™



Many other styles and colors available.



All systems available in both enamel and latex.
Sprayed • Troweled • Stamped



Beautiful. And Stronger Than Concrete.

Spray-Crete will beautify your pool deck with a cool, water-resistant and practically indestructible surface. And because you can spray or trowel Spray-Crete on, the combinations of color, texture and design are limitless. Not only does installation take less than half as long as conventional products, it beats standard cement in every test of strength. Spray-Crete is engineered to endure Northern freeze-thaw cycles and is equally resistant to Southern heat, sunshine and ultraviolet rays.

Ask about dealership opportunities (no franchise fee) today! Find out how much we can help your business.

DESIGN-A-DECK

13180 Spring Hill Drive, Suite F
Spring Hill, Florida 34609
(904) 686-7292

Circle 25 on Reader Inquiry Card



GEORGE COTT

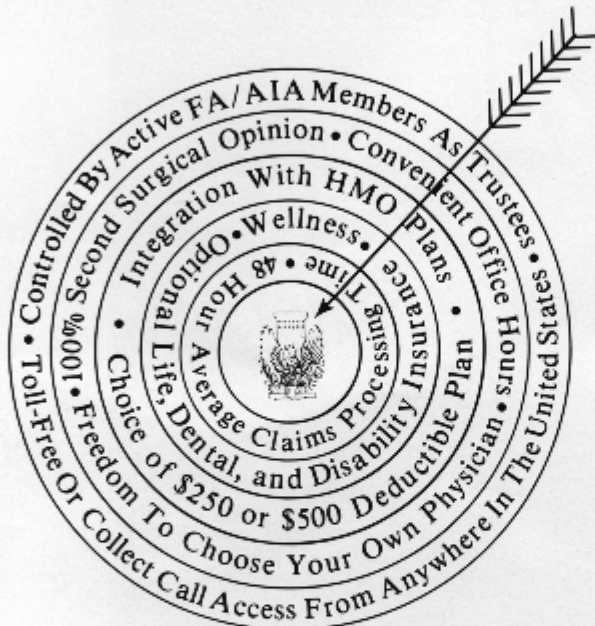
Architectural/Interior Design Photography

CHROMA INC ■ 2802 Azeele Street ■ Tampa, Florida 33609 ■ (813) 873-1374

Circle 30 on Reader Inquiry Card

**Order Your
Guide to Florida's Historic Architecture
Today**

Call the FA/AIA Bookstore in Tallahassee at 904/222-7590 to order.



**BENEFITS AND SERVICE
THAT ARE
RIGHT ON TARGET!**

Group Health Insurance is a wonderful employee benefit...if it offers the coverage employees want and need at a price employers can afford.

The FA/AIA Insurance Program combines extensive medical coverage, cost containment features, a "Take Care of Yourself/Wellness Campaign", and an unbeatable service package to offer a health insurance program designed exclusively for the design professional.

For information on the FA/AIA Group Insurance Program, please call Ken Hobbs or Kathleen McDonnell at:



**Association Administrators
& Consultants, Inc.**
The FA/AIA Insurance
Service Organization
19000 MacArthur Boulevard, Suite 500
Irvine, California 92715

1-800-854-0491 Toll Free

Circle 27 on Reader Inquiry Card

For more information about Kohler Plumbing Products see these Kohler distributors:

**Lawrence Plumbing
Supply Company**

Showroom:
5700 W. Flagler St.
Miami, Florida 33144
(305) 266-3338

31 S.W. 57th Avenue
Miami, Florida 33144
(305) 266-1571

405 N. Flagler Avenue
Homestead, Florida 33030
(305) 248-7020

8712 S.W. 129th St.
Miami, Florida 33176
(305) 251-7022

**Wool Plumbing
Supply**

*Distributors of Plumbing
and Decorative Hardware*

Showroom:
5910 Shirley St.
(off Pine Ridge Rd.)
Naples, Florida 33942
(813) 597-8155

Showroom:
1321 NE 12th Avenue
Ft. Lauderdale, Florida 33304
(305) 763-3632

Showroom:
4340 SW 74th Avenue
Miami, Florida 33155
(305) 266-7111

Showroom:
6778 N. Military Trail
West Palm Beach, FL 33407
(305) 863-7788

Circle 8 on Reader Inquiry Card

Commercial Properties

Bardon™ Water-Guard® Urinal. Kohler products have many properties that make them the intelligent choice for commercial applications. Like the Bardon Water-Guard Urinal. We design smart from the start. For example, its patented anti-splash “V” design for better hygiene and reduced area maintenance, and the savings of a one gallon flush. Plus, Kohler’s sales organization and extensive distributor network offer specification assistance and product support. For all the properties you want in a commercial product, depend on Kohler.

THE BOLD LOOK
OF **KOHLER**®



© 1996 by Kohler Co.

THIS *Could*
be the
RFP
YOU'VE
BEEEN
Looking
For!



Cobblestone Country Club
P.O. Box 688 • Stuart, FL 34995 • (407) 597-4501

Requests for proposals like this don't come along every day. Cobblestone Country Club is a 512-acre equity golf club community in Stuart (Martin County). Its developers have some very specific residential design criteria in mind. In a word: vernacular. In two words: Old Florida. In two more: Hilton Head.

A handful of preferred architects will be selected before October 30th for recommendation to Cobblestone Country Club homesite buyers. Examples of their work will be featured in a two-day on-site exhibit in January 1990 and in publications to be distributed to buyers and other interested parties.*

Architects who wish to be considered for inclusion in this unique program should submit material representative of their capabilities in the styles described, including color and black & white renderings and floorplan hardlines, along with an application form, to Managing Partner John Tompson by September 1, 1989. (To obtain an application form, call (407) 597-4501.)

All submissions will be reviewed by a panel of professional advisors, and those selected as preferred architects will be so advised no later than October 30, 1989.

DESIGN ♦ CRITERIA

Florida Victorian
Carolina Lowland

Treasure Coast Traditional

Vernacular style which incorporates the porches, decks, and gingerbread trim one might associate in areas such as Hilton Head, the Florida Keys, Sanibel Island, and the Sewell's Point area of Stuart.

Metal and shake roofs, dormers, cupolas and similar accents are encouraged.

Avoid Mizner style and high-glitz, Boca Raton type of elevations.

*No application fee. No charge for representation to buyers, inclusion in publications, or exhibit space.

Circle 8 on Reader Inquiry Card

1989 FA/AIA Awards for Excellence in Architecture

The 1989 Design Awards Jury met in St. Louis, Missouri, on July 8, in the office of Mackey Associates. There were 169 projects reviewed by the jury and fourteen were premeated.

The jury was impressed with the overall high quality of the submitted projects. In keeping with Florida's "rich palette" of climate and landscape, the jury felt that most of the buildings were in keeping with an indoor-outdoor lifestyle that gives them regional impact. The premeated projects, in particular, were "powerfully regional and true to their palette."

Unique to Florida is the fact that its architects can still build whole new cities. Many of Florida's new buildings seem to have a "very human scale with a strong relationship between the indoors and the outdoors." Outdoor spaces such as courtyards, verandas, patios, galleries and arcades were common to many of the premeated projects. The jury liked the idea of bringing the outdoors inside, and vice versa.

Stylistically, the jury felt that most of the submitted projects drew from a Post-modern vocabulary.

The Jury

Eugene J. Mackey, AIA **Chairman of the Jury**

Eugene Mackey founded Mackey Associates in 1968

and he is the current president of the St. Louis chapter which hosted this year's national AIA convention. In the past ten years, Mackey has won 17 national, state and local awards and in May he was named the recipient of the St. Louis Construction News & Review People's Choice Award for two projects, the Power House at St. Louis Union Station and Union Station 10 Cinc. Mackey, however, feels that the Missouri Botanical Gardens in St. Louis is his most important project to date.

William A. Bowersox, FAIA

William A. Bowersox is president of Ittner & Bowersox and is the partner in charge of design. The firm specializes in institutional and educational facilities, primarily in the Midwest. Bowersox is a graduate of the University of Kansas and the recipient of a number of national, state and local design awards.

Louis R. Saur, AIA

Louis Saur is president of Louis R. Saur & Associates, a full service architectural firm in St. Louis. He is a past director of the national AIA and has also served on its Design Committee. Recently, he was a recipient of the AIA/AASA Walter Taylor Award for the design of Parkway North Senior High School in St. Louis. Saur was a Steedman Fellow at Washington University in St. Louis where he has also been a visiting professor.

Miracle Center

Miami, Florida

Architect

Arquitectonica International Corporation
Coral Gables, Florida

Developer

Fort Schoenberg Properties
Sunbelt Developers

Consulting Engineers

Florida Engineering Services
Louis Aguirre & Associates
Guido van Meek & Associates
Cantor, Seinuk & Puig & Associates
Lagomasino Vitale & Associates

Landscape Architects

Albert R. Perez & Associates

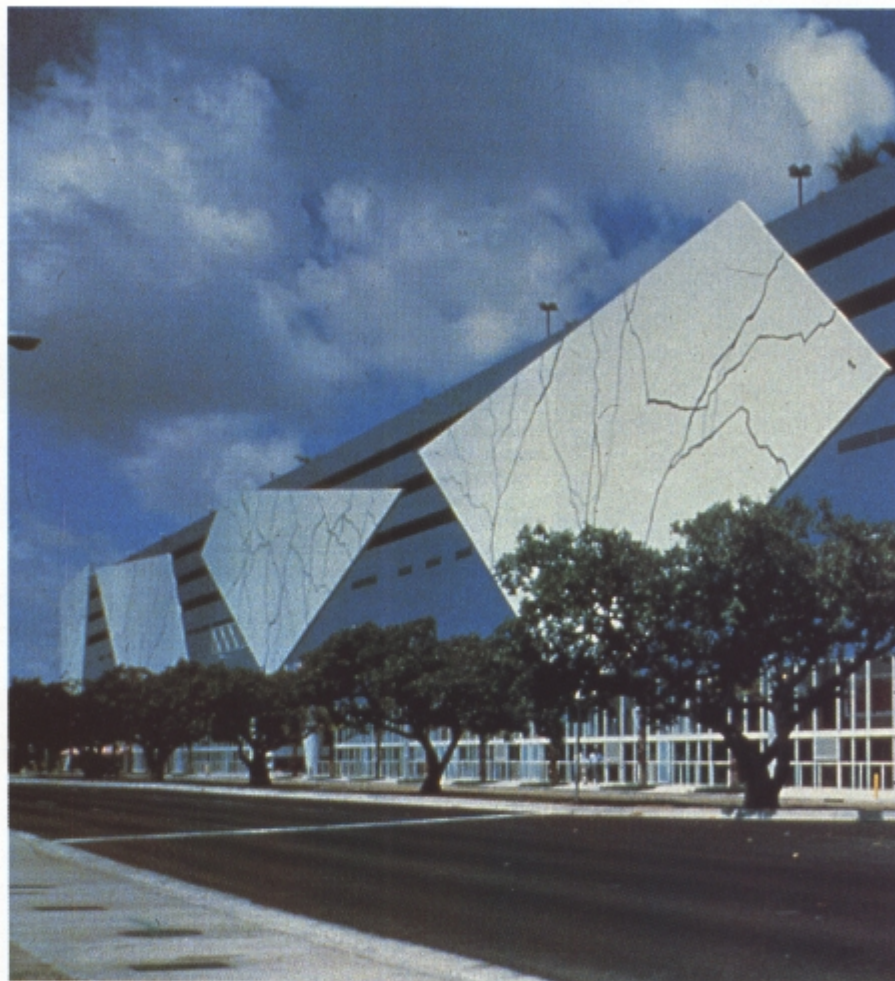
General Contractor

Hill Constructors

This project is a multi-level urban, mixed-use center on a busy urban street which is an extension of downtown Coral Gables. The design maximizes the retail space and structured parking in a simple and efficient volume while creating a dramatic interior mall, as well as an urban landmark.

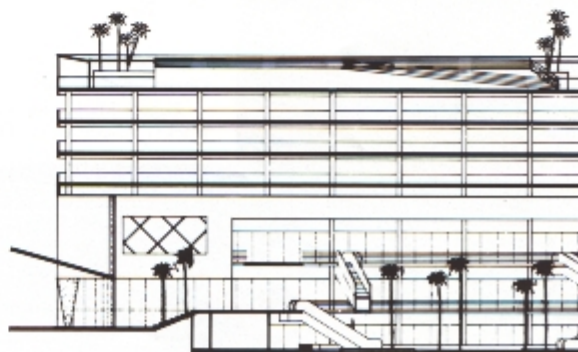
The commercial functions are organized on three levels in a block long rectangle. A central 30-foot-wide mall connects through the block from street to street. At the upper level, the cinema lobby and circulation spaces cross the mall on bridges. Also on the upper level, the health club aerobics room spans the mall, adding interest and energy to the shopping level below.

In addition to three shopping levels, the building contains five parking levels and a pool and running track on the roof. On the outside the building is a sheer glass rectangle on its public sides. There is a continuous glass display of store windows at the pedestrian level, punctuated by three major entries. Above these, super-scaled trapezoidal pan-



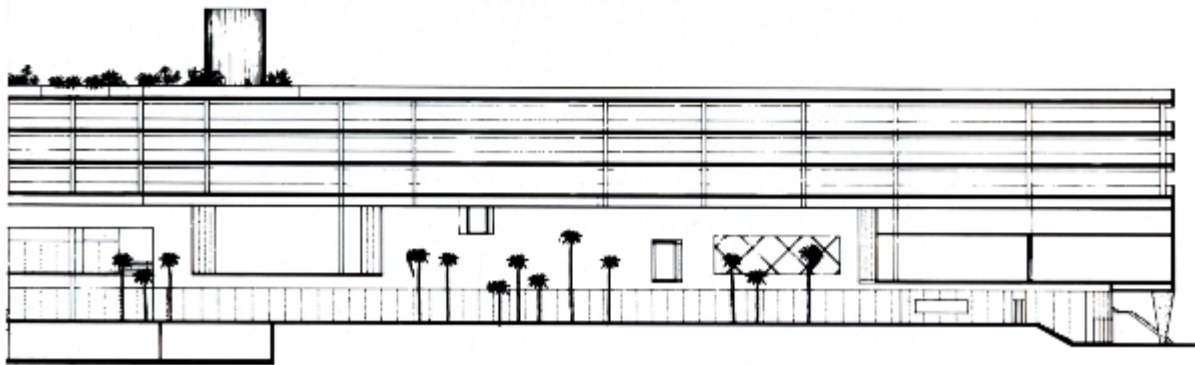
els float like "clouds" in front of the retail and parking facades behind. These "clouds" are painted black and white to appear marbled and contrast to the blue background of the building mass.

JURY: "This is an exciting building for what is usually a mundane function. A real show stopper. This building took guts on the part of the architect and the owner."





Photos by Patricia Fisher and Chris Janney



Tokyo Rose Restaurant

North Miami, Florida

Architect

Mateu Rizo Associates
Coconut Grove, Florida
Armando M. Rizo, AIA -
Principal-in-Charge
Roney J. Mateu, AIA -
Principal

Consulting Engineers

Rosas-Guyon Engineers

Owner

Masa Yamazaki

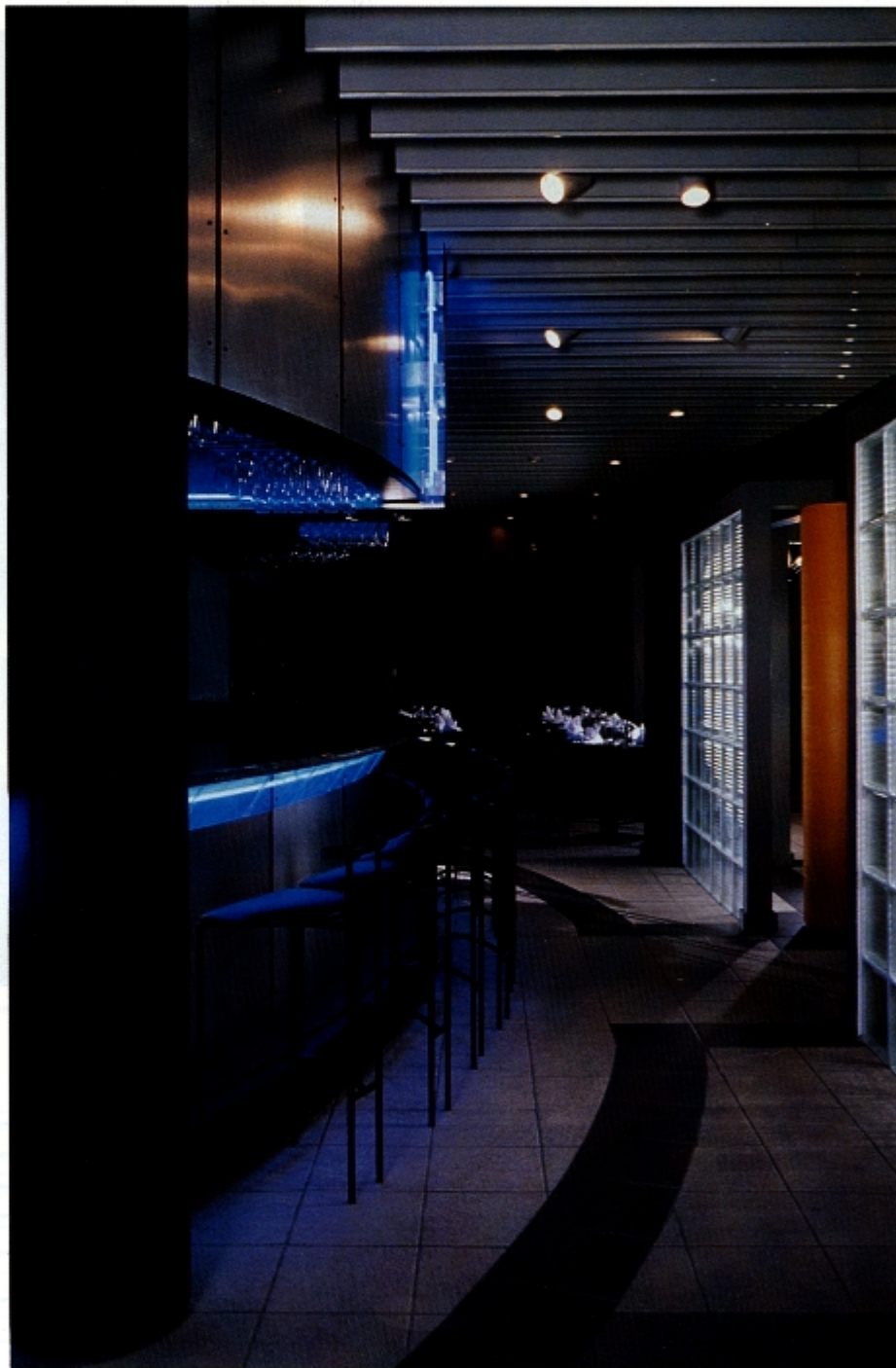
General Contractor

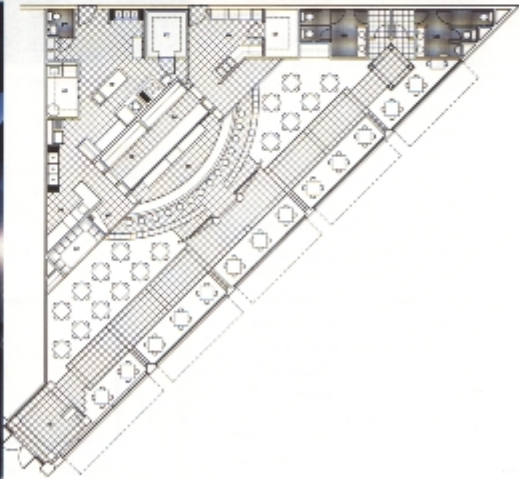
Romano Brothers-West, Inc.

Tokyo Rose is a 3,500 square foot restaurant located in a very conventional strip center. Working within the confines of a typical lease space, the challenge was to create a unique ambience for dining that would transport guests into an urban setting different from the one outdoors.

The design direction became one of bringing into the restaurant the feeling of being a part of a narrow pedestrian "street" that cuts through the dining room. The "street" fragments the room into smaller, intimate rooms along its path. At the center of the "street" is the hub of the restaurant, a room with a brushed aluminum bar which is entered through two bright yellow columns. The bar and the food area behind it are separated by a glass wall, creating a "stage set" for food preparation. Guests can wait for a table at the bar and watch food being prepared in the grille area.

Jury: "This ambitious design is presented as a total set of ideas under the complete control of the architect. The project is simple, but special in that it has good control of lighting and material patterns."





Photos by Carlos Domenech.

Rados Residence

Tampa, Florida

Architect
Rick Rados, Architect

Consulting Engineers
Cabana and Fernandez
Burton and Rolley

Landscape Architect
Rick Rados

Owner
Mr. and Mrs. Rick Rados

General Contractor
Ranon and Jimenez, Inc.

This design responds to its urban location and the Florida sunlight, which is both friend and foe. It also responds to a program that calls for spaces that are bright and open, cool and private. An additional program requirement was for spaces that could be economically conditioned.

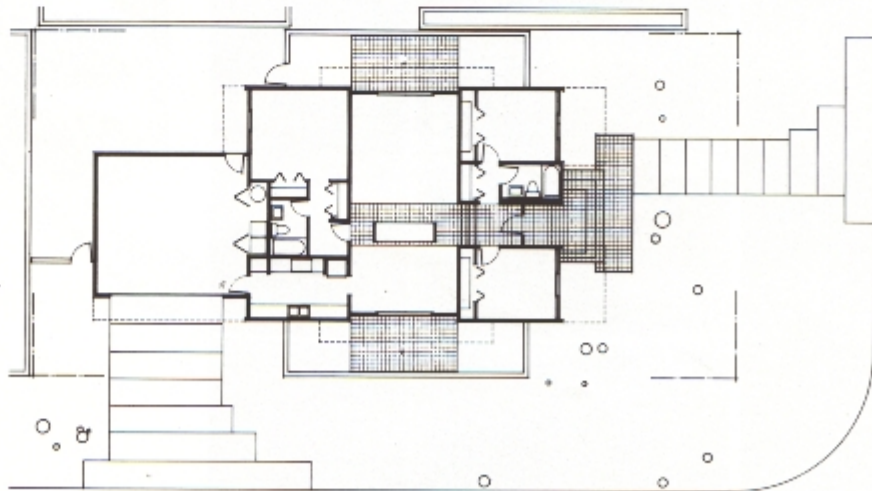
The construction is heavily insulated light wood framing that resists daylight heat transmission and will not store it for later transmission during warm nights. The near white exterior assists by reflecting sunlight while deep overhangs shade the openings.

Small, walled courtyards at each end of the living-dining space allow it to be opened up for air movement as well as to visually extend the space without loss of privacy. Light value, hard and reflective miscellaneous materials and finishes such as tile, marble, chrome and dense firm carpet without padding were selected to reinforce the psychological aspects of remaining cool.

Jury: "This looks like a Florida house. The louvers add texture to an otherwise simple exterior. This is a house which attempts to deal with light, sun and view on a suburban lot through the use of garden walls, overhangs and sunshades. The exterior is very handsome and scale and form are good."



Photos by George Cott





Burger King Corporate Headquarters

Miami, Florida

Architect

Hellmuth, Obata and
Kassabaum, Inc.
St. Louis, MO/Tampa, Florida

Consulting Engineers

HOK Engineers

Landscape Architect

HOK Landscape Architects

Owner

Burger King Corporation

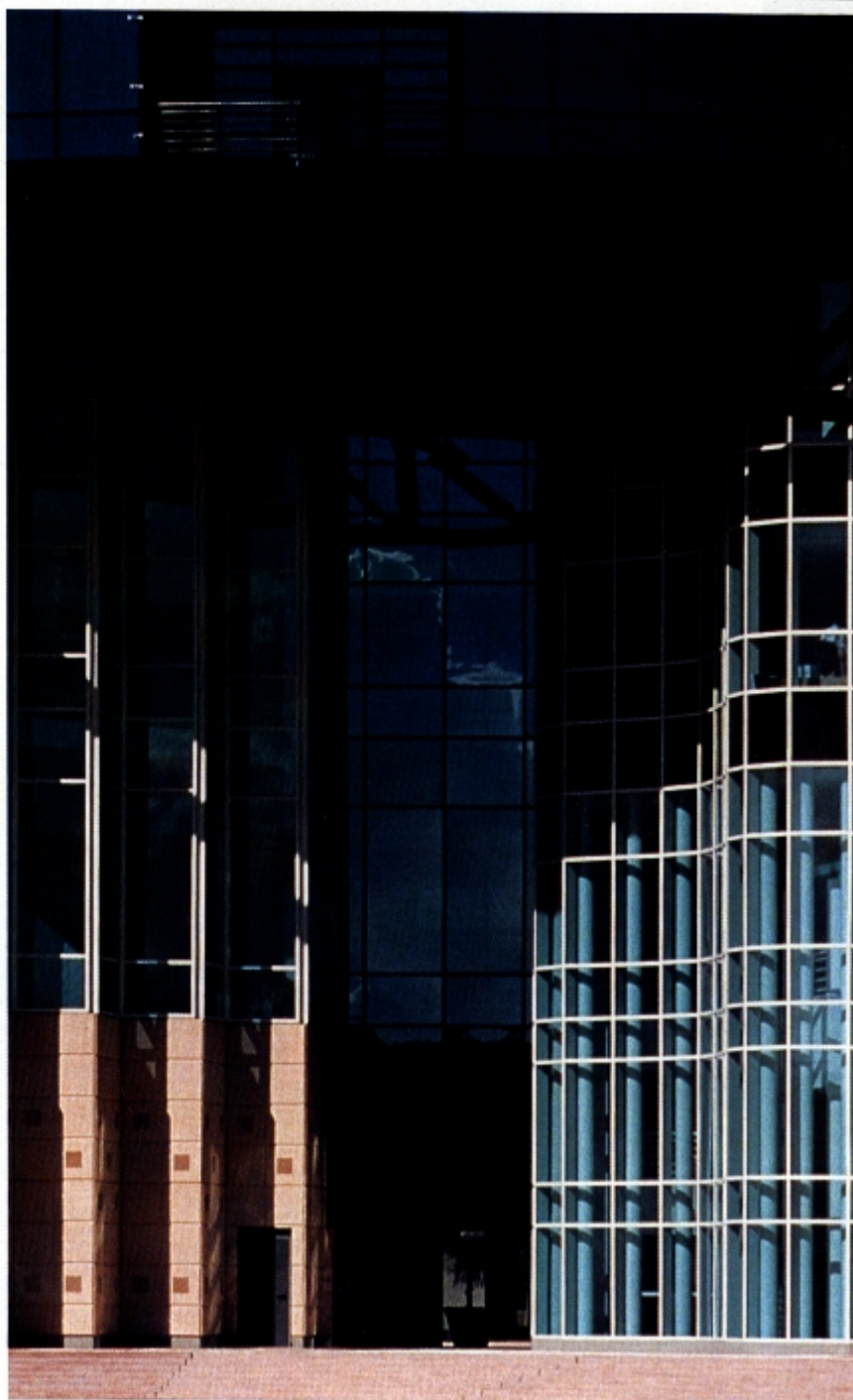
General Contractor

Gilbane Building Company

This project is a new headquarters for a leading chain of fast-food restaurants. The site is a fifty-acre bayside tract in South Florida. Site planning was a key element in the design of the project. The existing jungle was left intact wherever possible and restored where necessary. The buildings themselves occupy less than five percent of the site. The two lower levels of each building are dedicated to parking facilities. This raises the buildings as required for safety in the event of floods or hurricanes. The main building has four upper floors of office space. Large floor plans allow maximum flexibility for the client's frequently changing space needs.

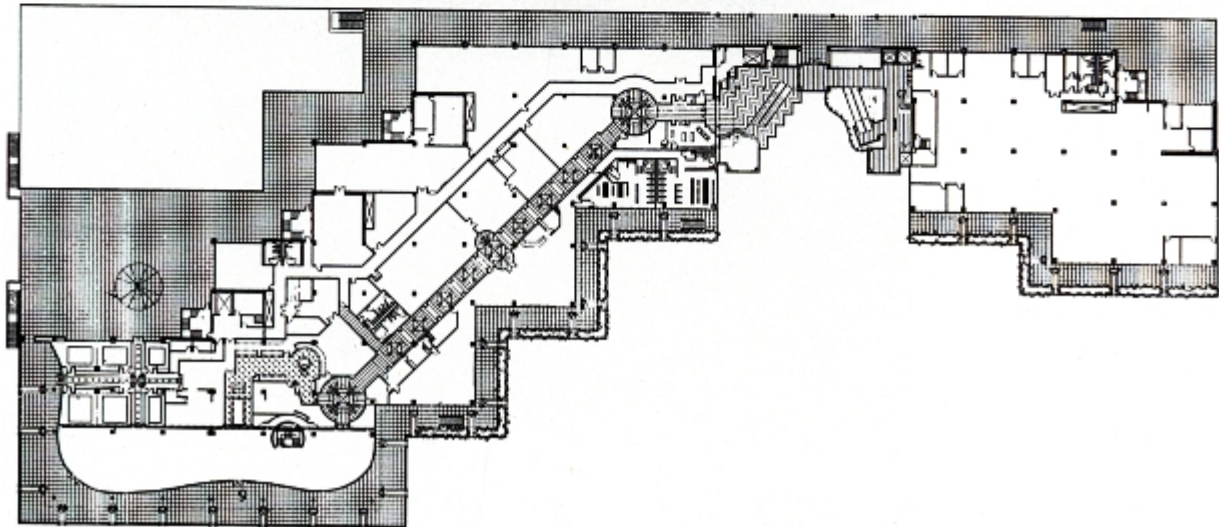
Exterior materials are pre-cast concrete and glass. The concrete is pink with a gridded and textured pattern and the accent is aqua and pink marble.

Jury: "This large, strong building has a wonderful sense of scale. There is careful follow through in detail and color and the strong entry experience and appropriate terracing invite outside activity."





Photos by George Cott



Bayside Marketplace

Miami, Florida

Architect

Benjamin Thompson &
Associates, Inc.
Cambridge, Massachusetts
and
Spillis Candela & Partners
Coral Gables, Florida

Consulting Engineers

Spillis Candela & Partners

Landscape Architect

Albert R. Perez & Associates

Owner/Developer

Rouse-Miami, Inc., a
subsidiary of
The Rouse Company

General Contractor

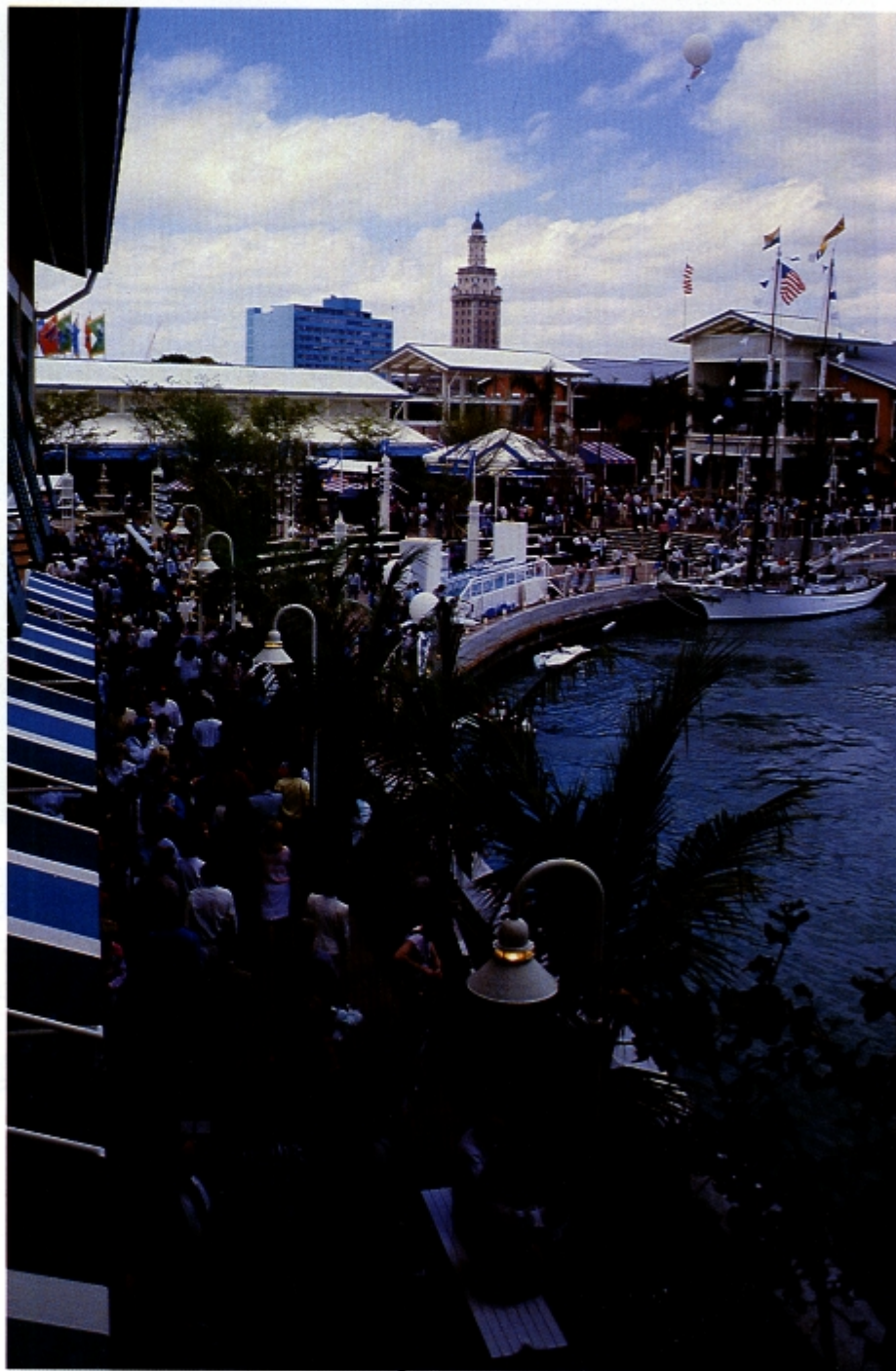
H.C.B. Contractors

This festive marketplace was designed to celebrate its waterfront site. The project pairs two sets of pavilions surrounding the open market shed, and continues with a promenade along the water's edge.

The development mixes a variety of elements: new commercial spaces, restaurants, open public gathering spaces, small scale retailing and places for sitting and people-watching.

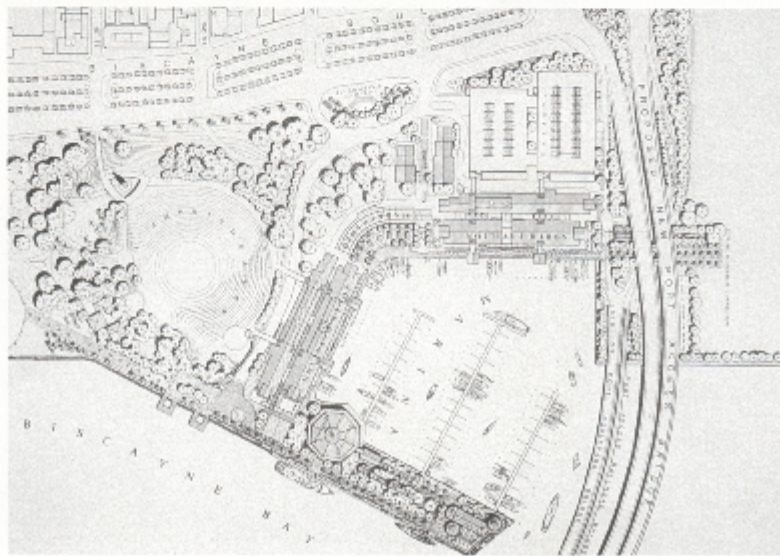
The breezy multi-level pavilions play host to elegant shops, restaurants, market stalls and pushcarts and waterfront bars. Its casual tropical blend of architectural elements is not unlike the diverse cultural elements brought together by Miami's own population mixture.

To minimize the use of air-conditioning systems and to maximize energy efficiency, the project uses natural ventilation, exterior breezeways, shaded open streets with fountains, porches with fixed sun louvers and Bahama-shuttered windows to control heat build-up.





Jury: "The architecture creates a festive atmosphere. This type of project uses a proven formula, yet this project has been executed with verve and charm and its adapts perfectly to the Florida climate and culture."



Photos by © Steve Rosenthal

Shoar Residence

Punta Gorda, Florida

Architect

Suzanne Martinson

Consulting Engineer

Steve Surman, Structural Engineer

Owner

Mr. and Mrs. Melville Shoar

Photographer

Steven Brooke

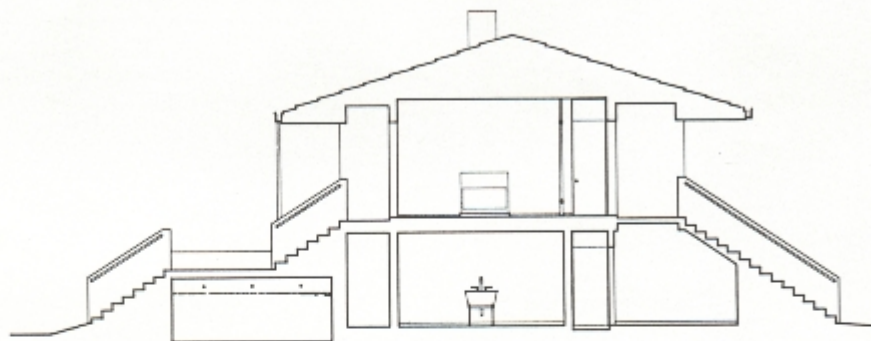
This program called for a two-bedroom house with a raised living area to capture the trade winds and to maximize the views of an estuary. It further required a large cistern for maintaining a lush garden in a region often plagued with drought and water rationing. Inexpensive construction and ease of maintenance were also priorities.

The house is organized in layers oriented to the southern water view. Intersecting these layers is a strong linear axis created by the masonry external stairs passing through the bilaterally symmetrical massing of the house. The resultant form is, in the Southern tradition, the prototypical "dog trot" house with a hip roof.

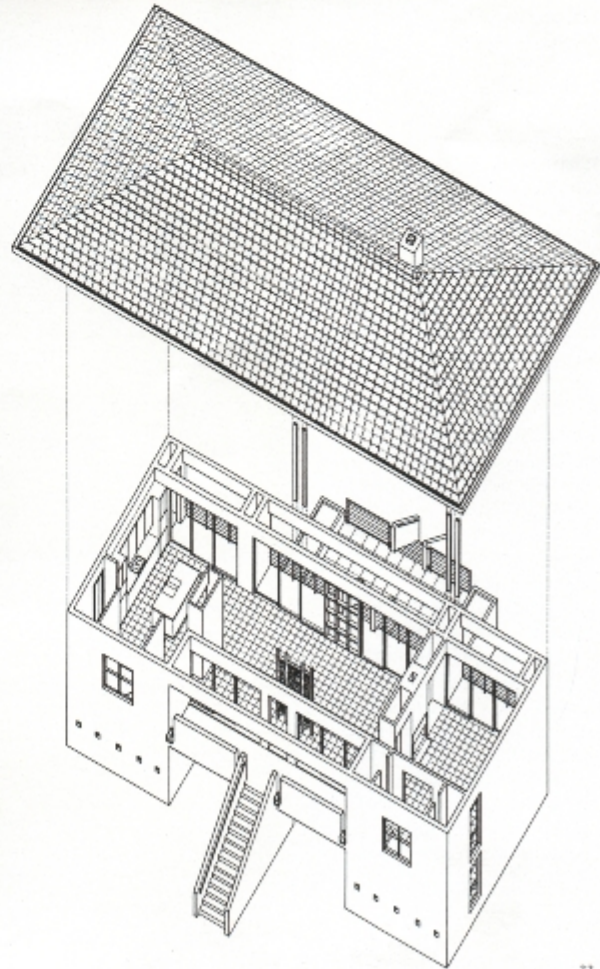
The interior spaces are organized in a linear arrangement. A circulation spine runs the entire length of the house, on both levels, and is expressed in the side elevations by the two-story slot windows.

The five-foot roof overhangs protect the house from summer heat and provide shelter for the balconies. The overhangs also serve as the water collecting device for the cistern.

Jury: "This simple house deals with real world issues in an elegant, straightforward manner. The house is well-sited and outstanding in its simplicity and clarity."



Photos by Steven Brooke



Airside "F" - Tampa International Airport

Tampa, Florida

Architect

Design Arts Group Inc./
Rowe Holmes Hammer Russell
Architects, Inc.
Associated Architects
H. Dean Rowe, FAIA -
Principal-in-Charge
Michael L. Russell, AIA -
Project Architect

Consulting Engineers

Walter P. Moore and Assoc.
Post Buckley Schuh and
Jernigan
Delon Hampton and Assoc.

Lighting Consultant

William Lam and Assoc.

Graphics Consultant

The Bugdal Group

Carpet Design Consultant

Joseph A. Maxwell

Landscape Architect

Design Arts Group, Inc./
Rowe Holmes Hammer
Russell Architects, Inc.
Associated Architects

Owner

Hillsborough County Aviation
Authority

General Contractor

Taylor Woodrow Construction
Co.

This program called for a new international airside terminal to be added to an existing landside/airside concept airport. The envelope of the building was dictated by existing runway/taxiway alignment and maximum utilization of the apron in an effort to gain the greatest number of gates.

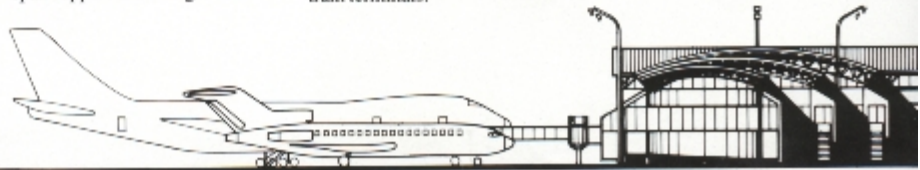
The two-story building is 190,000 square feet. The lower level contains the federal inspection area for arriving international passengers and the operations area for support of the airlines. The upper level comprises general use seating areas, concessions, lounges, office areas and shuttle car lobby.

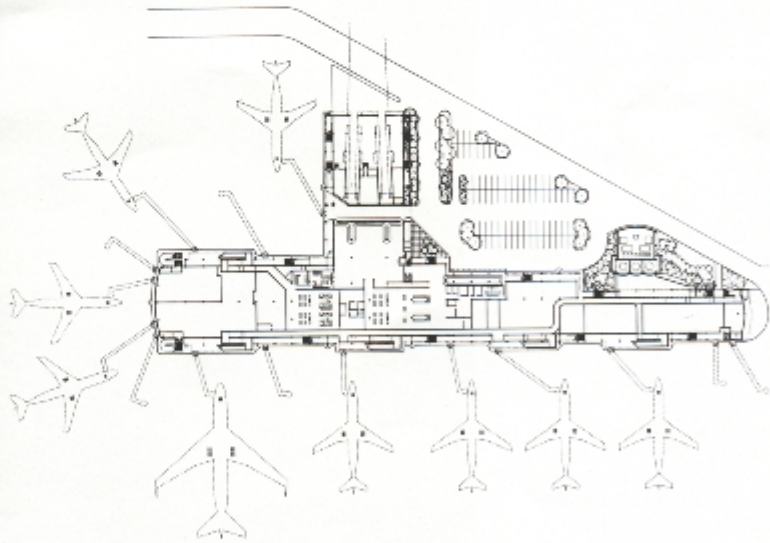
To provide an atmosphere



conductive to movement by large numbers of people, a large volume was provided. The upper level spaces are column-free with arched triangular exposed trusses providing clear span support of roofing. Areas

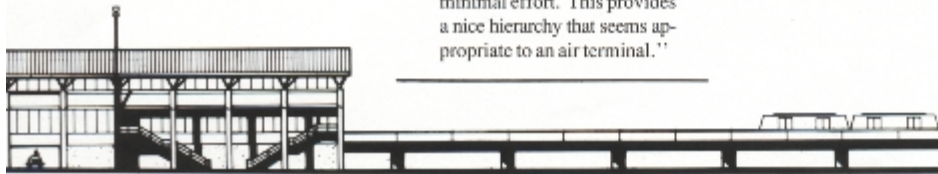
of passenger movement throughout the building are oversized to create a sense of easy movement. The overall goal was to create a sense of space reminiscent of the early train terminals.





Photos by George Cott

Jury: "The exposed structure gives the interior an interesting texture. The roof works like a geodesic dome in that it simply encapsulates with minimal effort. This provides a nice hierarchy that seems appropriate to an air terminal."



North Dade Justice Facility

Miami, Florida

Architect

Arquitectonica International
Corporation
Coral Gables, Florida

Consulting Engineers

Lagomasino & Vitale
Associates
Robert H. Tanner
Post, Buckley, Schuh &
Jernigan

Special Judiciary Architectural and Program Consultant

Walter H. Sobel, FAIA &
Associates

Landscape Architect

Ted Baker Group

Owner

Metropolitan Dade County
G.S.A.

This two-story building is sited and shaped to respond to major site influences. Toward the vehicular artery, the convex shape of the main volume of the building acts as a monumental object seen by passing traffic. The same volume of building is concave toward the lake, defining and enclosing a quiet, pedestrian-oriented environment. A linear pedestrian plaza passing under the suspended upper volume links a bus stop with an outlook in the lake, thus uniting the two areas.

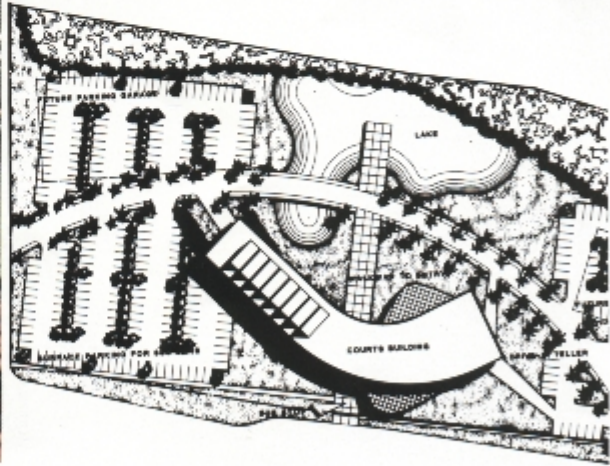
The 39,000 square foot building is designed as three separate volumes, each with its own function, facade, treatment and shape. Downstairs a rectangular green stucco and black tile wall encloses a protected parking area. The entrance lobby is contained within a curved volume of vertical



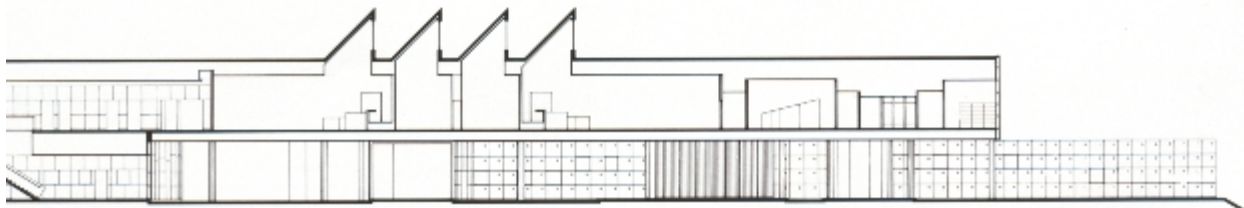
panels of pink marble and green glass. Upstairs, the courtrooms, judges' chambers and ancillary facilities are arranged linearly to accommodate expansion within a volume clad in a curtain wall of white spandrel glass and silver reflective glass. The yellow tile-clad clerestories on the roof assure natural daylight in all courtrooms and jury deliberation rooms.

Jury: "A dynamic shape, bold in form and plan, but restrained in elevation. The curved shape responds to various angles of the sun. The language of this building is so individualized that it is hard to critique beyond the fact that it makes such a strong statement on the landscape."





Photos by Patricia Fisher and Paul Warchol



Medical Office Building

Palm Harbor, Florida

Architect

Ranon & Partners, Inc.

Landscape Architect

Ranon & Oural, Inc.

Owner

Michael H. Butan, M.D.

General Contractor

Dooley and Mack Constructors



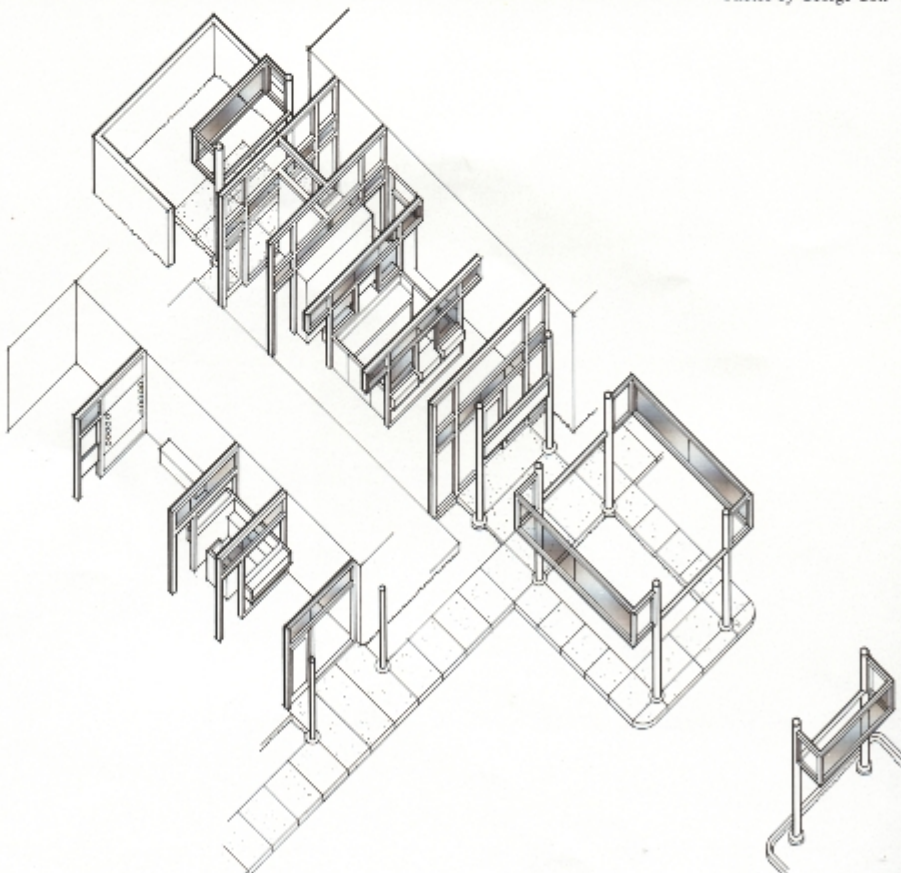
Photos by George Cott

The design for this 10,000 square foot office building strives to provide an understated, professional image. The facility's two anchor tenants are a plastic surgery center and a neurology center.

The site is a rural strip of land bounded by a major highway. To fast moving traffic, the extended entrance canopies increase the apparent building "frontage". They also provide a sense of invitation, arrival, enclosure and shelter, in addition to expressing the hierarchy of the interior spatial system.

The two principal building lobbies are high-volumed voids formed by adjacent masses of support spaces. The glazed frames which functionally subdivide these spaces are an interplay of solid, clear and translucent panels. The exterior translucent screen adds lightness to the building during daylight hours and at night, the backlit panels provide ambience and presence.

In reaction to Florida's severe climate, the building has an east/west axis, generous overhangs and reflective coloration.



Jury: "This building is a study in beautifully composed geometry. It is well proportioned, bright, airy and disciplined. The use of sunscreens is particularly successful."



Independent Day School

Tampa, Florida

Architect

The Architects Studio
Tampa, Florida

Consulting Engineers

Florida Technical Services Inc.
O'Neal Engineering
Associates, Inc.

Landscape Architect

The Architects Studio

Owner

The Independent Day School
Board of Trustees

General Contractor

J. O. DeLotto and Sons, Inc.

This project is a private school for grades kindergarten through eighth grade. The project consists of the redesign of the existing campus and the creation of eight new classrooms, art, music, multi-purpose and administration buildings.

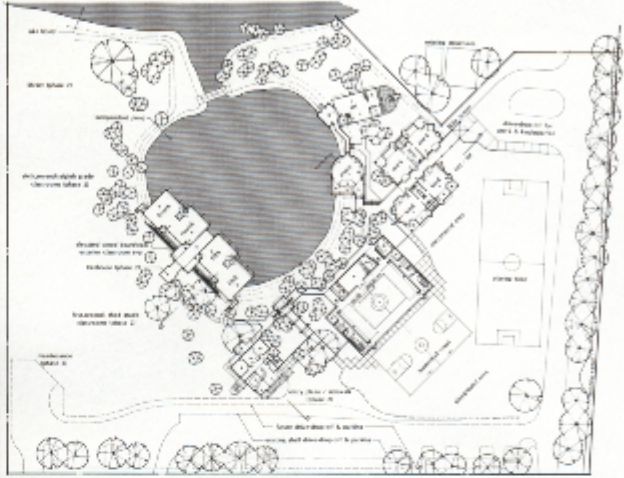
The classroom buildings are wood frame on wood pilings and the non-classrooms are reinforced concrete on slabs on grade.

The reclaimed swamp site presented significant environmental and design challenges. Although the total area is nearly eight acres, only 2 1/2 is buildable upland. Severe environmental constraints exist, including a central drainage pond, adjacent lake and surrounding cypress stands which required delicate handling.

From an architectural standpoint, inexpensive and common materials were combined in primary shapes and colors that provide the students with identifiable imagery.

Jury: "Outstanding site plan. The relationship between the building's style and color contribute to a fresh solution appropriate to its function."





Photos by George Cott

Moog Inc., Engine Controls Division

Pinellas County, Florida

Architect
Reefe Yamada & Associates
Tampa, Florida

Consulting Engineers
Burton & Rolley, Inc.
Walter P. Moore & Associates

Landscape Architect
Phil Graham

Owner
Moog, Inc.

General Contractor
Enterprise Building Corporation

This project is a 70,000 square foot aerospace research and development facility. The owners required a building which reflected their unique philosophy toward their employees and their surroundings. Primary goals included an open work environment and the co-mingling of all activity areas.

Most of the site is heavily wooded and in order to reduce the impact of the building on the environmentally-sensitive site and to meet flood insurance requirements, half of the building is elevated over covered parking while the production shop areas are all on fill. The common ceiling line throughout the building, the varied floor elevation and the extensive use of glass are intended to provide a stimulating work environment with a strong relationship to the natural surroundings.

Jury: "This building seems to work well with natural light, both inside and out. The shading devices are exaggerated and give the building scale. The combination of solids and voids is very effective and when combined with the white color, it becomes a landscape sculpture."





SECTION A



SECTION B

Banco de Credito

Lima, Peru

Architects

Arquitectonica International Corporation

Consulting Engineers

Gallegos, Rios, Casabonne, Ucelli, Arango Ingenieros Civiles
Friba Ingenieros
Lagomasino Vitale & Associates

Landscape Architect

Mercedes Beale de Porcari

Lighting Consultant

Phillips Export B.V.
International Products Division

General Contractor

La Inmobiliaria, S.A.

Owner

Banco de Credito del Peru

This building is a 530,000 square foot corporate headquarters for the largest private bank in Peru. It is located at the foot of the Sierra Mountains outside Lima. The four-story building is a broken courtyard which has been raised on stainless steel piloti over white marble ground level buildings surrounding a landscaped garden. The organization of the building recalls a traditional Spanish colonial courtyard prototype with a formal public facade on the exterior and an informal interior facade. At the same time, the building is a modern prototype, with piloti supporting a free-form interior plan, user spaces on the roof, sculptural facade elements and a free-flowing terrain below.

Cafeteria and auditorium are beneath the building while forms such the lobby and board room slice through it. These forms are clad in white marble and white stucco. The elliptical entry space intersects the building vertically and is made



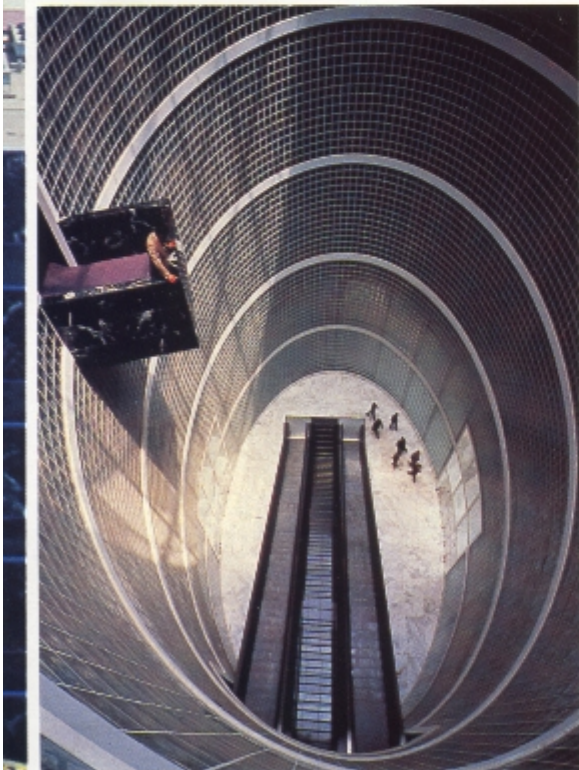
Photos by Tim Hursley and Paul Warchol



of glass block topped by a skylight. The exterior of the building is mullionless strip windows of blue glass and diagonally mounted indigenous black marble. The interior facade of the broken courtyard is local pink slate which has been cut in irregular slabs.

The interiors are designed with special orienting features such as cylindrical elevator lobbies and zig-zag glass block walls which are focused back at circulation along the courtyard.

Jury: "This spectacular project is a wonderful sculpture that works well as a piece of architecture. There is a really dramatic interplay between the plan, shape and pattern in elevation. The building has a powerful relationship with its difficult site."



Interior Architecture/ NCNB tenant space

Tampa, Florida

Architect

Associated Space Design, Inc.
Tampa, Florida

Owner

NCNB Tower Associates

General Contractor

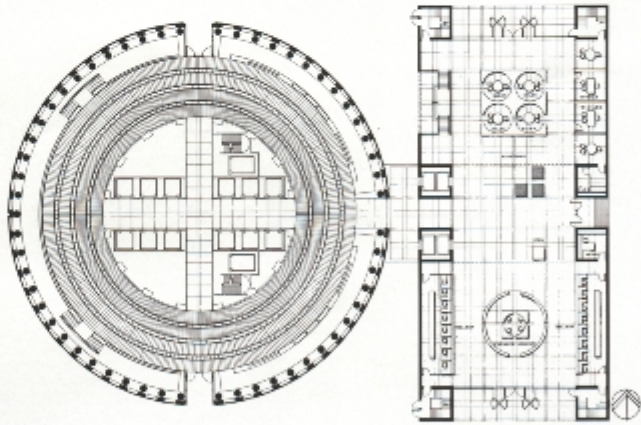
Pace Construction

This project is comprised of two connected spaces, a 31-floor tower serving the bank's corporate needs and a 6-floor atrium serving the bank's public needs. The design concept for the tower addresses the bank's requirement for an open, flexible office plan which responds to the circular form of the building. The backbone of the tower, which creates a square form within the circle, is a space which defines circulation, establishes arrival and termination points and distributes ambient lighting and communication cabling.

Finishes were selected to enhance the building materials, i.e., French limestone, Texas shellstone, polished marble and honey teak.

Jury: "This simple, elegant project has beautiful details. There is a highly controlled relationship between the architecture and the interior design. It shows masterful control of a sophisticated interior. There is total coordination of space, light, color, materials and detail."





Rio

Atlanta, Georgia

Architect

Arquitectonica International Corporation - design
Milton Pate & Associates, Inc. - production

Consulting Engineers

Bennett & Pless, Inc.
Brady & Anglin
Harris Engineering Corp.

Landscape Architects

The Office of Peter Walker and Martha Schwartz-Courtyard

Signage and Graphics

Wagner Bruker Design Associates, Inc.

General Contractor

McDevitt & Street Company

Mechanical Contractor

J.S. Thomas Co.

Electrical Contractor

Michael/Yukon Electric Co.

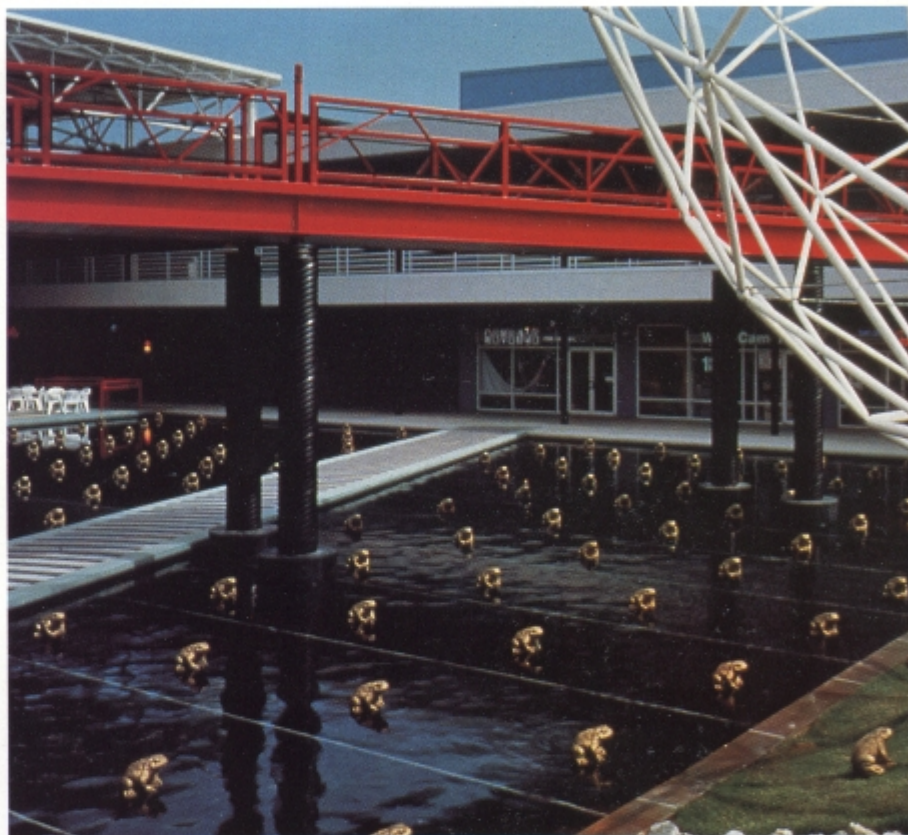
Owner/Developer

Ackerman and Company

This 110,000 square foot retail center is primarily a series of buildings around a central entertainment court. It is located at a busy intersection adjacent to downtown Atlanta.

Conceived as a small, urban village with separately defined buildings, this complex allows the pedestrian to circulate from the inner court to the parking outside. Within this complex, one building is rotated from others to allow special entry. The buildings of the center are made of vertical blue corrugated metal siding with white window mullions and yellow awnings. The rotated building is horizontal corrugated black metal siding with green mullions.

The entertainment court is a series of similarly rotated squares. The court contains a garden which consists of a



Photos by Rion Rizzo and Mike Astalos

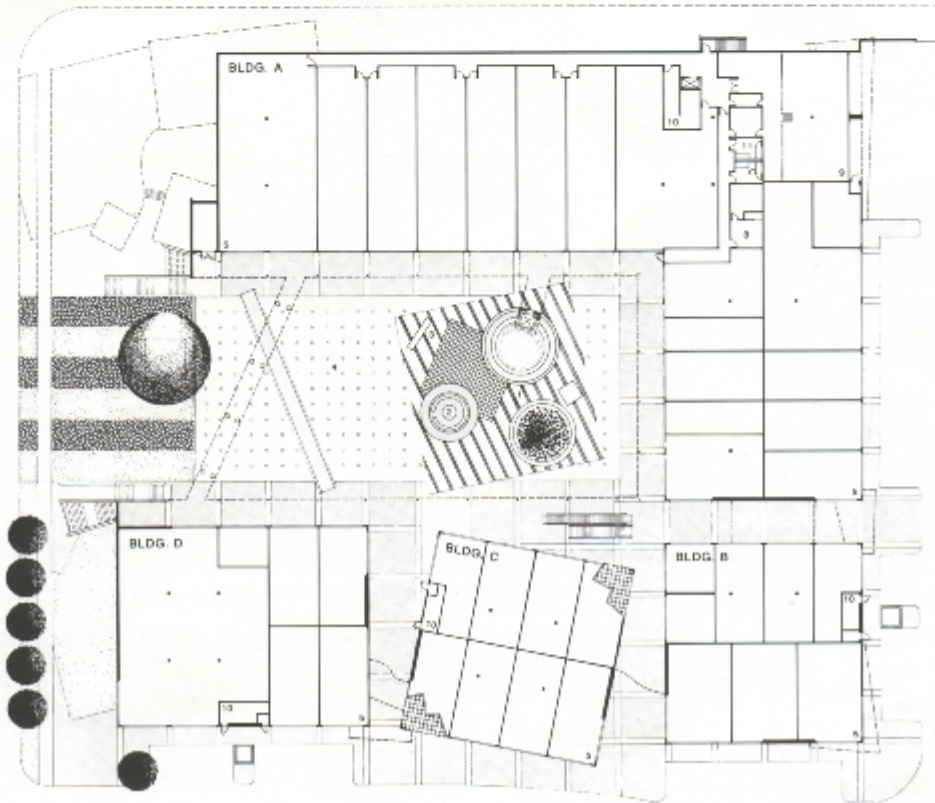
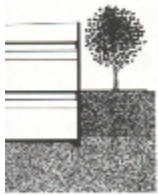


series of turf and green boulder strips sloping into a reflecting pool.

As the stripes engage the pool, they are continued as fiber optics. Situated along the stripes in land and water is a rigidly placed grid of golden frogs. All of the frogs are facing a forty foot vine-covered geodesic sphere which emits a fog at regular intervals.



Jury: "The use of 'off-the-shelf' building elements and the response to a restricted site and budget produced a masterful work. The frog pond is a great thing to build around. The building is strong and eye-catching."





FITTING GRAPHICS OR SIGNAGE INTO TIGHT SPACES & BUDGETS? **SR+** SOLVES GRAPHICS PROBLEMS. WE SAVE YOU MORE THAN OUR FEE.

FOR PROGRAMMING, SPEC WRITING, FEASIBILITY STUDIES, LOGOS & DESIGN, REVAMPS & SITE SURVEYS, SUPERVISION OF MANUFACTURE & INSTALLATION OF SIGNAGE: **SR+**

SR+ PROVIDES FULL SERVICES TO INDUSTRY, GOVERNMENT, ARCHITECTS, DESIGNERS, DEVELOPERS & END USERS. WE HAVE COLLABORATED IN TV & FILM PRODUCTION & ARCHITECTURAL SIGNAGE: HIGH TECH TO PERIOD REPRODUCTION.

OUR STAFF IS OUR FORTE: COMMITTED TO EXCELLENCE WITH A VAST RANGE OF TALENT & EXPERIENCE.

a division of great american sign, signal & graphics co.
po box 20035 tallahassee, fl. 32316-0035

1-(800) 874-4678

Circle 39 on Reader Inquiry Card



PREMIX-MARBLETITE
Manufacturing Co.

Serving the building industry since 1955

STUCCO, PLASTER, DRYWALL AND POOL PRODUCTS
SOLD BY LEADING BUILDING MATERIALS DEALERS

For Specifications and color chart refer to SWEET'S CATALOG

3009 N.W. 75th Ave. • Miami, FL 33122
Oviedo & Sanford Rd. • Orlando, FL 32707

Miami	Orlando
(305) 592-5000	(407) 327-0830
(800) 432-5097	(800) 432-5539

MANUFACTURERS OF:

- **THE HARD-WALL SYSTEM**
- **MARBLETITE** (All Marble) Stucco
- **MARBLECRETE** Trowel Stucco
- **POOLCOTE** Swimming Pool Stucco
- **FLO SPRAY** Ceiling Spray
- **CEMCOTE** Cement Paint
- **FLOTEX** Wall Spray
- **ACOUSTICOTE** Acoustical Plaster
- **WONCOTE** Veneer Plaster
- **P.V.L.** Vinyl Ceiling Spray
- **ACOUSTEX** Ceiling Spray
- **BEDDINGCOTE** For Rock Dash
- **SNOWFLAKE** Ceiling Spray

AND OTHER BUILDING PRODUCTS

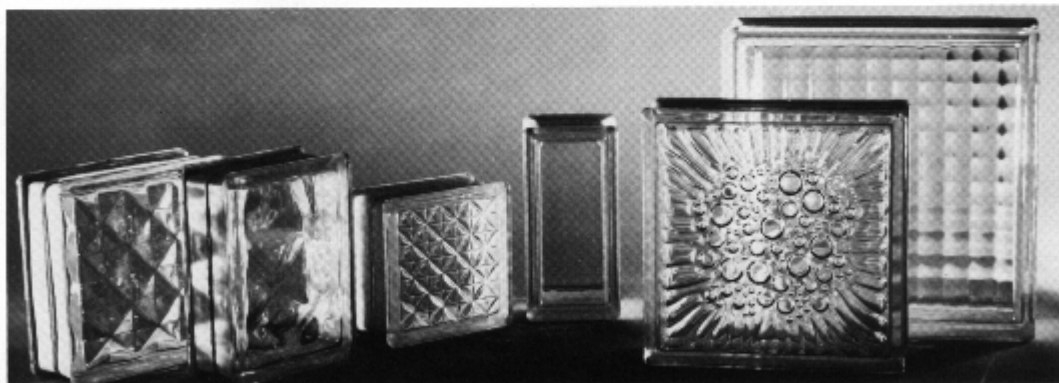
An Imperial Industries Company

Circle 14 on Reader Inquiry Card

Express your imagination with

GLASS BLOCKS

OVER 60 DESIGNS • SIZES • COLORS



HIGH SECURITY • THERMAL INSULATION • SOUND INSULATION • LIGHT TRANSMISSION

GLASS MASONRY INC.

P.O. Box 8325 / Pembroke Pines, FL 33024 / (305) 962-6884

MIAMI • ORLANDO • ATLANTA

Circle 37 on Reader Inquiry Card

NEW PRODUCTS

Senergy's SENERTHIK Wall System

All Children's Hospital in St. Petersburg recently completed the conversion of an abandoned church into a medical education and conference center. The project used a polymer-modified exterior insulating finish system (EIFS) to achieve two purposes at once - to preserve the underlying structure while making the finished project look like new.

Renovations created classrooms, a 600-seat auditorium, audio-video production facilities and a teleconferencing center as well as administrative offices. A glass-enclosed front lobby and a canopied porte-cochere at the rear improved public access. Hospital officials selected Harvard, Jolly & Marceet Associates, Architects, AIA, to design the facility. Project architect, John McCormack, and assistant project architect Daniel Houston, specified a polymer-modified, impact-resistant exterior insulating finishing system for the retrofit. The system that was used is called Senerthik from Senergy Inc. in Cranston, Rhode Island. Fernald & Wallace, the oldest plastering contractor in Florida, was selected for the application.

Since work was in a very tight interior space and condensation problems with interior insulation were a concern, EIFS, with its rigid insulation board, was a good product choice. More R-value could be added without losing interior space and at the same time the exterior could be upgraded at reasonable cost. Using EIFS also allowed the architects to refine the building and use details, such as Art Deco elements, that wouldn't have been possible otherwise.

Crack control was another major concern. With EIFS systems, depressions and bumps in walls can be fairly easily smoothed out by adjust-

ing the thickness of the foam instead of building up thick layers of stucco, which are more likely to crack later.

All Children's Hospital's new education and conference center, designed by Harvard, Jolly & Marceet Associates, was converted from an abandoned church nearby and Senergy's impact resistant, polymer-modified exterior insulating wall system was used to save interior space, prevent water penetration, and resist local vandalism.

Correx

The specifications for TASSO's diagonal texture wallcovering were incorrectly stated in the July issue of FA. A roll (or bolt) of TASSO is 39 inches wide by 54 1/2 yards long.



RANDALL ATLAS ARCHITECTURAL SECURITY CONSULTANTS

SECURITY SYSTEMS DESIGN
◆
SECURITY PROGRAMMING
◆
SECURITY AUDITS
◆
VULNERABILITY ASSESSMENTS
◆
CRIME PREVENTION THROUGH
ENVIRONMENTAL DESIGN

ARCHITECTS FOR SECURITY

Randall L. Atlas, Ph.D., AIA, CPP
600 NE 36th St., Suite 1522
Miami, Florida 33137

(305) 576-6029
FAX (305) 576-1390

CALL NOW FOR CONSULTATION

Circle 19 on Reader Inquiry Card

4 EASY-TO-ORDER SIGNAGE SYSTEMS OFFER UNIQUE LOOKS FOR EACH DESIGN JOB

Standard
Signage

Contemporary
Style

Designer
Series

Elite Framed
System

Design your signs before you write your specs. And specify Desk & Door.

Our four distinctive interior sign systems suit the needs of busy architects, interior designers and space planners.

You'll find them strong on flair and flexibility. Plus, you can customize.

You'll be pleased. And you'll specify Desk & Door again and again!

We'll see you at the Boca Raton Club!

Please stop by our exhibit and receive your complimentary Sign Manual at the FA/AIA 1989 Annual Convention on September 22.



Desk & Door NAMEPLATE COMPANY

Interior & Exterior Architectural Signage
2895 21st Avenue North • St. Petersburg, FL 33713

Quality Products and Quick Service

For your complimentary Sign Manual, call us at: **(813) 327-1472**



Circle 2 on Reader Inquiry Card

DON'T GET STUCK WITH INFERIOR STUCCO.



Perma Crete™ Stucco is a quality-controlled, pre-blended portland cement and selected aggregate composition which includes a waterproofing agent, fade-resistant pigments, and other chemical combinations to provide a long-lasting finish.

Perma Crete's finish coat is color through so there is never a need to paint. Available in white and many beautiful colors, it can be trowel applied or sprayed for either a textured or smooth finish.

The buttery consistency makes it easier to apply and its greater spread gives extra coverage making it more economical.

All components meet the standards set forth in ASTM-C929-81 for stucco. Coverage is 6-9 yards per 80 pound bag.



For further information write or call C.L. INDUSTRIES, INC.
P.O. Box 593704, 8188 South Orange Avenue, Orlando, Florida 32859-3704
(407) 851-2660; 1-800-333-2660; FAX: (407) 240-2743

Circle 26 on Reader Inquiry Card



AWNINGS BY JAY

WINNER OF INTERNATIONAL DESIGN AWARDS
AWNINGS OF DISTINCTION



CUSTOM DESIGN FABRICATION-INSTALLATION
CANVAS, VINYL, AWNINGS
CANOPIES, CABANAS, CURTAINS
CUSHIONS, CUSTOM WELDING

844-4444

RESIDENTIAL • COMMERCIAL • INDUSTRIAL
1125 BROADWAY, RIVIERA BEACH, FL
SINCE 1974

MEMBER I.F.A.I.

LICENSE #U-10179
Circle 24 on Reader Inquiry Card

HANDI-LIFT, INC.



6964 Aloma Avenue
Winter Park, FL 32792
407/679-0055
(Outside Orlando)
1-800-367-8177



Member, National Association of
Elevator Contractors



GARAVENTA (CANADA) LTD.

Overcome Architectural Barriers In Public Buildings

Sales, Installation and 24 hour service of Vertical
and Inclined Wheelchair Lifts.

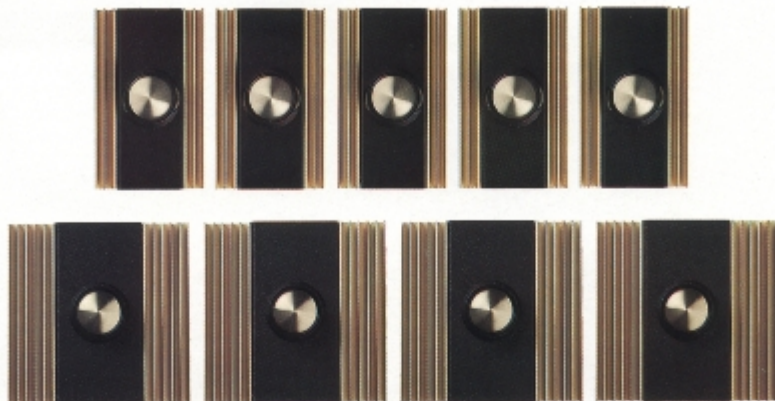
Residence Elevators

Call for Consultation and Free Evaluation for
for Handicapped ACCESS and EGRESS.

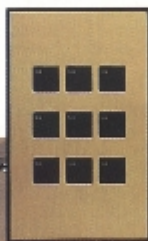
EXPERIENCED - CONSIDERATE

Circle 15 on Reader Inquiry Card

This...



or This?



LiteTouch[®]
2000

catches your eye and captures your imagination. With an intriguing mix of uncompromising quality and contemporary design, LiteTouch 2000 is destined to create lighting control trends that will demand your attention.



Up until now, total flexibility in lighting control has only been a dream. LiteTouch 2000 makes that dream a reality by providing the freedom to create the environment you desire with control for every lifestyle.

LiteTouch 2000 . . . the leader, where others only dream of following. Indulge yourself with the future today . . .
LiteTouch 2000! *Imagine It!*

LiteTouch[®]
LIGHTING CONTROL SYSTEMS

Phone 801/268-8668
Fax 801/268-9200

The Choice is Yours.

Circle 38 on Reader Inquiry Card

OFFICE PRACTICE AIDS

Video: A Marketing Edge for the 1990's

by Leslie Draper

Among the professionals who market A/E services, the following statistic provokes a ripple of anxiety. The number of architectural and engineering firms in Florida grew 137 percent in the last decade. Since the nature of the design/build industry is to go where the work is, new firms and branch offices of established heavyweights are magnetically attracted to Florida's booming economy. The result is an increased focus on marketing strategies and innovative solutions to better position one's services beyond that of the competition.

There's no better way to convey your firm's message to prospective clients and employees than video. Professionally-produced video presentations are now incorporated into the marketing budgets of many design/build firms for trade show exhibits, project updates, new business presentations and employee recruiting.

Trade shows are a perfect place for video productions. As more A/E firms join the ranks of other professional service industries in trade show marketing, they're realizing that video is the ideal medium for such a competitive environment.

Lyle P. Fugleberg of Fugleberg Koch Architects in Winter Park, is an architect who realized early that to be effective in a trade show format, video was a good choice. He felt that an exhibit utilizing slides and renderings would require too much time to present adequately. Trade show visitors generally try to see as much as they can as fast as they can. The exhibitor is dealing with short attention spans where impressions are molded in seconds. Fugleberg feels that his firm's video has become the focal point for his exhibit. It captures the essence

of the corporate philosophy, shows a variety of the firm's work and its computer technology, all within an approximate time of five minutes.

Fugleberg adds that his firm has put the video to good use for countless new business presentations and admits that it would also be appropriate for recruiting and conducting new employee interviews.

Another Central Florida firm decided that a video format was the ticket for an intern recruiting mission. Arsham and Associates, Inc., Landscape Contracting and Design, wanted a presentation that would set the firm apart as a "forward-minded firm." As it turned out, Arsham was the only firm at the University's recruiting program to use video, and it really captured the recruit's attention and generated interest in the firm.

Let's assume for the moment, that you're sold on using video as a marketing tool. How do you select the right video production company to do the job?

Think of the selection process in terms of the submittal/interview process your own firm goes through to ensure new work. In this case, however, you'll be quizzing the prospective video production company in the same, vigorous manner that a new prospect/client questions your firm's capabilities.

Here are some basic guidelines on what to ask a production company regarding costs, capabilities and quality of service.

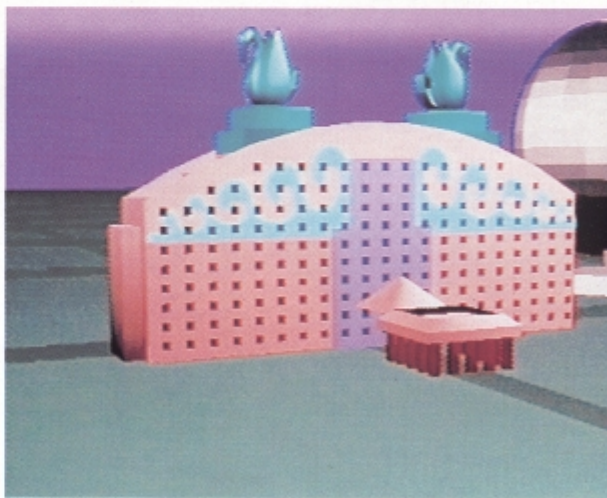
First, does the company have a strong background in producing the kind of video you want? Ask for a client list, and verify that the references are satisfied customers. Ask specific questions about the company's ability to finish the project on time and within budget. Ask about their prob-

lem-solving techniques and their ability to save time and money. Would they hire the video company again to do another project?

Once you've talked to a sufficient number of references, ask the video company for tapes of some completed projects so you can see for yourself what to expect from the finished product.

Second, ask who will actually be working on your video and what equipment will they be using? Who will be the producer and how does his or her experience relate to your project needs? Who are the crew members, and what is their experience in the field? Are they full-time employees of the production company?

Third, ask exactly what the contract covers. Does it include scriptwriting, location work, postproduction and editing?



Top, AVID video transition from Fugleberg Koch sales video illustrating how important "human comfort" is as a design factor at the office and at home. The same man is in both shots. Above, a single frame of AVID/Animagic 3D animation used in the Walt Disney Swan Hotel sales video. The full length animation depicts the rear of the hotel and its proximity to the Magic Kingdom, MGM, and EPCOT Center Ball.

Ask the company to help you develop a budget for the project and expect them to look for ways to save money without sacrificing product quality. Ask for specifics on any services or equipment that may cost your firm an extra fee beyond the original bid. And, that includes work your firm may be expected to provide that is not included in the contract. Get a written proposal that spells out all services in detail.

Ask when you will receive a detailed proposal and contract. Once they're secured, and you've narrowed your choices to one or two companies, ask for a time schedule for the project. Remember, Murphy's Law is always a factor in video production, but you should still have a somewhat flexible schedule to follow from planning through completion.

Answers to these questions should give you a basic education for a well-informed, budget-conscious start on your first video project.

The author is President of AVID, a full-service video production company in Orlando.

EPICORE[®] CONCEPT 2 COMPOSITE FLOOR SYSTEM



- Manufactured in Lakeland, Florida
- 48-hour Delivery
- Fast, Simple Installation by One Sub-Contractor
- Reduced Construction Time
- All Necessary Building Code Approvals
- Long Uninterrupted Spans
- Unbeatable Fire Ratings
- Excellent Sound Attenuation
- Monolithic Construction
- Distributor/Installers throughout Florida

Contact in Lakeland
813-688-7686

EPIC[®]

METALS CORPORATION

Eleven Talbot Avenue, Rankin PA 15104

PHONE: 412/351-3913

TWX: 710-664-4424

EPICMETAL BRDK

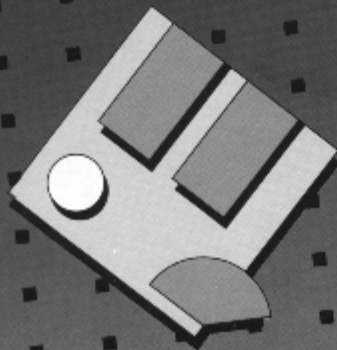
Circle 22 on Reader Inquiry Card

"DESIGN SOLUTIONS FOR SPECIAL POPULATION GROUPS"

November 29–December 2, 1989
Marriott's Orlando World Center / Orlando, Florida

The Second Symposium on Health Care Interior Design will focus on "Design Solutions for Special Population Groups." The Symposium will feature presentations by 20 nationally recognized health care design experts, tours of exemplary local health care facilities and a Trade Show Exhibition – all addressing the unique requirements of geriatric, psychiatric, pediatric and other special population group facilities – and highlight strategies for creating high-quality, life-enhancing health care environments that support healing and promote well being.

Architects, health care professionals, interior designers, educators and manufacturers will find this one-of-a-kind Symposium invaluable in developing innovative approaches to health care facility design.



SECOND SYMPOSIUM ON HEALTH CARE INTERIOR DESIGN

For a registration kit and/or more information contact:
National Symposium on Health Care Interior Design, Inc.
4550 Alhambra Way
Martinez, California 94553
415/370-0345

SPEC THE BEST!

Why settle for "equivalent" quality.

When you get roofing plans that read ... "or equivalent quality" you can afford to use Bender concrete roof tiles to add quality that's *more* than just "equivalent." Because Bender quality *and* color run all the way through every tile!



- Manufacturing process allows consistency in weight and thickness
- Assures more even looking roof installation
- Lightweight - up to 35% lighter than most concrete tile
- Fungus Retarding top coat
- Color throughout

Specify superior quality and value with Bender Roof Tile.

For more information contact:

bender
ROOF TILE IND., INC.

3100 S.E. County Road 484 • P.O. Box 190 • Belleview, Florida 32620
(904) 245-7074 • FAX (904) 245-1873 • 1-800-527-5808 Florida Only



SBCCI No. 8736

Circle 43 on Reader Inquiry Card

DISTINCTION.



Lifetile roofs play a significant part in capturing the essence of a structure.

That unique radiance and beauty first envisioned before your plans were ever put to paper.

And with all the selections of styles and colors available from Lifetile, we'll help your ideas remain one-of-a-kind.

Your designs and Lifetile roofs.
An original concept.

Whether commercial or residential, we know what you want. Because we listen to what you say.

 **LIFETILE®**

Fire-Safe roofing with the Concrete Advantage

Rialto, California
(714) 822-4407

Stockton, California
(209) 983-1600

Casa Grande, Arizona
(602) 836-8100

Katy, Texas
(713) 371-2634

San Antonio, Texas
(512) 626-2771

Lake Wales, Florida
(813) 676-9405

Member of National Tile Roofing Manufacturers Association, Inc.

Circle 29 on Reader Inquiry Card