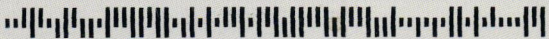


florida / caribbean ARCHITECT



FORT LAUDERDALE FL 33306-2076
2889 NE 33RD CT
FLORIDA ATLANTIC UNIVERSITY
Delidre Hardy

P-1 P6 -107-*****AUTO**3-DIGIT 333



PRSR1 STD
US POSTAGE PD
FARGO ND
PERMIT # 43

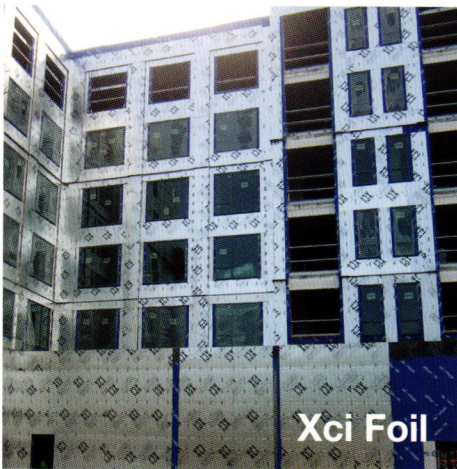


Fall 2015

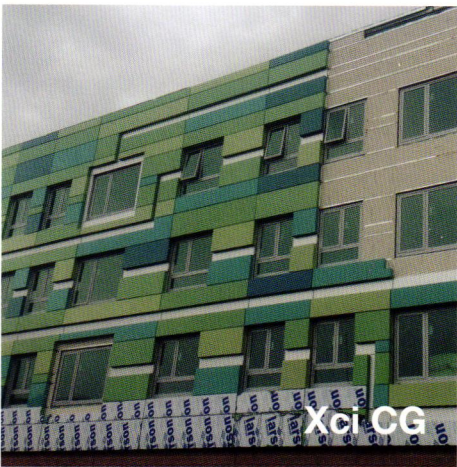
Official journal of the Florida Association
of the American Institute of Architects



Xci Ply



Xci Foil



Xci CG



Xci Class A

Why Specify Hunter Xci Polyiso for ci?

- Highest R-value in thinnest profile reducing the overall wall footprint and cost
- Provides superior energy efficiency at a competitive price
- Excellent fire performance properties enable Xci to be used in walls of all types
- Lightweight and easy to cut, saving time and money on installation
- Diverse product offerings allowing for design flexibility
- 7 manufacturing facilities servicing the USA, Canada and Caribbean
- HCFC & CFC free, zero ODP & GWP makes Polyiso the environmentally conscious choice
- Easy-to-use website and app provide readily accessible information on a wide assortment of NFPA 285 compliant assemblies
- Customer service-savvy "Whatever it takes" attitude



HUNTER
CONTINUOUS INSULATION

Choose Hunter Xci for your exterior wall insulation needs.

Call us today at 888-746-1114.

www.hunterxci.com

THE NEW GENERATION OF SUB-ZERO & WOLF



It is an entirely new way to think of appliances: sleek, innovative designs that incorporate the most advanced food preservation and precision cooking features of any appliance brand on Earth. monarkhome.com

SHOWROOM LOCATIONS

- 1742 W. Atlantic Blvd., Pompano Beach 954 956 7051
- 6300 S. Dixie Highway, Miami 305 669 0910
- 400 Northpoint Pkwy., Suite 400, West Palm Beach 561 622 9900
- 27180 Bay Landing Dr., Suite 1, Bonita Springs 239 495 8535
- 5670 Fruitville Rd., Sarasota 941 926 0700
- 500 S Park Ave., Winter Park 407 636 9725

[Twitter](#) monarkhome [Facebook](#) monarkhome [Pinterest](#) monarkhome

SUB-ZERO WOLF



MONARKSM
PREMIUM APPLIANCE CO.

©2015 Monark Premium Appliance Co. All rights reserved.

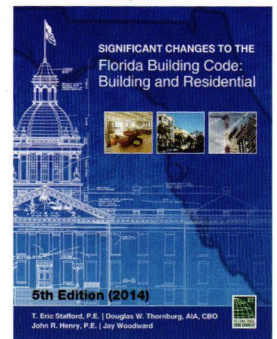
Introducing a new resource created specifically for Florida code users!

Significant Changes to the Florida Building Code: Building and Residential, 5th Edition (2014)

Gain full access to the most critical updates to the 5th Edition (2014) Florida Building Code, Building and the Florida Building Code, Residential, the real-world application of those changes, and why they originated—all in a single, easy-to-use resource in the **Significant Changes to the Florida Building Code: Building and Residential, 5th Edition (2014)**.

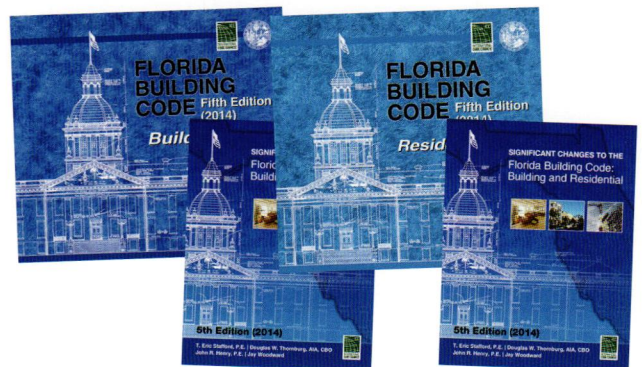
Features include:

- Clarification of code language, full-color illustrations, photographs and/or examples to enhance understanding of each change.
- Summaries and in-depth discussions of the significance of each change to aid in the understanding of the change and its application.
- Clear notations of all key changes, including deleted code language shown with a strike-through and new code text indicated as underlined text.
- Logical organization, facilitating quick and accurate identification of key information that follows the layout of the codes by chapter, section number and title format.



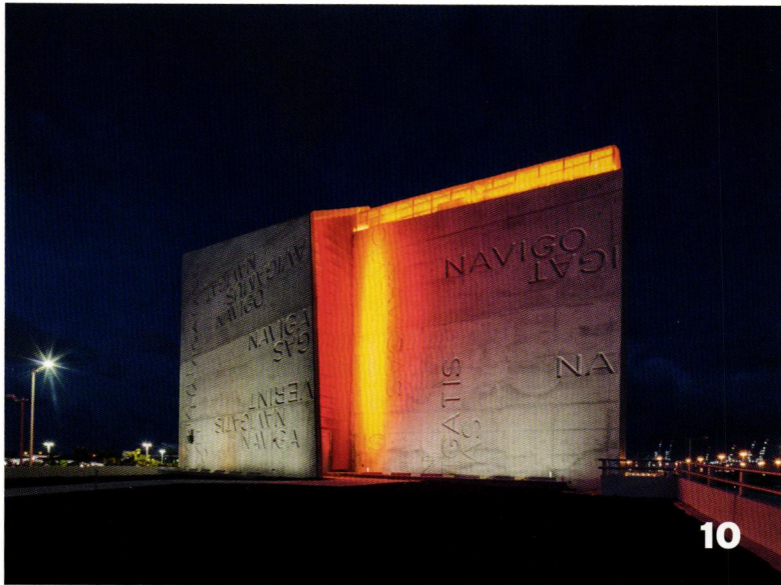
SAVE when you purchase your code and Significant Changes together as a combo!

- 5th Edition (2014) Florida Building Code, Building and Significant Changes Combo
- 5th Edition (2014) Florida Building Code, Residential and Significant Changes Combo



Visit the ICC Store today to get your 2014 Florida codes and the new Florida-specific reference, Significant Changes to the Florida Building Code: Building and Residential. Get your transition started!

GET YOURS TODAY! | www.iccsafe.org/FLPHCC | 1-800-786.4452



10

features

**AIA Florida/Caribbean
2015 Design & Honor Awards**

- 10 Awards of Excellence in Architecture**
 - New Work
 - Renovations and Additions
 - Historic Preservation and Restoration
 - Interior Architecture
- 22 Sustainability and Masonry Design Awards**
- 24 Test of Time Awards**
- 25 Theoretical and Research Design Award**
- 26 Unbuilt Design Awards**
- 29 Object Awards**
- 30 Honor Awards**
 - Gold Medal
 - Firm of the Year
 - William G. McMinn, FAIA, Award for Outstanding Architectural Education Contributions
 - Charles W. Clary, FAIA, Government Service Award
 - Anthony "Tony" Pullara Individual Honor Award
 - Bob Graham Architectural Awareness Award
 - Builder of the Year
 - Photographer of the Year
 - People's Choice Award



24

in every issue _____

- 6 President's Perspective / Andrew M. Hayes, AIA**
- 9 Editorial / Diane D. Greer**
- 34 Advertisers Index**



View *florida/caribbean Architect* anytime at www.naylornetwork.com/fla-nxt.

On the cover: 2015 Object Award: Koski Bell Tower, Renker Eich Parks Architects. Photography by Harmon H. Haley, Jr. AIA, LEED AP BD+C. *florida/caribbean Architect* is published by NAYLOR, 5950 NW 1st Place, Gainesville, FL 32607, (800) 369-6220, www.naylor.com.
Group Publisher Jack Eller, **Project Manager** David Freeman, **Marketing** Cayla Degen, **Book Leader** Krys D'Antonio, **Editor** Ann Arnold, **Designer** Gordon Klassen, **Account Reps** Brian Agnes, Josh Cochran, Anook Commandeur, Brian Donohoe, David Evans, Adam Firestone, Marjorie Pedrick, Amanda Rowluk, Joseph Watkins, Chris Zabel.
 ©2015 Naylor, LLC. All rights reserved. The contents of this publication may not be reproduced by any means, in whole or in part, without the prior written consent of the publisher. Opinions expressed by the contributors are not necessarily those of AIA Florida. Single copies \$10; annual subscription \$25, plus applicable sales tax.
 Published October 2015/FLA-Q0415/1213.

President's Perspective / Andrew M. Hayes, AIA



AIA
Florida

2015 AIA FLORIDA EXECUTIVE COMMITTEE

President:

Andrew M. Hayes, AIA

President-Elect:

Martin Diaz-Yabor, FAIA

Secretary/Treasurer:

Nati Soto, FAIA, LEED AP BD+C

Vice Presidents:

Gregory John Burke, AIA

Kim Headland, AIA

Joyce Owens, AIA, RIBA

JJ Scott, AIA, LEED AP BD+C

Associate Director at Large:

Jordan Yee, AIA

Immediate Past President:

Nathan Butler, AIA, LEED AP

2015 AIA PUERTO RICO EXECUTIVE COMMITTEE

President:

Richard Cuebas, AIA

President-Elect:

Nilda Marchan, AIA

Treasurer:

Carlos Purcell, Assoc. AIA

Secretary:

Luis Mattei, Assoc. AIA

Immediate Past President:

Raul Perez-Veve, AIA

Associate Director:

Jose Rivera, Assoc. AIA

Director One Year:

Geraldine Perez, Assoc. AIA

Director Two Years:

Esteli Capote, Assoc. AIA

Director Three Years:

Jorge Calderon, AIA

2015 AIA VIRGIN ISLANDS EXECUTIVE COMMITTEE

President:

Robert deJongh, AIA

President Elect:

Stacy Bourne, FAIA

Past President:

Michael Stauffer, AIA

Treasurer:

Patsy Breunlin, AIA

2015 FLORIDA REGIONAL REPRESENTATIVES

Miguel Del Rio, AIA

Daniel L. Kirby, AIA, AICP,
LEED AP BD+C

REGIONAL ASSOC. DIRECTOR

Sherryl Muriente, Assoc. AIA



A robust organization is signified by the opportunities for growth and leadership it makes available to its members. As we enter the second century of AIA Florida's leadership in, and support for, the profession of architecture, I am extremely encouraged by our recent initiative to mentor the next generation of architects. This important action reminds me of the words of R. Buckminster Fuller when he said, "I look for what needs to be done. After all, that's how the universe designs itself."

At AIA Florida's annual business meeting in Boca Raton in July, historic action was taken to ensure that our association remains resilient and relevant for the foreseeable future. Through unanimous action by all the components, a new organizational structure

was adopted. Changes include reducing the size of the Board of Directors from nearly 50 members to 22. An additional position was created for an Associate Director and eligibility for the position of vice-president was opened to associate members. This increases the opportunity for associate members to serve on the Board from two percent to more than 27 percent. In addition, each component will now have a single State Director engaged in the fiduciary operations and oversight of AIA Florida. These individuals will serve the state association while serving as intermediaries with the components they represent.

Hopefully, this Board action will further ignite the passion of the next generation of architects for serving the Association while establishing a legacy of lasting engagement. To paraphrase 2013 AIA President Mickey Jacob, FAIA on the next generation of architects: "they advocate that community-building projects should be standard practice, not exceptions. It is their sense of urgency to enlist the public as partners in using design to shape more healthy, productive and livable communities that carries with it the seeds of our renewal as a profession. We would be wise to nurture them."

In addition to a streamlined Board of Directors, the association's new governance structure created the Strategic Council that will include three public members, three members who are Deans or Directors of Florida Schools of Architecture, the immediate past president of AIA Florida and select members of the Association who will serve on a rotating basis. This council will not have fiduciary responsibility. Rather it will be charged with engaging and interacting with communities around the state, listening to citizens' concerns and bringing topics that matter back to the Board of Directors.

The combined goals of these actions will ensure that, going forward, AIA Florida remains a nimble organization, an association that is engaged in the relevant issues facing the built environment and one that enlists the talents of its best and brightest members to advance the cause of good architecture. Now, more than ever, we need members to engage and participate; and an important part of that engagement is inviting new architects to join the organization. Today, as our schools of architecture produce a more age, gender and ethnically diverse group of young people to the profession, it is imperative that we welcome them, engage them and demonstrate to them the value of membership in AIA Florida. ■

Introducing the Largest Impact Resistant Lift & Slide in the industry
The IS.14 IMPACT Lift & Slide



Florida Approved #17457

The IS.14 provides all the weather protection needed to endure large missile and hurricane impact without compromising design, imagination and aesthetics - and standing up to coastal pressures such as corrosion, humidity and salt.

- Tested to wind speeds up to 197.64 with a 100 DP rating
- Available in Aluminum and Aluminum with wood clad interior
- Designed to comply with stringent Florida Building Codes TAS 201; TAS 202; and TAS 203



LEARN MORE AT PANDA-WINDOWS.COM

Custom Home, Jupiter FL | Architect: Mitchell O'Neil | Tim Lee Photography

Contact us:
 702-643-5700
panda@panda-windows.com





ARCHITECT SERIES®
WINDOWS AND DOORS

Transform your view into living art.

Choose **Pella® Architect Series windows and doors**, and revel in the design possibilities for your home. Our finest rendering of the window-crafting art, these exquisitely detailed wood windows and doors will indulge you with custom choices. Virtually any size, shape, color or grille design you can imagine can be yours.

For your personal consultation, call **800-999-4868** or visit **pella.com**.

Serving Florida and the Caribbean.



VIEWED TO BE THE BEST.®



AIA Florida

AIA Florida

104 East Jefferson Street
Tallahassee, FL 32301
850.222.7590
www.aiafl.org

Executive Vice President

Vicki L. Long, CAE, Hon. AIA FL
vlong@aiafla.org

Director of Administration

Becky Wilson Magdaleno, CAE
bwilson@aiafla.org

Director of Membership and Marketing

Lisa O'Donnell
lodonnell@aiafla.org

Director of Professional Development

Wendy Johnson
wjohanson@aiafla.org

**Manager of Communications
and Public Relations**

Candace Munz
cmunz@aiafla.org

**Manager of Component Relations
and Member Services**

Jessica Brown
jbrown@aiafla.org

Manager of Meetings and Events

Sarah Brown
sbrown@aiafla.org

Editor, *florida/caribbean Architect*

Diane D. Greer
sadieecoco@gmail.com

Story Ideas

editor@aiafla.org



@AIAFlorida



Like AIA Florida on Facebook



Join the AIA Florida group



@aia_florida

Editorial / Diane D. Greer

Great Buildings Online is a website that describes itself as “a fantastic online research tool for anyone interested in architecture around the world and across history (it has primarily European and American buildings). It documents a thousand buildings and hundreds of leading architects, with 3D models, photographic images and architectural drawings, commentaries, bibliographies, web links and more, for famous designers and structures of all kinds.”

I have known about the site for a long time and I am reminded of it every year at AIA Florida Design Awards time. Of the one thousand great buildings that are listed, seven are in Florida. California has 54, New York 46 and most shocking, Virginia has seven. That tells me that Georgian architecture built in the colonies was not considered “great.” But, I digress. What are the seven great buildings that are located in Florida? Are you thinking Wright and Rudolph because if you are, you’re on the right track.

The list includes Wright’s Annie Pfeiffer Chapel at Florida Southern College, Rudolph’s Walker Guest House, Seaside, which I guess has to be taken as a whole since no one building is referenced, the Team Disney Building by Arata Isozaki, the Healey Guesthouse by Ralph Twitchell and the Broward County Library by Robert Gatji. Granted, these are all great buildings, but so few! And that brings me to why I think about this list at design awards time.

There are lots of great buildings being designed every year by Florida architects. Most, but not all, are within the state. I live in Tallahassee and while I have traveled the state widely, I do not always see new projects unless they are submitted for publication. Thus, every August I am overcome with a certain amount of shock and awe as I look at the award-winning projects and realize that there is a considerable amount of “greatness” on display.

I think it’s time that on-line list got updated!

This year was a particularly “wow” year in terms of project type, size, context, “greenness” and impact on the immediate site and the global environment. And, frankly, several projects were simply gorgeous to behold. There are those who would argue that great photography doesn’t hurt a building’s chance for recognition and there is some truth in that. But, overall, the 2015 design jury seems to have made thoughtful decisions based on solid criteria.

In his introduction to the 2015 Design Awards program, Nathan Butler, AIA, LEED AP, and 2014 President of AIA Florida, authored remarks that define “great” architecture very well. With his kind permission, portions of those remarks are reprinted here.

“Architecture is a fundamental and defining characteristic of society. It embodies collective ideals and aspirations, forming the fabric of communities. It is a constant presence that frames our existence and experiences every day. Because of this central role, both the relevance and resilience of architecture are most readily measured by its impact on community health. Communities thrive when the foresight of citizens is applied to transform vision into tangible, meaningful results. Architecture - regardless of scale, location, or function - achieves its highest station of relevance when it advances this goal. Insightful architects understand that by the nature of their work, they are stewards of their community - and that a community is most resilient when it is enabled to thrive by design.” ■

DESIGN HONOR AWARD OF EXCELLENCE AWARDS FOR NEW WORK

The jury met in the offices of the Boston Society of Architects to review more than 320 projects. The 2015 Design Awards Jury included Chris Genter, AIA, LEED AP of the Boston Firm, Utile, Inc.; Diane Dooley, AIA, LEED AP, a Principal in DiMella Shaffer and leader of the AIA's Design for Aging Community; and Nader Tehrani, Principal and Founder of NADAAA and a professor at the MIT School of Architecture and Planning. Comments from the jury about design award winners appear in bold italics.

HONOR AWARD OF EXCELLENCE FOR NEW WORK

Brillhart House, Miami, Florida **Brillhart Architecture, Miami, Florida**

The operation of this wood screen and the control of the environment it ultimately yields, is a wonderful aspect of this project.

The screen has a transformative quality that changes the light and mood of the interior.



PHOTO BY CLAUDIA URIBE

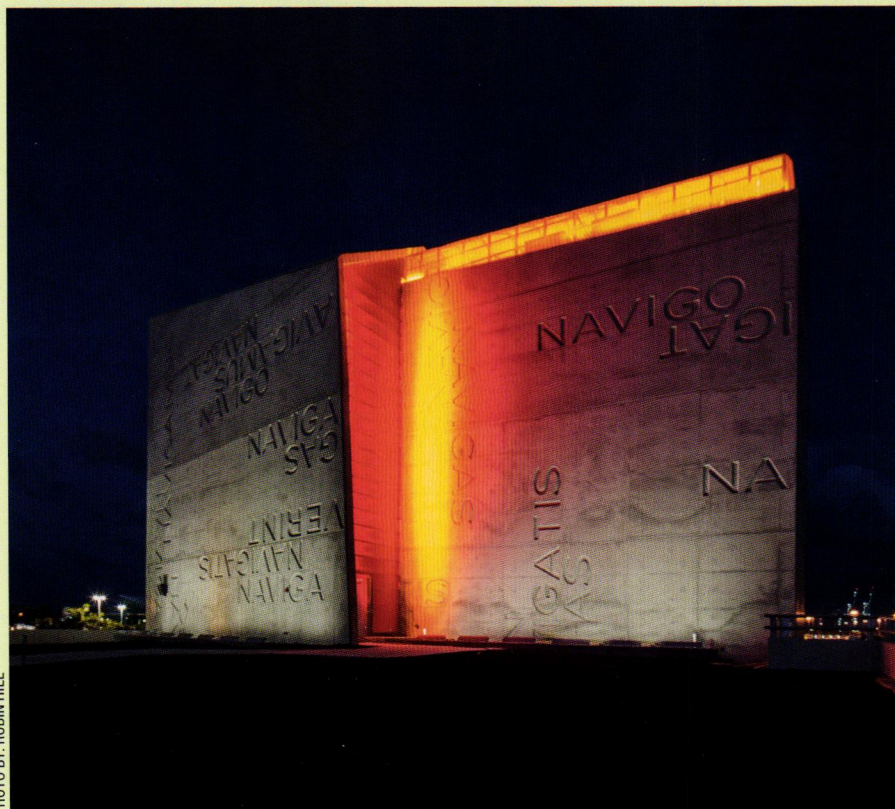


PHOTO BY: ROBIN HILL

PortMiami Tunnel, Miami, Florida **ArquitectonicaGEO, Miami, Florida with AECOM, New York**

With the billions invested federally in infrastructure, it is still rare that a project contributes to, and enhances, the quality of the urban experience. The boldness of the design combined with an expert level of restraint between graphics, form and lighting, has turned this into an iconic piece of architecture.



PHOTO BY: GREG RIEGLER PHOTOGRAPHY URIBE

Cold Water Gardens Bathhouse, Milton, Florida Dalrymple Sallis Architecture, Pensacola, Florida

When thoughtfully designed, small buildings such as this bathhouse can be jewels in the landscape. This frame structure is elegant in its simplicity and beautifully detailed, making it stand out on the site.

Play Ball Pavilion at Fruitville Park, Sarasota, Florida Sweet Sparkman Architects, Sarasota, Florida

This program beautifully transforms a piece of infrastructure into an iconic part of the built environment. Within the civic realm, it promises to play an integral role in community life.



PHOTO BY: WILLIAM SPEAR

DESIGN

A W A R D S

MERIT AWARD OF EXCELLENCE
FOR NEW WORK

**Landmark East,
Kwun Tong,
Kowloon,
Hong Kong, China**
**Arquitectonica,
Miami, Florida**

*This program was cleverly
conceived and the building
possesses incredibly elegant
proportions that are a dramatic
addition to the skyline of the city.*



PHOTOS BY: AMRAL IMRAN



AIA Florida

Thank You

2015 AIA FLORIDA SPONSORS

Allegiance Contracting, Inc./STAR Building Systems | Applied Software | CGI Windows & Doors, Inc.
Collinsworth Insurance & Risk Management Services, Inc. | Coverings | Crawford Tracey Corporation
Digital Drafting Systems, Inc. | Florida Natural Gas Association | Sunbrella | Graphisoft
Signage Foundation, Inc. | Jackson, Collinsworth & Johnson Insurance Agency
Masonry Association of Florida, Inc. | Pella | PGT Industries | Pottorff
Seal-Krete High Performance Floor Coating Systems | Siplast | Thorburn Associates, Inc.
Thornton Tomasetti | Tubelite, Inc. | USI Insurance Services | XL Group
WorkflowMax | YKK AP America

Splashy Application



CASE STUDY



Hurricane Harbor, Six Flags Over Georgia, Austell, GA – Contractor: McMichael's Construction Co. Architect: Hill, Foley, Rossi and Associates Supplier: CRS Roofing Contractor: R.E. Primm & Co.

PAC-CLAD M-36 and Snap-Clad panels in patina green, terra cotta and military blue

“All the roofs look beautiful, and are the shining crown for the Hurricane Harbor water park at Six Flags Over Georgia.”

– Rick Primm, R.E. Primm & Company

Six Flags Over Georgia's new Hurricane Harbor water park near Atlanta features 22 buildings covered with Petersen PAC-CLAD .032 aluminum standing seam and exposed fastener roofing panels.

Multiple roof colors were selected to complement the park's island theme, making for a bright and stimulating environment. Most of the PAC-CLAD 38 colors meet LEED, ENERGY STAR, and cool roof certification.

See us at METALCON, booth 1230!



DESIGN MERIT AWARD
OF EXCELLENCE
A W A R D S FOR NEW WORK



PHOTOS BY: ROBIN HILL

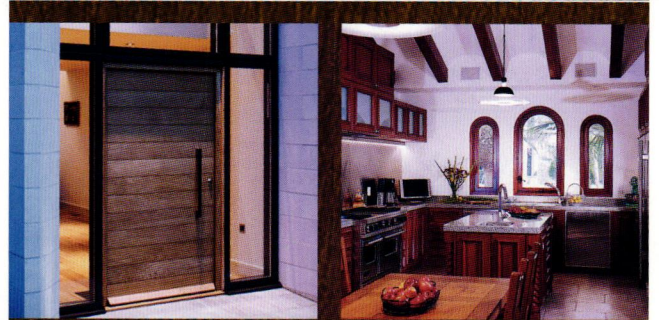
**Broward
College
Miramar
West Center,
Miramar,
Florida
Perkins+Will,
Miami, Florida**



Once a building achieves institutional scale, it is inevitably identified by, and associated with, its sheer size. However, the architect's careful attention to detail and massing allows this building to avoid that and enables the interior to be carved into a public space.

*Created by nature.
Modernized by hand.*

ROATAN
GENUINE MAHOGANY



CLASSIC | CONTEMPO | HISTORIC

ROATANMAHOGANY.COM

PROTECTION FROM WHATEVER HURRICANES CAN THROW AT YOU.

StormPlus®



*speeds of debris items are estimated impact speeds in a 140 mph wind

Marvin StormPlus windows are impact tested by firing a 2 x 4 from an air cannon, typically at speeds of 40' to 50' per second, multiple times depending on IZ3 or IZ4 codes. The glass shatters, but the laminated layers help preserve structural integrity, even under pressure cycling tests.

▶ See the Marvin StormPlus window impact test at marvin.com/stormplus.



Window Classics 1-800-344-7650

Hollywood	Orlando	Gainesville/Ocala
Miami	Tampa	Sarasota
W. Palm Beach	Bonita Springs	Santa Rosa Beach

For Caribbean/Export Sales Department Please Call 954-966-1148

www.windowclassics.com



MARVIN®
Windows and Doors

Built around you.®

©2014 Marvin Windows and Doors. All rights reserved.
®Registered trademark of Marvin Windows and Doors.

**ALL WINDOWS HAVE JAMBS,
SILLS AND GLASS.**

**ONLY ONE HAS
BACKBONE.**

ULTREX® PULTRUDED FIBERGLASS. THE ULTREX ADVANTAGE.



People want tough again. Integrity designed Ultrex's pultruded fiberglass substrate with a patented, thick acrylic cap finish to resist corrosion, streaking and fading – while giving you unparalleled strength and durability. When you install well-designed windows and doors like Integrity with Ultrex, you're getting a brand that's Built to Perform.

Integrity
from **MARVIN**
Windows and Doors

Contact us today to discuss window and door solutions for your next project.



Window Classics 1-800-344-7650

Hollywood	Orlando	Gainesville/Ocala
Miami	Tampa	Sarasota
W. Palm Beach	Bonita Springs	Santa Rosa Beach

For Caribbean/Export Sales Department Please Call 954-966-1148

www.windowclassics.com

©2015 Marvin Windows and Doors. All rights reserved.
®Registered trademark of Marvin Windows and Doors.

Built to perform:



PHOTO BY: GREG WILSON

Tetreault-Pirman House, Florida
Seibert Architects, PA, Sarasota, Florida

This residential program keeps the occupants connected to the environment whether they are occupying a single interior space or moving from room to room. The connection between interior and exterior is elegantly handled and persists throughout the plan.

The Newest Innovation In TPO Roofing Is Here. And It's...

EXTREME.

New 50 mil and 70 mil EverGuard Extreme® blow away "standard" TPO.
(At a price your customers will love!)

See The Proof...
 Even after the most severe accelerated heat aging at 280°F, EverGuard Extreme® TPO still looks brand new!

But, a leading competitor's standard TPO shows severe deterioration on both the top and bottom of the membrane.

EverGuard Extreme® TPO (top of membrane)	EverGuard Extreme® TPO (bottom of membrane)	Competitor's Standard TPO (top of membrane)	Competitor's Standard TPO (bottom of membrane)

To learn more, visit gaf.com

GAF **EverGuard EXTREME** Advanced Protection TPO

ADVANCED PROTECTION TECHNOLOGY

©2013 GAF 9/13

SCHOOL OF ARCHITECTURE + ENGINEERING TECHNOLOGY

FLORIDA AGRICULTURAL AND MECHANICAL UNIVERSITY
 1938 SOUTH MLK BLVD, TALLAHASSEE, FL 32307
<http://www.famu.edu/architecture>

BUSH ROSS
 ATTORNEYS AT LAW

1801 N. Highland Avenue
 Tampa, Florida 33602
 [813] 224-9255
www.bushross.com

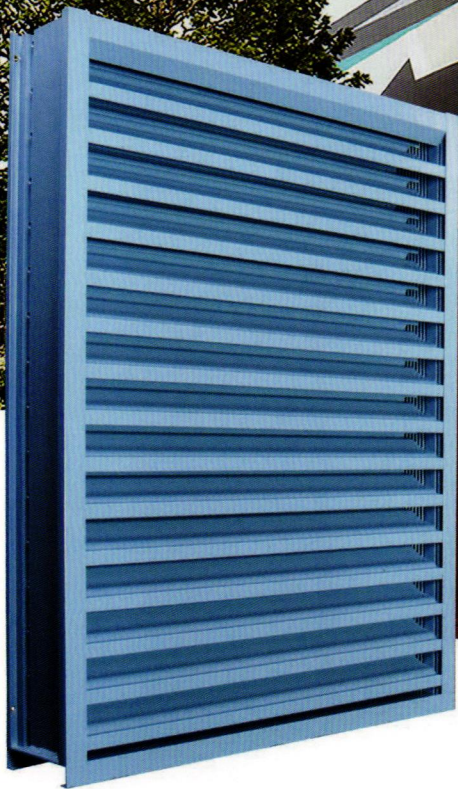
Edward O. Savitz
 David C. Banker
 Amanda B. Buffinton

Meredith A. Freeman
 Stephen B. French
 Brian T. McElfratrick

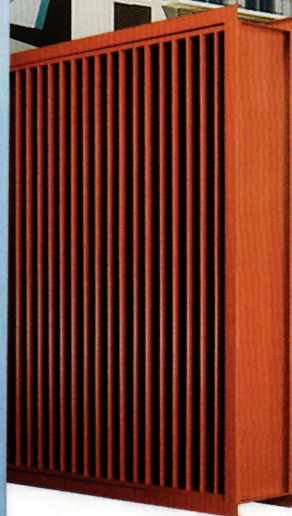
Representation and Advice for Design Professionals

ENGINEERED FOR SAFETY DESIGNED FOR FLORIDA

Pottorff supplied ECD-545-MD louvers for the construction of the Baltus House in Miami, Florida.
Pottorff Representative: Environmental Air Products
Architect: CFE Architects, PA



ECD-545-MD



ECV-645-MD

Our ECD-545-MD and ECV-645-MD severe duty louvers are engineered and tested to withstand extreme wind loads, impact, cyclic fatigue, and high velocity, wind-driven rain without the need of a damper. These louvers are Miami Dade/ Florida Building Code – 2014 approved, AMCA certified, and AMCA 540/550 listed.

POTTORFF®

817.509.2300 • www.pottorff.com

DESIGN

A W A R D S

HONOR AWARD OF EXCELLENCE
FOR RENOVATION AND ADDITIONS



PHOTOS BY ROBIN HILL ©

Columbus Networks
U.S. Headquarters,
Miami, Florida
Shulman + Associates,
Miami, Florida

*The entire program is handsome and clever.
It transformed a structure that was boring
and ugly into something bold and fantastic.*



DESIGN

A W A R D S

MERIT AWARD
FOR RENOVATION AND ADDITIONS

Miami Ad School, Miami, Florida
Shulman + Associates, Miami, Florida

*The gutsy use of color and graphics is exciting. The simple
addition of exterior stairs and connectors has radically
transformed the building and created new spaces.*



PHOTOS BY ROBIN HILL ©



DESIGN

A W A R D S

HONOR AWARD OF EXCELLENCE

FOR HISTORIC PRESERVATION AND RESTORATION



PHOTOS BY: GREG WILSON

Center for Architecture Sarasota, UF CityLab Sarasota, Florida Guy Peterson Office for Architecture, Inc., Sarasota, Florida

*The best project submitted this year.
It revisits history and the legacy of its
author through the excellent restoration
of an already superb building.*



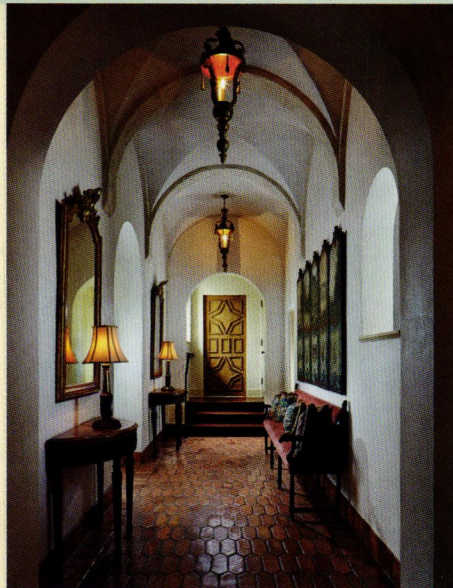
Cameo Theater, Orlando, Florida Process Architecture, LLC. Orlando, Florida

*This restoration returned an
iconic presence to the neighborhood
and was wonderfully re-imagined
into a gallery space.*



PHOTOS BY: RYAN BEGLEY





Fisher Residence,
Palm Beach, Florida
Clemens Bruns
Schaub
Architect &
Associates, P.A.,
Vero Beach, Florida



PHOTOS BY: KIM SARGENT

This project was carefully researched and exquisitely restored. Mediterranean Revival houses are an important part of Florida's architectural heritage and worthy of preservation. This is an elegant restoration with great concern for historic detail.

STORAGE IS BORING

We are OK with admitting that storage is boring to you. In fact, it's why we're here. Let us handle your storage projects, and you'll reduce mistakes, save time and money. We'll handle the details, because that's what we love. For us, storage is anything but boring.



pattersonpoppe.com



Jugofresh Wynwood Walls, Miami, Florida Shulman + Associates, Miami, Florida

This project goes beyond connecting the interior to the exterior and considers the space and its use over time. It has opened the neighborhood and changed the way people use the space by giving it life and character.



PHOTO BY: ROBIN HILL

Bob Marley Messenger Exhibit, HistoryMiami Museum, Miami, Florida Shulman + Associates, Miami, Florida



Without objectifying the content of the museum, this exhibit creates an immersive environment through the use of photos and text.

DESIGN HONOR AWARD
A W A R D S FOR SUSTAINABLE DESIGN

Gordon Ozarks Cabin,
Arkansas
DEN Architecture,
Miami, Florida



PHOTOS BY: GREG CLARK

This LEED Gold home is completely self-sufficient and “off-grid.” It clearly demonstrates a direct correlation between forms and performance.

DESIGN MERIT AWARD
A W A R D S FOR SUSTAINABLE DESIGN



**Palm Avenue
Parking Garage,**
Sarasota, Florida
Solstice Architects,
Sarasota, Florida

This project’s agenda goes far beyond the program and engages the community by using space in ways that would never be expected.

PHOTO BY: DK CONSULTING GROUP

DESIGN HONOR AWARD A W A R D S FOR MASONRY

Private Residence, Vero Beach, Florida Moor, Baker & Associates Architects, P.A., Vero Beach, Florida



PHOTO BY: IMOOR, BAKER & ASSOCIATES

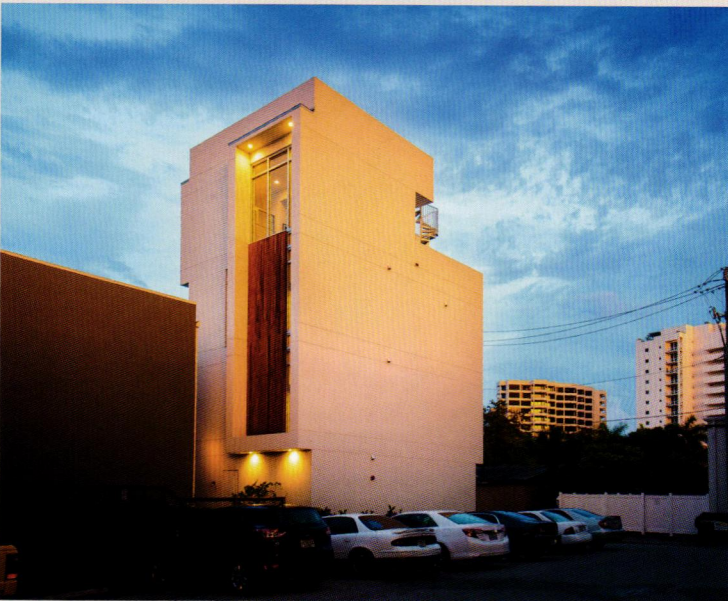
The project is impeccably styled and clearly demonstrates the importance of its masonry massing.



PHOTO BY: JESSICA KLEWICKI GLYNN

DESIGN MERIT AWARD A W A R D S FOR MASONRY

Ferguson Alley House, Sarasota, Florida Guy Peterson Office for Architecture, Inc., Sarasota, Florida



PHOTOS BY: RYAN GAMMA

This residence possesses an interesting juxtaposition of masonry and warmer elements such as wood cladding, while the most compelling elevation remains the blank, masonry wall.





**Barnett Residence,
Tallahassee, Florida
Barnett Fronczak
Barlowe Architects,
Tallahassee, Florida**

This home has the unusual quality of reinterpreting regional aspects into a plan that defines space yet, possesses transparency and openness.

PHOTO BY: TIM LEFSTEAD

**Rees-Schulaner Residence,
Sarasota, Florida
Seibert Architects, PA,
Sarasota, Florida**

This home simply and subtly captures the outdoor space. The exposure of the tectonic structure gives the space character and becomes integral to the experience of the house.



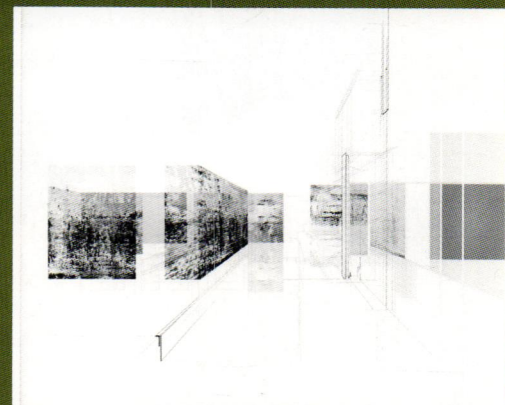
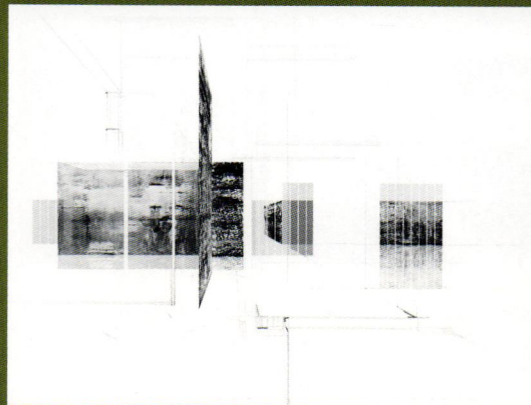
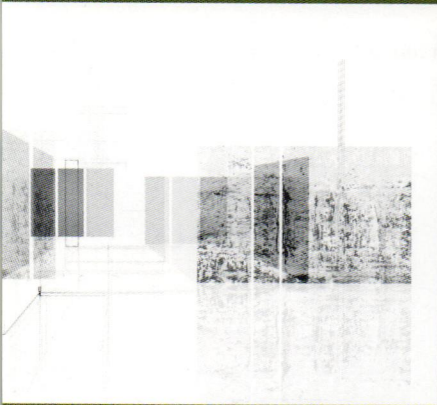
PHOTO BY: JACOB TERMANSEN

DESIGN AWARDS

MERIT AWARD
FOR THEORETICAL AND RESEARCH DESIGN

Field of Fragments: A Study of Miesian Transcendental Spatialities Zilsalinda June Mendieta, Assoc. AIA

This project is a true piece of research that presents new knowledge by dismantling known buildings and projects.



ArchiCAD
BIM for Architects

Great for Design
High Performance
Proven Workflow
Intuitive to Learn

ArchiCAD.com
305.438.0838

OPPENHEIM

**JUDGE A BUILDING
BY ITS COVER**

Complement your overall building design
with a highly aesthetic roofing membrane.

**Fiberlite
BRITE**
BY SEAMAN CORPORATION

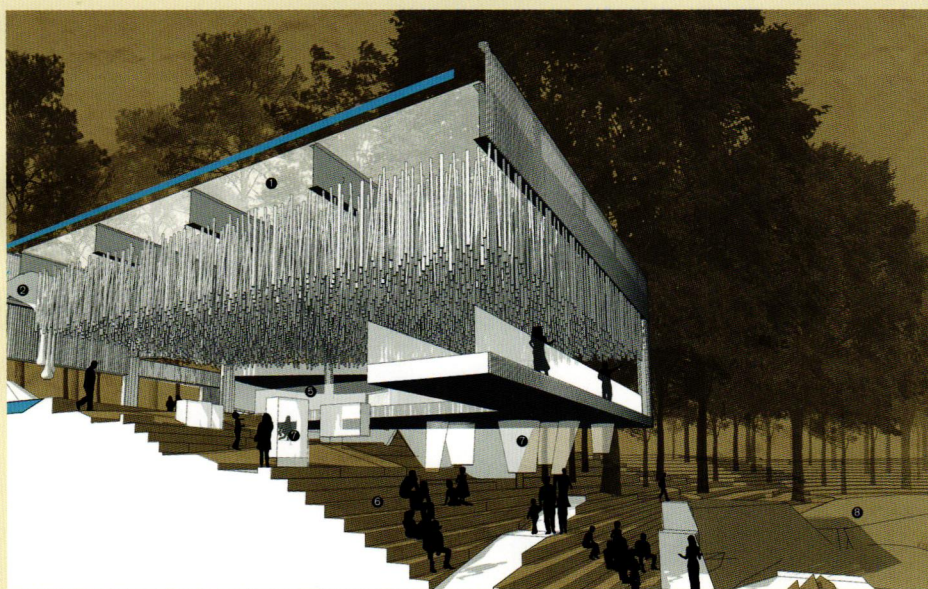
REQUEST A SAMPLE AND LEARN MORE:
fibertite.com/brite | 800-927-8578

ALCOA

INTRODUCING
**REYNOBOND® NC
DOUBLE SHEET**

► reynobond.com/NC

REYNOBOND®



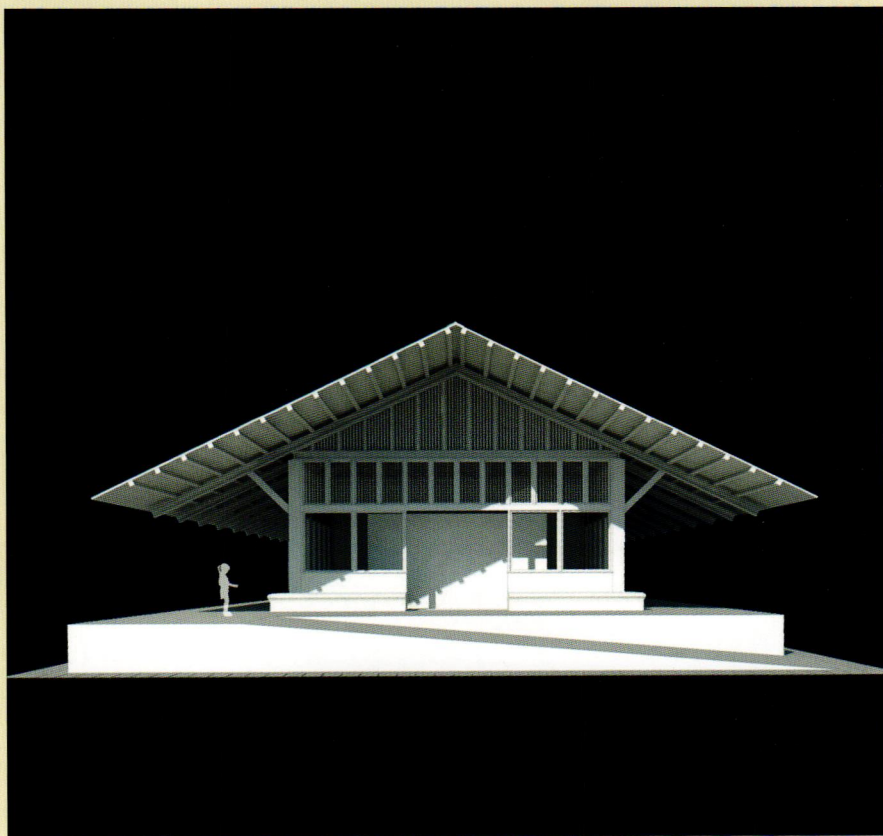
One can appreciate the lightness of this program which seems so appropriate to the landscape. The project beautifully manipulates its setting.

Trailhead Complex at Maumelle Nature Center, Arkansas University of Arkansas Community Design Center



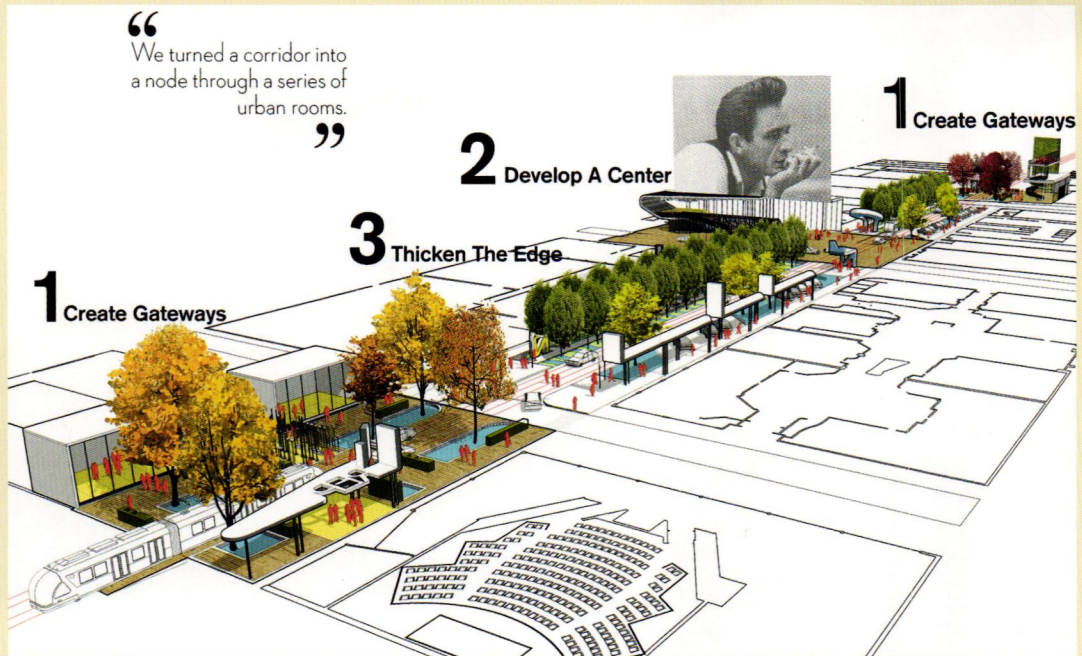
Esquelita Baganvilia, Guatemala Cure & Penabad, Coral Gables, Florida

This design radicalizes the distortion of proportions so that even when misinterpreted, the building can only get better. This exaggeration provides shade and an expanded covering. As a building type, it is inherently flexible and timeless.



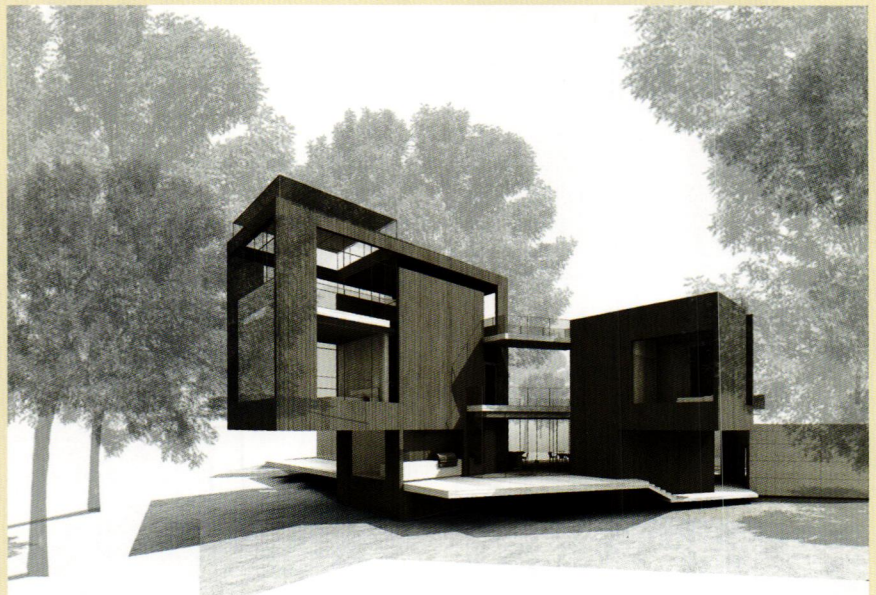
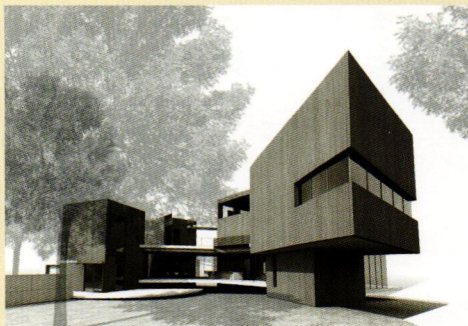
**The Creative Corridor:
A Main Street Revitalization Plan**
Little Rock, Arkansas
University of Arkansas Community Design Center
in association with **Marlon Blackwell Architects**
Fayetteville, Arkansas

An expert balance of analytical drawing and clarity of wayfinding makes this an excellent depiction of urbanism.



DESIGN MERIT AWARD
A W A R D S FOR UNBUILT DESIGN

Treescapes,
Hardee County, Florida
Guy Peterson, Office
for Architecture, Inc.,
Sarasota, Florida



This project is incredibly compact and very discrete in its placement within the landscape.

**Premium Pocket /
Sliding Door Hardware**



Passage, privacy and keyed applications available for various door thicknesses

ADA options available (with pair of back to back pulls)



Engineered for strength and durability, Accurate's pocket door hardware line meets the house, office, condominium and hotel market. For details, please call 203.348.8865.



Accurate

Lock and Hardware

www accuratelockandhardware.com

Added Value

We always dig a little deeper.

Contact Josh Bomstein (727) 461-5522, jbomstein@creativecontractors.com
www.creativecontractors.com



CGC060364

EDUCATION • HEALTHCARE • MUNICIPAL • COMMERCIAL • INDUSTRIAL • GREEN BUILDING

GLASS+METAL SYMPOSIUM DESIGNING THE BUILDING ENVELOPE

Crawford-Tracey invites you to join us in a half-day of education and networking with industry professionals involved with the design and construction of the building envelope.

ESTERO, FL
Miromar Design Center
7:30 a.m. to 12:00 p.m.
Thursday, Oct 29th

WEST PALM BEACH, FL
Hilton Palm Beach Airport
7:30 a.m. to 12:00 p.m.
Friday, Oct 30th

Both events are accredited for four (4) AIA LU's / HSW

For all the details or to register online go to:
www.glassmetalsymposium.com

DESIGN HONOR AWARD
A W A R D S OBJECT

Koski Bell Tower,
New College of Florida, Sarasota
Renker Eich Parks Architects,
St. Petersburg, Florida

The design challenge facing this project was how to create a beautiful piece of art that functions on its site like a piece of architecture. That challenge was ably met.

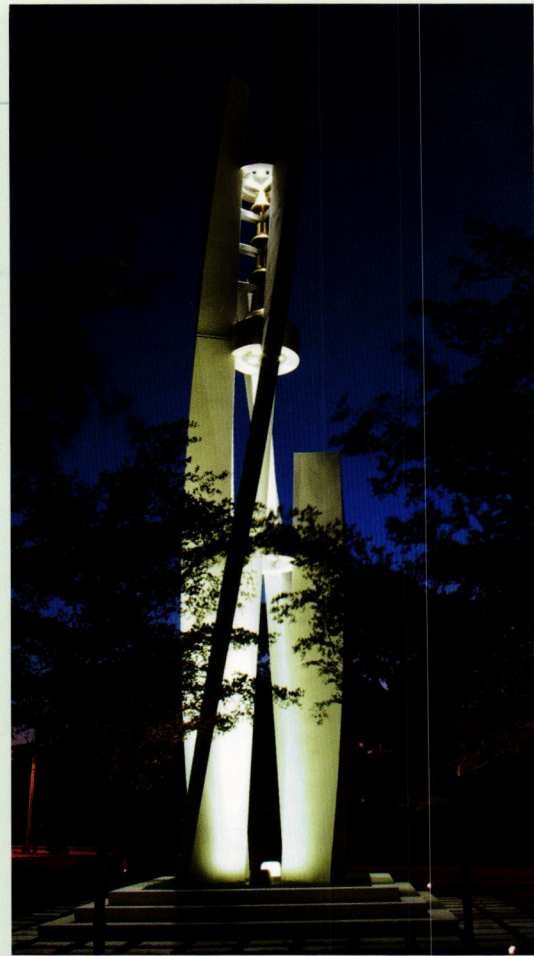


PHOTO BY: HARMONI H. HALEY JR., AIA, LEED AP BD+C, ARCHITECT

DESIGN MERIT AWARD
A W A R D S OBJECT

Two-Pole Beach Shelter,
Siesta Key, Florida
Sweet Sparkman Architects,
Sarasota, Florida



PHOTOS BY: WILLIAM SPEAR

This project creates a new and distinguishable shape from something old. The new shelter is uniquely responsive to the client's needs.



GOLD MEDAL

Steve Jernigan, FAIA *Pensacola, Florida*

The highest honor awarded by AIA Florida to one of its members, the Gold Medal recognizes a Florida architect whose distinguished career has had a profound impact on the profession for an extended period of time. Leading by example through political advocacy at the local, state and national levels, Jernigan's leadership influences component strategies across the country. Throughout his career, he has preserved Florida's privatized prosecution of unlicensed activity, established coalitions to handle A/E overlap issues for building officials, stood as a barrier against an onslaught of challenges to the state's Qualifications-Based Selection process and averted attempts to reduce Florida's educational requirements for licensure. His talent for thinking outside-the-box reenergized the Florida Architect's Political Action Committee (FAPAC). Serving as Chair of the National ArchiPAC in 2013-2014, the campaign was able to raise more than \$300,000 to support architecture-friendly candidates in the last election cycle. He has served on innumerable local, state and national committees and currently serves as the AIA appointee to the NAAB Visiting Teams for the 2015-2018 term.

As the 2015 jury stated, "Steve's tireless dedication to the AIA, the profession and the community make him an exceptional candidate for the AIA Florida Gold Medal. He continues to be in touch with members at every level of the organization, while actively contributing to and protecting the practice of architecture."



FIRM OF THE YEAR

Wilder Architecture, *Tampa, Florida*

Founded in 2003, Wilder Architecture employs five licensed architects, three of whom obtained licensure while interning with the firm. Dedicated not only to professional development, Wilder Architecture has raised more than \$670,000 for the Hillsborough Education Foundation since founding the "Hooked on Education" fishing tournament in 2005. Wilder Architecture has received more than 15 local and state design awards and was honored by the Greater Tampa Bay Chamber of Commerce with its "Small Business of the Year" award in 2010.



CHARLES W. CLARY, FAIA GOVERNMENT SERVICE AWARD

Dan Kirby, AIA, AICP, LEED AP BD+C *Orlando, Florida*

In keeping with the objectives of this award, Dan Kirby's work as an advocate for the advancement of renewable energy in Central Florida and beyond serves as an inspiring example of how architects can lead through public service. Throughout his tenure on the Orlando Utilities Commission (OUC), he has demonstrated what architects can contribute to their communities and has linked OUC and AIA Orlando through mutually beneficial activities and programs.



ANTHONY "TONY" PULLARA, AIA INDIVIDUAL HONOR AWARD

Virgil Campaneria, AIA *Miami, Florida*

AIA Florida established the Anthony L. Pullara Individual Honor Award to recognize a member who is devoted to service over and above his or her official capacities in hopes that this award will perpetuate Tony's memory and the things for which he stood in the profession. Virgil Campaneria has been practicing architecture since 1992 and has established himself as an AIA leader at the local, state, and national levels. For more than a decade, he has been recognized for his development of the Architect Registration Exam (ARE) Preparation Program, which he founded in 1998. Most recently, he worked to create the AIA Florida Gubernatorial Appointment Toolkit, helping Florida architects identify more than 250 positions statewide for which they could provide leadership by serving on governing boards.



WILLIAM G. MCMINN, FAIA AWARD FOR OUTSTANDING ARCHITECTURAL EDUCATION CONTRIBUTIONS

Frank Bosworth, Ph.D., AIA **Director, CityLab** *Orlando, Florida*

The William G. McMinn Award for Outstanding Architecture Educational Contributions celebrates an individual who has made outstanding contributions to architecture and education and whose teaching and values have inspired the young men and women who will one day shape our environments as architects. Fusing the profession to the classroom, Frank Bosworth's innovative approach to teaching brings the classroom to the city, invites the profession to engage students and exposes students to the community. This allows students to see the dynamic forces and facets that influence the creation of architecture on an urban scale.



BOB GRAHAM ARCHITECTURAL AWARENESS AWARD

Harold Bubil, Sarasota, Florida

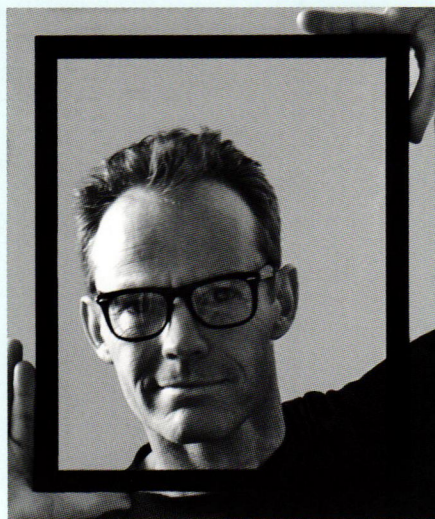
The Bob Graham Architectural Awareness Award is presented to a non-architect who, by his or her interest, activity and concern for the profession, has advanced the cause of good design and planning and/or contributed to the dignity and value of the architectural profession. As Real Estate Editor for the *Sarasota Herald-Tribune*, Harold Bubil tirelessly promotes good architecture. He regularly interviews architects and chronicles the renaissance of modernism in Sarasota, while teaching readers about good design in Tampa, Lakeland, Fort Myers, Naples and Miami.



BUILDER OF THE YEAR

Lord and Son Construction, Ft. Walton Beach, Florida

The Builder of the Year Award recognizes a company licensed in Florida that has exemplified a sincere and genuine interest in encouraging outstanding craftsmanship in the performance of its work. As one of the largest family-owned construction management firms based in Florida's Panhandle, Lord and Son Construction has provided trusted performance with lasting values for the past 40 years. The unique aspects of its work on the Rosemary Beach Owners' Center (the project for which it was nominated) included excellent craftsmanship and attention to detail.



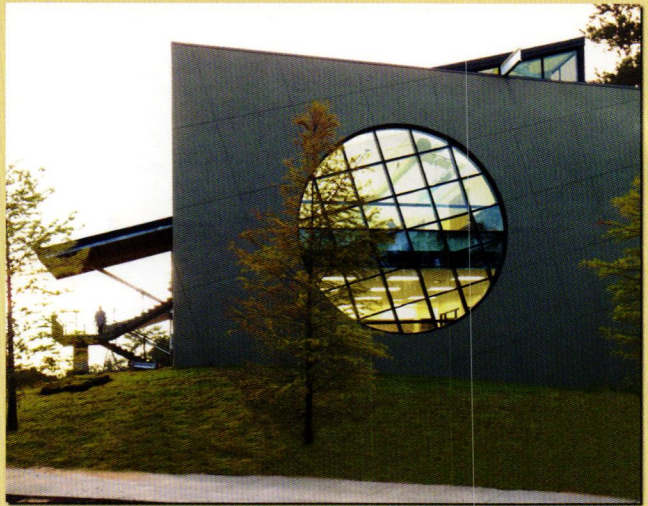
PHOTOGRAPHER OF THE YEAR

Robin Hill, Miami Beach, Florida

Through photography, outreach, lectures and teaching, Robin Hill has raised awareness of, and significantly contributed to, an ongoing discourse about the importance of preserving Florida architecture. During his 29-year career, he has documented and photographed buildings around the state, amassing a portfolio of work that has garnered critical acclaim. His work has been featured in books, magazines and gallery exhibits, most recently the Guggenheim Museum in New York. He is also active on the board of the Miami Center for Architecture & Design (MCAD) where he has been conducting regular photography workshops to raise funds for the Center.

2015 AIA FLORIDA
PEOPLE'S CHOICE AWARDS
**Killearn Lakes
Elementary School,
Tallahassee, Florida**
**Hoy+Stark Architects,
Tallahassee Florida**

This new classroom space inspires third graders at Killearn Lakes Elementary Schools to look at the typical school setting in new ways. The facility is sited to convey to students, faculty and families that exciting things are in store.



With more than 556,000 votes coming in from more than 120 countries, the remaining 2015 top voted buildings are:



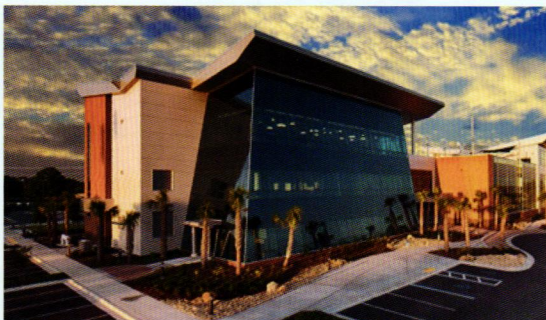
SECOND PLACE:

Ft. Myers Regional Library,
Ft. Myers, Florida
BSSW Architects, Inc.
Ft. Myers, Florida



THIRD PLACE:

Albert J. Dunlap Athletic Training Facility at FSU,
Tallahassee, Florida
Barnett Fronczak Barlow Architects,
Tallahassee, Florida



FOURTH PLACE:

GCSC Advanced Technology Center,
Panama City, Florida
Florida Architects, Inc.
Orlando, Florida



FIFTH PLACE:

Celebration Baptist Church, The Core,
Tallahassee, Florida
Lewis+Whitlock,
Tallahassee, Florida

WATERFURNACE IS NOW DEALER DIRECT IN FLORIDA



7 Series

The most efficient heating and cooling system you can sell.

Variable Capacity Technology

The first variable capacity geothermal heat pump available to homeowners. It runs at exactly the capacity needed instead of the one or two speeds of traditional equipment.



Aurora Controls

Aurora communicating controls provide advanced diagnostics and service capabilities. Troubleshooting as well as many startup calculations that were once manual are done automatically on the AID Tool making maintenance a fraction of the effort.



Energy Monitoring

Internal energy monitoring components measure actual power consumption rather than estimating. Homeowners can easily review an instantaneous or 13 month history of their unit's energy usage.



waterfurnace.com/7Series

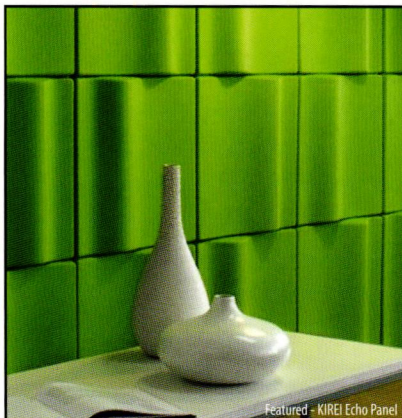
700A11
41 EER
5.3 COP



Variable capacity geothermal technology. Available today.

To learn more contact *Mike Stevens, Florida Territory Manager*, at (260) 446-9640.

WaterFurnace is a registered trademark of WaterFurnace International, Inc. ©2015 WaterFurnace International, Inc.



Featured - KIREI Echo Panel

Representing these fine Architectural Products

Bendheim Architectural Glass & Wall Systems - Interlam Architectural Panels - JM Lifestyles Decorative Concrete - Kirei Architectural Products - Lab Design Laminates - Oberflex Real Echo Panel - Kirei Dune

1020 NW 6th St. Ste H, Deerfield Beach, FL 33442 | Tele: 954-429-3883
Email: debr@roosintl.com
Website: www.roosintl.com



Call Deborah Roos to schedule a presentation at your firm or visit our Trade Only showroom in Deerfield Beach

ADVERTISERS INDEX

ACM/MCM - ALUMINUM COMPOSITE MATERIAL	
Alcoa Architectural Products	25
www.alcoaarchitecturalproducts.com	
AIR CONTROL PRODUCTS	
Pottorff	17
www.pottorff.com	
APPLIANCES	
Florida Builder Appliances	3
www.monarkhome.com	
ARCHITECTS	
Creative Contractors	28
www.creativecontractors.com	
ARCHITECTURAL MATERIALS	
Roos International	34
www.roosintl.com	
ARCHITECTURAL METAL ROOFING	
Petersen Aluminum Corporation	13
www.pac-clad.com	
ARCHITECTURE SCHOOLS	
FAMU School of Architecture	16
www.famu.edu/architecture	
ATTORNEY	
Bush Ross, P.A.	16
www.bushross.com	
BUILDING CODES	
International Code Council	4
www.iccsafe.org/FLPHCC	
CAD/BIM SOFTWARE	
3DCADCO, Inc.	25
www.3dcadco.com	
DAYLIGHTING SOLUTIONS	
Varco Pruden Buildings	Inside Back Cover
www.vp.com	
DECORATIVE SURFACING PRODUCTS	
Roos International	34
www.roosintl.com	
DOORS & HARDWARE	
Accurate Lock and Hardware Co.	28
www accuratelockandhardware.com	
Roatan Mahogany U.S.A.	14
www.roatanmahogany.com	
EXTERIOR & INTERIOR METAL WALL CLADDING	
Alcoa Architectural Products	25
www.alcoaarchitecturalproducts.com	
FIRE & SMOKE PROTECTION	
Pottorff	17
www.pottorff.com	
GEOTHERMAL SYSTEMS	
WaterFurnace International Inc.	34
www.waterfurnace.com	
LOUVERS	
Pottorff	17
www.pottorff.com	
METAL WALL PANELS	
Hunter Panels	Inside Front Cover
www.hunterxci.com	
ROOFING & SIDING PANELS	
GAF	16
www.gaf.com	
ROOFING SYSTEMS & ACCESSORIES	
Seaman Corporation	25
www.fibertite.com	
STEEL BUILDING SYSTEMS	
Varco Pruden Buildings	Inside Back Cover
www.vp.com	
STORAGE & SHELVING	
Patterson Pope	20
www.pattersonpoppe.com	
UNITIZED & PRE-GLAZED CURTAIN WALL	
Crawford Tracey Corporation	28
www.glassmetalsymposium.com	
WINDOWS	
Marvin Windows / Window Classics Corporation	15
www.windowclassics.com	
WINDOWS & DOORS	
CGI Windows and Doors, Inc.	Outside Back Cover
www.cgjwindows.com	
Panda Windows & Doors, LLC	7
www.panda-windows.com	
Pella Windows and Doors	8
www.pella.com	