

new england

AMERICAN INSTITUTE
OF
ARCHITECTS

Architect

JULY 1 1973

LIBRARY

October 1973

& NEW HAMPSHIRE ARCHITECTURAL REVIEW





Without electricity, some American businessmen could still survive.

If you took a half hour or so, you could probably think of several businesses that don't depend very much on electricity.

But the easier job would be listing companies that do—companies whose very existence depends on a reliable source of electric power. The kind of company you probably work for.

And right now, your company and the electric utility industry face a problem. The energy crisis.

Today, the demand for electricity isn't just increasing—it's exploding.

Our best projection is we're going to need

twice the power capacity we have right now in just 10 years. Twice. And by 1990, who knows?

Obviously, fulfilling this demand is going to be a difficult task. Just as obviously, fossil fuels aren't going to be able to do the job alone. Oil and gas are in short supply already. And they're irreplaceable. As for nuclear plants, there just aren't enough of them yet. And alternate power resources such as magnetohydrodynamics and solar energy are in the research stage.

What this adds up to is a problem. A problem we're trying to solve right now. By plan-

ning for new plants. By designing a balanced power supply system—that will provide the electricity we need without doing serious injury to our environment.

To do the job, we need something from you. Your support. Your understanding.

The economy of New England has a lot riding on the outcome. And so do you.

Boston Edison Company
 Massachusetts Electric
 Eastern Utilities Associates and
 Subsidiaries
 New England Gas and Electric System
 Companies

JOHNS-MANVILLE

JM
TRANSITE*



TRANSITE* RING-TITE® WATER PIPE



*TRANSITE is Johns-Manville's registered trademark for its brand of asbestos-cement products.

For Supply Lines and Distribution Systems Carrying Water Under Pressure

JM Johns-Manville **TRANSITE®** Storm Drains

materials and manufacture

A homogeneous mixture of asbestos, cement and silica formed on a turning mandrel under high pressure. Asbestos fibers with the tensile strength of 400,000 psi provide strong reinforcement. All lengths are cured under high pressure steam for chemical stability. Plastic coupling is a polyethylene material conforming to requirements of ASTM D-1248.



Immediately available at our 3 locations.
Most sizes of pipe and fittings in stock.

**CORRIVEAU-
ROUTHIER**

159 Temple Street
Nashua, N. H.
Tel. 889-2157

266 Clay St.
Manchester, N. H.
Tel. 627-3805

71 Broadway
Dover, N. H.
Tel. 742-1901



Left to right: R. J. Joyce, Program Chairman; Charles Velardo, Vice President Mason Contractors Association of America; Allan Yorkdale, Brick Institute of America; Armand Gustafiero, Fire Protection Consultant; and, Ashby T. Gibbons, Portland Cement Association.

NOTES & COMMENTS

Masonry Unlimited Seminar Draws 200

On September 12, 1973, Masonry Unlimited, a day-long seminar for architects and consulting engineers on fire-safe, high-rise, loadbearing masonry, was held at the Boston Architectural Center. According to Robert J. Joyce, Executive Director of the Massachusetts Masonry Institute and Chairman of the Program, nearly two hundred architects and engineers from New England attended the event.

Principal speakers were:

Thomas J. McIntyre, Vice President of BM & PIU of America, "Union Attitude on Loadbearing Masonry."

Henry Toennies, Director of Engineering, National Concrete Masonry Association, "An Overview of High Rise Loadbearing Masonry Construction."

Allan Yorkdale, Director of Engineering, Brick Institute of America, "The Role of Clay Products in Loadbearing Masonry Construction."

Armand H. Gustafiero, Consulting Engineer, "Fire Testing of Structures and Building Materials."

Ashby T. Gibbons, Portland Cement Association, "Fire Resistive Systems for High Rise Loadbearing Construction."

Masonry Unlimited was sponsored by the Mass. Masonry Institute, the N. E. Concrete Masonry Assoc., and the N. E. Chapter of the National Assoc. of Brick Distributors. It was the first step in a concentrated program designed to focus the attention of the design field, governmental bodies, and the public on the inherent economic, safety, and aesthetic features of masonry construction.

Ashley/Myer/Smith Now Arrowstreet Inc.

Ashley/Myer/Smith of Cambridge, Mass., has changed the firm name to **Arrowstreet Inc.**, following a three-year review of office organization, procedures, relationships and goals.

"The impetus was a shared concern of senior and junior members of the firm to seek a new kind of working environment and to increase project effectiveness," according to Fletcher Ashley, Principa

SPAULDING BRICK COMPANY, INC.

Distributors of Brick and Clay Pavers



120 MIDDLESEX AVENUE,
SOMERVILLE, MASSACHUSETTS

WINTER HILL STATION
BOSTON, MASSACHUSETTS 02145
666-3200

BRICK MFG.
Kane Gonic Brick Corp.

CHARTER MEMBER
National Association of Brick Distributors



McGregor House
Undergraduate Housing
Massachusetts Institute of Technology
Cambridge, Massachusetts

Architect:
The Architects Collaborative Inc.
46 Brattle Street
Cambridge, Massachusetts

Principal in charge:
Norman C. Fletcher

ACOUSTICAL SOLUTIONS
Consulting Services
in
Architectural Acoustics
and Noise Control

RALPH H. GIBSON, JR.-DEPT HEAD
80 SOUTH MAIN ST.
WEST HARTFORD, CONN. 06107
(203) 521-5148



NORTH BERWICK, MAINE 03906
Tel. 1-207-676-2273

Roll-Out Gym Seats

Grandstands

Bleachers

Telescopic
Platforms

School Equipment

Tables

Back Stops

new england

Architect

& NEW HAMPSHIRE ARCHITECTURAL REVIEW

October 1973 Volume 4 Number 5

features

Dining Hall/Dormitory Complex Woods Hole, Mass.	6
Miriam Hospital Research Center Providence, R.I.	12
General Electric Credit Union Pittsfield, Mass.	16
Guest House Center Harbor, N.H.	24

departments

Notes & Comments	2
On The Drawing Board	19
Index to Advertisers	32

Photo Credits: Frank Guiliani, Cover (Miriam Hospital Research Center), pages 12-15; Phokion Karas, pages 6-11; Dick Smith, pages 24-27; Harvey J. Segall, 23 & 29 (upper); Vantines Studio, 29 (lower).

Editorial & Sales Office:
Three Sheafe Street
Portsmouth, N.H. 03801
Telephone: 603-436-4503

Published monthly by the
Walsh Publishing Corporation,
Three Sheafe Street Ports-
mouth, N.H. 03801. No article
appearing in this issue may be
reprinted in whole or in part
without permission of the
publisher.
Controlled circulation postage paid
at Portland, Maine. Postmaster:
Please send Form 3579 to
NEW ENGLAND ARCHITECT,
P.O. Box 900, Portsmouth, N.H.
Fifty Cents A Copy
Subscription: Five Dollars Per Year.

Publisher
James F. Walsh

Editor
James Bolquerin

Editorial Staff
Peter Randall
Mary H. Arnett

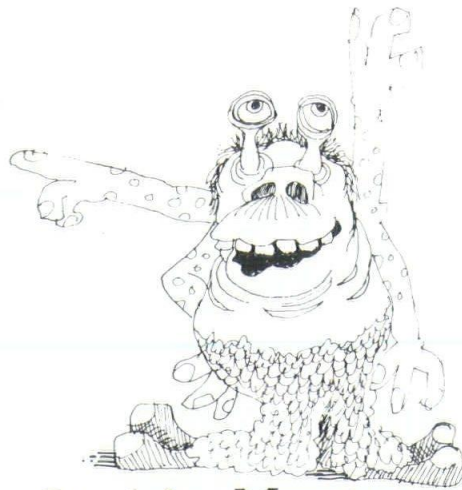
General Manager
Herbert F. Georges

Advertising Production
Anne Cullen

Art Director
Herb Rauh

Circulation Manager
Marjorie Henderson

Sales Representatives:
Ruth & Carll Downs
120 Manchester St.
Nashua, N.H. 03060
Phone: 603-882-6715



The Servicing Monster:

he always waits till your back is turned.

We don't forget you or your client after everything's installed. We'll instruct his people on the operation and maintenance of new equipment, and prompt punch list servicing, plus continuous client contact, quickly solve any problems that might pop up. So that's one less monster to worry about, thanks to our Specifier Services Division. For pictures and descriptions of ten more, plus how we banish them, write Mr. Malcolm Korner.

"Monster, stay away from my door."

BE BUSINESS EQUIPMENT CORPORATION · 1/3 H
100 Shawmut Avenue, Boston, Massachusetts 02118 (617) 426-6800

The answer, man.

This is it. A new brochure that tells you how to slash your office phone rates — and get better service as a bonus.

See for yourself. If your business has 5 incoming lines and 10 or more phones, this free new brochure can help you save money. It explains how a leased or purchased phone system from Communicon generates savings from beginning to end. From lower initial costs and operating expenses to cash flow and tax advantages — along with more features and far better phone service as a bonus. Send for your free copy today. We'll respond promptly. With all the right answers.

Communicon 965-4300
Telephone & Communications



FREE

Communicon
56 Elmwood Street
Newton, Mass. 02158

332 Main Street
Worcester, Mass. 01608

OK. Answer, Man.

I want some answers. Please send me a free copy of your new brochure "Cut your monthly phone rates..."

Name _____ Title _____
Company _____
Address _____ Phone _____
City _____ State _____ Zip _____

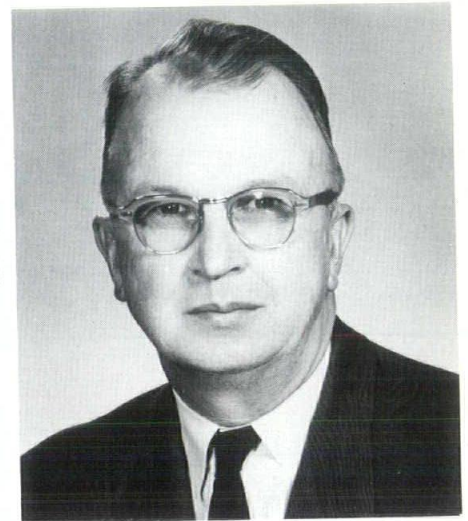
N.E.A.

"For us, environment-making has become a collaborative effort of equals which begins in the office and extends to the client and potential users.

"We have developed a management structure combining shared ownership and broad participation in decision-making, with clear lines of responsibility on projects.

"Our reorganization makes possible a new level of commitment and performance, assuring a combination of skills, experience, creativity and quality, which best respond to the dimensions of each new problem. To celebrate our new directions, we're changing our name to Arrowstreet Inc."

Ashley Appointed To Industry Panel



Warren H. Ashley

Warren H. Ashley, prominent West Hartford, Conn., architect, has been appointed a member of the Dodge Advisory Panel, a newly formed national group of construction industry businessmen.

Members of the panel, formed by the F.W. Dodge Division of McGraw-Hill Information Systems Company, represent all segments of the construction industry, including building products manufacturers; general construction contractors and specialized sub-contractors; plus construction-related financial, insurance, real estate, and service firms. Information furnished by the panel to Dodge, will provide valuable guidance in the development of special information services that will aid various types of companies
(Continued on page 28)

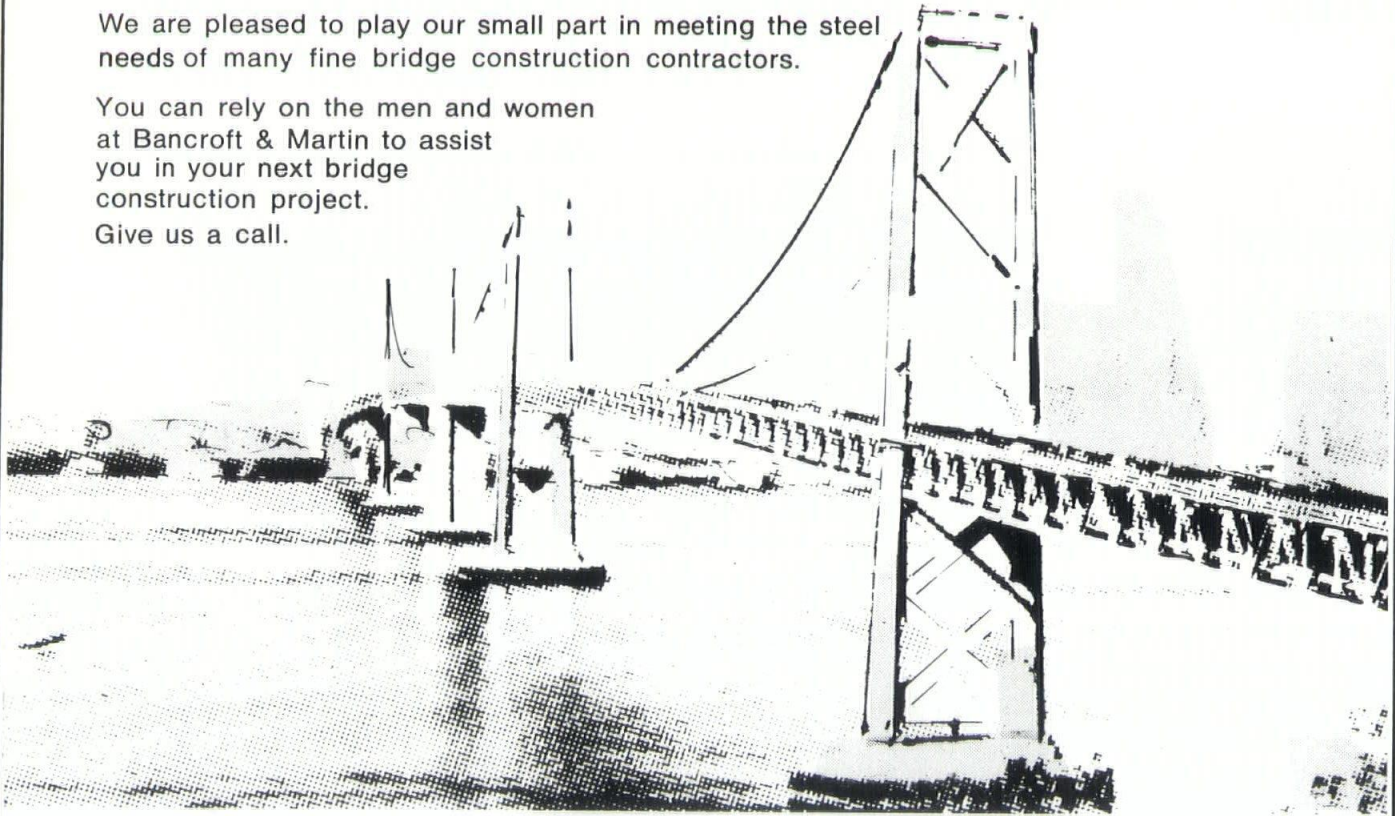
New England Architect

BANCROFT & MARTIN SALUTES THE BRIDGEBUILDERS.

The rugged men who combine knowledge and brawn with precisely engineered structural steel to erect the beautiful bridges that span the highways and waterways of Northern New England.

We are pleased to play our small part in meeting the steel needs of many fine bridge construction contractors.

You can rely on the men and women at Bancroft & Martin to assist you in your next bridge construction project. Give us a call.



SOUTH PORTLAND 207-799-8571 • LEEDS 207-933-4478
BREWER 207-989-4860

STRUCTURAL STEEL • REINFORCING STEEL • WAREHOUSE STEEL
SPAN-DECK CONCRETE PANELS • DRAINAGE PRODUCTS

DINING HALL
DORMITORY COMPLEX
MARINE BIOLOGICAL
LABORATORY

WOODS HOLE, MASS.



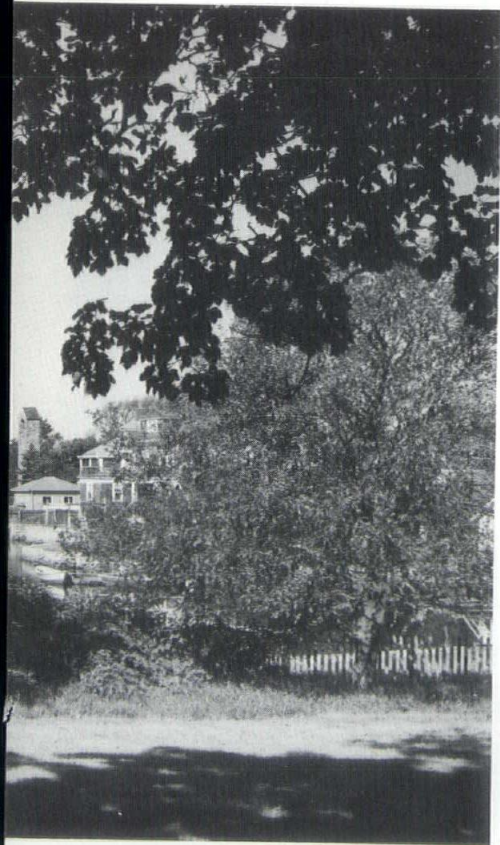
Peirce & Pierce/Architects
Boston, Mass.

CLEAR water and a sheltered harbor brought the Marine Biological Laboratory to the Cape Cod town of Woods Hole in 1888. MBL's programs in teaching and salt water research have been joined since then by those of the U. S. Bureau of Fisheries and the Woods Hole Oceanographic Institution, a continually expanding group of marine facilities which today makes Woods Hole one of the world's leading ocean research centers.

As these institutions have grown they have added major buildings and a substantial population to the



New dormitory/dining hall maintains visual continuity with coastal townscape. Building massing kept low, horizontal and small scale compatible with neighboring houses. Landscape terraces overlook sheltered boat harbor and are accessible from dining room and lounge.



tightly packed peninsula they share with the Woods Hole Community. Within this context institutional planning is shaped by many of the same factors which influence planning in dense urban areas. In Woods Hole the most critical of these are limited land area for institutional buildings, environmental relationship to the existing community.

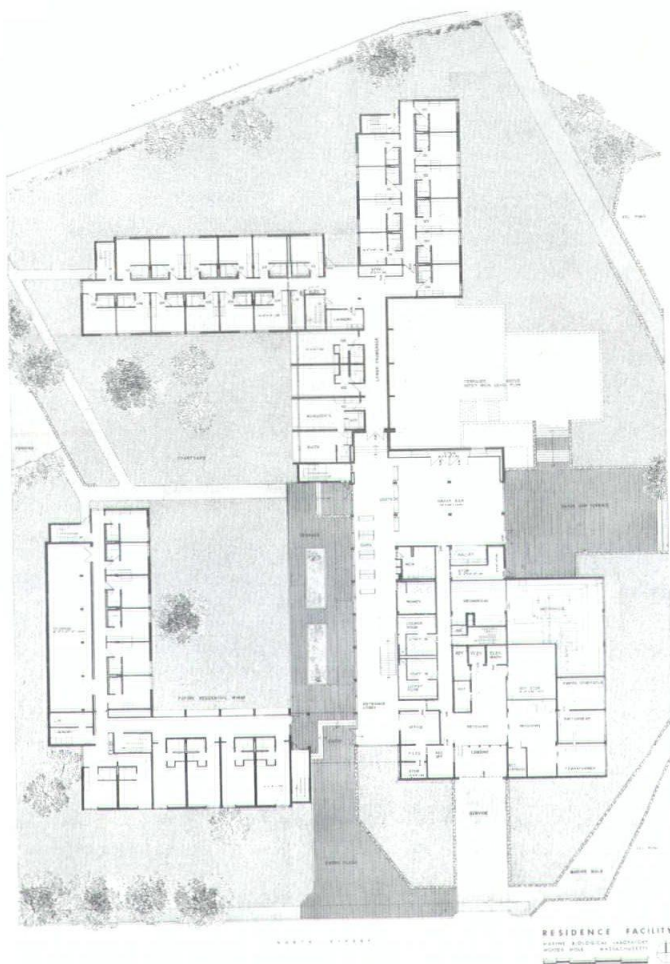
These factors have guided Peirce & Pierce in planning two new major facilities for the Marine Biological

Laboratory. These buildings have developed within the context of a campus master plan which anticipates the growth of MBL and the pressures on the Woods Hole community over the years ahead.

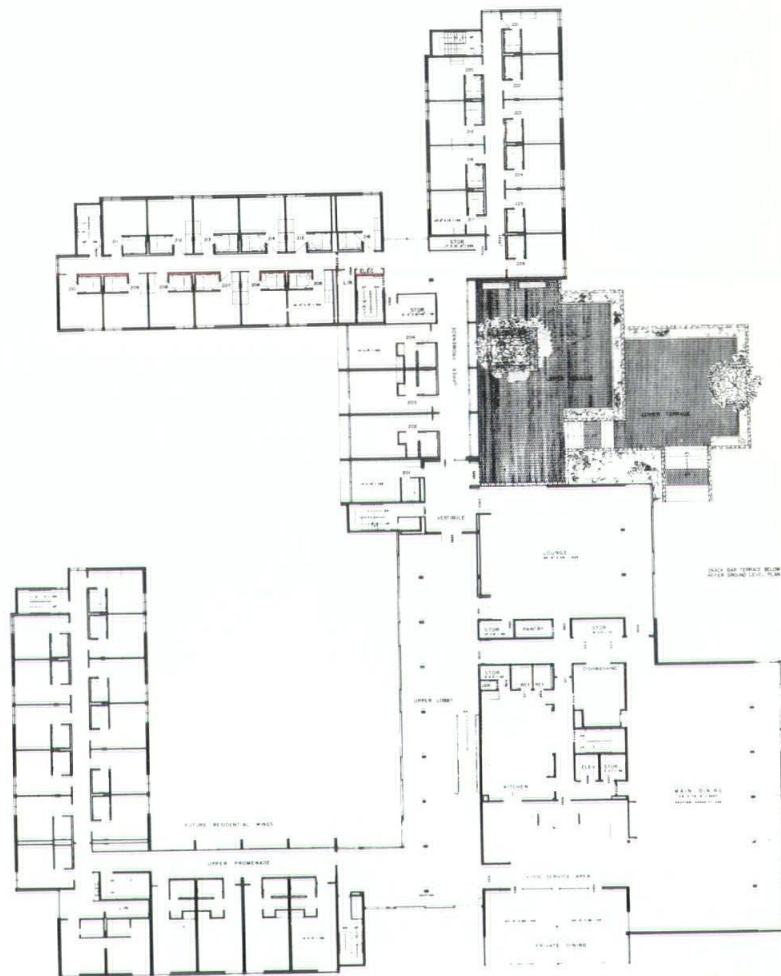
This planning process began in 1967 when the architects were commissioned to design a 70,000 square-foot research and teaching laboratory and a related dormitory/dining hall complex, both facilities to replace a miscellaneous collection of

older frame buildings which until then had served as an "informal" campus. Expansion beyond MBL's present holdings was difficult because of institutional or residential neighbors on all sides. Location of the Loeb Laboratory (N.E.A., July/August, 1972), the first project to be designed, was therefore on a collection of small sites presently occupied by older MBL buildings.

This constraint on expansion was turned to advantage by the resultant



Ground Level Plan



Main Level Plan

location of the new Loeb Laboratory contiguous to MBL's major existing laboratories: Lillie and Whitman. In addition to easy movement between all research buildings by MBL scientists, the underground utilities network serving the laboratories is kept short; of particular importance in the functioning of the gravity flow salt water system originating from the Lillie building. By placing the Loeb Laboratory at right angles to MBL Street the

architects have created space for a future landscaped plaza which will be the visual focus of this emerging campus, and which will realize its final form with the addition of another research laboratory on the west. As a large, traffic free space sheltered from sea winds, it will provide a campus amenity in welcome contrast to the crowded streets of the town.

The new Residence Facility

Although a site several blocks

away from the laboratories had been purchased by MBL for its dormitory/dining hall, the architects recommended that a more suitable locus would be to the immediate north. This would link all MBL facilities closely together, reduce dependence on the automobile, provide for easy serving and control, and respond to local community resistance to institutional encroachment on residential areas. Fortunately, MBL was able to acquire the



Upper level lounge, leading to dining room (right) and bedroom wings (background). Stairs lead up from ground level vestibule. Sliding windows open to views of the laboratory campus or to the waterfront.

Exterior materials are concrete structural frame with infill panels of cypress or glass.

majority of properties in this block between Millfield and North Streets, thus providing space for the first phase development of the residence facility.

Accommodations are planned for an eventual 300 residents in double bedroom suites with private baths. This serves a wide variation of married and single scientists and also enhances its use as a conference center for scientific groups attracted both to the amenities of the seaside town and to the resources of the laboratory.

The focus of the complex is the dining room which is placed one floor above ground level to take advantage of the harbor view. Glazed promenades with informal sitting areas lead to dormitory wings. A series of outdoor terraces and roof top sun decks are also oriented to views of the harbor and ocean beyond.

Materials and tones of the new building reinforce the visual relationship to the community. The structural frame of exposed concrete is sandblasted to reveal native sands and beachstone aggregates while weathered gray cypress cladding continues the weathered shingle vernacular of local buildings.

Foundations: Concrete pressure injected footings and spread footings in combination.

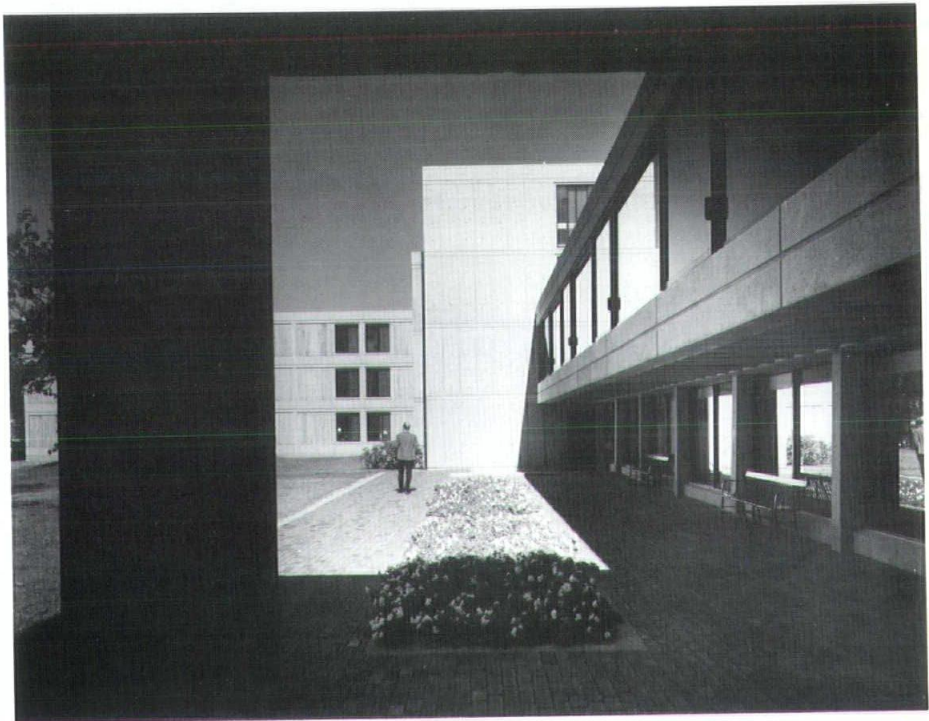
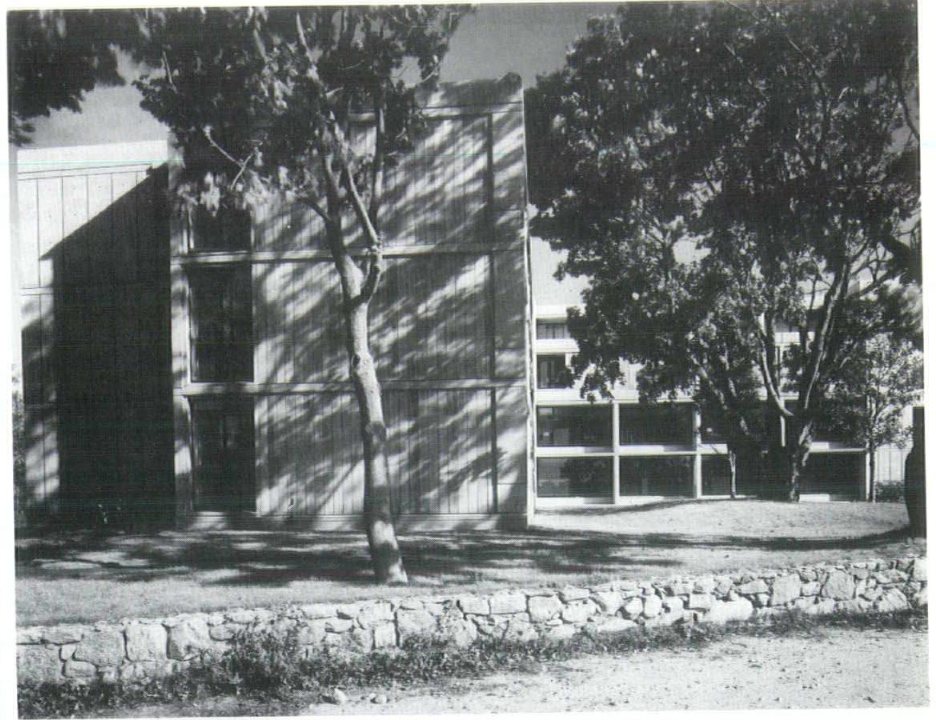
Framing: Reinforced concrete.

Exterior wall paneling: Rough sawn Louisiana cypress in 6" tongue and groove pattern. Concrete block masonry back up.

Exterior doors and windows: Black anodized aluminum.

Interior partitions: Residential wings — drywall on metal stud framing. Public areas — painted tongue and groove pine paneling.

Mechanical system: Residential



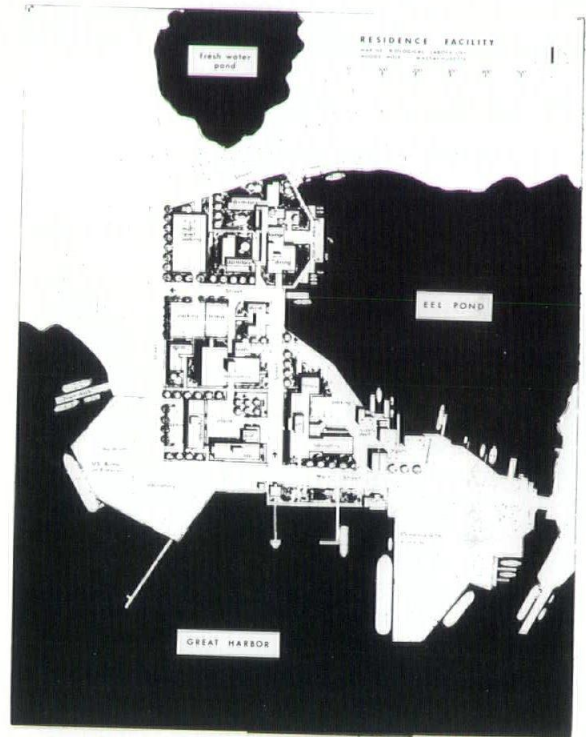
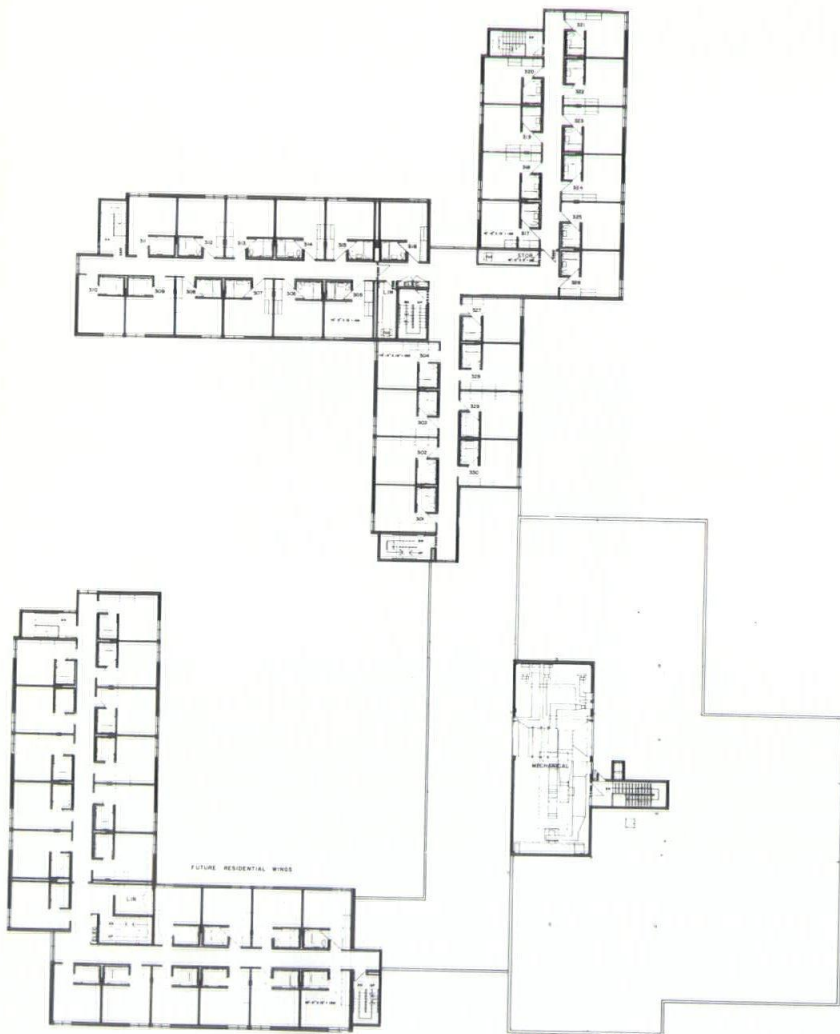
Courtyard framed by dining hall and dormitory wings provides outdoor space buffered from on-shore breezes and is visual focus for lower level lounge and snack bar at same level (through doors).

wing — forced hot water circulation with individual thermostatic control in each room. Public areas — heating and ventilation by unit ventilator with provision for future cooling.

Structural Engineers: Souza & True, Cambridge.

Mechanical Engineers: Reardon & Turner, Boston.

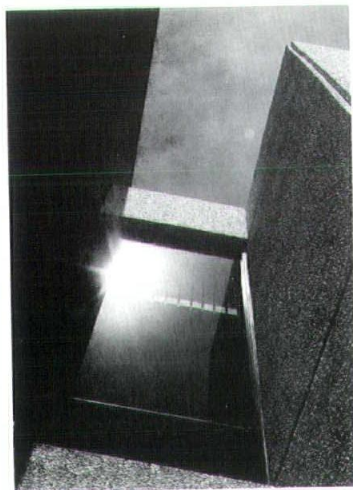
Electrical Engineers: Cleverdon, Varney & Pike, Boston.



Second Level Plan.

MIRIAM HOSPITAL

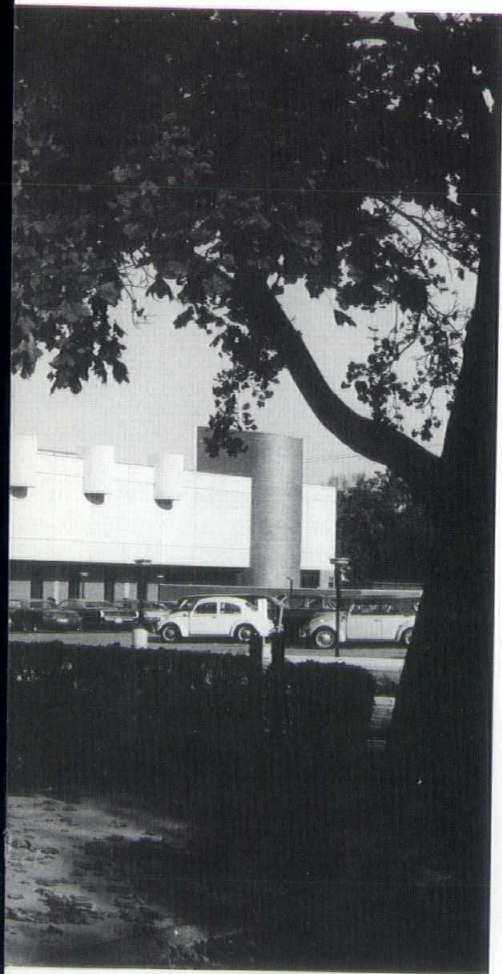
*C. E. Maguire, Inc.
Waltham, Mass.
Project Architect:
John Hampshire*



RESEARCH CENTER

PROVIDENCE,

R.I.



Developing teaching hospital, The Miriam is located on a tight urban site of approximately eight acres in a residential area some three miles from downtown Providence and two miles from the Brown University campus. The 1967 appointment of full-time Chiefs of Medicine and Surgery, reflecting the Miriam Hospital's affiliation with the Brown University Bio-Medical Sciences Program created a need for substantial basic research facilities. Ideally, such a facility would be separated from patient care areas without creating a sense of isolation of the research staff. This suggested a discreet structure with the potential of an easy direct link to the main hospital building.

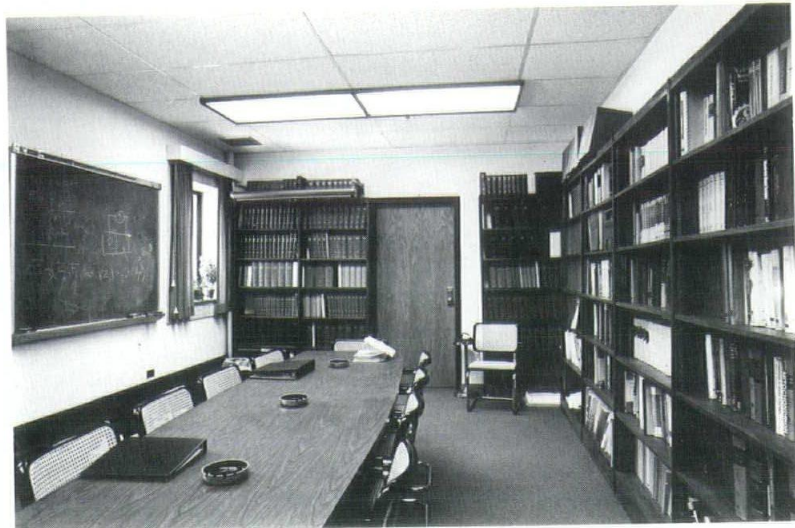
The addition of a research building with offices and laboratories for full-time staff with attending support areas such as conference and seminar rooms, animal care facilities and other auxiliary functions, was seen as one of the major keys in the attraction of a superior staff to the institution. Facilities to meet the research needs of attending staff and graduate students from Brown University were also required. Complete spacial and me-

chanical flexibility was stipulated to permit the building to meet the changing needs of basic research.

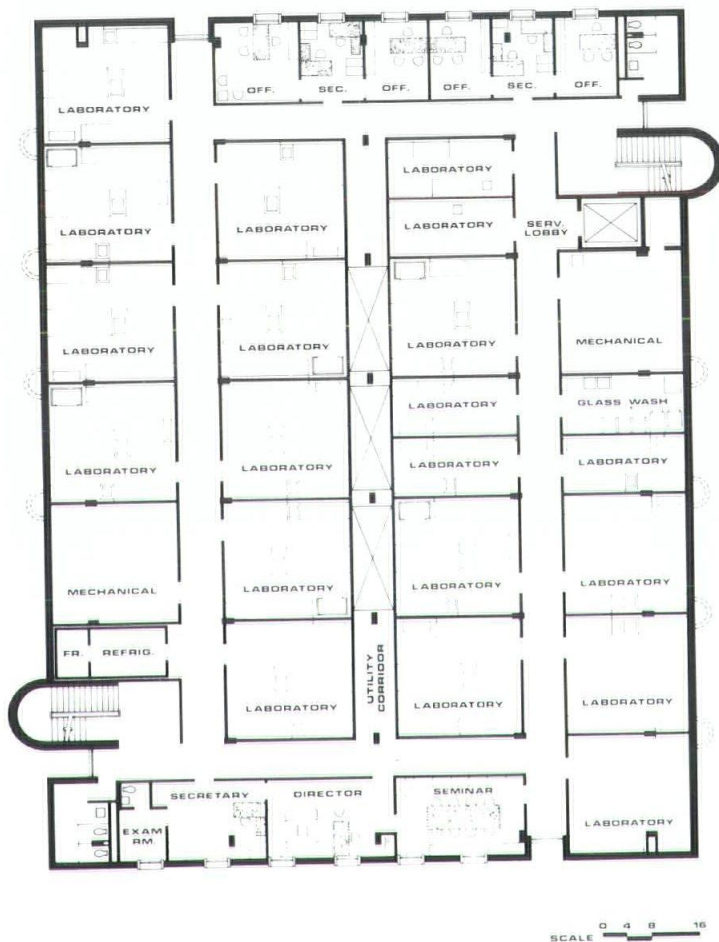
The research building truly reflects a team approach to health facility planning. It represents the cumulative experience and technical knowledge of the hospital's medical staff, administrative personnel, the Building Committee of the Hospital Trustees and the consulting Architects and Engineers.

Located a short distance to the northeast of the main lobby, it gives additional definition to the existing cafeteria court and the main entrance approach. Initially built as a two-story structure, the building was designed for a two-story vertical addition to meet growing needs of the research programs. Modular laboratories, suitable for most projects in basic research, are placed in two interior rows on each floor flanking a central service core which provides maximum access to major services at all levels.

Cost control played a major role in the selection of materials and building systems. The basic structure is a cast-in-place reinforced concrete frame with masonry infilling. The exterior is brick and



Seminar Room



Modular laboratories, suitable for most projects in basic research, are placed in two interior rows on each floor flanking a central service core which provides maximum access to major services at all levels.

precast concrete panels with exposed aggregate finish while painted concrete masonry block was used on the interior. The mechanical system, entirely independent of the rest of the structure, is left exposed in laboratories and support areas providing complete flexibility to meet the changes which time dictates.

Such complete separation of utility and mechanical systems from other parts of the structure represents a saving in time and construction costs and permits continued modification and expansion with minimum disturbance to adjoining facilities. Steam and chilled water are provided by a central power plant while the entire hospital complex is served by a standby generator system in the event that local utility power fails.

Project Architect: John Hampshire.

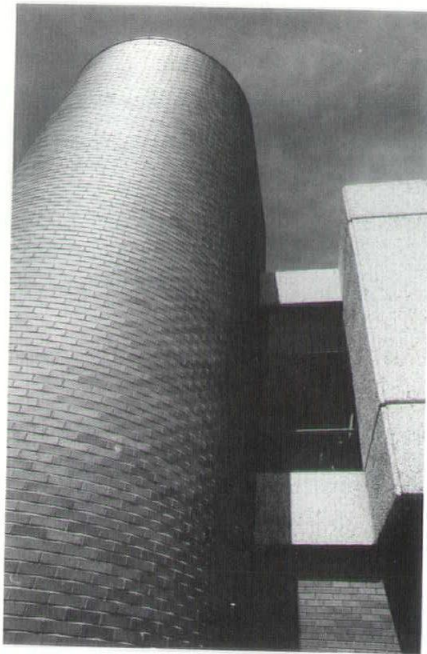
Area of the building: 28,700 gross square feet (2 stories).

Total Cost: \$1,340,000.

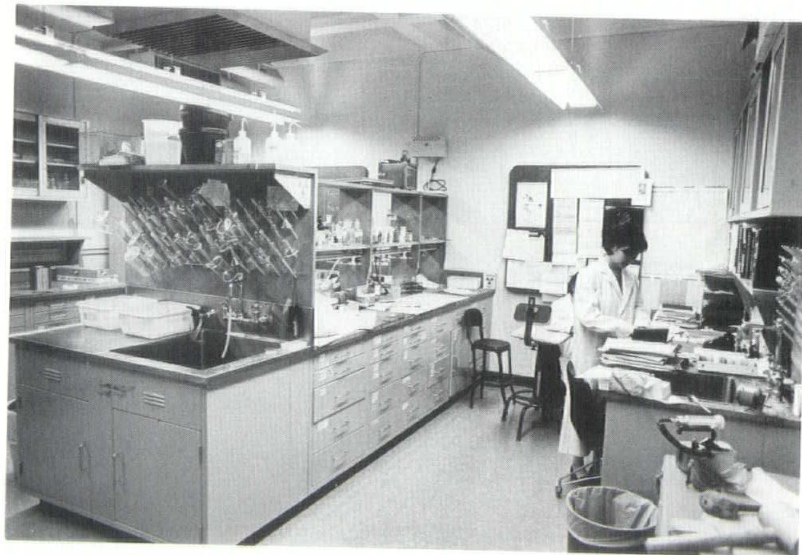
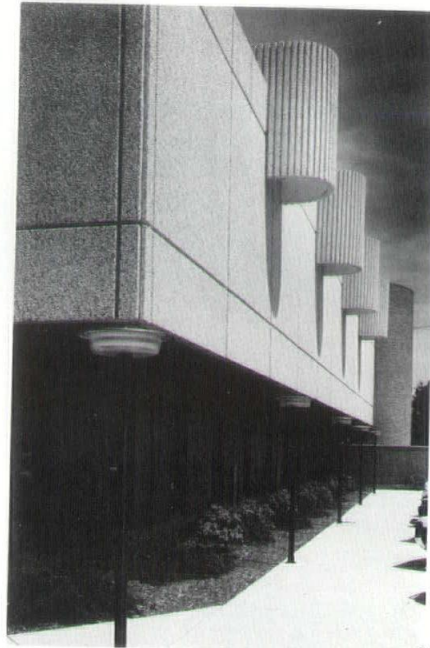
Construction Time: 15 months.

Mechanical Engineers: Alonzo B. Reed, Inc.

Contractor: M. G. Allen.

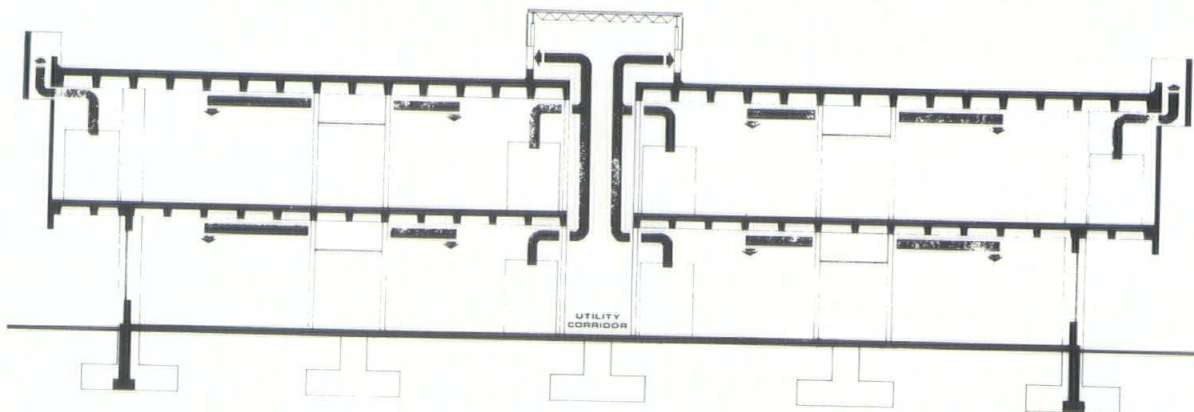


The exterior is brick and precast concrete panels with exposed aggregate finish.



Initially built as a two-story structure, the building was designed for a two-story vertical addition.

Laboratory

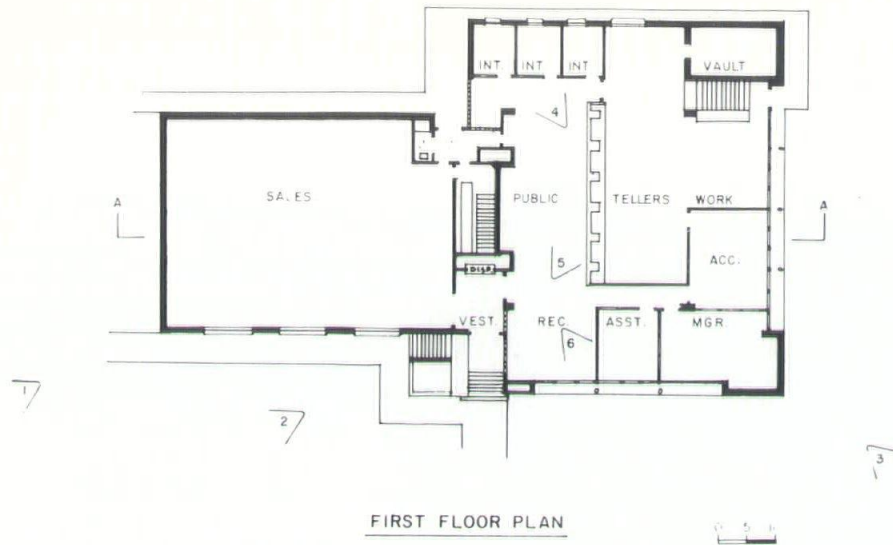




G.E. CREDIT UNION

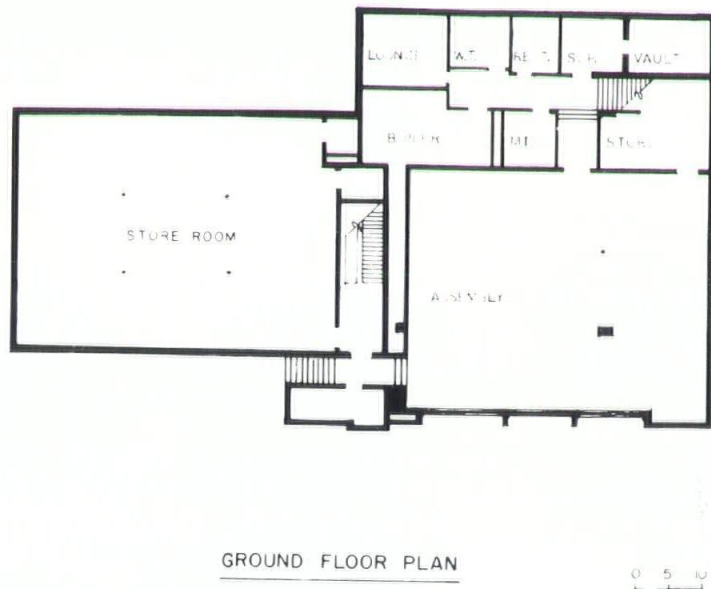
PITTSFIELD, MASS.

John H. Fisher
Pittsfield, Mass.



DESIGNING a small building to house a growing Credit Union serving employees of one of the country's most prestigious electrical companies posed two problems. The first was to create pleasant, efficient quarters for what is essentially a banking institution and at the same time provide a building that would carry itself on operating costs. This was accomplished by incorporating a store for General Electric's employees where General Electric and other products could be offered at savings to employees.

Thus a building was designed on a site adjacent to one of the main gates to the plant. Of the total build-



At one end of the lobby is a receptionist desk and a pleasant alcove.



The entrance lobby serves both the store and the banking room which has five teller cages facing a spacious public lobby.



The exterior of the building is a chocolate colored wirecut brick.

ing area of 10,562 square feet 40% is rented for the store.

Most Credit Union buildings do not compare favorably with the current structures being put up by most

Commercial banks. This one strives to achieve architectural merit without lavishness which is so foreign to Credit Union policies.

The entrance lobby serves both

the store and the banking room which has five teller cages facing a spacious public lobby. At one end of the lobby is a receptionist with a pleasant alcove for visitors to wait, while at the opposite end are three private offices for the negotiation of loans with a small semi-private nook for those waiting to be interviewed.

The work spaces consist of a sound retardant accounting room and an 8' x 14' six-hour bank vault. A private office for the manager with secretary's office is located where the manager can watch all operations in the quarters. Soundtropicane glass deadens the noise of the accounting machine while allowing vision through area. The ground floor contains rest rooms, a kitchenette, another vault, and a large meeting room where members of the Credit Union can hold annual meetings, or available for leasing to other organizations for meetings.

The exterior of the building is a chocolate colored wirecut brick with all windows of bronze colored polyvinyl-chloride coated steel windows. All windows have thermal breaks to prevent interior condensation. Glazing is bronze tinted thermopane. Spandrels are deep blue porcelain enamel sandwich panels.

The interior is a warm red-tan colored brick laid with $\frac{1}{4}$ " raked joints. Floor is carpeted and office partitions are demountable type glass and panel construction. Ceilings are fissured mineral acoustic tile. The clearstory seen in View 4 is a very interesting and effective source of light and consists of a pinwheel arrangement of Pittsburgh Corning No 11, Chiaro glass block.

The entire building is electrically heated and air-conditioned with main delivery of air through plenums above the acoustic tile which is the perforated ventilating type.

ON THE DRAWING BOARD



AGA KHAN MEDICAL CENTER

Markus Nocka

KARACHI, PAKISTAN

Payette



Associates

Boston,

Mass.

HIS Royal Highness, the Aga Khan, religious leader of the Ismaeli Moslem community, announced recently that the Boston-based architectural firm of Markus Nocka Payette and Associates has been authorized to draw up the final plans for the proposed Aga Khan Foundation Medical Center in Karachi, Pakistan.

Acceptance of the Boston architectural firm's design was confirmed by the President of Pakistan, Zulfikar Ali Bhutto, at a recent meeting in Muree, Pakistan.

The center calls for a 670-bed hospital, a 500-student medical college, nursing school, student and staff housing and an Islamic mosque. Need for a medical center in the Karachi area was voiced several years ago by the Aga Khan. The new facilities will provide a wide range of diagnostic and treatment services for patients throughout the Middle East.

Thomas M. Payette, president of Markus Nocka Payette and Associates, will serve as partner in charge of the medical center project. John

P. Ruffing, of the firm's London office, will be project architect. Markus Nocka Payette and Associates' London office has been formulating preliminary plans for the 67-acre medical center since early 1972.

"One of the greatest and most exciting challenges of the project," Payette noted recently, "has been to combine the best in Western medical technology with the great tradition of Moslem culture.

"This tradition," according to Payette, "maximizes the use of reflective pools and running water as well as landscaped gardens and interior courts. In contrast to western buildings, Islamic buildings seek to blend with their environment. There is no attempt to set them off from their natural and man-made surroundings.

"Islamic buildings intrigue the visitor. Upon entering, the visitor is unsuspectingly drawn further into inner areas. The extent and precise form of these interiors are mainly concealed until the visitor is actually inside," Payette said.

"The 'spaces' within the building — the courts and other unroofed areas — are an integral part of the architectural concept," he noted. "Space dominates 'mass' in Islamic architecture. The elaborate decoration of surfaces reduces the importance of 'mass' and 'structure' and emphasizes still more the relationships of contained spaces," the Boston architect explained.

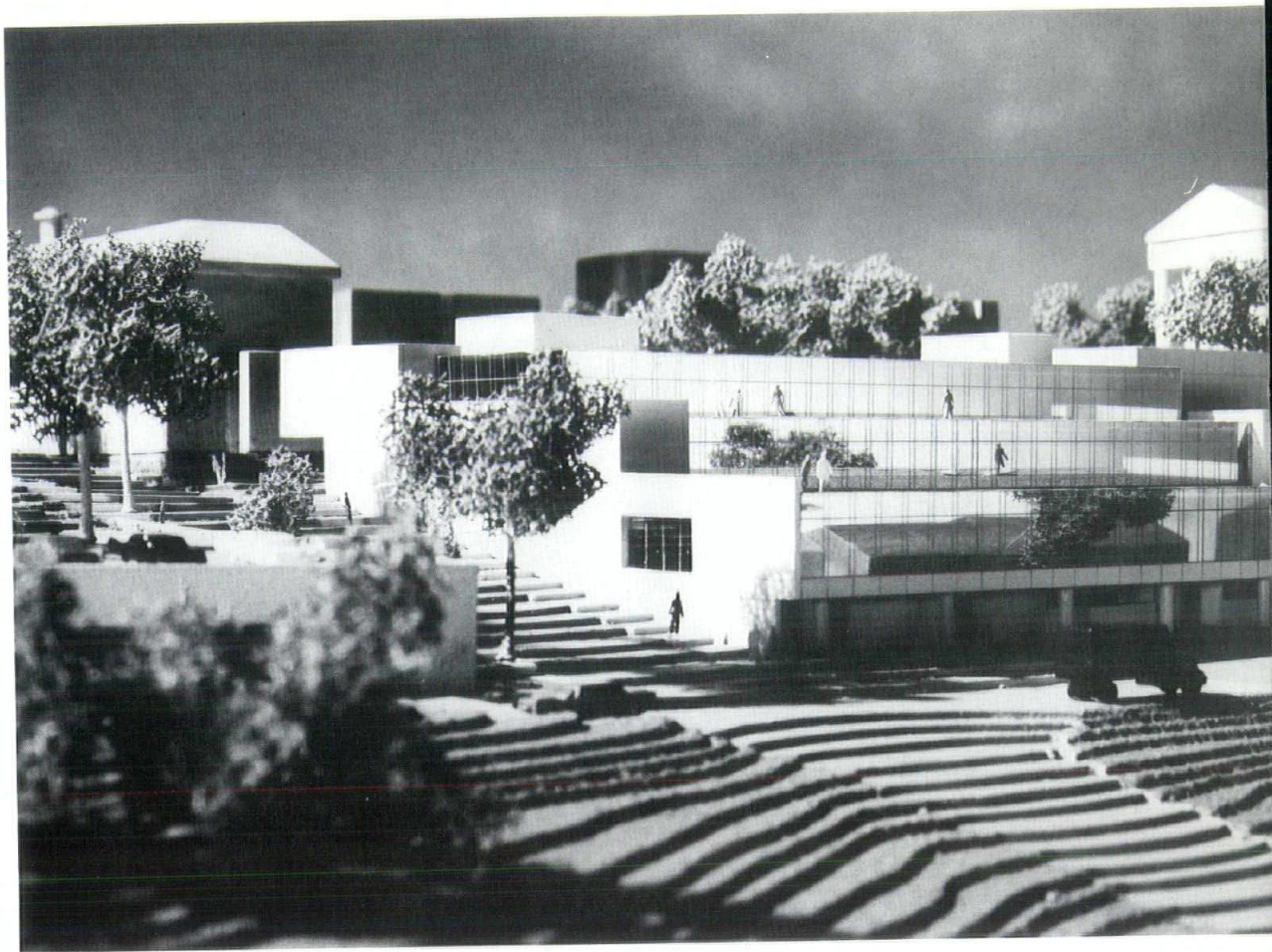
Because of Karachi's shortage of energy resources and severe climate — hot days and cool nights — the medical center design is being based upon the principles of climatic control found in Islamic architecture. Payette indicated that "all facilities will be oriented so that they will take full advantage of prevailing winds. All structures will also feature construction that will capture and store heat. This 'massive heat capacitative construction' will shield occupants from daytime heat while storing the warmth for release into building interiors during the cool nights," Payette explained.

The medical center will also employ solar devices and so-called air-scoop "Venturi" devices to air-evaporate rooftop cooling pools. Conventional air conditioning systems will be limited to areas, such as surgery, which require precise environmental control," he said.

Internationally known for their hospital architecture, Markus Nocka Payette and Associates has designed more than 15 hospitals and medical centers in New England during the past eight years alone. Among them are: Leonard Morse Hospital, Natick, Mass.; Eastern Maine Medical Center, Bangor, Me.; and Salem Hospital, Salem, Mass.

The 41-year-old firm generally employs 50 architects, engineers, draftsmen and administrative personnel in Boston and London offices.

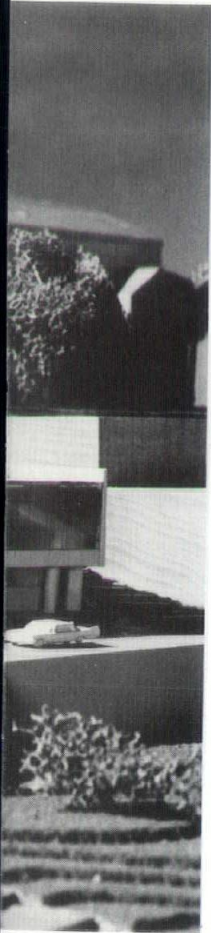
ON THE DRAWING BOARD



LIBRARY/BOARD OF EDUCATION NEWBURGH BUILDING N.Y.

A new library/office building designed by Hugh Stubbins and Associates, Inc. of Cambridge, Massachusetts is now under construction across from the Orange County Courthouse in Newburgh, New York. A former parking lot in the Courthouse Square Development Area, the site is being developed by the New York State Urban Development Corporation in conjunction with the Newburgh Board of Education.

The 66,000-square-foot masonry and glass building will provide: approximately 40,000 square feet of



space for the Newburgh Library; 18,000 square feet of space for the Newburgh Board of Education offices now in four different locations; and an 8,000 square foot multi-purpose meeting space for community use.

The building will also help to define a new public green and unite the nearby Orange County Courthouse, Dutch Reformed Church and City Club buildings around one major town space — the new Courthouse Square.

Stepping down the sloping site in three tiers, the new low building is designed to maintain maximum unobstructed views of the Hudson River and nearby mountains from the Courthouse. Floor-to-ceiling heat-absorbent "Solex" glass set in polished natural aluminum mullions will open these same views to people within the new building's library and office space.

Open office planning for the Board of Education offices and terraces located on the main library and office levels will further enhance the feeling of uninterrupted space, enclosed only to the north and south by the light colored, highly textured solid end walls of the step-shaped building. Building cores and the multi-purpose room are split-ribbed masonry block to provide textural contrast with the open expanse of glass.

Organized in four levels, the building has its main entrance from Grand and Second Streets to the Entry Level display foyer. An open staircase and elevator off the foyer provide access to the Upper Level's Board of Education offices and multi-purpose room. Doors lead directly from the foyer to the main library level's Current Periodical, Young Adult, and Children's Areas. These areas partially overlook and are linked by an open staircase to the

Lower Library Level which houses the Adult Non-Fiction and Reference Collections.

Space for two hundred readers, 200,000 books, microfilms, paintings, and documents, and a central Genealogy and local history collection will be provided in this new library. The current Newburgh Library has space for 30 readers and is divided between two buildings on Grand Street, one built in 1876 and one in 1872.

Book storage and shipping receiving areas are located on the Lower Street Level, accessible from Montgomery Street at the base of the site.

The Upper Entry Level, directly accessible from the public green by stairs from the display foyer, includes the Newburgh Board of Education offices. Also on this level is audio-visual and meeting space for up to 150 people in the multi-purpose room. Library and office space can be closed off to permit evening use of the multi-purpose room by community organizations.

Prime consideration in the design of the building is flexibility. All fixed elements such as stairs, elevators, and mechanical ducts are located on the building perimeter. Structural and lighting grids are keyed to the 4'9" stack, reader, and office module, allowing these elements to be interchanged as needs vary.

Development team members for the Newburgh Library/Board of Education building are: Hugh Stubbins and Associates, Inc., architects; Flemming and Silverman of Newburgh, consulting architects; LeMessurier Associates, Inc., structural engineers; van Zelm, Heywood and Shadford, mechanical engineers; Golder Gass, soil engineers.

General contractors for the \$3 million project are Solart Builders of Monroe, New York. The expected completion date is March 1975.

Hugh Stubbins and Associates, Inc.
Cambridge, Mass.

ON THE DRAWING BOARD



ON Wednesday, September 5th, the Boston Housing Authority took the final step in a new community-oriented procedure for selecting architects to design public housing in Boston. The Authority's Board ratified the choice of the South Boston Design Review Committee who had selected Huygens and Tappé Inc., a Boston firm of architects and planners, to design a new sixty-five unit elderly housing project on L Street in South Boston. The Committee, a group of 17 local residents, made their choice after reviewing the submissions of fifteen Boston architects who participated in an open competition for the contract.

The competition was conducted

ELDERLY HOUSING PROJECT

Huygens and Tappé Boston

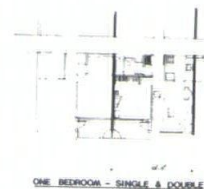
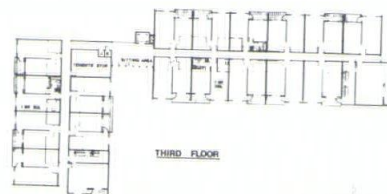
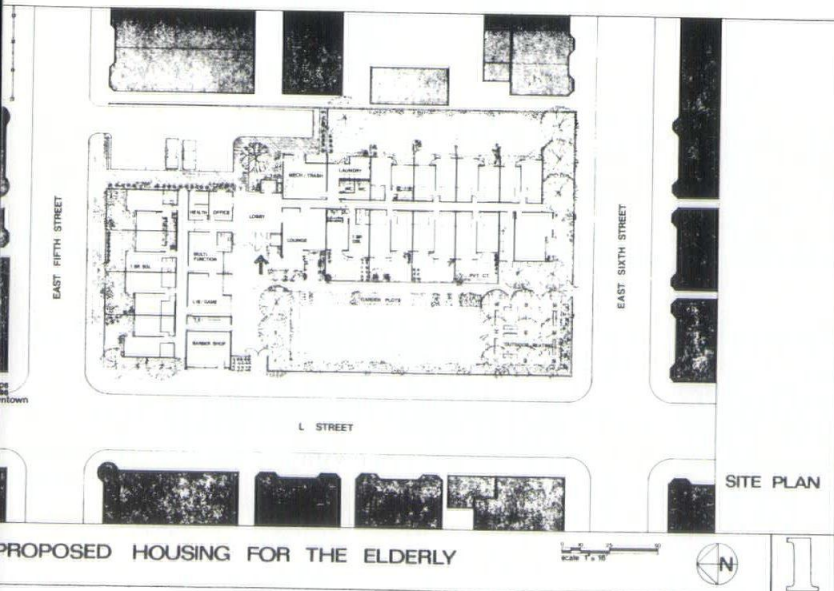
BOSTON, MASS.

by the Boston Housing Authority to give local people a hand in the design of new housing built in their neighborhood. The South Boston Design Review Committee, aided by professional staff of the Department of Community Affairs, the Boston Society of Architects, and the Boston Housing Authority, spent two days examining proposals for the L Street site submitted anonymously in the form of plans and perspective sketches.

After narrowing the choice to three designers, the Committee conducted interviews to question the finalists face to face. Following the interviews a vote was taken and the firm of Huygens and Tappé Inc. received the Committee's approval.

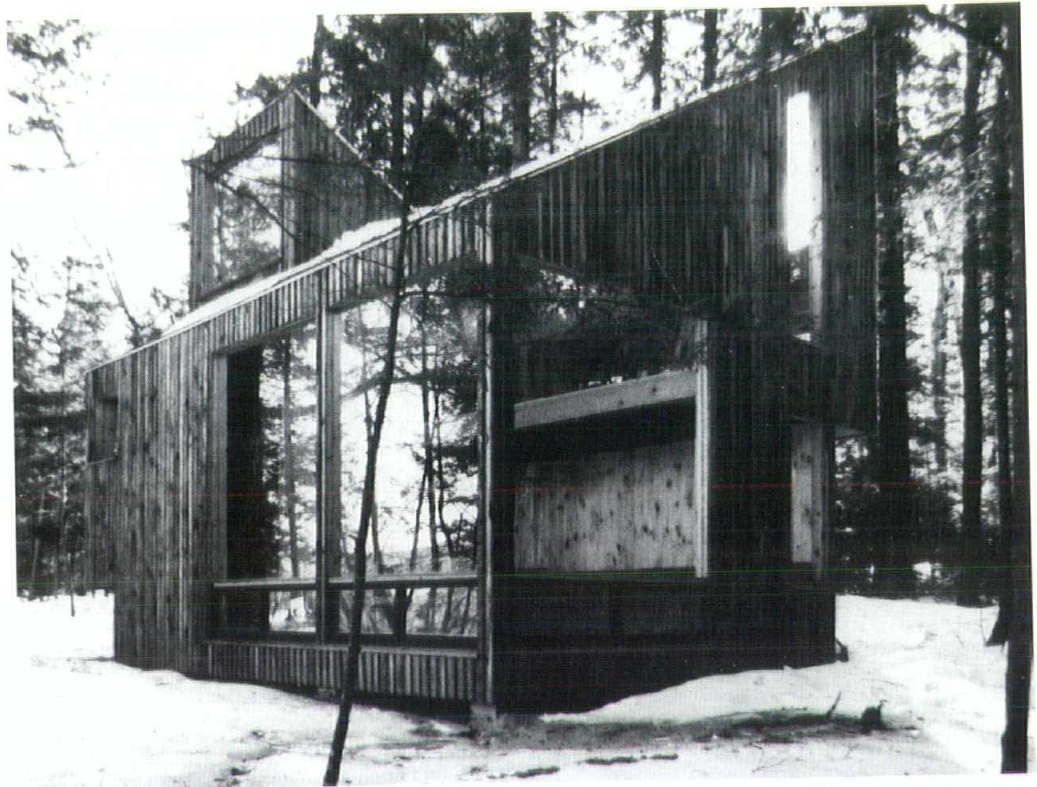
The architects will now proceed with detailed plans for the building working closely with the local group. The Authority plans to exhibit all of the submissions it received during the competition in the Boston City Hall galleries, starting September 17.

The winning submission was a four-story brick building set back from L Street to create a park-like yard and seating area in front. Designed to match the height of surrounding homes to fit into its neighborhood, the building included sixty-five apartments, a lobby, lounge and library. Small private gardens were provided for ground floor units with a common planting area for tenants living on upper floors. The architects enclosed the outdoor areas with a low wrought iron fence to provide security for the elderly residents.



GUEST HOUSE

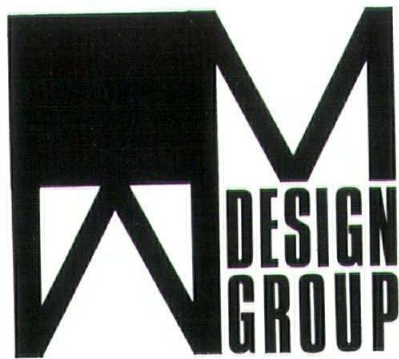
CENTER HARBOR, N.H.



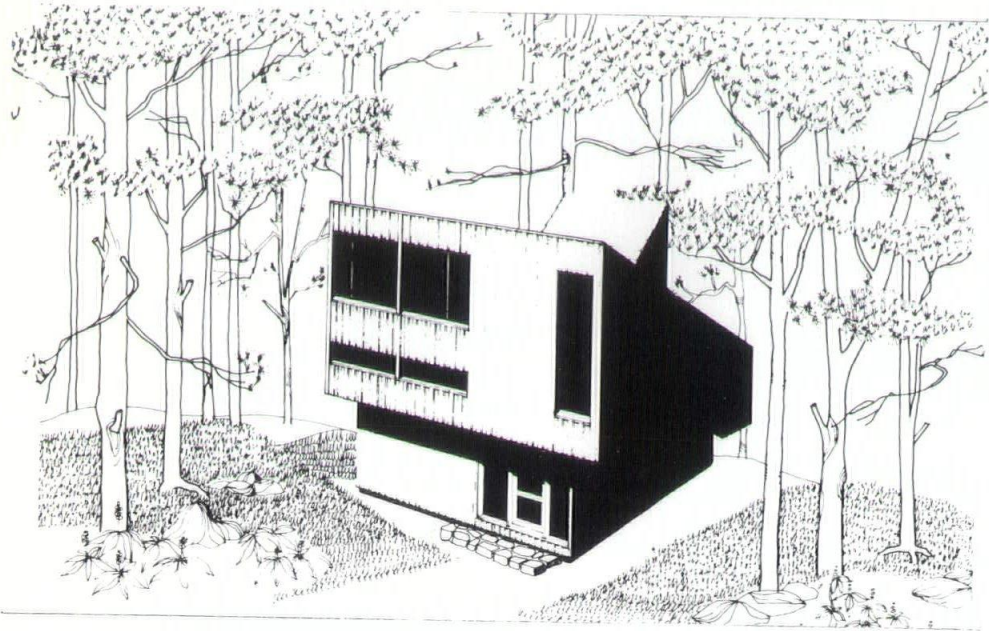
PEYTON Place II is a small guest house designed for transient guests and occasional parent use. It is adjacent to the client's main house, a remodelled boat house, but far enough away for privacy.

The site is located at the edge of Squam Lake in New Hampshire. It is essentially flat with several large hemlock trees in the foreground and fine views of the lake and mountains beyond.

The program was relatively simple — provide a compact but exciting space for living, eating, talking and sleeping. The decision was reached to build a small house (for economy) but make it seem larger by creating a free flowing space. The sleeping area is thus treated as a loft or balcony open to the living area below. There are no doors between the two major spaces. Sunlight from the generous glass areas on the sleeping loft flood the living area with nat-



*Nahant
Mass.*



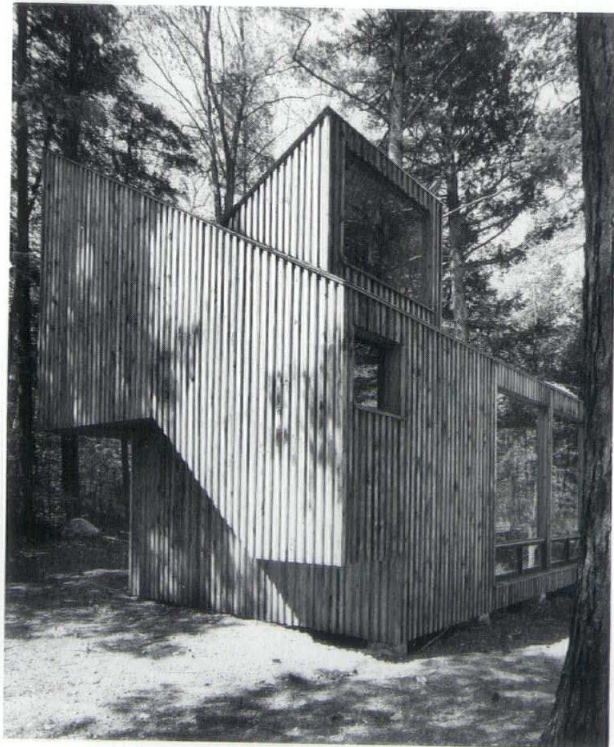
ural light and tree top views.

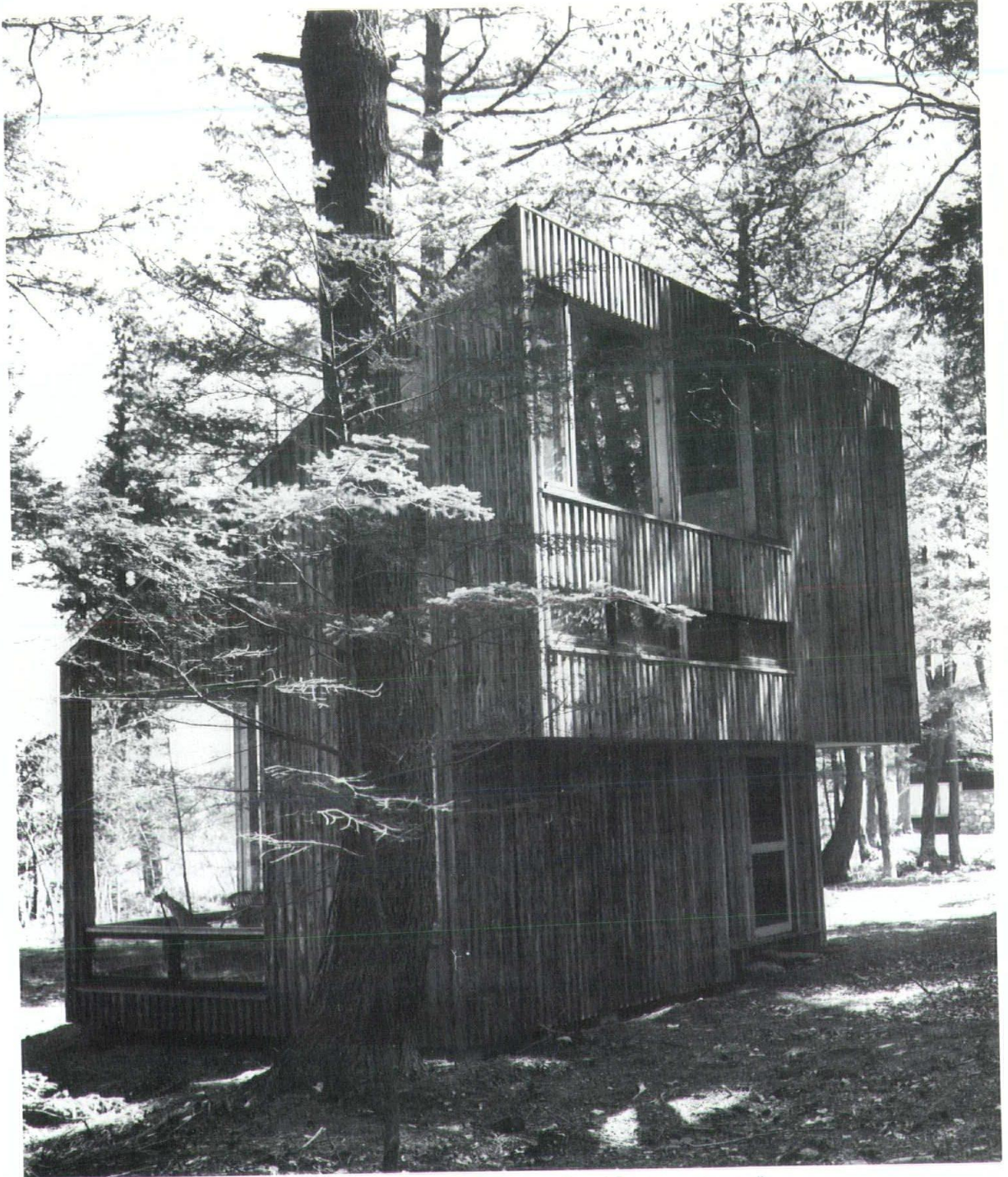
The bold form of the cantilevered stair, visible as one enters the house, gives this dwelling drama and interest. One of the unexpected surprises within is the only enclosed space of the whole house — the bathroom which is two-stories high and features a clerestory window at tree top level!

The structure is plank and beam with double 2 x 10 western hemlock beams 7'-0" on centers. Foundations are square concrete piers on footings.

The beams which form a strong visual pattern on the interior are stained dark to contrast with the 2" white spruce decking which is used for both the sleeping loft floor and the roof structure. The floor and walls are kiln dried pine.

The exterior sheathing is made up of a rough textured board and batten system of rough sawn pine

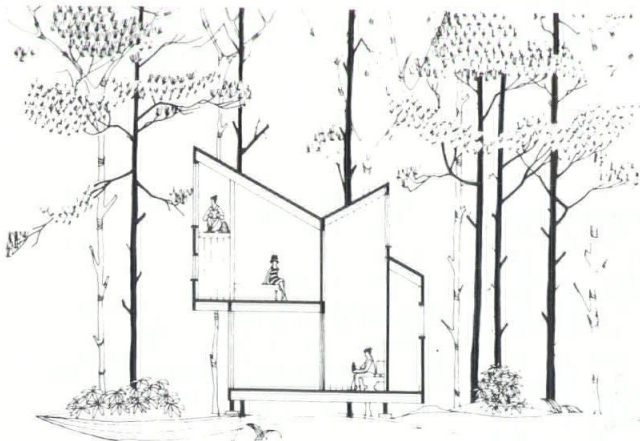
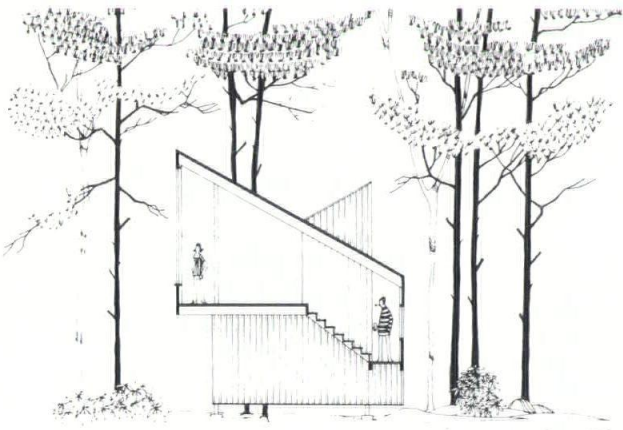
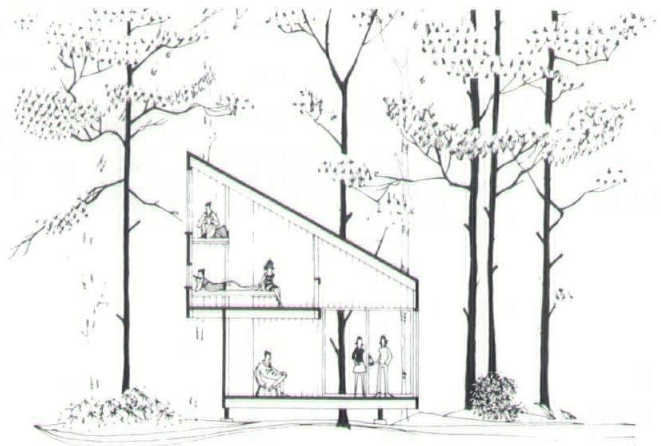




The exterior sheathing is made up of a rough textured board and batten system of rough sawn pine sprayed with an exterior Danish oil.

sprayed with an exterior Danish oil. The texture created by this siding effectively complements the roughness of the bark of the hemlock trees. Dark asphalt shingles are used on the roof. Moveable wood sash throughout allows for views and breezes.

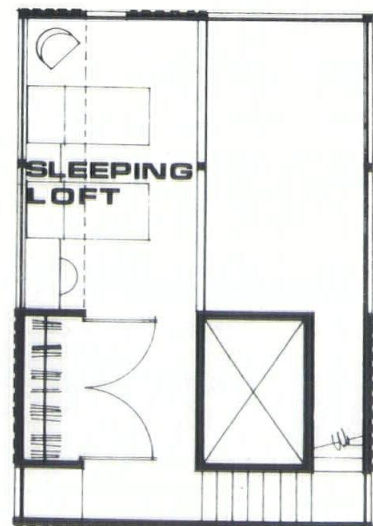
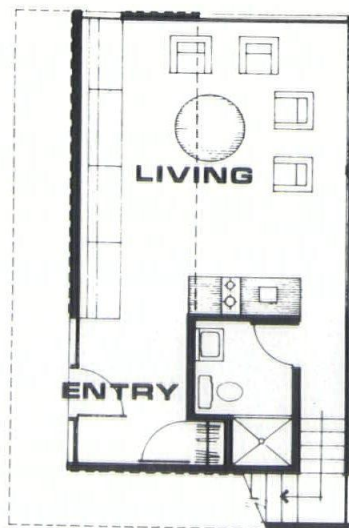
This guest house was completed in 1970 at a cost of \$15.60 p.s.f.



C

B

A



The sleeping area is treated as a loft or balcony open to the living area below. There are no doors between the two major spaces.



THE MacMILLIN FLAG,
FLOWN AT THE SITE OF
EACH OF OUR CONSTRUCTION
PROJECTS, SYMBOLIZES OUR
PRIDE IN NEW ENGLAND
CRAFTSMANSHIP AND SKILL.

THE MacMILLIN COMPANY, INC.
BUILDERS



KEENE · NEW HAMPSHIRE

MEMBER, THE ASSOCIATED GENERAL CONTRACTORS OF AMERICA • ASSOCIATED BUILDERS & CONTRACTORS, INC.

Landscaping for
THE MANCHESTER BANK
Manchester, N.H.

Davison Construction Company, Inc. — GENERAL CONTRACTOR

by



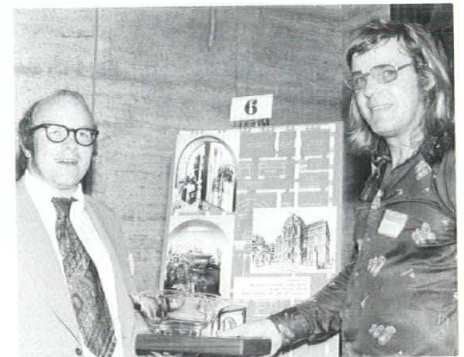
NORTHERN LANDSCAPE, Inc.
Industrial and Commercial Landscaping

468 MERRIMACK ST., METHUEN, MASS. TEL. 617-686-6583

(Continued from page 4)
involved in the expanding construction industry.

Mr. Ashley, who has designed over 130 schools throughout New England, New York, and New Jersey, has recently expanded his services to the industrial, commercial, and housing fields. He has received national recognition for his architectural designs including the Top Honor Award from the American Institute of Architects, Citations from the American Association of School Administrators and the School Executive Competition for Better School Design, Interior Award from Institution Magazine, and Architectural Awards of Excellence from the American Institute of Steel Construction.

**Anderson, Notter
Win Peabody Award**



George M. Notter, Treasurer (left), and J. Timothy Anderson, President, of Anderson, Notter Associates, Inc., Boston, won for their design treatment of offices for the Massachusetts Housing Finance Agency at the Old City Hall building.

The first annual L. J. Peabody Awards competition held recently at the Boston Museum of Fine Arts attracted approximately 230 prominent architects and designers. The event, established for the purpose of "honoring creative excellence in office design and furnishings," was reportedly the first of its kind in New England.

The three winners were: (Best of Show) Anderson, Notter Associates Inc., of Boston; (First Runner-up) Naomi Rosen of J. W. O'Brien Associates, Inc., of Boston; (Second Runner-up) Marian Sachs of The Robinson Green Beretta Corporation, of Providence, Rhode Island.

Sponsored by Peabody Office Furniture Corp., New England's oldest and largest office furnishers, the awards are named after L. J.

Peabody, founder. Lester C. Peabody, President of the firm and son of the founder, presented the awards. Peter Beacham, Executive Vice President, presided.

Of the 10 final entries, five represented photographic presentations of jobs actually completed for clients in the past year; the remaining five



Naomi Rosen of J. W. O'Brien Associates, Inc. (Boston) won first runner-up award in L. J. Peabody bowl competition for her recommended treatment of offices for Ellen Katske, area accounts manager for Peabody Office Equipment Corp.

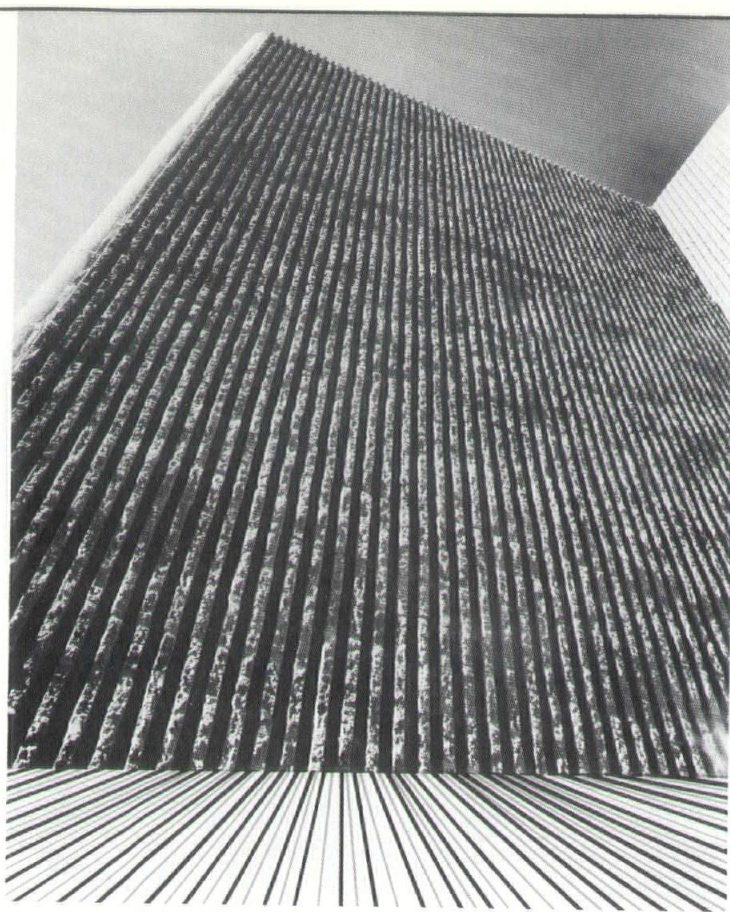
were renderings of recommended design treatments of offices for Ellen Katske. As invitees arrived they reviewed each exhibit and cast their ballots for first, second, and third places in a container provided.



Marian Sachs of The Robinson Green Beretta Corporation (Providence, R. I.) received a second runner-up trophy for winning design treatment of Price Waterhouse offices in Providence.

**Barrett Sales Manager
For California Paints**

Richard E. Barrett, a long-time resident of Maine, was recently appointed District Sales Manager for
(Continued on Next Page)



Split-Ribbed Feature Wall

Multi-purpose concrete masonry allows you to tie together almost every structural facet of building design — creating visual continuity and an environmental entity that will endure for the life of the building.

DURACRETE BLOCK CO., INC.

MANCHESTER, N.H. — MANUFACTURERS OF CEMENT BLOCKS



**Store Front Glass & Glazing Contractors
Distributors Erectors
For Windows and Curtain Walls**

GLASS, GLAZING & ALUMINUM WINDOWS & ENTRANCES for

**C. V. S. STORE, MANCHESTER, N. H.
CARTER and COMPANY, MANCHESTER, N.H.
GRAND UNION SHOPPING CENTER, BRATTLEBORO, VT.**

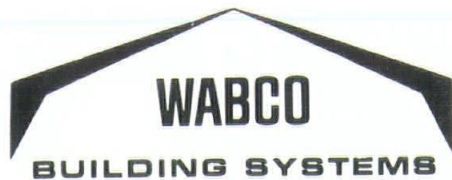
PPG INDUSTRIES, INC./ 100 CAHILL AVE./
MANCHESTER, NEW HAMPSHIRE 03103/AREA 603/624-4386
Contract and Supply Glass Division





METAL BUILDINGS

constructed to meet your client's needs. We offer a complete turn-key package or metal building only erected to meet your job budget.



Call Dick Steer or Ron Farland
today.

WAGHORNE-BROWN COMPANY

P. O. Box 454
Nashua, New Hampshire 03060
Phone: 603-883-0146

the California Paint Division of California Products Corporation of Cambridge, Mass., according to an announcement by company President, Robert Caldwell.

California Products Corporation is a pioneer in latex paint formulations and produces a complete line of latex paints.

Barrett will be responsible for sales throughout Maine and New Hampshire. Formerly with Soule Glass and Paint Company of Portland, Maine and the Sherwin-Williams Company, Barrett has over 20 years experience in paint sales.

1974 AIA Honor Awards Jury Named

David A. Pugh, FAIA, an architect from Portland, Ore., has been named chairman of the 1974 American Institute of Architects Honor Awards Jury.

Together with four other jurors he will select the structures which will receive the nation's highest awards for architectural excellence.

The other 1974 jurors are John Carl Becker, a student at the Harvard Graduate School of Design; Richard M. Bennett, FAIA, of Chi-

BEAN

R. E. BEAN CONSTRUCTION CO., INC.

Industrial — Commercial — Institutional

25 ROXBURY STREET, KEENE, N.H. — TEL. 352-1774

cago; Charles Gwathmey, AIA, of New York City, and Ellamae Ellis League, FAIA, of Macon, Ga.

The jury meets several times to select the most outstanding structures from the usually more than 450 entries. Recent jury procedural changes require at least one member to visit any building which is being considered for an award.

In 1973 nine buildings, among them two large performing arts complexes, a convention-exhibition hall, a corporate headquarters, and a small day camp, were chosen from 470 entries.

McCormack Building Nearing Completion



Use of steel for the framework of the 22-story John W. McCormack state office building, now about 85 percent erected on Beacon Hill here, is resulting in a considerable dollar savings to Massachusetts taxpayers.

The \$25-million structure is being built for the Commonwealth of Massachusetts, Government Center Commission, adjacent to the State House. Partners Austin J. Cribbin Jr. and Nisso T. Aladjem of Hoyle, Doran and Berry, Inc., Boston architect-engineer for the project, explain:

"The structural steel — in order to gain time — was let as a separate contract about four to five months before the general contractor (Vappi & Co., Inc., Cambridge, Mass.) was awarded the general construction contract.

"This was possible since we previously designed a newly completed 465-car, 4-level underground garage at the site with provision for steel erection from its roof when the time came. As a result, we could

help the state save about five months on the overhead of the general contractor — and realize the use of the high-rise structure perhaps three to four months sooner.

"When you consider that the average rental cost of office space in the Boston area runs about \$9 per square foot (ranging roughly between \$7.50 to \$12.00 per square foot of space), any time saved in getting into this 650,000-square-foot office structure can be very valuable to the taxpayers. Now that's a real plus for steel."

About 6,100 tons of structural steel shapes and plates are currently being furnished, fabricated and erected by Bethlehem Steel Corporation for the 136- by 216-foot by 318-foot-

high structure.

The building is 22 stories and will house approximately 3,000 occupants when it is operational. It has been completely designed to accommodate the needs of the handicapped, many of whom are employed by the Commonwealth. For example, for the blind there will be braille-designated buttons on the elevators and special knurled door-knobs on doors leading to dangerous areas. Ramps and prudently located electrical devices will be installed for occupants in wheelchairs. Special drinking fountains, flashing lights and buzzers will also assist the handicapped.

(Continued on Next Page)



P.O. Box 511
Loudon Road
Concord, N.H. 03301
603 224-2562

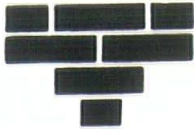
P.O. Box 327
Daniel Webster Highway So.
Merrimack, N.H. 03054
603 424-2106

There are times...

...when a soft touch is needed, but when it comes to insurance of any kind, firm hands on the reins are essential. Joe Rowley and his staff are all more than qualified to handle any insurance problem you may encounter.



The architect has designed a fully blended amount of white ce-
 facade of bronze-tinted glass, high- ment with pink granite and quartz
 lighted by warm precast concrete aggregates.
 column covers comprised of a care-



W. S. GOODRICH, INC.

Established 1906
 Manufacturers of

Water Struck Brick

HARVARD, COLONIAL, ANTIQUE, FACE AND COMMON BRICK

Recently Completed:

Cancer Management Research Center-Mass. General Hosp. - Boston, Mass
 Westport High School Addition - North Bedford, Mass.

Amoskeag Bank Branches:

- Hanover St., Manchester, N.H.
- Hookset, N.H.

■ Epping, New Hampshire

■ Telephone 679-5338

■ Telephone 679-5339

Also Sales Outlet for a complete line of Masonry Supplies
 Supplying Schools, Churches, Industrial Buildings,
 Town Houses, Apartments and Home Construction.

NATIONAL PARTITIONS INC.

18 HARBOR AVE., NASHUA, N.H. 603 883-4171

*The Leading Drywall and
 Movable Partitions Contractor*

in NEW HAMPSHIRE & VERMONT



DYMENT BROS.

40 CENTRE ST., CONCORD, N.H. Tel: 228-8184



Carpets & Installation for . . .

PLAINVILLE SCHOOL, MERIDEN, N.H.

MARRIED STUDENTS HOUSING, KEENE STATE COLLEGE, KEENE, N. H.

CARPETS — SALES & INSTALLATIONS — RESILIENT FLOORS

Index To Advertisers

Acoustical Solutions	2
Bancroft & Martin, Inc.	5
<i>Advertising Exchange</i>	
R. E. Bean Construction Co., Inc.	30
<i>Bosson-Sawyer</i>	
Business Equipment Corp.	4
<i>Clark, Bernard, Husband</i>	
Communicon	4
Corriveau-Routhier	1
Duracrete Block Co., Inc.	29
Dymment Brothers	32
Fimbel Door Corporation Cover III	
Fletcher's Paint Works	32
Four-Power Group	Cover II
<i>Ingalls Associates, Inc.</i>	
Local Gas Company	Cover IV
<i>Harold Cabot & Co., Inc.</i>	
W. S. Goodrich, Inc.	32
Hussey Products Corp.	2
The MacMillin Company, Inc.	28
National Partitions, Inc.	32
Northern Landscape, Inc.	28
PPG Industries, Inc.	29
The Rowley Agency, Inc.	31
<i>The Young Advertising Agency</i>	
Spaulding Brick Co., Inc.	2
Waghorne-Brown Co. of New England, Inc.	30



NEW HAMPSHIRE'S
 OWN PAINT MANUFACTURER
 FOR MORE THAN A QUARTER
 OF A CENTURY

Paints for the Home
 (including Authentic Colonial Colors
 which have a nation-wide reputation)

Paints to Specification for
 Commerce, Institutions & Industry

FLETCHER'S PAINT WORKS

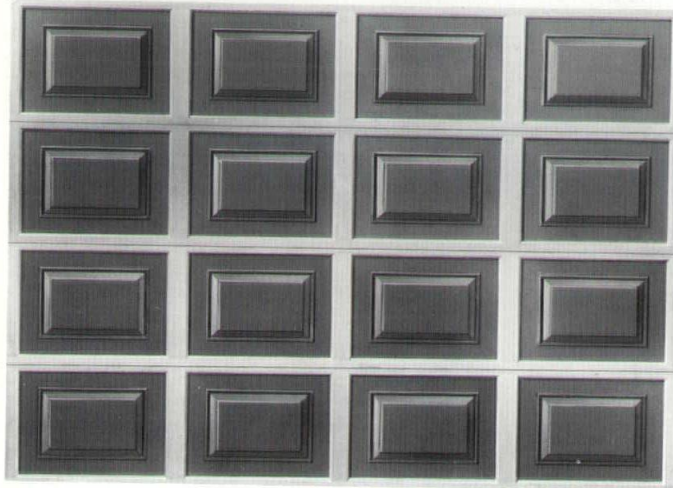
Route 101 Milford, N.H.
 Factory Branch Stores in

Concord, Laconia, Keene, Lebanon
 Woodsville, Hampton, Milford
 Littleton (Littleton Hardware)
 ALL IN NEW HAMPSHIRE

Behind This Door...



THERE IS A STORY OF INTEREST TO ARCHITECTS



This is not an ordinary garage door! It is a FIMBEL OVERHEAD TYPE DOOR, crafted with precision and flair for Architectural Design. Called "Raised and Routed" — the door shown above has the rich look of hand-carved wood panels.

Any of our Contemporary Doors offers unlimited expression of individual taste — through the use of Glass Craftsmanship in Sunburst, Diamond, Cathedral — among others — and Wrought Iron in Modern Style or Authentic Colonial.

There is a Fimbel Door for Every Type Home . . . to blend with its natural setting. While the "Capri" and "Fanlite" Models, for example, are suited to the home of today — the FIMBEL ENGINEERING DEPARTMENT welcomes the challenge of the older traditional home.

In a Colonial Decor, one might prefer the "old barn look". You could choose a weathered "Herringbone" pattern. Or, our Residential Flush Models adapt easily to arched-head or clipped-corner openings . . . lending old style simplicity and clean lines to the traditional.

Through Creative Engineering we can custom-build to specifications for unusual applications . . . Residential, Commercial, and Industrial.

We use only the finest materials — in Wood, Fiberglass, Aluminum, and Steel.

All Workmanship and Products are fully guaranteed — including the Electric Operators and Remote Electronic Controls. Heavy duty Components are totally enclosed.

Manufacturing and Servicing Overhead Type Doors since 1924 — we will soon be celebrating our 50th Anniversary!

Free Estimates & Quotations ——— For Technical Information ——— see Sweet's 1973 Catalog

FIMBEL DOOR CORPORATION

The Nashua, N.H. Factory

24 Fox Street

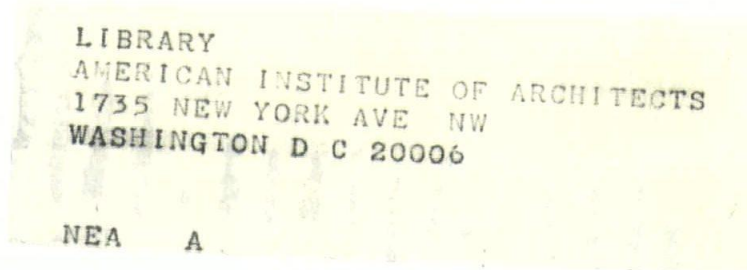
P. O. Box 848

Tel. 603-882-9786

Distributors and Dealers in principal New England cities

Other factories located at: HILLSIDE, NEW JERSEY • WHITEHOUSE, NEW JERSEY • EGG HARBOR CITY, NEW JERSEY

How to conserve and save money.



Confine heat to areas with work in process.

By doing so, you not only conserve natural gas for yourself, but you save money too. Try following these four simple things that will save everyone natural gas. And *you* money.

1. Maintain optimum combustion and heat transfer efficiency. Limit excess air to actual needs. Confine flames to heating areas. Maintain proper air/gas ratio at each burner. 2. Maintain optimum flame geometry in impingement heating jobs. 3. Reduce building heat losses by sealing cracks around exterior windows and doors, by replacing broken windows, by closing doors promptly and by the adequate application of proper insulation, and by limiting fan exhaust to actual needs. 4. Insulate lines conveying steam and hot liquids.

 **The Natural Gas Companies of Massachusetts**

Your Gas Company representative will be glad to consult with you on any of these projects.

