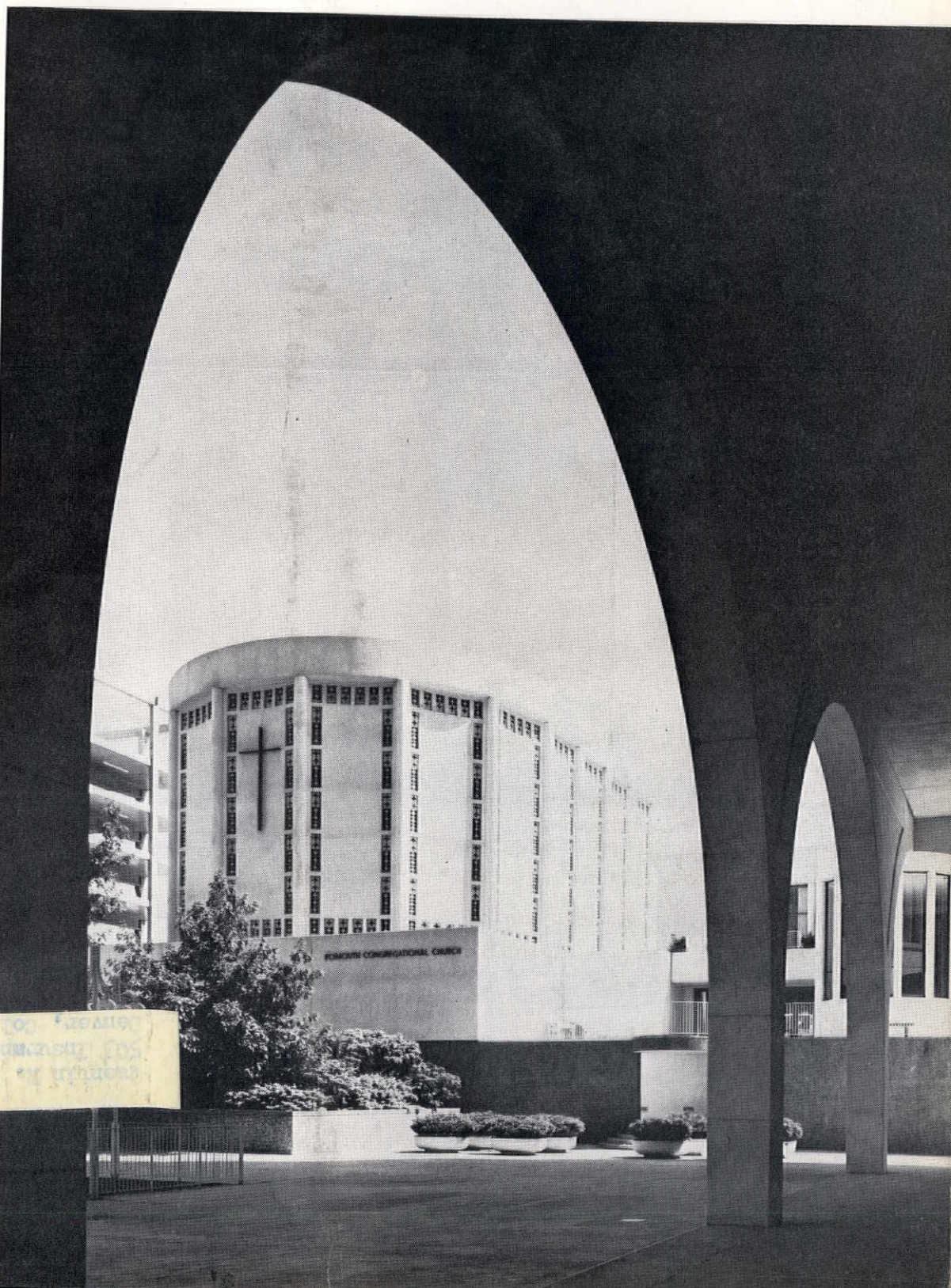


architecture / engineering / construction

symposia

april, 1970



2000 0707 1970
Riverside Congregational Church
Riverside, California

How does Gas energy help the fish in polluted waters?



For years, our waterways were convenient dumping places for industrial wastes. And many were harmful to waterlife. But now, Gas incineration is helping to change all that.

With Gas incineration, plants can get rid of liquid waste virtually without a trace left behind. There's no smoke, odor, or fly ash. And, of course, no costly haulage.

Take the case of Chrysler Corporation. At their stamping plant in Ohio, they produce 12,000 gallons of oily waste every

working day. But with Gas incineration they get rid of it quickly, cleanly and efficiently.

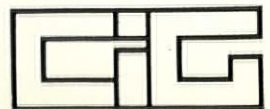
Gas incineration is already doing a job for supermarkets, hospitals... all kinds of places. Because Gas combustion is complete. Costs are low. And air and water pollution are no problem.

But is all this really so surprising? After all, Gas is almost pure energy. Learn more about Gas incineration by calling your local Gas Company Sales Engineer.

Gas makes the big difference

...costs less too!

COLORADO INTERSTATE GAS COMPANY
COLORADO SPRINGS, COLORADO



**Do Herman Miller,
Knoll, Domore, Harter,
CCC and Dunbar/Dux
have showrooms in Denver?**

**Yes...all at
80 South Santa Fe!**

Seal has extensive selections of fine furnishings by these great makers . . . and many others . . . in more than 30 completely furnished offices. Over 16,000 square feet of newly decorated individual offices, work modules and showroom areas. Now there's no need to take clients to New York, Chicago or Los Angeles to see the newest lines offered by these leading manufacturers. Just bring them to Seal! Other lines in our showrooms include Art Metal, Supreme, Thayer Coggin, Howard Miller and George Kovacs. See them all in Seal's new showrooms.

SEAL
FURNITURE, INC.
80 SO. SANTA FE / DENVER / 777-3071

symposia

construction communications
in the West

VOLUME 4

NUMBER 11

APRIL, 1970

THIS MONTH

	Page
Honors and Awards/Consulting Engineers Council/Colorado	6
The Last Word	8
A/E Selection Bill Introduced	12
Architecture '70 . . . a look ahead . . . Utah to Celebrate Architecture Week	13
"Operation Teamwork," Region 8 Forum/N.A.W.I.C.	14
Student Affairs—The Word Is "Ecology" by Calvin Hoiland, A.I.A.	15
C.S.I./SPEC DATA II—Building Products File prepared by Information Handling Services	16
Restoration—The Delgado House in Santa Fe by Bradley P. Kidder, F.A.I.A.	18
A.I.A./C.E.C. Public Affairs Conference—in summary	20
The Quotable " "	22
Encore—Denver C.S.I. Seminar and Workshop	22
Take Me to Your Leader	23
Design Study: Open or Closed/The Case Is for Education	24
Symposia/Around the Region	28
Landscape Institute Sets Goals for the Seventies	32
Seattle Architects Honored	33
Silt Pile 10—Arcosanti 2	34
Critique	35
Education, continued—U.N.M. Conference	36
Symposia/About the Cover	36
Index to Advertising	36

publisher: Fletcher B. Trunk

editor: Elizabeth W. Trunk

art direction: Bob Hesdorfer

photography: Rush McCoy

circulation: Florence Morrison

A publication of Boyce Publications, Inc. Issued monthly.
Business offices 4070 Estes St., Wheat Ridge, Colorado 80033
Telephone Area 303-422-4153
Controlled circulation postage paid at Denver, Colorado
Copyright 1970 Boyce Publications, Inc.

EDITORIAL ADVISORY BOARD

arizona

Richard M. Arnold, AIA,
Phoenix

Sidney W. Little, FAIA
Tucson

colorado

James Barr, CSI

Don Decker, ABC

W. Patrick Dulaney, AIA

Thomas W. Keeton, Jr.,
CSI/PC

F. Lamar Kelsey, FAIA
Colorado Springs

E. Vernon Konkel, CEC

Bernard P. McMenamy,
CSI-ASHRAE

R. James Noone, CSI

Maxwell L. Saul, AIA-CSI

idaho

John L. Hoffmann, CEI
Boise-Lewiston

montana

A. Calvin Hoiland, AIA
Great Falls

nevada

Edward S. Parsons, AIA
Reno

Walter F. Zick, AIA
Las Vegas

new mexico

Bradley P. Kidder, FAIA
Santa Fe

Joe Boehning, AIA
Albuquerque

Robert Schmidt, FASCE-CSI
Albuquerque

James R. Cushing, CSI
Albuquerque

oregon

Robert Wilmsen, AIA
Portland

utah

Ashley Carpenter, AIA

Nancy Carpenter
WAL/NAWIC

C. Walter Scott, CSI
Salt Lake City

wyoming

Gerald Deines, AIA
Casper

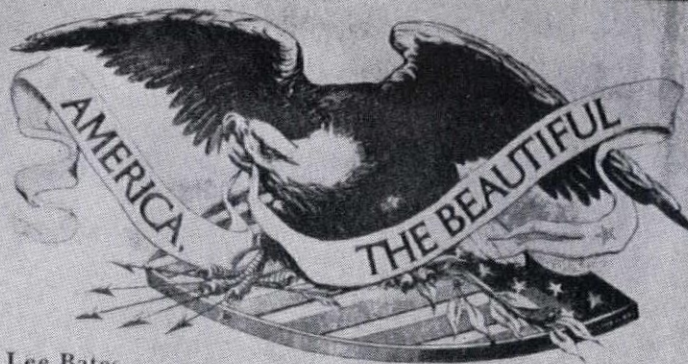
N. A. Nelson, AGC
Sheridan

CONTRIBUTING EDITORS:

Landscape: F. J. MacDonald,
AIA/CSI Arizona

Urban Affairs: Ronn Ginn,
AIA/AIP/CSI
New Mexico, Florida

An unsolicited testimonial to Frontierland from Katharine Lee Bates.

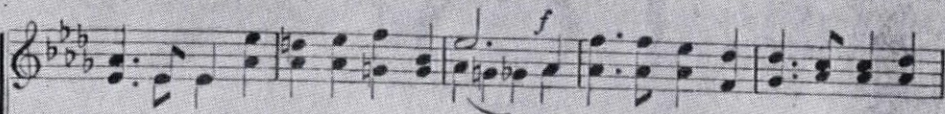
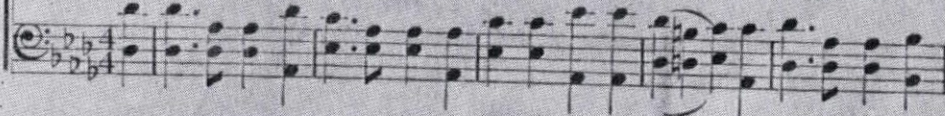


words by
Katharine Lee Bates

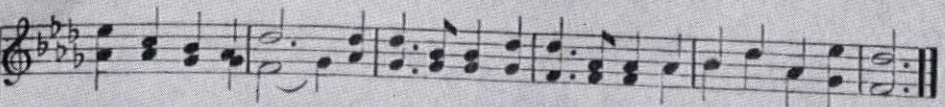
music by
Samuel A. Ward



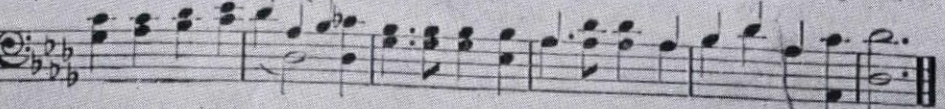
O beau-ti-ful for spacious skies, For am-ber waves of grain, For pur-ple moun-tain



maj-es-ties A-bove the fruit-ed plain. A-mer-i-ca! A-mer-i-ca! God



shed His grace on thee, And crown thy good with brother-hood From sea to shin-ing sea.



In 1893, Katharine Lee Bates came to Frontierland . . . and was so moved by what she saw, she wrote a song about it.

And, that song still rings true today. The clean air. Mountains. Lakes. Waterfalls. The rolling plains. The canyons and deserts. All part of Frontierland. The beautiful big country.

. . . Stretching across 16 states . . . from Memphis to Las Vegas . . . and the Canadian border to the Rio Grande.

To help keep it beautiful, many areas of Frontierland are protected as National Parks.

Frontier Airlines can help you discover Frontierland . . . where it's still America the Beautiful.

Once you see it, you may not be able to describe it as well as Katharine Lee Bates did, but you'll know exactly how she felt.

FRONTIER AIRLINES
a better way to fly



Award Judges stand behind the Top Award winner. Left to right, Dean Lionel Baldwin, CSU School of Engineering; Dean Allen Thurman, DU School of Engineering, and Dean DeVon Carlson of the CU School of Architecture.

honors and awards consulting engineers council

On February 24, Colorado's Consulting Engineers gathered at Denver's historic Brown Palace Hotel to honor winners in their Third Annual Engineering Excellence Awards program. Top place was accorded Wright-McLaughlin Engineers of Denver for "An Urban Storm Drainage Manual," researched, prepared and published for the Denver Regional Council of Governments.

The Wright-McLaughlin project is the first such standard manual to be prepared for implementation throughout an American metropolitan area. The Urban Storm Drainage study is presently under consideration in some thirty-six communities in twenty-two other states and by at least five other nations for possible adoption.

Other firms and projects given Engineering Excellence Awards were Henningson, Durham and Richardson of Denver for the design of a new water treatment plant for the Colorado western slope city of Grand Junction. This sixteen-million gallon per day water treatment plant is the major facility of a master plan for water development in that city.

The Consulting Engineering firm of McFall and Konkel was recognized for the comfort conditioning system for The Financial Programs Building in Denver. The air conditioning system for this building is designed to intercept a major portion of heat gains before they enter the building and facilities utilizing water circulating through cores

of louvers and troffers, automatic sun control positions the louvers automatically.

The fourth award was for the design of a blast freezing facility in the bakery at King Soopers, Inc., in Denver and was presented to Rice-Marek-Harral and Associates. The King Soopers bakery project provided for flash freezing, the reduction of storage requirements, insulation costs and the costs of freezing bakery products.

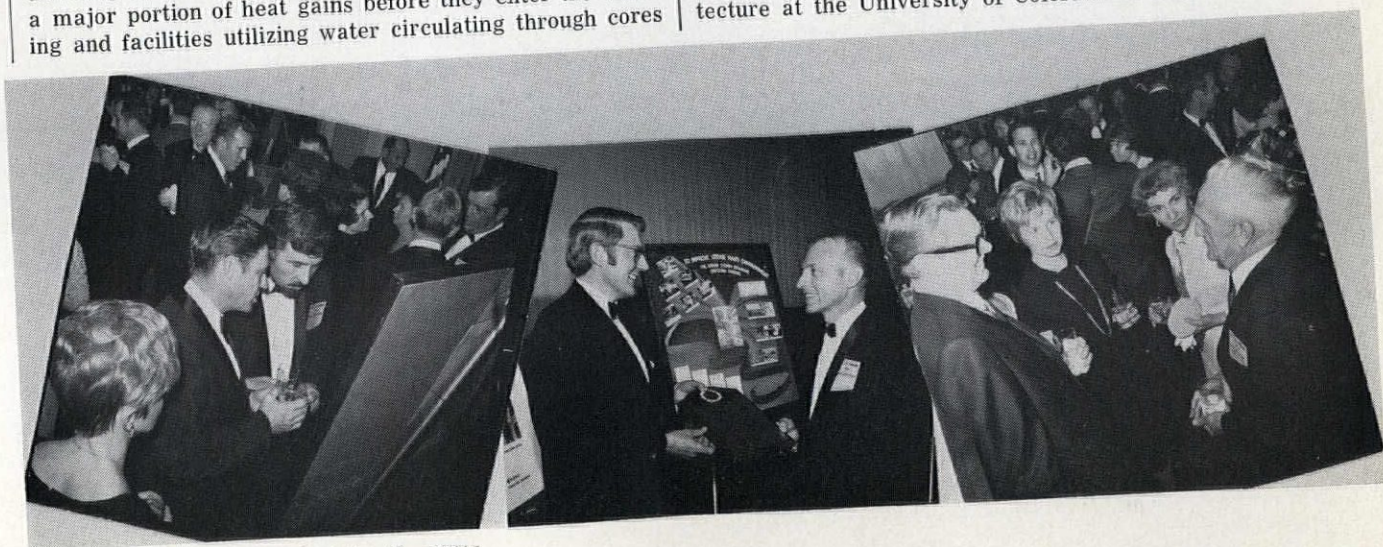
In addition to top honors, the Wright-McLaughlin firm was also recognized for the water supply system for the Colorado city of Montrose. This included a comprehensive water resources management approach which will provide the city with a total supply to meet its increasing needs.

All five of the Colorado Engineering Excellence Awards are scheduled to be entered in the CEC/USA competition with national awards to be made in Boston at the national CEC convention slated for June.

Life Memberships in the Consulting Engineers Council/Colorado were presented to three long-time members of the Council. They were given to Lottye Miner of Greeley and Clifford Johnson and Morey Wilson, both of Denver.

This very gala affair was highlighted by the presentation of the Auraria Higher Education Center by its master planner, F. Lamar Kelsey, Jr., F.A.I.A., of Colorado Springs. Mr. Kelsey (Symposia Editorial Advisory Board member), prepared the Feasibility Study for the projected core-city campus (featured in our January/1969 issue) and is presently engaged in more detailed master planning for the campus where three higher education facilities will be located. Initial funding for the Auraria project has already been approved by the City of Denver and the State Senate and House of Representatives. Mr. Kelsey's presentation included a fine group of colored slides illustrating all factors of the project, and the place the higher education consortium would play in "our changing society."

Judges for the Third Consulting Engineers Council of Colorado Awards program were Dean Lionel Baldwin of the Colorado State University School of Engineering, Dean Allen Thurman of the University of Denver School of Engineering and Dean DeVon Carlson of the School of Architecture at the University of Colorado at Boulder.



Where can you get the best power systems engineering, installation and service?

At McCoy, because we care!



Next time you're confronted with a power systems problem, call on McCoy's Engine Center personnel. They're experienced specialists who understand power and its application. They are backed with the finest facilities, the tools and the Caterpillar technical data to assure you power systems correctly engineered to meet any requirement. It may involve a Total Energy System that supplies full time power needs on site. Or a Caterpillar Standby Power Unit that takes over when outside power fails. For help with either new power or repowering of existing systems, use McCoy's Total Service Engine Center. It's designed to meet your needs and those of your clients. Professionally. Capably.

... because at McCoy, we care!

McCOY CO.

*Caterpillar in Colorado | 6000 Dahlia | Commerce City, Colo. 288-2621
Durango | Grand Junction | Pueblo*

Caterpillar, Cat and Traxcavator are Registered Trademarks of Caterpillar Tractor Co.

Symposia/April, 1970

Page 7

SUDDENLY IT'S 70 NEW CONCEPTS NEW DIMENSIONS

Combining our Fifteen Year Old
Kitchen and Bath Division

With our New
Design Surface Division

For
Complete Design and Color
Coordination

PARKWOOD Plastic Laminate Counter Tops

GENUWOOD Vinyl Flooring
Resilient Flooring made with genuine wood
veneer

GENOWALL—A new concept in wall covering
and surfacing

FABRITILE Vinyl Fabric Flooring

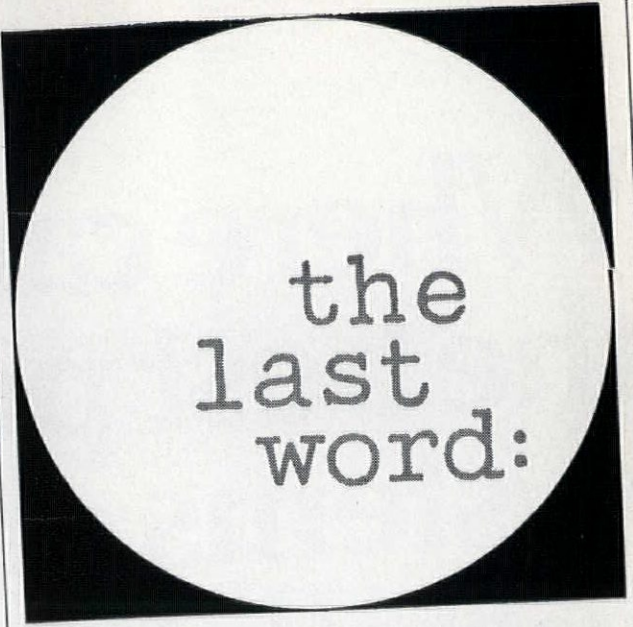
CARPETING

Shags, Prints, Hi-Low Patterns

Commercial-Residential—Kitchen and Bath
Jute Hi-Density Foam and Sponge Rubber
Backs

Complete Inventory in 12 ft. and 54 in. widths in all colors
for Immediate Shipment.

NELSON
DISTRIBUTING
917 WAZEE STREET / DENVER, COLO.
TELEPHONE: 292-3290



LAURELS! Our heartiest must go to the Nevada Chapter of the Associated General Contractors who placed first in the National competition (130 Chapters) for membership development. E. W. McKenzie of Reno accepted the award for the Nevada Chapter at the AGC Convention in New Orleans.

If, at first, you don't succeed—yes, the Colorado Society/AIA IS trying again. Scheduled for the guest speaker spot at the Annual Colorado University/AIA Student Awards Banquet on April 16th is Forrest Wilson, Editor of Progressive Architecture. It will be a great pleasure to welcome this charming guy at the Boulder Country Club on that evening. Felled by a pneumococci, Mr. W. couldn't make the Annual Society meeting in Colorado Springs. Button up your overcoat, Forrest!

CHEER UP—our own Kitty Little! Yep, Kitty, that is to say...Mrs. Sidney W. Little, has a broken right arm. So, tell her you're sorry!

The Consulting Engineers Council of Utah has a new address! It is P. O. Box 8366 — Foothill Station — Salt Lake City, Utah 84108. They will appreciate getting their mail addressed and delivered to one address.

Santa Fe will host the Annual Convention of the New Mexico Society/AIA in mid-September. It will begin on Friday afternoon, with meetings all day Saturday climaxed by the Awards Banquet that evening. And Santa Fe is beautiful in September!

A FAT and beautiful issue of the Salt Lake Chapter News—newsletter of the Salt Lake Chapter/CSI at hand. A spectacular reporting job of the Region 10 Conference held in that city in early February—Congrats are in order for all concerned.

One firm plus one firm equals one firm. Not higher mathematics, just a merger of the architectural firm of James N. Rowland and the consulting engineering firm of Cottrell Vaughan. It is now Cottrell Vaughan/James N. Rowland and Associates, Inc., with new and expanded services, and located at 301 Graceland, SE in Albuquerque.

Three new members are being welcomed by CSI's Pike's Peak Chapter . . . they are Architect, Cliff Nakata; G. C., Sterling Penman and Industry member, Del Doty of Godwin-Bevers. A good group!

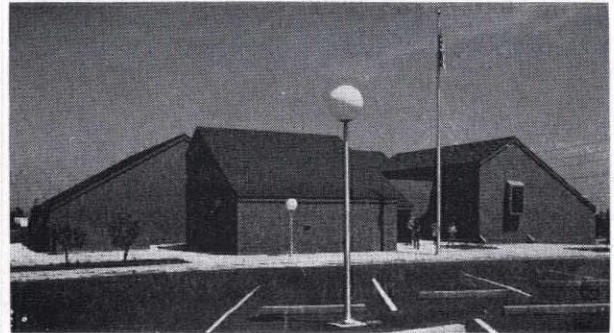
William Slayton, Executive Vice President of the AIA, has announced a \$500,000 Ford Foundation Grant to the AIA Foundation, matched by a like grant from the AIA, for scholarships for minorities. A giant step toward implementing the Professional Responsibility Program of the Institute.

WOW! Those Lotharios of the Denver Chapter/CSI were swingin' again at their March 11 meeting. They not only had the WOW! Women in Construction, but the WOW! Architectural Secretaries too. Oh, yes, the program? It was Jim Merlin and SPEC-DATA II . . . fortunately the fella's can catch up on their homework in this issue of Symposia.

HONOR AWARD

BONFILS-STANTON REGIONAL LIBRARY
WILLIAM MUCHOW & ASSOCIATES, ARCHITECT

1969 S.C.P.I./A.I.A.
Awards Competition



THE JURY: Bold in its forms and in its concept, this library building in a growing but as yet lightly developed part of Jefferson County, is a place of interesting spaces, gay colors and unexpected vistas through the building. The concepts of wings around a central area results in the plan solution, and in a variety of projections and roofs which, although not overly obvious on the interior, contribute to the light-hearted character of the library. Colorful graphics in fashionably large letters and numerals are prominently part of the interiors.

STRUCTURAL CLAY
PRODUCTS INSTITUTE
2680 18th Street Phone 455-4791
Denver, Colorado

Colorado's First Environmental Housing Conference was held March 23-24 at the Brown Palace Hotel. Featured was Professor Walter H. Lewis, AIA, from the University of Illinois in Urbana. A full report on this important event to come.

Those SMACNA (Sheet Metal Contractors National Association) fellows—Chapter Managers and the Council of Chapter Representatives are meeting on the 6-8 of April in Clearwater, Florida. Isn't that where the mermaids are, Daddy?

ANNUALS—Two important chapters of the Consulting Engineer's Council have scheduled Annual Meetings and Installation of New Officers. CEC/Utah will meet at the Willow Creek Country Club on April 29 with Larry Spiller, CEC/US as guest speaker. CEC/Colorado will meet April 28th at the "Olive and Grape." We look forward to meeting the new "leaders" in May's Symposia.

NEW ADDRESS — the International Offices of the American Institute of Landscape Architects are now located at 501 East San Juan — Phoenix, Arizona 85012. Board Member, F. J. MacDonald is the Executive Director.

The Student Awards Dinner at the University of Arizona will be held on Monday evening, May 4th—a repeat of last year's most successful at Little Abner's Steak House. Oh, to be in Tucson now that May is here! Wish "the team" could make it, Sid!

New location for the Chapter Meetings of the Albuquerque Chapter/CSI is the Coach and Six at 2509 San Mateo Boulevard, N.E. Balance of the "specs" are the same Happy Hour beginning at 5:30 on the second Tuesday of every month.

Add/"Architecture, '70"—The Utah Chapter/AIA has an Honor Awards Program coming up in connection with their Big Week in May. Marvin Hatami and Charles Sink of the Colorado Central Chapter will join William Muchow, FAIA, on the Awards Jury.

In early March, 15 members of the Iowa State University Student Chapter of the AGC visited Colorado—touring construction sites, taking a long look at Denver architecture and generally becoming acquainted with the Associated Building Contractors of Colorado. A most successful program.



W. RAY CRABB, INC.
471 KALAMATH DENVER, COLORADO (303) 534-5101

MANUFACTURERS OF QUALITY CUSTOM HOLLOW METAL DOOR AND FRAMES

Largest Stock of Standard Doors and Frames in the Rocky Mountain Area

AUTHORIZED **KOOLSHADE**
SUNSCREEN CONTRACTORS



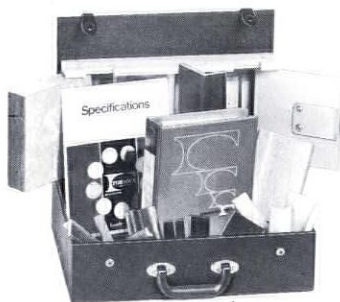
Before you specify tile again, take a look at this!



FORMICA® Panel System 202 is ideal wherever you need moisture-proof walls.

Now you can specify handsome, wide panels not possible with tile. FORMICA® Panel System 202 can be installed over existing structurally sound walls, including ceramic tile. Ideal for tub surrounds, showers, or the entire bathroom...

wherever a moisture-proof surface is needed. Twenty elegant patterns available to make a bath distinctively beautiful. For details consult Sweet's Architectural File 10b/Fo or write Formica Corporation, Dept. HL-2.



For wall surface ideas, see the man with a case full... your Formica man.

Leadership by design

FORMICA
BRAND
laminate

A/E SELECTION BILL INTRODUCED

(Democratic Congressman, Jack Brooks of Texas addressing the members of the American Institute of Architects and the Consulting Engineers Council meeting in Washington, D. C., in February for their "Public Affairs Conference," stated he would introduce legislation providing the broadest competitive selection of architects/engineers on the basis of proven capability. Representative Brooks has done just that. We know, within our Symposia Region, this particular topic is of great interest to our readers. We, therefore, are reprinting the complete text of this legislation as it was presented to the House of Representatives by Congressman Brooks on March 12, 1970.)

Be it enacted by the Senate and House of Representatives of the United States of America in Congress assembled, That the Federal Property and Administrative Services Act of 1949 (40 U.S.C. 471 et seq.) is amended by adding at the end thereof the following new title:

"TITLE IX — SELECTION OF ARCHITECTS AND ENGINEERS

"Definitions

"Section 901. As used in this title—

"(1) The term 'firm' means any individual, firm, partnership, corporation, association or other legal entity permitted by law to practice the professions of architecture or engineering.

"(2) The term 'agency head' means the Secretary, Administrator or head of a department, agency or bureau of the Federal Government.

"(3) The term 'professional services' includes those of an architectural or engineering nature as well as incidental services that members of these professions and those in their

employ may logically or justifiably perform.

"Policy

"Section 902. The Congress hereby declares it to be the policy of the Federal Government to negotiate contracts for professional services on the basis of demonstrated competence and qualification for the type of professional services required and at fair and reasonable prices.

"Requests for Data on Professional Service

"Section 903. In the procurement of professional services the agency head shall invite firms engaged in the lawful practice of their profession to submit, in accordance with the terms of the invitation, a statement of qualifications and performance data. The agency head inviting such proposals shall evaluate the submissions received and shall select therefrom, in order of preference, no less than three of the firms deemed to be most highly qualified to provide the services required.

"Negotiation of Contracts for Services

"Sec. 904. (a) The agency head shall negotiate with the highest qualified firm for a contract for such professional services at a fee which the agency head determines is fair and reasonable to the Government. In making such determination, the agency head shall take into account the estimated value of the services to be rendered, the scope, complexity, and professional nature thereof.

"(b) Should the agency head be unable to negotiate a satisfactory contract with the firm considered to be the most qualified, at a price he determines to be fair and reasonable to the Government, negotiations with that firm should be formally termi-

nated. The agency head should then undertake negotiations with the second most qualified firm. Failing accord with the second most qualified firm, the agency head should terminate negotiations. The agency head should then undertake negotiations with the third most qualified firm.

"(c) Should the agency head be unable to negotiate a satisfactory contract with any of the qualified firms, he shall, in his discretion, either select additional firms in order of their competence and qualifications, or re-issue a new request for proposals."

Under the Brooks bill, the Government agencies requiring architect or engineering services would invite all interested A/E's to submit data as to their qualifications and performance. The Agency head would then rank those architect-engineers submitting this data according to their qualifications to undertake the particular design contract then under consideration.

The Agency head would then negotiate with the highest qualified architect-engineer and, assuming a fair and reasonable price can be agreed upon, award a contract to him. If such an agreement on price cannot be negotiated, the next most qualified A/E would then be afforded the opportunity to negotiate a contract, and so on until the contract was let.

This approach, which many Federal agencies have used effectively for many years, discourages the award of design contracts to lesser qualified individuals simply because they might quote a slightly lower fee, as well as architect-engineers who might quote a lower fee to obtain the contract, then cut corners in their design work to make up the loss.

Representative Brooks emphasized, "This proposal that I have introduced would provide the Government with the highest quality architect-engineer services and also assure the broadest possible competition among architects and engineers for Government contracts. Members of these professions would compete on the basis that reflects the best interests of the Government—their qualifications.

ARCHITECTURE '70

"Where Do We Go From Here?"

It is with great pleasure that we invite you to look forward with us to what we believe to be one of the most significant "architectural events" to come down the pike in a long month of Sundays. It is • **Architecture Week** • in Utah, scheduled for May 18-24, 1970, and it is the joint effort of the Women's Architectural League and the Utah Chapter of the American Institute of Architects. Born in the busy and fertile mind of pretty Marlene Edwards, W.A.L. President, it has been given the love and care such a promising brain-child deserves by Utah's A.I.A. members. The schedule of events now seems to be complete and given the Gold Seal of Approval by A.I.A. Chairman, William Richardson and his Co-Chairman, Marlene Edwards, W.A.L.

May 18: An Open House at the new Utah Chapter Office (Ralph Edwards, AIA, Chairman)

May 19: A combined Service Clubs Luncheon with a nationally recognized speaker, and Presentation of Design Competition Awards. (Fred Montmorency, Chairman)

May 21: Student Awards Party (Stanley Hallet, Chairman)

May 22: Television Documentary — KCPX Television (Ralph Evans, AIA, Chairman)

May 23: Home Tour and Tea (Marlene Edwards, Chairman)

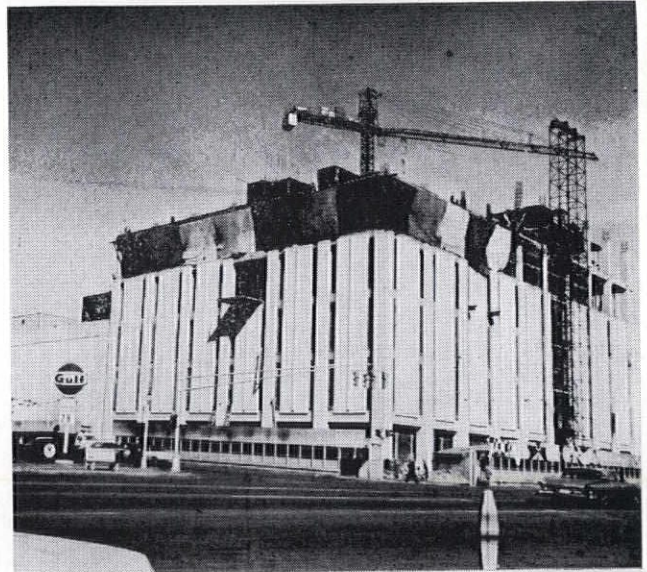
During the entire week, there will be Architect's Programs in forty of the area's schools under the joint chairmanship of Fran Daniels and Burtch Beall, AIA. An exhibit of Architectural Renderings may be seen during this week at the Salt Lake Art Center, and there will be window displays in downtown stores. These exhibits are under the direction of Spencer Smith, Chairman. Ann Blackner and Betty Bailey of W.A.L. are preparing a Public Guide to Utah's Award Winning Architecture. Architectural films will be shown at the Main Library in Salt Lake City, and a special issue of **Utah Architect** is projected.

All graphics for Architecture '70 are being designed by the Art Department at the University of Utah with Clifford Harvey as Chairman—Will Louie, AIA, coordinating. At the conclusion of Architecture Week, there is no doubt that the citizens of Utah will know what an architect is—what he does—and of his deep concern for the world we live in. The interpretation of the part architects will play in shaping our environment is of grave moment to the future of the profession. We salute Utah's Chapter of the American Institute of Architects and the Women's Architectural League for taking a giant stride toward this goal. BRAVO!

WHAT IS A SYSTEMS BUILDING?

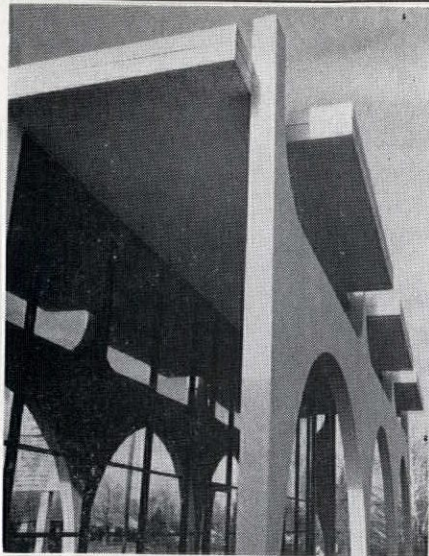
It is not a repetitious prototype design that the word system implies, actually it is a predetermined functional edifice having the basic aesthetics of a monumental structure. The approach from system means application of prefabrication with the use of a prefabricated systems approach. Dividends over and above conventional construction are earlier completion reducing construction cost, loan interest, and quick occupancy availability. Exteriors of architectural precast concrete allow the artistic, imaginative concepts of the designing architect. The flexibility of architectural concrete may encompass period architectural aesthetics from the Renaissance to the modern without inducing astronomical investments.

MAK PRECAST PRODUCTS CO.
6900 ELM STREET 288-1571 ADAMS CITY, COLO.



Colorado Springs Main Exchange
Mountain States Telephone Co.
Carlisle B. Guy, Architect
Gerald H. Phipps, Inc., General Contractor

THIS IS SYSTEM Pouring Structural concrete fifth-floor elevation enclosed with architectural precast concrete fourth-floor elevation.



D7
WATERPROOFING

THOROSEAL

Manufactured by Standard Dry Wall Products

WATERPROOF your Masonry
CREATE an even-textured surface
DECORATE

ALL IN ONE OPERATION

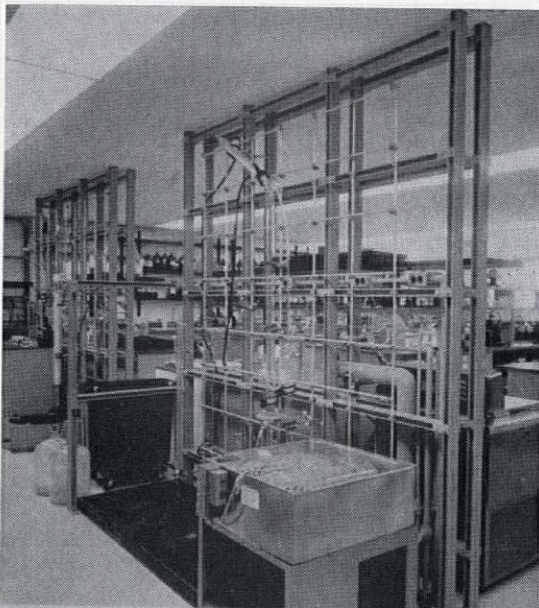
Spec Data Sheets Available



FRANCIS J. FISHER, Inc.

24th & Blake Street

303/825-6203



LABORATORIES
with UNISTRUT metal framing

Complete Informational Catalog Available
Call

UNISTRUT WESTERN Inc.

601 S. Jason St. Denver, Colo. 733-5535

Region 8 Forum "Operation Teamwork"

The last weekend in April (24-26) will see women actively engaged in the Construction Industry meeting for their Annual Forum at the Antler's Plaza Hotel in Colorado Springs, Colorado. Since the Colorado Springs Chapter No. 138 is the youngest in the area, chartered on May 13, 1967, they are particularly proud and happy to welcome fellow WICS from Phoenix and Tucson, Arizona; from Denver; Albuquerque, New Mexico; Amarillo, Big Spring, Lubbock, Midland and Odessa in Texas, and Salt Lake City, Utah. In addition to over a hundred Women in Construction from Region 8, there will be a number of VIPs—National Officers, Past Presidents and the current NAWIC 2nd Vice President, Janith Gould who hails from Seattle, Washington.

This year's Forum Coordinator is Marie Oeltjen who has been nicknamed "Columbine Kate" by her Colorado Springs buddies headed by Chapter President, Gayle Nice. (Just in case you do not recognize the name we would postscript that until very recently she was known as Gayle Richards.) Lots of special and fun events have been planned by the Colorado Springs Chapter with the All-Day Business session on Saturday, April 25th conducted by Region 8 Director, Margaret Miller of Denver.

FORUM PROGRAM

Friday, April 24

12:00 Noon: Registration opens in Douglas and Pueblo Rooms; Hospitality Room in International Suite Opens

6:00 p.m.: The Friday Night Extra—Dinner and Melodrama in Cascade

Saturday, April 25

7:00 a.m.: Registration (Will close at 8:45 a.m.)

8:00 a.m.: Chapter President's Meeting with Regional Director

9:00 a.m.: Morning Business Session, El Paso Room
Margaret Miller will preside. After the opening ceremonies and Official Welcome, there will be a message from the Regional Director and a report on the National Association from Janith Gould, NAWIC Second Vice President. Construction Projects will be presented and discussed, National Committee Reports and Candidates for National Office presented.

12:00 Noon: Luncheon—Douglas and Pueblo Rooms

2:00 p.m.: Afternoon Business Session, El Paso Room—Margaret Miller presiding. The afternoon session will begin with reports from appointed members from each luncheon committee for general floor discussion.

Election of Region 8 Director — Selection of 1971 Forum Site and Choice of Dates.

7:30 p.m.: President's Banquet

Visiting WICs will have several options for "fun activities" on Sunday, April 25th—a briefing on NORAD, Church at the Air Force Academy or a tour of the Academy . . . all are being projected.

Joanne Kuhl, Publicity Chairman for the Colorado Springs Chapter, extends this most sincere invitation—"Come join us in Colorado Springs, for what we know will be an informative and constructive Forum . . . lots of fun, too! See you there."

The Word Is "Ecology"

By Calvin Hoiland, A.I.A.

The big news in student circles is EARTH DAY/Teach-In which is set for April 22nd. In case you haven't heard this is the day the kids tell us where we screwed up in the field of Ecology. However, after having heard their condemnations of our efforts in the areas of economics, warfare, selective service, race relations, drugs, education, clothing, art, music, politics and sex, I'm not sure their protest will have as much impact as it should. The Earth Day/Teach-In will feature three speakers at each regional workshop on ecological problems:

Speakers on—Attitude Change (Hell, I do that every night at 5)

Economy

Problems of Population

That's April 22nd—almost everywhere. But they're on the right track, and I'm the first to admit we have not done all we should for our country or the world. It's just that I have a hard time listening after the first few blows of their attack. . . . In short, they have a good product, but they're damn poor salesmen.

On May 9th, the students at Washington State University are sponsoring a one-day "Ecological Happening" called COURSE and featuring the newly popular ecologist, Ian McHarg. Should also be good.

The Northwest Region has voted \$2,000.00 (This parallels action taken by the Western Mountain Region in Las Vegas in November) to begin a fund for the support of student activities in the Region . . . funds to be dispersed by a committee of three, headed by the AIA Regional Director and including at least one student. The kids were

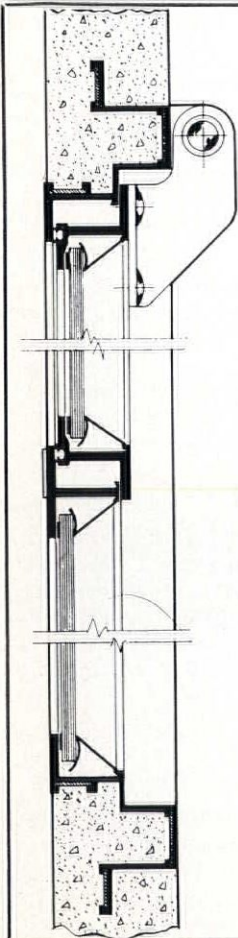
STUDENT AFFAIRS

so excited that the AIA was giving them some aid that when the budget for the Regional in Hawaii next October was discussed, one objected to the \$1,500 budget figure for Entertainment—hula dancers, singers and the like—said this much money would pay for a whole bunch of travel for kids and things, or for a speaker on ecology. Maybe he's right, but it seems a shame to go clear to Hawaii without seeing a single hula dancer.

Saw one particularly interesting boy at the Seattle discussions . . . architectural student at UW, I think—Nice looking, sensitive boy with a full Jesus beard and shoulder length wavy hair; very dark, thick Mediterranean hair. He had on a rust color sweatshirt, except it was a wool yarn sweatshirt (cost about 30 bucks, I figured), rough-out chukka boots (and up to here he was a genuine revolutionary, fighting the Establishment) but with this he had plastic frame glasses, tight vinyl pants and pot-metal love beads. **How** can you put **down** the plastic people in a getup like that. Interesting!

But . . . my personal project for the year is to find out what students of architecture want the A.I.A. to be and what they want A.I.A. to do.

(Symposia's Board members all share a universal concern for young people—none is more involved than Cal Hoiland from Montana. He seems somehow to view the student rebellion with a twinkle in a knowing eye and with a dispassionate humor which quite escapes the most of us who are apt to look at the whole bit with either "holy horror" or by the "rending of our garments." Our motto may well be—keep your Cool with Cal).



Throughout the Western States, Colorado Metal Products Provides Total Capability in Window Design and Fabrication.

Erecting pre-cast concrete buildings?
Insert U. S. Patented Colorado Metal Products aluminum sash
in casting molds, and achieve:

- Significant cost savings through trouble-free installation.
- Overall improvement in aesthetics.
- Permanency of installation.

If you are planning commercial or residential construction, inquire about COLUMBINE steel or aluminum casement windows, full wall-width basement windows, sliding, single-hung or awning windows, and sliding aluminum doors.



COLORADO METAL PRODUCTS

450 KALAMATH STREET • DENVER, COLORADO 80204
(303) 266-2451

The only Colorado owned metal window manufacturer for over 30 years.

Another Les Taylor Enterprise

BUILDING PRODUCTS FILE

CSI
SPEC. DATA
II

(This article outlining the Visual Search Microfilm File was prepared for Symposia by James Merlin of Information Handling Services, and authorized by Joseph Gascoigne, Executive Director of the Construction Specifications Institute. It is presented in answer to the many requests for further information on this exciting "breakthrough" from many readers throughout Symposia's region. Further information for both design professionals and manufacturers can be obtained by writing Information Handling Services, Denver Technological Center, 5500 South Valentia Way, Englewood, Colorado 80110.)

I. SPEC DATA II IN FINAL STAGES OF PRODUCTION

July, 1968, saw the beginning of an idea that is becoming a reality this month (March). SPEC DATA II, developed jointly by CSI and Information Handling Services, an Indian Head Company, located in Englewood, Colorado, will soon live up to its early promises of providing designers and specification writers with a system of providing product information that is fast, comprehensive, easy to use, and compact.

II. A GIANT STEP TOWARDS THE ULTIMATE INFORMATION SYSTEM

SPEC DATA II is a logical complement to CSI's existing SPEC DATA program. SPEC DATA took the first step in crystallizing manufacturers' product information in a standard format of an 8½"x11" printed page. This gave the spec writer his first tool to use in preparation of the final spec.

From the very beginning of the project the fundamental purpose was to make maximum use of computer technology to help solve the data organization problem for the spec writer. They did not limit themselves to merely miniaturizing or compacting the information available but rather used the computer and other related hardware to digest product data needed by the spec writer and then further to put that information in a usable format for the Designer/Spec Writer.

The resulting system reflects maximum use of computer power. It has complete storage of key product data and provides the retrieval of that data in a usable format for spec writers. They also used one other important guideline, namely, "it's just as important to exclude unnecessary

data as it is to have enough data to make a good value judgment during the design phase."

SPEC DATA II comes in two data configurations using proven microfilm methods and equipment. The picture captions describe the differences. The Personal Data Stations serve individual or small group needs. They operate ideally in diverse work locations. Separate departments conferring about a specific product item gain the same frame of reference allowing simultaneous viewing of identical information. "Satellite" systems are created simply by having a centrally-located Office Data Center "time-share" its printer capability with Personal Data Stations. Those using the latter can simply request copies of needed catalog pages from the Office Data Center.

III. A WORKING TOOL FOR THE DESIGNER/SPEC WRITER

The extensive use of the computer affords several advantages to the De-

signer/Spec Writer. IHS extracts key product information from the thousands of manufacturers' catalogs and then uses the computer to organize this data so you don't have to. In essence, SPEC DATA II delivers the benefit of a computer to your desk without the computer cost.

SPEC DATA II is a marriage of this computer capability with the medium of microfilm. This means that all this mass of data can be reduced in bulk without losing its utility. This is especially true in the Product Selector section where IHS uses its exclusive 8mm Satellite microfilm reader.

SPEC DATA II consists of four basic elements that work together in providing this unique new service.

MANUFACTURER'S INDEX

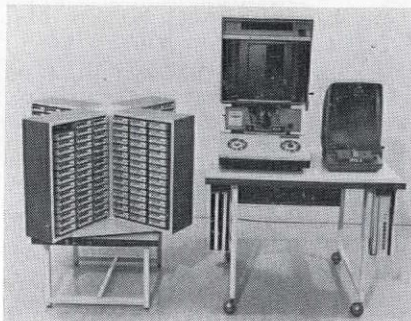
A microfilmed index that allows you to find data when you know the manufacturer's name. This index is an alphabetical listing of manufacturer's names including addresses and product line. This index will also tell you if SPEC DATA sheets are available on products. With this index you are directed to the catalog section where the manufacturer's complete catalog(s) is located on microfilm.

BRAND NAME INDEX

This index, also on microfilm, offers a one-step look-up when you know only the brand name. It is organized alphabetically by Brand Name, tells you the manufacturer's name and gives you the location of the data in the Catalog Section.

CATALOG SECTION

This section of SPEC DATA II is the catalog library. Manufacturers' catalogs are filmed in sequence as printed at no cost to the manufacturer. This section is automatically updated along with all indexes every 180 days. All



Office Data Center — includes personal desk-top unit for continuous viewing of appropriate index. Prints are available in seconds from the Catalog Section through the combination Reader-Printer.

catalog data is computer maintained for accuracy, currentness and completeness.

PRODUCT SELECTOR

This element of SPEC DATA II is the new and unique index that separates this system from all others. Through the use of this computer generated index you can locate full product data when you know one isolated characteristic. You need not spend time searching through catalog information on a hit-or-miss basis. Many times it is not even necessary to refer to the catalog. This index is also organized according to the CSI format for Construction Specifications. There is a separate Product Selector for each of the 16 Divisions.

Using this new index is amazingly simple — just “pull” the appropriate Division (the Key Word Index can be used in cases where you are not sure of the Division) cartridge, place it on the Reader that is provided and turn to the first frame—the index will do the rest—that is, lead you to the section of the index covering the product

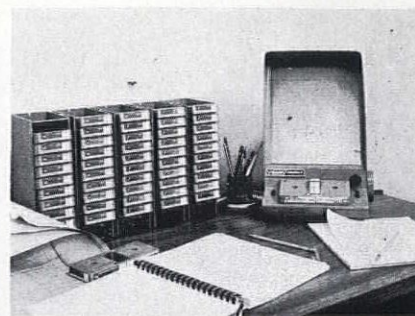
type of special interest to you.

We show you a typical index grid. This grid is one of numerous frames on the microfilm giving information on wood doors, Flush, Solid Core. In this particular grid there are 3 separate doors shown—as long as the computer has information in its memory core it keeps printing these grids—hence you will have a series of these grids covering a particular product—one after the other.

This index featuring logical CSI sub-headings provides a tremendously fast-working system. It permits location and selection of products by the product characteristics most critical to your design objective or need. It truly does away with hit-and-miss research.

IV. SPEC DATA II RESULT OF EXTENSIVE MARKET RESEARCH

During the development stage of SPEC DATA II, CSI and IHS did extensive market research throughout the United States in testing the concept of SPEC DATA II. They also obtained input from people in the archi-



Personal Data Station — Complete “File” takes less than two square feet of desk top space. Further miniaturization possible by IHS Satellite Reader.

tectural community relative to their problems in information storage and retrieval.

During the course of this market research IHS visited over 80 individual architectural and design construction firms. Many of the improvements and features of the SPEC DATA II as it evolved were the result of this market research. For instance, the inclusion of and coding for the market area of each manufacturer included in SPEC DATA II was a direct result of suggestions from the field that the file should be “regionalized” to insure that designers did not specify a manufacturer who could not deliver in that area.

In addition to the inclusion of market area, most all designers and spec writers felt that it was very important to have a reference for specs and standards. For this reason, if a manufacturer includes information in his catalog covering specs and standards for any product they will be in SPEC DATA II. This includes ASTM, Commercial Specs, Fed Specs, and Association and Institute specs as indicated in the catalog pages. There will also be a reference to Mil Specs and Mil Standards when those are given by the manufacturer.

To further help the spec writer in his preparation of the spec, all products which have spec data sheets are referenced in the Product Selector grids and indexes. In addition, all SPEC DATA sheets are included on film in the Catalog Section. This means that all manufacturers who subscribe to SPEC DATA will automatically be included in SPEC DATA II. In order to insure maximum coverage of all products in the building construction field SPEC DATA II includes manufacturers’ data at no cost to the manufacturer. This means that SPEC DATA II users are assured of receiving all manufacturers’ data in a complete form.

Shown here—a sample of the Product Selector Grid showing side-by-side Manufacturer’s Data for a given product.

16-Division CSI Format reference

08-11-02-02	PRODUCT SELECTOR GRID VSMF BUILDING PRODUCT FILE			SPEC-D A II T A
DOORS, WINDOWS & GLASS WOOD DOORS FLUSH SOLID CORE	* INDICATES OTHER CUSTOM VARIATIONS AVAILABLE			
MANUFACTURER	* IPIK DOOR COMPANY, INC. P.O. BOX 248 KENNER, LOUISIANA 70062	* MOHAWK FLUSH DOORS, INC. 402 N. SHERIDAN STREET SOUTH BEND, INDIANA 46619	* MORGAN COMPANY 601 OREGON STREET OSHKOSH, WISCONSIN 54901	
SPEC DATA...CART/FRAME	SPEC DATA....	SPEC DATA....	SPEC DATA....	
CATALOG...CART/FRAME	CATALOG.....2001/1908	CATALOG.....2001/2155	CATALOG.....2001/2195	
MARKET AREAS	SE;SW;MW;E	MW;E	NATIONAL	
BRAND NAMES SPECS/STANDARDS	* DOORMASTER, TIME-MASTER, * STILEMATCHER	* GOLD ARROW, FIBERLITE * CS 171	* COLOR CLAD	
DIMENSIONS--HEIGHT (MAXIMUM --WIDTH OR RANGE) --THICKNESS	* STANDARD SIZES 10'0" * TO: 4'0" * 2-1/2"	* 6'8" * 3'0" * 1-3/4"	* 8'0" * 4'0" * 1-3/4"	
VARIATIONS--PLAIN --SASH/LITE --LOUVERED --DECORATOR --STORM --SCREEN --COMBINATION --FLUSH --PANELED	* PLAIN * SASH/LITE * LOUVERED	* PLAIN * SASH/LITE * LOUVERED * DECORATOR	* PLAIN * SASH/LITE * LOUVERED * DECORATOR	
CORE CONSTRUCTION --HOLLOW CORE --SOLID CORE --MINERAL CORE	* SOLID CORE	* SOLID CORE	* HOLLOW CORE * SOLID CORE * MINERAL CORE	
MATERIALS--CORE --FACING --EDGES --STILES/RAILS --PANELS	* HARDWOOD STAVES * POPULAR VENEERS * MATCHING VENEERS AVAIL.	* SOFTWOOD/BAGASSE * 3-PLY VENEER/VINYL * MATCHING AVAILABLE	* BLOCK/STRUT/MINERAL * 1/16" PLASTIC LAMINATES * HARDWOOD/MATCHED FORMICA	
COLOR/FINISH PREFINISHED UNFINISHED SANDED SEALED/PRIMED PLASTIC-LAMINATE FACED COATED	* SANDED * SEALED	* PREFINISHED * UNFINISHED * SANDED * SEALED * PLASTIC-LAMINATE FACED	* PREFINISHED * PLASTIC-LAMINATE FACED	
SOUND TRANSMISSION FIRE RATING WEATHERSTRIPPED RECOMMENDED USE	* INTERIOR/EXTERIOR	* INTERIOR/EXTERIOR	* 1-1/2 HR MAX * INTERIOR/EXTERIOR	
UNIQUE/SPECIAL FEATURES	* CONCEALED CROSSBAND * IN STYLEMATCHER	* PREFITTING AND * PREMACHINING AVAILABLE	* PREFITTING AND * PREMACHINING AVAILABLE	

Product Characteristics

Manufacturers' product data



Restoration

The Delgado House Santa Fe, New Mexico

Restoration complete—the old house is returned to its pristine beauty. The pictures of the restoration were taken for Mr. Kidder and Symposia by Lewis E. Thompson/Advertising, Santa Fe.

Always, we greet with joy the news that an old and cherished part of our architectural past has been given the T.L.C. which it so richly deserves. Such is this story from Bradley P. Kidder, FAIA, Santa Fe, New Mexico. It began with Brad's Symposia report dated 8/November, 1969, and is climaxed with his 8/March, 1970, letter complete with pictures. We are delighted to bring you the renaissance of the Delgado House in Santa Fe.

by: Bradley P. Kidder, FAIA

Dateline: November 8

The Restoration Project is — THE HISTORIC FILIPE DELGADO HOUSE on Palace Avenue, just a stone's throw from the Plaza in Old Santa Fe.

Fortuitously, this restoration will be accomplished under ideal circumstances.

Purchased and owned outright by an Architect, and being restored by the same Architect, who by his past experience has demonstrated his sympathetic and understanding approach to the restoration and preservation of old buildings—possessed of what in an individual would be called "charisma."

John Gaw Meem, FAIA, has purchased the old (1890) Delgado House which had been allowed to deteriorate and become tenant-abused, but still kept its fine old lines and much of the handsomely corbeled cornice and the delicate tracery of a delightfully graceful small balcony centered on the second floor.

Mr. Meem plans to make little change from the original floor plan which held four rooms downstairs and five rooms on the second floor which was reached by means of narrow stairs with a spindled handrail of slender shapeliness.

The exterior is to be left unchanged, except for restuccoing and repainting in the original color scheme—which in spite of untold paintings, was still evident on the bare wood when the later coatings had been totally removed. All Santa Fe can be grateful that this Historic Monument will once again be restored to its original state of fastidiously tasteful elegance.

Dateline: March 8, 1970

The Felipe B. Delgado House—Built in 1890

Restored by Mr. John Gaw Meem, FAIA, in 1970

"El Honor de su presencia es rogado

Por Don Juan de Gaw Meem y su Amable Esposa

En la Casa de Don Felipe Delgado

Para celebrar la Restauracion de este Historica Mansion."

Thus read the invitation to the opening of the restored Don Felipe Delgado House just one hundred steps west of the Old Santa Fe Plaza in historic Santa Fe.

The Delgado family came to New Mexico in 1778—its founder, Captain Manuel Delgado, who enlisted in the Royal Army of Spain in 1776. Five grandsons of this Captain rose to prominence and position in Santa Fe in the late 19th century. Educated in Saint Louis—Santa Fe schools in this era held little attraction for the gentle Spanish families—grandson, Don Felipe, owned a general store and was one of the principal owners of mule and ox trains operating over the Santa Fe Trail from Independence, Missouri. The Delgado House was built upon the site where Don Delgado originally conducted his mule-trading business in those years when the Santa Fe Trail was still in active use.

The foundation walls and the small basement of the house were laid up with the same stone and by the same masons who had built the St. Francis Cathedral, in a fine example of beautiful stone work. Upon these foundations rests the two-story adobe structure.

Mr. Meem found the adobe walls, the floor and roof joists and the standing seam metal roof to be in sound condition and completely reusable. The lime plaster both inside and out did have to be replaced with gypsum plaster and cement stucco and many trim members for the doors,

JOHN GAW MEEM, FAIA

Born in Pelotas, Brazil, in 1894, John Gaw Meem is an architect in the finest sense of that professional term. Today he is retired from active practice but his awareness of New Mexico's great architectural heritage has kept him in the forefront of the historical preservation movement.

By his buildings, you shall know him. John Gaw Meem was the architect for the La Fonda Hotel, the Laboratory of Anthropology and St. Vincent's Hospital in Santa Fe. In Albuquerque he designed thirty-three buildings for the University of New Mexico and St. John's Cathedral, and in Colorado Springs was the architect for the Fine Arts Center there.

windows, balcony and cornice had to have the old paint removed and the broken or missing members restored or replaced. Then, too, the interior and exterior had to be painted but in the colors most used in the 1890's.

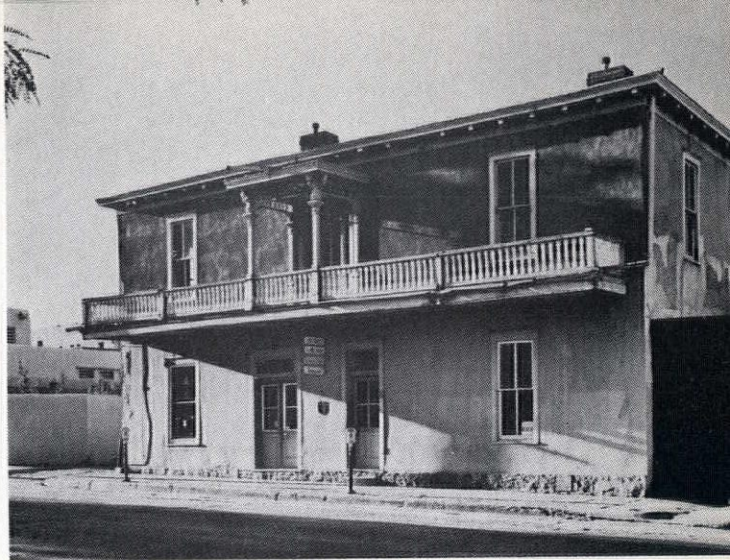
Naturally, the building had many deficiencies by modern code standards, and so the fireplaces in each room had to be supplemented with hot water heat. Fortunately, the baseboard units were almost the exact height and profile as the original wooden base and this change is almost unnoticeable. The old building lacked any bath rooms so that it was necessary to provide toilet rooms as an addition, and the ladder access to the basement had to be changed to an outside stairwell. The too-narrow carriage entrance simply became a side yard, and, of course, the essential electric service had to be rewired.

However, the original four rooms on the first floor and five rooms on the second floor—complete with their fireplaces and cupboards—were retained intact. The old floors were of oak and others in pine boards. They were merely refinished. Because of the cracks which have opened between these boards, these floors may eventually have to be carpeted, if only for housekeeping reasons. This also holds true for the stairway, although it was possible to preserve the old stair rail and the handsome balusters. Aside from the primitively detailed, but well proportioned spacing of the corbels in the roof cornice, probably the most distinctive feature of the old Delgado house is its delightful balcony with the central bay roofed and supported on well designed columns forming a most charming veranda. Tradition has it that the "lady of the house" used this as a vantage point.

Don Felipe's wife was the Dona Lucia Ortiz, daughter of still another prominent Santa Fe citizen and trader, Captain Gaspar Ortiz y Alarid, for whom Don Gaspar Avenue and Ortiz Streets in Santa Fe are named. One can well imagine this "flower of New Spain" in her finest and most festive attire seated in the small shadow of her second story veranda, viewing the two annual processions in with the famous statue "La Conquistadora," "Our Lady of the Rosary," is transported, according to the De Vargas vow of 1693, from the Cathedral of St. Francis to the Rosario Chapel and returned a Novena later. Dona Lucia must have been most imposing in such a setting.

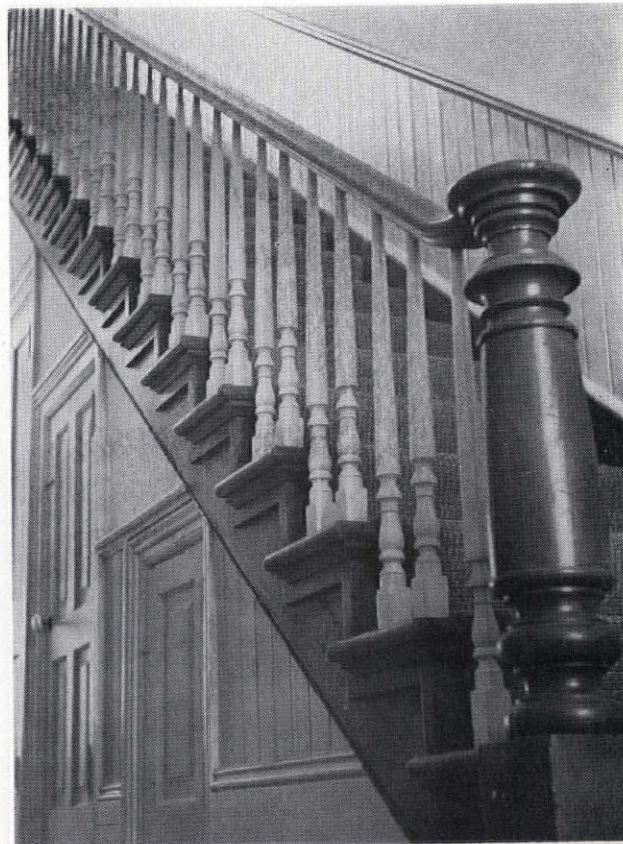
Mr. Meem's preservation project has been just that—a faithful restoration of one of Santa Fe's most significant examples of an architectural era in which the local adobe construction was modified by late 19th century architectural detail—a reflection of the delicately detailed solidarity of so many of its former adobe mansions.

Unfortunately, the rental revenue will probably never be sufficient to repay the architect for his restoration costs.



This "before" picture of the old Delgado House was taken by Karl Kernberger and appears through the courtesy of the School of American Research. It originally appeared in the delightful, red-covered booklet, "Santa Fe Today," which came as a happy and surprising "Un-Birthday" gift to the Editor from Board Member Brad Kidder, author of this article.

Mr. John Gaw Meem, who celebrated the opening of this magnificently restored small house with champagne and the "creme de la creme" of Santa Fe society, has made a most substantial contribution to the cultural heritage of the citizens of Santa Fe—of New Mexico and for all Americans who flock to this cultural center each summer. His only reward must be the humble thanks of us all.



The handsome stairway in the Delgado House which also shows the exquisite detailing of paneling and woodwork.

! "Impact of the 75 per cent Federal cutback on architects and engineers has been like a snowflake making a three-point landing on a granite ledge."—Dr. Maurice Mann, Assistant Director of the Bureau of the Budget

"The mad cycle of unplanned urban sprawl and chronic urban congestion must end."—Senator Birch Bayh (D-Ind.) !

! "We've got to make a start . . . in broadening suburban housing opportunities for low income families . . . in making the core city a more attractive place for the affluent to live and work."—George W. Romney, Secretary of Housing and Urban Development

in summary

A.I.A./C.E.C. PUBLIC AFFAIRS CONFERENCE

Approximately six hundred and fifty members of the American Institute of Architects and the Consulting Engineers Council met in Washington, D. C., in February to hear messages from top legislators and key personnel in the Nixon administration. Members of the 91st Congress who spoke to the design professionals included Senators Proxmire (D-Wisc.), Williams (D-N. J.), and Jacob Javits (R-N. Y.), Congressmen Arends (R-Ill.), Boggs (D-La.), Anderson (R-Ill.) and Jack Brooks (D-Texas). Members of the Administration were George W. Romney, Secretary of the Department of Housing and Urban Development; Russell E. Train, Under-Secretary of the Department of the Interior; Dr. Maurice Mann, Assistant Director, Bureau of the Budget, and John R. Wikoff of the U. S. Bureau of the Census. Top level staff members from both organizations were present, including William Slayton, AIA Executive Vice President, and Phil Hutchinson of the Octagon Staff and Donald Buzzell, CEC Executive Director, and Larry Spiller of the CEC Staff. Rex Whitaker Allen, FAIA, presided at the Luncheon on Tuesday, February 17, and CEC President, Art V. Maxwell, at the Congressional Presentation Breakfast the following morning.

Both key Democrats and Republicans agreed on policies aimed at reversing post-war urban trends—major disagreement at the day-long session was on the topic of how best to combat inflation. For instance, Hale Boggs, House Majority Whip, claimed—"The economy is not moving ahead;

the principal problem before our country is to get the economy moving." High interest rates and a rollback in new Federal construction contracts, Boggs claimed, will simply mean the public will pay more later. House Minority Whip, Leslie C. Arends countered by claiming that high interest rates are necessary to restrain "run-away inflation."

Senator Proxmire told the joint meeting that the present monetary policy (i.e., a 75 per cent cutback in Federal construction expenditures) has had a discriminatory impact on housing, with low and middle income housing hit hardest. He complained that "70 per cent of the people of this country have been taken out of the home buying market" due to high mortgage interest rates, rising land and material costs and other factors. "There are other ways to fight inflation. We have to cut spending elsewhere, on the military budget particularly and for space and public works." A number of solutions have been proposed, including a secondary market and Senator Proxmire's own bill which provides a 6½ per cent mortgage credit by obtaining funds from the Federal Reserve discount window at six per cent. Although this may alleviate the problem of high interest rates, many other housing problems remain.

"If our population increases by 100 million in the next 30 years as has been predicted," said the Senator, "approximately 60 million of that increase will occur in four urban strips: Boston to Washington, D. C.; the Great Lakes region; the West Coast

from San Francisco to San Diego; and the Florida Gulf Coast. The additional 40 million will concentrate in large cities."

Architects and engineers were urged to consider the costs of congestion, pollution, the destruction of natural amenities and the increased requirements for governmental services such as transportation against such solutions as a \$21 million New Town being built near Minneapolis, Minnesota. The Democrats, Proxmire revealed, "are preparing a bill for long-term loans to New Towns." This bill would establish an Urban Growth Council to coordinate the impact of Federal grant programs on urban growth. The nation's engineers and architects will be called into action to build new towns as well as to help disperse low-income housing into the suburbs while rejuvenating central cities.

Representative John Anderson told the Conference that innovative techniques may eventually reduce the cost of housing just as automobiles were eventually made available to the average citizen. He reported "some progress" by unions agreeing to assemble factory-built houses. But a much greater production of both houses and construction workers . . . 130,000-140,000 new workers a year instead of the current rate of 30,000-35,000 — is needed, he said.

Comparing the national economy to a gyroscope, which achieves stability through motion, Congressman Jack Brooks stated that stability cannot be achieved by clamping down on the housing industry or by halting the

Federal investment in public improvements the nation desperately needs.

Brooks took strong issue with the Comptroller General's report of April 1967, recommending the auctioning off of Government architect and engineer contracts. "This practice," he said, "would remove safeguards present in the traditional method of awarding contracts on the basis of quality of design as well as reasonableness of cost." A reduction in price may be assumed by a lower quality design. Better buildings result from a selective bidding process, Brooks maintained. "A commitment to design a complex structure is different from purchasing pencils and paper clips."

Because competitive bidding for architect/engineer services is contrary to Federal military and civil procurement laws, Congressman Brooks announced his intention to introduce legislation, if necessary, to insure that Federal engineering and architectural contracts will be awarded on the basis of 1) the highest standards of quality and excellence and 2) the lowest possible construction and maintenance cost.

Senator Jacob Javits, in a talk prepared for the conference, urged engineers and architects to support:

—A National Institute of Building Sciences that would offer "nationally acceptable building standards" as alternatives to the 5,000 different local building codes that block aggregation of a housing market and industrialized fabrication.

—Federal assistance for states to build New Towns and for cities to use vacant land for housing.

Both Senators Birch Bayh and Harrison Williams, Jr. stressed the importance of Rapid Transit Systems and super-highways to combat a diversely polluted environment.

The "mad cycle of unplanned sprawl and chronic urban congestion must end," declared Bayh. He blamed fragmented local government and reliance on "one-man-one-car" thinking for failure of transportation plans to mesh. "Transportation plans now are mostly on paper because of fragmented local governmental units not planning together and because money wasn't available or not at the right time." He noted that the Interstate Systems, largest public works system in the history of the world, not only provides rapid travel to millions of Americans, but "it will save about 5,000 lives annually. New Federally aided highways," Bayh said, "should avoid throwing up a large wall that

divides cities and stirs consternation." Roads must be planned in conjunction with housing, jobs, parks and recreation or they will split neighborhoods forcing people out of the homes and businesses.

Senator Williams, author of the \$10 billion, 12-year Urban Mass Transportation Assistance Act (passed by the Senate—Awaiting House Action), said the new bill would provide a "long-term Federal commitment which our states and cities must have in order to embark upon the construction necessary if our cities are to work their way out of the morass of traffic under which cities are slowly strangling." He portrayed the need of city ghetto dwellers for "low cost, efficient mass transportation." "Money spent to train a man for a job which he cannot reach unless he owns a car is money thrown down the drain."

Summarizing the program with which architects and engineers are all-too-familiar, that of the difficulty of regional governments to obtain long-term financing, Williams emphasized that transportation is not only a problem of the cities. He said, "Of the 258 transit systems abandoned since 1954, 206 served communities of less than 50,000 population," and "currently, transit systems in communities of that size have a yearly volume of 181 million passengers." In conclusion, Senator Williams urged architects and engineers to stay "in the forefront of our movement toward innovation."

Further emphasis on transportation problems was provided by Russell E. Train, Chairman-designate of the President's Council on Environmental Quality. By 1980, he warned, "autos will overwhelm us" due to increased smog levels no matter what improvements are made on gasoline-burning engines. He disclosed the Nixon Administration has ordered him to research "unconventional" vehicles that avoid the internal combustion engine. Other directives for the new Environmental Council include an international environmental monitoring system, a bounty system to get junk cars off the street and ways to deal with agricultural wastes that leak into lakes and rivers.

A slight difference of opinion developed between design professionals attending the Public Affairs Conference and Assistant Director of the Bureau of the Budget, Dr. Maurice Mann. The 75 per cent cutback on new Federal construction contracts announced last September, insisted Dr. Mann, has only dented the construction industry slightly and has not at all af-

fected architects and engineers. "Design contracts were not affected" and the Federal order "has had no effect on architectural-engineering contracts." Several engineers and architects in the Mayflower Hotel audience, however, said the cutback had had a definite impact on the work of design professionals. Likelihood of the end of the 75 per cent cutback, said Assistant Director Mann, seems possible in June, 1970. "We think we have the economy on the right track. It has been suffering from acute inflation—right now it is cooling off. We need this to subdue and later contain inflation. We need this time because prices are still rising." On June 3, "if we still have rampant inflation, some of us will argue to keep the lid on" with the cut back, Dr. Mann said. If the economy is sliding, on the other hand, more contracts could be authorized, he added.

Some hope was held out by Boggs and Arends who assured A/E's that appropriations would move through Congress faster in 1970 than in the preceding year since "delays are the natural result of a change in Administration."

The major speech of the 1970 Public Affairs Conference was delivered to a packed luncheon crowd of consulting engineers and architects on February 16 by George W. Romney, Secretary of the Department of Housing and Urban Development. The number one problem, according to the Secretary, is the creeping dissolution of our environment. He quoted the President's environmental message in which Nixon said — "For the most part, the damage done to our environment has been . . . the inevitable by-product either of advancing technology or of growing population. It results not so much from choices made as from choices neglected; not from malign intention, but from failure to take into account the full consequences of our actions."

The Secretary cited the Interstate Highway system as a case in point — two unforeseen consequences of this program, he said, have been "the decline of public transportation and the enormous growth of smog." As a second cause of urban environmental problems he pointed to the fragmentation of local political jurisdictions which inhibits systematic consideration and action. "What's really needed is a metropolitan or regional approach" to paying for public services. The third cause of environmental decline, he said, was our "historic failure to allocate adequate resources to

the task." He feels Operation Break-through, the Model Cities program and the President's new environmental programs are finally dealing with physical and social ills.

He urged opening the suburbs to the poor and "making the center cities more attractive to the affluent . . . the deep divisions in our metropolitan areas are our most serious problem. . . . Alienation, hostility and fear are the daily lot of both groups."

Just as the highway program dealt a nearly mortal blow to many public transportation systems, compounding isolation with unemployment, so did the housing programs of the '30's and '40's refuse to take risks on mortgages or improvement loans in the inner city, expediting the decay of the central cities. "Early urban renewal, too, made little provision for the relocation of displaced families."

One of the hold-ups to correcting this mis-location of people, stated the Secretary, is the fear felt by many small suburbs of the economic impact of an influx of low income families, particularly when there is wide variation in local property tax bases. Romney challenged the design team with the words of Edwin Markham:

*"Why build these cities glorious, if man unbuilted goes?
In vain we build the world unless the builder also grows."*

"To that," said Secretary Romney, "I can add only one final comment from President Nixon's State of the Union message:"

... "Each individual must enlist if this fight is to be won."

All fifty states and Puerto Rico were represented at this year's Public Affairs Conference which was concluded on February 17 when architects and consulting engineers visited Capitol Hill to meet with their Congressmen. The majority came away feeling there is still much they can continue to do as a design team to produce a better environment for both present and future generations of Americans, and that, cutbacks notwithstanding, the 91st Congress seems disposed to utilize their professional services in the improvement of the quality of daily life in the United States.

(Further information and copies of the Brooks and Javits texts are available from AIA Public Relations, 1735 New York Avenue, N.W., Washington, D. C. 20006.)

The Quotable " "

- * As reported in the National CEC Newsletter . . . Larry Spiller, Assistant Director, Consulting Engineers Council/US defines . . . *
- * "The Federal Reflex" *
- * "The government's practice of studying a subject until it becomes a problem, and then throwing increasingly large appropriations of money at it in the hope it will go away." *
- * Thank you, Mr. Spiller. *

ENCORE!

The Denver Chapter of the Construction Specifications Institute has scheduled a repeat performance of an event which was so highly successful in 1969. This is the Seminar and Workshop program of interest to all members of the architecture/engineering/construction community interested in specifications (isn't that everybody?) This year, the program will be divided into two separate sessions on two different days. The Seminar will be held in the Aspen Room (2nd floor) if the Radisson Denver Hotel, 1790 Grant, at 4:00 p.m. on Thursday, April 9.

Following an introduction by Mr. Larry L. Bourn, CSI/AIA, President of the Denver Chapter, the program will feature Donald A. Watson, CSI/AIA, Assistant Professor at Pasadena City College, California. His topic: "Evaluating the Approach of Specification Writing — Where We've Been, Where We're Going and Methodology to Guide Us." Professor Watson has had a long and eminent career in the industry. He was employed as construction superintendent and manager of personnel training with Bechtel, McCone and Parsons in Los Angeles, North Africa and Arabia; construction superintendent and estimator for Howard Allen, Building Contractor; draftsman and specification writer associated with architects in the Los Angeles area and specification consultant for Danniell, Mann, Johnson and Mendenhall. A licensed California architect, Professor Watson has taught Specification Writing and Architecture for the past nine years at Pasadena City College.



Professor Donald A. Watson

Following "attitude adjustment" and dinner, Professor Watson will be available for a question and answer period.

The Workshop will take place on Tuesday, April 14, in the Colorado Room (2nd floor) of the Radisson Denver Hotel. The time is from 4:00-5:30 p.m., and participants are asked to bring C.S.I. Document 001b with them.

The cost of Seminar and Workshop—which also includes dinner and a personal copy of C.S.I. Document 001b—is just \$12.50. For further information or for pre-registration, contact Mr. Henry De Nicola, Architect, 1790 South Federal Boulevard, Denver 80219.

Those important dates again are April 9 - April 14 for the Second Annual Seminar and Workshop of the Denver Chapter of the Construction Specifications Institute.

UTAH

TAKE ME TO YOUR LEADER

COLORADO



James W. Christopher, AIA
President, Utah Chapter
American Institute of Architects

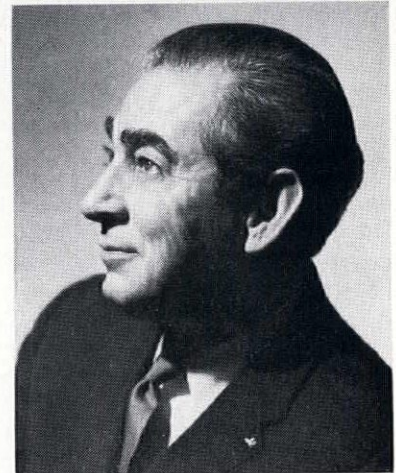
Long before he completed high school in his home town of Audubon, New Jersey, Jim Christopher had determined upon a career in architecture. First stop on the way was Rice University in Houston, Texas. Second on the list, a two-year stint in Uncle's Navy which, although it didn't contribute directly to his architectural career, did net him a lovely wife, Caroline (Lyn) Kennard of Marblehead, Massachusetts. Aided and abetted by the G.I. Bill, scholarships and Lyn, who was getting her P.H.T. (Putting Hubby Through) degree, Jim got his Masters at the Massachusetts Institute of Technology.

Pocketing their separate degrees, Jim and Lyn headed west in 1957 where Jim joined the faculty at the University of Utah. He taught design for four years, and again on a part-time basis when in 1963 he formed a partnership with Martin Brixen. This compatible and successful team has offices in a lovely old mansion on historic South Temple Street in Salt Lake City where they hang a host of awards . . . the 1968 WMR Honor Award, for instance, for their Snowbird Lodge, and the 1969 Regional Merit Award for the Sundance Resort Stables in Provo Canyon. Both Mr. Christopher and his partner, Marty Brixen, have strongly supported a permanent AIA Chapter office, now very much a reality, and the establishment of a Community Design Center. Marty heads this committee, and the proposal for its establishment has been approved by the Utah Chapter.

Jim is looking forward to a highly successful "Architecture Week/1970," scheduled from the 18-23/May and "letting the public know what we're all about."

Jim and Lyn Christopher are now the parents of five lively moppets and live in a Christopher-designed home which just seems to keep growing. Architect Christopher calls himself an "impossible client." The whole family camps and skis and enjoys the West, with Jim getting in a little golf when time permits.

A real sparkplug, Utah's AIA can anticipate a great year with Jim Christopher in the driver's seat!



James M. Hunter, FAIA
President, Colorado Society
American Institute of Architects

Finding himself in the leader's role is no surprise to Jim Hunter of Boulder, Colorado—it is a normal state of things with this most personable gentleman. He is past president of the State Board of Examiners of Architects, past president of the Colorado Chapter/AIA, past second vice-president of the National AIA and a past director of the Western Mountain Region. It was quite natural then for the newly formed Colorado Society to elect Jim to the vice-presidency last year and as president for 1970.

Born in Nebraska, he studied architectural engineering at Iowa State, transferring to the University of Illinois where he received his Bachelor of Architecture degree with additional study in planning and landscape architecture. Awarded the Allerton Traveling Scholarship, he was twice medalist at the BAID, and finalist in the Prix de Rome and Ryerson Competitions. His initial experience as an architect was with Charles Platt and Ernest Stouffer at the University of Illinois. In 1936 he was retained by G. H. Huntington, AIA, on the University of Colorado buildings as designer and head draftsman.

In 1940 Jim formed a partnership for private practice with Harold Stuart Jones, dissolved by Mr. Jones' death in 1945. The James M. Hunter and Associates firm was formed at that time, and is still very active.

Mr. Hunter is registered in Colorado, Iowa, Wyoming, Nebraska, Utah and Missouri, and holds NCARB Certificate No. 3847. His interest in research is evidenced in his design of a completely solar heated house in Denver, and his membership on the Advisory Board for the Association for Applied Solar Energy. He has been a Fellow of the American Institute of Architects since 1957.

Jim and his very nice wife, "Mad," are the parents of a grown-up family, and are welcome additions at AIA gatherings throughout the Region.

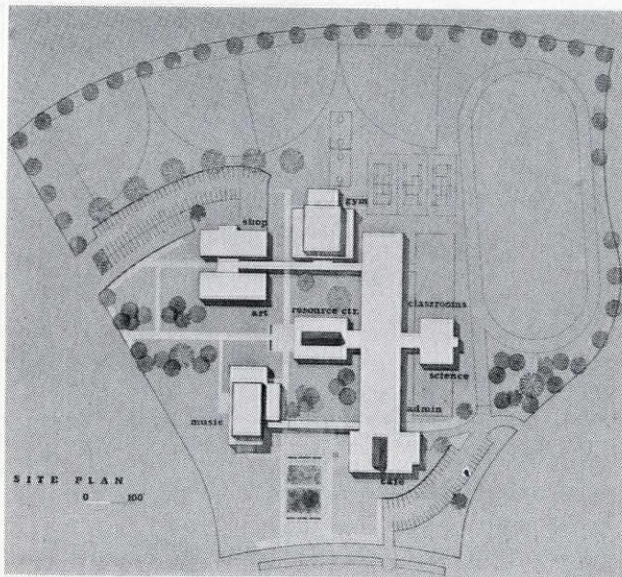
design study

OPEN or CLOSED

the case is for education

There are many architectural roads open to the designer of educational facilities. All lead—like the roads to Rome—to relatively the same place, that is, a building(s) which adequately interprets the educational criteria, is within the budget and has “something to say” to the students and to the community. Two such divergent paths have been chosen by the architects of the Junior High Schools shown here. Both are located in areas which are dominated by mountains—Flagstaff, Arizona and Colorado Springs, Colorado. Both provide answers to similar approaches to education, and for the same number of students—approximately 1,200 pupils. And there the similarity ends.

OPEN



Ralph Waldo Emerson Junior High
Lusk and Wallace, A.I.A., Architects
Colorado Springs, Colorado

The Program Requirements:

District 11 in Colorado Springs has a knowledgeable, experienced, conscientious superintendent supported by like assistants, teaching staff and Board of Education. This “team” prepared a most comprehensive program, indeed, it would have delighted the heart of Education’s witty friend, Dr. James MacConnell of Stanford University. It set forth their philosophy and their obligations to the community and to the students. Progressive and explicit in every respect, the program required a campus style arrangement of spaces adaptable to modification, changing personnel, methods, content and school organization—each instructional department complete in its own and with maximum flexibility. It called for facilities for educational

television, electronic language teaching, team teaching, provisions for visual education throughout with a master controlled public address and two-way communication system within all areas of the school plant. Arrangement of spaces placed the Resource Center near the core of the academic area with the administrative area in this department readily accessible to the exterior; the music department and auditorium were to be grouped together separate from the academic area. A central courtyard to separate gymnasium and cafeteria, a playground adjacent to gymnasium with concrete tennis and basketball courts—buildings to be joined by covered walkways.

There was to be consideration of the health of all occupants with lighting, heating and ventilation, color, corridors, walkways and elevations being included, among others, as an adjunct to health. Fire and safety regulations meeting the Colorado State Industrial Commission requirements and provisions for confining fires in one area of building were also stressed.

The Site

Eighteen acres of gently rolling prairie land—nongeometrically shaped and sloping from northeast to southwest with a fall of approximately 30 feet. Surrounded by residential streets which feed into major highways. There is an impressive view to south and west.

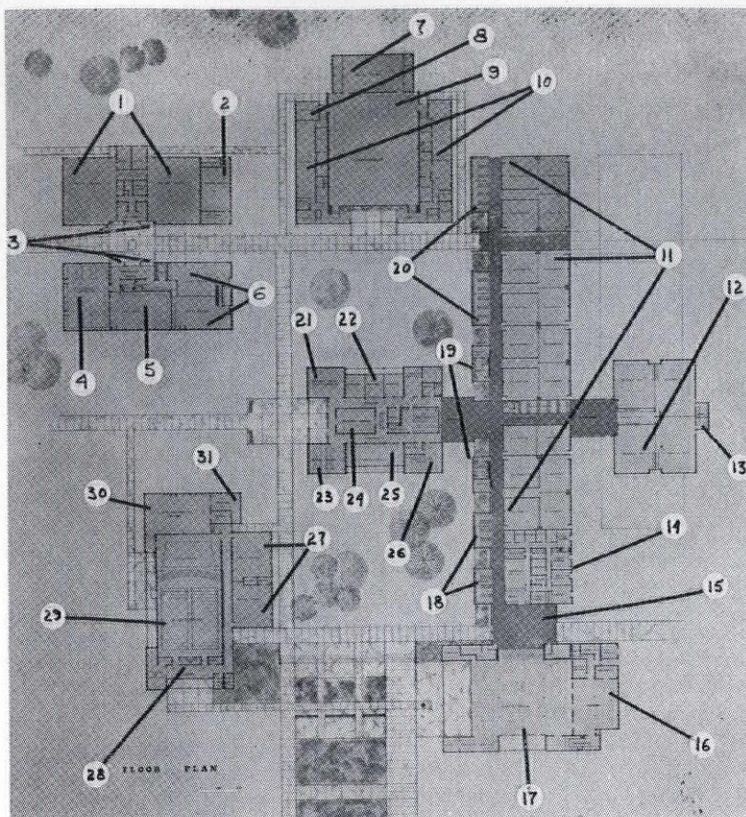
The Architect’s Solution:

Three basic considerations were added to the owner’s comprehensive program: a complex presenting a pleasing and village-like appearance with building locations maintaining the natural drainage without extensive site work and with minimum traffic congestion of surrounding residential streets. All criteria suggested individual units (expandable without interruption of activities), which would be in keeping with surrounding residences.

Located at the hub of the plant, the Resource Center (study, library, visual and audio aids and teachers’ preparation areas) is situated so it could be used independently. It is expandable and accessible to all other elements

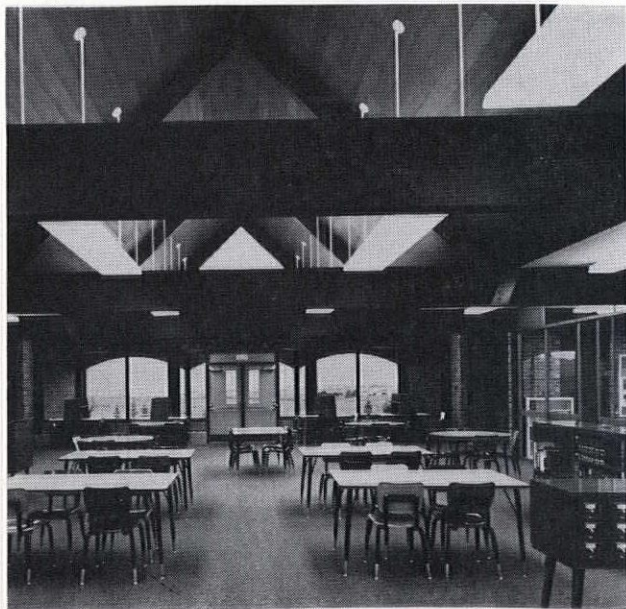
KEY

1. Shops/metal and wood
2. Boiler Room
3. Display Cases
4. Food Laboratory
5. Clothing
6. Art Rooms
7. Auxiliary Gymnasium
8. Grounds Equipment Storage
9. Main Gymnasium
10. Showers and Lockers
11. Classrooms
12. Science Rooms
13. Special Science Projects
14. Administrative
15. Commons
16. Kitchen
17. Cafeteria
- 18/19. Locker Alcoves
20. Toilet Rooms
21. Reading/Study
22. Seminar Rooms
23. Reading Reference
24. Library
25. Study Hall
26. Audio-Visual
27. Vocal Music
28. Lobby/Storage/Toilets
29. Auditorium
30. Instrumental Music
31. Storage



of the plant, adjacent to academic and science classrooms.

The Classroom wing is composed of clusters of classrooms with folding partitions permitting one large team teaching room, two large classrooms of four standard, 30-student spaces. To alleviate corridor congestion and noise, lockers are dispersed in alcoves off the main corridor separated by intermittent windows opening corridors to views of the court and to the west. Expansion is provided to the north.



Looking west from Resource Center interior

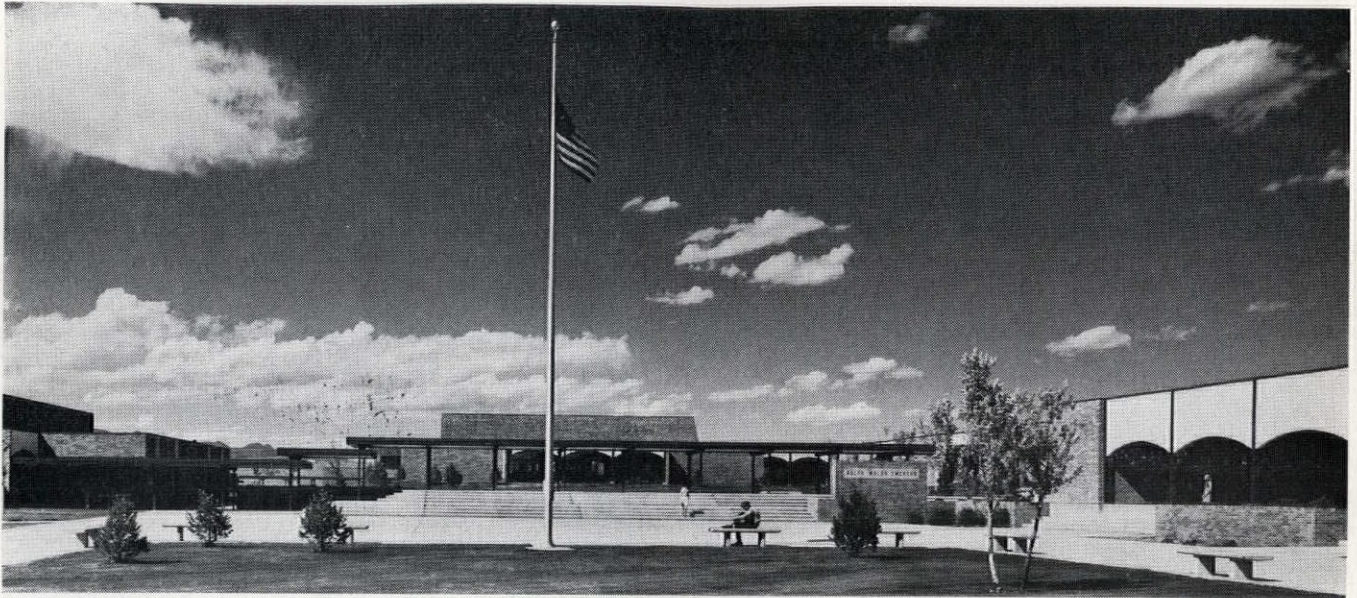
The Science wing, with a common area for special projects and with adjustable classrooms as in the academic area, is connected to Resource Center and Academic wing by a covered walk. Additional classrooms may be added without disruption of existing facilities.

Administrative areas provide a natural sound barrier between classrooms and Cafeteria Commons. This common area is located near parking, making it suitable for evening and weekend functions. By taking advantage of the sloping terrain, a change in elevation was introduced permitting a "secondary stage" for assemblies. Located near the commons area, the Auditorium and Music wing is housed in a separate building. The two may be used simultaneously for special activities without disrupting the balance of the plant. The band room is located so it can double as a dressing room.

Arts and Shop consist of separate wings where spaces may be added without disrupting activities. Display cases located in exterior walls permit viewing displays from the protection of a covered patio connecting the two elements. Housed separately, the Gymnasium, complete with attendant facilities, is located adjacent to playing fields and parking. Fixed bleachers line the east wall with storage provided for roll-away seating. Janitor closets are included in all buildings with a large storage room in the gymnasium for grounds equipment accessible from the exterior.

Technical Data:

Foundations are spread footing and foundation walls. Superstructure is laminated beams and columns and wood joists. Exterior walls are brick with arches faced with marblecrete on steel stud and metal lath framework. Ceilings of arches are cement plaster. Flat roofs are plywood sheathing and built-up felt and gravel. Gable roofs



and high fascias on gymnasium and auditorium are covered with plywood sheathing and cedar shakes. Frames for exterior doors and fenestration are custom hollow metal. Gable ends above library and cafeteria are glazed with bronze plate, all other exterior glazing is clear polished plate.

Floors are concrete slabs on grade plus structural slabs over underground utility tunnels which connect each building with the main heating plant located in the east end of the shop building. The hot water heating system utilizes unit ventilators. The electrical work includes the usual time and signal systems. There is a fire alarm system incorporating door holders released by smoke detectors. In addition to a complete public address system, there are separate systems in each team-teaching area

with amplifiers, speakers, projector and microphone outlets. Flush duct raceways are included in the language laboratories.

Consultants:

Structural: Howard Dutzi, Colorado Springs

Mechanical: Walt Langbartel

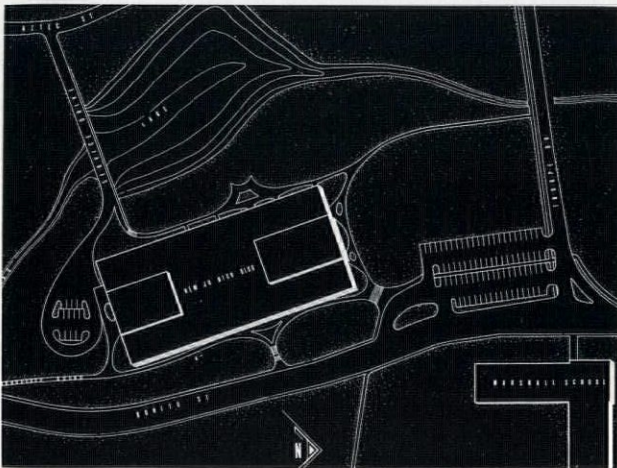
Electrical: Albert E. McKittrick

General Contractor: James Digman Construction

Completion: March, 1967

Cost: \$1,736,000.00

CLOSED



Flagstaff Junior High School
Flagstaff, Arizona
Nelson, A.I.A., Architect

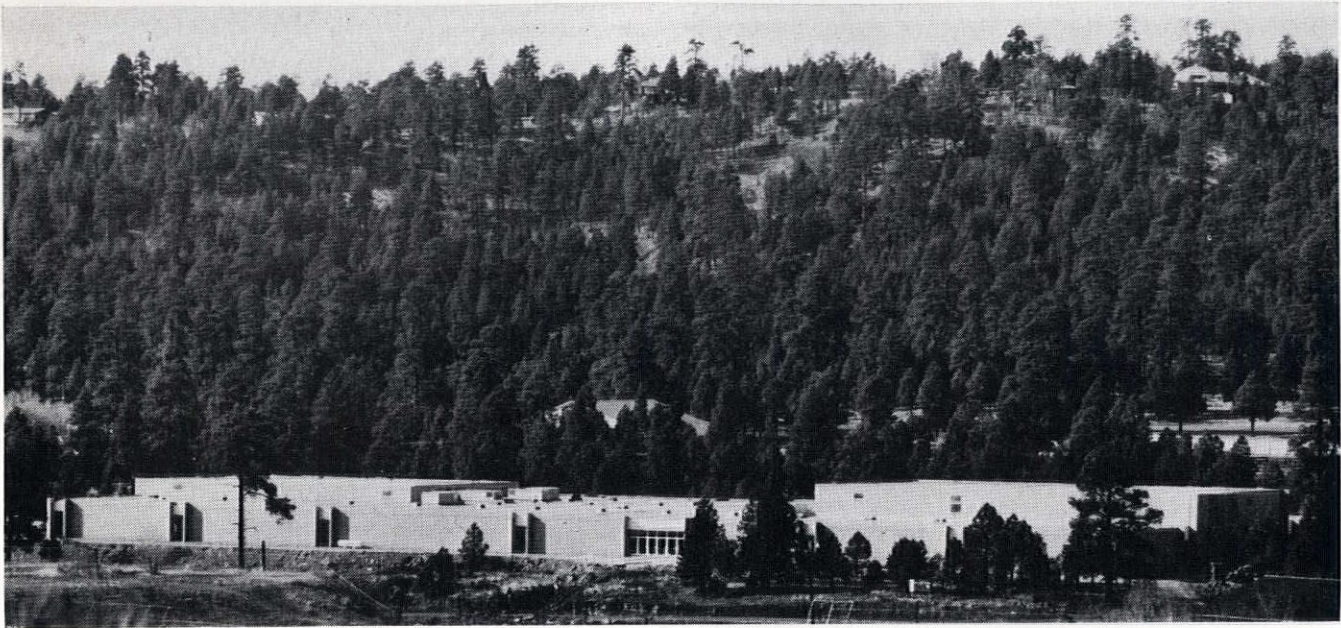
Construction on the new Flagstaff Junior High School was begun in May of 1969 with completion and occupancy scheduled for September of this year. The architect

writes: "In these days of soaring prices, of which building costs are no exception, much effort was expended to stay within the budget without jeopardizing the esthetic or functional value of the building. We feel these goals were met when after satisfying all requirements set forth for the project, the construction cost was well below the budget."

Housing grades 7, 8 and 9, with a capacity of 1,200 students, the cost of the Flagstaff Junior High School is \$1,393,000, exclusive of land, landscaping, fees and furniture. The square footage of 89,800 sq. ft. brings the cost to approximately \$15.50 per square foot or \$1,162 per student. This is, indeed, an impressive figure in these days of skyrocketing construction costs.

The Site:

The small, hilly, eight-acre site is a solid extrusion of basalt rock with very little soil cover. The redeeming feature of the site was the large number of pine trees and its location which adjoins a lake and other city park facilities. Size and terrain resulted in a compact plan. A great amount of fill material was required to provide a level base for the building, for athletic facilities and parking.



The Design:

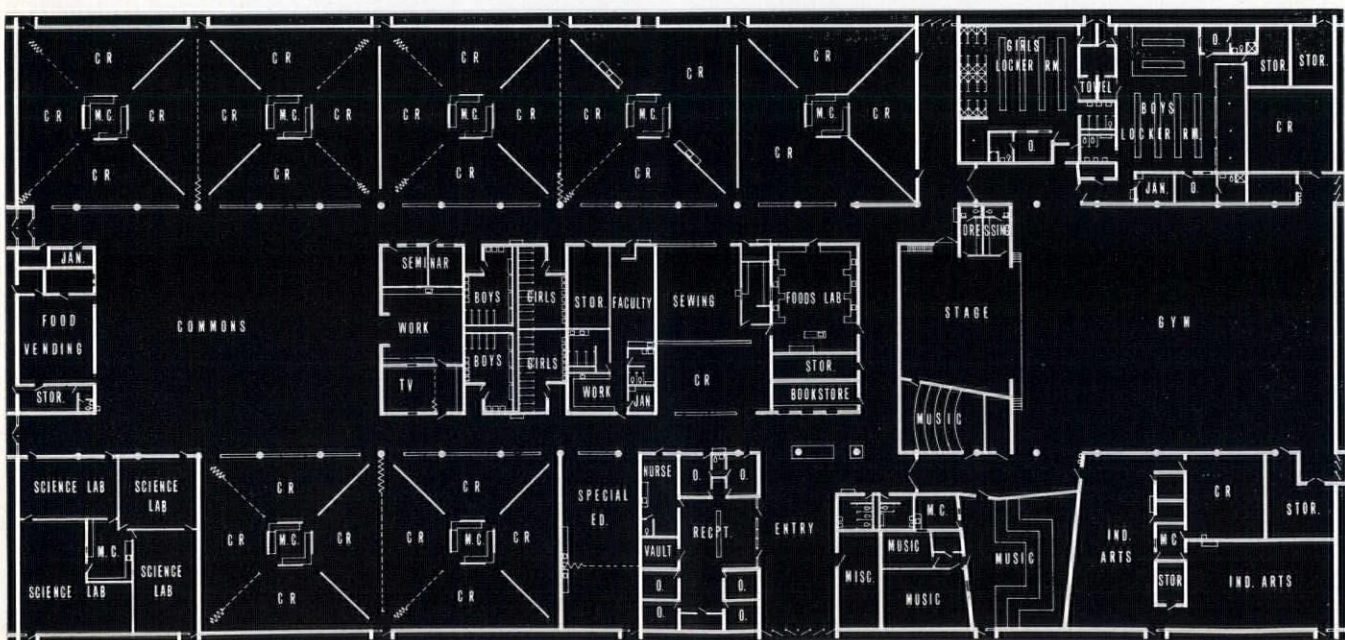
The basic approach to the design of this compact facility was one of flexibility and exploration. These educational goals were achieved by the use of a compact, yet open, plan, with few complete classroom enclosures. Partial and folding partitions form sight barriers between the classrooms and the open commons. The commons spaces will serve as library, study area, assembly area and cafeteria. Out-door decks in the pines on the southwesterly exposure of the building overlook the lake and provide study and lounge areas when the weather is suitable. The building is fully air-conditioned, and the few fixed windows are sidelights to the exit doors in the exterior walls. There was careful attention given to the sound conditioning which was considerably aided by complete floor carpeting. This adjunct to the planning made it possible to achieve the open spaces required by the educational criteria.

Structural Data:

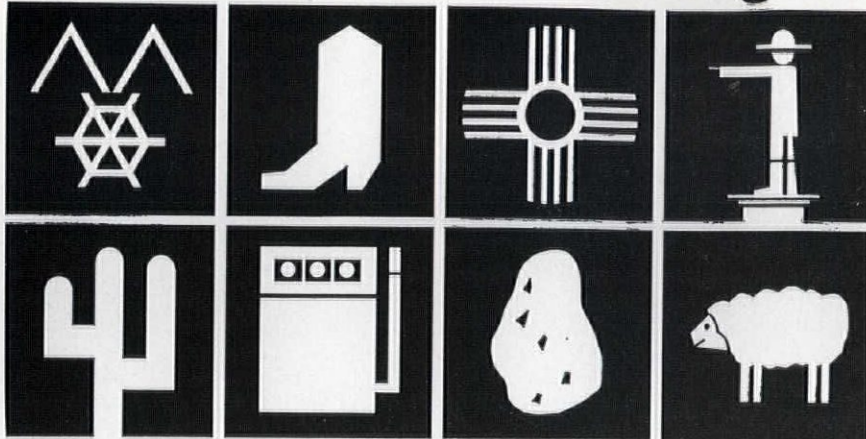
Combination wall bearing (cinder slump block) and concrete frame with longspan steel joists spanning sixty foot and eighty-four-foot bays. A gypsum concrete roof deck, metal stud and masonry partitions, with a concrete floor slab on grade. A 227/480 volt electrical system which utilizes fluorescent lighting and multi-zone, roof-mounted, air-conditioning units will service the building.

Consultants:

- Structural: Foltz, Hamlyn and Adams, Phoenix
- Mechanical: Walter Biddle, Phoenix
- Electrical: A. E. Magee, Tucson
- General Contractor: E. L. Farmer Construction Company
- Completion: September, 1970



symposia/around the region



arizona

ASU Sets Annual Awards

Dean Jim Elmore, FAIA, College of Architecture at Arizona State University in Tempe tells us their Annual Awards Dinner has been scheduled for the night of Thursday, 14 May. He writes—"Both President Newburn of Arizona State University and Governor Williams have set aside the date." It is to be fervently hoped that Arizona State's fine new Art and Architecture Complex will be fully occupied in time, but as Jim writes, "We are at the point of moving into our new building, but, not knowing just when we can begin, we are uncertain as to just how far in we will be on that date. In any case, our present plan is for some kind of stand-up buffet and a walk through the building and exhibits, followed by a brief awards ceremony in the auditorium that is a part of the new Art and Architecture Complex."

We are all indeed looking forward to the further report on this Annual Event, and for some pictures of the new ASU Architectural headquarters.

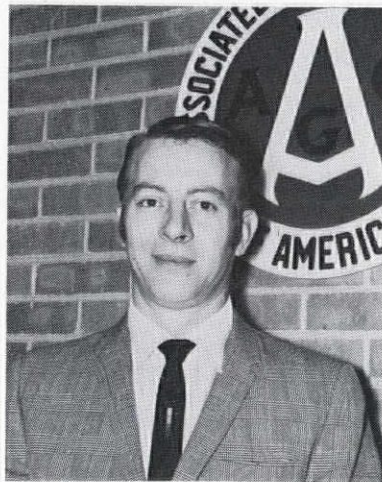
colorado

Pikes Peak in Action

"Intent," a sprightly monthly report from the Pike's Peak Chapter of the Construction Specifications Institute continues upon its merry way. Its very frankness is disarming. For instance, reporting a recent meeting, "Intent" stated—"To a Select Audience (this is a sneaky way of saying there weren't very many there) Mr. W. A. Haas from the Chicago Office of Underwriters' Laboratories showed a film."

Or this announcement of the March 17th meeting—"Portland Cement as a Facing—Sounds like a strange statement doesn't it? This is the title prepared by PCA dealing with the history of cement application from 41 B. C. (seems like only yesterday) to

the present." Three Denver members were on hand for the panel which followed the film — Wally Prebis, Structural Engineer with Portland Cement was the moderator, "Tony" Murray (Protex Industries) and Keith Bell (Mountain States Bureau for Lathing and Plastering) shared the platform with the lone Colorado Springs panelist, Mark Eichstadt, Technical Consultant for Ideal Cement.



Martin E. Woolford

Vocational Director Named

A Director of Vocational and Apprenticeship Training has been named by the Associated Building Contractors of Colorado, Inc. (AGC) He is Mr. Martin E. Woolford, most recently a teacher of Industrial Arts at Cherry Creek High School, and a graduate of Colorado State College in Greeley, where he has also taken work at the graduate level in Industrial Arts education.

In his new position, Mr. Woolford will be responsible for the administration of ABC-sponsored vocational and apprenticeship programs, serving as a representative of the Association on all joint management-union committees dealing with apprenticeship. He

will work with personnel in the Junior and Senior High schools and in Colorado Community Colleges on matters pertaining to vocational education programs related to the construction industry. His attention will also be devoted to a project acquainting Junior and Senior High school teachers in vocational education and industrial arts with the newly-developed Industrial Arts Curriculum Project which Ohio State University has introduced in a number of schools throughout the country.

P. C. Plans Busy April

Along with whatever April showers to come the Industry's way in this month, the Rocky Mountain (Denver) Chapter of the Producers' Council will add some meetings to our normal Spring inundation of same. President Milt Hayman (Robco) has scheduled an Executive Committee Meeting for April 6. The following day, P. C. members will host a Satellite Meeting at the Harvest House in Boulder, Colorado. A Big Event is scheduled for the Albany Hotel in Denver on April 14th when the P. C. boys will welcome members of the American Institute of Interior Designers and the Business Owners and Managers Association. The informational meeting on April 29th is sponsored by Lennox Industries.

Oh, yes, P. S.: There will be a Satellite Meeting for Colorado Springs at the Antlers on May 6.

You've got your choice these days—you can work or you can go to meetings. That is to say—some people have a choice.

idaho

Boise to Host WCARB

Idaho will have the pleasure and the privilege of hosting the Annual meeting of the Western Conference of State Architectural Registration Boards on April 3rd and 4th at the Downtowner Motel in Boise. Representatives are expected from Architectural Examining Boards in Alaska, Arizona, California, Colorado, Guam, Hawaii, Idaho, Nevada, New Mexico, Oregon, Utah and Washington. Chairman of the WCARB is that most charming Mr. John McHugh, A.I.A. (McHugh and Kidder) of Santa Fe, New Mexico. Other officers are Willard Nelson of Utah, Vice Chairman; Richard Eddy, Washington, who serves as Secretary-Treasurer and Board Members Dean Unger of California and William Church of Oregon. In addition to the usual lively turnout, National President Dean Gustavson from Salt Lake City, Utah, will be present as well as NCARB President-Elect Bill Geddes of Cambridge,

Massachusetts. Mr. G. who heads the Host Chapter Committee for the Boston Convention of the American Institute of Architects in June is in the process of being "woodyed by the West." Since the WMR in September, 1968—he has returned again, and yet again.

montana

AIA Honor Awards/1970

At hand, the list of those architectural firms who have received laurels in the Montana Honor Award Competition of the Montana Chapter of the American Institute of Architects. The Honor Award is to Page-Werner and Partners of Great Falls, for their Charles M. Russell Gallery. Awards of Merit were given C.T.A. for three separate projects . . . A Classroom-Office Building at Eastern Montana College in Billings, the AOP Sorority House at Missoula and the Missoula Crippled Children and Adults Rehabilitation Center. The CTA firm is located in Billings, Montana. Other Awards of Merit were presented to the Architectural Design Group of Billings for a Residence for Mr. and Mrs. John O. Odegaard and to Drake Gustafson and Associates of Billings for the Gazette Publishing Facilities in the same city.

We would extend our hearty Symposia congratulations to these architects, and wish them Happy Designing.

Politics and Problems

Our Man in Montana, Cal Hoiland, just sneaked in "under the wire" on the April issue. He, of course, had been enjoying the sights, the sea food et al in the Big City of Seattle, so "all is forgiven." In any event, he reports the Special Session of the Montana Legislature didn't come off—probably too many money, interest and tax problems to solve in a short time so the Governor decided against it. Comments Hoiland, "Looks like the cost of money is easing so a special session is getting harder to justify." (Let's all Hope with Hoiland and perhaps those banker-types will throw out the anchor before we really do sail off the end of the world!)

Item 2: "Because of the mobility of architects, there are developing conflicts in the services offered and rates of compensation charged by those being interviewed for a project. It is not unusual to find 4 or 5 different firms from 4 or 5 different states all being considered for the same job. It even confuses the architects."

"The Northwest Region is going to do something about this if possible. Director Jack Wright has appointed a 3-man Task Force for Compensation

to work toward a common fee schedule for the entire region. Members are Ken Brooks, Vince Werner and Bill Reed . . . good men, all! Hope they can come up with the answers!" (The balance of the Hoiland Report will be found under the heading—"Student Affairs.")

nevada

Opportunity Program Initiated

The Northern Nevada Construction Opportunity Program was kicked off Monday evening, February 23, 1970, with approximately fifteen students signed up for the first training class. Ernest Mullins, Program Director, introduced the initial class to members of the Trust which established the Program.

Discussing the Program with the students were Mel Moody, Chairman of the Trust; John Byrne, Co-Chairman, and two Trustees, Paul Helms and Rowland Oakes.

Mr. Byrne, Secretary of the Building Trades Council, told the students that jobs in the Construction Trades were open to all persons regardless of race, color, or creed. Rowland Oakes, Manager of the Nevada Chapter, AGC, stated that while initial employment was through a hiring hall, once on a project the employee who applied himself was assured of employment. Mel Moody of A. Teichert and Son and Paul Helms of Robert L. Helms Construction volunteered to loan construction equipment on which the students would train.

Otis Burell, classroom instructor, advised the students that the purpose of the classroom instruction was to learn each student's weaknesses and coach him in those areas so he might pass the G E D test which would open the door to apprenticeship.

new mexico

Design Center/Albuquerque

The Community Design Center in Albuquerque is providing a superb example of real involvement — and action! The Center which was set up in coordination with the Model Cities Program is, of course, sponsored by the Albuquerque Chapter of the American Institute of Architects. Volunteer professionals are on hand, but much of the work is being done by architectural students from the University of New Mexico. In addition, the Consulting Engineers Council/New Mexico has also gone on record as supporting the Center, and pledged engineering assistance whenever needed. A copy of the roster of local CEC members was provided the Director of Housing and Urban Development along with a statement of the consultant's willingness to help.

Latest word on the first of the CDC projects is that all is going "full speed ahead." Construction on a small residence for a needy family that was a flood victim is nearing completion. Several other projects are now on the boards. The Newsletter of the New Mexico Society reports . . . "Architectural Students are providing the manpower, and they are doing a fine job!"

Legislature/New Mexico

As always, Mr. Brad Kidder of Santa Fe keeps us informed of what is going forward on the law-making front in the "land of enchantment." His report on the 1970 Session of the State Legislature follows:

"By Constitutional Provisions, the even-year Legislative session may consider only three types of action—1) The State Budget and financial matters relating to new taxes or how the Budget shall be spent—2) Consideration of matters contained in the Governor's Message to the Legislature—3) Re-consideration of any measures vetoed by the Governor at the end of the 1969 Regular Session.

No matters which had any effect on Architects, Engineers or the Construction Industry were introduced or considered. No Memorials or Resolutions which could in any way affect any of these professions. So, we had nothing to contest.

Legislative action: 1) Voted an Income Tax Refund for 1969 in the amount of 20%. 2) Adopted a General Fund Budget for 1970-71 with an increase of about \$18.5 million above that for the previous year. 3) Increased Public School support by about \$8 million. 4) Appropriated \$295,000 to buy New Mexico's half of the Narrow-Gauge Railroad Line. Colorado expected to do likewise. (A triumph for Terry Ross, President of the Santa Fe Chapter/AIA, who served as Chairman of the Railroad Preservation Committee.) 5) Killed the possible sale of Liquor on Sundays. 6) Passed a very weakened bill relating to Water and Air Pollution Control . . . a small (in lower case) step in the right direction. 7) Referred 3 Constitutional Amendments to the voters for consideration at the next General Election.

In Summary: Session was dominated largely by Political Party vote lines —this being an election year for both Senators and Representatives. Democrats did all they dared to discredit the Governor. Session marked by indecision and reconsideration. Not good. HOWEVER—nothing happened to affect the Construction Industry."

Awards/Albuquerque

A special Awards Banquet held on February 27th was the occasion for members of the Albuquerque Chapter/AIA to honor their colleagues for their designs of buildings in New Mexico. Joe Boehning, Symposia's Man in Albuquerque and 1970 President of the New Mexico Society has forwarded the "names and numbers" of all the winners. The Honor Award went to Ferguson, Stevens, Mallory and Pearl for the Telephone Exchange Building at Los Alamos for Mountain Bell. Four Awards of Merit were presented—they went to John Reed for the College of Business Administration on the campus of the University of New Mexico; to Ferguson, Stevens, Mallory and Pearl for their Addition to the Chemistry Building at UNM; to W. C. Kruger for the Public Service Company of New Mexico's Building in Albuquerque, and to Jess Holmes for the Wilson Park Swimming Pool, a project for the City of Albuquerque. At this same Awards Banquet, Joe reports that the New Mexico Society of Architects presented Citations of Honour to Dr. Bainbridge Bunting and the late Miles Brittelle, Sr. for their dedicated work for the AIA component publication — "New Mexico Architecture" during the past decade. Dr. Bunting is a professor of the History of Art and Architecture at the University, and served as co-editor of the magazine for many years. "He is," comments Joe, "one of my favorite teachers." Mr. Brittelle, Sr. was instrumental in founding "New Mexico Architecture" in 1959, and handled advertising for the publication until his death last December. He practiced architecture in Albuquerque for over forty years.

The New Mexico Society of Architects has finally initiated its first Honor Awards Program is the "last word" from the Society. This first year, awards will be given for commissions or projects which have been completed between January 1, 1965 and July 1, 1970. Three areas of architectural interest are included: (a) New buildings or structures and the remodeling of existing buildings or structures; (b) Historic Preservation or Restoration; (c) Environmental Planning Projects which were completed by the submittal of a bound report and/or drawings. Entry is open to all members of the New Mexico Society, and while the completed structure or planning project need not be located in New Mexico, the execution of the commission must have been undertaken in New Mexico architectural offices and all entries must so stipulate. Deadline for the receipt of entry submittals is August 1, 1970

... and go to John P. Conron, AIA/AID, 207 Lincoln Avenue in Santa Fe, New Mexico—87501. Complete details, of course, are to be had in "New Mexico Architecture."

Change Order

The Santa Fe Chapter/AIA has switched its meeting time and place. Hereinafter, the Chapter will meet on the **second Friday** of the month at the **Inn of the Governors** in what Correspondent Kidder terms "our size room." At the March 10th meeting, the gentlemen heard Mr. Franklin Jones, Commissioner of the Bureau of Revenue and Head of the Gross Receipts Tax Division. Brad comments — "He should be most informative and perhaps help us to avoid 'penalties.'" With April 15 almost upon us—what magnificent timing!

The Santa Fe Chapter is still working to get the Model Cities Program Community Design Center under way, however the Program has had its Budget cut to the point where it is doubtful whether there can be any real accomplishment. Hopefully something can come out of the work done by the Chapter.

oregon

C.E.C. Publications

After to these many, the Consulting Engineers Council of Oregon has proudly announced the publication of "The Procurement of Engineering Services": "Book A—General Engineering" and "Book B—Interprofessional Engineers." Both are available from CEC/Oregon at a cost of \$1.50 each. The new publications provide excellent, complete data on professional engineering services, and are according to reports, providing Oregon consultants with an excellent educational document and public relations tool. Copies of Book B have been distributed to all Oregon architects.

Evaluation/Economic

The Oregon State Board of Higher Education has postponed until May over ten million dollars worth of college construction as a result of the State Emergency Board's moratorium on construction funds. The Emergency Board acted at its February meeting to transfer funds to the state welfare fund which has been rapidly depleted due to rising unemployment resulting from the tight money and high interest rate policy of the Federal Government. In a state whose number one industry is wood products, the fall-off of housing nationally is causing a welfare crisis. Paradoxically, the area the State of Oregon first restricts within its own

boundaries is the wood oriented construction industry.

To the north, in the State of Washington, its single biggest employer, Boeing Aircraft Company, has been laying off workers for the past year, as result of cutbacks in commercial aircraft contracts and production losses. The layoffs in recent months have been so heavy that many technicians and engineers have left the state seeking employment in Oregon and California. As has been the case in prior years, as goes Boeing so goes the economy of Puget Sound, which has hit hard the construction industry.

utah

ASSIST

The Utah Chapter of the AIA has changed the name of its Community Design Center. The C.D.C. Steering Committee has selected the name "ASSIST"—as shown above, a logo which was the donated design of Advertising artist, Ted Nagata.

On March 12-14, ASSIST Director, Carl Inoway attended the first AIA Community Design Center Conference in Washington, D. C.—a timely meeting coming at just the right time for many budding centers throughout the country. The Status Report in the UAIA Newsletter shows that two "Assists" have been completed and work is being done for the Utah Non-Profit Housing Corporation. Several more requests for assistance have been received and are under study.

Engineers Week Outstanding!

Utah's Engineers may look back with pride on their 1970 Engineering Week program, "Environmental Design for the 1970's," which was held at the Salt Palace on February 27-28. Particular goals for this year's observance included involving both Junior and Senior High Students by exposing them to the accomplishments of the Engineering profession, and interpreting the role of the Engineer in solving contemporary problems. Committees were at work on the program for several months under the efficient direction of the General Chairman, Sigurd A. Blomquist, CEC/Utah. Other CEC members on the job were George Gudgell, Fund Development Chairman and George Toland who chaired the Awards Committee.

Highlight of the week's activities was the banquet held in the Salt Palace on Saturday 28 February, where a large audience was entertained by the wit of M. C. George S. Odiorne, and the

wisdom of guest speaker, Dr. Allen V. Astin. Dr. Astin, former director of the Bureau of Standards, Washington, D.C. is on special assignment from the Department of Commerce. In his speech on "Environmental Design," Dr. Astin likened the four threatening spectres in our society to the Four Horsemen of the Apocalypse—Air Pollution, Water Pollution, Solid Wastes and the Population Explosion. After a keen analysis of the problems involved, he recommended a "systems approach" toward a solution. Honored for outstanding grades and participation in the engineering field were three young students—Jed R. Robinson, of Brigham Young University; Steven E. Harris, Utah State University; and Dennis Keith Brown, University of Utah.

The Outstanding Engineering in Government Award was made to Mr. Ellis L. Armstrong, Commissioner, Bureau of Reclamation. Mr. Armstrong, a former Utahan, was present to receive not just his award, but the warm welcoming applause of his engineering colleagues. The Outstanding Engineer in Education Award was presented to Dr. George R. Hill, Dean of the University of Utah's College of Mines and Mineral Industries.

A special award was given Clayton

Clark from the Institute of Electrical and Electronic Engineers . . . Master of Ceremonies, George Odiorne presented Clark's "Fellow" title on the end of a piece of electrical cable. And everybody agrees—it was a great week for the Engineers in Utah.

Science-Fiction?

No, not really—but in February, the Intermountain Chapter of Producers' Council did present a "prediction-and-a-half" at their regular luncheon meeting at the Rodeway Inn, Salt Lake City. For this extra-special, they included members of the A.I.A., C.S.I., W.A.L. and W.I.C. The guest speaker was Robert Whorf, transportation scientist for the Ford Motor Company. But, we'll let our own Symposia correspondent, Nancy Carpenter take it from there—Eyewitness News, of course.

"The auto industry has come to the conclusion if they are going to sell any more cars on today's market, they must do something about the traffic problems they've created in America. Bearing this in mind, the Ford Motor Co. has made a two-year study costing \$100,000.00 and geared to the year 1984 when Salt Lake City is expected to reach one million in population.

"Mr. Whorf gave a twenty-five minute film presentation of the concept of such a transportation system. It would be a monorail type, running to and from the present airport to the downtown area. One would park their car at a downtown transportation center and thus proceed on the system. Passengers could be loaded and unloaded along the way at stations and those going out to the airport could remain on the monorail, being ticketed on the way, and then deposited in their own seat inside of the aircraft. This would be particularly desirable when the 747's take over the airlines. Eventually the system would be enlarged to tie into the southeast part of the city or anywhere else when the area becomes heavily populated.

"So far the study is only a concept and a final report is due later in the spring—along about April. Ford will remain on the program as a consultant. If such an idea becomes fact, a bond election will have to be held. You're undoubtedly asking the same question as I did! How much would such a transportation system cost? In Mr. Bob Whorf's own words, 'such a system would run about one million dollars per mile including structures and vehicles.' "

Specify

RICHLAWN Quality Sod



We invite you to see our installations at

- The Air Force Academy
- University of Colorado
- University of Wyoming
- Polo Club Apartments
- D. U. Memorial Gardens

Your choice of
SCOTT'S WINDSOR
Merion or Kentucky Blue

Full Written Guarantee
Call for a Free Estimate
on your next project.

Richlawn Turf Farms

Denver-Boulder 771-5611
Colorado Springs 473-5836
Pueblo: 800-332-9862



For Interior
Below Grade
Waterproofing

**SONNEBORN'S
FERROLITH W**
Waterproofing

FERROLITH® W Waterproofing

Iron powder compound for interior below-grade metallic membrane waterproofing. Mix with portland cement, sand and water to form parging or plastercoating mortars for application to below-grade walls, and floors before final topping. Sealing action based on oxidation. Protects against seepage, flowing or hydrostatic leakage. May be applied to exterior foundation walls to combat extraordinary site water problems. Requires 40 lbs. for three brush coats per 100 sq. ft. (100 lb. bags)



K. C. CONSTRUCTION SUPPLY CO.

19th & Bryant St. Denver, Colo. • (303) 477-1601

Landscape Institute Sets Goals for The Seventies

At their recent Annual Meeting held in San Diego, California, the American Institute of Landscape Architects reviewed past accomplishments and projected a dynamic course for the future. They joined other design professionals in expressing their concern for the environment in the following resolution adopted unanimously—

"WHEREAS, the public awareness of the extreme danger to the human race through pollution of the environment has reached the level of concern long expressed by the profession of landscape architecture, and

WHEREAS, landscape architects are the professionals able to identify those things which should be preserved, those things which should be changed and the techniques that should be used,

BE IT, THEREFORE, RESOLVED that the American Institute of Landscape Architects takes a firm public stand in support of those programs by both governmental and private agencies toward preservation and improvement of our natural surroundings, and

BE IT FURTHER RESOLVED that the public be made aware that the officers, directors and members will bend all efforts toward assisting such programs to a successful completion."

Reelected to office for a second term as International President of AILA is Alexander Budrevics of Ontario, Canada. A landscape architect in private practice, Mr. Budrevics was born in Latvia, and practiced landscape architecture in Germany, Belgium and England before coming to Canada sixteen years ago. Other officers include Paul M. Saito, Los Angeles, First Vice President; E. Ibsen Brodersen, British Columbia, Second Vice President; Gunter Schoch, Manitoba, Secretary and Richard A. Wilson of San Diego, Treasurer.

An unusually fine panel was presented on the topic "The Design Team in Action." Moderated by Roy Krell, Building Editor of Sunset Magazine, the panelists were Robert E. Jones, A.I.A.; Gerald Jerome, A.I.D.; Lee E. Schafer, Facility Planner and A.I.L.A. members, Philip Tattersfield and Warren Lauesen. These gentlemen, knowledgeable and eminently successful in their respective fields, were able to point up the increasing

importance of the design team in projects at the initial planning level.

Among the many highlights at this most successful A.I.L.A. Annual were presentations by Artist-Sculptor, James Hubbell of Santa Ysabel, California—"If you want a beautiful life, or a beautiful building, then you must make the moments beautiful," and of The Japanese Art of Ikebana presented by Mari Morgan of San Diego and by Senior Professor, Masato Uetsuhara, head supervisor of all teachers of the Ikenobo Institute in San Francisco.

Principal speakers included Garrett Eckbo, FASLA, who spoke at a luncheon gathering on the topic, "Focusing On Japan." A slide presentation was made by world renowned Richard Neutra, FAIA, titled—"Survival Through Design." Both Mr. Neutra and Mr. Eckbo were elected to Honorary membership in the Institute.

A significant address on "Gardens" was delivered by Professor Roberto Burle Marx of Rio de Janeiro, Brazil. Professor Marx told AILA members, in part . . . "When it comes to gardens, there is no doubt that it is through them that we can get relief from a life that is going to be increasingly mechanized and farther removed from our original contact with nature. I am convinced that community gardens, squares and parks will assume a growing importance in our lives in quest of stabilities to counter-balance the uncertainties of our present industrial civilization. The garden will have a social as well as a vocational and scientific character. Its functions will be determined by the aspirations of a book linked to man's esthetical and ethical conduct." He continued . . . "In thinking in terms of modern city planning, one great concern should be to guarantee the preservation of green areas, allowing the city dweller to contact with nature and not to leave him to feel lost in a mass of concrete, that little by little takes possession of his country's free spaces until lost in the last city. The last cities are becoming more and more inhuman. Air pollution, lack of green areas and haphazard city growth without any planning have contributed to this misunderstanding of what could be an

ideal city with its woodland picnic sites, playing fields, open theaters with open spaces that people could meet, making use of swimming pools and above all, what imagination could contribute towards the esthetic aspects so necessary in our daily lives."

The Board of Directors of the American Institute of Landscape Architects approved the following recommendations by the Executive Director . . . 1) AILA will be directed very strongly as an organization oriented toward the professional individual and will continue efforts to expand throughout the Americas as an All-American or Pan-American organization, 2) Officially adopted the Construction Specifications Institute Standard Format for Specifications, 3) Courtland Paul will chair a study and develop a book of landscape details under a grant, and the AILA will publish 24 Plans-of-the-Month in book form. In his message to the membership, Executive Director F. J. MacDonald of Phoenix, Arizona (a member of Symposia Advisory Board) challenged Institute members . . .

"Let me add my predictions to the long list of those already made for this new decade.

Arnold Toynbee states that because of local sovereignty, nationalism if you please, the world will not make any real strides in the next decade to solve its greatest problems. In other words, we will be frustrated in our attempts to limit this planet's population explosion, to increase the food supply, to prevent this planet's soil, water and air from being contaminated lethally by technological developments that will not yet be under any kind of global control.

U Thant, Secretary General of the United Nations, mentions the advancing menace of environmental pollution.

In 1907, President Theodore Roosevelt said that the conservation and proper use of our natural resources constitute the fundamental problem which underlies almost every problem of our national life.

Gentlemen, ecology and environment are the key words for this next decade. And environment is our forte. Now is the time for the American Institute of Landscape Architects to make itself heard in the nations."

Seattle Architects Honored

The Seattle architectural firm of Naramore, Bain, Brady and Johanson was presented the special Portland Cement Association award for "distinguished architectural design in white cement concrete" at a luncheon at the Washington Plaza Hotel on February 24. The award was made for the architect's design of the Plymouth Congregational Church located in downtown Seattle. In making the presentation, Ross Hildebrandt, Northwest Regional Manager of P.C.A., said: "It is always a pleasure to recognize such an outstanding design concept and to give public credit to the excellence in workmanship for this most important structure, a focal point for creativity and a restful religious sanctuary in the heart of a great city."



THE AWARD

(Left to right) Ross Hildebrandt, Northwest Regional Manager, Portland Cement Association, presents the engraved plaque to Perry B. Johanson, Partner in Charge, and Donald A. Winkelmann, Project Designer, representing the architectural firm of Naramore, Bain, Brady and Johanson, Seattle, Washington, and John D. Stef, Architectural Concrete Specialist, P.C.A., San Francisco.



THE BUILDING

Courtyard of the Plymouth Congregational Church (United Church of Christ), Seattle. The General Contractor was Baugh Construction of Seattle with the white Portland cement plaster work by Western Tile Contractors, Inc.

Photographs are by George R. White

In describing the design, the architect has written, "The block-long church complex includes a 560-seat sanctuary, 90-seat chapel, fellowship hall, reception lounge, library, classrooms, administrative offices and a parking garage for 90 automobiles. Articulation of the various elements was desired to give this downtown building a unique character, and to relate very specifically to the adjacent IBM Building. This was accomplished not only by the design of the buildings but by the inclusion of a plaza which relates to the IBM plaza. The base structure is reinforced concrete with an exposed aggregate finish. The portion above the base is poured-in-place concrete with a dash-coat finish. Narrow stained glass windows have been set in precast concrete panels."

The Portland Cement Association annually honors architects for white cement architectural projects judged best in each of its 12 U. S. Regions. Other winners west of the Rockies, including the Plymouth Congregational Church, Seattle, were Wilshire Square 1, Los Angeles, and the Federal Reserve Bank, Denver. (Symposia/March.)

* **hufcor systems**

FOLDING DOOR
AND PARTITION
HEADQUARTERS

Vinyl Accordion Doors
Vinyl Acoustical Partitions
Wood Panel Folding Doors
Operable Wall Partitions
Portable Wall Partitions
Ventilating Wood Slat
Folding Doors

Call for Technical Assistance, Estimates and Quotations

RAY CARSON CO.
726 south pearl street
denver, colorado 80209

733-9514

*Trade Mark Hough Mfg. Corp.

... for
versatility
and design
freedom

gloss general building service and supply, inc.
1736 boulder street, denver, colorado 80211 / phone (303) 433-8995

TRUSS JOIST — THE UNIQUE WOOD AND STEEL, ROOF AND FLOOR SYSTEM.

The continuing Student Participation Project "Silt Pile" which is sponsored by Paolo Soleri's Cosanti Foundation and coordinated through the College of Architecture at Arizona State University will begin this year on Monday, April 6. The Five-Week Workshops will continue registration thereafter through and including Monday, June 15. The Soleri studios are located eleven miles north of Tempe, site of the University, and students have access to studios and library there. Activities at Cosanti begin at 5:30 a.m. in mid-June with a break between 11:30 a.m. and 4:00 p.m. The information bulletin stresses that the Silt Pile Workshop is based on hard work, that student spectators are not welcome and anyone envisioning a five- to six-week vacation in the Arizona desert is discouraged.

No transportation or living accommodations are provided. Popular in 1969, the Bunkhouse, 5111 North Scottsdale Road, offers rooms for two with kitchenettes, evaporative cooling and swimming pool—prices after Easter, \$70.00 per month, per person. Students are to find their own transportation with students who have cars. Admission to the Silt Pile/10 program

is limited to students who have completed the equivalent of at least one year of architectural design, engineering or studio work in the fine arts. A letter of recommendation from the head of the school and a \$10.00 deposit must accompany each application, and must be received by April 1, for June 15 registration. This material should be addressed to James W. Elmore, FAIA, Dean—College of Architecture—Arizona State University, Tempe, Arizona 85281. The fee is \$75.50, payable the first day of the Five-Week Workshop. The elective sixth week is without charge.

(Our information on Silt Pile/10 was received after the March issue deadline. We regret not having this material available sooner to those interested.)

Arcosanti/2

(The work at Arcosanti/2 will begin after completion of Silt Pile/10 and is not under the sponsorship of Arizona State University.)

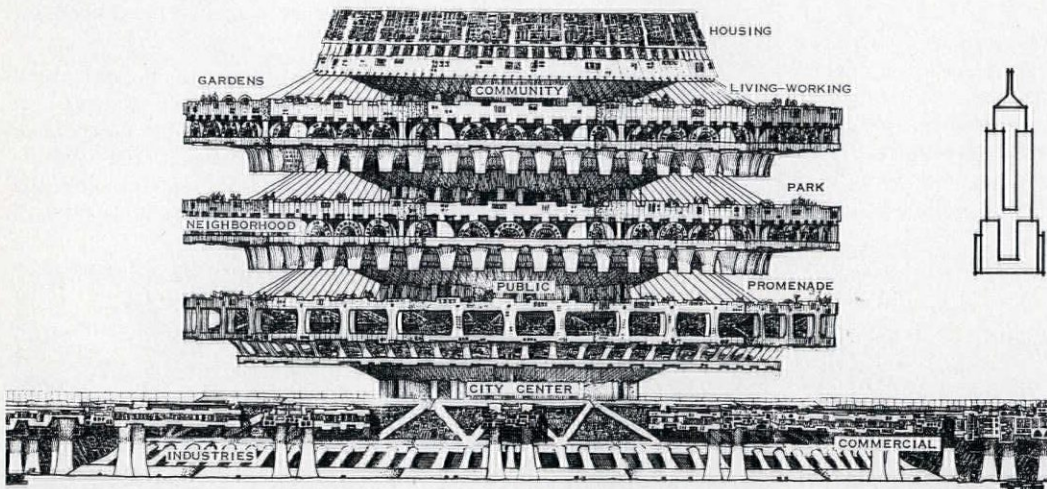
Initial work on the Aqua Fria site is scheduled by the Cosanti Foundation for June 1 with the opening of a one-mile-long road to the work area, the extension of water and power lines, the setting up of a camp for those in-

involved in the work and the installment of equipment and materials.

The Foundation has announced that only about 30-35 students can be accommodated, and all must have some previous experience in construction. There will be a fee of \$200.00 which the Foundation will match with a like sum. Lodging at the site is included in the fee. The work will run probably from July through part of September with students admitted any Monday between the 20th of July and the 17th of August. Inquiry, deposit, money and fees should be made directly to the Cosanti Foundation, 6433 Doubletree Road, Scottsdale, Arizona 85253. There is no credit for the workshop.

Students and others interested in the workshops and programs of the Cosanti Foundation may well be interested in Paolo Soleri's book—"Arcology: The City in the Image of Man" (M.I.T. Press).

The price of the book is \$25.00, no charge for mailing. Simply address the Cosanti Foundation in Scottsdale (address above). All profits and royalties from the book are transferred to the Foundation for the Arcosanti construction fund.

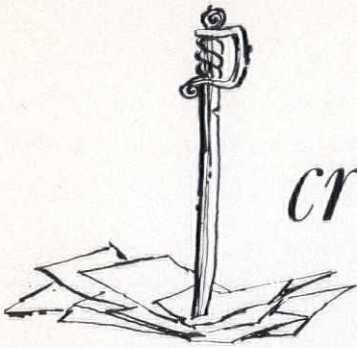


Arcosanti/2

A hyperstructure over one kilometer high and two kilometers in diameter at the bowl base. Vertical shafts carry (1) the vertical transportation system, elevator batteries and continental, transcontinental air transport "sleeves"; (2) services, exhausts. Anchored to the shafts are the platform-grounds of the city: (1) at the periphery, the residential spaces; (2) in the medial belt, the gardens and waste processing plants; (3) toward the center, civil facilities and work. The top platform-ground is for cultural institutions; schools, labs, studios, theaters, libraries. At the ground is a system of parks, gardens, and playgrounds. Under the ground level develops the automated world of production and maintenance with environmental

conditions dictated by the functionality of each plant division: there will, or may, thus be production (and research) in an atmosphere of vacuum, fire, cold, gas, radiation, water pressure . . . the fusion (or equivalent) power plant at the core. Energy is served radially to plants, to the technological "City" and to the totality of dome in which the arcology is contained.

The first structure to be built will be the base of one of the seven apses measuring 60 meters in diameter. These bases will be a ring of vaults 15 meters deep and five meters high. It is also possible that by employment of a crusher for the production of aggregate will start excavation of a pit of about 30 meters in diameter to be later on "sculptured" into a carved theater and meeting place.



critique

(Symposia means a free interchange of ideas—we want you to express your ideas, thoughts and opinions on any and all architectural and building subjects. Simply address: Symposia, 4070 Estes Street, Wheat Ridge, Colo. 80033.)

Dear Miss Trunk:

Many thanks to you again for sending along copies of the February issue of Symposia which carries such a fine story on our Exhibition of School Architecture and entries from your part of the country. This certainly is well done and I enjoyed seeing all of those familiar entries laid out so beautifully in your magazine.

Thanks again for your interest and support.

Sincerely,

Beatrix Sebastian, Director
Architectural Exhibition

American Association of School Administrators

The fine cooperation and interest which Bea Sebastian has shown Symposia makes us look forward to February—every year!

Quite inadvertently, pretty, perky Atha Lavalett (the Sweetheart of the Pikes Peak Chapter/CSI) thought we had asked her boss, Editorial Board Member, Lamar Kelsey, FAIA, for pictures of all the officers of the Colorado South Chapter/AIA. Actually, we just needed one from Walt Burgess, their "fearless leader." Are we glad, however, that she misunderstood—for look what we found in our smiling (maybe even laughing-out-loud) Symposia mailbox!

Dear Betty:

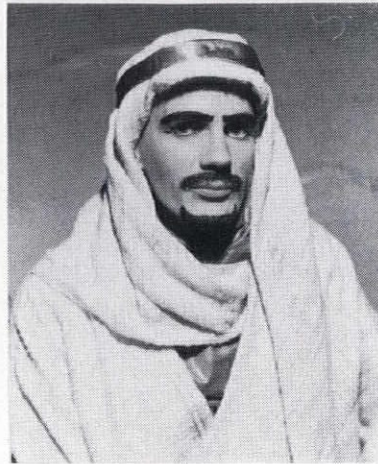
DeRos finally took me seriously and sent a picture after

all—I told him anything but his kindergarten picture would do—so this is what I got.

Caption is on back.

He has a great sense of humor.

Atha



DeRos Hogue
American Institute of Arabs
(Pronounce that aye-rabs)

Dear Betty:

The Board of Directors of the Construction Specifications Institute, at their February meeting, passed the following resolution: "Be it resolved that Mrs. Betty Trunk be accorded our utmost thanks for her composition of the 'Introduction to Tom Keeton' which was sent to all chapters in the Western region."


The Board is again indebted to you for your unselfish assistance to our chapter.

Very truly yours,
Larry Bourn, President
C.S.I./Denver Chapter

You had better believe we'll sing Tom's praises—anytime and anywhere! And certainly CSI/Denver lists a "whole herd" of our favorite people!

OLYMPIC
Pre-Stained Wood

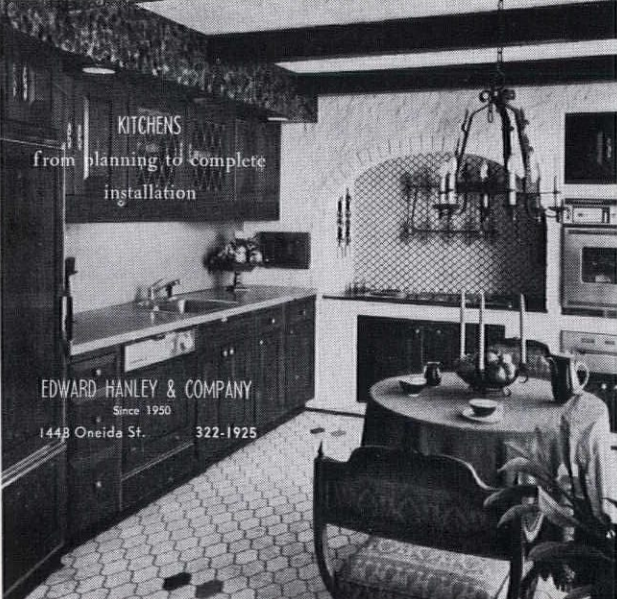
Quality - Economy
Reduced Labor Cost
Lasting Results
IMMEDIATE DELIVERY



Alpine
LUMBER CO.

4100 So. Santa Fe Dr.
Englewood, Colo. 80110
Phone 789-2275

KITCHENS
from planning to complete installation



EDWARD HANLEY & COMPANY
Since 1950
1448 Oneida St. 322-1925

EDUCATION, *continued...*

A one day conference at the University of New Mexico on Friday, April 10, is designed as continuing education for practicing engineers, architects, contractors and for students. Theme for the meeting is "New Developments in Concrete Construction" and will feature Alfred A. Yee, structural engineer from Honolulu, Hawaii. Mr. Yee is one of the world's foremost authorities on precast and prestressed concrete structures, including prestressed concrete hulls for ships. His topic will be "Column Tee Framing System for High Rise Buildings."

Other speakers on the program are Richard P. Geysler, Portland Cement Association of Skokie, Illinois. Mr. Geysler who is Coordinator of Building Systems Development will speak on "Integration of Mechanical and Electrical Systems in Concrete Floor Construction." Methods of accommodating air handling ducts and electrical wiring through holes in concrete joists will be explored.

"Design and Construction of Instant Buildings" will be the title of the presentation to be given by Francis J. Jacques, Prestressed Concrete of Denver. He will point out the architectural possibilities, economics, speed of erection and structural design concepts for buildings constructed entirely of precast concrete double tee members.

The presentation by Chris Pickett, PCA, Salt Lake City, will utilize two slide projectors to point out useful information and recommendations to obtain the many new textures and colors in cast in place concrete.

The program will begin with a timely talk on "The Effect of the Systems Approach on Architectural Design" by Don

P. Schlegel, AIA, Head of the Department of Architecture.

Co-sponsored by the Departments of Architecture and Civil Engineering at the University of New Mexico and the Portland Cement Association, further information on the one-day conference may be obtained from Dr. C. L. Hulsbos, Chairman, Department of Civil Engineering, University of New Mexico, Albuquerque 87106. The registration fee of \$6.00 includes the luncheon and copies of conference literature.



symposia/about the cover

Chief among ye Editor's problems is "the cover"—but occasionally, one picture hits the old desk which just fits that position of eminence. It was certainly so with this fine photograph taken by George R. White of Portland Cement, Seattle. Beautifully framed, we see the Plymouth Congregational Church (United Church of Christ) located in downtown Seattle, Washington . . . certainly one of the nicest things that could happen to any city's core area. This in-town church was designed by Donald Winkelmann, AIA, of the Seattle firm of Naramore, Bain, Brady and Johanson with Perry B. Johanson as the partner in charge. It also serves to introduce our readers to our Symposia expanded coverage in the great Northwest.



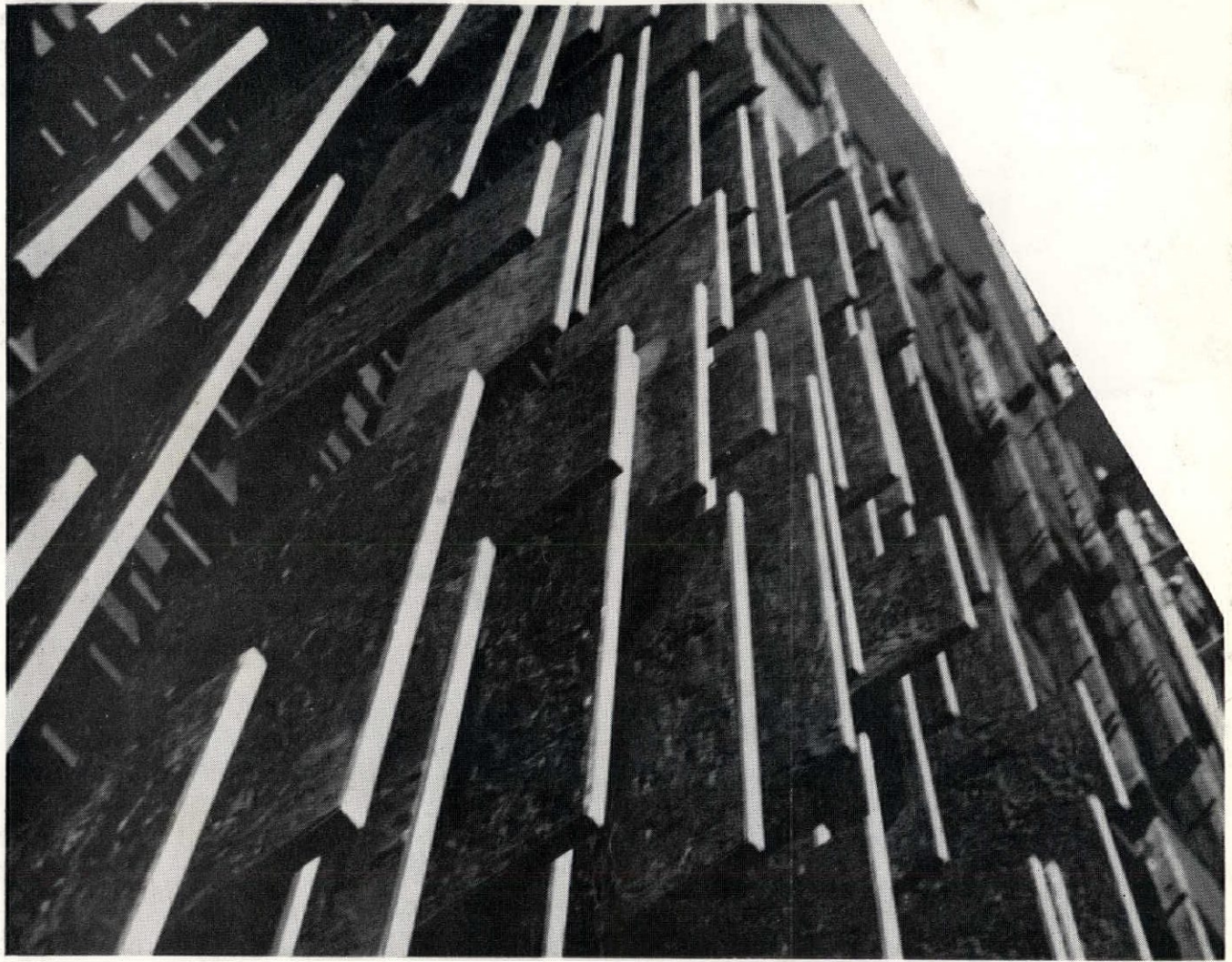
INVESTOR
owned
CUSTOMER
oriented



Public
Service
Company
of
Colorado

Index to Advertising

CSI Specifications Division	Page
6 Alpine Lumber Company.....	35
4 Ray Carson Company.....	33
Colorado Interstate Gas Company.....	Inside Front Cover
8 Colorado Metal Products.....	15
8 W. Ray Crabb, Inc.....	10
7 Francis J. Fisher Company.....	14
9 Formica	11
Frontier Airlines	5
10 Edward Hanley Company.....	35
7 K C Construction Supply Company.....	31
16 McCoy Company	7
3 Mack Precast Products Company.....	13
10 Nelson Distributing Company.....	8
Public Service Company.....	36
3 Ready Mix Concrete Association.....	Inside Back Cover
2 Richlawn Turf Farms.....	31
12 Seal Office Furniture.....	3
4 Structural Clay Products Institute.....	9
5 Trus-Joist Corporation	33
11 Unistrut Western, Inc.....	14
5 William G. Zimmerman Architectural Metals, Inc.....	Outside Back Cover



Denver, Colorado United States Court House and Federal Building

Grill: 32,000 lbs. of Aluminum $\frac{3}{4}$ " thick.
Textured sides, Durodonic Finish
with Bright Edge.

Fisher and Davis &
James Sudler Associates,
Architects

Architectural Metal
by



William G. Zimmerman
Architectural Metals, Inc.

Craftsmen for the Rocky Mountain Region Since 1932

PHONE 623-4171

201 EAST 58TH AVENUE

DENVER, COLORADO 80216