

# TEXAS ARCHITECT

OFFICIAL PUBLICATION OF THE TEXAS SOCIETY OF ARCHITECTS

14th TSA CONVENTION OPENS NOVEMBER 4

"TEXAS ARCHITECTURE — 1953" AWARDS MADE

ROLE OF THE ARCHITECT IN HIS COMMUNITY

FIFTEEN YEARS OF PROGRESS FOR THE TSA

OCTOBER  
1953

# WRIGHT

**3 DIVISIONS TO SERVE YOU!**

**1**

## RUBBER AND VINYL TILE DIVISION

The oldest, most-respected name in rubber tile flooring, now brings you another quality flooring . . .

**WRIGHT VINYL TILE . . .**

a thermo-set plastic with a smooth, non-porous, non-slip surface . . . keeps its shape and color in spite of temperature changes.

**2**

## REINFORCED PLASTICS DIVISION

New, lightweight building materials:

**STURDALITE**—shatterproof, translucent, multipurpose structural panels permit unlimited daylighting, dynamic decoration, at low cost.

**VERSATEX**—roofing and siding material that never needs painting!

**VERSARITE**—superior chalkboard material for school-room or nursery; won't become mottled and never needs costly refinishing.

**3**

## CUSTOM MOLDING DIVISION

Plastic and rubber parts and finished items for commerce and industry.



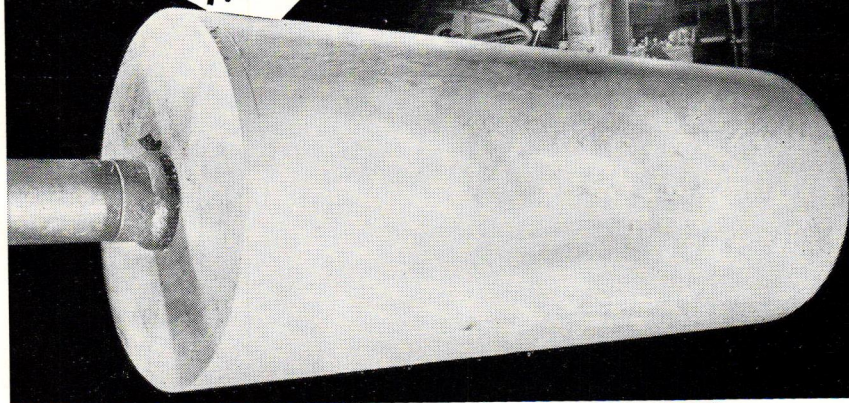
**WRIGHT MANUFACTURING CO.**

5608 Post Oak Road • Houston 5, Texas

Wright Rubber Tile — Wright Vinyl Tile  
Sturdalite — Versatex — Versarite



**APMI**  
**QUALITY PLYWOOD**  
*Begins*  
*Here*



*and it's*  
*sold here*

This "peeler" log was once part of a giant Douglas fir that grew in Oregon's rich rain forests.

It is shown here in an Associated mill at the beginning of its transition from raw log to finished product. At the end of the manufacturing line it is excellent plywood, grademarked and trademarked in a double guarantee of quality.

For more than 30 years APMI has been making plywood from fine timber, in modern mills equipped with the best of machinery and with hundreds of skilled workmen.

This plywood is shipped to major building and distribution areas and is sold by veteran plywood men. We welcome your inquiries.

All car load sales and shipments of APMI plywood for this territory are handled by our Dallas, Texas office at 4814 Bengal Street — Telephone Logan 6647 — Deryl Glossup, Manager.



**ASSOCIATED PLYWOOD MILLS, Inc.**

GENERAL OFFICES: EUGENE, OREGON

Plywood plants at Eugene and Willamina, Oregon. Lumber mill at Roseburg, Oregon

## FIFTEEN YEARS OF PROGRESS

It is fitting that the annual convention of the Texas Society of Architects, from November 4-6, will be held this fall at the Driskill Hotel in Austin. For it was at the Driskill, since completely refurbished, that 85 charter members of TSA met in June of 1938 to form the Society.

In the intervening 15 years, TSA has grown 800% in membership. This increase, accompanied by a normal expansion of TSA activities, is gratifying. But it is not extraordinary, even in the field of professional societies, where additions to membership sometimes come rather slowly.

What we do believe to be unusual, is the manner in which the Texas Society of Architects has progressed in these two principal avenues: (1) maintaining consistently high levels for professional competence in the practice of architecture and (2) encouraging TSA members throughout the state to take an active and useful part in the community.

Designs by Texas practitioners have won acclaim throughout the Southwest and over the nation, in every architectural classification. The TSA's own competition "Texas Architecture—1953", sponsored by the Dallas Chapter in conjunction with the Dallas Museum of Fine Arts, has again attracted attention throughout the U. S. National publications, both the more professional journals and the mass-audience weeklies, reflect the growing interest in Texas architecture.

The seminar subject at this year's convention, "The Role of the Architect in the Community", indicates how the TSA membership accepts the concept of architecture as a vital and active profession which must take a significant role in shaping our environment and patterns of living. With this concept, there has been a marked growth of interest in the profession, and a considerable upturn in public understanding of just what the architect does, and how he contributes to a better life for all.

The fourteenth annual convention will provide a vantage point from which TSA members can look back to 1938, and determine what progress the Texas Society of Architects has made in 15 years. We credit much of the Society's progress to maintaining high levels of professional competence, while encouraging TSA members to be active in the life of their community and state.

# 14th TSA CONVENTION OPENS NOVEMBER 4

## Governor Shivers To Address Opening Session; Austin Attracts Record Number of Delegates; Full Three-Day Program Ends November 6

The Texas Society of Architects will return to the Driskill Hotel in Austin, scene of the Society's founding in 1938, for the 14th annual convention from November 4-6.

A full three-day program, featuring many public figures including Governor Allan Shivers and well-known architects from the U. S. and abroad, has been scheduled for the convention, expected to draw a record number of more than 500 delegates.

### Separate Article On Seminar

The title for the convention seminar this year is, "The Role of the Architect in the Community", and a separate article on this key convention activity is carried elsewhere in this issue of the Texas Architect.

Registration begins at the Driskill at 9 a.m., Wednesday, November 4, and the first day will be devoted to a golf tournament sponsored by the Texas Quarries at the Austin Country Club, followed by a 6:30 p.m. cocktail party at the Driskill.

### President Golemon To Preside

The following day, Governor Shivers speaks at a 9:30 a.m. business session at which TSA President Albert S. Golemon is to preside. The Governor's address follows the invocation by Bishop-Coadjutor John E. Hines of the Episcopal Diocese of Texas, and welcoming speeches by Mayor C. A. MaAden of Austin and Louis Southerland, president of the Central Texas Chapter, TSA.

Also at the opening business session, Herbert Tatum, TSA-AIA of Dallas, will report for the By-Laws Committee; and Edward L. Wilson of Fort Worth, TSA-AIA, for the special committee. President Golemon and Secretary-Treasurer George

F. Pierce, Jr. will present annual reports before the nomination of officers.

### Seminar Thursday Afternoon

The seminar session at 1:30 p.m. will follow separate luncheons for men and women delegates on Thursday. At 4 p.m., there is a Fall Festival in the Music Hall at the University of Texas, and a coffee in the Patio of the Architecture Building.

A social event Thursday night is a hill-billy party jointly sponsored by Green Acres and the Elgin-Butler Brick Company, with the following firms assisting: Austin White Lime Company, Calcasieu Lumber Company, William Cameron Company, Sheffield Steel Company, Texas Steel Company, Tips Engine Works, and the Walter Tips Company.

### Willem Dudak To Speak

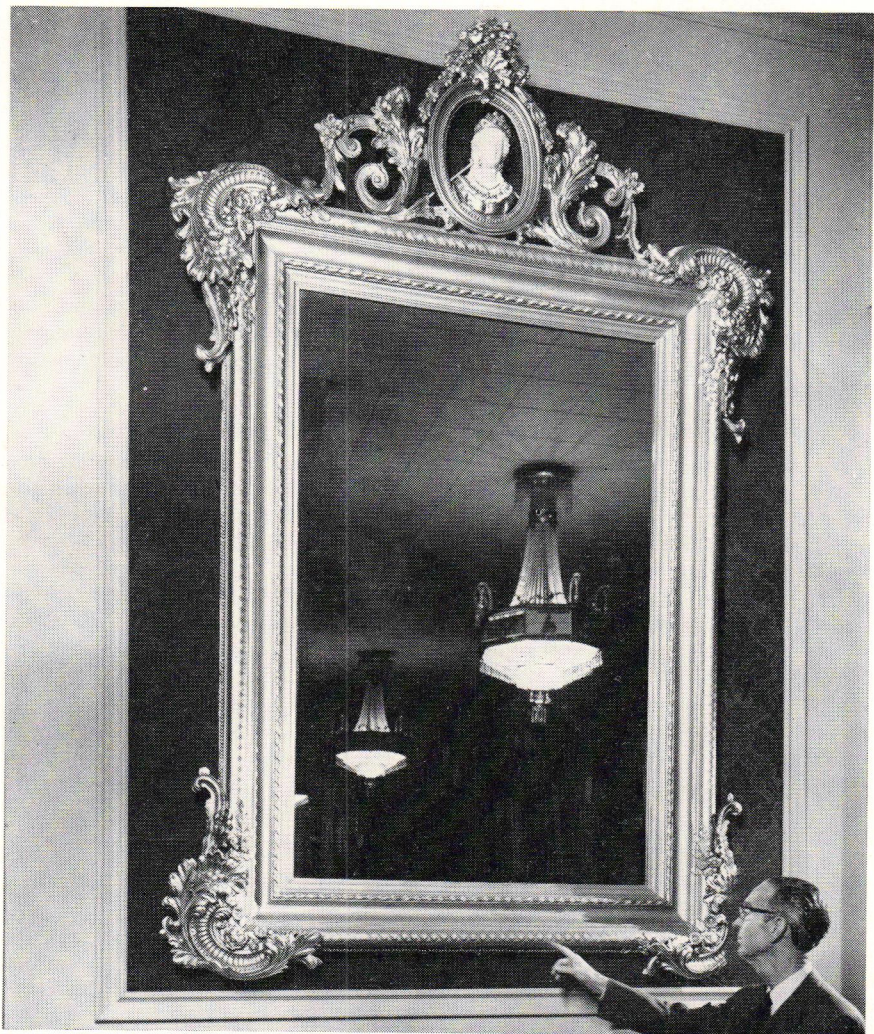
The final day of the convention, Friday, November 6, opens with an 8 a.m. breakfast at the Driskill, sponsored by the Acme Brick Company. The delegates will then attend a 9:30 a.m. public relations forum, followed again by separate luncheons, the one for men being sponsored by the building industry. Willem Dudak, distinguished Dutch architect and town planner is the speaker at this Friday luncheon.

Edwin W. Carroll, vice-president of TSA, presides at a 2 p.m. business session which will include various committee reports, a general discussion, and the election of 1953-54 officers.

### Featherlite Competition Awards

The annual meeting concludes Friday night with a 7:30 p.m. cocktail party given by the Producers' Council and the formal President's Dinner and Ball, at 8:30 p.m. At the dinner, awards in the \$2500 Featherlite Competition for senior architectural students in Texas universities and colleges will be made.

## The Empress Carlotta's Treasured Mirrors



Great crystal chandeliers, made especially to complement the mirrors in which they are reflected, are seen in the famed Maximilian Room of the Driskill Hotel in Austin, scene of the 14th annual TSA convention opening November 4. Several convention affairs will be held in the Maximilian Room.

The mirrors were made in Europe, on order of the Emperor Maximilian of Mexico, to decorate the palace of his Empress, Carlotta, the ill-fated daughter of King Leopold of Belgium.

Read the story of Empress Carlotta's treasured mirrors, which dominate one of Texas' most interesting rooms, on page 11.

# MILTON A. RYAN WINS HONOR AWARD

## Design For Church At Victoria Brings Top Award To San Antonio Architect In "Texas Architecture—1953" Competition

Milton A. Ryan, TSA-AIA, San Antonio, was presented the honor award in "Texas Architecture—1953", an annual competition of the Texas Society of Architects, at the Dallas Museum of Fine Arts Thursday night, October 8th.

Mr. Ryan won the statewide competition, sponsored by the Dallas Chapter of the Texas Society of Architects, in conjunction with the Dallas Museum, with his design for the First Church of Christ Scientist at Victoria.

### Stanley Marcus Master of Ceremonies

Results of the competition were announced at a preview exhibition at the Dallas Museum of Fine Arts October 8, with award certificates presented by Stanley Marcus, master of ceremonies.

The exhibition was preceded by a dinner at the Dallas Athletic Club.

The winning designs in "Texas Architecture—1953" are on display at the Dallas Museum through October 25 as a feature attraction during the State Fair of Texas.

### Awards of Merit

Awards of merit in the competition went to the following architectural firms and individual architects, all members of TSA and the American Institute of Architects:

Fehr & Granger, Austin, for a residence for Mr. & Mrs. Joseph T. Sneed, Austin.

Cato, Austin & Evans, Houston, for residence for Mr. & Mrs. C. H. Benckenstein, Jr., Orange.

R. Gommel Roessner, Austin, for a residence for Mr. & Mrs. Millard H. Ruud, Austin.

Bolton & Barnstone, Houston, for resi-

dence for Mr. & Mrs. M. G. Rosenthal, Houston.

Cocke, Bowman & York, Harlingen, for a clinic for Dr. James D. Casey, San Benito.

Hidell & Decker, Dallas, for the Episcopal Collegiate Chapel of St. Alban, Southern Methodist University.

Thomas E. Greacen II, Houston, for the First Unitarian Church of Houston.

White & Prinz, Dallas, for a Municipal Service Center, Dallas.

### Nelson General Chairman

Judges in the contest were William Wilson Wurster, dean of the school of architecture at the University of California, Bruce Goff, architect of Norman, Oklahoma, and Jerry Bywaters, director of the Dallas Museum of Fine Arts.

Donald Nelson, president of the Dallas Chapter, was general chairman of "Texas Architecture—1953". Assisting him as chairman of sub-committees were Arch B. Swank, jury; Donald Jarvis and George McGill, mounting and hanging; Joseph Gordon, catalogue; and Robert White, all TSA-AIA, certificates and plaques.

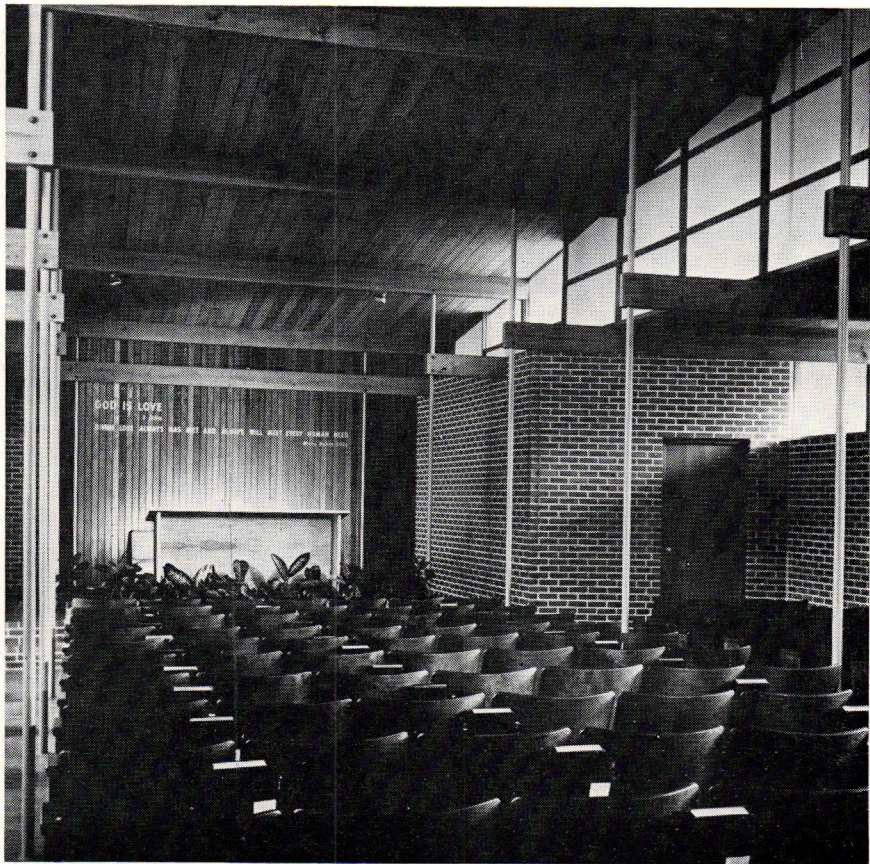
---

## \$2500 Featherlite Competition Results To Be Announced At Austin Convention

Results of the \$2500 Featherlite Competition, sponsored by the Featherlite Corporation for senior architectural students in Texas universities and colleges, will be announced at the TSA convention in Austin November 6.

Awards in the competition are to be presented November 6 at the concluding President's Dinner, by TSA President Albert S. Golemon.





## First Church of Christ Scientist, At Victoria

Interior view of the First Church of Christ Scientist, at Victoria, Texas. The design for this church won for Milton A. Ryan, TSA-AIA, of San Antonio, the honor award in "Texas Architecture—1953", annual competition of the Texas Society of Architects sponsored by the Dallas Chapter in conjunction with the Dallas Museum of Fine Arts.

Awards were given at the Dallas Museum the evening of October 8, with Stanley Marcus as master of ceremonies, and winning designs were then displayed at the Museum as a feature attraction of the State Fair of Texas.

The award ceremonies were preceded by a dinner at the Dallas Athletic Club, which was attended by winners in the competition, judges, officials of the Texas Society of Architects, members and officials of the Dallas Chapter, representatives of many other TSA affiliates over the state, and invited guests.

It is estimated that more than 200,000 persons will have seen the winning designs in "Texas Architecture—1953" before the exhibition at the Dallas Museum in conjunction with the State Fair comes to an end on October 25.

The exhibition will be seen next at Austin November 4-6 during the TSA convention at the Driskill Hotel.

# WHITE is so much more effective!

Trinity white—the whitest white cement—is a true portland.

The gleaming sparkling whiteness as mass or contrast increases the stature of good design. Use it for architectural concrete units; stucco; terrazzo; and wherever high light-reflection is indicated.

Trinity white meets all Federal and ASTM specifications.

← This greyness of grey portland cement is absent in Trinity White. That's why Trinity White is best where concrete is to be tinted. There is no muddiness to your colors. You get cleaner, truer values.



**Trinity White**  
THE WHITEST WHITE CEMENT

A Product of GENERAL PORTLAND CEMENT CO. • Chicago • Dallas • Chattanooga • Tampa • Los Angeles

## Seminar Features Role of Architect In Community

Charles Luckman Heads Distinguished Panel  
Which Includes Many Well-Known Figures  
From Public Life In State of Texas

"The Role of the Architect in the Community" is the discussion topic for the seminar at the TSA convention this year, and Charles Luckman, former president of Lever Brothers who is now a partner in the Los Angeles architectural firm of Pereira & Luckman will deliver the keynote speech before a series of 10-minute presentations by many well-known Texas figures.

With Walter T. Rolfe, FAIA, of the Houston firm of Golemon & Rolfe as moderator, the seminar begins at 1:30 p.m. Thursday, November 5.

### AIA Secretary To Speak

First speaker will be George Bain Cummings of Binghamton, N. Y., secretary of the AIA. Mr. Cummings is to outline the historic background of the topic. He will be followed by Mr. Luckman, whose address is entitled "The Contemporary Scene".

A view of the architectural profession as seen by leaders in business, public life, and the professions, will then be given by the following:

### Well-Known Participants

Mayor Roy Hofheinz of Houston, Dr. J. W. Edgar, state commissioner of education; Gordon Turrentine, vice-president of the Texas National Bank, Houston; Dr. C. P. Boner, dean of the University of Texas; Judge J. W. Summers of Rusk, county judge of Cherokee County; and Joe Parish, chief engineer, Texas division, Dow Chemical Company, Freeport.

Each of these speakers will give a 10-minute presentation, to be followed by a general discussion.

### In Preparation Six Months

The seminar, which has been in preparation for more than six months, is expected to be one of the most interesting ever presented at an architectural meet-



Charles Luckman, AIA, of the Los Angeles firm of Pereira & Luckman, is keynote speaker at the seminar session for the 14th annual TSA convention.

ing. The topic was chosen because of the growing emphasis on the architect's place in the community, and his influence on environment and ways of life.

The participants were selected to afford a cross-section of ideas about the architect's relationship to the community in which he lives, and his role in the life of that community and the state and nation as a whole.

### TSA Board Of Directors Will Meet in Austin On November 3

The board of directors of TSA will hold a meeting in Austin November 3, immediately preceding the annual TSA convention.

Increase usable floor space with  
**Ideal SLIDING DOOR UNITS**



Modern home construction demands full utility of space. IDEAL Sliding Door Units provide many owner benefits. Every square inch of floor space is made available for use. Specify space-saving IDEAL Sliding Door Units for residential and commercial construction.



Manufactured by  
**IDEAL COMPANY**  
Waco, Texas

## Special Arrangements Made For Senior Architectural Students At Convention

TSA is making special arrangements, in cooperation with the architectural departments of Texas universities and colleges, to have senior architectural students from over the state in attendance at the 14th annual convention.

A sub-committee has been set up to encourage these students to attend many of the convention sessions, and to register as special delegates. Housing and transportation arrangements are being worked out in cooperation with separate architectural departments.

TSA officials have emphasized attendance by senior students because of the advantages of having incoming practitioners present for convention sessions and speeches by leaders in the profession.

In this our 80th year of continuous operation it is with pleasure that we join in welcoming the

## **ARCHITECTS OF TEXAS**

to Austin  
Nov. 4-6, 1953

## **ELGIN-BUTLER BRICK COMPANY**

*"Butler Brick Since '73"*

**AUSTIN, TEXAS**

BRANCH OFFICES: Houston, Dallas, Corpus Christi, Midland  
Baton Rouge

Visit Us at the Jim Hogg Parlor at the Driskill

## The Story Of Empress Carlotta's Mirrors

Driskill Hotel's Maximilian Room  
Recalls Tragic History  
Of Ill-Fated Rulers

Delegates to the TSA convention this year will be entertained in the Maximilian Room of the Driskill Hotel, so called because the room is dominated by eight great mirrors with gold leaf frames which the ill-fated Emperor Maximilian of Mexico ordered for Carlotta, his Empress.

W. L. Stark, former manager of the Driskill, purchased the great mirrors, each of which is crowned with a beautiful gold and plaster medallion of Carlotta, from a San Antonio antique dealer. The dealer said at the time that they had been in storage for 40 years, in the original packing crates in which they left France as part of the furnishing for Maximilian's palace, Chapultepec Castle.

Four huge crystal chandeliers were made in Saint Louis to complement the mirrors, which in their frames are about eight feet tall and six feet wide.

Maximilian, a Hapsburg prince and brother to Emperor Franz Josef of Austria, came to Mexico in 1863 to accept the crown offered him. During a revolution in 1867, he was betrayed and captured. The Emperor was executed on the morning of June 19, 1867.

In the meantime, Empress Carlotta had returned to Europe to seek aid for Maximilian. Her failure, and her husband's subsequent execution, drove the beautiful daughter of King Leopold of Belgium insane. She lived on another half-century, one of the most tragic figures in history.

According to one legend, the Maximilian Room mirrors were never seen by Carlotta. But Mr. Stark found from later investigations that they actually hung for several years in Chapultepec Castle, and were removed during the revolution, which ended in Maximilian's execution, in order to save them from possible loss.

● *When you desire*

**SERVICE**

*in the form of*

**FURNITURE  
INFORMATION**

*or collaboration in*

**INTERIOR  
LAYOUTS**

*along with*

**GRAPHIC  
PRESENTATION**

*you- or your*

**CLIENT**

*are welcome to our*

**SHOWROOM** *and*

**DESIGN  
DEPARTMENT**

*any time, with*

**NO OBLIGATION**

*Plan to visit* ●

**FINGER CONTRACT**

*3131 Calhoun, Houston-AT 3441*

## Houston Chapter Sponsors Panel Discussion As Part Of Allied Arts Festival

The Houston Chapter, TSA, will hold a public panel discussion of the subject "Environment And You" at the Houston Museum of Fine Arts on the evening of November 18. The discussion will be part of the second annual Allied Arts Festival in Houston.

In the first part of the program, a panel composed of a physician, a psychologist, a philosopher, and an educator is to discuss the effects of environment on human beings. After an intermission, a second group composed of architects, artists, and editors and writers will discuss means of controlling environment.

### Greacen Is Chairman

Thomas Greacen, II, TSA-AIA of Houston, is chairman for the program.

Also, as part of the Allied Arts Festival, the Houston Chapter will display photographs of winners in the biennial Chapter honor awards competition in the Blaffer Room of the Houston Museum of Fine Arts, from November 10-22. The next issue of the TEXAS ARCHITECT will report on results of this honor awards competition.

## New Office Location For Reginald Roberts Firm In San Antonio

The architectural firm of Reginald Roberts Associates, TSA-AIA, of San Antonio, is now in new offices at 2600 McCullough Avenue at Hildebrand, telephone U 6-1001.

## David C. Baer, Chas. S. Chase Open Separate Offices

David C. Baer & Chas. S. Chase Architects Engineers announce the dissolution of their partnership and the opening of separate offices at 1200 Bissonnet, Houston.

## PROFESSIONAL DIRECTORY

### FOUNDATION INVESTIGATIONS

- undisturbed sample borings
- laboratory soil tests

### GREER & McCLELLAND

Consulting Foundation Engineers  
2649 N. Main Houston, Texas 98 Greenwood  
Montclair, N. J.

### SOUTHERN INSPECTION SERVICE ENGINEERS INSPECTION & TESTS

P. O. Box  
8633

P. D. Barnard  
Mgr.



3206 Houston  
Ave.

Houston, Texas

VA-6621

## ATTENTION, GOLFERS!

If you are planning to play Golf at the Convention in Austin, be sure to send in your entry blanks for the T.S.A. Golf Tournament.

## TEXAS QUARRIES

P. O. Box 91

Austin, Texas

## Karl Kamrath Appointed To State Planning Board

Karl Kamrath, TSA-AIA, of the Houston architectural firm, of MacKie and Kamrath, has been appointed by Governor Allan Shivers to the state planning board.

The immediate problem confronting the board will be the proposing and adoption of a long-range state capital ground development plan. Mr. Kamrath has been chairman of the Texas Society of Architects Capital Plan Committee for the past three years.

*creamy, rich*

# **CORDOVA** *Limestone*

**FOR BUILDINGS**

**THAT**

**STAND OUT**

**WITH UNUSUAL**

**NEW COLOR**

**AND**

**BEAUTY**



*The New Baptist Building in Dallas*

*Architect, John B. Danna*

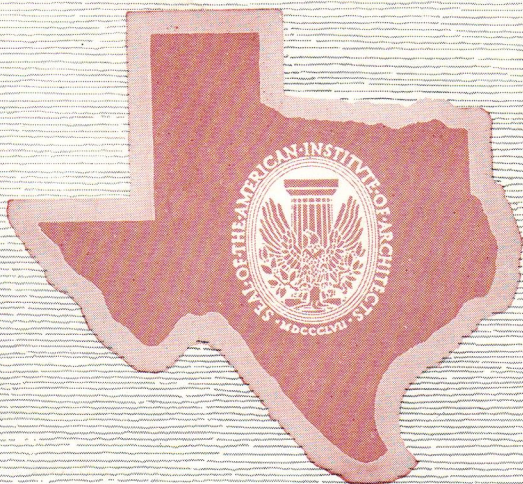
Buildings designed of rich, creamy Cordova Limestone *stand out* from the rest . . . they are *pointed out* as something strikingly different in beauty and color. . . . Cordova Limestone, with its smooth, even-textured finish and warm, buff to rich cream color, is ideally suited for homes, churches and public buildings . . . for unusual effects in both exterior and interior design. It offers the architect brilliant new color, refreshing new beauty, and a wealth of new inspiration.

We will be pleased to send you sample stones of Cordova Cream Limestone so that you may see its richness of color, its smooth texture, its outstanding beauty. For sample stones and additional information, write to the address below.

## **TEXAS QUARRIES, INC.**

P. O. Box 91

Austin, Texas



**THE TEXAS SOCIETY OF ARCHITECTS**  
**THE TEXAS REGIONAL DISTRICT ORGANIZATION OF**  
**THE AMERICAN INSTITUTE OF ARCHITECTS**

~~1741 New York Avenue, N. W.~~  
THE AMERICAN INSTITUTE OF ARCHITECTS  
1741 NEW YORK AVENUE, N. W.  
WASHINGTON 6, D. C.

Sec. 34.66, P. L. & R.  
U. S. POSTAGE

**PAID**

Houston, Texas  
Permit No. 6061

**TEXAS ARCHITECT • 1200 BISSONNET • HOUSTON, TEXAS**