

# THE ARCHITECTURAL AND BUILDING MONTHLY

Vol. 1.  
No. 2.

A JOURNAL OF  
PRACTICAL DESIGNS & DETAILS

May,  
1890.

A. J. BICKNELL, PUBLISHER.

[Entered at New York Post Office as second-class matter.]

115 BROADWAY, NEW YORK.

## SPECIAL ANNOUNCEMENT

— OF —

**The Bradley  
AND  
Currier Co.,  
LIMITED,**  
Cor. of Hudson and Spring Sts.,  
NEW YORK.

HAVING decided to make the *Mantel Department* an important branch of our business, we cordially invite the attendance of Architects, Builders, Owners and all persons interested, to the *Opening* of our *New Mantel Show-rooms*, *Tuesday, May 13th*, *Wednesday, May 14th*, and *Thursday, May 15th*. We will then display more designs, better work and offer lower prices than those of any other house in the trade.

Our *Finished Mantels* in unlimited variety will be displayed with *Tiles*, *Open Fires*, *Grates*, etc., and the *Mantels* in the *Wood* will be shown to those requesting the same, at our factory on the adjoining block. Buyers cannot afford to let this opportunity pass, and all interested parties will be cordially welcomed.

Leave Eighth Avenue or Sixth Avenue horse cars at Spring Street. Leave the elevated roads at Grand Street, Desbrosses Street and Houston Street Stations.

## JOSEPH B. TIFFANY & CO.,

SPECIALISTS IN

**Constructive and Decorative Fine Art.**  
INTERIOR COLOR TREATMENTS, WOOD WORK, METALS, MASONIC,  
ORNAMENTAL AND ECCLESIASTICAL GLASS.  
12 East 22d Street, New York.

Gibbs'  
English  
Portland  
Cement.

**HOWARD FLEMING,**  
23 Liberty Street, New York.  
SOLE AGENT.

Send for Circulars and Testimonials.

Ingram's  
English  
Enamelled  
Bricks.

Illustrated Circular Price List Statement of Advantages over Slate or Wood Shingles Letters from Parties using them mailed on application

**CORTRIGHT  
METAL TILES  
& SLATE**

Storm-proof  
Fire-proof  
Durable  
Handsome.



METAL SLATE - METAL TILES - SIDING PLATE - CORTRIGHT METAL ROOFING CO. - RIDGE-COPING - AIR-COVERING - VALLEYS &c

## "BURHAM" PORTLAND CEMENT

Imported by JAMES BRAND Office in  
Market and Fulton Bank Building, 81-83 Fulton Street, New York.

The D. Frisbie Co. **ELEVATORS** 118 LIBERTY STREET  
NEW YORK.



CHAS. W. SPURR COMPANY.

MANUFACTURERS OF

**Spurr's Patent Veneers  
and Wood Carvings.**

Samples of Veneers and Catalogue of 200  
designs of Wood Carvings and Price-List  
free to any address upon application.

PRINCIPAL OFFICE

465-467 East 10th St., New York.



"Acme" Drawing Papers,  
"Acme Hello" for Blue Printing,  
"Bon Accord" and Doppelt  
Detail Papers,

Drawing Instruments and  
Drawing Materials  
OF EVERY DESCRIPTION.  
ENGINEERS' INSTRUMENTS.

Send for Catalogue for 1890.

**QUEEN & CO.,**  
PHILADELPHIA.

**HALL & GARRISON,**  
Interior Fittings,

For Dwellings, Offices, Stores, &c., in all kinds  
of wood, finished and fitted up.  
HARDWOOD MANTELS AND CABINETS.  
N. Y. Office, 280 BROADWAY, cor. Chambers St.  
Factory in Philadelphia. HENRY C. ADAMS, Mgr.

**"RUSTLESS" IRON PIPE**  
WROUGHT AND CAST IRON.

Manufactured by  
The Wells Rustless Iron Co., 21 Cliff Street,  
NEW YORK.  
Send for Catalogue.

**Albany Venetian Blind Co.,**

MANUFACTURERS OF

Phillip's Patent  
Venetian Blind.

The Best in Quality  
And Lowest in Price.

This blind can  
hang either between  
the stop bands or  
jambs, and does not  
interfere with drap-  
eries; is specially  
adapted to frame  
buildings, and can  
be hung in a few  
minutes by any per-  
son. Send for esti-  
mate to

WM. G. ORR,

150 Broadway,  
NEW YORK.



**HALL DUPLEX STEAM PUMPS.**

For Residences, Flats, Hotels,  
Fire Service and all Fac-  
tory Purposes. Prices  
as low as any first-  
class pump, \$35  
and upwards.  
Send for 1890 Illustrated  
Circular.

**HALL STEAM PUMP CO.,**  
91 LIBERTY ST., NEW YORK



# DESCRIPTION OF PLATES.

## Inside Title Page.

Residence of Cyrus Eidlitz, Architect, New York City.

## Plate Nos. 13, 14, 15 and 16.

DESCRIPTION OF HOUSE OF F. B. WILLIAMSON, ESQ., ELIZABETH, N. J.

The material of foundation is a rough brown sandstone, left rock face and pointed, with cement of the same color, the rest of house entirely frame, clapboards in first story, and the sides and roof are covered with cedar shingles. The style of the house somewhat colonial, as far as compatible with economy of construction.

The interior of the house is finished throughout in white-wood, with the exception of the hall, which is ash, and the kitchen and butler's pantry, which are in ash.

The details shown are simple and yet effective without being very costly, and are in a style somewhat different from the usual finish of small country houses. The cost of the house is about \$6,000.

## Plate No. 17.

DESIGN FOR A DOUBLE COTTAGE.

This plate shows a design for a double cottage, well suited for a large lot where the view or surroundings would give a reason for the wide piazzas at either end and the second story balconies. To give all rooms sunny exposure the house should front South.

The broad roof of single slope makes an economical exterior for a building of twenty good rooms.

## Plate Nos. 18 and 19.

This house is located on one of the most picturesque spots in Tenafly, New Jersey, presenting from every side a view of surprising beauty. Its architecture is of colonial style, exterior. The foundation, cellar, veranda, and first story walls are 18 inches field stone, "rubble work;" cellar, 9 ft. deep, extending under the entire house and veranda, the veranda being 59 ft. long by 9 and 15 ft. in width. The frame work above the stone is sheathed, papered and shingled, also shingled roof. Gables finished in plaster, with two coats of raw oil, over iron lathing—the oil giving them the effect somewhat of Mexican onyx. Exterior trim painted in white, brown and yellow. Veranda has hardwood floor, and ceiling finished in natural wood. This house has 15 rooms, besides pantries and closets. Rooms on first floor finished in hardwood; hall and stairway in quartered oak with paneled ceiling, colored glass, leaded sash, staircase windows, wide sliding doors on first floor which virtually throws all rooms into one. Windows have sliding blinds throughout; the mantels are unique in design, those for the first floor being in quartered oak with beveled plate glass extending across the front. On the second and third floors are eight bedrooms, billiard room, large cedar closet and storage. The house is heated throughout by steam by both direct and indirect radiation. Lighted by gas generated by a machine on the premises, and has hot and cold water throughout, in short, is complete in all its appointments.

For view of this house see 4th page of cover, next issue.

## Plate No. 20.

DESIGN FOR A PARK ENTRANCE.

This plate shows a gateway with cafe, office, and ample waiting room on piazzas, suitable for park or pleasure grounds.

The upper part to be open or closed as desired.

The details indicate the material to be used for the different parts of the work.

The framing should all show to give the best effect.

## Plate No. 21.

This sheet illustrates two mantels of different designs of ornamentation in the style of work executed in the colonial period, and should be executed with good material and careful and accurate workmanship, the most pleasing finish being ivory white, and if the cost will permit such finish should be rubbed down in the same manner as is usual with hardwood.

For parlors the high parts of the carving are frequently brought out with gold. All carving on such work should be very carefully executed. A composition material such as is used for the molding of picture frames is sometimes used on painted work, for a substitute for hand carving.

## Plate No. 22.

Three designs for staircase, with sectional drawings of newels and details.

## Plate No. 23.

Five dormer windows of ornamental design, with sections and details all drawn to scale.

## Plate No. 24.

1. Highway bridge suitable for spans 50 to 75 feet. Two wrought iron trusses 8 to 10 feet deep, iron floor beams and stringers. Pine and oak plank.

2. Iron fireproof construction of building 220 and 222 William St., New York City, furnished and erected by the Riverside Bridge & Iron Works. Cast iron columns, wrought iron girders, steel beams filled in with fireproof blocks. Construction suitable to carry floor loads from 150 to 400 pounds per square foot.

## FORECAST OF CONTENTS OF NO. 3. TO BE READY BY OR BEFORE JUNE 1.

Number 3 will contain elevations, plans and details of a suburban house, with views of hall and parlor, details of staircase, window trim and door sections; elevations, plans, exterior details, staircase hall, and interior finish and details of a country residence; plate of mantels with sections and details; plate of door trim with sections. This number will also contain a design of an iron highway bridge, and an iron roof showing construction in sections.

A plate on iron fireproof construction may be expected in each number for some time to come.

# MORSE ELEVATOR WORKS.

MORSE, WILLIAMS & CO.,  
Builders of all kinds of

PASSENGER AND FREIGHT

## ELEVATORS,

Automatic  
Hatch  
Doors  
A SPECIALTY.  
Send for Illustrated Circular.

Office, 1105 FRANKFORD AVE.,  
Works, Frankford Ave., Wilkey  
and Shackemaxon Sts.,  
PHILADELPHIA.

N. Y. Office, 108 Liberty Street.  
Boston Office, 14 High Street.

### ACADEMY OF BUILDING.

Academy of Architecture and Building. An Institute  
for Theoretical and Practical Education for Building  
Tradesmen. 3666 South 9th St. St. Louis, Mo. Terms  
begin September, December and March. Send for prospectus.  
H. MAACK, Principal.

FOR  
SUBSCRIPTION BLANK  
See Page 13.

Decorate Your Own Windows



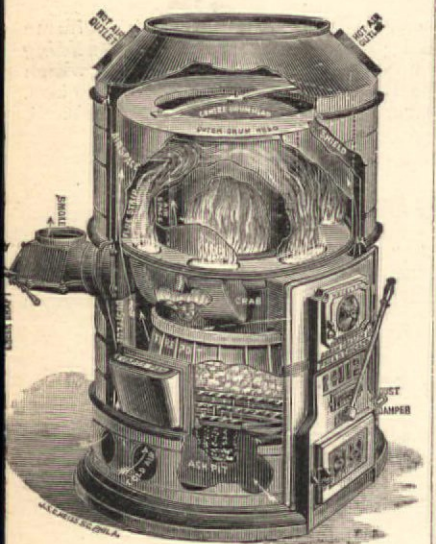
McCAW, STEVENSON & ORR'S PATENT.

Glacier Window Decoration and Glacier Letters.

Low-priced, Effective, Durable and  
Satisfactory, gives all the effects of the  
most expensive Stained Glass at a frac-  
tion of the cost. Illustrated Circular  
free by mail.

HENRY H. ROSS,  
UNITED STATES AGENT,  
56 Pine Street, - New York.  
Sub-Agents in States or Cities Wanted.

Little Fuel-Great Heat-No Dust.



Houses are healthier and more comfortable  
heated with a Furnace, and cost no greater  
than stoves.  
The Novelty Line of Hot-Air Furnaces give  
entire satisfaction and are the best to use.  
Send for descriptive circular, showing plans for  
setting, complete to heat 4 rooms at a cost of \$50.

ABRAM COX STOVE CO.,  
254 Water St., New York.  
W. B. WILKINSON, Mgr.

## ZIMDARS & HUNT,

PATENTEES AND MANUFACTURERS OF

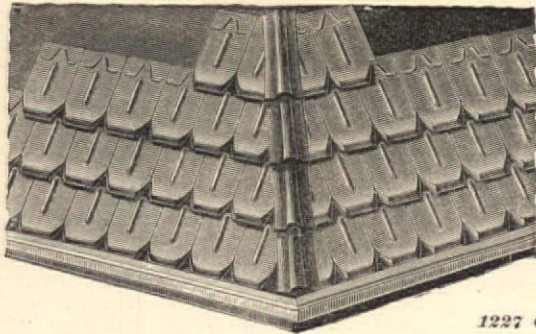
### AIR BELLS

FOR PUBLIC BUILDINGS, DWELLINGS, ELEVATORS, ETC.

No Wires. No Batteries.

237 MERCER ST., - NEW YORK.

Thorn's Patent Metallic Roofing, Tiles and Spring-Lock Shingles.



The best, most handsome, durable  
and secure roofing plates yet  
offered to the building trade.

INDORSED BY ALL THE LEADING  
ARCHITECTS.

We keep a complete stock of Eight  
Designs of Tiles and Two Sizes of  
Shingles.

Our tiles are a marvel of beauty  
and have the most secure and most  
practical side-lock ever invented.

Send for Illustrated Catalogue and  
Circular.

THORN SHINGLE &  
ORNAMENT CO.,

1227 Callowhill St., Philadelphia, Pa.  
Mention A. & B. Monthly.

## PURE IMPERIAL WHITE LEAD.

ESTABLISHED 1837.

(REGISTERED TRADE MARK.)

Snow White and of Great Durability. Will wear longer than any other Lead made.

WILL NOT CHALK OR PEEL OFF.

## PURE IMPERIAL PAINTS.

(REGISTERED TRADE MARK.)

(READY MIXED FOR USE.)

These Paints are *not* made by any secret or patent method, and, unlike most  
brands of "Ready Mixed" Paints now on the market, contain no Benzine or Water,  
but consist *Solely* of the Best and most Durable Pigments combined with pure  
Linseed Oil. Send for 1890 Sample Cards and Price List.

ROBERT SHOEMAKER & CO.,  
Manufacturers of Paints and Varnishes,  
N. E. Cor. Fourth & Race Sts., Philadelphia.



## GRANITE LAUNDRY TUBS & SINKS.

NEVER WARP AND NEVER LEAK.

Made in One Solid Piece.  
Cheaper than Wood.  
More Durable than Iron.

Send for Illustrated Circular and Price-List. Special Terms to Archi-  
tects and Builders specifying our goods.  
We have the largest capacity for the manufacture of these wares.  
No stone tubs are of such hard quality or made so perfectly.

Only Stone Tubs sent to Paris Exhibition 1889.

EMPIRE GRANITE CO., 625 & 627 E. 15th St., New York City.



## Natural Wood ORNAMENTS Pressed in Relief.

NEW DESIGNS IN PLAIN AND VENEERED WOODS.  
For Builders, Furniture Manufacturers, Interior Decorators, etc.  
Pressed Corner Blocks for Door and Window Casings.  
Patent Papyrus Centre Pieces.

EDWIN C. PARKER, 157 Eleventh Avenue, near 23d Street,  
NEW YORK.

Successor to ALBERT KOMP. Send one cent stamp for Catalogue.



## CHAS. E. LITTLE, 59 FULTON STREET, New York.

Will send Illustrated Price List of Mechanics' Tools,  
Brass, Cabinet Hardware and Pressed Wood Ornaments to  
Readers of A. & B. MONTHLY Free. Also Supplies

W. F. & J. BARNES' WORKSHOP MACHINERY  
At Factory Prices.

## IMPROVED Labor-Saving CARPENTERS' TOOLS.

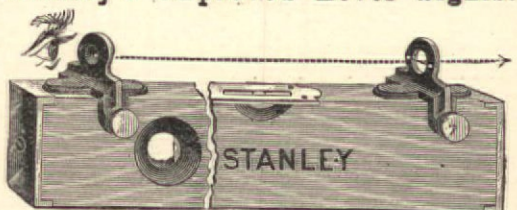
## STANLEY

RULE & LEVEL CO.

New Britain, Conn.

SOLD BY ALL  
Hardware Dealers.

## Stanley's Improved Level Sights.



By the use of these ingenious devices, which can be attached  
to any Level, the owner has a convenient and accurate means for  
leveling from one given point, to another at a long distance away.  
When not in use, the Level Sights are easily detached, and  
can be packed away in a small space, for future use.

No. 1. Improved Level Sights, per pair, in a box.....\$0 75

## DRAWING INSTRUMENTS, DRAWING PAPER, BLUE PROCESS PAPER, AMERICAN LIQUID INK.

A fully illustrated and priced catalogue of 200 pages,  
of all instruments and materials used by draughtsmen,  
sent upon mention of this paper.

G. S. WOOLMAN,  
116 Fulton Street,  
NEW YORK.

## DRAFTING PENCILS.

Every builder is obliged to do more or  
less drafting, and nothing is more annoy-  
ing than to get hold of a pencil that is  
gritty or has a crumbling lead. Dixon's  
American Graphite "Artists'" Pencils  
have the smoothest and toughest leads of  
any pencils made. If you do not know this  
mention *The A. and B. Monthly* and  
send 9 cents in stamps for samples  
worth DOUBLE the MONEY, to

JOS. DIXON CRUCIBLE CO.,  
JERSEY CITY, N. J.



80-Page Illustrated Catalogue of  
over 250 Designs of Superior

Weather Vanes,  
Tower Ornaments,  
Church Crosses,  
Finials, Etc., Etc.

Mailed to any address for two-  
cent stamp—half the postage.

T. W. JONES, Manufacturer,  
170 & 172 Front St., New York.

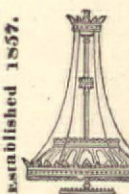
## BUTCHER'S BOSTON POLISH

## HARD WAX

Is the Best Finish for

FLOORS.

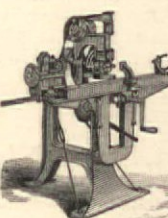
BUTCHER POLISH CO., 9 & 11 Haverhill Street,  
BOSTON, MASS.



## The Great LIGHT

Frank's Patent Reflectors  
for Gas, Oil, or Electric, give  
the most powerful, softest,  
cheapest, and best light known  
for Churches, Stores, Banks, The-  
atres, Depots, etc. New and el-  
egant designs. Send size of room.  
Get circular & estimate. A liberal  
discount to churches & the trade.  
Don't be deceived by cheap imitations.  
I. P. FRANK, 531 Pearl St., N.Y.

## P. PRYIBIL,



Twist Machine.

518-524 W. 41st St.

NEW YORK CITY.

Manufacturer of

SUPERIOR

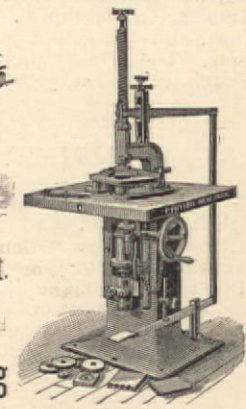
Wood-Working

Machinery.

Shafting, Pulleys and Hangers,

LATHES, all sizes.

SEND FOR CATALOGUE.



Corner Block Machine.



LATHES, all sizes.

SEND FOR CATALOGUE.

## PRESS NOTICES.

## THE MAIL AND EXPRESS, NEW YORK.

The "*Architectural and Building Monthly*," published by A. J. Bicknell, with an office at 115 Broadway, comes out with the first number of its first volume for April, or at what is virtually the beginning of the building year in the country. It is \$5 a year, or 50 cents a number, and aims to do what no other publication does so thoroughly, namely, furnish practical designs, plans and details for residences. Each number is to contain eight to twelve plates to scale, with abundant information. The first issue promises finely, and is worth more than the price to anyone who intends to build a small house. It looks like an admirable, interesting and instructive publication, and is certainly, so far, one of the best of its kind.

## THE ALBANY EVENING JOURNAL.

The "*Building Monthly*" is an excellent journal of practical designs and details, amply illustrated, and devoted to the use of all associated with architecture and the building trades. A. J. Bicknell, publisher, No. 115 Broadway, New York city. \$5 a year.

## THE BERKSHIRE COUNTY EAGLE,

PITTSFIELD, MASS.

One of the best monthlies devoted to the interests of builders and everybody interested in house building is the "*Architectural and Building Monthly*," published by A. J. Bicknell, at 115 Broadway, New York. The April number, which, by the way, is the first issue, is a very interesting and creditable number. There are plans for several houses of various costs, and more details are given than is usual in such works. Detail drawings of all peculiar parts of the construction are given. There are sheets of plans for handy shelves, kitchen dresser, seat, etc.

## THE CHICAGO JOURNAL OF COMMERCE.

We are in receipt of a new technical periodical, "*The Architectural and Building Monthly*," a journal of practical designs and details, published by A. J. Bicknell, 115 Broadway, New York. The initial number (for April) contains twelve large quarto pages of architectural plates, showing a design for front stairs and details; elevations, floor and framing plans of a special cottage; elevations and plans of a shingled cottage in the colonial style; perspective and design for a modern cottage; a model kitchen; shelves, seat and table combined; details for inside window and door finish; designs for low-cost cottages, and exterior details of a suburban house recently built. On this subject the publisher says: "Having issued several practical books on architecture, carpentry, and building, I propose to furnish more designs each year in this journal for \$5.00 than I ever published in book form for \$10.00." While he does not propose to burden readers with a mass of letter-press, he purposes to give an abundance of valuable drawings of modern designs and details, with descriptions not spun out and lumbered up with technicalities, but brief and intelligent, with the intention to make all plates so easily understood that any long explanation of them will be unnecessary. For ordinary builders this periodical will be a helpful assistant.

## THE PAPER WORLD.

"*The Architectural and Building Monthly*" is a new candidate for favor among the building fraternity. It aims to furnish "designs and details of a practical character," and the initial number, which bears date of April 1, 1890, gives excellent promise. Its publisher is A. J. Bicknell, of 115 Broadway, New York, and the subscription price is \$5 a year, single numbers selling for 50 cents. The present number has twelve pages of designs, embracing a variety of architectural subjects.

## CHRISTIAN ENQUIRER, NEW YORK.

"*The Architectural and Building Monthly*" is a journal of practical designs and details, of which the first number has just appeared. It gives several designs of houses with copious illustrations engraved in a superior manner. Certainly, anyone can tell from such a book whether a house erected after one of its plans, would be likely to suit his wishes. It promises to be a real addition to the publications of the architectural world, numerous though they be. The *Monthly* is published by Mr. A. J. Bicknell, 115 Broadway, at \$5.00 a year.

## THE NORTHERN BUDGET, TROY, N. Y.

"*The Architectural and Building Monthly*" is the title of a new periodical, of which we have the first number. It is somewhat different from most architectural journals, as giving in addition to the simple design, the practical details and working drawings, made to scale, enabling the builder to utilize them in his business. Original design for dwellings, varied in style and cost, will appear in every number. The editor is a person of long experience, and of great practical knowledge, and under such auspices the new enterprise ought to prove very successful. It will be of interest, not only to professionals, but to anyone who is contemplating the erection of a dwelling, or indeed, of any building whatever. New York: A. J. Bicknell; \$5.00 a year.

## NEW YORK SUNDAY NEWS.

"*The Architectural and Building Monthly*," published by A. J. Bicknell, 115 Broadway, enters a field in which there are already numerous publications, but bases its claims for attention on the attractive manner in which it presents its subjects to its readers. Unlike many of the building journals, which deal in wordy descriptions, the new monthly is profusely illustrated, and confines the reading matter to short but comprehensive descriptions of its illustrations. The issue in hand contains many attractive architectural designs, and presents a very handsome appearance. The price is \$5.00 per year.

## EXTRACTS FROM TRADE PAPERS.

## THE ARCHITECTURAL ERA.

"*The Architectural and Building Monthly*," a journal of practical designs and details, is the name of the latest arrival in the field of architectural journalism. We bid the new comer welcome and trust it may meet with the success it merits. This journal being eminently practical in its character seems to fill a niche that was waiting for it and we commend it to those who are seeking something which will be of real utility in architectural work and study and also to the builder who will find these "Practical Designs and Details" of great value and interest. A. J. Bicknell, publisher, 115 Broadway, New York City.

## THE SANITARY NEWS, CHICAGO, ILL.

We have Vol. 1, No. 1 of "*The Architectural Building Monthly*," published by A. J. Bicknell, 115 Broadway, New York City, at the subscription of \$5.00 per year. The object of the journal is to furnish a larger number of practical designs and details than are usually published in the average architectural journals, and judging from this first number, that object will be most fully accomplished. The journal is practicable and brings the information regarding building construction, illustrated and explained, home to its readers. The journal is handsomely printed and its designs, even to details, are perfect, not suggestive, but explicit. "*The Building Monthly*" is the result of Mr. Bicknell's wide knowledge of and experience with building journals, and if anyone is qualified to fill a vacancy or need in this field of journalism, that one is Mr. Bicknell. He possesses the knowledge, ability and experience to make his publication succeed, and give its patrons more than full value for their money.

## BUILDERS' GAZETTE, PITTSBURGH, PA.

We are in receipt of the initial number of the "*Architectural Building Monthly*," published by A. J. Bicknell, 115 Broadway, New York. The first number is beautifully illustrated with drawings and plans for both interior and exterior purposes. Judging from the large number of well known advertisers, it looks as though it came to stay and that its success has been already attained. The untiring energy of Mr. Bicknell will add very materially to its future success. May it long well live.

## U. S. GOVERNMENT ADVERTISER,

WASHINGTON, D. C.

NEW PUBLICATION.

The attention of contractors and builders of iron, stone, brick or frame work is called to a new publication entitled "*The Architectural and Building Monthly*," containing practical designs and details, the April number of which has reached us, and which promises to be the most useful work of its class. This journal is issued at 50 cents a number; \$5.00 per year. A. J. Bicknell, publisher, 115 Broadway, New York.

## THE BUILDING BUDGET, CHICAGO, ILL.

"*The Architectural Building Monthly*," a journal of practical designs and details, published by A. J. Bicknell, 115 Broadway, New York. The first copy has appeared and contains interesting designs and details of specialties in building.

## CONTRACTOR AND BUILDER, ST. LOUIS.

"*The Architectural and Building Monthly*" is the name of the new publication the first issue of which reached us. It is published by A. J. Bicknell, the proprietor of Bicknell's Advertising Agency. Is handsomely gotten up, given over almost entirely to detail drawings in building specifications. It, however, fills a new field in that particular line. We welcome the rival.

BUILDER, DECORATOR AND WOODWORKER,  
PHILADELPHIA.

"*The Architectural and Building Monthly*" is the title of a new journal, which gives in every number a large and varied assortment of "practical designs and details," a feature that is of great value and one that must bring to it a host of patrons. The initial number consists of twenty-four pages, bound in a heavy, brick-red cover, and twelve of the pages are illustrations. A. J. Bicknell, 115 Broadway, New York, is the publisher.

## CONTENTS OF No. 1.

APRIL, 1890.

- Plate No. 1.—A Design for Front Stairs and Details.
- Plates Nos. 2, 3, and 4.—Elevations, Floor and Framing Plans for Cottage A.
- Plate No. 5.—Elevations and Plans of a Shingled Cottage in the Colonial Style.
- Plates Nos. 6 and 7.—View, Elevation, and Plans of a Modern Cottage.
- Plate No. 8.—Designs and Details of a Model Kitchen.
- Plate No. 9.—Design of Shelves, Seat, and Table Combined, etc.
- Plate No. 10.—Details for Inside Window and Door Finish.
- Plate No. 11.—Elevations and Plans of Three Low-Cost Cottages.
- Plate No. 12.—Exterior Details of a Suburban House, shown on Plates Nos. 13, 14, 15, and 16, erected for F. B. Williamson, at Elizabeth, N. J.

## Recently Published.

THE  
Architect's - -  
- and Builder's  
Pocket Book.

Mensuration, Geometry, Trigonometry, Rules, Tables and Formulas Relating to the Strength and Stability of Foundations, Walls, Buttresses, Piers, Arches, Posts, Ties, Beams, Girders, Trusses, Floors, Roofs, etc., etc. Statistics and Tables Relating to Carpentry, Masonry, Drainage, Painting and Glazing, Plumbing, Plastering, Roofing, Heating and Ventilation, Weights of Materials, Capacity and Dimensions of Churches, Theatres, Domes, Towers, Spires, etc., etc.

BY  
F. E. KIDDER, C.E.,  
Consulting Architect, BOSTON.

MOROCCO, ROUND CORNERS.  
500 Pages. 408 Engravings.  
PRICE, \$3.50.

Will be sent by mail, prepaid, on receipt of the price.

This is a new and thoroughly practical work, specially adapted to the needs of American architects, Builders, Contractors and Draughtsmen, and indispensable as a Reference Book of practical Rules, Tables and Information pertaining to Architecture.

A. J. BICKNELL,  
115 Broadway, New York.

## Club Offer.

Our offer for a Club of five or ten subscribers for this Journal will be forwarded on application,

THE PHILADELPHIA  
REAL ESTATE RECORD  
AND  
BUILDERS' GUIDE.

DEVOTED TO

Real Estate, Building, Architectural and Insurance Interests.

Published Every Wednesday, at 17 N. Tenth Street, Philadelphia, Pa.

Terms: One Year, in Advance, \$5.00.

Sample Copies, 15 Cents.

SEND FOR

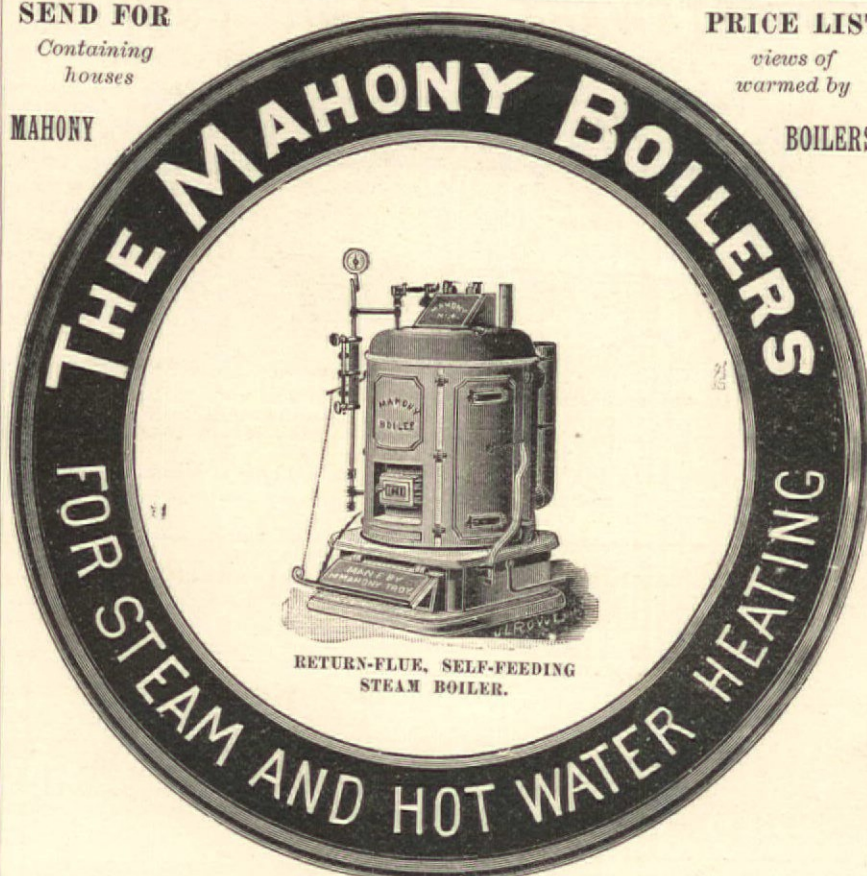
Containing  
houses

PRICE LIST

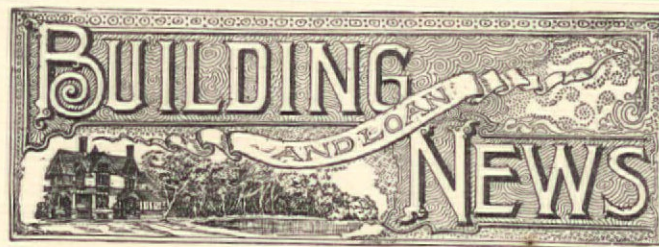
views of  
warmed by

BOILERS.

MAHONY



MADE BY **M. MAHONY,**  
Troy Architectural Iron Works, Troy, N. Y.



Devoted to the Building and Loan Associations and Co-operative Societies.

Published by **THE BUILDING & LOAN NEWS CO.,**  
54 Beekman Street, NEW YORK CITY.  
LOUIS H. CORNISH, Manager.

Subscription \$1.00 per year. Single Copy, 10 cents.

The Leading Building-Loan and Co-operative Journal in America.

Each Number Contains Illustrations of Houses built through the Agency of these Associations.

A HANDSOME SUPPLEMENT TO FRAME WITH EACH COPY.

SPECIAL FEATURES FOR 1890.

The LAW DEPARTMENT will be conducted by GUSTAVE A. ENDLICH, Author of "The Law of Building Associations." The HOUSEHOLD DEPARTMENT will be conducted by Mrs. M. C. WILLIAMS.

A new feature will be a short, sketchy story, having for its moral the owning of a home.

Each number will contain a supplement, usually of some house built through the medium of Building Associations, Correspondence, News Items, Reports from Secretaries, etc.

Any one sending us a club of four subscribers, with \$4.00, will receive a copy free for one year.

Liberal terms to those forming clubs. SEND FOR COPY.

PUBLISHED MONTHLY.

# The Builders' Exchange.

The Official Organ of The  
National Association  
of Builders of the  
United States.

Circulation 5,000.

This paper offers unequalled  
facilities for reaching builders  
and contractors throughout the  
United States.

SAMPLE COPIES FREE.

Garnsey, Stone & Co., Publishers,  
164 DEVONSHIRE STREET,  
BOSTON, MASS.

Advertising Rates on Application.

ACADEMY OF ARCHITECTURE AND BUILDING.—An Institute for Theoretical and Practical Education for Building Tradesmen. 3026 South 9th Street, St. Louis, Mo. Terms begin September, December and March. Send for Prospectus.  
H. MAACK, Principal.

SEND STAMPS FOR SPECIMEN.



Edited by CHAS. O'C. HENNESSY,

President Daily News Co-operative Building and Loan Association, and Secretary Metropolitan League of B. and L. Associations.

Published by THE HOME-SEEKER Printing and Publishing Co., 258 Broadway, New York. Stock owned entirely by members of B. and L. Associations.

KNOWLEDGE IS POWER.

THE HOME-SEEKER teaches the TRUE CO-OPERATIVE road to WEALTH and HAPPY HOMES, and how to avoid the traps of expensive associations of private capital, which imitate co-operation. Fifty thousand HOME OWNERS are created yearly in the United States without individual capital, but by using the rent money for CO-OPERATIVE PURCHASE. You should know the difference between true co-operation and the bogus kind. THE HOME-SEEKER advises WHERE to BUILD, HOW to BUILD, HOW to FURNISH, HOW to DECORATE, HOW to ORGANIZE BUILDING ASSOCIATIONS, What they are, What they do, Where to find them, How to join them.

A PROFITABLE INVESTMENT OF ONE DOLLAR.

Subscribe now and start right.

Send \$1.00 to

HOME-SEEKER,

258 BROADWAY,

NEW YORK.

## Business and Personal.

THE Air Bells of Zimdars & Hunt, whose adv. appears in another column, have been in use for several years by the Publisher of this Journal in various parts of his dwelling to the entire satisfaction of the household.

THE attention of our readers is specially called to the announcement of the Bradley & Currier Co., Limited, inviting all interested to attend their mantel opening at their show rooms, corner of Hudson and Spring Sts., on May 13, 14 and 15.

This house has been long and favorably known as reliable and extensive manufacturers of doors, windows, blinds, stairs, cabinet work, moldings, etc., and hereafter they propose to also take the lead in the manufacture of mantels. See page 1 of this issue.

THE rapid increase of the sale of the Albany Venetian Blinds show that the present generation is learning to appreciate the value and artistic effect of this style of durable window fixture, which is made to suit any style of finish, by this Company. For advertisement see another column.

WE are in receipt of a very attractive souvenir, containing calendar for 1890, with the compliments of Mr. Ralph L. Shainwald, President of the Standard Paint Co., 59 Maiden Lane, N. Y., which will be sent to any address on application.

ESPECIAL attention is called to the superior quality of Powerville Stringed Carbonized Roofing and Sheathing Felts supplied by Mr. John G. Tait, whose advertisement appears in another column.

THE shingle work of the residence of Mr. F. A. Hine, shown on plates 18 and 19, is stained with Cabot's Creosote Stains; the frame work Brown and roof Moss Green, and the house is furnished throughout with Willer's sliding blinds.

### LIGHTNING RODS THAT PROTECT.

J. D. West & Co., of 40 Cortlandt St., who advertise with us, are the oldest house in New York in the business, and their hollow square copper rods with perfectly continuous surface and sharp corners to receive and disperse, have been adopted and recommended by such eminent and practical scientists as T. A. Edison, Geo. Westinghouse, Jr., the chief electricians of the Commercial Cable Co., and the Western Union Telegraph Co., Clarence Cary, Salem H. Wales, Cyrus W. Field, U. S. Engineers of West Point, and many others. Send for their circular and read their arguments in favor of these rods.

### PEOPLES' THEATRE.

New York, February 14, 1890.  
MR. I. P. FRINK,

551 Pearl St., New York City:  
Dear Sir—I could give you no more satisfactory evidence that the massive reflecting chandelier, with its 150 gas burners, lighted by electricity, and 126 incandescent electric lamps, you put in my Newark Theatre two years ago, has given entire satisfaction, than by ordering another exactly like it for the Fifth Avenue Theatre, New York City. I expect to make this one of the handsomest theatres in the city, and as I considered your fixture one of the chief attractions in my Newark Theatre, I desire it also to be the same in this.

Yours is the only proper method of lighting a theatre, and sooner or later will be adopted by all.

You may take your time in making it, as I do not take possession of the Theatre until May 1, 1890.

Respectfully yours,  
HARRY MINER.

## VALUABLE SPECIALTIES FOR USERS OF STEAM.

**Kellam's Damper Regulator, Oil Extractor and Filter. Centrifugal Exhaust Heads. Shaking and Dumping Grate Bar. Standard Reducing Valve.**

Send for Catalogue and Price List.

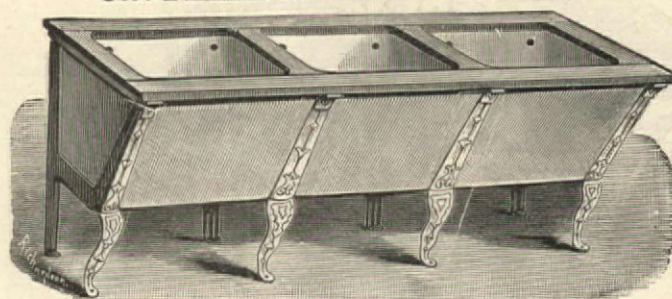
HINE & ROBERTSON, 45 Cortlandt Street, New York.



All First-Class Houses should be Furnished with the Sanitary Tubs of

## THE STEWART CERAMIC COMPANY,

Cor. PEARL ST. and PECK SLIP, NEW YORK.



Sole Manufacturers under Morahan's Patents of

THE CELEBRATED SOLID WHITE CROCKERY STATIONARY WASH TUBS.

The only Perfect Sanitary Tubs now in Existence.

VERY STRONG. No Seams to Open.

ABSOLUTE CLEANLINESS SECURED FOR ALL TIME. WELL GLAZED. WILL NOT ABSORB, LEAK OR DECAY.

The only Solid White Crockery Washtub ever made in the world. Do not buy imitations until you see the Genuine "Morahan's Patent" stamped on the front of every tub. Washboard and Soap cup moulded in every set. Will outlast any house.

Solid White Crockery Sinks, comprising Butler's Pantry, Kitchen Slop, &c.,

Made of same material as the Tubs. Very strong, Well Glazed, no labor required to keep clean. LIBERAL TERMS TO THE TRADE. SEND FOR 1890 ILLUSTRATED PRICE LIST.

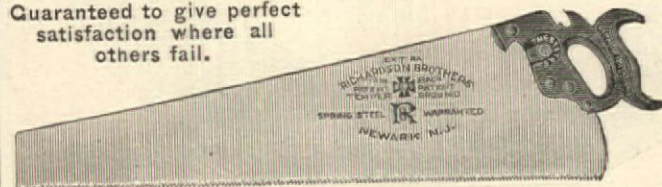
## THE RICHARDSON SAWS ARE THE BEST IN THE WORLD.

So say the Thousands of Carpenters who use them, and we want every Carpenter who has not used them to give them a trial.

ONCE USED

ALWAYS USED.

Guaranteed to give perfect satisfaction where all others fail.



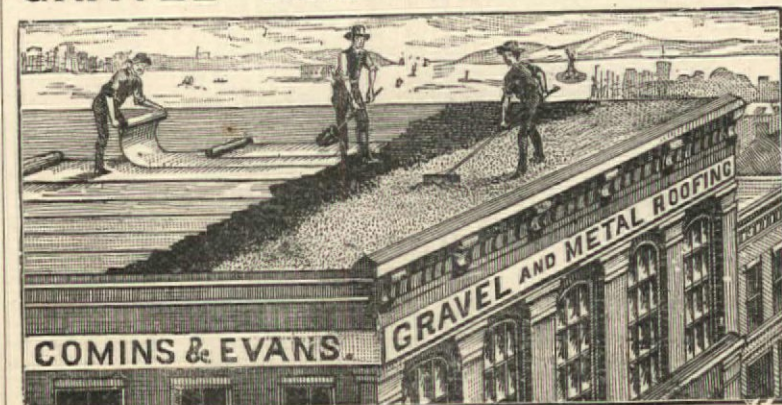
All their Saws are ground TAPER, THIN at the Back, and warranted SMOOTH CUTTERS.

The Richardson Brothers are Thoroughly Practical Saw Makers.

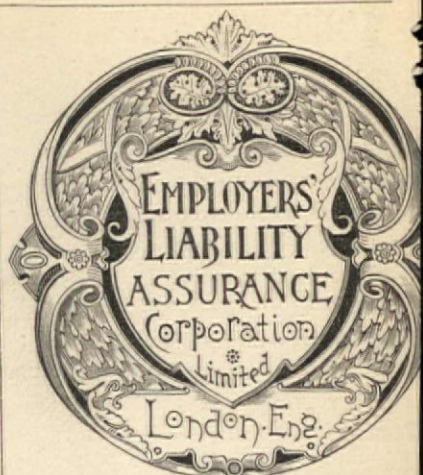
The RICHARDSON SAWS will be sent, Express Paid, direct from the Factory, when they cannot be procured from the Hardware Dealer. Special saws made to order. Send for Illustrated Price List to

RICHARDSON BROS., 15 to 31 River St., Newark, N. J.

## COMINS & EVANS, GRAVEL AND METAL ROOFING.



41-45 Waverly Ave., Brooklyn. TELEPHONE CALL, BROOKLYN 366. MARKET AND FULTON BANK BUILDING, 81 & 83 FULTON ST., N. Y. City.

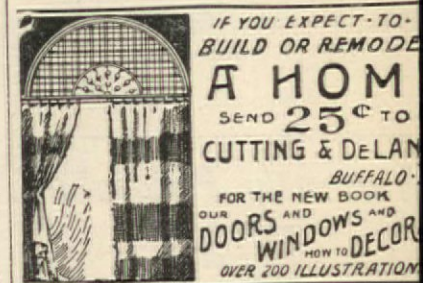


Deposited in the U. S., \$670,000

Chief Office in the United States: 71 KILBY STREET, BOSTON, MASS. ENDICOTT & MACOMBER, Managers and Attorneys.

BOSTON: Samuel Appleton, 28 Central St. NEW YORK: Kirby & Dwight, 51 Cedar St. PHILADELPHIA: Tattall Paulding, John G. Hoover, 416 and 420 Walnut St.

CHICAGO: Geo. A. Gilbert, 226 and 228 La Salle St. ST. LOUIS: F. D. Hirschberg Bro., 120 N. Third St. AGENTS IN ALL THE PRINCIPAL CITIES.



## HYATT HOUSE FILTERS

These filters are connected to the supply pipe and filter all the water which enters the house whether for drinking, bathing, washing clothes or for culinary purposes.

The filtering material can be thoroughly cleaned once each day or more frequently desired by following directions which are easily understood by the least intelligent custodian.

Hundreds are in use in Pittsburgh, Allegheny, Philadelphia, Cleveland, Washington, Albany, Newark and other cities.

## HYATT PURE WATER CO.

18 CORTLANDT ST., NEW YORK

Contractors for the purification of city water supplies under the Hyatt System as practised Long Branch, Lakewood, Atlanta, etc.



Open Burner, Perfectly White Smokeless Flame

PRODUCED BY TERRILL

EQUALIZING GAS MACHINES

Circulars and full information free to any address

O. TERRILL

39 DEY ST., NEW YORK

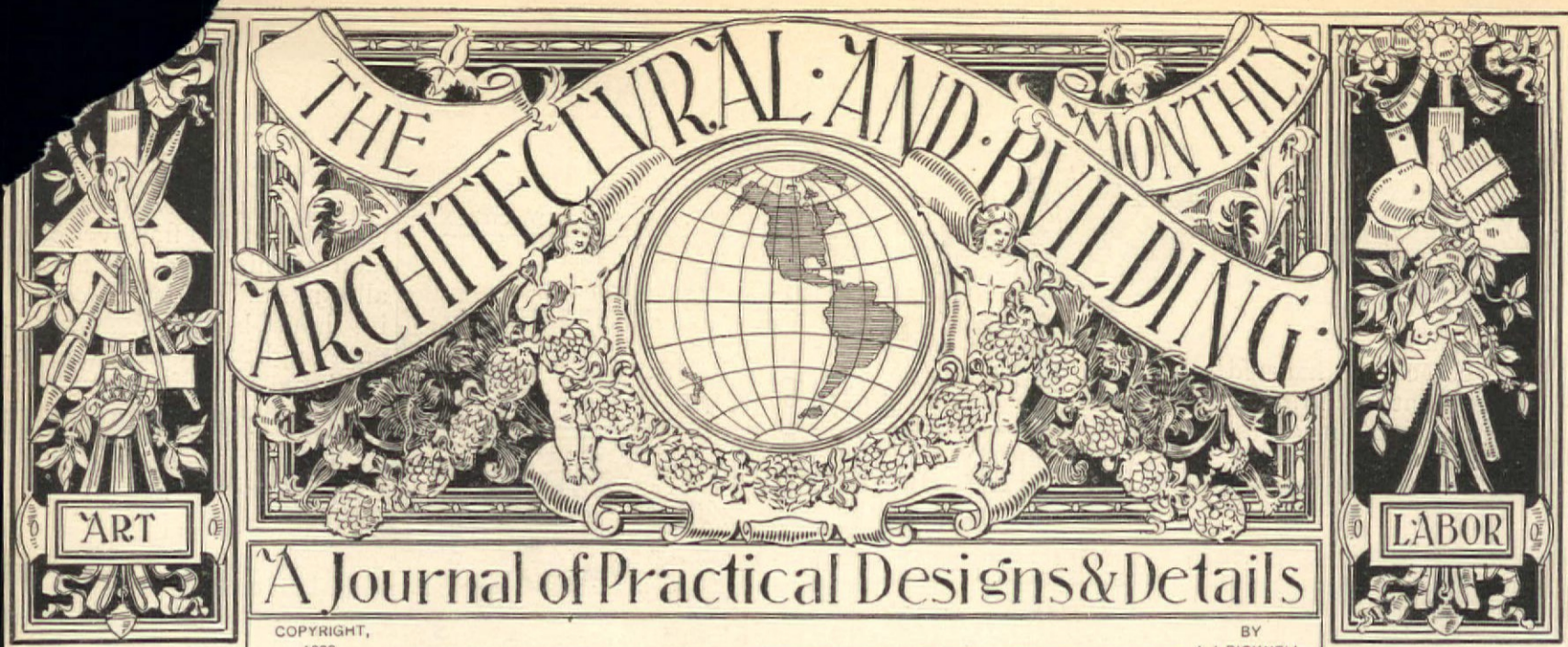
## P & B WATERPROOF Building Paper

Cannot Rot, Thoroughly VERMIN ACID and Alkali Proof. Put up in Rolls each containing 1,000 square feet.

Mention this Journal and send for Price-List.

## THE STANDARD PAINT CO.

59 Maiden Lane, New York.



# THE ARCHITECTURAL & BUILDING MONTHLY.

JOURNAL OF PRACTICAL DESIGNS AND DETAILS.

Adapted to the Use of all Associated with  
Architecture and the Building Trades.

A. J. BICKNELL, Publisher,

Box 560. 115 Broadway, New York City.

Subscription, Domestic or Foreign,

\$5.00 a Year,

Readers shall be pleased to receive from Archi-  
tects and Draughtsmen, practical drawings  
of New and Improved Designs and  
Plans, with brief description. Due credit  
will be given for all acceptable designs.  
Drawings of special interest will be paid for.

## INTRODUCTORY.

THE ARCHITECTURAL AND  
BUILDING MONTHLY

is intended to supply such  
designs as are usually  
found in Practical Archi-  
tectural and Building  
Journals, but its leading fea-  
ture will be one in which many  
are largely deficient. There  
is at the present time about  
a dozen publications treating on  
Architecture, Carpentry, Build-  
ing and kindred arts and trades  
in the United States. Having  
a full acquaintance with  
these periodicals, beginning  
with the publication of "Sloan's  
Architectural Review" and the  
other journals since estab-  
lished, it has been found that,  
while many are valuable for  
facts and general information,  
they contain a very limited number  
of practical designs. More  
practical designs and details of a prac-  
tical character are wanted.  
The object of this journal is to  
supply that want. The editor  
from the beginning will



be to give full value for the  
price, and no reasonable effort  
or expense will be spared to  
make our subscribers satisfied.

See page 13 for blank order,  
which it is hoped those receiv-  
ing this number will use, if  
they have not already sent in  
their subscriptions.

## TO READERS

PRINCIPALLY INTERESTED IN  
THE ARCHITECTURAL AND  
BUILDING TRADES.

THE publisher will be  
glad to hear from all in-  
terested (many of whom  
have been his former  
patrons), who may receive  
this number of THE ARCHI-  
TECTURAL AND BUILDING  
MONTHLY. Their opinions and  
suggestions will be acceptable.  
This issue is a fair sample of  
what the MONTHLY is intended  
to be, although, if possible, it  
will be made better and better  
each month. It is hoped many  
will show their appreciation by  
forwarding \$5 for subscription  
for the first year, if they have  
not already done so, or \$2.75  
for a trial subscription for six  
months, after which \$2.25 will  
be accepted for the balance of  
the year.

Each succeeding issue will  
contain from 8 to 12 plates of  
Practical Designs and Details  
to scale, giving in all, during  
the year, a very large amount  
of original and useful matter  
valuable to the building trades.

It will be seen that the aim  
of THE ARCHITECTURAL AND  
BUILDING MONTHLY is not to  
burden readers with a mass of  
letterpress, of which they have  
no doubt more than they can  
read, but to give an abun-  
dant of valuable drawings of

Modern Designs and Details, with brief descriptions only. The intention is to make all plates so easily understood that any extended description will be unnecessary.

All subscriptions to commence with Vol. I, No. 1, April, 1890, until the edition of 10,000 copies is exhausted. It is hoped that the A. & B. MONTHLY will be made so valuable that all subscribers will wish to have it complete. To be sure of this it will be necessary to forward names early.

#### HOW IT IS DONE.

HAVING issued several Practical Books on Architecture, Carpentry, and Building, the publisher proposes to furnish more designs each year in this journal for \$5 than he ever published in book form for \$10.

This can only be done by using a portion of each issue for advertising articles used in the construction and finish of buildings, thus introducing a feature of interest to all subscribers and of value to advertisers on account of the large circulation. In corresponding with the Manufacturers and Dealers who advertise in this journal, please mention the A. & B. MONTHLY. It is not intended to insert the advertisements of any irresponsible parties.

#### SUBSCRIPTIONS.

ALL persons desiring to subscribe for this Journal should do so only through well-known and responsible parties.

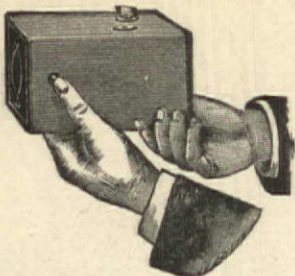
The publisher cannot be responsible for money paid for subscriptions, unless the same be sent to the office of publication by Money Order, Registered Letter or Draft on New York, or paid to an Agent having receipts signed by the Publisher, and written authority for the collection of money.

*A. B. Mitchell*

#### Note to Subscribers.

All copies sent to subscribers will be mailed flat or in tubes, which will insure their delivery in perfect condition.

## NEW KODAK CAMERAS.



"You press the Button, we do the rest."

(OR YOU CAN DO IT YOURSELF.)

SEVEN NEW STYLES AND SIZES

ALL LOADED WITH

TRANSPARENT FILMS.

FOR SALE BY ALL PHOTO. STOCK DEALERS.

Mention this Journal and send for Illustrated Catalogue and Price-list.

THE EASTMAN COMPANY, Rochester, N.Y.

## WARRANTED SUPERIOR

TO ANY

ROSENDALE HYDRAULIC CEMENT

MANUFACTURED.

USED ON THE

Most Important Works

IN THE COUNTRY.



TRADE MARK.

influenced by heat, cold, or moisture, is practically indestructible. Being absolutely non-absorbent, it is the most sanitary wall covering known. The Company's goods are sold by leading Decorators and Dealers in Paper Hangings in the United States.

Factory, Stamford, Conn.

## THE LINCRUSTA-WALTON MANUFACTURING COMPANY,

Sole Manufacturers in the United States of the material known as "Lincrusta-Walton,"

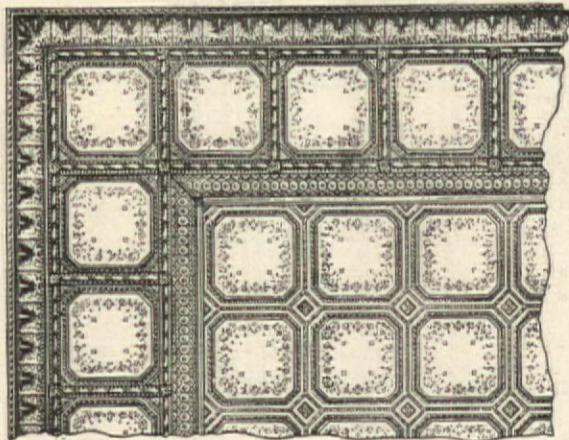
Desires to call the attention of Architects, Decorators and House-owners to the merits of its material for wall covering and decoration. It is made in beautiful and artistic designs, of which a catalogue containing 192 patterns will be mailed on request.

The Company will also manufacture from special designs for Architects, Decorators and Dealers in Wall Coverings.

The material is capable of any desired relief and decoration, and being un-

Company's Salesroom,  
No. 7 West 28th Street, New York City.

## METAL CEILINGS.



27 x 27 Embossed Plates.

—OF—  
Fine Corrugated  
Twilled & Embossed  
**SOFT STEEL.**

Suitable Designs  
For All Classes of Buildings.  
Send for Illustrated Circular.  
Agents Wanted in all towns of  
5,000 and upwards.  
**HENRY S. NORTHROP**  
20 Rose St., NEW YORK.

## THE STANDARD CONTRACT.

—FRAMED AND ADOPTED BY—

American Institute of Architects, Western Association of Architects,  
National Association of Builders.

It is Certain to Come into General Use. Try it for  
Your Next Building.

#### PUBLISHERS' CARD.

Having been licensed to publish and sell THE STANDARD FORM OF CONTRACT, we are prepared to fill all orders promptly. We will furnish the blanks at the following prices, agreed upon with the Joint Committee, viz.: \$1.10 per 100, \$4.25 per 500, and \$8.00 per 1,000, free by mail or express. Architects' names and consequent pronouns inserted at additional cost. To save innumerable small accounts, payment should accompany orders. Personal checks on local banks not accepted unless New York, Chicago, or equivalent exchange is added.

**INLAND PUBLISHING CO.,**

(Publishers Inland Architect.)

Tribune Building, CHICAGO.

## POINTS ON VARNISH.

THE EXTRA COST OF FINE COMMON VARNISH.

An exaggerated notion of the extra cost of fine over common varnish prevails among all ranks of persons concerned in house-building. Experience ought to correct it. Indeed the use of fine varnish for house-work is so very rare that experience has no chance to correct it. First-class architects, builders, painters and decorators, all, are behind in appreciation and practical knowledge of varnish.

Varnish is new; or, if varnish is not, fine varnish is; at least fine house-work, of which fine varnish is the crowning glory, is new. There are thousands of house-interiors as costly as that of a Pullman car; there are not in the United States so many as one hundred varnished so well. The varnish is cheap and the work perfunctory. What we deplore, and are trying to put an end to, is ignorance, not a difference of opinion. There is no opinion of varnish. When Architects do not distinguish between two brands of a maker for different uses and specify "Murphy's varnish," they have no opinion; they are simply ignorant. "Murphy" makes a hundred sorts of varnish not fit for house-work. It is the Architect's business to know what name as well as maker.

Transparent Wood Finish Interior and Exterior, cost \$2.50 and \$4 a gallon; twice as much as is commonly paid but they work more freely cover more surface and have more body, than any of the varnishes commonly used. They do not cost double; half more, may be.

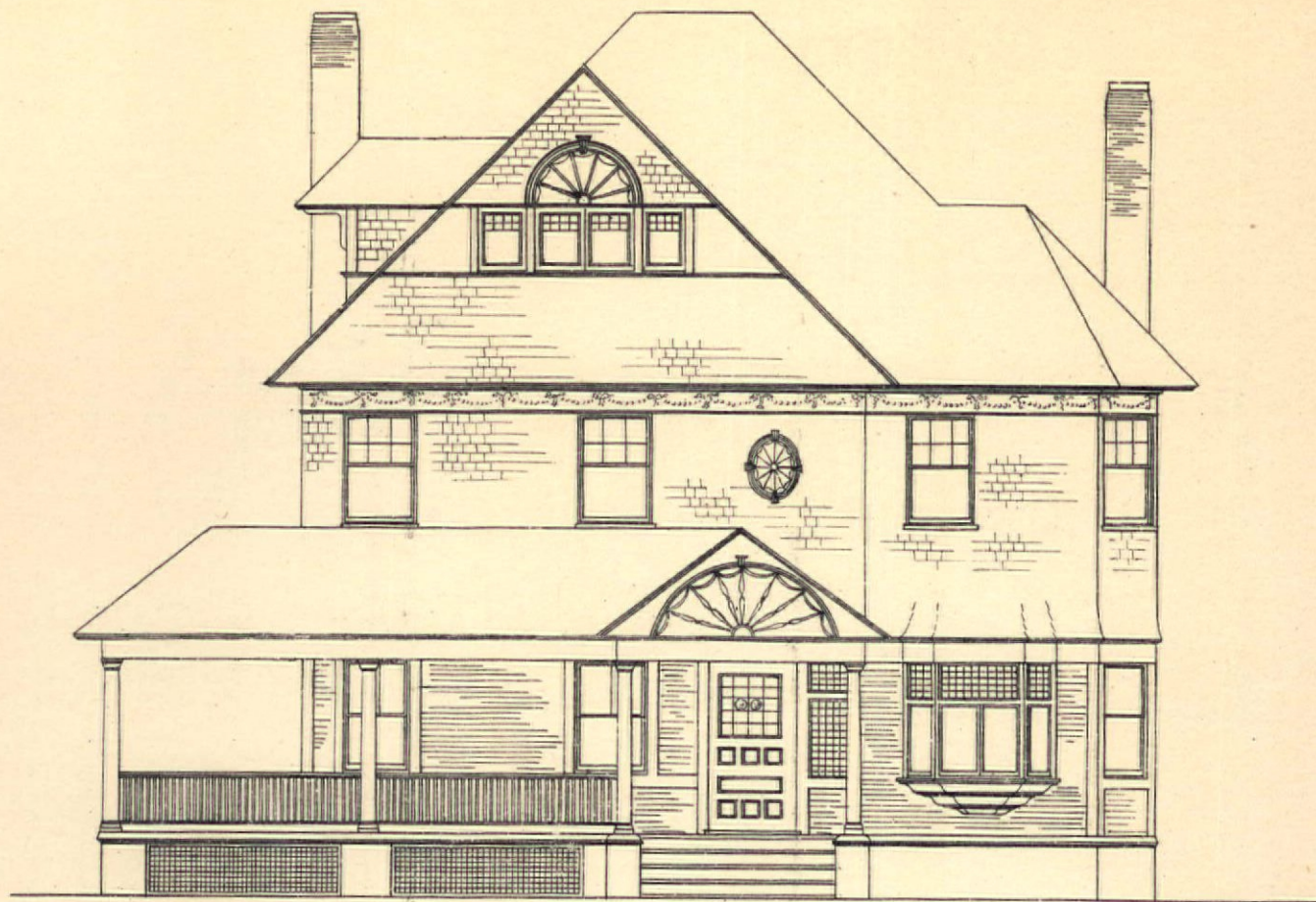
Interior lasts as long as any body wants it to last, as long as the wood-work is likely to stay. It has to be done but once in a life-time.

Exterior is for the porch where sun shine and storm conspire to destroy it. It needs a new coat as often as once a year to keep it in good condition.

A house once properly varnished needs no mending but, once a year new coat on the doors exposed to the sun. You can save a third of the money at first and have your varnishing never right and never done.

**MURPHY & COMPANY.**

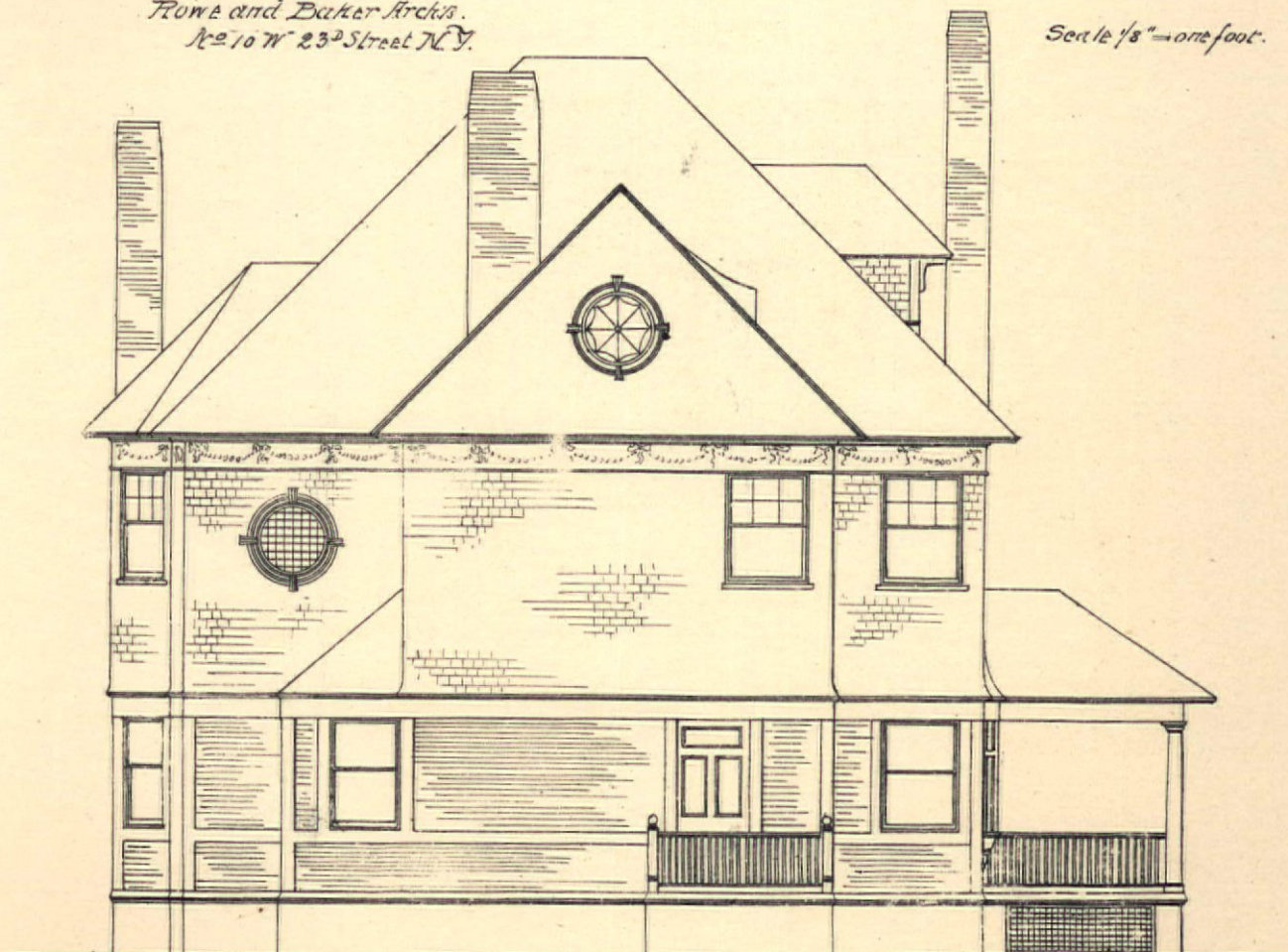
Newark, Boston, Cleveland,  
St. Louis, Chicago.



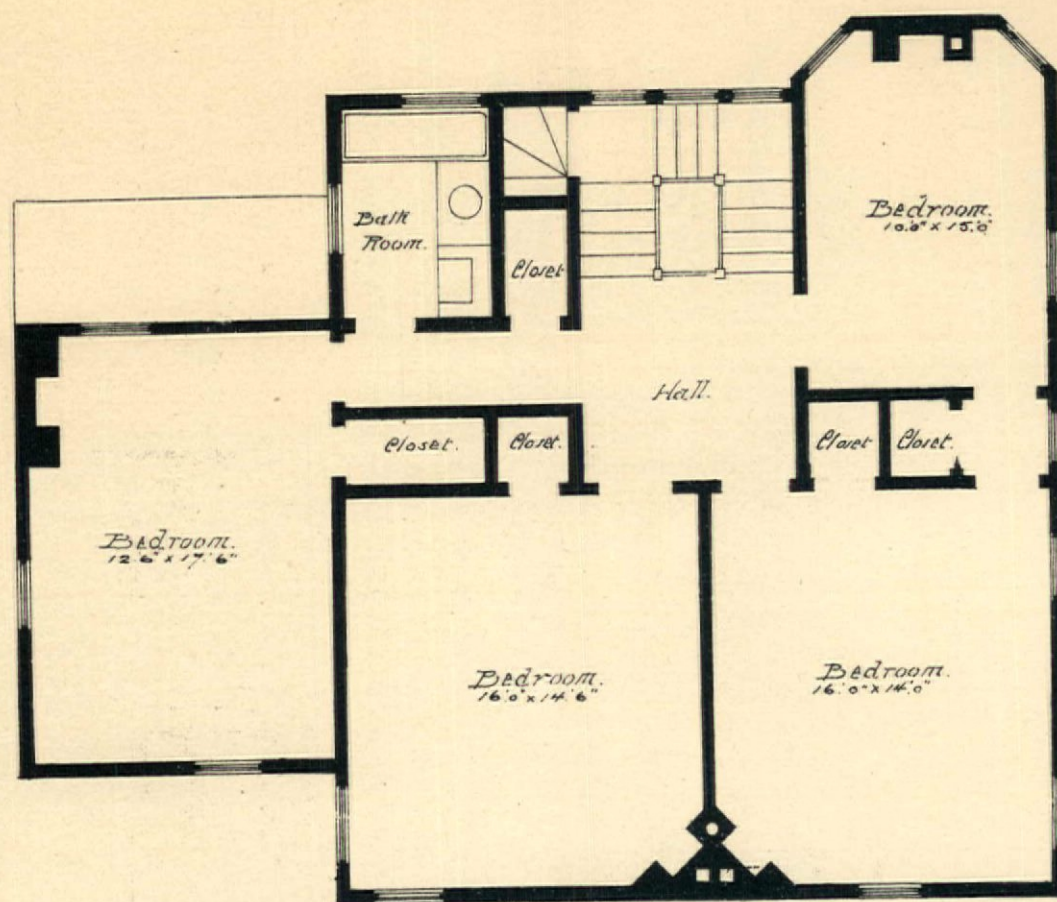
Front Elevation.

House at Elizabeth N.J.  
 Rowe and Baker Architects.  
 No 10 W 23<sup>d</sup> Street N.Y.

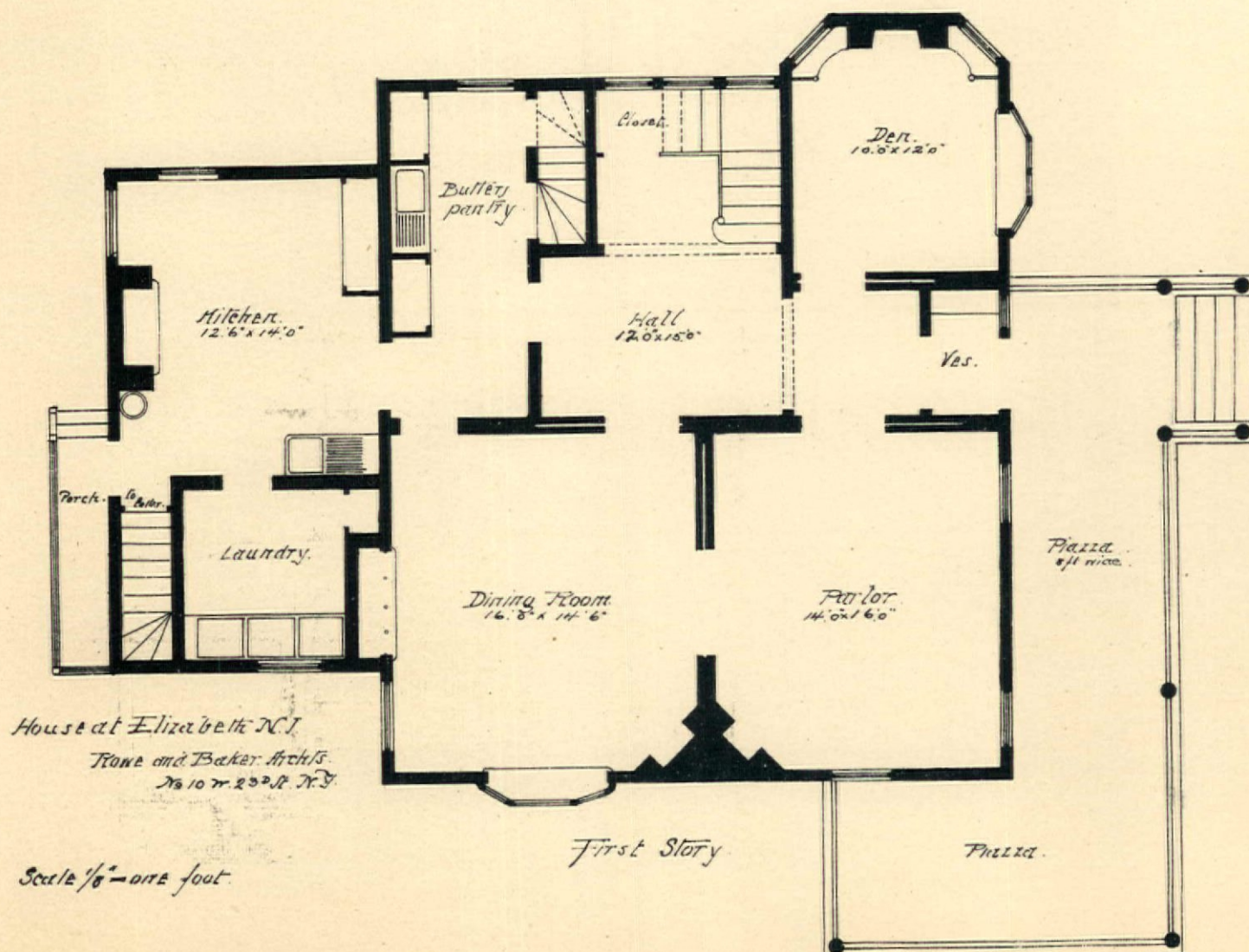
Scale  $\frac{1}{8}$ " = one foot.



Rear Elevation.



Second Story.

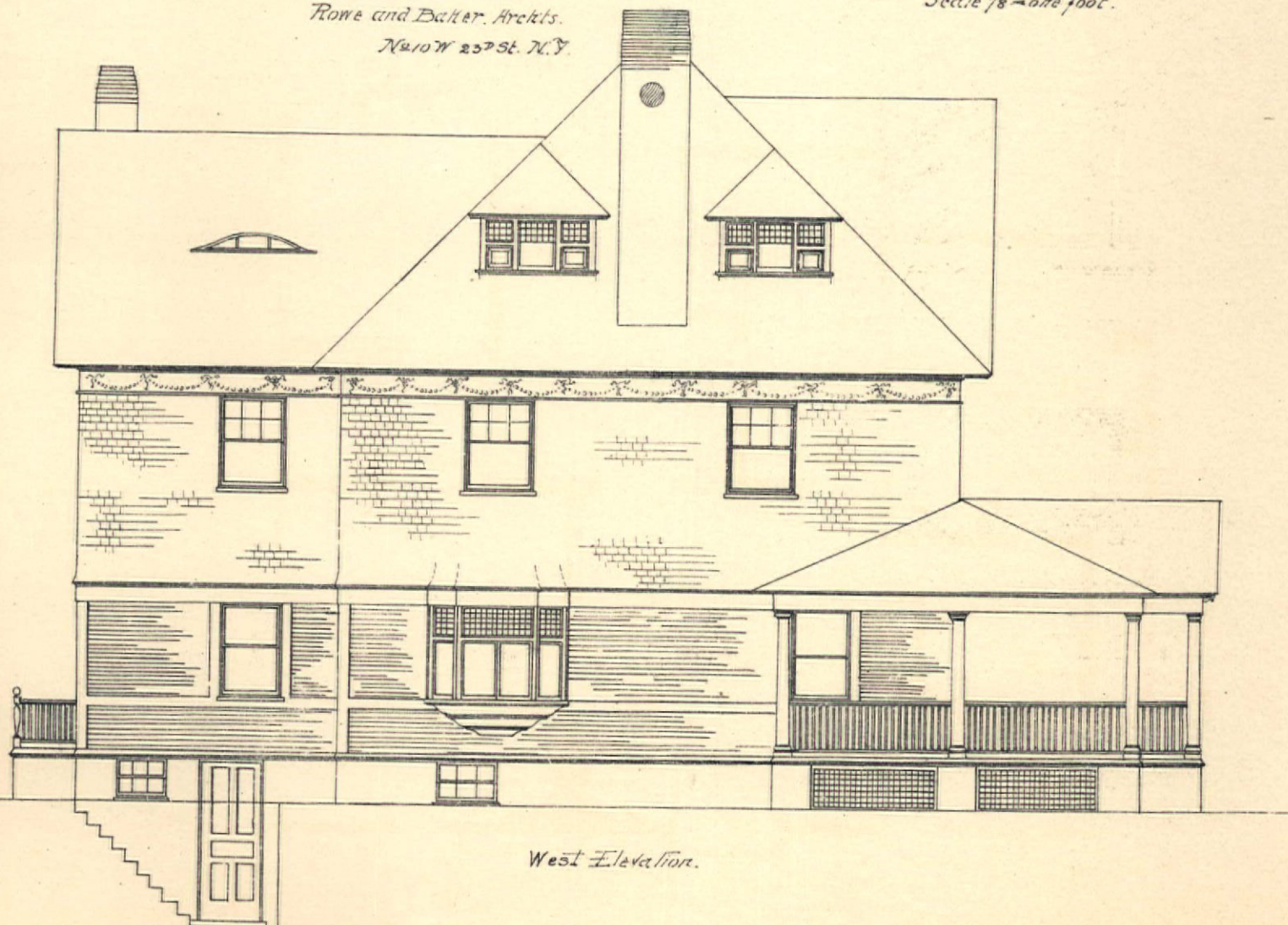


House at Elizabeth N.Y.  
Rome and Baker Archts.  
No 10 W. 23rd St. N.Y.

Scale 1/8" = one foot.

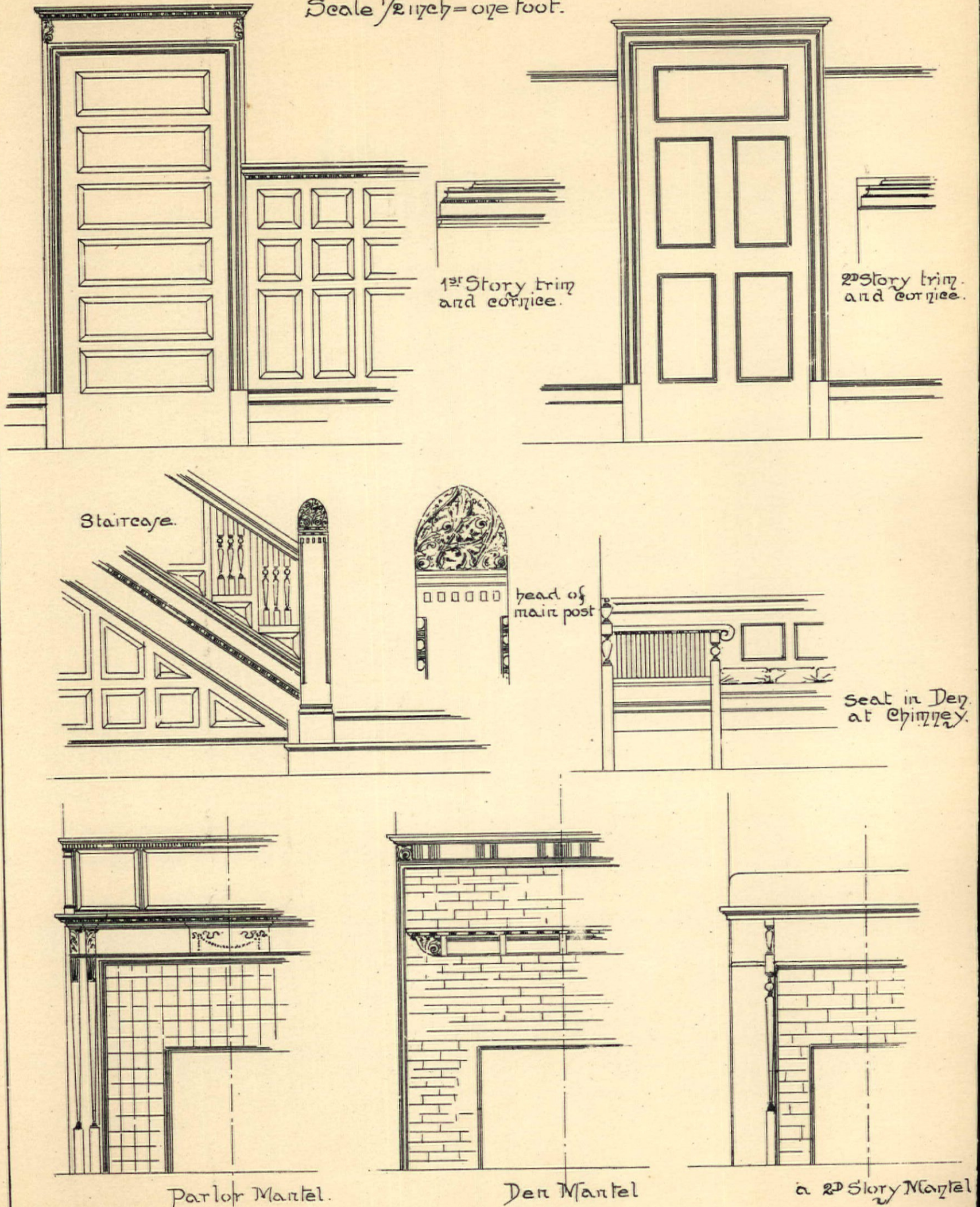
First Story

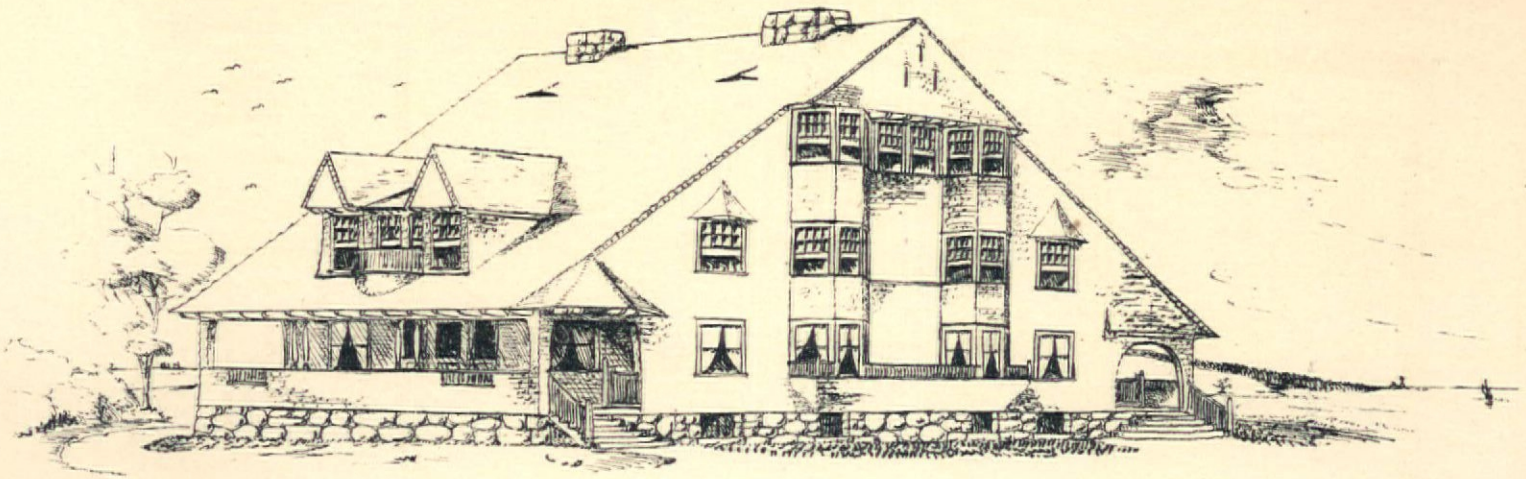
Piazza.

*East Elevation.**House at Elizabeth, N. J.**Rowe and Baker, Architects.**No. 10 W 23rd St. N. Y.**Scale 1/8" = one foot.**West Elevation.*

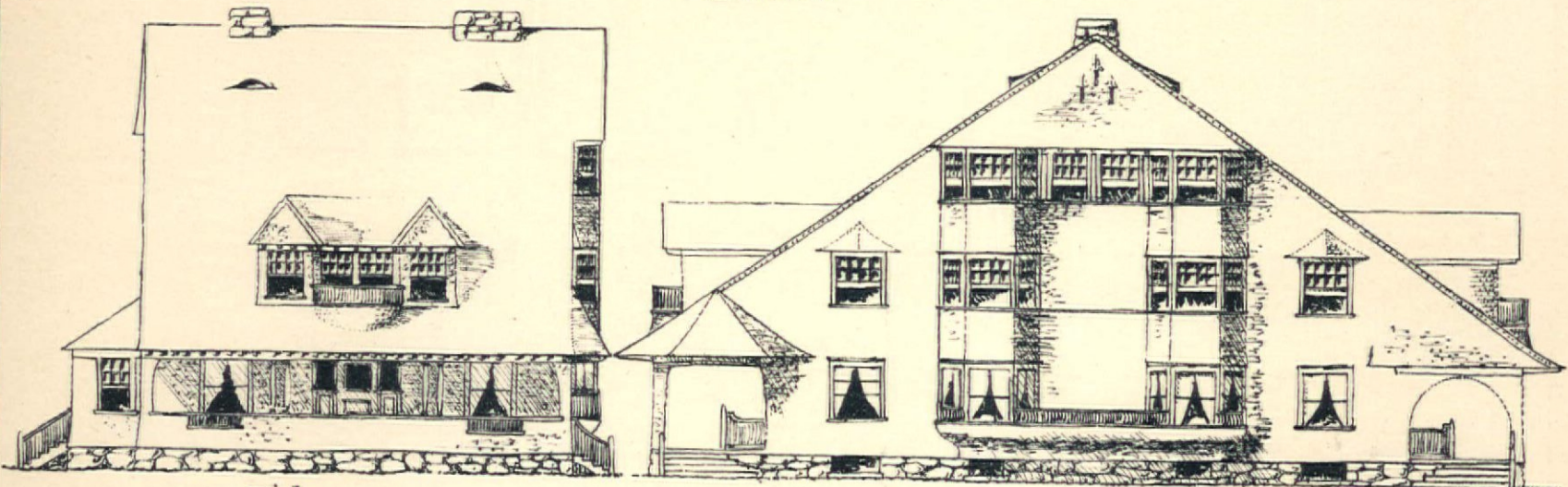
INSIDE DETAILS OF HOUSE. SEE PRECEDING PLATES

Scale  $\frac{1}{2}$  inch = one foot.



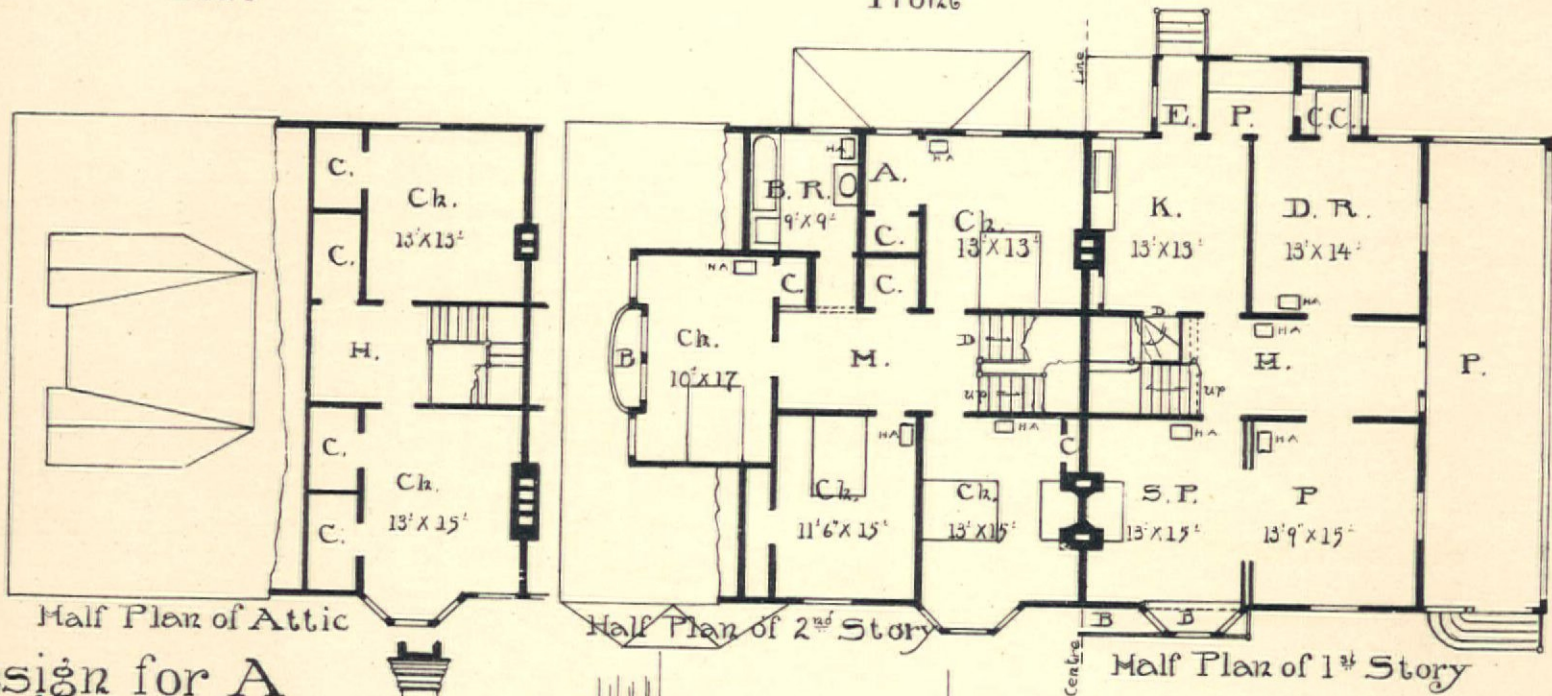


Sketch



Side

Front



Half Plan of Attic

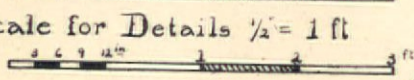
Half Plan of 2<sup>nd</sup> Story

Half Plan of 1<sup>st</sup> Story

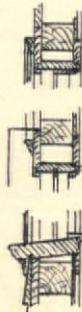
# Design for A Double Cottage

Scale for Plans & Elevations  $\frac{1}{4}$ " = 1 ft

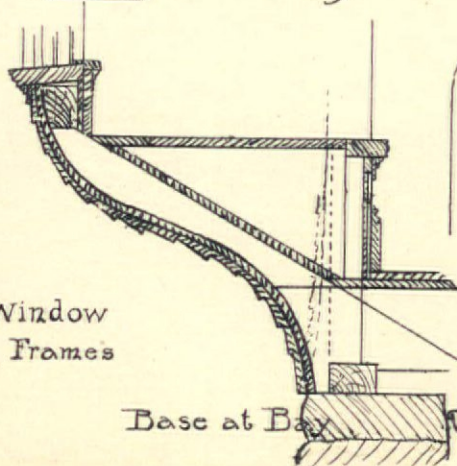
Scale for Details  $\frac{1}{2}$ " = 1 ft



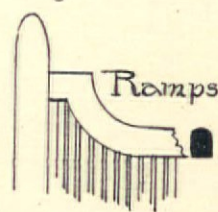
Column



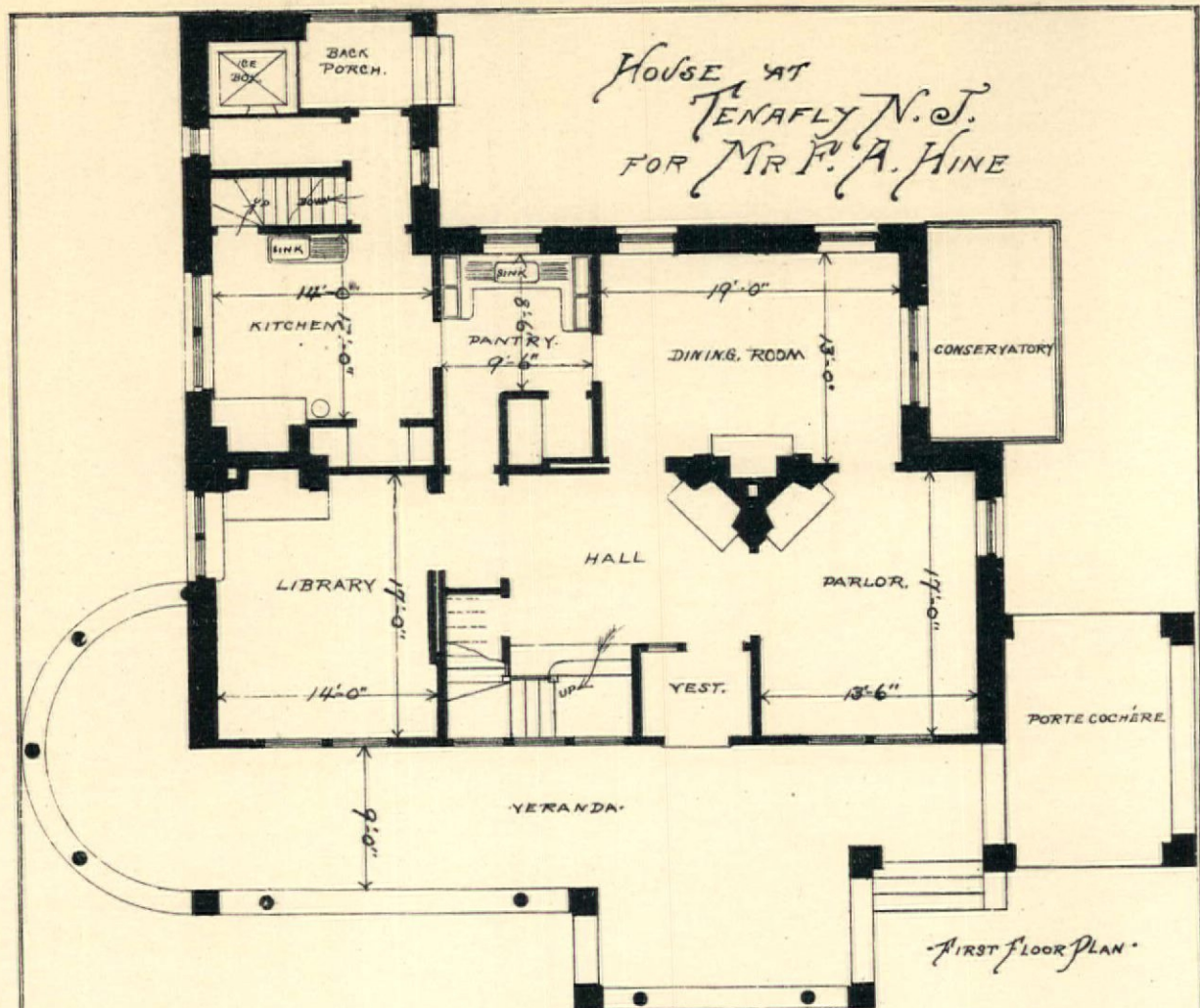
Window  
Frames



Base at Bay



Cornice

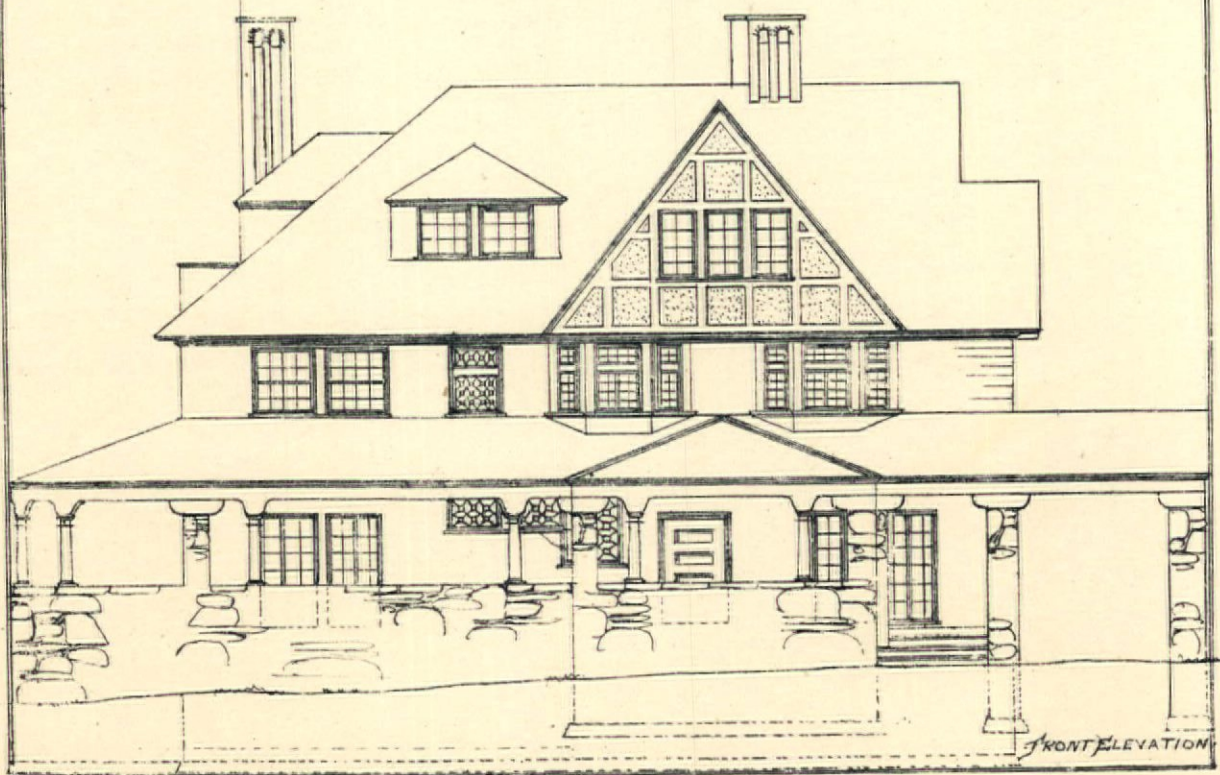


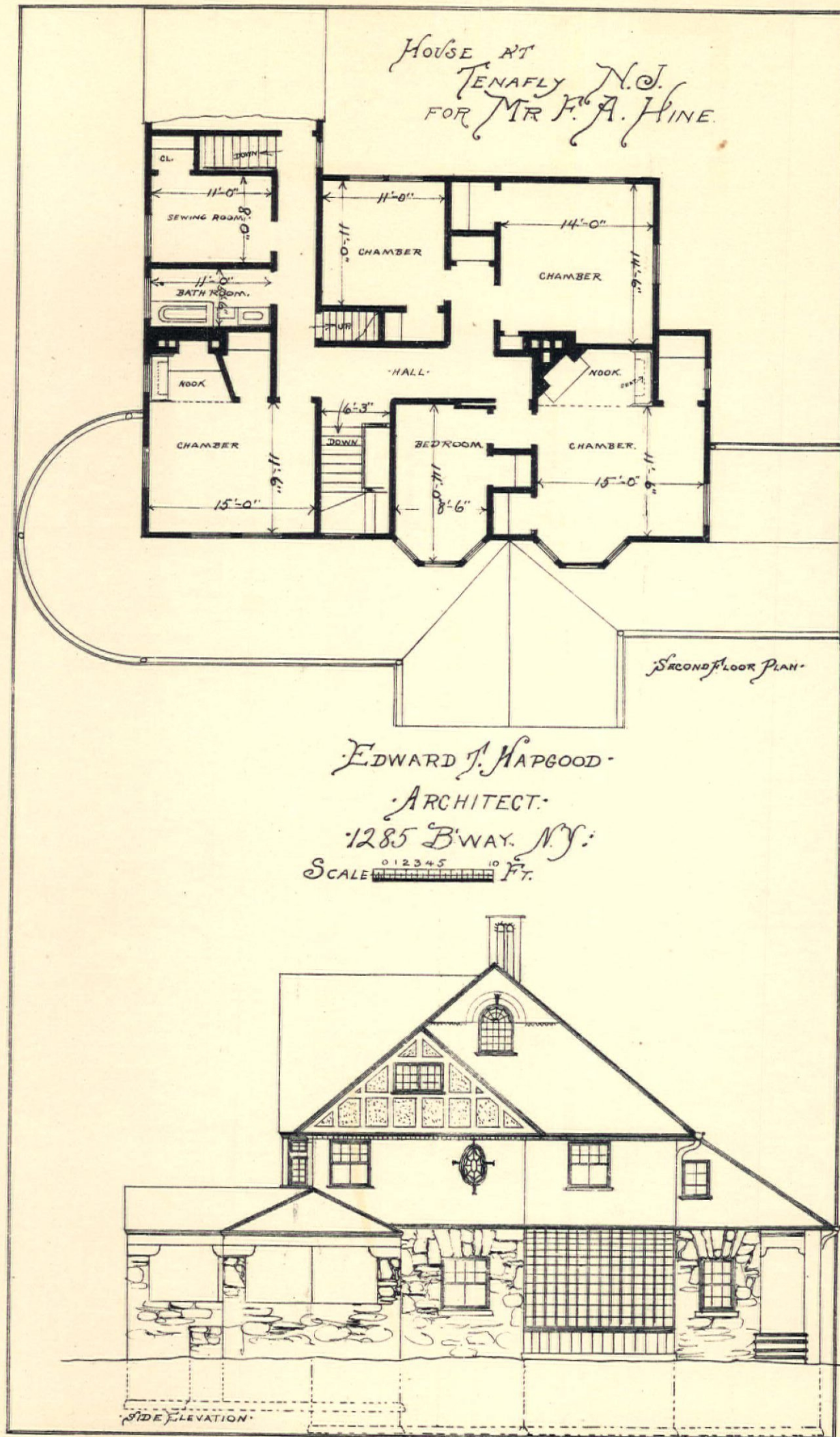
EDWARD J. HAPGOOD.

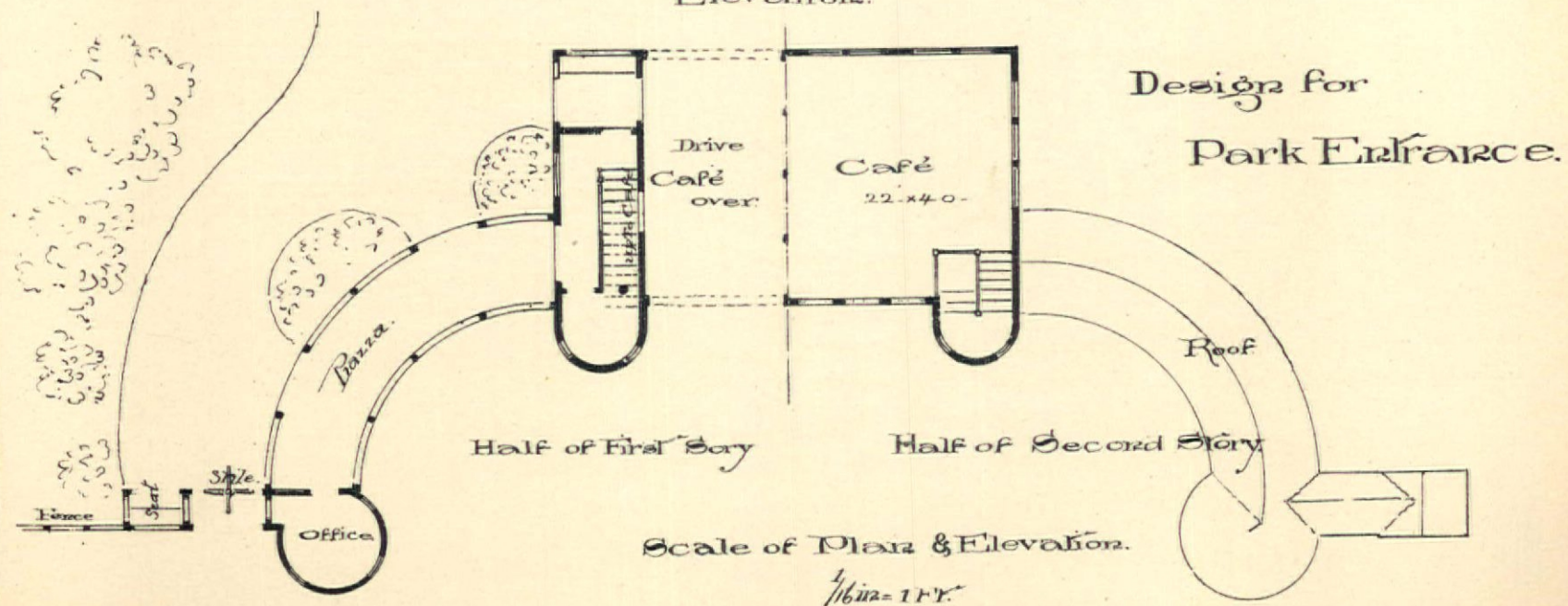
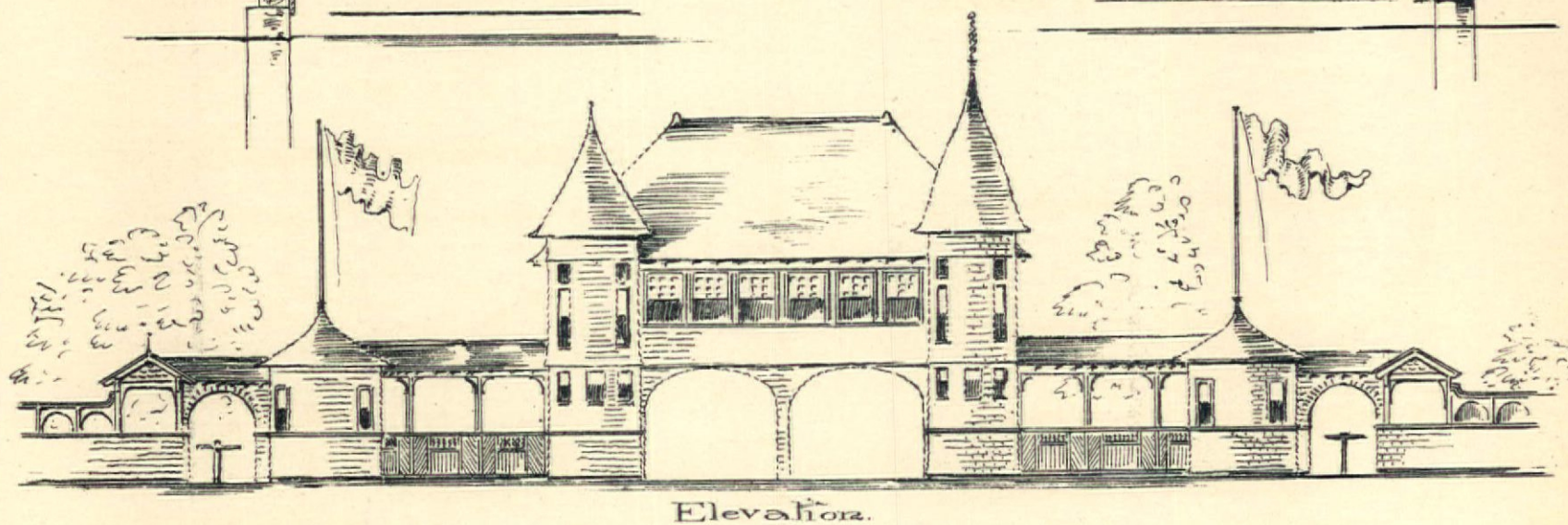
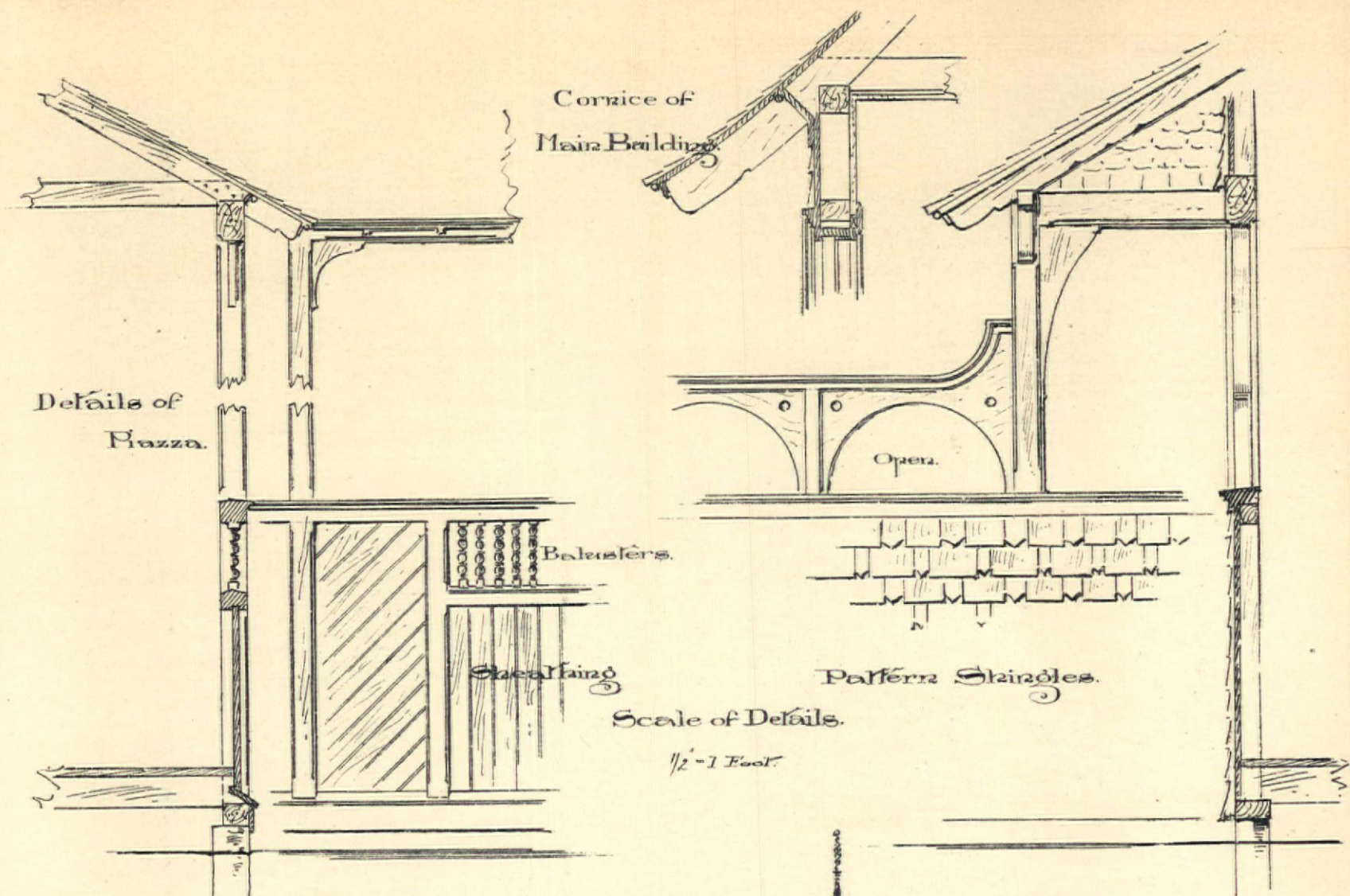
ARCHITECT.

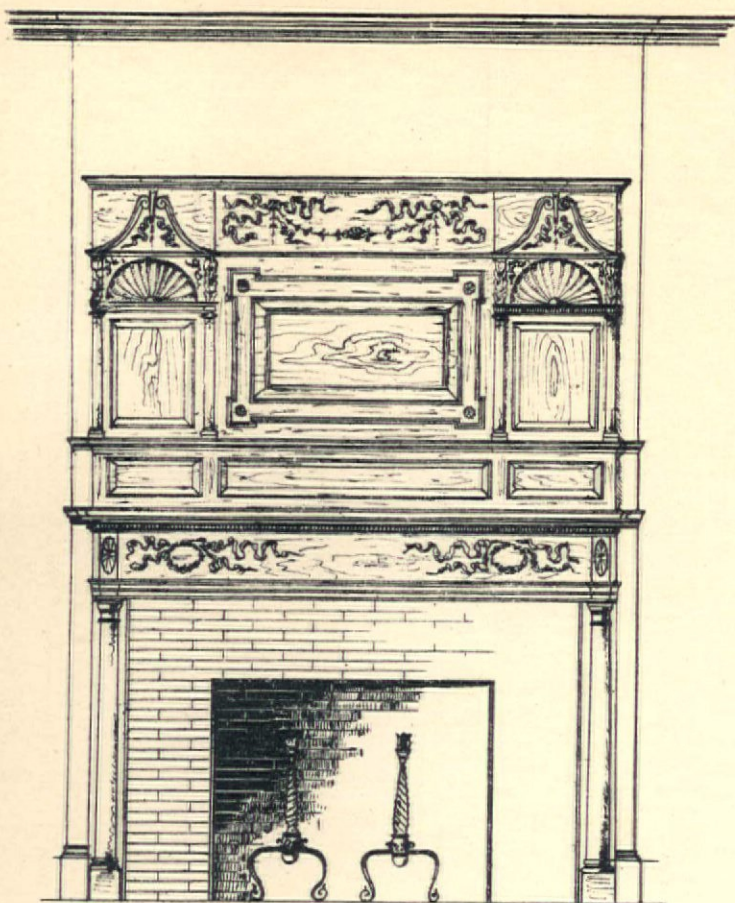
1285 BWAY. N. Y.

SCALE 0 1 2 3 4 5 6 7 8 9 10 Ft.

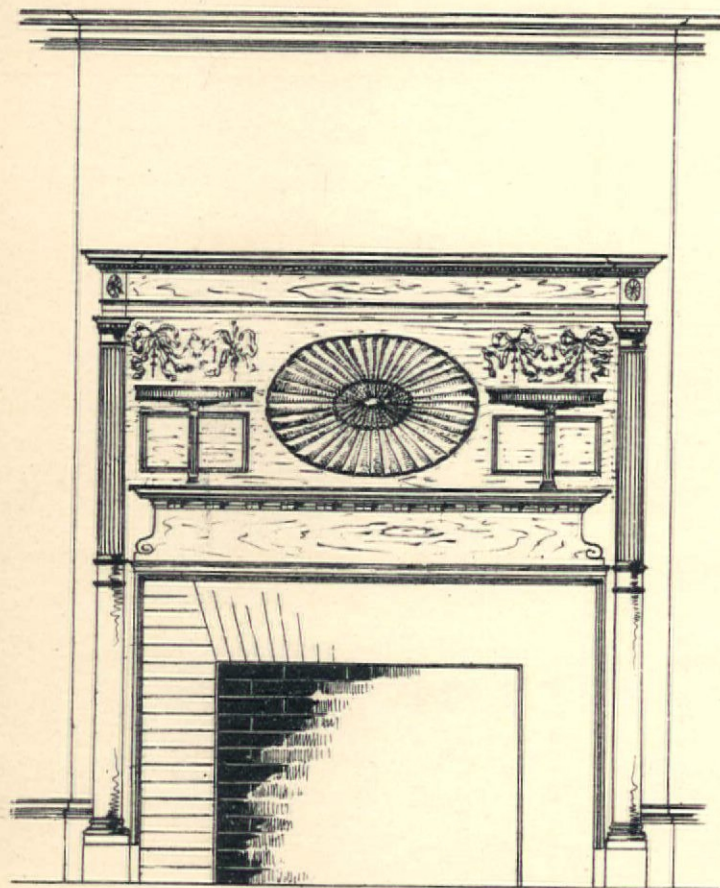








No. 1.

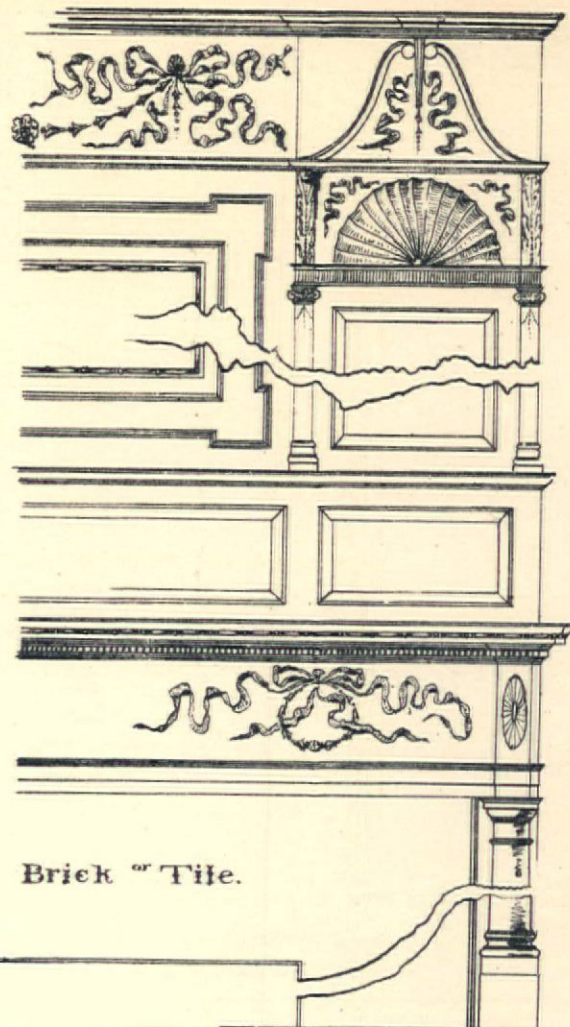


No. 2.

Scale for 1 2 3 4 5 6 Ft. Elevations.  
Scale for 1 2 3 Ft. Details.



Section.

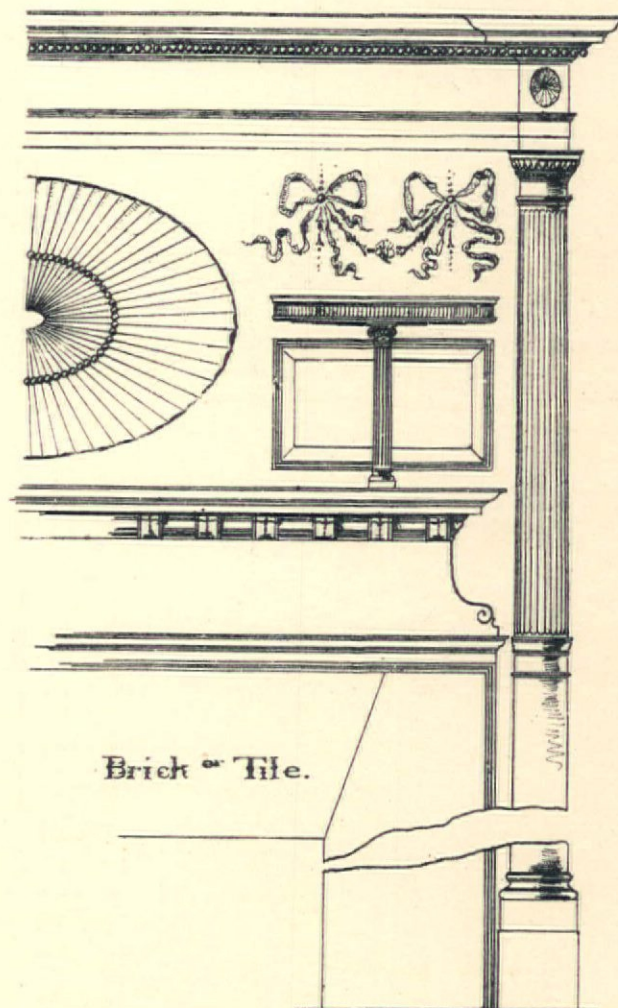


Brick or Tile.

Detail Elevation.



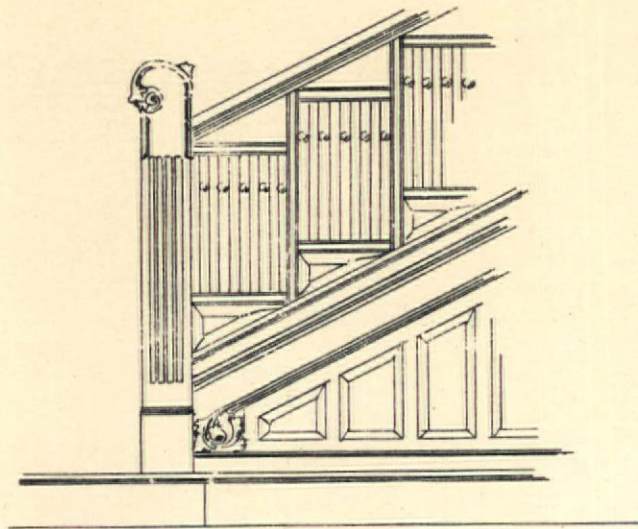
Section.



Brick or Tile.

Detail Elevation.

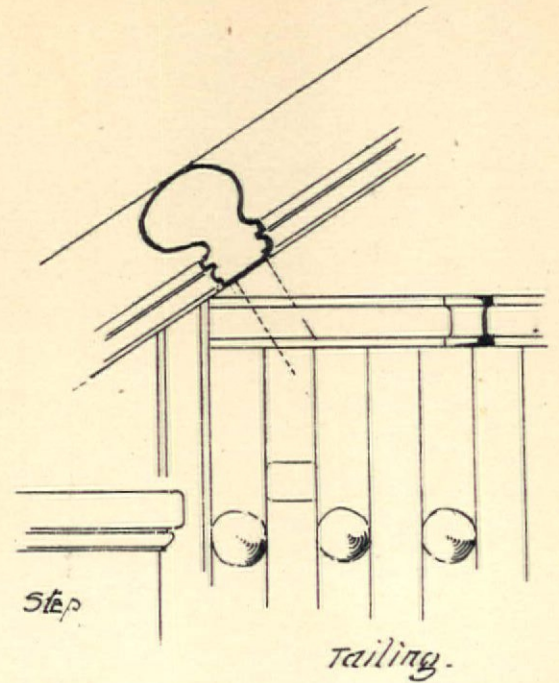
Two Mantels and Details,  
Colonial Style.



Elevation.

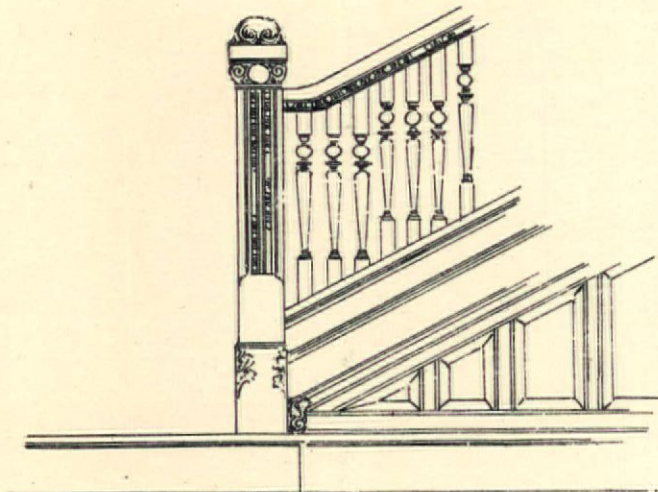


head of Newel.

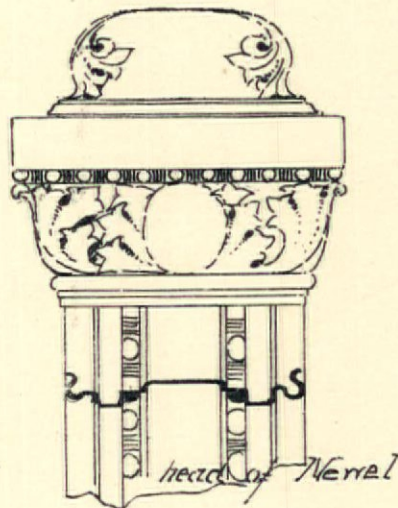


Step

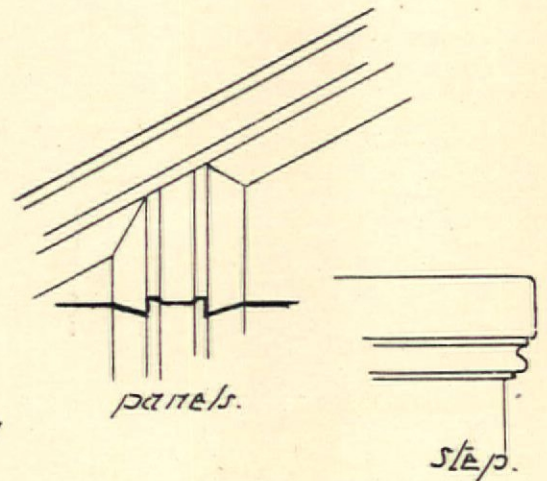
railing.



Elevation.

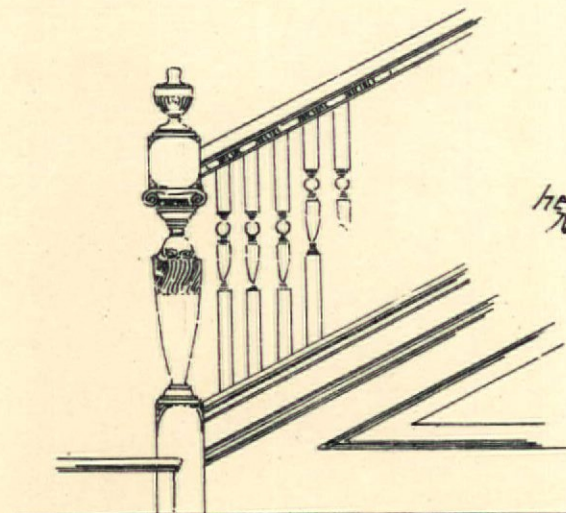


head of Newel



panels.

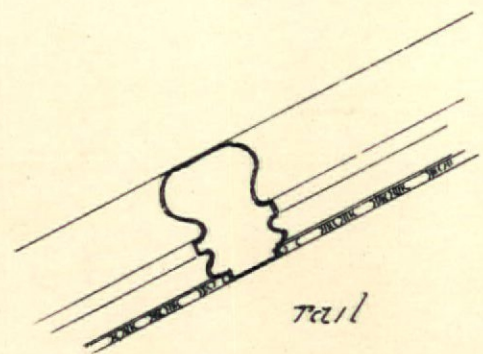
step.



Elevation.

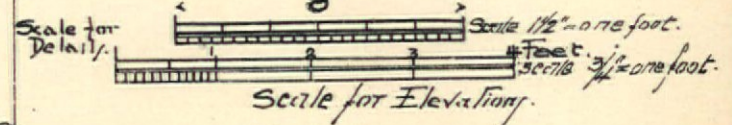


head of Newel



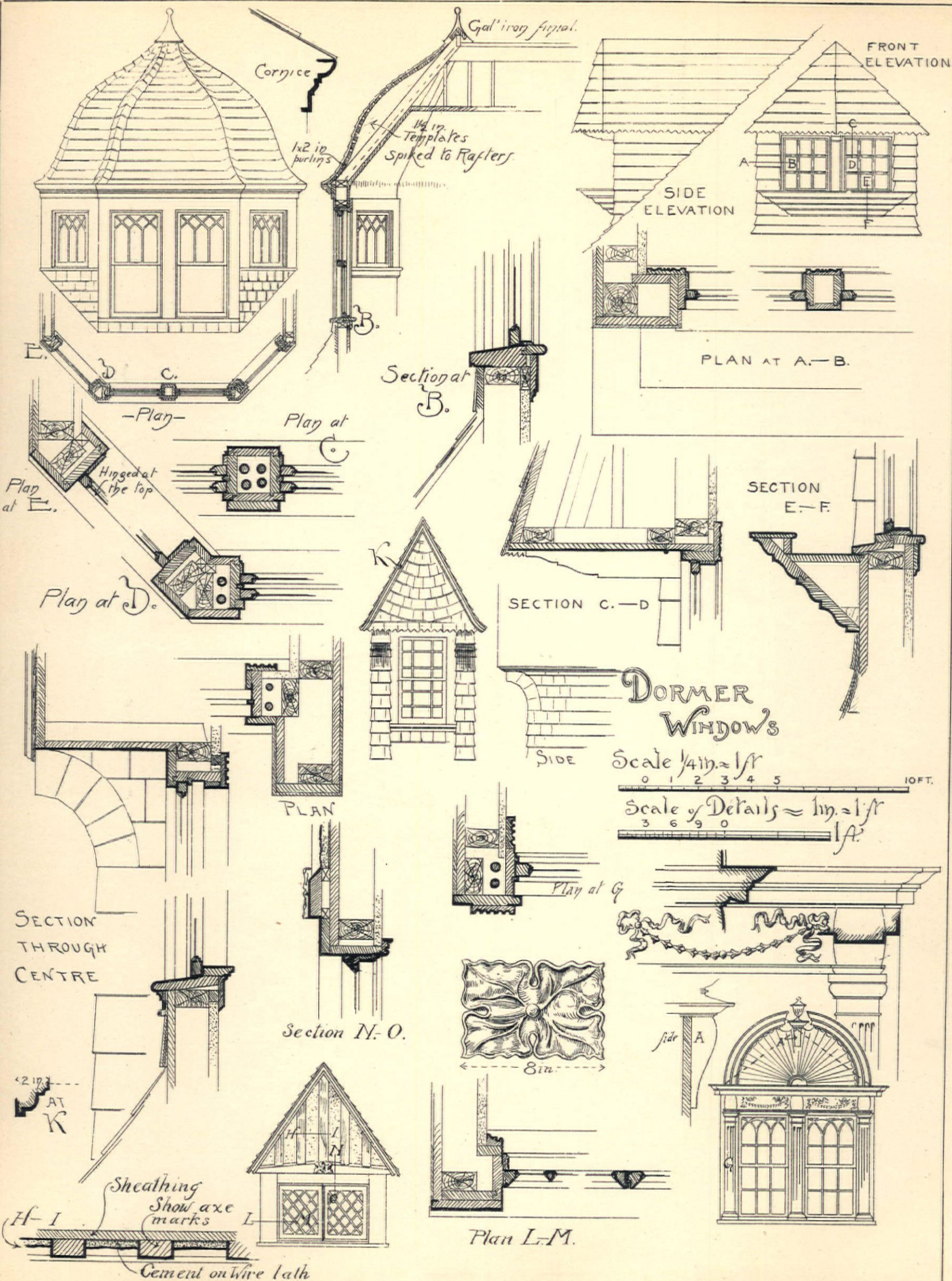
rail

Three Staircases.  
and details.

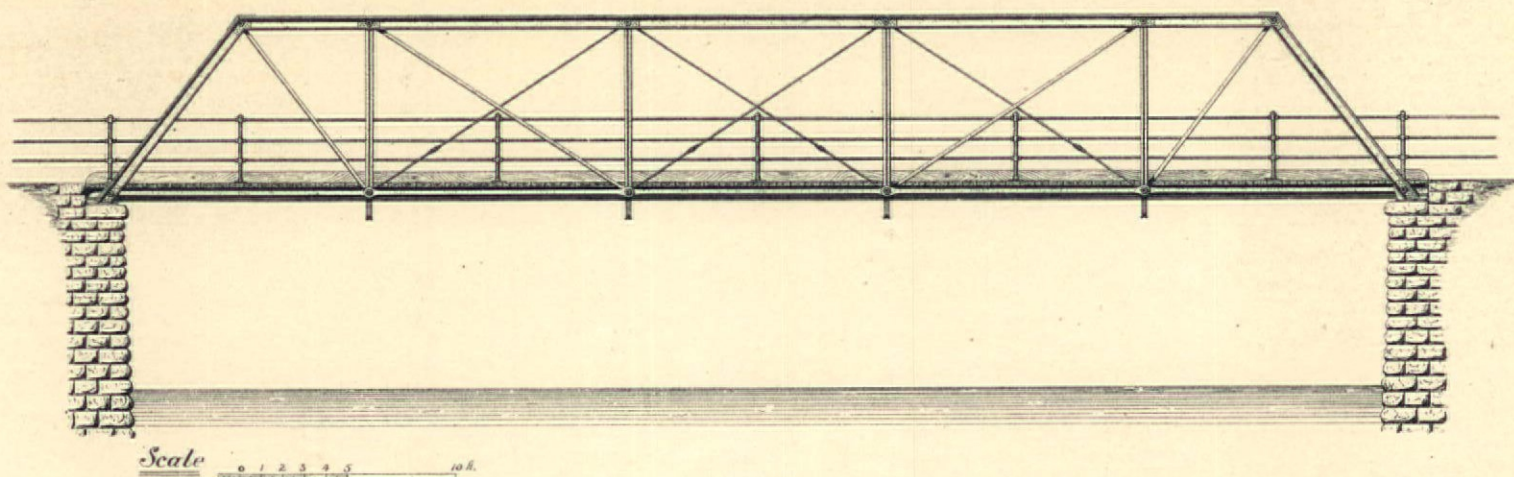


Scale for  
Details.

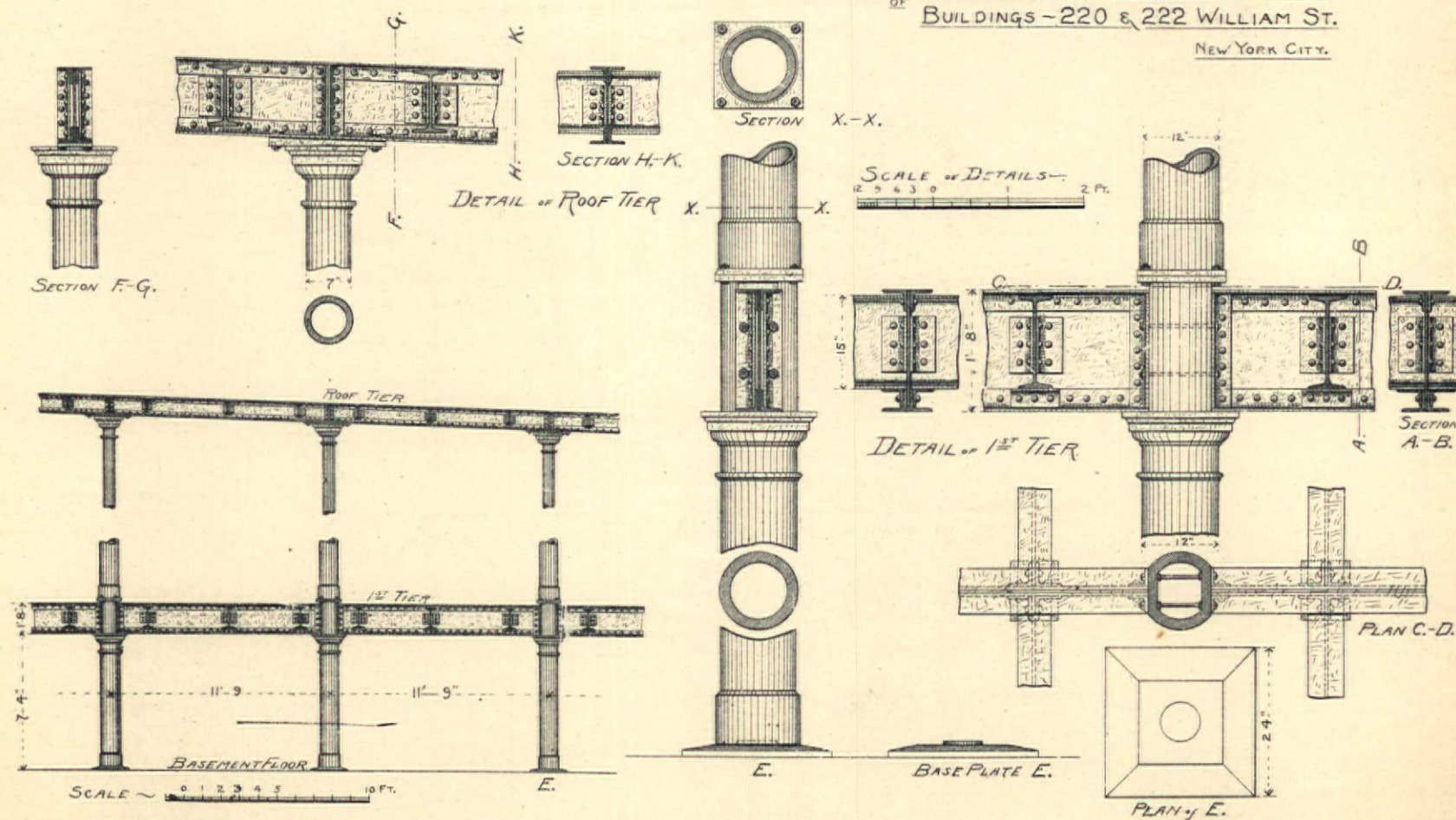
Scale for Elevation.



*Iron Highway Bridge — 60 ft. span — 8 ft. deep — 16 ft. wide —*



IRON FIRE-PROOF CONSTRUCTION  
OF  
BUILDINGS — 220 & 222 WILLIAM ST.  
NEW YORK CITY.





# THE BOSTON SANITARY CHECK VALVE,



FOR CHECKING ESCAPE OF SEWER GAS FROM FRESH AIR INLETS.

H. H. SAWYER &amp; CO., Manufacturers,

292 WASHINGTON STREET, BOSTON.

## - SAMPLE OF WINDOW -

MANUFACTURED BY

Postel's Stained Glass Works.



Estimates for Architects and Builders promptly given on application.

Work shipped to any part of the country.

C. H. POSTEL &amp; CO.,

1314 &amp; 1316 Ridge Ave., Philadelphia, Pa.

FOR

## ORDER \* BLANK

SEE PAGE 13.

## KANSAS CITY ARCHITECT AND BUILDER.

A 44-page Architectural Journal, published monthly, in the interests of Architecture, Decoration and Art. Its contents are original, from the pens of recognized authorities upon the various subjects of interest to the building trade, as well as to lovers of true Art and Decoration.

It is finely illustrated from original drawings prepared especially for our columns, by men of known ability.

Subscription price, { Regular edition, \$2.00.  
 { Architects' edition, 6.00.

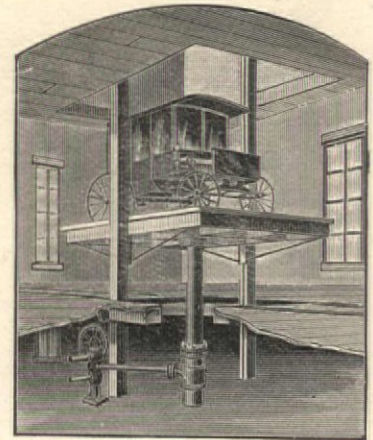
The Architects' edition contains the same reading matter as the regular edition, but has 52 Gelatine Supplements of Architecture, Painting, Sculpture and Decoration. Address

KANSAS CITY ARCHITECT AND BUILDER,

THOS. ELLIS, JR., Manager,

KANSAS CITY, MO.

## ECLIPSE ELEVATOR.



ONLY SAFE ELEVATOR.

For Circulars and Estimates, Address,

Tuerk Hydraulic Power Co., 12 Cortlandt St., N. Y.

SEE Page 13  
 For Blank Order.

Doors, C. B. KEOGH & CO., Sashes, Blinds, 1889 Price List, Mouldings.  
 6 & 8 Howard St., NEW YORK. SENT FREE On Application.

IS YOUR HOUSE  
 NEARING COMPLETION?

Then you will soon need to

Decorate the Walls and Ceilings.

WHY NOT TRY

**LIGNOMUR**  
 TRADE MARK

"The Manufacturer and Builder" says of this New Material:

"It may safely be commended to the notice of architects, builders, decorators, and the wall-paper trade as a meritorious invention worthy of their attention."

Call or Send for Samples.

AMERICAN DECORATIVE CO.,  
 116 PEARL ST., BOSTON.

SPECIAL NOTICE TO  
 ADVERTISERS.

ON account of several of my patrons having given orders for advertising to parties whom they supposed represented me, I wish to say that all contracts intended for me should be written on the blanks of "BICKNELL'S ADVERTISING BUREAU," printed on blue paper, with which all persons working in my interest are supplied. A. J. BICKNELL.

## KING'S WINDSOR CEMENT.

FOR PLASTERING WALLS AND CEILINGS.

300 per cent more TENSILE STRENGTH.  
 200 per cent HARDER and requires  
 ONE-THIRD LESS LABOR than  
 Lime and Hair Plaster.

Sample mailed free to any  
 address.



Station of N. Y. City & Northern R.R., Yonkers,  
 N. Y., plastered with King's Windsor Cement.

Also Sole Manufacturers King's Eagle Patented  
 and Diamond Brand Calcined Plasters.

**J. B. KING & CO.,**  
 Patentees and Sole Manufacturers,

24 STATE STREET,  
 NEW YORK.

## "BUILDING NEWS"

Published at  
 97 Oliver Street, Boston, Mass.

BY THE  
 BUILDING NEWS CO.

A Weekly Journal Devoted to Building Interests. Issued every Saturday.

CONTAINING the Freshest and most Authentic News that it is possible to obtain in regard to Buildings contemplated and in process of erection, by means of special correspondents in all the Cities and prominent Towns of New England, and through correspondence with all the Architects in the same section; Real Estate Transfers and Mortgages in Boston, the largest list of Building Permits published by any journal on Building matters; Trade Notes for the benefit of patrons; in short, all news in regard to building or in any way allied therewith.

Subscription \$5.00 Per Year. Advertising Rates upon Application.

As a means of introducing a specialty to the notice of New England Architects and Builders, the "BUILDING NEWS" is positively without a rival, as it is the only paper that covers the ground. Address all communications to the

BUILDING NEWS CO.

## RECENT VALUABLE PUBLICATIONS.

**SAFE BUILDING.** By Louis De Coppet Berg. Vol. I. Square 8vo. Illustrated. \$5.00. "The author proposes to furnish to any earnest student the opportunity to acquire, so far as books will teach, the knowledge necessary to erect safely any building. First comes an introductory chapter on the Strength of Materials. This chapter gives the value of, and explains briefly, the different terms used, such as stress, strain, factor of safety, centre of gravity, neutral axis, moment of inertia, etc. There follows a series of chapters, each dealing with some part of a building, giving practical advice and numerous calculations of strength; for instance, chapters on foundations, walls and piers, columns, beams, roof and other trusses, spires, masonry girders, inverted and floor-arches, sidewalks, stairs, chimneys, etc.

These papers are the work of a practising architect, and not of a mere book-maker or theorist. Mr. Berg, aiming to make his work of the greatest value to the largest number, has confined himself in his mathematical demonstrations to the use of arithmetic, algebra, and plane geometry. In short these papers are in the highest sense practical and valuable.

**BUILDERS' HARDWARE.** By Clarence H. Blackall. A manual for Architects, Builders, and Building Furnishers. Square 8vo. With five hundred illustrations and figures. \$5.00.

The work of Mr. Blackall embraces a subject which has a direct bearing on the work of an architect, and is also of vital importance to the builder and house furnisher. During its serial appearance in the "American Architect" it attracted the widest notice and commendation from the trade and the profession at home, and received the further compliment of being translated into French, and transferred bodily, with the illustrations, into the columns of *La Construction Moderne*, a leading architectural journal of Paris.

The above books, post-paid, on receipt of price by A. J. Bicknell, 115 Broadway, New York.

All Interested Should Send for a Free Sample Copy of the  
Builder, Decorator and Woodworker,

1305-1307 Arch Street,

PHILADELPHIA, PA.,

Giving Particulars of a Series of Interesting and  
IMPORTANT COMPETITIONS

That are open to all. We want you to enter.

The **Builder, Decorator and Woodworker** is one of the **Handsomest and most profusely Illustrated** Journals of its class, consists of **36 pages**, and **4 full-page Supplements**, and should be in the hands of every Architect, Builder, Carpenter and every Artisan in the Building Trades. April issue will contain **Prize Designs** in Competition No. 1 for a \$2,000 Cottage.

Manufacturers and Dealers in Builders' Supplies will find it a **Paying Advertising Medium**, and should send for rates.



IF YOU ARE INTERESTED IN THE  
**Practical Operation of Wood-Working Machinery**  
Send for a sample copy of

## - - THE WOOD-WORKER, - -

PUBLISHED BY

S. H. SMITH, - - - Indianapolis, Ind.

It is the most popular journal published for practical machine wood-workers.

## The American Builder.

PUBLISHED MONTHLY.—DEVOTED TO THE INTERESTS OF

**Architects, Builders, Carpenters,  
MASONS AND PLUMBERS.**

EACH ISSUE CONTAINS FULL SET OF HOUSE PLANS, ELEVATIONS AND DETAILS  
AND MANY VALUABLE AND PROFUSELY ILLUSTRATED ARTICLES  
WRITTEN BY ABLE WRITERS.

**SUBSCRIPTION PRICE, ONLY 50 CENTS A YEAR.**

SAMPLE COPY SENT FREE TO ANY ADDRESS.

ADVERTISING RATES MAILED ON APPLICATION.

F. HOUGHTON & CO, Publishers, 84 Champlain Street, Cleveland, O.

## THE SOUTH.

A JOURNAL OF SOUTHERN AND SOUTHWESTERN PROGRESS.

The *South* occupies a distinctive field in journalism. It is the oldest journal in the country devoted exclusively to the development of the Southern States.

Every issue is illustrated, often in color, with characteristic views, prominent buildings, factories, iron works, mines, railways, etc.

Advertisers will find it to their interest to advertise in *The South*, as it answers all those questions with regard to the Southern States in which people are now interested. Write us for information.

TERMS OF SUBSCRIPTION, \$3 A YEAR, IN ADVANCE. SAMPLE COPIES FREE.

The South Publishing Company, 76 Park Place, N. Y.

VALUABLE TO ARCHITECTS, BUILDERS AND CARPENTERS.  
INTERESTS EVERY ONE

WHO WISHES TO

**OWN A HOME,**

OR WHO WISHES TO

**DECORATE OR**

**BEAUTIFY HOME.**

—THE—

**BUILDER & WOODWORKER**

W. F. Underwood, Ph.D., Editor.

The oldest Building Journal in America, now  
in its twenty-sixth year.

Above is shown a house costing \$2,200, plans and description of which appeared in *THE BUILDER AND WOODWORKER*.  
EACH NUMBER contains EIGHT full-page plates, printed in tint, of city and country residences, cottages, etc., plans with estimates of cost, elevations, etc., etc., in addition to numerous illustrated articles, suggestions for, and illustrations of interior decoration.

ISSUED EVERY MONTH at ONE DOLLAR PER YEAR.

Published by A. L. CHATTERTON & CO.,  
78 Maiden Lane, New York City.



THE HANDSOMEST PUBLICATION IN THE WEST.

\*\*\*\*\*

THE WESTERN ARCHITECT  
AND BUILDING NEWS.

\*\*\*\*\*

Published Monthly at Three Dollars per year.

DEVOTED TO WESTERN BUILDING INTERESTS. TWO SPECIAL NUMBERS  
DURING THE YEAR. PHOTO-GRVURE SUPPLEMENTS.

J. B. DORMAN & CO., PUBLISHERS,

DENVER, COLO.

Box 2265.

Rooms 26-32, Cass and Graham Block

Sample Copies FREE.

## THE SANITARY NEWS.

A WEEKLY JOURNAL

For the	Architect,	Builder,	Plumber,	Gas Fitter,	Engineer,	Contractor,	Manufacturer,	Mechanic,	and
---------	------------	----------	----------	-------------	-----------	-------------	---------------	-----------	-----

ALL PERSONS INTERESTED IN SANITARY INTELLIGENCE.

ESTABLISHED - - - 1882.

SUBSCRIPTION: \$2.00 A YEAR, IN ADVANCE.

ADVERTISING RATES FURNISHED ON APPLICATION.

SEND FOR A SAMPLE COPY.

88 AND 90 LA SALLE STREET,

CHICAGO

1869.

1890

The Manufacturer and Builder,  
Published Monthly.

A Handsomely Illustrated Mechanical Journal,  
Edited by DR. WM. H. WAHL.

Every Number Consists of 38 Large Quarto Pages and Cover  
Filled with useful information on all subjects of a practical nature.

It is invaluable to the Manufacturer, the Builder, the Architect, the Carpenter, the Engineer, the Plumber, and in fact to everyone who works with hands or brain. For the Household there is information given in every number worth the subscription price. The newest inventions are illustrated and described; science, both practical and theoretical, have a place in its columns; the Architectural department has an attractive design in every number. Questions on any topic asked by readers answered, and a thousand and one bits of interesting matter go to complete the oldest, best, a cheapest Mechanical Monthly in the country. It is the best, because the information it contains accurate and up to the times. It is the oldest, being now in its twenty-second year. It is the cheapest because it gives the reader the most substantial literary food for his money.  
Send \$1.50 for yearly subscription, and begin with the earliest number you can get.

SPECIMEN COPY FREE.

FOR SALE BY ALL NEWSDEALERS. AGENTS WANTED EVERYWHERE. ADDRESS

HENRI GERARD,

P. O. Box 1001.

83 Nassau Street, New York.

SPECIMEN COPY

—OF—

## The Architectural Era,

An Artistic and Practical Monthly,

Mailed Free to the Readers

—OF—

## THE A. &amp; B. MONTHLY,

Each Number Contains a SUPPLEMENT SHEET showing a large photographic reproduction of a new and prominent Building, also designs of Cottages, Country Houses, and other new and original designs.

Subscription, Per Year, - \$2.00.

D. MASON & CO., PUBLISHERS,  
Syracuse, N. Y.

OFFICE:

115 Broadway, New York.

A. J. BICKNELL, MANAGER,  
New York & Phila.

## RECENTLY PUBLISHED.

EIGHTH EDITION.

## BUILDING SUPERINTENDENCE.

A MANUAL: For young Architects, Students, and others interested in Building Operations as carried on at the present time. By T. M. CLARK, Fellow of the American Institute of Architects, 1 vol., 8vo., 336 pages. Illustrated with 194 Plans, Diagrams, etc. Price, \$3.00.

Introduction—The Construction of a Stone Church—Wooden Dwelling-Houses—A Model Specification—Contracts—The Construction of a Town-Hall—Index.

"This is not a treatise on the architectural art, or the science of construction, but a simple exposition of the ordinary practice of building in this country, with suggestions for supervising such work efficiently. Architects of experience probably know already nearly everything the book contains, but their younger brethren, as well as those persons not of the profession, who are occasionally called upon to direct building operations, will perhaps be glad of its help."

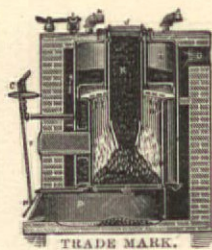
There is hardly any practical problem in construction, from the building of a stone town-hall or church to that of a wooden cottage, that is not carefully considered and discussed here; and a very full index helps to make this treasury of facts accessible. Every person interested in building should possess this work, which is approved as authoritative by the best American architects.

This volume has been used for years as a text-book in the chief Architectural Schools of the United States.

Postpaid to any address by

A. J. BICKNELL,  
115 BROADWAY, NEW YORK.

## THE DUNNING PATENT WROUGHT-IRON BOILER

WITH SELF-FEEDING COAL MAGAZINE  
IS THE BEST FOR

Low Pressure Steam or Hot-Water Heating,  
And insures a warm House night and day. Over 15,000 in use. Keeps steam up constantly. Also Steam Engines and Boilers of all kinds and Machinery generally.

MANUFACTURED AT THE

NEW YORK CENTRAL IRON WORKS,  
43 Exchange St., Geneva, N. Y.

Send for 120 page Illustrated Catalogue and Price List.



JUST PUBLISHED  
DIRECTORY OF ARCHITECTS—1890.  
PRICE, \$2.00.

For Sale at the Office of this Journal, or Mailed on Receipt of Price by

A. J. BICKNELL,  
115 BROADWAY, NEW YORK.

Decorative  
Glass  
and  
Sand Blast  
Work.

Novel Effects in Beveled and Chipped Plate Glass. Also in Colored Chipped. New Designs in Stock Sheets of Colored Glass. The Original Matthews' Silver Embossed Obscured Glass, Plain or in Suitable Designs. Send for Price List of Matthews' New Sand Blast Enamelled Glass—Cheapest and Handsomest Glass Made.

THE MATTHEWS' DECORATIVE GLASS CO.,  
328 and 330 East 26th Street, New York.

J. F. HONEY & SON,  
Metallic Skylights and General Sheet Metal Works.  
18 BROADWAY, NEW YORK.  
Shop, 116 West 18th Street.

## Patent Foot Power Machinery.

The Latest and Most Improved, for

Carpenters, Builders, Cabinet Makers and  
Wood and Metal Workers Generally.



Machines for Scroll Sawing, Ripping, Cross-Cutting, Mitering, Rabbeting, Grooving, Gaining, Beading, Variety Molding, Boring, Mortising, Tenoning, Wood and Metal Turning, Screw Cutting, Etc., Etc.

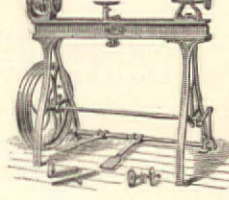
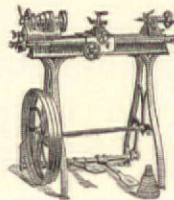
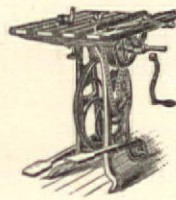
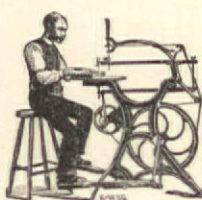
Enterprising Mechanics are quick to see the Superior Merit of our Machines.

Machines sold on trial if desired. Send for 36-page Illustrated Catalogue and Price-list, giving full description, testimonials, etc.



THE SENECA FALLS MFG. CO.,

300 Water Street, Seneca Falls, N. Y.



The Smead System of Warming and Ventilation  
AND THE SMEAD DRY CLOSET SYSTEM,

For Public School Buildings.

PURE AIR AND PLENTY OF IT!

NO SEWER GAS!!

"A NEW SUN IN THE SANITARY HEAVENS."

This system is peculiarly adapted to School Buildings, and is now in acceptable use in more than three thousand buildings of that class. Architects and School Authorities are invited to write for our new illustrated book (containing 150 pages), sent free on application.

ASSOCIATED OFFICERS:

ISAAC D. SMEAD & CO.,  
Toledo, O., Washington, D. C. and Kansas City, Mo.  
SMEAD, WILLS & CO., Philadelphia.  
SMEAD WARMING & VENTILATING CO., Boston.  
RITTAN WARMING & VENTILATING CO., Chicago.  
SMEAD, DOWD & CO., Toronto, Ont.

T. C. NORTHCOTT,

(Successor to Smead &amp; Northcott),

ELMIRA, N. Y.

Centrifugal, Rotary and Piston Power  
Pump, and House Pumps,

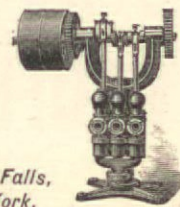
Over 800 Varieties of Brass Lift and Force Pumps.

SEND FOR ILLUSTRATED CATALOGUE.

400 Seneca Street.

Rumsey &amp; Company, Ltd.,

Seneca Falls, New York.



THE JERSEY CITY  
Woodworking Company,  
No. 310 Washington St.,  
JERSEY CITY, N. J.

TURNED BALUSTERS  
of all Sizes and Patterns.  
Pedestal and Turned Newels.  
STAIR RAILS  
of all dimensions worked ready to put up.  
Send 4c. in Stamps for Illustrated Catalogue.

The Theory of  
Transverse Strains.

And its application to the Construction of Buildings, including a full discussion of the Theory and Construction of Floor Beams, Girders, Headers, Carriage Beams, Bridging, Rolled Iron Beams, Tubular Iron Girders, Cast Iron Girders, Framed Girders, and Roof Trusses, with Tables calculated expressly for the work, etc., etc.

By R. G. HATFIELD, Architect.

FULLY ILLUSTRATED.  
Second Edition, with Additions.  
8vo, Cloth, \$5.00.

"The 'Theory of Transverse Strains' is undoubtedly the most important contribution to the Science of Building that has yet appeared."—  
London Architect.

A. J. BICKNELL,

115 Broadway, New York.

The Eureka Building Specifications advertised on another page will be found adapted to most of the designs published in this Journal.

## AMERICAN MANSIONS AND COTTAGES.

By CARL PFEIFFER, F.A.I.A. 100 folio plates. In handsome portfolio. \$10.00.

During his last years the late Carl Pfeiffer, F.A.I.A., of New York, prepared for publication a work on American Domestic Architecture, representing designs for dwelling-houses of various classes, with all their details carefully worked out, and perspective views of each house from several points.

One hundred of these drawings, carefully selected as the best, have been chosen for publication, forming the most unique and useful work ever issued upon the subject for either the profession or the public.

ILLUSTRATIONS OF SPIRES  
AND TOWERS

Of the Mediæval Churches of England.

Preceded by some observations on the Architecture of the Middle Ages and its Spire-Growth. By CHARLES WICKES. One Vol. Folio. Nearly one hundred plates, with text. \$15.00.

Years ago Mr. Charles Wickes had the good sense to print before the issue of the more elaborate colored drawings an uncolored edition of SPIRES AND TOWERS for the special use of Architects, thus giving the profession one of the most useful and beautiful works at their command.

This work has been reprinted, and the prints have lost nothing of their original force and delicacy in reproduction, and the reprint is quite as valuable and useful as the original. The present edition contains, also, in full, the notes and criticisms of the original, making 40 pages of text and notes, not less valuable than the plates.

The above books post-paid on receipt of price by

A. J. BICKNELL,

115 BROADWAY, NEW YORK.

# NATIONAL \* BUILDER

—AND—

## ARCHITECTURAL NEWS.

An Architectural and Art Weekly.

PUBLISHED EVERY SATURDAY.

Each issue contains costly photographic reproductions of prominent buildings; each volume embracing all the public buildings, churches and art homes.

New subscribers will benefit by a series of one hundred and ten superb photos of the gems of British Architecture of the present day (reproduced from original negatives, taken the past season by a distinguished American Artist); also by a succession of "views of the legation buildings and the private residences of prominent public men in the National Capital."

The photographs are inserted loose; are 9x12 inches in size, on heavy plate paper, the collection making a portfolio that would cost five times the amount of subscription, while the text of the journal gives complete descriptions, making a pen and picture history of the development of taste and culture as displayed in buildings and art subjects in the National Capital.

The Annual collection of the journal represents an art value never before approached either in quality or price.

Subscription \$5 Per Year.

Single Number 10 Cents.

POSTAGE PREPAID.

CHAS. H. VAN BUREN, PUBLISHER,  
OFFICE,  
608 F. Street, N. W., WASHINGTON, D. C.



The Exponent of the Building Craftsmen Generally

SUBSCRIPTION, \$2.00 PER ANNUM, IN ADVANCE.  
SAMPLE COPIES FREE.

The Widest-Spread Circulation of any Building Journal Extant in the Mid-land United States.

LOWEST ADVERTISING RATES, VALUE CONSIDERED.

THE BUILDERS' GAZETTE PUBLISHING CO.  
PITTSBURGH, PA.

## BOOKS ON BUILDING

And the Allied Arts.

LATEST WORKS ISSUED.

Palliser's Court Houses, City Halls, Jails, Etc.  
Palliser's Common Sense School Architecture.  
Each Containing 85 plates.

Specification and Contract Blanks, etc.

Full descriptive lists mailed on application; also of all American and Foreign Building Journals, with club rates.

PALLISER, PALLISER & CO.,  
24 East 42d St., New York.

# THE HARTSFELD FURNACE & REFINING Co.

Oldest Manufacturers of Pure Aluminum in America.

PRICES BELOW COMPETITION.

In Operation in this Country since 1885. Office and Works, Newport, Ky.

**Agents Wanted** for Aluminum, the New Metal, which will no doubt take the place of gold and silver, and perhaps replace our future coin. Is lightness, brilliancy, non-tarnishing lustre and durability is admitted by more than Fifty Million People, especially for Jewelry, Ornamental and Household Utilities, its demand is now enormous.

We have, with great care and expense, succeeded in placing before the public some entirely new and useful articles as souvenirs, made out of the **Pure Aluminum Metal** by skillful Artists and New Mechanism, solid Finger Rings without a weld, Earrings, Eardrops, Watch Charms containing the Lord's Prayer—smallest ever coined—and many other novel and useful articles for which the demand called for. We also reduced the price below competition, within the reach of all. For each Souvenir by mail, prepaid, 50 cents, or \$4.00 per dozen. \$10.00 to \$15.00 per day is easily cleared. The demand is great and the profit fair.

## A New Harvest for Agents to Supply the Demand.

Will you start to work, or induce some one who will? "Let this be the means of our introduction."—Wanamaker.

THE HARTSFELD FURNACE AND REFINING COM'Y,  
NEWPORT, KENTUCKY.

## If You Wish to Save Valuable Time

—USE THE—

### "EUREKA BUILDING SPECIFICATIONS"

Instead of Spending Hours in Writing Out Your Own.

**CLASS A.**—These Specifications are intended to be used for Frame Dwellings, without plumbing. Price, 25 cts.

**CLASS B.**—These Specifications are intended to be used for Frame Dwellings, of moderate cost, with heating and plumbing. Price, 30 cts.

**CLASS C.**—These Specifications are intended to be used for Frame Dwellings, costing \$4,000 and upwards, with heating and plumbing. Price, 40 cts.

**CLASS D.**—These Specifications are intended to be used for Brick Dwellings, with heating and plumbing. Price, 50 cts.

ARCHITECTS, Builders and Contractors cannot afford to do without them. Published in four Styles as above. Sample copy of all sent for introduction to any address for One Dollar, by the publisher of this Journal.

## SOUTHERN MANUFACTURER AND BUILDER.

The Representative Paper of the Manufacturing and Building Interests of the South and Southwest.

Principal Office, 243 Fifth Street, Louisville, Ky.

Advertisers will find the SOUTHERN MANUFACTURER AND BUILDER just the medium they want for reaching **Consumers of Building Supplies of all Kinds.**

It is the oldest and most widely circulated publication of its class in the South or West.

It has a very extensive circulation among Architects, Builders, Carpenters, Contractors, Masons, Painters, Plumbers, Hardware Dealers, Lumber Men, Manufacturers, Machinists, etc.

**ADVERTISING RATES**, which are based upon circulation, will be made known on application.

Address all Communications to

SOUTHERN MANUFACTURER AND BUILDER,  
Louisville, Ky.

## GLASS

Ornamental, Ground, Cut, Beveled and Embossed.  
For Dwellings, Railway Cars, Steamboats, Offices, Banks, Churches, Etc.  
POTTS BROTHERS, M'FES 48 AND 50 DUANE ST., NEW YORK.  
Estimates, Photographs and Designs sent on Application.

## ROOFING.

Asbestos and Building Paper, Sheathing, Deadening and Roofing Felts.  
Coal Tar Products and all kinds of Roofing Materials.  
Samples and prices to readers of "A. & B. Monthly" free.  
JOHN C. TAIT, 100 Maiden Lane, N. Y.

## ELECTROTYPES

For the advertising department of this Journal are made by us. We refer to the publisher for the quality and promptness in the execution of our work. Send for estimates for large or small work.

SEEBECK BROS., 41 and 43 Beekman St., New York.

In writing Advertisers, please mention "The A. & B. Monthly" and oblige them and the Publisher.

# Magneso-Calcite

## Fire-Proof Co.,

OFFICE AND SALESROOM:

96 ARCH ST., - BOSTON.

MANUFACTURERS OF

## MAGNESO-CALCITE

## FIRE-PROOF BOARD,

Composed of various Animal, Mineral and Vegetable Fibers, Chemically Treated, forming an absolute Non-Conductor of Heat.

Extensively used in Boston and other cities.

Indorsed by leading Architects and Builders.

Circulars giving practical tests in detail, including a recent test by Prof. Norton of Stevens Institute, furnished on application.

## House Painting and Decorating.

An Illustrated Monthly Magazine.

VALUABLE TO

House Owners, Builders, House Painters, Coach Painters, Car Painters, Fresco Painters, Sign Writers, Paper Hangers, and all interested in Painting and Decoration.

Every Number contains a Colored Plate and Fifty Pages of Reading Matter.

The following serial articles are now running:

Sign Painting. (Illustrated with examples of lettering banners, monograms, etc., etc.)  
Decoration.

Scene Painting.

Coach Painting.

Wall Paper Design

With much useful information, recipes, etc., etc.

\$1.00 a Year. Single number, 10 cts

Send postal for free sample copy.

1130 South 35th St., Philadelphia, Pa.

# **THE ARCHITECTURAL AND BUILDING MONTHLY.**

**A JOURNAL OF PRACTICAL DESIGNS AND DETAILS**

Adapted to the Use of Architects, Contractors, Carpenters and Builders, Mason Builders, Plasterers, Sash and Blind Manufacturers, Real Estate and all other Interests connected and associated with the Building Trades in Various Localities.

*Each Number will contain from eight to twelve 9x12 Plates of designs and details. Before the the completion of the first year, a large variety of Designs and Details of Public and Private Buildings suited to Cities, Towns and Villages, also Medium and Low-Cost Cottages, Suburban or Country Houses, Stables and Out Buildings, Street and Store Fronts, with details of Store Finish, Designs of Furniture and a great variety of Miscellaneous Exterior and Interior Details, drawn to Scale, will be published. Including Details of Brick, Stone and Plaster Work, making in all a collection of more new and original matter for \$5.00 than we ever published in book form for \$10.00.*

**A. J. BICKNELL, PUBLISHER,**

P. O. Box 560.

No. 115 BROADWAY, NEW YORK.

(Original publisher of Bicknell's Village Builder, Bicknell's Detail, Cottage and Constructive Architecture, Wooden and Brick Buildings, Wither's Church Architecture, Loth's Practical Stair Builder, and compiler and publisher of several other practical works on Architecture, Carpentry and Building.)

Please fill this out and send it to Publisher of A. and B. Monthly, P. O. Box 560, New York.

## **SUBSCRIPTION ORDER**

A. J. BICKNELL, Publisher,

(P. O. Box 560) 115 Broadway, New York,

1890.

Please send the "ARCHITECTURAL AND BUILDING MONTHLY" to the undersigned for one year, including No. .... already received. Five Dollars enclosed, for which please acknowledge receipt.

**TERMS:**

\$5.00 - PER YEAR.  
2.75 - SIX MONTHS.  
.50 - A NUMBER.

Name, .....

Street, .....

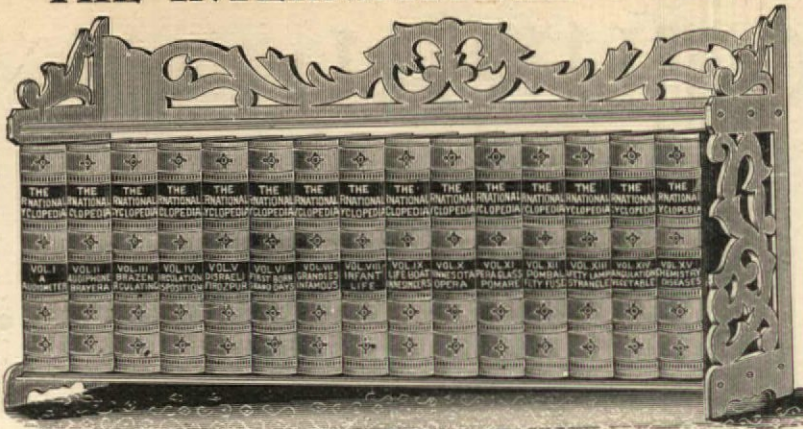
City or Town, .....

State, .....

Please remit by Money Order, Registered Letter or Draft, on New York, payable to the order of A. J. BICKNELL.

# THE INTERNATIONAL CYCLOPEDIA. The Best for Ready Reference.

13,000 Pages.  
15 Large Royal Octavo Volumes.  
Latest and Best.



50,000 Titles, 150 Double-Page Illustrations,  
100 Double-Page Maps.

**YOU NEED IT IN YOUR HOME.**—It is a complete, comprehensive, ready reference cyclopedia, published four years ago at the lowest cost consistent with good paper, good type, and good editing, and is better to-day because of careful revision.

**NO OTHER CYCLOPEDIA APPROACHING IT IN SIZE** (15 volumes with 50,000 titles) is sold at so low a price, and no other so generally contains the latest information and statistics. Yet its cost is moderate and terms of payment easy, if you wish. Delivered free of expense.

Correspondence Solicited.

Salesmen Wanted.

Address SUBSCRIPTION DEPARTMENT,

**DODD, MEAD & COMPANY, Publishers,**

753 and 755 Broadway, New York.

## Bicknell's Advertising Bureau,

*Especially Devoted to the Interests  
of Those who Supply.*

**THE ARCHITECTURAL, BUILDING,  
DECORATIVE AND KINDRED  
ARTS AND TRADES.**

SPECIAL LIST OF

Journals, Magazines and Illustrated Weeklies  
Mailed to any Address on Application.

Office, 115 Broadway, N. Y.

## Wheeler's Patent Wood Filler

For beauty of finish and durability no wood should be naturally finished without first filling the pores with this article. Specified by all prominent Architects. In use ten years. The wood work of the principal public and private buildings throughout the world are and have been treated with it. Beware of Infringements. 1890 Illustrated Catalogue on Hard Wood finish sent free to any address

**The Bridgeport Wood Finishing Co.,**  
Principal Office: New Milford, Conn.  
New York Office, 240 Pearl St.  
Chicago Office and Warehouse,  
211 East Randolph Street, Chicago, Ill.  
Mention "The A. & B. Monthly."

## THE Iron Clad —STEEL— BATH BOILER

GALVANIZED.

**Tested 150 Lbs.**  
(28 Different Sizes.)

**Perfect Satisfaction  
Guaranteed.**

For sale by all  
JOBBERS and DEAL-  
ERS in PLUMBERS'  
SUPPLIES.

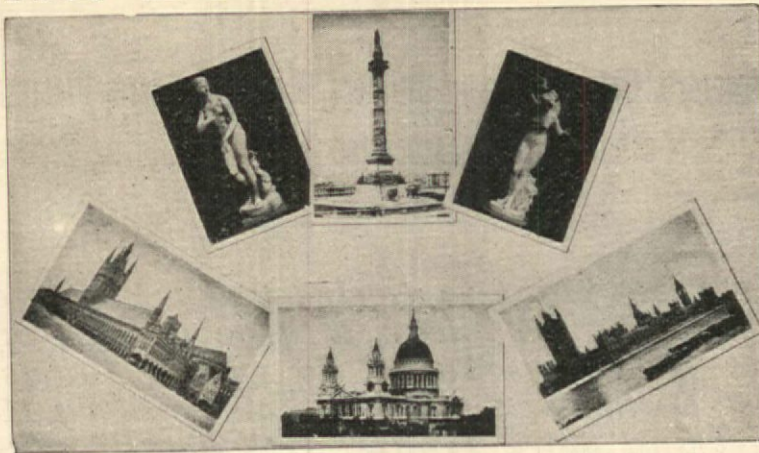
Illustrated Circular  
and Price-List sent  
to the readers of  
"The A. and B. Monthly," also the  
address of our near-  
est dealer.

**Iron-Clad Mfg. Co.**

22 Cliff Street,  
NEW YORK.



## THE BUILDING BUDGET.



— A Journal of Architecture and Kindred Arts. —  
\* INSTRUCTIVE AND INTERESTING TO ALL ARCHITECTURAL READERS. \*  
Published Monthly at Chicago. 63 and 65 WASHINGTON ST.

### PENNSYLVANIA GLOBE GAS LIGHT CO.

SOLE MANUFACTURERS OF THE  
**IMPROVED ROYAL AND  
ELKINS GAS MACHINE**

**THE BEST IN THE  
MARKET**  
22 TO 28 SO 15TH ST.  
PHILA'DA.  
115 BROADWAY  
NEW YORK  
195 MICHIGAN ST.  
CHICAGO.

**NAPHTHA & GASOLINE**  
KINDS OF GAS MACHINES

**CONTRACTORS FOR LIGHTING CITIES  
WITH THEIR RENOWNED SYSTEM OF  
SELF-GENERATING GAS LAMPS. OVER 50,000 IN USE.**

## ELECTRO-LIGHT ENGRAVING CO., DESIGNING & ENGRAVING FOR All Mercantile and Artistic Purposes.

**Color work a Specialty. Electrotyping in all Branches.**  
All reproduced Photographic and Line Work shown in this Journal was done by this Company.  
Terms Reasonable and Work First-Class. Send Copies for Estimates.  
Office, 157 and 159 William Street, - - New York.

## THE GRAVES ELEVATORS

**PASSENGER AND FREIGHT**  
**L. S. GRAVES & SON,**  
NEW YORK, 92 & 94 LIBERTY ST.  
BOSTON, 113 DEVONSHIRE ST.  
CATALOGUE ON APPLICATION.  
**ROCHESTER, N. Y.**  
ST. LOUIS, 301 ROE BUILDING,  
DETROIT, HODGES BUILDING.

## U. S. Government Advertiser

—AND—

## MUNICIPAL CONTRACTOR

This paper is valuable to all persons having or desiring to have business with the Government; furnishes a record of all contracts; publishes all calls for proposals; gives the list of bidders, and amount of each bid. The ONLY paper containing all Government Advertisements.

Special arrangements with every department of the Government. Price Five Dollars a year. Published at

1420 PENNSYLVANIA AVENUE, WASHINGTON, D. C.

## JUST PUBLISHED.

Elevations, Plans, Details and Specifications

—OF—

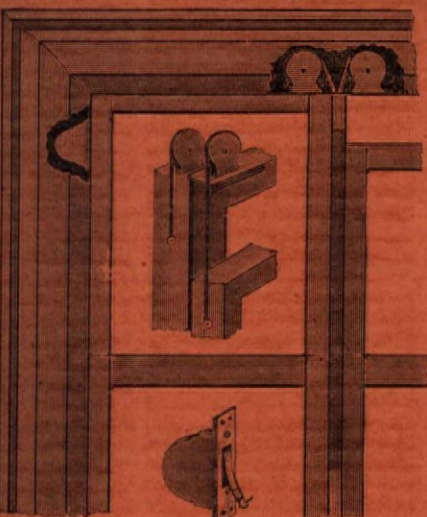
**A MODEL ARTISTIC HOME,**  
By Lawrence B. Valk & Son,  
**COSTING \$2,500.**

Including full working drawings. This house can be easily executed by any carpenter or builder. Price, \$5.00. Post-paid by

**A. J. BICKNELL,**

115 BROADWAY, NEW YORK

## The Caldwell Sash Balance

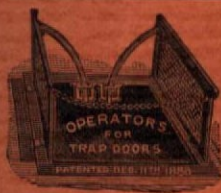


PAT. OCT. 30, 1888.

is specified by architects and endorsed by builders. Carried in stock by the hardware trade generally. Applied to new or old windows at less expense than cord and weights, and perfect satisfaction guaranteed. The Side Balance for general use, and Top Balance for narrow mullions. Ask your dealer for them, or write to

CALDWELL MFG. CO.,

Center, near State St., Rochester, N. Y.



J. C. French  
& Son,  
Vault and Sidewalk  
LIGHTS  
Of Every Description.

155 West Broadway, N. Y.



C. F. HOLLINGSHEAD,  
Wrought-Iron Railings  
ROOF CRESTING,  
Doors, Shutters.  
COOPER'S POINT IRON WORKS  
Camden, N. J.

**DRAUGHTSMEN'S SENSITIVE PAPER**  
FOR COPYING DRAWINGS & C. IN  
WHITE LINES ON BLUE GROUND  
BY LIGHT AN EXCEEDINGLY CHEAP & SIMPLE METHOD.  
**AMATEUR PHOTOGRAPHIC OUTFITS**  
SEND FOR THOS H MC COLLIN 635 ARCH ST  
PRICE LIST PHILADELPHIA PA.

3.00 PER YEAR 3.00

IF YOU PROPOSE to build a house and desire to obtain the latest and most approved designs, drawings and specifications, or if you are interested in any building operation, or if you are a contractor or mechanic, subscribe for THE NATIONAL BUILDER, a monthly journal, now in its sixth year of publication, acknowledged to be the only practical magazine reproducing on an accurate scale, working drawings for all classes of buildings, and guaranteed to be reproductions of original drawings, made by prominent architect engaged especially for the purpose. All matters in connection with the building interests are plainly and scientifically explained in THE NATIONAL BUILDER. Send for sample copy, 25 cts. Subscription one year, \$3.00. THE NATIONAL BUILDER, 116 LaSalle Street, Chicago, Ills.

3.00 PER YEAR 3.00



Samples of this Lathing sent to the readers of the A. &amp; B. Monthly free.

## Send for Price List of Lindeman LIQUID FILLER

NO WASTE.  
NO CLEANING OFF.  
NO SETTLING.

The only Liquid Wood Filler on the Market by which a perfectly smooth and non-absorbing surface for varnishing can be obtained without the labor and expense of rubbing off.  
NOTE.—Our Liquid Filler does not settle; is transparent as a varnish; it readily combines with any of the pigment stains; is especially adapted to the use of the House Painter.

WM. T. LINDEMAN & CO.,  
1400 Frankford Ave., PHILA., PA.

SOMERS, LINDEMAN & CO.,  
281 Pearl Street, NEW YORK.

## Labor Saving

THE B. G. I. CO.

NO EQUAL ON EARTH.

to all Wood-Workers. Send \$1.25 for set (3-8 to 11-8) in fine cloth case, or 50c. for 4-8 sample, mailed free. Illustrated Price-list on application. Highest awards, American Institute, N. Y., 1885-6-7 for sale everywhere.

THE B'PORT CUN IMP. CO., 17 Maiden Lane, New York City.

CLINTON H. MENEELY BELL COMPANY,

—MANUFACTURE SUPERIOR—

Church, Chime, Peal, School and Court House Bells, TROY, N. Y.



TRADE MARK.  
"PEDAL VALVE" For Direct Radiators. Radical Improvements for 1890. Mechanism simplified one-half. Prices reduced. Valve seats with the pressure and the greater the pressure the tighter it will close. Seat is perpendicular and chips and dirt fall away from it. A touch of the foot will turn the heat on or off. Patented in the U. S. and Canada. Circulars on application.  
UTICA STEAM GAUGE CO., Utica, N. Y.

ESTABLISHED 1849.

INCORPORATED 1884.



'BOYNTON'  
HOT  
WATER  
HEATER.



FOR WARMING HOUSES, SCHOOLS, CHURCHES &amp; PUBLIC BUILDINGS.

These Heaters have been pronounced by scientific experts to be the most effective, economical, and of the best mechanical construction of any ever placed on the market.

Also Manufacturers of the Celebrated BOYNTON FURNACES, RANGES, Etc.

THE BOYNTON FURNACE CO.,

47 &amp; 49 Dearborn St., CHICAGO, ILL.,

207 &amp; 209 Water St., NEW YORK.

Illustrated circular of all of our Heaters will be sent on application to readers of "THE A. & B. MONTHLY," together with the address of the nearest agent.

## OMEGA VENTILATING GRATE.

Saves Fuel. Gives Uniform Heat and Perfect Ventilation. Cost Reasonable. Catalogue free on Application. Address THE OMEGA GRATE CO., CHICAGO.

## PORTABLE HOUSES.

For Illustrated Circular and Estimates for Portable and Permanent Buildings, address

THE PORTABLE HOUSE MANUFACTURING CO.,  
335 Broadway, New York, or Tenafly, N. J.

## Esterbrook's Pens.

Standard and superior quality. Leading Nos. 048, 14, 130, 125, 239, 313, 335. All stationers have them.  
THE ESTERBROOK STEEL PEN CO., 26 John Street, New York.

NATH'L CHENEY.

CHAS. HEWLETT

CHENEY &amp; HEWLETT,

## Architectural Iron Works,

OFFICE,

207 BROADWAY,  
NEW YORK.

WORKS:

GREENPOINT, L. I.

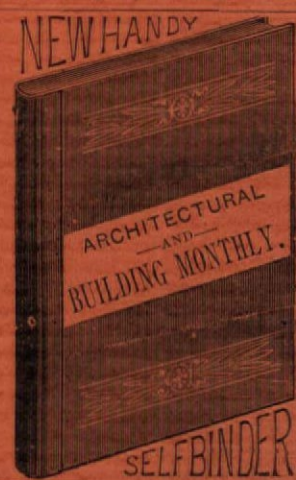
SUBSCRIPTIONS for this Journal in Philadelphia and vicinity may be sent through JOHN WANAMAKER, who will also supply single numbers.

FOR—  
**TILES** MANTEL FACINGS, HEARTHS, DADOS, ETC., ETC.  
THE PROVIDENTIAL TILE WORKS,  
MANUFACTURERS,  
P. O. Box 603. TRENTON, N. J.



ARCHITECTS AND BUILDERS  
Should send for and read our argument on construction of  
**LIGHTNING RODS,**  
and if they believe in our reasons given they will order rods which will PROTECT, last long and look neat. Our Hollow Square Copper Rod is universally approved by scientists.  
J. D. WEST & CO., 40 Cortlandt St., N. Y.

Price \$1, Post-Paid.



Free With One Year's Subscription, Paid For in Advance.



**DETROIT SURE GRIP**  
STEEL TACKLE BLOCK,  
HALF THE COST of hoisting saved  
to Machinists, Builders, Contractors,  
and OTHERS. Admitted to be the  
greatest improvement EVER made in  
tackle blocks. Freight prepaid. Send  
for catalogue.  
**FULTON IRON & ENGINE WORKS,**  
Estab. 1852. 25 Brush St., Detroit, Mich.

### GRANOLITHIC

SIDEWALKS, FLOORS, AND FIRE-PROOF  
STEPS, LANDINGS, AND CORRIDORS.  
**STAR ASPHALT,**  
Sanitary Cellars, Floors, Arches, Etc.  
**STAR ROOFING,**  
Sparham Cement Roofs, guaranteed for ten years.  
Tin Roofs Covered.  
**MATT TAYLOR PAVING CO.,**  
15 STATE ST., NEW YORK.

### BUILDERS AND SLATE ROOFERS

—IN WANT OF—

### Roofing! Slate or Black-Boards

WILL FIND IT TO THEIR ADVANTAGE  
TO CORRESPOND WITH

**T. M. LOISE, Elmira, N. Y.**

### The McTear Flax Felt Mfg. Co.,

MANUFACTURERS OF  
**ROOFING and ROOFING MATERIALS,**  
Sheathing and Lining Felts.  
Send for Descriptive Catalogue to  
**292 PEARL ST., NEW YORK.**  
Samples and Price-List Mailed Free.

**The Eureka Building**  
Specifications Advertised on  
another page will be found  
adapted to most of the designs  
published in this Journal.

### MAC KNIGHT FLINTIC STONE CO.

—MAKE THE BEST—

### Artificial Stone Sidewalk & Curb, FLOORS and TILING.

Washbasins and Sinks, Fire-Proof Flintic Stone Roofs. Also Best  
and Cheapest Fire-Proofing. Illustrated Circular  
on application.

Office, 150 Broadway, New York.

FOR 65-page Illustrated Catalogue, Price  
List and Testimonials of the following Blinds:  
Outside Venetian, Rolling Steel Shutters, English  
Venetian Blinds, Rolling Venetian Blinds, Rolling  
Partitions, School Venetian. Address

### JAS. G. WILSON,

Patentee and Manufacturer of Blinds and Shutters  
**907 BROADWAY,**  
Telephone No. 496, 21st, NEW YORK.

### NEW YORK

### Photo & General Lithographing.

Reproductions of Steel, Copper,  
Stone and Wood Engravings, Etc.,  
Etc., at low Prices.

Estimates for any number of reproductions  
promptly given on receipt of drawings.

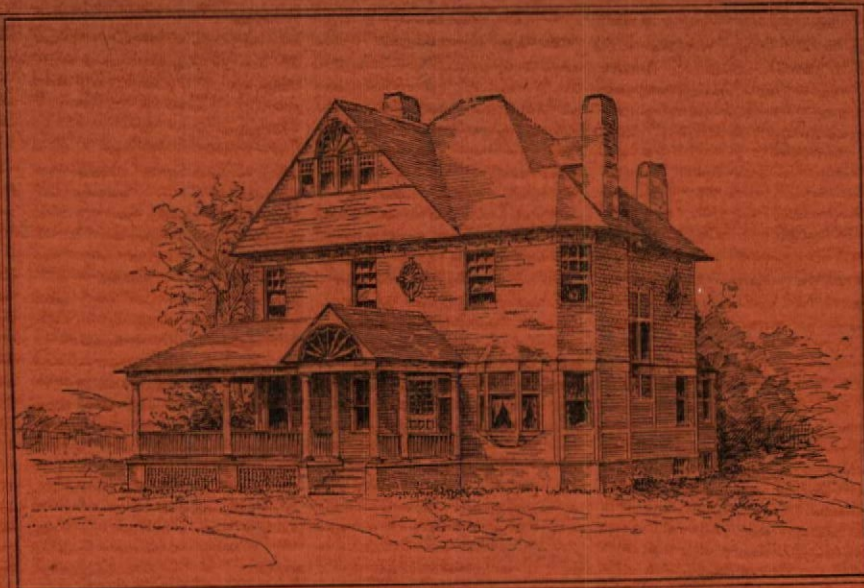
For Sample of Work See the Full Plate  
Illustrations in this Journal.

### ROBT. A. WELCKE,

178 William Street, N. Y.

SEE PAGE 13 FOR

PROSPECTUS.



Sketch of Residence of F. B. Williamson, Elizabeth, N. J.

For Elevations, Plans and Details see Plates Nos. 12, 13, 14, 15 and 16.

*Do you want any* **ROOFING,**  
SHEATHING PAPER OR HOUSE PAINT?  
Sample Free. Send for Special Price.  
**INDIANA PAINT & ROOFING CO., New York.**

## GEM SPRING HINGES.

For Doors.	Length of Flanges.	Japanned.		Copper Bronzed.		Real Bronze and Brass.	
		Single Acting Per pair. No.	Double Acting Per pair. No.	Single Acting Per pair.	Double Acting Per pair.	Single Acting Per pair.	Double Acting Per pair.
6x2 x 3/4 to 1 1/4	3 1/2 in.	63 \$0 70	83 \$1 40	\$2 00	\$3 75	\$3 00	\$6 00
7x2 x 1 1/4 to 1 3/4	4 in.	64 0 90	84 1 75	2 50	4 75	3 75	7 00
7x2 1/2 x 1 1/4 to 1 3/4	5 in.	65 1 10	85 2 20	3 00	5 75	4 75	8 50
7x3 1/4 x 1 1/4 to 1 3/4	6 in.	66 1 40	86 2 80	3 75	6 75	5 75	10 25
8x2 1/2 x 1 1/4 to 1 3/4	7 in.	67 1 75	87 3 50	4 50	8 25	7 00	13 25
8x3 x 1 1/4 to 2 1/4	8 in.	68 2 53	88 5 00	5 50	10 50	9 25	17 00
9x3 x 1 1/4 to 2 1/4	10 in.	69 3 50	89 7 00	7 50	14 25	12 25	23 00
10x3 x 2 1/4 to 3	12 in.	70 4 50	90 9 00	10 00	18 00	16 50	30 00

Manufactured by **VAN WAGONER & WILLIAMS CO.,**  
Send for April, 1899, Catalogue. 82 Beekman St., New York.

## Peerless Mortar Colors.

**BLACK, RED, BROWN AND BUFF.**

THESE COLORS ARE PERMANENT AND SUPERIOR TO ANY ARTICLE IN USE.

Prepared only by

### SAMUEL H. FRENCH & CO.,

PAINT MANUFACTURERS,

Importers, Dealers and Manufacturers of Painters' and Builders' Supplies,  
**York Avenue, Fourth and Callowhill Streets,**  
Send for Circular and Catalogue. **PHILADELPHIA, PA.**

## ELEVATORS AND DUMB WAITERS.



The Wythe (patent) is superior to any other  
machine for Dumb Waiters. The load is abso-  
lutely controlled by a self-acting stop, concealed  
within the head; this stop is substantially a  
LOCK, and the Hand Wheel is the Key;  
no visible brake, clamp or check rope. It cannot run  
down of itself no matter how heavy the load. Pull  
one way to raise, the other to lower. It is very dur-  
able, the controlling parts being made of steel, Mal-  
leable Iron and Bronze; any part broken or worn can  
be duplicated at small cost. See cut.

Specialty adapted for Hotels, Dining Rooms, Restaurants  
and all places where absolute safety in raising or lowering is  
required.

**WYTHE No. 2,** Same as above, but geared for heavier  
work, Light Elevators, Invalid Lifts, Etc. One man can  
raise 300 to 500 pounds.

For Illustrated Circular and Price List mention A. & B. MONTHLY and  
Address,

**JOHN Q. MAYNARD, 12 Cortlandt Street, New York.**

### HOW TO SECURE

## A GOOD TIN ROOF.

Use the Genuine "Old Style" Brand.  
The Original Brand—the Standard Tin that  
has been so often imitated.  
It has stood a practical test of over 40 years  
and then been found just as good as when  
first put on.

N. & G. Taylor Co. offer the following ab-  
solute protection in the use of their special  
brand of Roofing Tin:

1st. By guaranteeing every sheet to be  
perfect, square and true to standard gauge,  
all Wasters rigidly excluded.

2d. Guaranteeing the sheets to be heavier  
coated than any of its imitations.

3d. Every sheet stamped with the name of  
N. & G. Taylor Co. It being the only tin  
made that bears the name of the guarantor  
upon the sheets.

4th. Protection by stamping the Regis-  
tered Trade Mark of Target and Arrow, also  
the thickness and the name "OLD STYLE"  
on each sheet.

5th. If the tin should not be found as re-  
presented it will be removed from the roof  
and replaced, the expense being borne by the  
guarantor, N. & G. Taylor Co.

N. & G. Taylor Co. originated the idea of  
stamping the brand and the thickness on  
sheets of tin. They were also the first to  
offer a bona fide guarantee to Architects,  
Property Owners and Tin Roofers. They  
publicly challenge contradiction on these two  
points. They further assert that through  
their exertions a complete change has been  
wrought among the trade. Bidders placed  
on an equal, more honest work done and  
better tin used.

Our book "How to Secure A Good Tin  
Roof," sent free to any address, also samples  
of Tin, etc.

**N. & G. TAYLOR CO.**  
Established 1810—81st year.  
Chicago. Philadelphia. Liverpool.

## The "Calumet."

PRICE.

With Copper Lined Cistern, - \$20.00  
With Cabinet Cistern and Seat, 35.00



Ivory Tinted Embossed Back Outlet Closet.

### GEO. A. BLESSING & Co.,

Plumbing Goods and \* \* \*

\* \* \* Sanitary Appliances.

Illustrated Circular of our Specialties in Fine  
Wood Work and Nickel Goods mailed free.

290 PEARL ST., Near Beekman

Formerly 52 Cliff Street.

NEW YORK.

## Art Stained Glass

### Belcher Mosaic Glass Co.

HENRY F. BELCHER, Pres.

123 Fifth Avenue, - New York

Designs and Catalogue sent free to  
readers of Architectural and Build-  
ing Monthly.

# ART STAINED GLASS

FOR CHURCHES, DWELLINGS, ETC.  
Designs and Estimates on Application.

**KEYSTONE STAINED GLASS WORKS.**  
S. 5th, near Locust St., PHILADELPHIA.

In writing Advertisers, please mention "The A. & B. Monthly" and oblige them! and the Publisher.