



*East
Tennessee Chapter*

*Memphis
Architects' Project*

*Alabama
Elects Kirkland*

*Product
Exhibits Set*

*Architects
Receive Award*

March, 1959



G U L F S T A T E S

architect

builder

THE JOURNAL OF SOUTHERN ARCHITECTURE



Living concrete in integrally colored 2"-high split block



Painted 4"-high units. Another of concrete masonry's many new forms



Coarse-textured units in stacked bond for design interest



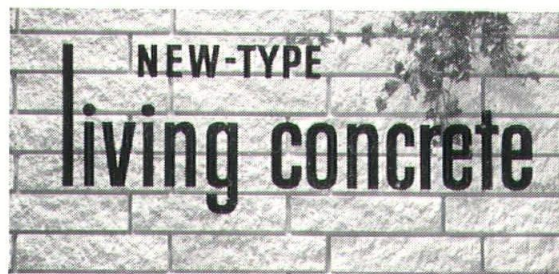
Raked horizontal joints add dramatic shadow lines to fireplace

Masonry patterns that bring new charm for today's homes...

More and more builders are discovering the sales appeal of modern concrete masonry.

Here are new shapes, new textures and colors that create homes of fresh interest, real warmth and charm . . . homes that are appealing, easier to sell. Concrete masonry's known practicality and economy now fit the buyer's idea of modern living . . . new-type *living concrete*!

And because *living concrete* is so beautifully suited to any region, any style of home, you find it used by builders everywhere—from California



to Michigan to New York. Acceptance by architects and financing agencies is expanding its popularity. *Living concrete* has much to offer you. Write for free booklet "*What Builders Say About Concrete Masonry Homes*," distributed only in the United States and Canada.

PORTLAND CEMENT ASSOCIATION 611 Gravier Street, New Orleans 12, Louisiana

A national organization to improve and extend the uses of concrete

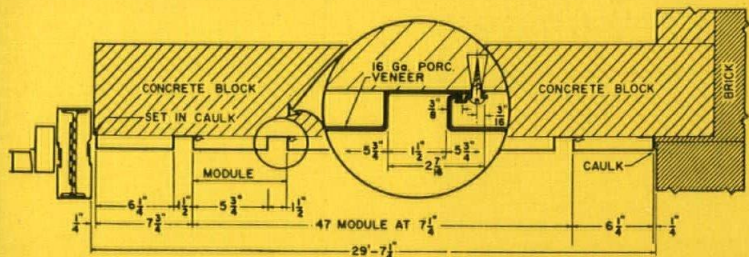
For quality AT LOW COST... specify

ATLAS architectural porcelain enamel BUILDING PANELS

STANDARD OR CUSTOM-MADE
... for any building project

Shown here are three basic types of Atlas Architectural Porcelain Enamel, each available in a variety of applications. Combining quality with construction economy, these panels have proved highly adaptable whenever unusual design and color effects are desired. Although offering standard panels, Atlas specializes in tailoring Porcelain Enamel to the size, shape, color and other properties that best serve the architect's needs.

Design, engineering "know-how" and experience is only a part of Atlas Complete Service. Panels are fabricated and enameled in accordance with the high standards established by the Porcelain Enamel Institute. In addition, Atlas will assume full installation responsibility—with fast erection by its dealers. Call your Atlas Distributor today for complete information and a copy of the Atlas Architectural Porcelain Detail File.



VENEERS

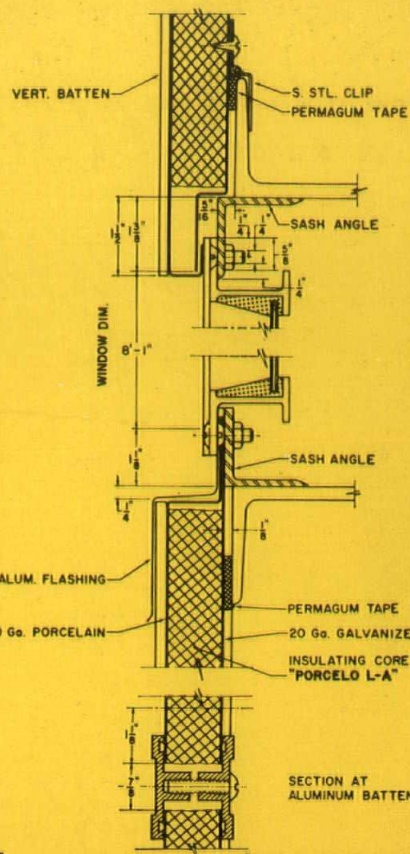
ATLAS ENAMELING CO., inc.

2021 North Broadway, St. Louis 6, Mo.
PHONE: CHestnut 1-0577

See our catalog in Sweet's Architectural File

MFRS. AGENTS WANTED

Must be able to read blue prints and make takeoffs. Address inquiry direct to Atlas Enameling Co., Inc., St. Louis 6, Mo.



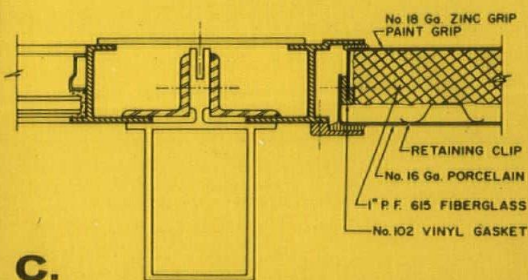
A.

LAMINATED PANELS

A. "Forge Shop", Haynes-Stellite Co.,
Div. of Union Carbide—Kokomo, Ind.
Architect: Henry C. Wolf, Logansport, Ind.
Contractor: Ted D. Anderson Const. Co.
Kokomo, Ind.

B. Brigham Young University—Provo, Utah
Architect: Kogley-Westphall & Arbogast
Los Angeles, Calif.
Contractor: S. A. Roberts & Co.
Salt Lake City, Utah

C. Doctors' Building, Tulsa, Okla.
Architect: Murray-Jones-Murray—Tulsa, Okla.
Contractor: Tulsa Rig-Reel & Mfg. Co.
Tulsa, Okla.



C.

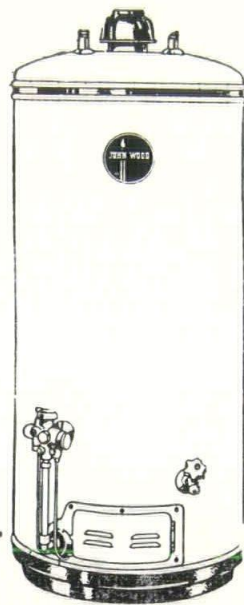
MECHANICAL PANELS



DISTRIBUTORS WANTED

Several choice territories open for qualified distributors. Address inquiry direct to Atlas Enameling Co., Inc., St. Louis 6, Mo.

Architects and Builders



are giving their
customers more
hot water for
less money than
ever before

JOHN WOOD
PENFIELD
Automatic GAS
WATER HEATERS

give
LOWEST
COST
PER
GALLON
Hot Water



Harry Cash Company Inc.

2312 Scenic Highway
BATON ROUGE
phone ELgin 7-1469

ARCHITECT and BUILDER

The Magazine of Architectural Construction
serving the Architect, Engineer, Contractor,
and allied members of the building indus-
try in the Deep South.

Lloyd Lewis
Editor-Publisher

EDITORIAL ADVISORY BOARD

O. J. Baker, A. I. A.
Secretary
Louisiana Architects Association

Arren Broussard
Associated
General Contractors of America

Ray E. Putfark
Executive Director, Construction
Industry Association of
New Orleans

Ruth Campbell
Business Manager

Fred W. Smith
District Manager
1201 Forest View Lane
Vesthaven
Birmingham, Alabama

Howard M. Dodge
District Manager
333 No. Michigan Ave.
Chicago, Illinois

The Gulf States Architect and Builder is
published monthly at 1391 Highland Road,
Baton Rouge, Louisiana by Delta Publications,
Inc. Subscription Rates to all architects, en-
gineers, contractors, draftsmen students, and
members of recognized construction industry
trade associations — 1-year \$3.50; 2-years
\$6.00; 3-years \$8.00. For all others \$5.00 per
year. Fifty cents per single copy. All corres-
pondence relative to Editorial and Adver-
tising information should be addressed to
the publication, Suite 100, 816 Howard
Ave., New Orleans, La.

MARCH, 1959

architect

builder

THE OFFICIAL JOURNAL
GULF STATES REGION
AMERICAN INSTITUTE OF ARCHITECTS

MARCH, 1959

VOL. 3, NO. 9

East Tennessee Chapter	8
Alabama Architects Elect	10
Memphis Architects Plan	10
Convention Exhibits	14
Material Dealers Meet	17

DEPARTMENTS

names in the news	8
new products	18

Hallmark of



This metal plaque appears only on homes that meet modern requirements for electrical living.

Comfort

It's important that a new home provides full electrical facilities for good value and solid, electrical livability.

You can be sure the homes that carry the new Live Better Electrically Medallion — the hallmark of excellence in electrical living — have the facilities to make home life more comfortable.

Make sure the homes you build or design qualify as medallion homes—that they have plenty of electrical outlets for better livability now and in the future.

For more information about the advantages of building medallion homes contact the Sales Department of Gulf States. We'll be happy to serve you.

Live Better . . . Electrically

Gulf States

Letters

● Enclosed herewith is \$8.00 for a subscription for three years to your very fine magazine. We understand that you are publishing a special national program for the 1959 AIA convention in New Orleans. Could you send us a copy of this too when published, and does our subscription enclosed cover the cost of this issue?

J. H. McGuire

Architect
Seattle, Washington

¶ The special national issue referred to by subscriber McGuire is a special effort by the editors for the AIA Convention. It is being directed to all AIA members throughout the United States in May and does not carry a pre-convention price.

● We would like to see some magazine print more about coming conventions throughout the South. Trade shows and whether or not they have materials exhibits and special product promotions. Have you people done anything like this recently? If not, it would be a big help to your readers who do sell merchandise to the construction industry. . . ."

A. J. Pickens

St. Louis, Mo.

MEETINGS

● March 12-13—**National Concrete and Masonry Association**, annual regional meeting, Tulsa Hotel, Tulsa, Okla.

● March 20—**Arkansas Engineers' Club**, annual meeting, Hotel Marion, Little Rock.

● April 11-13—**Southern Pine Association**, 1959 Machinery Exposition, Municipal Auditorium, New Orleans.

● April 12-17—**National Association of Architectural Metal Manufacturers** 21st annual convention, Monteleone Hotel, New Orleans, La.

● April 30-May 2—**American Society of Civil Engineers, Mid-South Section**, annual spring meeting, Lafayette Hotel, Little Rock, Ark.

● June 21-26—**91st Annual Meeting, American Institute of Architects**, New Orleans, Roosevelt Hotel.

CHAPTER EVENTS

ALABAMA CHAPTER

Meets three times each year. First meeting is the second Friday in January and held in Birmingham. Second meeting is held Spring-Summer and alternates between Mobile and Montgomery. Third and Fall meeting is held annually at the School of Architecture at Alabama Polytechnic Institute at Auburn.

ARKANSAS CHAPTER

Arkansas Chapter meets four times each year. In January, April, July or August and October. Meetings are usually held in Little Rock at local hotel beginning at 6:00 p.m. July-August meeting includes party for associates.

LOUISIANA ASSOCIATION

Although Louisiana has chapters in Baton Rouge, Shreveport, New Orleans, Lake Charles, Monroe, and Alexandria, the Louisiana Architects Association has an annual meeting usually held in conjunction with the Gulf States Regional Conference plus another meeting which is held in the various chapter cities also annually. The 1959 meeting is scheduled in conjunction with the 1959 National Convention of the AIA in New Orleans June 21-26.

MEMPHIS CHAPTER

The Memphis chapter has twelve meetings annually. The 1959 schedule is as follows:

January 12	July 6
February 2	August 3
March 2	September 14
April 6	October 5
May 4	November 2
June 8	December 7

The July meeting is subject to change. The December meeting features the election of officers and is usually a dinner meeting. One other dinner meeting is held each year.

MIDDLE TENNESSEE

The Chapter holds twelve monthly meetings, held at the Noel Hotel in Nashville beginning at 12:15 P.M. on the Second Wednesday of each month. A special dinner meeting is held in the Spring and Fall.

SHREVEPORT CHAPTER

Chapter has monthly meetings held at the Embers Restaurant at 12:00 noon and all are scheduled on the third Wednesdays of each month unless changed to special events.



Publisher's Letter

One bright autumn morning in the fall of 1956, it was my happy privilege to be driving back to Louisiana from a delightful four-day visit with the architects of five great southern states during their meeting atop Lookout Mountain in the colorful hills of southern Tennessee.

This publication had just recently been born, and the glow of this new experience was a match for all of its ambitions and dreams of things to come.

My fellow traveler, an architect who has inspired a great deal of the stamina of this publication, principally by his faith in its purpose and ultimate success, tossed out a big challenge for a baby magazine . . . said he: "why not publish a special national issue and distribute it to every AIA member throughout the country when the National AIA convention is held in New Orleans in 1959. This will greatly assist the architects in the South to expose the fine work that has been done here. . . ."

We're happy to announce that in May of this year, our architect friends throughout America will be receiving their copy of our "national issue."

We, of course, thank our friend for the excellent idea that has brought a new challenge . . . and experience . . . all from an ambitious conversation during that return trip from a visit to the colorful hills of southern Tennessee.

Most cordially,

Howard Lewis

CSI Speaker

Thomas H. Creighton, Editor, *Progressive Architecture*, will be the featured speaker at the Annual Banquet of the **Construction Specification Institute** Wednesday, May 6, in Chicago.

Mr. Creighton is a member of the AIA and an honorary member of CSI. The May 4-6 meeting is the third National Convention of the Institute.

New Engineering Office Announced

Glen W. Buchanan, has announced the opening of engineering offices in Little Rock at 915 West 2nd Street.

Buchanan is a former bridge designer with the Arkansas highway department. He is a registered professional engineer, and will engage in civil and structural design services for the construction industry.

He is a graduate from the University of Oklahoma with a degree in civil engineering.

Howard K. Williford, Starkville, Miss., professor of civil engineering at Mississippi State University, has been elected president of the Mississippi Sewage and Industrial Wastes Association succeeding **J. E. Johnston**.

James L. Ayres, Jr., Chattanooga, Tenn., has been named civil engineer with the Natchez Trace Parkway with headquarters in Tupelo, Miss., according to a recent announcement.

Ayers studied at Tennessee University and formerly was with the U. S. Corps of Engineers. He will assist the parkway civil engineer, **John H. Saxon**.

Bernard M. Dornblatt, New Orleans, has been appointed chairman of a special origin and destination survey sub-committee of the New Orleans chamber of commerce which is to concern itself with highway location.

Kenneth Gale, Director of Design for **Mosaic Tile Company**, presented the company's new Harmitone Color Palette at the New Orleans chapter, **Producer's Council**, March 18.

East Tennessee Chapter Elects

Milton P. Robelot, architect of Kingsport, Tennessee, has been elected president of the East Tennessee Chapter AIA.



Robelot

Other chapter officers elected for 1959 at a recent chapter meeting are: **Charles S. Lindsay**, vice president; **Robert D. Holsaple**, secretary-treasurer. Directors are: **Bruce McCarty**, and **David B. Liberman**. Mr. Liberman is the retiring president of the chapter.

The East Tennessee Chapter meets



Holsaple



Lindsay

monthly at the S&W Cafeteria in Knoxville at 12:15 p.m. A special spring meeting and outing which features boating, golf and a banquet is held annually in Knoxville. Maintaining an active schedule of events throughout the year, the chapter also holds a summer outing, at Knoxville.

Future monthly meetings scheduled by the chapter are as follows: April 10, May 12, June 9, July 14, August 11, September 8, October 13, November 10, and December 8.

AZROCK DISTRIBUTOR

The **Intrasouth Distributing Division of Interstate Electric Co.** of New Orleans, and 1565 Texas Avenue, Shreveport, Louisiana, has been appointed Azrock Distributor, it was announced by Mr. V. W. Willoughby of the Company and **W. K. Clark**, general sales manager, **Azrock Products Division**, Uvalde Rock Asphalt Company.

Intrasouth Distributing Division will serve flooring dealers in the Shreveport trading area with the complete Azrock line.

New Foundry Plant Announced

The opening of the **Pangburn Foundry Company** of Pangburn, Arkansas, has been announced by its owners, Mr. and Mrs. **J. W. Brashear** of Searcy, Ark.

According to **Brashear**, the new firm will pour cast iron, aluminum and brass castings per customers' orders. It will also handle jobs from prints, make up necessary patterns and cast per specifications using modern foundry and melting equipment, **Brashear** stated.

The company will specialize in municipal castings, machine castings and ornamental iron and will have the ability to cast items from six ounces to 600 pounds in size, **Brashear** said. He said his company will also be interested in bridge drains, downspout boots, pipe flanges and other types of castings used in construction work.

Mrs. Thelma Brashear, his wife, was formerly secretary-treasurer of the **M. B. Parker Co.** in Memphis and supervised production, sales and shipping in the foundry. She is familiar with design work and engineering of foundry products and is a member of the **National Foundrymen's Association**, the company announcement stated.

W. H. Moynan, New Orleans lumber distributor, has announced the appointment of **C. H. Weigle** as sales representative for the firm in the greater New Orleans area.

Weigle is a former manager of the **Washington, D. C. office of Georgia-Pacific Plywood Corp.**

In his new capacity, **Weigle** will serve the offices of architects, engineers, lumber yards, and dealers in the New Orleans area.

Subscribe

Today

To

Architect & Builder

New...Natural Beauty!

BELLO

PRECAST TERRAZZO TILE

FOR LIFETIME USE AND LASTING SATISFACTION

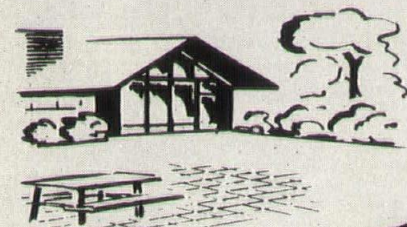
The NEW decorative surfacing material made in the age-old Italian process . . . now in new pre-cast form for quicker mess free — no grinding installation, and simplified handling for greater economy.

Easily installed over cement, wood, etc.:

BELLO PRECAST TERRAZZO

is ideal and unique for both interior and exterior settings.

Here at last is the 'mess-less' terrazzo, architects, builders and contractors have sought.



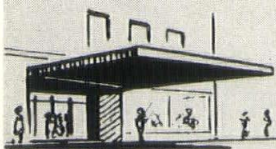
FOR HOMES

PATIO DEN
LIVING ROOM
BATHROOMS



FOR PUBLIC BUILDINGS

HOSPITALS
SCHOOLS
HOTELS



FOR BANKS, THEATRES, CHURCHES

ASK YOUR
BUILDING SUPPLY DEALER
about BELLO — or write for
TRU-color brochure
and specification
sheets.

YES there is a
BELLO PRECAST TERRAZZO TILE
for every use
and every building need!

Available in 2 mirror polished sizes
12" x 12"
16" x 16"
in 30 basic colors,
or to your specifications.

A product of Puerto Rico Marble Industries

THE **HAVES** CORPORATION 1105 Jericho Turnpike, New Hyde Park, N. Y.



New officers of the Alabama AIA Chapter, are from left: Murray Watson, treasurer; Tom Kirkland, president; L. P. Roberts, retiring president; and Allen Northington, vice-president. The new officials of the chapter were elected during the annual meeting of the chapter in Birmingham.

Alabama Architects Elect Kirkland

Tom Kirkland, Montgomery, Alabama architect has been elected president of the Alabama chapter, AIA at the chapter's recent annual meeting and banquet.

Other officers of the chapter elected during the meeting include Allen Northington, Florence, Alabama, vice-president and Murray Watson, Montgomery, treasurer.

Mr. Kirkland succeeds L. P. Roberts of Mobile as president for the coming year.

Program chairman for the annual meeting was D. H. Greer. Paul M. Heffernan, director of the school of architecture at Georgia Tech was a featured speaker for the program.

The Alabama chapter meets three times each year with its first meeting on the second Friday in January held in Birmingham. Other meetings include a Spring-Summer event alternated between sites in Mobile and Montgomery, and a Fall meeting which is held at the School of Architecture at Alabama Polytechnic Institute at Auburn.

Memphis Product Exhibit Program

A special product exhibit for the benefit of architects and contractors was sponsored recently by the Memphis Chapter, Producers' Council during a meeting at the Rainbow Terrace Room in Memphis.

The event included a cocktail party and buffet with guests inspecting

(Continued on Page 10)

Miss. Engineers Hold Meeting

The Mississippi Society of Professional Engineers held its 20th Annual meeting in January and elected its officers for 1959, entertained members and guests, and heard reports from outstanding speakers.

Officers for the Society elected for 1959 include: Arthur C. Miller, president; Gene Thomas, president-elect; and John E. Hall, secretary-treasurer. Directors include: Clyde V. Maxwell, R. M. Scholtes, William Turnbull, and H. S. McElroy.

Prominent speakers for the program of the two-day event included Dr. Clark A. Dunn, president of the National Society of Professional Engineers; Harry C. Simrall, Profes-

sional Engineer, Dean, School of Engineering, Mississippi State University; and Robert W. Naef, Jackson architect and engineer.

Memphis Architects Plan Big Project

The Memphis Chapter, AIA has begun a special project for the design of a proposed Memphis Civic Center.

Working through the chapter's Civic Design Committee, headed by Memphis architect Zeno Yeates, the chapter proposed to organize a general welfare, non-profit organization to contract with the city for studies to develop the preliminary plan prior to the convention of the American Planning and Civic Association to be held in Memphis in June.

The chapter presented its proposal to the Memphis City Planning Commission through a civic center advisory committee group. The latter committee has asked the Commission to provide \$30,000 for a preliminary master plan for the project.

Architects presenting the plan to the committee included chapter officers, Thomas F. Faires, president; Francis Gassner, vice president; Raymond Martin, secretary; Robert Goforth, treasurer, Wells Awsumb and William H. Norton, directors. Also Dean E. Hill, immediate past president.

Members of the design committee include: Zeno Yeates, Roy Harrover, Charles Jen, Walk C. Jones, Jr., W. D. McKinnie, Jr., Tom Windrom, Robert Day Smith and Francis Gassner.



Other officials of the Alabama AIA chapter attending its annual meeting in Birmingham, are: D. H. Greer, program chairman; Paul M. Heffernan, featured speaker, and director of the School of Architecture, Georgia Tech.; and William P. Shaw, director of the North Alabama district.



Architects provide the owner of this residence with an honest application of contemporary design within a restricted budget, integrating the structure with existing natural beauty on its site.

Donald Zadeck Residence, Shreveport, Louisiana. Walker & Walker, Architects. Photography by Clarence John Laughlin, New Orleans.



Living area of Donald Zadeck residence, Shreveport.—Photo by Clarence John Laughlin.

This residence in north Louisiana, designed by Shreveport architects, Walker & Walker, AIA, represents a design with maximum use of existing site beauty combined with blending exterior materials with a contemporary approach and result.

The Donald Zadeck residence in Shreveport features the use of an exterior combination of wood and norman brick. All exterior wood is heart redwood including wall surfaces, doors and soffitt of overhangs.

Norman brick exterior walls are in pink. Terrazzo floors are featured in all sections of the residence except carpets in living room area and bedrooms.

Philippine mahogany is used as paneling and cabinets in living room and dining area, pantry and the kitchen combined with plastic fabric wall coverings on other walls.

The combination of wall surfaces, paneling and exposed members of wood reflect a dignified, yet modern atmosphere. E. A. Tharpe & Co., general contractor.

Exterior walls of heart redwood are used on rear elevation.





Top photo shows modern built-in units in bath with open view of outside. Middle picture shows front elevation and roman brick exterior, and lower photo of kitchen area featuring built-ins and mahogany paneling for cabinets and working areas.

Research Program In Design

Six of the nation's largest manufacturers of building products will put their research directors on the rostrum at the Building Research Institutes 8th Annual Meeting to talk about research planned for the 1960's and what it will mean in terms of the design and construction of 1970's buildings.

Scheduled for the Penn-Sheraton Hotel, Pittsburgh, April 7 and 8, the BRI meeting will have as one of its feature sessions the following speakers: Dr. J. E. Archer, Director of Research, Pittsburgh Plate Glass Co.; Dr. J. B. Austin, Administrative Vice President, Research and Technology, U. S. Steel Corp.; Dr. Paul W. Bachman, Vice President, Research and Development, Koppers Co.; E. C. Hartman, Assistant Director of Research, Aluminum Company of America; Dr. W. S. Herwald, Vice President of Research, Westinghouse Electric Co.; and Dr. Lawrence C. Hicks, Director of Research, Allegheny Ludlum Steel Corp.

In addition to this opportunity to take a behind-the-scenes look at what some of industry's giants are planning in the way of new research and development projects which will affect tomorrow's products, materials and methods, those in attendance will be able to quiz the research men in an open forum discussion following the talks, moderated by Dr. G. A. Webb, Director of Administration, Mellon Institute.

According to a BRI announcement, this particular program is one of five technical sessions during the two-day conference. Others will be concerned with Sealant for Curtain Walls, Mechanical Fasteners in Building, a Workshop on Windows, and a general "Look to the Future" in the fields of building finance and city planning, home building, and building design.

Japanese Contractors Visit Memphis

A group of Japanese contractors, in this country on a nationwide tour sponsored by the Housing and Home Finance Agency, recently visited the Memphis area, touring construction projects.

Serving as hosts and guide were members from the Memphis Builders Association, Memphis AIA Chapter, Tennessee Society of Professional Engineers, and the Associated General Contractors of America, Inc.



NATIONAL AIA CONVENTION TO FEATURE OUTSTANDING EXHIBITS

One of the big interests in conventions from the materials producer's point of view is the chance to exhibit his new products to as many likely prospective users within the shortest period of time.

Materials manufacturers today invest heavily in exhibits, both in the very expensive design and construction of the booth itself, and also the rental of floor space. Added to this are such charges as lighting, mechanical problems, and transportation. Man hours consumed by attending company personnel is considered another expense. So the total mounts to a substantial figure. Multiply these costs for one convention by the several that the national manufacturer must concern himself with during the year and the total costs for present-

ing his materials first-hand to his likely prospects is impressive.

But the cost must be well worth the time, trouble, and detailed headaches involved, if the booth space reservations of the National AIA Convention set for New Orleans in June is any criterion.

Scheduled for the International Ball room of the Roosevelt Hotel, the big exhibit will feature almost 100 different booths with a varied and impressive list of materials exhibitors. All space has been sold or reserved, according to Producers' Council officials in charge of exhibit arrangements. Officials of the exhibits program for the convention state that every favorable opportunity has been programmed for maximum booth attendance.

CSI To Hold National Convention

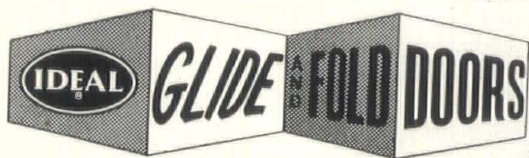
The third annual National convention of the Construction Specifications Institute will be held in Chicago May 4-6, according to J. Stewart Stein, CSI president.

Warren Richardson, chairman of the Institute's Convention Committee, said that indications are for a record attendance and exhibits for

building products will be a big feature of the program. Robert I. Geyer, chairman of the convention's exhibits committee, said that eighty per cent of the exhibits booths have been taken by firms which have associate members of the Institute on their staffs.

Headquarters for the convention will be at the Palmer House.

The CSI has more than 3,000 members throughout America.



**Will Make The Homes You Design
Even More Convenient, Distinctive**

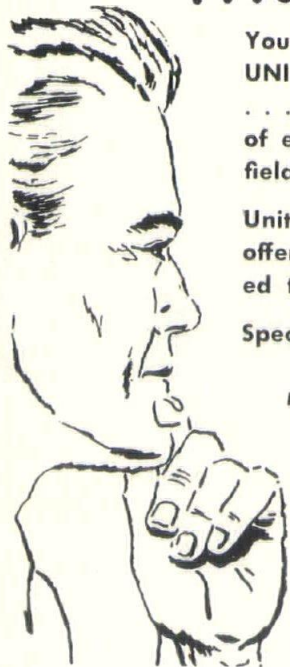
Your clients will like IDEAL Glide and Fold Doors because they are practical as well as beautiful. They open wide to provide easy access into closets, pantries. The unit includes four doors, hinged in pairs; an aluminum track; hanger hardware. Available in sizes to fit openings 3, 4, 5, and 6 feet wide by 6 feet 8 inches high. For literature giving complete information, write IDEAL COMPANY, Box 889, Waco, Texas.

Sold at
RETAIL LUMBER YARDS



Worthy Of Consideration —

*Your Reputation
...and Ours!*



You take no chances when you specify UNIT laminated products and UNIT DECK . . . we feel that our quarter of a century of experience and service to the architectural field is a safeguard to your reputation.

Unit Structures, Inc., is the pioneer laminator, offering a product designed, fabricated and finished to your exacting specifications.

Specify in confidence — specify UNIT products

For factual data and planning Contact— Unit Sales Office

John B. Howard Company
600 West Monument Street
Jackson, Mississippi—4-2346

Shearer & Rayford, Inc.
2504 Old Shell Road
P. O. Drawer E. Crichton Station
Mobile, Alabama—GR9-4581

G. R. SCHMELZER SALES ASSOCIATES
124 River Road
P. O. Box 3346

Little Rock, Arkansas—Mohawk 6-6664
Room 504 Audubon Building
931 Canal Street
New Orleans, Louisiana—RAMOND 1560



UNIT STRUCTURES, Inc.

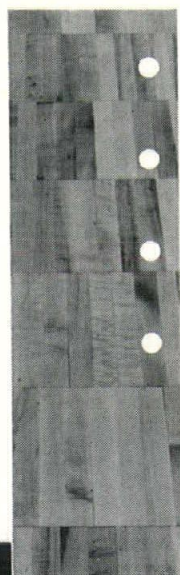
GENERAL OFFICES: Peshtigo, Wisconsin
PLANTS — Peshtigo, Wisconsin and Magnolia, Arkansas
Offices and Representatives in all Principal Cities



Southern Pine laminated
arches clear span nearly
250 feet.

FINE HARDWOOD FLOORS

EXPERTLY INSTALLED — FULLY GUARANTEED



● Ironbound* Continuous Strip*
Hard Maple

● PermaCushion* Resilient Floor
System

● Maple, Beech, Birch, Oak Strip
Flooring and unit blocks

● Available Dri-Vac treated with
Woodlife to resist moisture,
termites and fungi

*T.M. Reg. U.S. Pat. Off.

E. P. CUTHRELL FLOORING CO.

104 2nd Avenue, Birmingham 4, Ala., Ph. FAirfax 2-1854

W. H. MOYNAN (distributor)

1318 Richards Bldg., New Orleans, La., Ph. JA 5-0834

safeguard with silence



SHOCK ABSORBERS

- quiet water hammer
- prevent breaks and leaks in pipe lines



Water hammer in pipe lines is not only nerve-racking—it's destructive! The noisy vibration is particularly annoying in institutions, hospitals, hotels, schools and homes. Commercial and industrial establishments must be safeguarded against the damage it causes to pipe fittings, valves and gauges.

You can provide silence and prevent damage by specifying Josam Shock Absorbers for all supply lines—new or old. They are easily and quickly installed—provide long trouble-free service. Your clients will welcome the suggestions!

Call or write for literature.

JOSAM MANUFACTURING COMPANY

Michigan City, Indiana

District Representatives



938 Volunteer Bldg.

Carondelet Bldg.

35 S. Cooper St.

L. M. FLANARY

AM 6-5645

JOSEPH TANET

RA 3656

JOHN J. CORRIGAN

BR 8-2833

Chattanooga, Tenn.

New Orleans 12, La.

Memphis 4, Tenn.

Architects Receive Design Award

Burk, LeBreton and Lamantia, Architects and Engineers, Inc., New Orleans architectural firm, has received a first award for the design of the St. Catherine of Siena Catholic Church in New Orleans. The structure is located on Metairie Road.

The firm was honored in the final judging of the Fifth Annual Architectural Awards conducted by the Catholic Property Administration Magazine in the category of churches completed in 1958 seating from 400 to 1,000. In the judging, all Catholic churches of this size completed within the required period throughout the United States were considered.

The jury comments stated that the design . . . possessed a traditional classic expression of a happy balance between the structural decorative qualities . . . and judged to be straightforward with some historical foundation without resorting to eclecticism spiritual in expression—possessed of abstract decorative elements.

Judges on the panel included Bro. Augustine Philip, SCC, president of Manhattan College, New York; Paul Goettelmann, AIA, Murphy and Lo-craft, Washington, D. C.; Viggo F. E. Ramabusch, New York; and Victor Olgyay, Associate Professor of Architecture, Princeton University.

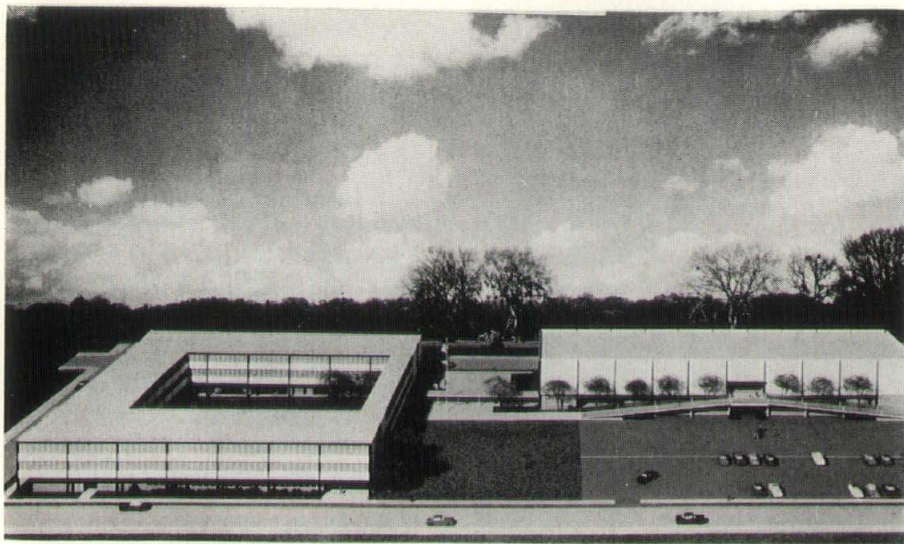
School Safety Conference Asked

The American Institute of Architects has called for a "national conference on school safety" to help architects, engineers, fire marshalls, educators and local building authorities intensify the search for fire-safe school building plans.

According to an announcement from the Octagon, the call was issued by the AIA board of directors at the beginning of its annual meeting in Washington D. C., March 9-12.

"The recent school fire tragedies at Chicago and near Little Rock make a national conference on school safety imperative" the directors report stated, and "all of us who share in the responsibility for school safety must pool and coordinate our experiences and findings. We owe no less to the parents of America."

The board announcement pointed out that the two tragedies cited occurred in obsolescent school plants which should have been modernized or replaced long ago.



Ricciuti Firm Receives Award . . .

The design of the Derham Junior High School in New Orleans by New Orleans architects Ricciuti Associates has been awarded a special citation by the American Association of School Administrators at their 1959 Convention held recently in Atlantic City, New Jersey.

The school design was named and exhibited at the convention as being among the most outstanding design-

ed in the country.

Scheduled for completion in the fall of 1959, the new facility will accommodate 1,500 students and will be bounded by Tonti Street, Fourth Street, Rocheblave Street, and Second Street, in New Orleans.

Brice Construction Company, Inc., general contractors were low bidders with a bid approximate \$300,000 below the school board's budget.

Memphis WIC Elect Officers

Mrs. Ruth King of Dougherty-Liddell Construction Co. has been elected president of the Memphis Chapter, Women in Construction. She succeeds Mrs. Ruby Poat of the Builders Exchange.

Other chapter officers for the year include: Mrs. Sarah Pittman, vice president; Mrs. Telena Foster, secretary; Mrs. Ann McGinnis, treasurer, Mrs. Lois Stevens, parliamentarian. Directors include Mrs. Poat, Mrs. Mary DeCamp, Mrs. Alice Harris, Mrs. Lorraine Estes, and Mrs. Estelle Wilkins.

New committee chairmen announced for 1959, include: Mrs. Sadie Armour, badges and identification; Mrs. Evelyn Phelps, by-laws; Mrs. Martha Hornsby, dinner planning; Mrs. Dorothy Hovekamp, friendship; Miss Jennie Lee Bullock, historian; Mrs. Marie Miller, Membership; Mrs. Cordy Dozier, program; Mrs. Alice Hunt, project, and Mrs. Eloise Laughlin, publicity.

Other chairmen include Mrs. Dorothy Smith, roster; Mrs. Alice Smith,

social; Miss Mae Whitledge, telephone; Miss Marie Baird, transportation; Miss Gwynne Rentz, ways and means, and Mrs. Jewell Gaines, hospitality.

The chapter recently held a special cocktail hour and dinner for their employers, at the Hotel King Cotton in Memphis.

Memphis Builders Exchange Meets

The Memphis Builders Exchange held its annual installation meeting recently at the Rainbow Terrace, in Memphis.

Over 200 members, wives and guests attended the event which featured a cocktail party, dinner and dance.

Officers include: P. C. Mock, P. C. Mock Construction Co., president; Phil Galloway, 1st vice president; Allen Young, Young Brothers, 2nd vice president; Walter Roos, E. W. G. Meers Construction Co., treasurer; and J. Walter Jones, Wessell Construction Co., secretary.

Material Dealers Hold Convention

The Louisiana Building Material Dealers Association held its 39th Annual Convention at the Jung Hotel in New Orleans, March 17-19.

The three-day event featured a product exhibit, panel discussions featuring prominent marketing and industry representatives from throughout the country. Included among panel participants and convention speakers were: Paul B. Shoemaker, Masonite Corp., Dr. Frank Goodwin, professor of Marketing, University of Florida; Robert A. Jones, Middle Atlantic Lumberman's Association, Philadelphia; and Gene Flack, Sales Director of Sunshine Biscuit Company.

Always a feature of the convention, the recent event provided attending members with a view of the latest in building materials with a materials exhibit including a total of sixty-eight participating exhibitors.

R. Needham Ball is executive vice president of the association with offices in Baton Rouge.

Biloxi Urban Renewal Program

An urban renewal committee has been recently appointed by the Biloxi, Mississippi city council.

Heading the new committee is Emery Sadler, Biloxi, realtor.

According to Mayor Laz Quave this is a first step in a long-range program of slum clearance, blight removal and redevelopment. He said that the city also has written officials of the Housing and Home Finance Agency asking that a survey team be sent to Biloxi to help in developing a workable program for urban renewal.

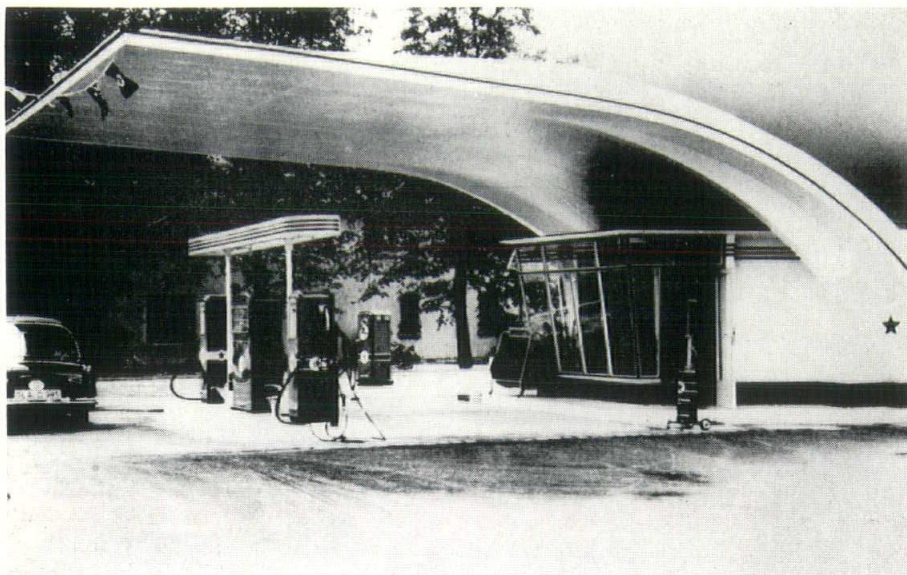
EXHIBIT—

(Continued from Page 10)

the new materials and their application.

Officers of the Memphis chapter include: John R. Cawthon, president; Robert Turner, Armstrong Cork Co., vice president; M. E. Conrad, E. L. Bruce Co., secretary, and John Mitchell, treasurer.

Warren P. Landon and Glenn Shelton directed the exhibit display arrangements with Jack Richmond, and Rodney F. Scarbrough handling publicity and attendance.



Laminated Design

Unit Structures, Inc., Peshtigo, Wisconsin has announced an agreement which the company has formed with the N. V. Namaho Company of Doetichem, Holland for the inter-exchange of technical, engineering and

research information in the field of laminated construction.

Pictured above is a new structural design using laminated timbers. The ultra-modern "petrol" station in Germany features free-standing, glued laminated arches coupled with prefabricated roof panels.

Metal Tile

A decorative metal tile in a new antique finish has been introduced by Vikon Tile Corporation of Washington, New Jersey.

According to the company announcement, the new finish tiles are available in both solid copper and "Copper Glaze".

The company says that the new tile can be easily installed and many varied designs can be obtained by alternating the grain or varying the angle.

Distribution of the new line is through lumber and hardware stores, the announcement said.

Air Intakes

Fresh air and pressure relief intakes in reinforced Fiberglas are announced by the Gallaher Company, Omaha, Nebraska.

The company said that the chief advantage of the new fresh air intakes will be the uniformity of appearance that can be achieved when

used with the new line of exhausters.

According to the announcement, the use of Fiberglas offers many advantages: the intakes can be ordered in any color; they never require maintenance; and are extremely lightweight, yet strong.

New Tile

A durable glaze, simulating ceramic tile, can now be applied to cinderblock school halls, bathrooms and kitchens with a coating containing Bakelite epoxy resin, according to an announcement by Universal Chemical Corporation.

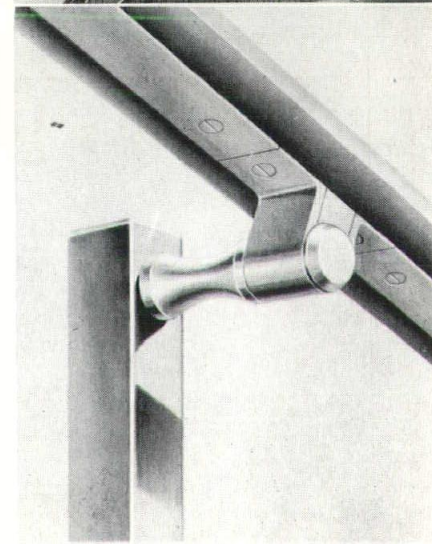
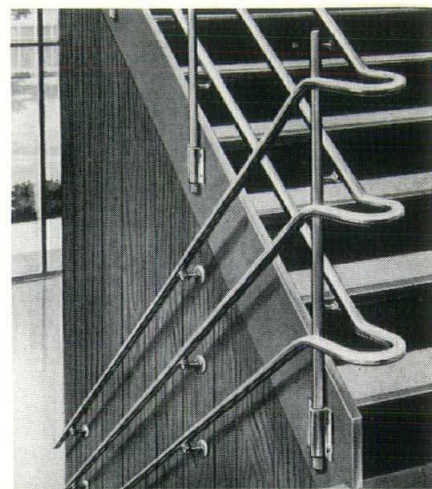
The announcement said that following a simple procedure for application, the coating, when dry, becomes an integral part of the cinderblock wall. It will not chip or peel, the announcement said, and the coating made of Bakelite epoxy, produces a hard, tough finish which the company claims is stain-resistant, washable and nonfading.

It is expected to last at least twenty years under normal wearing conditions, the manufacturer said.

New Railing System

A new Carlstadt Railing System of aluminum stock components has been announced by Julius Blum & Company, Carlstadt, N. J.

According to the announcement, the



new system is designed around a novel adjustable pitch handrail bracket of rugged construction and which allows the architect complete freedom of design.

The announcement said that the entire line, including posts, handrail mouldings, mounting brackets and fittings, along with a complete range of bars and shapes for use in railing construction is available from the company.

The company's bulletin No. 911 of interest especially to architects will be sent upon request. Write to Julius Blum & Company, Carlstadt, N. J.

Old Canton Road Branch,
First National Bank
Jackson, Mississippi

Jay T. Liddle, Jr., Architect

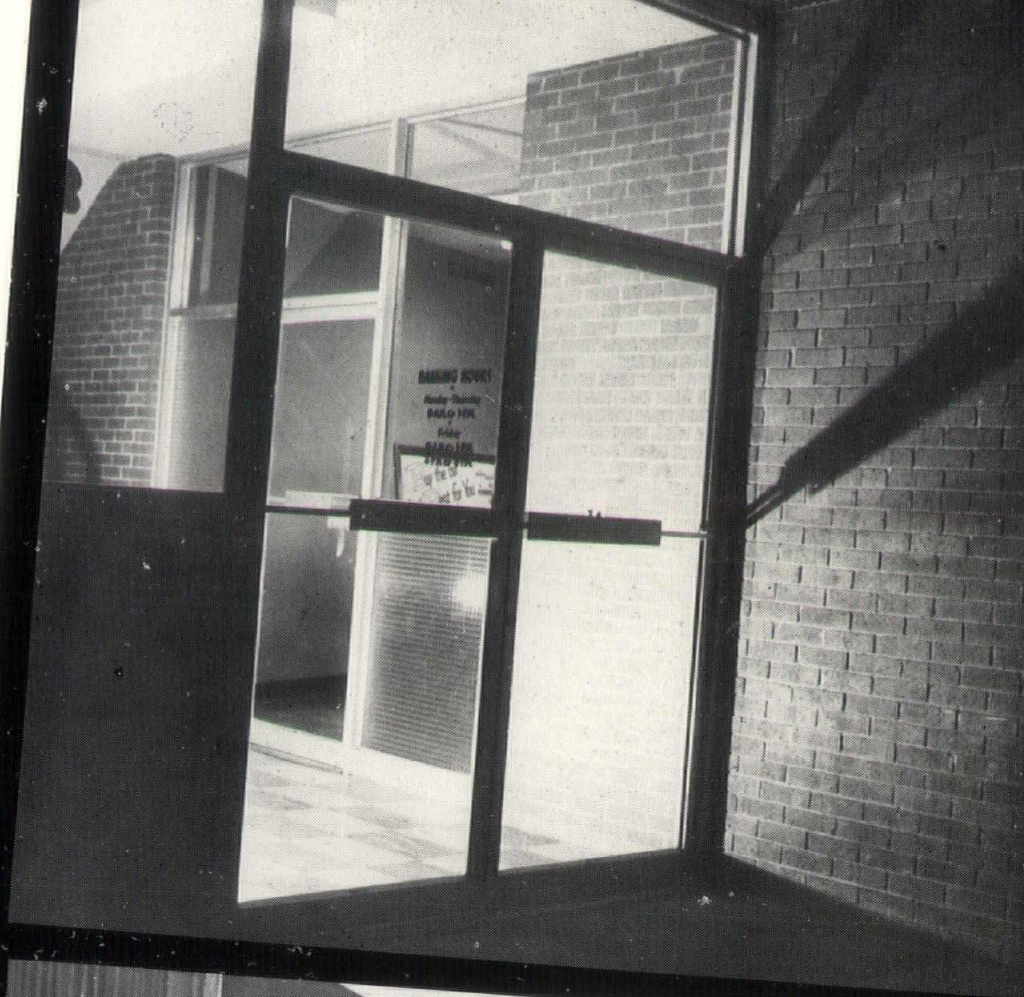
Brick *Interiors*

are
decorative,
structural
and
maintenance
free

MISSISSIPPI -
LOUISIANA
BRICK & TILE
MANUFACTURERS
ASSOCIATION

P. O. Box 4501—Fondren Station
Jackson, Mississippi

603 Clare Court
New Orleans, Louisiana





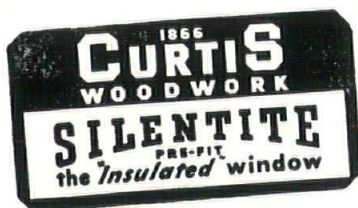
Architects know quality counts most **in WINDOWS**

A typical arrangement above of a Curtis Silentite picture window, with two Silentite double hung units for ventilation requirements. For your next job, examine the fine Curtis Craftsmanship that spells quality in window construction.

*Contact Your Curtis Distributor Below for Specifications
and Information on Curtis Products.*

ARCHITECTS

Write to your
nearest Curtis
Distributor listed
below for your
latest Architec-
tural Detail Kit.



NEW ORLEANS
BERNARD LUMBER CO., INC.
7833 Edinburgh St.
Telephone AUDubon 0814

BATON ROUGE
RONALD A. COCO, INC.
3717 Florida St.
Telephone Dickens 2-5242