

AMERICAN  
ARCHITECTS  
1975  
LIBRARY  
DEC 15 RECD

# Hawaii Architect 11/75

Journal of the Hawaii Chapter  
American Institute of Architects

## A Proclamation

It is most appropriate that the first annual State Architects' Convention is directed towards the theme "BEYOND TODAY'S REALITIES," a topic of many facets, all essential to the role of the master builder.

The architectural profession, in meeting the challenge of civic, public and private development, concerned with the environment, with energy and with tomorrow, cannot be overstated.

It gives me great pleasure to join with the Hawaii Chapter of the American Institute of Architects in proclaiming the week of November 17, 1975, as

HAWAII STATE ARCHITECTS' WEEK

and, in so doing, I express the people's gratitude to the members of this profession for their high reaching goals.



DONE at the State Capitol, Honolulu,

State of Hawaii, this 21<sup>st</sup>

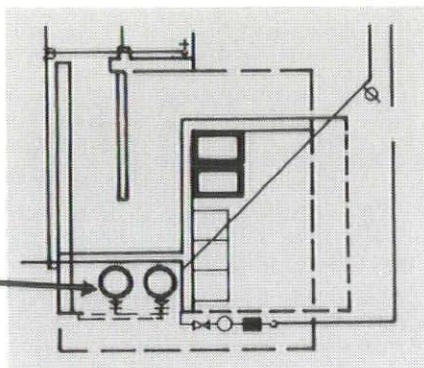
day of October, 1975.

*George R. Kuyoshi*

# Our Engineering Services Team can save you money.

Centrally located gas water heaters can do all the work of many individually located heaters — at lower initial cost and lower operating cost.

The water heaters went into the central laundry facility for this low-rise apartment building, allowing more usable saleable space in each of the 24 individual units.



Free estimates and installation proposals help architects and engineers reduce planning costs.

## And save you energy.

The Gas Company's Engineering Services team can save you money by providing accurate cost estimates. Estimates of the size and type of gas equipment that will give the best economy and efficiency for a project. Comparative equipment, installation and operating costs. And estimates of gas consumption and operating costs. With this kind of information, architects, mechanical engineers and developers can make thoughtful, cost-control decisions. And when called in early enough, our Engineering Services team can often save planners many dollars by recommending alternate locations or piping routes.

They're also Energy Savers. Of course, the project that uses gas uses less of Hawaii's primary energy source, oil, than one that is

"all-electric." But our Engineering Services team can do even more — suggesting ways to get maximum energy efficiency, from equipment selection to appliance installations. A single phone call can bring this free service to anyone in the building industry — 548-4236 or 548-2113.

*Two of The Gas Company's Energy Savers: Charlie Bazell and Ed Inouye, engineering consultants.*



**THE GAS COMPANY**

GASCO, INC., A SUBSIDIARY OF PACIFIC RESOURCES, INC.  
P. O. Box 3379, Honolulu, Hawaii 96842





The official monthly journal of  
The American Institute of Architects  
Hawaii Chapter.

# Hawaii Architect 11/75

## Hawaii Chapter Officers:

### President:

Owen Chock

### Vice-President/President-Elect:

Edward R. Aotani

### Secretary:

Wayson W.C. Chong

### Treasurer:

Dennis Toyomura

### Directors:

Louis A. Fultori

E. Alan Holl

Gene Miyatake

Steve Mori

Gordon Tyau

Red Phillips

## Hawaii Architect:

### Co-Editors:

Robert M. Fox

James N. Reinhardt

### Graphic Design:

Eric Engstrom, Art Director

### Editorial Board:

Gerald Allison, FAIA

Edward Sullam

Fred Sutter

Arthur Kohara

## Contents



Letter from Governor Ariyoshi	4
Letter from Mayor Fasi	5
Letter from Owen Chock	6
1975 HC/AIA Honor Awards	8
Participants	10
Program of Events	12
Hawaii State Convention of Architects	
The Lester McCoy Pavilion at Ala Moana Park	14

## Department

New Members	19
Letters to the Editors	22

Subscriptions \$10.00 per year

All correspondence should be  
directed to:

Hawaii Chapter AIA  
1192 Fort Street Mall  
Honolulu, Hawaii 96813

Beverly Wolff, Executive Secretary  
Phone (808) 538-7276

Published by

### Crossroads Press, Inc.

863 Halekauwila St.  
P.O. Box 833  
Honolulu, Hawaii 96808  
(808) 521-0021

George Mason, Publisher  
Stephen Lent, VP/Sales

Controlled circulation postage paid  
at Honolulu, Hawaii.

Opinions expressed are those of the  
editors and writers and do not  
necessarily reflect those of either the  
Hawaii Chapter or the AIA.



EXECUTIVE CHAMBERS  
HONOLULU

GEORGE R. ARIYOSHI  
GOVERNOR

MESSAGE FROM GOVERNOR GEORGE R. ARIYOSHI  
HAWAII STATE ARCHITECTS' CONVENTION

November 17, 1975

It is with the greatest pleasure that I extend my warmest welcome and my Aloha to you, the architects of Hawaii, as you gather for your first annual convention.

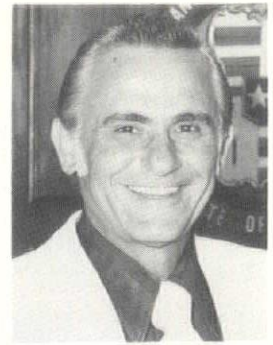
Never more than at the present have we been more concerned about the shape of our structures of the future than at present, for we are fully aware that much of the charm of Hawaii comes from the appearance of our buildings and their relationship to our lovely natural surroundings. Therefore, I am pleased to note that your theme for this convention is entitled, "Beyond Today's Realities."

Your conclusions, addressed to this theme, will surely be of importance to us, and we shall await them with interest.

I wish you a productive convention and a pleasant gathering of your profession.

*George R. Ariyoshi*





FRANK F. FASI  
MAYOR

October 16, 1975

MESSAGE

On behalf of the City and County of Honolulu, I welcome you to the First Annual State Architects' Convention.

An annual conference of this kind is long overdue. I'm sure it will be a most worthwhile undertaking. It will provide you with an opportunity to improve the skills and philosophies of your profession. I'm sure it will also have far-reaching effects throughout our state.

Although you will have a great deal of business to discuss, I hope you will all have an opportunity for some futuristic daydreaming; envisioning what Hawaii will be like within the next ten to twenty years. You will be playing a major role in this progress, whether you envision a scene of congested ugliness or of awesome beauty.

I hope this challenge and responsibility will be a major concern during this and future conventions.

Aloha and best wishes for a productive weekend.

FRANK F. FASI, Mayor  
City and County of Honolulu





October 29, 1975

Members  
• Hawaii Chapter  
A.I.A.

Hawaii's architects have enjoyed a disproportionate amount of work over the past several years when related to population and land area. As a consequence, we have about twice the national average on a per capita basis of architects to population. Because success in professional areas may breed apathy in public circles, architects have, as a group, been overlooked in responding to community issues. Conversely, success in traditional roles may have caused architects as individuals to overlook the changing roles of the profession in its relationship to society.

The past year has been particularly frustrating to our profession. We have not enjoyed the rush of clients as in times past, we have been faced with new regulations and procedures at every turn, we are saddled with rising materials and labor cost, we are seeing finite energy resources with money scarcity and the influence of government hanging heavy over our heads. These are today's realities.

But what of tomorrow?

This year the Hawaii Chapter is sponsoring the State Architects Convention for all of the profession. The goal is to bring out those issues that architects feel ought to be at the forefront. To implement the theme 'BEYOND TODAY'S REALITIES' the convention will focus on the architects' role both now and in the future, as an individual and as a member of a professional society.

The State Convention program offers us an opportunity:

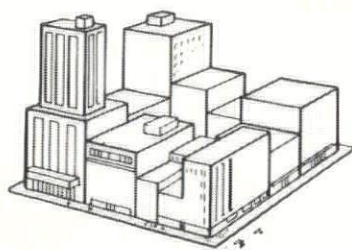
- to propose, discuss and vote on long-range policies, short-term goals and leadership
- to speak out on community issues
- to hear and discuss with resource people architecture and related topics
- to honor design award recipients
- to meet together in a spirit of fellowship

I feel that this convention, a first for Hawaii's architects, will offer to concerned professionals an opportunity to be informed, express ideas and represent concerns. I hope that you share this conviction and convention with me.

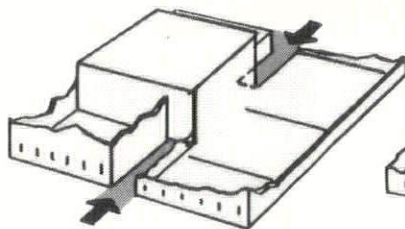
Owen Chock  
President  
Hawaii Chapter, A.I.A.



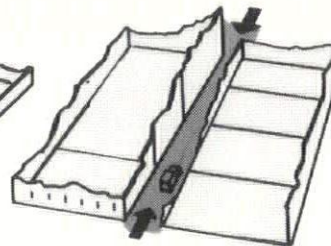
# How to Design a COMPACTION Refuse System For High-Rise and Other Buildings.



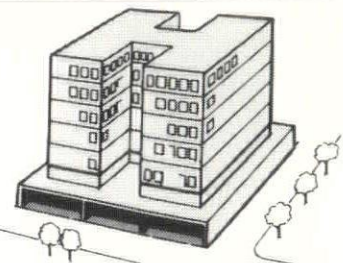
NO ACCESS BLOCK



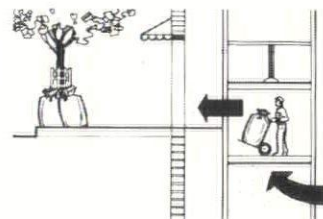
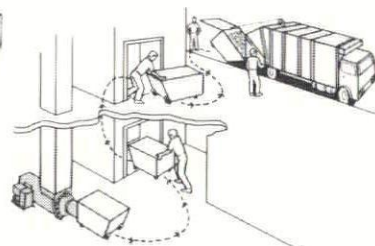
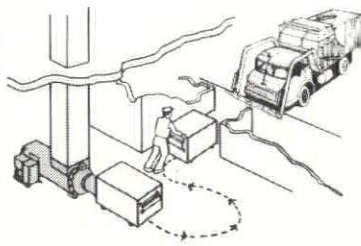
LIMITED ACCESS BLOCK



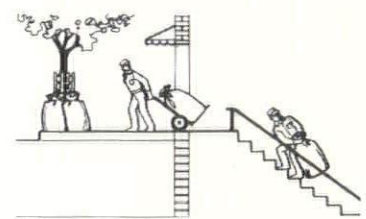
FULL ALLEY ACCESS



FREE STANDING -  
UNLIMITED ACCESS



Elevator



Manual or Dolly

**\*ACCESS**

**\*INTERNAL MOVEMENTS**

**\*CHUTE PLACEMENT**

**\*PLACING THE UNIT**

**\*CONVERSION**

**\*SELECTING COMPACTOR**

A Dempster Refuse Consultant is available without cost or obligation, for advice, counsel or a detailed study of your situation. Often, because of his experience, training and knowledge of every type of refuse situation, he can solve expensive problems after a few minutes examination of building plans or after a brief on-site study.

Call today 531-2048.

*SPECIALIZED MECHANICAL EQUIPMENT*

## **MOTION SYSTEMS, INC.**

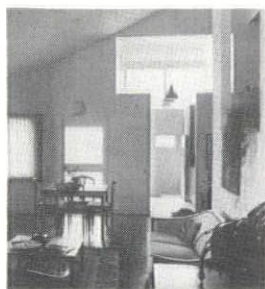
MANUFACTURERS' REPRESENTATIVES & DISTRIBUTORS

PO Box 4526 Honolulu Hawaii 96813 Telephone (808) 531-2048

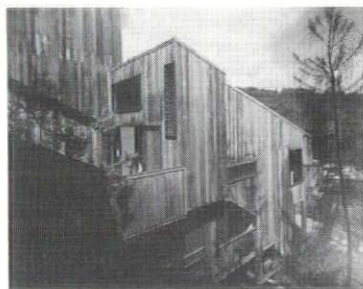
# 1975 HC/AIA Honor Awards

For our terminology, we use the terms  
"Honor Award" for the first award, "Citation"  
for the second award, and "Honorable Mention"  
for the third award. — The Jury

Category: Single Family Residential  
Award: Honor Award  
Name: R. T. Ikeno Residence  
Architect: John Hara



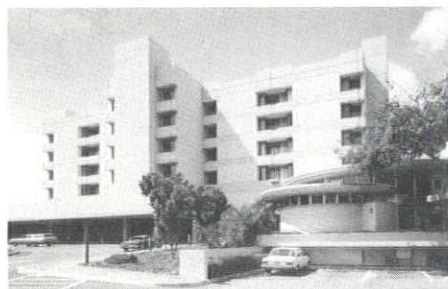
Category: Single Family Residential  
Award: Honor Award  
Name: Kazu Ishihara residence  
Architect: Group 70 Lab



Category: Industrial Buildings  
Award: Honor Award  
Name: Honolulu Airport P.O.  
Architect: Haines, Jones, Farrell,  
White & Gima



Category: Institutional Buildings  
Award: Citation  
Name: Straub Clinic  
Architect: Stone, Marraccini  
& Patterson



Category: Multi-Family Residential  
Award: Citation  
Name: Kailua Gardens  
Architect: EDW



Category: Commercial Buildings  
Award: Citation  
Name: Wailea Tennis Club  
Architect: Hogan & Chapman



Category: Recycled Buildings  
Award: Citation  
Name: Hayashida Kogoshima Hotel  
Architect: Wimberly, Whisenand,  
Allison, Tong & Goo



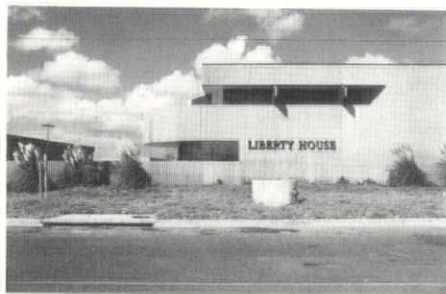
Category: Commercial Buildings  
Award: Honorable Mention  
Name: Pacific Trade Center  
Architect: Haines, Jones, Farrell,  
White & Gima





Note: The 12/75 issue of Hawaii Architect will be devoted to the Honor Awards with juror's comments and more complete photographic coverage.

Category: Industrial Buildings  
Award: Honor Award  
Name: Liberty House  
Architect: Haines, Jones, Farrell, White & Gima



Category: Multi-Family Residential  
Award: Citation  
Name: Mount Terrace Apartments  
Architect: David Stringer



Category: Governmental Buildings  
Award: Honorable Mention  
Name: Bachelor Officer Quarters and Mess  
Architect: Hogan & Chapman



# GOLT

## PHOTOGRAPHIC ART

Individual projects created to compliment the overall concept of architect and designer... murals, collages, dimensional and lighted modules... an infinity of original applications... an interior medium as versatile as the imagination...

Suite One — 1410 Kapiolani

946-7220

A Du Pont product, CORIAN is a filled polymer ideally suited for use as counter tops, wall wainscoting, and work surfaces. CORIAN is solid, strong, hard, non-porous and is characterized by outstanding durability. While it is durable, CORIAN is also pleasing in appearance offering "Practical Elegance." CORIAN is made in sheet form and also cast in one-piece shapes. It is available in richly opalescent Cameo White or in two marble-pattern colors, Dawn Beige or Olive Mist, in which the delicate veining runs completely through the material. It can be worked much like wood and can be fabricated with power tools.

DISTRIBUTED BY



**ALOHA**  
STATE SALES CO., INC.  
2829 Awaawaloa St. Ph. 833-2731





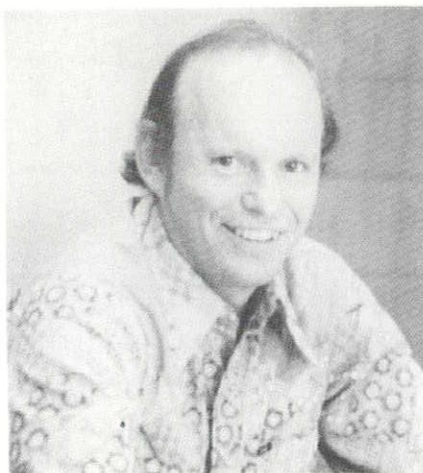
# Participants



Elmer E. Botsai, FAIA, is a partner in the firm of Botsai, Overstreet Associates, with offices in San Francisco and San Diego, Calif. He received his bachelor of architecture degree from the University of California at Berkeley.

Currently an Institute vice president, Botsai has also been treasurer of the AIA, as well as the AIA Foundation. Other national activities include chairmanship of the Finance Committee and Dues Structure Committee, and membership in the Executive Committee, Board of Directors, Planning Committee, the AIA Corporation, and two task forces on structure.

Botsai has been a director of the California Council, AIA, and chairman of its Codes Committee, Ad Hoc Committee on AIA Structure, and the Hazardous Buildings Committee. He has also held all elective offices of the Northern California Chapter, AIA, and was chairman of its Codes Committee, Downtown Zoning Committee, and Chapter Bylaws Committee.



Dr. David Heenan, the new dean of the University of Hawaii College of Business Administration, is a graduate of Wharton School and Columbia University Graduate School of Business. He has been with Caltex Oil, McKinsey & Co. and was most recently vice president of executive planning and development for First National City Bank in New York City. He has experience in Asia and Australia, and plans emphasis on international business relations. The College of Business Administration has 2,500 undergraduate students and 500 graduate students.

Ward Deems is a partner in the firm of Deems/Lewis & Partners, Architects & Planners, in San Diego, Calif. A generalized practice started in 1959, the firm's emphasis is on educational, institutional, and commercial facilities, and it has a substantial amount of urban design and planning business.

He is a graduate of the University of Southern California School of Architecture.

Deems is 1975 president of the California Chapter AIA (CCAIA). He has served also as 1974 vice president of CCAIA and was its secretary in 1973. A member of the National AIA Membership Task Force and the Compensation and Management Task Force, he is 1976 chairman of the Business Management Task Force.

Continued on Page 20



# MAKE IT A GREEN CHRISTMAS!



**YOUR HERITAGE MEANS TIME TO TALK MAN TO MAN!**

Brunswick home billiards have been bringing families together for years & years. The Heritage slate table is no exception with its heirloom design & durability! For generations of family fun turn to the expert, Custom Games!

Other models priced from \$1375  
690.00 to 2995.00.

**Brunswick**   
THE NO. 1 NAME IN BILLIARDS

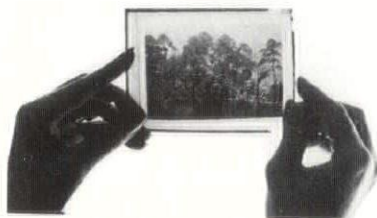
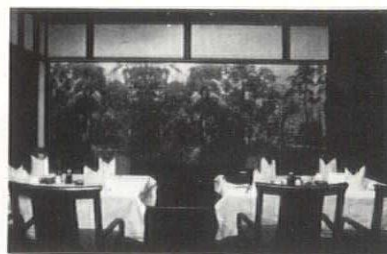
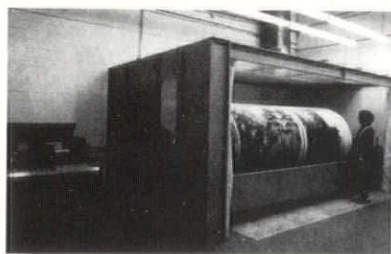
   **CUSTOM GAMES**  
THE ULTIMATE IN HOME HAPPINESS

521-7304

**ONE OF 3 GREAT SPORT STORES IN THE WARD WAREHOUSE!**

## SCANACHROME: A REVOLUTIONARY CONCEPT IN FULL COLOR ENLARGEMENT

Any Piece of Positive Artwork Can be Reproduced as a Full Color Enlargement on Any Flexible Material such as Linen, Canvas, Vinyl, Velvet, or Paper.

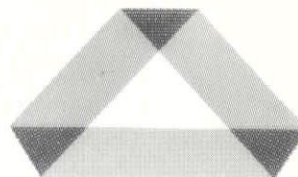


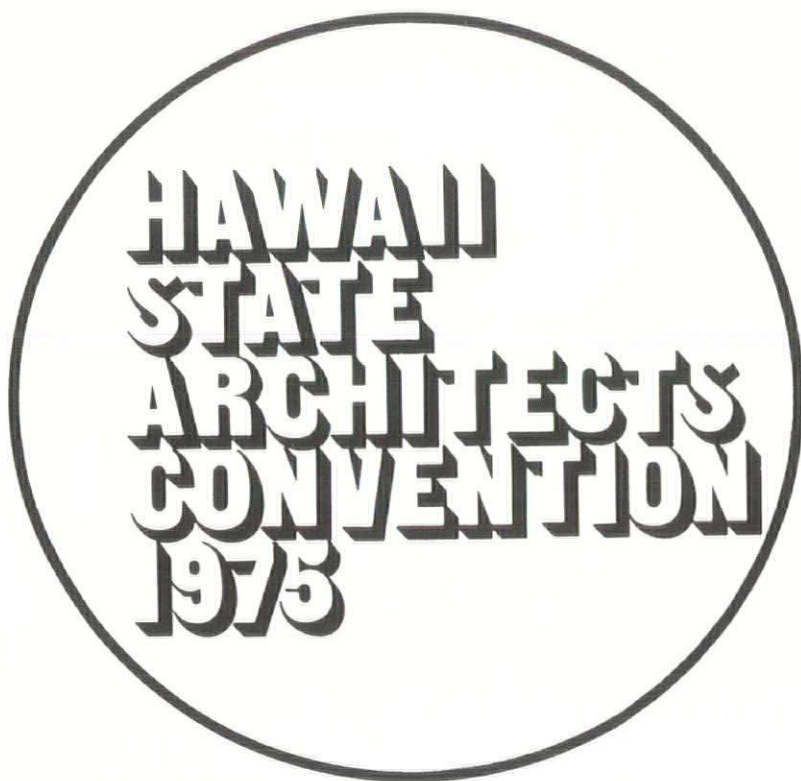
The SCANACHROME process incorporates a huge drum rotating at the same speed as a tiny cylinder, which the transparency is attached to. The transparency is electronically scanned and the colors translated to airbrushes that travel the length of the big drum. As the drum rotates the brushes spray water based ink onto the fabric or paper attached to the drum. The final product has full color fidelity, resistance to fading, and is unexcelled in durability.

For All Your Color Needs  
Call On:

**colorprints, inc.**

324 Kamani Street / Honolulu, Hawaii 96813 / Phone 533-2836





# Program of Events

## FRIDAY, NOVEMBER 21

8	<p>Registration Opens Blessing Welcome</p> <p>Keynote Speech</p> <p>Panel: The Architect and His Clients</p>	<p>The Rev. Kaina Governor Ariyoshi</p> <p>Elmer Botsai Botsai — Moderator</p> <p>Engson — Moderator Stark      Kamalu Cheung    Murakami Smith</p>
10	<p>Questions and Answers</p> <p>Surprise Entertainment</p>	
12	Luncheon with Guest Speaker	Heenan
2	<p>Panel: Shoreline Protection</p> <p>Coffee and Slides</p> <p>Commentary</p>	<p>Levine — Moderator Way Suefuji Nishimoto</p> <p>Haines — Moderator Skrivanek      Moore Brooks          Whisenand Whitesell      Reinhardt</p>
4		



## SATURDAY, NOVEMBER 22

Registration Opens "Room to Move" — film Continental Breakfast Panel: The Directors Report	Ossipoff Chock — Moderator Aotani Toyomura	Chong Tyau Phillips	Holl Miyatake Fulton	8
Role of Women in Architecture	Dericks Ladd	Prysock		
Coffee and Slide Show	Furer Fox	Bannick Lanzone		10
Chapter Annual Meeting	Chock Resolutions Nominations Voting			
Luncheon with Guest Speaker	Deem			12
Chapter Annual Meeting Reconvenes				2
Special Afternoon Workshop Programs	Fujii Sellers Pearson	Evans Yanoviak Others		4
Social Hour Dinner ( 7 p.m.)	Mayor Fasi Design Awards Election Results Installations			6

# The Lester McCoy Pavilion at Ala Moana Park

by ANDREW C. YANOVIK AIA



Makai entrance lanai.



A non-monumental complex of diversified interior and exterior spaces . . . The whole design system is purposely low-key and intended to develop prescribed patinas with human use.

Ala Moana is one of the most heavily used parks, not only on weekends and holidays, but especially during the workday, as a place of respite and relief from the intensive urbanization processes and productions. It was in realization of this particular community need that the architect and his clients envisioned a responsive, inviting, and attractive pavilion that would appropriately befit its special context.

It is anticipated that the pavilion will receive high intensity use, and it was so designed to withstand some abuse in the selection of materials incorporated within the range of construction methods utilized. The whole design system is purposely low-key and intended to develop prescribed patinas with human use.

The restaurant will be open for lunch and exhibits, and programs will be scheduled for daytime activities within the encompassing facility, so that people can return to work refreshed and inspired.

The recently completed Lester McCoy Pavilion project by the City and County of Honolulu Department of Parks and Recreation and the Outdoor Circle (advisor to the Trustees of the McCoy Estate) adds a whole new dimension to this prime central-park location.

This non-monumental complex of diversified interior and exterior spaces was designed by Hawaii architect Charles J. W. Chamberland AIA. Structural engineering was provided by Richard Libbey P. E. Mechanical engineer for the project was Giovanni K. L. Chung, and the electrical consultant was

**Continued on page 16**



**Mauka view from restaurant.**



# Pavilion

from 15



Albert S. C. Chong. Thoht Construction served as the general contractor. The building inspector was Richard Ikei of the Department of Parks and Recreation.

Actually, the new pavilion is an addition to an already existing facility — the older Banyan Court a la Honolulu architect Harry Bent, circa 1930s — adjacent to the much-used tennis courts in the center of the park. Chamberland perceived this particular setting as rather quiet and unobtrusive; consequently, his immediate response was to create “a place” which would not dominate this unique landscape. He chose instead to enhance its presence as the pavilion in the park by the sea by emphasizing, in low-profile fashion, its natural attributes as a

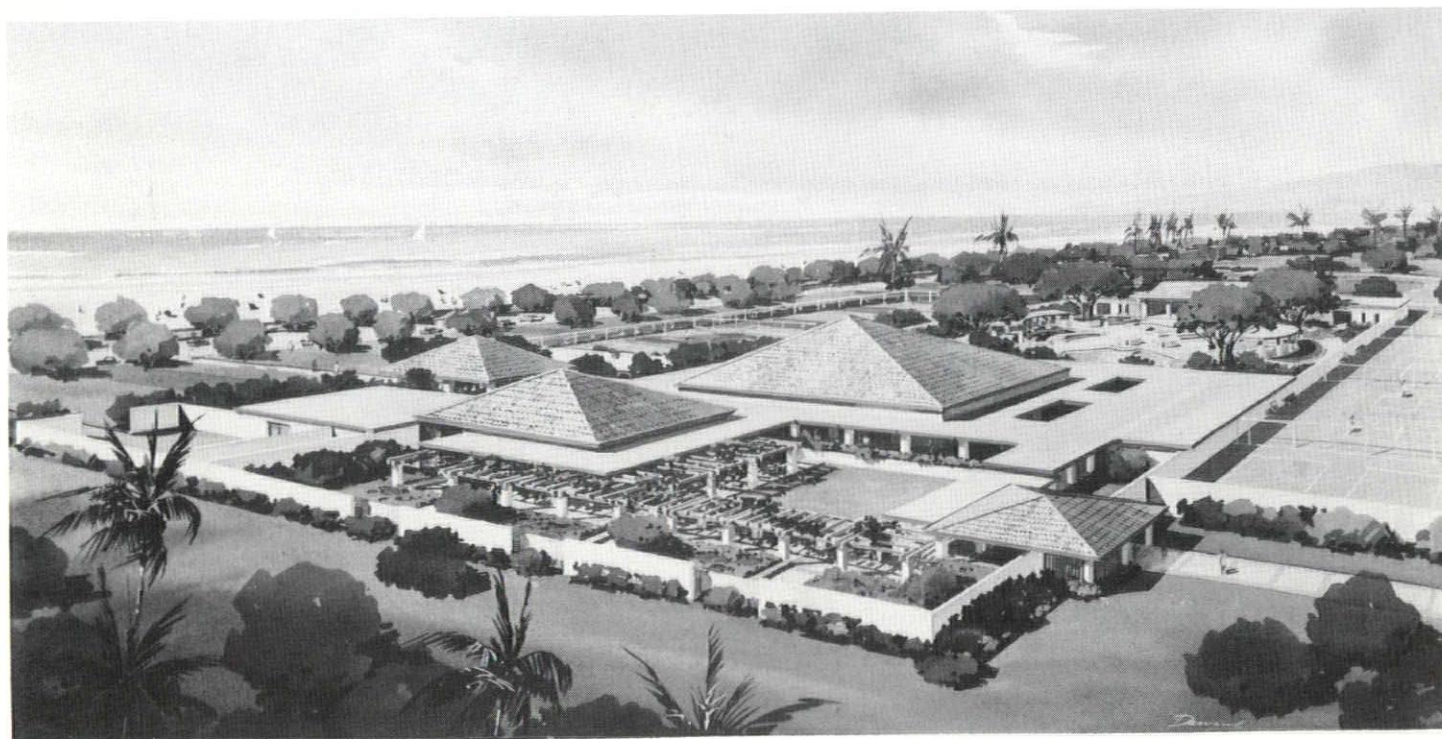
visual-spatial-environmental experience.

The McCoy Pavilion is pedestrian-oriented. There is, therefore, no porte-cochere, or large expanse of paved parking immediately adjacent to the new structure. It was the intention of the architect that people walk through the complex and not just pass it by. In other words, the architect attempted to design an alluring “long-cut” thru this assemblage of interior and exterior spaces, very much similar to several older Honolulu civic and governmental compounds. In this manner, one would be able to savor a pleasant architectural experience before, during, or after lunch.

In a sense, this somewhat “cloistered” monastic architecture

provides an atmosphere of serenity and solitude, of peace and contemplation, as it is buffered by the environs. At the same time, it possesses a built-in propensity for larger group gatherings in suburban country-club style in the heart of urban and metropolitan Honolulu.

The keen observer is reminded that the pavilion in the park by the sea exists simultaneously as a welcomed neighbor in the larger context of enveloping Ala Moana Shopping Center and the ring of residential and commercial high-rises surrounding it. In many ways, Ala Moana Beach Park is both the “front lawn” and “back yard” for the intensely developed areas circumventing it, as the R/UDAT report indicates.



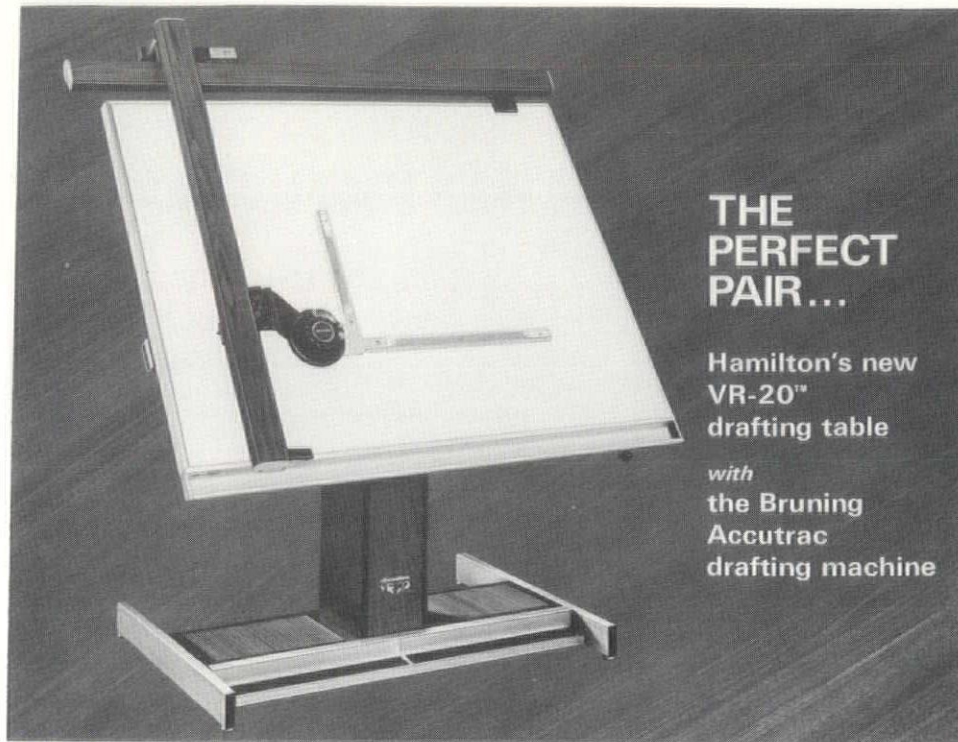


Chamberland used the design study model approach to formulate the variety of interspersed indoor and outdoor volumes of enclosed and semi-enclosed spaces. He was confronted with a challenge to unify the functional and aesthetic aspects of such diversified and simultaneously overlapping uses for different groups of users.

In addition to the gardens and lanais, the complex features a divisible restaurant, a large assembly room complete with stage and a garden-view, offices, and meeting rooms — all of which have built-in requirements and design solutions for expandable-contractible space utilization flexibility.

The entire building structure is designed on the basis of a 16 foot square modular grid, so that longer spans generate higher roof volumes of space. This rather lofty and spacious composition consists of four symmetrical pyramidal roof forms — two of the smaller modules serve for the mauka and makai entrance lanais, while the medium-span 48-foot-by-48-foot bay serves for the restaurant, and the 80-foot-by-80-foot span dramatically shelters the assembly area.

Architecturally, the details have been simplified in order to reduce their number and cost. The structural system goes together almost like an "erector set" and was therefore easy to construct. The contractor was preoccupied with doing the best possible job, and this quality construction attitude was shared with the City Building Inspector.



## THE PERFECT PAIR...

Hamilton's new VR-20" drafting table

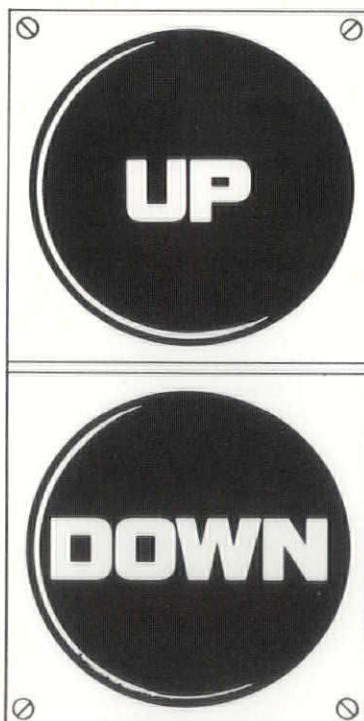
with the Bruning Accutrac drafting machine



## BRUNING DIVISION

ADDRESSOGRAPH MULTIGRAPH CORPORATION

250 Ward Avenue Honolulu, Hawaii 96814 Phone: 521-0365



## Two good signs of change in Honolulu.

How many elevator buttons have you pressed today? To go up — or down — or to select a floor? At home in your high rise, or at the office, or on a call? In Honolulu today more and more people take an elevator's instant response for granted. At Amelco Elevator we maintain elevators of all makes and models. We keep them running and we come running if something goes wrong to put it right fast. For a fast estimate of how little this expert service can cost:

Call 521-6557



## Amelco Elevator

Company

645 Halekauwila Street / Honolulu, Hawaii 96813 / Phone: 521-6557



# "Sure, we could have poured our exteriors in place—but..."

A building, like a book, is often judged by its cover. It's the outside that first catches the eye and it's the outside that best exemplifies your work.

Today more and more precast architectural exteriors are being used in better buildings around the world. Not only do these materials result in a uniform

finish of high quality, but you can see for yourself just how it's going to look before ground is even broken.

Important too, precast materials are in no way limiting. There is an infinite variety of precast textures and shapes. The real beauty of it all is that precast is not only a fast, beautiful alternative—it has value.



## Precast Division Hawaiian Dredging & Construction Company

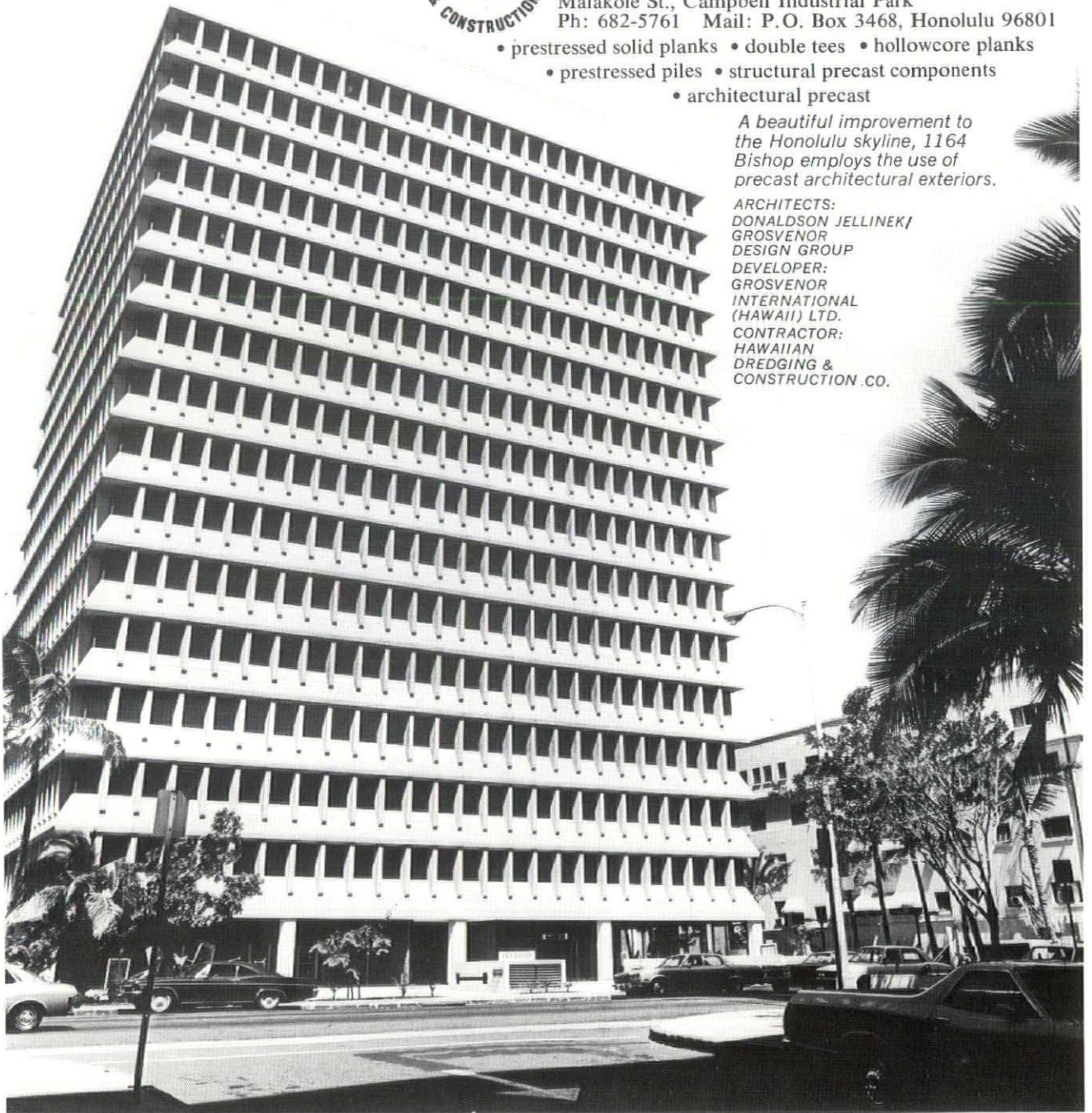
Malakole St., Campbell Industrial Park

Ph: 682-5761 Mail: P.O. Box 3468, Honolulu 96801

- prestressed solid planks
- double tees
- hollowcore planks
- prestressed piles
- structural precast components
- architectural precast

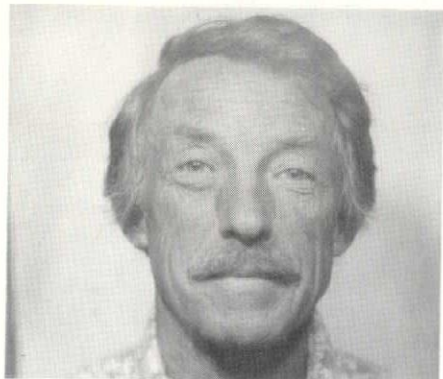
*A beautiful improvement to the Honolulu skyline, 1164 Bishop employs the use of precast architectural exteriors.*

ARCHITECTS:  
DONALDSON JELLINEK/  
GROSVENOR  
DESIGN GROUP  
DEVELOPER:  
GROSVENOR  
INTERNATIONAL  
(HAWAII) LTD.  
CONTRACTOR:  
HAWAIIAN  
DREDGING &  
CONSTRUCTION CO.





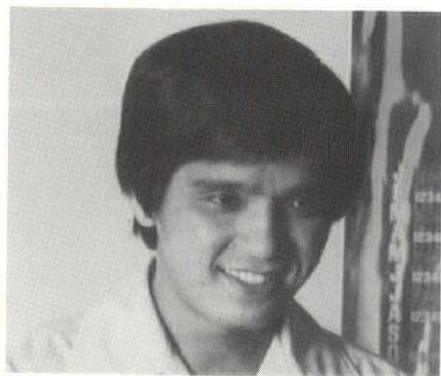
# New Members



**WILLIAM GUY GARWOOD.** Corporate member; Stone, Marraccini & Patterson, B. Arch., Yale University. Hobbies: people, classical guitar, painting, and tennis. Recently received a patent for design of a bicycle parking stand which restricts the two wheels and the frame from theft.



**DARSHAN KHURANA.** Corporate member; Group Architects Collaborative, Inc. B. Arch., Delhi School of Architecture & Planning, Delhi, India; M. F. A. in Arch., Princeton U. Wife: Barbara. Children: Rabinder Lewis, 5½. Hobbies: photography, weaving.



**ROBERT K. KISHI.** Corporate member; Takahashi, Nagata, Kishi Architects, Inc. B. Arch., U. of Hawaii. Wife: Barbara.

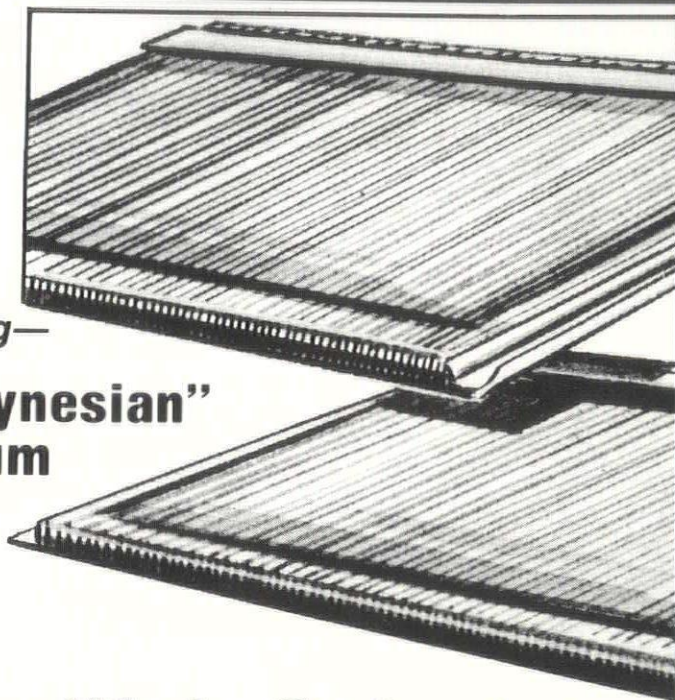
## Armstrong Ceiling Systems Resilient Floors Carpets

For information contact Gerry Evenwel  
Armstrong District Office, King Center Building, Honolulu  
Phone 946-5929



Announcing—

### "The Polynesian" Aluminum Shingle



## Beautiful, Colorful And They Don't Leak!

Our new "The Polynesian" Aluminum Shingles outlast most buildings... guaranteed not to leak for 50 years, probably never will... paint guaranteed for 20 years (These are factory guarantees and they're transferable, too)...

All at one reasonable, pre-determined, installed price... \$125 per square (100 square feet) installed. This is retail price. Appropriate commercial discounts.

Also solid copper versions of "The Polynesian." Higher prices, of course.

Ask for complete information, including choice of colors, product demonstration and views of installations already in Hawaii (no obligation).

Call or write:

Jim Worden, President  
Trus Joist Hawaii Inc.  
641 Keeaumoku Street  
Honolulu, HI 96814  
Tel. 949-6661





# Participants

from 10

George R. Ariyoshi (The Honorable)  
Governor  
State of Hawaii

Frank F. Fasi (The Honorable)  
Mayor  
City & County of Honolulu

The Rev. William Kaina  
Conference Minister  
United Church of Christ

Bruce Stark, Realtor and  
President of  
Stark Enterprises, Ltd.

Kisuk Cheung  
Chief, Engineering Division  
U.S. Army Corps of Engineers

Mrs. Mickey Smith  
President  
Oahu Tenants Association

Robert Kamalu  
Executive Director  
Hawaii Council for Housing Action

Hideo Murakami  
Comptroller  
Dept. of Accounting & General Services  
State of Hawaii

Aaron Levine  
President  
Oahu Development Conference

Robert R. Way  
Chief Planning Officer  
Dept. of General Planning  
City & County of Honolulu

Raymond H. Suefuji  
Planning Director  
Hawaii County Planning Commission

Brian Nishimoto  
Planning Director  
Kauai County Planning Commission

Frank Haines, FAIA  
President  
Haines, Jones, Ferrell, White & Gima

Frank Skrivaneck  
Deputy Director  
Dept. of Planning & Economic  
Development  
State of Hawaii

Wendell Brooks, Jr.  
Executive Vice President  
Oceanic Properties  
President  
Mililani Town, Inc.

Carol Whitesell  
President  
League of Women Voters of Honolulu  
and Member Land Use Commission  
State of Hawaii

Willis H. Moore  
Education Coordinator Bishop Museum  
and Past Chairman, Hawaii Chapter  
Sierra Club Foundation

George V. Whisenand, AIA  
Vice President & Secretary  
Wimberly, Whisenand, Allison, Tong  
& Goo Architects, Ltd.

James N. Reinhardt, AIA  
President  
Anderson/Reinhardt, Ltd.

National Affairs:  
Vladimir Ossipoff, FAIA, Northwest  
Regional Director of AIA  
and principal of Ossipoff, Snyder,  
Rowland & Goetz

Owen Chock, Chapter President  
and principal of EDW, Inc. Architects  
& Planning Consultants

Community Services:  
Edward R. Aotani, Chapter Vice  
President and principal of  
Aotani & Hartwell Associates

Office Management:  
Dennis T. Toyomura, Chapter Treasurer  
and principal of Dennis T. Toyomura,  
AIA

Chapter Affairs:  
Wayson W. C. Chong, Chapter Secretary  
Department of Transportation  
Services, City & County of Honolulu

Education & Research:  
Gordon D. C. Tyau, Chapter Director  
and principal of Group 70 Lab, Inc.

Government Affairs:  
Elmer D. Phillips, Chapter Director  
and principal of E. D. Phillips &  
Associates

Professional Practice:  
Alan E. Holl, Chapter Director  
and partner of Stone, Marraccini &  
Patterson, Pacific Division

PR & Publications:  
Gene M. Miyatake, Chapter Director  
with Arthur B. Hanson, Inc.

Environment & Design:  
Louis A. Fulton, Chapter Director  
and principal of Louis A. Fulton, AIA

Diane Dencks  
Graduate Student  
University of Hawaii, School of  
Architecture

Shirley Ladd  
President  
Womens Architectural League

Shirley Prysock  
President  
Architectural Secretaries Association

Frederick H. Furer, AIA  
Furer & Hee Associate Architects

Robert M. Fox, AIA  
President  
Robert M. Fox AIA

Nancy Bannick, Hawaii Consultant to  
Sunset Magazine and Executive Secretary  
of the Hawaii Environmental  
Awareness Resources Program

Dale Lanzone  
Architectural Historian  
State Register of Historic Places



## STIFLED?

*Know What You Want But Can't  
Find it in a Catalogue?  
Let Us Shine a Little Light  
on your Frustrated Creativity.  
SKYLIGHTS, AND . . .  
Manufactured to your specs  
here in Hawaii*



**Callaway-Hawaii**

1014 ARTESIAN STREET  
HONOLULU, HAWAII 96814  
808-547-5166



Gene Fujii  
Cybernetics of Hawaii

Jack Evans  
L. L. Ridgway, Inc.

Tom Sellers, Jr.  
Sellers Advertising, Inc.

Dale Petersen  
General Business Services

James Pearson, AIA  
UH Dept. of Arch.

Don Olsen  
Central YMCA



Diane Kersting, Miss Parade of Homes.  
Not pictured: M. Matayoshi, winner of a  
\$1,000 gift certificate; Eddy Nagao,  
president, Home Builders Association of  
Hawaii; Ted DiTullio, president, Hawaii  
Association of Realtors; and Seiki  
Uechi, winner of trip to Mexico City.  
(The Fiesta Palace via Western Airlines).  
— Camera Hawaii Photo

**Durable / Beautiful / Functional**

## ROMANY—SPARTAN CERAMIC TILE

**United States  
Ceramic Tile  
Company**

Subsidiary of **Spartek  
Inc.**

### Meets Your Specifications

Providing a wide array of colors, shapes and sizes typified in the following examples:

#### Decorative Tile

Romany Maze — Bright glaze white tiles dappled with color.

Cloud Swirl — Bright glaze white tiles with swirls of color.

Romany Flair — A distinctive collection of low relief designs.

Decorative — Design decals set on bright glaze tile.



**Bright Glaze Tile** — Ideal for walls in a variety of institutional and commercial settings.

**Matte Glaze and Crystal Tone Tile** — Subtle, subdued colors designed for use where understatement and quiet beauty are preferred.

**Romany Rustic Tile** — Rugged yet elegant. Simple yet sophisticated.

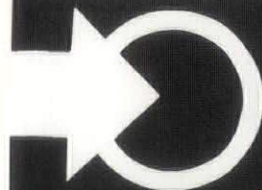
**Ceramic Mosaics** — The natural beauty of earthen colors and pastel tints offers a world of design potential for nearly any interior or exterior application.

**Quarry Tile** — A versatile, heavy-duty tile with an unglazed yet smooth finish.

**Swimming Pool Tile** — Orsan II is ideal for pool deck application and it eliminates the need for abrasive additives. Dresden Porcelain Ceramic Mosaics are ideal for pool tanks.

**Our Custom Design Service** specializing in mural design, color coordination and swimming pool detailing is also available.

*Verbal descriptions are fine, but these distinctively designed tiles must be seen to be appreciated. Tile samples for color and design selection may be obtained by contacting **YOUR NEW DISTRIBUTOR . . .***



**HAWAII  
PACIFIC  
SALES**

120 Mokuuea Street

Telephone: (808) 845-9581





## The Mauna Luan in Hawaii Kai



Careful, cost-conscious developers call on State Tile to get a dependable, quality-controlled and economical supply of double "I" load-bearing blocks. Call on us yourself. It's **841-2869**.



**STATE  
TILE**

158 Sand Island Access Road

## Advertisers Index

Addressograph Multigraph Corp.	17
Aloha State Sales Co.	9
Amelco Elevator	17
Armstrong Cork Co.	19
Callaway-Hawaii	21
Cement and Concrete Products	24
Industry of Hawaii (CCPI)	
ColorPrints, Inc.	11
Custom Games	11
Dillingham	18
Gasco, Inc.	2
Golt Graphic Productions, Ltd.	9
Hawaii Pacific Sales	21
Hawaiian Electric Co.	23
Motion Systems	7
State Tile	22
Trus Joist Hawaii, Inc.	19

## Letters to the Editors

Dear Editors,

I would like to take this opportunity to pass on to you and your readers, the gist of favorable comments regarding HAWAII ARCHITECT, which have come to my attention over the past several months.

As the Journal of the Hawaii Chapter/American Institute of Architects, HAWAII ARCHITECT has not only maintained its highly commendable quality on a continual basis; but furthermore, it has managed to provide this Community with refreshing material and inspirational ideas. Under your stellar leadership, HAWAII ARCHITECT has become an outstanding publication series, with many people anticipating each

"fresh" issue as a substantive creative "act". Your distinguished community service is meritorious and it is especially rewarding to realize the extensive participation by supportive advertisers and noteworthy publishers who definitely contribute to the graphical and verbal communications quality of the magazine.

Your positive force for good architecture, and improved environmental planning and design, is very much appreciated. In many ways, your excellent efforts have most appropriately set the stage and the "forum", and probably the quorum, for our upcoming State Architects Convention.

ANDREW C. YANOVIK, AIA

OCT 24 1975



EDITOR  
HAWAII ARCHITECT  
1192 FORT STREET MALL  
HONOLULU, HAWAII  
96813

DEAR MR. EDITOR:

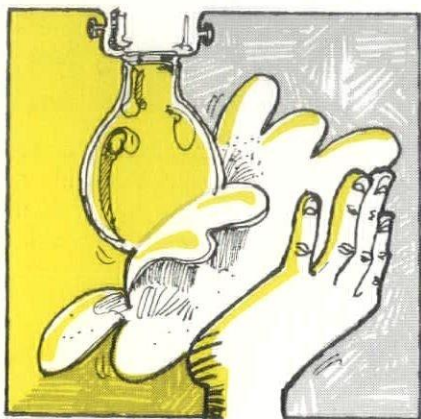
I SEEN A PITCHER OF  
MERVIN KWAKIUTL IN  
YOUR BOOK. WHAT IS  
HIS ADDRESS? MY  
LAWYER NEEDS IT. HE  
OWES ME A TON SACK FULL  
OF ALIMONY.

MS. PRUNELLA K.



# 3 Lessons in Security Lighting.

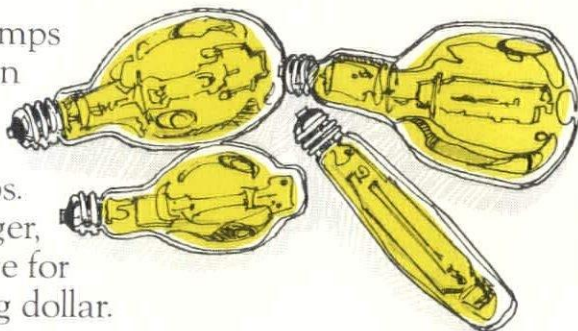
## 1. Cleanliness Counts.



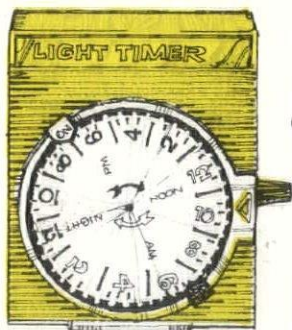
You'll increase lighting efficiency enormously with regular cleaning. It's hard to believe, but you can lose 30-40% of lighting efficiency due to dirty bulbs and fixtures. A frequent once-over with a cloth and soapy water should do the trick.

## 2. A New Light on the Subject.

Today there are many lamps around that last longer than incandescent ones. Like fluorescent, mercury, metal-halide and sodium lamps. And because they'll last longer, you'll be getting more for your lighting dollar.



## 3. Get your timing perfect.



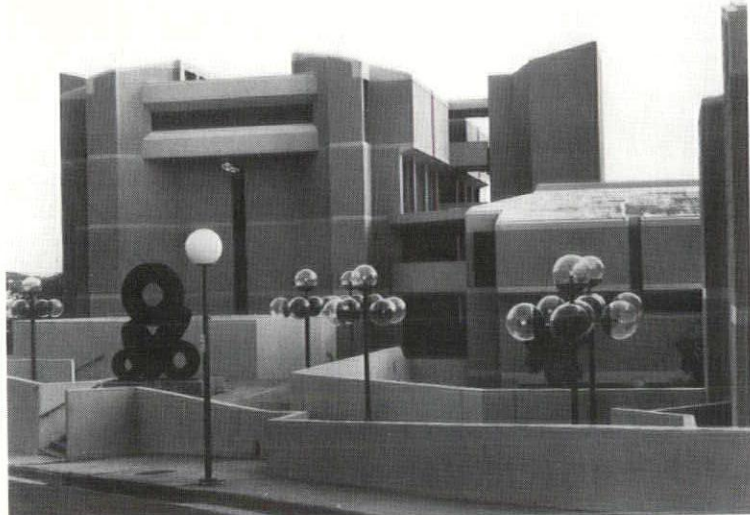
You don't have to panic about forgetting to turn on your security lighting system. Photo-electric cells or timers can do the job for you.

When it's a question of getting the most out of your lighting system, you shouldn't take chances. Your consulting engineer or lighting supplier has the answers.



Evagene Bond  
PR National AIA  
1735 New York Ave. N.W.  
Washington, D. C. 20006

# GREAT DESIGNS IN CONCRETE



Leo S. Wu & Associates

Put your imagination together with concrete and look what can happen. Hawaii's most beautiful buildings are the result of thoughtful design and the flexibility of concrete.

## DESIGN FLEXIBILITY

Shape concrete to your structural and architectural ideas. Finish it in a wide range of textures and colors. From pure white to deep tones, smooth to rugged surfaces, there is a concrete finish to perfectly complement every building design and environment.

## COST COMPETITIVE

Only concrete combines competitive construction costs with unmatched long-range economy. Concrete is impervious to rot, termites or rust. Concrete lasts a lifetime and requires minimum maintenance, year after year.

## BUILDINGS...BIG OR SMALL

Hawaii's builders have long made concrete their first choice for large buildings. Smaller structures, too, present the kind of challenges best met by concrete's design flexibility, integral finish options and long-term cost benefits.

For technical information about any concrete product, call CCPI at 833-1882.

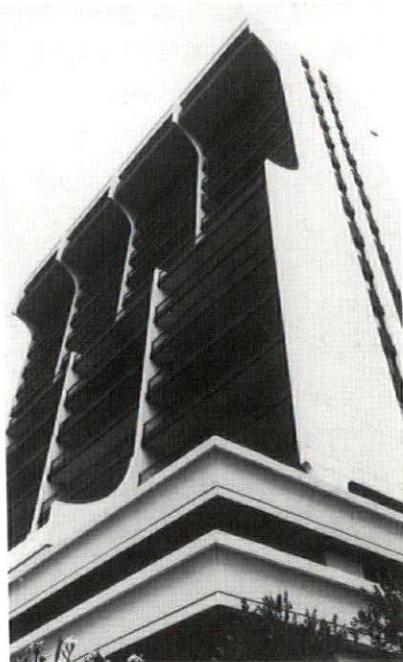
**MAKE THE MOST OF YOUR IDEAS . . . WITH CONCRETE.**  
It's made right here in Hawaii.



Killingsworth, Brady & Sutter, Inc.



Sanborne, Cutting & Associates



Haines Jones White Farrell Gima



## CEMENT AND CONCRETE PRODUCTS INDUSTRY OF HAWAII

Suite 1110, Control Data Building  
2828 Paa Street, Honolulu, Hawaii 96819

**Member Firms:** Amelco Corporation; Concrete Industries Maui; Hale Kaula, Ltd.; Cyprus Hawaiian Cement Corporation; HC&D, Ltd.; Hawaii Concrete Products; Hawaiian Dredging & Construction Company, Precast Division; James W. Glover, Ltd.; Hilo Operations; Kaiser Cement & Gypsum Corporation; Laie Concrete & Aggregate, Inc.; Lone Star Industries, Inc., Hawaii Division; Maui Concrete & Aggregates; Monier Roof Tiles; Pacific Concrete & Rock Company, Ltd.; Shield Pacific, Ltd.; Tileco, Inc.; United States Pipe & Foundry Company, Concrete Pipe Division; Valdastris Schokkabeton.