

Journal
of the
Hawaii
Architectural
Society/
American
Institute
of Architects

HAWAII ARCHITECT

AMERICAN INSTITUTE
OF
ARCHITECTS
12/76





Where to go For BUSINESS DINING



RESTAURANTS & CATERING

GARDEN



COURT

Our special events room, a convenient place to hold business luncheons, company parties, wedding receptions, and more.

Our take-out party catering service, providing a menu of tempting appetizers through desserts in no-return containers.

liberty house

AN Amfac COMPANY



PANCHO VILLA

1972 Kalakaua Ave.
Free Parking

Hay Partner! Stop into the oldest Mexican Restaurant in the Hawaiian Islands, at the gateway to Waikiki. Featuring the finest in Mexican food and Margaritas by the pitcher.

Lunch M-F 11:30-5:00. S-S 12:00-5:00 Dinner Daily 5:00-11:00. Cocktails til 2:00A.M.
RESERVATIONS PLEASE 949-1695

A Christmas Carol

FOR BUSY EXECUTIVES

'Twas the week before Christmas and all thru the hall
His helpers and reindeer were having a ball!

Santa was grinning and raising a toast,
For this was his party and he was the host.

He hadn't had time to arrange it himself
So he'd called up the Hilton to give him some help.

Our Catering Specialists knew in a flash
That here was a party that needed some dash.

And so in a twinkling they planned the affair,
Giving every last detail their scrupulous care.

"Now this is the spirit!" laughed the merry old gent.
"I can kick off my boots and enjoy this event!"

So take it from Santa and give us a call . . .
A party from Hilton means Merry Christmas to All!

For inspirations, call 949-4321.

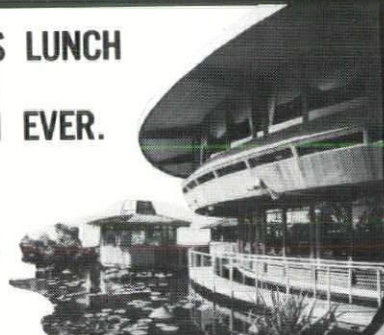


HILTON
HAWAIIAN
VILLAGE

THE BUSINESS LUNCH CAN BE BETTER THAN EVER.

At
THE
PAGODA
FLOATING RESTAURANT

1525 Rycroft Street
Phone 941-6611



Columbia INN



OPEN
24 HOURS

(except the wee hours of
Monday morning.)

Restaurant-Bar-Coffee Shop
645 Kapiolani Blvd. Honolulu

Valentinos

MEMBERSHIP CLUB & DISCOTHEQUE

Imperial Hawaii Hotel
205 Lewers St. Hon., Hi. 96815

An exclusive club of limited membership for those who command the finest dining, service, pleasantries and other amenities.

For information call
923-1141

memberships
available

HAWAII ARCHITECT

12/76

Hawaii Society Officers:

Contents

President:

Edward R. Aotani

Vice-President/President-Elect:

Donald Goo

Secretary:

Clarence Miyamoto

Treasurer:

Duane Cobeen

Directors:

Louis A. Fulton

E. Alan Holl

Paul Osumi

Steve Mori

Gordon Bradley

Hawaii Architect:

Co-Editors:

Robert M. Fox

James N. Reinhardt

Graphic Design:

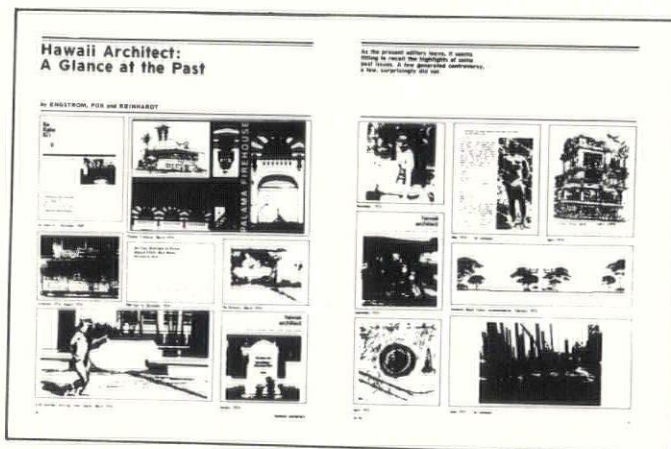
Eric Engstrom, Art Director

George S. Walters FASLA, Hon. AIA

5

Hawaii Architect: A Glance at the Past

10



Editorial Board:

Gerald Allison, FAIA

Edward Sullam, FAIA

Fred Sutter

Arthur Kohara

1976 HS/AIA Honor Award

14

Continued from a Previous Issue

17

The Great Pumpkin Carve-In

20

Miscellany

18

Subscriptions \$10.00 per year

All correspondence should be directed to:

Hawaii Society AIA

1192 Fort Street Mall

Honolulu, Hawaii 96813

Beverly Wolff, Executive Secretary

Phone (808) 538-7276

Published by

Stephen Lent, Publisher

Crossroads Press, Inc.

863 Halekauwila St.

P.O. Box 833

Honolulu, Hawaii 96808

(808) 521-0021

Controlled circulation postage paid at Honolulu, Hawaii.

Opinions expressed are those of the editors and writers and do not necessarily reflect those of either the Hawaii Society or the AIA.

Announcing . . .
“The noise and fire fighter”

Petrical

Acoustical Deck, Wall Panel and Formboard—bringing you one more great product for the building industry in Hawaii from our young and growing industry service company.

Petrical is non-combustible—chemically treated long, tough northern aspen wood fiber, each fiber and the total wood core enclosed in Portland Cement . . .

Petrical precast units are moulded under pressure, then cured and kiln dried—accurate in dimension, strong, both sound and fire resistant . . .

And Petrical units span eight feet and more between joists, depending upon dead load . . .

We're excited about Petrical as a great addition to our line. Ask any of us about it . . .

Bob Hanford . . .

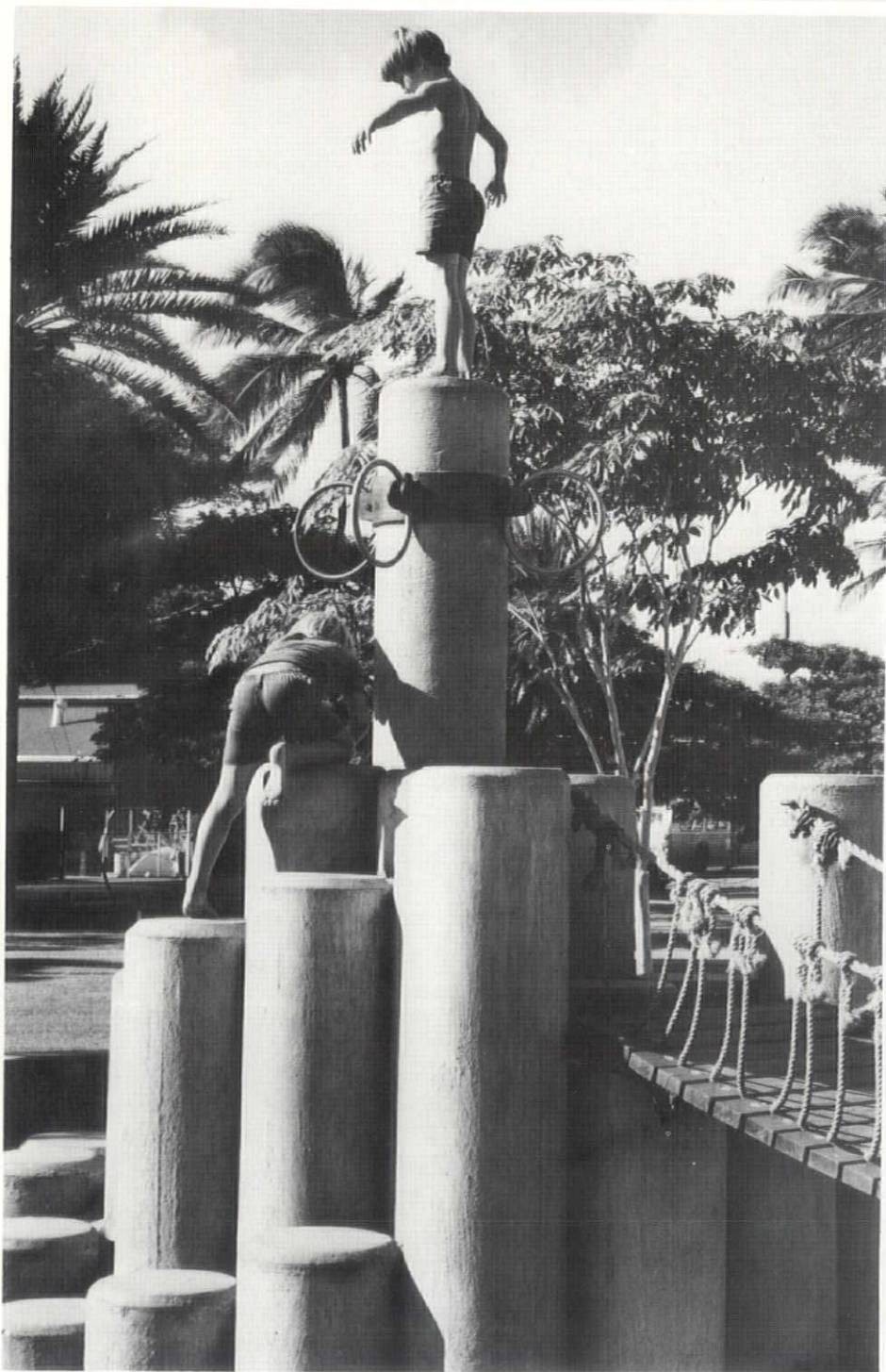
Erv Buss . . .

Jim Worden, President, Trus Joist Hawaii.

Write us at 641 Keeaumoku, Honolulu, HI 96814. Or pick up the phone. Call 949-6661.

George S. Walters, FASLA, Hon. AIA

by TOM PAPPANDROU, ASLA



Playsculpture Paki Park, Honolulu



GEORGE S. WALTERS

George S. Walters' outstanding personal contributions to the profession of landscape architecture through his works of landscape architecture and his service to the profession and community live on for us to enjoy. He contributed greatly to the profession by his enthusiasm, intelligence, vision, conscientious manner, and total commitment to landscape architecture.

He gained increased local recognition for the landscape architect by the other design professions and the public through the high quality of his work and active role in civic affairs relating to urban design. He executed works of landscape architecture numerous and well-known in Hawaii, which included commercial, recreational, civic, residential, and resort projects. Many have been honored by ASLA national and local awards.

Continued on Page 6

George S. Walters, FASLA

Continued from page 5

Locally, Walters was a driving force in the community for many years with clear vision of the possibilities for the advancement of the profession of landscape architecture, including being instrumental in obtaining passage of a registration law in Hawaii.

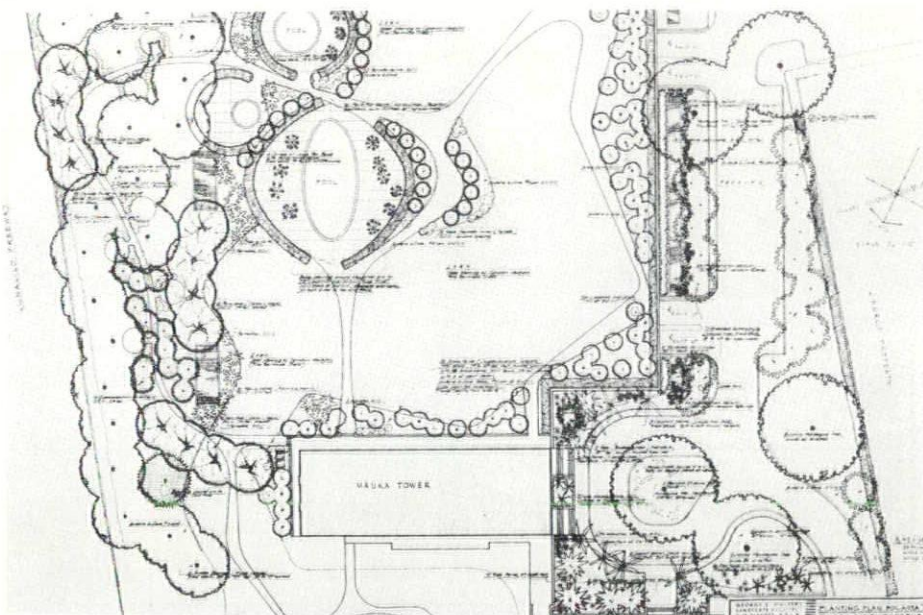
Additionally, he had been a vigorous leader in the ICED commission in Hawaii and, within that forum, a tireless advocate for the special interests and full recognition of landscape architecture in all respects.

Nationally, he very ably represented the Hawaii Chapter of American Society of Landscape Architects as it's trustee since the Florida meeting in 1974, where he "impressed his peers with his sincerity, intelligence, and concern for the Society." (Letter from Giles W. Howard, Associate Executive Director).

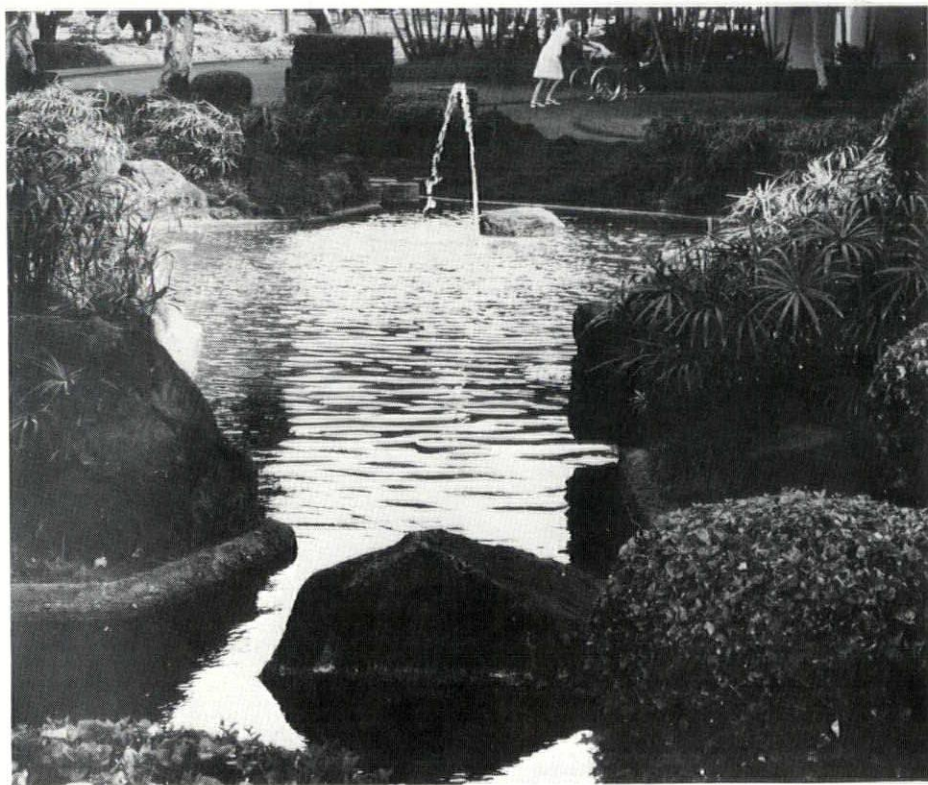
He was appointed chairman of the 1975/76 Bradford Williams Medal Jury, for the best articles from the Landscape Architecture Quarterly, and to the ASLA Constitution and Bylaws Committee which instituted many constitutional changes.

Through his efforts and dedication to the profession, the community, and the Society, George Walters was a source of continuing inspiration to fellow practitioners and related design professionals.

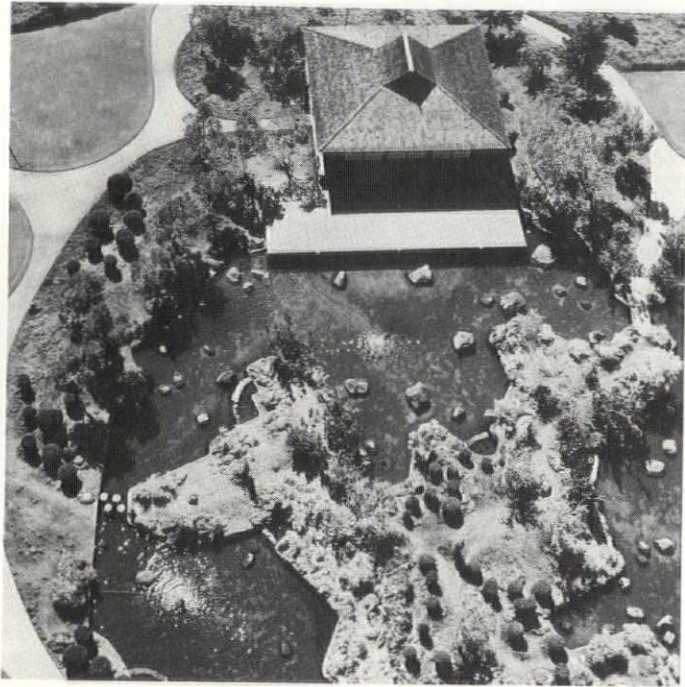
Continued on Page 8



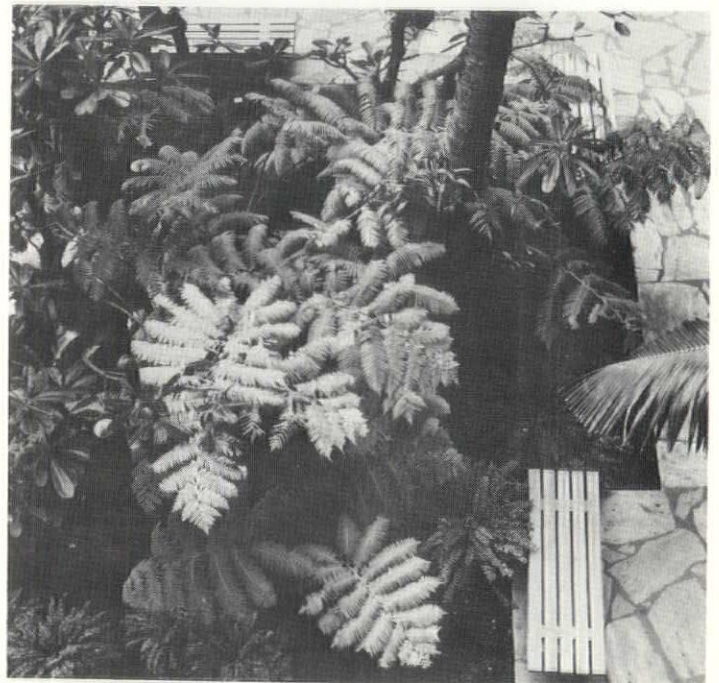
Landscape plan, Queen Emma Gardens, Honolulu



Queen Emma Gardens, Honolulu



Teahouse, Queen Emma Gardens



Hawaiian Regent Hotel, Waikiki



Hawaiian Regent Hotel, Waikiki

George S. Walters, FASLA

Continued from Page 6



River Street Mall, Honolulu

BACKGROUND PROFESSIONAL EDUCATION:

University of California, Berkeley—
Bachelor of Arts, Architectural Design
June 1952

University of California, Berkeley—
Master of Science, Landscape Architecture
Sept. 1954

PROFESSIONAL EXPERIENCE:

Wimberly & Cook, Architects —
Honolulu; 1942-1945

C. Mason Whitney, Landscape Architects—California; 1952-1954

George S. Walters & Associates, Inc.—Honolulu; 1954-1975

Walters, Kimura & Associates, Inc.—
Honolulu, 1975-1976

Registered Professional Landscape
Architect, State of Hawaii, 1971

Registered Professional Landscape
Architect, State of California, 1954

ASLA ACTIVITIES, OFFICES, SERVICES:

President, Hawaii Chapter, ASLA

Trustee, National ASLA

Director, ASLA Foundation

Chairman, Bradford Williams Medal
Jury, ASLA

Member, Constitution and Bylaws
Committee, ASLA

Executive Committee, Hawaii Chapter, ICED
Fellow American Society of Landscape
Architects

CIVIC HONORS, SERVICES, AWARDS, MEMBERSHIPS:

Architectural Advisory Committee:
Department of Land and Natural Resources

Mayor's Waikiki Diamond Head Advisory
Committee

Citizen's Advisory Committee to the
Honolulu Civic Center Master Plan

University of Hawaii Design Review
Committee

Airport Advisory Committee: State
Department of Transportation

Mayor's Advisory Committee on
Community Renewal Program

Conservation-Recreation Committee:
Department of Planning and Economic
Development

Planning and Beautification Committee
of the Chamber of Commerce of
Hawaii: Consultant Member

Comprehensive Planning Committee:
Oahu Development Conference

Governor's Conference on Beautifica-

tion: Member and Speaker
Governor's Conference on the Year
2000: Member and Panelist

Planning Committee of the Manoa
Valley Community Association: Technical
Advisor

American Institute of Architects:
Honorary 1956, Associate Member, Hawaii
Chapter; AIA Allied Arts Ward 1963

Oahu Turfgrass Conference: Past
Charter President

Queen Emma Gardens — National
ASLA and Hawaii ASLA Honor Award

River Street Mall — Hawaii ASLA Honor
Award

Amfac Roof Garden — Hawaii ASLA
Special Recognition Award

Auahi Office Building — Hawaii ASLA
Honor Award

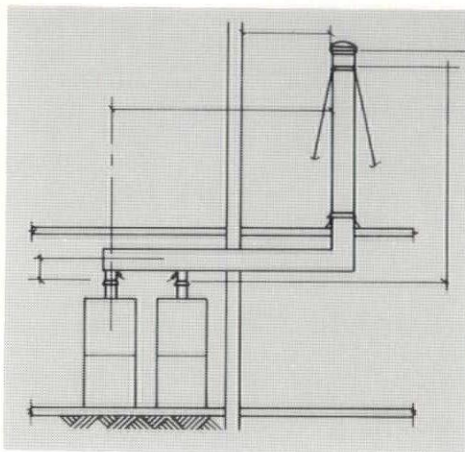
Playsculpture — Hawaii ASLA Merit
Award

Hawaiian Regent Hotel — Hawaii
ASLA Merit Award

Our Engineering Advisory Team can save you time.

Gas Company know-how on equipment requirements helped save the planner time and make the best use of this piping system.

Our Engineering Advisory Team saved designers time by helping to plan a simple, efficient gas piping system in this 24-unit apartment building. They knew optimum piping sizes, pressures, vent locations, too.



Easy servicing access — and no time wasted hunting for repairmen. The Gas Company itself can service all gas equipment for its customers.

And save you energy.

The Gas Company's Engineering Advisory Team can help Hawaii's architects and mechanical engineers save time in a number of important ways. They can help draw up specs for water heating systems. They can assist in equipment layout. Provide advice on local codes and regulations. And their thorough knowledge means that there's no time wasted searching for the answer to virtually any gas energy or equipment question. They're also Energy Savers. Of course, the project that uses gas uses less of Hawaii's primary energy source, oil, than one that is "all-electric." But our Engineering Advisory

Team can do even more — suggesting ways to get maximum energy efficiency, from equipment selection to appliance installations. A single phone call can bring this free service to anyone in the building industry — 548-4236 or 548-2113.

Two of The Gas Company's Energy Savers: Charlie Bazell and Ed Inouye, engineering advisors.

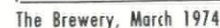
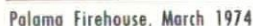


THE GAS COMPANY

GASCO, INC., A SUBSIDIARY OF PACIFIC RESOURCES, INC.
P. O. Box 3379, Honolulu, Hawaii 96842



by ENGSTROM, FOX and REINHARDT



As the present editors leave, it seems fitting to recall the highlights of some past issues. A few generated controversy, a few, surprisingly did not.



November, 1973

Everything you always wanted to know about Jerry Hauser, but were afraid to ask.

Dear Editor,

The readers of Hawaii Architect have been treated to some excellent work by Jerry Hauser, who is identified as a well-known architectural delineator. I think a number of readers and viewers of your magazine would like to know more about Jerry Hauser or the work he has done in the past and what can be expected to be seen in the future. Hawaii Architect, I assume, will continue to bring Mr. Hauser's efforts to our attention.

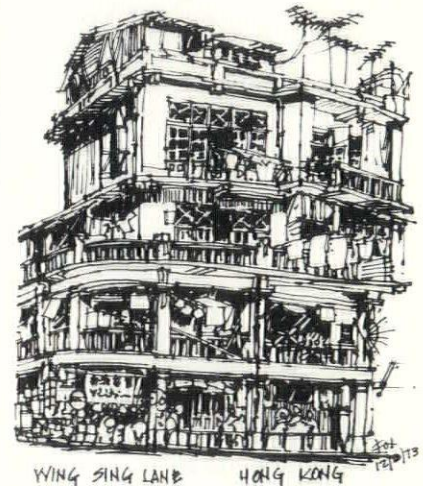
Cordially,
R. Bruce Duncan

Jerry Hauser
Visual Statistics
Occupation: Staff pornographer for HA
Sex: Yes
Race: 100-yard streak
Hair: Ponytail
Eyes: Leering
Height: Between 5 ft. and 6 ft.
Weight: Fluctuates
Age: Unknown

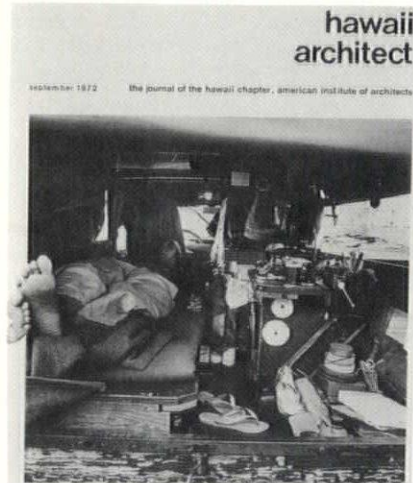
Jerry, who has for many years been providing Hawaii's architects with outstanding renderings, has recently expanded his art to include photography. So far his subject matter has been rather limited much to the delight of HA readers.

Currently Jerry is working on a full color book containing numerous photos of his lovely ladies to be published soon. Anyone wishing to contact Jerry on any of his art can call 922-1255.

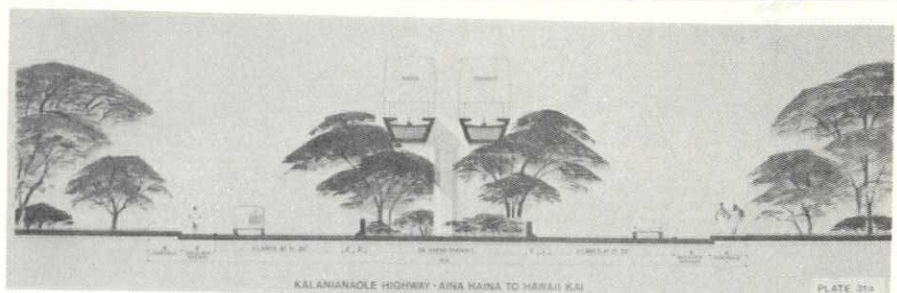
May 1974... no comment



April 1974



September 1972



Honolulu Rapid Transit recommendation, February 1973

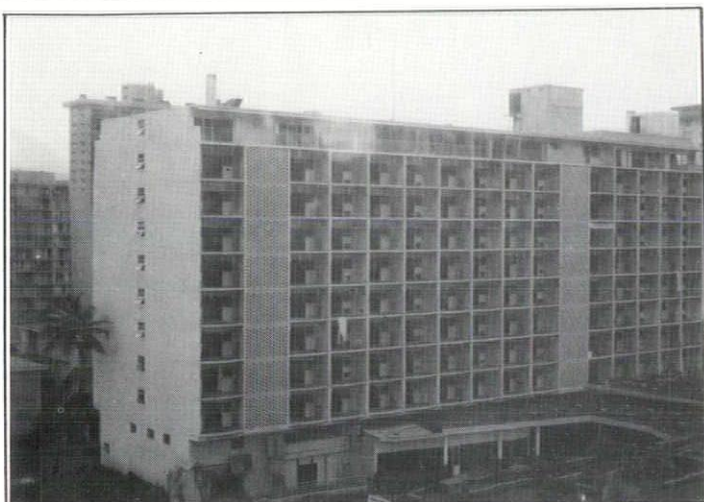


April 1975



June 1972... no comment

A Glance at the Past



Remember the Biltmore, June 1974



The fire, May 74



Pioneer Inn by Ramsey Berman, November 1974



AIA office, April 1973

Advertisers Index

ALOHA STATE SALES CO.	16
AMELCO ELEVATOR CO.	24
CLARK HATCH	17
COLUMBIA INN	2
GARDEN COURT	2
HILTON HAWAIIAN VILLAGE	2
GASCO, INC.	9
GASCO, INC.	19
PACIFIC BUREAU FOR LATHING & PLASTERING	13
PAGODA	2
PANCHO VILLA	2
POSTAL INSTANT PRESS	13
TRUS JOIST	4
VALENTINO'S	2
VERMICULITE OF HAWAII, INC.	17

Keeping Hawaii Plastered



Remember using the shower at a Hotel and the tiles—literally—coming off the walls? Remember the bowed tile walls in the shower room at the new school . . . or around the swimming pool at an otherwise beautiful resort?

This is unsightly, unsanitary, unsafe—and unnecessary.

Here's the cure—portland cement mortar bed reinforced with metal lath. In even the most severe moisture conditions, ceramic tile installations on metal lath and plaster walls normally last as long as the building.

Moreover, the metal lath base provides superior internal resistance to impact forces in heavy-use areas like gymnasiums, shower rooms and pool areas.

Call us for our bulletin on Ceramic Tile Installations With Metal Lath and Plaster. They offer the kind of quality you may still remember. **847-4321**.

Plaster Information — Don Morganella
**PACIFIC BUREAU for
LATHING & PLASTERING**
905 Umi St. — Rm. 303 Ph. 847-4321



*Would you believe
this penny repre-
sents 17% of your
per-copy cost at
P.I.P.'s old 6¢-a-
copy price?*

SAVE ^{that} 17%!

Postal Instant Press rolled back its Xerox price to 5¢ in its Amfac and Pacific Trade Center locations. And look what comes free!

5¢

FREE:

- Pick-up & delivery in downtown area.
- Collating of Xerox copies.
- Stapling of Xerox copies.



No Extra Charge for Xerox in Legal Size.

Simply call our friendly downtown numbers:

533-2967

531-3121

Pacific Trade Center

Amfac Bldg., Mall Area

AIA HONOR AWARD:

R. T. Ikeno Residence

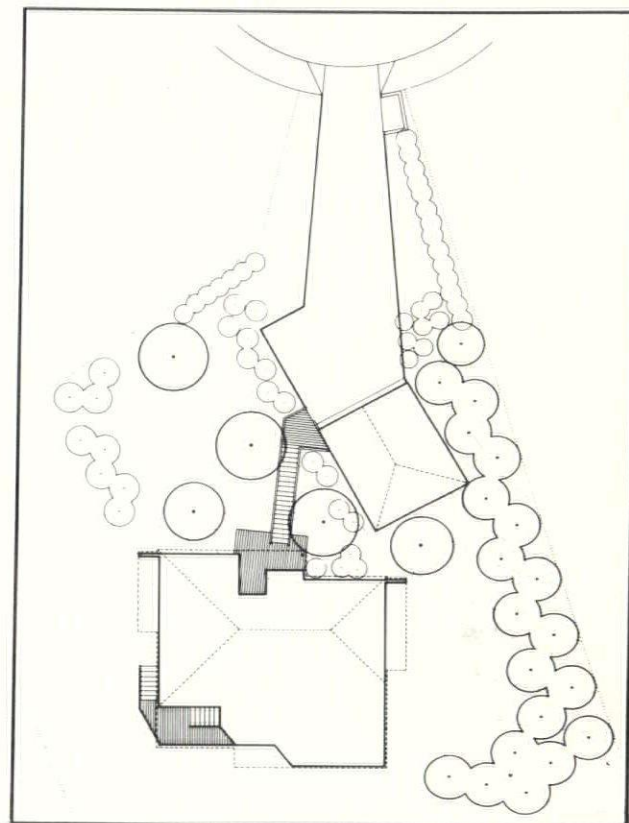
by JOHN HARA, AIA

Jury Comments:

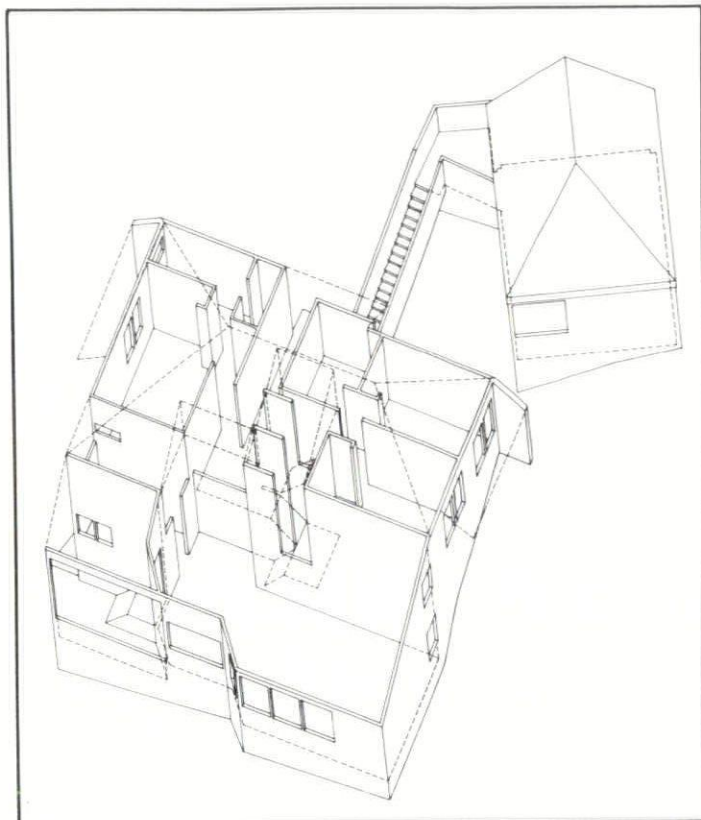
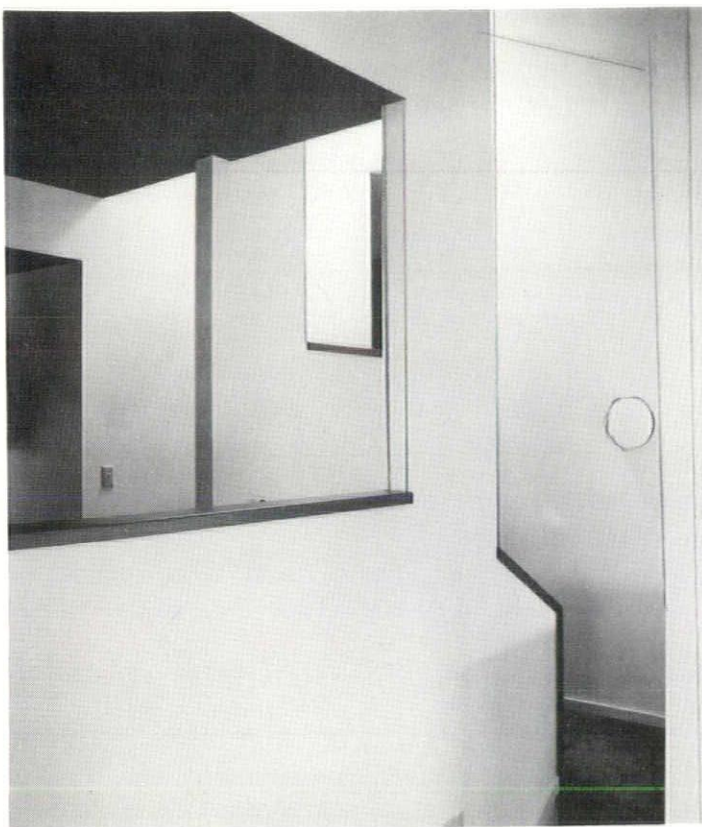
The way this house nestles into the crest of the hill is extremely nice. It appears to be a very appropriate part of the landscape. Inside there's a very sensitive handling of light, and interesting, well-organized spaces—very pristine and sculptural. A nice surprise in contrast to the exterior.



T. T. Ikeno residence, third from the right.



Ikeno Residence



Introducing SPANTEX

SELF-VULCANIZED COATING and TEXTURED TREAD that PROVIDES A NON-SKID SURFACE even when thoroughly wet!

*IT'S WEATHER-PROOF,
SUPER TOUGH AND COMES
IN EIGHT DECORATOR COLORS*

**Now you can easily have a
NON-SKID SURFACE
ON**

- | | | |
|--------------|--------------|-----------------|
| * Boat Decks | * Patios | * Shower Stalls |
| * Steps | * Sun Decks | * Sidewalks |
| * Cat Walks | * Pool Decks | * Roofs |
| * Boat Docks | * Porches | * Diving Boards |

SPANTEX is easily applied to wood, metal or concrete surfaces. The coating is self-vulcanizing and its texture tread provides a **NON-SKID SURFACE** even when thoroughly wet! And there's a choice of eight decorator colors! Stop at Aloha State Sales and see our demonstration display and take a free explanatory brochure. Or give us a call, 833-2731.

APPLICATION IS AS EASY AS A-B-C

A. BUTTERING

Fill all nail holes and blemishes with Trowel Coat. Then, using a putty knife, begin to cover seams and retouched areas with Trowel Coat.

B. TEXTURING

As soon as step 'A' is pau, begin spreading Trowel Coat over entire surface, using any adequate finishing trowel. 32 sq. ft. per gallon.

C. FINISHING

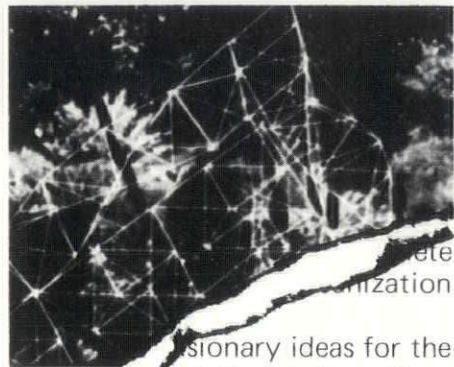
Now you simply roll on a coat using a good quality Lambswool or Dynel roller coater. 150 sq. ft. per gallon.

HERE'S THE ONLY TOOLS NEEDED! Putty knife, standard cement trowel, Dynel roller coater, small paint brush.

A LOHA
STATE SALES CO., INC.

2829 Awaawaloa St. Ph. 833-2731

from a Previous Issue



visionary ideas for the
about the static notions
ship harbors, rigidized
airports, and planted highway
cloverleaves, which have been shaping
our cities with less than desirable
results for less than centuries
now.

"What I envision are dynamical-
ly mobile cities, which collectively
integrate and disintegrate in a
systematic manner... to congre-
gate and disperse Man in the 'UNI-
VERSE:CITY:2000' as a com-
munity communicant... at
various scales from the micro to the
macro cosmic.

"Prof. Yanoviak warns that
...in terms of our future en-
vironments, modern man has
several big decisions to make very
soon concerning his attitudes to-
wards spaceship Earth. First of all,
we must decide whether or not to
build on the Land at all; and, if so,
how? (Excerpted from unpub-
lished Earth Day lecture (over 2
hours) presentation on Manoa
Campus in April 1970.)

"We certainly cannot continue
to destroy our precious lands
with more concrete and
blacktop roadways
and rooftops. With
importance
streams to
bratin

To be continued

FITNESS

IS YOUR BLUEPRINT FOR A HEALTHIER, RICHER LIFE!

If drafting is your only exercise...
let our professional staff design a
complete exercise program
according to your specifications.
Come see us, today.

GRAND OPENING SPECIAL
20% OFF MEMBERSHIP FEE
Reg. fee - \$150. Men • \$125. Women
OFFER EXPIRES DECEMBER 31, 1976

- FULLY EQUIPPED EXERCISE ROOMS
- JACUZZI
- SAUNA & STEAM BATH
- HEATED INDOOR SWIMMING POOL
- INDOOR AND OUTDOOR JOGGING
- HANDBALL COURT
- PROFESSIONAL SUPERVISION



CLARK HATCH

PHYSICAL FITNESS CENTERS

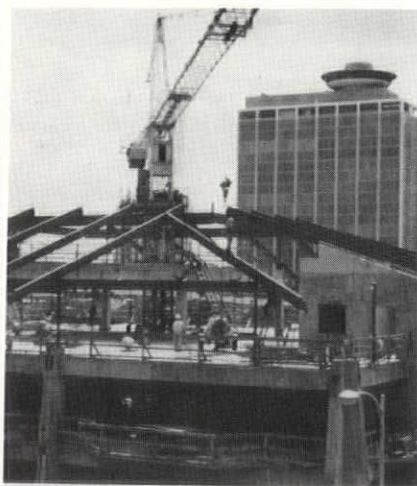
Center hours: weekdays from 6 a.m.-8 p.m. • Saturdays from 7:30 a.m.- 5:30 p.m.
AMFAC/HAWAII BLDG. • 745 FORT STREET • HONOLULU • TELEPHONE 536-7205

Monokote^(R)

fireproofing, developed
by, W.R. Grace & Co., is specifically
designed for fast application,
high fire resistance, and low cost.

Monokote is fast because it is a
clean, uniform material spray-applied
quickly and easily to steel, concrete
and any other surfaces requiring fire
protection. Monokote fireproofing
is a plaster-type, cementitious
mill-mixed material, requiring only
the addition of water.

Monokote fireproofing meets
or exceeds the General Services
Administration (GSA) requirements
for properties such as adhesion,
corrosion resistance, deflection, bond
strength, impact resistance, surface
hardness, air erosion, and dam-
ageability. It has been tested and
classified by Underwriters'
Laboratories Inc., for fire resistance
ratings from 1 to 4 hours in over
40 classifications.



First Hawaiian Bank, Kapiolani Blvd.

TYPE-MK
fireproofing

VERMICULITE OF HAWAII, INC.

842-A Mapunapuna Street / Honolulu, Hawaii 96819 839-5105

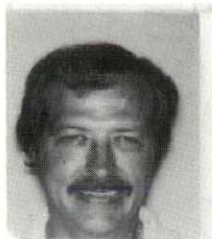
Miscellany:

New Members, A Picture, and a Letter



Producers Council 1976-77 Officers

Left to Right—Stan Kotata, president; Ed Aotani, president HS/AIA; Biull Clapham, 1st vice president; Dave Rinell, 2nd vice president; Murray Brown, treasurer. Missing: Bill Slaton, secretary.



RICHARD A. BAKER. Associate member; N. A. Hal-lonquist & Associates. A.B. and M.A. Arch., U. of California-Berkeley. Wife: Lyndi. Children: Holly Scarlett 6½, Ryan 2½. Hobbies: photography, golf, snorkeling, billiards.



DENNIS DANIEL. Corporate member; Architects Hawaii. B. Arch., U. of Oklahoma. Wife: Janet. Hobbies: photography, hiking.

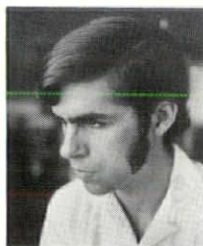
ALAN L. ATKINSON. Corporate member; EDW, Inc. B. Arch. Eng., Washington State U. Wife: Alice. Children: Karen 9. Hobbies: basketball, golf, swimming, photography.

DENNIS S. KIMURA. Corporate member. B.A., U. of Hawaii. Wife: Eunice. Children: Denise 5. Hobby: golf.

B. JACK GOLDEN. Hogan, Chapman, Cobein, Weitz & Associates, Inc. B. Arch., U. of Oklahoma. Wife: Carolyn D. Children: Timothy 13, Megan 8. Hobby: painting.

GEORGE HENEGHAN. Self employed. B. Arch., Washington U., St. Louis, Mo.; Ecole des Beaux Arts, Paris. Wife: Molly. Children: Eric 8, Adam 6.

KARL HAUPTSTEIN. Associate member; Sam Sweitzer & Associates. B.S.A.E., Chicago Technical College. Wife: Edna. Hobbies: sports cars, travel, soccer.



GLENN E. MASON. Corporate member; Ossipoff, Snyder, Rowland & Goetz. B.A., M. Arch., U. of Michigan. Hobbies: distance running, photography, volleyball, ceramics.

ALBERT T. MURAKAMI. Professional Associate member; Peter Hsi Associates, Inc. B. Arch., U. of Arizona. Hobby: writing.

NORMAN G. Y. HONG. Corporate member; Group '70 Lab, Inc., B.A. in Architecture, U. of Hawaii. Wife: Lorna. Hobbies: tennis, hiking, reading, photography.

LYNN S. POMEROY. Corporate member; Pomeroy & Pomeroy; B. Arch., Arizona State U.; diploma in architecture, Ecole de Beaux Arts, Fontainebleau, France; M. Arch., U. of Hawaii. Hobbies: sailing, diving, hiking, ceramics.

ROY STUEBINGER. Corporate member; Pomeroy & Pomeroy; B. Arch., U. of Southern Calif. Hobby: photography.



JEFFREY Y. NISHI. Corporate member; Ossipoff, Snyder, Rowland & Goetz. B. Arch., U. of Arizona.



FRANCIS M. WAI-LING WONG. Corporate member; Space Management Consultants, Inc. B. Arch., Dip. T.C.P., Ph.D. Arch. Science, U. of Sydney. Wife: Frances. Children: Tracy 3. Hobbies: music, art, sports.

Letter

Hawaiian Energy House
c/o Prof. Jim Pearson

Dear House:

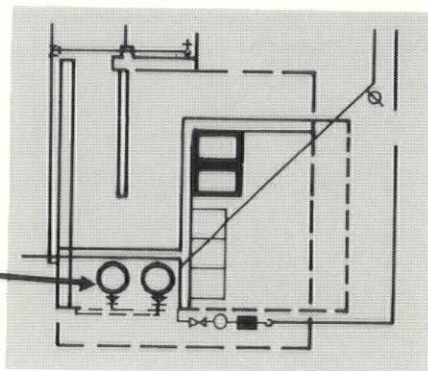
Please tell ol' Jim Pearson he's got a most articulate exponent of his project. Your self-description, aided by your major components, most effectively demonstrates that good architecture speaks for itself.

Frederick H. Kohloss

Our Engineering Advisory Team can save you money.

Centrally located gas water heaters can do all the work of many individually located heaters — and cost less for equipment and installation.

The water heaters went into the central laundry facility for this low-rise apartment building, allowing more usable saleable space in each of the 24 individual units.



Free estimates and installation proposals help architects and engineers *reduce* planning costs.

And save you energy.

The Gas Company's Engineering Advisory Team can save you money by providing accurate cost estimates. Estimates of the size and type of gas equipment that will give the best economy and efficiency for a project. Comparative equipment, installation and operating costs. And estimates of gas consumption and operating costs. With this kind of information, developers, working with their architects and mechanical engineers, can make thoughtful, cost-control decisions. And when called in early enough, our Engineering Advisory Team can often save planners many dollars by recommending alternate locations or piping routes.

They're also Energy Savers. Of course, the project that uses gas uses less of Hawaii's primary energy source, oil, than one that is

"all-electric." But our Engineering Advisory Team can do even more — suggesting ways to get maximum energy efficiency, from equipment selection to appliance installations. A single phone call can bring this free service to anyone in the building industry — 548-4236 or 548-2113.

Two of The Gas Company's Energy Savers: Charlie Bazell and Ed Inouye, engineering advisors.



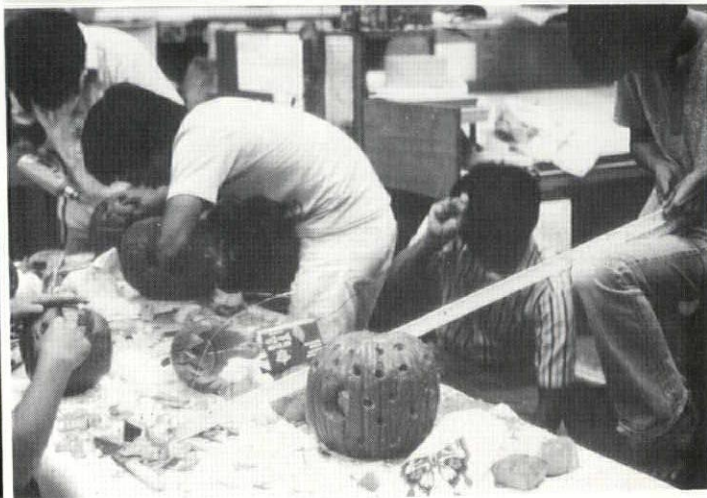
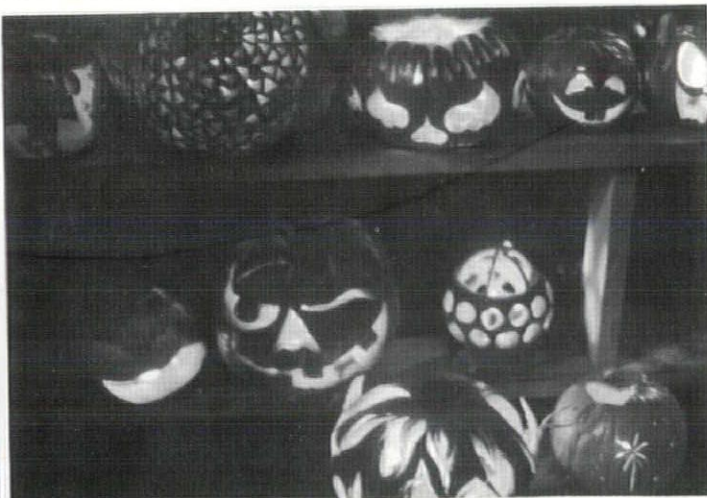
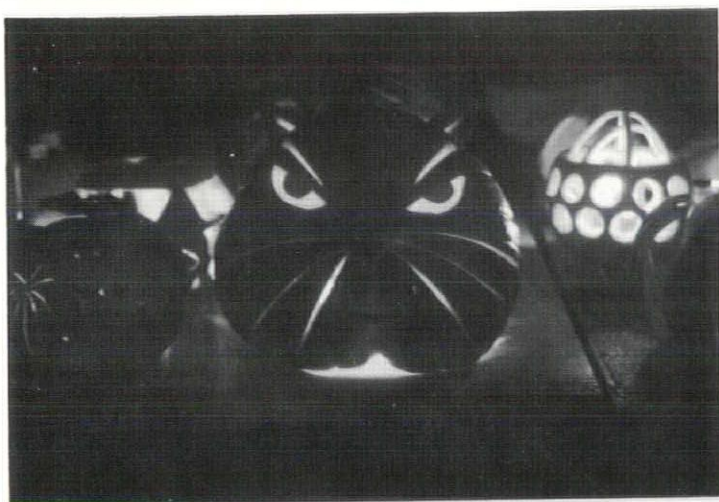
THE GAS COMPANY

GASCO, INC., A SUBSIDIARY OF PACIFIC RESOURCES, INC.
P. O. Box 3379, Honolulu, Hawaii 96842

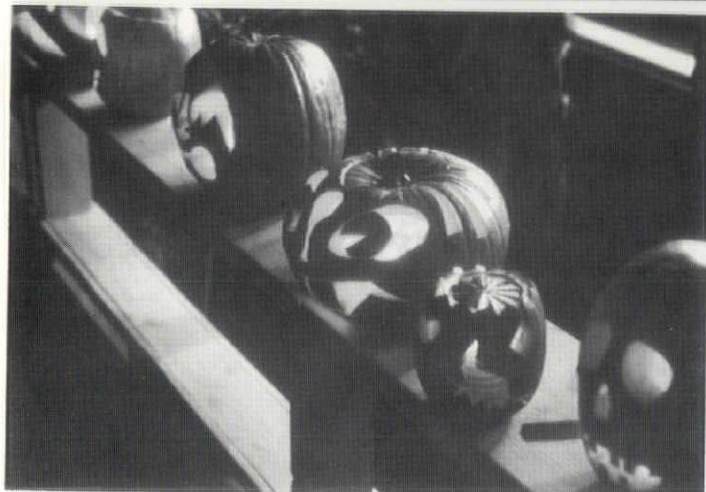
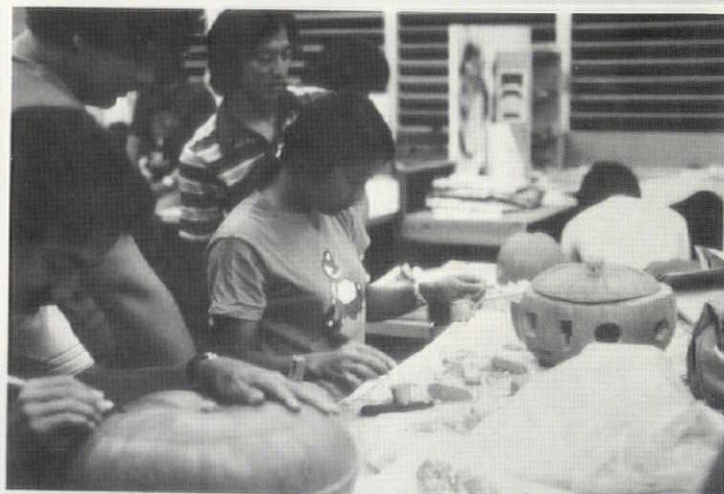
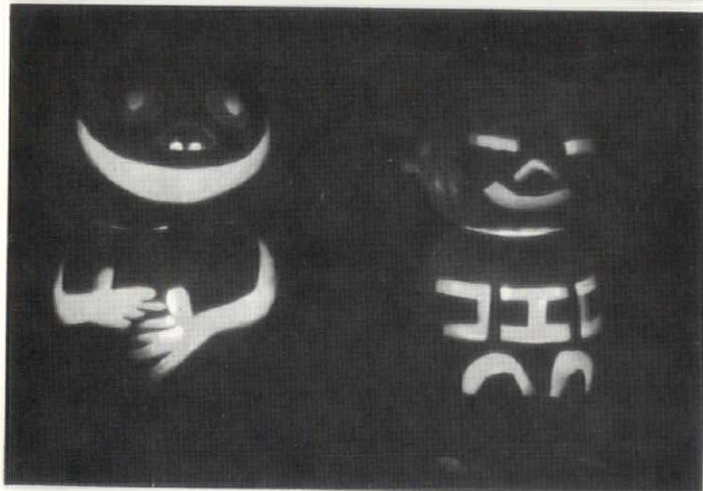
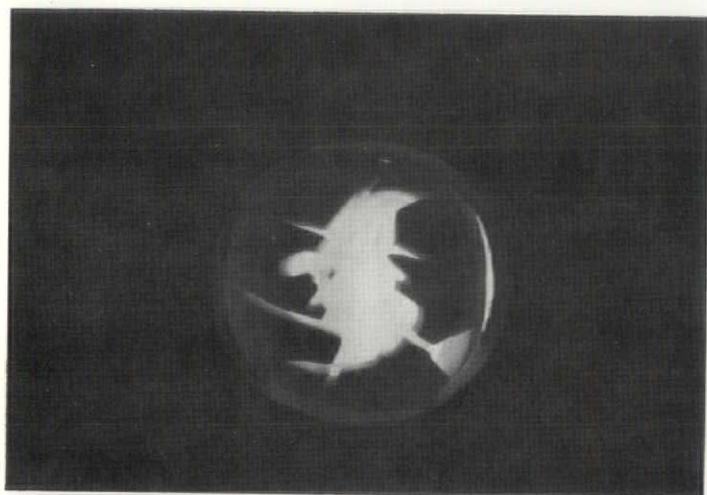


The Great Pumpkin Carve-In

Students of the Department of Architecture, University of Hawaii



Equisse number seven coincided with Halloween. What more natural problem than a pumpkin carve-in. The imagination and skill of the students speaks for itself. Ed.

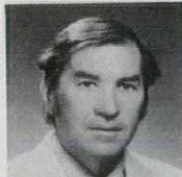


Continued from page 13

Co-Editors Named to Hawaii Architect

The Editorial Board announces the selection of Robert M. Fox and James Reinhardt as permanent co-editors of the Chapter magazine, "Hawaii Architect." Bob and Jim have served on the Editorial Board for the past eight months, providing sketches, articles, and leadership in determining format and distribution policies. During this time the Hawaii Architect's distribution has greatly increased and featured articles written by civic leaders outside of the architectural profession. It is expected that this trend shall continue in an effort to more closely relate the architectural profession with the community it serves. This is a difficult task and our thanks go to Bob and Jim for accepting this appointment.

THE EDITORIAL BOARD



Bob Fox



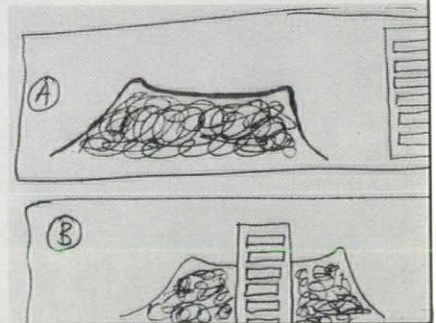
Jim Reinhardt

The Beldominium A Building for Our Time

by Ronald H. Bafetti

It seems incredible that as late as last year, citizens of Honolulu were embroiled in efforts to prevent the development of a high-rise at the base of Punchbowl Crater. Incredible simply because, with the advanced technology that is ours today, there should have been no problem in keeping both the development and anti-development forces happy.

The major objection raised against the proposed high-rise was that it would debase the appearance of the impressive natural landmark, site of a national cemetery for war dead. The objection, while valid, existed solely because the developer involved was trying to solve conventional problems —



Ah, youth... September 1972

The Beldominium, January 1975

HAWAII STATE ARCHITECT'S CONVENTION 1975

Hawaii Architect
11/75

Journal of the Hawaii Chapter
American Institute of Architects

A Proclamation

It is hereby proclaimed that the first annual State Architect's Convention is directed towards the theme "Hawaii's Tomorrow: A Vision of the Future." All residents are invited to participate in this historic event.

The architectural profession, by meeting the challenges of urban, public and private development, integrated into the environment, with courage and with foresight, cannot be overstated.

It gives the great pleasure to join with the Hawaii Chapter of the American Institute of Architects in celebrating the week of November 27, 1975, as

HAWAII STATE ARCHITECT'S WEEK

and, in so doing, to express the people's gratitude to the members of this profession for their high standing goals.

200th of the State Chapter, Hawaii
State of Hawaii, Nov. 27, 1975
for a October, 1975

George P. Robinson

HAWAII ARCHITECT

11 76

Yesterday,
Today, and
Tomorrow

**1976 Hawaii State
Architects Convention**

**Hawaii Society/AIA
50th Anniversary
1926-1976**

UH Student Awards Interdisciplinary Design Day at the University of Hawaii:

Roger Lee, past
Area Chapter,
University of Hawaii

I would like to direct my comments especially to the architectural students, speaking a little bit about "What is the Role of an Architect." It is quite complex and actually very difficult to explain in such a short period of time. But I would like to discuss one particular aspect of this concept which I feel is quite important.

I think one of the most important roles which I want to bring before you students as future professionals in architecture is

to your professional development and educational process as students in architecture. Many of the projects you work on as students or even as apprentices in an office — there's often a tendency to take a lot for granted — in many ways is not leadership, because you expect someone else to initiate the project in advance. You eventually learn that in order to most effectively control the outcome, you must get right to the beginning of things.

I think the best way to explain what I'm trying to say is to take

point of "I said, 'I don't want to do this.' You are... This time ship came within a few units, its rise or high units, its community. It's project for I call 'lead' This kind assume a ability, and

UH student awards, June 1975

A Critique: The General Plan Revision

by Mark Hastert AIP
and The Hawaii Chapter American Institute of Planners

The proposed objectives and policies for the revised General Plan, one alternative of which the Planning Commission of the City & County of Honolulu has been asked to recommend for adoption.

The revised plan is said to be government initiated, meaning that any new development will be primarily for the betterment of the community rather than the developer or landowner. However,

draws a line between urban and non-urban uses, that "since it is not a fine line which is precisely drawn, the boundary line is not to be amended" (pp 19 & 52).

Does this mean that even the

An Opinion: Architect/Engineer Selection Bills

by JIM REINHARDT

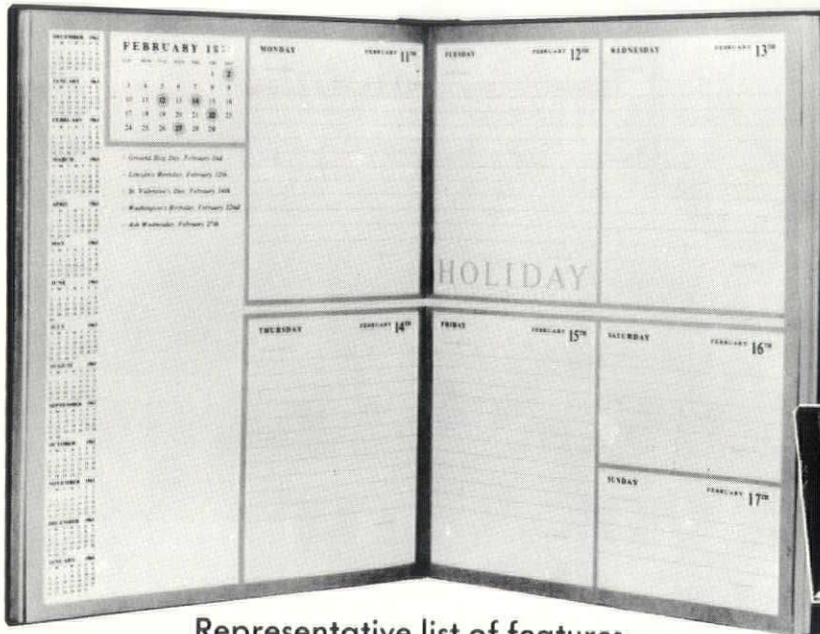
The vote was 5-to-4 — against. of what they wanted the bill to

An opinion, March 1975

A critique, January 1975

The perfect executive gift: SUPERBOOK

THE FINEST DESK APPOINTMENT BOOK IN THE WORLD



Representative list of features:

- 14 month appointment section
- Telephone/address section
- World and U.S. maps in full color
- Information and guide to selected major cities in the U.S.
- U.S. Government agencies and congressional committees
- Federal and state tax, and Social security information
- Holidays, vital statistics, and territories of the U.S.
- Postage, phone, & cable rates
- United Nations, foreign city and currency information
- Weights and measures

- and much more information on everything from vintage wine to first aid

Standard Edition

Padded cover in leather-like Red or Black Morocco grain, leather-like Tan Ostrich or Antiqued Green finish. \$10.95

Majestic Edition

Padded cover in smooth textured Tortoise-shell color. Gilt edge leaves. \$12.95

Director Edition

Padded cover in genuine leather Antiqued Red, Walnut Brown, or Black. Gilt edge leaves. \$17.00

The executive desk diary and businessman's compendium of information for the man who has everything. Simply the finest desk appointment book in the world

Enclosed is \$_____ for


_____ copies Director at \$17.00 ea., color _____
 _____ copies Majestic at \$12.95 ea. _____
 _____ copies Standard at \$10.95 ea., color _____

Name _____

Address _____

City _____ State _____ Zip _____

No C.O.D.s Make check or money order payable to:

 Crossroads Press, Inc. P.O. Box 833, Honolulu, Hi. 96808

also available at:

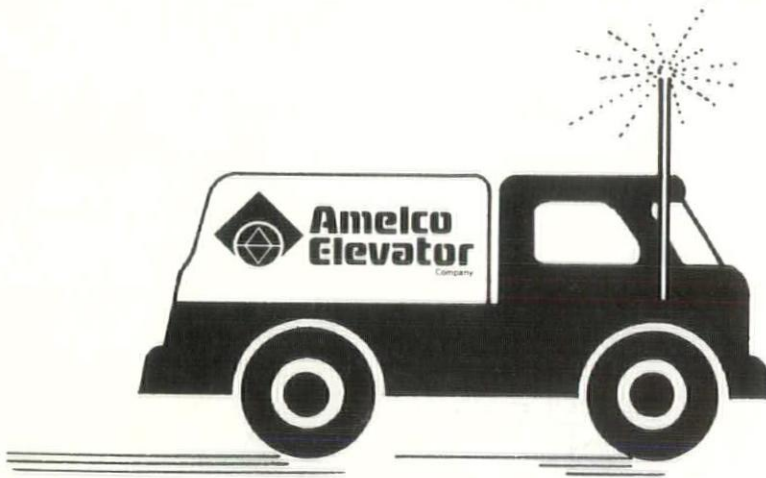
POCKETBOOK MAN
(Director only)

Ala Moana Center

HOPACO STATIONERS
(Standard & Director)

Ala Moana Center
Downtown-Bishop St.
Pearlridge Center

Mr. Robert A. Harris, AIA
Dir., Component Services
1735 New York Ave. N.W.
Washington, D.C. 20036



We're as fast with our offer to serve as we are with the service we offer

The best elevator maintenance and emergency service you can get for your contract dollar also happens to be the best you can get at any price. It's by Amelco Elevator, a leader on Oahu in keeping elevators working properly, the way they were designed to work. We're easy to talk to.

Call 521-6557.

We specialize in the right answers.



Amelco Elevator Company

645 Halekauwila Street / Honolulu, Hawaii 96813 / Ph 521-6557