

IOWA ARCHITECT

Official publication of
IOWA CHAPTER DIRECTORY
AMERICAN INSTITUTE OF ARCHITECTS

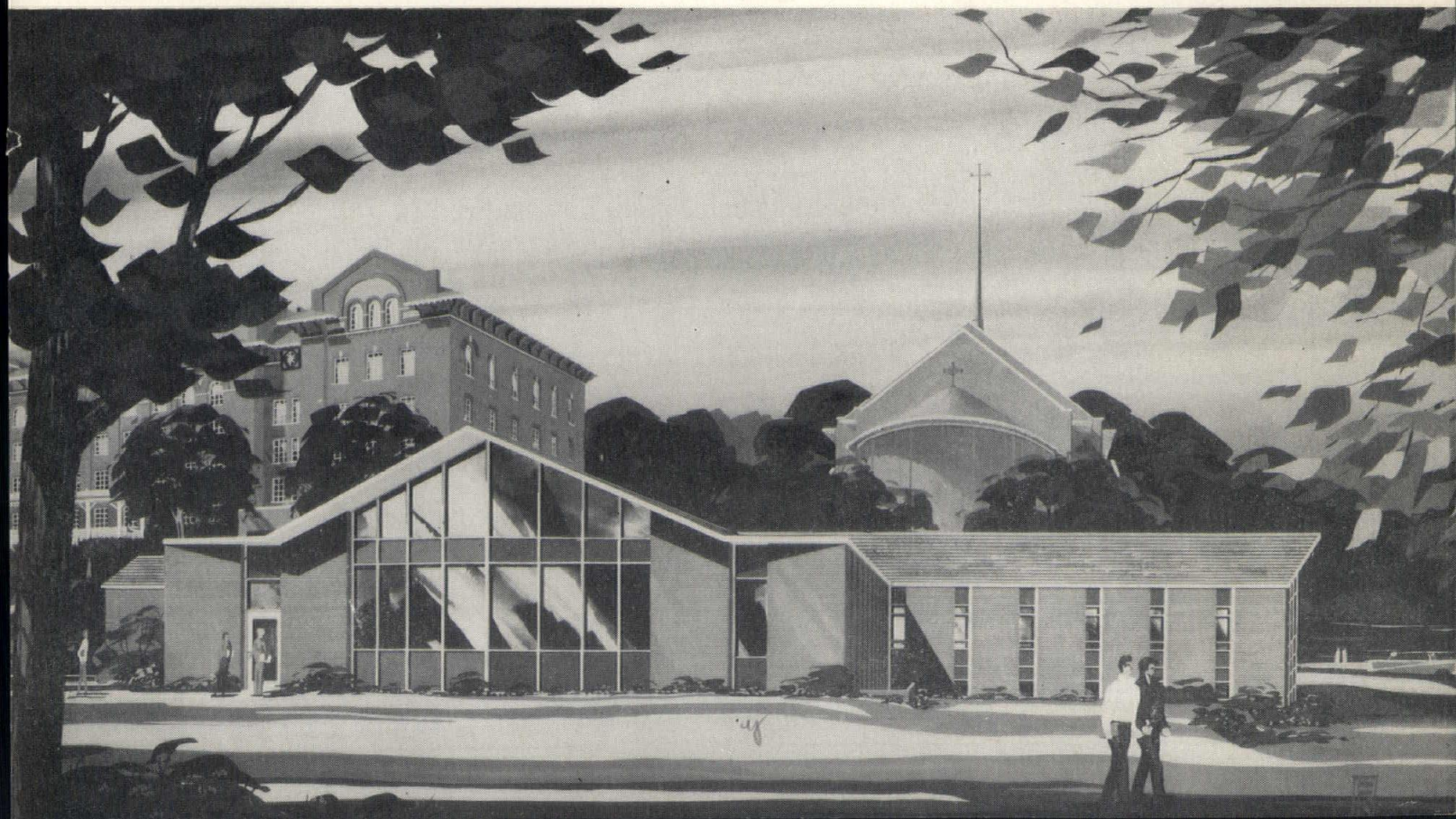


AMERICAN INSTITUTE
OF
ARCHITECTS
MAR 21 1961
LIBRARY

JANUARY - FEBRUARY

VOL VIII

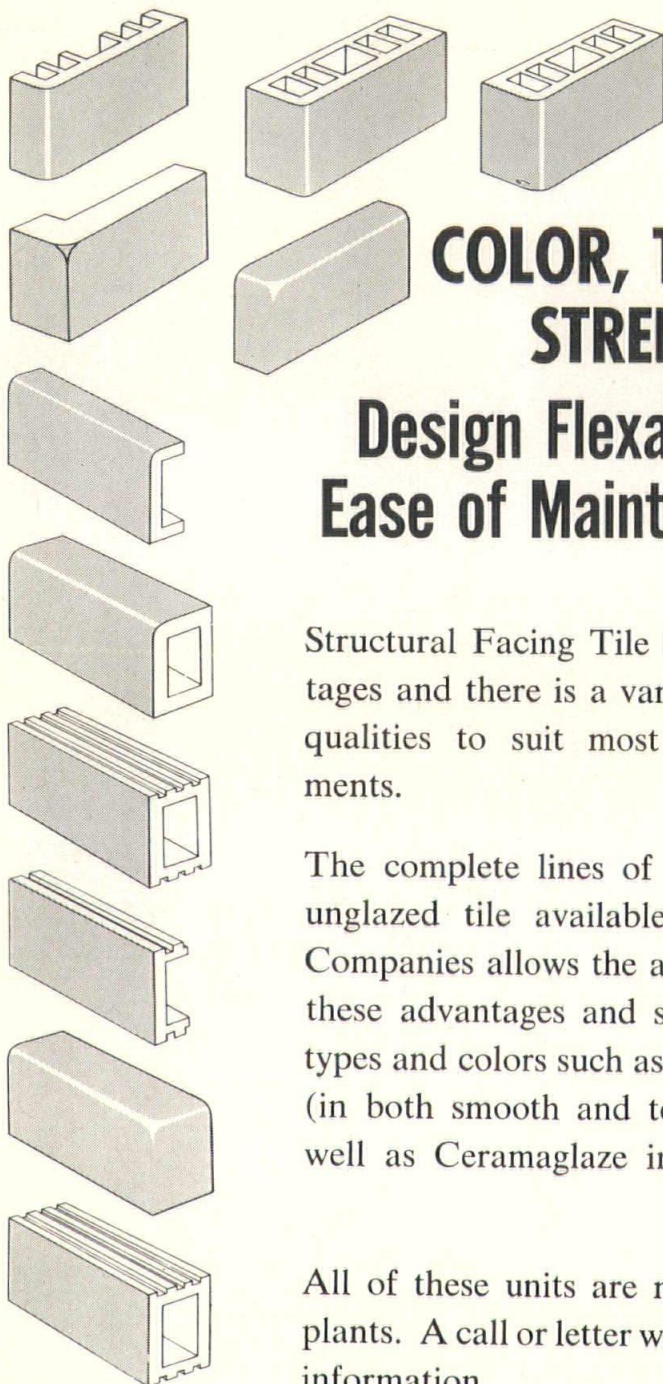
NO. 1 1961



FACING TILE

CERAMAGLAZE

UNGLAZED



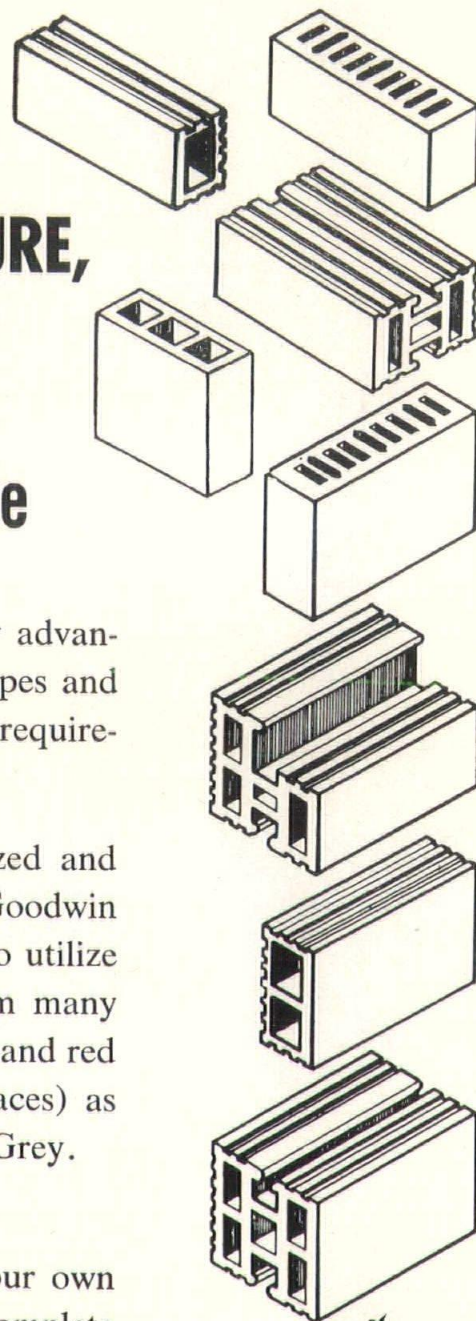
**COLOR, TEXTURE,
STRENGTH**

**Design Flexability,
Ease of Maintenance**

Structural Facing Tile has many advantages and there is a variety of types and qualities to suit most budget requirements.

The complete lines of both glazed and unglazed tile available from Goodwin Companies allows the architect to utilize these advantages and select from many types and colors such as tan, buff and red (in both smooth and textured faces) as well as Ceramaglaze in Blush Grey.

All of these units are made in our own plants. A call or letter will bring complete information.



MEMBER
SCPI
STRUCTURAL CLAY
PRODUCTS INSTITUTE
WASHINGTON, D.C.



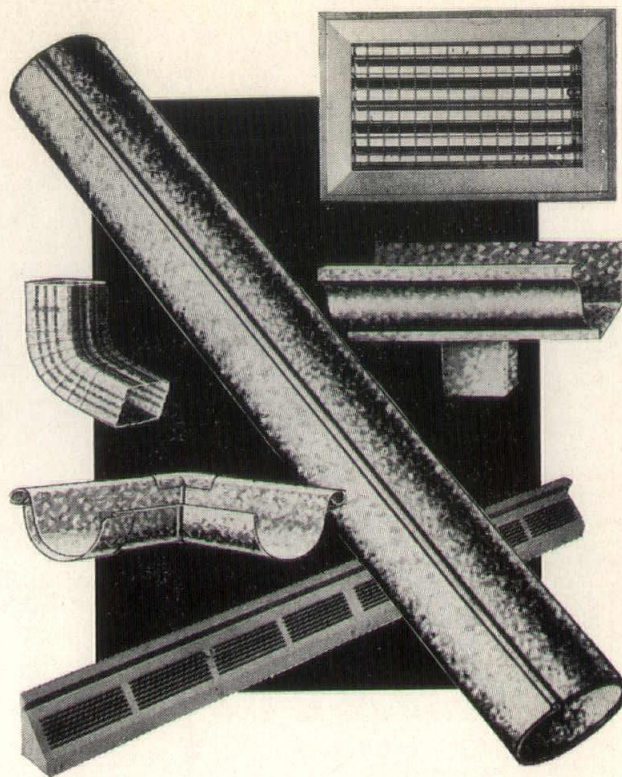
GOODWIN COMPANIES
ENGINEERING & PROMOTION OFFICES
614 Central National Bldg. 513 Foshay Tower
Des Moines, Iowa Minneapolis, Minnesota
Phone AT 8-3387 Phone FE 6-6788

QUALITY
Engineered
**CLAY
PRODUCTS**

DES MOINES CLAY COMPANY
MASON CITY BRICK AND TILE COMPANY
OTTUMWA BRICK AND TILE COMPANY
OSKALOOSA CLAY PRODUCTS COMPANY
REDFIELD BRICK AND TILE COMPANY

Q. What's the tightest-bonding and fastest-drying primer for things like these? ➡

A. "GALVA-BOND", the new base coat that bites into metals and never lets go!



● GALVA-BOND ANCHORS TO ALL THESE METALS:

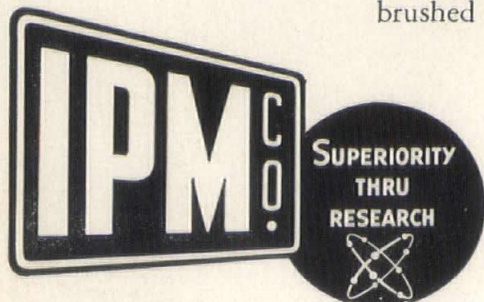
Galvanized — Aluminum — Magnesium — White Metal — Tin Plate — Terne Plate — Zinc — Copper — Brass — Steel. It is the perfect base coat for unpainted downspouts, flashings, gutters, metal roofs, metal farm buildings, silos, pipes and metal surfaces in industrial plants.

● GALVA-BOND ETCHES AND PRIMES IN A SINGLE COAT!

Prior to its quickly drying to a tough, hard film, Galva-Bond imparts a deep-etch chemical pre-treatment to the metal on which it has been applied. This 'bite-in' action assures secure anchoring and provides maximum stability for subsequent coatings.

● GALVA-BOND CAN SAVE YOU UP TO TWO DAYS TIME!

This new, highly-perfected priming material can be re-coated after only two hours drying time. Compare this with the 36 to 48 hours which most other satisfactory metal primers require. Available only in white. Can be brushed or sprayed. Thins with shellac alcohol.



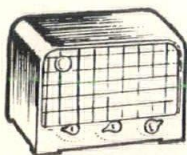
Retain this page for your material reference files.

Please contact us if further information is desired. No obligation, of course.

IOWA PAINT MANUFACTURING CO., INC.

General Offices, 118 Eighth St., Des Moines, Ia., Phone AT 3-1501

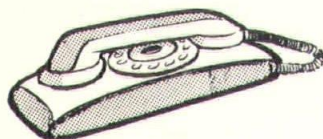
NOW! ONE FIRM OFFERS ALL TYPES OF INTERNAL COMMUNICATIONS SYSTEMS



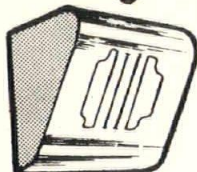
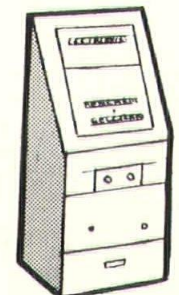
PAGING • LOUD SPEAKER • INTERNAL
TELEPHONE • BACKGROUND MUSIC • INTERCOM
for business, industry, institutions, clinics



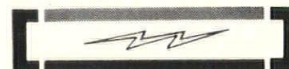
Whatever your internal communications
problem, Central Sound Systems is
ideally equipped to offer both counsel and
to furnish the finest product lines in
the country.



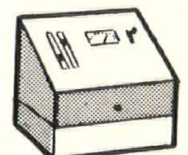
Top specialized engineering talent is yours for
the asking on a consultant basis with
architects or company management. A
call or letter will bring complete information.



709 RAILROAD AVENUE.....
WEST DES MOINES, IOWA.....
TELEPHONE CRESTWOOD 4-1172....



CENTRAL SOUND SYSTEMS



IOWA ARCHITECT

Iowa Chapter, American Institute of Architects

CONTENTS

OFFICERS

Raymond Bergquist
Dubuque
President

Robert Savage
West Des Moines
Vice-President

Richard Goewey
Des Moines
Secretary

John McKlveen
Des Moines
Treasurer

PUBLICATIONS COMMITTEE

James A. Lynch
Chairman
Thomas Waggoner
Rich Goewey

EDITOR

Harold J. Bullington
202 Masonic Temple Bldg.
Des Moines 9, Iowa

MANAGING EDITOR

Robert F. Bonomi
422 Securities Bldg.
Des Moines 9, Iowa
ATlantic 2-4309

" a building code preferred".....	6
the pot's boiling.....	7
Committee Appointments 1961-62.....	10
Calendar	11
Directory of Firms.....	13
Iowa Members, A.I.A.....	14
Associate Members.....	24
Junior Associate Members.....	28
Personal & Professional.....	32

THE COVER

Among new buildings gracing the college campi in Iowa is this Library for Loras College designed by Durrant & Bergquist of Dubuque.

The "Iowa Architect" is published bi-monthly for the Iowa Chapter, American Institute of Architects, and mailed without charge. Appearance of names and pictures of products or services in editorial or advertising copy does not constitute endorsement of either the A.I.A. or this chapter.

DESCO VITRO GLAZE

(Enameled Cement)

TERRAZZO CERAMIC TILE

For Information, Write or Phone:

Sioux City Mosaic Co., Inc.

WEST FIRST AND REBECCA STREETS

5-5653

SIOUX CITY 3, IOWA

Established 1920

Member of

National Terrazzo and Mosaic Ass'n.
Desco Vitro Glaze Ass'n. of America
Northwest Terrazzo Ass'n.

Our knowledge and experience of over 25 years in the Floor and Wall Covering Field is at your service. Call on us for solution of your problem jobs.

- Laytex Underlayments
- Asphalt Underlayments
- Vinyl Asbestos & Asphalt
- Homogeneous Vinyl
- Rubber and Cork Tiles
- Bolta-Wall Vinyl Wall Coverings
- Rubber Wall Coverings

RALPH N. SMITH, Inc.

Des Moines, Iowa

1339 2nd Ave.

AT 8-6741

... a building code preferred

The Iowa Fire Marshal has issued the 1961 Fire Safety Regulations for Schools and Colleges. The Iowa Chapter, A.I.A., at its annual convention expressed a unanimous conviction that the state should have a Building Code which would cover all the areas of public safety, for which responsibility is now divided at least among the Fire Marshal, the Department of Public Safety, the Health Department, and, to some degree, the Department of Public Instruction. Each department has the power to create, administer and interpret the regulations which affect its "Sphere of Authority."

Representatives of the Iowa Chapter worked wholeheartedly with a committee which studied and reviewed the Fire Safety Regulations before they were adopted. The State Fire Marshal and his staff are to be commended for recognizing the need for regulations and for extending their efforts to correct present and future hazards.

The Iowa Chapter, A.I.A., felt that it could not recommend adoption of the new rules and regulations, despite the good intentions of the issuing authority. The "bottleneck" to approval lies in the department's authority to create, administer and interpret its own regulations; another "road block" is the shadow of multiple regulation by three or more governmental agencies each operating independently of the others.

The State, in the years 1947 to 1951, spent funds for a building code study and a reasonable code was presented to the Legislature in 1949, 1951 and 1953 without success. Perhaps it is time that the Legislature revive this study for construction safety rules which would exempt agricultural structures, and those in incorporated places which have a building code adopted by ordinance.

PLAIN TALK HAS YOU IN MIND

Yes, Plain Talk has you in mind, and others who want economical printing without loss of craftsmanship and service.

Have your future printing tailored to meet your requirements by our creative art department.



**PLAIN TALK
PUBLISHING CO.**
Phone ATlantic 2-0485
511 6th Ave. East
Des Moines, Iowa

The Pot's Boiling



BERGQUIST



McKLVEEN



GOEWAY

Honor Awards, Student Liaison, Curriculum Revision, Office Practice Seminar, Iowa Movie, 1962 Convention

An Iowa Honor Awards program for architectural design, closer relationship with the Student Chapter, A.I.A., and a pair of "Retread" sessions on office practice and design were immediately in the picture following the Iowa Chapter's 1961 convention.

Raymond Bergquist of Dubuque, the 1960 vice-president, became the 1961 president, and Robert Savage of West Des Moines was elected vice-president. Richard Goewey and John McKlveen of Des Moines were re-elected secretary and treasurer respectively. W. D. Frevert and N. C. Prall of Des Moines were named to the executive committee with E. H. Healey of Cedar Rapids.

The 1961 Awards Banquet drew 421 persons to the Hotel Savery—the largest attendance ever at an Iowa A.I.A. function, and nearly 50 more than attended the 1960 event.

Presentation of Distinguished Craftsmen Awards to four craftsmen and four construction superintendents was one climax of the evening. The thought-provoking discussion by Dean Charles Colbert of Columbia University was a highlight of mental exercise.

One craftsmanship award this year was presented posthumously. Reen Petersen, a master carpenter employed in the firm of Reen Petersen and Son, Alta, died after the selections were made. His son, Mervin accepted the award on the behalf of his father. Mrs. Reen Petersen also attended.

Other craftsmen honored are: Joe Allatorre of Waterloo, a tile setter for Waterloo Tile & Marble Co.; Charles J. Chew, mason, with William Knudson and Son, Inc., Des Moines, and Harold M. Peterson, carpenter, Arthur H. Neumann & Bros., Inc., Des Moines.

For the first time, the chapter honored construction superintendents, and those named were: Woodrow J. Buck, James Thompson & Son, Ames; E. J. Forster, Boone Construction Co., Boone; Webb Hall, Ringland-Johnson Co., Clinton, and Howard K. Hansen, William Knudson and Son, Inc., Des Moines.

Architects were given plenty of food for thought in a fine series of technical talks through the convention which had as its theme "Design Responsibilities of the Architect." These began with the presentation Thursday night by Dean Henry Kamphoefner of North Carolina State College School of Design. He addressed the architects on NECA Night, at which the A.I.A. Chapter members were guests of the Iowa Chapter, National Electrical Contractors Association.

George N. Qualls of Philadelphia, who had been a student under Kamphoefner in Oklahoma and more recently at North Carolina State, kept the design ball rolling at the Luncheon Friday. Additional impetus was given during an excellent panel during the afternoon.



HEALEY



FREVERT



PRALL

SAVAGE

(No photo available)

Right: In view at the head table are Chairman Herbert, Pres. O'Neil and Governor Erbe, Mrs. Erbe, Mrs. O'Neil, Ray Bergquist and Mrs. Bergquist. At adjoining table Pres. Bill Mahan of ISU Student Chapter.

Below: A view of the banquet crowd of the 1961 convention.



Resolutions were unanimously adopted expressing the sorrow of the chapter at the death of Members C. C. Woodburn of Des Moines and William Parish of Davenport, and of Honorary Members Bernice Setser of Des Moines and Prof. Phillip H. Elwood of Tucson, Ariz. These deaths occurred since the 1960 convention.

Unanimous approval was also given resolutions which urged:

a state law to control billboards on the interstate highways,

legislation permitting Iowa to participate in federal low-cost housing programs, and

a law prohibiting construction of permanent structures which would block streets that have been mapped as part of a city plan, but are not yet opened or improved.

Copies of these resolutions were sent to all members of the Iowa Senate and House of Representatives.

Another resolution, urging creation of a federal Department of Urban Affairs, was dispatched to members of the Iowa delegation in Washington, and to President John F. Kennedy.

"Second United States"

"The Second United States," the A.I.A. newest film, which carries the torch for urban renewal, was viewed at the chapter meeting Saturday and the Executive Committee immediately had a print ordered for Iowa use. The film is available to all members and may be obtained through the chapter office.

Within two weeks of the convention, President Bergquist had completed all committee appointments (see page 10). The Executive Committee (Bergquist, Savage, Goewey, McKlveen, Frevert, Prall, Healey, Bonomi) met February 10, working from

9 a.m. to 5 p.m. on a comprehensive outline of the year's activity.

In addition to the standing committees, Bergquist named John Rice, Des Moines, as a Chapter Advisor for the student chapter at Iowa State University, Ames.

Taking note of activity underway for revisions in the architectural curriculum at Iowa State University, Bergquist appointed Clyde Lighter, Eugene O'Neil and Robert Savage as a special committee to participate in discussions with the faculty. These special appointments are added to the Education Committee.

With appointment of Charles Herbert of Des Moines as General Chairman for the 1962 convention, it was agreed by the Executive Committee that an Architectural Honor Awards program should be made a part of that convention. Herbert was asked to prepare an initial outline of the program for consideration of the Executive Committee at the Spring Meeting.

Spring Meeting April 12, Ames

The Executive Committee approved April 12 for the Spring Meeting of the Chapter at Ames. Planning for an Office Practice Seminar for this Spring will be in the hands of that committee chairman, Carl Blum of Burlington.

Summer Meeting at Cedar Rapids

Continuing to lay out the program for the year, the committee chose the weekend of July 14-15-16 for a Summer Outing at Cedar Rapids. E. H. Healey, executive committee member from that city, accepted the responsibility of planning the event which will headquarter at a motor hotel.

In other actions, the committee:

indicated it wants motion pictures produced showing Iowa architectural subjects;



BOWERY BELLES. The "Face on the Bar Room Floor" was the theme for chapter ladies on Thursday night, with Mrs. Myron Jensen (right, rear) in charge. Delightful costumes of yesteryear were worn by: (front, left to right) Chris Bullington, Kay Prall, Ann Shirk, and Mary Russell as the villain. Second row, are Margaret Voorhees, Mary O'Neil, Virginia Ver Ploeg, Alice Frevert, Pat Robison, Marguerite Ramsey, and Jean Jensen. The ladies also enjoyed a tea at Terrace Hill on Friday. All agreed the ladies' program was fun-filled.



approved a resolution complimenting the plumbers and steamfitters for their interest in architecture, but pointing out that chapter members may not participate in an advertising bulletin board;

renewed for a year its contract with Robert Bonomi as executive secretary;

nominated four men for two vacancies which will occur on the State Board of Architectural Examiners;

approved a letter which states chapter policy in regard to departmentally created, administered and interpreted regulations with particular attention to the 1961 Fire Safety Regulations for Schools and Colleges, and

set its next meeting for March 17 with an indication that executive committee meetings may be held monthly in 1961. In previous years the committee has met four to five times annually.

Subjects for discussions at the March 17 meeting will include:

Suggestions for revision of the state law regarding registration of architects; presentation of plaques to men who have served the chapter as president; home builders school; architectural photography school; newly registered architect's dinner, and public relations films.



NECA's Dewey Smith, AIA's Gene O'Neil, Kamphoefner of NCSC



Columbia's Colbert, Kamphoefner, Brown and Higgins

While the ladies enjoyed the Bowery Belles Buffet, the AIA Chapter members were guests of the Iowa Chapter NECA at which Kamphoefner of North Carolina State was the principal speaker.

Karol Kocinski, design instructor at Iowa State University, poses with a duplicate model of his Honorable Mention winning design, one of only 22 so recognized in the Franklin Delano Roosevelt memorial contest. Nearly 600 designs were entered in the contest. The design symbolized the Four Freedoms and the universal brotherhood of man.



YOUR SIGN OF PROMPT SERVICE

And a vital part of that service to you is a complete understanding and thorough knowledge of the many cost-saving advantages of one of our major product lines.



This versatile material has had rapid acceptance by architect and engineer alike for roof deck systems, acoustical ceilings, as a form plank material for concrete slab or thin shell contemporary designs. Tectum insulates; is acoustical and structural; is rated non-combustible. In all, twelve outstanding Tectum features help keep roof deck and other reflected building costs in line. We'll be happy to see that you get complete information, at once. Call or write today.



Central Avenue School, Burlington, Iowa.
Architects: Dane Morgan and Associates,
Burlington, Iowa



SWANSON SALES INC.
3213 Forest Ave. • Des Moines
CR 9-9793

COMMITTEES 1961

Chapter Affairs

SAVAGE, ROBERT E.

Chairman

1200 Grand

West Des Moines, Iowa

BERGQUIST, RAYMOND G.

GOEWY, RICHARD W.

McKLVEEN, JOHN

O'NEIL, EUGENE C.

FREVERT, W. DAVID

HEALEY, EDWARD H.

PRALL, N. CLIFFORD

Education & Registration

BENTLEY, JAMES M.

Chairman

219 Waterloo Bldg.

Waterloo, Iowa

JORDISON, RICHARD R.

WOLF, LEONARD

GRIFFITH, GERALD I.

DOMMER, JEROLD W.

RICHARDSON, CHARLES

Student Advisor:

RICE, JOHN

Curriculum Study:

LIGHTER, CLYDE W.

O'NEIL, EUGENE C.

SAVAGE, ROBERT E.

Convention, 1962

HERBERT, CHARLES E.

Chairman

202 Masonic Temple Building

Des Moines 9, Iowa

Fellowships

WALSH, JAMES H.

Chairman

Glass Block Building

Spencer, Iowa

HEALEY, EDWARD H.

KENINGER, BERNARD

Relations with Construction Industry

LYON, R. WAYNE

Chairman

526 Liberty Building

Des Moines 9, Iowa

FREVERT, W. DAVID

VER PLOEG, STANLEY

SKILES, PAUL

HORNER, GEORGE

Legislation

RUSSELL, GEORGE

Chairman

1221 Savings & Loan Building

Des Moines 9, Iowa

PRALL, N. CLIFFORD

HIGGINS, BURDETTE

EMERY, AMOS B.

THORSON, OSWALD H.

SILLETTO, CHARLES B.

Membership

DEAN, WALDO

Chairman

202 Masonic Temple Building

Des Moines 9, Iowa

HENRY, HARVEY W.

THOMPSON, JACK D.

McKLVEEN, JOHN

Practice of Architecture

BLUM, CARL R.

Chairman

314 N. Fourth Street

Burlington, Iowa

JENSEN, MYRON E.

STEFFEN, KENNETH J.

BROM, RICHARD H.

Preservation of Historical Buildings

WAGNER, WILLIAM J.

Chairman

506 Shops Building

Des Moines 9, Iowa

PATTEN, LAWTON M.

Public Relations

ROBISON, DOUGLAS

Chairman

601 Brady Street

Davenport, Iowa

RAMSEY, ROBERT

KRAMER, DONOVAN D.

PAYNE, HAROLD

Publications

LYNCH, JAMES A.

Chairman

1221 Savings & Loan Building

Des Moines 9, Iowa

GOEWY, RICHARD

WAGGONER, THOMAS M.

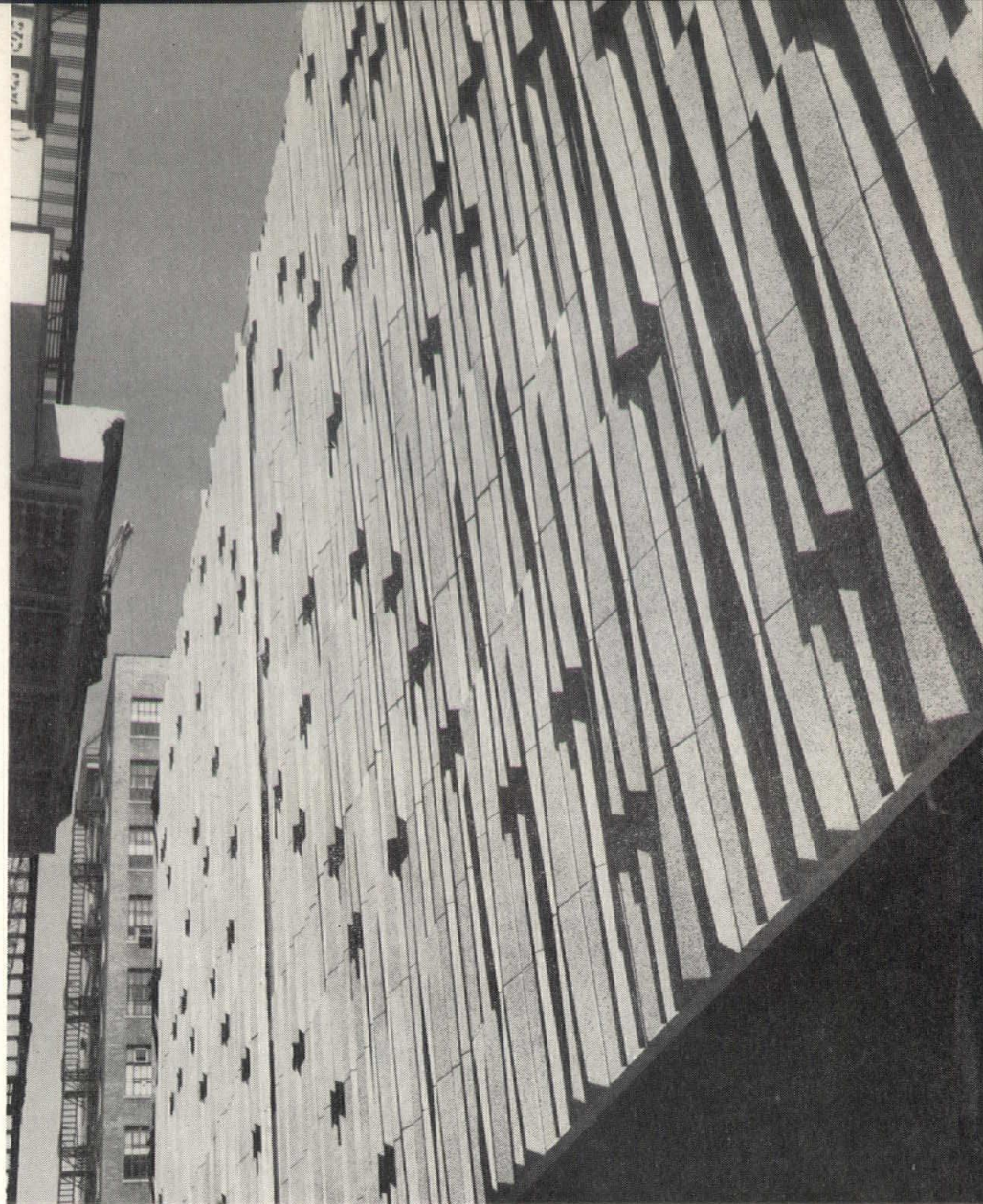
C A L E N D A R

Better Concrete Conference, Ames, March 8-9

Spring Meeting, A.I.A., Ames, April 12

A.I.A. Convention, Philadelphia, April 23-28

Summer Outing, Cedar Rapids, July 14-16



THE BANKERS TRUST COMPANY • DES MOINES

BROOKS - BORG, Architects



MIDWEST CONCRETE INDUSTRIES
WEST DES MOINES, IOWA





STRENGTH

BEAUTY

ECONOMY

Knights of Columbus Club Home, Waterloo. Youngblut Construction Co., Washburn, builders.
Harvey W. Henry, Waterloo, architect.

prestressed concrete

INTERIOR BEAUTY AT LOW COST

Prestressed Concrete beams are more and more popular with school boards, club secretaries, clergymen, and church boards. And there's a reason. Prestressed Concrete improves the interior beauty of large meeting rooms—in fact, the whole building—at low cost!

The superb strength of Prestressed Concrete eliminates unsightly supporting columns, even for lengths up to 100 feet. Prestressing concrete eliminates cracking, adds up to permanently beautiful finishes. Prestressed Concrete beams are gracefully slender and beautiful with or without acoustical finishing.

Prestressed Concrete costs are kept down through factory methods of production. All the advantages of off-site manufacture, standardiza-

tion, prompt delivery, and easy, speedy erection are gained.

Concrete has come into its own as a building material—with Prestressing. Include the strength, beauty, and economy of Prestressed Concrete in your next design.



IOWA ASSOCIATION OF

prestressed concrete

MANUFACTURERS

A & M Prestress, Clear Lake * Midwest Concrete Industries,
West Des Moines * Prestressed Concrete of Iowa, Iowa
Falls * C. W. Shirey Co., Waterloo * Wilson Concrete
Co., Red Oak

DIRECTORY, IOWA CHAPTER, A.I.A.

On this page are listed all architectural firms resident in Iowa, whose principals are affiliated either with the A.I.A. or its Iowa Chapter.

Altfillisch, Olson, Gray & Thompson
126½ West Water Street
Decorah, Iowa

Architects Associated
518 Badgerow Building
Sioux City, Iowa

Ralph Arnold
State House
Des Moines 19, Iowa

Herbert A. Arthur
310½ Main Street
Ames, Iowa

Atherton-Dean-Herbert
202 Masonic Temple Building
Des Moines 9, Iowa

Bergland & Bianco
11½ S. Federal Avenue
Mason City, Iowa

Wm. Beuttler & Son
14th and Nebraska Streets
Sioux City, Iowa

Brooks-Borg
815 Hubbell Building
Des Moines 9, Iowa

Brown & Healey
Town & Country Building
Cedar Rapids, Iowa

Carrithers, I. T.
6 N. First Street
Council Bluffs, Iowa

M. B. & R. M. Cleveland
424 E. 4th Street
Waterloo, Iowa

G. B. Cox
Professional Arts Building
1630 State Street
Bettendorf, Iowa

Architects Crites & McConnell
1953 First Ave. S.E.
Cedar Rapids, Iowa

Deuth & Gibson
417 Logan Street
Waterloo, Iowa

Dewild-Grant-Reckert & Stevens
Rock Rapids, Iowa

Dougher, Frevert & Ramsey
707 Locust Street
Des Moines 9, Iowa

Durrant & Bergquist
666 Loras Blvd.
Dubuque, Iowa

Amos Emery & Associates
820 Locust Street
Des Moines 9, Iowa

Gerald Griffith
3810 Ingersoll
Des Moines 12, Iowa

The Griffith Co.
S. Kenyon Road
Fort Dodge, Iowa

Grow & Devoe
403½ Main Street
Cedar Falls, Iowa

Robert D. Hecker
200 Toy Nat'l. Bank Bldg.
Sioux City, Iowa

Henry & Broshar
2101A Falls Ave.
Waterloo, Iowa

Hollis and Miller
120 Council Bluffs Savings Bank Bldg.
Council Bluffs, Iowa

George Horner
State University of Iowa
Iowa City, Iowa

Lyle P. Howard
208 Kresge Building
Ottumwa, Iowa

Ervin C. Huneke
802 E. Madison
Fairfield, Iowa

Louis Kingscott & Associates
321 W. Kimberly Road
P.O. Box 202
Davenport, Iowa

Kohlmann & Eckman
634 Higley Building
118 3rd Avenue S.E.
Cedar Rapids, Iowa

Lindgren & Taylor
6311 Hickman Road
Des Moines 22, Iowa

Keith Lorenzen
215 Commercial Street
Waterloo, Iowa

Maiwurm-Wiegman
612 Third Ave. South
Fort Dodge, Iowa

Dane D. Morgan & Associates
314 N. 4th
Burlington, Iowa

William Nielsen
307 Masonic Temple Bldg.
Des Moines 9, Iowa

Charles Richardson & Associates
1001 Kahl Building
3rd & Ripley Streets
Davenport, Iowa

Peiffer & Associates
1213 Fourth Avenue S.E.
Cedar Rapids, Iowa

N. Clifford Prall
910 Insurance Exchange Bldg.
Des Moines 9, Iowa

Russell J. Prescott
126½ W. Main Street
Marshalltown, Iowa

Prout-Mugasis-Johnson
709 5th Avenue S.
Clinton, Iowa

Glen Ralston
214 Waterloo Building
Waterloo, Iowa

Rossiter & Hamm
455 Main Street
Dubuque, Iowa

Russell & Lynch
1221 Savings & Loan Building
Des Moines 9, Iowa

Savage & Ver Ploeg
1200 Grand
West Des Moines, Iowa

Smith-Voorhees-Jensen
Architects Associated
304½ 8th Street
Des Moines 9, Iowa

Louis G. Soenke
601 Brady St.
Davenport, Iowa

Steffen & Stoltz
Box 601
Ottumwa, Iowa

Stewart, Robison & Laffan
Priester Building
601 Brady Street
Davenport, Iowa

Thorson & Brom
219 Waterloo Building
Waterloo, Iowa

Thorson, Gjelten & Schellberg
205 S. Clark Street
Forest City, Iowa

Tinsley-Higgins-Lighter & Lyon
526 Liberty Building
Des Moines 9, Iowa

Toenjes & Stenson
217 W. 4th Street
Waterloo, Iowa

Waggoner & Waggoner
15 S. Federal Avenue
Mason City, Iowa

Walsh & Keninger
Box 467
Glass Block Building
Spencer, Iowa

Wetherell-Harrison-Wagner
506 Shops Building
Des Moines 9, Iowa

Raymond C. Whitaker
1202 Adams Street
Davenport, Iowa

Leonard Wolf
Engineers Annex
Iowa State University
Ames, Iowa

Woodburn & O'Neil
201 Jewett Building
Des Moines 9, Iowa

IOWA CHAPTER, A. I. A.

Members Emeritus

CHARLES W. DeJARNETTE, 3523 University, Apt. 13-B, Des Moines
E. R. SWANSON, 3133 Morrison Avenue, Sioux City
VERNON F. TINSLEY, 3913 Maquoketa Drive, Des Moines

Members, American Institute of Architects

ALTFILLISCH, CHARLES

(F.A.I.A.)
Principal, Altfillisch,
Olson, Gray &
Thompson, 126½ W.
Water Street,
Decorah



ARNOLD, RALPH

Board of Control of State Institutions,
Statehouse, Des Moines



ARTHUR, HERBERT A.

Principal, Herbert A.
Arthur, 310 Main
Street, Ames



ATHERTON, THOMAS J.

Principal, Atherton-
Dean-Herbert, 202
Masonic Temple
Bldg., Des Moines



BENTLEY, JAMES M.

Thorson & Brom,
219 Waterloo
Building, Waterloo

BERGLAND, ROBERT B.

Principal, Bergland and Bianco,
11½ S. Federal Avenue, Mason City

BERGQUIST, RAYMOND G.

Principal, Durrant and
Bergquist, 666 Loras
Blvd., Dubuque



BEUTTLER, WILLIAM

Principal, William Beuttler and Son,
14th and Nebraska Streets, Sioux City

BEUTTLER, W. LEE

Principal, William Beuttler and Son,
14th and Nebraska Streets, Sioux City

BIANCO, HAROLD F.

Principal, Bergland and Bianco,
11½ South Federal Avenue, Mason City

BLUM, CARL R.

Principal, Dane D. Morgan and Associates,
314 North 4th Street, Burlington

BORG, ELMER H.

Principal, Brooks-Borg,
815 Hubbell Building, Des Moines

BORG, JOSEPH E.

Principal, Brooks-Borg,
815 Hubbell Bldg., Des Moines



BROM, RICHARD H.

Principal, Thorson and
Brom, 219 Waterloo
Building, Waterloo

BROOKS, J. WOOLSON (F.A.I.A.)

Principal, Brooks-Borg,
815 Hubbell Building, Des Moines



BROSHAR, ROBERT C.

Principal, Henry &
Broshar, 2101A Falls
Avenue, Waterloo

BROWN, WILLIAM J.

Principal, Brown and
Healey, 36th Street
and First Avenue,
SE, Cedar Rapids



CAMIZZI, FRANCIS J.

Brown & Healey,
Town & Country
Bldg., Cedar Rapids



CARRITHERS, IRA T., JR.

Principal, I. T.
Carrithers,
6 North First Street,
Council Bluffs



CLEVELAND, MORTIMER B.

Principal, R. M. &
M. B. Cleveland,
424 East 4th Street,
Waterloo



CLEVELAND, RHODES M.

Principal, R. M. &
M. B. Cleveland,
424 East 4th Street,
Waterloo



COUCH, LOUIS C.

Lundine & Toline,
1630 - 5th Ave., Moline, Illinois



WOOD POST

SCULPTURED BY BLUMCRAFT IN HAND RUBBED
OIL FINISH • SEND FOR GENERAL CATALOG M-61



Blumcraft

OF PITTSBURGH

COPYRIGHT 1961 BY BLUMCRAFT OF PITTSBURGH • 460 MELWOOD ST., PITTSBURGH 13, PENNSYLVANIA

**COX,
GERALD BURTON**

Principal, G. B. Cox,
Architect, Professional
Arts Bldg., 1630
State St., Bettendorf



**FERNBACH,
RICHARD B.**

708 Foster Drive,
Des Moines



**GRIFFITH,
STANFORD WELLS**

Principal, The
Griffith Company
S. Kenyon Road,
Fort Dodge



CRITES, RAY D.

Principal, Architects Crites and McConnell,
1953 First Avenue S.E., Cedar Rapids



FRANZEN, ARCHIE W.

P.O. Box 1515, Harper's Ferry,
West Virginia



GROW, ROBERT WARREN

Principal, Grow and Devoe,
403 1/2 Main Street, Cedar Falls



**DEAN,
WALDO J.**

Principal, Atherton-
Dean-Herbert,
202 Masonic Temple
Building, Des Moines



**FREVERT,
W. DAVID**

Principal, Dougher-
Frevert-Ramsey,
302 Garver Building,
Des Moines



**HARRISON,
ROLAND T.**

Principal, Wetherell-
Harrison-Wagner,
506 Shops Building,
Des Moines



**DEVOE,
ROBERT C.**

Principal, Grow and
Devoe, 403 1/2 Main,
Cedar Falls



GALVIN, JOHN C.

Altfillisch, Olson, Gray & Thompson,
126 1/2 West Water Street, Decorah



GIBSON, VICTOR P.

Deuth & Gibson, 417 Logan Street, Waterloo

**HAYNES,
STANLEY F.**

Prout, Mugasis and
Johnson, 709 5th
Avenue South, Clinton



DOMMER, JERALD W.

Principal, Durant and Bergquist,
666 Loras Blvd., Dubuque

**GJELTEN,
GORDON O.**

Principal, Thorson,
Gjeltten and
Schellberg,
205 S. Clark Street,
Forest City



DOUGHER, JAMES A.

Principal, Dougher-Frevert-Ramsey,
302 Garver Building, Des Moines

**GOEWY,
RICHARD W.**

Brooks-Borg,
815 Hubbell Building,
Des Moines

**HEALEY,
EDWARD HOPKINS**

Principal, Brown and
Healey, 36th Street
and 1st Ave., S.E.,
Cedar Rapids



**ECKMAN,
REALAND F.**

Principal, Kohlman
and Eckman,
634 Higley Building,
Cedar Rapids



GRAY, DONALD LOWELL

Principal, Altfillisch, Olson, Gray & Thompson,
305 Fifth Avenue, Decorah

**HECKER,
ROBERT D.**

Principal, Robert D.
Hecker, 200 Toy
National Bank,
Sioux City

**EMERY,
AMOS B.**

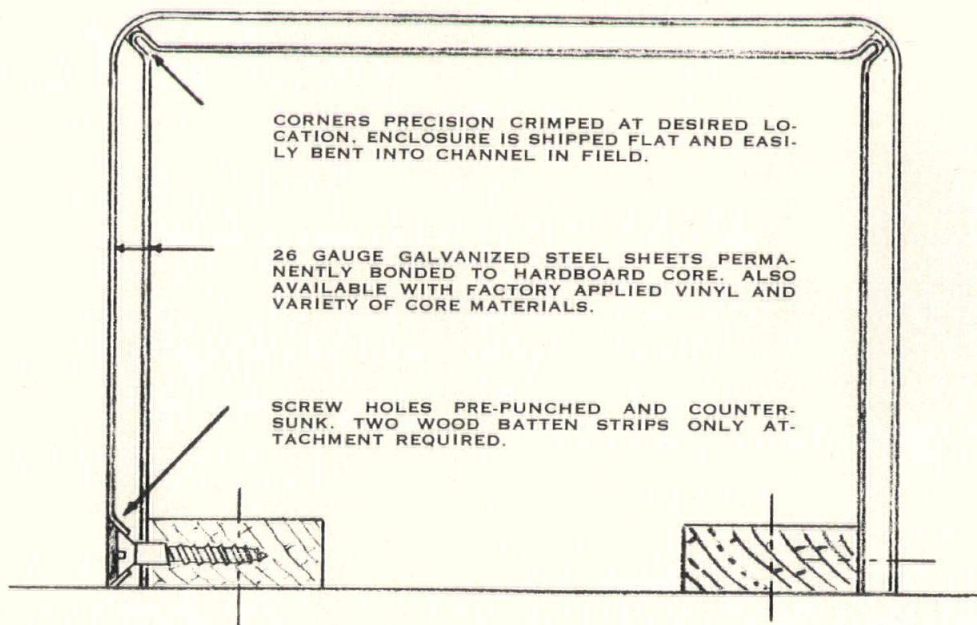
Principal, Amos Emery
and Associates,
820 Locust Street
Des Moines

**GRIFFITH,
GERALD I.**

Principal, Gerald I.
Griffith,
3810 Ingersoll,
Des Moines

PIPE AND COLUMN CLOSURES

- RAPID CLEAN INSTALLATION
- REMOVABLE
- UNIFORM ROUNDED CORNERS
- ABSOLUTELY FLAT—STIFF AS $\frac{1}{4}$ " PLATE
- DURABLE METAL FACES
- LOWER INITIAL COST



M E T - L - W O O D

STRESSED SKIN STRUCTURAL LAMINATES

OWL'S HEAD ENGINEERING

2814 Forest Drive



Des Moines II



AT 2-6972



HENRY, HARVEY W.

Principal, Henry & Broshar, 2101A Falls Ave., Waterloo



HUEHOLT, RAYMOND L.

Principal, Smith-Voorhees-Jensen, Architects Associated, 201 Davidson Building, Des Moines



KRAMER, DONOVAN D.

Principal, Durrant and Bergquist, 666 Loras Blvd., Dubuque



HUKILL, WILLIAM V., JR.

Kohlmann and Eckman, 634 Higley Building, Cedar Rapids



HUNEKE, ERVIN C.

Principal, Ervin C. Huneke, First National Bank Building, Fairfield

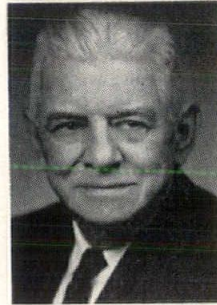
LAFFAN, WILLIAM J.

Principal, Stewart-Robison-Laffan, 601 Brady St., Davenport



HERBERT, CHARLES E.

Principal, Atherton-Dean-Herbert, 202 Masonic Temple Building, Des Moines



JENSEN, MYRON E.

Principal, Smith, Voorhees, Jensen, Architects Associated, 201 Davidson Building, Des Moines



LANGOHR, E. LAWRENCE

Principal, Dane D. Morgan Associates, 314 N. 4th Street, Burlington

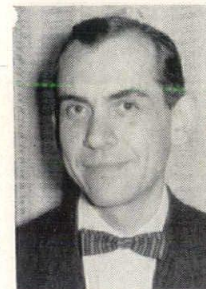
HIGGINS, BURDETTE

Principal, Tinsley, Higgins, Lighter and Lyon, 526 Liberty Building, Des Moines



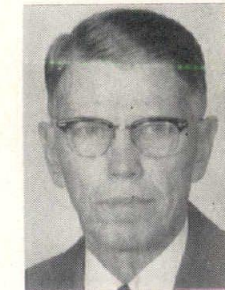
JOHNSON, ROBERT L. M.

Principal, Prout-Mugasis-Johnson, 709 Fifth Avenue South, Clinton



LANTZ, REUBEN S.

Tinsley, Higgins, Lighter and Lyon, 526 Liberty Building, Des Moines



HORNER, GEORGE L.

Principal, George Horner, Department of Planning and Construction, State University of Iowa



KENDALL, R. KENNETH

Brooks-Borg, 815 Hubbell Bldg., Des Moines



LIGHTER, CLYDE W.

Principal, Tinsley, Higgins, Lighter and Lyon, 526 Liberty Building, Des Moines



HOTCHKISS, WALTER ALAN

Principal, Amos Emery and Associates, 820 Locust, Des Moines



KENINGER, BERNARD J.

Principal, Walsh & Keninger, Box 467, Spencer



LORENZEN, KEITH E.

Principal, Keith Lorenzen, 215 Commercial Street, Waterloo



HOWARD, LYLE

Principal, Lyle P. Howard, 208 Kresge Building, Ottumwa

KNIGHT, CALVIN A.

Box 553, Iowa City

KOHLMANN, ELLSWORTH F.

Principal, Kohlmann and Eckman, 634 Higley Building, Cedar Rapids

The best ideas are more exciting
in **CONCRETE**



Stanford University Medical Center, Palo Alto, Calif. Architect: Edward D. Stone, New York, Structural Engineers: Pregnoff & Matheu, San Francisco, Calif.

Decorative patterns in concrete give unity and beauty to new medical center!

Hospital, clinic, school, research laboratory—the many activities of the new Stanford Medical Center require 7 separate buildings. To bring this complex into one harmonious whole, ingenious use has been made of modern concrete. Precast grilles provide a strong light-and-shadow pattern over large areas. They also set a design theme which is repeated in bold relief on other concrete surfaces throughout the Center. The elegant beauty achieved gives dramatic evidence of concrete's esthetic versatility and its structural advantages. Today, more than one architect is acquiring a reputation through the creative uses of modern concrete.

**LUNDBLAD,
GLENN E.**

Smith-Voorhees-Jensen, Architects Associated, 424 Badgerow Building, Sioux City



**McKLVEEN,
JOHN H.**

Principal, Wetherell-Harrison-Wagner, 506 Shops Building, Des Moines



PATTEN, LAWTON M.

Department of Arch. and Arch. Eng., Iowa State University, Ames



**PAYNE,
HAROLD L.**

Russell & Lynch, 1201 Savings & Loan Building, Des Moines

PEIFFER, LEO CLEMENT

Principal, Peiffer and Associates, 1213 Fourth Avenue S.E., Cedar Rapids



**LYNCH,
JAMES A.**

Principal, Russell and Lynch, 1221 Savings and Loan Building, Des Moines



McLENNAN, DONALD M.
208 Bever Bldg., Cedar Rapids

**MORGAN,
DANE D.**

Principal, Dane D. Morgan and Associates, 314 North 4th Street, Burlington



**PRALL,
N. CLIFFORD**

Principal, N. Clifford Prall, 910 Insurance Exchange Building, Des Moines



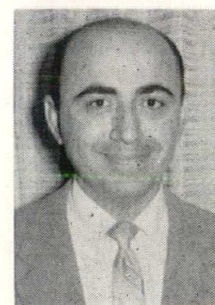
**LYON,
R. WAYNE**

Principal, Tinsley, Higgins, Lighter and Lyon, 526 Liberty Building, Des Moines



**MUGASIS,
ALEXANDER P.**

Principal, Prout, Mugasis and Johnson, 709 5th Avenue, South, Clinton



PRESCOTT, RUSSELL, J.

Principal, Russell J. Prescott, 126 1/2 W. Main Street, Marshalltown



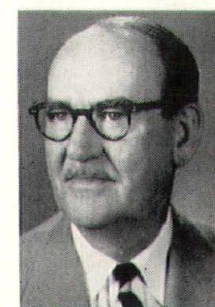
**MAIWURM,
DONALD J.**

Principal, Maiwurm and Wiegman, 612 Third Avenue South, Fort Dodge



NIELSEN, WILLIAM N.

Principal, William Nielsen, 307 Masonic Temple Building, Des Moines



**PROUT,
CHARLES U.**

Principal, Prout, Mugasis and Johnson, 709 5th Ave. S., Clinton



PRUSINER, LAWRENCE A.

6523 Ridge Circle, Cincinnati, Ohio

**MARQUART,
GAIL EUGENE**

Prout-Mugasis-Johnson, 709 Fifth Avenue South, Clinton



**NORMILE,
JOHN**

2425 Parke Avenue Des Moines

OLSON, ROGER MERWIN

Principal, Altfillisch, Olson, Gray & Thompson, 126 1/2 West Water Street, Decorah



**RALSTON,
GLEN E.**

Principal, Glen E. Ralston, 214 Waterloo Building, Waterloo

McCONNELL, RICHARD D.

Principal, Architects Crites & McConnell, 1953 First Avenue S.E., Cedar Rapids

McKEOWN, DONALD

Dept. of Arch. & Arch. Eng., Iowa State University, Ames

**O'NEIL,
EUGENE C.**

Principal, Woodburn and O'Neil, 201 Jewett Building, Des Moines

**RAMSEY,
ROBERT**

Principal, Dougher-Frevert-Ramsey, 302 Garver Building, Des Moines

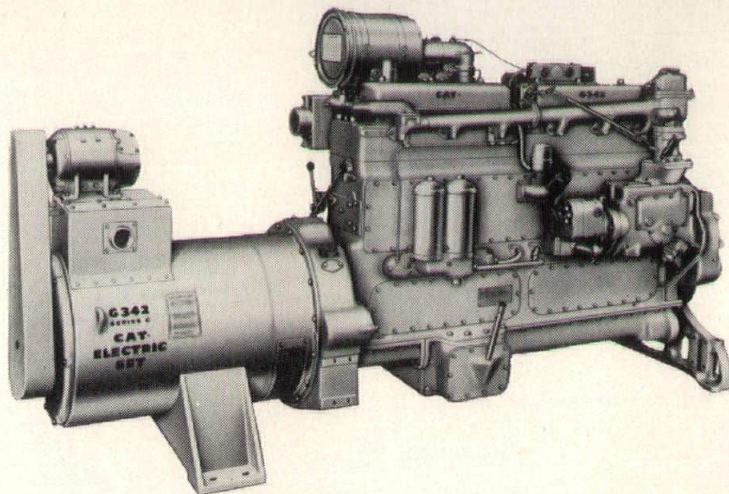
Where Gas Is Available and Power Is Required, Choose

CAT* Gas Engines

Prime Electric
Power

Standby Power

Air Conditioning
Units



Sewage Disposal
Plants

Pipe Line Pumps

Irrigation Pumps

Fire
Pumps

*Here's Why You'll Get Highest Power, Performance
And Economy With CATERPILLAR* Natural Gas Engines..*

Caterpillar* Natural Gas Engines are designed to fulfill the duties of diesel engines. They are built on a basic diesel engine block using the standard diesel engine parts wherever possible. Only pistons and fuel systems are changed for operation on natural gas. This basic diesel construction of a natural gas engine allows the Caterpillar* Gas Engine to operate continuously at full horsepower *without derating*. To derate the Cat* Engine to 65% is *not necessary* since it is operating well within the peak pressure load of the Cat* Diesel. Other make engines, designed explicitly for gas service and of correspondingly lighter construction, find it necessary to derate under continuous operation to provide reasonable engine life.

The superior combustion characteristics of natural gas and the continuous horsepower output of the 10.5:1 compression ratio gives the Cat* High Compression Natural Gas Engine the highest power output of any gas engine its size. In addition, Cat* Engines offer the lowest cost of operation available — in both cleaner burning and lowest cost fuels, even free sewer gas — and will pay for themselves in fuel savings alone before the first major overhaul is required.



Yes, see Gibbs-Cook today for the full story about the new expanded line of Caterpillar Natural Gas Engines for continuous power requirements from 210 to 470 HP.*

*Caterpillar and Cat are Registered Trade Marks of Caterpillar Tractor Co.

☆ YOUR CATERPILLAR* DEALER

Gibbs-Cook
EQUIPMENT COMPANY

MAIN OFFICE
1314 WALNUT, DES MOINES, IOWA
PHONE CHERRY 3-1176

BRANCH OFFICES
325 N. JACKSON, MASON CITY, IOWA
PHONE GA 3-7240

3029 5TH AVE. SO., FT. DODGE, IOWA
PHONE 7-2011

308 N. LAWLER, POSTVILLE, IOWA
PHONE 86 4-7461

**RICE,
JOHN**

Brooks-Borg, 815
Hubbell Building,
Des Moines



**SALISBURY,
ALLEN B.**

Smith-Voorhees-
Jensen, Architects
Associated, 424
Badgerow Building,
Sioux City



**SOENKE,
LOUIS G.**

Principal, Louis G.
Soenke, 601 Brady
Street, Davenport



**RICHARDSON,
CHARLES V.**

Principal, Charles
Richardson and
Associates, 1001 Kahl
Building, Davenport



SAVAGE, ROBERT E.

Principal, Savage and Ver Ploeg,
1200 Grand Avenue, West Des Moines



**STEFFEN,
KENNETH J.**

Principal, Steffen &
Stoltz, Box 601,
Ottumwa



**RITTS,
CHARLES L.**

Tinsley, Higgins,
Lighter and Lyon,
526 Liberty Building,
Des Moines



**SCHELLBERG,
WILLIS E.**

Principal, Thorson,
Gjeltten and
Schellberg, 205
S. Clark Street,
Forest City



**STEVENS,
WAYNE TOWNSEND**

Principal, DeWild-
Grant-Reckert and
Stevens, Rock Rapids



**ROBISON,
DOUGLAS**

Principal, Stewart-
Robison-Laffan, 601
Brady St., Davenport



**SILLETTO,
CHARLES B.**

Woodburn and
O'Neil, 201 Jewett
Building, Des Moines



**STEWART,
HAROLD J.**

Principal, Stewart-
Robison-Laffan, 601
Brady St., Davenport



RUDI, NORMAN H.

Architects Crites and McConnell,
1953 First Avenue S.E., Cedar Rapids



**SKILES,
PAUL S.**

Principal, Wetherell-
Harrison-Wagner,
506 Shops Building,
Des Moines



**STOLTZ,
STEPHEN M.**

Principal, Steffen and
Stoltz, Box 601,
Ottumwa



**RUSSELL,
GEORGE**

Principal, Russell and
Lynch, 1221 Savings
and Loan Building,
Des Moines

**SMITH,
DIGHTON H.**

Principal, Smith,
Voorhees and Jensen,
Architects Associated,
201 Davidson Building,
Des Moines

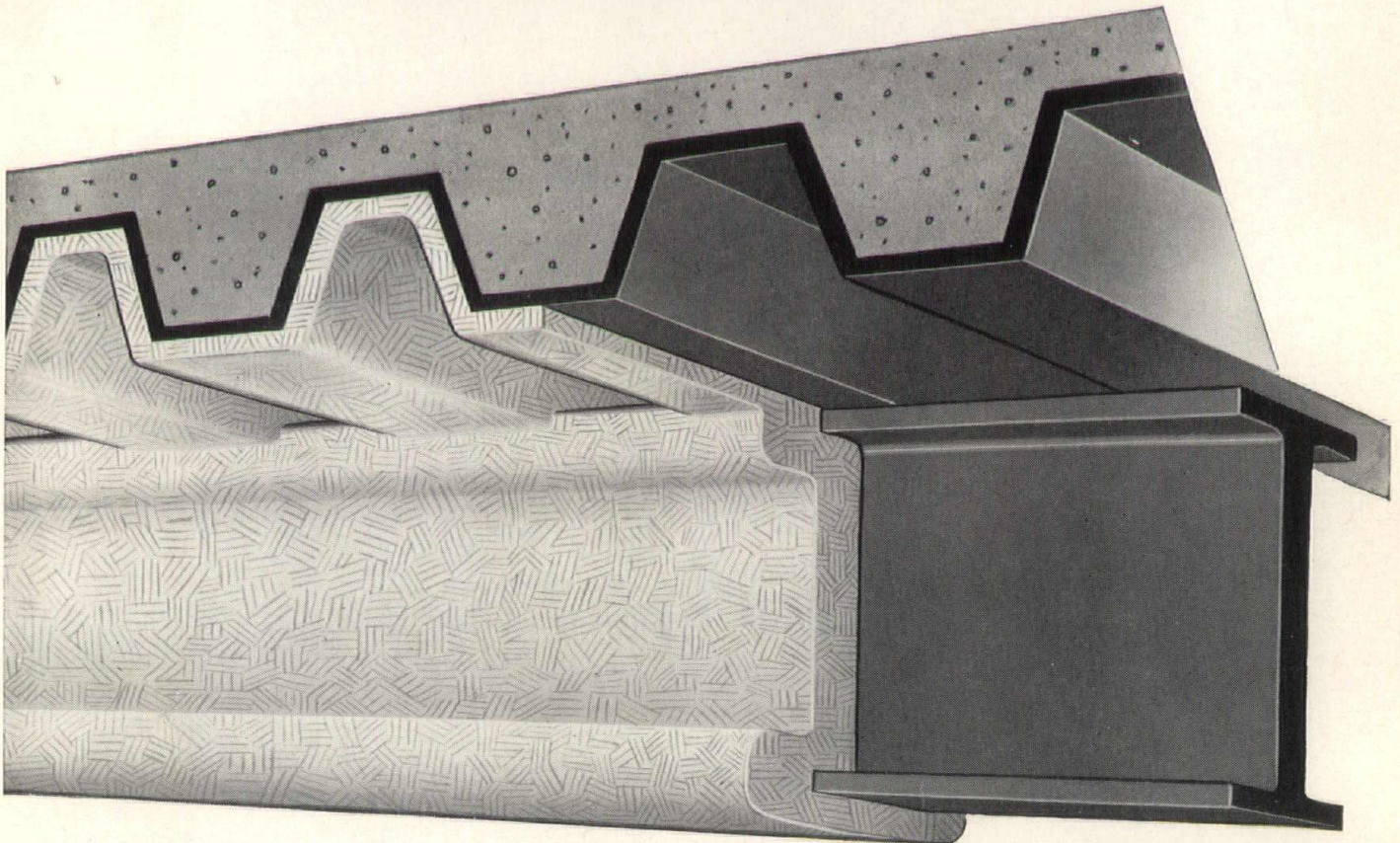
TAYLOR, WILLIAM A.

Principal, Lindgren & Taylor,
6311 Hickman Road, Des Moines

THOMPSON, JACK DEAN

Principal, Altfillisch, Olson, Gray & Thompson,
126 1/2 W. Water Street, Decorah

For **DIRECT-TO-STEEL** fireproofing **ZONOLITE MONO-KOTE® OFFERS** **4 NEW ADVANTAGES**



- 1. FASTER APPLICATION**—A two inch thickness of Mono-Kote can be applied over a large area in *one* day . . . greatly reducing scaffolding time and cost, and allowing other trades to follow up faster.
- 2. NON-SHRINKING, FISSURE-FREE**—Assures attractive, finished surface with no tendency to fissure crack.
- 3. HARD-SETTING**—Mono-Kote provides a firm, monolithic surface.
- 4. NO NEED TO WRAP BEAMS**—Mono-Kote applies directly to beams. No need to cage beams with lath.

Mono-Kote is a mill-mixed fireproofing material designed for machine application to the underside of steel floors and direct to beams. It takes a firm set, free of fissure cracks and has bond strengths of 400 to 600 psf. Because Mono-Kote is also a fast setting material, a two inch thickness can be applied in one day, eliminating time-consuming delays encountered with "soft" fireproofing products.

Mono-Kote can provide fast, top quality fireproofing applications. Write now for full details, including technical data, specifications, and fire test information.



Western Mineral

**PRODUCTS
COMPANY**

MINNEAPOLIS • OMAHA • MILWAUKEE • DENVER

1720 MADISON ST. N.E. • MINNEAPOLIS 13; MINNESOTA

**THORSON,
OSWALD H.**

Principal, Thorson and
Brom, 219 Waterloo
Building, Waterloo



**WAGNER,
WILLIAM J.**

Principal, Wetherell-
Harrison-Wagner,
506 Shops Building,
Des Moines



**WOLF,
LEONARD**

Professor and Head,
Dept. of Architecture
and Architectural
Engineering, Iowa
State University,
Ames



**THORSON,
THORWALD**

Principal, Thorson,
Gjeltten and
Schellberg, 205 S.
Clark Street,
Forest City



**WALLERSTEDT,
W. KENNETH**

Principal, Smith-
Voorhees-Jensen,
Architects Associated,
201 Davidson Building,
Des Moines



**WOODBURN,
WILLIAM M.**

Principal, Woodburn
and O'Neil,
201 Jewett Building,
Des Moines



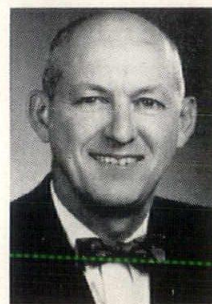
TOENJES, DAVID B.

Principal, Toenjes and Stenson,
217 W. Fourth Street, Waterloo



**WALSH,
JAMES H.**

Principal, Walsh &
Keninger, Box 526,
Spencer



WAYLAND, LLOYD K.

Louis C. Kingscott & Associates,
P.O. Box 202, Davenport

**Associate Members
Iowa Chapter**

AMEND, JAMES LEE

Hollis and Miller,
120 Council Bluffs Savings Bank Bldg.,
Council Bluffs

**UTTERBACK,
RICHARD A.**

Wetherell-Harrison-
Wagner, 506 Shops
Building, Des Moines



**WETHERELL,
EDWIN H.**

Principal, Wetherell-
Harrison-Wagner,
506 Shops Building,
Des Moines



**ANDERSON,
RAYMOND ERIC**

Brooks-Borg,
815 Hubbell Bldg.,
Des Moines



**VER PLOEG,
STANLEY C.**

Principal, Savage and
Ver Ploeg,
1200 Grand Avenue,
West Des Moines



WHITAKER, RAYMOND G.

Principal, Raymond G. Whitaker
227 Union Arcade Bldg., Davenport



**APPELL,
DONALD W.**

Principal, Peterson &
Appell, Structural
Engineers, 1148 Polk
Blvd., Des Moines



**VOORHEES,
GRANT W.**

Principal, Smith-
Voorhees-Jensen,
Architects Associated,
201 Davidson Building,
Des Moines



WAGGONER, KARL M.

Principal, Waggoner and Waggoner,
15 S. Federal Avenue, Mason City

**WIEGMAN,
JOHN H.**

Principal, Maiwurm
and Wiegman, 612
Third Avenue S.,
Fort Dodge

BLOODGOOD, JOHN DUDLEY

Building Editor, Better Homes & Gardens,
1716 Locust Street, Des Moines

WAGGONER, TOM

Principal, Waggoner and Waggoner,
15 S. Federal Avenue, Mason City

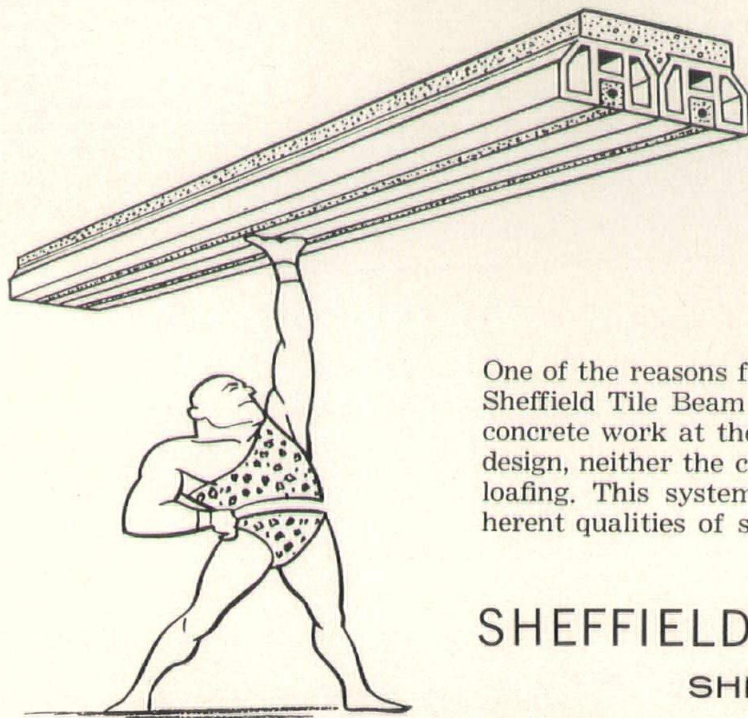
WISE, CARL M.

Department of Arch. and Arch. Eng.,
Iowa State University, Ames

BRIERLY, ROBERT S.

N. Clifford Prall,
910 Insurance Exchange Building, Des Moines

Perfectly Balanced Strength . . .



SHEFFIELD PRE-CAST TILE BEAMS HAVE IT!

One of the reasons for the strength of the relatively thin Sheffield Tile Beam Floor is the fact that the steel and concrete work at the allowable stresses. In this balanced design, neither the compressive or the tensile strength is loading. This system is designed to best utilize the inherent qualities of steel, clay tile and poured concrete.

SHEFFIELD BRICK & TILE CO.
SHEFFIELD, IOWA

Manufacturers Of Superior Quality Clay Products For Over Half A Century

ADEL CLAY PRODUCTS CO.

Specify Adel TEXTURED RED FACED TILE

Size 3 $\frac{3}{8}$ " x 11 $\frac{1}{8}$ " x 3 $\frac{1}{2}$ "

TEXTURED BOTH SIDES
RECOMMENDED FOR
ECONOMY PROJECTS

Adel Clay Products Co.

STIPPLE-MATT FACE TILE AND BRICK
AND OTHER VITRIFIED CLAY PRODUCTS

IOWA SALES OFFICE AND WAREHOUSE
101 ASHWORTH ROAD • WEST DES MOINES, IOWA
FACTORIES IN REDFIELD AND CENTERVILLE, IOWA

Phone CRestwood 9-9721

**BULLINGTON,
HAROLD J.**

Atherton-Dean-
Herbert,
202 Masonic Temple
Bldg., Des Moines



BUNKER, FRANKLIN J.

Board of Control of State Institutions,
Statehouse, Des Moines

BURTON, ARTHUR E.

Department of Arch. and Arch. Eng.,
Iowa State University, Ames

**CARNES,
F. LEE**

Department of Public
Works, City of Des
Moines, City Hall,
Des Moines



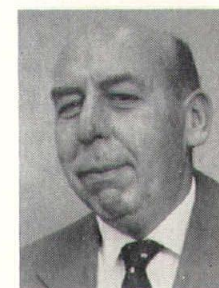
**CARNEY,
LEO A.**

Wetherell-Harrison-
Wagner, 506 Shops
Building, Des Moines



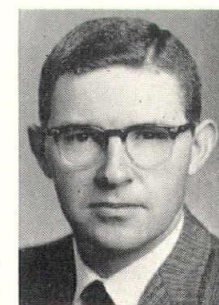
**COON,
KENNETH V.**

Brooks-Borg, 815
Hubbell Bldg.,
Des Moines



DREY, JOHN E.

Dougher-Frevert-Ramsey,
302 Garver Bldg., Des Moines



**DUFFY,
JAMES M.**

Wm. Beuttler & Son,
14th and Nebraska
Sts., Sioux City

**DUTT,
CHARLES A.**

Tinsley, Higgins,
Lighter and Lyon,
526 Liberty Building,
Des Moines



ESCH, DELMER D.

Woodburn and O'Neil,
201 Jewett Building, Des Moines



**HALL,
HAROLD C.**

Powers & Associates,
Structural Engineers,
Box 694, Iowa City

HANSEN, RICHARD F.

Waggoner & Waggoner,
15 So. Federal, Mason City

HARRISON, ARTHUR

Harrison & Associates, Landscape Architects,
408 1/2 Douglas Avenue, Ames



**HIGGINS,
TOM G.**

Tinsley, Higgins,
Lighter and Lyon,
526 Liberty Building,
Des Moines



**JORDISON,
RICHARD R.**

State University of
Iowa, Old Dental
Building, SUI,
Iowa City



**KOCIMSKI,
KAROL J.**

Department of Arch.
and Arch. Eng., Iowa
Iowa State
University, Ames

LAMOND, CHARLES O.

Architect, Federal Housing Administration,
Des Moines

LARSON, JEROME W.

Building Engineer, Bell Telephone Co.,
Des Moines

LIND, JOHN HOWARD

Div. Planning & Construction, SUI,
State University of Iowa, Iowa City



**LINDGREN,
ARTHUR A.**

Principal, Lindgren &
Taylor, 6311
Hickman Road,
Des Moines



**MOELLER,
YALE CLIFFORD**

Principal, Yale
Moeller and
Associates, Landscape
Architects, 4040-42nd
Street, Des Moines

MOORE, LARRY R.

Moore & Bouse, Consulting Engineers,
706 Dows Building, Cedar Rapids



**OLSON,
EUGENE A.**

Wm. Beuttler & Son,
14th and Nebraska
Streets, Sioux City

PAULSON, THEODORE F.

Paulson Construction Co., Cedar Rapids



**PETERSON,
CARLYLE W.**

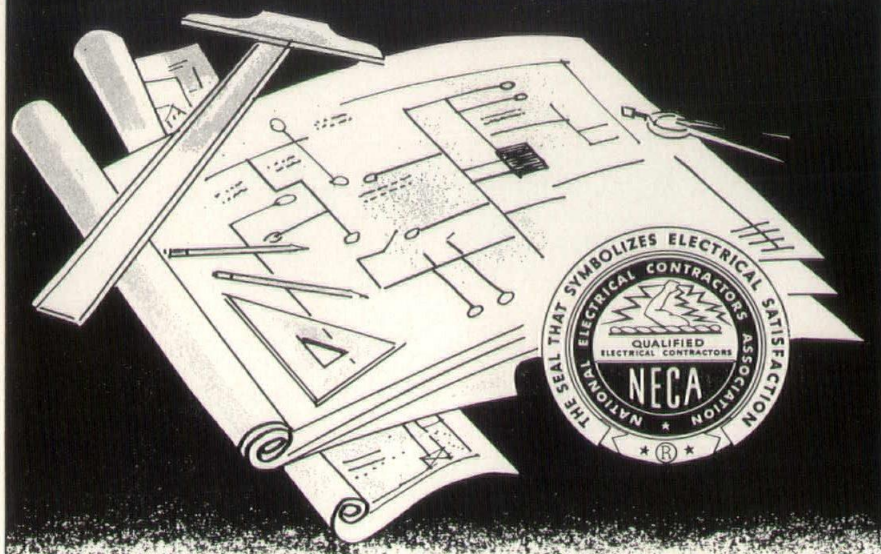
Peterson & Apell,
Structural Engineers,
1148 Polk Blvd.,
Des Moines



**PETERSON,
GEORGE M.**

Tinsley, Higgins,
Lighter and Lyon,
526 Liberty Building,
Des Moines

When the plans are completed...



**CALL
AN
EXPERT!!**

To be **DOUBLY SURE**
your electrical installations
are just as you intended . . .

Call on a
**NECA
MEMBER**

Ask us for the names of NECA members in your area.

IOWA CHAPTER

NATIONAL ELECTRICAL CONTRACTORS ASSOCIATION

1118 MULBERRY

AT 8-3279

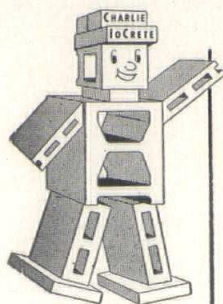
DES MOINES, IOWA

CONCERNING IOWA CONCRETE BLOCK & MATERIAL CO.

- 1—Old Enough To Have Learned Your Problems
- 2—Big Enough To Properly Serve Your Needs
- 3—Sound Enough (Financially) To Stand Back of Their Products
- 4—Small Enough To Give Your Orders Personal Attention
- 5—Appreciative Enough To Value Your Business

*We Believe Architects Should Consider The Above When Specifying
Materials*

BETTER
MATERIALS
SINCE
1917



**IOWA
CONCRETE
BLOCK &
MATERIAL
COMPANY**

Concrete Blocks • Haydite Blocks • Bricks • Chan-
nel Roof Slabs • Concrete Joist • Owens-Illinois
Glass Blocks • Lannon Stone • Sanymetal Toilet
Compartments • Champion Masonry Saws and
Blades • Chicago Fire Brick • Masonry Materials
Aluminum and Steel Windows • Arketex Glazed Tile
Metal Specialties • Concrete Corn Crips and Silos

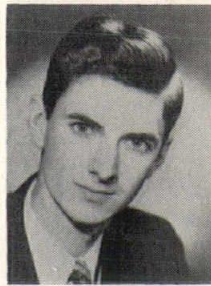
SERVICE
AND
QUALITY
ALWAYS

820 S.W. 9th St. PH. AT 8-5751 DES MOINES 9, IOWA
"Your Problems Keep Us in Business"

Junior Associates, Iowa Chapter

**PORTER,
TOM**

N. Clifford Prall, 910
Insurance Exchange
Bldg., Des Moines



PULLEY, FRANK L.
Consulting Engineer,
Securities Building, Des Moines

SCHILLING, RALPH R.
Smith-Voorhees-Jensen, Architects Associated,
201 Davidson Bldg., Des Moines



**SHANE,
HERBERT**

Tinsley, Higgins,
Lighter and Lyon,
526 Liberty Building,
Des Moines



**SHIRK,
KEITH E.**

Tinsley, Higgins,
Lighter and Lyon,
526 Liberty Building,
Des Moines

SLATER, BERNARD J.
Department of Arch. and Arch. Eng.,
Iowa State University, Ames

STEVENSON, DANIEL B.
Consulting Engineer
Empire Building, Des Moines



**WALTERS,
PAUL A.**

Consulting Engineer,
206 Masonic Temple
Building, Des Moines

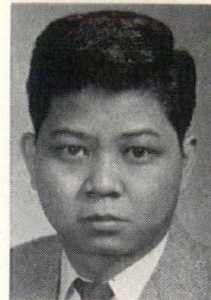
**ALLSUP,
EDGAR DEAN**

Smith-Voorhees-
Jensen, Architects
Associated, 201
Davidson Building,
Des Moines



**ARTIAGA,
JESUS M.**

Brooks-Borg, 815
Hubbell Building,
Des Moines



BELKNAP, DALE D.
Smith-Voorhees-Jensen, Architects Associated,
201 Davidson Building, Des Moines



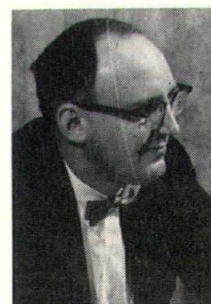
**BERGER,
ROY**

Brooks-Borg, 815
Hubbell Building,
Des Moines

BISHOP, HARLE J.
Tinsley, Higgins, Lighter and Lyon,
526 Liberty Bldg., Des Moines

CAMPBELL, ROYCE
1781 Flower Street, Waterloo

CARPINO, RALPH
Amos Emery & Associates,
820 Locust, Des Moines



**FAUST,
THOMAS W.**

Smith-Voorhees-
Jensen, Architects
Associated, 201
Davidson Building,
Des Moines

GEHRLS, G. H.
Smith-Voorhees-Jensen, Architects Associated,
201 Davidson Building, Des Moines

GRIFFITH, M. BRUCE
N. Clifford Prall,
910 Insurance Exchange Bldg., Des Moines

HAMMOND, JAMES EDWARD
Monticello, Iowa

HARMEYER, R. J.
Woodburn & O'Neil, 201 Jewett Building,
Des Moines



**HART,
JOHN J., JR.**

Brooks-Borg, 815
Hubbell Building,
Des Moines

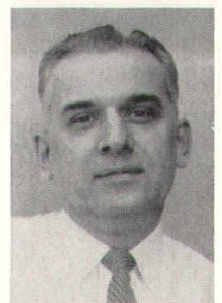
HENNAGER, KEITH C.
Smith-Voorhees-Jensen, Architects Associated,
201 Davidson Building, Des Moines

HESTNESS, ADRIAN C.
Thorson, Gjelton & Schellberg,
Forest City



**JOHNSON,
DONALD ALVIN**

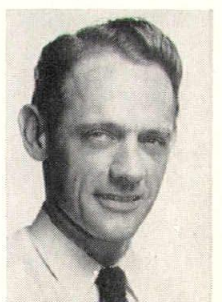
Smith-Voorhees-
Jensen, Architects
Associated, 201
Davidson Building,
Des Moines



**KAUZLARICH,
PETER J.**

Brooks-Borg, 815
Hubbell Building,
Des Moines

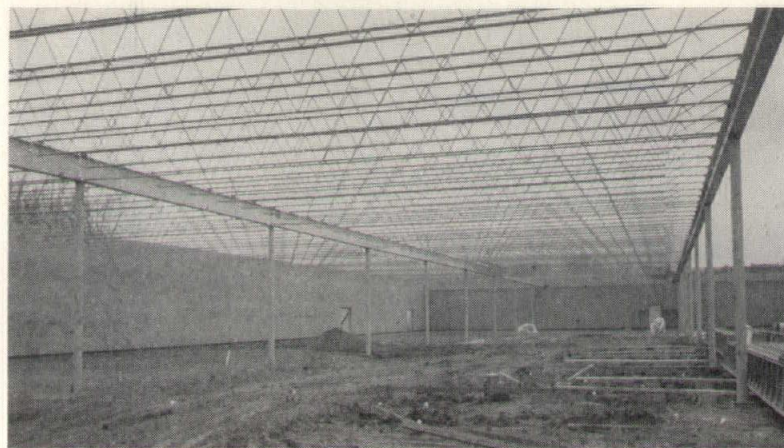
KUGLER, OSKAR
Thorson, Gjelton & Schellberg,
205 S. Clark Street, Forest City



**LEMON,
ROBERT H.**

Dougher-Frevert-
Ramsey, 302 Garver
Building, Des Moines

**BUILD
FASTER
EASIER
WITH
STEEL**



**SPEED
THE
PAYOFF
WITH
STEEL**

Green Hills Plaza, Des Moines, Iowa

Sixty-seven tons of fabricated steel for this 60,000 square foot building were on the job site just 20 working days after the steel order was entered. Another twenty-one tons for an addition to the above building were delivered 10 working days after receipt of order. Steel construction means easier designs, faster construction, faster rentals and a faster return on the owner's investment.

DES MOINES STEEL COMPANY

421 S.W. 5th St.

Des Moines, Iowa

Ph. CH 4-2101

HOPE'S WINDOWS, Inc.

Niedringhaus Metal Products Co.

Ramset

Simmons Dormitory Furniture

PermaCushion Gym Floors

"Twin-Beam" Church Windows



C. D. WILCOX AND COMPANY

S.W. 6th & Murphy

Des Moines 9, Iowa

Phone CHerry 4-5191

Member Iowa Chapter, Producers Council Inc.

**L. J. "Buck"
Sweeney**



Representing

**Halsey Taylor Electric Water Coolers
& Fountains**

Sloan Flush Valves

**Church Seats
(The Best Seat in the House)**

Lawler Thermostatic Valves

Parker Mirrors & Bathroom Accessories

313 49th Street

Phone CRestwood 4-2050

DES MOINES, IOWA

**LOBE,
HORST W.**

Smith-Voorhees-
Jensen, Architects
Associated, 201
Davidson Building,
Des Moines



**RATCLIFFE,
JOHN R.**

Brooks-Borg,
815 Hubbell Building,
Des Moines



**UGULINI,
ALDO EDWARD**

Smith-Voorhees-
Jensen, Architects
Associated, 201
Davidson Building,
Des Moines



McMULLIN, RICHARD N.

N. Clifford Prall,
910 Insurance Exchange Bldg., Des Moines



**REDFERN,
MERLIN L.**

Brooks-Borg,
815 Hubbell Building,
Des Moines



**VANDER LINDEN,
CHARLES W., JR.**

2904 34th Street,
Des Moines



**MUNZENMAIER,
EDWARD W.**

Savage & Ver Ploeg,
1200 Grand Avenue,
West Des Moines



SELZER, MAX D.

Louis Kingscott & Associates,
Box 202, Davenport



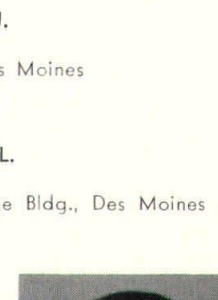
VER STEEG, CARL

Savage and Ver Ploeg,
1200 Grand, West Des Moines



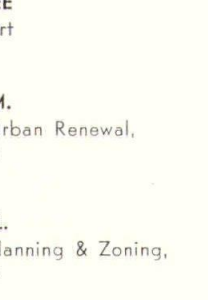
**NIELSEN,
WILLIAM N., JR.**

Brooks-Borg,
815 Hubbell Building,
Des Moines



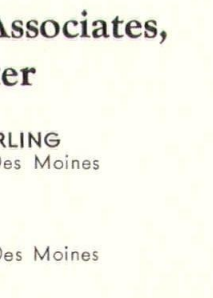
**SHELLEDY,
JOHN G.**

Smith-Voorhees-
Jensen, Architects
Associated, 201
Davidson Building,
Des Moines



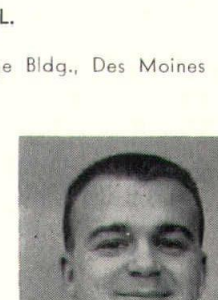
**VIFQUAIN,
JOHN A.**

Tinsley, Higgins,
Lighter and Lyon,
526 Liberty Building,
Des Moines



NIGRO, ANTHONY J.

Savage & Ver Ploeg,
1200 Grand, West Des Moines



SKINNER, SAMMY LEE

1508 Gaines, Davenport

SMITH, CLARENCE M.

City of Des Moines, Urban Renewal,
City Hall, Des Moines



WALDEN, BROCK A.

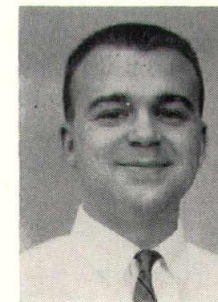
Thorson, Gjeltten & Schellberg,
205 S. Clark Street, Forest City

WINKLER, KARL J.

Brooks-Borg, 815 Hubbell Bldg., Des Moines

OLSON, CLARENCE L.

N. Clifford Prall,
910 Insurance Exchange Bldg., Des Moines



STAEHLE, WILLIAM L.

City of Des Moines, Planning & Zoning,
City Hall, Des Moines

STENSON, MARVIN L.

Principal, Toenjes & Stenson
217 W. 4th St., Waterloo

ZARNIKOW, WERNER E.

Smith-Voorhees-Jensen,
Architects Associated,
201 Davidson Bldg., Des Moines

**PARKS,
RUSSELL**

Brooks-Borg,
815 Hubbell Building,
Des Moines

PFIFNER, JOHN F.

Russell & Lynch,
1221 Savings and Loan Bldg., Des Moines

**THURSTON,
RAY L.**

Wetherell-Harrison-
Wagner, 506 Shops
Building, Des Moines

**Honorary Associates,
Iowa Chapter**

JAY N. (DING) DARLING
2320 Terrace Road, Des Moines

DWIGHT KIRSCH
1701 Casady Drive, Des Moines

CHRISTIAN PETERSEN
Ames, Iowa

Philadelphia architects already are beating the drums for the A.I.A. convention to be held there April 23 to 28 in 1961, and the program outlined indicates that it will be well worth attending.

From religious services at 1 p.m., April 23, until the end of the week, A.I.A. members will find a full and varied program ranging from a luncheon at the Franklin Institute's unique "do-it-yourself" museum of applied science, to an orchestral concert by the renowned Philadelphia Orchestra (Eugene Ormandy conducting), and from a tour of Philadelphia to an excursion through Bucks county and a visit to the Fairless Works of United States Steel Co. These "Host Chapter" events are planned to make the week most enjoyable and will be highlighted by a

midnight buffet and ball at the Bellevue-Stratford Hotel on Tuesday, April 25.

For the ladies, special events will include a performance at the Playhouse-in-the-Park (Philadelphia's theatre in-the-round), and a tour to such show places as Longwood Gardens (1,000 acres of indoor and outdoor plantings) and the Henry Francis DuPont Winterthur Museum in Delaware.

Philadelphia architects are planning to be hosts in their own homes to visitors for cocktails preceding the annual banquet, and will lead tours of the city at the close of the convention. As a final event on the host chapter program, Philadelphia chapter members will be hosts at dinner to visiting architects.

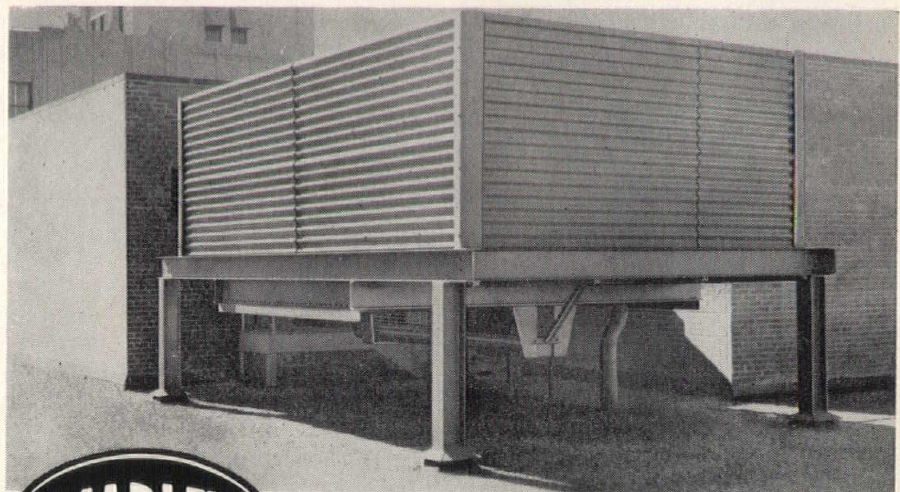
BETTER CONCRETE CONFERENCE AT AMES

The Iowa Chapter A.I.A. was among sponsors of the 12th annual Better Concrete Conference held March 8 and 9 in Ames. A total of 24 speakers took part. Among them were James D. Piper, Chicago, vice-president, Portland Cement Institute; Robert E. Wilde, assistant secretary and Kenneth D. Cummins, technical director, American Concrete Institute, Detroit; and Stanton Walker, Washington, D.C., director of engineering for the National Sand and Gravel Association and the National Ready Mixed Concrete Association.

CLIPPED WITHOUT COMMENT

From an Iowa newspaper: "A campaign to raise funds to build a new grade school and to renovate the present school structure has been announced to members of the parish . . . Support for the project has come from His Excellency the Bishop and from the Iowa State Fire Marshal who have termed the project an absolute necessity . . .

"In addition to the new construction, plans call for complete renovation of the old school building with the installation of a new fire-fighting sprinkler system. The latter, it was stated, is being installed because of the insistence of the State Fire Marshal's office and the need for added protection for the children in the building."



UNDERFLOW

knows no location limitations

Any area that will accommodate its plan dimensions is good enough for a Marley UNDERFLOW AQUATOWER, the tower that supplies its own grillage.

This low-silhouette tower for intermediate-capacity water cooling is based on a new principle of operation. The fan and air intake are located beneath the cooling cells and air is discharged vertically. Hence, without any sacrifice of performance, UNDERFLOW can be placed immediately adjacent to walled structures that would obstruct air and discharge in any other type of tower. See your Marley Engineer today.

UNDERFLOW® TOWERS are protected by U. S. Patents granted.

Represented
by . . .

**R. S. STOVER
COMPANY**

3 1/2 W. Main St.
Marshalltown, Iowa

120 N. 69th St.
Omaha, Neb.

PERSONAL & PROFESSIONAL

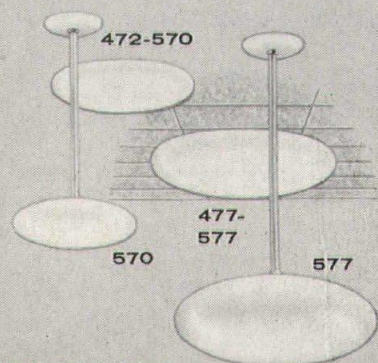
GROW TAKES LEAVE TO LIVE IN JAPAN

Mr. and Mrs. Robert Grow and their three children will leave Cedar Falls in April, and expect to spend a year in Kyoto, Japan. Grow is taking a year's leave from practice in the firm of Grow and Devoe.

Sailing from Vancouver, the Grows will touch at West Coast points and Hawaii before arriving in Yokohama. They will be in Tokyo for a week, while Mr. Grow attends the Rotary International convention as delegate from the Cedar Falls Rotary Club, and then will go on to Kyoto, about 400 miles west.

Intending to learn as much as possible of Japanese culture, the Grows will live in a Japanese house, with a Japanese housekeeper, and will eat the food of the country. The children, Sue, Steve and Tom, will attend Japanese schools.

A Few Lighting Fixtures from the **PRESCOLITE** NEW PRODUCT PARADE



SATELLITES

A new departure in beautiful, hand blown "Thermopal" glass used with pendant fixture or on recessed housings.



write for
further information

PRESCOLITE MFG. CORP.
2229 Fourth St., Berkeley, Calif.
FACTORIES: Berkeley, Calif. • Nesheim, Pa. • El Dorado, Ark.

ARCHITECTURE LIKENED TO PRINTING PRESS

Architecture has been called 'the printing press of the ages.' It leaves a record of its doing for subsequent generations to unravel.

So commented Dane D. Morgan, speaking to a Methodist church group in Burlington in February.

Each historical style of architecture rose and fell within its framework of certain basic influences—geographical, geological, climatic, religious, social and historical — Morgan said.

He traced the architectural periods which have affected present design, concluding with the Modern school.

Commenting on present-day trends, Morgan said Americans are too much given to following fads in architecture.

"We see the principles laid down by Wright, van der Rohe, Dudoc, Corbusier, and the others, being made dull and platitudinous in the hands of the unskilled," he said.

HUEHOLT PARTICIPATES IN CHURCH CONFERENCE

Raymond L. Hueholt, Des Moines, represented the profession of architecture at a conference on Building and Equipment for Christian Education sponsored by the Iowa Council of Churches February 17-18 in Des Moines.

SAKELLAR IN AMES

Nicholas Sakellar, who practices in Tucson and Phoenix, Ariz., spoke to students and the public on the Iowa State University campus at Ames Feb. 15.

BEDINGER HEADS AGC

W. E. Bedinger, Jr., Sioux City, is the new president of Associated General Contractors of Iowa. Wood W. Weaver, Iowa Falls, and G. A. Parish, Spencer, are vice-presidents, and Irving F. Jensen, Sioux City, treasurer. O. W. Crowley, Des Moines, is executive secretary.

PRODUCERS COUNCIL IS CHARTERED

An Iowa chapter of the Producers Council has been established, and invited corporate members of the A.I.A. in Iowa to the presentation of its charter March 7. C. D. Willcox, Des Moines, is president; Joe Ryan and Ken Swanson are vice-presidents; Roger Stetson, Jr., is secretary and John Bain is treasurer. The organization had 26 charter members, most of whom are manufacturers or representatives of construction material firms.

- ✓ 37 years of service to Iowa schools
- ✓ chalkboard specialists
- ✓ state-wide installation service
- ✓ natural slate
- ✓ Johns-Manville "Colorlith"
- ✓ "Wensco" washable cork tackboard
- ✓ Gotham aluminum trim and chalkboards
- ✓ display cases
- ✓ the only COMPLETE chalkboard line

W. E. Neal Slate Company

1121 Dartmouth Ave., S.E.

Minneapolis 14, Minn.

FE 9-2783

IOWA CHAPTER GAINS TEN CORPORATE MEMBERS

During the past year, ten Iowa architects were elected to corporate membership in the American Institute of Architects. Another is pending.

The men, listed in the directory of the chapter beginning on page 13, are:

James Bentley, Waterloo; Robert C. Broshar, Waterloo; John Galvin, Decorah; Victor Gibson, Waterloo (pending); Richard Goewey, Des Moines; William Hukill, Cedar Rapids; Kenneth Kendall, Des Moines; John Rice, Des Moines; Norman Rudi, Cedar Rapids; Kenneth Steffen and Stephen Stoltz, Ottumwa.

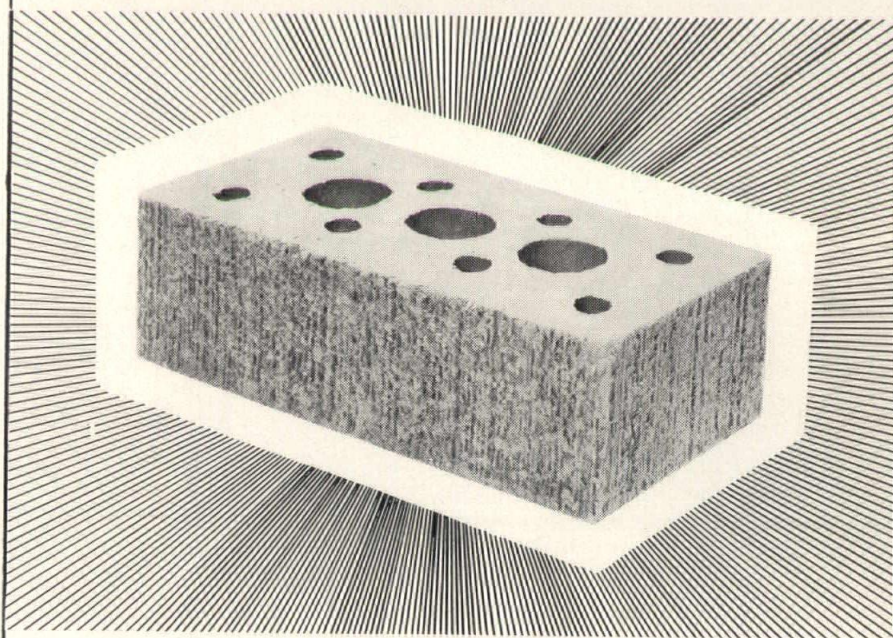
Robert C. Robinson, Council Bluffs, and Charles Zalesky, Cedar Rapids, have retired from practice. A. Hews McCann, formerly of Clinton, has moved to California.

DIRECTORY OF ADVERTISERS

ADEL CLAY PRODUCTS CO.	25
BLUMCRAFT OF PITTSBURGH	15
CENTRAL SOUND SYSTEMS	4
DES MOINES STEEL CO.	29
GIBBS-COOK EQUIPMENT CO.	21
GOODWIN COMPANIES	2
IOWA CONCRETE BLOCK & MATERIAL CO.	27
IOWA PAINT MANUFACTURING CO.	3
IOWA ASSN. OF PRESTRESSED CONCRETE MANUFACTURERS	12
MARQUARDT CONCRETE BLOCK CO.	35
MIDWEST CONCRETE INDUSTRIES	11
NATIONAL ELECTRICAL CONTRACTORS ASSOCIATION	27
W. E. NEAL SLATE CO.	32
OWL'S HEAD ENGINEERING	17
PLAIN TALK PUBLISHING CO.	6
PORTLAND CEMENT ASSOCIATION	19
PRESCOLITE MANUFACTURING CORP.	32
SHEFFIELD BRICK & TILE CO.	25
SIOUX CITY BRICK & TILE CO.	34
SIOUX CITY MOSAIC	6
RALPH N. SMITH CO.	6
R. S. STOVER CO.	31
STRUCTURAL CLAY PRODUCTS INSTITUTE	36
SWANSON SALES, INC.	10
L. J. SWEENEY	29
UNITED BRICK AND TILE CO. OF IOWA	34
VINCENT CLAY PRODUCTS	33
WATERITE COMPANY	35
WESTERN MINERAL PRODUCTS CO.	23
C. D. WILLCOX	29

EXCITING RED MATTE FACE

MONTEREY and BEDFORD



Face brick of a soft-toned warm red color and matte texture. The Monterey is the dark range — Bedford is the light range. Can be appealingly used as a solid light or dark surface or blended for a full color range effect. Available in Nominal-8", Norman, SCR sizes. Sample panel and complete information upon request.



EXCLUSIVE DISTRIBUTOR FOR
ELGIN-BUTLER BRICK COMPANY, AUSTIN, TEXAS
RELIANCE BRICK COMPANY, DALLAS, TEXAS
and
NATCO CERAMIC GLAZED TILE CORPORATION
Ask for complete literature or sample panels showing both glazed and unglazed brick of the highest quality.

FORT DODGE, IOWA

Manufacturers of Superior Face Brick, Glazed Tile, Building Tile, and Drain Tile.

OFFICE State Bank Building • **PHONE** 3-7851 • **FACTORY** 2½ Miles South of Fort Dodge

PERSONAL & PROFESSIONAL

ALTFILLISCH ANNOUNCES NEW PARTNERSHIP

A new partnership has been announced by Charles Altfillisch, F.A.I.A., and associates in Decorah. The firm is now Altfillisch, Olson, Gray & Thompson. Partners are Altfillisch, Roger M. Olson, Donald L. Gray and Jack D. Thompson, all A.I.A. Offices remain at 126½ West Water Street.

LINDGREN & TAYLOR MOVE

Lindgren and Taylor, formerly at 4058 41st street in Des Moines, have established an enlarged office at 6311 Hickman road, Des Moines.

KEFFER NAME CHANGES

The Des Moines firm earlier known as Karl Keffer Associates has become Atherton-Dean-Herbert. Principals are Thomas J. Atherton, Waldo Dean and Charles E.

Herbert. Offices are at 202 Masonic Temple Building, Des Moines.

FIRM OPENS OFFICE

The Kansas City firm of Hollis and Miller, architects and engineers, has opened an office at 120 Council Bluffs Savings Bank Building, Council Bluffs. Its representative, James Lee Amend, has affiliated with the Iowa chapter, A.I.A., as an associate member.

BOYER FEATURED

Roger Boyer, A.I.T., was featured in an article in *The Carnation* of Delta Sigma Phi fraternity this winter. He has designed two first-place Homecoming displays, two first-place (fraternity division) Veishea floats and two sweepstakes Veishea floats.

The magazine's editor commented that Roger is a member of the A.I.A. (student chapter) and "had one of his projects selected for the cover of the *Iowa Architect*, a magazine for all working architects in the state of Iowa."

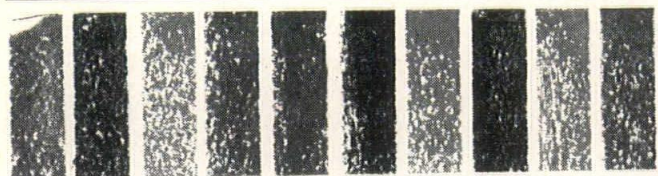
"THREE-DIMENSIONAL HISTORY"

"Three-dimensional history" is preserved in historical buildings, commented Charles van Ravenswaay, director of the Missouri Historical Society, at a conference September 23-24 on the acquisition and use of historical buildings.

Very bygone grandeur — "the early Sears Roebuck" period — is deserving of preservation as a means of understanding the period in which it was popular, he noted.

He was among speakers who traced the pioneer origins of Iowa culture, the architecture which reflects them, and ways and means of preserving and enjoying this tangible heritage.

About 100 persons attended the conference, at Iowa State University at Ames. Lawton Patten, professor of architecture at the University, was chairman; the advisory committee included architects William Wagner and Donovan Kramer, and Dwight Kirsch, honorary member of the Iowa chapter now artist-in-residence at Iowa State.



a flourish of
**COLOR and
TEXTURE**

to stimulate
YOUR imagination!

**FACE
BRICK
and
Structural
GLAZED
TILE**

RESEARCH

Has given Iowa Architects these new colors and textures:

- Des Moines Ivories
- Tidewater Face Brick
- Charcoal Black Face Brick
- Antique White Face Brick

STRUCTURAL GLAZED TILE

Representing in Iowa:
ARKETEX CERAMIC CORP.
STARK CERAMICS, INC.
THE CLAYCRAFT COMPANY

ASSURANCE OF QUALITY

SERGEANT BLUFF FIRE CLAY—
the only buff burning fire clay
deposit of its kind in this area.

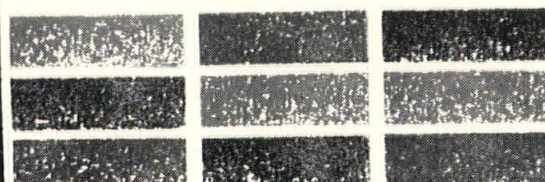
"NO EFFLORESCENCE" RATING—
Laboratory tests show "no efflorescence" for both Sergeant Bluff Fire Clay Face Brick and United Red Brick!

**Sioux City
Brick and
Tile Co.**

Benson Building - Sioux City, Iowa

**United Brick
and Tile Co.
of Iowa**

1200 Thomas Beck Road - Des Moines, Ia.



Social Hall
Westminster Presbyterian Church
1301 Kimball Avenue
Waterloo, Iowa

ARCHITECTS:
Thorson & Brom

CONTRACTOR:
N. H. Hansen Co.
Waterloo, Iowa

One of the many beautiful
buildings featuring exposed
Concrete Masonry walls . . .
for lasting beauty and dura-
bility!



MARQUART CONCRETE BLOCK COMPANY

110 Dunham Place — Waterloo, Iowa
Phone ADams 3-8421

Swimming Pool Equipment

- Vacuum and Pressure Diatomite Filters
- Zeolite Softeners
- Chemical Feeders



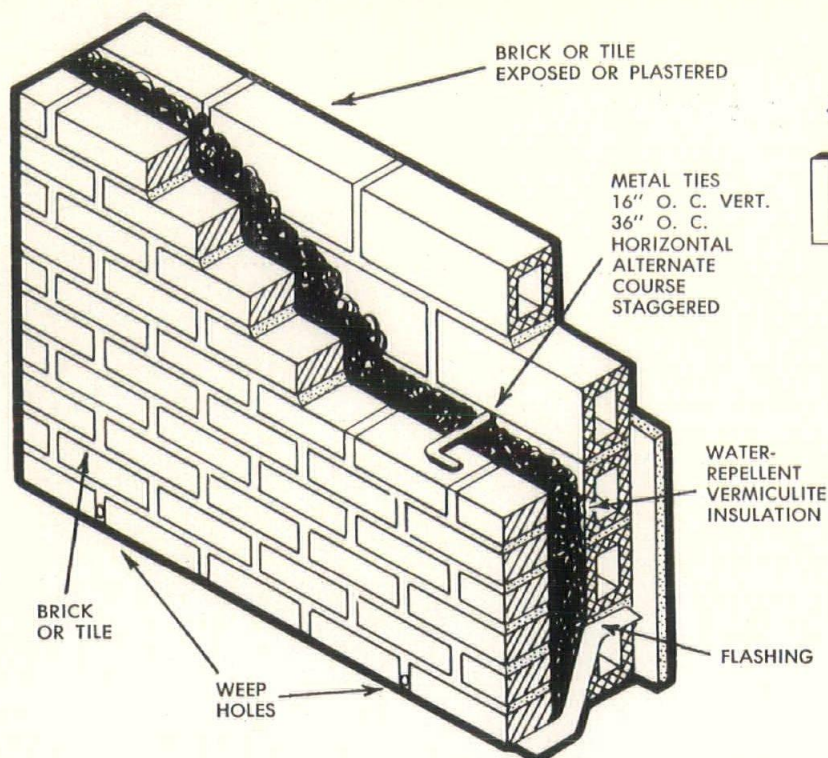
For Information Write or Call



WATERITE CO.

OMAHA, NEBRASKA

Phone PLeasant 5582



SCR Insulated Cavity Wall*

Offers

- DESIGN FLEXIBILITY
- EASE OF MAINTENANCE
- LOW ULTIMATE COST
- SUPERIOR INSULATION
- ELIMINATION of FURRING
- EASE OF CONSTRUCTION
- RAIN RESISTANCE
- SOUND RESISTANCE
- TERMITE AND RODENT PROOF
- UNRESTRICTED USE - FULL GOVERNMENT APPROVAL

* REG. T.M., SCPRF

The clay masonry cavity wall is actually two walls, or wythes, separated by a continuous air space 2 to 3 in. wide. These wythes, laid one unit thick, may be of brick, glazed or unglazed facing tile, or structural clay tile. The exterior wythe is usually 4 in., while the interior wythe may be 4 in., 6 in., 8 in., or more, depending on structural requirements. The resulting wall has exceptional insulating qualities, and is totally resistant to rain penetration.

Good as it is, the masonry cavity wall can be made still more efficient in resisting heat transfer by filling the cavity with a suitable insulating material such as water-repellent vermiculite. The addition of the vermiculite more than pays for itself during the life of the building through lowered heating and air conditioning costs. In addition to its total resistance to moisture penetration, the resulting "SCR insulated cavity wall" has a low initial cost, extremely low maintenance costs, and many other qualities which prove that it is, for most uses, head and shoulders above other wall types.

The "SCR insulated cavity wall" offers the designer the opportunity to make use of a full spectrum of colors in varying combinations of brick and tile. Available colors in brick range from black through the traditional maroons and reds to cream and white. A comparable sweep of color is available in tile. Clay masonry units also come in many textures, ranging from fine through medium to coarse, and in a wide variety of shapes and sizes, allowing freedom in the placement of curves and angles. Due to the relatively small sizes of the units, building dimensions are unrestricted.

Design flexibility is emphasized further by a variety of bond patterns. In addition to the well known bonds, common bond, common bond with Flemish headers, Flemish bond, English bond and Dutch bond, the number of contemporary bonds available depends only on the imagination of the designer. Most contemporary bonds are achieved by projecting or recessing units from the principal plane of the wall. Through coordination of color, texture, size of unit and type of bond, the designer can achieve a virtually limitless number of effects.

Possibilities for both exterior and interior wythes include the use of brick, structural clay tile, plastered or exposed, facing tile or glazed brick. Brick and brick cavity are popular when exposed brick interiors are desirable.

For complete information on the "SCR insulated cavity wall", developed by the Structural Clay Products Research Foundation, write or call any of the three offices listed below.



CLAY PRODUCTS INSTITUTE

REGION 6
120 1/2 WELCH AVE.
AMES, IOWA
Cedar 2-6623

BRANCH OFFICE
401 WESLEY TEMPLE BUILDING
MINNEAPOLIS 4, MINNESOTA
Federal 6-7055

BRANCH OFFICE
8529 TEMPLETON DRIVE
OMAHA, NEBRASKA
391-1061

FIRMS DISPLAYING
THIS EMBLEM



ARE MEMBERS OF THE
STRUCTURAL CLAY PRODUCTS
RESEARCH FOUNDATION