

OWA ARCHITECT

Official publication of
OWA CHAPTER
AMERICAN INSTITUTE OF ARCHITECTS



AMERICAN INSTITUTE
OF
ARCHITECTS

APR 2 1962

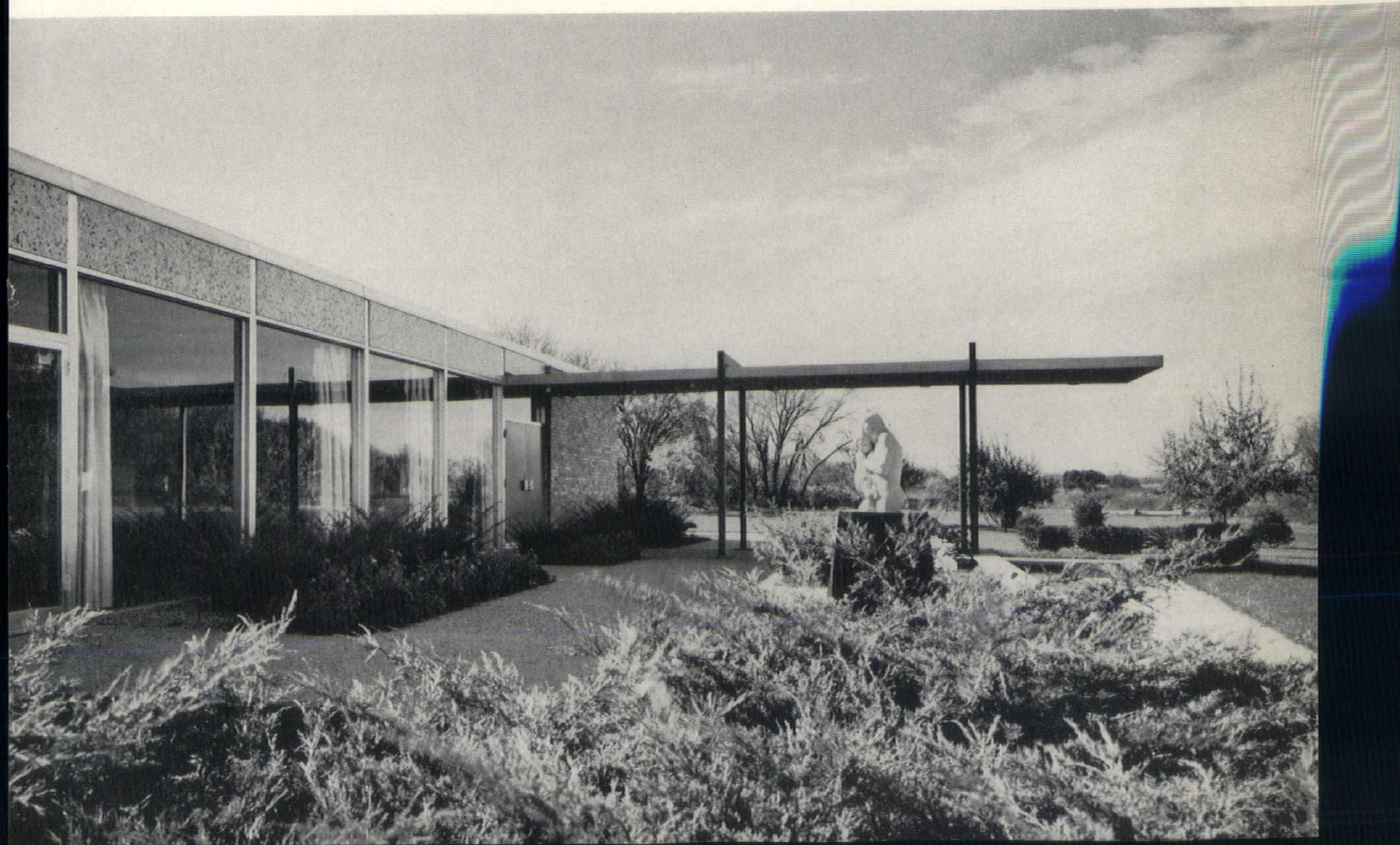
LIBRARY

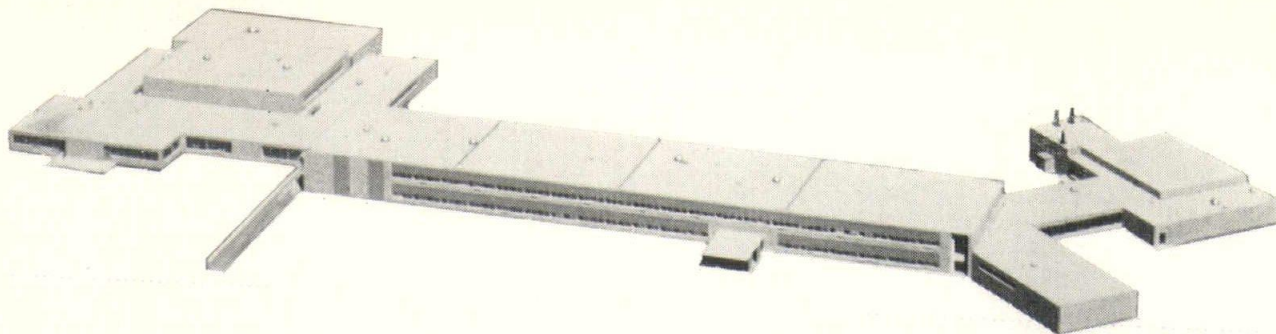
Membership
Directory

JANUARY - FEBRUARY 1962

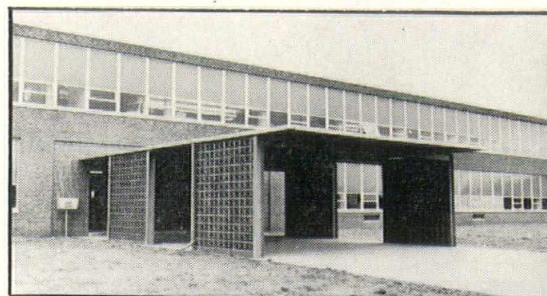
VOL. IX

NO. 1





*.... textured face tile
for interior rooms,
select common
brick for
stairwells
and corridors
attractive, high utility
low maintenance*



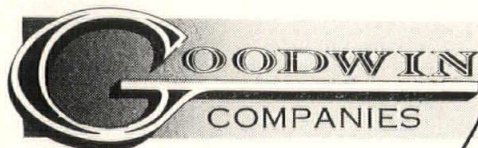
John Adams Junior High School, Mason City, Iowa
Waggoner & Waggoner, principal architect
Bergland & Bianco, associate architect
Henkel Construction Co., General Contractor

The exterior brick used throughout this structure is Queen Mary Face Brick from Des Moines Clay Company. Mason City texture face tile was used throughout the interior rooms with Mason City Select Common brick in the stairwells and corridors.

Solar screen furnished by Redfield Brick and Tile effectively sets off the main entrance and above the stairwell windows at one end of the structure.

Because of the resourceful use of clay products, interior decorating, maintenance, and ultimate costs are minimum.

MEMBER
SCPI
STRUCTURAL CLAY
PRODUCTS INSTITUTE
WASHINGTON, D.C.



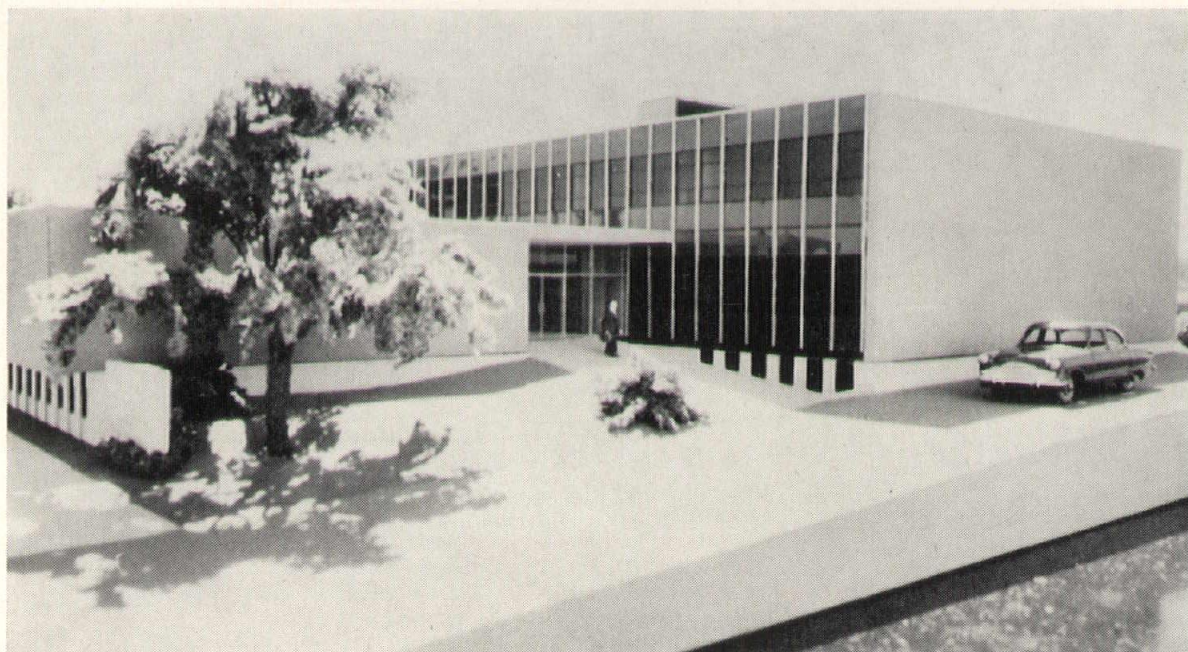
MANUFACTURING DIVISIONS
DES MOINES CLAY COMPANY
MASON CITY BRICK AND TILE COMPANY
OSKALOOSA CLAY PRODUCTS COMPANY
OTTUMWA BRICK AND TILE COMPANY
REDFIELD BRICK AND TILE COMPANY



**614 CENTRAL
NATIONAL BLDG**
DES MOINES, IOWA

Skillful balance of basic elements means

OBVIOUS GOOD DESIGN



Hawley Welfare Building, Des Moines, Iowa

ARCHITECT: Amos Emery & Associates, Des Moines, Iowa.

CONTRACTOR: Garmer & Stiles, Des Moines, Iowa.

Discriminating consideration of design essentials is a part of the architect's art. Part of the architect's science is the selection of elements of construction to fulfill his design intent. The Sheffield Clay Tile Beam System should be a part of your thinking when specifying floor and roof systems.

Selected for this building, the Sheffield Clay Tile Beam System offers high rigidity at low cost. It is a shallow system, making available more useful volume and allowing greater freedom in ducting. And, ease of installation results in savings of construction time and costs.

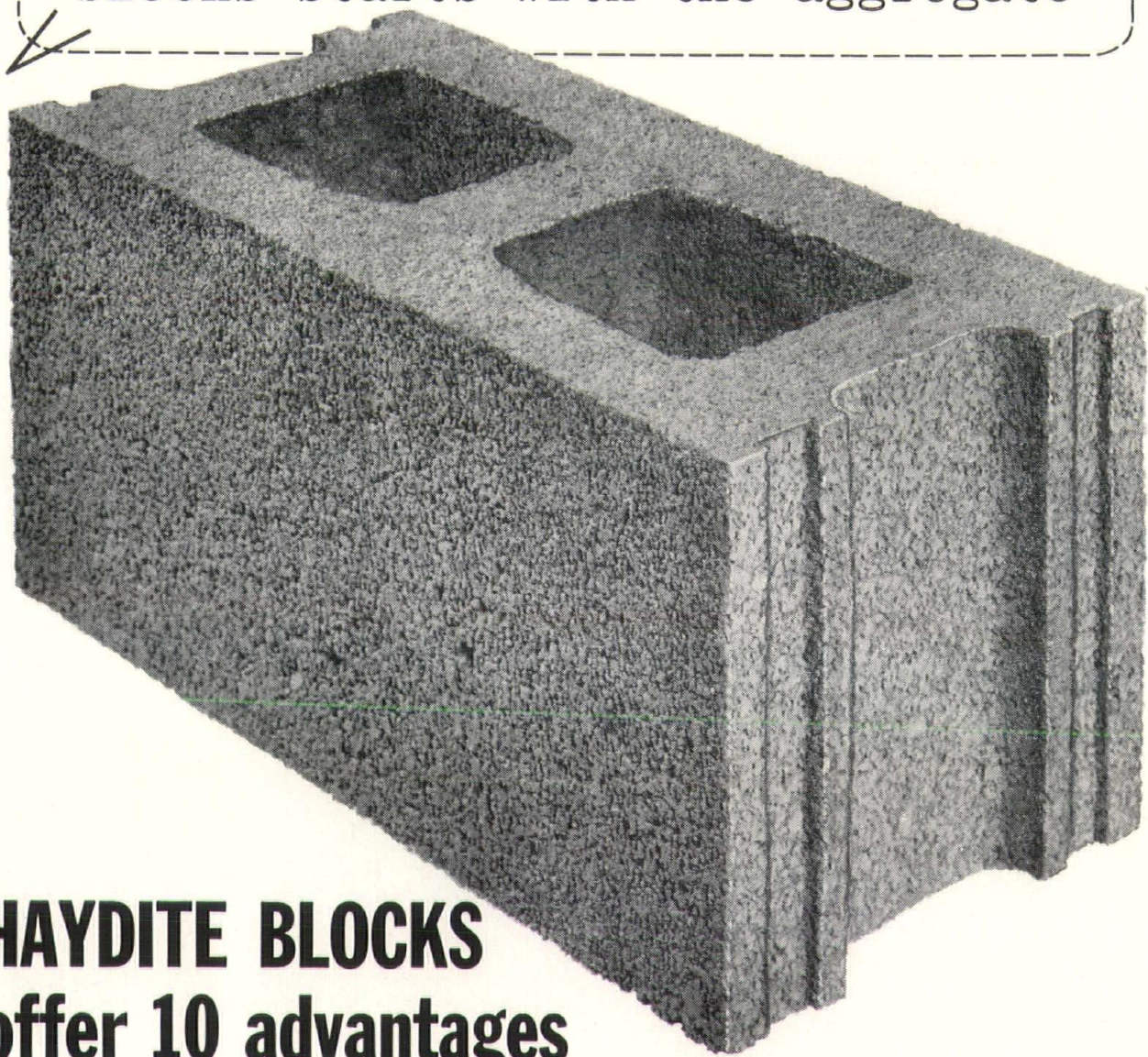
Accurately pre-sized, The Sheffield Clay Tile Beam System is a skillful balance of the basic qualities of hard-burned clay tile, steel and poured concrete . . . AN OBVIOUS GOOD DESIGN.



SHEFFIELD BRICK & TILE COMPANY

SHEFFIELD, IOWA

...the difference in concrete blocks starts with the aggregate



HAYDITE BLOCKS offer 10 advantages

LIGHT WEIGHT—approximately $\frac{1}{3}$ lighter than ordinary concrete. Reduces deadload without sacrificing strength.

STRENGTH—in excess of Federal and ASTM specifications and local building code requirements.

FIRE RESISTANCE—manufactured at temperatures in excess of 2,000° F., Haydite aggregate produces a block of unusually high fire resistance.

UNIFORMITY—in size, texture and color for accuracy and beauty.

ACOUSTICS—are improved by the cellular structure of the aggregate and the texture of the block. Approximate Noise Reduction Coefficient is 0.45.

THERMAL INSULATION—the U factor (average) on 8" Haydite blocks is 0.35 and on 12", 0.32.

AVAILABLE—nails can be driven in Haydite blocks to save time and money in many applications.

DURABLE—Haydite blocks have passed laboratory tests of 100 cycles of freezing and thawing without visible damage or loss of weight.

PAINTABILITY—the chemically inert composition of Haydite eliminates paint discoloration by rust or other chemical reactions.

ATTRACTIVE—a pleasing texture and natural gray color suitable for many applications without further treatment.

Haydite blocks manufactured from Carter-Waters Haydite, produced in Iowa, are available from more than 40 Iowa plants. For complete information contact your local plant or write to—

CONSTRUCTION THE MATERIALS
CARTER-WATERS
KANSAS CITY CORP. 8, MISSOURI
2440 Pennway GRand 1-2570

Producers of Haydite aggregate at Center-ville, Iowa, and New Market, Missouri.

IOWA ARCHITECT

Iowa Chapter, American Institute of Architects

CONTENTS

OFFICERS

Robert E. Savage
Des Moines
President

G. Doug Robison
Davenport
Vice-President

James A. Lynch
Des Moines
Secretary

Willis Schellberg
Forest City
Treasurer

PUBLICATIONS COMMITTEE

N. Clifford Prall
Chairman
Rich Goewey
Carl Ver Steeg

EDITOR

N. Clifford Prall
4717 Grand Avenue
Des Moines 12, Iowa

MANAGING EDITOR

Robert F. Bonomi
422 Securities Bldg.
Des Moines 9, Iowa
ATlantic 2-4309

Orchids to the entrants.....	6
Four awards to Crites-McConnell.....	7
Chapter says "GO".....	8
Student chapter report.....	10
Architects and home builders.....	12
Committees for 1962.....	13
Directory of Firms.....	14
Directory of Members.....	15
Associates	28
Junior Associates	28
Horizon Homes for 1962.....	35
National convention	35
Personal and Professional.....	36-38

THE COVER

Entrance detail and statue of the Fischer Community Center, Marshalltown, selected as the outstanding design project in the first Iowa Honor Awards competition. See page 7. Photo by Julius Shulman.

The "Iowa Architect" is published bi-monthly for the Iowa Chapter, American Institute of Architects, and mailed without charge. Appearance of names and pictures of products or services in editorial or advertising copy does not constitute endorsement of either the A.I.A. or this chapter.

Orchids to the entrants

EVERY FIRM which participated in the 1962 Honor Awards competition of the Iowa Chapter is deserving of the compliments of all members of the Chapter. The quality of the display was excellent. Much of the photography was outstanding. There was evidence of painstaking effort on the part of all participants. The number of completed plates furnished was encouraging to every member of the Chapter.

The compliments of the Chapter are extended to Ray Crites and Richard McConnell, whose design of the Fisher Community Center, Marshalltown, was judged best in the show. They also are to be complimented for their other mention winning designs. Chapter compliments go also to Brown, Healey and Bock and Brooks Borg.

The firms which won the Jury mentions, however, are not alone responsible for any success the project may enjoy. The breadth of the display—the variety of project type, presentation, and composition—is a showcase for collecting in one place a demonstration of the growth that architecture is making in Iowa. This is the result of the work of many individuals over many years, and reflects ability of Iowa architects to meet a challenge.

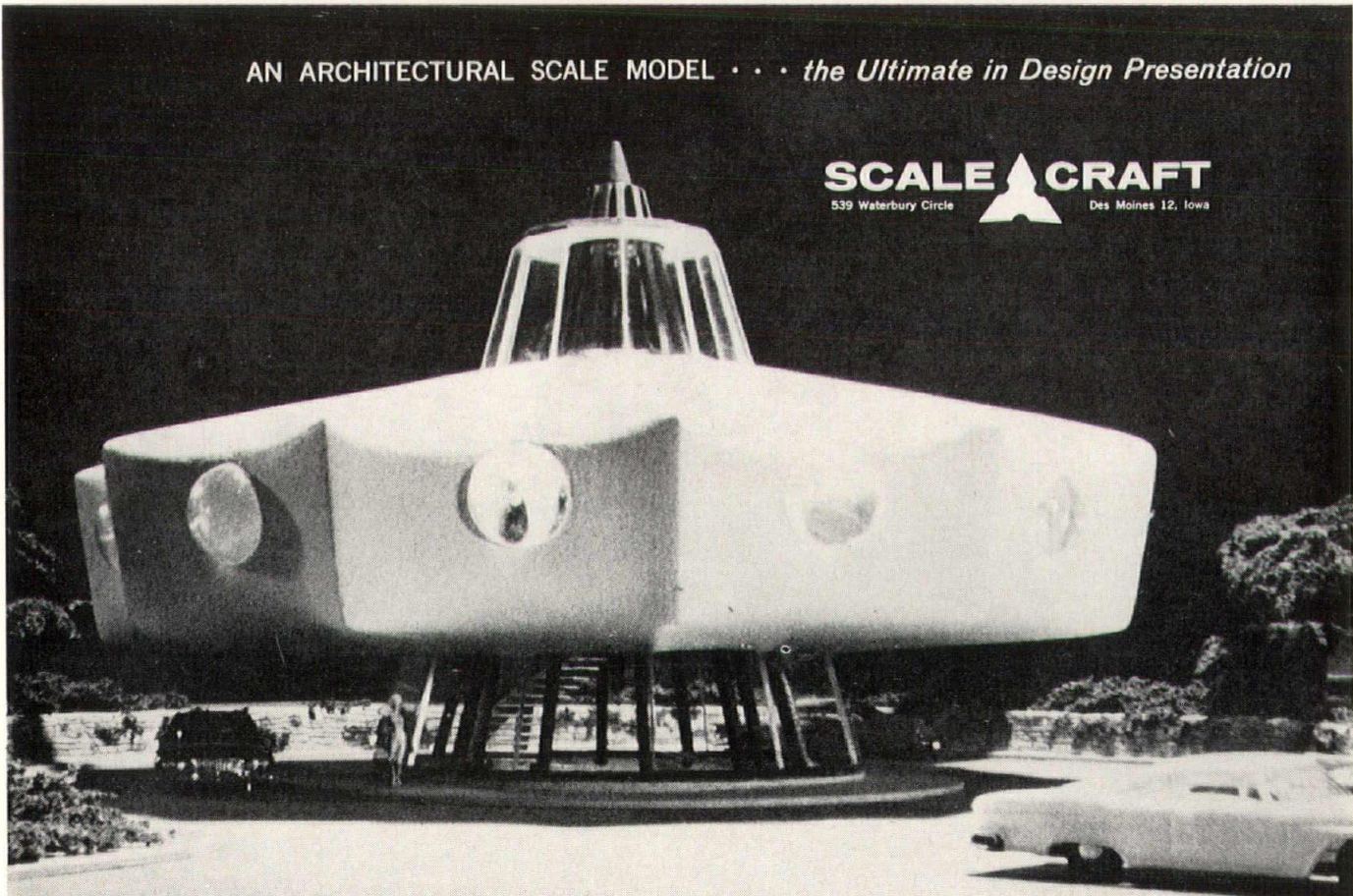
Some credit for the success of the 1962 Awards Program is due also to the officers of the Chapter during 1961. They encouraged the project and worked with everyone who had a part in its preparation. Charles Herbert, AIA, of Des Moines, outlined the basic program and helped launch the original calendar for participation.

Another measure of the effectiveness of the 1962 program will be taken in January of 1963, when entries can be expected from many firms which did not take part in the program this year. Fewer than one-fourth of the chapter members' firms had entries in the 1962 program. Several chapter members, while viewing the impressive display in the lobby of the Hotel Savery, expressed a wish that they had taken the time to prepare an entry.

The two most important results of such a display and awards program, however, will never be accurately measured. The first is the effect which such a program has upon the architects themselves, and the second is the effect which such a program has upon the public. Both, however, will be affected by a continuing honor awards program, to the benefit of each.

AN ARCHITECTURAL SCALE MODEL • • • *the Ultimate in Design Presentation*

SCALE CRAFT
539 Waterbury Circle Des Moines 12, Iowa



$\frac{1}{8}$ " = 1'-0" SCALE MODEL OF PROPOSED OFFICE BLDG. FOR COTA INDUSTRIES, INC. • BROOKS-BORG ARCHITECTS

Four awards to Crites - McConnell

IOWA CHAPTER members and their guests were enthusiastic in their compliments for the quality of the work exhibited in the First Iowa Honor Awards which culminated at the 1962 Chapter Convention as the firms of Crites and McConnell, Brown, Healey and Bock, and Brooks-Borg, were cited for excellence.

Architects Crites and McConnell, Cedar Rapids, whose entries comprised nearly one-half of the total exhibit, almost walked away with all the honors. The firm was awarded the highest, or medal, honor, an honorable mention, and two mentions.

Brown, Healey and Bock, also of Cedar Rapids, won honorable mention, and the firm of Brooks-Borg, Des Moines, was mentioned for two projects.

Judging of the entries was done by Dean Joseph R. Passenneau, AIA, of the School of Architecture at Washington University, St. Louis, and by Angus McCallum, AIA, Kansas City.

The Jury comments were (in part):

"The Jury commends the chapter on the unusually high quality of the submissions . . . The Jury feels obliged to repeat the almost hackneyed caution against photography for the sake of photographs . . . the arty photograph seldom produces the most direct expressions of a competent architectural accomplishment."

The jury awarded the highest honor to the Crites and McConnell project at the Fisher Community Center, Marshalltown. Of this project, the jury said:

"Successful solution to a problem complicated by the requirement to accommodate several diverse functions. Obviously programmed after careful research with unusual competence.

"The Jury felt that the building has a pleasant, relaxing and unostentatious character. The sitework, foreground pool and statue enhance the structure. The owners and the community are to be congratulated for their part in the accomplishment of this building."

Announcement of the Jury's choice came as a climax in the 1962 Annual Awards Banquet of the chapter, attended by the largest crowd ever for a chapter convention event.

Crites and McConnell also received an Honorable Mention Citation for the design of the Tucker Residence at Cedar Rapids, of this project, the Jury said:

"Disciplined plan, well sited, interestingly detailed. The Jury questioned the somewhat public exposure of the bedroom elevations."

Two other projects of the firm were cited. The Crites Residence (occupied by winner-architect Ray Crites) was described by the jury as an "interesting house, pleasantly situated on a handsome site."

Of the Lutheran Church of the Resurrection at



Studying panels during the judging of the 1962 Honors Awards Program are Angus McCallum, A.I.A., Kansas City, and Dean Joseph R. Passonneau, A.I.A., of the School of Architecture, Washington University, St. Louis.

Marion, the Jury was critical of a repetition of form, but said the church was "quite elegant in elevation and detail . . . direct in plan . . ."

Of the Brown, Healey and Bock project, Office Building for the Interocean Reinsurance Company, the Jury had this to say:

"Exceptionally well organized plan. Automobile approach and parking well integrated into the plan, yet removed from visual interference with the building."

Brooks-Borg of Des Moines won mention for the Maytag Office Building at Newton, and for the Press Box at the Iowa State University Stadium, Ames.

Of the Maytag Building, the jury said:

"Obvious problem of tremendous difficulty, thoroughly studied, well handled, competent and in good taste."

Of the ISU Press Box, the jury said:

"A competent architectural solution to a problem fundamentally structural. Well integrated into the existing stadium structure."

The 38 display mounts, each 40 x 40 inches, which comprised the entries are being retained for one year by the Chapter and will be provided as loan exhibits to art and community centers throughout the state. A major portion of the exhibit was to be on display at Iowa State University during the latter part of February and early March.

The Des Moines Art Center will have the display for the month of April, and it is scheduled in November for the Waterloo Recreation Commission. It will be at the State University of Iowa for the month of December.

The mounts were displayed in the mezzanine lobby of the Hotel Savery during the convention and were the background for an interview program at which Russ Van Dyke of KRNT-TV, Des Moines, asked questions of several architects.

GO!

says chapter



SAVAGE

in its sessions.

Particularly well received was the witty, lucid and informative talk by Dean Joseph Passonneau of the School of Architecture, Washington University, St. Louis. In making the point that there is an "invisible city" which brings life to the static creations which meet the eye, Dean Passonneau set the tone for the events which followed.

Angus McCallum, a past president of the Kansas City Chapter, took time in his banquet speech to ask the architects of Iowa (and the nation) to look again at themselves as they had during the Centennial activities of five years previously. He posed the question, "Where have we been?"

McCallum and Passonneau teamed to judge the first Honor Awards competition of the Iowa Chapter and found the entire submission to comprise an excellent presentation.

Robert Savage of West Des Moines was elevated to president from his previous post of vice president. Doug Robison of Davenport was chosen vice president. James A. Lynch, Des Moines, was elected secretary and Willis Schellberg of Forest City was elected treasurer. Lynch succeeds Rich Goewey of Des Moines and Schellberg succeeds John McKlveen of Des Moines, each of whom had served two years in the office.

Ray Bergquist of Dubuque, the outgoing president, remains as a member of the Executive Committee.

Paul Skiles of Des Moines was elected to the Board,

VIEW OF THE 427-PERSON BANQUET CROWD



DEAN PASSONNEAU AT KEYNOTE LUNCHEON

succeeding Dave Frevert of Des Moines. E. H. Healey of Cedar Rapids and N. Clifford Prall of Des Moines were re-elected to the board.

One speaker brought to Iowa by the Iowa chapter brought front-page copy for newspapers in the Des Moines area with his discussions of urban redevelopment and prospects for activity in Des Moines. He was Don Knutson of Minneapolis, who has been a prime mover in the development of a project which comprises 44% of the area of downtown Minneapolis. He described his activities in detail from the first steps in getting the project underway, through the arrangement of financing, and the arrangements for sale or lease of completed properties. He appeared before the Greater Des Moines Chamber of Commerce on the same day that he appeared before the Iowa Chapter.



ROBISON

For at least the fourth successive year, the annual Awards Banquet was larger than any previous convention meeting, and again was highlighted by the presentation of awards and the announcement of award winners. Three architectural firms were cited for excellence in the Honor Award program. (See page 7).

Seven awards—three to craftsmen and four to construction superintendents—were presented.

Craftsmen honored were:

Oscar H. Anderson, Council Bluffs, a cabinetmaker for the Alfred Bloom Company, Omaha.

Clifford J. Hauswald, Sioux City, a carpenter for the W. A. Klinger, Inc., Sioux City.

Roger Isacson, Humboldt, a mason for Woodruff-Evans Construction Co., Ft. Dodge.

Construction superintendents were:

Howard Miller, Des Moines, employed by William Knudson and Sons, Inc., Des Moines.

Henry J. Klosterman, Sioux City, employed by W. A. Klinger, Inc., Sioux City.

W. J. Krahling of Marshalltown, employed by Gilbert Buildign and Manufacturing Co., of Iowa Falls.

Raymond Rush, Des Moines, employed by Ringland-Johnson Inc., Des Moines.

These annual awards to individuals are the means by which the Iowa Chapter recognizes the contri-



LYNCH



bution of skilled craftsmanship to the successful completion of a construction project.

Business meetings took up two full morning sessions during the convention. Committee reports which had been received at the December 5 meeting were reviewed and proposals received.

Government Relations Committee Chairman George Russell and Attorney J. B. Mackaman of the firm of Dickinson, Throckmorton, Parker, Mannheimer and Raife, discussed the status and the shortcomings of the Iowa law relating to the practice of architecture. Suggested methods of correcting inconsistencies in the law were proposed, and, at the Saturday business meeting, the members voted decisively in favor of action to correct the inadequacies of the law.

The members also expressed approval for the continuation of a chapter meeting in the Spring, a seminar in the fall, and a chapter meeting in December to coincide with the meeting of the M.B.I.

John Rice, Chapter Liaison with the student chapter, and Student Chapter President Val Satko urged architects to visit the department at Iowa State University and to attend student chapter meetings.

O. H. Thorson, Waterloo, AIA Central States Regional Director, was unable to attend the session because of illness and a brief of his report was presented by President Savage. Thorson will be a speaker at the Chapter Spring meeting, April 11.

Resolutions of condolences were adopted in memory of Ralph Arnold, AIA, and Christian Petersen, sculptur, who had been an honorary member of the chapter. The Executive Committee adopted resolutions on condolences on the deaths of F. E. Wetherell, a past president of the chapter, and J. N. (Ding) Darling, who also had been an honorary member of the chapter.

A resolution of commendation for the Department of Architecture at ISU specifically cited the work of Professors Claire Watson, Vernon Stone and Karol Kocinski.



SCHELLBERG



CONCENTRATION MARKS MEMBERSHIP MEETING

Chapter members also formally approved the creation of sections of the chapter in areas throughout the state to provide architecture with an official, local voice to assist civic groups in meeting purely local problems.

In other resolutions, the chapter voted a special assessment to support action on changes in the architectural law and also commended the officers who had served in 1961. Compliments were voted Convention Chairman James Lynch and his committee of Harold Bullington, Clarence Olson, Jack Shelledy, and Merlin Redfern. Compliments also went to Mrs. Clifford Prall, ladies' program chairman, and her assistants, Mrs. Bill Woodburn, Mrs. Harold Bullington, and Mrs. Richard Goewey.

Firms with interests in the construction field were urged to choose architects on the basis of competence and integrity, in still another resolution which came after members noted that a "name from a hat" method had been used to select architects on some jobs within the industry. The resolution said in part:

"Whereas it occasionally happens that persons in the various fields of the Construction Industry wish to avail themselves of Architectural Service, and

"Whereas at such a time these persons may feel compelled for reasons of diplomacy to supinely entrust the choice of an architect to chance, now therefore

"Be it resolved that the Iowa Chapter express its firm adherence to the principle that the selection of an architect should always be made on the basis of competence and integrity."

Guests at the Banquet headtable included Lt. Gov. William L. Mooty of Grundy Center, and M. L. Carlson, Cedar Rapids, president of the Iowa Engineering Society.

CONSTRUCTION SUPERINTENDENTS, LEFT TO RIGHT, KRAHLING, MILLER, RUSH, AND KLOSTERMAN



CRAFTSMEN HAUSWALD, ANDERSON, ISACSON



The student chapter reports

IN NOVEMBER of 1961, Morris E. Mikkelsen, External Vice President attended the annual Student Chapter Forum in Washington, D. C. Mr. Mikkelsen was elected Regional Director for the Central States Region of Student Chapters. He has initiated a program of closer cooperation through mutual correspondence between the various schools. A newsletter of current affairs at the various schools has been started and we hope to promote chapter sponsored student displays among schools in the region. In October of 1962, a regional meeting is planned; to be held at the University of Nebraska.

Within the student chapter here at Iowa State we are continuing with our lecture series. Various members of the architectural profession and other professions related to architecture have visited with us. Mr. O. H. Thorson of Waterloo spoke to the chapter in October on the structure and function of the A.I.A. He stressed the role of the student in our professional society. In November, Mr. Harold Jobse of the Portland Cement Association gave a slide lecture on the design and use of reinforced concrete structures. Our last program of the year was a delightful slide lecture on the Architecture of Mexico. Mr. James Lynch, architect of Russell and Lynch, Des Moines, described his recent trip to Mexico to us. Of especial note were the excellent slides of the work of Felix Candella.

We began the new year with our first theme lecture. The theme for this year is Urban Design. On January twenty-fifth we were privileged to hear Dean Joseph Passeneau of Washington University, St. Louis, Missouri. The title of Dean Passeneau's lecture was "The Invisible City" as later given at the Iowa Chapter Convention. For the remainder of the school year we hope to continue the series by investigating several aspects of urban planning and design.

The culmination of chapter events will again be the student sponsored annual banquet on April eleventh of this year. I should like at this time to extend a personal invitation to all members, associates and junior associates of the Iowa Chapter to attend this banquet.

Further, I should like to invite all architects to visit the school of architecture both at our student chapter meetings and at any other time. A tentative list of student chapter meeting dates appear at the end of this report. All of the students here at Iowa State would honestly appreciate the opportunity to discuss their work and the "real" aspects of our profession with you. Visit with us as often as you can. You are more than welcome.

Val A. Satko

Student Chapter A.I.A., President

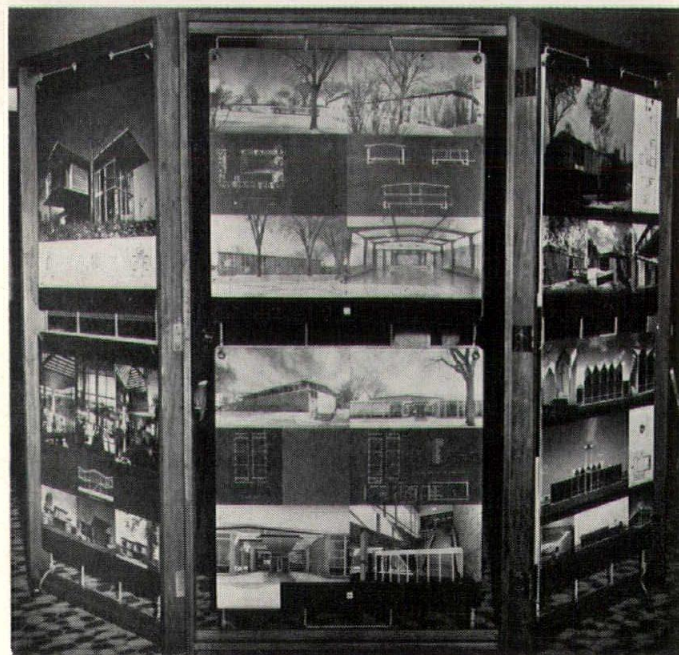
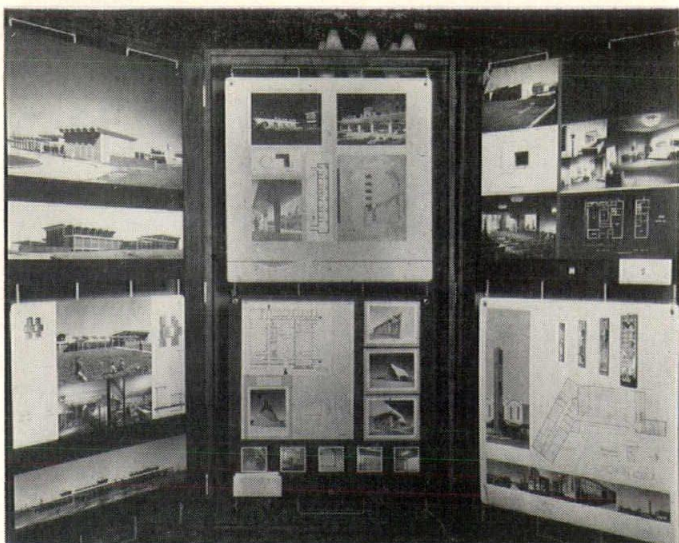
TENTATIVE SCHEDULE OF STUDENT CHAPTER MEETINGS

Monday, April 16, 1962 — A.I.A. Student Banquet

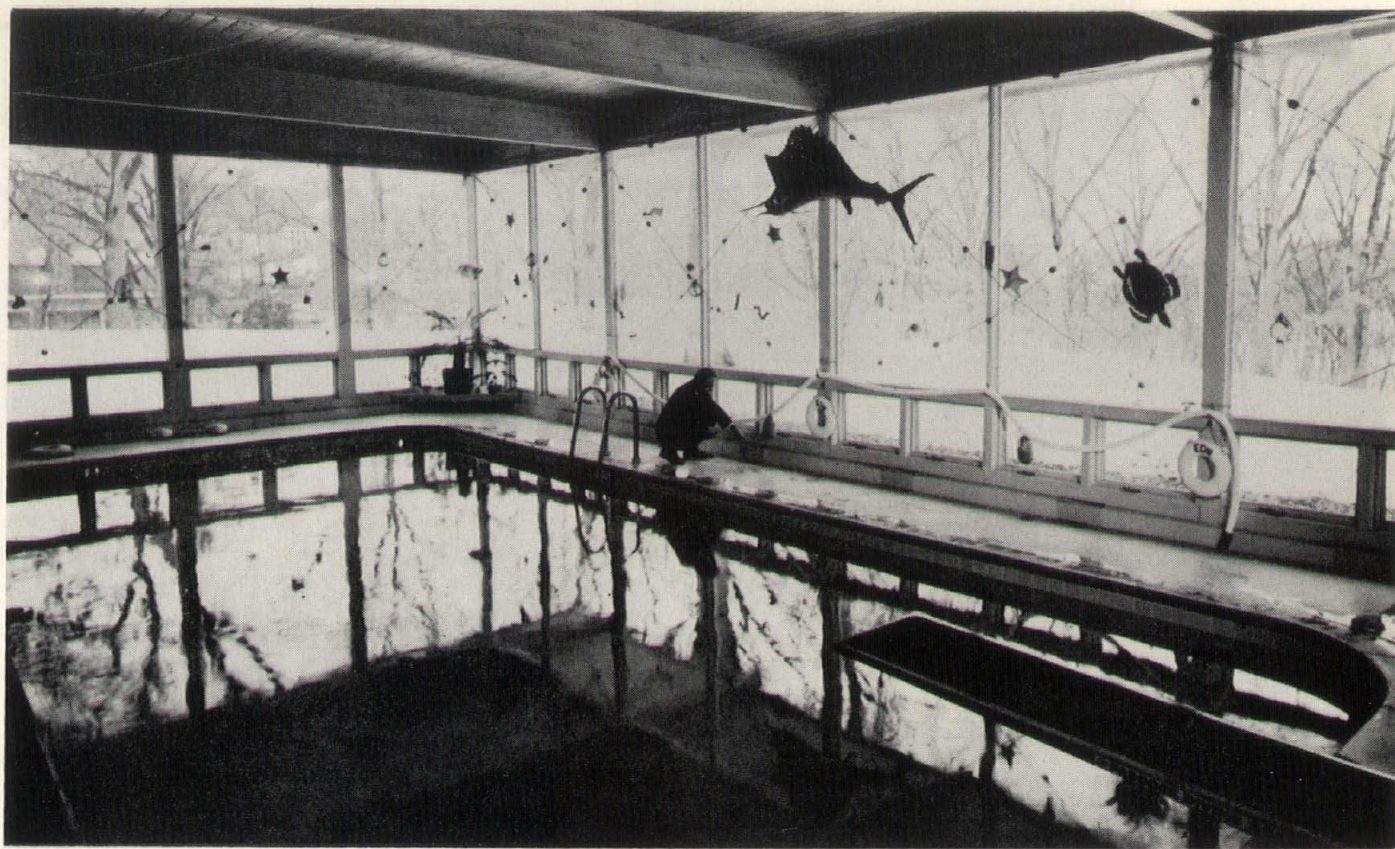
Wednesday, April 25, 1962 — A.I.A. Student Chapter Meeting

Wednesday, May 9, 1962 — Final A.I.A. Student Chapter Meeting

Speakers will be announced later.



These three photos are general views of the displays which presented the 1962 Honor Awards entries to visitors to the lobby of the Hotel Savery during the January Convention. Entries were of excellent quality and carefully prepared.



Specify Creative Heating and Air Conditioning by **GREEN COLONIAL**



As one example of the adaptability of Green Colonial heating and air conditioning, the private swimming pool shown in the two photographs, presented several unusual problems. The closed-in area includes the pool and a lounge deck on different levels.

The photo above shows the solution to prevent condensation on the window walls when a number of people are using the pool. The man in the photo is showing the location of warm air ducts to blanket the windows with warm air streams to prevent "fogging", which has proved to be completely satisfactory.

The excess humidity is removed through the barbeque grill exhaust hood shown at the back of the second level in the photo at left. The operation of this exhaust hood is automatically controlled by a humidistat on the lounge deck. Fresh outside air is warmed and circulated to replace the moisture laden air.

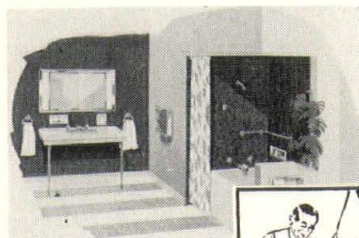
The services of the GREEN COLONIAL Engineering Department are available to you for CREATIVE Heating and Air Conditioning for homes, schools, churches, and commercial installations. GREEN COLONIAL has been serving Midwest homeowners since 1869. In Iowa there are over 400 dealers, and 15 Factory representatives ready to serve you!

**GREEN
COLONIAL**
HEATING & COOLING

GREEN COLONIAL INC.

DES MOINES 6, IOWA

Interiors Brought To Life With Des Moines Marble & Mantel Ceramic Tile



Des Moines Marble and Mantel Ceramic Tile, in a wide range of hues and tints, lends itself to many design possibilities.

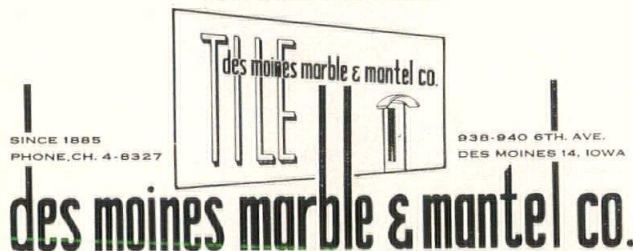
Call us -

when buildings are in their blueprint stages. We are always happy to work with Iowa Architects.



Our precise control assures architects a permanency of color as well as uniformity of shade throughout the job.

Members of Producer's Council and leading national Terrazzo and Mosaic associations.



HOPE'S WINDOWS, Inc.

Niedringhaus Metal Products Co.

Ramset

Simmons Dormitory Furniture

PermaCushion Gym Floors

"Twin-Beam" Church Windows



C. D. WILCOX AND COMPANY

S.W. 6th & Murphy

Des Moines 9, Iowa

Phone CHerry 4-5191

Member Iowa Chapter, Producers Council Inc.

Architects and home builders

A CONFERENCE on home building with a secondary aim of bringing architects and home builders together will convene March 21 and 22 on the Iowa State University Campus. It will be the Fifth Annual Home Builders Short Course. Sessions will be in the Gallery at the Memorial Union, and the first day's events open at 8:30 a.m., the second day at 9:00 a.m.

Fifteen speakers are listed on the program, and six of them would be listed on the architectural side of the building industry.

Robert Englebrecht, A.I.A. of New York City, will be the featured speaker on the Thursday morning program and will participate in a panel on Thursday afternoon. Englebrecht, former architectural editor of *Living for Young Homemakers* magazine specializes in house design has done small research homes, and is the designer of the model home for the Seattle World's Fair.

James A. Lynch, AIA, of Des Moines will speak Wednesday under the title of "What Iowa Home Builders are Giving Iowa Home Buyers."

Prof. Leonard Wolf, FAIA, ISU department head, B.J. Slater, assistant professor, William DeKovic, instructor, and William Lauer, graduate student, of the department, also have parts in the program.

Emil Hanslin of Melrose, Mich., (a graduate of the University of Iowa) a real estate developer and promoter who has been named the 'best in the business' by House and Home magazine, also will be a major participant in the Thursday discussions, taking up the subject "Successful Subdivisions Through Teamwork."

"We need a good showing of architects at this kind of a meeting to convince the builders and the public that architectural design can improve housing. We need to have the builders and the architects become acquainted with each other.

Other speakers during the two-day event will be Alvin Campbell of the NAHB Washington, D. C., Dean Alseth, W. C. Gray and George Rybolt of the U. S. Gypsum Co., Dean George Town, John T. Schlebecker, Margaret Liston of the ISU departments, James Jensen of the General Electric Co., Cleveland, O., and Ray E. Hertz, a builder from Cedar Rapids.

COMMITTEES 1962

IOWA CHAPTER A.I.A.

Awards and Scholarship

HERBERT, CHARLES E.
Chairman
709 Bankers Trust Bldg.
Des Moines 9
CRITES, RAY

Chapter Affairs

ROBISON, DOUGLAS
Chairman
601 Brady Street
Davenport
SAVAGE, ROBERT
LYNCH, JAMES
SCHELLBERG, WILLIS
PRALL, CLIFFORD
HEALEY, E. H.
SKILES, PAUL
BERGQUIST, RAYMOND

Publications

PRALL, N. CLIFFORD
Chairman
4717 Grand Avenue
Des Moines 12, Iowa
GOEWEY, RICH
VER STEEG, CARL

Convention, 1963

GOEWEY, RICHARD
Chairman
815 Hubbell Bldg.
Des Moines 9

Construction Industry Relations

FREVERT, W. DAVID
Chairman
302 Garver Building
Des Moines 9
SKILES, PAUL
LYON, WAYNE
SOENKE, LOUIS

Education

BENTLEY, JAMES
Chairman
219 Waterloo Building
Waterloo
RICHARDSON, CHARLES
HOTCHKISS, WALTER
WOLF, LEONARD
HEALEY, EDWARD H.
RICE, JOHN
Student Advisor
O'NEIL, EUGENE C.
Curriculum

Professional Practice

JENSEN, MYRON E.
Chairman
206 Davidson Building
Des Moines 9
BROM, RICHARD
SCHELLBERG, WILLIS E.
GRIFFITH, GERALD I.

Fellowships

WALSH, JAMES
Chairman
Glass Block Building
Spencer

Government Relations

RUSSELL, GEORGE
Chairman
1221 Savings & Loan Bldg.
Des Moines 9
THORSON, OSWALD
BERGQUIST, RAYMOND
WAGGONER, THOMAS
STEFFEN, KENNETH J.
SILLETTO, CHARLES B.
EMERY, AMOS B.
LUNDBLAD, GLENN E.
WALSH, JAMES
BROOKS, J. WOOLSON
Advisor

Home Building Industry

TAYLOR, WILLIAM A.
Chairman
6311 Hickman Road
Des Moines 10
LORENZEN, KEITH E.

Preservation of Historic Buildings

WAGNER, WILLIAM J.
Chairman
500 Hubbell Building
Des Moines 9
PATTEN, LAWTON M.

Public Relations

PAYNE, HAROLD
Chairman
1221 Savings & Loan Bldg.
Des Moines 9
GERMANSON, GERALD D.
BROSHAR, ROBERT C.
PORTER, TOM
WOODBURN, WILLIAM

School Buildings

RAMSEY, ROBERT
Chairman
302 Garver Building
Des Moines 9
ROBISON, DOUG
VER PLOEG, STANLEY
KRAMER, DONOVAN D.
ATHERTON, TOM

Community Development

LIGHTER, CLYDE
Chairman
526 Liberty Building
Des Moines 9
VOORHEES, GRANT W.
LYNCH, JAMES A.

Collaboration with Design Professions

HUEHOLT, RAYMOND
Chairman
206 Davidson Building
Des Moines 9
KOCIMSKI, KAROL
ROBISON, DOUGLAS

ADEL CLAY PRODUCTS CO.

Specify ADEL SMOOTH FACE BRICK

Available in Modular, Standard, SCR and
Norman sizes. Red Color Range
201 and 209.

Sample on request.

Adel Clay Products Co.

STIPPLE-MATT FACE TILE AND BRICK
AND OTHER VITRIFIED CLAY PRODUCTS

IOWA SALES OFFICE AND WAREHOUSE
101 ASHWORTH ROAD • WEST DES MOINES, IOWA
FACTORIES IN REDFIELD AND CENTERVILLE, IOWA

Phone CRestwood 9-9721

DIRECTORY, IOWA CHAPTER, A.I.A.

*On this page are listed all architectural firms resident in Iowa, whose principles are affiliated either with the A.I.A. or its Iowa Chapter.
Chapter Office: 422 Securities Bldg., Des Moines 9, Iowa.*

Altfillisch, Olson, Gray & Thompson
126½ West Water Street
Decorah, Iowa

Architects Associated
424 Badgerow Building
Sioux City, Iowa

Herbert A. Arthur, Architect
310½ Main Street
Ames, Iowa

Bergland & Bianco
11½ S. Federal Avenue
Mason City, Iowa

Wm. Beuttler & Son
14th and Nebraska Streets
Sioux City, Iowa

Brooks-Borg
815 Hubbell Building
Des Moines 9, Iowa

Brown, Healey & Bock
131 36th St. Drive, S.E.
Cedar Rapids, Iowa

I. T. Carrithers, Architect
6 N. First Street
Council Bluffs, Iowa

R. M. & M. B. Cleveland
424 E. 4th Street
Waterloo, Iowa

G. B. Cox, Architect
Professional Arts Building
1630 State Street
Bettendorf, Iowa

Architects Crites & McConnell
1953 First Ave. S.E.
Cedar Rapids, Iowa

Deuth & Gibson
417 Logan Street
Waterloo, Iowa

Dewild-Grant-Reckert & Stevens
Rock Rapids, Iowa

Dougher-Frevert-Ramsey
707 Locust Street
Des Moines 9, Iowa

Durrant & Bergquist
666 Loras Blvd.
Dubuque, Iowa

Amos Emery & Associates
820 Locust Street
Des Moines 9, Iowa

Phil Feddersen, Architect
818 North Second Street
Clinton, Iowa

Germanson-Foss & Co.
1308 Pierce
Sioux City 5, Iowa

Gerald Griffith, Architect
3810 Ingersoll
Des Moines 12, Iowa

The Griffith Co.
S. Kenyon Road
P.O. Box 917
Fort Dodge, Iowa

Grow & DeVoe
403 Main Street
Cedar Falls, Iowa

Robert D. Hecker, Architect
407 Toy Nat'l Bank Bldg.
Sioux City, Iowa

Henry & Broshar
2101A Falls Ave.
Waterloo, Iowa

Charles Herbert & Associates
709 Bankers Trust Bldg.
Des Moines 9, Iowa

Hollis and Miller
120 Council Bluffs Savings Bank Bldg.
Council Bluffs, Iowa

George Horner, Architect
State University of Iowa
Iowa City, Iowa

Lyle P. Howard, Architect
208 Kresge Building
Ottumwa, Iowa

Ervin C. Huneke, Architect
802 E. Madison
Fairfield, Iowa

Karl Keffer Associates
202 Masonic Temple Building
Des Moines 9, Iowa

Louis Kingscott & Associates
321 W. Kimberly Road
P.O. Box 202
Davenport, Iowa

Kohlman-Eckman-Hukill
634 Higley Building
118 3rd Avenue S.E.
Cedar Rapids, Iowa

Lindgren & Taylor
6311 Hickman Road
Des Moines 22, Iowa

Keith E. Lorenzen & Staff
215 Commercial Street
Waterloo, Iowa

Maiworm-Wiegman
Warden Building
Fort Dodge, Iowa

William L. Martin, Architect
821 15th Street
Boone, Iowa

Wm. R. Meehan, Architect
2215 Grand Avenue
Des Moines 12, Iowa

Dane D. Morgan & Associates
314 N. 4th
Burlington, Iowa

William Nielsen, Architect
307 Masonic Temple Bldg.
Des Moines 9, Iowa

John H. Normile, Architect
2425 Park Avenue
Des Moines, Iowa

Charles Richardson & Associates
1001 Kahl Building
3rd & Ripley Streets
Davenport, Iowa

Leo C. Peiffer, Architect
3330 Mt. Vernon Road, S.E.
Cedar Rapids, Iowa

N. Clifford Prall, Architect
4717 Grand Avenue
Des Moines 9, Iowa

Russell J. Prescott, Architect
126½ W. Main Street
Marshalltown, Iowa

Prout-Mugasis-Johnson
709 5th Avenue S.
Clinton, Iowa

Glen E. Ralston, Architect
1440 E. Ridgeway Ave.
Waterloo, Iowa

Russell & Lynch
1221 Savings & Loan Building
Des Moines 9, Iowa

Savage & Ver Ploeg
1200 Grand
West Des Moines, Iowa

Smith-Voorhees-Jensen
Architects Associated
304½ 8th Street
Des Moines 9, Iowa

Louis G. Soenke
601 Brady St.
Davenport, Iowa

Steffen & Stoltz
125½ East Second
Box 601
Ottumwa, Iowa

Stewart, Robison & Laffan
Priester Building
601 Brady Street
Davenport, Iowa

Thorson & Brom
219 Waterloo Building
Waterloo, Iowa

Thorson, Gjeltten & Schellberg
205 S. Clark Street
Forest City, Iowa

Tinsley, Higgins, Lighter & Lyon
526 Liberty Building
Des Moines 9, Iowa

Toenjes & Stenson
217 W. 4th Street
Waterloo, Iowa

Waggoner & Waggoner
15 S. Federal Avenue
Mason City, Iowa

Walsh & Keninger
Box 467
Glass Block Building
Spencer, Iowa

Wetherell-Harrison-Wagner
500 Hubbell Building
Des Moines 9, Iowa

Raymond C. Whitaker, Architect
1202 Adams Street
Davenport, Iowa

Leonard Wolf, Architect
Engineers Annex
Iowa State University
Ames, Iowa

Woodburn & O'Neil
201 Jewett Building
Des Moines 9, Iowa

Members, the American Institute of Architects

ASSIGNED TO THE IOWA CHAPTER

ALTFILLISCH, CHARLES

(F.A.I.A.)
Principal, Altfillisch,
Olson, Gray &
Thompson, 126½ W.
Water Street,
Decorah



ARTHUR, HERBERT A.

Principal, Herbert A.
Arthur, 310 Main
Street, Ames



ATHERTON, THOMAS J.

Principal, Karl Keffer
Associates, 202
Masonic Temple
Building, Des Moines



BENTLEY, JAMES M.

Associate:
Thorson & Brom,
219 Waterloo
Building, Waterloo



BERGLAND, ROBERT B.

Principal, Bergland and Bianco,
11½ S. Federal Avenue, Mason City

BERGQUIST, RAYMOND G.

Principal, Durrant and
Bergquist, 666 Loras
Blvd., Dubuque



BEUTTLE, WILLIAM

Principal, William Beuttler and Son,
14th and Nebraska Streets, Sioux City

BEUTTLE, W. LEE

Principal, William Beuttler and Son,
14th and Nebraska Streets, Sioux City

BIANCO, HAROLD F.

Principal, Bergland and Bianco,
11½ South Federal Avenue, Mason City



BLUM, CARL R.

Principal, Dane D.
Morgan and
Associates, 314 North
4th Street, Burlington



BORG, ELMER H.

Principal, Brooks-Borg,
815 Hubbell Bldg.,
Des Moines 9



BORG, JOSEPH E.

Principal, Brooks-Borg,
815 Hubbell Bldg.,
Des Moines 9



BROM, RICHARD H.

Principal, Thorson and
Brom, 219 Waterloo
Building, Waterloo

BROOKS, J. WOOLSON

Principal, Brooks-Borg,
815 Hubbell Bldg.,
Des Moines 9

BROSHAR, ROBERT C.

Principal, Henry &
Broshar, 2101A Falls
Avenue, Waterloo



BROWN, WILLIAM J.

Principal, Brown,
Healey Bock, 131
36th Drive, S.E.,
Cedar Rapids



CAMIZZI, FRANCIS J.

Brown Healey & Bock,
131 36th St., Drive,
S.E., Cedar Rapids



CARRITHERS, IRA T., JR.

Principal, I. T.
Carrithers,
6 North First Street,
Council Bluffs



CLEVELAND, MORTIMER B.

Principal, R. M. &
M. B. Cleveland,
424 East 4th Street,
Waterloo



**CLEVELAND,
RHODES M.**

Principal, R. M. &
M. B. Cleveland,
424 East 4th Street,
Waterloo



COUCH, LOUIS C.

Lundine & Toline,
1630 - 5th Ave., Moline, Illinois



**COX,
GERALD BURTON**

Principal, G. B. Cox,
Architect, Professional
Arts Bldg., 1630
State St., Bettendorf



**CRITES,
RAY D.**

Principal, Architects
Crites and
McConnell 1953
First Avenue, S.E.,
Cedar Rapids



**DEAN,
WALDO J.**

Principal, Karl Ketter,
Associates, 202
Masonic Temple
Building, Des Moines



**DeVOE,
ROBERT C.**

Principal, Grow and
DeVoe, 403 Main,
Cedar Falls

DOMMER, JERALD W.

Principal, Durant and Bergquist,
666 Loras Blvd., Dubuque

DOUGHER, JAMES A.

Principal, Dougher-Frevert-Ramsey,
302 Garver Building, Des Moines



**DUFFY,
JAMES M.**

Wm. Beuttler & Son,
14th and Nebraska
Sts., Sioux City



**ECKMAN,
REALAND F.**

Principal, Kohlman-
Eckman-Hukill, 634
Higley Building,
Cedar Rapids



**EMERY,
AMOS B.**

Principal, Amos Emery
and Associates,
820 Locust Street
Des Moines



**FEDDERSEN,
PHIL H.**

Principal, Phil H.
Feddersen, Architect,
818 No. Second St.,
Clinton



**FERNBACH,
RICHARD B.**

708 Foster Drive,
Des Moines

FRANZEN, ARCHIE W.

P.O. Box 151, Harper's Ferry
West Virginia

**FREVERT,
W. DAVID**

Principal, Dougher-
Frevert-Ramsey,
302 Garver Building,
Des Moines



**CALVIN,
JOHN C.**

Altfillisch, Olson,
Gray and Thompson,
126 1/2 West Water
Street, Decorah



**GERMANSON,
GERALD D.**

Principal, Germanson-
Foss & Co., 1308
Pierce, Sioux City



GIBSON, VICTOR P.

Deuth & Gibson, 417 Logan Street, Waterloo



**GJELTEN,
GORDON O.**

Principal, Thorson,
Gjeltten and
Schellberg,
205 S. Clark Street,
Forest City



**GOEWEEY,
RICHARD W.**

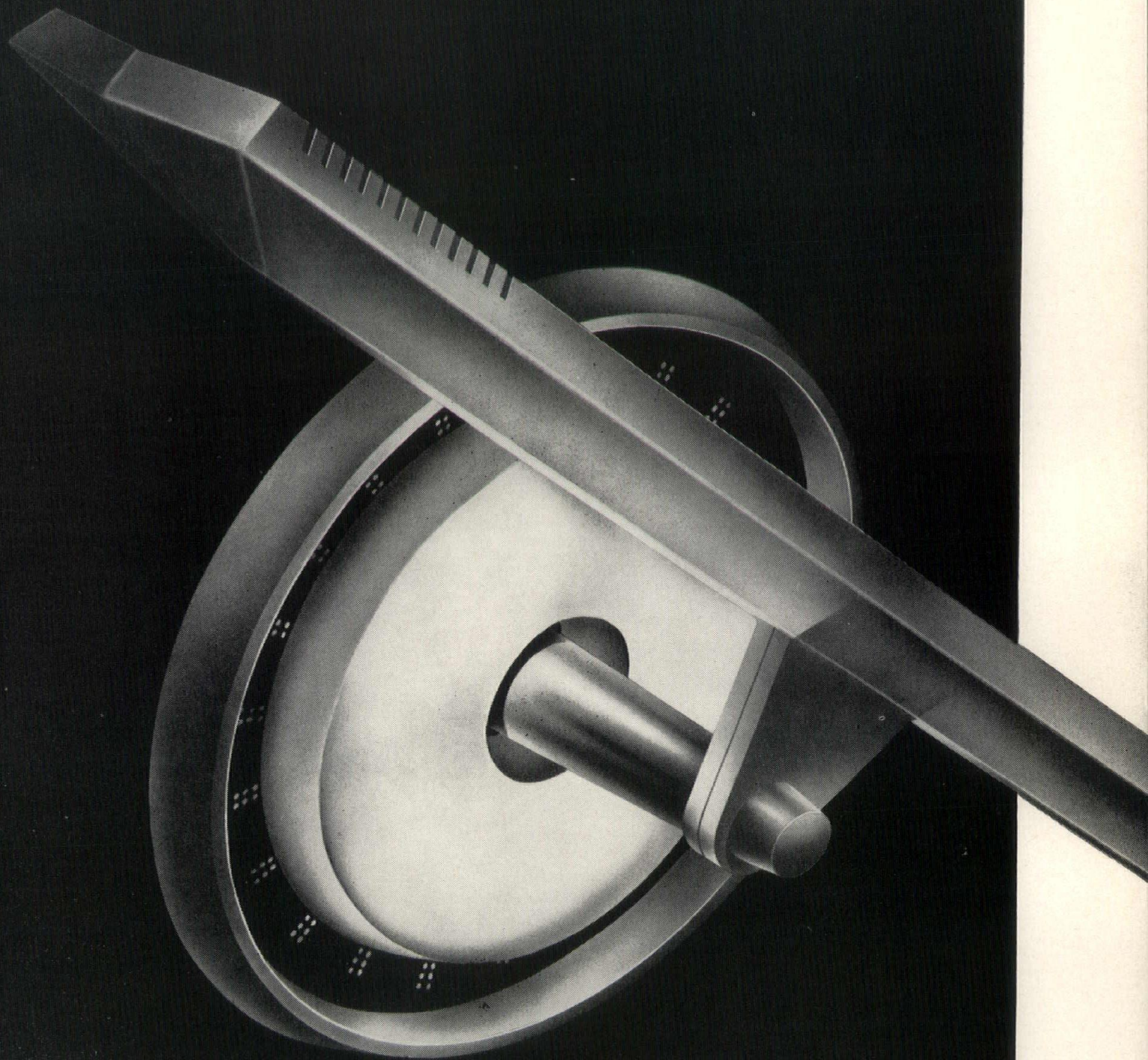
Principal, Brooks-Borg,
815 Hubbell Building,
Des Moines

GORDON, GENE P.

Principal, Durant & Bergquist, 666 Loras Blvd.,
Dubuque

GRAY, DONALD LOWELL

Principal, Altfillisch, Olson, Gray & Thompson,
305 Fifth Avenue, Decorah



NEW

ILLUMINATED WALL BRACKET

spotlights handrails in corridors and stairways • • • Incandescent recessed lighting provides added safety and decorative night lighting for:

HOSPITALS • HOMES FOR AGED • THEATRES • HOTELS • SHIPS



Blumcraft

OF PITTSBURGH

GENERAL CATALOG OF COMPLETE BLUMCRAFT LINE AVAILABLE ON REQUEST
COPYRIGHT 1961 BY BLUMCRAFT OF PITTSBURGH • 460 MELWOOD STREET, PITTSBURGH 13, PENNSYLVANIA

**GRIFFITH,
GERALD I.**

Principal, Gerald I. Griffith, 3810 Ingersoll, Des Moines



**HECKER,
ROBERT D.**

Principal, Robert D. Hecker, 407 Toy National Bank, Sioux City



**HOWARD,
LYLE**

Principal, Lyle P. Howard, 208 Kresge Building, Ottumwa



**GRIFFITH,
STANFORD WELLS**

Principal, The Griffith Company S. Kenyon Road, P.O. Box 917 Fort Dodge



HENRY, HARVEY W.

Principal, Henry & Broshar, 2101A Falls Ave., Waterloo



**HUEHOLT,
RAYMOND L.**

Principal, Smith-Voorhees-Jensen, Architects Associated, 201 Davidson Building, Des Moines



GROW, ROBERT WARREN

Principal, Grow and Devoe, 403 1/2 Main Street, Cedar Falls



**HERBERT,
CHARLES E.**

Principal, Charles Herbert and Associates, 907 Bankers Trust Building, Des Moines 9



HUKILL, WILLIAM V., JR.

Principal, Kohlman-Eckman-Hukill, 634 Higley Building, Cedar Rapids



**HARRISON,
ROLAND T.**

Principal, Wetherell-Harrison-Wagner, 500 Hubbell Building, Des Moines



**HIGGINS,
BURDETTE**

Principal, Tinsley, Higgins, Lighter and Lyon, 526 Liberty Building, Des Moines



**HUNEKE,
ERVIN C.**

Principal, Ervin C. Huneke, First National Bank Building, Fairfield



**HAYNES,
STANLEY F.**

Prout, Mugasis and Johnson, 709 5th Avenue South, Clinton



**HORNER,
GEORGE L.**

Architect's Office, State University of Iowa, Iowa City



**JENSEN,
MYRON E.**

Principal, Smith, Voorhees, Jensen, Architects Associated, 201 Davidson Building, Des Moines



**HEALEY,
EDWARD HOPKINS**

Principal, Brown, Healey Bock, 131 36th Drive, S.E., Cedar Rapids

**HOTCHKISS,
WALTER ALAN**

Principal, Amos Emery and Associates, 820 Locust, Des Moines



**JOHNSON,
ROBERT L. M.**

Principal, Prout-Mugasis-Johnson, 709 Fifth Avenue South, Clinton



MURAL IN EXPOSED AGGREGATE

PROJECT: CENTRAL NATIONAL INSURANCE COMPANY
72ND STREET, 2 BLOCKS SOUTH OF DODGE ST., OMAHA
ARCHITECT: LEO A. DALY COMPANY, OMAHA
ARTIST: BILL HAMMON, OMAHA
PHOTOGRAPHER: TORKEL KORLING, CHICAGO

Working in the plant, Artist Bill Hammon prepared molds for these panels. Relief is plus 3 inches and minus 1 inch from panel face. Finish is $\frac{3}{4}$ " milky quartz in light grey matrix.



MIDWEST CONCRETE INDUSTRIES
WEST DES MOINES, IOWA

**KENDALL,
R. KENNETH**

Brooks-Borg, 815
Hubbell Bldg.,
Des Moines



**LANGOHR,
E. LAWRENCE**

Principal, Dane D.
Morgan & Associates,
314 North 4th Street
Burlington



**LYNCH,
JAMES A.**

Principal, Russell and
Lynch, 1221 Savings
and Loan Building,
Des Moines



**KENINGER,
BERNARD J.**

Principal, Walsh &
Keninger, Box 467,
Spencer



**LANTZ,
REUBEN S.**

Tinsley, Higgins,
Lighter and Lyon,
526 Liberty Building,
Des Moines



**LYON,
R. WAYNE**

Principal, Tinsley,
Higgins, Lighter and
Lyon, 526 Liberty
Building, Des Moines



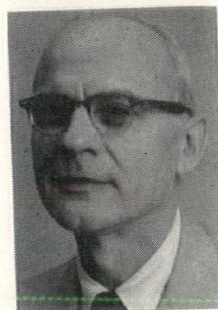
**KNIGHT,
CALVIN A.**

Box 553, Iowa City



**LIGHTER,
CLYDE W.**

Principal, Tinsley,
Higgins, Lighter and
Lyon, 526 Liberty
Building, Des Moines



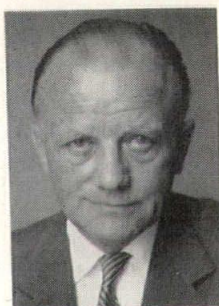
**MAIWURM,
DONALD J.**

Principal, Maiwurm
and Wiegman,
Warden Building
Fort Dodge



**KOCIMSKI,
KAROL J.**

Professor of
Architecture, Iowa
State University,
Ames



**LINDGREN,
ARTHUR A.**

Principal, Lindgren &
Taylor, 6311
Hickman Road,
Des Moines



**MARQUART,
GAIL EUGENE**

Prout-Mugasis-
Johnson, 709 Fifth
Avenue South,
Clinton



**KRAMER,
DONOVAN D.**

Principal, Durrant and
Bergquist, 666 Loras
Blvd., Dubuque



**LORENZEN,
KEITH E.**

Principal, Keith
Lorenzen & Staff, 215
Commercial Street,
Waterloo



**MARTIN,
WILLIAM L.**

Principal, William L.
Martin, 821 15th St.,
Boone



**LAFFAN,
WILLIAM J.**

Principal, Stewart-
Robison-Laffan, 601
Brady St., Davenport



**LUNDBLAD,
GLENN E.**

Smith-Voorhees-
Jensen, Architects
Associated, 424
Badgerow Building,
Sioux City



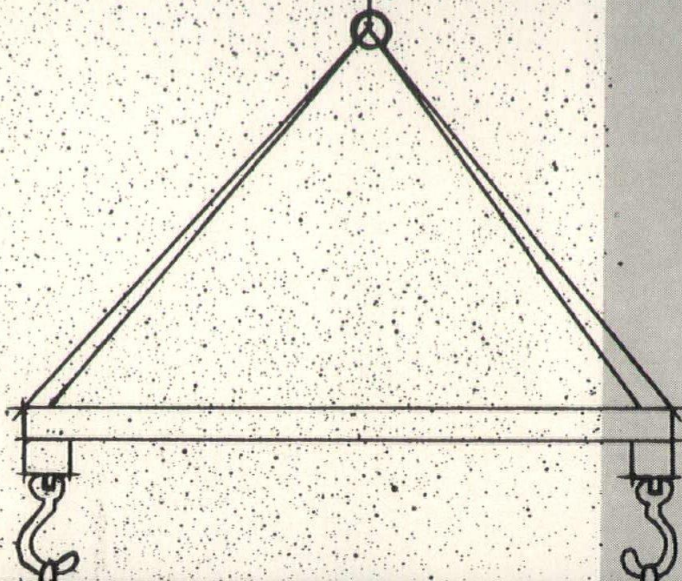
**McCONNELL,
RICHARD D.**

Principal, Architects
Crites and
McConnell 1953
First Avenue, S.E.,
Cedar Rapids



PRESTRESSED CONCRETE of Iowa, Inc.

CORED FLAT SLABS



**REDUCE
CONSTRUCTION
TIME**

SAVE ON

- MATERIALS
- LABOR
- SUPERVISION

Guaranteed Concrete Quality
Spans to 40' +
Versatile and Flexible
Smooth exposed surface
2 hour fire resistive rating



SWANSON GENTLEMAN, INC.

3213 Forest Ave., Des Moines, Iowa • Telephone CRestwood 9-9793

McKEOWN, DONALD
Dept. of Arch. & Arch. Eng.,
Iowa State University, Ames



**McKLVEEN,
JOHN H.**

Principal, Wetherell-
Harrison-Wagner,
500 Hubbell Building,
Des Moines

McLENNAN, DONALD M.
208 Bever Bldg., Cedar Rapids

**MEEHAN,
WILLIAM R.**

Principal, William R.
Meehan, 2215 Grand
Ave., Des Moines 12



**MILLER,
GERALD H.**

Bracke & Hayes,
Architects, Bankers
Life Building, Moline,
Illinois



**MORGAN,
DANE D.**

Principal, Dane D.
Morgan and
Associates,
314 North 4th Street,
Burlington



**MUGASIS,
ALEXANDER P.**

Principal, Prout,
Mugasis and Johnson,
709 5th Avenue,
South, Clinton

NIELSEN, WILLIAM N.
Principal, William Nielsen,
307 Masonic Temple Building, Des Moines

**NORMILE,
JOHN**

Principal, John
Normile, 2425 Park
Avenue, Des Moines

OLSON, ROGER MERWIN

Principal, Altfillisch, Olson, Gray & Thompson,
126½ West Water Street, Decorah

**O'NEIL,
EUGENE C.**

Principal, Woodburn
and O'Neil,
201 Jewett Building,
Des Moines

PATTEN, LAWTON M.
Department of Arch. and Arch. Eng.,
Iowa State University, Ames

**PAYNE,
HAROLD L.**

Russell & Lynch, 1221
Savings & Loan
Building, Des Moines

**PEIFFER,
LEO CLEMENT**

Principal, Leo C.
Peiffer, Architect,
3330 Mt. Vernon Rd.,
S.E., Cedar Rapids

**PORTER,
TOM**

N. Clifford Prall,
4717 Grand Avenue,
Des Moines 12



**PRALL,
N. CLIFFORD**

Principal, N. Clifford
Prall, 4717 Grand
Ave., Des Moines 12

PRESCOTT, RUSSELL, J.

Principal, Russell J. Prescott,
126½ W. Main Street, Marshalltown

**PROUT,
CHARLES U.**

Principal, Prout,
Mugasis and Johnson,
709 5th Ave. S.,
Clinton

PRUSINER, LAWRENCE A.
6523 Ridge Circle, Cincinnati, Ohio

**RALSTON,
GLEN E.**

Principal, Glen E.
Ralston, 1440 E.
Ridgeway Ave.
Waterloo

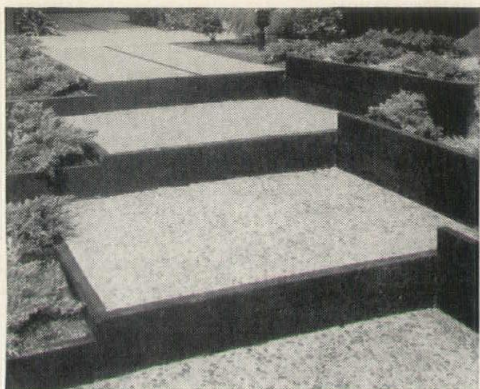
**RAMSEY,
ROBERT**

Principal, Dougher-
Frevert-Ramsey, 302
Garver Building,
Des Moines

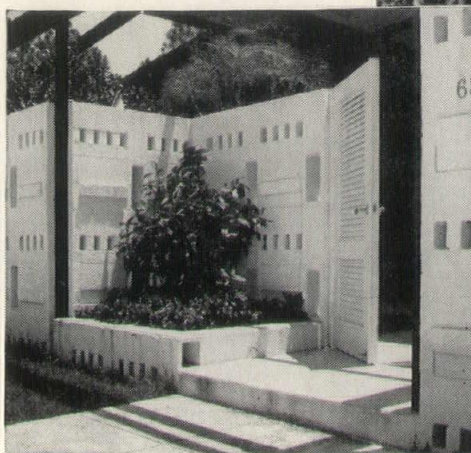
**RICE,
JOHN**

Principal, Brooks-Borg,
815 Hubbell Building,
Des Moines 9

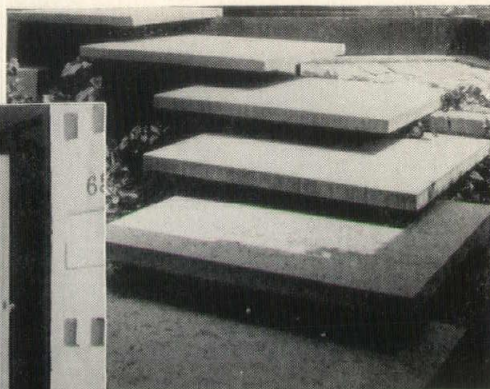




STEPS OF EXPOSED AGGREGATE CONCRETE



ENTRANCE WALL OF CONCRETE MASONRY



THIN SLAB STEPS OF PRECAST CONCRETE

MODERN CONCRETE

**offers so many opportunities
for imaginative
landscaping**

From a simple patio on a small lot . . . to large campus-style site planning . . . modern concrete offers today's landscape architect new opportunities.

Reflecting pools, sight screens of concrete grille block, pebble-surfaced terraces . . . design ideas are unlimited with concrete. That's because it is so versatile . . . whether cast-in-place or preassembled, colored, textured or polished.

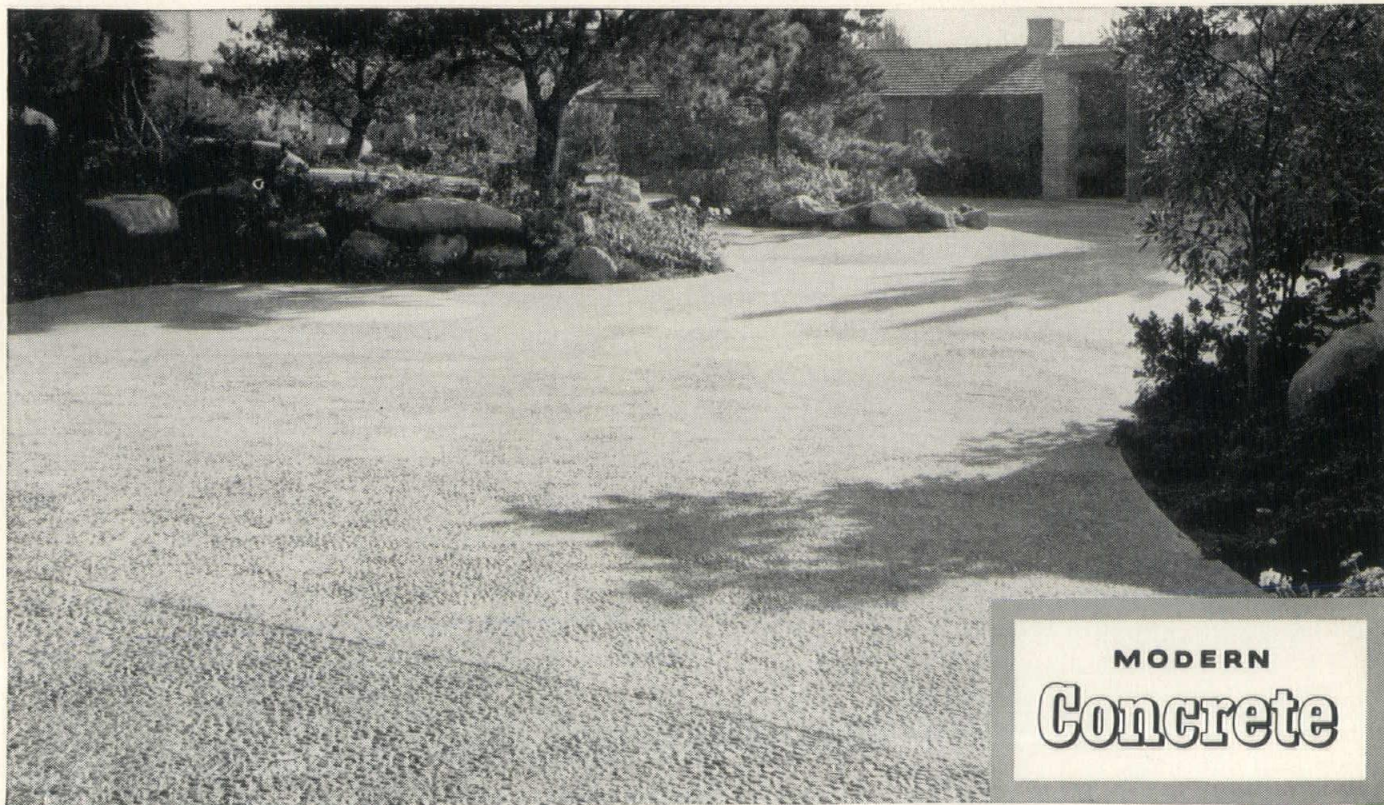
Why not bring *your* best plans to life with modern concrete?

PORTLAND CEMENT ASSOCIATION

408 Hubbell Bldg., Des Moines 9, Iowa

A national organization to improve and extend the uses of concrete

COLORFUL CONCRETE DRIVEWAY WITH EXPOSED AGGREGATE



**MODERN
Concrete**

**RICHARDSON,
CHARLES V.**

Principal, Charles
Richardson and
Associates, 1001 Kahl
Building, Davenport



**SAVAGE,
ROBERT E.**

Principal, Savage and
Ver Ploeg, 1200
Grand, West Des
Moines



**STEFFEN,
KENNETH J.**

Stoltz, 125 1/2 East
Second St.,
Ottumwa



**RITTS,
CHARLES L.**

Tinsley, Higgins,
Lighter and Lyon,
526 Liberty Building,
Des Moines



**SCHELLBERG,
WILLIS E.**

Principal, Thorson,
Gjeltten and
Schellberg, 205
S. Clark Street,
Forest City



**STENSON,
MARVIN L.**

Principal, Toenjes &
Stenson, 217 W.
Fourth St., Waterloo



**ROBISON,
DOUGLAS**

Principal, Stewart-
Robison-Laffan, 601
Brady St., Davenport



**SILLETTO,
CHARLES B.**

Woodburn and
O'Neil, 201 Jewett
Building, Des Moines



**STEVENS,
WAYNE TOWNSEND**

Principal, DeWild-
Grant-Reckert and
Stevens, Rock Rapids



**RUDI,
NORMAN H.**

Instructor, Dept. of
Arch and Arch Eng.,
Iowa State University,
Ames



**SKILES,
PAUL S.**

Principal, Wetherell-
Harrison-Wagner,
500 Hubbell Building,
Des Moines



**STEWART,
HAROLD J.**

Principal, Stewart-
Robison-Laffan, 601
Brady St., Davenport



**RUSSELL,
GEORGE**

Principal, Russell and
Lynch, 1221 Savings
and Loan Building,
Des Moines



**SMITH,
DIGHTON H.**

Principal, Smith,
Voorhees and Jensen,
Architects Associated,
201 Davidson Building,
Des Moines



**STOLTZ,
STEPHEN M.**

Stoltz, 125 1/2 East
Second St.,
Ottumwa



**SALISBURY,
ALLEN B.**

Smith-Voorhees-
Jensen, Architects
Associated, 206
Davidson Building,
Des Moines 9



**SOENKE,
LOUIS G.**

Principal, Louis G.
Soenke, 601 Brady
Street, Davenport



**TAYLOR,
WILLIAM A.**

Principal, Lindgren &
Taylor, 6311 Hickman,
Des Moines 10



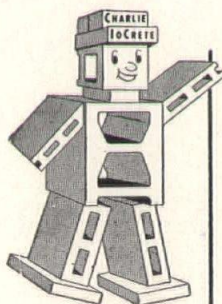
CONCERNING

IOWA CONCRETE BLOCK & MATERIAL CO.

- 1—Old Enough To Have Learned Your Problems
- 2—Big Enough To Properly Serve Your Needs
- 3—Sound Enough (Financially) To Stand Back of Their Products
- 4—Small Enough To Give Your Orders Personal Attention
- 5—Appreciative Enough To Value Your Business

We Believe Architects Should Consider The Above When Specifying Materials

BETTER
MATERIALS
SINCE
1917



**IOWA
CONCRETE
BLOCK &
MATERIAL
COMPANY**

Concrete Blocks • Haydite Blocks • Bricks • Chan-
nel Roof Slabs • Concrete Joist • Owens-Illinois
Glass Blocks • Lannon Stone • Sanymetal Toilet
Compartments • Champion Masonry Saws and
Blades • Chicago Fire Brick • Masonry Materials
Aluminum and Steel Windows • Arketex Glazed Tile
Metal Specialties • Concrete Corn Cribbs and Silos

SERVICE
AND
QUALITY
ALWAYS

820 S.W. 9th St. PH. AT 8-5751 DES MOINES 9, IOWA
"Your Problems Keep Us In Business"

DEVOE PAINT

First in Quality Since 1784

Complete Stocks Serving All Iowa

SERVICE BY LOCAL ARCHITECTURAL REPRESENTATIVES

G. M. MELTON

MELVIN E. WILLS

DEVOE & RAYNOLDS CO., INC.

108 JEFFERSON

DES MOINES, IOWA

PHONE CH 4-5261

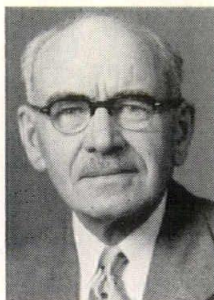
THOMPSON, JACK DEAN

Principal, Altfillisch, Olson, Gray & Thompson,
126½ W. Water Street, Decorah



THORSON, OSWALD H.

Principal, Thorson and Brom, 219 Waterloo Building, Waterloo



THORSON, THORWALD

Principal, Thorson, Gjelten and Schellberg, 205 S. Clark Street, Forest City



TOENJES, DAVID B.

Principal, Toenjes & Stenson, 217 W. Fourth St., Waterloo



UTTERBACK, RICHARD A.

Wetherell-Harrison-Wagner, 500 Hubbell Building, Des Moines



VER PLOEG, STANLEY C.

Principal, Savage and Ver Ploeg, 1200 Grand Avenue, West Des Moines

VOORHEES, GRANT W.

Principal, Smith-Voorhees-Jensen, Architects Associated, 206 Davidson Building, Des Moines



WAGGONER, KARL M.

Principal, Waggoner and Waggoner, 15 S. Federal Avenue, Mason City

WAGGONER, TOM

Principal, Waggoner and Waggoner, 15 S. Federal Avenue, Mason City



WAGNER, WILLIAM J.

Principal, Wetherell-Harrison-Wagner, 500 Hubbell Building, Des Moines



WALLERSTEDT, W. KENNETH

Principal, Smith-Voorhees-Jensen, Architects Associated, 206 Davidson Building, Des Moines



WALSH, JAMES H.

Principal, Walsh & Keninger, Box 526, Spencer



WAYLAND, LLOYD E.

Louis C. Kingscott & Associates, P.O. Box 202, Davenport

WETHERELL, EDWIN H.

Principal, Wetherell-Harrison-Wagner, 500 Hubbell Building, Des Moines



WHITAKER, RAYMOND G.

Principal, Raymond G. Whitaker, 227 Union Arcade Bldg., Davenport



WIEGMAN, JOHN H.

Principal, Maiwurm and Wiegman, Warden Building, Fort Dodge

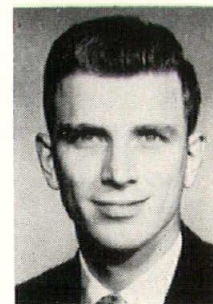
WISE, CARL M.

Department of Arch. and Arch. Eng., Iowa State University, Ames



WOLF, LEONARD F.A.I.A.

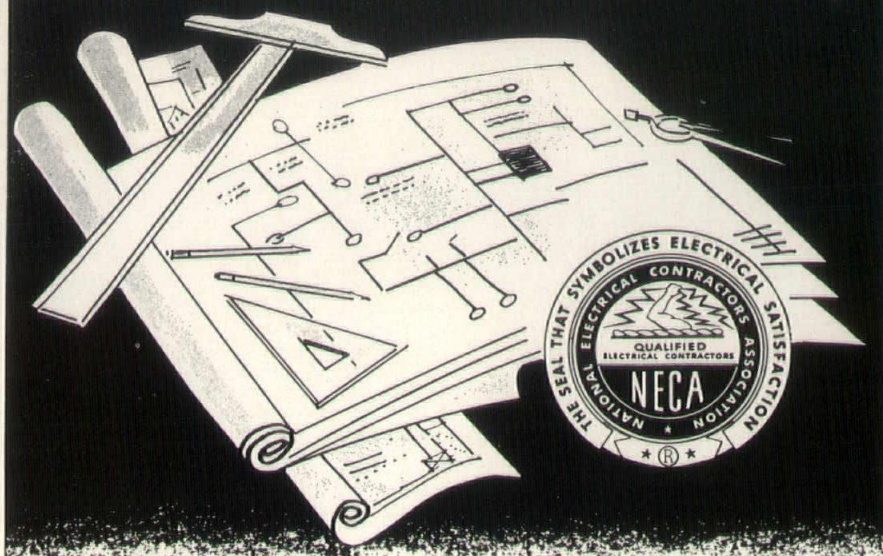
Professor and Head, Dept. of Architecture and Architectural Engineering, Iowa State University, Ames



WOODBURN, WILLIAM M.

Principal, Woodburn and O'Neil, 201 Jewett Building, Des Moines

When the plans are completed...



**CALL
AN
EXPERT!!**

To be **DOUBLY SURE**
your electrical installations
are just as you intended...

Call on a
**NECA
MEMBER**

Ask us for the names of NECA members in your area.

IOWA CHAPTER

NATIONAL ELECTRICAL CONTRACTORS ASSOCIATION

1118 MULBERRY

AT 8-3279

DES MOINES, IOWA

Structural Steel STANDS for the Future



Iowa Clay Pipe Company, Des Moines, Iowa

The American Institute of Steel Construction has published a new Specification for the Design, Fabrication, and Erection of Structural Steel for Buildings, copy of which is available by writing us. This 1961 Revision is the most comprehensive change ever made to the AISC Specification. It recognizes a full range of new steels (A36, A373, A440 and A441) as well as the well-known A7 and A242 grades. In addition, new design criteria are included for composite design and plastic design of steel. Building costs can be reduced by use of these new Specifications, as in the above building.

DES MOINES STEEL COMPANY

421 S.W. 5th St.

Des Moines, Iowa

Phone CH 4-2101

Associate Members Iowa Chapter

**AMEND,
JAMES LEE**

Hollis and Miller,
120 Council Bluffs
Savings Bank Building,
Council Bluffs



**ANDERSON,
RAYMOND ERIC**

Brooks-Borg,
815 Hubbell Bldg.,
Des Moines



**APPELL,
DONALD W.**

Principal, Peterson &
Appell, Structural
Engineers, 1148 Polk
Blvd., Des Moines



**ARTIAGA,
JESUS M.**

Brooks-Borg,
815 Hubbell Building,
Des Moines



**BLOODGOOD,
JOHN DUDLEY**

Building Editor,
Better Homes &
Gardens, 1716 Locust
Street, Des Moines 9



**BRIERLY,
ROBERT S.**

N. Clifford Prall,
4717 Grand Avenue,
Des Moines 12



**BULLINGTON,
HAROLD J.**

Karl Keffer
Associates,
202 Masonic Temple
Bldg., Des Moines



**BUNKER,
FRANKLIN N.**

Architect, Board of
Control of State
Institutions, State
Office Building
Des Moines



**BURTON
ARTHUR E.**

Dept. of Arch. and
Arch. Eng., Iowa State
University, Ames



**CARNES,
F. LEE**

Department of Public
Works, City of Des
Moines, City Hall,
Des Moines



**CARNEY,
LEO A.**

Wetherell-Harrison-
Wagner, 500 Hubbell
Building, Des
Moines 9



**COON,
KENNETH V.**

Brooks-Borg, 815
Hubbell Bldg.,
Des Moines



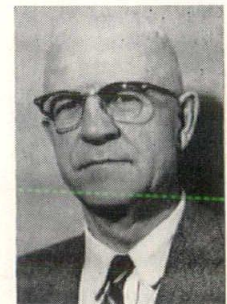
**DeKOVIC,
CHARLES W.**

Dept. of Arch. and
Arch. Eng., Iowa State
University, Ames



DREY, JOHN E.

Dougher-Frevert-Ramsey,
302 Garver Bldg., Des Moines



**DUTT,
CHARLES A.**

Tinsley, Higgins,
Lighter and Lyon,
526 Liberty Building,
Des Moines



ESCH, DELMER D.

Woodburn and O'Neil,
201 Jewett Building, Des Moines



**HALL,
HAROLD C.**

Hall Engineering
Service, Box 572,
Iowa City



**HANSEN,
CHARLES H.**

Iowa representative,
Harland Bartholomew
& Associates, Fleming
Building, Des Moines



HANSEN, RICHARD F.

Waggoner & Waggoner,
15 So. Federal, Mason City





A SPECTACULAR NEW TOOL
for the architect—

Sixteen glamorous colors of terrazzo tile
featuring marble and onyx aggregates of
unusual beauty and quality.

Beautiful terrazzo tile available in two sizes and in three aggregate sizes, with the
aggregate comprising more than 75% of the visual face.

Tile Sizes are: 12" x 12" x 1"; 18" x 18" x 1 1/4"

Aggregate Sizes are: 1" to 3"; 3" to 6", and 6" and larger.

For further information, write or call:

Lowell Stone Products of Iowa, Inc.

P.O. Box 182

Marshalltown, Iowa

Telephone 2-1327

HORIZON HOME
1116 Rachel Street
Waterloo, Iowa

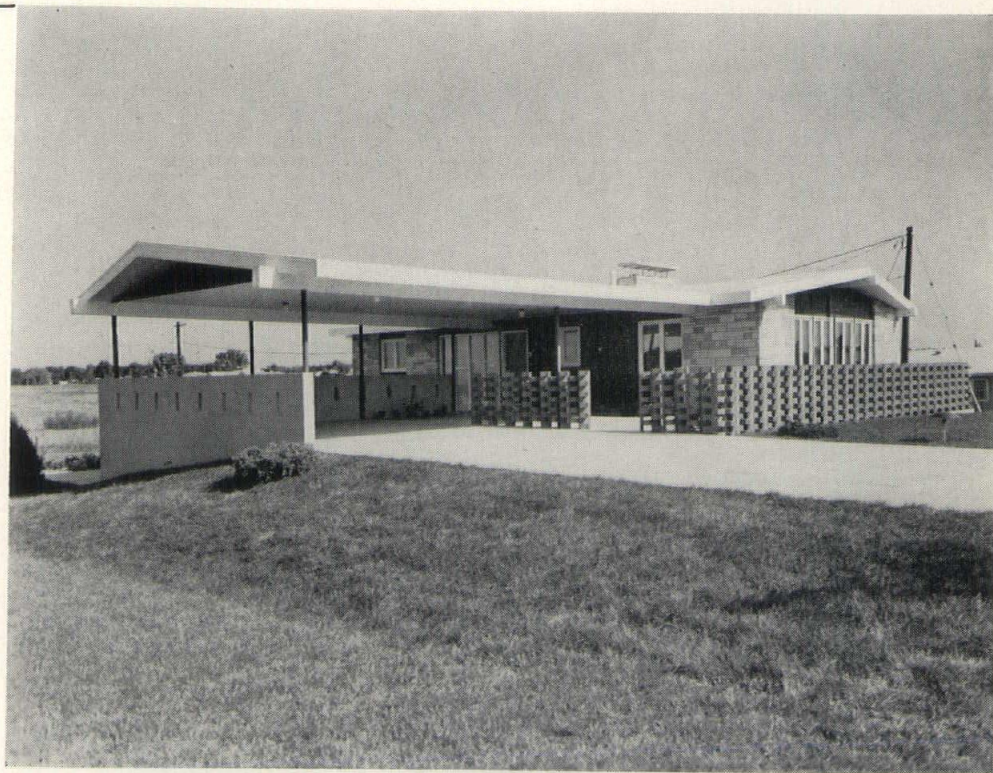
ARCHITECT

Keith E. Lorenzen
Waterloo, Iowa

CONTRACTOR

Walker Building Company

One of the many beautiful
buildings featuring exposed
Concrete Masonry walls . . .
for lasting beauty and dura-
bility!



MARQUART CONCRETE BLOCK COMPANY

110 Dunham Place — Waterloo, Iowa

Phone ADams 3-8421

HARRISON, ARTHUR
Harrison, Brauer & Ripple,
Site planning Consultants
Municipal Airport, Ames



**HIGGINS,
TOM G.**

Tinsley, Higgins,
Lighter and Lyon,
526 Liberty Building,
Des Moines



**JORDISON,
RICHARD R.**

State University of
Iowa, Old Dental
Building, SUI,
Iowa City

LAMOND, CHARLES O.

Architect, Federal Housing Administration,
Des Moines



**LARSON,
JEROME W.**

Building Engineer,
Northwestern Bell
Telephone Company,
Des Moines 6

LIND, JOHN HOWARD

Div. Planning & Construction, SUI,
State University of Iowa, Iowa City



**MOELLER,
YALE CLIFFORD**

Principal, Yale
Moeller and
Associates, Landscape
Architects, 4040-42nd
Street, Des Moines



**MOORE,
LARRY R.**

Moore & Bouse,
Consulting Engineers,
605 Dows Building,
Cedar Rapids

**MUNZENMAIER,
EDWARD W.**

Savage & Ver Ploeg,
1200 Grand Avenue,
West Des Moines



**OLSON,
EUGENE A.**

Wm. Beuttler & Son,
14th and Nebraska
Streets, Sioux City



PAULSON, THEODORE F.

Paulson Construction Co., Cedar Rapids



**PETERSON,
CARLYLE W.**

Peterson & Apell,
Structural Engineers,
1148 Polk Blvd.,
Des Moines



**PETERSON,
GEORGE M.**

Tinsley, Higgins,
Lighter and Lyon,
526 Liberty Building,
Des Moines



**PETRE,
GEORGE M.**

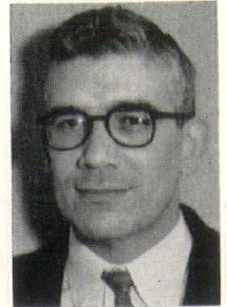
William R. Meehan,
2215 Grand Avenue,
Des Moines 12

PULLEY, FRANK L.

Consulting Engineer,
Securities Building, Des Moines

SCHILLING, RALPH R.

Smith-Voorhees-Jensen, Architects Associated,
201 Davidson Bldg., Des Moines



**SHANE,
HERBERT**

Tinsley, Higgins,
Lighter and Lyon,
526 Liberty Building,
Des Moines



**SHIRK,
KEITH E.**

Tinsley, Higgins,
Lighter and Lyon,
526 Liberty Building,
Des Moines

**SKINNER,
SAM L.**

Stewart-Robison-
Laffan, 601 Brady
Street, Davenport

SLATER, BERNARD J.

Department of Arch. and Arch. Eng.,
Iowa State University, Ames

STEVENSON, DANIEL B.

Consulting Engineer
Empire Building, Des Moines



**WAGNER,
WILLIAM R.**

Brown, Healey &
Bock, 131 36th St.
Dr. S.E., Cedar
Rapids



**WALTERS,
PAUL A.**

Consulting Engineer,
206 Masonic Temple
Building, Des Moines

Our knowledge and experience of over 25 years in the Floor and Wall Covering Field is at your service. Call on us for solution of your problem jobs.

- Laytex Underlayments
- Asphalt Underlayments
- Vinyl Asbestos & Asphalt
- Homogeneous Vinyl
- Rubber and Cork Tiles
- Bolta-Wall Vinyl Wall Coverings
- Rubber Wall Coverings

RALPH N. SMITH, Inc.

Des Moines, Iowa

1339 2nd Ave.

AT 8-6741

BONDED APPLICATORS OF DESCO WALL COATINGS

VITRO GLAZE — ARMITE
NYOCON — GLAZETITE — STARTEX
VINYL — ARMTEX

NEVER NEEDS PAINTING

WATERPROOF
Applied to ANY Dry or
Grease-Free Surface

SIoux CITY MOSIAC CO., INC.


SINCE 1920

Ceramic Tile & Terrazzo Contractors
W. 1st & REBECCA STS. PHONE 5-5653

Members of:
DESCO International of America
National Terrazzo & Mosaic Ass'n.
Northwest Terrazzo Ass'n.

WHY

PLAIN TALK PUBLISHING CO.



P.T.

Because I want superior
quality printing and personal service.
*P.T. gives both

511 6th Ave. East • Des Moines, Iowa • Phone AT 2-0485

L. J. "Buck" Sweeney

Representing



Halsey Taylor Electric Water Coolers
& Fountains

Sloan Flush Valves

Church Seats
(The Best Seat in the House)

Lawler Thermostatic Valves

Parker Mirrors & Bathroom Accessories

313 49th Street

Phone CRestwood 4-2050

DES MOINES, IOWA

**WARM,
IVAN**

Toenjes & Stenson
217 W. 4th Street,
Waterloo



**WHITMER,
WAYNE M.**

Brooks-Borg, Cedar
Rapids Office,
Cedar Rapids

WINKLER, KARL J.

Brooks-Borg, 815 Hubbell Bldg., Des Moines

ZARNIKOW, WERNER E.

Smith-Voorhees-Jensen,
Architects Associated,
201 Davidson Bldg., Des Moines

**Junior Associates,
Iowa Chapter**

**ALLSUP,
EDGAR DEAN**

Smith-Voorhees-
Jensen, Architects
Associated, 201
Davidson Building,
Des Moines



BELKNAP, DALE D.

Smith-Voorhees-Jensen, Architects Associated,
201 Davidson Building, Des Moines



**BERGER,
ROY**

Brooks-Borg, 815
Hubbell Building,
Des Moines

BISHOP, JACK

Dougher-Frevert-Ramsey, 302 Garver
Building, Des Moines 9

**CAMPBELL,
ROYCE**

1781 Flower St.,
Waterloo



CARPINO, RALPH

Amos Emery & Associates,
820 Locust, Des Moines

**FAUST,
THOMAS W.**

Dougher-Frevert-
Ramsey, 302 Garver
Building, Des
Moines 9



GEHRLS, G. HUGO

Smith-Voorhees-Jensen, Architects Associated,
206 Davidson Building, Des Moines 9

GRIFFITH, M. BRUCE

Savage & Ver Ploeg, 1200 Grand, West
Des Moines

HAMMOND, JAMES EDWARD

Monticello, Iowa

HARMEYER, R. J.

Woodburn & O'Neil, 201 Jewett Building,
Des Moines

**HART,
JOHN J., JR.**

Principal
Brooks-Borg, 815
Hubbell Building,
Des Moines



HENNAGER, KEITH C.

Smith-Voorhees-Jensen, Architects Associated,
201 Davidson Building, Des Moines



**HESTNESS,
ADRIAN C.**

DeWild, Grant,
Reckert & Stevens,
Rock Rapids

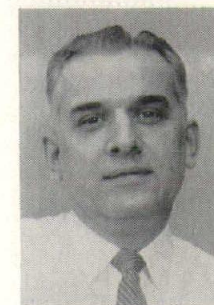
**JOHNSON,
DONALD ALVIN**

Smith-Voorhees-
Jensen, Architects
Associated, 206
Davidson Building,
Des Moines



**KAUZLARICH,
PETER J.**

Brooks-Borg, 815
Hubbell Building,
Des Moines



**KUGLAR
OSKAR**

Thorson, Gjelten &
Schellberg, 205 S.
Clark Street, Forest
City



**LEMON,
ROBERT H.**

Dougher-Frevert-
Ramsey, 302 Garver
Building, Des Moines



**LOBE,
HORST W.**

Smith-Voorhees-
Jensen, Architects
Associated, 424
Badgerow Bldg.,
Sioux City



**MARTEN,
PATRICIA A.**

N. Clifford Prall,
4717 Grand Avenue,
Des Moines 12



**McMULLIN,
RICHARD N.**

N. Clifford Prall,
4717 Grand Avenue,
Des Moines 12



**REDFERN,
MERLIN L.**

Brooks-Borg,
815 Hubbell Building,
Des Moines



SAUER, EDWARD G.

Keith C. Lorenzen & Staff, 215 Commercial
Street, Waterloo



**SEABOCH,
DON**

N. Clifford Prall,
4717 Grand Avenue,
Des Moines 12



**NIELSEN,
WILLIAM N., JR.**

Brooks-Borg,
815 Hubbell Building,
Des Moines



NIGRO, ANTHONY J.

Gerald I. Griffith, 3810 Ingersoll,
Des Moines



**SELZER,
MAX D.**

Louis C. Kingscott &
Associates, P.O. Box
202, Davenport



**OLSON
CLARENCE L.**

N. Clifford Prall,
4717 Grand Avenue,
Des Moines 12



**SHAWHAN,
DALE**

N. Clifford Prall,
4717 Grand Avenue,
Des Moines 12



**PARKS,
RUSSELL**

Brooks-Borg,
815 Hubbell Building,
Des Moines



**SHELLEDY,
JOHN G.**

Smith-Voorhees-
Jensen, Architects
Associated, 201
Davidson Building,
Des Moines



PIFFNER, JOHN F.

Kohlmann, Eckman, Hukill, 634 Higley
Building, Cedar Rapids, Iowa



**SMITH,
CLARENCE M.**

Tec-Search, Inc.,
Evanston, Illinois



STAEHLE, WILLIAM L.

City of Des Moines, Planning & Zoning,
City Hall, Des Moines



**THURSTON,
RAY L.**

Wetherell-Harrison-
Wagner, 506 Shops
Building, Des Moines



**UGULINI,
ALDO EDWARD**

Smith-Voorhees-
Jensen, Architects
Associated, 201
Davidson Building,
Des Moines



**VANDER LINDEN,
CHARLES W., JR.**

2904 34th Street,
Des Moines



**VANDE VENTER,
ROBERT L.**

Savage & Ver Ploeg
1200 Grand,
West Des Moines



**VER STEEG,
CARL**

Savage and Ver
Ploeg, 1200 Grand,
West Des Moines



**RATCLIFFE,
JOHN R.**

Brooks-Borg,
815 Hubbell Building,
Des Moines



**VIFQUAIN,
JOHN A.**

Tinsley, Higgins,
Lighter and Lyon,
526 Liberty Building,
Des Moines



WALDEN, BROCK A.

Thorson & Brom, 219 Waterloo Building,
Waterloo



**WEBER,
DELANO B.**

Thorson & Brom, 219
Waterloo Building,
Waterloo



**WILLIS,
J. D.**

3420 Race Street,
Philadelphia 4, Pa.

Member Emeritus

CHARLES DeJARNETTE

3523 University, Apt. 13B
Des Moines, Iowa

ROBERT C. ROBINSON

415 Pensacola Avenue
Fairhope, Alabama

E. R. SWANSON

5334 Killdee St.
Long Beach 8, Calif.

VERNON F. TINSLEY

3913 Maquoketa Drive
Des Moines, Iowa

CHARLES B. ZALESKY

2490 Orange Ave.
Sanford, Florida

Honorary Associate

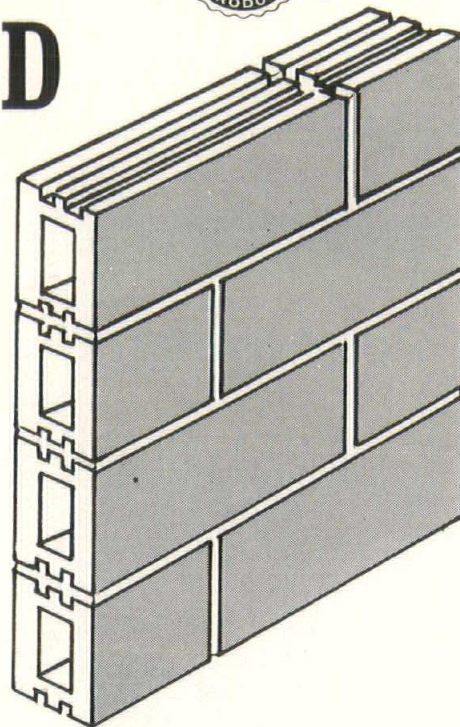
DWIGHT KIRSCH

1701 Casady Drive, Des Moines

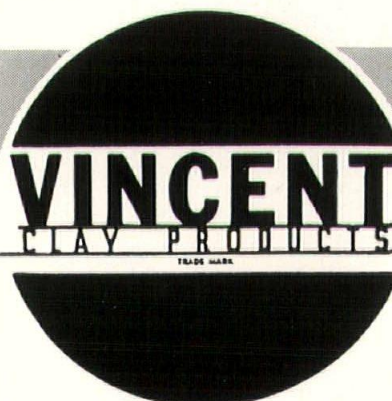
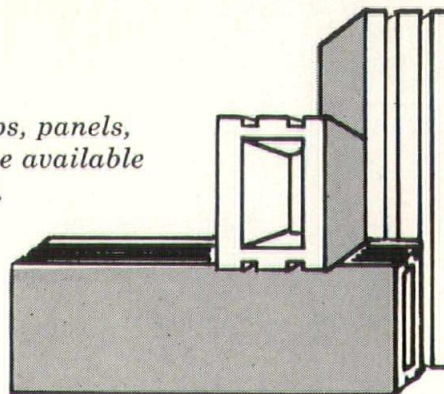
GOLDEN GLAZED

**TILE
COST
ONLY
69¢ SQ. FT.**

● For jobs that require a smooth, gleaming brick or tile, investigate Vincent's line of Golden Glazed tile. A wide range of non-fading colors combined with numerous shapes and sizes allows maximum design expression for the architect; assures the owner of beauty, permanence and economy (only 69¢ Sq. Ft. in the wall, according to a recent Central Iowa cost study).



*Sample straps, panels,
and literature available
upon request.*



EXCLUSIVE DISTRIBUTOR FOR
ELGIN-BUTLER BRICK COMPANY, AUSTIN, TEXAS
RELANCE BRICK COMPANY, DALLAS, TEXAS
and

NATCO CERAMIC GLAZED TILE CORPORATION
Ask for complete literature or sample panels showing both glazed and unglazed brick of the highest quality.

FORT DODGE, IOWA

Manufacturers of Superior Face
Brick, Glazed Tile, Building Tile,
and Drain Tile.

OFFICE State Bank Building • **PHONE** 3-7851 • **FACTORY** 2½ Miles South of Fort Dodge

Changing architectural practice studied at A.I.A. Meet

A WIDE-RANGING discussion of "New Dimensions of Architectural Practice" will be subject of The American Institute of Architects' 1962 Convention May 7-11 in Dallas, President Philip Will Jr., announced.

"The nature and needs of our society are rapidly changing", Will said. "New problems and new and broader opportunities for service are being created for the architectural profession."

"Architects across the country are being called upon to expand the scope of their day-to-day practice, and with it their knowledge", he said. "This expansion will be theme of the Dallas Convention and a matter of continuing study for the architectural profession throughout 1962 and beyond."

Keynote speaker Tuesday morning, May 8, will be Dean Charles R. Colbert of the Columbia University school of architecture, whose topic will be social dimensions of design. Following Dean Colbert will be Jane Jacobs, associate editor of Architectural Forum and author of the widely discussed book "The Death and Life of Great American Cities", and Mayor Ben West of Nashville, Tenn.

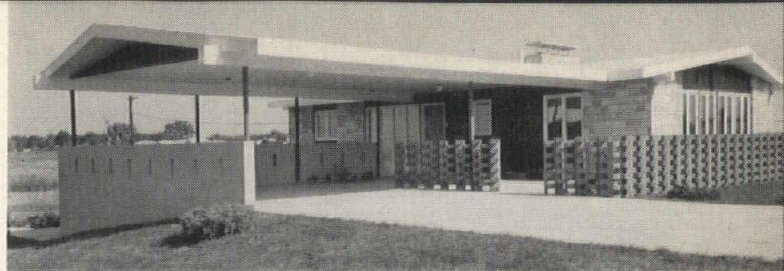
The three other general sessions will be led by the editors of America's leading architectural journals: Douglas Haskell of Architectural Forum, Emerson Goble of Architectural Record, and Thomas Creighton of Progressive Architecture.

Haskell's topic Wednesday afternoon will be new dimensions of architectural knowledge. Speakers will include Karl Falk, economist and president of the National Association of Housing and Redevelopment Officials; internationally known Los Angeles architect William Pereira, and Paul Opperman, executive director of the Northeastern Illinois Metropolitan Area Planning Commission.

Thursday morning a panel on the dimension of development, headed by Goble, will tell how voluntary cooperative effort by architects has improved the face of three small American cities. Creighton's session Thursday afternoon will concern the dimension of quality, exploring in depth an individual building project involving expanded architectural services.

Other Convention events will include an awards luncheon when AIA's 1962 honors for professional and artistic achievement will be presented; the traditional investiture of new AIA Fellows; a full calendar of social events, and the largest exhibition of architectural products ever assembled.

Chairman of the Dallas AIA Host Chapter Committee is Roscoe DeWitt, FAIA.



WATERLOO HORIZON HOME—ARCHITECT: LORENZEN

Horizon Homes competition is repeated in 1962

IOWA ARCHITECT-BUILDER teams will participate in the construction of model homes for the second annual Horizon Homes program, D. H. Comann, Iowa district engineer for the Portland Cement Association, has announced.

In 1961 two Horizon Homes, featuring unusual and increased uses of concrete, were built at Mason City and Waterloo. More than 10,000 persons visited these two homes during national Parade of Homes week. Success of the 1961 program prompted a repeat.

The Mason City home was designed by architects Bergland and Bianco and built by Ewers and Pope, Mason City home builders. The Waterloo residence was designed by Keith E. Lorenzen, Waterloo, and built by Walker Building Co. Inc., Waterloo.

The program is designed to promote interest in home ownership, and to emphasize to architects, builders and prospective home buyers the usefulness of concrete in home construction and site development.

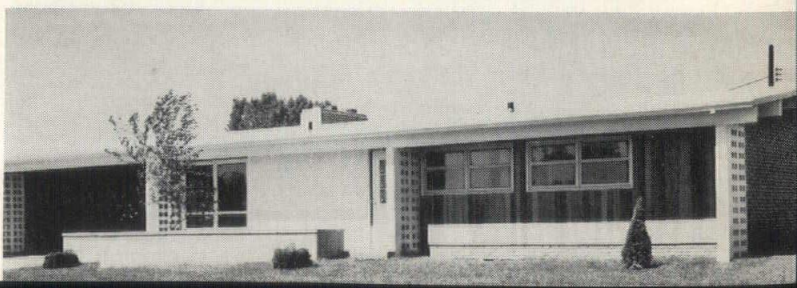
The American Institute of Architects and the National Association of Home Builders again are co-operating in the program which is sponsored by the National Concrete Masonry Association, the National Ready-Mix Association and the Portland Cement Association.

Each Horizon Home is to be designed and built by an architect-builder team, each of whom must be a member of his respective national organization, A.I.A. and N.A.H.B.

Comann said that basic program requirements will be the same as in 1961, however, the model Horizon Home presentation will not be confined to National Home Week or local Parade of Homes sites. The home must be open for display for 10 consecutive days before October 15, 1962.

Architects and builders wishing additional information on the 1962 program can contact the Portland Cement Association, 408 Hubbell Bldg., Des Moines 9, Iowa.

MASON CITY PROJECT—ARCHITECT: BERGLAND & BIANCO



WILL DISCUSS NEW STEEL SPECIFICATIONS

A one-day conference to familiarize architects and engineers with the new steel specifications will be held April 6 at the Hotel Savery, Des Moines, under the sponsorship of steel fabricators who are members of the American Institute of Steel Construction.

The conference will cover: construction steels, working stresses I and II, column formulas, and interaction formulas, composite design and plate girder design.

CANTY HEADS PUBLIC INFO

Donald Canty has begun work as head of the Department of Public Information for the A.I.A. He previously had been chief editor of Western Architect and Engineer, a McGraw-Hill professional magazine for the 13 far western states. That publication was recently combined with Architectural Record.

PROSPERI WINS AWARD IN REYNOLDS CONTEST



Robert T. Prosperi, a third year student in architecture, was winner of a \$200 prize in the third annual Reynolds Aluminum Competition.

Prosperi's award, presented by Prof. Leonard Wolf, was for his design of a quick assembly roof panel, and was entered in the national competition.

The national prize of \$5,000 went to John Starnes of the University of Texas for the design of a warped space component.

FELLOWSHIP ANNOUNCED

Qualified architects and engineers are encouraged to apply for the \$2,500 Material Service Foundation Fellowship Award to be issued through the Chicago Chapter, A.I.A. The successful candidate will use the \$2,500 to defray expenses of study and research in the utilization of concrete and masonry at Illinois Institute of Technology, Univ. of Illinois, or Northwestern University.

PICTURE REPEATED

An Iowa Architect photo of the Iowa Chapter Exhibit at the 1961 Convention of the Iowa Association of School Boards was borrowed for re-use in the Iowa School Board Bulletin.

Engravings used in the Iowa Architect are available for loan to all other publications, or to chapter members.

AIMS AT ARCHITECTURE

Steve Colton, 14, Cedar Rapids newspaper carrier, stated his vocational aim as architecture in an interview in the Cedar Rapids Gazette. The ninth grade student has been added to the list of those who receive the Iowa Architect.

ACOUSTICAL CONFERENCE

Architectural Acoustics will be discussed at a Conference April 27-28 at the University of Wisconsin, Madison. Purpose of the conference will be to aid designers to eliminate common errors.

Information will be presented by teams of professional practitioners.

- ✓ 38 years of service to Iowa schools
- ✓ chalkboard specialists
- ✓ state-wide installation service
- ✓ natural slate
- ✓ Johns-Manville "Colorlith"
- ✓ "Wensco" washable cork tackboard
- ✓ Gotham aluminum trim and chalkboards
- ✓ display cases
- ✓ the only COMPLETE chalkboard line

w. e. neal slate co.

1215 Second Avenue, North
Minneapolis 5, Minn.

FR 7-8100

light-forms
by Prescolite

Glowing geometric shapes combine the beauty of soft satin handblown glass with all-aluminum construction to provide an unusual combination of decorative effects limited only by the imagination of the designer. Designed for wall use only light-forms may be used on either interiors or exteriors. Available with or without black trim plates.

Write for complete catalog.

PRESCOLITE
MANUFACTURING CORP.
2229 Fourth Street
Berkeley 10, California

FACTORIES:
Berkeley, Cal. • Warrington, Pa. • El Dorado, Ark.

STEEL-FRAME DEADLINE IS APRIL 25

THE THIRD ANNUAL Architectural Awards of Excellence Program for steel-framed buildings has been announced by the American Institute of Steel Construction, the national association representing the fabricated structural steel industry.

The program is open to all registered architects practicing professionally in the United States. Entries may be one building or a related group of buildings completed or occupied during 1961. A professional jury will give equal emphasis to buildings of all sizes and types.

Deadline for receiving entries by

DIRECTORY OF ADVERTISERS

The Iowa Architect calls attention of its readers to the firms listed here, and the pages upon which their advertisements appear in this issue. Advertisers may secure information on rates, deadlines and copy requirements by writing the chapter office, 422 Securities Building, Des Moines 9, Iowa.

ADEL CLAY PRODUCTS CO.	13
BLUMCRAFT OF PITTSBURGH	17
CARTER-WATERS	4
DES MOINES MARBLE AND MANTEL CO.	12
DES MOINES STEEL COMPANY	27
DEVOE PAINT	25
GOODWIN COMPANIES	2
GREEN COLONIAL	11
IOWA CONCRETE BLOCK AND MATERIAL CO.	25
IOWA PAINT MANUFACTURING CO.	39
LOWELL STONE PRODUCTS OF IOWA, INC.	29
MARQUART CONCRETE BLOCK CO.	29
MIDWEST CONCRETE INDUSTRIES	19
NATIONAL ELECTRICAL CONTRACTORS	27
W. E. NEAL SLATE CO.	36
PLAIN TALK PUBLISHING CO.	31
PORTLAND CEMENT ASSOCIATION	23
PRESCOLITE MANUFACTURING CO.	36
SCALE-CRAFT	6
SHEFFIELD BRICK & TILE CO.	3
SIOUX CITY MOSAIC	31
RALPH N. SMITH, INC.	31
R. S. STOVER CO.	37
SWANSON GENTLEMAN, INC.	21
VINCENT CLAY PRODUCTS	34
L. J. SWEENEY	31
WESTERN MINERAL PRODUCTS	40
C. W. WILLCOX AND COMPANY	12

AISC in New York is April 25. Further information is available through AISC, 101 Park Avenue, New York 17, N. Y.

HEADS SHORT COURSE

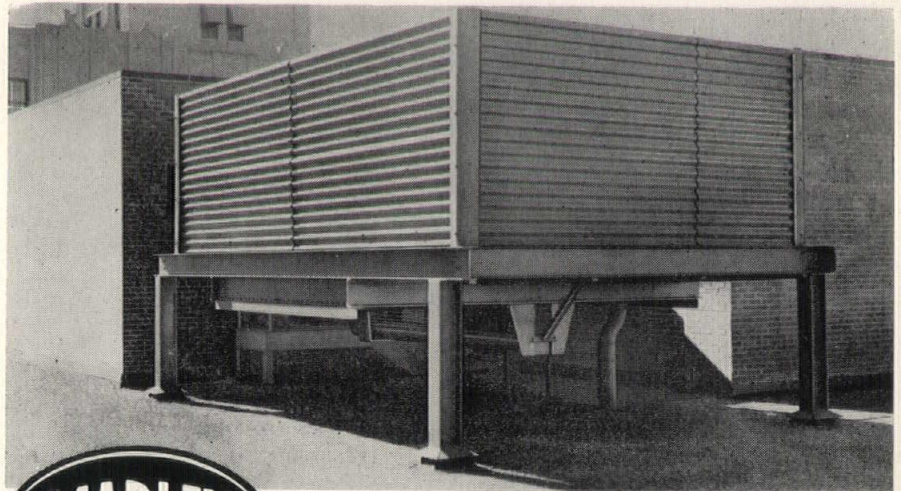
Tom Jellinger of the Dept. of Architecture and Architectural Engineering, ISU, was in charge of the Construction Contracting Conference at Ames in February. Plans are underway for the third annual conference at Ames in 1963. The event

is sponsored by the Master Builders of Iowa.

HEADS INSTITUTE RELATIONS

Kenneth C. Landry, A.I.A., has been appointed head of the Department of Institute Relations for the American Institute of Architects. Landry has been in the firm of Bodman, Murrell, Landry & Webb.

The Department has responsibilities involving national and state legislative programs, and relations with other segments of the construction industry.



UNDERFLOW

knows no location limitations

Any area that will accommodate its plan dimensions is good enough for a Marley UNDERFLOW AQUATOWER, the tower that supplies its own grillage.

This low-silhouette tower for intermediate-capacity water cooling is based on a new principle of operation. The fan and air intake are located beneath the cooling cells and air is discharged vertically. Hence, without any sacrifice of performance, UNDERFLOW can be placed immediately adjacent to walled structures that would obstruct air and discharge in any other type of tower. See your Marley Engineer today.

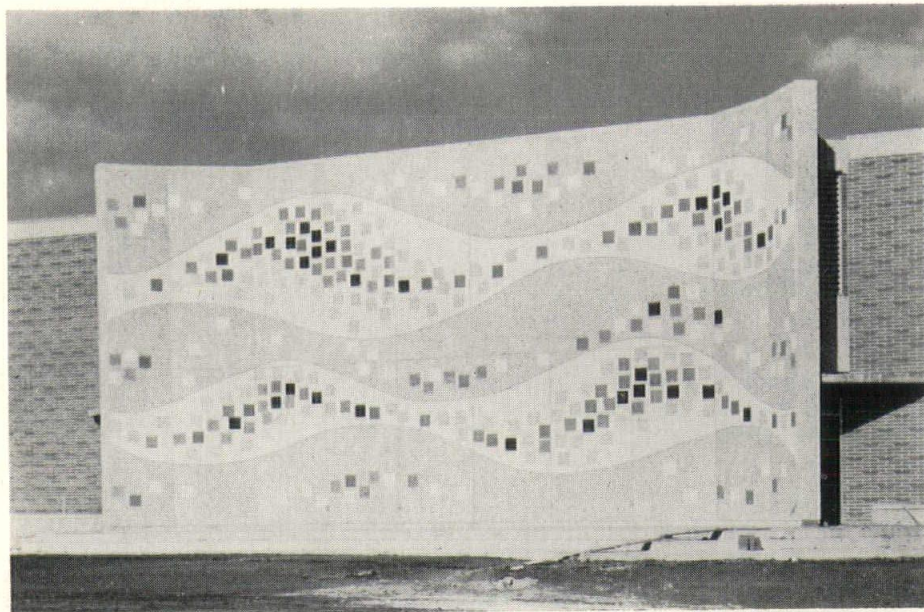
UNDERFLOW® TOWERS are protected by U. S. Patents granted.

Represented
by . . .

R. S. STOVER COMPANY

3 1/2 W. Main St.
Marshalltown, Iowa

120 N. 69th St.
Omaha, Neb.



This photo of an exposed aggregate mural which decorates the music building bandshell at the State College of Iowa, Cedar Falls, was used to illustrate an advertisement by Midwest Concrete Industries in the November-December issue of the Iowa Architect. Technical problems in reproducing, in a half-tone, the small faces which compromise the various stones in the aggregate prevented the picture from showing the panel at its best. This repeat of the picture is an attempt to show the mural as it can be viewed.

GEORGE RUSSELL SPEAKS TO LANDSCAPERS

George Russell, AIA, Des Moines, was among a panel of four speakers who addressed Landscape Architects of Iowa in a seminar at Iowa State University, January 19.

Russell spoke of the increasing collaboration between the architects and the landscape architects, but said there was a need for a definition of the responsibilities to be worked out for each particular project. He said increased collaboration was particularly needed on projects involving major site planning and development for esthetic purposes.

Other members of the panel were Mr. and Mrs. Emmet Layton, St. Louis, of the firm of Layton and Layton. Layton is an architect and landscape architect; Mrs. Layton is editor of the Home and Garden Section for the St. Louis Democrat. The other participant was Don Brauer of Ames, a civil engineer and partner in the firm of Harrison, Brauer & Ripple, landscape architects of Ames and Minneapolis.

AT CIVIL DEFENSE SCHOOL

Werner Zarnikow of Des Moines attended a special civil defense school for architects and engineers at Boulder, Colorado, during February.

BETTER CONCRETE MEETING MARCH 26 - 27 AT AMES

The 13th annual Iowa Better Concrete Conference will be held March 26 - 27 in Memorial Union at Iowa State University, Ames.

Registration will begin at 8:15 each day at the Great Hall entrance. Two luncheon meetings and a dinner session will be features with A. Carl Weber, Leclde Steel Co., St. Louis as the banquet speaker. J. V. Rowe, DX Sunray Oil Co., Waterloo, and William Maples, American Concrete Institute, Detroit, will speak at the luncheons.

Joe Borg, AIA, represented the Iowa chapter in planning sessions and Ken Coon, a chapter associate, will speak at one of the sessions on the subject of specifications.

Sponsors of the event include the Portland Cement Association, Iowa Highway Commission, Ready Mixed Concrete Association, American Concrete Institute, Iowa Chapter, A.I.A., the Master Builders of Iowa and the Associated General Contractors of Iowa.

Speakers include Joseph J. Shideler, Portland Cement Association, Skokie, Ill.; Thomas J. Reading, Missouri River, Corps of Engineers, Omaha, Neb.; Stanton Walker, National Ready-Mixed Concrete Association, Washington, D.C.; Bryant

Mather, U.S. Army Engineer Waterways Experiment Station, Jackson, Miss., and John H. Banker, Portland Cement Association, Chicago.

COMMITTEE RECOMMENDS BID DATE SERVICE

The Committee on Relations with The Construction Industry wishes to call attention to the scheduling service available to Architects:

The M.B.I. for many years has had a policy of providing a clearing house for bid opening dates and encourage architects to use this service.

There is mutual advantage in doing so, and to confirm a bid opening date as soon as you and the Owner have a date in mind. Quite often the adjustment of a day or two will eliminate conflict with another letting in your territory and avoid embarrassment for you or the other architect and owners involved.

This service is of great benefit to Architects, Owners and Contractors as it promotes scheduling bid openings with minimum conflicts and consequently better competition in obtaining bids.

In the Quad City area and in Sioux City proper it may be that the local builders' exchanges can give better information, but for jobs elsewhere in the state we urge all architects to take advantage of this service and clear your dates with the M.B.I. in Des Moines.

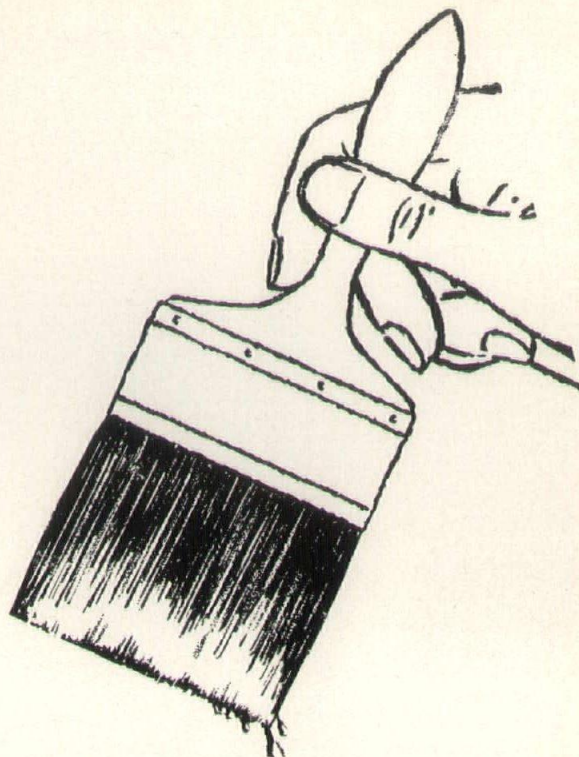
NICKERSON BUYS FIRM FROM GLEN RALSTON

Howard E. Nickerson, Jr., who was an employ in the office of Glen E. Ralston, AIA, Waterloo, for the past year and a half, has purchased the practice from Ralston. Nickerson will continue to practice in the same location. He was graduated from the University of Illinois in 1950 and since has been employed in the Waterloo area.

S-O-M GIVEN FIRM HONOR

The firm of Skidmore, Owings & Merrill of New York, Chicago, San Francisco and Portland, has been voted the first "Architectural Firm Award" of the A.I.A. The award was voted the firm for "maintaining a high standard of excellence that has distinguished its architecture over a wide geographical area and in many building types."

What do you
expect of the
FINISHES
you specify...

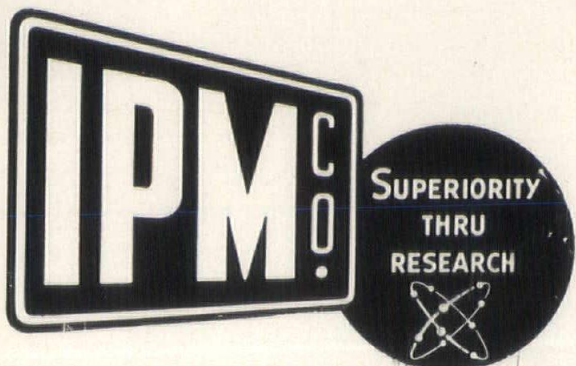


- *Durability?*
- *Low Maintenance?*
- *Accuracy of Color?*
- *Long-Lasting Beauty?*

You will find all these qualities, and more, in
IPM scientifically formulated finishes.

The correct coating for every type of surface.

The services of our finishing material experts
and research staff are at your disposal.
Contact us if we can assist on any problem.
No obligation.



IOWA PAINT MFG. CO., INC.

CEDAR RAPIDS DES MOINES DAVENPORT OMAHA
MASON CITY SIOUX CITY WATERLOO

General Offices
118 Eighth St.

Des Moines, Iowa
Phone ATLantic 3-1501

for approximately



per sq. ft.

you can reduce
heat transfer through a
brick cavity or concrete
block wall up to 50% or more
with water-repellent

ZONOLITE® MASONRY FILL INSULATION*

By doubling the thermal efficiency of most masonry walls, Zonolite Masonry Fill Insulation saves money and increases comfort.

This new insulation often pays for itself while a building is in the planning stages. Because of its high efficiency, smaller, less costly heating and air conditioning units frequently can be used. Savings on this equipment pays the low cost of Zonolite water-repellent Masonry Fill Insulation.

The approximate installed costs per sq. ft. of insulating walls of different sizes are:

10¢ for 6" concrete block or 10" brick cavity walls

13¢ for 8" concrete block walls

21¢ for 12" concrete block walls

Savings in operating costs were demonstrated in a study of a standard U.S. Corps of Engineers Army Barracks

Building, conducted for the Vermiculite Institute by J.N. Pease & Co., architectural and engineering firm of Charlotte, N.C.

It showed that by insulating the walls of a two-story concrete block barracks, an \$800 saving could be realized in the cost of the heating plant, thus paying more than half of the cost of the Zonolite Masonry Fill Insulation.

If the building was air-conditioned, the total cost of the insulation would be recovered before the building was occupied.

This unique insulation offers other benefits as important as its economy:

COMFORT: Interior wall temperatures are brought closer to skin temperatures. Radiant heat exchange is reduced about 30%, providing greater comfort, winter and summer.

WATER PERMEABILITY: Field experience and laboratory tests prove that even if rain penetrates the exterior wythe (and it probably will) water will not be transmitted across the cavity, due to the patented water-repellency feature of the insulation.

SETTLING: It doesn't.

All these characteristics are confirmed in tests conducted by Penn State University and the Structural Clay Products Research Foundation.

You'll want complete data and specifications on this remarkable new way to insulate masonry walls. Phone your Zonolite Sales Engineer, or write:

WESTERN MINERAL PRODUCTS COMPANY

4725 Olson Highway, Minneapolis 22, Minn.

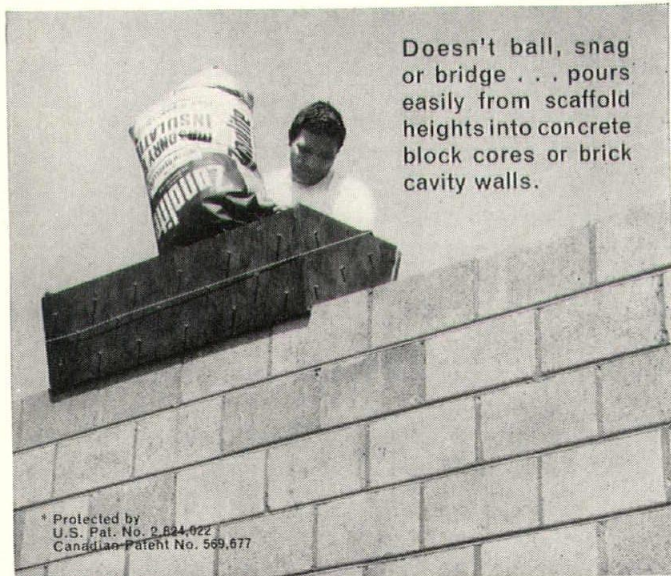
Please send me complete information file (G-158) on Zonolite Masonry Fill Insulation.

Name _____

Firm _____

Address _____

City _____ Zone _____ State _____



Doesn't ball, snag or bridge . . . pours easily from scaffold heights into concrete block cores or brick cavity walls.

* Protected by
U.S. Pat. No. 2,824,922
Canadian Patent No. 569,677