

2c

OWA ARCHITECT

Official publication of
OWA CHAPTER

AMERICAN INSTITUTE OF ARCHITECTS



AMERICAN INSTITUTE
OF
ARCHITECTS

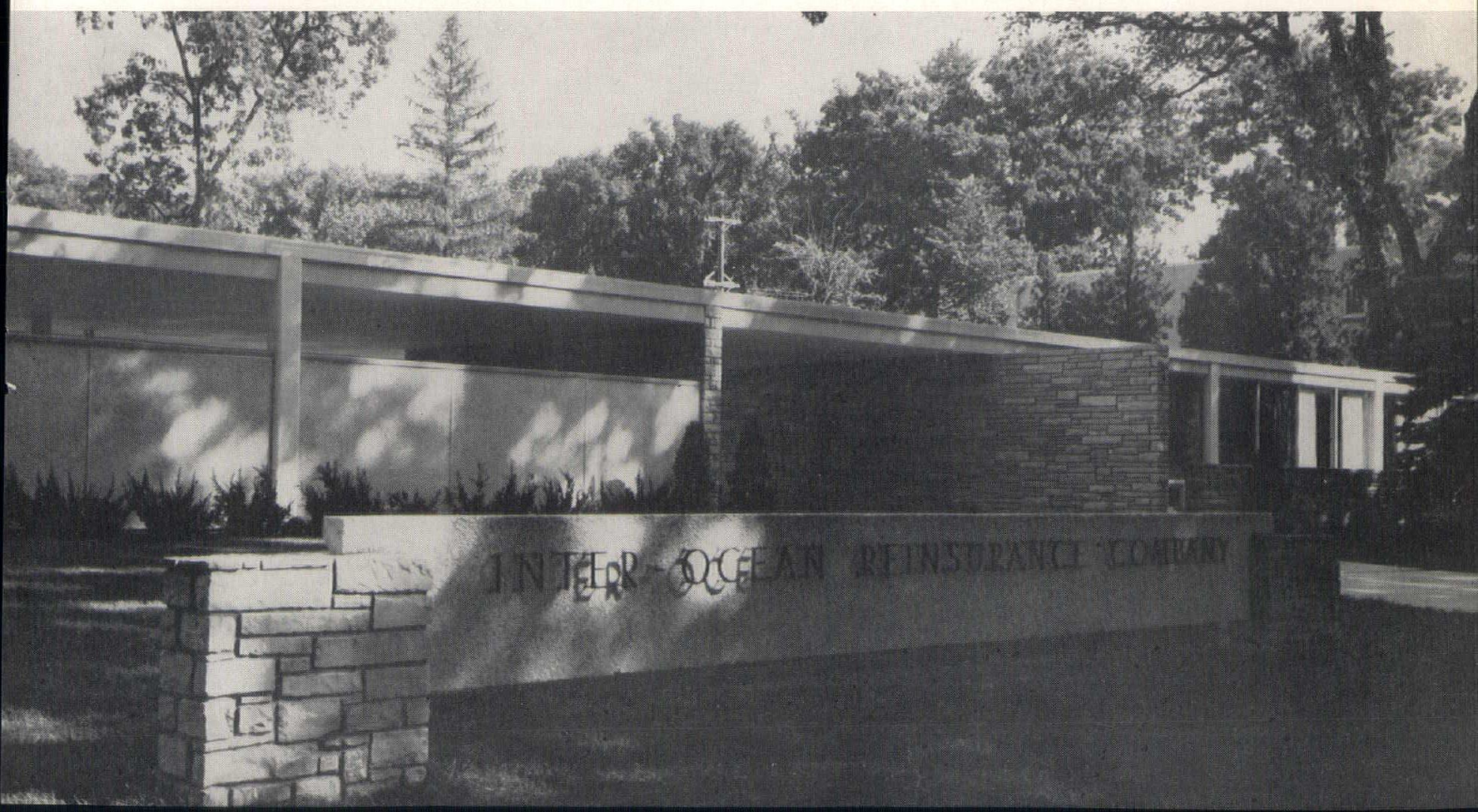
JUN 4 1962

LIBRARY

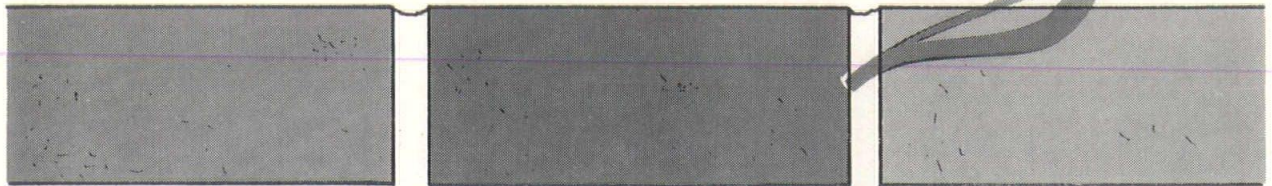
MARCH - APRIL 1962

VOL. IX

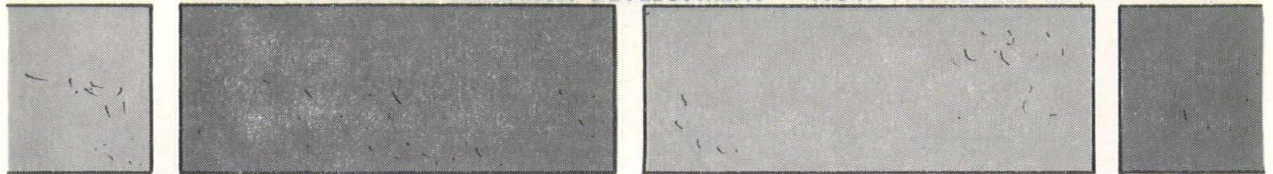
NO. 2



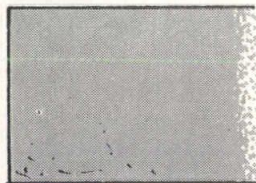
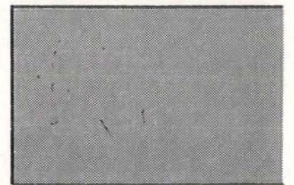
Goodwin Greys



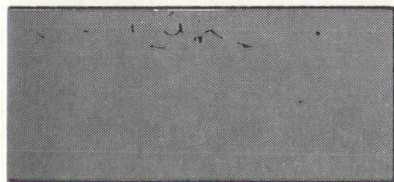
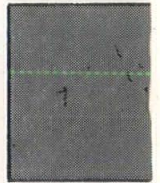
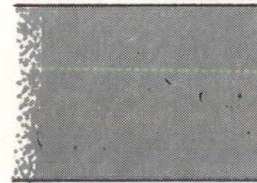
A NEW GOODWIN RESEARCH DEVELOPMENT — NOW AVAILABLE IN



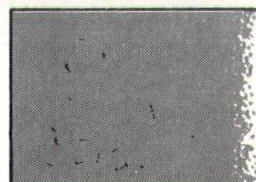
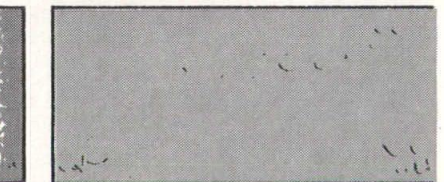
LIGHT RANGE
MEDIUM RANGE
DARK RANGE



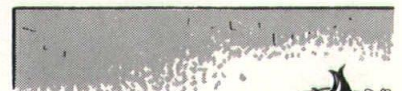
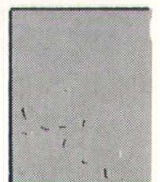
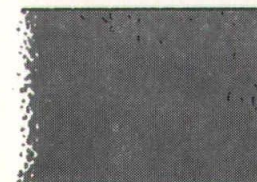
The new Goodwin Greys[®]
is an extremely warm
grey wirecut face. The



standard size units are
produced by Des Moines
Clay Company. Each



of the three color ranges
offers a distinct opportunity
for special design effects.



MEMBER
SCPI
STRUCTURAL
CLAY
PRODUCTS
INSTITUTE
Washington DC

*A Reminder: Any brick in the Goodwin line may be
ordered with the distinctive Rock Face feature.*



MANUFACTURING DIVISIONS
DES MOINES CLAY COMPANY
MASON CITY BRICK AND TILE COMPANY
OSKALOOSA CLAY PRODUCTS COMPANY
OTTUMWA BRICK AND TILE COMPANY
REDFIELD BRICK AND TILE COMPANY

**614 CENTRAL
NATIONAL BLDG.
DES MOINES, IOWA**



The Plus Values of *Creative* Heating and Air Conditioning

Green Colonial quality heating and air conditioning delivers much more than the mere heating or cooling of the structure.

The plus values offered by Green Colonial quality are numerous. Luxurious quietness is assured because air delivery to each room is achieved without excessive velocity. Each installation is carefully regulated to assure the desired temperature in every room.

Such superior performance requires more than just a well designed installation. It demands the "after installation service" for which Green Colonial is noted.

The services of the Green Colonial Engineering Department are available to you for Creative Heating and Air Conditioning for homes, schools, churches and commercial installations.


There are over 400 Dealers and 15 Factory Representatives ready to serve you in Iowa.

GREEN COLONIAL INC.



DES MOINES 6, IOWA

**GREEN
COLONIAL**
HEATING & COOLING

A black and white photograph of a large, multi-story parking structure. The building's facade is composed of numerous vertical, white, hyperbolic paraboloid panels that create a rhythmic, louver-like pattern. The structure is situated in an urban environment, with a few trees and a street visible in the foreground. A small, dark, circular feature, possibly a tunnel entrance, is visible at the base of the building.

The best ideas are more exciting
in **concrete**

Henry Ford Hospital 870-car parking structure, Detroit, Michigan. Architect: Albert Kahn, Associated Architects and Engineers, Inc., Detroit, Michigan

Louvers give a new beauty twist to concrete curtain walls!

Precast concrete curtain walls have given Henry Ford Hospital an off-the-street parking structure that blends attractively into a residential area. 1,716 hyperbolic paraboloid panels, precast from white cement, white quartz and sand aggregates, form the unique walls. An intriguing visual effect is obtained from these louvers which seem to change shape and position, depending on lighting and angle of view. Practicality is everywhere. In the light, open feeling of the interior . . . in the enduring solidity of the concrete frame and floors. The versatility of concrete is today winning new appreciation as architects express fresh concepts in design.

PORTLAND CEMENT ASSOCIATION 408 Hubbell Bldg., Des Moines 9, Iowa
A national organization to improve and extend the uses of concrete

IOWA ARCHITECT

Iowa Chapter, American Institute of Architects

CONTENTS

OFFICERS

Robert E. Savage
Des Moines
President

G. Doug Robison
Davenport
Vice-President

James A. Lynch
Des Moines
Secretary

Willis Schellberg
Forest City
Treasurer

PUBLICATIONS COMMITTEE

N. Clifford Prall
Chairman
Rich Goewey
Carl Ver Steeg

EDITOR

N. Clifford Prall
4717 Grand Avenue
Des Moines 12, Iowa

MANAGING EDITOR

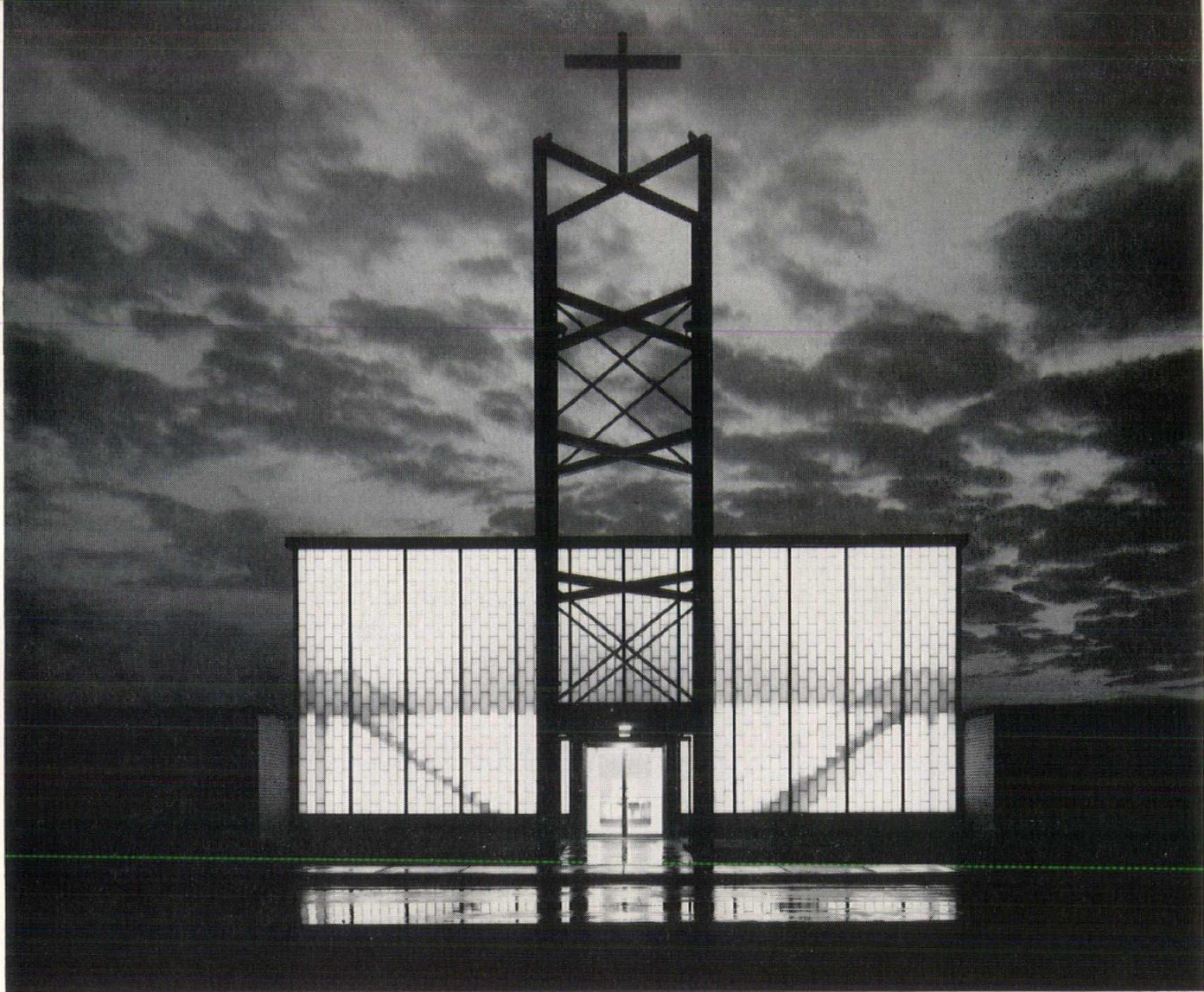
Robert F. Bonomi
422 Securities Bldg.
Des Moines 9, Iowa
ATlantic 2-4309

Honors to owners	7
Come to the great southeast!	8
Cooperation is planned	10
Articles say "non-profit"	10
Photography contest	10
HONOR AWARDS Display	12
<i>Fisher Community Center, Marshalltown</i>	
<i>Inter-Ocean Reinsurance Co., Cedar Rapids</i>	
<i>Tucker Residence, Cedar Rapids</i>	
<i>Church of the Resurrection, Marion</i>	
<i>Crites Residence, Cedar Rapids</i>	
<i>ISU Stadium Press Box, Ames</i>	
<i>Maytag Co. Office Building, Newton</i>	
<i>Fire Station No. 9, Cedar Rapids</i>	
<i>Sieberling Residence, North Liberty</i>	
<i>Collins Credit Union, Cedar Rapids</i>	
<i>Bankers Trust Co., Des Moines</i>	
<i>Merrill Junior High, Des Moines</i>	
<i>Motor Bank, Iowa-Des Moines National Bank</i>	
<i>Bethlehem Lutheran Church, Inwood, Iowa</i>	
<i>Emmons Lutheran Church, Emmons, Minn.</i>	
<i>United Church of Christ, Schleswig</i>	
<i>Redeemer Lutheran Church, Owatonna, Minn.</i>	
<i>Eagle Food Center, Dubuque</i>	
<i>State Highway Commission Office, Ames</i>	
<i>Belmond High School, Belmond</i>	
<i>Page Elementary School</i>	
<i>Eisenhower School, Cedar Rapids</i>	
<i>Bowman Retreat, Coralville</i>	
<i>Farmhouse Fraternity, Ames</i>	
<i>International House, Sioux City</i>	
<i>Westover Funeral Home, Des Moines</i>	
Award Exhibit is travelling	18
Iowa Schools in the sixties	21
Calendar	21
Form Des Moines Section.....	24
Directory of Advertisers	25
Personal & Professional.....	26

THE COVER

Entrance area the Inter-Ocean Reinsurance Company, Cedar Rapids, Iowa. An Award of Merit winner in the 1962 Honor Awards competition of the Iowa Chapter, AIA. Designed by Brown, Healey & Bock, Cedar Rapids.

The "Iowa Architect" is published bi-monthly for the Iowa Chapter, American Institute of Architects, and mailed without charge. Appearance of names and pictures of products or services in editorial or advertising copy does not constitute endorsement of either the A.I.A. or this chapter.



Built with translucent Kalwall: First Missionary Church, Berne, Indiana. Architect: Orus O. Eash, A.I.A.; Contractor: Habegger Construction Co.

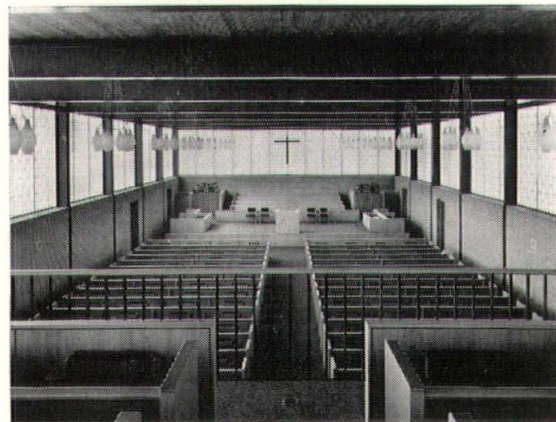
To help you do bold new things with light ...Kalwall translucent walls

In creative hands, light is "a many-splendored thing."

And with translucent Kalwall you can translate this "many-splendored thing" into design, most imaginatively and dramatically.

You get softly diffused light with Kalwall Translucent Walls — light that's shadowless and pleasantly glare-free.

You also get great structural strength. For lightweight as Kalwall is (1.5 lbs/sq ft), it is so strong that no intermediate support is required. Shatterproof. Weather-tight. Available in panels up to 4' x 20', white or colored — with a choice of modern, functional patterns produced by aluminum grid cores. Write for details on this new way to "build with light."



Kalwall lights church interior evenly — no "hot spots."



KALWALL CORPORATION

SWANSON GENTLEMAN, INC.

3213 Forest Ave., Des Moines, Iowa Telephone CRestwood 9-9793



Honorable mention plaques are held by John Rice, Bert Livingston, Boyun Platt, and Jesus Artiaga.



Award of Merit plaques are held by Frank Fulkerson and Ted Healey, and by Ray Crites and Herbert Tucker.

Honors to owners

BUILDING OWNERS and practicing architects joined student award winners in receiving honors at the 1962 Awards Banquet of the Student Chapter, A.I.A., at Iowa State University, April 16.

Robert L. Johnson was awarded the School Medal of the A.I.A., and Robert M. Lee was recipient of the Book Award from the Henry Adams fund of the A.I.A. Richard Kruse was awarded the Alpha Rho Chi medal.

Charles Burnidge, John Sharratt and Robert L. Lee were judged winners in that order on the basis of exhibits hung by fifth year students for judging by a team of members of the Iowa Chapters, A.I.A.

Stanford Griffith, son of Stanford Griffith, A.I.A., Fort Dodge, received the Durrant and Bergquist award; the Karl Keffer award was presented to Don S. Wheeler and the Leo A. Daly award to James Dwinell. The faculty prize for sophomores went to James Lammers, and for freshmen to A. L. Bridge.

In the Iowa Chapter awards, made during the student program, Herbert C. Tucker and Ray Crites stepped forward to receive the Award of Merit plaques for the Tucker residence, Cedar Rapids, and Frank E. Fulkerson, representing the Inter-Ocean Reinsurance Co., Cedar Rapids, and E. H. Healey, Brown, Healey and Bock, received Award of Merit plaques. The awards were a result of the 1962 Honor Awards Competition of the

Iowa Chapter, A.I.A., conducted in conjunction with the Chapter convention in January.

Dick McConnell received an Honorable Mention plaque on behalf of the firm of Crites and McConnell for the design of the Crites' residence.

Honorable Mention plaques also were presented to Boyun Platt, representing Iowa State University, and Jesus Artiaga, representing Brooks-Borg, for the design of the press box at the ISU stadium, and to Burt Livingston, representing the Maytag Co., and John Rice, representing Brooks-Borg, for the design of the Maytag Building, Newton. Presentations were by Iowa Chapter President Robert Savage.

The firm of Crites and McConnell also received plaques for the First Honor Award of the Fisher Community Center, Marshalltown, and another Honorable Mention for the Church of the Resurrection, Marion. Representatives of the owners of these last named buildings could not attend the banquet.

A. Quincy Jones, Jr., Los Angeles, Cal., was principal speaker at the banquet. Mr. Jones, noted for his architecture in housing, used a series of quad-mounted slides to illustrate his points.

Jim Bragonier, student, handled the m.c. duties for the bulk of the program, and Prof. Leonard Wolf, F.A.I.A. presented the student awards before a crowd that met size anticipations.

Winners of student awards for the 1961-62 academic year at Iowa State University in the department of Architecture and Architectural Engineering were, left to right:

Stanford F. Griffith, Fort Dodge, recipient of the Durrant & Bergquist Award; Robert L. Johnson, Forest City, recipient of the School Medal of the A.I.A.; Donald Eric Wheeler, La Crosse, Wisc., recipient of the Karl Keffer Award; Alan L. Bridge, Storm Lake, recipient of the faculty prize for freshmen; Robert Mark Lee, Sioux City, recipient of the Henry Adams Award from the A.I.A.; James I. Dwinell, Bedford, recipient of the Leo Daly Award; James I. Lammers, Rockford, Ill., recipient of the faculty prize for Sophomores; and Richard H. Kruse, Mt. Vernon, recipient of the Alpha Rho Chi Medal.



BONDED APPLICATORS OF
DESCO WALL COATINGS

VITRO GLAZE — ARMITE
NYOCON — GLAZETITE — STARTEX
VINYL — ARMTEX

NEVER NEEDS PAINTING

WATERPROOF

Applied to ANY Dry or
Grease-Free Surface

**SIoux CITY
MOSAIC CO., INC.**

SINCE 1920

Ceramic Tile & Terrazzo Contractors
W. 1st & REBECCA STS. PHONE 5-5653

Members of:
DESCO International of America
National Terrazzo & Mosaic Ass'n.
Northwest Terrazzo Ass'n.

DEVOE PAINT

First in Quality Since 1754

Complete Stocks Serving All Iowa

SERVICE BY LOCAL ARCHITECTURAL
REPRESENTATIVES

G. M. MELTON MELVIN E. WILLS

DEVOE & RAYNOLDS CO., INC.

108 JEFFERSON DES MOINES, IOWA PHONE CH 4-5261

**Come to the
great southeast!**

CHAPTER BUSINESS will be important, but will take a back seat to entertainment at the annual summer outing to be held August 3-4-5 at Davenport, it appears from the outline of activities submitted by Vice-President Doug Robison, who also is handling the chores of general chairman for the summer meeting.

Preliminary sketches of the weekend show an entry of a cocktail hour at 5 p.m. on Friday, dinner at the El Rancho Villa (which will be the meeting headquarters motel) and at 7:30 p.m. a bus will take architects and their ladies to the Quad City Musical Guild production of "Bye Bye Birdie."

Robison also says amateur guides will be available to lead "twist" and "stomp" devotees (or spectators) to such Rock Island night life spots as the "Yankee Clipper," "The Plantation," and others.

Saturday's program will begin with a chapter meeting at 10 a.m. and a noon luncheon at the El Rancho Villa, with an afternoon bus tour set for a number of recently completed structures (Robison explains that to avoid provincial jealousy, none of the buildings on the tour will have been designed by an Iowa architect. He also implied that guides would be available to take visitors to projects designed by Iowa architects.)

Projects on the list include: Steepmeadow by S.O.M., the John Deere Plant, Saariem, Moline Public Hospital Chapel, Kruse; Unitarian Church, Lundeen & Toline, and the Davenport Museum & Art Gallery, Swanson.

There is a swimming pool at the Motel, and there is a golf course directly across the highway. The "Duck Creek Plaza" is nearby for shopping.

Cocktails are slated for 7 p.m. Saturday, followed by dinner at the Davenport Club in downtown Davenport. At 10 p.m. the group will embark on the new excursion craft "Thunderbird" for a charter cruise through the locks on the Mississippi and among the many islands of the "Mighty Messy River." There will be dancing and refreshments, moonlight and music . . .

After the craft returns at midnight, the hardy will again venture toward Rock Island . . . but no guides are promised.

The Sunday program sets a poolside brunch for the hours from 9:30 to 11:00 a.m., and that will close the scheduled portion of the program.

There are plenty of other places to visit however and some of them are the ALCOA plant, the Arsenal Museum, Studio 15, and the Blackhawk State Park & Museum.

Registration cards will be distributed along with additional information for chapter members.



MURAL IN EXPOSED AGGREGATE

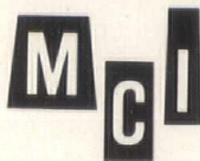
PROJECT: CENTRAL NATIONAL INSURANCE COMPANY
72ND STREET, 2 BLOCKS SOUTH OF DODGE ST., OMAHA

ARCHITECT: LEO A. DALY COMPANY, OMAHA

ARTIST: BILL HAMMON, OMAHA

PHOTOGRAPHER: TORKEL KORLING, CHICAGO

Working in the plant, Artist Bill Hammon prepared molds for these panels. Relief is plus 3 inches and minus 1 inch from panel face. Finish is $\frac{3}{4}$ " milky quartz in light grey matrix.



MIDWEST CONCRETE INDUSTRIES
WEST DES MOINES, IOWA

Articles say "non-profit"

IOWA CHAPTER members expressed a feeling of opposition to proposals which would create "Councils" affiliated with the A.I.A. for various types of design and construction, and then approved another "sense of the meeting" motion which would permit the inclusion of professional affiliates in the chapters.

These two actions were among those taken as members of the Iowa Chapter met April 11 at the Des Moines Golf & Country club to act on a formal change to the articles of incorporation by inserting a new paragraph which says: "No part of the net income of this corporation shall inure to the benefit of any private member or individual." This became Section 3 of Article III, upon approval of the membership.

In other formal action, the Government Relations Committee under Chairman George Russell was instructed to proceed on its present course of attempting to determine the need, and the possibility of success, for changes in the Iowa Code which would eliminate loopholes by which technically unqualified persons can present themselves to the public as capable of handling design, structure and observation duties which for protection of the public require application of the skill and technical training of architects and engineers.

Some of the needs and scope of such legislation was discussed at a morning meeting April 11, at which representatives of the Iowa Engineering Society, the Board of Engineering Examiners, the Board of Architectural Examiners, the Master Builders of Iowa, and legal counsels were present.

It was agreed that all groups were interested in securing legislative proposals which would first protect the interests of the public.

Cooperation is planned

EXECUTIVE COMMITTEES of the Iowa Chapter and Student Chapter of the AIA conferred April 16 at Iowa State University on the express point of creating mutual understanding and engendering greater cooperation between the two groups. The student group was headed by Presidents Val Satko (1961-62) and Perry Bolin (1962).

The students were told by Chapter President Robert Savage that the Executive Committee of the Iowa Chapter normally meets on the second Friday of each month, and that it would be very willing to consider subjects which may be presented by the student chapter.

A subject of prime interest to the student group was that of learning of the actual activities in the office of an architect, and of the day-to-day life of the practicing architect. As one discussant said, "We want to learn how an architect spends his time—or uses it."

Discussion covered the possibilities of students visiting the offices of architects, spending time with the principals, as well as with subordinate members of the firms. Others indicated that great value would accrue to the students if practicing architects would visit student chapter meetings and engage in "bull sessions" about the practice.

Emphasis also was placed on the possibility of having architects, who hire students and graduates, conduct discussions before the student chapter on the qualities and characteristics which are sought in employees who are to be trained to assume major responsibilities in a firm.

In a mechanical step re-instituted this year, the applications of 42 students for student associateship were forwarded to the Iowa chapter, and were approved. This was done to help create an official record in the chapter office for those students who participate in the university chapter activities. It will provide a basic mailing list from which the Iowa Architect can be sent to the student chapter members, and will provide a basis upon which a student chapter directory can be made a part of the Iowa Chapter directory in future years. It also provides a basis upon which the Iowa Chapter can base answers to queries which sometimes come from other states regarding persons who apply there for association with an AIA chapter.

The Iowa Chapter purchased 20 tickets to the student banquet for the use of the architects and building owners who received awards at the Student Chapter Banquet April 16.

The judging team for the student awards was comprised of Eugene C. O'Neil, chairman, John Rice, and Walter Hotchkiss, all of Des Moines.

Architectural Photography Contest

PRIZES TOTALLING \$320 are offered in a color slide photography contest being sponsored by the Iowa Chapter A.I.A. for students in architecture and architectural engineering at Iowa State University. Details of the contest were distributed at the Department of Architecture and to the Student Chapter A.I.A.

Intended to create an interest in existing Iowa structures and to help inform students about structures of historical value, the contest has prizes for color slides of structures which were built prior to 1930, and for those built since 1930.

Prizes also are offered for interiors and exteriors of such buildings.

First prize in each of the two major categories is \$50, there are six second prizes of \$25 each, and 12 third prizes of \$5 each.

The contest is limited to students in the department of architecture and architectural engineering, and to photos made after May 1, 1962.

Walter Hotchkiss, AIA, Des Moines, headed a subcommittee of the Education Committee which prepared the contest outline, reports James Bentley, AIA, education committee chairman, Waterloo.



Blumcraft

ADJUSTABLE ANCHORING SYSTEMS

SOLVES PROBLEMS OF SECURING RAILINGS TO CONCRETE BY BECOMING AN INTEGRAL PART OF THE STAIR STRUCTURE

- INSURES EXTREME RIGIDITY
- REDUCES COSTLY FIELD LABOR
- ELIMINATES BREAKAGE IN MASONRY
- ADJUSTABLE FOR POST ALIGNMENT



Blumcraft OF PITTSBURGH

GENERAL CATALOG OF COMPLETE BLUMCRAFT LINE AVAILABLE ON REQUEST
COPYRIGHT 1962 BY BLUMCRAFT OF PITTSBURGH • 460 MELWOOD STREET, PITTSBURGH 13, PENNSYLVANIA

HONOR AWARDS COMPETITION

IOWA CHAPTER

The American Institute of Architects



FIRST HONOR AWARD

Fisher Community Center,
Marshalltown, Iowa

Designed by Architects Crites and
McConnell, Cedar Rapids

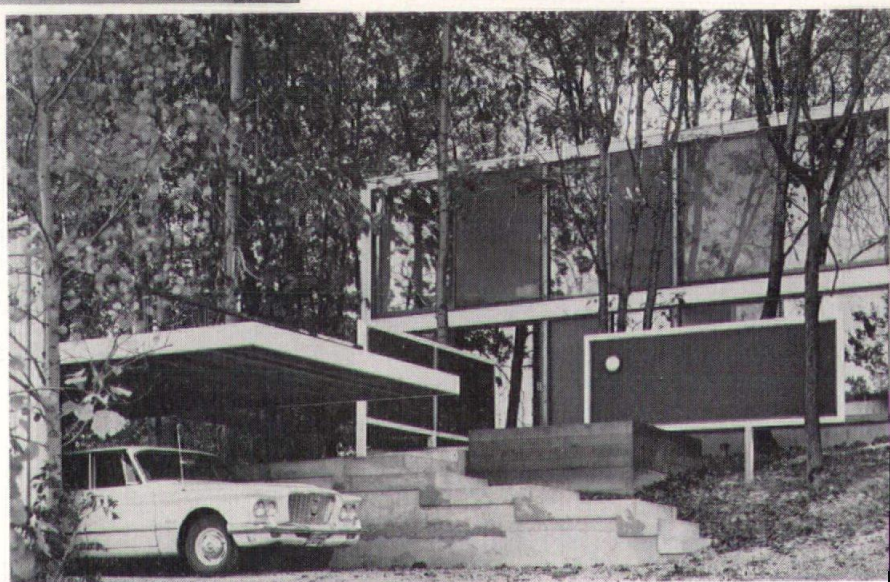
AWARD OF MERIT

Inter-Ocean Reinsurance Company,
Cedar Rapids (On cover)

Designed by Brown, Healey & Bock,
Architects and Engineers,
Cedar Rapids

Tucker Residence, Cedar Rapids (right)

Designed by Architects Crites and
McConnell, Cedar Rapids



HONORABLE MENTION

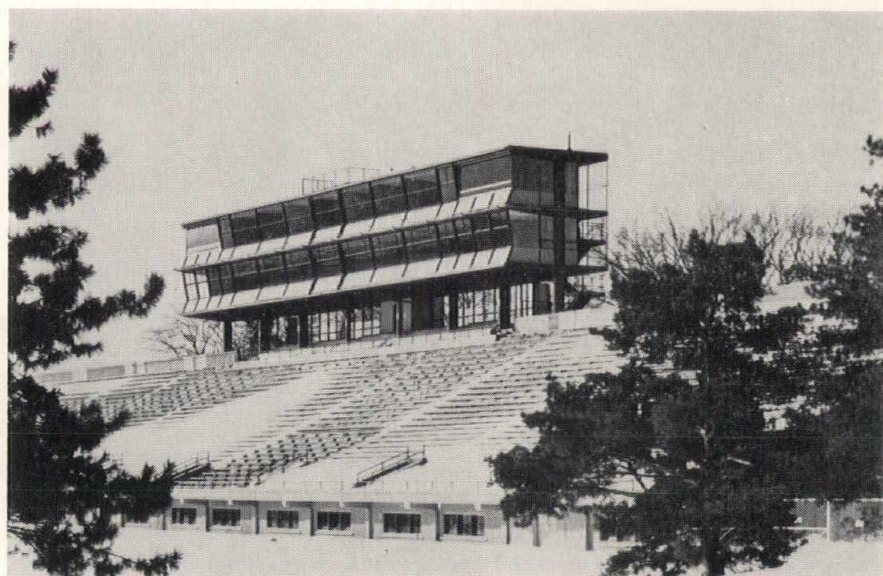
Lutheran Church of the Resurrection,
Marion, Iowa

Designed by Architects Crites and
McConnell, Cedar Rapids

HONORABLE MENTION

Crites Residence, Cedar Rapids

Designed by Architects Crites and
McConnell, Cedar Rapids



HONORABLE MENTION

Stadium Press Box, Iowa State
University, Ames

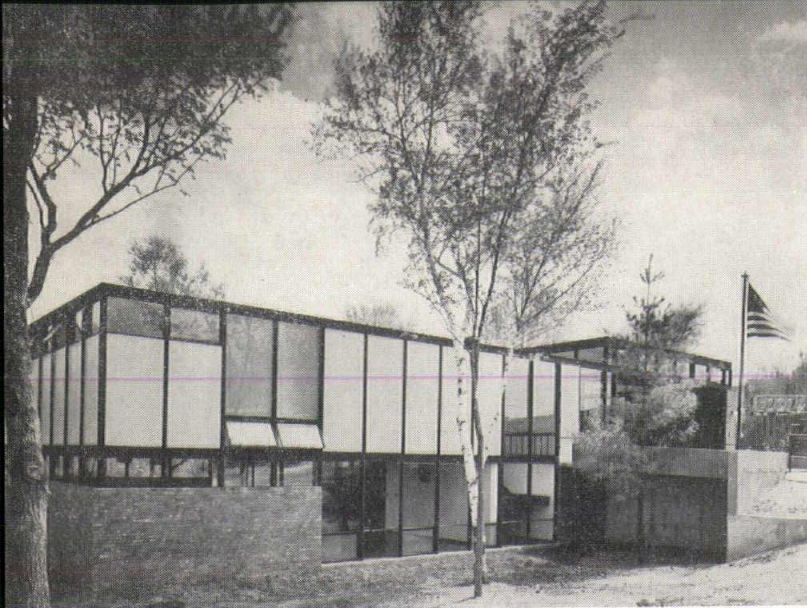
Designed by Brooks-Borg, Architects-
Engineers, Des Moines

HONORABLE MENTION

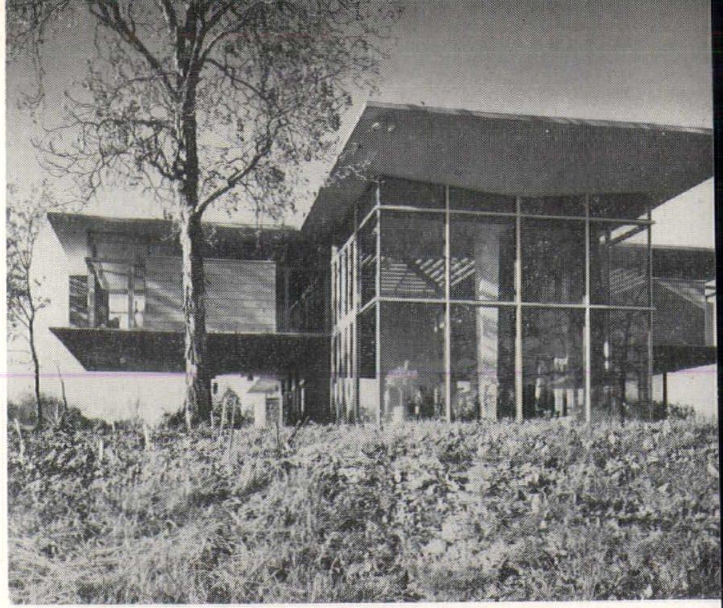
Maytag Co. Office Building, Newton

Designed by Brooks-Borg, Architects-
Engineers, Des Moines





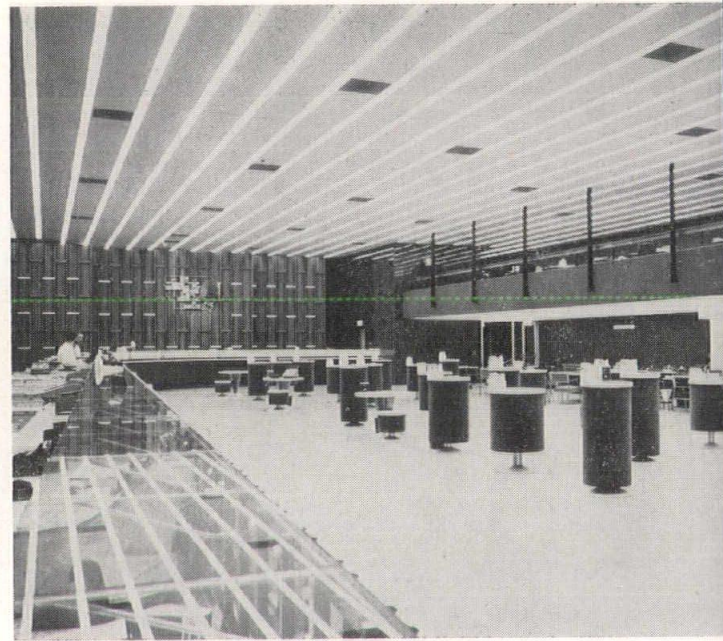
FIRE STATION NO. 9, CEDAR RAPIDS, IOWA
ARCHITECTS CRITES & McCONNELL, CEDAR RAPIDS



SIEBERLING RESIDENCE, NORTH LIBERTY, IOWA
ARCHITECTS CRITES & McCONNELL, CEDAR RAPIDS



COLLINS CREDIT UNION, CEDAR RAPIDS, IOWA
ARCHITECTS CRITES & McCONNELL, CEDAR RAPIDS



BANKERS TRUST CO., DES MOINES
BROOKS-BORG, DES MOINES

MERRILL JUNIOR HIGH SCHOOL, DES MOINES
BROOKS-BORG, DES MOINES

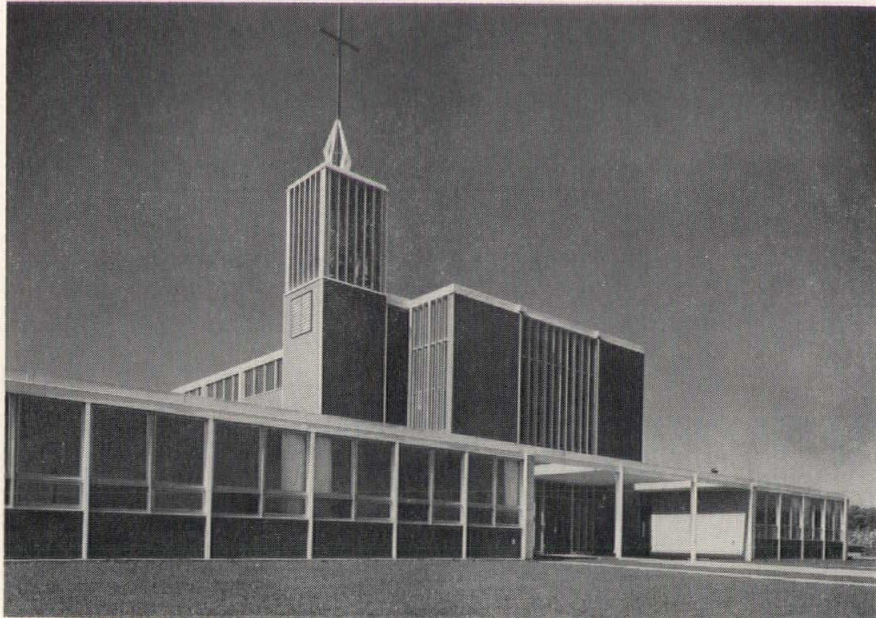
MOTOR BANK OF IOWA-DES MOINES NATIONAL BANK,
DES MOINES
BROOKS-BORG, DES MOINES



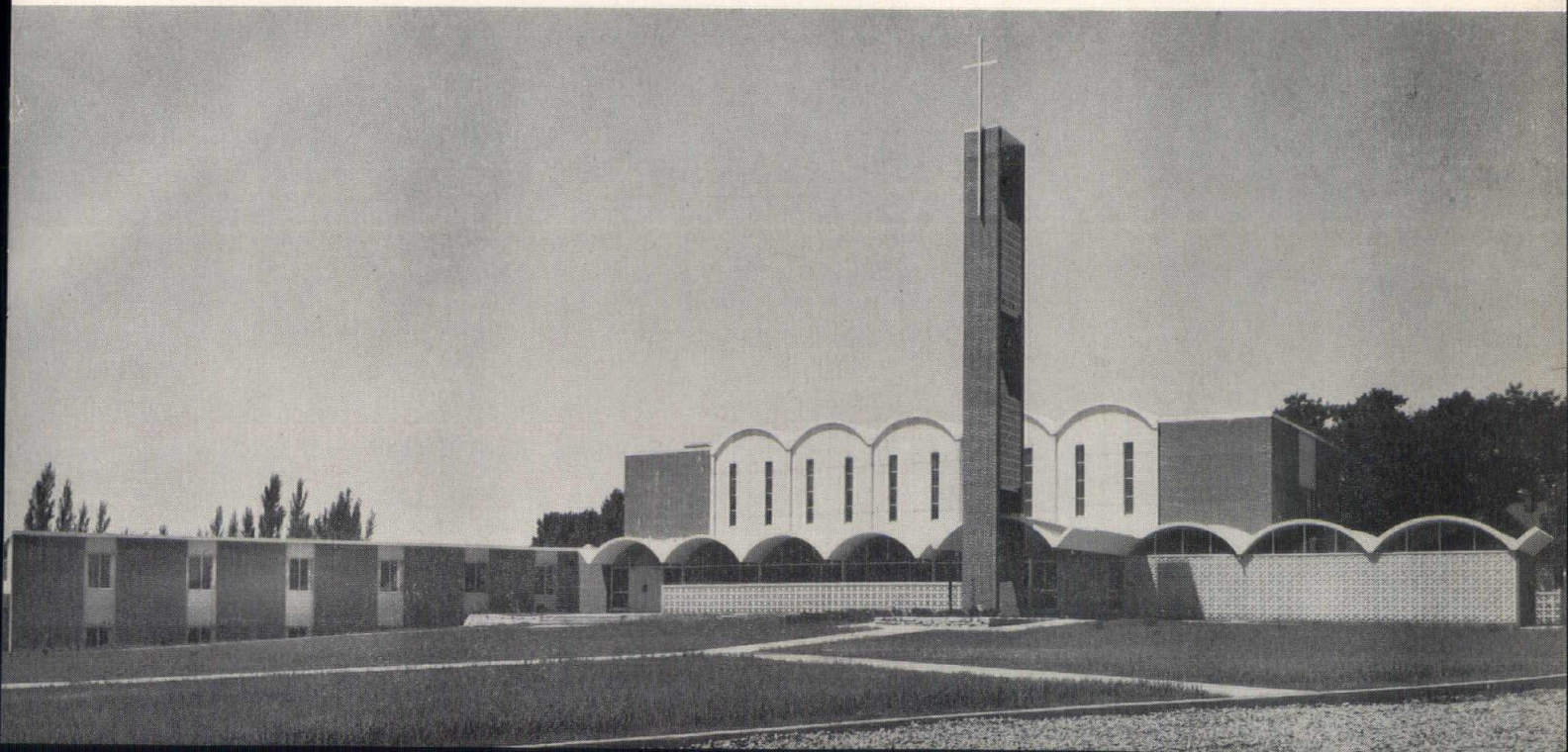
BETHLEHEM LUTHERAN CHURCH, INWOOD, IOWA
GERMANSON-FOSS & CO., SIOUX CITY



EMMONS LUTHERAN CHURCH, EMMONS, MINNESOTA
THORSON, GJELTEN & SCHELLBERG, FOREST CITY, IOWA



UNITED CHURCH OF CHRIST,
SCHLESWIG, IOWA
SAVAGE & VER PLOEG,
WEST DES MOINES, IOWA



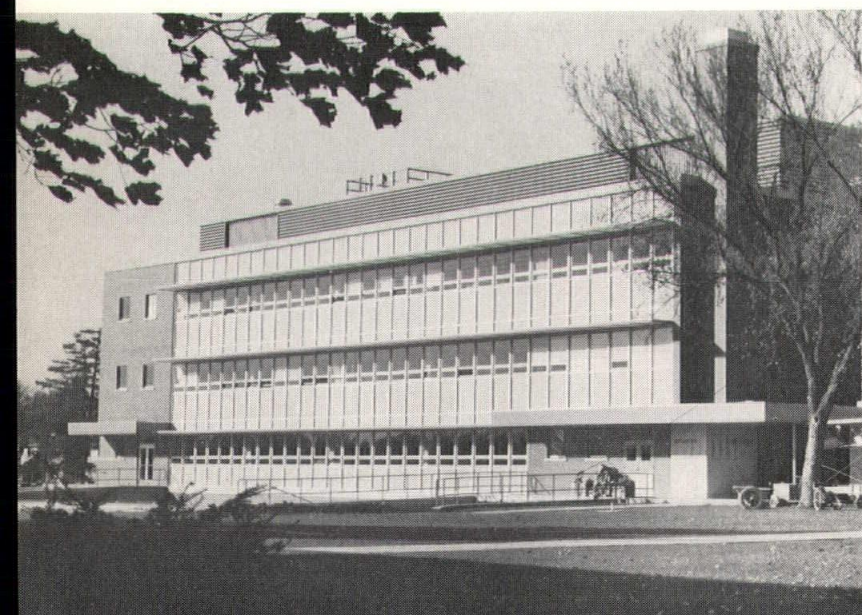


REDEEMER LUTHERAN CHURCH, OWATONNA, MINN. THORSON, GJELTEN & SCHELLBERG, FOREST CITY

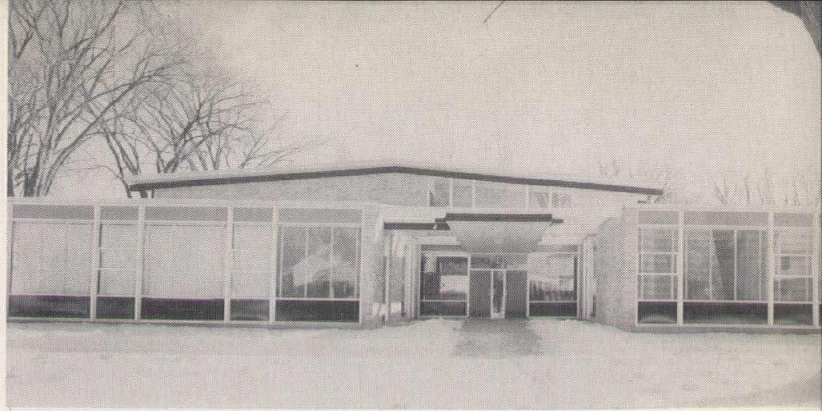
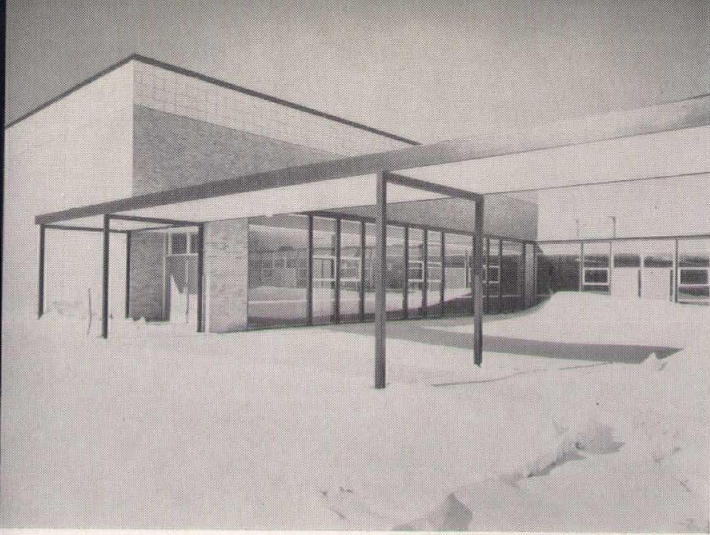
ALSO SHOWN in the exhibit are the following projects which have previously been featured in the design section of the Iowa Architect: FIRST NATIONAL BANK, HUMBOLDT. N. C. PRALL, DES MOINES. TRUMAN ELEMENTARY SCHOOL, CEDAR RAPIDS, CRITES & McCONNELL, CEDAR RAPIDS. ADAMS ELEMENTARY SCHOOL, CEDAR RAPIDS, CRITES & McCONNELL, CEDAR RAPIDS.



EAGLE FOOD CENTER, DUBUQUE
DURRANT AND BERGQUIST, DUBUQUE, IOWA



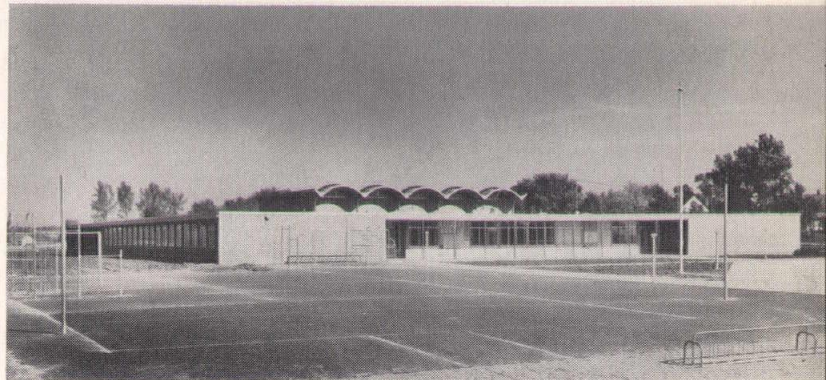
IOWA STATE HIGHWAY COMMISSION OFFICE BUILDING,
AMES
DOUGHER-FREVERT-RAMSEY, DES MOINES



PAGE ELEMENTARY SCHOOL, (above)
KARL KEFFER ASSOCIATES, DES MOINES
BELMOND HIGH SCHOOL, BELMOND (left)
KARL KEFFER ASSOCIATES, DES MOINES



BOWMAN RETREAT, CORALVILLE
KOHLMANN-ECKMAN-HUKILL, CEDAR RAPIDS



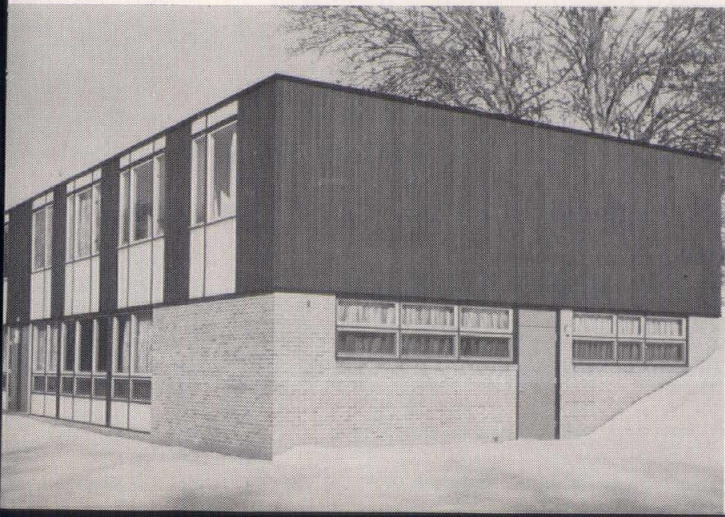
EISENHOWER SCHOOL, CEDAR RAPIDS (right, upper)
KOHLMANN-ECKMAN-HUKILL, CEDAR RAPIDS



FARMHOUSE FRATERNITY, AMES (right, lower)
KOHLMANN-ECKMAN-HUKILL, CEDAR RAPIDS

INTERNATIONAL HOUSE, MORNINGSIDE COLLEGE, SIOUX CITY
SMITH-VOORHEES-JENSEN, ARCHITECTS ASSOCIATED,
SIOUX CITY

WESTOVER FUNERAL HOME, DES MOINES
SMITH-VOORHEES-JENSEN, ARCHITECTS ASSOCIATED,
DES MOINES



Historical committee meets

WILLIAM WAGNER, AIA chairman of the Iowa Chapter Committee on the Preservation of Historic Buildings, was present for a meeting of the national committee in Washington, D.C., March 15, for the initial showing of a travelling show "The Heritage of Progress" which has been prepared by the National Trust for Historic Preservation.

Award exhibit is traveling

EXHIBITS PREPARED by Iowa Chapter members for the 1962 Honor Awards competition are on the go most of the time. Advance schedules have them in Marshalltown during the month of June, in Waterloo during November and at Iowa City in December.

Mrs. F. A. Gordon, president of the Central Iowa Art Association, has asked that the exhibit be scheduled for the Fisher Community Center for the month of June, with the exhibition to be ready for viewing by June 4.

Mrs. Rae Bartnek, public relations director of Younkers, Des Moines, had the exhibit scheduled for the sixth floor gallery beginning May 11.

Approximately two-thirds of the mounts were on display during the month of April in the educational wing of the Des Moines Art Center.

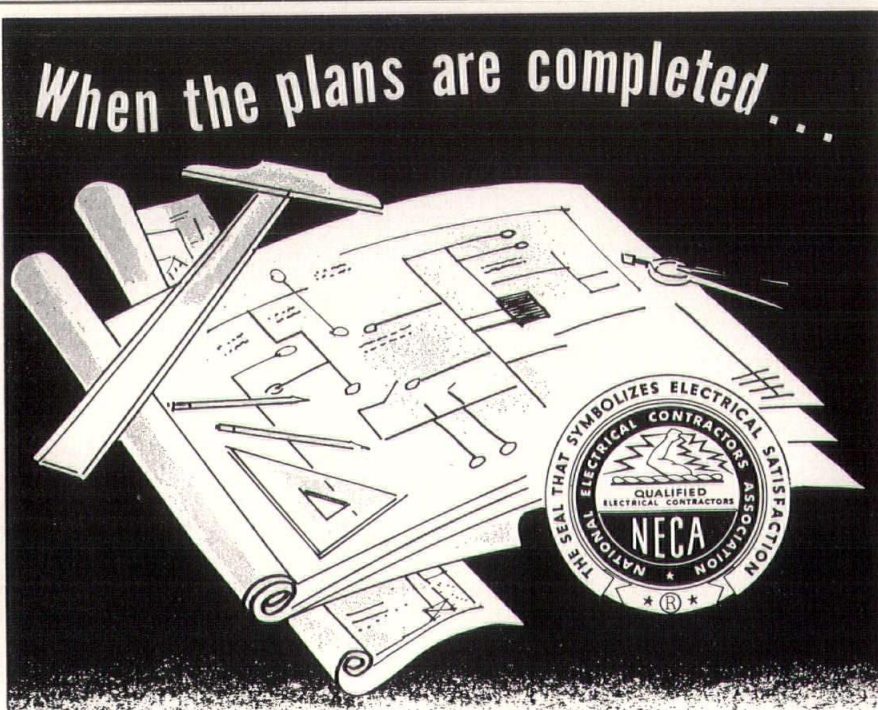
Public relations chairman Harold Payne collected a crew comprised of Dave Frevert, Clarence Olson, Jim Wilkins, Don Johnson, and Bob Bonomi, chapter executive-secretary, who spent an afternoon attaching identification labels to the mounts.

The national committee heard remarks from two representatives of the U. S. National Parks Service, and Charles Peterson, representative for the eastern half of the U. S., said that the U. S. is losing many landmarks because of urban renewal programs. He urged chapter preservation officers to press the recording of architectural landmarks.

Wagner has also completed a report on the life and architectural accomplishments of William Foster who practiced architecture in and around Des Moines from 1868 to 1896. It is to appear in the Annals of Iowa published by the Iowa Historical Society.

Two bus loads of architecturally interested people were conducted on a tour of Des Moines landmarks and little known points of architectural interest on April 2. The tour, sponsored by the Adult Education Division of the Des Moines Public School program, will be repeated.

Wagner was a principal speaker before the Polk County Historical Society meeting, March 21, at the IPALCO auditorium in Des Moines.



CALL AN EXPERT!!

To be **DOUBLY SURE**
your electrical installations
are just as you intended . . .

Call on a
**NECA
MEMBER**

Ask us for the names of NECA members in your area.

IOWA CHAPTER

NATIONAL ELECTRICAL CONTRACTORS ASSOCIATION

1118 MULBERRY

AT 8-3279

DES MOINES, IOWA

Another Haydite Job!



Building: Traders National Bank, Kansas City, Mo.
Architect & Engineer: Thomas E. Stanley, Dallas, Texas
Contractor: Beck-Truckee Construction Co., Dallas, Texas

Lightweight Haydite Concrete reduces deadload more than 7 million pounds

The 20-story Traders National Bank Building, Kansas City's newest skyscraper, is an outstanding example of lightweight Haydite concrete construction.

To date approximately 7,000 yards of this lightweight concrete have been poured in the erection of this three and one half million dollar structure.

It is estimated that the use of Haydite concrete instead of heavy aggregate concrete, will reduce the deadload of the structural frame and floors approximately $7\frac{1}{2}$

million pounds. This is substantial evidence of the basic economy of lightweight Haydite concrete.

If you would like more information about lightweight Haydite concrete, see your local Ready-Mix plant or contact—

CONSTRUCTION THE MATERIALS
CARTER-WATERS
KANSAS CITY CORP 8 MISSOURI
2440 Pennway GRand 1-2570

Producers of lightweight
HAYDITE aggregate at
Centerville, Iowa and
New Market, Missouri

Skillful balance of basic elements means

OBVIOUS GOOD DESIGN



Hawley Welfare Building, Des Moines, Iowa

ARCHITECT: Amos Emery & Associates, Des Moines, Iowa.

CONTRACTOR: Garmer & Stiles, Des Moines, Iowa.

Discriminating consideration of design essentials is a part of the architect's art. Part of the architect's science is the selection of elements of construction to fulfill his design intent. The Sheffield Clay Tile Beam System should be a part of your thinking when specifying floor and roof systems.

Selected for this building, the Sheffield Clay Tile Beam System offers high rigidity at low cost. It is a shallow system, making available more useful volume and allowing greater freedom in ducting. And, ease of installation results in savings of construction time and costs.



Accurately pre-sized, The Sheffield Clay Tile Beam System is a skillful balance of the basic qualities of hard-burned clay tile, steel and poured concrete . . . AN OBVIOUS GOOD DESIGN.

SHEFFIELD BRICK & TILE COMPANY

SHEFFIELD, IOWA

C A L E N D A R

Iowa schools in the sixties

SCHOOL ADMINISTRATORS and school board members from throughout Iowa are to be invited to a conference in Des Moines, October 1, on the theme "Iowa's Schools in the Sixties," sponsored by the Master Builders of Iowa in conjunction with the Iowa Chapter, AIA, the Iowa Association of School Boards and with the assistance of representatives of the Iowa Department of Public Instruction.

Bob Ramsey, Chairman of the chapter Schools Committee, Cliff Prall, Stan Ver Ploeg and President Bob Savage have met with the public relations committee of the MBI in relation to the conference, and Ramsey reports that a list of outstanding speakers has been compiled to help bring information to the schoolmen on the changes which can be expected in teaching and construction techniques.

Sponsors of the program are anticipating an attendance of about 200 persons. Sessions are expected to be included regarding school planning, school board relations with architects and builders, what is ahead in curriculum and construction, and a tour of one or more new schools.

Fred Mast, Waterloo, heads the MBI public relations committee. Representatives of other groups working with the MBI are Don Foster, Iowa Association of School Boards, Dr. Virgil Marcino of Iowa State

May 7-11	AIA National Convention	Dallas
May 15	Des Moines Architects Council Hotel Ft. Des Moines	Des Moines
May 18	Iowa Chapter Executive Committee Office of Savage & Ver Ploeg	West Des Moines
Aug. 3-5	Chapter Summer Outing El Rancho Motel	Davenport
Oct. 15	Closing Date Student Photography Contest	
Nov. 15	Closing Date, 1963 Honor Awards Competition of Iowa Chapter	

University, Dr. Willard Lane, State University of Iowa. Dr. Howard Knudson, State College of Iowa, Arch Grimes of the Department of Public Instruction, Dr. Arthur Templeton, assistant superintendent of Des Moines public schools, and Ken Lewis, executive secretary of the MBI.

The Proper Use of Concrete Masonry

For many years, the lowest cost of masonry walls could be accomplished by the use of concrete blocks.

However, it is very important that the concrete blocks are properly manufactured, cured, stored and delivered in order to get a first-class finished building.

We — at Iowa Concrete Block — have made improvements over the years until now we believe we can furnish blocks that will give you fine, trouble-proof buildings.

✓ **MIXING.** We have the best machinery to proportion and mix the materials so it will produce the very best blocks. Within 30 days, all of this will be electronically and automatically done—doing away with manpower mistakes entirely in this division.

✓ **MANUFACTURE.** Our two three-block machines not only use vibrations for compacting the

blocks, but they are the only ones in this section using both bottom and top vibration.

✓ **CURING.** We have a large, automatically controlled, high pressure steam boiler which enables us to get just a right temperature and moisture to cure the blocks properly.

✓ **STORAGE.** We have a large all steel building in which more than 150,000 units can be placed under cover to keep them out of the rain and snow. Orders for large buildings are placed under this roof.

✓ **DRY UNITS.** We have our own testing equipment not only to test the strength but also the moisture content of our blocks. If the moisture content is too high we have a drying kiln in which the blocks can be brought down to the proper dryness for satisfactory use.

"QUALITY AND SERVICE ARE OUR MOST IMPORTANT PRODUCTS"

IOWA CONCRETE BLOCK & MATERIAL CO.

820 S.W. Ninth St.

Phone ATLantic 8-5751

Des Moines

Interiors Brought To Life With Des Moines Marble & Mantel Ceramic Tile



Des Moines Marble and Mantel Ceramic Tile, in a wide range of hues and tints, lends itself to many design possibilities.

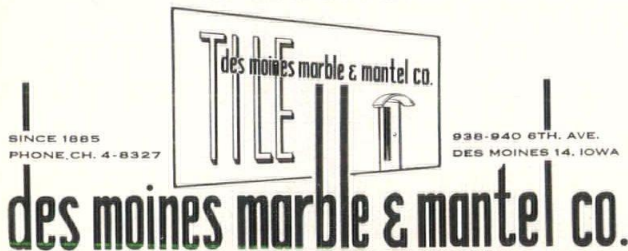
Call us -

when buildings are in their blueprint stages. We are always happy to work with Iowa Architects.



Our precise control assures architects a permanency of color as well as uniformity of shade throughout the job.

Members of Producer's Council and leading national Terrazzo and Mosaic associations.



Our knowledge and experience of over 25 years in the Floor and Wall Covering Field is at your service. Call on us for solution of your problem jobs.

- Laytex Underlayments
- Asphalt Underlayments
- Vinyl Asbestos & Asphalt
- Homogeneous Vinyl
- Rubber and Cork Tiles
- Bolta-Wall Vinyl Wall Coverings
- Rubber Wall Coverings

RALPH N. SMITH, Inc.

Des Moines, Iowa

1339 2nd Ave.

AT 8-6741

Liaison committee appointed

APPOINTMENT OF Robert Bergland, Thomas Waggoner, and Gordon Gjelten to an Architect-Engineer Liaison committee was announced by President Robert Savage following a March meeting with representatives of engineering groups which asked the formation for the purpose of discussing problems which affect both professions.

Bergland is a member of the firm of Bergland and Bianco, Mason City, Waggoner is a member of Waggoner and Waggoner, Mason City, and Gjelten is with Thorson, Gjelten and Schellberg, Forest City.

Engineering representatives are:

Richard Grant of DeWild, Grant, Reckert & Stevens, Rock Rapids; Ralph Wallace of Mason City, chairman of the Board of Engineering Examiners; Noel L. Tweet, executive director of the Iowa Engineering Society, and Donald Zarley, an I.E.S. member who also is an attorney.

The group held its first meeting April 4 at the Hotel Hanford, Mason City, and began exploration of areas in which a liaison group could serve the professions. Discussion centered for the day on proposals for strengthening registration laws and it was mutually agreed that most architects and engineers were probably not aware of reasons for mutual concern over the other's registration laws.

A report was prepared which asked the architectural and engineering groups to consider the possibility of regulating the architectural and engineering professions through a single law, administered by a joint board.

Bolin heads student chapter

PERRY BOLIN of Ames was elected president of the Student Chapter of the AIA at ISU to serve until the beginning of 1963. Under revised operational plans, student chapter officers will take their posts at the beginning of the calendar year, instead of at the close of the academic year as in the past. Bolin said he expects the new schedule to permit better scheduling for all events on the part of the student chapter officers.

Serving with Bolin throughout this year will be:

Mark Engelbrecht, external vice president, Gary Hayden, LaPorte City, internal vice president, Jarratt Griffith, Ft. Dodge, secretary, Bill Roe, treasurer, Jim Bragonier, Ames, and Roger Ollenburg, Ames, engineering council representatives, and Bob Kendall, freshman representative.

Jim Dwinnell and Tom Clark were the co-chairmen for the Student AIA banquet and Roger Ollenburg and Bill Voorhees were co-chairmen for the Veishea open house.

Extruded

Extruded

Extruded

Extruded

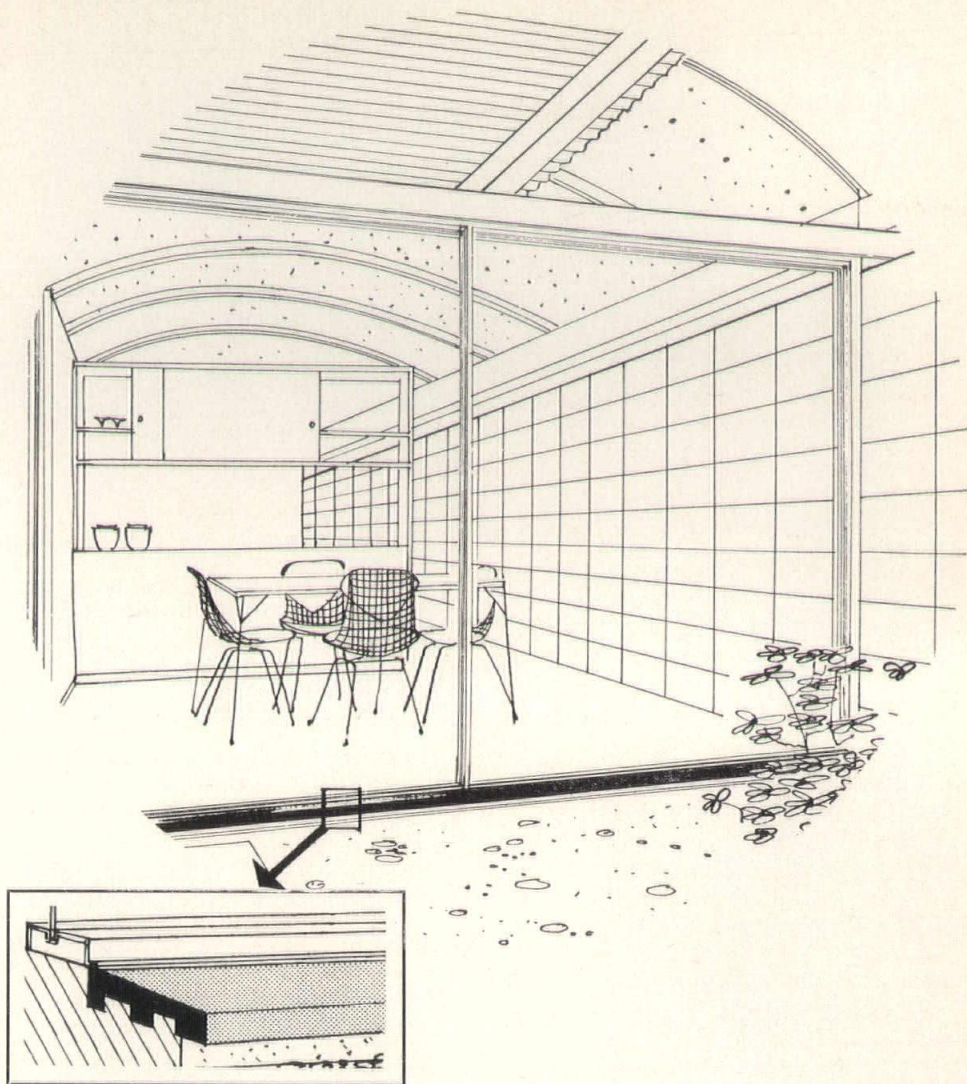
Extruded

Extruded

Extruded

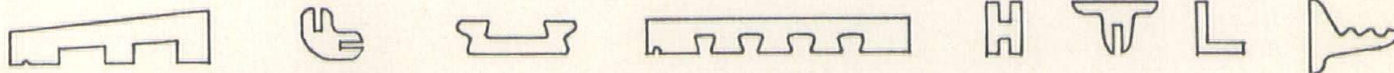
Extruded

Extruded



COLORLITH

Yes, now the stone-like qualities of Johns-Manville "Colorlith" come in intricate extruded shapes. The window sill illustrated shows the benefits of J-M's "ACE" (asbestos-cement extrusions) process. Engineered into the shape's cross-section are a built-in slope, masonry keys and a drip groove. And, being extruded, the shape can be provided in one continuous length across the two windows. This six-inch sill is a standard shape, as are interior stools from three to thirteen inches, and many other shapes. Some are illustrated below. All are available in pleasing shades of gray, green or brown. ACE shapes are strong, weather resistant, economical. Representing ACE products for J-M in the upper-midwest:



w. e. neal slate co.

1215 SECOND AVENUE NORTH • MINNEAPOLIS 5, MINNESOTA • FR 7-8100

Des Moines section formed

To provide Des Moines architects with a "local" voice with the official arm of the American Institute of Architects, the architects of the city met April 10 at the Hotel Fort Des Moines and officially formed the "Des Moines Architects' Council" as a section of the Iowa Chapter of the AIA.

M. E. Jensen was chosen president of the new group. George Russell was elected vice president, and Rich Goewey Secretary-treasurer. Charles Herbert and Paul Skiles were named directors.

Stated purpose of the organization, as adopted at the preliminary meeting, is:

To create greater interest and participation as a body in local civic affairs and issues. To foster recognition of the profession as an organized unit in the community among local civic organizations.

The group plans to hold regular monthly meetings, now scheduled for the second Tuesday of each month. Special meetings may be held at the call of the Executive Board, and the Executive Board—which consists of the officers named above—are held at the call of the President.

The group set a quorum as one-third of the membership, and decided that it would hold its 1963 elections in February. Under the by-laws adopted by the group, one of its five executive board members also is to be a member of the Executive Committee of the Iowa Chapter of the AIA.



JENSEN



RUSSELL



GOEWY

To assure a tie with the American Institute of Architects, the group adopted as its name the title "The Des Moines Architects' Council, a section of the Iowa Chapter of the American Institute of Architects."

Official notice of the formation of the section, with the full approval of the state chapter will be forwarded to the Octagon for the information of the officers and directors of the Institute.

The first meeting of the new organization was set for May 15 at the Hotel Fort Des Moines with Richard Bryan, chairman of the Des Moines Special Housing Action Committee, John Hart, a committee member, John Grubb, a builder, and City Manager Elder Gunter each to discuss a specific phase of the Des Moines housing problem. A question and answer period was planned.

Formation of local architectural sections to provide local outlets for architectural group action was approved by the Iowa Chapter at its convention in January.

**Specify Adel
ACOUSTILE**
for your next building job

- Withstands compression
- Solves wall cracking problems
- Tensile strength about 3 times that of light-weight concrete block
- Makes an ideal surface to paint

Adel Clay Products Co.
STIPPLE-MATT FACE TILE AND BRICK
AND OTHER VITRIFIED CLAY PRODUCTS

IOWA SALES OFFICE AND WAREHOUSE
101 ASHWORTH ROAD • WEST DES MOINES, IOWA
FACORIES IN REDFIELD AND CENTERVILLE, IOWA

Phone CRestwood 9-9721



Three principals in the student awards banquet at Ames, April 16, conferred briefly at its close. Shown here are A. Quincy Jones of Los Angeles, widely known architect who was the principal speaker, Student James Bragonier, who was master of ceremonies, and Robert Savage, president of the Iowa Chapter, A.I.A.

DIRECTORY OF ADVERTISERS

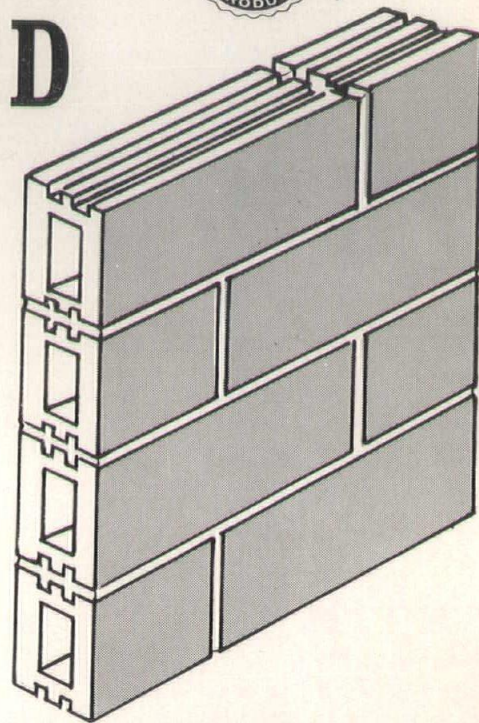
The Iowa Architect calls attention of its readers to the firms listed here, and the pages upon which their advertisements appear in this issue. Advertisers may secure information on rates, deadlines and copy requirements by writing the chapter office, 422 Securities Building, Des Moines 9, Iowa.

ADEL CLAY PRODUCTS	24
BLUMCRAFT OF PITTSBURGH	11
CARTER-WATERS	19
DES MOINES MARBLE AND MANTEL CO.	22
DES MOINES STEEL COMPANY	28
DEVOE PAINT	8
GOODWIN COMPANIES	2
GREEN COLONIAL	3
IOWA CONCRETE BLOCK & MATERIAL CO.	21
IOWA PAINT MANUFACTURING CO.	31
MARQUART CONCRETE BLOCK CO.	28
MIDWEST CONCRETE INDUSTRIES	9
NATIONAL ELECTRICAL CONTRACTORS	18
W. E. NEAL SLATE CO.	23
PORTLAND CEMENT ASSOCIATION	4
PRESCOLITE MANUFACTURING CO.	30
SHEFFIELD BRICK & TILE CO.	20
SIOUX CITY MOSAIC CO., INC.	8
RALPH N. SMITH, INC.	22
R. S. STOVER CO.	29
STRUCTURAL CLAY PRODUCTS INSTITUTE	32
SWANSON GENTLEMAN, INC.	6
VINCENT CLAY PRODUCTS	25
L. J. SWEENEY	30
WESTERN MINERAL PRODUCTS	26-27
C. W. WILLCOX AND COMPANY	30

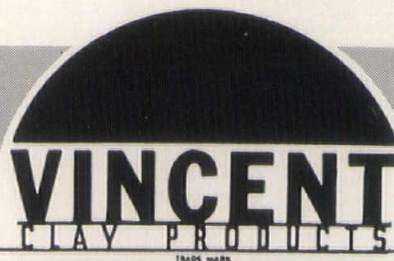
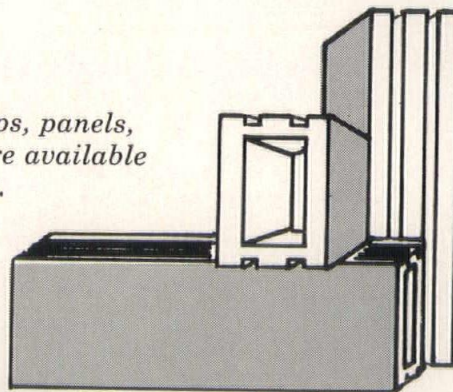
GOLDEN GLAZED

**TILE
COST
ONLY
69¢ SQ. FT.**

● For jobs that require a smooth, gleaming brick or tile, investigate Vincent's line of Golden Glazed tile. A wide range of non-fading colors combined with numerous shapes and sizes allows maximum design expression for the architect; assures the owner of beauty, permanence and economy (only 69c Sq. Ft. in the wall, according to a recent Central Iowa cost study).



*Sample straps, panels,
and literature available
upon request.*



EXCLUSIVE DISTRIBUTOR FOR
ELGIN-BUTLER BRICK COMPANY, AUSTIN, TEXAS
RELANCE BRICK COMPANY, DALLAS, TEXAS
and
NATCO CERAMIC GLAZED TILE CORPORATION
Ask for complete literature or sample panels showing both glazed and unglazed brick of the highest quality.

FORT DODGE, IOWA

Manufacturers of Superior Face
Brick, Glazed Tile, Building Tile,
and Drain Tile.

OFFICE State Bank Building • **PHONE** 3-7851 • **FACTORY** 2½ Miles South of Fort Dodge

PERSONAL & PROFESSIONAL

NEW SPECIFICATIONS

Technical details of the new AISC Specifications for the design, fabrication and erection of structural steel for buildings were explained for the benefit of engineers, architects and other interested individuals at a one-day conference at the Hotel Savery, April 6.

Described as the most significant changes in steel construction since the original specifications were published in 1923, the new specifications

permit greater use of imagination in design plus more economy and greater convenience.

New, high strength steels were described by John Gilligan of United States Steel; working stresses I and II were discussed by A. J. Oudheusden of Bethlehem Steel; Ned L. Ashton discussed composite design; Prof. J. H. Senne, Jr., covered column stresses and column interaction formulas, and W. D. Rudeen discussed plate girder design.

Weight economies of 10 to 20 per cent are possible with the new specifications.

The conference was sponsored by the American Institute of Steel Construction and member steel fabricators in Iowa.

STUDENT ASSOCIATESHIP APPLICANTS

Allen A. Ambrose, Nevada
Daryl E. Andersen, Cedar Falls
Perry R. Bolin, Ames
David L. Buehrer, Ames
James W. Bragonier, Ames
Warren T. Clarke, Mount Ayr
James C. Campbell, Ames
Carole Ann Danilson, Adel
Timothy W. Downing, Bettendorf
James I. Dwinell, Bedford
Gerald R. Foote, Des Moines
Val E. Fuger, Ames
Harvey B. Gantt, Ames
Jarrett F. Griffith, Ames
Frederick N. Heintz, Ames
Gary Heyden, LaPorte City
Larry L. Hoskins, Des Moines
Robert L. Hutchings, Des Moines
Steven R. Israel, Dallas, Tex.
Lloyd R. Jafvert, Albert City
Robert L. Johnson, Ames
Thomas A. Knoop, Oshkosh, Wisc.
Fred W. Krejci, Ames
Richard H. Kruse, Ames
Ronald E. Lohse, Ames
Ronald F. Middlebrook, Ames
Rodrick S. Mitchell, Reinbeck
David L. Nelson, Boone
Roger V. Ollenburger, Ames
Francis E. Rebholz, Ames
William F. Rogers, Ames
Jay T. Rohwer, Orinda, Calif.
E. Bruce Schock, Ames
Donald R. Smith, Des Moines
Michael A. Stricker, Ames
Byrl E. Swanson, Ames
Charles J. Van Fossen, Davenport
Wesley D. Welsh, Agency
Robert L. Wilund, Ames
Vernon L. Worrell, Ames
Ann M. Younggreen, Laurens



Now
it is practical to insulate
nearly any block wall with
ZONOLITE® Masonry Fill

Zonolite Masonry Fill was specifically designed to fully satisfy the requirements for insulating block and cavity walls. Its low installed cost makes it possible to insulate buildings which formerly didn't warrant the cost of other insulating methods.

CHECK THESE IMPORTANT FEATURES

- CUTS INSULATING COSTS IN HALF—Both material and labor costs are less.
- DOUBLES THE INSULATION VALUE—Block and cavity walls are twice as efficient.
- WATER REPELLENT—Won't draw moisture across cavities. Can't rot or decay.
- WON'T EVER SETTLE—Fills to solid, uniform, tamper-proof density.



Write today for complete information including estimate
of fuel savings forms...

Western Mineral
Products Company



4725 OLSON HIGHWAY • MINNEAPOLIS 22, MINNESOTA

PERSONAL & PROFESSIONAL

MCGINN TRANSFERS

Donald P. McGinn of 865 Kirkwood, Dubuque, has transferred his membership from the Wisconsin Chapter, A.I.A., to the Iowa Chapter, and action by the Institute has made the transfer retroactive to January 1 of this year.

McGinn is a 1950 graduate of ISU and has been in practice in Dubuque for about one year. He previously had been an architectural draftsman for William Stuhf of Rock Island, Ill., and then had been in the firm of Durrant & Bergquist at Dubuque from May of 1952 until he began his own practice in 1961. He is registered in Iowa, Wisconsin and Illinois.

GOODWIN ESTABLISHES NATIONAL SALES

A major color insert in the most recent copy of the AIA Journal is introducing architects throughout the nation to the Goodwin Companies of Des Moines and Minneapolis.

C. T. Bridgman, head of the firm's research and engineering department, says the firm was forced by demand to create a national distributorship for its "designer selections" of face brick. The distributor organization now makes the brick available in almost every section of the nation.

A. C. Frisk is president of the Goodwin Companies and also is president of the Structural Clay Products Institute, Washington, D.C.

Products listed for national distribution include: Glazed Provincials, Frosty Wirecut, Queen Anne, Goodwin Greys, Orleans Antique, Ivory Wirecut, Antique Colonials, Fall Festival, and Red Rock Face Romans.

Nine additional new products and refinements on four existing products are presently subjects of research.

R. H. VANDERCOOK

Royal H. Vandercook, 72, of Marshalltown, an architect, died April 15, after having been in practice there since 1916. He had headed his own firm since 1938.

STUDENT TO DALLAS

The Student Chapter, AIA, at Iowa State University was subsidized to the extent of \$75 for the purpose of sending one representative to the National convention of the American Institute of Architects at Dallas.

For several years the chapter has provided a fund of approximately this size to the student group to be used to assist one or more students, as the student chapter determined,

to attend the national meeting. In some cases, the fund was used to subsidize transportation for more than one student.

CALVIN KNIGHT RESIGNS

Calvin Knight, Iowa City, who had been a member of the Iowa Chapter, AIA, since November of 1946, resigned from the Institute in April explaining that he is no longer engaged in the practice of architecture.



*Design Magic
at
low cost*

**Specify
Hi-Sorb®**

Colored Acoustical Plaster

Let your creativity take wings. New color freedom and a firm damage-resisting surface. New one-phase fast application to speed construction schedules. Good sound absorption. Hi-Sorb gives a monolithic evenly textured surface over any curve or shape. Low material cost plus time-saving application saves money, too.

Now . . . get the complete story plus colored samples of Hi-Sorb! . . . write to

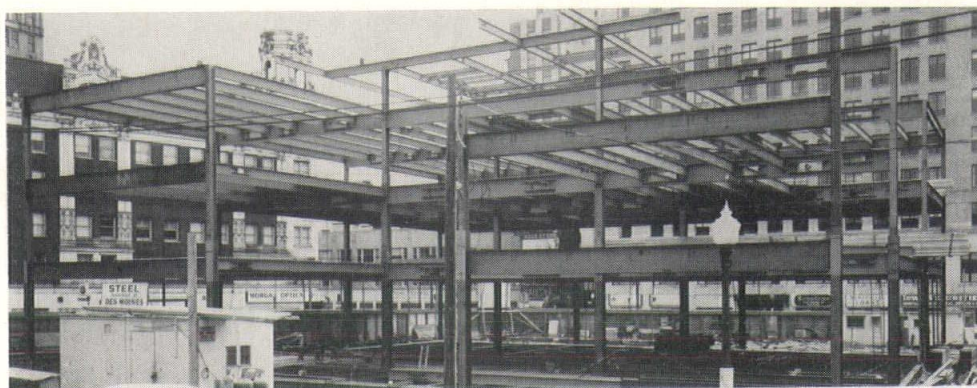
**Western Mineral
Products Company**



4725 OLSON HIGHWAY • MINNEAPOLIS 22 MINNESOTA

HI-SORB IS THE REGISTERED
TRADEMARK OF HIGHLAND
STUCCO AND LIME PRODUCTS,
INC., VAN NUYS, CALIFORNIA.

Structural Steel **STANDS** for the Future



Home Federal Savings & Loan Assoc. Office Bldg., Des Moines, Iowa

The new higher-strength steels, A36, A373, A440 and A441, allow the designer to select the appropriate strength steel for the loading conditions, thus reducing tonnage, footings and building height, and resulting in substantial cost savings. In the 539 ton framework pictured above, 170 tons of A36 steel were specified for beams 24" deep and over. A36 steel now is priced identically with A7.

DES MOINES STEEL COMPANY

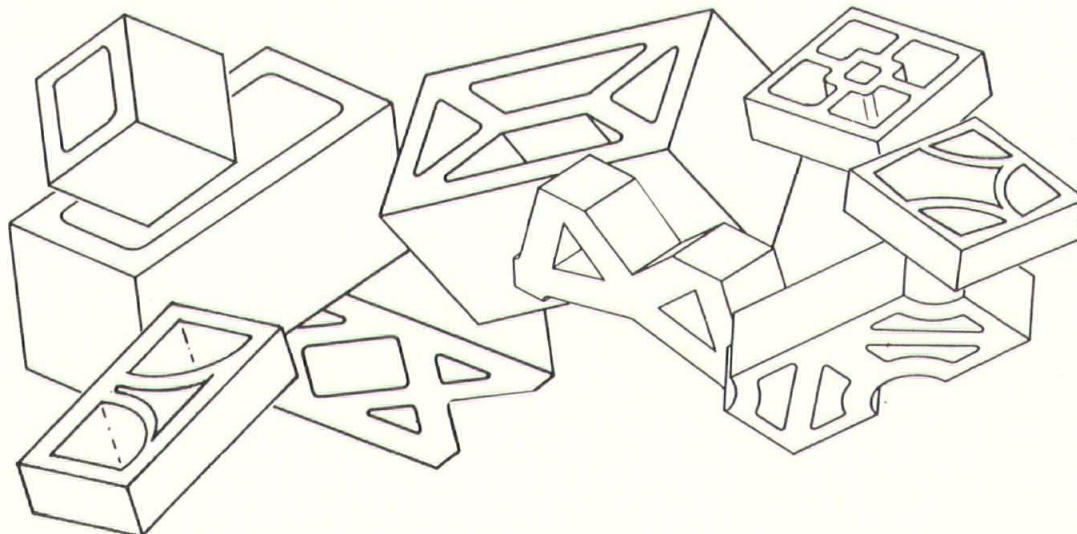
421 S.W. 5th St.

Des Moines, Iowa

Phone CH 4-2101

architectural block

beautiful new pierced designs - NOW



All of the Nine Patterns Available in 4" and 8" Wall Widths
MARQUART CONCRETE BLOCK COMPANY

110 Dunham Place

Waterloo, Iowa

RUDI TO CRANBROOK

Prof. Leonard Wolf, FAIA, head of the Department of Architecture and Architectural Engineering at ISU has announced designation of Norman Rudi, AIA, to attend the 1962 Seminar for instructors in Architecture at Cranbrook in June.

The seminar is jointly sponsored by the American Institute of Architects and the Associated Collegiate Schools of Architecture. The Iowa Chapter has provided \$200 to assist meet expenses of the trip.

Rudi, formerly with the firm of Crites and McConnell, Cedar Rapids, joined the ISU faculty during the 1961-62 year.

ENLARGE QUARTERS

Durrant & Bergquist, Dubuque, have moved a portion of the firm's staff into an "annex" office in Dubuque. Enlargement of the staff also is anticipated.

RAILING ANCHOR SYSTEM

A solution to the problem of attaching metal railings has been proposed by Blumcraft of Pittsburgh which has devised an adjustable malleable iron anchor which is welded to the reinforcing rods before the stair is cast. For mounting through the tread, Blumcraft has sleeves which are built into the pre-cast treads.

Blumcraft asserts the suggested solution avoids the costly field labor of systems which call for drill and tap of steel anchors at the job-site. Use of the malleable iron permits accurate vertical alignment of the posts.

Blumcraft will provide details of the system.

STUDENTS HEAR MURPHY

Joseph D. Murphy, FAIA, of the firm of Murphy & Mackie, St. Louis, discussed architecture before the ISU Department students on April 6.

He illustrated his talk with color slides showing the Washington University Library, the new Federal Building in St. Louis, several churches and the Reynolds Award winning structure, the Climatron.

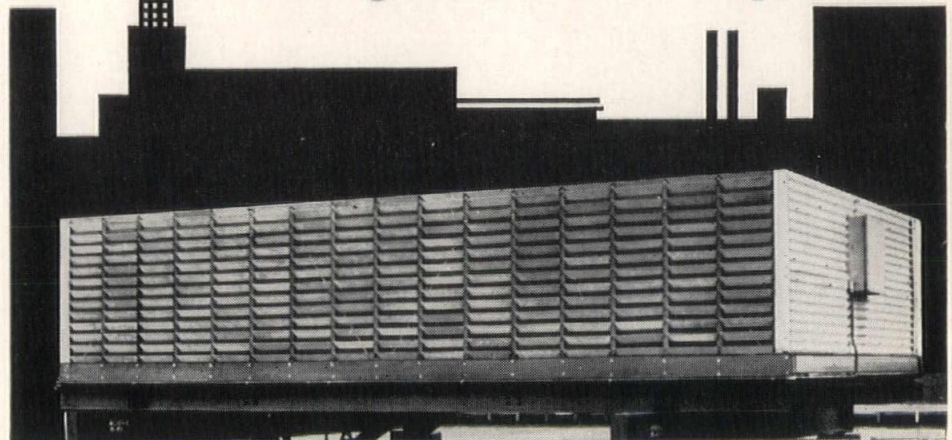
TSD TAKES SIX

Tau Sigma Delta, architectural honor society, elected six students to membership from the Iowa State University department of architecture.

They were: Robert M. Lee, Robert Lowell Johnson, Mark Charles Engelbrecht, Ronald F. Middlebrook, James I. Dwinell, and Stanford W. Griffith.

Cold light exit lamps which use but 5 watts of electricity have been announced by Prescolite Manufacturing Corp. The miniature, plastic sealed Lumescence lamps contain a rare neon gas which, when energized, becomes a glowing bridge between the electrodes and yields a soft, diffused light equal to about 15 watts fluorescent or 50 watts incandescent. The lamps are guaranteed for 44,000 hours (five years) of use.

Marley Double-Flow AQUATOWER® ...the cooling tower that changed Iowa's skyline



Out-of-sight in appearance, out-of-mind so far as maintenance and operation are concerned, and out-of-this-world when it comes to performance is the Marley Double-Flow Aquatower. In the field of intermediate capacity cooling, the Double-Flow Aquatower is "the real thing"—the first and only *complete* low-silhouette tower.

Diffusion decking, drift eliminators, access doors, adequate fan cylinders—every cooling tower component that contributes to better performance, greater economy and simpler maintenance is *standard equipment* on Double-Flow Aquatowers. Such quality explains why this unique tower is the overwhelming first choice of architects, contractors, engineers and owners who require water cooling on a commercial and institutional scale.

Represented in Iowa by

r. s. stover COMPANY

HANDLES EXTRUSIONS

W. E. Neal Slate Co., of Minneapolis has been appointed exclusive representative for the Johns-Manville ACE Extrusions in the Upper-Midwest.

Wally Neal, firm operator, said the new extrusions are an inorganic mixture of synthetic calcium aluminum silicate binder reinforced with finely dispersed asbestos fibers and mixed with chemically resistant inorganic pigments and fillers. One extrusion is a six-inch window sill which incorporates masonry keys and dip groove and built-in slope. Interior stools, base and cove moldings, coping and other shapes are available. Some shapes are in Colorlith, some in Transite.

NAMED DISTRIBUTOR

Appointment of the Goodwin Companies, Des Moines, as southern and eastern Iowa distributor for the Robco line of structural ceramic glazed tile and $\frac{3}{8}$ " vitriNeer has been announced by the Robinson Brick & Tile Co., Denver.

SETS SCHOLARSHIP

Blumcraft of Pittsburgh has established a \$3,000 scholarship fund which will be administered by the AIA Foundation.



HOPE'S
WINDOWS, Inc.
Everly
Metal Products Co.
Ramset
Simmons Dormitory
Furniture
PermaCushion Gym
Floors
"Twin-Beam" Church
Windows

C. D. WILLCOX AND COMPANY
S.W. 6th & Murphy Des Moines 9, Iowa
Phone CHerry 4-5191
Member Iowa Chapter, Producers Council Inc.

"Buck" Sweeney

Parker Mirrors &
Bathroom Accessories
Halsey Taylor
Coolers & Fountains
Lawler
Thermostatic Valves
Church Seats
Sloan Flush Valves
Just Stainless Steel
Sinks

313 49th STREET, DES MOINES, IOWA



PCI HARDWARE MEET DRAWS 60 VISITORS

Paul Skiles, A.I.A., served as moderator for a discussion of builder's hardware at an April 3 meeting of the Iowa Chapter of Producer's Council at the Wakonda Club, Des Moines.

More than 60 architects and council members were present for the discussion.

Panelists were:

Oscar Neumann of Arthur H. Neumann & Bros., Inc., Karl Winkler of Brooks-Borg, Thomas Morris and Walter Seyr, representing Yale & Towne, C. W. Wojack and K. F. Kysor of Stanley Hardware, and William Henley of Sargent & Co.

NEB. CHAPTER MOVES

The Nebraska Chapter of the A.I.A. has moved to 1103 Omaha National Bank Building from a former location at 810 W.O.W. Building.

Warren Johnson is executive secretary of the Nebraska group which is planning a "real show" for the 1963 Regional Convention of the Central States, A.I.A.

PAINT EXPERT TALKS

Dr. Eric Grant, director of research and product development for Devoe paints, Louisville, Ky., was the principal speaker to more than 40 Des Moines area architects in April at the Kirkwood hotel.

Dr. Grant discussed the epoxy resins and polyurethane coating materials and told of developments and new products in protective coatings for steel and construction materials.

G. M. Melton, Mel Wills and Charles Wheeler represented the host firm, Devoe & Reynolds.

NEW "PRODUCTS REGISTER"

The A.I.A. has announced the 1962 issue of the Building Products Register will be available immediately after January 1, 1962.

Price of the book to A.I.A. members is \$15, to non-members it is \$25.00.

The Register is a single-source reference of technical product descriptions and comparative performance data on building products.

The Register is available on a 30-day trial period, and may be ordered from the Institute.

TALK ROOFING PROBLEMS

Architects throughout Iowa were invited to attend an afternoon session of the Iowa Roofers Association May 12 at Waterloo at which roofing problems, failures and corrective measures were to be discussed.

The program indicated a hospitality hour at 11 a.m., followed by a luncheon (dutch) and the discussion of roofing techniques.

Jim Lenzner, president of the roofers' group, said an outstanding presentation was planned to help architects and roofers solve problems of mutual concern.

EUROPEAN TOUR

A 56-day tour of Europe to see art and architectural points of interest will be headed by J. E. Aronin, AIA, architectural author and lecturer, is being promoted by University Travel Co. Price of the tour (including all meals except in Rome, Paris and London) is \$1,678 by air from New York.

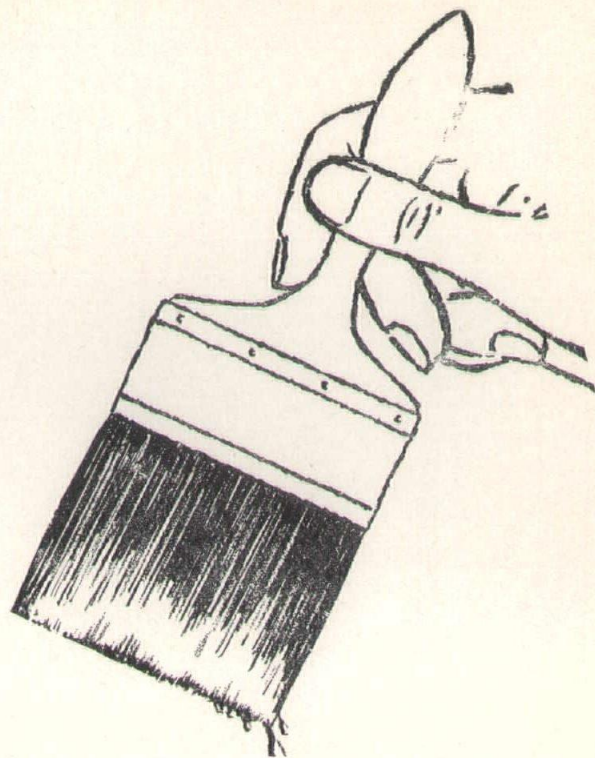
PRESCOLITE
ASTRALUME
RECESSED LIGHTING FIXTURES

- Beautiful shallow silhouette. Round or square hand blown Thermopal glass. 100-300 Watts.
- No frames, latches or visible means of glass support (U. S. Pat. No. 2,826,684). NEW hinging principle.
- Prewired recessed housings.
- Vertical lamping.

Write for further information.
PRESCOLITE MFG. CORP.
1251 Doolittle Drive
San Leandro, California

FACTORIES:
San Leandro, Cal. • Warrington, Pa. • El Dorado, Ark.

What do you
expect of the
FINISHES
you specify...

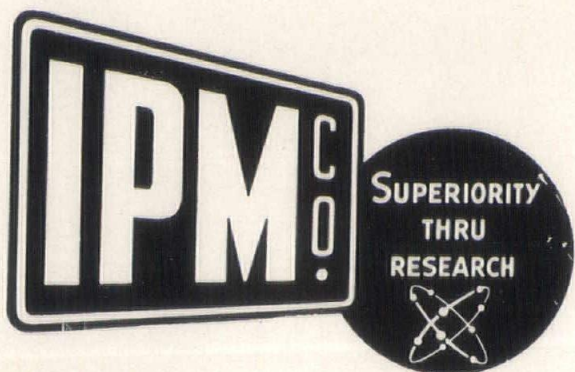


- *Durability?*
- *Low Maintenance?*
- *Accuracy of Color?*
- *Long-Lasting Beauty?*

You will find all these qualities, and more, in
IPM scientifically formulated finishes.

The correct coating for every type of surface.

The services of our finishing material experts
and research staff are at your disposal.
Contact us if we can assist on any problem.
No obligation.



IOWA PAINT MFG. CO., INC.

CEDAR RAPIDS DES MOINES DAVENPORT OMAHA
MASON CITY SIOUX CITY WATERLOO

General Offices
118 Eighth St.

Des Moines, Iowa
Phone ATLantic 3-1501

A STATEMENT OF PURPOSE

SCPI disseminates current and pertinent clay products information to the architectural profession.

SCPI acts as technical consultants to architects, contractors, and owners in all phases of clay masonry construction.

SCPI assists clay masonry utilization research.

SCPI aids in the adoption and maintenance of high standards and specifications for the manufacture, sale and delivery of clay products.

These four maxims guide our work.

You are encouraged to call upon us often for service.



CLAY PRODUCTS INSTITUTE

REGION 6
120 1/2 WELCH AVE.
AMES, IOWA
CEdar 2-6623

BRANCH OFFICE
401 WESLEY TEMPLE BUILDING
MINNEAPOLIS 3, MINNESOTA
FEderal 6-7055

BRANCH OFFICE
8529 TEMPLETON DRIVE
OMAHA, NEBRASKA
391-1061

FIRMS DISPLAYING
THIS EMBLEM



ARE MEMBERS OF THE
STRUCTURAL CLAY PRODUCTS
RESEARCH FOUNDATION