

IOWA ARCHITECT

Official publication of
IOWA CHAPTER
AMERICAN INSTITUTE OF ARCHITECTS



AMERICAN INSTITUTE
OF
ARCHITECTS

JUL 17 1962

LIBRARY

MAY - JUNE 1962

VOL. IX

NO. 3



WO

New

Designer Selections

CINNAMON PINK

by Des Moines Clay Company

This new face brick is basically cinnamon brown with a unique pastel pink undertone. The texture captures the early American sand mold appearance.

SANDED BUFF

by Ottumwa Brick and Tile Company

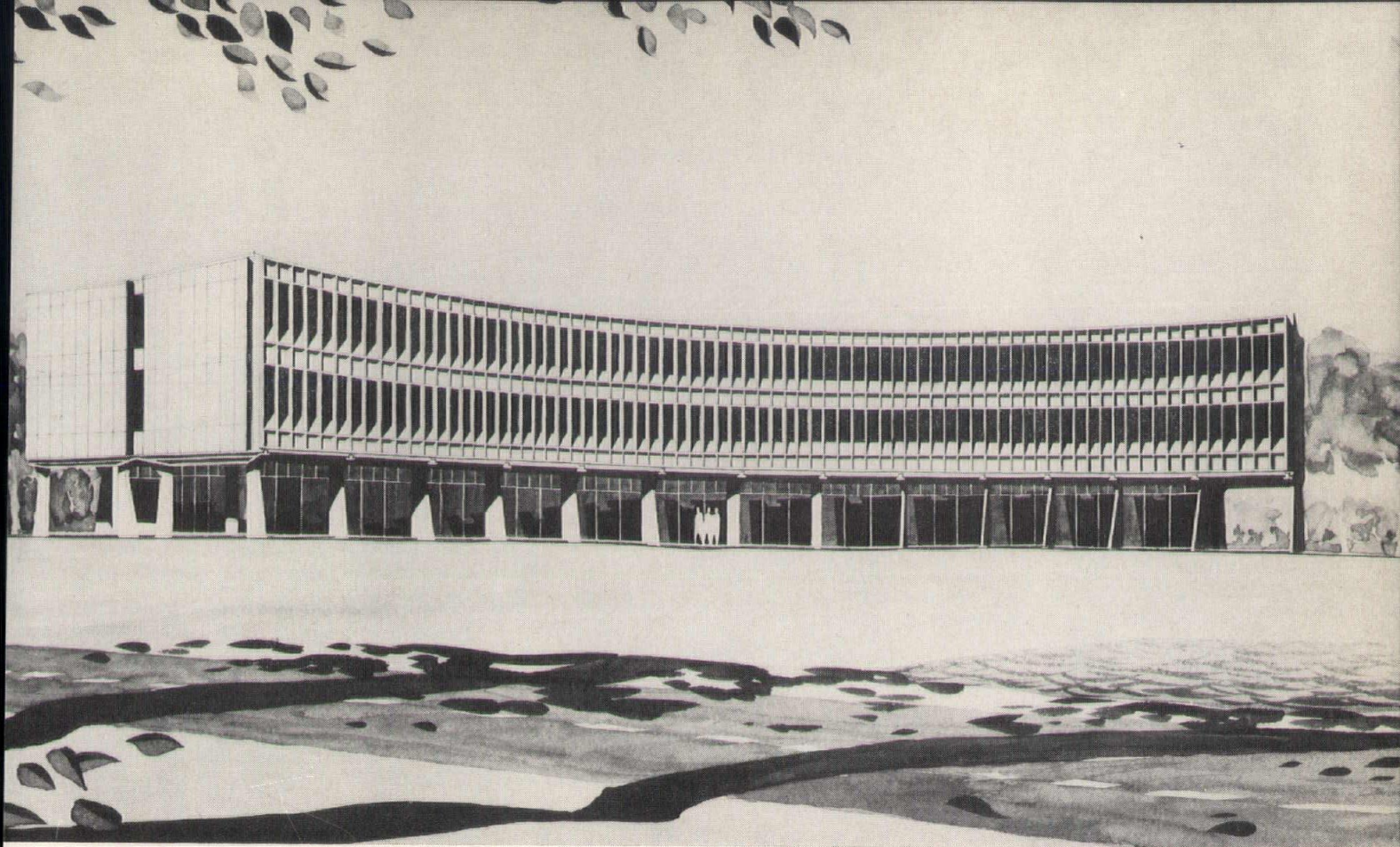
This beige buff colored brick has an unevenly applied coarse sand face which shows some of the markings and produces a subtle pink cast.

The resulting wall offers a pleasing blending of texture and color variations.



MANUFACTURING DIVISIONS
DES MOINES CLAY COMPANY
MASON CITY BRICK AND TILE COMPANY
OSKALOOSA CLAY PRODUCTS COMPANY
OTTUMWA BRICK AND TILE COMPANY
REDFIELD BRICK AND TILE COMPANY

614 CENTRAL
NATIONAL BLDG
DES MOINES, IOWA

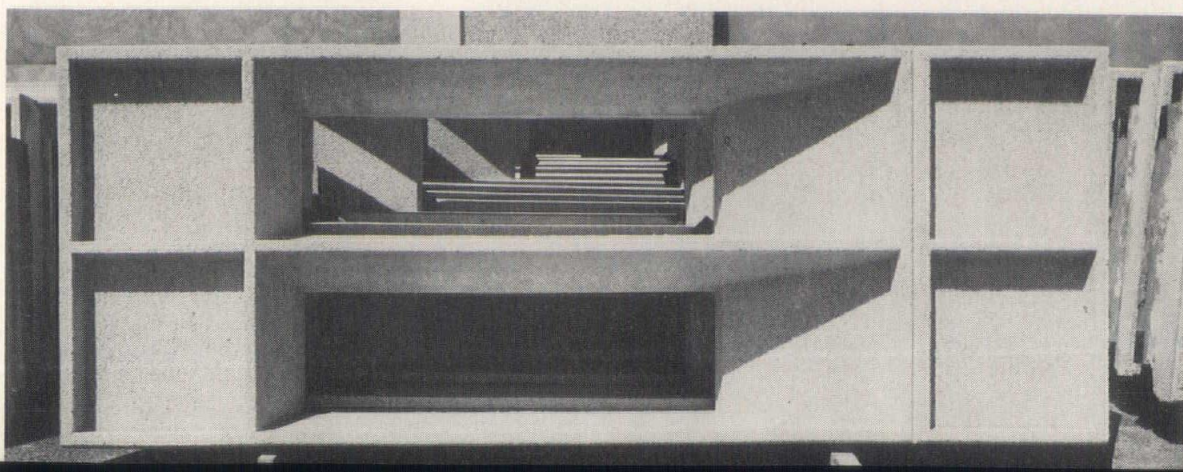


THORSEN AND THORSHOV, ARCHITECTS—MINNEAPOLIS, MINNESOTA

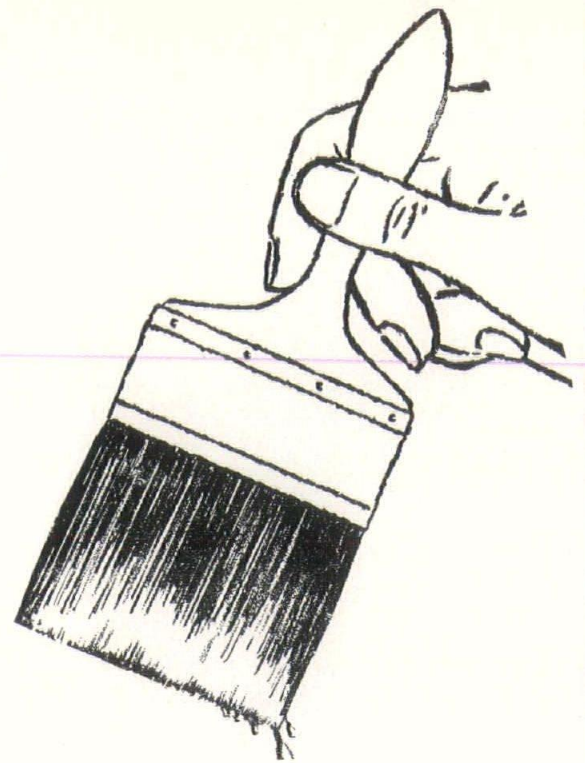
OFFICE BUILDING FOR,
MODERN MEDICINE PUBLICATIONS, INC.
65th STREET AND VALLEY VIEW ROAD
MINNEAPOLIS (EDINA), MINNESOTA

The double window box pictured is 19" deep, 14'-3" high and 5'-6" wide. The finish is $\frac{3}{8}$ " milky quartz exposed in a white concrete. The panels will be erected in late June 1962. The site is just Northwest of the Southdale shopping center.

PRECAST BY MIDWEST CONCRETE INDUSTRIES, WEST DES MOINES



What do you
expect of the
FINISHES
you specify...



- *Durability?*
- *Low Maintenance?*
- *Accuracy of Color?*
- *Long-Lasting Beauty?*

You will find all these qualities, and more, in
IPM scientifically formulated finishes.

The correct coating for every type of surface.

The services of our finishing material experts
and research staff are at your disposal.

Contact us if we can assist on any problem.
No obligation.



IOWA PAINT MFG. CO., INC.

CEDAR RAPIDS DES MOINES DAVENPORT OMAHA
MASON CITY SIOUX CITY WATERLOO

General Offices
118 Eighth St.

Des Moines, Iowa
Phone ATLantic 3-1501

IOWA ARCHITECT

Iowa Chapter, American Institute of Architects

CONTENTS

OFFICERS

Robert E. Savage
Des Moines
President

G. Doug Robison
Davenport
Vice-President

James A. Lynch
Des Moines
Secretary

Willis Schellberg
Forest City
Treasurer

PUBLICATIONS COMMITTEE

N. Clifford Prall
Chairman
Rich Goewey
Carl Ver Steeg

EDITOR

N. Clifford Prall
4717 Grand Avenue
Des Moines 12, Iowa

MANAGING EDITOR

Robert F. Bonomi
422 Securities Bldg.
Des Moines 9, Iowa
ATlantic 2-4309

THE COVER

Union Story Trust and Savings Bank, Ames, Iowa. Designed by Germanson-Foss, Sioux City. Concrete floor, columns and thin shell concrete barrel roof. Indirect lighting accents ceiling. James Thompson & Sons, Ames, general contractors.

Leak in the dike..... 6

Floating down the river..... 7

Regional in Omaha..... 8

Thorson advances.....10

Awards display travels.....10

New examiners.....10

Architectural Registration.....10

Sketches in northeast Iowa.....12

DESIGN BY IOWA ARCHITECTS

Harold Bendixen residence, Clinton

Eugene Coffman residence, Dubuque

Leo Peiffer residence, Cedar Rapids

Walter Block residence, Cedar Rapids

HOUSE AND HOME Winners

Top Honors to Crites, McConnell.....18

Clambake is coming.....18

Directory of Advertisers.....19

Personal and Professional.....20

The "Iowa Architect" is published bi-monthly for the Iowa Chapter, American Institute of Architects, and mailed without charge. Appearance of names and pictures of products or services in editorial or advertising copy does not constitute endorsement of either the A.I.A. or this chapter.

DEVOE PAINT

First in Quality Since 1754

Complete Stocks Serving All Iowa

SERVICE BY LOCAL ARCHITECTURAL
REPRESENTATIVES

G. M. MELTON MELVIN E. WILLS

DEVOE & RAYNOLDS CO., INC.

108 JEFFERSON DES MOINES, IOWA PHONE CH 4-5261

BONDED APPLICATORS OF

DESCO WALL COATINGS

VITRO GLAZE — ARMITE
NYOCON — GLAZETITE — STARTEX
VINYL — ARMTEX

NEVER NEEDS PAINTING

WATERPROOF

Applied to ANY Dry or
Grease-Free Surface

**SIoux CITY
MOSAIC CO., INC.**

SINCE 1920

Ceramic Tile & Terrazzo Contractors
W. 1st & REBECCA STS. PHONE 5-5653

Members of:
DESCO International of America
National Terrazzo & Mosaic Ass'n.
Northwest Terrazzo Ass'n.

Leak in the dike

The Iowa Supreme Court, has, for the first time in the 30-plus year history of the Iowa architectural registration law, issued a ruling which interprets that part of the Iowa code. The ruling indicates that the dike which protects Iowa building owners from actions of unscrupulous or untrained persons is a very low dike indeed.

The question of the competence of the plaintiff firm in the suit was never in question in the point of law decided by the court, and no doubt of the competence of the firm has been raised. The court ruling, by a five to four decision, was that persons who perform the services of an architect under a contract are entitled to remuneration for those services.

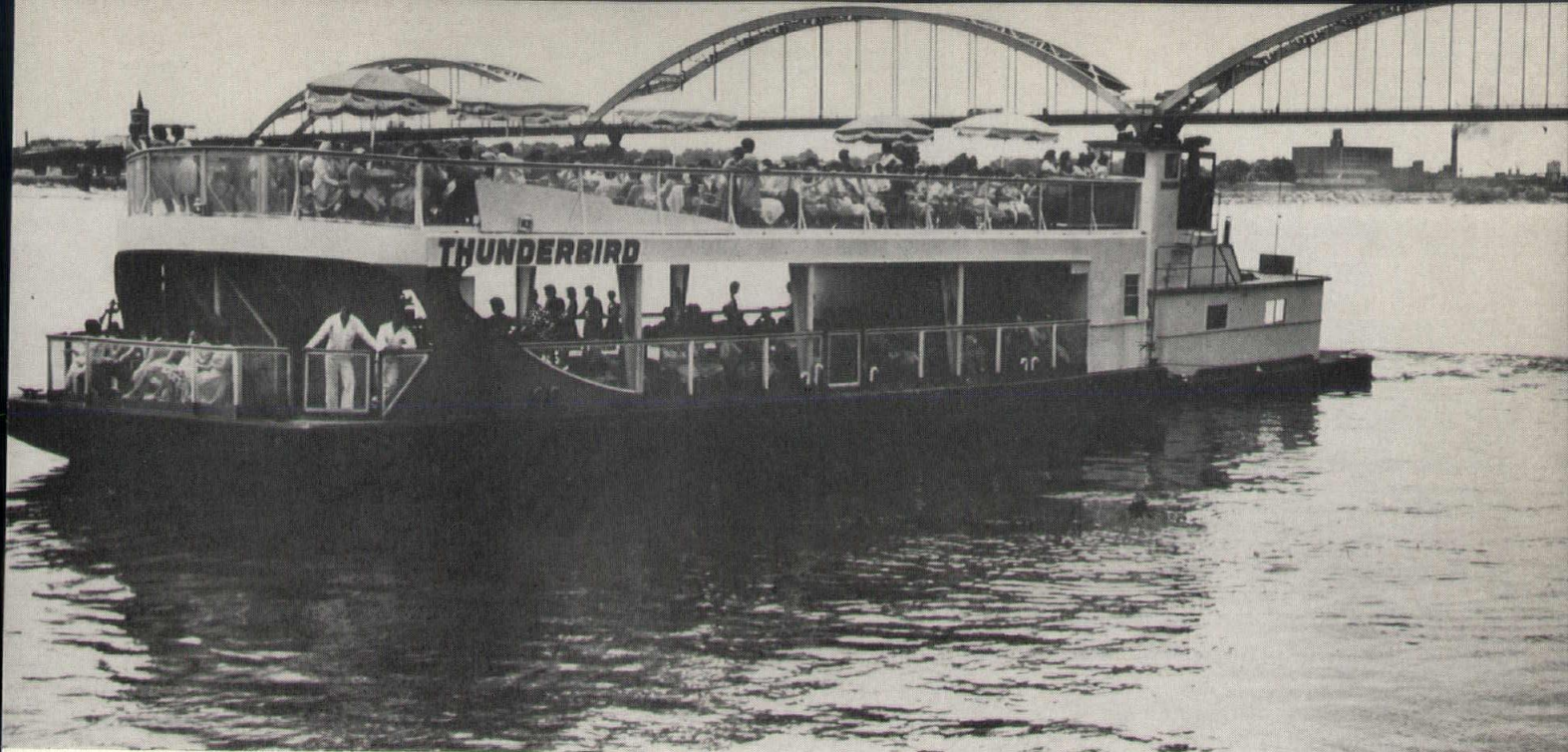
The four justices who dissented did not contend that the Iowa law prohibited the performance of architectural services by unregistered persons, but they contended that a contract in which a non-registered person assumed the title of architect was so tainted as to be unenforceable. Five justices held the contract could be enforced.

The court ruling puts the finger on the weakness in the Iowa law, for the ruling does not set forth that services of an architect should be performed by persons of proven skill and technical training.

The ruling seems to say what many Iowa architects had felt was true—that the present law does not protect the public from unscrupulous and untrained persons who proclaim they can perform all of the services of an architect. Nor is the building owner protected from those who may illegally claim to be architects. If the individual falsely claims he is an architect, he may be prosecuted for a misdemeanor.

Plugging this leak in the dike is an urgent goal for the 1963 meeting of the Iowa General Assembly.

The ruling was handed down June 12 in the case of Davis, Brody and Wisniewski, New York, versus Charles H. Barrett, a Des Moines shopping center developer. The controversy centered on whether a contract was enforceable if signed before the architects were registered to practice in Iowa.



RIVER CRUISER "THUNDERBIRD" ON THE MISSISSIPPI

Floating down the river . . .

IOWA ARCHITECTS, their ladies and guests will be floating down the river on a Saturday night as but one of the highlights of entertainment at the annual summer outing of the chapter at Davenport August 3-5.

Doug Robison is issuing a special bulletin asking all members who plan to attend to signify their desires regarding tours of some of the outstanding structures in the Quad-City area. Members also are reminded to watch for reservation cards with which to reserve space at the El Rancho Tel motel which will be headquarters for the chapter during the three-day meeting.

"We will have at least one business session, and that will give us an opportunity to ask questions regarding the recent Supreme Court ruling on architecture," Robison said. Plans also will be discussed in relation to a professional seminar at Ames during the fall.

"We have lined up a program which will take visitors to many parts of the Quad-Cities, and we think that a number will be interested in the tours of some of the new major buildings in this area.

"Steepmeadow is a luxury apartment building of 12 stories located high on a bluff in Rock Island. It has two to four apartments per floor and these apartments sell at \$48,000 to \$96,000 with down payments of from \$24,000 to \$48,000. This apartment is not yet full and we will have a chance to tour units.

"We also have contacted the John Deere company, and have arranged for tour privileges of the \$13,000,000 administrative center which operates the entire John Deere implement manufacturing organization.

"The Moline Public Hospital Chapel is what I call a 'little jewel,' and is well worth a visit. It cost about \$85 a square foot, and is of pre-cast concrete in teepee form."

Robison says tours also can be arranged for the ALCOA rolling mill which produces sheet and foil, the Davenport Museum & Art Gallery, and the Unitarian Church.

"No plans are being made for programs for children, but if somebody brings their children, we'll do the best we can," Robison said.

Louis Soenke is in charge of arrangements for golf for each of the three days, Gerald Miller is in charge of the tours, Lloyd Wayland is handling the arrangements with the El Rancho Villa, and Max Selzer will be in charge of the refreshments.

The program lines up this way:

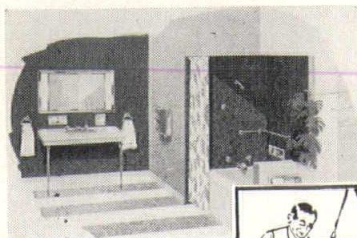
Cocktails at 5 p.m. Friday at the El Rancho Tel, followed by dinner at the motel dining room, El Rancho Villa. Bus departure at 7:15 p.m. for "Bye Bye Birdie", a musical production of the Quad City Music Guild. Return at 10:15 and then guided tours of Illinois night spots in Rock Island or Moline.

Chapter business session is set for 10 a.m. Saturday and a luncheon will be held at El Rancho Villa. Tour arrangements for the afternoon will depend upon response to a questionnaire being sent all members.

The Saturday evening program begins late, with cocktails set for 7 p.m., followed by dinner at the Downtown Club in Davenport. At 10 p.m., it is down the river on the Thunderbird—a spacious cruise craft with a capacity of 275 persons. The cruise will end at midnight.

The Sunday program lists only a poolside brunch from 9 to 10:30 a.m.

Interiors Brought To Life With Des Moines Marble & Mantel Ceramic Tile



Des Moines Marble and Mantel Ceramic Tile, in a wide range of hues and tints, lends itself to many design possibilities.

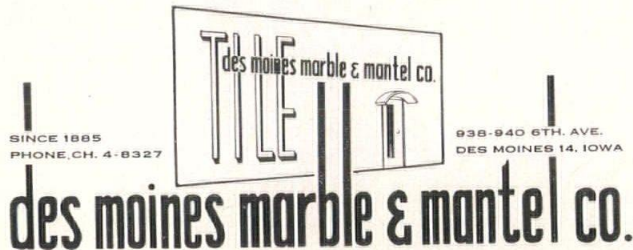


Our precise control assures architects a permanency of color as well as uniformity of shade throughout the job.

Call us -

when buildings are in their blueprint stages. We are always happy to work with Iowa Architects.

Members of Producer's Council and leading national Terrazzo and Mosaic associations.



Our knowledge and experience of over 25 years in the Floor and Wall Covering Field is at your service. Call on us for solution of your problem jobs.

- Laytex Underlayments
- Asphalt Underlayments
- Vinyl Asbestos & Asphalt
- Homogeneous Vinyl
- Rubber and Cork Tiles
- Bolta-Wall Vinyl Wall Coverings
- Rubber Wall Coverings

RALPH N. SMITH, Inc.

Des Moines, Iowa

1339 2nd Ave.

AT 8-6741

Queen's own architect at Omaha regional

SIR HUGH CASSON, distinguished architect to the Queen of England, has been announced by Cecil A. Martin as one of the outstanding speakers who will address the 17th Central State Regional Conference at Omaha October 11 and 12.

AIA President Henry L. Wright and William H. Scheick, executive director of the AIA, will head a panel of outstanding American architects who will discuss the new proposals for "Expanded and Comprehensive Architectural Services," and the proposed revision to the Mandatory Standards of the A.I.A.

Sir Hugh is (as the English say) a practicing architect, author, lecturer, and professor who currently is doing new college and university buildings throughout the British Empire. He also has taken a great interest in "public housing for the masses."

Cecil A. Martin of Omaha, general chairman for the meeting, says the conference location will be at the Indian Hills Inn, 85th & Dodge, in Omaha. He describes it as:

"Omaha's newest and finest motor hotel in the center of Omaha's newest commercial and residential area, at the crossroads of the nation."

He also reports that the final theme for the convention program has not been set, but one event of previous years is to be repeated because of many requests. This will be the "Old Fashioned Chuck Wagon Party" at the home of Frank Latenser. Every Iowan who attended the last regional at Omaha will do his neighboring architects a favor if he describes the delights of that event and encourages a big Iowa turnout at the Omaha meeting. The "Chuck Wagon Party" has been set for Thursday evening.

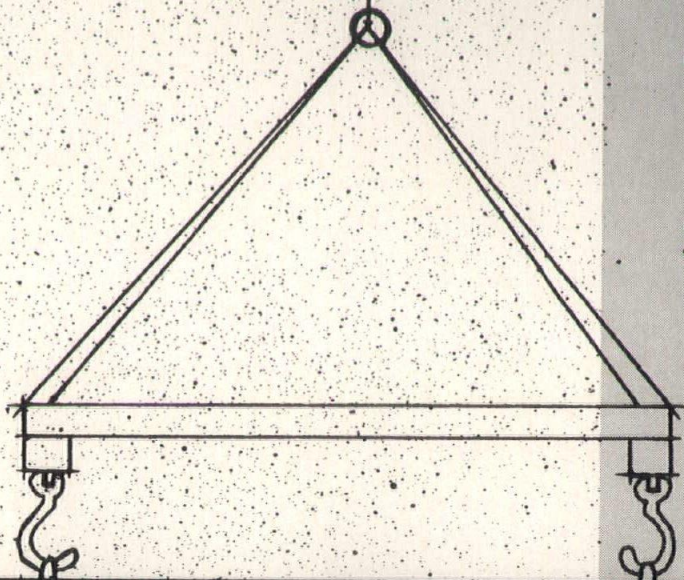
Martin said that a hospitality room would be open and a pre-conference mixer is planned for Wednesday evening, October 10. He indicated program events probably would be limited to Thursday and Friday, with but little carry over to Saturday morning.

Ladies will be particularly interested in the "Chuck Wagon Party", and special events will also be scheduled for them during Thursday and Friday.

Serving with Martin on the Conference committee are John M. Free, George C. Money, Kenneth B. Clark, Alex Weinstein, Stanley J. How, and Woodrow Hull.

PRESTRESSED CONCRETE of Iowa, Inc.

CORED FLAT SLABS

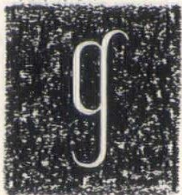


**REDUCE
CONSTRUCTION
TIME**

SAVE ON

- MATERIALS
- LABOR
- SUPERVISION

Guaranteed Concrete Quality
Spans to 40' +
Versatile and Flexible
Smooth exposed surface
2 hour fire resistive rating



SWANSON GENTLEMAN, INC.

3213 Forest Ave., Des Moines, Iowa • Telephone CRestwood 9-9793

Thorson advances

O. H. Thorson of Waterloo, Central States Regional Director of the AIA, has been advanced to membership on the Executive Committee of the National Board of the American Institute of Architects. He is serving the third year of his term as regional director, and the national policy places members in their third year on the Executive Committee.

In addition to his duties as director representing the states of Iowa, Nebraska, Kansas, Missouri and Oklahoma at general meetings of the board, Thorson will participate in six meetings of the Executive Committee the first of which is set for July 14-15 on the west coast.

Thorson's most important assignment during the coming year will be development of the professional program for the 1963 convention which will be held in Miami in May. He also is working toward coordinating the various regional convention programs with the national convention.

Thorson said he would be able to report on activities of the AIA at the Chapter Meeting in Davenport August 4, and will have recently been at the AIA Executive Committee meeting.

He also expressed belief the Regional Conference at Omaha will have a program of exceptional interest for Iowa architects because of the planned discussion of the concept of expanded services. He pointed out that both AIA President Henry L. Wright and Executive Director William Scheick are to be a part of the program at Omaha.

One of the important business features of the Regional conference this year will be the selection of the Central States Regional Director for the three year period beginning at the close of the 1963 AIA Convention.

Awards display continues travelling

Thousands of persons have viewed the 1962 Honor Awards display of the Iowa Chapter, AIA, which has been nearly continuously on display for the past three months, and will be seen by thousands more people during July and August.

During three weeks of June it was on display in the building which was chosen for the First Place Honor Award, the Fisher Community Center, Marshalltown. The display will be moved to the Younkers store at Cedar Rapids for three weeks in July and then will be at the firm's Bettendorf store for at least two weeks at the end of July and the first of August.

Transportation of the mounts and the display units is being provided by Younkers, which also had the entire display on exhibit in the 5th floor gallery for three weeks in May.

Mrs. F. A. Gordon, president of the Central Iowa Art Association, arranged for exhibit of the display at the Fisher Center.

The 38 exhibit mounts were entries in the 1962 Honor Awards competition of the Iowa Chapter and are available, subject to previous scheduling, for display by art centers, associations or firms.



O'NEIL



GRIFFITH



THORSON

New Examiners

Appointment of Eugene O'Neil to the Iowa Board of Architectural Examiners was announced in June by Governor Norman Erbe, who also re-appointed Gerald Griffith of Des Moines and O. H. Thorson of Waterloo to that board.

O'Neil, principal in the firm of Woodburn and O'Neil, Des Moines, was graduated from Iowa State University in 1943 and became a junior associate of the Iowa chapter in 1946. As a corporate member he has taken an active part in chapter affairs, and served as its president in 1960.

He succeeds John Woolson Brooks, F.A.I.A., who concluded a third five-year term on the state board.

Griffith, who is a past president of the Iowa chapter A.I.A., has been secretary of the examining board this past year (see page 20). Thorson is in his third year as central states regional director of the A.I.A.

The board of examiners will hold its organizational meeting July 31.

Architectural Registration

by John Woolson Brooks, F.A.I.A.

My retirement from the Board of Architectural Examiners will undoubtedly be as welcome to the profession as it will be to me, for fifteen years is a long time to serve on such a body—by then one's transformation is almost complete into a bureaucrat. But a person cannot fail to acquire some wisdom in the experience and I wish to share a few observations with my former critics.

There appear to be two major areas of criticism of the Board. (1) The young men seem to feel that the old fuds on the Board are unsympathetic to their efforts to join the profession and (2) practitioners generally feel that the Board is unconcerned about enforcement.

(Continued on page 12)

C A L E N D A R

Aug. 3-5	Annual Summer Outing El Rancho Tel	Davenport
Oct. 11-12	Central States Regional Conference Indian Hills Inn 85th and Dodge Sts., Omaha, Nebraska	
Oct. 15	Student Photography Contest Closing	
Nov. 15	Closing date for entries in 1963 Iowa Honor Awards competition	



Blumcraft

ADJUSTABLE ANCHORING SYSTEMS

SOLVES PROBLEMS OF SECURING RAILINGS TO CONCRETE BY BECOMING AN INTEGRAL PART OF THE STAIR STRUCTURE

- INSURES EXTREME RIGIDITY
- REDUCES COSTLY FIELD LABOR
- ELIMINATES BREAKAGE IN MASONRY
- ADJUSTABLE FOR POST ALIGNMENT



Blumcraft

OF PITTSBURGH

GENERAL CATALOG OF COMPLETE BLUMCRAFT LINE AVAILABLE ON REQUEST
COPYRIGHT 1962 BY BLUMCRAFT OF PITTSBURGH • 460 MELWOOD STREET, PITTSBURGH 13, PENNSYLVANIA

Sketches of northeast Iowa historical spots

The sketches on the adjoining page were prepared by William J. Wagner, AIA, and are the first of an indefinitely scheduled series which will appear from time to time in the Iowa Architect. Over a period of time, it is planned to collect enough sketches to combine into small booklets which will describe and indicate points of architectural and historical note within a "tour area."

SHOT TOWER

Dubuque.

Eight tons of shot per day, part of it used by Union troops in the War Between the States, was produced by this shot tower which reaches 150 feet high at Dubuque, the center of Iowa's lead mining operations. The stone wall is three feet thick at the bottom and tapers to a thickness of 20 inches at a height of 110 feet. The tower was built in 1856 and was in production until 1863.

CHIMNEY SWIFT TOWER

At National, near Garnavillo on U.S. Highway 52.

To study the life and habits of the Chimney Swift, Althea R. Sherman, a graduate of Oberlin College, had this tower built. The study resulted in the first complete report on the Swift.

PIONEER MUSEUM

Luther College, Decorah.

Log buildings dating from pioneer days and furnished in the original manner have been moved to the Luther College Campus. The group includes a school house, pioneer homes, and a drying house.

BARRACKS, FORT ATKINSON

Sixteen miles southwest of Decorah on State Road 24.

Built by the Federal Government in 1840 as an outpost for soldiers assigned to protect the Winnebago Indians from the more warlike Sioux, Sac and Fox tribes, the old fort is now part of Fort Atkinson State Park and is slowly being restored.

ST. ANTHONY'S CHAPEL

Two and one-half miles west of Festina in Winneshiek county.

This tiny, 12 by 16 foot chapel seats only eight people in four double pews. It was built in 1885 by John Gartner and Frank Huber on the site of the first log mission of Our Lady of Seven Dolors parish.

PIONEER ROCK CHURCH

Between Garnavillo and Guttenberg on Highway 72.

The interior, with short back pews and winding stair to pulpit remains unchanged from pioneer days in this church built in 1858 by the first St. Peter's Evangelical Lutheran congregation. The church is used only for special services and has become a museum for objects connected with its early history. A picnic area with shelter adjoins the church.

Registration Board

(Continued from page 10)

I can testify that the ten men whom I have known on the Board over the years, were sincere, and zealously tried to carry out their commission. The complaints are due to a misunderstanding of the mission of the Board rather than to malfeasance on the part of its members.

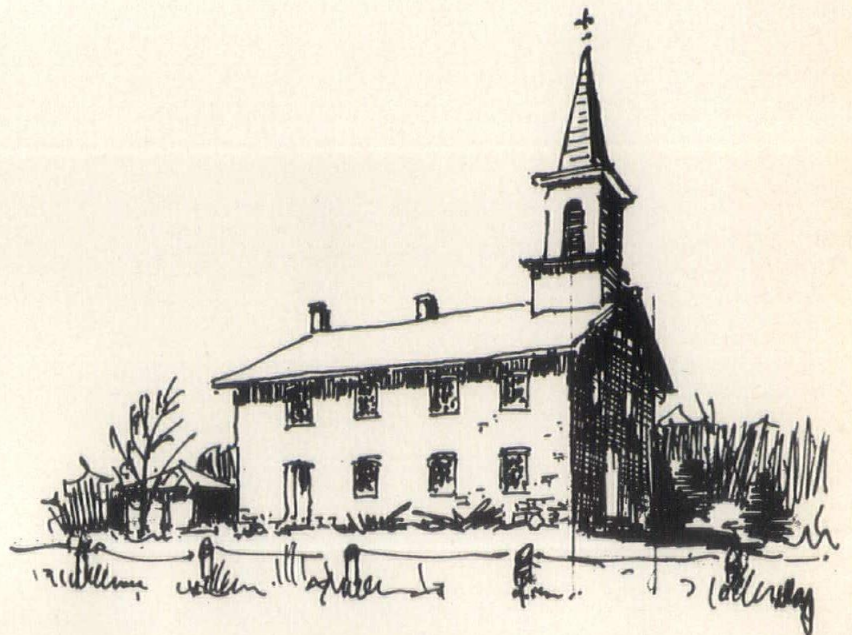
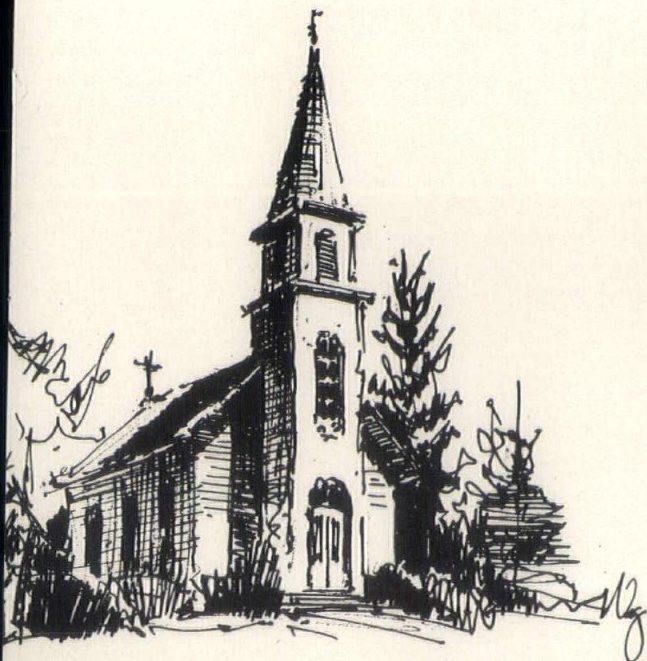
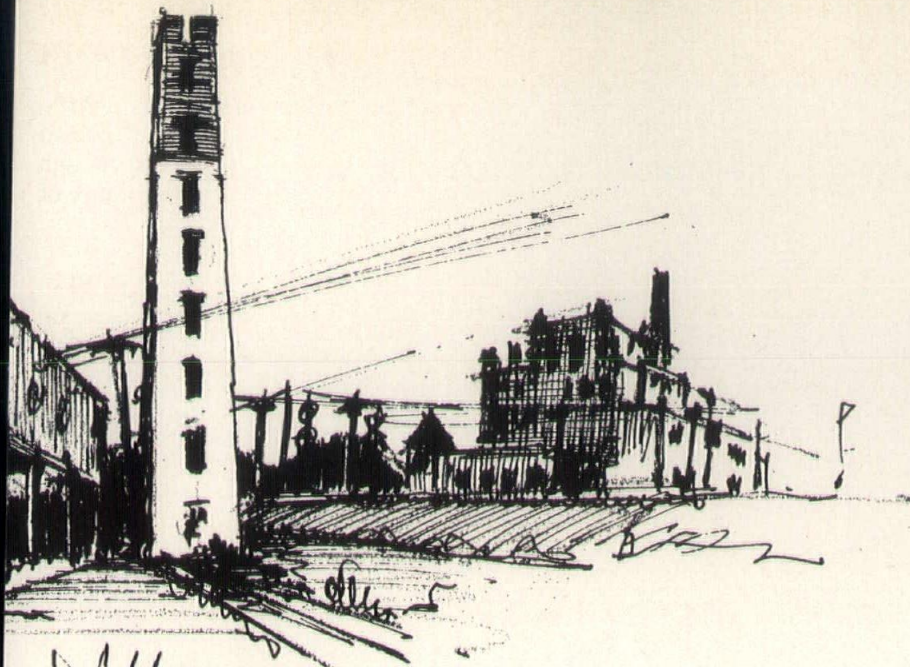
Both complaints result usually from failure to appreciate the qualifications of the Architect. An Architect should be a man technically qualified to provide trouble-free shelter under any condition, at a cost commensurate with the ability of the client to pay for it, and the resulting structure should have a permanent beauty which will inspire generations yet unborn. The duties of the Board would be simple indeed if they could limit the registrants to individuals who fully fulfilled those requirements. What makes the job of board member sticky is the fact that ideal human beings are created at the frequency rate of miracles; many compromises are necessary to meet reality.

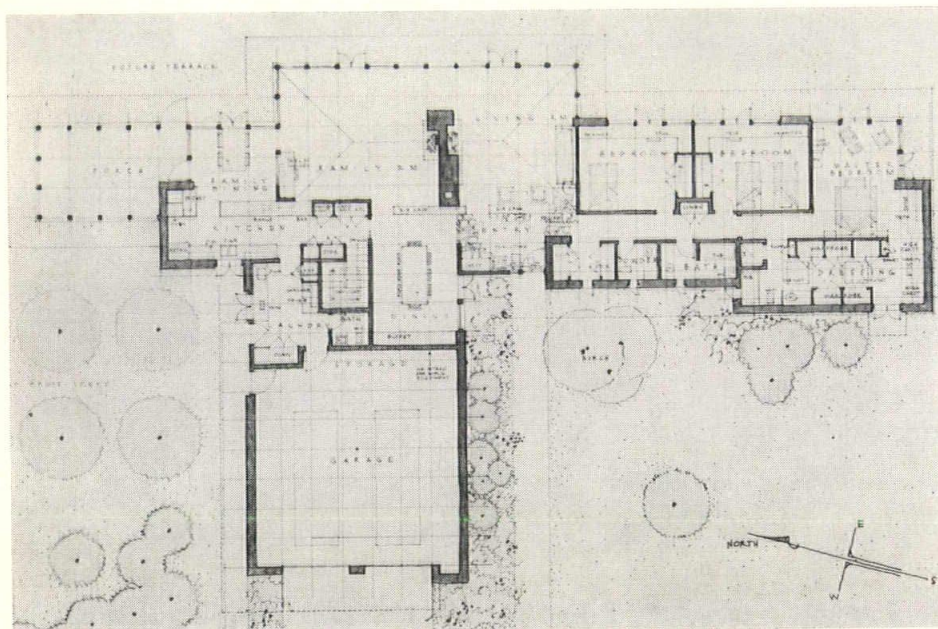
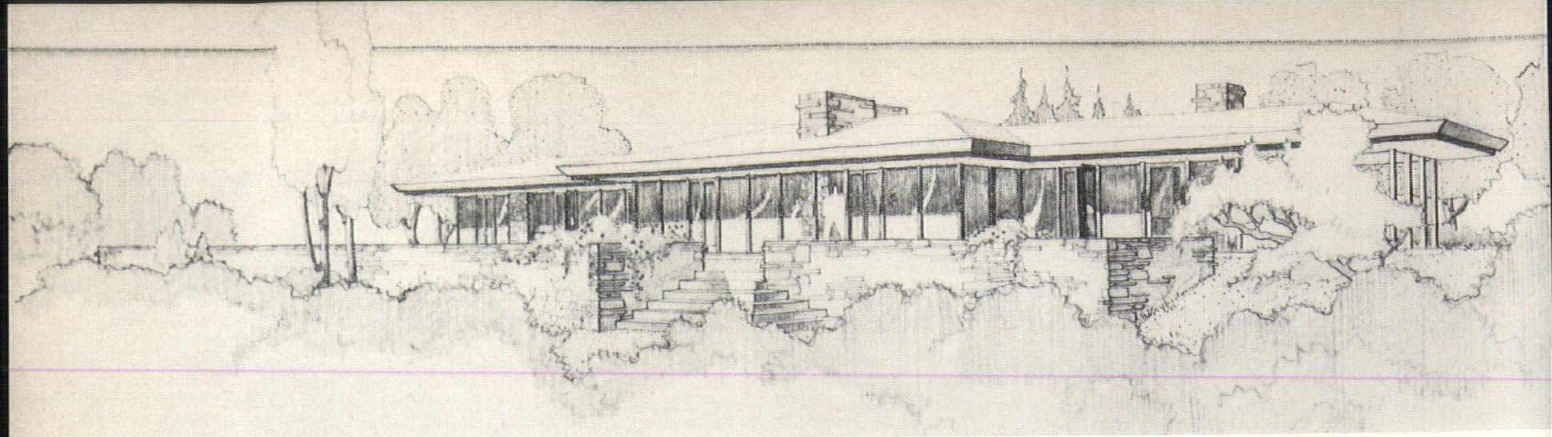
The Board must set up standards to determine when a young man might be qualified for examination. In this they are assisted by the National Council of Architectural Registration Boards. Experience has shown that certain minimum periods of education and subsequent experience are necessary before any man can be prepared to engage in independent practice. The Iowa Board accepts these standards, but the applicants fail to realize that they are minimum standards. Board members shudder at the inadequacy of preparation represented by these criteria, but they admit applicants to examination who

can demonstrate their compliance. The trouble comes when an applicant is deficient in some of the recognized units of preparation. If he is exceptionally mature, an interview will usually disclose it and he will be accepted. However, he frequently is attempting to advance inadequate short cuts as a substitute for the meager standard requirements, and he would be in a sorry position to protect the safety and health of the public, which is the only basis for registration.

As to Complaint No. 2, the loose existing law would be almost adequate if practitioners performed in a manner to make the Architect mean to the public what was described above. If an Architect could always produce for the client the perfect building, it would be unnecessary to prevent incompetents from calling themselves Architects. Unfortunately, a client sometimes obtains a more satisfactory result from a contractor than from a "decorator." A change in the law, as long as this condition persists would in the first place, be difficult to accomplish, and in the second place, would be as difficult to enforce as the existing law. The public will support Architects if it is to their interest to do so, but will not go along with a vision of supermen whose ability is confined to their own egocentric exaggerations.

What I am trying to point out is that any change in the existing law should be studied thoroughly and realistically. It should not be reached by emotional means and the Chapter should realize that the Law will not pull chestnuts out of the fire. The only basis for respect and employment of Architects is the conviction based upon experience, that Architects are worth the hire.

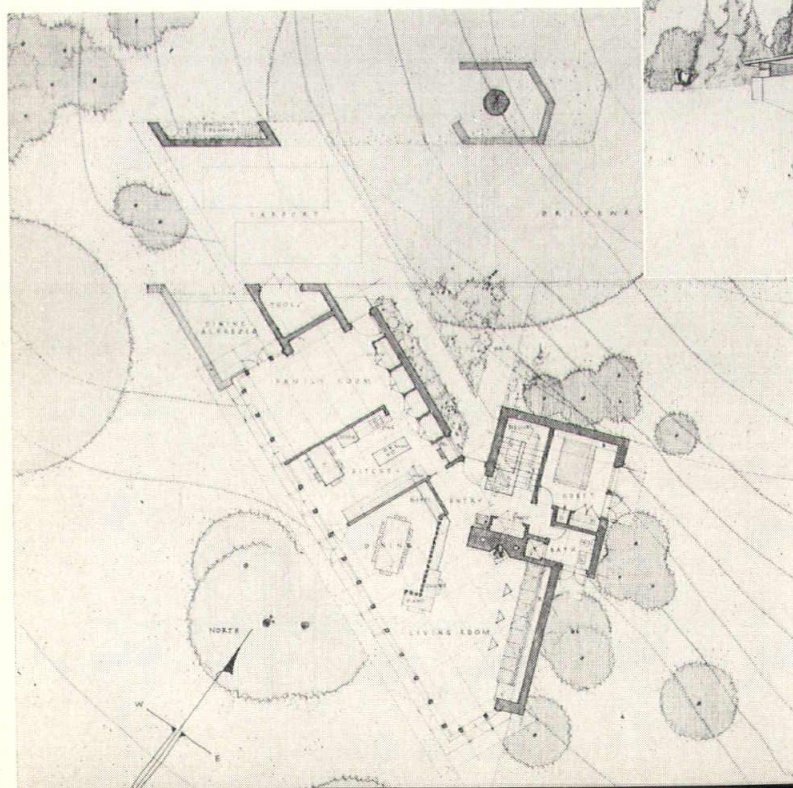
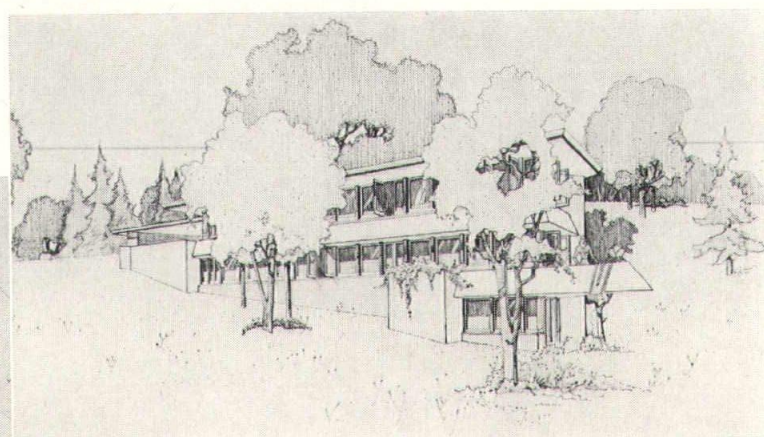




RESIDENCE FOR MR. AND MRS. HAROLD
A. BENDIXEN OVERLOOKING THE
MISSISSIPPI RIVER
CLINTON, IOWA

ARCHITECT: PHIL FEDDERSEN, AIA,
CLINTON

DESIGN BY IOWA ARCHITECTS

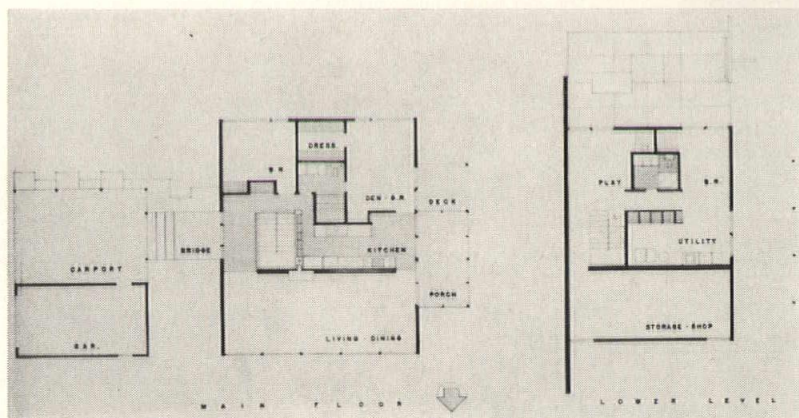


RESIDENCE FOR DR. AND MRS. EUGENE
A. COFFMAN
INDIAN HILLS, DUBUQUE, IOWA
ARCHITECT: PHIL FEDDERSEN, AIA,
CLINTON

Upper floor plan at left and contour lines
explain the setting.

RESIDENCE FOR MR. AND MRS. LEO C.
PEIFFER
CEDAR RAPIDS, IOWA

ARCHITECTS: LEO C. PEIFFER, AIA,
CEDAR RAPIDS

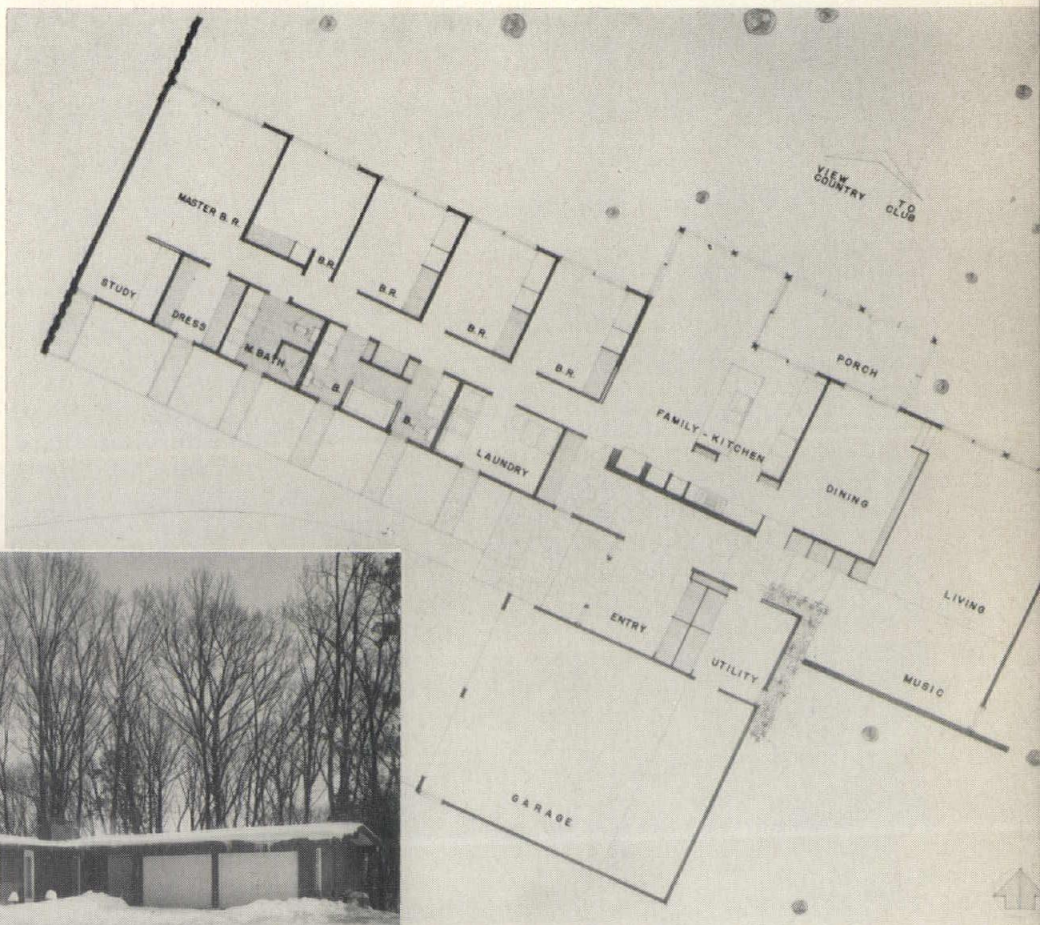


Enter across bridge from carport to main floor. Exterior of face brick and vertical redwood, insulating glass throughout, perimeter forced air heat. Interior of solid black walnut trim and panelling. Step-down, tiled Roman bath. 30' x 40'.

RESIDENCE FOR MR. AND MRS. WALTER
BLOCK
CEDAR RAPIDS, IOWA

ARCHITECT: LEO C. PEIFFER, AIA,
CEDAR RAPIDS

Five bedroom home overlooks Cedar Rapids Country Club. Redwood inside and out, beam ceilings, slab on grade, perimeter heat and air conditioning, insulating glass, laminating drywall. Living, dining, storage walls, bedroom chests, desks, etc., built in to meet the needs of three-boy family with spare bedroom and owner suite. 28' x 100'.





READERS of the Iowa Architect are familiar with the three residences on this page, for all appeared in the March-April issue of the Iowa Architect. Because these three were also winners of honors in the national competition of HOUSE and HOME and LIFE magazines in conjunction with the AIA, they are here repeated. It is believed that was the first time a design team has won honors in three classifications of size in the HOUSE and HOME competition. From the upper left the residences are: THE TUCKER RESIDENCE, Cedar Rapids, first Honor Award; THE CRITES RESIDENCE, Cedar Rapids, and THE SEIBERLING RESIDENCE, North Liberty, both received Honorable Mention. All were designed by Architects Crites & McConnell, AIA, Cedar Rapids.



RIGHT SIDE UP

At the lower right is a photograph of the interior of the Fisher Community Center, Marshalltown, First Honor Award winner in the 1962 competition of the Iowa Chapter A.I.A. This picture was inadvertently carried upside down in the March-April issue.





Creative Heating & Air Conditioning

that lends itself to Architect-designed Homes

The plus values offered by Green Colonial heating and cooling are numerous. Heating and air conditioning units have the added capacity to assure maximum efficiency and performance.

The tailored-to-fit distribution system is carefully engineered to assure the desired temperature in every room. Luxurious quiet is assured because air delivery is achieved without excessive velocity. Long life is assured because of the rugged construction.

Such superior performance requires more than just a well designed installation. It demands the "after installation service" for which Green Colonial is noted.

The services of the Green Colonial Engineering Department are available to you for Creative Heating and Cooling in homes, schools, churches and commercial installations.

*There are over 4000 Dealers and 15 Factory
Representatives ready to serve you in Iowa.*



GREEN COLONIAL, INC. • DES MOINES 6, IOWA

Top honors to residences by Crites and McConnell

Residences which won honors in the competition of the Iowa Chapter also were winners in a national competition sponsored by the AIA and House & Home and Life magazines.

Architects Crites and McConnell of Cedar Rapids were first listed among Honor Award winners in the Custom House category for the design of the Tucker residence, Cedar Rapids. They were awarded Honorable Mention for the designs of the Crites Residence, Cedar Rapids, and for the Seiberling Residence, North Liberty.

All award winning residences were to be published in House & Home, and were to be considered for publication by the editors of LIFE.

Custom House entries were judged by:

Chairman, Henry L. Kamphoefner, Dean of the School of Design, North Carolina State College; Mary Hamman, Modern Living Editor, LIFE; P.I. Prentice, Editor and publisher of House & Home magazine; Henry L. Wright, AIA, and Samuel E. Homsey, FAIA.

The Tucker and Crites residences were among the designs selected for ratings at the first Iowa Honor Awards program, judged during the chapter convention in January.

The three designs by the Iowa team were among 19 premiated in the competition, and the Iowa architects

were the only designers to have more than one residence rated among the winners. There were a total of 626 entries in three categories; custom houses, merchant-built houses, and garden apartments.

Clambake is coming

Swiggers of clam juice can begin whetting their appetites for the delicious liquid, according to an announcement by Iowa Producers' Council President Ken Swanson.

"We are asking architects to put a red flag on the date of September 14 and plan to be with us for the 1962 annual Clambake at the Isaac Walton League clubhouse in Des Moines," Swanson said.

He said the annual outing would feature clam juice, broiled appetizers, baked clams, broiled lobsters, and broiled chicken. The event will get underway before sundown, and will end before midnight.

PCI members in charge of the event are C. D. Willcox, Walter Winger and Bill Lemke.

Swanson said the PCI will hold a nationally sponsored seminar on "Ceilings" in October, but the date and details of that event are not yet completed. Other seminars are to be held at regular intervals during the winter months.

Structural Steel **STANDS** for the Future



New Home Federal Building, Des Moines, Iowa

Architecturally exposed steel is an artistic feature of the design of this office building. Spandrel plates, column cover plates and exposed structural mullions form the exterior steel curtain wall. The exposed steel has been sand-blasted and given a coat of paint in our shop. The 4" unpainted strip on each plate is for field welding of mullions to plates.

DES MOINES STEEL COMPANY

421 S.W. 5th St.

Des Moines, Iowa

Phone CH 4-2101

PERSONAL & PROFESSIONAL

DES MOINES COUNCIL TALKS CIVIC PROBLEMS

Problems of the City of Des Moines were discussed at two meetings of the Des Moines Architectural Council in May and June.

Four speakers were on the May 15 program as the architects heard various presentations in relation to the

housing problem. Speakers include Dick Bryan of Des Moines Savings & Loan Association, John Hart of Brooks-Borg as a representative of a special committee named to investigate means of providing needed housing, John Grubb, Des Moines home builder, and Elder Gunter, the Des Moines city manager.

Grubb told the architects that "do-

it-yourself" home improvement activities brought upgrading to the housing which surrounded the areas in which he has built housing developments. He said this self-improvement by the nearby residents extended to their standards of dress and conduct, particularly of school age children.

Des Moines Councilman Bill Leachman distributed copies of a report titled: "Public Improvements Program, 1963-1968" which is part of a comprehensive plan of the Des Moines Plan and Zone Commission. This report, directed to the council by the commission, was the work of the professional staff of the plan and zone commission.

Leachman then went through the report step by step, describing the proposed program and detailing the priority schedule which had been assigned by the commission and its staff.

The program lists a basic initial program which would cost \$14.25 million in the first year and would require a total of \$82 million over the six-year period for priority projects. The program also sets out \$170 million in other "reserve" projects which could be undertaken if the money becomes available.

First priority of the projects is the River Hills Renewal project. Others in the approximate order of priority are: a new central garage, a sewage treatment plant, Oak Ridge urban renewal project, the Eighth street parking garage (which may now be sited closer to the new Federal Office Building to be built in Des Moines) the 9th St. viaduct, sewer construction, bridge restoration, airport hangars and base facilities, street paving, swimming pools, and an extended list of other items.

Members attending the meeting June 12 were of the opinion that more information on many of the problems facing the city of Des Moines should be sought before the Council chooses a course of action in relation to any one of the problems studied so far.

Burdette Higgins reported briefly at the May 12 meeting, telling on the AIA National Convention at Dallas. He brought the chapter's attention to the fact that because of rigid rules regarding attendance, the AIA body was not able to conduct business on the final day of the convention.



There's a MARLEY COOLING TOWER for every building, large or small, for every air conditioning system, simple or complex. Each MARLEY COOLING TOWER is built to handle a specific job efficiently, whether in hotel, hot dog stand . . . or factory.

We are MARLEY application engineers whose experience is yours for the asking. Write or call us.

Represented by

UNDERFLOW© TOWERS are protected by U. S. Patents granted.

Represented
by . . .

**R. S. STOVER
COMPANY**

3 1/2 W. Main St.
Marshalltown, Iowa

120 N. 69th St.
Omaha, Neb.

TREATMENT FOR WOLF

Prof. Leonard Worlf, AIA, head of the Department of Architecture and Architectural Engineering at Iowa State University, returned to the Mayo Clinic, Rochester, Minn., the third week of June for a continuation of treatment.

Illness had prevented Mr. Wolf from attending the AIA Convention at Dallas in May, but he was reported much better by mid-June. Continued improvement was anticipated from the additional treatment.

IRMCA NAMES BONOMI

E. J. "Ned" Poyner of Cedar Rapids, president of the Iowa Ready Mixed Concrete Association, has announced the appointment of Robert F. Bonomi of Bonomi Associates of Des Moines, as executive secretary of the association.

Bonomi succeeds Howard Conrow of Waterloo in the part-time position. Mr. Conrow, 79, had been in the post for more than eight years.

Bonomi said addition of the new work would not require a change in relationships with the Iowa Chapter AIA which he also serves as executive secretary on a part-time basis.

DIRECTORY OF ADVERTISERS

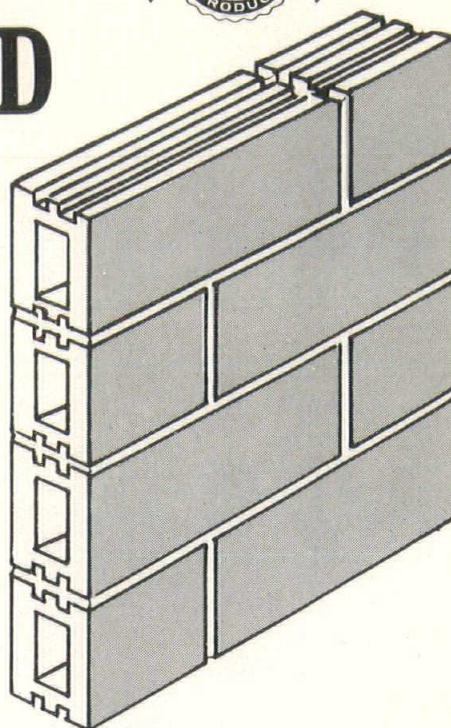
The Iowa Architect calls attention of its readers to the firms listed here, and the pages upon which their advertisements appear in this issue.

ADEL CLAY PRODUCTS	21
BLUMCRAFT OF PITTSBURGH	11
CARTER-WATERS	27
DES MOINES MARBLE	
AND MANTEL CO.	8
DEVORE PAINT	6
DES MOINES STEEL COMPANY	18
GOODWIN COMPANIES	2
GREEN COLONIAL	17
IOWA CONCRETE BLOCK & MATERIAL CO.	23
IOWA PAINT MANUFACTURING CO.	4
MARQUART CONCRETE BLOCK CO.	23
MIDWEST CONCRETE INDUSTRIES	3
NATIONAL ELECTRICAL CONTRACTORS	21
W. E. NEAL SLATE CO.	22
PRESCOLITE MANUFACTURING CO.	26
SHEFFIELD BRICK & TILE CO.	28
SIOUX CITY MOSAIC CO., INC.	6
RALPH N. SMITH, INC.	8
R. S. STOVER CO.	20
SWANSON GENTLEMAN, INC.	9
VINCENT CLAY PRODUCTS	19
L. J. SWEENEY	25
WESTERN MINERAL PRODUCTS	24-25
C. W. WILLCOX AND COMPANY	26
WILSON CONCRETE	22

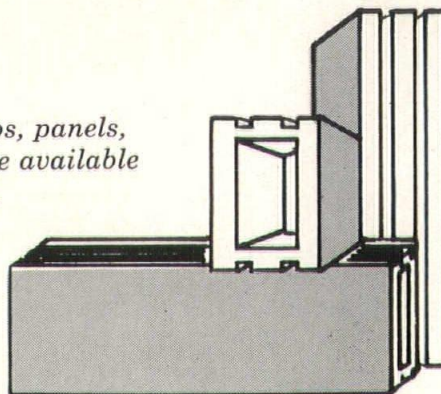
GOLDEN GLAZED

**TILE
COST
ONLY
69¢ SQ. FT.**

● For jobs that require a smooth, gleaming brick or tile, investigate Vincent's line of Golden Glazed tile. A wide range of non-fading colors combined with numerous shapes and sizes allows maximum design expression for the architect; assures the owner of beauty, permanence and economy (only 69¢ Sq. Ft. in the wall, according to a recent Central Iowa cost study).



Sample straps, panels, and literature available upon request.



EXCLUSIVE DISTRIBUTOR FOR
ELGIN-BUTLER BRICK COMPANY, AUSTIN, TEXAS
RELiance BRICK COMPANY, DALLAS, TEXAS

and
NATCO CERAMIC GLAZED TILE CORPORATION
Ask for complete literature or sample panels showing both glazed and unglazed brick of the highest quality.

VINCENT
CLAY PRODUCTS
TRADE MARK

FORT DODGE, IOWA

Manufacturers of Superior Face Brick, Glazed Tile, Building Tile, and Drain Tile.

OFFICE **PHONE** **FACTORY**
State Bank Building • 3-7851 • 2½ Miles South of Fort Dodge

ADEL CLAY PRODUCTS CO.

BRICK WITH CHARACTER!
ADEL PINKTONE VELOUR

A delicate pastel pink achieved by subduing the red, offers the beauty of mellow, natural pink — and an exceptionally rich texture.

In Modular and Norman Sizes
— or SCR on request.

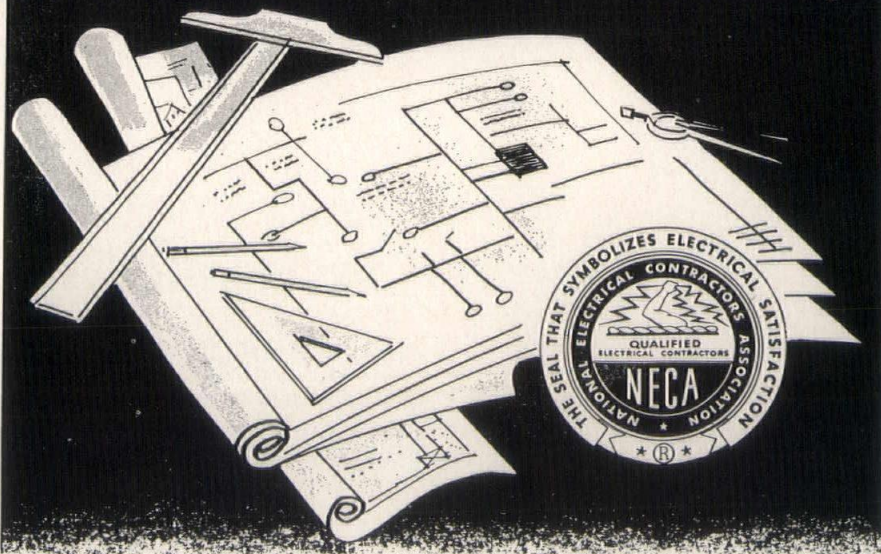
Adel Clay Products Co.

STIPPLE-MATT FACE TILE AND BRICK
AND OTHER VITRIFIED CLAY PRODUCTS

IOWA SALES OFFICE AND WAREHOUSE
101 ASHWORTH ROAD • WEST DES MOINES, IOWA
FACTORIES IN REDFIELD AND CENTERVILLE, IOWA

Phone CRestwood 9-9721

When the plans are completed...



**CALL
AN
EXPERT!!**

To be **DOUBLY SURE**
your electrical installations
are just as you intended...

Call on a
**NECA
MEMBER**

Ask us for the names of NECA members in your area.

IOWA CHAPTER

NATIONAL ELECTRICAL CONTRACTORS ASSOCIATION

1118 MULBERRY

AT 8-3279

DES MOINES, IOWA

GRIFFITH-KENDALL FORM NEW FIRM

Gerald I. Griffith, AIA, and R. Kenneth Kendall, AIA, have formed the firm of Griffith-Kendall and will office at 3810 Ingersoll, which has been the address of G. I. Griffith.

Griffith has been in practice for 12 years, and Kendall has been with Brooks-Borg for the past 15 years. Both are graduates of Iowa State University. Griffith is registered as an architect, and Kendall as an architect and engineer.

Griffith is Secretary of the Iowa State Board of Architectural Exam-



Griffith



Kendall

iners, and is a past-president of the Iowa Chapter, AIA. He is a member of the Advisory Architectural Committee to the Urban Renewal Board.

Pete Kauzlarich, formerly with Brooks-Borg, is employed by the new firm.

GEORGE HORNER HEADS UNIVERSITY ARCHITECTS

George L. Horner, AIA, a past president of the Iowa Chapter, AIA, and superintendent of architectural and engineering services for the University of Iowa, has been elected president of the Association of University Architects, a national organization.

JOINS BROOKS-BORG

John Chapman, 51, formerly of the firm of George S. Voinovich, Cleveland, O., has joined the firm of Brooks-Borg, Des Moines.

Chapman, formerly of Burlington, Iowa, is a graduate of Washington University, St. Louis, and is registered in Ohio. He was an associate member of the Cleveland Chapter, AIA.

SUMMER HELP

Bill Dikis and Wesley Welch, both juniors at Iowa State University, are employed by Brooks Borg, as is Ron Sweet who has just completed his freshman year in industrial design at the University of Cincinnati.

Perry Bolin, president of the Student Chapter, AIA, at Iowa State University, and Dick Pattschull, also of Iowa State, are employed by Karl Keffer Associates.

Hee Joon Yoo, a native of South Korea who has been working towards his Master's Degree at Iowa State University, is employed at Wetherell-

Harrison-Wagner, but intends to return to complete work for the advanced degree.

SHOW EQUIPMENT

The American Sterilizer Company, Chicago was host to architects at a Forum held May 23 at the Ft. Des Moines on the newer developments in hospital equipment and design. The technical presentations were preceded by a cocktail hour and dinner.

Henry Aarnio, manager of the sterilizer firm, was host for the meeting.

- ✓ 38 years of service to Iowa schools
- ✓ chalkboard specialists
- ✓ state-wide installation service
- ✓ natural slate
- ✓ Johns-Manville "Colorlith"
- ✓ "Wensco" washable cork tackboard
- ✓ Gotham aluminum trim and chalkboards
- ✓ display cases
- ✓ the only COMPLETE chalkboard line

w. e. neal slate co.

1215 Second Avenue, North
Minneapolis 5, Minn.
FR 7-8100

PRECAST AND PRESTRESSED CONCRETE PRODUCTS

- MO-SAI EXPOSED AGGREGATE
- FLOORS
- ROOFS
- BEAMS
- COLUMNS
- PILING

SPECIFY CONCRETE FOR PERMANENCE AND ECONOMY

**WILSON
CONCRETE CO.**

"Since 1905"

OMAHA—GRAND ISLAND
RED OAK—SO. SIOUX CITY

AUDITORIUM
Music Education Hall
State College of Iowa
Cedar Falls, Iowa

ARCHITECT

Thorson & Brom
Waterloo, Iowa

CONTRACTOR

John G. Miller Construction Co.
Waterloo, Iowa

The entire building is functionally designed with excellent acoustics and soundproofing. Exposed masonry used throughout this building enhances the beauty of it, and permitted construction at considerably less cost per square foot than other new construction.



MARQUART CONCRETE BLOCK COMPANY

110 Dunham Place — Waterloo, Iowa

Phone ADams 3-8421

The Proper Use of Concrete Masonry

For many years, the lowest cost of masonry walls could be accomplished by the use of concrete blocks.

However, it is very important that the concrete blocks are properly manufactured, cured, stored and delivered in order to get a first-class finished building.

We — at Iowa Concrete Block — have made improvements over the years until now we believe we can furnish blocks that will give you fine, trouble-proof buildings.

✓ **MIXING.** We have the best machinery to proportion and mix the materials so it will produce the very best blocks. Within 30 days, all of this will be electronically and automatically done—doing away with manpower mistakes entirely in this division.

✓ **MANUFACTURE.** Our two three-block machines not only use vibrations for compacting the

blocks, but they are the only ones in this section using both bottom and top vibration.

✓ **CURING.** We have a large, automatically controlled, high pressure steam boiler which enables us to get just a right temperature and moisture to cure the blocks properly.

✓ **STORAGE.** We have a large all steel building in which more than 150,000 units can be placed under cover to keep them out of the rain and snow. Orders for large buildings are placed under this roof.

✓ **DRY UNITS.** We have our own testing equipment not only to test the strength but also the moisture content of our blocks. If the moisture content is too high we have a drying kiln in which the blocks can be brought down to the proper dryness for satisfactory use.

"QUALITY AND SERVICE ARE OUR MOST IMPORTANT PRODUCTS"

IOWA CONCRETE BLOCK & MATERIAL CO.

820 S.W. Ninth St.

• Phone ATLantic 8-5751 •

Des Moines

PERSONAL & PROFESSIONAL

WINS SHIREY AWARD

Lyman J. Walker, II, of Kellerton, Iowa, was winner of the C. W. Shirey award at Iowa State University in a competition for students in the Department of Architecture and Architectural Engineering. Walker received a Bachelor of Science degree in architectural engineering at the May 26 commencement. He has entered employment with John Deere & Co., Moline. The award was presented for a design utilizing precast concrete structural components in a residence.

A feature was integral air conditioning ducts.

FOUR ARCHITECTS JOIN IN VENTURE

Four Architects' Joint Venture is the title on the door at 1114 Register and Tribune Building, Des Moines, where four architectural firms have joined in working out the design and details of the new Federal Office Building which is to be constructed in Des Moines.

Plans and specifications for the

multi-story structure are expected to be completed in about a year. The building, which will house a number of governmental agencies, will have approximately 385,000 square feet and will cost about \$8.6 million.

Participating firms are: Amos Emery and Associates, Wetherell-Harrison-Wagner, Savage & Ver



Emery



Skiles



Savage



Hart

Ploeg, and Brooks-Borg. Representatives of the firms in the venture are: Amos Emery, AIA, Paul Skiles, AIA, Robert Savage, AIA, and John Hart, PE, an associate of the Iowa Chapter.

DAUGHTER BORN

Chapter President and Mrs. Robert Savage have been receiving congratulations on the birth of a daughter, Sara Elizabeth, who very politely delayed her arrival until her father returned from the AIA Convention at Dallas.

Sara Elizabeth was born May 12, the day after the chapter president returned from the convention.

PEIFFER APPOINTED

Leo C. Peiffer, AIA, Cedar Rapids, was appointed to a second six-year term on the Board of Review which hears protests on tax assessments.

Peiffer also headed a five-man committee which studied the Linn County home and reported the structure was sound and could be remodeled satisfactorily. The building study was asked after a grand jury had recommended the home be condemned.



Now
it is practical to insulate
nearly any block wall with
ZONOLITE® Masonry Fill

Zonolite Masonry Fill was specifically designed to fully satisfy the requirements for insulating block and cavity walls. Its low installed cost makes it possible to insulate buildings which formerly didn't warrant the cost of other insulating methods.

CHECK THESE IMPORTANT FEATURES

- CUTS INSULATING COSTS IN HALF—Both material and labor costs are less.
- DOUBLES THE INSULATION VALUE—Block and cavity walls are twice as efficient.
- WATER REPELLENT—Won't draw moisture across cavities. Can't rot or decay.
- WON'T EVER SETTLE—Fills to solid, uniform, tamper-proof density.



Write today for complete information including estimate of fuel savings forms...

Western Mineral
Products Company



4725 OLSON HIGHWAY • MINNEAPOLIS 22, MINNESOTA

PERSONAL & PROFESSIONAL

NAME WRIGHT, HUNTER

J. Roy Carroll, Jr., FAIA, partner in the firm of Carroll, Grisdale & Van Alen, Philadelphia, Pa., was chosen over James M. Hunter, FAIA, James M. Hunter & Associates, Boulder, Colo., in a spirited contest for the office of first vice president of the American Institute of Architects.

Henry L. Wright, FAIA, Los Angeles, ran uncontested for the office of president.

In two other contests, Arthur Gould Odell, Jr., FAIA, Charlotte, N. C. was elected second vice president, and Clinton Gamble, FAIA, Fort Lauderdale, Fla. won the post of secretary.

There was no contest on the position of treasurer with Raymond S. Kastendieck, FAIA, Gary, Ind., incumbent, the lone candidate.

LET THEM IN

Standard specifications have been drafted by the American Standards Association, Inc., for making buildings and facilities accessible to and usable by the physically handicapped, and an appeal has been directed to the Iowa Chapter, AIA and to many other groups concerned with construction to promote in every way the widest possible degree of adoption of these specifications.

The effort, however, does not restrict its objectives to matters of employment of the physically handicapped, but to the removal of barriers which now impede or even prevent their access to schools, churches, theaters, all public buildings as well as to the places where they are employed.

It seeks alleviation of difficulties now encountered in wheel chairs or on crutches, blind persons, etc. It seeks to make usable by them of doorways wide enough to permit

entry of wheel chairs, ramps rather than difficult stairs, phone booths they can enter, drinking fountains and other facilities arranged to be within reach.

HELP WITH DISPLAY

Jack Shelledy of Architects Associated, Steve Carlson and Norm Travis of Brooks-Borg, and Russ Miller of Dougher-Frevert-Ramsey, did the heavy labor as the chapter Honor Awards display was put in

place in the Younkers Gallery in May. Carlson and Travis returned to help dismantle the exhibit on the completion of the showing May 30. On hand for both events was R. F. Bonomi, chapter executive secretary.

WORLD'S FAIR WELCOME

Hugo W. Osterman, AIA, of the Seattle Chapter has issued a broad invitation to all members of the Iowa Chapter to visit the west coast group's booth at the World's Fair.

The Seattle Chapter has a hospitality and information center at the northeast corner of the Coliseum.



In 10 exciting colors

*Design Magic
at
low cost*

**Specify
Hi-Sorb®**

Colored Acoustical Plaster

Let your creativity take wings. New color freedom and a firm damage-resisting surface. New one-phase fast application to speed construction schedules. Good sound absorption. Hi-Sorb gives a monolithic evenly textured surface over any curve or shape. Low material cost plus time-saving application saves money, too.

Now . . . get the complete story plus colored samples of Hi-Sorb! . . . write to

**Western Mineral
Products Company**

4725 OLSON HIGHWAY • MINNEAPOLIS 22 MINNESOTA



HI-SORB IS THE REGISTERED
TRADEMARK OF HIGHLAND
STUCCO AND LIME PRODUCTS,
INC., VAN NUYS, CALIFORNIA.

"Buck" Sweeney

Parker Mirrors &
Bathroom Accessories

Halsey Taylor
Coolers & Fountains

Lawler
Thermostatic Valves

Church Seats

Sloan Flush Valves

Just Stainless Steel
Sinks



313 49th STREET, DES MOINES, IOWA

PIPE PLANT PLANS CELEBRATION

Architects, engineers, contractors and dealers will be guests of the Iowa Clay Pipe Company on Saturday July 14 as part of a three-day "Open House" at the new plant near the intersection of Interstate Highways 80 and 35.

A barbecue and dance will be held after the visitors have toured the plant.

Tom Rawson, plant manager, said the first day of the open house would be for families of the employees, and the second day would be devoted to the entertainment of local and state officials. Plant dedication is set for July 13.

HONOR IOWA WORKERS AT SCPI DINNER

High compliments were paid to Iowa workmen as the skilled bricklayers who participated in the brick murals of the Des Moines Y.M.C.A. Building were called forward May 21 at a dinner honoring Harry C.

Bates, the president emeritus of the B.M. & P.I.U.

Mr. Bates, who has travelled widely and observed the craftsmanship of workmen in many climes said:

"I have never seen better brick work any place in the world—outside and inside. I am proud of anyone who had anything to do with it."

William Wagner, AIA, the Y.M.C.A. Architect, and Stan Hess, artist for the murals, were recognized for their contributions.

The dinner was sponsored by the Region 6 of the Structural Clay Products Institute, with C. H. Koplen and H. C. Frisk participating in the ceremonies.

Speakers included Douglas Whitlock, chairman of the board of S.C.P.I., and Harry C. Bates.

Awards on behalf of the industry were presented to Harry C. Bates, John J. Murphy, Heath Boyd and Tom Garton of the B.M. & P.I.U.

BLUMCRAFT HONORED

Blumcraft of Pittsburgh was among firms winning awards in the Product Literature Competition sponsored jointly by the AIA and Producer's Council, Inc. The Citation concerns Catalogue M-62 concerning aluminum railings.

The citation said:

"An example of the type of reference material architects find most helpful. Technical, informative, complete."

GOOF GETS RESULTS; NEW BRICK APPEARS

C. T. Bridgman, director of engineering for the Goodwin Companies, reports that a new cinnamon colored brick was actually the result of an experimental "goof."

Bridgman says research specialists for the company were attempting to turn out a brick of another specific color to meet the requirements of an architect.

The result, Bridgman says, is the cinnamon colored brick with a somewhat pastel pink undertone. It wasn't exactly the color sought, but it attracted so much attention that the bricks have been added to the Des Moines Clay Company list of colors available. The texture of the brick is similar to that of the early American sand mold bricks.

PHILADELPHIA FILM

Architects attending the AIA Convention at Dallas had an opportunity to view a newly made film which was based on the 1962 convention presentation detailing the renewal planning for downtown Philadelphia.

The film, a 57-minute sound and color show, was produced by the Reynolds Metals Company, is to become available to chapters and will be used in AIA Urban Renewal Seminars throughout the nation.

Phil Will, Jr., president of the AIA, said:

"This film is intended to offer basic guidelines, through the experience of Philadelphia, in how a city can succeed in the tremendous task of renewing its central area and achieving high standards of urban design."

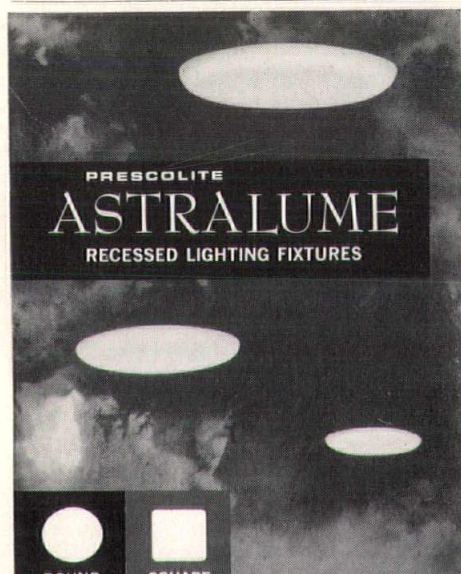
60 AT CONFERENCE

The Second Annual Construction Conference at ISU drew 60 representatives of construction firms and plans already are underway for a third conference to be held in the Spring of 1963.

Tom Jellinger of the Department of Architecture and Architectural Engineering, was in charge of the conference arrangements.

Great interest was shown in the session on cost distribution and cost records conducted by Dudley Priester of the Priester Construction Co., Davenport, and in the discussion of the critical path method of job scheduling conducted by representatives of Proctor & Gamble Co.

The conferences are made possible by a grant from the Master Builders of Iowa for the improving facilities for construction education at ISU.



PRESCOLITE
ASTRALUME
RECESSED LIGHTING FIXTURES

- Beautiful shallow silhouette. Round or square hand blown Thermopal glass. 100-300 Watts.
- No frames, latches or visible means of glass support (U.S. Pat. No. 2,826,684). NEW hinging principle.
- Prewired recessed housings.
- Vertical lamping.

Write for further information.
PRESCOLITE MFG. CORP.
1251 Doolittle Drive
San Leandro, California

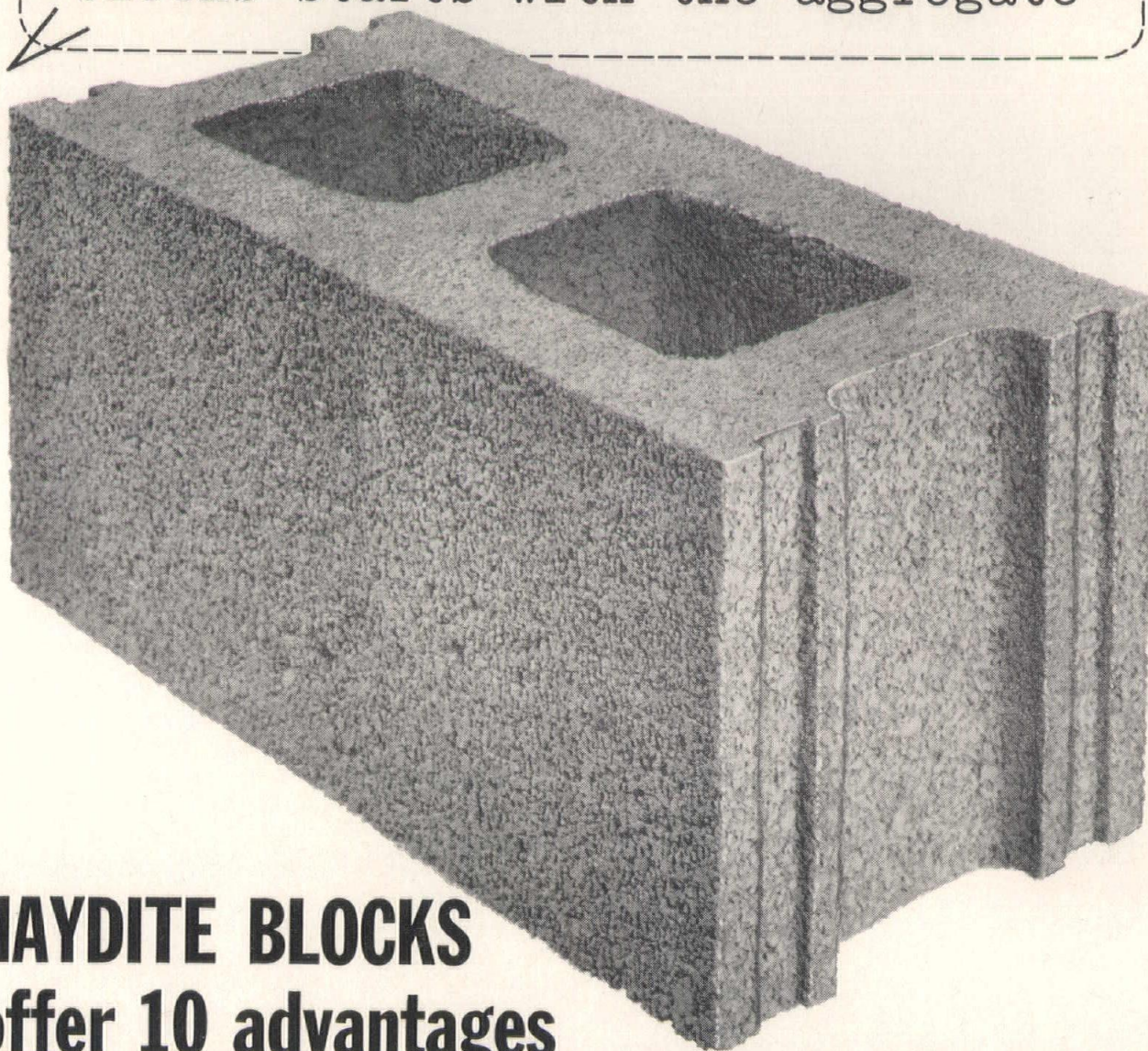
FACTORIES:
San Leandro, Cal. • Warrington, Pa. • El Dorado, Ark.



C. D. WILLCOX AND COMPANY
S.W. 6th & Murphy Des Moines 9, Iowa
Phone CHerry 4-5191
Member Iowa Chapter, Producers Council Inc.

HOPE'S
WINDOWS, Inc.
Everly
Metal Products Co.
Ramset
Simmons Dormitory
Furniture
PermaCushion Gym
Floors
"Twin-Beam" Church
Windows

...the difference in concrete blocks starts with the aggregate



HAYDITE BLOCKS offer 10 advantages

LIGHT WEIGHT—approximately $\frac{1}{3}$ lighter than ordinary concrete. Reduces deadload without sacrificing strength.

STRENGTH—in excess of Federal and ASTM specifications and local building code requirements.

FIRE RESISTANCE—manufactured at temperatures in excess of 2,000° F., Haydite aggregate produces a block of unusually high fire resistance.

UNIFORMITY—in size, texture and color for accuracy and beauty.

ACOUSTICS—are improved by the cellular structure of the aggregate and the texture of the block. Approximate Noise Reduction Coefficient is 0.45.

THERMAL INSULATION—the U factor (average) on 8" Haydite blocks is 0.35 and on 12", 0.32.

AVAILABLE—nails can be driven in Haydite blocks to save time and money in many applications.

DURABLE—Haydite blocks have passed laboratory tests of 100 cycles of freezing and thawing without visible damage or loss of weight.

PAINTABILITY—the chemically inert composition of Haydite eliminates paint discoloration by rust or other chemical reactions.

ATTRACTIVE—a pleasing texture and natural gray color suitable for many applications without further treatment.

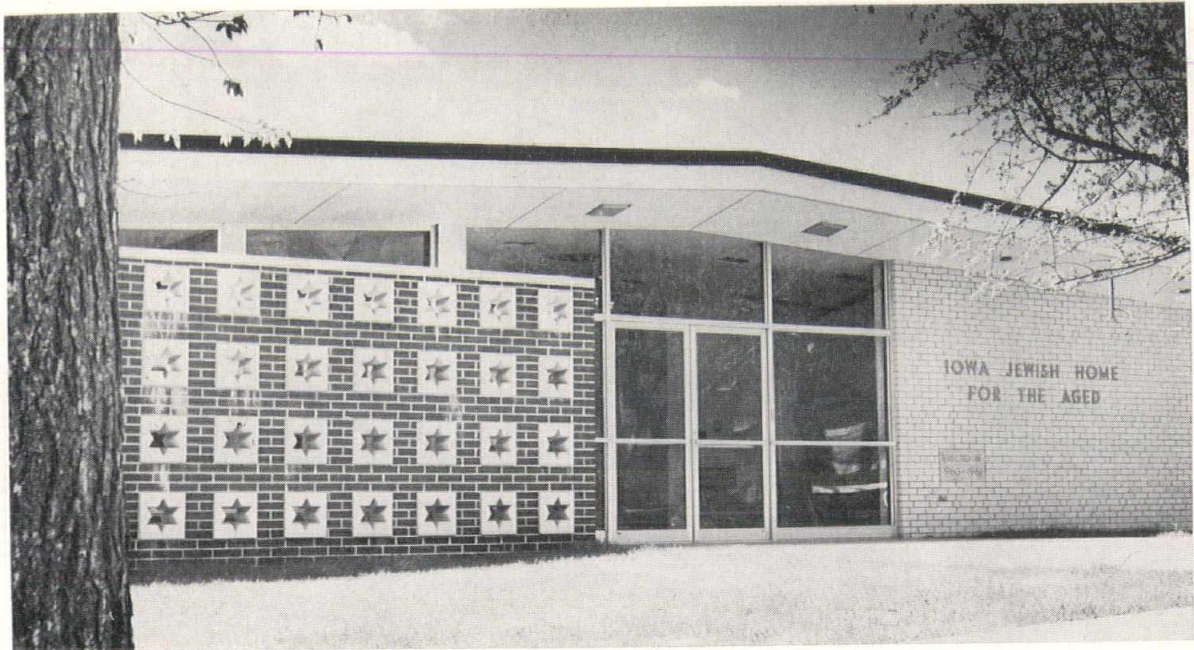
Haydite blocks manufactured from Carter-Waters Haydite, produced in Iowa, are available from more than 40 Iowa plants. For complete information contact your local plant or write to—

CONSTRUCTION THE MATERIALS
CARTER-WATERS
KANSAS CITY CORP. 8. MISSOURI
2440 Pennway GRand 1-2570

Producers of Haydite aggregate at Center-ville, Iowa, and New Market, Missouri.

Skillful balance of basic elements means

OBVIOUS GOOD DESIGN



Jewish Home For The Aged, Des Moines, Iowa

ARCHITECT: Architects Associated, Des Moines, Iowa

CONTRACTOR: Garmer & Stiles, Des Moines, Iowa

Basic elements often are not visible in a finished building. Yet these unseen essentials usually distinguish your proudest accomplishment from the ordinary. When specifying floor and roof elements in your designs, the Sheffield Clay Tile Beam System merits your consideration.

In this building, the Sheffield Clay Tile Beam System provides superior acoustical damping properties coupled with exceptional strength. And, the shallow design of the Sheffield system offers more usable volume — especially important in a low building.

Accurately pre-sized and available in a variety of capacities, the Sheffield Clay Tile Beam System saves construction time and costs. From any point of view — or as an unseen essential — it is AN OBVIOUS GOOD DESIGN.



SHEFFIELD BRICK & TILE COMPANY

SHEFFIELD, IOWA