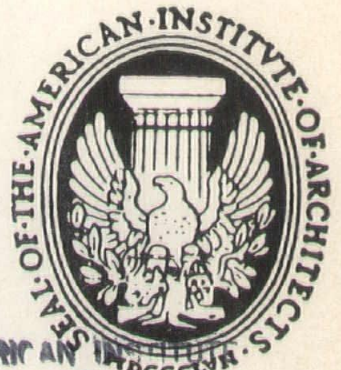


IOWA ARCHITECT

Official publication of

IOWA CHAPTER

AMERICAN INSTITUTE OF ARCHITECTS



AMERICAN INSTITUTE
OF
ARCHITECTS

JAN 28 1963

LIBRARY

SEPTEMBER - OCTOBER, 1962

VOL. IX NO. 5

Be as precise as you wish when you specify coatings

You're the boss. No holds barred.

Specify the exact type of surface, the correct degree of protection, the precise color, the most rigorous resistance to abrasion or weather.

Something new? Hardly—Iowa Paint has been formulating paint for countless surfaces, coatings for every job, and they've been doing it for years. Today many architects specify Iowa Paint products to extend their creative range in designing all types of buildings.

For instance: If you wanted a smooth-as-glass finish—absolutely resistant to moisture, abrasion and expansion—for a curved, concrete form, just say so. Iowa Paint has the answer in its wide line of Iopoxy Enamels.

Or, say your problem is a concrete floor in an industrial

building that must stand unusual wear, heavy equipment traffic, constant abrasion, high impact. Easy! Iowa Paint has already solved the problem with Fusiontred.

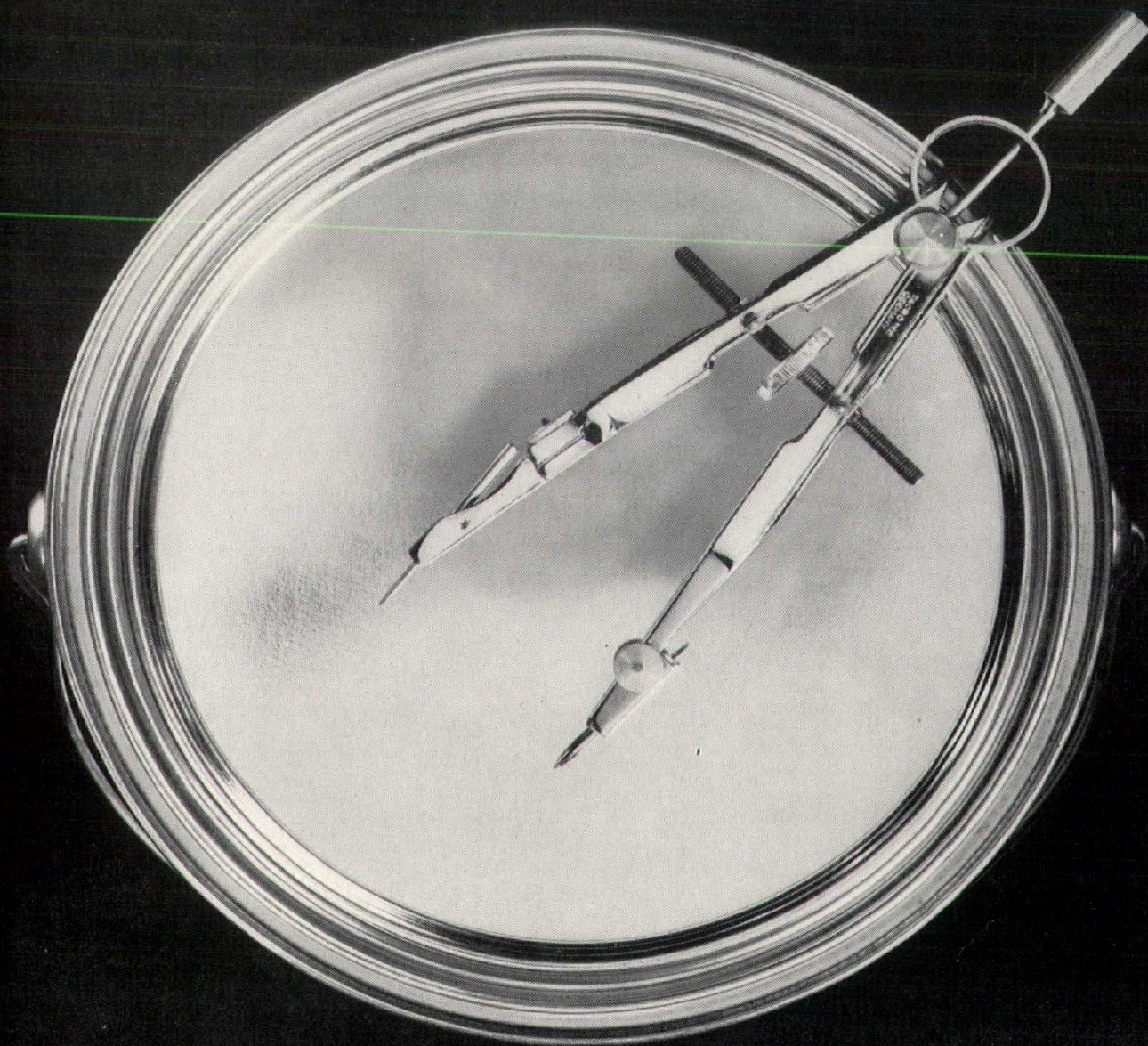
Just specify—as precisely as you wish.

And you know what? If Iowa Paint hasn't solved your problem already, we'll probably custom-make a coating for you. We've done it many times before.

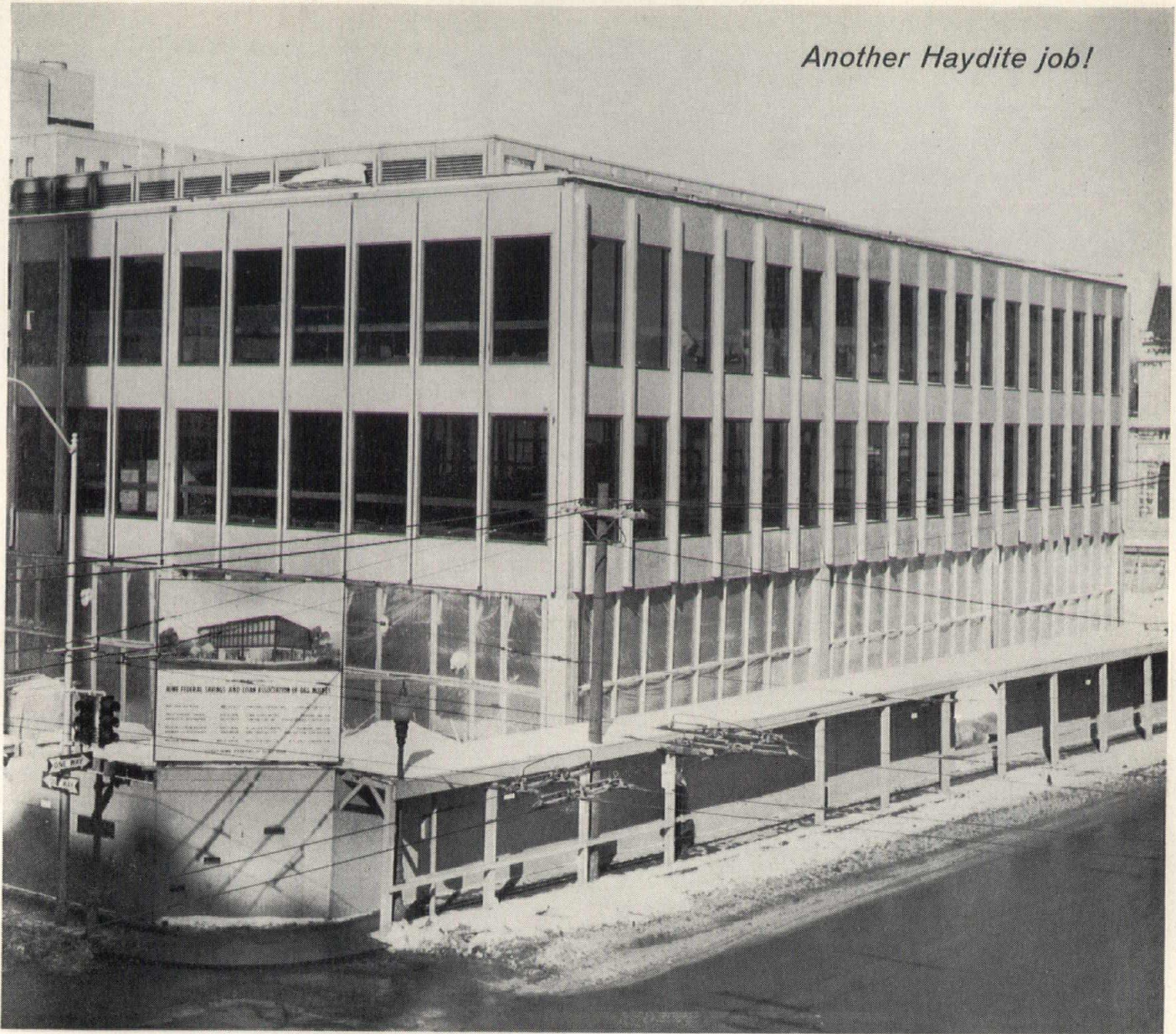
Expand your creative ability by expanding your concepts of paints and finishes. Call Iowa Paint. We'll come running to show you how.

IOWA PAINT

MANUFACTURING CO.



Another Haydite job!



Home Federal Building, Des Moines, Iowa • Architect: Ludwig Mies van der Rohe, Chicago, Illinois • Associate Architect: Smith-Vorhees-Jensen Architects Associated, Des Moines, Iowa • Engineer: Nelson, Ostrom, Baskin, Beerman & Associates, Chicago, Illinois • Contractor: Ringland-Johnson, Inc., Des Moines, Iowa • Ready Mixed Concrete: Crown Concrete Company, Des Moines, Ia.

For floors and roof
Lightweight Haydite
Concrete provided
extra advantages

Approximately 400 cubic yards of lightweight Haydite Concrete was placed over metal deck for the floors and roof of Des Moines' newest bank building. The use of Haydite lightweight concrete not only helped in reducing weight, but cut the cost of structural framing. In addition, lightweight Haydite Concrete provides floors and roof that are durable, fire safe and permanent.

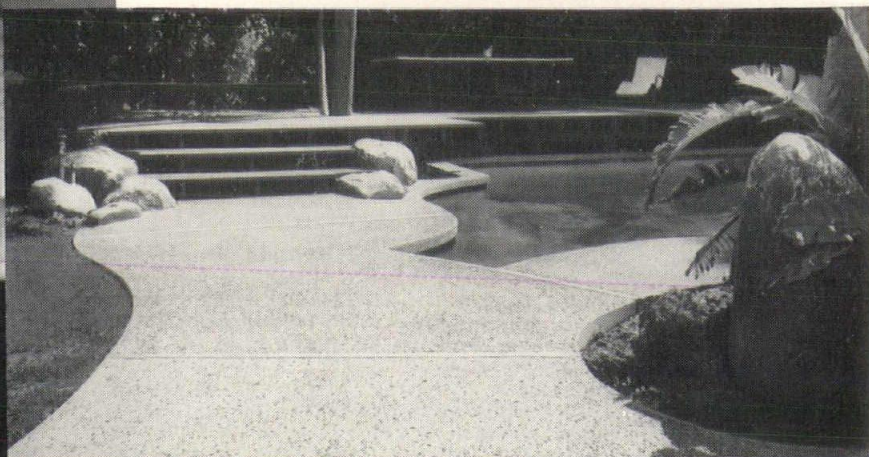
This modern structure for Home Federal Savings & Loan Association cost approximately 2 million dollars. It is 120 feet square, has 57,600 square feet of usable space in addition to the penthouse.

If you would like more information about lightweight Haydite concrete, see your local Ready-Mix plant or contact —

CONSTRUCTION THE MATERIALS
CARTER-WATERS
KANSAS CITY CORP. 8. MISSOURI
2440 Pennway GRand 1-2570

Producers of lightweight
HAYDITE aggregate at
Centerville, Iowa and
New Market, Missouri

*Textured terrace blends with shady poolside setting.
Landscape Architect: Phil Shipley.*



for dramatic
color
effects

...MODERN CONCRETE

Exposed aggregate techniques are bringing new visual impact to concrete-paved surfaces in today's patios and gardens. Intriguing color and texture possibilities are endless.

Tiny chips to fist-sized rocks, sparkling white to dramatic black, aggregates of all kinds combine with a rainbow choice of concrete colors.

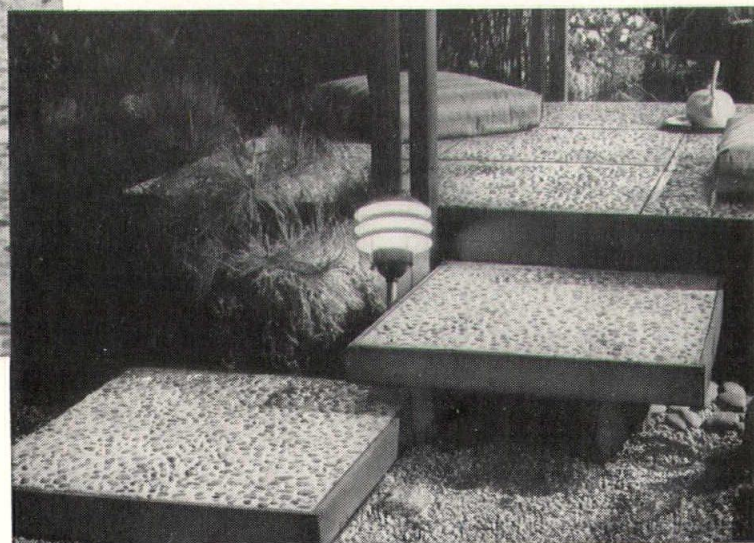
Landscape architects everywhere choose modern concrete to bring new beauty to their best ideas.

PORTLAND CEMENT ASSOCIATION

408 Hubbell Bldg., Des Moines 9, Iowa

A national organization to improve and extend the uses of concrete

*Pebbled concrete fits the modern approach.
Landscape Architect: Richard Beeson.*



Boxed steps and patio gain added interest from colorful design.

IOWA ARCHITECT

Iowa Chapter, American Institute of Architects

OFFICERS

Robert E. Savage
Des Moines
President

G. Doug Robison
Davenport
Vice-President

James A. Lynch
Des Moines
Secretary

Willis Schellberg
Forest City
Treasurer

PUBLICATIONS COMMITTEE

N. Clifford Prall
Chairman
Rich Goewey
Carl Ver Steeg

EDITOR

N. Clifford Prall
4717 Grand Avenue
Des Moines 12, Iowa

MANAGING EDITOR

Robert F. Bonomi
422 Securities Bldg.
Des Moines 9, Iowa
ATlantic 2-4309

C O N T E N T S

. . . and having writ, moves on . . .	6
Leonard Wolf, FAIA, Education.....	7
Regional Conference 1962.....	8
Little red schoolhouse.....	11
Entertain team	11
Among "Hot Hundred".....	12
Thorwald Thorson, 83.....	12
Iowa Convention 1963.....	14
Sketches of northeast Iowa historical spots.....	16
. . . clambake.....	18
Advertising directory	20
Personal and Professional.....	22, 23, 25, 26
Association of Professions described.....	24

The "Iowa Architect" is published bi-monthly for the Iowa Chapter, American Institute of Architects, and mailed without charge. Appearance of names and pictures of products or services in editorial or advertising copy does not constitute endorsement of either the A.I.A. or this chapter.

Our knowledge and experience of over 25 years in the Floor and Wall Covering Field is at your service. Call on us for solution of your problem jobs.

- Laytex Underlayments
- Asphalt Underlayments
- Vinyl Asbestos & Asphalt
- Homogeneous Vinyl
- Rubber and Cork Tiles
- Bolta-Wall Vinyl Wall Coverings
- Rubber Wall Coverings

RALPH N. SMITH, Inc.

Des Moines, Iowa

1339 2nd Ave.

AT 8-6741

BONDED APPLICATORS OF

DESCO WALL COATINGS

VITRO GLAZE — ARMITE
NYOCON — GLAZETITE — STARTEX
VINYL — ARMTEX

NEVER NEEDS PAINTING

WATERPROOF
Applied to ANY Dry or
Grease-Free Surface

SIoux CITY MOSAIC CO., INC.

SINCE 1920

Ceramic Tile & Terrazzo Contractors
W. 1st & REBECCA STS. PHONE 5-5653

Members of:
DESCO International of America
National Terrazzo & Mosaic Ass'n.
Northwest Terrazzo Ass'n.

... and having writ, moves on ...

The ceaseless flow of time brings ceaseless change; as the years fall into the past (as this year must) so do the people who inhabit them.

The measure of the men who go down with the years can be taken only long after their active years have ended.

Is the measure of a man a counting of the earthly values he has accumulated?

Is it a numbering of those persons who speak of him with deference?

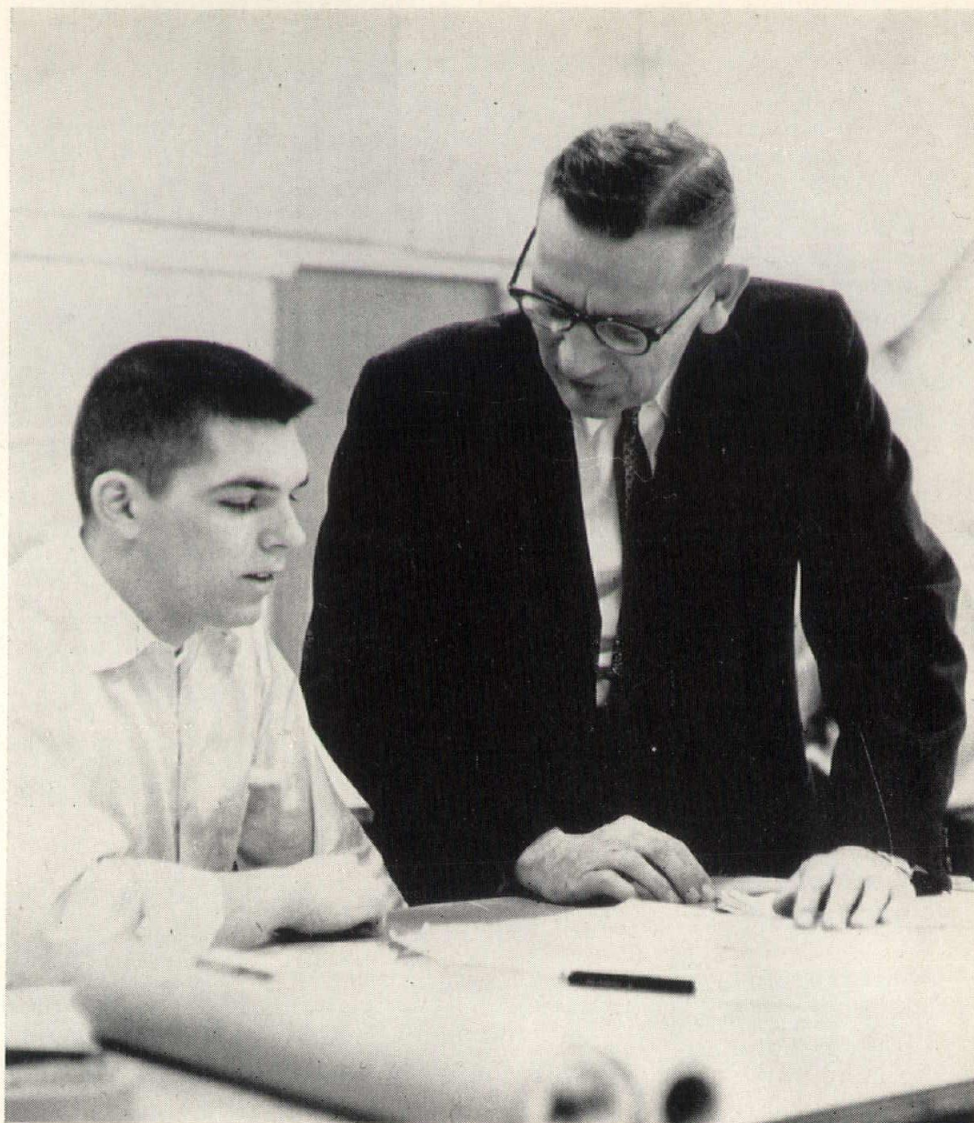
The actual measure is more likely to be found in the impact of his life upon the lives of others. An impact that—like a pebble falling into a still pond—creates waves which touch thousands of others along the shore. This is particularly true of those in the educational field.

The impact of an educator upon the lives of his students is an incalculable factor, for the variations of effect are infinite. Some students respond to encouragement and commendation, others become inspired to perform at their best only when challenged, while in others the determination to succeed is fired by being told the goal is beyond achievement. In each group, many achieve beyond their expectations. Some believe they were helped, others believe they were thwarted, and some believe a rocky road had been made more difficult.

With each individual, the impact is there and it will echo down through the ages to generations yet to be born. From father to son, the waves of the impact will proceed, lessening in some areas and strengthening in others.

Leonard Wolf

F.A.I.A. Education



LEONARD WOLF, FAIA and head of the Department of Architecture and Architectural Engineering at Iowa State University died October 17 of cancer after an extended illness. He was 54 years old.

Professor Wolf had headed the Department and served as Supervising Architect for nearly 10 years, having been appointed to the post in 1953. He had received a B.S. in Architectural Engineering in 1930 from (then) Iowa State College and a M.A. in the same field in 1932 from Iowa State.

His professional experience was dedicated to teaching. He served as an assistant professor at the University of Oklahoma from 1935 to 1937, and then returned to Iowa State where he was an assistant professor until 1943, an association professor until 1946, and a professor in 1946. During his years at the ISU Department, he saw the number of ISU architectural graduates, who were registered architects in Iowa, grow from only 5 in 1938 to more than 90 by 1960.

He had contributed outside of his University, too. As a member of the A.I.A. Committee on education he participated in development of the experience log book for the Architect-in-Training program, a system for recording the effective progressive training of young architects in practice. He had worked with the Educa-

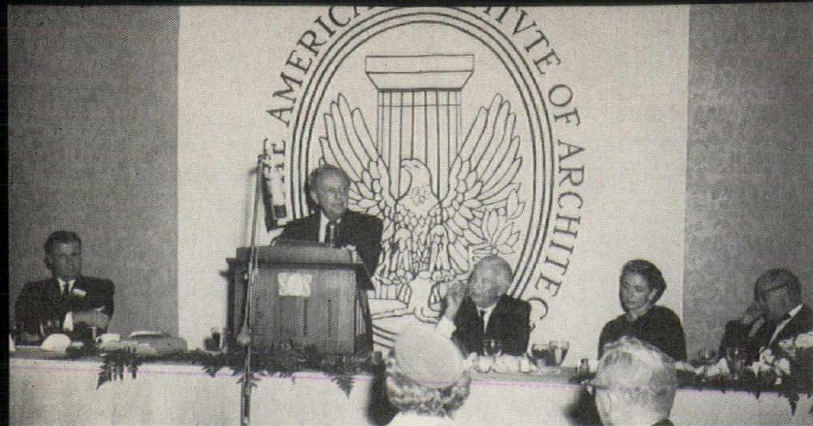
tion Testing Service in Princeton, N.J. in preparing an aptitude test for high school graduates. While he worked with this committee, it held three conferences regarding architectural schools and the expansion of their scope and objectives for better service to the profession and the building industry.

In 1957 he served on the A.I.A. Committee on Human Safety, and in 1959 he was Chairman of a joint AIA-NAHB Housing Research Institute committee on education for home building.

He served on the visiting committees for the National Architectural Accrediting Board for Notre Dame University in 1958, for Oklahoma State University in 1959, and the University of Michigan in 1960. He also had been on the visiting committee for the Engineers' Council for Professional Development in accrediting engineering curricula at the Universities of Wyoming, Colorado, and Kansas, at Montana State College, Washington University and Ohio University.

During the period that he headed the Department of Architecture at ISU, the university sponsored conferences on Religious Architecture, Home Building, Architectural Design, the Acquisition, Use and C re

(Continued on page 10)



SPEAKER CHARLES LUCKMAN A.I.A., of Los Angeles, entertained and stimulated the banquet crowd at the 1962 Central States Regional Conference held at the Indian Hills Inn, Omaha. Also shown at the head table are Nebraska Governor James Morrison (left), Nebraska Chapter President **W. L. Steele** and A.I.A. President **Henry L. Wright** (right). The ladies are not identified.

SECOND ONLY to Nebraska was the Iowa turnout for the Central States Regional conference at Omaha in mid-October, with 51 persons connected with the Chapter on hand for the excellent program and warm hospitality.

Sir Hugh Casson of London delighted the audience with his keen witticisms which also brought sharp attention to the points he made in relation to architectural needs and developments. **Walter Netsch** of Chicago, whose accomplishments are widely known to Iowans, was another of the principal speakers.

AIA President **Henry L. Wright** of Los Angeles presented a report on activities and aims of the Institute, and **Charles Luckman** of Los Angeles was the principal speaker at the closing banquet.

Angus McCallum of Kansas City, Mo., was voted the Central States Region's choice to succeed **O. H. Thorson** of Waterloo as the Regional Director. The nomination by the region members comes up for vote at the National Convention in Miami.

Iowa chapter officers conferred with those of the Institute and the Region at the regional council meeting, and ideas were freely interchanged for improvement of the services offered the members by the chapters and by the Institute.

William Scheick, Executive Director of the Institute, Washington, D. C., attended the regional council meetings to brief local chapter officers on the proposed programs of the Institute.

NEBRASKA PRESIDENT and Mrs. Steele, Mrs. and **O. H. Thorson**.



1962 Regional Conference

ANGUS McCALLUM of Kansas City, joined A.I.A. President **Henry Wright** of Los Angeles and Central States Regional Director **O. H. Thorson** of Waterloo for this brief moment after it was announced that **McCallum** had been selected as the Central States nominee to succeed **Thorson** in the Regional post. Formal election of **McCallum** to the post of Central States Regional Director will take place at the A.I.A. Convention at Miami.



IOWA PRESIDENT Robert Savage and Vice President **Doug Robison** conferred with A.I.A. President **Henry L. Wright** during an intermission of the 1962 Central States conference.





Blumcraft

ADJUSTABLE ANCHORING SYSTEMS

SOLVES PROBLEMS OF SECURING RAILINGS TO CONCRETE BY BECOMING AN INTEGRAL PART OF THE STAIR STRUCTURE

- INSURES EXTREME RIGIDITY
- REDUCES COSTLY FIELD LABOR
- ELIMINATES BREAKAGE IN MASONRY
- ADJUSTABLE FOR POST ALIGNMENT



Blumcraft OF PITTSBURGH

GENERAL CATALOG OF COMPLETE BLUMCRAFT LINE AVAILABLE ON REQUEST
COPYRIGHT 1962 BY BLUMCRAFT OF PITTSBURGH • 460 MELWOOD STREET, PITTSBURGH 13, PENNSYLVANIA

TRUSCON LABORATORIES
INDUSTRIAL MAINTENANCE

Complete Stocks Serving All Iowa

**SERVICE BY LOCAL ARCHITECTURAL
REPRESENTATIVES**

**G. M. MELTON MELVIN E. WILLS
GEORGE R. CARR**

DEVOE & RAYNOLDS CO., INC.

108 JEFFERSON DES MOINES, IOWA PHONE CH 4-5261

His services to the Iowa Chapter were many and varied. He stood as a voice of counsel and reason throughout the years, and was a steady proponent of improved service by the chapter to its members and for the education of architects of the future.

One climax to his service to the American Institute of Architects, the profession and to his own professional interest in education came in the Spring of 1960 when he was elected a member of the College of Fellows of the Institute. This honor was bestowed upon him for his service in the field of education.

Mr. Wolf had served as secretary-treasurer of the chapter from 1941 to 1944, and was the Iowa chapter president from 1944 to 1946. He served as a member of the Executive Committee during the years of 1946 to 1948 when the chapter doubled its size. Since then he has served on many committees.

His abilities were recognized in many fields. He was president of Phi Kappa Phi, all-university honor society at Ames from 1958 to 1959, and was president of Tau Sigma Delta honor society for Architecture and the Allied Arts from 1958 to 1960.

Simple memorial services for Professor Wolf were held Friday afternoon, October 19, at Ames with a large number of his former students, colleagues and Iowa State University staff members in attendance.

The Proper Use of Concrete Masonry

For many years, the lowest cost of masonry walls could be accomplished by the use of concrete blocks.

However, it is very important that the concrete blocks are properly manufactured, cured, stored and delivered in order to get a first-class finished building.

We — at Iowa Concrete Block — have made improvements over the years until now we believe we can furnish blocks that will give you fine, trouble-proof buildings.

✓ **MIXING.** We have the best machinery to proportion and mix the materials so it will produce the very best blocks. Within 30 days, all of this will be electronically and automatically done—doing away with manpower mistakes entirely in this division.

✓ **MANUFACTURE.** Our two three-block machines not only use vibrations for compacting the

blocks, but they are the only ones in this section using both bottom and top vibration.

✓ **CURING.** We have a large, automatically controlled, high pressure steam boiler which enables us to get just a right temperature and moisture to cure the blocks properly.

✓ **STORAGE.** We have a large all steel building in which more than 150,000 units can be placed under cover to keep them out of the rain and snow. Orders for large buildings are placed under this roof.

✓ **DRY UNITS.** We have our own testing equipment not only to test the strength but also the moisture content of our blocks. If the moisture content is too high we have a drying kiln in which the blocks can be brought down to the proper dryness for satisfactory use.

"QUALITY AND SERVICE ARE OUR MOST IMPORTANT PRODUCTS"

IOWA CONCRETE BLOCK & MATERIAL CO.

820 S.W. Ninth St.

• Phone ATLantic 8-5751

• Des Moines

Little red schoolhouse

IOWA'S BARGAIN in school construction costs was made plain during the conference on "Iowa Schools in the Sixties" by Arch Grimes of the Iowa Department of Public Instruction. The conference was held October 1 at Memorial Auditorium under the sponsorship of the Master Builders of Iowa in conjunction with the Iowa Chapter, AIA, and the Iowa Association of School Boards.

A major report on the conference is planned for the November-December issue of the Iowa Architect.

In his talk Grimes pointed out that whether you figure from square foot, per classroom or per pupil, Iowans are paying less for schools today than they were in 1955.

He included in his talk two basic points on the philosophy of school construction:

"There should be some way that school planning groups and members of a community could be converted to the text that real economy is not a matter of cost per square foot, or cost per school child, or cost per classroom.

"The cheapest school building erected today may be the most expensive over the years if it is properly maintained, to say nothing of what it does to the children that dwell therein."

More than 60 members of the Iowa Chapter AIA were among the crowd of more than 300 school administrators that responded to the invitation to hear a roster of outstanding educators.

Dr. Archibald Shaw, editor of *Overview Magazine*, New York, advised the educators to:

"Look at the finished school in terms of how well it functions, not in terms of economy, nor even in terms of lavishness."

He also told the schoolmen they must consider the future place of young people in society and declared: "They are biologically men and women, but society says to them, 'You are dependent probationers'."

Every speaker pointed to the changing role of schools in the educational program and Dr. L. A. Van Dyke emphasized his reference by citing the danger of the

(Continued on page 12)



ACCREDITING TEAM members were guests of the Chapter at a dinner and reception at the Wakonda Country Club. At the head of the table are, left to right, Frederick Hobbs, Clair Watson, President Robert Savage (standing) and Ken Swanson, Iowa P.C. president.

Entertain team

FORMALITIES WERE brief as some twenty members of the Iowa Chapter gathered at the Wakonda Country Club, Des Moines, to entertain the Accrediting Team which was visiting the Department of Architecture at Iowa State University.

President Robert Savage handled the formalities following a short reception for Frederick H. Hobbs, AIA, Columbus, Ohio, chairman of the team, and team members Frank Montana, AIA, Head, Department of Architecture, Notre Dame University, and Karel H. Yasko, AIA, Wisconsin State Architect of Madison, Wis.

Among the subjects discussed were the product of the ISU Department of Architecture during the past several years and its future prospects for producing students whose talents are developed to the best advantage. Success of ISU students in major competitions in recent years was noted.

Although there were no formal speeches, Mr. Hobbs addressed a very short talk to the architects and a few words were also spoken by Clair Watson, acting head of the department at ISU, and by Ken Swanson, president of the Iowa chapter, Producer's Council, who also attended the session with C. D. Willcox, the Iowa PC past president.

College staff members present for the meeting in addition to Mr. Watson were Prof. Karel Kocimski, Art Burton, and Donald McKeown.

DR. JOHN HARRIS, DES MOINES, OPENS SCHOOL CONFERENCE.



Among "Hot" Hundred

ARCHITECT RAY CRITES of the firm of Architects Crites and McConnell, Cedar Rapids, was among three Iowans included in a Life Magazine feature article which spotted "A Red Hot Hundred" which it also labelled the "Take Over Generation."

In its opening statement the magazine said: "There are many others qualified to be in this roster—and some of them show up later in this issue. But anyone who wants to see what the generation is like can see it here. And any young American who aspires to join these movers and shakers can find an inspiring model somewhere here—"



CRITES

Crites' Iowa companions on the list were President Arend Lubbers of Central College, Pella, and George H. Ludwig, who formerly was a co-worker of Dr. James Van Allen at the State University of Iowa.

Crites, whose firm took most of the top honors in the 1962 Honor Awards program of the Iowa Chapter, AIA, has acquired a long string of awards since his college days.

Life Magazine said each of the Red Hot Hundred was selected because of a tough, self-imposed standard of individual excellence, zest for hard work, dedication to something larger than private success, courage to act against old problems, boldness to try out new ideas, and hard-bitten, undaunted hopefulness about man.

Schools . . .

(Continued from page 11)

traditional vocational education program. He said that the woodworking courses now are obsolete vocationally because of the decline in the woodworking trade as a major employment field. He said the current need is for education in electronics and automation.

Dr. Harold Gores of New York, president of the Ford Foundation's Educational Facilities Laboratory, Inc., was another of the speakers who held his listeners attention for every moment.

Gores predicted the demise of the "egg crate" school with classrooms strung along a bowling alley-like hallway. He also predicted the rise of the cluster of four or more rooms around a common work room, with the children being served by teams of teachers.

He placed emphasis also on the physical surroundings of the school child and advocated the use of carpeting to cut down noise and create an atmosphere of respect and dignity.

Dr. John H. Harris of Des Moines opened the conference with a penetrating talk, and an exceptionally fine discussion of the responsibilities of board members in the promotion of better schools was presented by Dr. Fred Hill, assistant superintendent in charge of business affairs for Minneapolis Public Schools. Dr. Arthur Templeton, assistant to the superintendent, Des Moines, was chairman of the conference.

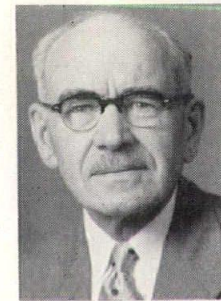
The MBI created a half-hour motion picture film of several of the speakers in interviews on the subject of school design and construction. A tape recording of the entire proceedings was made, and in addition, the proceedings were recorded by stenotype.



PLANS FOR 1963 and the future will come before A.I.A. Chapter Vice President Doug Robison, President Robert Savage and Angus McCallum, the incoming Central States Regional Director. Plans for a regional conference have been set for early in February, following the national executive committee meeting of January, and the Iowa Chapter convention.

Thorwald Thorson, 83

Thorwald Thorson, 83, A.I.A., of Forest City, who spent more than 40 years in the practice of architecture after having been a member of the original faculty of Waldorf College, died in October after having suffered a stroke.



THORSON

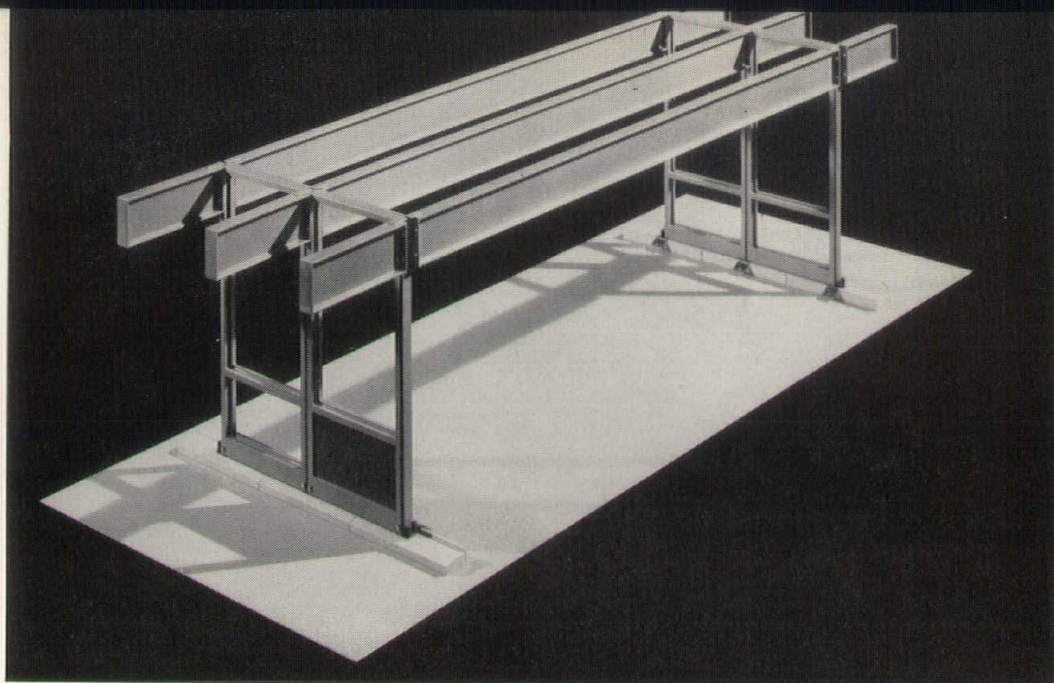
He was born February 20, 1879 at Kristiansund, Norway, and three years later his parents brought him to the United States to settle in what then was the wilderness area three miles east of Forest City. For a number of years they lived in a dugout house. He walked to school in Forest City to complete his high school education and upon the founding of Waldorf College in 1903 he was engaged to teach mathematics, drawing and botany. He also became business manager in 1907, and in 1912 took on the task of designing (and helping build) the dormitory "Thorson Hall," named in his honor. He entered the practice of architecture in 1914.

He had served on the school board and the city council at Forest City and was a founder of the Rotary Club there. He was active in the creation of the Pilot Knob recreation area as a state park.

Funeral services were at the Immanuel Lutheran Church, Forest City.

His survivors include Mrs. Thorson and two sons, O. H. Thorson of the firm of Thorson and Brom, Waterloo, who is Central States Regional Director for the A.I.A., and Phillip Thorson, an official with the International Monetary Fund, Washington, D.C., and two brothers, Ole of Eau Claire, Wis., and Theodore of St. Olaf, Iowa.

Model shows Functional Structures' new basic space module. Masons set stone sills on foundations. Self-aligning wall, door, and window frames bolt together. Four bolts secure lightweight junior beams to load-bearing frames. No anchor bolts, pre-set column bearing plates, or special tools needed. Clean, simple exposed structure costs \$1.35 to \$1.50 a square foot in Chicago, one-fourth less than conventional.



11.30 square foot school wins citation, new Functional Structures' system cuts costs

VILLA PARK saved one-fifth on construction of its award-winning Edward I. Schafer school.

Bekins Van Lines and Fernstrom Storage & Van Co. occupy air-conditioned office space that cost less than \$13 a square foot. You can save up to one-fourth on office or school building costs, with Functional Structures' *modular framing-closure system*.

Architects, engineers and contractors from Kansas to New Jersey are cutting planning and erection costs, and saving months on construction timetables,

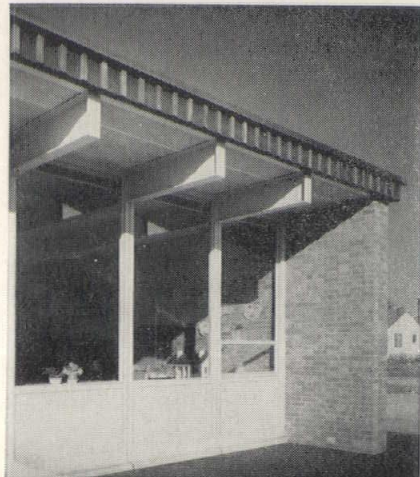
with Functional Structures' new, light metal, load-bearing wall frames.

All planning, material and mechanical elements are coordinated in three-dimensional space modules. Precision fabricated wall, door and window frames bolt together at the site. Doors, plate or insulating sash, insulated wall panels, even masonry, fit directly into exposed frames.

Write or phone today for information about this simple, economical way of building.

Two men can set up to 14 frames an hour. Wall and roof structure costs as little as \$1.35 to \$1.50 a square foot.

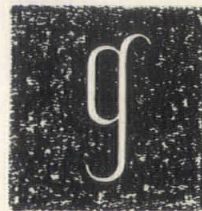
Opaque panels, plate glass, insulating glass and operating sash all fit into exposed modular metal frames.



FUNCTIONAL STRUCTURES

Steel and Aluminum
MODULAR
FRAMING-CLOSURE SYSTEMS

**SWANSON
GENTLEMAN, INC.**
3213 FOREST AVENUE
DES MOINES, IOWA
PHONE: CR 9-9793



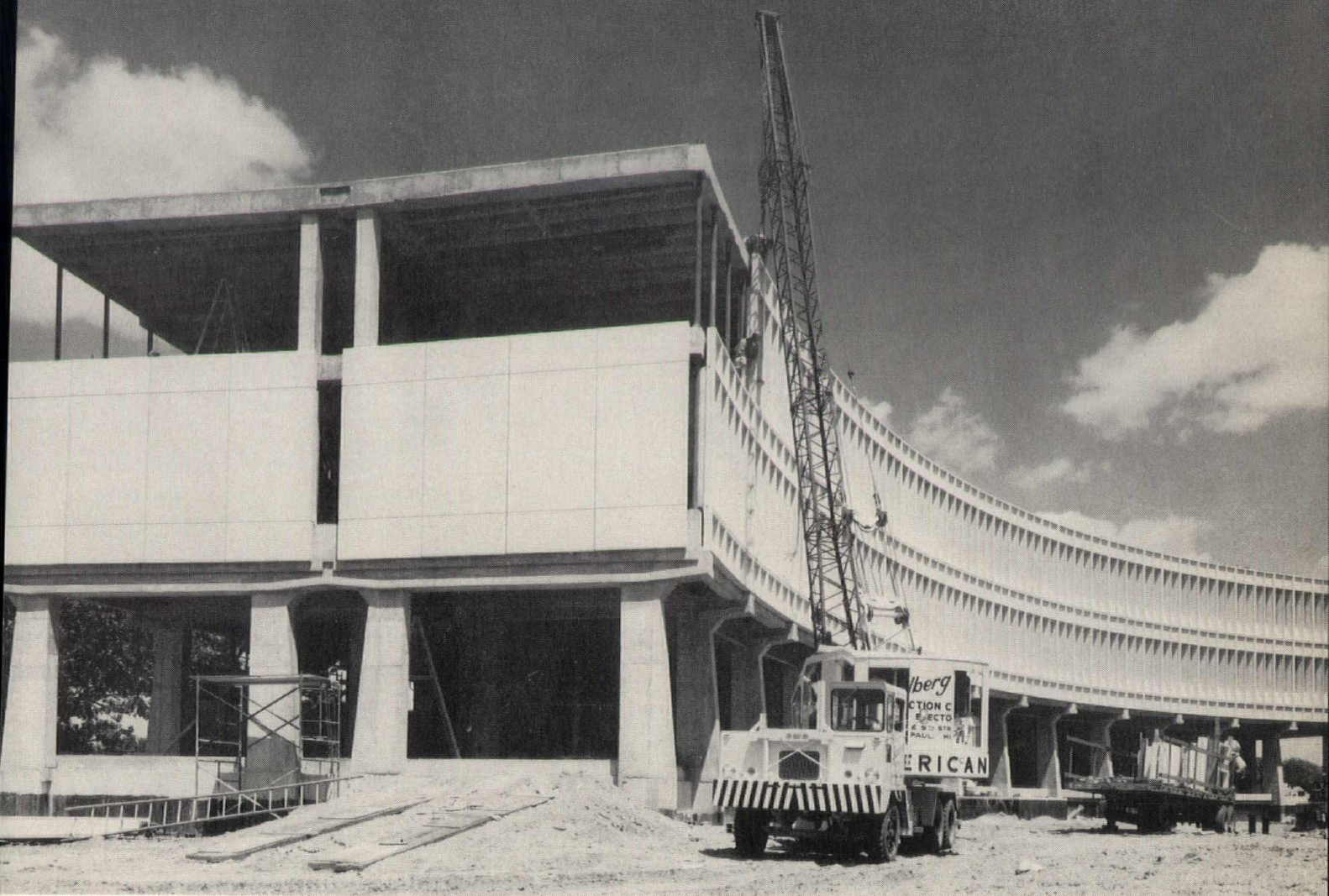
**Who
Is
Responsible
For
Good
Design ?**

Client or Designer ?

1963 Convention, Iowa Chapter A.I.A.

Hotel Savery, Des Moines

January 24-25-26, 1963



THORSEN AND THORSHOV, ARCHITECTS — MINNEAPOLIS, MINNESOTA

OFFICE BUILDING FOR,
MODERN MEDICINE PUBLICATIONS, INC.
65th STREET AND VALLEY VIEW ROAD
MINNEAPOLIS (EDINA), MINNESOTA



MIDWEST CONCRETE INDUSTRIES, WEST DES MOINES, IOWA

Sketches of northeast Iowa historical spots

The sketches of Iowa historical places on the adjoining page are the product of the active pen of William Wagner, AIA, who heads the Iowa Chapter Committee on the Preservation of Historic Buildings and this is a further demonstration of his interest in recording the structures and landmarks which are a part of the development of Iowa.

ST. WENCESLAUS CHURCH

Spillville, Winneshiek county

This magnificent church was built in 1860 and was styled after St. Barbara's of Kutna Hora Bohemia. It was in this church that Antonin Dvorak played the organ during the summer of 1893 when he worked in Iowa.

A BILY BROTHERS HAND CARVED WOODEN CLOCK

"Dvorak House", Spillville

In the house occupied by Composer Antonin Dvorak, during the summer of 1893, there now is a museum of Dvorak mementoes and the collection of musical and animated clocks created by the Bily brothers. The old square, brick and stone two story house is now referred to as the "Dvorak House."

MILL AT SPILLVILLE

Spillville, Winneshiek county

This picturesque stone mill and dam mark where Joseph Spillman established a sawmill in 1851 and later added a mill to make flour. It is probable that this town has never been without a mill. It is located 13 miles southwest of Decorah on state road 325.

ST. JOHN'S EVANGELICAL LUTHERAN CHURCH

One mile south of St. Donatus, Clayton county

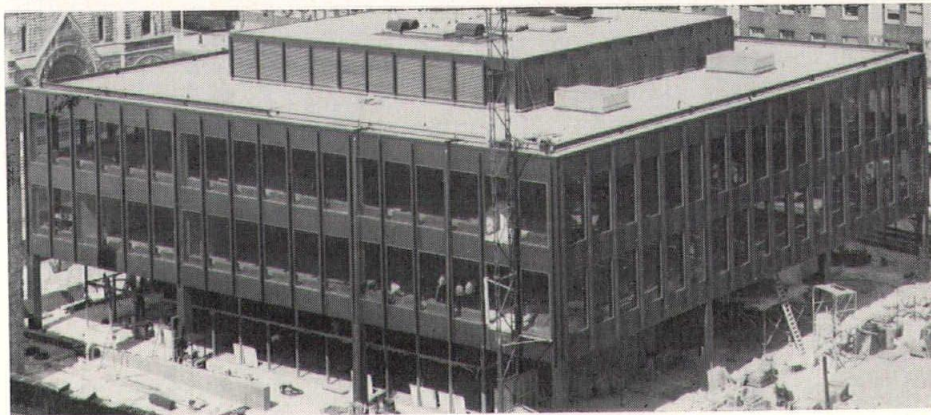
The parish for this twin-spired church was established in 1835 by immigrants from the Northern German provinces who chose a site overlooking the valley of Tete de Mort, a named selected because of the severed heads which lay in the stream after a battle between Indians and traders. The church now standing is not the original, but a later edifice.

HILLTOP CHAPEL

St. Donatus, Jackson county

Founded by a small group of settlers from Luxembourg, St. Donatus comprised a picturesque village of two story yellow stone, with green shuttered houses of French design. At the top of the bluff, reached by a path which winds past outdoor stations of the cross, stands this chapel which is a reproduction of the Chapel du Bilchen in Luxembourg. St. Donatus is 11 miles southeast of Dubuque on Highway 52 in Jackson county.

Structural Steel **STANDS** for the Future



New Home Federal Office Building, Des Moines, Iowa

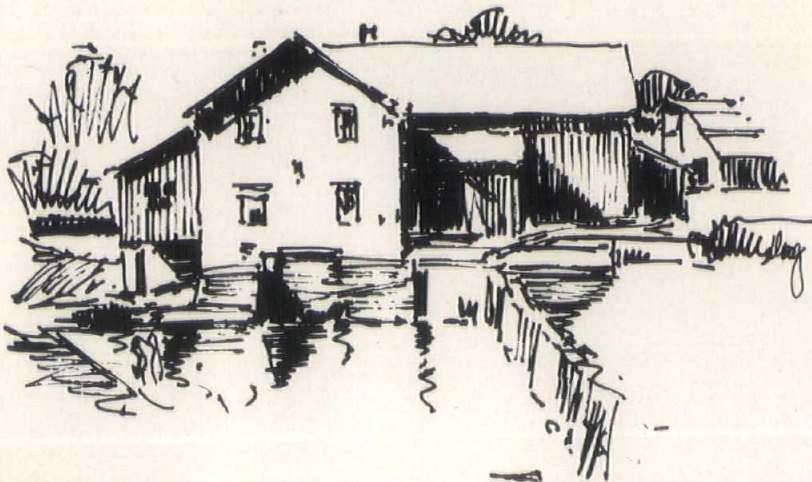
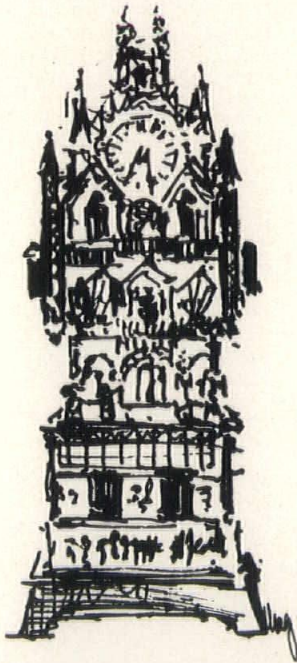
Steel is used in several special ways in this building. The steel skin curtain wall was shop sandblasted and painted, then fieldwelded to the steel frame. With two coats of field paint it makes a firm, substantial, long-lasting and handsome exterior. The inset first floor window walls are all of cold-finished steel, creating sharper edge lines. Beam depths under the penthouse where the load is heavier have the same depth as other roof beams because Composite Design was used.

DES MOINES STEEL COMPANY

421 S.W. 5th St.

Des Moines, Iowa

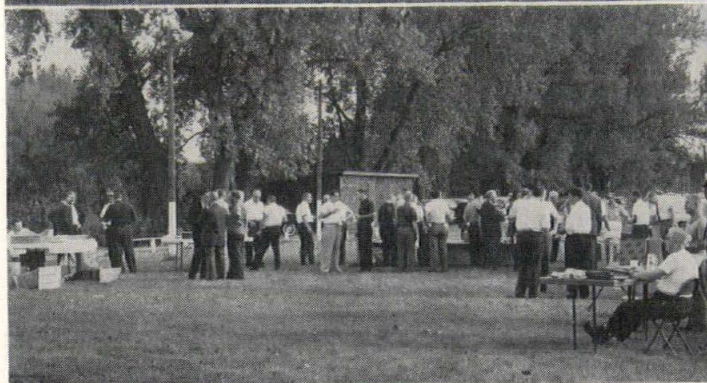
Phone 244-2101



... clambake

Lobsters by the barrel, clams by the bucket and bushels of corn on the cob were served at the second annual "Clam Bake" of the Iowa Chapter of Producers Council, Inc., held in an atmosphere of great informality at the Izaak Walton League clubhouse in Des Moines. Architectural and related professions were guests of the Producers' Council which sponsors the annual event as a means of bringing representatives of the design and supply areas into informal contact.

Shown in photos on this page are: (1) Ken Swanson and AIA President Bob Savage in conference at the left edge of the picture while some of the more than 150 attending are gathered around dispensers of edibles and liquids. (2) After appetizers and clam juice were served while the crowd gathered on the lawn, the guests moved inside to enjoy lobster brought from Maine alive. (3) Holding up gift steins are a few of the late-stayers who tested each other's ability to properly identify high, low, jack, and game. They were, from left: Charles Silletto, Harold Payne, Don Appell, George Russell, Jack Weichman, and Bill Packer (back to camera).



CONFEREES CONSIDER DRAFTING EDUCATION

Three architects had an opportunity to discuss the drafting education needs of architectural offices at the First Invitational Drafting Conference in the Industrial Arts Department of the State College of Iowa at Cedar Falls in October.

O. H. Thorson, Hovey Brom and James Bentley were cooperative speakers on one portion of the program, discussing the needs of the architectural office. Vernon G. Peters of the Viking Pump Company and vice president of the Iowa Engineering Society, discussed the drafting needs of the engineering offices.

Following the talks, there were group discussions of the drafting course content for the high school grades.

NEW MAGAZINE IS "ENVIRONMENT"

A publication has begun which will attempt to reach the architect, interior designer, landscape architect, painter and sculptor and to bridge the gaps between these professionals in creating environment. Title of the new magazine is "Environment" and it will appear quarterly beginning in February, 1963.

Editor Harry V. Anderson said each issue will contain authoritative and informative articles by leaders in their fields and will point out the advantages of using professional services in the aesthetic areas. Anderson said professional designing advice can help homeowners avoid the costly mistakes of "do-it-yourself" work. The new publication will cost \$10 a year and additional information is available through the New York Herald Tribune Information Service.

REPRESENTS ARKETEX

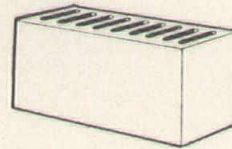
Appointment of the Sioux City Brick and Tile Company to represent the Arketex Ceramic Corporation in Minnesota and North Dakota has been announced by Arketex.

REPRESENT WEISTEEL

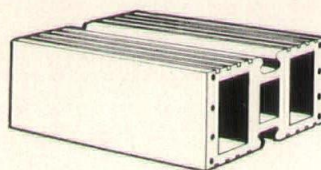
Appointment of Swanson Gentlemen, Inc., as representatives for Weisteel Compartments of the Henry Weis Mfg. Co., Elkhart, Indiana.

VINCENT OFFERS The Complete Line of BRICK and TILE

Yes, any needed type of clay product is available from Vincent.

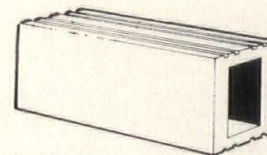


CERAMIC GLAZED TILE

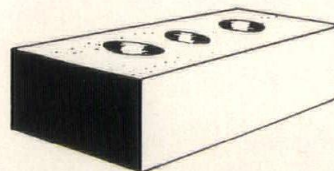


BUILDING TILE

In addition, Vincent is the exclusive distributor of several nationally known lines of specialty brick.

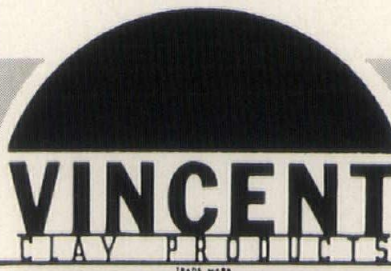


SALT GLAZED TILE



FACE BRICK

Fast and efficient service plus a **complete** line of materials makes Vincent a most reliable supplier for the architectural profession.



EXCLUSIVE DISTRIBUTOR FOR
ELGIN-BUTLER BRICK COMPANY, AUSTIN, TEXAS
RELiance BRICK COMPANY, DALLAS, TEXAS
and
MATCO CERAMIC GLAZED TILE CORPORATION
Ask for complete literature or sample panels showing both glazed and unglazed brick of the highest quality.

FORT DODGE, IOWA

Manufacturers of Superior Face Brick, Glazed Tile, Building Tile, and Drain Tile.

OFFICE PHONE FACTORY
2930 Fifth Ave. South • 573-8126 • 2½ Miles South of Fort Dodge

HEAR PLAN STATUS; OPPOSE GARAGE PLAN

Des Moines architects heard a summary of the status of the master plan for Des Moines at the Oct. 9 meeting of the Des Moines Architects Council at the Hotel Ft. Des Moines.

Reports on the plan were handled by Wayne Lyon, A.I.A., member of the Plan and Zoning Commission,

Chuck Ford, Director of the Plan and Zoning Staff, and Charles Brown, head of Advance Planning.

At the close of the meeting, a majority of those present gave approval to a resolution which opposed construction of a parking ramp garage at Locust and Seventh streets, and particularly in objection to the proposed overhang of the garage over Seventh St.

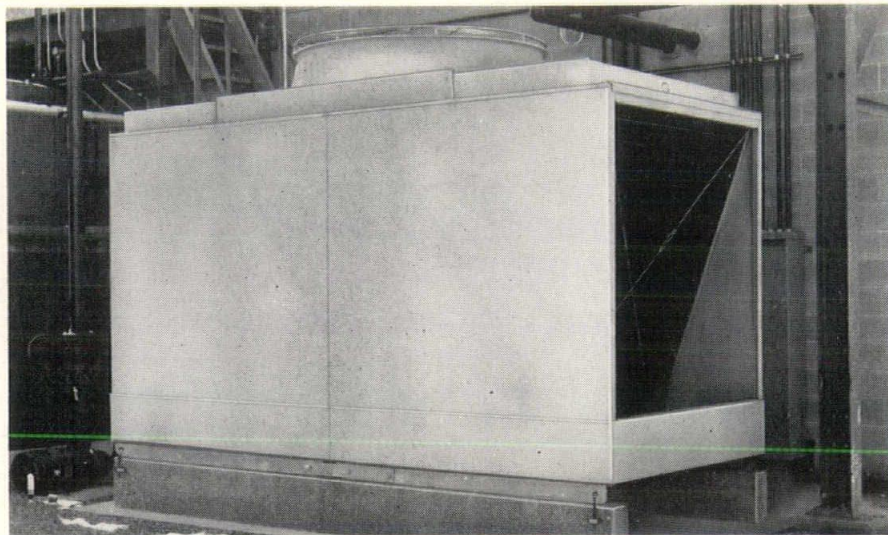
ATTEND REGIONAL

Iowa chapter members attending the regional conference at Omaha were:

James Bentley, Ray Bergquist, R. H. Brom, John W. Brooks, I. T. Carrithers, Amos B. Emery, Dave Frevert, Gerald Germanson, Gordon Gjelten, Richard Goewey, G. I. Griffith, E. H. Healey, Burdette Higgins, Walt Hotchkiss, Glenn Lundblad, Jim Lynch, Bob Ramsey, John Rice, Doug Robison, George Russell, Robert Savage, Willis Schellberg, Louis Soenen, and O. H. Thorson.

Associate members attending were: James Amend, Arthur Burton, and William R. Wagner of Iowa City.

Junior Associates at the conference were Brock Walden and Delano Weber.



Industry finds that the

"P. A. Q."
COOLING TOWER

pays for itself p.d.q....

Marley's Packaged Double-Flow Aquatower can quickly turn waste into profit if water in your plant is being used at the rate of 200-400 gpm—for process cooling, air conditioning, refrigeration, humidification, or other plant services.

The "P.A.Q." is low in initial cost, and soon pays for itself many times over by saving more than 95% of the water now wasted. Installation couldn't be more economical, for the Packaged Double-Flow Aquatower is shipped assembled.

The Packaged Double-Flow Aquatower is just a part of the complete Marley line of packaged and custom-designed towers that are saving millions of down-the-drain dollars for industry. For more information call or write today.

r. s. stover COMPANY

3½ W. Main St.
Marshalltown, Iowa

120 N. 69th St.
Omaha, Neb.

DIRECTORY OF ADVERTISERS

The Iowa Architect calls attention of its readers to the firms listed here, and the pages upon which their advertisements appear in this issue.

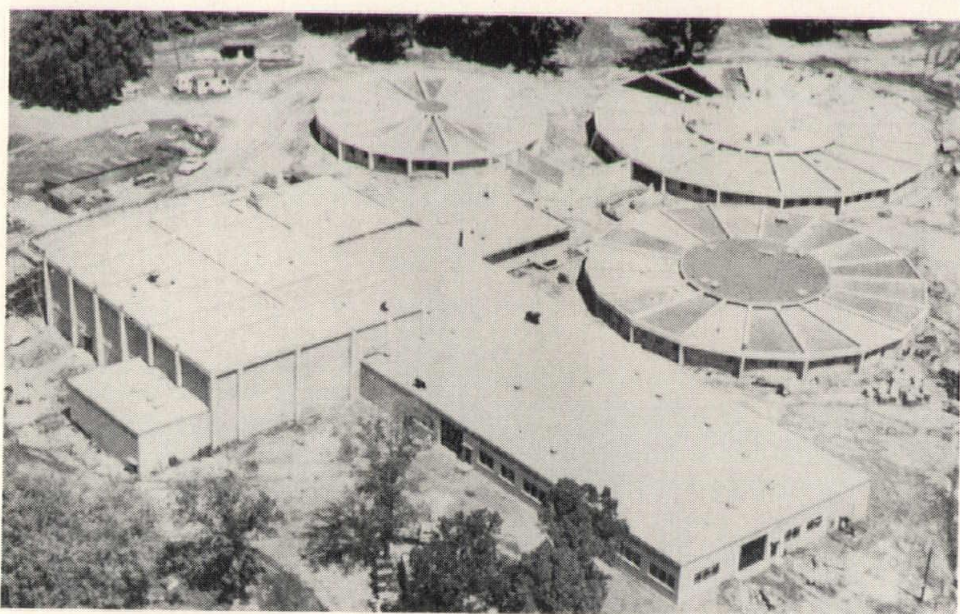
Advertisers may secure information on rates, deadlines and copy requirements by writing the chapter office, 422 Securities Building, Des Moines 9, Iowa.

ADEL CLAY PRODUCTS CO.....	27
BLUMCRAFT OF PITTSBURGH	9
CARTER-WATERS	3
DES MOINES MARBLE AND MANTEL CO.	16
DEVOE PAINT	24
DES MOINES STEEL COMPANY	10
GOODWIN COMPANIES	28
IOWA CONCRETE BLOCK & MATERIAL CO.	10
IOWA PAINT MANUFACTURING CO....	2
MARQUART CONCRETE BLOCK CO....	16
MIDWEST CONCRETE INDUSTRIES	15
NATIONAL ELECTRICAL CONTRACTORS	27
W. E. NEAL SLATE CO.....	26
PORTLAND CEMENT ASSOCIATION....	4
PRESCOLITE MANUFACTURING CO....	25
SHEFFIELD BRICK & TILE CO.....	21
SIOUX CITY MOSAIC CO., INC.....	6
RALPH N. SMITH, INC.....	6
R. S. STOVER CO.....	17
SWANSON GENTLEMAN, INC.	13
VINCENT CLAY PRODUCTS.....	19
L. J. SWEENEY.....	26
WESTERN MINERAL PRODUCTS	22-23
C. W. WILLCOX AND COMPANY	26
WILSON CONCRETE	25

VERSATILE SHEFFIELD TILE BEAMS

SAVED TIME AND MONEY ON THIS SCHOOL

IMPORTANT SAVINGS of construction time and money resulted from specifying Sheffield Tile Beam systems on these new school facilities. Accurately pre-sized, finished beams were delivered to the job site by Sheffield's own fleet of trucks. Ease of assembly of the Sheffield Tile Beam system meant days of labor time were saved. The school opened sooner, and is safer, thanks to the use of Sheffield Tile Beams.

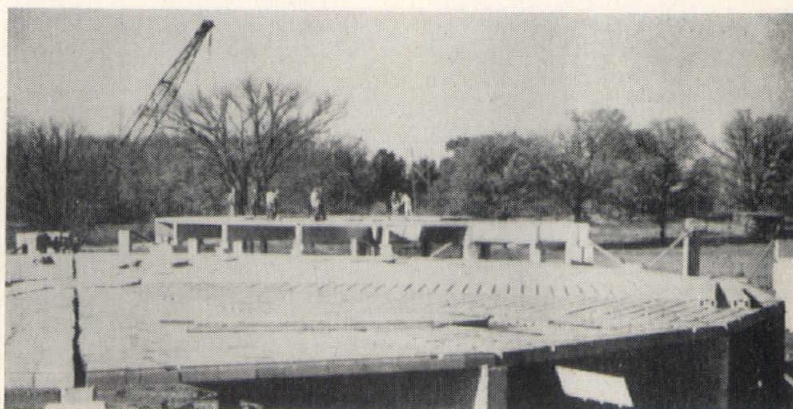


Charles City Senior High School
Charles City, Iowa

ARCHITECT: The Griffith Company
Fort Dodge, Iowa

CONTRACTOR: Jens Olesen and Sons
Waterloo, Iowa

INHERENT strength, durability, soundproofing and fire-proofing characteristics combined with their adaptability to the most challenging designs make Sheffield Tile Beam systems the ideal choice in floor and roof systems.



SHEFFIELD BRICK & TILE COMPANY

SHEFFIELD, IOWA

PERSONAL & PROFESSIONAL

ACOUSTICS LECTURE

David McCandless, Jr., presented a series of four lectures on acoustics at Iowa State University in early October.

His subjects covered: The types of acoustical problems encountered in architecture and the physical characteristics of sound in enclosed space.

The time of reverberations, enclosures and structures and the shape of rooms, for auditoriums and churches. Noise control, including room absorption, transmission, mechanical noises, and the uses of partitions. He also discussed the types of acoustical problems commonly encountered in various building types.



Now
it is practical to insulate
nearly any block wall with
ZONOLITE® Masonry Fill

Zonolite Masonry Fill was specifically designed to fully satisfy the requirements for insulating block and cavity walls. Its low installed cost makes it possible to insulate buildings which formerly didn't warrant the cost of other insulating methods.

CHECK THESE IMPORTANT FEATURES

- CUTS INSULATING COSTS IN HALF—Both material and labor costs are less.
- DOUBLES THE INSULATION VALUE—Block and cavity walls are twice as efficient.
- WATER REPELLENT—Won't draw moisture across cavities. Can't rot or decay.
- WON'T EVER SETTLE—Fills to solid, uniform, tamper-proof density.



Write today for complete information including estimate
of fuel savings forms...

Western Mineral
Products Company



4725 OLSON HIGHWAY • MINNEAPOLIS 22, MINNESOTA

WEHNER-HENRY OPEN IOWA CITY PRACTICE

Formation of the firm, Wehner and Henry, Architects, has been announced by Roland C. Wehner and Harvey W. Henry, principals in the Iowa City firm, which will office in the First National Bank building.

Wehner previously practiced with the late Henry Fisk, joining the firm in 1956 and becoming a partner in 1960. He formerly was with Dane Morgan & Associates at Burlington.

Henry moved to Iowa City from Cedar Falls. He had been in a partnership with Robert Broshar in Waterloo for two years and previously had been employed as an associate architect in the firm of Thorson, Thorson and Madson and with Thorson and Brom.

TOENJES RETIRES

Dave Toenjes of the firm of Toenjes and Stenson, Waterloo, has announced his retirement and was honored at a testimonial dinner at the Sunnyside club in Waterloo.

Marvin L. Stenson will continue the practice of the firm.

EXPRESS APPRECIATION

Carl Swanson, president of the Quad-City Builders Association, and Leo Wendland, executive secretary of the organization, have expressed appreciation to the Iowa Chapter for their participation in the Saturday evening events during the summer meeting of the Iowa Chapter at Davenport.

IN NEW HOME

Iowa Paint Manufacturing Co., Inc., is now located in its new re-designed offices at 17th & Grand in Des Moines. Charles Herbert & Associates, Des Moines, were architects for the reworking of a structure which formerly housed an automobile dealership.

PERSONAL & PROFESSIONAL

ARCHITECTS WILL STUDY IN SOUTH AMERICA

Architects from the Upper Midwest will leave from Minneapolis February 1 for a 17-day tour of Mexico, Panama, Brazil, and Peru, with an additional option available for those who would like to also visit Cuzco and Machu Picchu.

Tour sponsors have arranged visits with architects in the tour countries and visits to their works. Among those named were Mindlin, Pylon, Niemeyer and Costta.

Information on the tour can be secured from the Minnesota Society of Architects, 3416 University Avenue, S.E., Minneapolis, Minn.

NEW ASSOCIATION

Formation of the Iowa Concrete Pipe Association has been announced by Carl A. Bluedorn, president of the new organization.

Bluedorn, who is president of the Zeidler Concrete Products & Machinery Co., Waterloo, said other officers are Charles Wilson of the Wilson Concrete Co., Red Oak, vice president, Henry Ostlin of Prairie City Concrete Products Co., Prairie City, secretary-treasurer. The organization will have its headquarters in Waterloo.

The organization will promote the use of concrete pipe in Iowa and work for maintenance of the highest standards of business practice.

D-F-R ANNOUNCE NEW OFFICE

Dougher-Frevert-Ramsey have announced the transfer of the firm's office to 218 Professional Center, a newly built structure at 3839 Merle Hay Road.

The firm had been located for a number of years in the Garver Building in downtown Des Moines.

The location in the new building gives the firm improved quarters and greater accessibility to automobile parking areas.

LIMIT AWARD USE

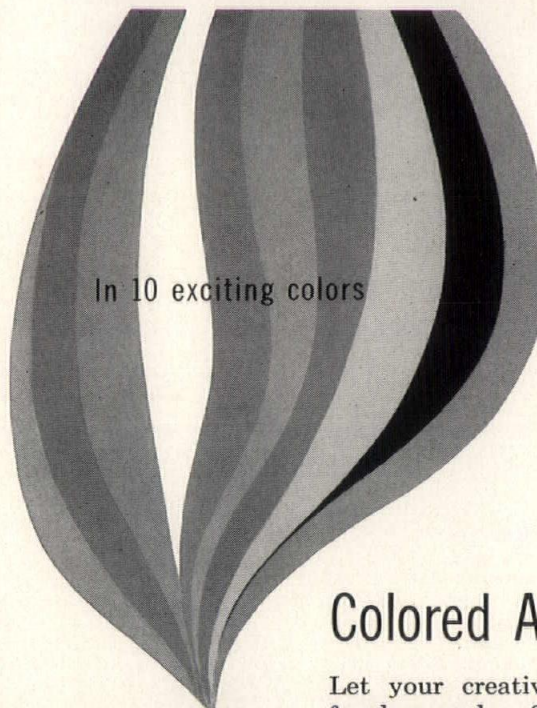
To assist architectural schools place emphasis on scholarship programs, the 1963 Reynolds Aluminum Prize for architectural students will be given for use in furthering the education of the recipient. No stipulation of the winner's use had been in effect previously.

First prize in the competition is \$2,500 for the winning student, plus \$2,500 to his school. Also offered

is a \$200 cash prize to the winning student in each participating school. Winning designs from the schools constitute the national entries. The competition is for the "best original design of a building component in aluminum."

BROSHAR OFFICE

Robert Broshar has announced the opening of an office for the practice of architecture at 223½ Main Street, Cedar Falls. Broshar formerly was associated with Harvey W. Henry, now of Iowa City.



In 10 exciting colors

*Design Magic
at
low cost*

**Specify
Hi-Sorb®**

Colored Acoustical Plaster

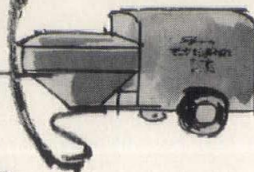
Let your creativity take wings. New color freedom and a firm damage-resisting surface. New one-phase fast application to speed construction schedules. Good sound absorption. Hi-Sorb gives a monolithic evenly textured surface over any curve or shape. Low material cost plus time-saving application saves money, too.

Now . . . get the complete story plus colored samples of Hi-Sorb! . . . write to

**Western Mineral
Products Company**



4725 OLSON HIGHWAY • MINNEAPOLIS 22 MINNESOTA



HI-SORB IS THE REGISTERED
TRADEMARK OF HIGHLAND
STUCCO AND LIME PRODUCTS,
INC., VAN NUYS, CALIFORNIA.

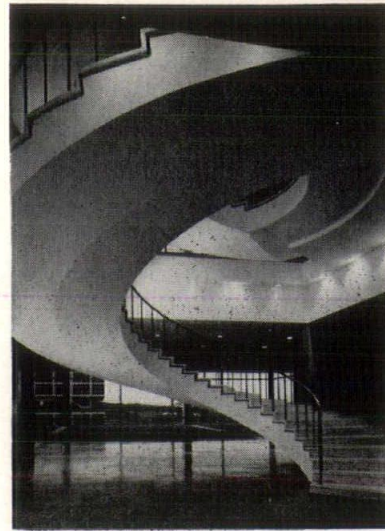
Association of professions described to chapter

Representatives of the Iowa Chapter, A.I.A. in October heard about operation of a Michigan program for professionals which works to improve the public's knowledge of why professional people "do what they do in the way they do it", how professions serve the public welfare, and how people can more efficiently use professional services.

Hugh Brenneman, Executive Director of the Michigan Association of Professions, described the "MAP" to President Robert Savage, Executive Secretary Robert Bonomi, and to representatives of the Iowa Engineering Society, the Iowa Medical Society, the Iowa Pharmaceutical Association, and the Iowa Dental Society.

Brenneman said that in addition to Michigan, associations of the professions have been organized in Texas, South Carolina, New York, Southern Florida, and that several other states have the program under consideration.

Brenneman described the association of professions as a means by which those in the professions can join in mutual support, and particularly in the areas in which professions have common interests.



Helical Marble Stairway - Cadet Library, U.S. Air Force Academy, Colorado Springs, Colo.

←
**The
ARRESTING
BEAUTY
OF
MARBLE**

THE
des moines marble & mantel co.
des moines marble & mantel co.

SINCE 1885
HARRIS M. GOLDEN, President • 938 SIXTH AVENUE • CHerry 4-8327
A member of the Producer's Council and leading national
Terrazzo and Mosaic Associations.

**SEWER DEPARTMENT
BUILDING**
1314 Black Hawk St.
Waterloo, Iowa

ARCHITECT
Thorson & Brom
Waterloo

CONTRACTOR
Claude Gardner
Construction Co.
Waterloo

MASONRY CONTRACTOR
Ideal Masonry
Waterloo



MARQUART CONCRETE BLOCK COMPANY

110 Dunham Place — Waterloo, Iowa

Phone ADams 3-8421

PERSONAL & PROFESSIONAL

HEADS CONFERENCE

C. T. Bridgman of Des Moines was named to moderate a conference on modern masonry practices planned for November 29 at the Mayflower Hotel, Washington, D.C.

Bridgman is director of engineering and research for the Goodwin Companies, and is Regional Director for the Structural Clay Products

PRECAST AND PRESTRESSED CONCRETE PRODUCTS

- MO-SAI EXPOSED AGGREGATE
- FLOORS
- ROOFS
- BEAMS
- COLUMNS
- PILING

**SPECIFY CONCRETE FOR
PERMANENCE AND
ECONOMY**

**WILSON
CONCRETE CO.**

"Since 1905"

OMAHA—GRAND ISLAND
RED OAK—SO. SIOUX CITY

Institute, and the conference on masonry construction forms part of the Building Research Institute activities November 27-29 at Washington.

Subjects to be covered include masonry walls, school building research, pump and spary application of materials. The wall session will cover waterproofing by coatings, construction to exclude moisture, and construction to accommodate differential movement.

PROVIDE FILM

The Iowa Chapter AIA is providing a print of the AIA motion picture film "A Place to Worship" for the Iowa conference on Church Building and Architecture, November 30-December 1 at the Central Lutheran Church, Des Moines.

Raymond L. Hueholt, AIA, of Smith-Voorhees-Jensen, Architects Associated, Des Moines, is participating as chairman of a panel to discuss the architect and his services to the church.

The National Conference on Church Architecture will be held in Seattle March 4-8 under sponsorship of the Department of Church Building and Architecture of the National Council of Churches.

The Iowa conference is sponsored annually by the Iowa Council of Churches.

NAME SPEAKERS

Officers of the Student Chapter AIA at Iowa State University announced two principal speakers were scheduled for consecutive nights in November.

Prof. Carl Condit of Northwestern University was to discuss "The Revival of 19th Century Structural Forms in Contemporary Buildings" on November 13 at the E. E. Auditorium.

Barbara Riston, Historian for the Chicago Art Institute, was to speak November 14, also in the E. E. Auditorium.

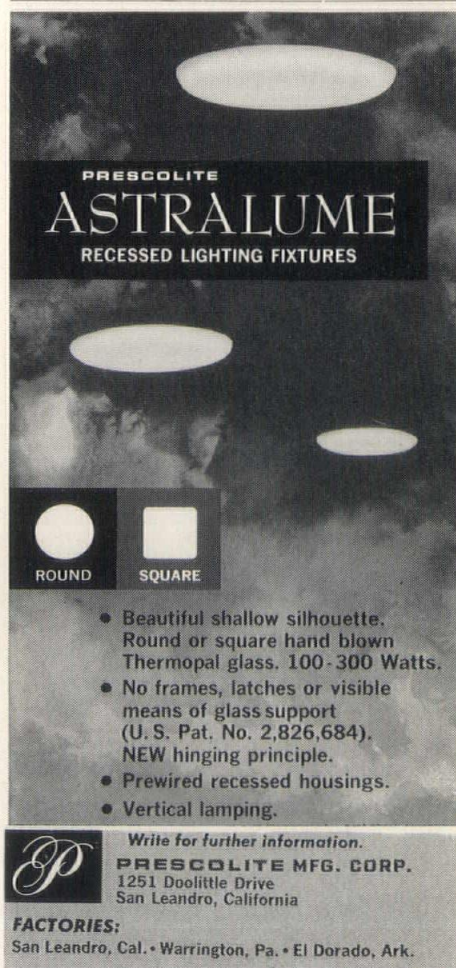
EDWIN ELLIS DIES

Edwin L. Ellis, 96, who formerly was an architect for the Iowa Board of Control, died at his home in Lake Bluff, Ill., September 11. He had moved to Lake Bluff after retiring from the Iowa position. He previously had been a structural design architect for the Arnold Steel Co. of Chicago.

PRODUCER'S COUNCIL SETS MEETING

The first of a series of informational meetings sponsored by national members of the Producer's Council was set for December 12 with the Tectum Corporation of Columbus, Ohio, to present a concise, but complete discussion of products and new developments in materials.

The afternoon program has been set for 4 p.m. and plans are for a cocktail hour following. There are no plans for a dinner session.



**PRESCOLITE
ASTRALUME
RECESSED LIGHTING FIXTURES**

ROUND **SQUARE**

- Beautiful shallow silhouette. Round or square hand blown Thermopal glass. 100-300 Watts.
- No frames, latches or visible means of glass support (U. S. Pat. No. 2,826,684). NEW hinging principle.
- Prewired recessed housings.
- Vertical lamping.

Write for further information.
PRESCOLITE MFG. CORP.
1251 Doolittle Drive
San Leandro, California

FACTORIES:
San Leandro, Cal. • Warrington, Pa. • El Dorado, Ark.

PERSONAL & PROFESSIONAL

CHANGE CRITERIA

The AIA has announced a change in the criteria which will be used to judge entries in the \$25,000 annual R. S. Reynolds Memorial Award with the prime emphasis on distinguished architecture in which sound effective use is made of aluminum.

The emphasis formerly was on "the creative value of the architect's contribution to the use of aluminum and its potential influence on the architecture of our times."

The concept of the award remains the same, to recognize an architect for a significant work of architecture in the creation of which aluminum has been an important contributing factor.

BEN HENRY DEAD

Ben Henry, a retired architect of Mason City, died September 3 at the age of 78.

Henry, a native of Guthrie Center, Iowa, had lived in Mason City since 1915 and had been employed by the firm of Jeffers and Broaten before establishing an architectural office in 1925. He retired in 1955.



HOPE'S
WINDOWS, Inc.
Everly
Metal Products Co.
Ramset
Simmons Dormitory
Furniture
PermaCushion Gym
Floors
"Twin-Beam" Church
Windows

C. D. WILLCOX AND COMPANY
S.W. 6th & Murphy Des Moines 9, Iowa
Phone CHerry 4-5191

Member Iowa Chapter, Producers Council Inc.

"Buck" Sweeney

Parker Mirrors &
Bathroom Accessories

Halsey Taylor
Coolers & Fountains

Lawler
Thermostatic Valves

Church Seats

Sloan Flush Valves

Just Stainless Steel
Sinks

313 49th STREET, DES MOINES, IOWA



21 STUDENTS BECOME CHAPTER ASSOCIATES

Twenty-one students in architecture and architectural engineering at Iowa State University were accepted into Student Associateship of the Iowa Chapter by the Executive Committee in meeting October 22.

Those whose applications were received and acted upon were:

Frederick A. Andringa
Dennis B. Brown
John M. Carlstrom
William S. Findlay
Terry M. Galvin
Richard J. Herrick
Joel B. Johnson
Patrick E. Klein
Claudia K. Krnoch
Donald P. Leonhard
Robert J. Luebke
Janet I. Miller
Terry C. Shamberger
Gene R. Smith
Jerry E. Somcrant
Gary L. Stowe
Bryan G. Way
Linda A. Welch
William Wuestenberg
Harold Youngman
James E. Zerbe

CONGRESS REJECTS FDR MEMORIAL DESIGN

The U.S. House of Representatives, by a voice vote, has rejected the design which had been judged winner in the Franklin Delano Roosevelt Memorial Competition, and which had aroused a storm of criticism.

The rejection came in the form of a vote to direct the Memorial Commission to consider changes in the design or to select a new design.

One of the strong proponents of a change in design was Rep. James Roosevelt of California, a son of the president. The approved pro-

posal would have required Fine Arts Commission approval of a changed design or of a newly selected design.

RUEBEL TO SIOUX CITY

John H. Ruebel has joined the firm of Germanson-Foss & Co. in Sioux City, coming to Iowa from Casper, Wyoming, where he had been for 7½ years associated with the Architectural Guild.

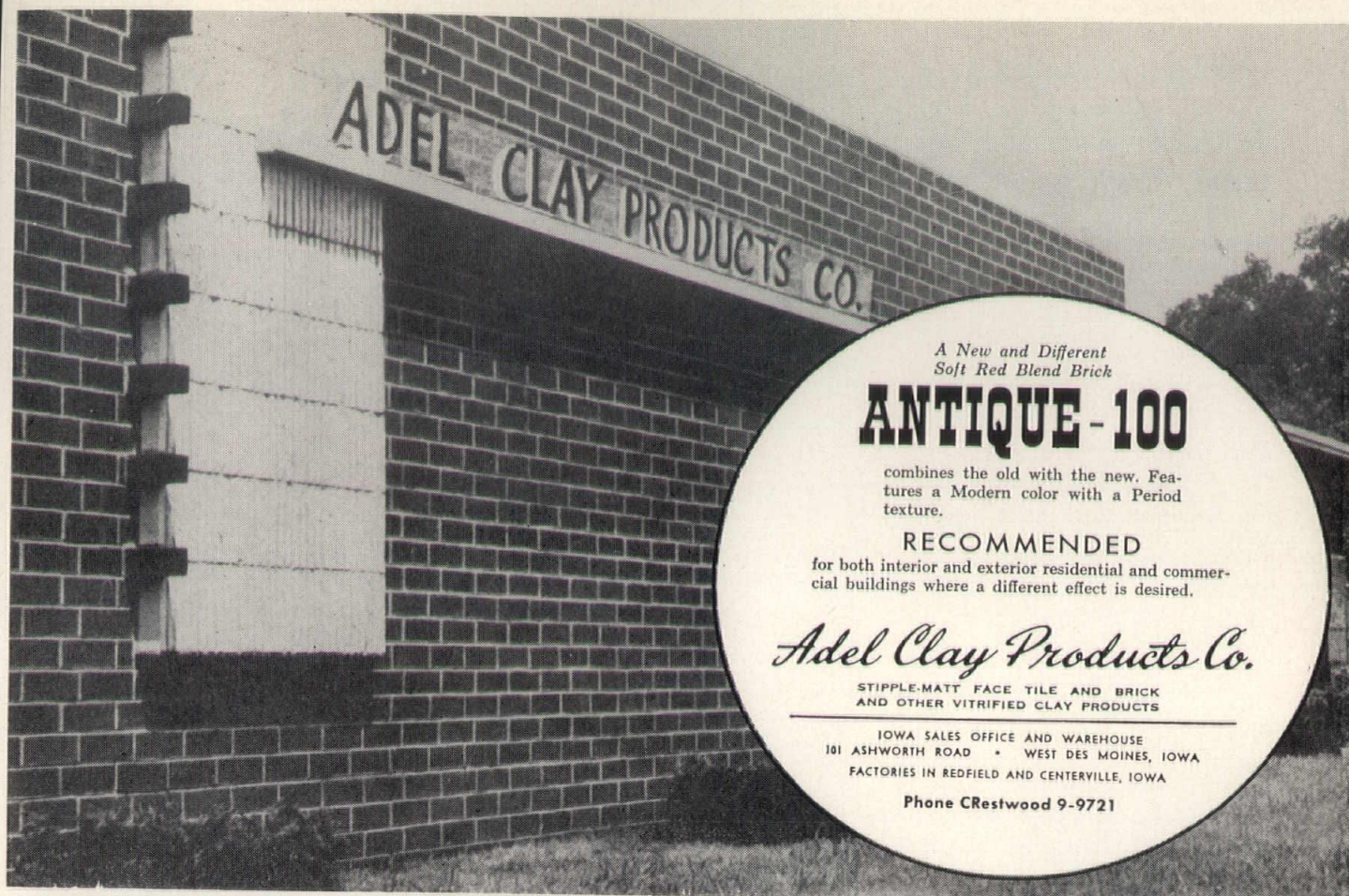
Ruebel is a 1952 graduate of the University of Nebraska and holds licenses as an architect and structural engineer.

- ✓ 38 years of service to Iowa schools
- ✓ chalkboard specialists
- ✓ state-wide installation service
- ✓ natural slate
- ✓ Johns-Manville "Colorlith"
- ✓ "Wensco" washable cork tackboard
- ✓ Gotham aluminum trim and chalkboards
- ✓ display cases
- ✓ the only COMPLETE chalkboard line

w. e. neal slate co.

1215 Second Avenue, North
Minneapolis 5, Minn.

FR 7-8100



A New and Different
Soft Red Blend Brick

ANTIQUE-100

combines the old with the new. Features a Modern color with a Period texture.

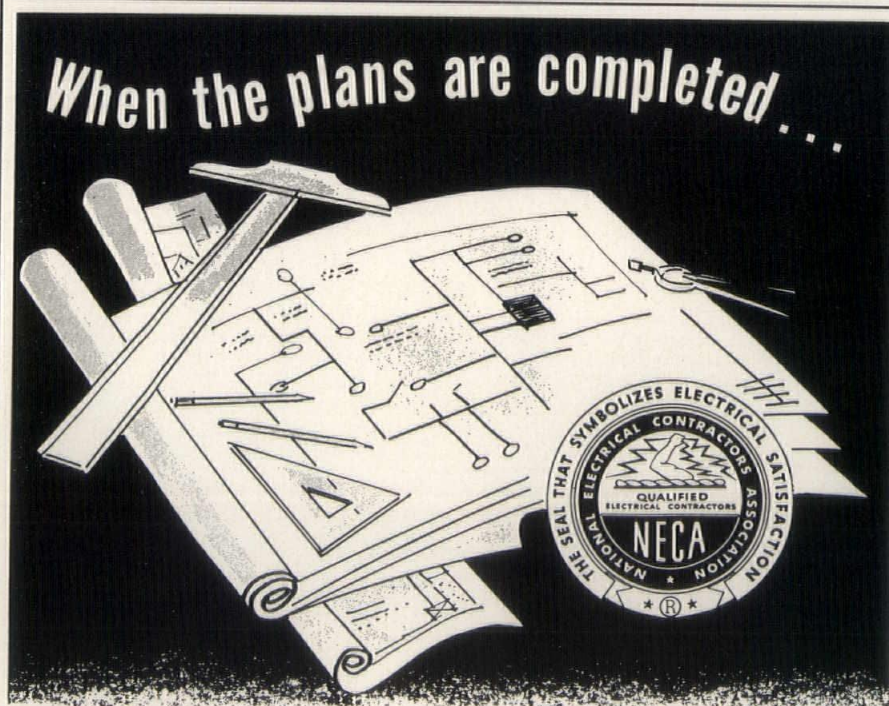
RECOMMENDED
for both interior and exterior residential and commercial buildings where a different effect is desired.

Adel Clay Products Co.

STIPPLE-MATT FACE TILE AND BRICK
AND OTHER VITRIFIED CLAY PRODUCTS

IOWA SALES OFFICE AND WAREHOUSE
101 ASHWORTH ROAD • WEST DES MOINES, IOWA
FACTORIES IN REDFIELD AND CENTERVILLE, IOWA

Phone CRestwood 9-9721



When the plans are completed...

**CALL
AN
EXPERT!!**

To be **DOUBLY SURE**
your electrical installations
are just as you intended...

Call on a
**NECA
MEMBER**

Ask us for the names of NECA members in your area.

IOWA CHAPTER

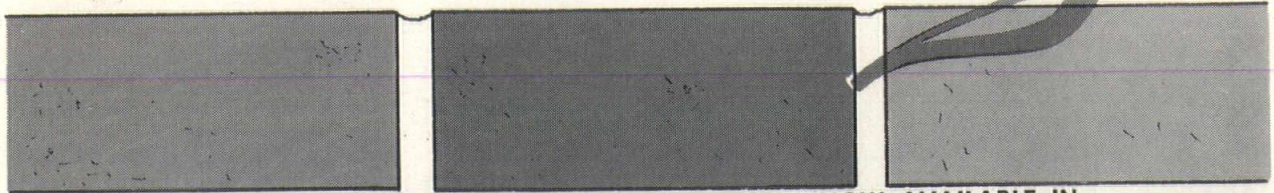
NATIONAL ELECTRICAL CONTRACTORS ASSOCIATION

1118 MULBERRY

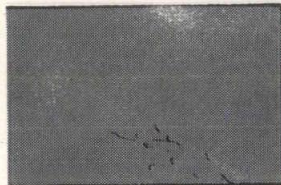
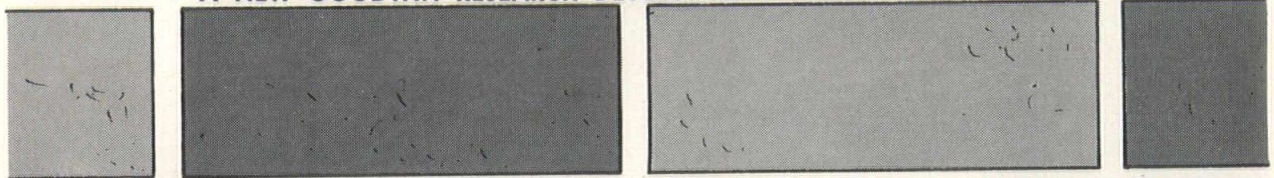
AT 8-3279

DES MOINES, IOWA

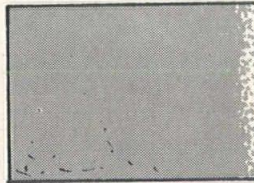
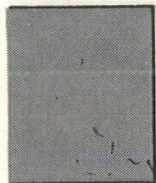
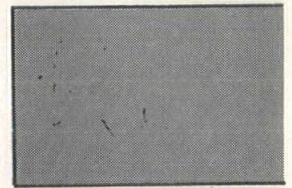
Goodwin Greys



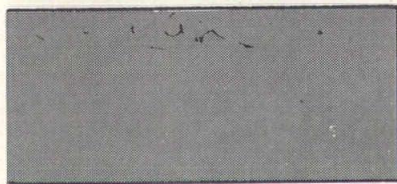
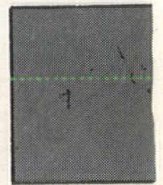
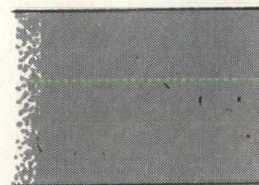
A NEW GOODWIN RESEARCH DEVELOPMENT — NOW AVAILABLE IN



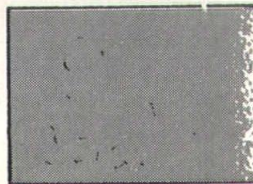
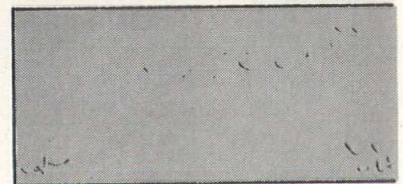
LIGHT RANGE
MEDIUM RANGE
DARK RANGE



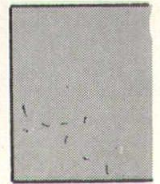
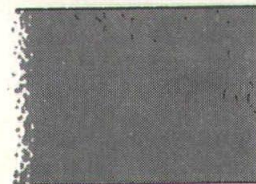
The new Goodwin Greys' is an extremely warm grey wirecut face. The



standard size units are produced by Des Moines Clay Company. Each



of the three color ranges offers a distinct opportunity for special design effects.



MEMBER
SCPI
STRUCTURAL
CLAY
PRODUCTS
INSTITUTE
Washington DC

A Reminder: Any brick in the Goodwin line may be ordered with the distinctive Rock Face feature.



MANUFACTURING DIVISIONS
DES MOINES CLAY COMPANY
MASON CITY BRICK AND TILE COMPANY
OSKALOOSA CLAY PRODUCTS COMPANY
OTTUMWA BRICK AND TILE COMPANY
REDFIELD BRICK AND TILE COMPANY

**614 CENTRAL
NATIONAL BLDG.
DES MOINES, IOWA**