

OWA ARCHITECT

Official publication of

OWA CHAPTER

AMERICAN INSTITUTE OF ARCHITECTS



AMERICAN INSTITUTE
OF
ARCHITECTS

MAY 27 1963

LIBRARY

1963 DIRECTORY ISSUE

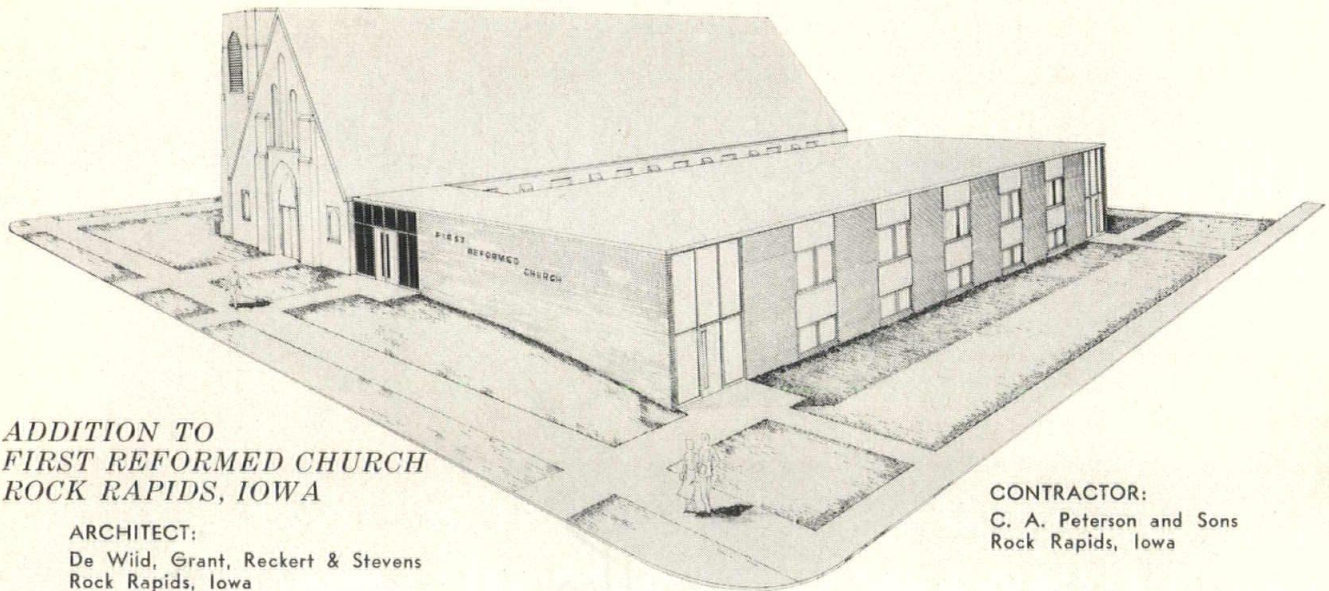
VOL. X NO. I



SPECIFICATION:

- *Minimum Floor Depth*
- *Minimum Sound Transmission*
- *Maximum Economy of Church Funds*

SPECIFIED: SHEFFIELD CLAY TILE BEAM FLOOR SYSTEM



*ADDITION TO
FIRST REFORMED CHURCH
ROCK RAPIDS, IOWA*

ARCHITECT:
De Wiid, Grant, Reckert & Stevens
Rock Rapids, Iowa

CONTRACTOR:
C. A. Peterson and Sons
Rock Rapids, Iowa

Minimum depth of floor structure, to permit required ceiling height . . . minimum transmission of sound from basement to ground floor . . . minimum cost, thus economizing on church funds . . . all these requirements led to the choice of Sheffield Clay Tile Beams for the floor structure of this fine new church addition. (Further, the tile-beam structure provided a temporary floor for contractor workmen to use before the concrete floor was poured.) All these factors helped keep the cost of the new construction down to \$10.93 per square foot of floor area.



Here, again, the skillful integration of Sheffield Clay Tile Beams into new construction has resulted in savings of time and money; flexibility of design; together with inherent strength, durability and fire-resistance.

SHEFFIELD BRICK & TILE COMPANY

SHEFFIELD, IOWA



She couldn't dream... A WALL could be so serviceable !

A Tabor CS-17 wheel with a 1000 gram load won't wear through a 4½ mil film of it in 750 cycles. Hydrochloric, phosphoric, acetic and sulphuric acid solutions do not blister, soften or wrinkle it.

Applied to a rigid substrate, it has more shock and impact resistance than glazed tile. Try to stain it with oils, greases, animal fats, urine, gasoline or food—you can't! Scrub it repeatedly with muriatic acid, alkalies or severe detergents—it doesn't dull or fade. Temperatures of -40°F to 800°F or extremely humid conditions do not affect it.

Decorate with it in scores of colors—with the added options of flecking, veiling or texturing—in a gloss or satin finish.

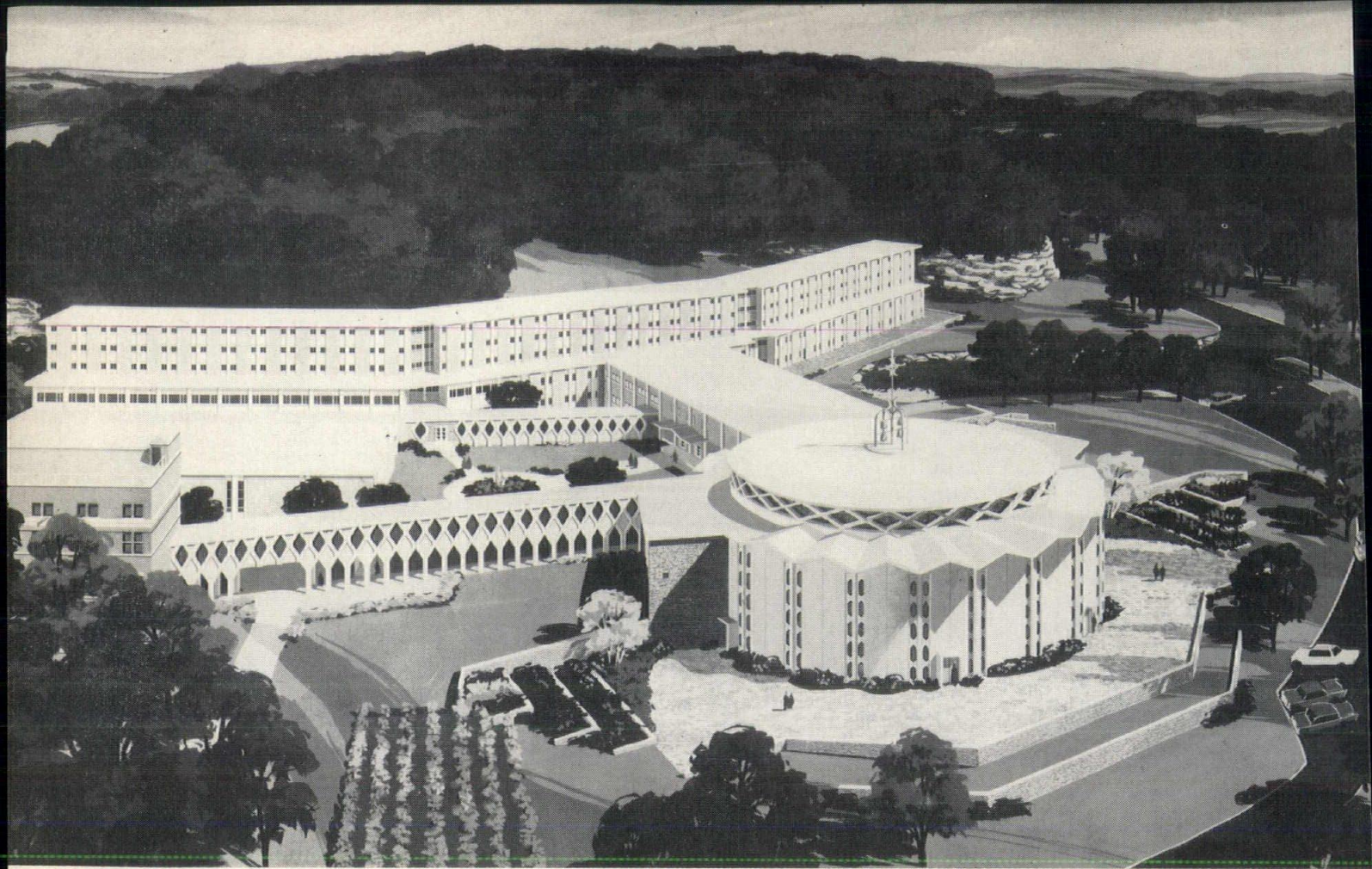
For a custom analysis of how this amazing new architectural coating can assist you—call 283-1501, Des Moines, collect.

P. S. Thrustgard sells for about ¼ the cost of glazed tile!



IOWA PAINT
MANUFACTURING CO., INC.

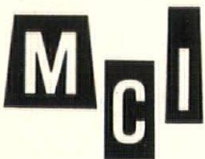
Des Moines, Iowa Decatur, Georgia



DOMINICAN MOTHERHOUSE
ST. CLARA COLLEGE
SINSINAWA MOUND
SINSINAWA, WISCONSIN

ARCHITECTS: SIBERZ • PURCELL • CUTHBERT,
MADISON, WISCONSIN

CONTRACTOR: ORVILLE MADSEN & SONS,
MINNEAPOLIS



MIDWEST CONCRETE INDUSTRIES
WEST DES MOINES, IOWA

Iowa Agents: Swanson-Gentleman Inc., Des Moines.

IOWA ARCHITECT

Iowa Chapter, American Institute of Architects

OFFICERS

G. Doug Robison
Davenport
President

W. David Frevert
Des Moines
Vice-President

James A. Lynch
Des Moines
Secretary

Willis Schellberg
Forest City
Treasurer

PUBLICATIONS COMMITTEE

Rich Goewey
Chairman
Russell Parks
John G. Shelledy
Carl Ver Steeg

EDITOR

Carl Ver Steeg
1200 Grand
West Des Moines

MANAGING EDITOR

Robert F. Bonomi
422 Securities Bldg.
Des Moines 9, Iowa
ATlantic 2-4309

CONTENTS

Growth in Iowa.....	6
Honor Awards 1963.....	7
Raymond G. Bergquist, 1907-1963.....	9
New Members.....	10
For Distinguished Craftsmanship.....	10
Committees 1963.....	11
DIRECTORY IOWA CHAPTER A.I.A.	
Firms	12
Corporate Members	13
Associates	22
Junior Associates	26
Personal & Professional	31

The "Iowa Architect" is published bi-monthly for the Iowa Chapter, American Institute of Architects, and mailed without charge. Appearance of names and pictures of products or services in editorial or advertising copy does not constitute endorsement of either the A.I.A. or this chapter.

THE COVER

McFarland Clinic, Ames, one of two First Honor winners in the 1963 Honors Awards competition. Crites and McConnell, Cedar Rapids. See page 7.

growth in Iowa



ROBISON



FREVERT



LYNCH



SCHELLBERG

OFFICERS OF the Iowa Chapter, A.I.A., lead a much larger organization than did those who were in the same positions only four years ago. A comparison of the first Directory issue of the Iowa Architect published in 1959 and this issue show a major difference.

President G. Doug Robison of Davenport, Vice President W. David Frevert of Des Moines, Secretary James Lynch of Des Moines and Treasurer Willis Schellberg of Forest City are joined by Board Members E. H. Healey of Cedar Rapids, M. E. Jensen and Paul Skiles of Des Moines in handling affairs for an organization comprised of 146 corporate members, 52 associate members and 46 junior associates. In 1959, the count stood at 114 corporate members, 41 associates, and 31 junior associates.

Chapter strength has grown 30 percent in four years, from 186 to 238. The number of firms has grown from 54 to 65.

The rosters today carry names of 43 corporate members who were not listed four years ago; there are 24 new names among the associates, and 39 among the junior associates. Many of the "new" names in the two higher brackets are those who "stepped up" from another classification. Among the corporate members, there now are six Members Emeritus, compared to three in 1959.

Growth in chapter size is a major factor in bringing recognition of the need for some change in structure of the chapter. Retiring President Robert Savage, who also serves on the 1963 Executive Committee, proposed that a second vice president be elected, and that members of the board be elected for three-year terms with one member elected each year.

President Robison, in naming committee chairmen, indicated he expects each committee to operate in fact as well as exist in name. First reports and plans of committees indicated an active year for the Iowa Chapter in 1963, and into 1964.

**Specify
ADEL SMOOTH
FACE BRICK**

Available in Modular, Standard, SCR and Norman sizes, Red Color Range 201 and 209.
Sample on request.

Adel Clay Products Co.
STIPPLE-MATT FACE TILE AND BRICK
AND OTHER VITRIFIED CLAY PRODUCTS

IOWA SALES OFFICE AND WAREHOUSE
101 ASHWORTH ROAD • WEST DES MOINES, IOWA
FACTORIES IN REDFIELD AND CENTERVILLE, IOWA

Phone CRestwood 9-9721

"The architecture
and natural surroundings
are unified"

FIRST
HONOR

honor awards 1963



The "high level of design" in submissions for the 1963 honor awards of the Iowa Chapter, A.I.A., brought commendation from the jury. "A number of submissions should be sent to the national A.I.A. award program where the projects would stand up very well with the national level of architecture being produced," the jury added.

Competition was judged by Robert Cerny, A.I.A., Minneapolis architect who is on the faculty of the University of Minnesota and is participating in the redevelopment of downtown Minneapolis, and Robert A. Little, A.I.A., Cleveland, Ohio, an architect who is widely known as a contributor to professional journals. They spoke to the chapter convention in January.

Both First Honor awards went to projects designed by Crites and McConnell, Cedar Rapids. The James Shive

residence at Lake McBride (above) "is well organized and structurally integrated, with economic use of simple materials consistent with a summer house," the jury said. "A total vacation spirit is achieved . . . It is difficult to distinguish between the view and the building." The lake is between Iowa City and Cedar Rapids.

The owner desired a house suitable for year-round living, with the atmosphere of vacation camping. Construction combines post-and-beam and wood framing; walls have cedar siding applied diagonally inside and out. Floor framing is set off the ground on concrete piers; warm-air furnace is in a small pit beneath the house. There are community water and sewer facilities.

Before the plans were complete, the owner decided to make the house his year-round residence, so the plan was enlarged to include four bedrooms and two baths

WITH AWARD CERTIFICATES: RICE (BROOKS-BORG), GERMANSON, SCHELLBERG, CRITES, HEALEY, McCONNELL.



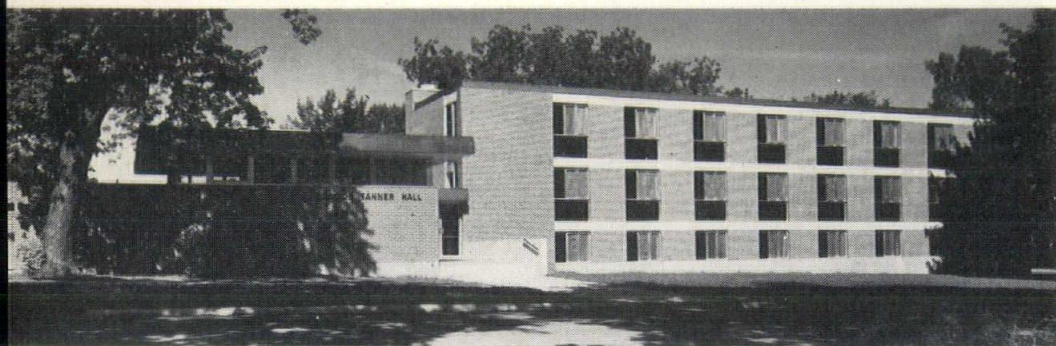


HONORABLE MENTIONS:

UNION STORY BANK, Ames

"A direct solution of space with structure," commended the jury. Barrel vaults and glass interior partitions achieve spacious effect on limited downtown site.

Germanson-Foss & Co.

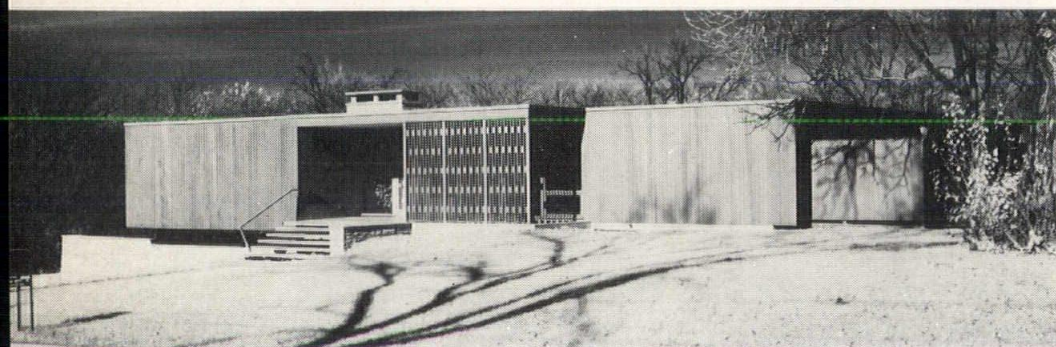


JACOB TANNER HALL

Waldorf College, Forest City

"Organization into a simple plan and unself-conscious structure," commended the jury. Building combines 72-unit dormitory and dean's apartment, on limited site.

Gjelten & Schellberg



WALL RESIDENCE, Boone

"Simplicity of exterior and refinement of interior detail," reads the commendation. Lanai house with interior court is designed around contemporary outdoor living for young family.

Crites & McConnell

on upper floor; main floor now has living room, den, kitchen, dining room and bath.

The McFarland Clinic in Ames (pictured on cover) "is a joy in every respect" said one of the jurors. "The jury admires clean definition of plan into well-integrated areas for waiting and treatment . . . There is exquisite detailing and a consistency of the detailing and scale throughout."

The owners desired a building accommodating 20 doctors and readily expandable to space for 30; comfortable and easy to maintain, but not ostentatious. The doctors group themselves into six specialties. The building now has two floors, each with three departmental wings and an administrative wing housing pharmacy, laboratory, business office, etc. Each of the six departments has its own waiting room and reception desk. Each wing may be extended individually, and provision has been made for a third floor.

Structure of the building is two-story precast concrete frames. Exterior wall panels are precast concrete with exposed quartz aggregate. Glass vision panels replace concrete panels wherever desired. Precast, prestressed floor and roof slabs are used for air distribution.

Three honorable mentions were made (photos above).

The Union Story Trust and Savings Bank in Ames was designed by Germanson-Foss, Sioux City. Fronting on three downtown streets, the site had to furnish parking as well as the main building and drive-in facilities. A setback from the sidewalk, with planting areas, and bright porcelain panels provide color and openness amid congestion.

The Waldorf College campus, expanding in a residential district, had limited space for a dormitory incorporating a residence for a family of five. The building designed by Gjelten and Schellberg provides a private patio and outdoor entrance for the dean's apartment, which also has an entry from the dormitory. Dormitory has central facilities for 72-unit addition later. Multi-story dormitory rests on perimeter band of concrete lintel beams, supported by masonry piers.

Crites and McConnell's lanai house in Boone features an interior court on the upper level, with access from kitchen, dining room and master bedroom. This level also has living room, three other bedrooms, three baths. Lower level contains recreation room, laundry, shop. Exterior is redwood rusticwood plywood. Heating is hot water radiant panels in concrete ground level floors and main floor ceilings.

Raymond G. Bergquist, 1907-1963

Raymond G. Bergquist, 56, Dubuque, who served as the 1961 president of the Iowa Chapter, A.I.A., died April 12 at Finley Hospital after having undergone surgery several days earlier. Burial was April 15 in Linwood Cemetery after services at St. Mark's Lutheran Church.



Mr. Bergquist had practiced architecture for 28 years, and was registered in Iowa, Wisconsin and Illinois. He was born in Chicago and received his architectural training at the Armour Institute of Technology, receiving a degree in 1931. He did post-graduate work at the Architectural Sketch Club in 1933, and at the Lewis Institute of Technology in 1934 and 1935.

As a member of the Iowa Chapter, A.I.A., he had been active on committees and as a participant in the programs of the chapter. As president, he was a decisive executive and leader who contributed to the growth and effectiveness of the chapter.

In Dubuque, Mr. Bergquist had served on the City Planning and Zoning Commission for six years and was vice chairman at the time of his death. He also was a member of the Board of Zoning Adjustment and the Urban Renewal Committee. He was a past Director of the Dubuque Chamber of Commerce, a member of the Council of St. Mark's Church, a past president of the Kiwanis club, and a director of the YMCA.

He was a member of the Masonic lodge and the Order of Eastern Star at Boscobel, Wis., where his firm maintains an office, and the Consistory at Chicago, Ill. He was a member of the B.P.O.E. and the Dubuque Golf and Country Club, and was a Boys Club Booster. He was a member of the State Schools and College Fire Regulations Advisory Committee.

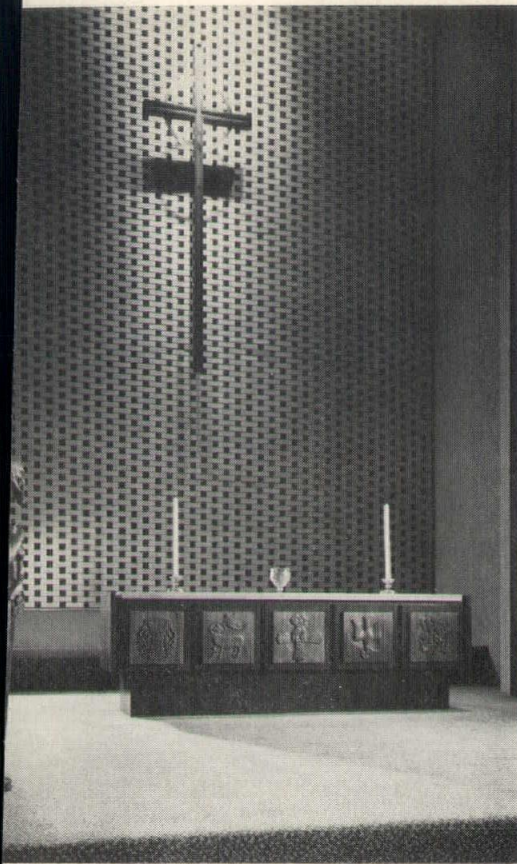
Honor Award Photography: Cover and Page 7, Julius Shulman, Los Angeles, Cal. Page 8: Bank, Hill Studio Ames; Dormitory, Joel, Sioux Falls; S.D.; Residence, Shulman. Page 9: Church, Joel; Bowling alley, Winkler, Des Moines.

MERIT CITATION

"The jury commends the detailing of the chancel." Wood sculpture was designed by architect.

FIRST PRESBYTERIAN CHURCH Cedar Rapids

*Brown,
Healey, &
Bock*



Two projects received merit citations. Brooks-Borg's bowling alley uses tile murals to carry out the name which the owner desired to feature. The 24-foot-deep section fronts a stock steel rigid frame building.

In Cedar Rapids, an unsafe downtown church was gutted and rebuilt within sound 100-year-old native stone walls by Brown, Healey, Bock. All chancel furnishings were designed by the architect, who made sketches for the walnut sculpture and other features. Wood block organ screen gives vertical "lift" to wide nave; is 90 percent open to transmit tone. Gothic arches on pews and pulpit recall windows preserved in stone walls. High relief is St. Paul the preacher; panels on communion table symbolize (from left) the bread; Holy Trinity, and wine.

MERIT CITATION

THE TOTEM BOWL Marshalltown

"The jury applauds the attempt to bring a cheerful but architectural character to a type of building that has been significant for its ugliness."

Brooks-Borg



new members

Changes in membership status brought seven new corporate members of the A.I.A. to the Iowa Chapter since publication of the 1962 Directory issue of the Iowa Architect. In the same period, seven names have been added to the roster of associate members, and six to the junior associates.

New names on the corporate member list are:

Franklin N. Bunker, Des Moines
Robert E. Earnhart, Iowa City*
Howard C. Heemstra, Forest City
Donald P. McGinn, Dubuque
Ivan V. Warm, Waterloo
Ronald C. Wehner, Iowa City
Marvin E. Werner, Muscatine

New associate members are:

Keith M. Carlson, Waterloo
John G. Chapman, Des Moines
Robert H. Jamerson, Cedar Falls
Pierce King, Cedar Rapids
Donald H. Luethje, Davenport
Kenneth A. Wagner, Jr., Davenport
Norman E. Wirkler, Dubuque

Newly accepted junior associates:

William C. Dale, Jr., Bettendorf
Arthur E. Hammond, Des Moines
Richard H. Kruse, Des Moines
A. (Raymond) A. Nasr, Des Moines
Wayne J. Snyder, Cedar Falls
James W. Wilkins, Des Moines

*Pending transfer from the Kansas Chapter.

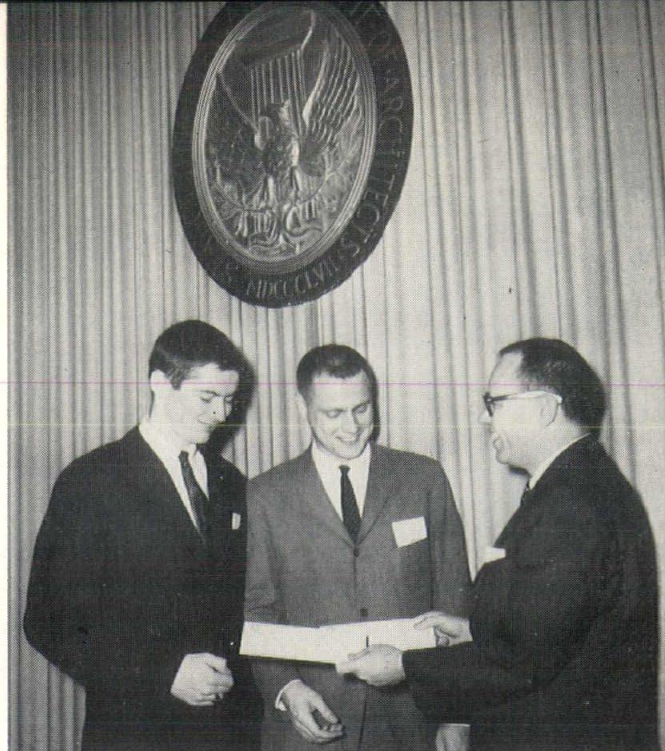
for distinguished craftsmanship

"Great pride in first-class workmanship" . . . "conscientious, capable, skilled with tools, a 'feel' for beauty" . . . "his projects have consistently left the owner satisfied" . . . "a combination of humility and the strength of personality to command respect on the job" . . . "concern for over-all quality" . . . "an example for all those who work with him" . . . "a major contribution to a successful building."

Such were the comments made by Iowa architects in nominating workmen in the building trades for the Distinguished Craftsman awards made by the Iowa Chapter A.I.A.

Receiving awards at the convention banquet were:

Arthur Harper, Des Moines, stone mason and contractor,



Bill Dikis, left, and David Nelson, center, students in architecture at Iowa State University, receive awards in the first architectural photography contest sponsored by the Chapter. Presentation is made by John Rice, A.I.A., Des Moines, of the Education Committee.

cited for work on the Farmers Elevator Mutual Insurance Company Home Office Building in Des Moines.

Alfred Hahn, Algona, journeyman electrician for Dewey Electric, Inc., Ventura, cited for work on Holy Family Hospital and Emmet County Courthouse in Estherville, and the Instrumentation Research Laboratory at Iowa State University.

C. D. Parsons, Gladbrook, carpenter and for 15 years construction superintendent for Gethmann Construction Co., Gladbrook.

Don Doak, Ottumwa, 30 years in the construction business and for eight years construction superintendent for Walter A. Zlogar, Inc., Ottumwa.

Robert Elsbury, Rock Falls, 20 years in the industry, for 10 years construction superintendent for Les Nelson Construction Co., Fertile.

Richard Vlaanderen, Sioux City, carpenter for 11 years, construction superintendent for 12 years, and for five years general superintendent of local work for W. A. Klinger, Inc., Sioux City, a large firm averaging 20 simultaneous city projects during the peak season.

Eight years ago, Vlaanderen's father, the late Jacob Vlann-deren, received one of the first craftsmanship awards made by the Iowa chapter.

CRAFTSMANSHIP AWARDS: ART HARPER, ALFRED HAHN, C. D. PARSONS, DON DOAK, ROBERT ELSBURY, RICH VLAANDEREN.



COMMITTEES 1963

IOWA CHAPTER A.I.A.

Chapter Affairs Committee

FREVERT, W. D., Vice Pres.,
Chairman

3839 Merle Hay Road
Des Moines, Iowa

ROBISON, G. D.
President

601 Brady Street
Davenport, Iowa

LYNCH, James A.
Secretary

1800 Watrous
Des Moines, Iowa

SCHELLBERG, WILLIS E.
Treasurer

546 N. Clark Street
Forest City, Iowa

HEALEY, EDWARD H.
Director

36th Street and 1st Avenue, S.E.
Cedar Rapids, Iowa

JENSEN, MYRON E.
Director

201 Davidson Building
Des Moines, Iowa

SKILES, PAUL S.
Director

500 Hubbell Building
Des Moines, Iowa

SAVAGE, ROBERT E.
Past President

12th and Grand
West Des Moines, Iowa

Community Development

LIGHTER, CLYDE
Chairman

526 Liberty Building
Des Moines, Iowa

PRALL, CLIFFORD
HANSEN, CHARLES

MOELLER, YALE

VOORHEES, GRANT

Consulting Engineers Liaison

BORG, JOSEPH E.
Chairman

815 Hubbell Building
Des Moines, Iowa

WAGGONER, TOM
RICHARDSON, CHARLES V.

STEVENS, WAYNE

Construction Industry Relations

SKILES, PAUL S.
Chairman

500 Hubbell Building
Des Moines, Iowa

FREVERT, W. D.

LUNDBLAD, GLENN
WAGGONER, TOM

HUKILL, WILLIAM V.
STEFFEN, KENNETH J.

PROUT, CHARLES U.
LYON, WAYNE R.

BIANCO, HAROLD F.
PEIFFER, LEO C.

HOWARD, LYLE P.
FEDDERSON, PHIL H.

Conventions

PORTER, THOMAS C.
Chairman

253 Franklin Avenue
Des Moines, Iowa

(To appoint own Committee when
and as required)

Design

McCONNELL, RICHARD
Chairman

1953 First Avenue, S.E.
Cedar Rapids, Iowa

HERBERT, CHARLES E.
SALISBURY, ALLEN B.

PAYNE, HAROLD L.
OLSON, CLARENCE

REDFERN, MERLIN L.
LOBE, HORST W.

Education

O'NEIL, EUGENE C.
201 Jewett Building

Des Moines, Iowa

RICE, JOHN S.
McKLVEEN, JOHN H.

MARTIN, WILLIAM L.
EMERY, AMOS B.

MAIWURM, DONALD J.
HOTCHKISS, WALTER A.

Fellowship

JENSEN, MYRON E.
Chairman

201 Davidson Building
Des Moines, Iowa

GRIFFITH, GERALD I.
HORNER, GEORGE L.

Government Relations

RUSSELL, GEORGE
Chairman

1221 Savings and Loan Bldg.
Des Moines, Iowa

SAVAGE, ROBERT E.
Co-Chairman

LYON, WAYNE R.
GRIFFITH, STANFORD W.

EMERY, AMOS B.
SILLETTO, CHARLES B.

Hospitals and Health

MORGAN, DANE D.
Chairman

314 N. 4th Street
Burlington, Iowa

Membership

WEIGMAN, JOHN
Chairman

612 Third Avenue, South
Fort Dodge, Iowa

WOODBURN, WILLIAM M.
SKINNER, SAMMY L.

DEVORE, ROBERT C.

Office Procedure

BROM, RICHARD H.
Chairman

25 Four Seasons Drive
Waterloo, Iowa

KENDALL, KENNETH R.
SCHELLBERG, WILLIS E.

WAYLAND, LLOYD

Preservation of Historic Buildings

WAGNER, WILLIAM J.
Chairman

500 Hubbell Building
Des Moines, Iowa

PATTEN, LAWTON M.
BENTLEY, JAMES M.

HANSEN, CHARLES

School Buildings

RAMSEY, ROBERT
Chairman

3839 Merle Hay Road
Des Moines, Iowa

STEWART, HAROLD J.

ATHERTON, THOMAS J.
CLEVELAND, MORTIMER B.

DE VOE, ROBERT C.
KRAMER, DONOVAN D.

VER PLOEG, STANLEY C.
HECKER, ROBERT D.

Producers Council Liaison

WOODBURN, WILLIAM M.
Chairman

201 Jewett Building
Des Moines, Iowa

VER PLOEG, STANLEY C.
HUEHOLT, RAYMOND L.

Public Relations

GERMANSON, GERALD D.
Chairman

1308 Pierce Street
Sioux City, Iowa

VANDE VENTER, ROBERT L.
JOHNSON, ROBERT L. M.

THORSON, OSWALD H.
HEALEY, EDWARD H.

HEEMSTRA, HOWARD

Publications

GOEWY, RICHARD W.
Chairman

815 Hubbell Building
Des Moines, Iowa

PARKS, RUSSELL
SHELLEDY, JOHN G.

VER STEEG, CARL

District Editors

DUFFY, JAMES M.

BROSHAR, ROBERT C.

MILLER, GERALD H.

RUDI, NORMAN H.

HEEMSTRA, HOWARD

BONDED APPLICATORS OF

DESCO WALL COATINGS

VITRO GLAZE — ARMITE
NYOCON — GLAZETITE — STARTEX
VINYL — ARMTEX

NEVER NEEDS PAINTING

WATERPROOF

Applied to ANY Dry or
Grease-Free Surface

SIoux CITY MOSAIC CO., INC.

SINCE 1920

Ceramic Tile & Terrazzo Contractors

W. 1st & REBECCA STS.

PHONE 5-5653

Members of:

DESCO International of America
National Terrazzo & Mosaic Ass'n.
Northwest Terrazzo Ass'n.

DIRECTORY, IOWA CHAPTER, A.I.A.

*On this page are listed all architectural firms resident in Iowa, whose principals are affiliated either with the A.I.A. or its Iowa Chapter.
Chapter Office: 422 Securities Bldg., Des Moines 9, Iowa.*

Altfillisch, Olson, Gray & Thompson
126 1/2 West Water Street
Decorah, Iowa

Herbert A. Arthur, Architect
310 1/2 Main Street
Ames, Iowa

Bergland & Bianco
11 1/2 S. Federal Avenue
Mason City, Iowa

Wm. Beuttler & Son
14th and Nebraska Streets
Sioux City, Iowa

Brooks-Borg
815 Hubbell Building
Des Moines 9, Iowa

Brown, Healey & Bock
131 36th St. Drive, S.E.
Cedar Rapids, Iowa

I. T. Carrithers, Architect
6 N. First Street
Council Bluffs, Iowa

R. M. & M. B. Cleveland
424 E. 4th Street
Waterloo, Iowa

G. B. Cox, Architect
Professional Arts Building
1630 State Street
Bettendorf, Iowa

Architects Crites & McConnell
1953 First Ave. S.E.
Cedar Rapids, Iowa

Deuth & Gibson
417 Logan Street
Waterloo, Iowa

Robert C. DeVoe, Architect
311B Main Street
Cedar Falls, Iowa

Dewild-Grant-Reckert & Stevens
Rock Rapids, Iowa

Dougher-Frevert-Ramsey
Professional Center
3839 Merle Hay Road
Des Moines 10, Iowa

James M. Duffy, Architect
208 Security Building
Sioux City, Iowa

Durrant & Bergquist
666 Loras Blvd.
Dubuque, Iowa

Amos Emery & Carl Hunter, Architects
820 Locust Street
Des Moines 9, Iowa

Phil H. Feddersen, Architect
818 North Second Street
Clinton, Iowa

Germanson-Foss & Co.
1308 Pierce
Sioux City 5, Iowa

Gjeltten & Schellberg
205 S. Clark Street
Forest City, Iowa

Griffith-Kendall, Architects
3810 Ingersoll
Des Moines 12, Iowa

The Griffith Co.
S. Kenyon Road
P.O. Box 917
Fort Dodge, Iowa

Richard Hansen & Associates
14 South Linn St.
Iowa City, Iowa

Robert D. Hecker, Architect
407 Toy Nat'l Bank Bldg.
Sioux City, Iowa

Charles Herbert & Associates
709 Bankers Trust Bldg.
Des Moines 9, Iowa

Hollis and Miller
120 Council Bluffs Savings Bank Bldg.
Council Bluffs, Iowa

George Horner, Architect
State University of Iowa
Iowa City, Iowa

Lyle P. Howard, Architect
208 Kresge Building
Ottumwa, Iowa

Ervin C. Huneke, Architect
First National Bank Bldg.
Fairfield, Iowa

Johnson-Jamerson Associates
401 1/2 Main Street
Cedar Falls, Iowa

Karl Keffer Associates
202 Masonic Temple Building
Des Moines 9, Iowa

Louis Kingscott & Associates
321 W. Kimberly Road
P.O. Box 202
Davenport, Iowa

Kohlman-Eckman-Hukill
610 Tenth Street S.E.
Cedar Rapids, Iowa

Lindgren & Taylor
6311 Hickman Road
Des Moines 22, Iowa

Keith E. Lorenzen & Staff
215 Commercial Street
Waterloo, Iowa

Maiwurm-Wiegman
Warden Building
Fort Dodge, Iowa

William L. Martin, Architect
821 15th Street
Boone, Iowa

Donald P. McGinn, Architect
740 Fischer Building
Dubuque, Iowa

Wm. R. Meehan, Architect
2215 Grand Avenue
Des Moines 12, Iowa

Dane D. Morgan & Associates
314 N. 4th
Burlington, Iowa

William Nielsen, Architect-Engineer
307 Masonic Temple Bldg.
Des Moines 9, Iowa

John H. Normile, Architect
2425 Park Avenue
Des Moines, Iowa

Porter-Brierly Associates
701 Insurance Exchange Building
Des Moines 9, Iowa

Leo C. Peiffer, Architect
3330 Mt. Vernon Road, S.E.
Cedar Rapids, Iowa

Powers & Associates
Airport Building
Iowa City, Iowa

N. Clifford Prall, Architect
4717 Grand Avenue
Des Moines 9, Iowa

Russell J. Prescott, Architect
126 1/2 W. Main Street
Marshalltown, Iowa

Prout-Mugasis-Johnson
709 5th Avenue S.
Clinton, Iowa

Charles Richardson & Associates
1001 Kahl Building
3rd & Ripley Streets
Davenport, Iowa

Russell & Lynch
1221 Savings & Loan Building
Des Moines 9, Iowa

Savage & Ver Ploeg
1200 Grand
West Des Moines, Iowa

Smith, Voorhees, Jensen
Architects Associated
201 Davidson Bldg.
Des Moines, Iowa
and

424 Badgerow Bldg.
Sioux City 1, Iowa

Soenke & Wayland, Architects
601 Brady Street
Davenport, Iowa

Steffen & Stoltz
125 1/2 East Second
Box 601
Ottumwa, Iowa

Stewart, Robison & Laffan
Priester Building
601 Brady Street
Davenport, Iowa

Thorson-Brom-Brosnar, Architects
219 Waterloo Building
Waterloo, Iowa

Tinsley, Higgins, Lighter & Lyon
526 Liberty Building
Des Moines 9, Iowa

Toenjes & Stenson
217 W. 4th Street
Waterloo, Iowa

Waggoner & Waggoner
15 S. Federal Avenue
Mason City, Iowa

Walsh & Keninger
Box 467
Glass Block Building
Spencer, Iowa

Wehner and Henry, Architects
204 1/2 E. Washington St.
Iowa City, Iowa

Wetherell-Harrison-Wagner
500 Hubbell Building
Des Moines 9, Iowa

Raymond C. Whitaker, Architect
1202 Adams Street
Davenport, Iowa

Woodburn & O'Neil
201 Jewett Building
Des Moines 9, Iowa

Members, the American Institute of Architects

ASSIGNED TO THE IOWA CHAPTER

BEUTTLER, WILLIAM
Principal, William Beuttler and Son,
14th and Nebraska Streets, Sioux City

BEUTTLER, W. LEE
Principal, William Beuttler and Son,
14th and Nebraska Streets, Sioux City

BIANCO, HAROLD F.
Principal, Bergland and Bianco,
11 1/2 South Federal Avenue, Mason City

**BROSHAR,
ROBERT C.**

Principal, Thorson-
Brom-Broshar,
Architects, 219
Waterloo Bldg.,
Waterloo



**ALTFILLISCH,
CHARLES**
(F.A.I.A.)

Principal, Altfillisch,
Olson, Gray &
Thompson, 126 1/2 W.
Water Street,
Decorah



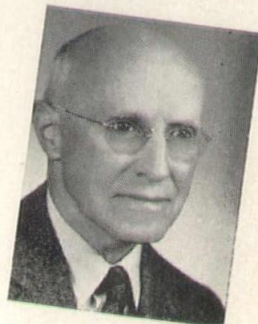
**BLUM,
CARL R.**

Principal, Dane D.
Morgan and
Associates, 314 North
4th Street, Burlington



**BROWN,
WILLIAM J.**

Principal, Brown,
Healey Bock, 131
36th St. Drive, S.E.,
Cedar Rapids



**ARTHUR,
HERBERT A.**

Principal, Herbert A.
Arthur, 310 Main
Street, Ames



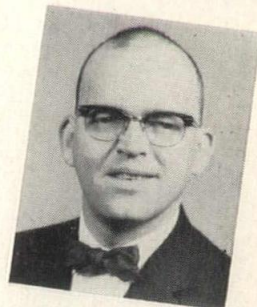
**BORG,
ELMER H.**

Principal, Brooks-Borg,
815 Hubbell Bldg.,
Des Moines 9



**BUNKER,
FRANKLIN N.**

Architect, Board of
Control of State
Institutions, State
Office Building
Des Moines



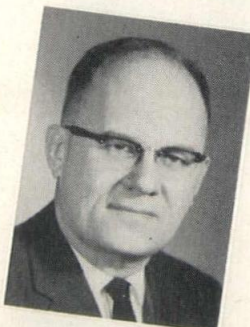
**ATHERTON,
THOMAS J.**

Principal, Karl Keffer
Associates, 202
Masonic Temple
Building, Des Moines



**BORG,
JOSEPH E.**

Principal, Brooks-Borg,
815 Hubbell Bldg.,
Des Moines 9



**CAMIZZI,
FRANCIS J., AIA**

Brown Healey & Bock,
131 36th St., Drive,
S.E., Cedar Rapids



**CARRITHERS,
IRA T., JR.**

Principal, I. T.
Carrithers,
6 North First Street,
Council Bluffs



**BENTLEY,
JAMES M.**

Principal, Louis C.
Kingscott, Associates,
Davenport



**BROM,
RICHARD H.**

Principal, Thorson-
Brom-Broshar, 219
Waterloo Building,
Waterloo

**BROOKS,
J. WOOLSON**
(F.A.I.A.)

Principal, Brooks-Borg,
815 Hubbell Bldg.,
Des Moines 9



**CLEVELAND,
MORTIMER B.**

Principal, R. M. &
M. B. Cleveland,
424 East 4th Street,
Waterloo

BERGLAND, ROBERT B.
Principal, Bergland and Bianco,
11 1/2 S. Federal Avenue, Mason City

**CLEVELAND,
RHODES M.**

Principal, R. M. &
M. B. Cleveland,
424 East 4th Street,
Waterloo



COUCH, LOUIS C.

Lundeen & Toline
1630 - 5th Ave., Moline, Illinois



**COX,
GERALD BURTON**

Principal, G. B. Cox,
Architect, Professional
Arts Bldg., 1630
State St., Bettendorf



**CRITES,
RAY D.**

Principal, Architects
Crites and
McConnell 1953
First Avenue, S.E.,
Cedar Rapids



**DEAN,
WALDO J.**

Principal, Karl Keffer,
Associates, 202
Masonic Temple
Building, Des Moines



**DeVOE,
ROBERT C.**

Principal,
311-B Main St.,
Cedar Falls

DOMMER, JEROLD W.

Principal, Durrant and Bergquist,
666 Loras Blvd., Dubuque

DOUGHER, JAMES A.

Principal, Dougher-Frevert-Ramsey,
3839 Merle Hay Road
Des Moines 10



**DUFFY,
JAMES M.**

Principal, James M.
Duffy, Architect, 208
Security Bank Bldg.
Sioux City

**EARNHART,
ROBERT E.**

(Pending transfer from Kansas Chapter)
Powers & Associates
Airport Building
Iowa City



**ECKMAN,
REALAND F.**

Principal, Kohlman-
Eckman-Hukill, 610
Tenth Street, S.E.,
Cedar Rapids



**EMERY,
AMOS B.**

Principal, Amos Emery
and Carl Hunter,
Architects,
820 Locust Street
Des Moines



**FEDDERSEN,
PHIL H.**

Principal, Phil H.
Feddersen, Architect,
818 No. Second St.,
Clinton



**FERNBACH,
RICHARD B.**

119 Devon Drive,
Falls Church, Va.

FRANZEN, ARCHIE W.

P.O. Box 151, Harper's Ferry
West Virginia



**FREVERT,
W. DAVID**

Principal, Dougher-
Frevert-Ramsey,
218 Professional
Center, 3839 Merle
Hay Rd.
Des Moines



**GALVIN,
JOHN C.**

Altfillisch, Olson,
Gray and Thompson,
126 1/2 West Water
Street, Decorah



**GERMANSON,
GERALD D.**

Principal, Germanson-
Foss & Co., 1308
Pierce, Sioux City

GIBSON, VICTOR P.

Deuth & Gibson, 417 Logan Street, Waterloo



**GJELTEN,
GORDON O.**

Principal,
Gjeltten and
Schellberg,
205 S. Clark Street,
Forest City



**GOEWY,
RICHARD W.**

Principal, Brooks-Borg,
815 Hubbell Building,
Des Moines

GORDON, GENE P.

Principal, Durrant & Bergquist, 666 Loras Blvd., Dubuque

GRAY, DONALD LOWELL

Principal, Altfillisch, Olson, Gray & Thompson, 305 Fifth Avenue, Decorah



GRIFFITH, GERALD I.

Principal, Griffith-Kendall 3810 Ingersoll Des Moines



GRIFFITH, STANFORD WELLS

Principal, The Griffith Company S. Kenyon Road, P.O. Box 917 Fort Dodge

GROW, ROBERT WARREN

17 Mt. Whitney Drive San Rafael, California Associate, Crig, & Daniloff, Architects



HARRISON, ROLAND T.

Principal, Wetherell-Harrison-Wagner, 500 Hubbell Building, Des Moines



HAYNES, STANLEY F.

Prout, Mugasis and Johnson, 709 5th Avenue South, Clinton



HEALEY, EDWARD HOPKINS

Principal, Brown, Healey, Bock, 131 36th St. Drive, S.E. Cedar Rapids

HECKER, ROBERT D.

Principal, Robert D. Hecker, 407 Toy National Bank, Sioux City



HEEMSTRA, HOWARD

Gjeltten & Schellberg 205 S. Clark Forest City, Iowa



HENRY, HARVEY W.

Principal, Wehner and Henry, Architects 204 1/2 East Washington, Iowa City



HERBERT, CHARLES E.

Principal, Charles Herbert and Associates, 709 Bankers Trust Building, Des Moines 9



HIGGINS, BURDETTE

Principal, Tinsley, Higgins, Lighter and Lyon, 526 Liberty Building, Des Moines



HORNER, GEORGE L.

Architect's Office, State University of Iowa, Iowa City



HOTCHKISS, WALTER ALAN

Supervising Architect, Iowa State University Engineering Annex, Ames



HOWARD, LYLE

Principal, Lyle P. Howard, 208 Kresge Building, Ottumwa



HUEHOLT, RAYMOND L.

Principal, Smith-Voorhees-Jensen, Architects Associated, 201 Davidson Building, Des Moines



HUKILL, WILLIAM V., JR.

Principal, Kohlmann-Eckman-Hukill, 610 Tenth Street S.E., Cedar Rapids



HUNEKE, ERVIN C.

Principal, Ervin C. Huneke, First National Bank Building, Fairfield



HUNTER, CARL JOHN

Principal, Amos Emery & Carl Hunter, 412 38th St. Place, Des Moines 12

**JENSEN
MYRON E.**

Principal, Smith
Voorhees, Jensen,
Architects Associated,
201 Davidson Building,
Des Moines



**KRAMER,
DONOVAN D.**

Principal, Durrant and
Bergquist, 666 Loras
Blvd., Dubuque



**LORENZEN,
KEITH E.**

Principal, Keith
Lorenzen & Staff, 215
Commercial Street,
Waterloo



**JOHNSON,
ROBERT L. M.**

Principal, Prout-
Mugasis-Johnson, 709
Fifth Avenue South,
Clinton



**LAFFAN,
WILLIAM J.**

Principal, Stewart-
Robison-Laffan, 601
Brady St., Davenport



**LUNDBLAD,
GLENN E.**

Smith-Voorhees-
Jensen, Architects
Associated, 424
Badgerow Building,
Sioux City



**KENDALL,
R. KENNETH**

Partner, Griffith-
Kendall Architects,
3810 Ingersoll Ave.,
Des Moines



**LANGOHR,
E. LAWRENCE**

Principal, Dane D.
Morgan & Associates,
314 North 4th Street
Burlington



**LYNCH,
JAMES A.**

Principal, Russell and
Lynch, 1221 Savings
and Loan Building,
Des Moines



**KENINGER,
BERNARD J.**

Principal, Walsh &
Keninger, Box 467,
Spencer



**LANTZ,
REUBEN S.**

Tinsley, Higgins,
Lighter and Lyon,
526 Liberty Building,
Des Moines



**LYON,
R. WAYNE**

Principal, Tinsley,
Higgins, Lighter and
Lyon, 526 Liberty
Building, Des Moines



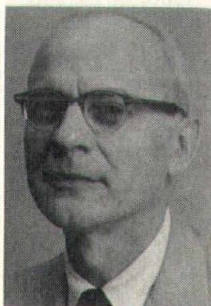
**KOHLMANN,
ELLSWORTH F.,**

Principal, Kohlmann-
Eckman-Hukill,
Architects, 610
Tenth Street S.E.,
Cedar Rapids



**LIGHTER,
CLYDE W.**

Principal, Tinsley,
Higgins, Lighter and
Lyon, 526 Liberty
Building, Des Moines



**MAIWURM,
DONALD J.**

Principal, Maiwurm
and Wiegman,
Warden Building
Fort Dodge



**KOCIMSKI,
KAROL J.**

Professor of
Architecture, Iowa
State University,
Ames



**LINDGREN,
ARTHUR A.**

Principal, Lindgren &
Taylor, 6311
Hickman Road,
Des Moines



**MARQUART,
GAIL EUGENE**

Wetherell-Harrison-
Wagner, 500 Hubbell
Bldg., Des Moines





Blumcraft

ADJUSTABLE ANCHORING SYSTEMS

SOLVES PROBLEMS OF SECURING RAILINGS TO CONCRETE BY BECOMING AN INTEGRAL PART OF THE STAIR STRUCTURE

- INSURES EXTREME RIGIDITY
- REDUCES COSTLY FIELD LABOR
- ELIMINATES BREAKAGE IN MASONRY
- ADJUSTABLE FOR POST ALIGNMENT



Blumcraft OF PITTSBURGH

GENERAL CATALOG OF COMPLETE BLUMCRAFT LINE AVAILABLE ON REQUEST
COPYRIGHT 1962 BY BLUMCRAFT OF PITTSBURGH • 460 MELWOOD STREET, PITTSBURGH 13, PENNSYLVANIA

**MARTIN,
WILLIAM L.**

Principal, William L. Martin, 821 15th St., Boone



**MILLER,
GERALD H.**

Principal, Bracke & Hayes, Architects, Bankers Life Building, Moline, Illinois



**PAYNE,
HAROLD L.**

Russell & Lynch, 1221 Savings & Loan Building, Des Moines



**McCONNELL,
RICHARD D.**

Principal, Architects Crites and McConnell 1953 First Avenue, S.E., Cedar Rapids



**MORGAN,
DANE D.**

Principal, Dane D. Morgan and Associates, 314 North 4th Street, Burlington



**PEIFFER,
LEO CLEMENT**

Principal, Leo C. Peiffer, Architect, 3330 Mt. Vernon Rd., S.E., Cedar Rapids



**McGINN,
DONALD P.**

Principal, Donald P. McGinn, Architect, 740 Fischer Building, Dubuque



**MUGASIS,
ALEXANDER P.**

Principal, Prout, Mugasis and Johnson, 709 5th Avenue, South, Clinton



**PORTER,
THOMAS C.**

Principal, Porter-Brierly Associates, 701 Insurance Exchange Bldg., Des Moines 9



**McKEOWN,
DONALD**

Dept. of Arch. & Arch. Eng., Iowa State University, Ames



NIELSEN, WILLIAM N.

Principal, William Nielsen, 307 Masonic Temple Building, Des Moines



**NORMILE,
JOHN**

Principal, John Normile, 2425 Park Avenue, Des Moines

**PRALL,
N. CLIFFORD**

Principal, N. Clifford Prall, 4717 Grand Ave., Des Moines 12



**McKLVEEN,
JOHN H.**

Principal, Wetherell-Harrison-Wagner, 500 Hubbell Building, Des Moines



OLSON, ROGER MERWIN

Principal, Altfillisch, Olson, Gray & Thompson, 126 1/2 West Water Street, Decorah



PRESCOTT, RUSSELL, J.

Principal, Russell J. Prescott, 126 1/2 W. Main Street, Marshalltown



McLENNAN, DONALD M.

208 Bever Bldg., Cedar Rapids

**MEEHAN,
WILLIAM R.**

Principal, William R. Meehan, 2215 Grand Ave., Des Moines 12

**O'NEIL,
EUGENE C.**

Principal, Woodburn and O'Neil, 201 Jewett Building, Des Moines

**PROUT,
CHARLES U.**

Principal, Prout, Mugasis and Johnson, 709 5th Ave. S., Clinton

PATTEN, LAWTON M.

Department of Arch. and Arch. Eng., Iowa State University, Ames

PRUSINER, LAWRENCE A.

6523 Ridge Circle, Cincinnati, Ohio

**RALSTON,
GLEN E.**

Principal, Howard R. Green Co., 417 1st Ave., S.E., Cedar Rapids



**RUDI,
NORMAN H.**

Instructor, Dept. of Arch and Arch Eng., Iowa State University, Ames



**SKILES,
PAUL S.**

Principal, Wetherell-Harrison-Wagner, 500 Hubbell Building, Des Moines



**RAMSEY,
ROBERT**

Principal, Dougher-Frevert-Ramsey, 3839 Merle Hay Rd., Des Moines



**RUSSELL,
GEORGE**

Principal, Russell and Lynch, 1221 Savings and Loan Building, Des Moines



**SMITH,
DIGHTON H.**

Principal, Smith, Voorhees and Jensen, Architects Associated, 201 Davidson Building, Des Moines



**RICE,
JOHN**

Principal, Brooks-Borg, 815 Hubbell Building, Des Moines 9



**SALISBURY,
ALLEN B.**

Smith-Voorhees-Jensen, Architects Associated, 206 Davidson Building, Des Moines 9



**SOENKE,
LOUIS G.**

Principal, Soenke & Wayland, Architects, 601 Brady Street, Davenport



**RICHARDSON,
CHARLES V.**

Principal, Charles Richardson and Associates, 1001 Kahl Building, Davenport



**SAVAGE,
ROBERT E.**

Principal, Savage and Ver Ploeg, 1200 Grand, West Des Moines



**STEFFEN,
KENNETH J.**

Principal, Steffen & Stoltz, 125 1/2 East Second, Ottumwa



**RITTS,
CHARLES L.**

Tinsley, Higgins, Lighter and Lyon, 526 Liberty Building, Des Moines



**SCHELLBERG,
WILLIS E.**

Principal, Gjeltten and Schellberg, 205 S. Clark Street, Forest City



**STENSON,
MARVIN L.**

Principal, Toenjes & Stenson, 217 W. Fourth St., Waterloo



**ROBISON,
DOUGLAS**

Principal, Stewart-Robison-Laffan, 601 Brady St., Davenport



**SILLETTO,
CHARLES B.**

Woodburn and O'Neil, 201 Jewett Building, Des Moines



**STEVENS,
WAYNE TOWNSEND**

Principal, DeWild-Grant-Reckert and Stevens, Rock Rapids



**STEWART,
HAROLD J.**

Principal, Stewart-
Robison-Laffan, 601
Brady St., Davenport



**VER PLOEG,
STANLEY C.**

Principal, Savage and
Ver Ploeg,
1200 Grand Avenue,
West Des Moines



**WARM,
IVAN**

Principal,
Toenjes & Stenson
217 W. 4th Street,
Waterloo



**STOLTZ,
STEPHEN M.**

Principal, Steffen &
Stoltz, 125½ East
Second, Ottumwa



**VOORHEES,
GRANT W.**

Principal, Smith-
Voorhees-Jensen,
Architects Associated,
206 Davidson
Building,
Des Moines



**WAYLAND,
LLOYD E.**

Principal, Soenke &
Wayland, Architects,
601 Brady St.,
Davenport



**TAYLOR,
WILLIAM A.**

Principal, Lindgren &
Taylor, 6311 Hickman,
Des Moines 10



WAGGONER, KARL M.

Principal, Waggoner and Waggoner,
15 S. Federal Avenue, Mason City

WAGGONER, TOM

Principal, Waggoner and Waggoner,
15 S. Federal Avenue, Mason City



**WEHNER,
ROLAND C.**

Principal, Wehner &
Henry, Architects,
204½ E. Washington,
Iowa City



THOMPSON, JACK DEAN

Principal, Altfillisch, Olson, Gray & Thompson,
126½ W. Water Street, Decorah



**WAGNER,
WILLIAM J.**

Principal, Wetherell-
Harrison-Wagner,
500 Hubbell Building,
Des Moines



**WERNER,
MARVIN E.**

Stanley Engineering
Co., 714 Woodlawn
Ave., Muscatine



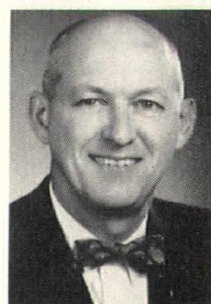
**THORSON,
OSWALD H.**

Principal, Thorson-
Brom-Broshar, 219
Waterloo Building,
Waterloo



**WALLERSTEDT,
W. KENNETH**

Principal, Smith-
Voorhees-Jensen,
Architects Associated,
206 Davidson
Building,
Des Moines



**WETHERELL,
EDWIN H.**

Principal, Wetherell-
Harrison-Wagner,
500 Hubbell Building,
Des Moines



**TOENJES,
DAVID B.**

Consultant, Toenjes &
Stenson, 217 W.
Fourth St., Waterloo



**WALSH,
JAMES H.**

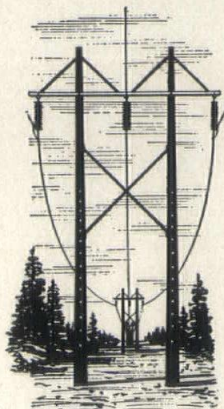
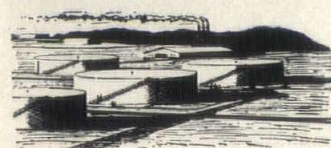
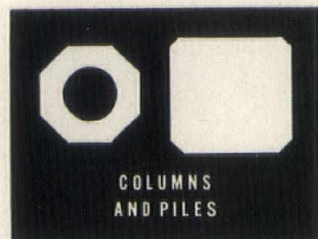
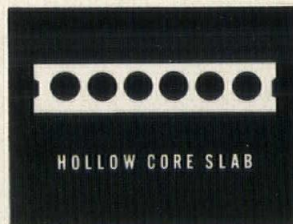
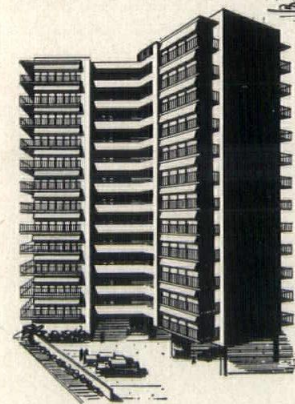
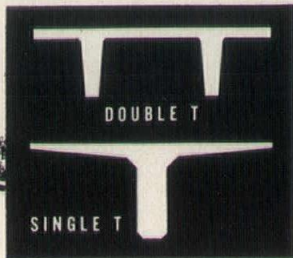
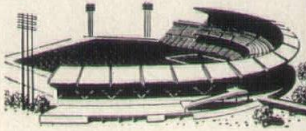
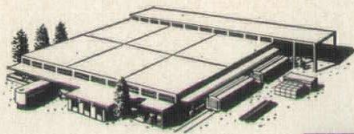
Principal, Walsh &
Keninger, Box 467,
Spencer

**UTTERBACK,
RICHARD A.**

**Wetherell-Harrison-
Wagner, 500 Hubbell,
Building, Des Moines**

WHITAKER, RAYMOND C.

Principal, Raymond C. Whitaker
1202 Adams St., Davenport



Warehouses to skyscrapers,
bridges to water tanks...

TODAY, IT'S PRESTRESSED CONCRETE

More and more architects and builders are choosing prestressed concrete for structures of every size and type. Prestressed concrete makes efficient use of two quality materials—high strength concrete and high tensile strength steel. This combination provides new opportunity for bold and imaginative design as well as money savings.

Prestressing makes possible long spans with beams and girders of shallow depth. Precasting of prestressed elements and site work can proceed together to shorten building schedules. Erection of the prestressed members is rapid. Prestressed designs give important weight reduction in large structures.

Upkeep costs are low. Concrete need not be painted. And in many cases, concrete's durability and fire resistance earn lower insurance rates.

The many advantages of versatile prestressed concrete provide structures that combine architectural appeal and construction efficiency.

PORTLAND CEMENT ASSOCIATION

408 Hubbell Bldg., Des Moines 9, Iowa

A national organization to improve and extend the uses of concrete

TYPICAL PRESTRESSED CONCRETE PRODUCTS ... AND HOW THEY ARE USED

	Warehouses
	Industrial plants
	Bridges and overpasses
	Schools
	Gymnasiums
	Auditoriums
	Public buildings
	Shopping centers
	Office buildings
	Terminals
	Storage tanks
	Stadiums
	Railroad ties
	Apartments
	Transmission poles
Girders	
Beams	
Columns	
Roof and floor units	
Slabs	
Wall panels	
Joists	
Piling	

**WIEGMAN,
JOHN H.**

Principal, Maiwurm
and Wiegman,
Warden Building
Fort Dodge



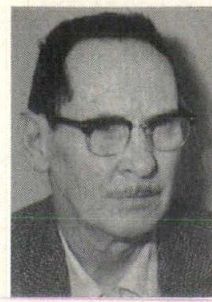
**ARTIAGA,
JESUS M.**

Griffith-Kendall
3810 Ingersoll
Des Moines



**CARNES,
F. LEE**

Department of Public
Services, City of Des
Moines, City Hall,
Des Moines



WISE, CARL M.

Department of Arch. and Arch. Eng.,
Iowa State University, Ames



**BLOODGOOD,
JOHN DUDLEY**

Building Editor,
Better Homes &
Gardens, 1716 Locust
Street, Des Moines 9



**CARNEY,
LEO A.**

Wetherell-Harrison-
Wagner, 500 Hubbell
Building, Des
Moines 9



**WOODBURN,
WILLIAM M.**

Principal, Woodburn
and O'Neil,
201 Jewett Building,
Des Moines

CHAPMAN, JOHN G.

Brooks-Borg, 650 Polk Boulevard
Des Moines 12



Associate Members Iowa Chapter

**BRIERLY,
ROBERT S.**

Porter-Brierly
Associates, 701
Insurance Exchange
Bldg., Des Moines 9



**COON,
KENNETH V.**

Brooks-Borg, 815
Hubbell Bldg.,
Des Moines



**AMEND,
JAMES LEE**

Hollis and Miller,
120 Council Bluffs
Savings Bank Building,
Council Bluffs



**BULLINGTON,
HAROLD J.**

Karl Keffer
Associates,
202 Masonic Temple
Bldg., Des Moines



**DE KOVIC
CHARLES W., JR.**

Dept. of Arch. and
Arch. Eng., Iowa State
University, Ames



**ANDERSON,
RAYMOND ERIC**

Brooks-Borg,
815 Hubbell Bldg.,
Des Moines



**BURTON
ARTHUR E.**

Dept. of Arch. and
Arch. Eng., Iowa State
University, Ames



DREY, JOHN E.

Dougher-Frevert-Ramsey,
3839 Merle Hay Rd., Des Moines



**APPELL,
DONALD W.**

Principal, Peterson &
Appell, Structural
Engineers, 1148 Polk
Blvd., Des Moines



**CARLSON,
KEITH M.**

Toenjes and Stenson
217 W. 4th St.,
Waterloo

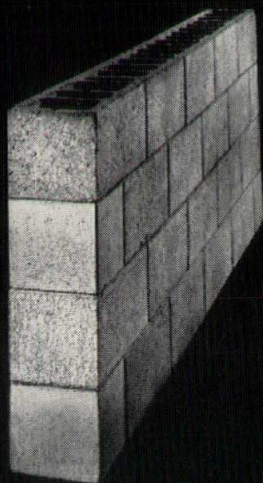


**DUTT,
CHARLES A.**

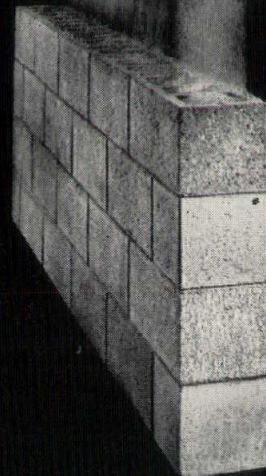
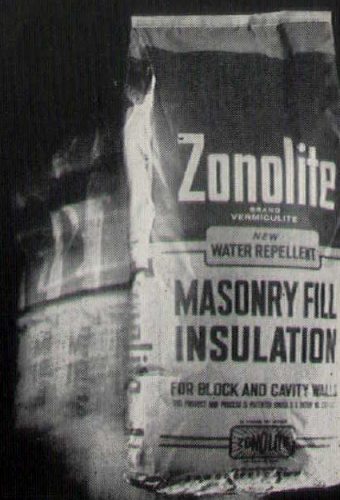
Tinsley, Higgins,
Lighter and Lyon,
526 Liberty Building,
Des Moines

ESCH, DELMER D.

Woodburn and O'Neil,
201 Jewett Building, Des Moines



U.33



U.17

Illustrated are comparative U values for 8" lightweight concrete block.

U values of other types and sizes of masonry walls are cut from $\frac{1}{3}$ to over $\frac{1}{2}$ when insulated with Zonolite Masonry Fill Insulation.

Need any more reasons for insulating masonry walls?

We need a minimum of encouragement to tell you about them. Zonolite Masonry Fill Insulation often pays for itself before the building is begun, because it reduces thermal transmission so effectively that smaller heating and air conditioning units can be used. Of course, future fuel bills will be much lower. And the occupants much more comfortable. Loudness of sound through Zonolite Masonry Fill insu-

lated walls is reduced by 20% to 31%.

The installed cost is low; from approximately 10¢ to 21¢ per sq. ft. (For example, 8" block can be insulated with Zonolite Masonry Fill Insulation for about 13¢ per sq. ft.) The reason: low material cost and fast installation. Zonolite just pours into the block cores, or cavities of cavity walls. For complete information, write for Technical Bulletin MF-56, to:

ZONOLITE

Western Mineral
Products Company



4725 OLSON HIGHWAY • MINNEAPOLIS 22, MINNESOTA

**HALL,
HAROLD C.**

Hall Engineering
Service, Box 572,
Iowa City



LAMOND, CHARLES O.

Architect, Federal Housing Administration,
Des Moines



**OLSON,
EUGENE A.**

Wm. Beuttler & Son,
14th and Nebraska
Streets, Sioux City



**HANSEN,
CHARLES H.**

Iowa representative,
Harland Bartholomew
& Associates, Fleming
Building, Des Moines



HANSEN, RICHARD F.

Principal, Richard Hansen & Associates,
14 South Linn Street, Iowa City

**LARSON,
JEROME W.**

Building Engineer,
Northwestern Bell
Telephone Company,
Des Moines 6



PAULSON, THEODORE F.

Paulson Construction Co., Cedar Rapids



HARRISON, ARTHUR L.

Harrison, Brauer & Rippel
Site planning Consultants
Municipal Airport, Ames



**LEMON,
ROBERT H.**

Dougher-Frevert-
Ramsey, 3839 Merle
Hay Rd., Des Moines



**PETERSON,
CARLYLE W.**

Peterson & Apell,
Structural Engineers,
1148 Polk Blvd.,
Des Moines



**HIGGINS,
TOM G.**

Tinsley, Higgins,
Lighter and Lyon,
526 Liberty Building,
Des Moines



LIND, JOHN HOWARD

Richard Hansen & Assoc.
14 South Linn St., Iowa City



**PETERSON,
GEORGE M.**

Tinsley, Higgins,
Lighter and Lyon,
526 Liberty Building,
Des Moines



JAMERSON, ROBERT H.

Principal, Johnson-Jamerson Associates,
401½ Main St., Cedar Falls



LUETHJE, DONALD H.

Charles Richardson & Associates, 1001 Kahl
Building, Davenport



**PETRE,
GEORGE M.**

William R. Meehan,
2215 Grand Avenue,
Des Moines 12



**JORDISON,
RICHARD R.**

State Univ. of Iowa
Architect's Office,
North Hall, Iowa City



**MOORE,
LARRY R.**

Moore & Bouse,
Consulting Engineers,
605 Dows Building,
Cedar Rapids



PULLEY, FRANK L.

Consulting Engineer.
Securities Building, Des Moines

SCHILLING, RALPH R.

Stevenson, Flanagan & Schilling
309 Empire Building, Des Moines



KING, PIERCE

Brown, Healey and
Bock, 131 36th St.
Drive S.E.,
Cedar Rapids



**MUNZENMAIER,
EDWARD W.**

Savage & Ver Ploeg,
1200 Grand Avenue,
West Des Moines

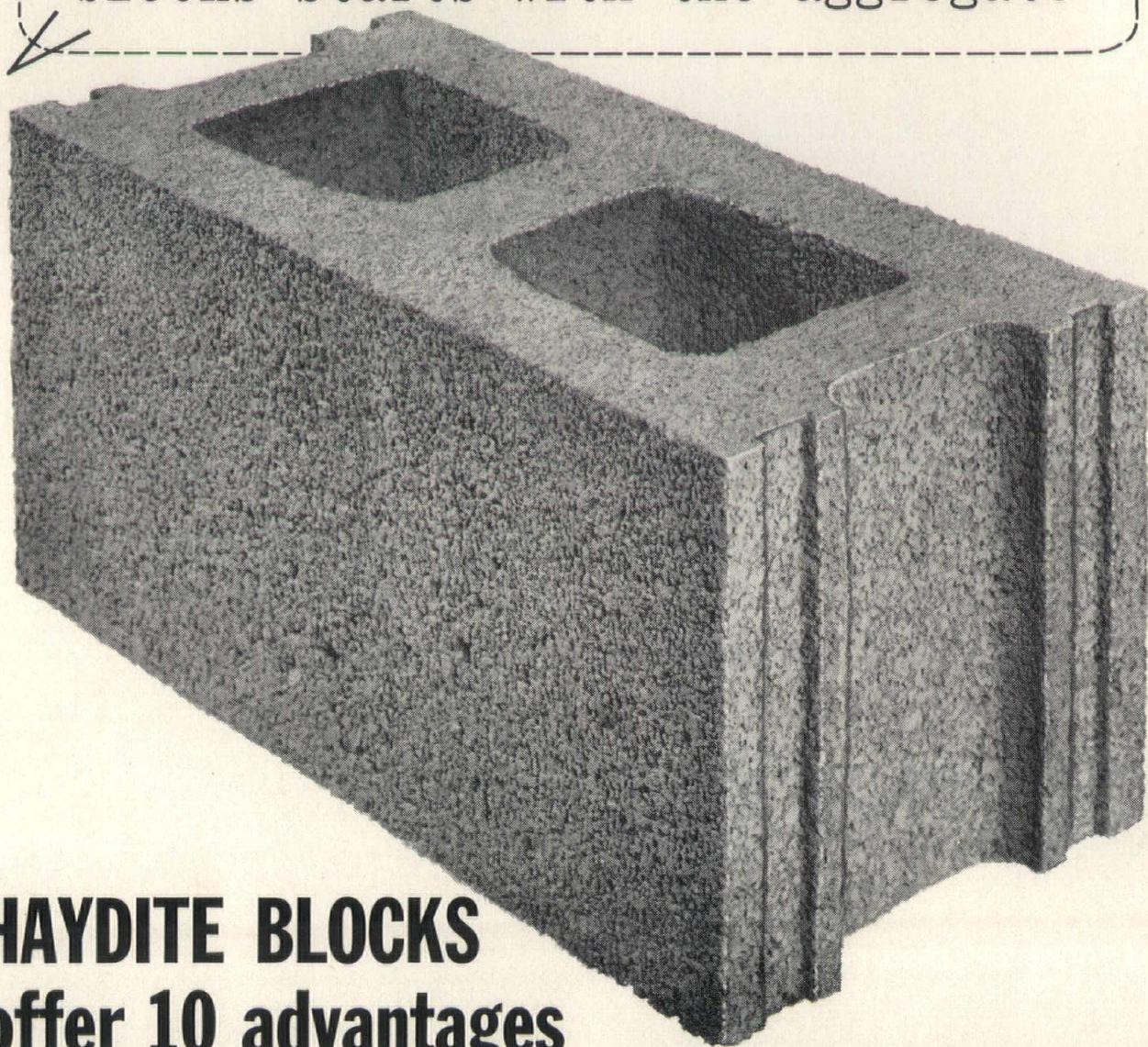


**SHANE,
HERBERT**

Tinsley, Higgins,
Lighter and Lyon,
526 Liberty Building,
Des Moines



...the difference in concrete blocks starts with the aggregate



HAYDITE BLOCKS offer 10 advantages

LIGHT WEIGHT—approximately $\frac{1}{3}$ lighter than ordinary concrete. Reduces deadload without sacrificing strength.

STRENGTH—in excess of Federal and ASTM specifications and local building code requirements.

FIRE RESISTANCE—manufactured at temperatures in excess of 2,000° F., Haydite aggregate produces a block of unusually high fire resistance.

UNIFORMITY—in size, texture and color for accuracy and beauty.

ACOUSTICS—are improved by the cellular structure of the aggregate and the texture of the block. Approximate Noise Reduction Coefficient is 0.45.

THERMAL INSULATION—the U factor (average) on 8" Haydite blocks is 0.35 and on 12", 0.32.

NAILABLE—nails can be driven in Haydite blocks to save time and money in many applications.

DURABLE—Haydite blocks have passed laboratory tests of 100 cycles of freezing and thawing without visible damage or loss of weight.

PAINTABILITY—the chemically inert composition of Haydite eliminates paint discoloration by rust or other chemical reactions.

ATTRACTIVE—a pleasing texture and natural gray color suitable for many applications without further treatment.

Haydite blocks manufactured from Carter-Waters Haydite, produced in Iowa, are available from more than 40 Iowa plants. For complete information contact your local plant or write to—

CONSTRUCTION THE MATERIALS
CARTER-WATERS
KANSAS CITY CORP. 8. MISSOURI
2440 Pennway GRand 1-2570

Producers of Haydite aggregate at Center-ville, Iowa, and New Market, Missouri.

Junior Associates, Iowa Chapter

**SHIRK,
KEITH E.**

Tinsley, Higgins,
Lighter and Lyon,
526 Liberty Building,
Des Moines

SKINNER, SAM L.

Stewart-Robison- Laffan, 601 Brady
Street, Davenport

SLATER, BERNARD J.

Department of Arch. and Arch. Eng.,
Iowa State University, Ames

STEVENSON, DANIEL B.

Stevenson-Flanagan-Schilling
309 Empire Building Des Moines 9

WAGNER, KENNETH A. JR.

Wm. Stuhr, Architect, 610 Safety Bldg.,
Rock Island, Ill.

**WAGNER,
WILLIAM R.**

1500 Glendale Road,
Iowa City

**WALTERS,
PAUL A.**

Consulting Engineer,
206 Masonic Temple
Building, Des Moines

WHITMER, WAYNE M.

Brooks-Borg, 815 Hubbell Bldg.,
Des Moines

WINKLER, KARL J.

Brooks-Borg, 815 Hubbell Bldg., Des Moines

**WIRKLER,
NORMAN E.**

Durrant & Bergquist
711 Laurel Park Rd.,
Dubuque

ZARNIKOW, WERNER E.

Smith-Voorhees-Jensen,
Architects Associated,
201 Davidson Bldg., Des Moines

**ALLSUP,
EDGAR DEAN**

Smith-Voorhees-
Jensen, Architects
Associated, 201
Davidson Building,
Des Moines

BELKNAP, DALE D.

Smith-Voorhees-Jensen, Architects Associated,
201 Davidson Building, Des Moines

BENZ, JOHN DOUGLAS

Durrant & Bergquist, 666 Loras Blvd.
Dubuque

**BERGER,
ROY E.**

Griffith-Kendall, 3810
Ingersoll, Des Moines

BISHOP, JACK

Dougher-Frevert-Ramsey, 3839 Merle Hay Rd.
Des Moines 10

**BOETEL,
PATRICIA M.**

Karl Keffer
Associates, 202
Masonic Temple Bldg.,
Des Moines

**CAMPBELL,
ROYCE**

1781 Flower St.,
Waterloo

CARPINO, RALPH

Amos Emery & Carl Hunter
820 Locust, Des Moines

DALE, WM. C. JR.

Stewart-Robison-Laffan, 1602 Cherry Hill Rd.
Bettendorf

**FAUST,
THOMAS W.**

Dougher-Frevert-
Ramsey, 3839 Merle
Hay Rd., Des Moines
10

GEHRLS, G. HUGO

Smith-Voorhees-Jensen, Architects Associated,
206 Davidson Building, Des Moines 9

GRIFFITH, M. BRUCE

Savage & Ver Ploeg, 1200 Grand, West
Des Moines

HAMMOND, ARTHUR E.

Tinsley, Higgins, Lighter & Lyons,
526 Liberty Building, Des Moines

HAMMOND, JAMES EDWARD

Board of Control of State Institutions,
State Office Building, Des Moines

HARMEYER, R. J.

Woodburn & O'Neil, 201 Jewett Building,
Des Moines

**HART,
JOHN J., JR.**

Principal
Brooks-Borg, 815
Hubbell Building,
Des Moines

HENNAGER, KEITH C.

Smith-Voorhees-Jensen, Architects Associated,
201 Davidson Building, Des Moines

**HESTNESS,
ADRIAN C.**

DeWild, Grant,
Reckert & Stevens,
Rock Rapids



Built with translucent Kalwall: First Missionary Church, Berne, Indiana. Architect: Orus O. Eash, A.I.A.; Contractor: Habegger Construction Co.

To help you do bold new things with light ...Kalwall translucent walls

In creative hands, light is "a many-splendored thing."

And with translucent Kalwall you can translate this "many-splendored thing" into design, most imaginatively and dramatically.

You get softly diffused light with Kalwall Translucent Walls — light that's shadowless and pleasantly glare-free.

You also get great structural strength. For lightweight as Kalwall is (1.5 lbs/sq ft), it is so strong that no intermediate support is required. Shatterproof. Weather-tight. Available in panels up to 4' x 20', white or colored — with a choice of modern, functional patterns produced by aluminum grid cores. Write for details on this new way to "build with light."



Kalwall lights church interior evenly — no "hot spots."

KALWALL CORPORATION

SWANSON GENTLEMAN, INC.

3213 Forest Ave., Des Moines, Iowa Telephone CRestwood 9-9793



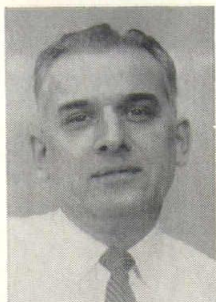
**JOHNSON,
DONALD ALVIN**

Smith-Voorhees-
Jensen, Architects
Associated, 206
Davidson Building,
Des Moines



**KAUZLARICH,
PETER J.**

Griffith-Kendall
3810 Ingersoll,
Des Moines



KRUSE, RICHARD H.

Russell & Lynch, 1221 Savings & Loan Bldg.
Des Moines



**KUGLER,
OSKAR**

Gjeltén & Schellberg,
205 S. Clark Street,
Forest City



**LOBE,
HORST W.**

Smith-Voorhees-
Jensen, Architects
Associated, 424
Badgerow Bldg.,
Sioux City



**McMULLIN,
RICHARD N.**

N. Clifford Prall,
4717 Grand Avenue,
Des Moines 12



**NIELSEN,
WILLIAM N., JR.**

Brooks-Borg,
815 Hubbell Building,
Des Moines

NIGRO, ANTHONY J.

Griffith-Kendall,
3810 Ingersoll, Des Moines

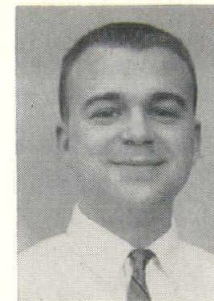


**OLSON
CLARENCE L.**

N. Clifford Prall,
4717 Grand Avenue,
Des Moines 12

NASR, A. (RAYMOND) A.

Griffith-Kendall, 3810 Ingersoll, Des Moines



**PARKS,
RUSSELL**

Amos Emery & Carl
Hunter, 820 Locust
Des Moines

PIFFNER, JOHN F.

Kohlmann, Eckman, Hukill, 610 Tenth St. S.E.,
Cedar Rapids



**RATCLIFFE,
JOHN R.**

Brooks-Borg,
815 Hubbell Building,
Des Moines



**REDFERN,
MERLIN L.**

Brooks-Borg,
815 Hubbell Building,
Des Moines

SAUER, EDWARD G.

Brown, Healy & Bock, 131 36th St. Dr. S.E.,
Cedar Rapids

SEABOCH, DON

Smith, Voorhees, Jensen, Architects Assoc.
206 Davidson Bldg., Des Moines 12

**SELZER,
MAX D.**

Louis C. Kingscott &
Associates, P.O. Box
202, Davenport



**SHAWHAN,
DALE**

Karl Keffer Assoc.
202 Masonic Temple
Bldg., Des Moines



**SHELLEDY,
JOHN G.**

Smith-Voorhees-
Jensen, Architects
Associated, 201
Davidson Building,
Des Moines



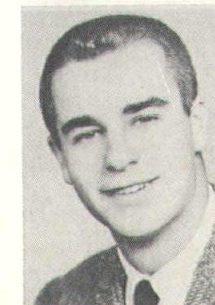
**SMITH,
CLARENCE M.**

Tec-Search, Inc.,
Evanston, Illinois



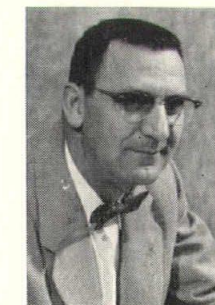
**SNYDER,
WAYNE J.**

220 Walnut St.,
Cedar Falls



STAEHLE, WILLIAM L.

City of Des Moines, Planning & Zoning,
City Hall, Des Moines



**UGULINI,
ALDO EDWARD**

Smith-Voorhees-
Jensen, Architects
Associated, 201
Davidson Building,
Des Moines

HOPE'S WINDOWS, Inc.

Niedringhaus Metal Products Co.

Ramset

Simmons Dormitory Furniture

PermaCushion Gym Floors

"Twin-Beam" Church Windows



C. D. WILCOX AND COMPANY

S.W. 6th & Murphy

Des Moines 9, Iowa

Phone CHerry 4-5191

Member Iowa Chapter, Producers Council Inc.

**L. J. "Buck"
Sweeney**



Representing

Halsey Taylor Electric Water Coolers
& Fountains

Sloan Flush Valves

Church Seats
(The Best Seat in the House)

Lawler Thermostatic Valves

Parker Mirrors & Bathroom Accessories

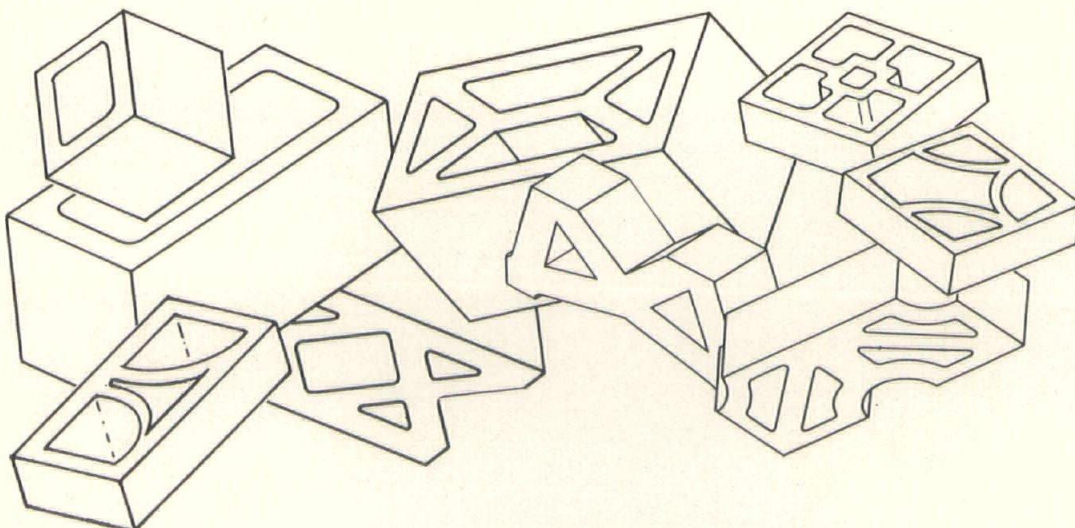
313 49th Street

Phone CRestwood 4-2050

DES MOINES, IOWA

architectural block

beautiful new pierced designs - NOW



All of the Nine Patterns Available in 4" and 8" Wall Widths
MARQUART CONCRETE BLOCK COMPANY

110 Dunham Place

Waterloo, Iowa

**VANDER LINDEN,
CHARLES W., JR.**

2904 34th Street,
Des Moines



Members Emeritus

CHARLES DeJARNETTE
3523 University, Apt. 13B
Des Moines, Iowa

ROBERT C. ROBINSON
415 Pensacola Avenue
Fairhope, Alabama

GEORGE SPOONER
7204 Reite Ave.,
Des Moines II, Iowa

E. R. SWANSON
5334 Killdee St.
Long Beach 8, Calif.

VERNON F. TINSLEY
3913 Maquoketa Drive
Des Moines, Iowa

CHARLES B. ZALESKY
2490 Orange Ave.
Sanford, Florida

**VANDE VENTER,
ROBERT L.**

Savage & Ver Ploeg
1200 Grand,
West Des Moines



**VER STEEG,
CARL**

Savage and Ver
Ploeg, 1200 Grand,
West Des Moines



WALDEN, BROCK A.

Thorson-Brom-Broshar, 219 Waterloo Bldg.
Waterloo



**WEBER,
DELANO B.**

Thorson-Brom-Broshar,
219 Waterloo Bldg.
Waterloo

WILKINS, JAMES W.

Charles Herbert & Associates
709 Bankers Trust, Des Moines



**WILLIS,
J. D.**

634 No. 5th St.
Grand Junction, Colo.

PRESCOLITE
ASTRALUME
RECESSED LIGHTING FIXTURES

ROUND **SQUARE**

- Beautiful shallow silhouette. Round or square hand blown Thermopal glass. 100-300 Watts.
- No frames, latches or visible means of glass support (U.S. Pat. No. 2,826,684). NEW hinging principle.
- Prewired recessed housings.
- Vertical lamping.

Write for further information.
PRESCOLITE MFG. CORP.
1251 Doolittle Drive
San Leandro, California

FACTORIES:
San Leandro, Cal. • Warrington, Pa. • El Dorado, Ark.

Honorary Associate

DWIGHT KIRSCH
1701 Casady Drive, Des Moines

DEVOE PAINT

First in Quality Since 1754

TRUSCON LABORATORIES
INDUSTRIAL MAINTENANCE

Complete Stocks Serving All Iowa

**SERVICE BY LOCAL ARCHITECTURAL
REPRESENTATIVES**

G. M. MELTON MELVIN E. WILLS
GEORGE R. CARR

DEVOE & RAYNOLDS CO., INC.

108 JEFFERSON DES MOINES, IOWA PHONE CH 4-5261

PERSONAL & PROFESSIONAL

TWO CITIES FEATURE ARCHITECTURE, ART

Architect as art was the subject of shows at Waterloo and at Sioux City. A display was held at the Waterloo recreation center and panel discussion presented. Exhibiting architects were *Johnson-Jamerson, Deuth & Gibson, Lorenzen, Nickerson, Broshar, Toenjes & Stenson, Thorson & Brom, Devoe, Cleveland, Flinn & Saito*.

At Sioux City the presentation was made at the art center in that city, with exhibits by *William Beuttler & Son, & Associates, Germanson-Foss & Co.* and *Robert D. Hecker*. Photographs and drawings were mounted on panels with explanations to interest and guide the public in following design evolutions.

LIGHTER ELECTED RENEWAL OFFICER

Clyde W. Lighter, A.I.A., *Tinsley, Higgins, Lighter and Lyon*, is vice-chairman of Des Moines' Urban Renewal Board. Lighter, a member of the board since 1958, and now serving his second three-year term, was elected unanimously by the board to fill the unexpired term of John Hawkenson who moved to Chicago.

ENGINEERS ELECT SHERMAN SMITH

Officers of the Iowa Engineering Society for 1963 are: President, Sherman A. Smith, P.E., Burlington; President-elect, Vernon G. Peters, P.E., Cedar Falls; Vice President, Carl V. Blomgren, P.E., Council Bluffs; treasurer, Marcus Powell, P.E., Iowa City. Past president is E. Robert Baumann, P.E., Ames.

IN MEMORIAM

Louis C. Kingscott, 65, founder and president of a widely known firm which has an office in Davenport.

Paul L. Francescon, 62, architect in the Clinton area for more than 20 years. He had worked on buildings abroad for Sidney H. Morris and Associates of Chicago and this year submitted a design for a multimillion dollar, long-range Mississippi River front development.

ISU STUDENTS VISIT DES MOINES FIRMS

Four Des Moines architectural offices played host to twenty members of the AIA Student Chapter of Iowa State University. Dividing into four groups, each student group visited one office to study procedure and ask questions. Cooperating firms were *Brooks-Borg, Amos Emery & Carl Hunter, Karl Keffer Associates, Woodburn & O'Neil*.

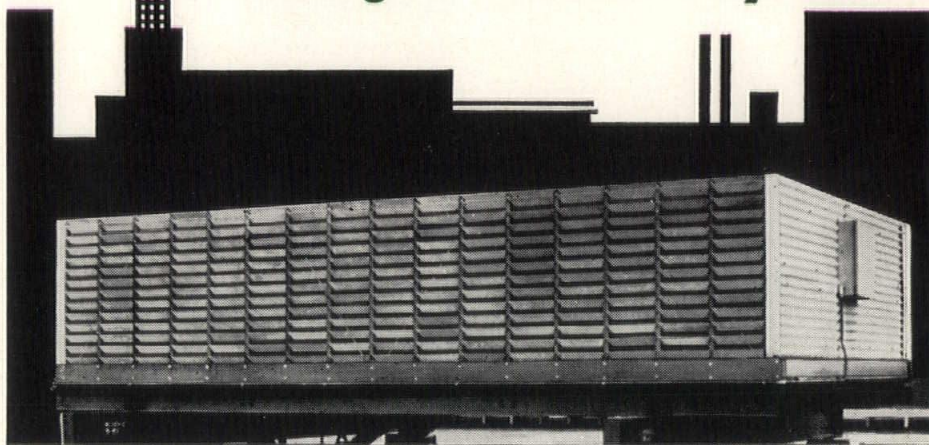
FIELD SUPERVISION FOR GEORGE CRAFT

George L. Craft, formerly of Lake City, has joined *Smith-Voorhees-Jensen, Architects Associated*, of Des Moines and Sioux City. He is field construction superintendent and engineer, working out of the firm's Sioux City office.

POLLY OPENS OFFICE

Vern G. Polly, P.E., has opened offices for the practice of engineering, at Sioux City.

Marley Double-Flow ...the cooling tower that changed Iowa's skyline



Out-of-sight in appearance, out-of-mind so far as maintenance and operation are concerned, and out-of-this-world when it comes to performance is the Marley Double-Flow. In the field of intermediate capacity cooling, the Double-Flow is "the real thing"—the first and only complete low-silhouette tower.

Diffusion decking, drift eliminators, access doors, adequate fan cylinders—every cooling tower component that contributes to better performance, greater economy and simpler maintenance is standard equipment on Double-Flow towers. Such quality explains why this unique tower is the overwhelming first choice of architects, contractors, engineers and owners who require water cooling on a commercial and institutional scale.

Represented
by . . .

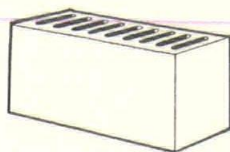
**R. S. STOVER
COMPANY**

203 W. Main St.
Marshalltown, Iowa

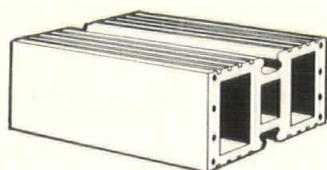
120 N. 69th St.
Omaha, Neb.

VINCENT OFFERS The **Complete** Line of **BRICK and TILE**

Yes, any needed type of clay product is available from Vincent.

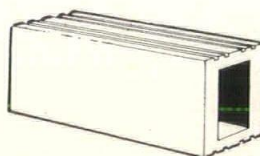


CERAMIC GLAZED TILE

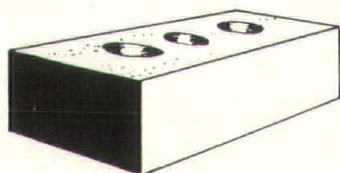


BUILDING TILE

In addition, Vincent is the exclusive distributor of several nationally known lines of specialty brick.



SALT GLAZED TILE



FACE BRICK

Fast and efficient service plus a **complete** line of materials makes Vincent a most reliable supplier for the architectural profession.



EXCLUSIVE DISTRIBUTOR FOR
ELGIN-BUTLER BRICK COMPANY, AUSTIN, TEXAS
RELIANCE BRICK COMPANY, DALLAS, TEXAS
and
MATCO CERAMIC GLAZED TILE CORPORATION
Ask for complete literature or sample panels showing both glazed and unglazed brick of the highest quality.

VINCENT
CLAY PRODUCTS

FORT DODGE, IOWA

Manufacturers of Superior Face Brick, Glazed Tile, Building Tile, and Drain Tile.

OFFICE 2930 Fifth Ave. South • **PHONE** 573-8126 • **FACTORY** 2½ Miles South of Fort Dodge

CHURCHMEN CHALLENGE IOWA ARCHITECTS

The "revolution in church architecture" was described at the Iowa Conference on Church Building and Architecture in Des Moines. "No amount of nostalgia is going to bring back the picture post card church," Harold Wagoner, Philadelphia architect, told the group. The type of program being carried on by the church is an important part of its architecture, he said.

Dr. S. T. Ritenour of New York challenged the architects with two questions: "Where is the presence of God?" and "How is it expressed in building?" Dr. Ritenour, an ordained Presbyterian minister, is executive director for church building and architecture, National Council of Churches. Dr. Edward Frey of New York City, executive director of church architecture for the United Lutheran Church of America, was also a speaker.

The sessions were sponsored by the division of Christian Education and division of Life and Work of the Iowa Council of Churches.

DIRECTORY OF ADVERTISERS

ADEL CLAY PRODUCTS CO.	6
BLUMCRAFT OF PITTSBURGH	17
CARTER-WATERS	25
DES MOINES MARBLE AND MANTEL CO.	35
DEVOE & REYNOLDS CO., INC.	30
GOODWIN COMPANIES	36
IOWA CONCRETE BLOCK AND MATERIAL CO.	35
IOWA PAINT MANUFACTURING CO.	3
MARQUART CONCRETE BLOCK CO.	29
MIDWEST CONCRETE INDUSTRIES	4
W. E. NEAL SLATE CO.	34
PORTLAND CEMENT ASSOCIATION	21
PRESCOLITE MANUFACTURING CO.	30
SHEFFIELD BRICK & TILE CO.	2
SIOUX CITY MOSAIC	11
RALPH N. SMITH, INC.	35
R. S. STOVER CO.	31
SWANSON GENTLEMAN, INC.	27
VINCENT CLAY PRODUCTS	32
L. J. SWEENEY	29
WESTERN MINERAL PRODUCTS	23
C. W. WILLCOX AND COMPANY	29
WILSON CONCRETE CO.	33



PRECAST AND PRESTRESSED CONCRETE PRODUCTS

- MO-SAI EXPOSED
AGGREGATE
- FLOORS
- ROOFS
- BEAMS
- COLUMNS
- PILING

**SPECIFY CONCRETE FOR
PERMANENCE AND
ECONOMY**

**WILSON
CONCRETE CO.**

"Since 1905"

OMAHA—GRAND ISLAND
RED OAK—SO. SIOUX CITY

AN OUTSTANDING SUCCESS among the programs of the Iowa Producers' Council was the February meeting at the Wakonda Club where 140 architects, suppliers, contractors and concrete producers talked the problems of handling concrete. Harold Jobse of the Portland Cement Association was moderator for the two-panel sessions. Panelists were: Bob Moucka, Ceko Steel; Wilson Witte of Economy Forms; John Ringland of Ringland and Johnson and Carlyle Peterson of Peterson and Appell, who spoke on cast-in-place construction, and, Jim Boehmler, Prestressed Concrete of Iowa; Greg Gentleman of Swanson-Gentleman; Dave Comann of PCA, and Hal Neumann, of Arthur H. Neumann & Bros., who spoke on precast construction.



"NO SET POLICY" ON SINGLE CONTRACT

Asked to express itself regarding the single-contract or multiple-contract system of construction bidding, the Iowa Chapter A.I.A. has decided not to adopt a set policy but to recommend a flexible attitude.

The chapter had been asked by the Board of Regents to make known its views on the subject.

At the annual meeting in January, a presentation on behalf of the single contract was made by Ken Lewis, executive secretary of the Master Builders of Iowa. Don Clark, representing the National Electrical Contractors Association, spoke on behalf of other mechanical contractors, who prefer the multiple contract.

As a result of discussion during two days of the annual meeting, the chapter informed the Board of Regents in February that it could see no reason to establish a set policy, but preferred the flexibility of selecting either system as the job warranted.

It was further suggested that the Board of Regents should follow the

advice of their staff, the Institution staff and the architect employed for specific projects involved.

HOVEY BROM HEADS BLACK HAWK COUNCIL

The Black Hawk County Architectural Council, formed by registered practicing architects and principals of architectural firms in that county, has as its charter officers R. Hovey Brom, A.I.A., president; Victor P. Gibson, A.I.A., vice president, and Robert C. Broshar, A.I.A., secretary-treasurer.

Purpose of the group is to create greater interest and participation in local civic affairs and issues, to foster recognition of the profession and to benefit from mutual discussion of architectural problems.

BABIES

To Mr. and Mrs. William Taylor of Des Moines, on March 1, an adopted son, Gregory William, three weeks old.

PERSONAL & PROFESSIONAL

RUSSELL HEADS DES MOINES COUNCIL

George Russell is the 1963 president of the Des Moines Architects' Council, a section of the Iowa Chapter, A.I.A., succeeding M. E. Jensen, who was the organization's first president.

Other 1963 officers are Charles Herbert, vice president; Arthur Lindgren, secretary-treasurer; and M. E. Jensen and John Rice, directors. All are members of the A.I.A.

A change in the by-laws was adopted at the February election meeting. It is: "The term of the

president and vice president shall be one year; the vice president shall be the president-elect; the retiring president shall become one of the two directors for a one-year term."

State Comptroller Marvin Selden discussed the financial operation of the State of Iowa in March and also commented upon a proposed law which would have placed all purchasing under the control of his office. One portion of the bill would have called for creation of an architectural-engineering division.

Selden explained that the idea for the bill had not originated in his office, nor was his office seeking those responsibilities.

The Des Moines "Ambassador" story was explained at the group's April meeting by Gerald Jewett, Sr., chairman of the Industrial Bureau of the Des Moines Chamber of Commerce; William McCarty, secretary of the Industrial Bureau, and Jack Wesenberg, general secretary of the Chamber.

PORTER-BRIERLY JOIN IN NEW FIRM

Thomas Porter, A.I.A., has announced the formation of a new firm, *Porter-Brierly Associates*, as a successor to his own recently founded firm. Brierly joined Porter early this year and is seeking registration.

Both men formerly were employed in the office of N. Clifford Prall, A.I.A., Des Moines.

NEW IOWA CITY FIRM

Announcement of the formation of the firm of *Richard Hansen and Associates* has been made in Iowa City by Richard Hansen, who formerly was with *Waggoner and Waggoner* in Mason City. Hansen, a 1955 graduate of ISU, was registered in 1960. He is an associate of the Iowa Chapter A.I.A.

John Lind is associated with Hansen in the firm.

PEIFFER APPOINTED

Leo C. Peiffer, A.I.A., Cedar Rapids, is a member of the Uniform Sign Code committee in that city. The function of the committee is to review and act on resolutions and changes proposed to the city relating to the construction, erection and aesthetics of present and future signs in Cedar Rapids.

GOEWY NAMES DISTRICT EDITORS

District editors to assist in the collection of material and photographs for use in Iowa Architect articles have been announced by Publications Chairman Rich Goewey and Editor Carl Ver Steeg.

Those named, and the districts, are:

James Duffy, Sioux City, Northwest.

Howard Heemstra, Forest City, North.

Robert Broshar, Waterloo, Northeast.

Gerald Miller, Davenport, East.

Norman Rudi, Ames, ISU.

Russ Parks, Des Moines and Jack Shelledy, Des Moines, for the Central Iowa area.

DUFFY OPENS PRACTICE

James M. Duffy, A.I.A., has opened an office for the practice of architecture in Sioux City. For the past 10 years he has been with *William Beuttler and Son* of that city.

Duffy is a 1950 graduate of Iowa State University and was registered in 1955. He became a member of the Institute in 1961.

BROSHAR JOINS THORSON AND BROM

Robert Broshar, A.I.A., has joined O. H. Thorson and Richard H. Brom in the Waterloo firm which now is known as *Thorson, Brom and Broshar*.

Broshar previously had been in partnership with Harvey W. Henry in Waterloo, and for a short time had been in practice in Cedar Falls.

Broshar is a 1954 graduate of Iowa State University, was registered in 1960 and has been a corporate member of the Institute since that year. He previously was employed in the firm he has now joined.

JIM BENTLEY JOINS KINGSCOTT FIRM

James M. Bentley, A.I.A., has been appointed the architect in charge in the office of *Louis C. King-scott & Associates*, Davenport.

Bentley, a 1953 graduate of Iowa State University, had been in the firm of *Thorson and Brom* in a variety of positions since 1948. He was registered in Iowa in 1959 and became a member of the Institute in 1961.

✓ 38 years of service
to Iowa schools

✓ chalkboard
specialists

✓ state-wide
installation
service

✓ natural slate

✓ Johns-Manville
"Colorlith"

✓ "Wensco" washable
cork tackboard

✓ Gotham aluminum
trim and
chalkboards

✓ display cases

✓ the only COMPLETE
chalkboard line

w. e. neal slate co.

1215 Second Avenue, North
Minneapolis 5, Minn.
FR 7-8100



Helical Marble Stairway — Cadet Library, U.S. Air Force Academy, Colorado Springs, Colo.

The ARRESTING BEAUTY OF MARBLE



des moines marble & mantel co.

SINCE 1885

HARRIS M. GOLDEN, President • 938 SIXTH AVENUE • CHerry 4-8327

A member of the Producer's Council and leading national Terrazzo and Mosaic Associations.

Our knowledge and experience of over 25 years in the Floor and Wall Covering Field is at your service. Call on us for solution of your problem jobs.

- Laytex Underlayments
- Asphalt Underlayments
- Vinyl Asbestos & Asphalt
- Homogeneous Vinyl
- Rubber and Cork Tiles
- Bolta-Wall Vinyl Wall Coverings
- Rubber Wall Coverings

RALPH N. SMITH, Inc.

Des Moines, Iowa

1339 2nd Ave.

AT 8-6741

The Proper Use of Concrete Masonry

For many years, the lowest cost of masonry walls could be accomplished by the use of concrete blocks.

However, it is very important that the concrete blocks are properly manufactured, cured, stored and delivered in order to get a first-class finished building.

We — at Iowa Concrete Block — have made improvements over the years until now we believe we can furnish blocks that will give you fine, trouble-proof buildings.

✓ **MIXING.** We have the best machinery to proportion and mix the materials so it will produce the very best blocks. Within 30 days, all of this will be electronically and automatically done—doing away with manpower mistakes entirely in this division.

✓ **MANUFACTURE.** Our two three-block machines not only use vibrations for compacting the

blocks, but they are the only ones in this section using both bottom and top vibration.

✓ **CURING.** We have a large, automatically controlled, high pressure steam boiler which enables us to get just a right temperature and moisture to cure the blocks properly.

✓ **STORAGE.** We have a large all steel building in which more than 150,000 units can be placed under cover to keep them out of the rain and snow. Orders for large buildings are placed under this roof.

✓ **DRY UNITS.** We have our own testing equipment not only to test the strength but also the moisture content of our blocks. If the moisture content is too high we have a drying kiln in which the blocks can be brought down to the proper dryness for satisfactory use.

"QUALITY AND SERVICE ARE OUR MOST IMPORTANT PRODUCTS"

IOWA CONCRETE BLOCK & MATERIAL CO.

820 S.W. Ninth St.

Phone ATLantic 8-5751

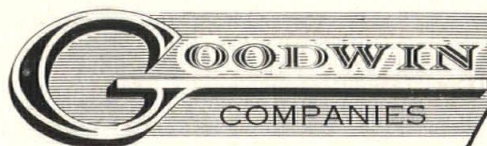
Des Moines

*The newest member
of the*
**Designer
Selections** *Line*

Van Dyck Brown

by DES MOINES CLAY COMPANY

This highly appealing new brick is offered in an unusually rich and warm range of medium to dark browns that capture the Burnt Umber shades. Regular wirecut surface; standard and norman sizes. Van Dyck Brown allows complete design freedom as it mixes exceptionally well with reds, buffs, and all light toned units.



MANUFACTURING DIVISIONS
DES MOINES CLAY COMPANY
MASON CITY BRICK AND TILE COMPANY
OSKALOOSA CLAY PRODUCTS COMPANY
OTTUMWA BRICK AND TILE COMPANY
REDFIELD BRICK AND TILE COMPANY

**614 CENTRAL
NATIONAL BLDG**
DES MOINES, IOWA